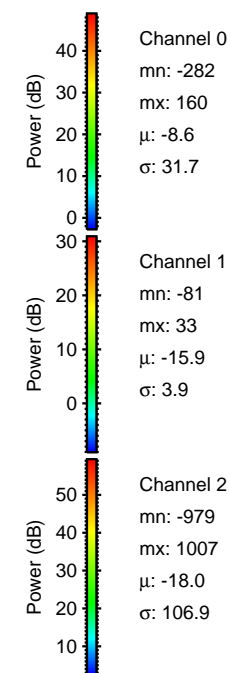
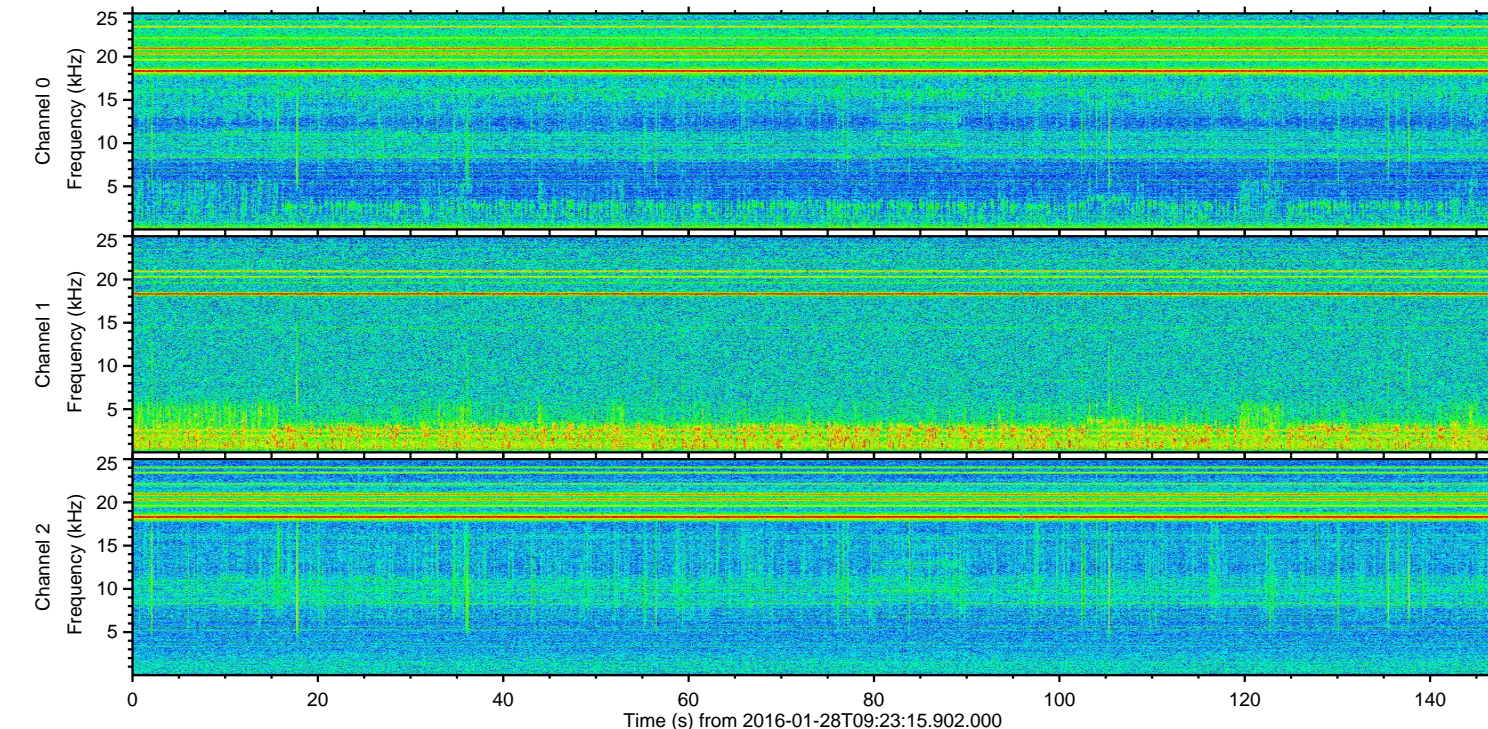
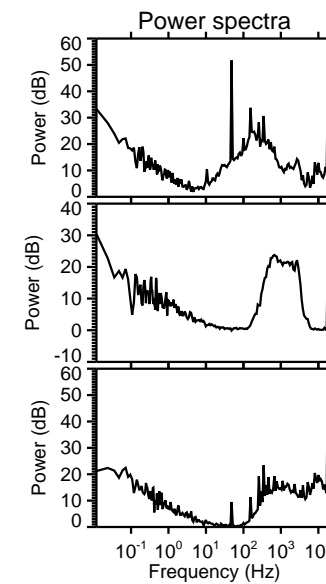
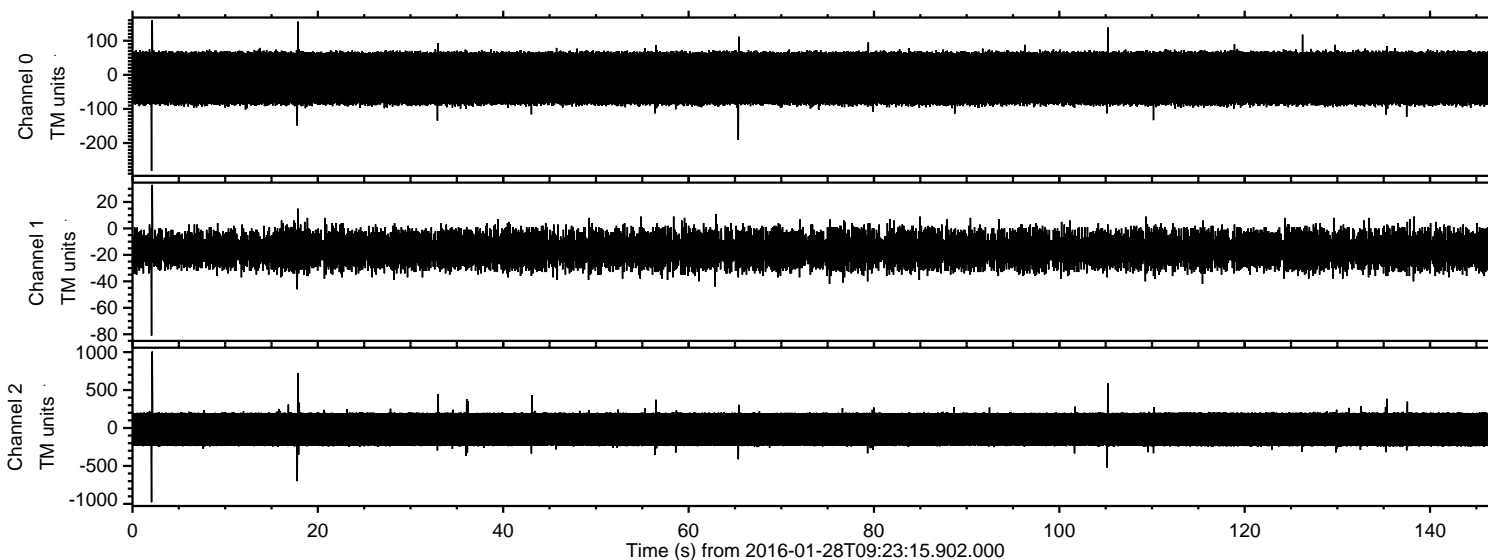
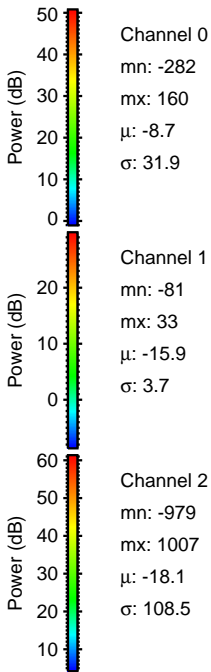
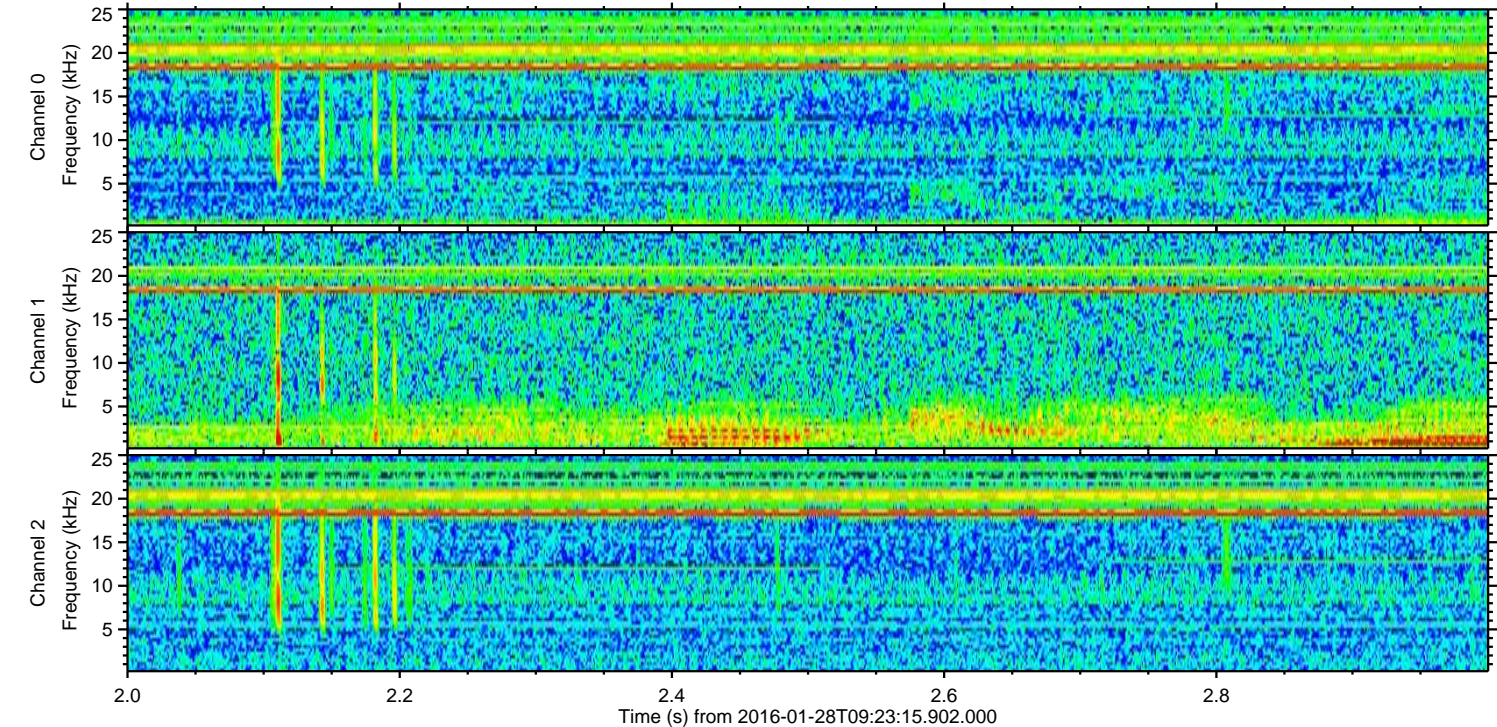
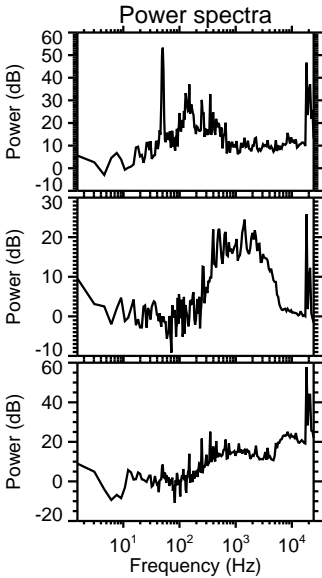
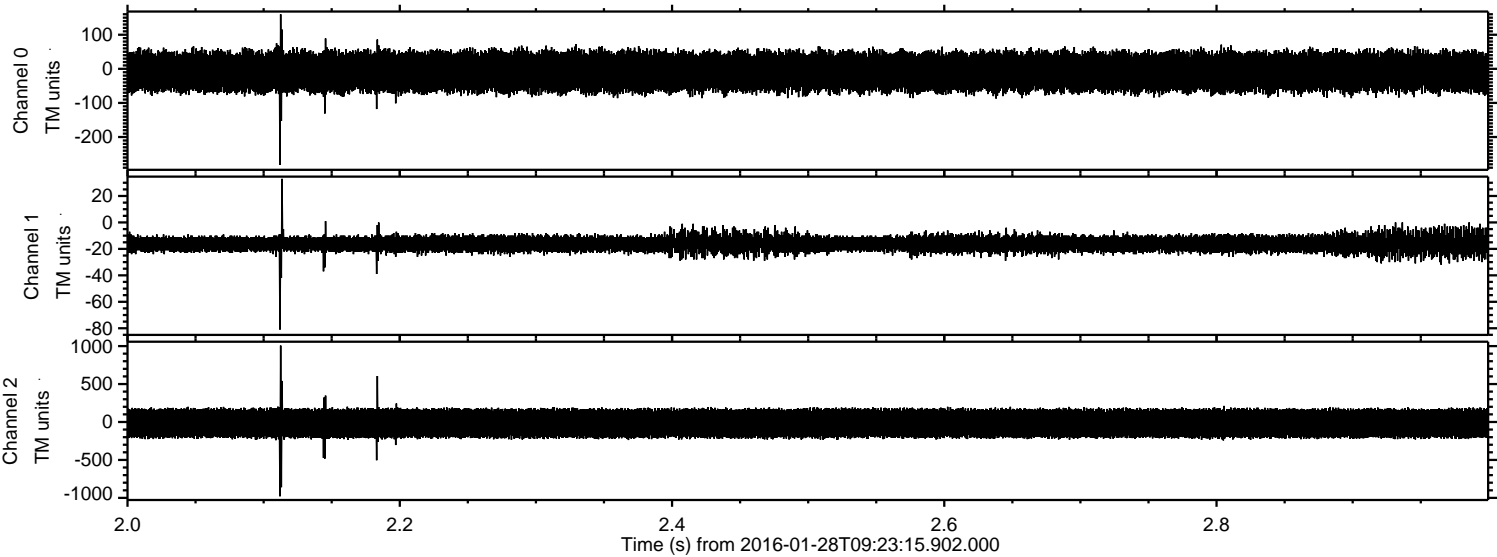


ELMAVAN 3D WAVEFORMS (Measured data sampled at 50 kHz) 51000 packets of 144 samples from 2016-01-28T09:23:15.902.000.

Processed Thu Apr 7 07:05:33 2016 by ELM ver.2012-10-06 from 001__elm20160128_092314__dat00.bin

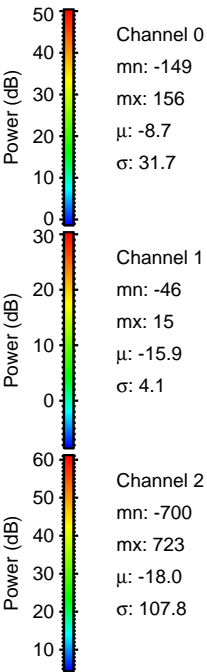
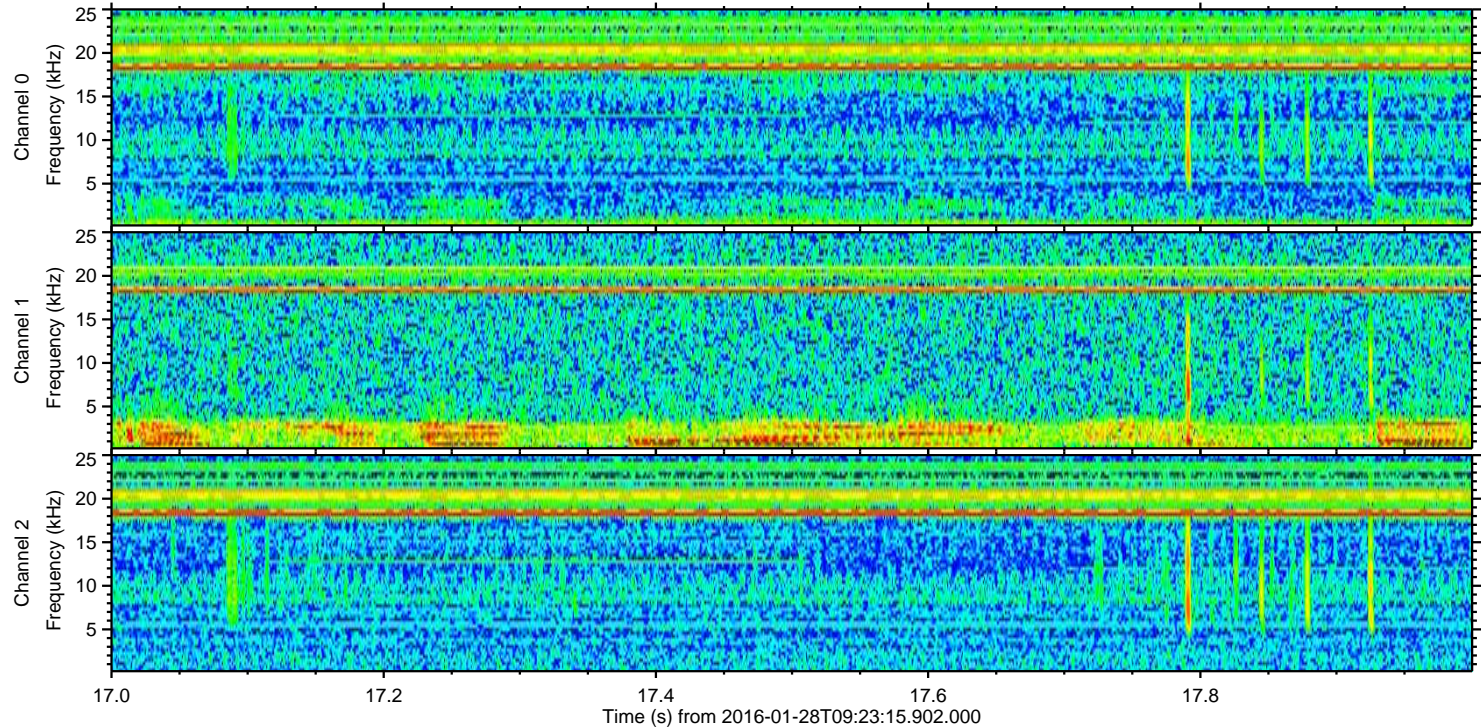
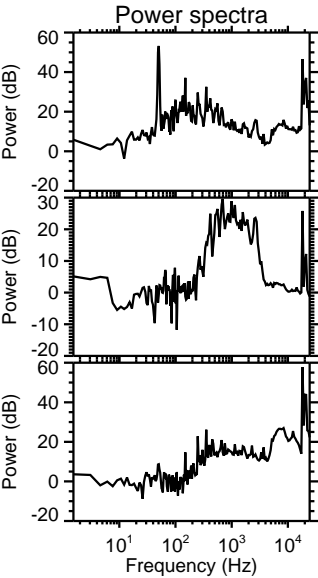
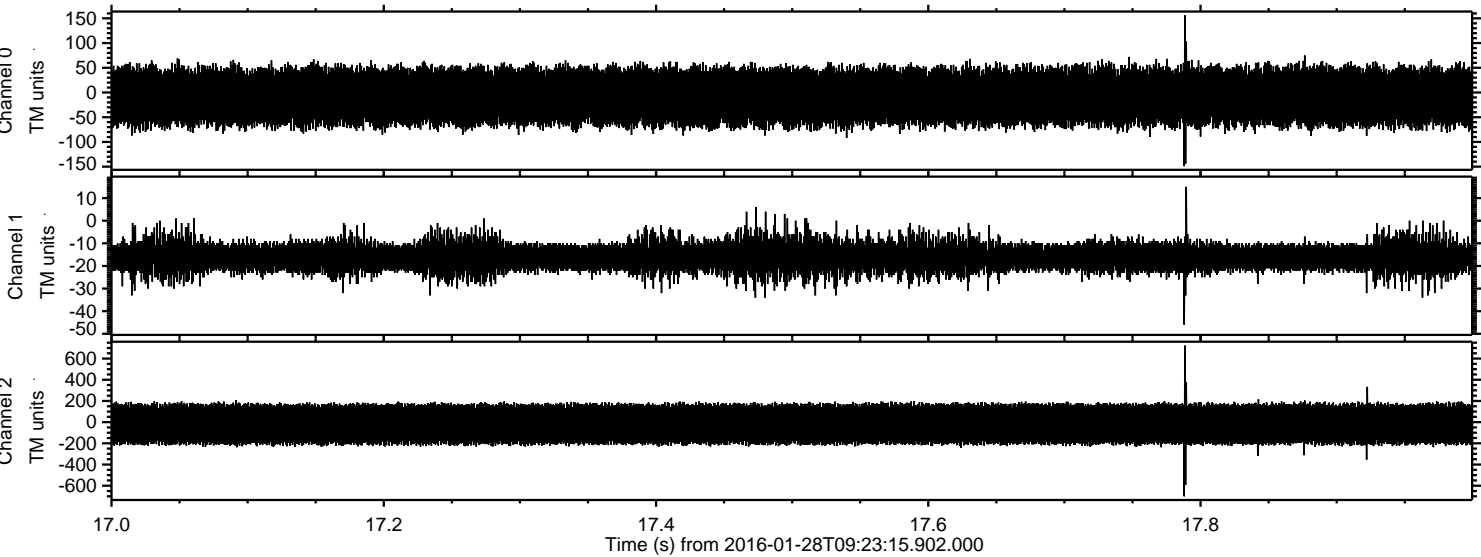


Processed Thu Apr 7 07:05:46 2016 by ELM ver.2012-10-06 from 001__elm20160128_092314__dat00.bin



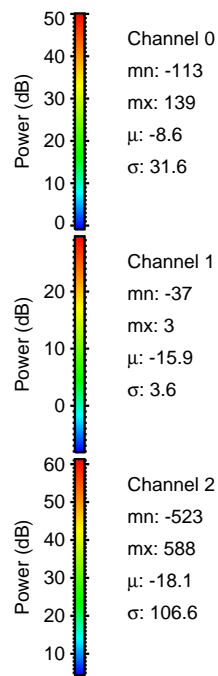
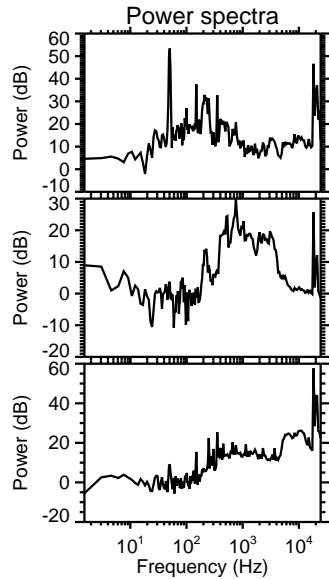
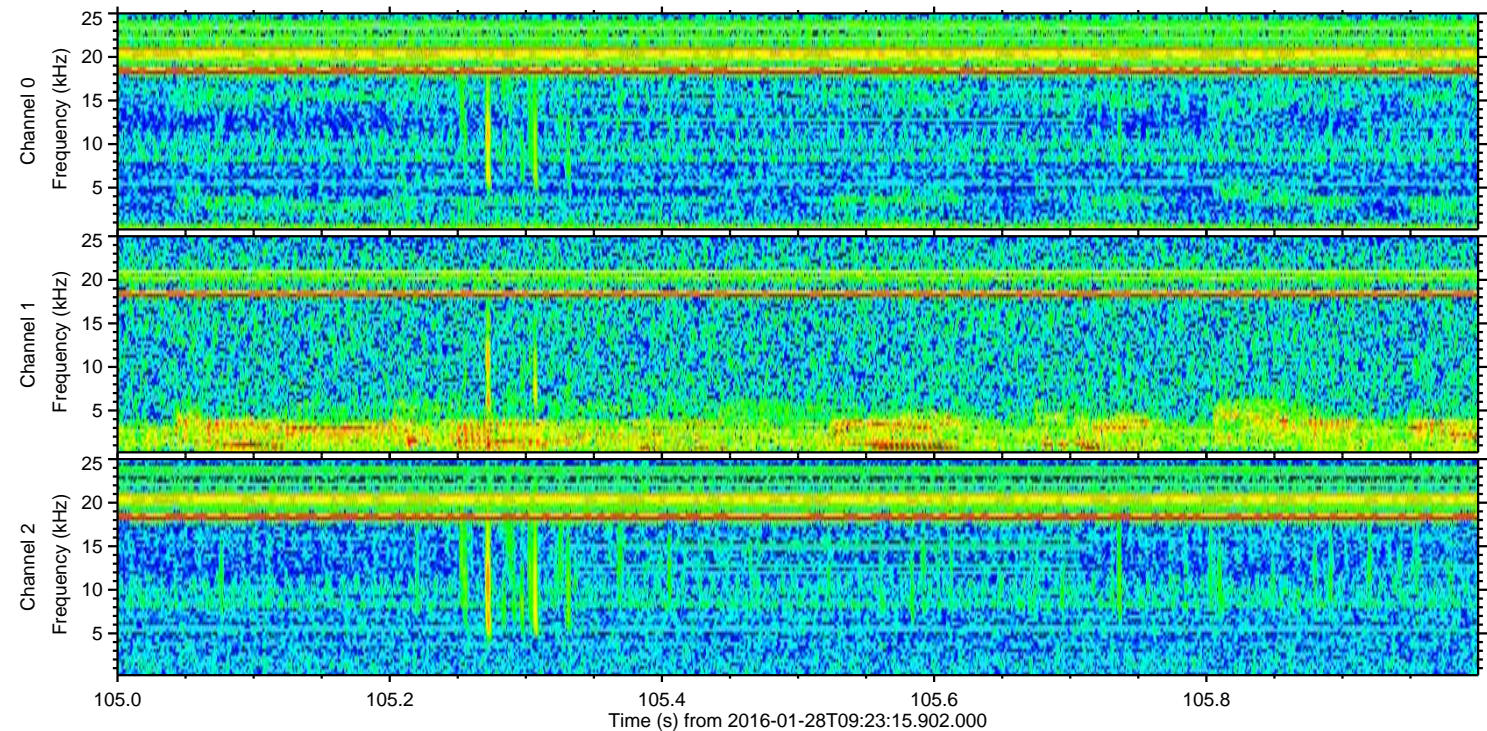
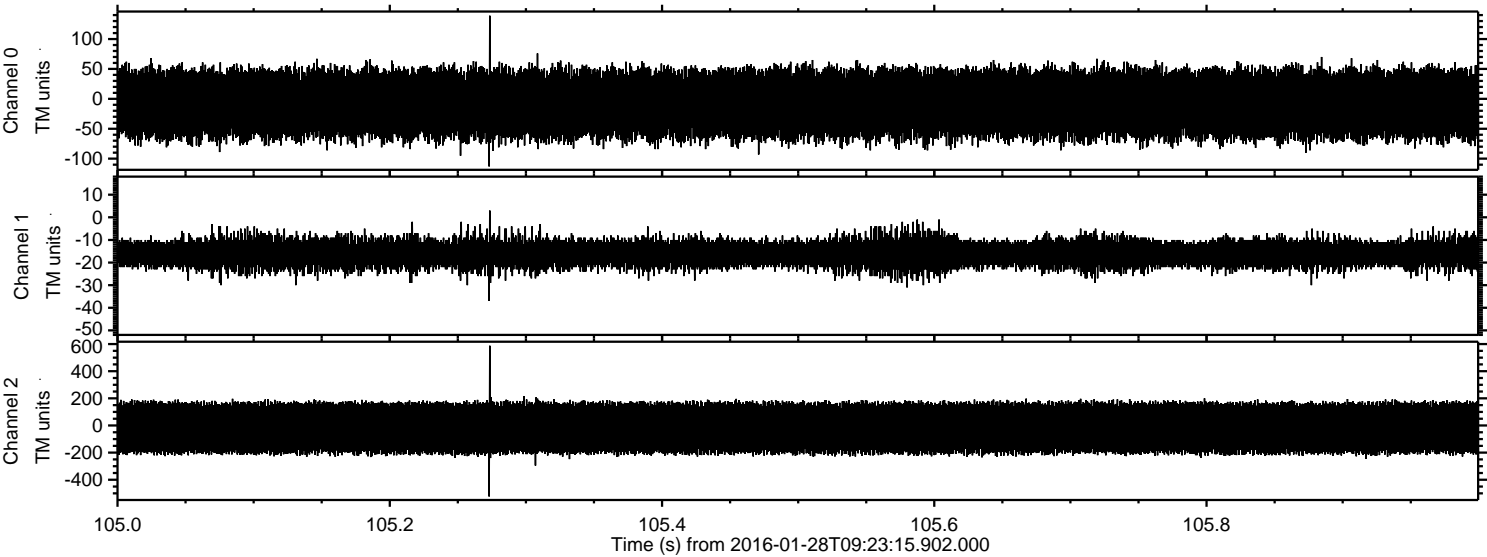
ELMAVAN 3D WAVEFORMS (Measured data sampled at 50 kHz) 51000 packets of 144 samples from 2016-01-28T09:23:15.902.000. Part 18/147

Processed Thu Apr 7 07:05:46 2016 by ELM ver.2012-10-06 from 001__elm20160128_092314__dat00.bin

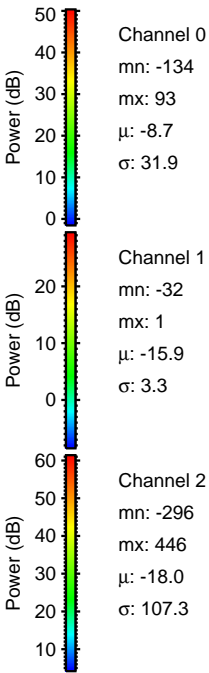
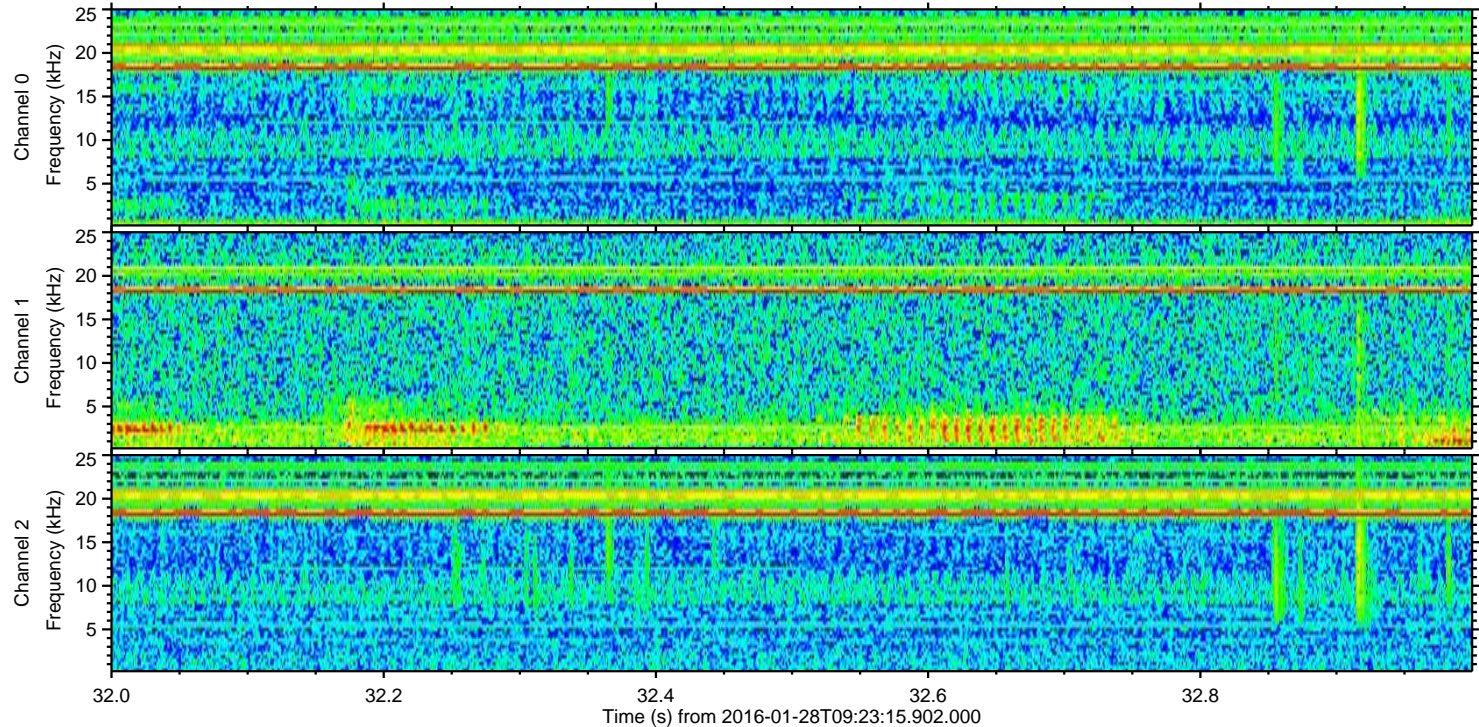
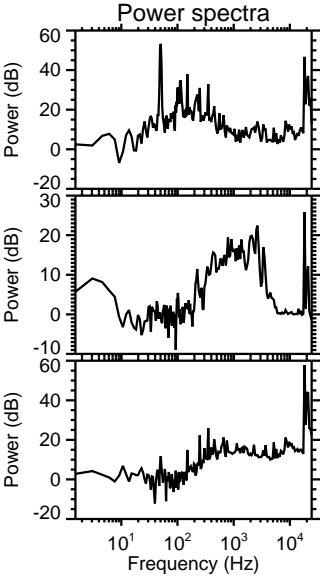
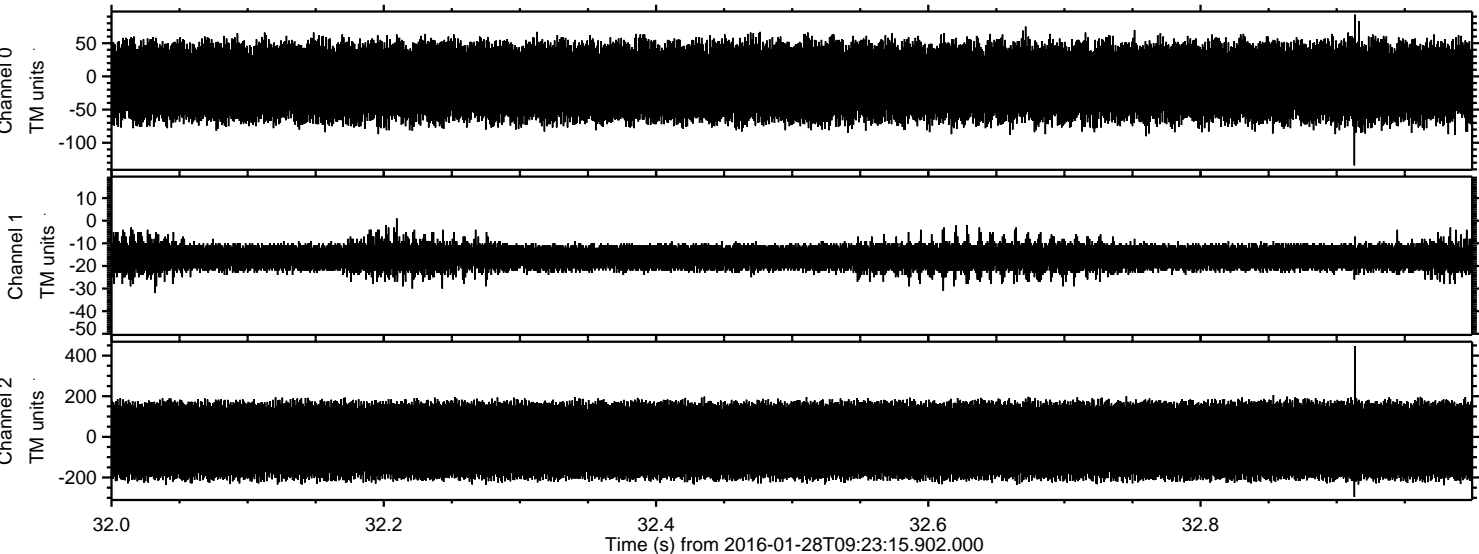


ELMAVAN 3D WAVEFORMS (Measured data sampled at 50 kHz) 51000 packets of 144 samples from 2016-01-28T09:23:15.902.000. Part 106/147

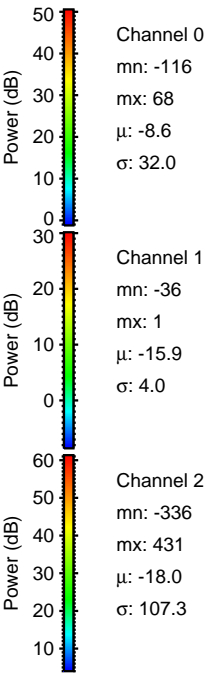
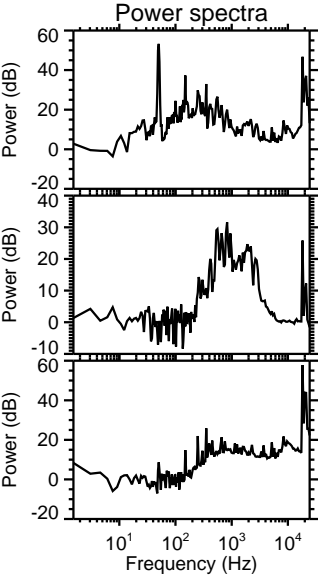
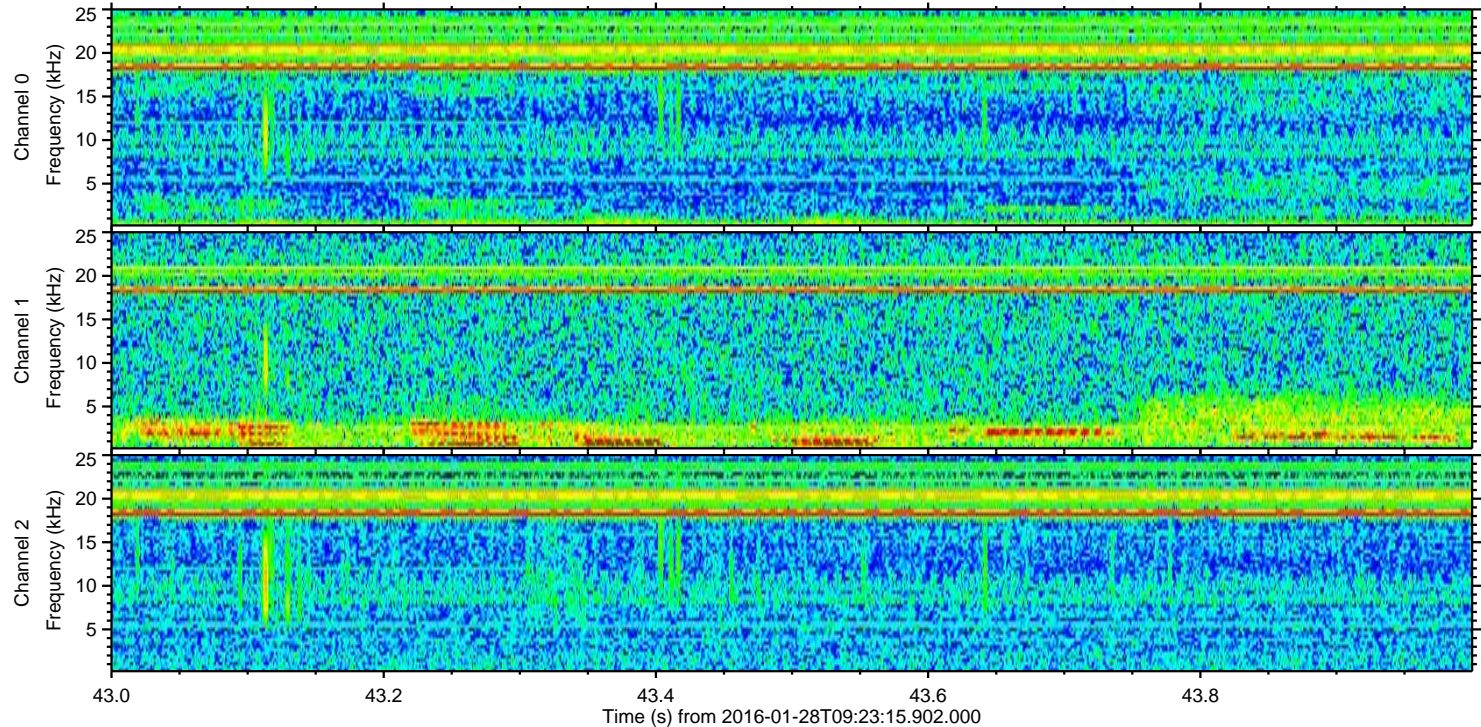
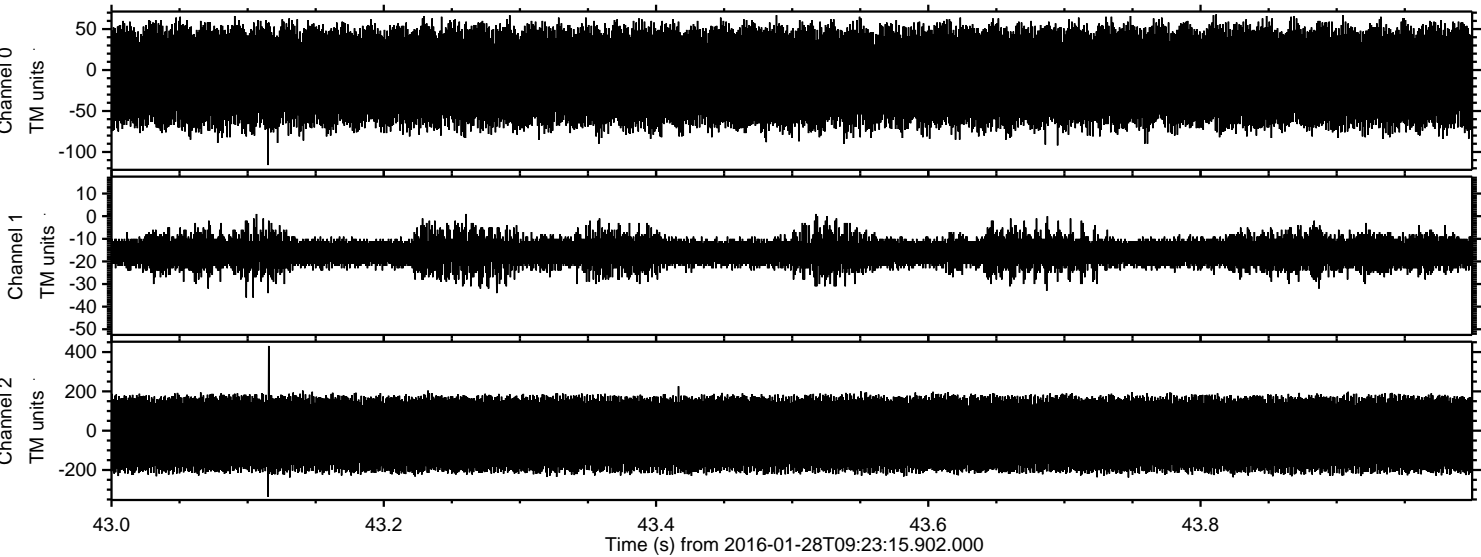
Processed Thu Apr 7 07:05:47 2016 by ELM ver.2012-10-06 from 001__elm20160128_092314__dat00.bin



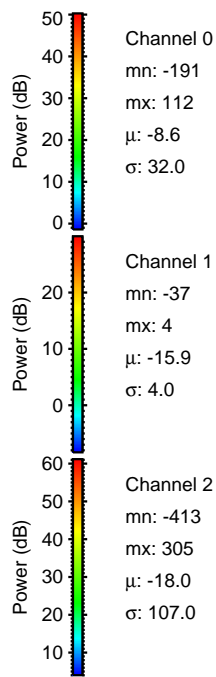
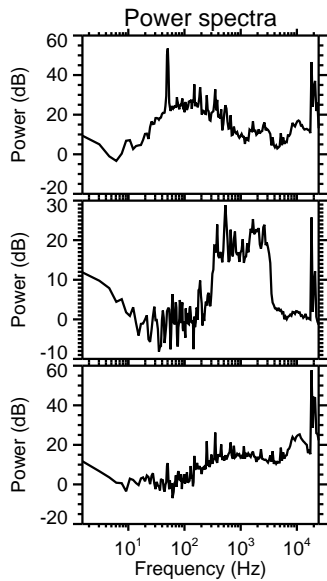
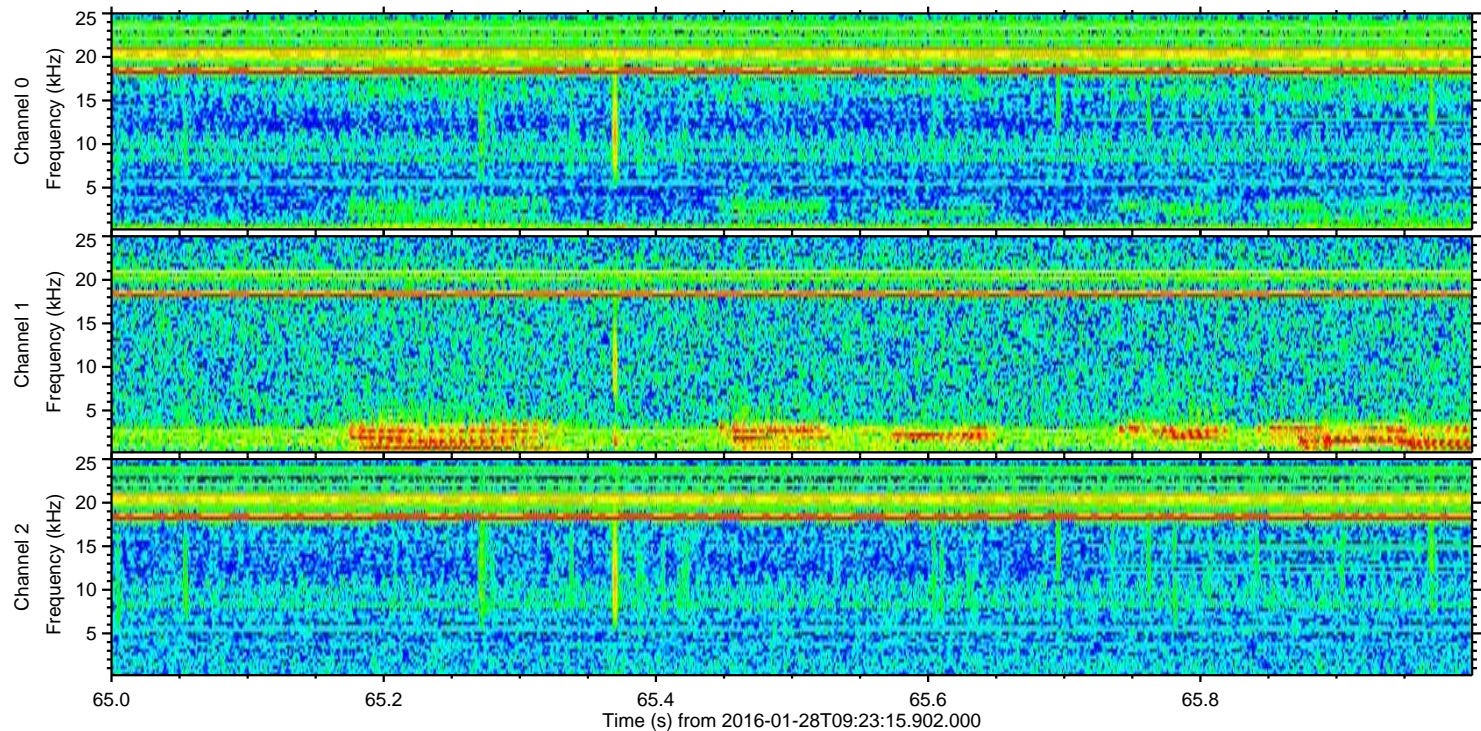
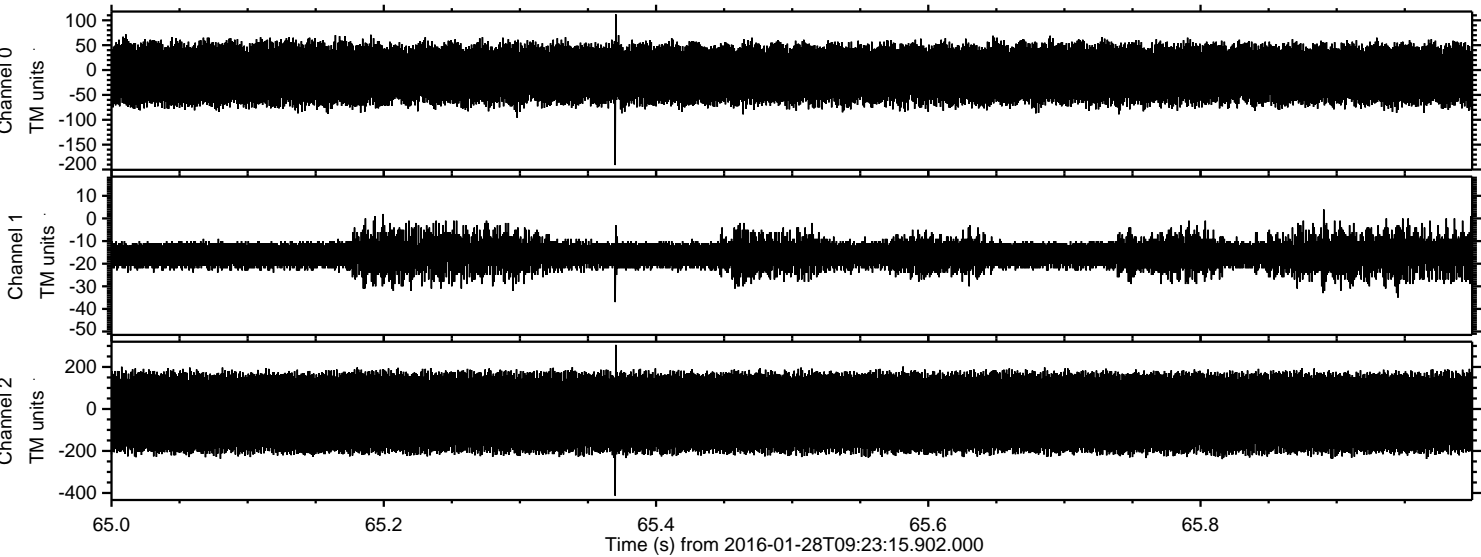
Processed Thu Apr 7 07:05:48 2016 by ELM ver.2012-10-06 from 001__elm20160128_092314__dat00.bin



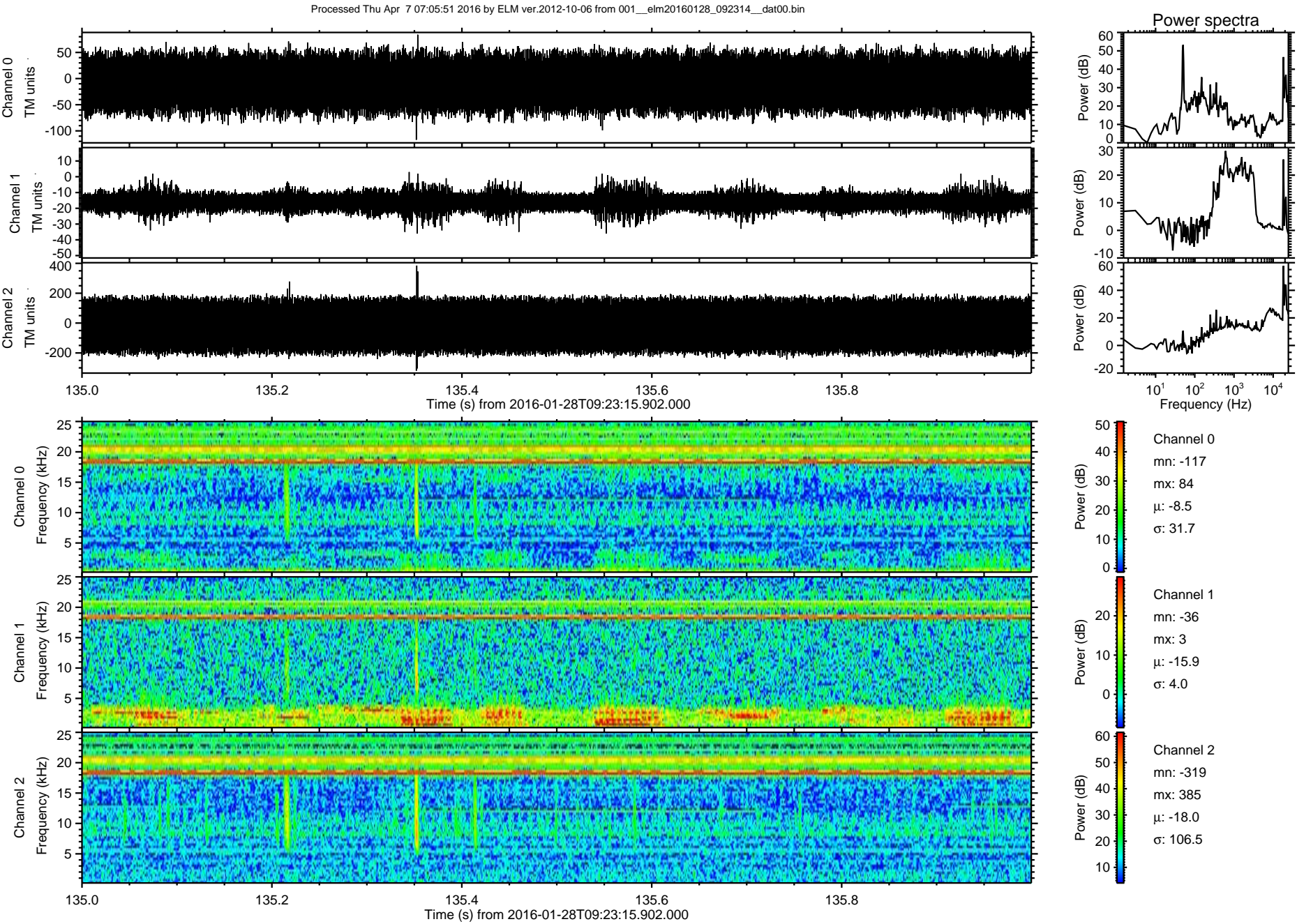
Processed Thu Apr 7 07:05:49 2016 by ELM ver.2012-10-06 from 001__elm20160128_092314__dat00.bin



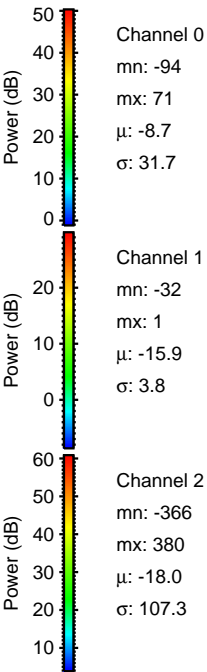
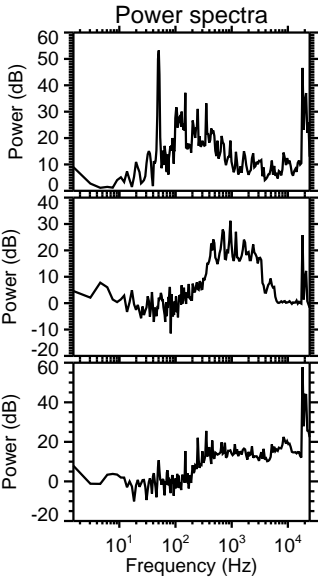
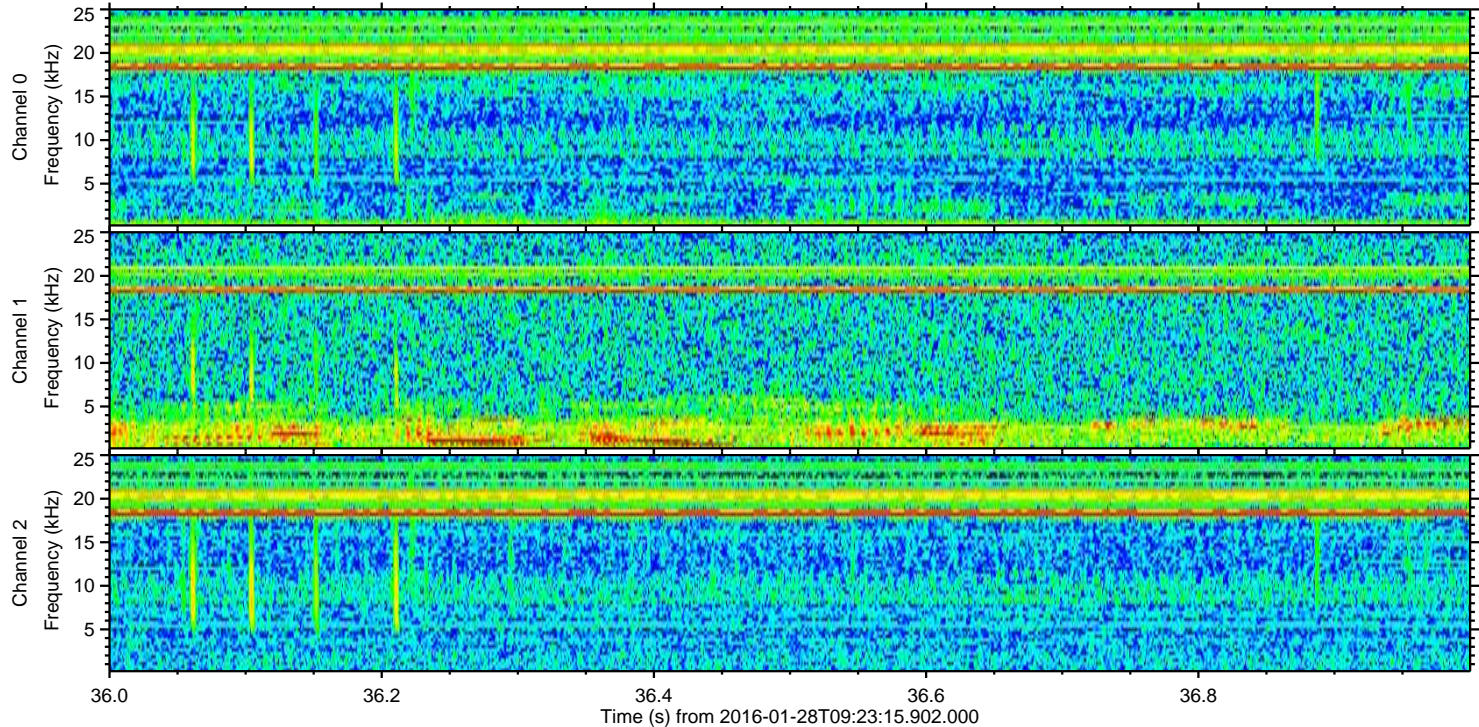
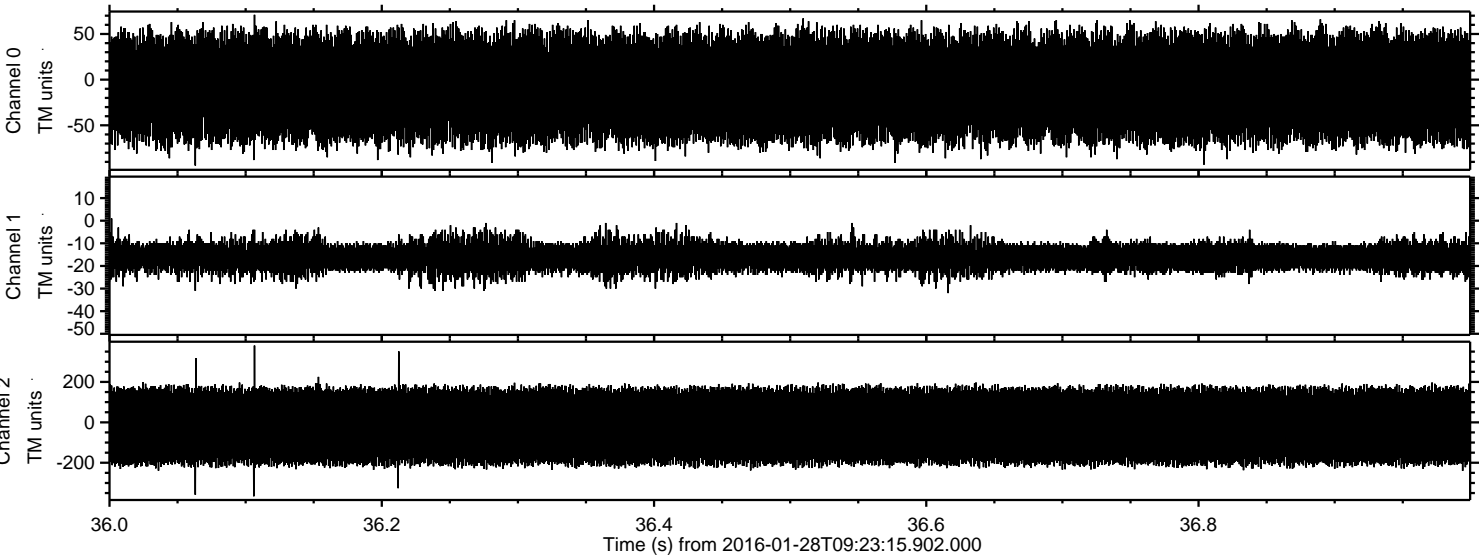
Processed Thu Apr 7 07:05:50 2016 by ELM ver.2012-10-06 from 001__elm20160128_092314__dat00.bin



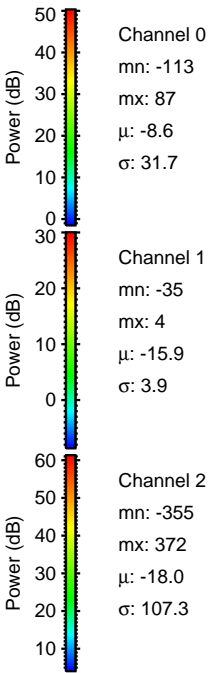
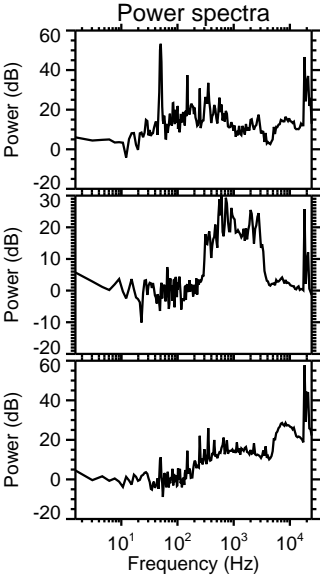
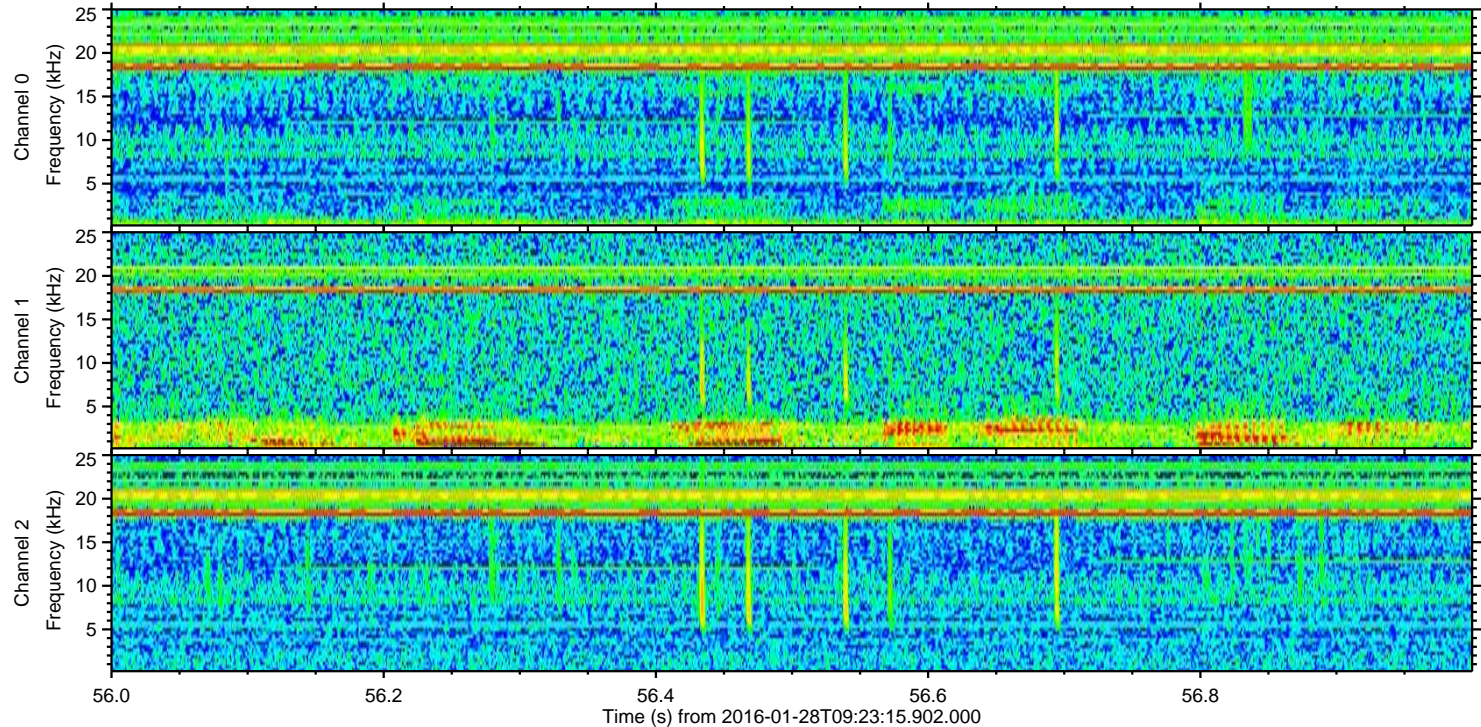
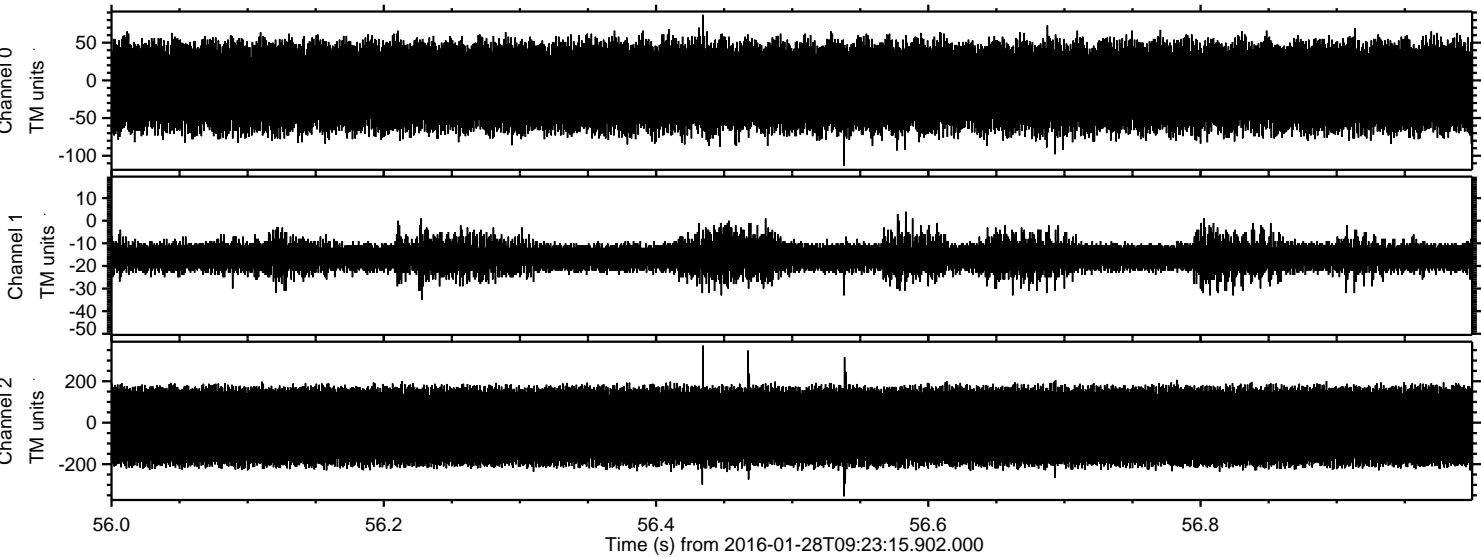
ELMAVAN 3D WAVEFORMS (Measured data sampled at 50 kHz) 51000 packets of 144 samples from 2016-01-28T09:23:15.902.000. Part 136/147



Processed Thu Apr 7 07:05:52 2016 by ELM ver.2012-10-06 from 001__elm20160128_092314__dat00.bin



Processed Thu Apr 7 07:05:53 2016 by ELM ver.2012-10-06 from 001__elm20160128_092314__dat00.bin



Channel 0
mn: -113
mx: 87
 μ : -8.6
 σ : 31.7

Channel 1
mn: -35
mx: 4
 μ : -15.9
 σ : 3.9

Channel 2
mn: -355
mx: 372
 μ : -18.0
 σ : 107.3

Processed Thu Apr 7 07:05:54 2016 by ELM ver.2012-10-06 from 001__elm20160128_092314__dat00.bin

