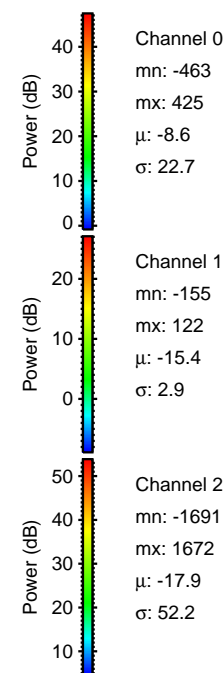
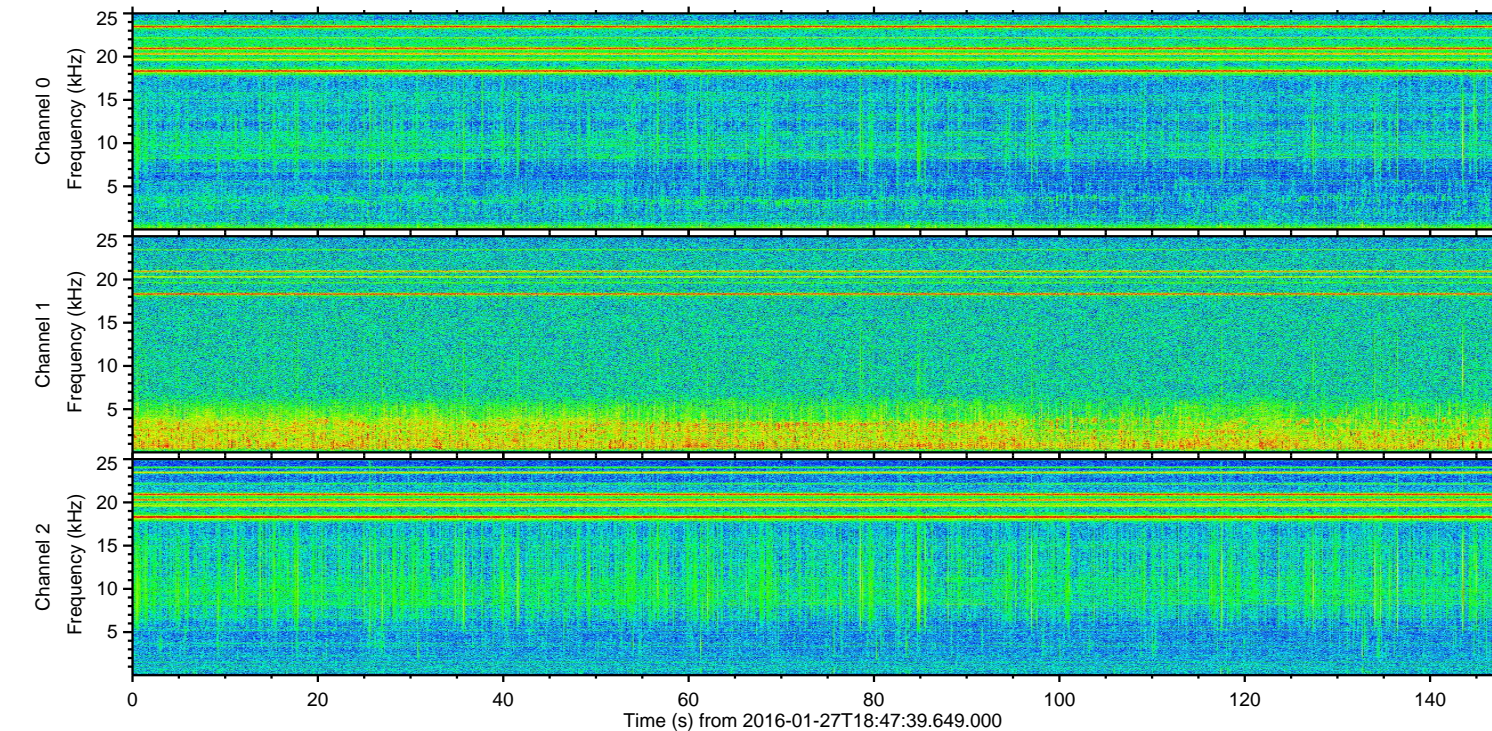
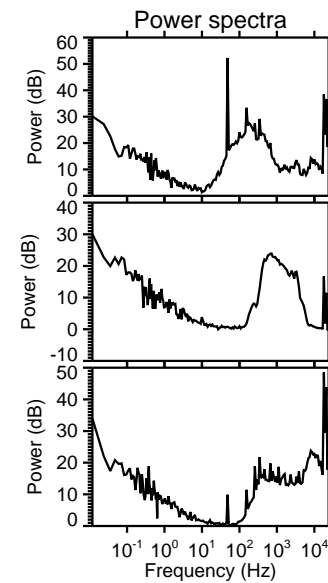
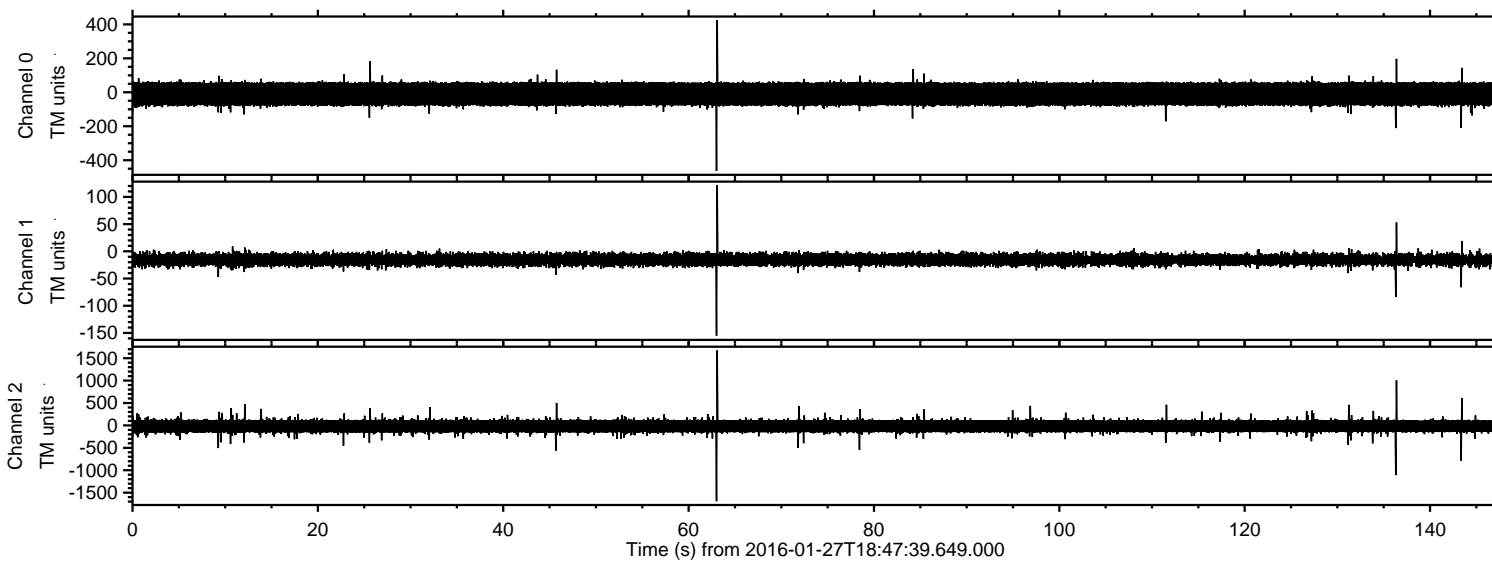
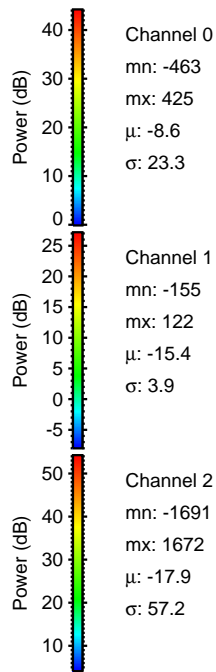
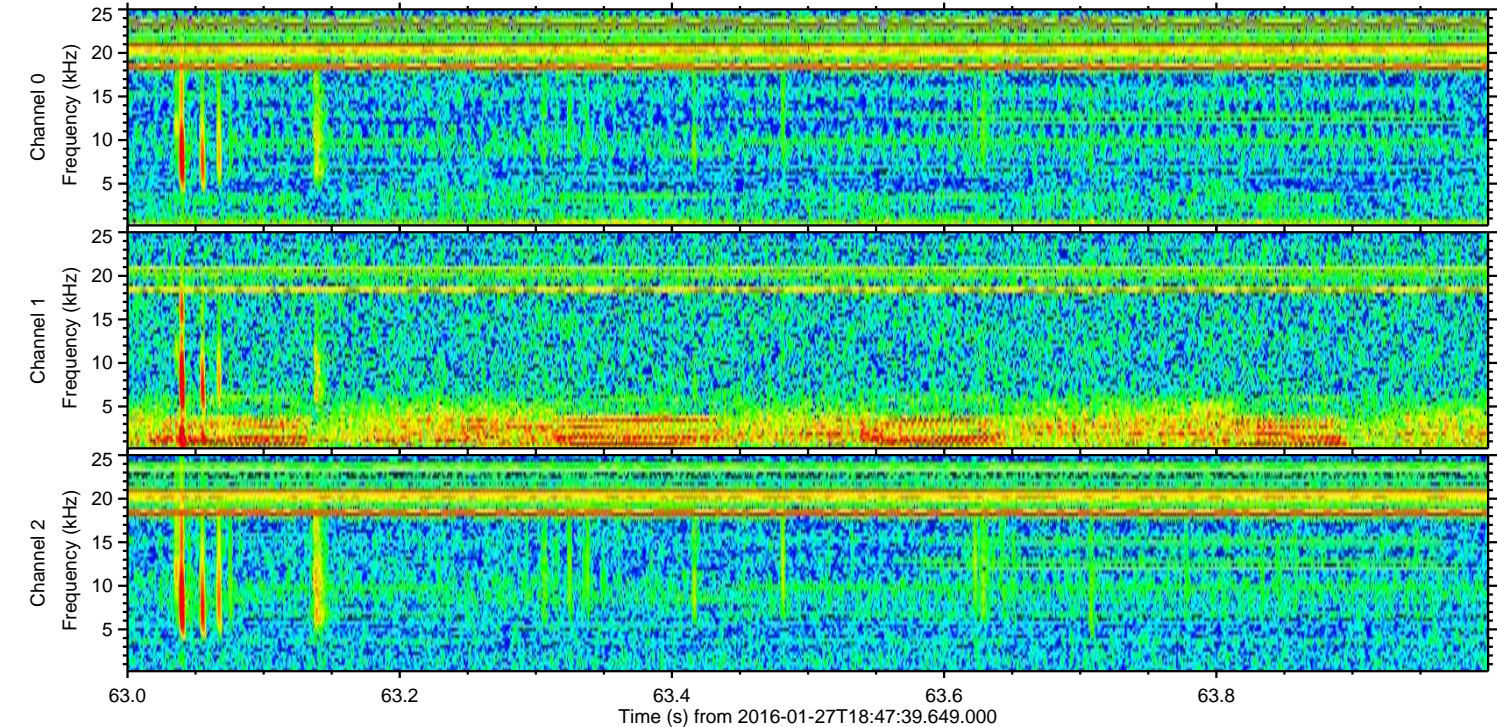
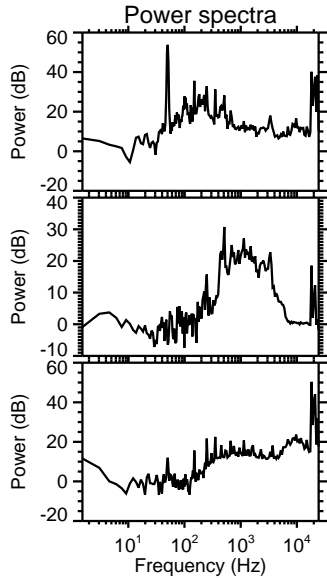
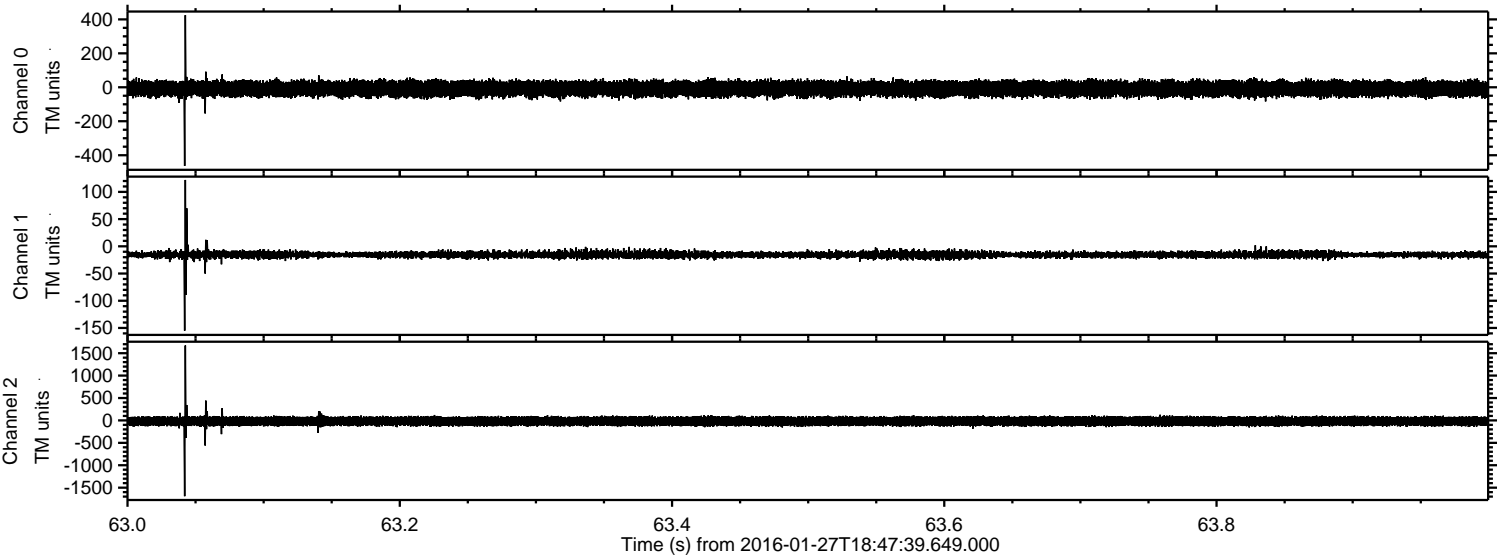


ELMAVAN 3D WAVEFORMS (Measured data sampled at 50 kHz) 51000 packets of 144 samples from 2016-01-27T18:47:39.649.000.

Processed Thu Apr 7 04:08:48 2016 by ELM ver.2012-10-06 from 001__elm20160127_184738__dat00.bin

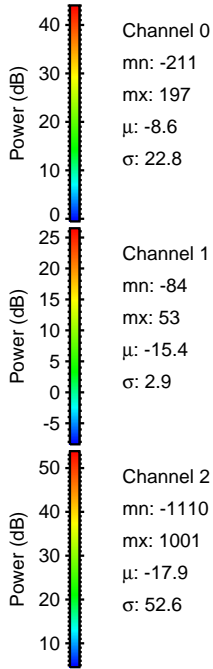
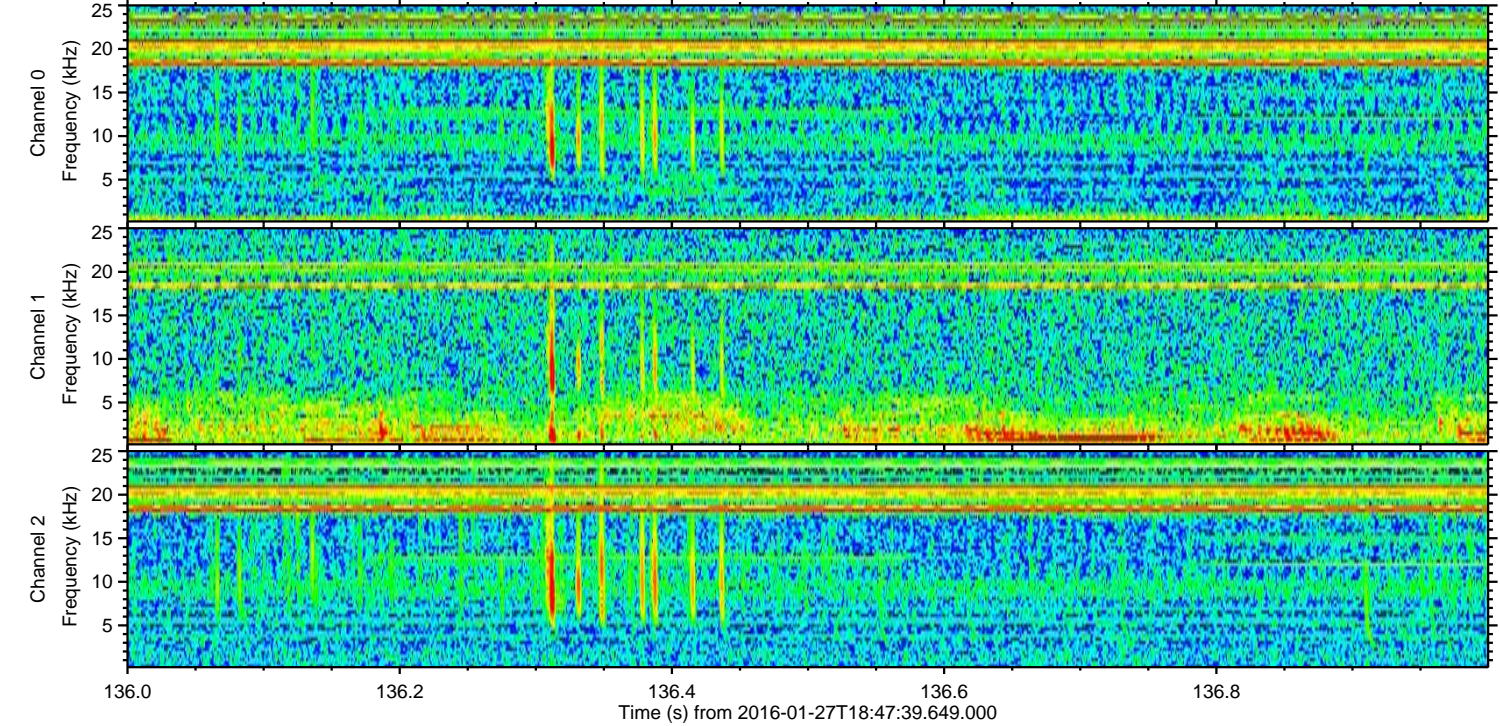
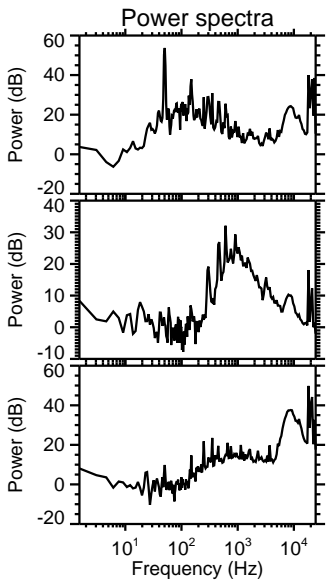
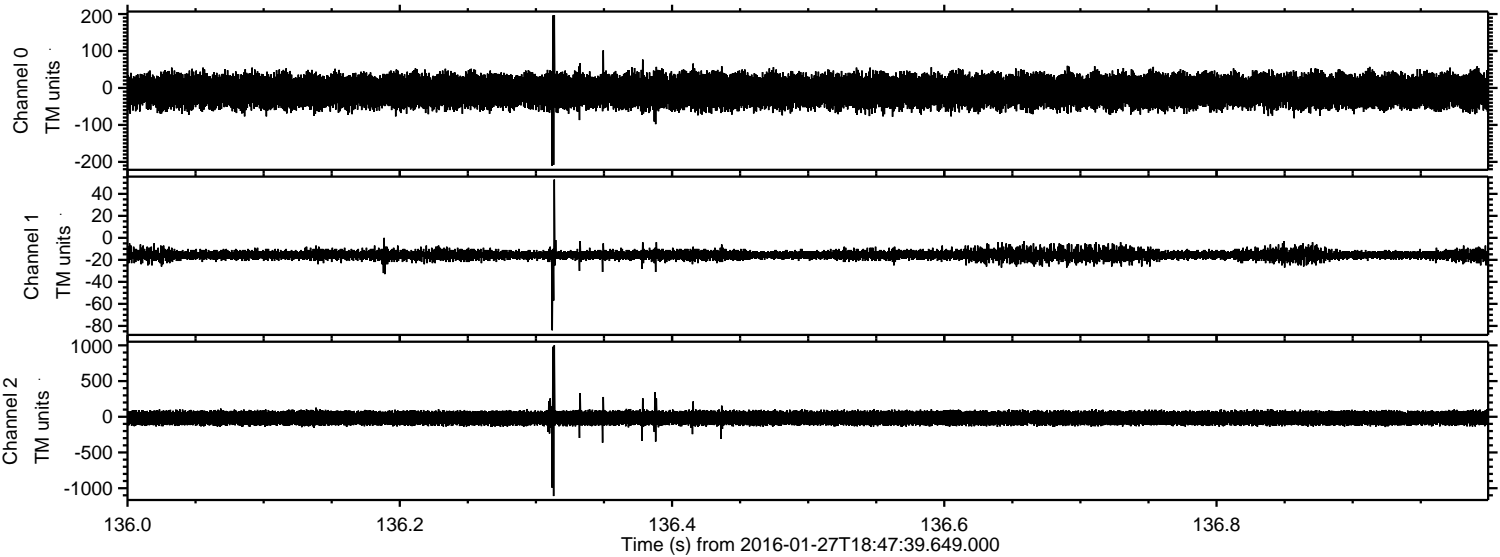


Processed Thu Apr 7 04:09:00 2016 by ELM ver.2012-10-06 from 001__elm20160127_184738__dat00.bin

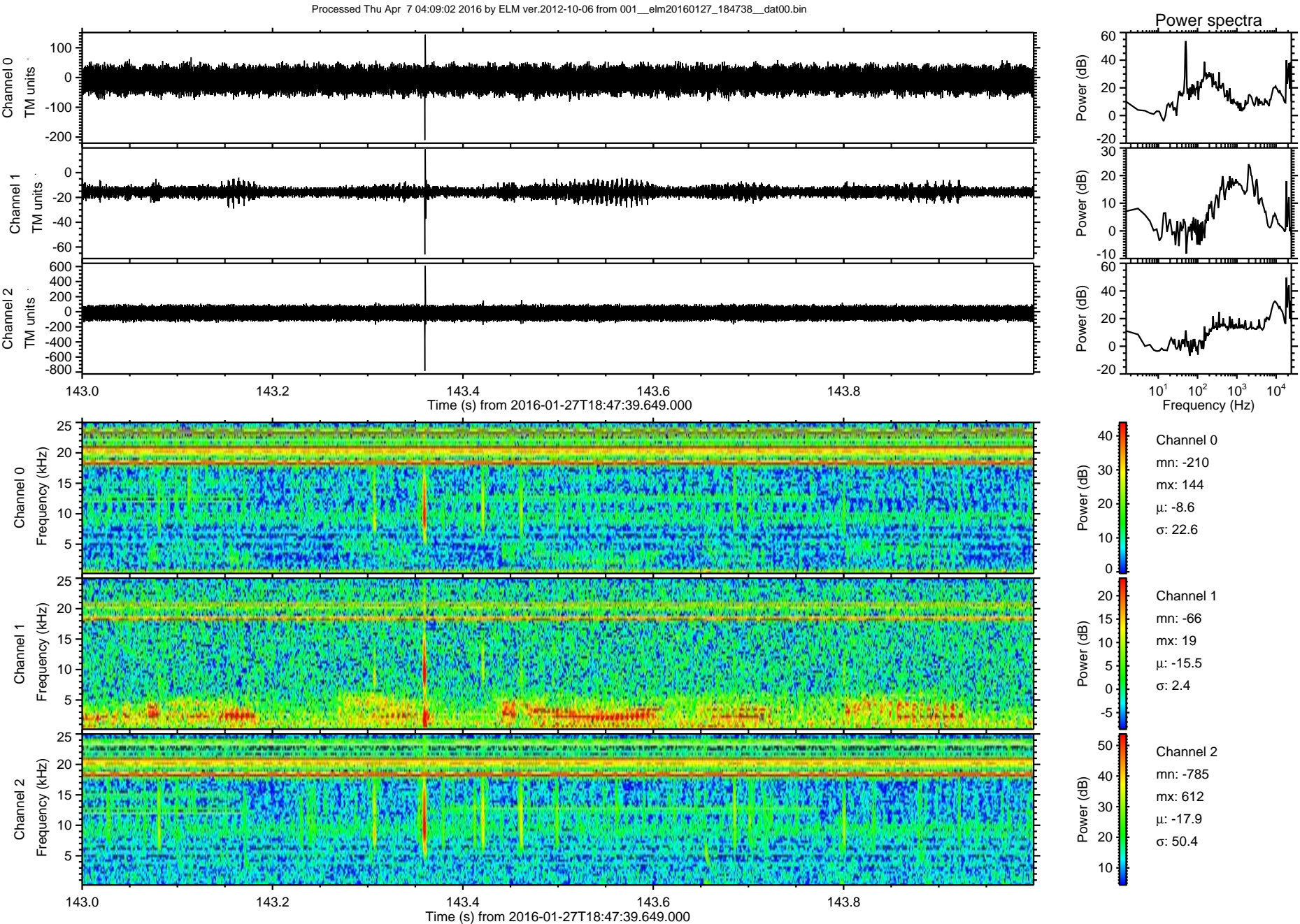


ELMAVAN 3D WAVEFORMS (Measured data sampled at 50 kHz) 51000 packets of 144 samples from 2016-01-27T18:47:39.649.000. Part 137/147

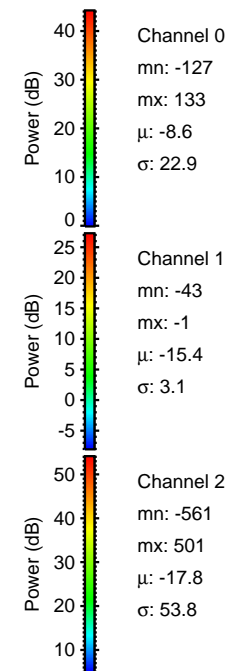
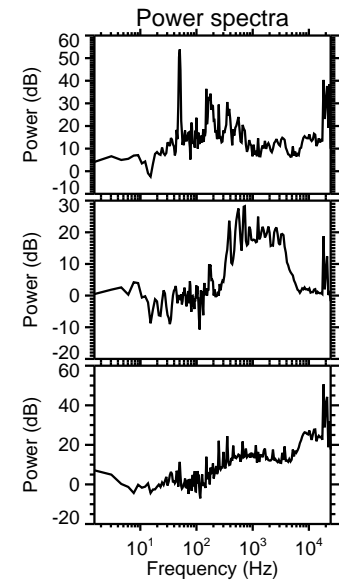
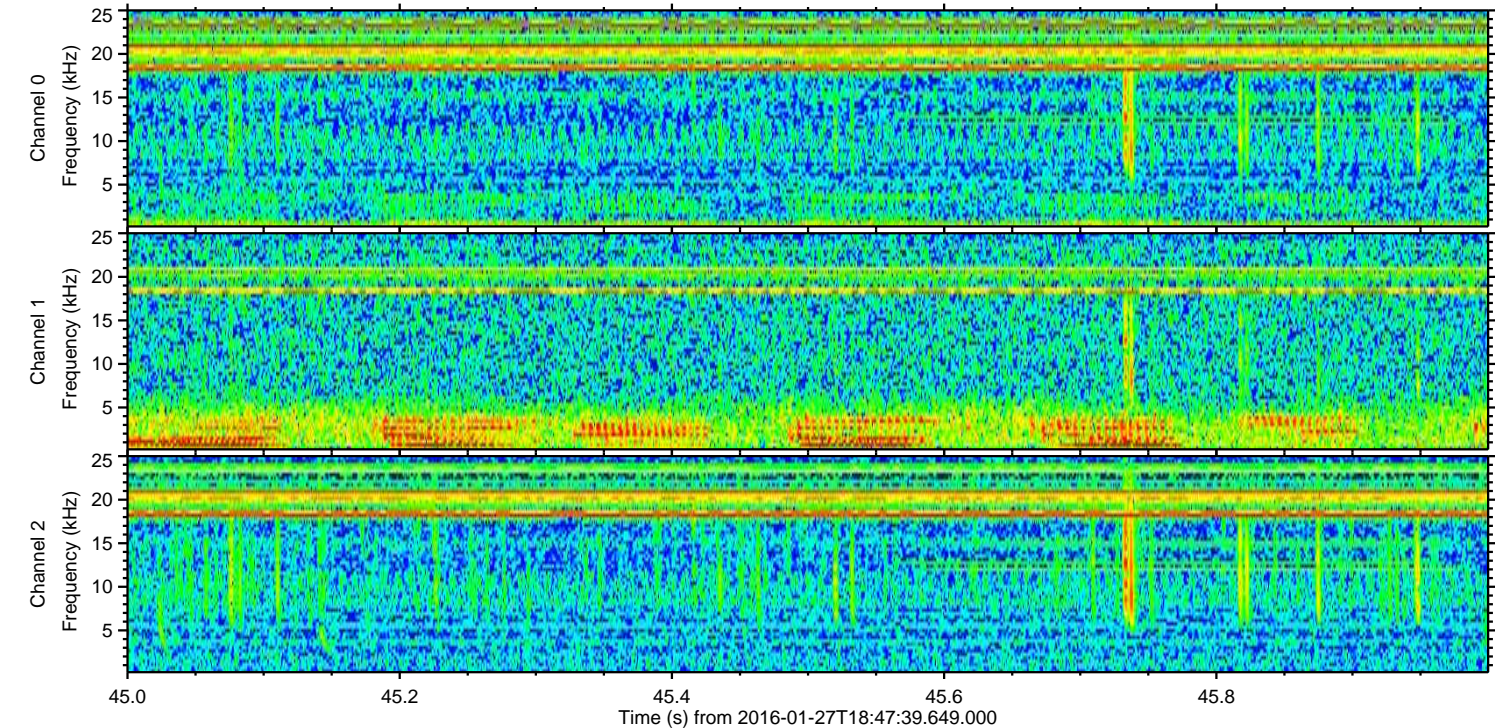
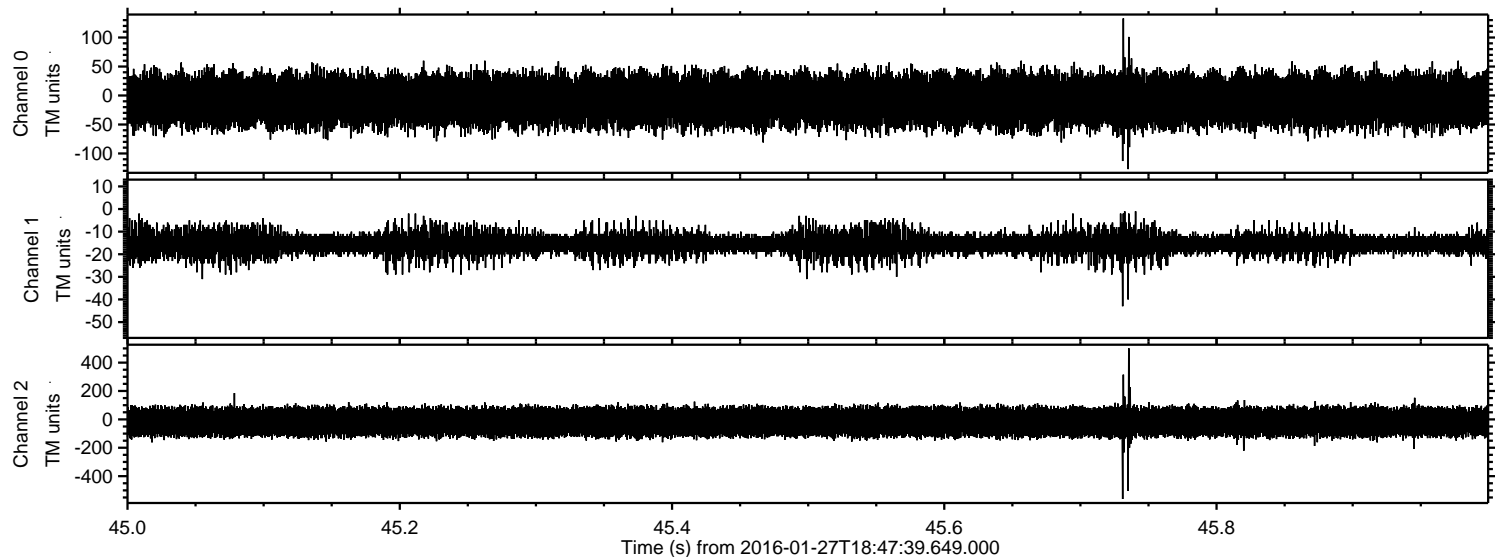
Processed Thu Apr 7 04:09:01 2016 by ELM ver.2012-10-06 from 001__elm20160127_184738__dat00.bin



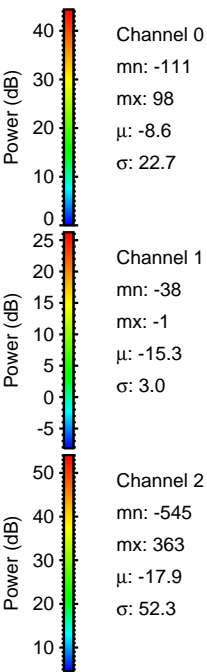
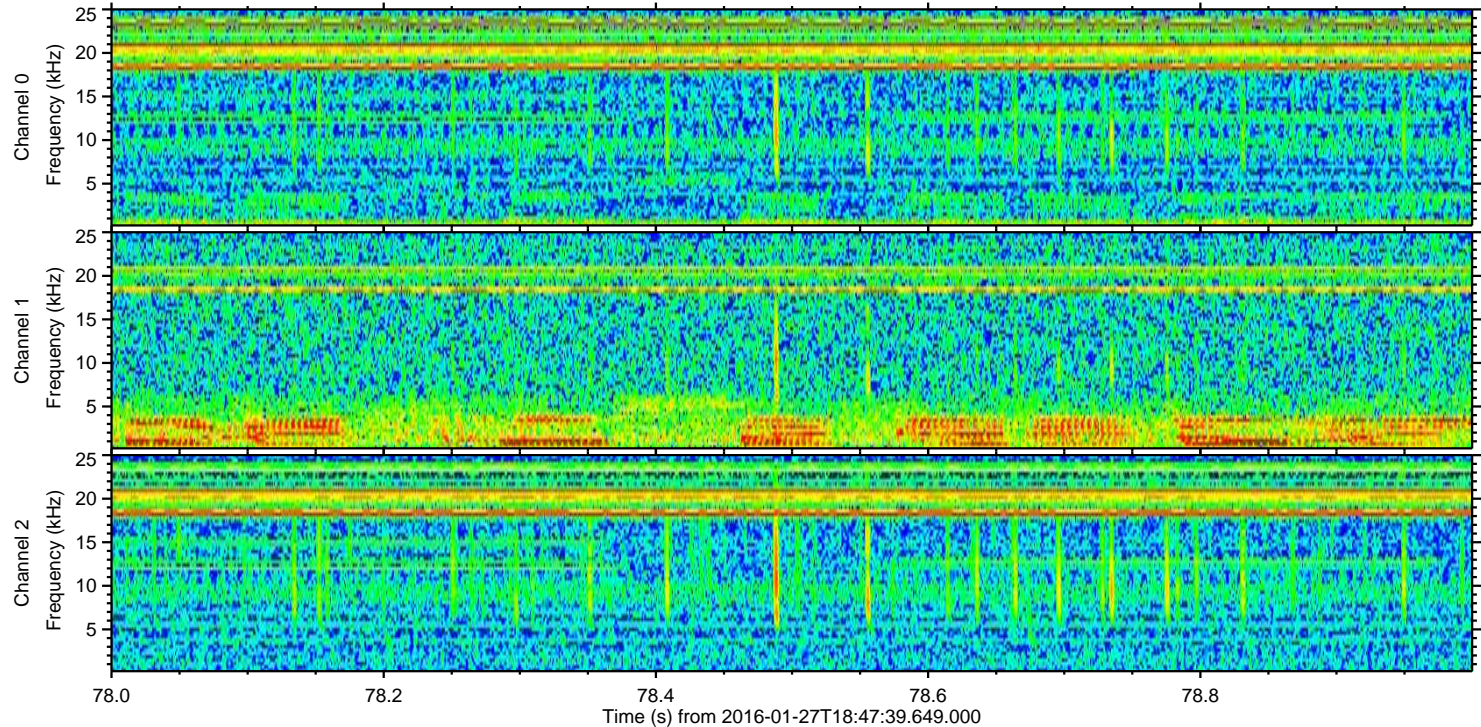
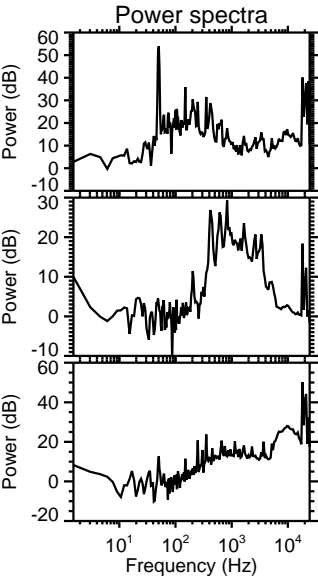
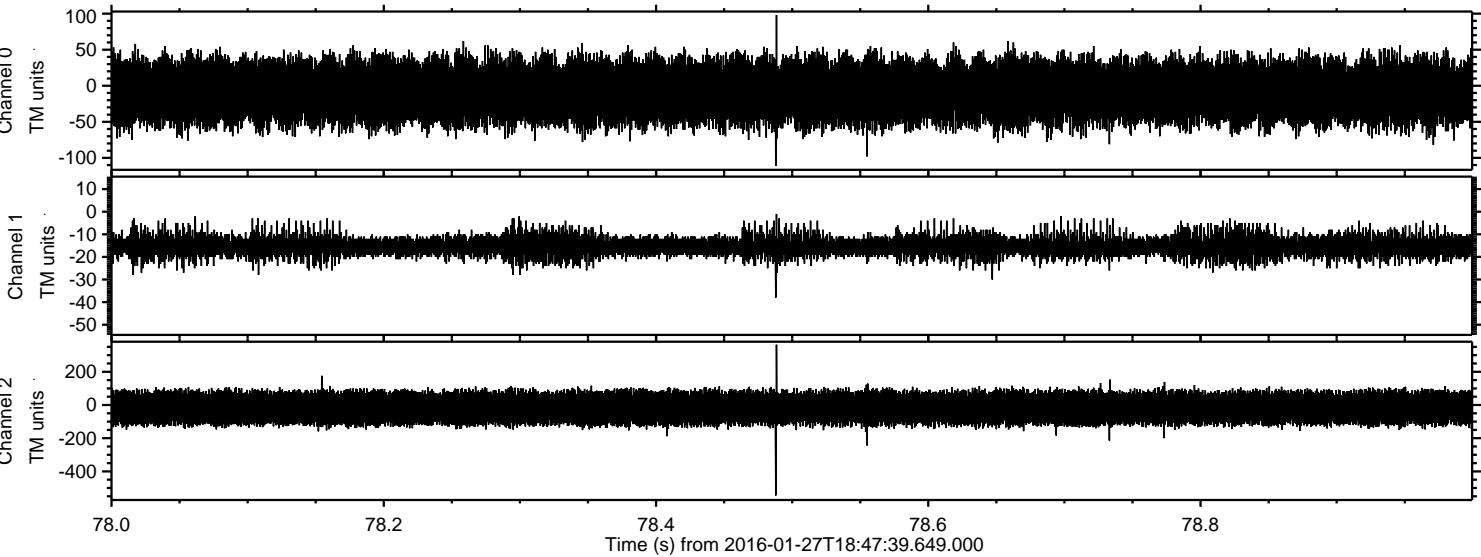
ELMAVAN 3D WAVEFORMS (Measured data sampled at 50 kHz) 51000 packets of 144 samples from 2016-01-27T18:47:39.649.000. Part 144/147



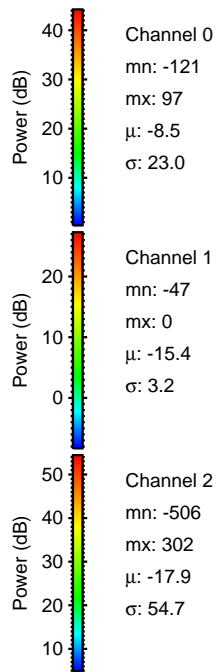
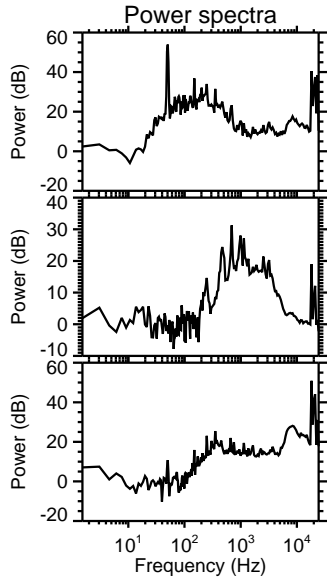
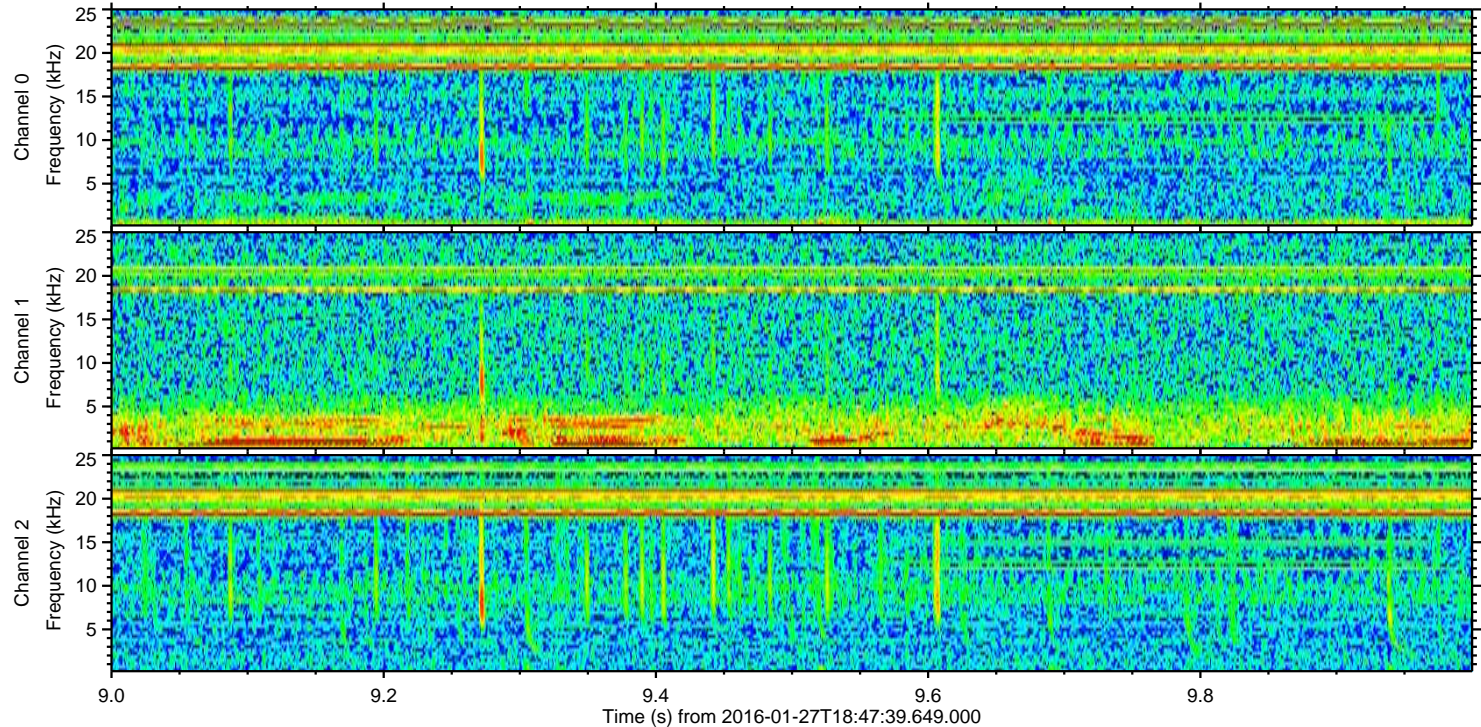
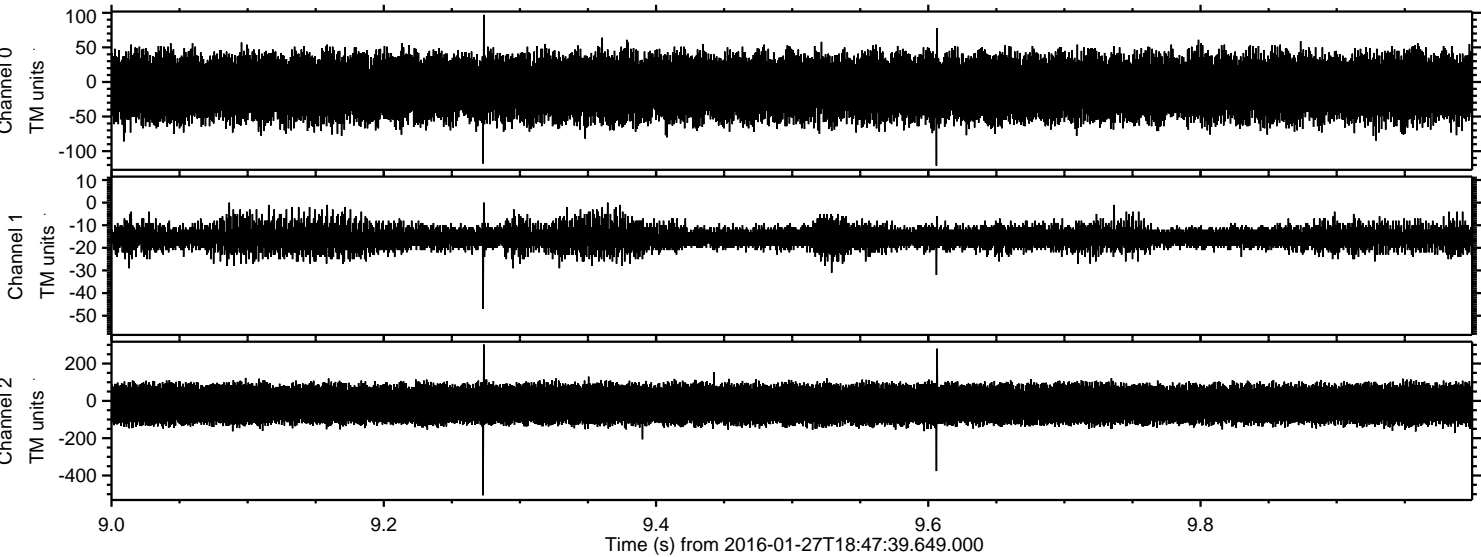
Processed Thu Apr 7 04:09:03 2016 by ELM ver.2012-10-06 from 001__elm20160127_184738__dat00.bin



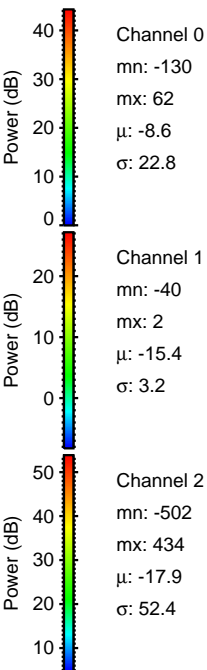
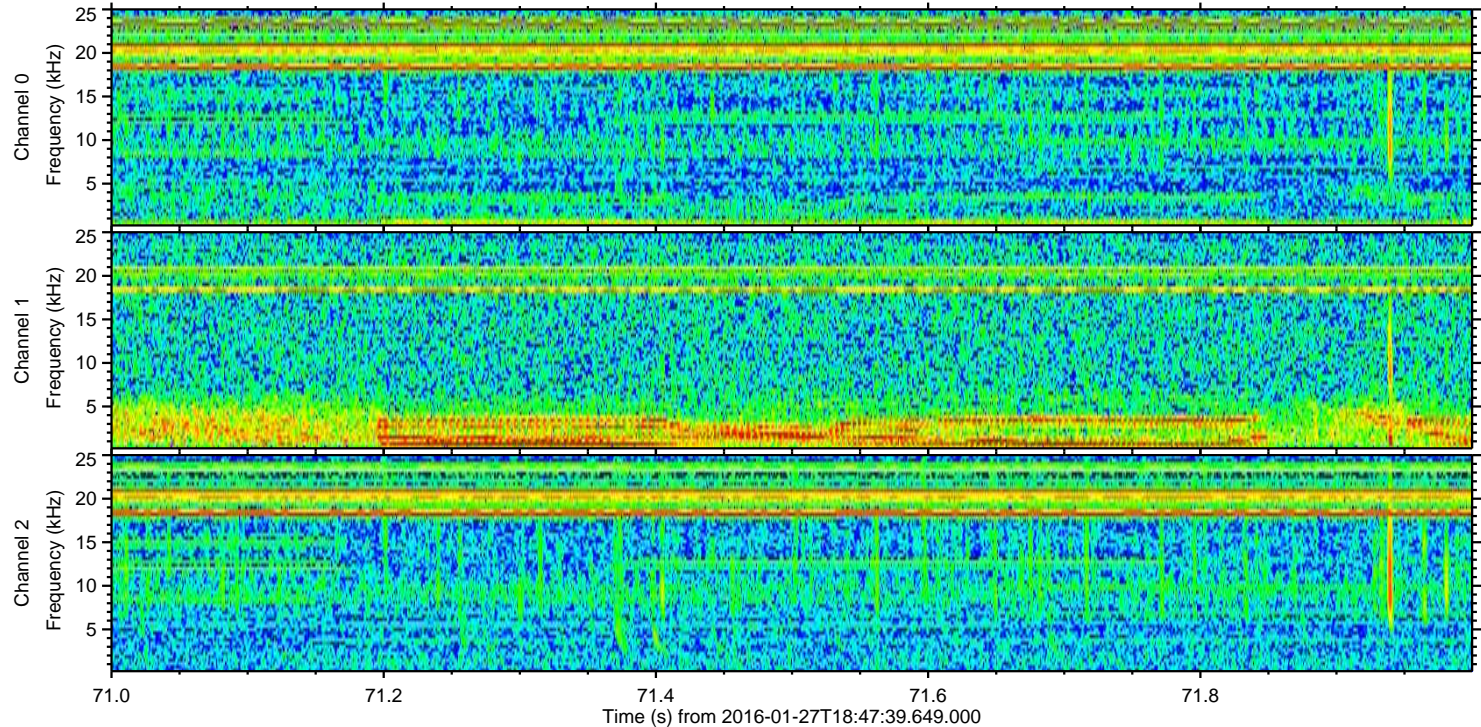
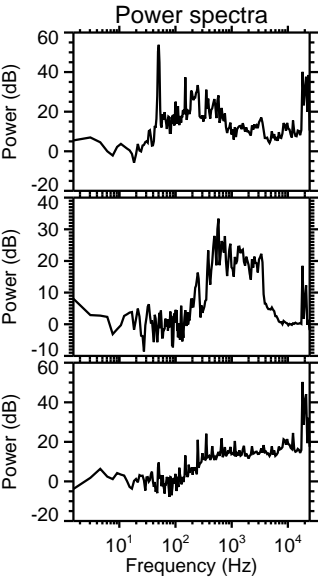
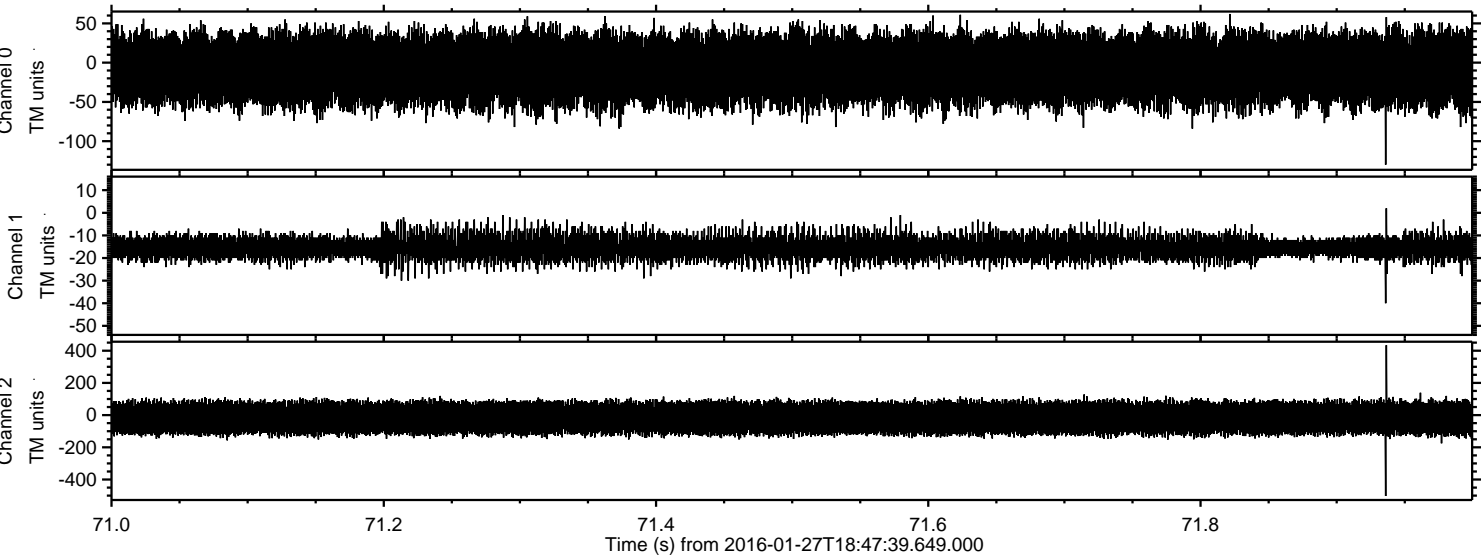
Processed Thu Apr 7 04:09:04 2016 by ELM ver.2012-10-06 from 001__elm20160127_184738__dat00.bin



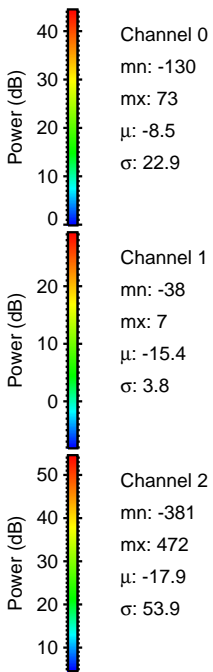
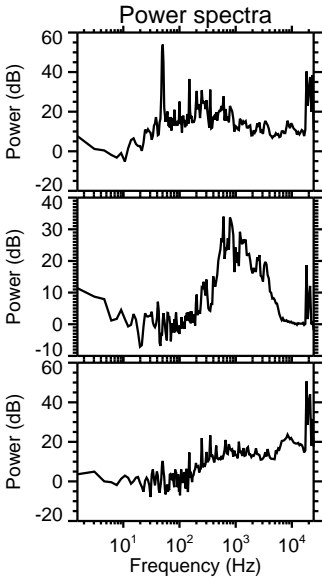
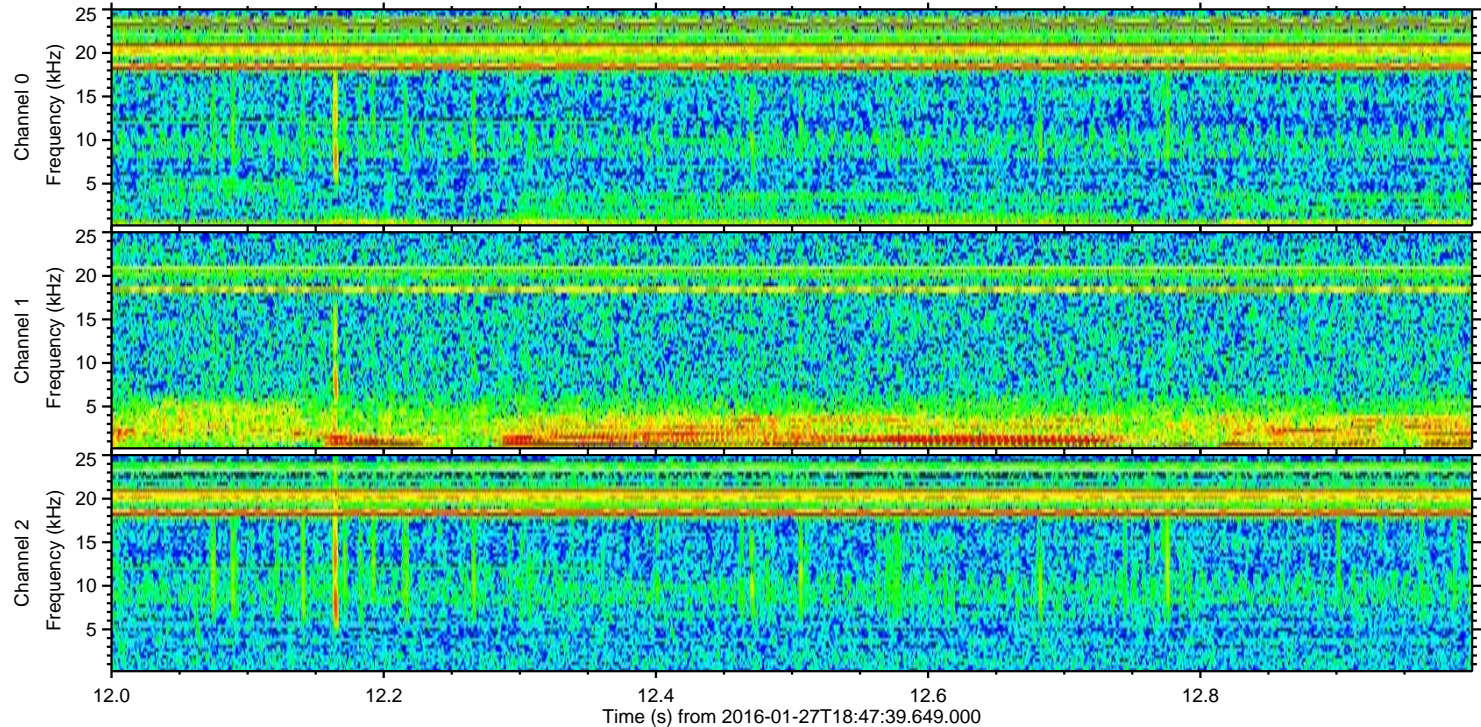
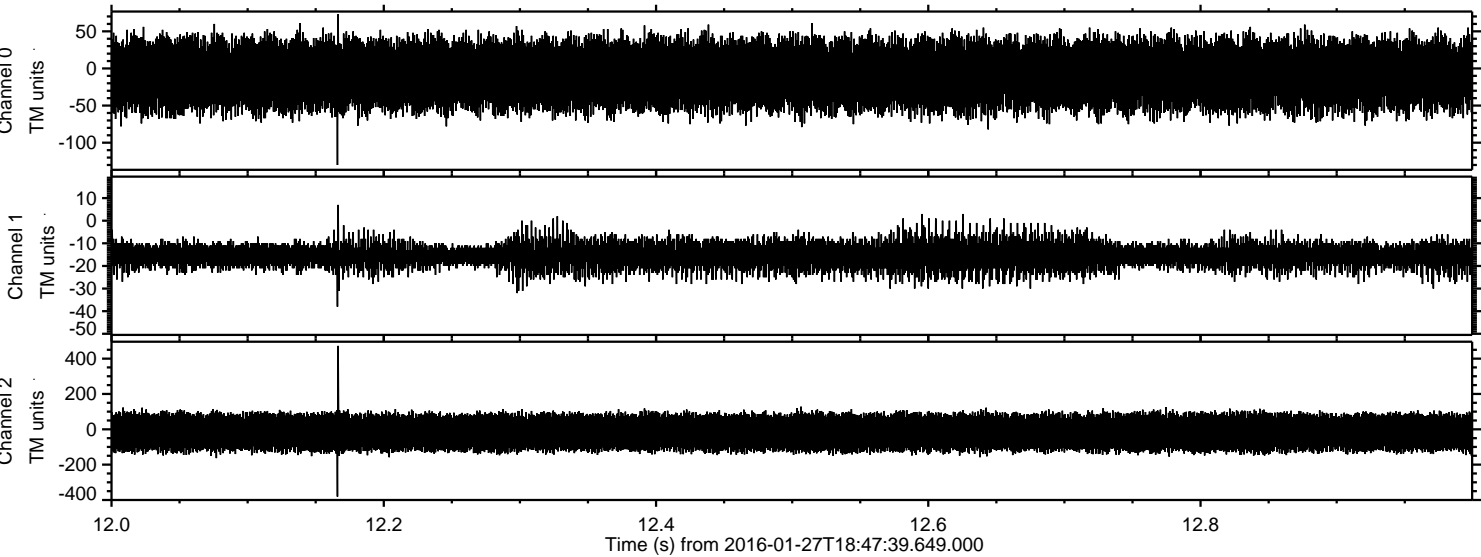
Processed Thu Apr 7 04:09:05 2016 by ELM ver.2012-10-06 from 001__elm20160127_184738__dat00.bin



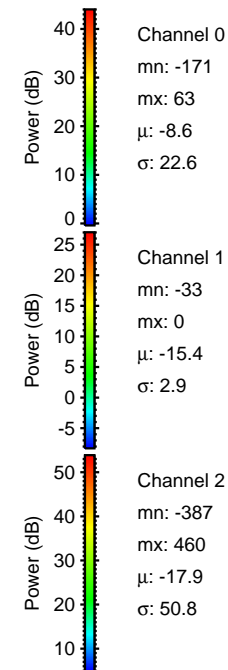
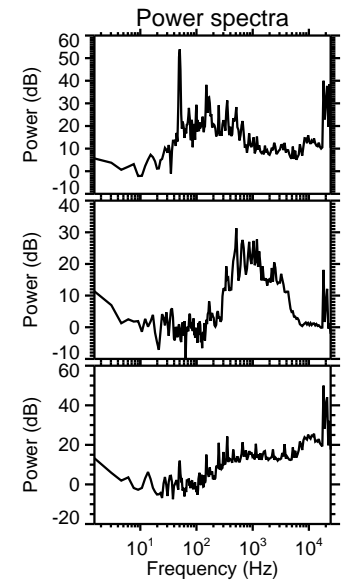
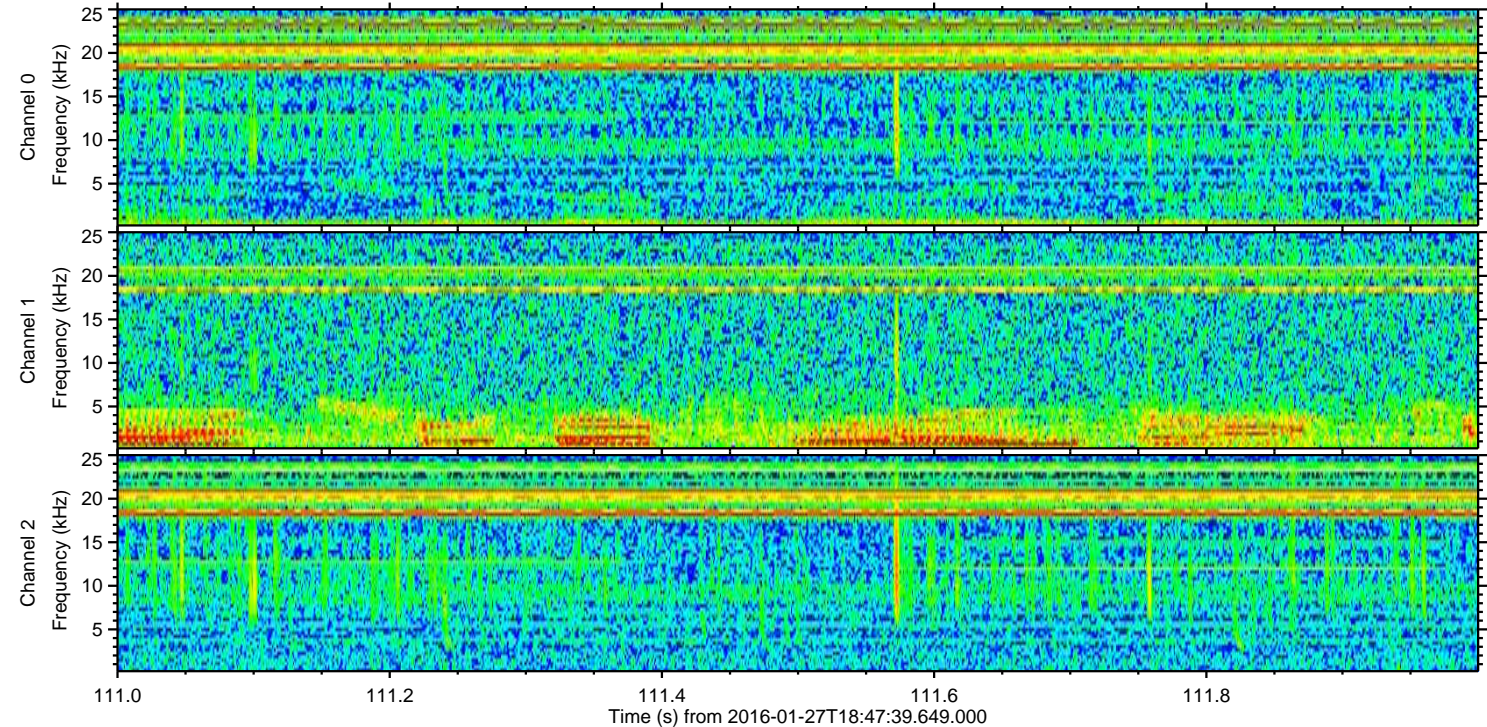
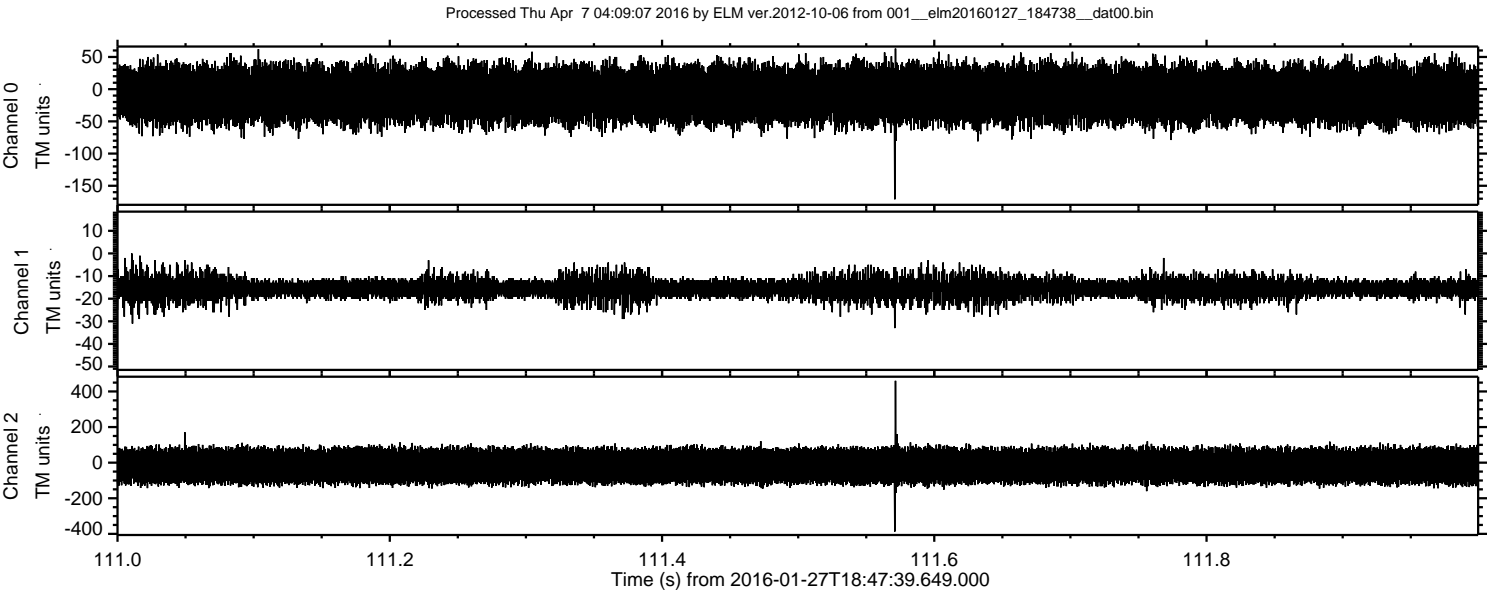
Processed Thu Apr 7 04:09:05 2016 by ELM ver.2012-10-06 from 001__elm20160127_184738__dat00.bin



Processed Thu Apr 7 04:09:06 2016 by ELM ver.2012-10-06 from 001__elm20160127_184738__dat00.bin



ELMAVAN 3D WAVEFORMS (Measured data sampled at 50 kHz) 51000 packets of 144 samples from 2016-01-27T18:47:39.649.000. Part 112/147



ELMAVAN 3D WAVEFORMS (Measured data sampled at 50 kHz) 51000 packets of 144 samples from 2016-01-27T18:47:39.649.000. Part 123/147

