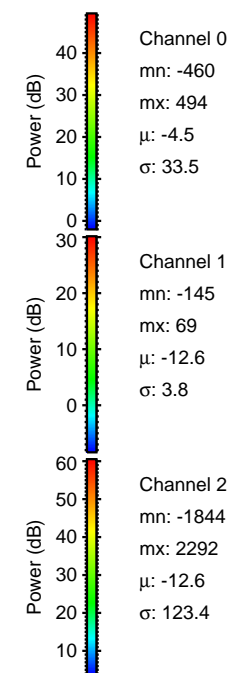
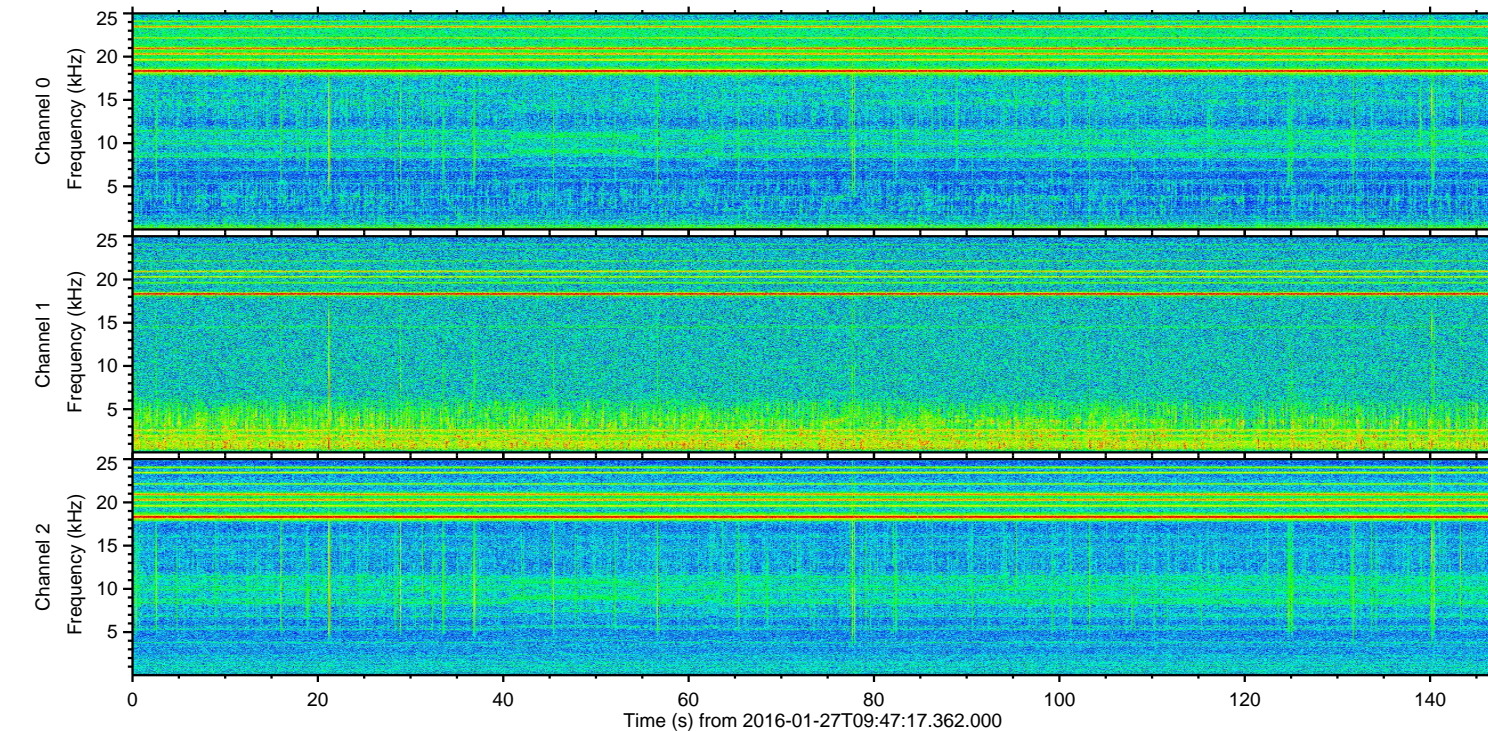
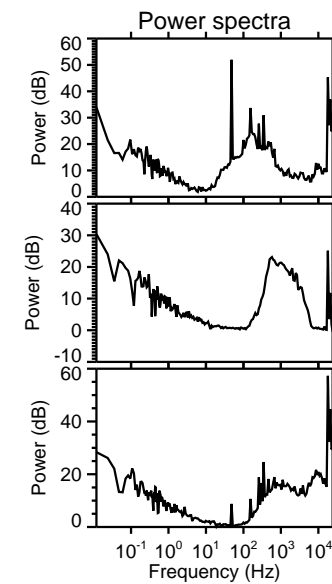
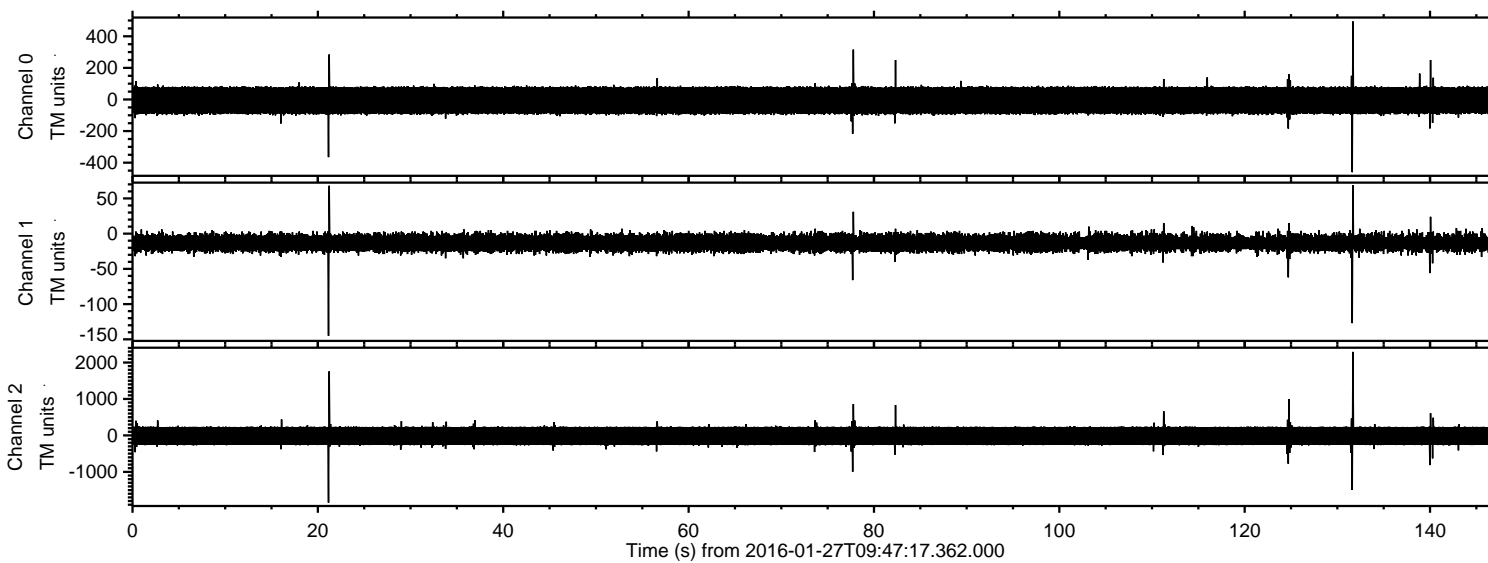


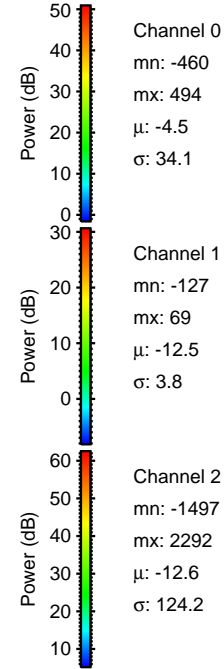
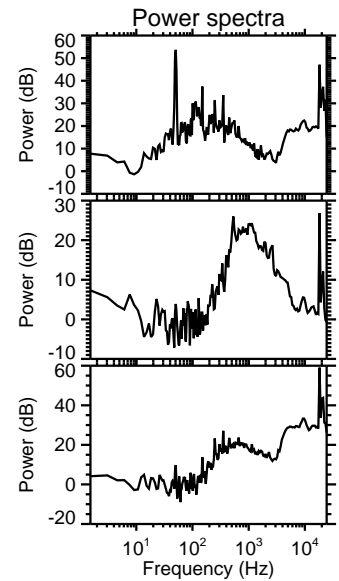
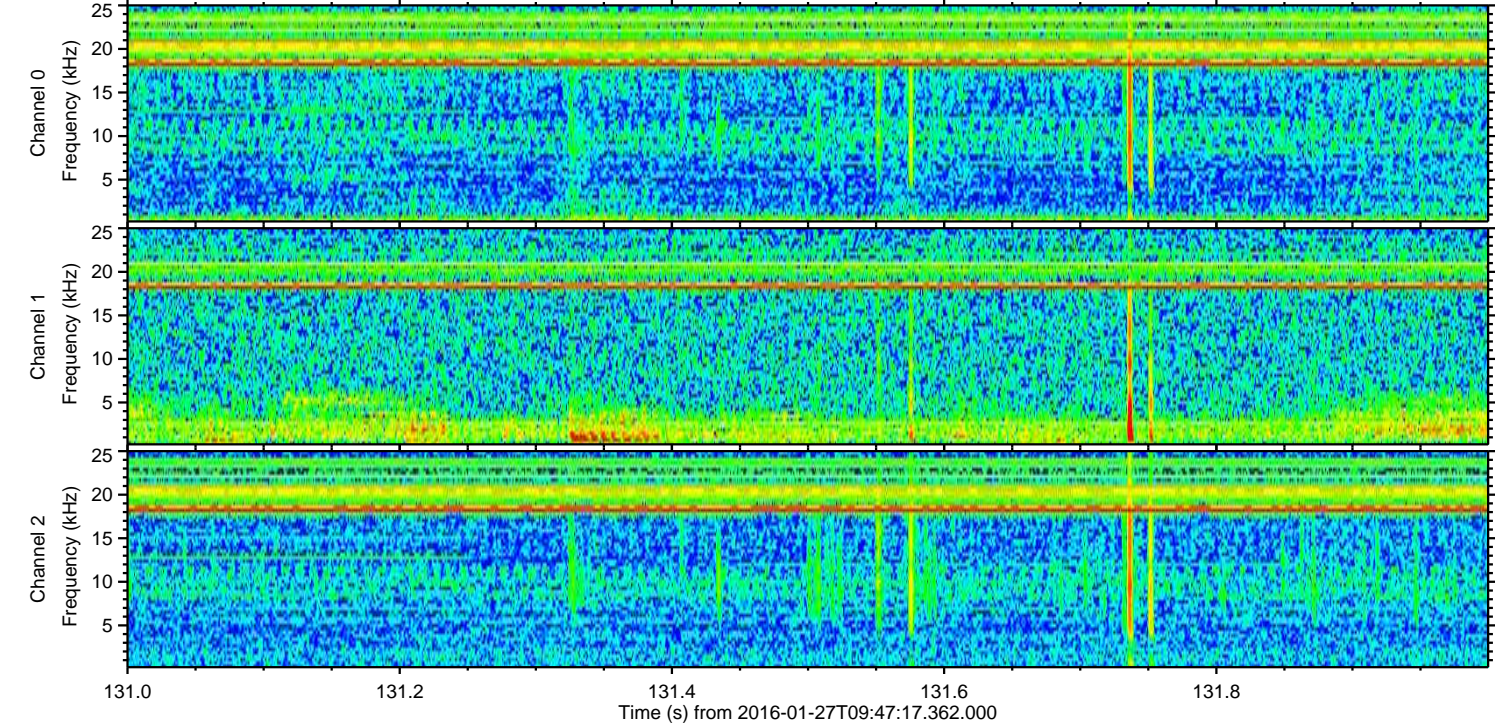
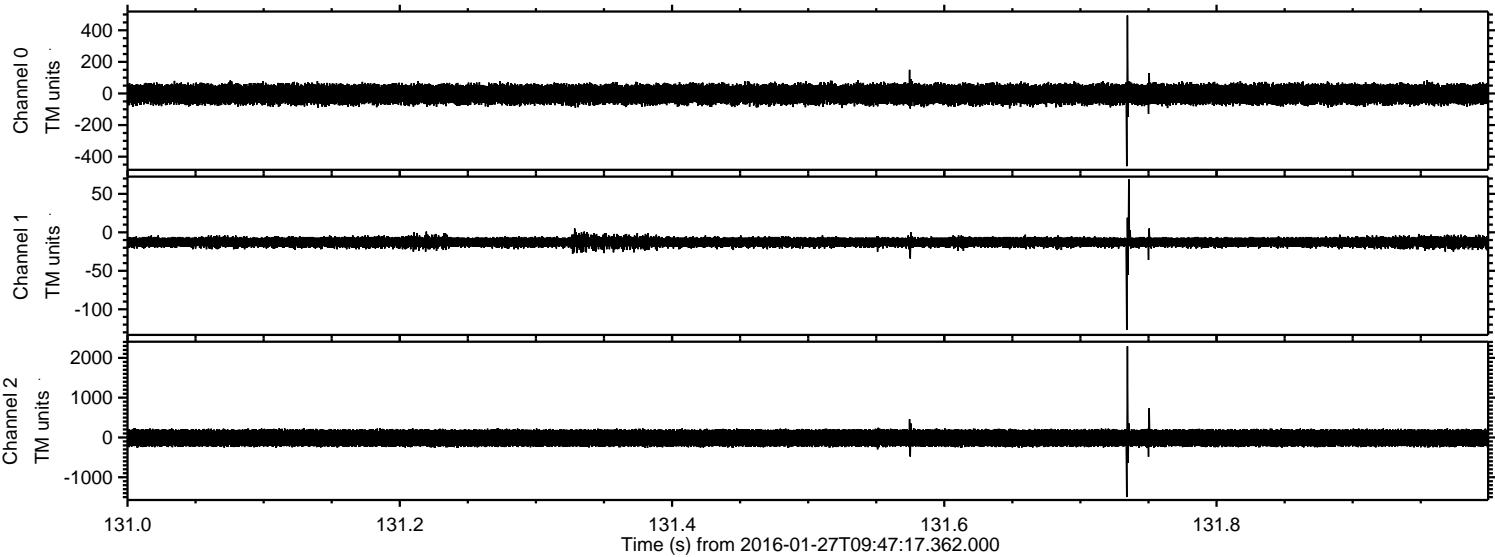
ELMAVAN 3D WAVEFORMS (Measured data sampled at 50 kHz) 51000 packets of 144 samples from 2016-01-27T09:47:17.362.000.

Processed Thu Apr 7 02:20:27 2016 by ELM ver.2012-10-06 from 001__elm20160127_094716__dat00.bin

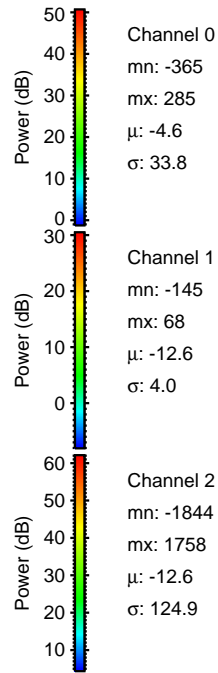
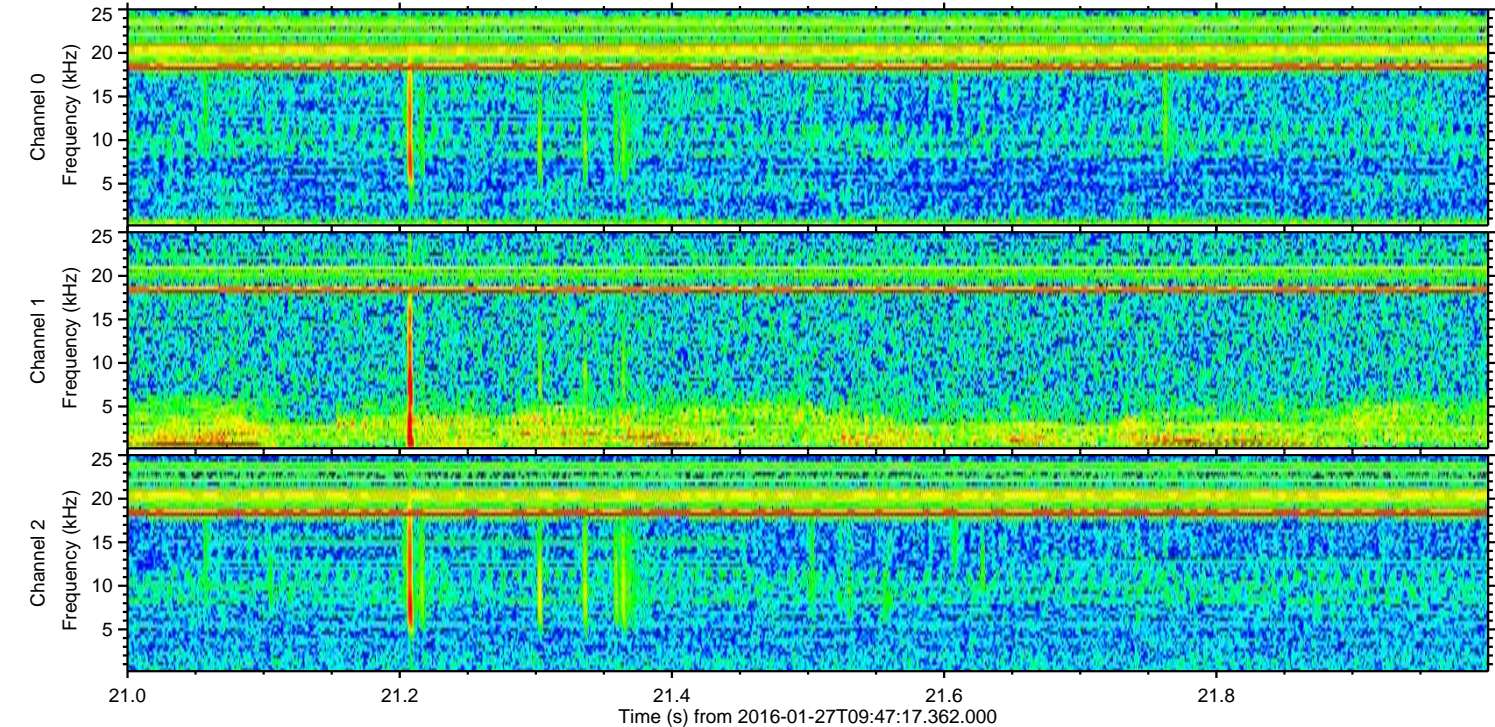
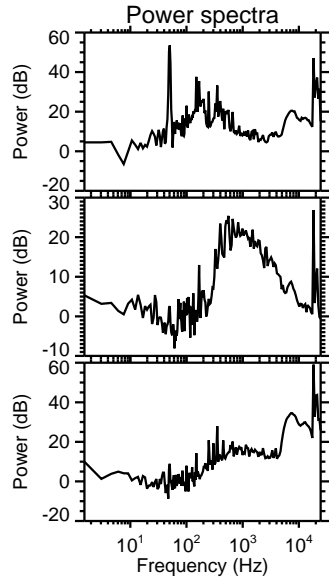
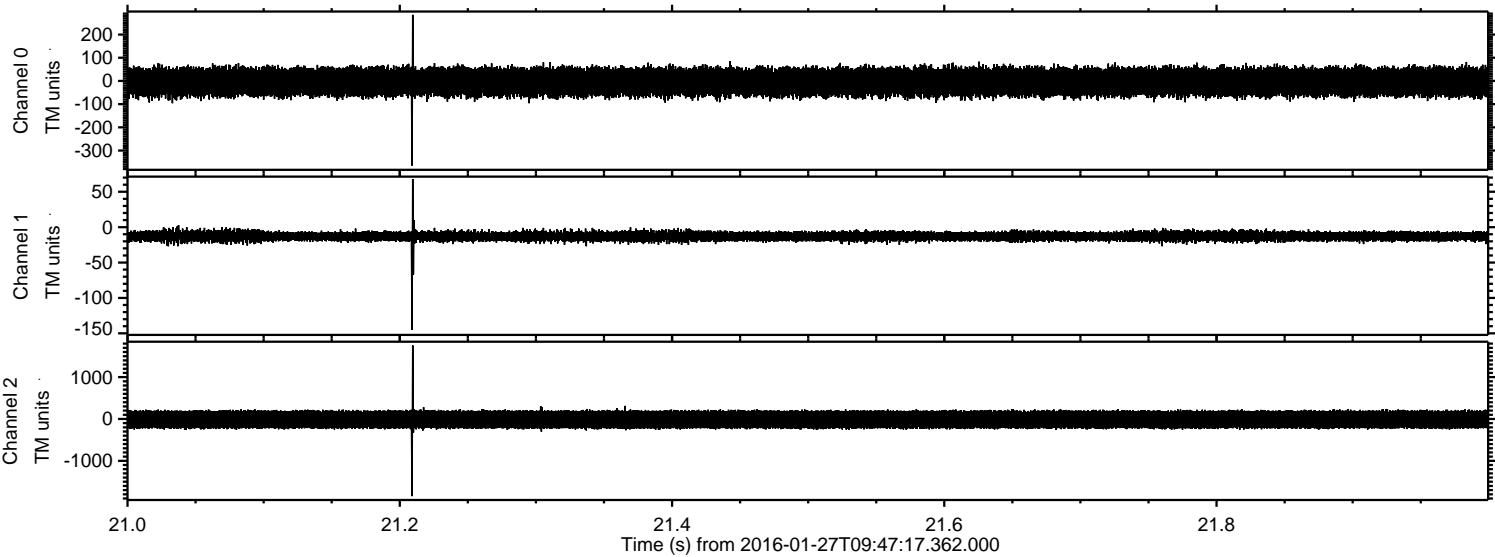


ELMAVAN 3D WAVEFORMS (Measured data sampled at 50 kHz) 51000 packets of 144 samples from 2016-01-27T09:47:17.362.000. Part 132/147

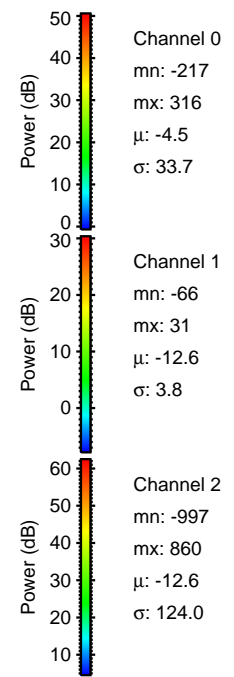
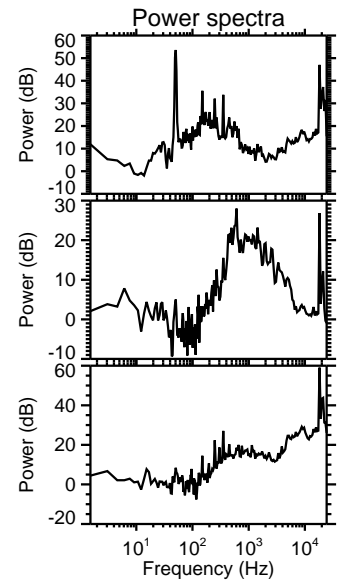
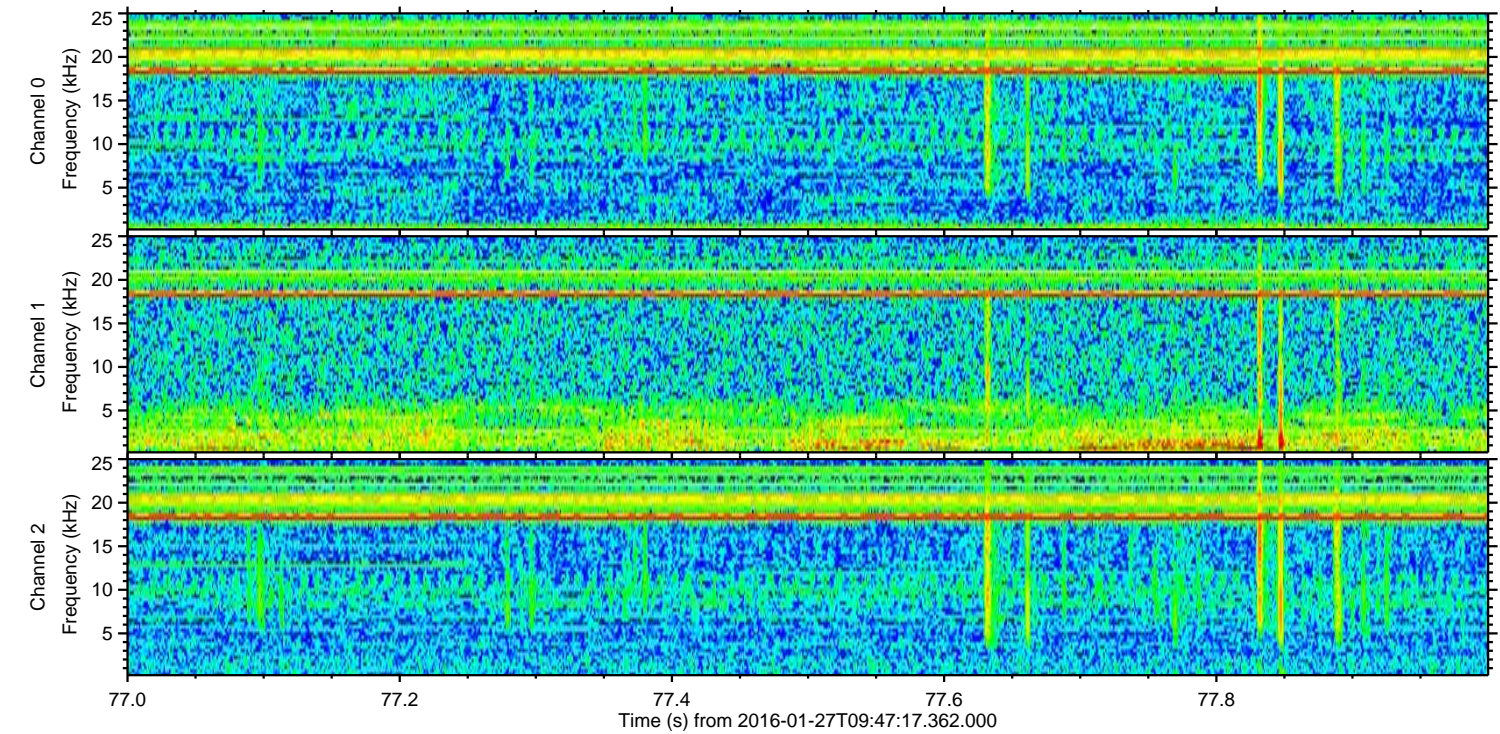
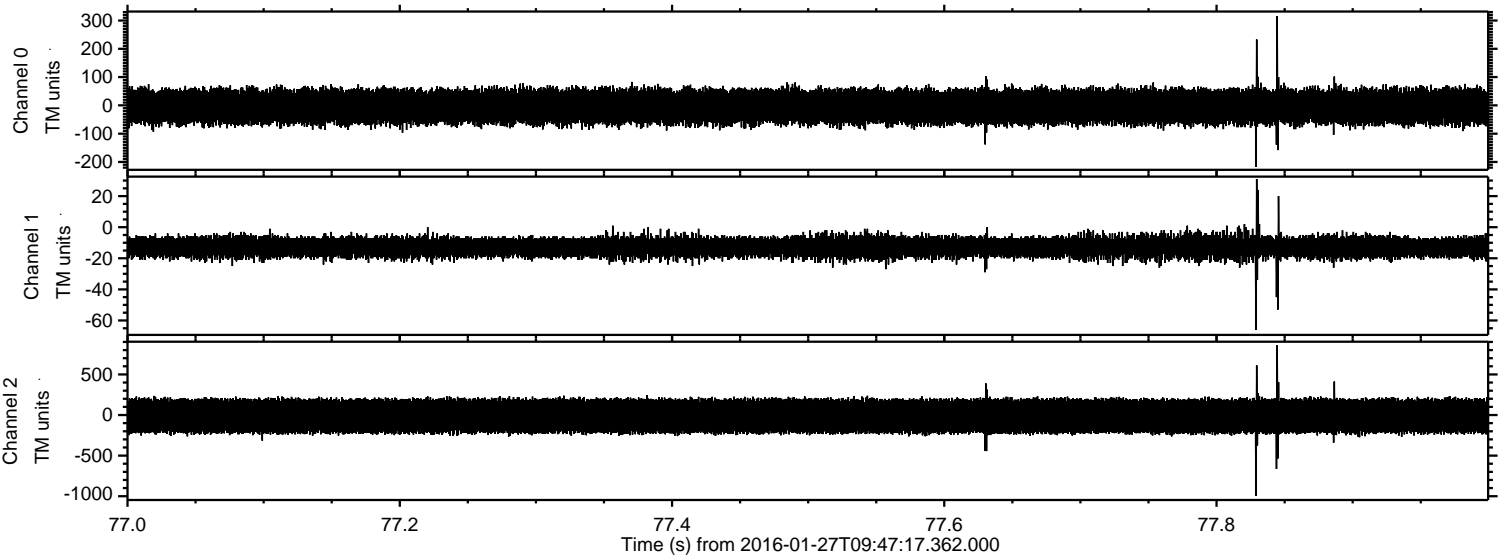
Processed Thu Apr 7 02:20:39 2016 by ELM ver.2012-10-06 from 001__elm20160127_094716__dat00.bin



Processed Thu Apr 7 02:20:40 2016 by ELM ver.2012-10-06 from 001__elm20160127_094716__dat00.bin

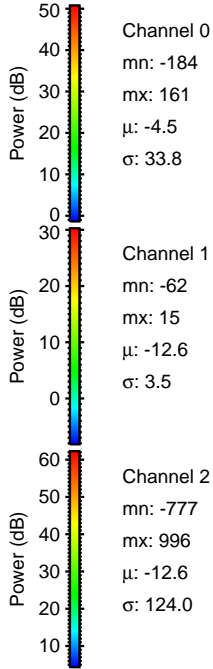
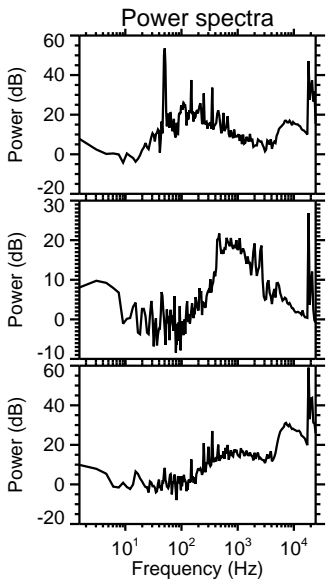
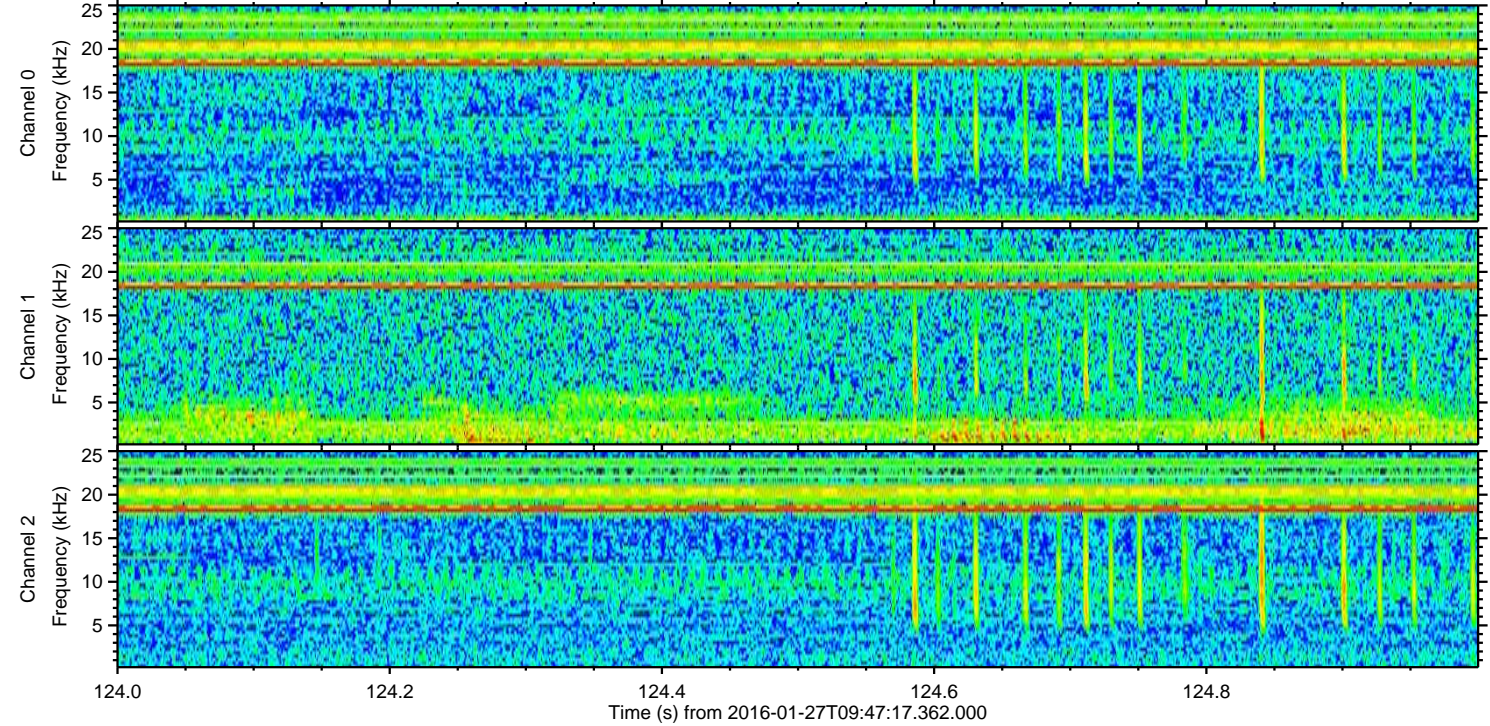
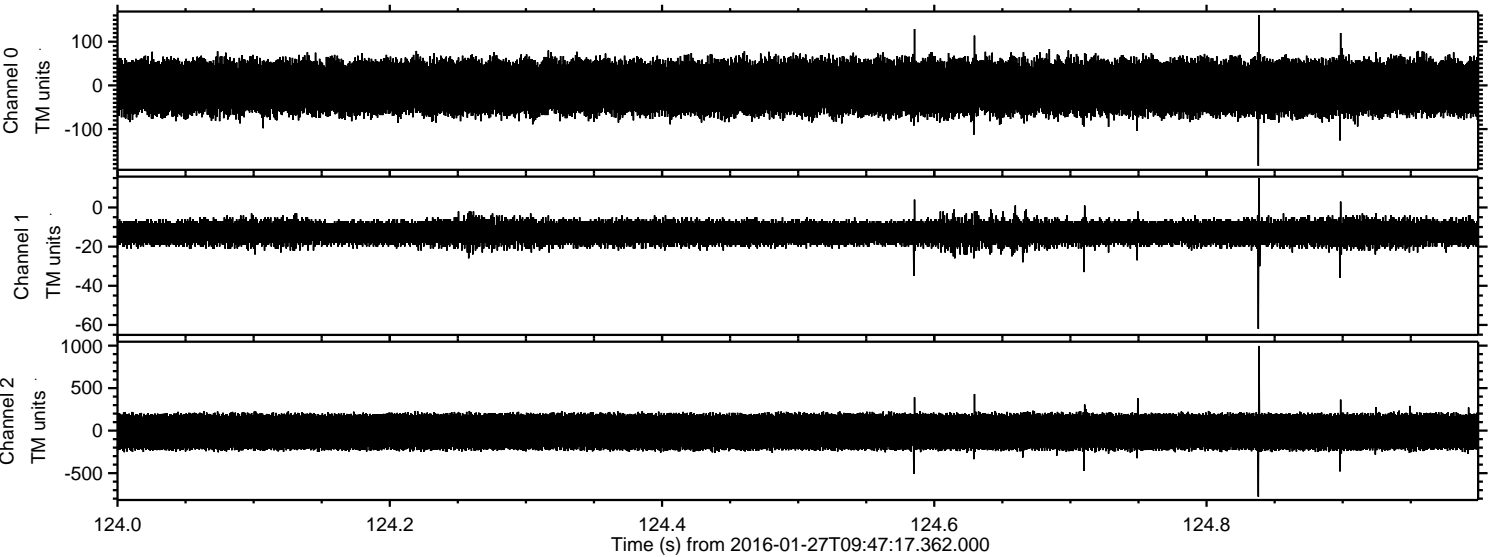


Processed Thu Apr 7 02:20:41 2016 by ELM ver.2012-10-06 from 001__elm20160127_094716__dat00.bin

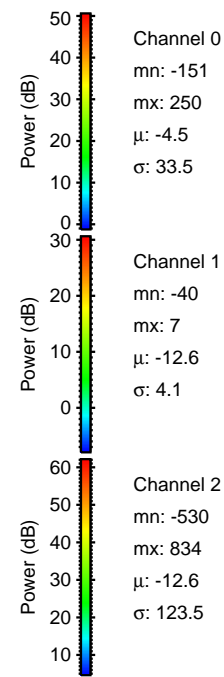
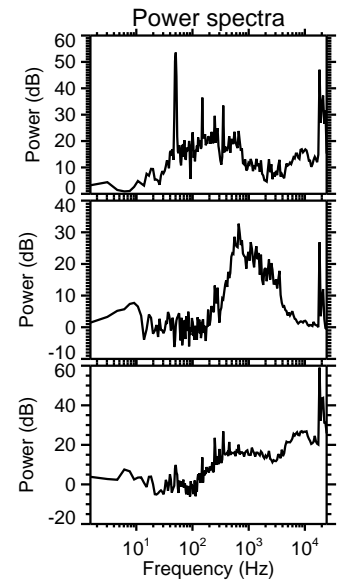
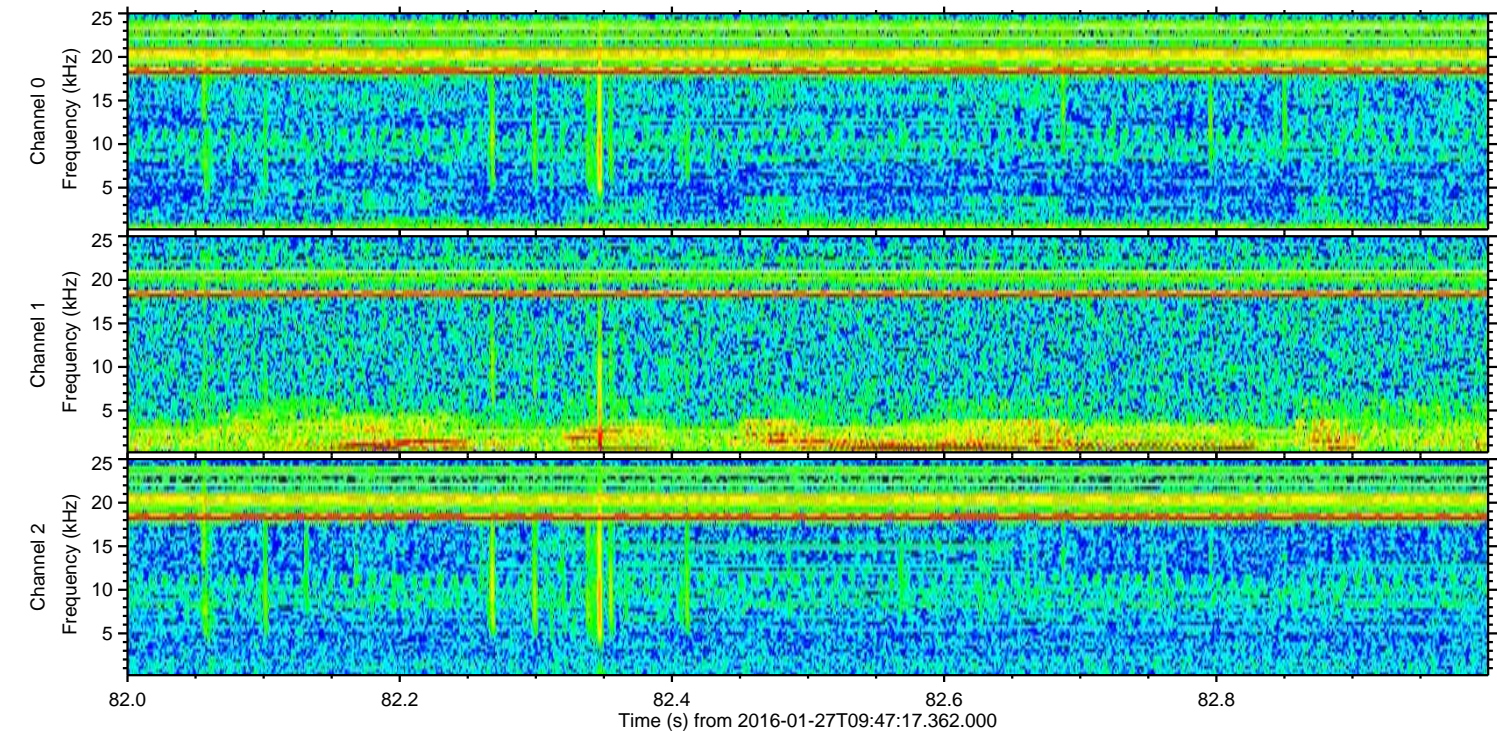
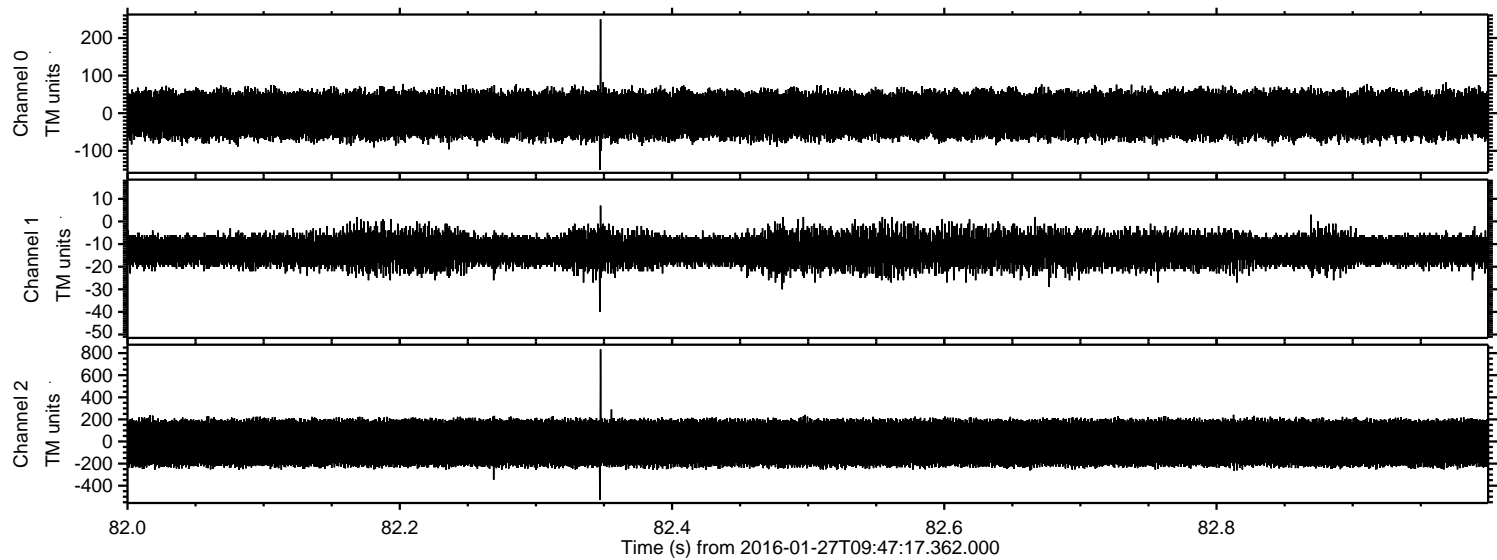


ELMAVAN 3D WAVEFORMS (Measured data sampled at 50 kHz) 51000 packets of 144 samples from 2016-01-27T09:47:17.362.000. Part 125/147

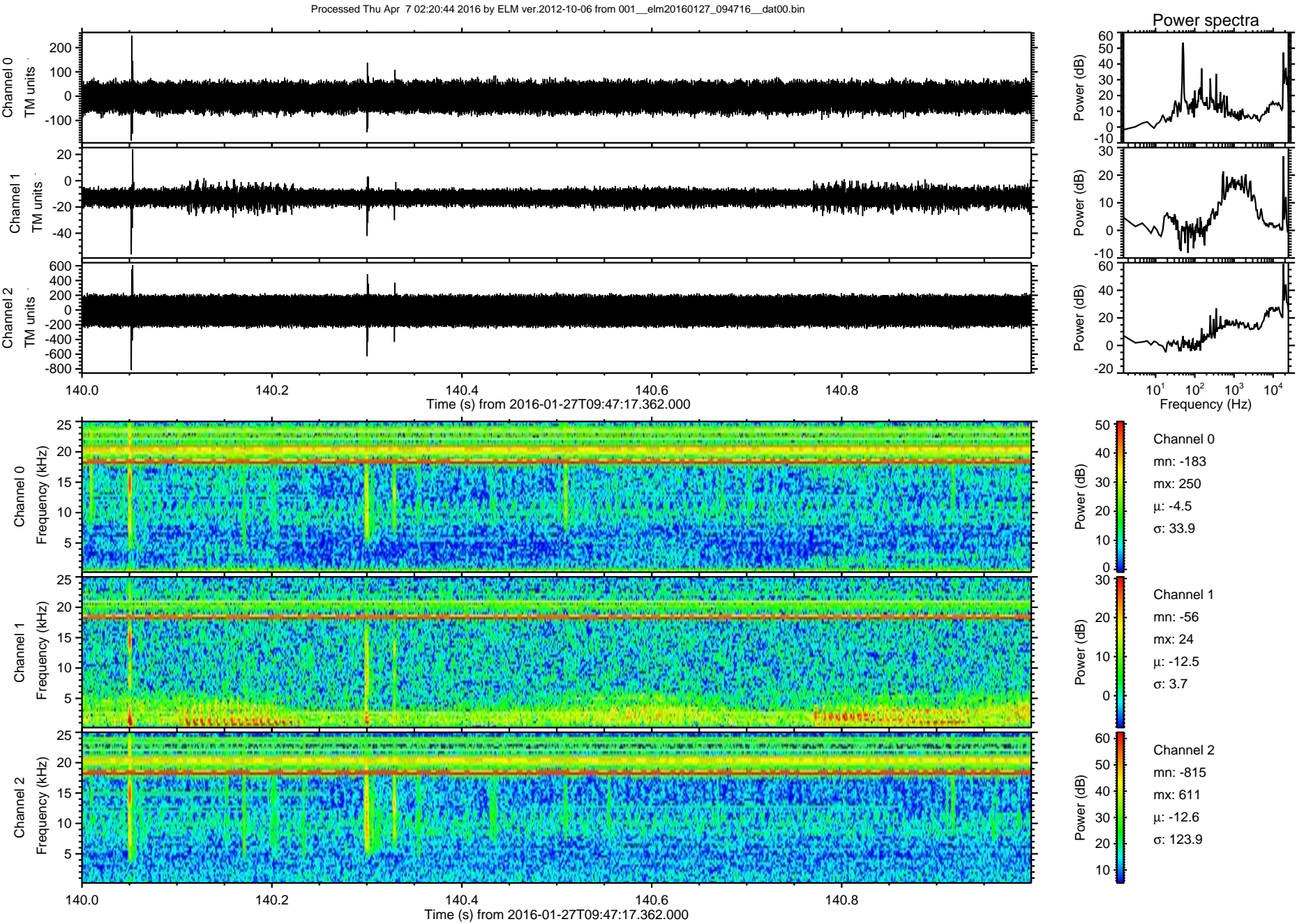
Processed Thu Apr 7 02:20:42 2016 by ELM ver.2012-10-06 from 001__elm20160127_094716__dat00.bin



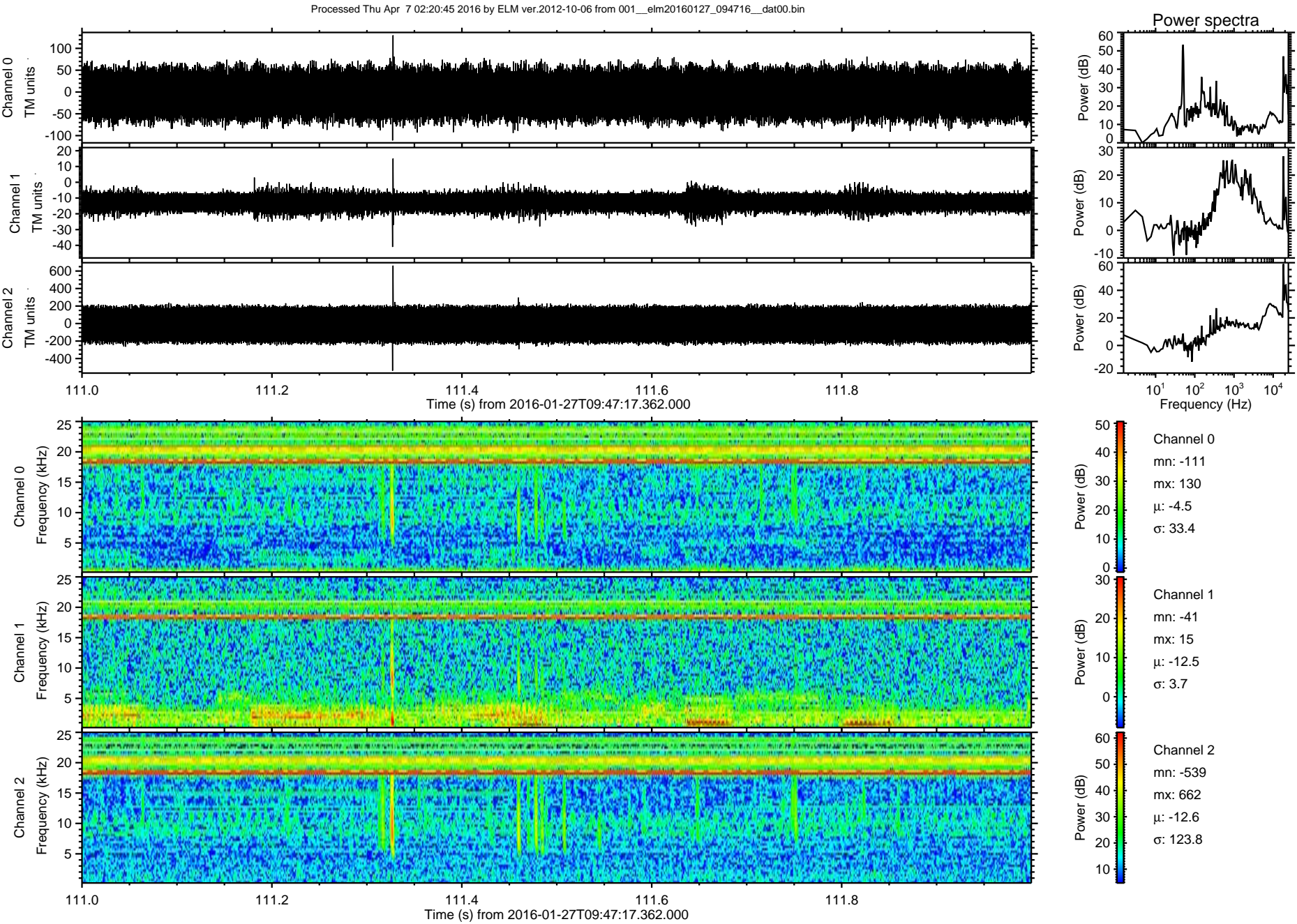
Processed Thu Apr 7 02:20:43 2016 by ELM ver.2012-10-06 from 001__elm20160127_094716__dat00.bin



ELMAVAN 3D WAVEFORMS (Measured data sampled at 50 kHz) 51000 packets of 144 samples from 2016-01-27T09:47:17.362.000. Part 141/147

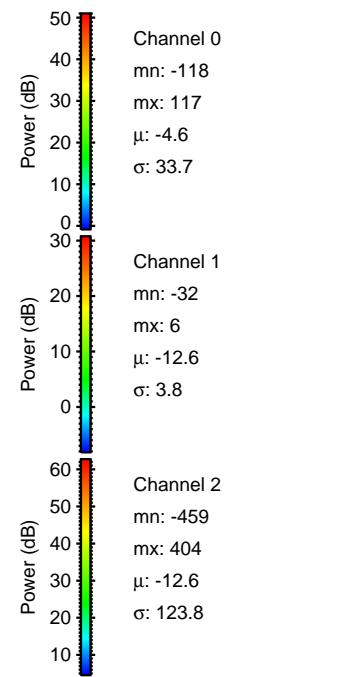
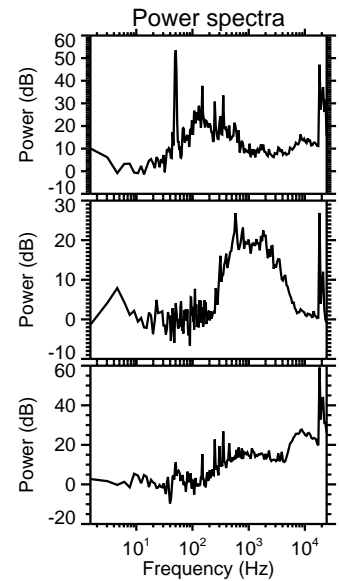
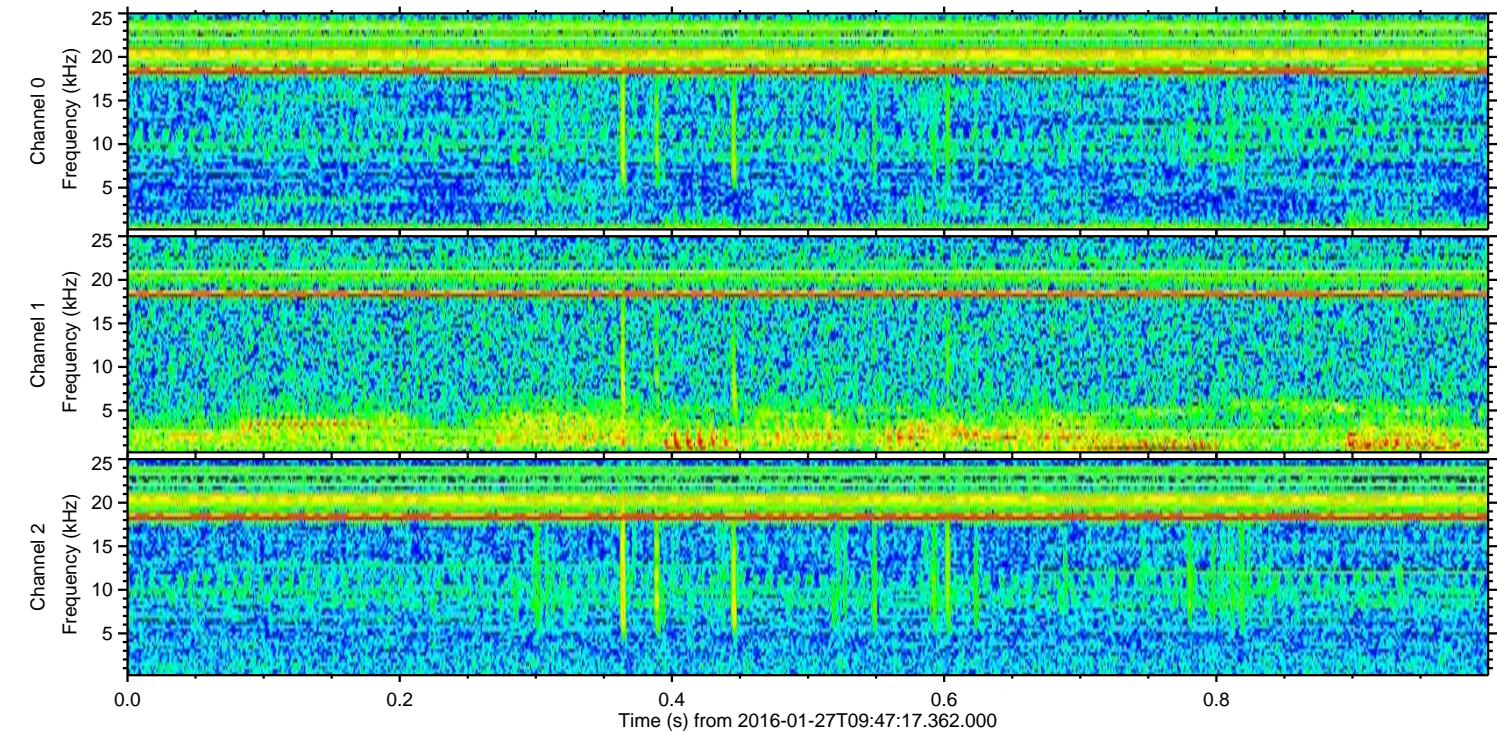
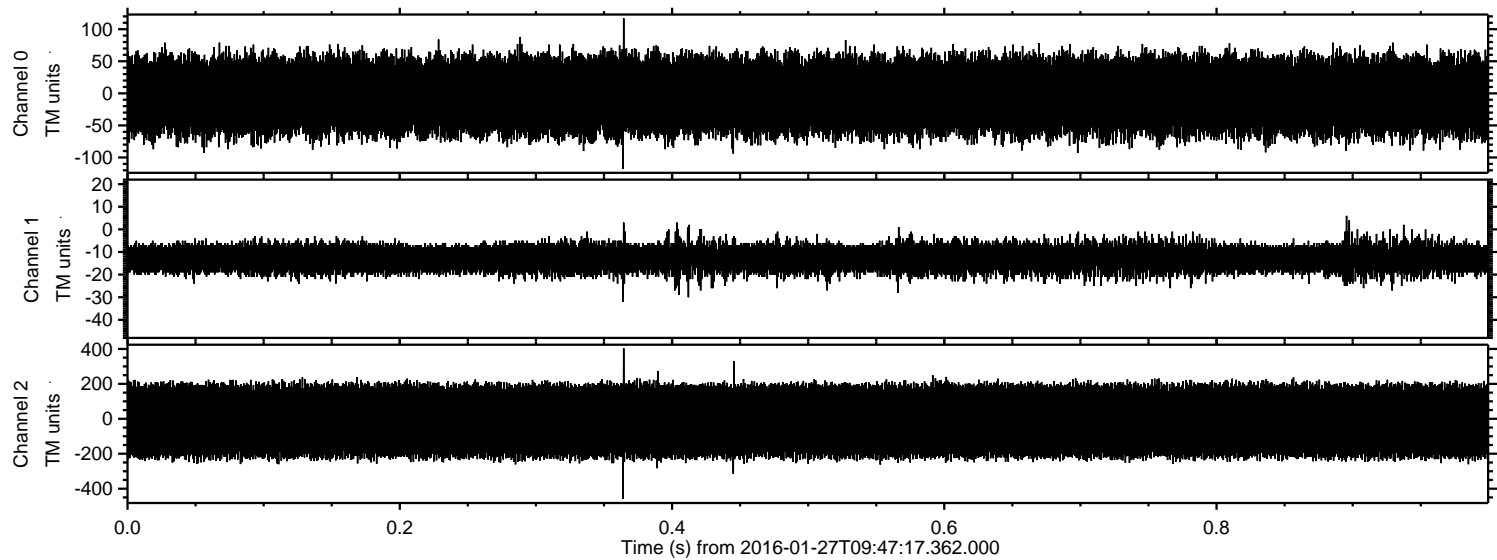


ELMAVAN 3D WAVEFORMS (Measured data sampled at 50 kHz) 51000 packets of 144 samples from 2016-01-27T09:47:17.362.000. Part 112/147

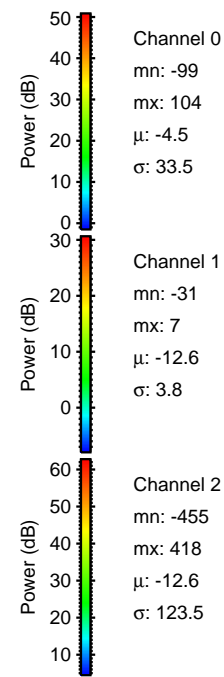
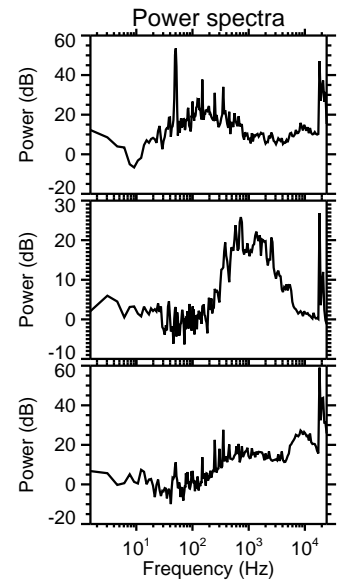
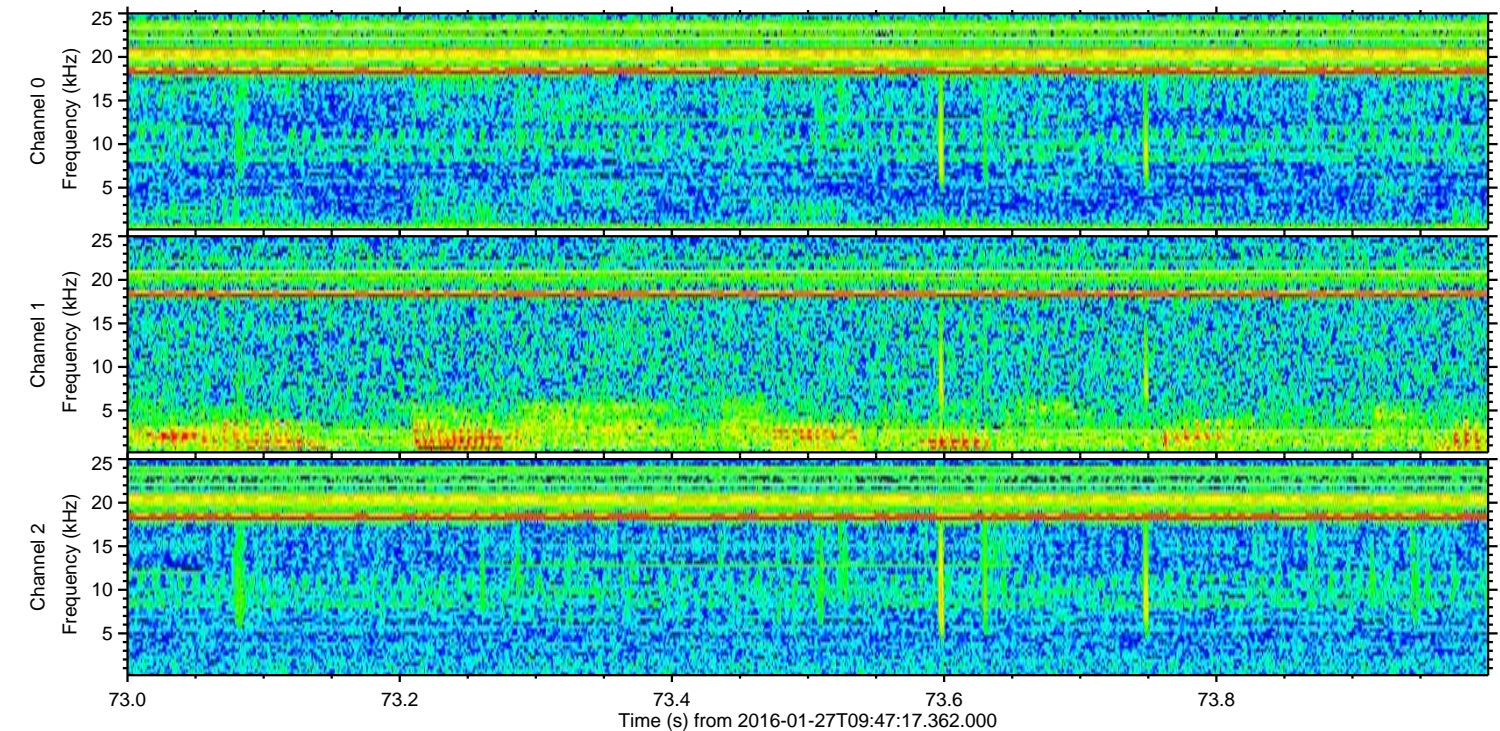
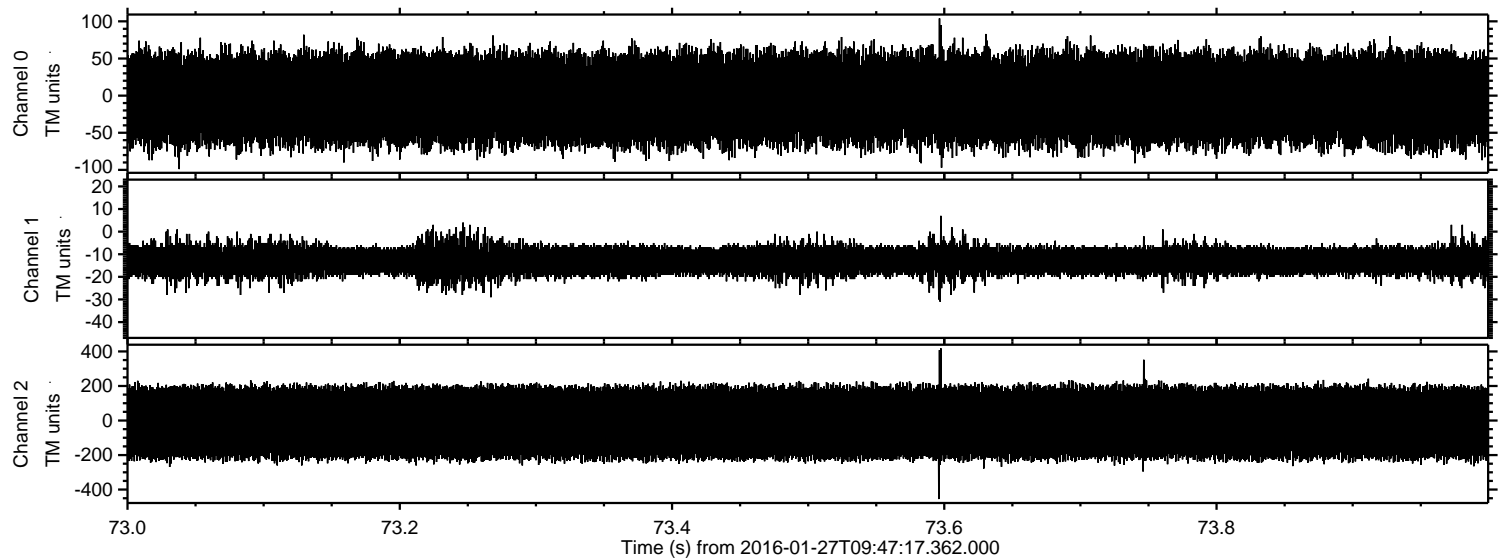


ELMAVAN 3D WAVEFORMS (Measured data sampled at 50 kHz) 51000 packets of 144 samples from 2016-01-27T09:47:17.362.000. Part 1/147

Processed Thu Apr 7 02:20:45 2016 by ELM ver.2012-10-06 from 001__elm20160127_094716__dat00.bin



Processed Thu Apr 7 02:20:46 2016 by ELM ver.2012-10-06 from 001__elm20160127_094716__dat00.bin



Channel 0
mn: -99
mx: 104
 μ : -4.5
 σ : 33.5

Channel 1
mn: -31
mx: 7
 μ : -12.6
 σ : 3.8

Channel 2
mn: -455
mx: 418
 μ : -12.6
 σ : 123.5

Processed Thu Apr 7 02:20:47 2016 by ELM ver.2012-10-06 from 001__elm20160127_094716__dat00.bin

