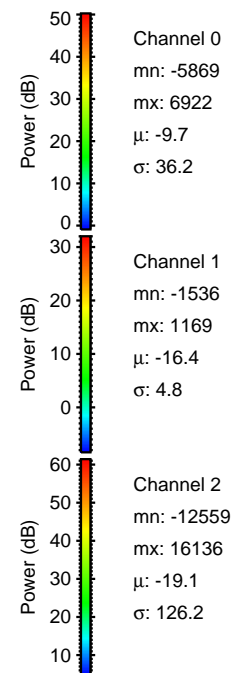
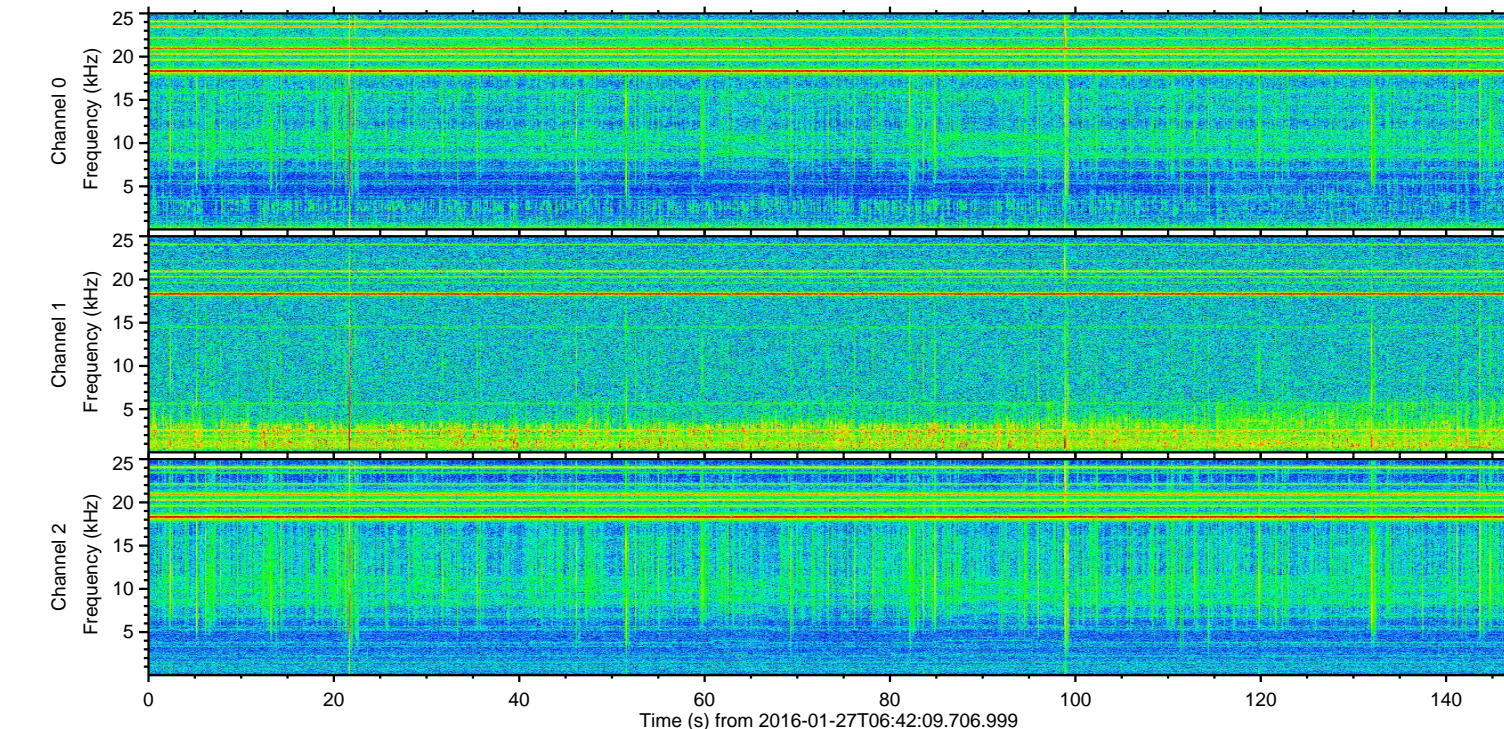
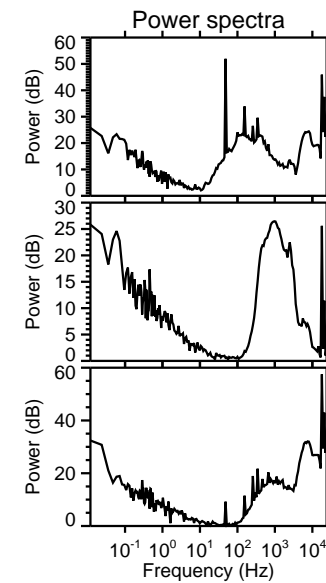
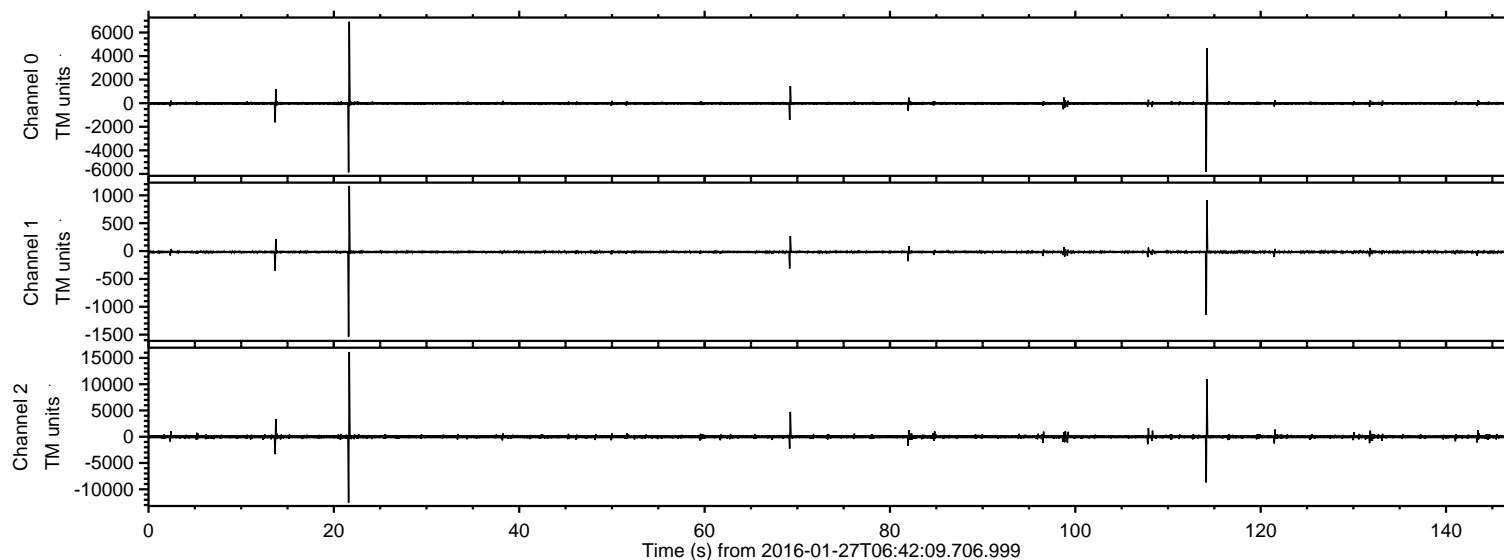


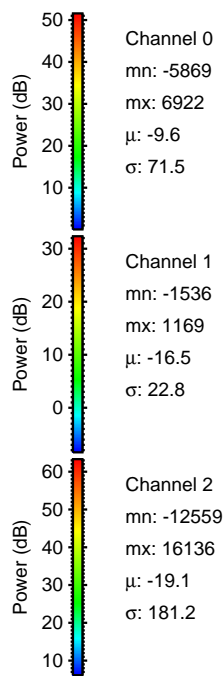
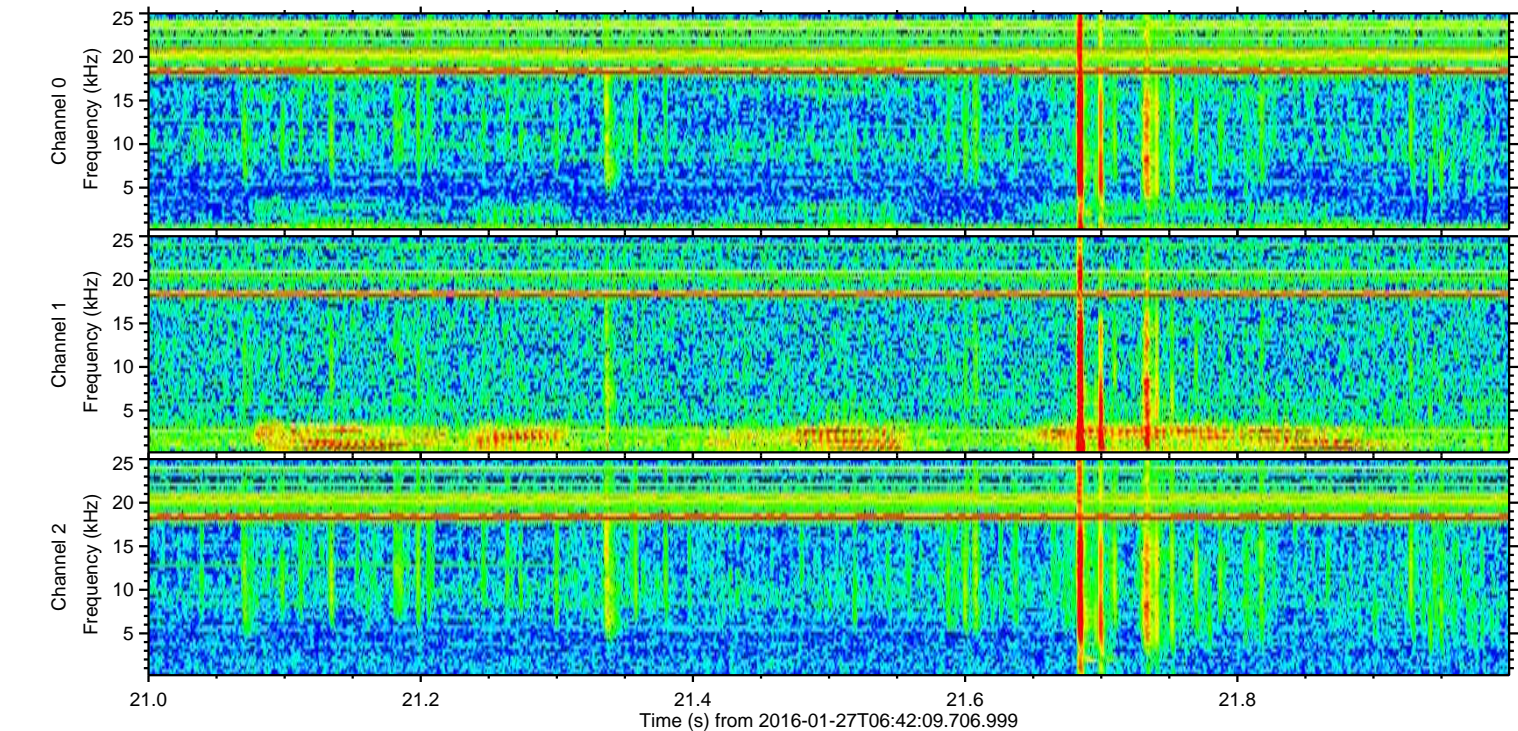
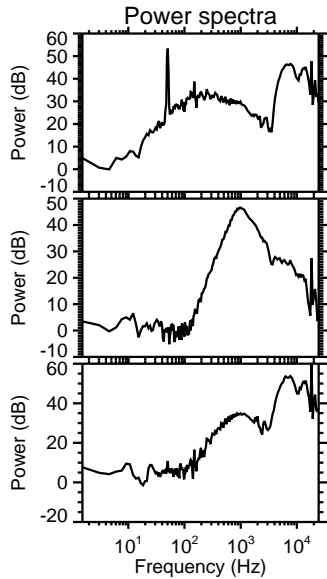
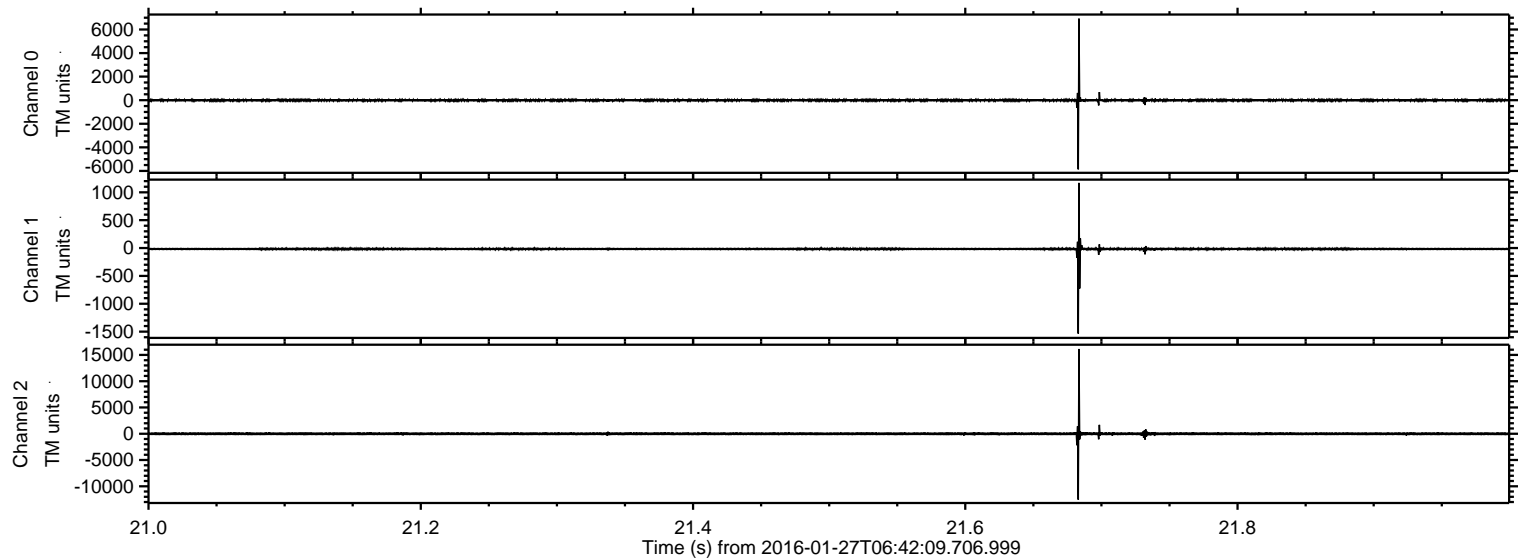
ELMAVAN 3D WAVEFORMS (Measured data sampled at 50 kHz) 51000 packets of 144 samples from 2016-01-27T06:42:09.706.999.

Processed Thu Apr 7 01:43:28 2016 by ELM ver.2012-10-06 from 001__elm20160127_064208__dat00.bin



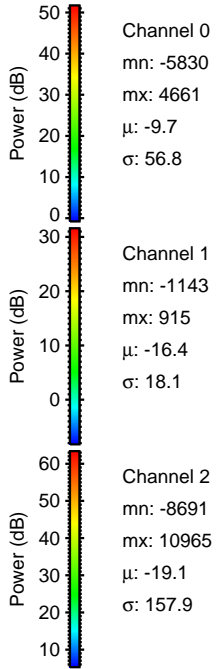
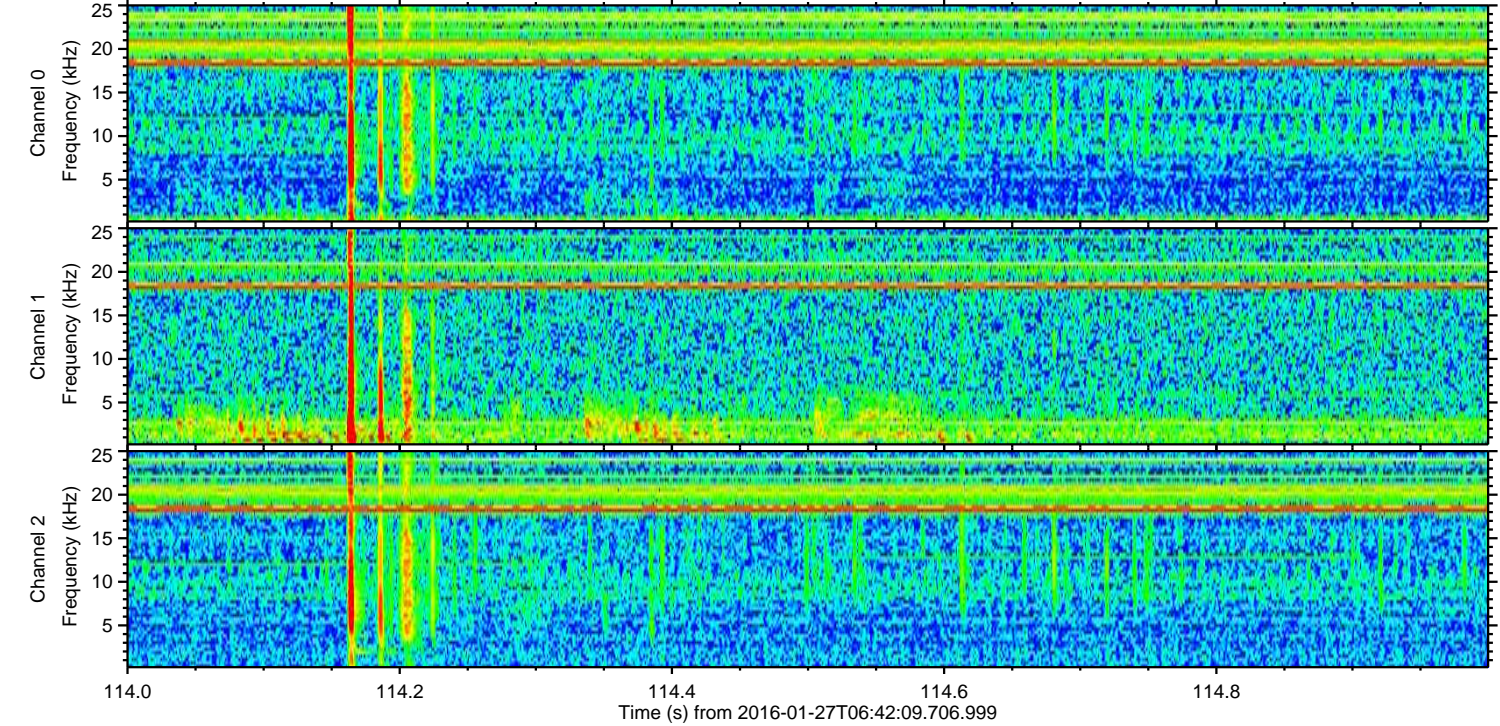
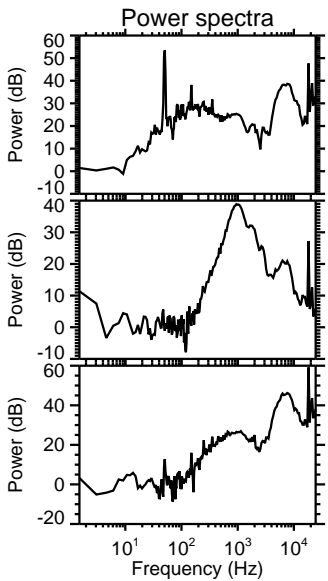
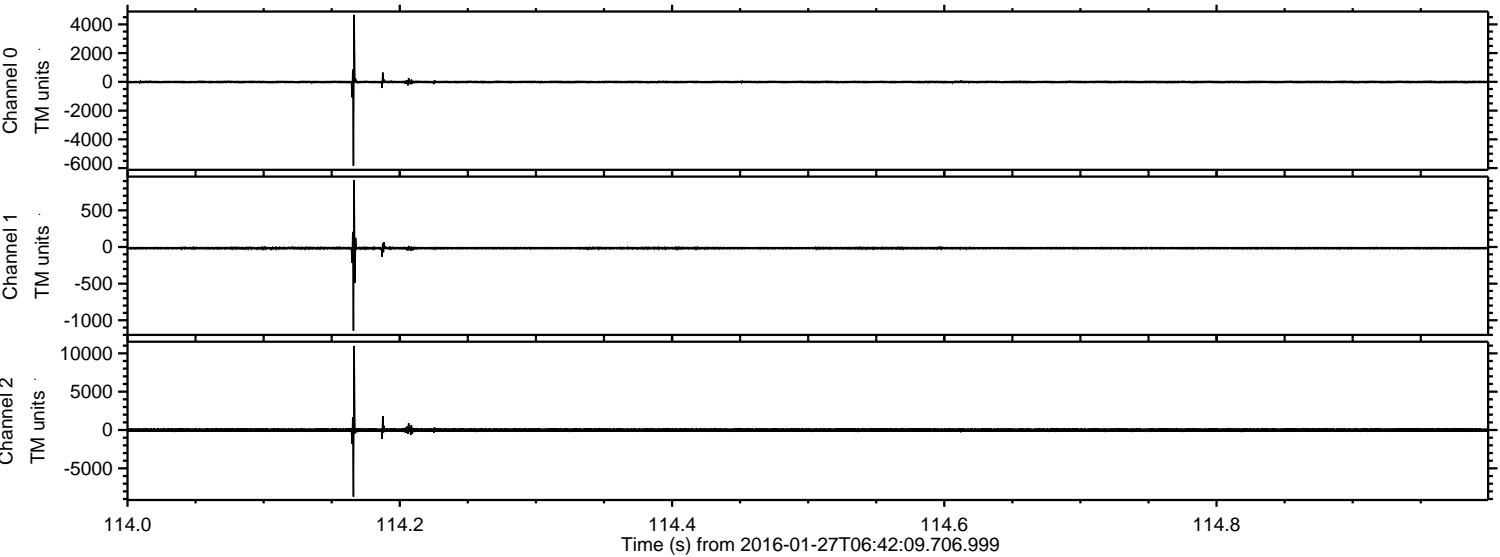
ELMAVAN 3D WAVEFORMS (Measured data sampled at 50 kHz) 51000 packets of 144 samples from 2016-01-27T06:42:09.706.999. Part 22/147

Processed Thu Apr 7 01:43:40 2016 by ELM ver.2012-10-06 from 001__elm20160127_064208__dat00.bin



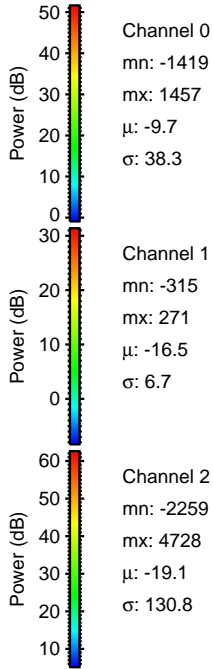
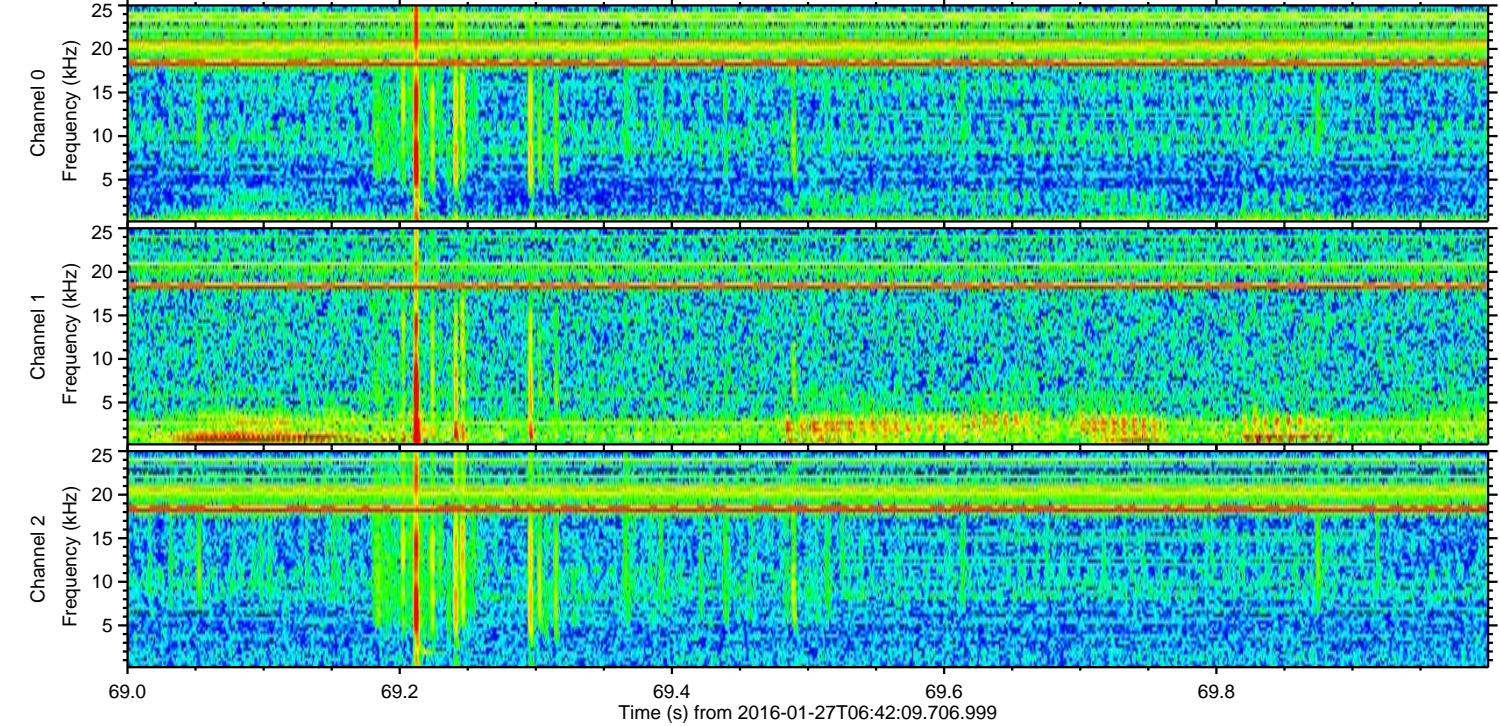
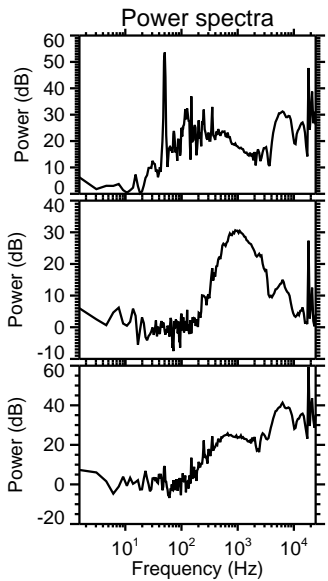
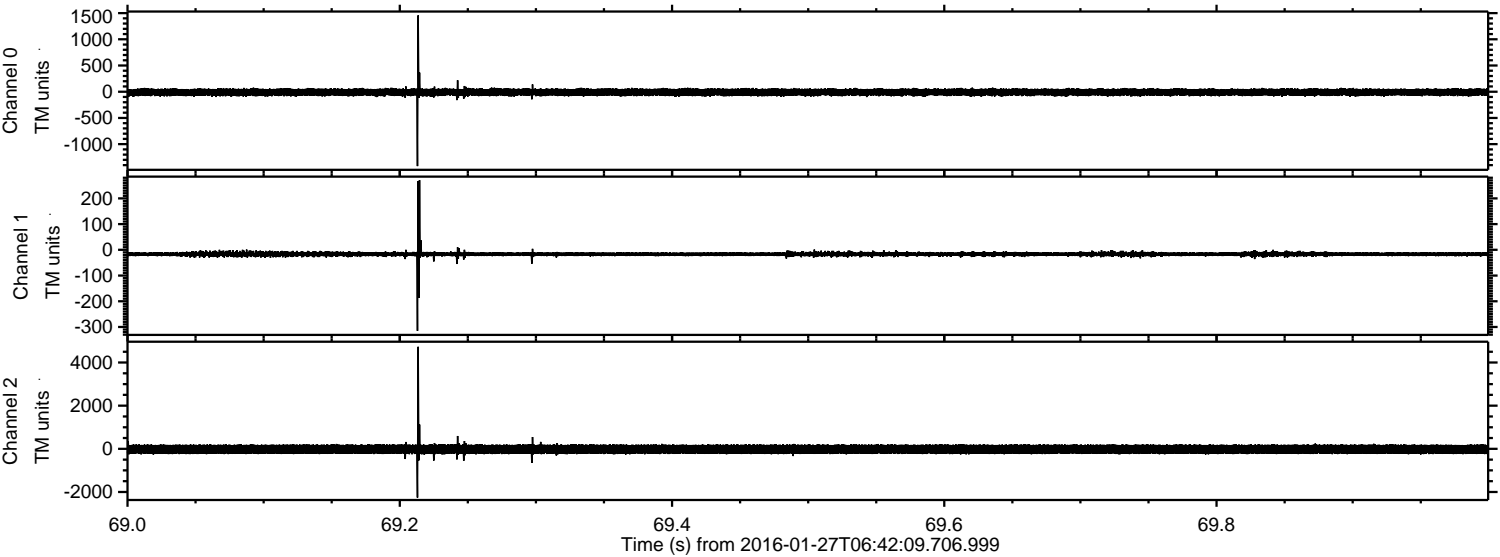
ELMAVAN 3D WAVEFORMS (Measured data sampled at 50 kHz) 51000 packets of 144 samples from 2016-01-27T06:42:09.706.999. Part 115/147

Processed Thu Apr 7 01:43:41 2016 by ELM ver.2012-10-06 from 001__elm20160127_064208__dat00.bin



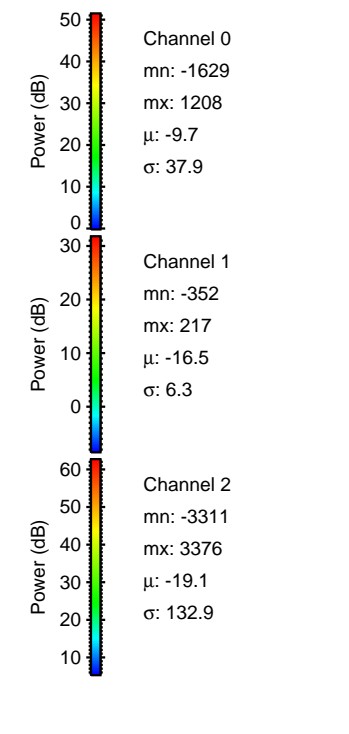
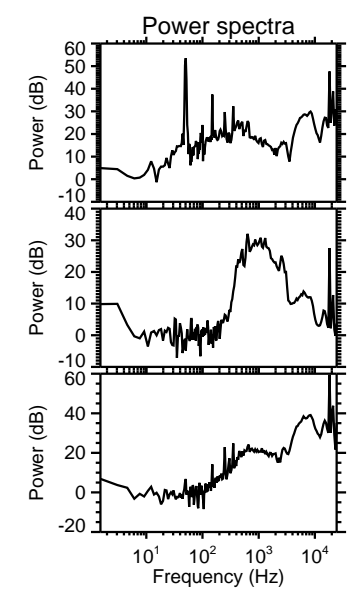
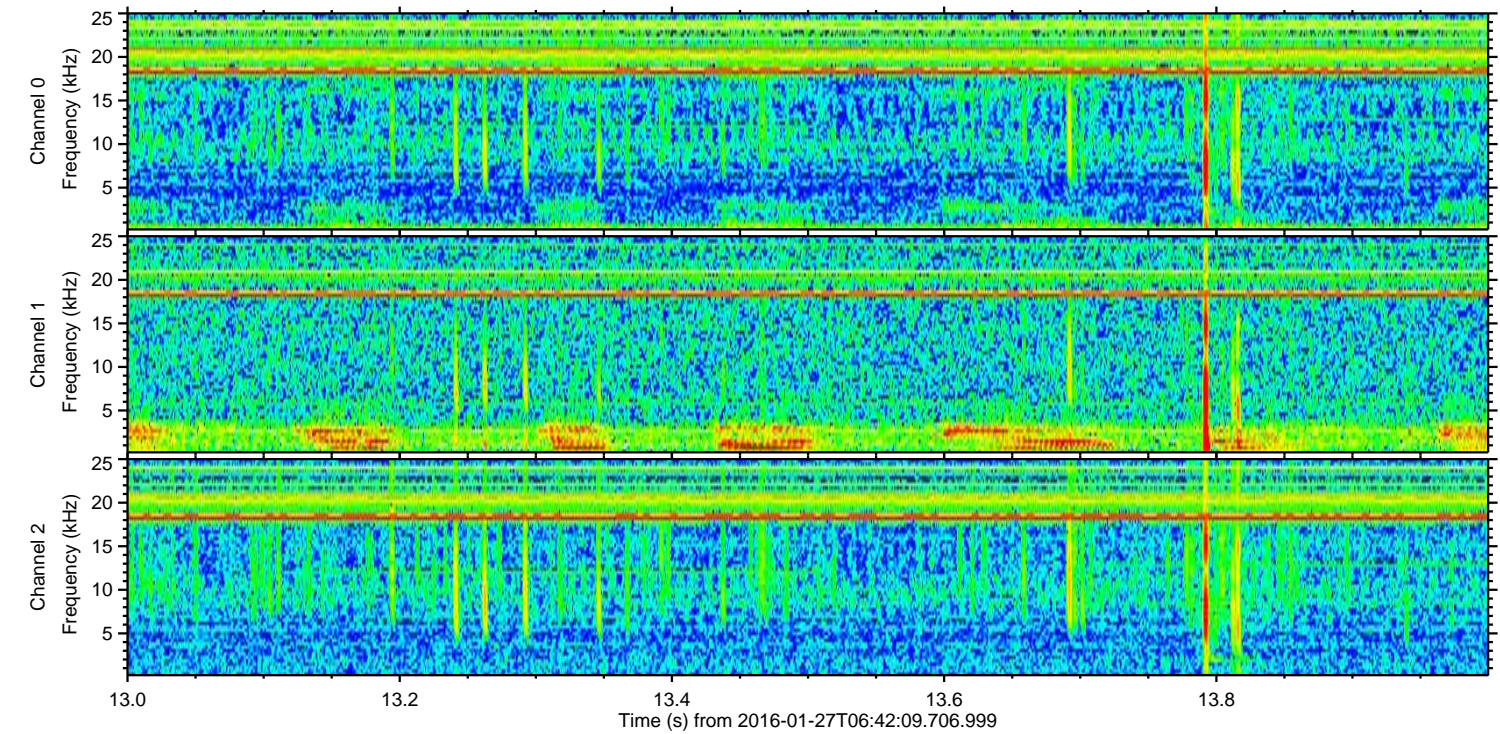
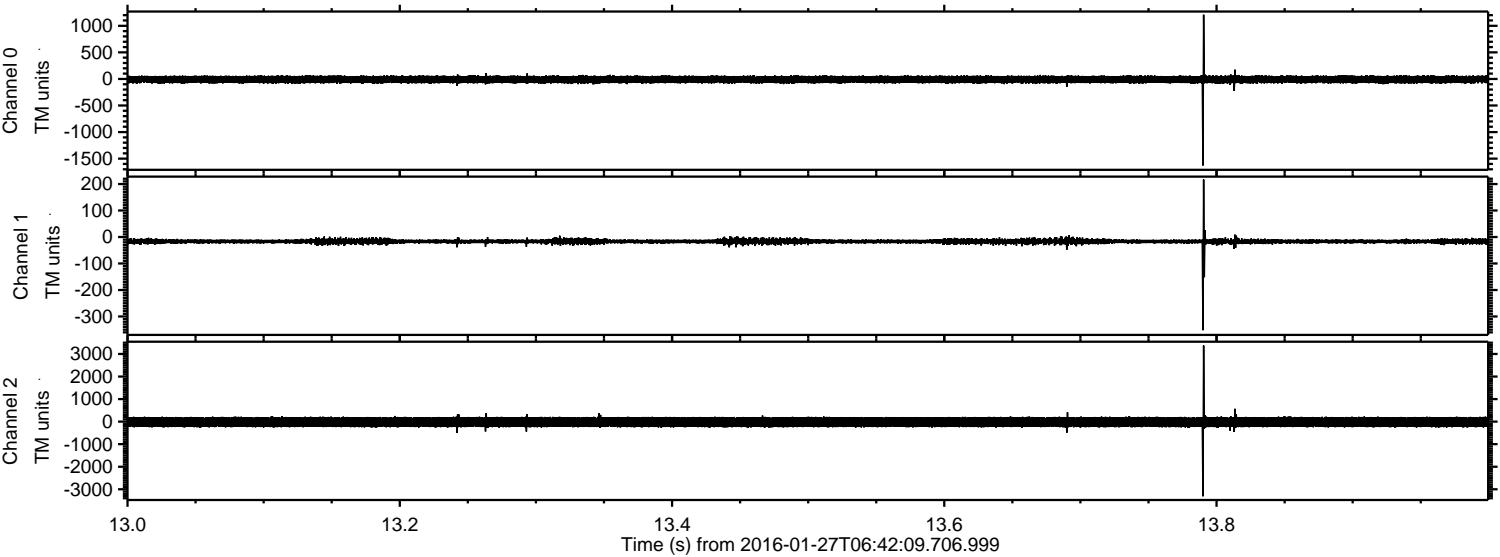
ELMAVAN 3D WAVEFORMS (Measured data sampled at 50 kHz) 51000 packets of 144 samples from 2016-01-27T06:42:09.706.999. Part 70/147

Processed Thu Apr 7 01:43:42 2016 by ELM ver.2012-10-06 from 001__elm20160127_064208__dat00.bin

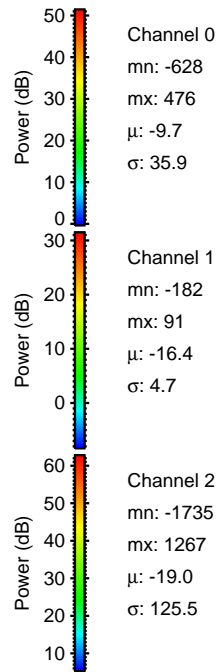
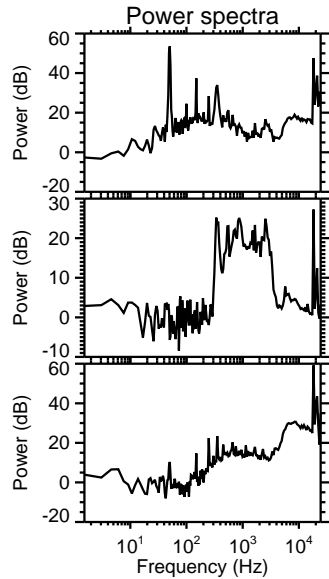
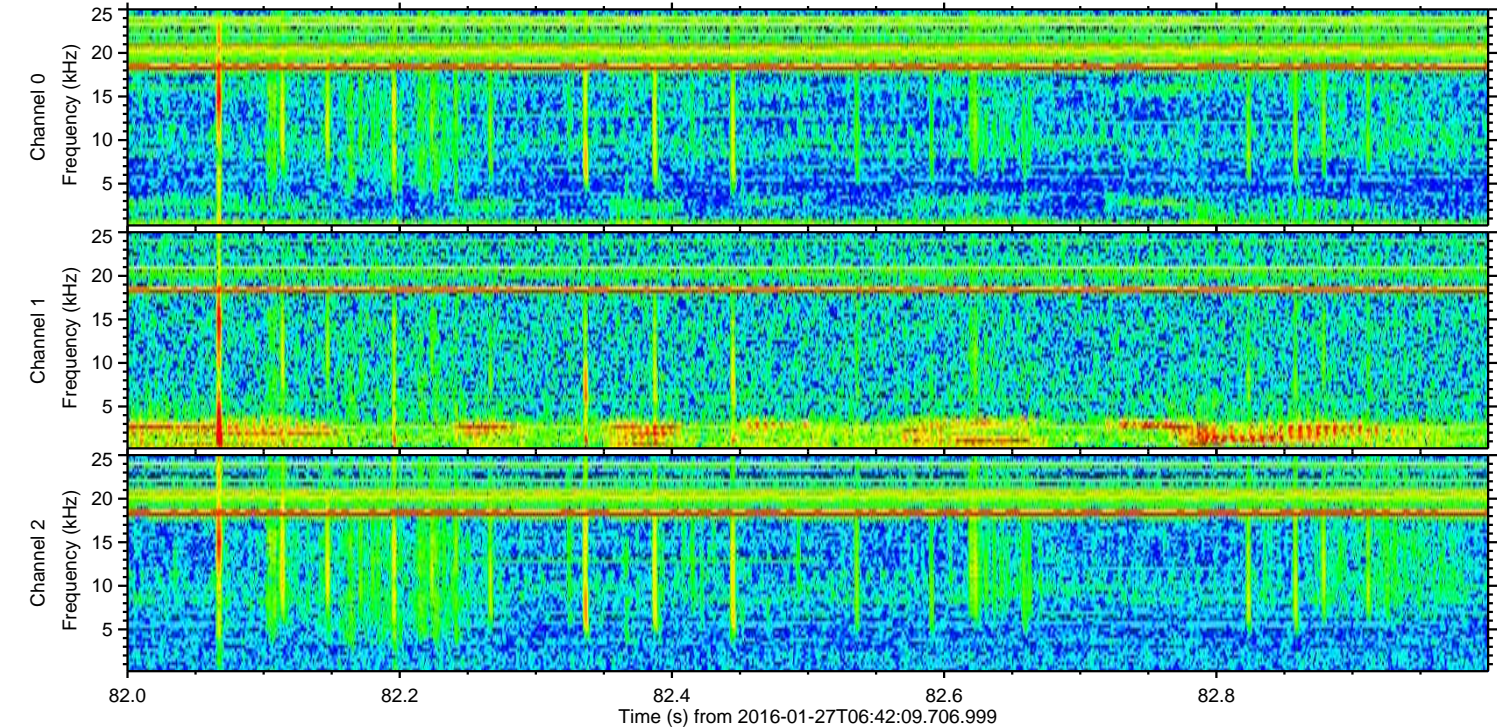
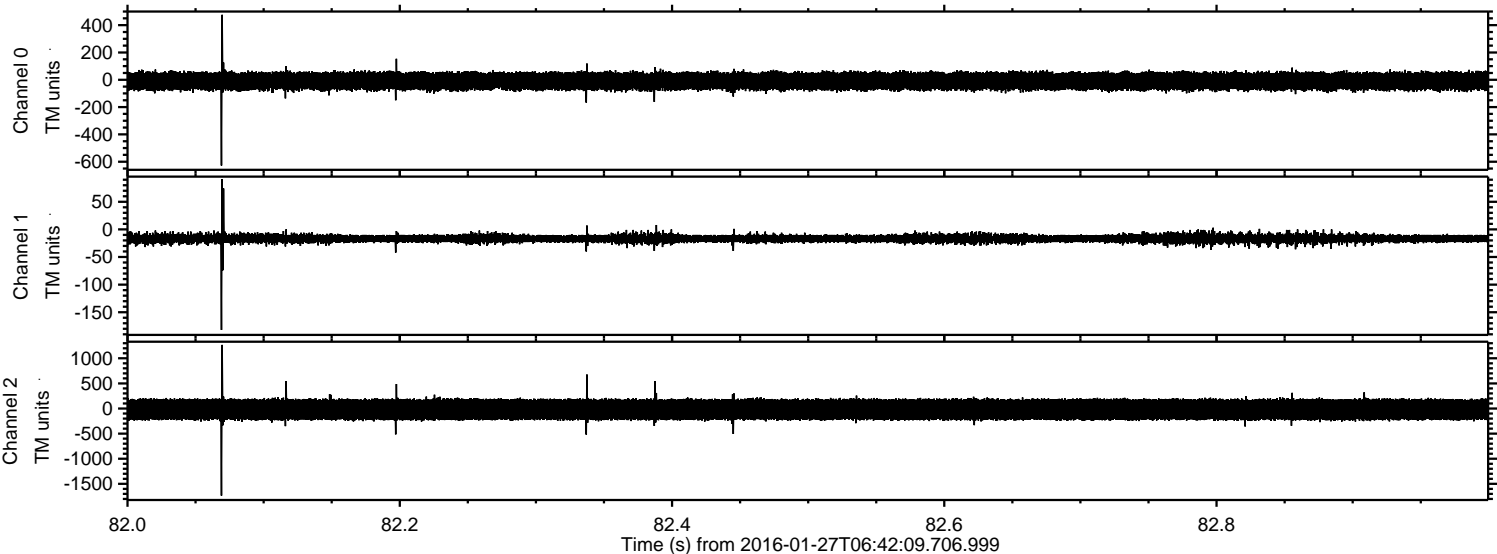


ELMAVAN 3D WAVEFORMS (Measured data sampled at 50 kHz) 51000 packets of 144 samples from 2016-01-27T06:42:09.706.999. Part 14/147

Processed Thu Apr 7 01:43:43 2016 by ELM ver.2012-10-06 from 001__elm20160127_064208__dat00.bin



Processed Thu Apr 7 01:43:44 2016 by ELM ver.2012-10-06 from 001__elm20160127_064208__dat00.bin



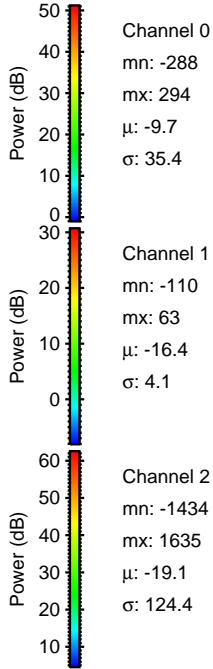
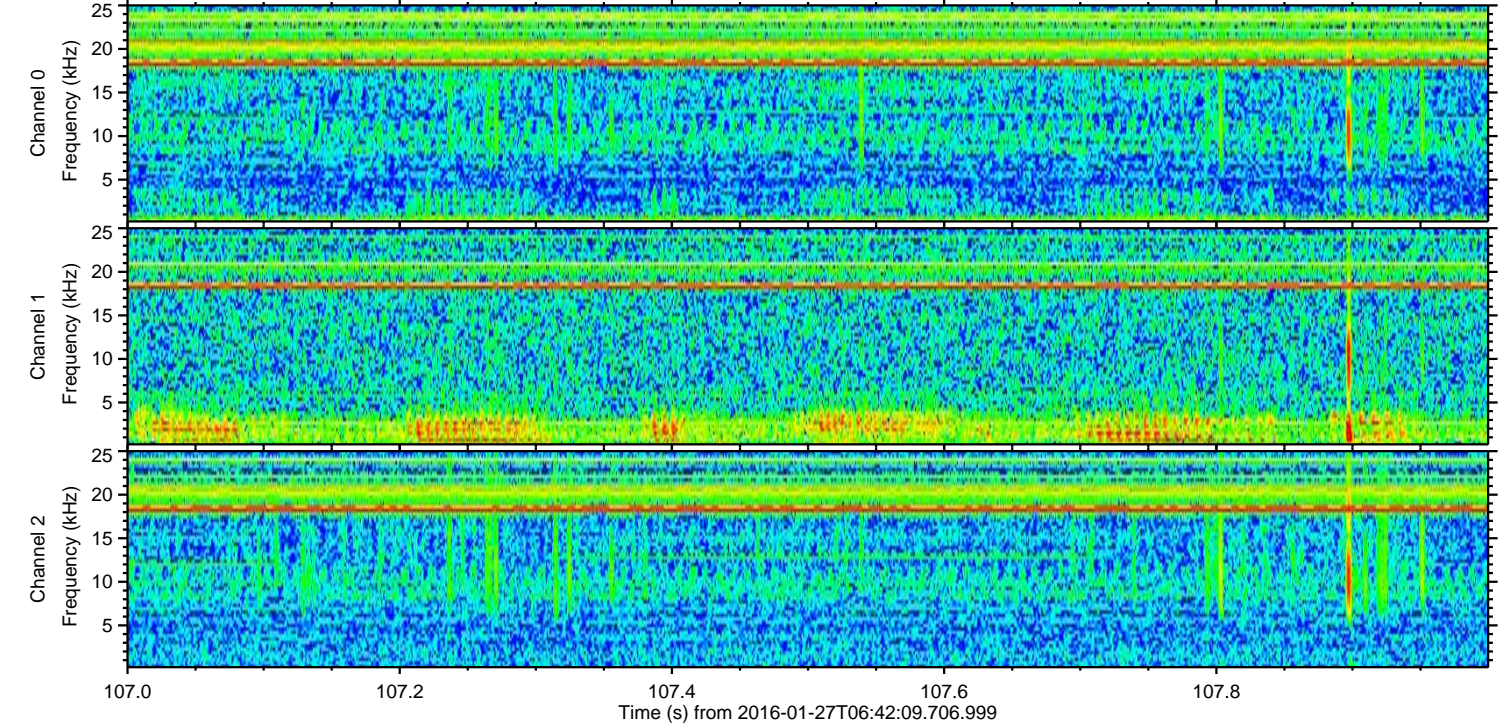
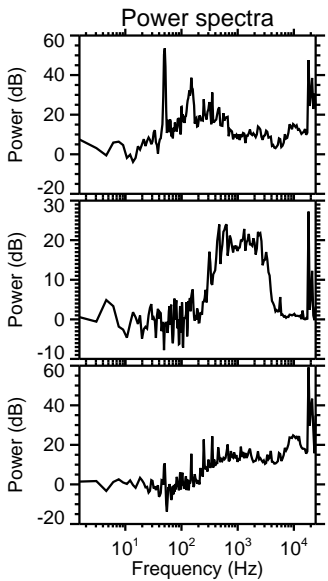
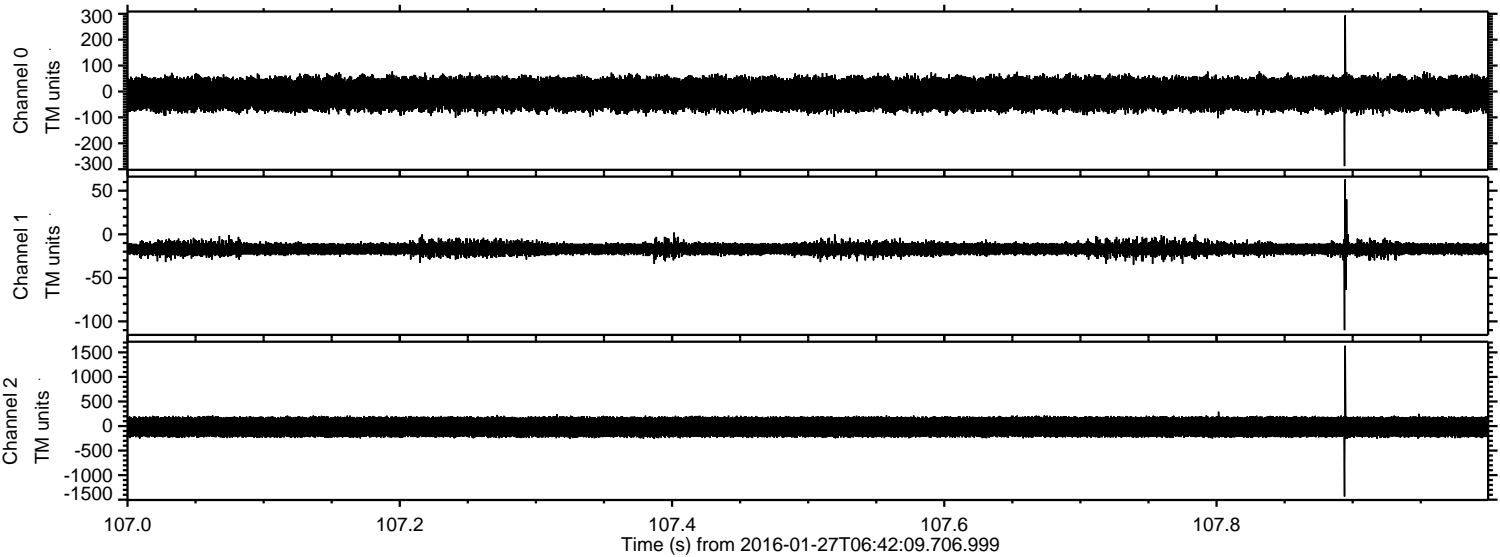
Channel 0
mn: -628
mx: 476
 μ : -9.7
 σ : 35.9

Channel 1
mn: -182
mx: 91
 μ : -16.4
 σ : 4.7

Channel 2
mn: -1735
mx: 1267
 μ : -19.0
 σ : 125.5

ELMAVAN 3D WAVEFORMS (Measured data sampled at 50 kHz) 51000 packets of 144 samples from 2016-01-27T06:42:09.706.999. Part 108/147

Processed Thu Apr 7 01:43:44 2016 by ELM ver.2012-10-06 from 001__elm20160127_064208__dat00.bin



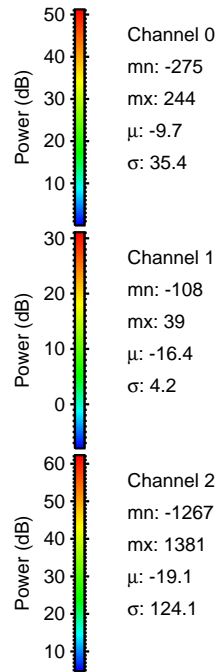
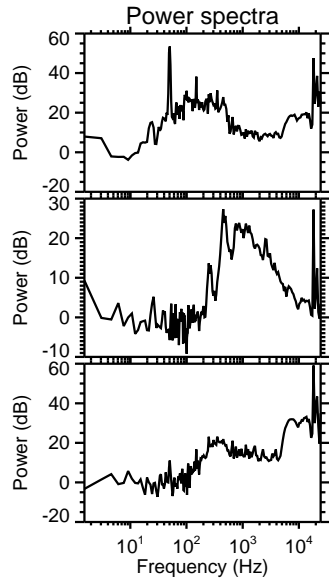
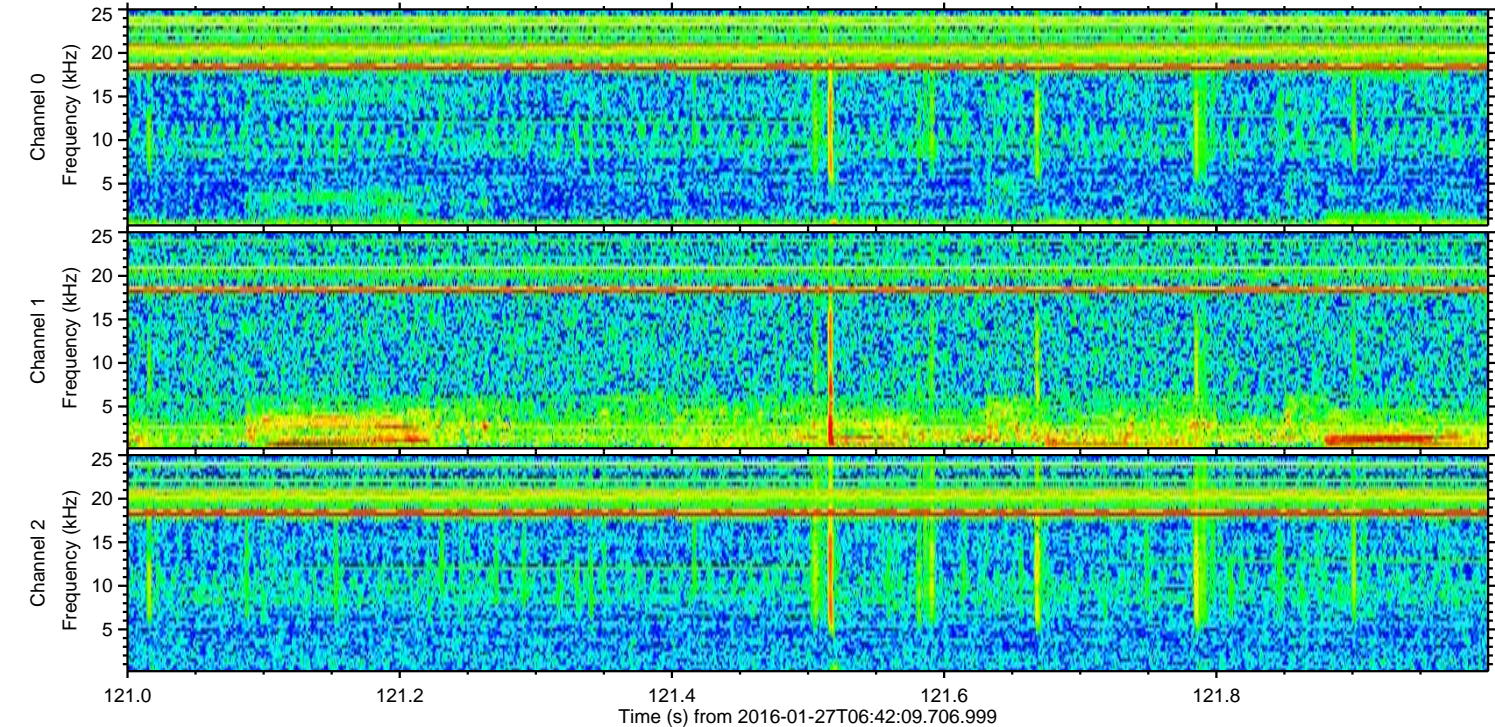
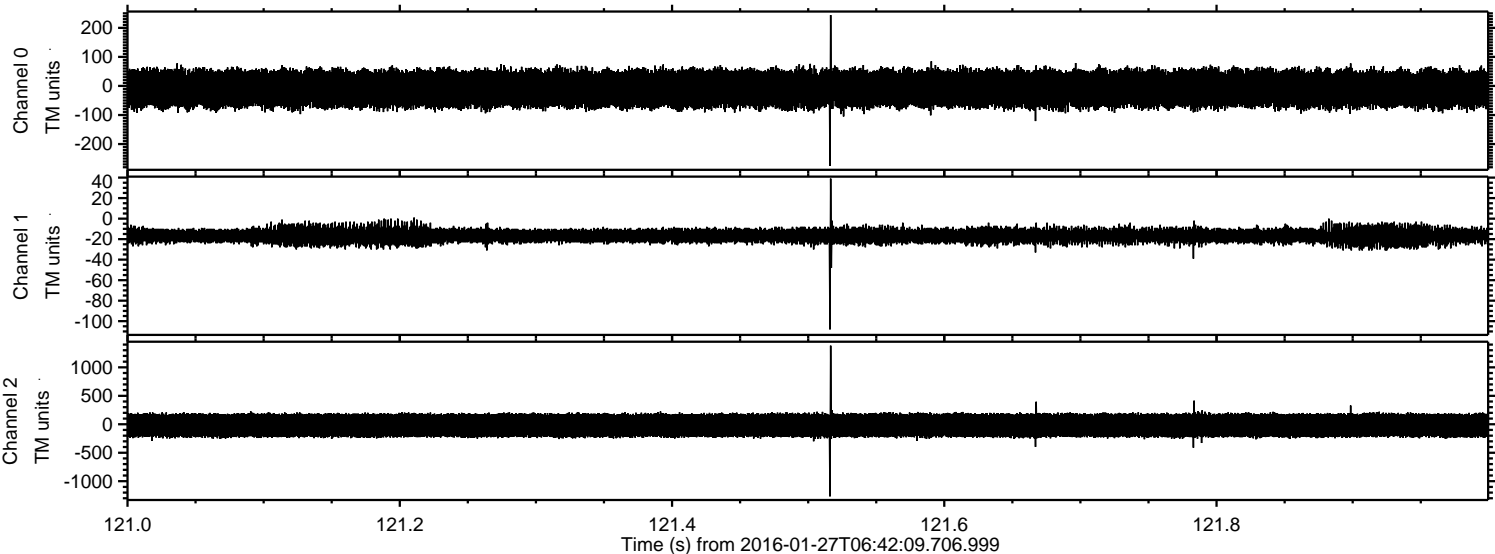
Channel 0
mn: -288
mx: 294
 μ : -9.7
 σ : 35.4

Channel 1
mn: -110
mx: 63
 μ : -16.4
 σ : 4.1

Channel 2
mn: -1434
mx: 1635
 μ : -19.1
 σ : 124.4

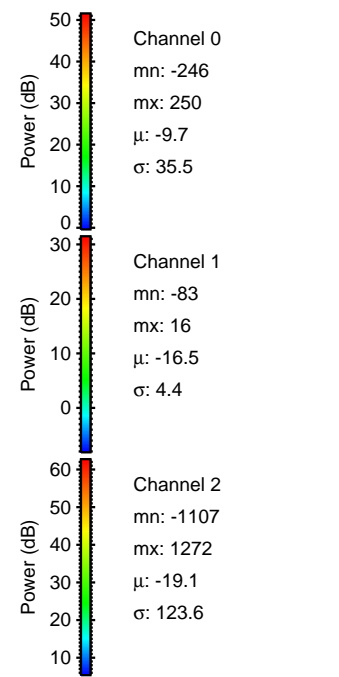
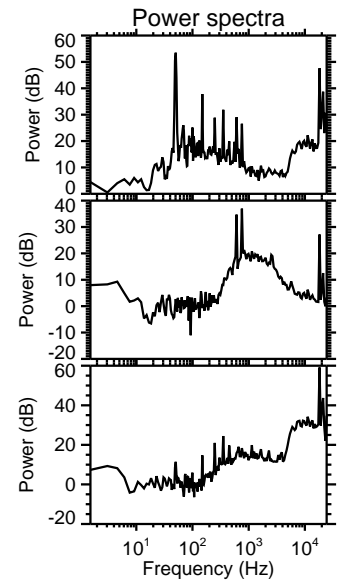
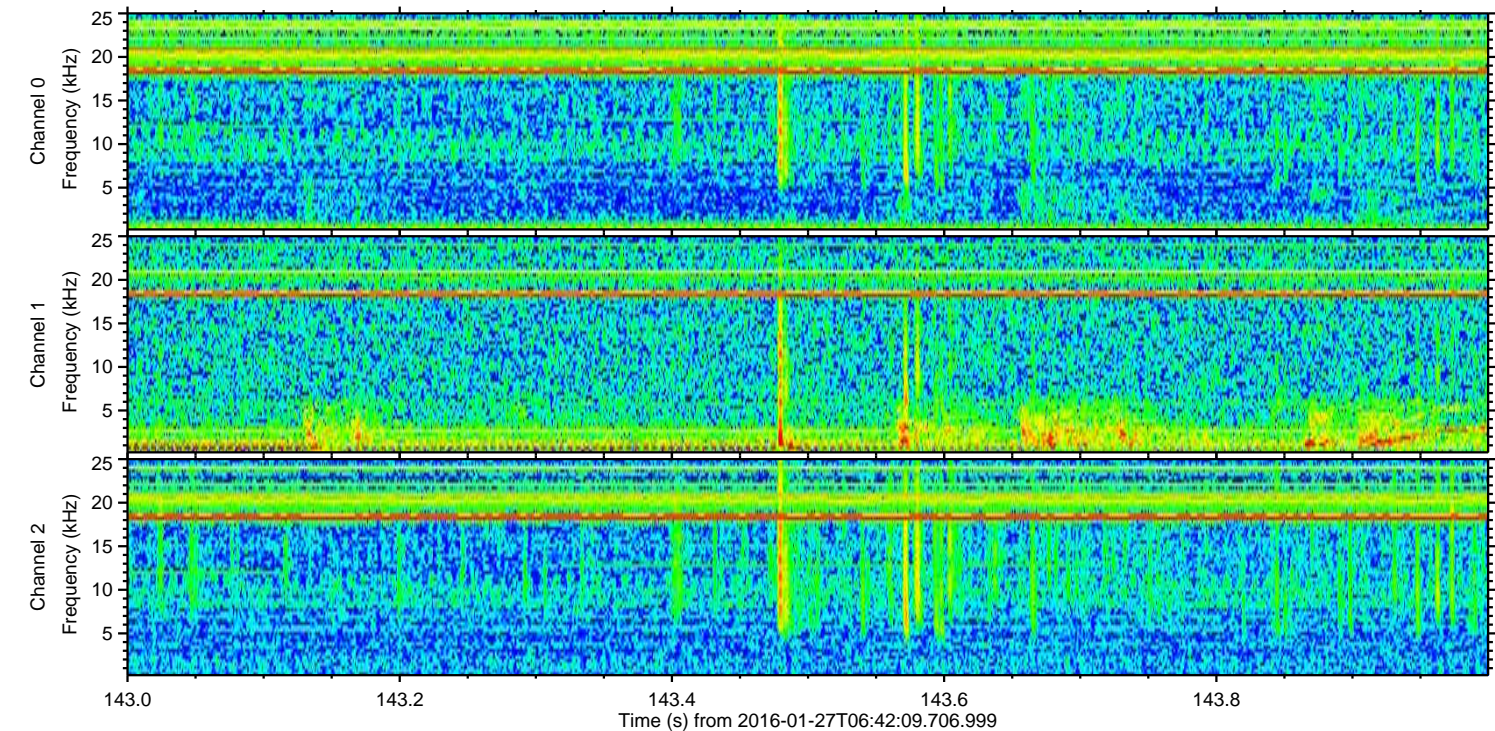
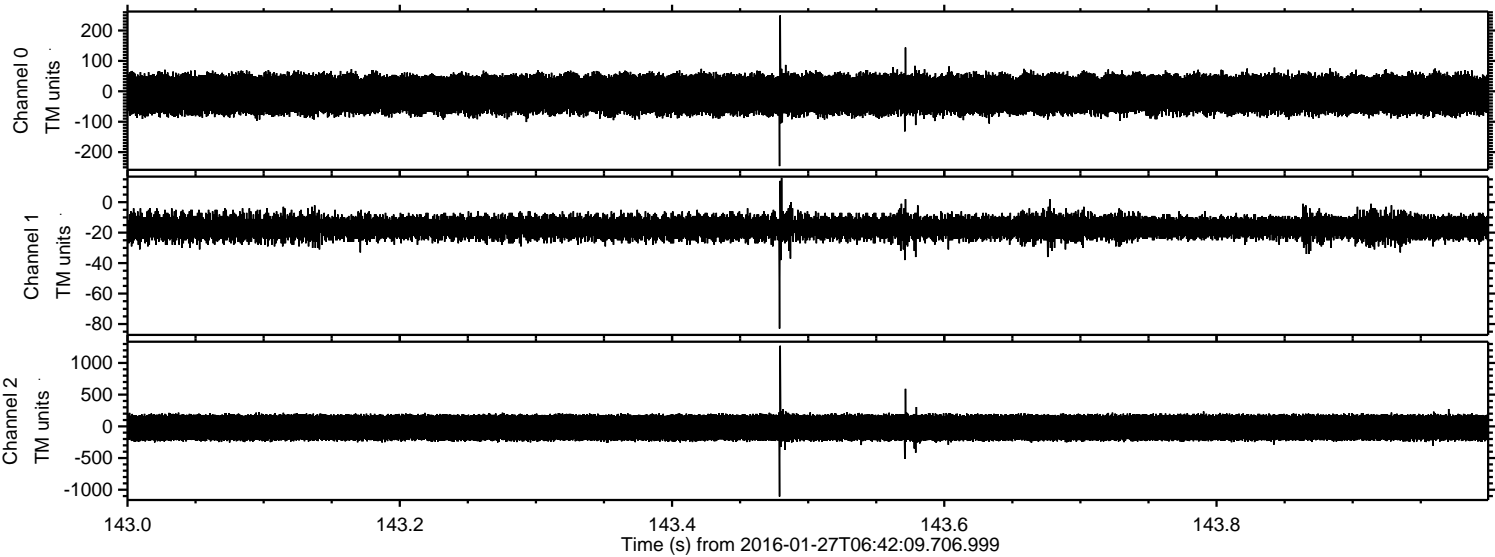
ELMAVAN 3D WAVEFORMS (Measured data sampled at 50 kHz) 51000 packets of 144 samples from 2016-01-27T06:42:09.706.999. Part 122/147

Processed Thu Apr 7 01:43:45 2016 by ELM ver.2012-10-06 from 001__elm20160127_064208__dat00.bin



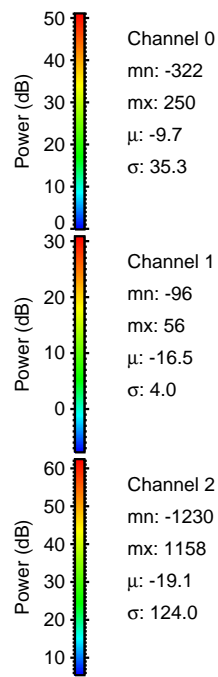
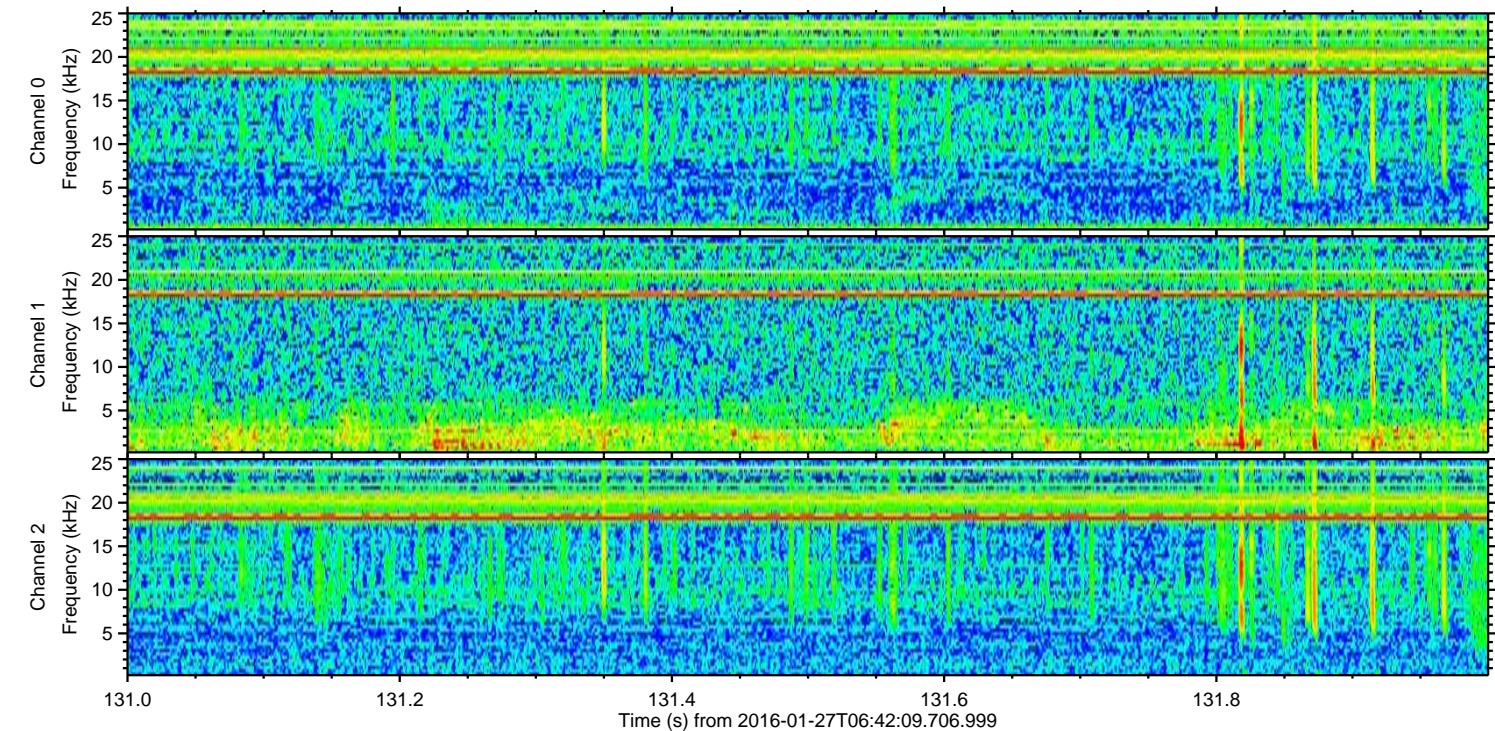
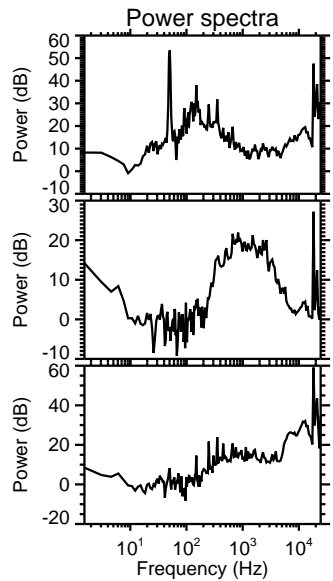
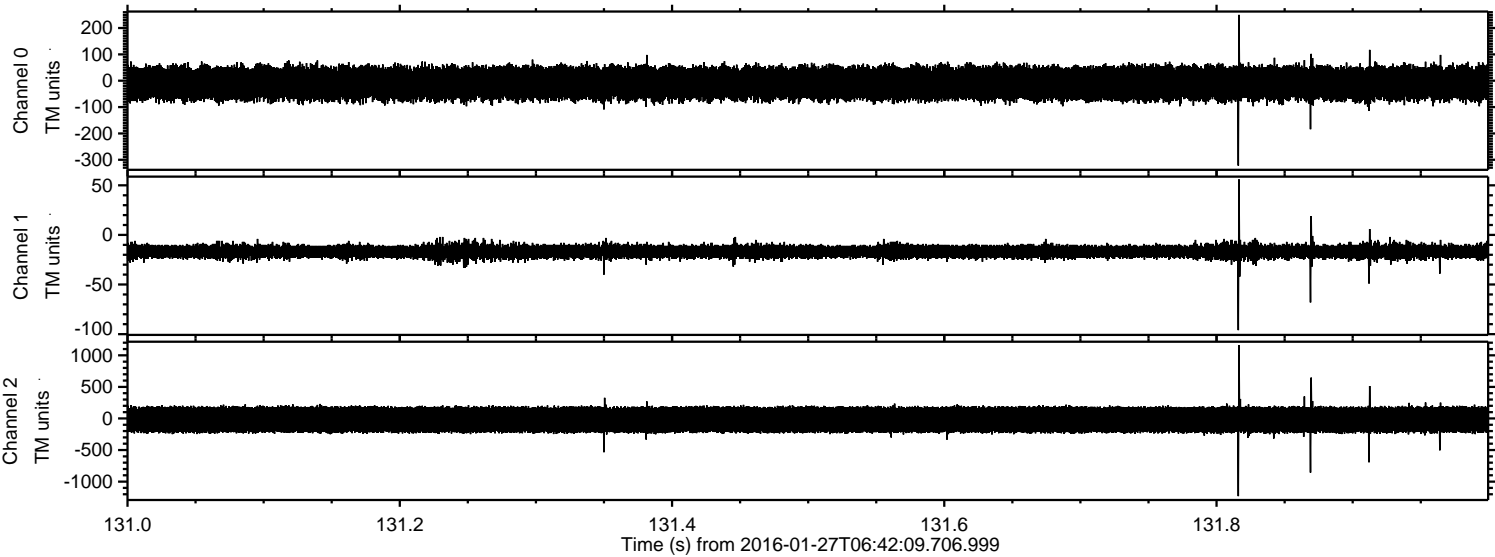
ELMAVAN 3D WAVEFORMS (Measured data sampled at 50 kHz) 51000 packets of 144 samples from 2016-01-27T06:42:09.706.999. Part 144/147

Processed Thu Apr 7 01:43:46 2016 by ELM ver.2012-10-06 from 001__elm20160127_064208__dat00.bin



ELMAVAN 3D WAVEFORMS (Measured data sampled at 50 kHz) 51000 packets of 144 samples from 2016-01-27T06:42:09.706.999. Part 132/147

Processed Thu Apr 7 01:43:47 2016 by ELM ver.2012-10-06 from 001__elm20160127_064208__dat00.bin



ELMAVAN 3D WAVEFORMS (Measured data sampled at 50 kHz) 51000 packets of 144 samples from 2016-01-27T06:42:09.706.999. Part 139/147

Processed Thu Apr 7 01:43:48 2016 by ELM ver.2012-10-06 from 001__elm20160127_064208__dat00.bin

