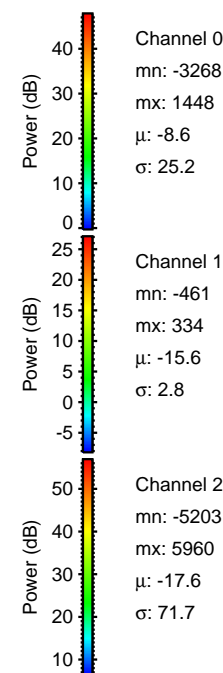
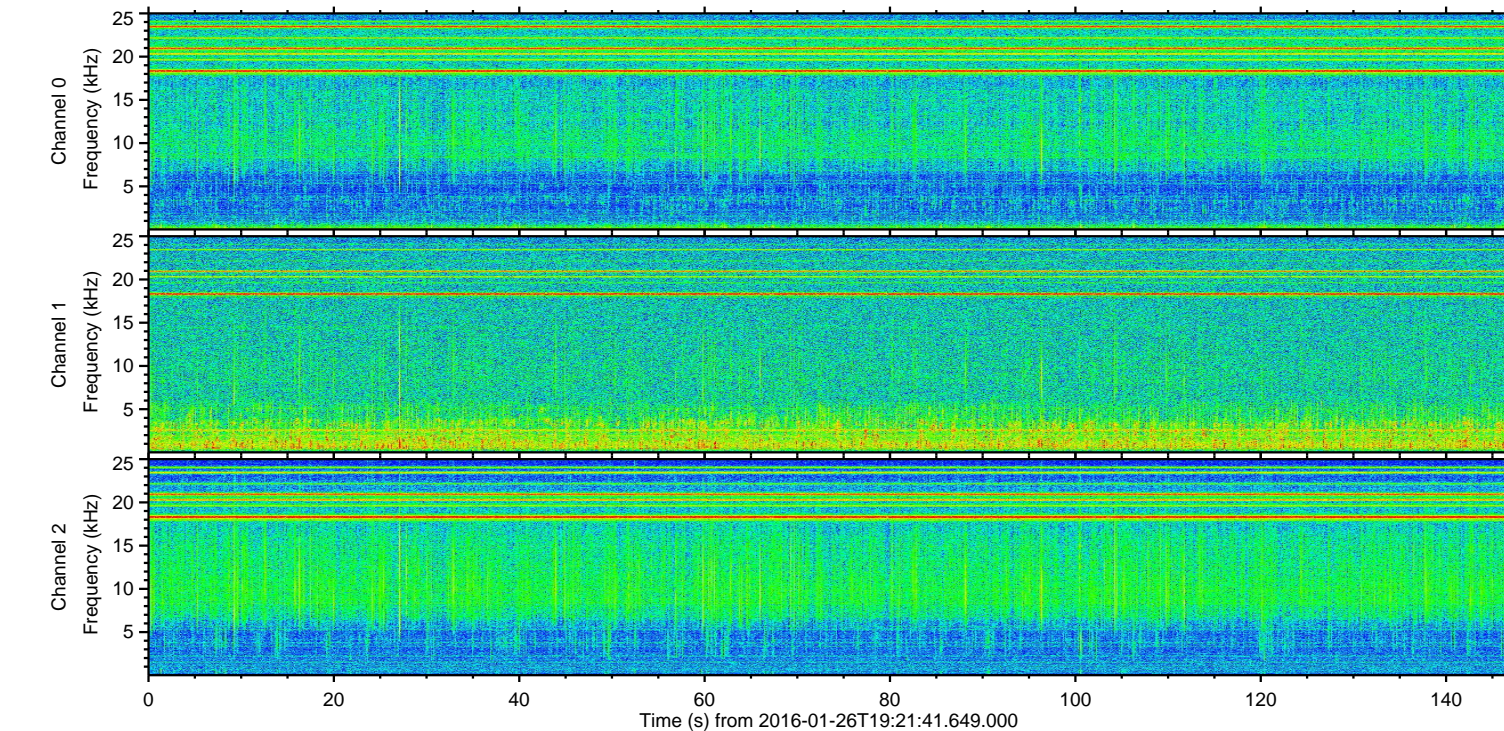
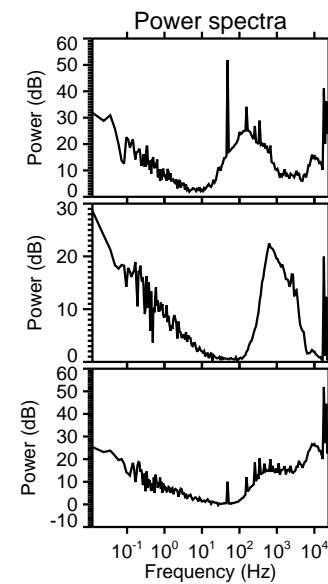
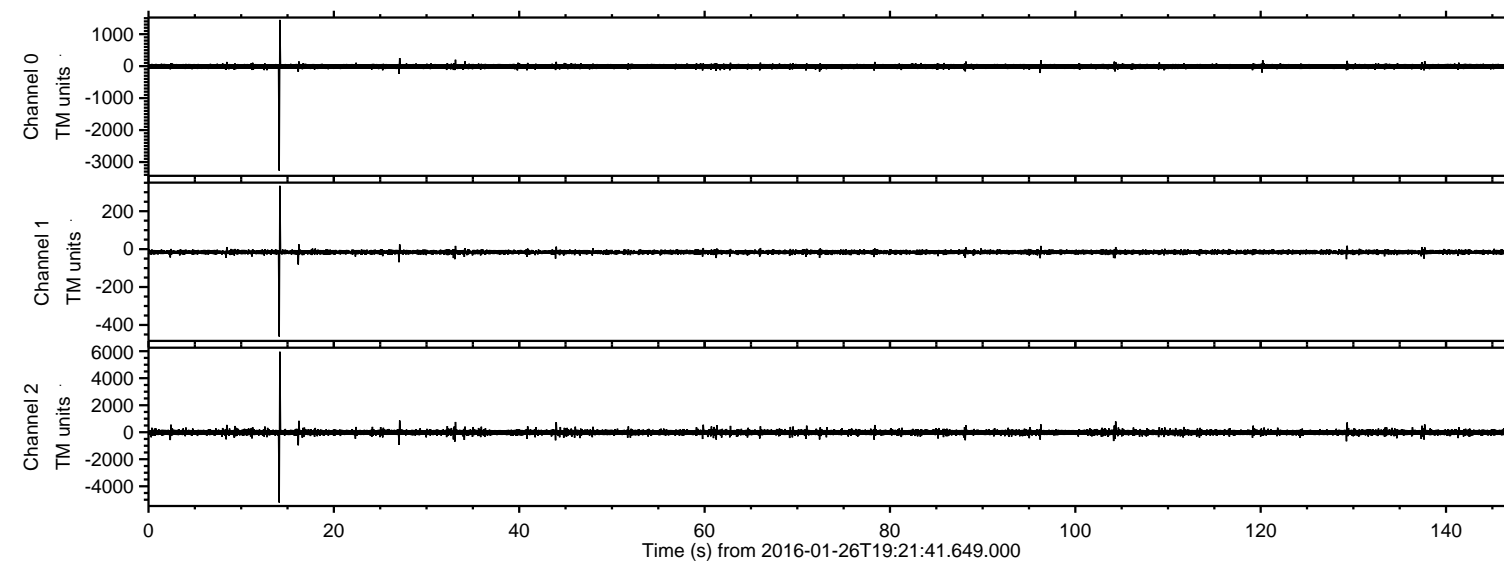
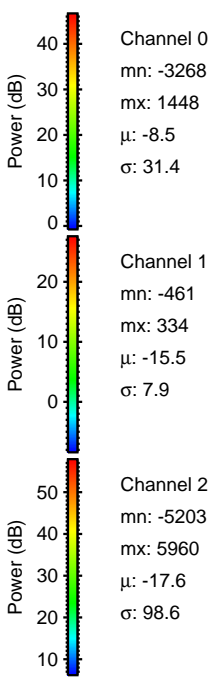
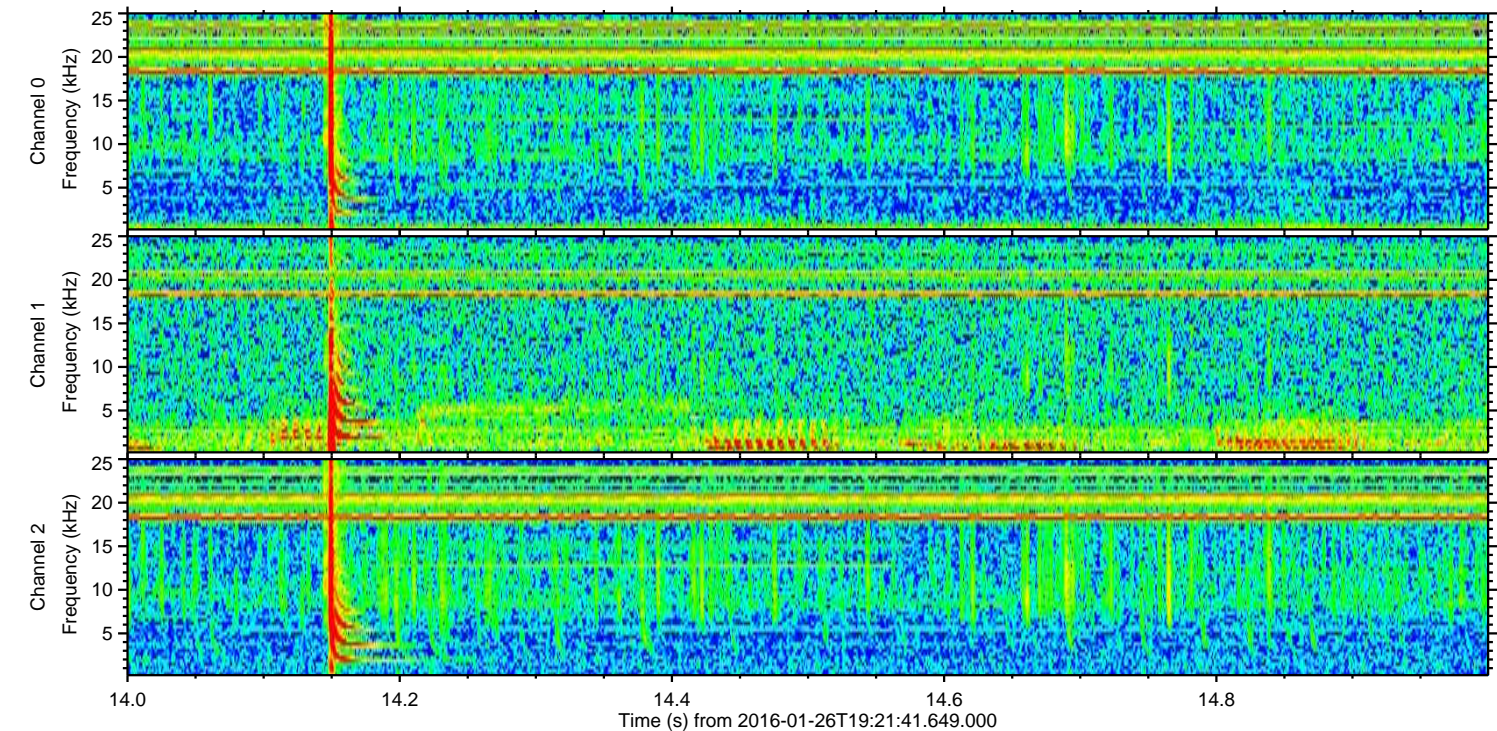
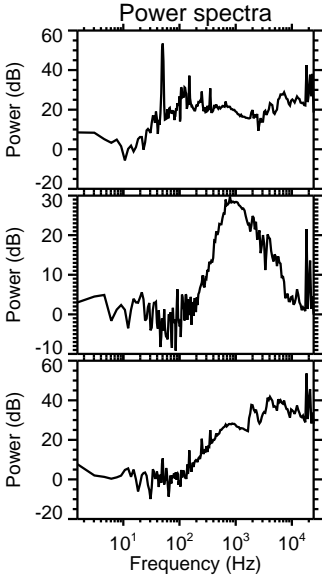
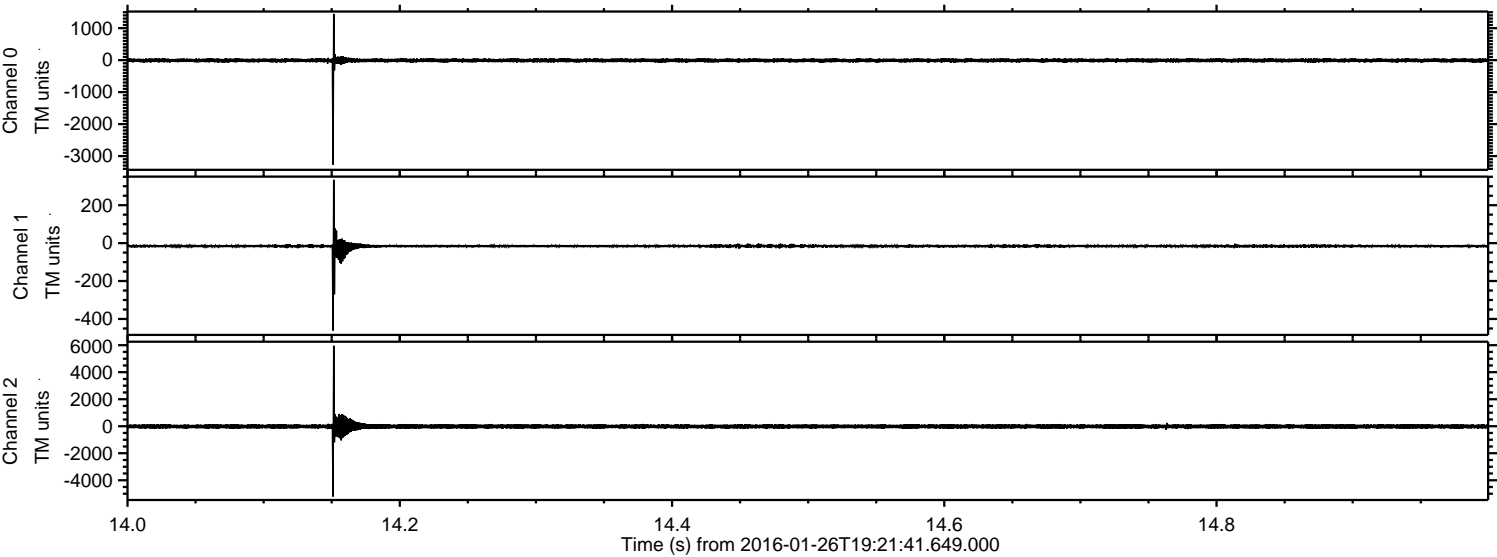


ELMAVAN 3D WAVEFORMS (Measured data sampled at 50 kHz) 51000 packets of 144 samples from 2016-01-26T19:21:41.649.000.

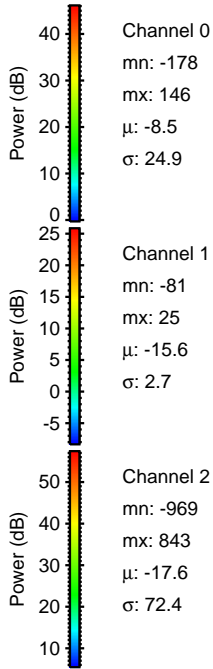
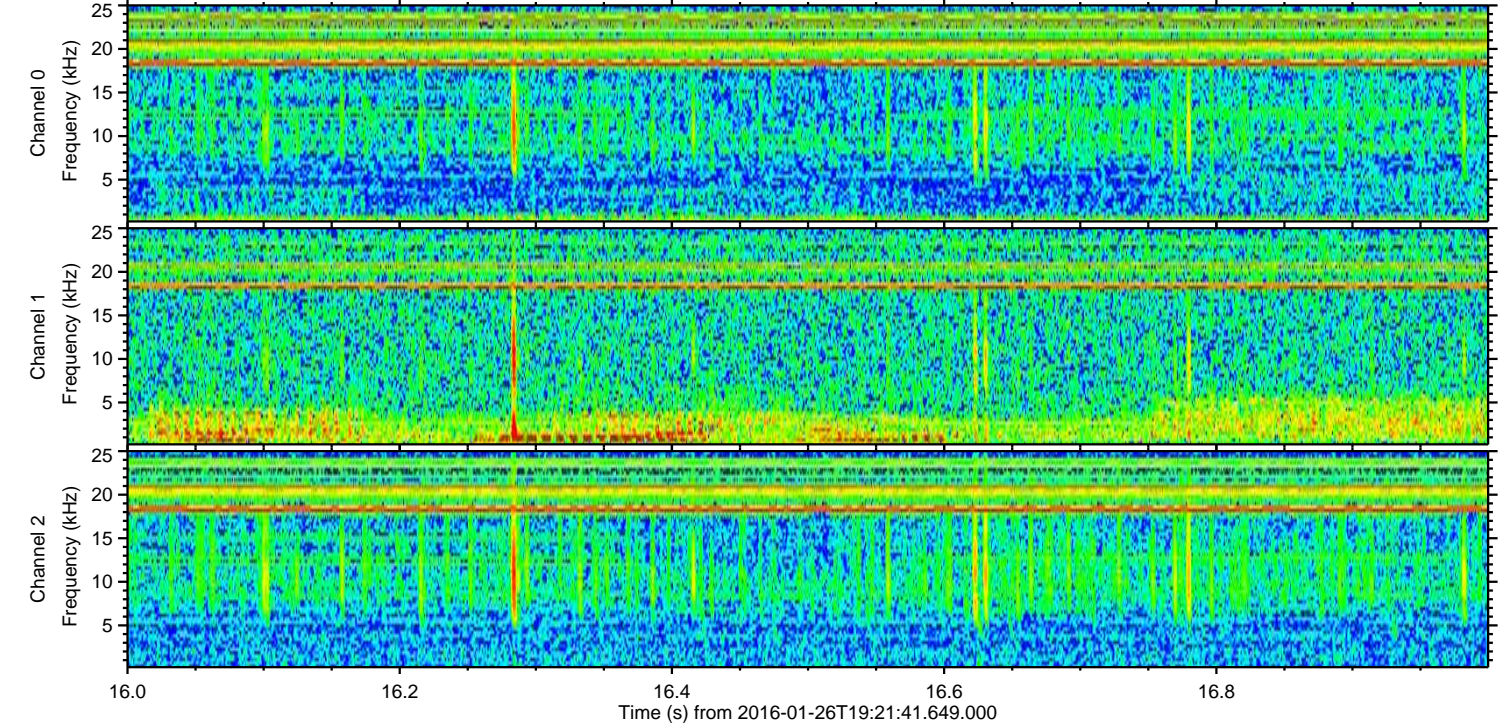
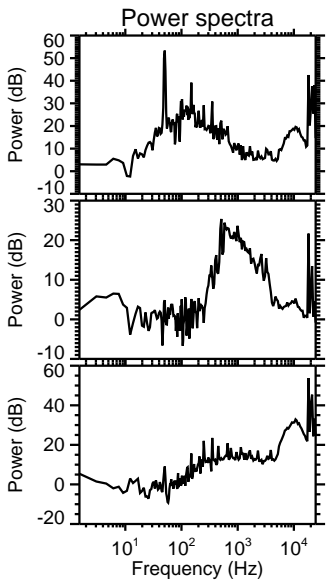
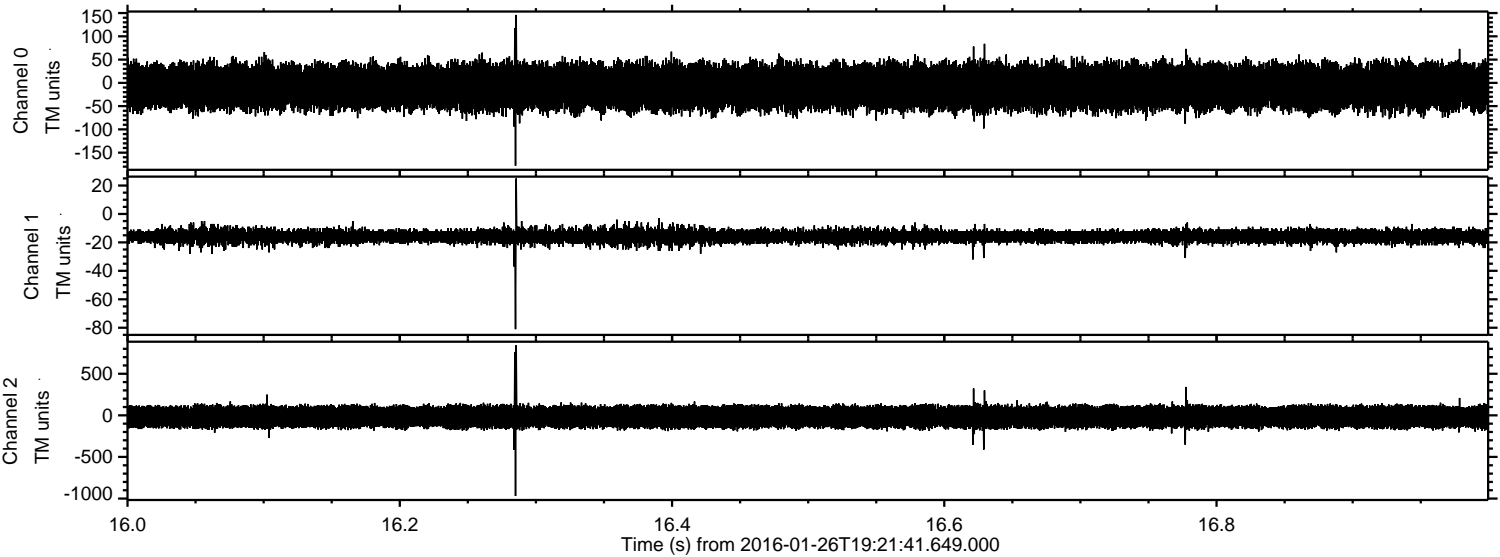
Processed Wed Apr 6 23:27:47 2016 by ELM ver.2012-10-06 from 001__elm20160126_192140__dat00.bin



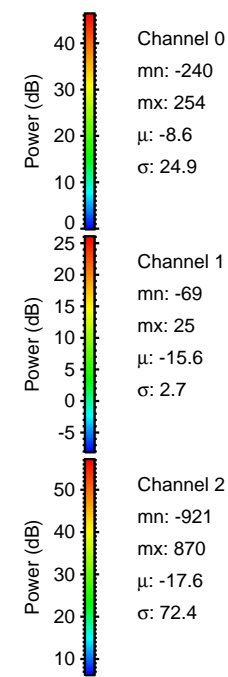
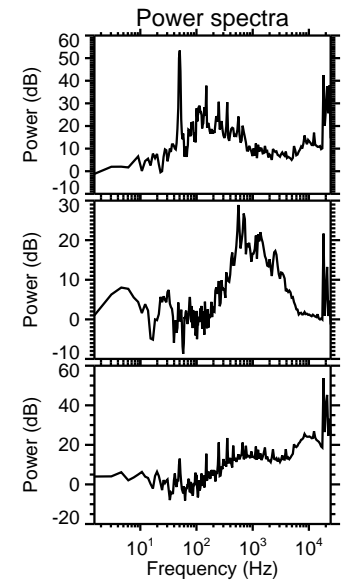
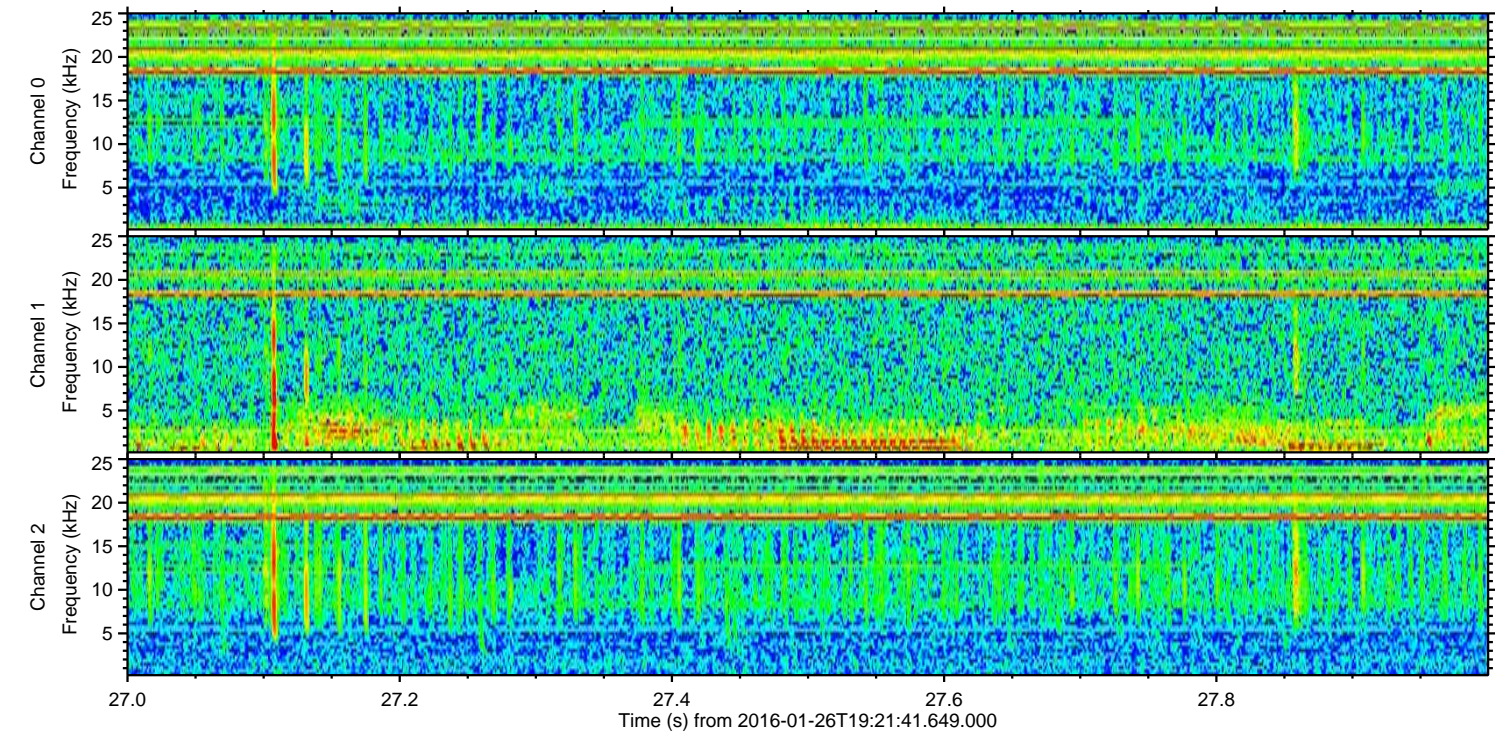
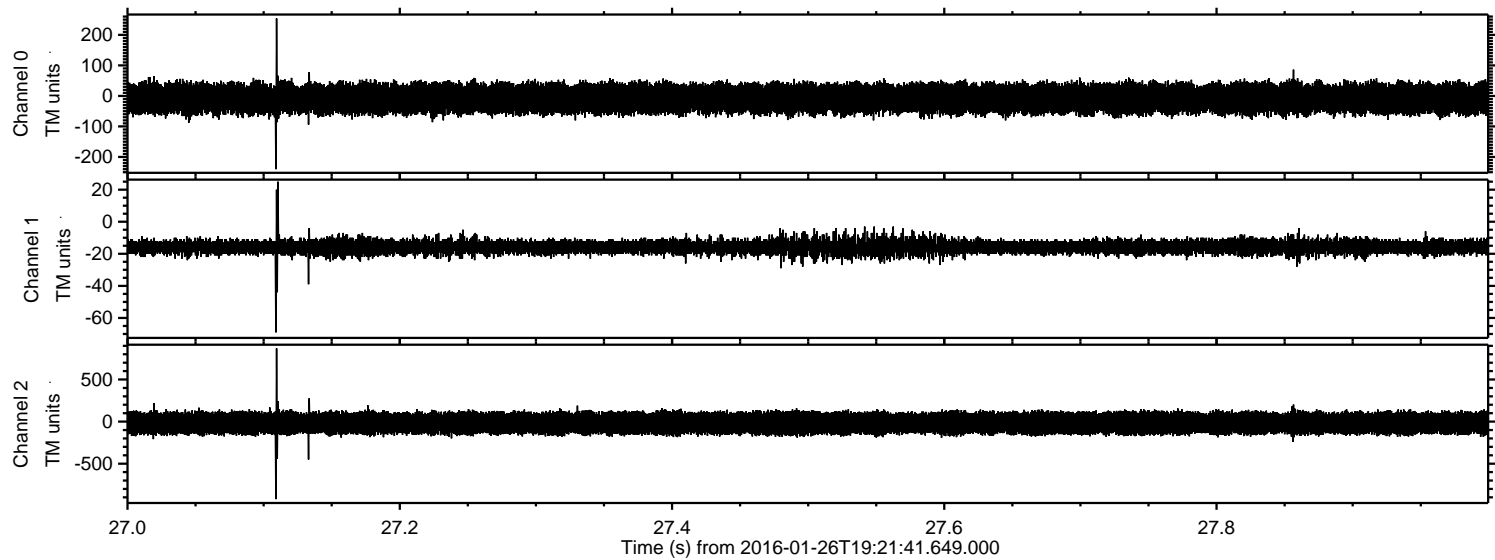
Processed Wed Apr 6 23:27:58 2016 by ELM ver.2012-10-06 from 001__elm20160126_192140__dat00.bin



Processed Wed Apr 6 23:27:59 2016 by ELM ver.2012-10-06 from 001__elm20160126_192140__dat00.bin



Processed Wed Apr 6 23:28:00 2016 by ELM ver.2012-10-06 from 001__elm20160126_192140__dat00.bin

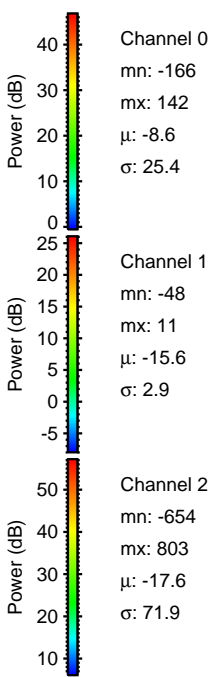
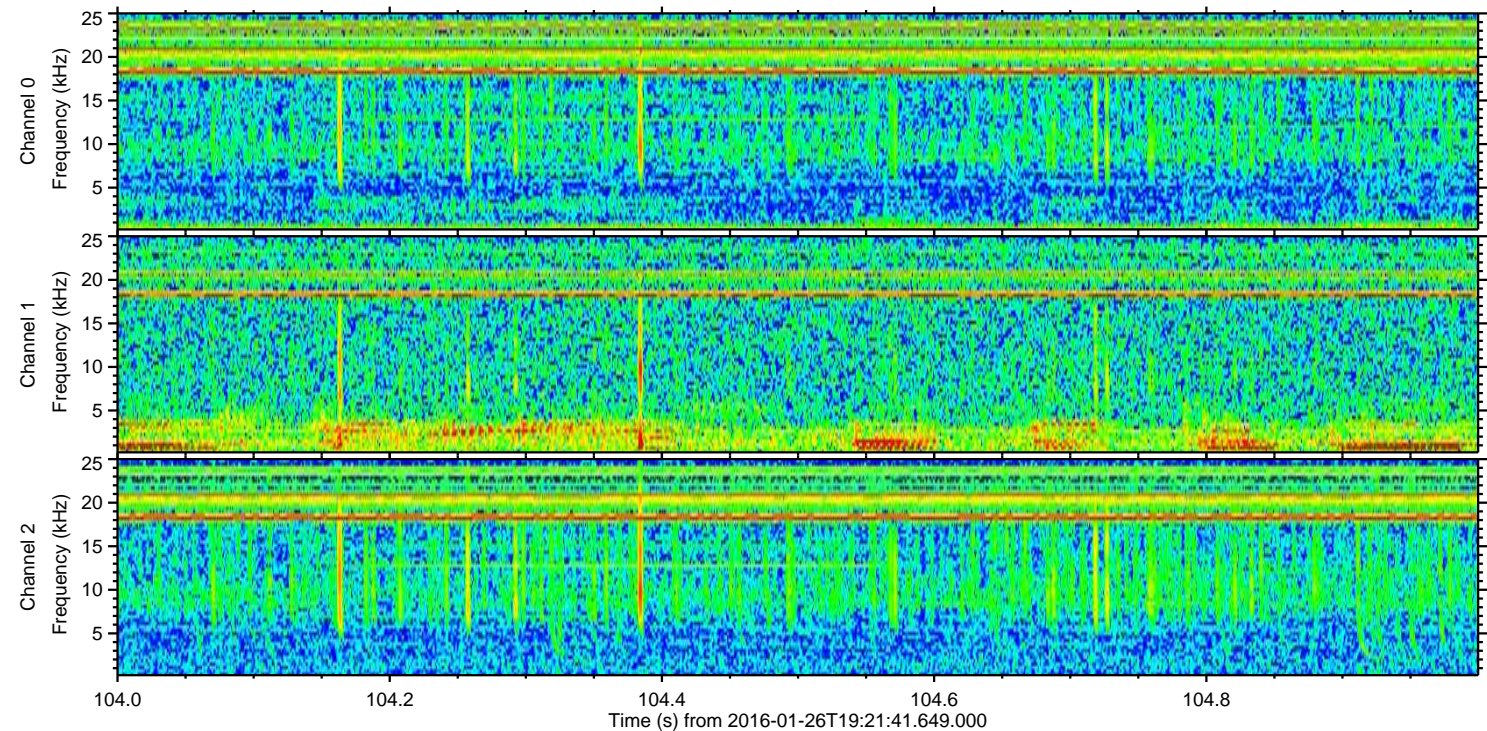
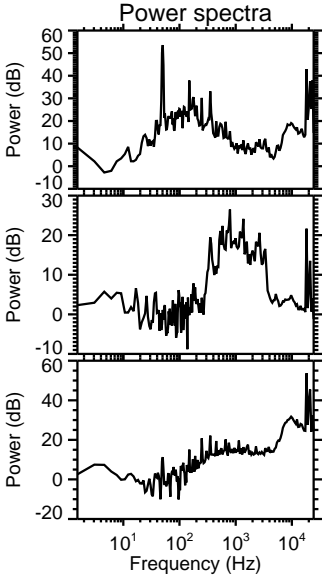
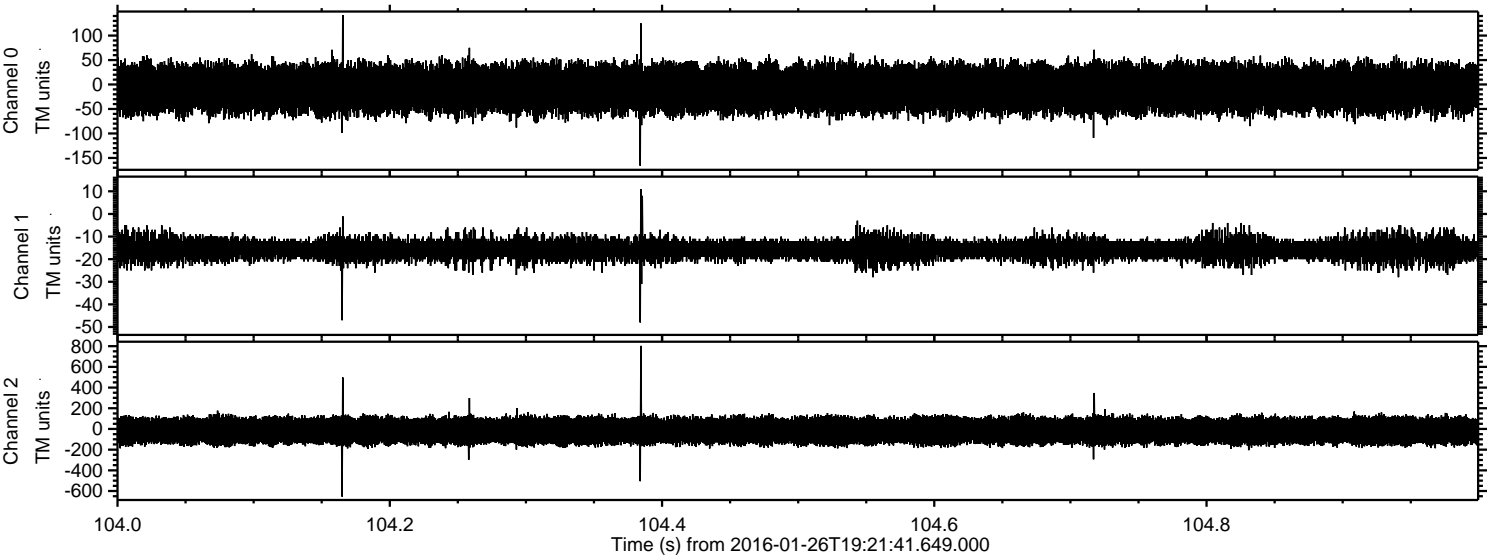


Channel 0
mn: -240
mx: 254
 μ : -8.6
 σ : 24.9

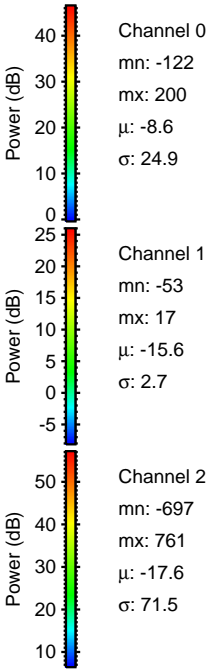
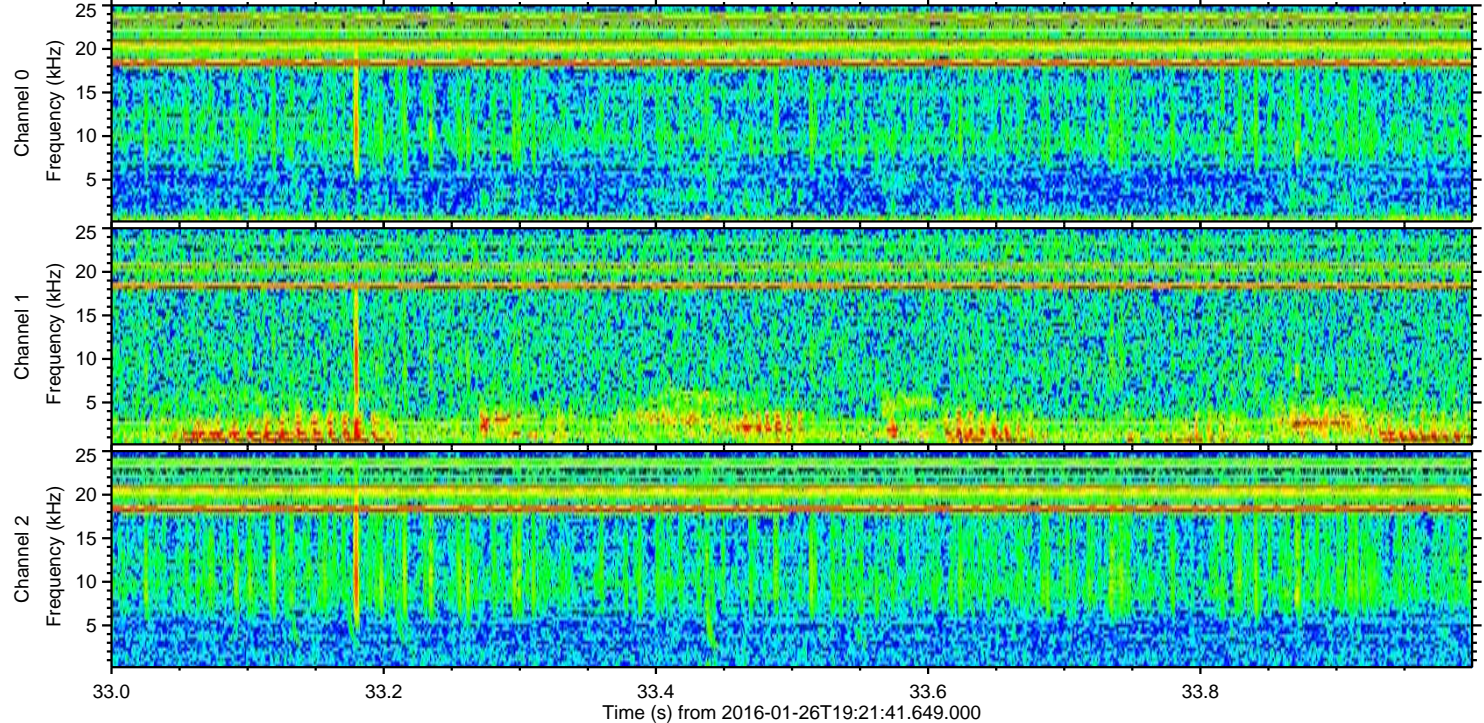
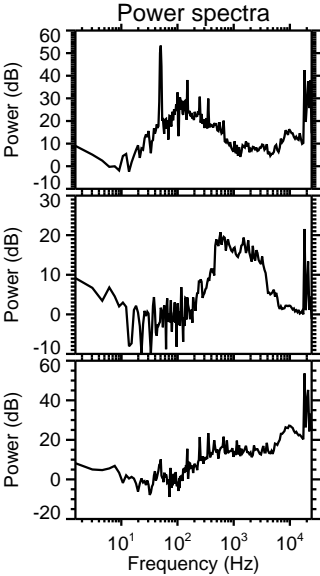
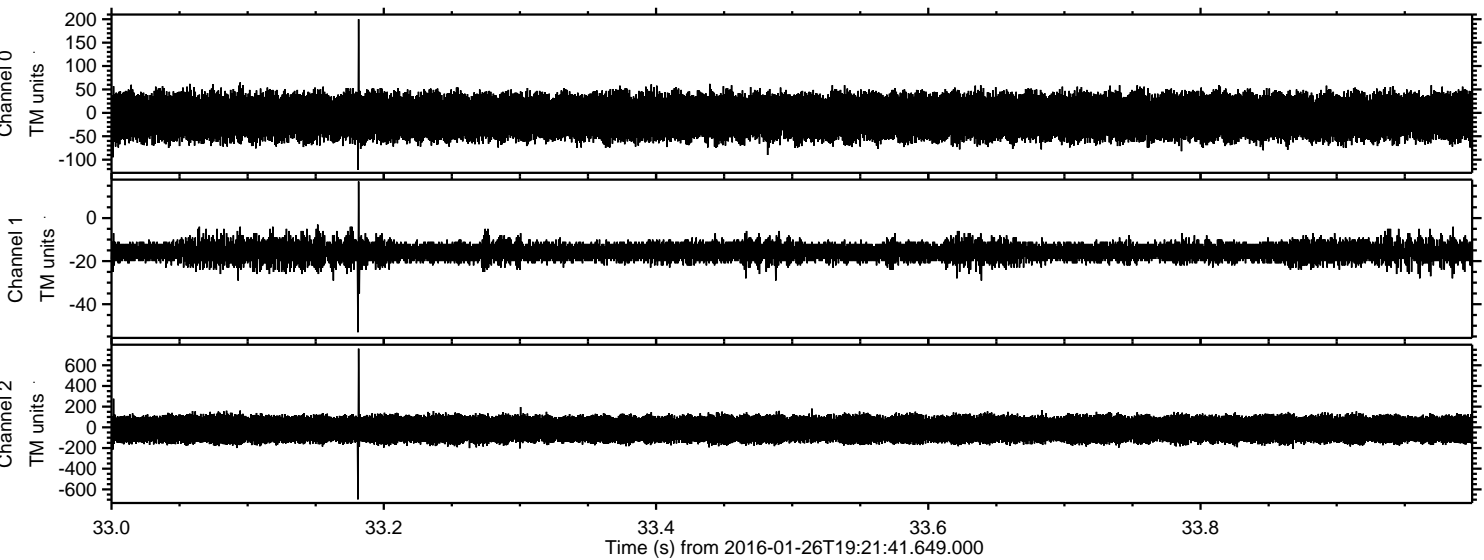
Channel 1
mn: -69
mx: 25
 μ : -15.6
 σ : 2.7

Channel 2
mn: -921
mx: 870
 μ : -17.6
 σ : 72.4

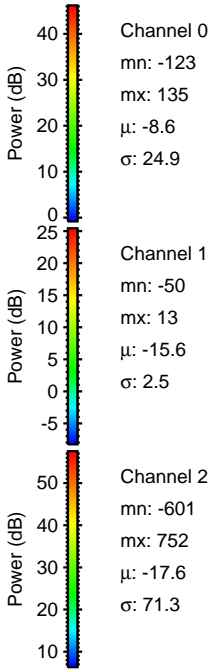
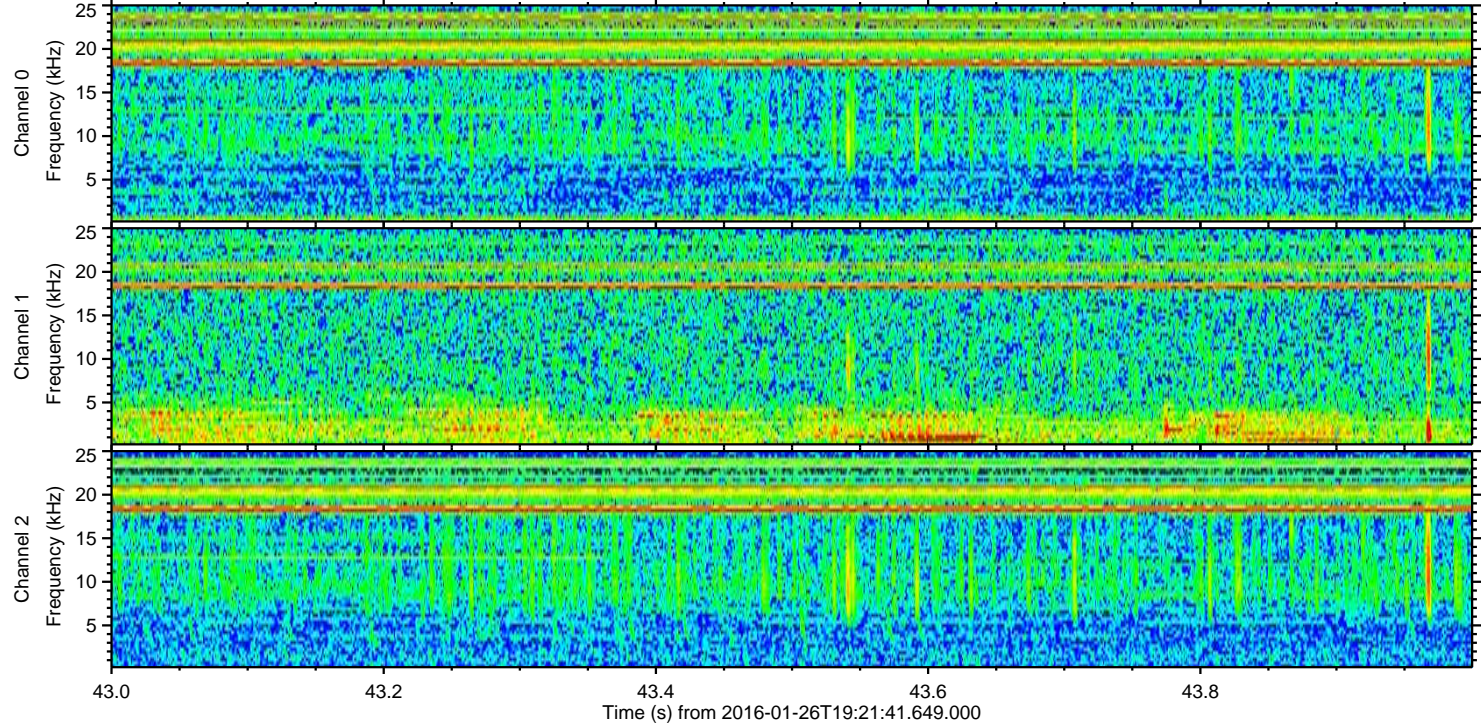
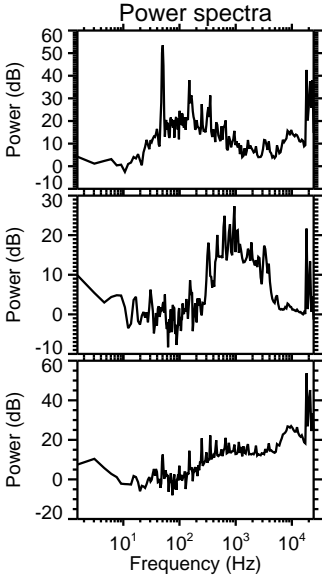
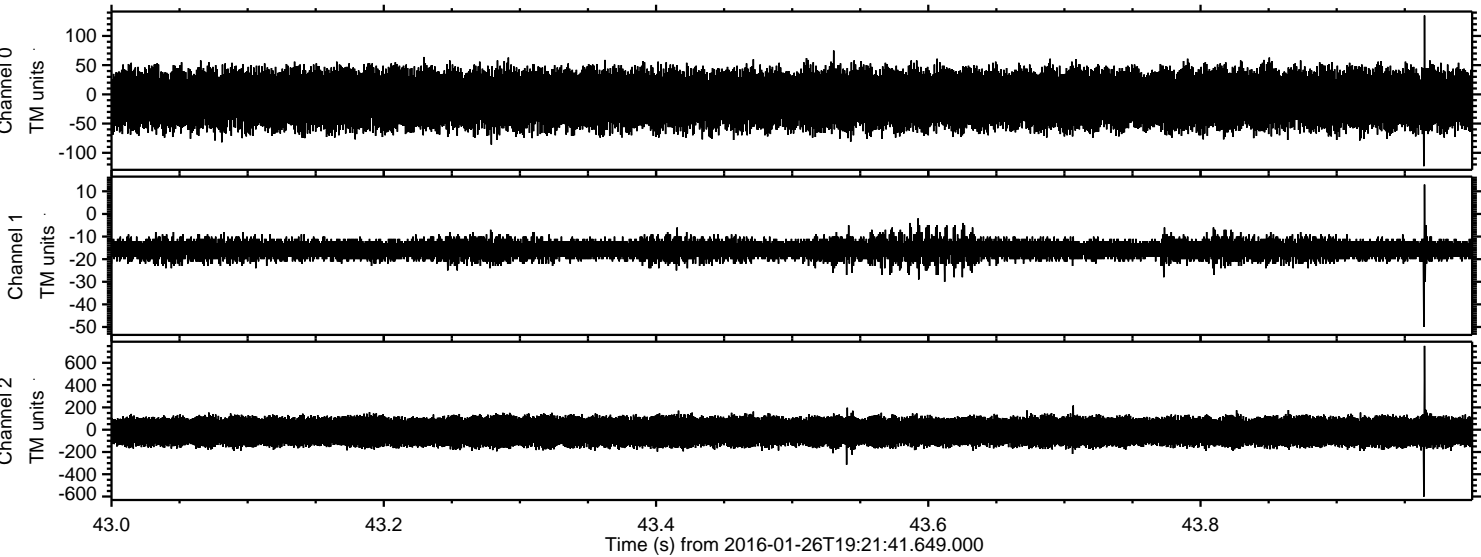
Processed Wed Apr 6 23:28:01 2016 by ELM ver.2012-10-06 from 001__elm20160126_192140__dat00.bin



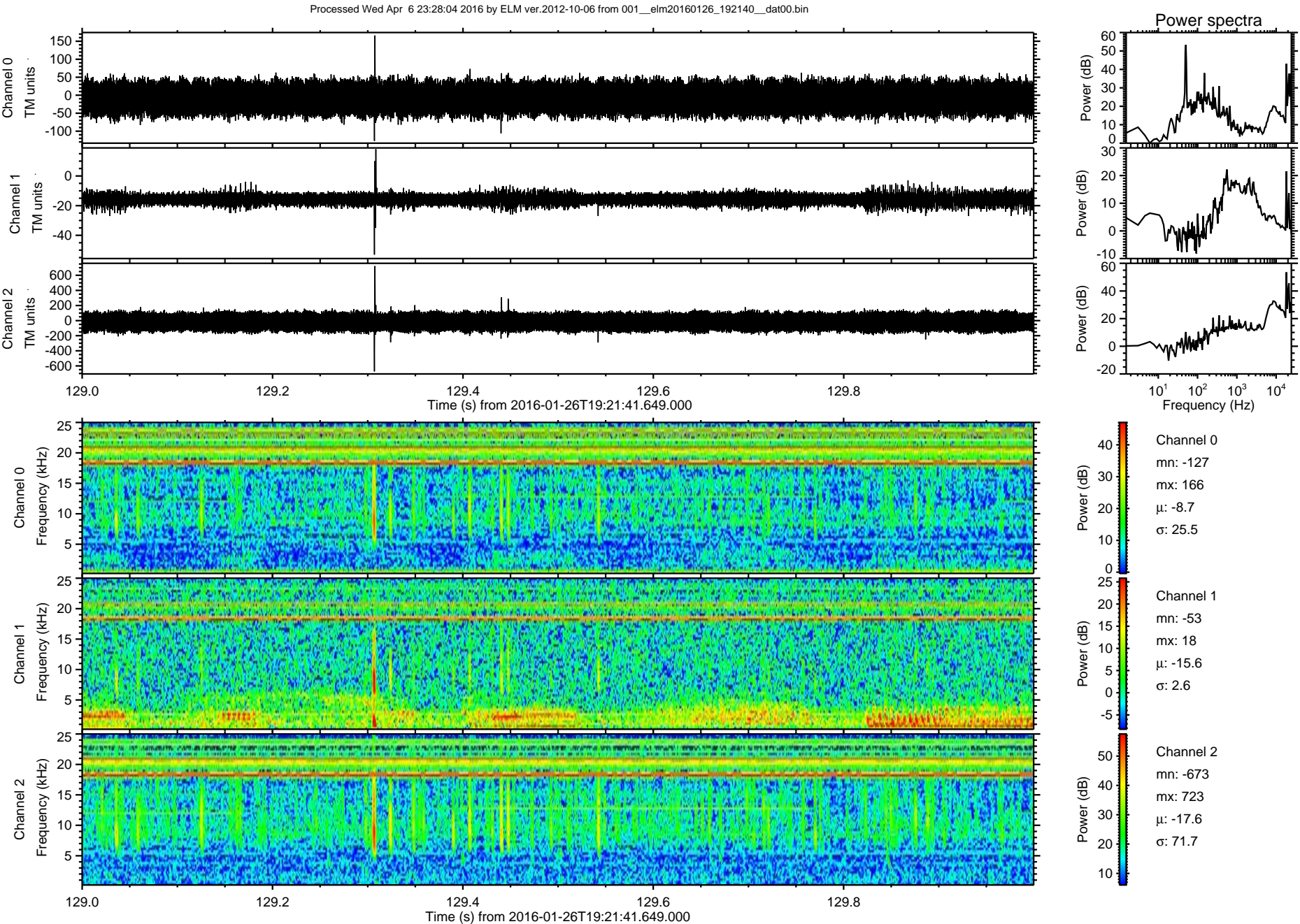
Processed Wed Apr 6 23:28:02 2016 by ELM ver.2012-10-06 from 001__elm20160126_192140__dat00.bin



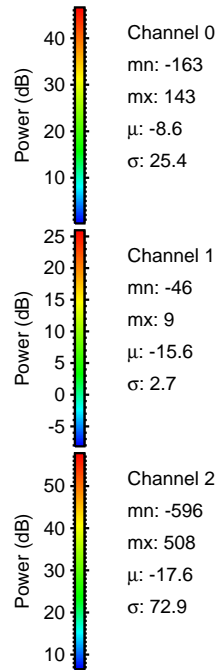
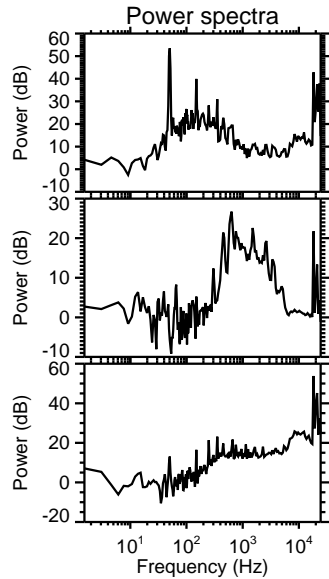
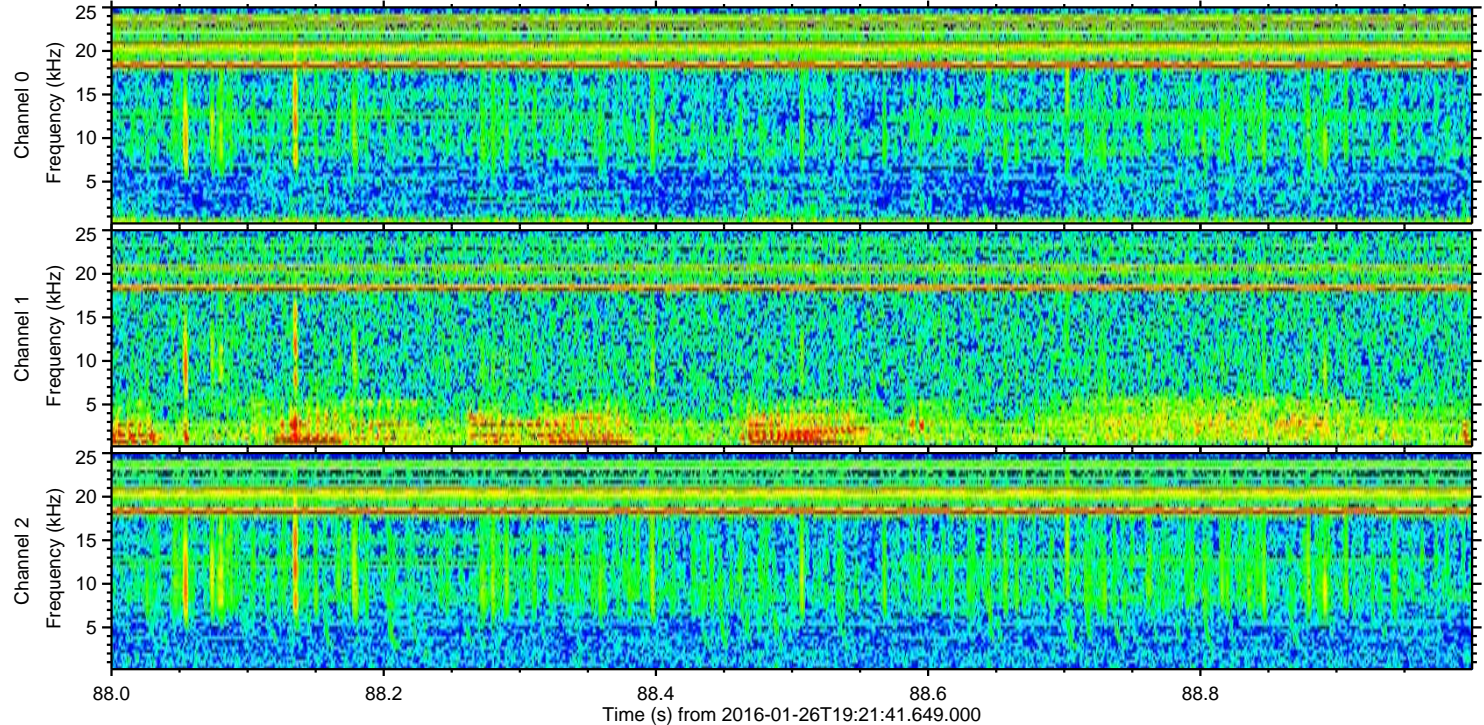
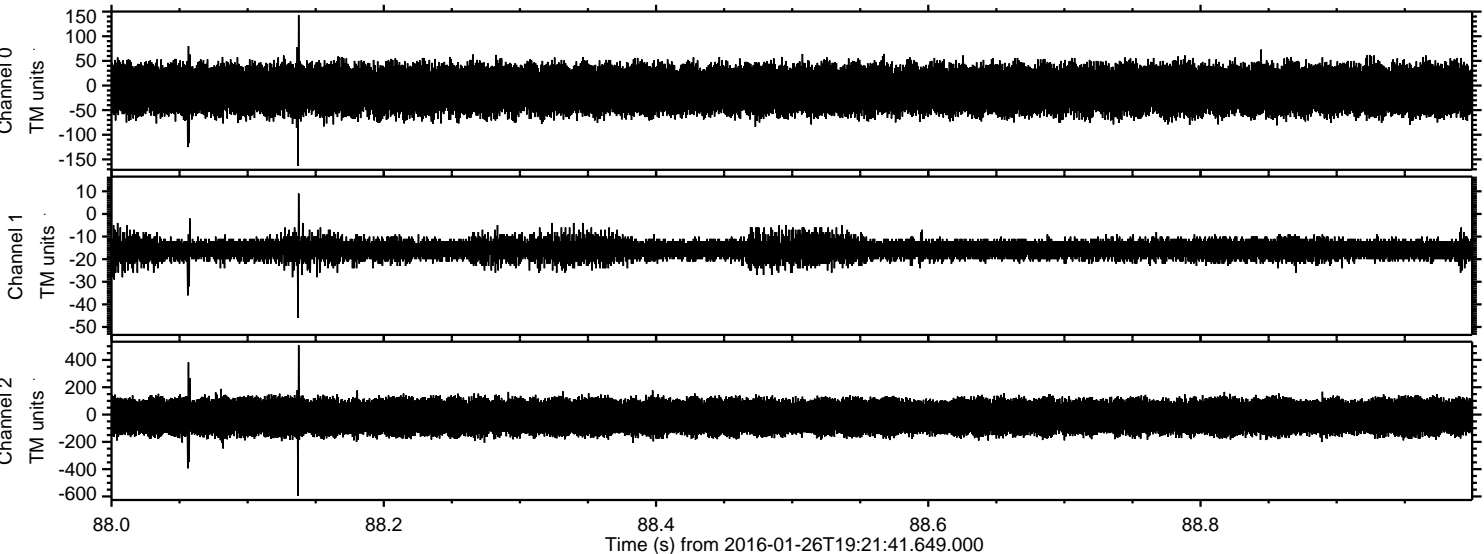
Processed Wed Apr 6 23:28:03 2016 by ELM ver.2012-10-06 from 001__elm20160126_192140__dat00.bin



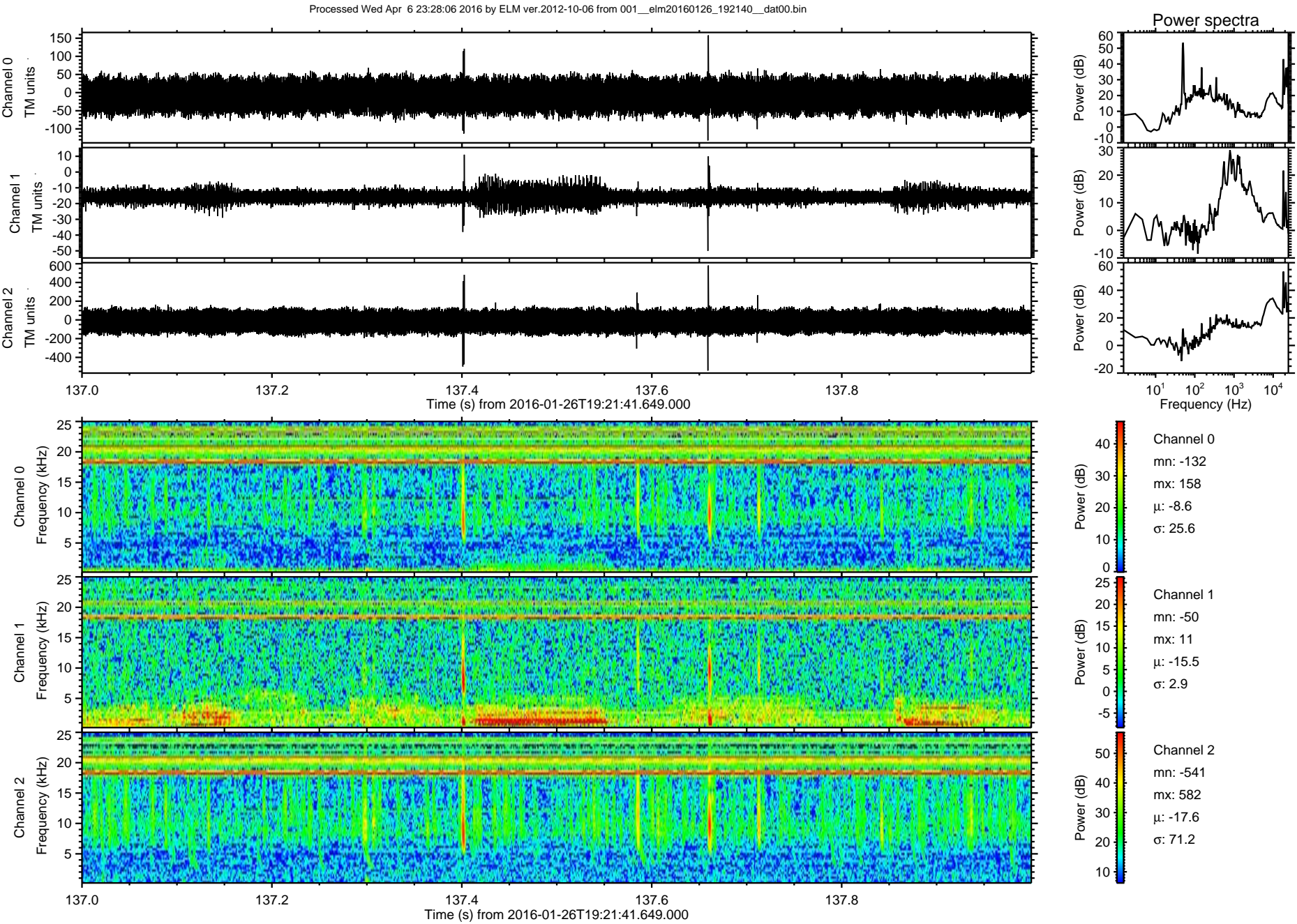
ELMAVAN 3D WAVEFORMS (Measured data sampled at 50 kHz) 51000 packets of 144 samples from 2016-01-26T19:21:41.649.000. Part 130/147



Processed Wed Apr 6 23:28:05 2016 by ELM ver.2012-10-06 from 001__elm20160126_192140__dat00.bin



ELMAVAN 3D WAVEFORMS (Measured data sampled at 50 kHz) 51000 packets of 144 samples from 2016-01-26T19:21:41.649.000. Part 138/147



ELMAVAN 3D WAVEFORMS (Measured data sampled at 50 kHz) 51000 packets of 144 samples from 2016-01-26T19:21:41.649.000. Part 100/147

