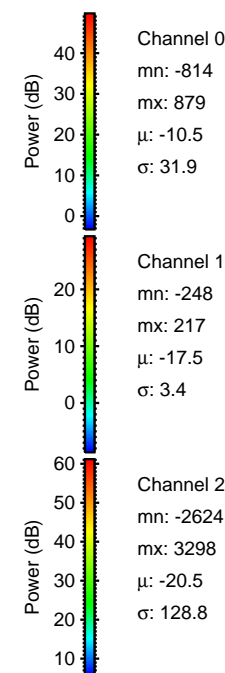
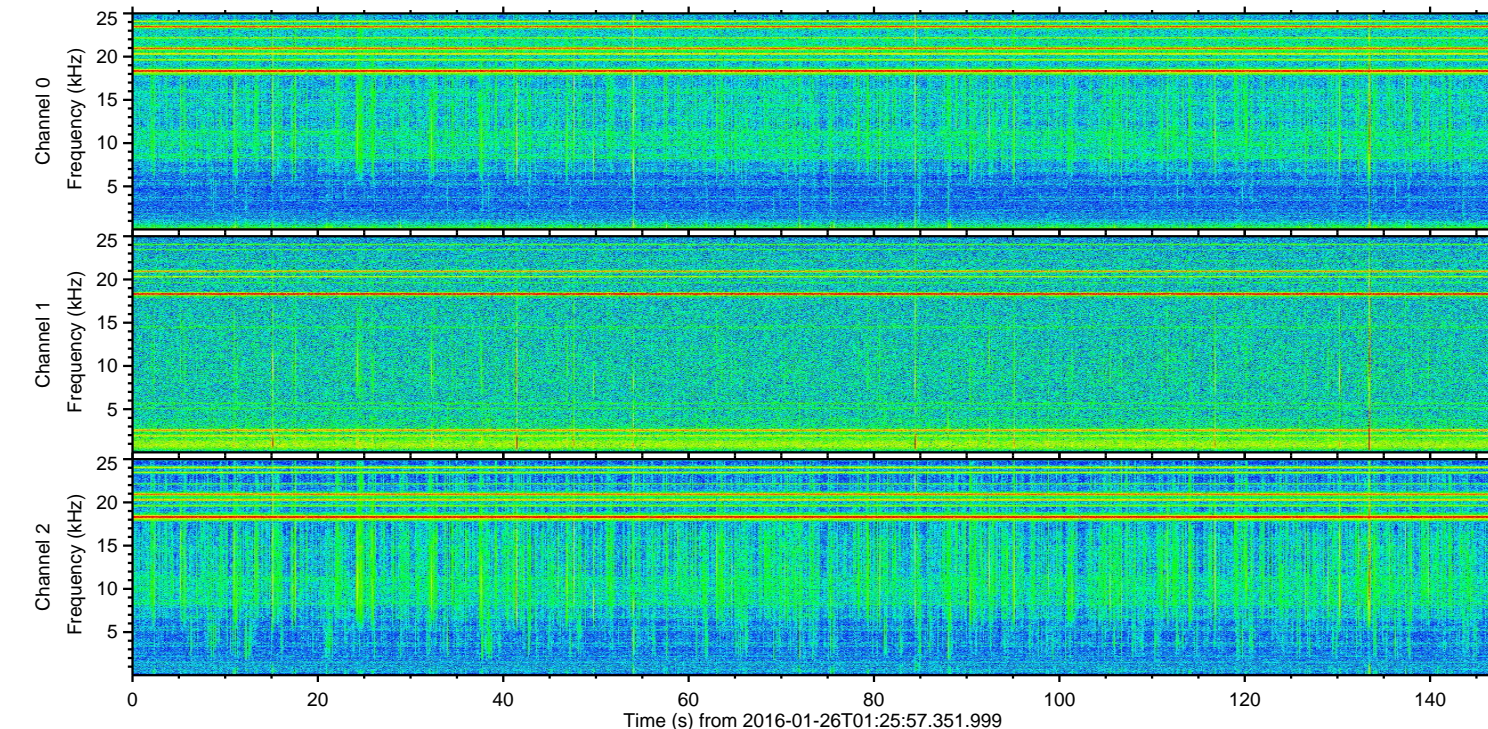
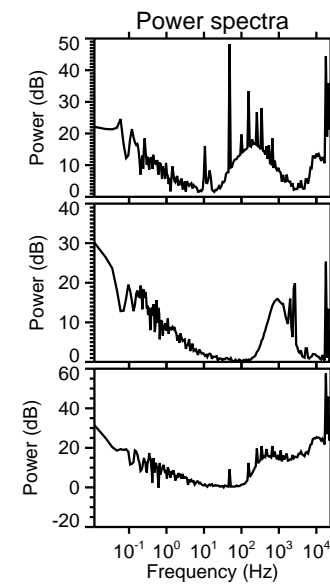
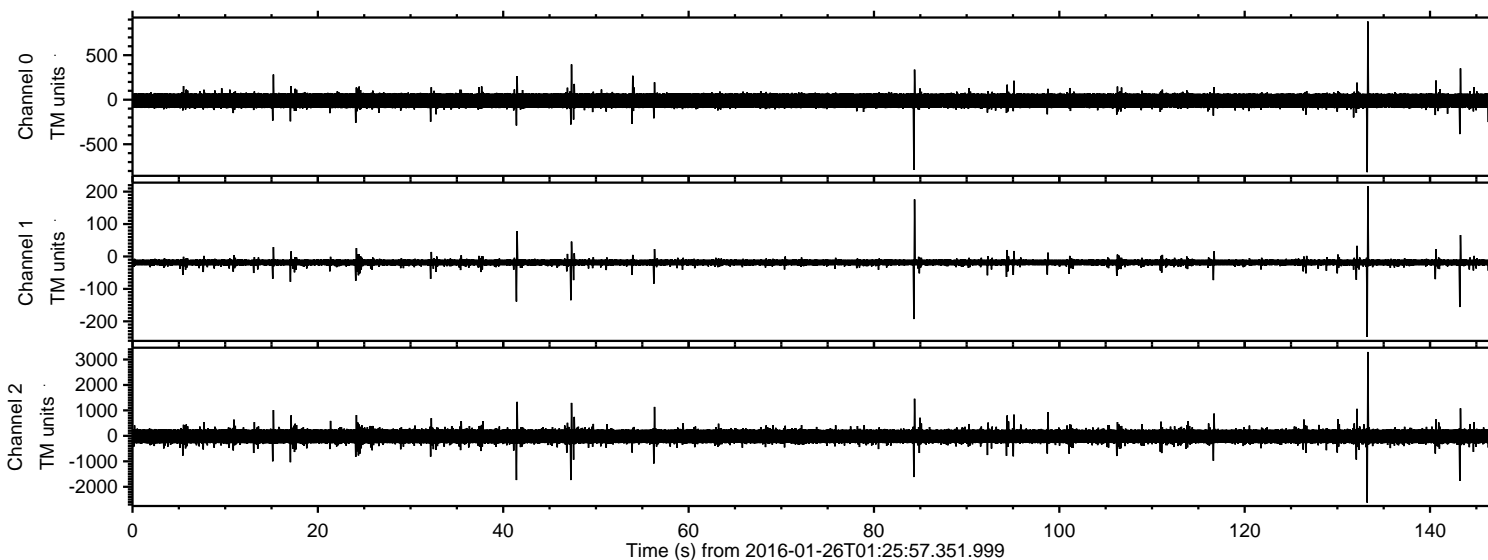


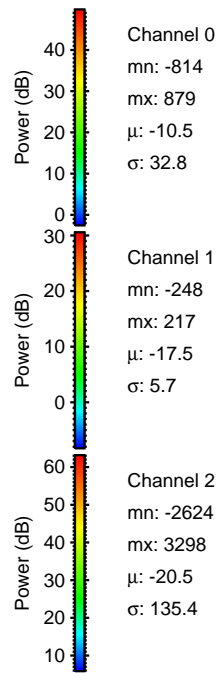
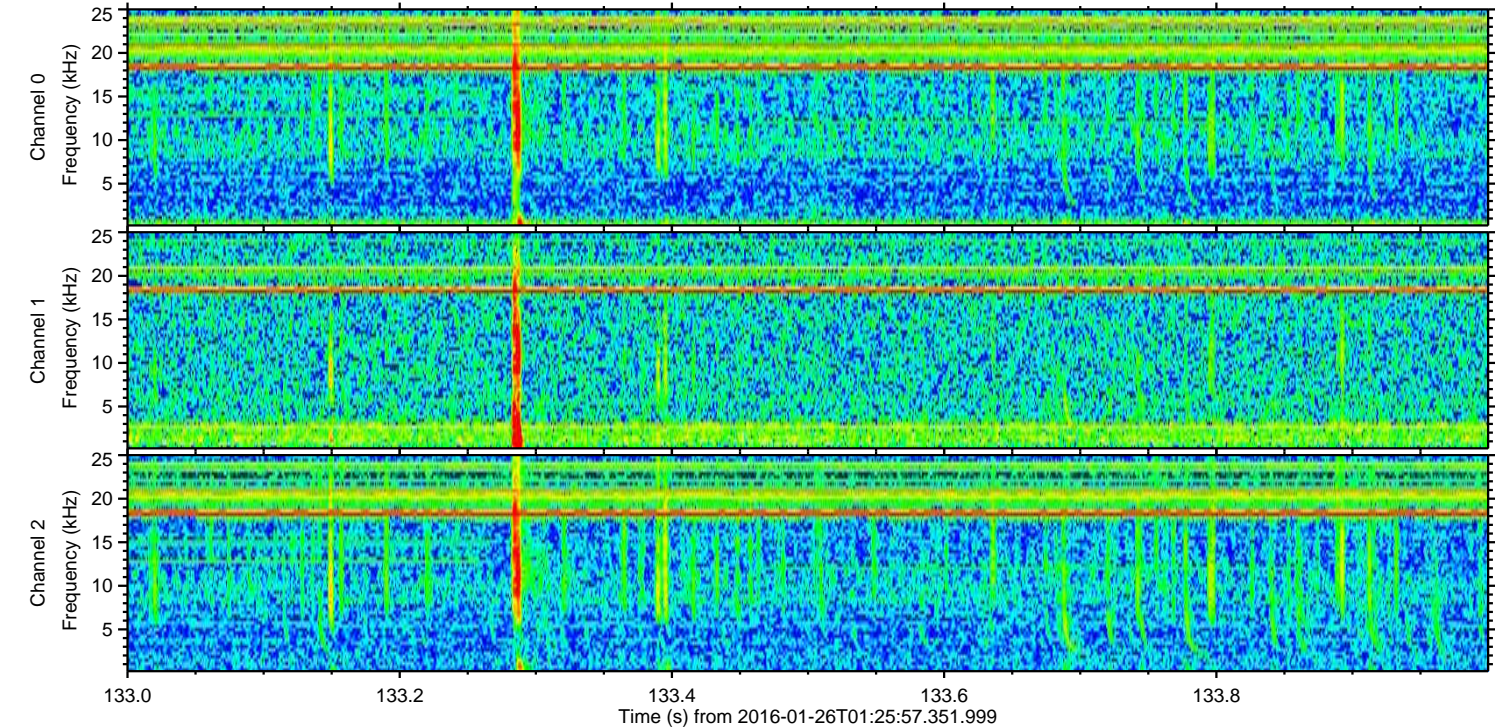
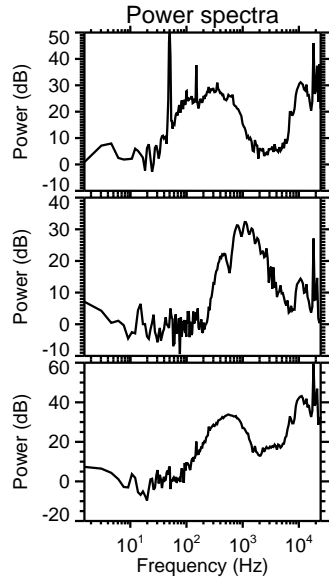
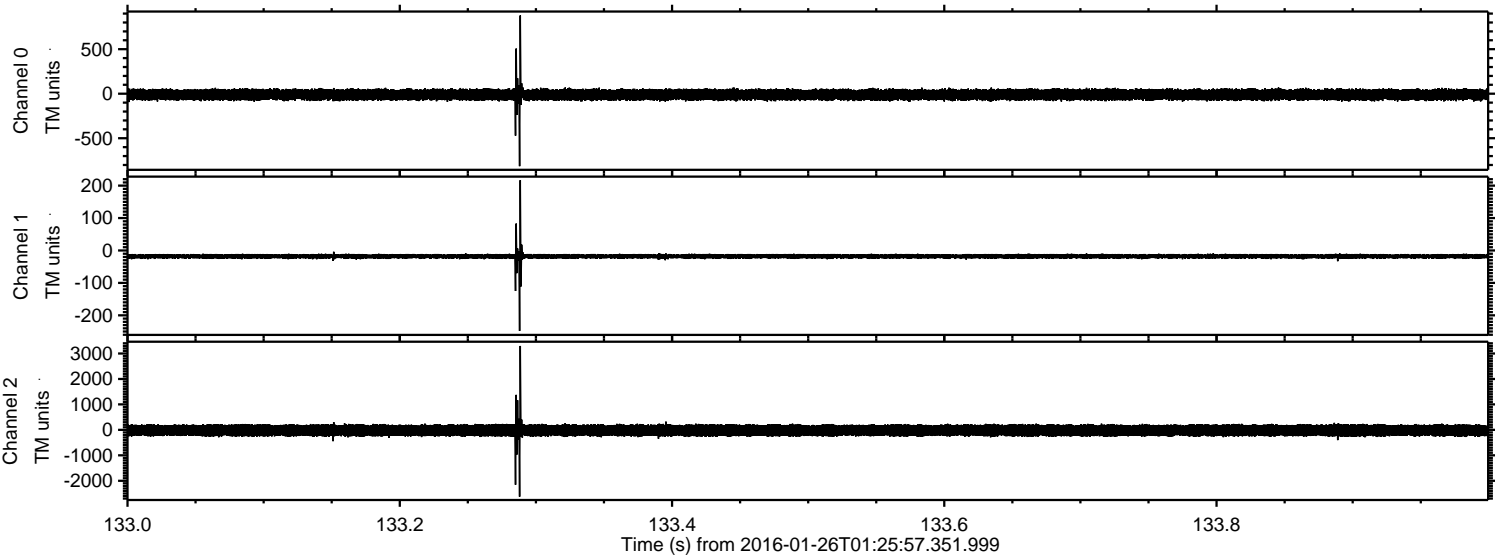
ELMAVAN 3D WAVEFORMS (Measured data sampled at 50 kHz) 51000 packets of 144 samples from 2016-01-26T01:25:57.351.999.

Processed Wed Apr 6 19:54:03 2016 by ELM ver.2012-10-06 from 001__elm20160126_012556__dat00.bin



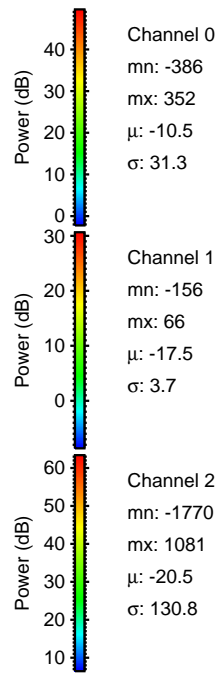
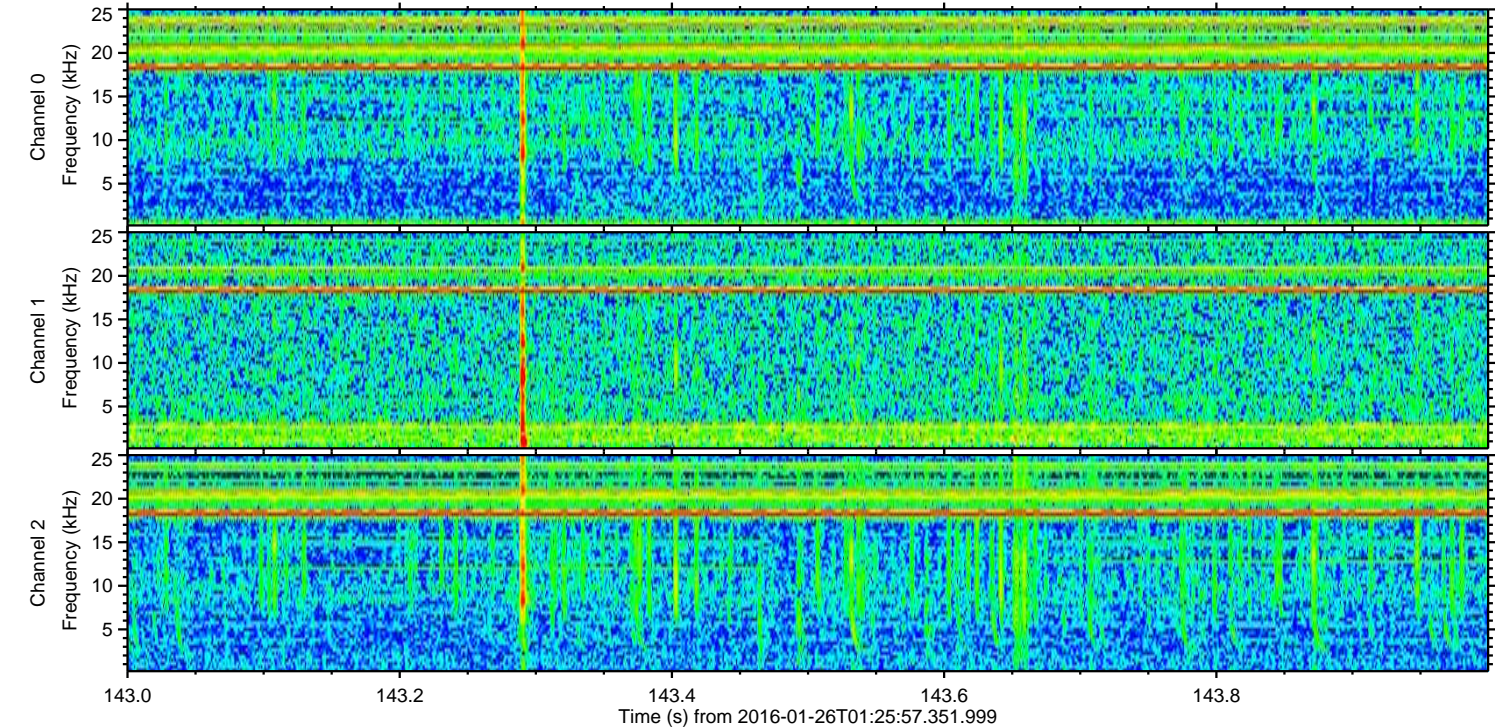
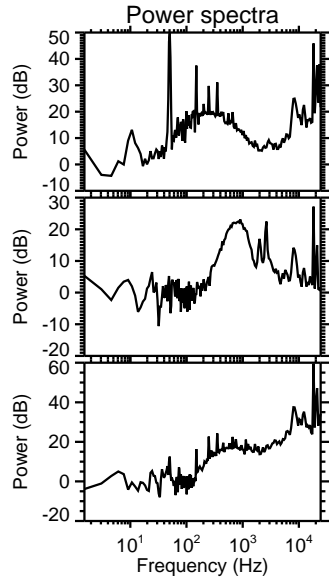
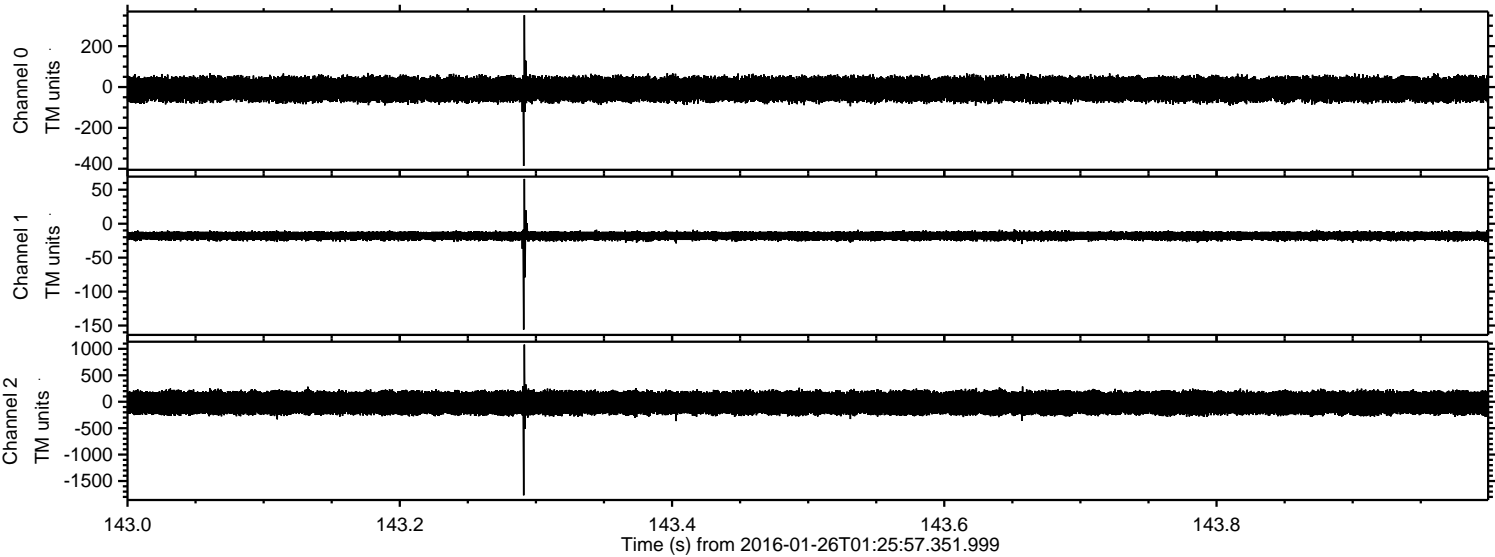
ELMAVAN 3D WAVEFORMS (Measured data sampled at 50 kHz) 51000 packets of 144 samples from 2016-01-26T01:25:57.351.999. Part 134/147

Processed Wed Apr 6 19:54:15 2016 by ELM ver.2012-10-06 from 001__elm20160126_012556__dat00.bin

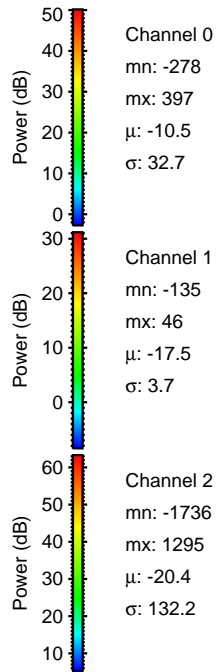
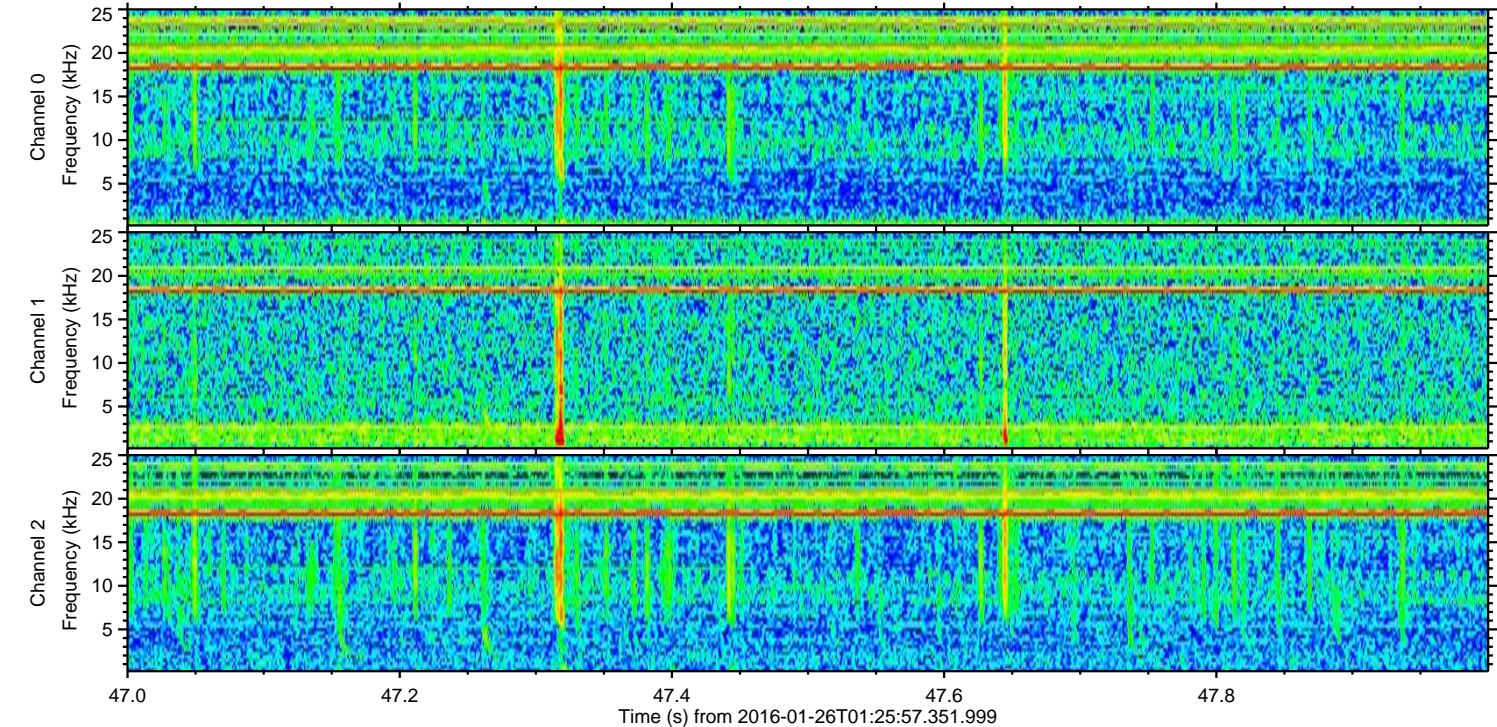
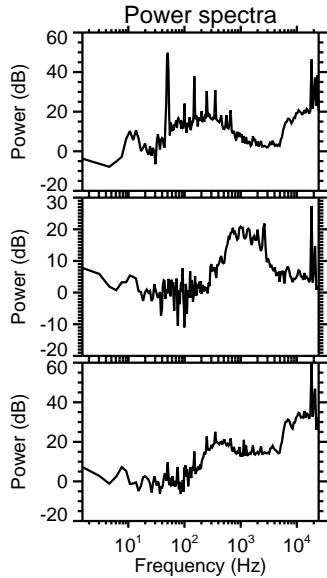
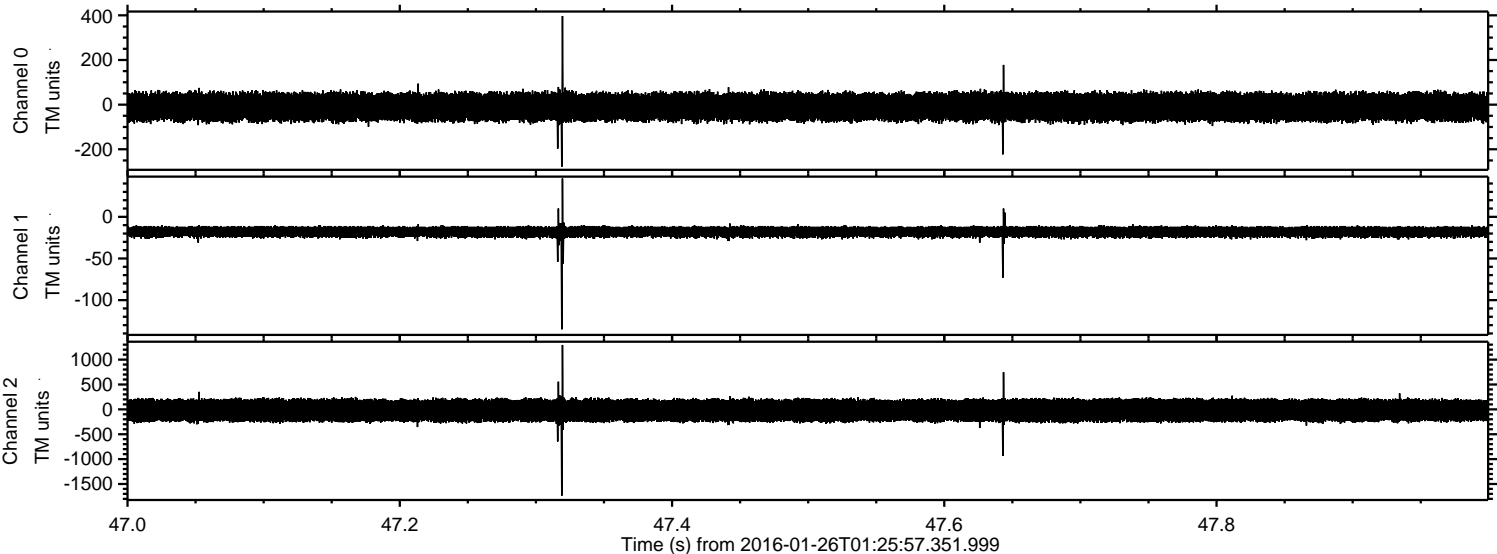


ELMAVAN 3D WAVEFORMS (Measured data sampled at 50 kHz) 51000 packets of 144 samples from 2016-01-26T01:25:57.351.999. Part 144/147

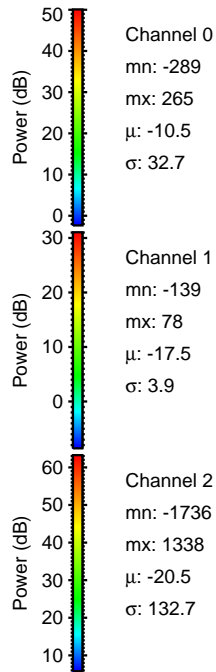
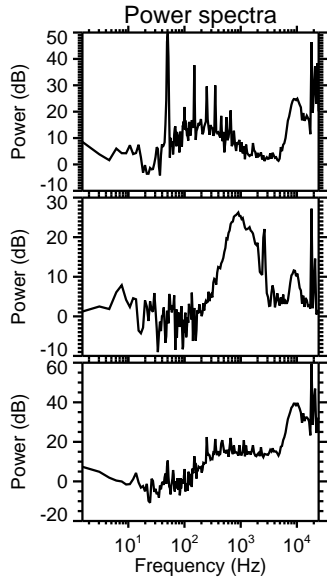
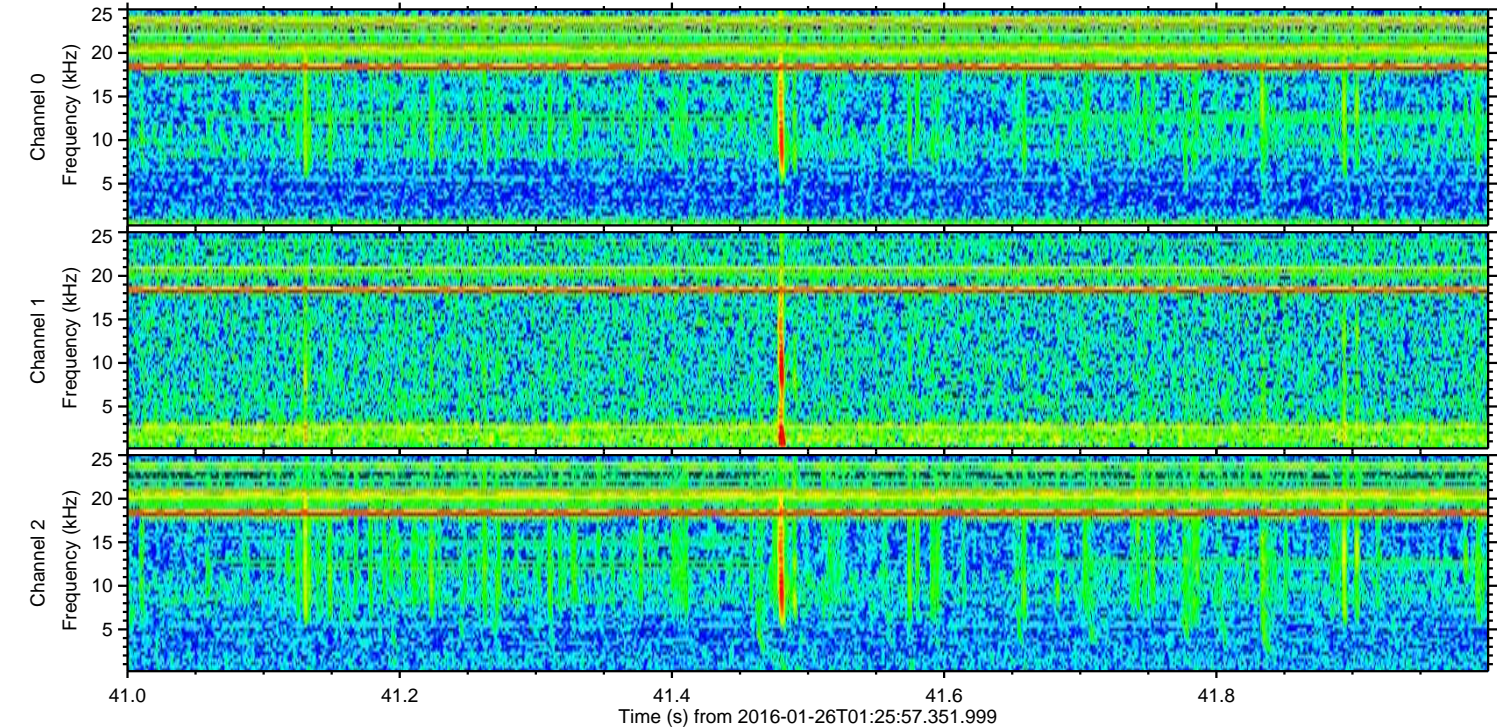
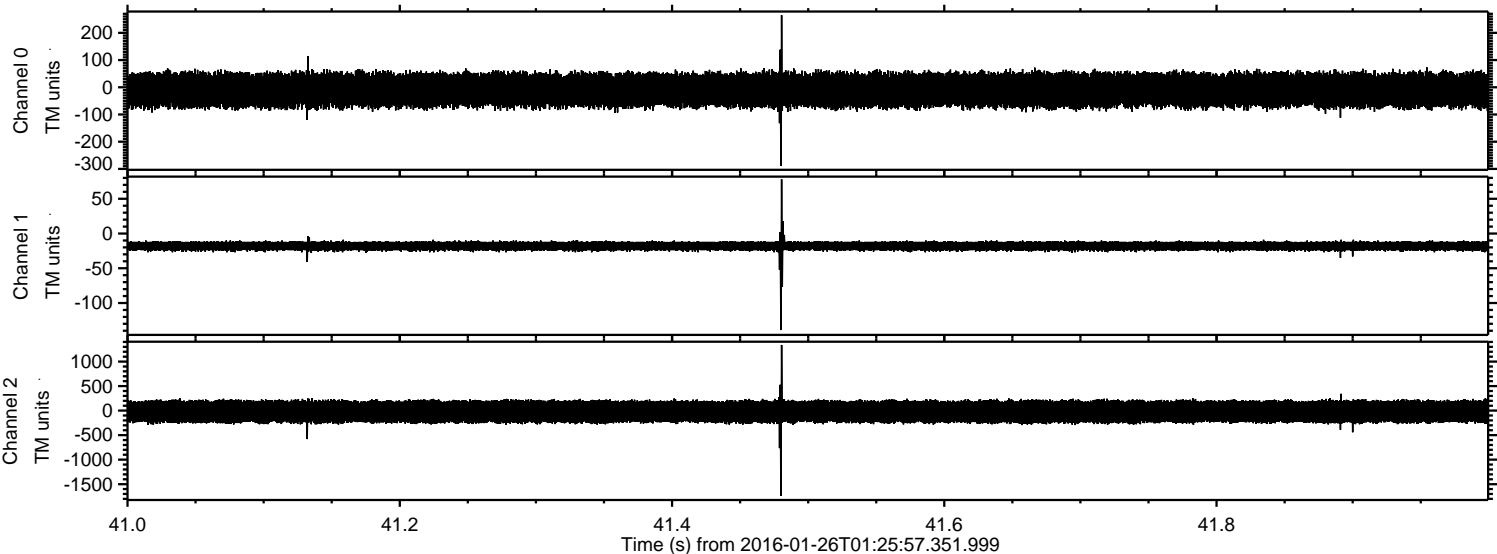
Processed Wed Apr 6 19:54:16 2016 by ELM ver.2012-10-06 from 001__elm20160126_012556__dat00.bin



Processed Wed Apr 6 19:54:17 2016 by ELM ver.2012-10-06 from 001__elm20160126_012556__dat00.bin



Processed Wed Apr 6 19:54:18 2016 by ELM ver.2012-10-06 from 001__elm20160126_012556__dat00.bin



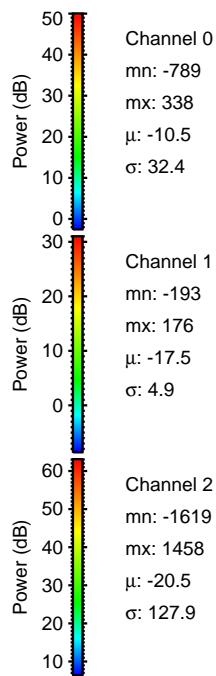
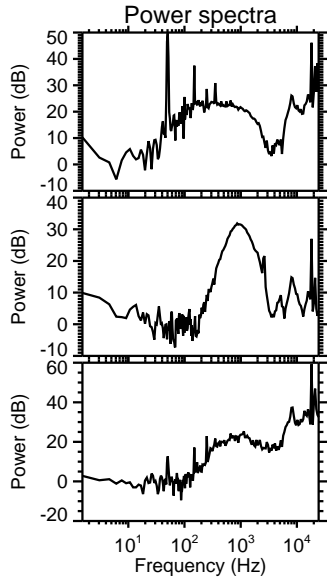
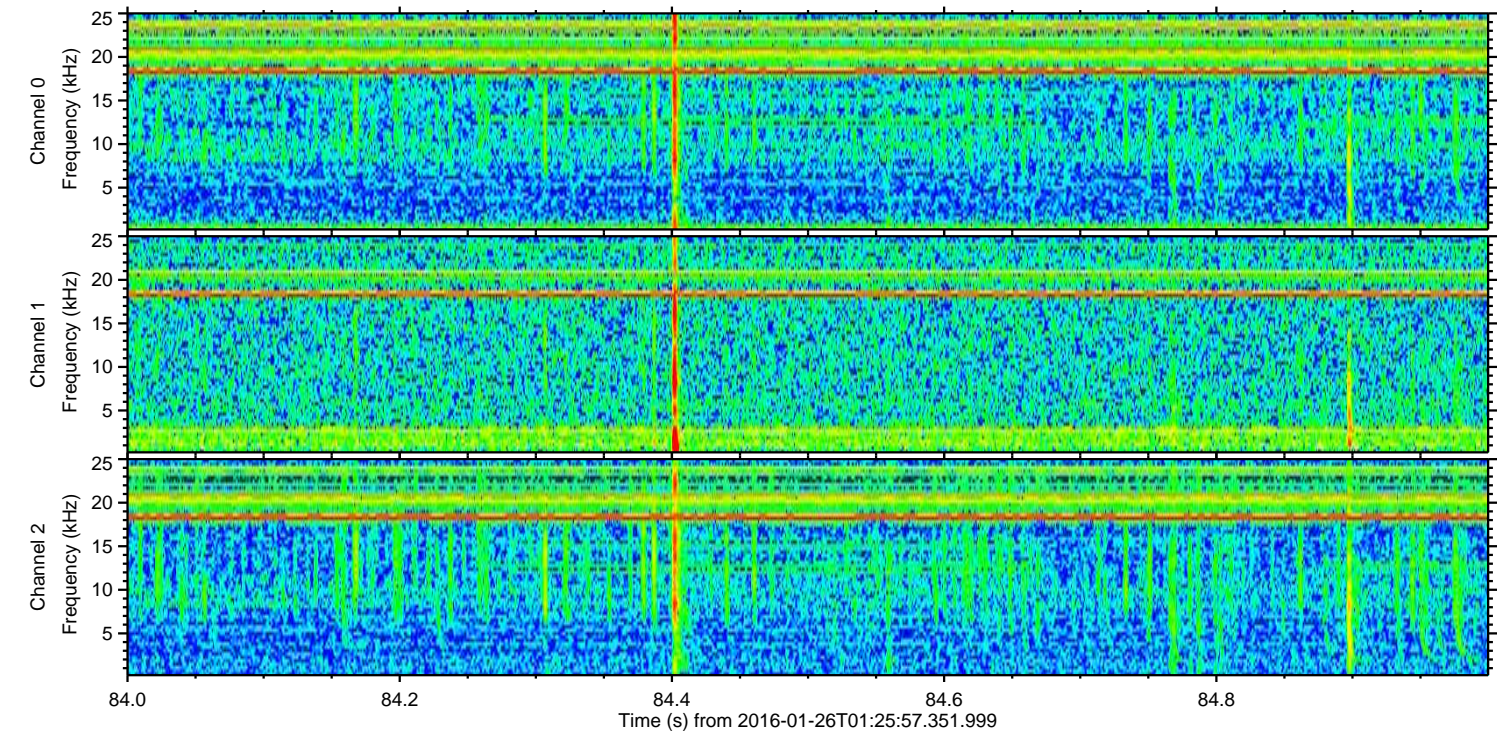
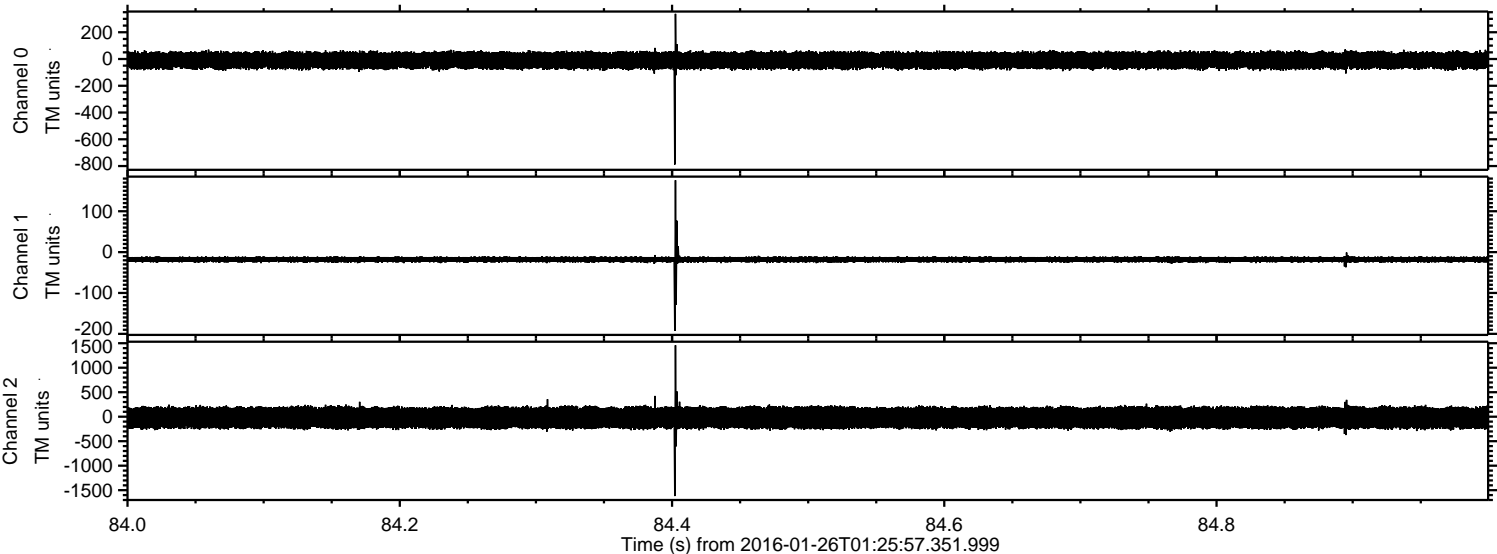
Power spectra

Channel 0
mn: -289
mx: 265
 μ : -10.5
 σ : 32.7

Channel 1
mn: -139
mx: 78
 μ : -17.5
 σ : 3.9

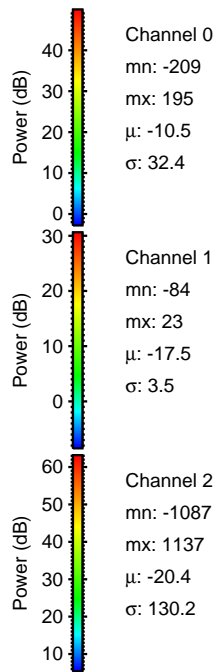
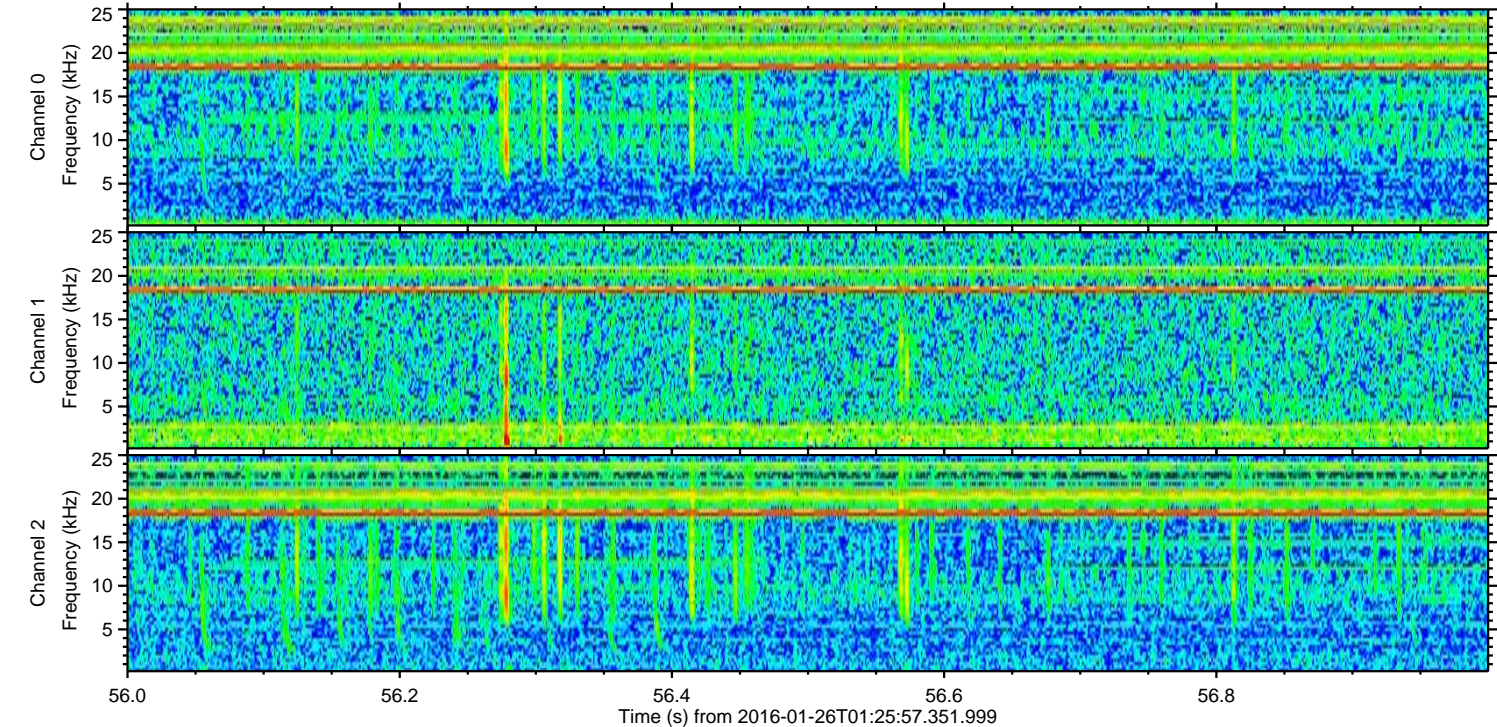
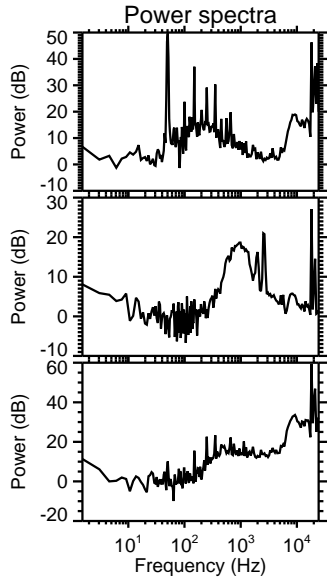
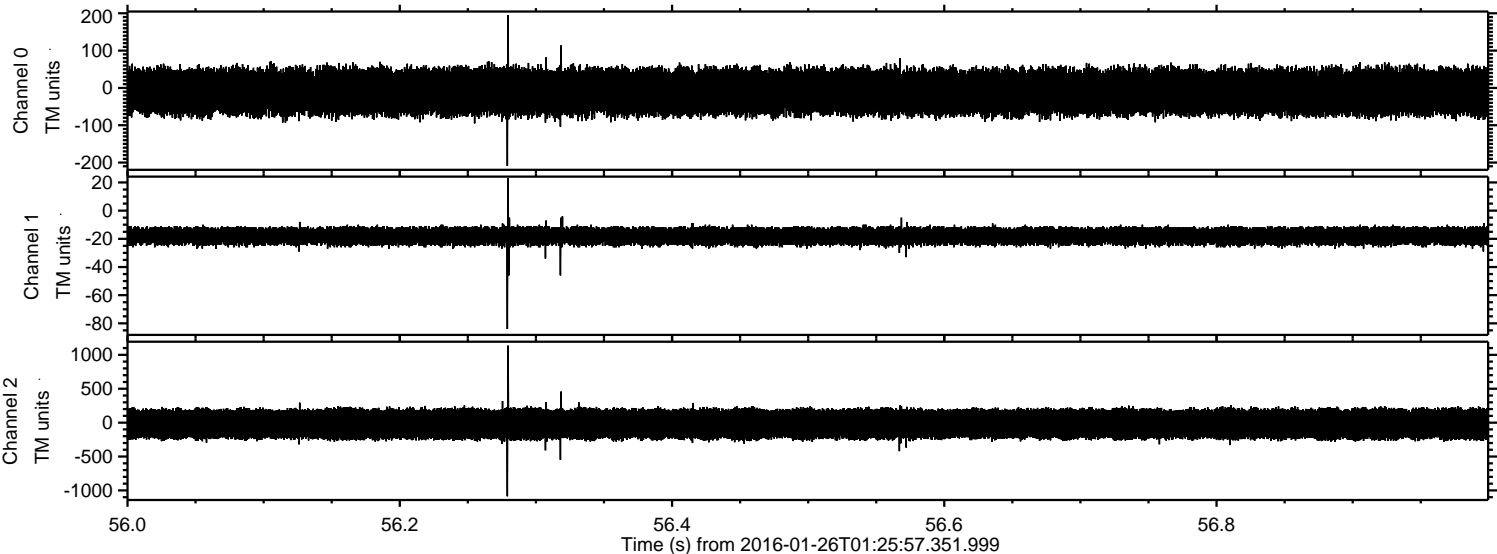
Channel 2
mn: -1736
mx: 1338
 μ : -20.5
 σ : 132.7

Processed Wed Apr 6 19:54:19 2016 by ELM ver.2012-10-06 from 001__elm20160126_012556__dat00.bin



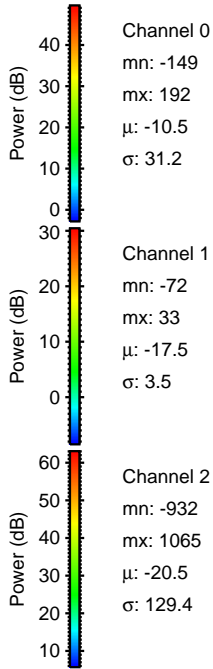
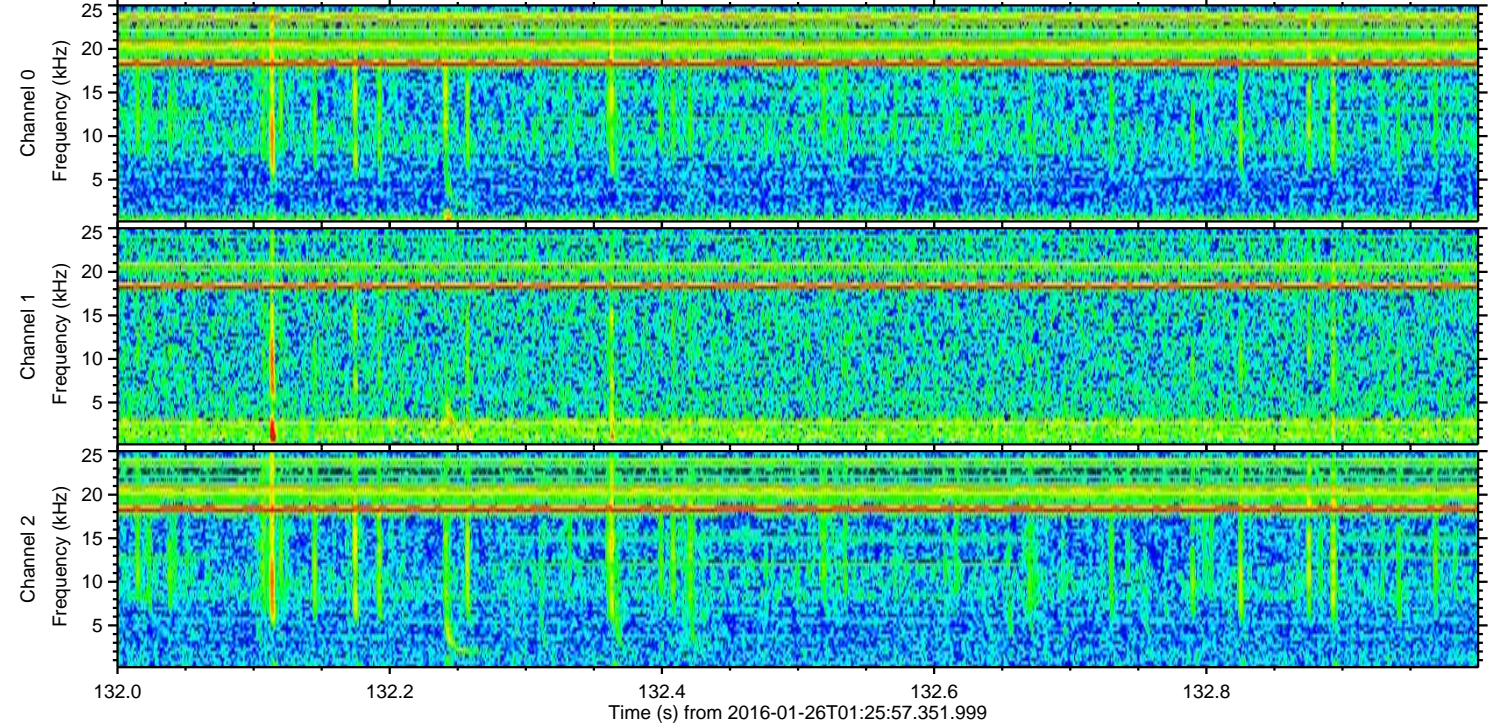
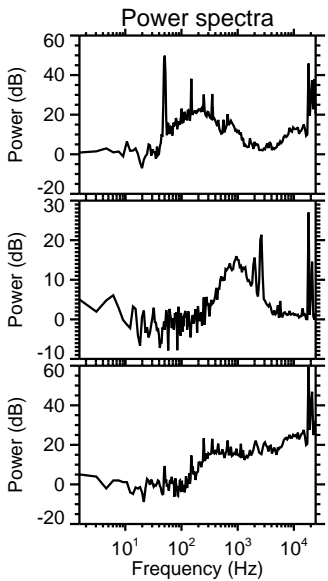
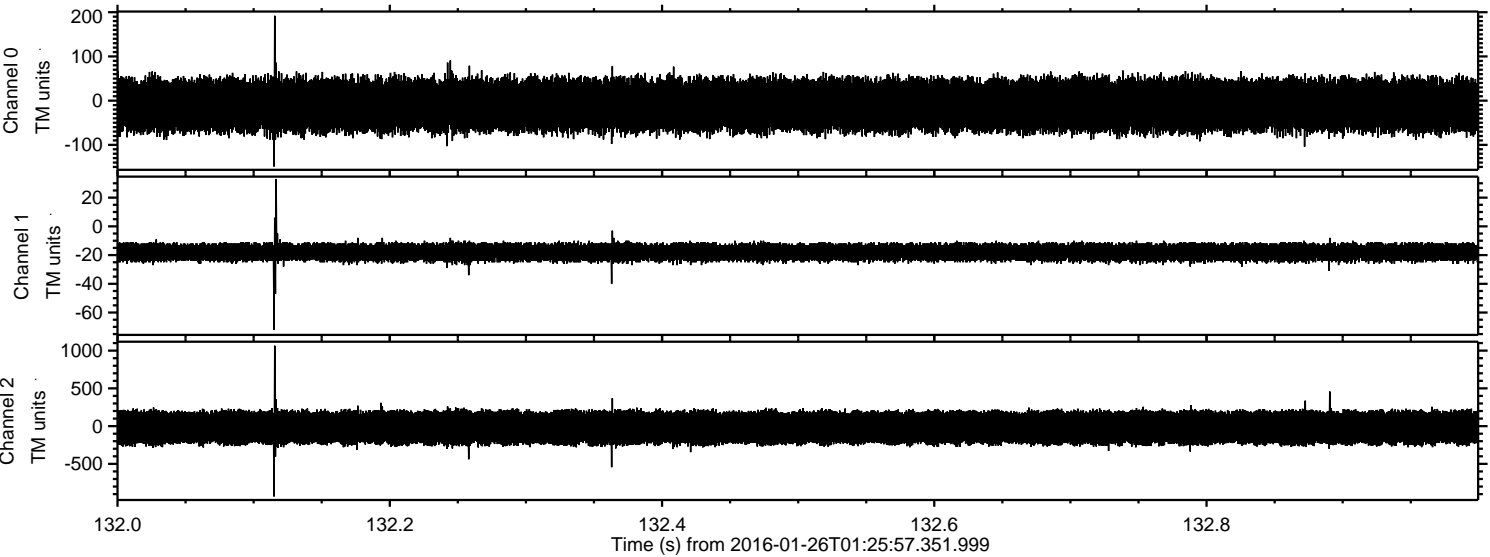
ELMAVAN 3D WAVEFORMS (Measured data sampled at 50 kHz) 51000 packets of 144 samples from 2016-01-26T01:25:57.351.999. Part 57/147

Processed Wed Apr 6 19:54:20 2016 by ELM ver.2012-10-06 from 001__elm20160126_012556__dat00.bin

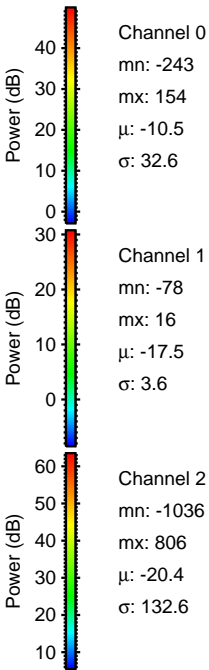
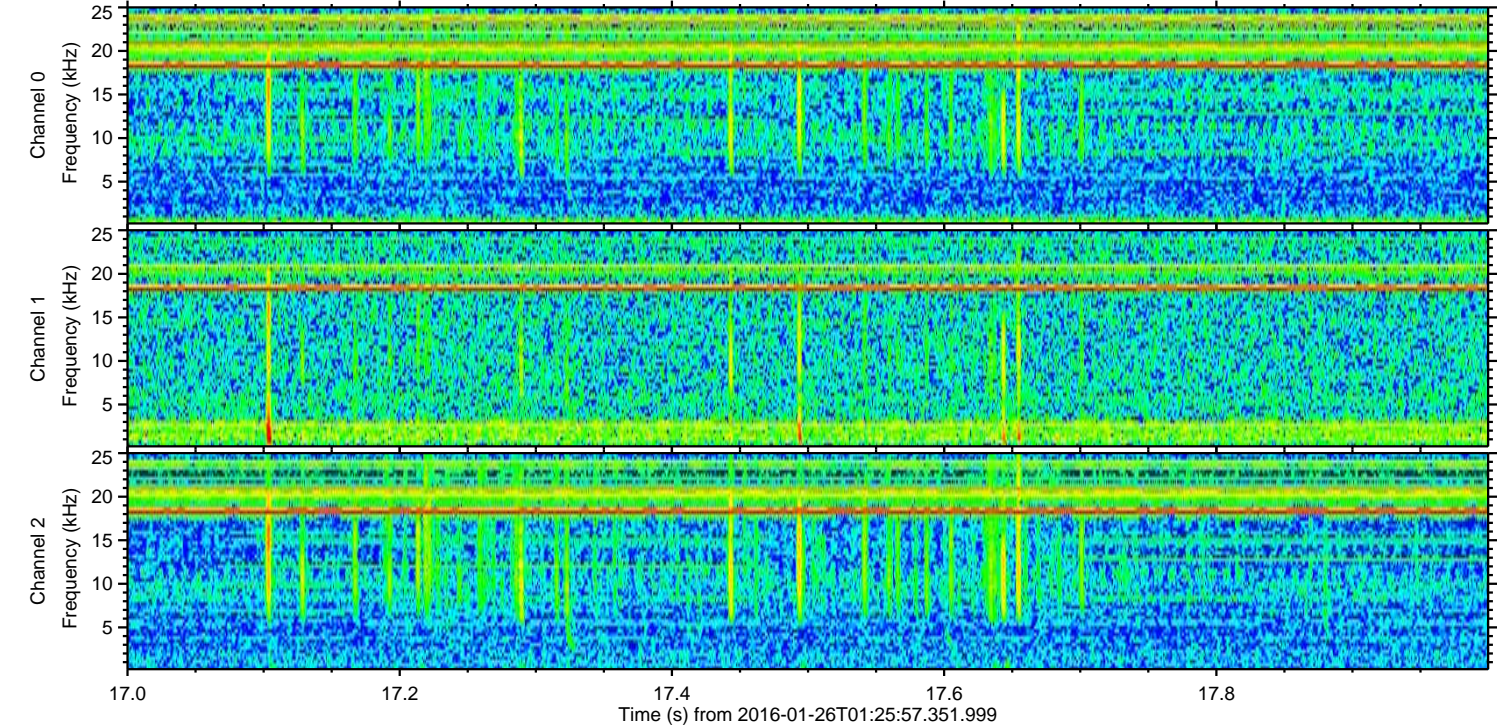
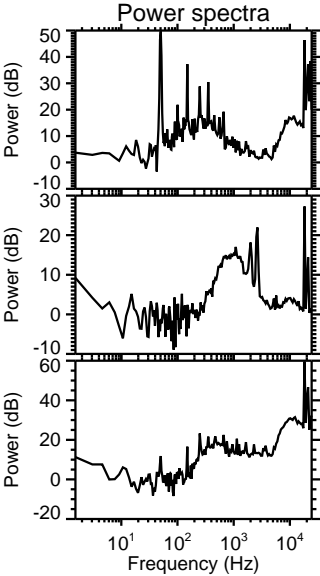
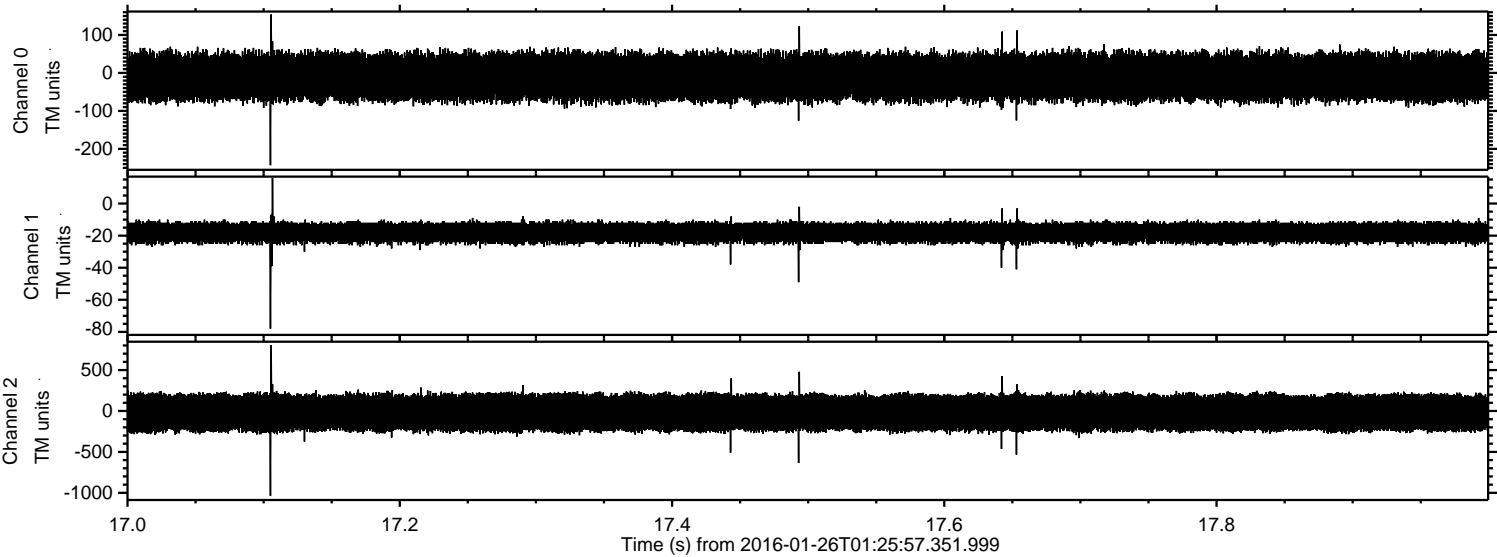


ELMAVAN 3D WAVEFORMS (Measured data sampled at 50 kHz) 51000 packets of 144 samples from 2016-01-26T01:25:57.351.999. Part 133/147

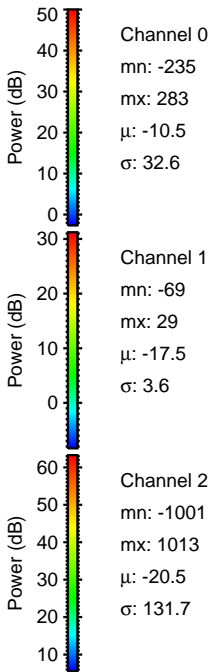
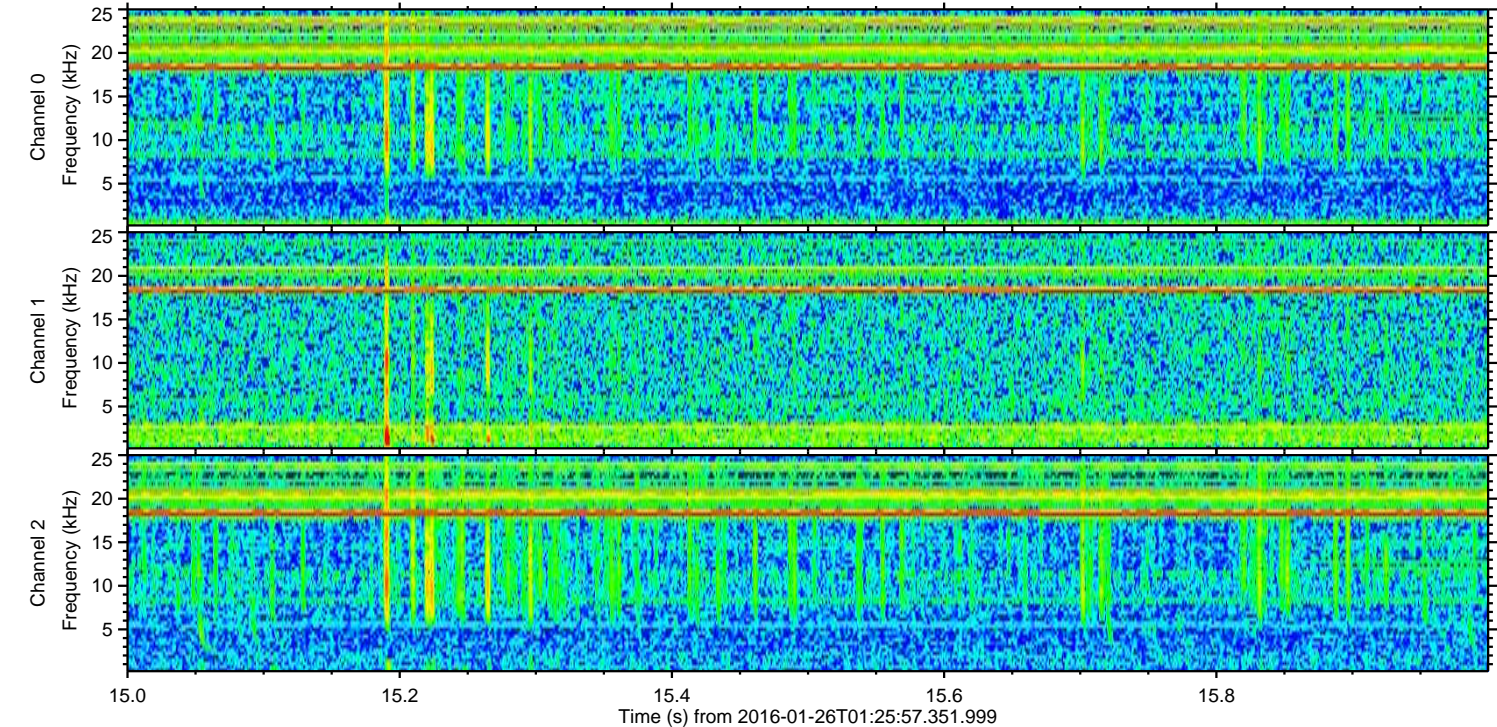
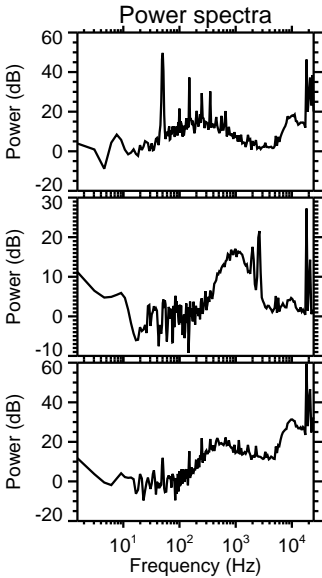
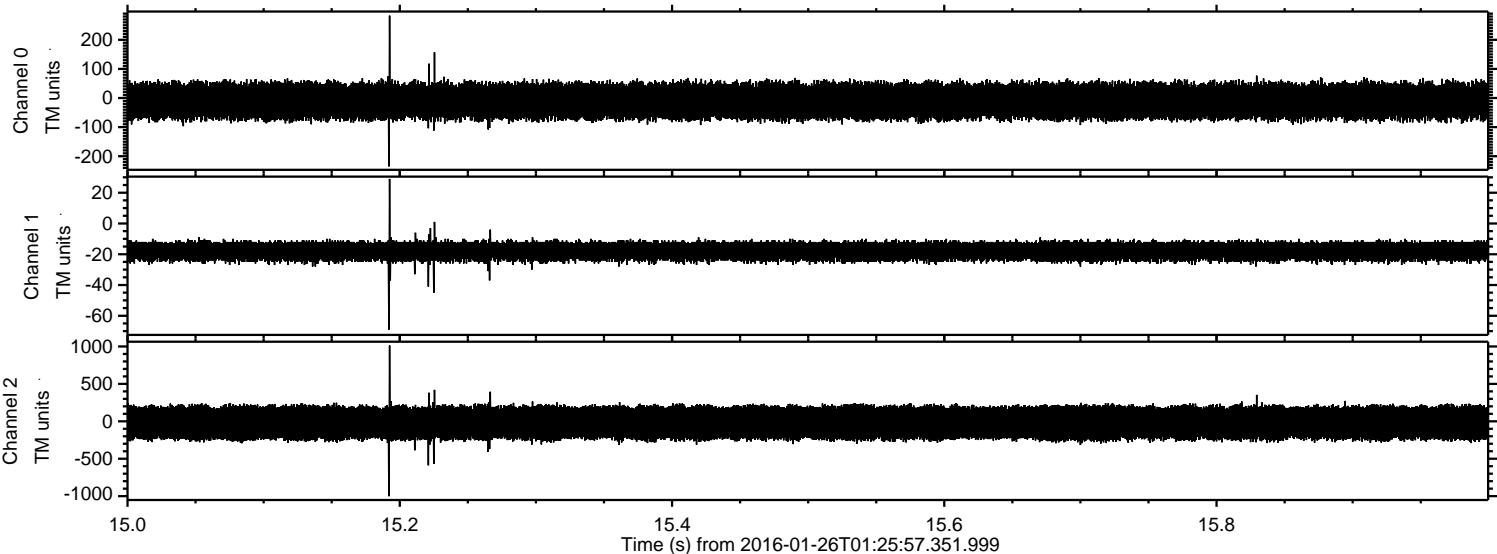
Processed Wed Apr 6 19:54:21 2016 by ELM ver.2012-10-06 from 001__elm20160126_012556__dat00.bin



Processed Wed Apr 6 19:54:22 2016 by ELM ver.2012-10-06 from 001__elm20160126_012556__dat00.bin



Processed Wed Apr 6 19:54:22 2016 by ELM ver.2012-10-06 from 001__elm20160126_012556__dat00.bin



Processed Wed Apr 6 19:54:23 2016 by ELM ver.2012-10-06 from 001__elm20160126_012556__dat00.bin

