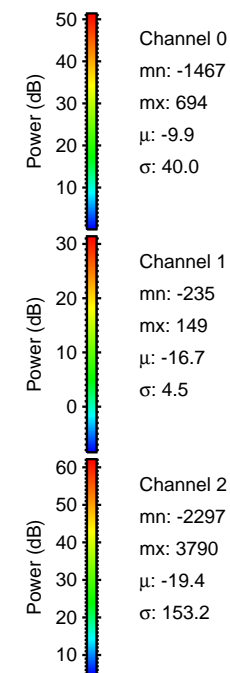
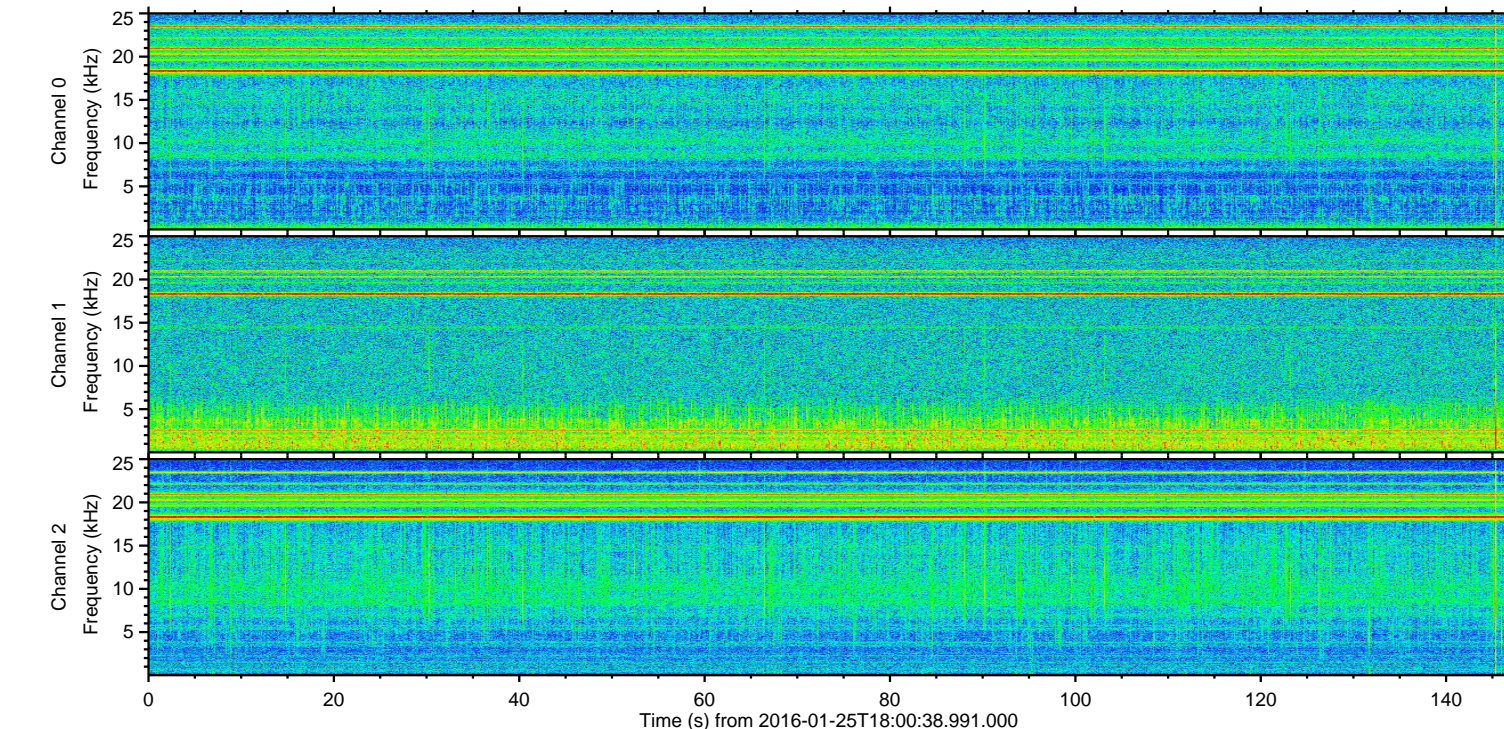
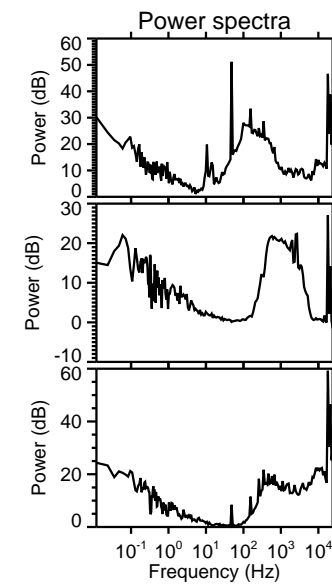
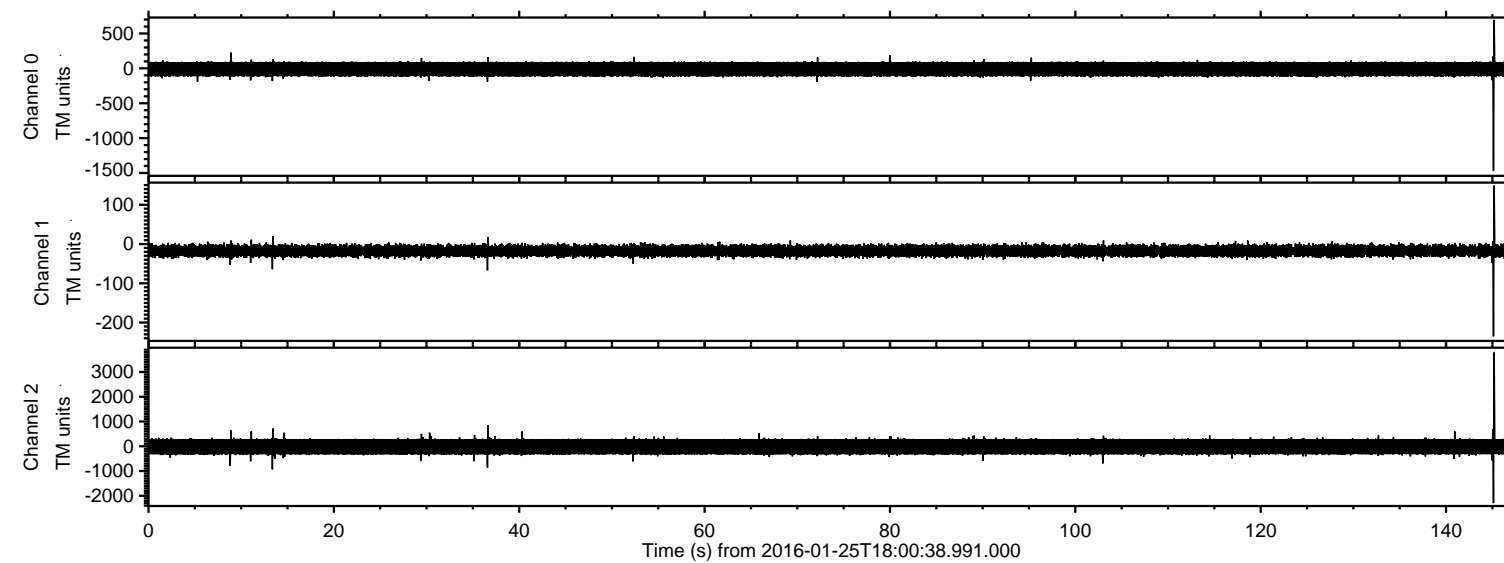


# ELMAVAN 3D WAVEFORMS (Measured data sampled at 50 kHz) 51000 packets of 144 samples from 2016-01-25T18:00:38.991.000.

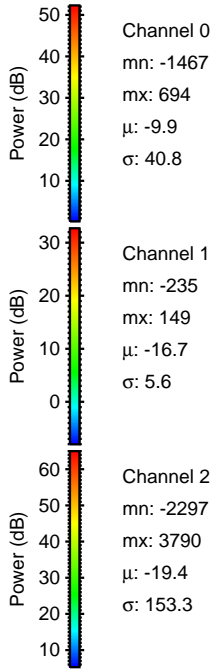
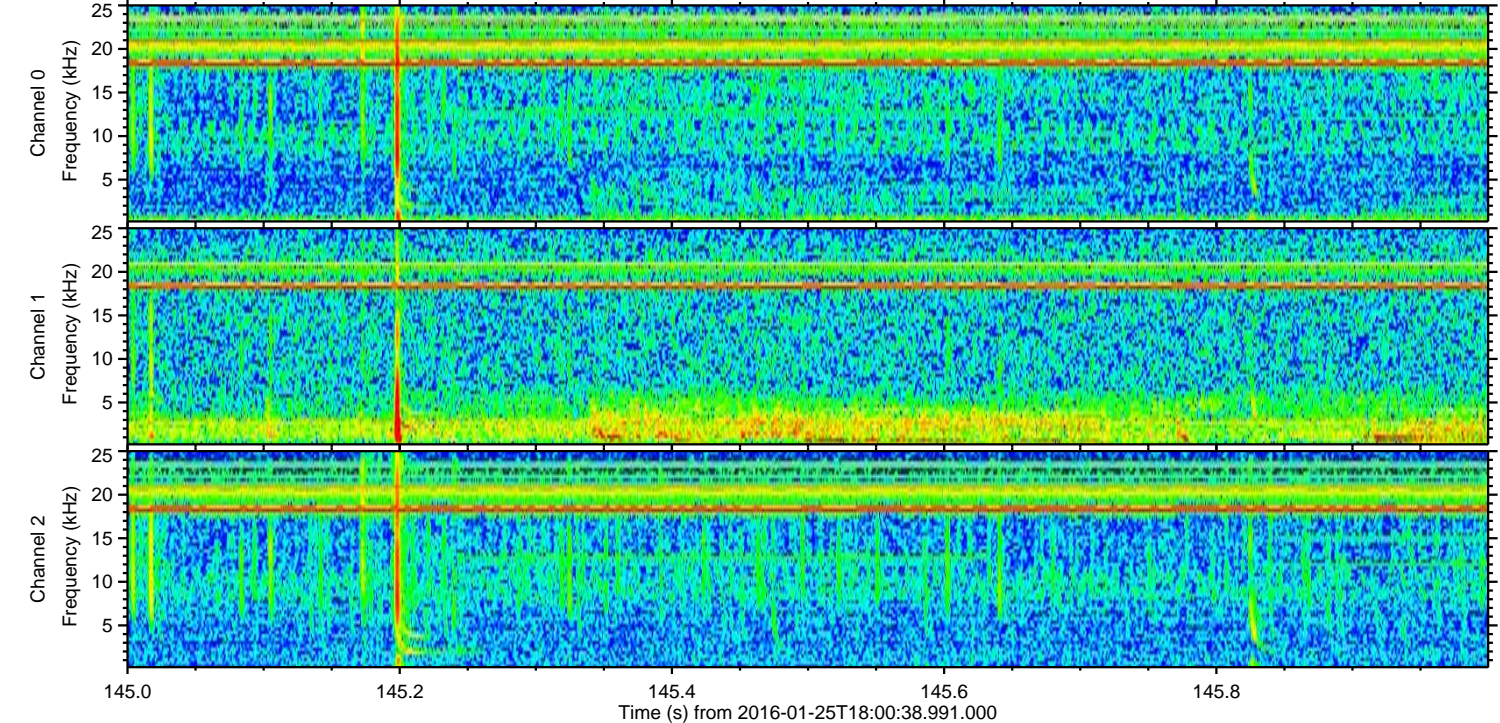
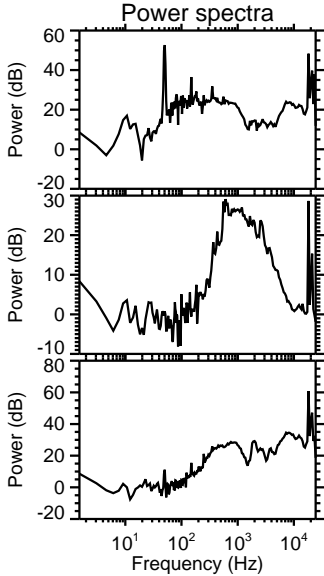
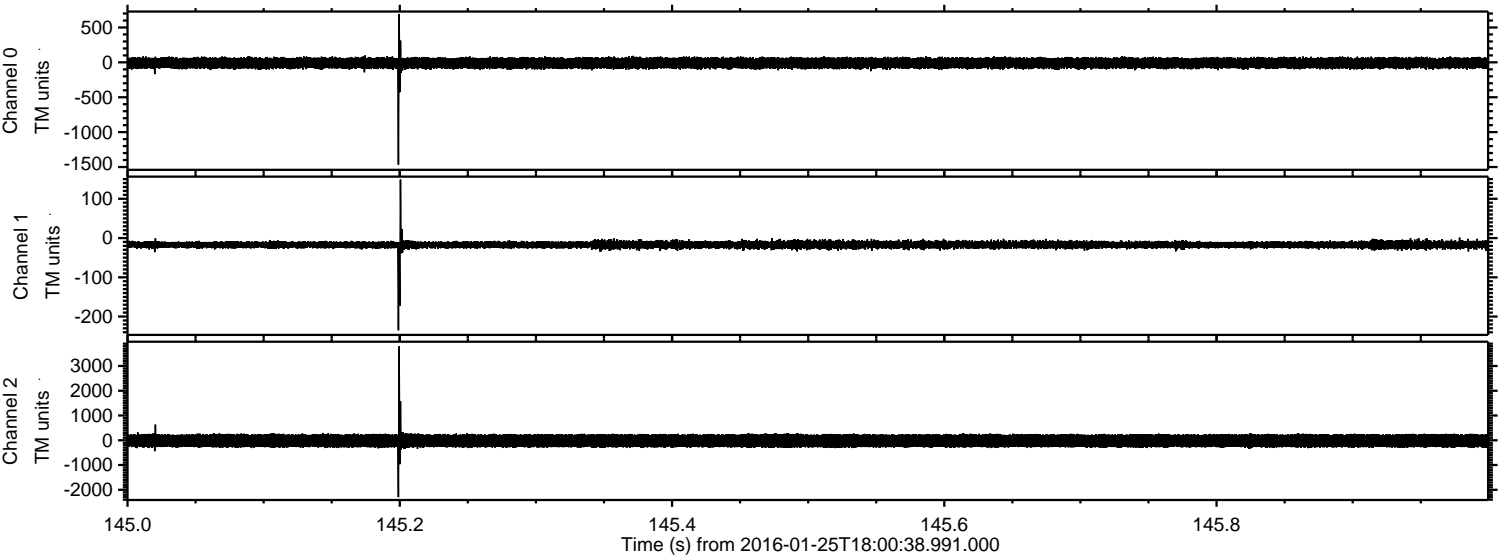
Processed Wed Apr 6 18:25:51 2016 by ELM ver.2012-10-06 from 001\_\_elm20160125\_180037\_\_dat00.bin





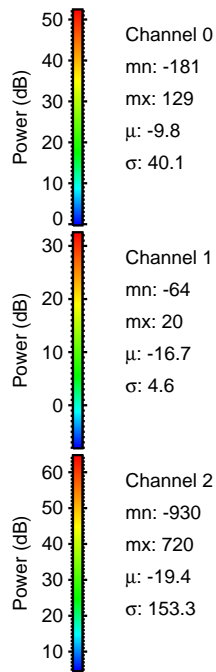
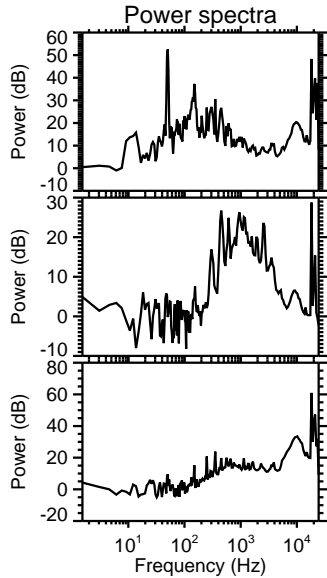
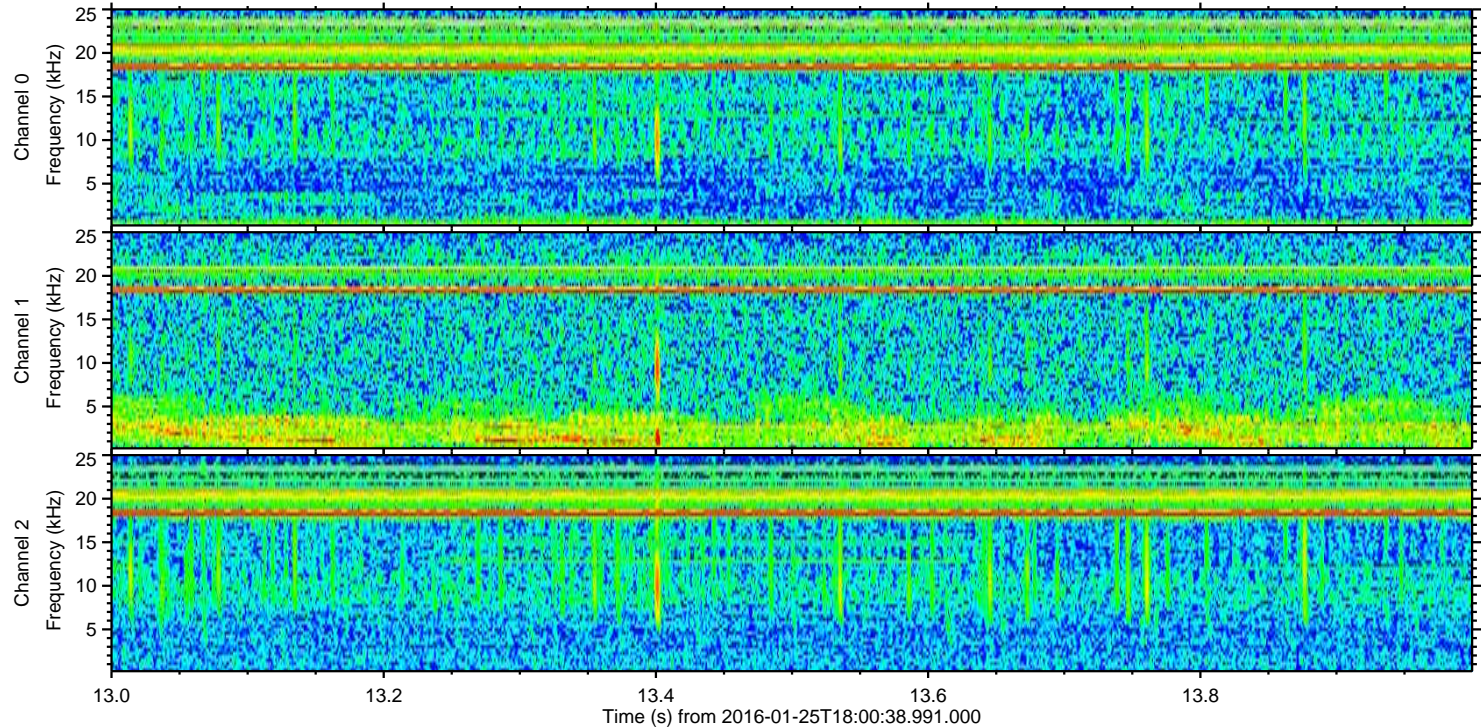
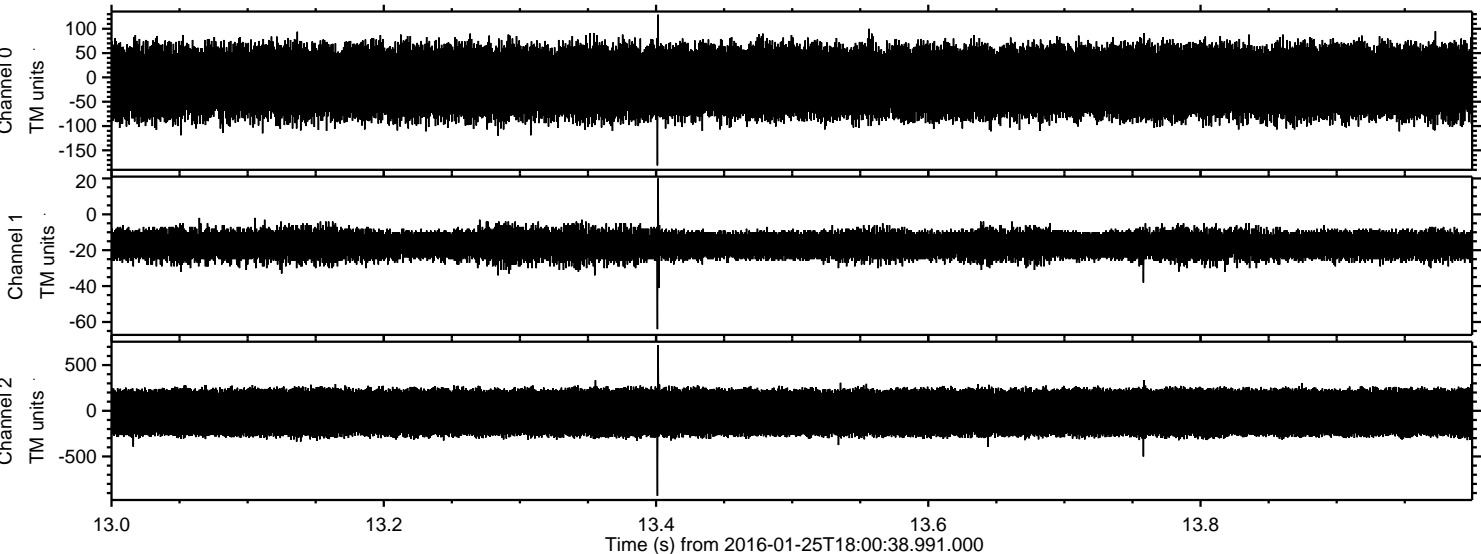
ELMAVAN 3D WAVEFORMS (Measured data sampled at 50 kHz) 51000 packets of 144 samples from 2016-01-25T18:00:38.991.000. Part 146/147

Processed Wed Apr 6 18:26:03 2016 by ELM ver.2012-10-06 from 001\_\_elm20160125\_180037\_\_dat00.bin



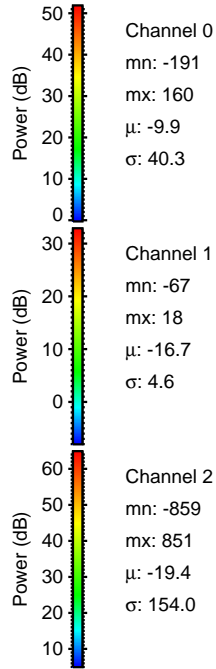
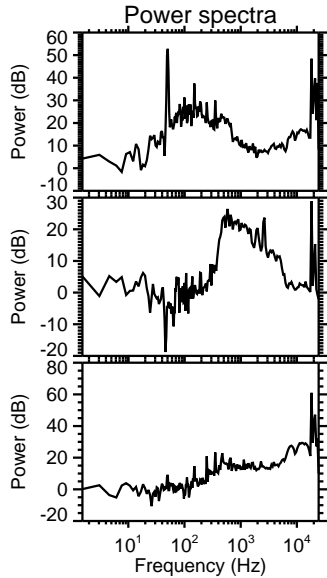
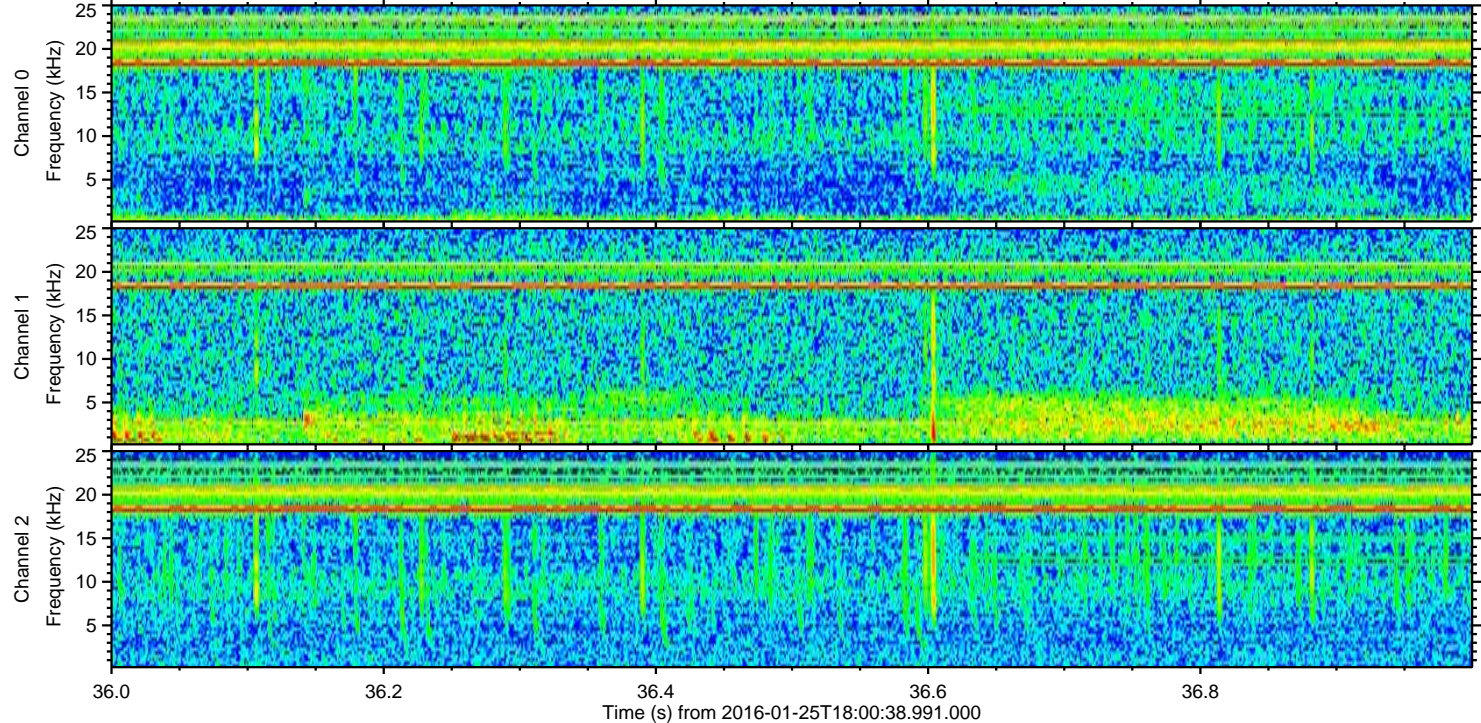
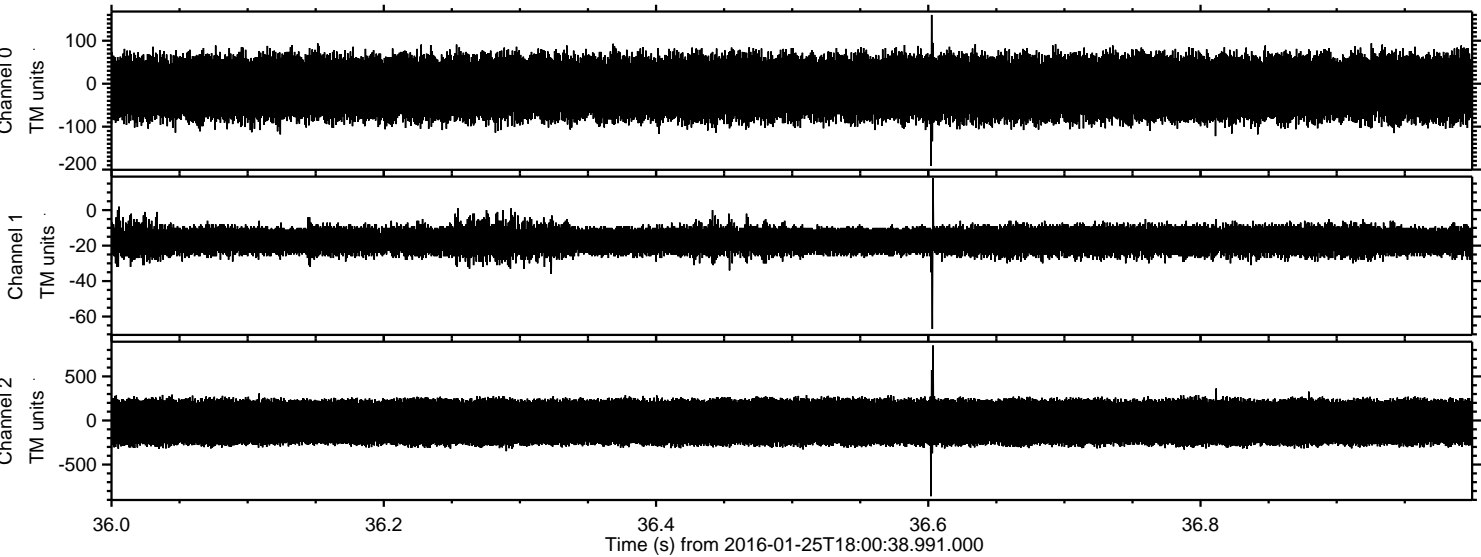


Processed Wed Apr 6 18:26:04 2016 by ELM ver.2012-10-06 from 001\_\_elm20160125\_180037\_\_dat00.bin



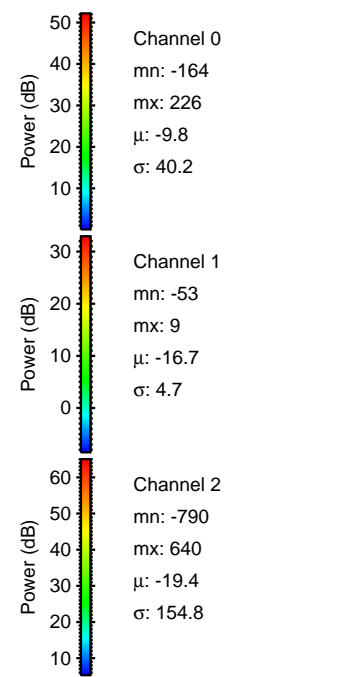
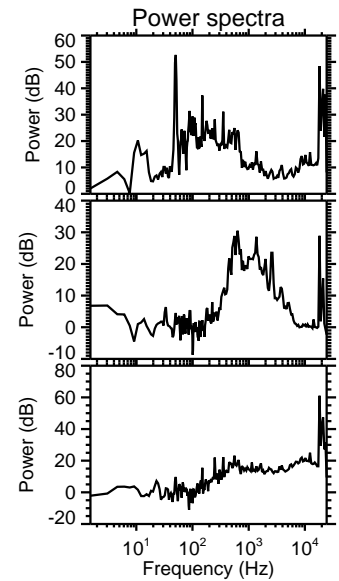
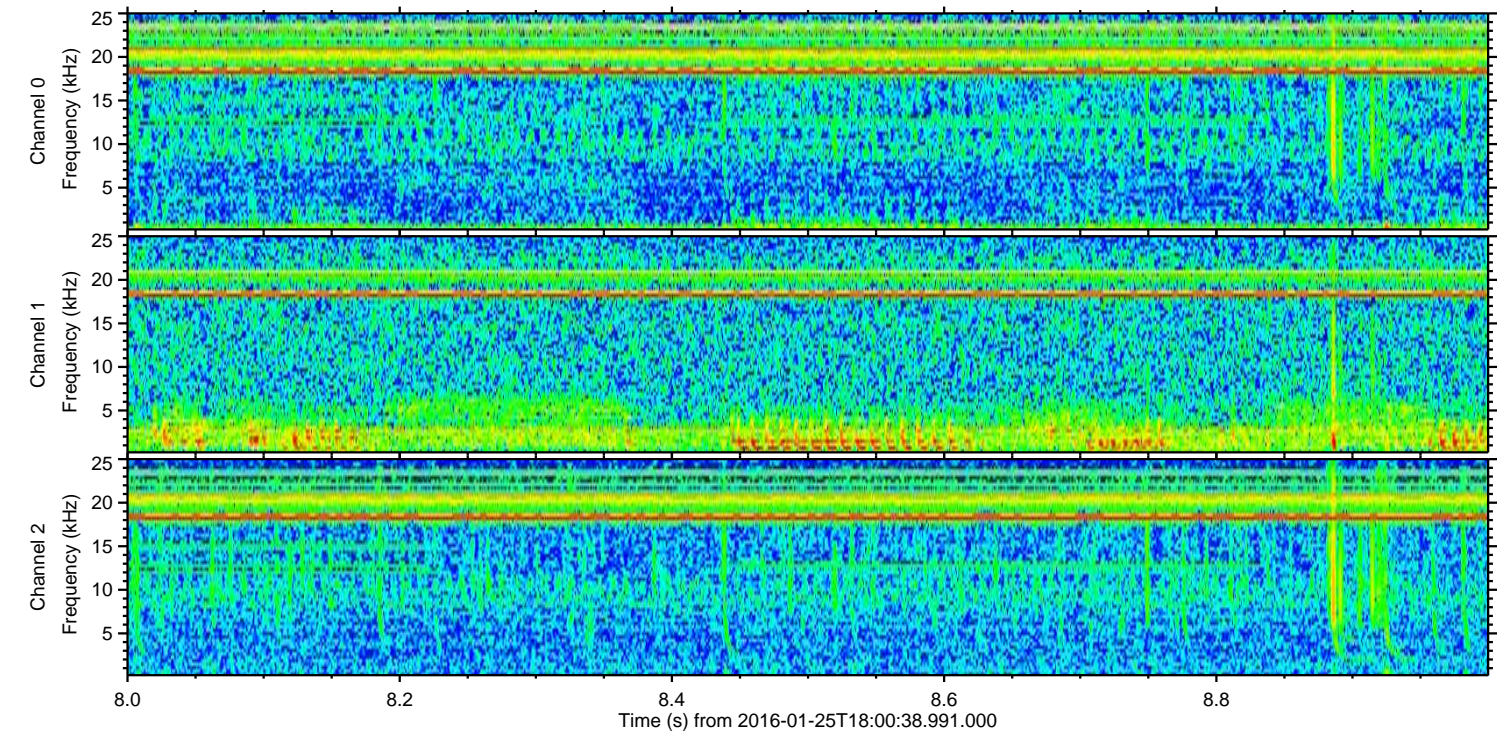
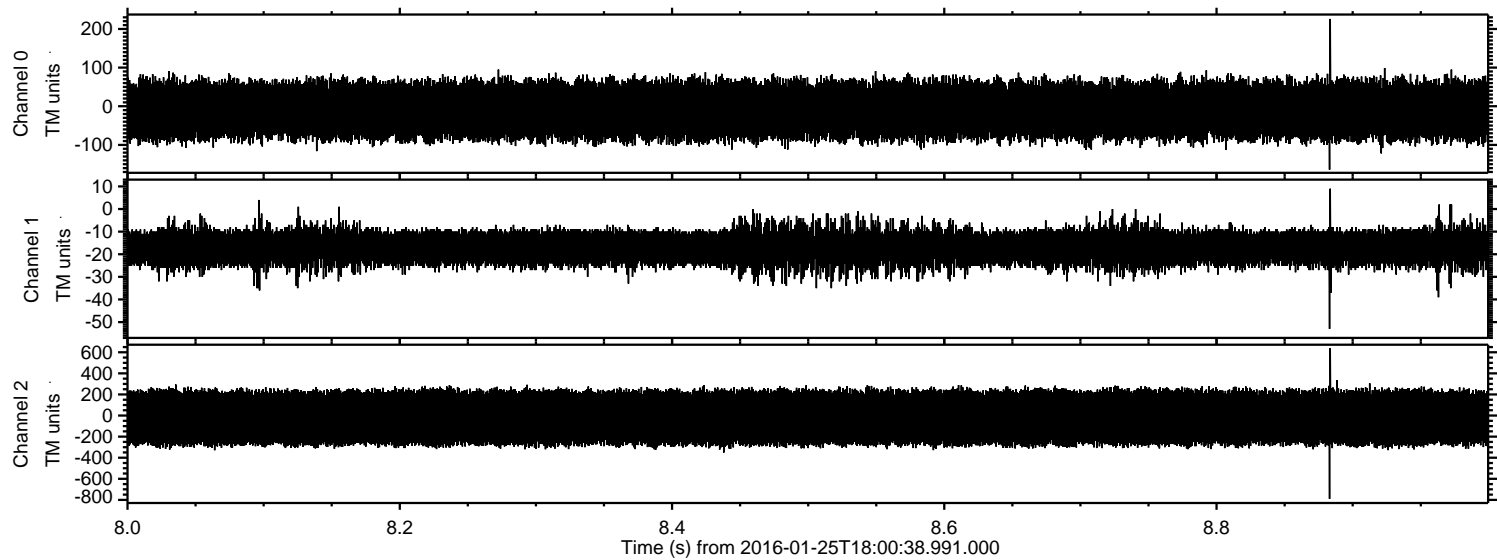


Processed Wed Apr 6 18:26:05 2016 by ELM ver.2012-10-06 from 001\_\_elm20160125\_180037\_\_dat00.bin



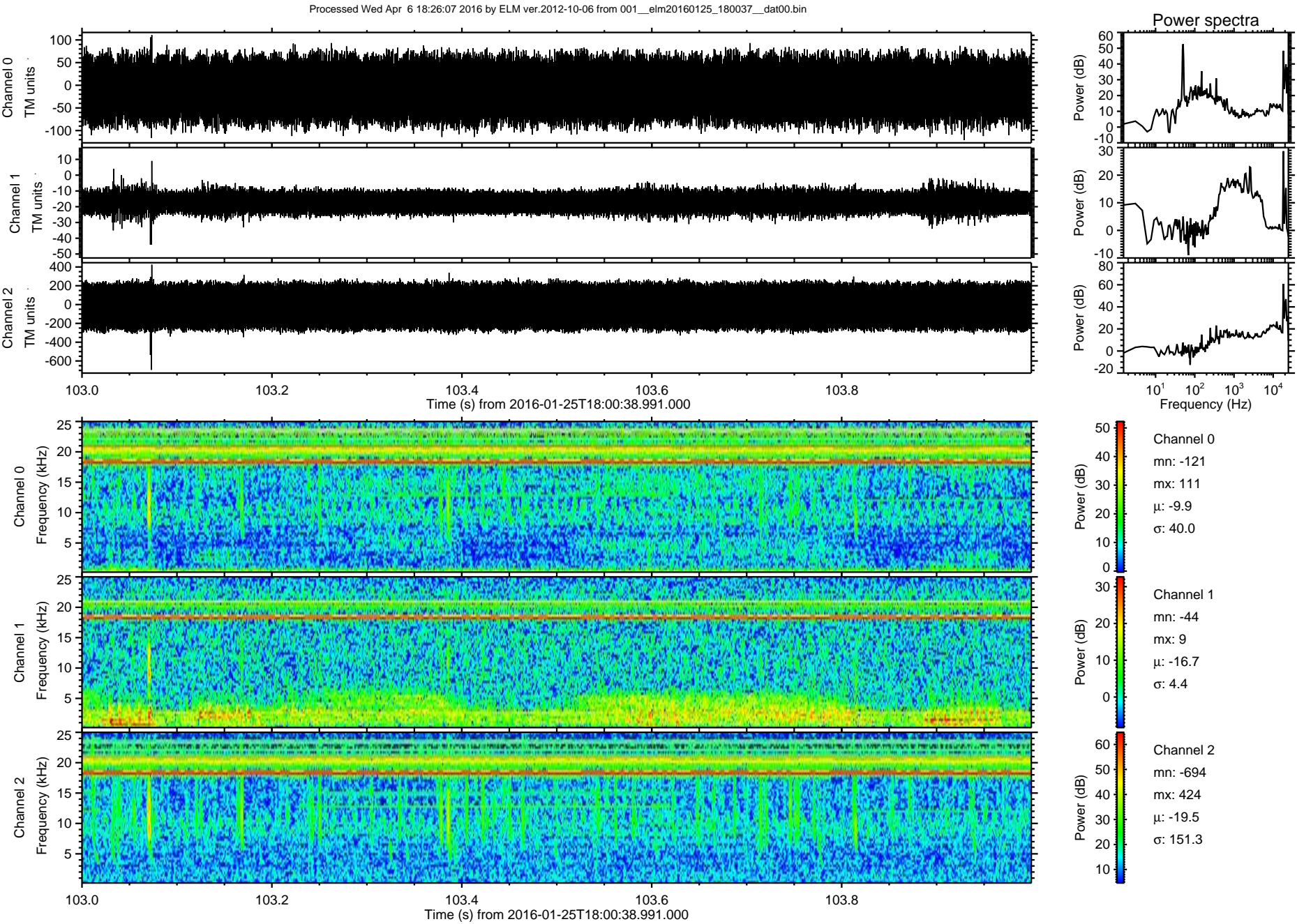


Processed Wed Apr 6 18:26:06 2016 by ELM ver.2012-10-06 from 001\_\_elm20160125\_180037\_\_dat00.bin





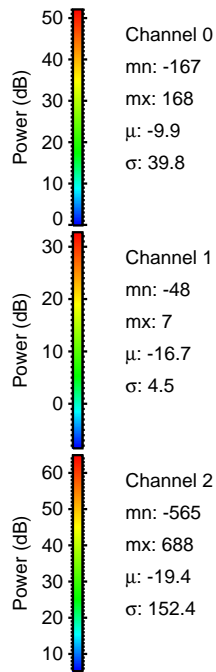
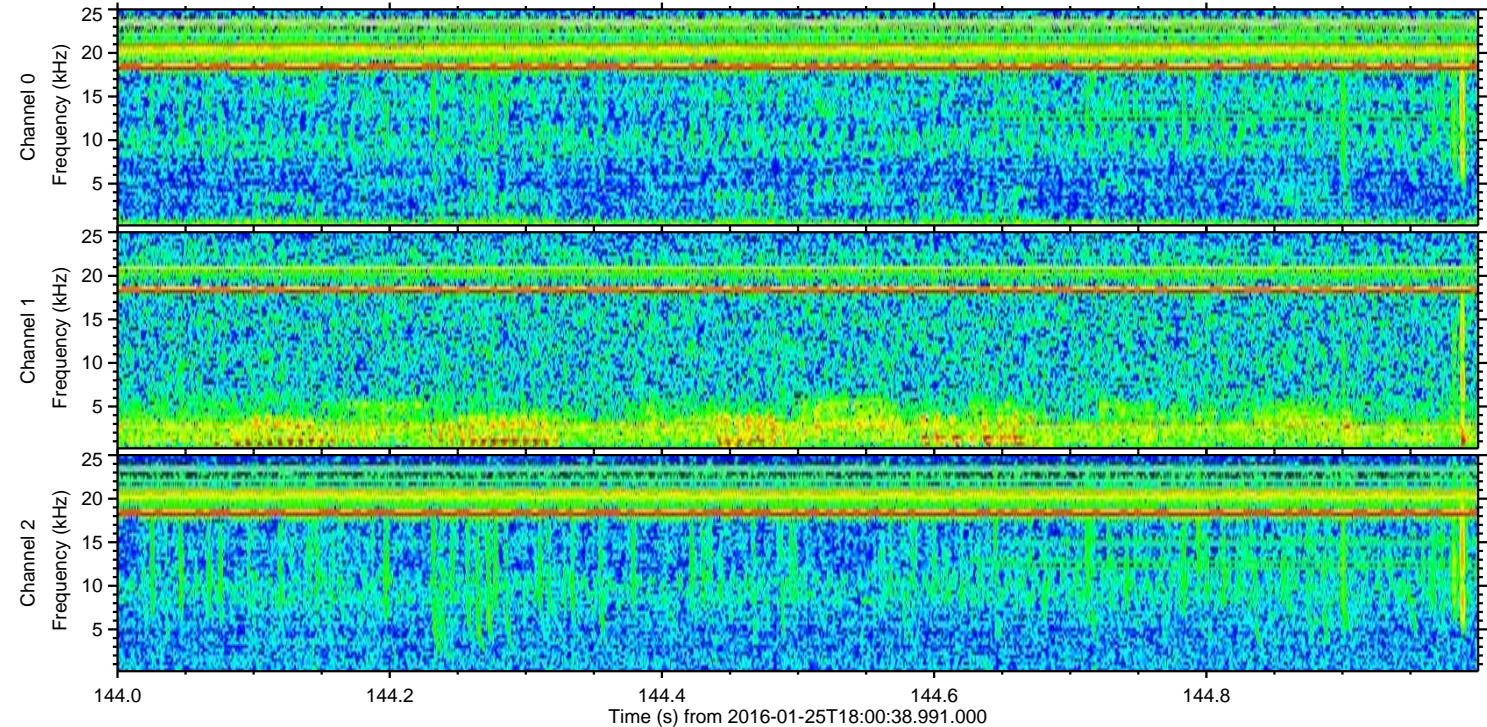
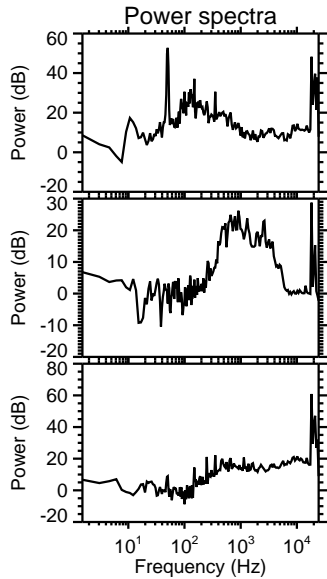
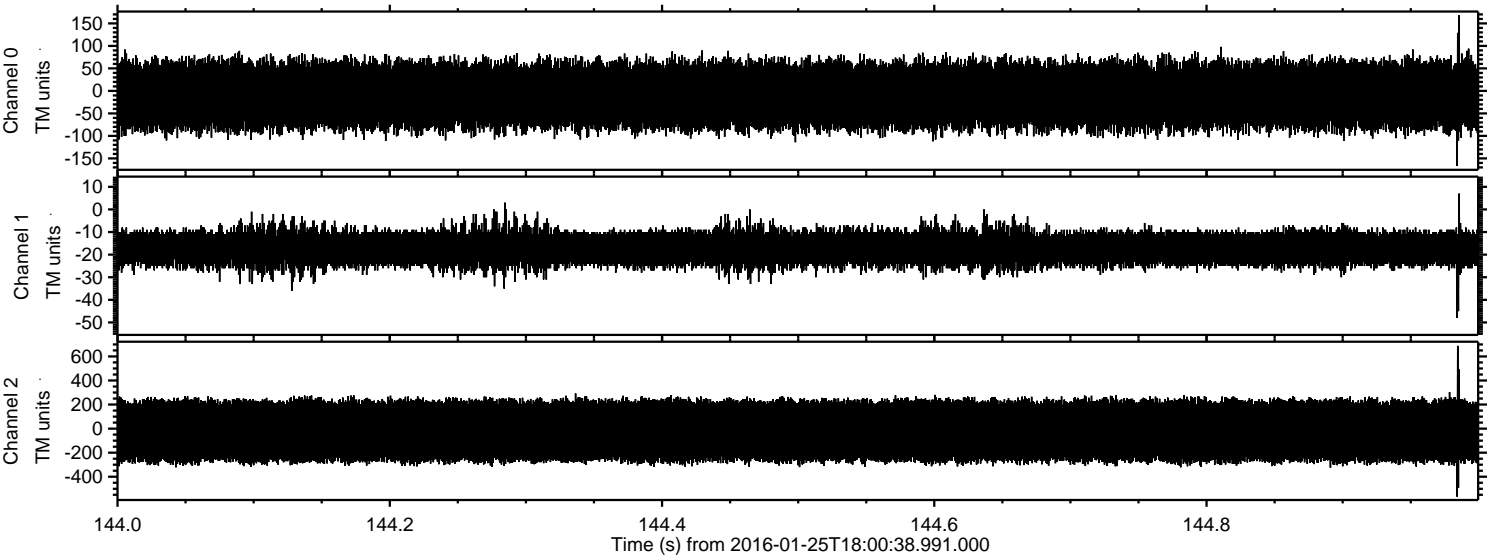
ELMAVAN 3D WAVEFORMS (Measured data sampled at 50 kHz) 51000 packets of 144 samples from 2016-01-25T18:00:38.991.000. Part 104/147





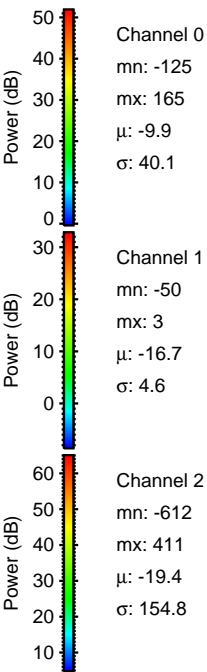
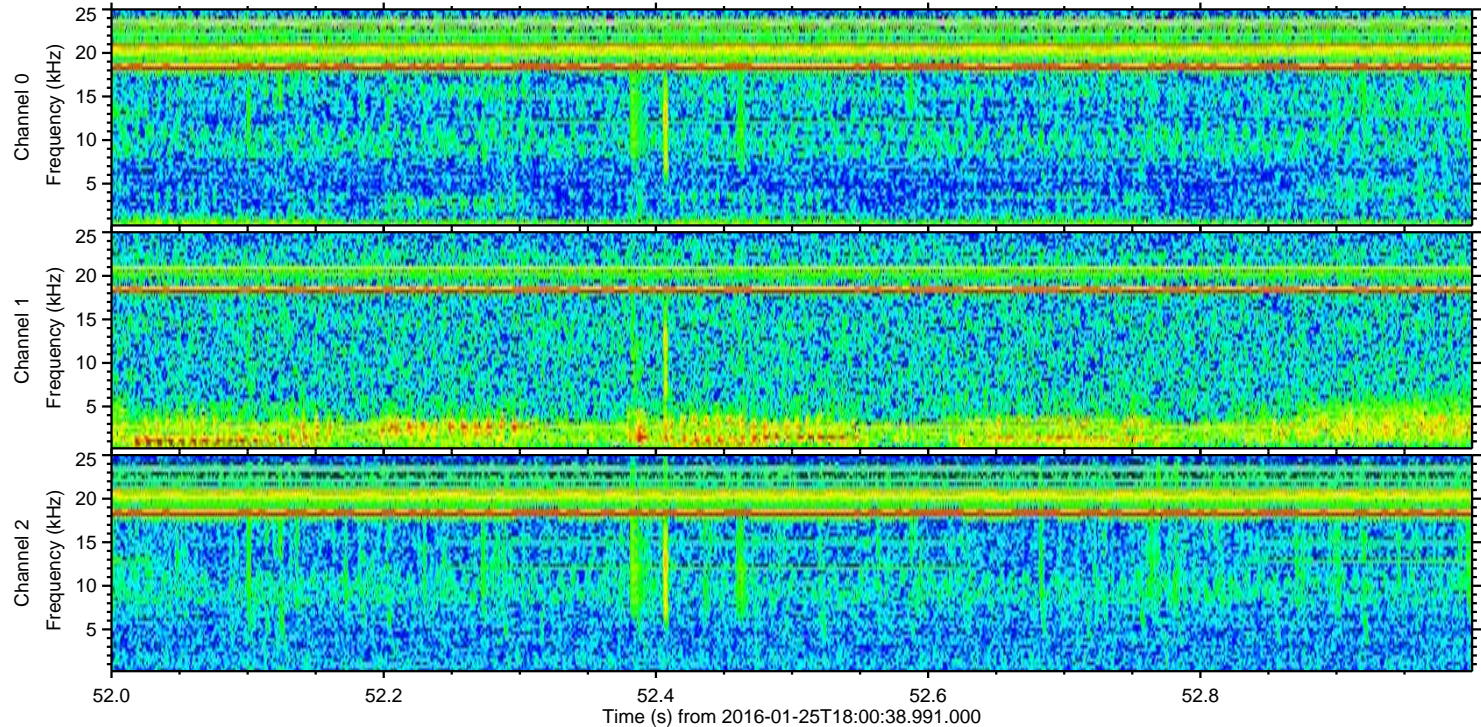
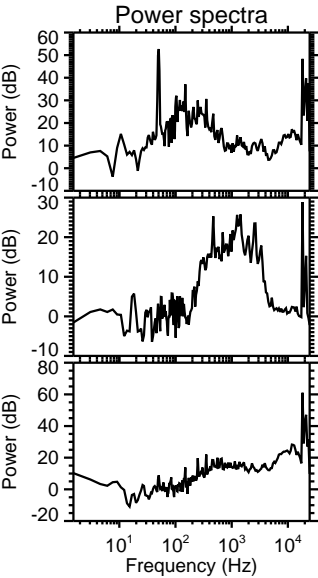
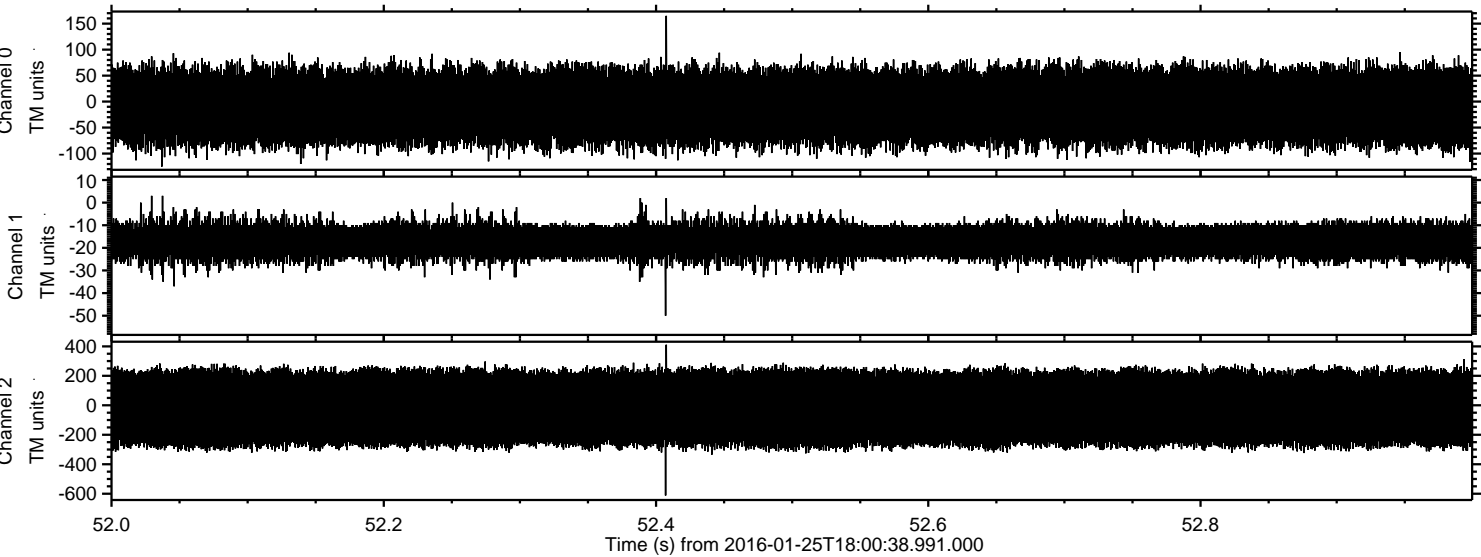
ELMAVAN 3D WAVEFORMS (Measured data sampled at 50 kHz) 51000 packets of 144 samples from 2016-01-25T18:00:38.991.000. Part 145/147

Processed Wed Apr 6 18:26:08 2016 by ELM ver.2012-10-06 from 001\_\_elm20160125\_180037\_\_dat00.bin



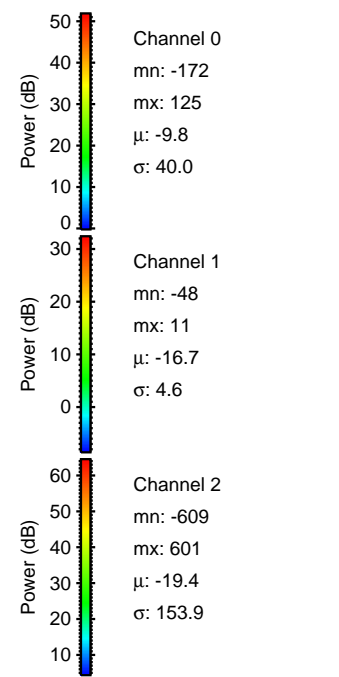
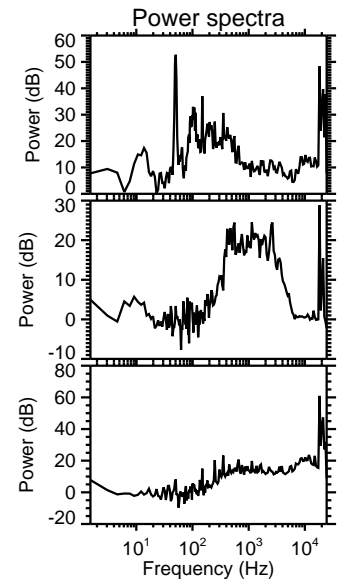
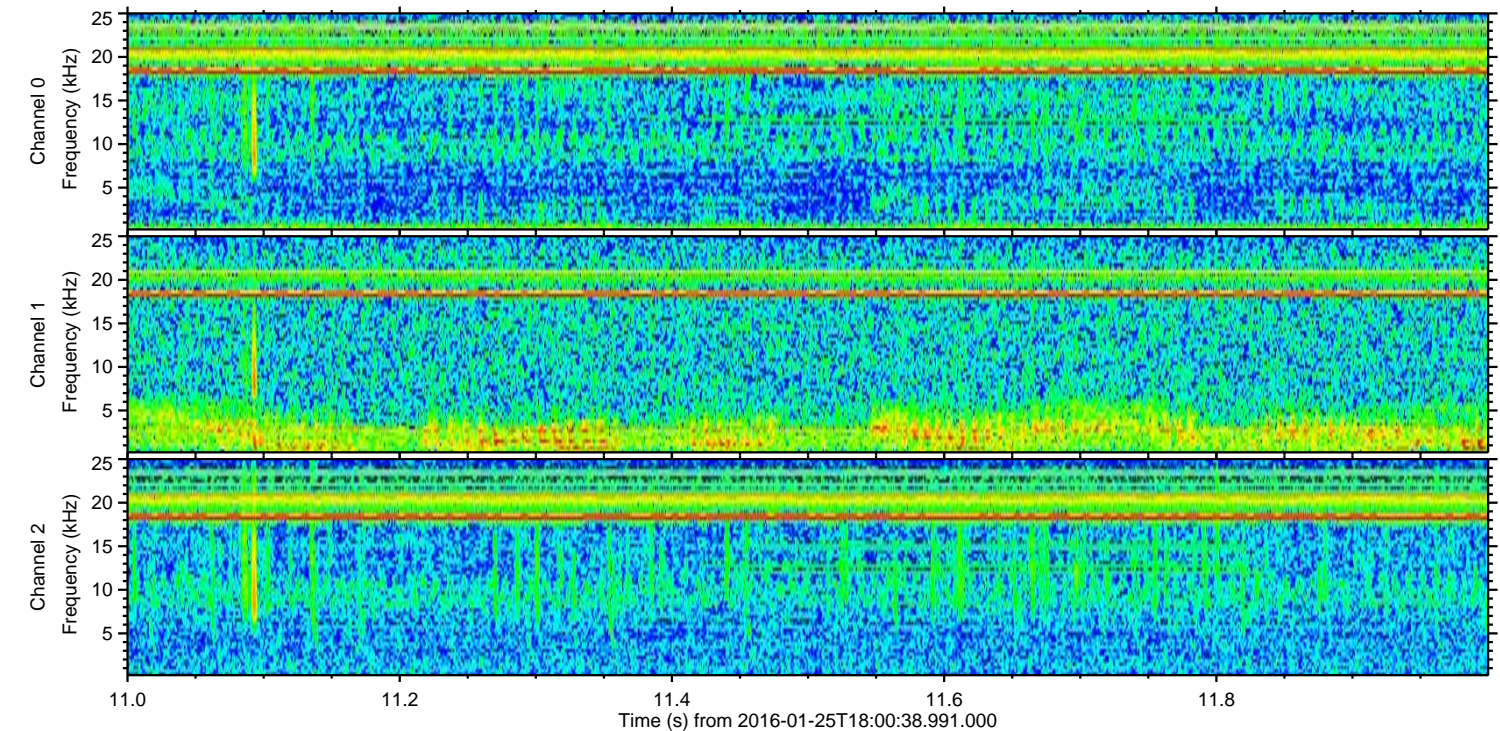
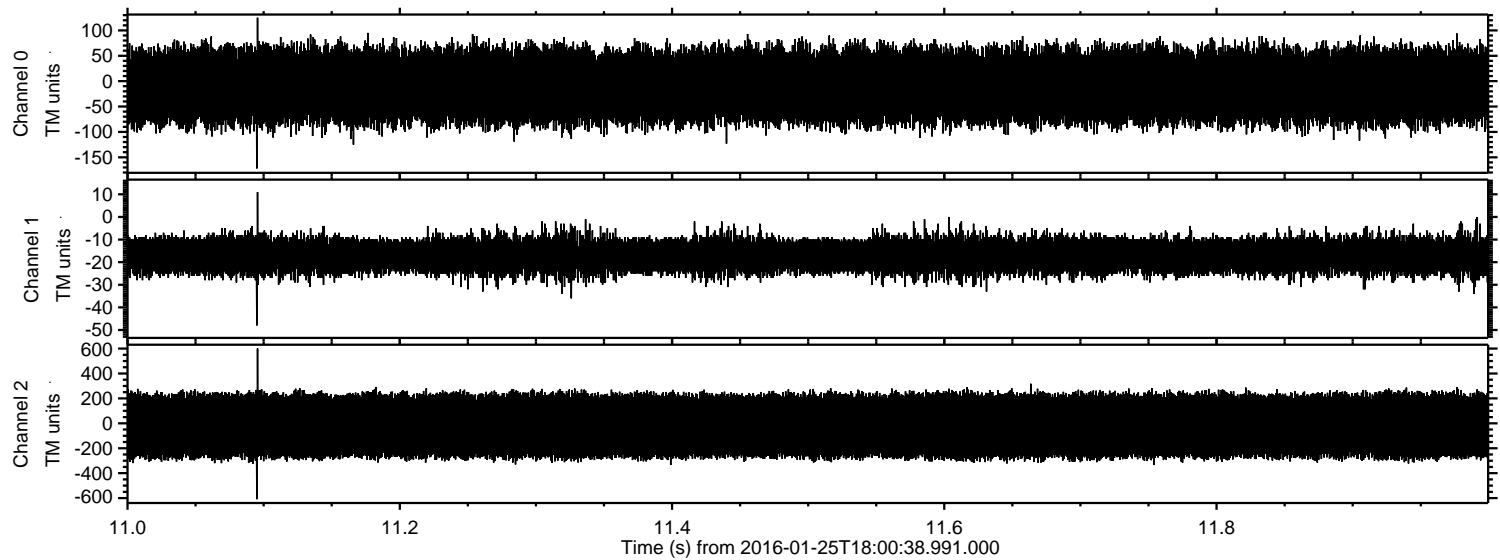


Processed Wed Apr 6 18:26:09 2016 by ELM ver.2012-10-06 from 001\_\_elm20160125\_180037\_\_dat00.bin





Processed Wed Apr 6 18:26:10 2016 by ELM ver.2012-10-06 from 001\_\_elm20160125\_180037\_\_dat00.bin



Power spectra

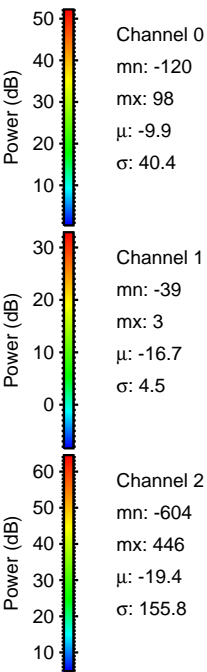
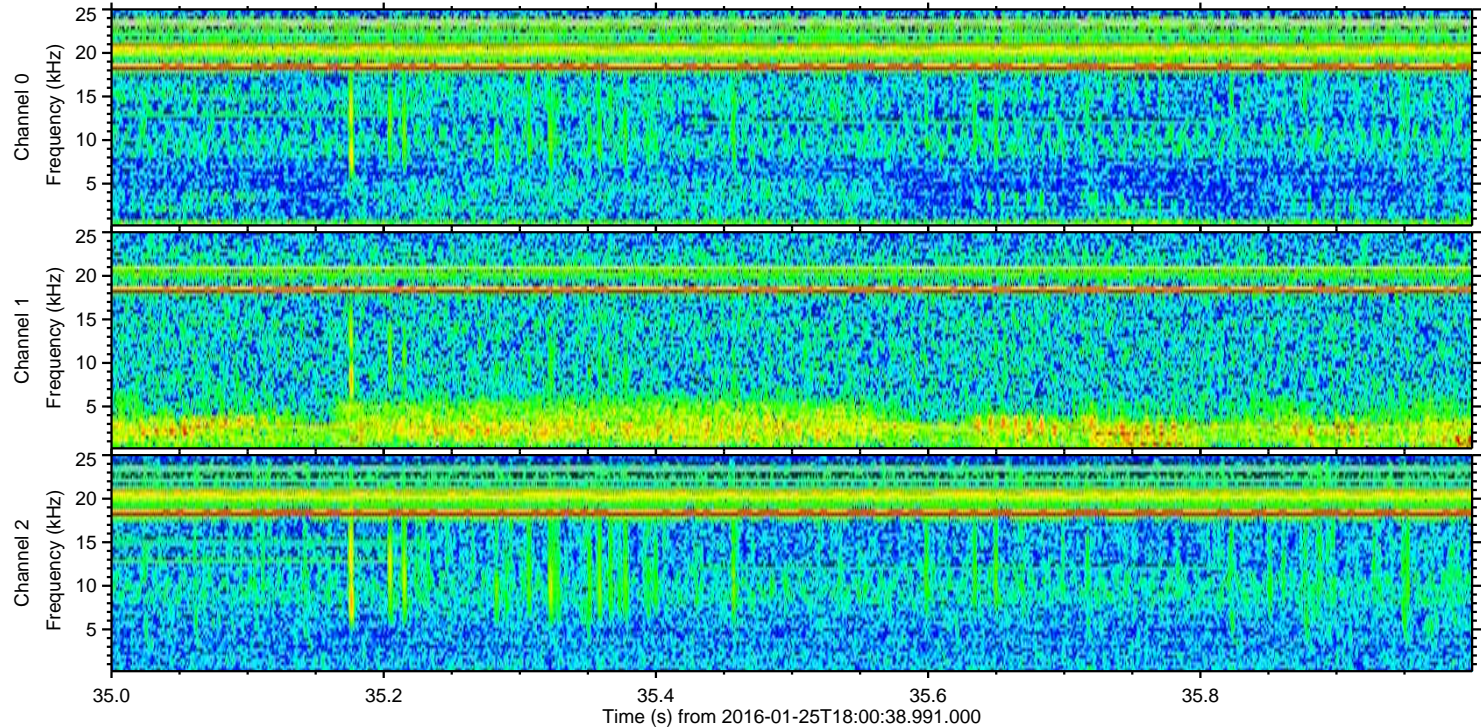
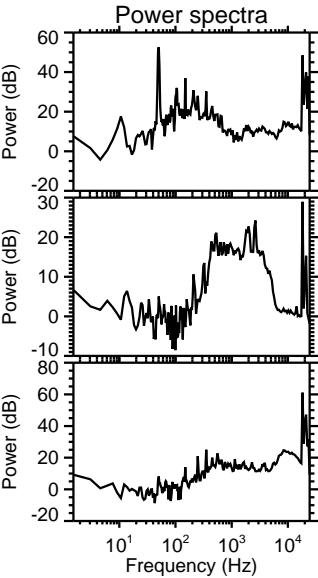
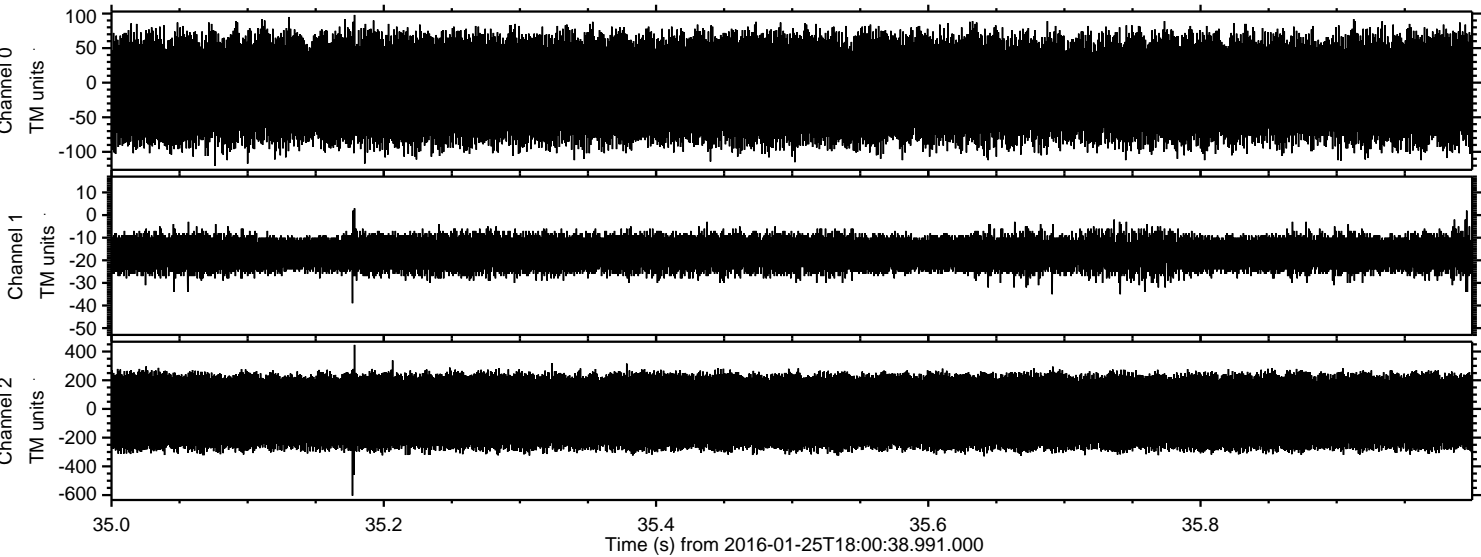
Channel 0  
mn: -172  
mx: 125  
 $\mu$ : -9.8  
 $\sigma$ : 40.0

Channel 1  
mn: -48  
mx: 11  
 $\mu$ : -16.7  
 $\sigma$ : 4.6

Channel 2  
mn: -609  
mx: 601  
 $\mu$ : -19.4  
 $\sigma$ : 153.9



Processed Wed Apr 6 18:26:11 2016 by ELM ver.2012-10-06 from 001\_\_elm20160125\_180037\_\_dat00.bin





Processed Wed Apr 6 18:26:12 2016 by ELM ver.2012-10-06 from 001\_\_elm20160125\_180037\_\_dat00.bin

