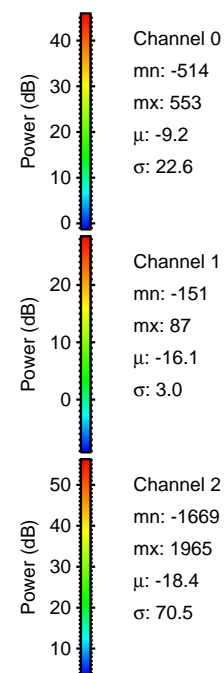
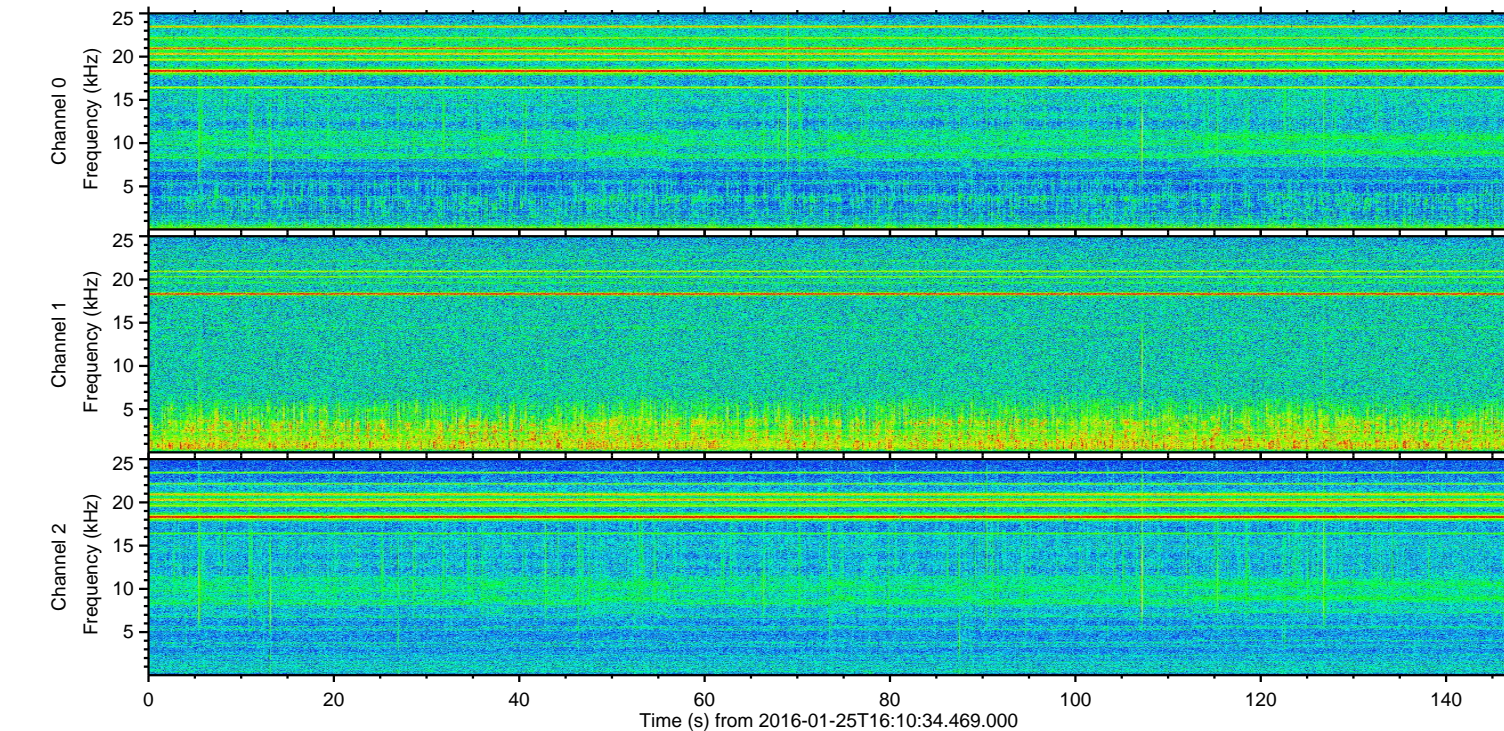
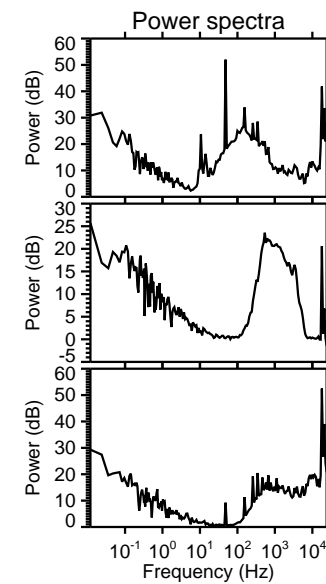
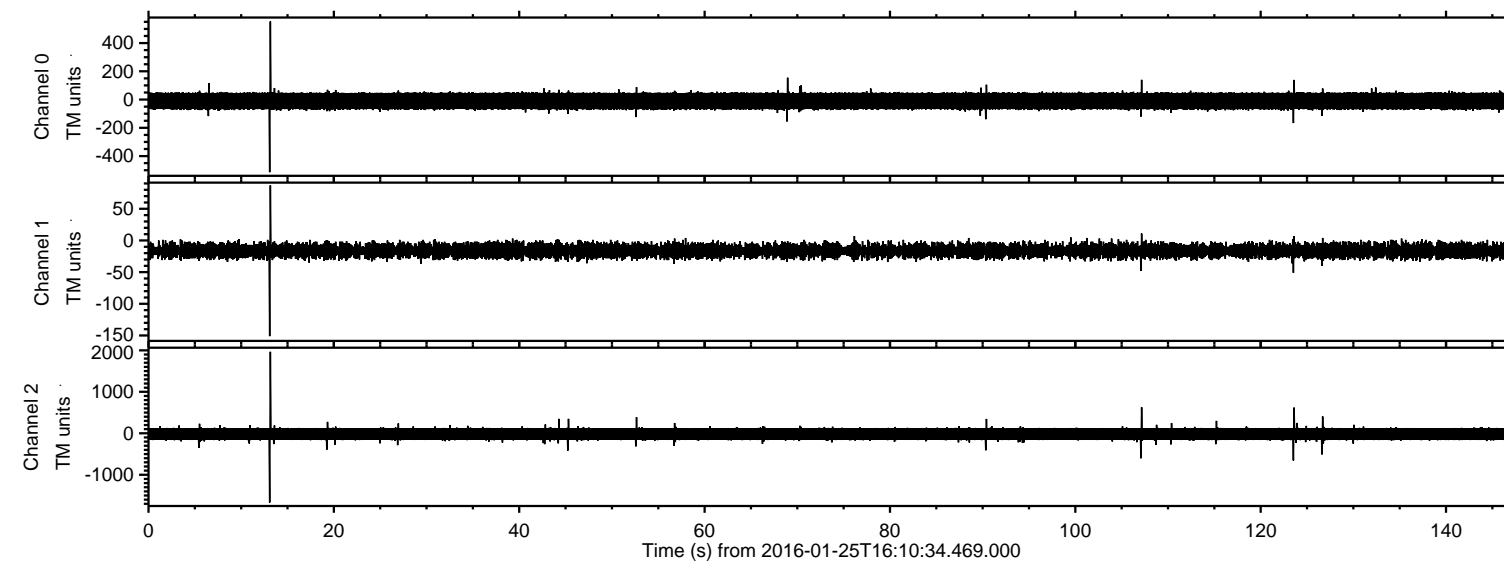
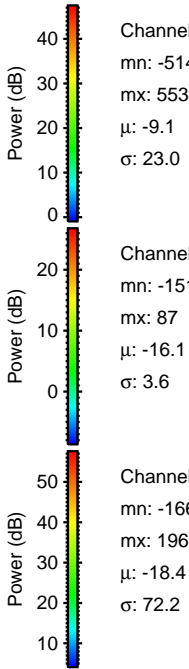
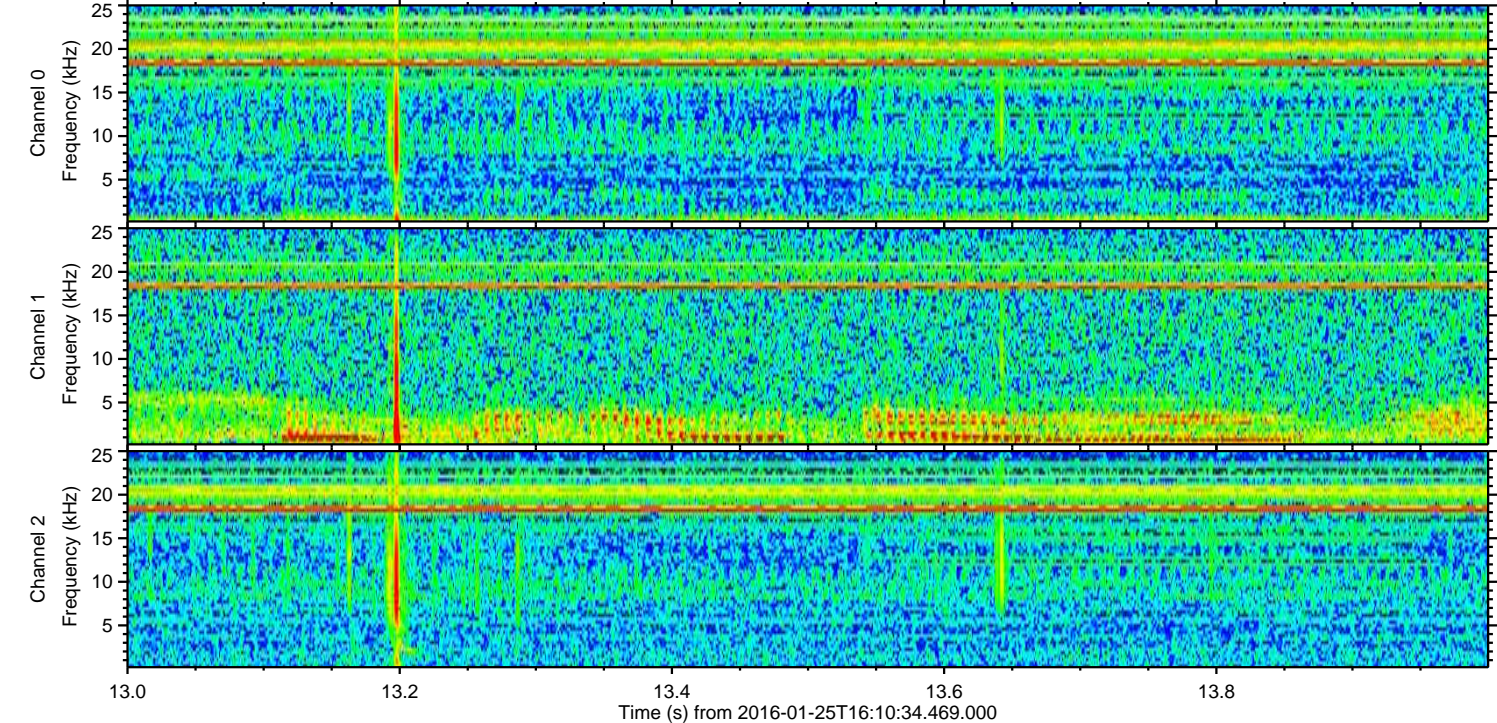
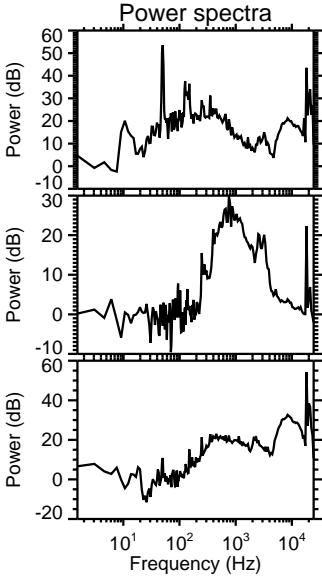
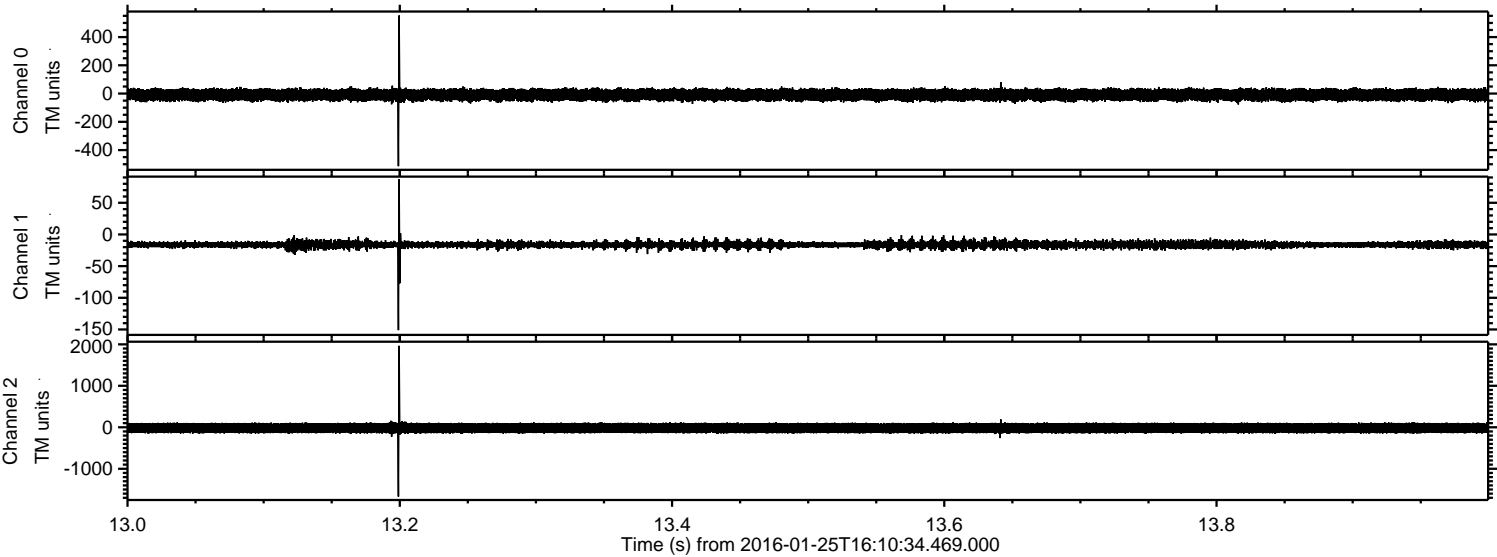


ELMAVAN 3D WAVEFORMS (Measured data sampled at 50 kHz) 51000 packets of 144 samples from 2016-01-25T16:10:34.469.000.

Processed Wed Apr 6 18:03:50 2016 by ELM ver.2012-10-06 from 001__elm20160125_161033__dat00.bin

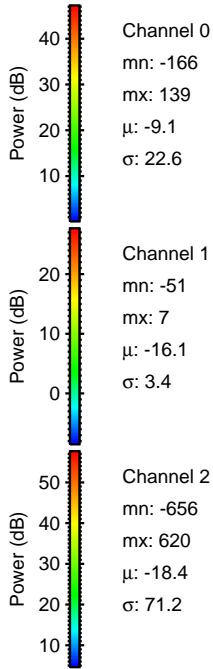
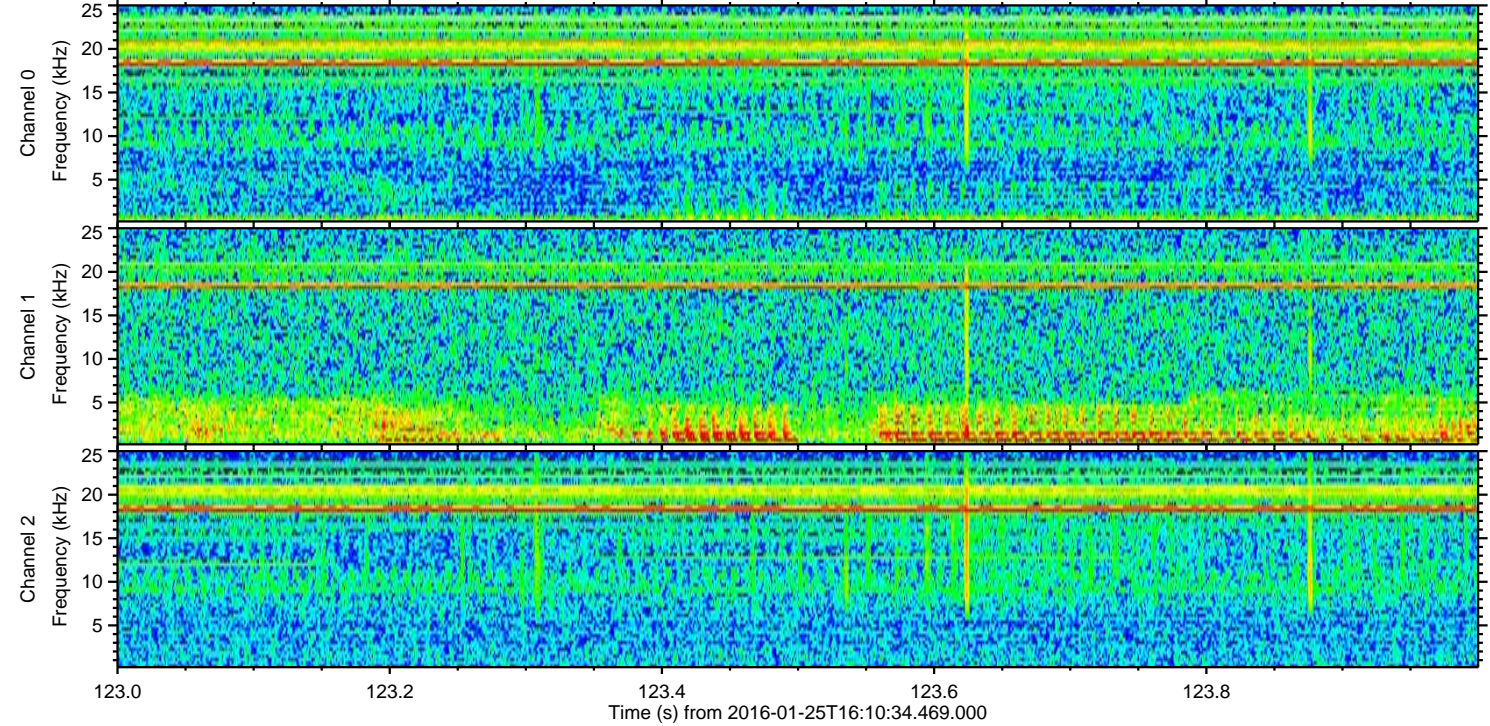
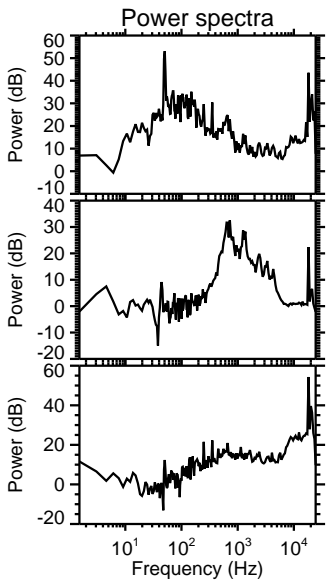
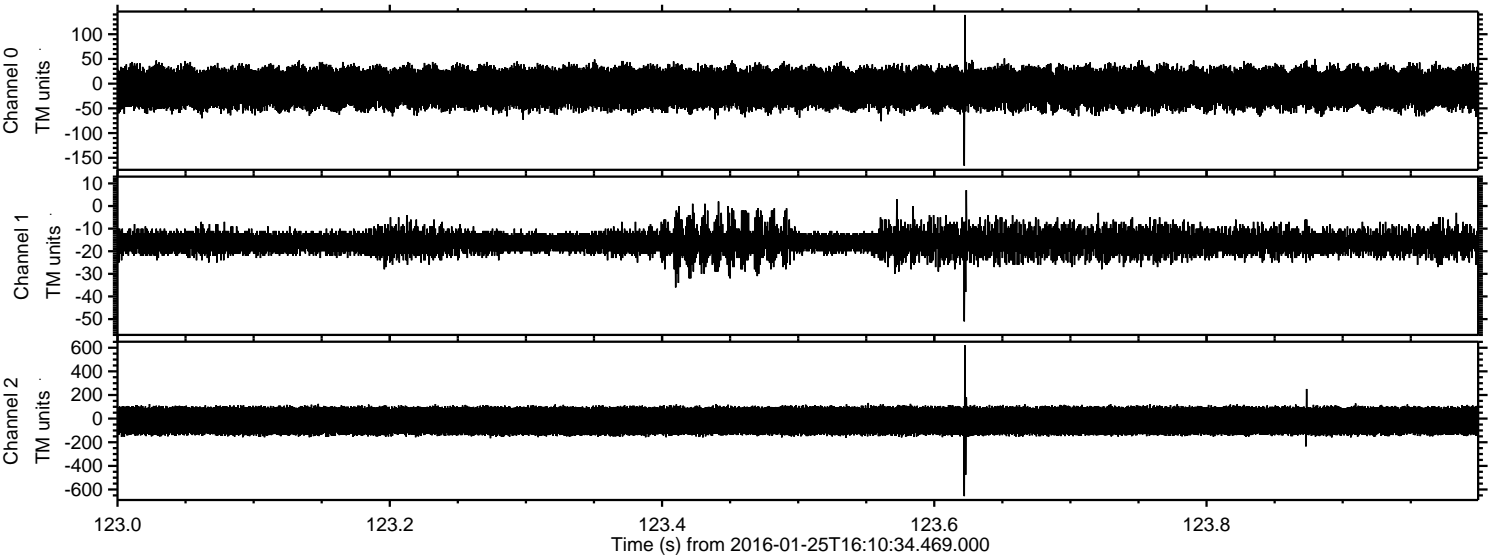


Processed Wed Apr 6 18:04:03 2016 by ELM ver.2012-10-06 from 001__elm20160125_161033__dat00.bin



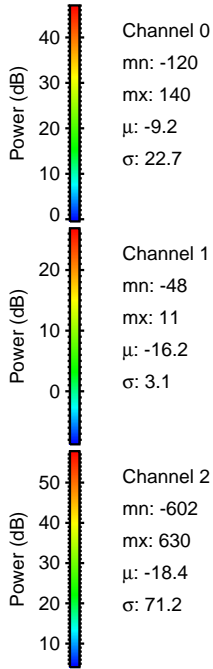
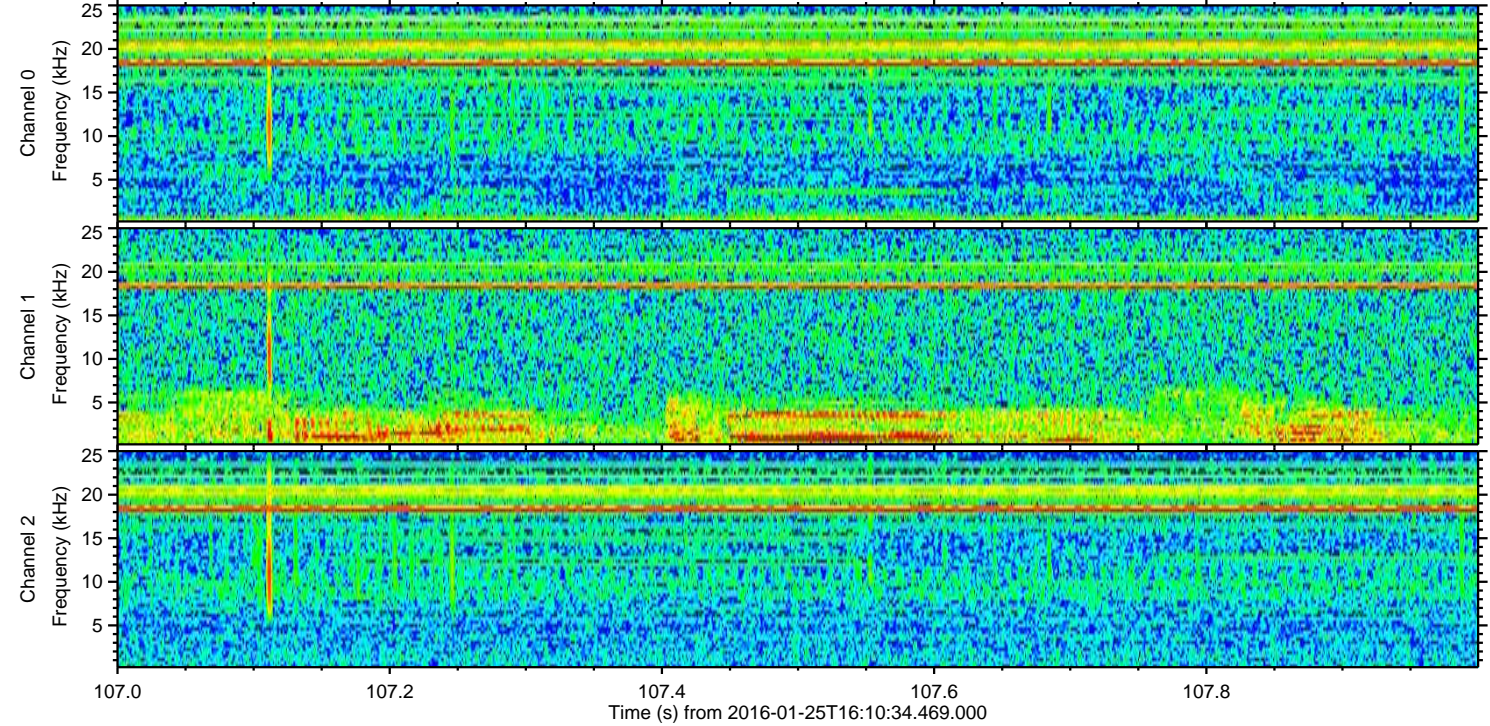
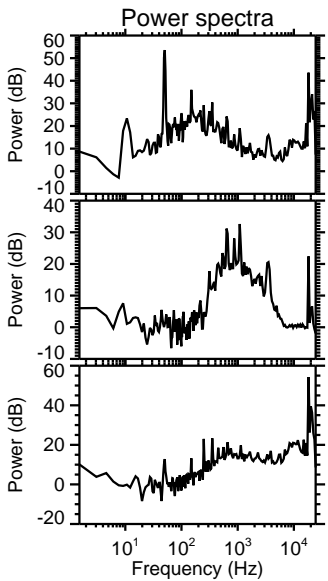
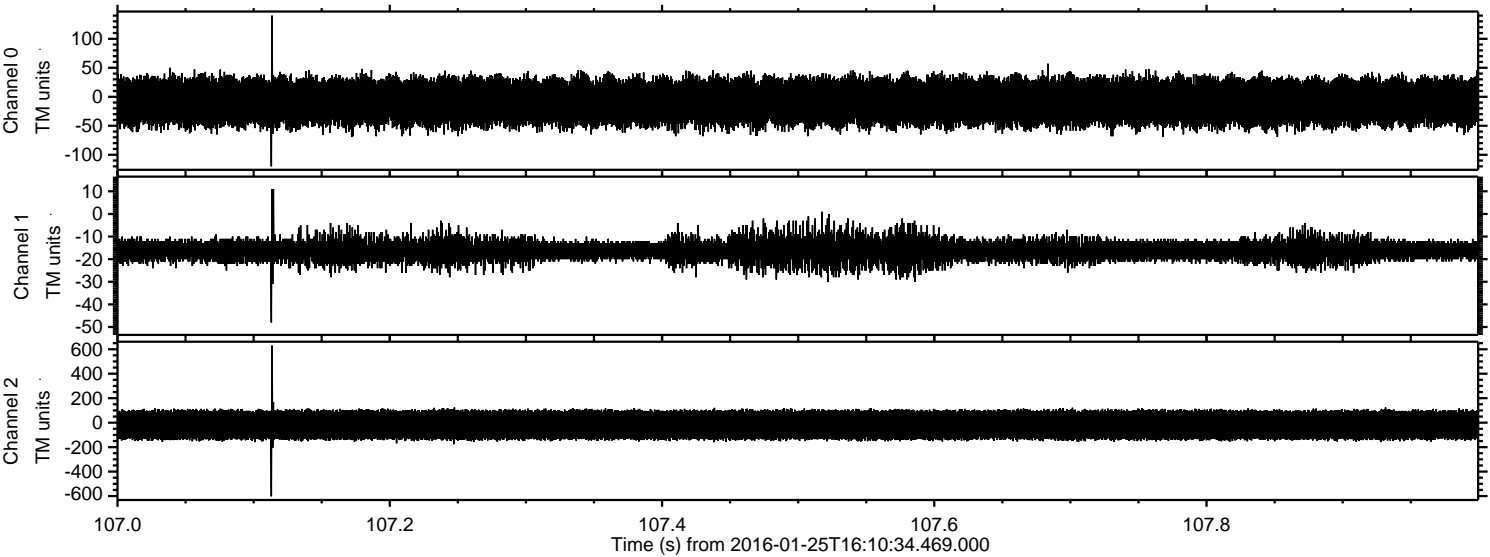
ELMAVAN 3D WAVEFORMS (Measured data sampled at 50 kHz) 51000 packets of 144 samples from 2016-01-25T16:10:34.469.000. Part 124/147

Processed Wed Apr 6 18:04:04 2016 by ELM ver.2012-10-06 from 001__elm20160125_161033__dat00.bin



ELMAVAN 3D WAVEFORMS (Measured data sampled at 50 kHz) 51000 packets of 144 samples from 2016-01-25T16:10:34.469.000. Part 108/147

Processed Wed Apr 6 18:04:05 2016 by ELM ver.2012-10-06 from 001__elm20160125_161033__dat00.bin



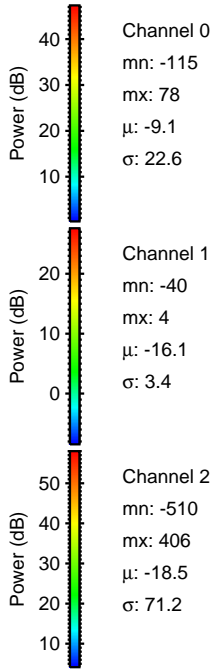
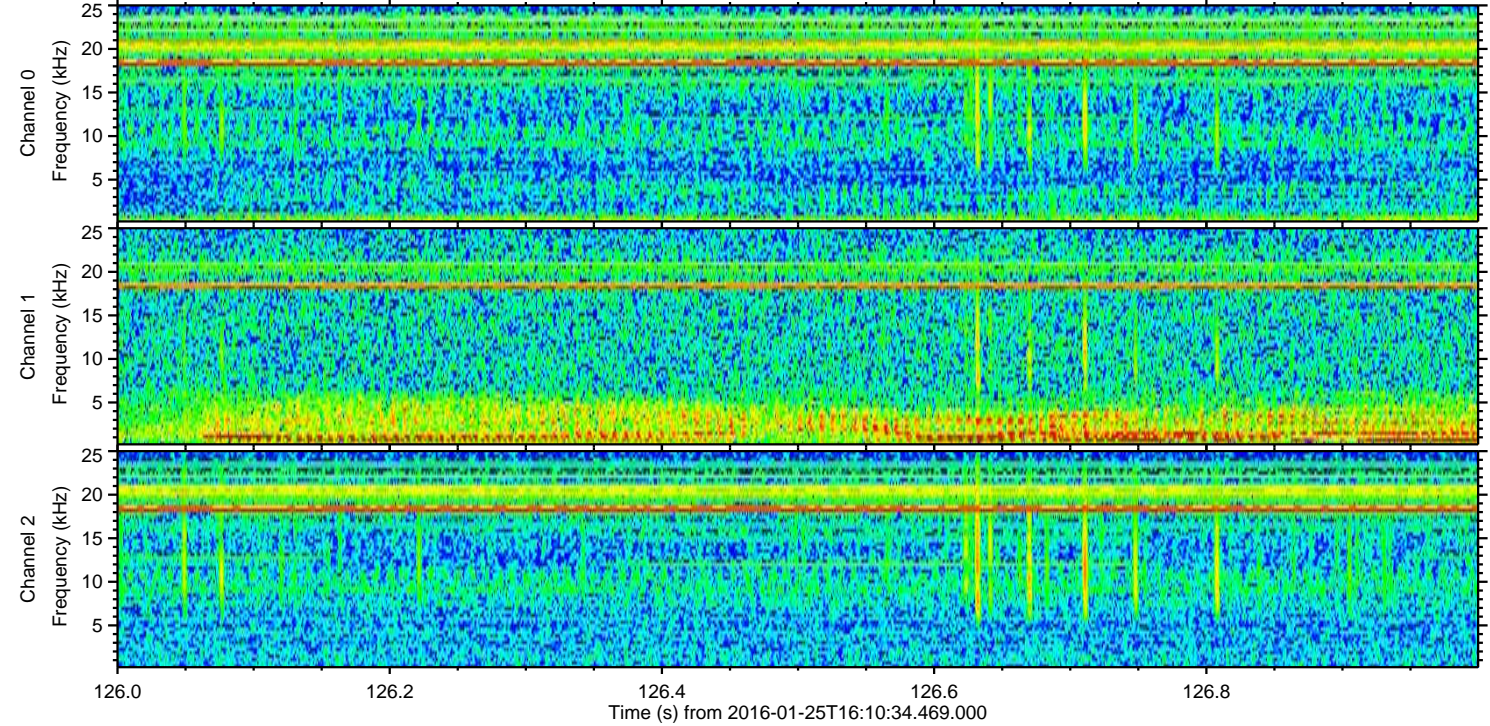
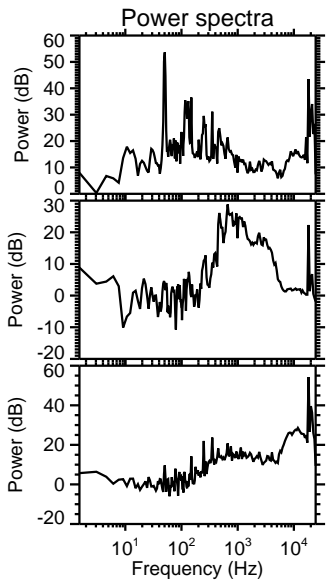
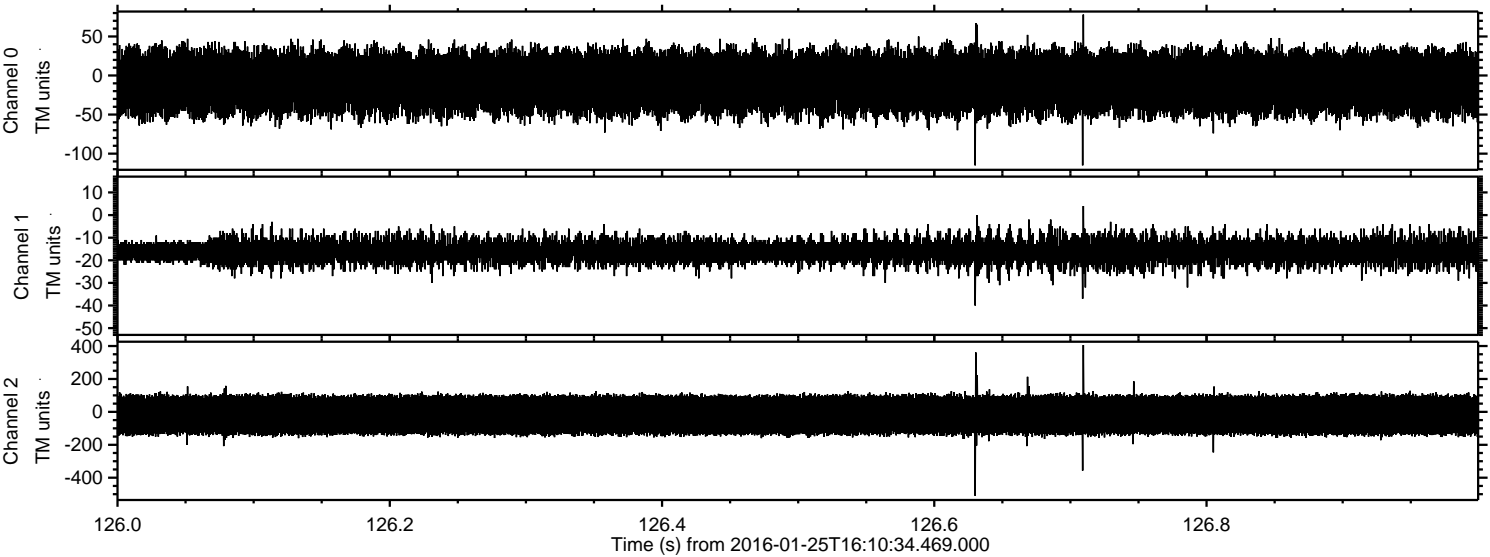
Channel 0
mn: -120
mx: 140
 μ : -9.2
 σ : 22.7

Channel 1
mn: -48
mx: 11
 μ : -16.2
 σ : 3.1

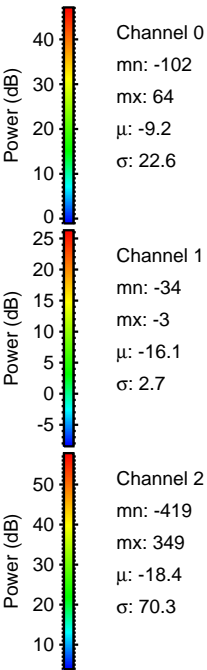
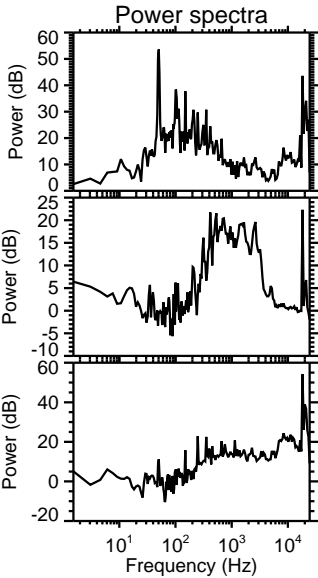
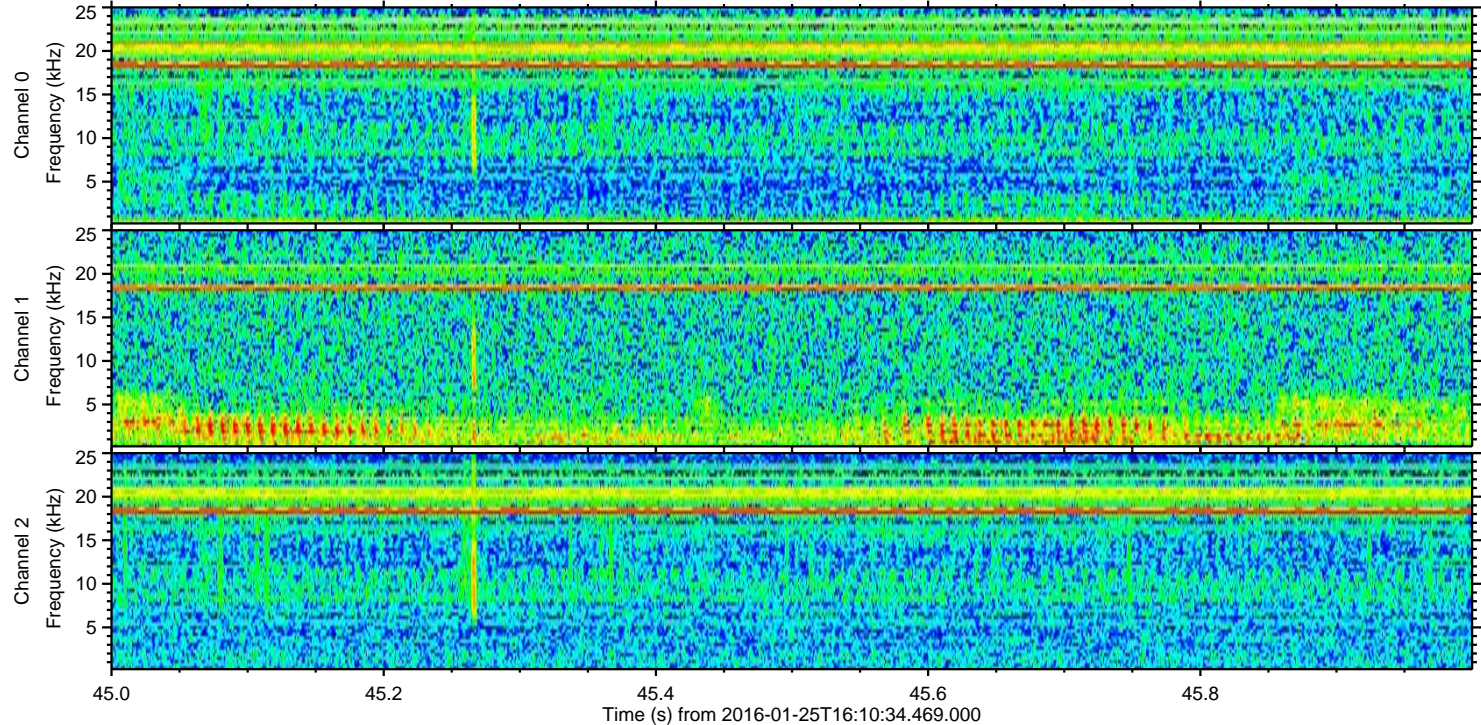
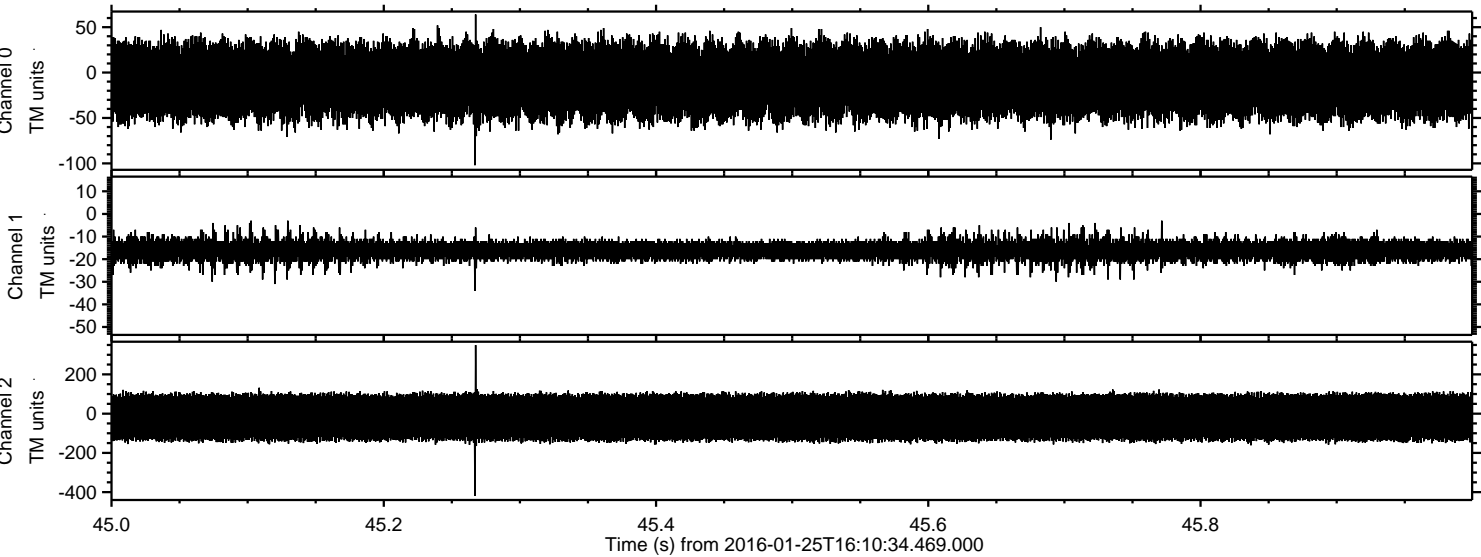
Channel 2
mn: -602
mx: 630
 μ : -18.4
 σ : 71.2

ELMAVAN 3D WAVEFORMS (Measured data sampled at 50 kHz) 51000 packets of 144 samples from 2016-01-25T16:10:34.469.000. Part 127/147

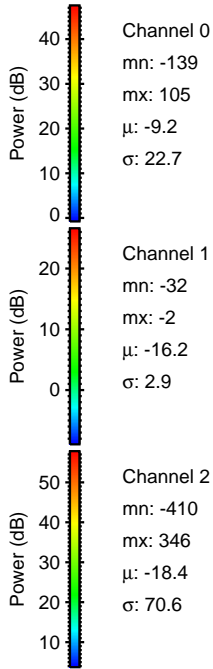
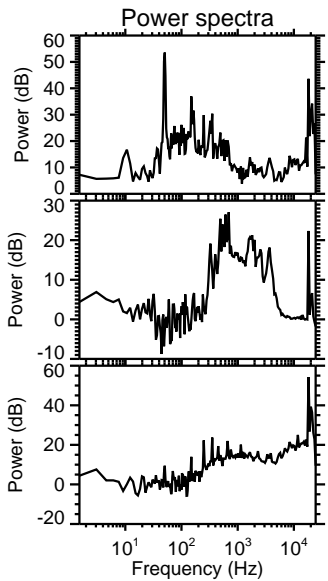
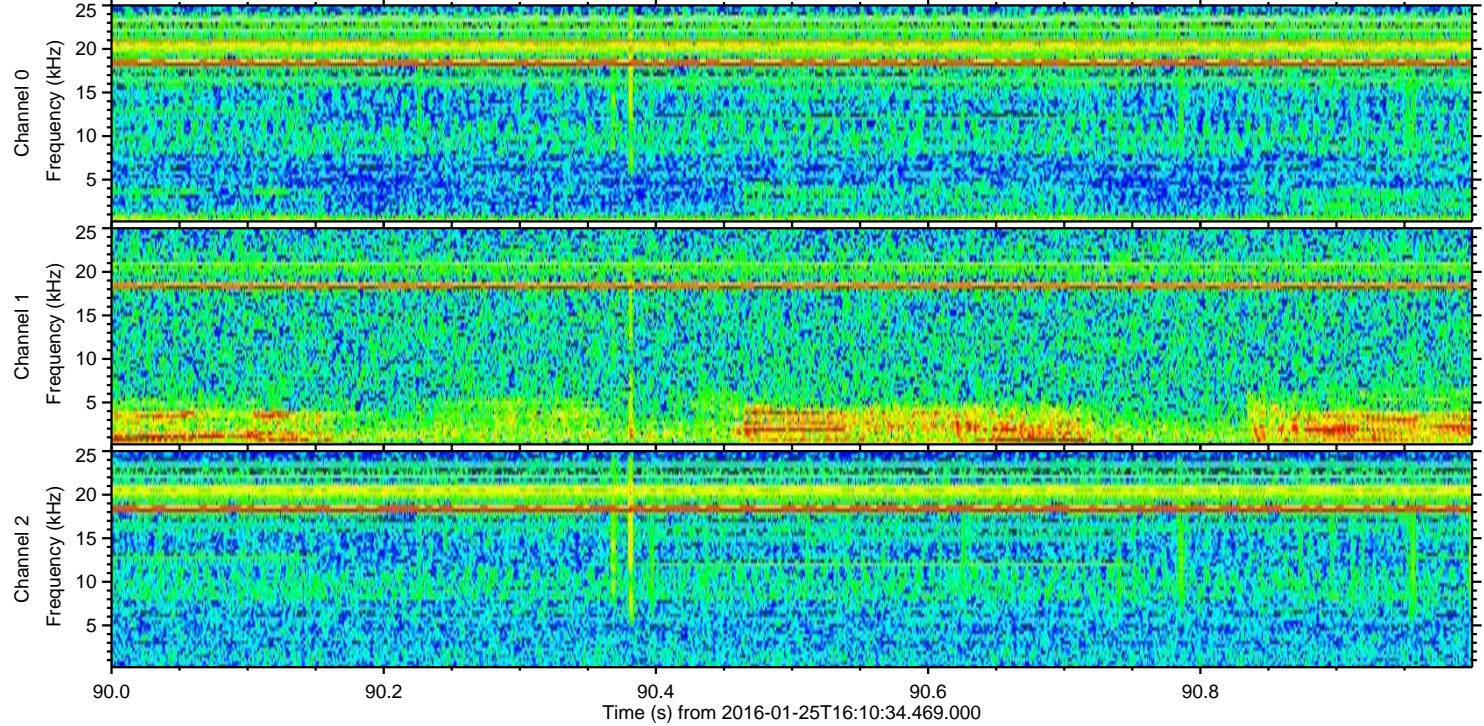
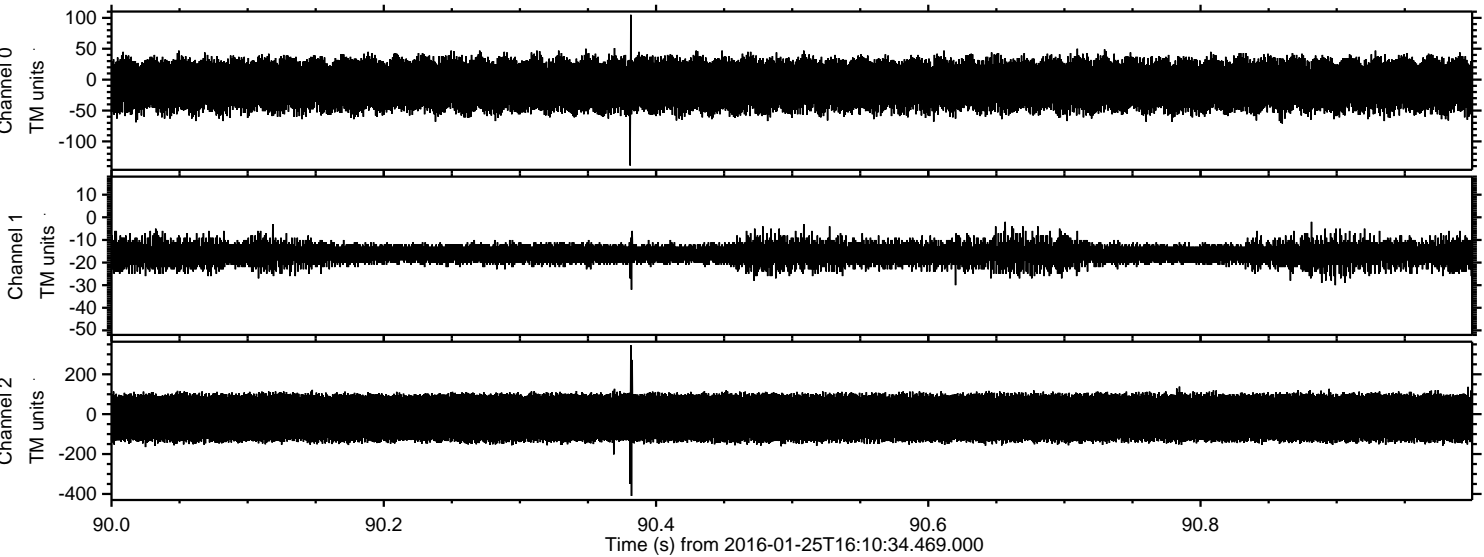
Processed Wed Apr 6 18:04:06 2016 by ELM ver.2012-10-06 from 001__elm20160125_161033__dat00.bin



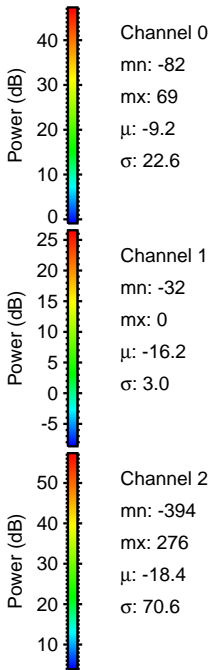
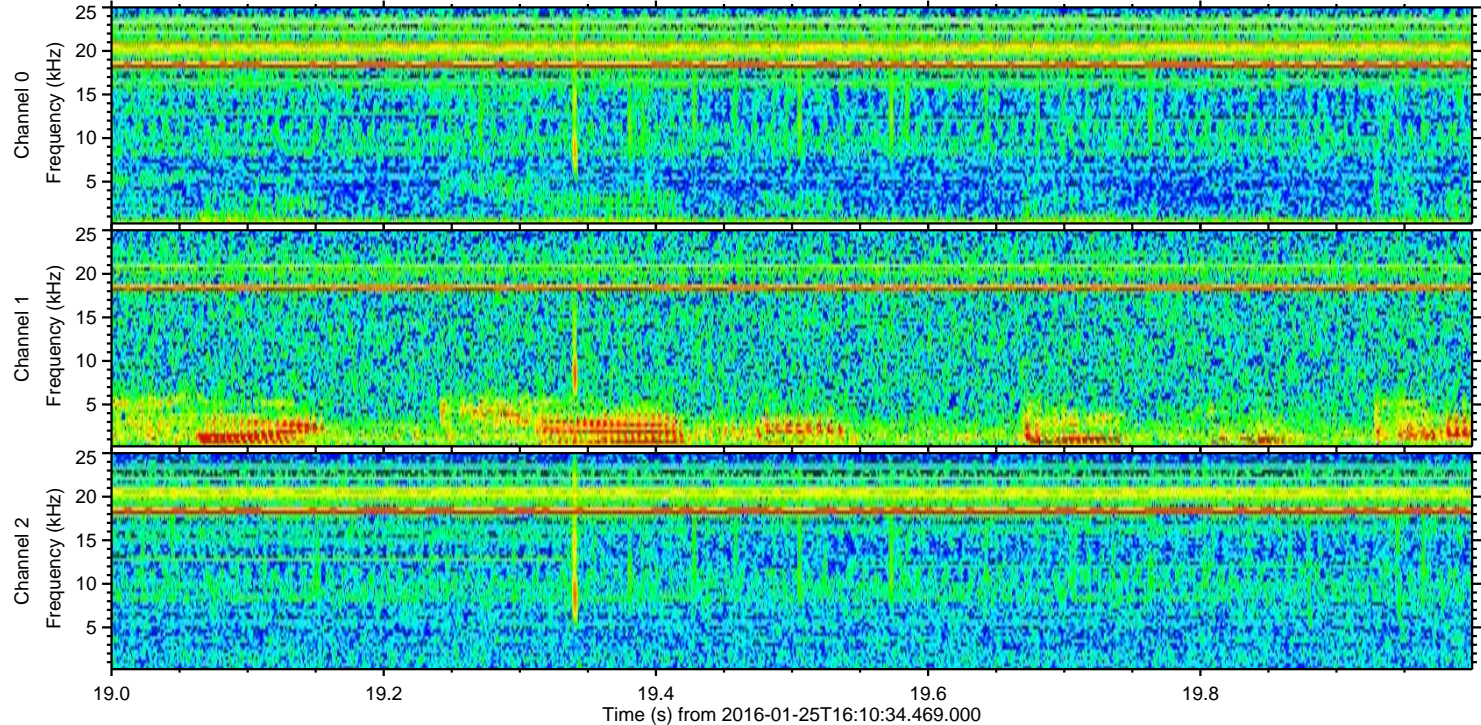
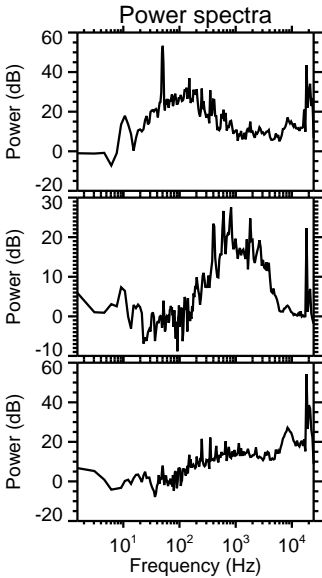
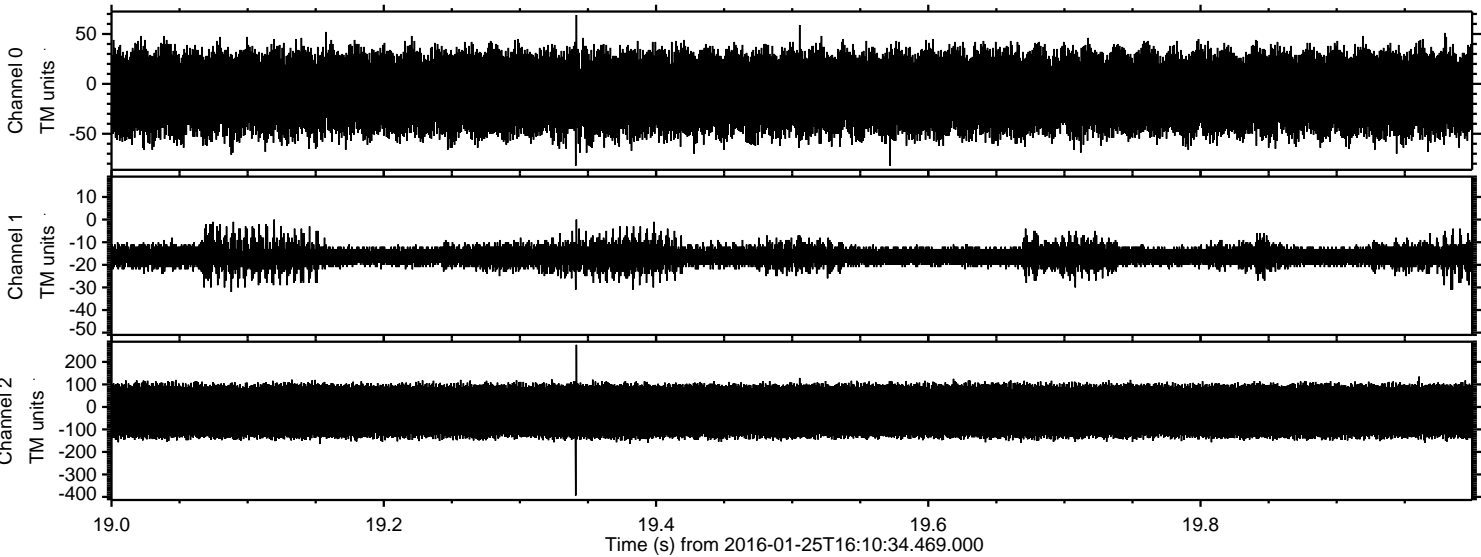
Processed Wed Apr 6 18:04:07 2016 by ELM ver.2012-10-06 from 001__elm20160125_161033__dat00.bin



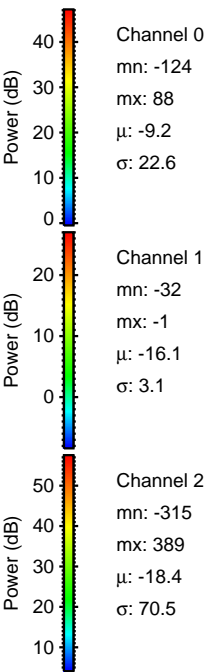
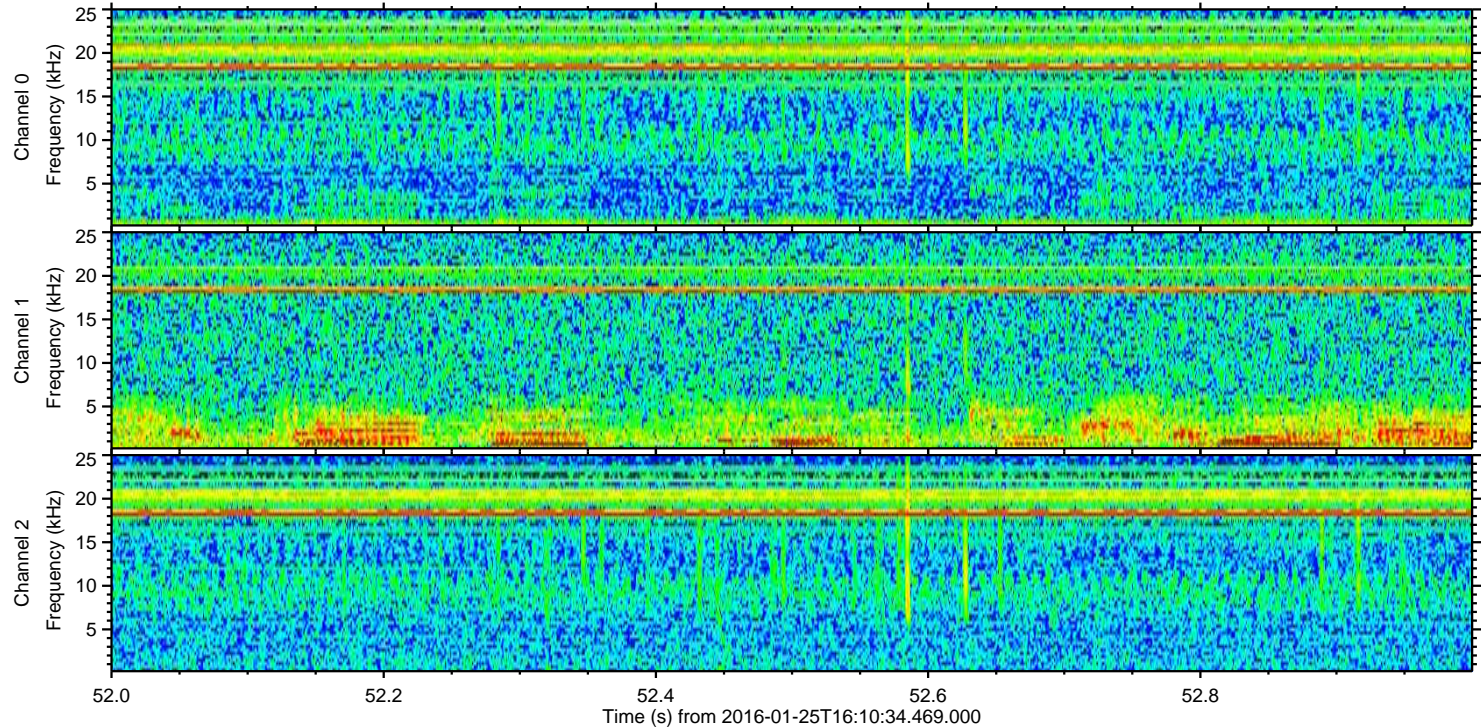
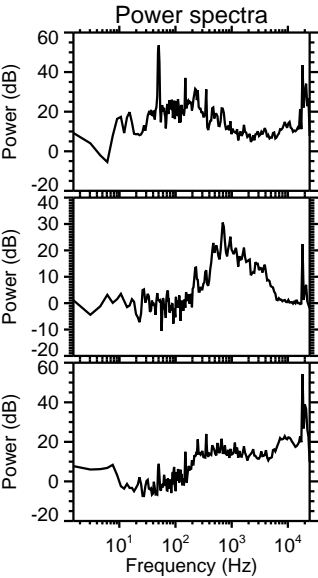
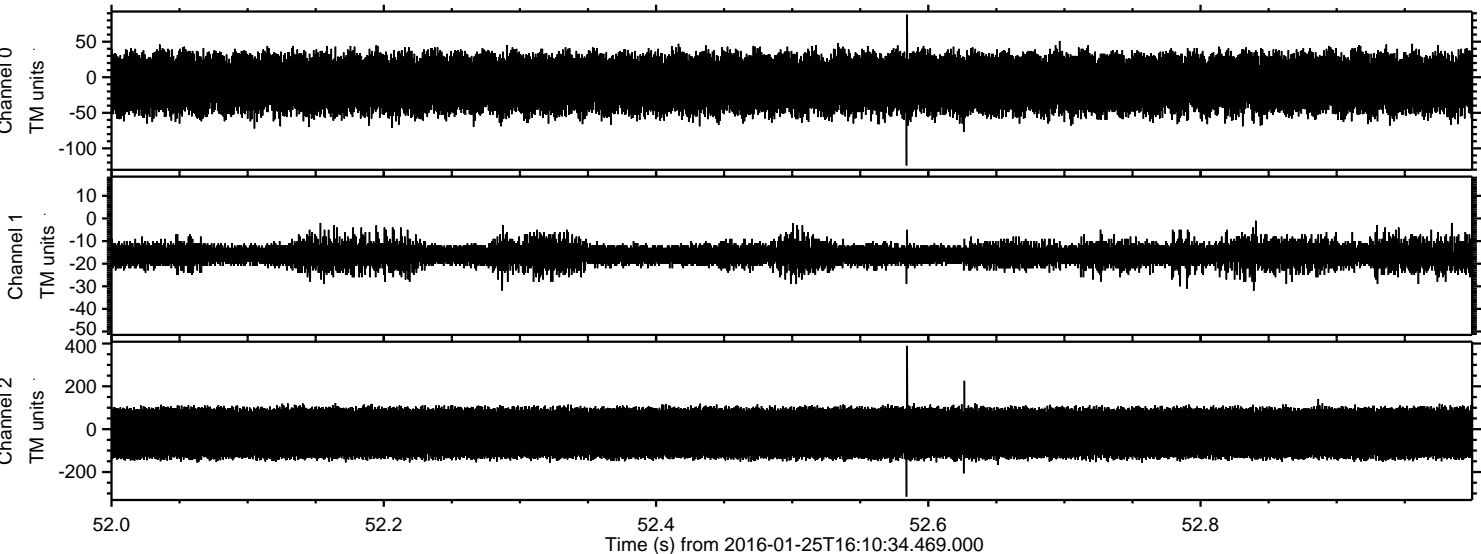
Processed Wed Apr 6 18:04:07 2016 by ELM ver.2012-10-06 from 001__elm20160125_161033__dat00.bin



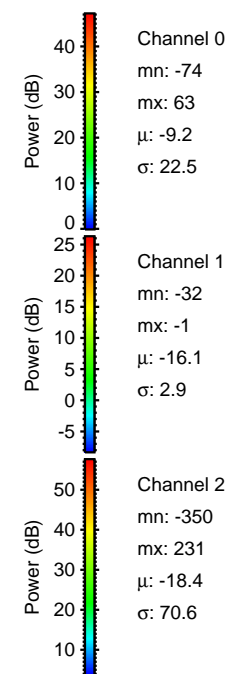
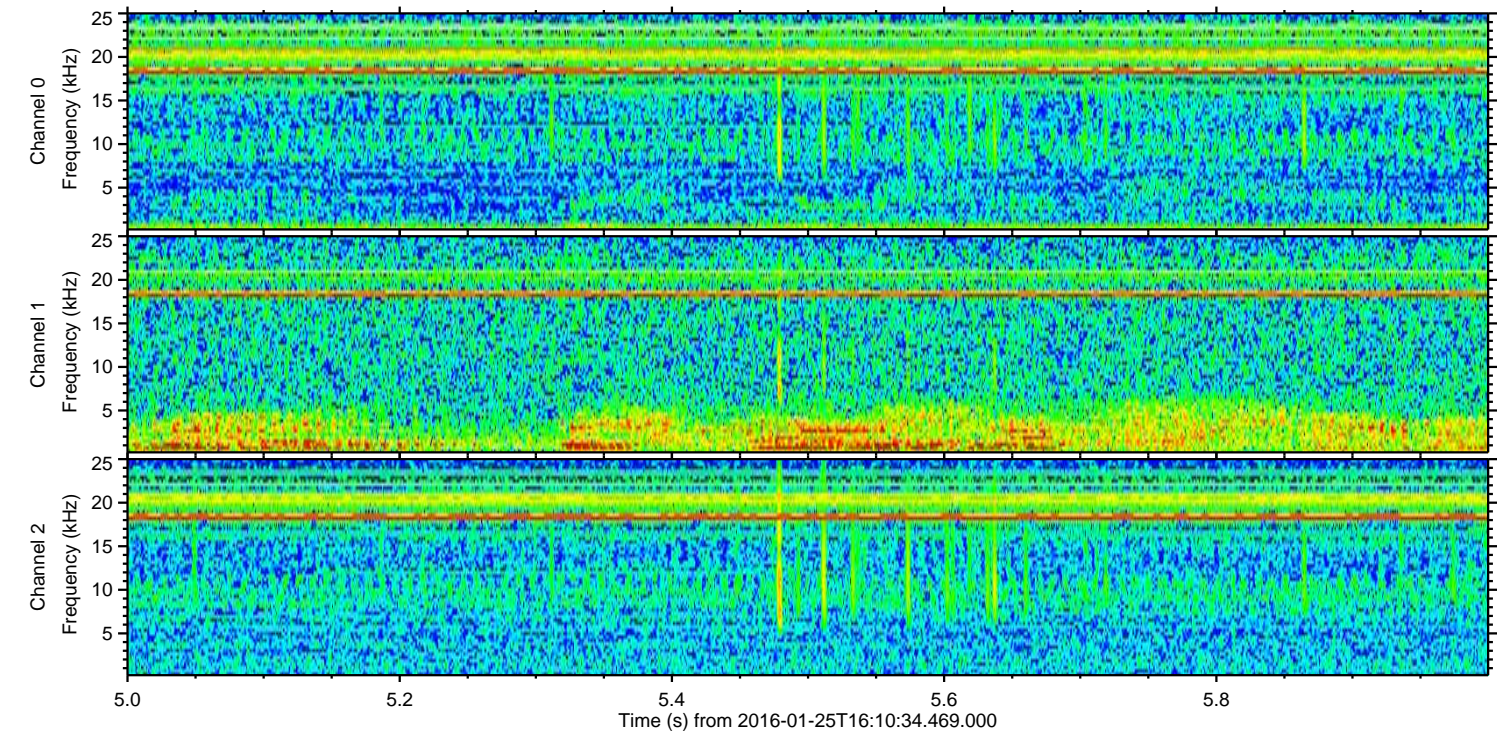
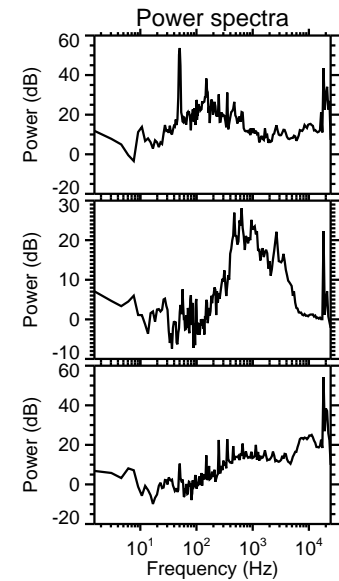
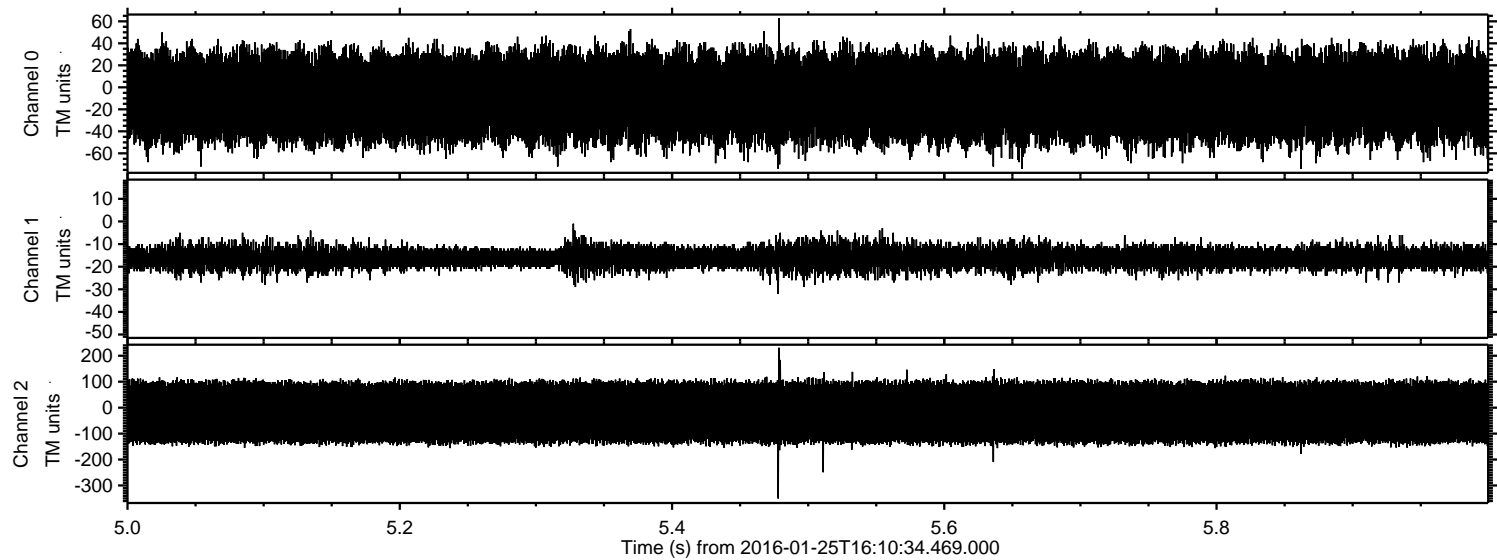
Processed Wed Apr 6 18:04:08 2016 by ELM ver.2012-10-06 from 001__elm20160125_161033__dat00.bin



Processed Wed Apr 6 18:04:09 2016 by ELM ver.2012-10-06 from 001__elm20160125_161033__dat00.bin



Processed Wed Apr 6 18:04:10 2016 by ELM ver.2012-10-06 from 001__elm20160125_161033__dat00.bin



Processed Wed Apr 6 18:04:11 2016 by ELM ver.2012-10-06 from 001__elm20160125_161033__dat00.bin

