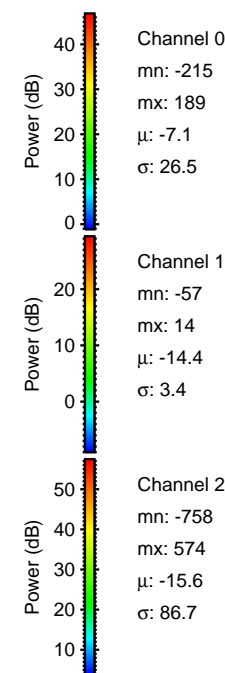
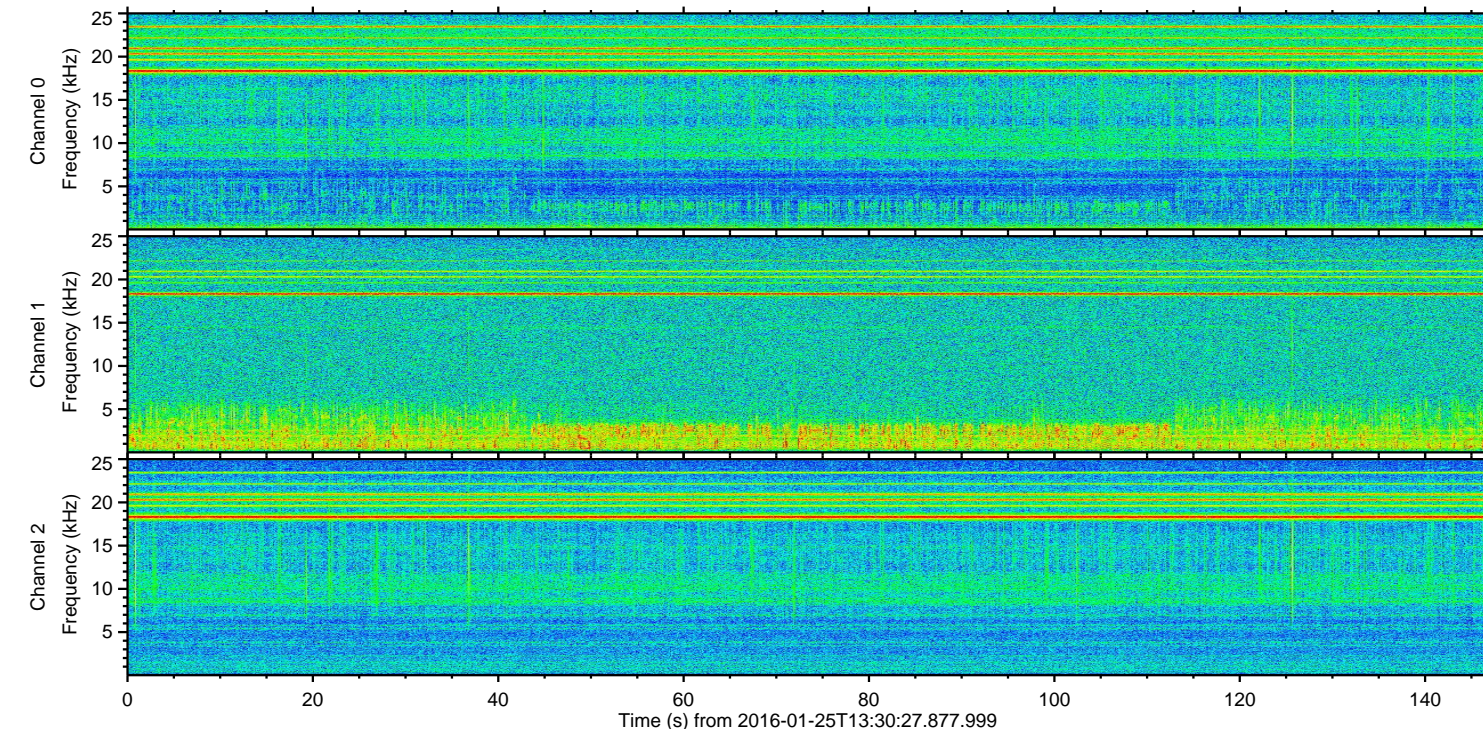
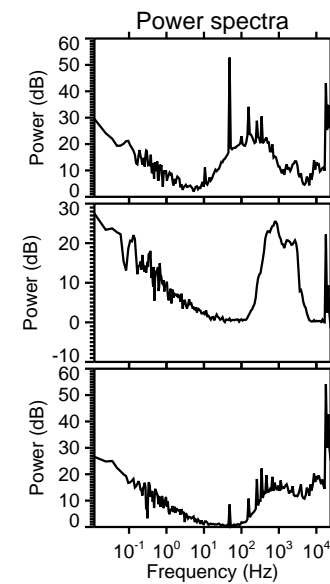
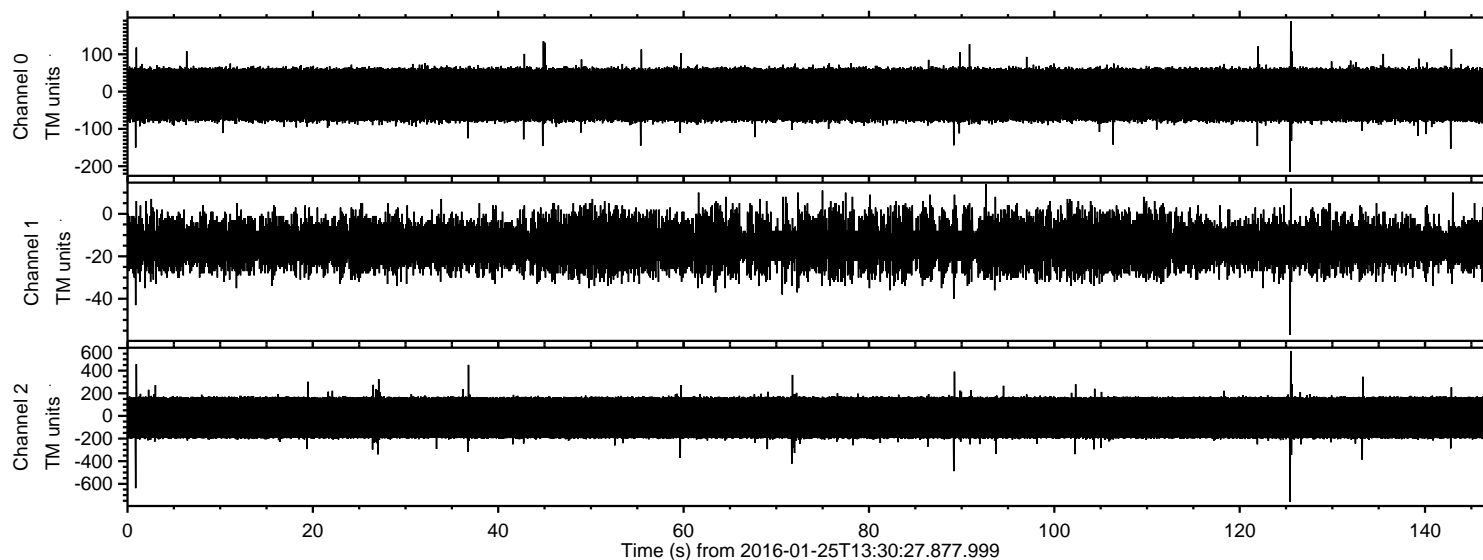


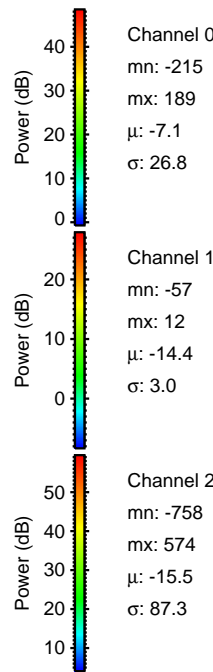
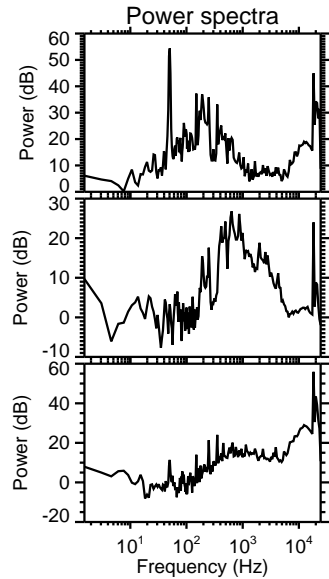
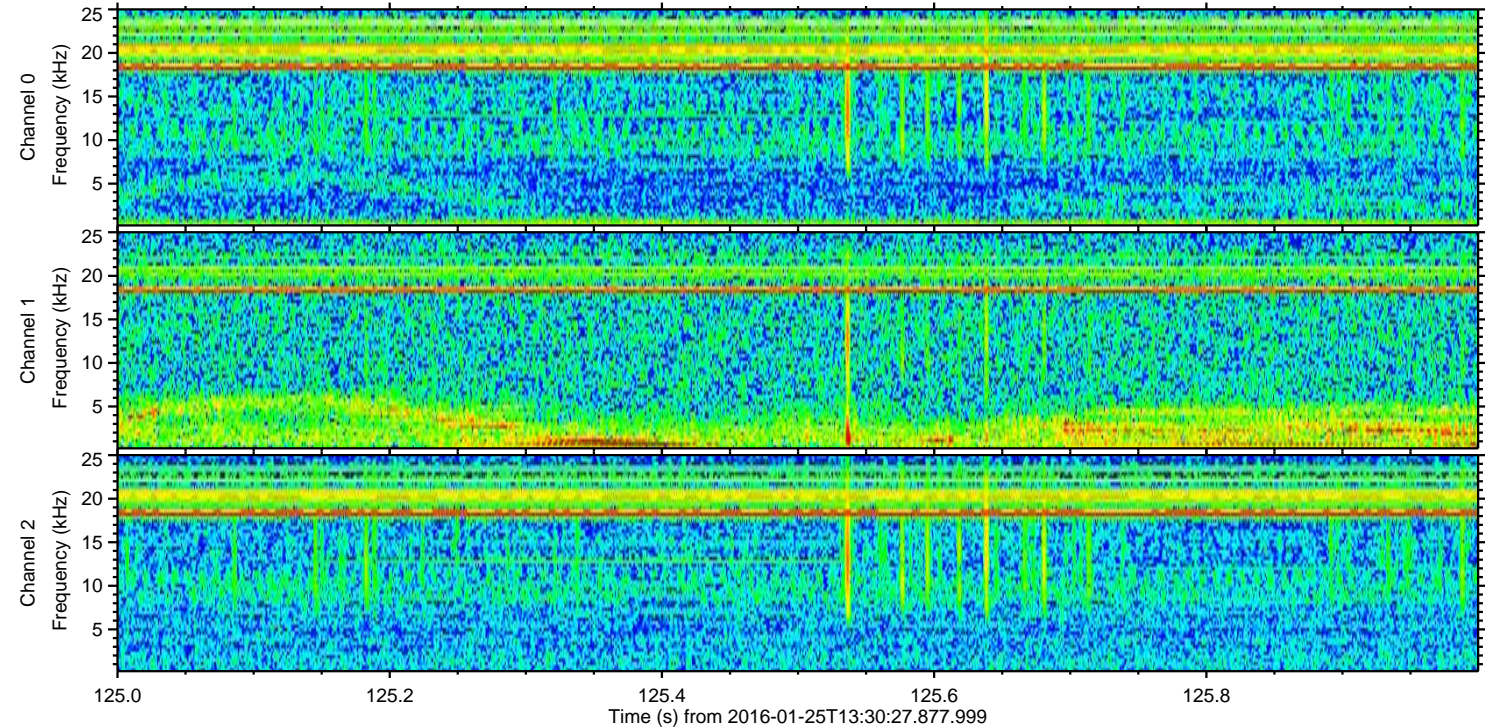
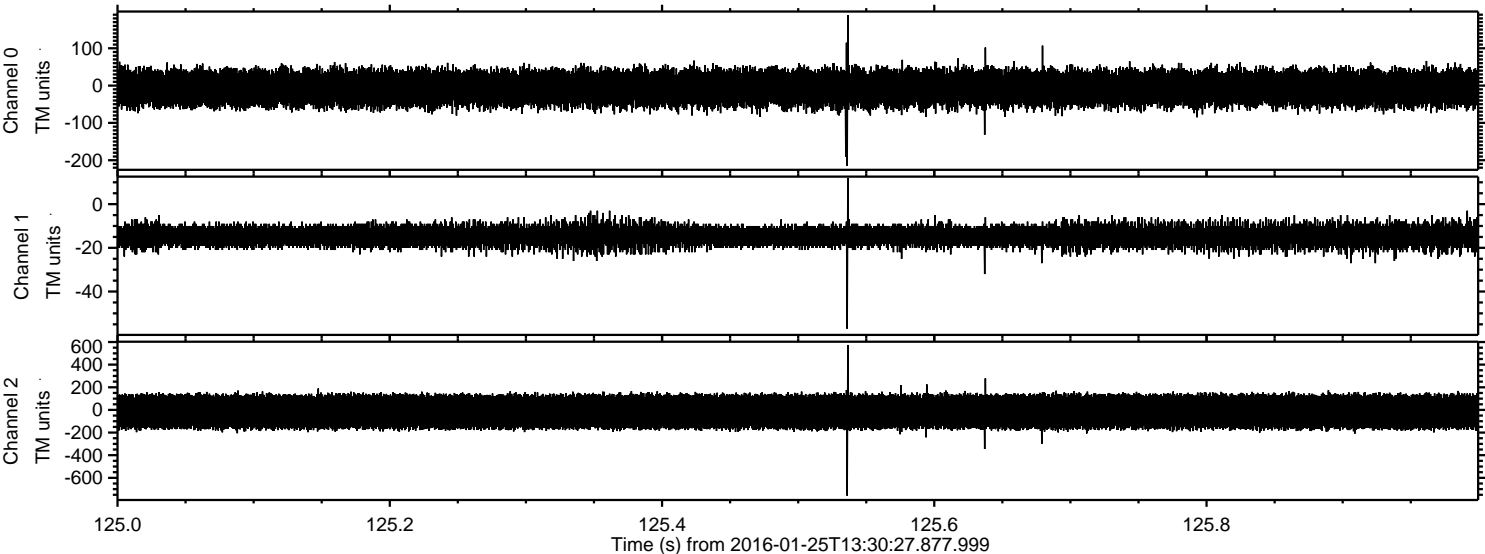
ELMAVAN 3D WAVEFORMS (Measured data sampled at 50 kHz) 51000 packets of 144 samples from 2016-01-25T13:30:27.877.999.

Processed Wed Apr 6 17:31:55 2016 by ELM ver.2012-10-06 from 001__elm20160125_133026__dat00.bin



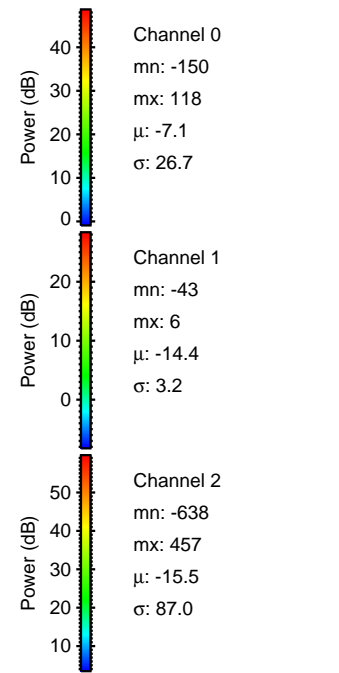
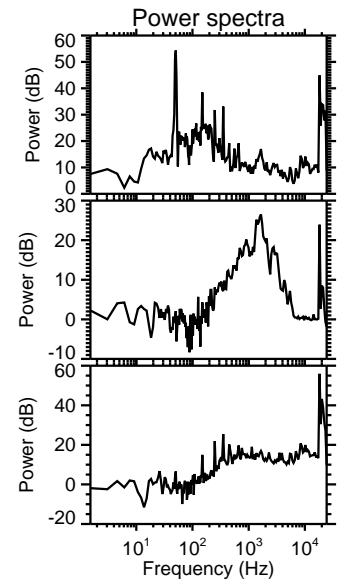
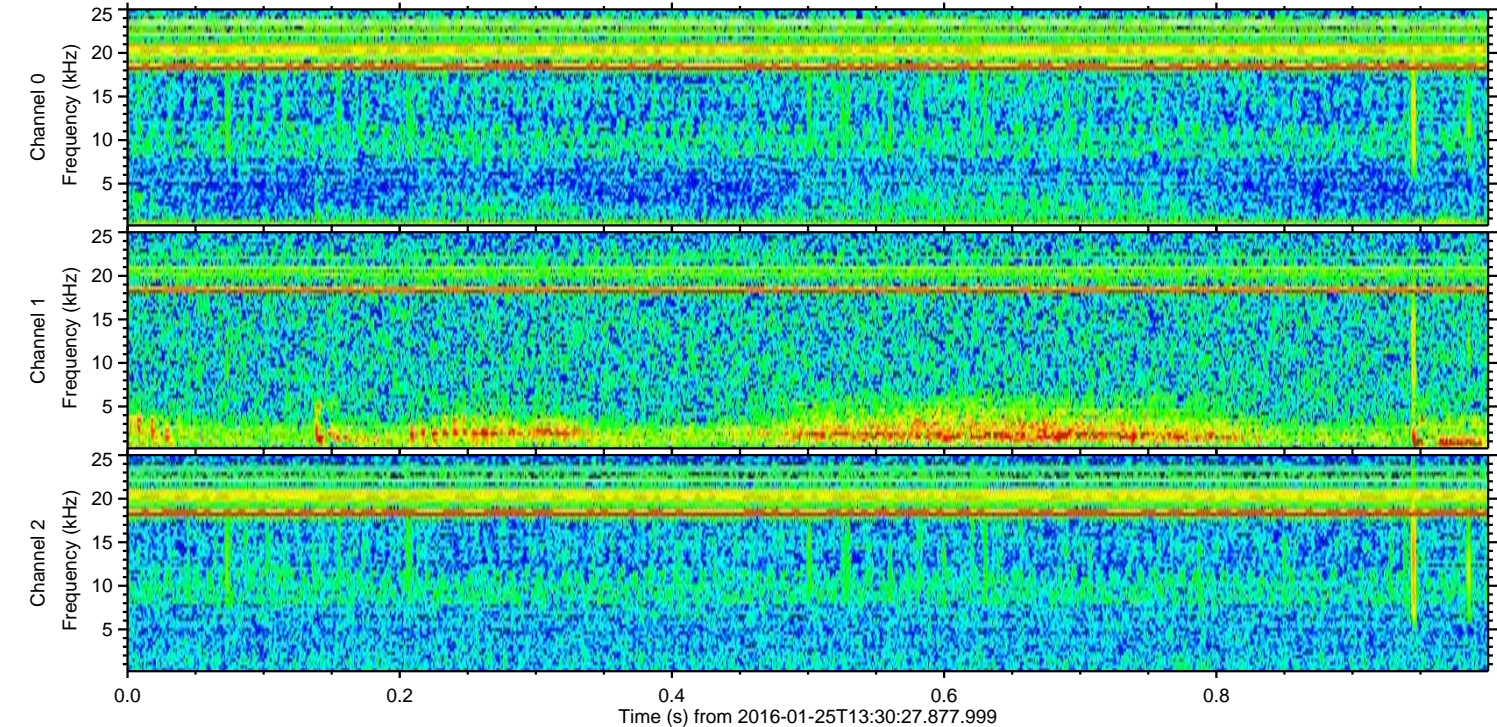
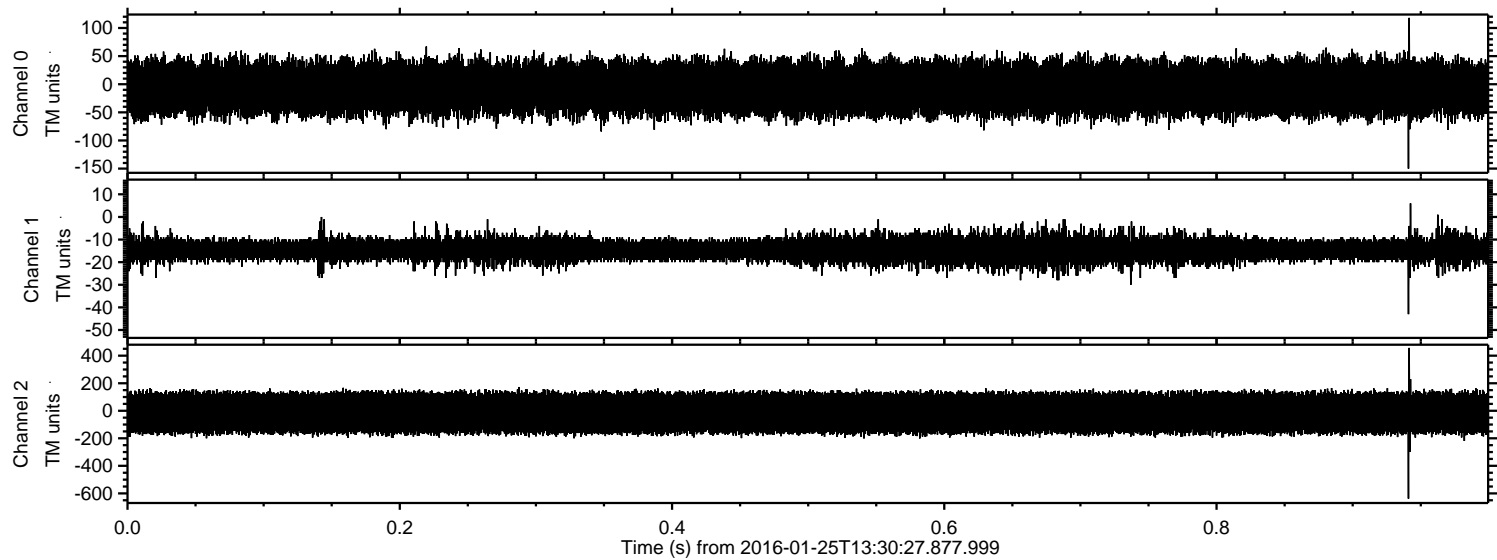
ELMAVAN 3D WAVEFORMS (Measured data sampled at 50 kHz) 51000 packets of 144 samples from 2016-01-25T13:30:27.877.999. Part 126/147

Processed Wed Apr 6 17:32:07 2016 by ELM ver.2012-10-06 from 001__elm20160125_133026__dat00.bin

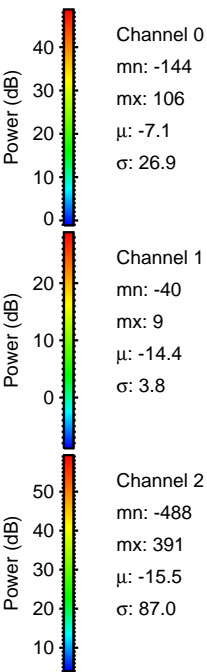
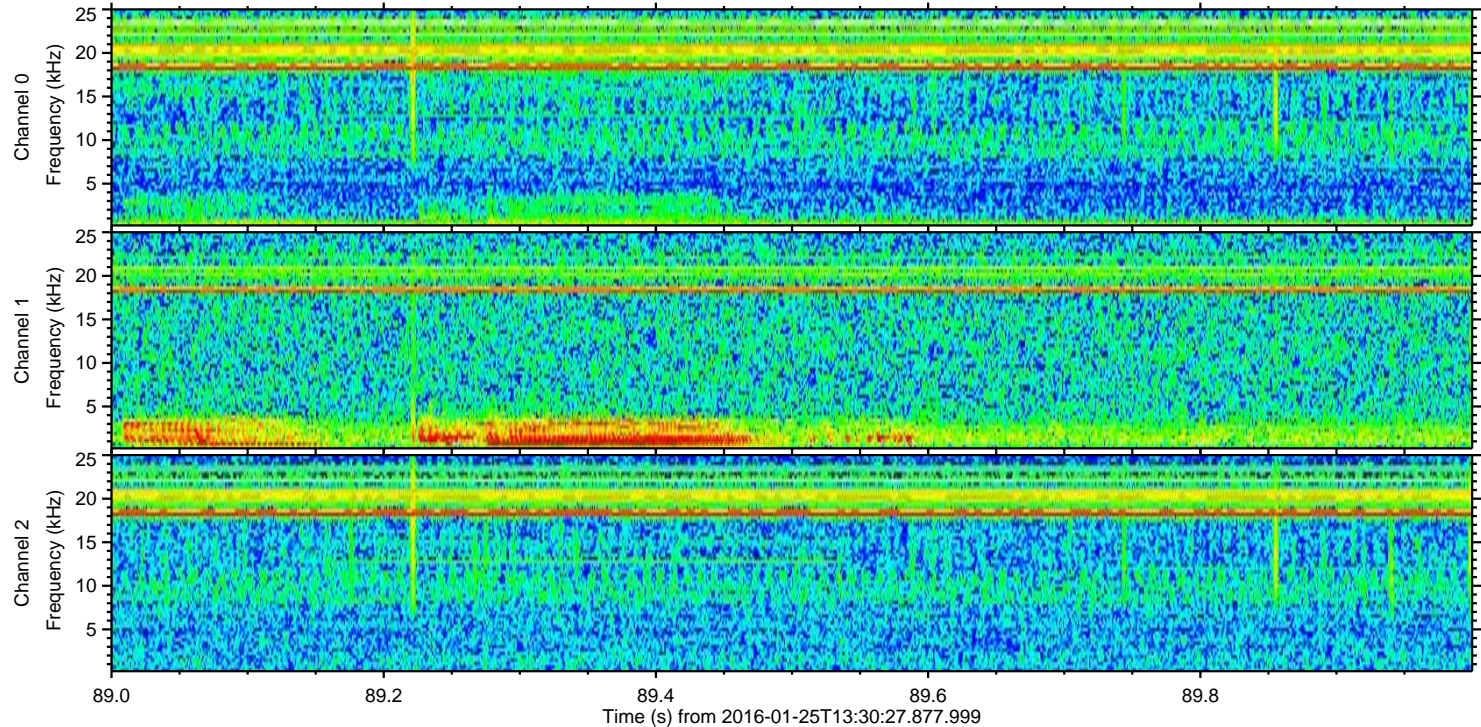
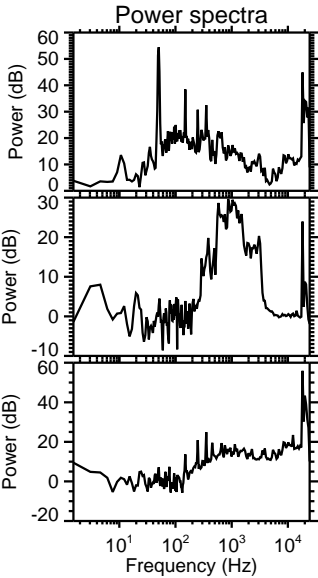
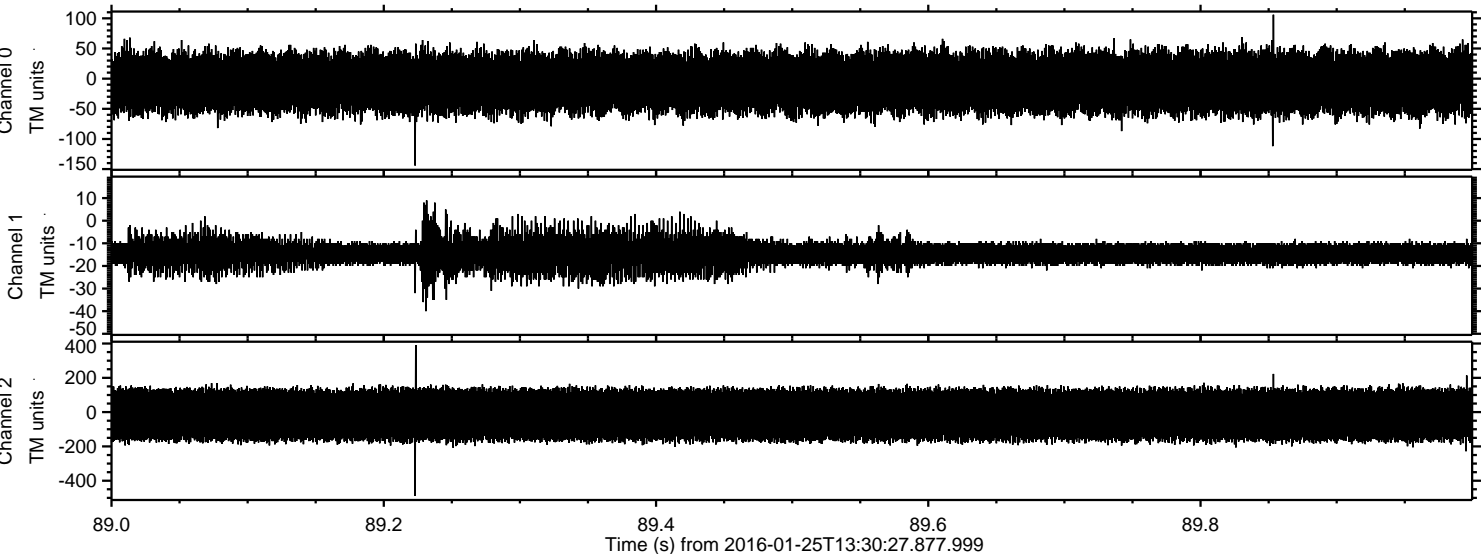


ELMAVAN 3D WAVEFORMS (Measured data sampled at 50 kHz) 51000 packets of 144 samples from 2016-01-25T13:30:27.877.999. Part 1/147

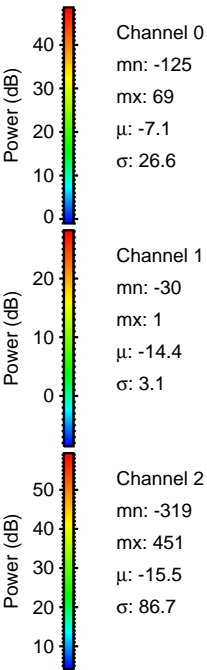
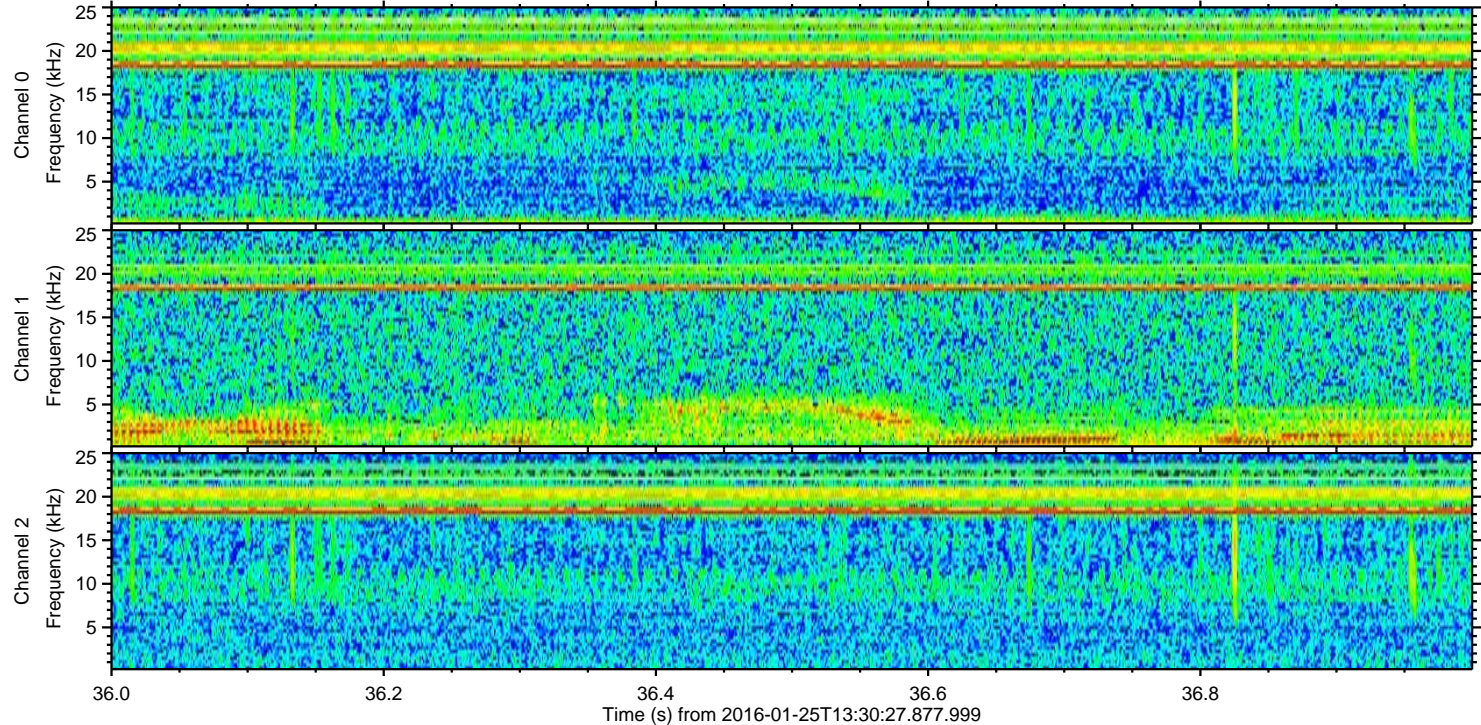
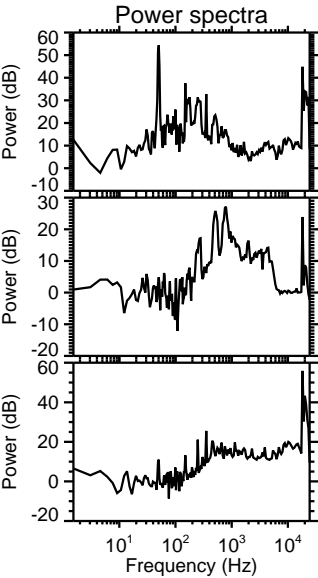
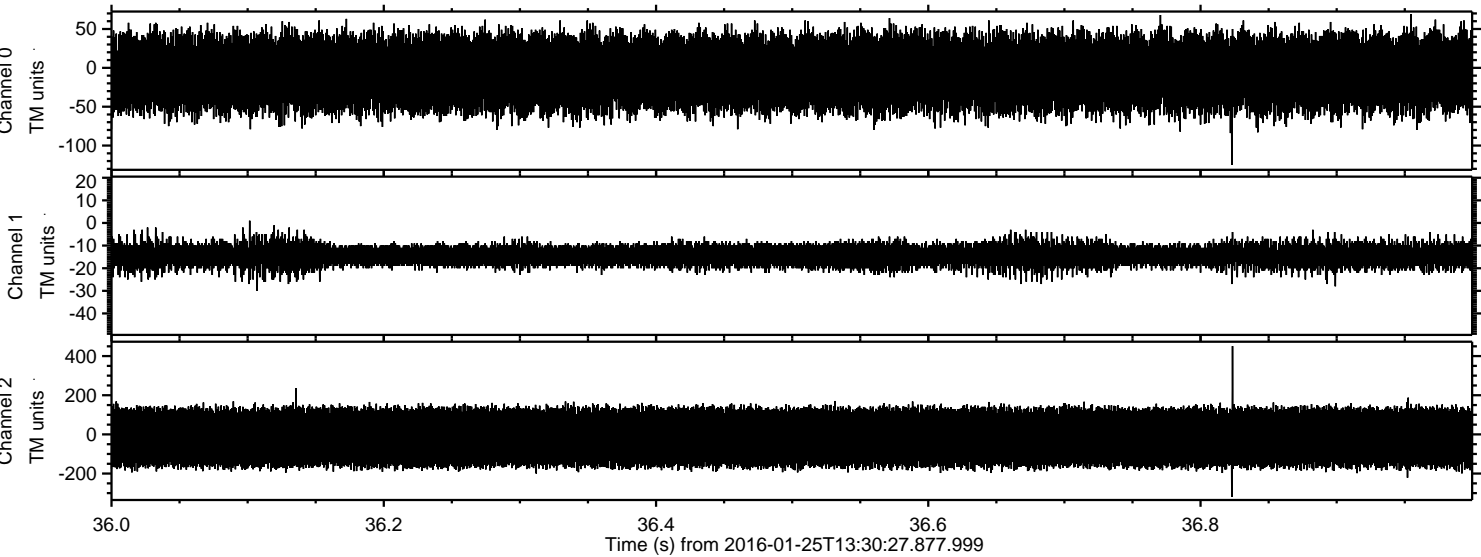
Processed Wed Apr 6 17:32:08 2016 by ELM ver.2012-10-06 from 001__elm20160125_133026__dat00.bin



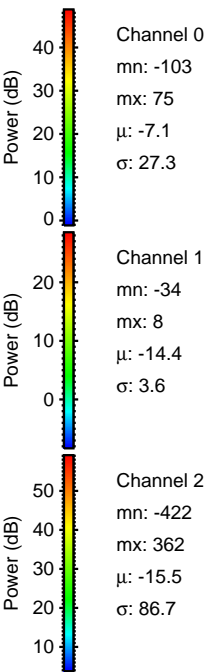
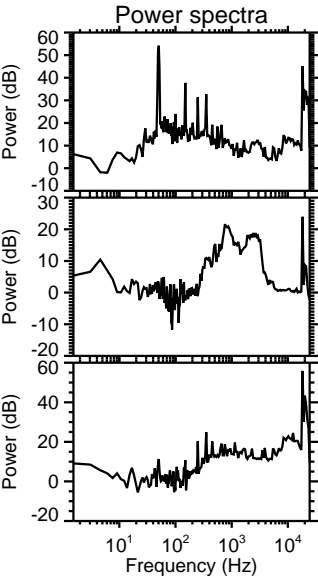
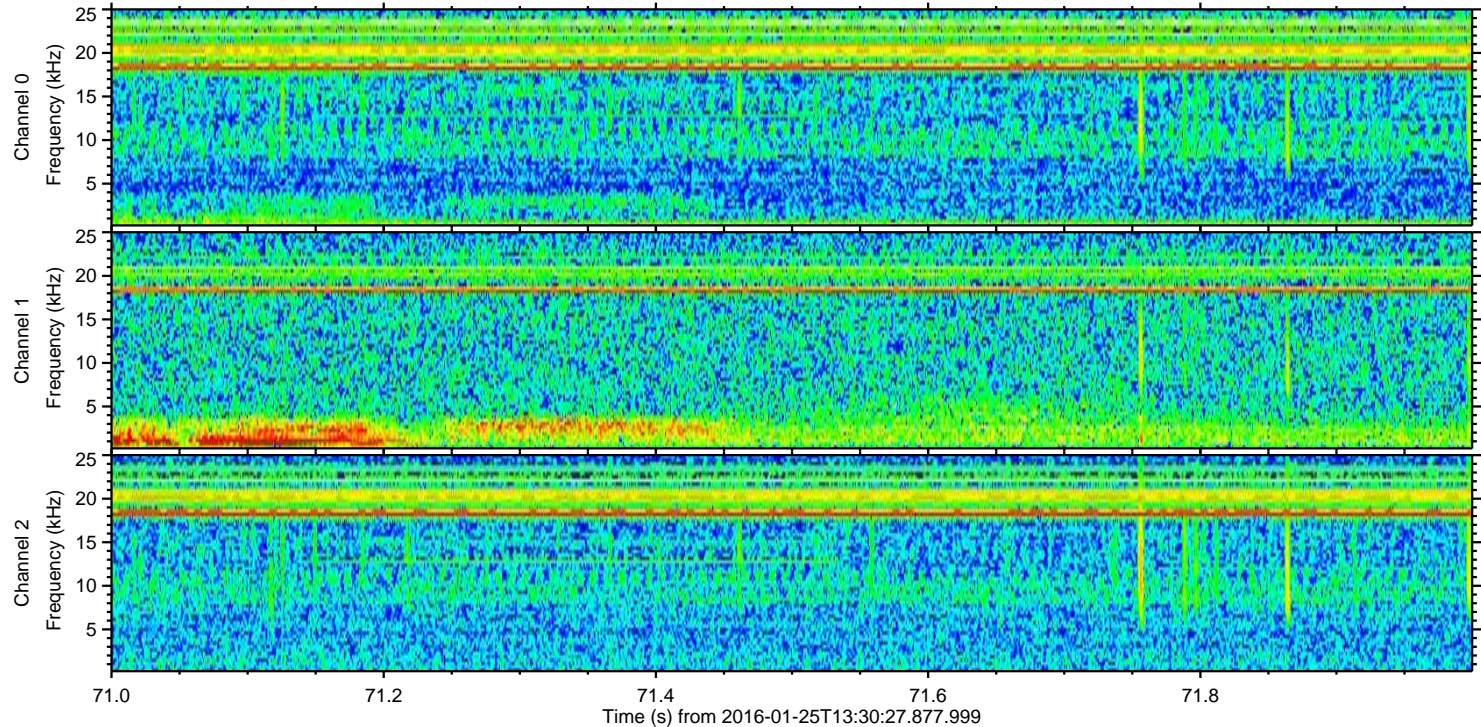
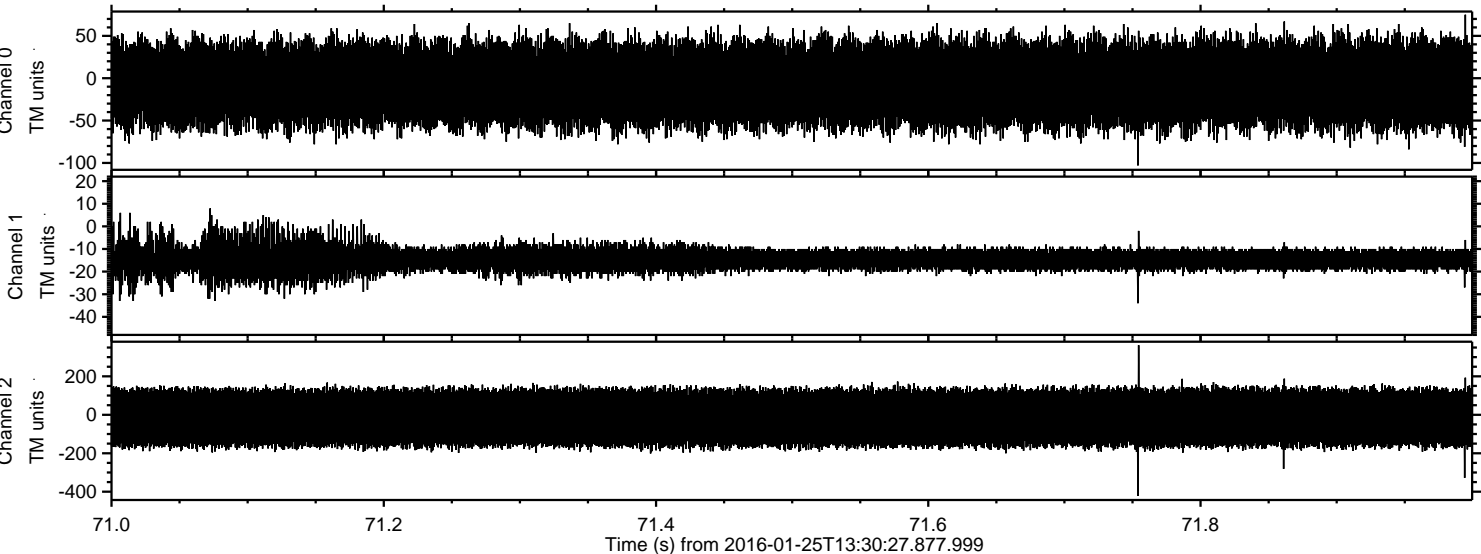
Processed Wed Apr 6 17:32:09 2016 by ELM ver.2012-10-06 from 001__elm20160125_133026__dat00.bin

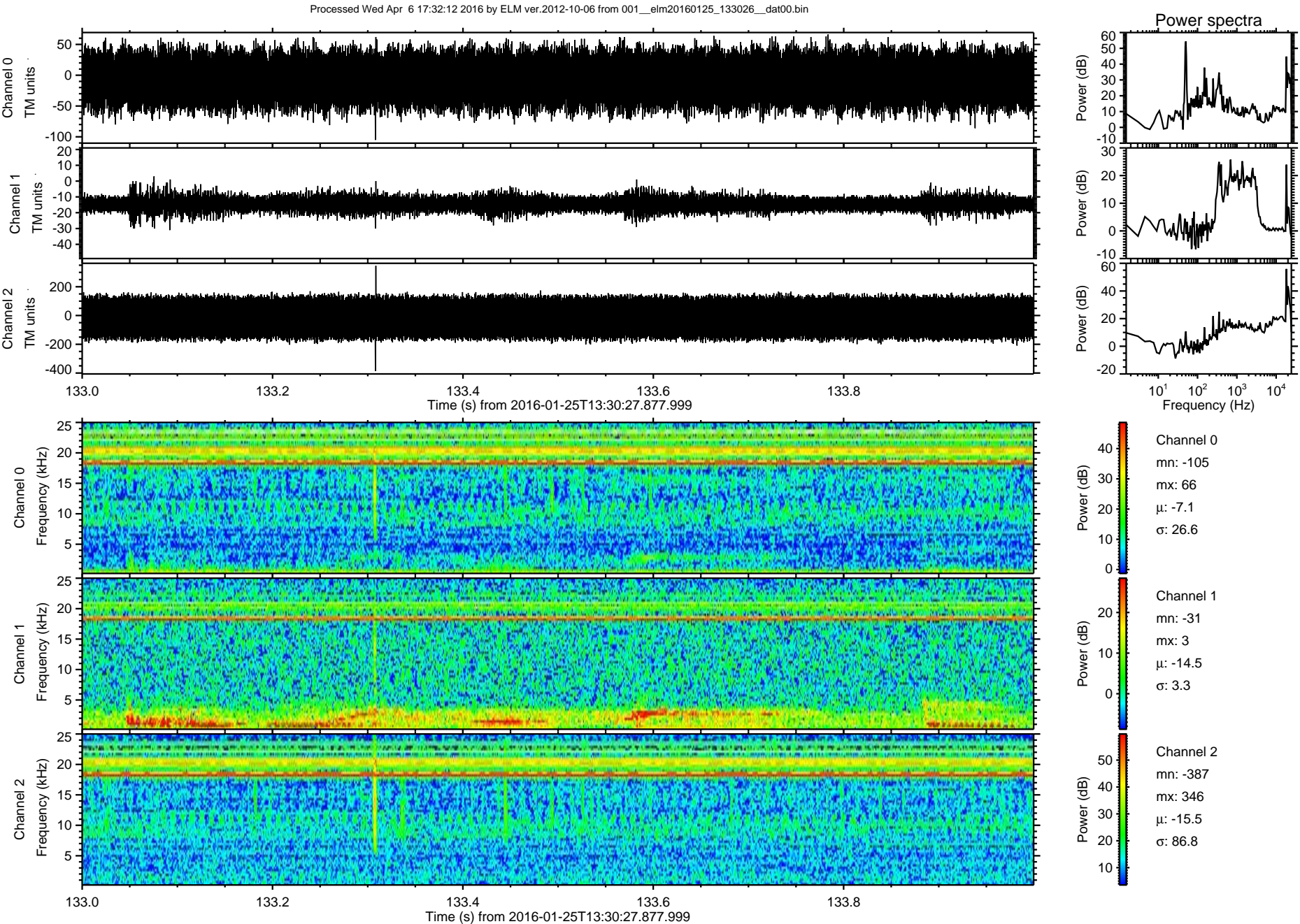


Processed Wed Apr 6 17:32:10 2016 by ELM ver.2012-10-06 from 001__elm20160125_133026__dat00.bin

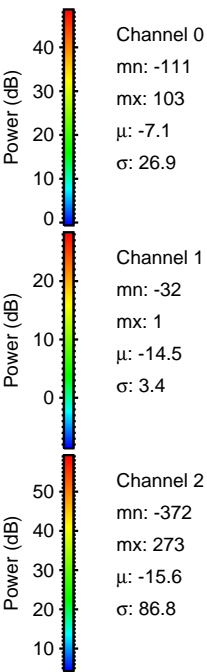
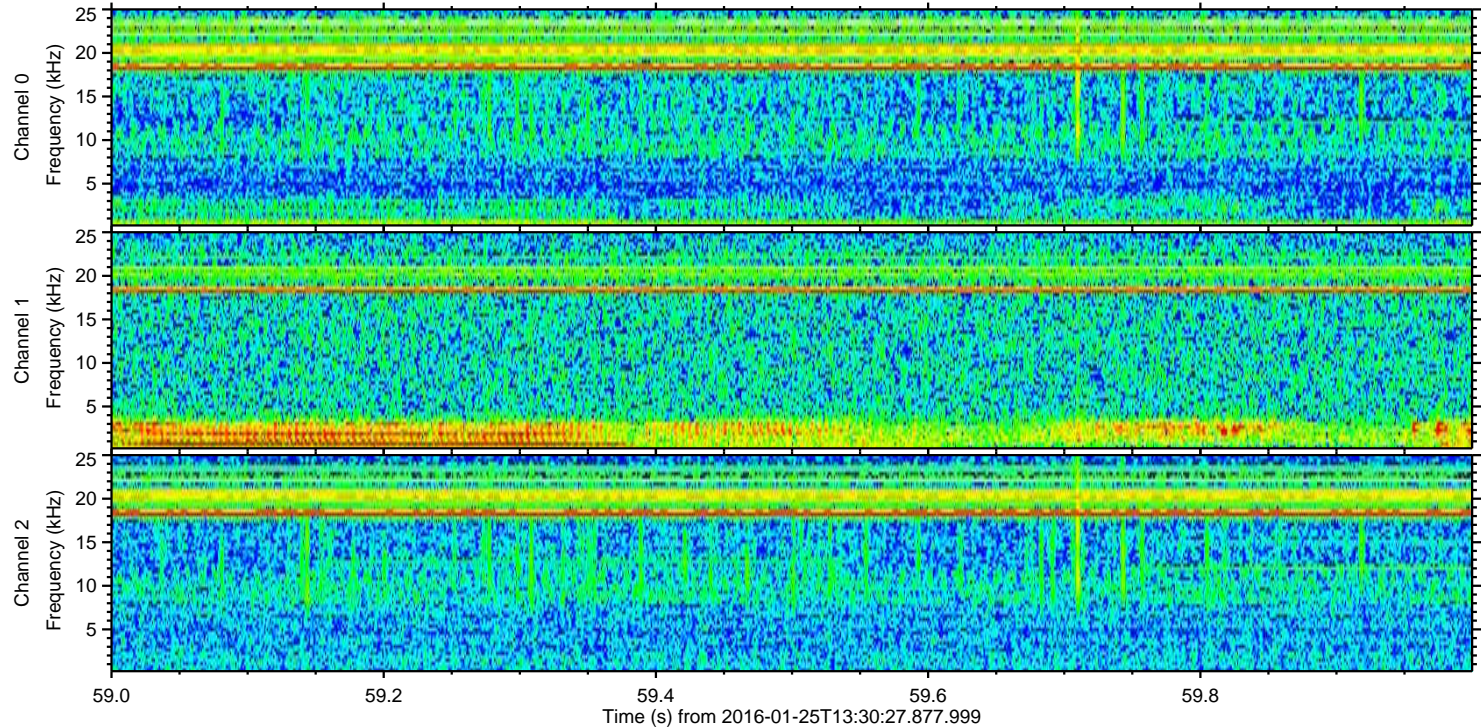
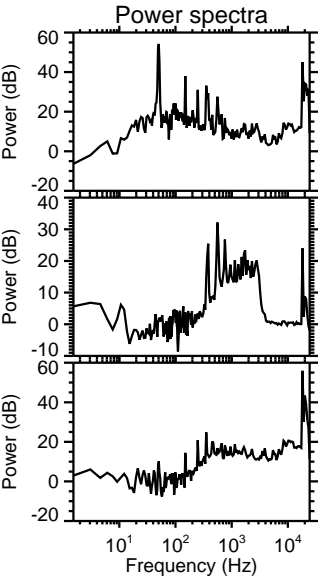
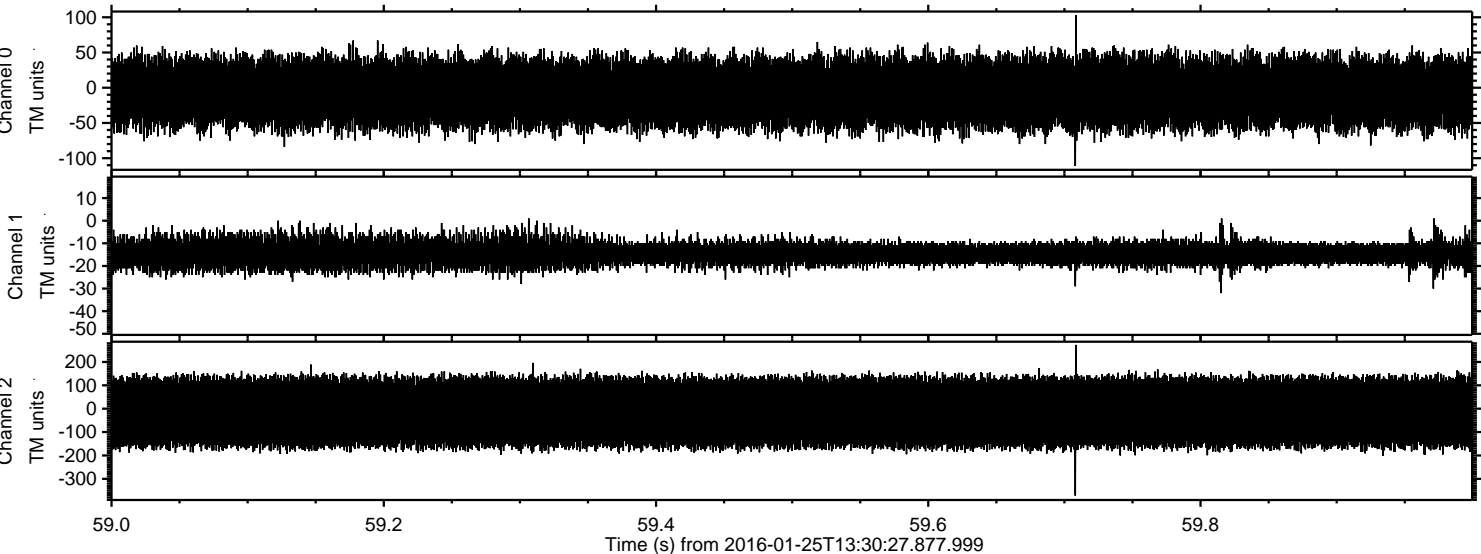


Processed Wed Apr 6 17:32:11 2016 by ELM ver.2012-10-06 from 001__elm20160125_133026__dat00.bin

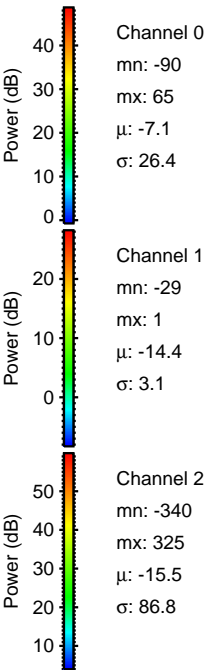
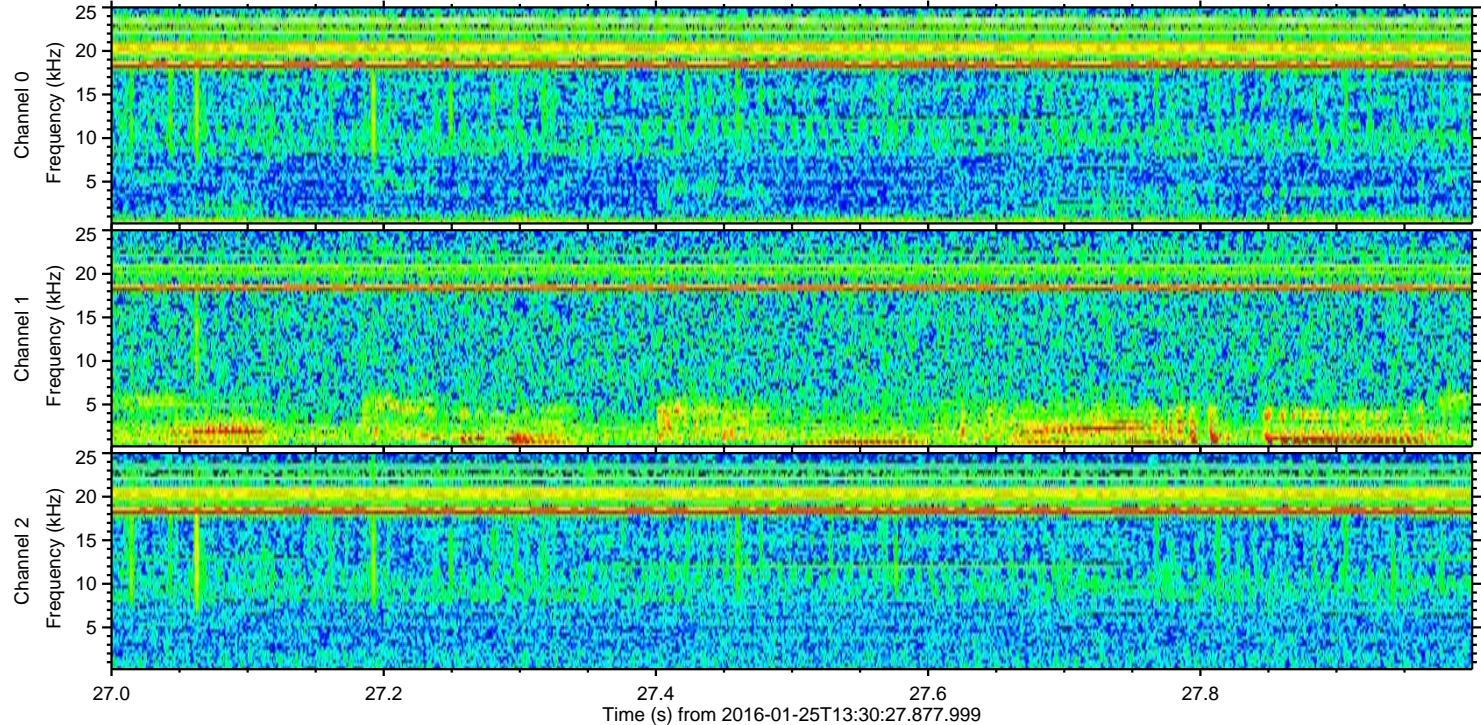
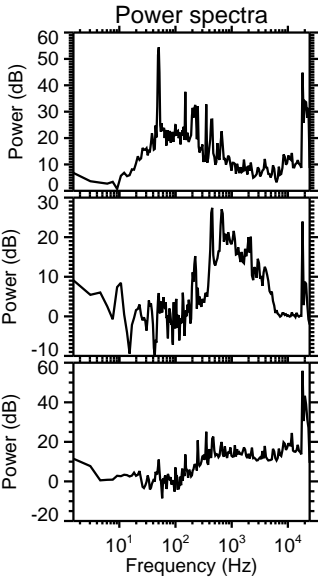
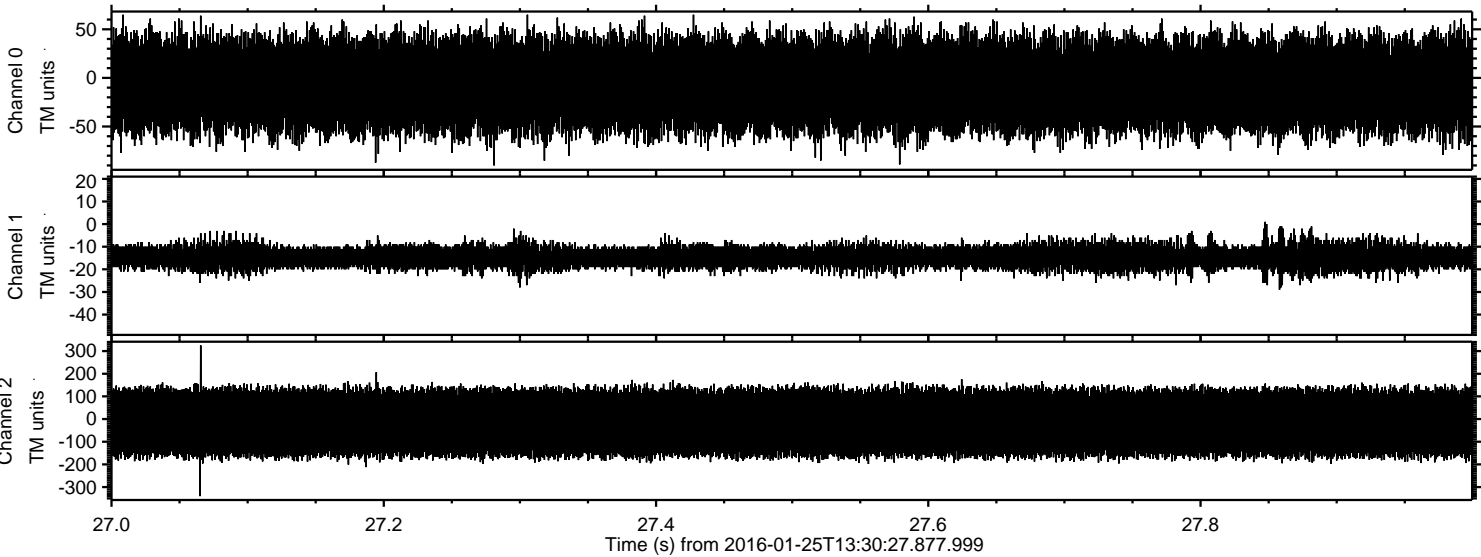




Processed Wed Apr 6 17:32:13 2016 by ELM ver.2012-10-06 from 001__elm20160125_133026__dat00.bin

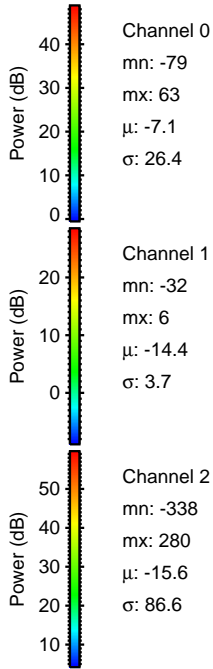
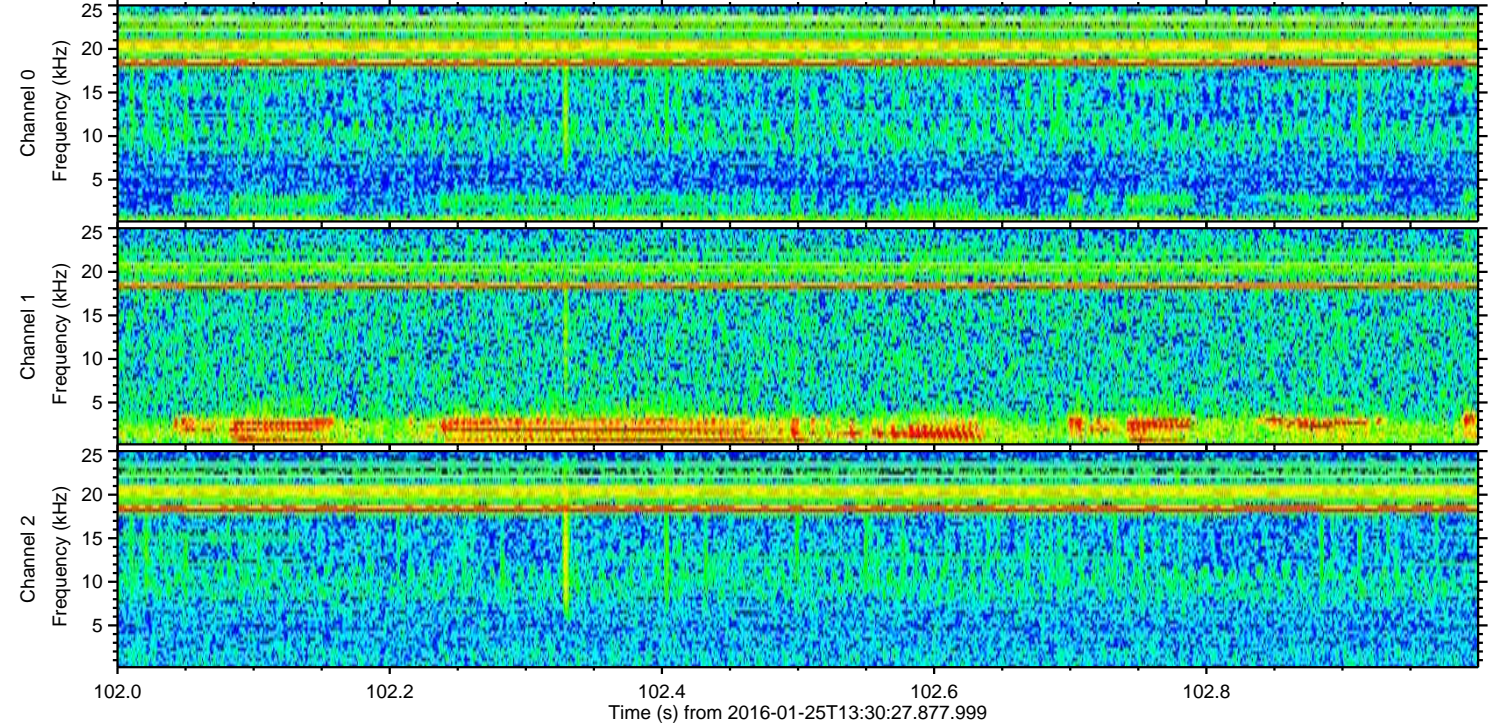
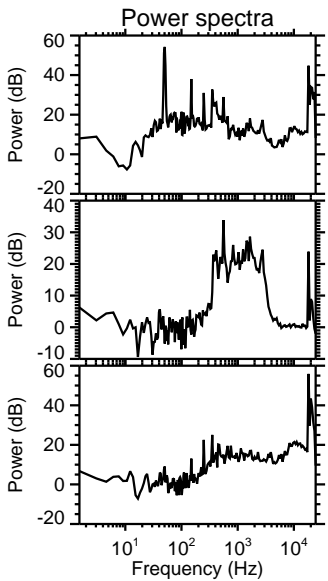
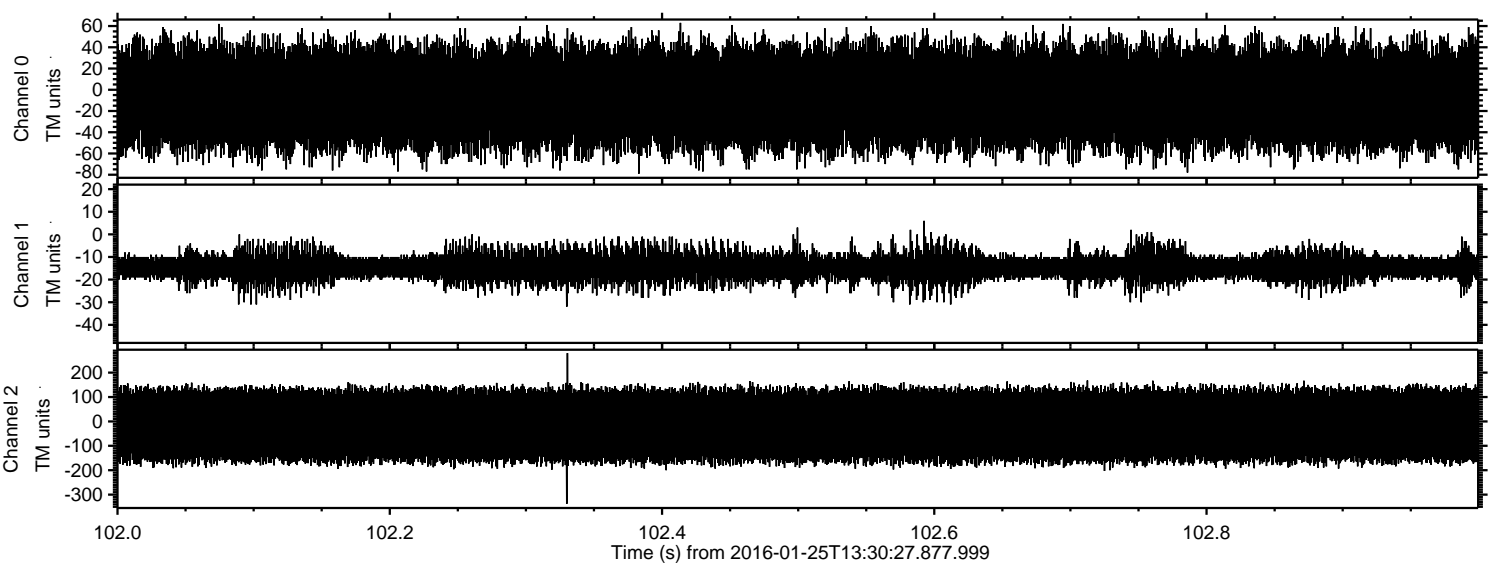


Processed Wed Apr 6 17:32:14 2016 by ELM ver.2012-10-06 from 001__elm20160125_133026__dat00.bin

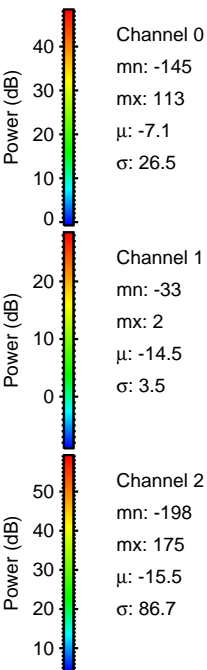
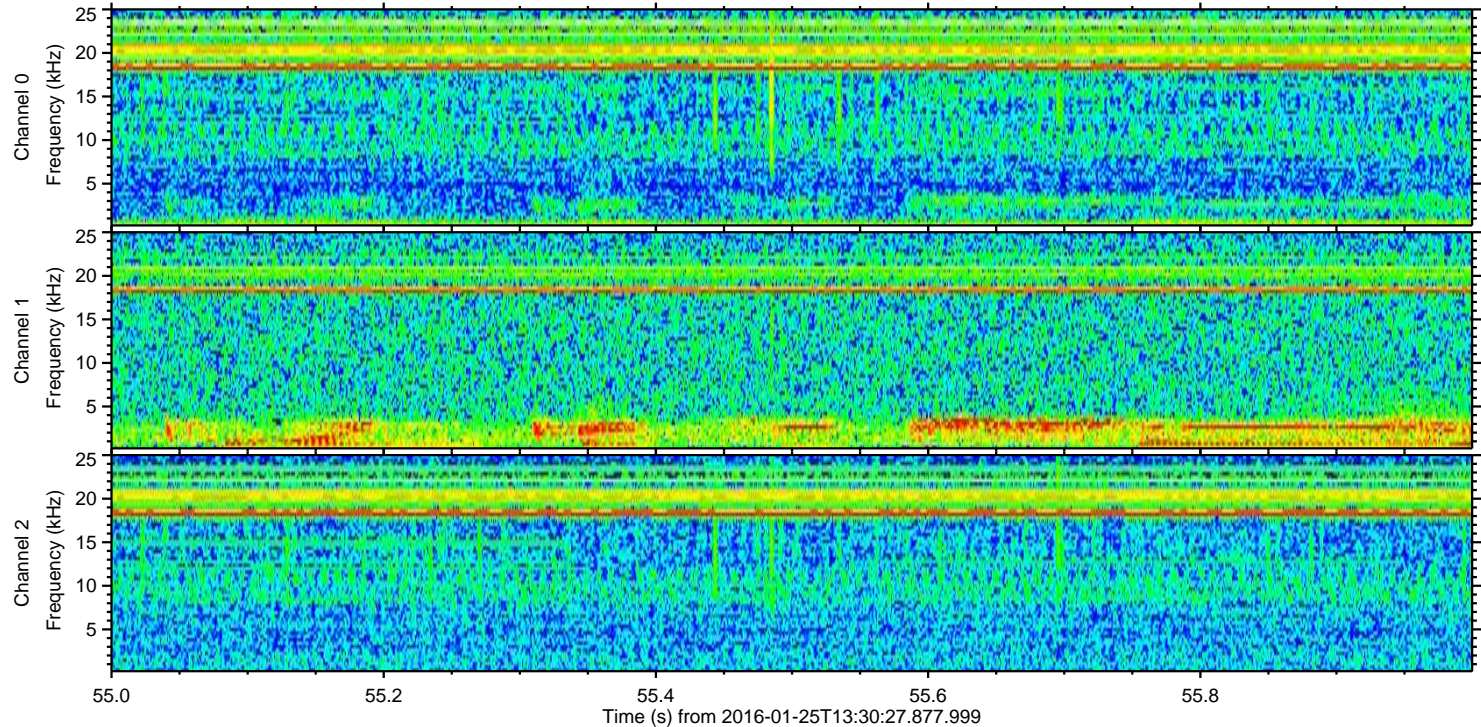
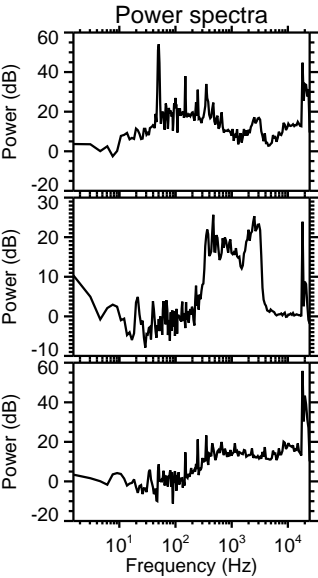
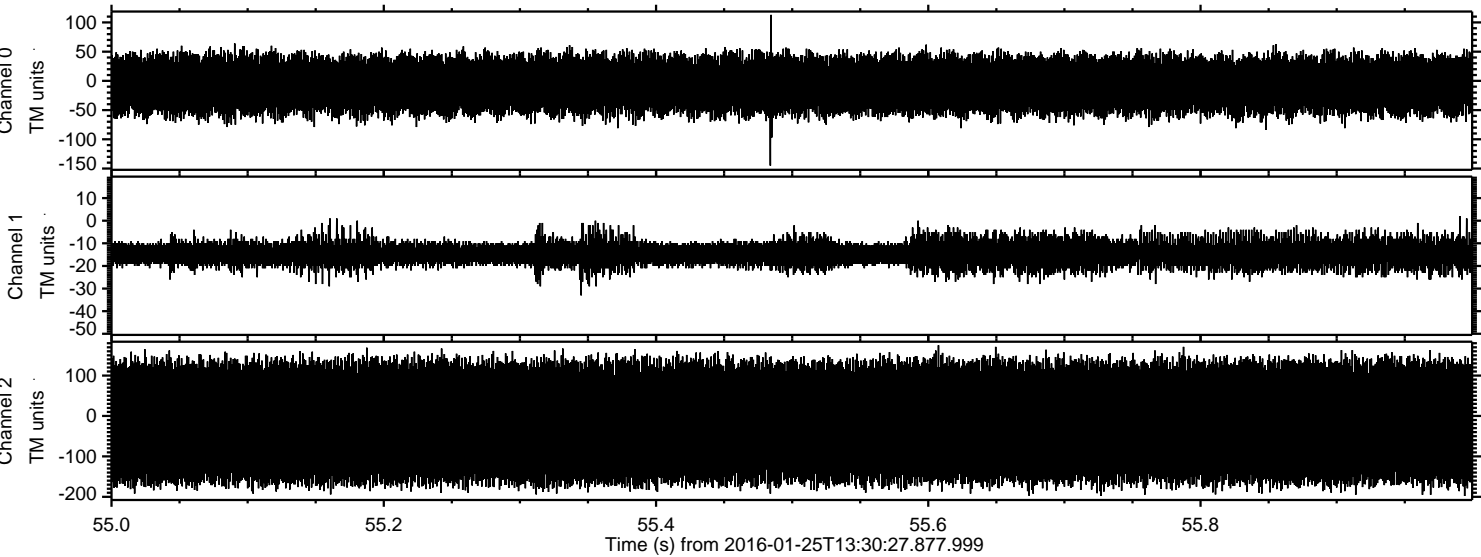


ELMAVAN 3D WAVEFORMS (Measured data sampled at 50 kHz) 51000 packets of 144 samples from 2016-01-25T13:30:27.877.999. Part 103/147

Processed Wed Apr 6 17:32:15 2016 by ELM ver.2012-10-06 from 001__elm20160125_133026__dat00.bin



Processed Wed Apr 6 17:32:16 2016 by ELM ver.2012-10-06 from 001__elm20160125_133026__dat00.bin



Channel 0
mn: -145
mx: 113
 μ : -7.1
 σ : 26.5

Channel 1
mn: -33
mx: 2
 μ : -14.5
 σ : 3.5

Channel 2
mn: -198
mx: 175
 μ : -15.5
 σ : 86.7