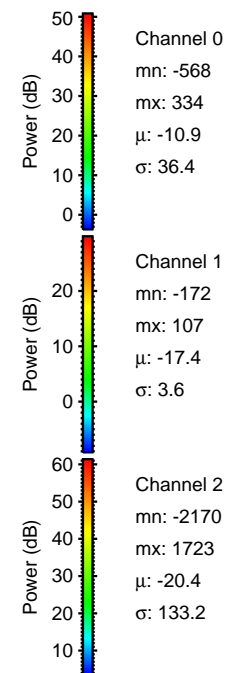
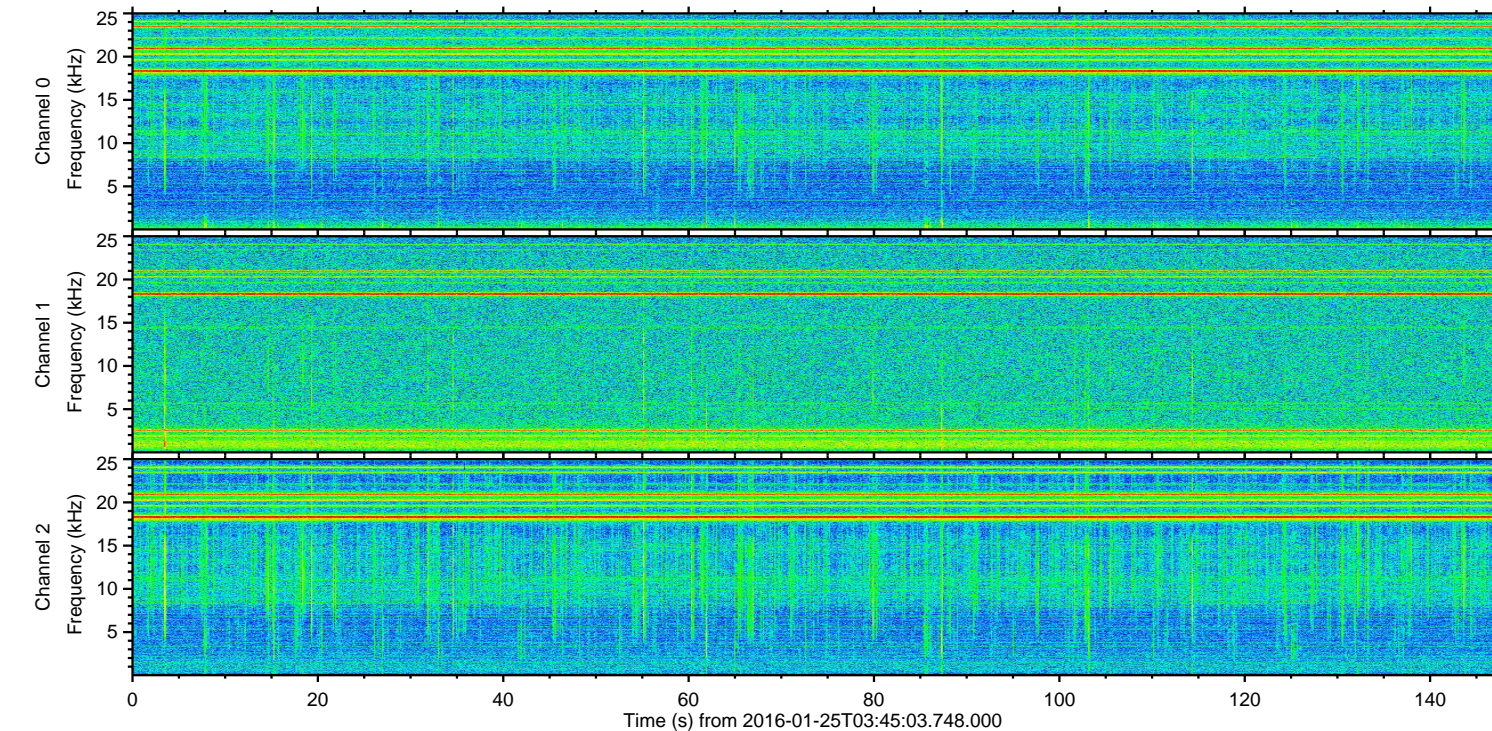
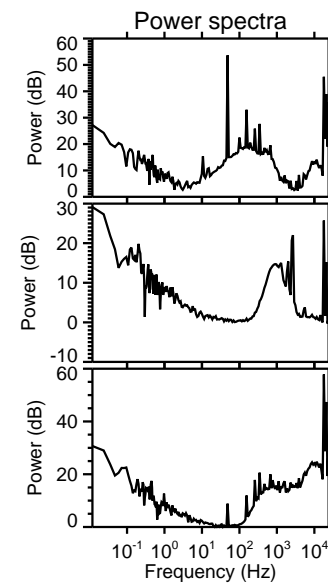
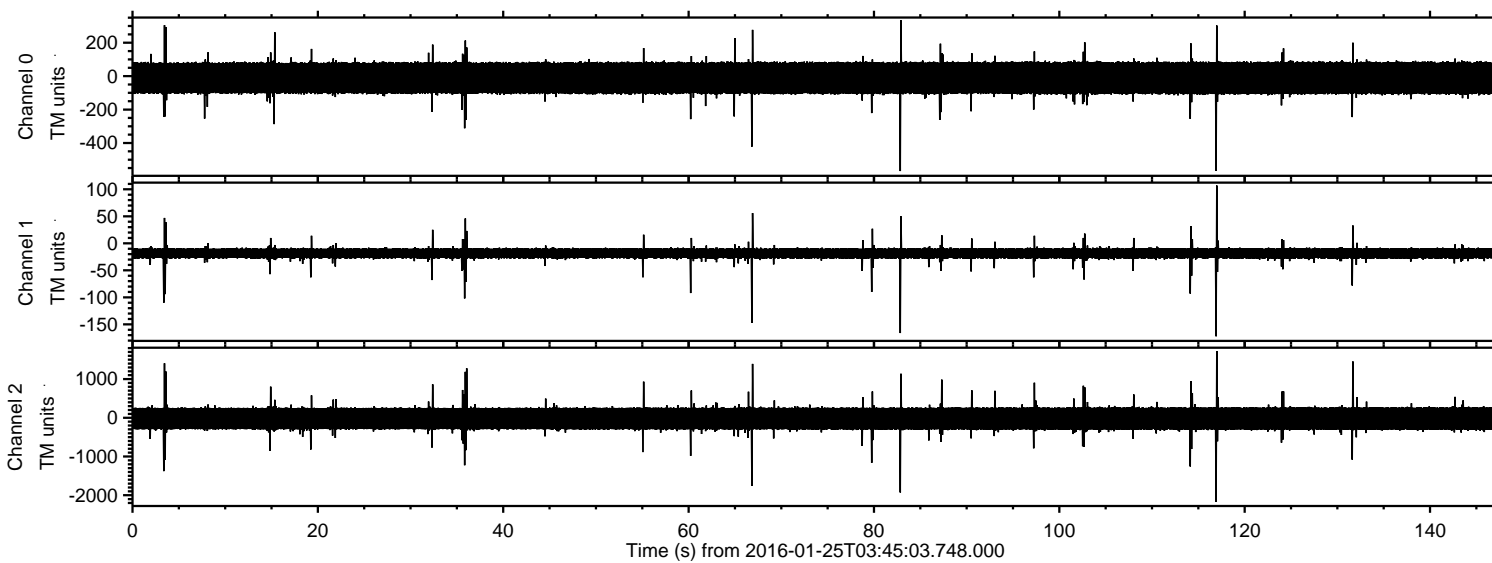


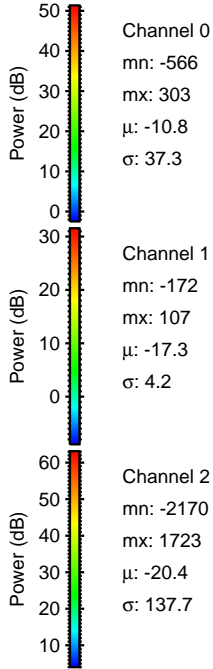
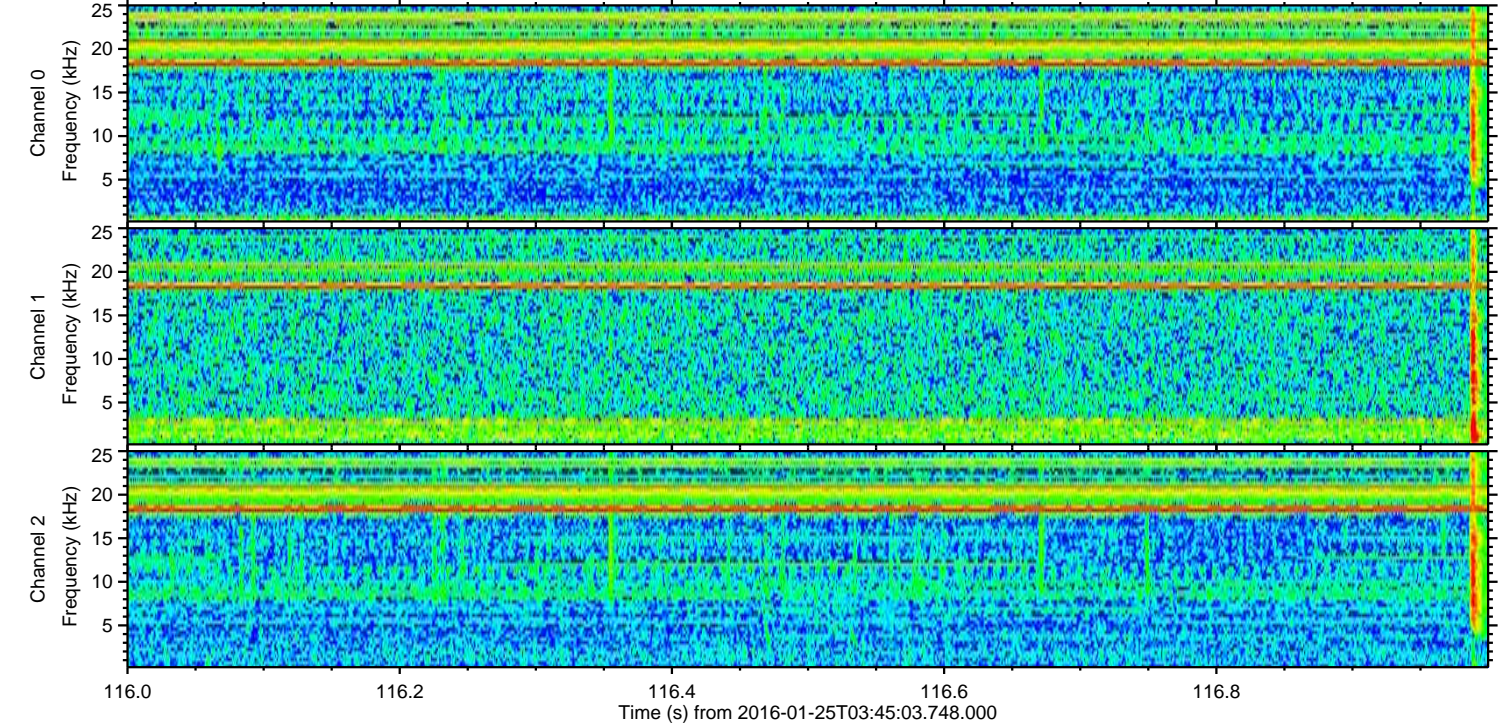
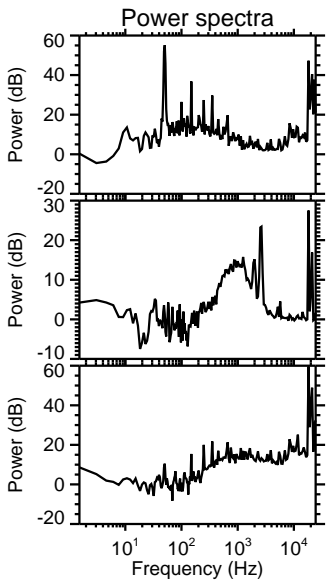
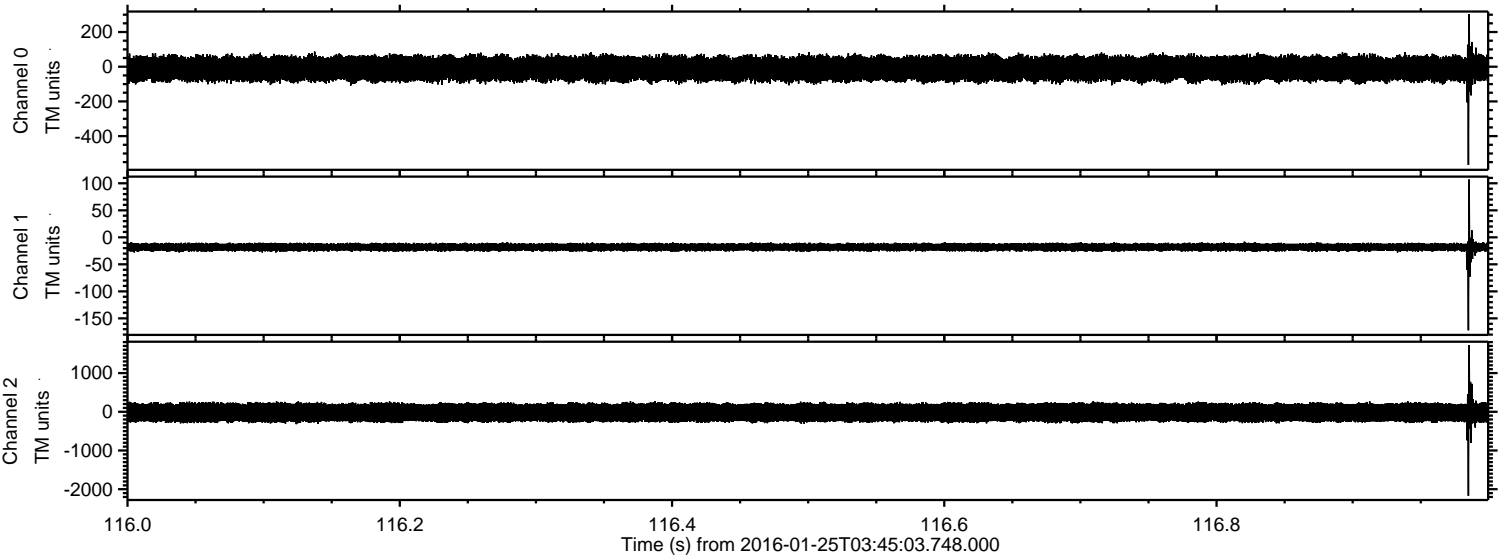
ELMAVAN 3D WAVEFORMS (Measured data sampled at 50 kHz) 51000 packets of 144 samples from 2016-01-25T03:45:03.748.000.

Processed Wed Apr 6 15:37:00 2016 by ELM ver.2012-10-06 from 001__elm20160125_034502__dat00.bin

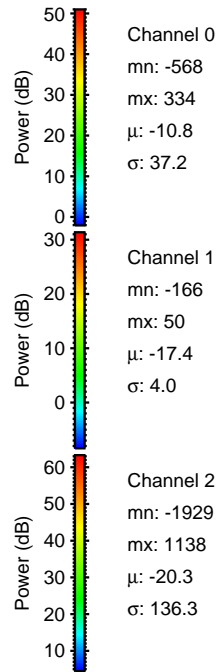
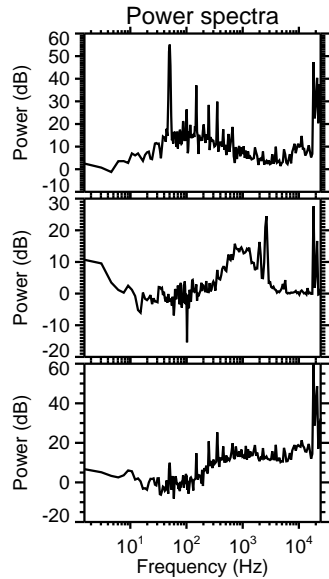
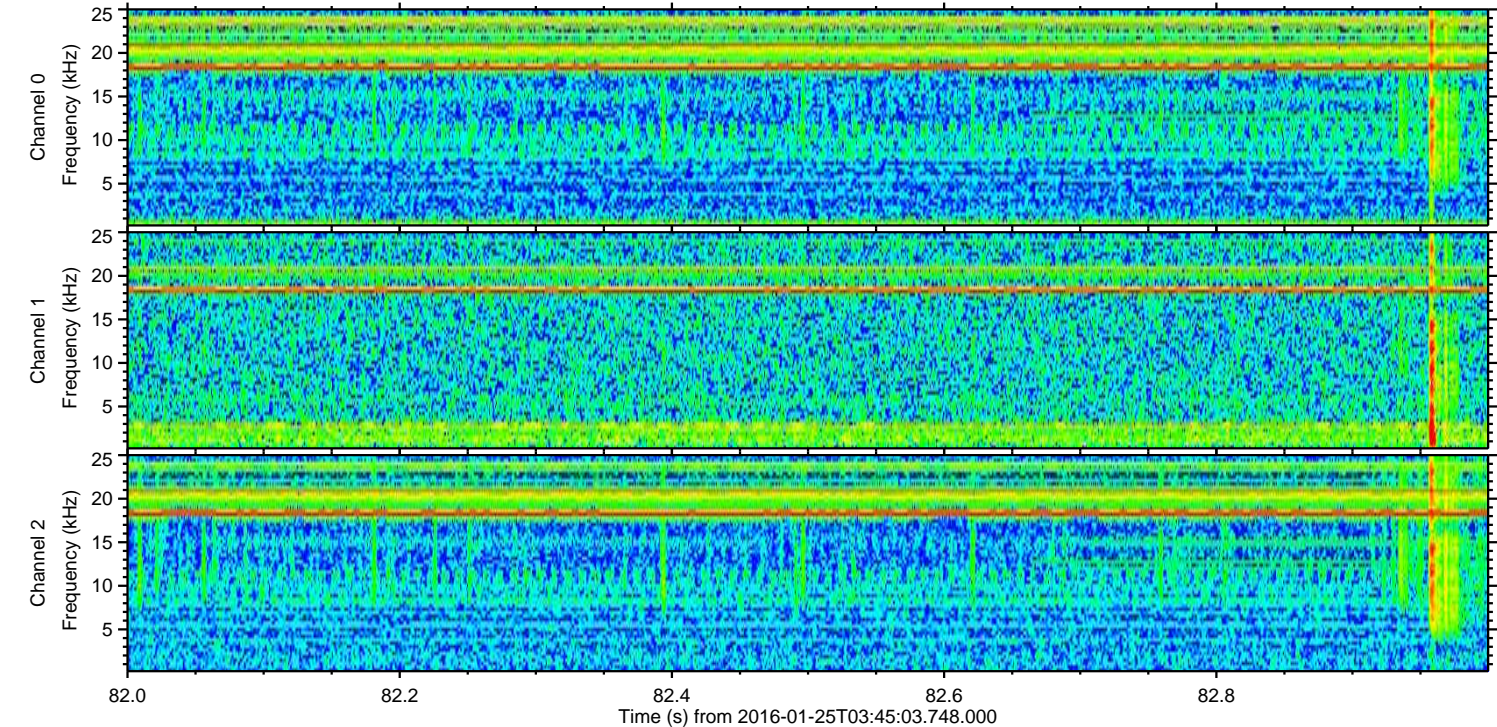
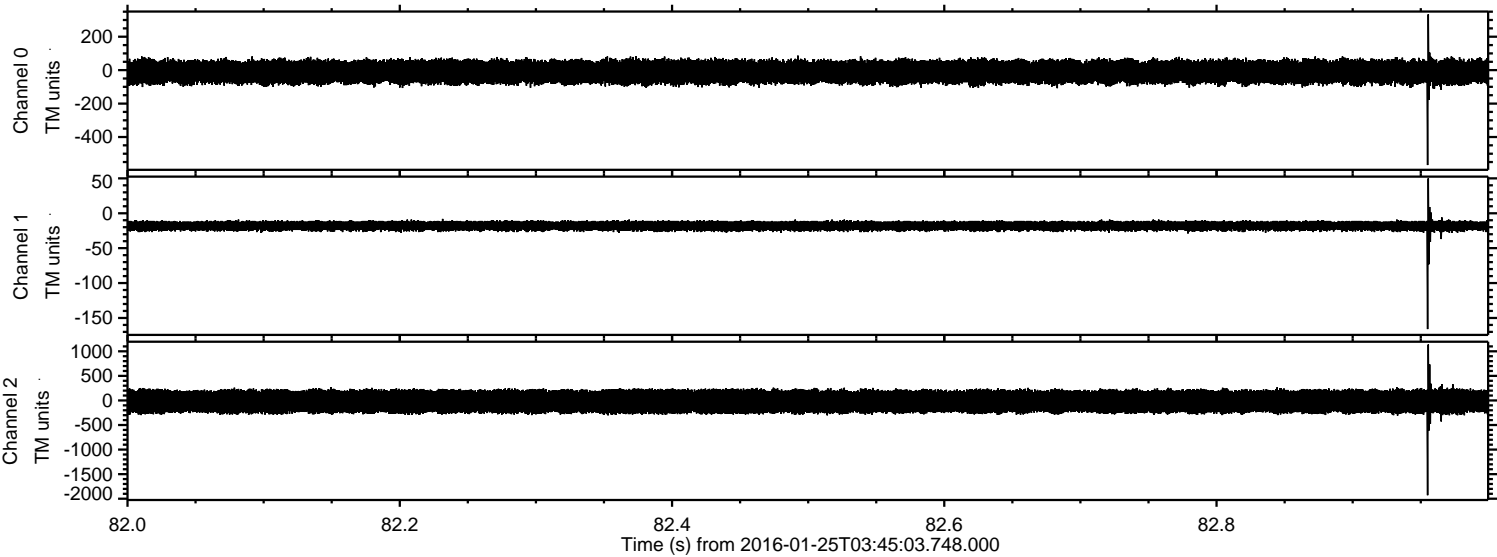


ELMAVAN 3D WAVEFORMS (Measured data sampled at 50 kHz) 51000 packets of 144 samples from 2016-01-25T03:45:03.748.000. Part 117/147

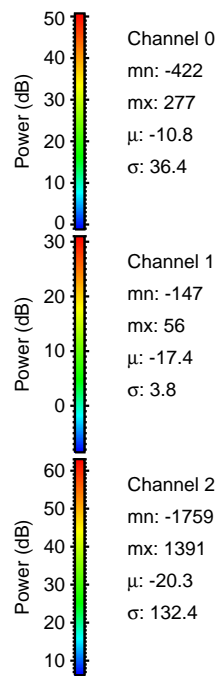
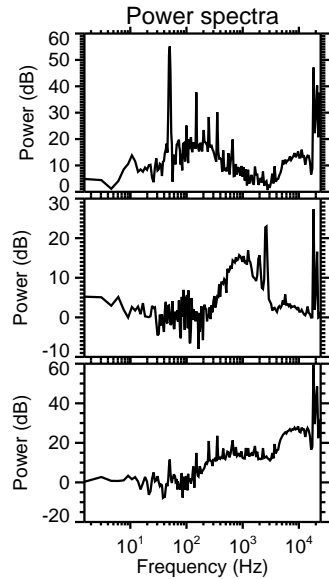
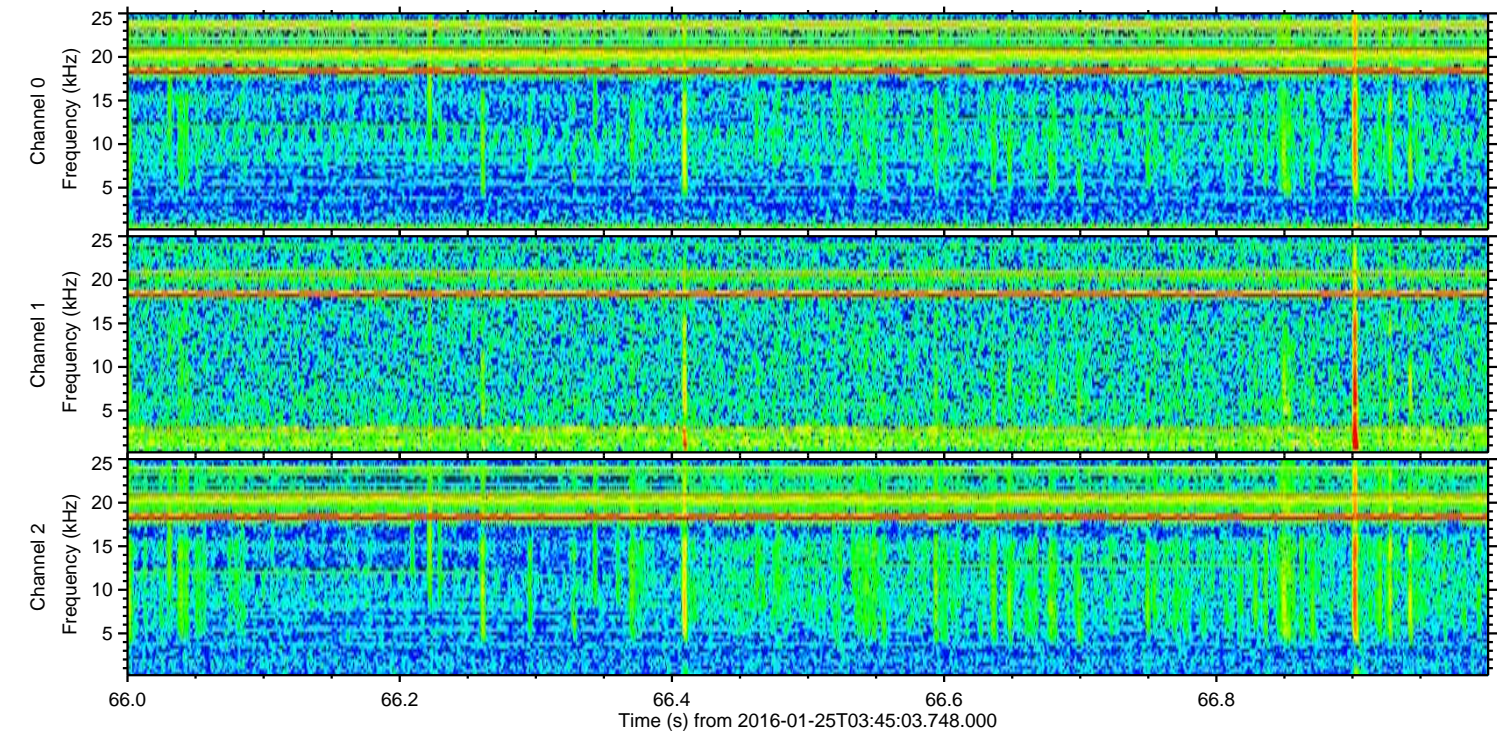
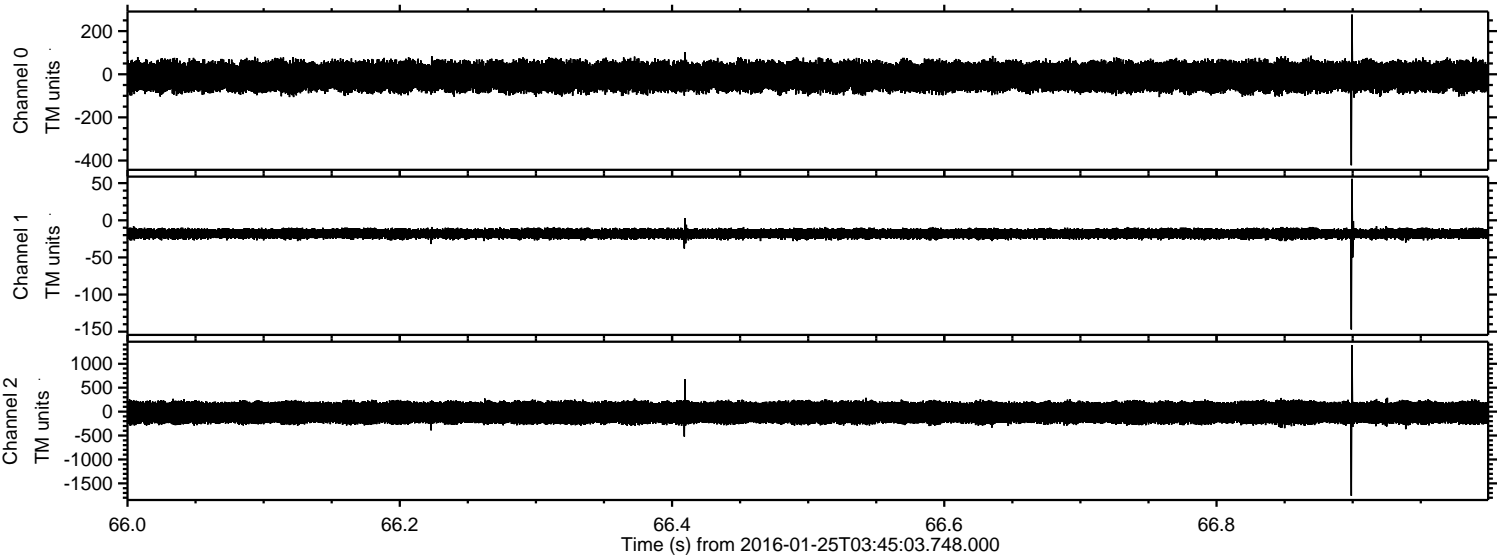
Processed Wed Apr 6 15:37:12 2016 by ELM ver.2012-10-06 from 001__elm20160125_034502__dat00.bin



Processed Wed Apr 6 15:37:13 2016 by ELM ver.2012-10-06 from 001__elm20160125_034502__dat00.bin

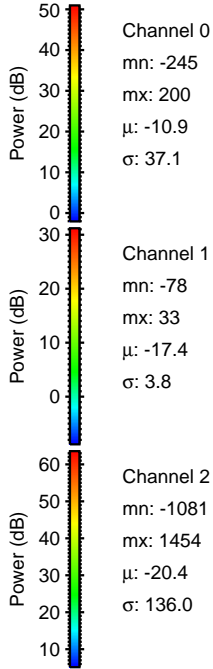
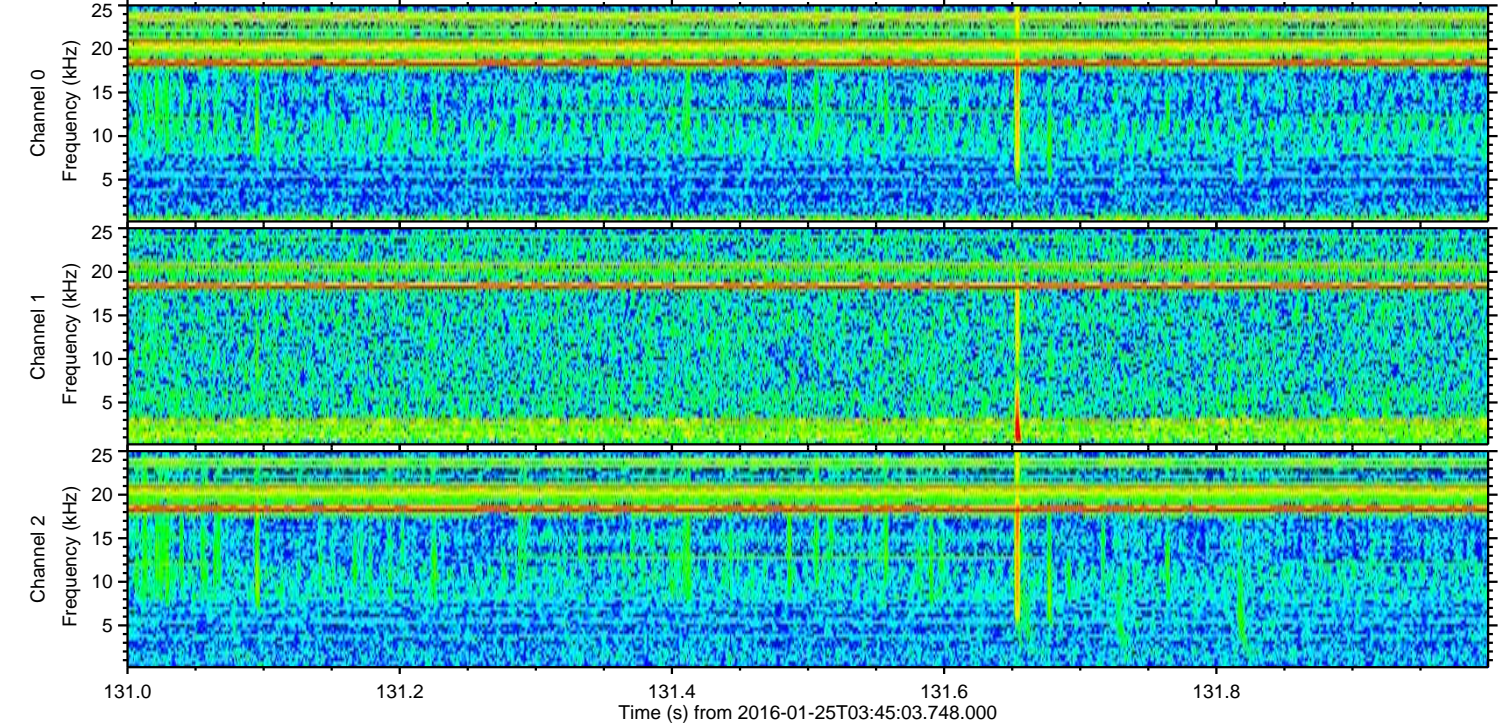
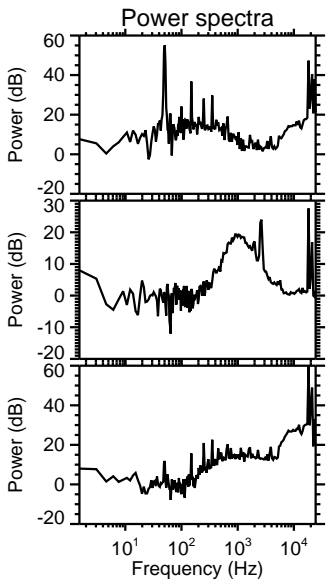
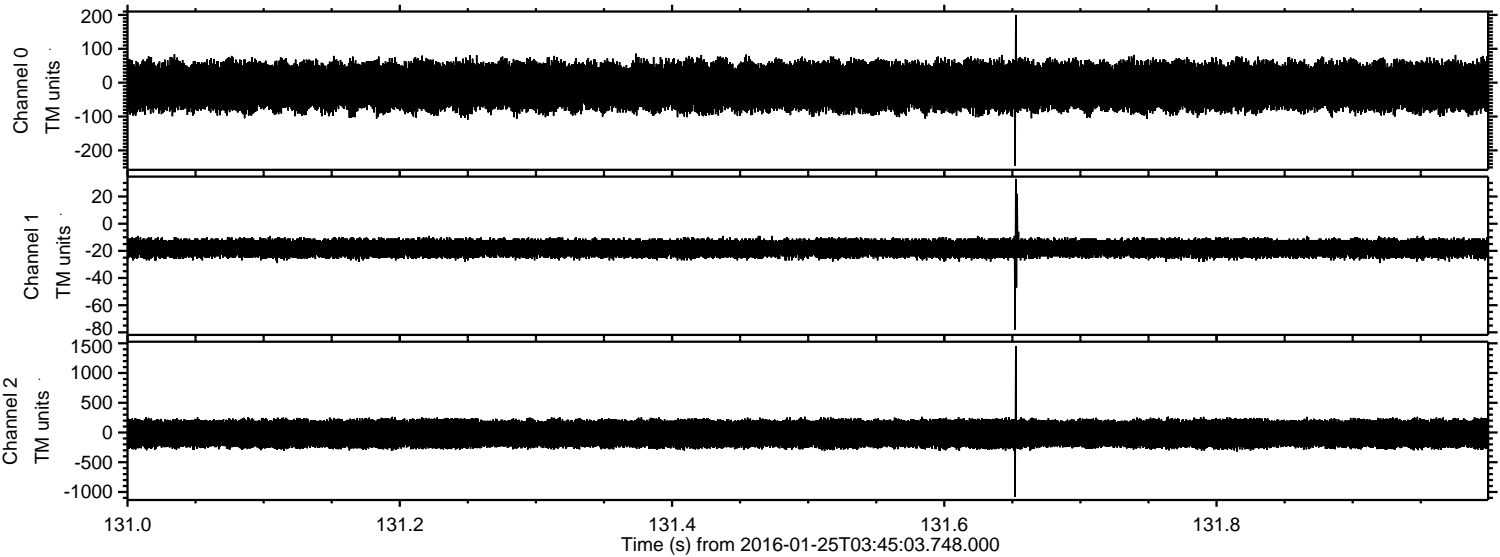


Processed Wed Apr 6 15:37:14 2016 by ELM ver.2012-10-06 from 001__elm20160125_034502__dat00.bin

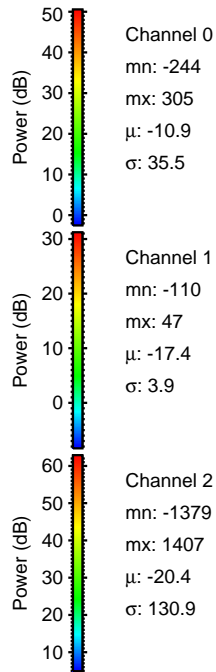
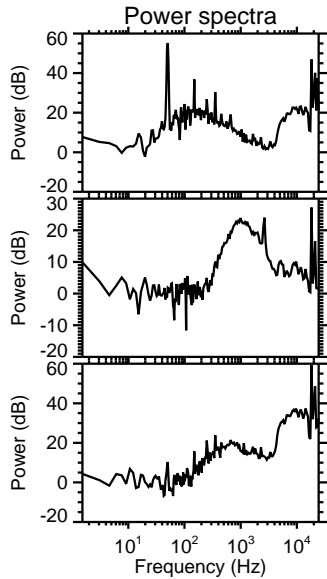
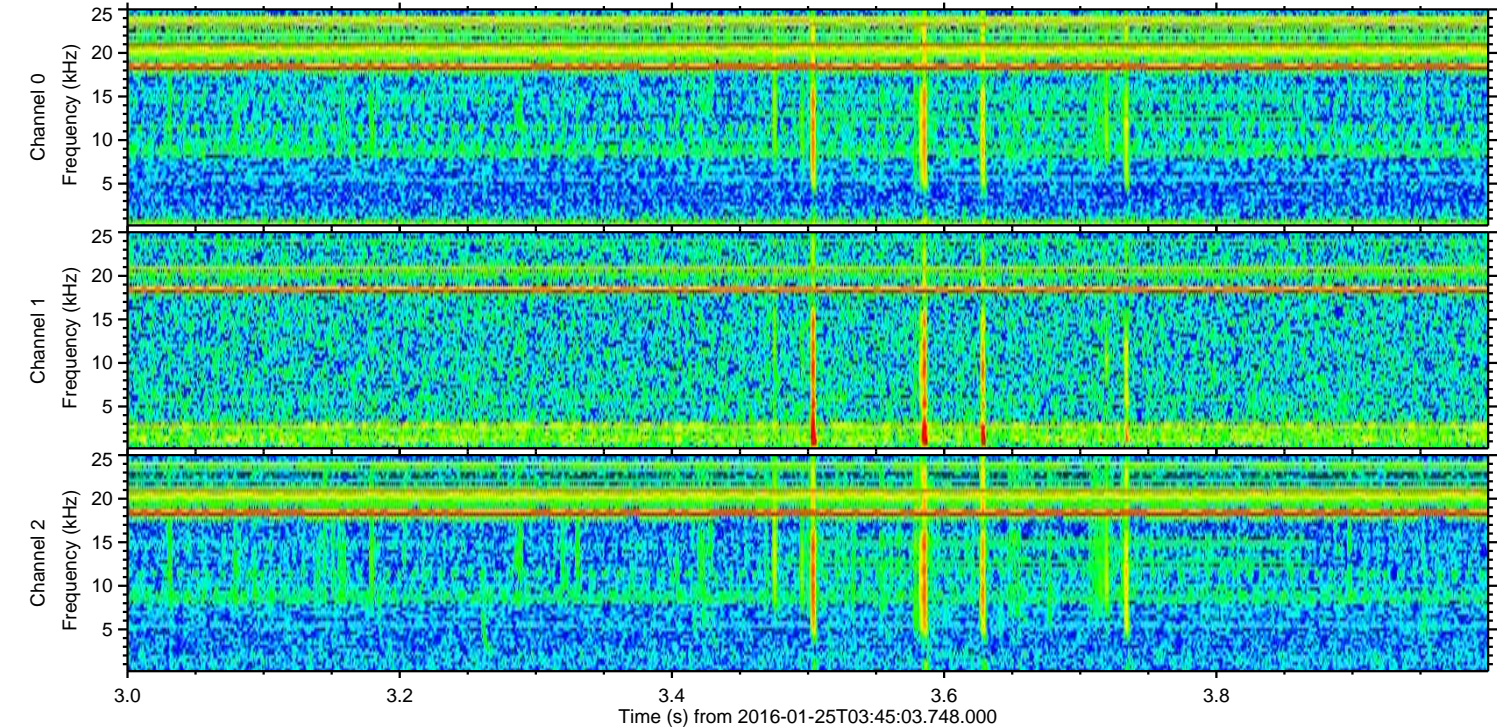
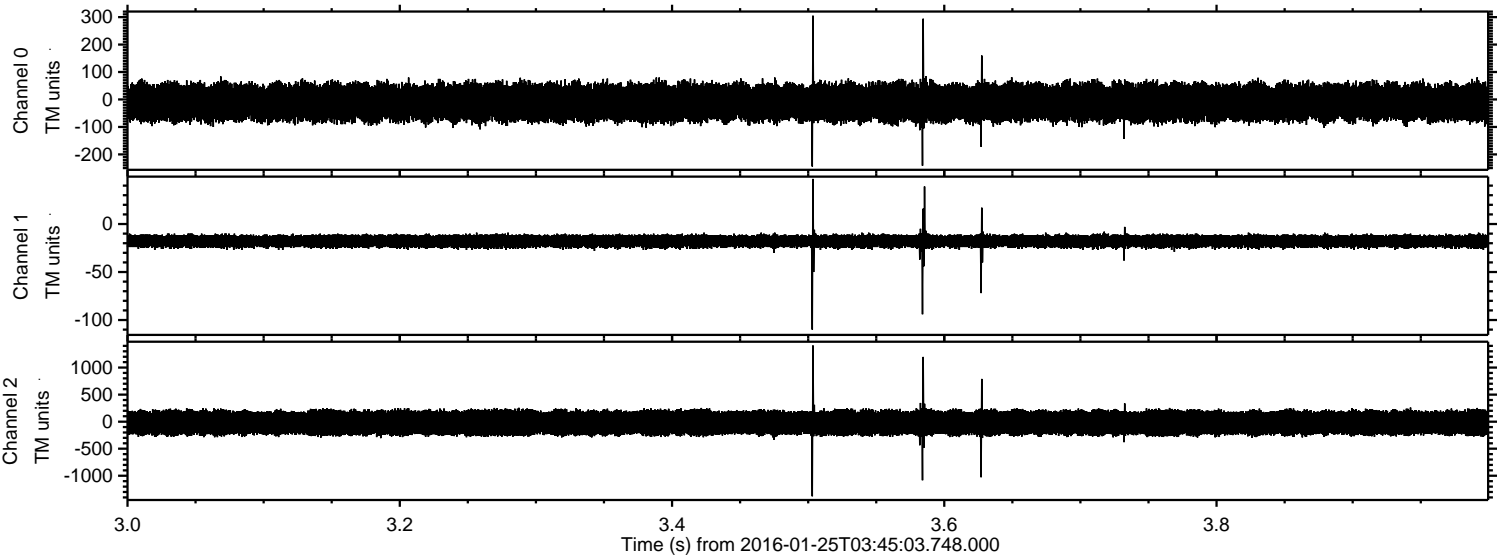


ELMAVAN 3D WAVEFORMS (Measured data sampled at 50 kHz) 51000 packets of 144 samples from 2016-01-25T03:45:03.748.000. Part 132/147

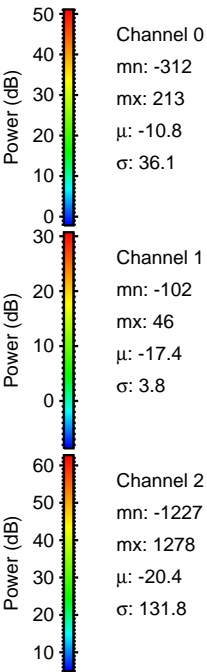
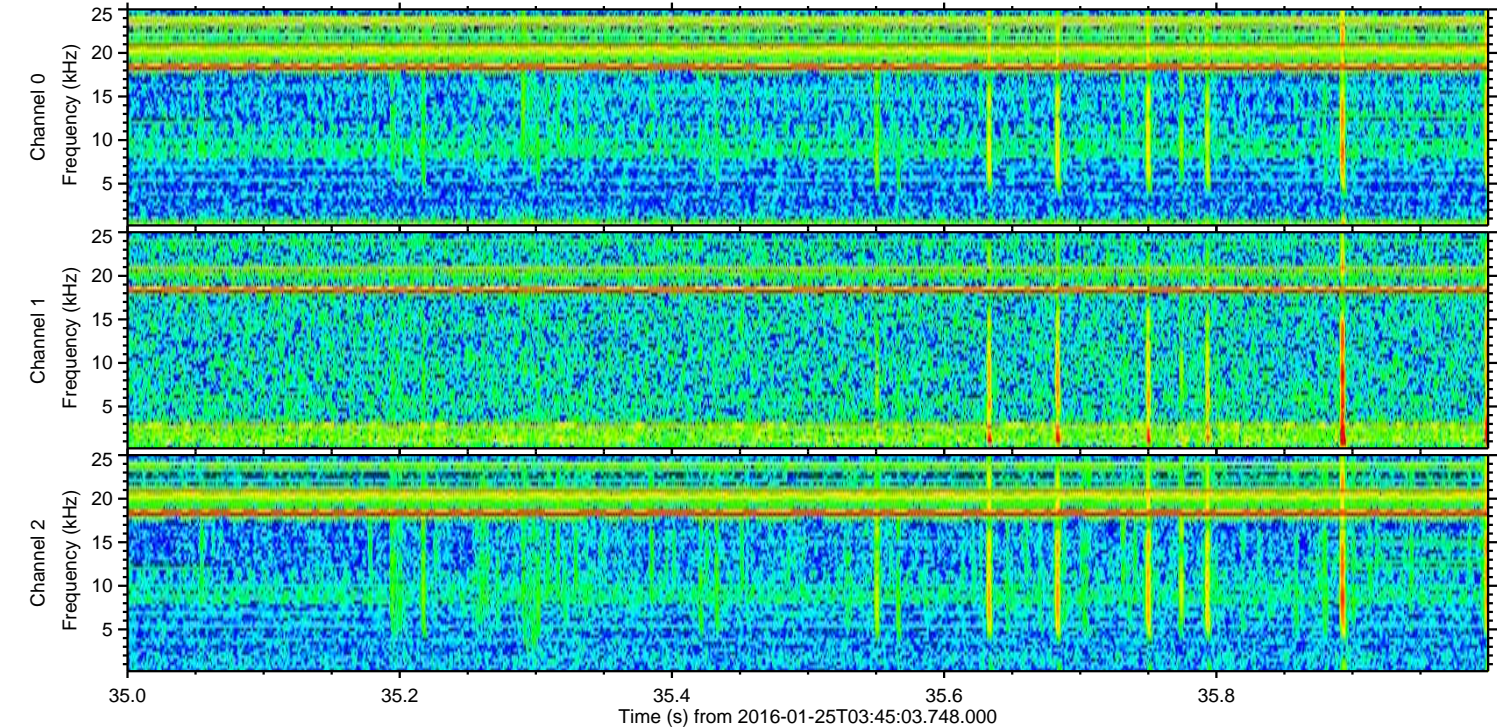
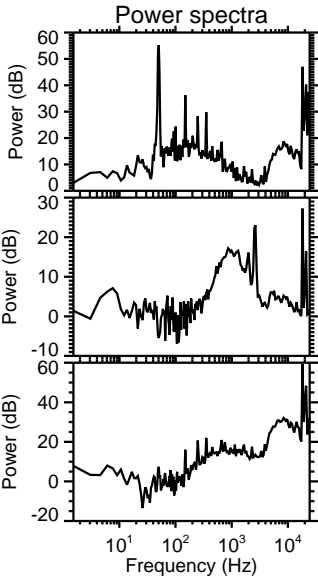
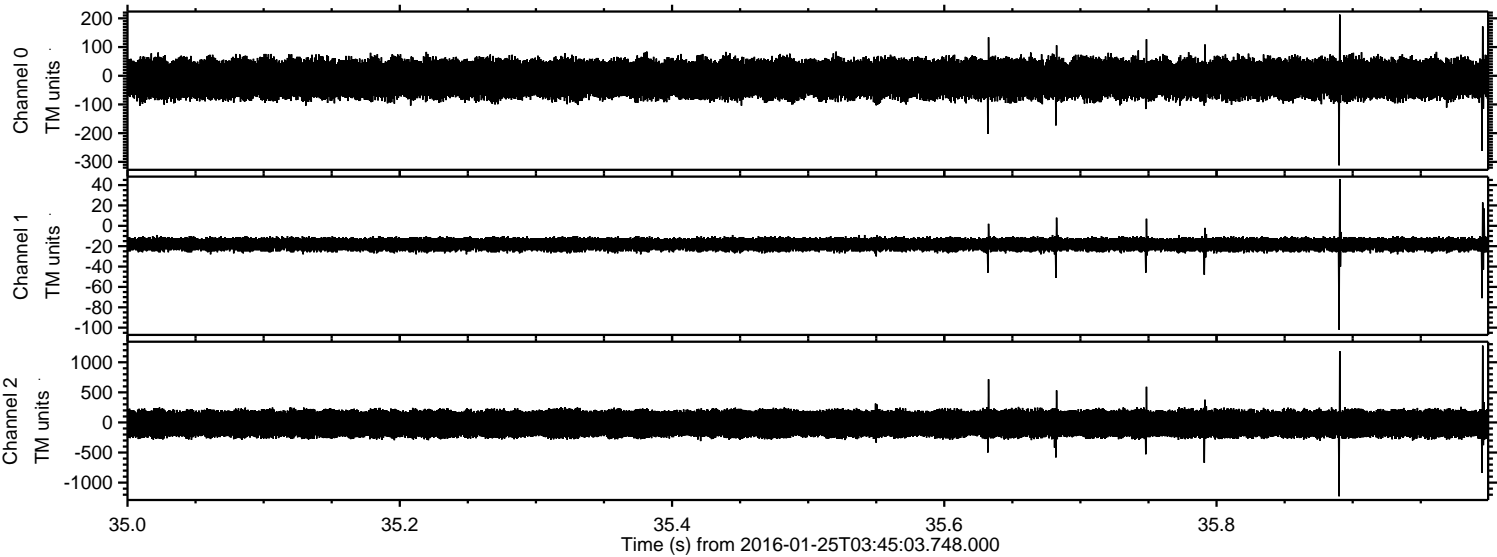
Processed Wed Apr 6 15:37:15 2016 by ELM ver.2012-10-06 from 001__elm20160125_034502__dat00.bin



Processed Wed Apr 6 15:37:16 2016 by ELM ver.2012-10-06 from 001__elm20160125_034502__dat00.bin

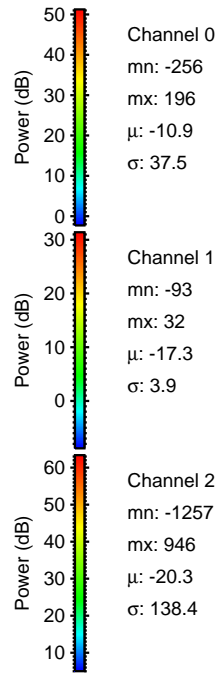
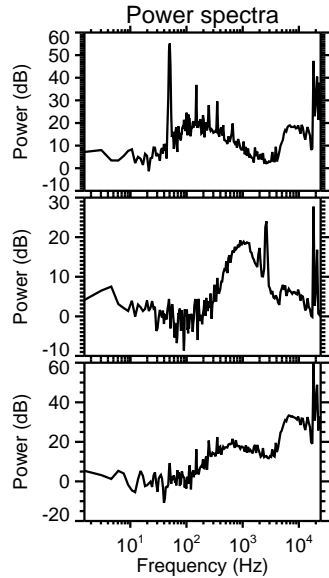
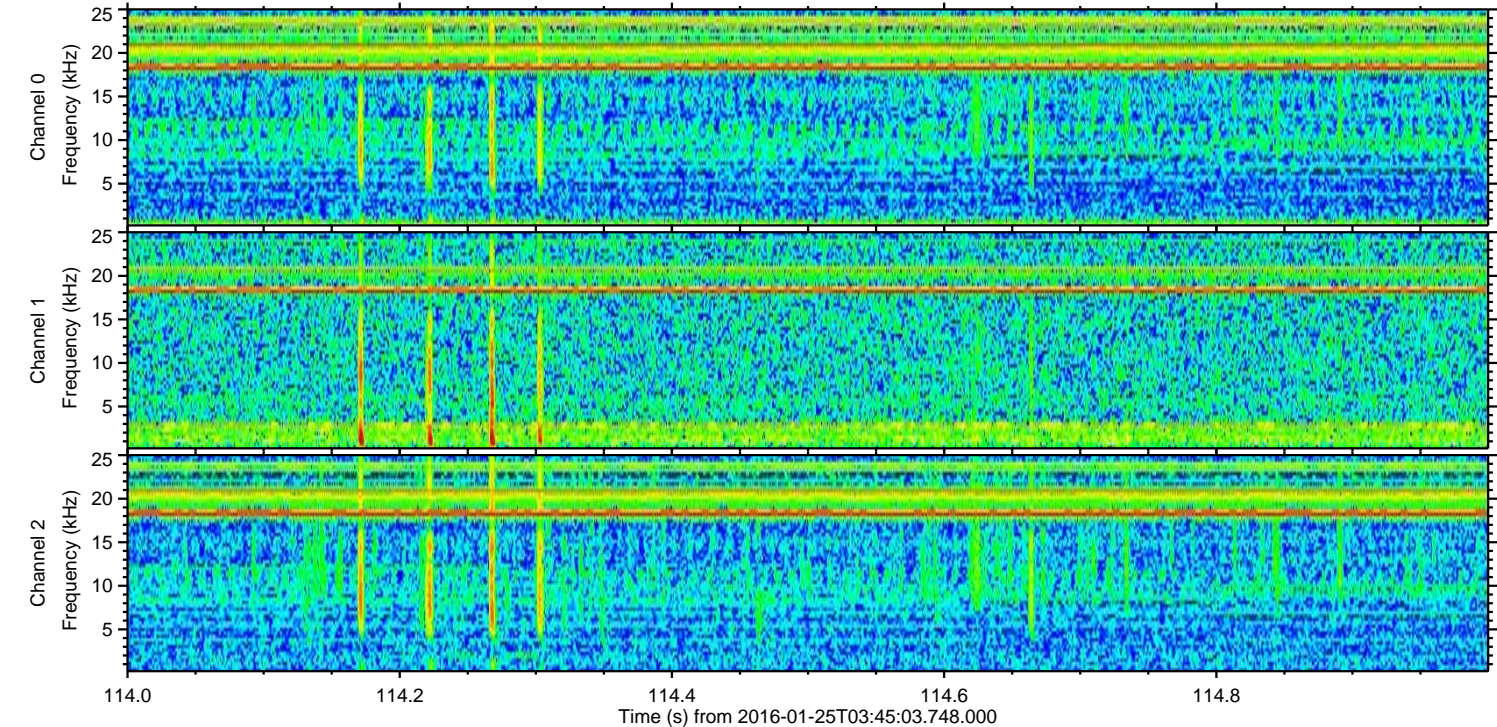
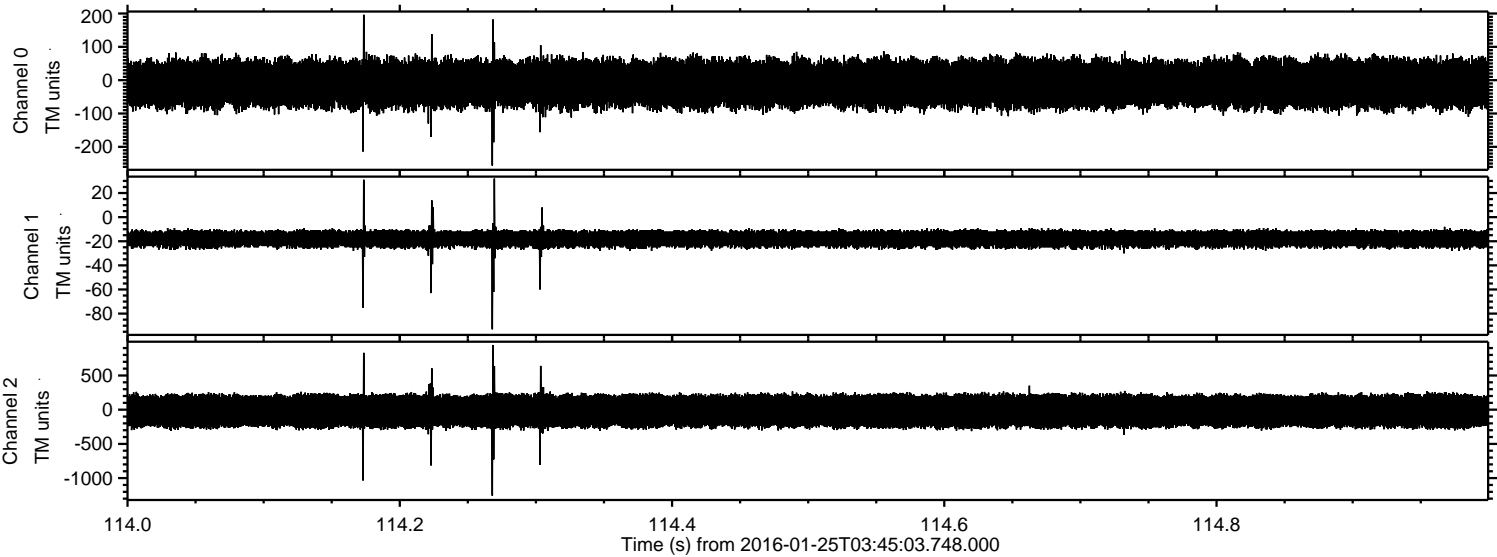


Processed Wed Apr 6 15:37:17 2016 by ELM ver.2012-10-06 from 001__elm20160125_034502__dat00.bin

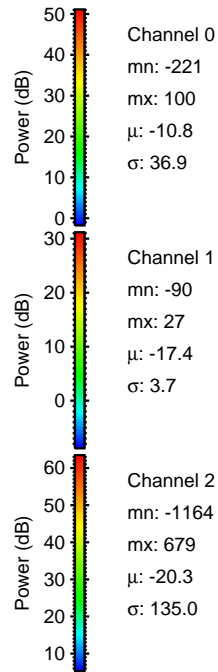
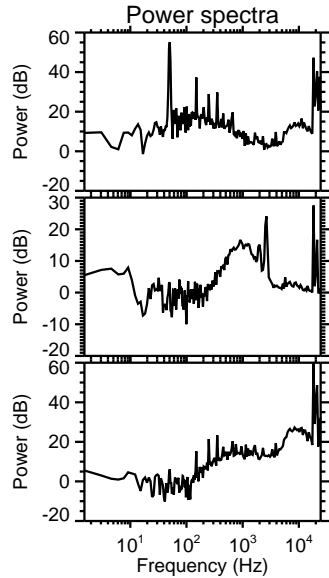
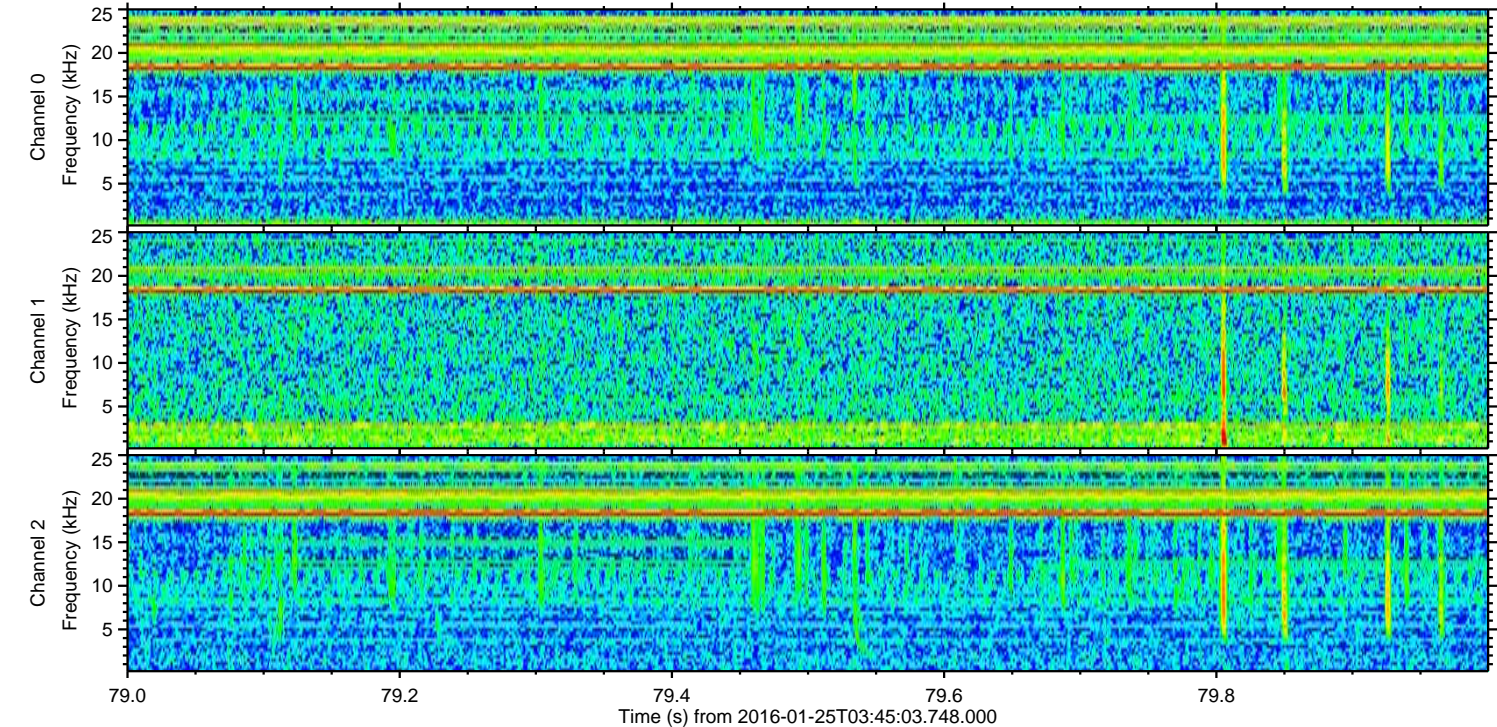
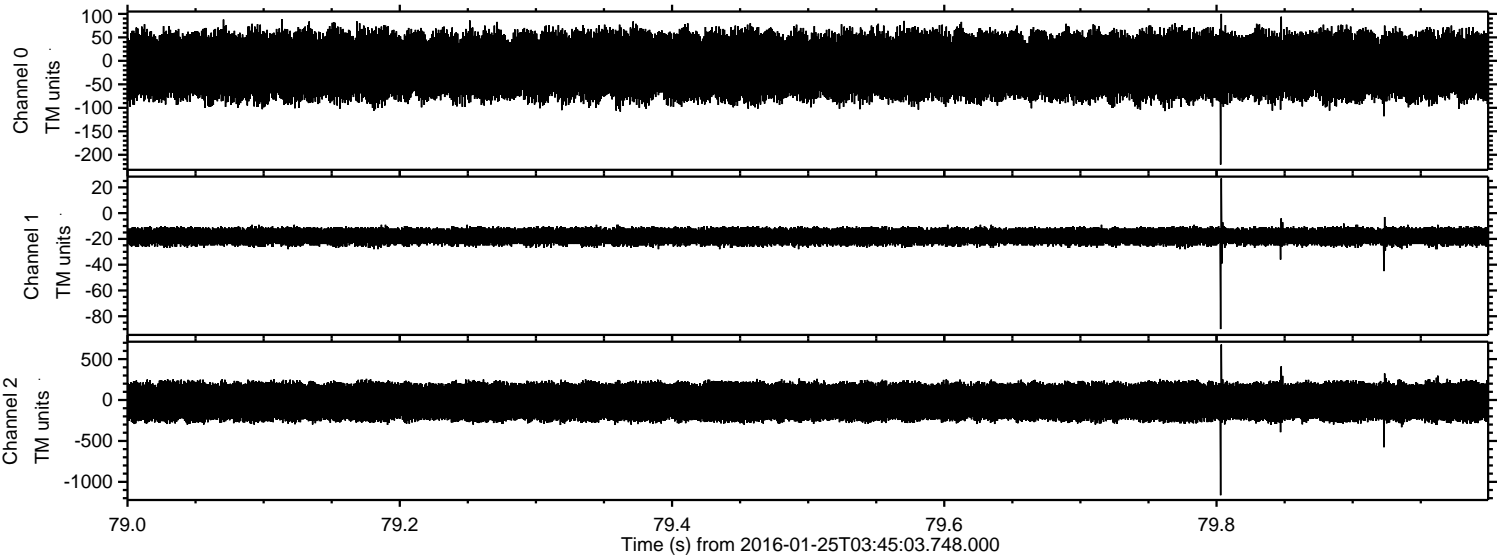


ELMAVAN 3D WAVEFORMS (Measured data sampled at 50 kHz) 51000 packets of 144 samples from 2016-01-25T03:45:03.748.000. Part 115/147

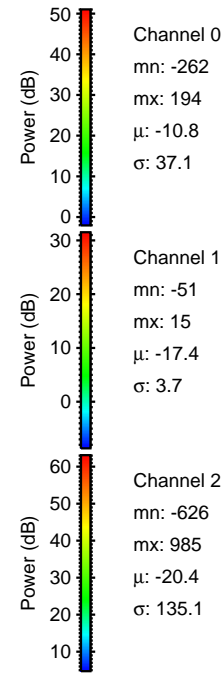
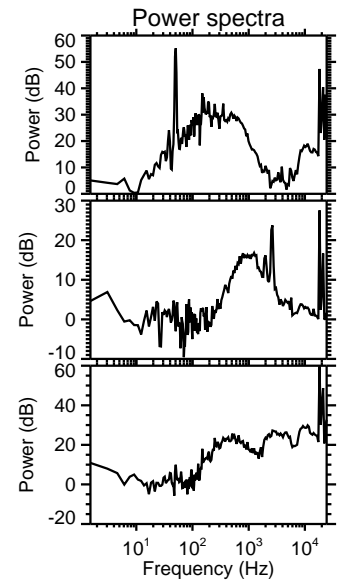
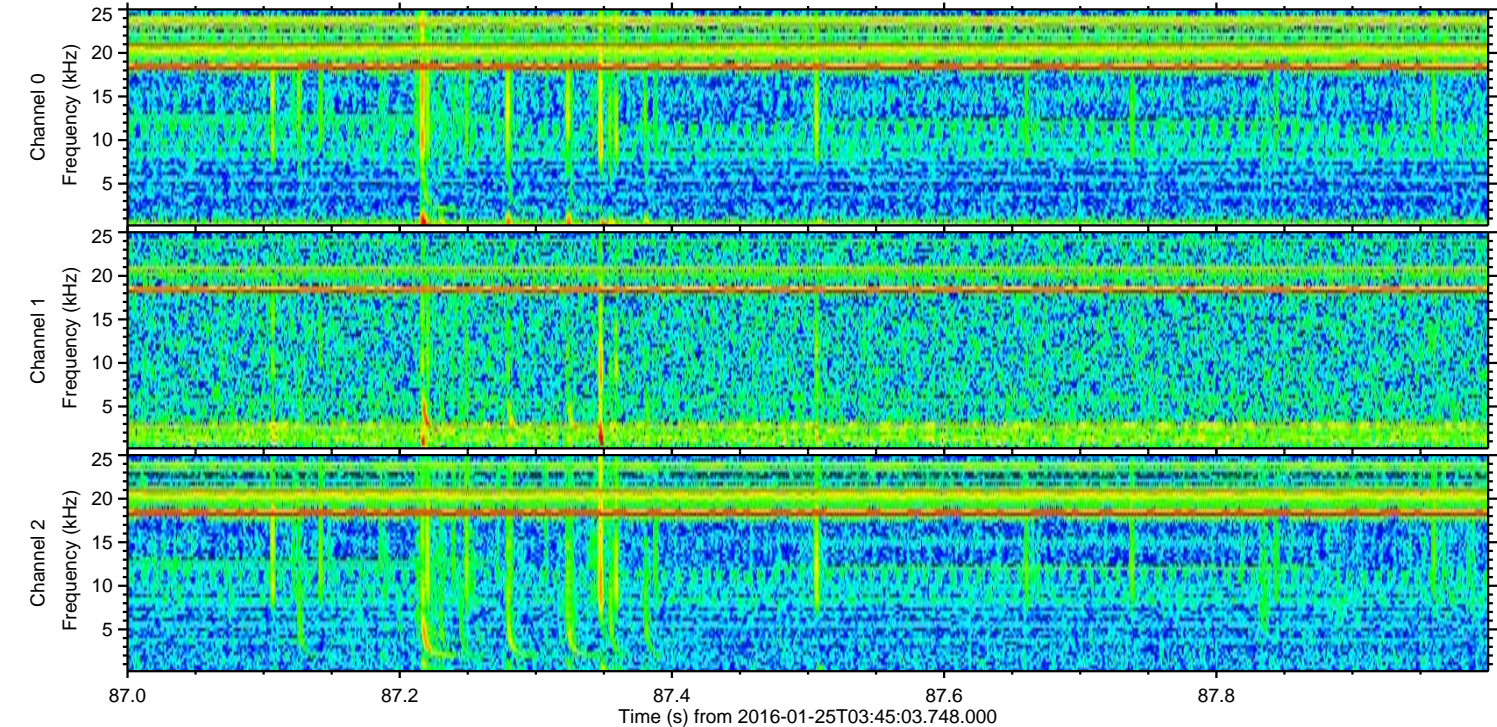
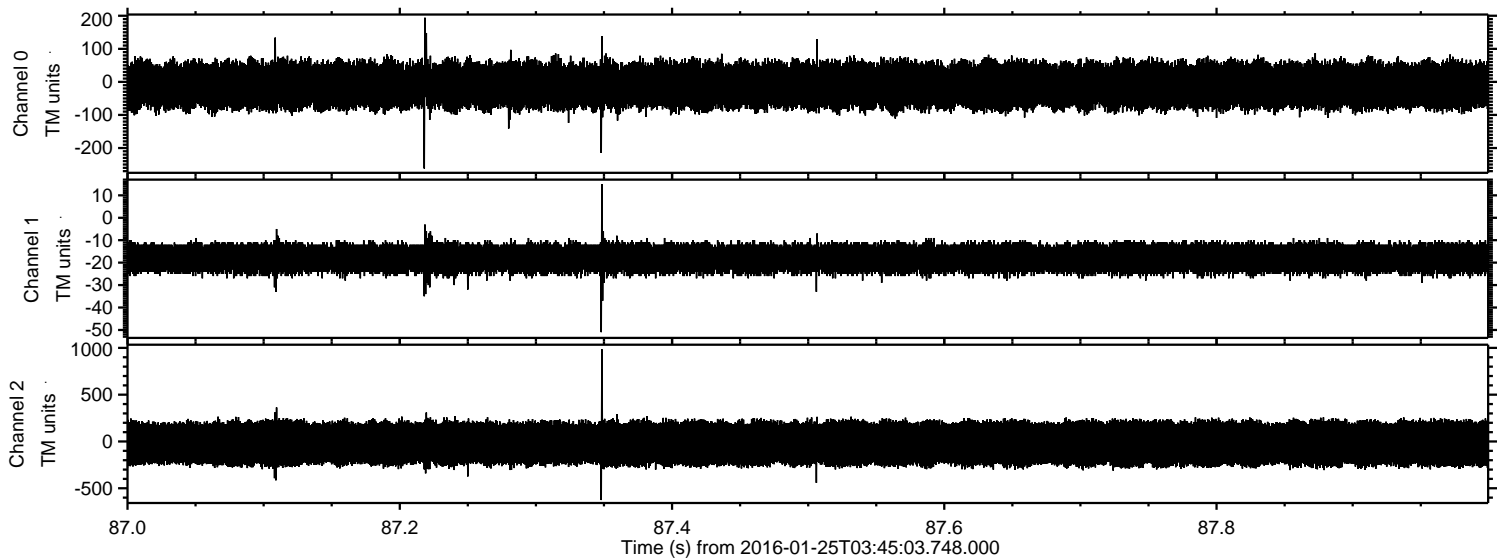
Processed Wed Apr 6 15:37:18 2016 by ELM ver.2012-10-06 from 001__elm20160125_034502__dat00.bin



Processed Wed Apr 6 15:37:19 2016 by ELM ver.2012-10-06 from 001__elm20160125_034502__dat00.bin



Processed Wed Apr 6 15:37:20 2016 by ELM ver.2012-10-06 from 001__elm20160125_034502__dat00.bin



Channel 0
mn: -262
mx: 194
 μ : -10.8
 σ : 37.1

Channel 1
mn: -51
mx: 15
 μ : -17.4
 σ : 3.7

Channel 2
mn: -626
mx: 985
 μ : -20.4
 σ : 135.1

Processed Wed Apr 6 15:37:21 2016 by ELM ver.2012-10-06 from 001__elm20160125_034502__dat00.bin

