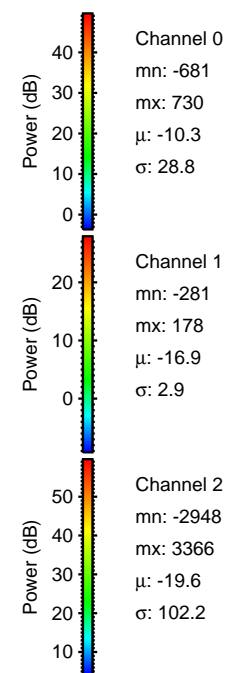
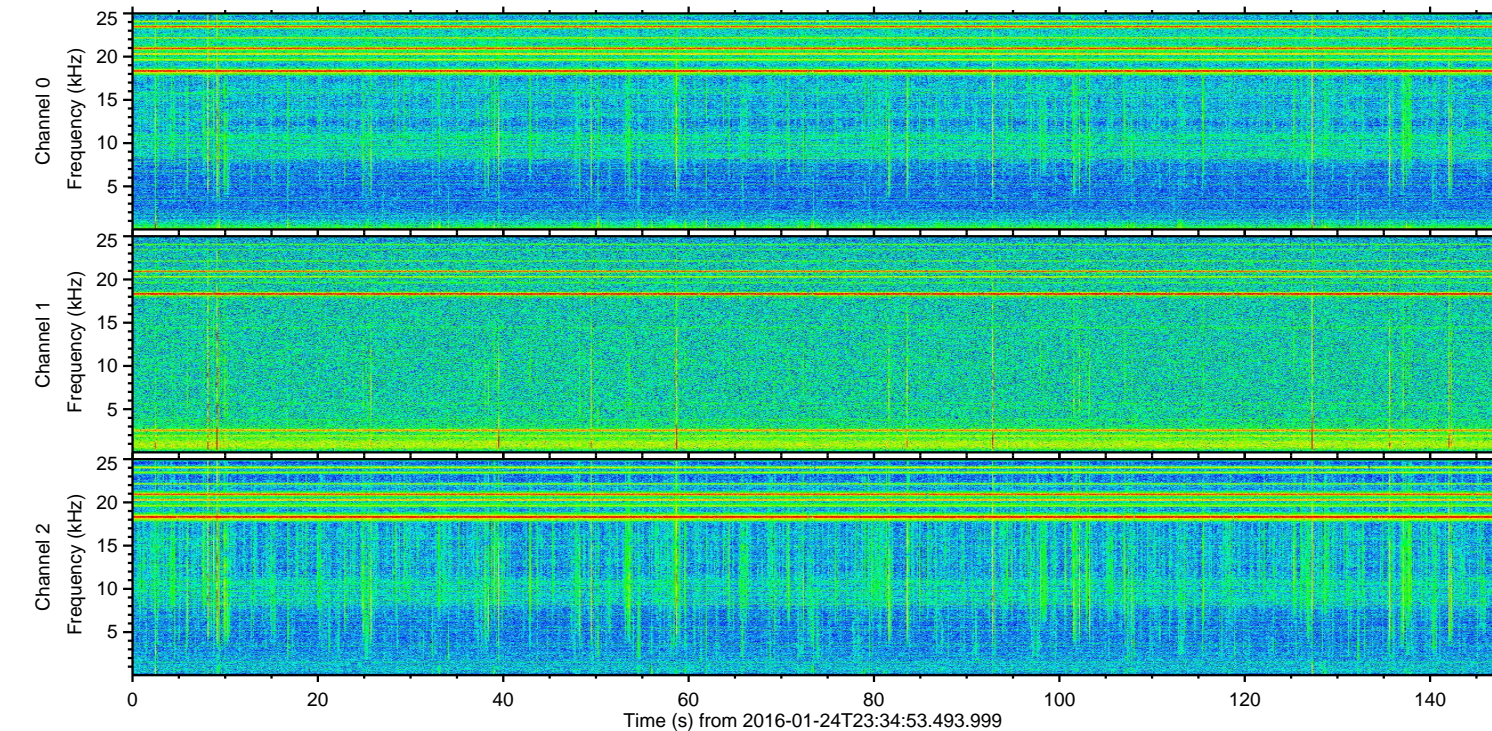
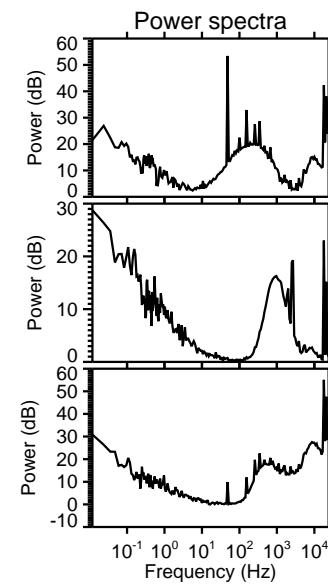
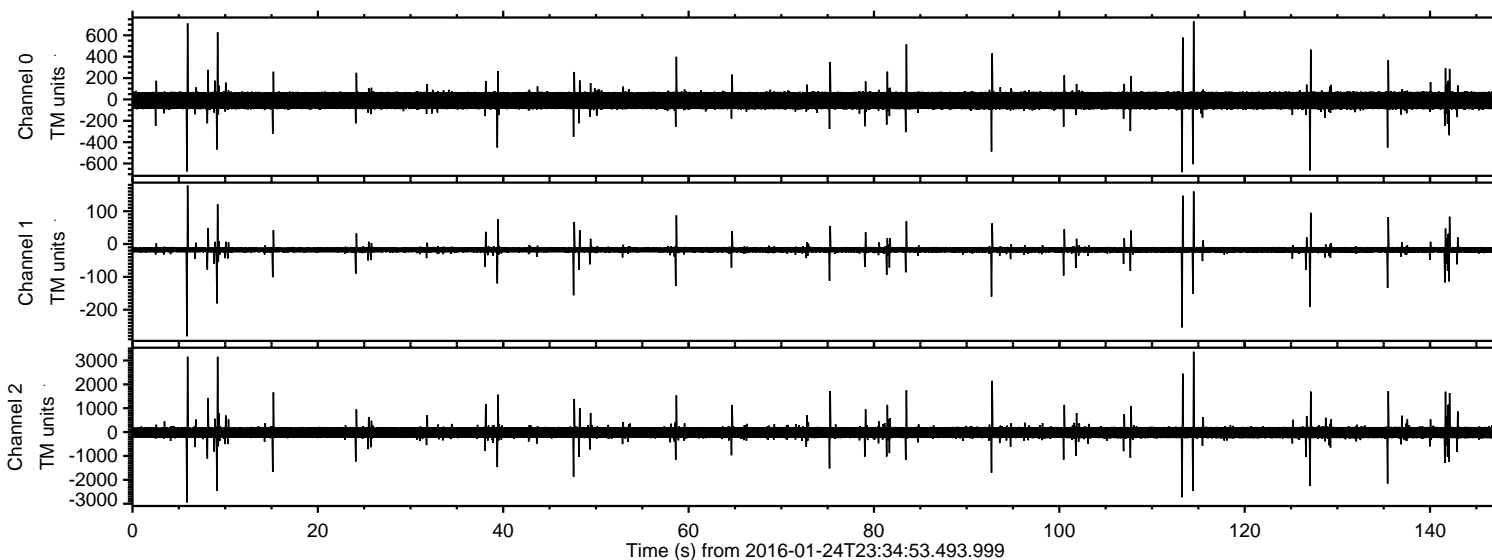


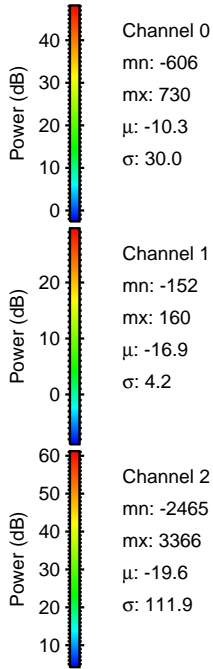
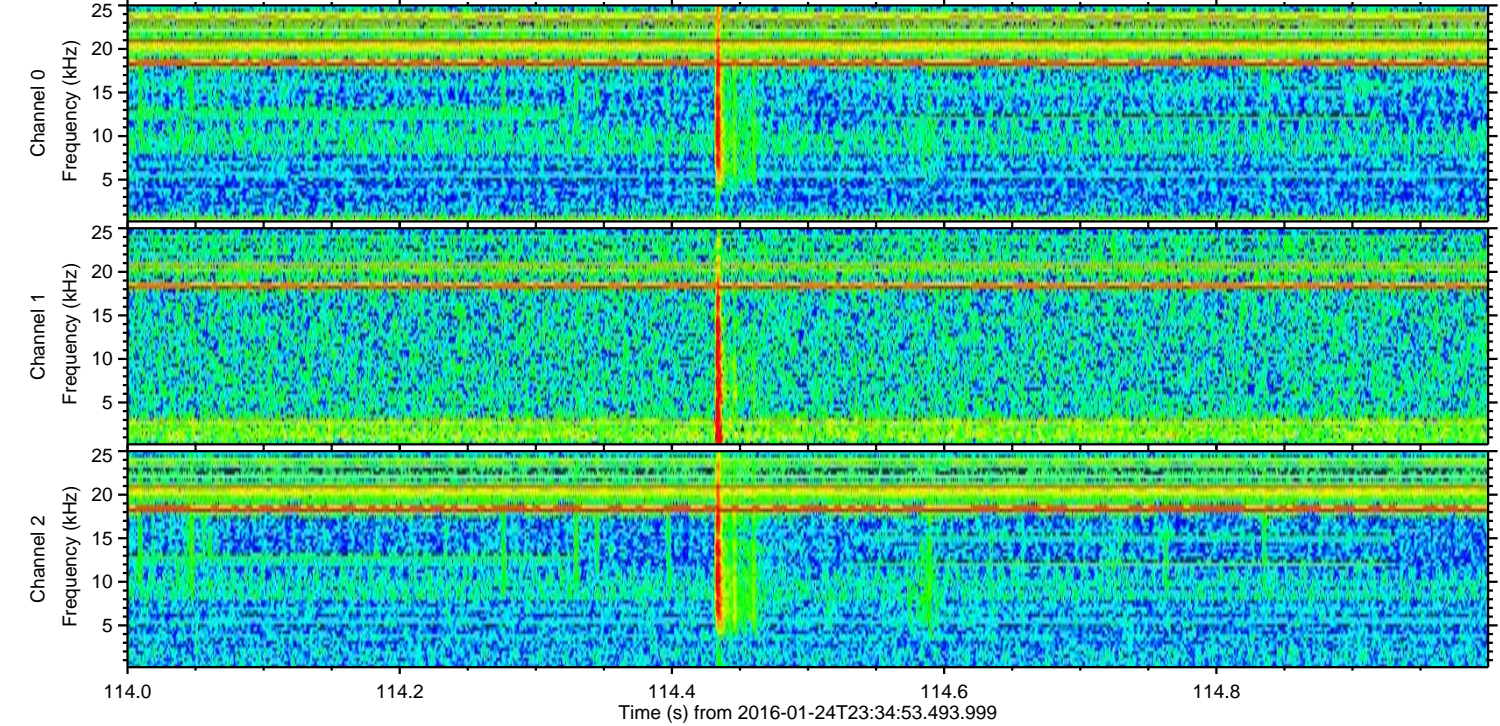
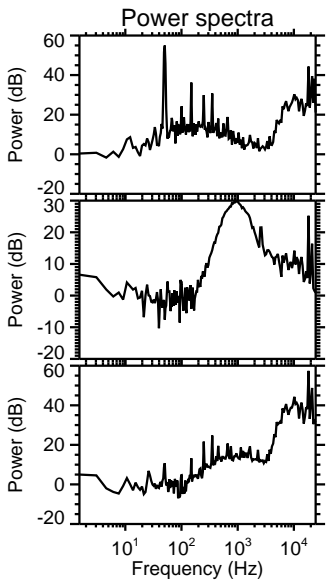
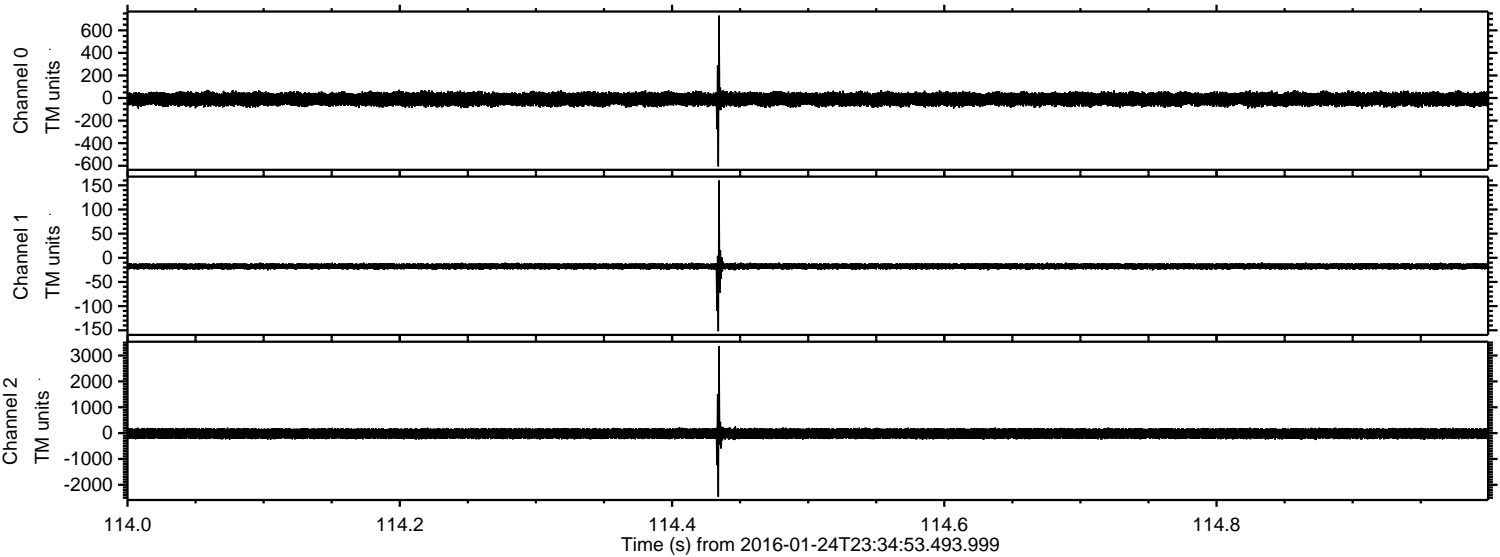
ELMAVAN 3D WAVEFORMS (Measured data sampled at 50 kHz) 51000 packets of 144 samples from 2016-01-24T23:34:53.493.999.

Processed Wed Apr 6 14:46:55 2016 by ELM ver.2012-10-06 from 001__elm20160124_233452__dat00.bin

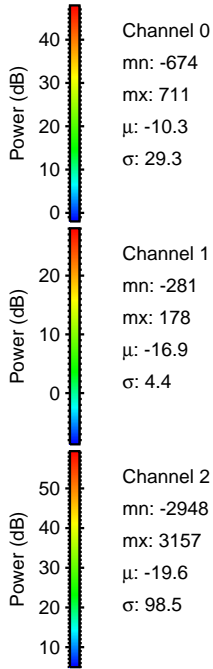
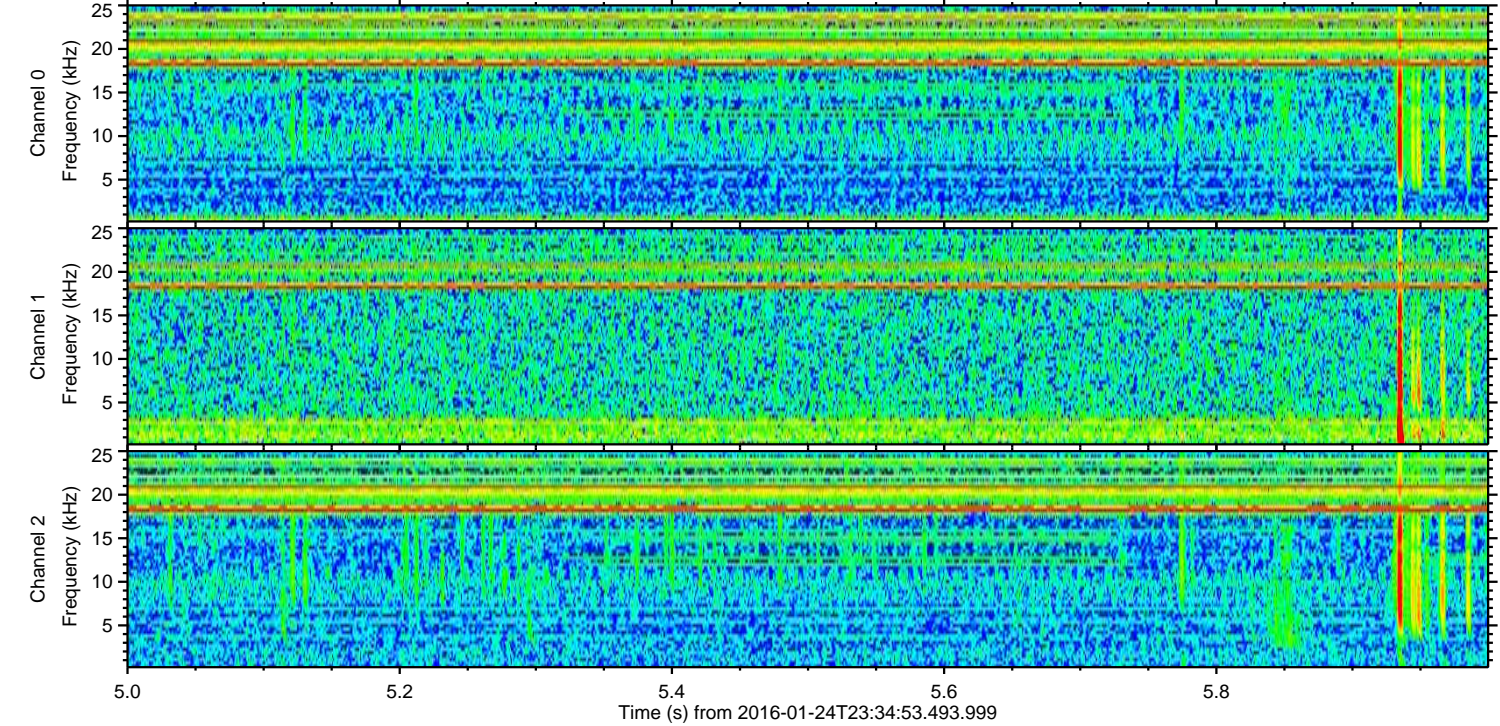
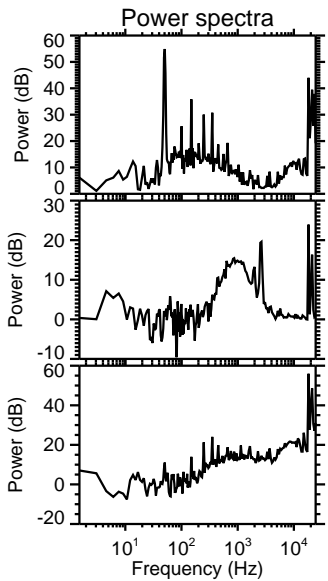
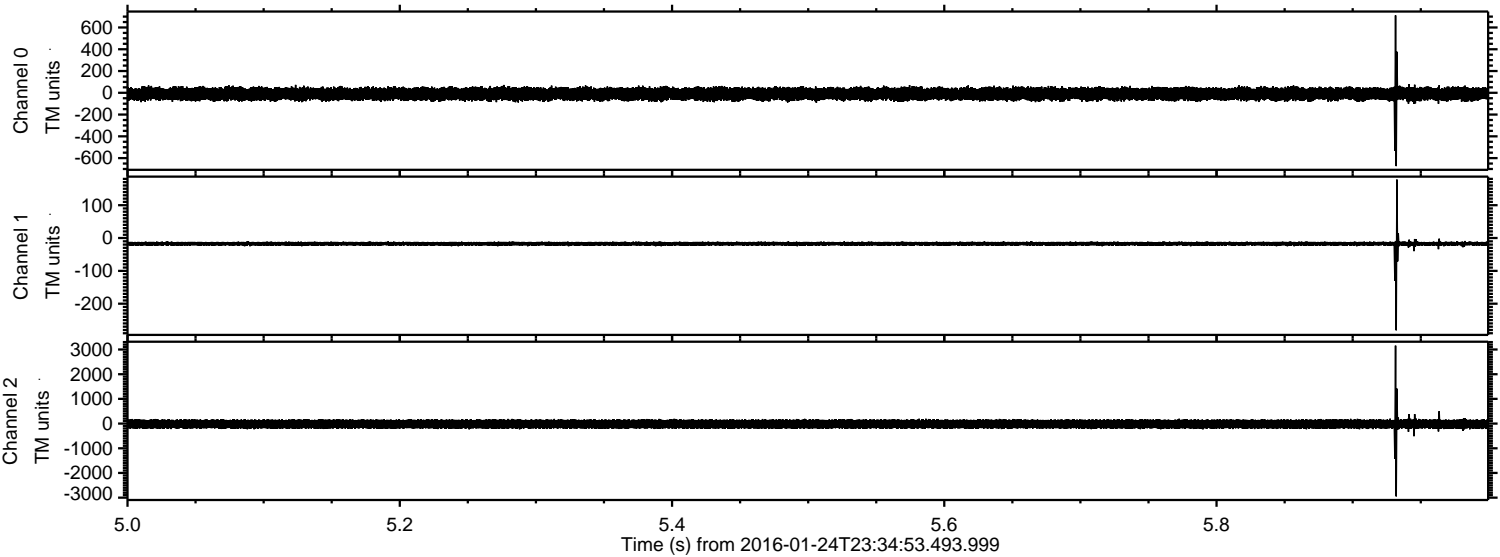


ELMAVAN 3D WAVEFORMS (Measured data sampled at 50 kHz) 51000 packets of 144 samples from 2016-01-24T23:34:53.493.999. Part 115/147

Processed Wed Apr 6 14:47:06 2016 by ELM ver.2012-10-06 from 001__elm20160124_233452__dat00.bin

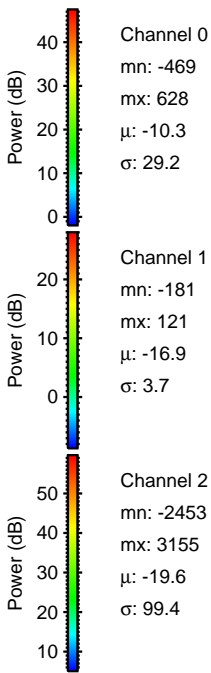
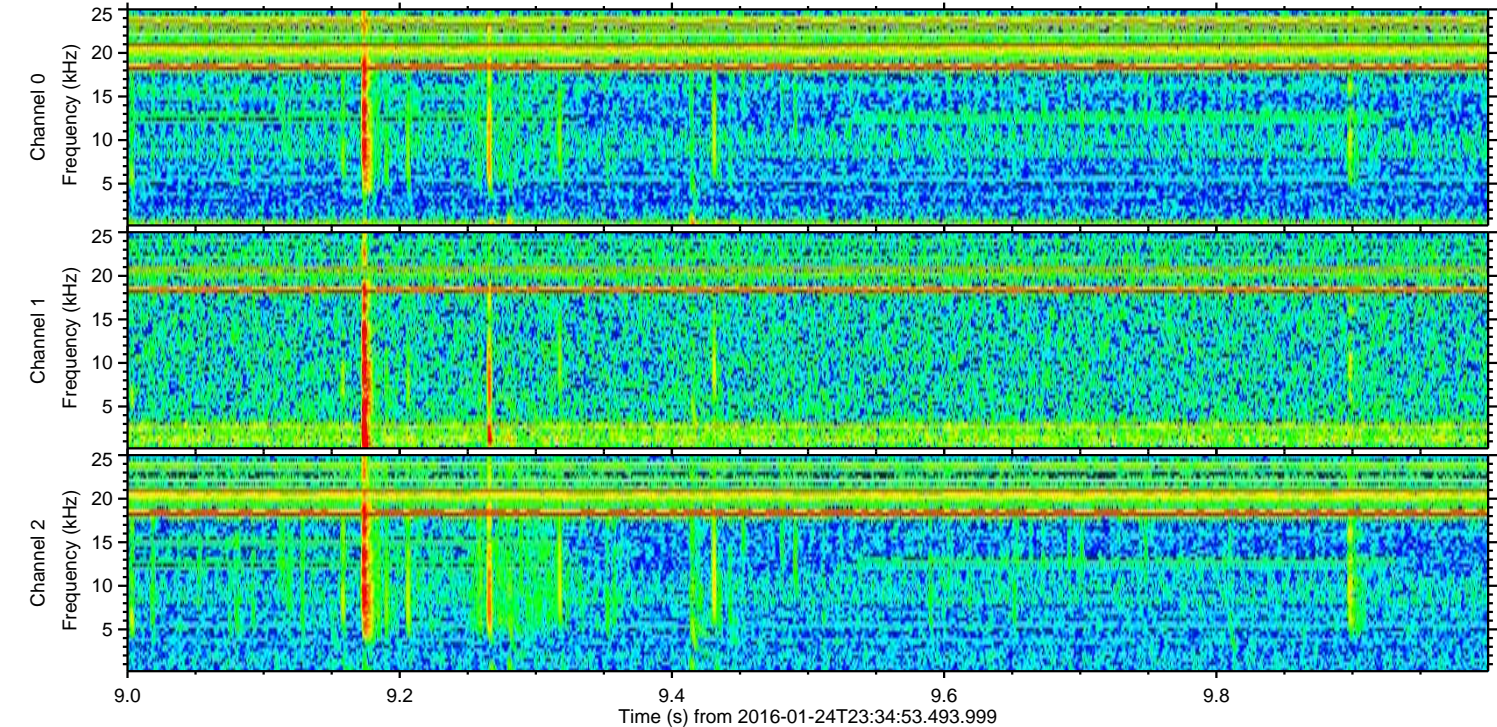
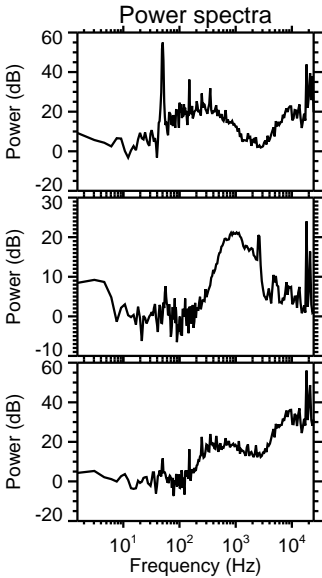
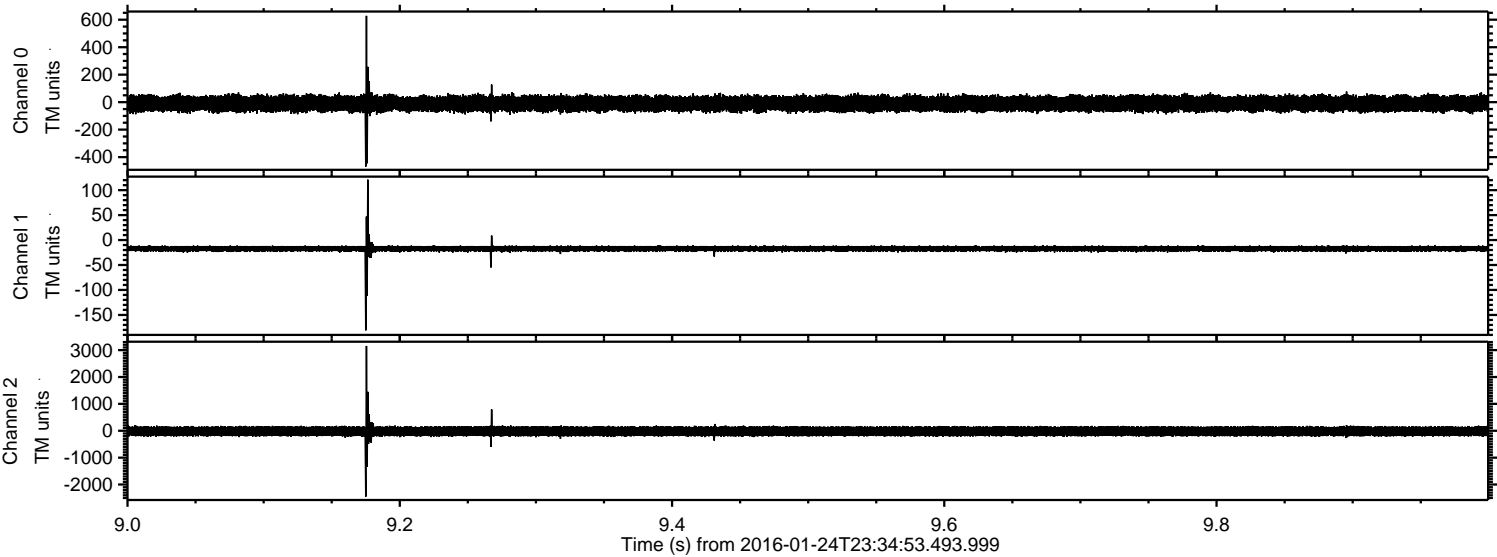


Processed Wed Apr 6 14:47:07 2016 by ELM ver.2012-10-06 from 001__elm20160124_233452__dat00.bin



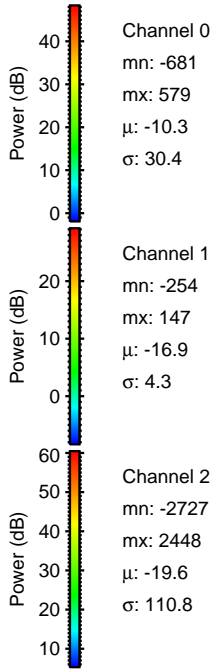
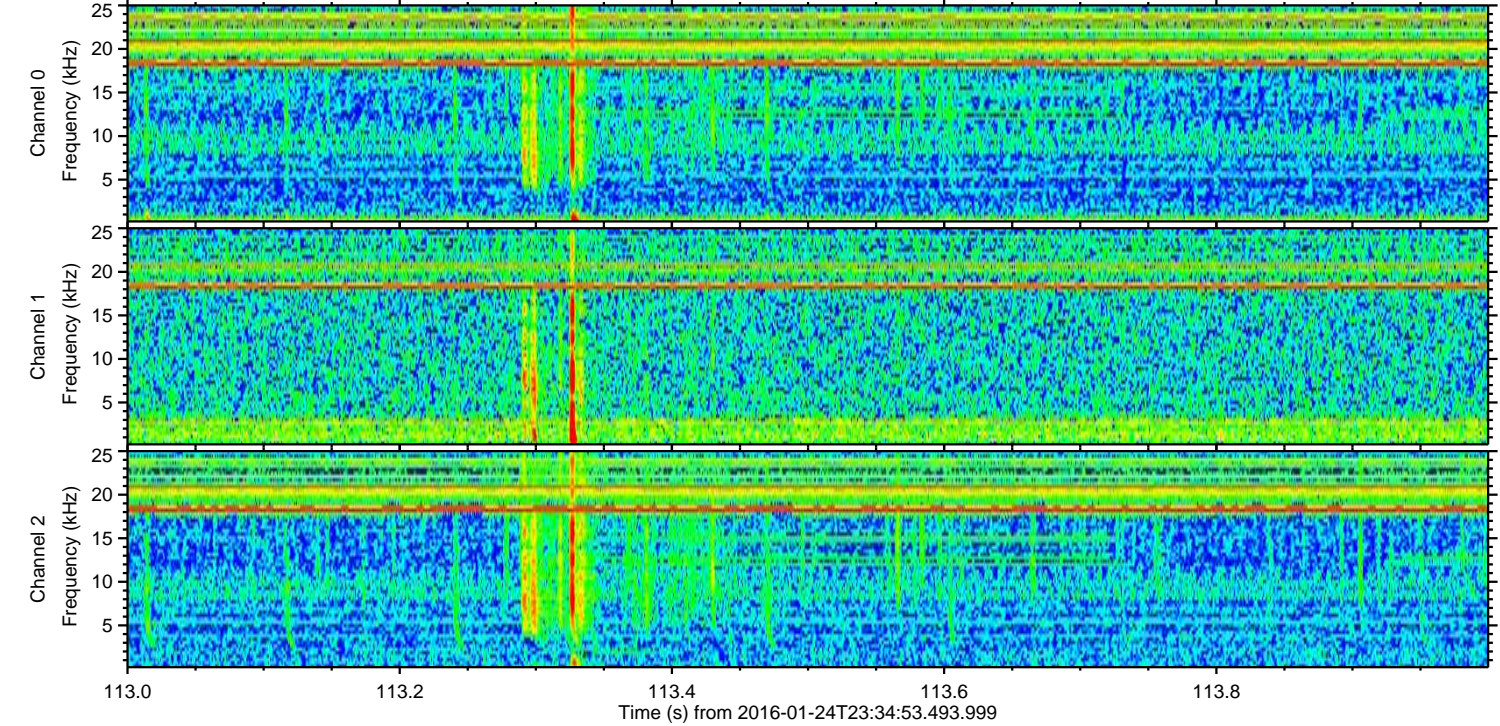
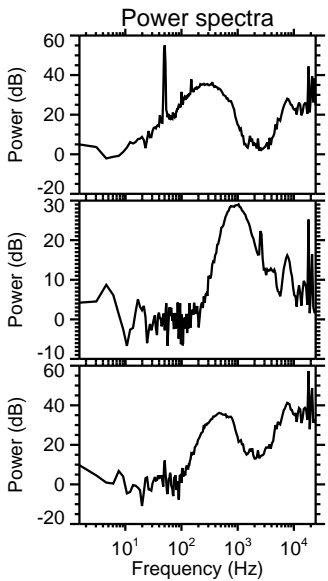
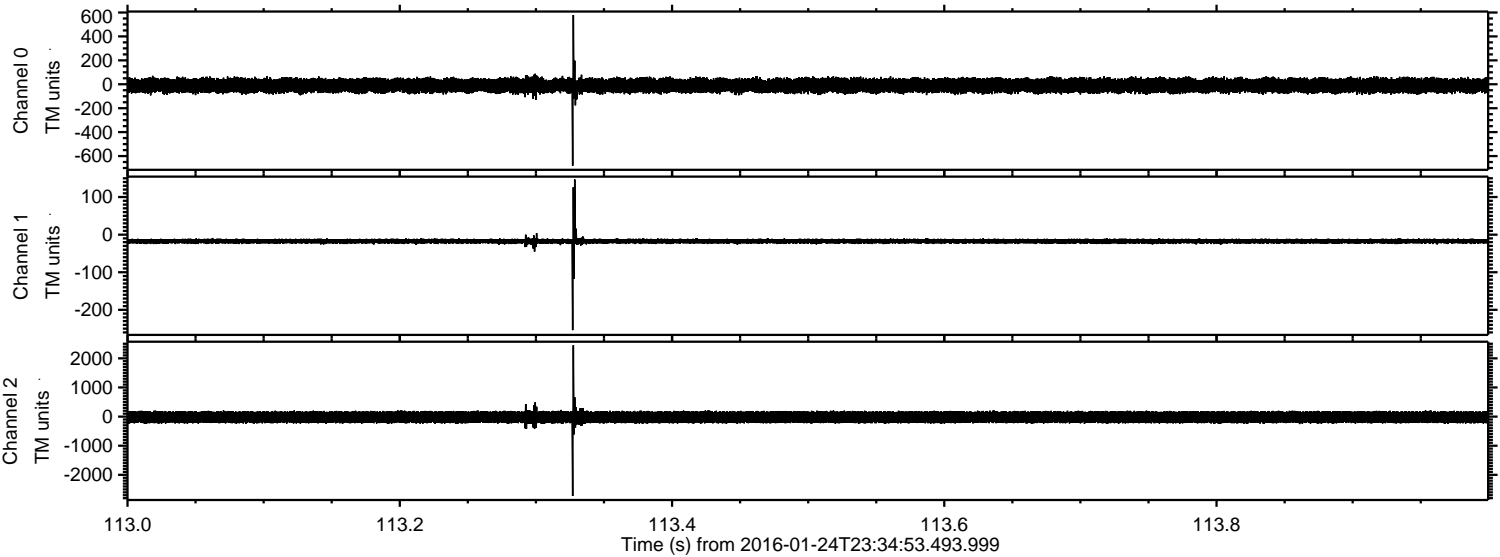
ELMAVAN 3D WAVEFORMS (Measured data sampled at 50 kHz) 51000 packets of 144 samples from 2016-01-24T23:34:53.493.999. Part 10/147

Processed Wed Apr 6 14:47:08 2016 by ELM ver.2012-10-06 from 001__elm20160124_233452__dat00.bin



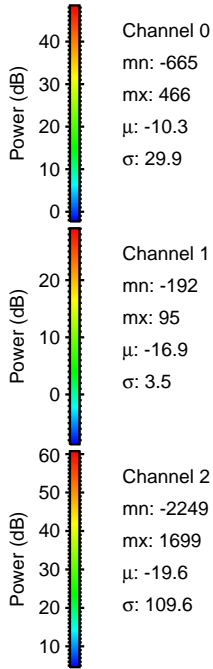
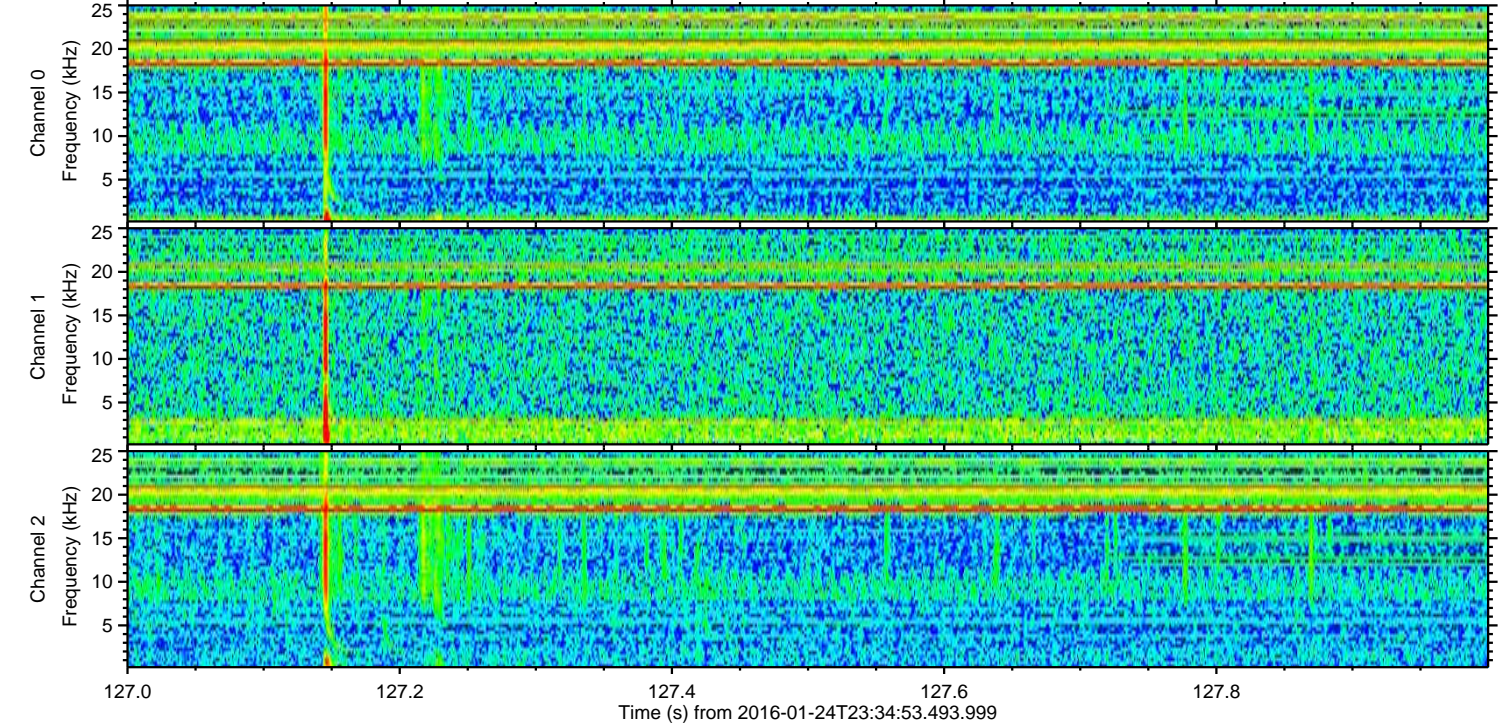
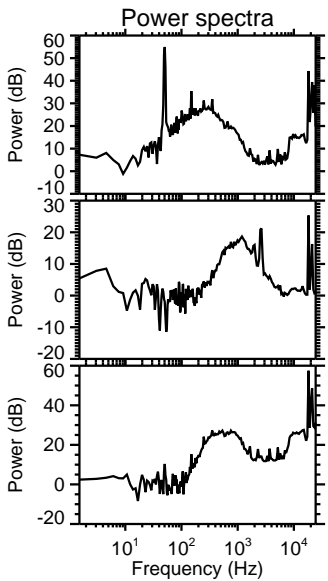
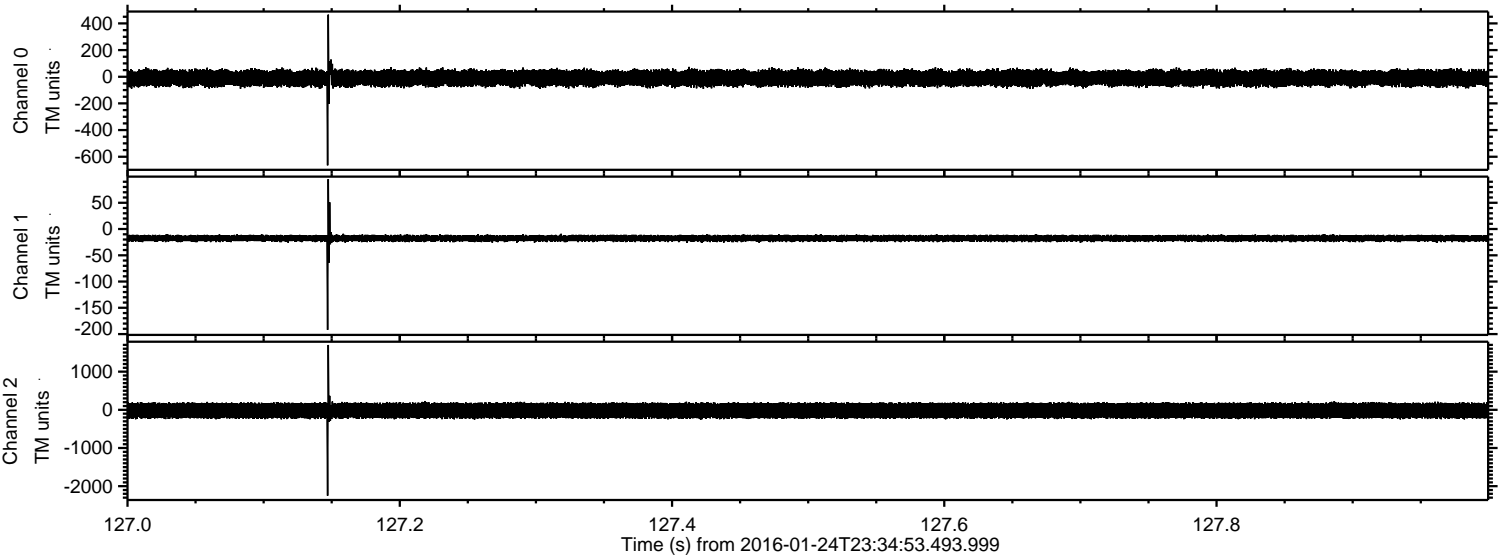
ELMAVAN 3D WAVEFORMS (Measured data sampled at 50 kHz) 51000 packets of 144 samples from 2016-01-24T23:34:53.493.999. Part 114/147

Processed Wed Apr 6 14:47:09 2016 by ELM ver.2012-10-06 from 001__elm20160124_233452__dat00.bin



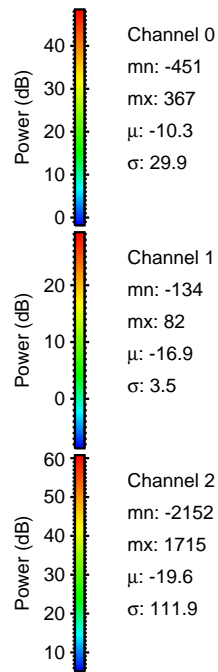
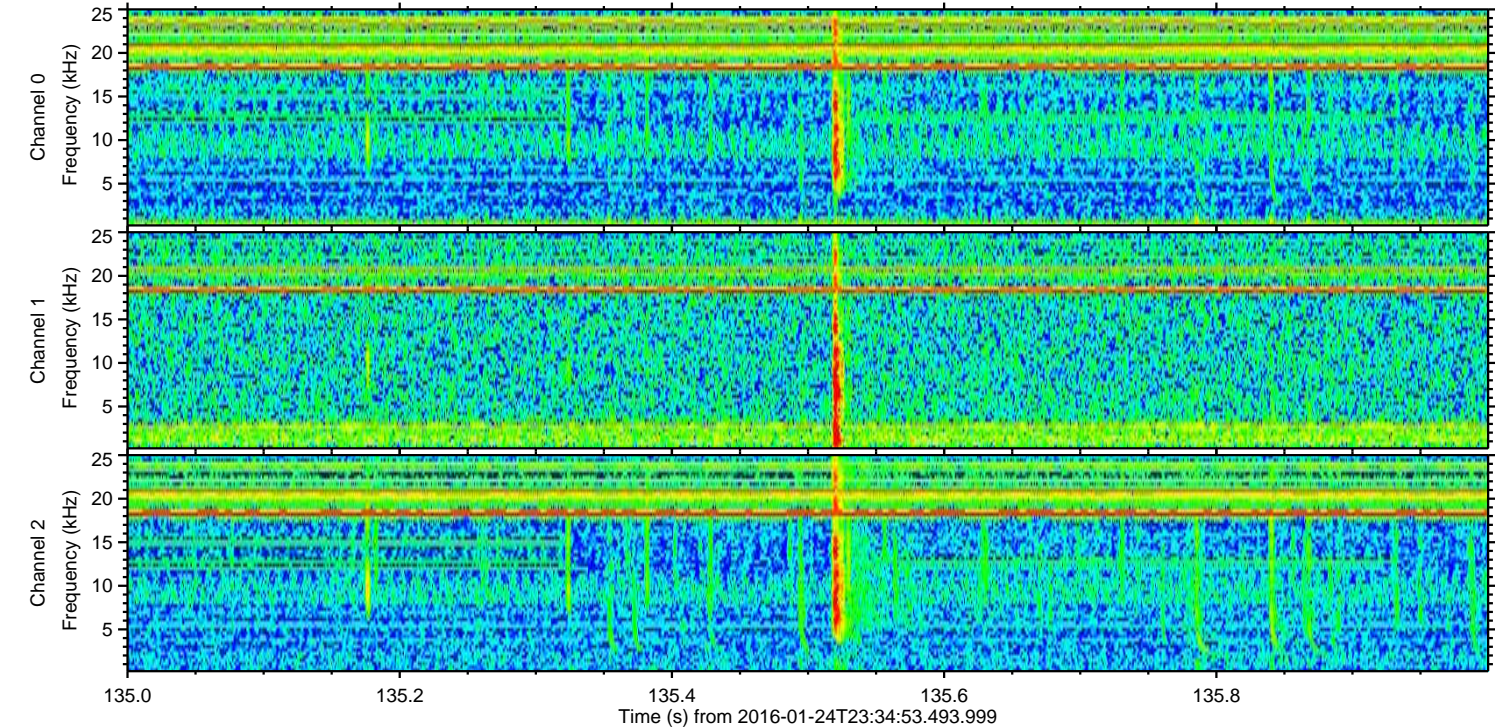
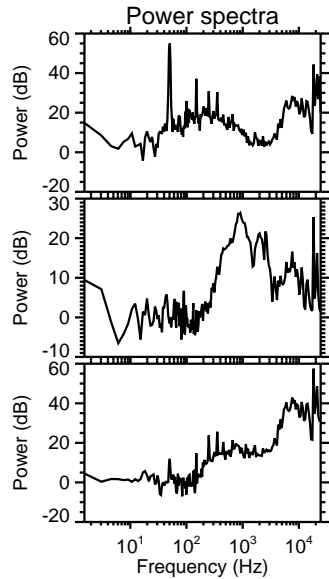
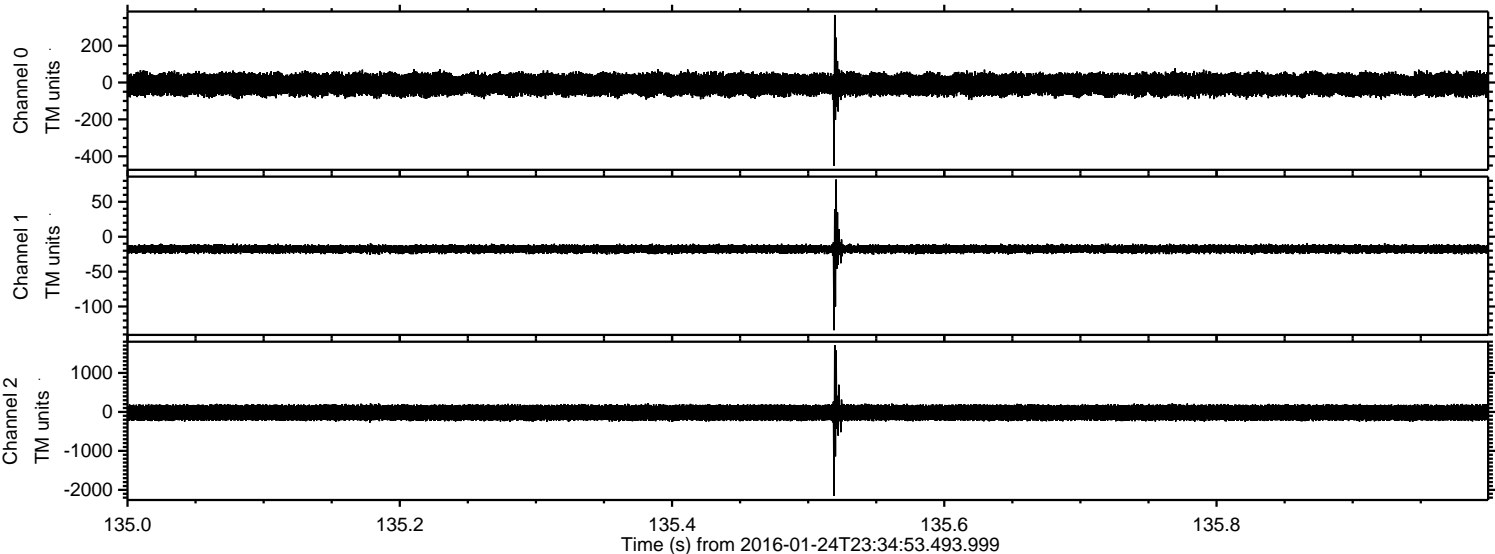
ELMAVAN 3D WAVEFORMS (Measured data sampled at 50 kHz) 51000 packets of 144 samples from 2016-01-24T23:34:53.493.999. Part 128/147

Processed Wed Apr 6 14:47:10 2016 by ELM ver.2012-10-06 from 001__elm20160124_233452__dat00.bin

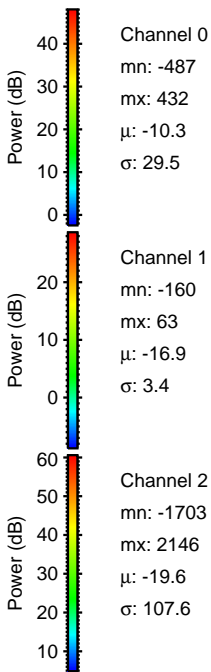
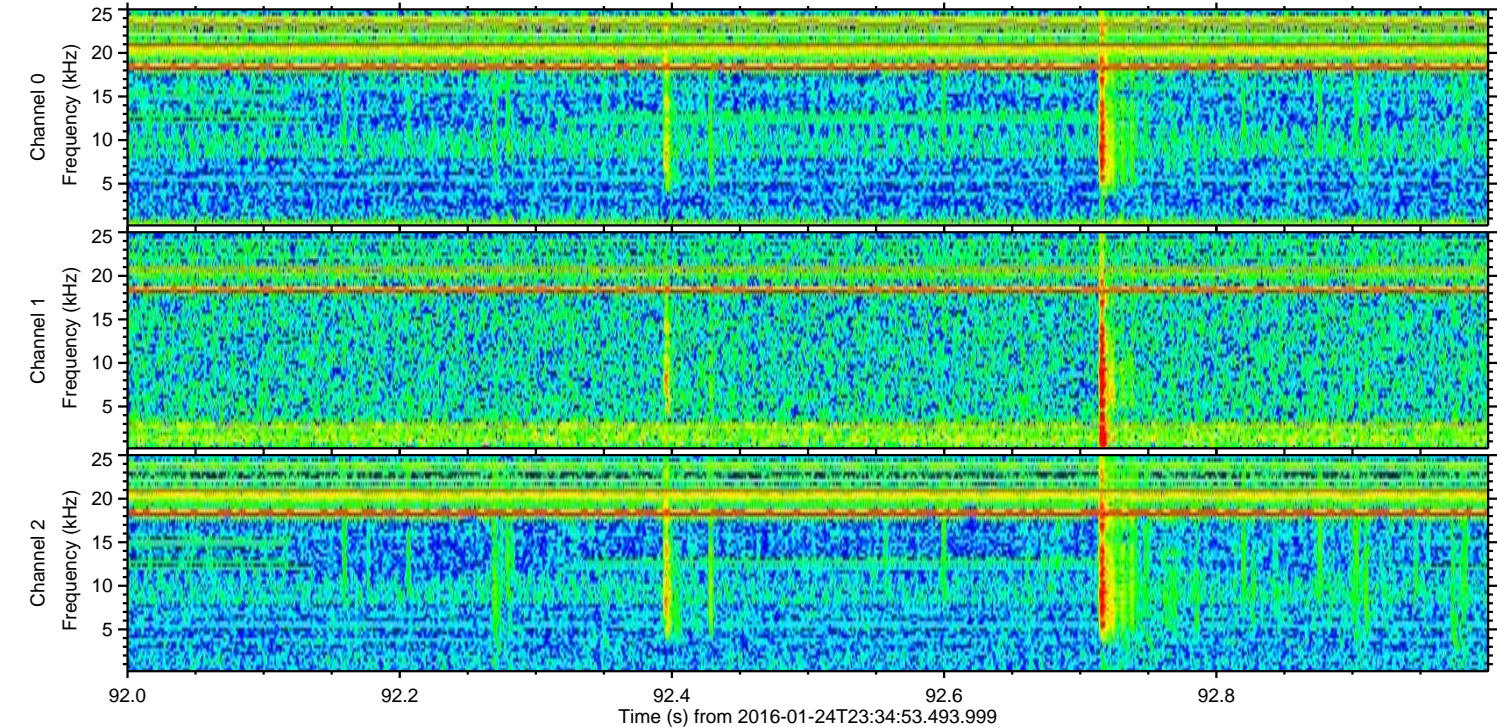
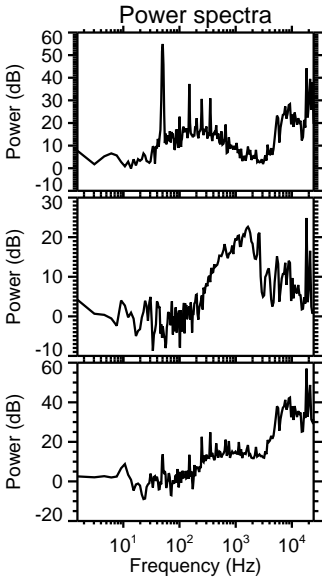
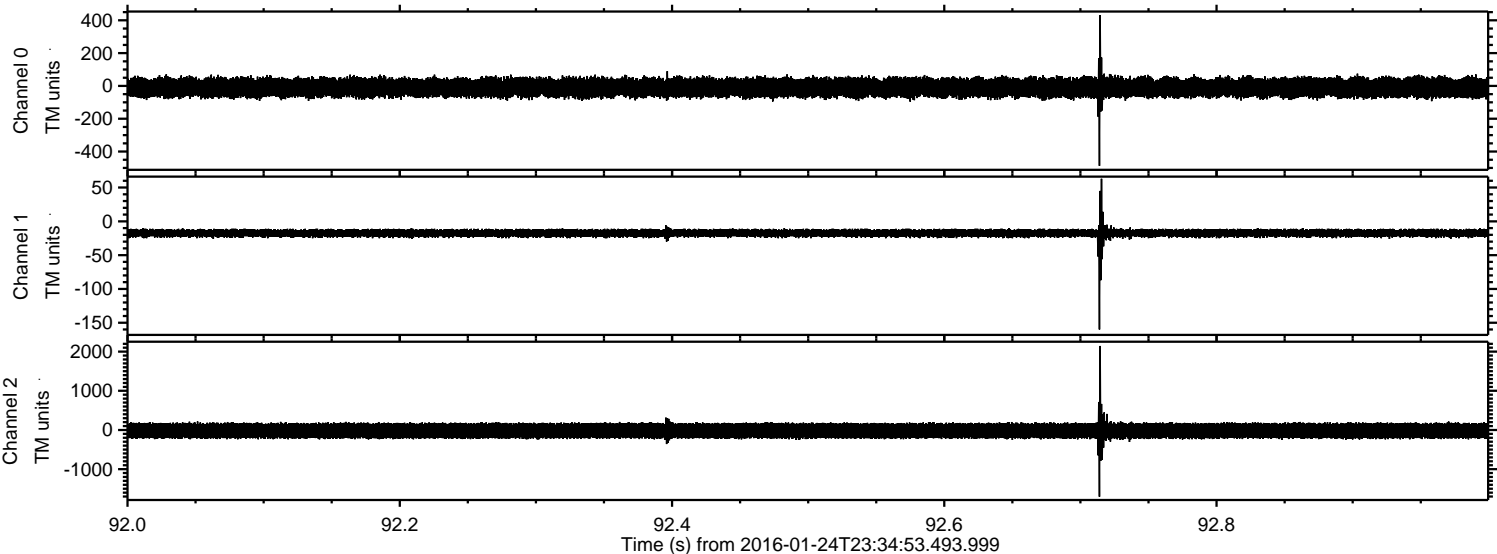


ELMAVAN 3D WAVEFORMS (Measured data sampled at 50 kHz) 51000 packets of 144 samples from 2016-01-24T23:34:53.493.999. Part 136/147

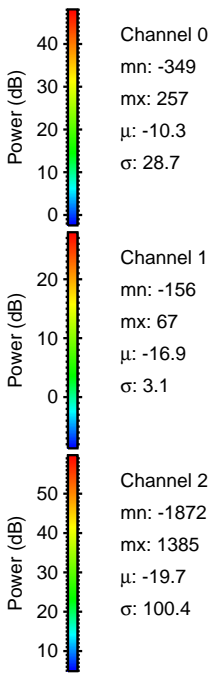
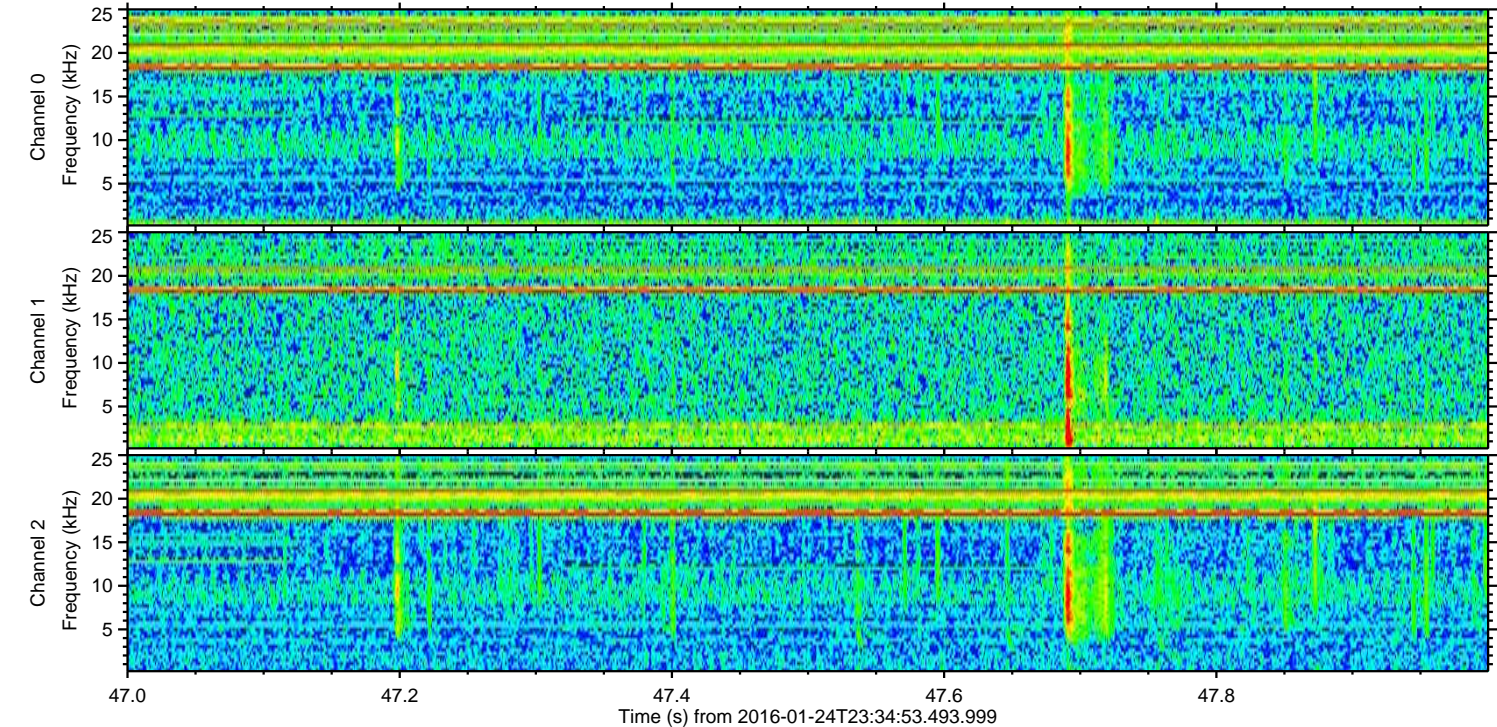
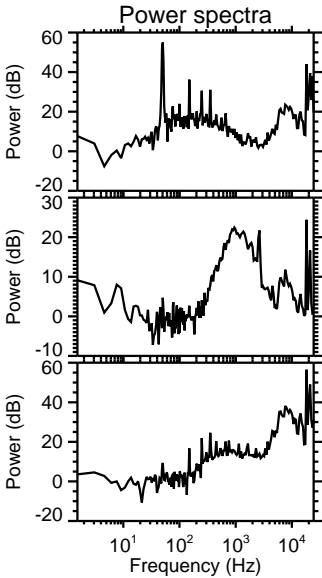
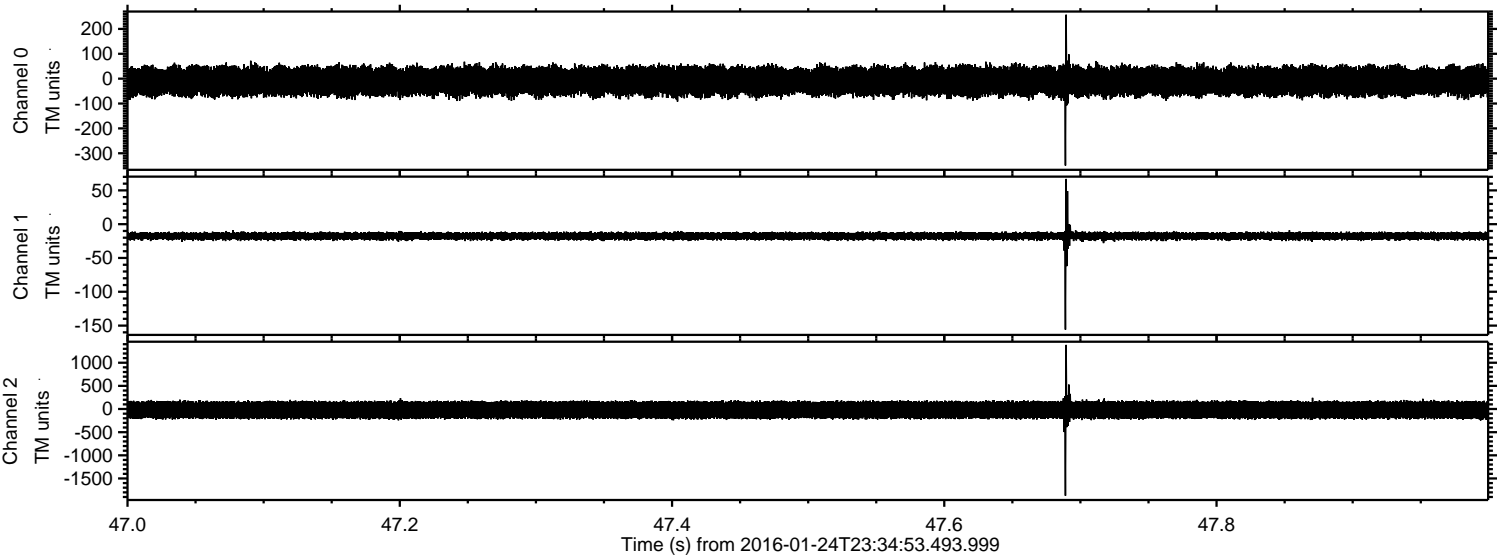
Processed Wed Apr 6 14:47:11 2016 by ELM ver.2012-10-06 from 001__elm20160124_233452__dat00.bin



Processed Wed Apr 6 14:47:12 2016 by ELM ver.2012-10-06 from 001__elm20160124_233452__dat00.bin



Processed Wed Apr 6 14:47:13 2016 by ELM ver.2012-10-06 from 001__elm20160124_233452__dat00.bin

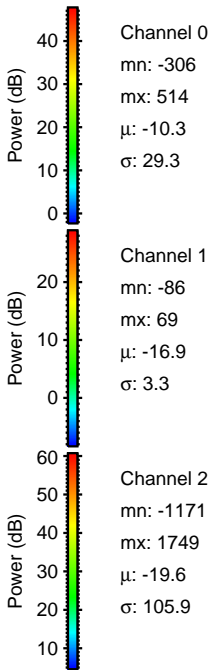
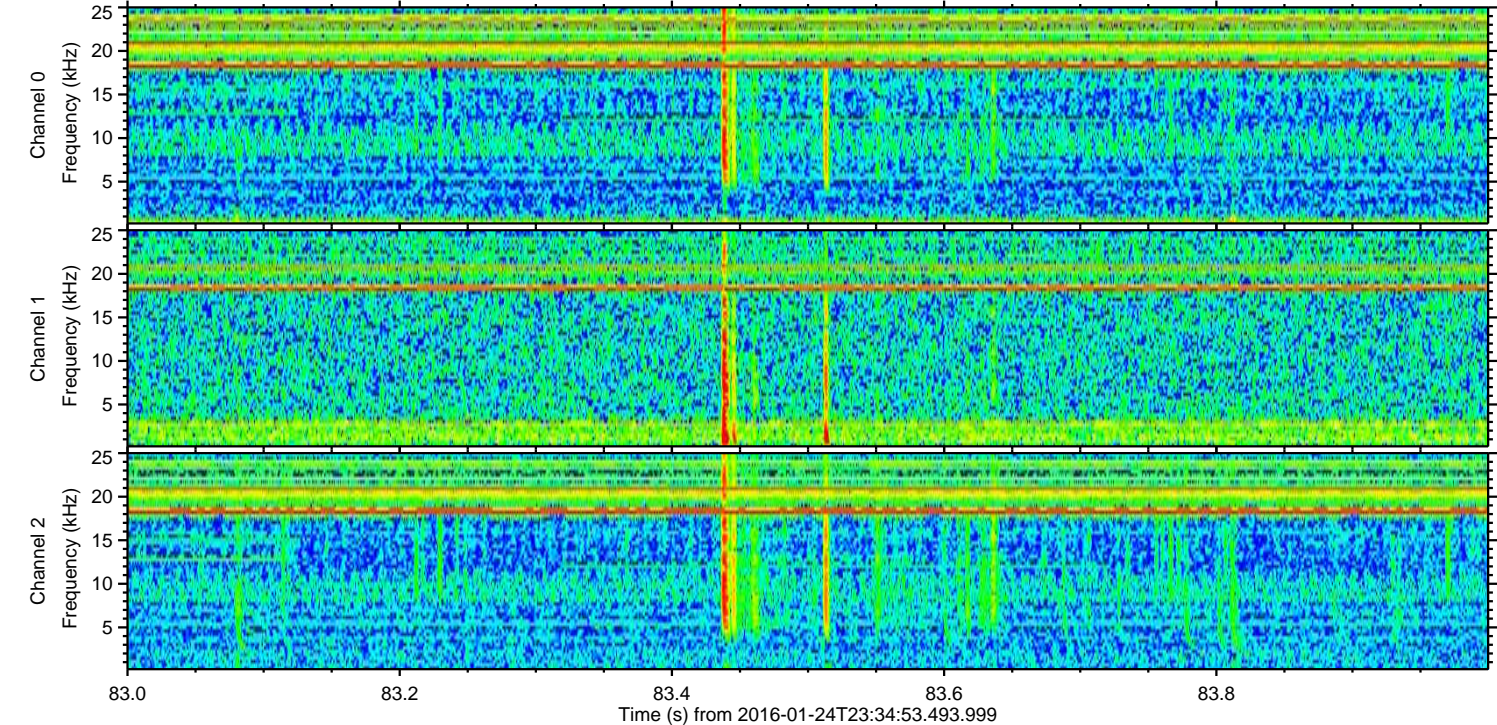
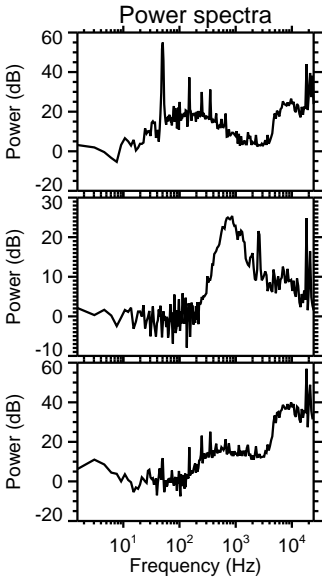
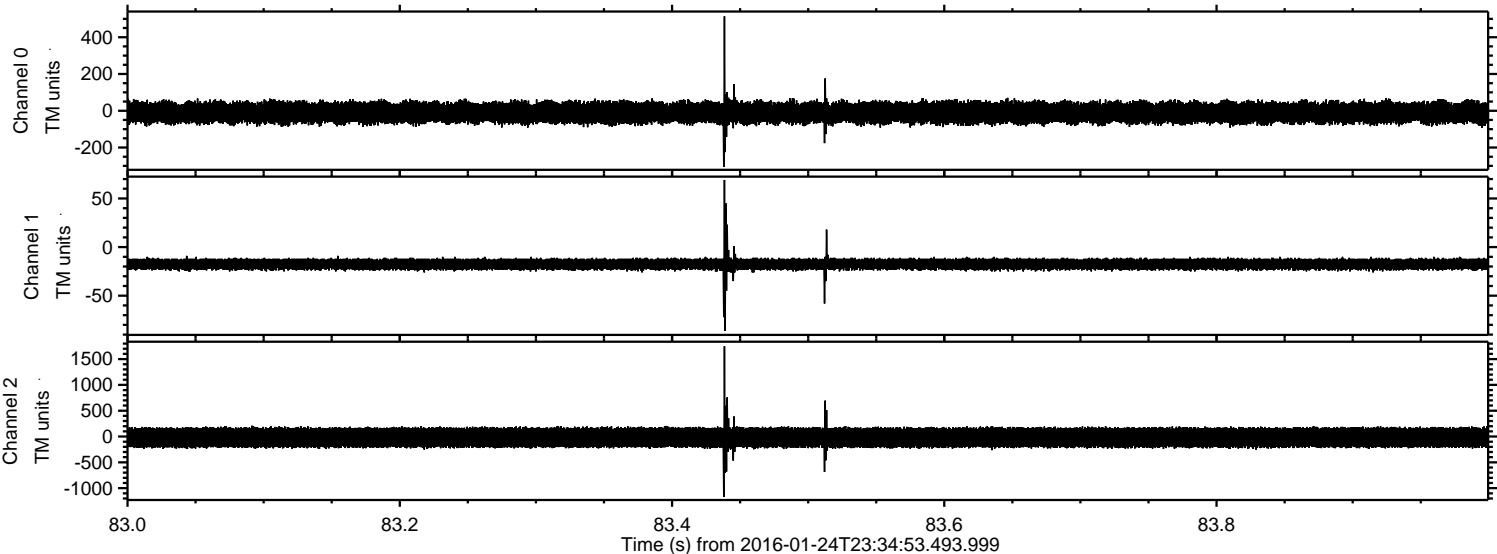


Channel 0
mn: -349
mx: 257
 μ : -10.3
 σ : 28.7

Channel 1
mn: -156
mx: 67
 μ : -16.9
 σ : 3.1

Channel 2
mn: -1872
mx: 1385
 μ : -19.7
 σ : 100.4

Processed Wed Apr 6 14:47:14 2016 by ELM ver.2012-10-06 from 001__elm20160124_233452__dat00.bin



Processed Wed Apr 6 14:47:15 2016 by ELM ver.2012-10-06 from 001__elm20160124_233452__dat00.bin

