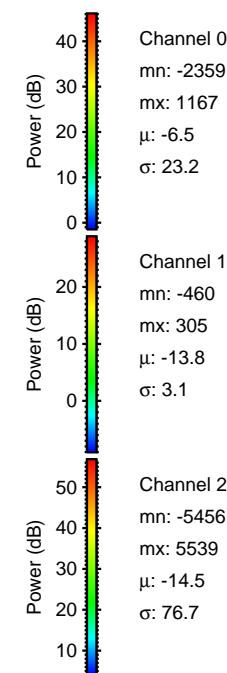
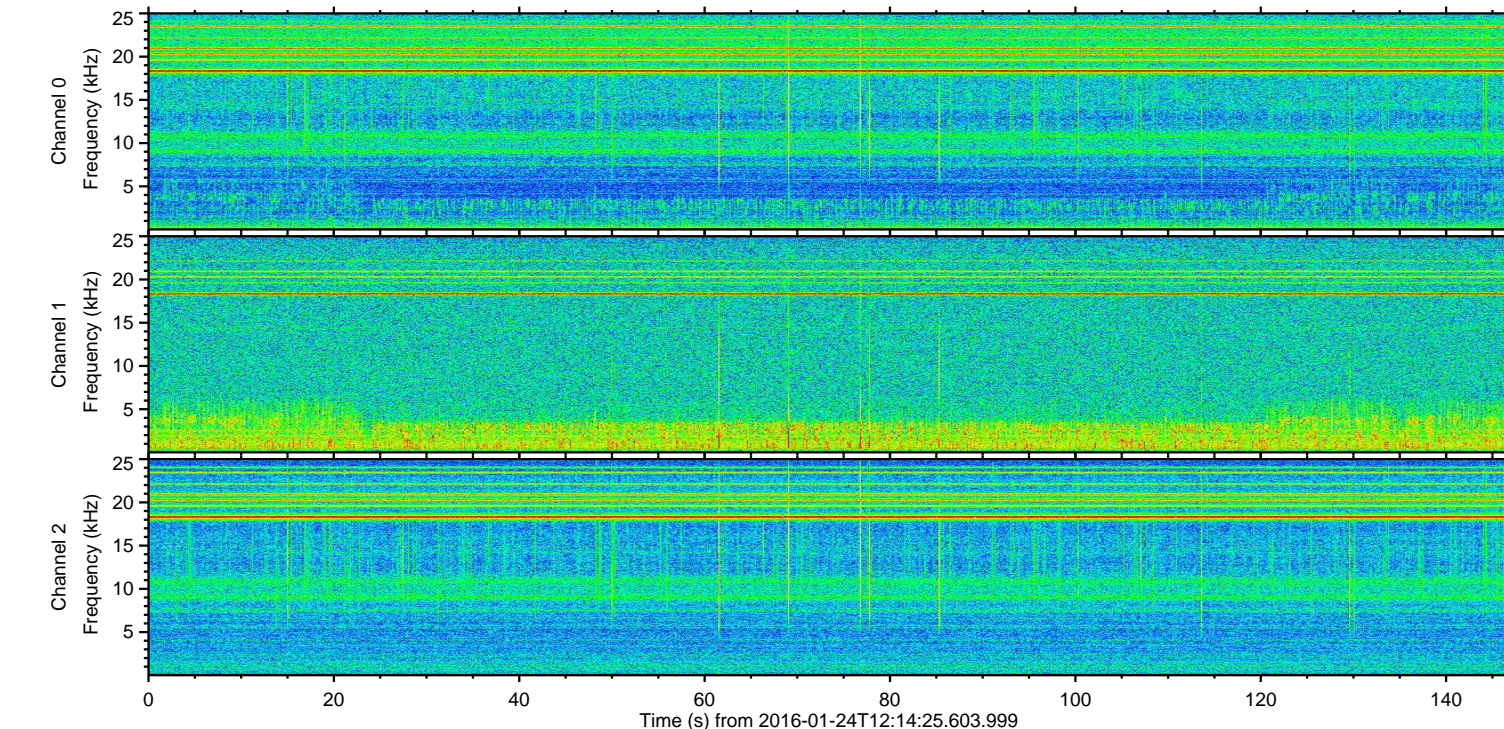
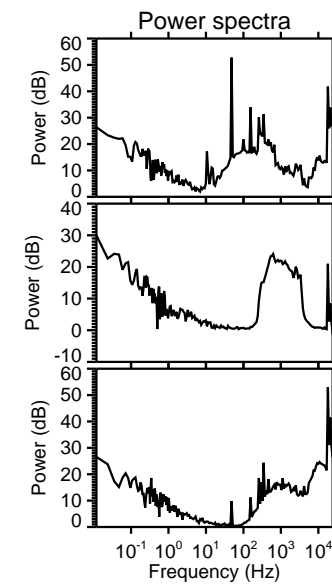
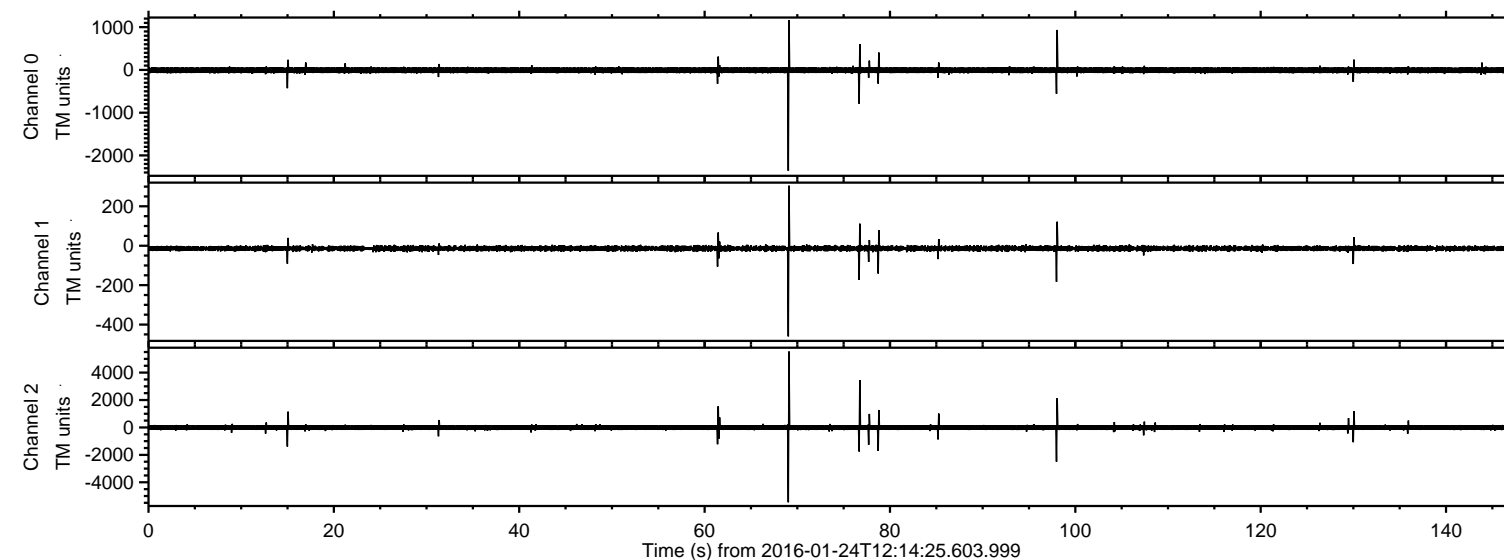


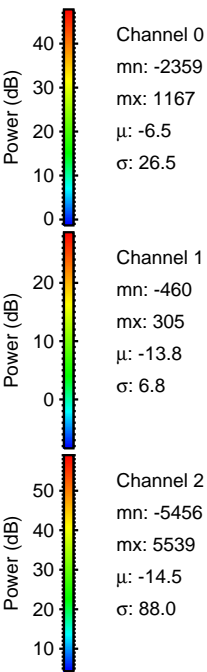
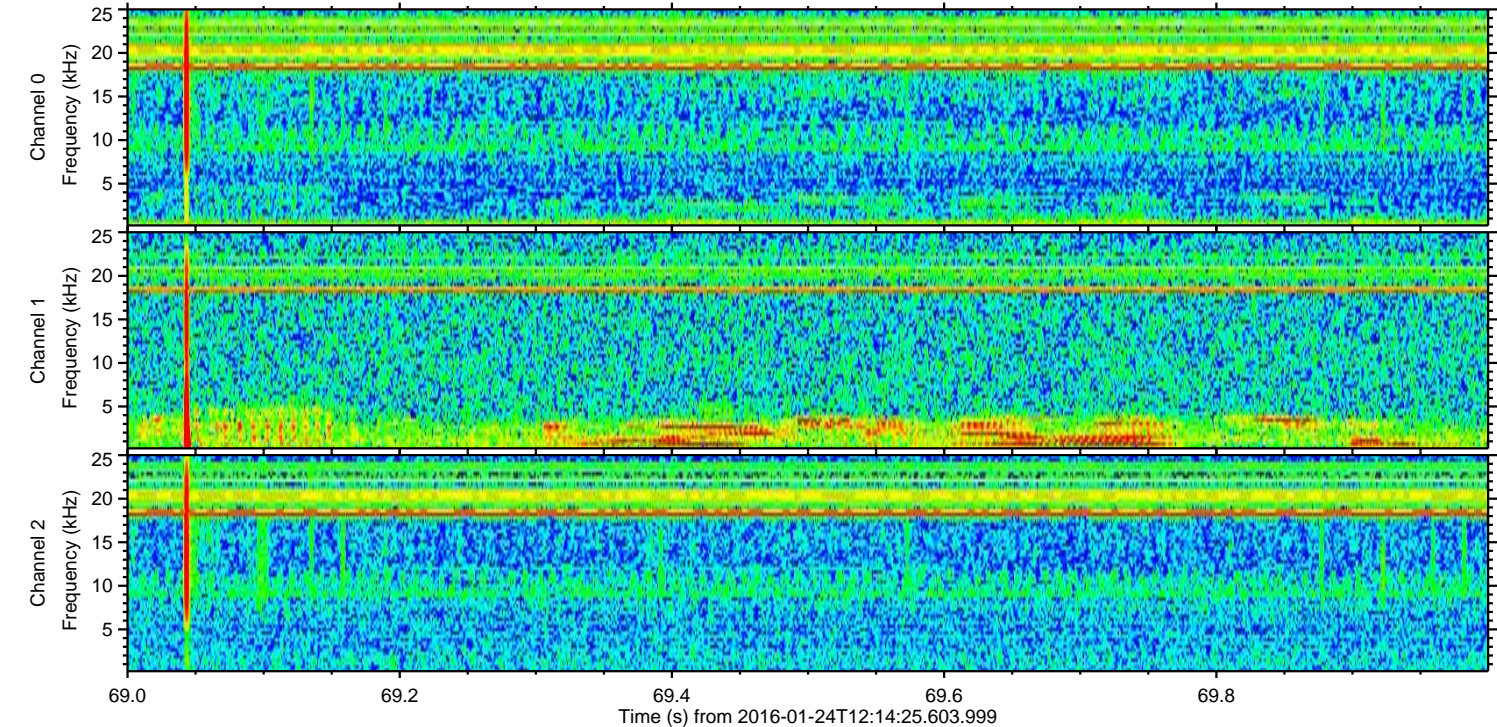
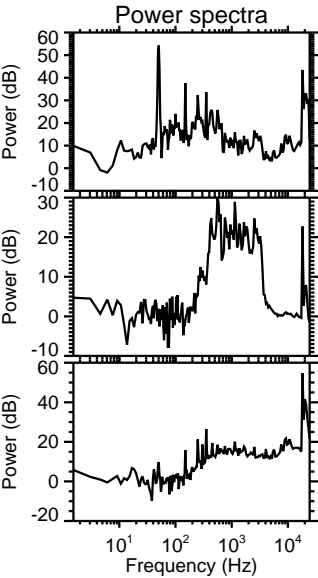
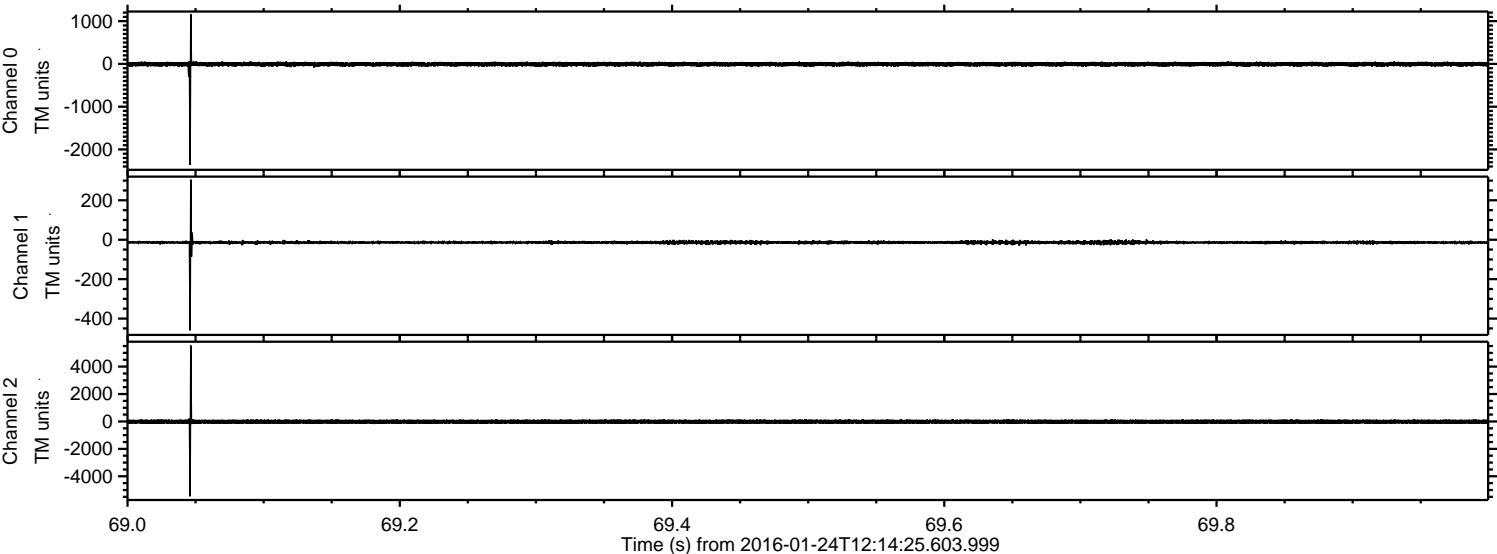
# ELMAVAN 3D WAVEFORMS (Measured data sampled at 50 kHz) 51000 packets of 144 samples from 2016-01-24T12:14:25.603.999.

Processed Wed Apr 6 11:41:56 2016 by ELM ver.2012-10-06 from 001\_\_elm20160124\_121424\_\_dat00.bin





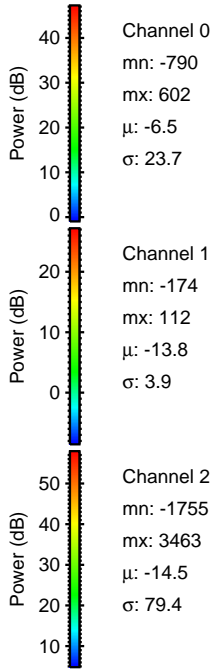
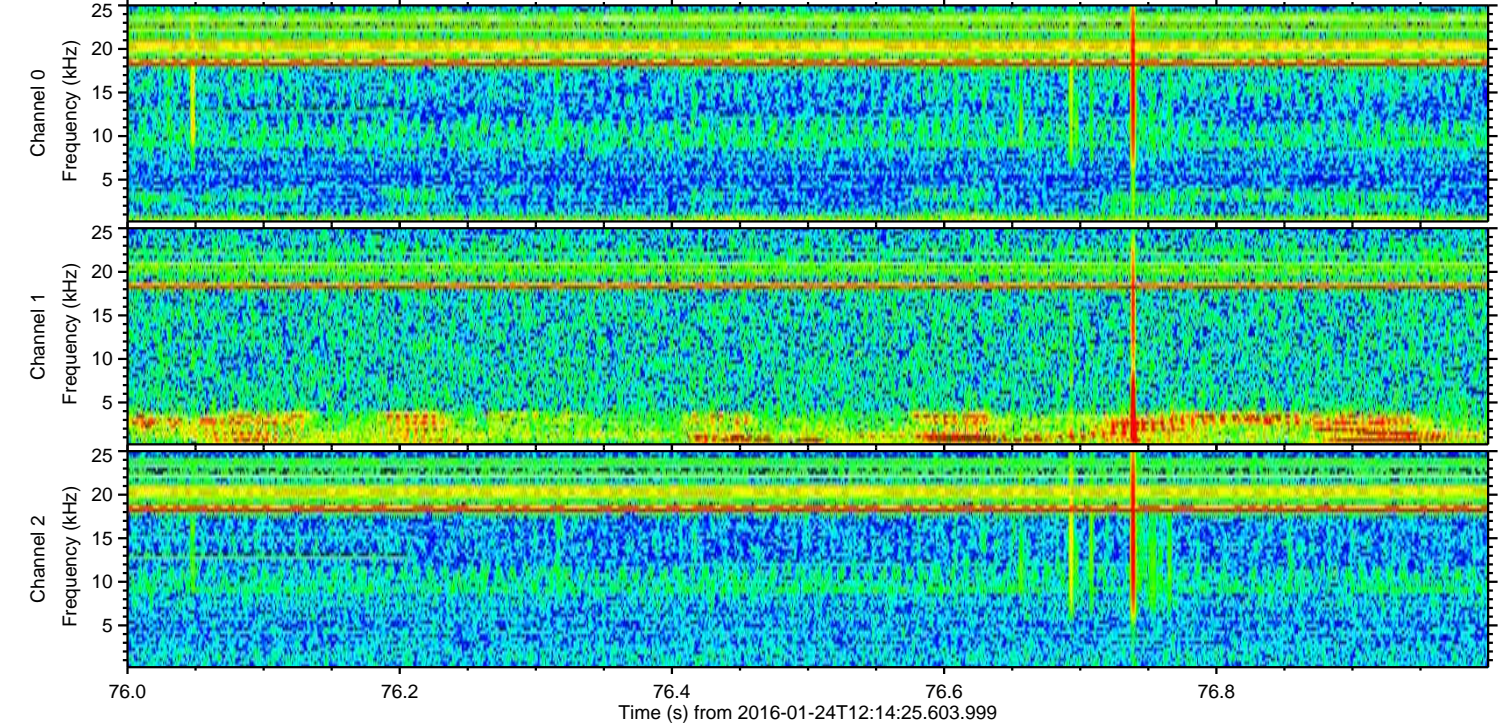
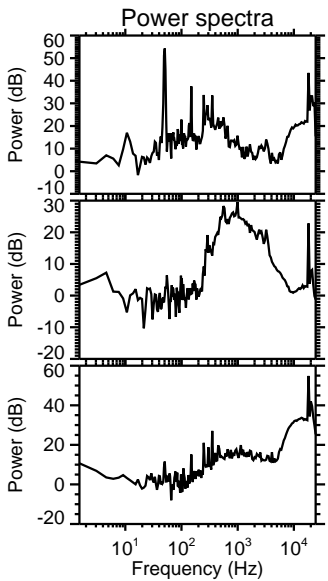
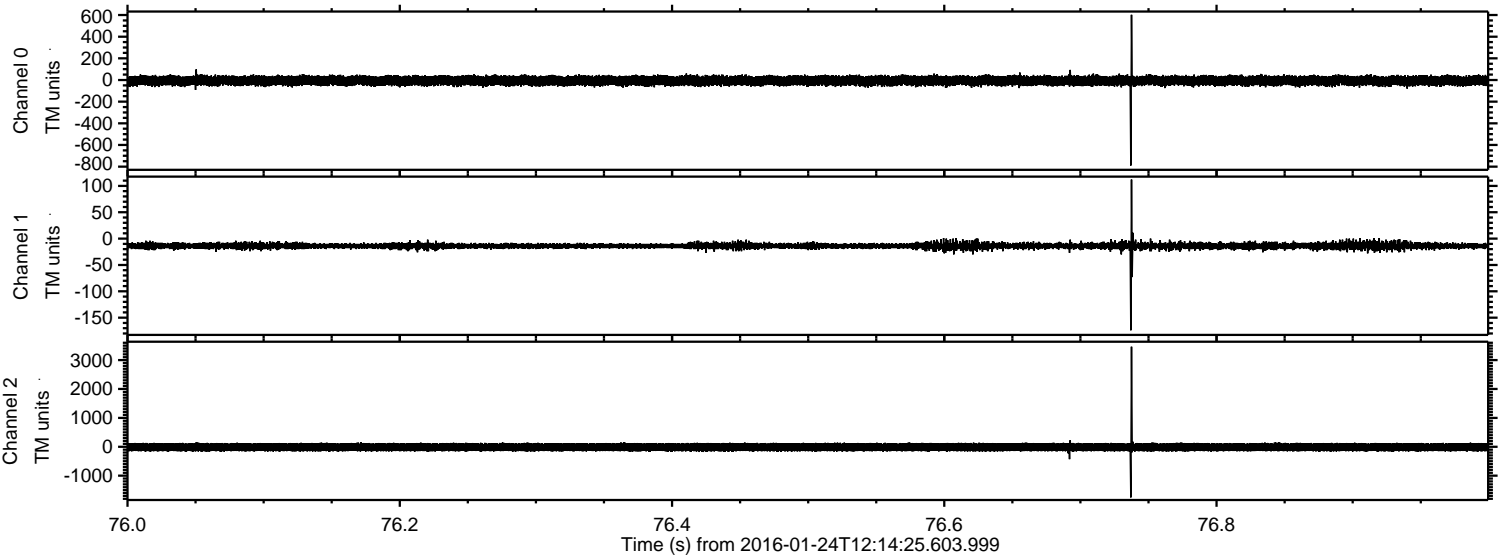
Processed Wed Apr 6 11:42:07 2016 by ELM ver.2012-10-06 from 001\_\_elm20160124\_121424\_\_dat00.bin





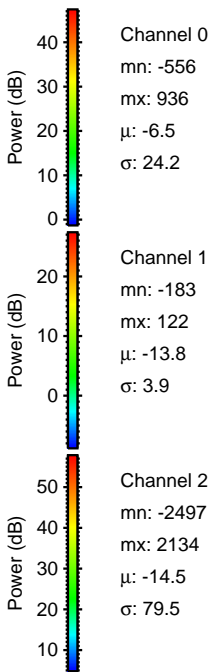
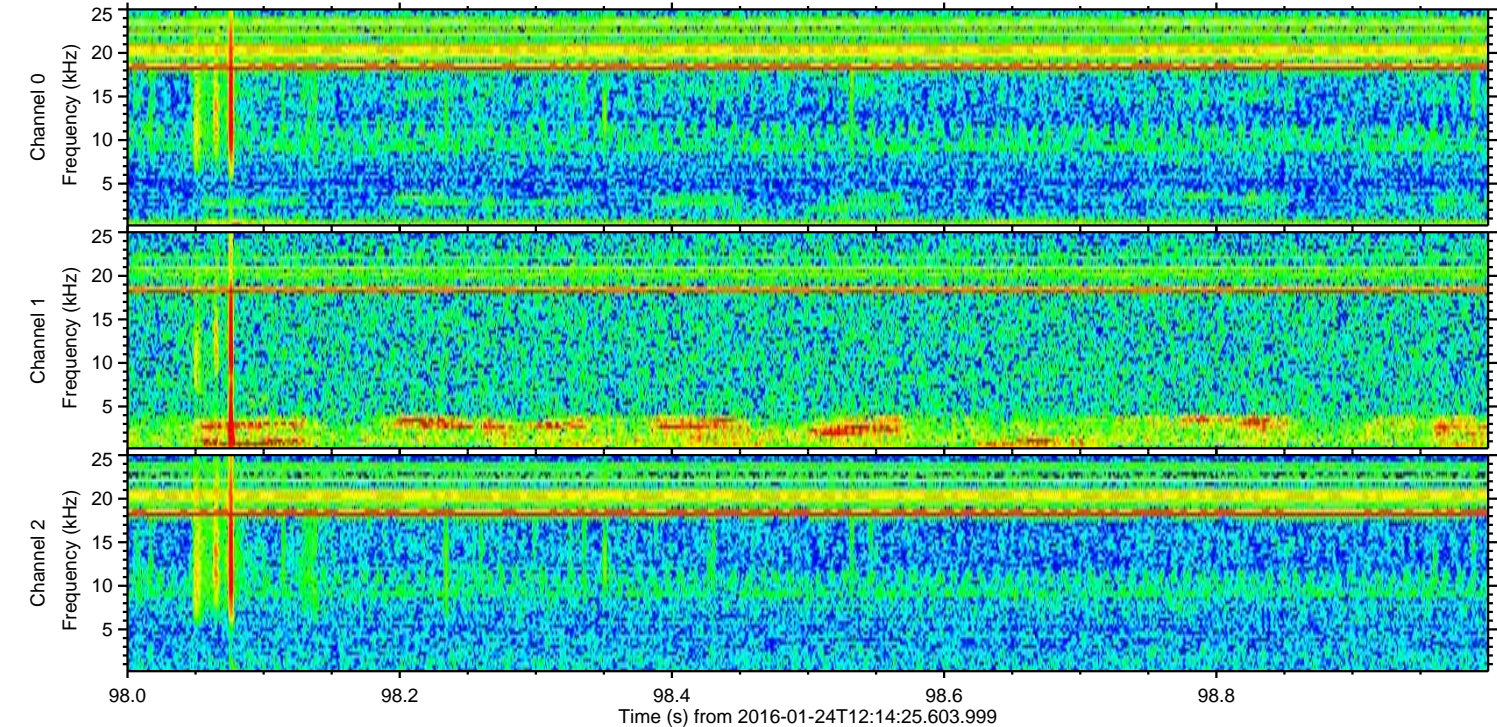
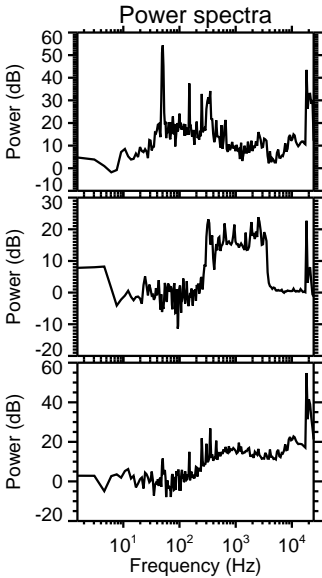
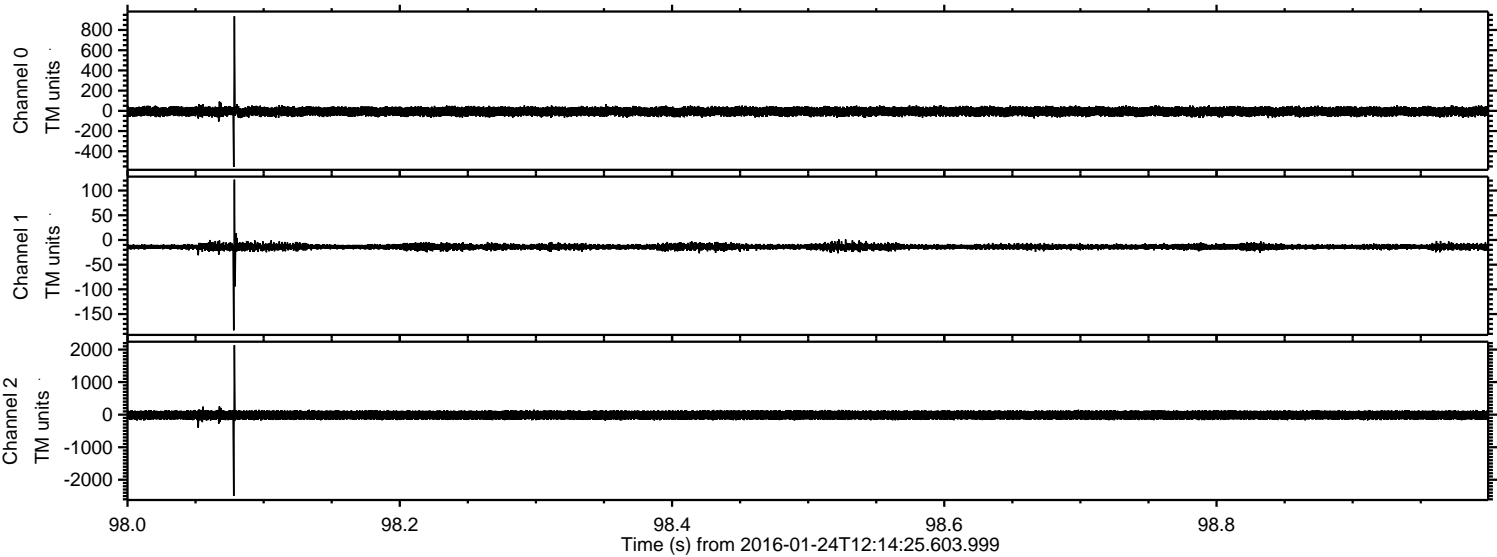
ELMAVAN 3D WAVEFORMS (Measured data sampled at 50 kHz) 51000 packets of 144 samples from 2016-01-24T12:14:25.603.999. Part 77/147

Processed Wed Apr 6 11:42:08 2016 by ELM ver.2012-10-06 from 001\_\_elm20160124\_121424\_\_dat00.bin



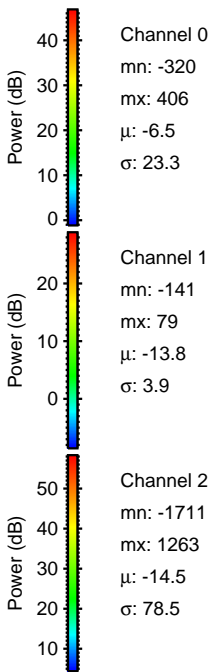
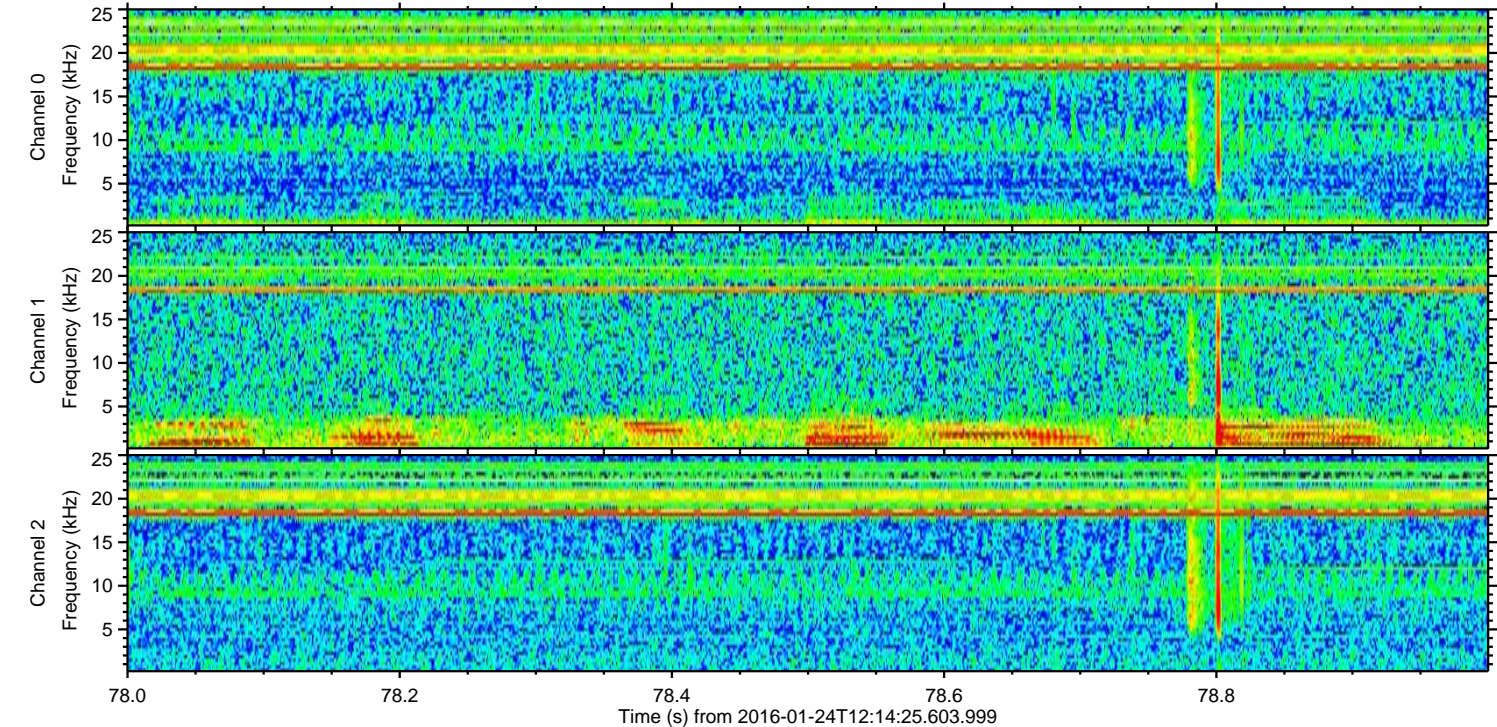
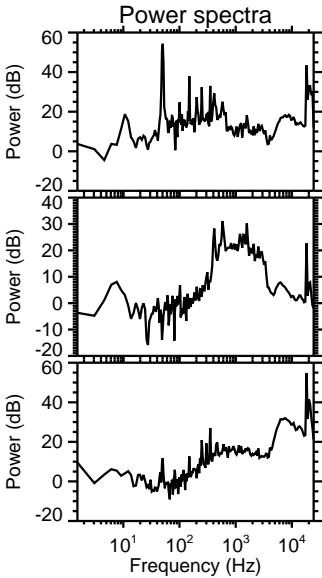
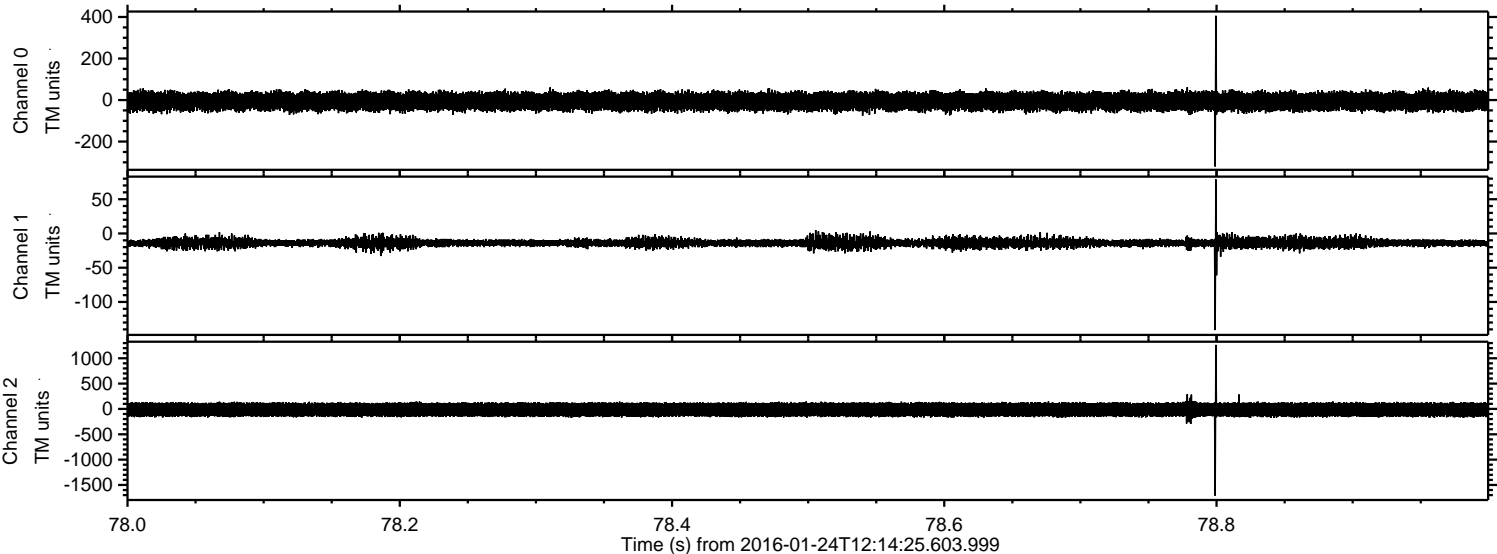


Processed Wed Apr 6 11:42:09 2016 by ELM ver.2012-10-06 from 001\_\_elm20160124\_121424\_\_dat00.bin



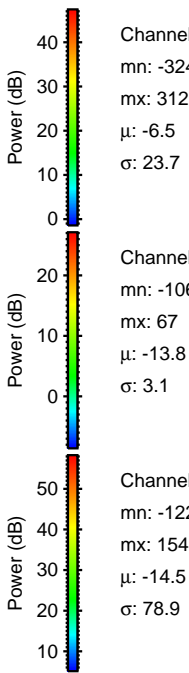
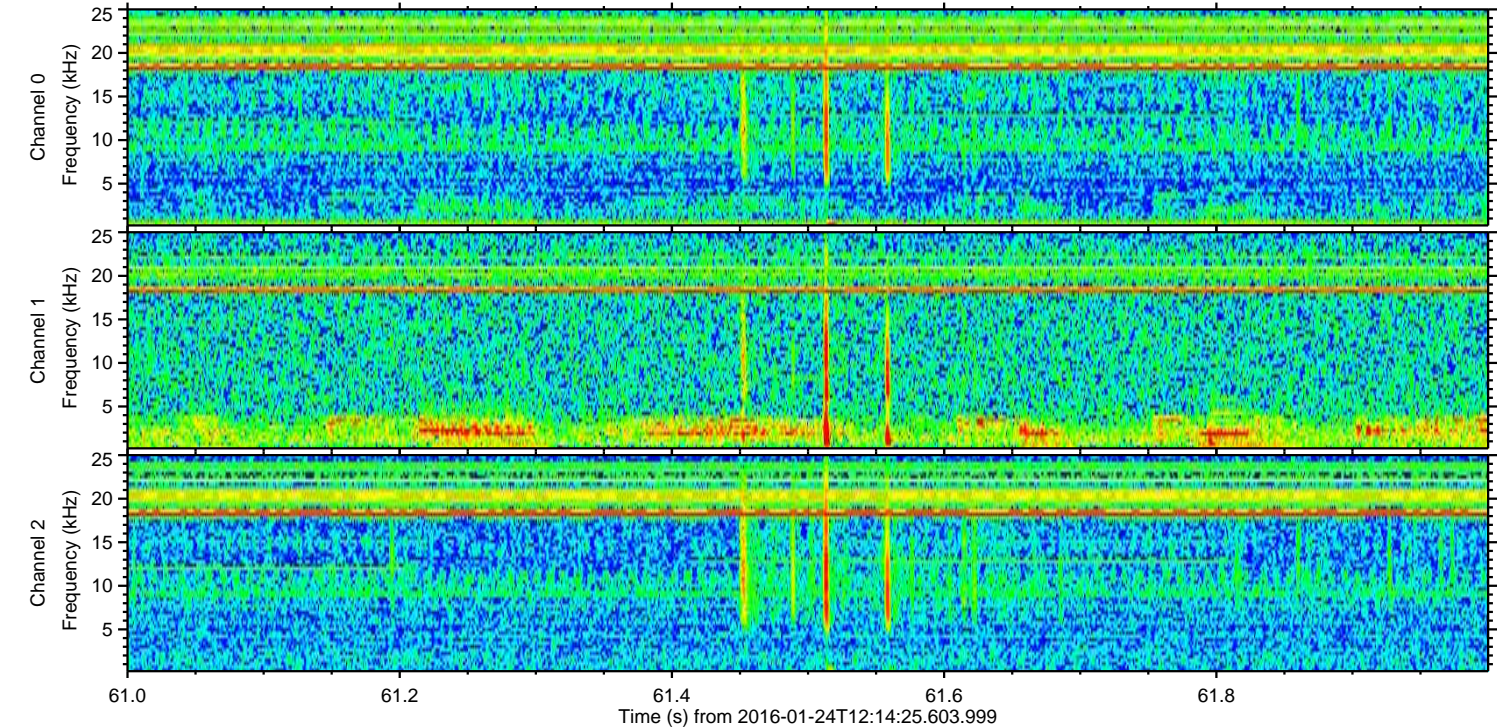
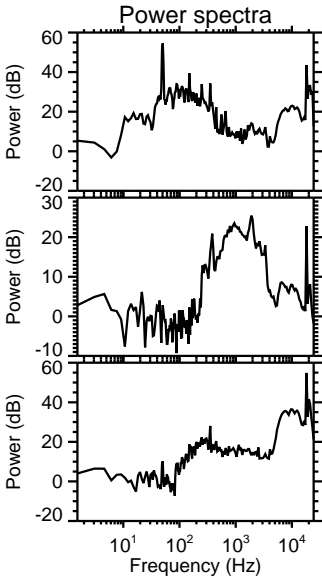
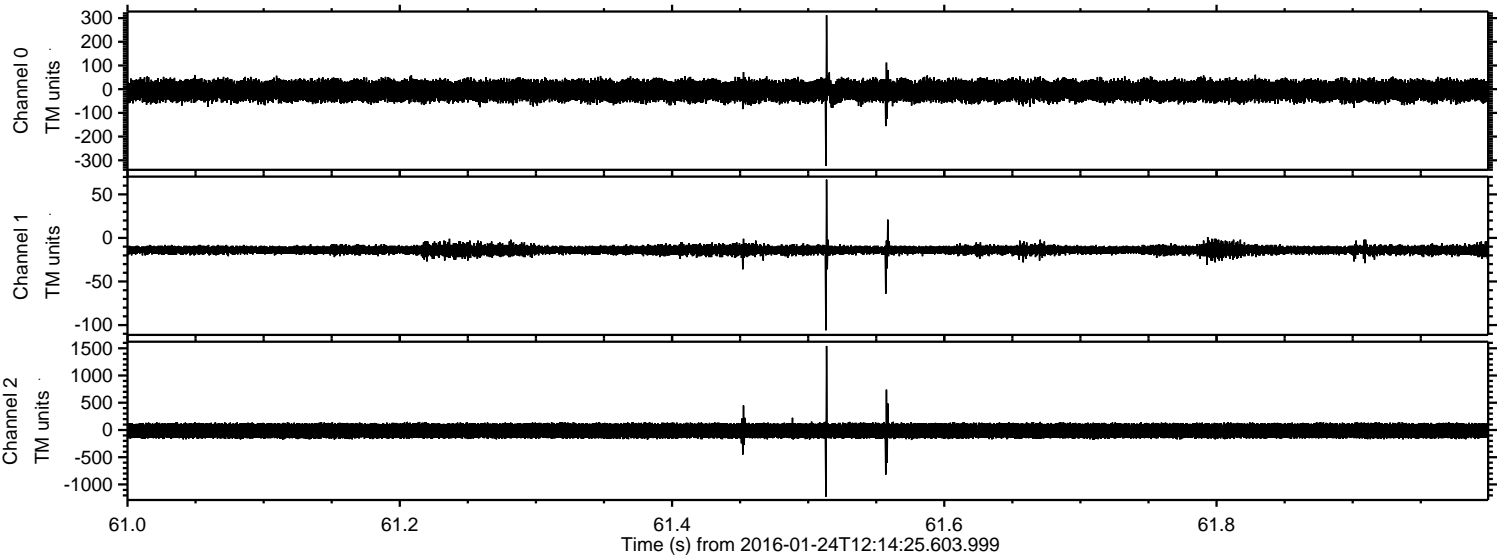


Processed Wed Apr 6 11:42:10 2016 by ELM ver.2012-10-06 from 001\_\_elm20160124\_121424\_\_dat00.bin



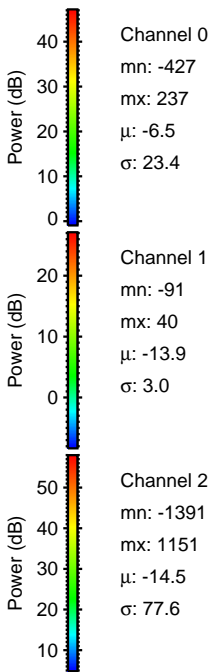
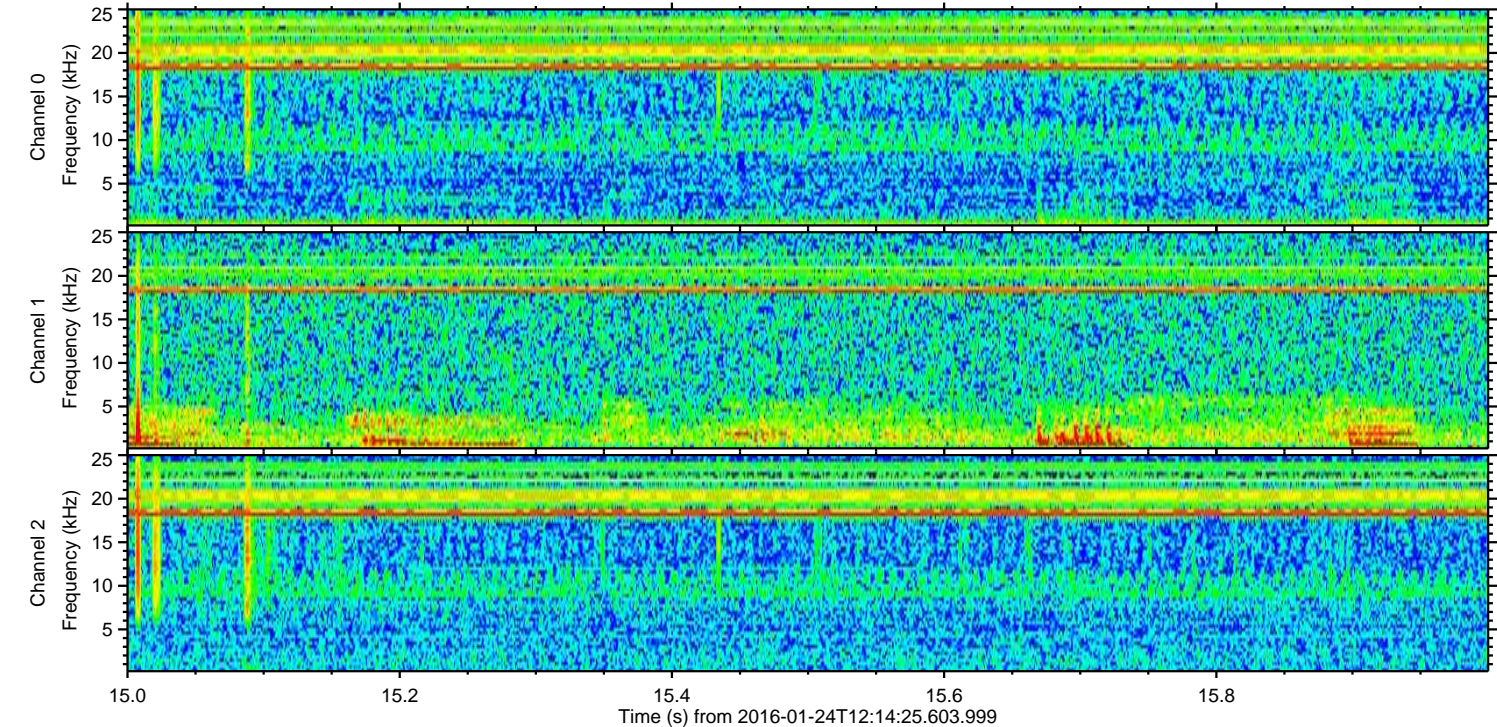
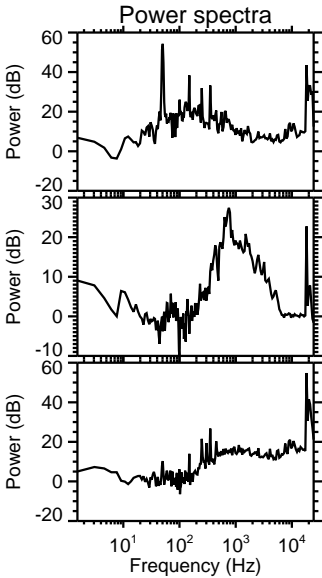
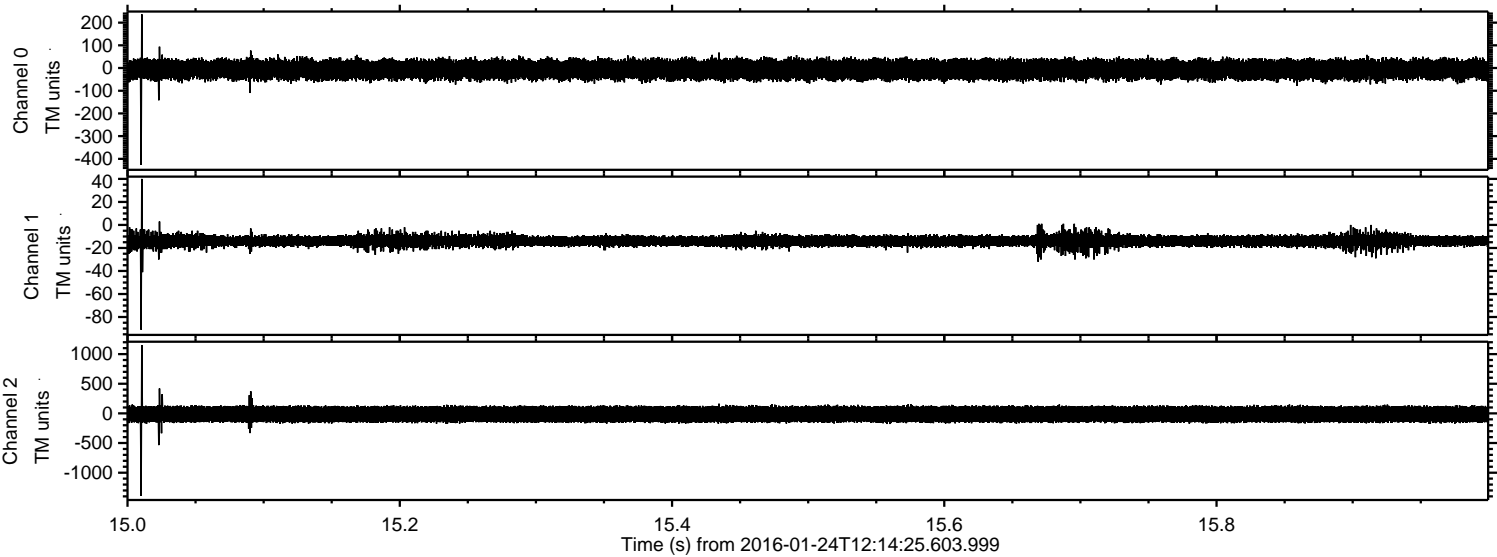


Processed Wed Apr 6 11:42:11 2016 by ELM ver.2012-10-06 from 001\_\_elm20160124\_121424\_\_dat00.bin



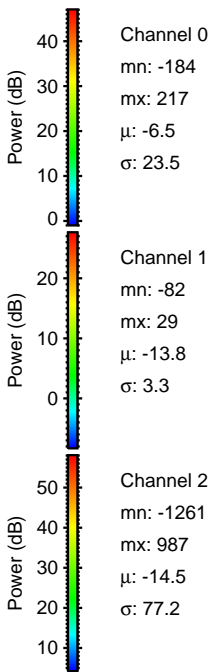
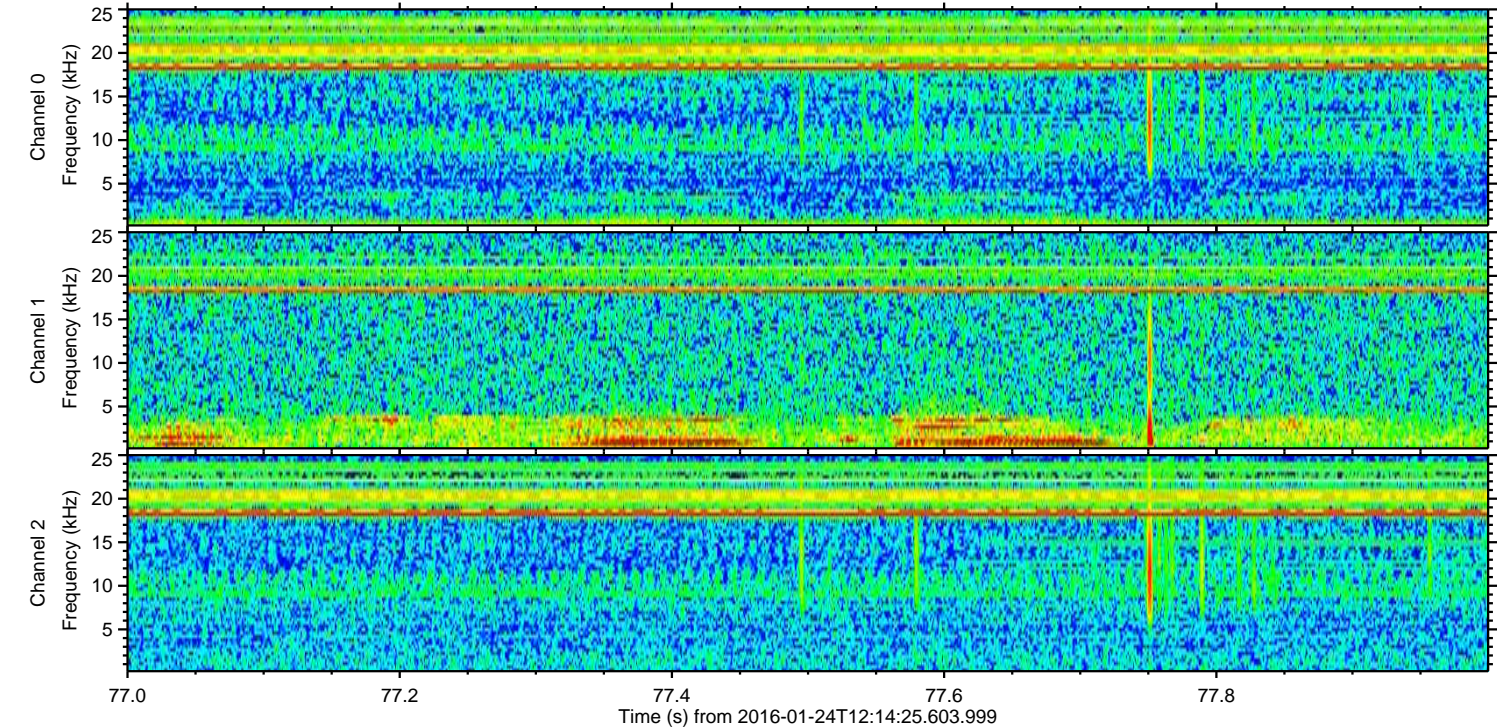
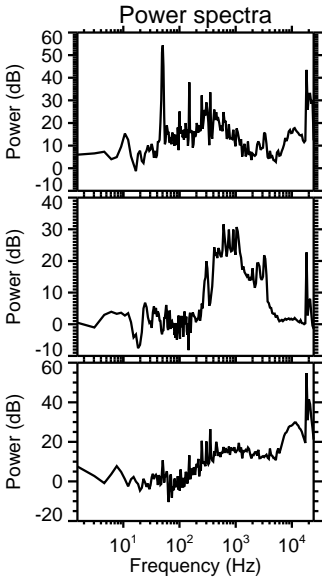
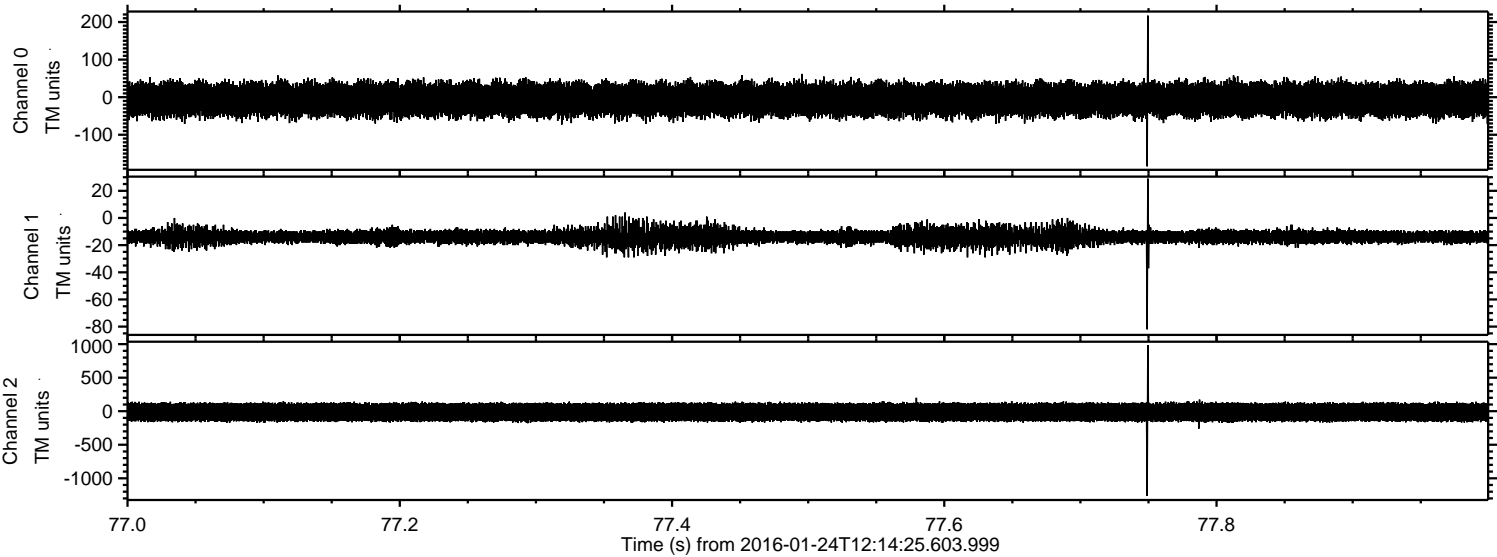


Processed Wed Apr 6 11:42:12 2016 by ELM ver.2012-10-06 from 001\_\_elm20160124\_121424\_\_dat00.bin





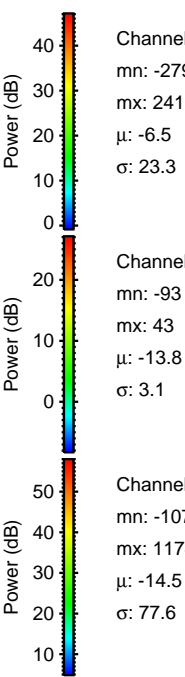
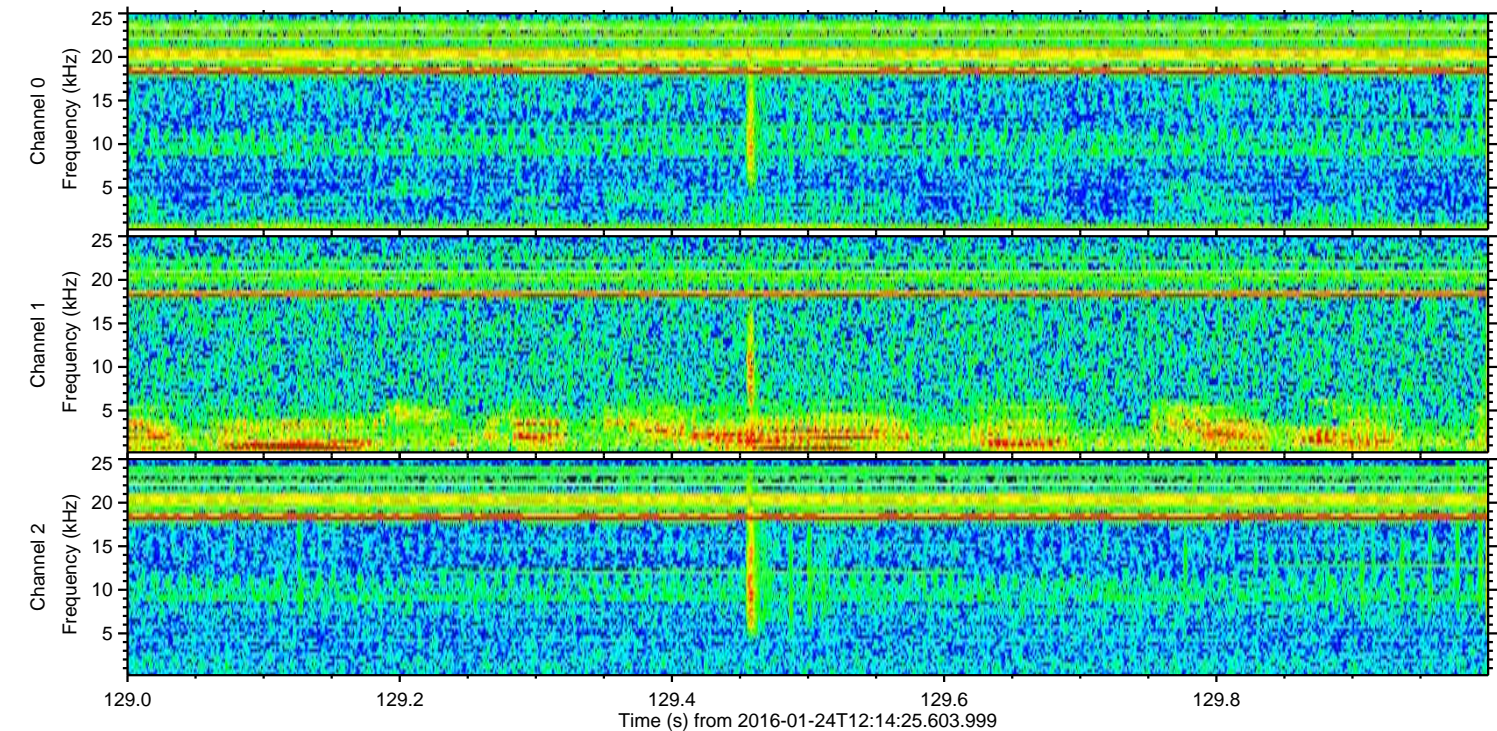
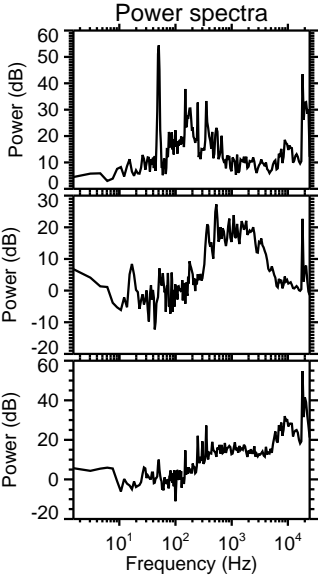
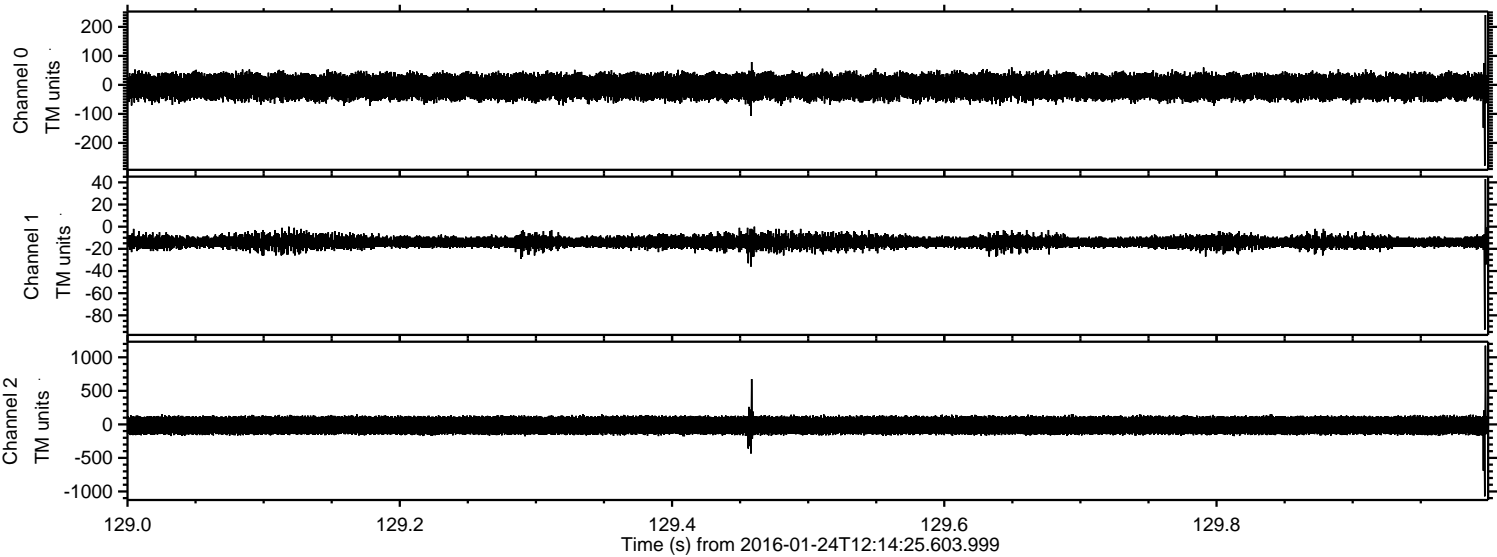
Processed Wed Apr 6 11:42:13 2016 by ELM ver.2012-10-06 from 001\_\_elm20160124\_121424\_\_dat00.bin





ELMAVAN 3D WAVEFORMS (Measured data sampled at 50 kHz) 51000 packets of 144 samples from 2016-01-24T12:14:25.603.999. Part 130/147

Processed Wed Apr 6 11:42:14 2016 by ELM ver.2012-10-06 from 001\_\_elm20160124\_121424\_\_dat00.bin



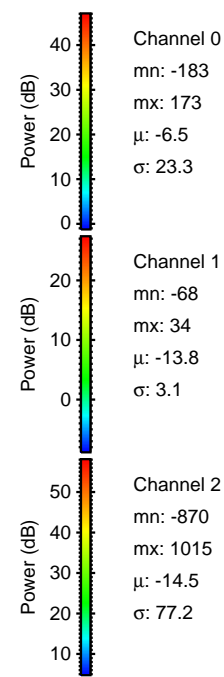
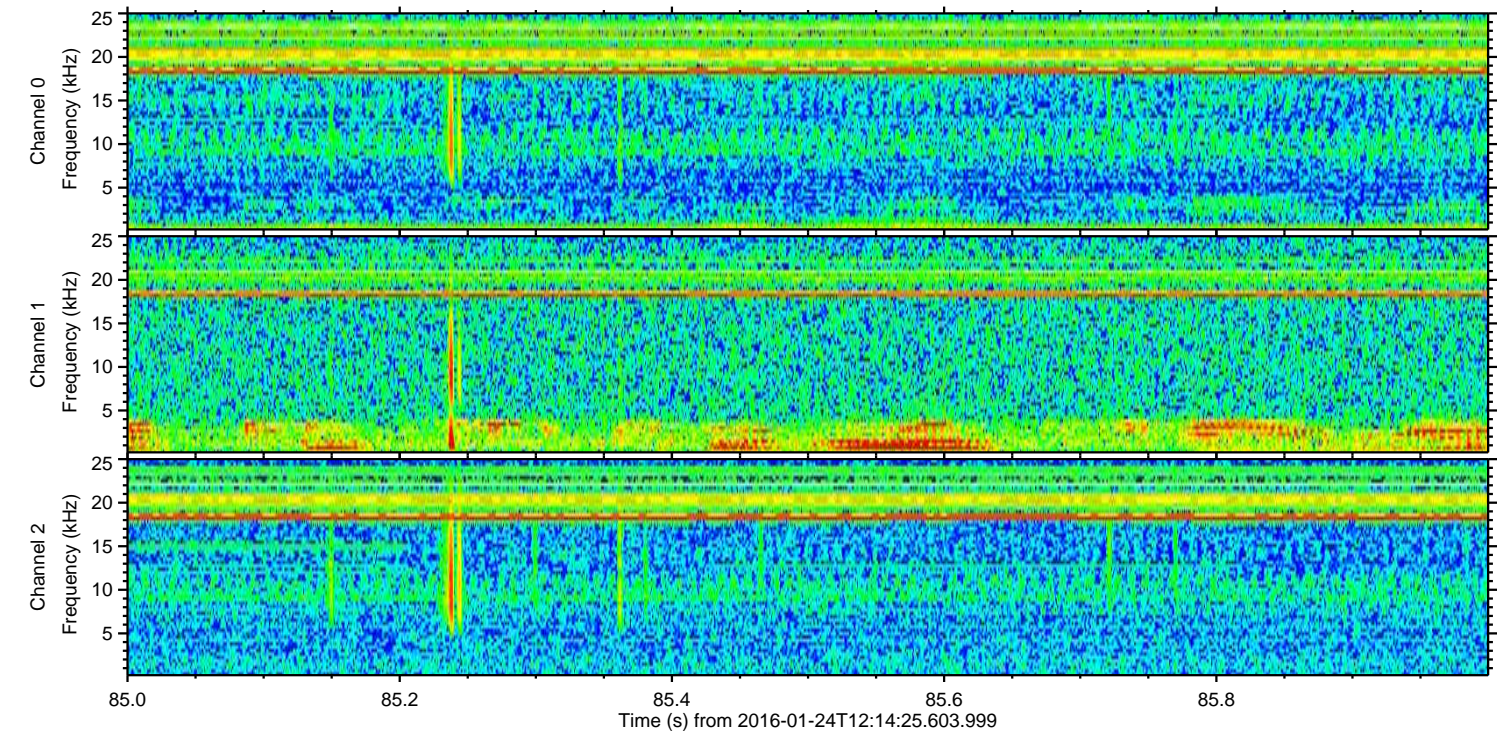
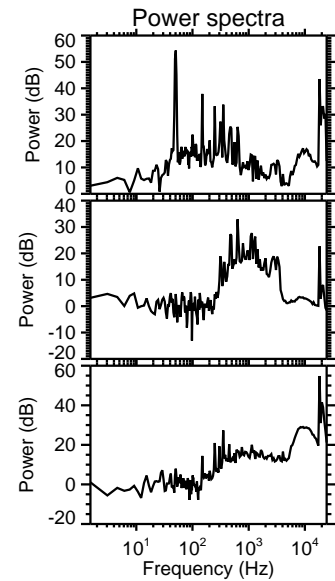
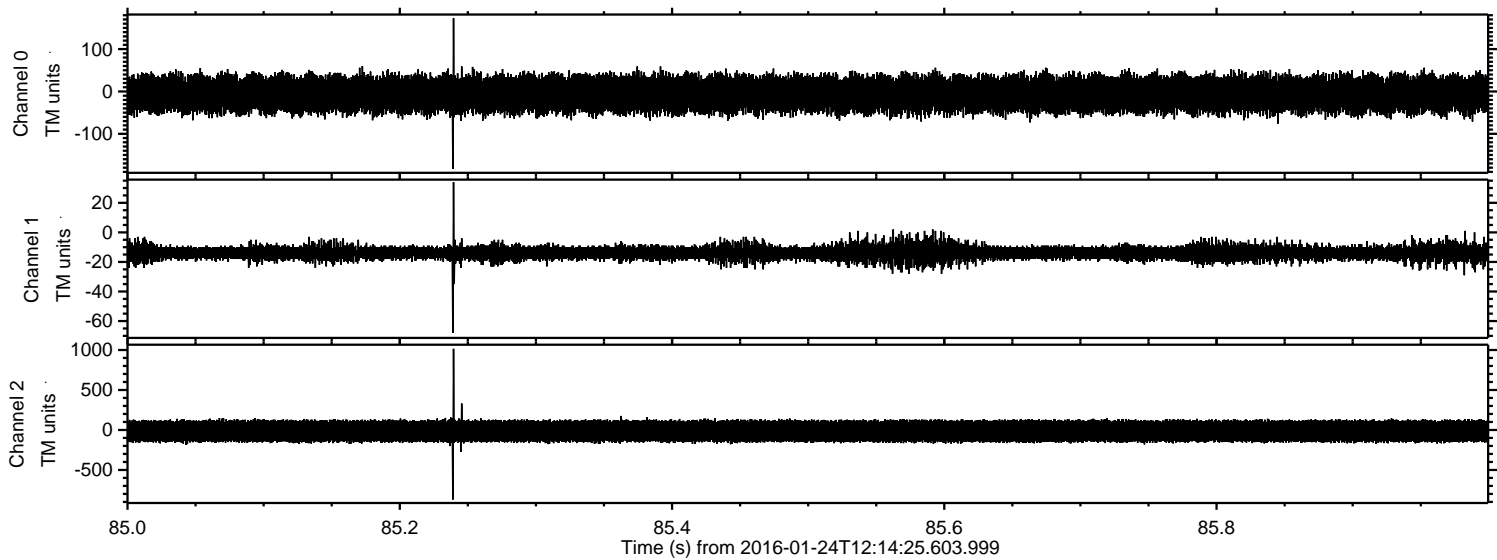
Channel 0  
mn: -279  
mx: 241  
 $\mu$ : -6.5  
 $\sigma$ : 23.3

Channel 1  
mn: -93  
mx: 43  
 $\mu$ : -13.8  
 $\sigma$ : 3.1

Channel 2  
mn: -1074  
mx: 1174  
 $\mu$ : -14.5  
 $\sigma$ : 77.6



Processed Wed Apr 6 11:42:15 2016 by ELM ver.2012-10-06 from 001\_\_elm20160124\_121424\_\_dat00.bin





Processed Wed Apr 6 11:42:16 2016 by ELM ver.2012-10-06 from 001\_\_elm20160124\_121424\_\_dat00.bin

