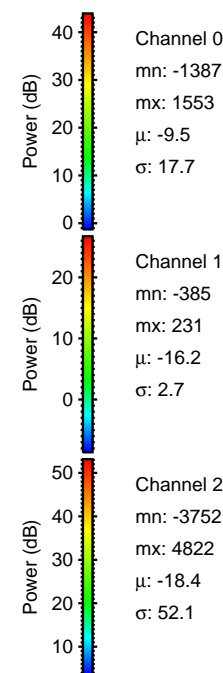
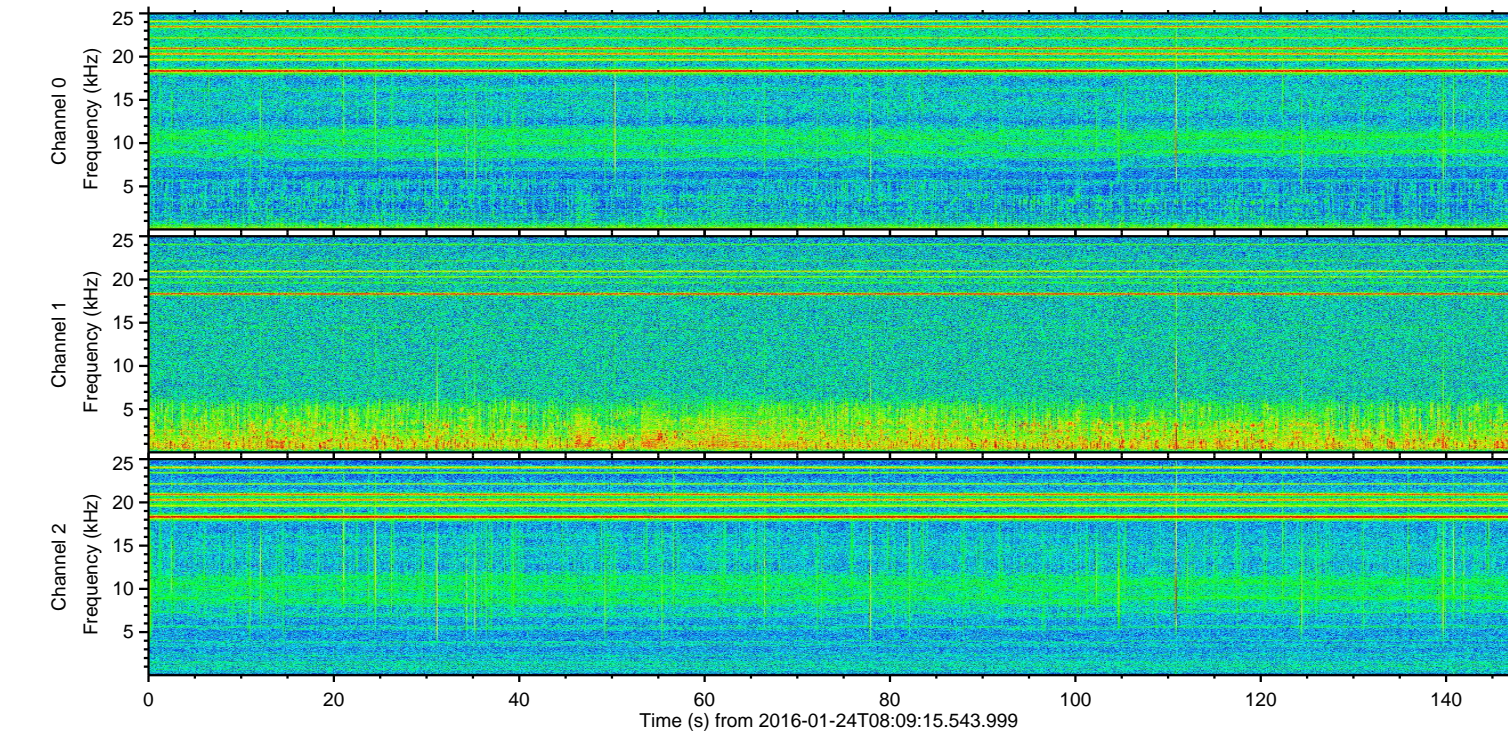
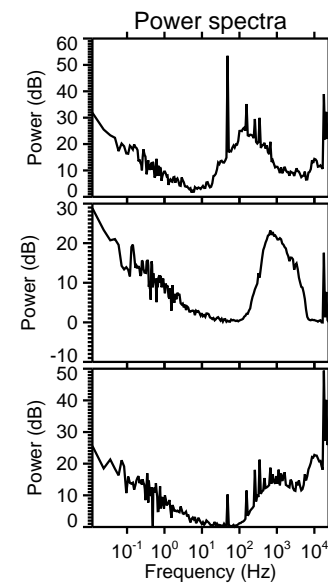
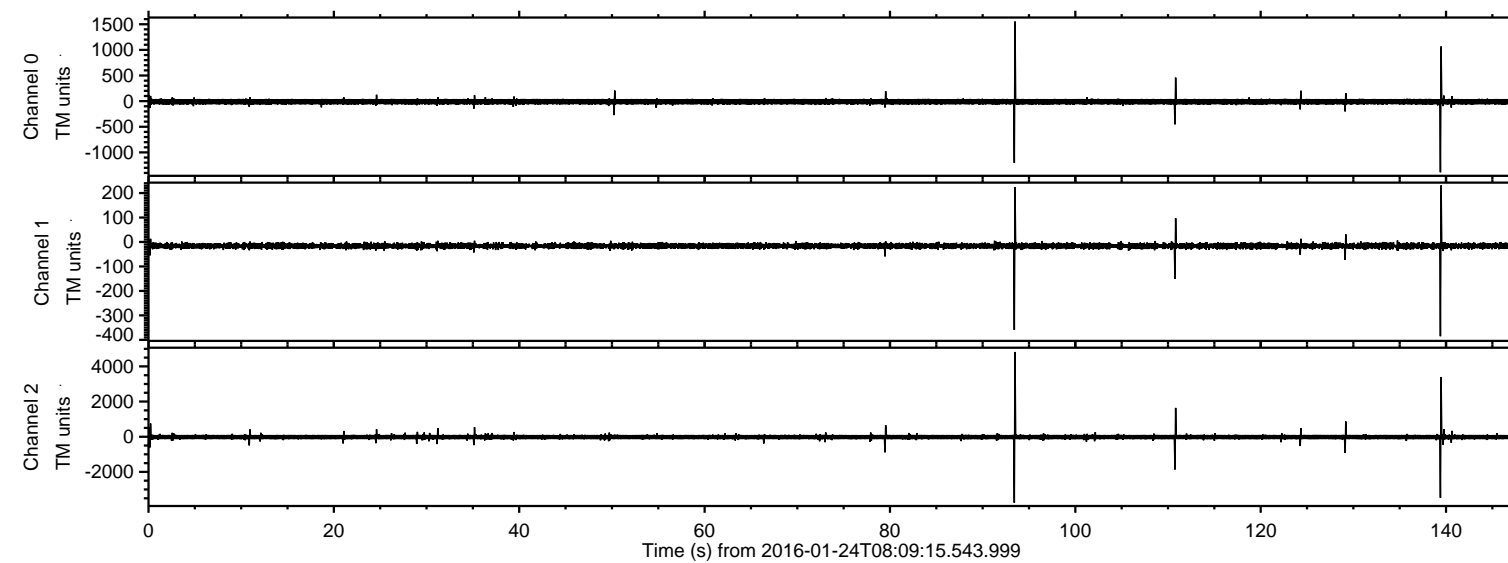
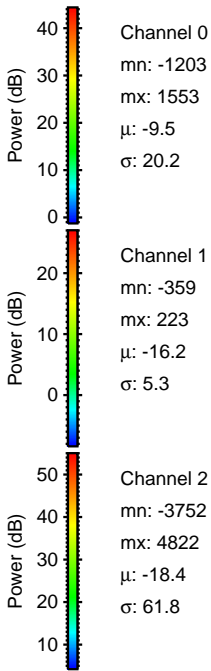
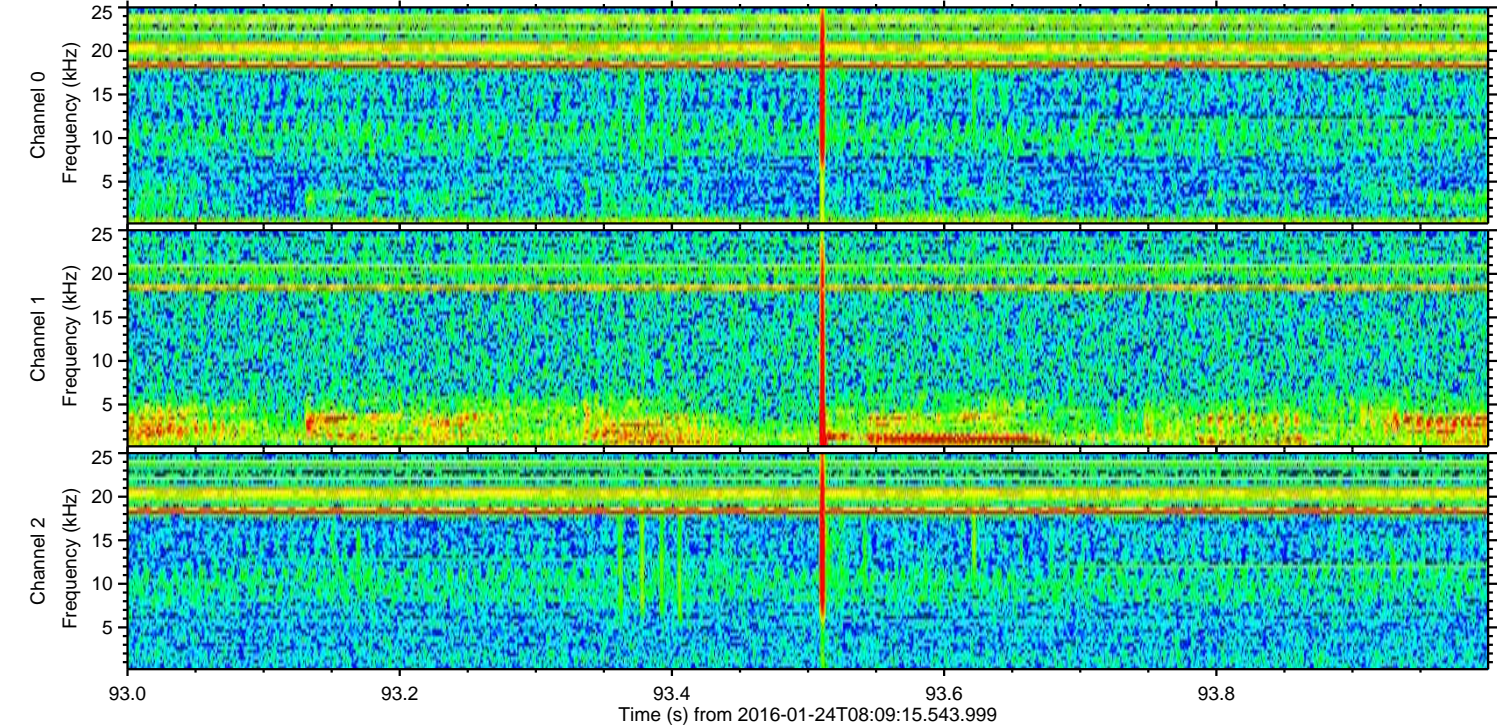
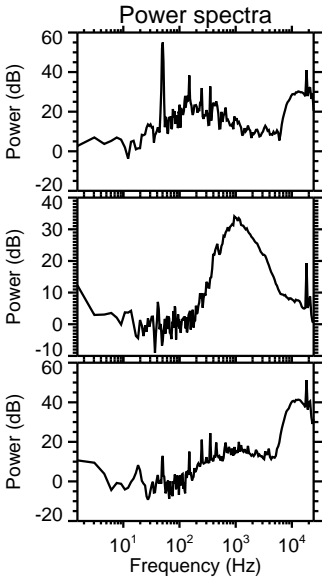
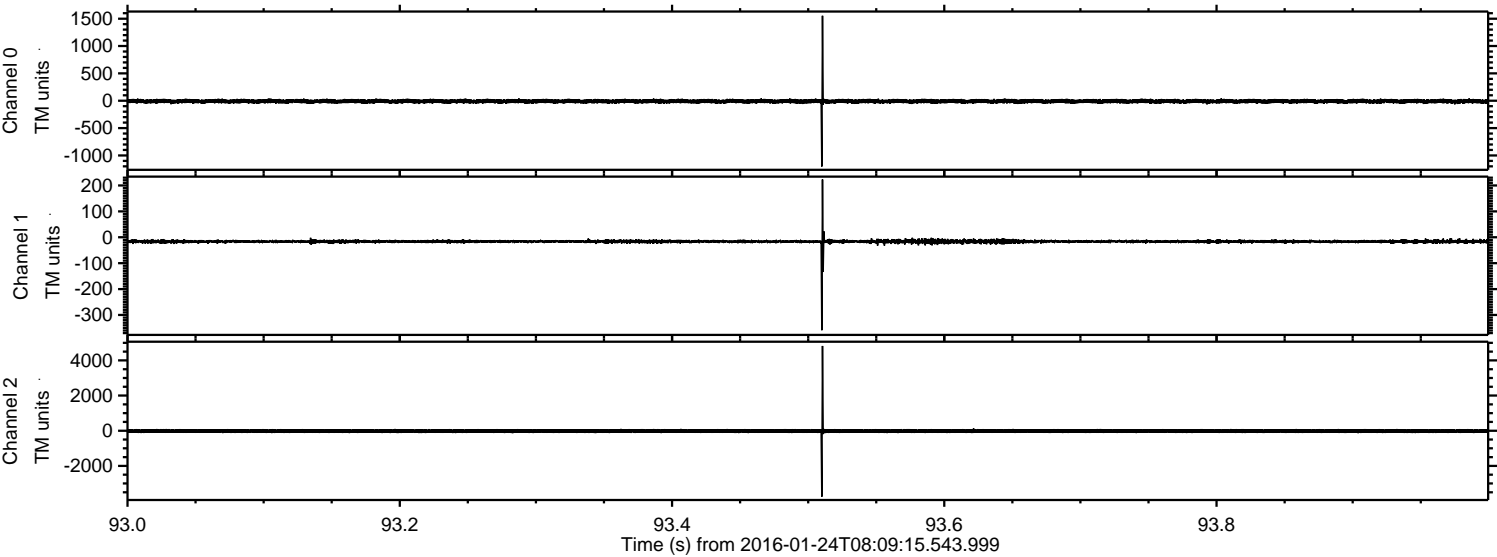


ELMAVAN 3D WAVEFORMS (Measured data sampled at 50 kHz) 51000 packets of 144 samples from 2016-01-24T08:09:15.543.999.

Processed Wed Apr 6 09:02:40 2016 by ELM ver.2012-10-06 from 001__elm20160124_080914__dat00.bin

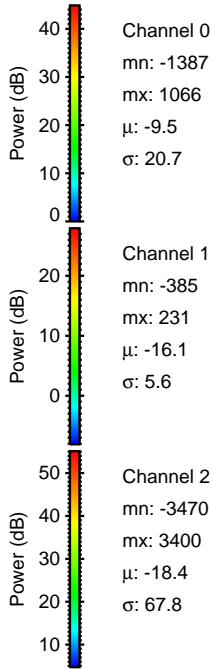
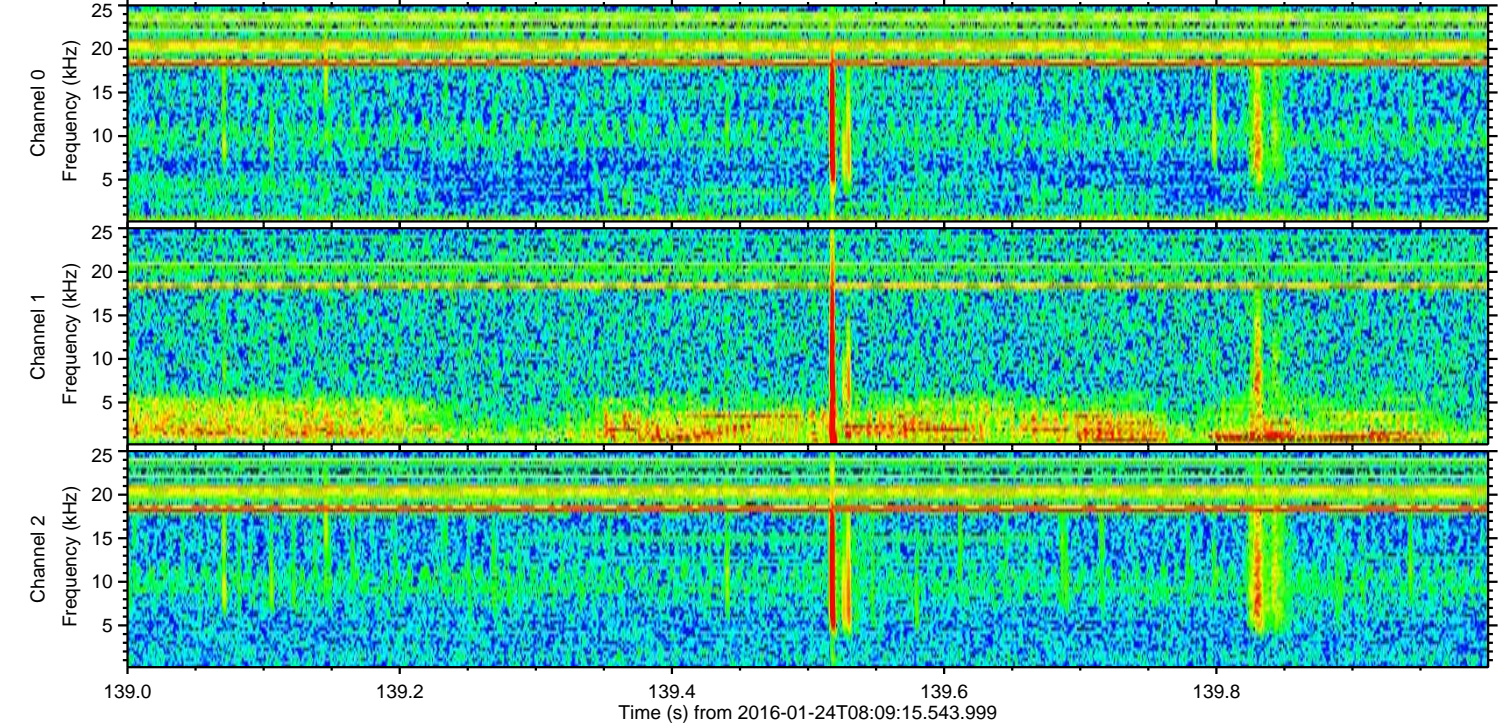
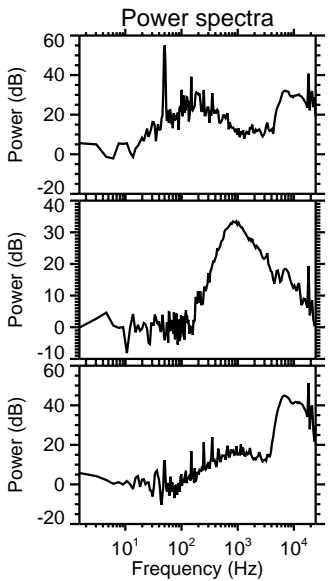
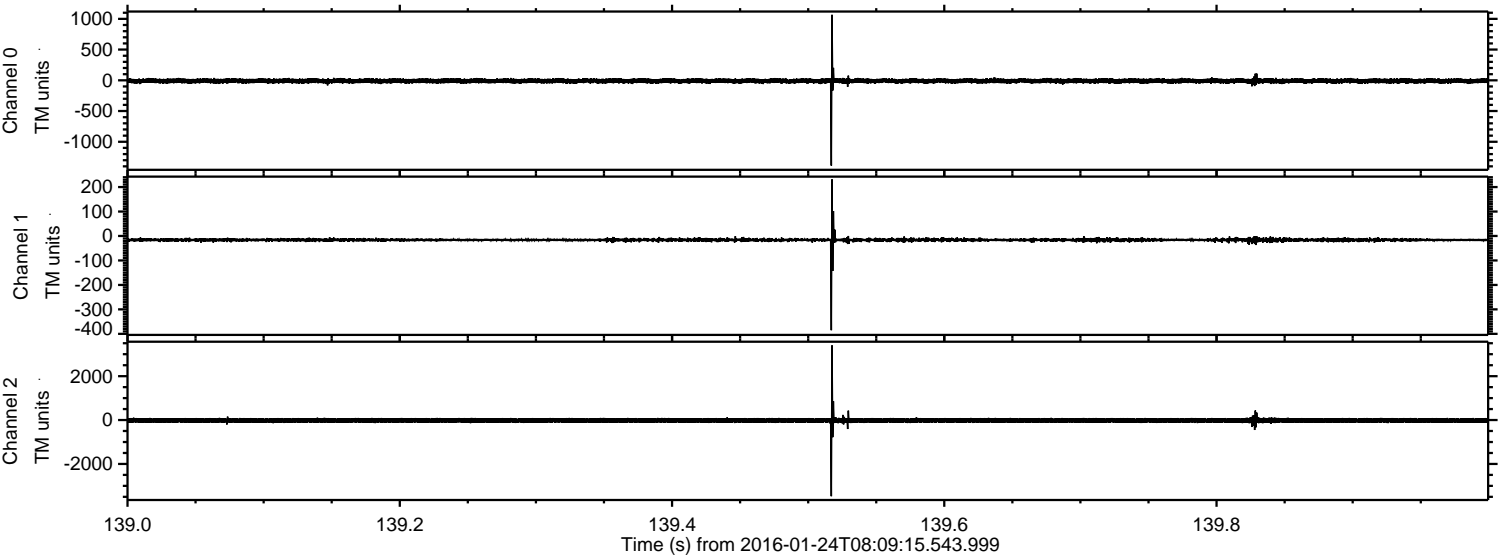


Processed Wed Apr 6 09:02:51 2016 by ELM ver.2012-10-06 from 001__elm20160124_080914__dat00.bin



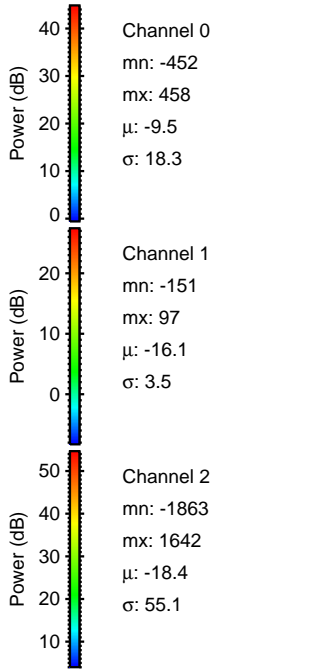
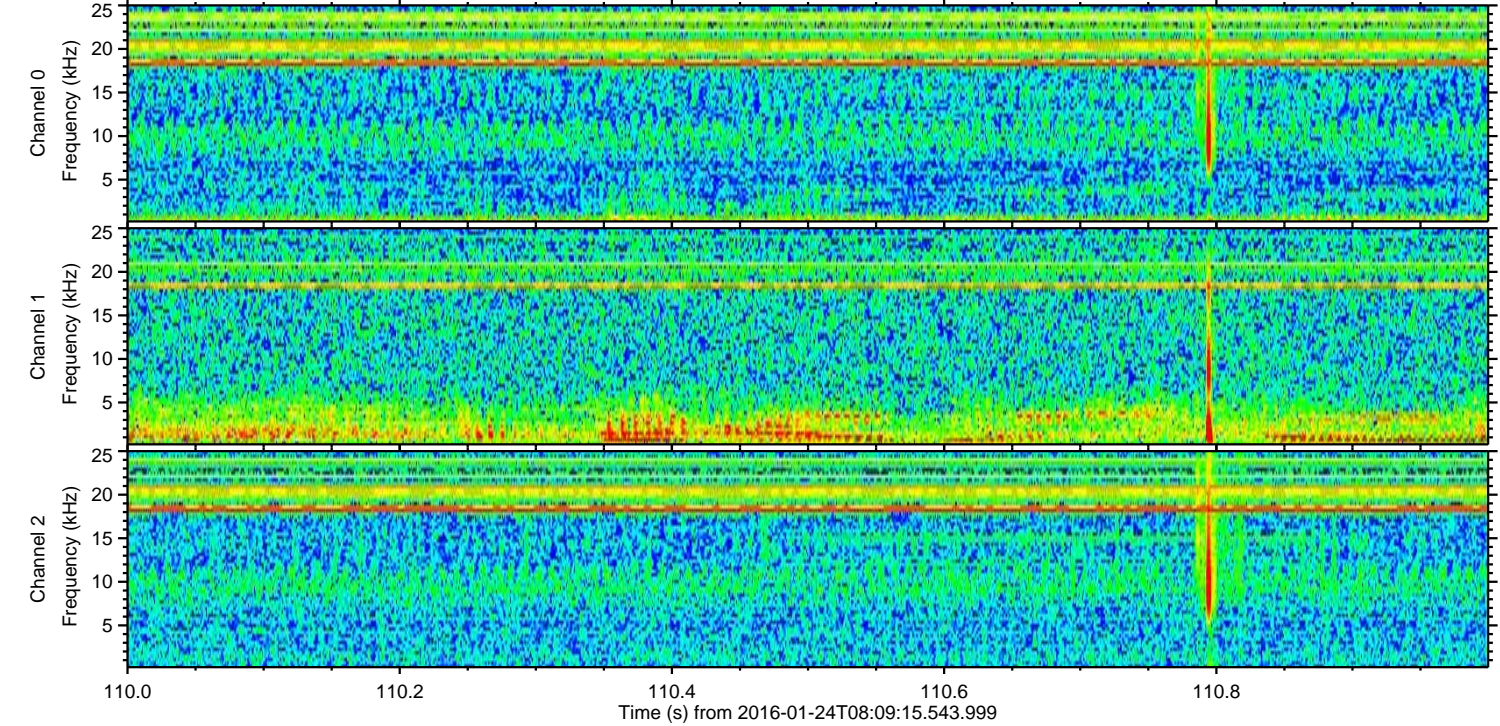
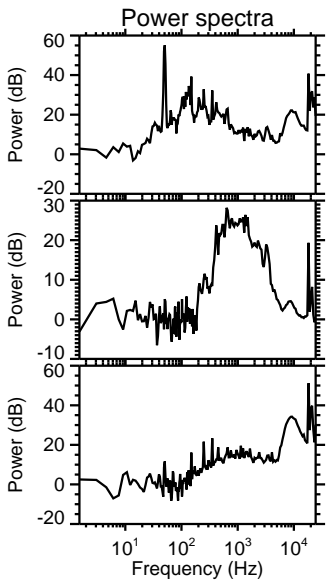
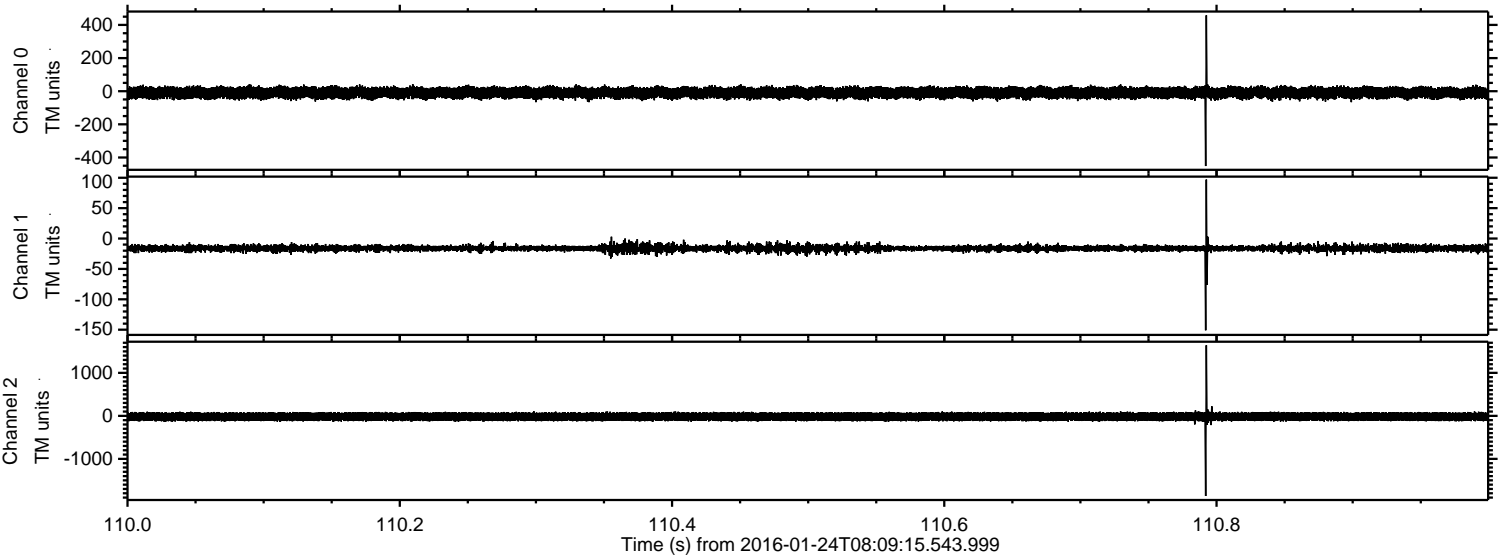
ELMAVAN 3D WAVEFORMS (Measured data sampled at 50 kHz) 51000 packets of 144 samples from 2016-01-24T08:09:15.543.999. Part 140/147

Processed Wed Apr 6 09:02:52 2016 by ELM ver.2012-10-06 from 001__elm20160124_080914__dat00.bin

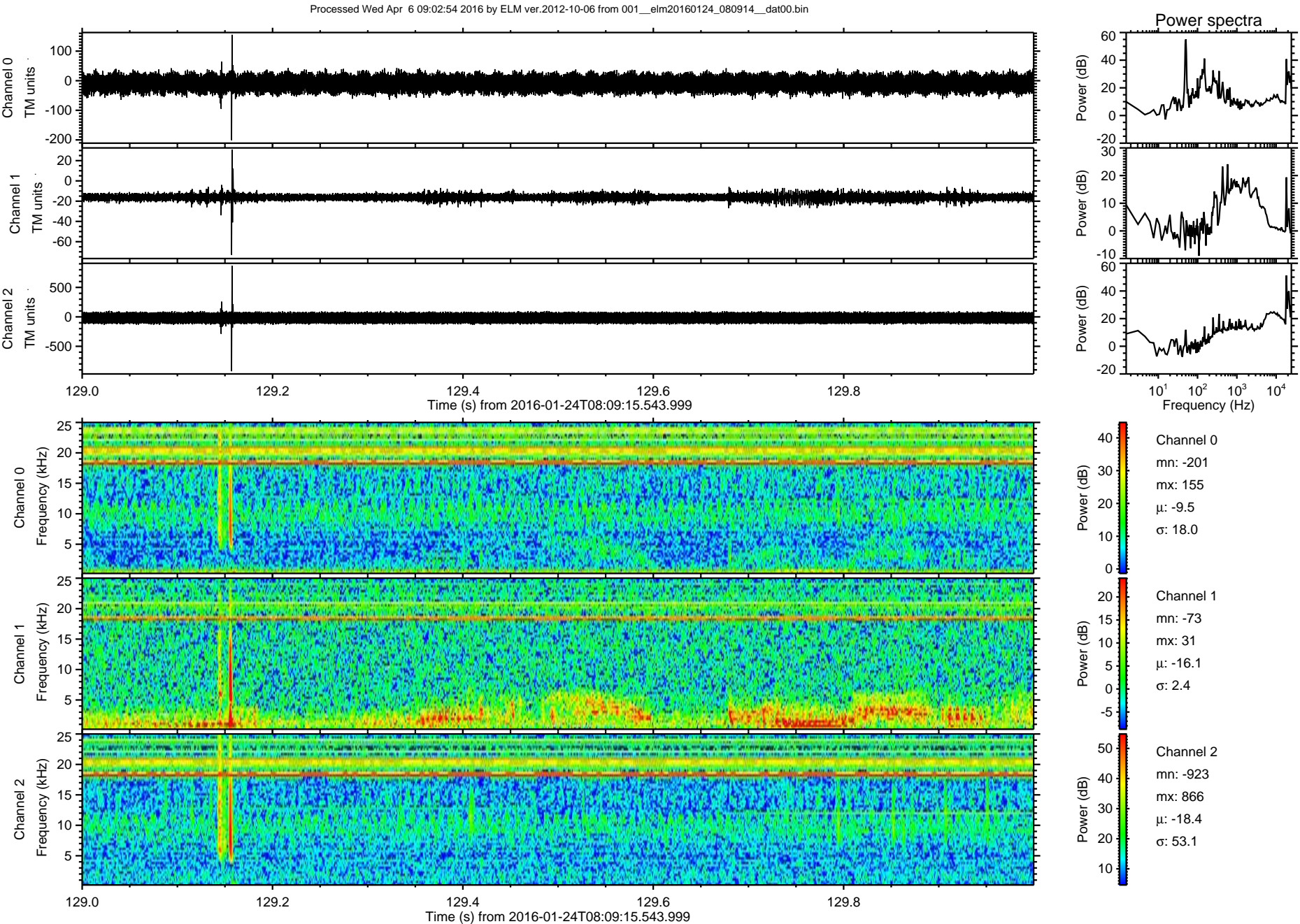


ELMAVAN 3D WAVEFORMS (Measured data sampled at 50 kHz) 51000 packets of 144 samples from 2016-01-24T08:09:15.543.999. Part 111/147

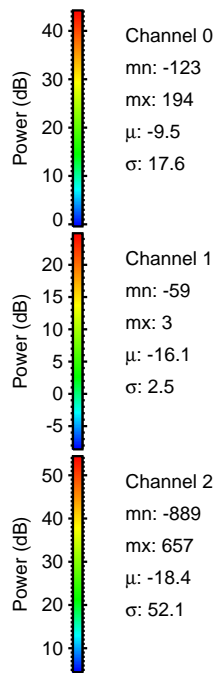
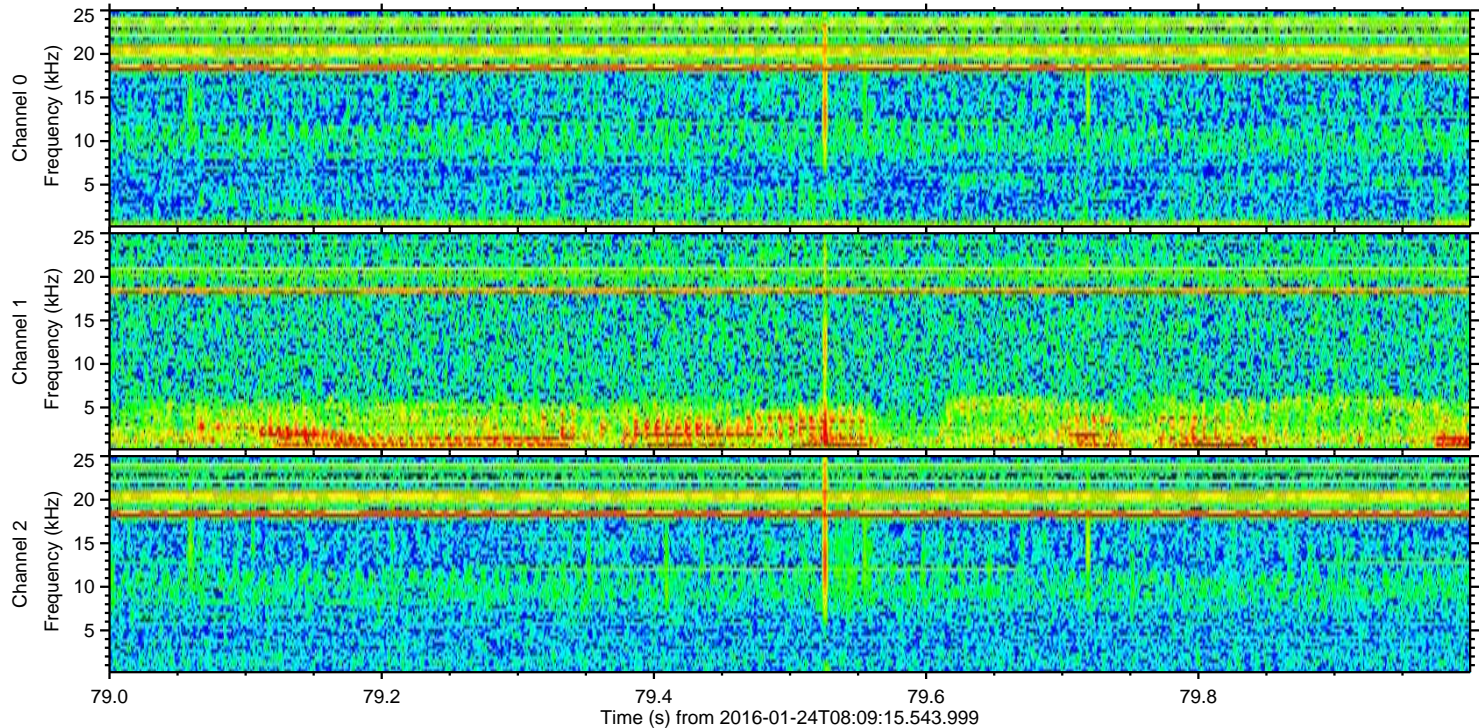
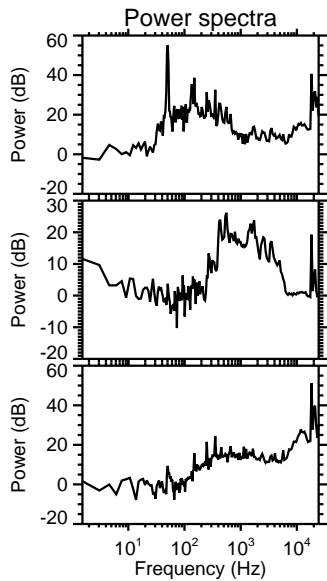
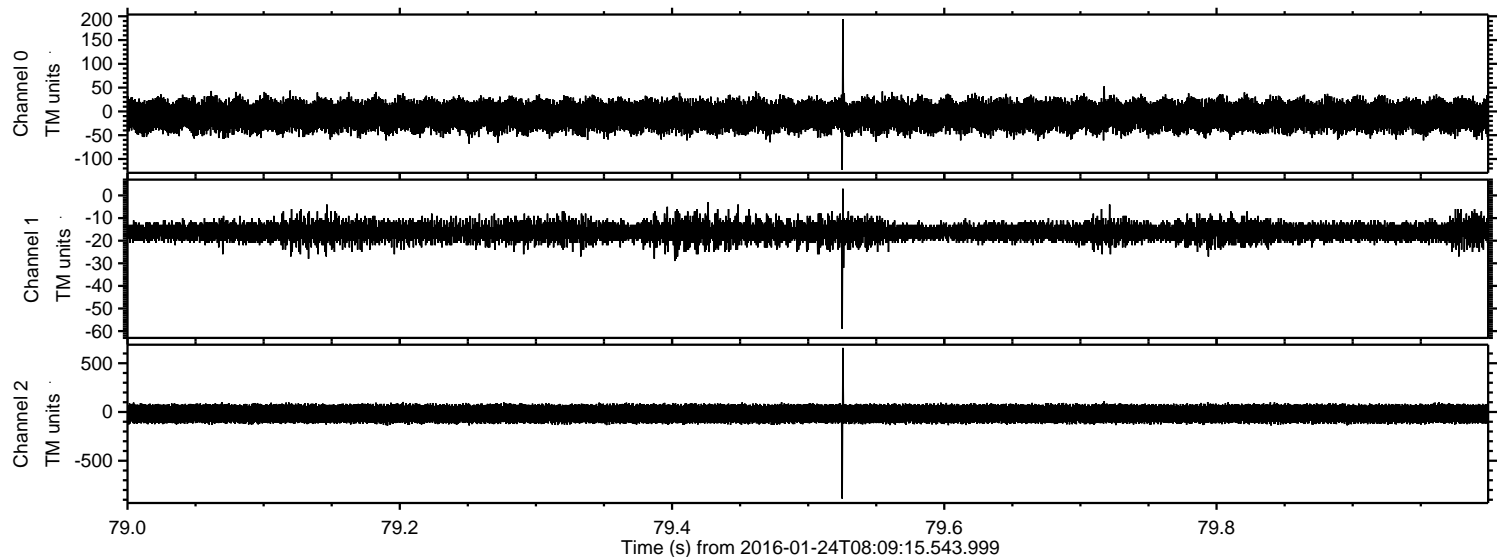
Processed Wed Apr 6 09:02:53 2016 by ELM ver.2012-10-06 from 001__elm20160124_080914__dat00.bin



ELMAVAN 3D WAVEFORMS (Measured data sampled at 50 kHz) 51000 packets of 144 samples from 2016-01-24T08:09:15.543.999. Part 130/147

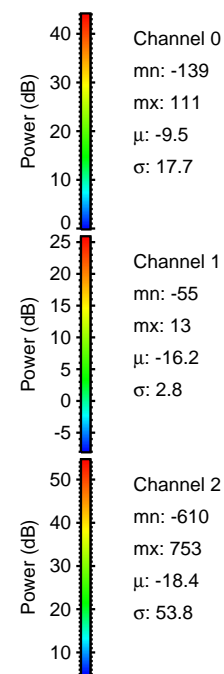
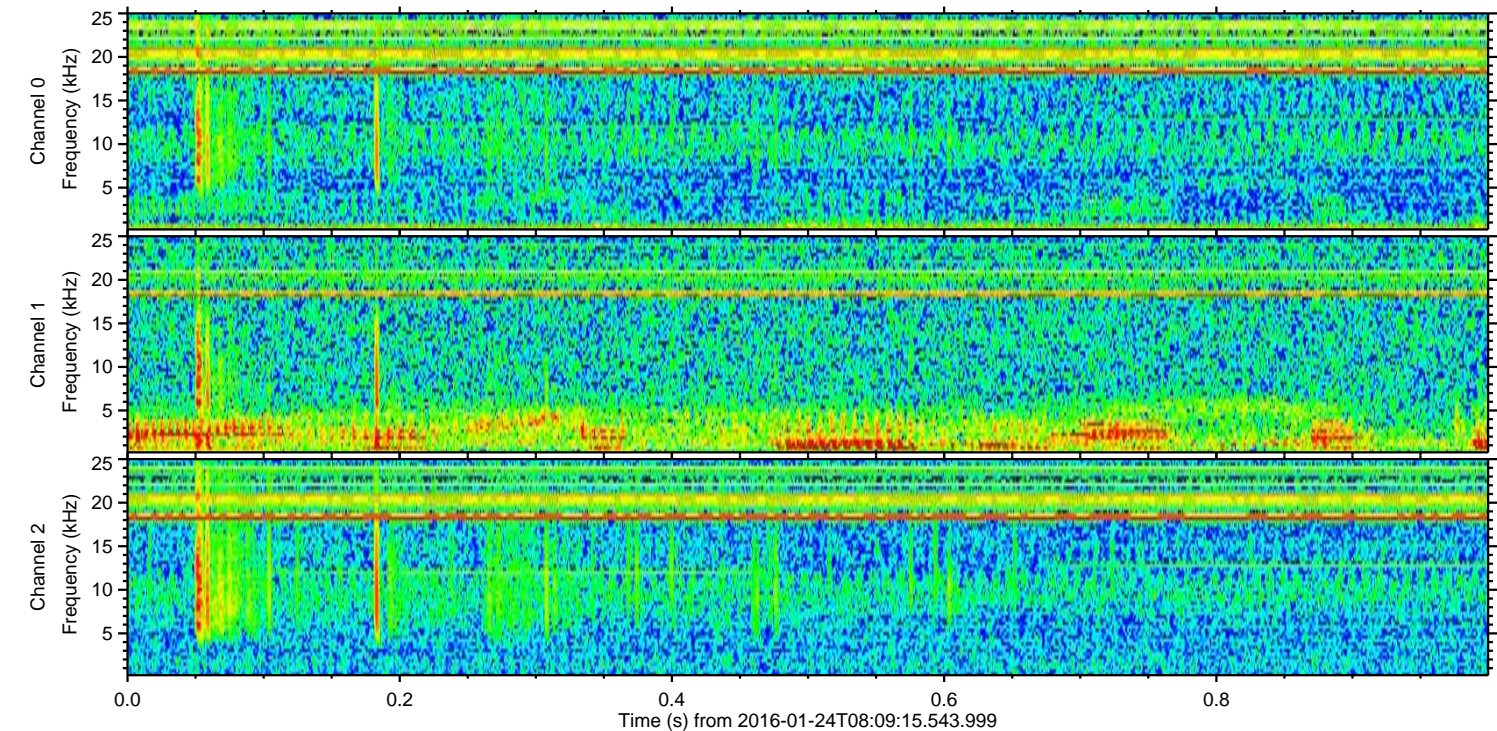
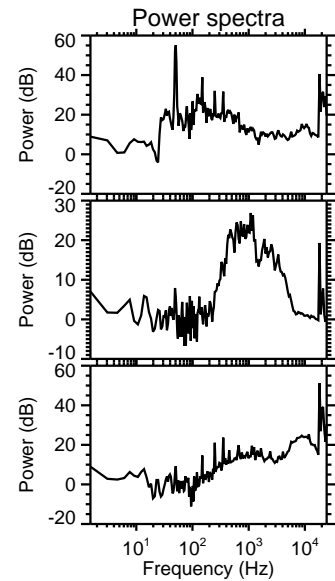
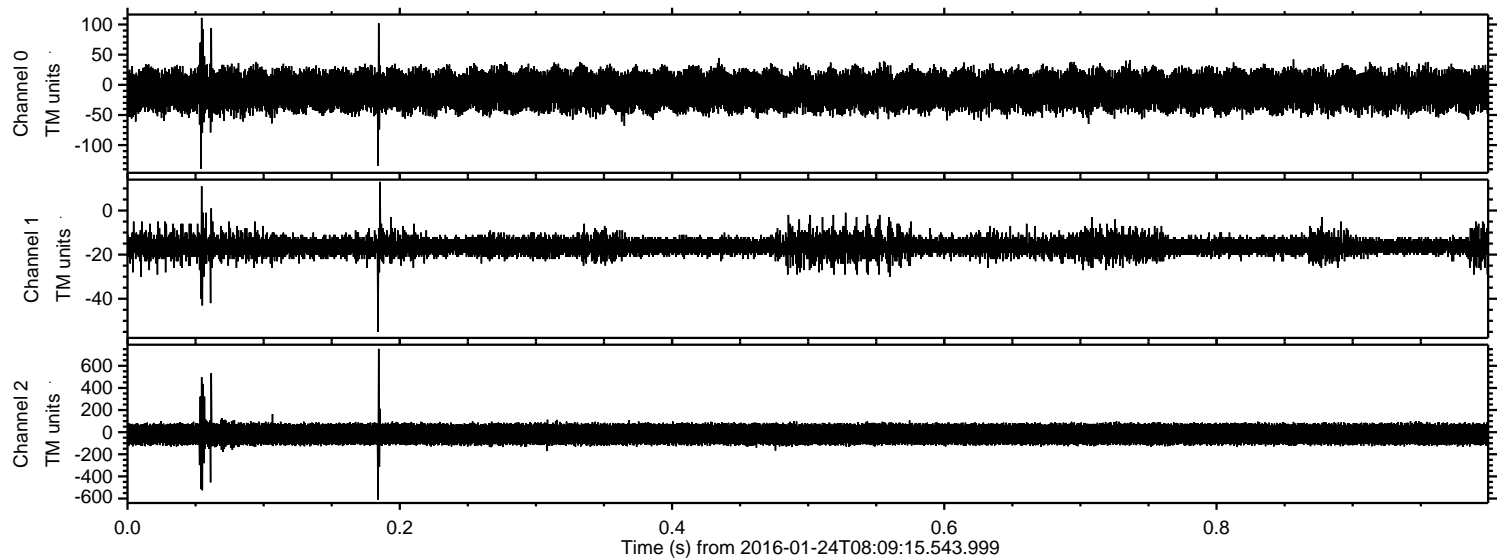


Processed Wed Apr 6 09:02:55 2016 by ELM ver.2012-10-06 from 001__elm20160124_080914__dat00.bin

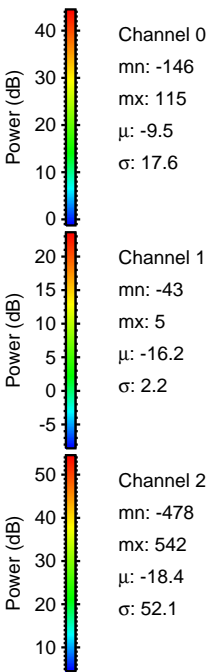
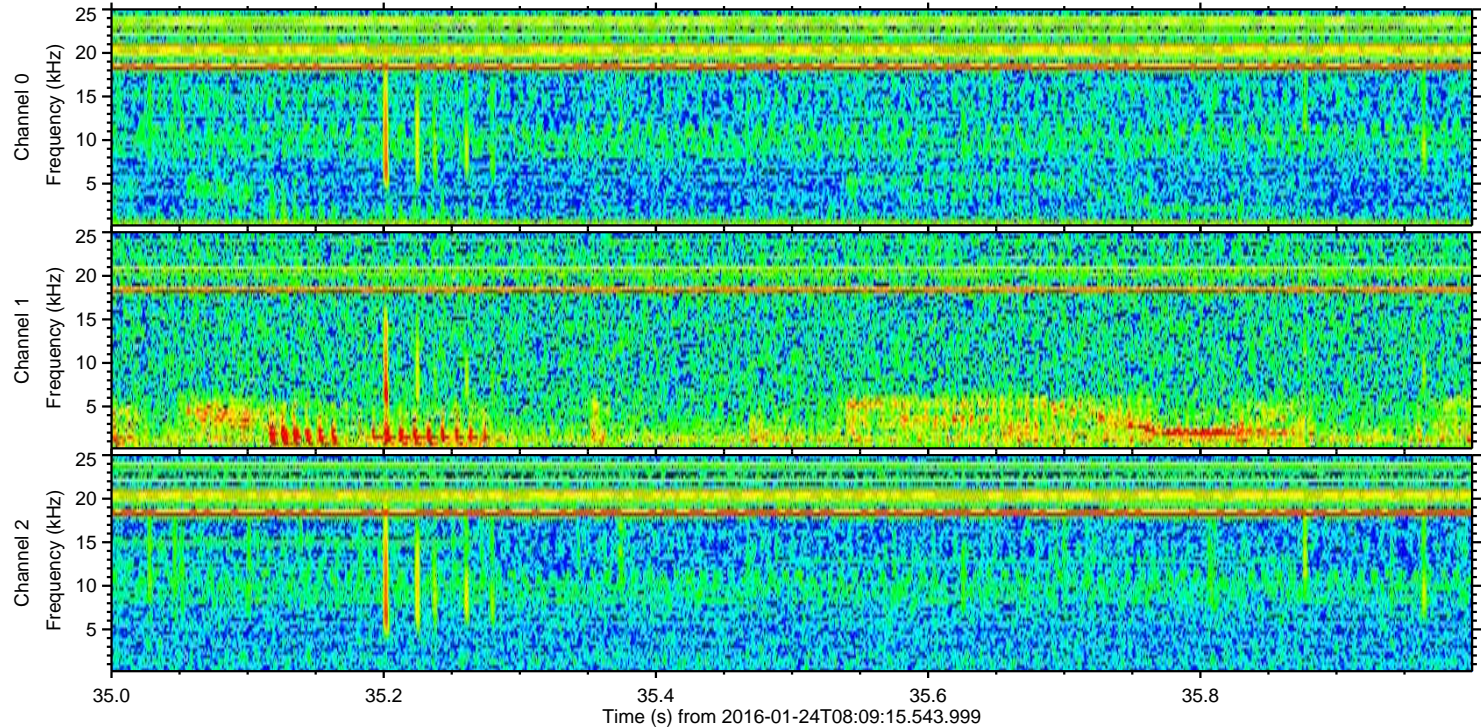
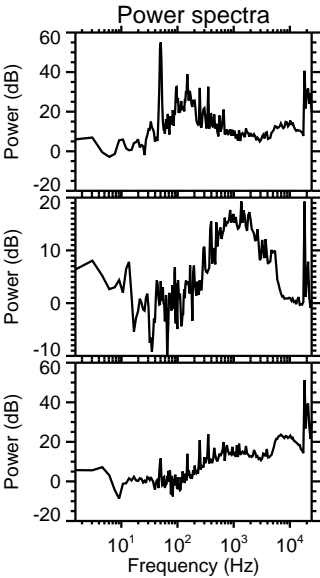
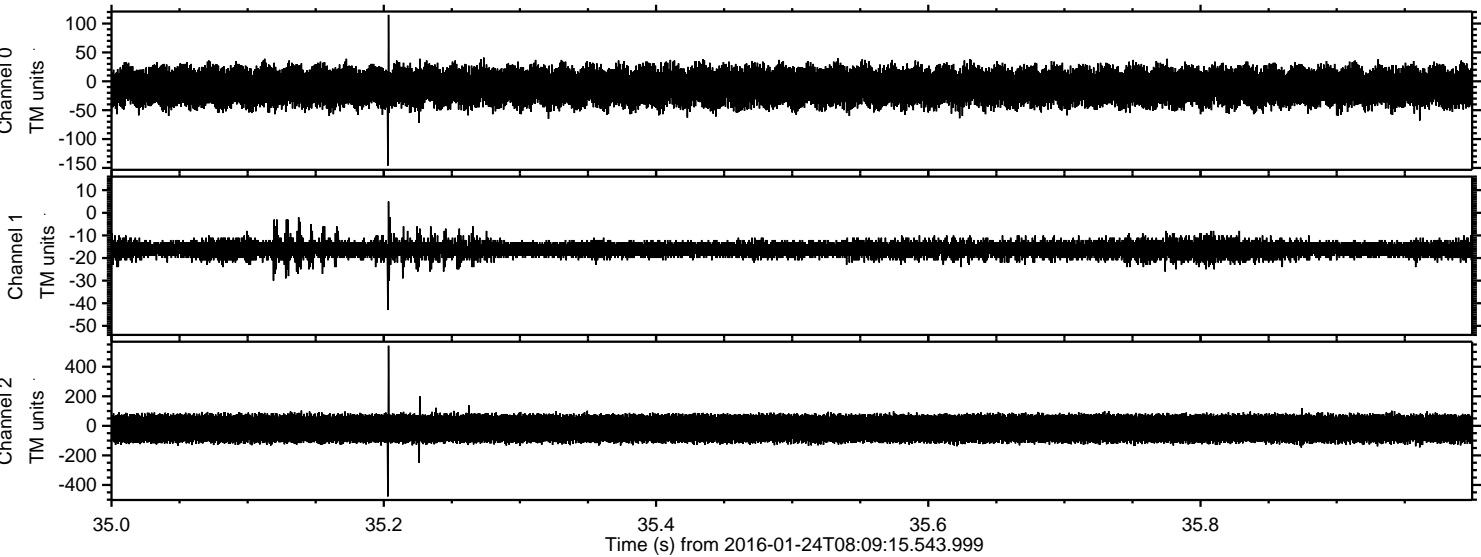


ELMAVAN 3D WAVEFORMS (Measured data sampled at 50 kHz) 51000 packets of 144 samples from 2016-01-24T08:09:15.543.999. Part 1/147

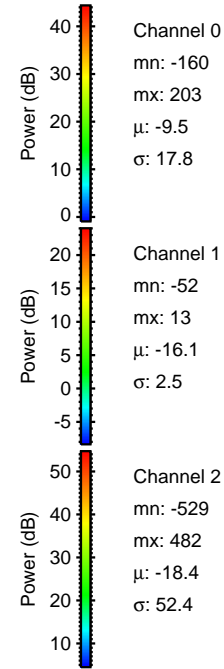
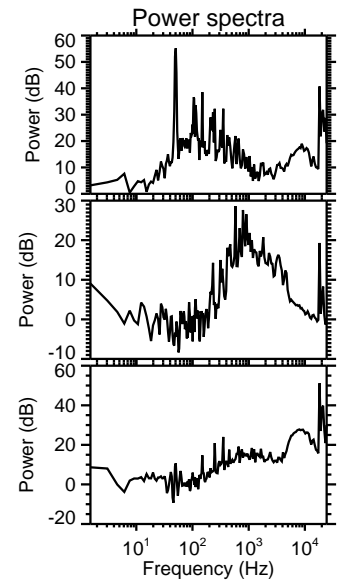
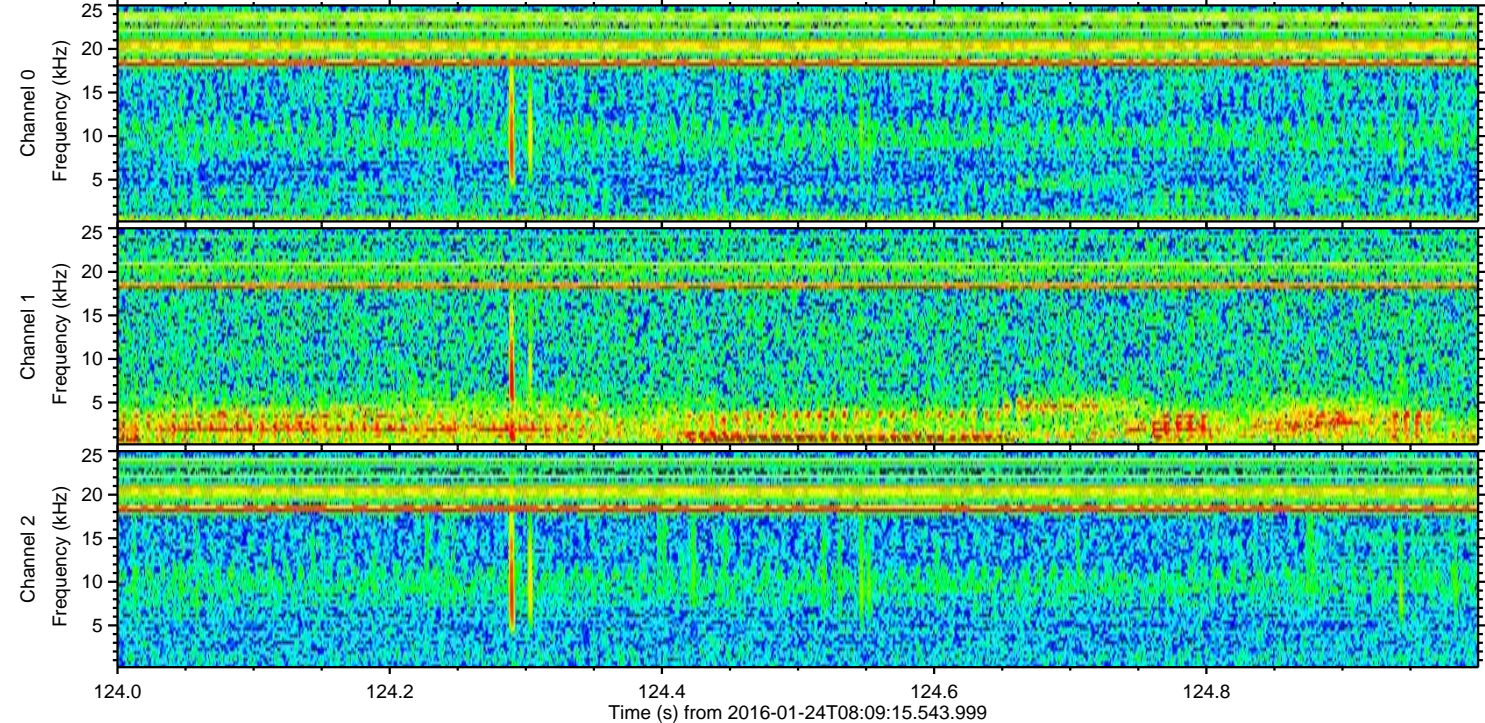
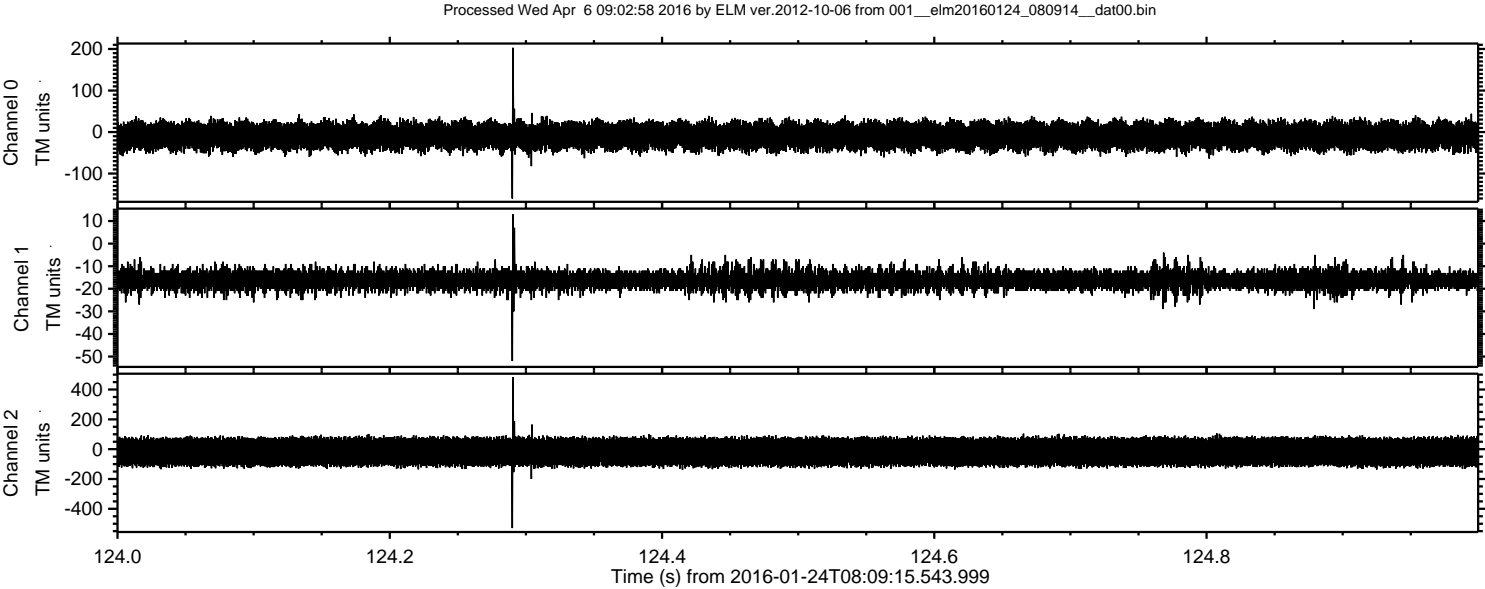
Processed Wed Apr 6 09:02:56 2016 by ELM ver.2012-10-06 from 001__elm20160124_080914__dat00.bin



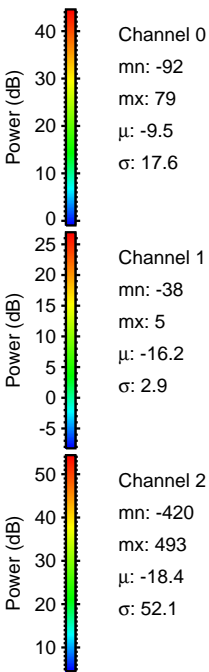
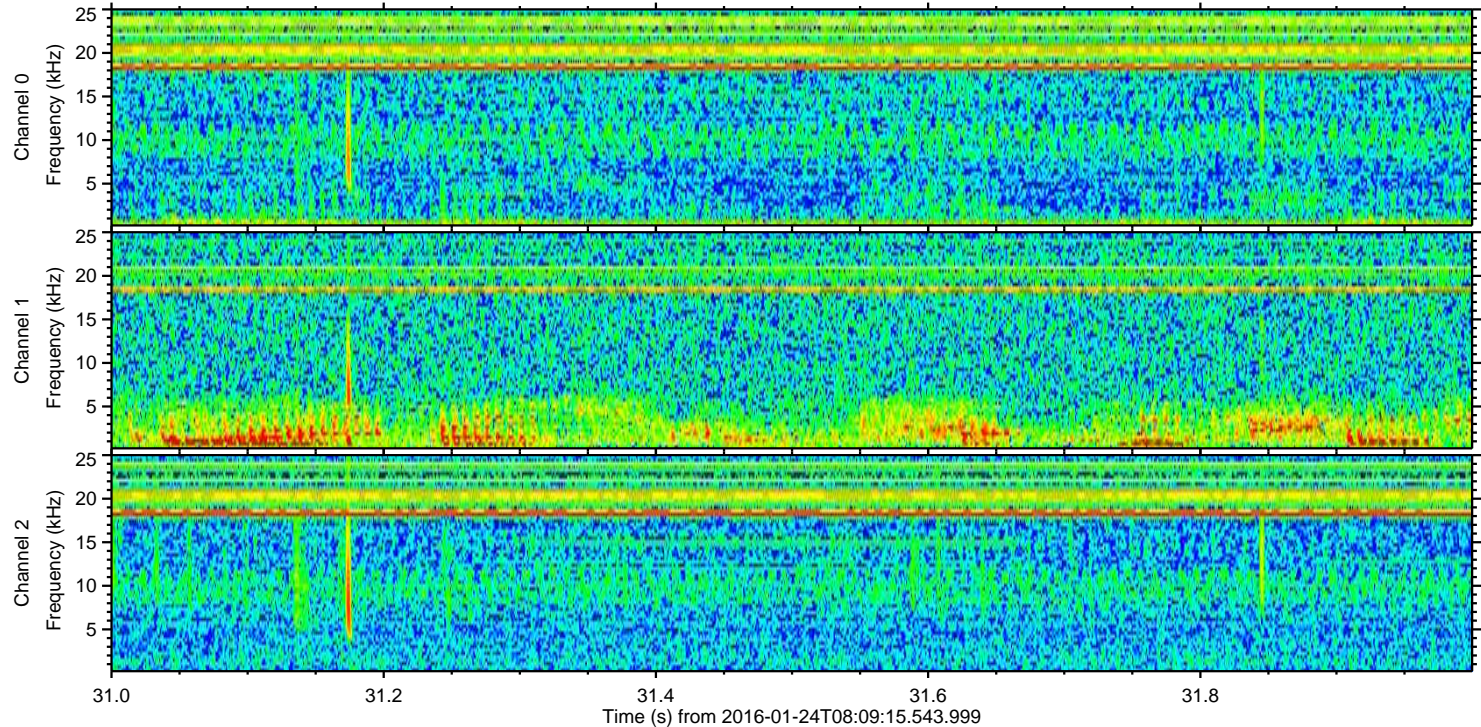
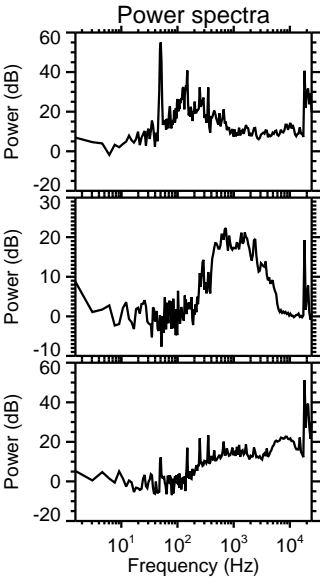
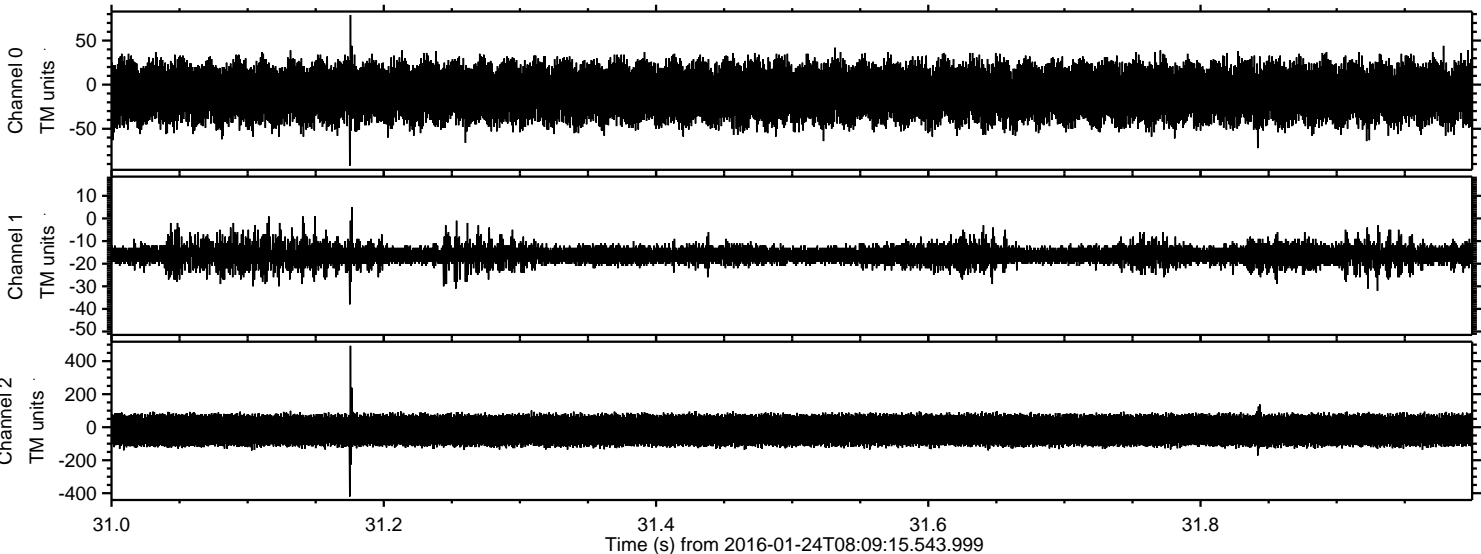
Processed Wed Apr 6 09:02:57 2016 by ELM ver.2012-10-06 from 001__elm20160124_080914__dat00.bin



ELMAVAN 3D WAVEFORMS (Measured data sampled at 50 kHz) 51000 packets of 144 samples from 2016-01-24T08:09:15.543.999. Part 125/147



Processed Wed Apr 6 09:02:59 2016 by ELM ver.2012-10-06 from 001__elm20160124_080914__dat00.bin



Processed Wed Apr 6 09:03:00 2016 by ELM ver.2012-10-06 from 001__elm20160124_080914__dat00.bin

