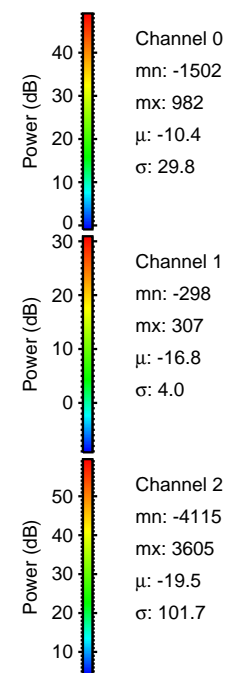
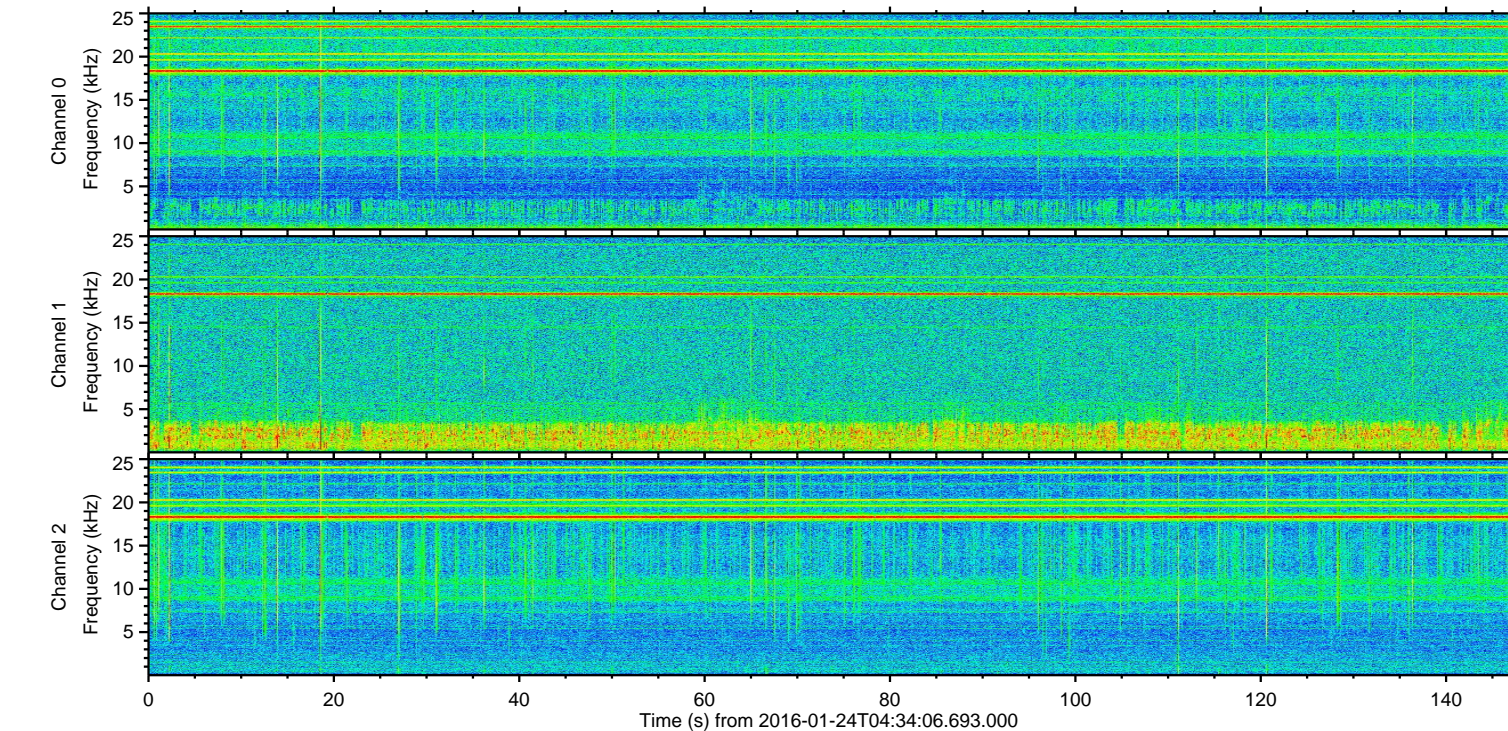
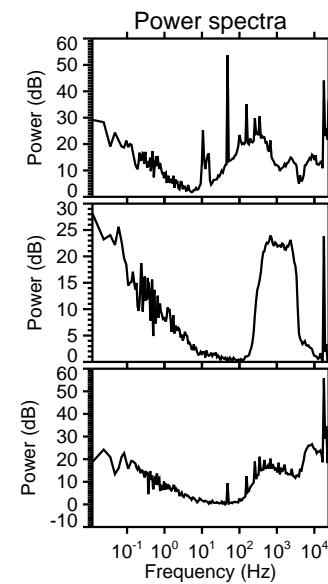
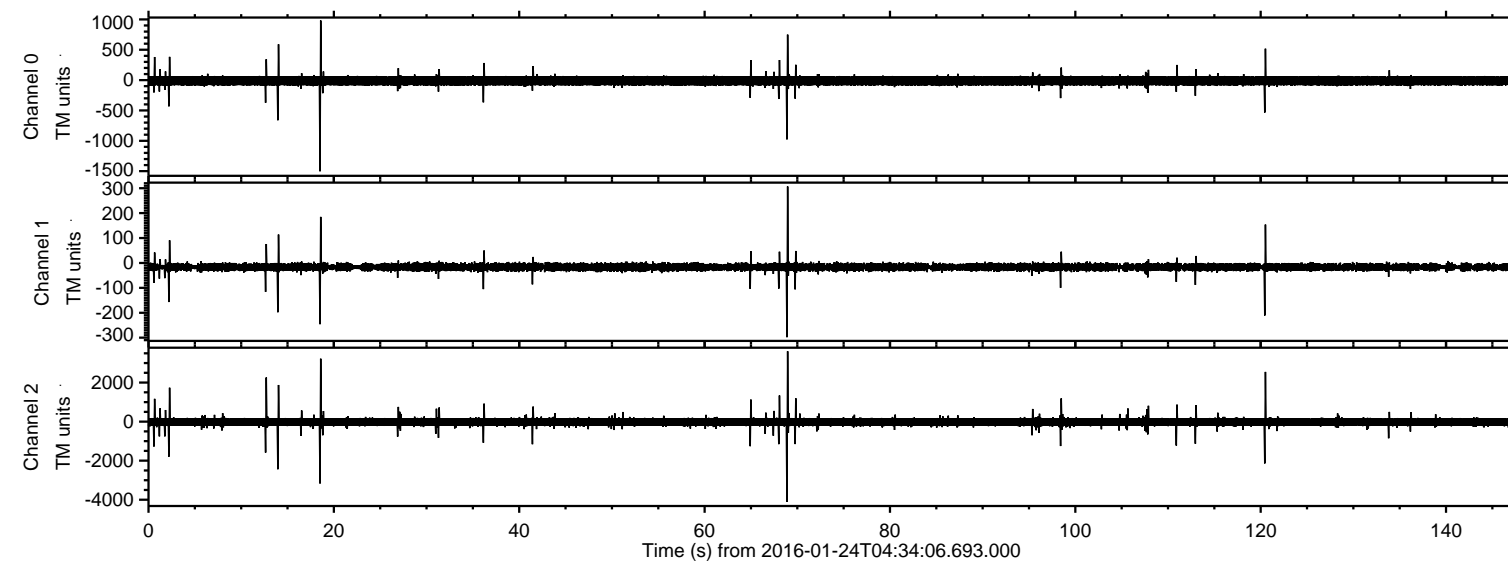
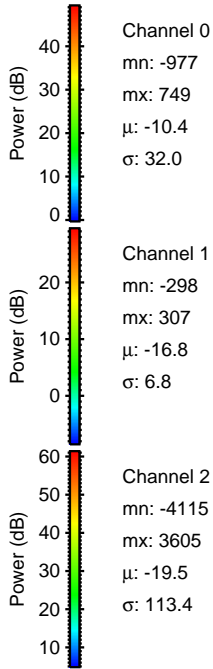
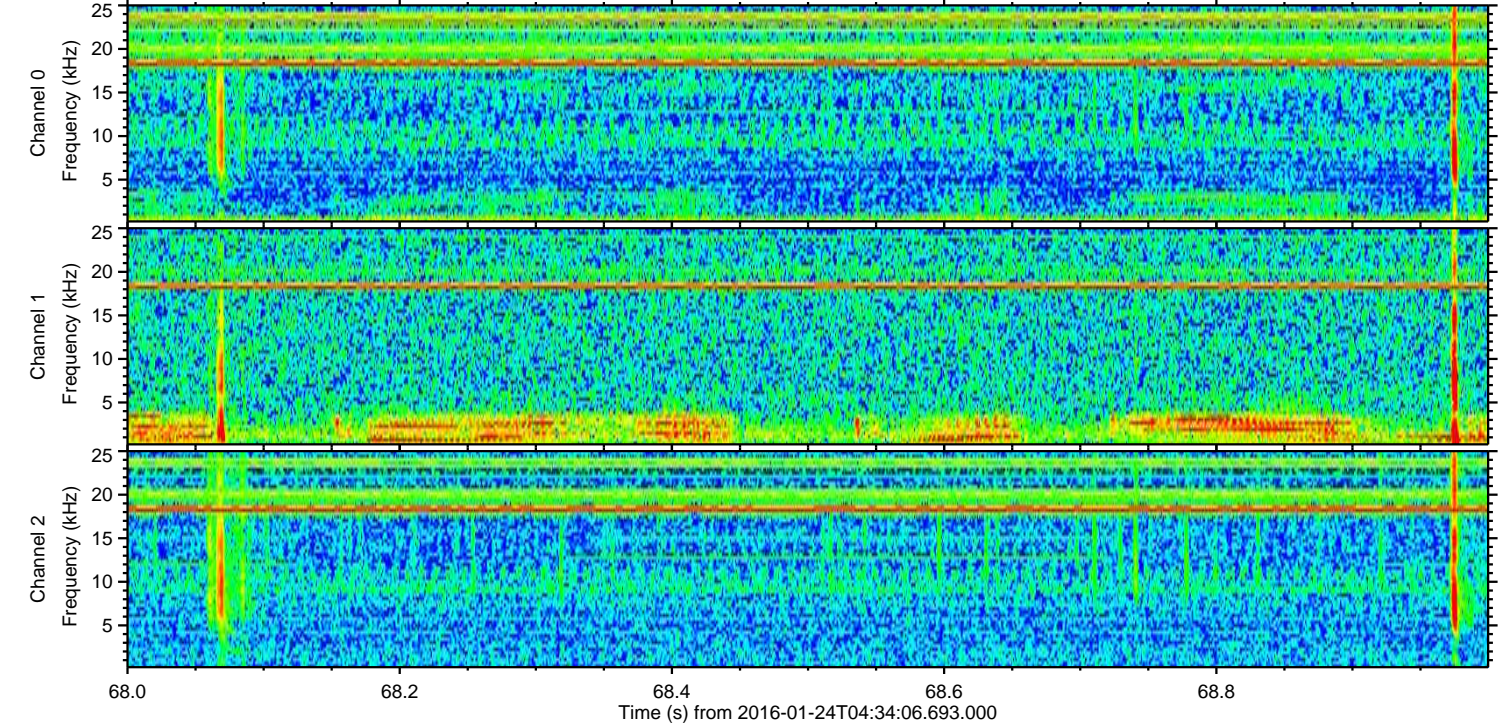
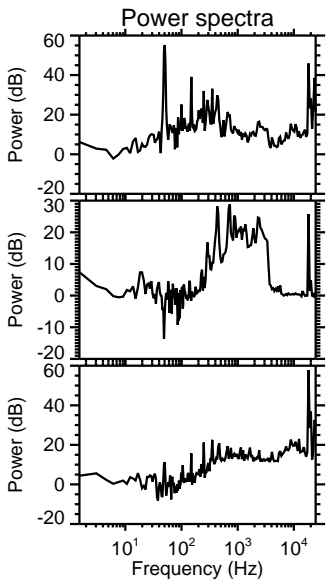
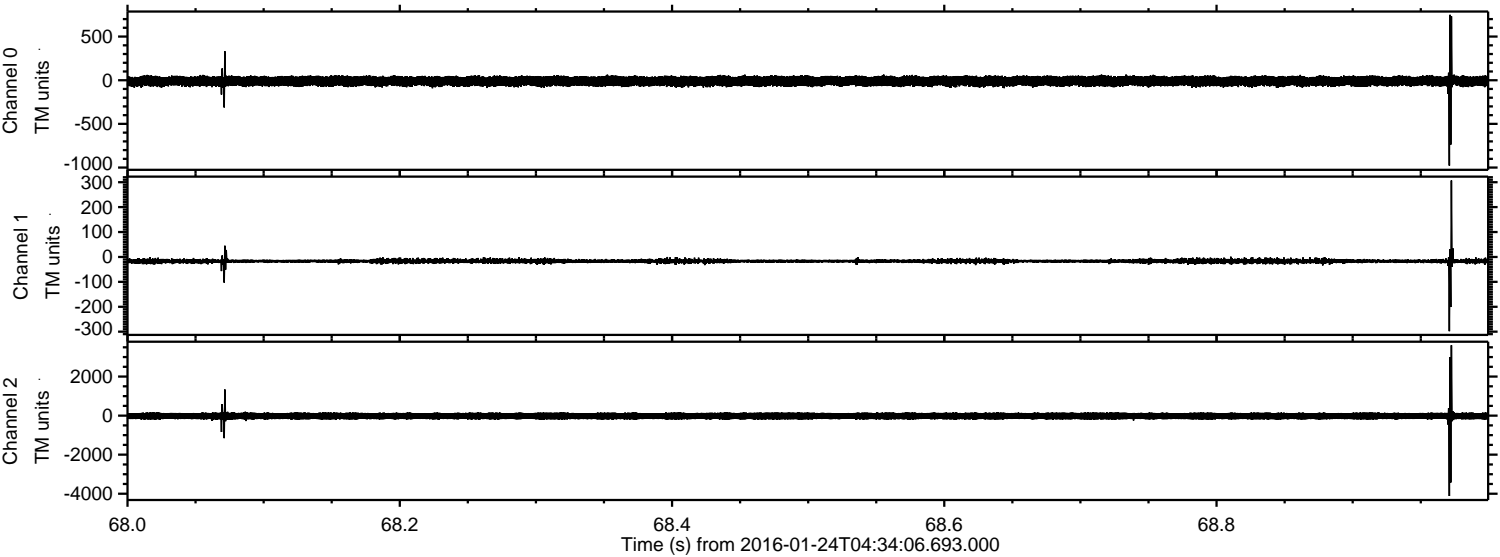


ELMAVAN 3D WAVEFORMS (Measured data sampled at 50 kHz) 51000 packets of 144 samples from 2016-01-24T04:34:06.693.000.

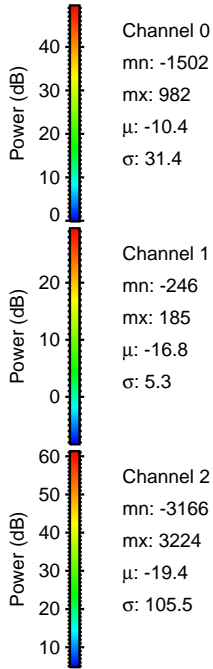
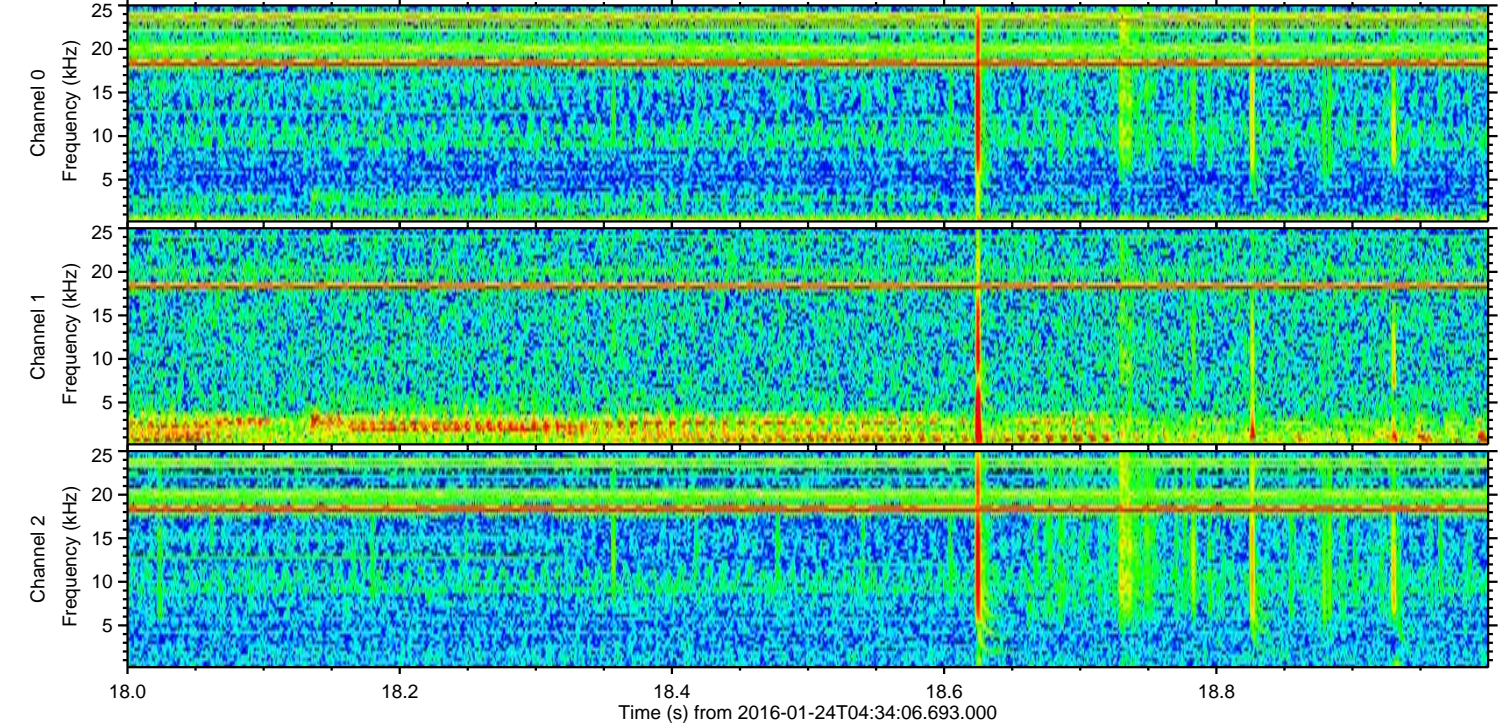
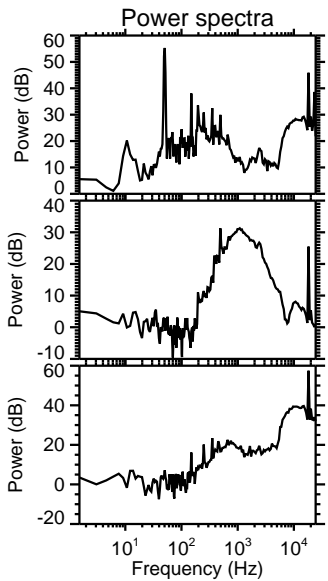
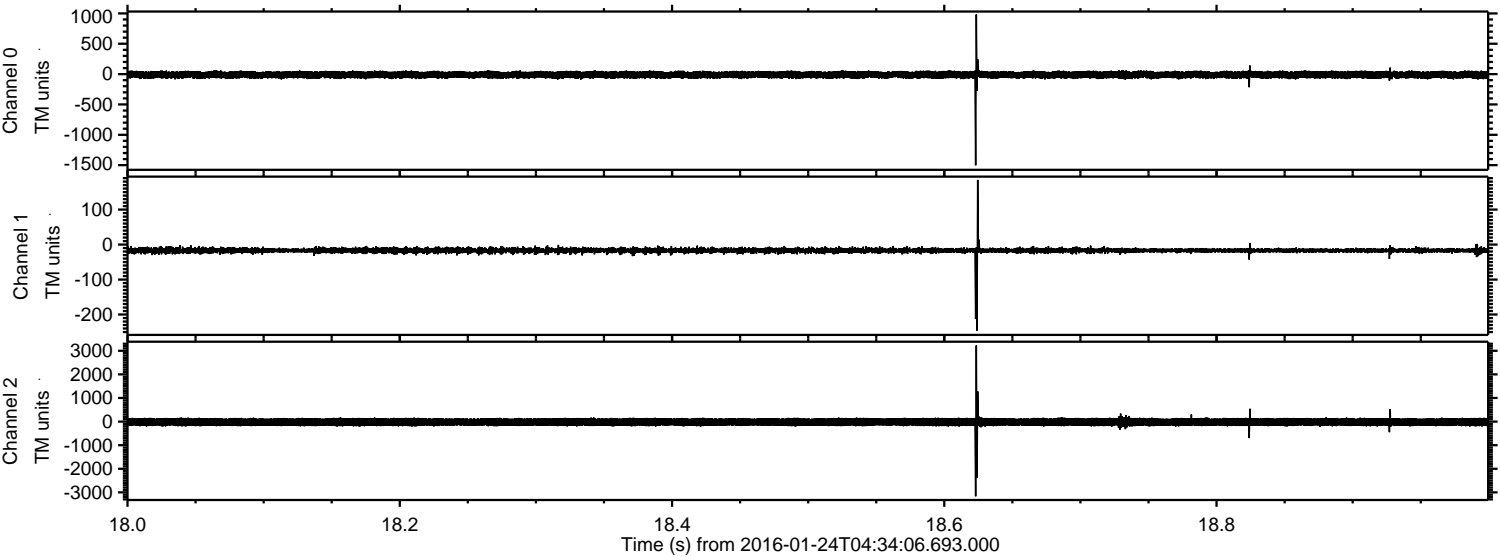
Processed Wed Apr 6 06:40:51 2016 by ELM ver.2012-10-06 from 001__elm20160124_043405__dat00.bin



Processed Wed Apr 6 06:41:03 2016 by ELM ver.2012-10-06 from 001__elm20160124_043405__dat00.bin

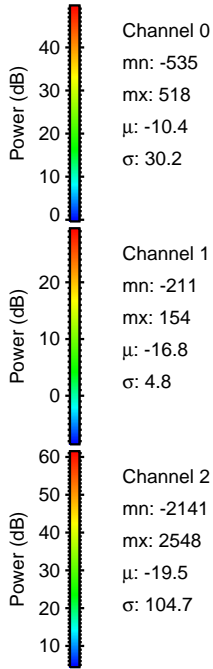
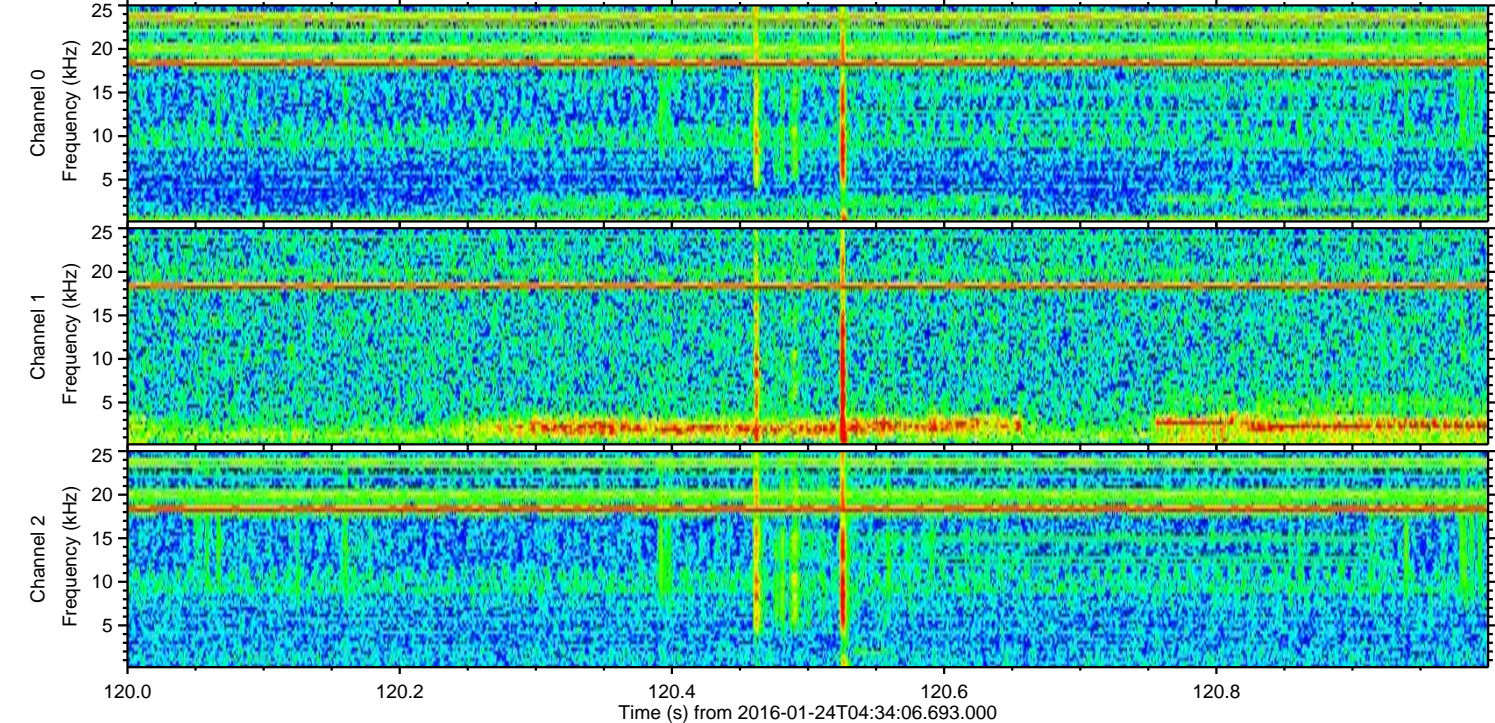
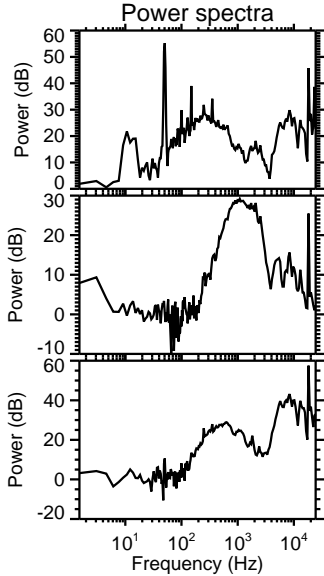
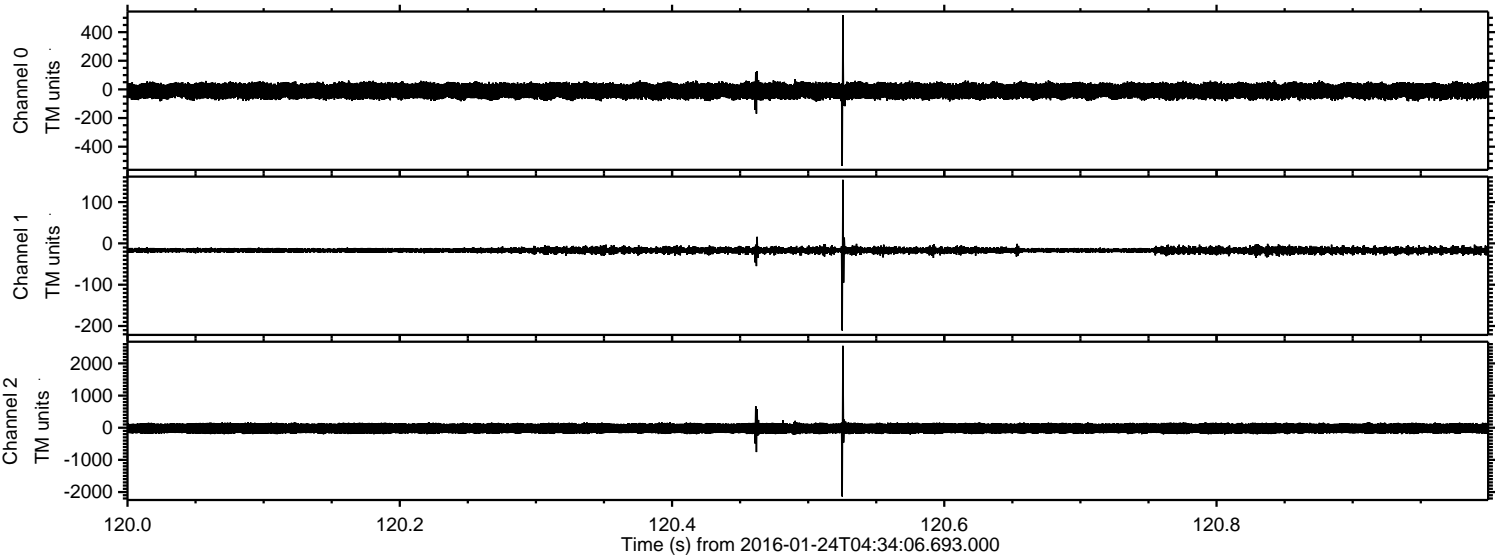


Processed Wed Apr 6 06:41:04 2016 by ELM ver.2012-10-06 from 001__elm20160124_043405__dat00.bin

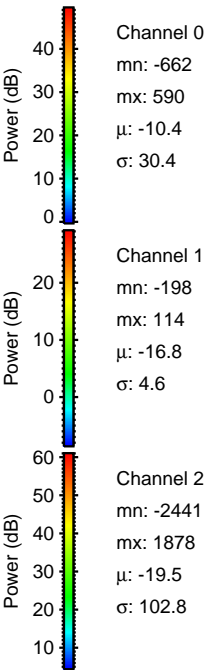
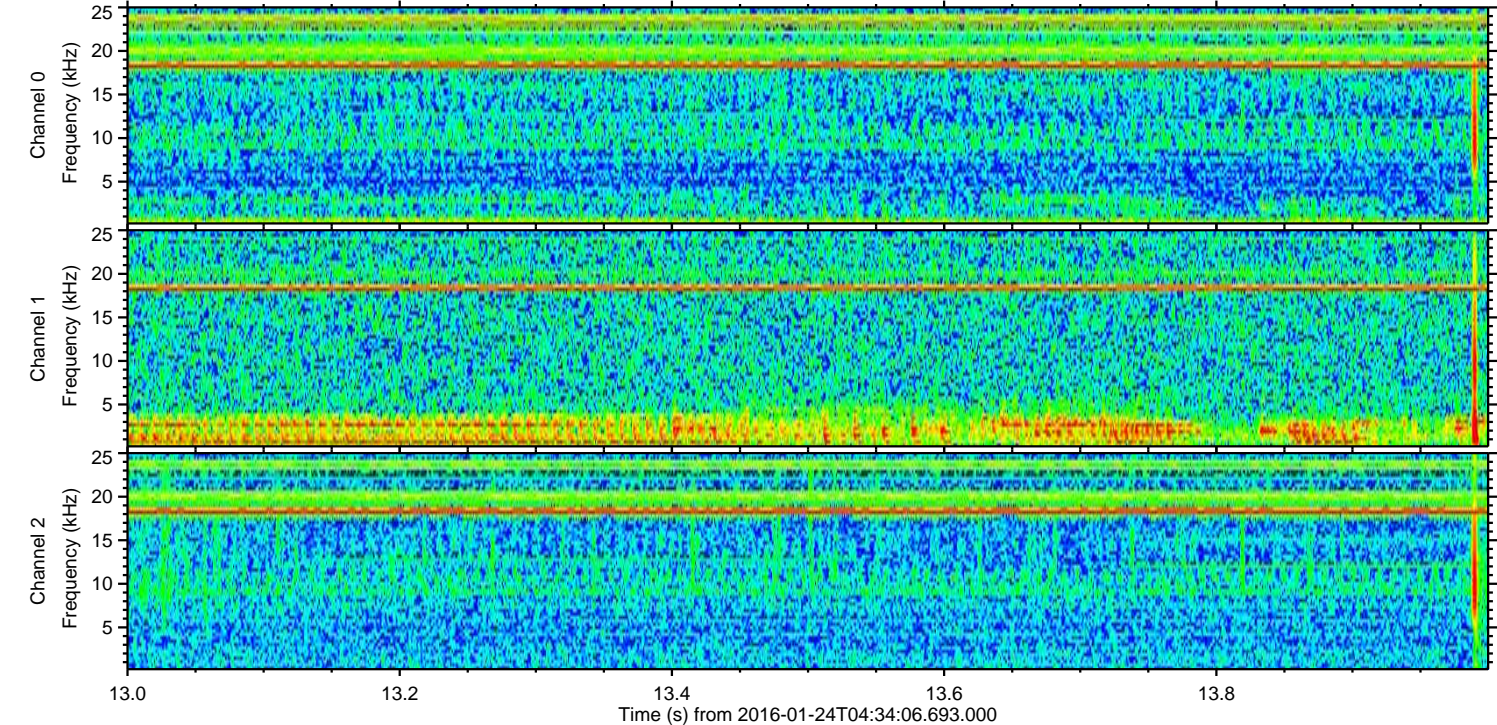
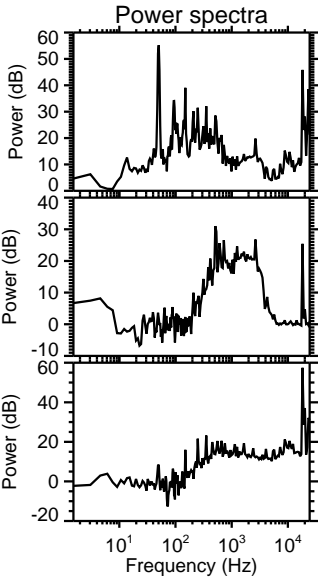
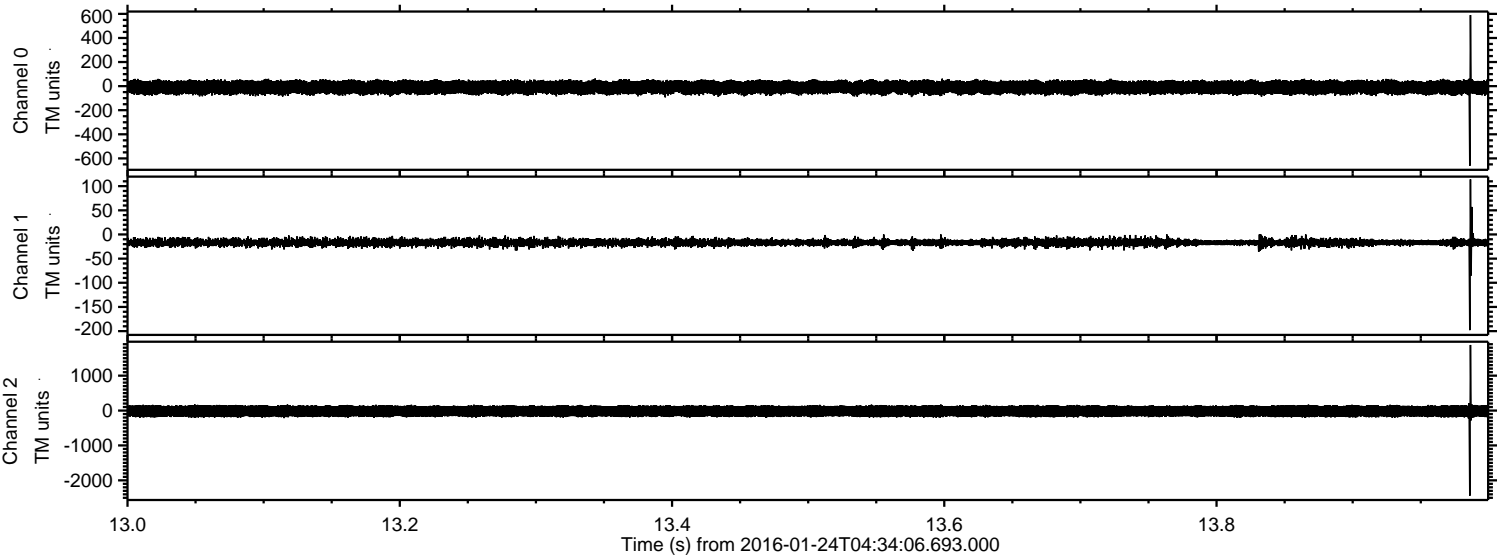


ELMAVAN 3D WAVEFORMS (Measured data sampled at 50 kHz) 51000 packets of 144 samples from 2016-01-24T04:34:06.693.000. Part 121/147

Processed Wed Apr 6 06:41:05 2016 by ELM ver.2012-10-06 from 001__elm20160124_043405__dat00.bin

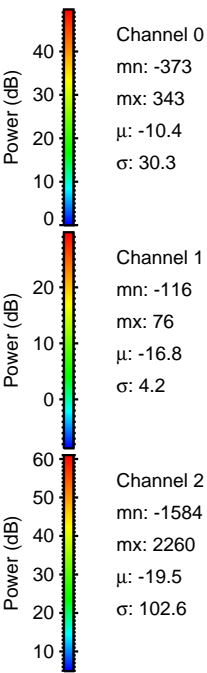
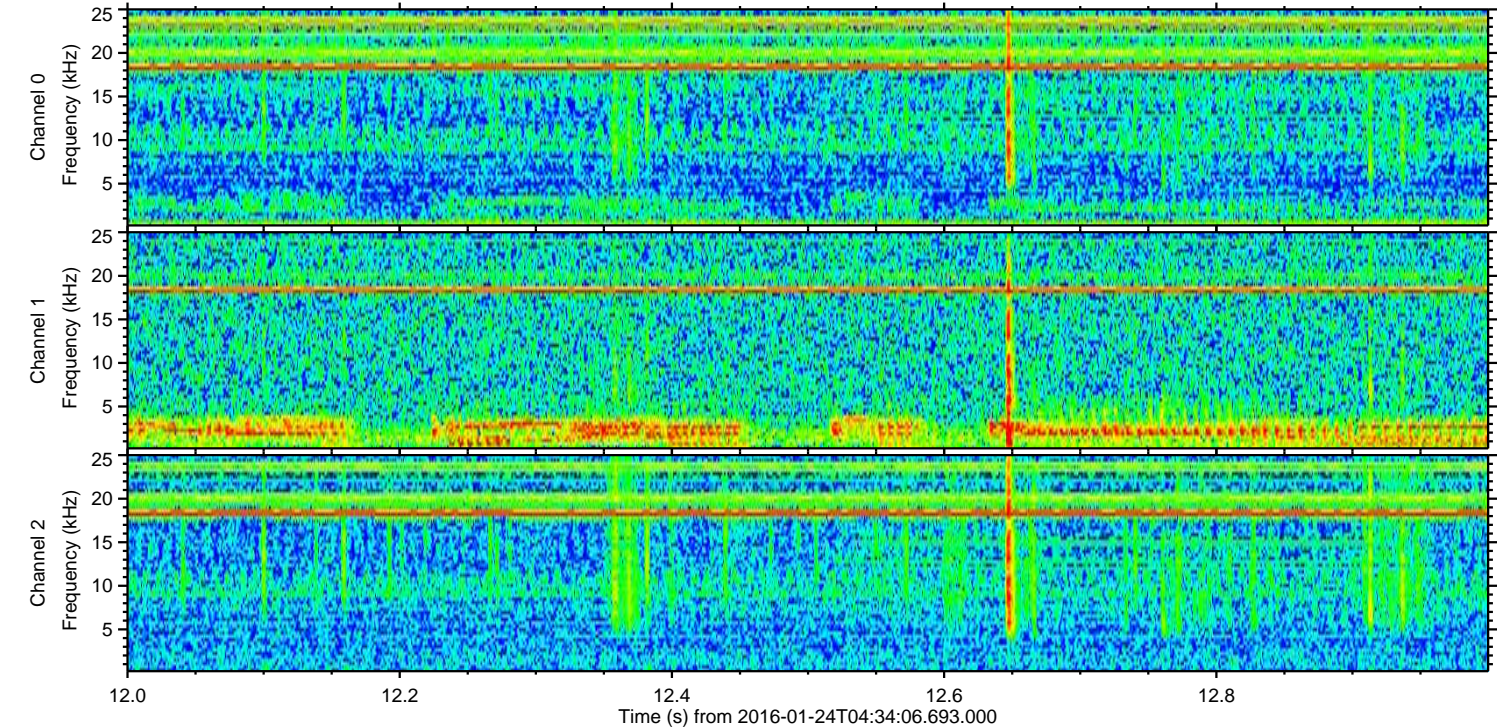
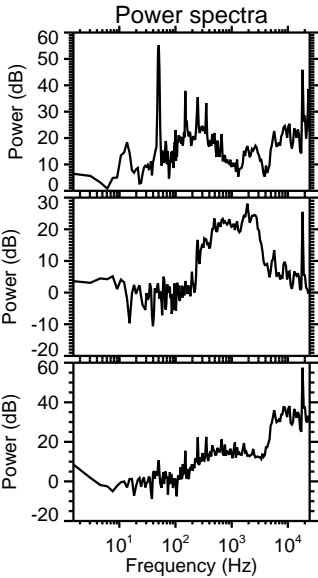
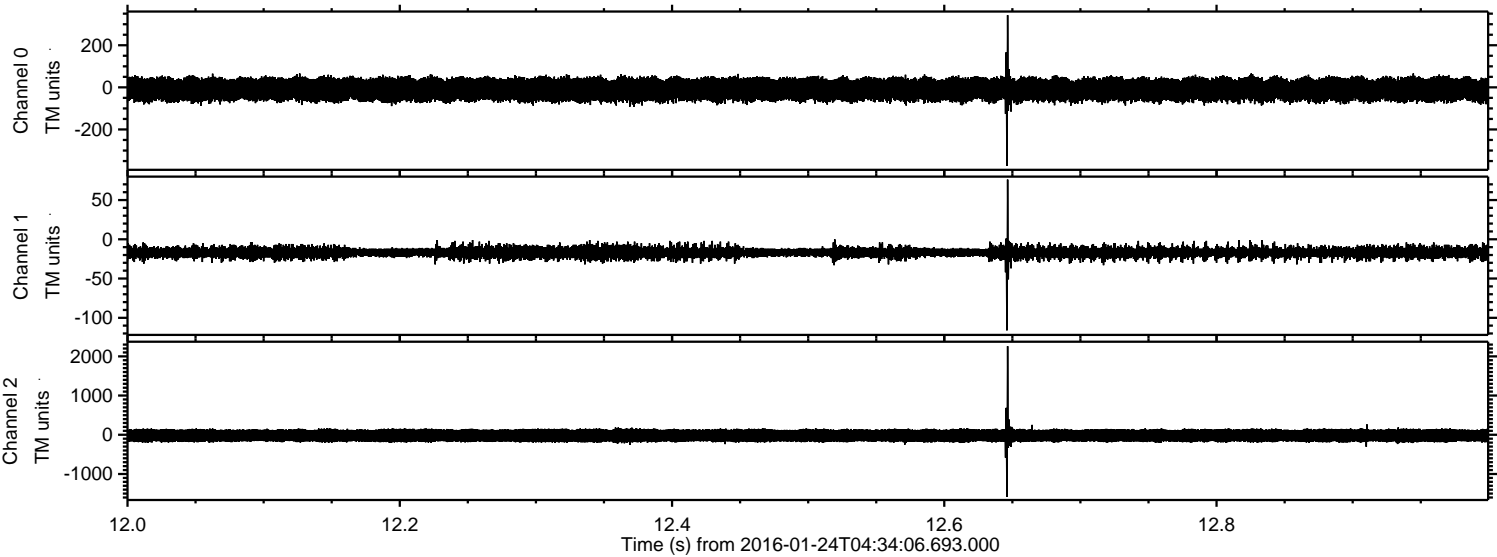


Processed Wed Apr 6 06:41:06 2016 by ELM ver.2012-10-06 from 001__elm20160124_043405__dat00.bin

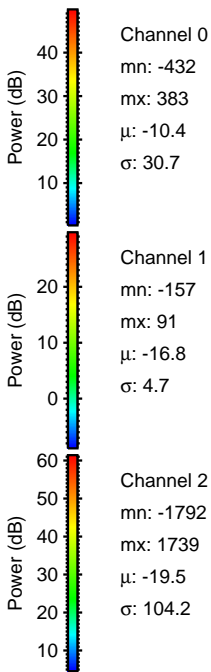
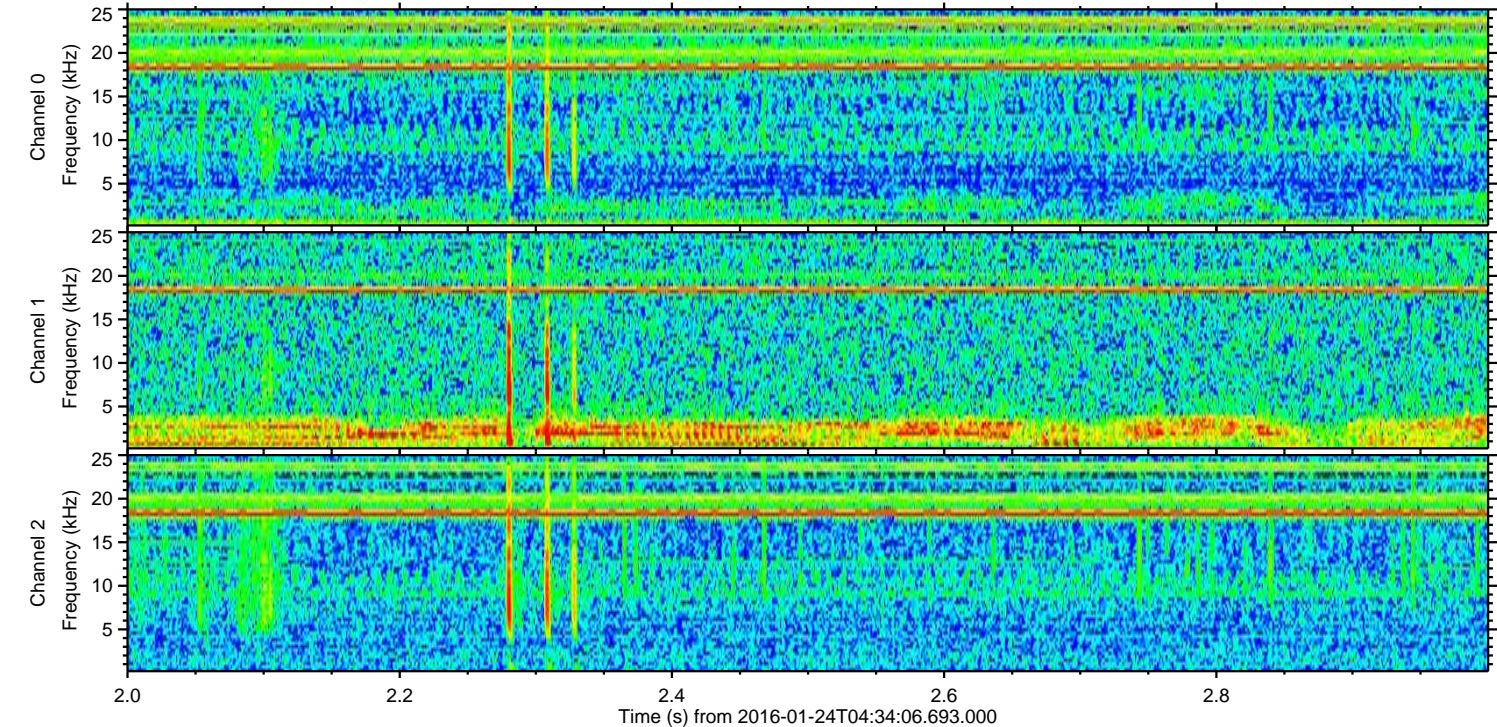
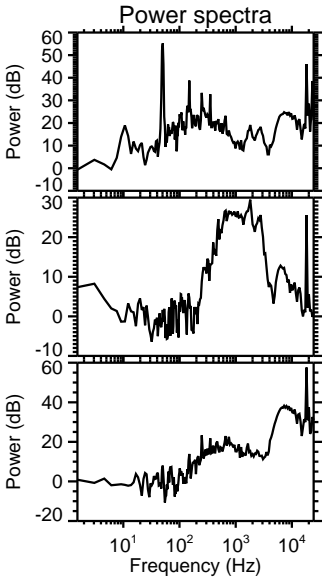
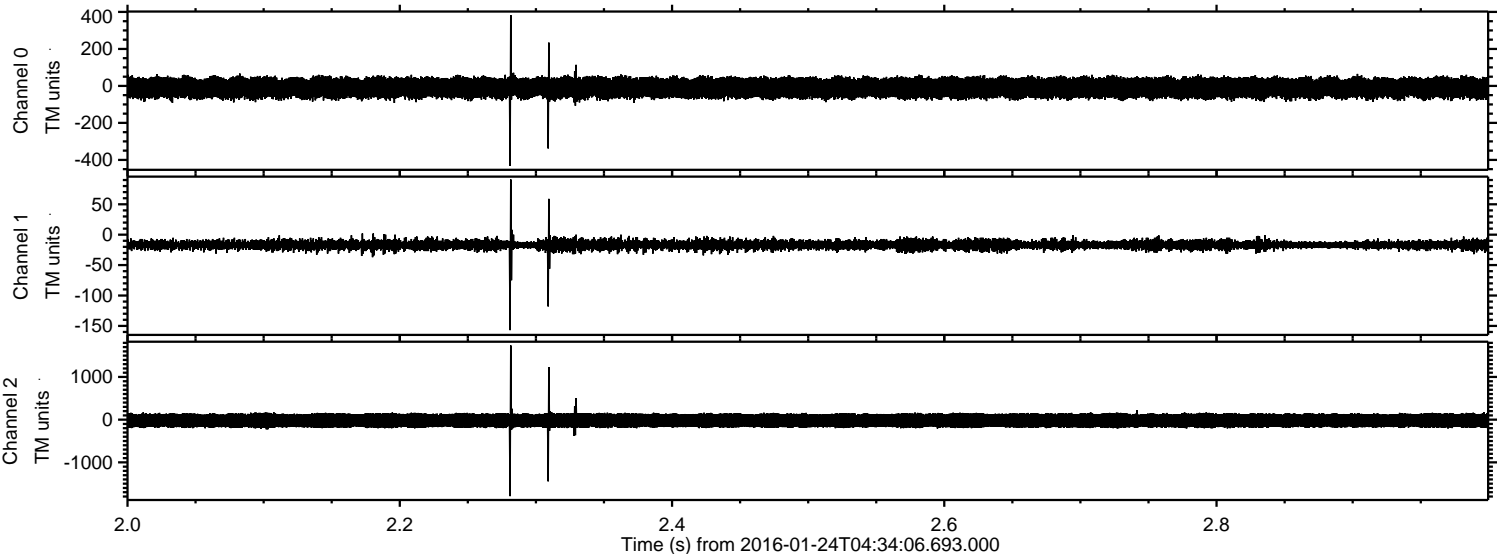


ELMAVAN 3D WAVEFORMS (Measured data sampled at 50 kHz) 51000 packets of 144 samples from 2016-01-24T04:34:06.693.000. Part 13/147

Processed Wed Apr 6 06:41:07 2016 by ELM ver.2012-10-06 from 001__elm20160124_043405__dat00.bin

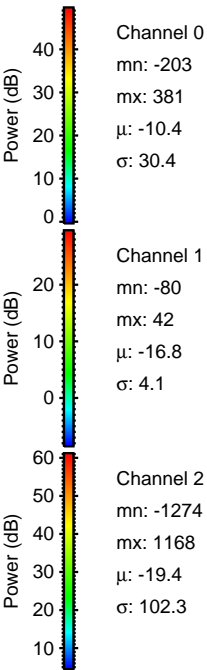
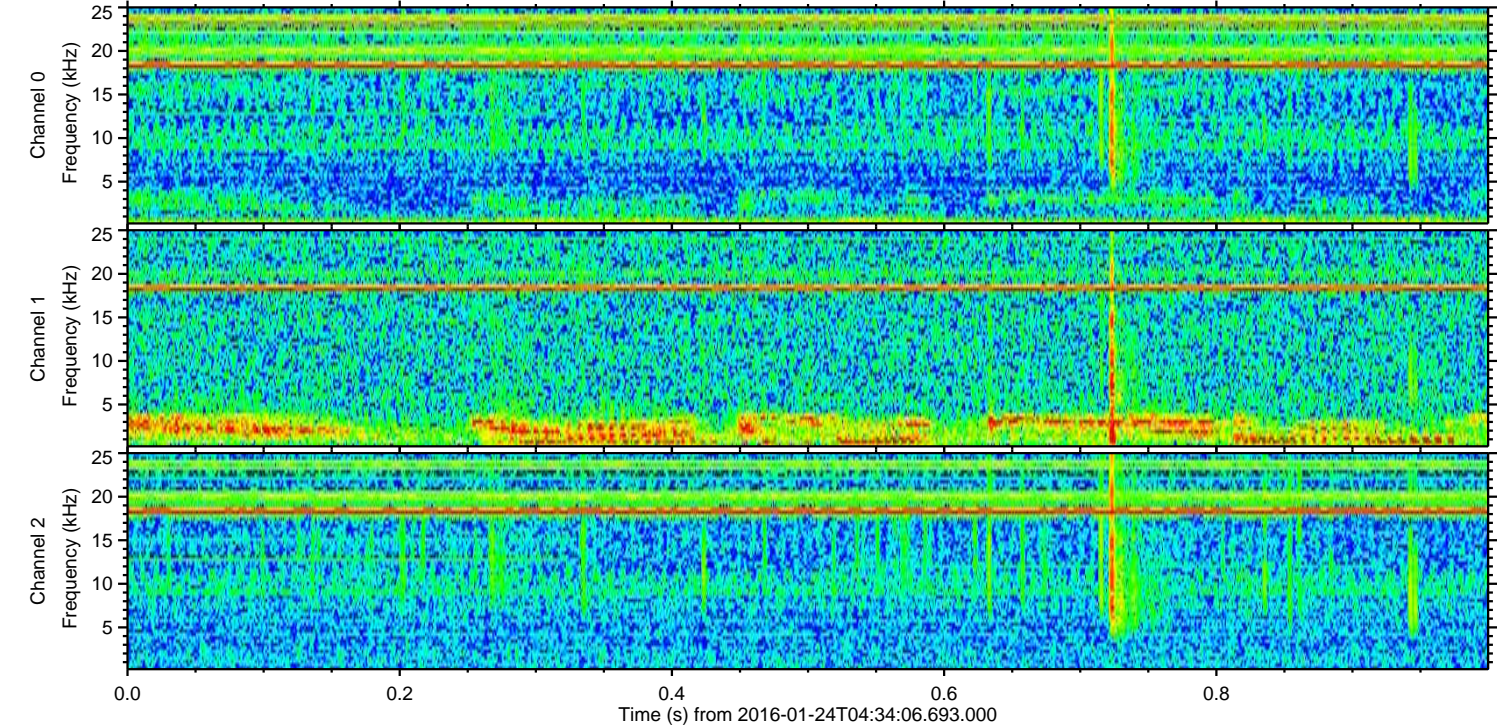
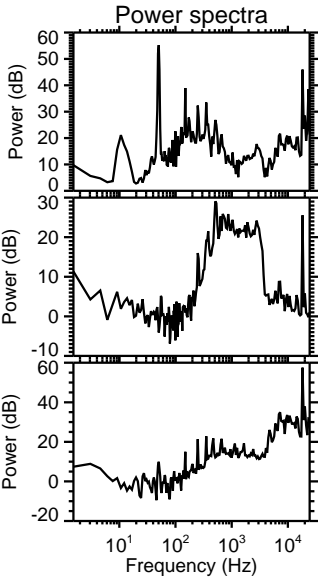
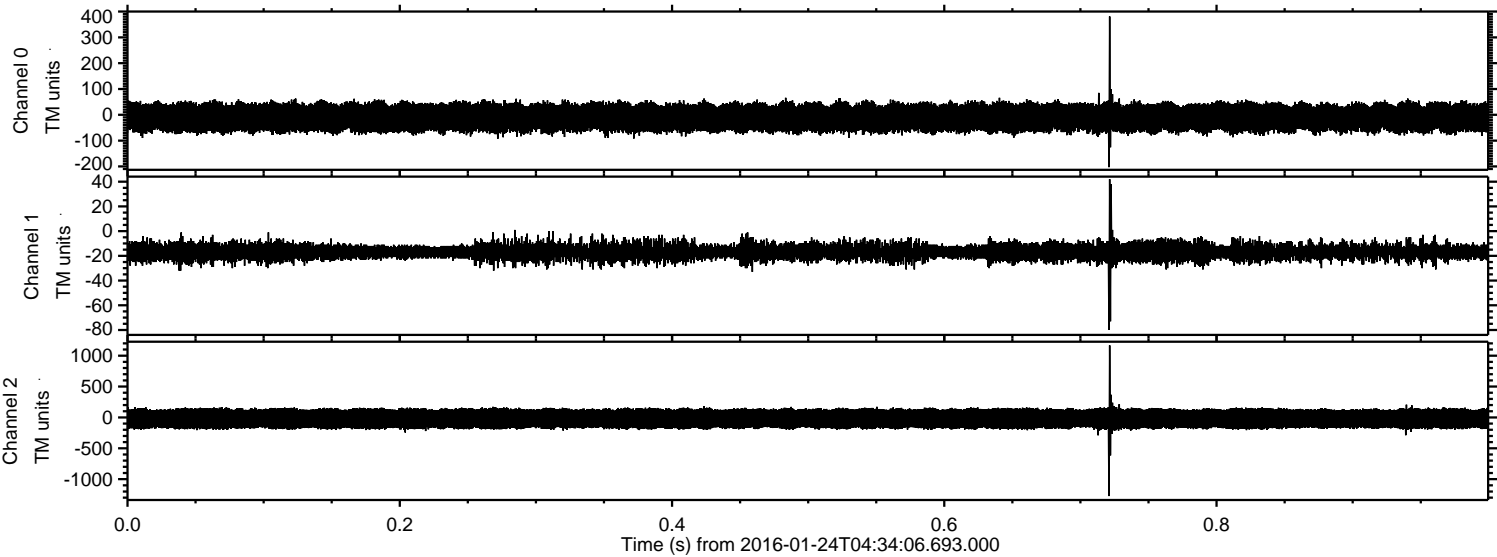


Processed Wed Apr 6 06:41:07 2016 by ELM ver.2012-10-06 from 001__elm20160124_043405__dat00.bin

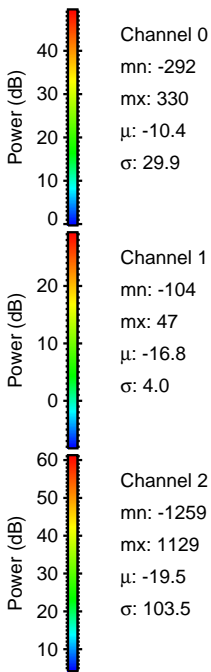
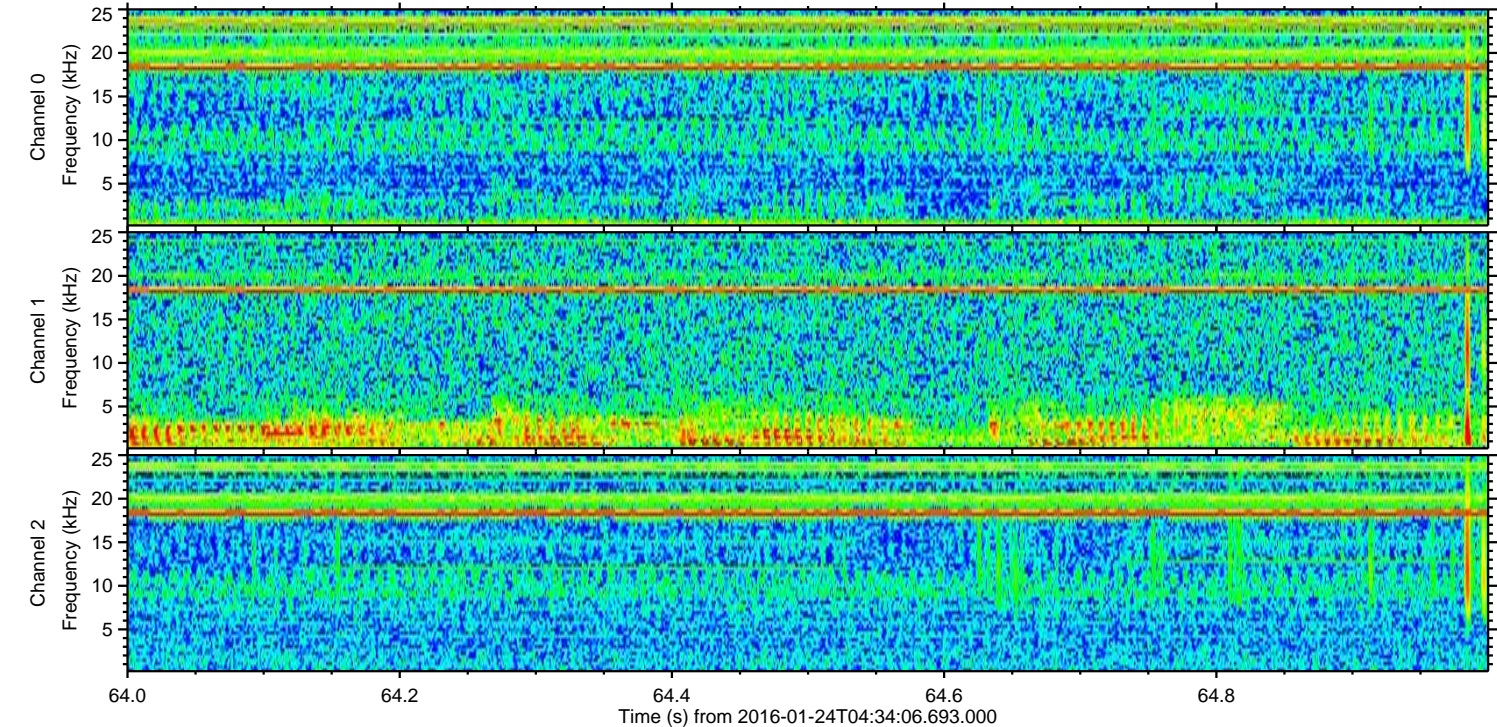
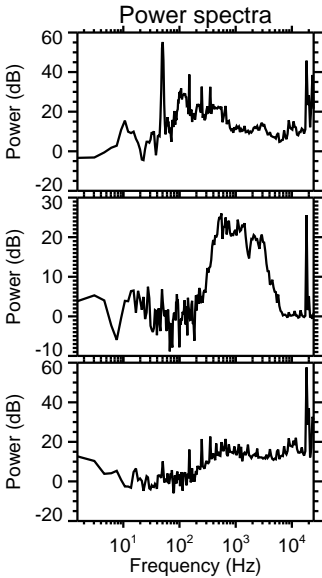
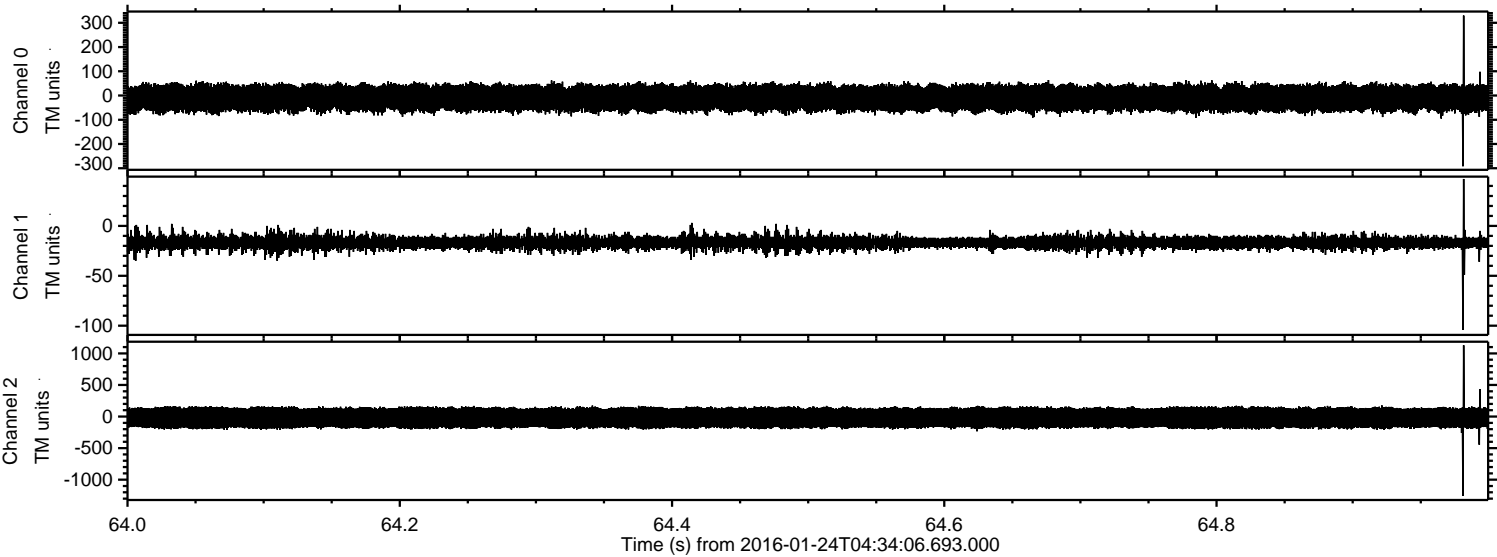


ELMAVAN 3D WAVEFORMS (Measured data sampled at 50 kHz) 51000 packets of 144 samples from 2016-01-24T04:34:06.693.000. Part 1/147

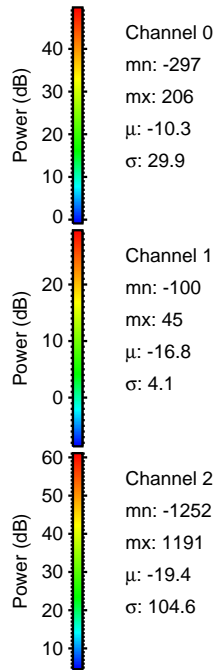
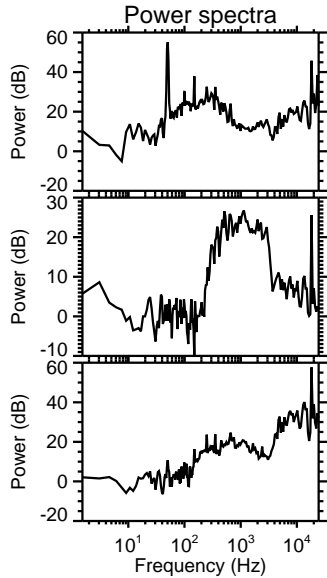
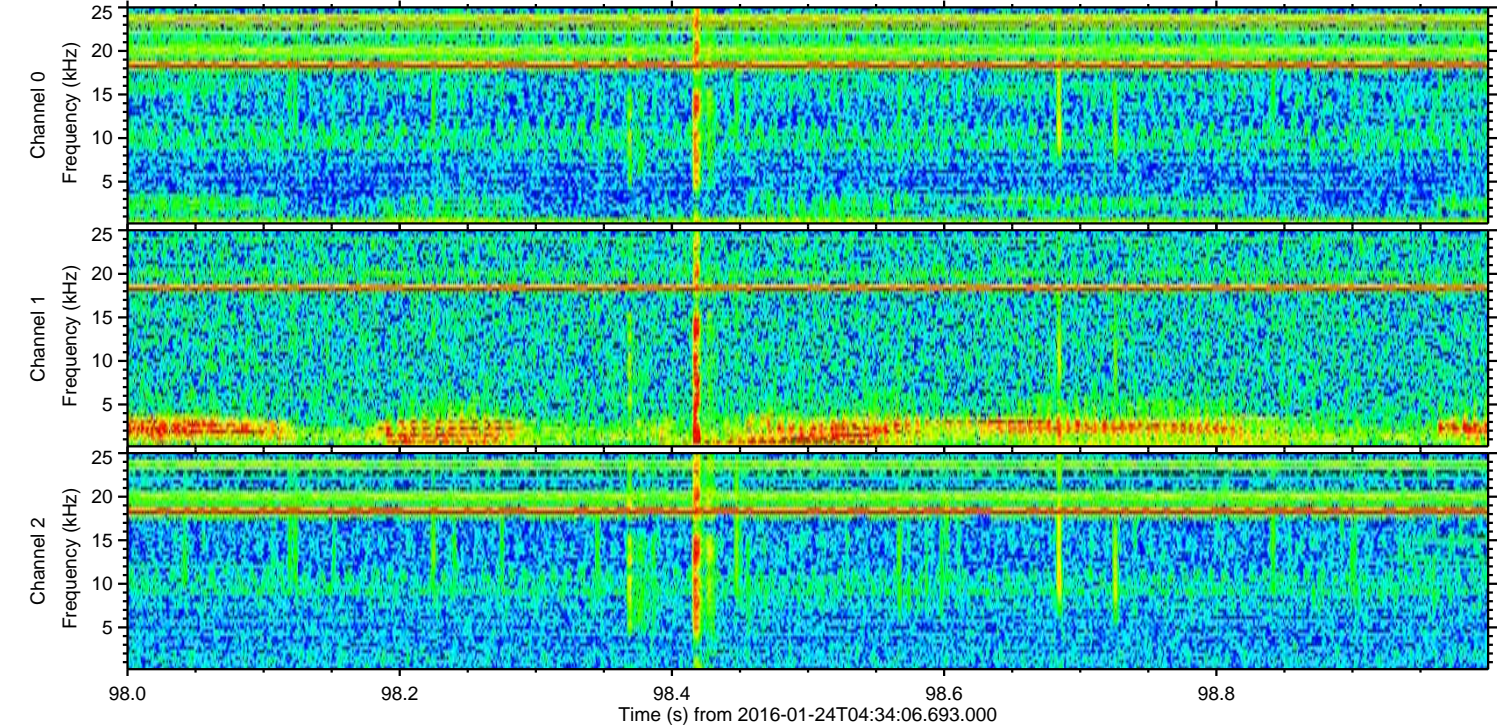
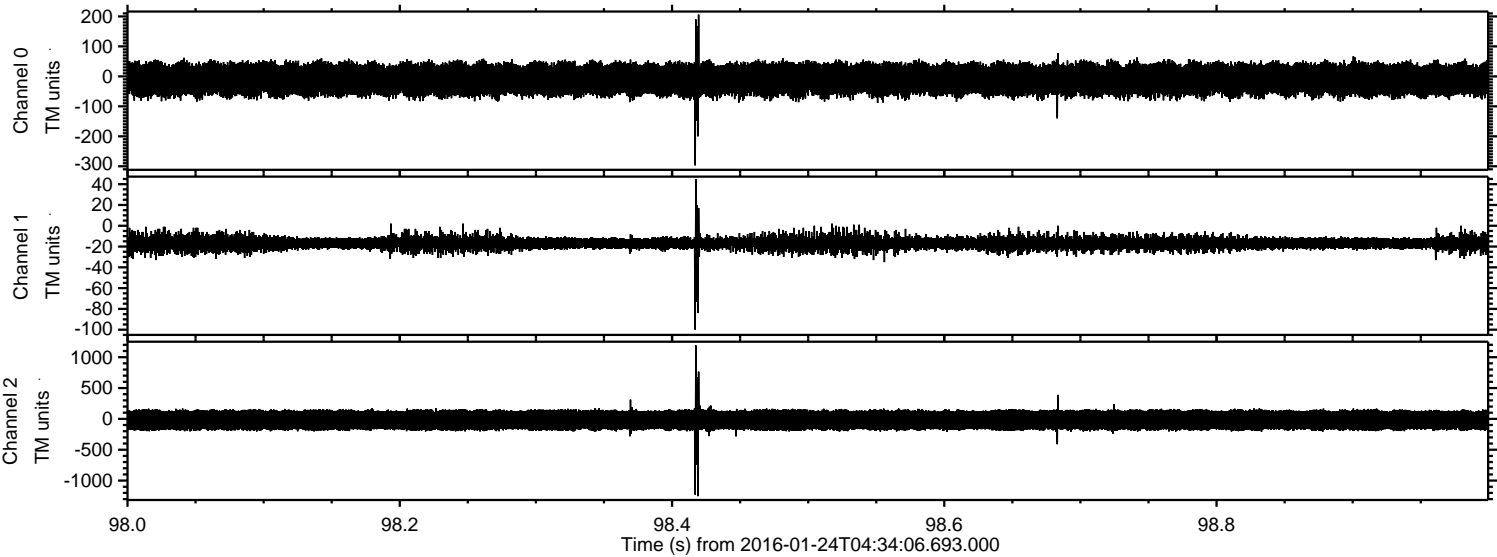
Processed Wed Apr 6 06:41:08 2016 by ELM ver.2012-10-06 from 001__elm20160124_043405__dat00.bin



Processed Wed Apr 6 06:41:09 2016 by ELM ver.2012-10-06 from 001__elm20160124_043405__dat00.bin



Processed Wed Apr 6 06:41:10 2016 by ELM ver.2012-10-06 from 001__elm20160124_043405__dat00.bin



Channel 0
mn: -297
mx: 206
 μ : -10.3
 σ : 29.9

Channel 1
mn: -100
mx: 45
 μ : -16.8
 σ : 4.1

Channel 2
mn: -1252
mx: 1191
 μ : -19.4
 σ : 104.6

Processed Wed Apr 6 06:41:11 2016 by ELM ver.2012-10-06 from 001__elm20160124_043405__dat00.bin

