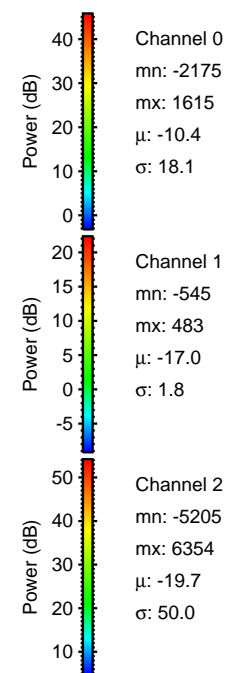
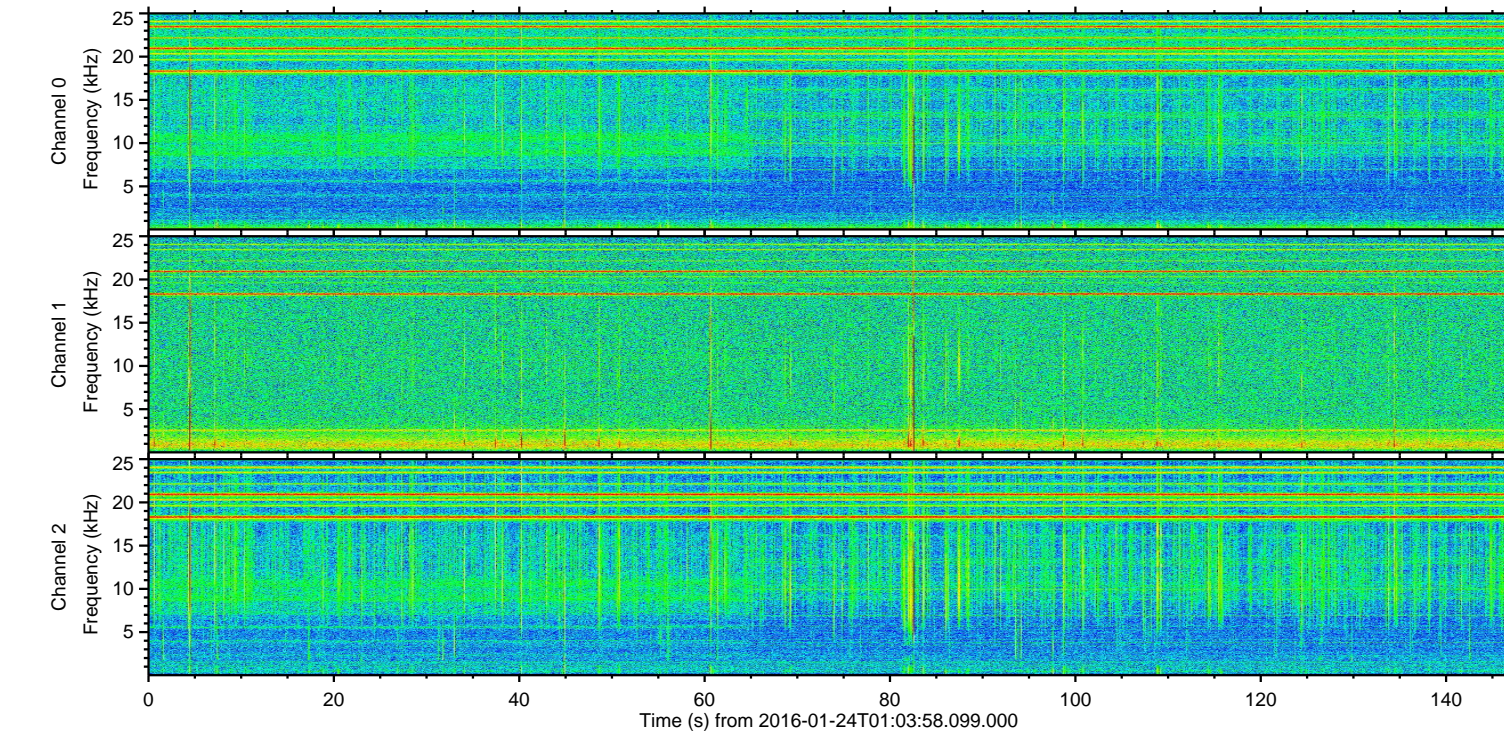
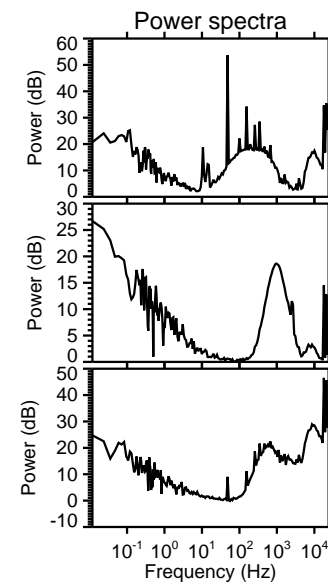
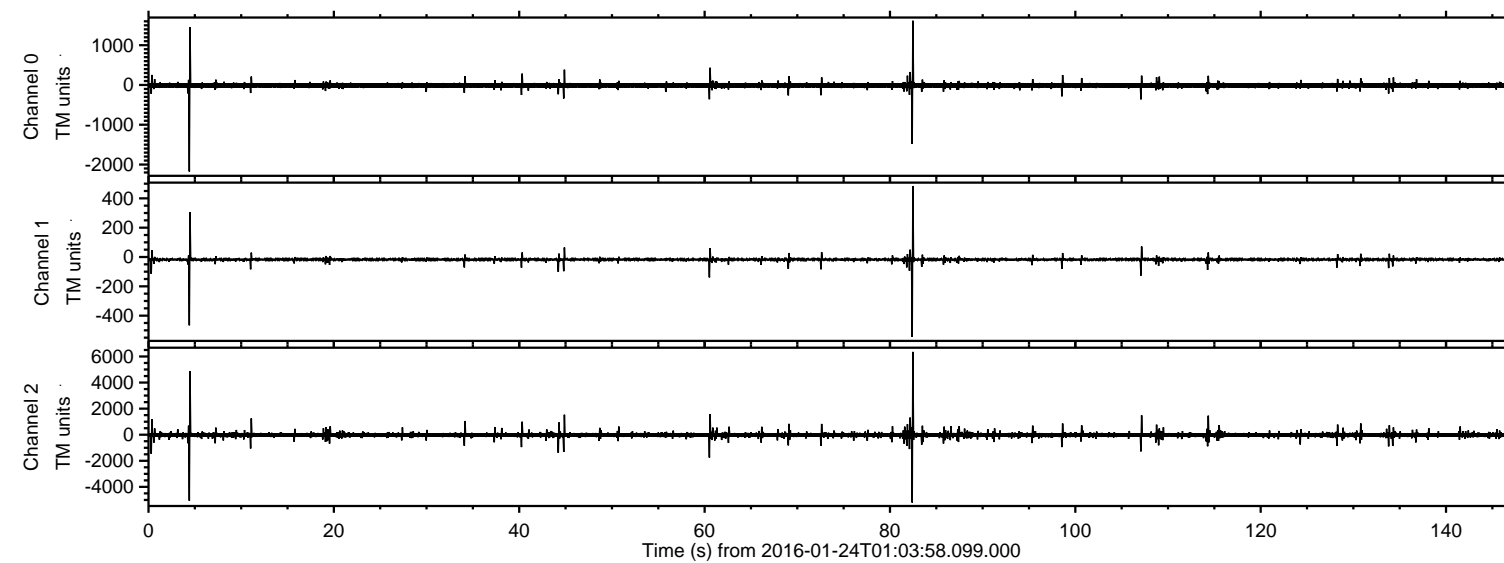
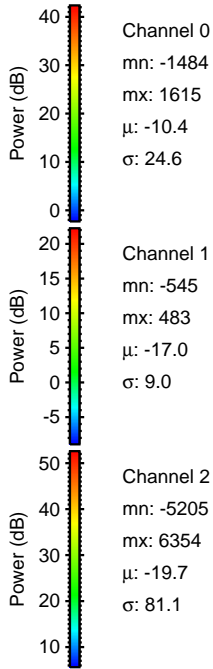
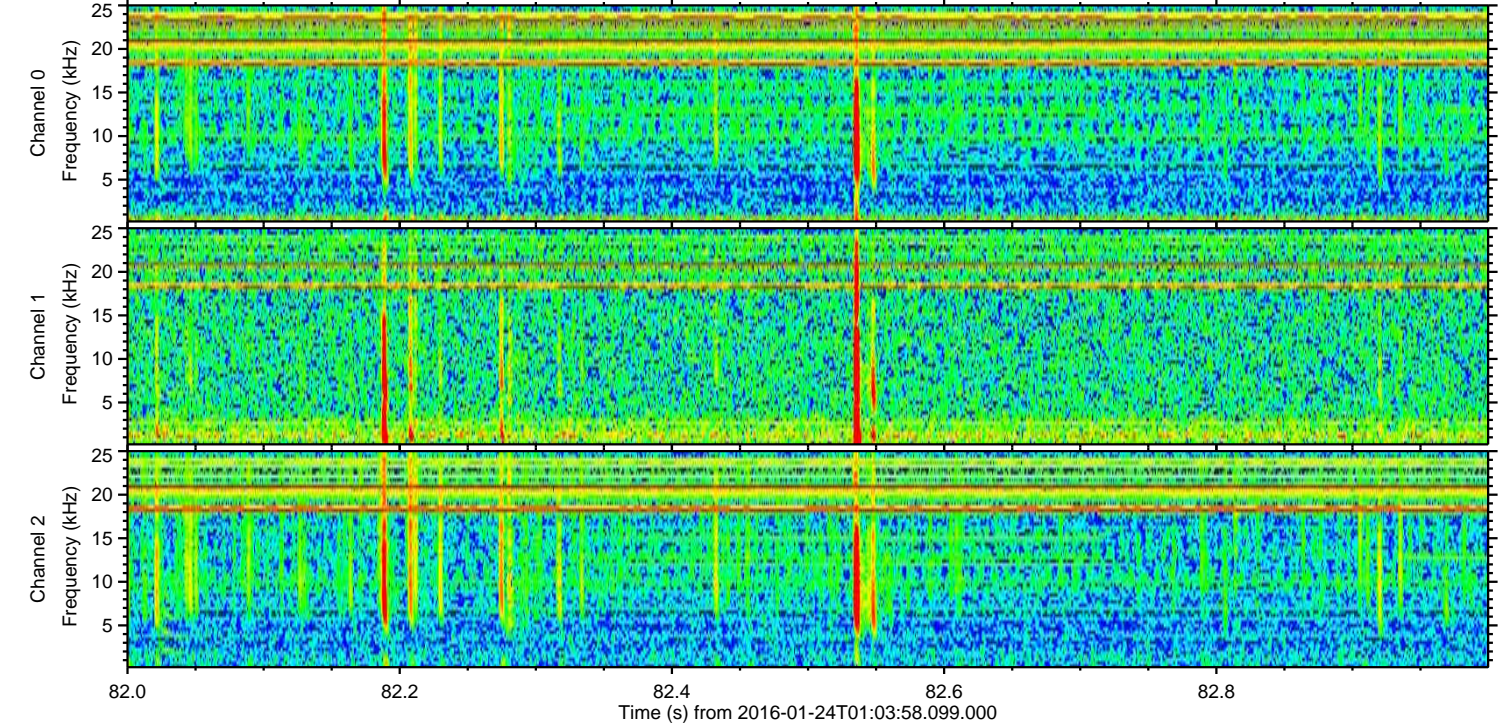
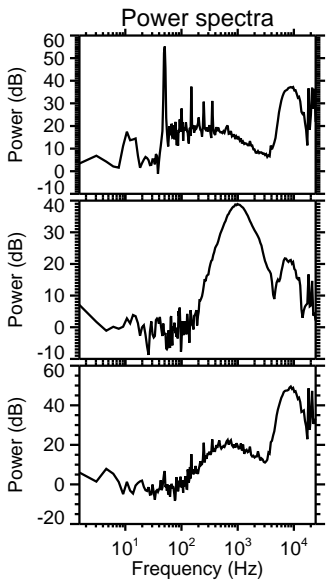
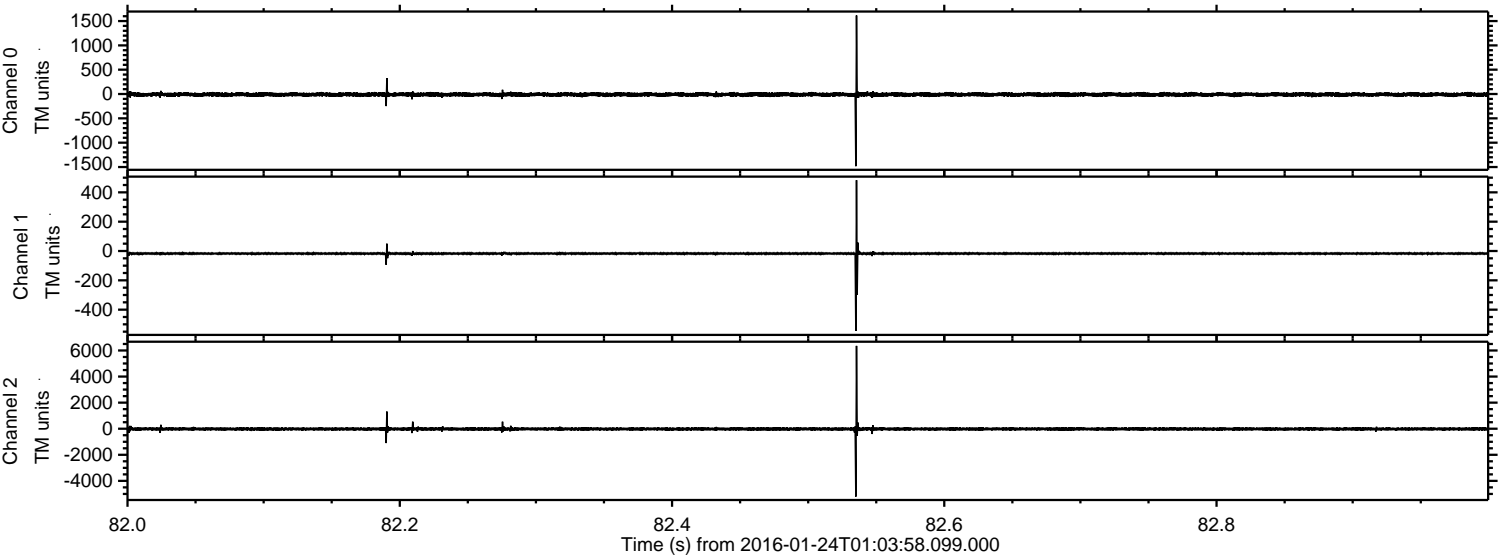


ELMAVAN 3D WAVEFORMS (Measured data sampled at 50 kHz) 51000 packets of 144 samples from 2016-01-24T01:03:58.099.000.

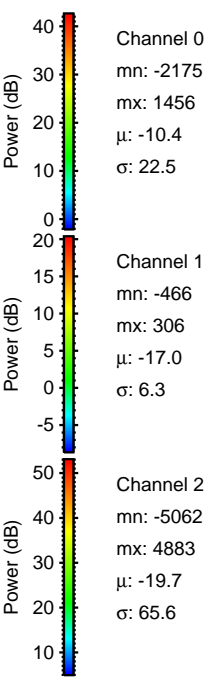
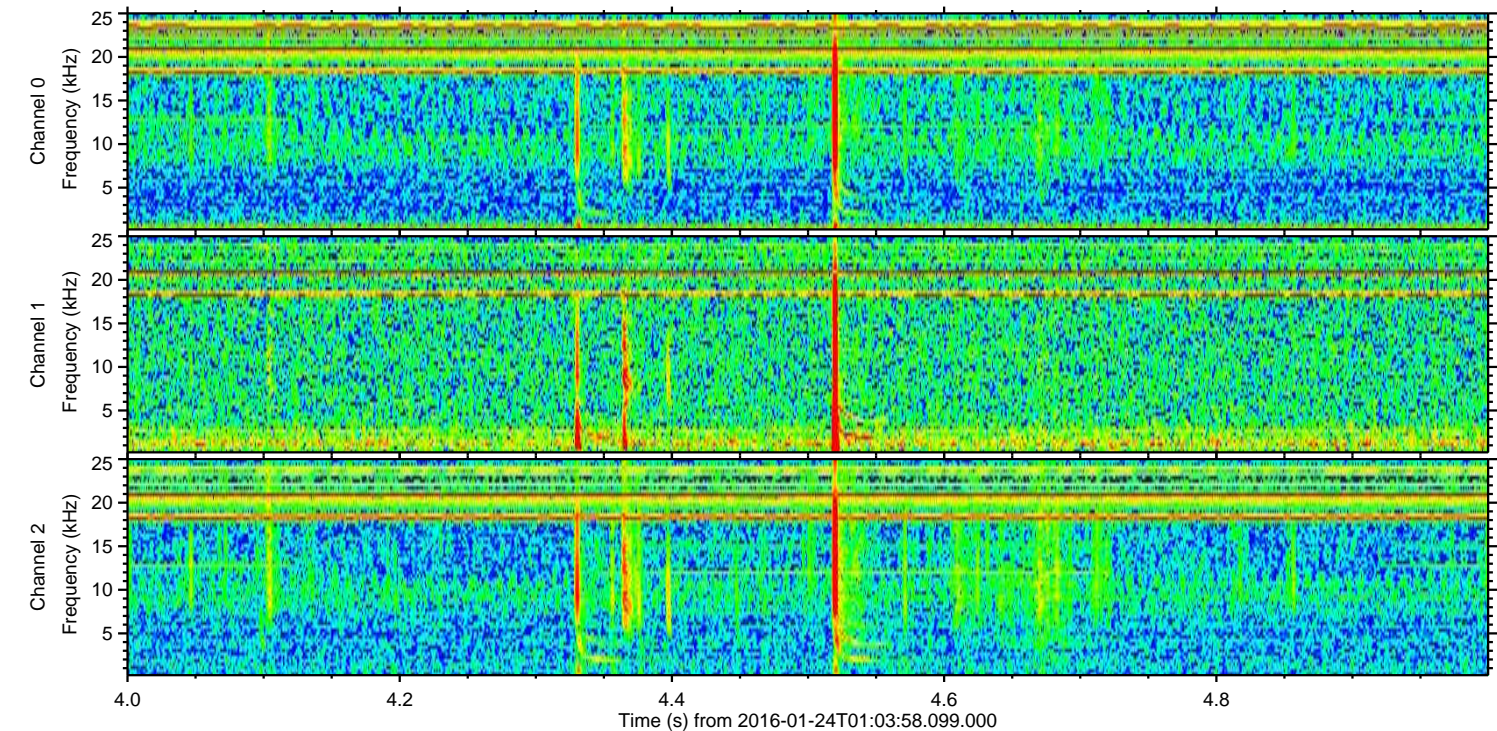
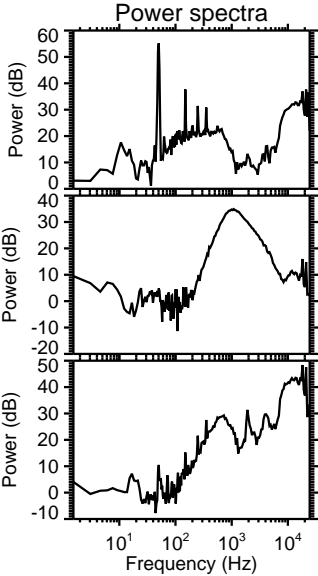
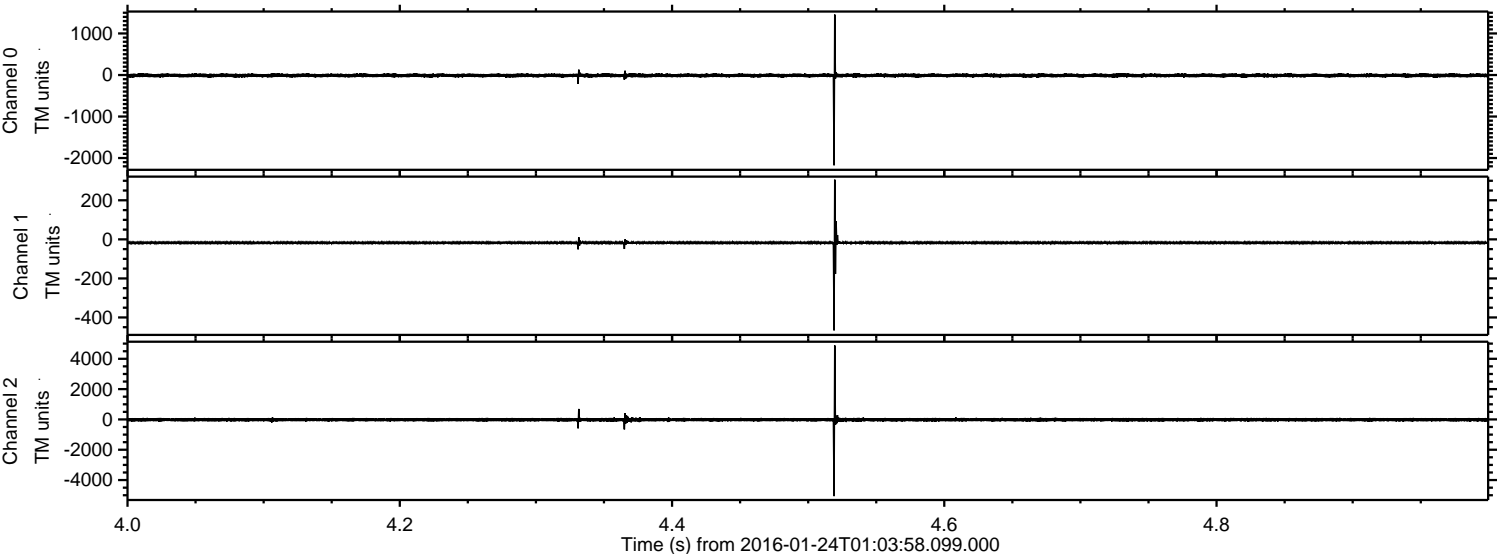
Processed Wed Apr 6 04:37:48 2016 by ELM ver.2012-10-06 from 001__elm20160124_010357__dat00.bin



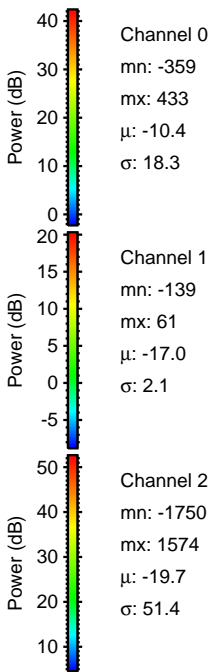
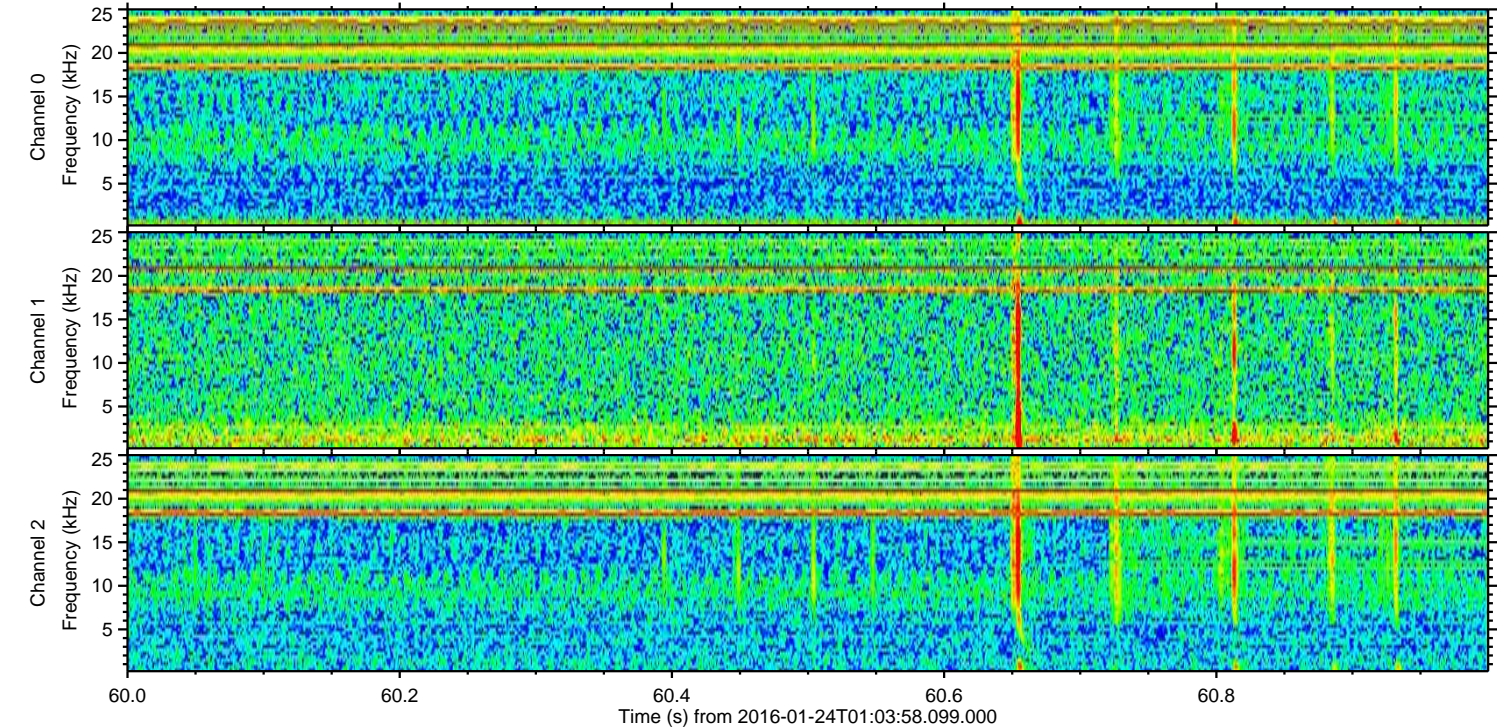
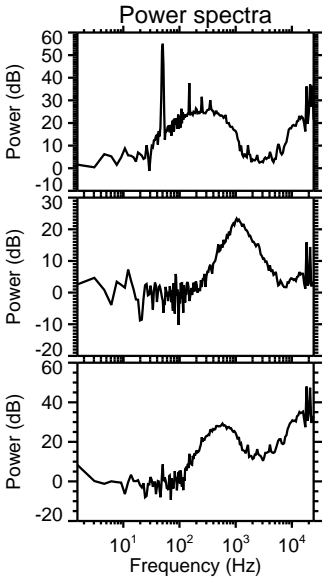
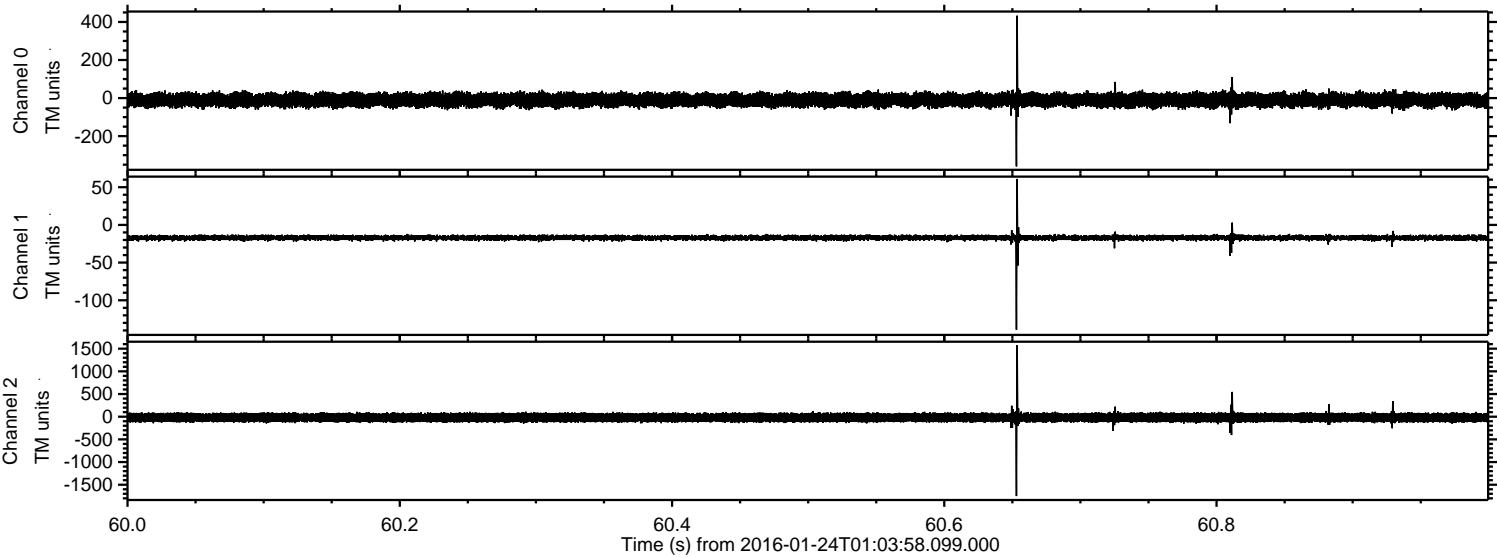
Processed Wed Apr 6 04:38:00 2016 by ELM ver.2012-10-06 from 001__elm20160124_010357__dat00.bin



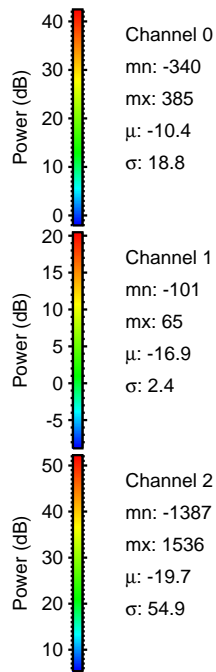
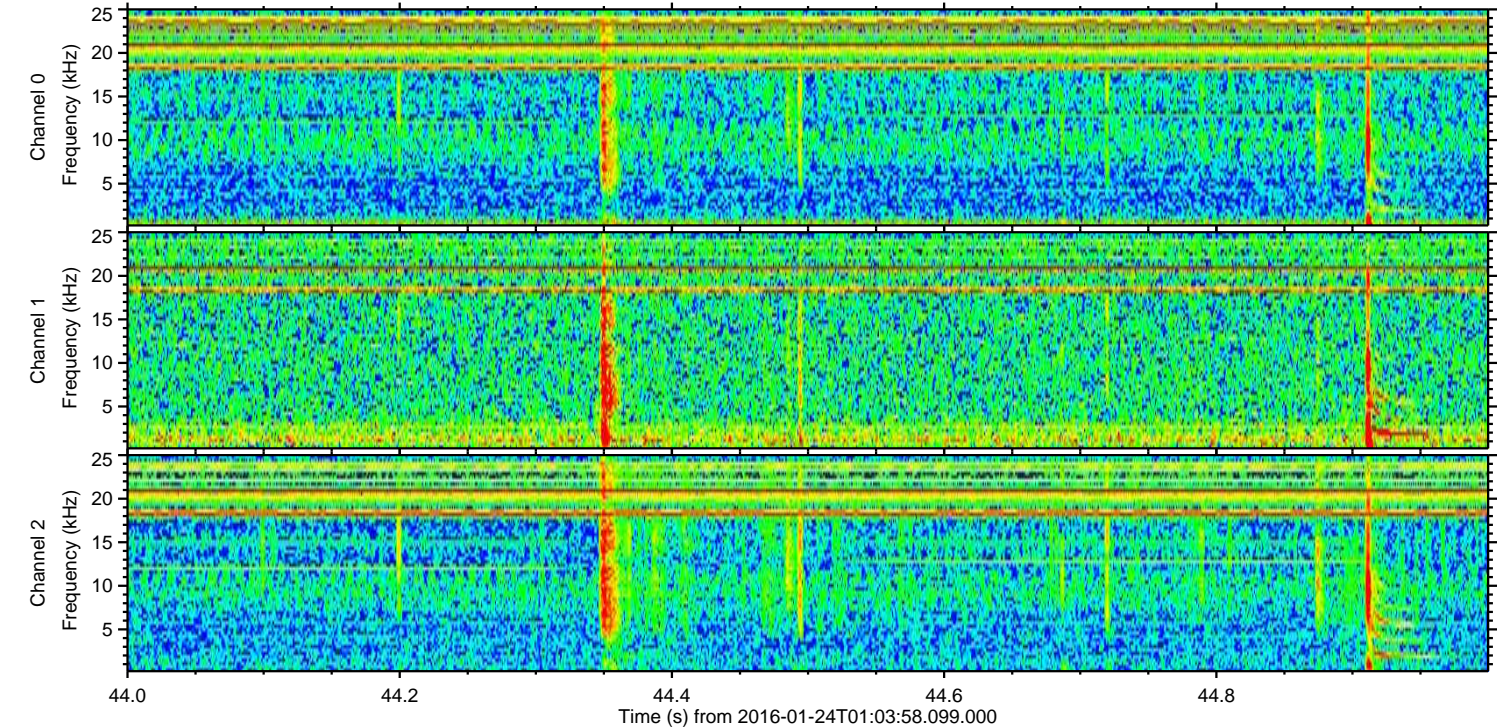
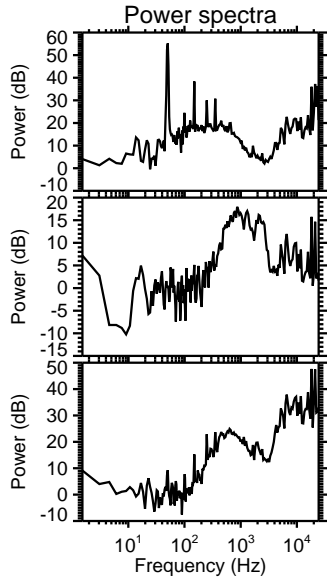
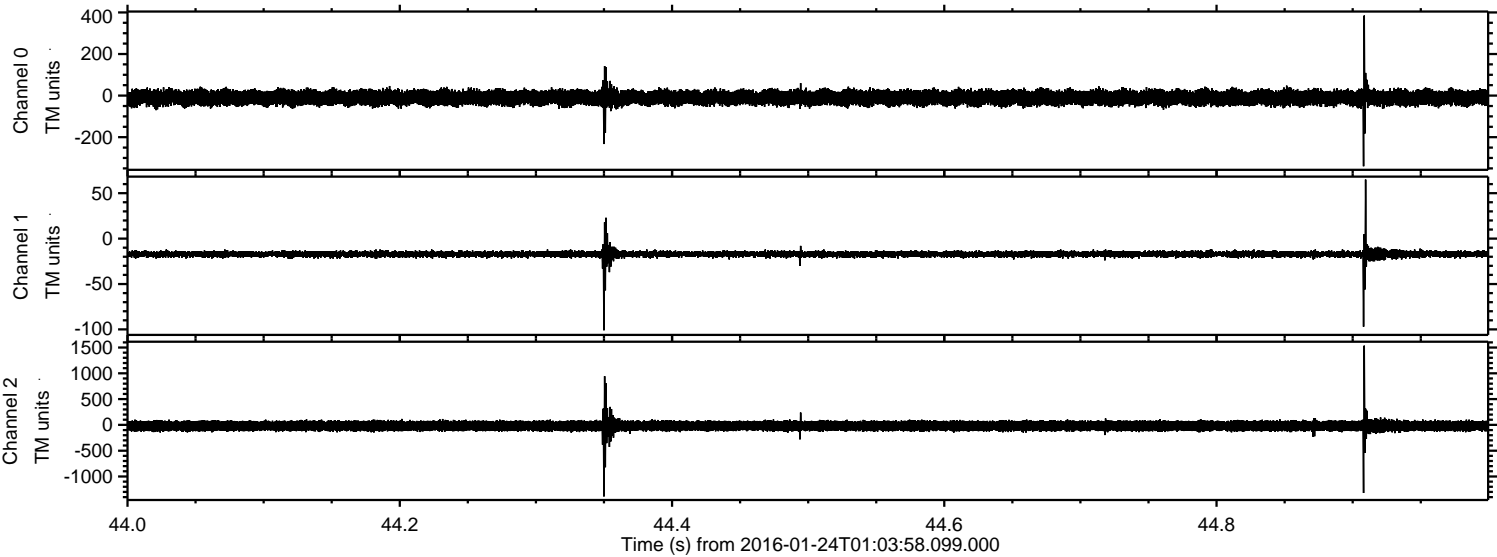
Processed Wed Apr 6 04:38:01 2016 by ELM ver.2012-10-06 from 001__elm20160124_010357__dat00.bin



Processed Wed Apr 6 04:38:02 2016 by ELM ver.2012-10-06 from 001__elm20160124_010357__dat00.bin

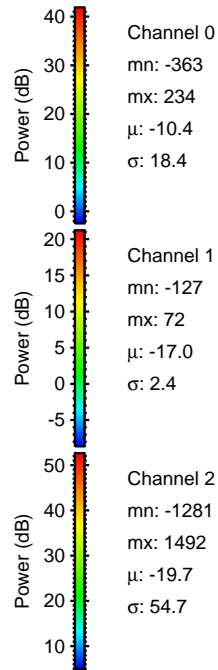
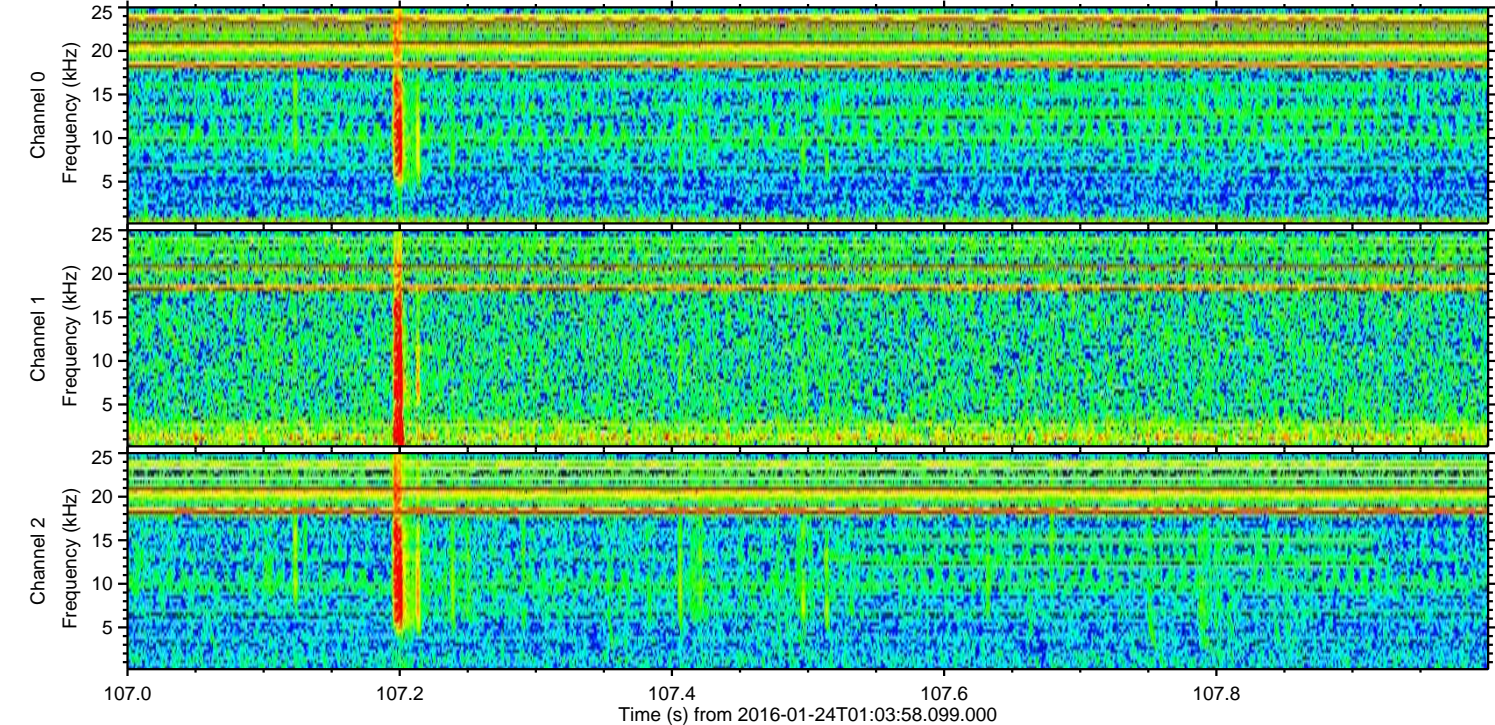
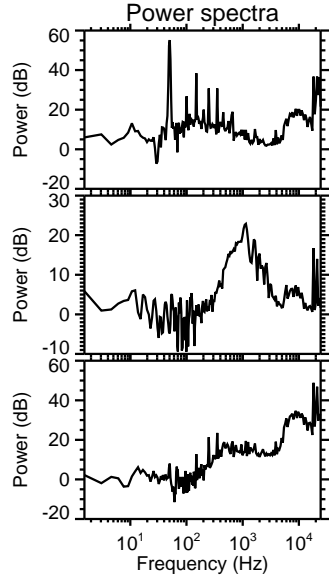
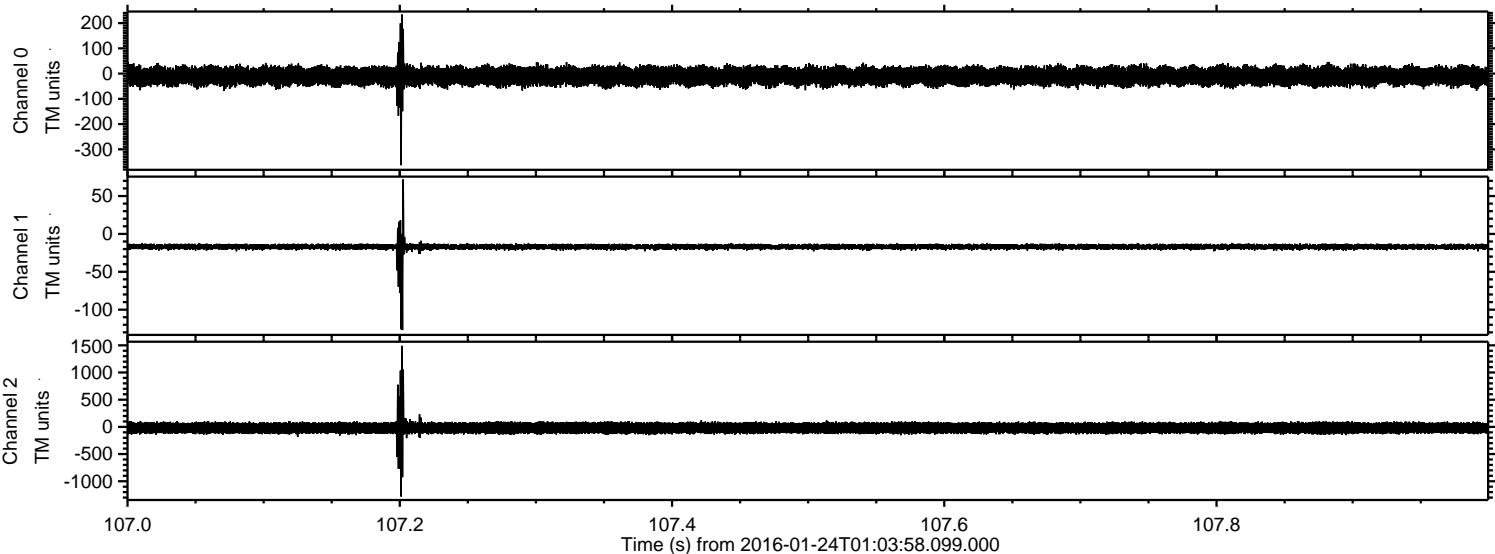


Processed Wed Apr 6 04:38:03 2016 by ELM ver.2012-10-06 from 001__elm20160124_010357__dat00.bin



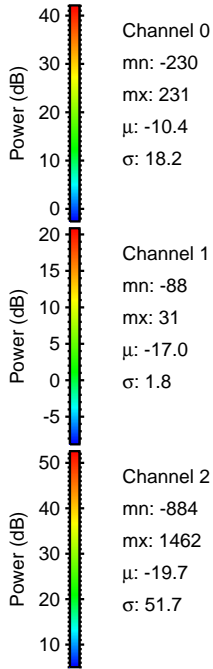
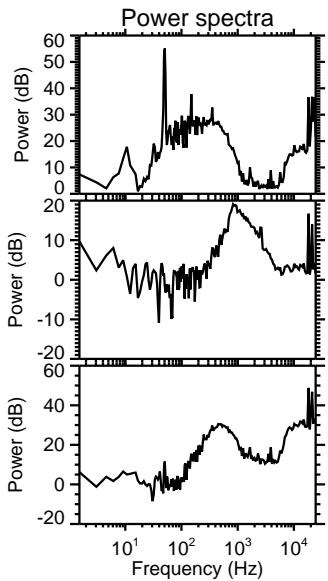
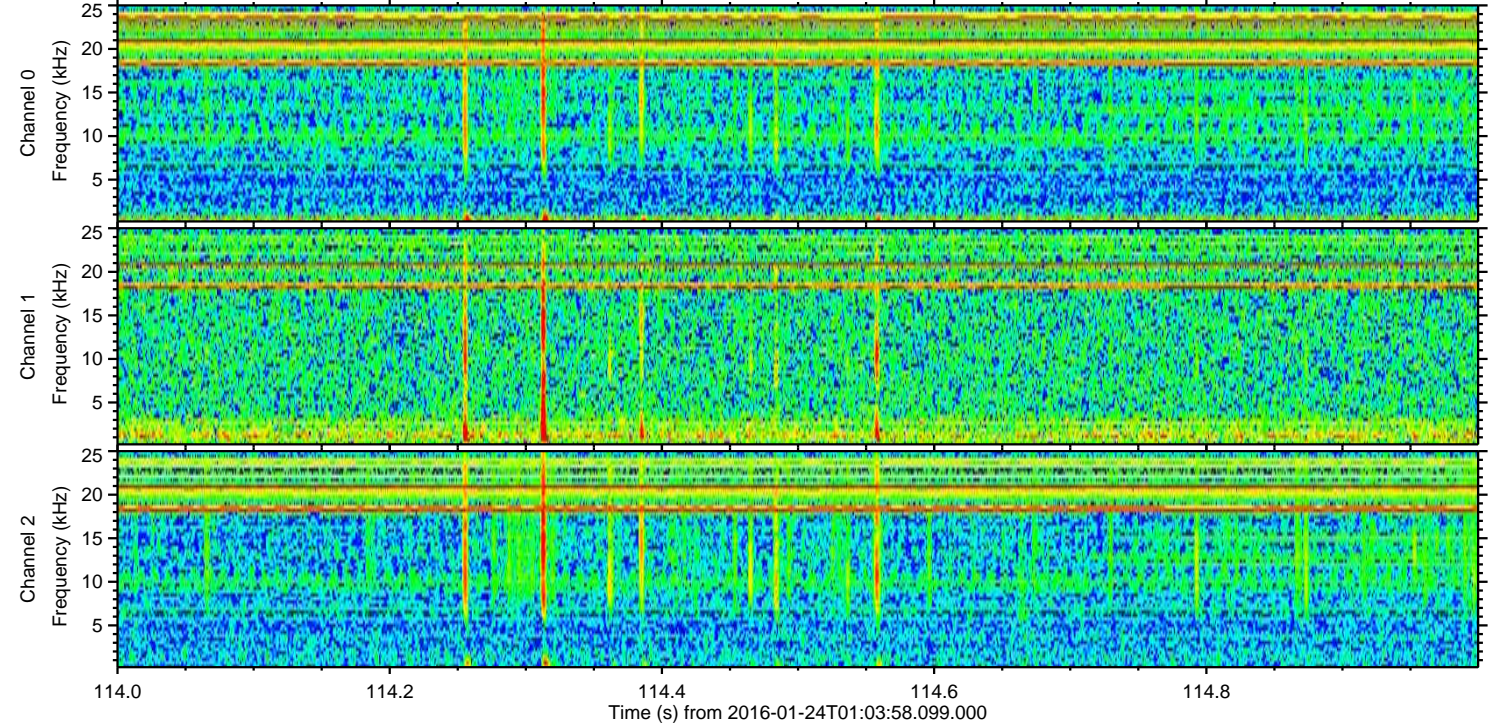
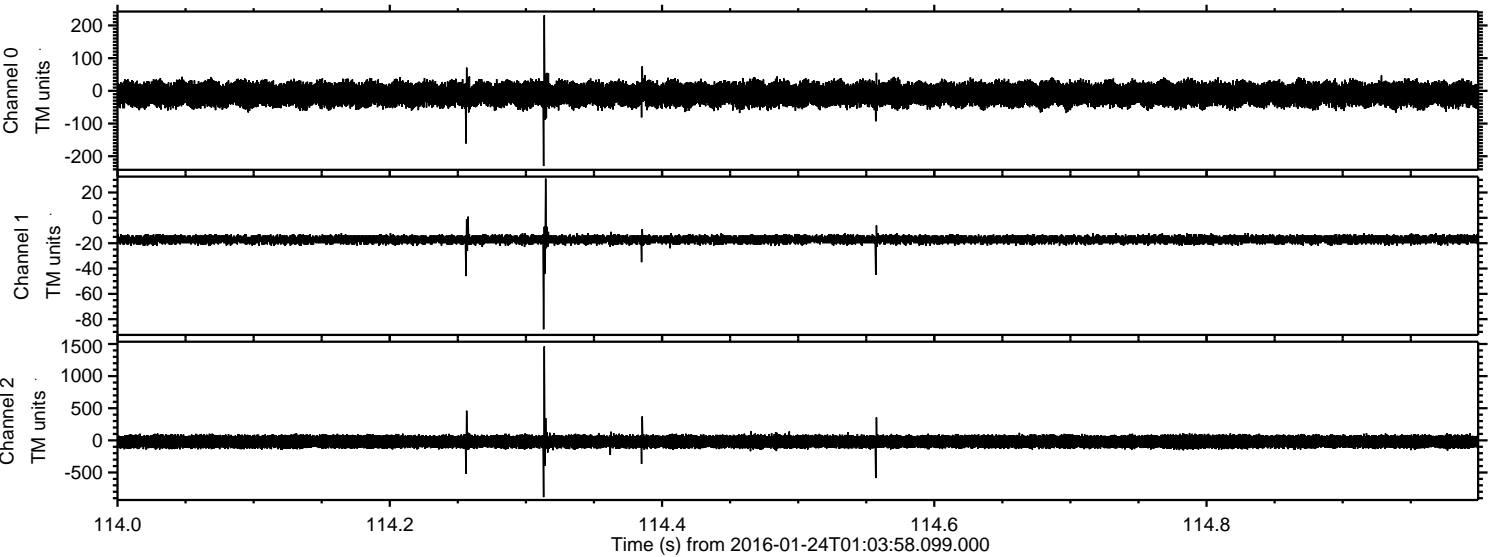
ELMAVAN 3D WAVEFORMS (Measured data sampled at 50 kHz) 51000 packets of 144 samples from 2016-01-24T01:03:58.099.000. Part 108/147

Processed Wed Apr 6 04:38:04 2016 by ELM ver.2012-10-06 from 001__elm20160124_010357__dat00.bin



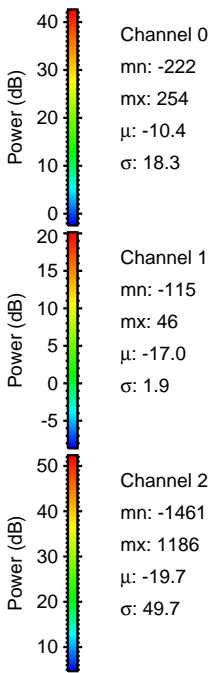
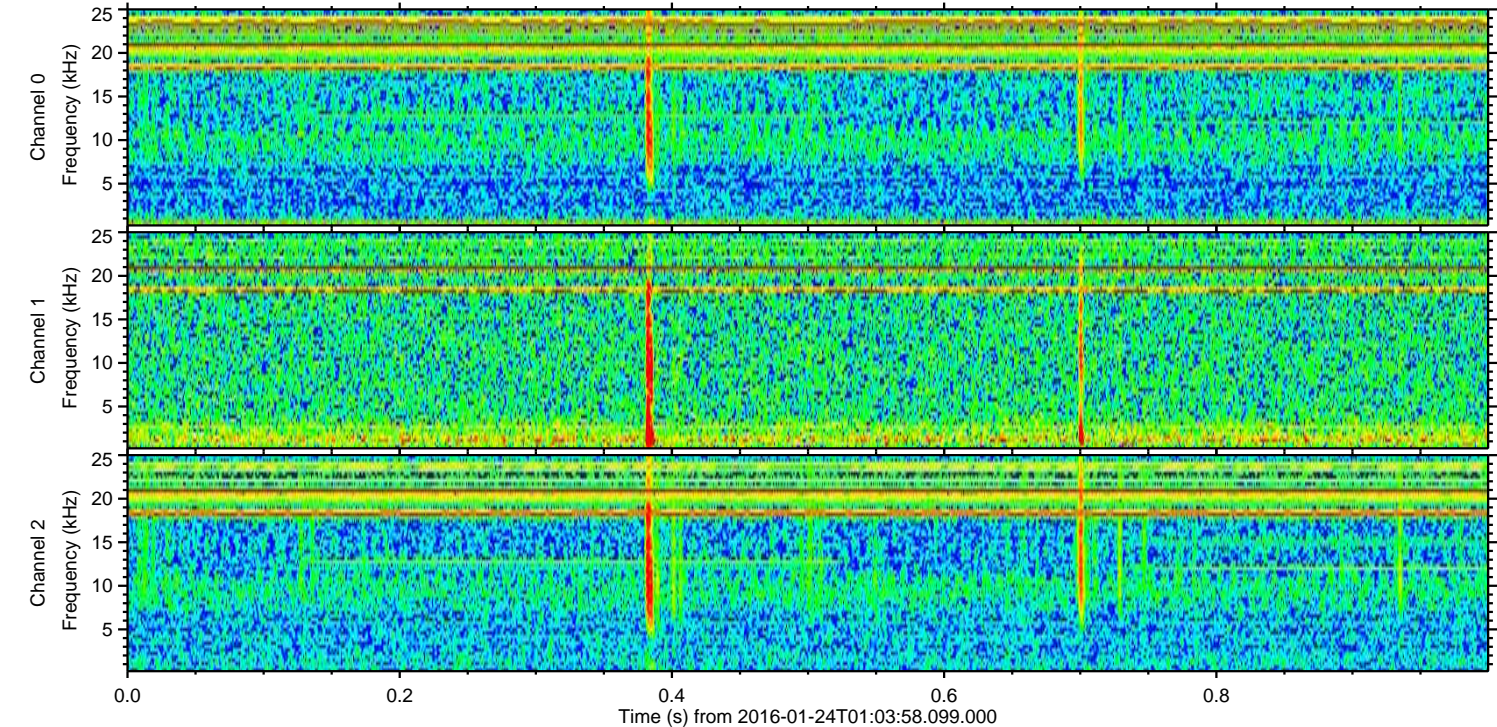
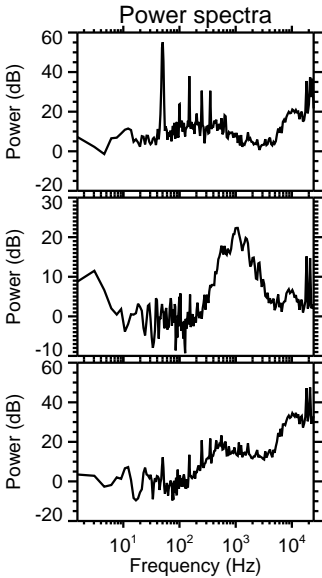
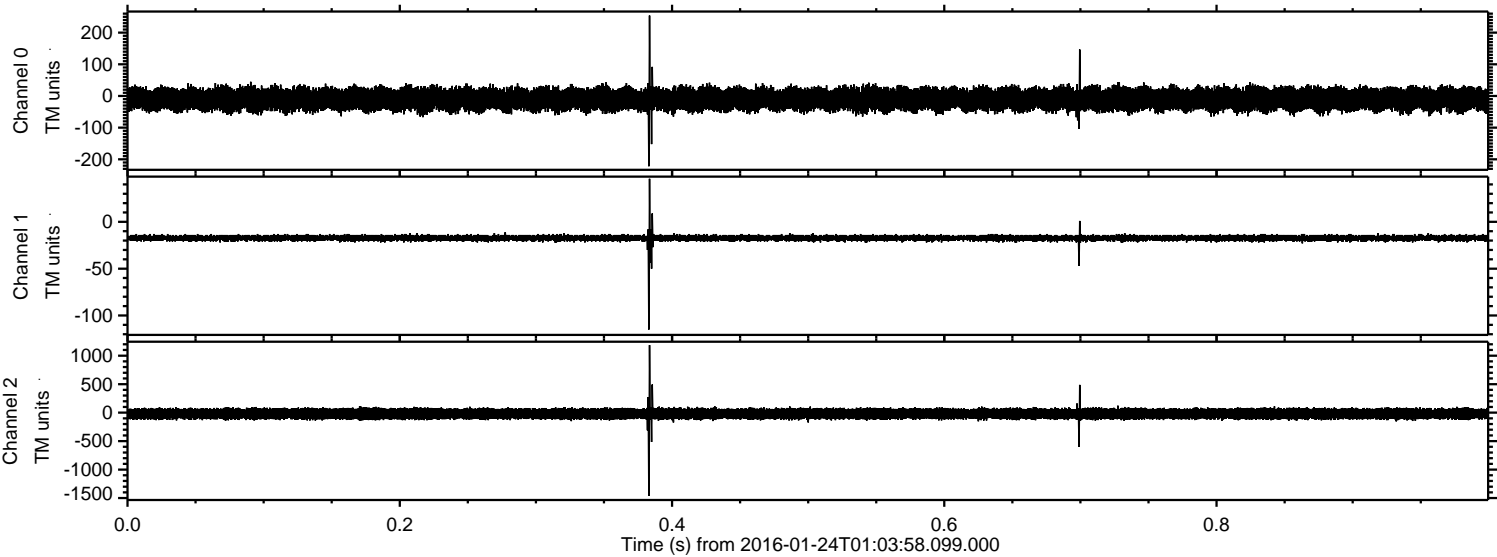
ELMAVAN 3D WAVEFORMS (Measured data sampled at 50 kHz) 51000 packets of 144 samples from 2016-01-24T01:03:58.099.000. Part 115/147

Processed Wed Apr 6 04:38:05 2016 by ELM ver.2012-10-06 from 001__elm20160124_010357__dat00.bin

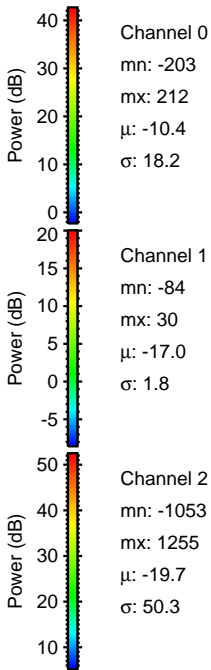
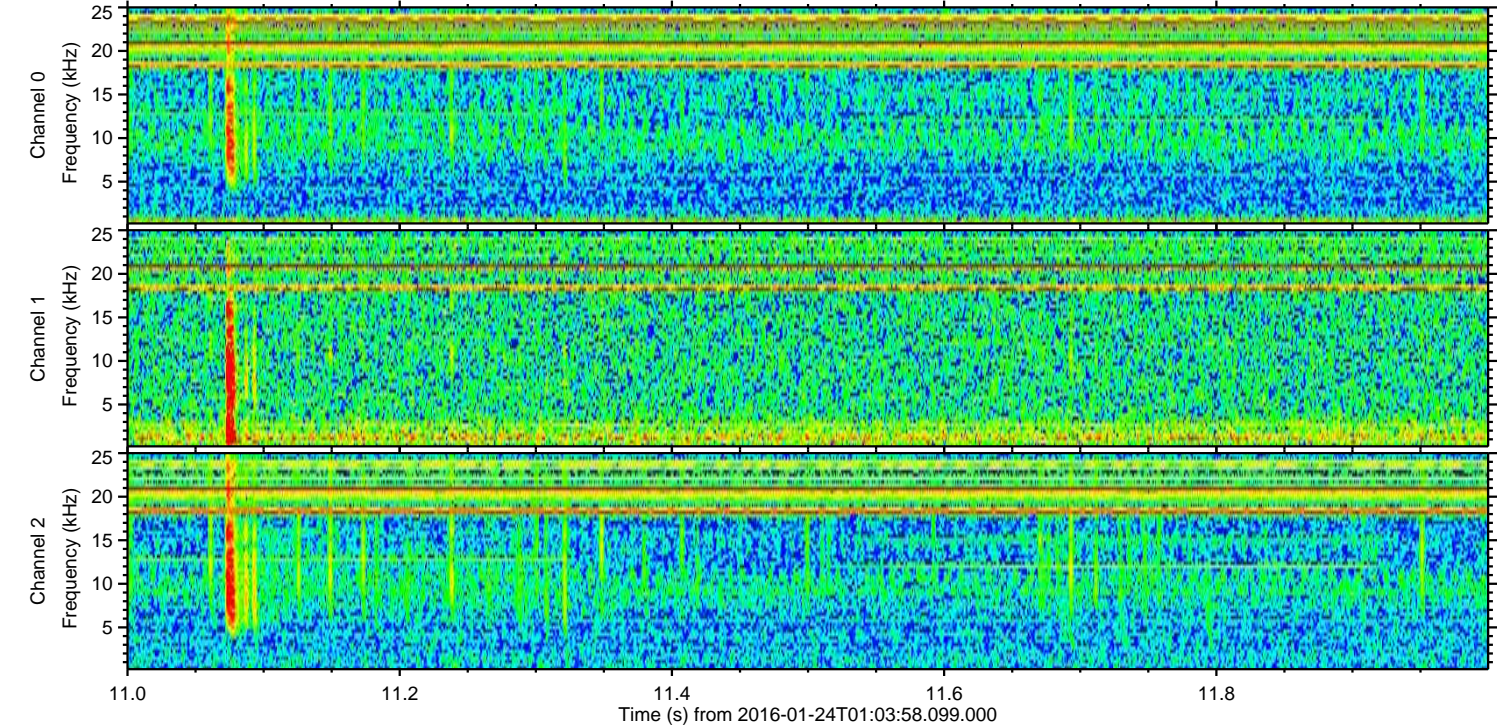
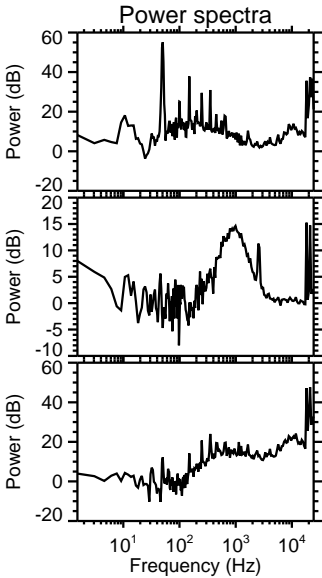
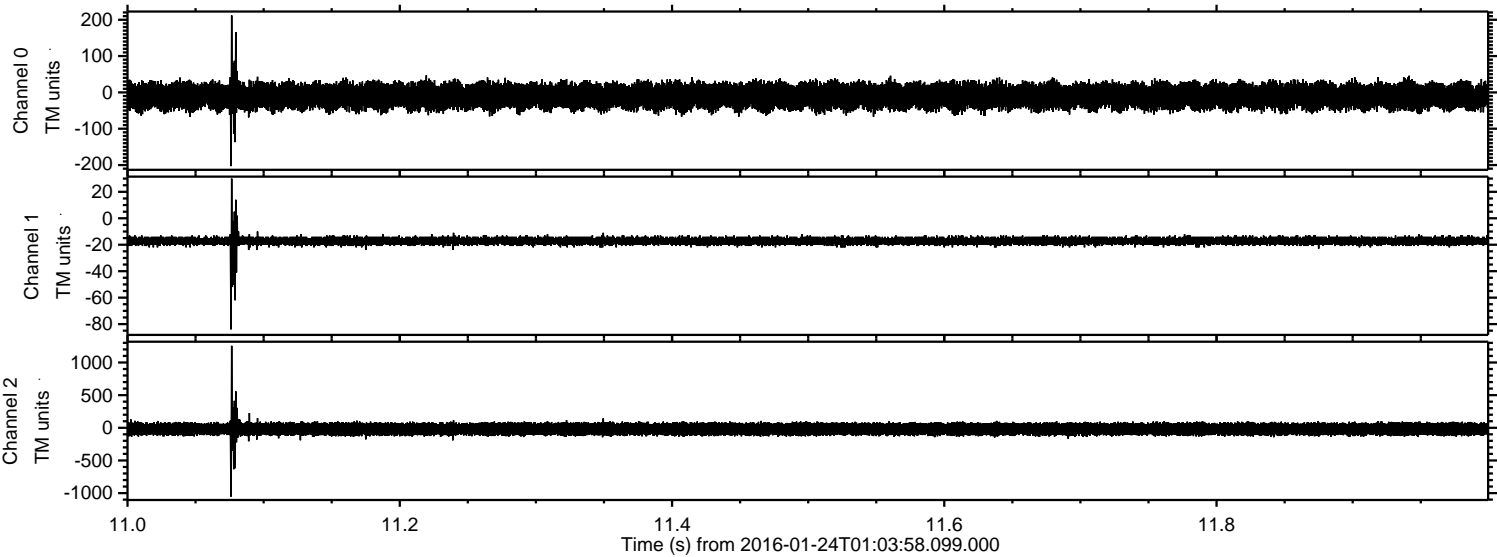


ELMAVAN 3D WAVEFORMS (Measured data sampled at 50 kHz) 51000 packets of 144 samples from 2016-01-24T01:03:58.099.000. Part 1/147

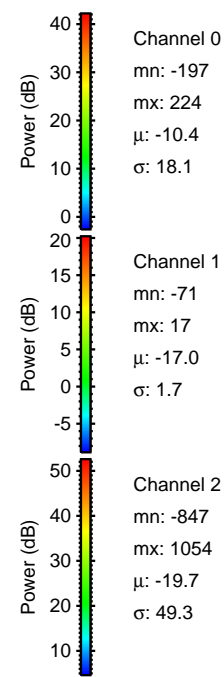
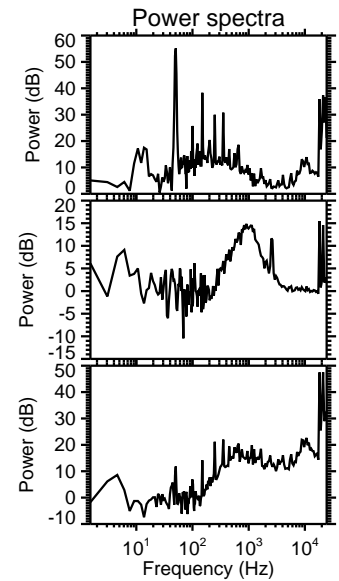
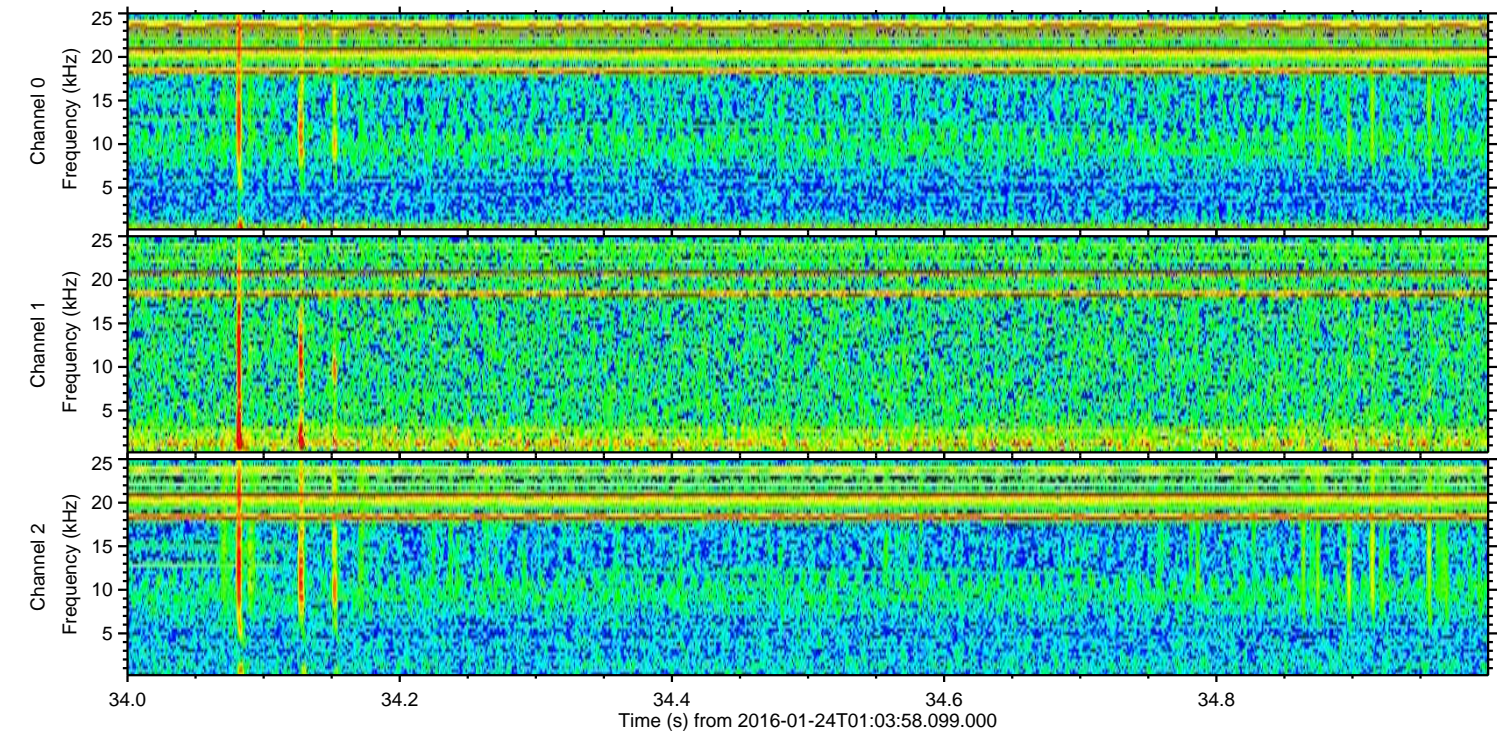
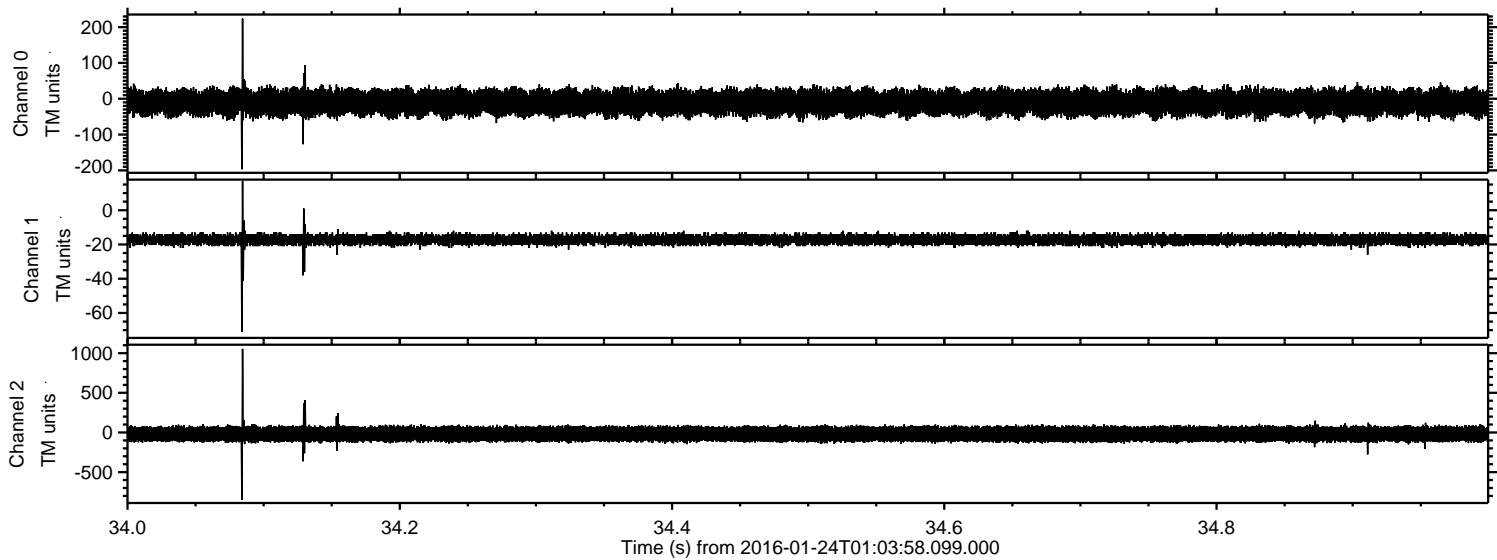
Processed Wed Apr 6 04:38:06 2016 by ELM ver.2012-10-06 from 001__elm20160124_010357__dat00.bin



Processed Wed Apr 6 04:38:07 2016 by ELM ver.2012-10-06 from 001__elm20160124_010357__dat00.bin



Processed Wed Apr 6 04:38:08 2016 by ELM ver.2012-10-06 from 001__elm20160124_010357__dat00.bin



Channel 0
mn: -197
mx: 224
 μ : -10.4
 σ : 18.1

Channel 1
mn: -71
mx: 17
 μ : -17.0
 σ : 1.7

Channel 2
mn: -847
mx: 1054
 μ : -19.7
 σ : 49.3

Processed Wed Apr 6 04:38:09 2016 by ELM ver.2012-10-06 from 001__elm20160124_010357__dat00.bin

