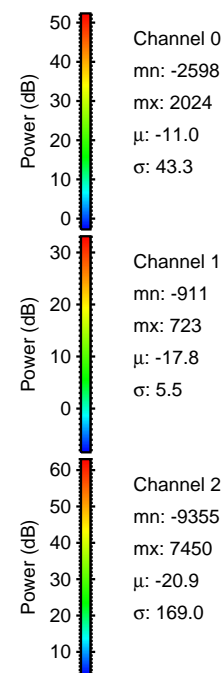
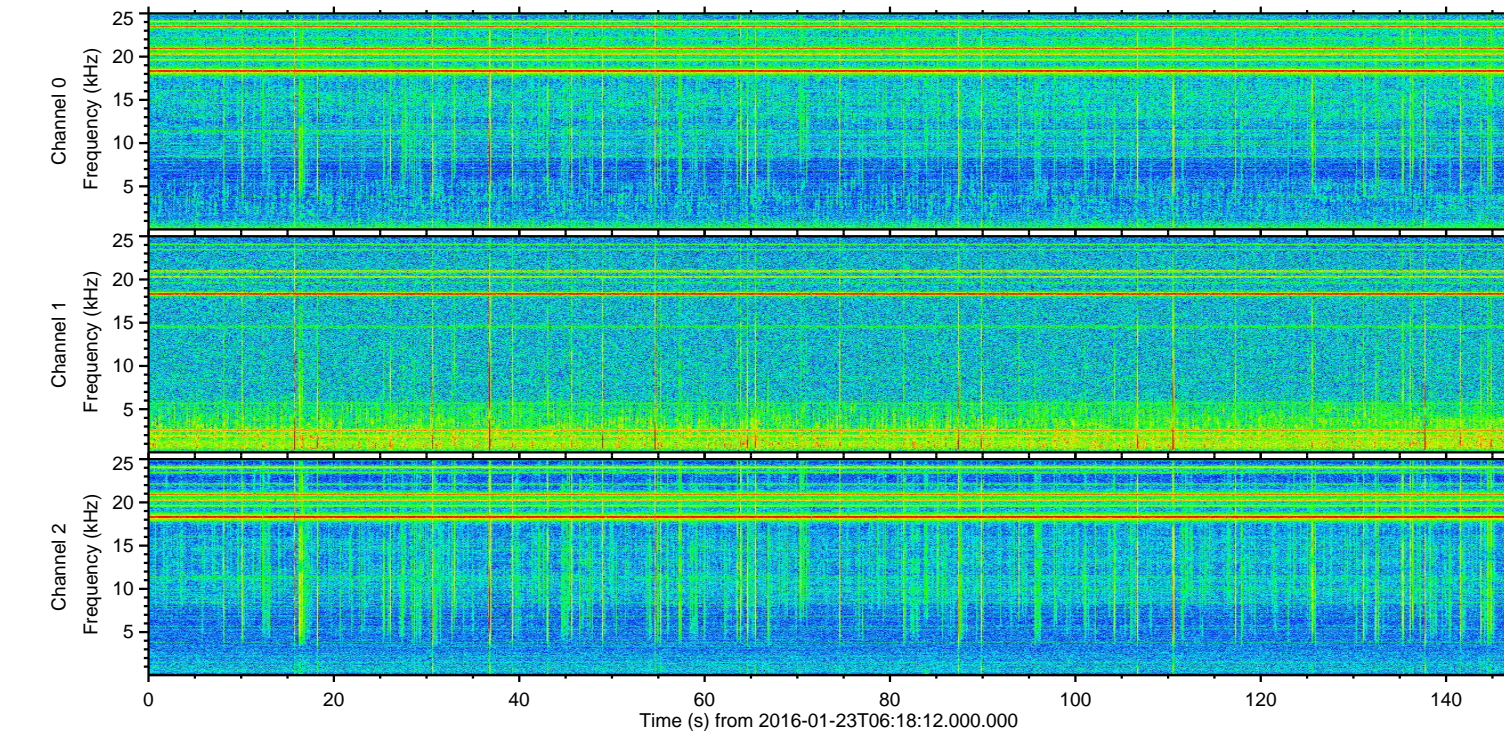
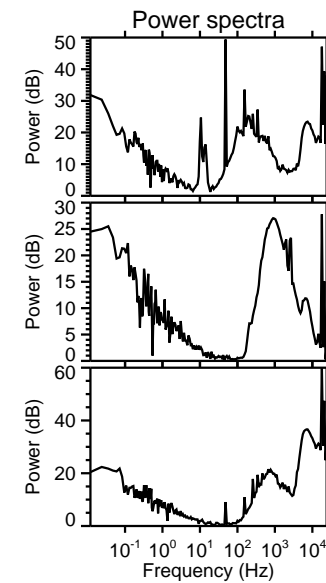
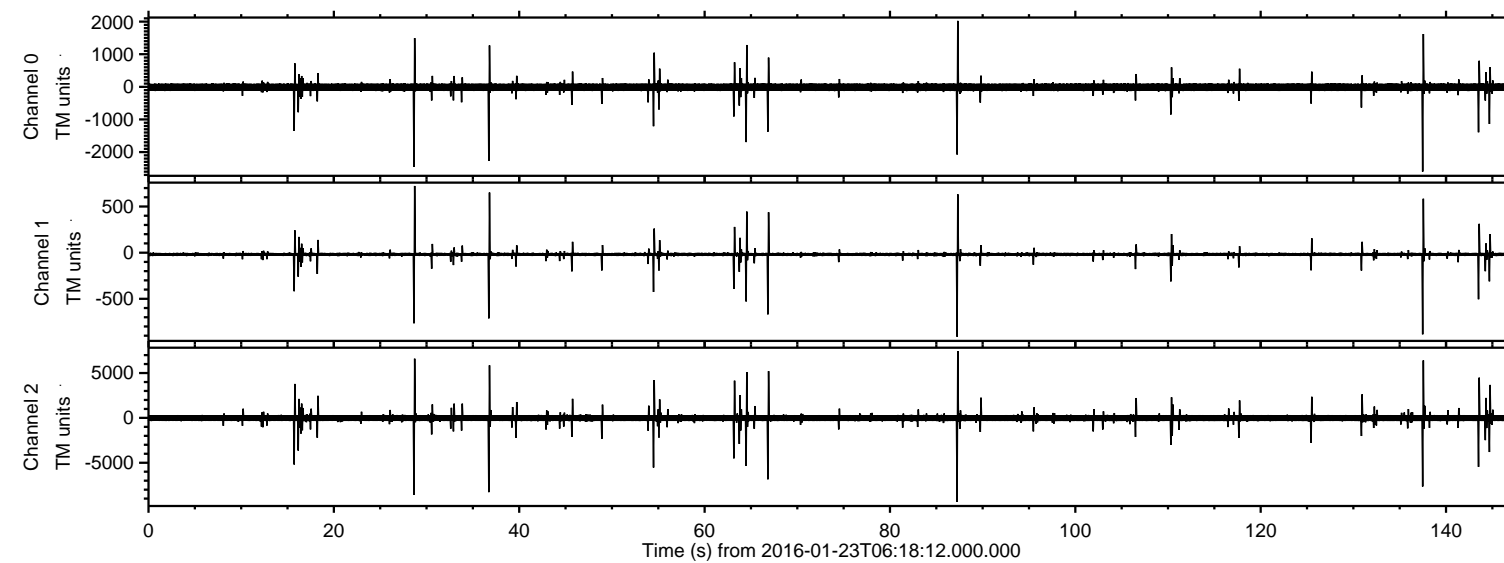
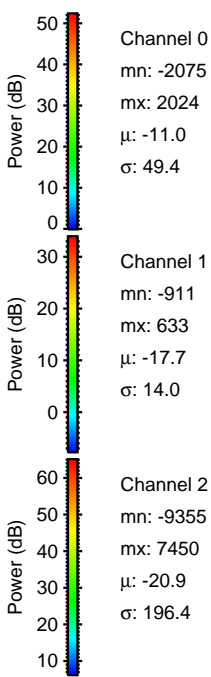
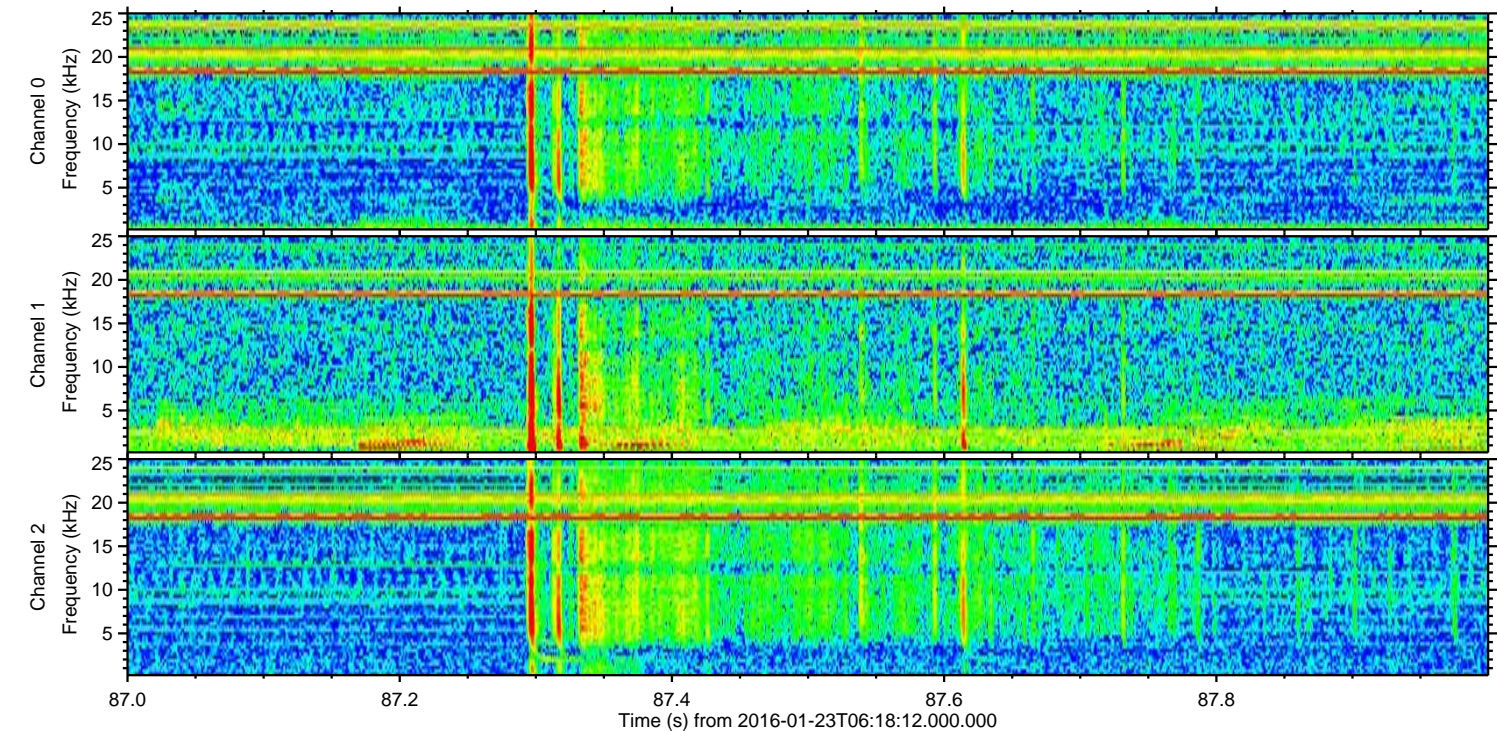
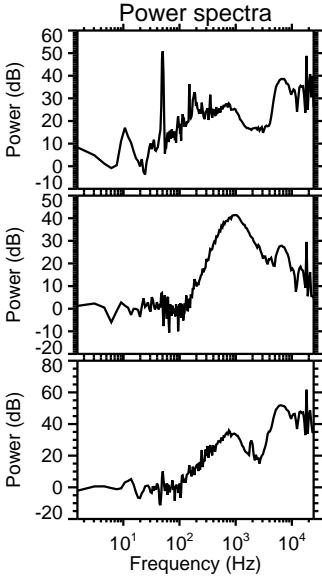
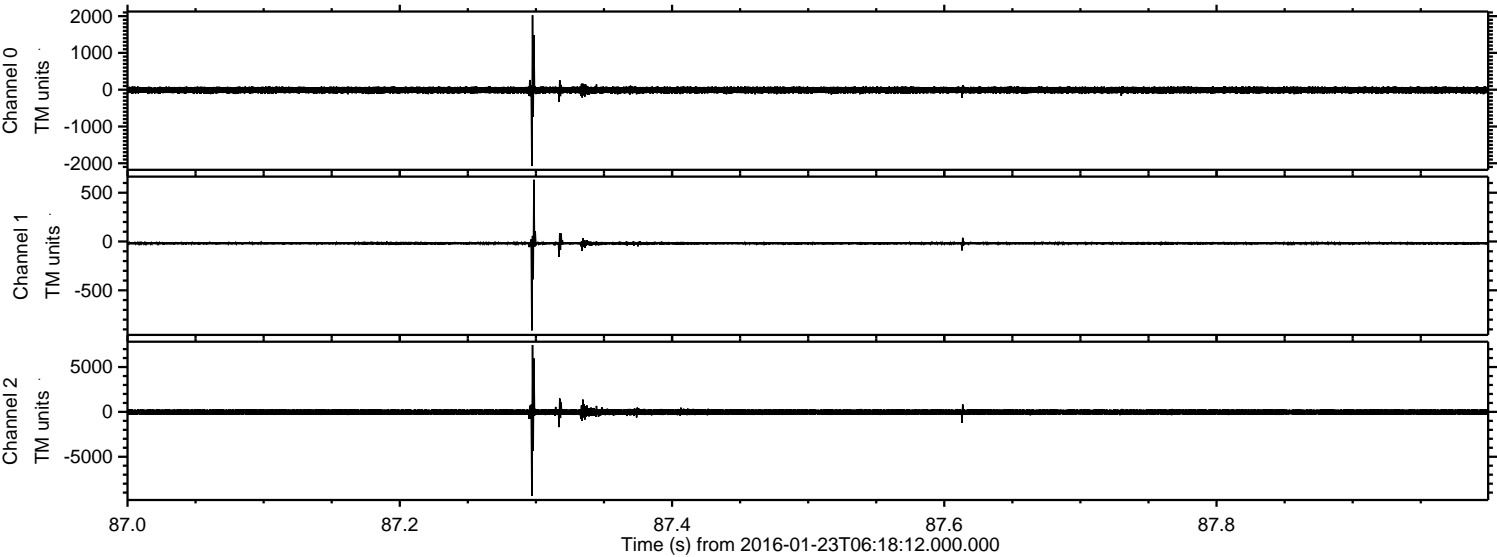


ELMAVAN 3D WAVEFORMS (Measured data sampled at 50 kHz) 51000 packets of 144 samples from 2016-01-23T06:18:12.000.000.

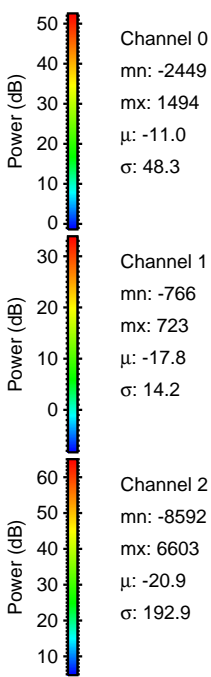
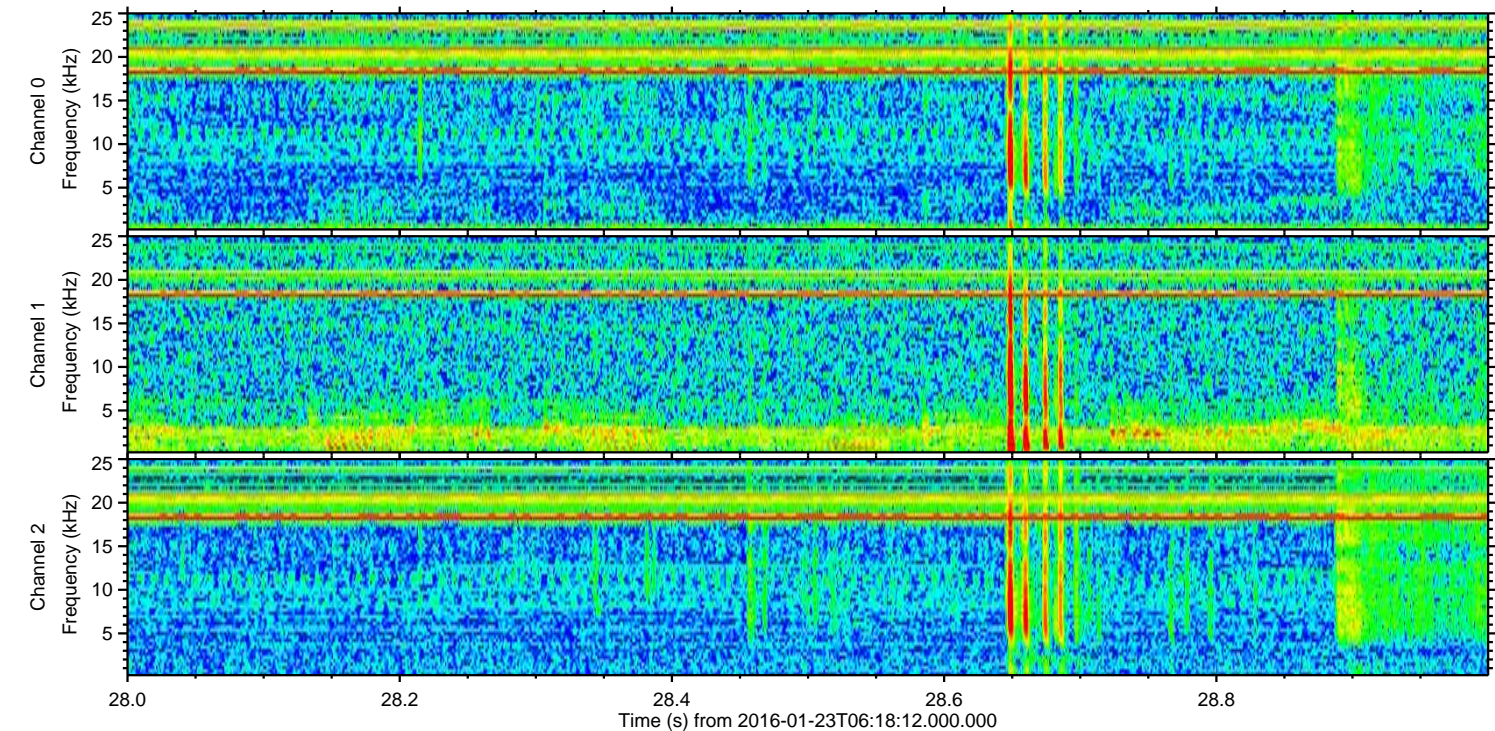
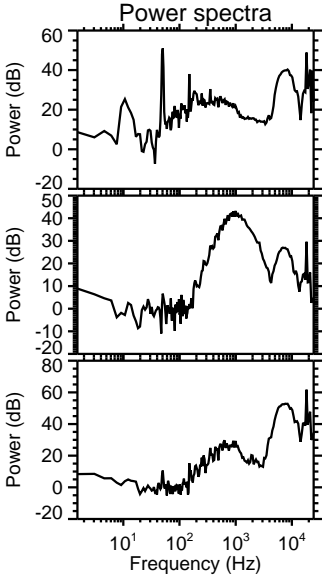
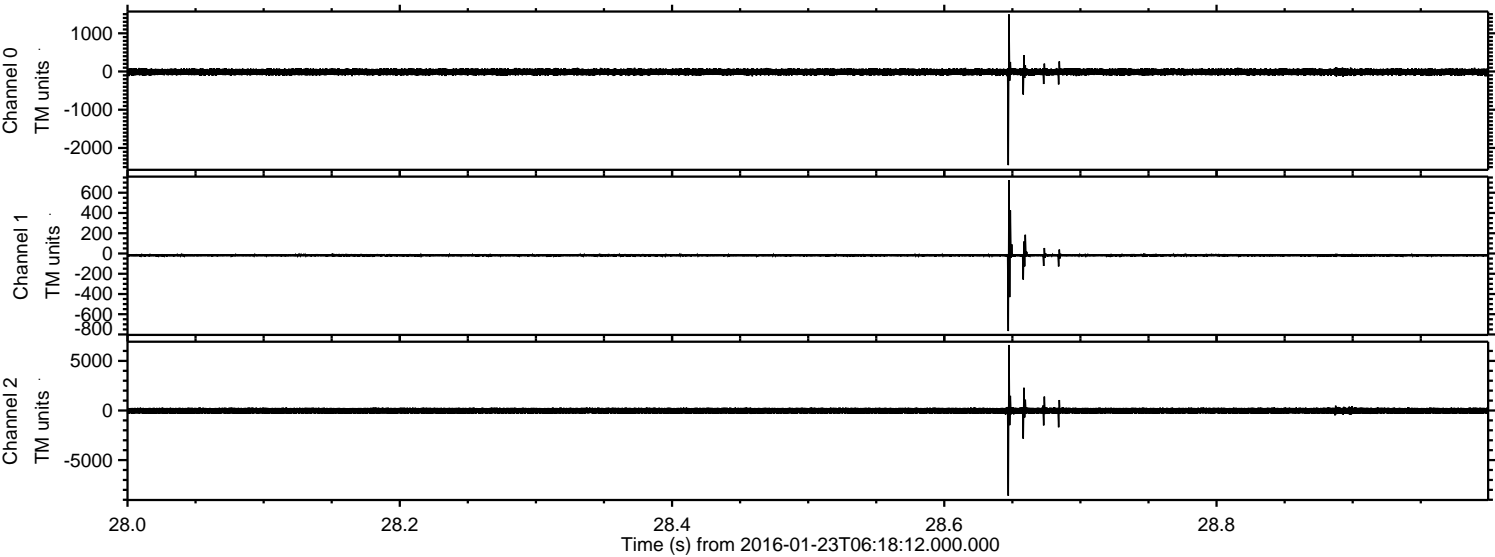
Processed Tue Apr 5 20:47:44 2016 by ELM ver.2012-10-06 from 001__elm20160123_061810__dat00.bin



Processed Tue Apr 5 20:47:55 2016 by ELM ver.2012-10-06 from 001__elm20160123_061810__dat00.bin



Processed Tue Apr 5 20:47:56 2016 by ELM ver.2012-10-06 from 001__elm20160123_061810__dat00.bin



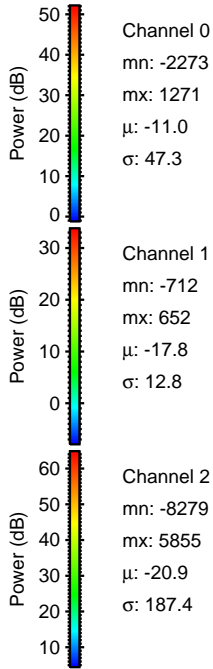
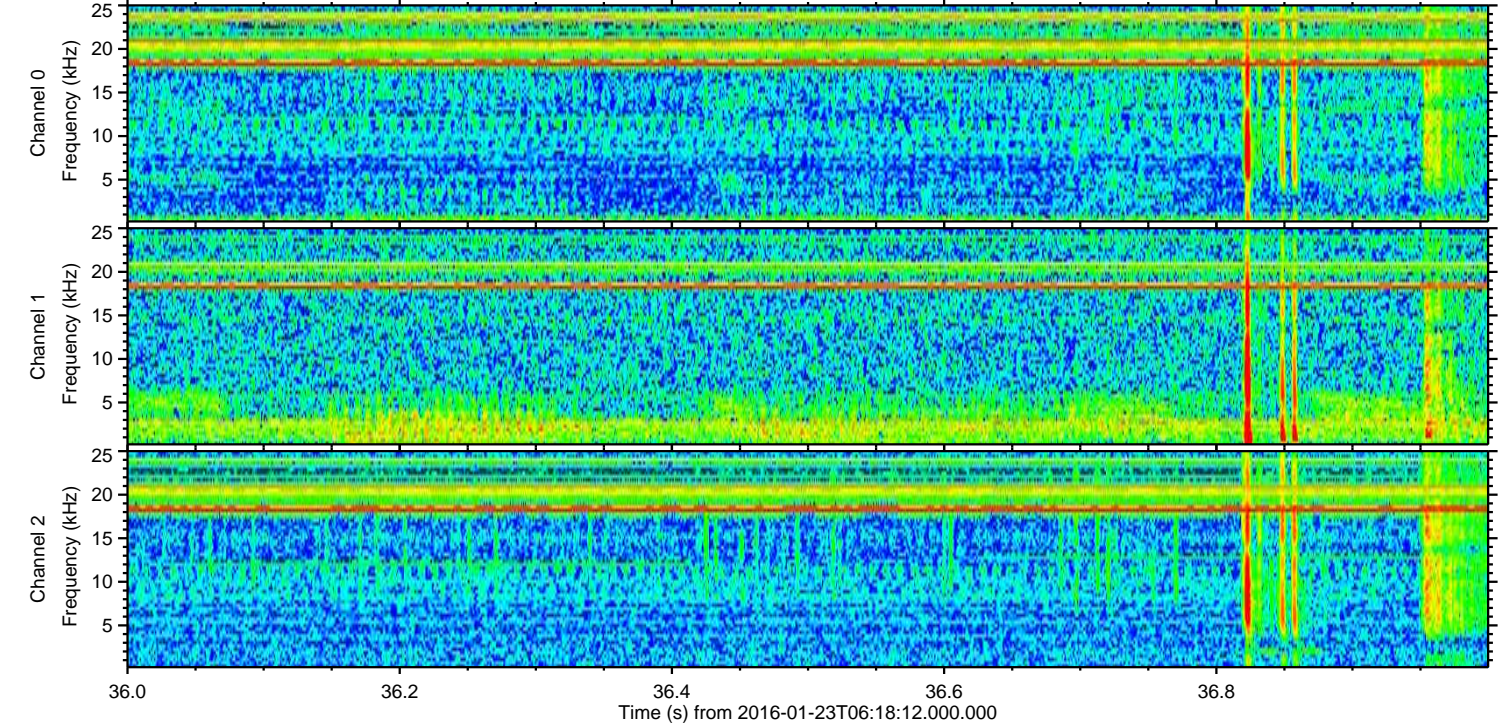
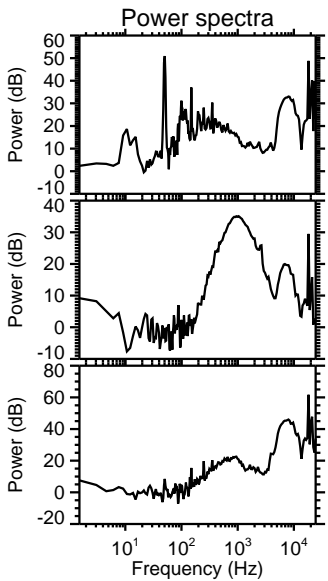
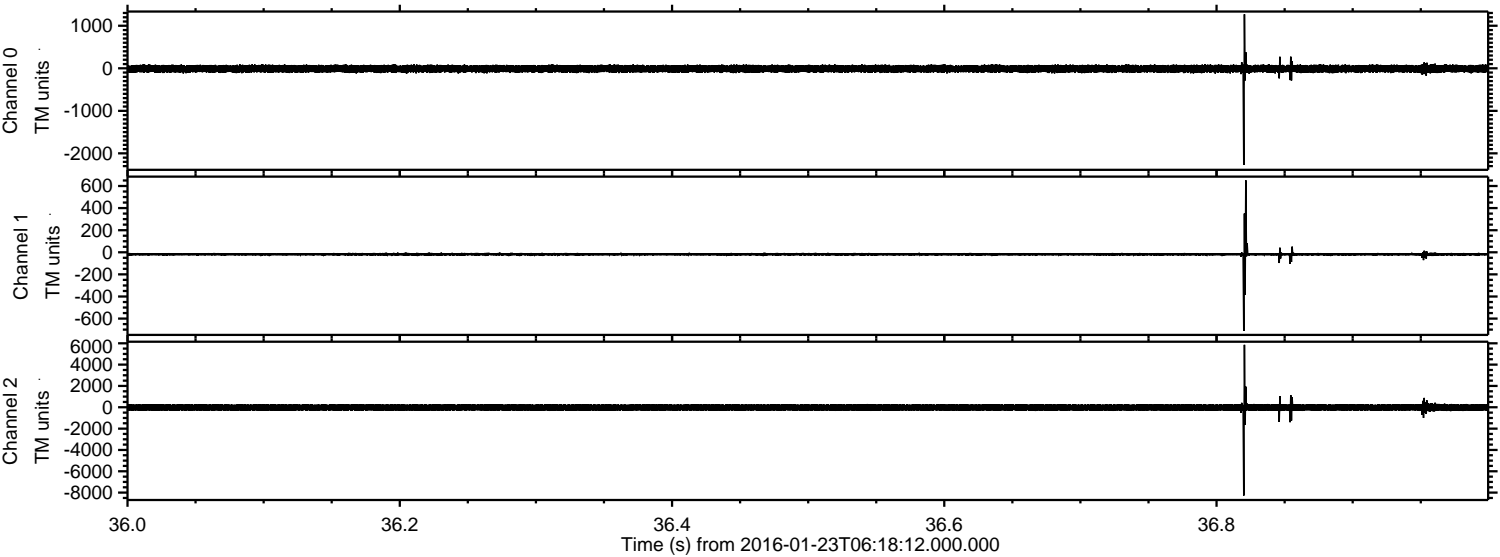
Channel 0
mn: -2449
mx: 1494
 μ : -11.0
 σ : 48.3

Channel 1
mn: -766
mx: 723
 μ : -17.8
 σ : 14.2

Channel 2
mn: -8592
mx: 6603
 μ : -20.9
 σ : 192.9

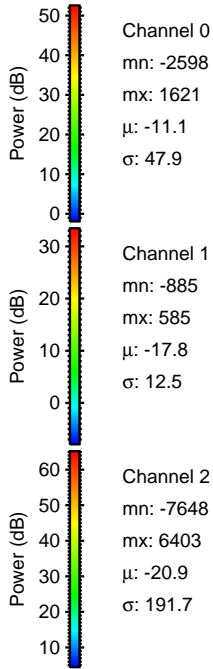
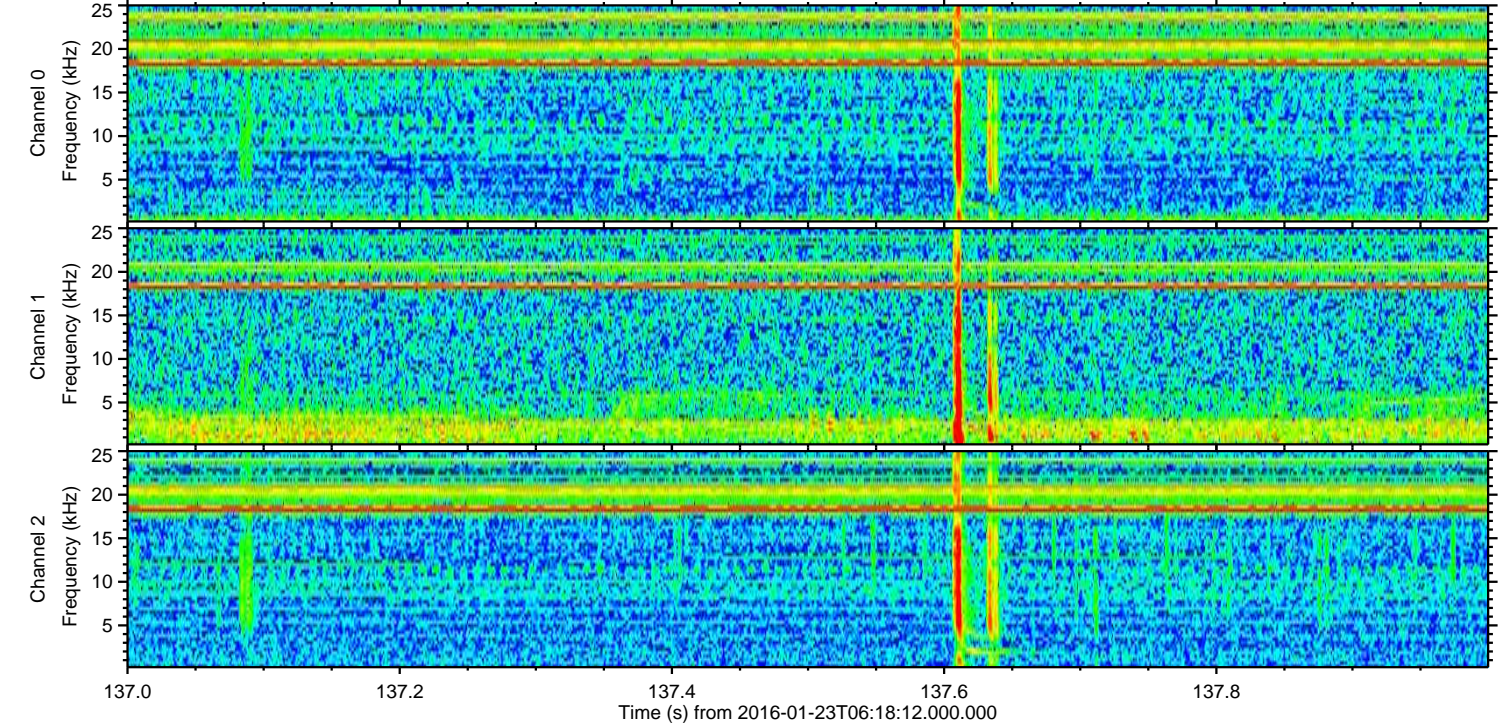
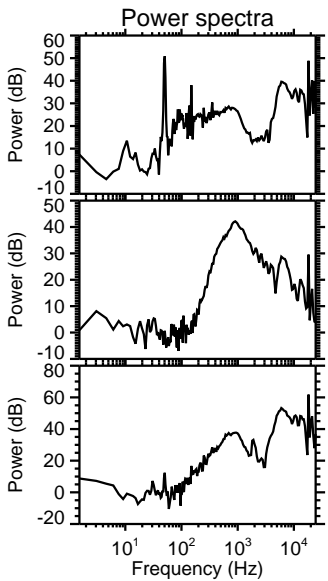
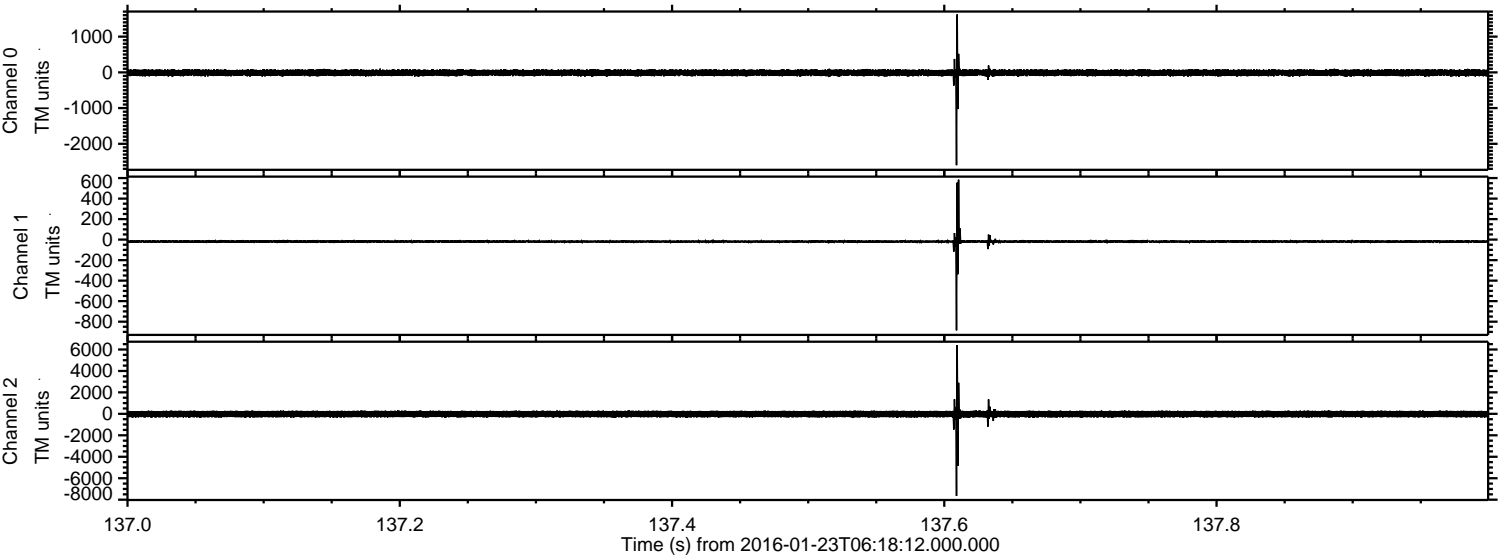
ELMAVAN 3D WAVEFORMS (Measured data sampled at 50 kHz) 51000 packets of 144 samples from 2016-01-23T06:18:12.000.000. Part 37/147

Processed Tue Apr 5 20:47:57 2016 by ELM ver.2012-10-06 from 001__elm20160123_061810__dat00.bin

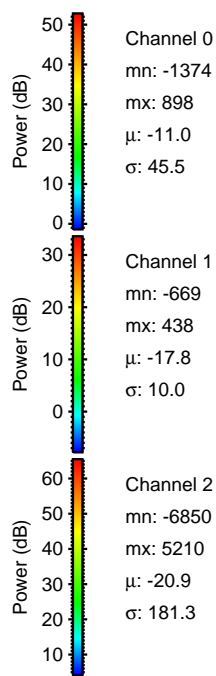
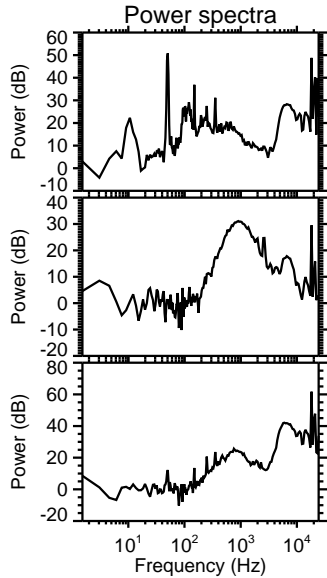
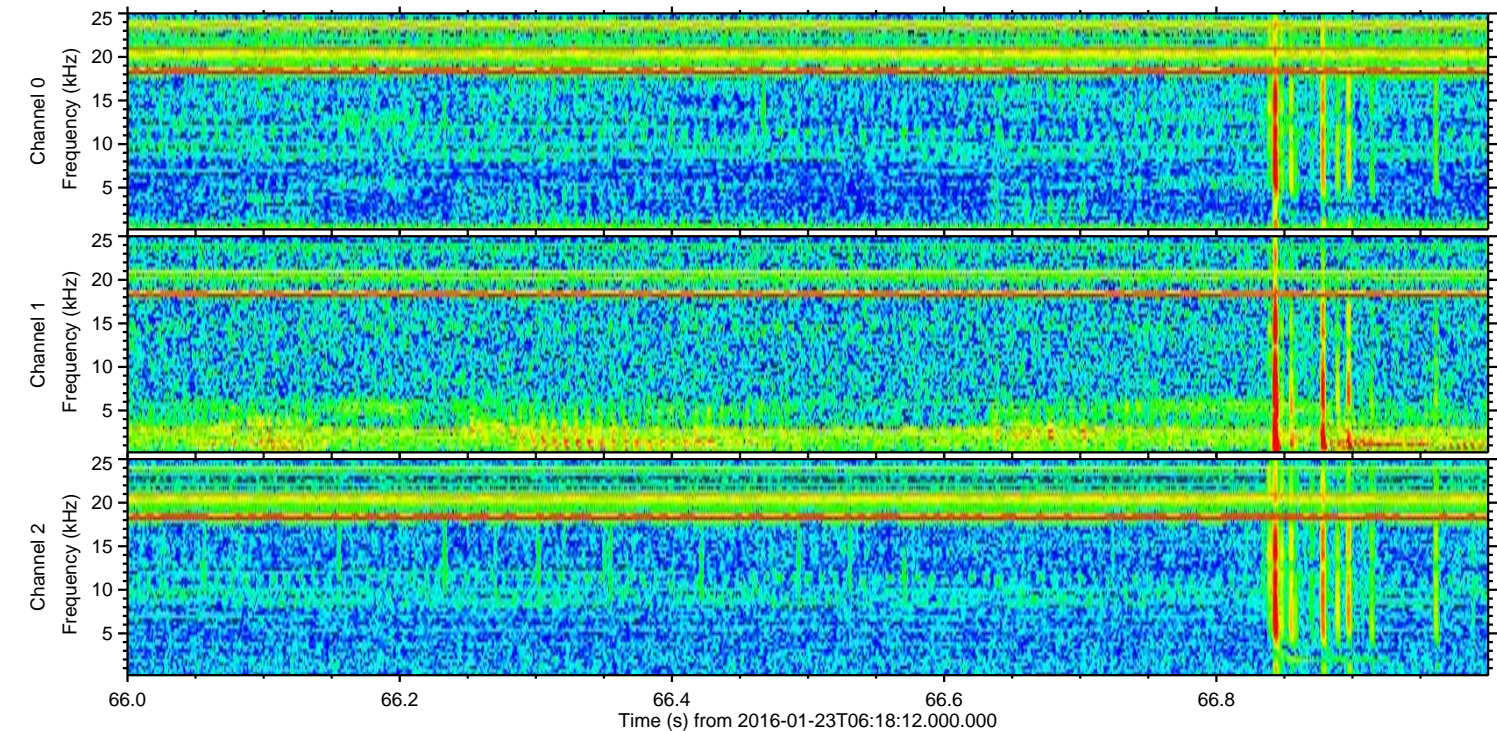
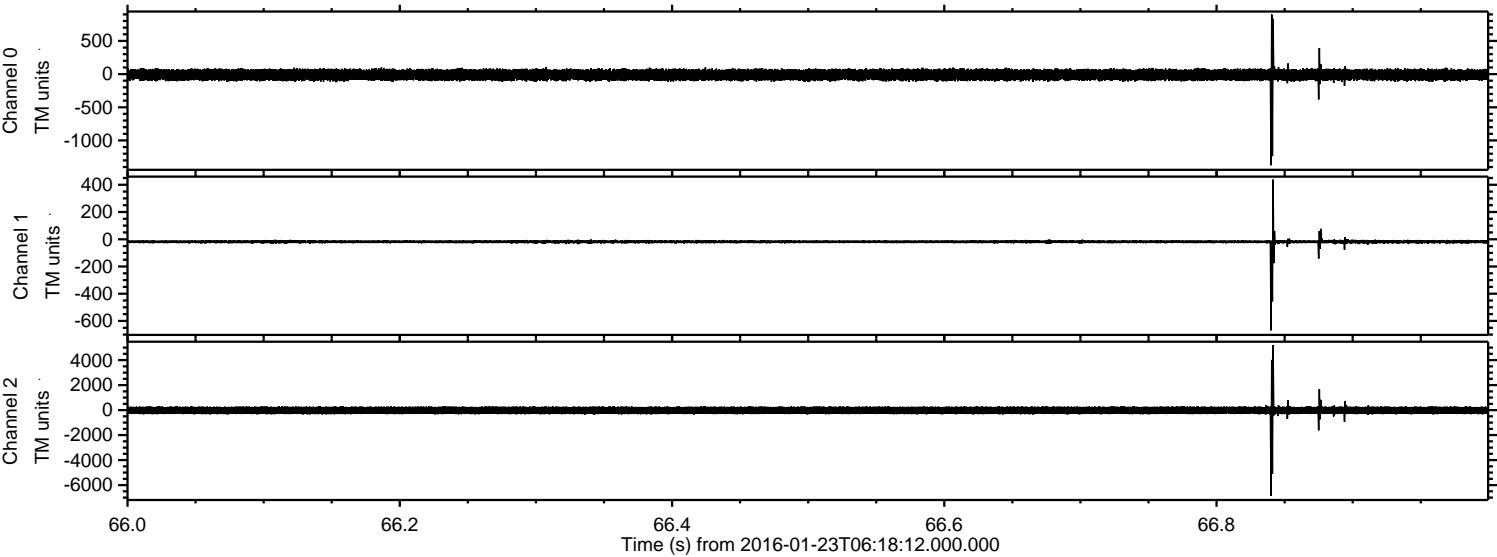


ELMAVAN 3D WAVEFORMS (Measured data sampled at 50 kHz) 51000 packets of 144 samples from 2016-01-23T06:18:12.000.000. Part 138/147

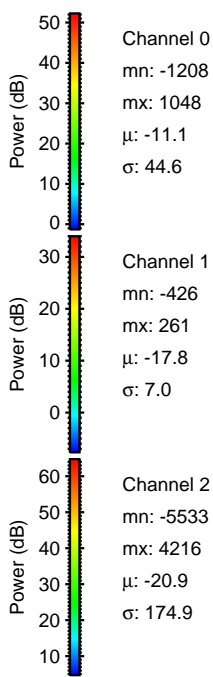
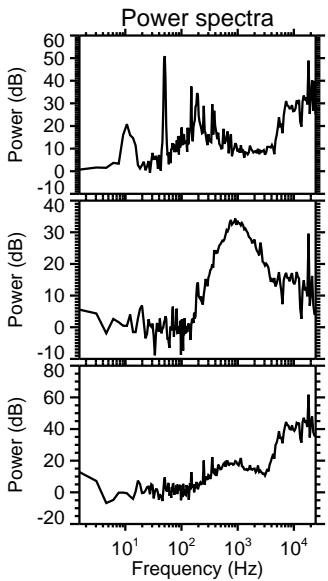
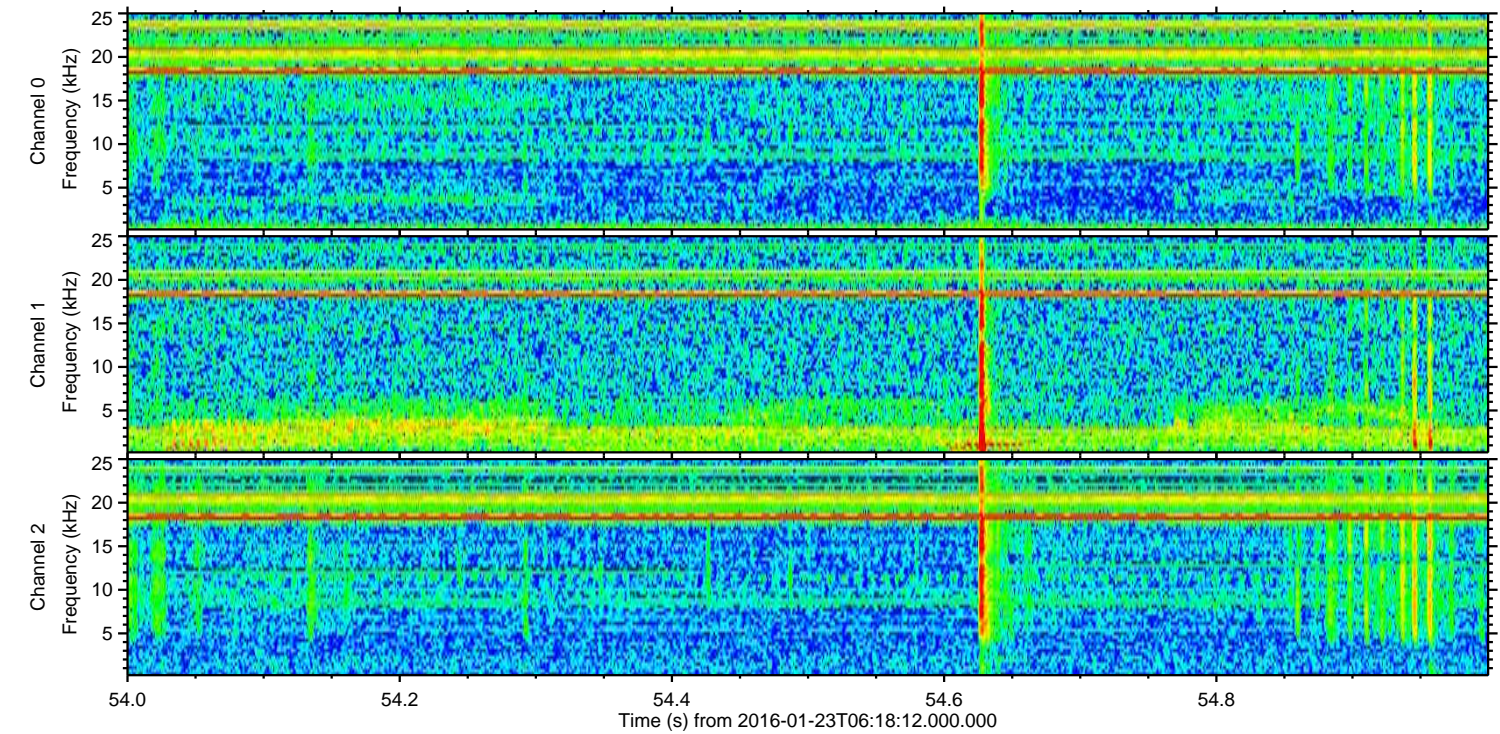
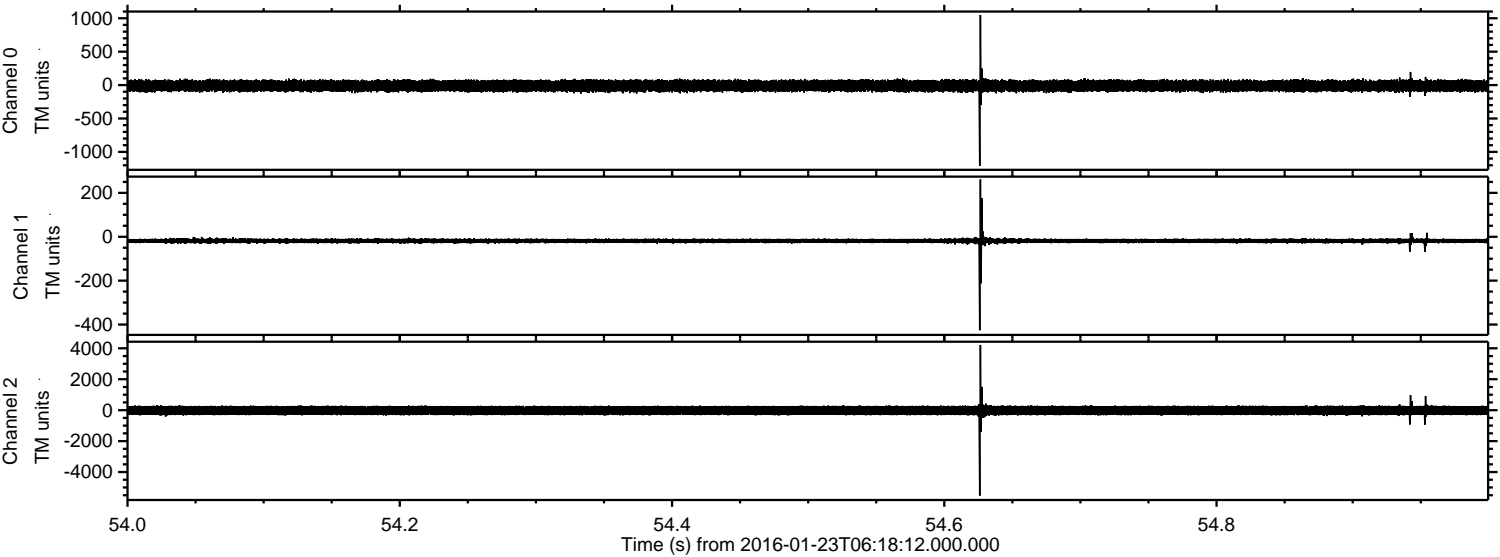
Processed Tue Apr 5 20:47:58 2016 by ELM ver.2012-10-06 from 001__elm20160123_061810__dat00.bin



Processed Tue Apr 5 20:47:59 2016 by ELM ver.2012-10-06 from 001__elm20160123_061810__dat00.bin

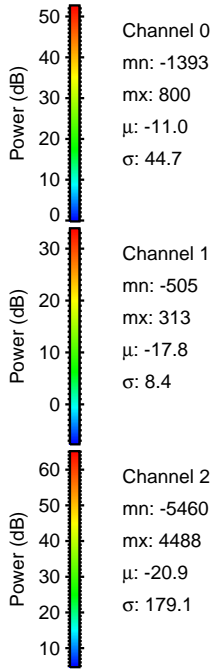
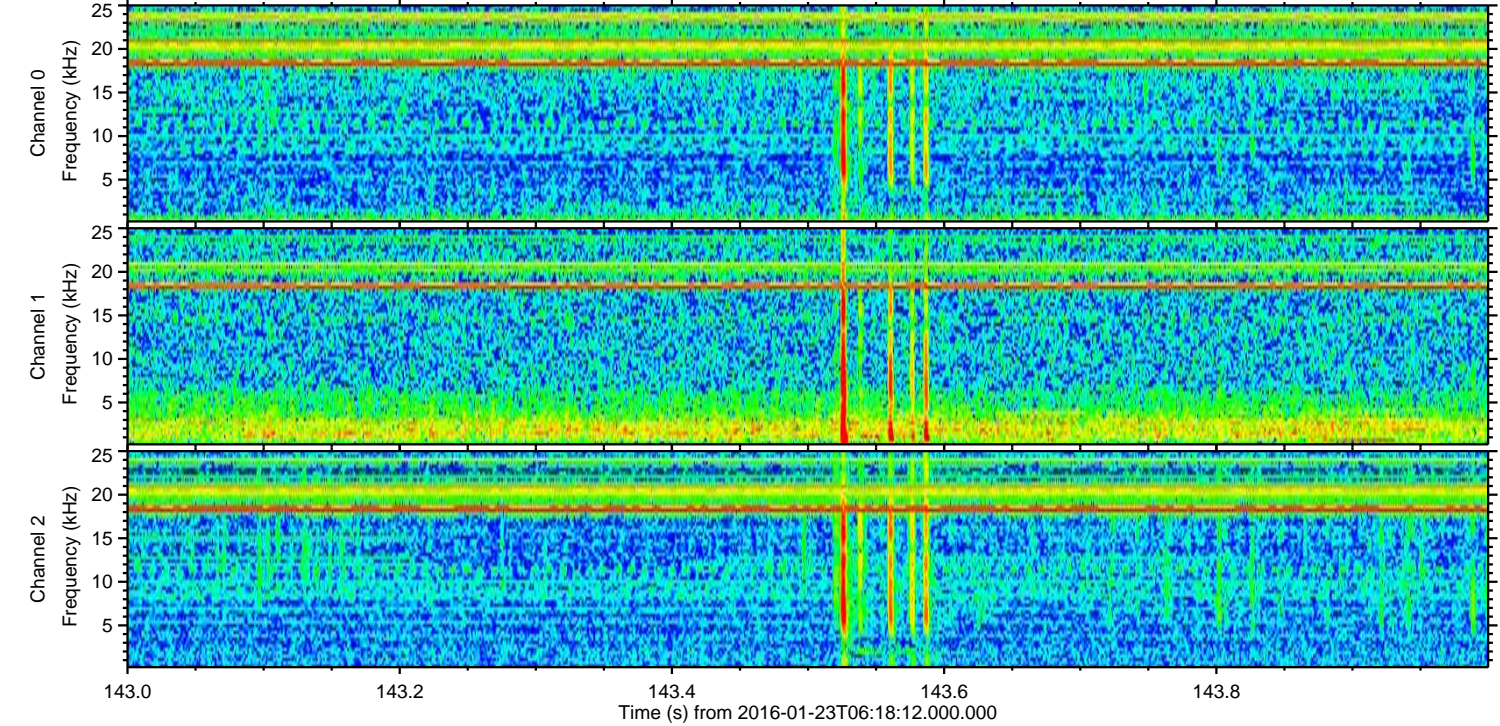
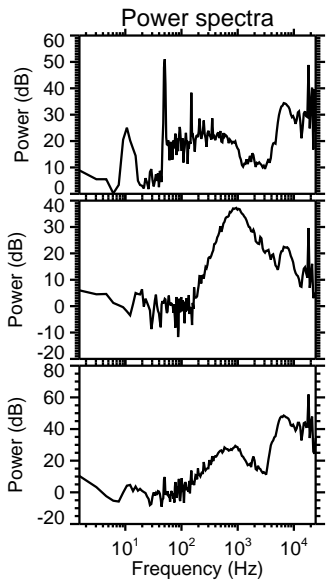
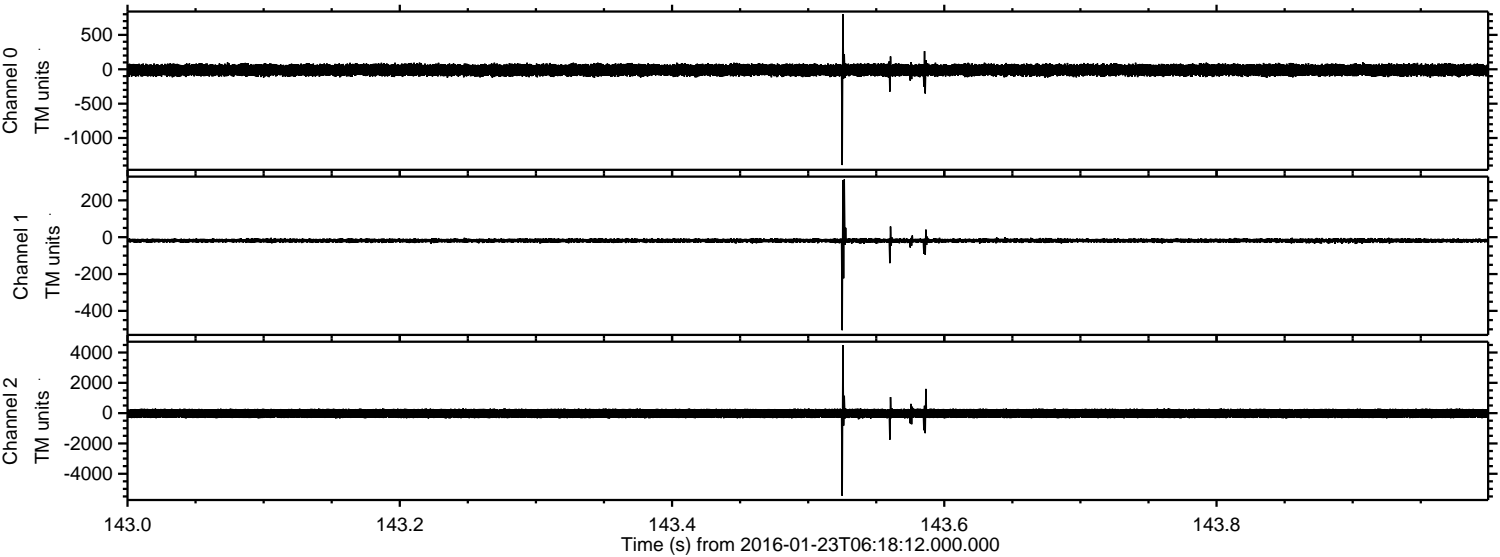


Processed Tue Apr 5 20:48:00 2016 by ELM ver.2012-10-06 from 001__elm20160123_061810__dat00.bin



ELMAVAN 3D WAVEFORMS (Measured data sampled at 50 kHz) 51000 packets of 144 samples from 2016-01-23T06:18:12.000.000. Part 144/147

Processed Tue Apr 5 20:48:01 2016 by ELM ver.2012-10-06 from 001__elm20160123_061810__dat00.bin

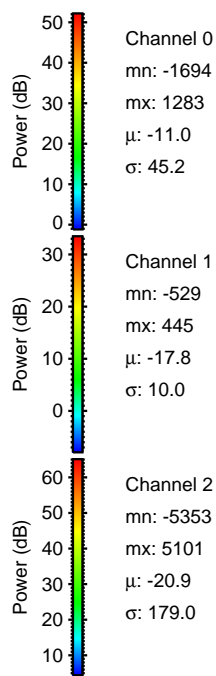
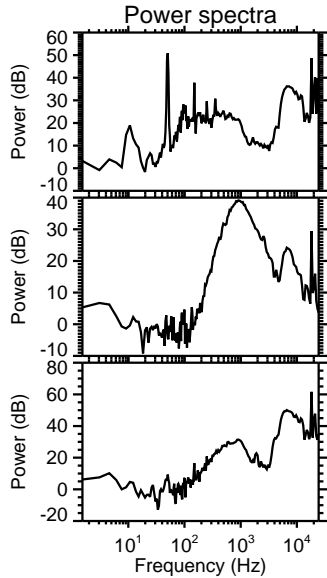
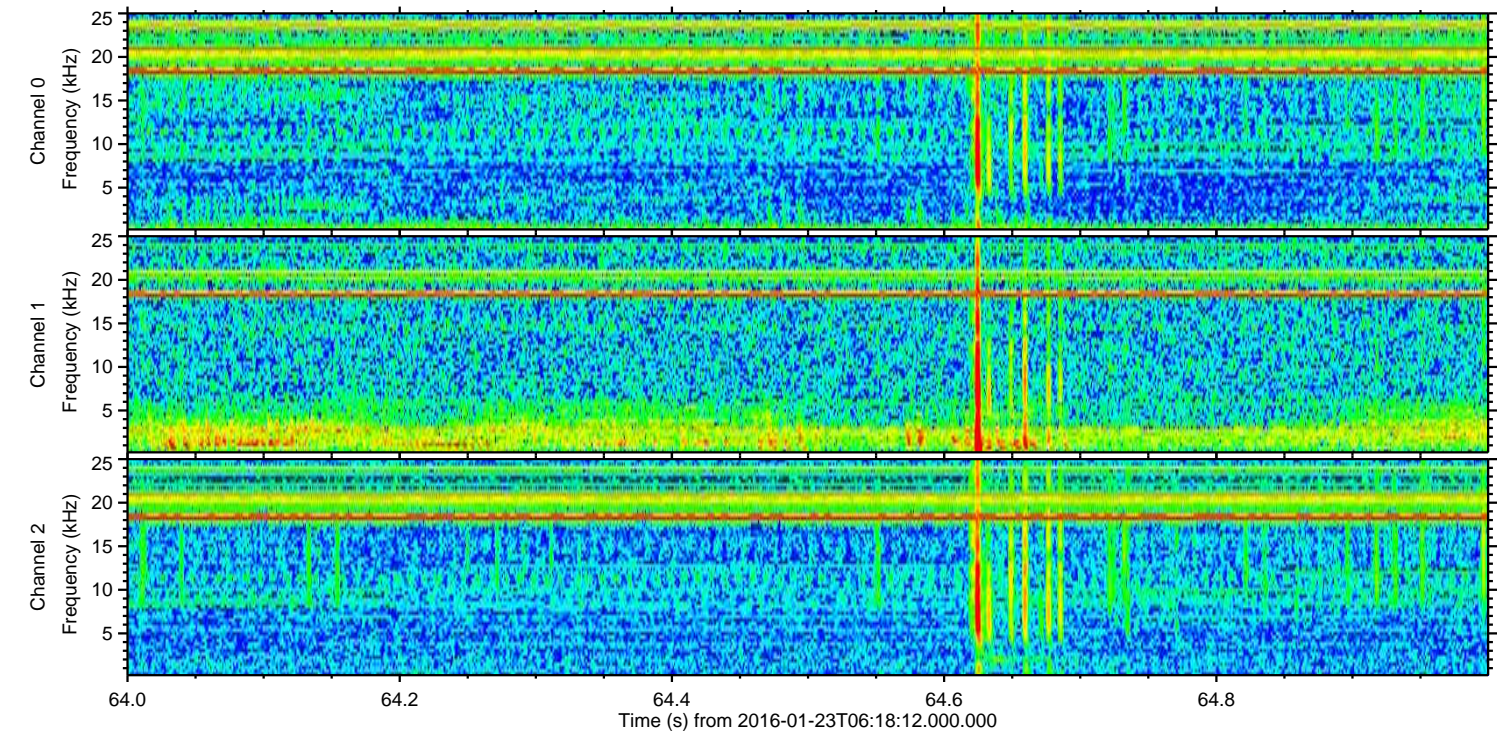
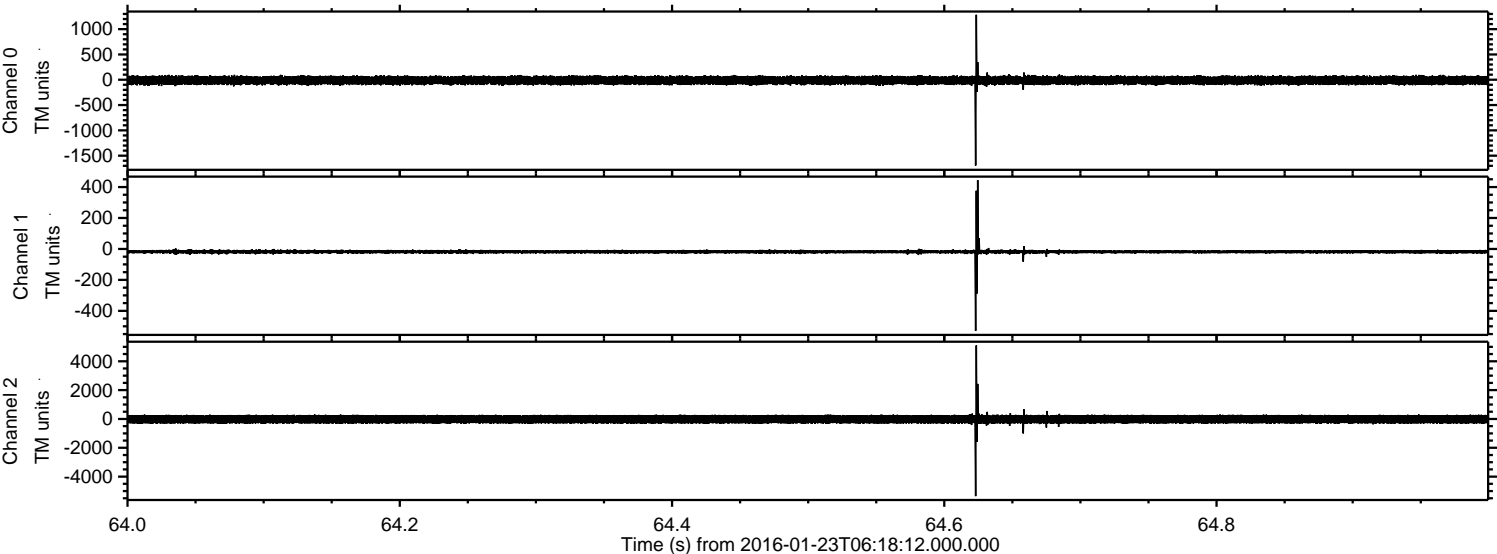


Channel 0
mn: -1393
mx: 800
 μ : -11.0
 σ : 44.7

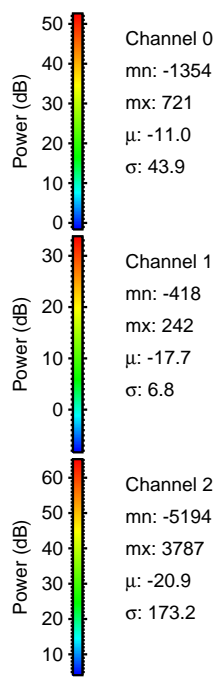
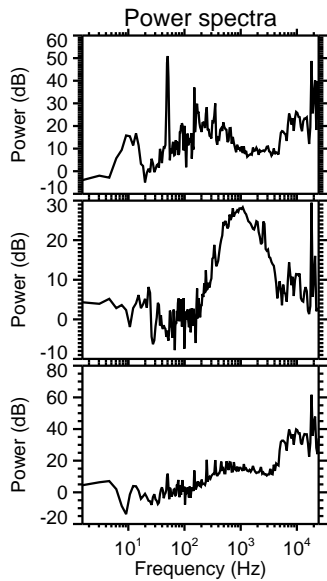
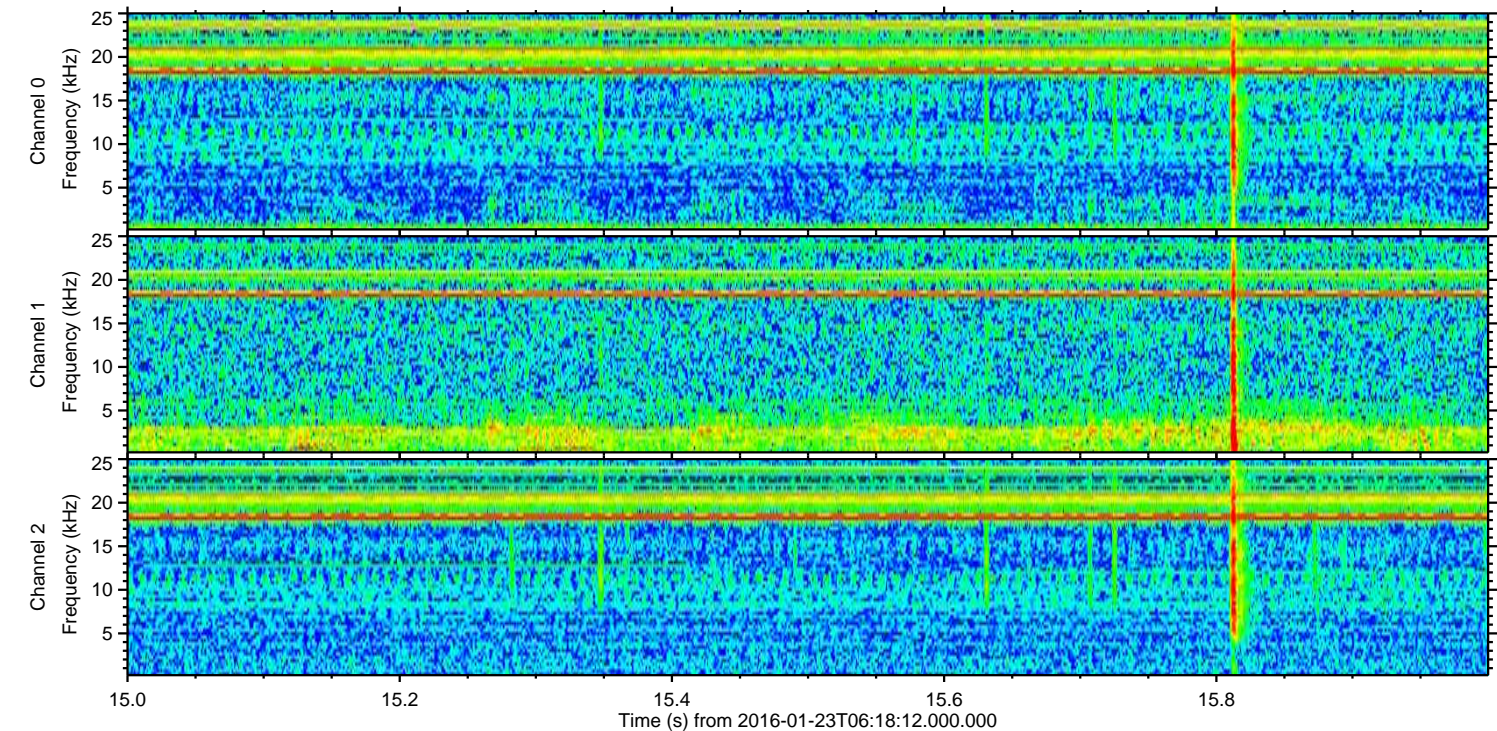
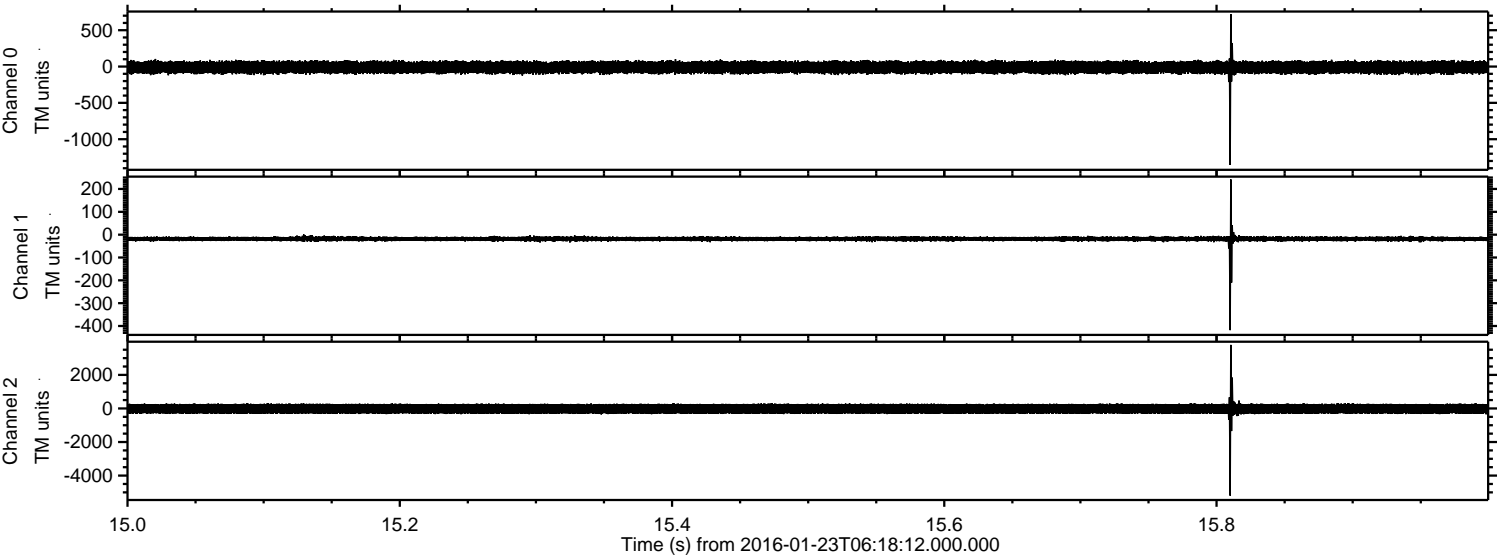
Channel 1
mn: -505
mx: 313
 μ : -17.8
 σ : 8.4

Channel 2
mn: -5460
mx: 4488
 μ : -20.9
 σ : 179.1

Processed Tue Apr 5 20:48:02 2016 by ELM ver.2012-10-06 from 001__elm20160123_061810__dat00.bin



Processed Tue Apr 5 20:48:03 2016 by ELM ver.2012-10-06 from 001__elm20160123_061810__dat00.bin



Channel 0
mn: -1354
mx: 721
 μ : -11.0
 σ : 43.9

Channel 1
mn: -418
mx: 242
 μ : -17.7
 σ : 6.8

Channel 2
mn: -5194
mx: 3787
 μ : -20.9
 σ : 173.2

Processed Tue Apr 5 20:48:04 2016 by ELM ver.2012-10-06 from 001__elm20160123_061810__dat00.bin

