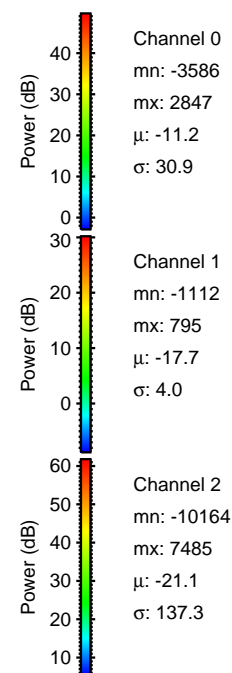
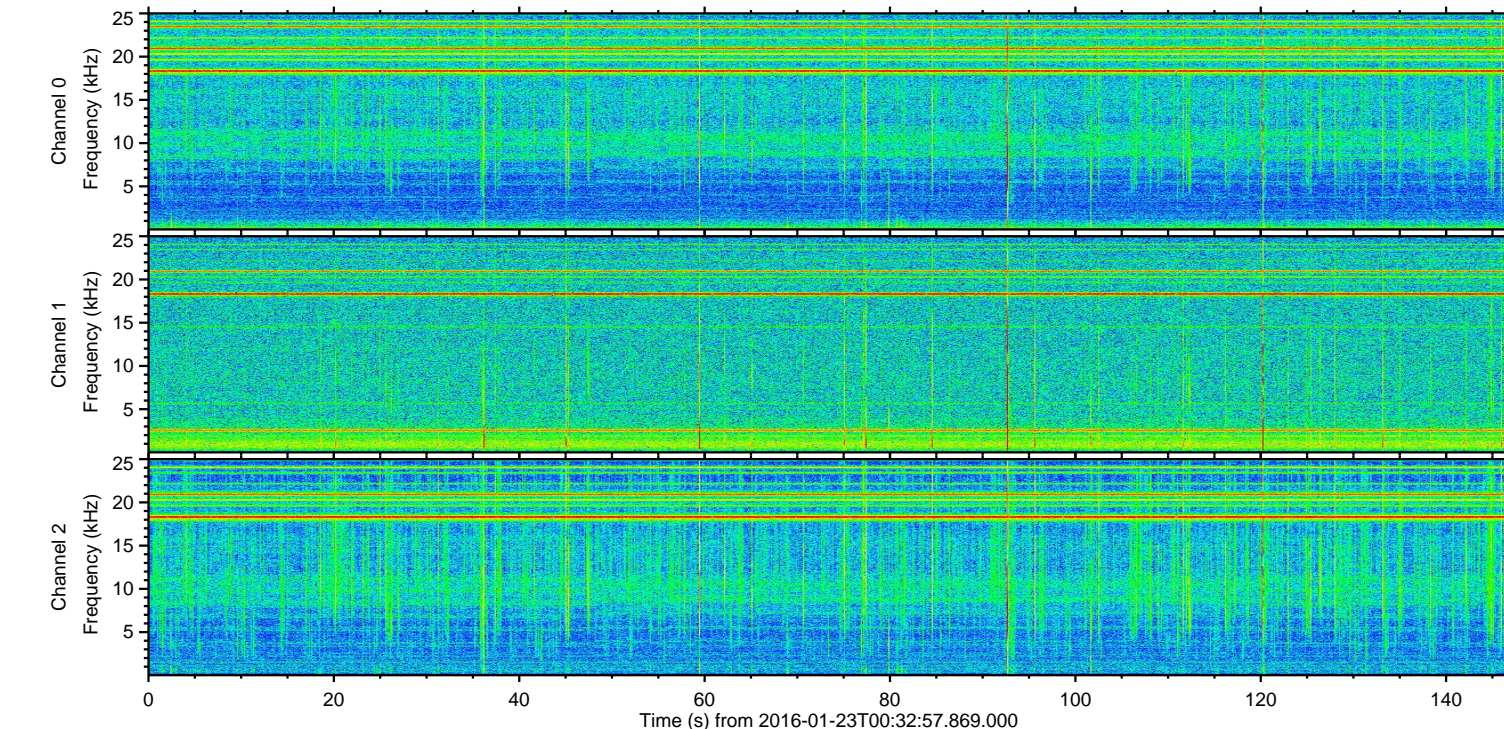
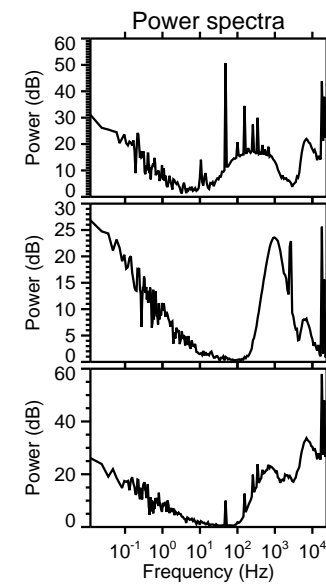
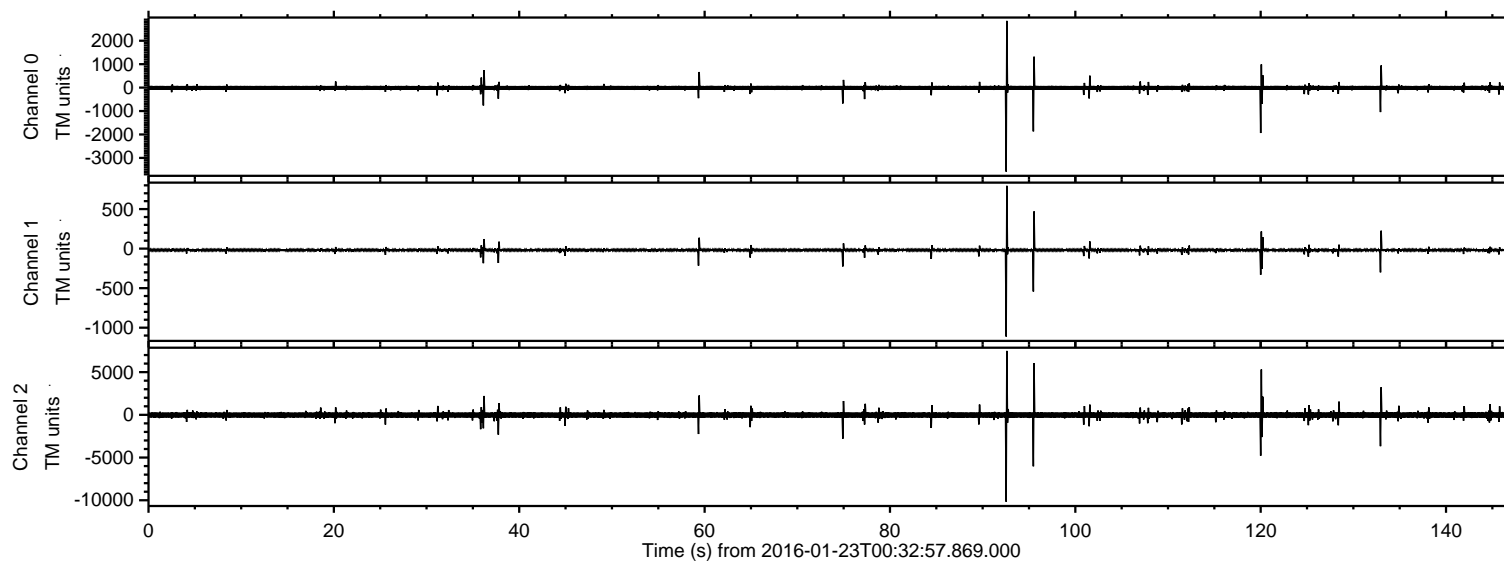
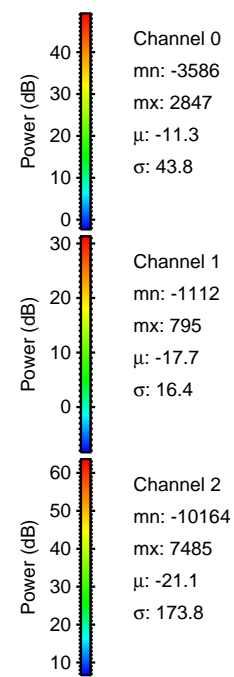
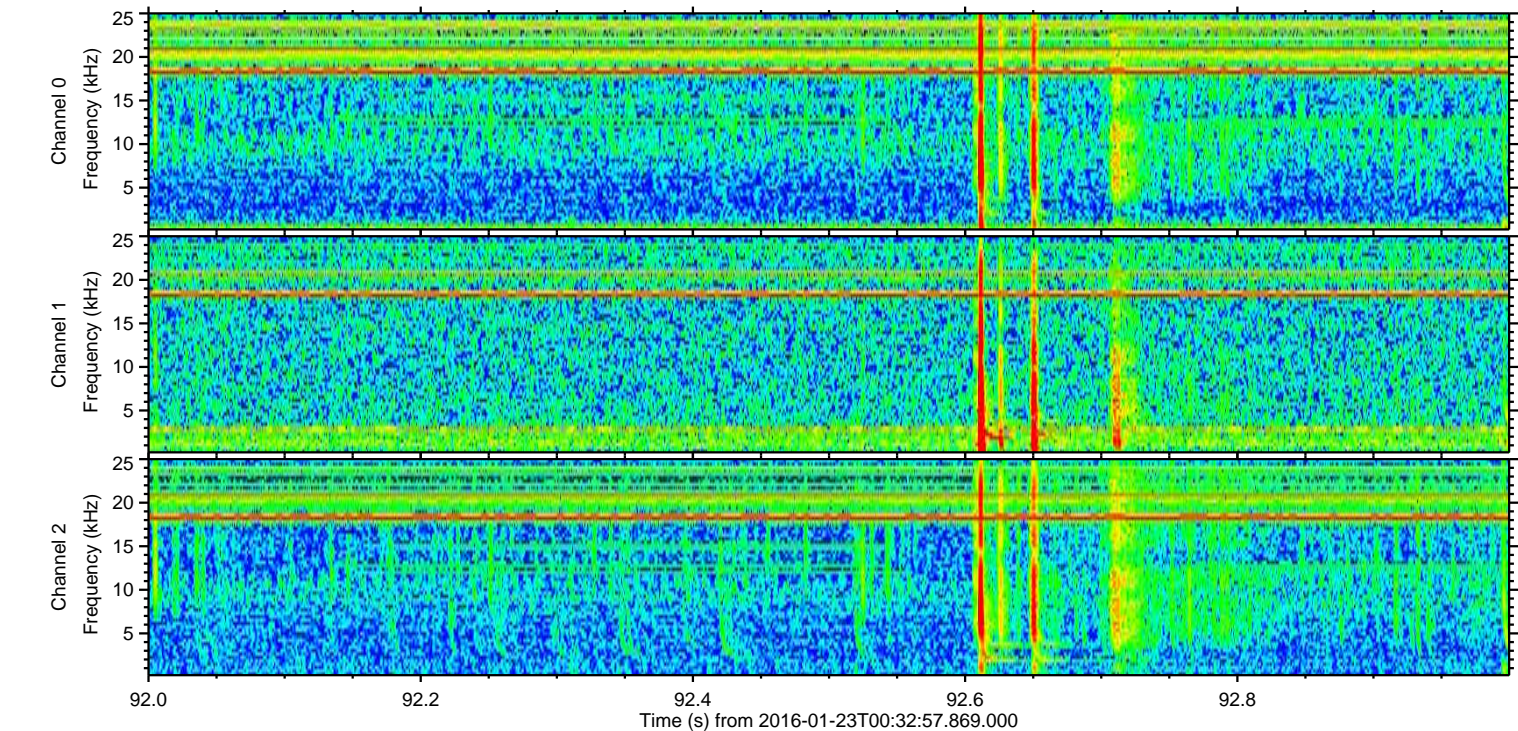
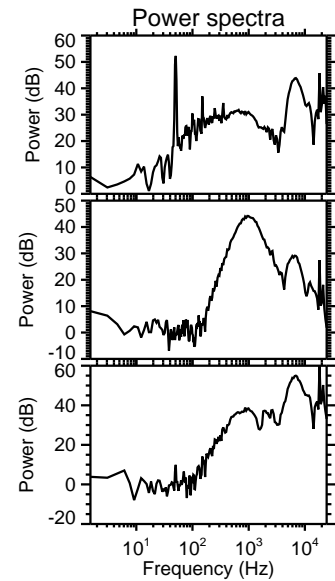
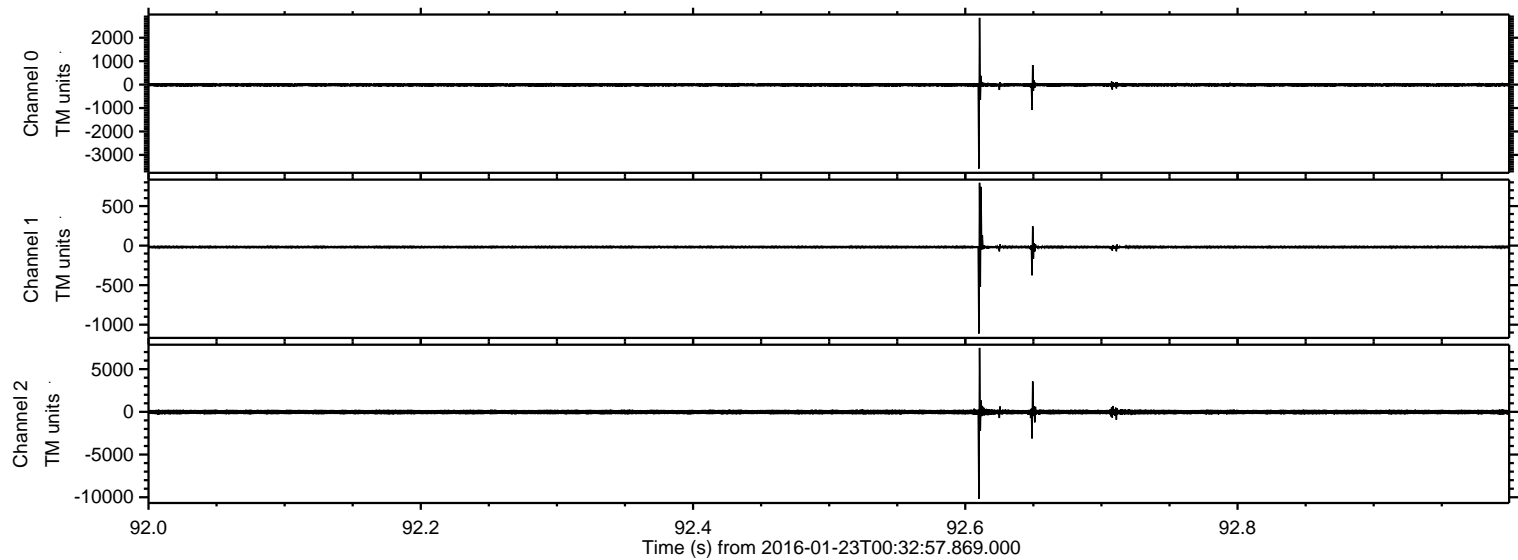


ELMAVAN 3D WAVEFORMS (Measured data sampled at 50 kHz) 51000 packets of 144 samples from 2016-01-23T00:32:57.869.000.

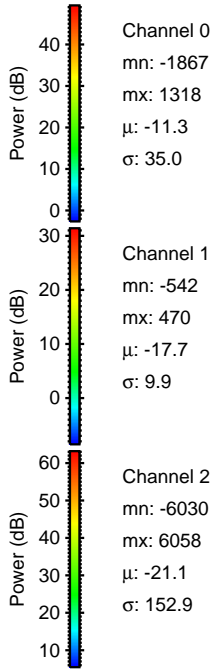
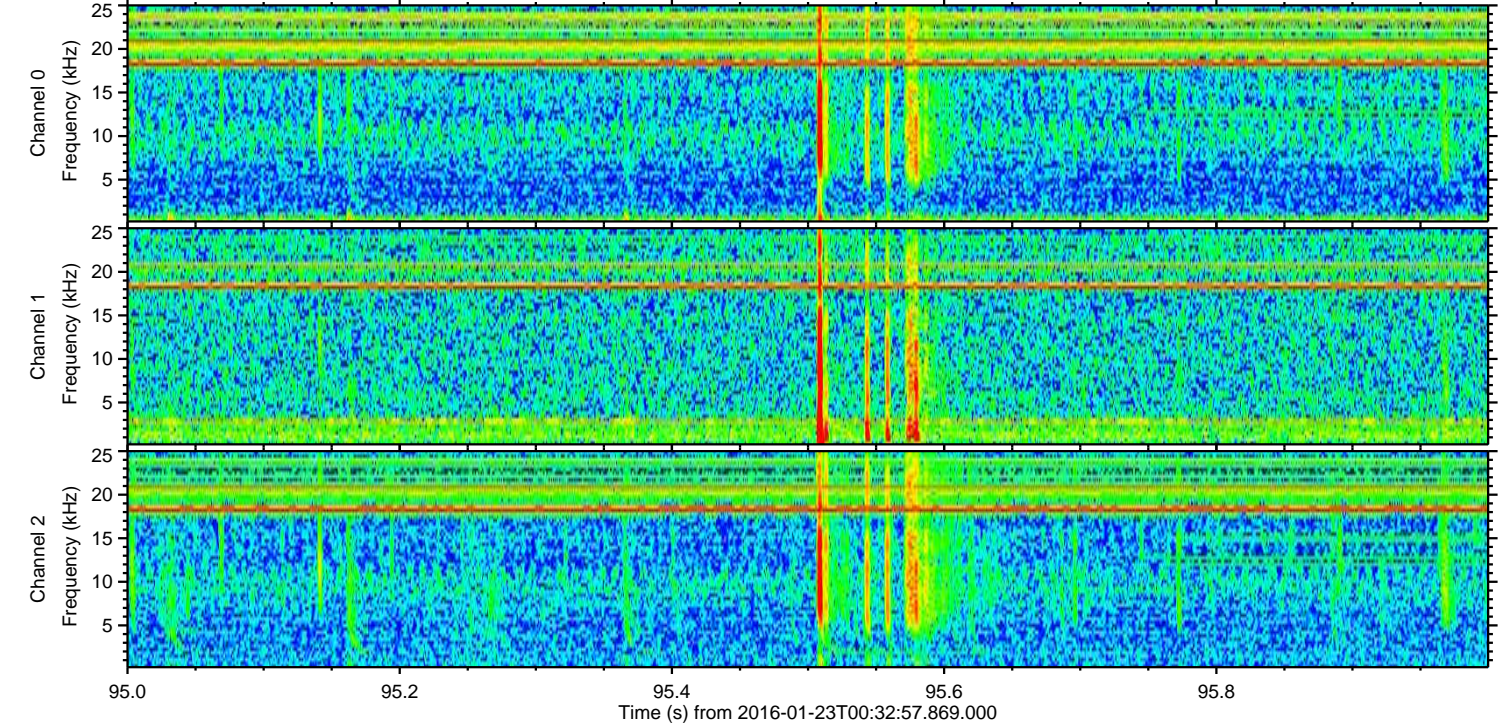
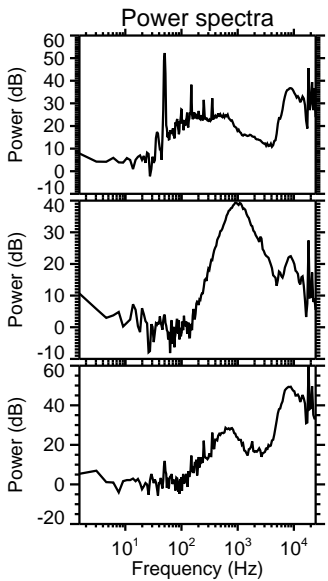
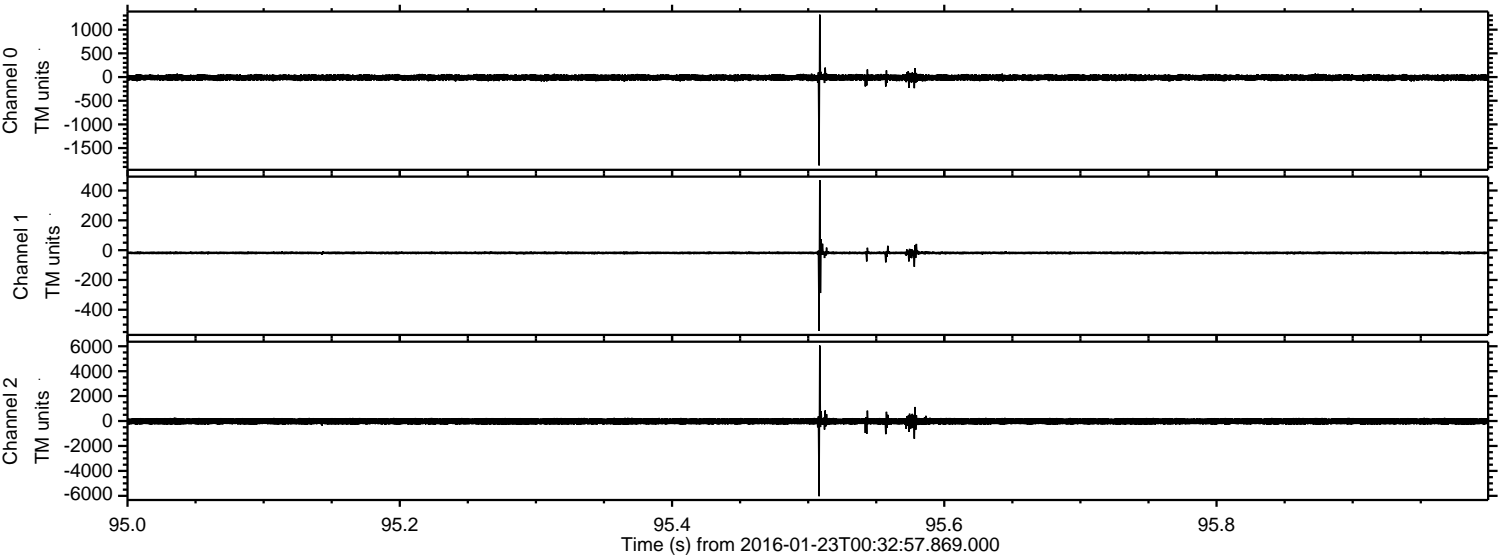
Processed Tue Apr 5 18:41:41 2016 by ELM ver.2012-10-06 from 001__elm20160123_003256__dat00.bin



Processed Tue Apr 5 18:41:53 2016 by ELM ver.2012-10-06 from 001__elm20160123_003256__dat00.bin

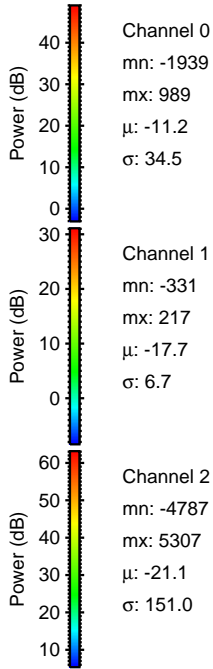
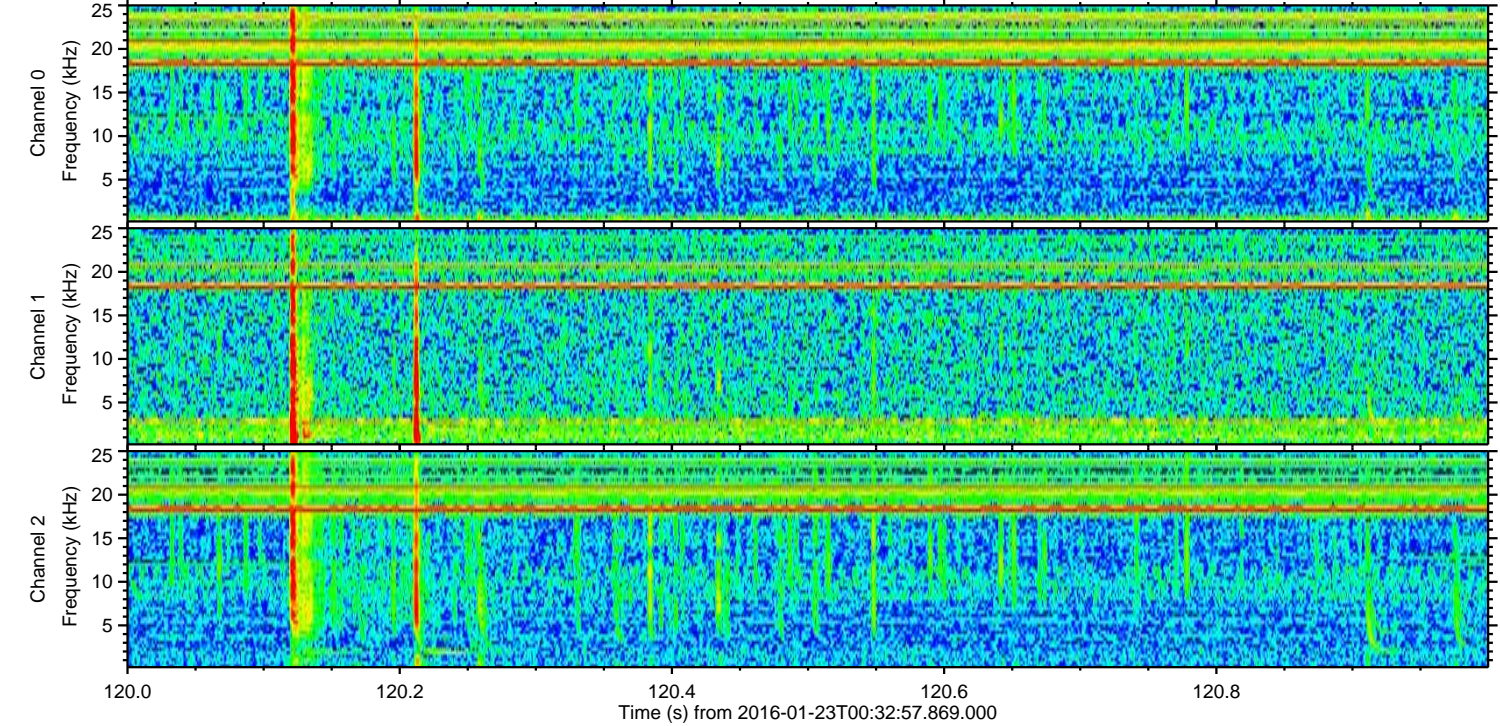
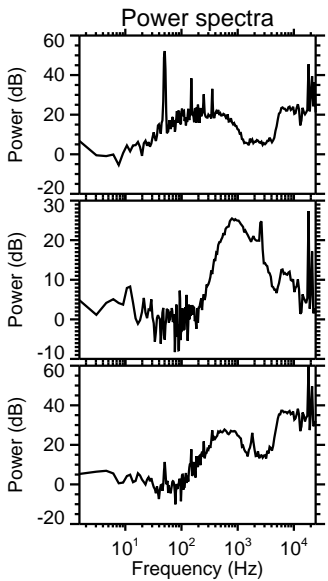
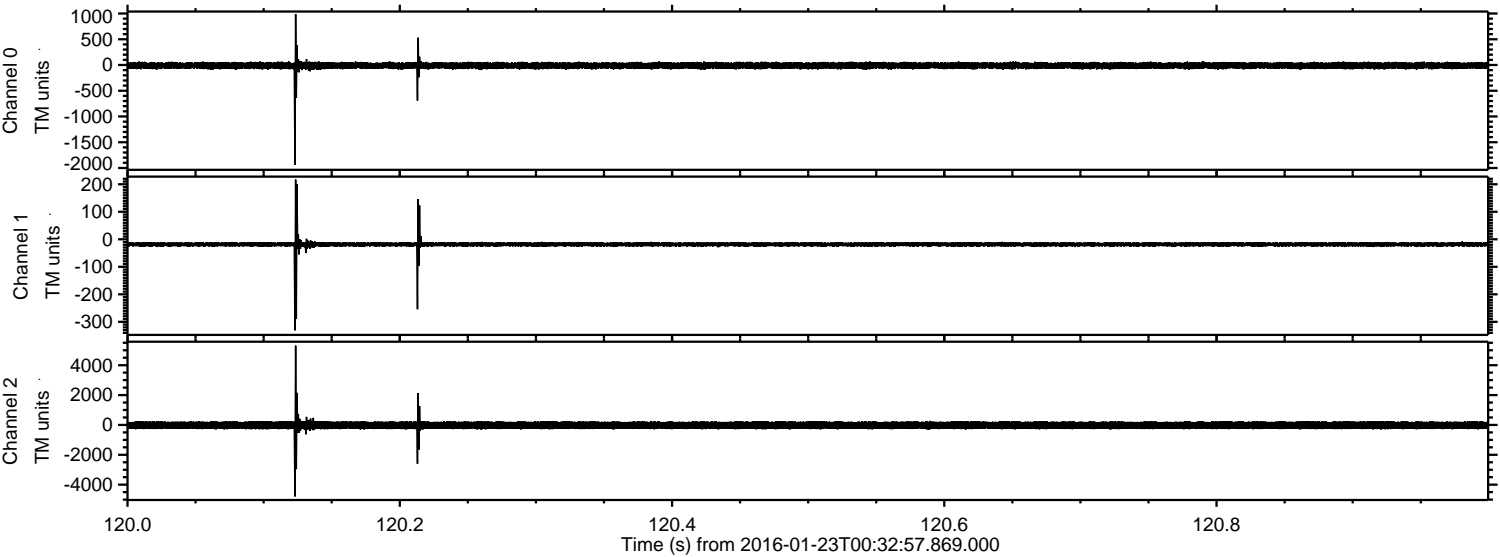


Processed Tue Apr 5 18:41:53 2016 by ELM ver.2012-10-06 from 001__elm20160123_003256__dat00.bin



ELMAVAN 3D WAVEFORMS (Measured data sampled at 50 kHz) 51000 packets of 144 samples from 2016-01-23T00:32:57.869.000. Part 121/147

Processed Tue Apr 5 18:41:54 2016 by ELM ver.2012-10-06 from 001__elm20160123_003256__dat00.bin



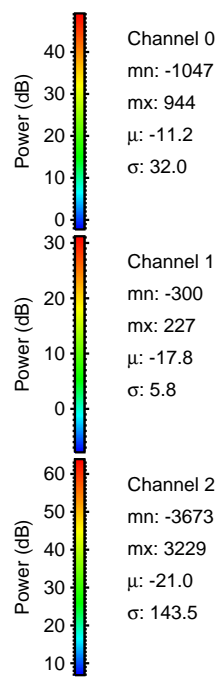
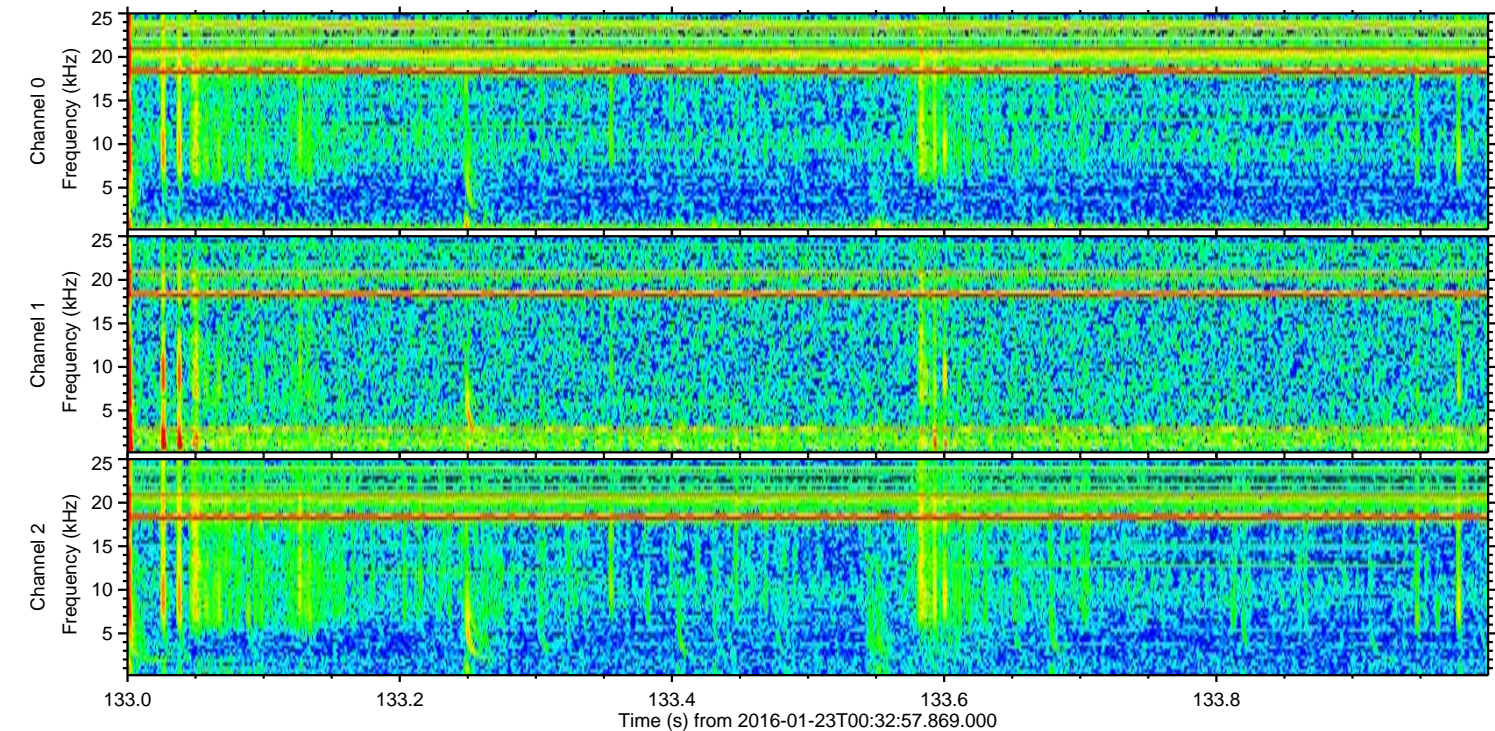
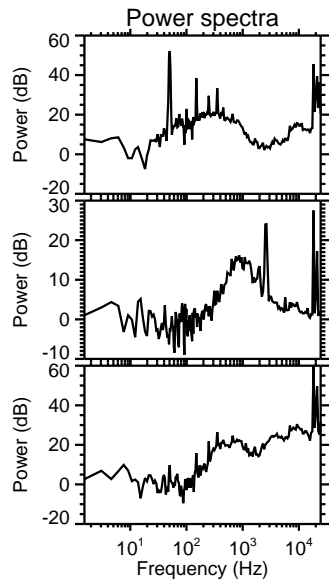
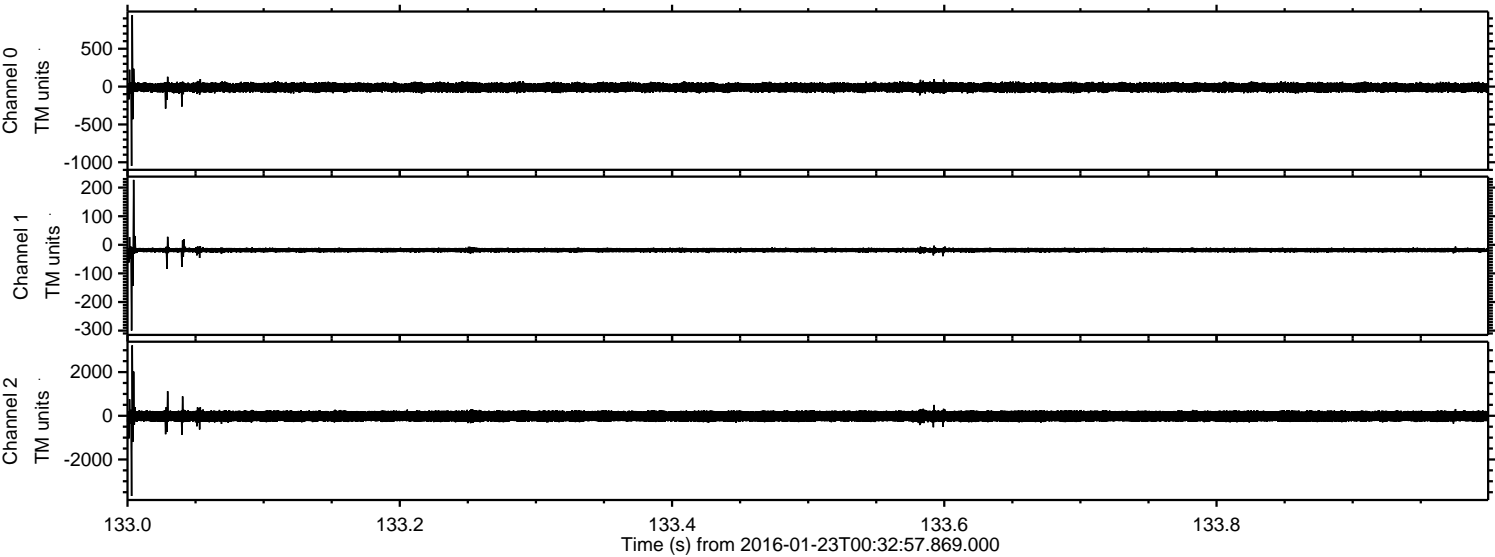
Channel 0
mn: -1939
mx: 989
 μ : -11.2
 σ : 34.5

Channel 1
mn: -331
mx: 217
 μ : -17.7
 σ : 6.7

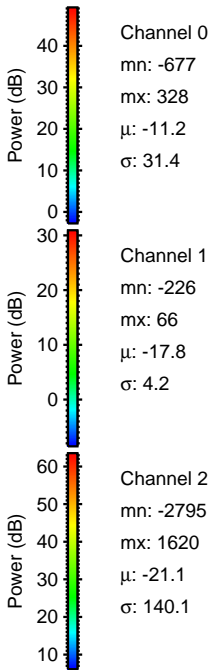
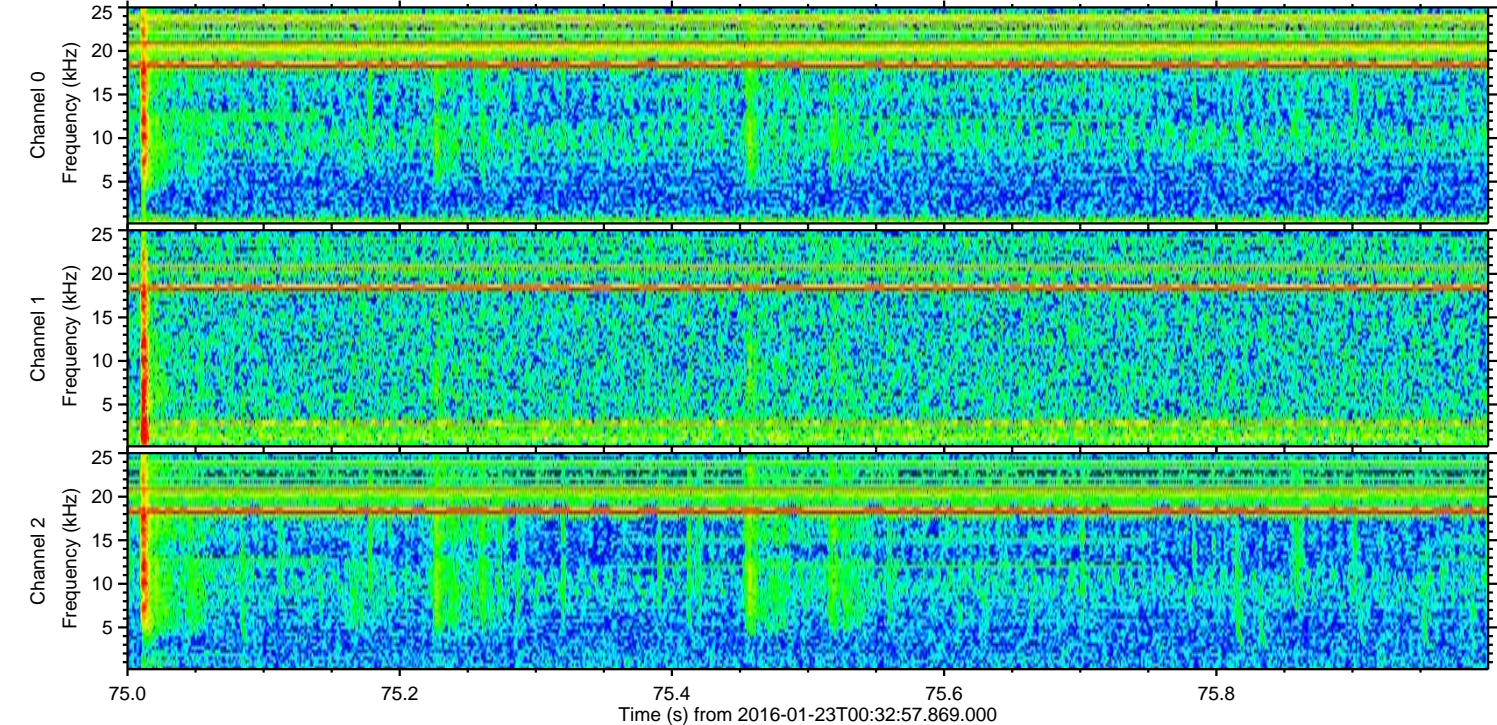
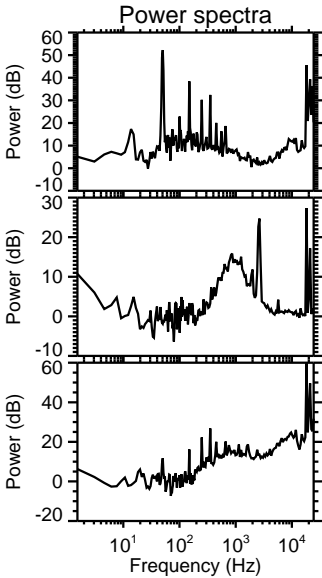
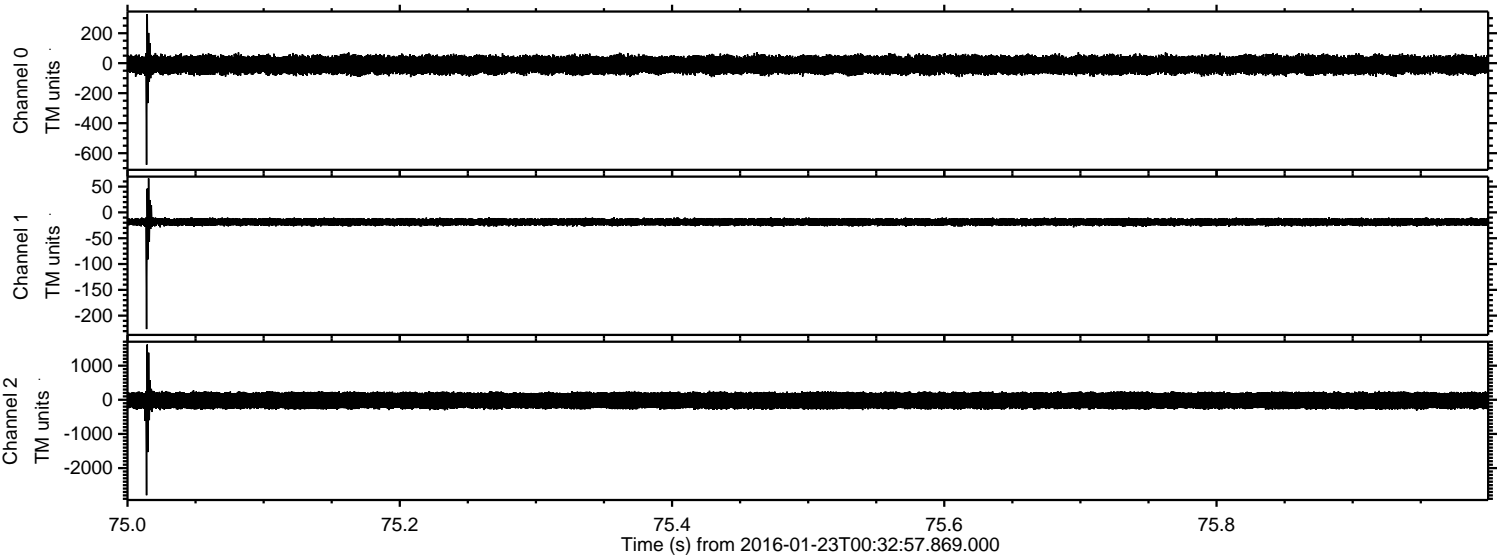
Channel 2
mn: -4787
mx: 5307
 μ : -21.1
 σ : 151.0

ELMAVAN 3D WAVEFORMS (Measured data sampled at 50 kHz) 51000 packets of 144 samples from 2016-01-23T00:32:57.869.000. Part 134/147

Processed Tue Apr 5 18:41:55 2016 by ELM ver.2012-10-06 from 001__elm20160123_003256__dat00.bin

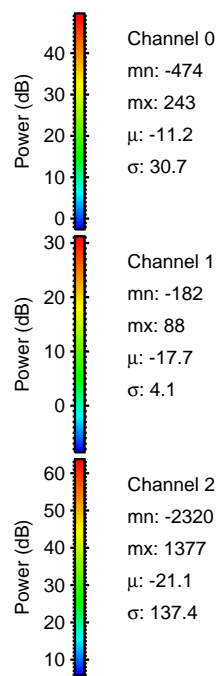
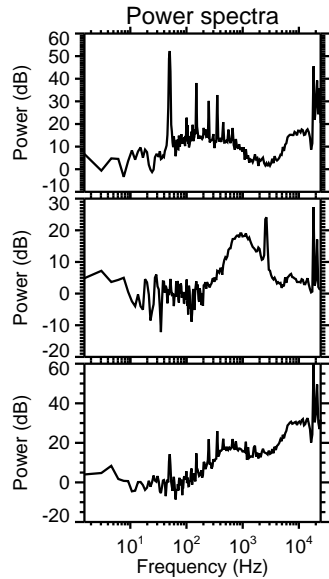
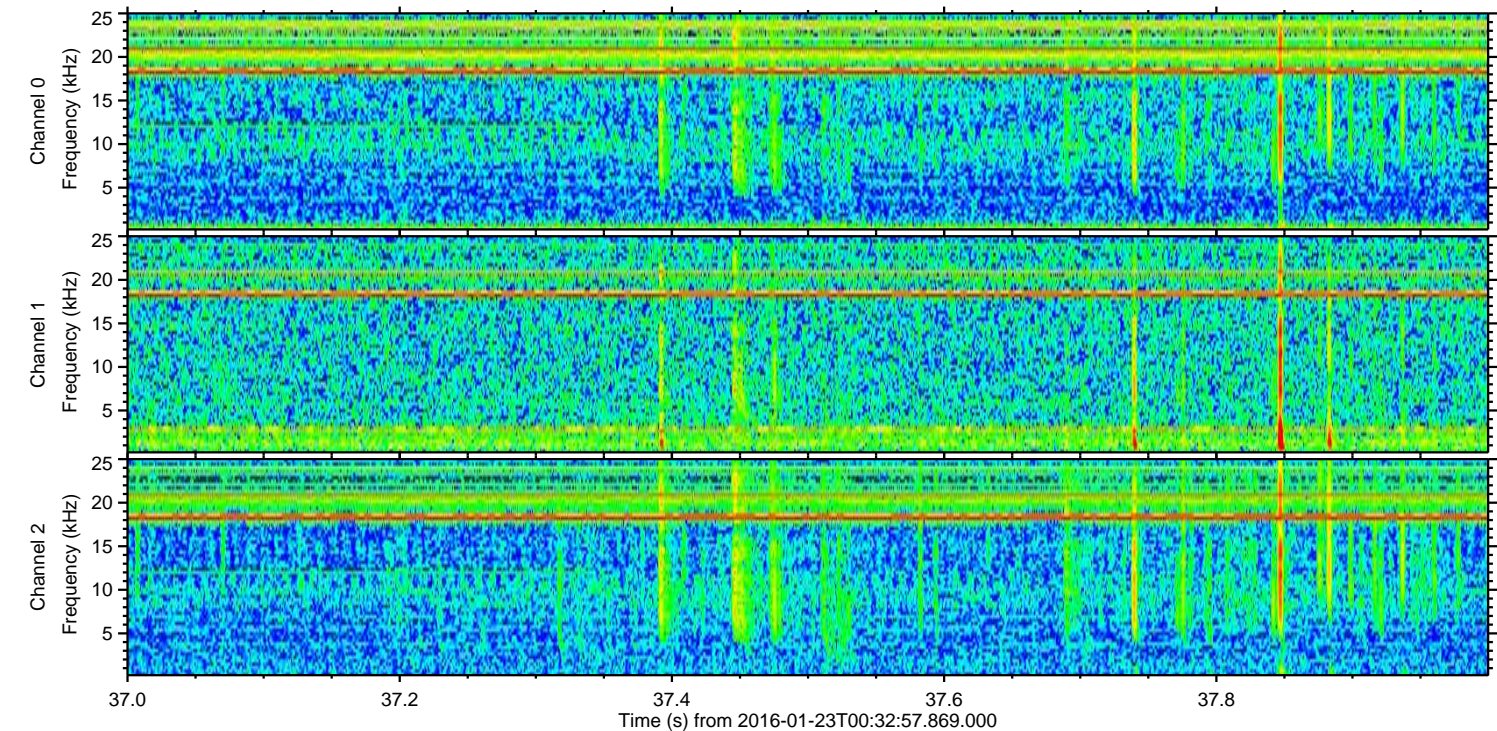
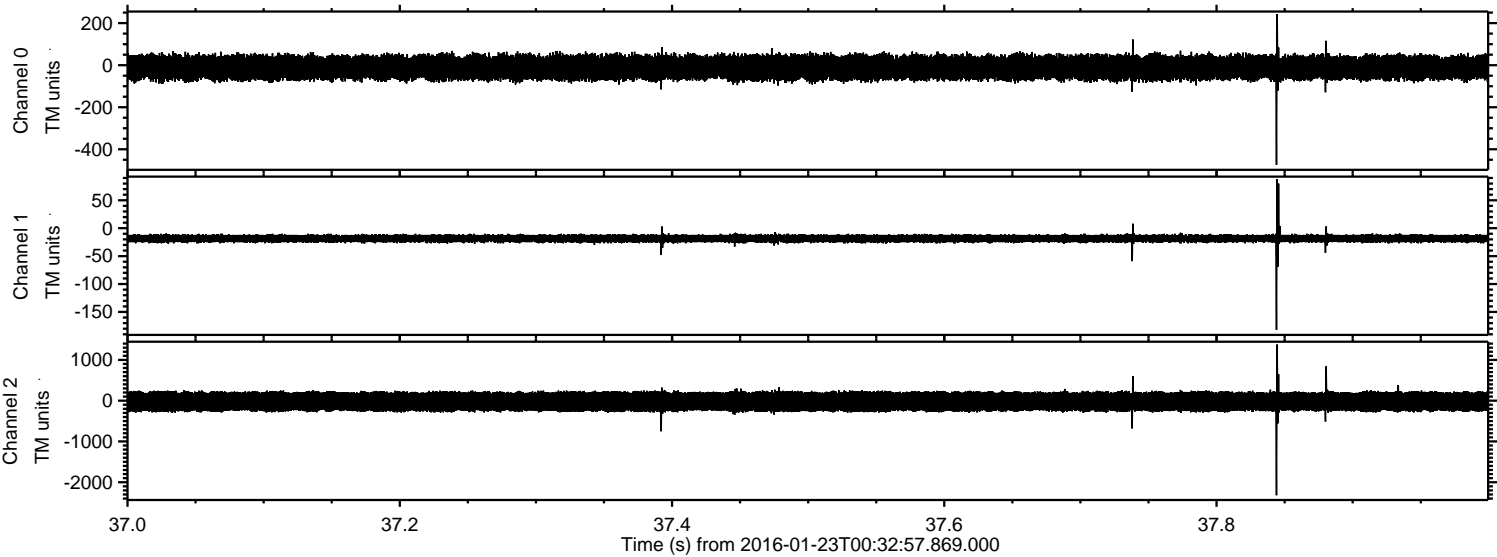


Processed Tue Apr 5 18:41:56 2016 by ELM ver.2012-10-06 from 001__elm20160123_003256__dat00.bin

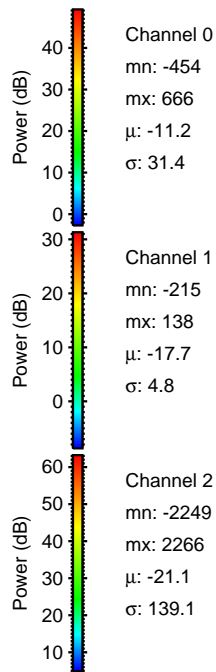
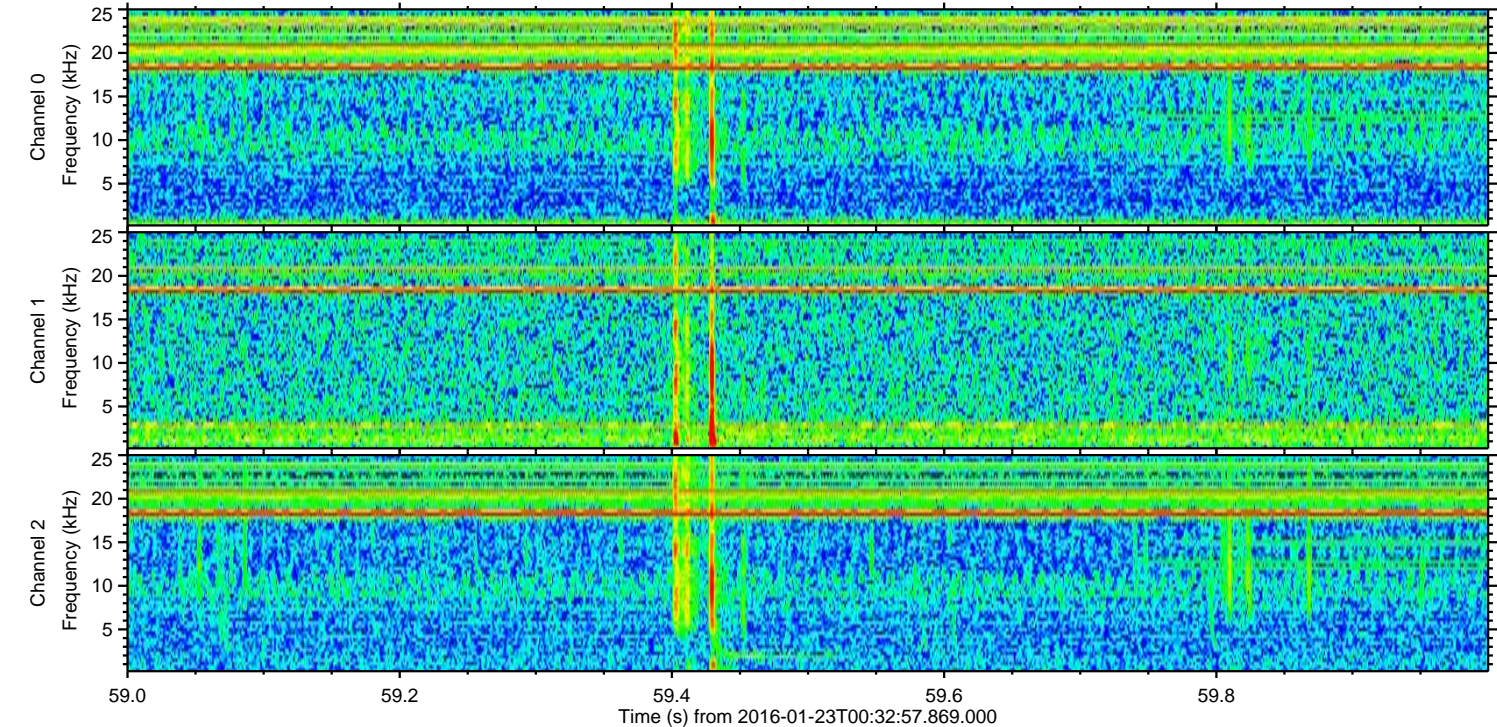
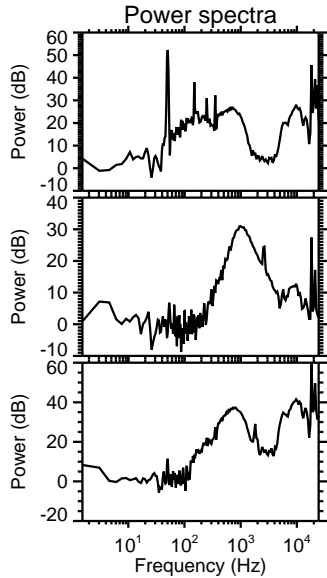
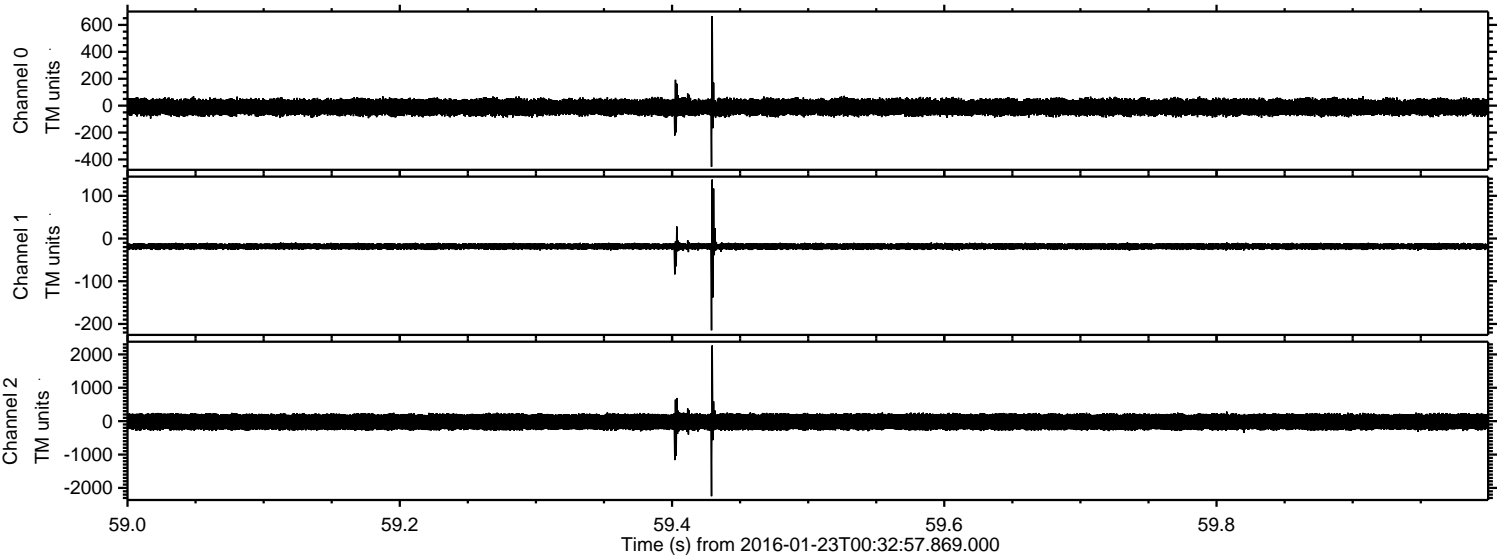


ELMAVAN 3D WAVEFORMS (Measured data sampled at 50 kHz) 51000 packets of 144 samples from 2016-01-23T00:32:57.869.000. Part 38/147

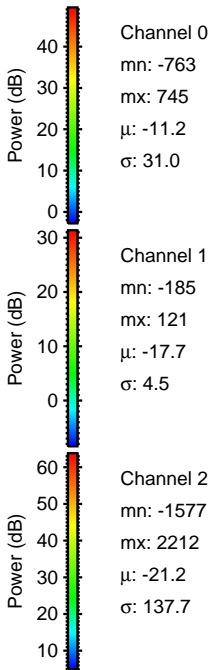
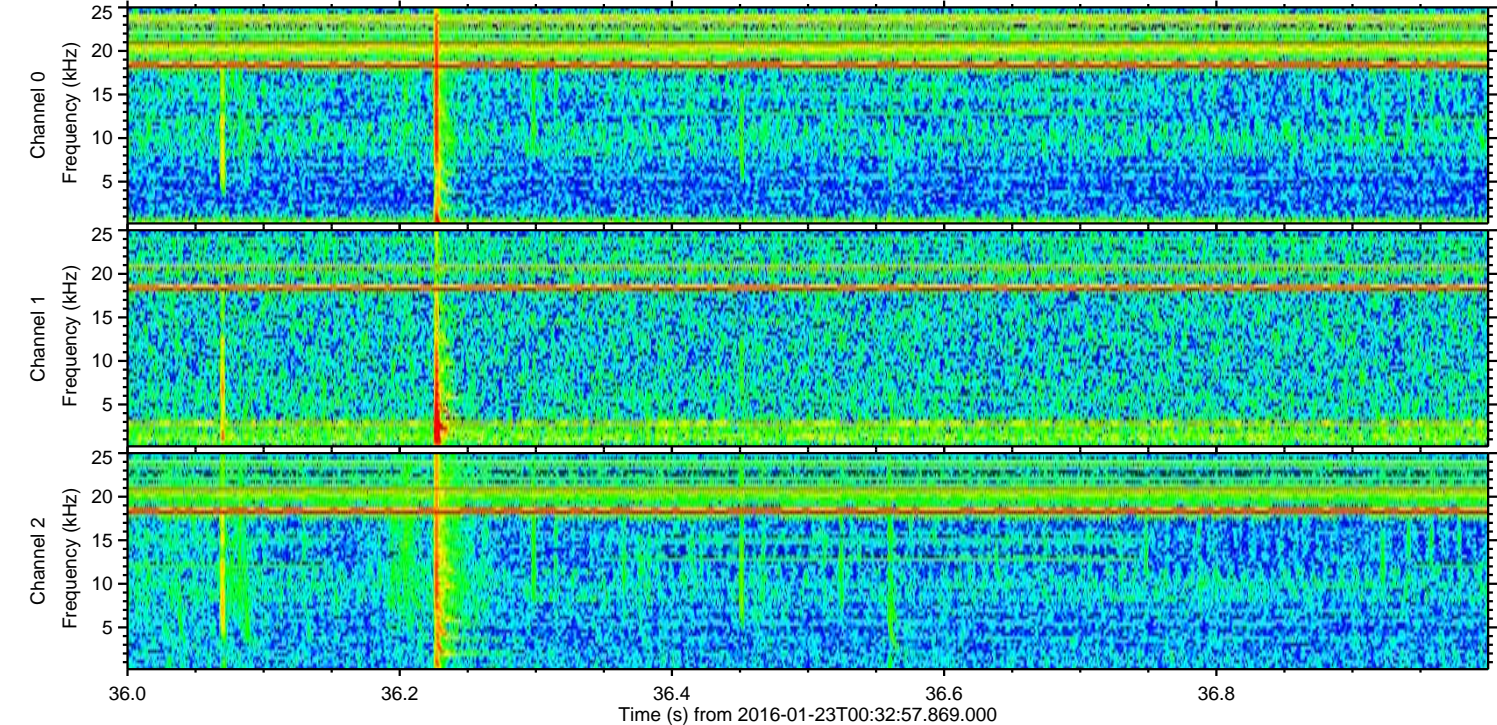
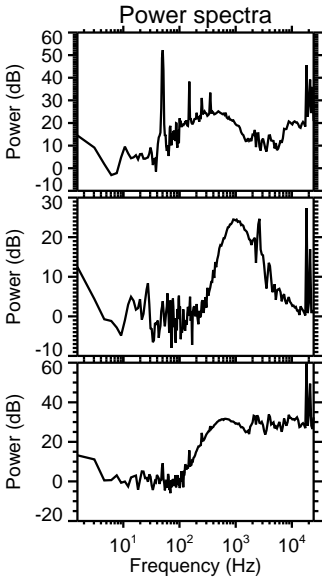
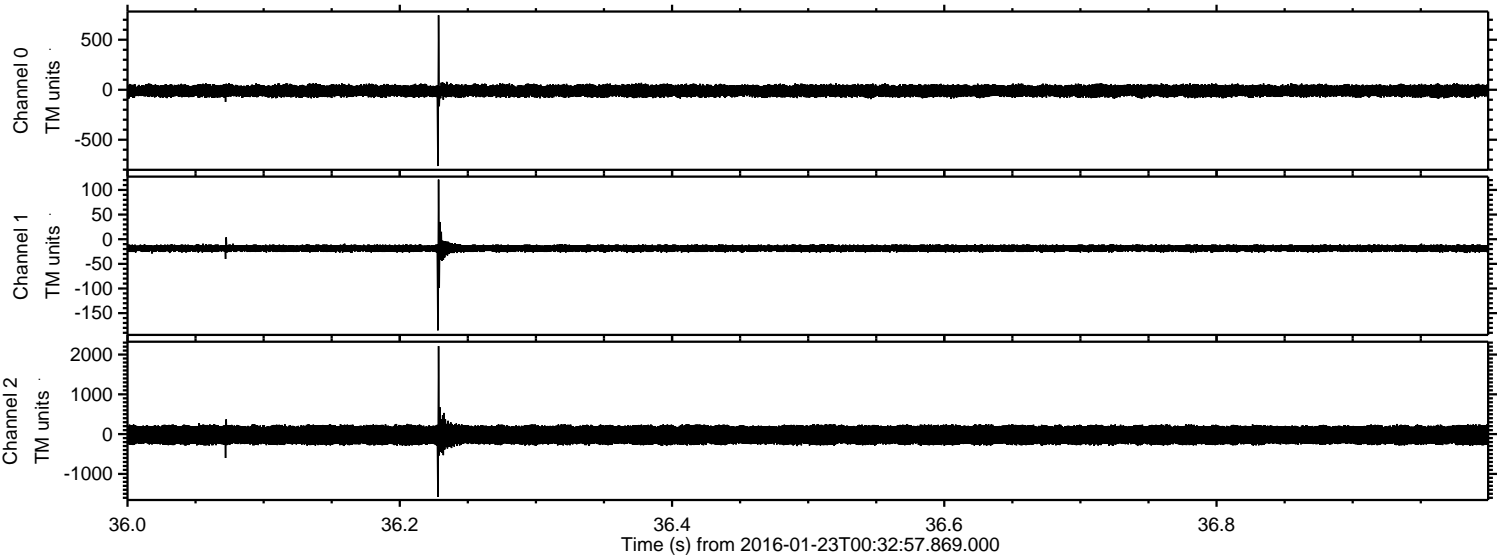
Processed Tue Apr 5 18:41:57 2016 by ELM ver.2012-10-06 from 001__elm20160123_003256__dat00.bin



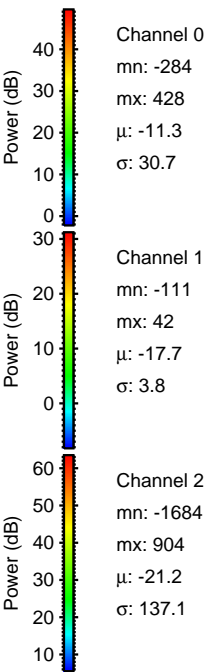
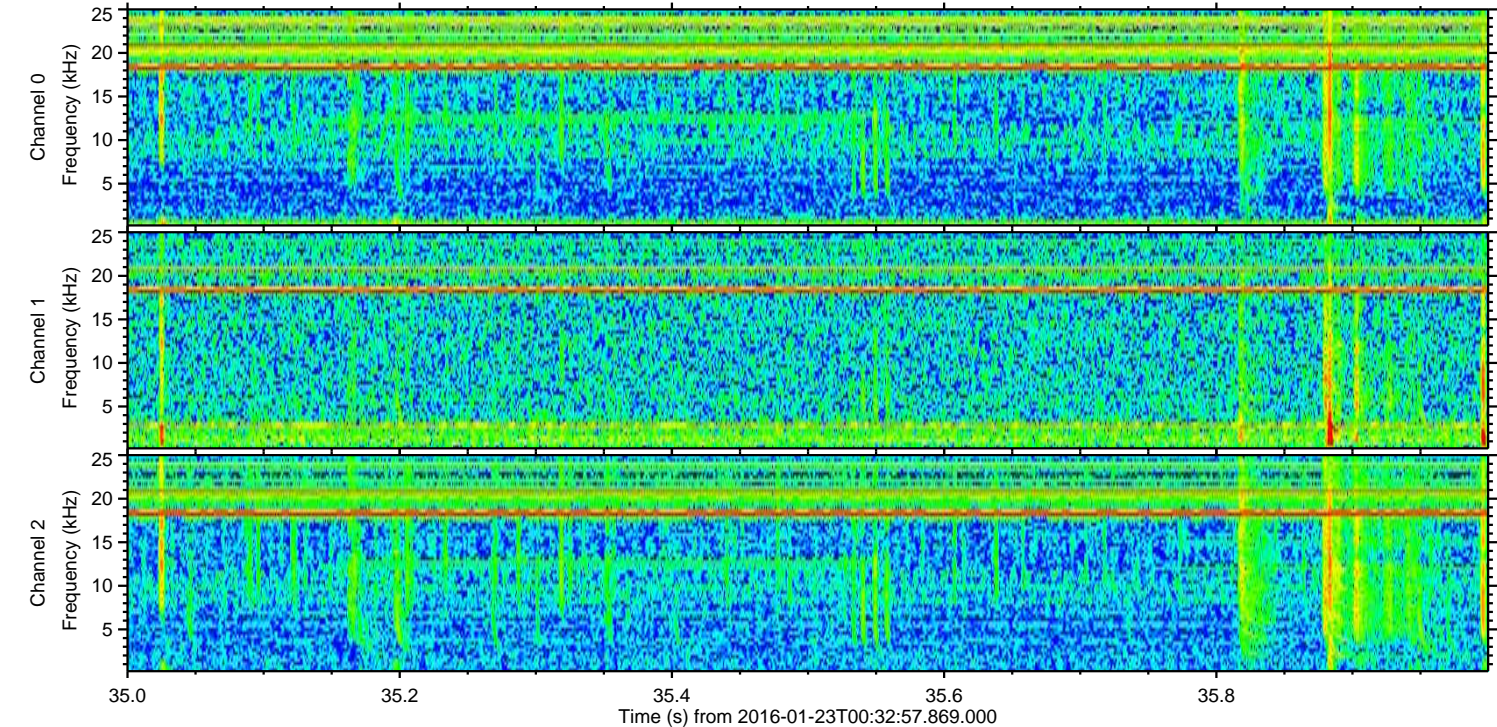
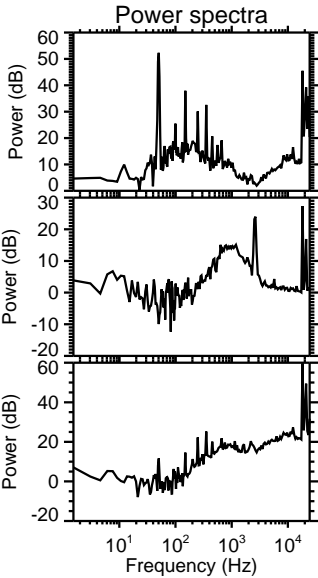
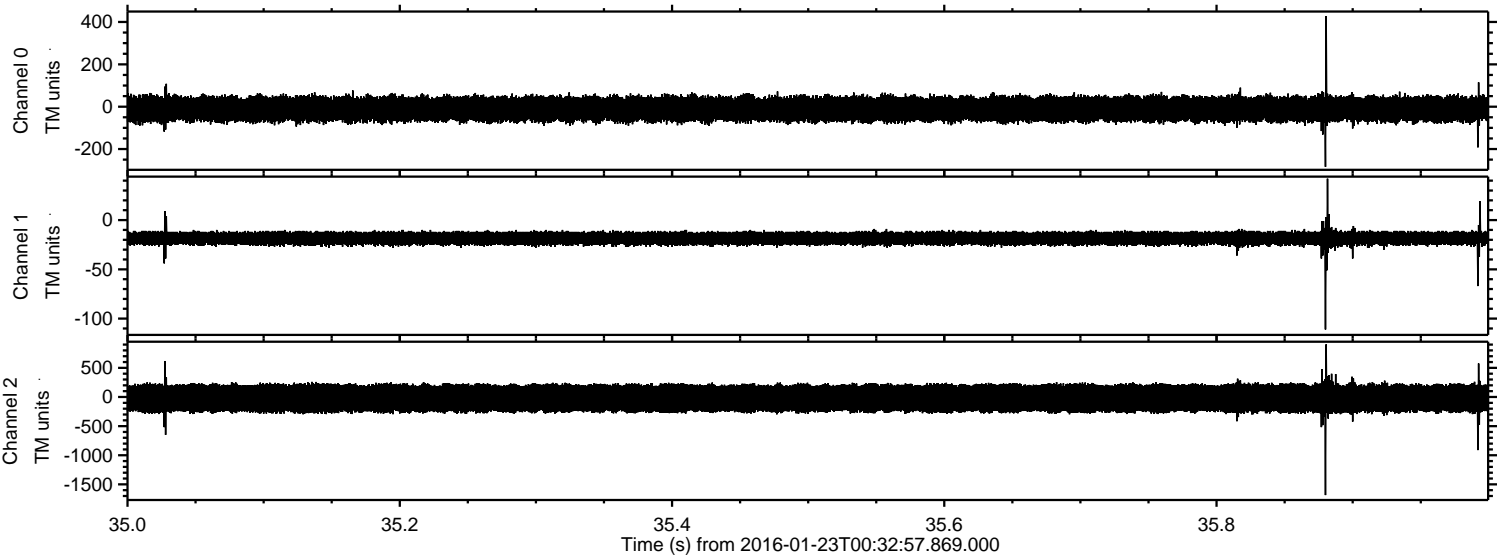
Processed Tue Apr 5 18:41:58 2016 by ELM ver.2012-10-06 from 001__elm20160123_003256__dat00.bin



Processed Tue Apr 5 18:41:59 2016 by ELM ver.2012-10-06 from 001__elm20160123_003256__dat00.bin



Processed Tue Apr 5 18:42:00 2016 by ELM ver.2012-10-06 from 001__elm20160123_003256__dat00.bin



Processed Tue Apr 5 18:42:01 2016 by ELM ver.2012-10-06 from 001__elm20160123_003256__dat00.bin

