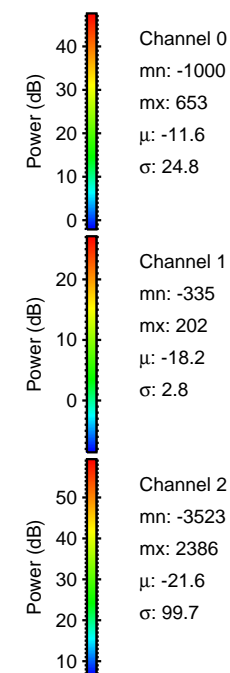
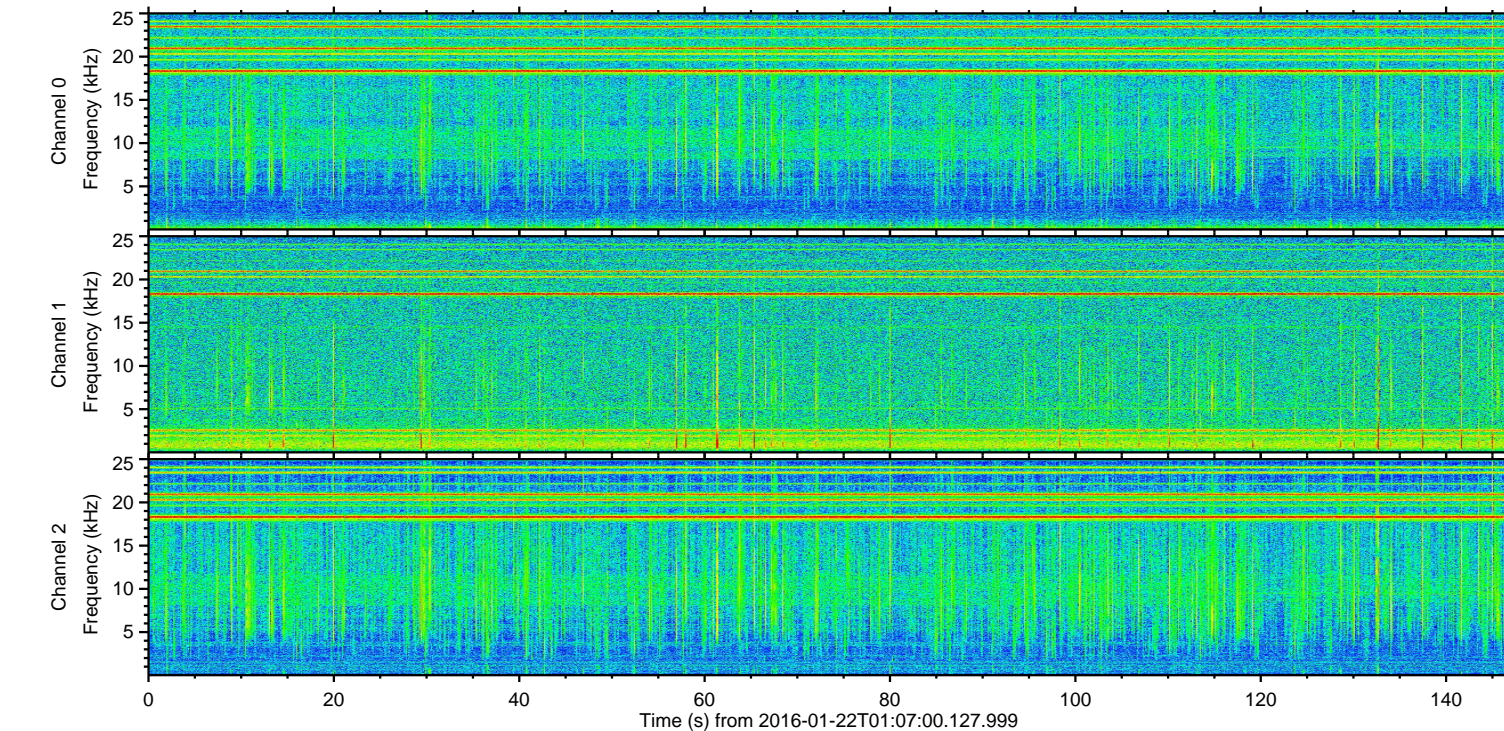
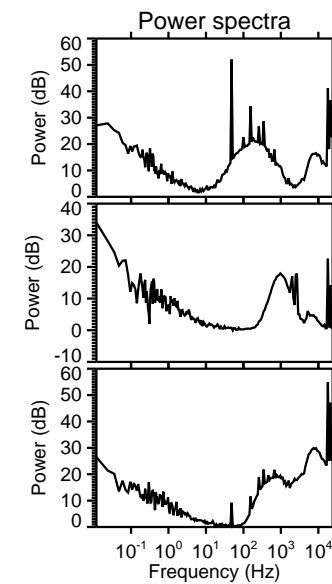
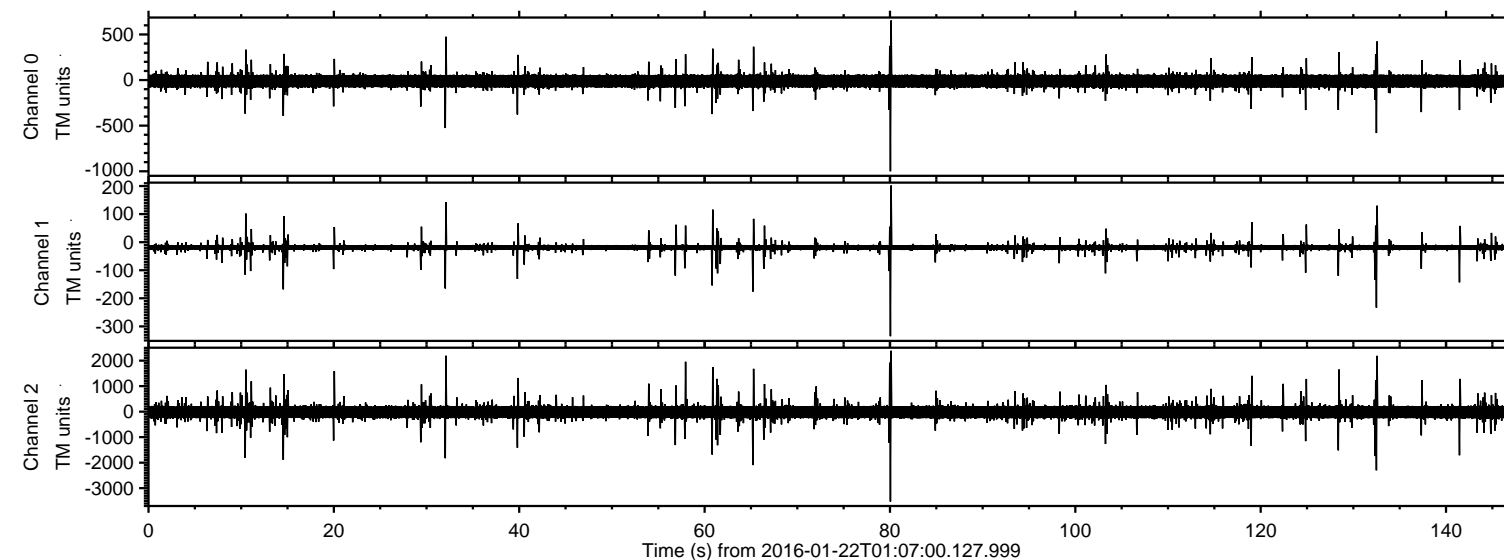


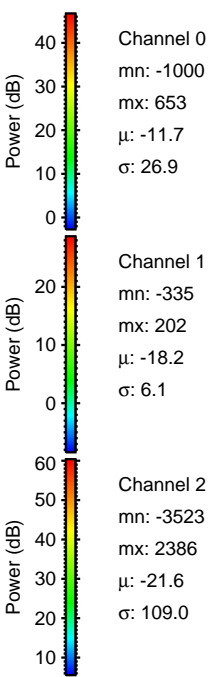
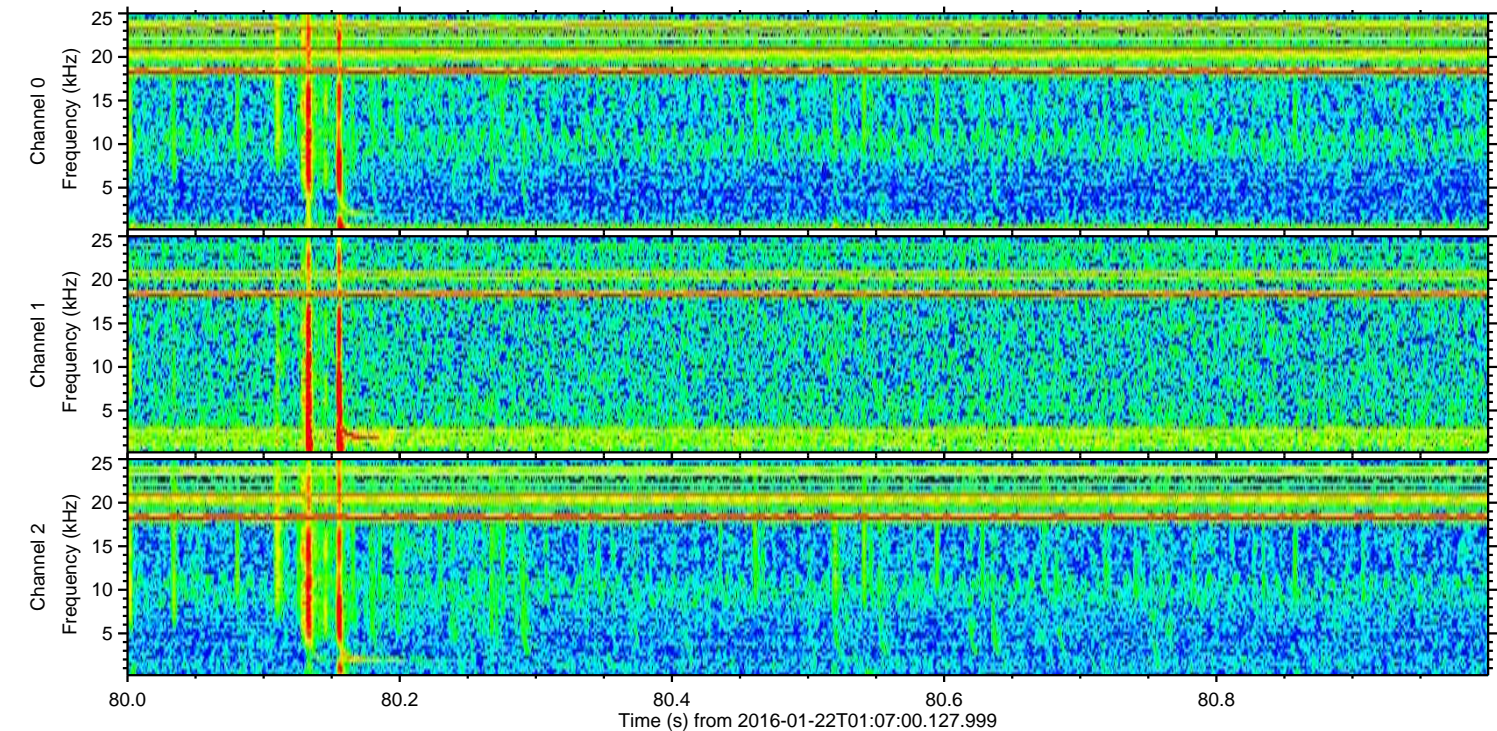
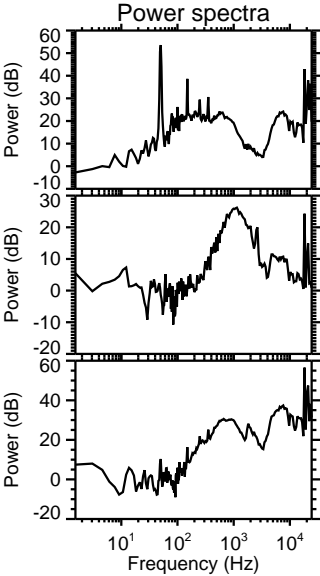
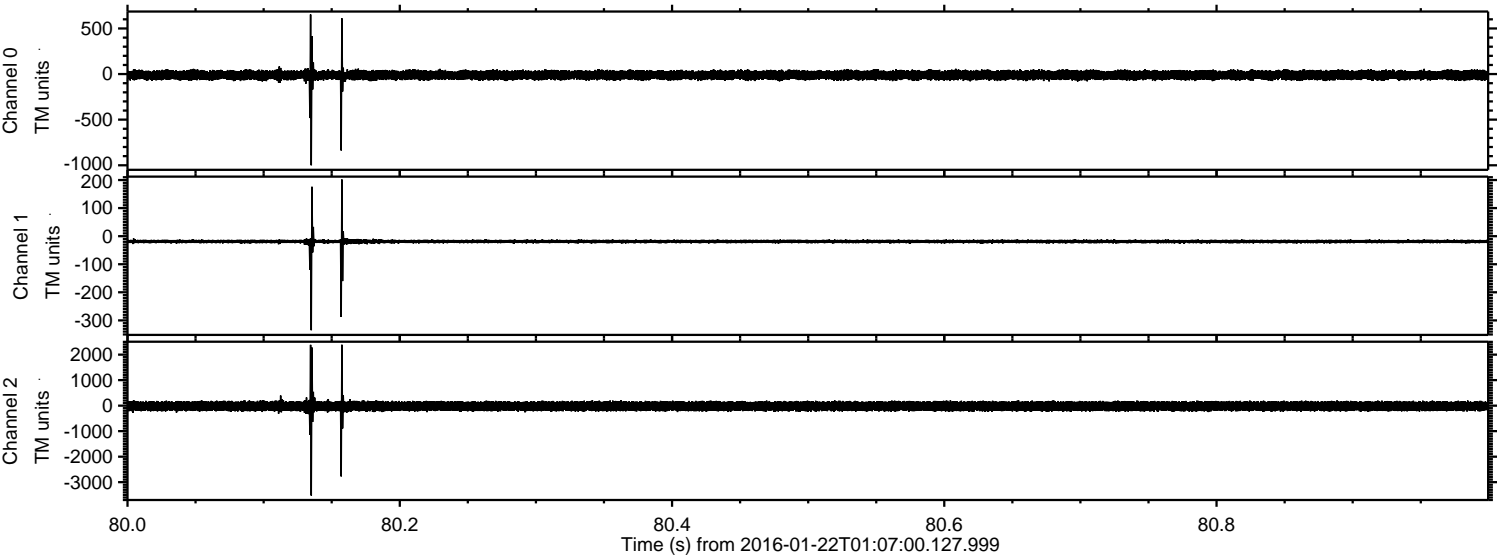
# ELMAVAN 3D WAVEFORMS (Measured data sampled at 50 kHz) 51000 packets of 144 samples from 2016-01-22T01:07:00.127.999.

Processed Mon Apr 4 07:47:19 2016 by ELM ver.2012-10-06 from 001\_\_elm20160122\_010659\_\_dat00.bin





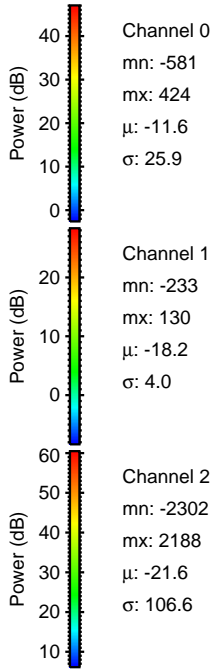
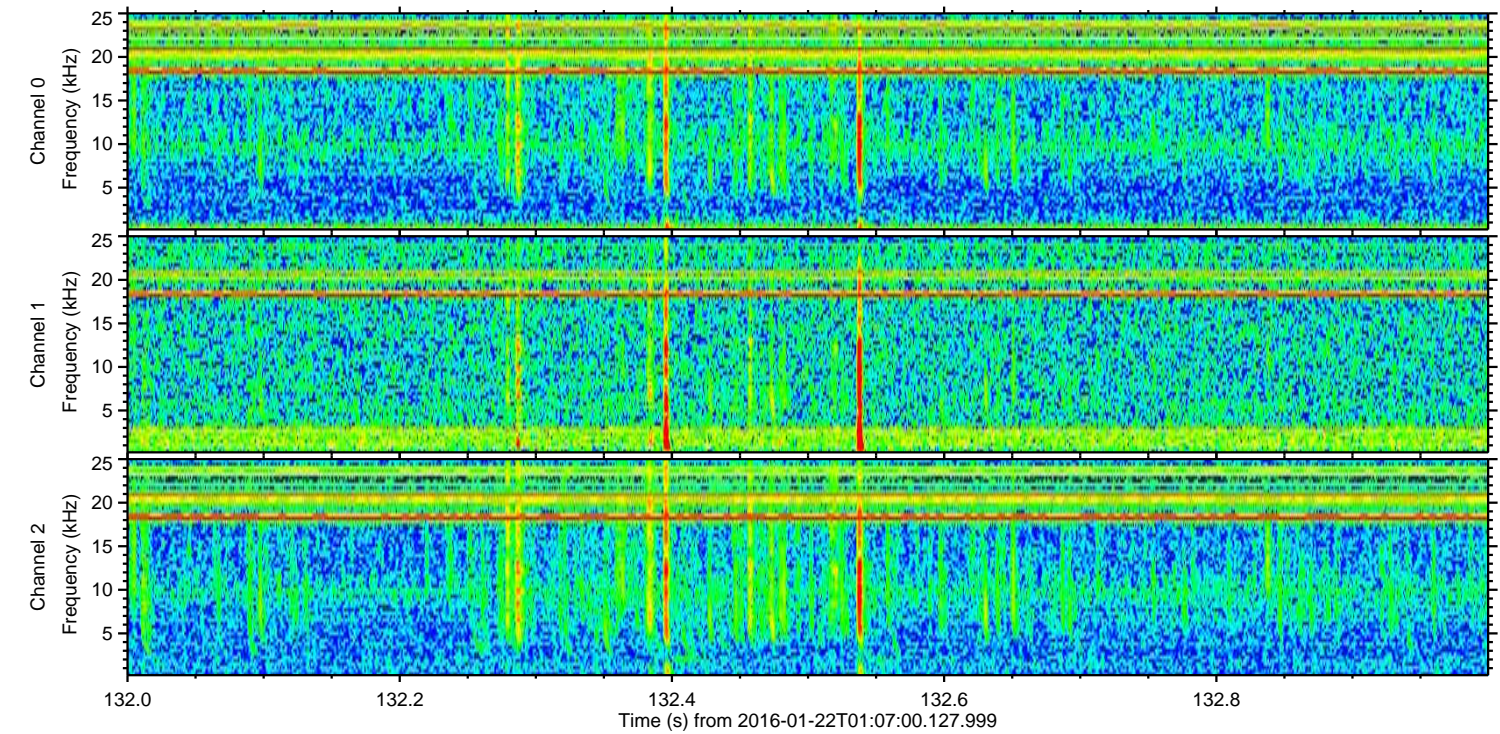
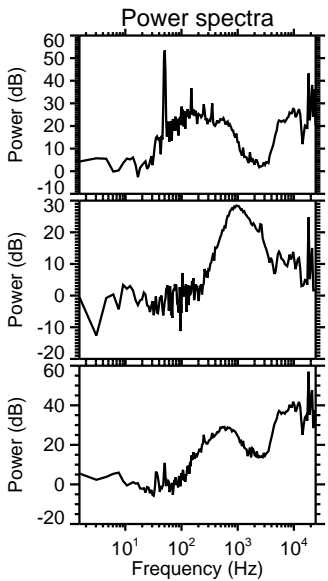
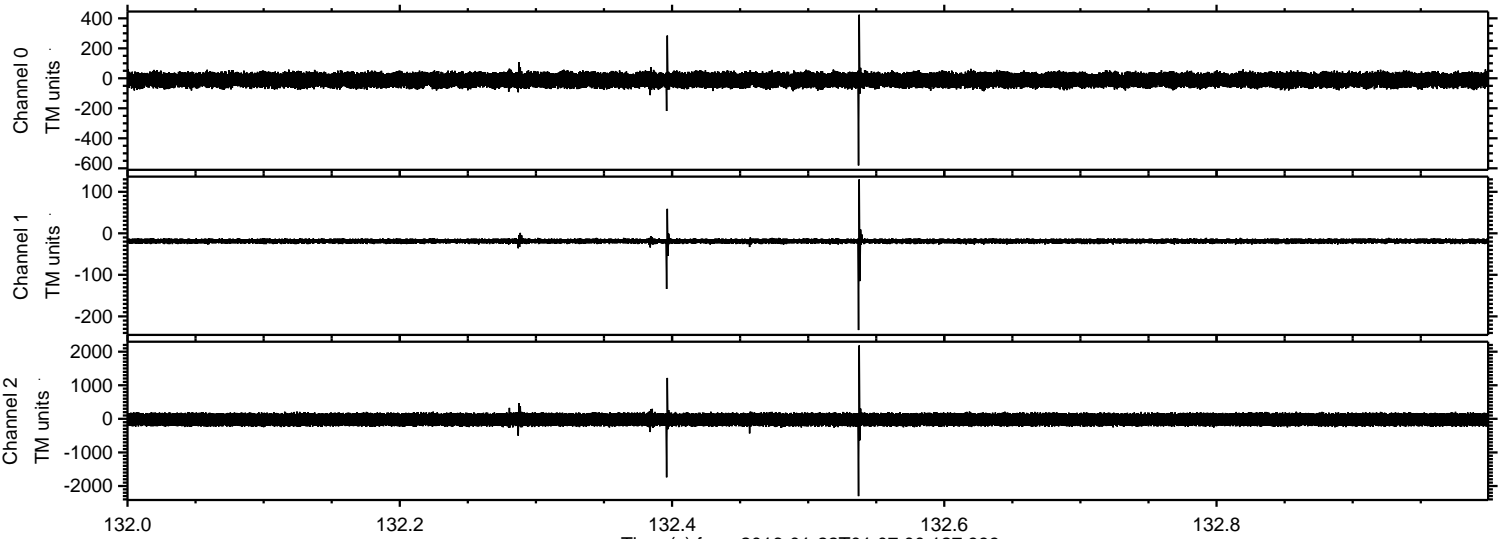
Processed Mon Apr 4 07:47:31 2016 by ELM ver.2012-10-06 from 001\_\_elm20160122\_010659\_\_dat00.bin





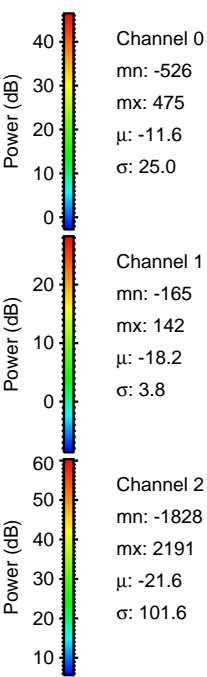
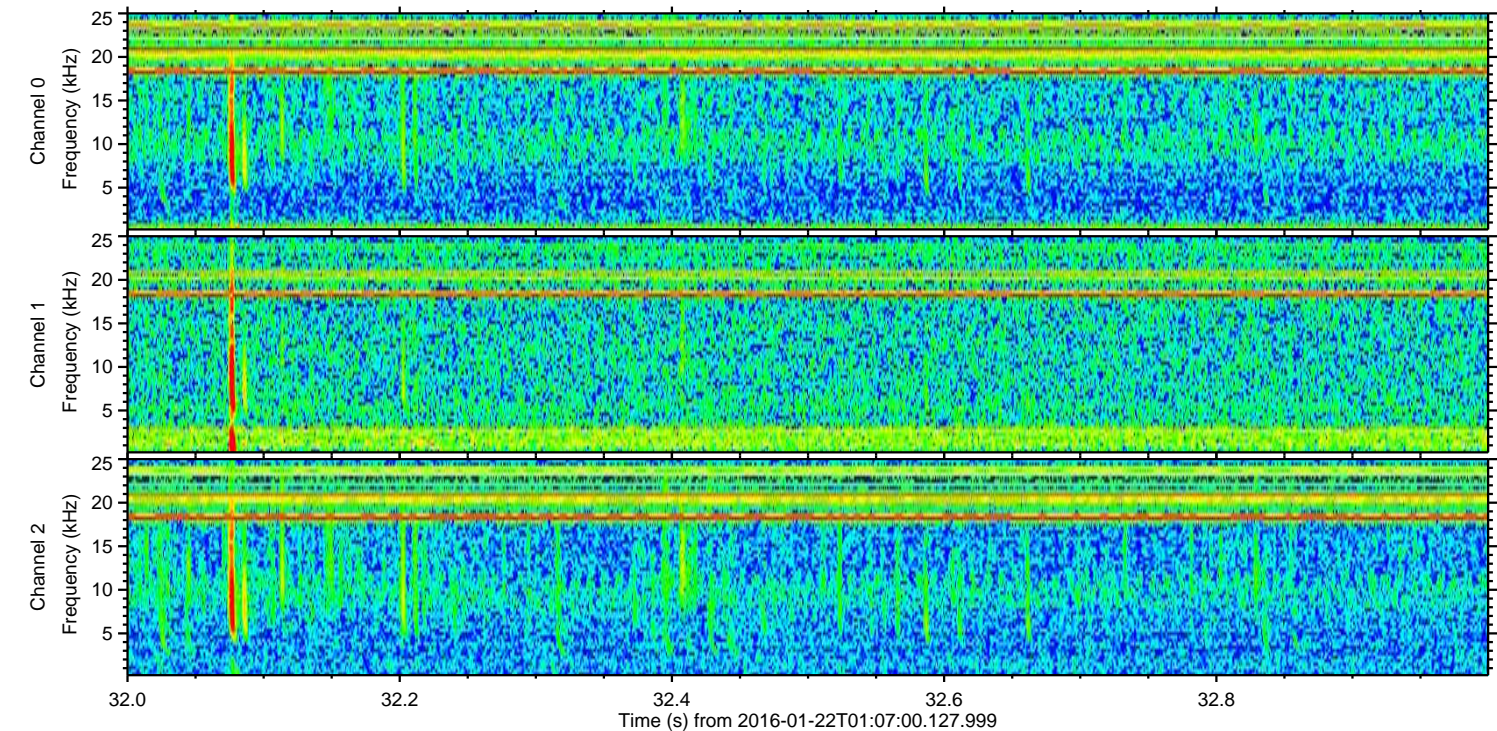
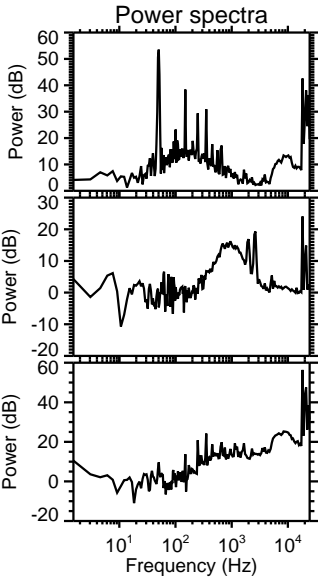
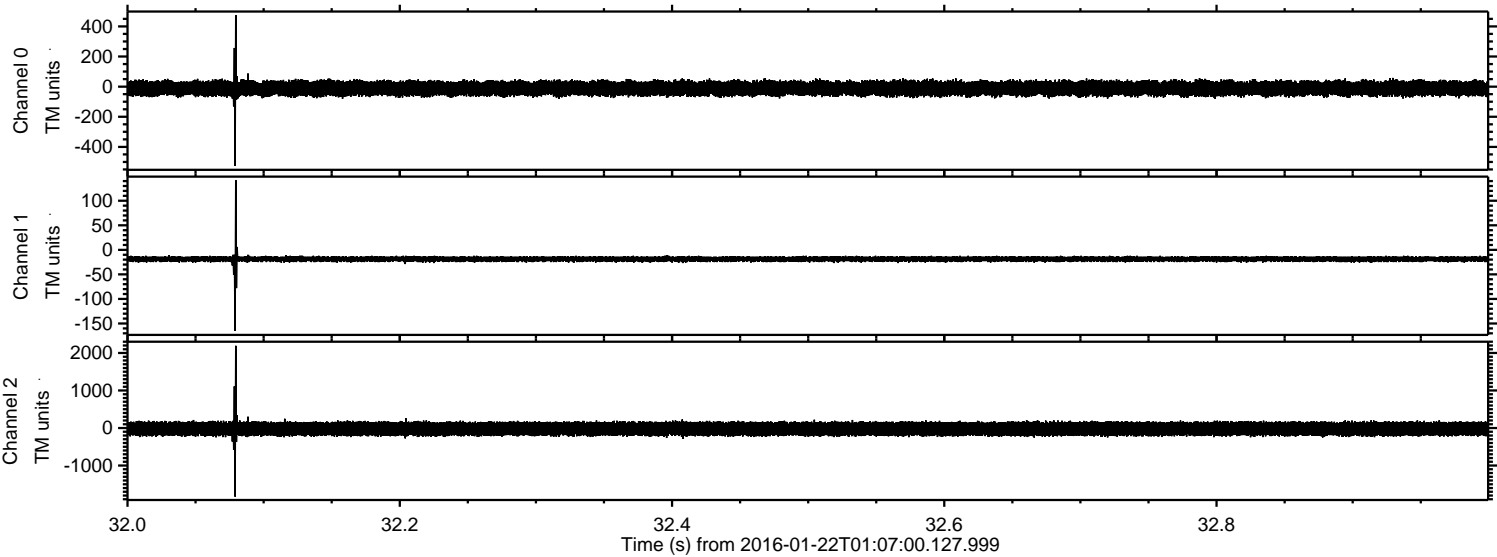
ELMAVAN 3D WAVEFORMS (Measured data sampled at 50 kHz) 51000 packets of 144 samples from 2016-01-22T01:07:00.127.999. Part 133/147

Processed Mon Apr 4 07:47:32 2016 by ELM ver.2012-10-06 from 001\_\_elm20160122\_010659\_\_dat00.bin



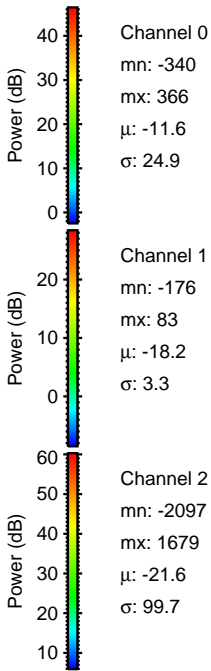
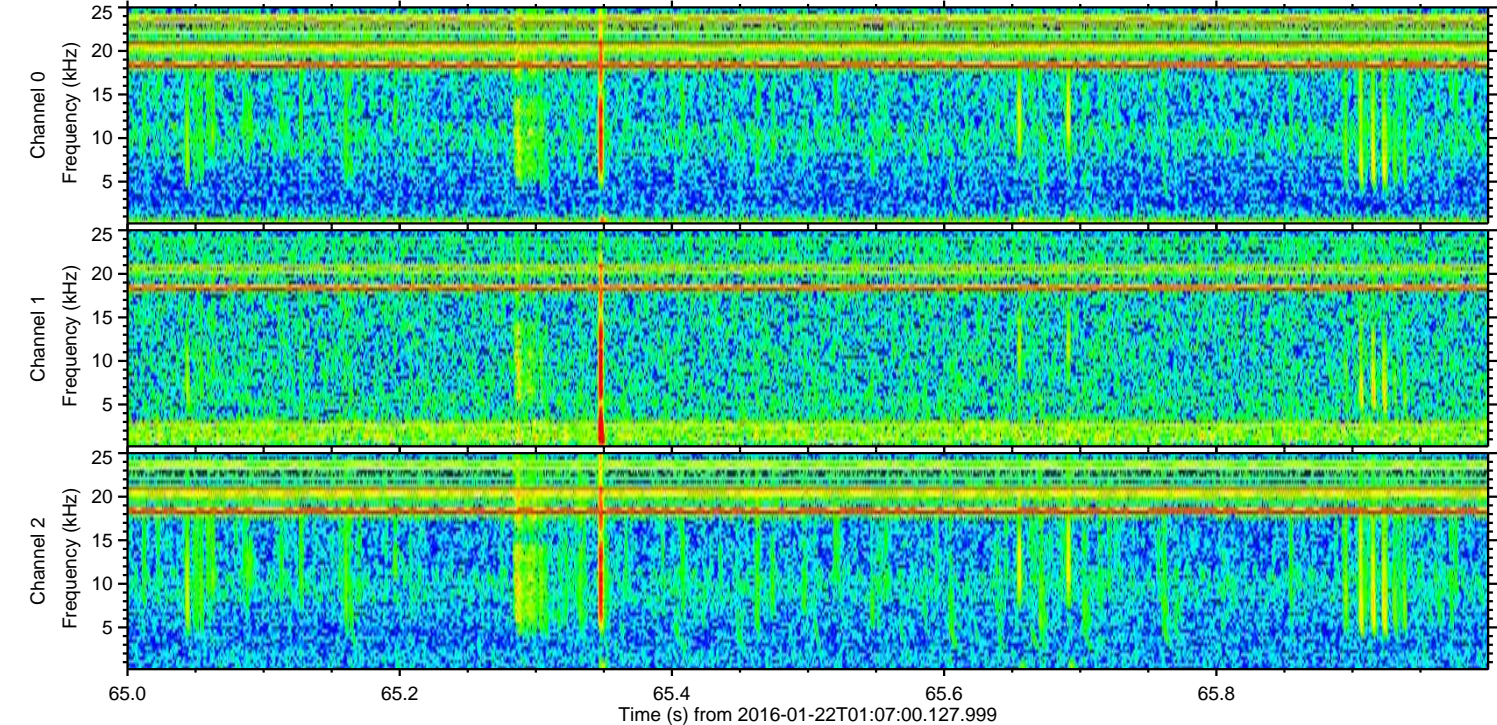
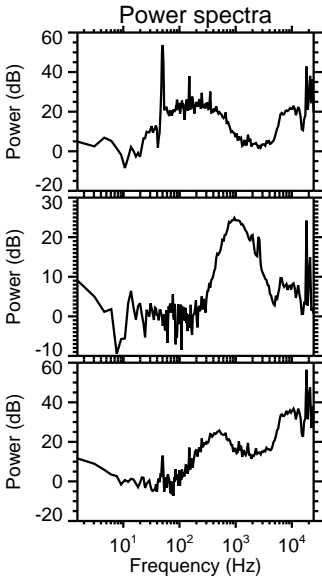
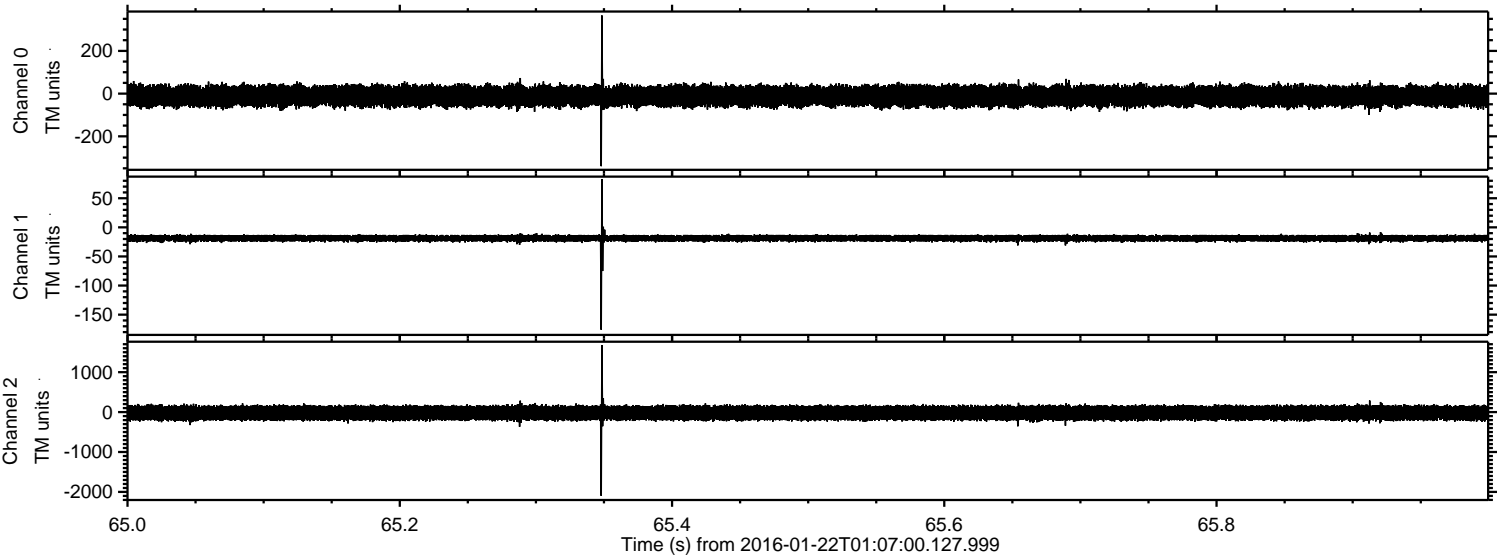


Processed Mon Apr 4 07:47:33 2016 by ELM ver.2012-10-06 from 001\_\_elm20160122\_010659\_\_dat00.bin



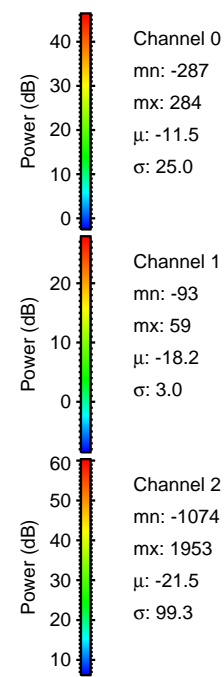
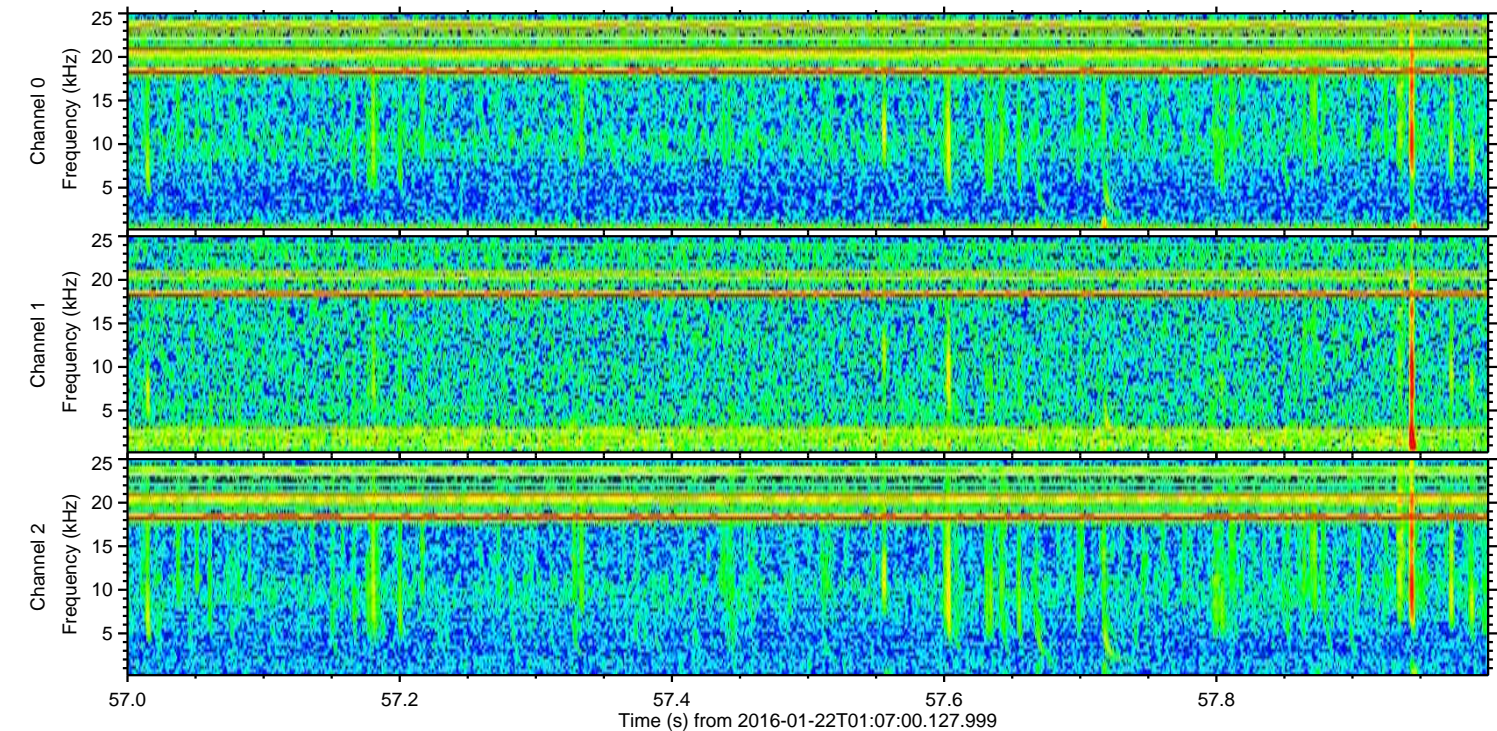
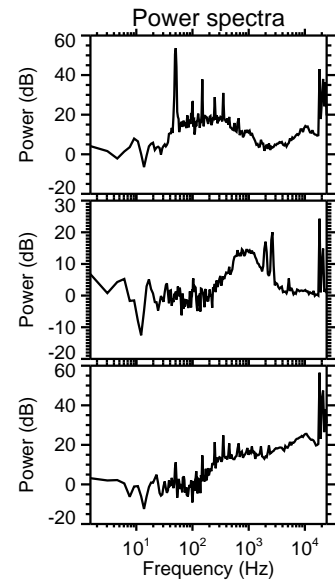
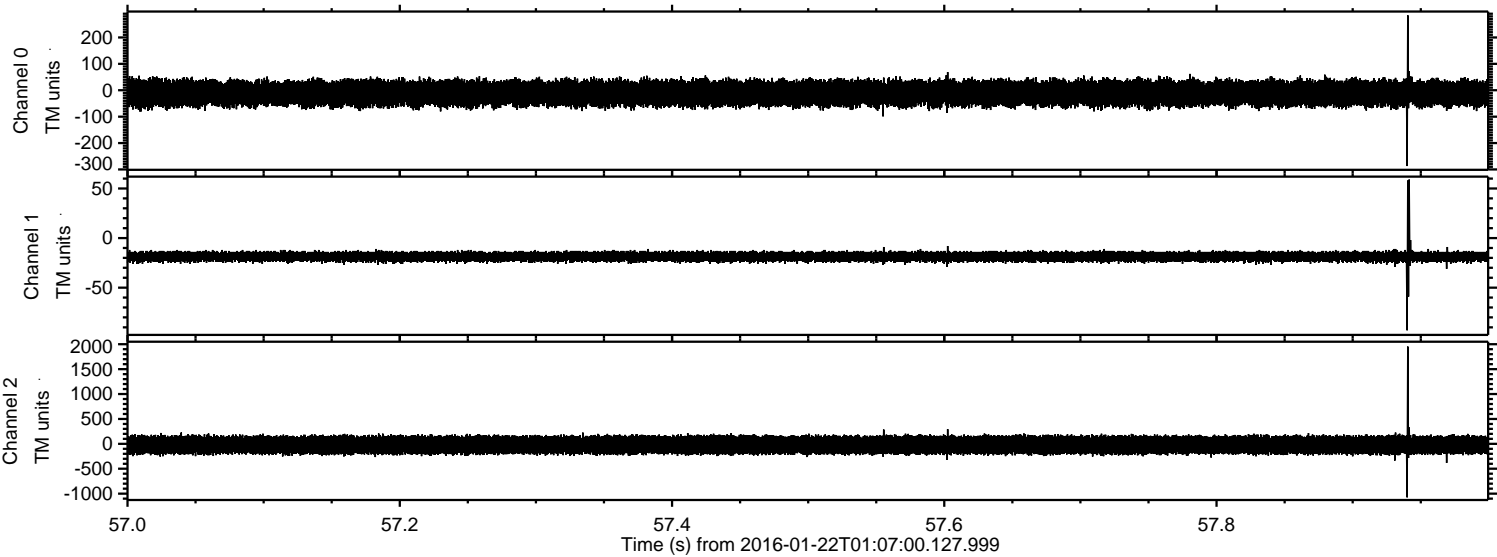


Processed Mon Apr 4 07:47:34 2016 by ELM ver.2012-10-06 from 001\_\_elm20160122\_010659\_\_dat00.bin



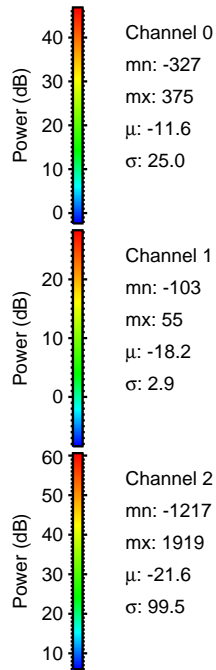
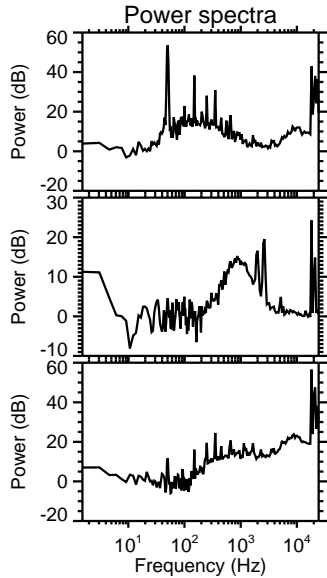
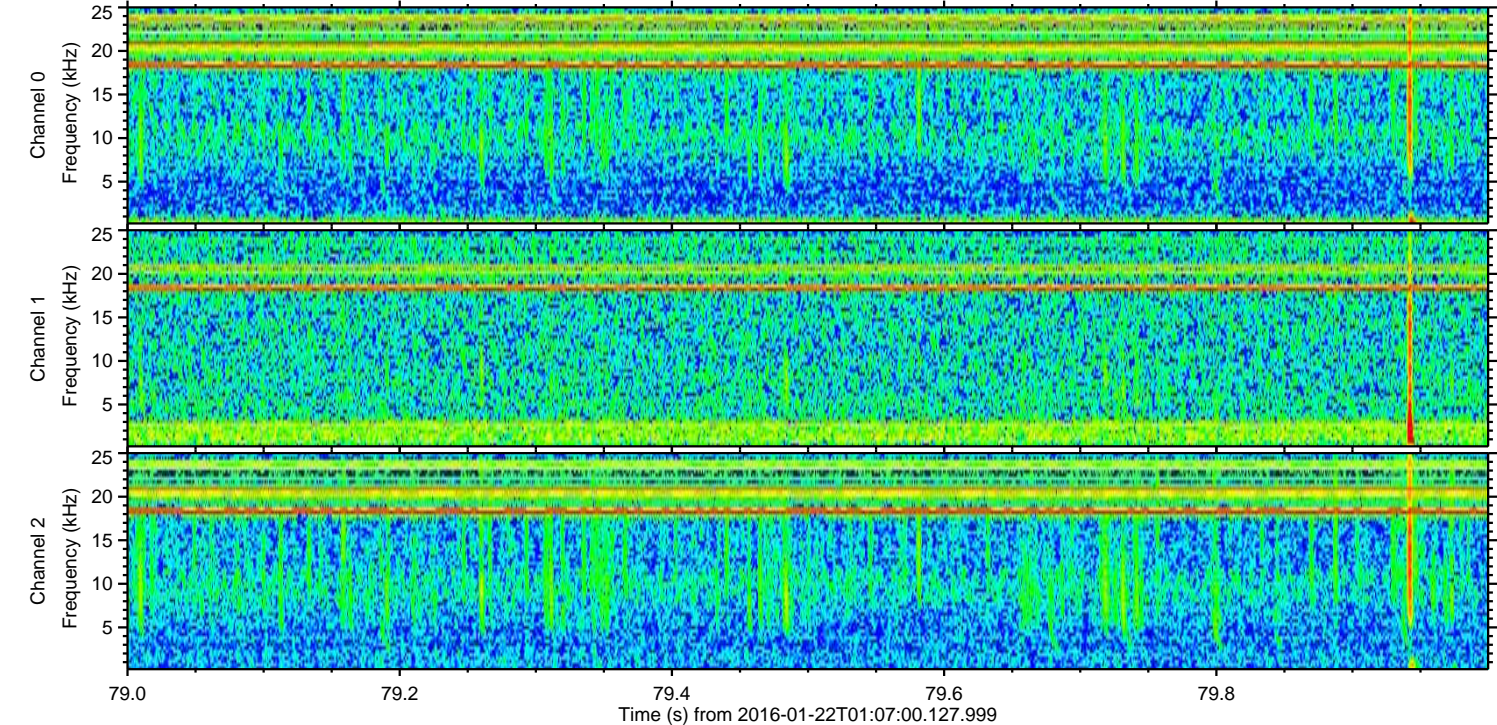
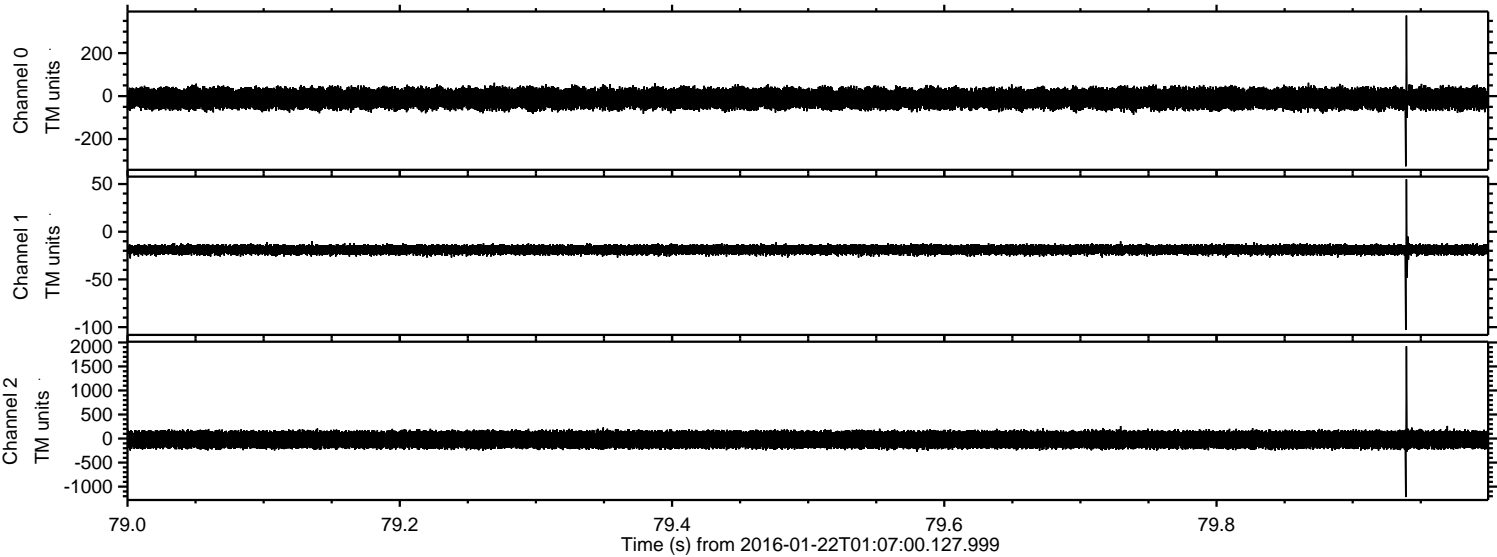


Processed Mon Apr 4 07:47:35 2016 by ELM ver.2012-10-06 from 001\_\_elm20160122\_010659\_\_dat00.bin





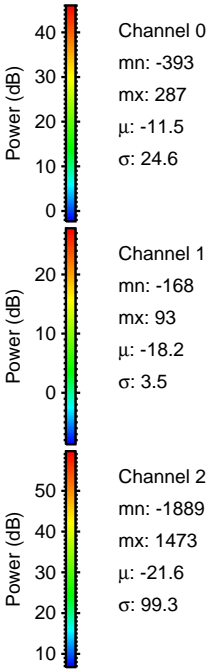
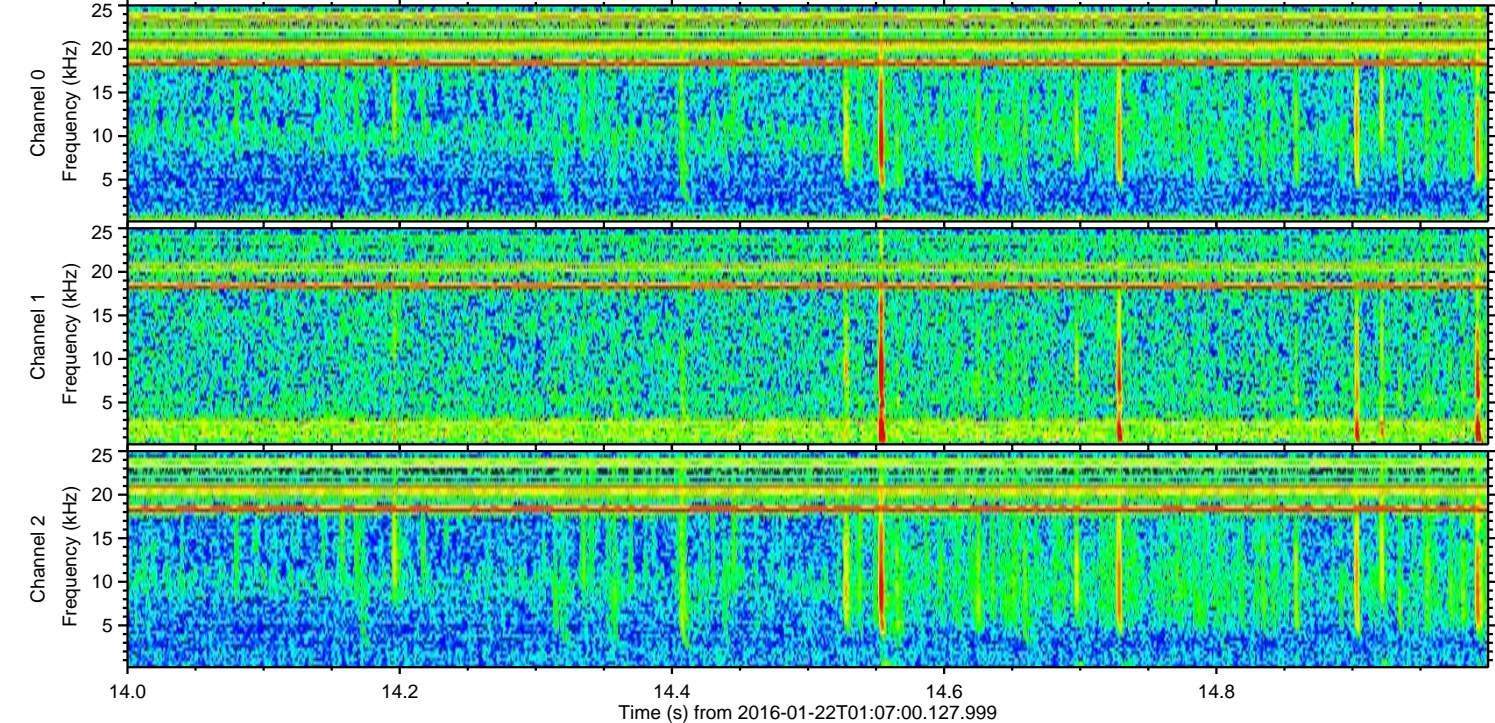
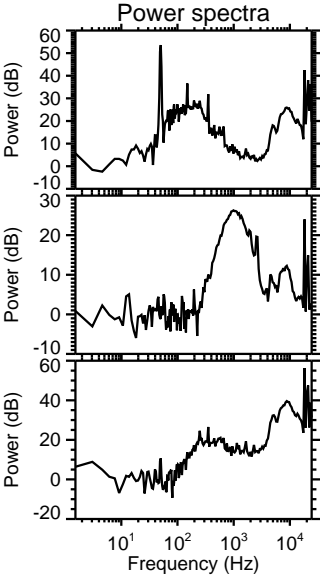
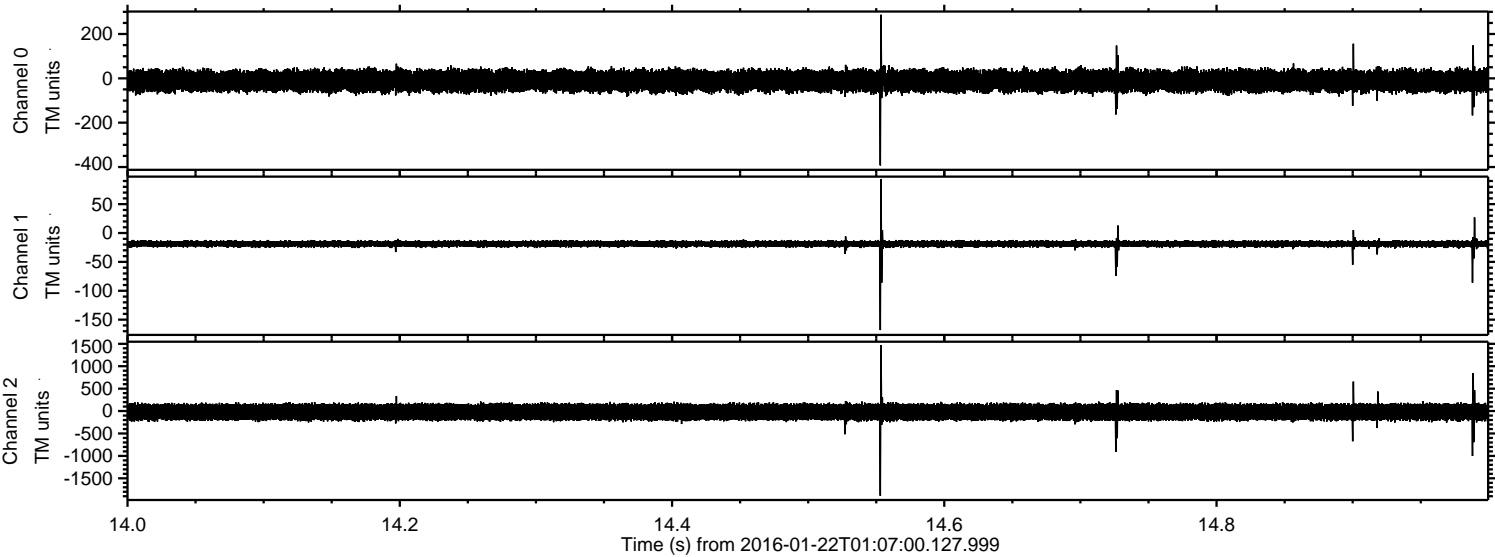
Processed Mon Apr 4 07:47:36 2016 by ELM ver.2012-10-06 from 001\_\_elm20160122\_010659\_\_dat00.bin





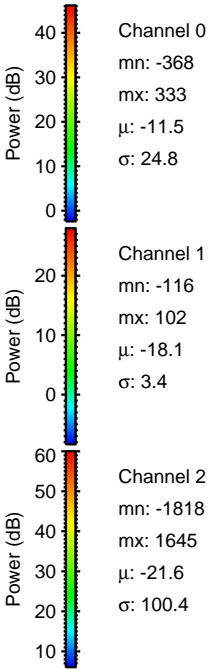
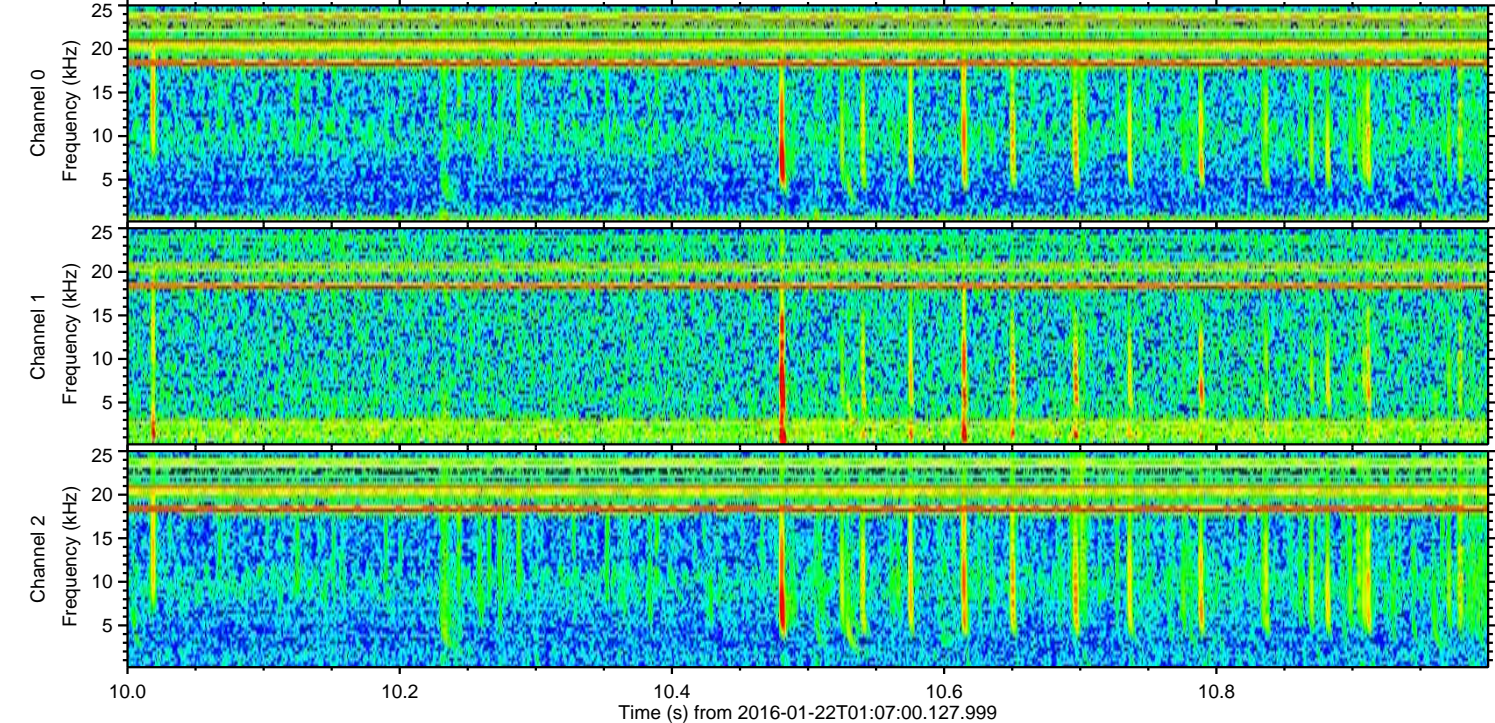
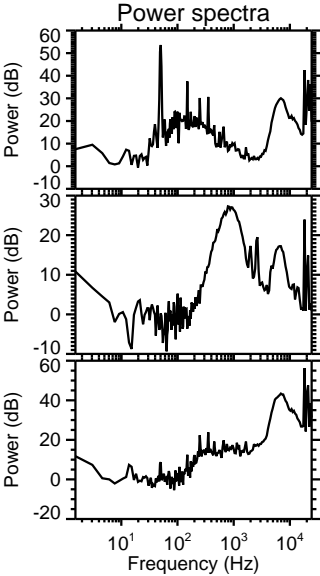
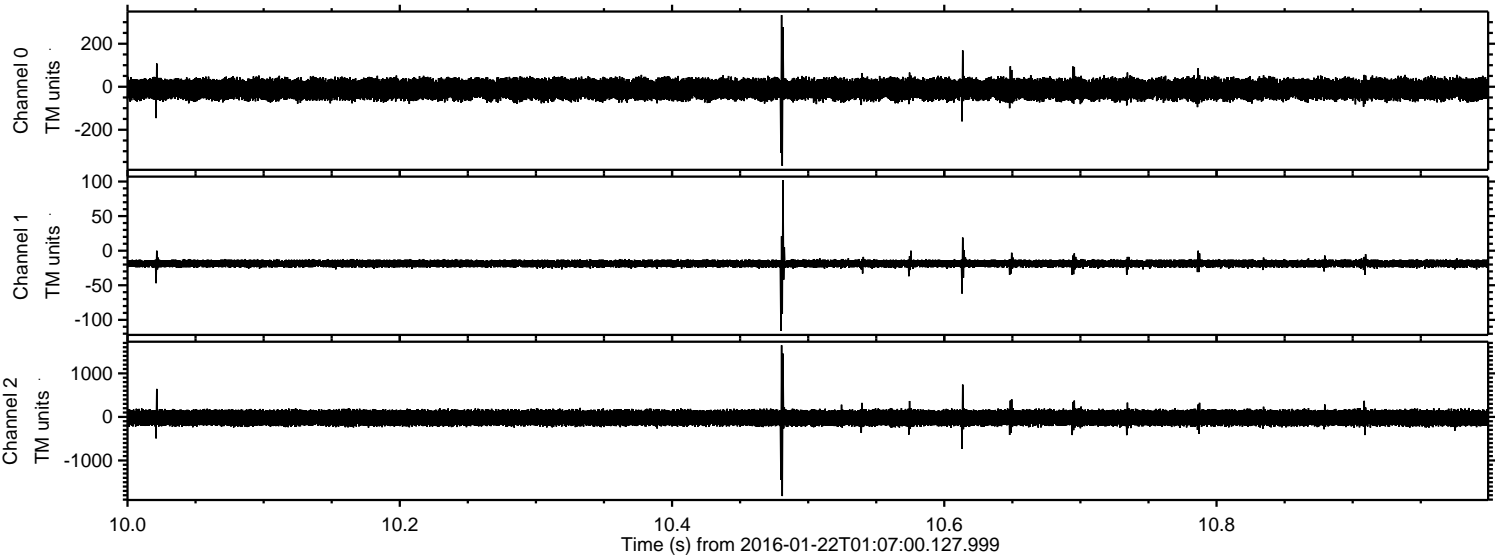
ELMAVAN 3D WAVEFORMS (Measured data sampled at 50 kHz) 51000 packets of 144 samples from 2016-01-22T01:07:00.127.999. Part 15/147

Processed Mon Apr 4 07:47:36 2016 by ELM ver.2012-10-06 from 001\_\_elm20160122\_010659\_\_dat00.bin





Processed Mon Apr 4 07:47:37 2016 by ELM ver.2012-10-06 from 001\_\_elm20160122\_010659\_\_dat00.bin





Processed Mon Apr 4 07:47:38 2016 by ELM ver.2012-10-06 from 001\_\_elm20160122\_010659\_\_dat00.bin

