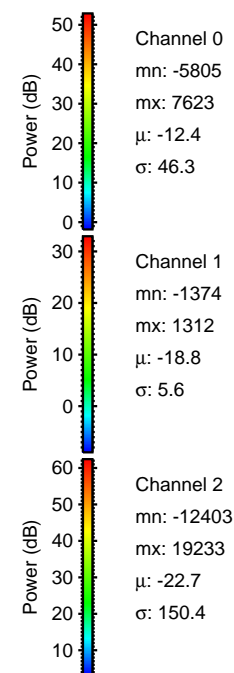
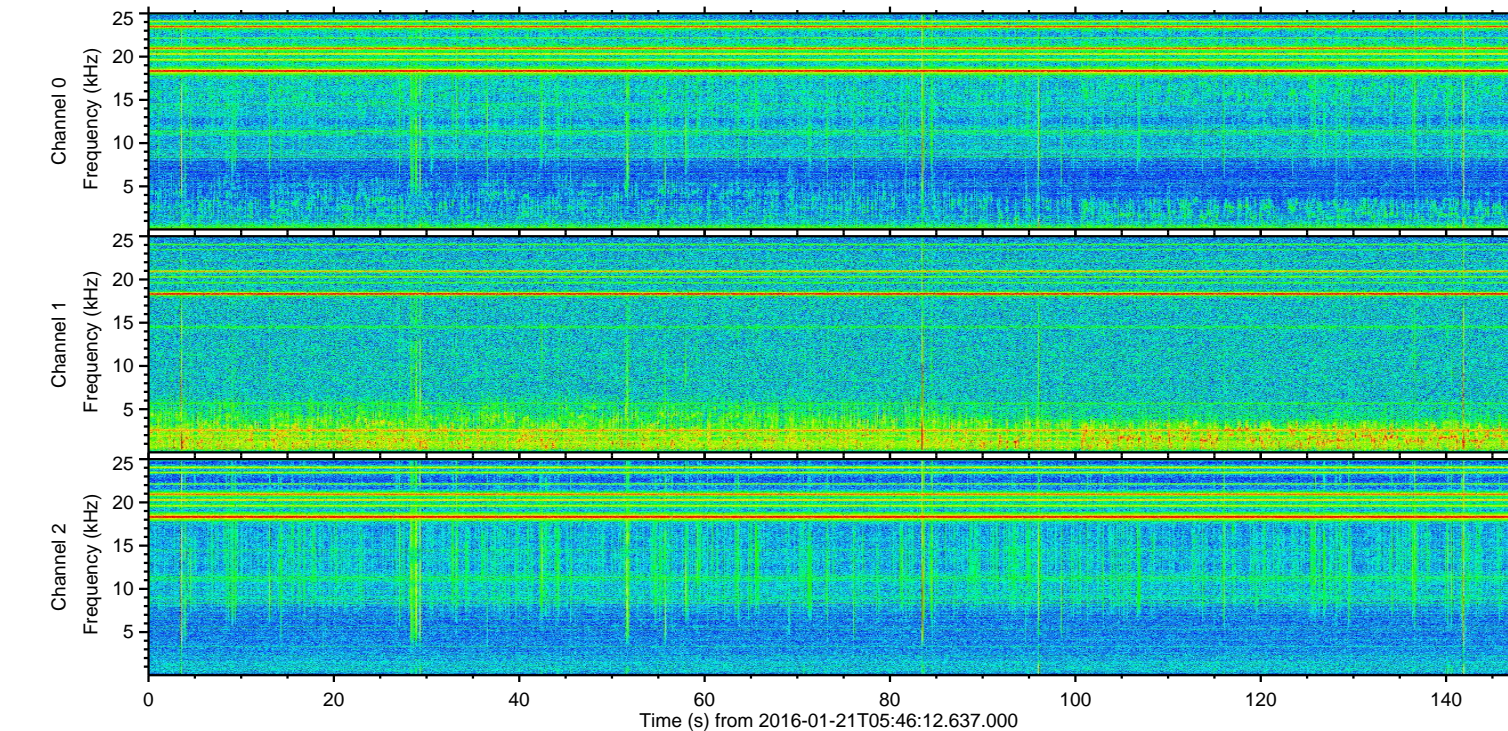
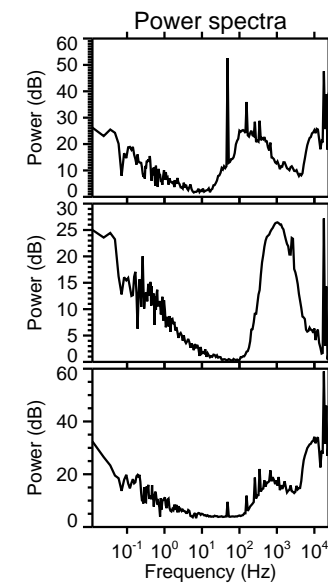
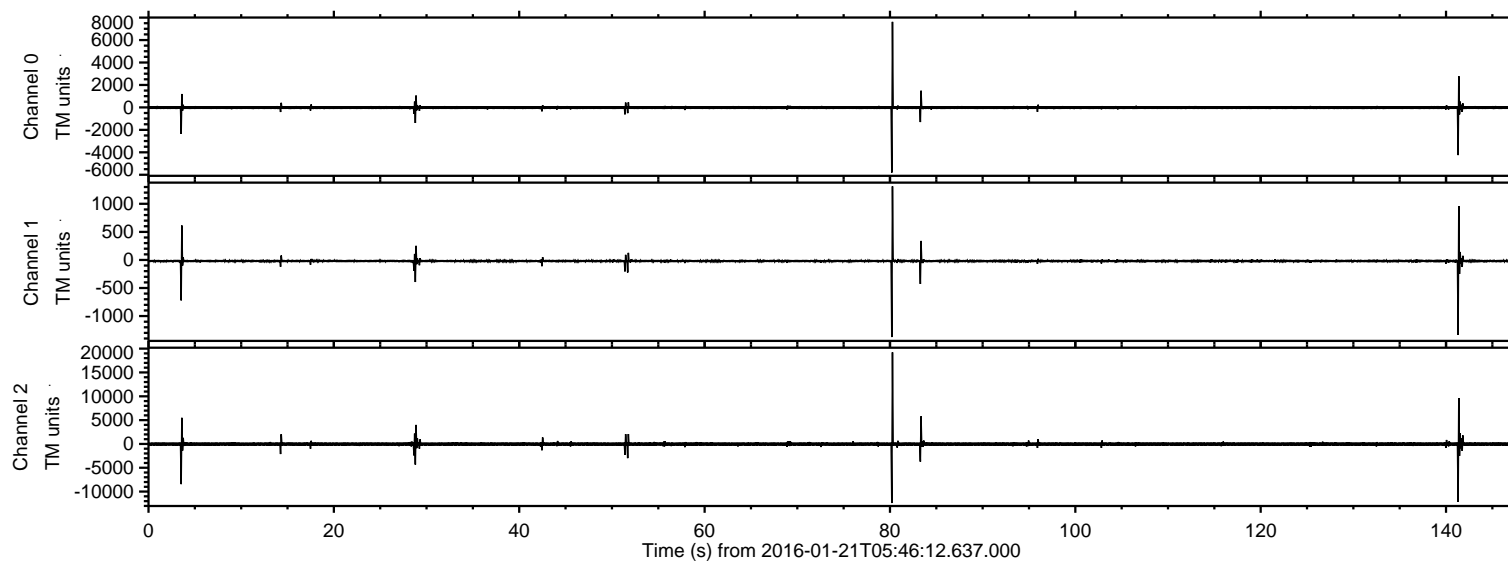


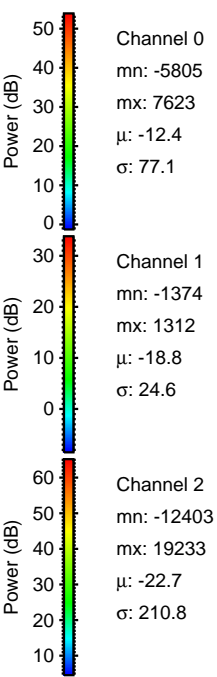
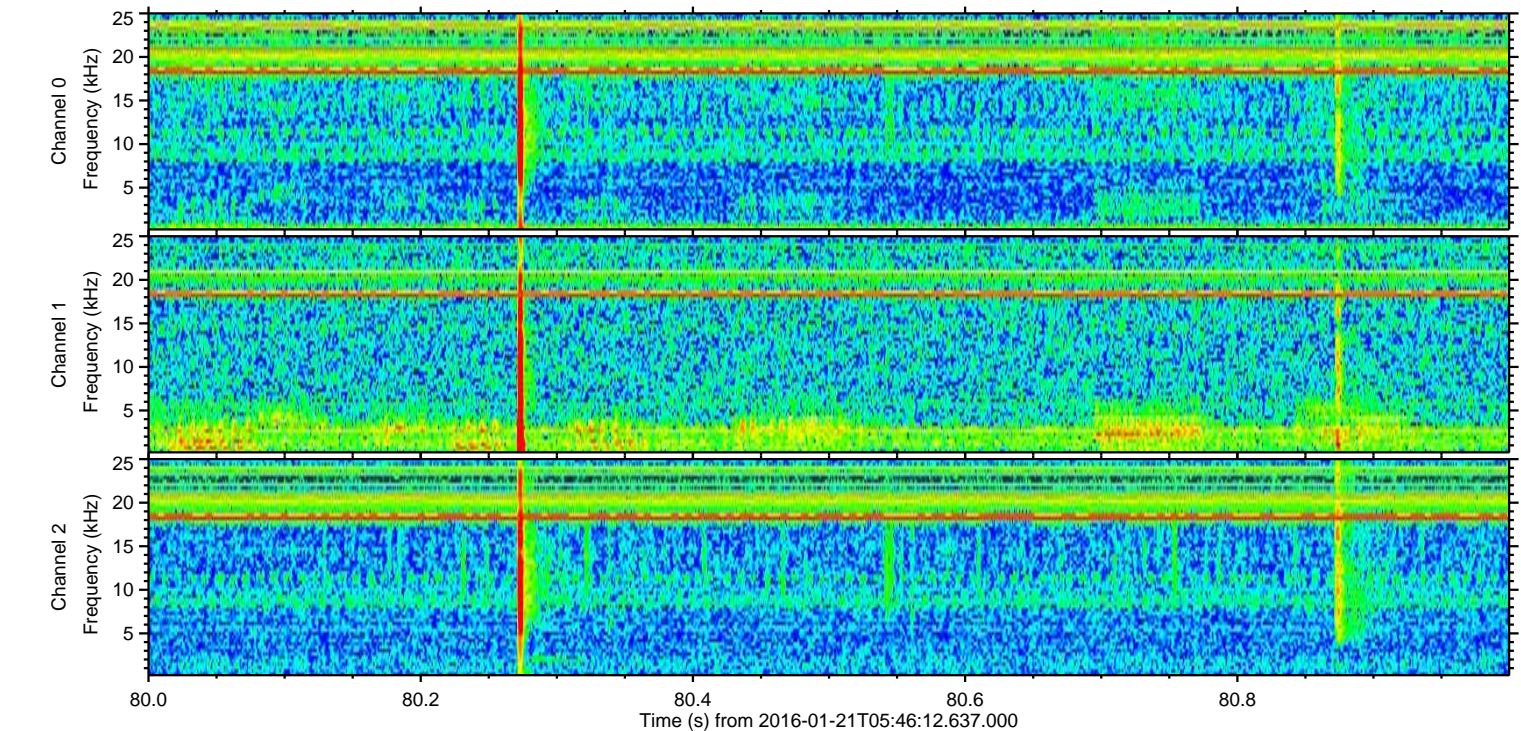
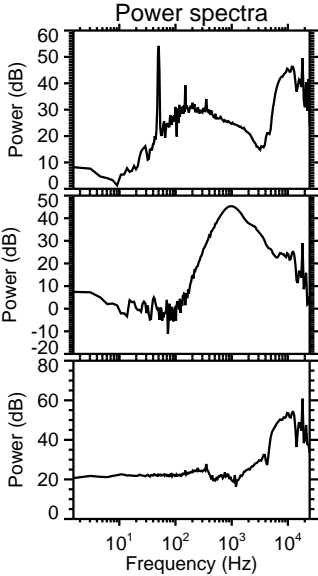
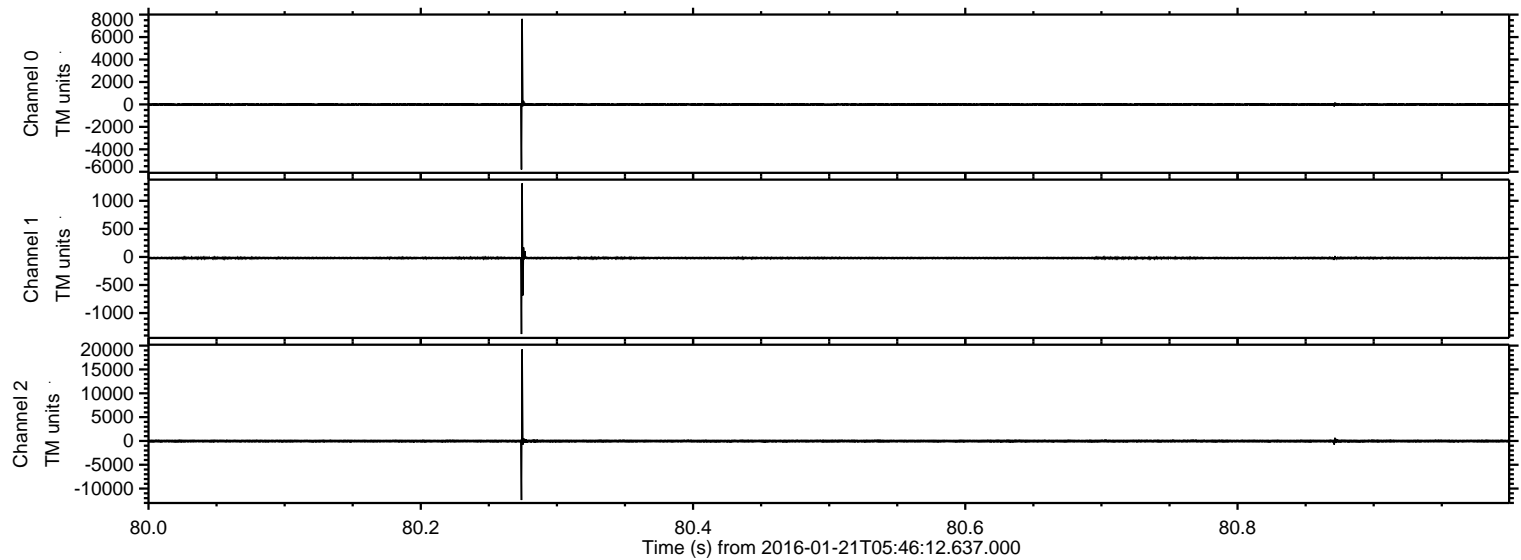
# ELMAVAN 3D WAVEFORMS (Measured data sampled at 50 kHz) 51000 packets of 144 samples from 2016-01-21T05:46:12.637.000.

Processed Mon Apr 4 03:57:05 2016 by ELM ver.2012-10-06 from 001\_\_elm20160121\_054611\_\_dat00.bin





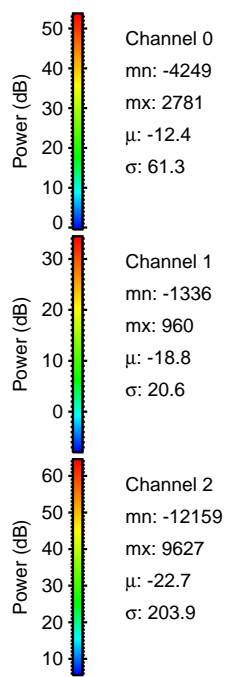
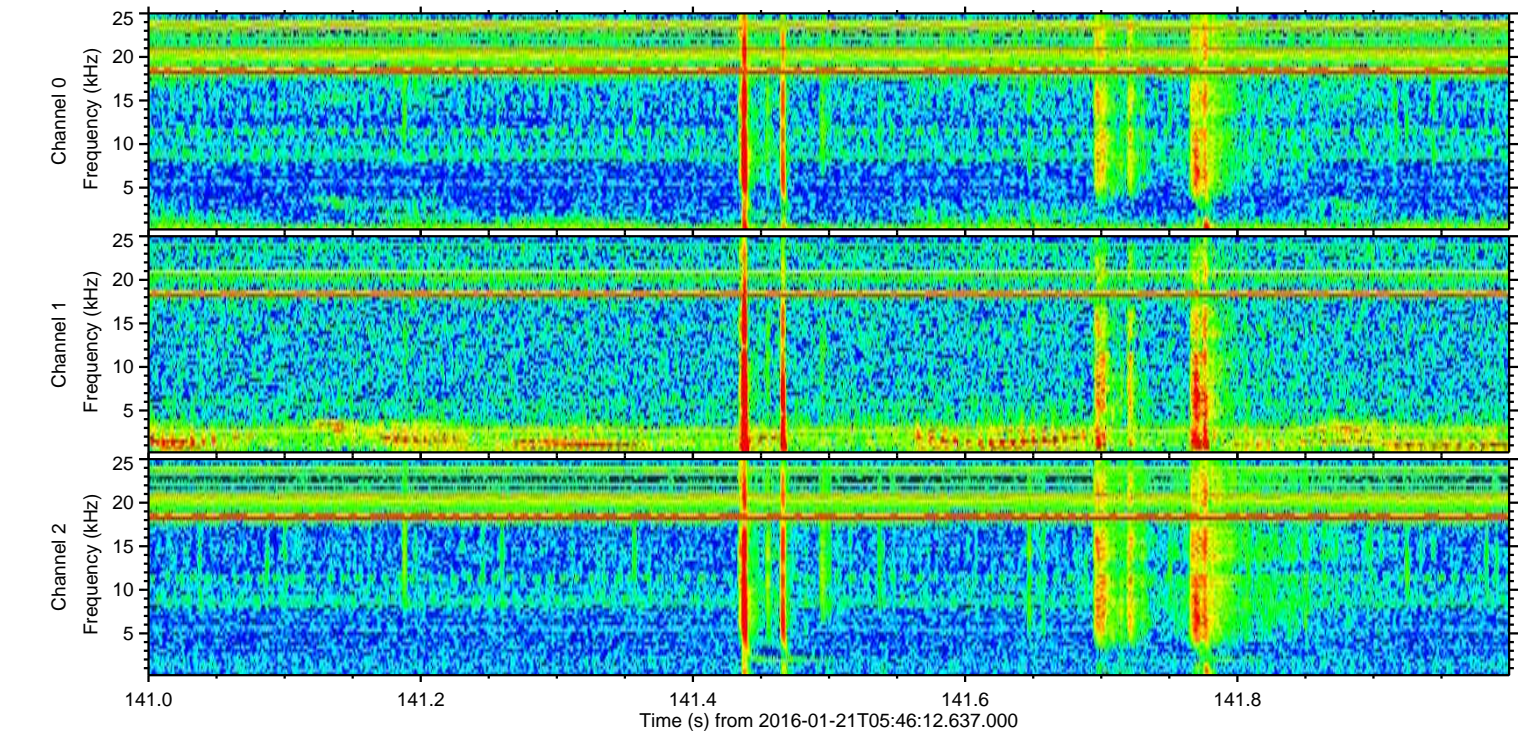
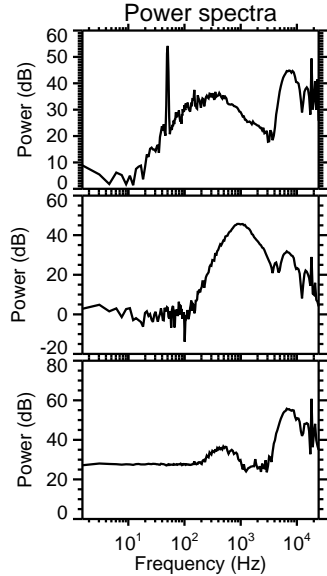
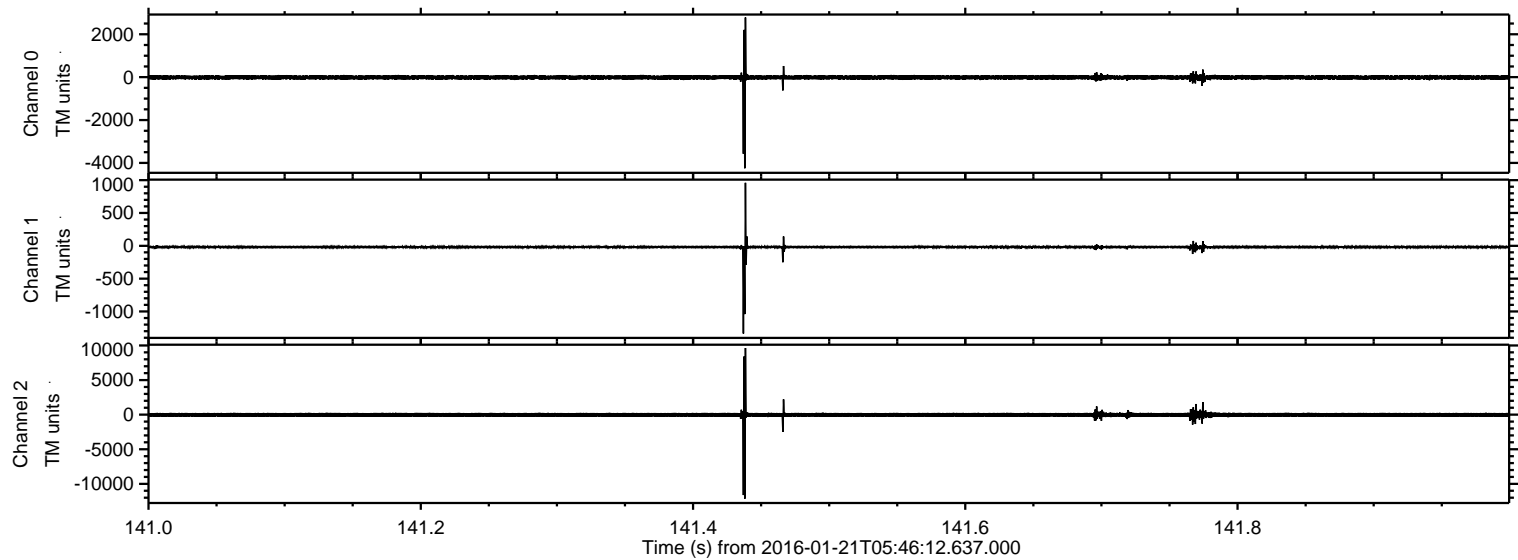
Processed Mon Apr 4 03:57:17 2016 by ELM ver.2012-10-06 from 001\_\_elm20160121\_054611\_\_dat00.bin





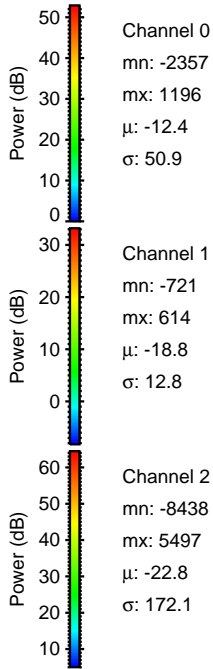
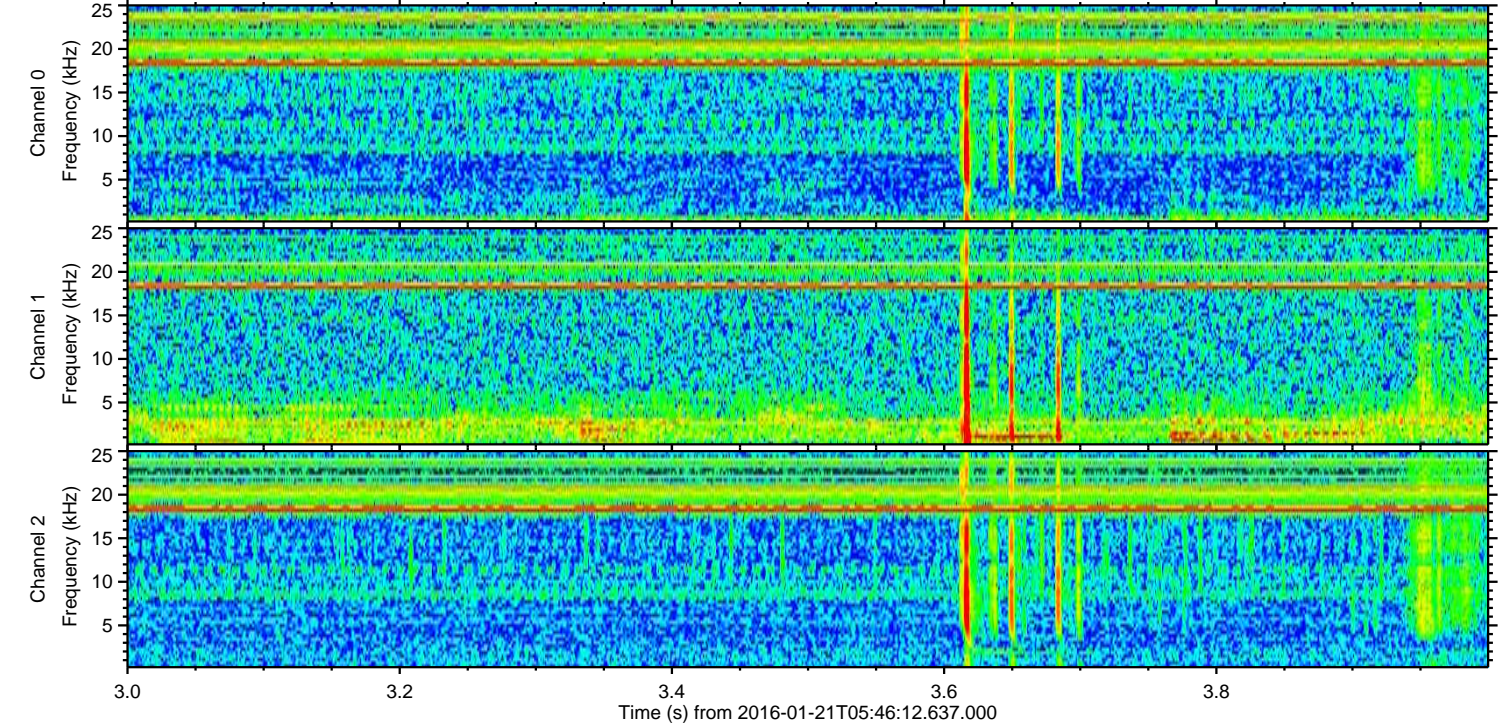
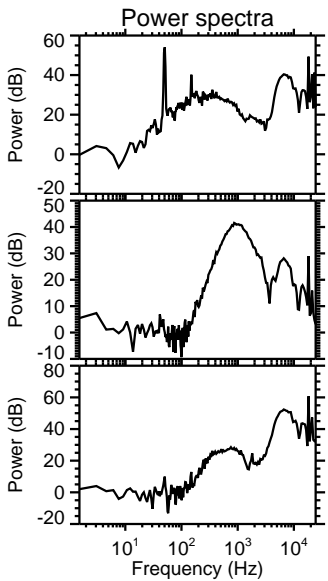
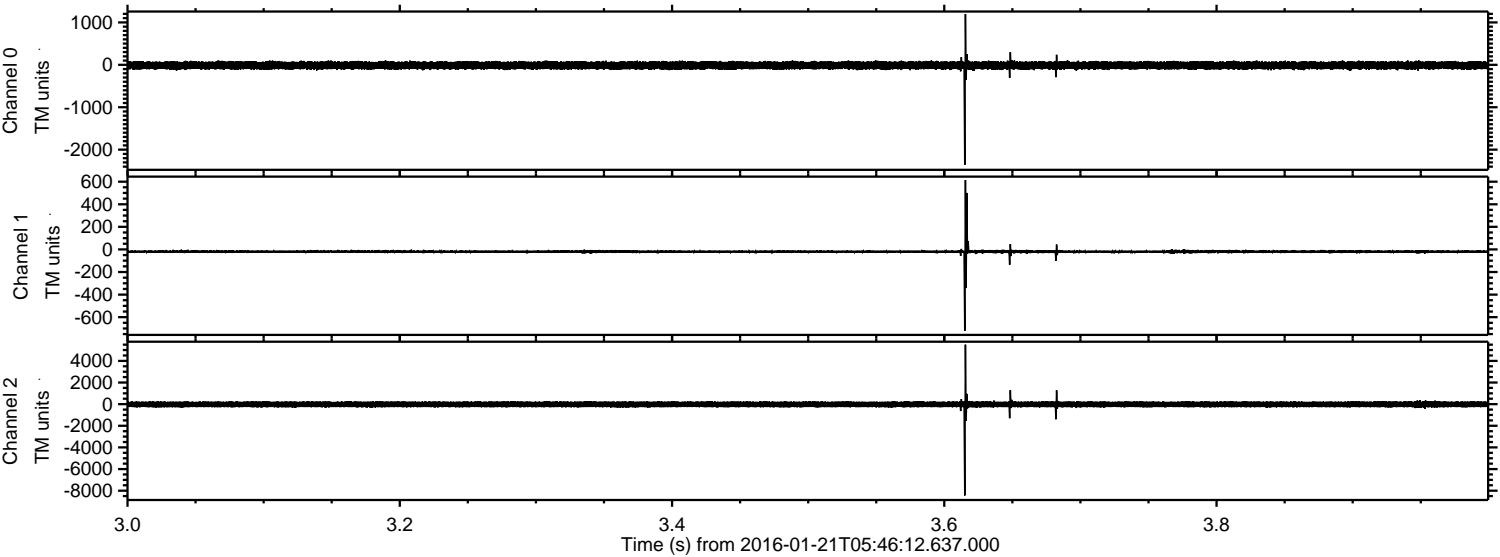
ELMAVAN 3D WAVEFORMS (Measured data sampled at 50 kHz) 51000 packets of 144 samples from 2016-01-21T05:46:12.637.000. Part 142/147

Processed Mon Apr 4 03:57:18 2016 by ELM ver.2012-10-06 from 001\_\_elm20160121\_054611\_\_dat00.bin





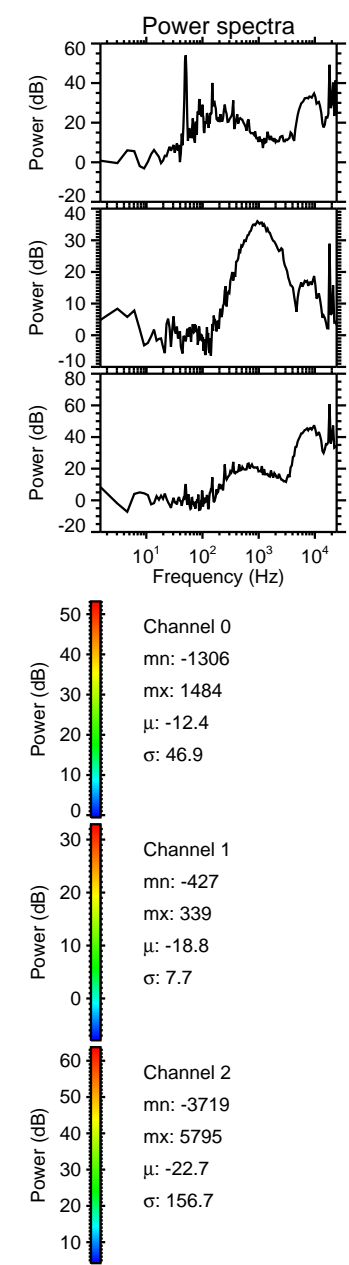
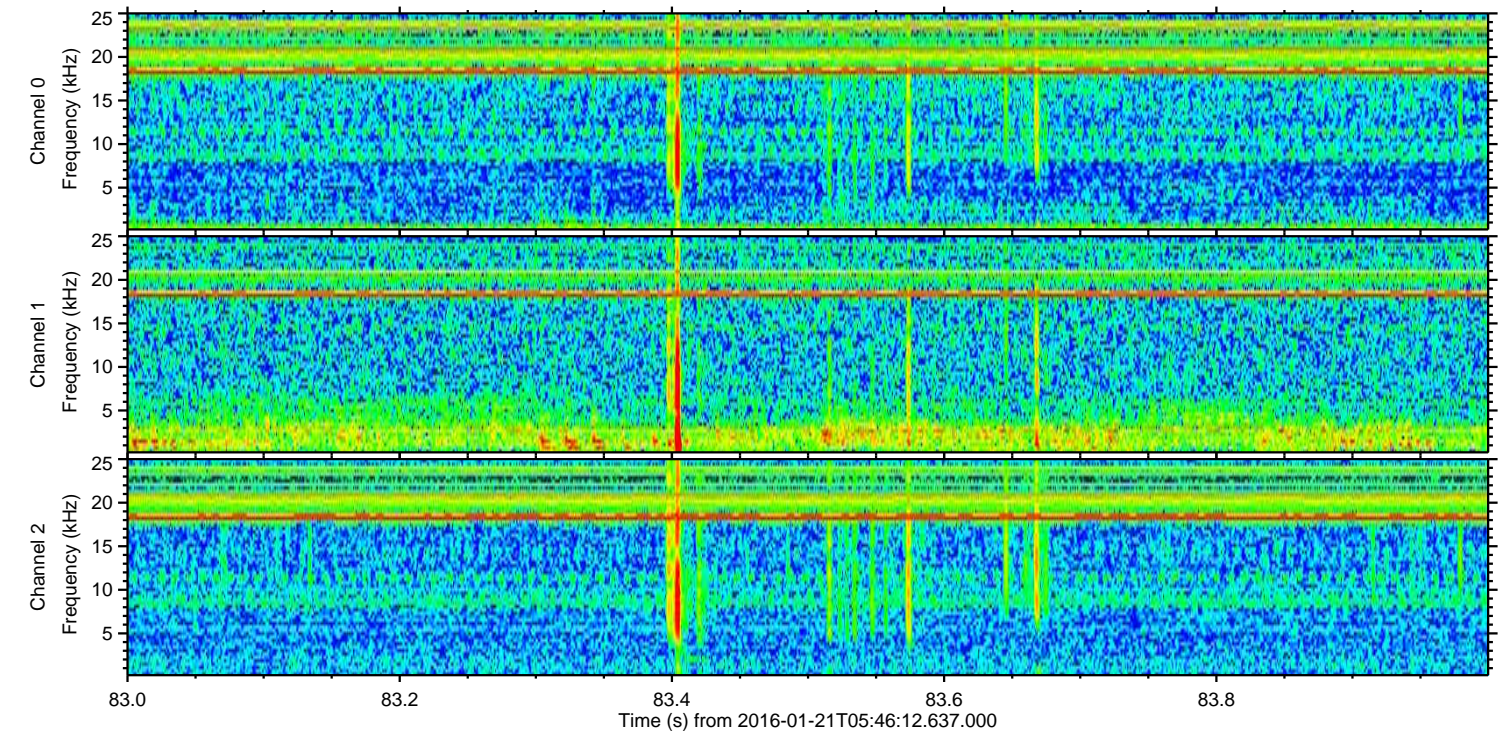
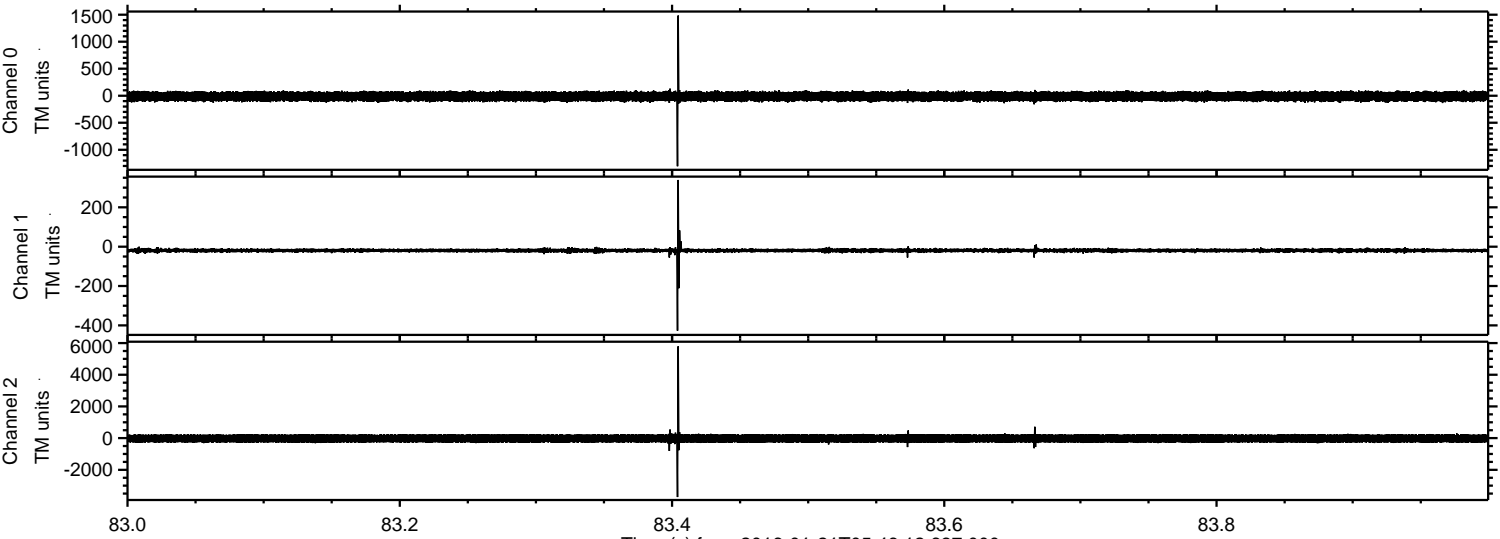
Processed Mon Apr 4 03:57:18 2016 by ELM ver.2012-10-06 from 001\_\_elm20160121\_054611\_\_dat00.bin





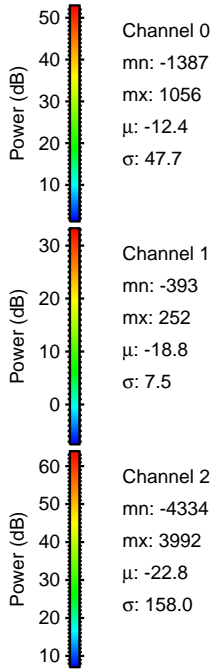
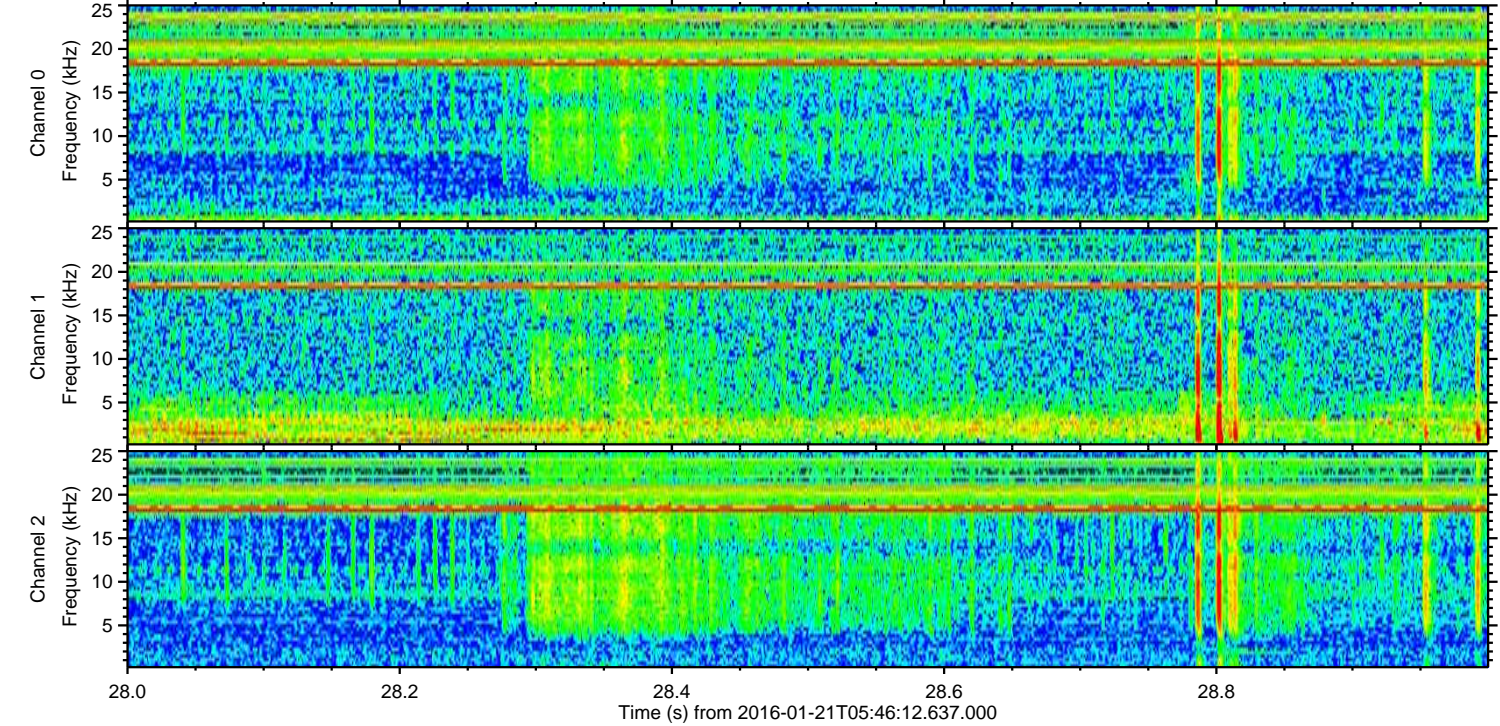
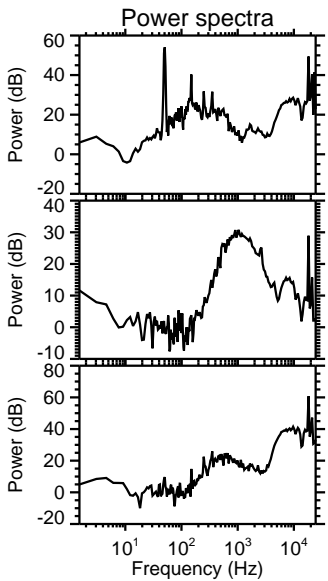
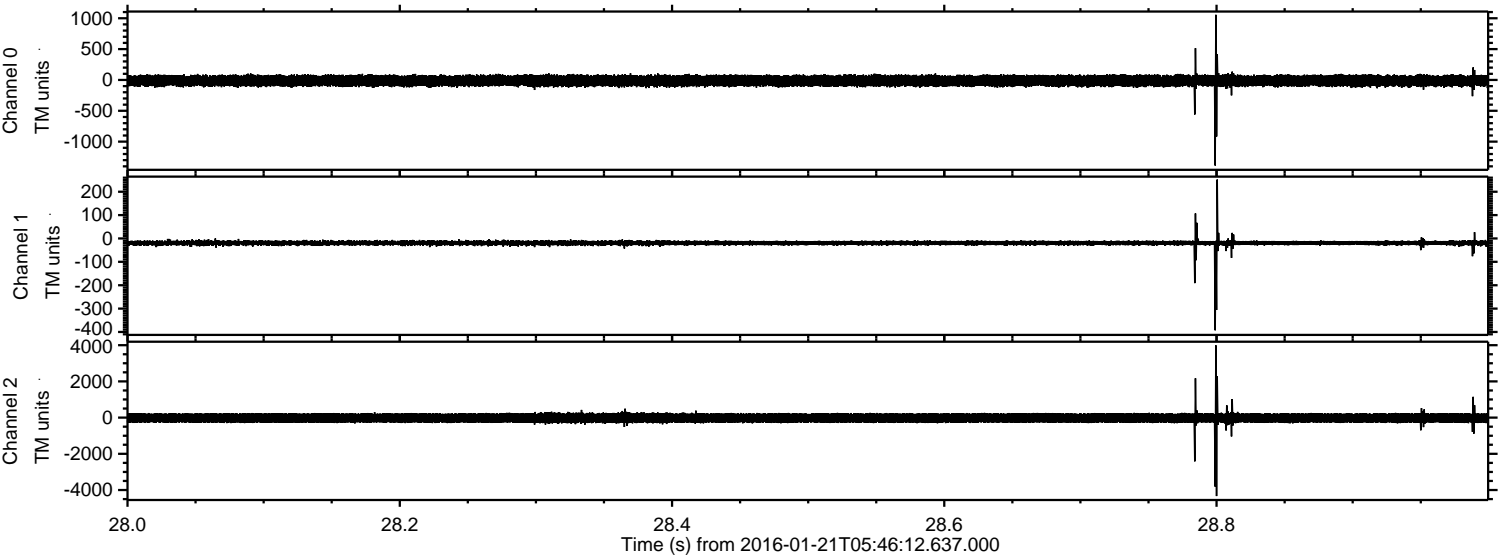
ELMAVAN 3D WAVEFORMS (Measured data sampled at 50 kHz) 51000 packets of 144 samples from 2016-01-21T05:46:12.637.000. Part 84/147

Processed Mon Apr 4 03:57:19 2016 by ELM ver.2012-10-06 from 001\_\_elm20160121\_054611\_\_dat00.bin





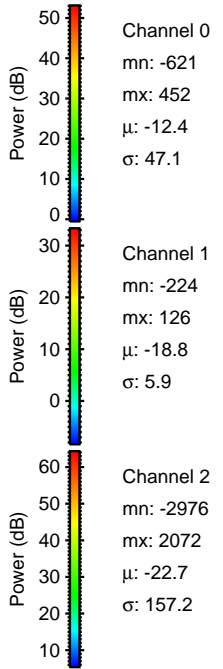
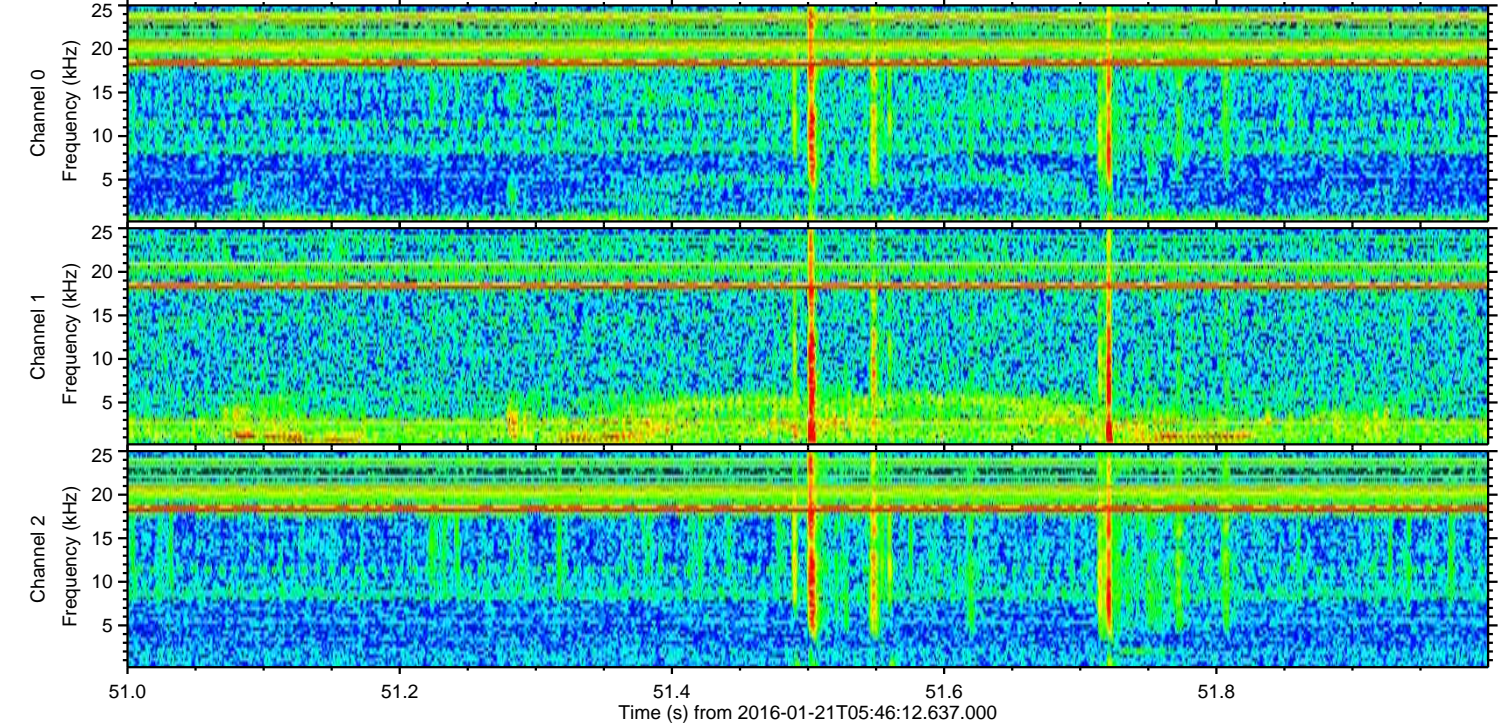
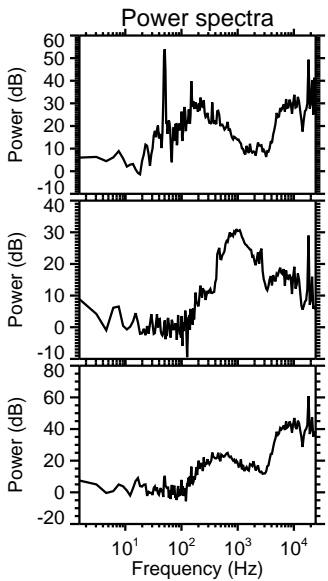
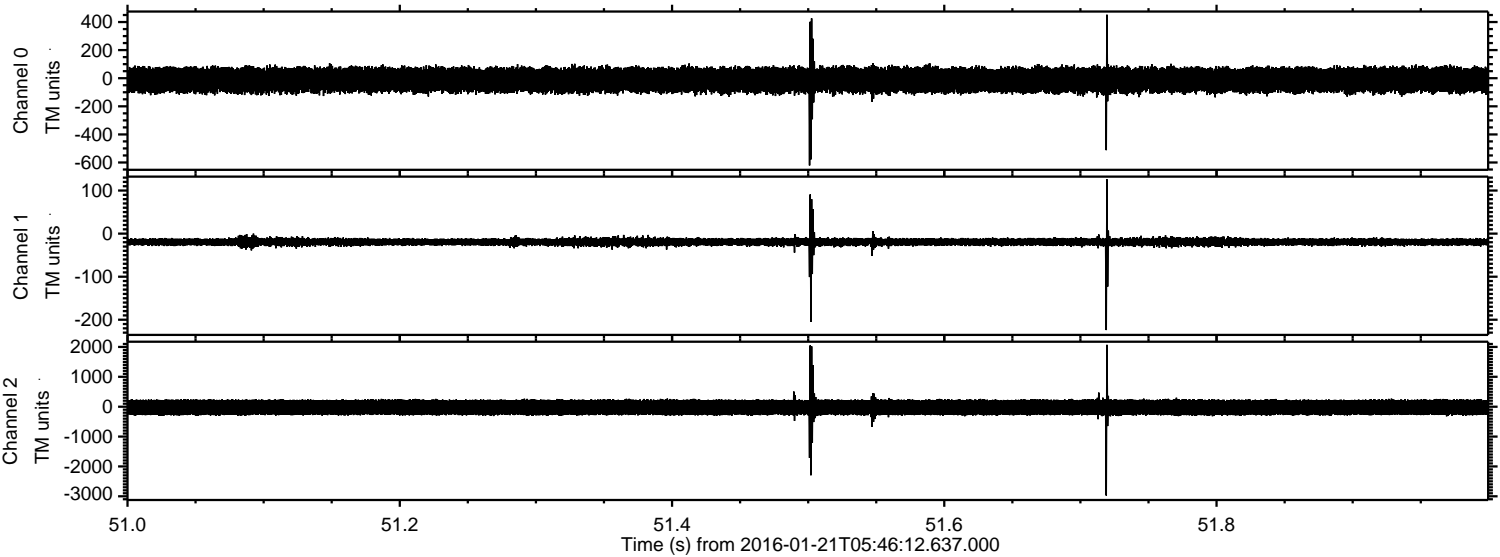
Processed Mon Apr 4 03:57:20 2016 by ELM ver.2012-10-06 from 001\_\_elm20160121\_054611\_\_dat00.bin





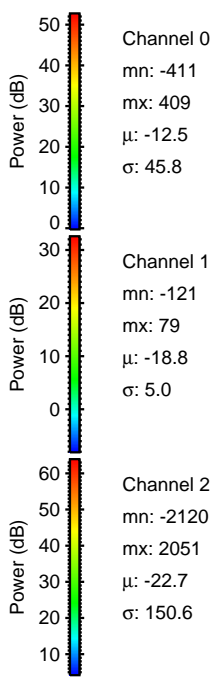
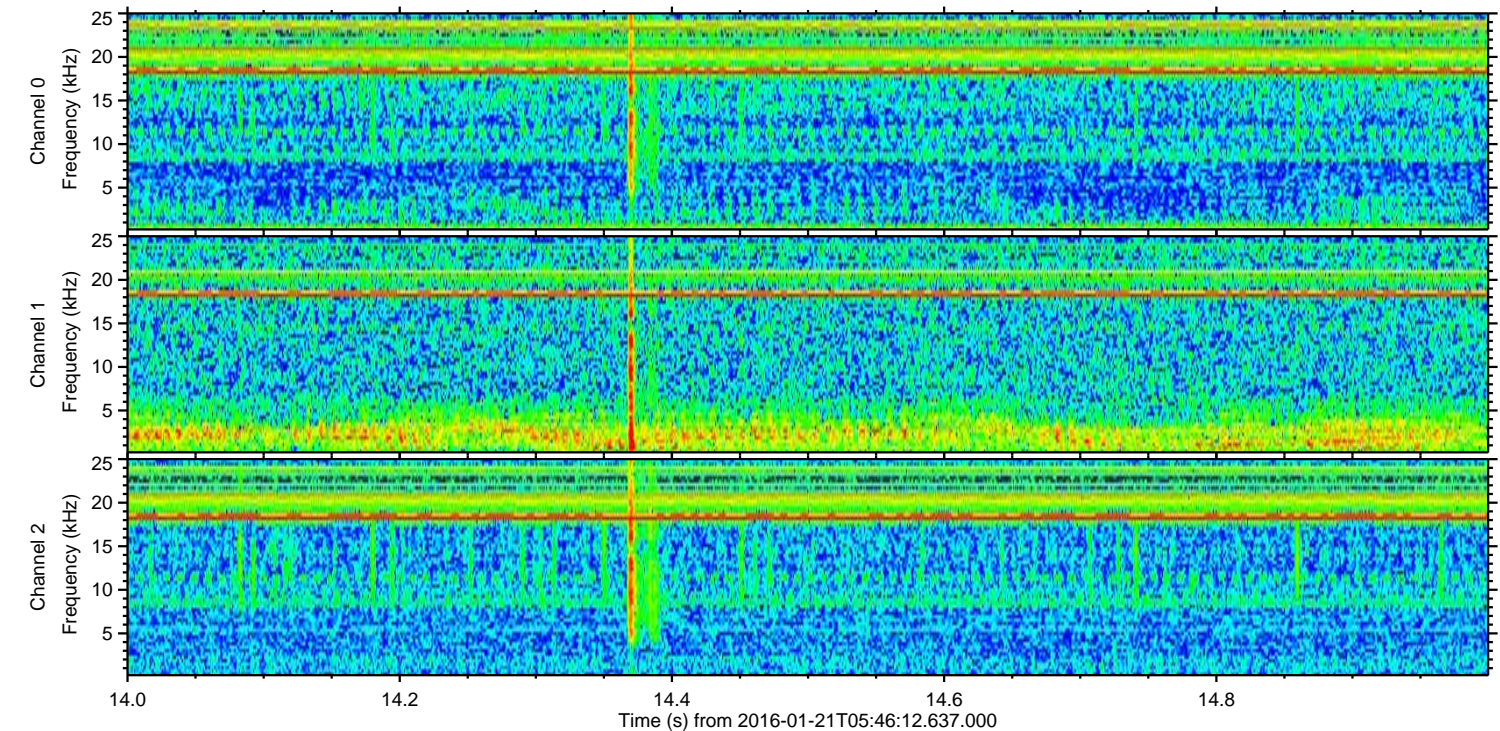
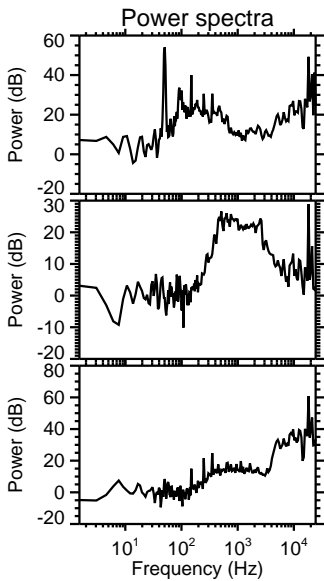
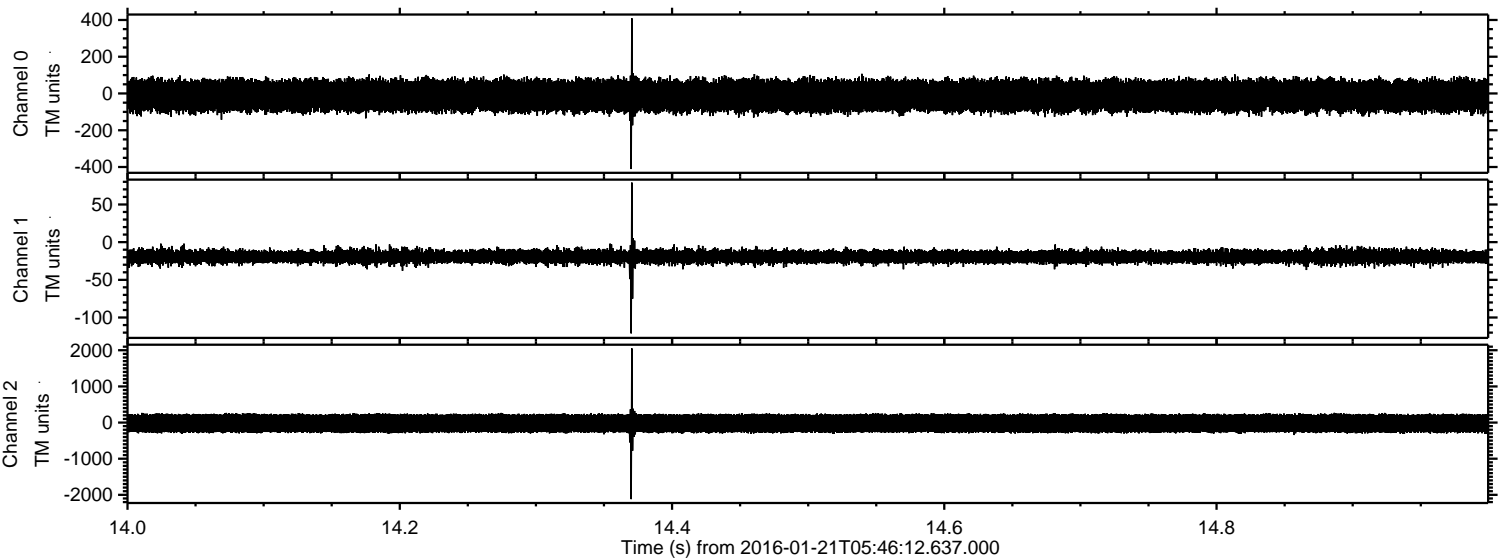
ELMAVAN 3D WAVEFORMS (Measured data sampled at 50 kHz) 51000 packets of 144 samples from 2016-01-21T05:46:12.637.000. Part 52/147

Processed Mon Apr 4 03:57:21 2016 by ELM ver.2012-10-06 from 001\_\_elm20160121\_054611\_\_dat00.bin



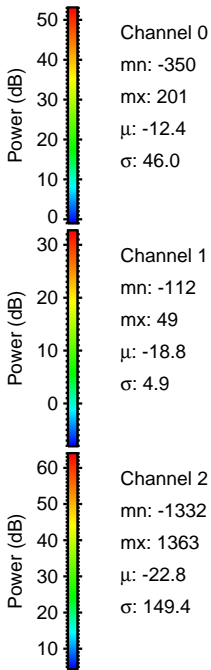
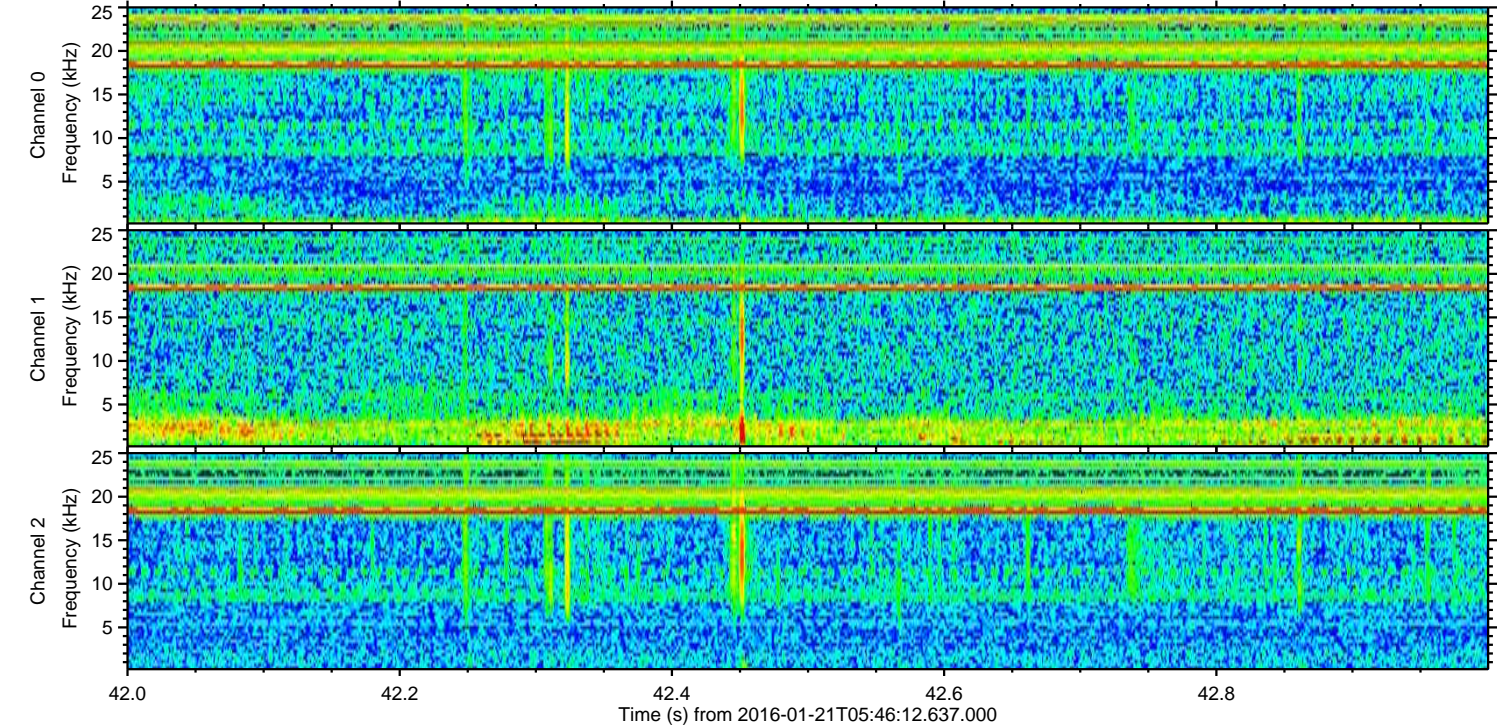
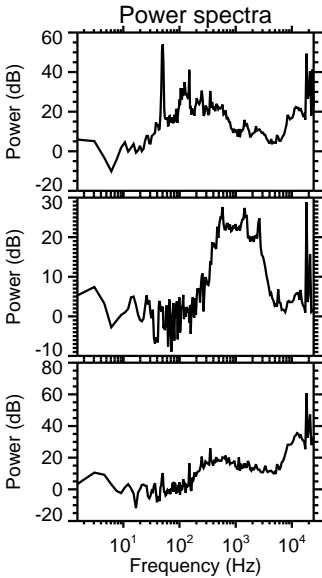
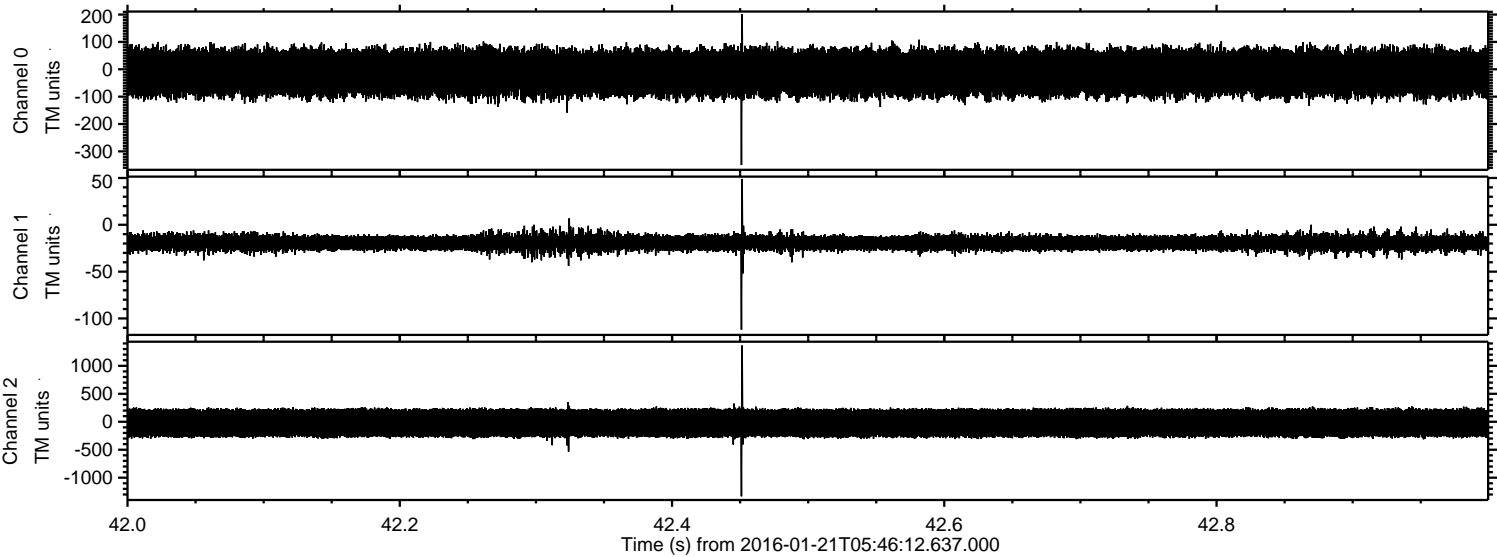


Processed Mon Apr 4 03:57:22 2016 by ELM ver.2012-10-06 from 001\_\_elm20160121\_054611\_\_dat00.bin



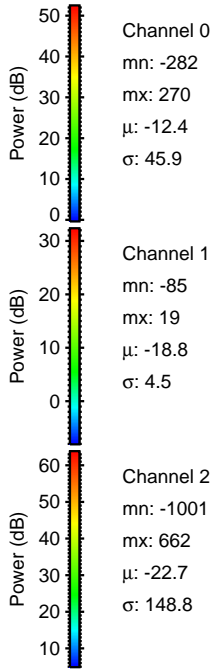
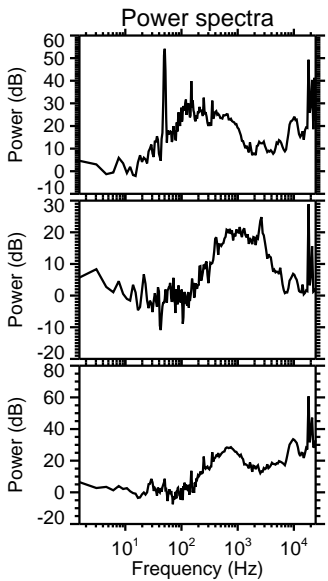
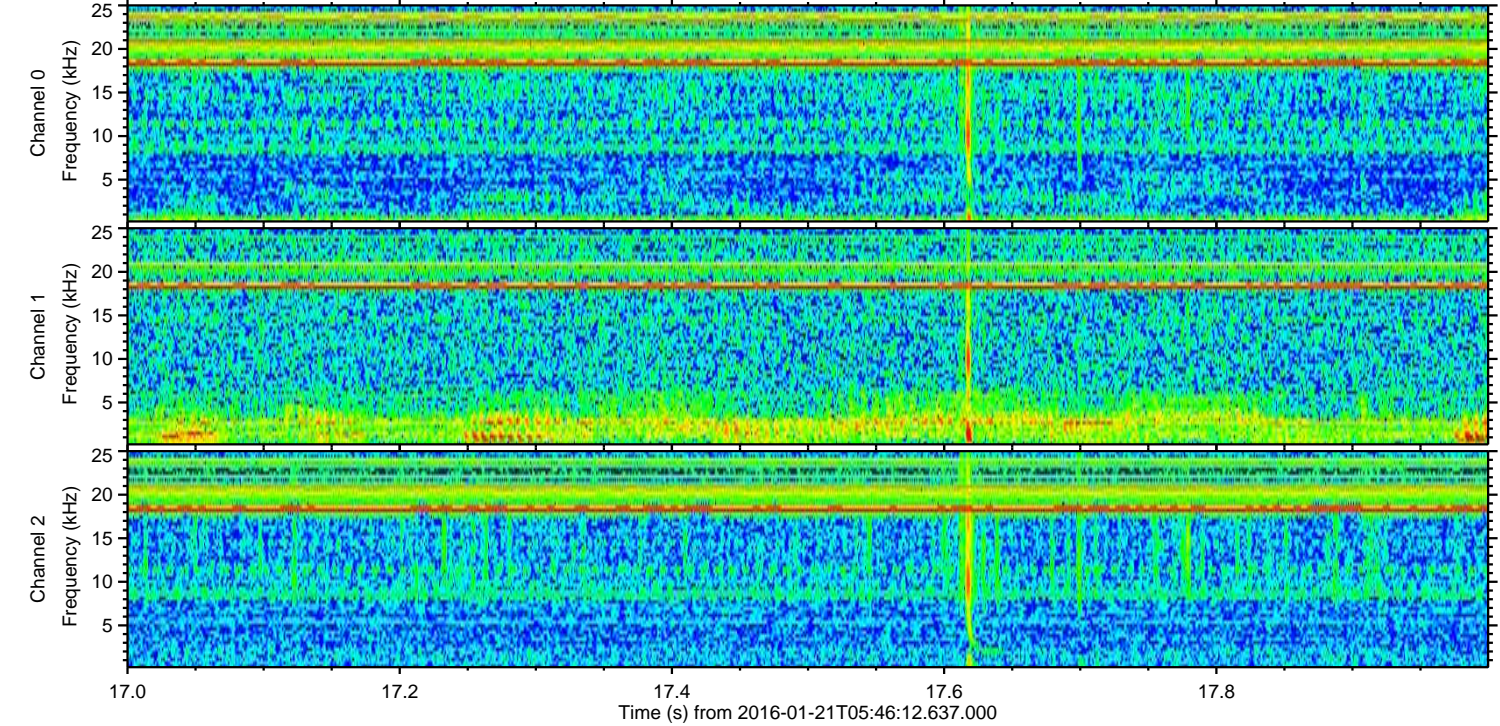
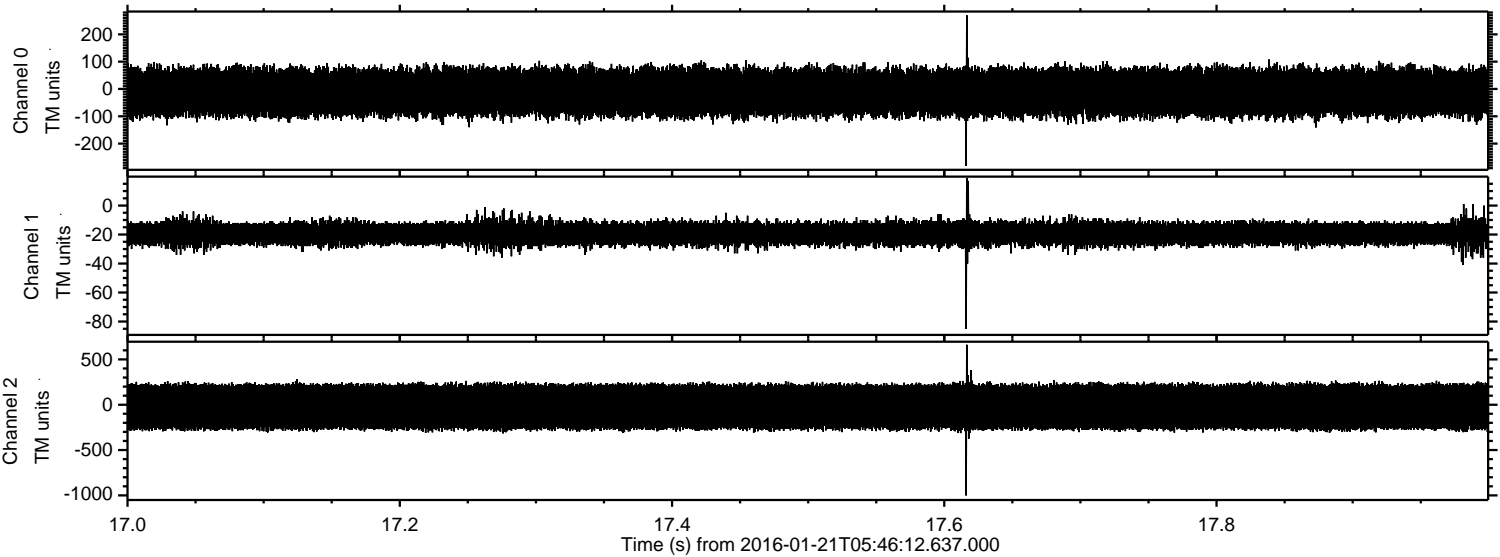


Processed Mon Apr 4 03:57:23 2016 by ELM ver.2012-10-06 from 001\_\_elm20160121\_054611\_\_dat00.bin





Processed Mon Apr 4 03:57:24 2016 by ELM ver.2012-10-06 from 001\_\_elm20160121\_054611\_\_dat00.bin



Channel 0  
mn: -282  
mx: 270  
 $\mu$ : -12.4  
 $\sigma$ : 45.9

Channel 1  
mn: -85  
mx: 19  
 $\mu$ : -18.8  
 $\sigma$ : 4.5

Channel 2  
mn: -1001  
mx: 662  
 $\mu$ : -22.7  
 $\sigma$ : 148.8



Processed Mon Apr 4 03:57:25 2016 by ELM ver.2012-10-06 from 001\_\_elm20160121\_054611\_\_dat00.bin

