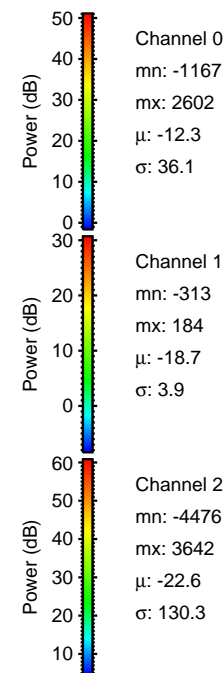
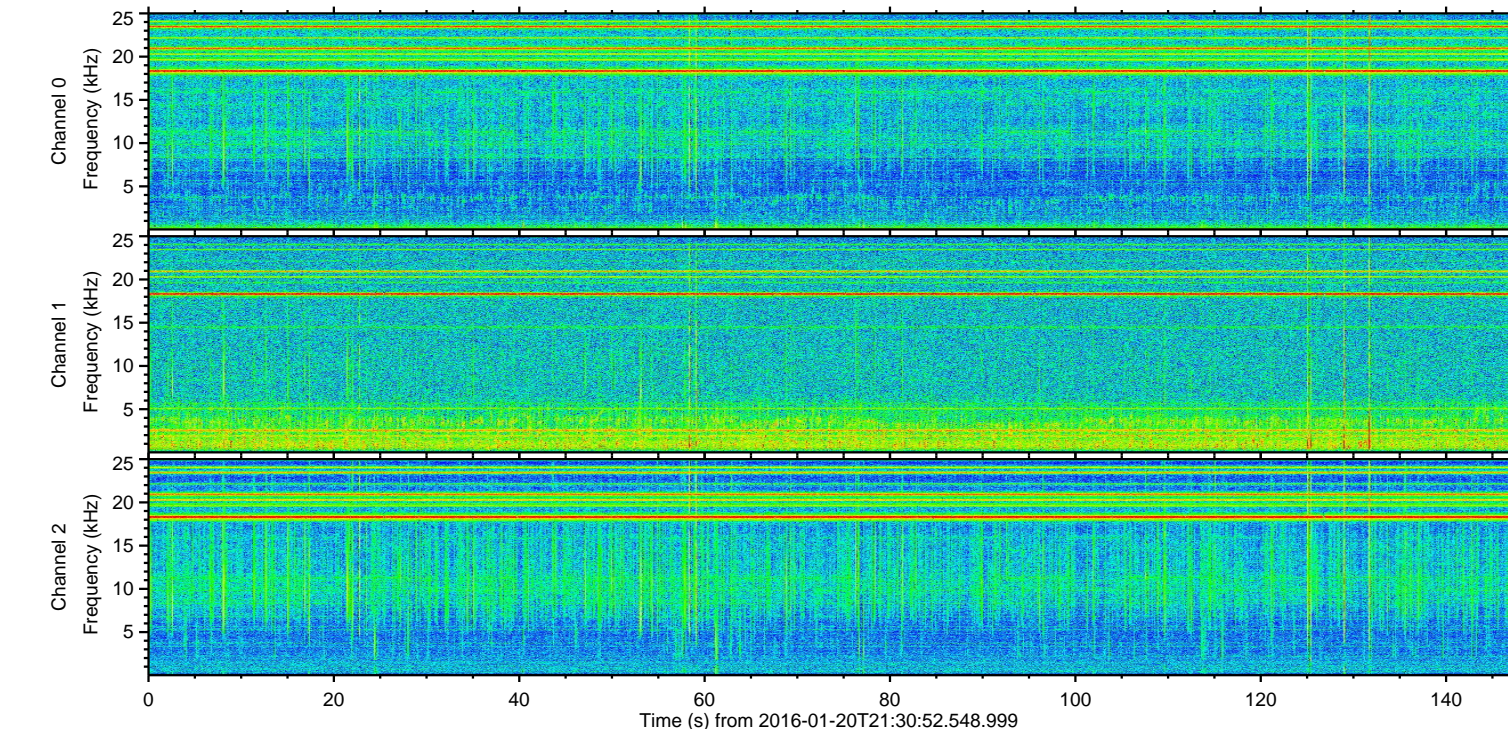
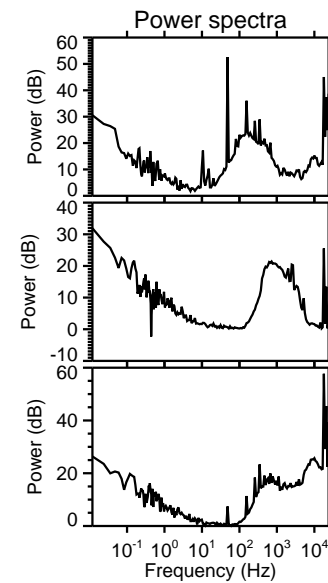
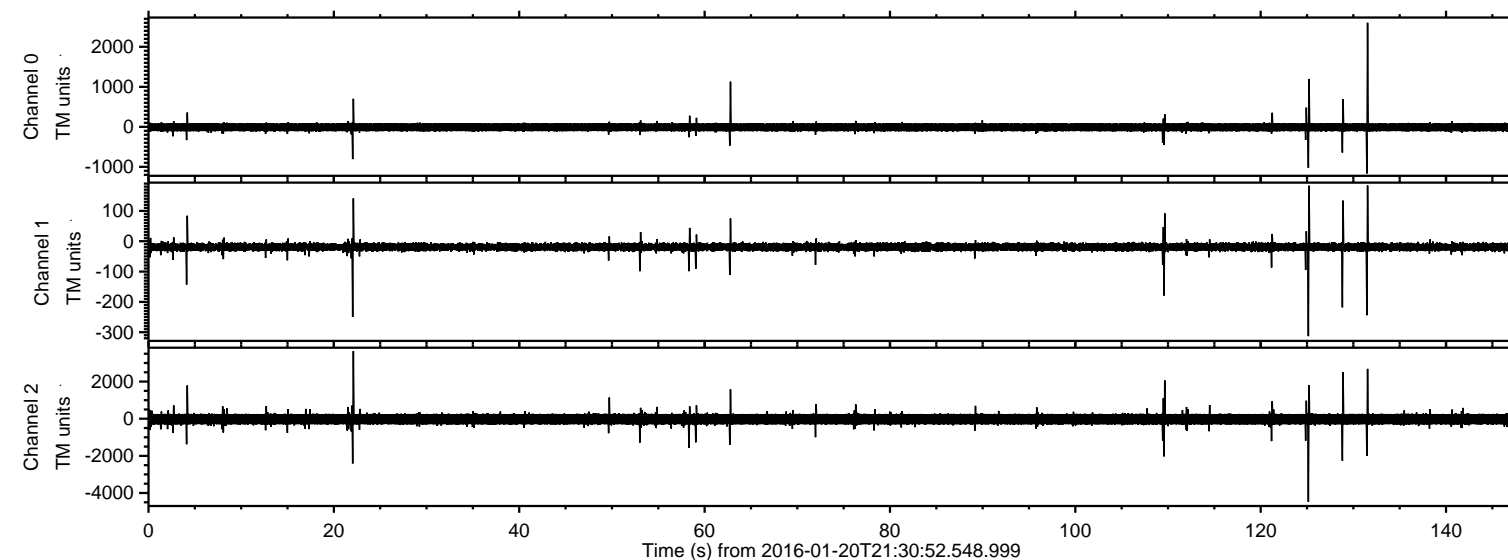


# ELMAVAN 3D WAVEFORMS (Measured data sampled at 50 kHz) 51000 packets of 144 samples from 2016-01-20T21:30:52.548.999.

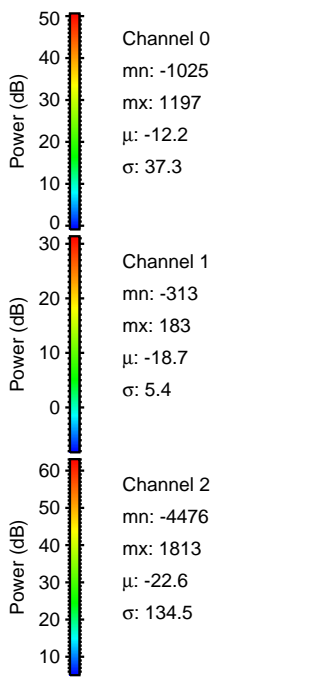
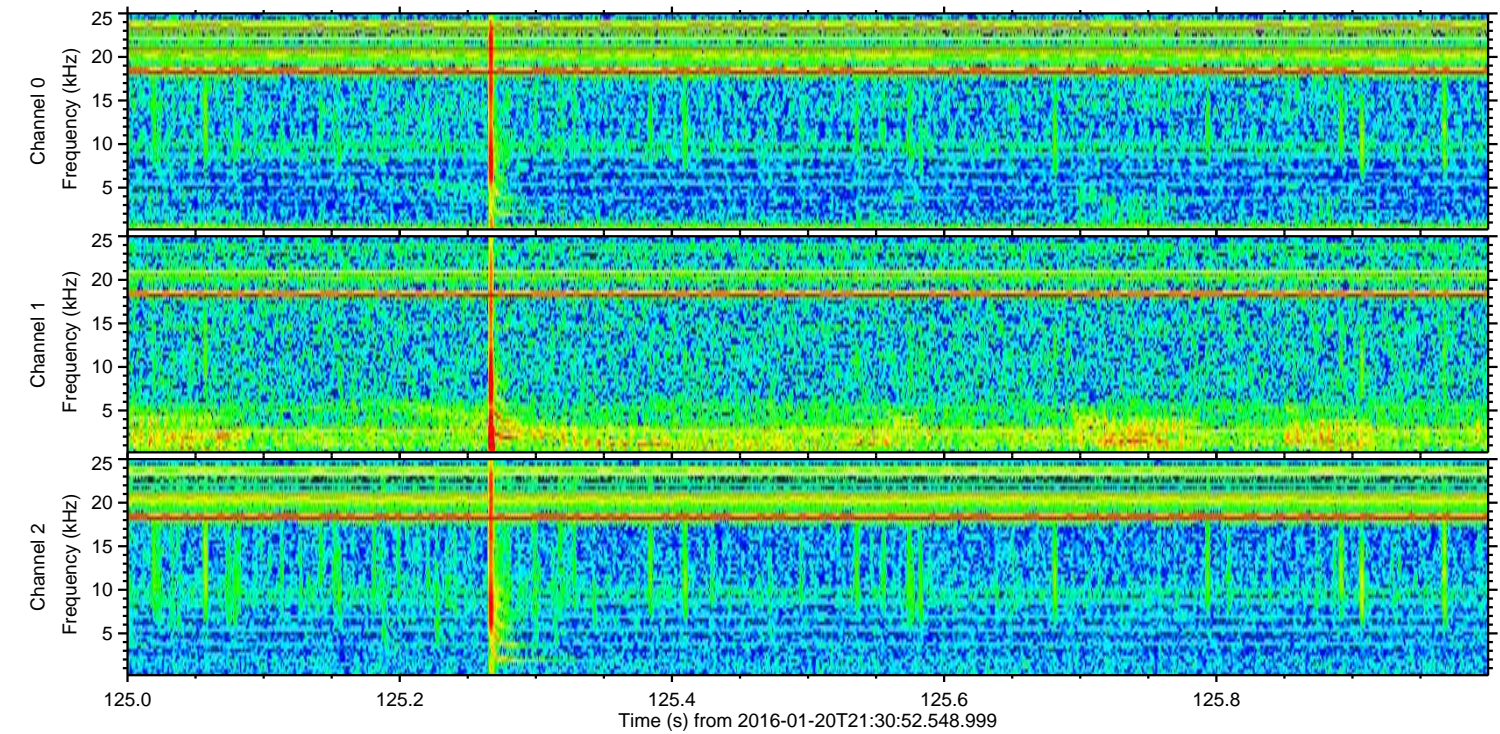
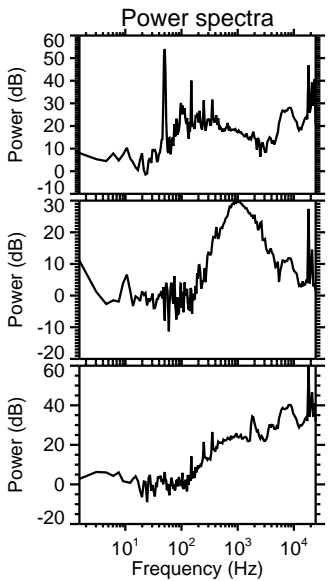
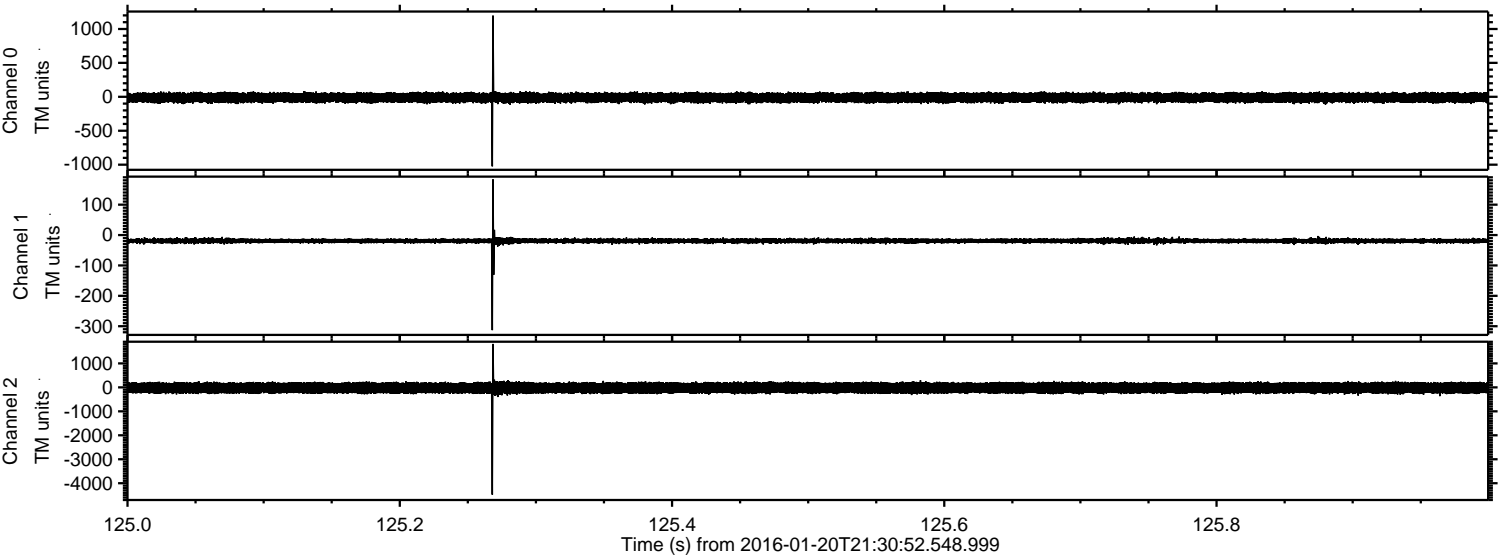
Processed Mon Apr 4 02:19:04 2016 by ELM ver.2012-10-06 from 001\_\_elm20160120\_213051\_\_dat00.bin





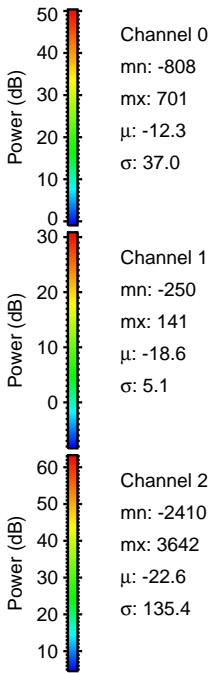
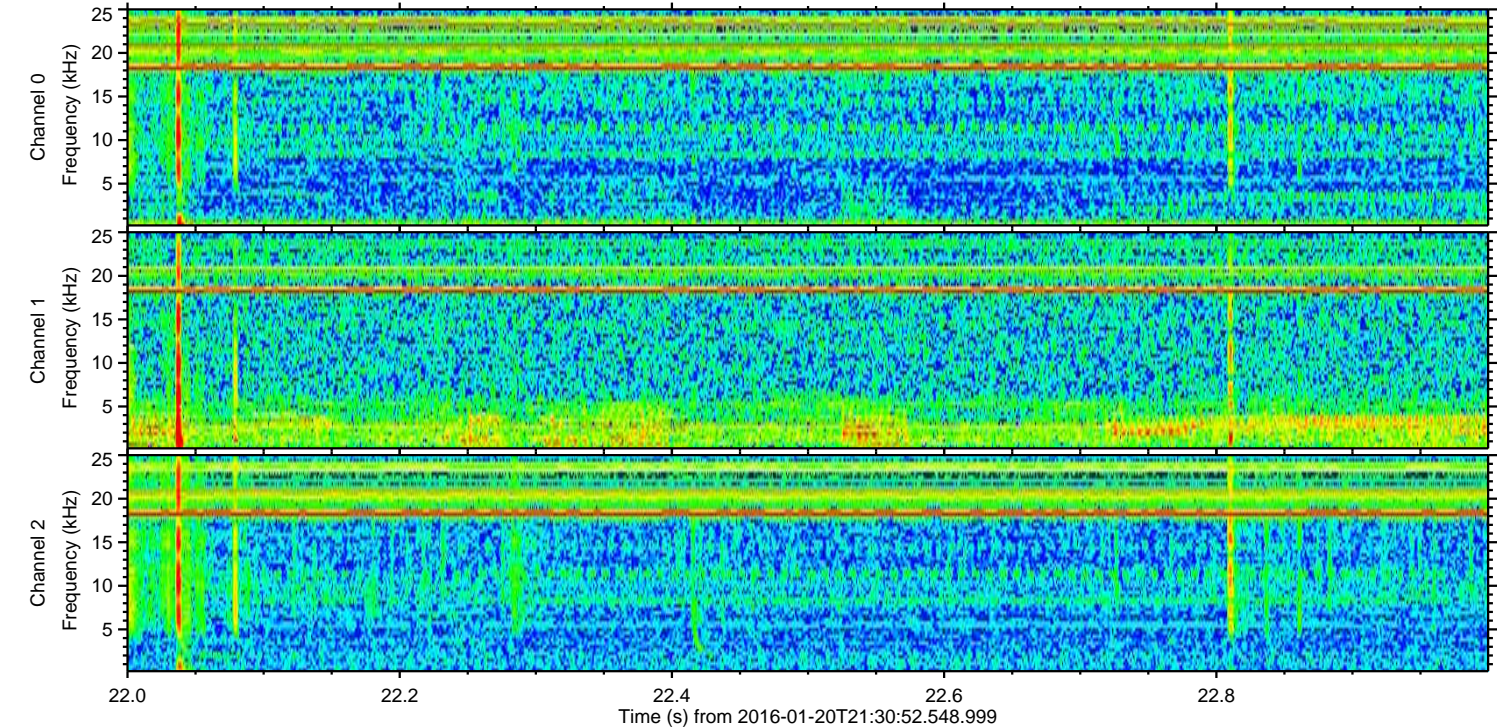
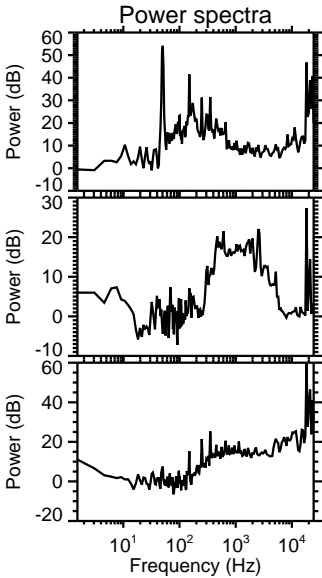
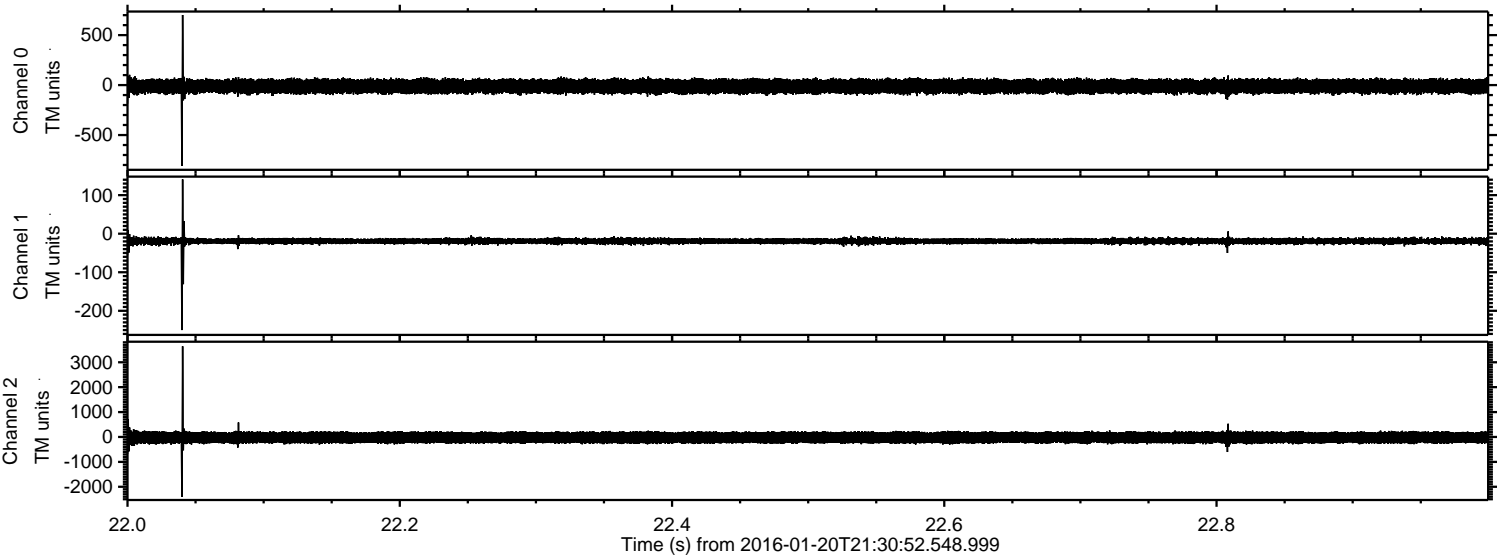
ELMAVAN 3D WAVEFORMS (Measured data sampled at 50 kHz) 51000 packets of 144 samples from 2016-01-20T21:30:52.548.999. Part 126/147

Processed Mon Apr 4 02:19:16 2016 by ELM ver.2012-10-06 from 001\_\_elm20160120\_213051\_\_dat00.bin





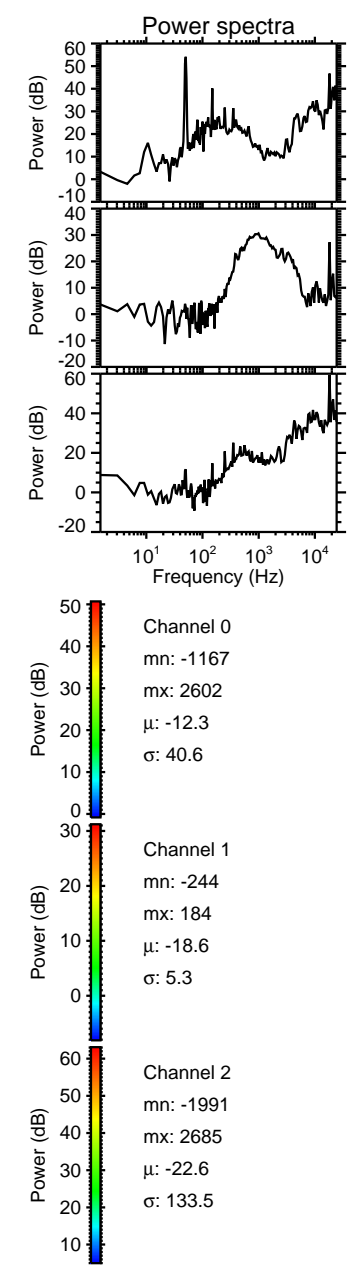
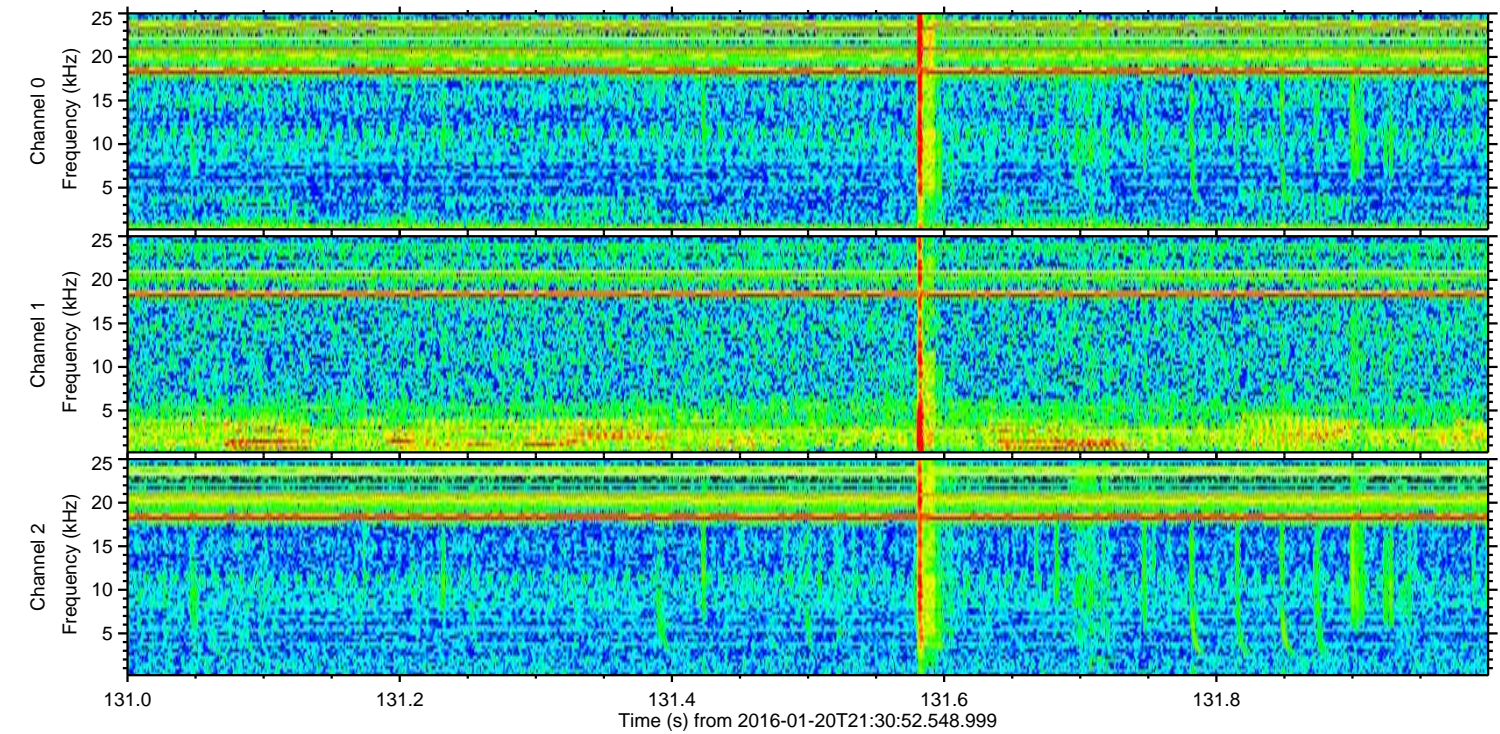
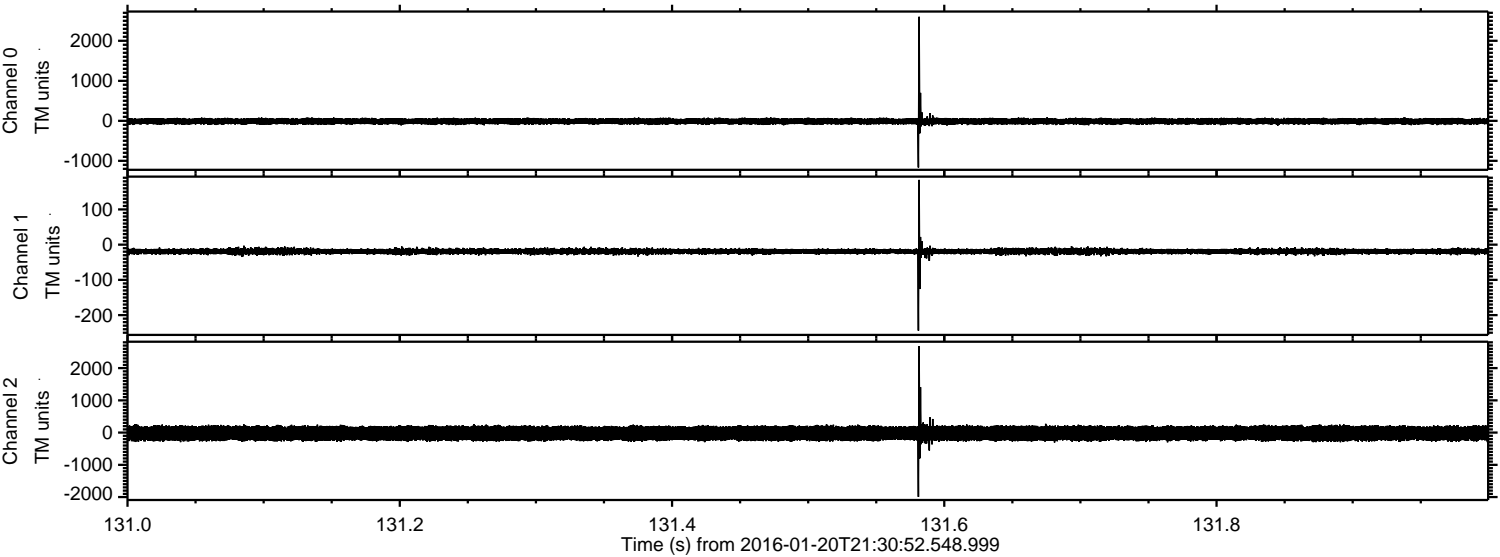
Processed Mon Apr 4 02:19:17 2016 by ELM ver.2012-10-06 from 001\_\_elm20160120\_213051\_\_dat00.bin





ELMAVAN 3D WAVEFORMS (Measured data sampled at 50 kHz) 51000 packets of 144 samples from 2016-01-20T21:30:52.548.999. Part 132/147

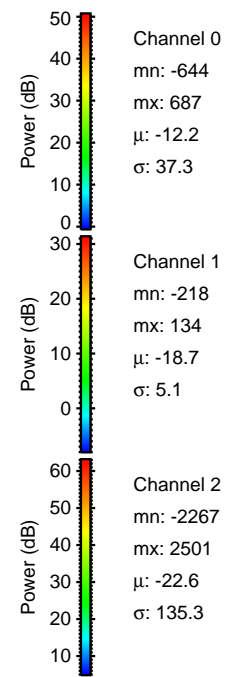
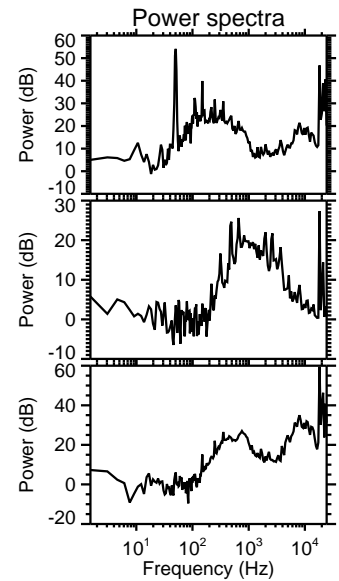
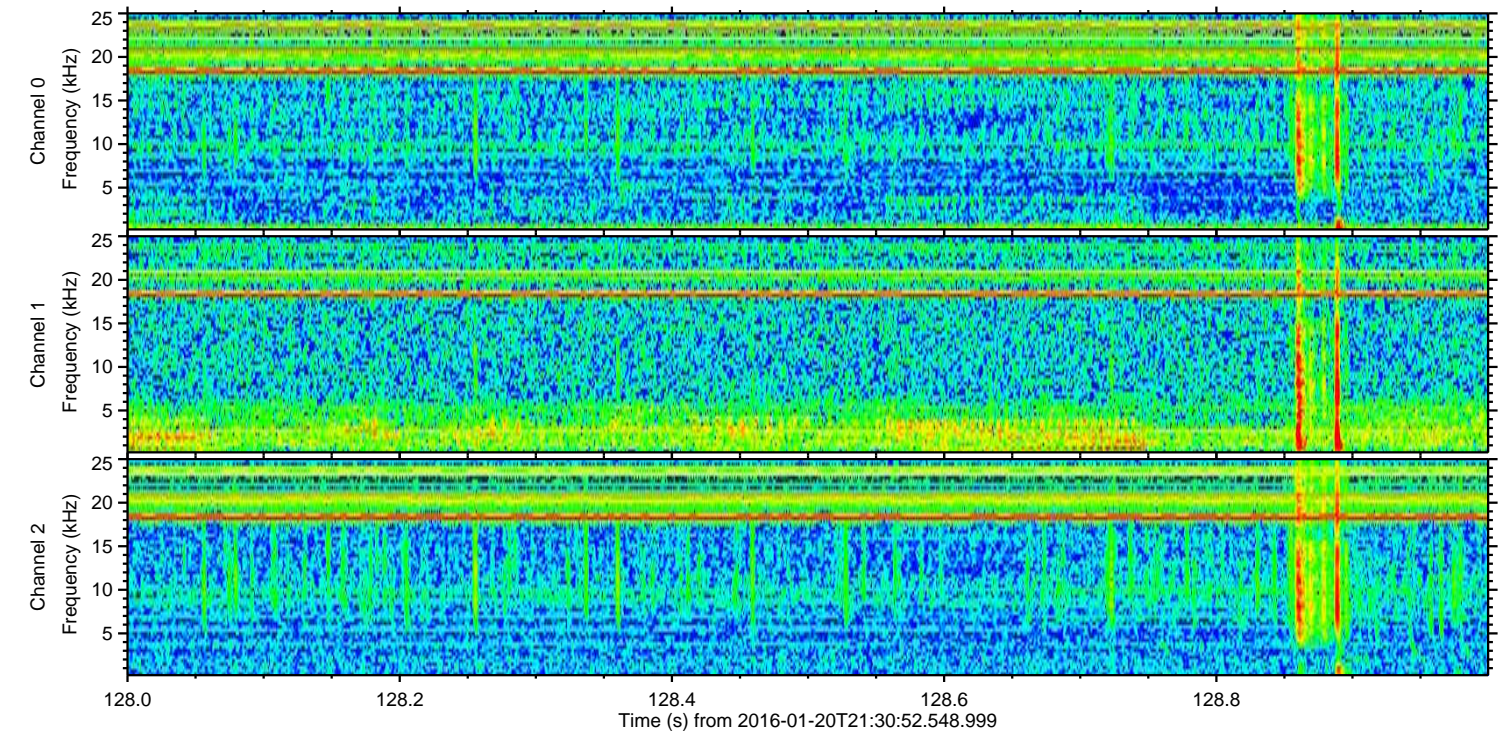
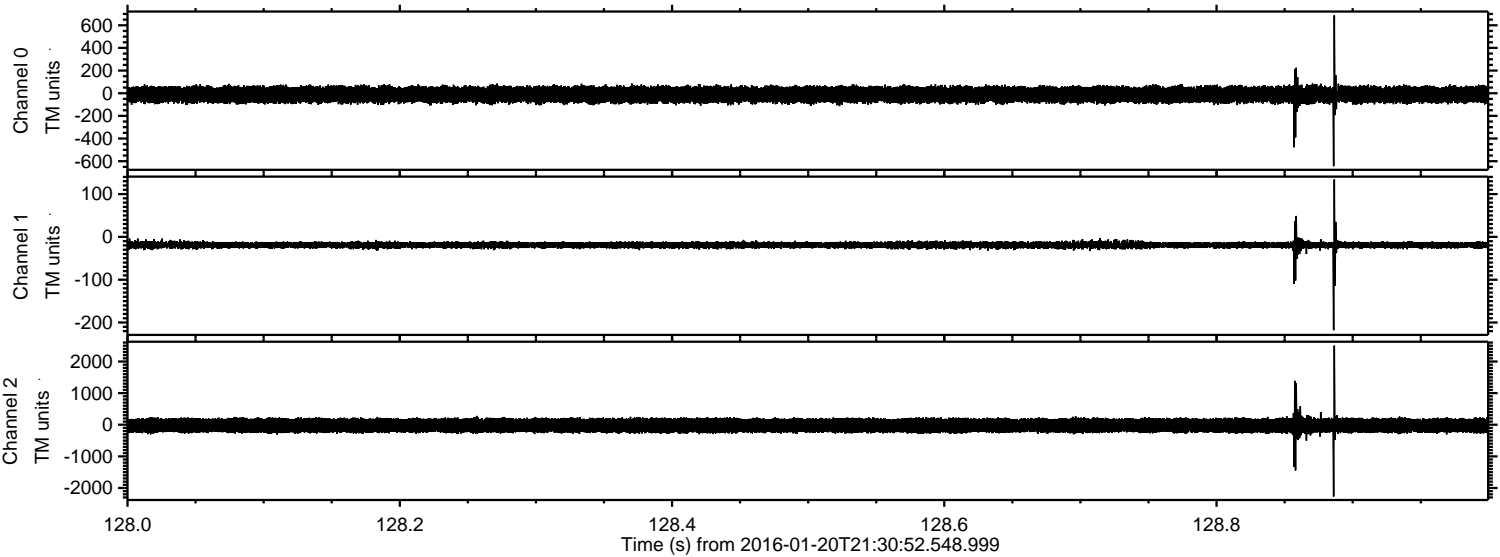
Processed Mon Apr 4 02:19:18 2016 by ELM ver.2012-10-06 from 001\_\_elm20160120\_213051\_\_dat00.bin





ELMAVAN 3D WAVEFORMS (Measured data sampled at 50 kHz) 51000 packets of 144 samples from 2016-01-20T21:30:52.548.999. Part 129/147

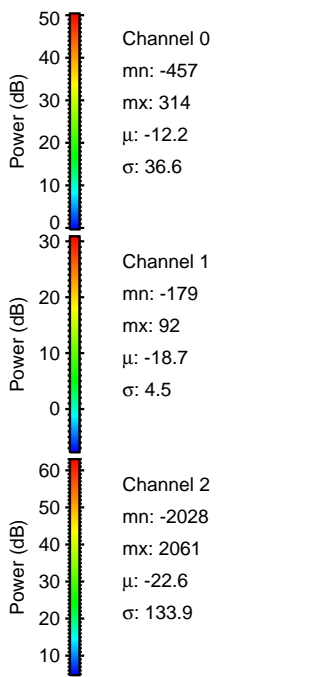
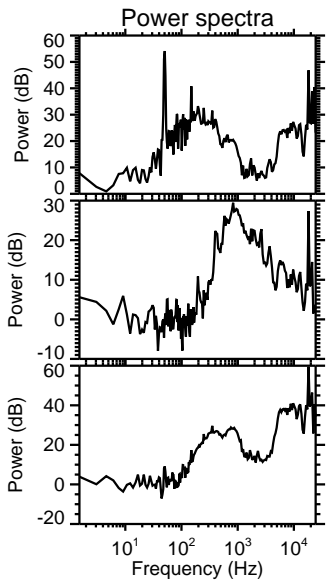
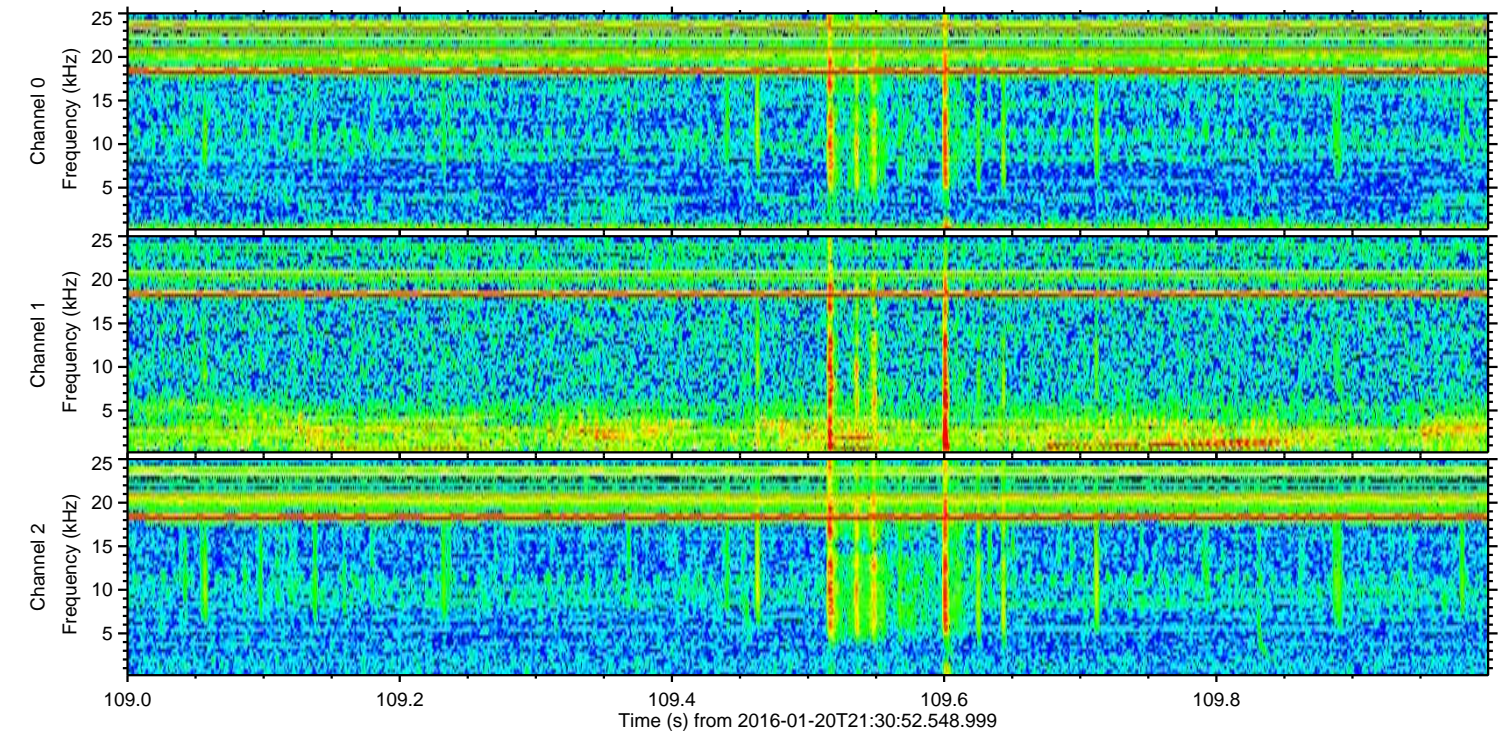
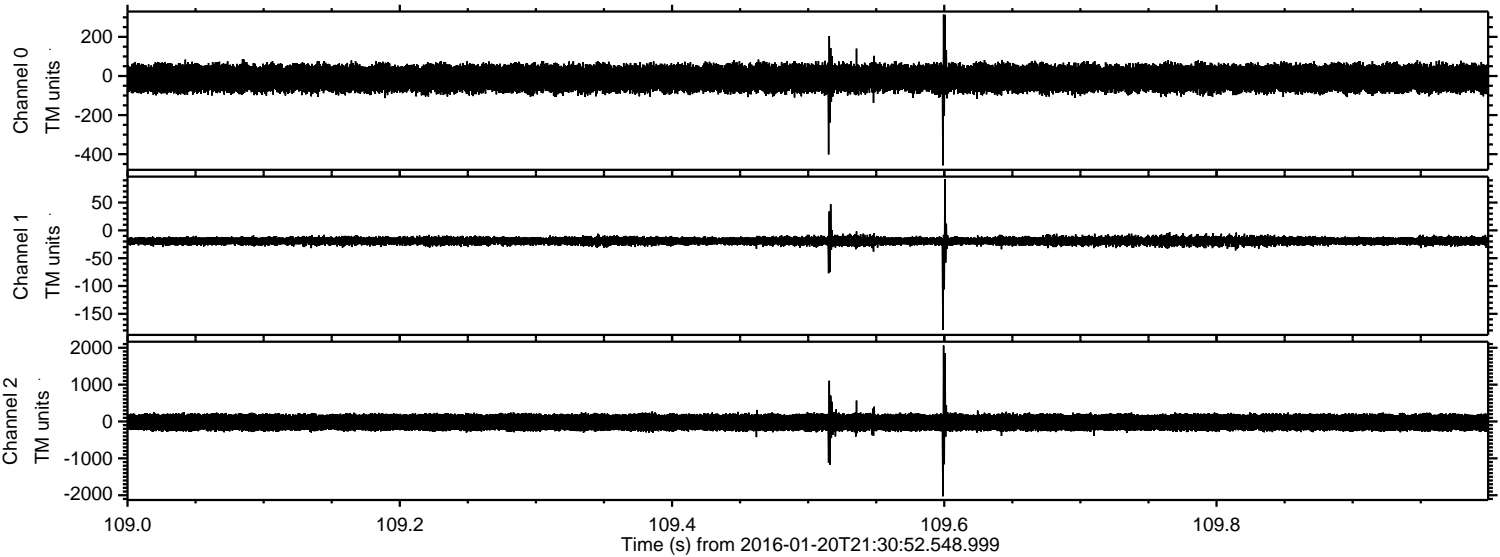
Processed Mon Apr 4 02:19:19 2016 by ELM ver.2012-10-06 from 001\_\_elm20160120\_213051\_\_dat00.bin





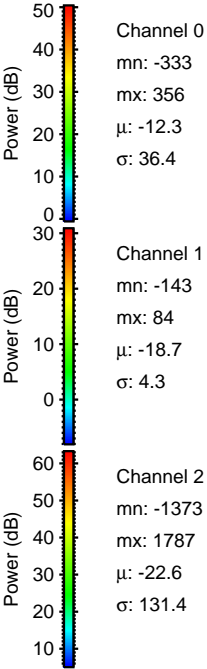
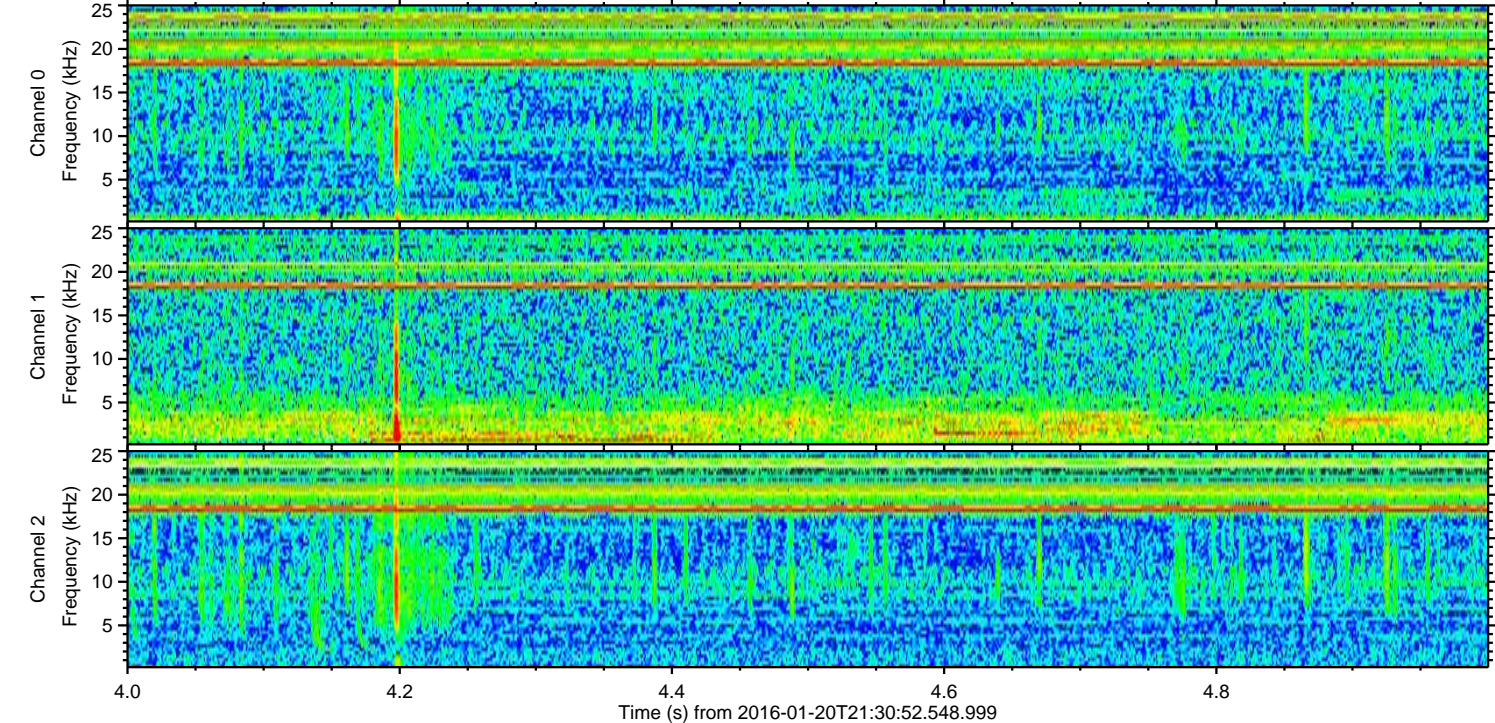
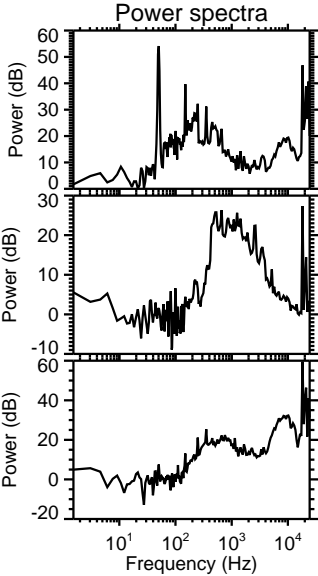
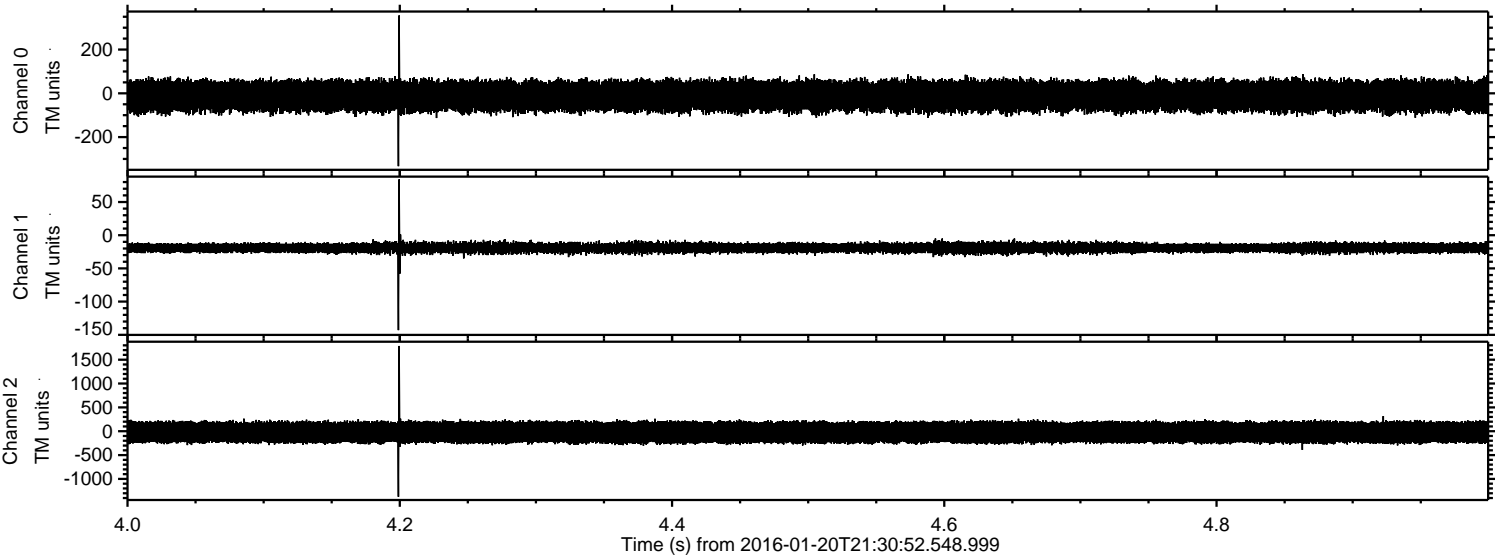
ELMAVAN 3D WAVEFORMS (Measured data sampled at 50 kHz) 51000 packets of 144 samples from 2016-01-20T21:30:52.548.999. Part 110/147

Processed Mon Apr 4 02:19:20 2016 by ELM ver.2012-10-06 from 001\_\_elm20160120\_213051\_\_dat00.bin



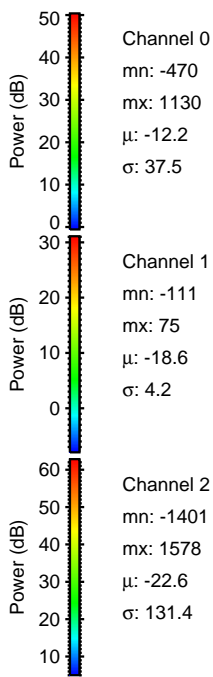
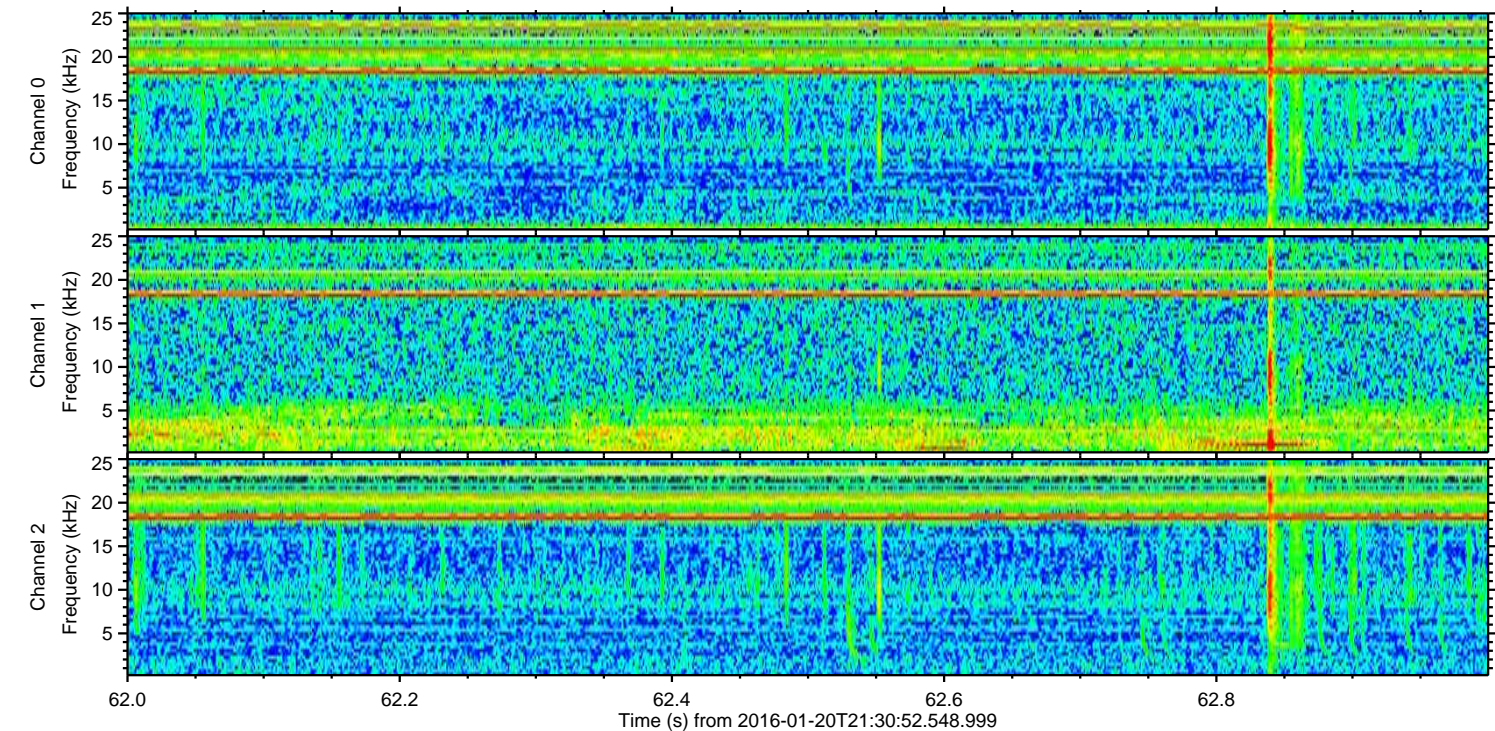
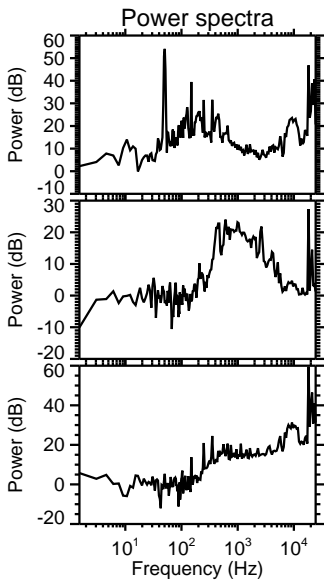
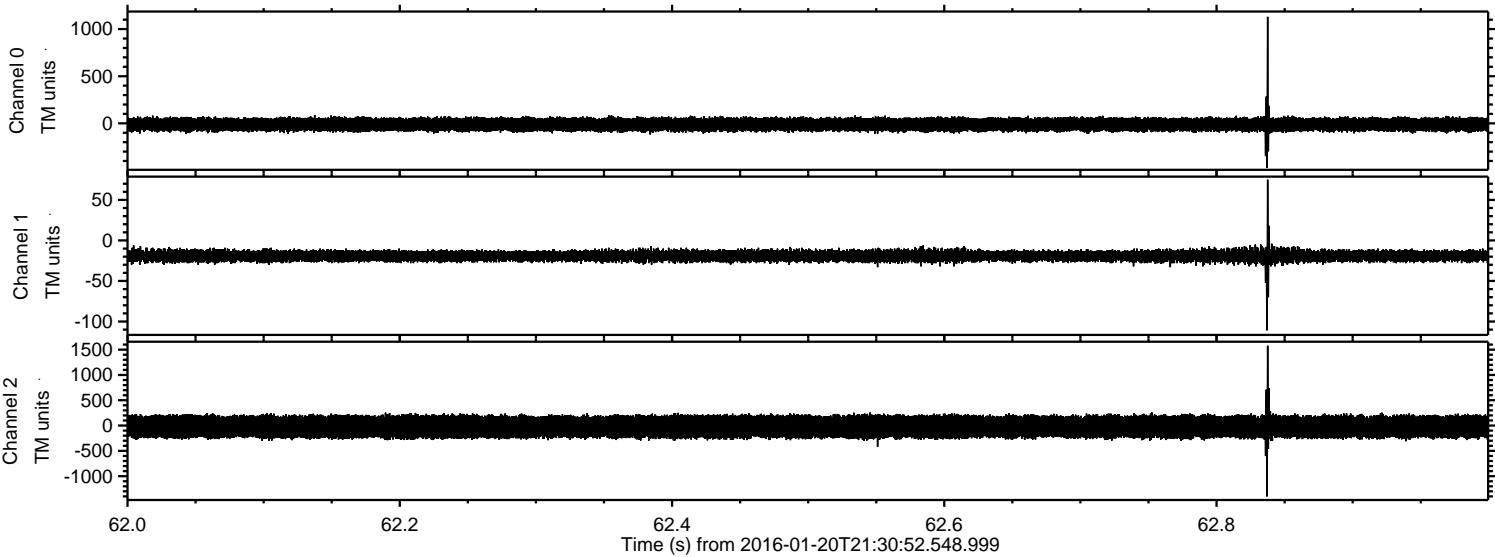


Processed Mon Apr 4 02:19:21 2016 by ELM ver.2012-10-06 from 001\_\_elm20160120\_213051\_\_dat00.bin



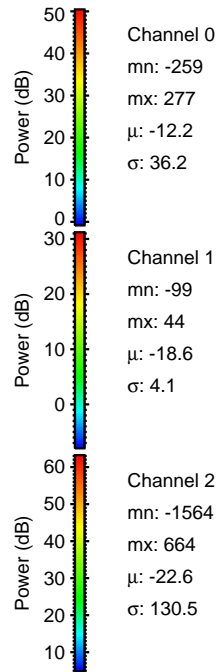
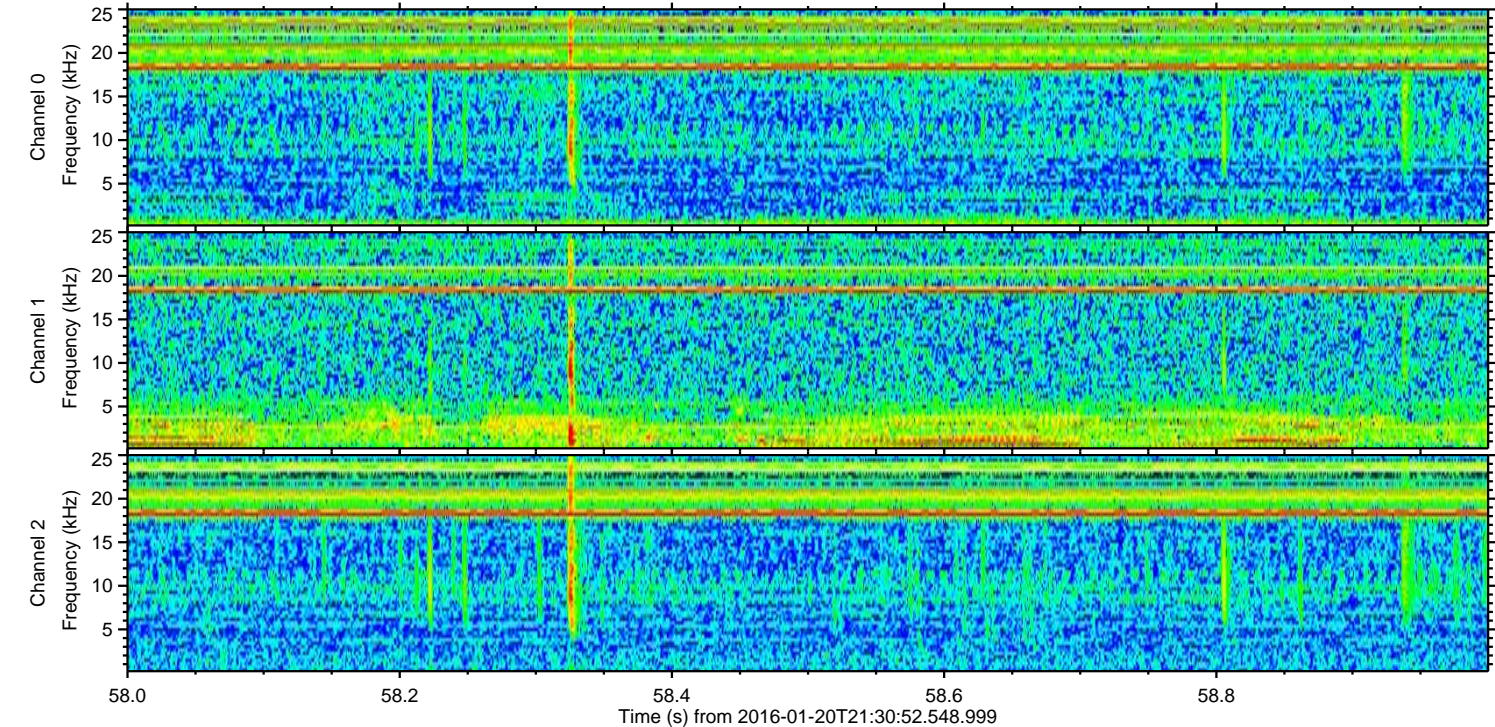
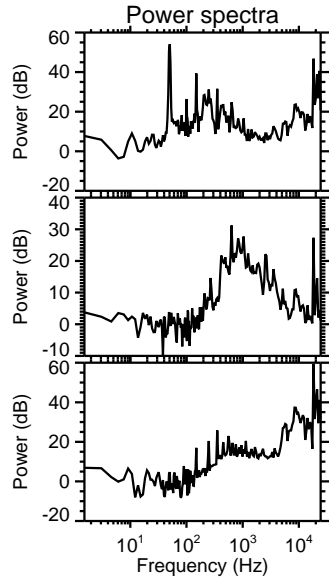
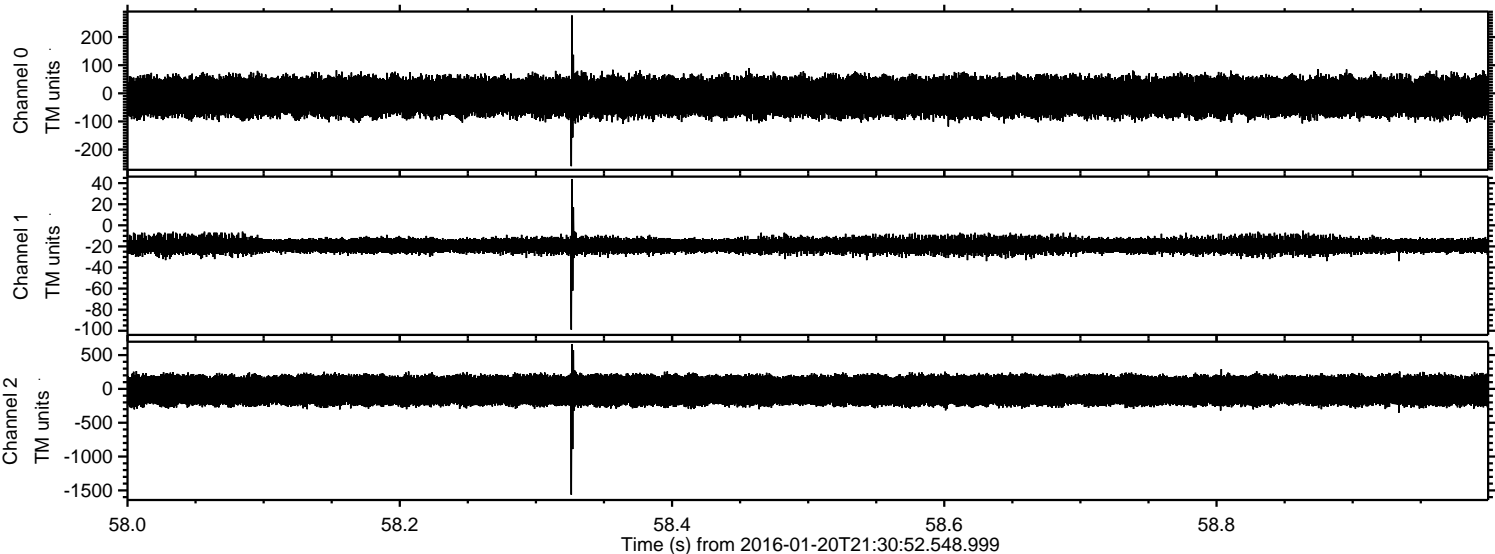


Processed Mon Apr 4 02:19:22 2016 by ELM ver.2012-10-06 from 001\_\_elm20160120\_213051\_\_dat00.bin



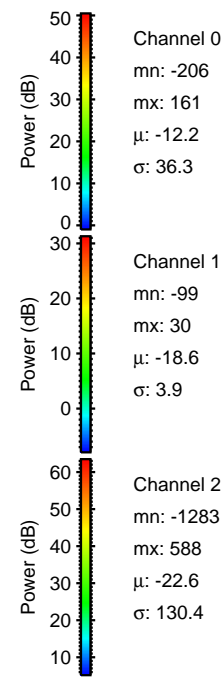
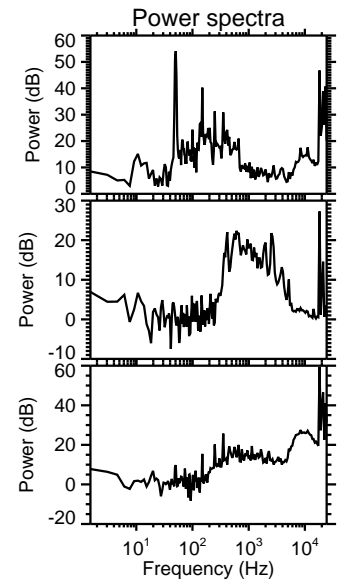
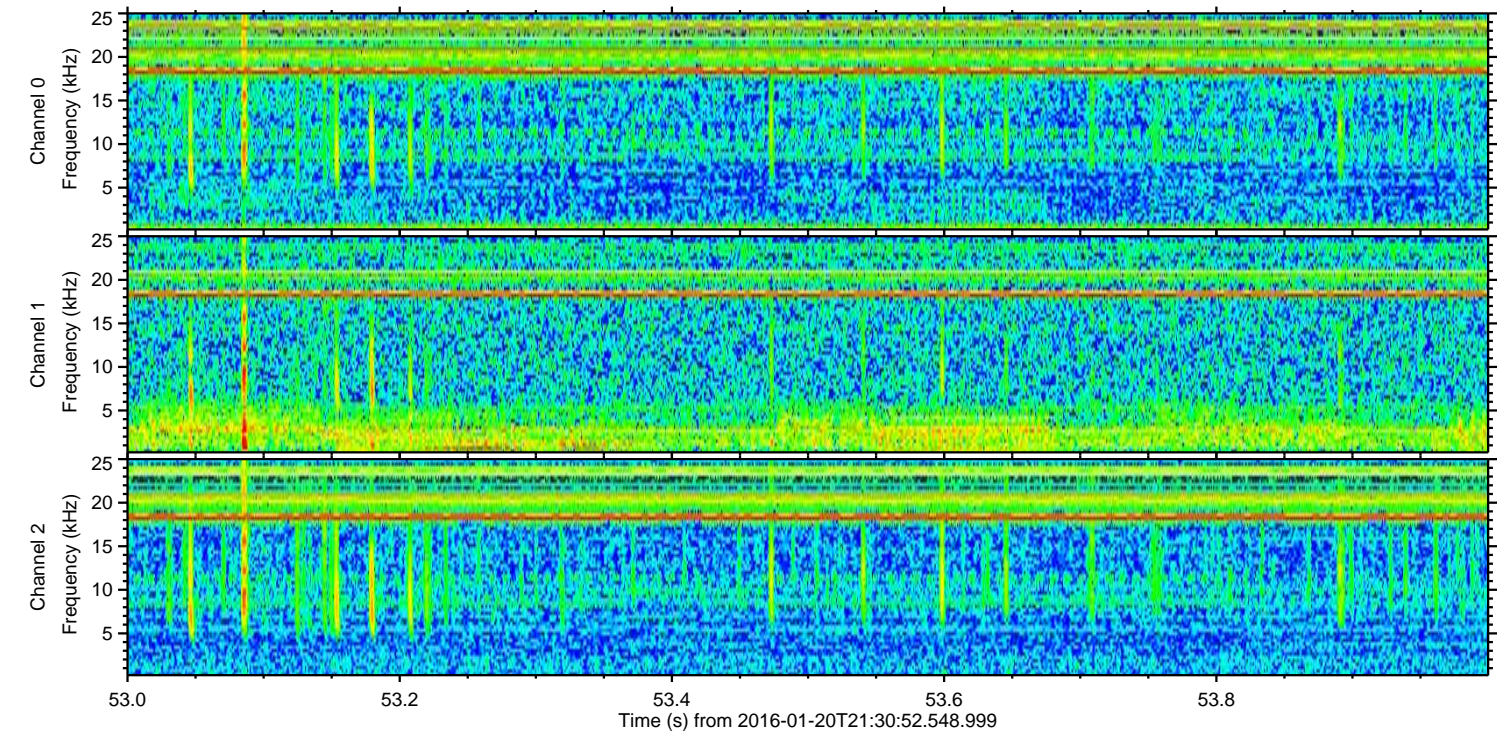
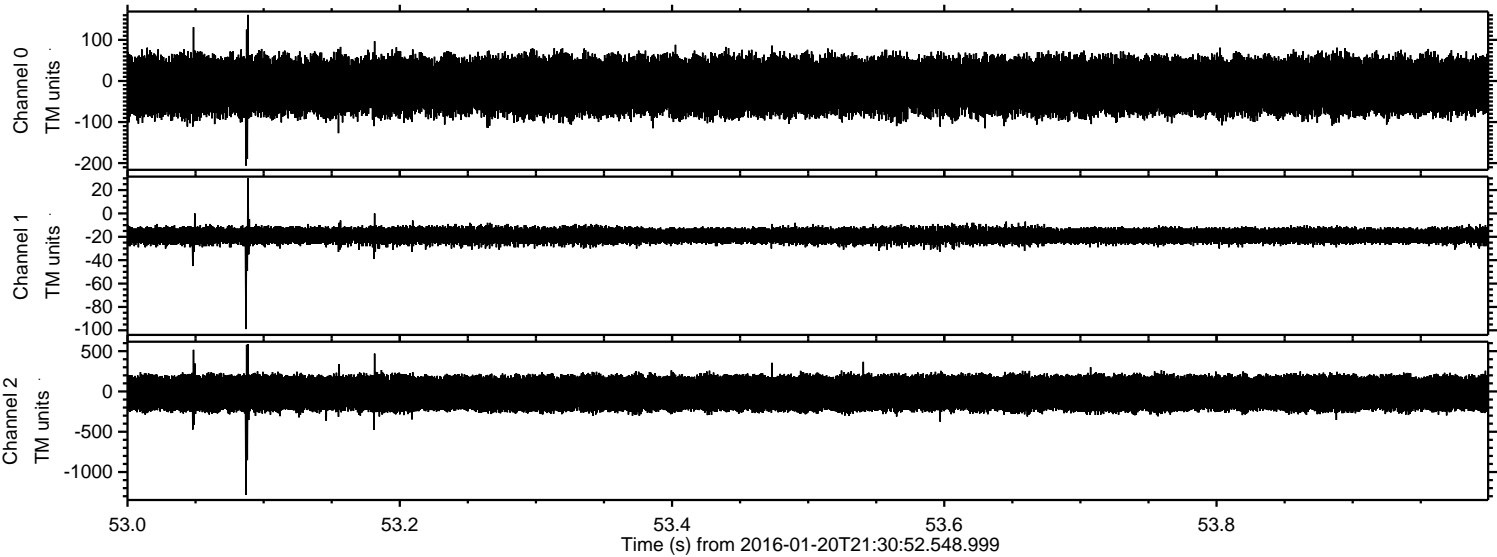


Processed Mon Apr 4 02:19:22 2016 by ELM ver.2012-10-06 from 001\_\_elm20160120\_213051\_\_dat00.bin





Processed Mon Apr 4 02:19:23 2016 by ELM ver.2012-10-06 from 001\_\_elm20160120\_213051\_\_dat00.bin



Channel 0  
mn: -206  
mx: 161  
 $\mu$ : -12.2  
 $\sigma$ : 36.3

Channel 1  
mn: -99  
mx: 30  
 $\mu$ : -18.6  
 $\sigma$ : 3.9

Channel 2  
mn: -1283  
mx: 588  
 $\mu$ : -22.6  
 $\sigma$ : 130.4



Processed Mon Apr 4 02:19:24 2016 by ELM ver.2012-10-06 from 001\_\_elm20160120\_213051\_\_dat00.bin

