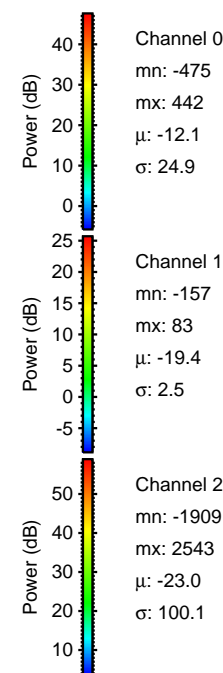
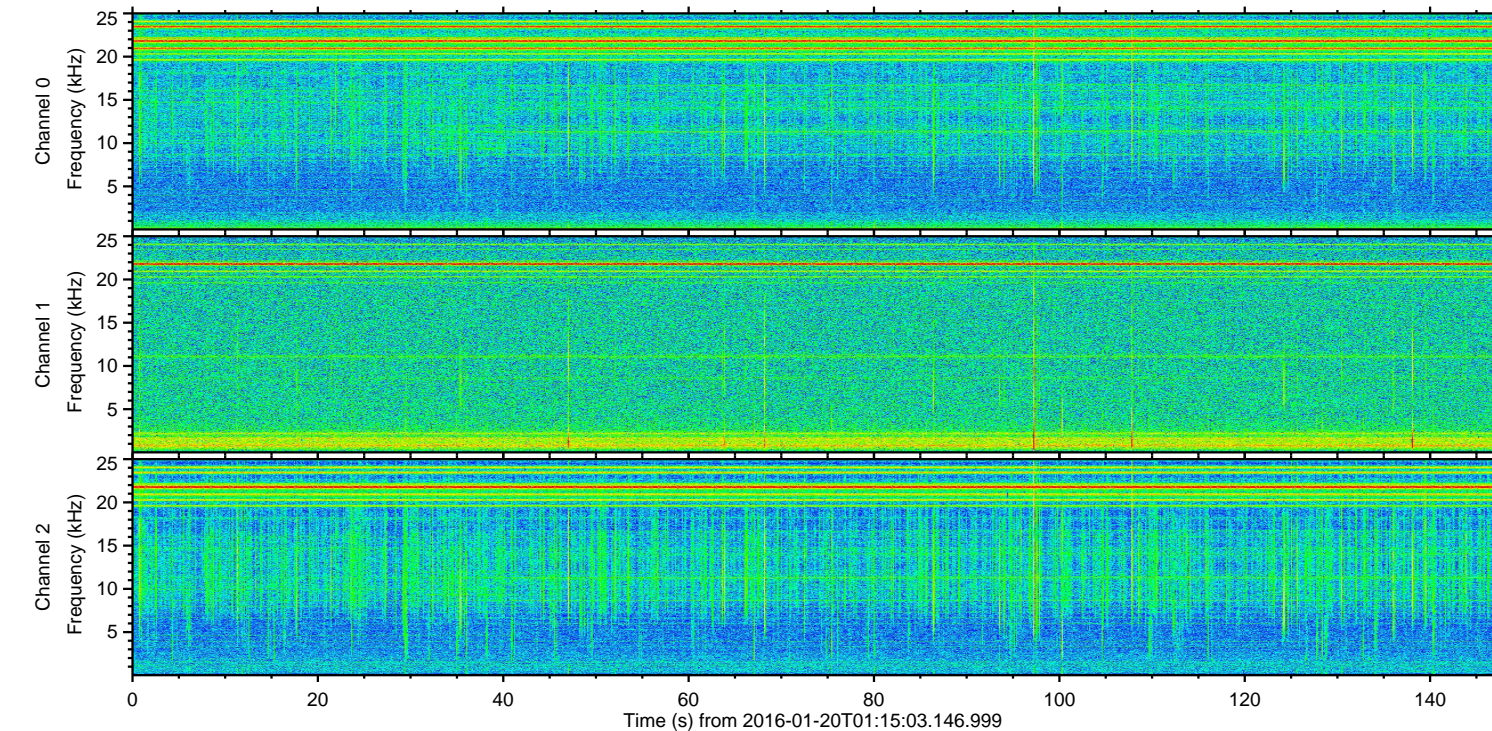
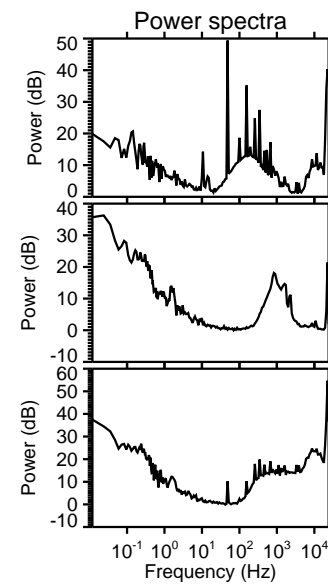
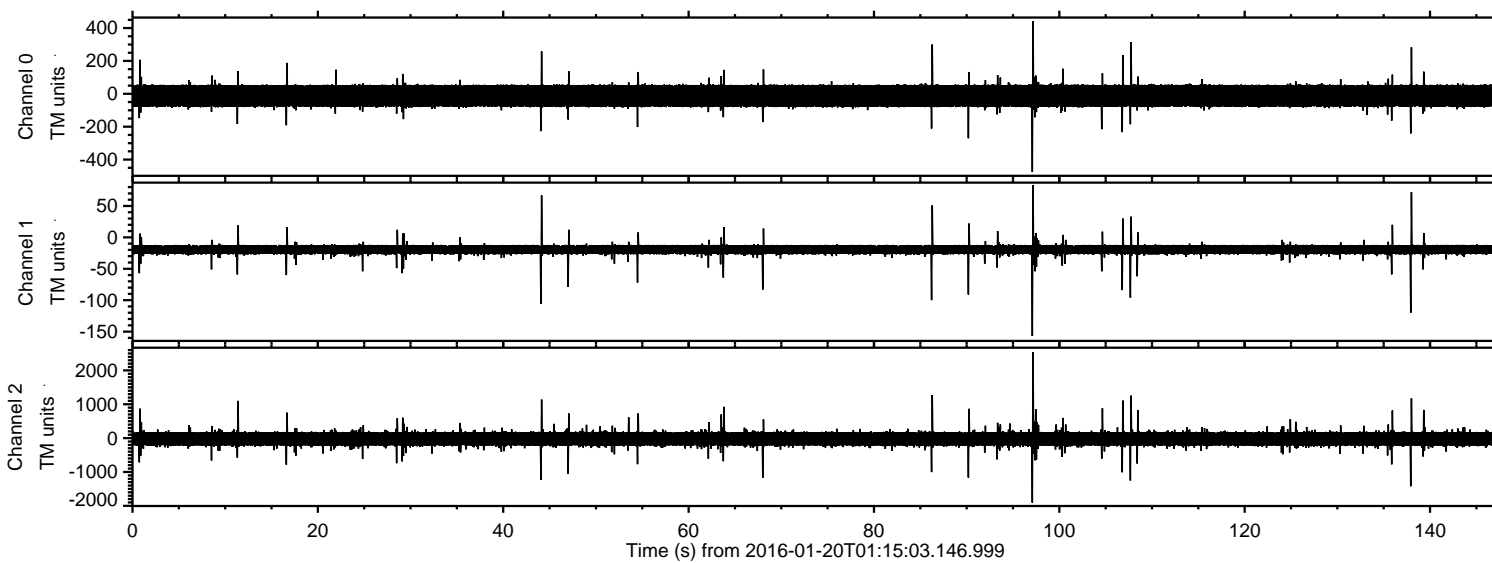
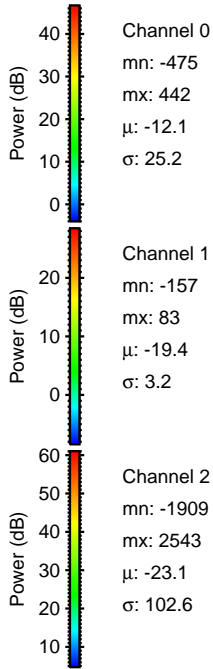
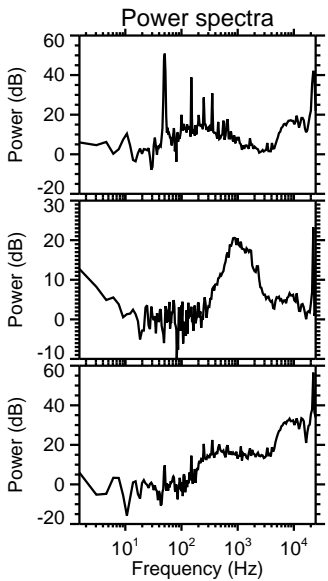
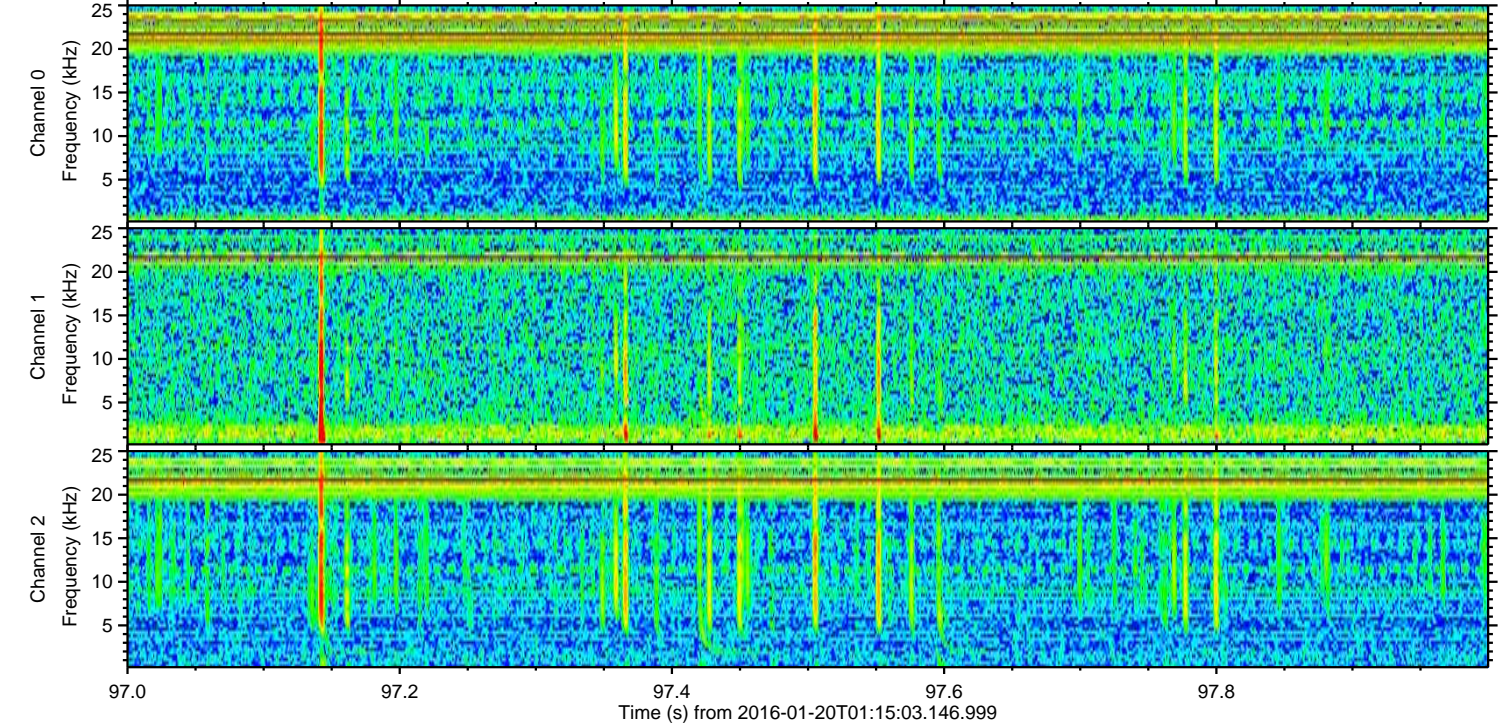
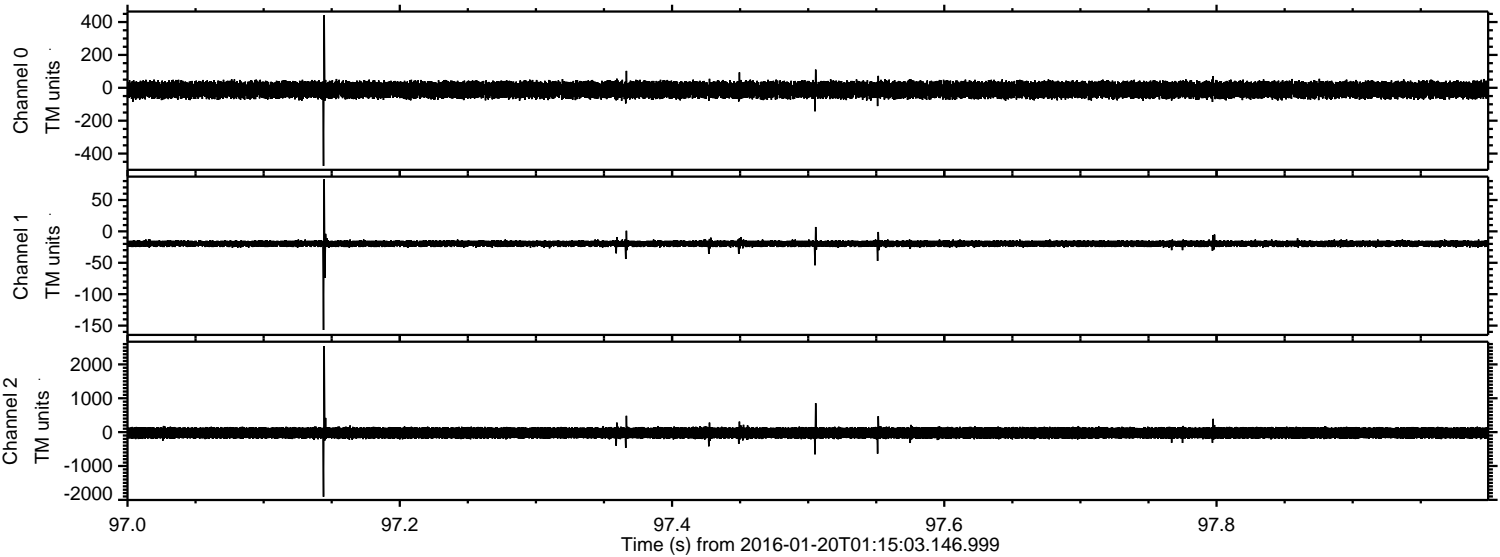


ELMAVAN 3D WAVEFORMS (Measured data sampled at 50 kHz) 51000 packets of 144 samples from 2016-01-20T01:15:03.146.999.

Processed Sun Apr 3 22:20:46 2016 by ELM ver.2012-10-06 from 001__elm20160120_011502__dat00.bin

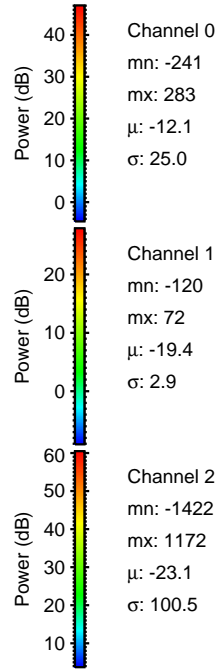
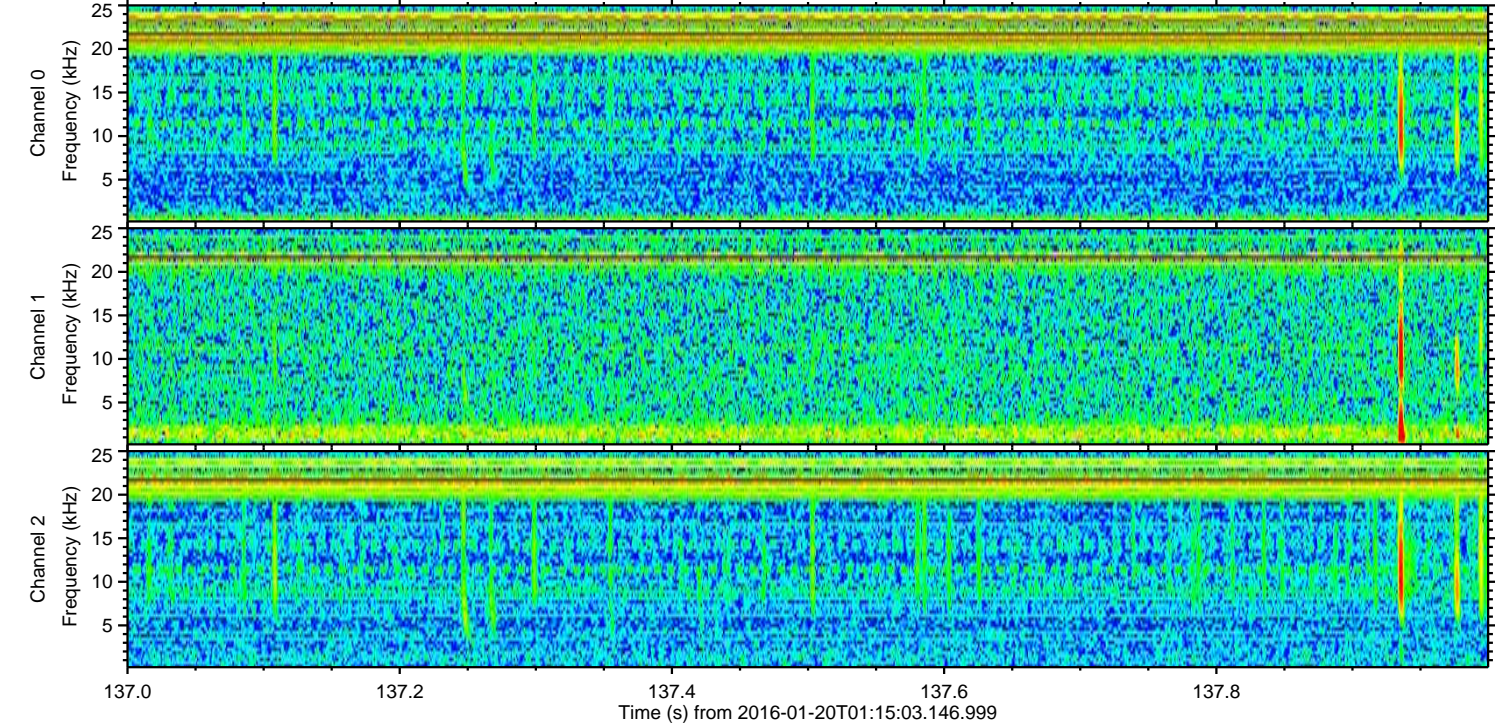
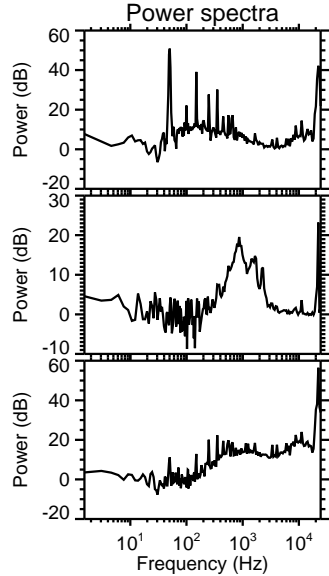
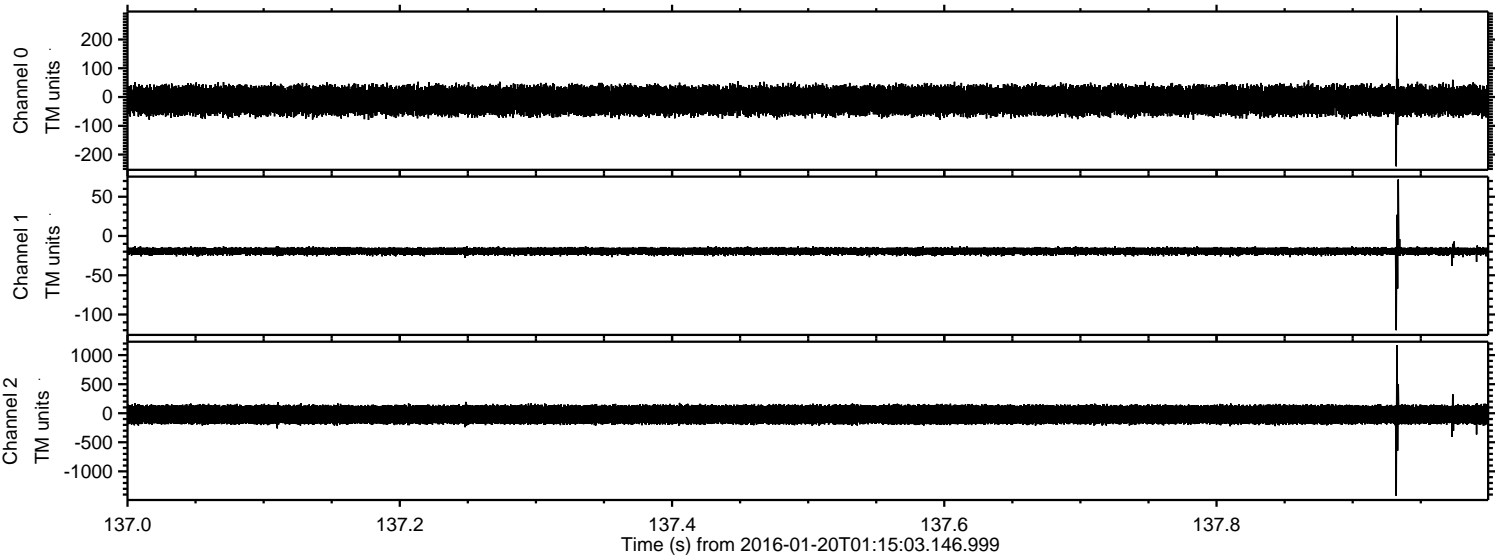


Processed Sun Apr 3 22:20:58 2016 by ELM ver.2012-10-06 from 001__elm20160120_011502__dat00.bin

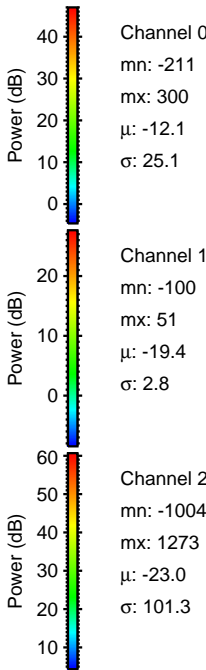
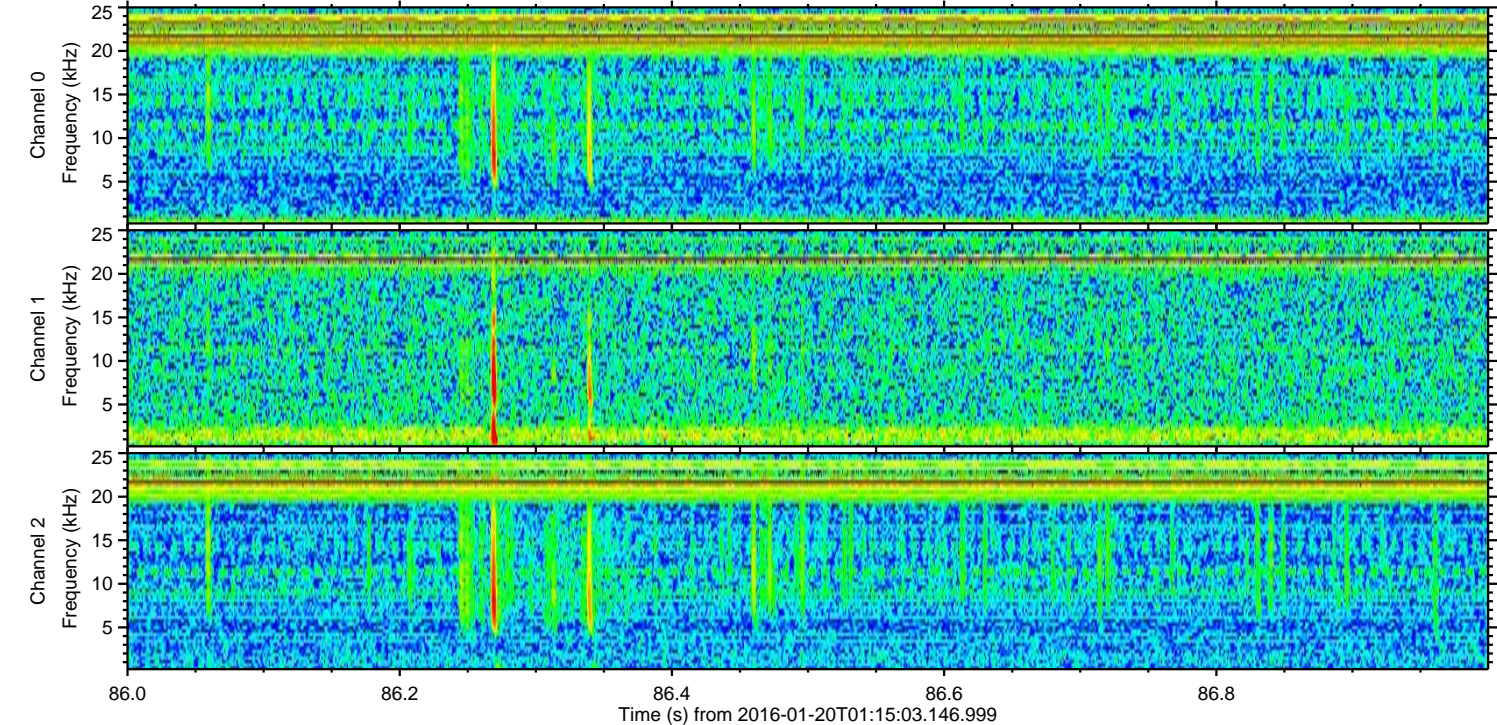
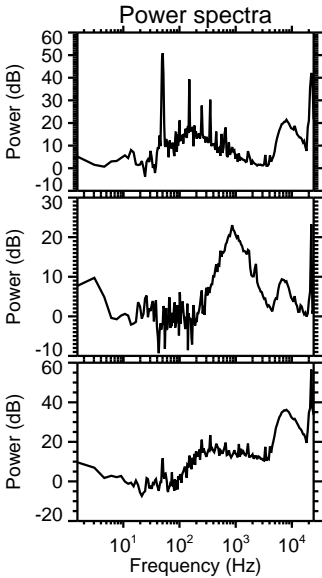
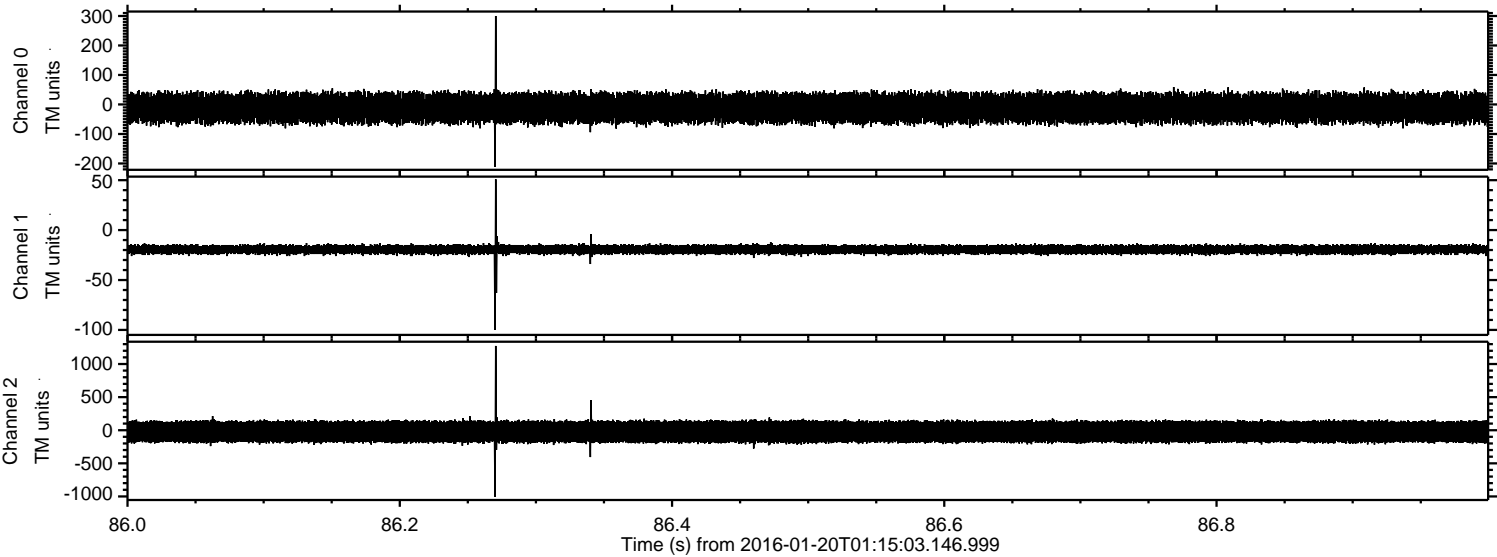


ELMAVAN 3D WAVEFORMS (Measured data sampled at 50 kHz) 51000 packets of 144 samples from 2016-01-20T01:15:03.146.999. Part 138/147

Processed Sun Apr 3 22:20:58 2016 by ELM ver.2012-10-06 from 001__elm20160120_011502__dat00.bin

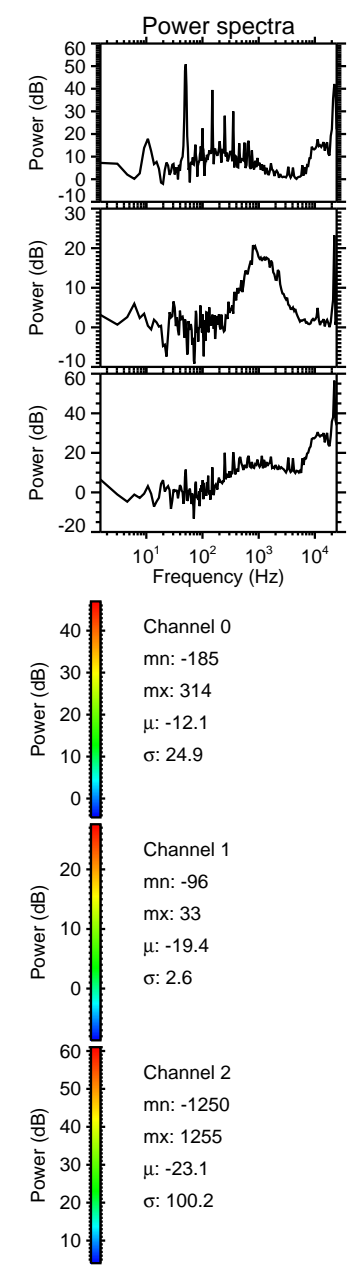
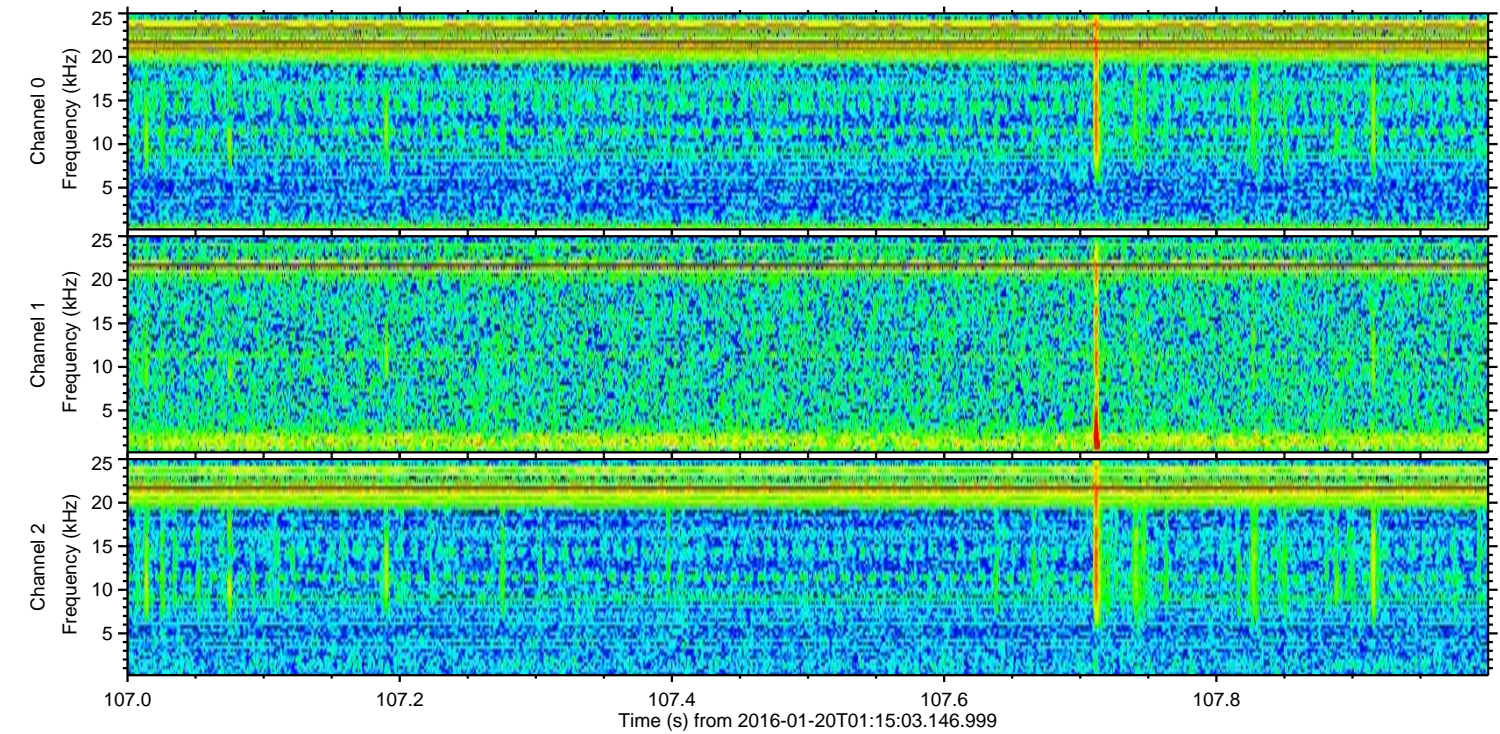
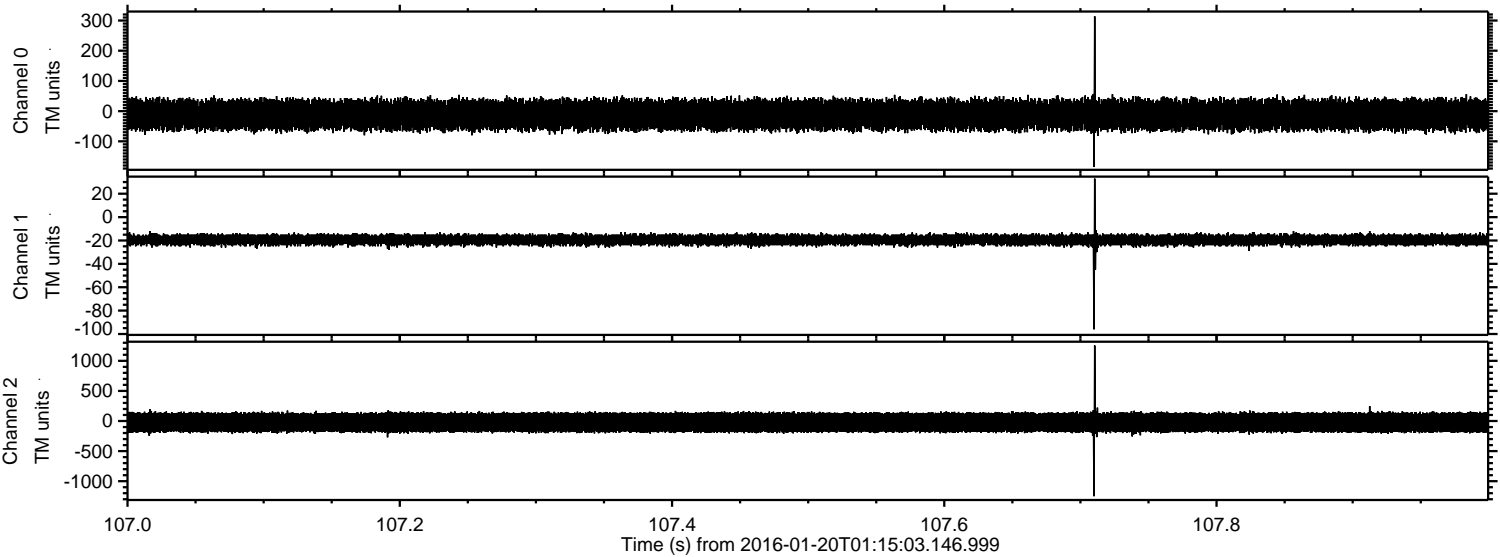


Processed Sun Apr 3 22:20:59 2016 by ELM ver.2012-10-06 from 001__elm20160120_011502__dat00.bin

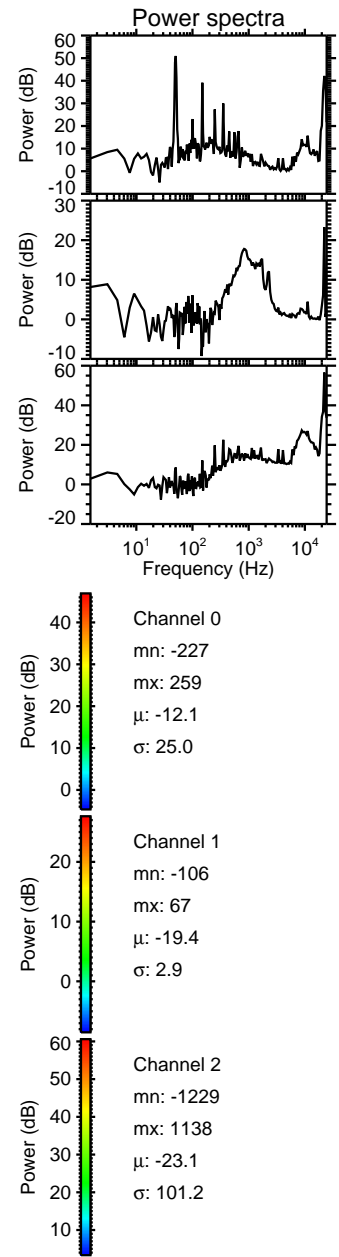
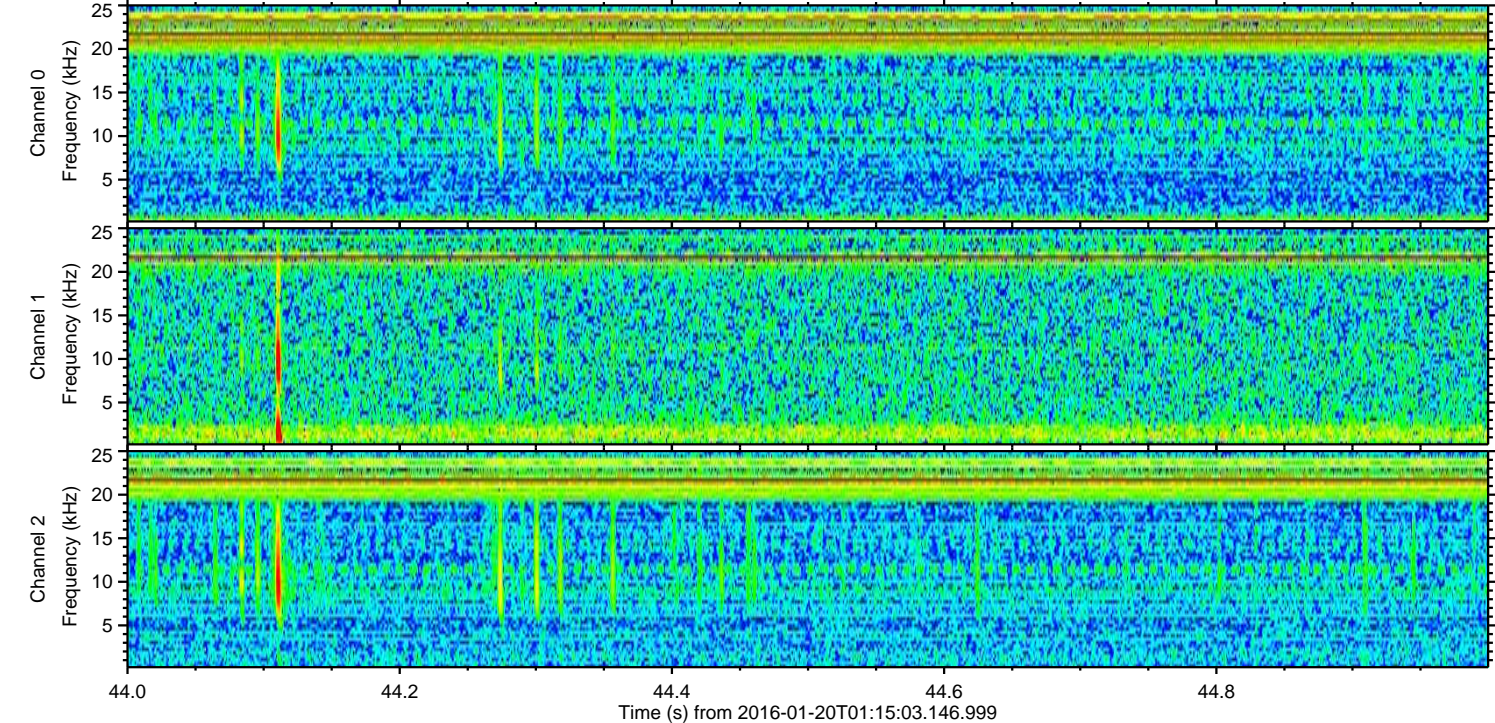
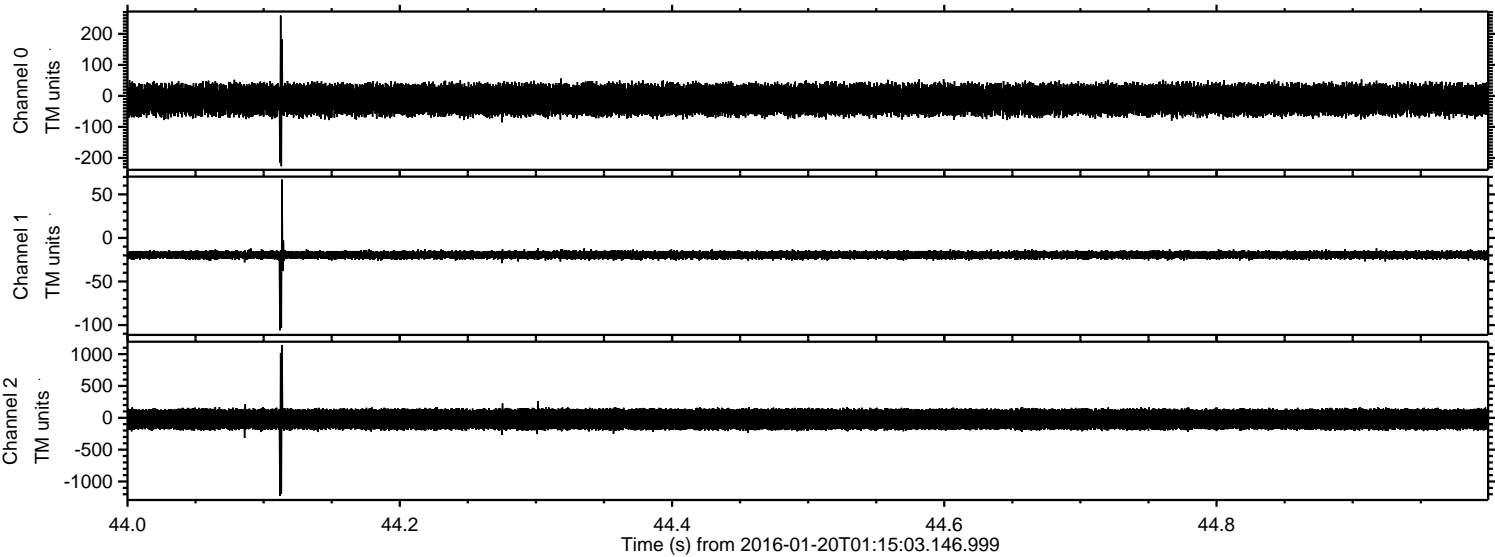


ELMAVAN 3D WAVEFORMS (Measured data sampled at 50 kHz) 51000 packets of 144 samples from 2016-01-20T01:15:03.146.999. Part 108/147

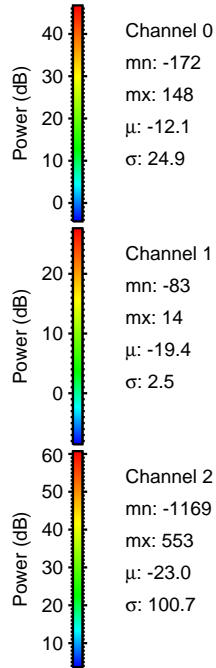
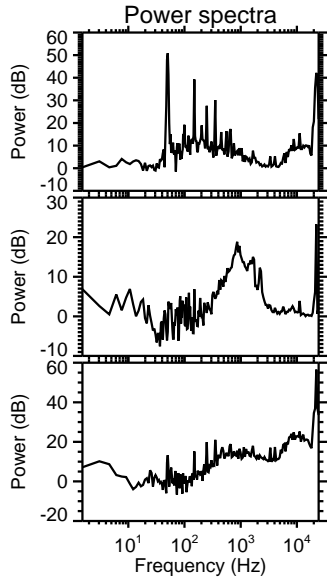
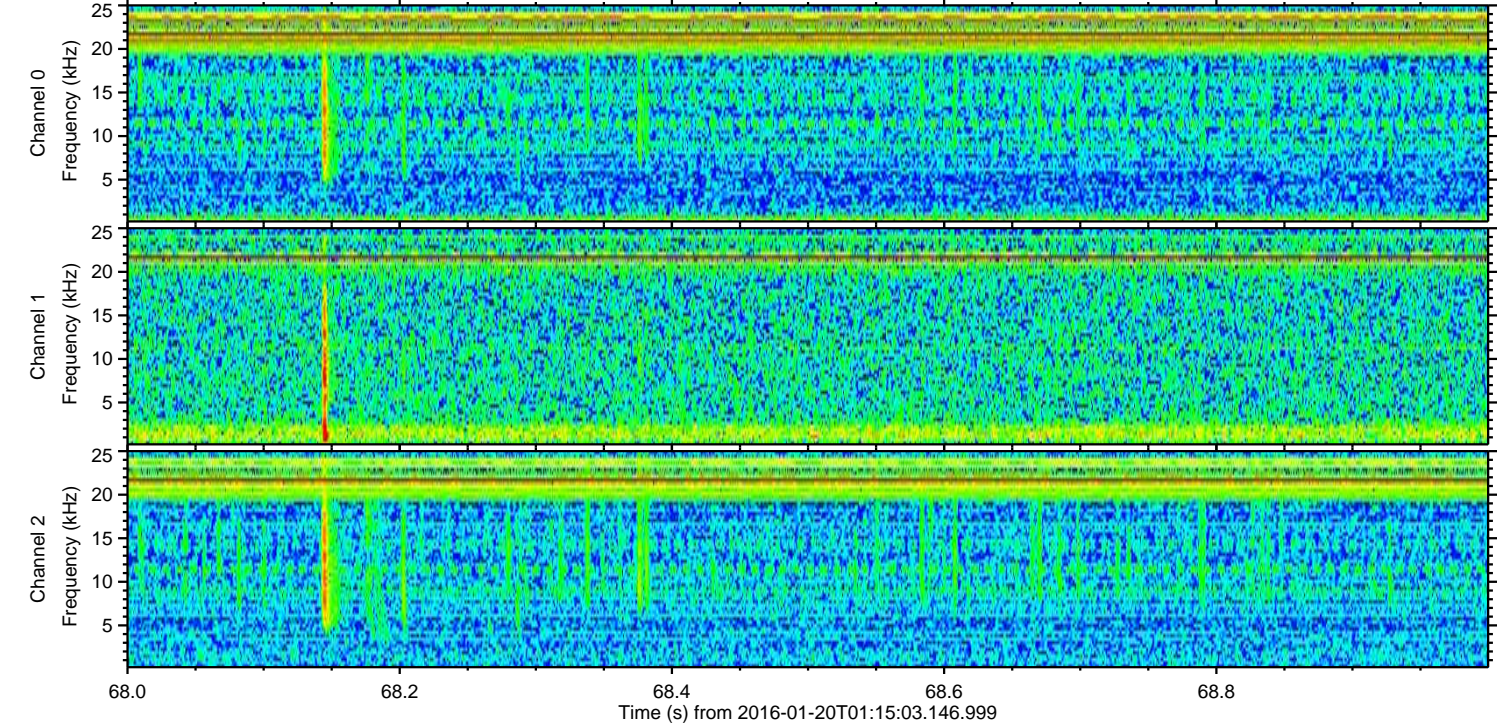
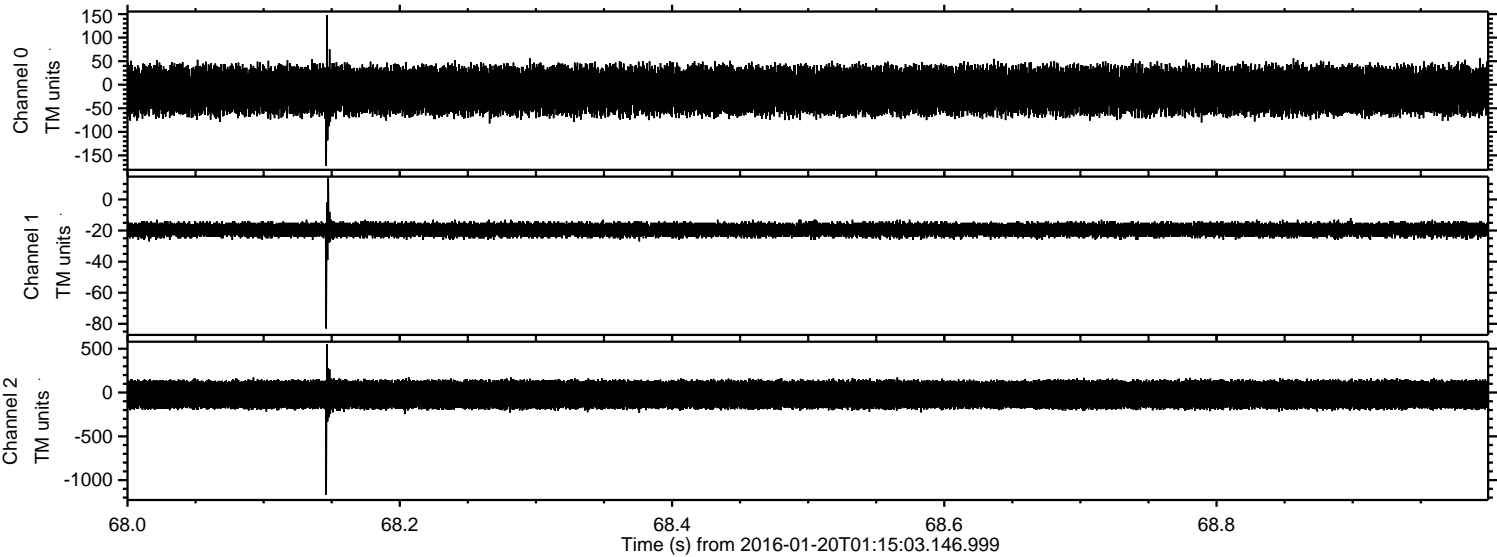
Processed Sun Apr 3 22:21:00 2016 by ELM ver.2012-10-06 from 001__elm20160120_011502__dat00.bin



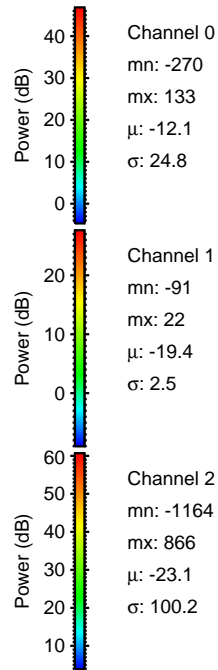
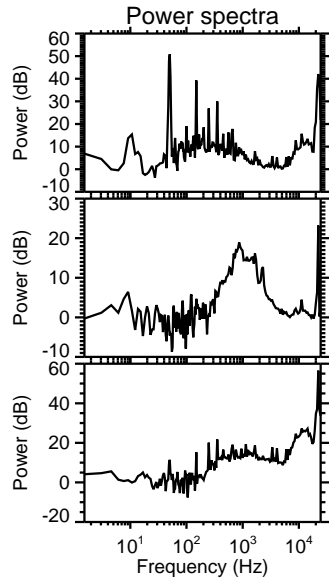
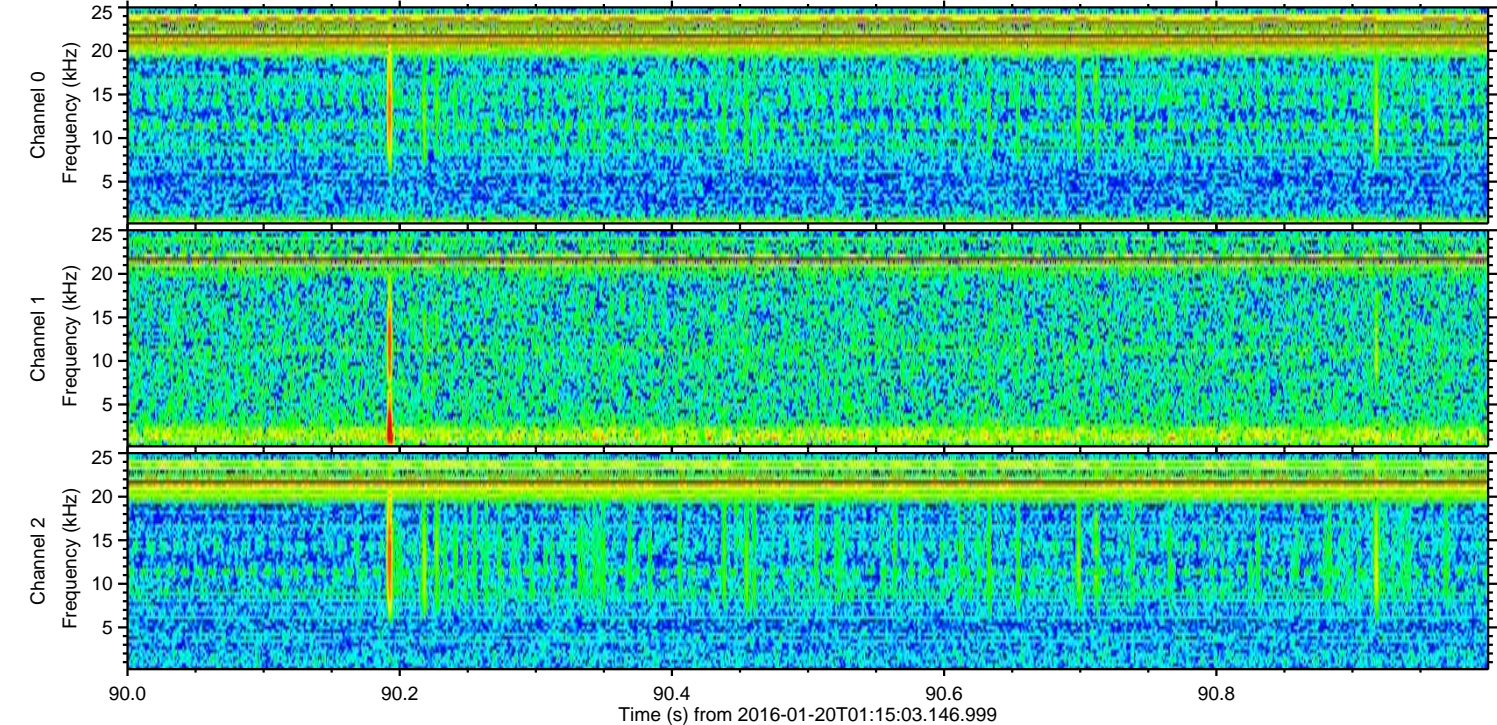
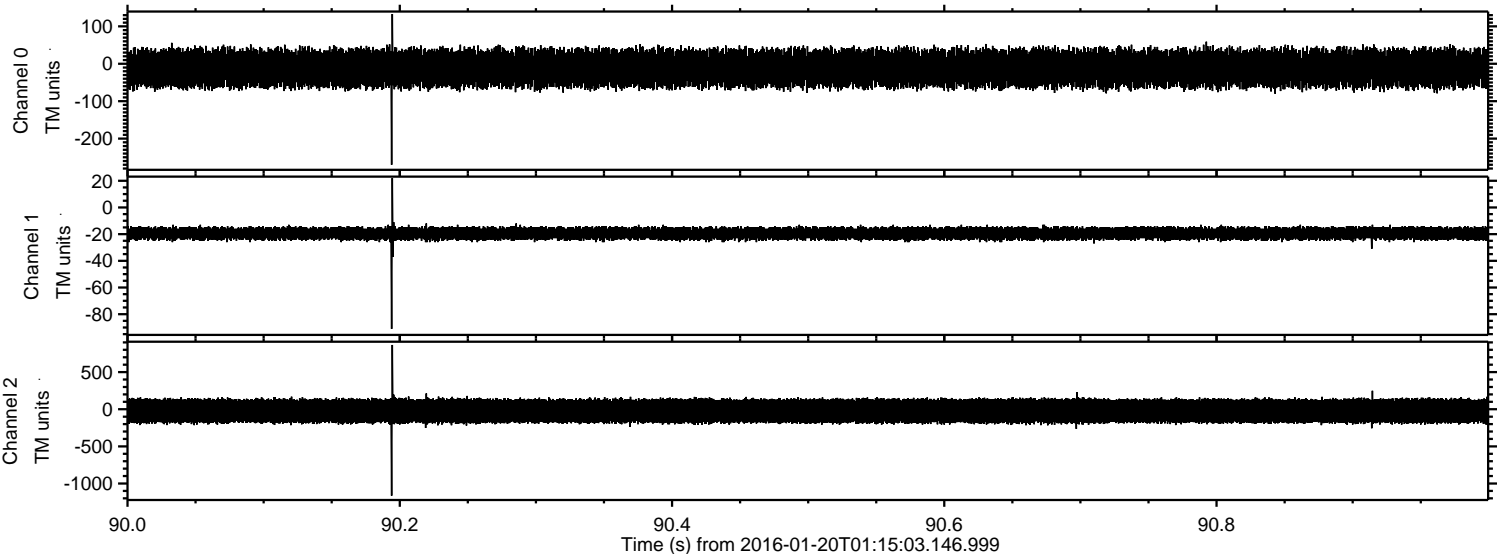
Processed Sun Apr 3 22:21:01 2016 by ELM ver.2012-10-06 from 001__elm20160120_011502__dat00.bin



Processed Sun Apr 3 22:21:02 2016 by ELM ver.2012-10-06 from 001__elm20160120_011502__dat00.bin

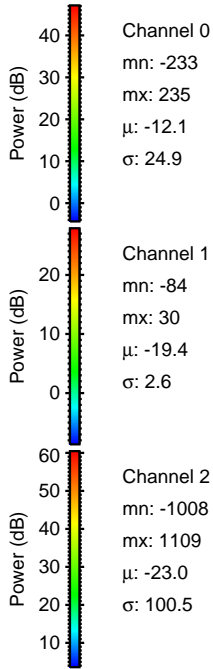
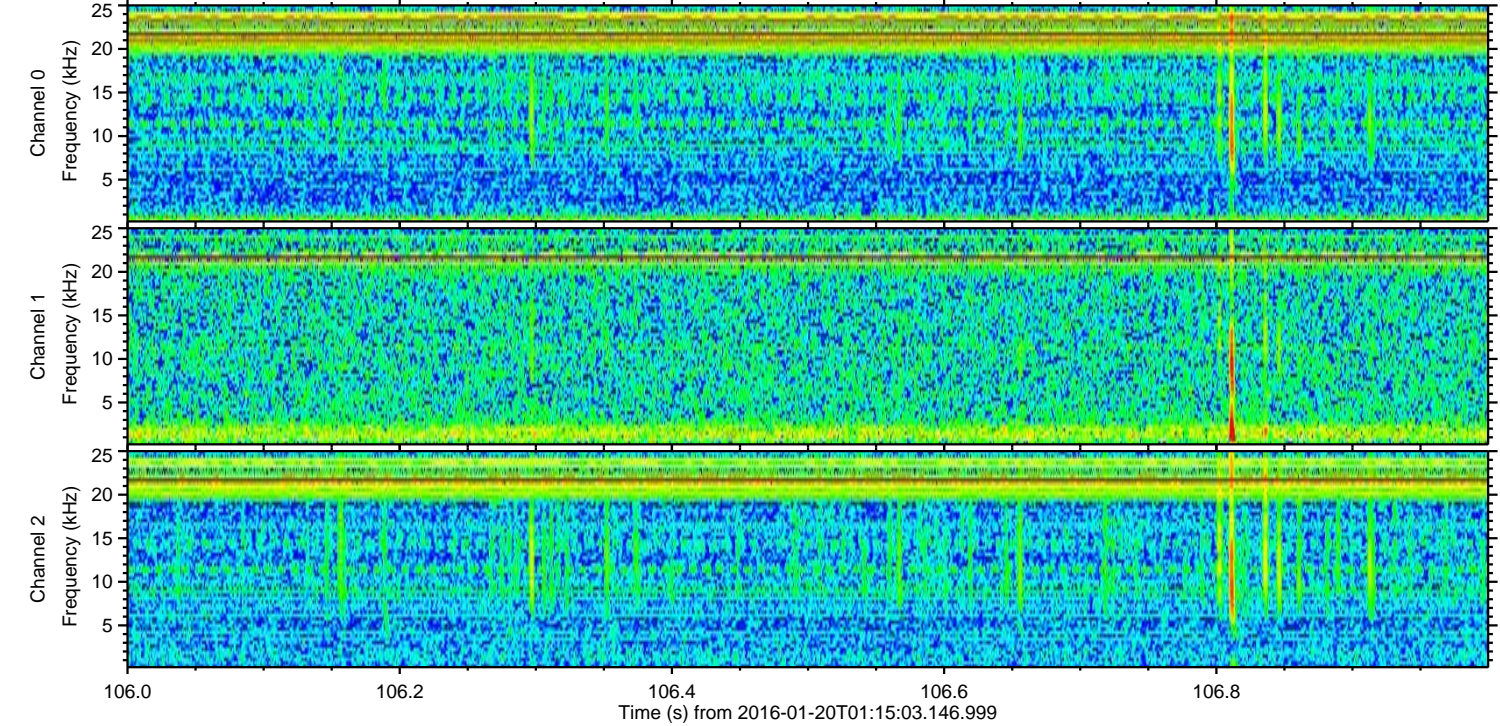
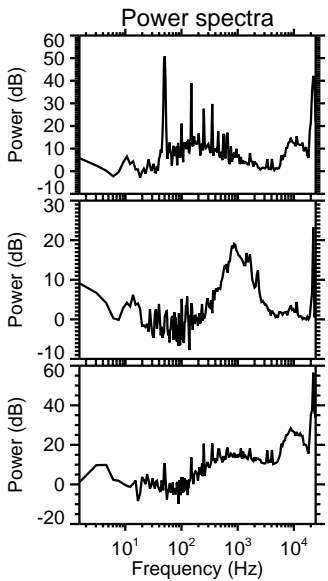
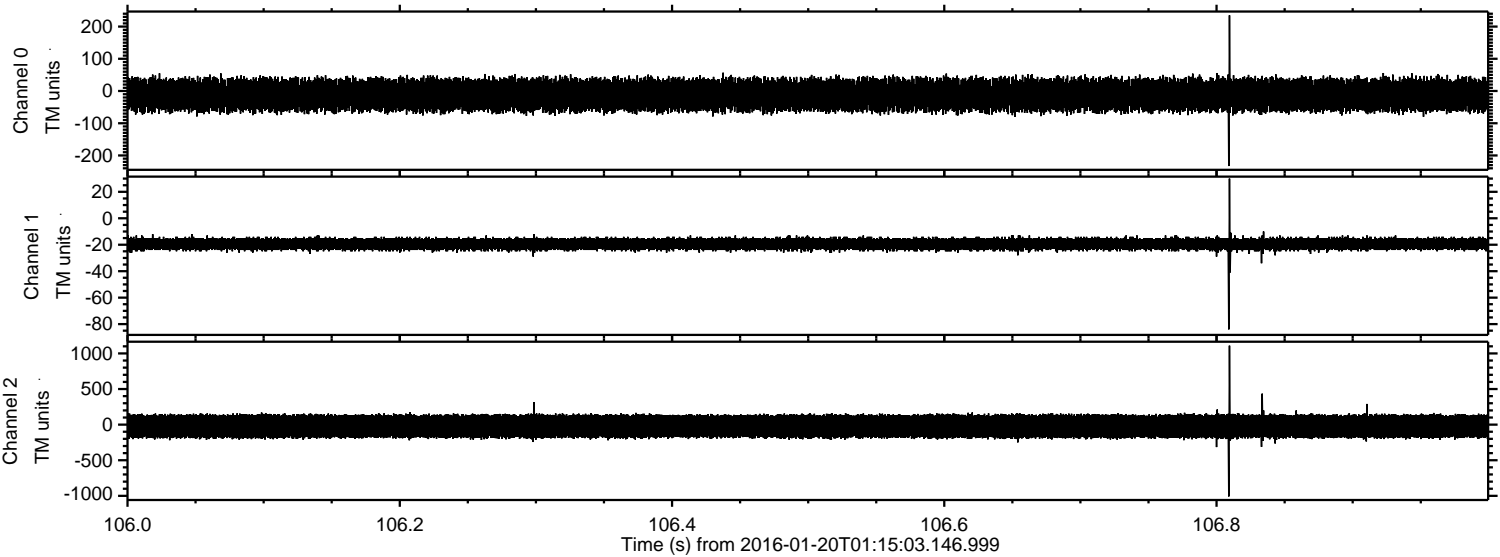


Processed Sun Apr 3 22:21:03 2016 by ELM ver.2012-10-06 from 001__elm20160120_011502__dat00.bin



ELMAVAN 3D WAVEFORMS (Measured data sampled at 50 kHz) 51000 packets of 144 samples from 2016-01-20T01:15:03.146.999. Part 107/147

Processed Sun Apr 3 22:21:04 2016 by ELM ver.2012-10-06 from 001__elm20160120_011502__dat00.bin

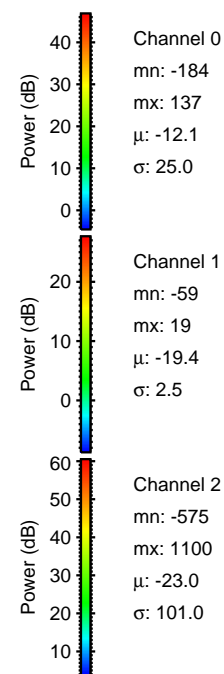
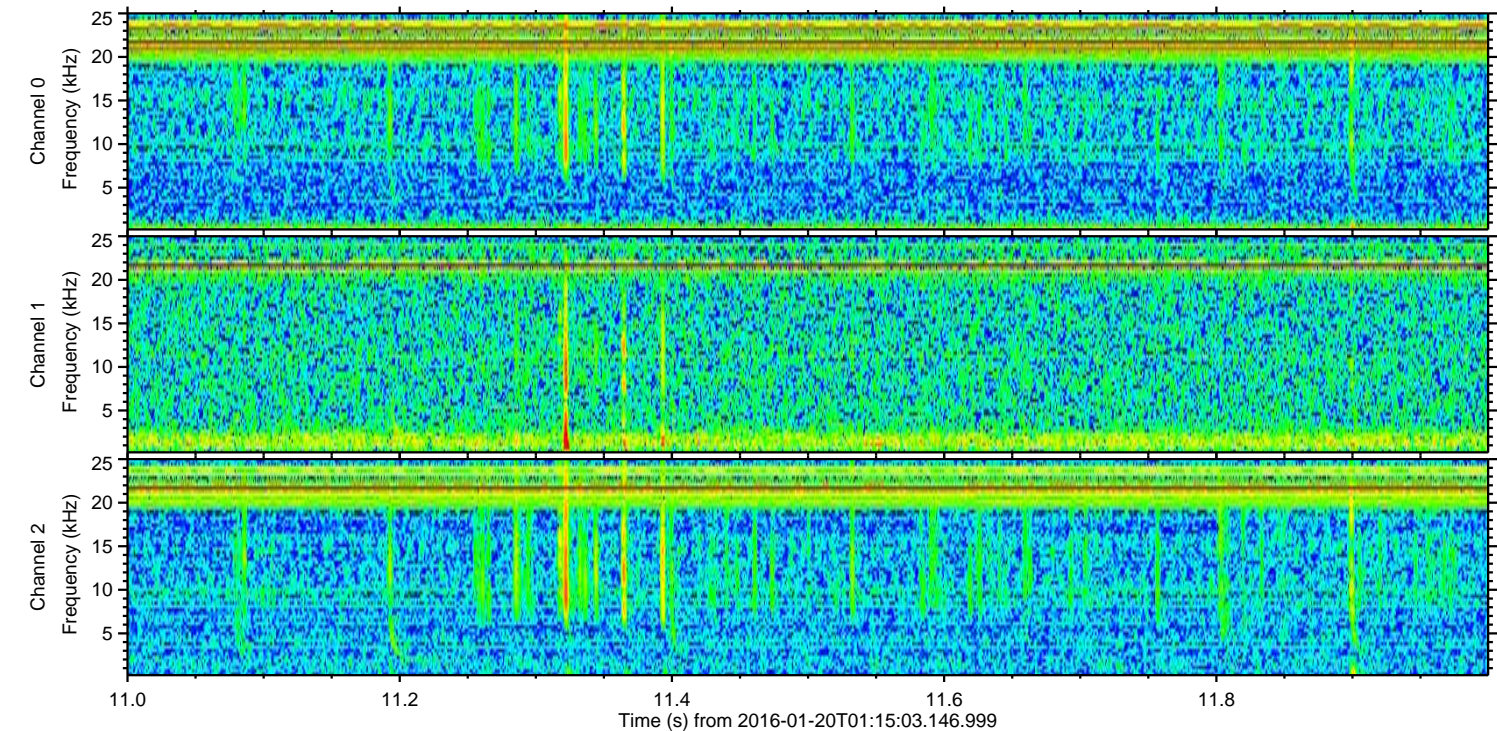
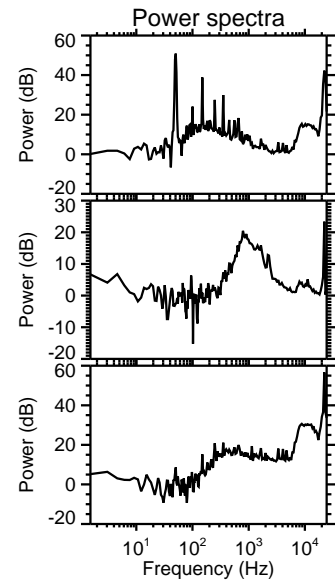
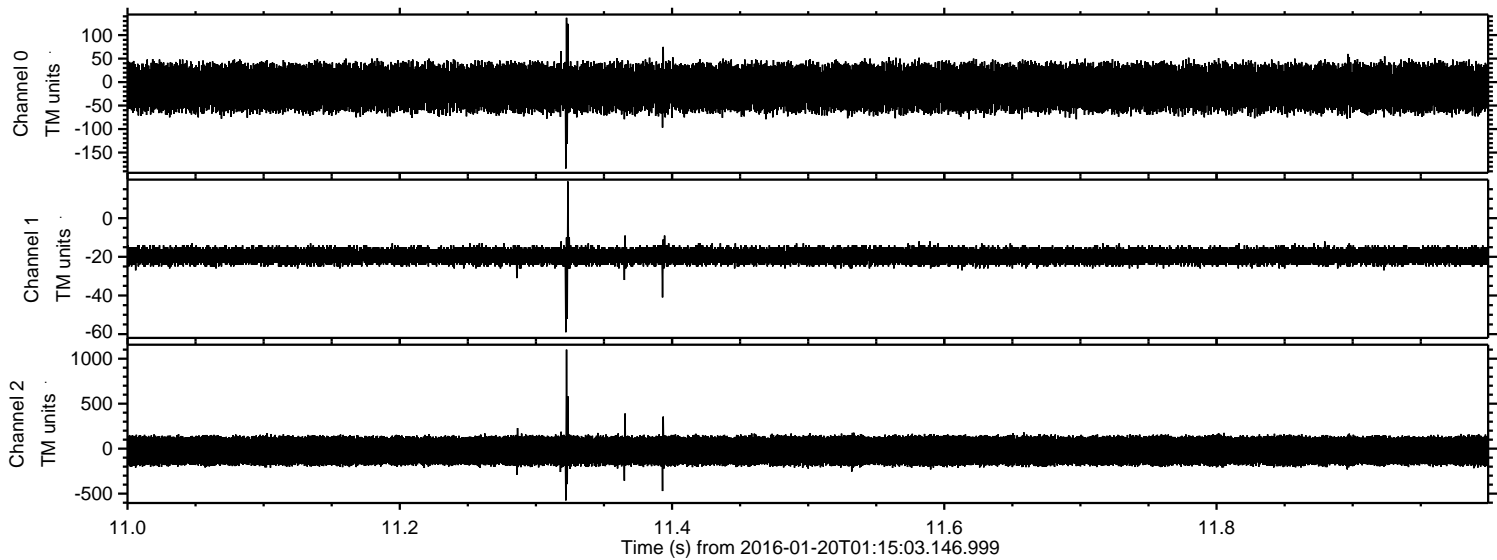


Channel 0
mn: -233
mx: 235
 μ : -12.1
 σ : 24.9

Channel 1
mn: -84
mx: 30
 μ : -19.4
 σ : 2.6

Channel 2
mn: -1008
mx: 1109
 μ : -23.0
 σ : 100.5

Processed Sun Apr 3 22:21:05 2016 by ELM ver.2012-10-06 from 001__elm20160120_011502__dat00.bin



Processed Sun Apr 3 22:21:06 2016 by ELM ver.2012-10-06 from 001__elm20160120_011502__dat00.bin

