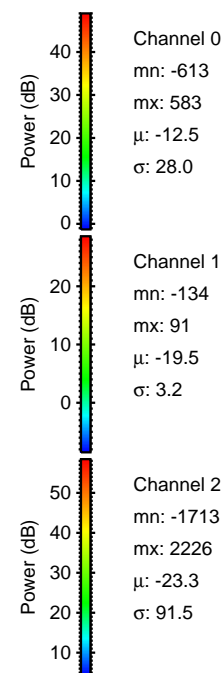
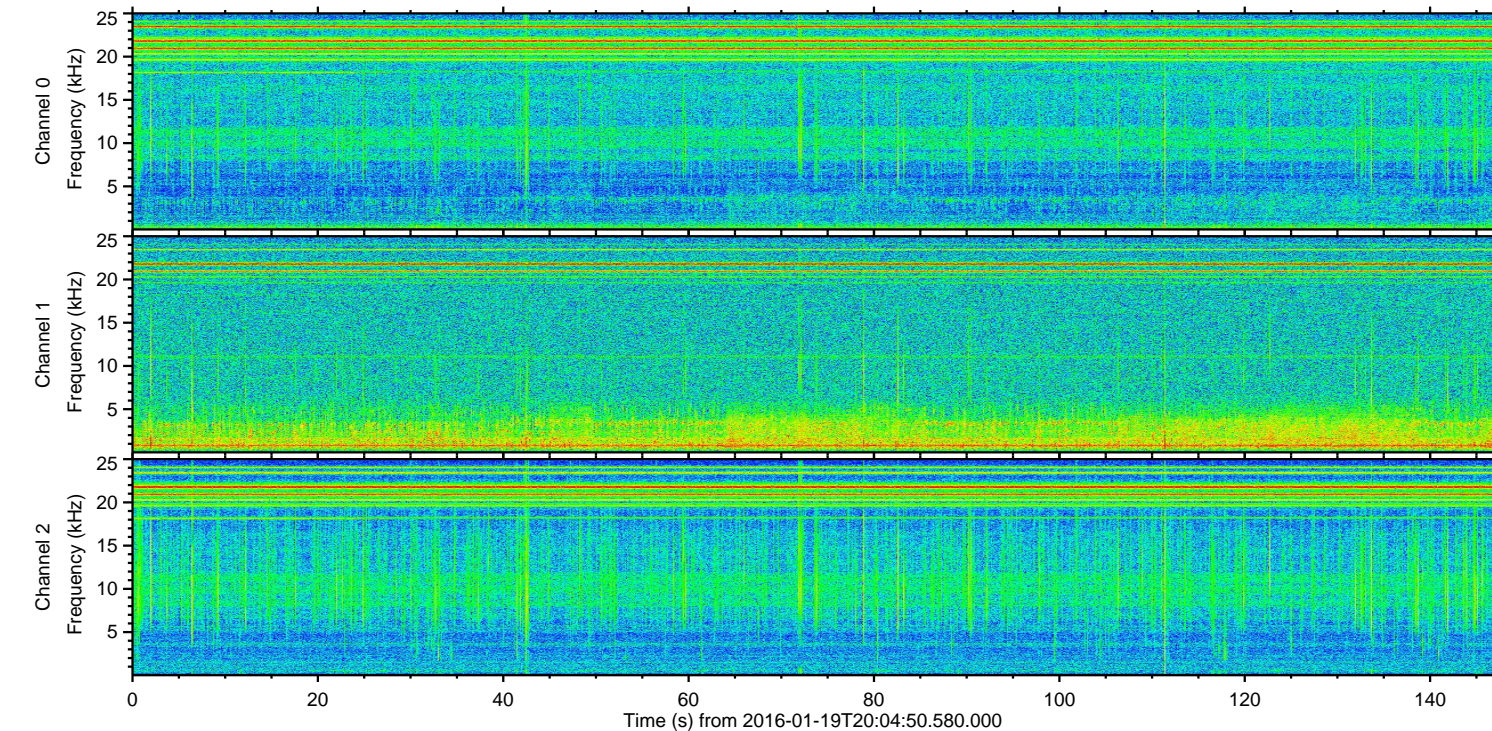
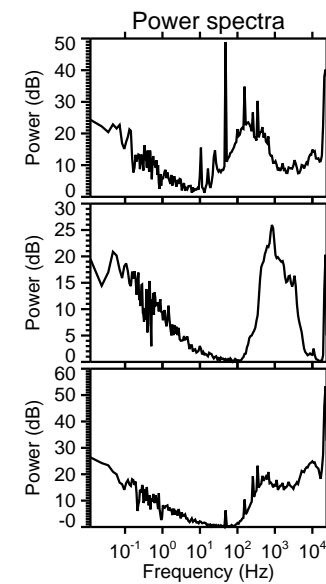
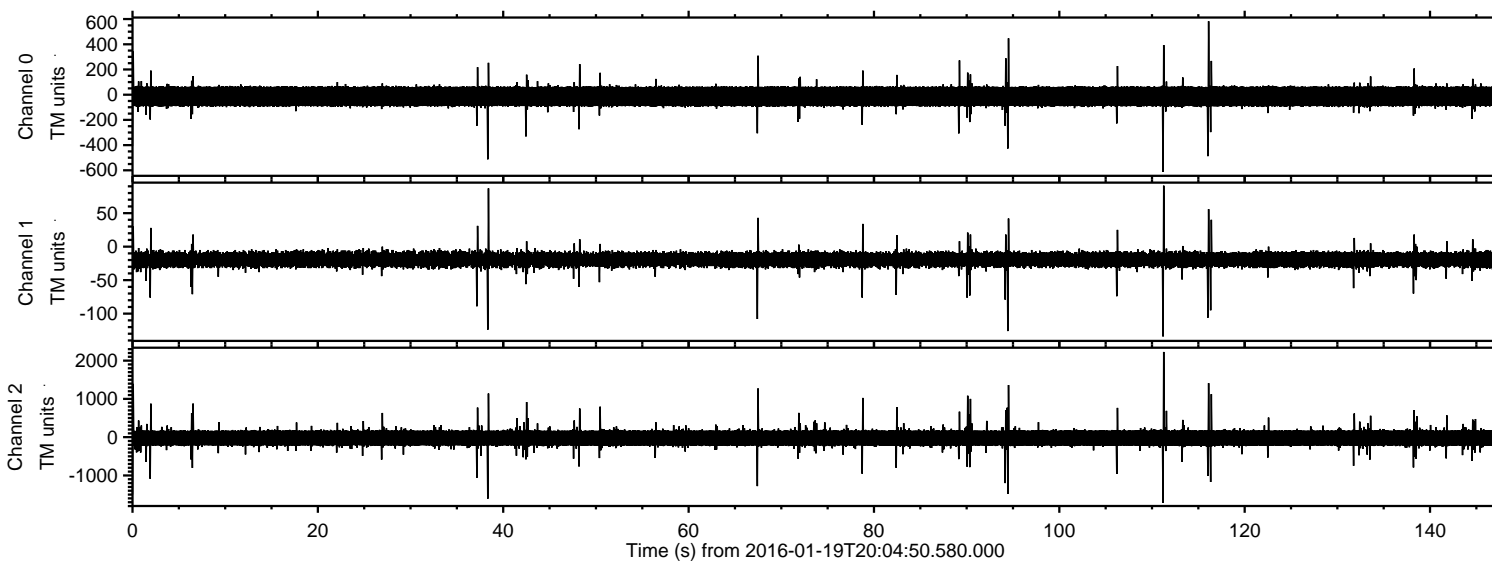


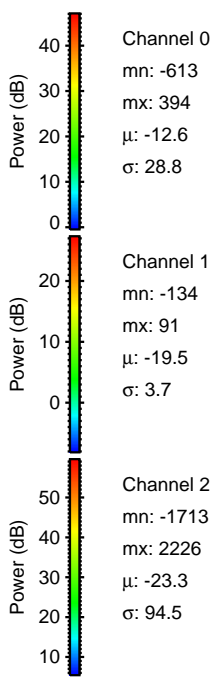
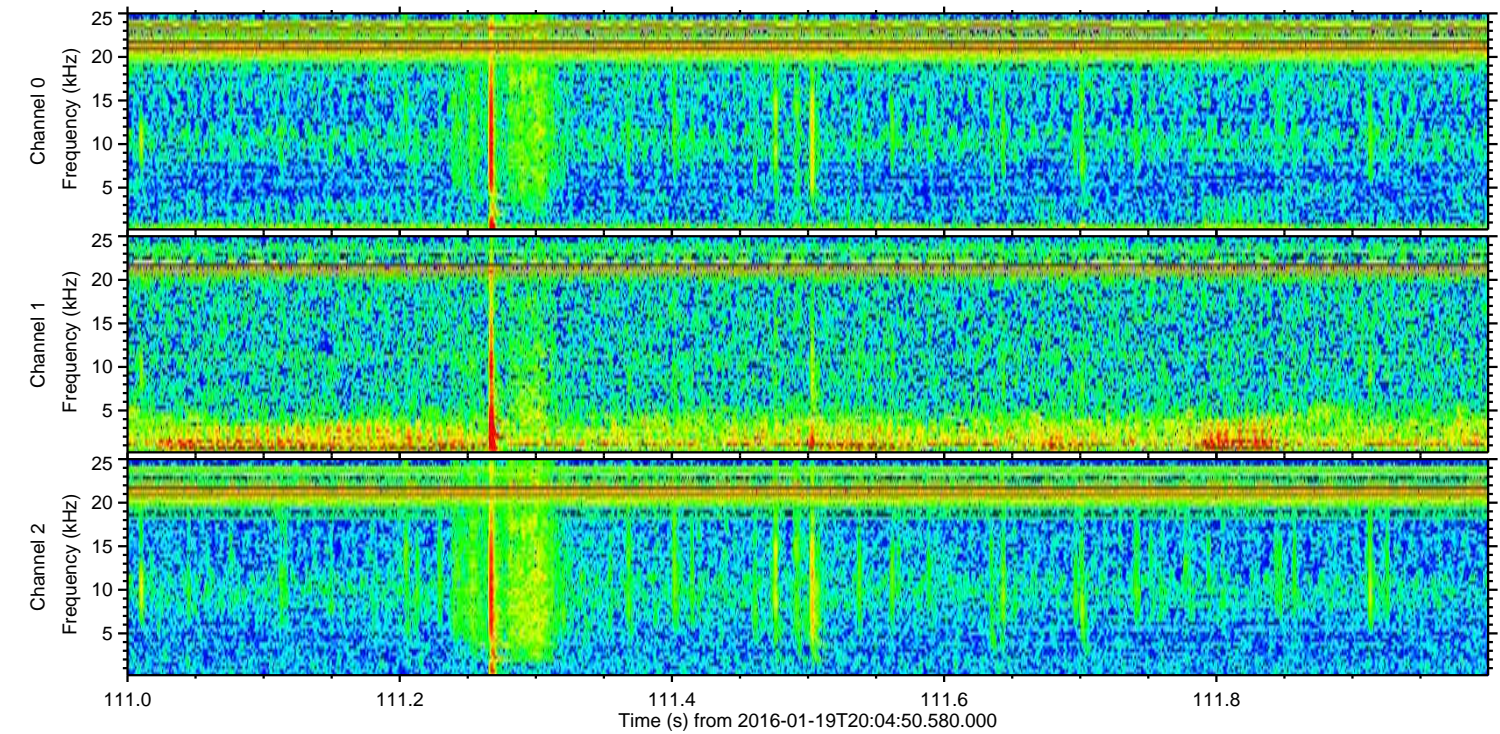
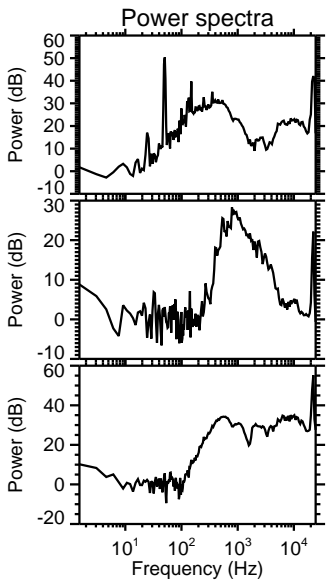
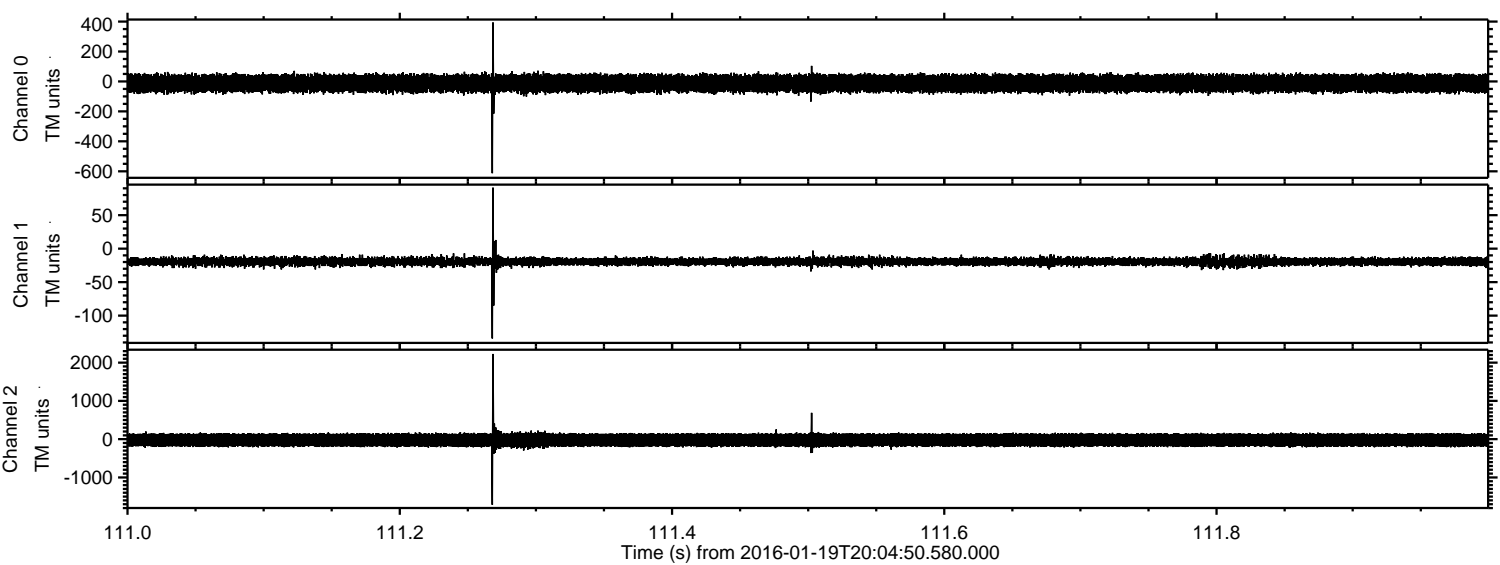
ELMAVAN 3D WAVEFORMS (Measured data sampled at 50 kHz) 51000 packets of 144 samples from 2016-01-19T20:04:50.580.000.

Processed Sun Apr 3 21:20:00 2016 by ELM ver.2012-10-06 from 001__elm20160119_200449__dat00.bin

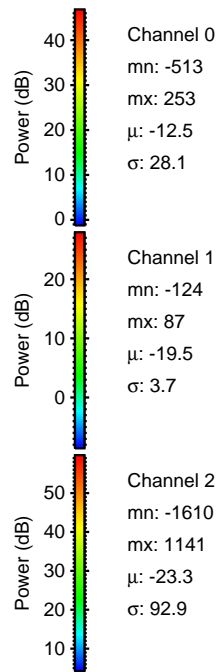
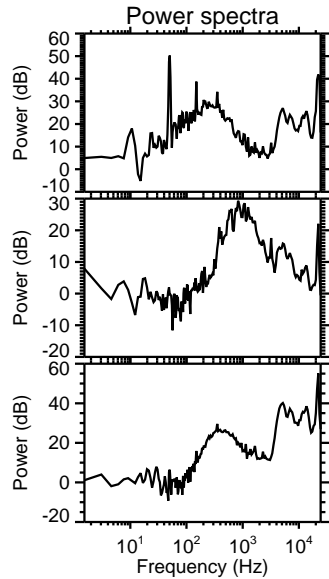
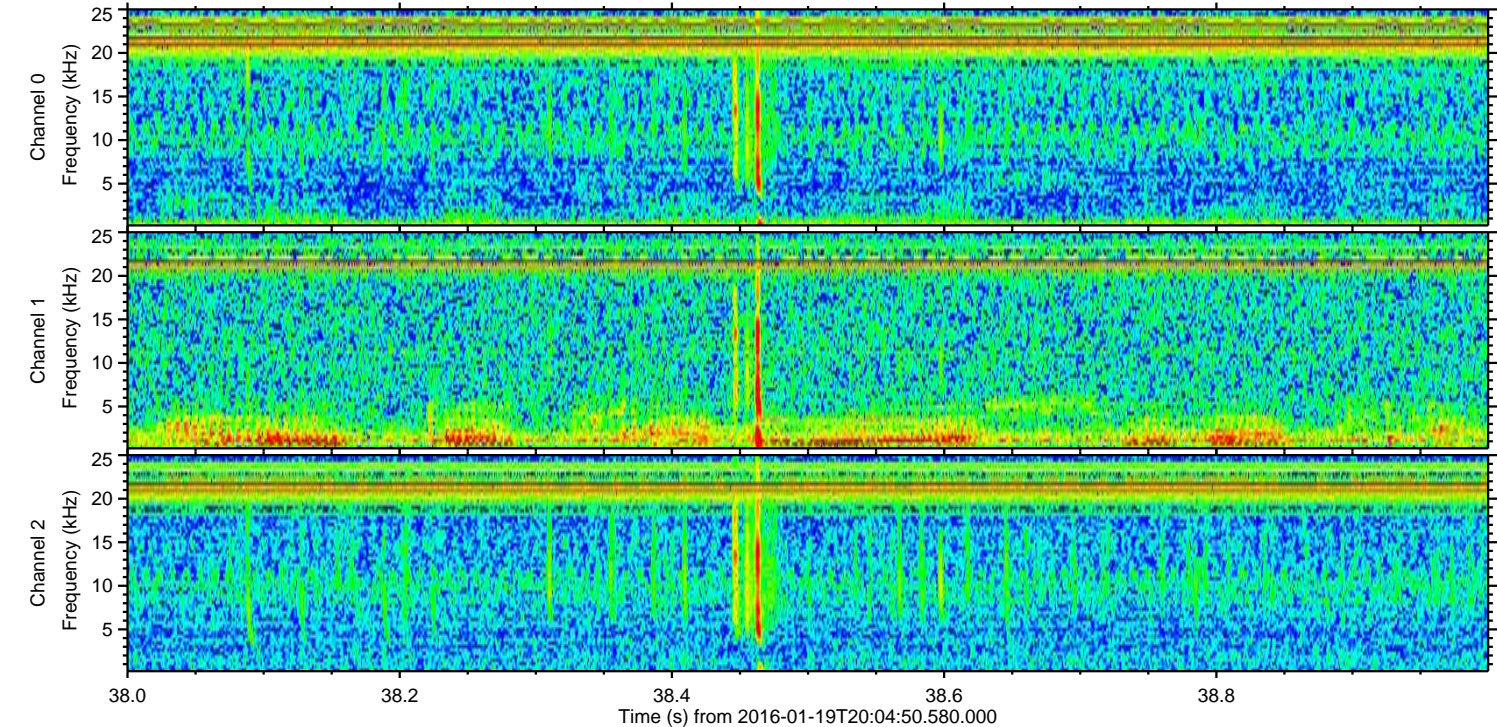
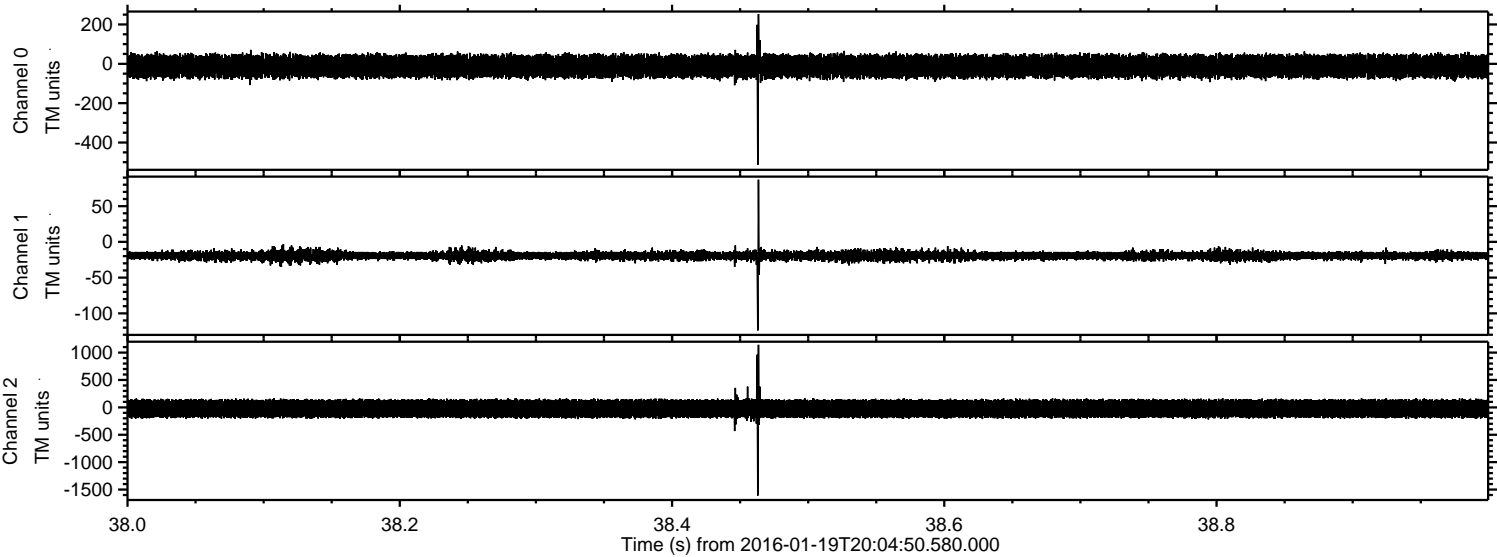


ELMAVAN 3D WAVEFORMS (Measured data sampled at 50 kHz) 51000 packets of 144 samples from 2016-01-19T20:04:50.580.000. Part 112/147

Processed Sun Apr 3 21:20:12 2016 by ELM ver.2012-10-06 from 001__elm20160119_200449__dat00.bin



Processed Sun Apr 3 21:20:13 2016 by ELM ver.2012-10-06 from 001__elm20160119_200449__dat00.bin

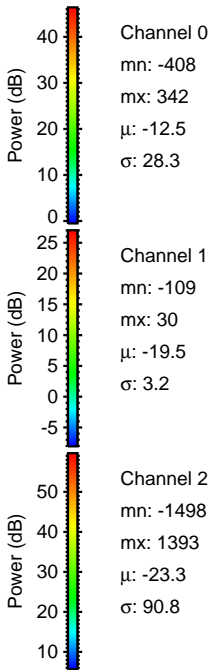
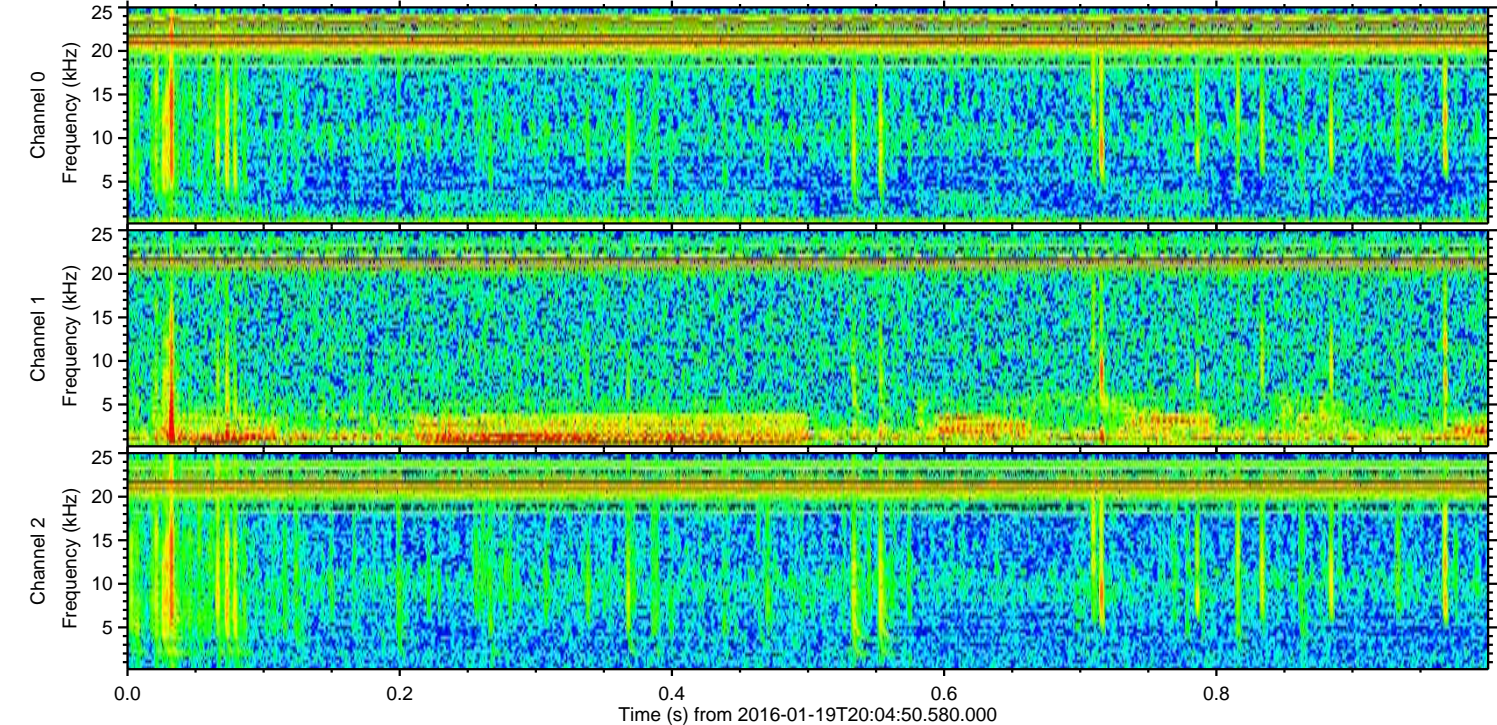
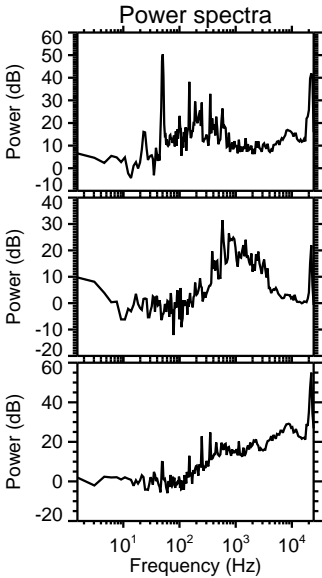
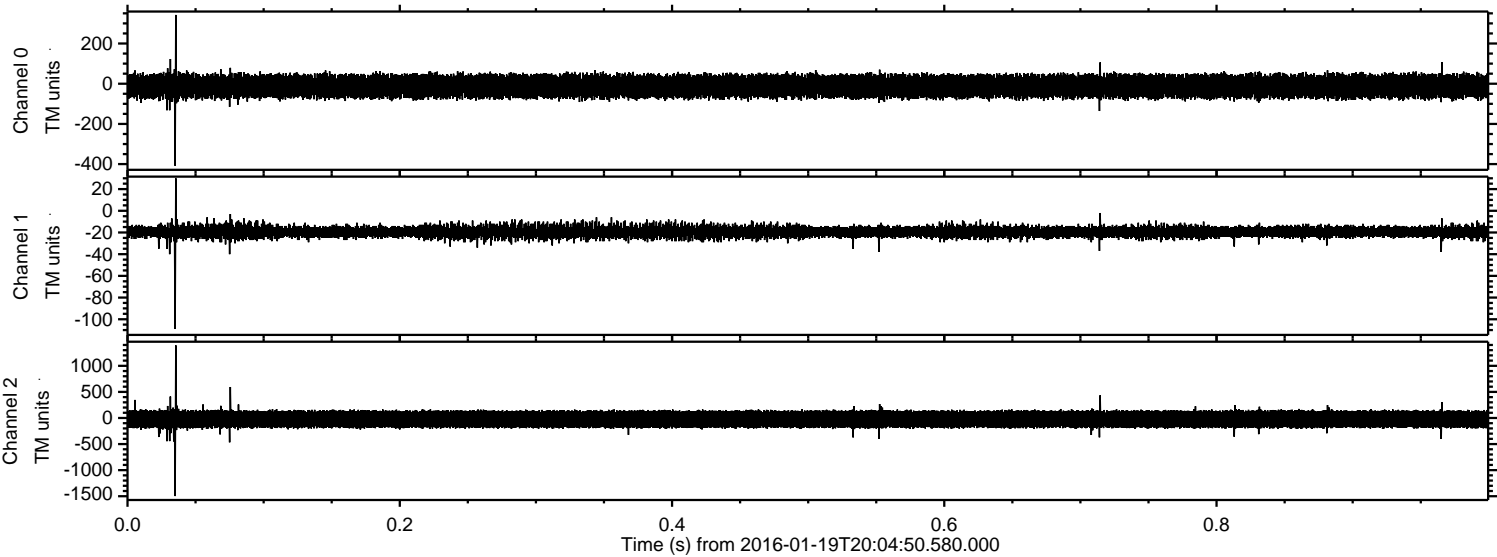


Channel 0
mn: -513
mx: 253
 μ : -12.5
 σ : 28.1

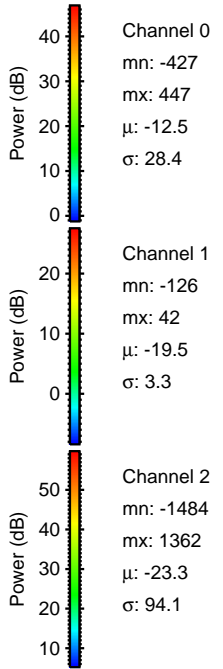
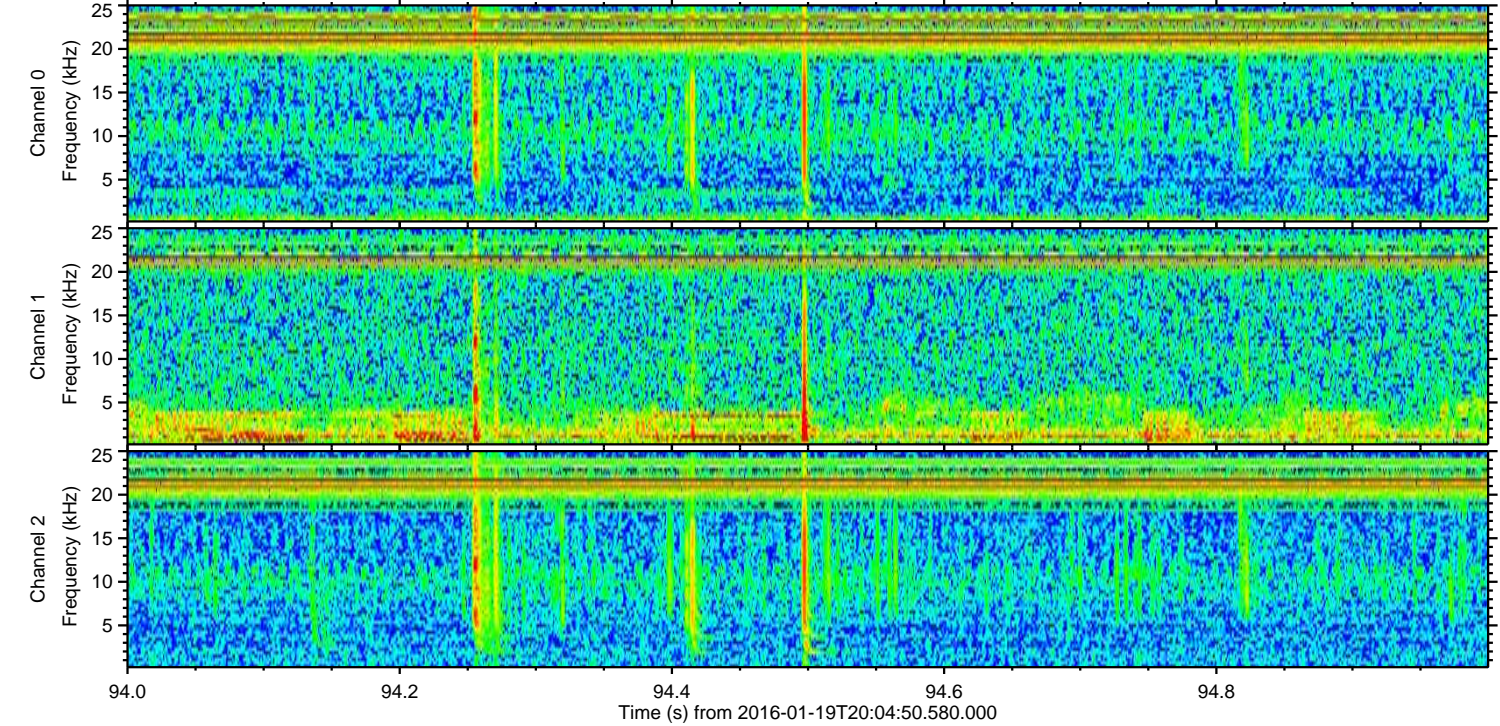
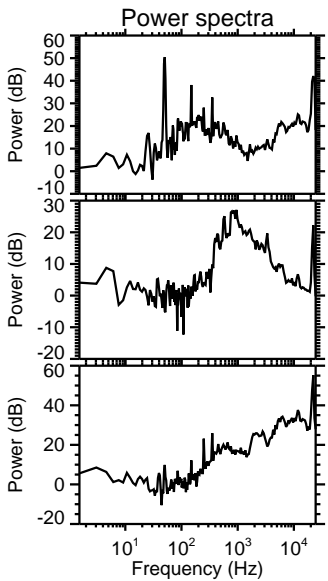
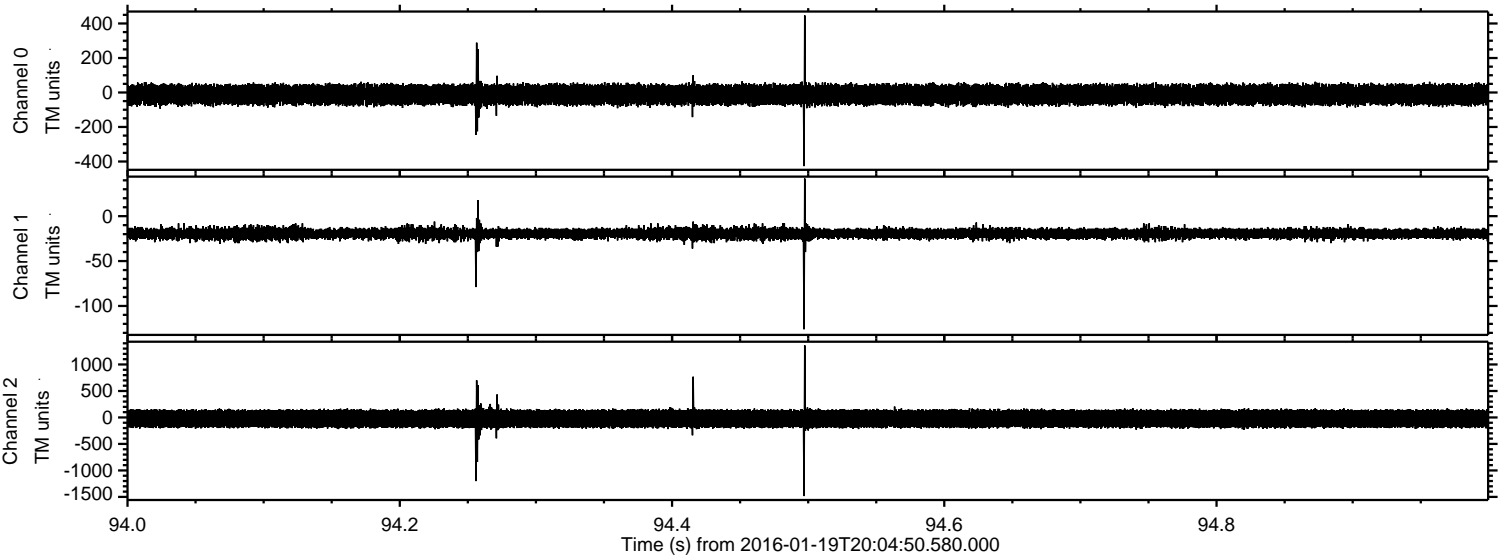
Channel 1
mn: -124
mx: 87
 μ : -19.5
 σ : 3.7

Channel 2
mn: -1610
mx: 1141
 μ : -23.3
 σ : 92.9

Processed Sun Apr 3 21:20:14 2016 by ELM ver.2012-10-06 from 001__elm20160119_200449__dat00.bin

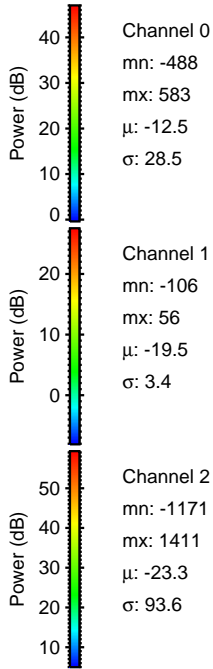
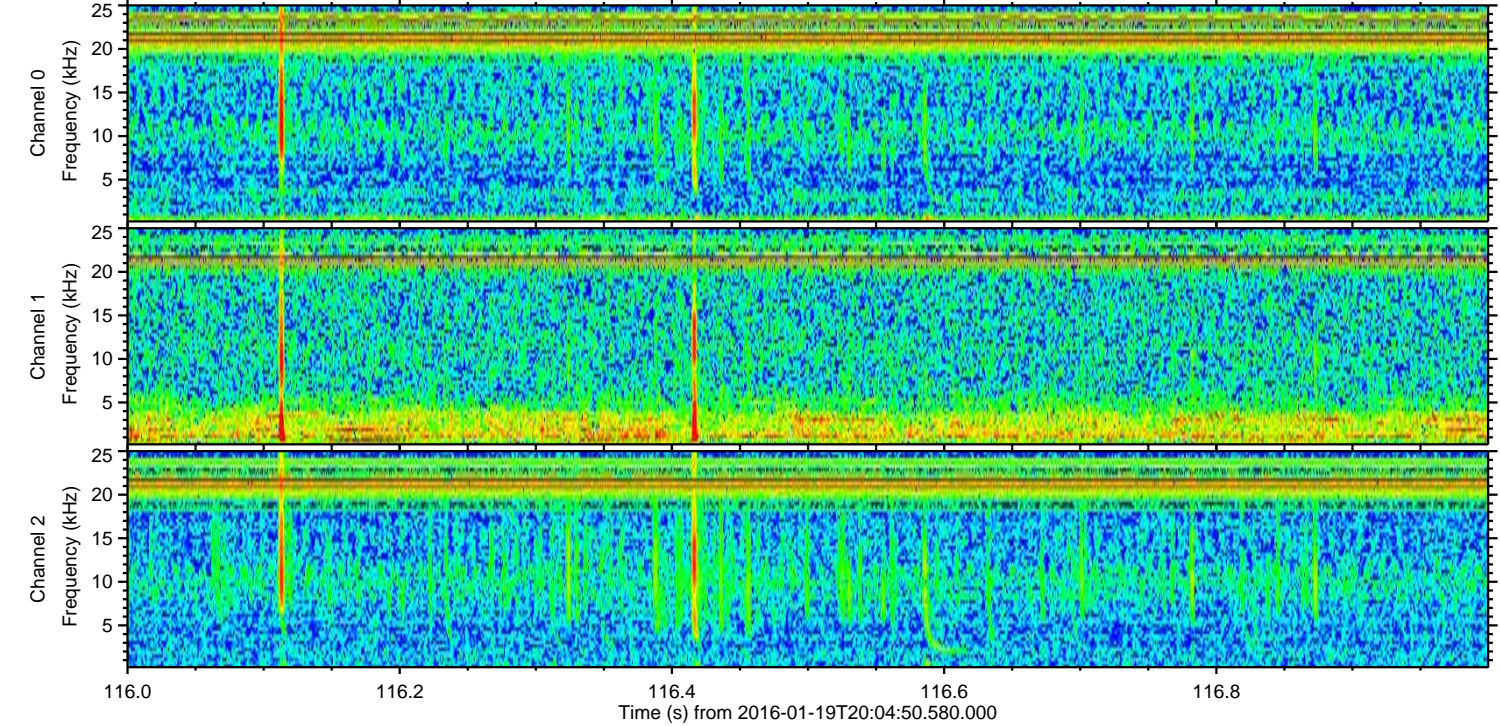
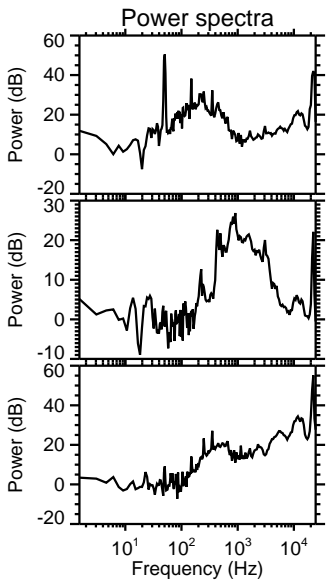
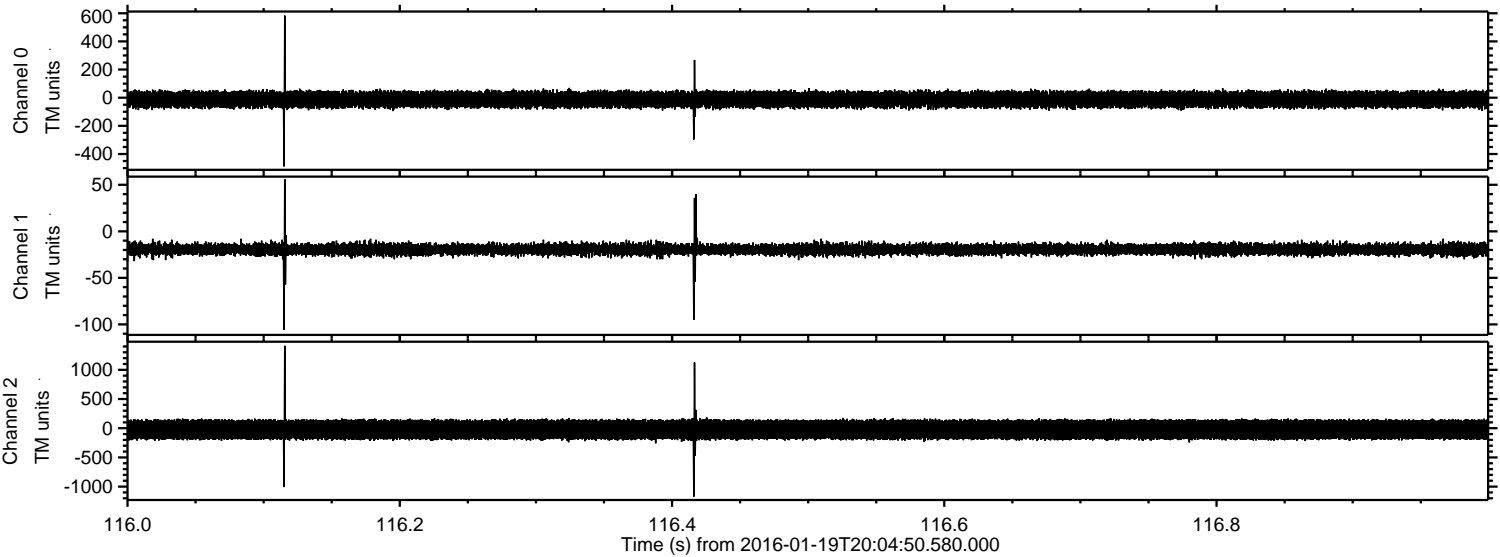


Processed Sun Apr 3 21:20:15 2016 by ELM ver.2012-10-06 from 001__elm20160119_200449__dat00.bin

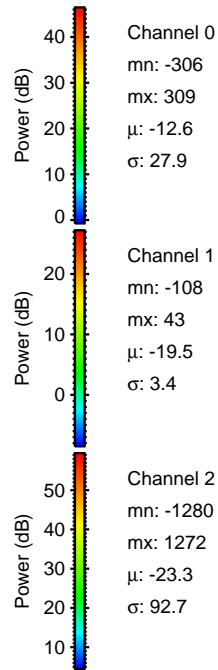
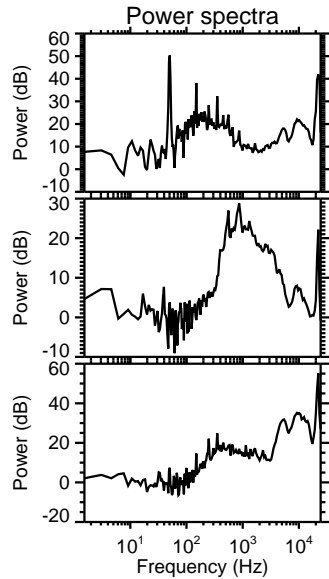
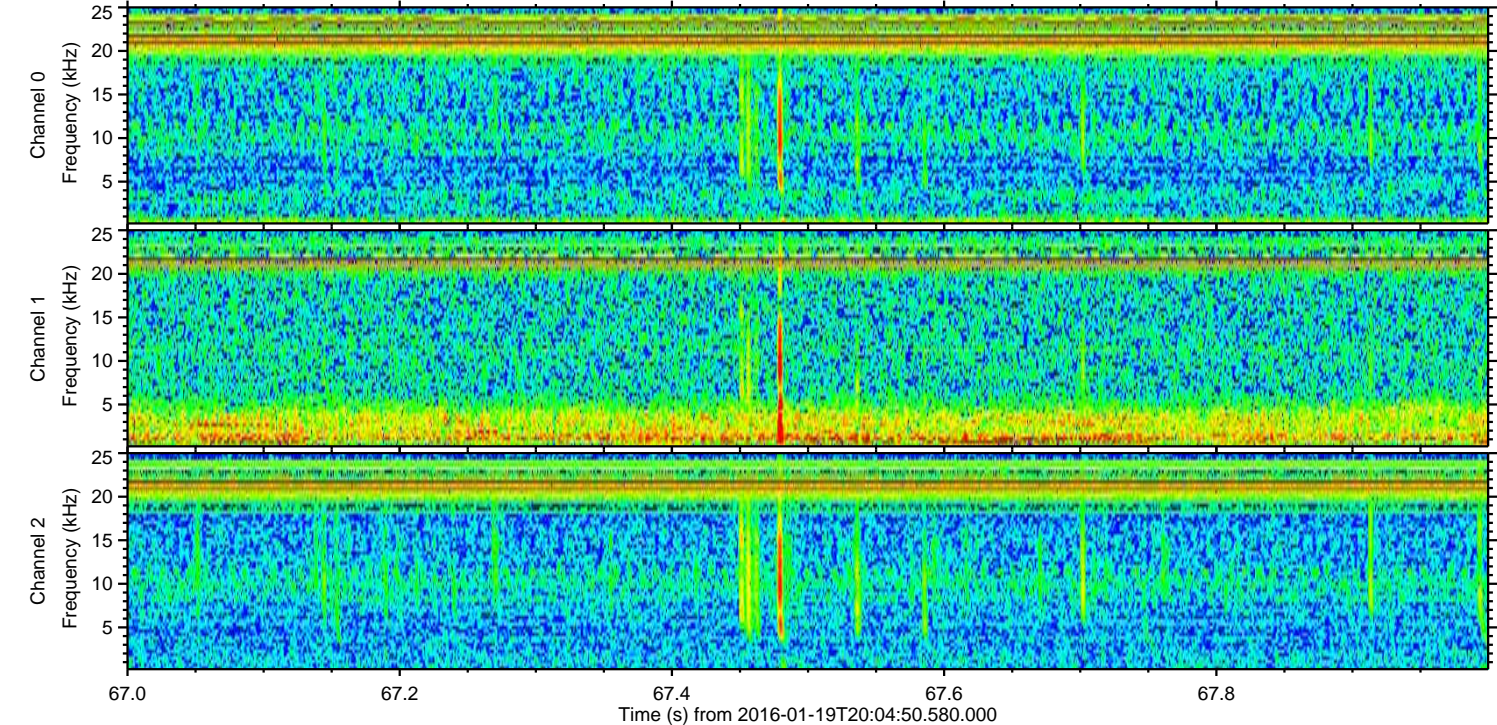
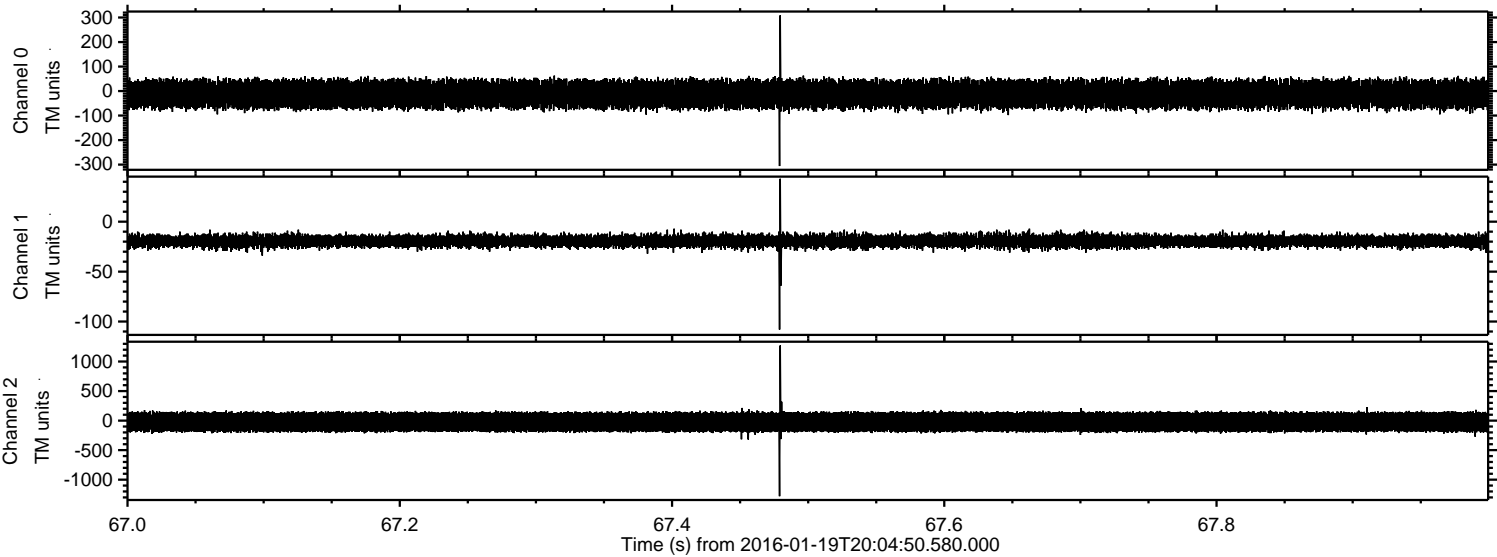


ELMAVAN 3D WAVEFORMS (Measured data sampled at 50 kHz) 51000 packets of 144 samples from 2016-01-19T20:04:50.580.000. Part 117/147

Processed Sun Apr 3 21:20:16 2016 by ELM ver.2012-10-06 from 001__elm20160119_200449__dat00.bin



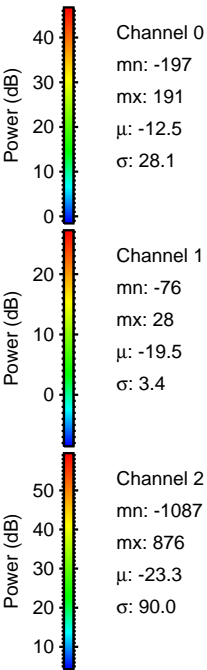
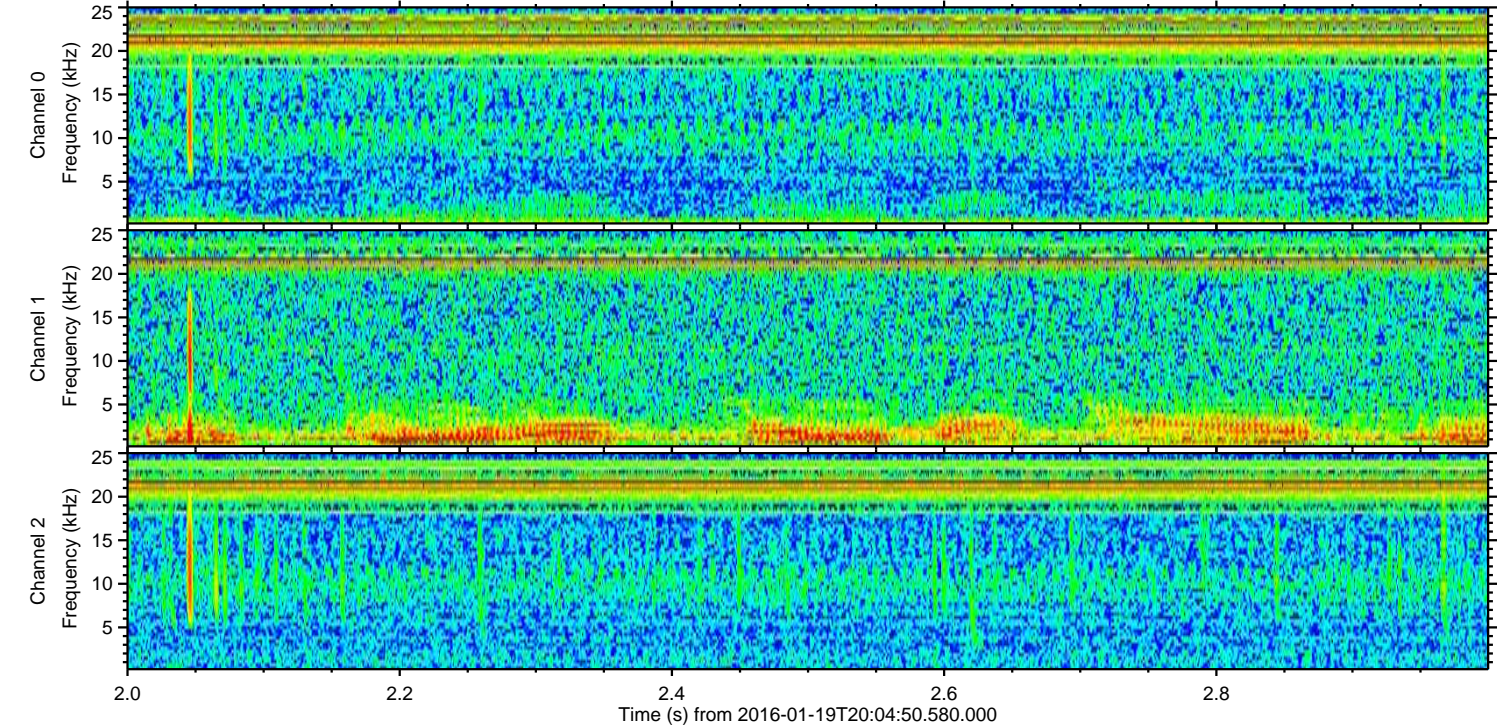
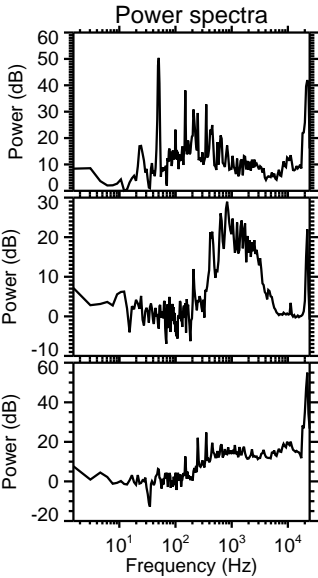
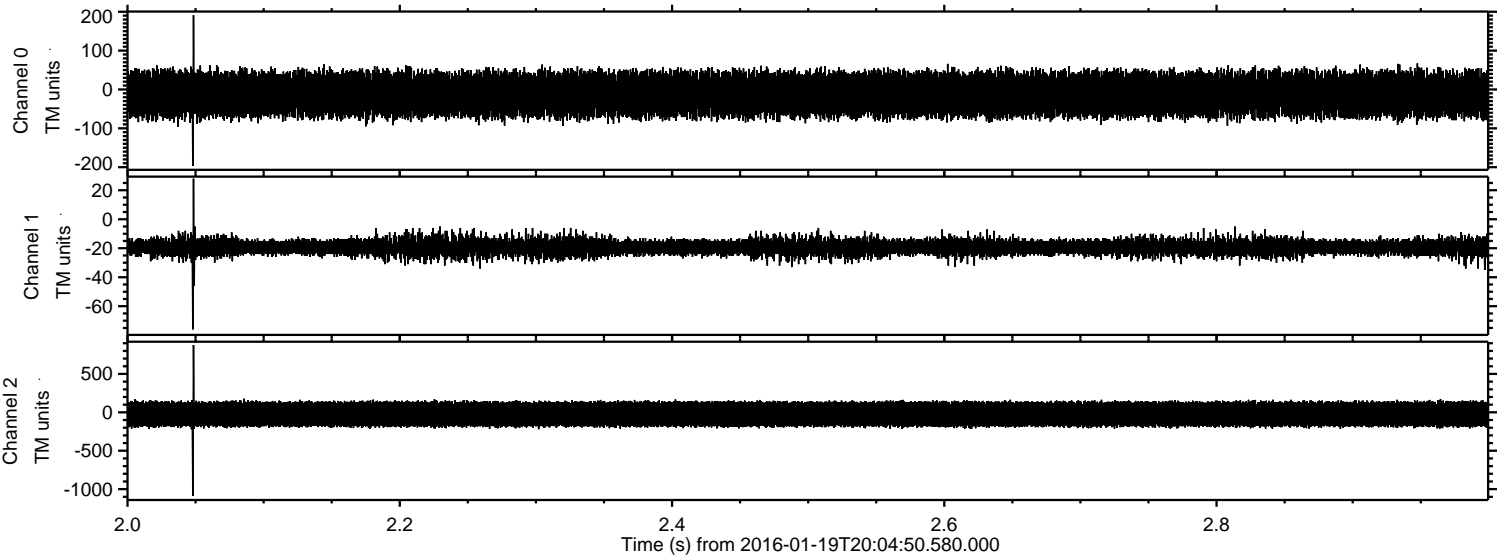
Processed Sun Apr 3 21:20:17 2016 by ELM ver.2012-10-06 from 001__elm20160119_200449__dat00.bin



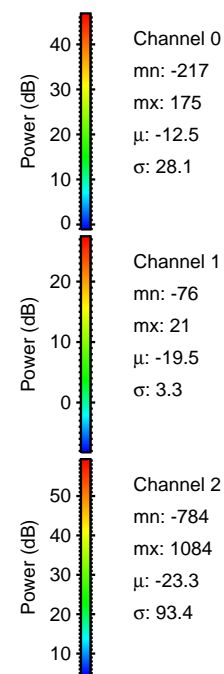
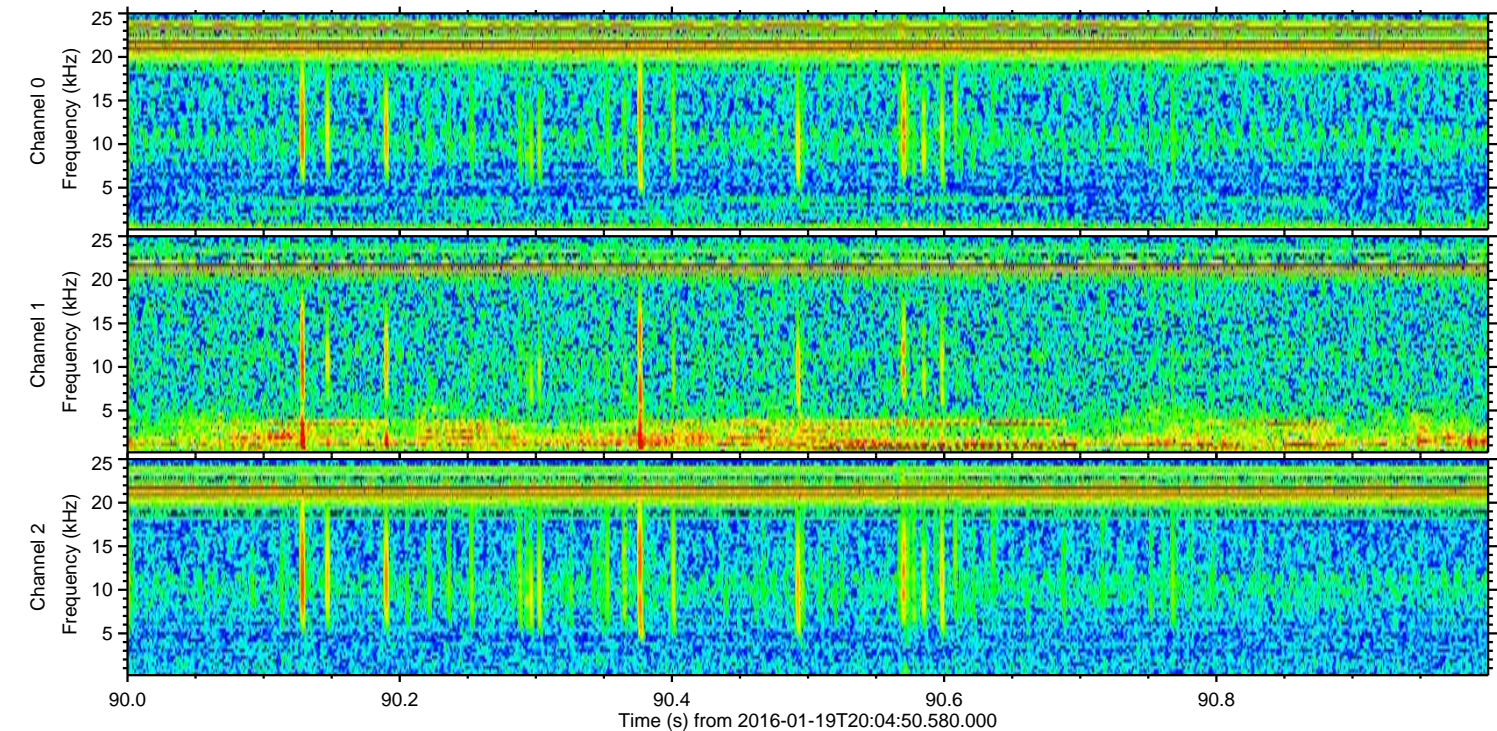
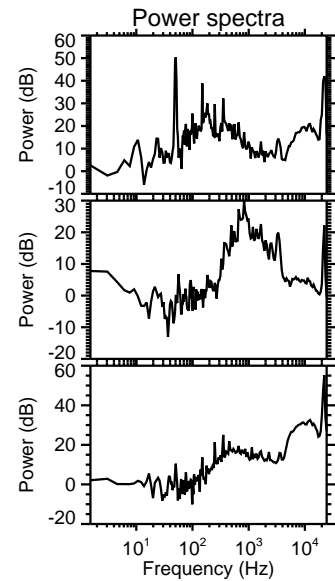
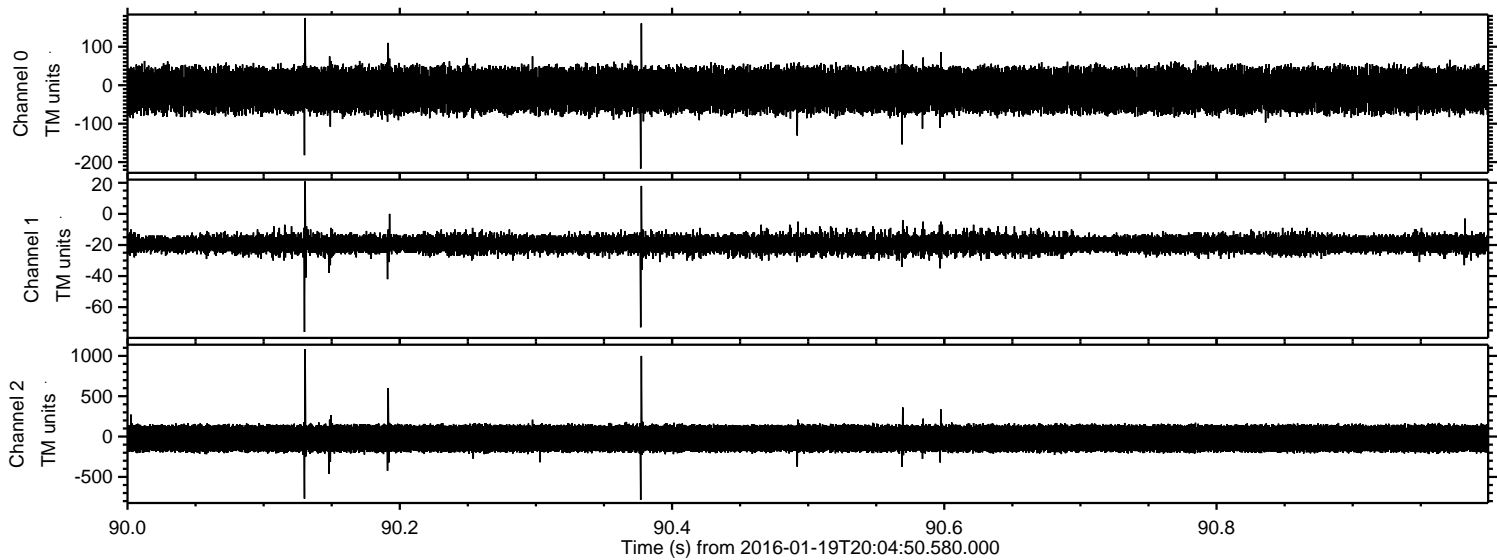
Power spectra

ELMAVAN 3D WAVEFORMS (Measured data sampled at 50 kHz) 51000 packets of 144 samples from 2016-01-19T20:04:50.580.000. Part 3/147

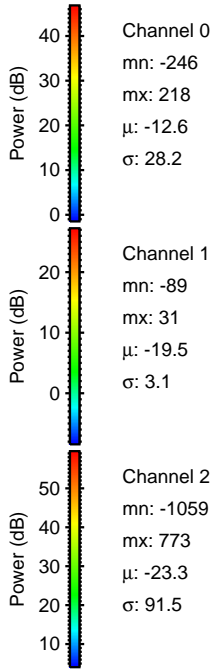
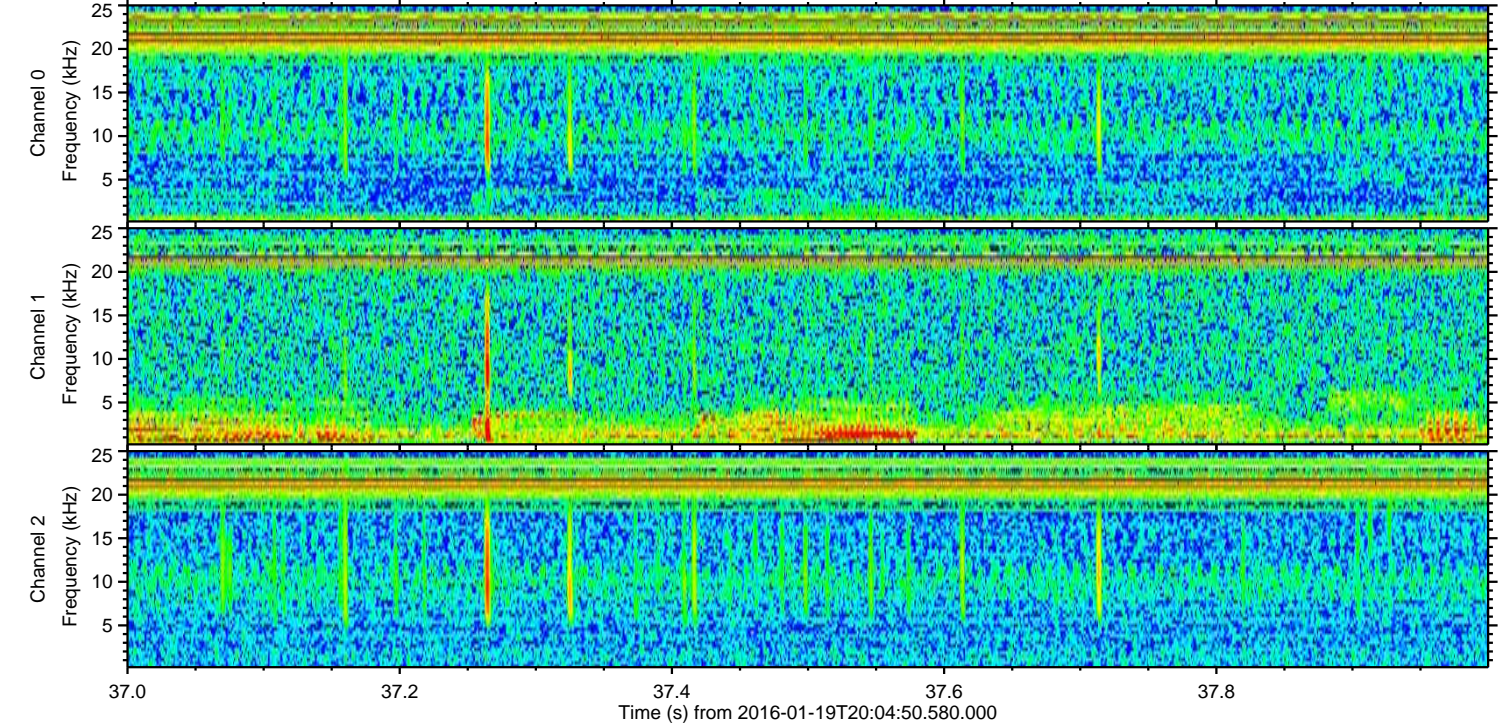
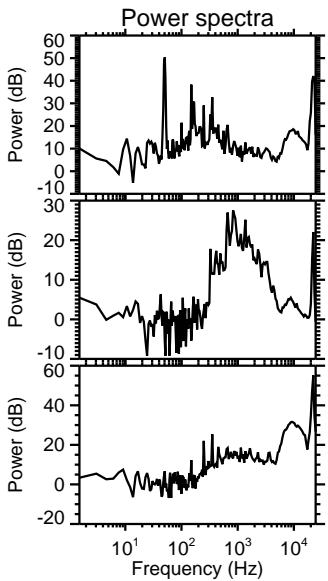
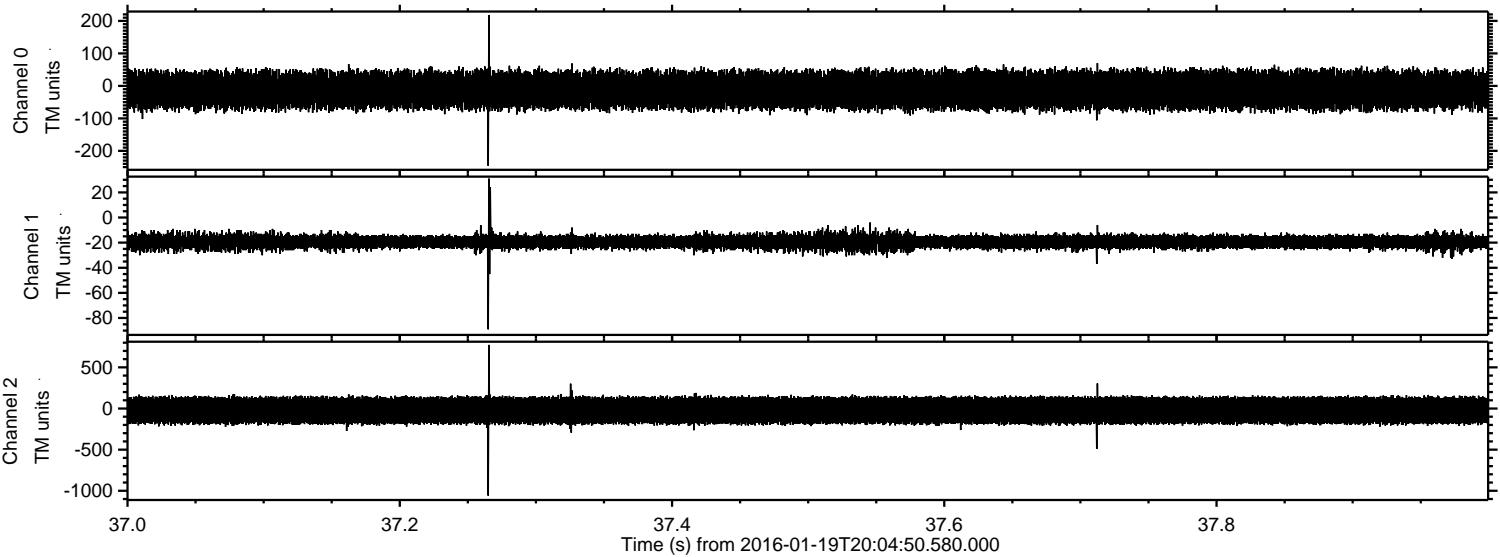
Processed Sun Apr 3 21:20:18 2016 by ELM ver.2012-10-06 from 001__elm20160119_200449__dat00.bin



Processed Sun Apr 3 21:20:18 2016 by ELM ver.2012-10-06 from 001__elm20160119_200449__dat00.bin



Processed Sun Apr 3 21:20:19 2016 by ELM ver.2012-10-06 from 001__elm20160119_200449__dat00.bin



Processed Sun Apr 3 21:20:20 2016 by ELM ver.2012-10-06 from 001__elm20160119_200449__dat00.bin

