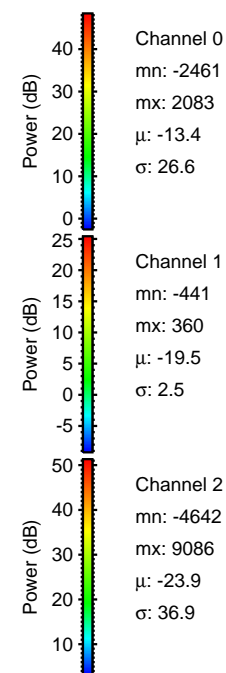
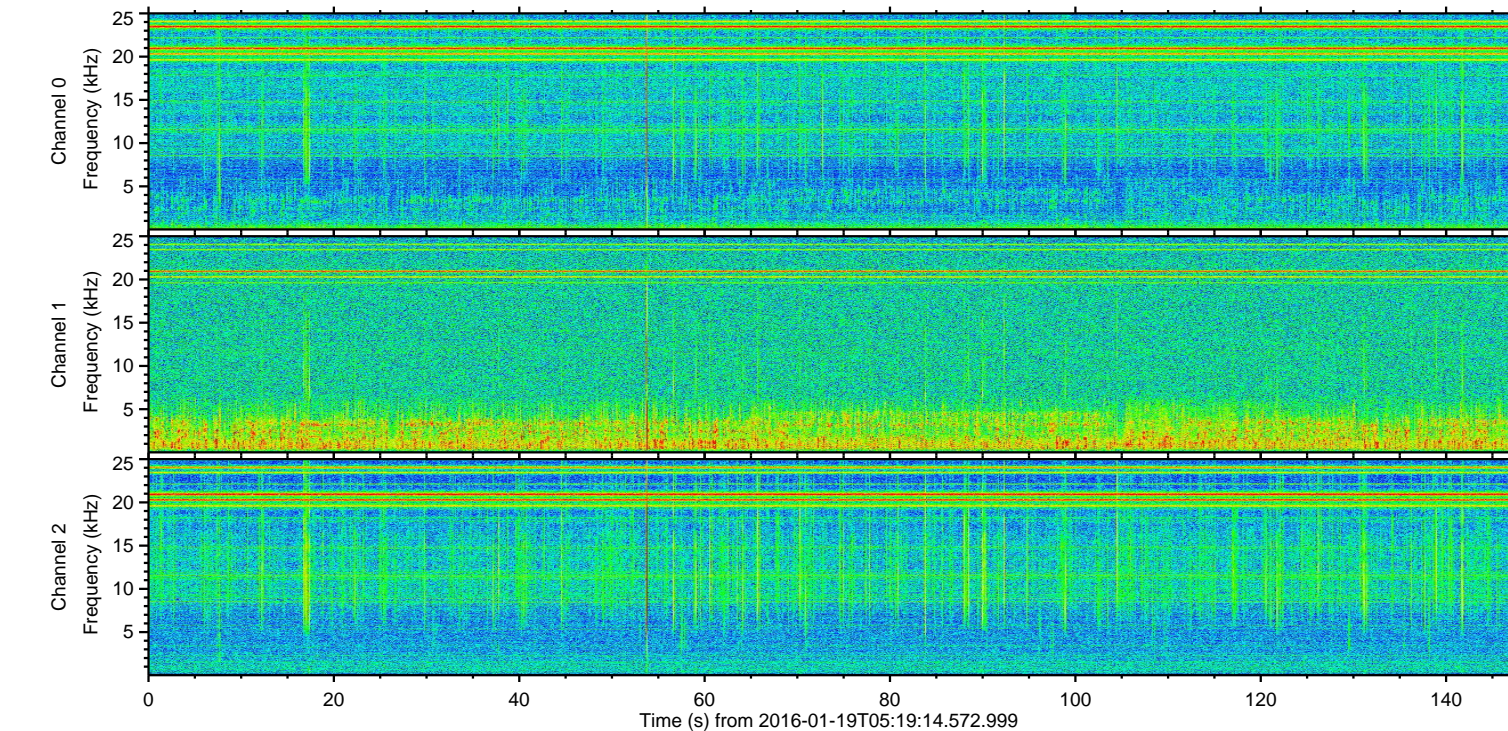
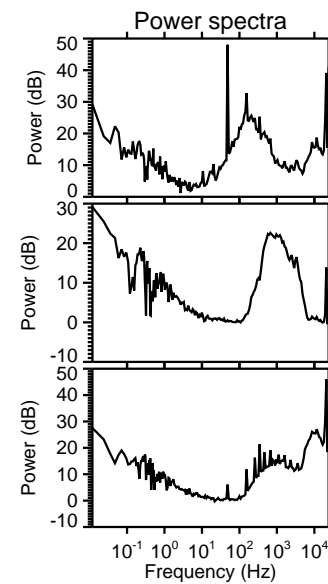
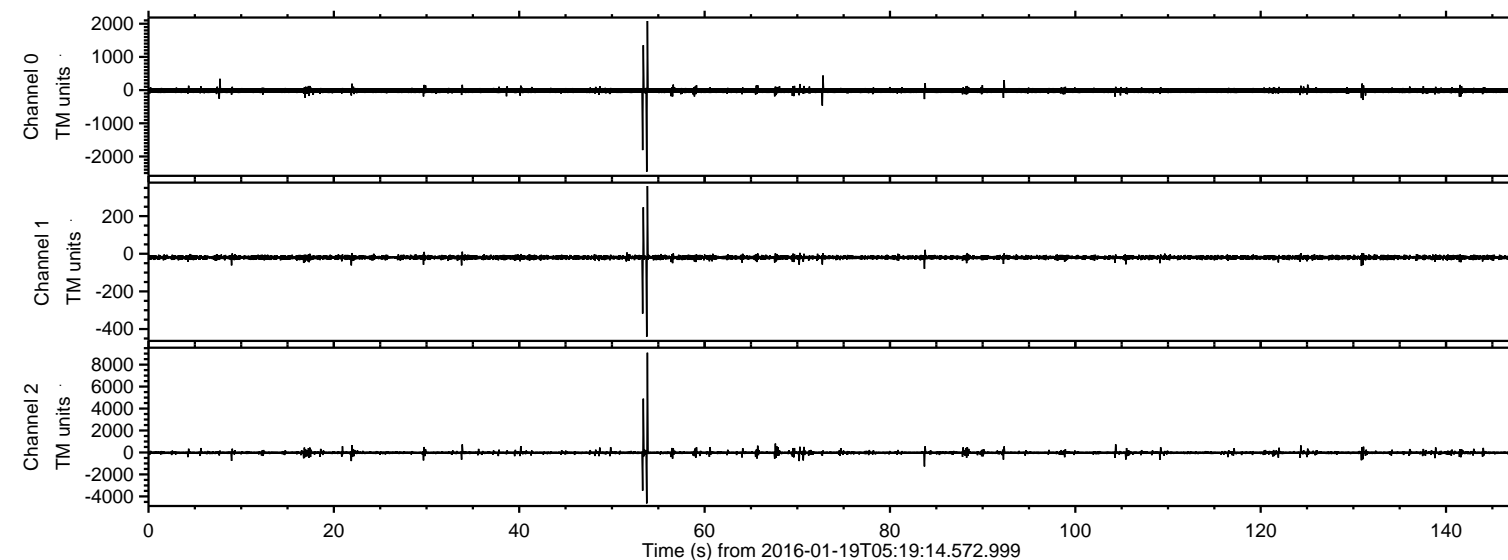


# ELMAVAN 3D WAVEFORMS (Measured data sampled at 50 kHz) 51000 packets of 144 samples from 2016-01-19T05:19:14.572.999.

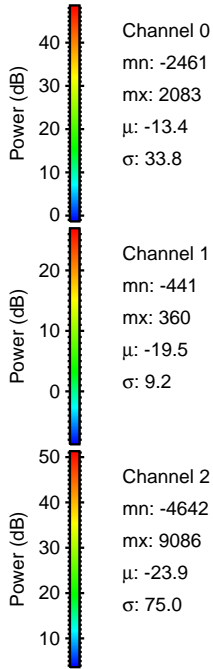
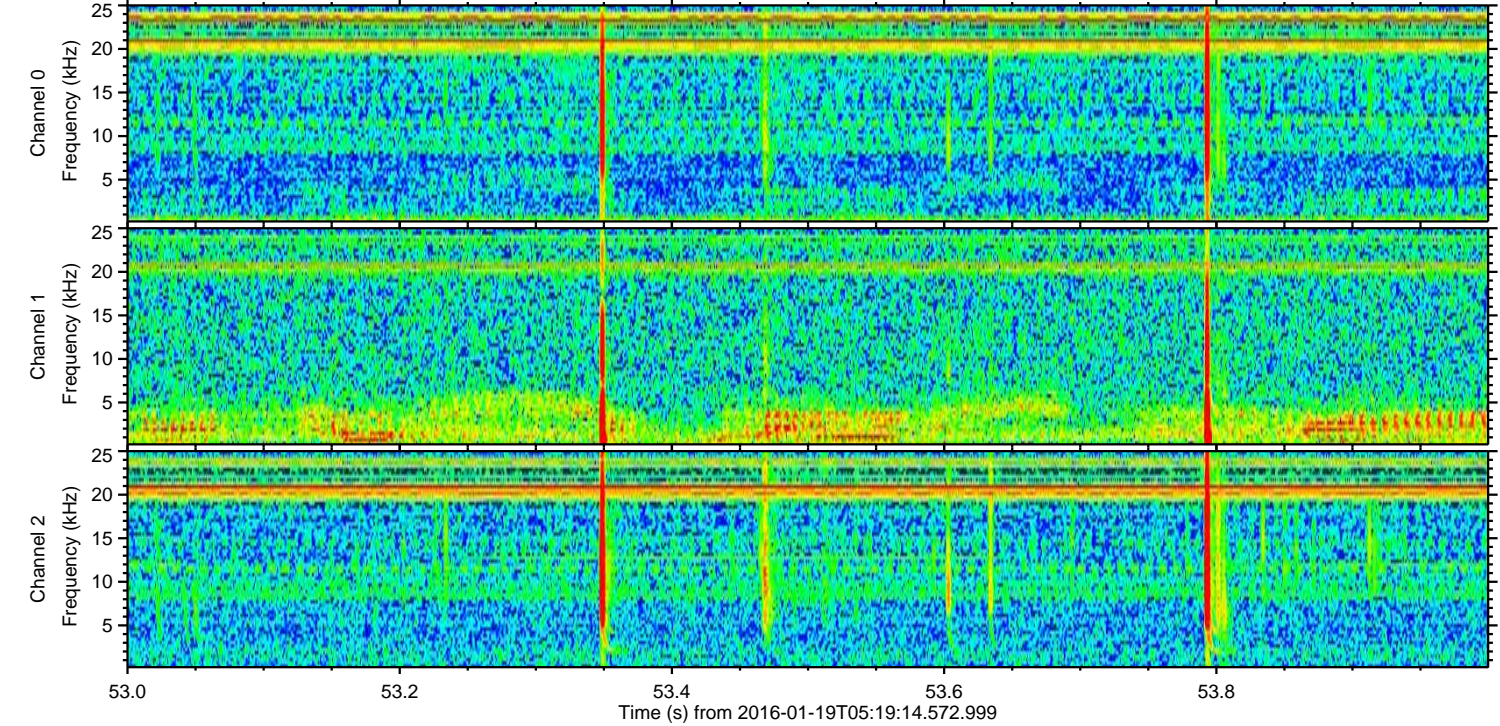
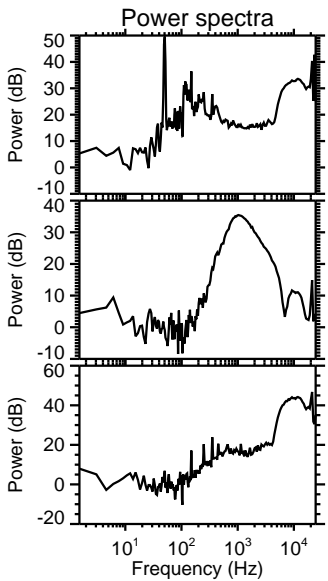
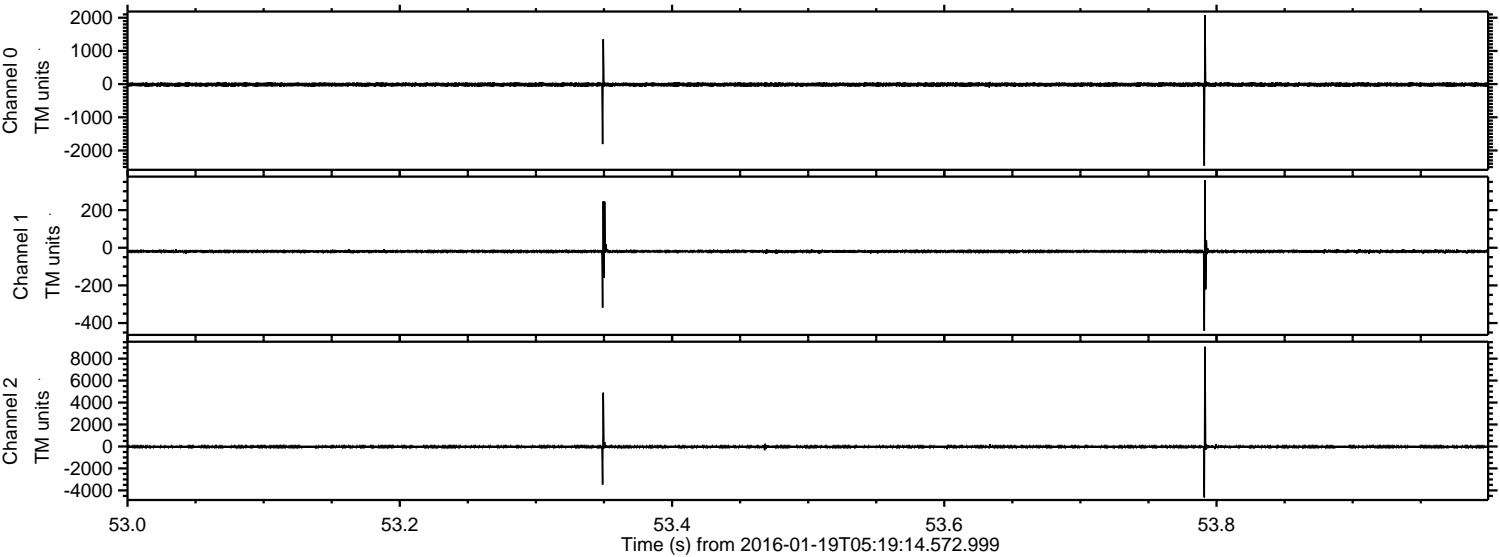
Processed Sun Apr 3 18:26:51 2016 by ELM ver.2012-10-06 from 001\_\_elm20160119\_051913\_\_dat00.bin





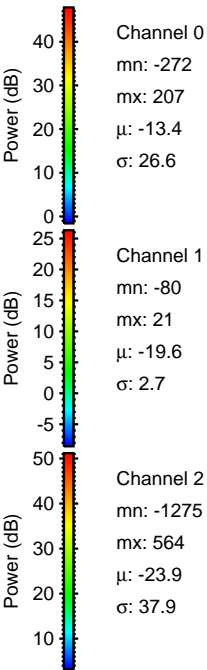
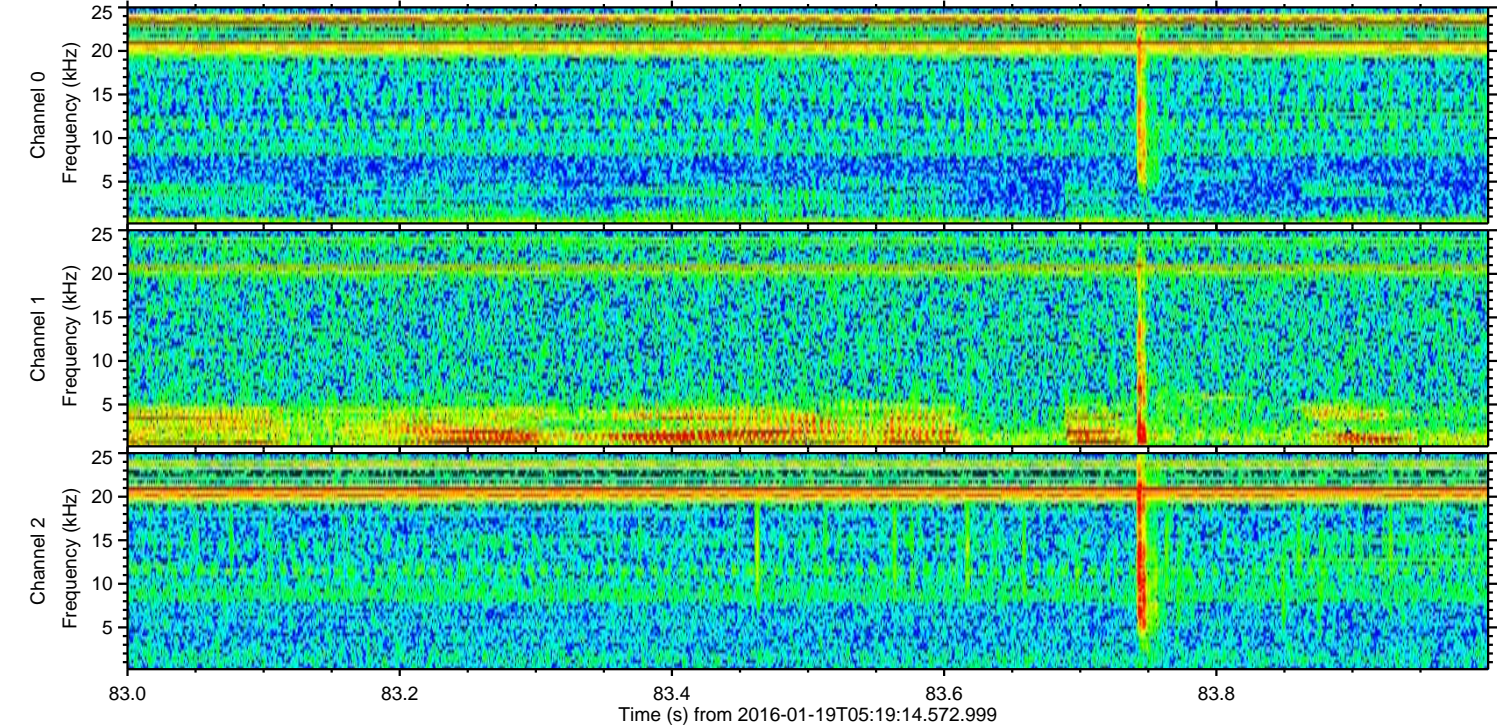
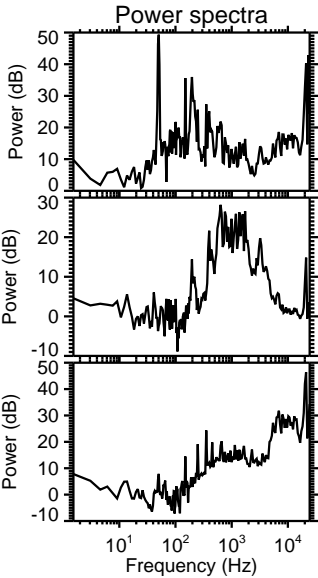
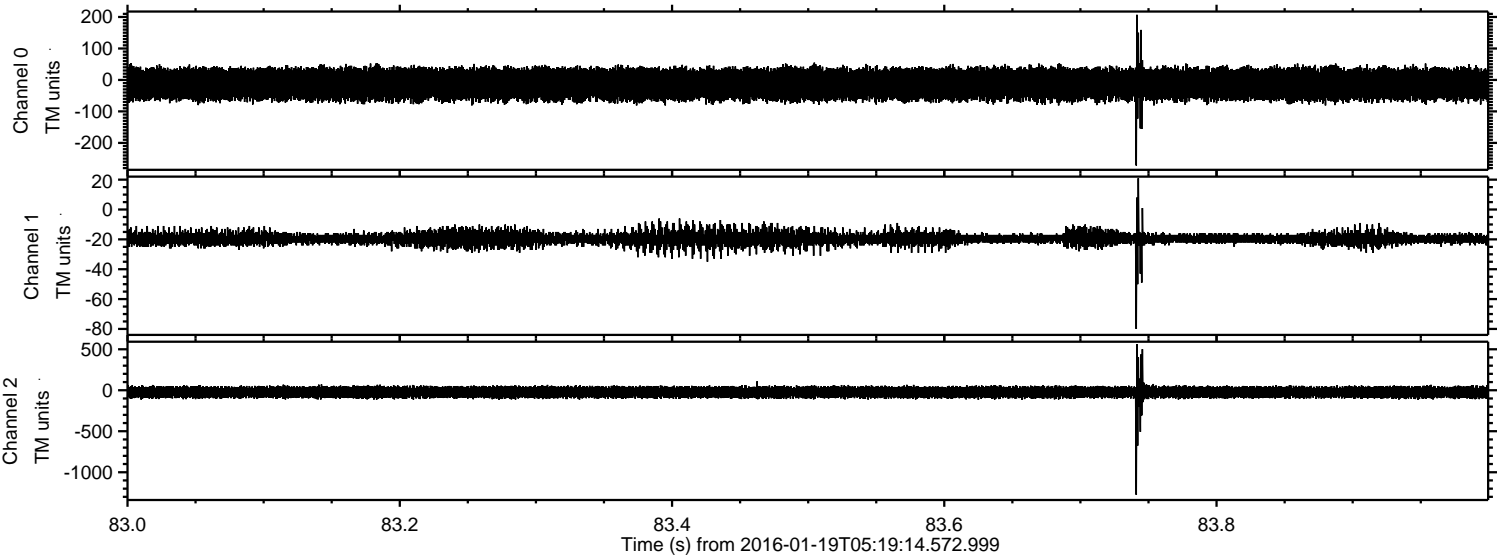
ELMAVAN 3D WAVEFORMS (Measured data sampled at 50 kHz) 51000 packets of 144 samples from 2016-01-19T05:19:14.572.999. Part 54/147

Processed Sun Apr 3 18:27:03 2016 by ELM ver.2012-10-06 from 001\_\_elm20160119\_051913\_\_dat00.bin



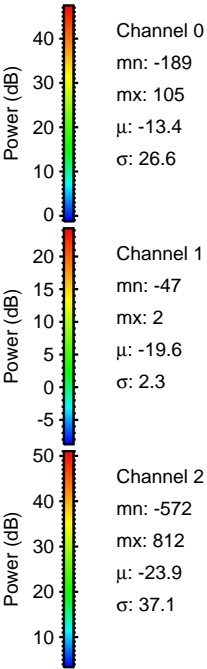
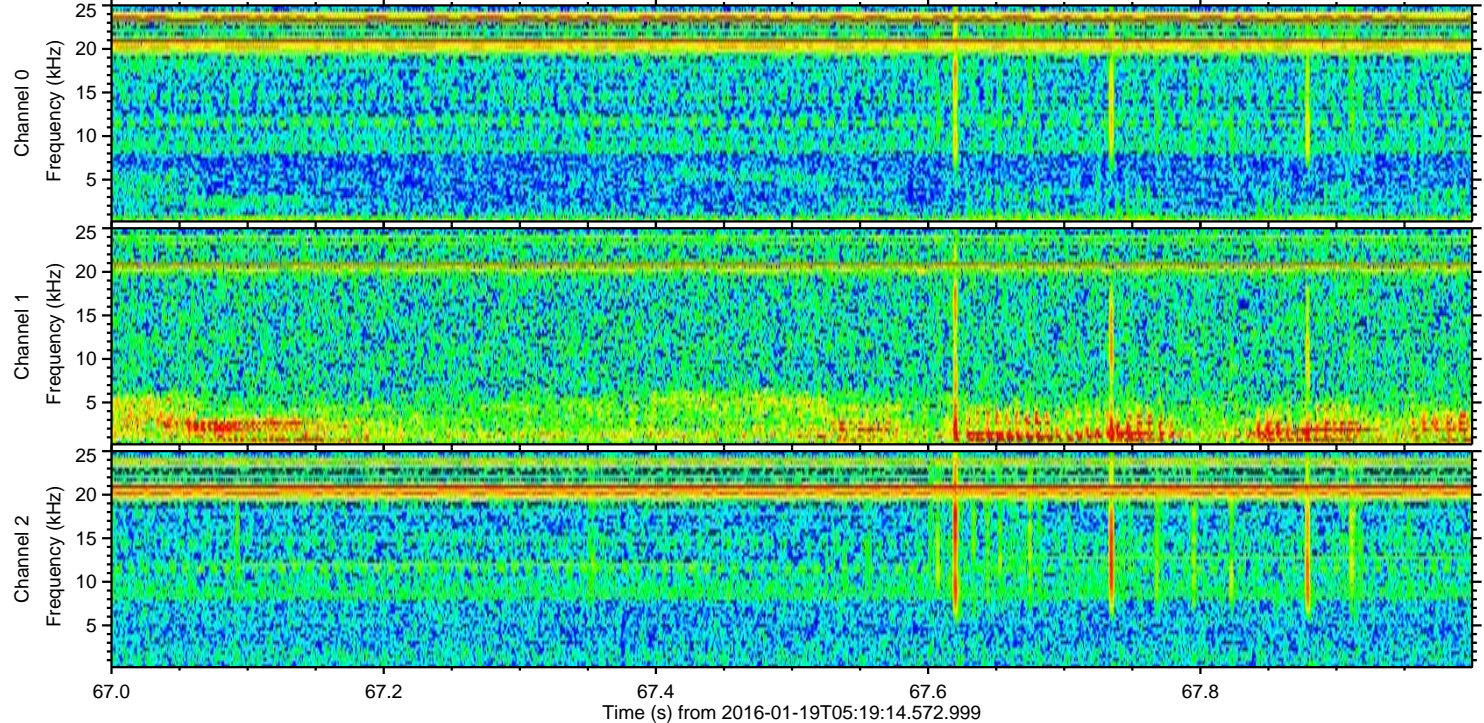
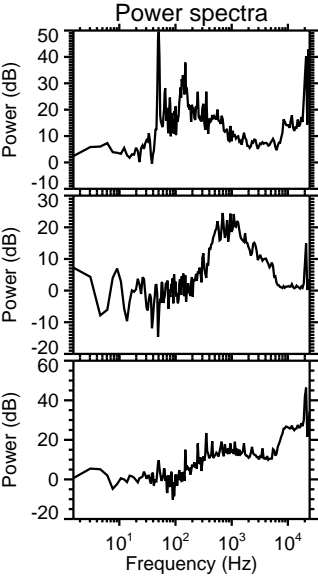
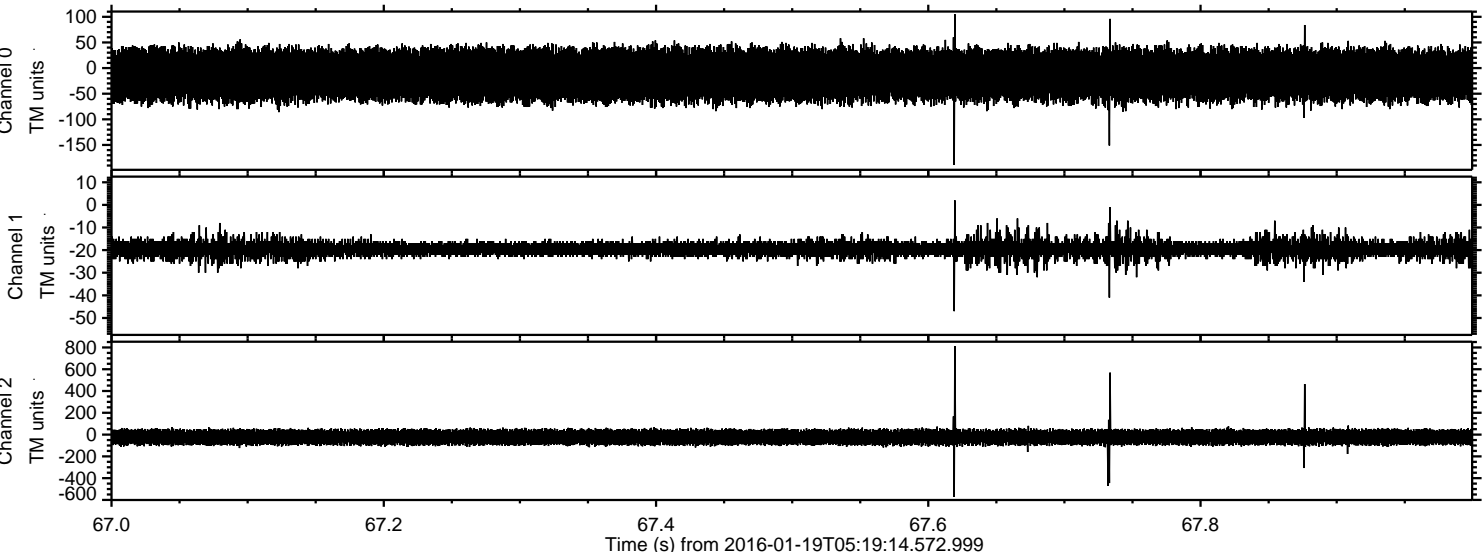


Processed Sun Apr 3 18:27:04 2016 by ELM ver.2012-10-06 from 001\_\_elm20160119\_051913\_\_dat00.bin





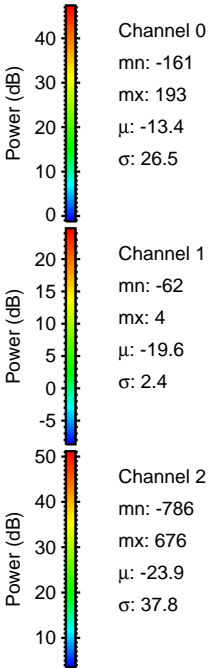
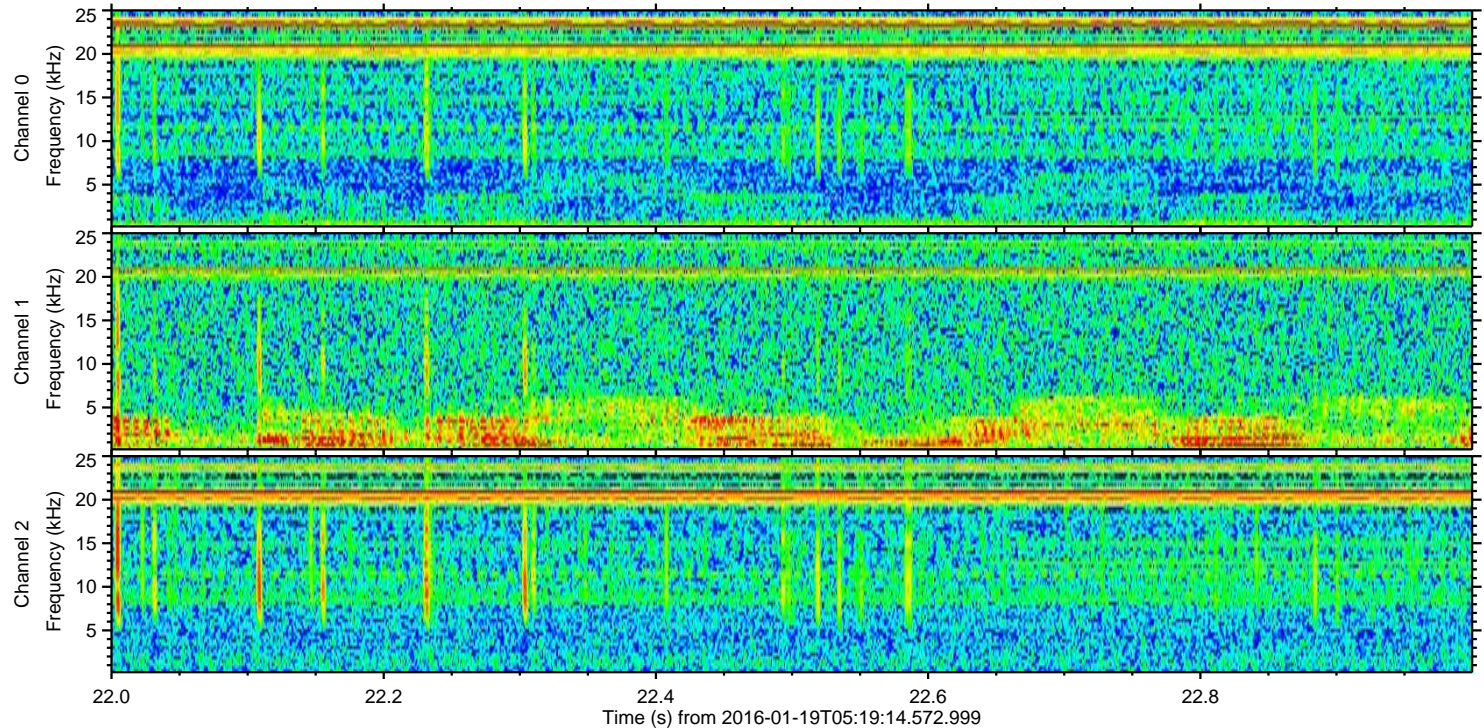
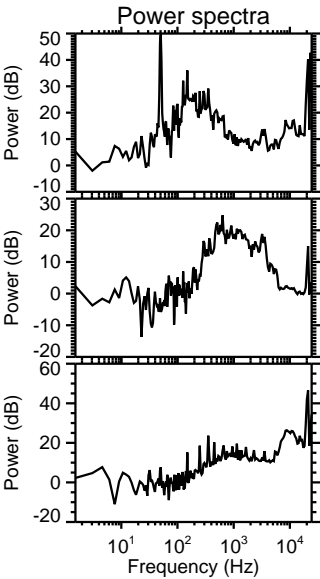
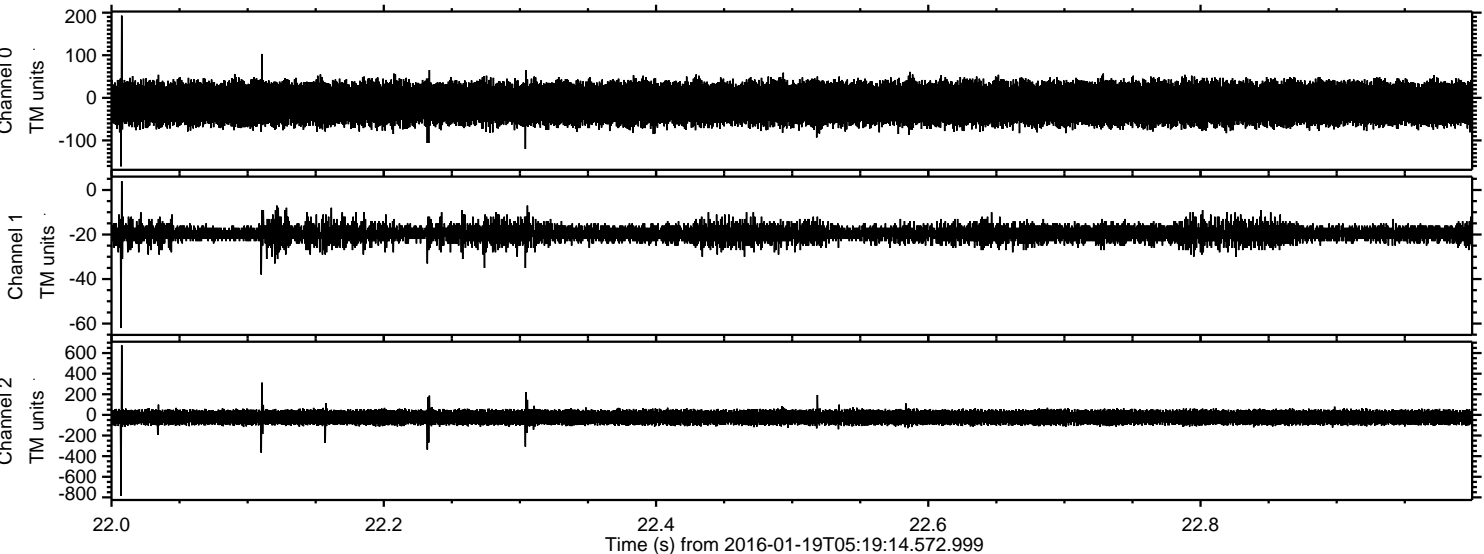
Processed Sun Apr 3 18:27:05 2016 by ELM ver.2012-10-06 from 001\_\_elm20160119\_051913\_\_dat00.bin





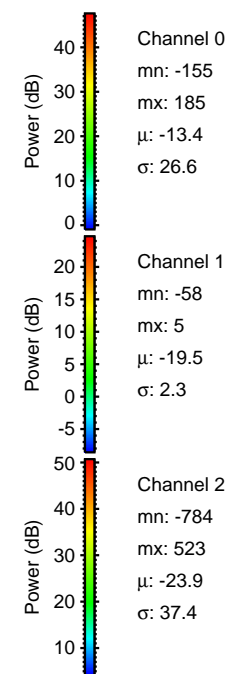
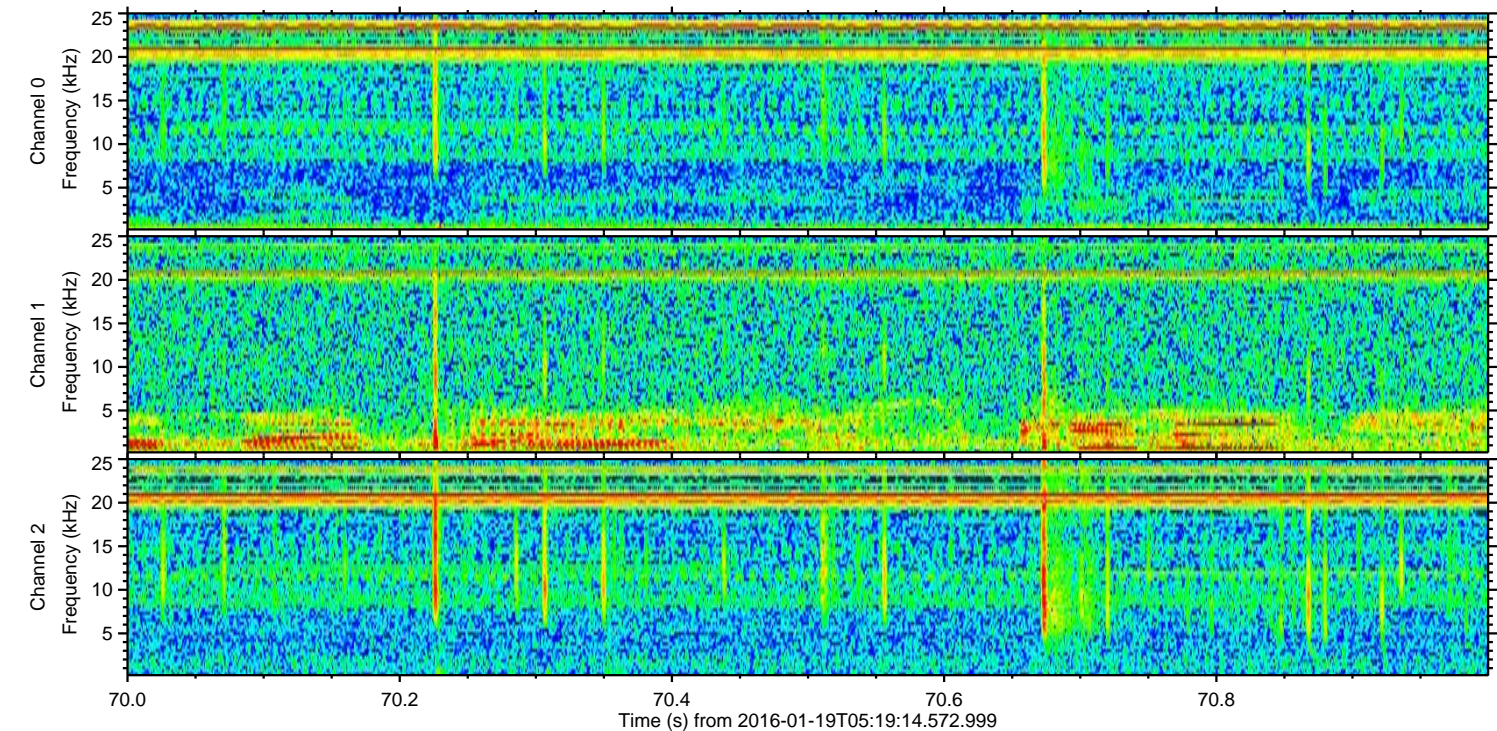
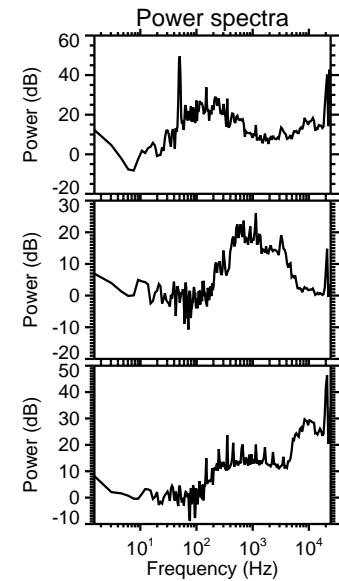
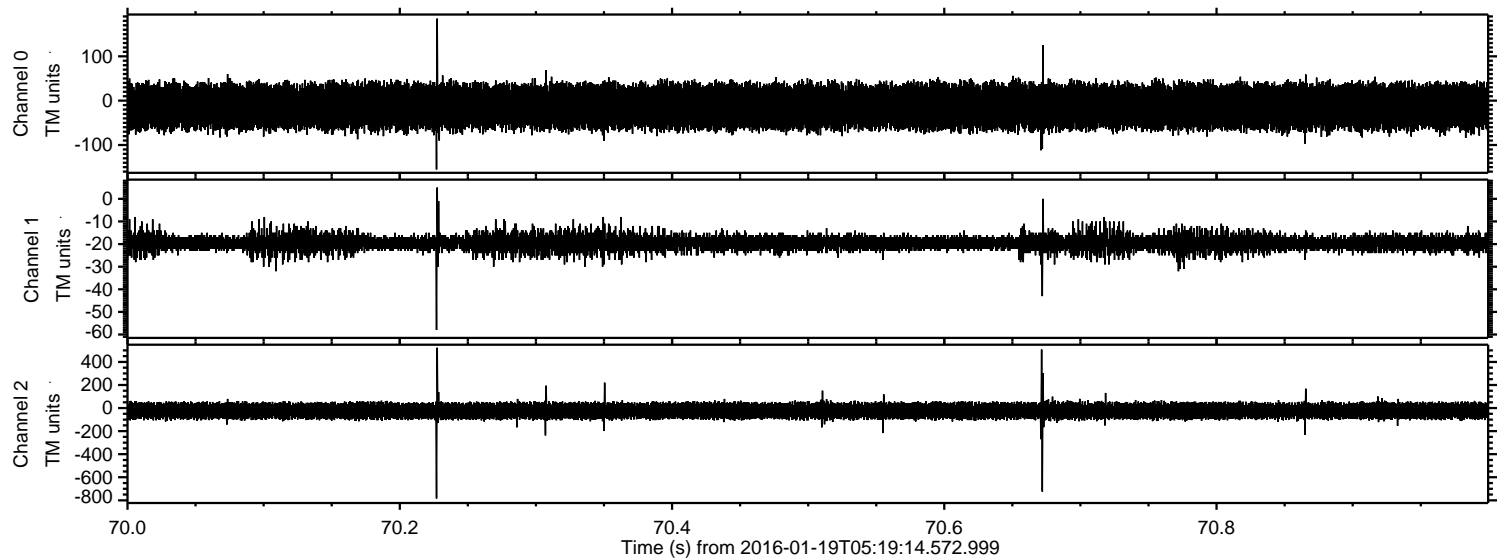
ELMAVAN 3D WAVEFORMS (Measured data sampled at 50 kHz) 51000 packets of 144 samples from 2016-01-19T05:19:14.572.999. Part 23/147

Processed Sun Apr 3 18:27:06 2016 by ELM ver.2012-10-06 from 001\_\_elm20160119\_051913\_\_dat00.bin





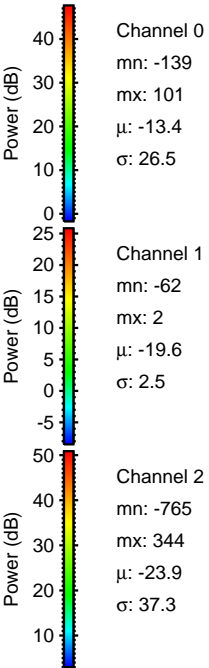
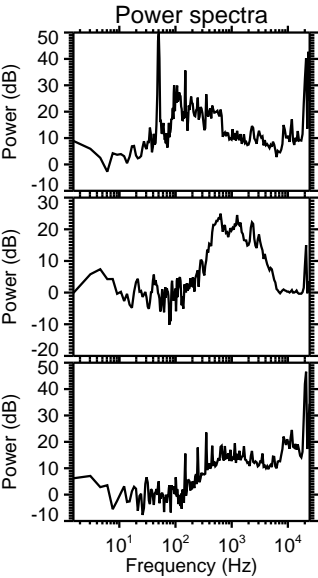
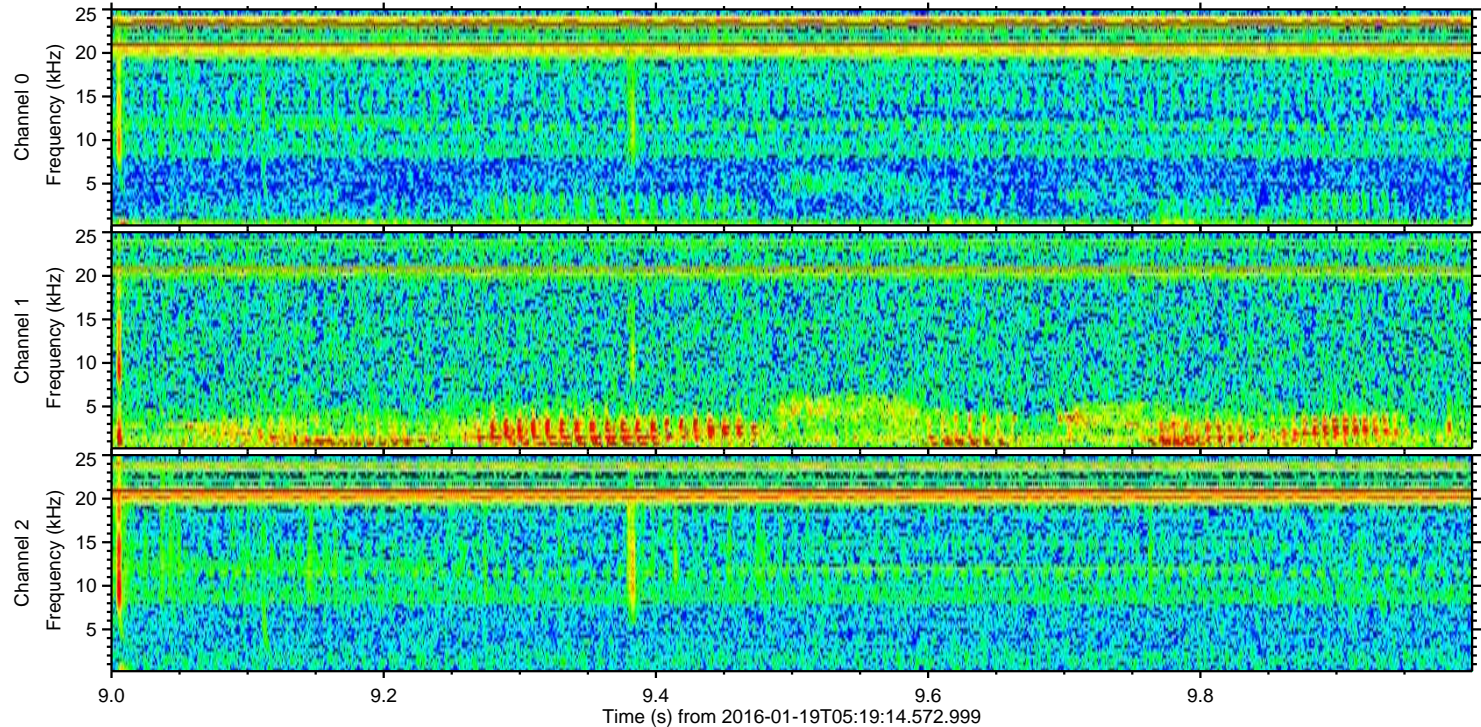
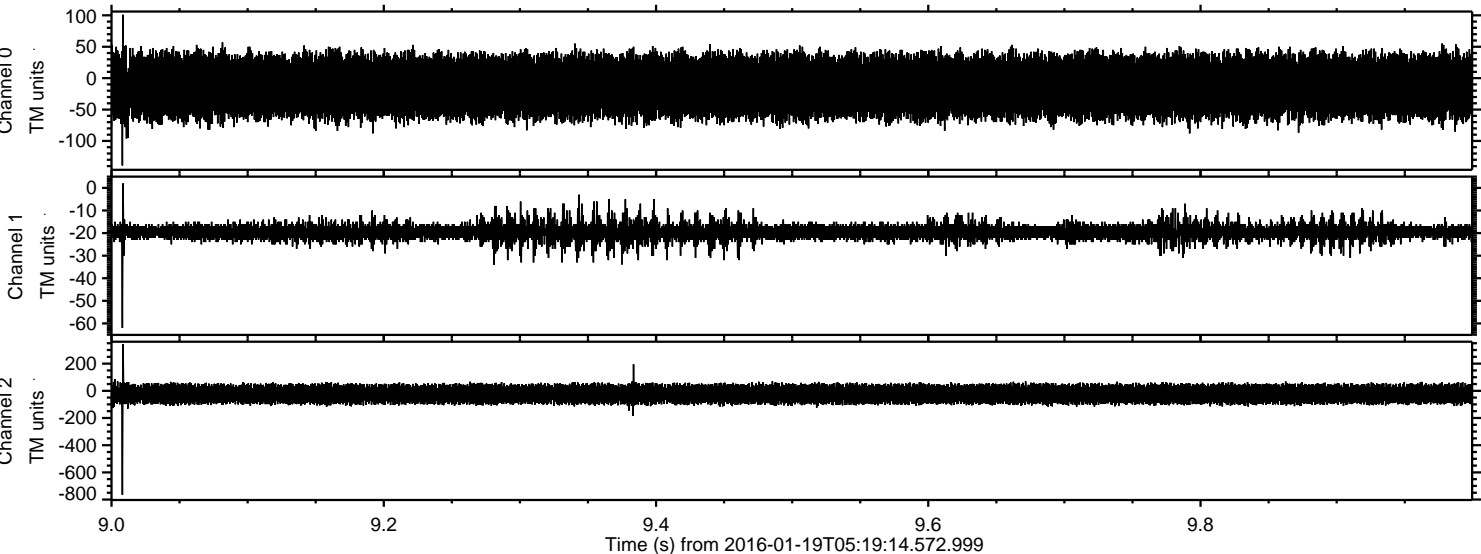
Processed Sun Apr 3 18:27:07 2016 by ELM ver.2012-10-06 from 001\_\_elm20160119\_051913\_\_dat00.bin



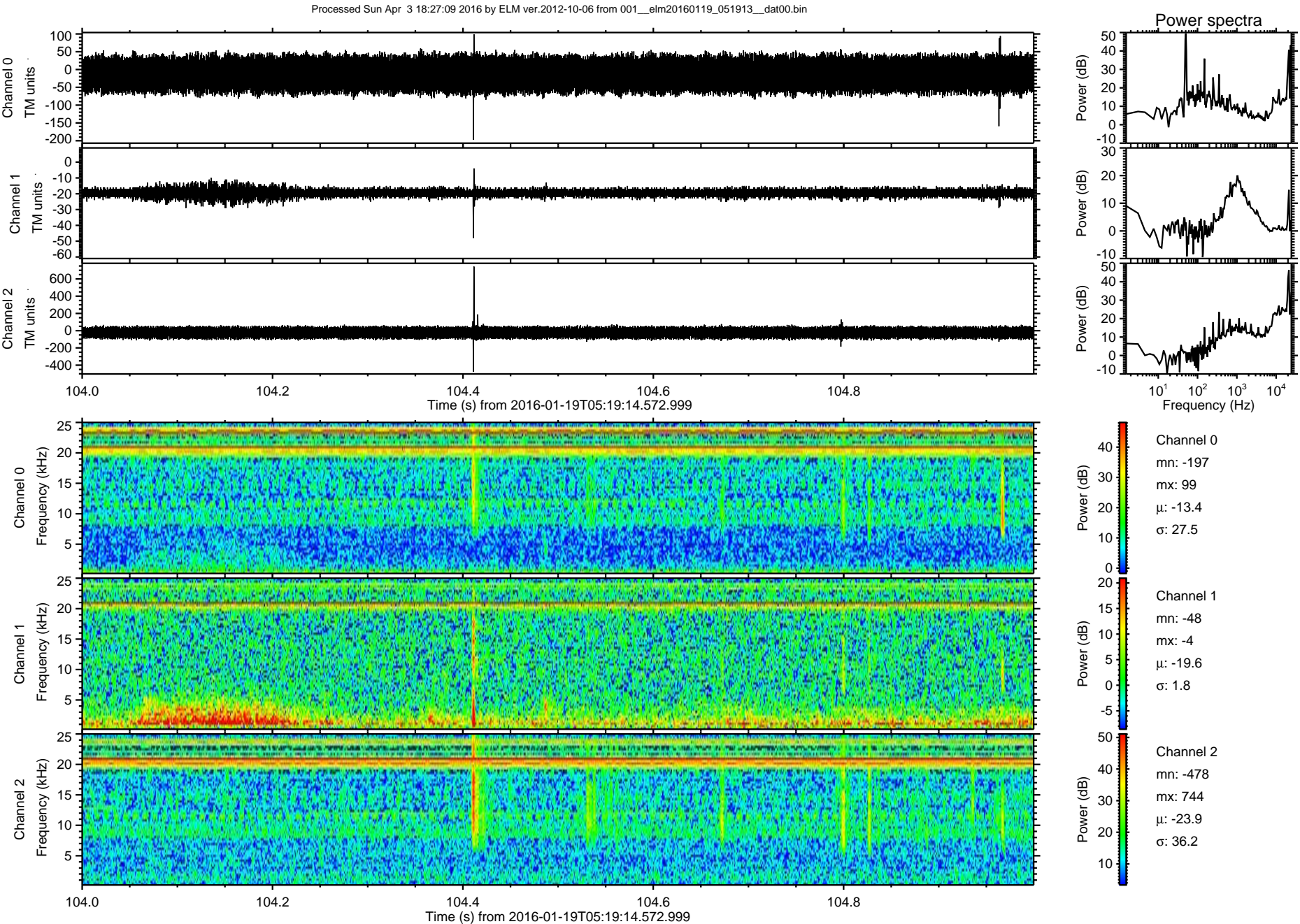


ELMAVAN 3D WAVEFORMS (Measured data sampled at 50 kHz) 51000 packets of 144 samples from 2016-01-19T05:19:14.572.999. Part 10/147

Processed Sun Apr 3 18:27:08 2016 by ELM ver.2012-10-06 from 001\_\_elm20160119\_051913\_\_dat00.bin



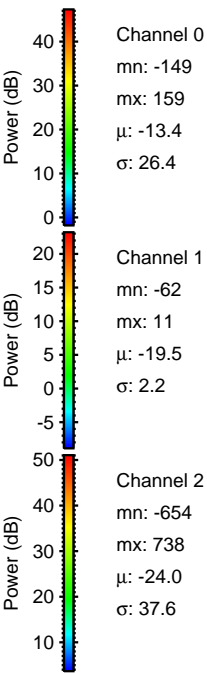
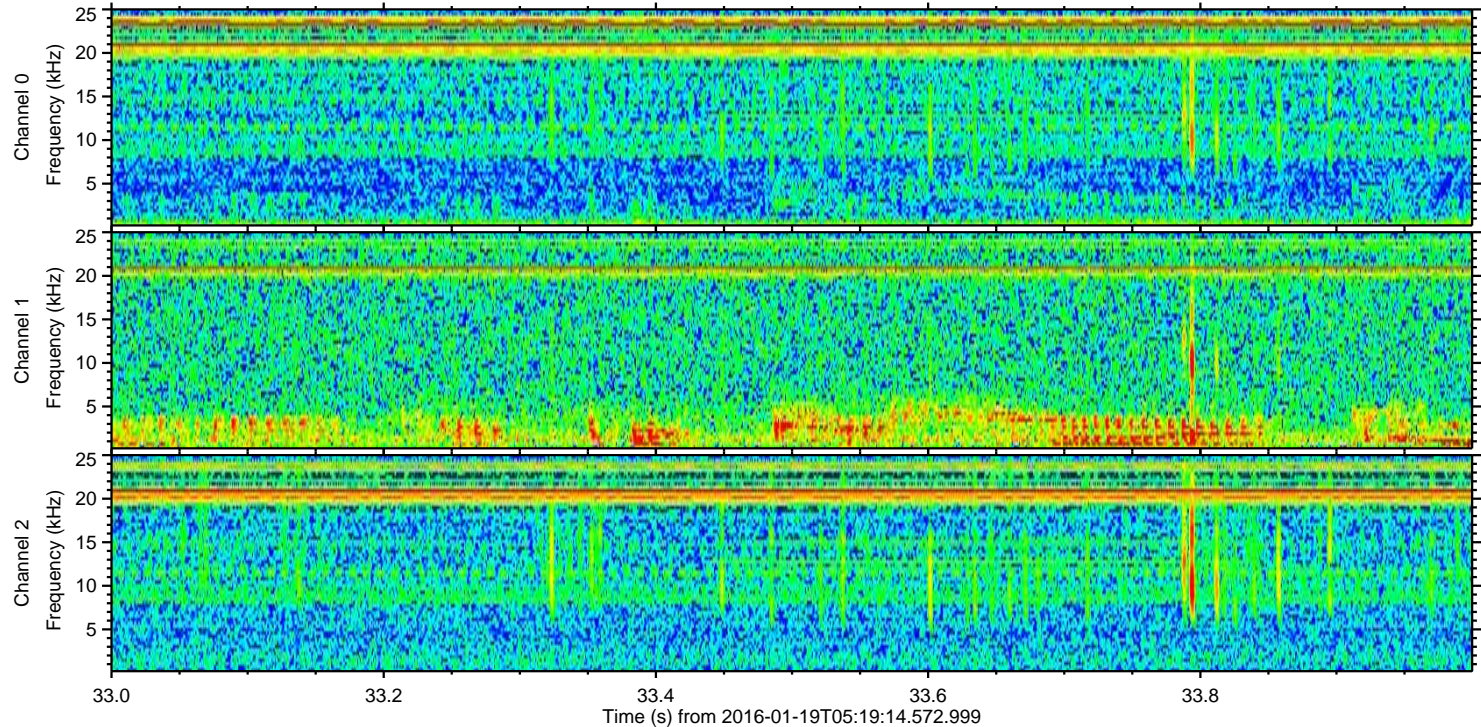
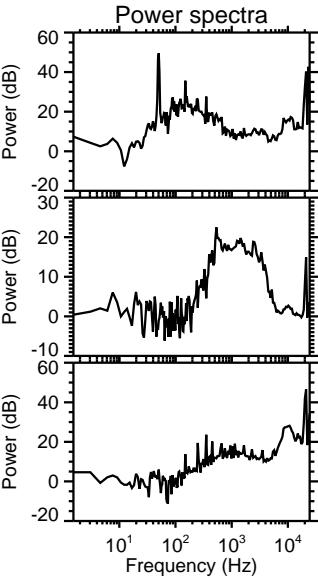
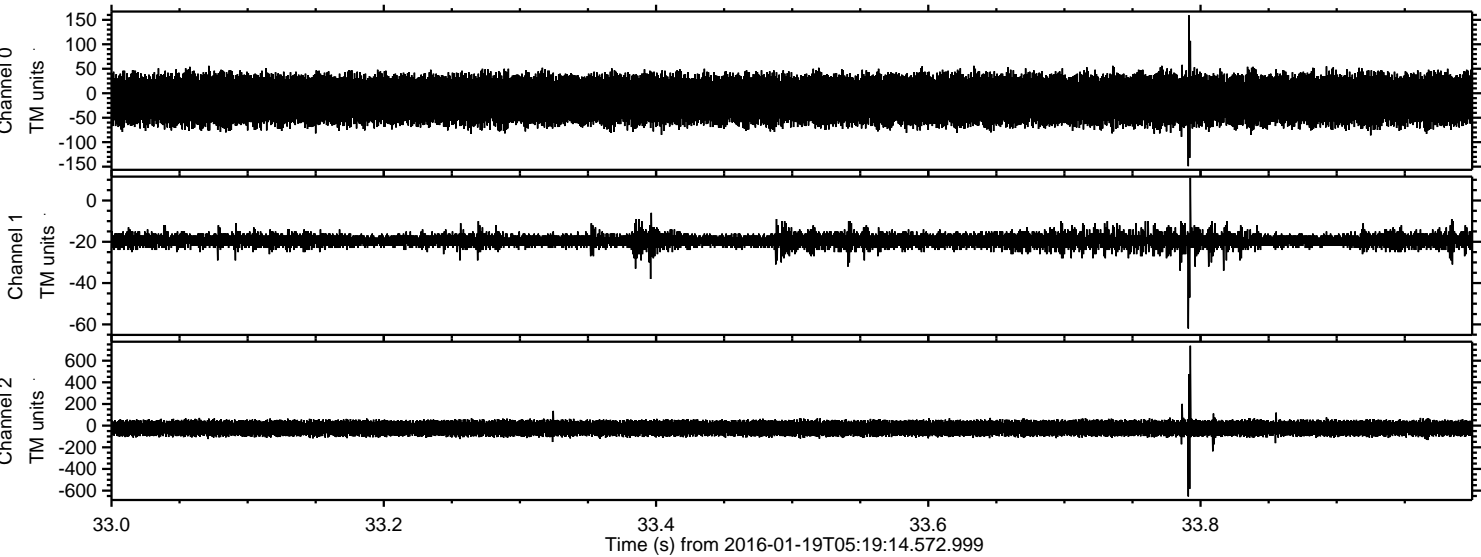






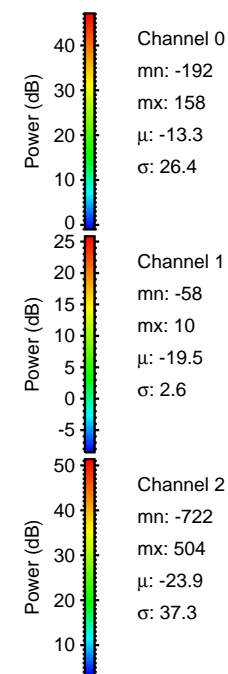
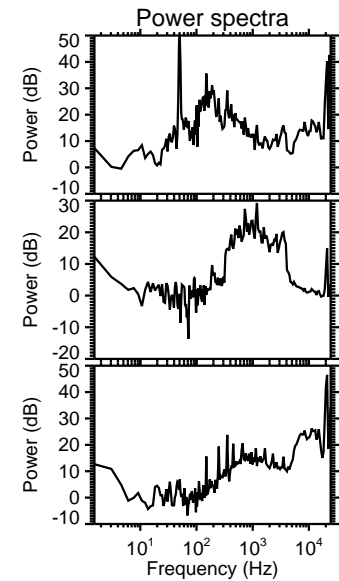
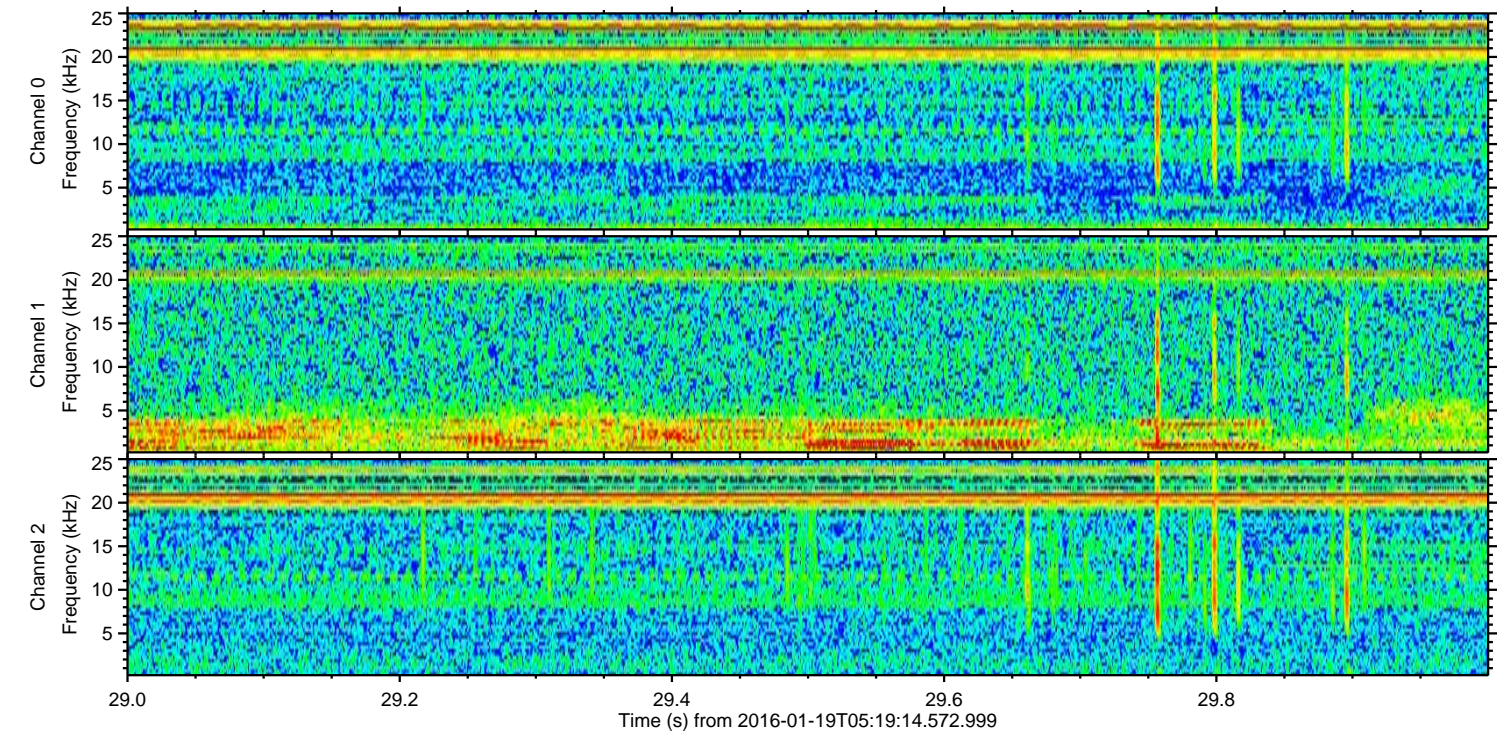
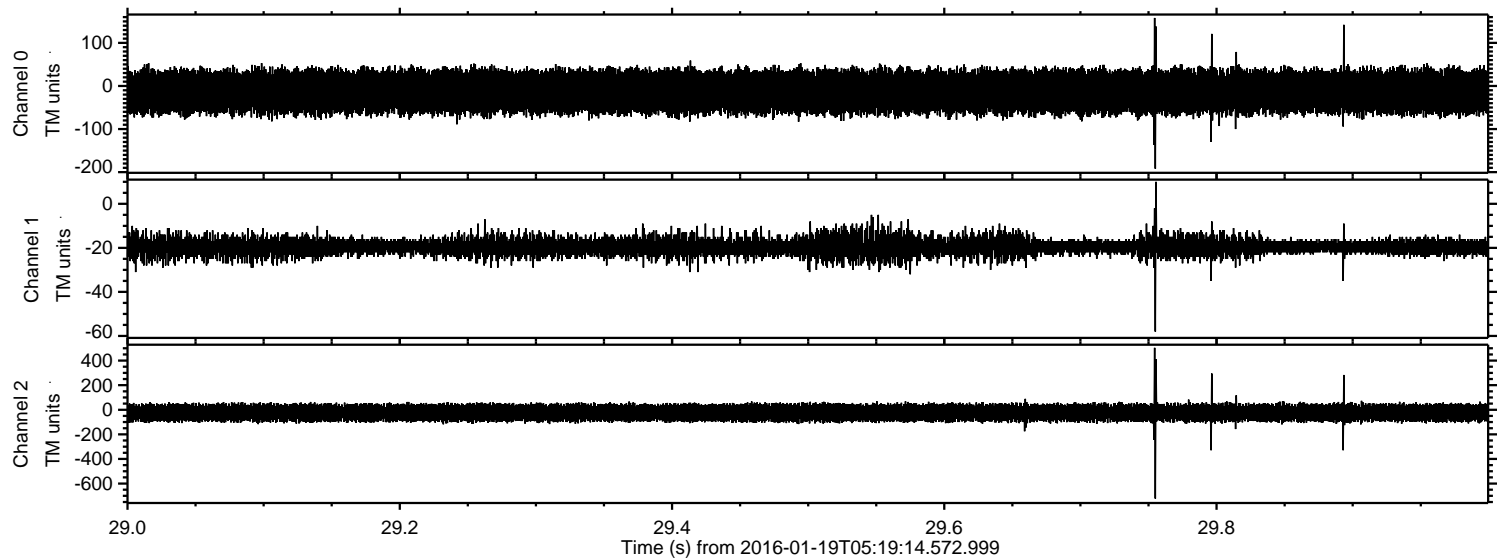
ELMAVAN 3D WAVEFORMS (Measured data sampled at 50 kHz) 51000 packets of 144 samples from 2016-01-19T05:19:14.572.999. Part 34/147

Processed Sun Apr 3 18:27:10 2016 by ELM ver.2012-10-06 from 001\_\_elm20160119\_051913\_\_dat00.bin





Processed Sun Apr 3 18:27:11 2016 by ELM ver.2012-10-06 from 001\_\_elm20160119\_051913\_\_dat00.bin





Processed Sun Apr 3 18:27:12 2016 by ELM ver.2012-10-06 from 001\_\_elm20160119\_051913\_\_dat00.bin

