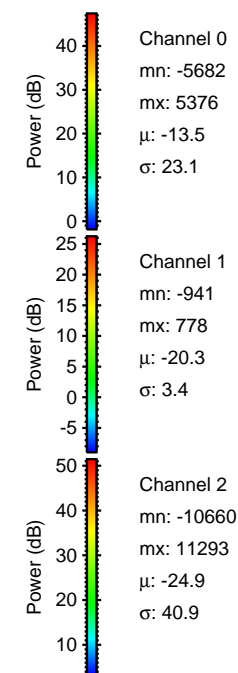
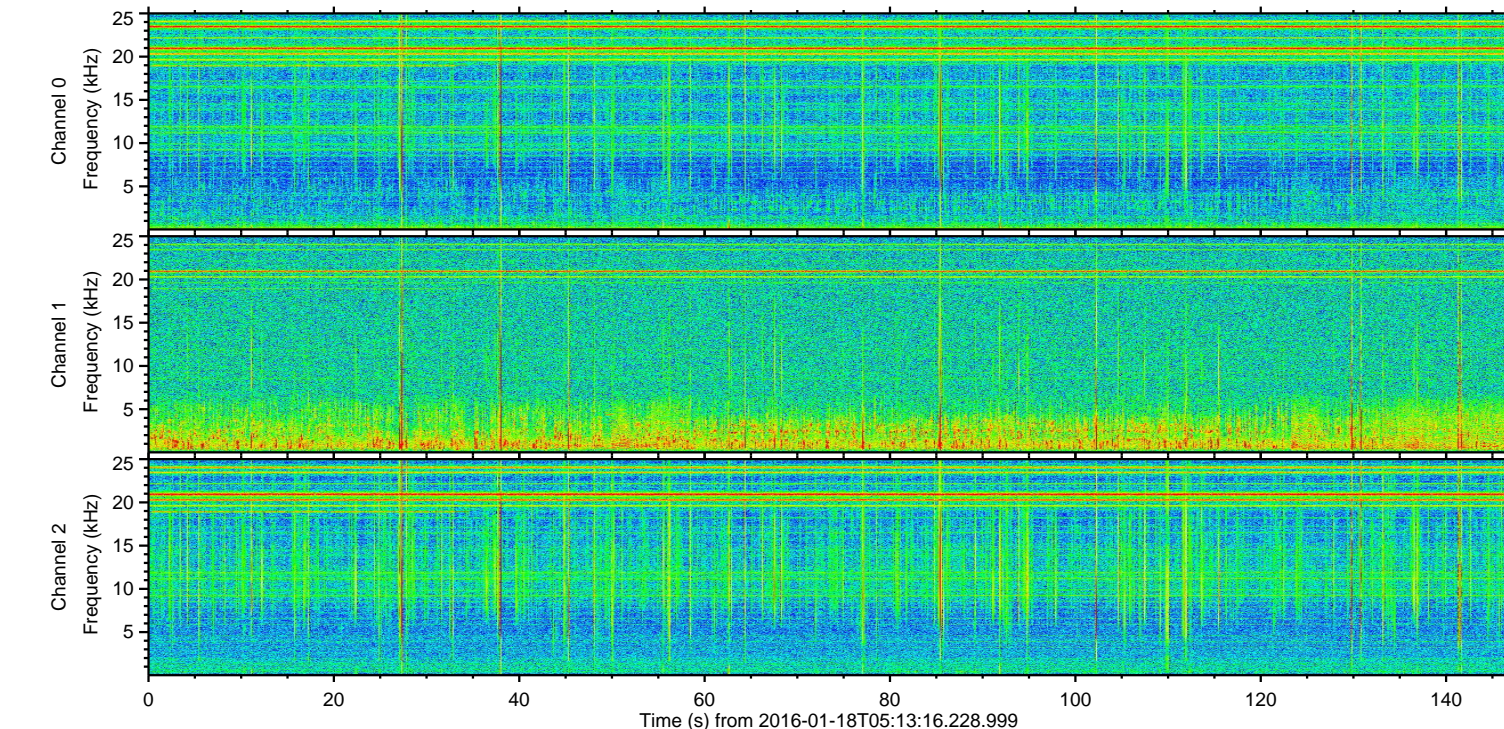
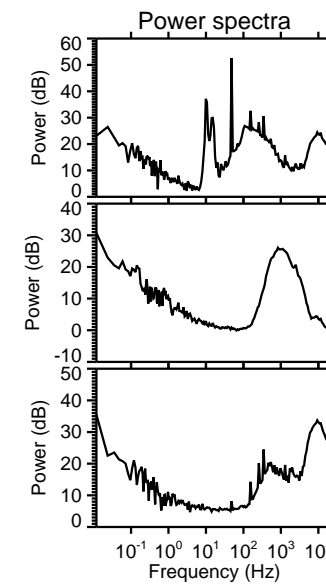
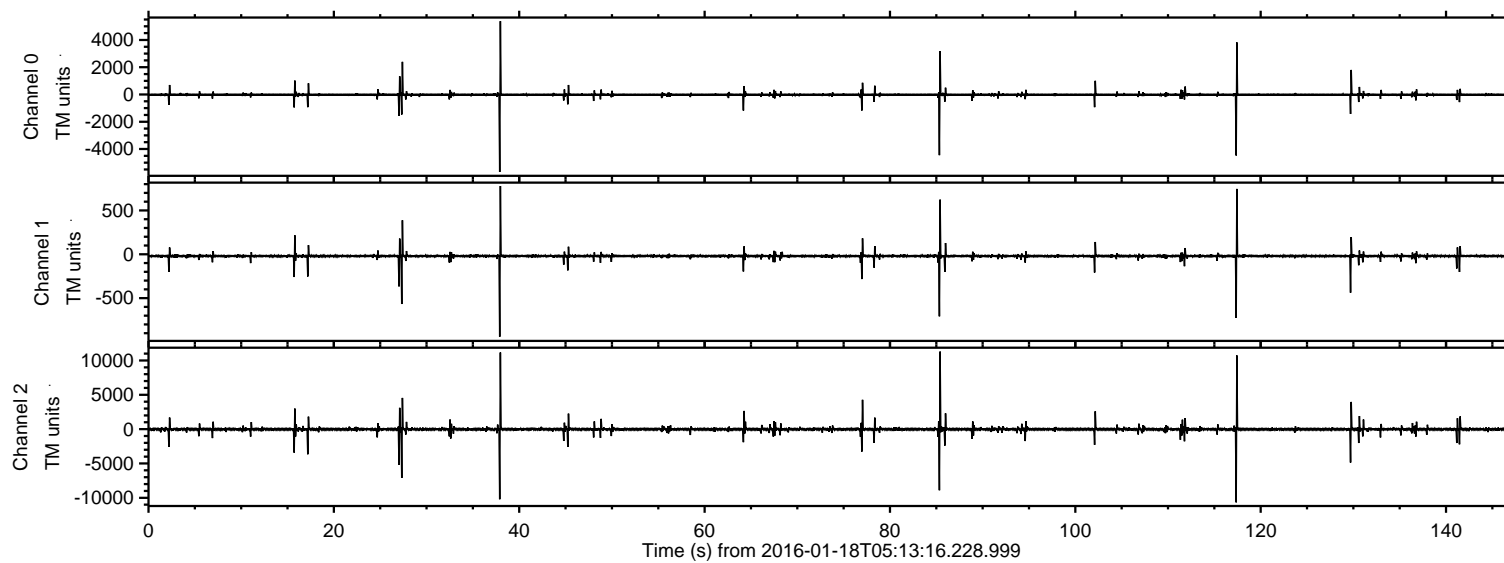


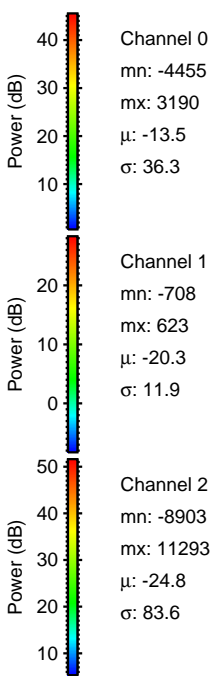
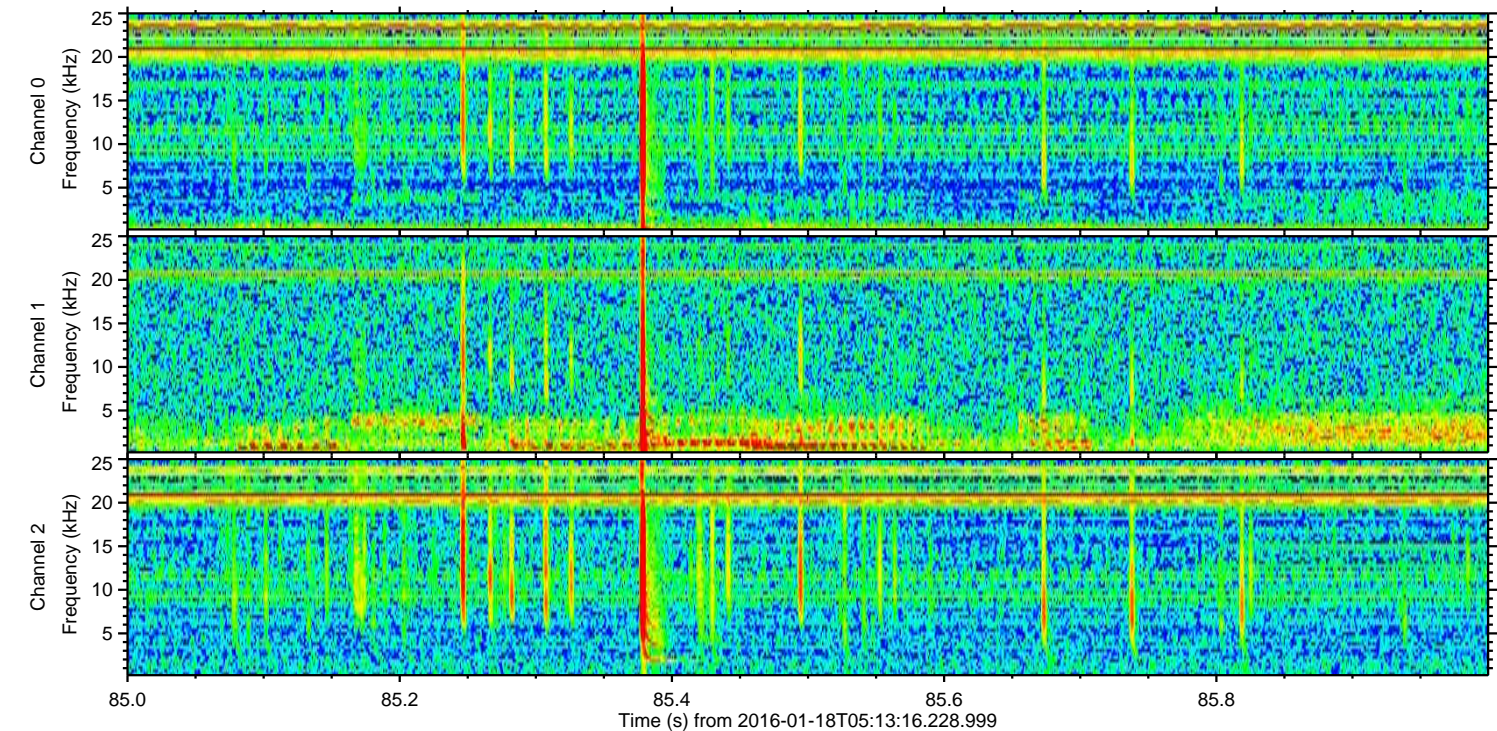
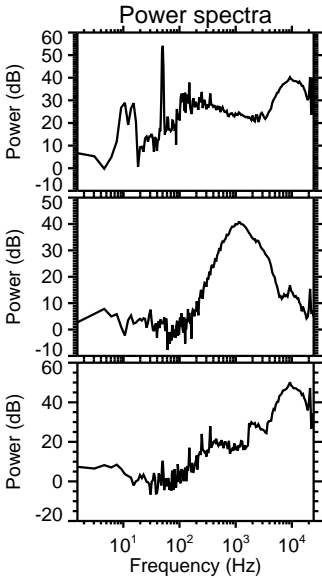
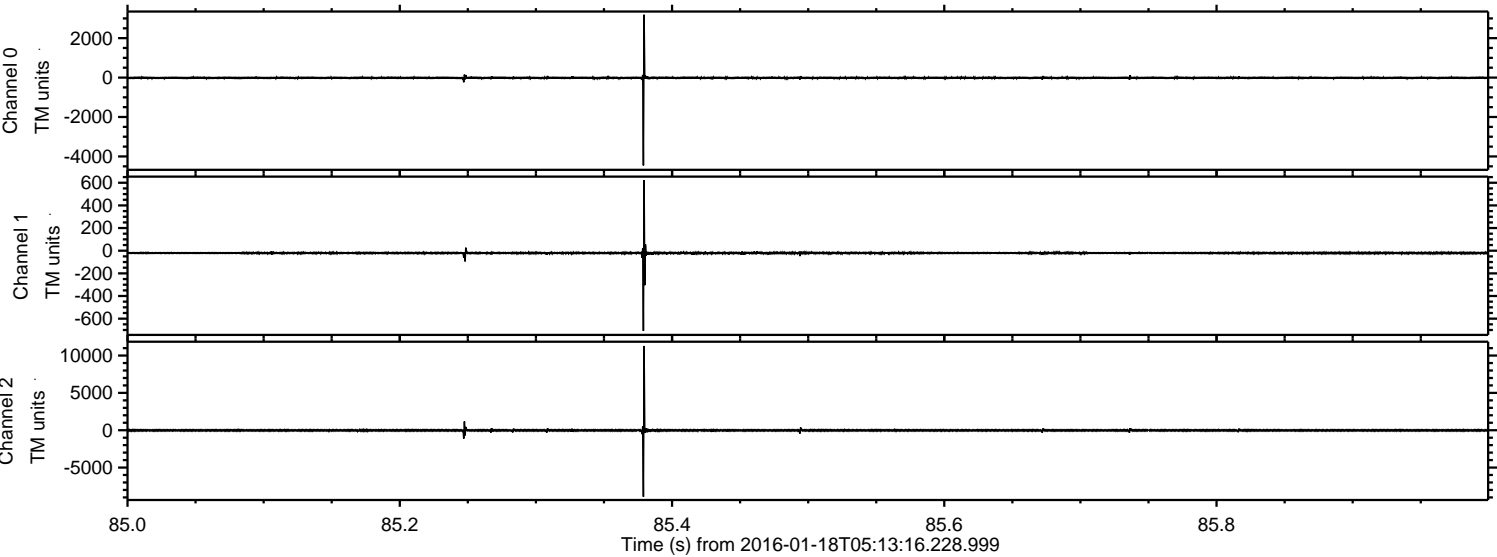
# ELMAVAN 3D WAVEFORMS (Measured data sampled at 50 kHz) 51000 packets of 144 samples from 2016-01-18T05:13:16.228.999.

Processed Thu Mar 31 17:02:51 2016 by ELM ver.2012-10-06 from 001\_\_elm20160118\_051315\_\_dat00.bin



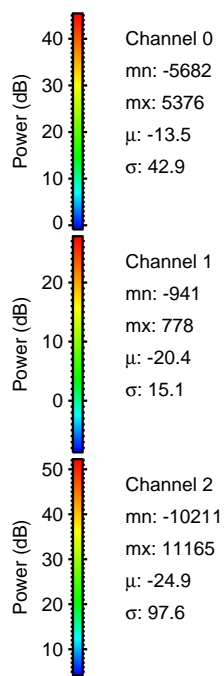
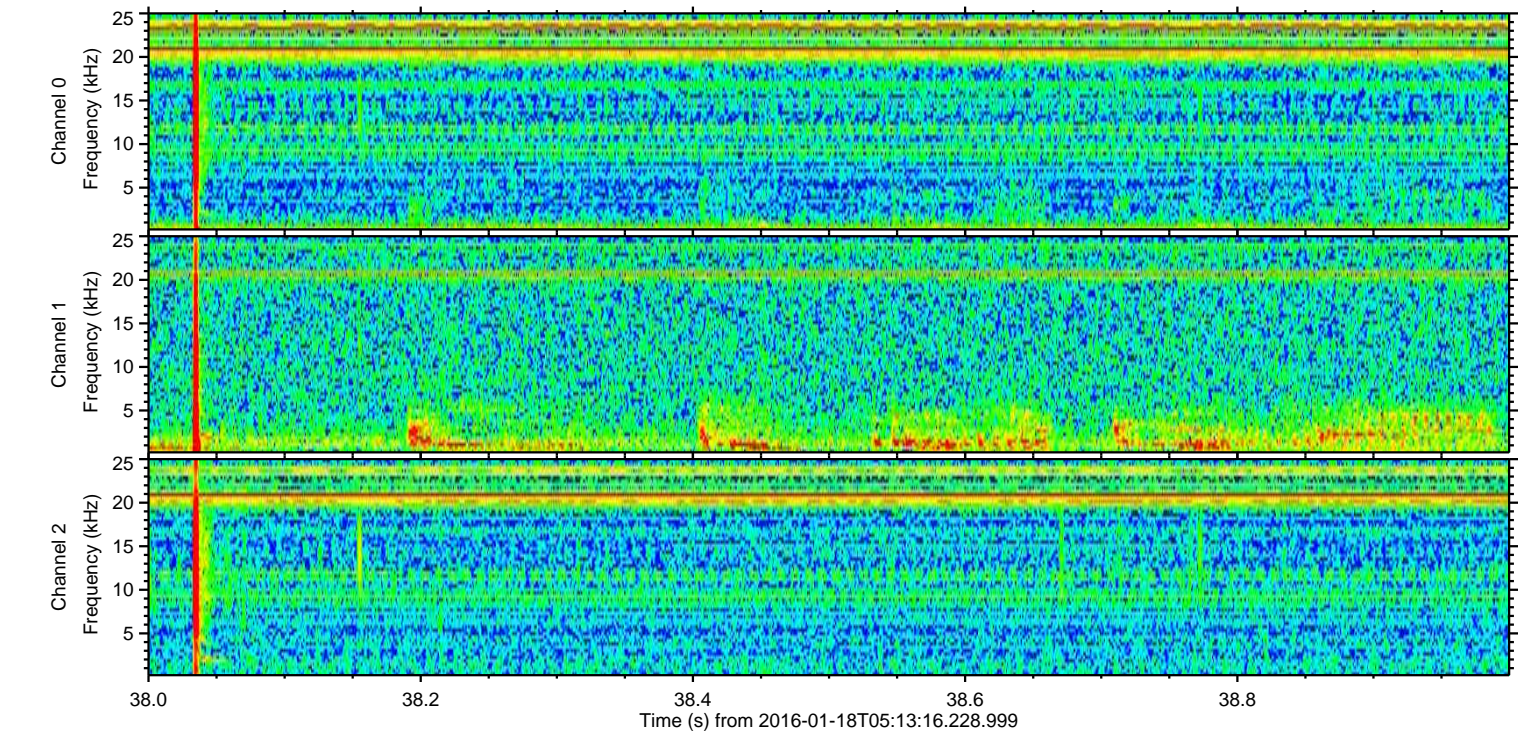
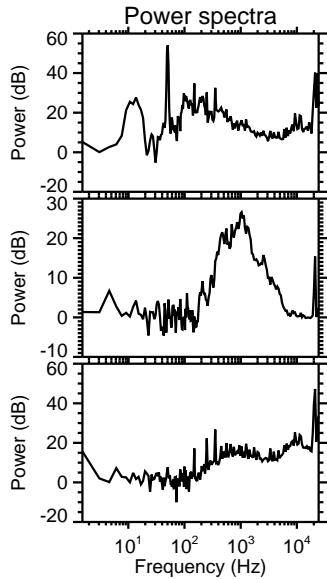
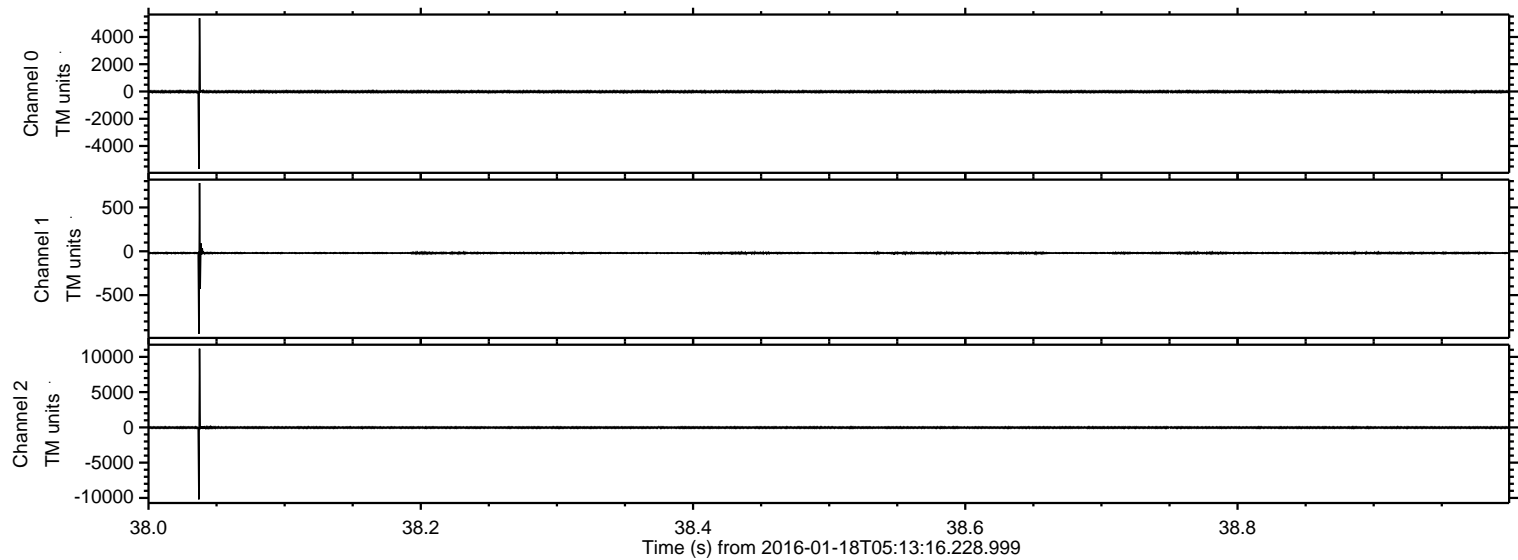


Processed Thu Mar 31 17:03:03 2016 by ELM ver.2012-10-06 from 001\_\_elm20160118\_051315\_\_dat00.bin





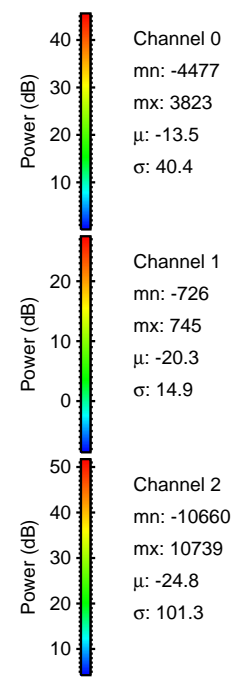
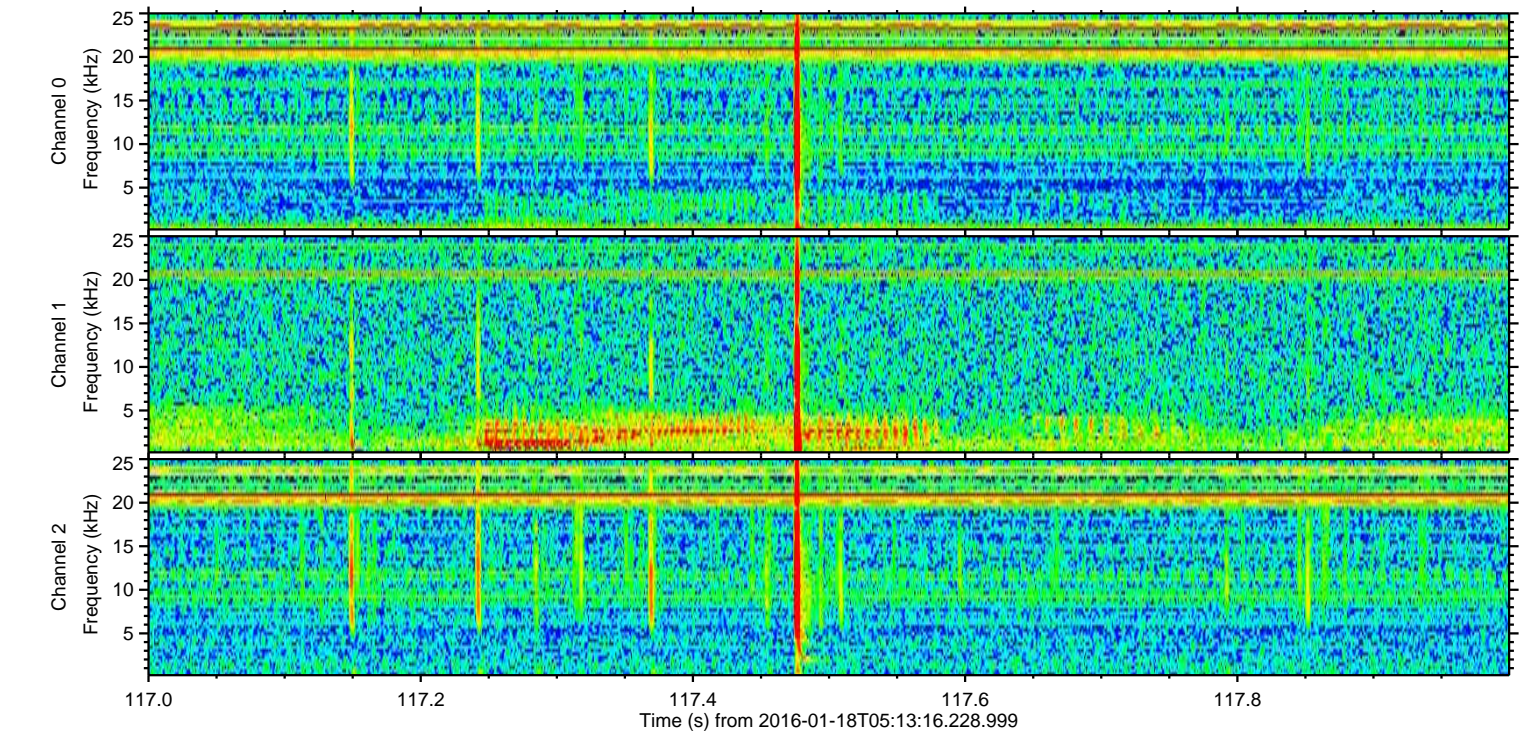
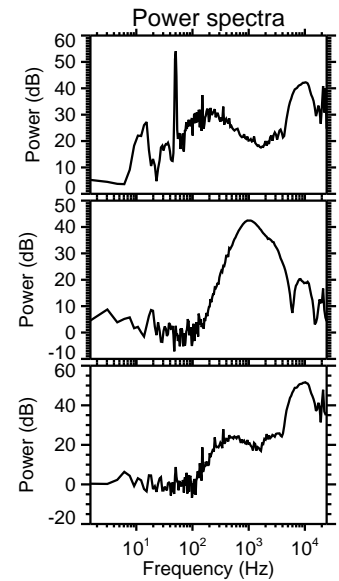
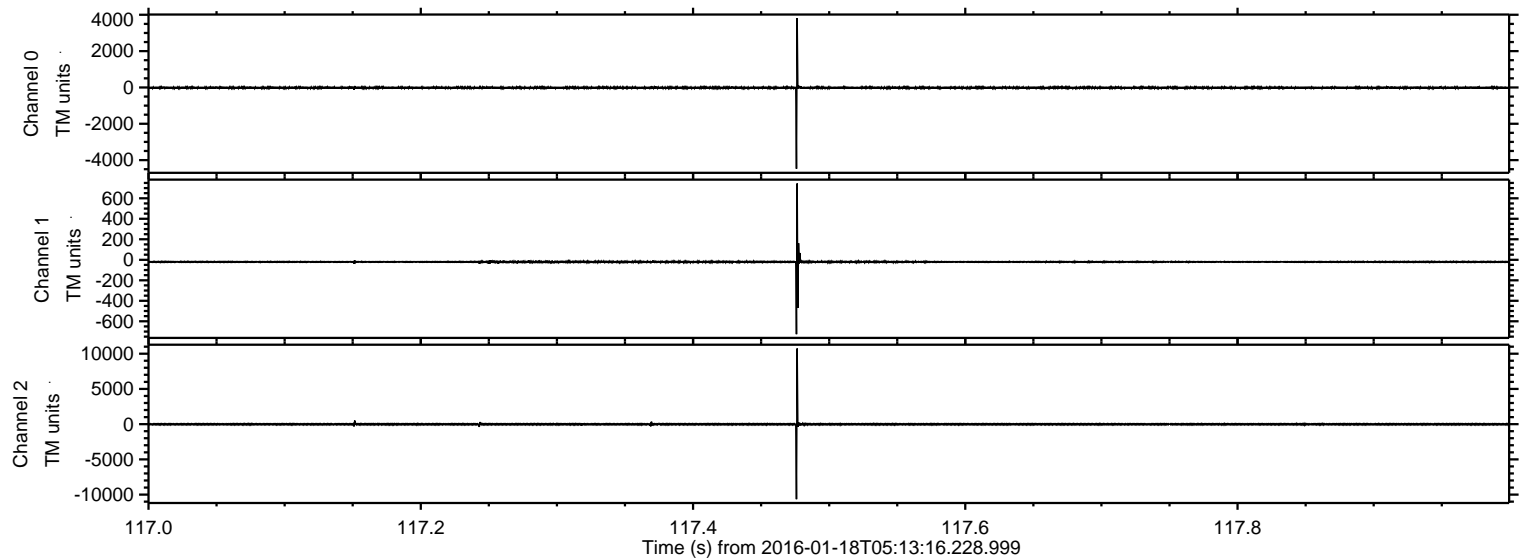
Processed Thu Mar 31 17:03:04 2016 by ELM ver.2012-10-06 from 001\_\_elm20160118\_051315\_\_dat00.bin





ELMAVAN 3D WAVEFORMS (Measured data sampled at 50 kHz) 51000 packets of 144 samples from 2016-01-18T05:13:16.228.999. Part 118/147

Processed Thu Mar 31 17:03:05 2016 by ELM ver.2012-10-06 from 001\_\_elm20160118\_051315\_\_dat00.bin



Channel 0  
mn: -4477  
mx: 3823  
 $\mu$ : -13.5  
 $\sigma$ : 40.4

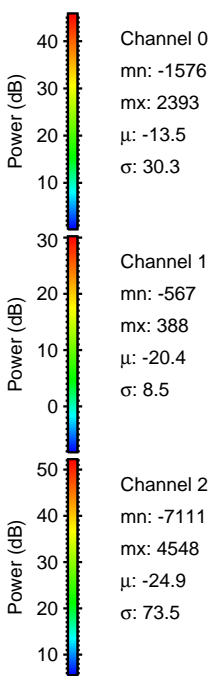
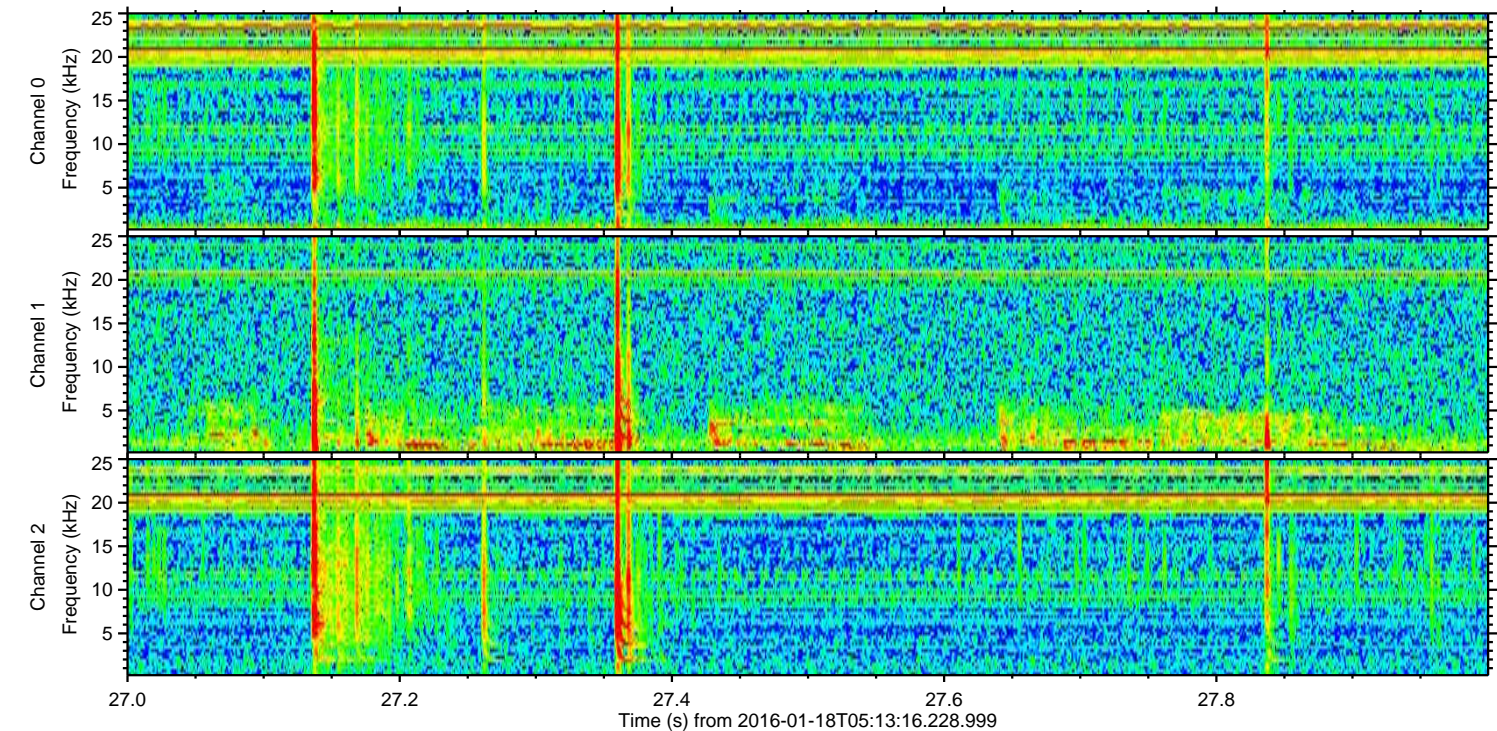
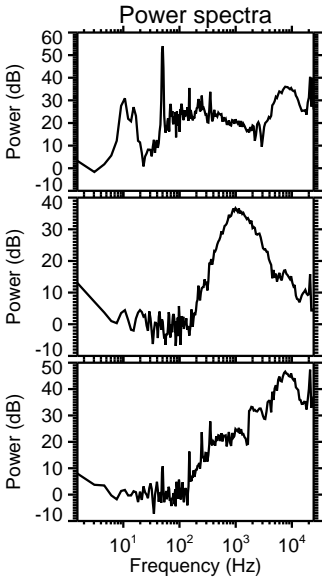
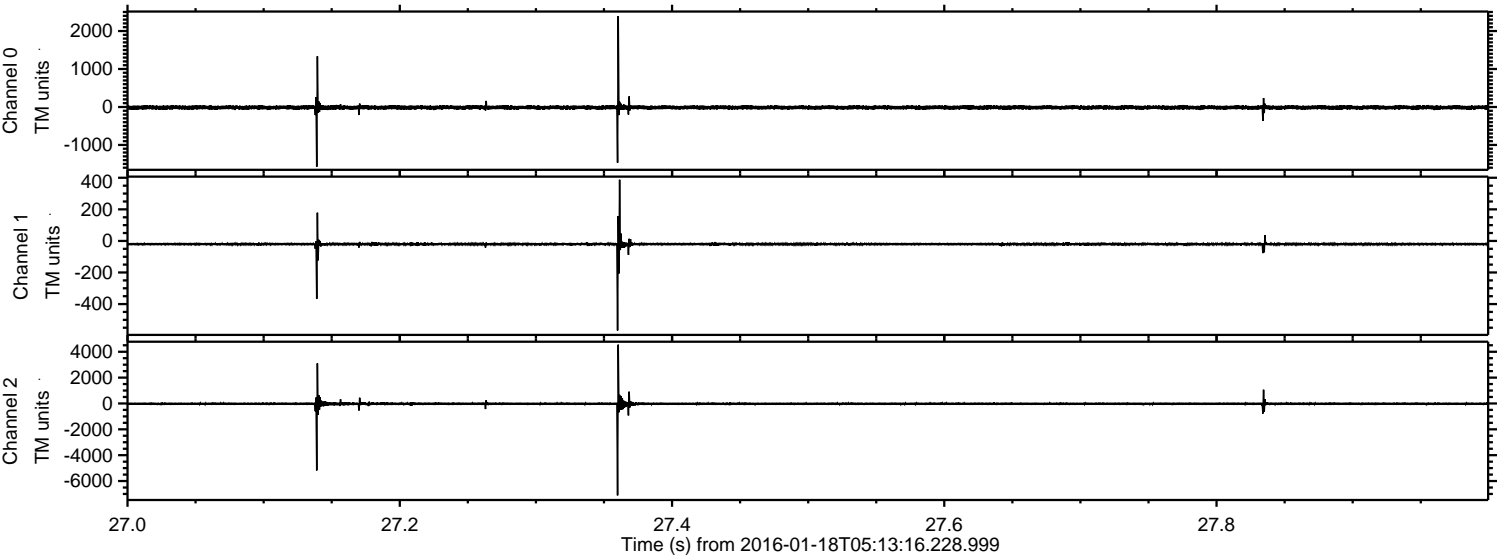
Channel 1  
mn: -726  
mx: 745  
 $\mu$ : -20.3  
 $\sigma$ : 14.9

Channel 2  
mn: -10660  
mx: 10739  
 $\mu$ : -24.8  
 $\sigma$ : 101.3



ELMAVAN 3D WAVEFORMS (Measured data sampled at 50 kHz) 51000 packets of 144 samples from 2016-01-18T05:13:16.228.999. Part 28/147

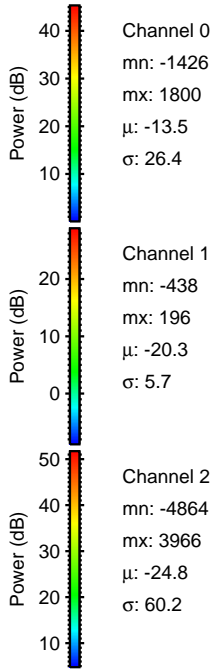
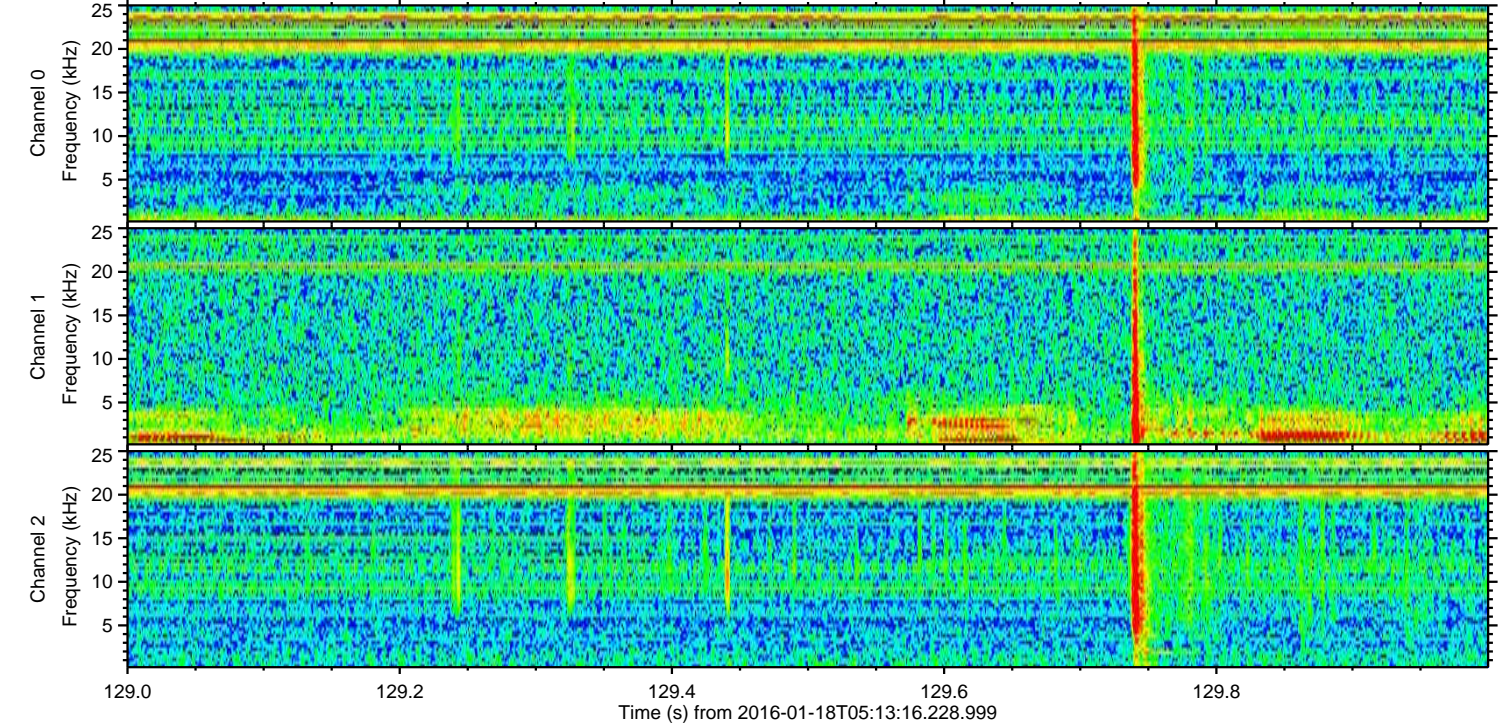
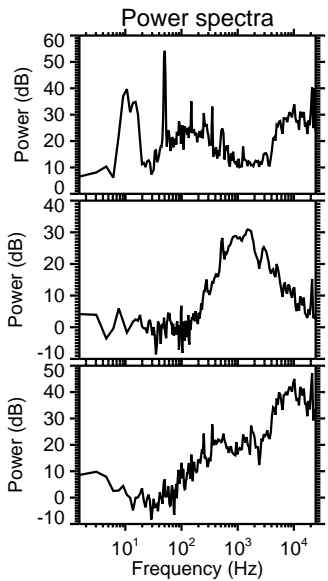
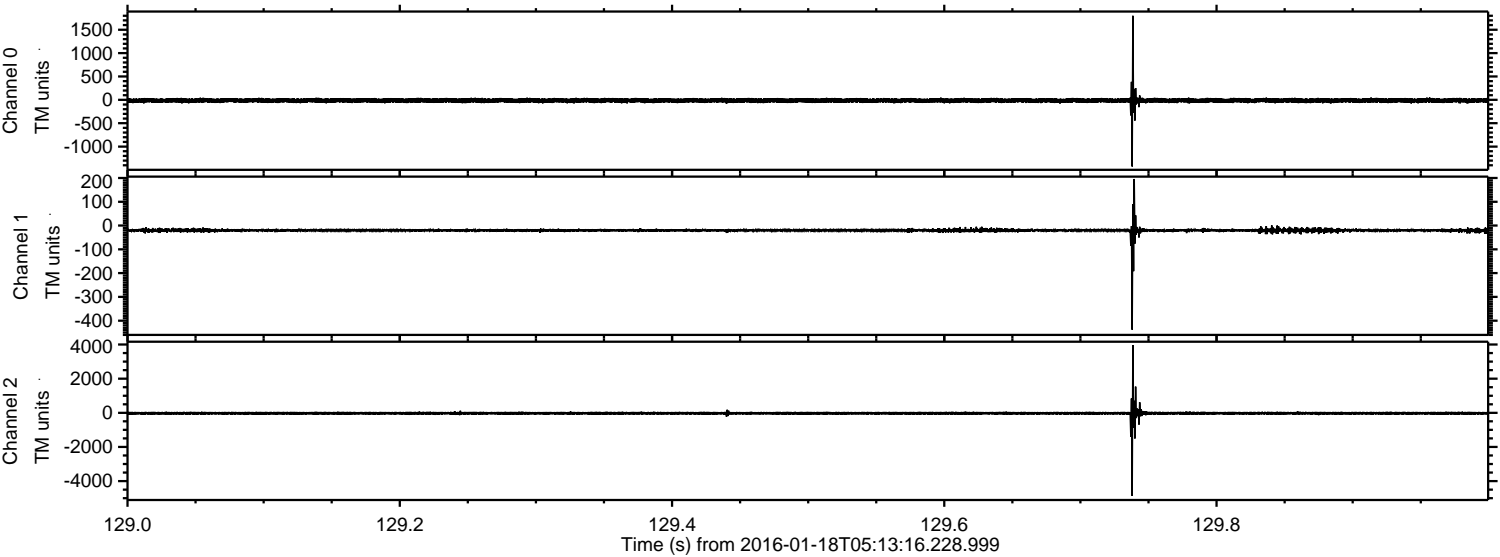
Processed Thu Mar 31 17:03:05 2016 by ELM ver.2012-10-06 from 001\_\_elm20160118\_051315\_\_dat00.bin





ELMAVAN 3D WAVEFORMS (Measured data sampled at 50 kHz) 51000 packets of 144 samples from 2016-01-18T05:13:16.228.999. Part 130/147

Processed Thu Mar 31 17:03:06 2016 by ELM ver.2012-10-06 from 001\_\_elm20160118\_051315\_\_dat00.bin



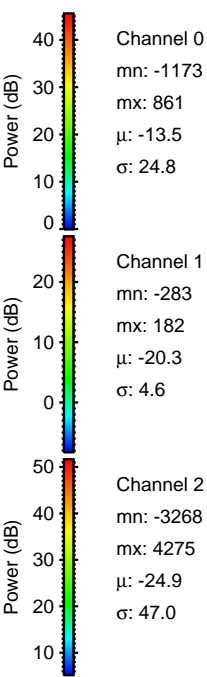
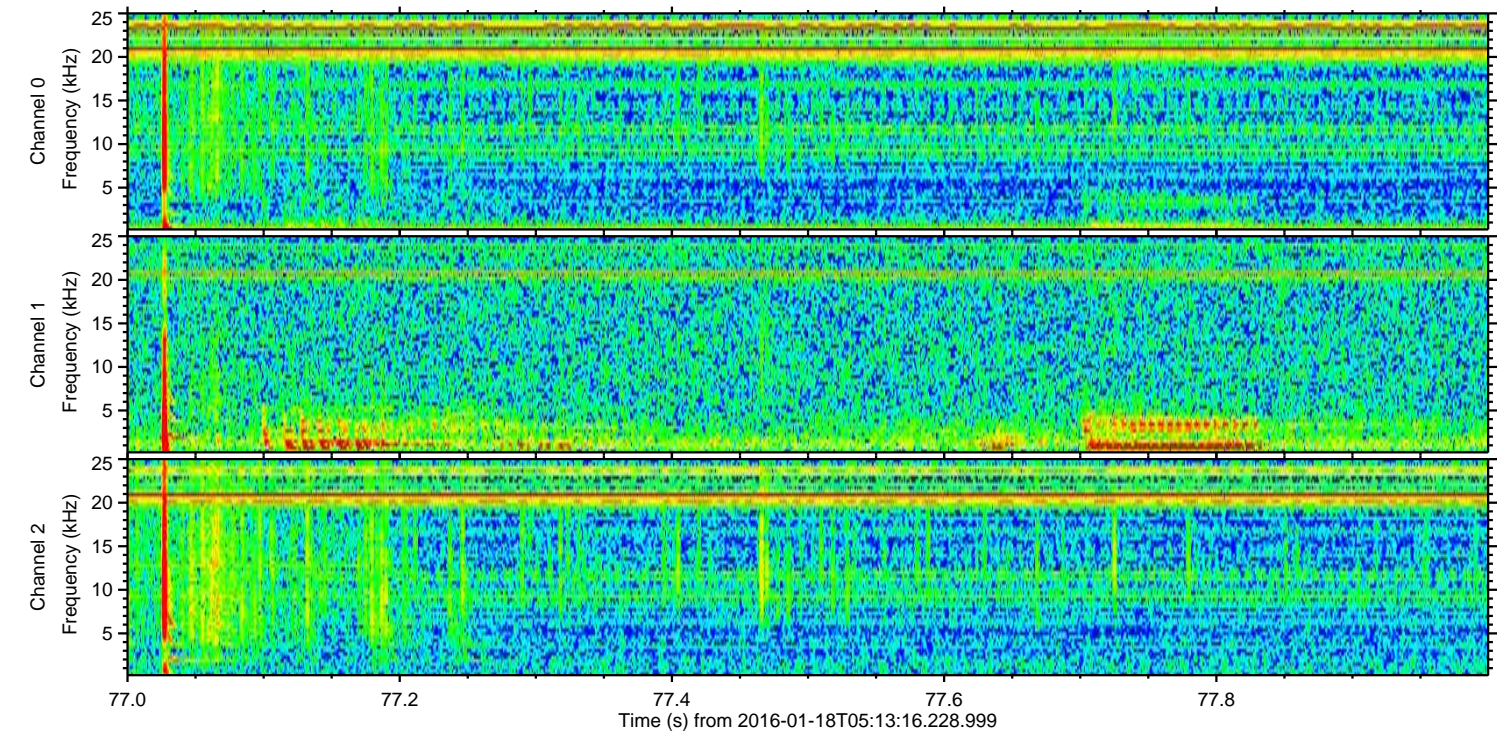
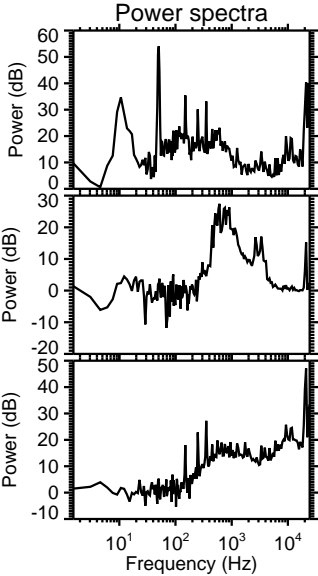
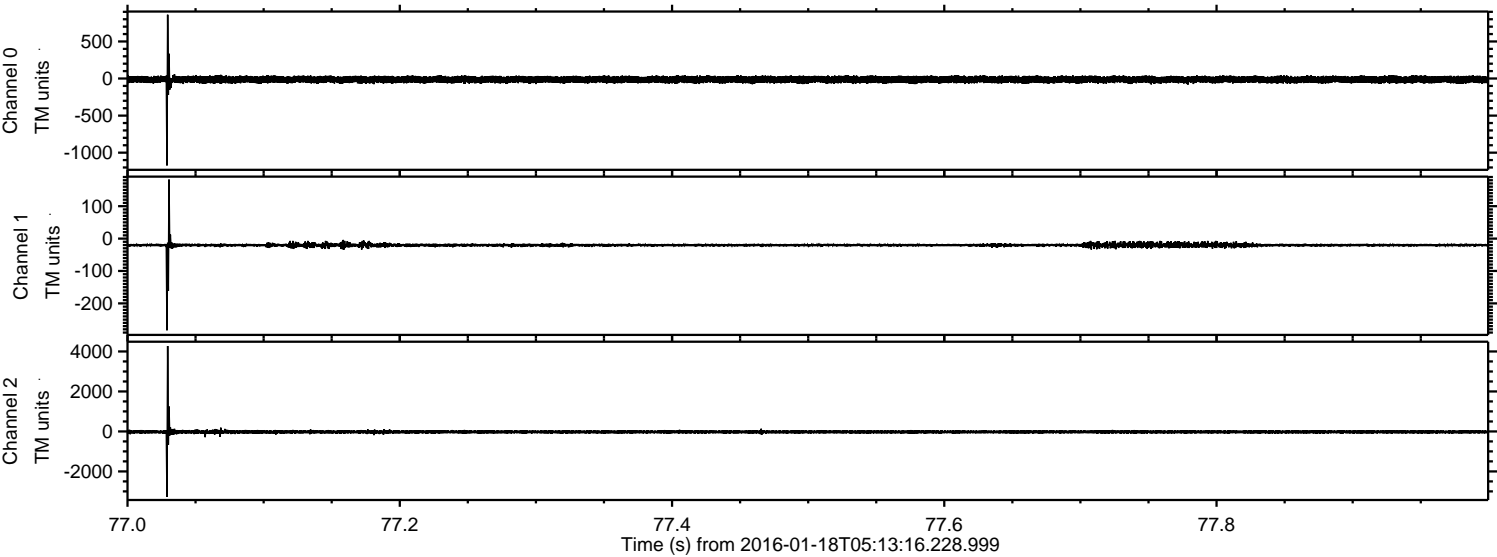
Channel 0  
mn: -1426  
mx: 1800  
 $\mu$ : -13.5  
 $\sigma$ : 26.4

Channel 1  
mn: -438  
mx: 196  
 $\mu$ : -20.3  
 $\sigma$ : 5.7

Channel 2  
mn: -4864  
mx: 3966  
 $\mu$ : -24.8  
 $\sigma$ : 60.2

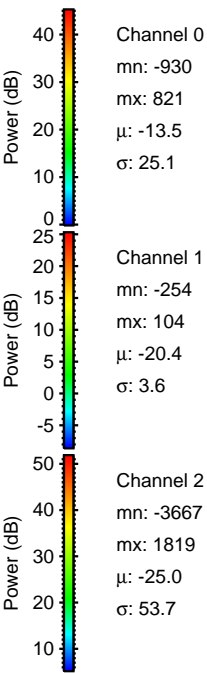
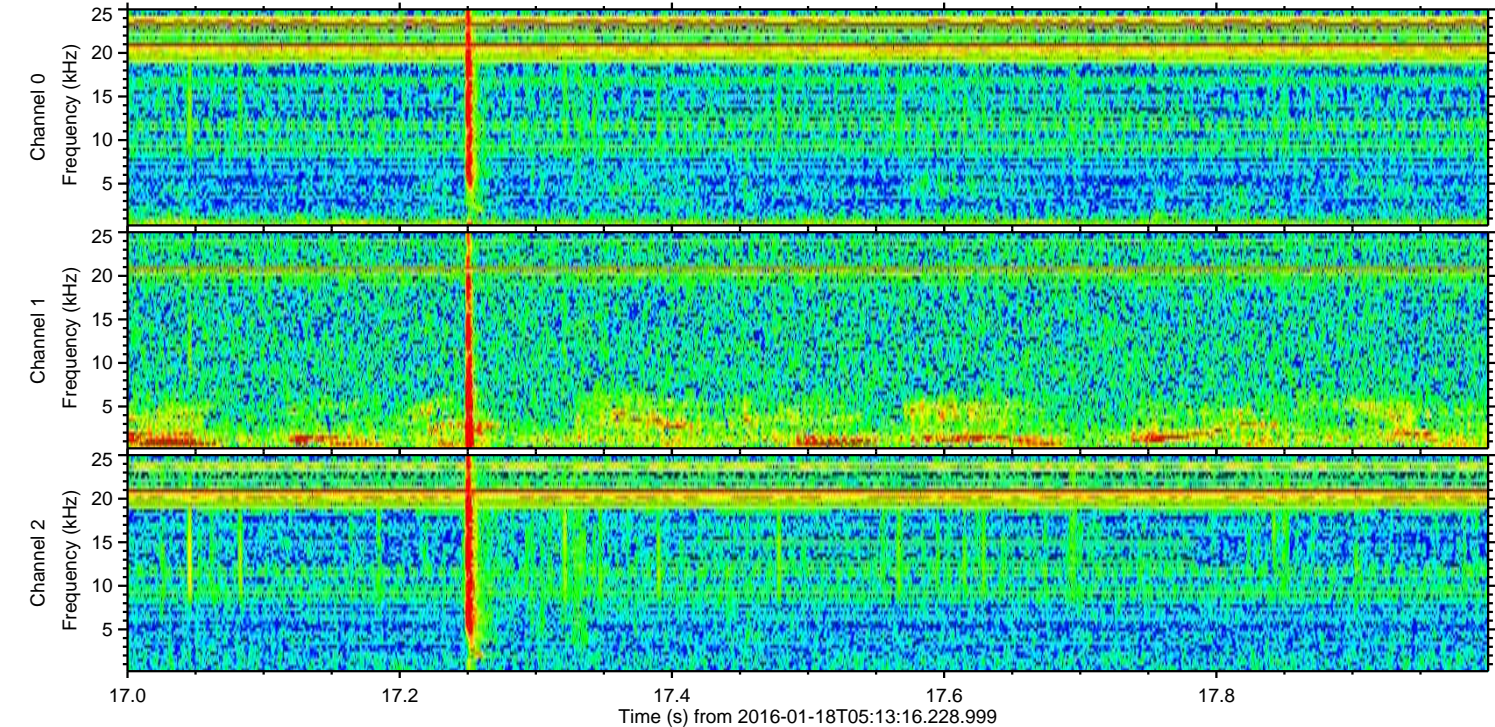
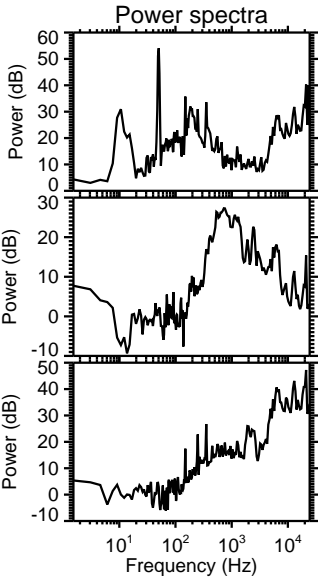
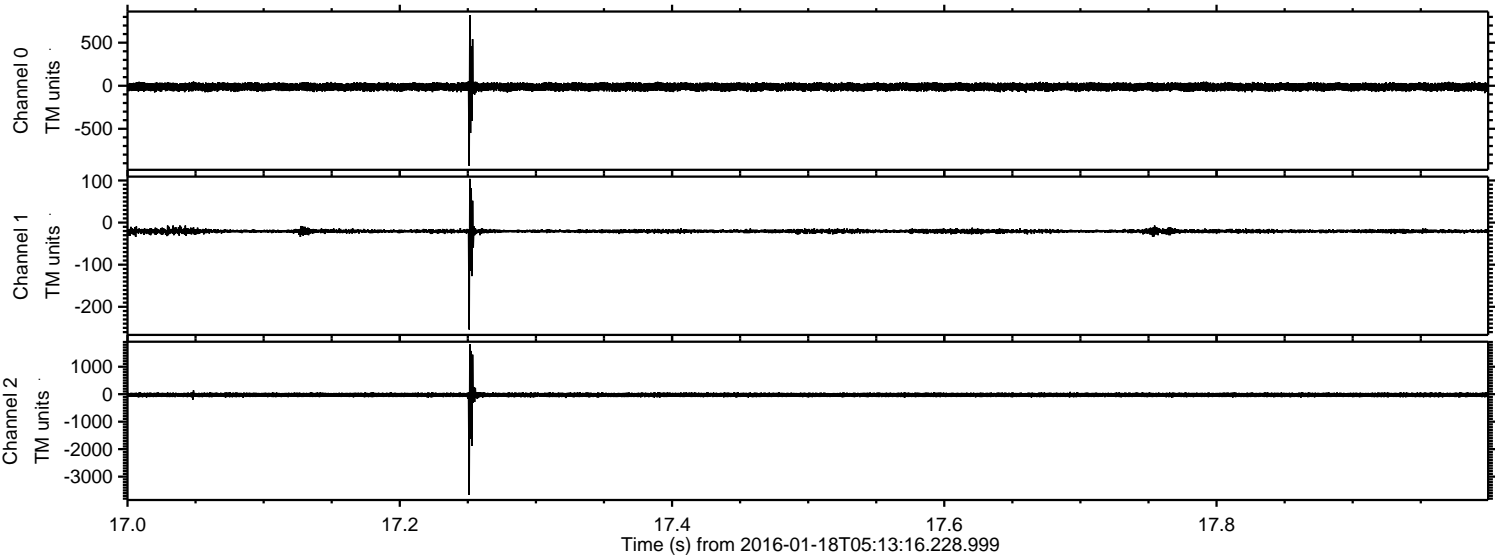


Processed Thu Mar 31 17:03:07 2016 by ELM ver.2012-10-06 from 001\_\_elm20160118\_051315\_\_dat00.bin



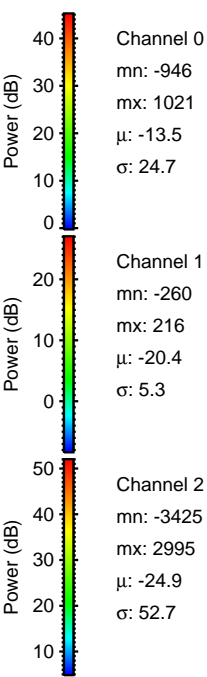
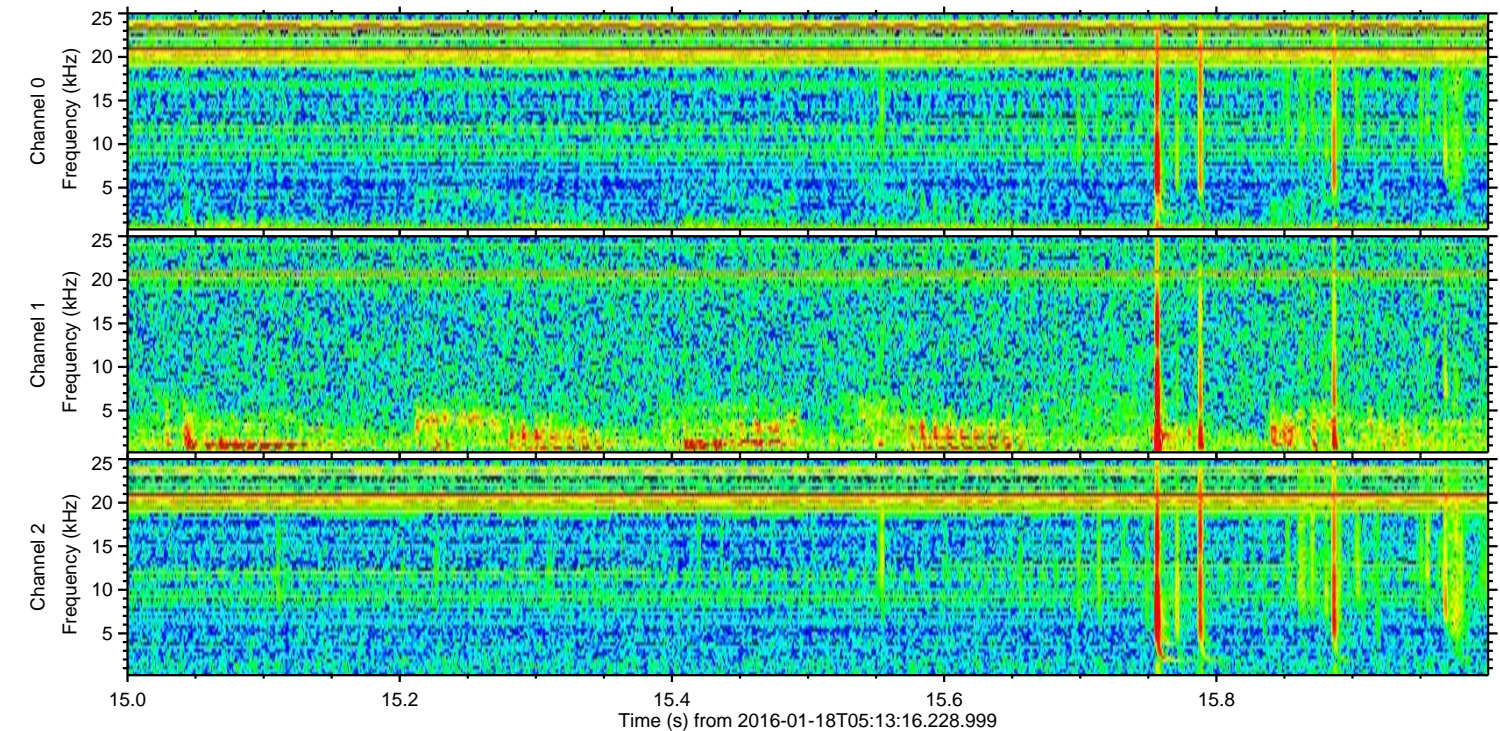
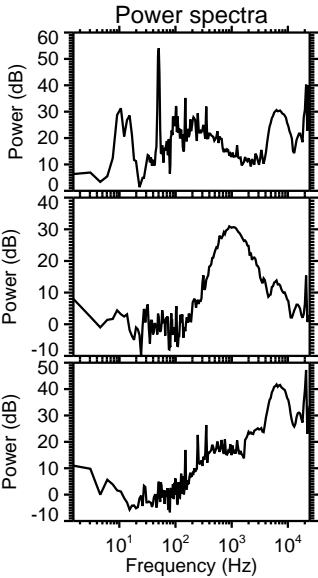
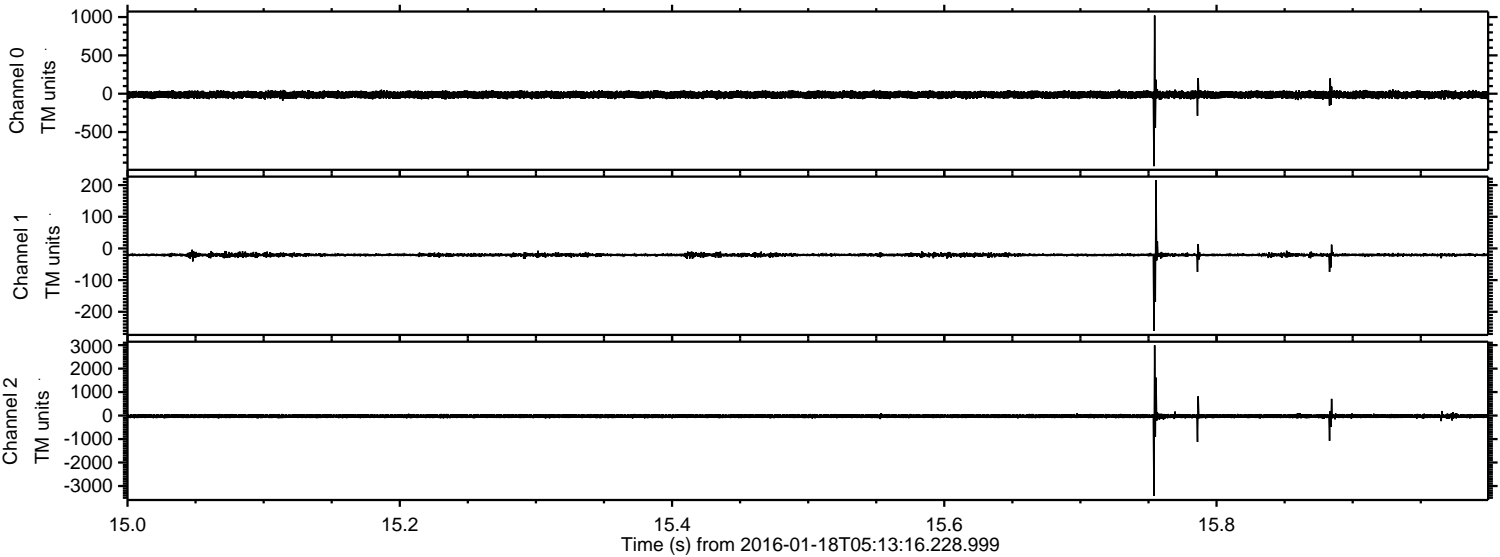


Processed Thu Mar 31 17:03:08 2016 by ELM ver.2012-10-06 from 001\_\_elm20160118\_051315\_\_dat00.bin



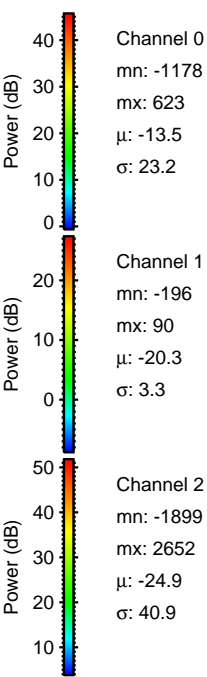
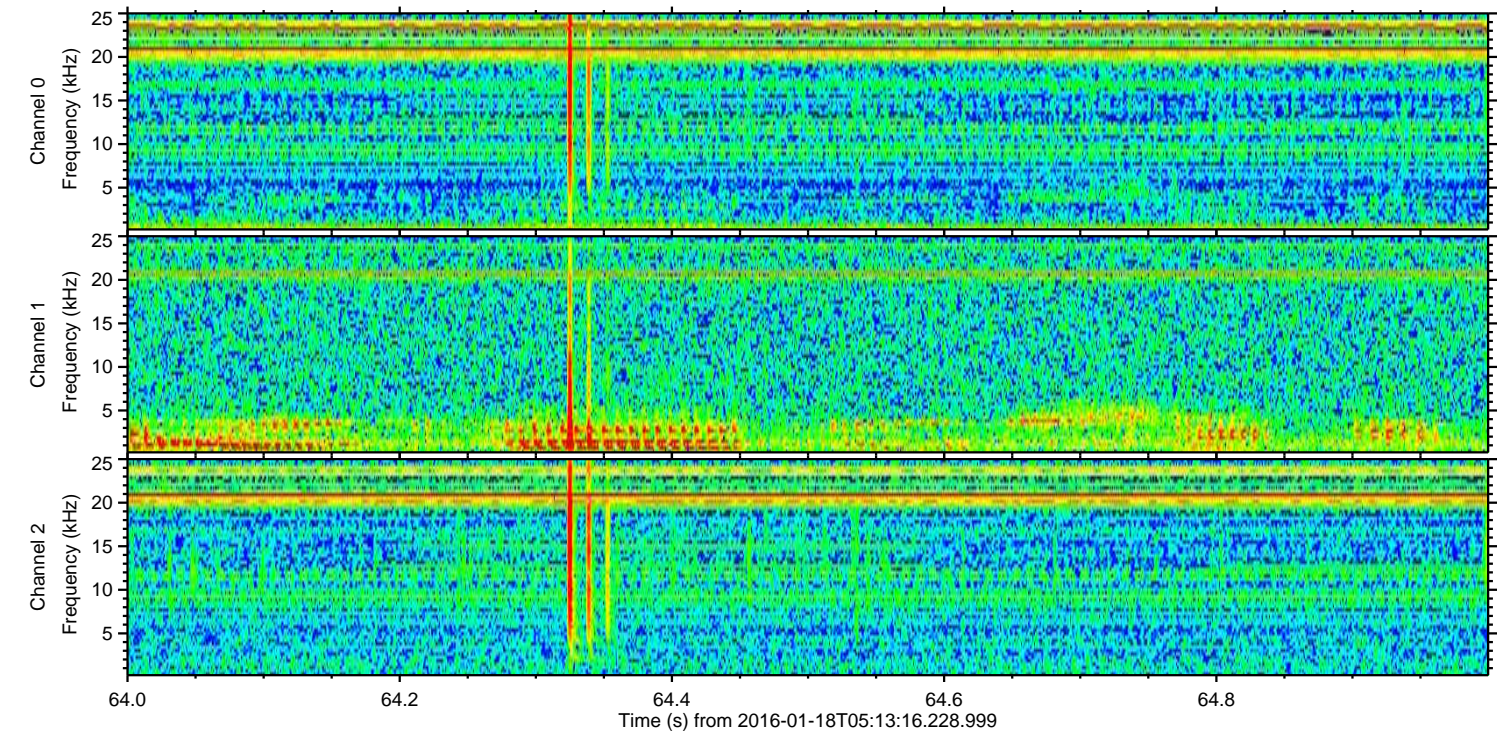
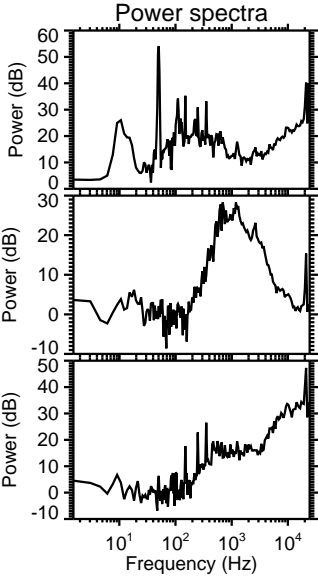
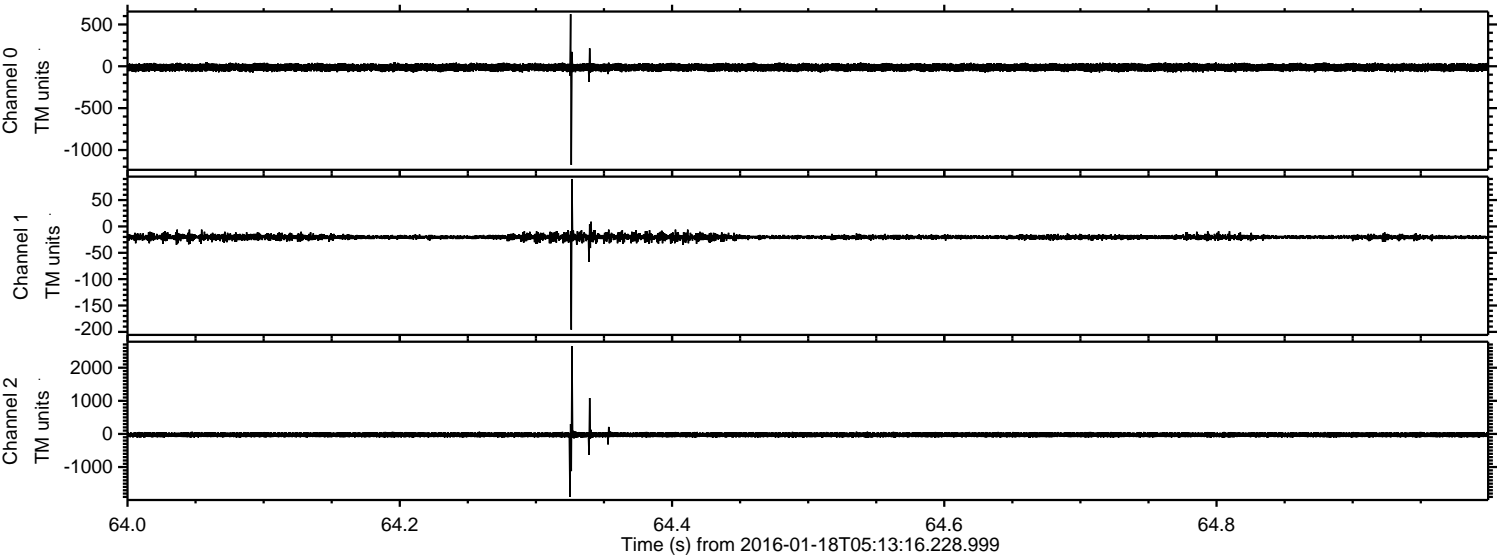


Processed Thu Mar 31 17:03:09 2016 by ELM ver.2012-10-06 from 001\_\_elm20160118\_051315\_\_dat00.bin





Processed Thu Mar 31 17:03:10 2016 by ELM ver.2012-10-06 from 001\_\_elm20160118\_051315\_\_dat00.bin





Processed Thu Mar 31 17:03:11 2016 by ELM ver.2012-10-06 from 001\_\_elm20160118\_051315\_\_dat00.bin

