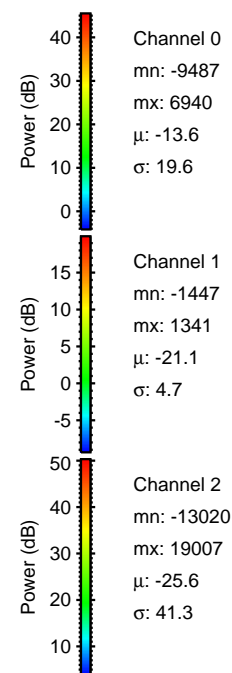
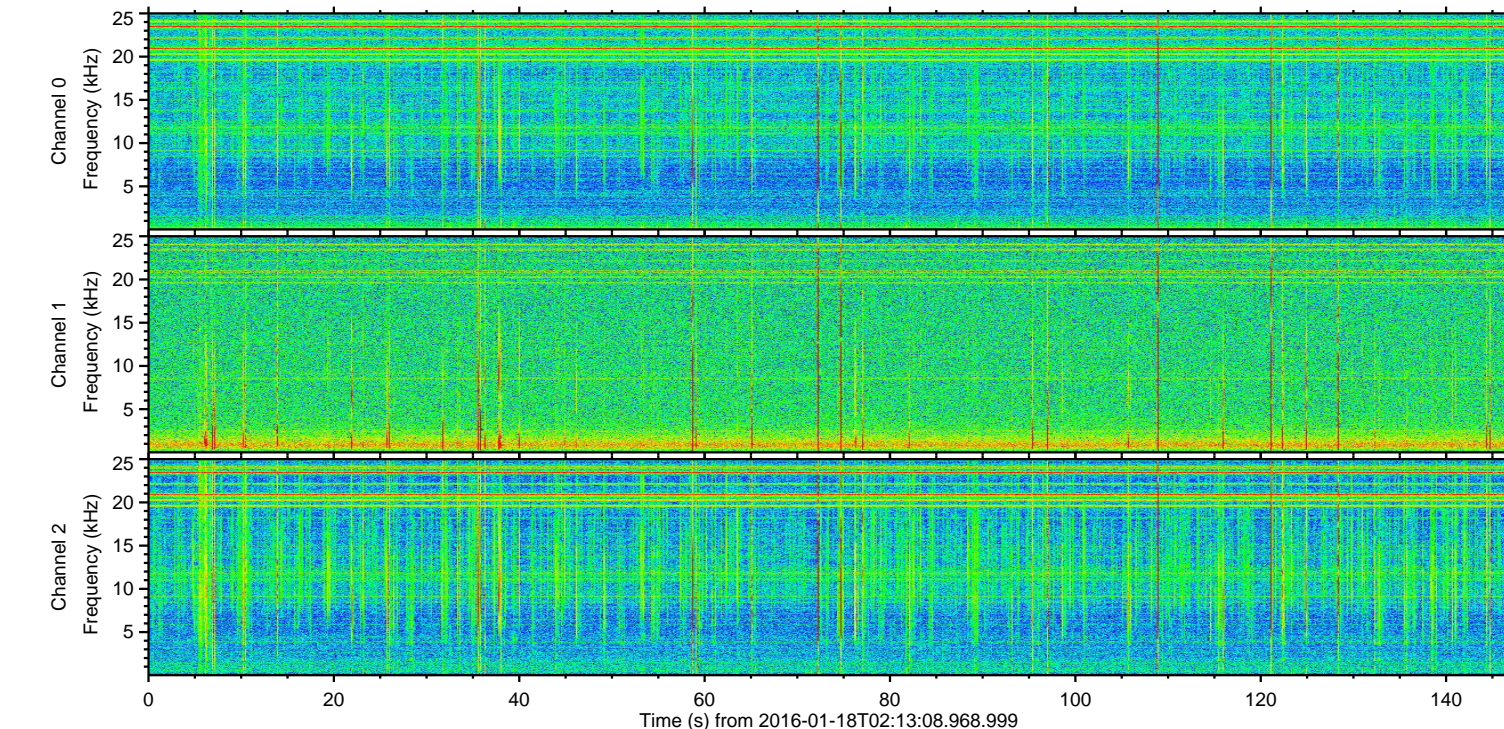
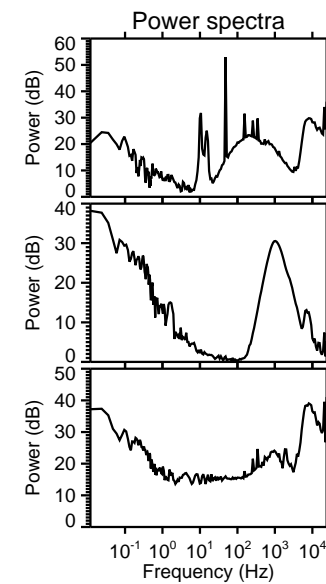
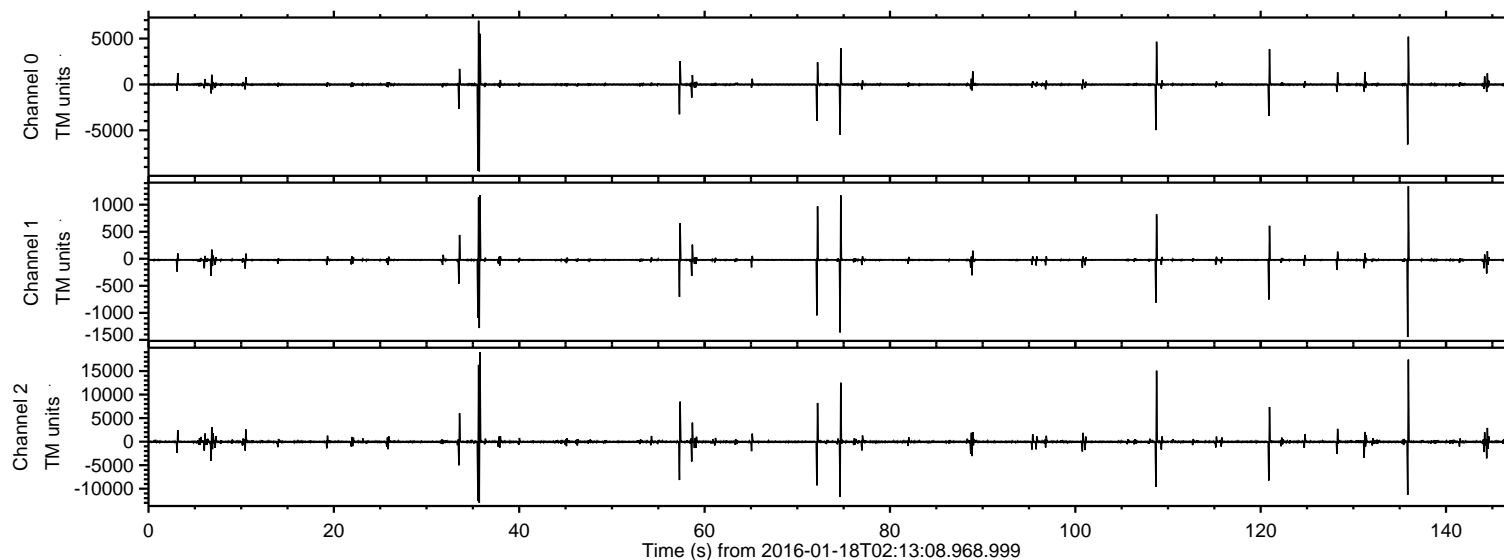


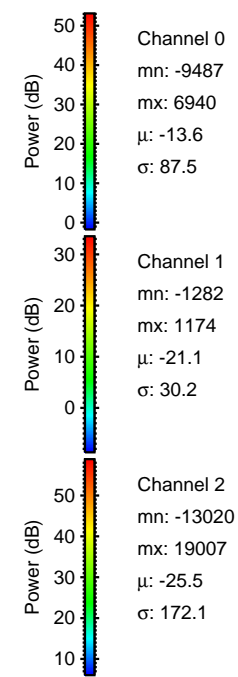
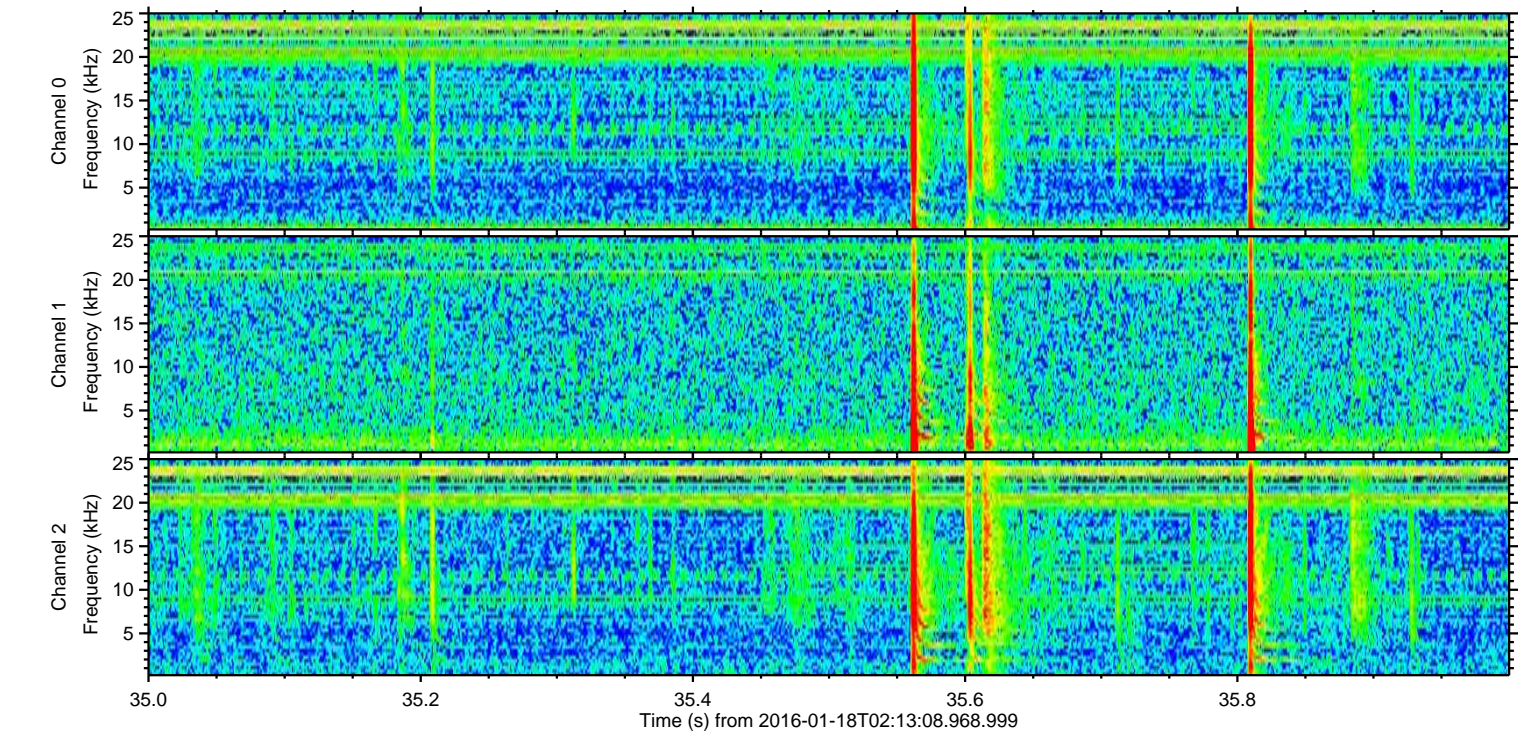
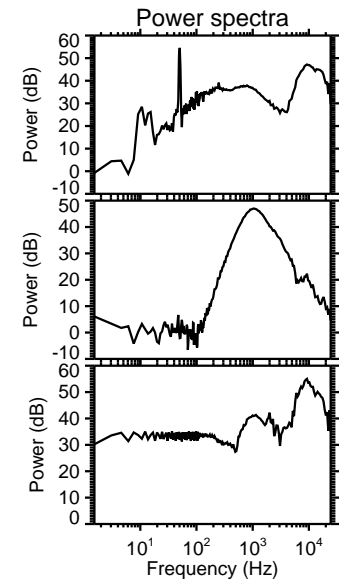
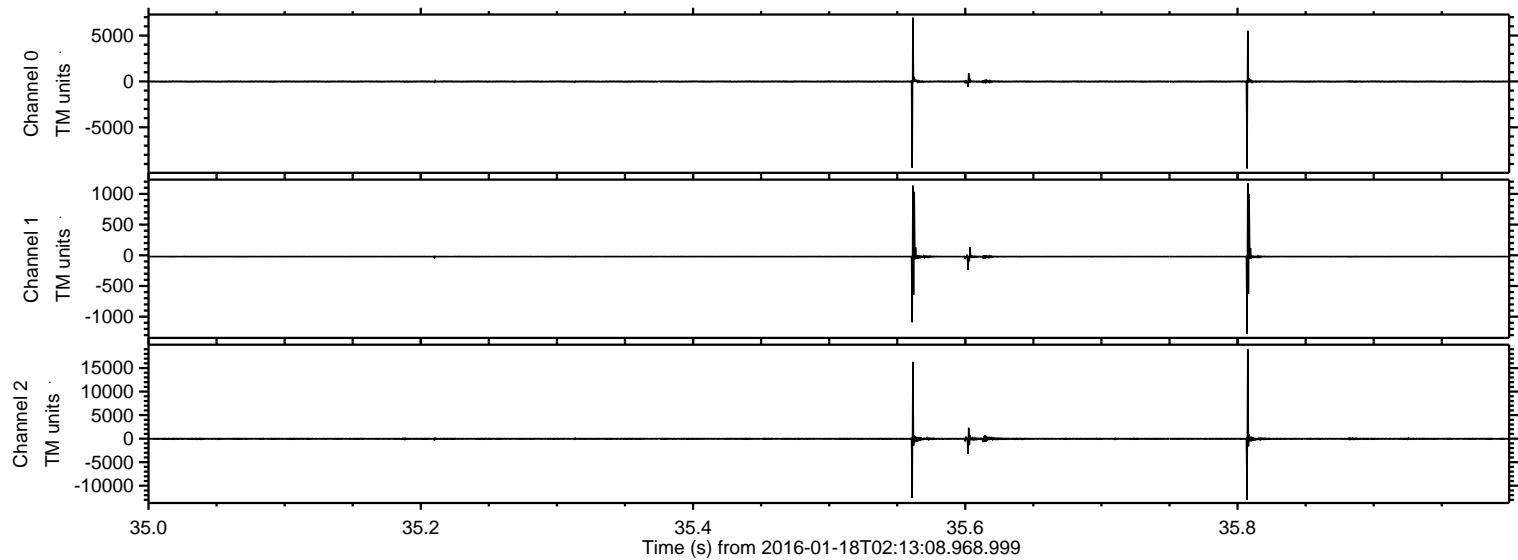
# ELMAVAN 3D WAVEFORMS (Measured data sampled at 50 kHz) 51000 packets of 144 samples from 2016-01-18T02:13:08.968.999.

Processed Thu Mar 31 16:09:30 2016 by ELM ver.2012-10-06 from 001\_\_elm20160118\_021307\_\_dat00.bin





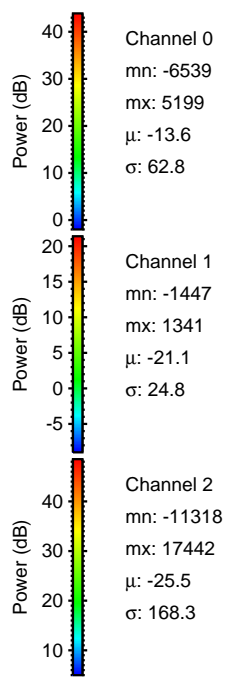
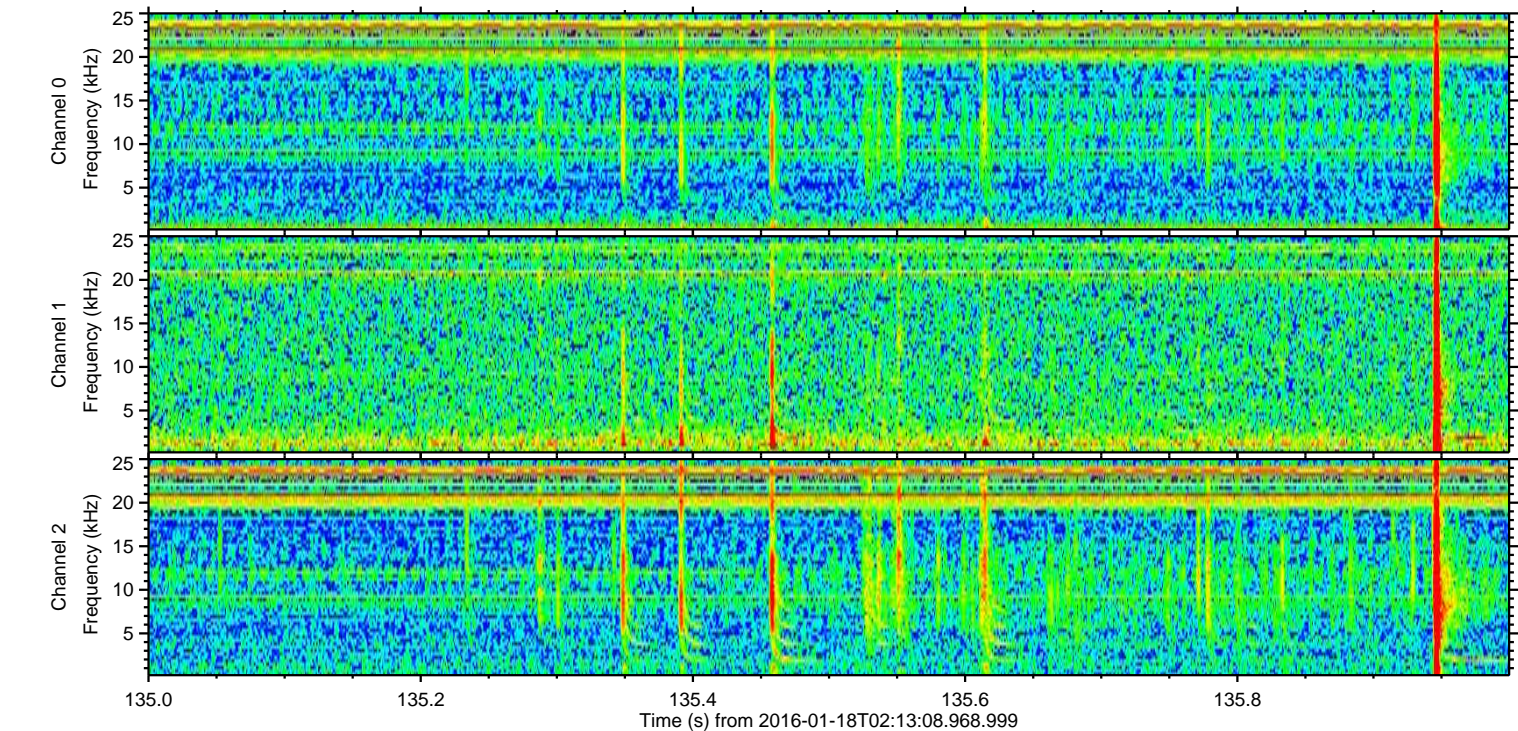
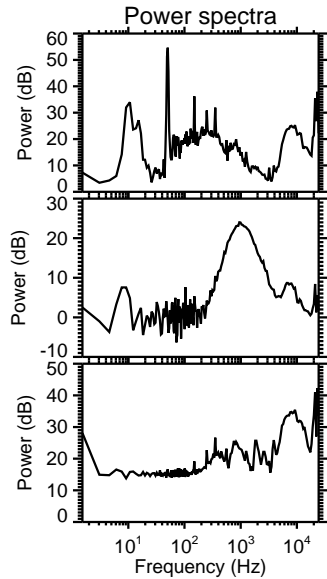
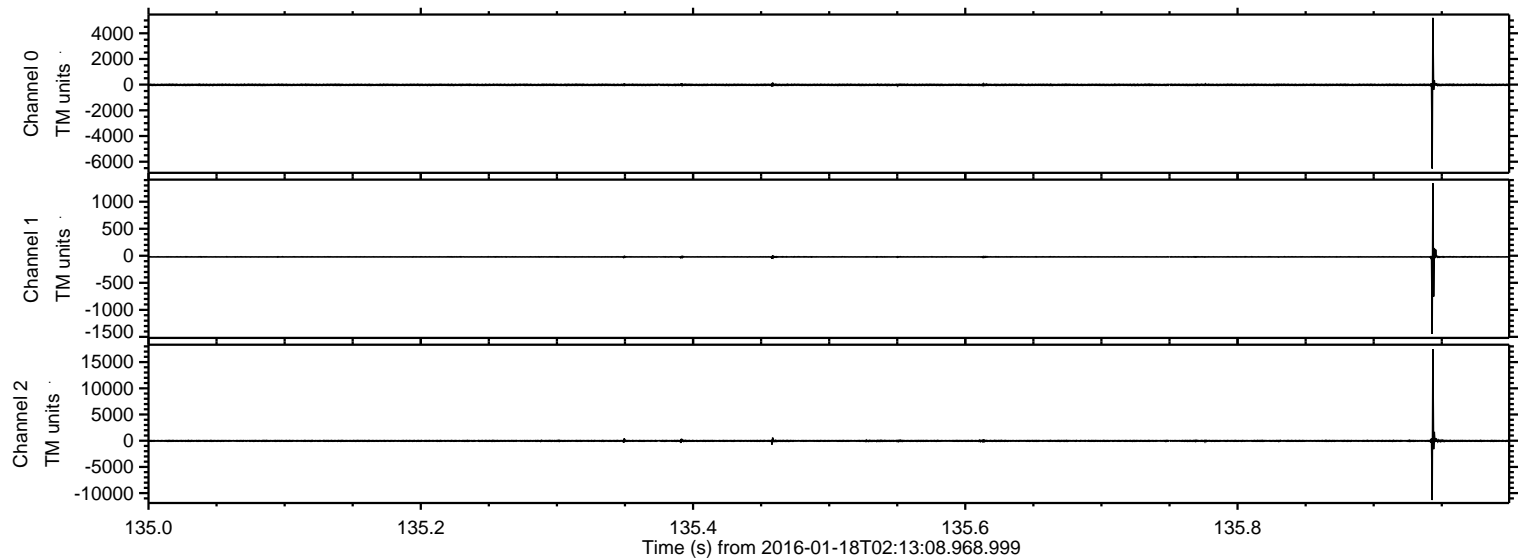
Processed Thu Mar 31 16:09:42 2016 by ELM ver.2012-10-06 from 001\_\_elm20160118\_021307\_\_dat00.bin





ELMAVAN 3D WAVEFORMS (Measured data sampled at 50 kHz) 51000 packets of 144 samples from 2016-01-18T02:13:08.968.999. Part 136/147

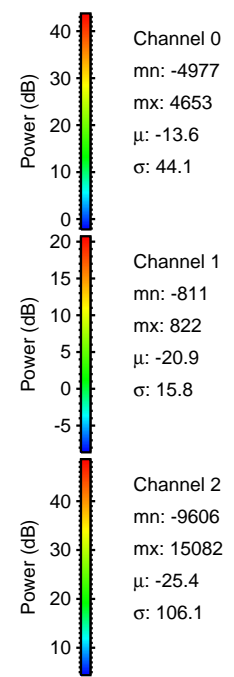
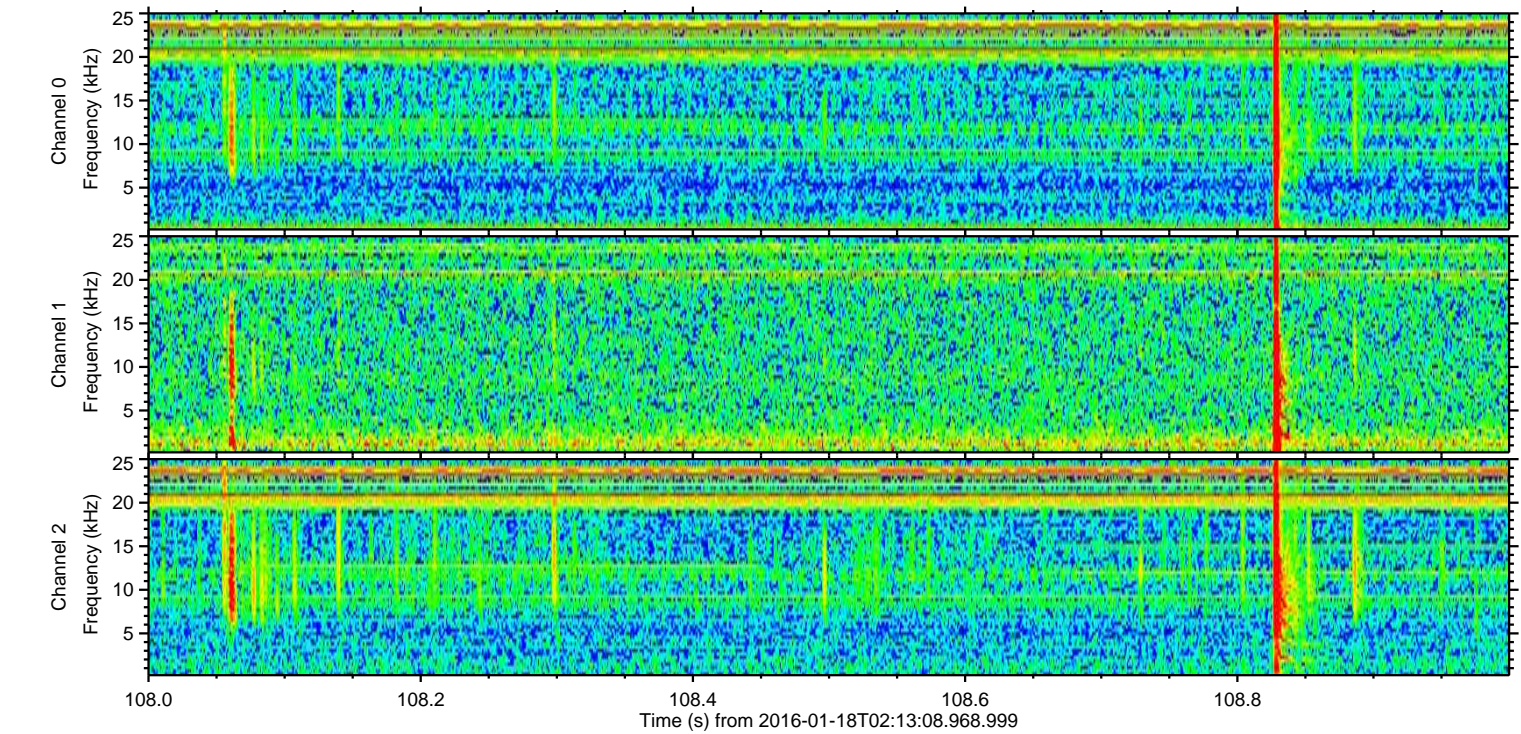
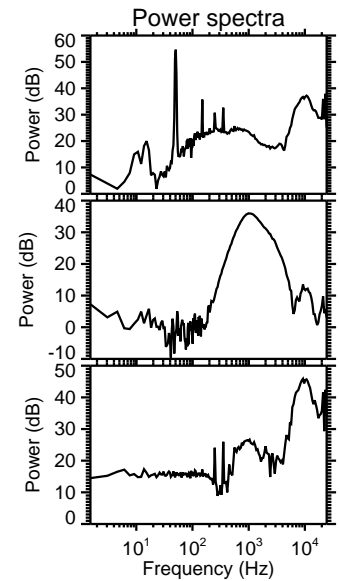
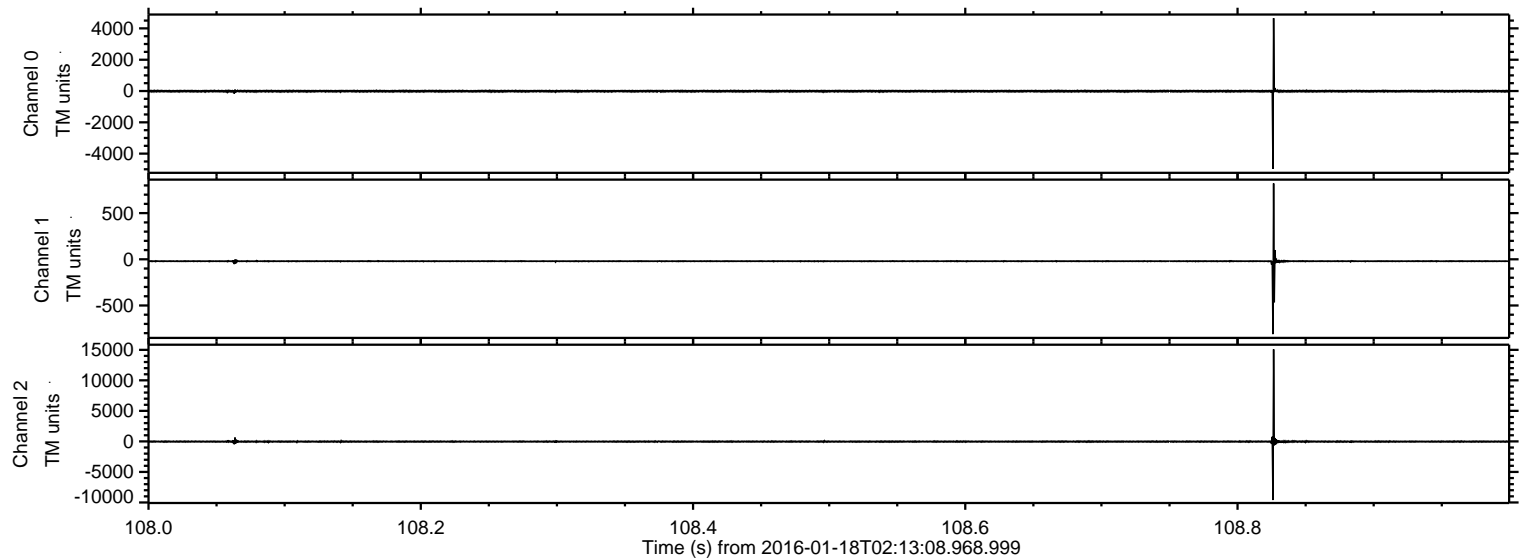
Processed Thu Mar 31 16:09:43 2016 by ELM ver.2012-10-06 from 001\_\_elm20160118\_021307\_\_dat00.bin





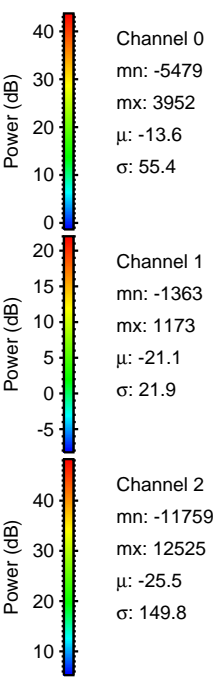
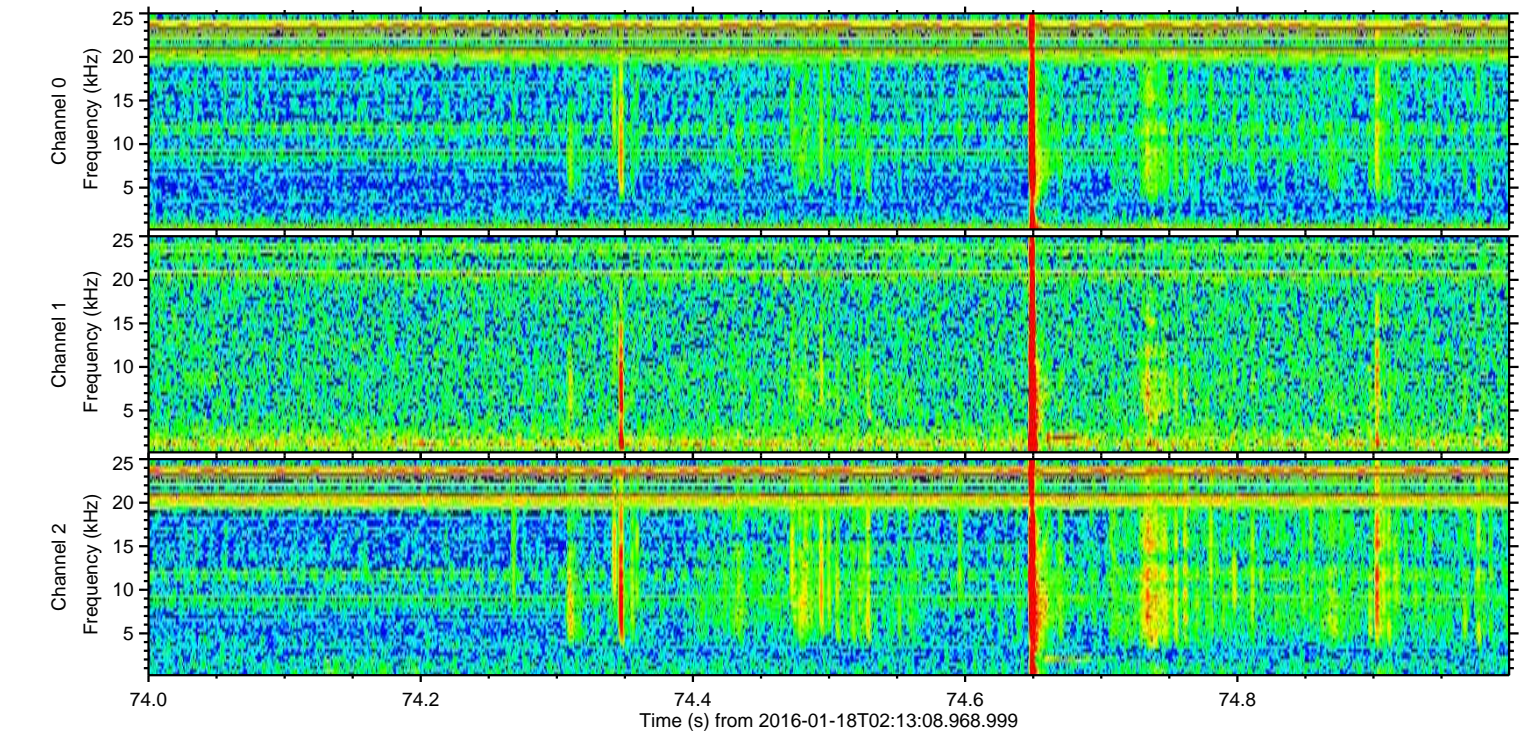
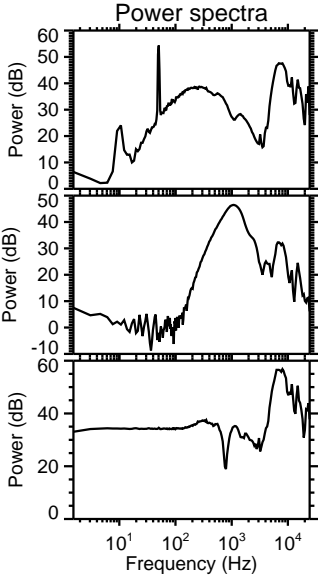
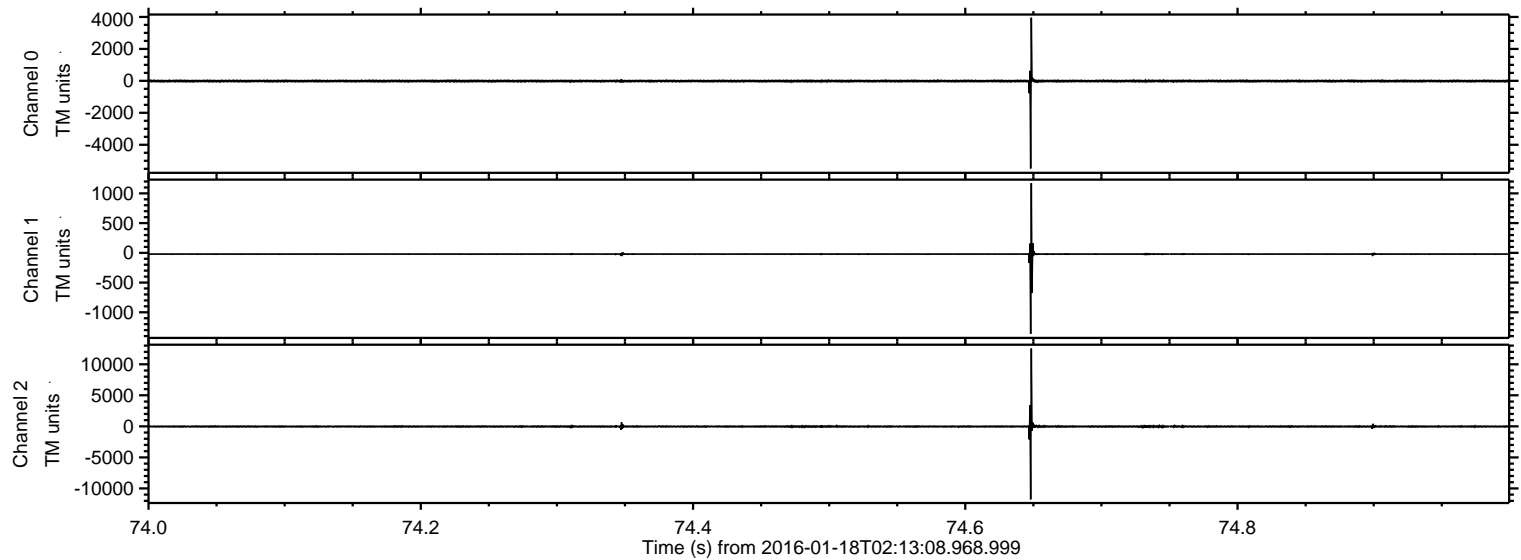
ELMAVAN 3D WAVEFORMS (Measured data sampled at 50 kHz) 51000 packets of 144 samples from 2016-01-18T02:13:08.968.999. Part 109/147

Processed Thu Mar 31 16:09:43 2016 by ELM ver.2012-10-06 from 001\_\_elm20160118\_021307\_\_dat00.bin



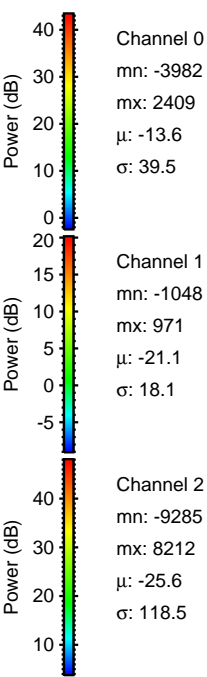
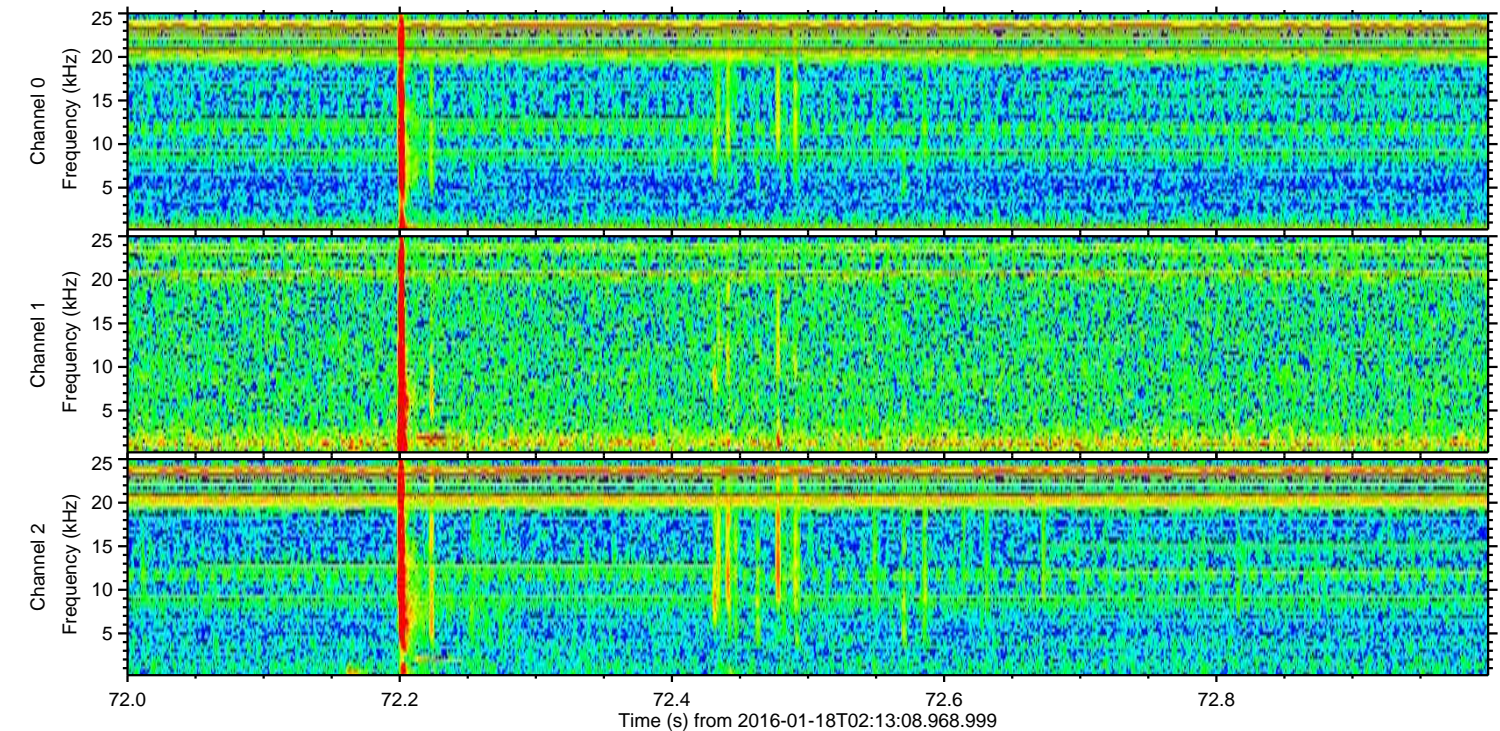
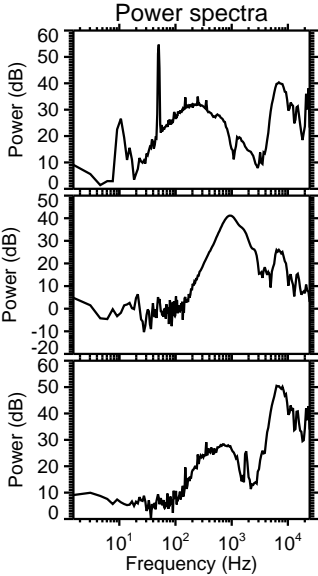
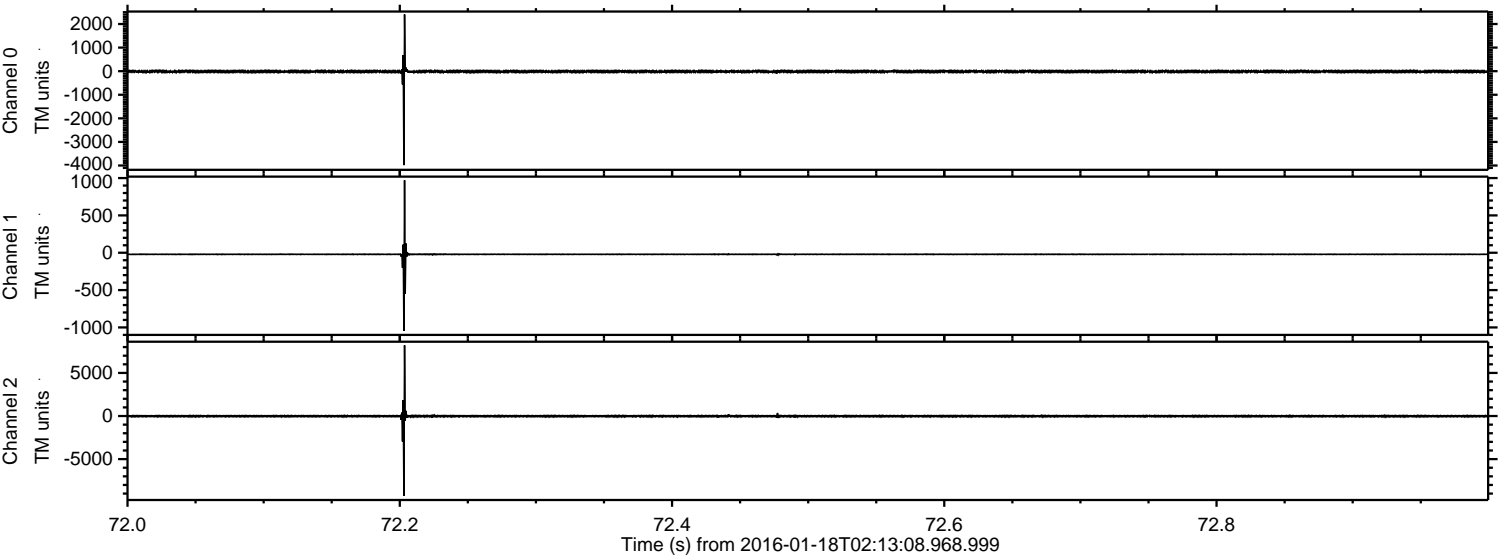


Processed Thu Mar 31 16:09:44 2016 by ELM ver.2012-10-06 from 001\_\_elm20160118\_021307\_\_dat00.bin



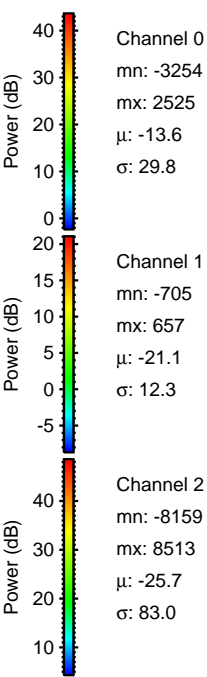
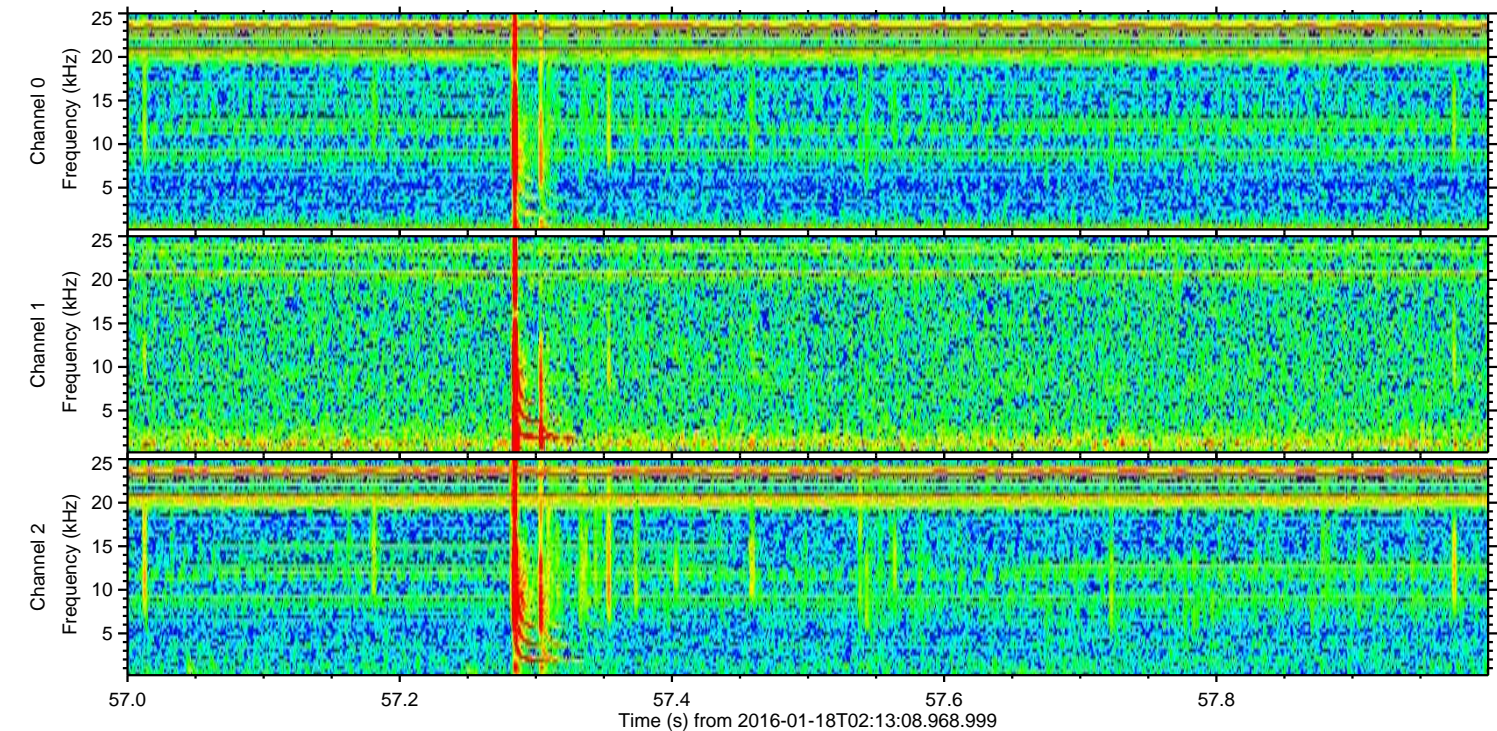
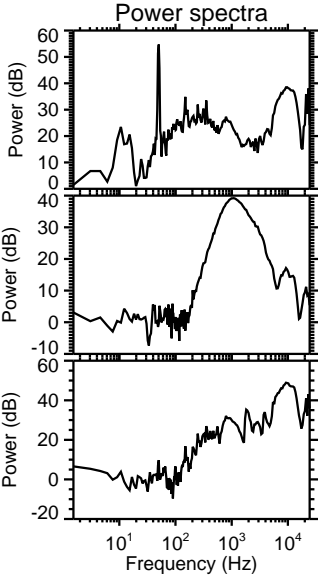
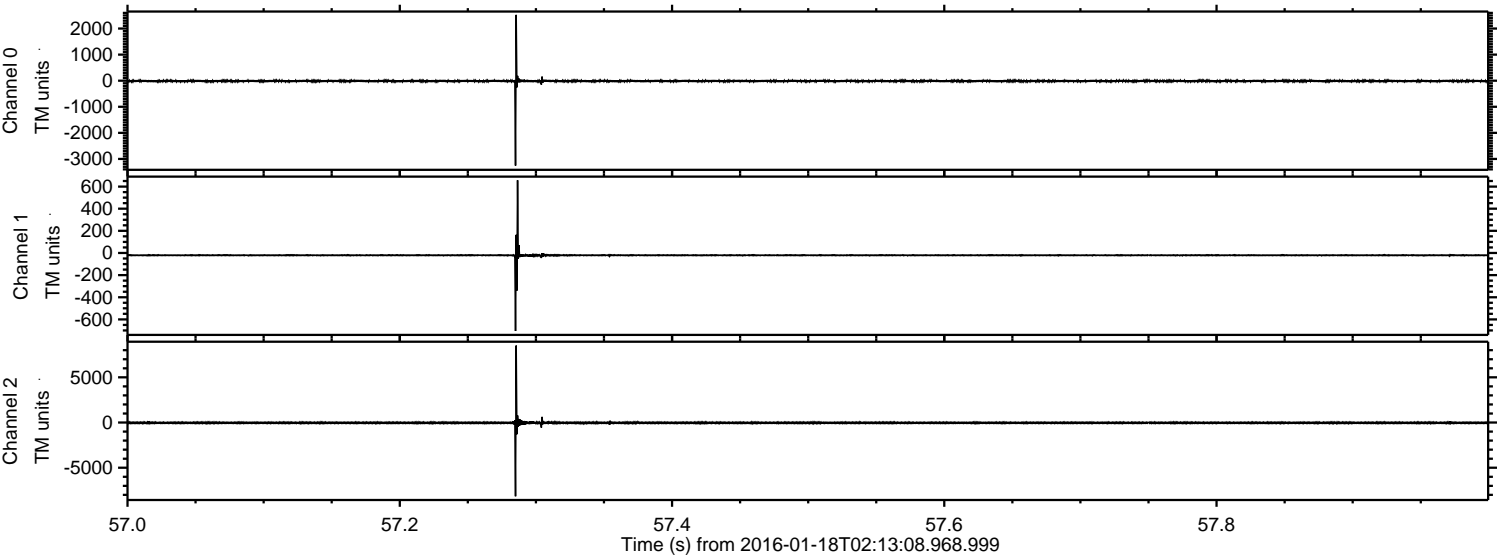


Processed Thu Mar 31 16:09:45 2016 by ELM ver.2012-10-06 from 001\_\_elm20160118\_021307\_\_dat00.bin





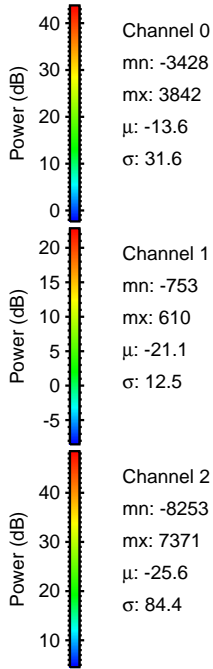
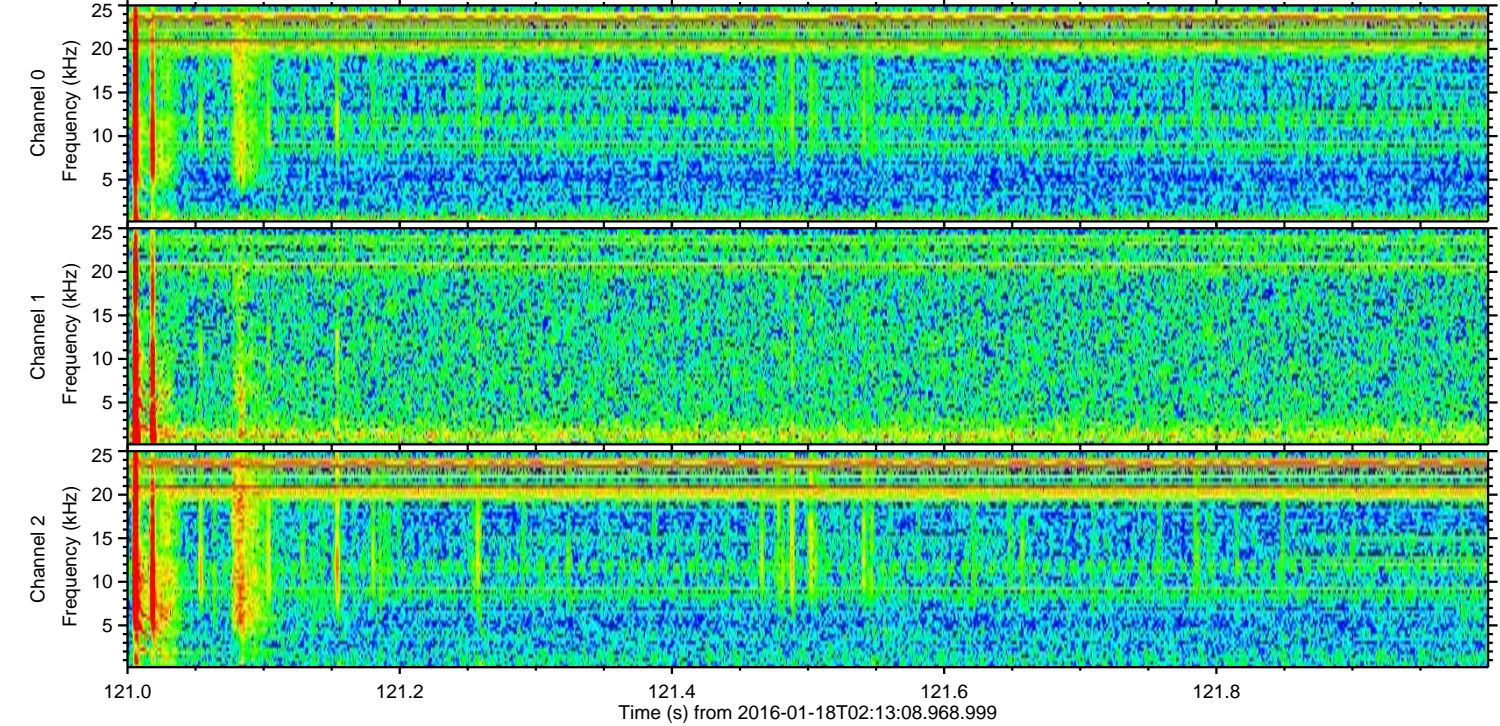
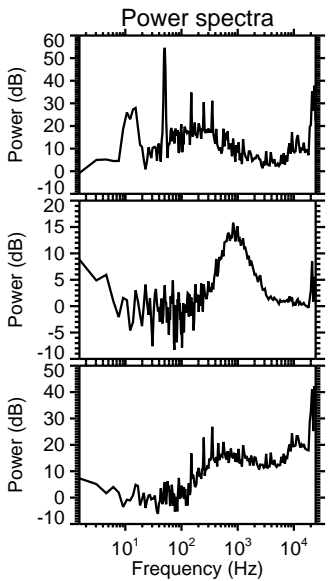
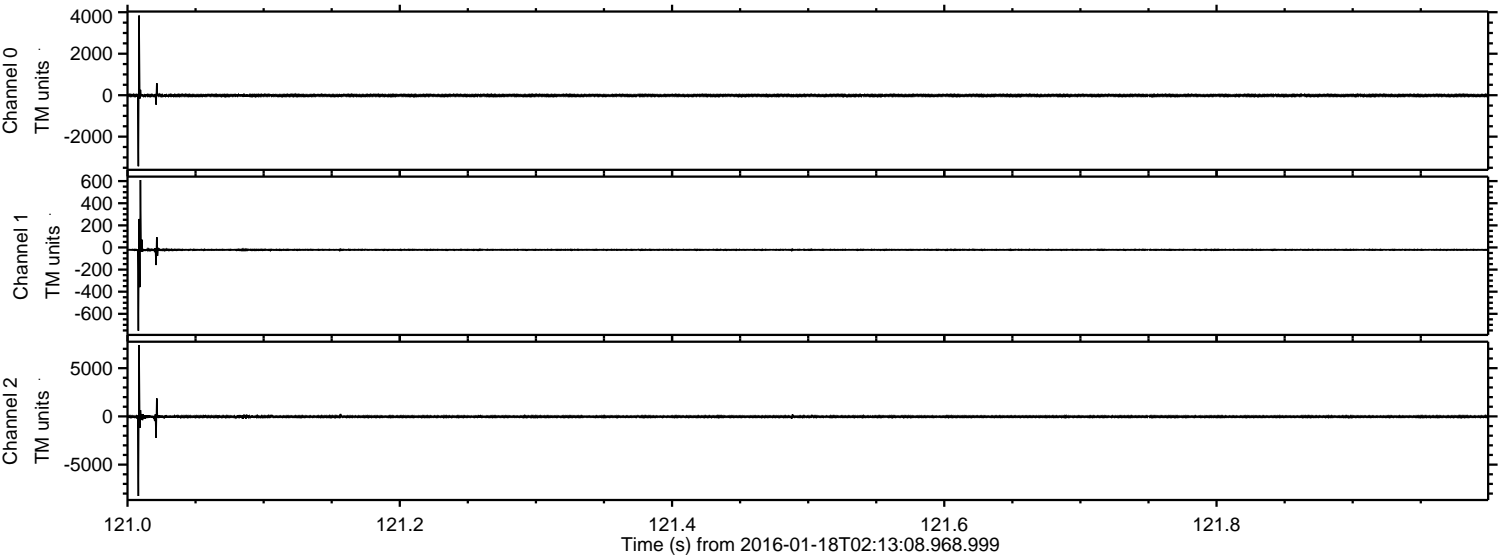
Processed Thu Mar 31 16:09:46 2016 by ELM ver.2012-10-06 from 001\_\_elm20160118\_021307\_\_dat00.bin





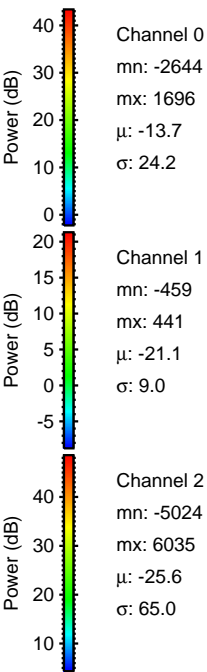
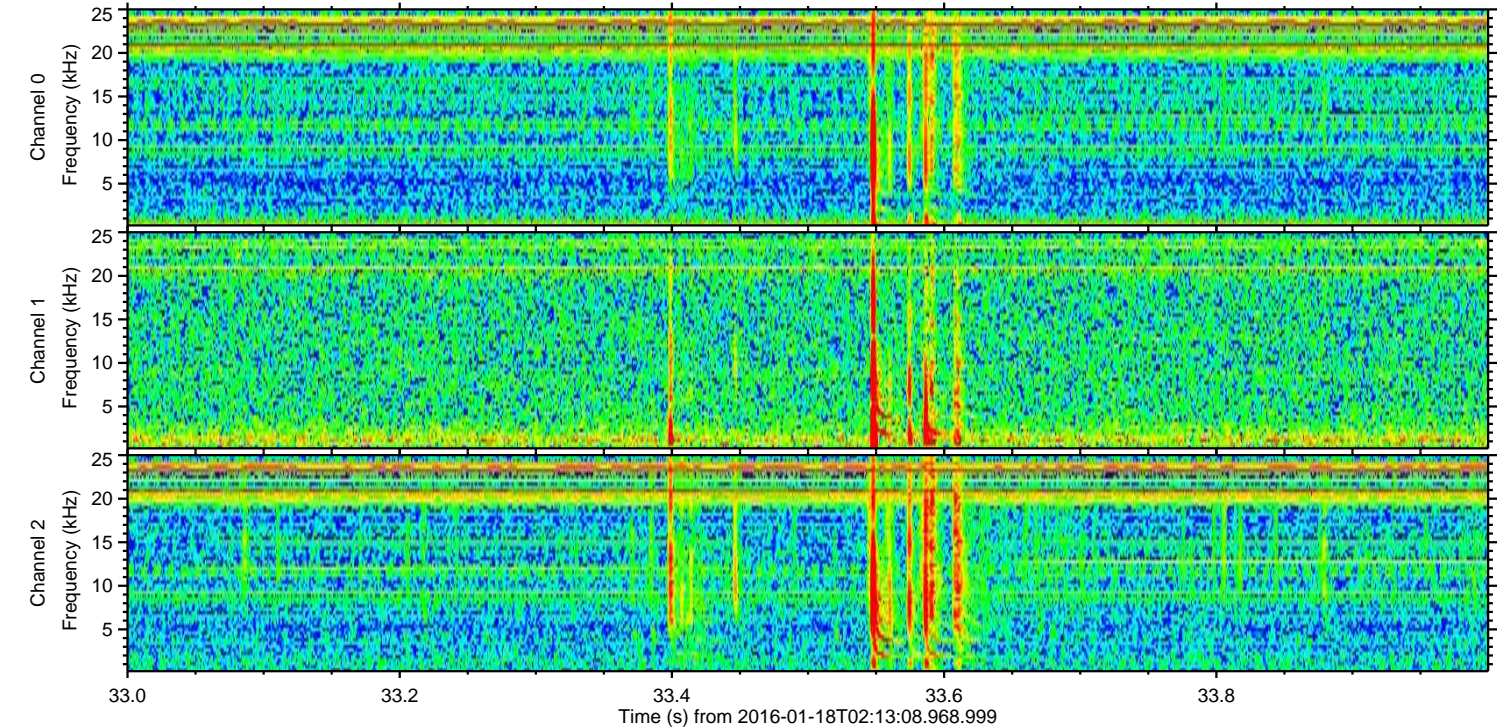
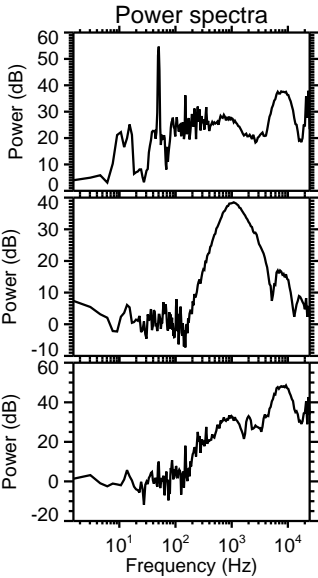
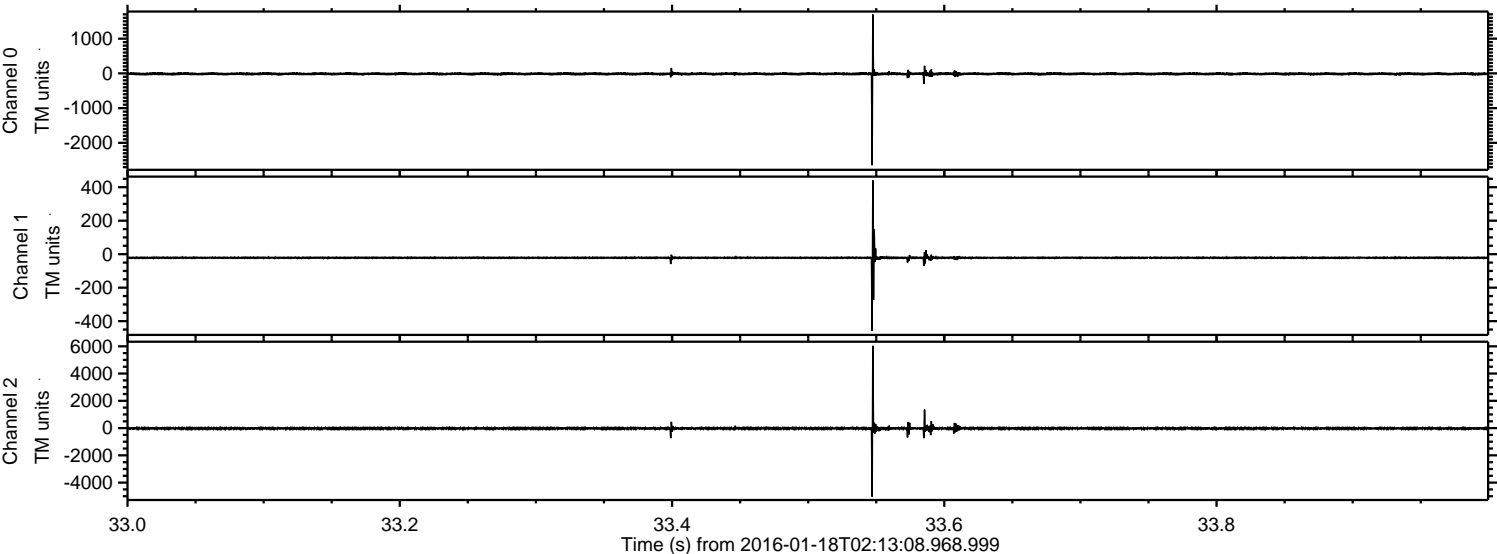
ELMAVAN 3D WAVEFORMS (Measured data sampled at 50 kHz) 51000 packets of 144 samples from 2016-01-18T02:13:08.968.999. Part 122/147

Processed Thu Mar 31 16:09:47 2016 by ELM ver.2012-10-06 from 001\_\_elm20160118\_021307\_\_dat00.bin



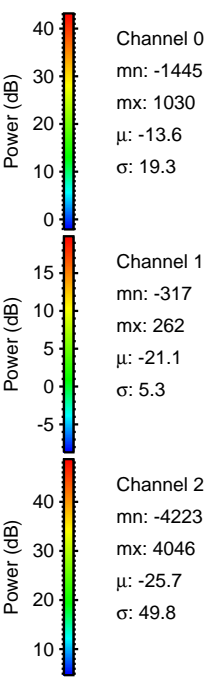
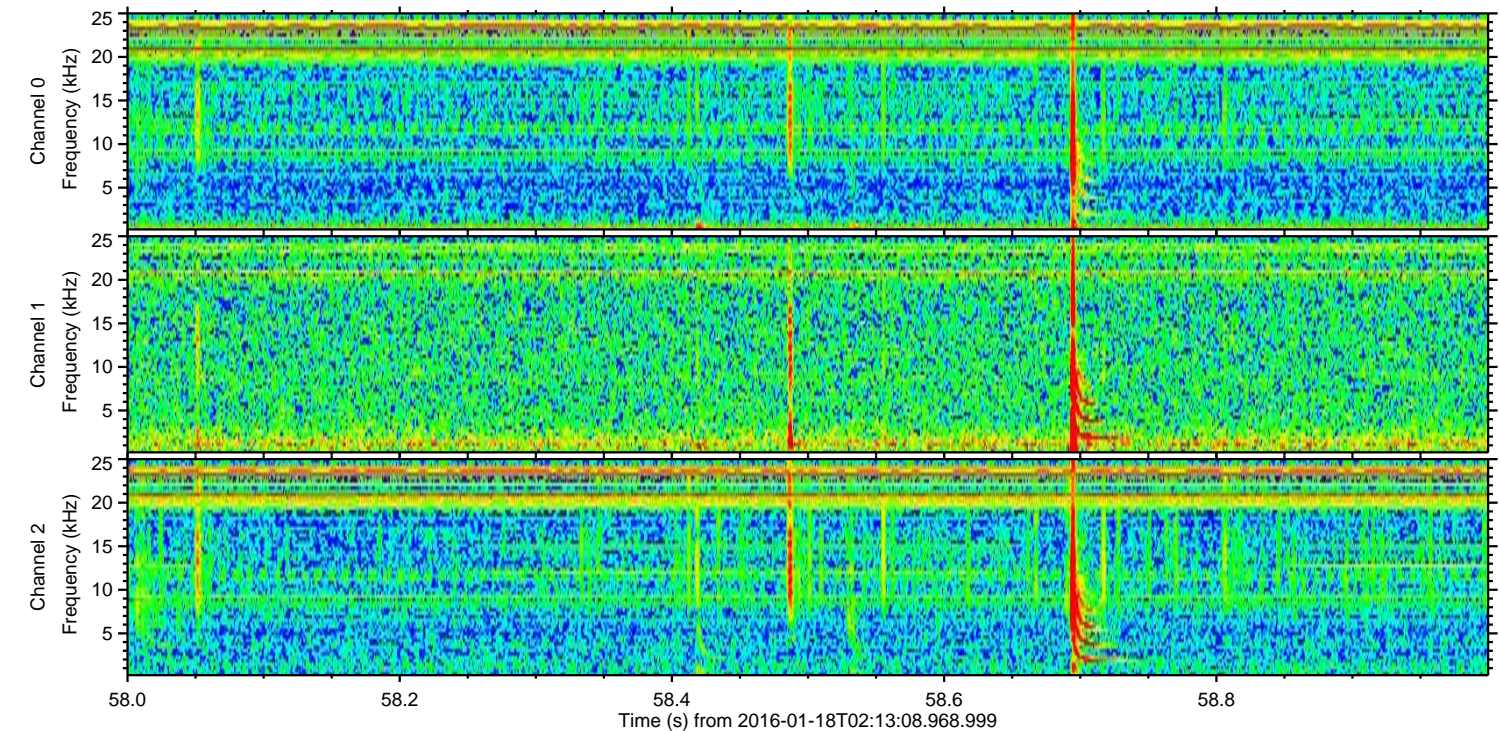
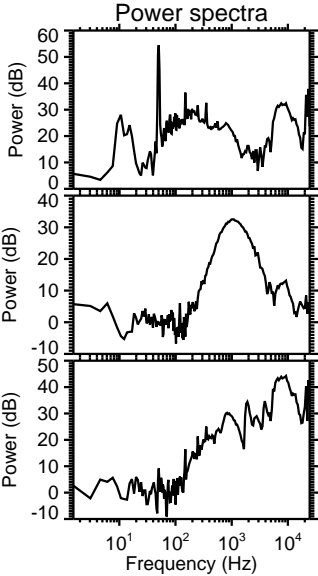
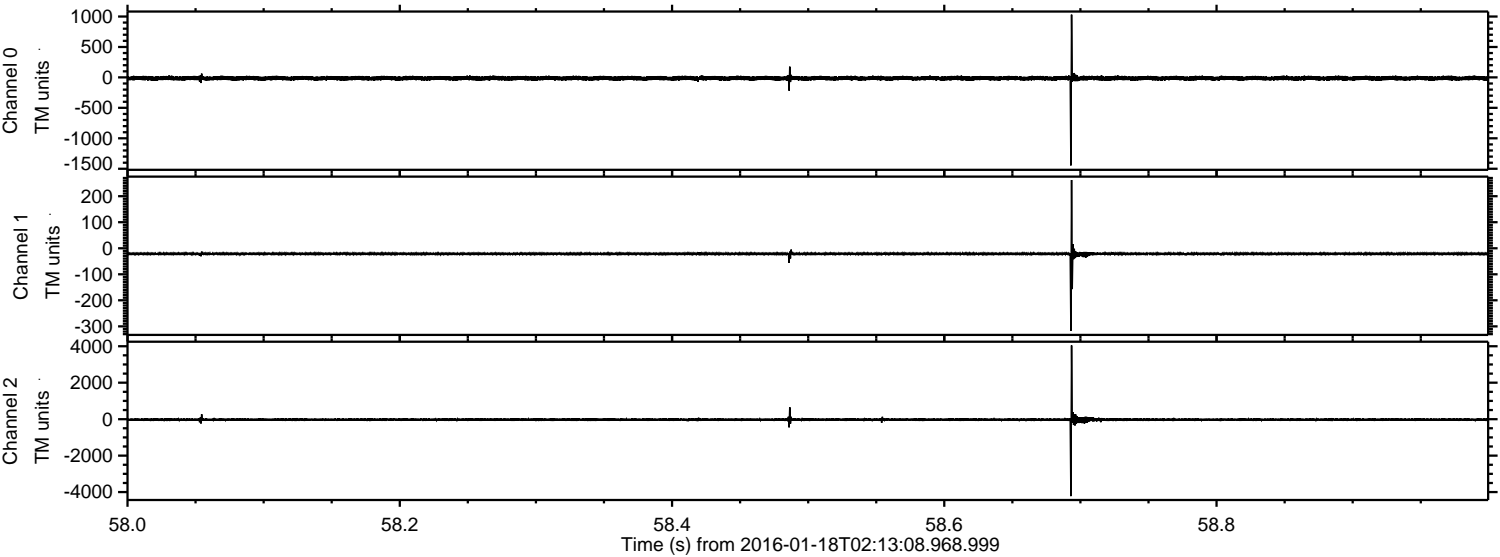


Processed Thu Mar 31 16:09:48 2016 by ELM ver.2012-10-06 from 001\_\_elm20160118\_021307\_\_dat00.bin





Processed Thu Mar 31 16:09:49 2016 by ELM ver.2012-10-06 from 001\_\_elm20160118\_021307\_\_dat00.bin



Channel 0  
mn: -1445  
mx: 1030  
 $\mu$ : -13.6  
 $\sigma$ : 19.3

Channel 1  
mn: -317  
mx: 262  
 $\mu$ : -21.1  
 $\sigma$ : 5.3

Channel 2  
mn: -4223  
mx: 4046  
 $\mu$ : -25.7  
 $\sigma$ : 49.8



Processed Thu Mar 31 16:09:50 2016 by ELM ver.2012-10-06 from 001\_\_elm20160118\_021307\_\_dat00.bin

