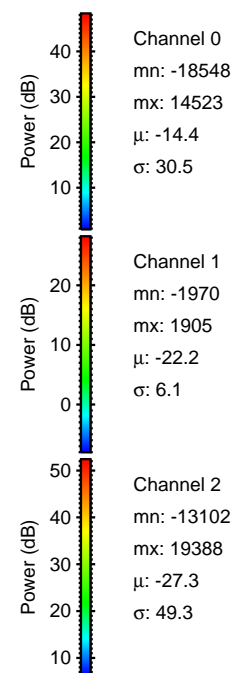
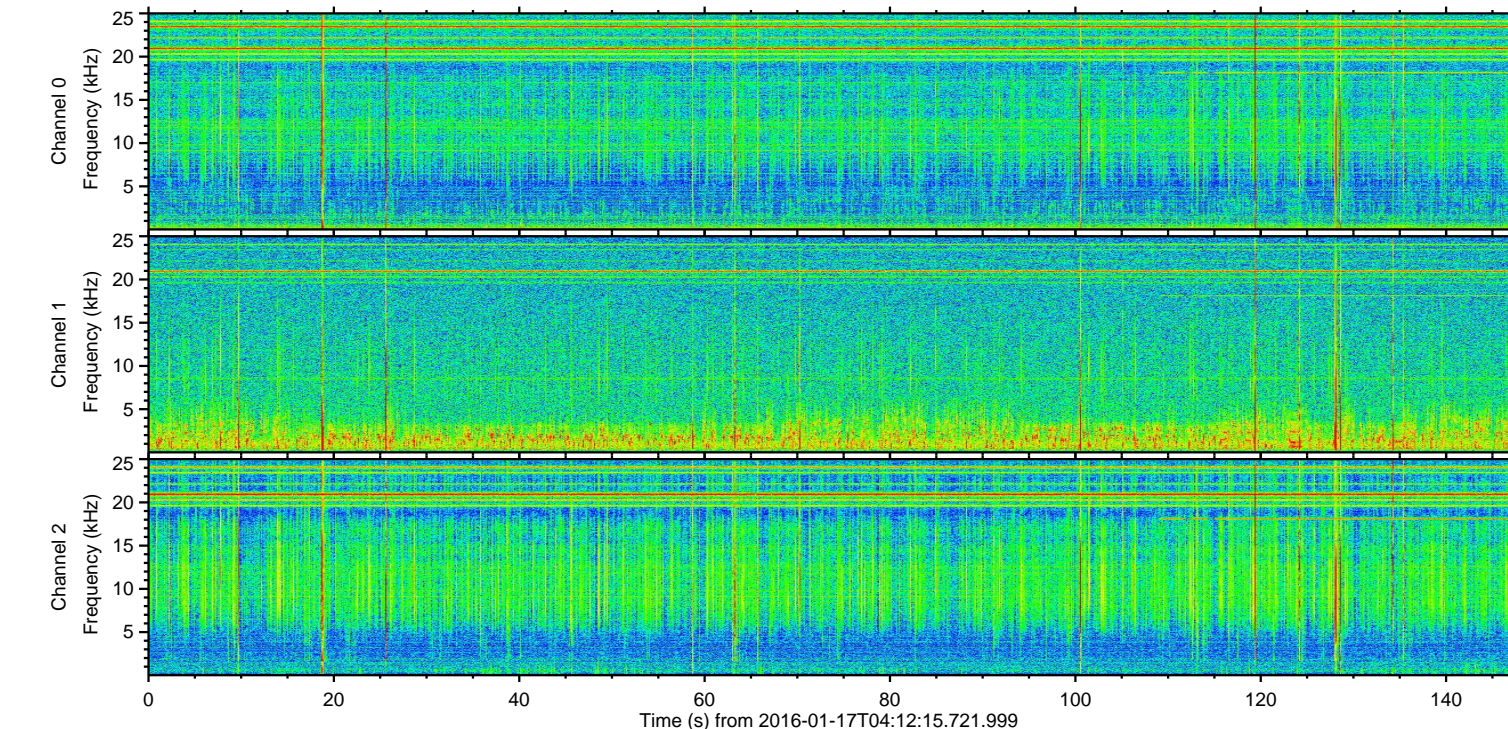
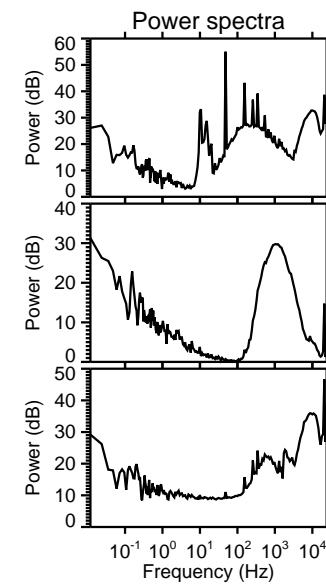
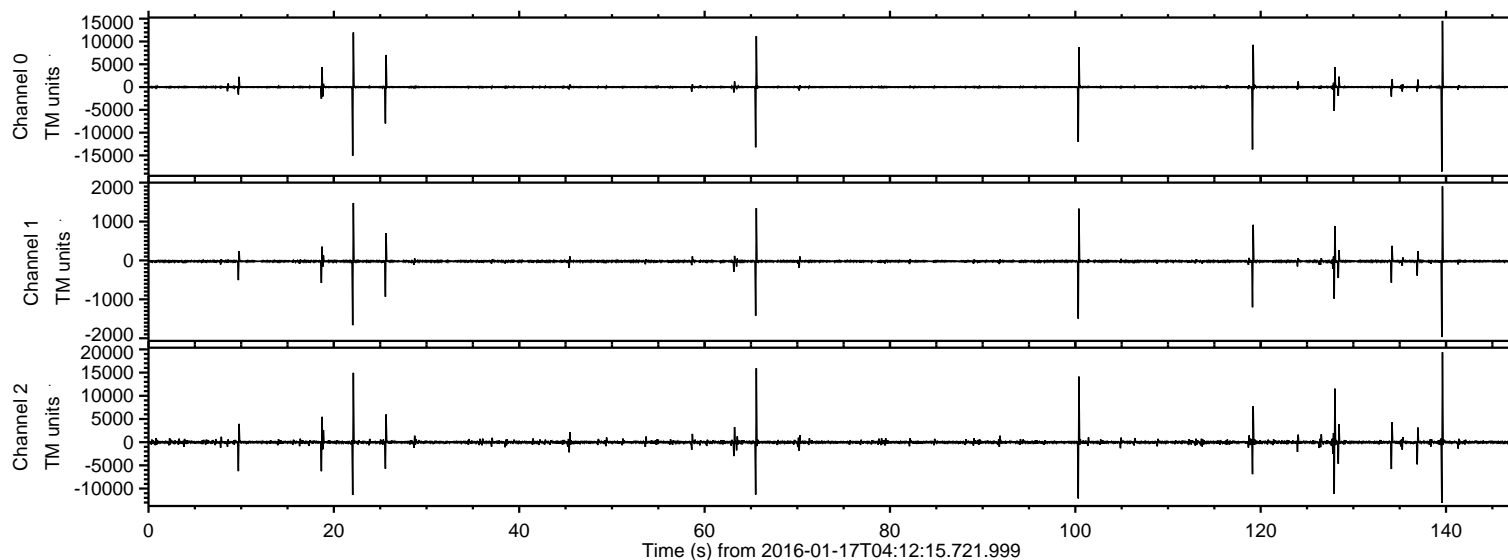


# ELMAVAN 3D WAVEFORMS (Measured data sampled at 50 kHz) 51000 packets of 144 samples from 2016-01-17T04:12:15.721.999.

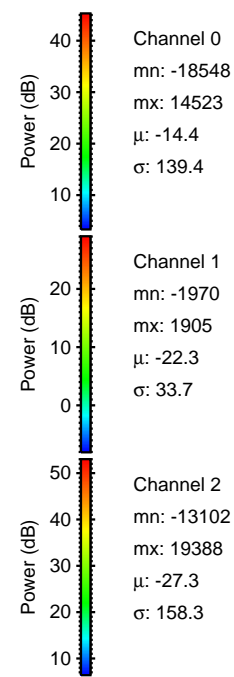
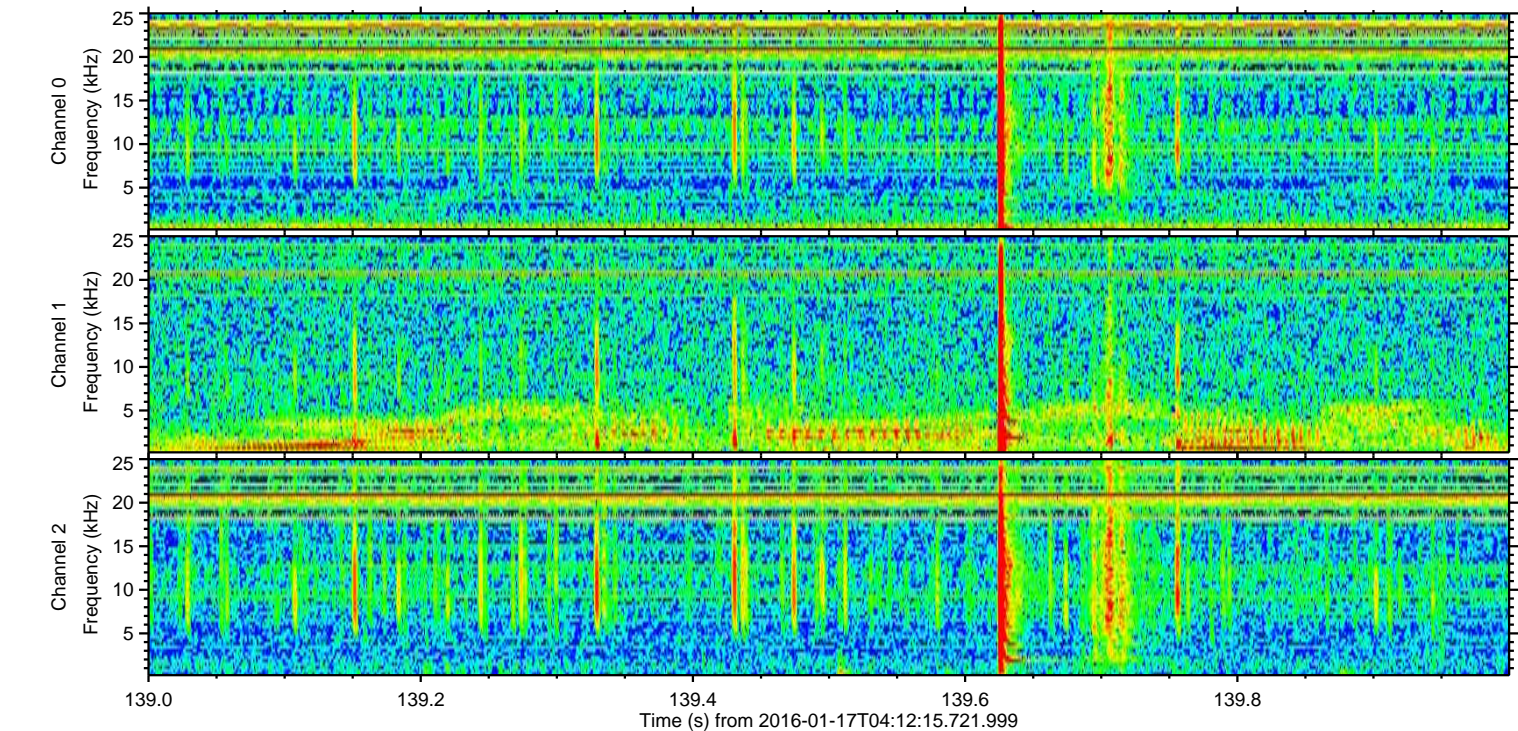
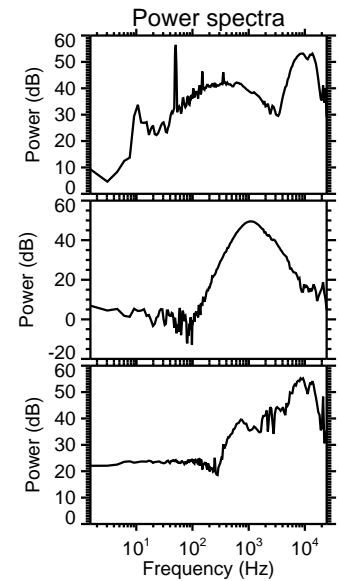
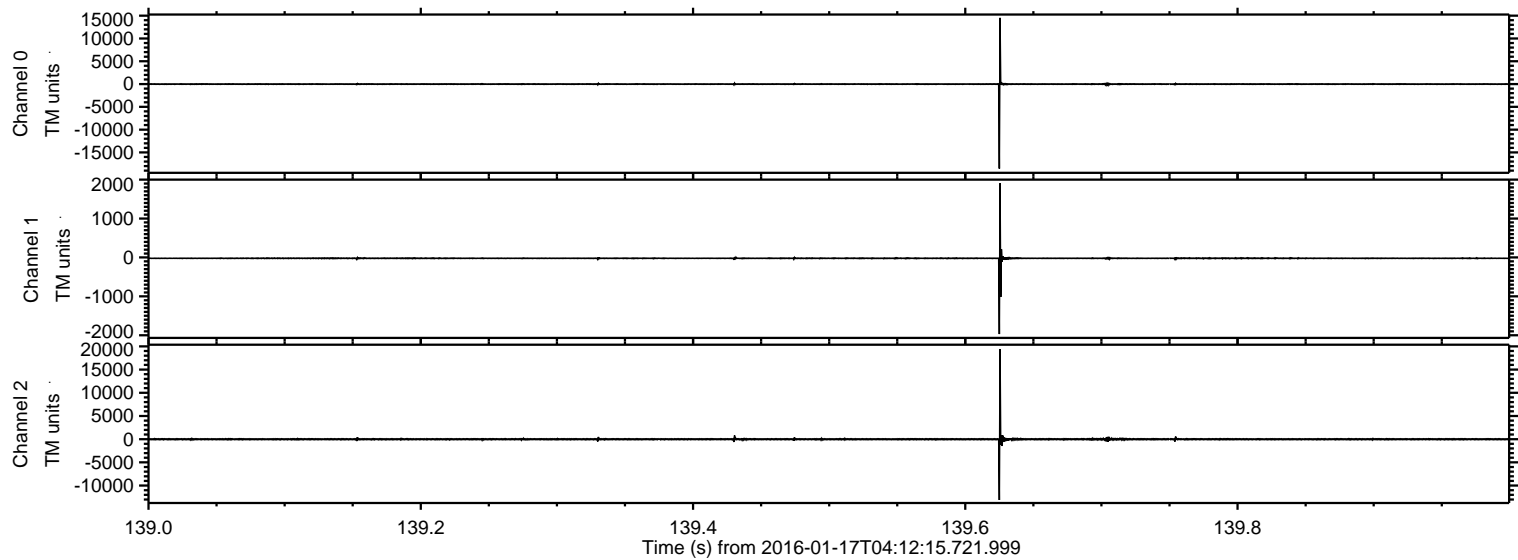
Processed Thu Mar 31 05:07:57 2016 by ELM ver.2012-10-06 from 001\_\_elm20160117\_041214\_\_dat00.bin





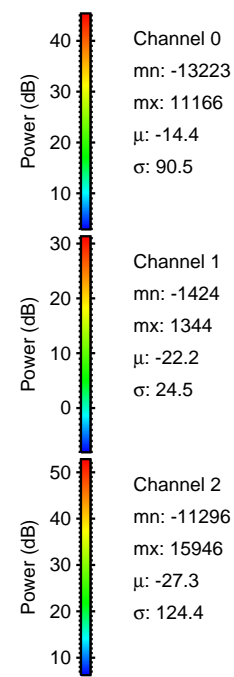
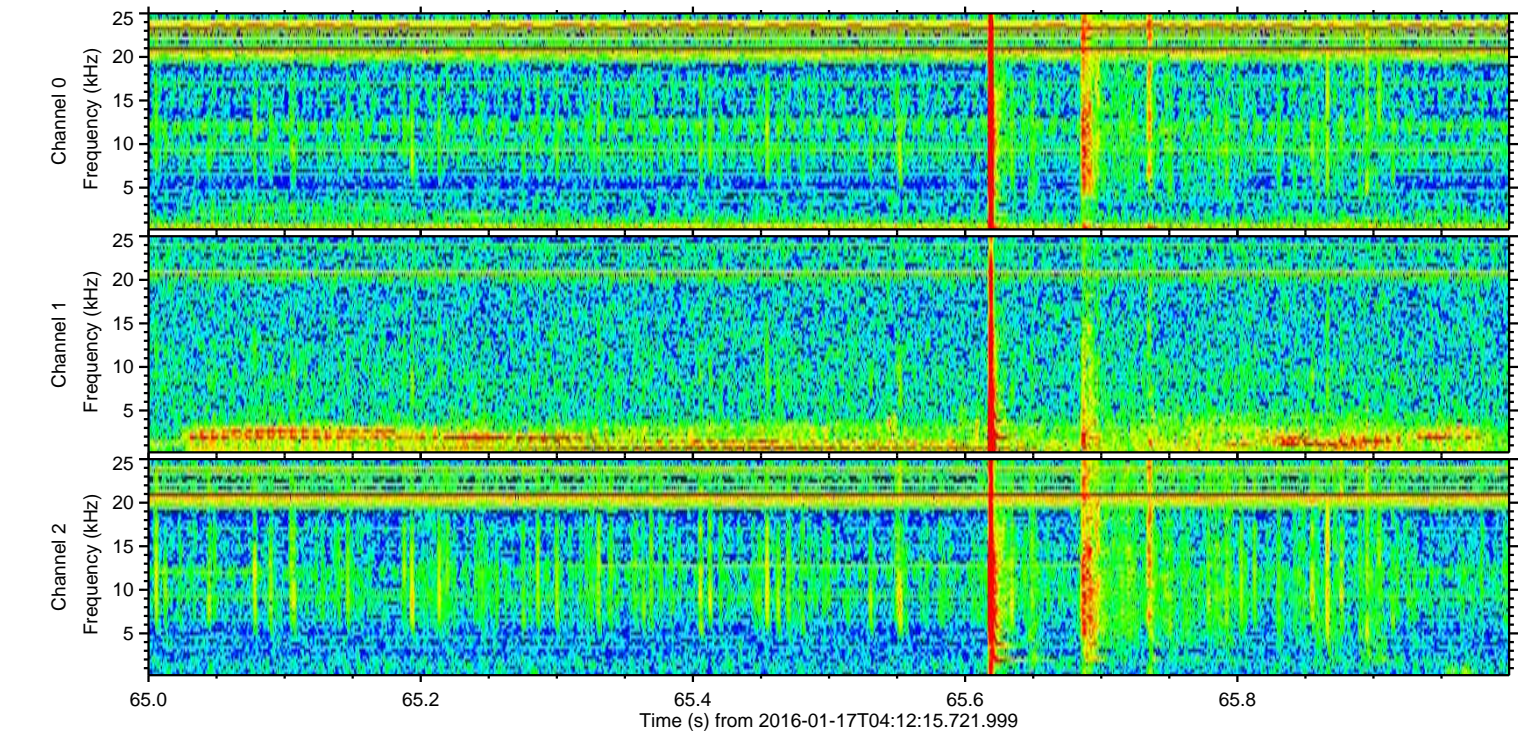
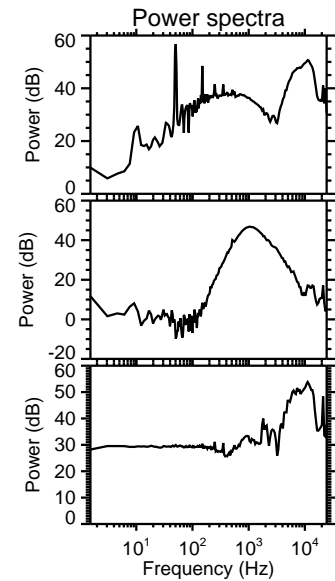
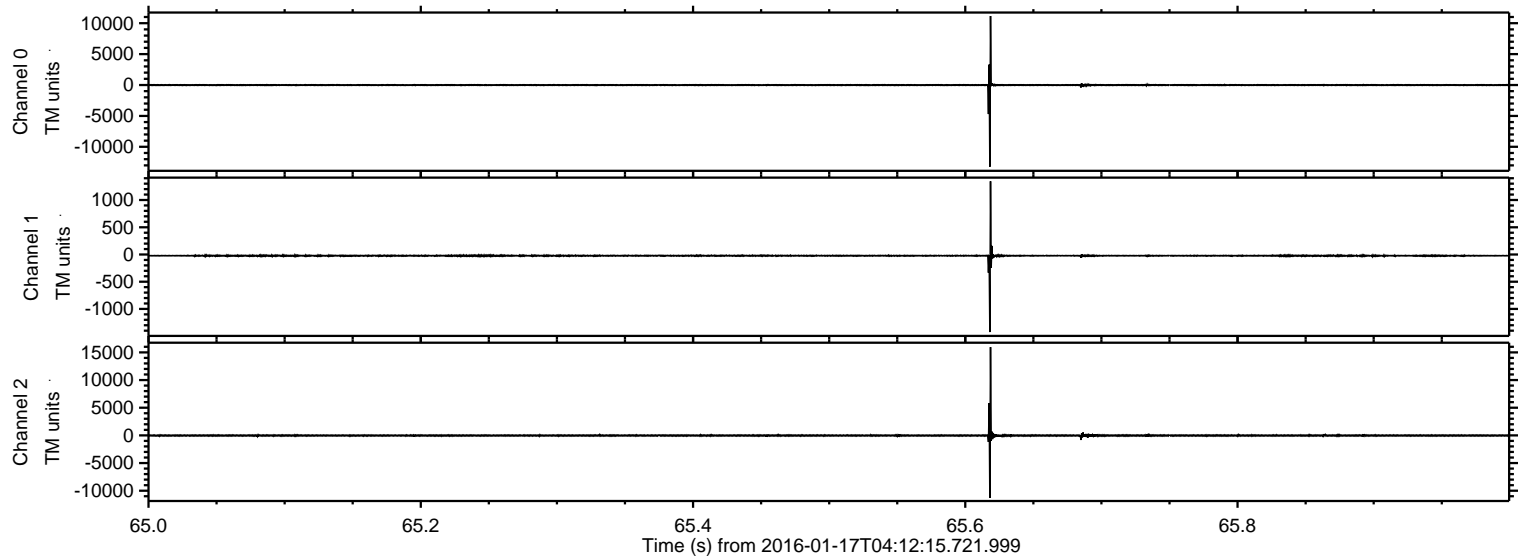
ELMAVAN 3D WAVEFORMS (Measured data sampled at 50 kHz) 51000 packets of 144 samples from 2016-01-17T04:12:15.721.999. Part 140/147

Processed Thu Mar 31 05:08:09 2016 by ELM ver.2012-10-06 from 001\_\_elm20160117\_041214\_\_dat00.bin





Processed Thu Mar 31 05:08:09 2016 by ELM ver.2012-10-06 from 001\_\_elm20160117\_041214\_\_dat00.bin



Channel 0  
mn: -13223  
mx: 11166  
 $\mu$ : -14.4  
 $\sigma$ : 90.5

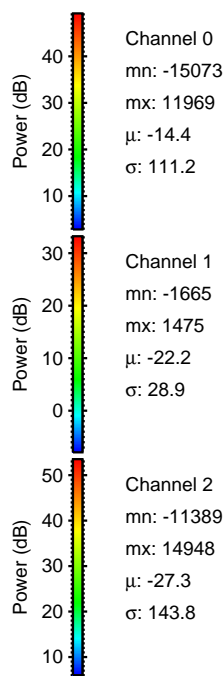
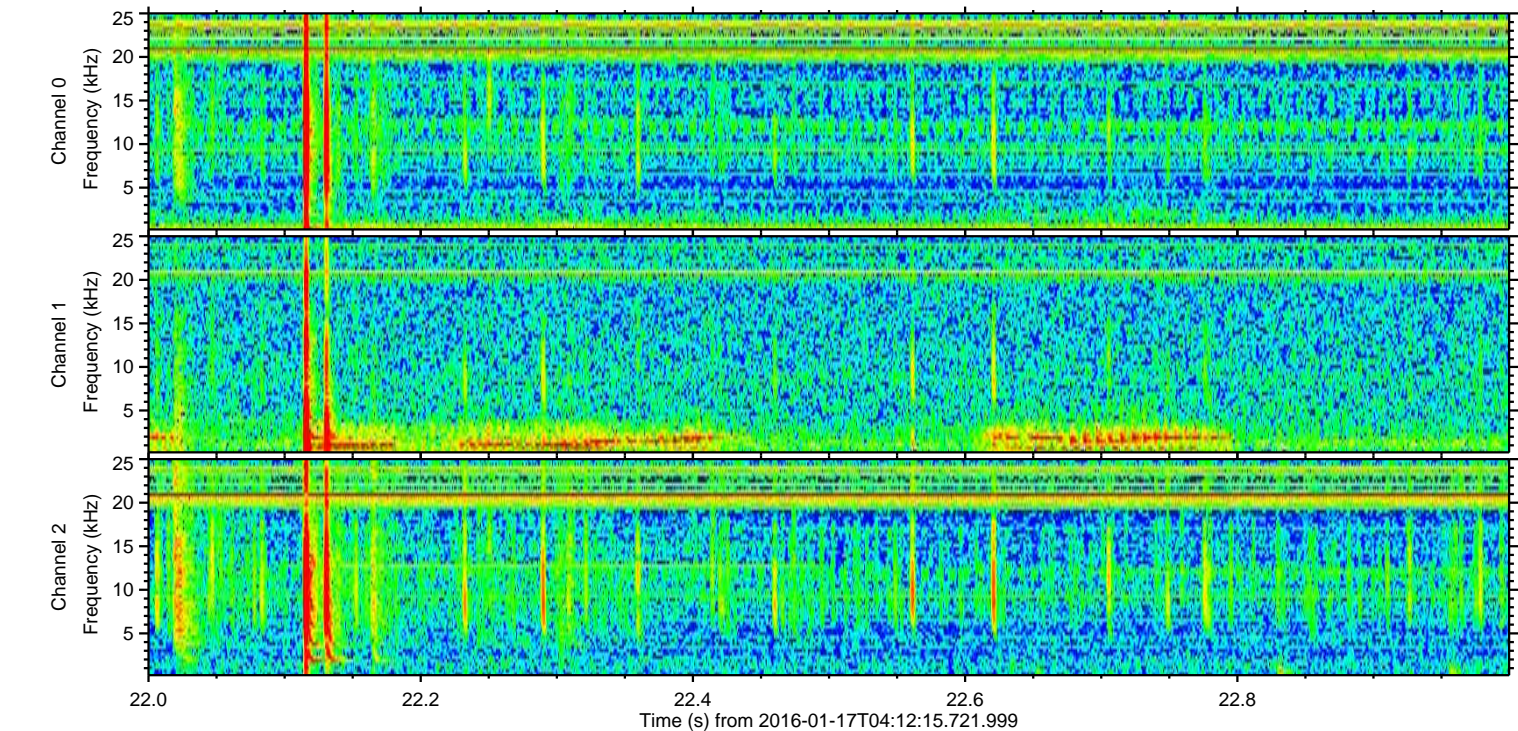
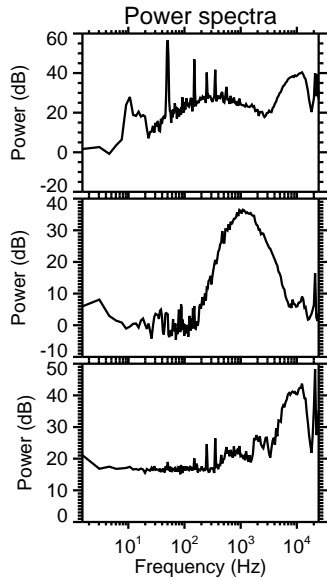
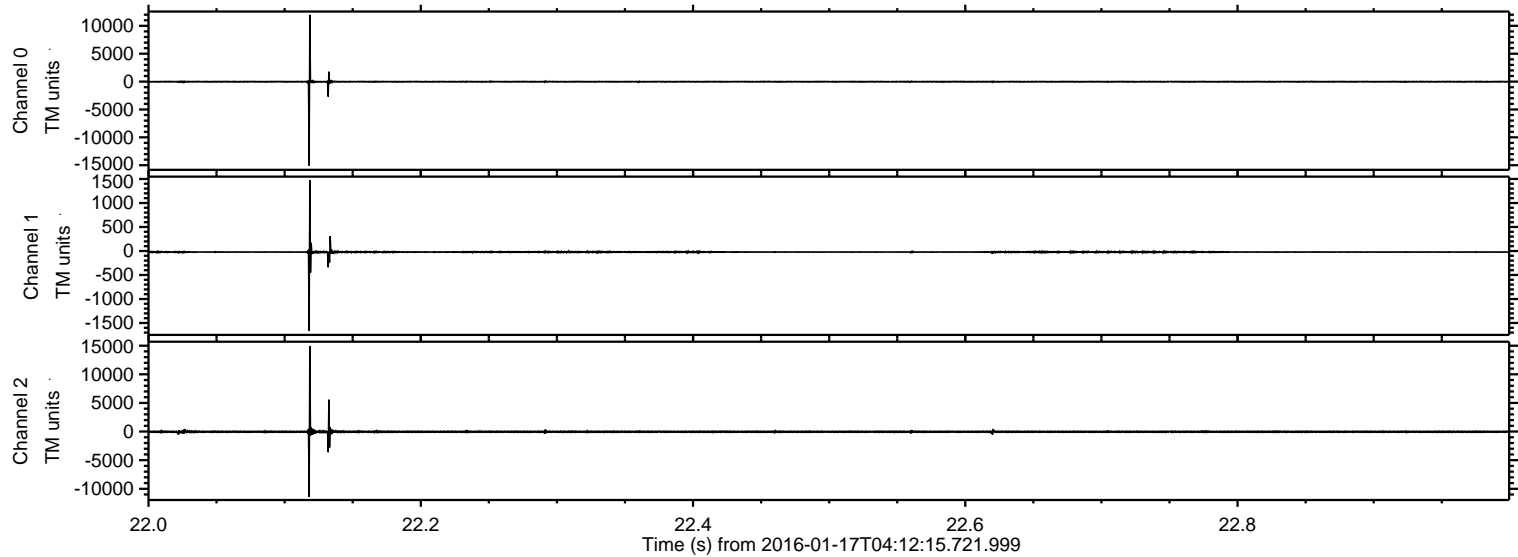
Channel 1  
mn: -1424  
mx: 1344  
 $\mu$ : -22.2  
 $\sigma$ : 24.5

Channel 2  
mn: -11296  
mx: 15946  
 $\mu$ : -27.3  
 $\sigma$ : 124.4



ELMAVAN 3D WAVEFORMS (Measured data sampled at 50 kHz) 51000 packets of 144 samples from 2016-01-17T04:12:15.721.999. Part 23/147

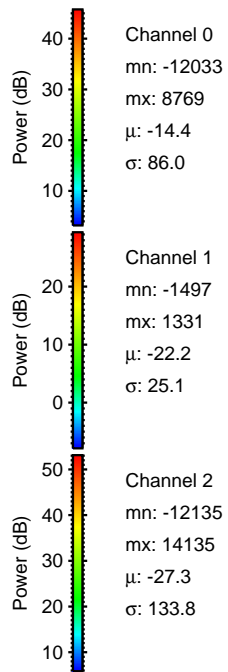
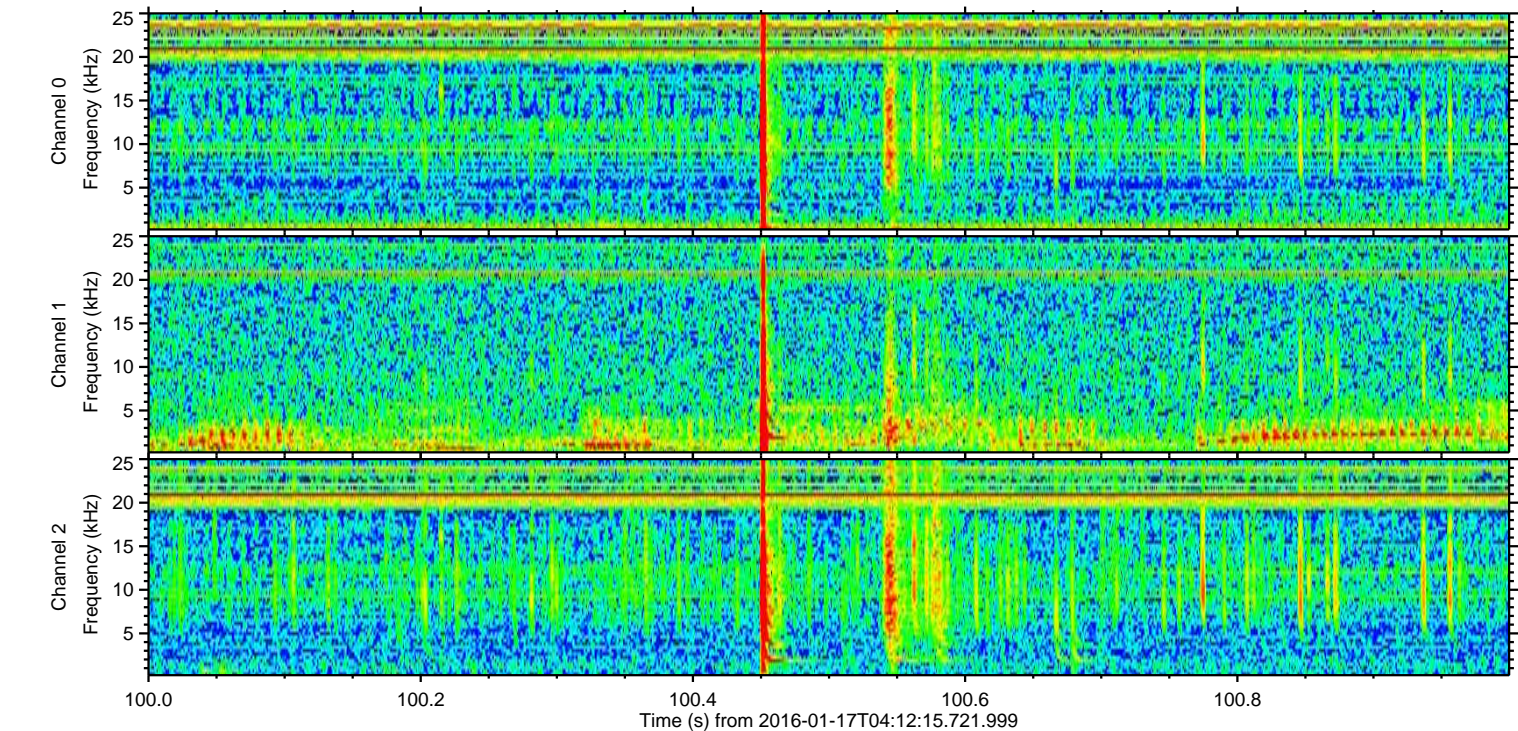
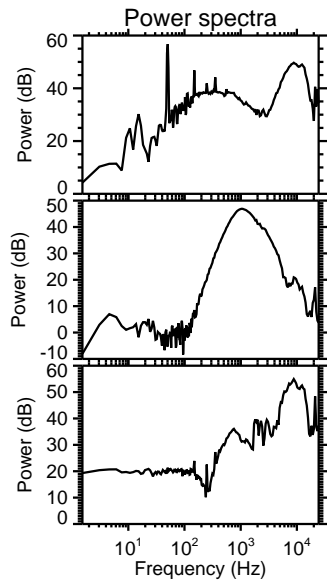
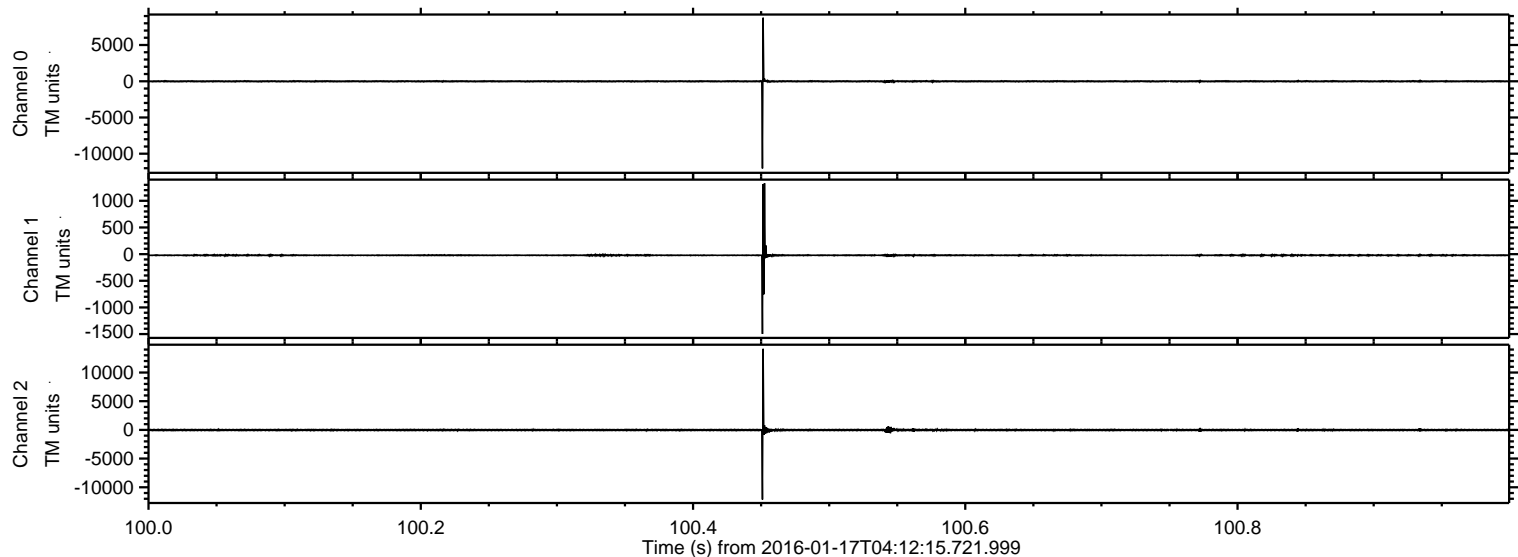
Processed Thu Mar 31 05:08:10 2016 by ELM ver.2012-10-06 from 001\_\_elm20160117\_041214\_\_dat00.bin





ELMAVAN 3D WAVEFORMS (Measured data sampled at 50 kHz) 51000 packets of 144 samples from 2016-01-17T04:12:15.721.999. Part 101/147

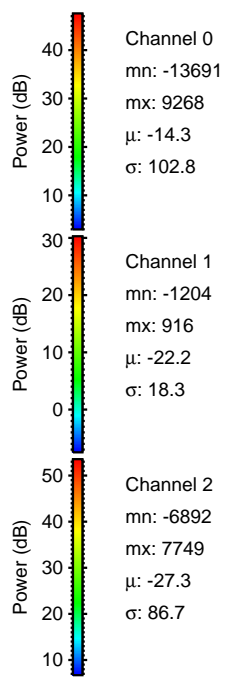
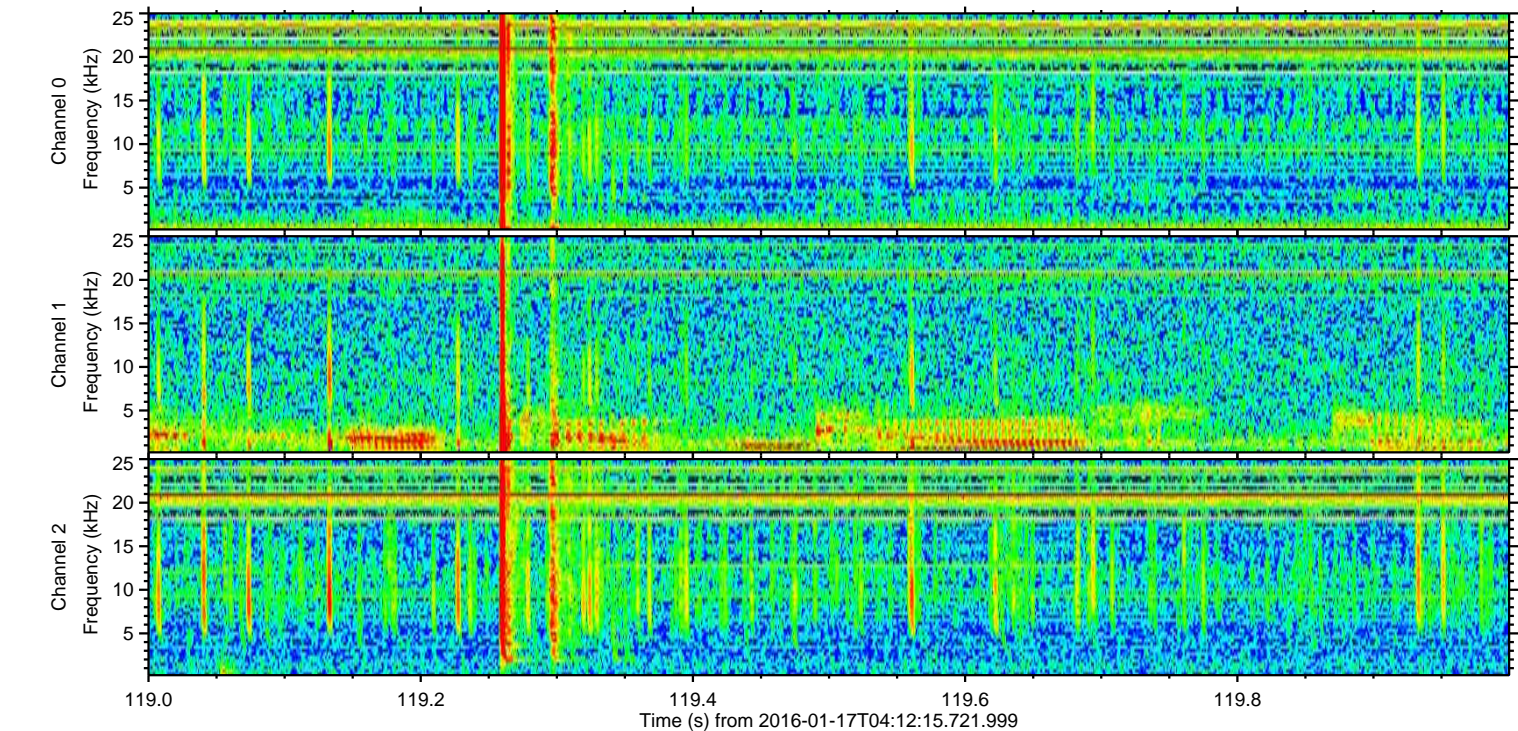
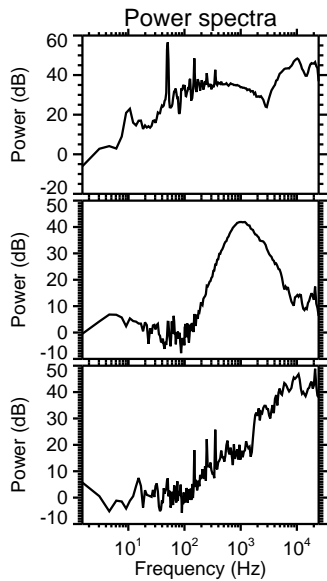
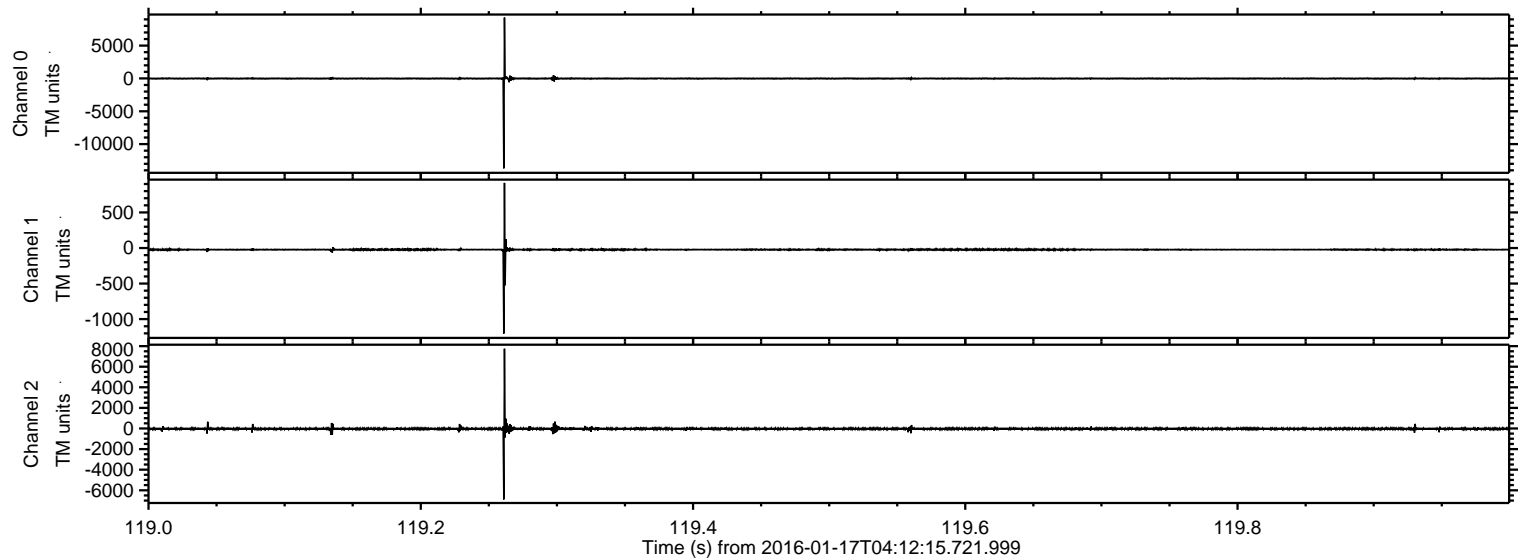
Processed Thu Mar 31 05:08:11 2016 by ELM ver.2012-10-06 from 001\_\_elm20160117\_041214\_\_dat00.bin





ELMAVAN 3D WAVEFORMS (Measured data sampled at 50 kHz) 51000 packets of 144 samples from 2016-01-17T04:12:15.721.999. Part 120/147

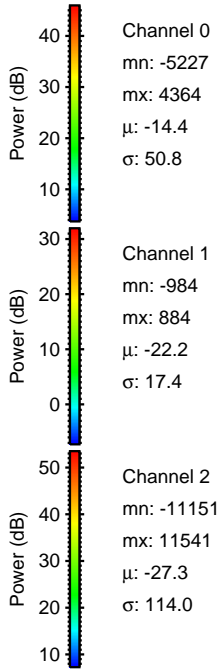
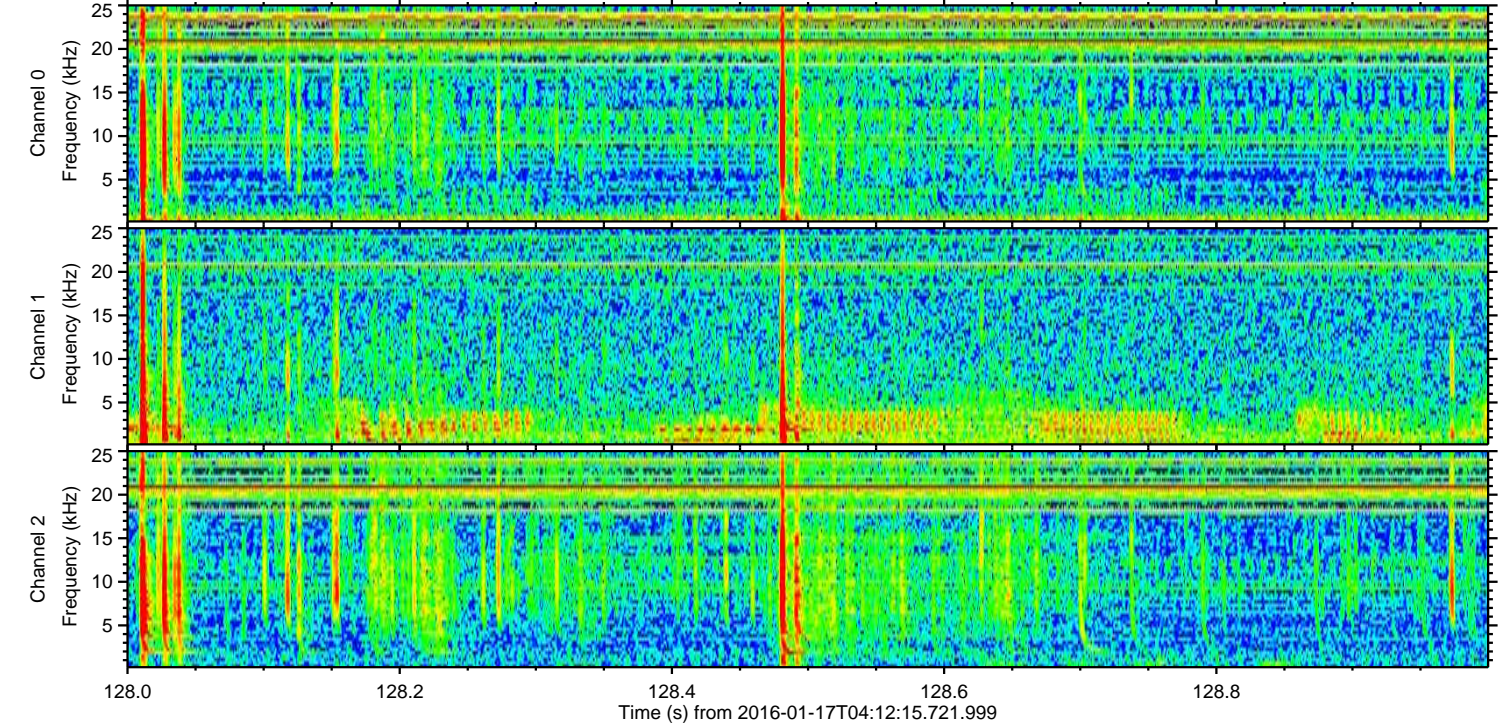
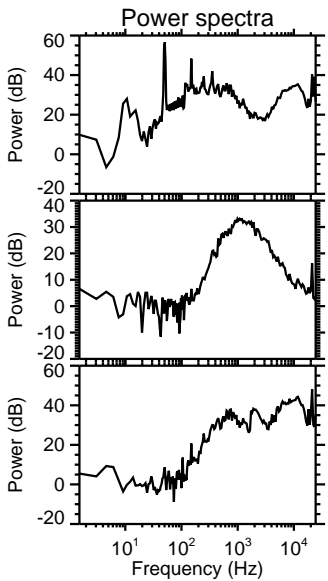
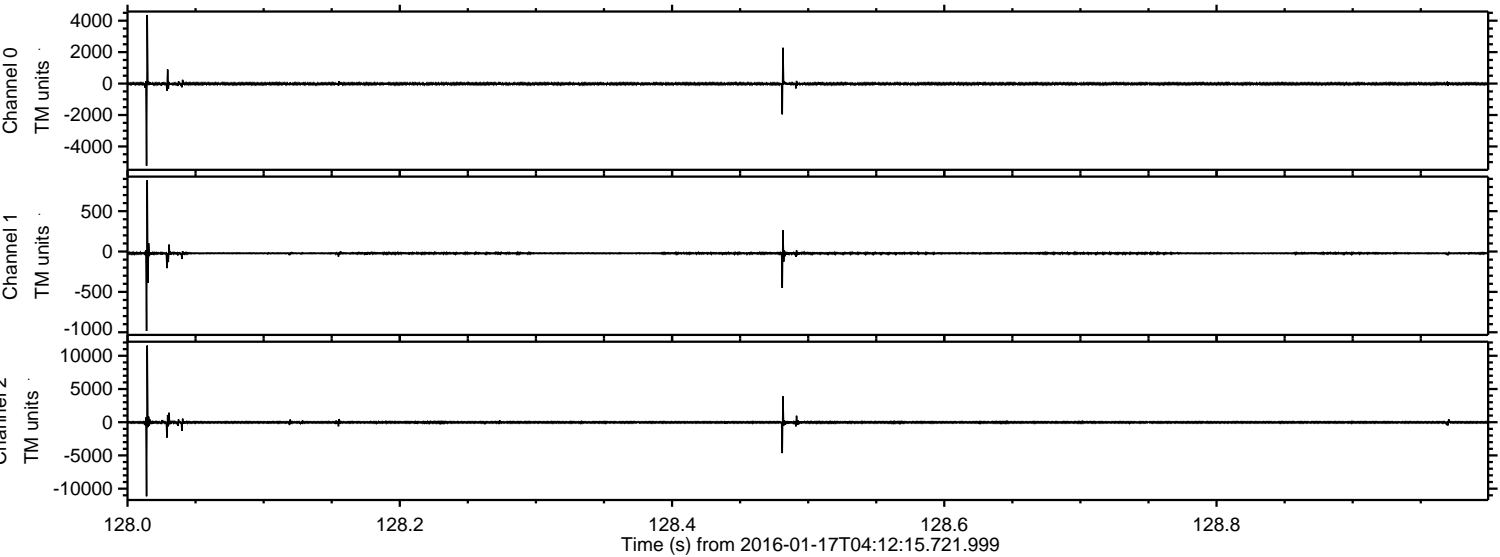
Processed Thu Mar 31 05:08:12 2016 by ELM ver.2012-10-06 from 001\_\_elm20160117\_041214\_\_dat00.bin





ELMAVAN 3D WAVEFORMS (Measured data sampled at 50 kHz) 51000 packets of 144 samples from 2016-01-17T04:12:15.721.999. Part 129/147

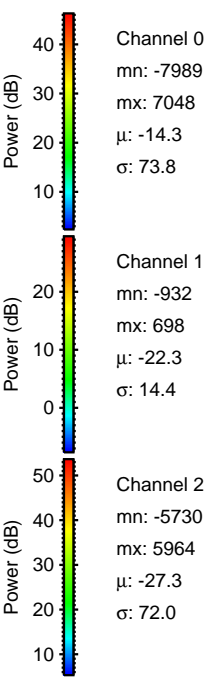
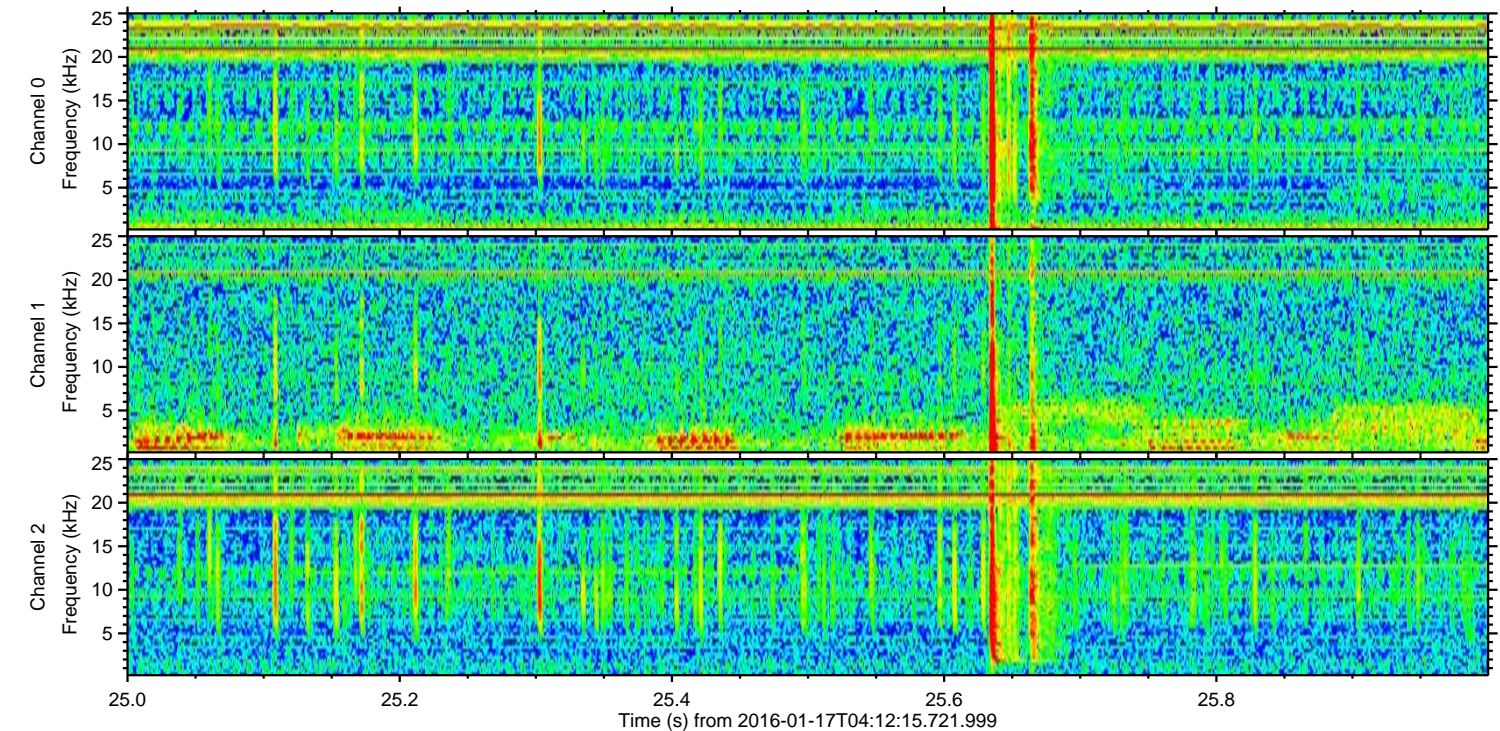
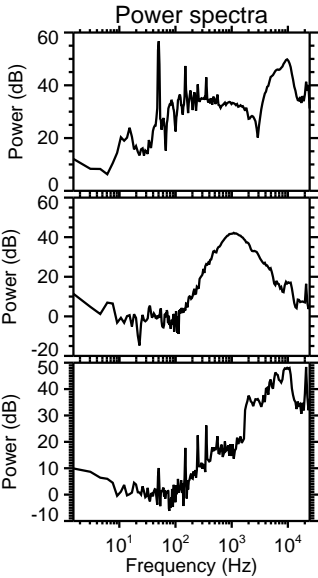
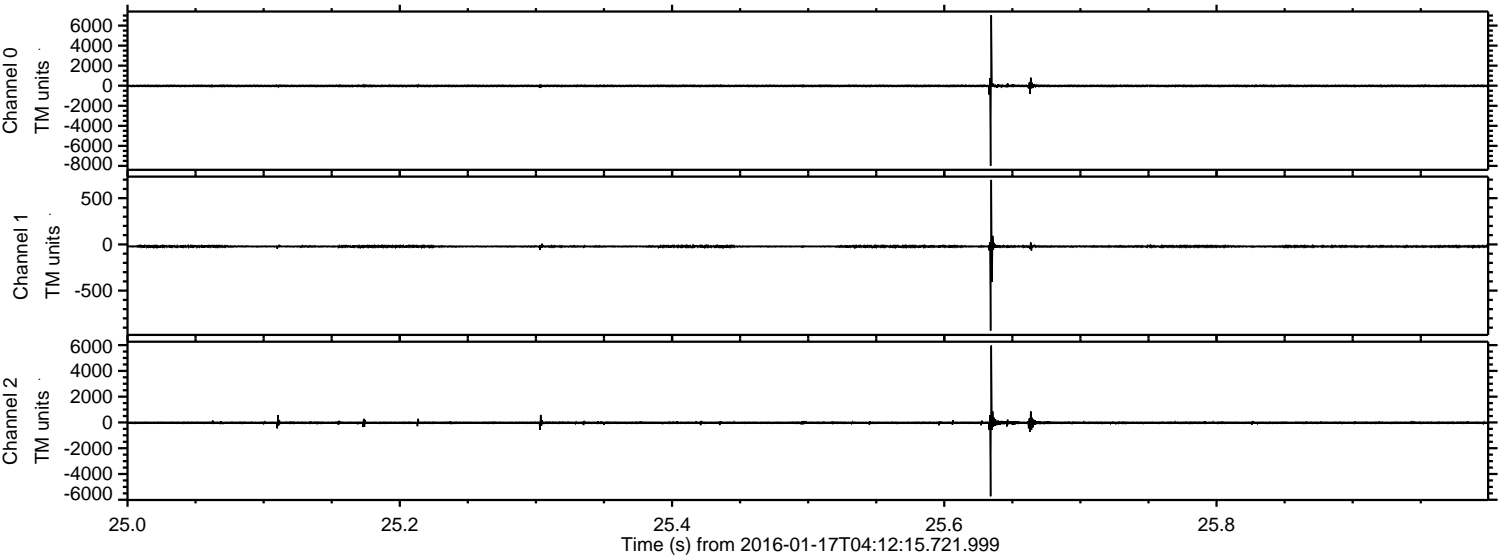
Processed Thu Mar 31 05:08:13 2016 by ELM ver.2012-10-06 from 001\_\_elm20160117\_041214\_\_dat00.bin





ELMAVAN 3D WAVEFORMS (Measured data sampled at 50 kHz) 51000 packets of 144 samples from 2016-01-17T04:12:15.721.999. Part 26/147

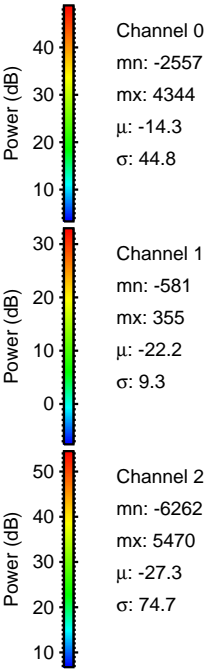
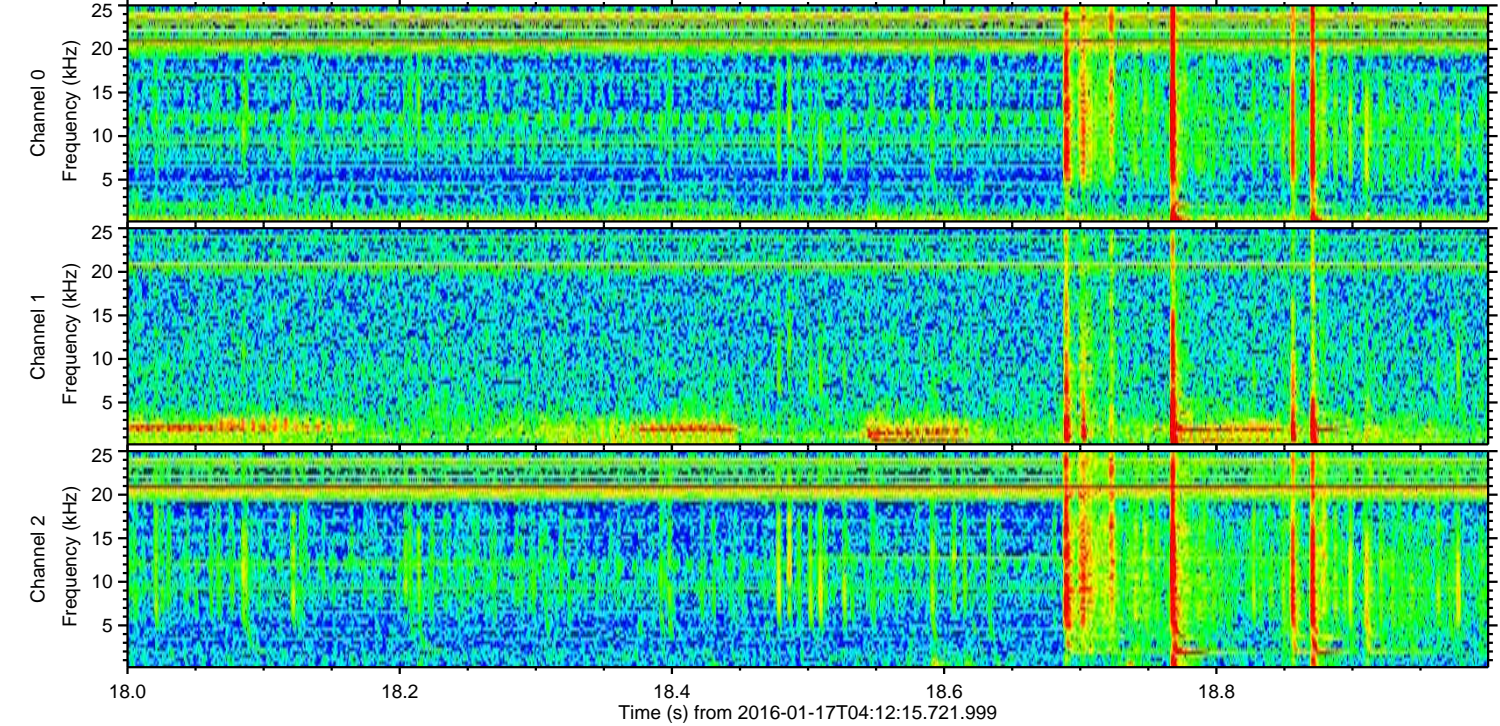
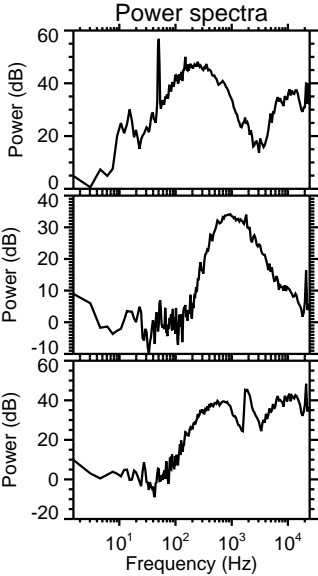
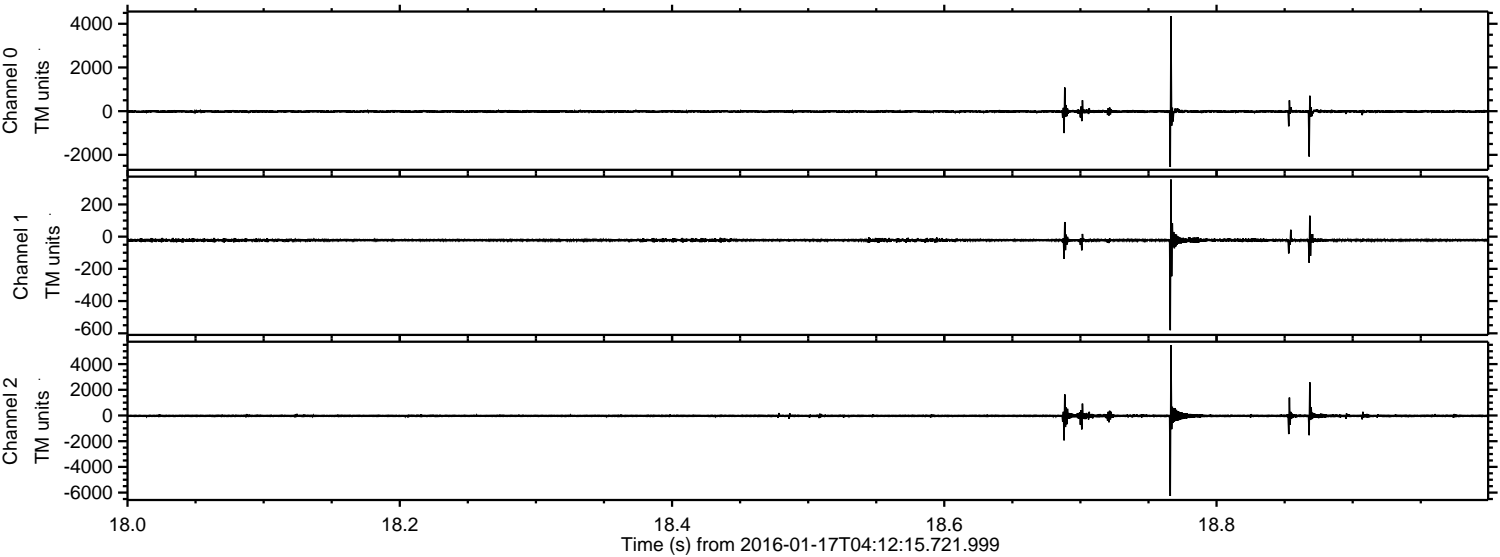
Processed Thu Mar 31 05:08:14 2016 by ELM ver.2012-10-06 from 001\_\_elm20160117\_041214\_\_dat00.bin





ELMAVAN 3D WAVEFORMS (Measured data sampled at 50 kHz) 51000 packets of 144 samples from 2016-01-17T04:12:15.721.999. Part 19/147

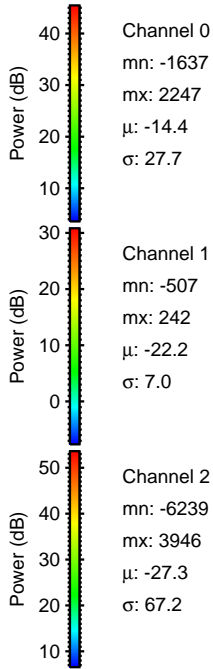
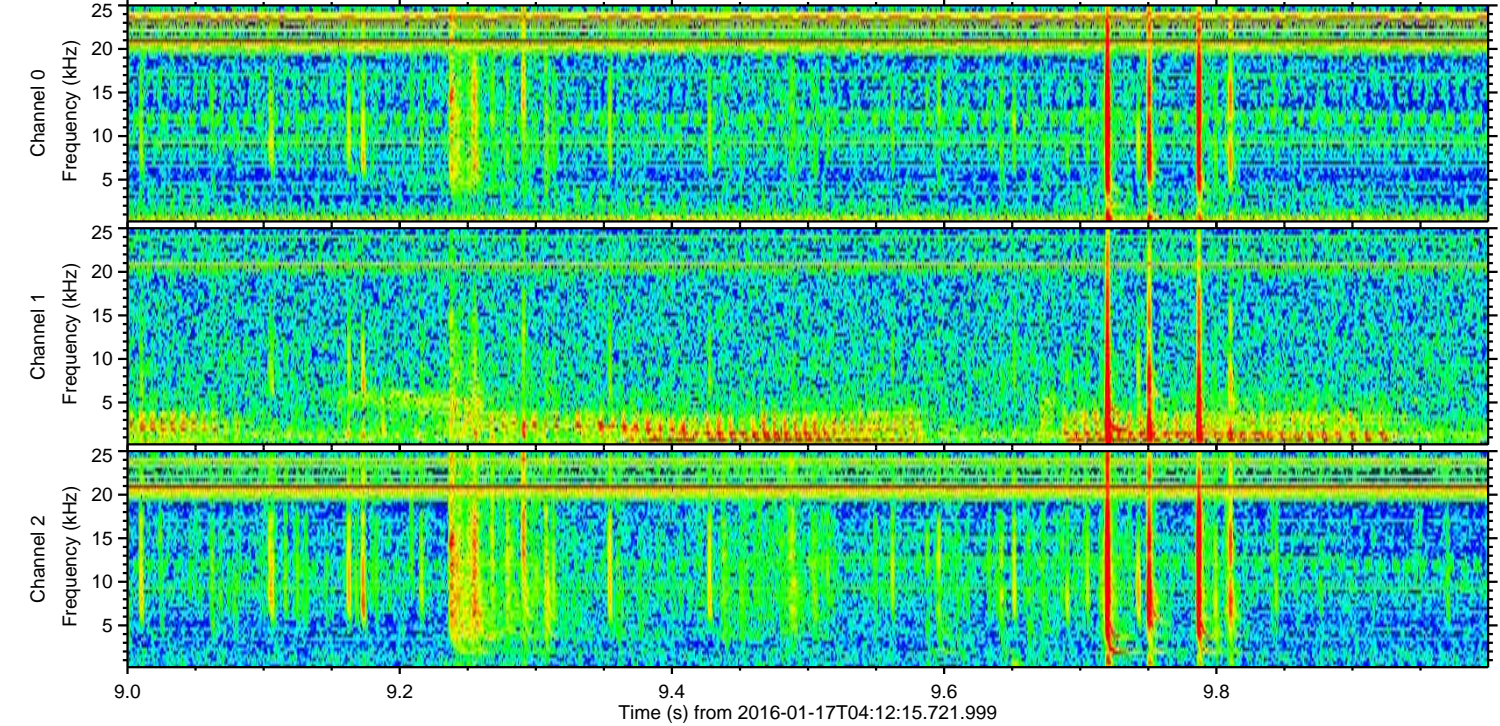
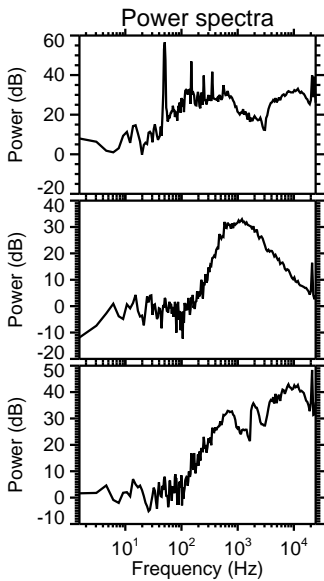
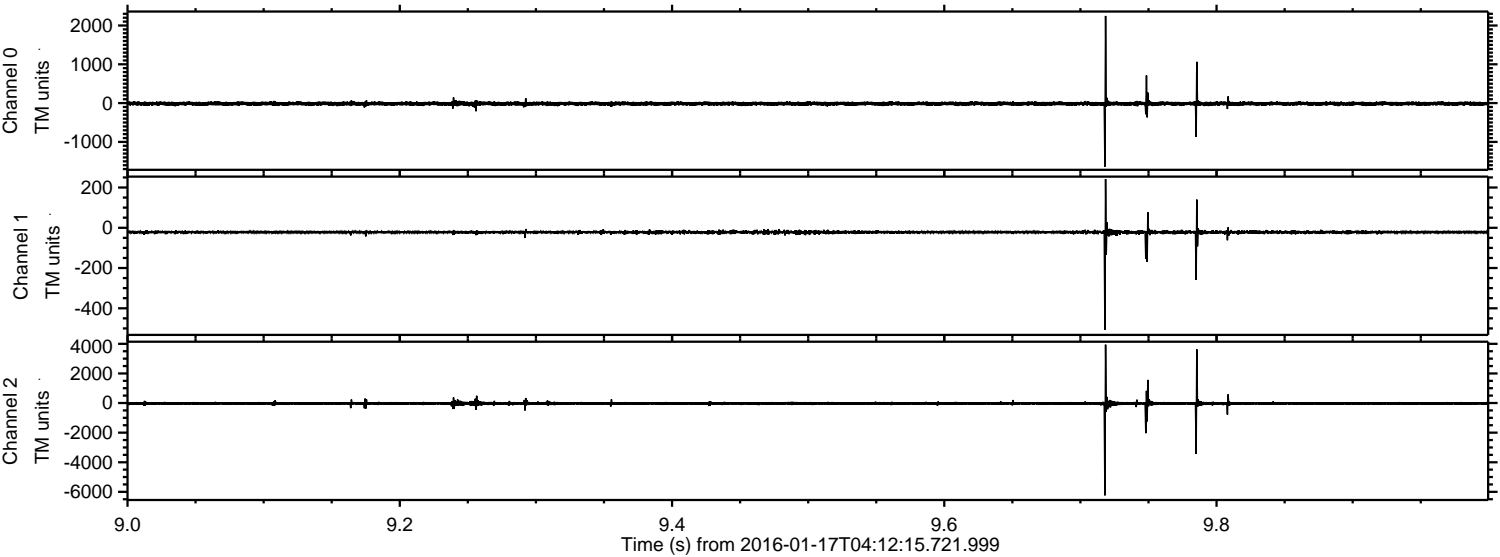
Processed Thu Mar 31 05:08:15 2016 by ELM ver.2012-10-06 from 001\_\_elm20160117\_041214\_\_dat00.bin





ELMAVAN 3D WAVEFORMS (Measured data sampled at 50 kHz) 51000 packets of 144 samples from 2016-01-17T04:12:15.721.999. Part 10/147

Processed Thu Mar 31 05:08:16 2016 by ELM ver.2012-10-06 from 001\_\_elm20160117\_041214\_\_dat00.bin



Channel 0  
mn: -1637  
mx: 2247  
 $\mu$ : -14.4  
 $\sigma$ : 27.7

Channel 1  
mn: -507  
mx: 242  
 $\mu$ : -22.2  
 $\sigma$ : 7.0

Channel 2  
mn: -6239  
mx: 3946  
 $\mu$ : -27.3  
 $\sigma$ : 67.2



ELMAVAN 3D WAVEFORMS (Measured data sampled at 50 kHz) 51000 packets of 144 samples from 2016-01-17T04:12:15.721.999. Part 12/147

Processed Thu Mar 31 05:08:17 2016 by ELM ver.2012-10-06 from 001\_\_elm20160117\_041214\_\_dat00.bin

