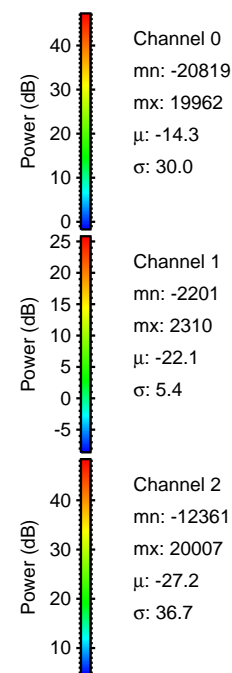
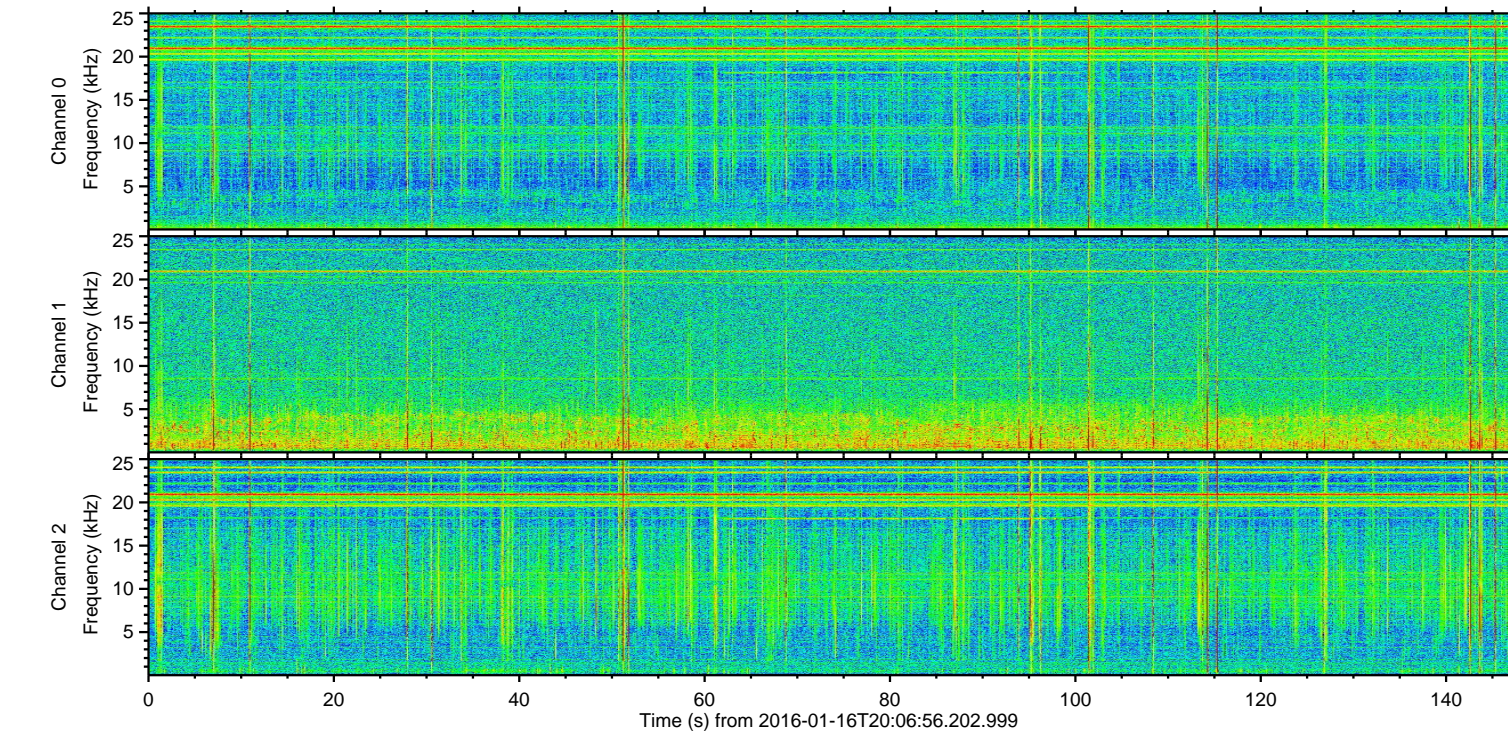
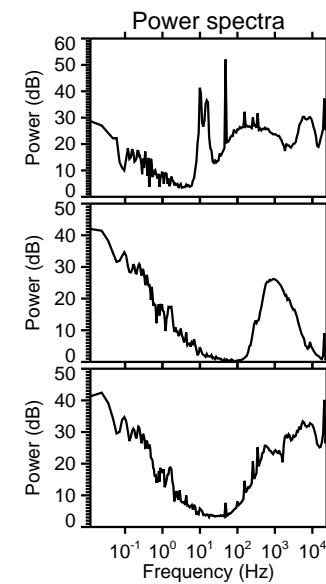
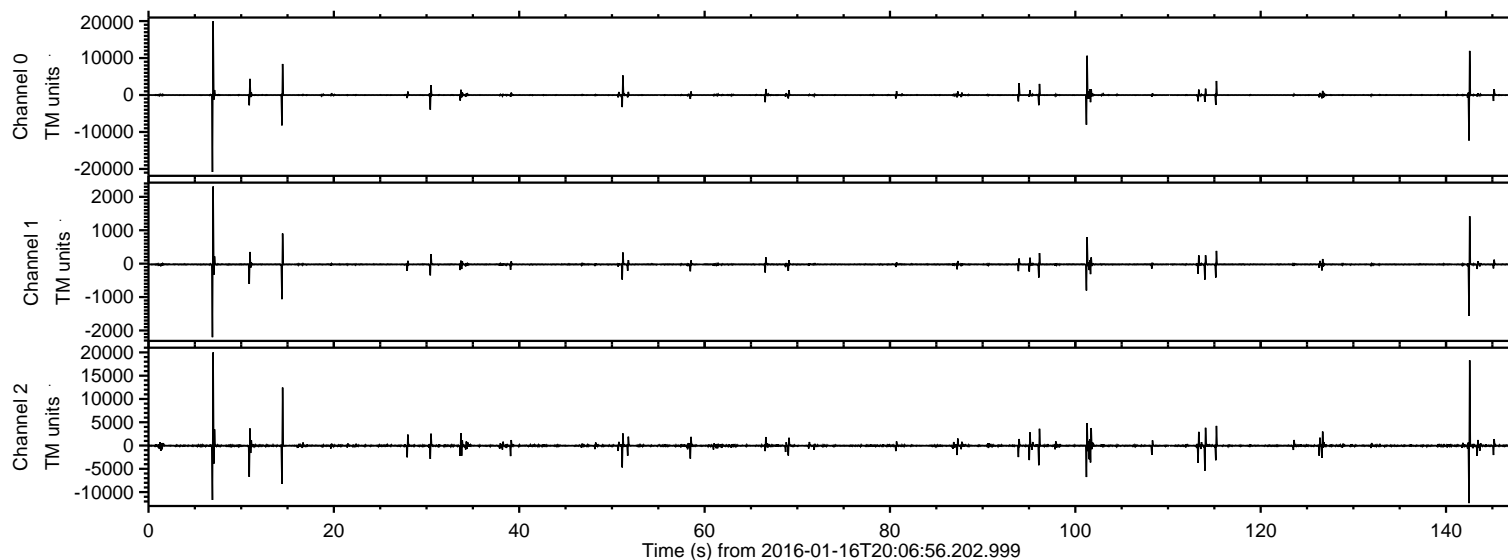


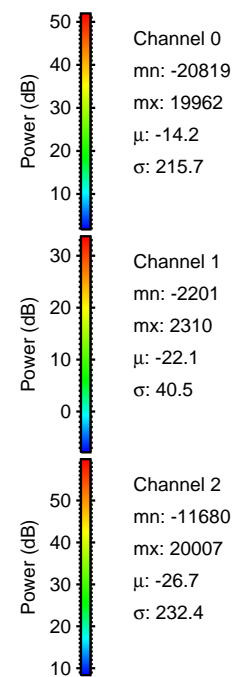
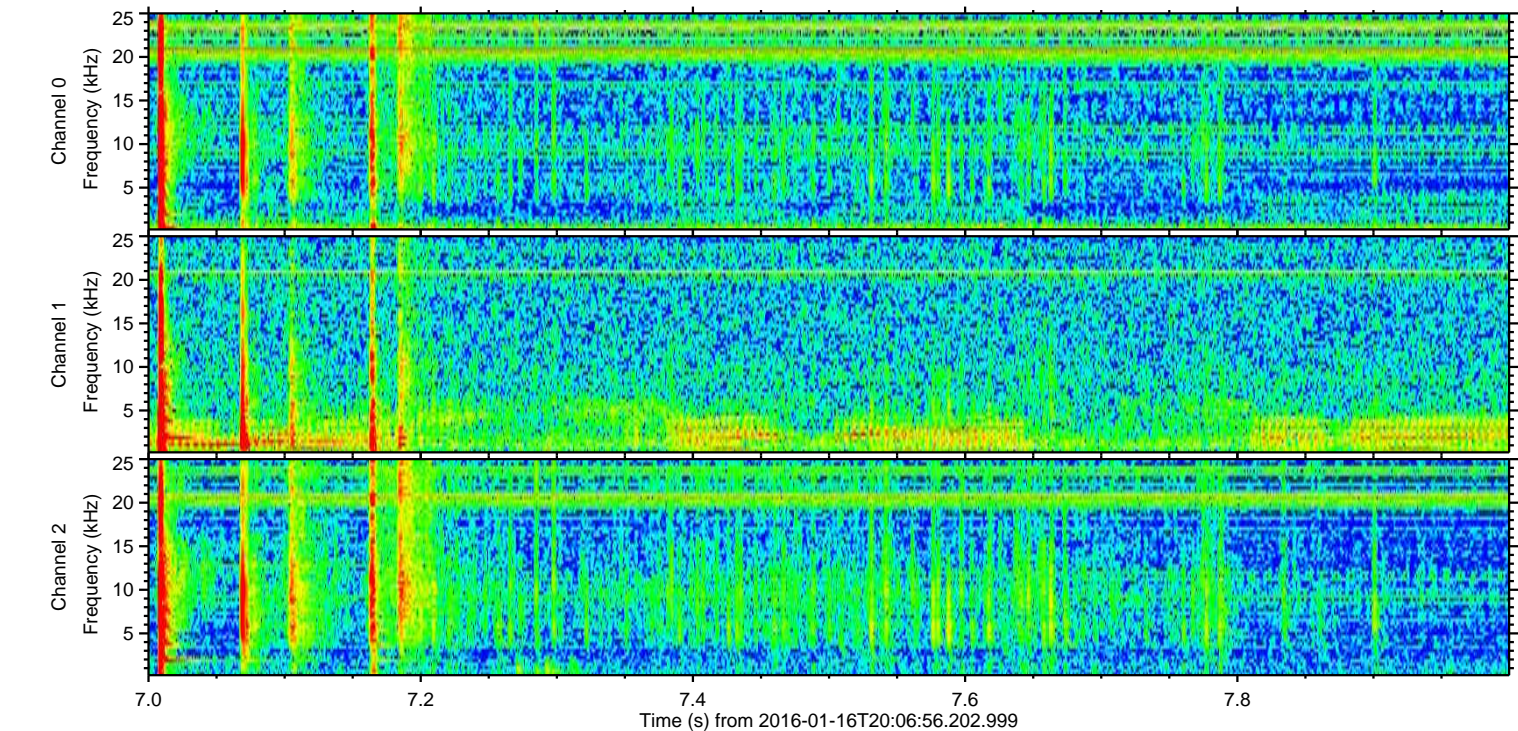
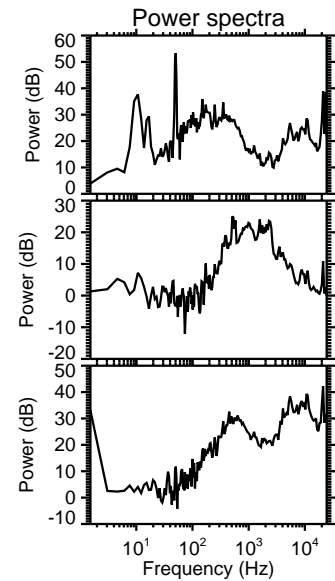
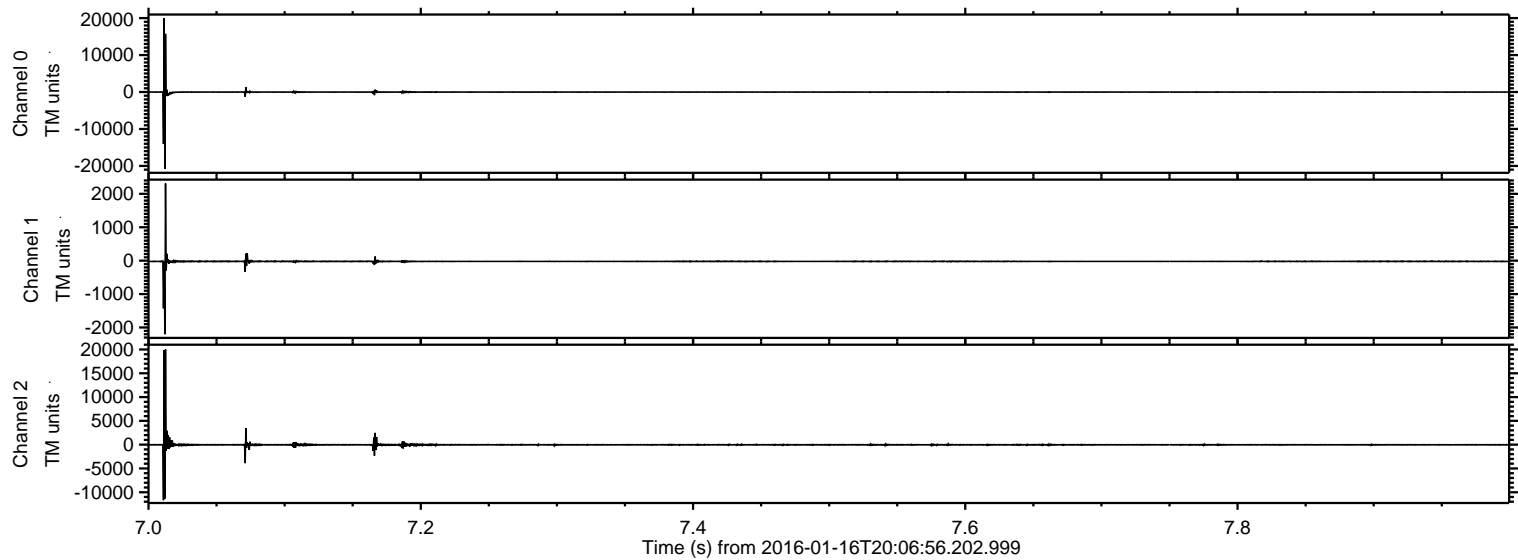
ELMAVAN 3D WAVEFORMS (Measured data sampled at 50 kHz) 51000 packets of 144 samples from 2016-01-16T20:06:56.202.999.

Processed Thu Mar 31 01:29:44 2016 by ELM ver.2012-10-06 from 001__elm20160116_200655__dat00.bin



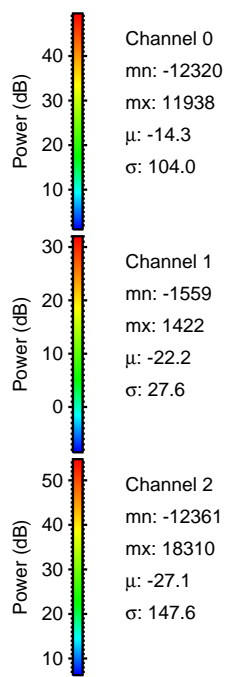
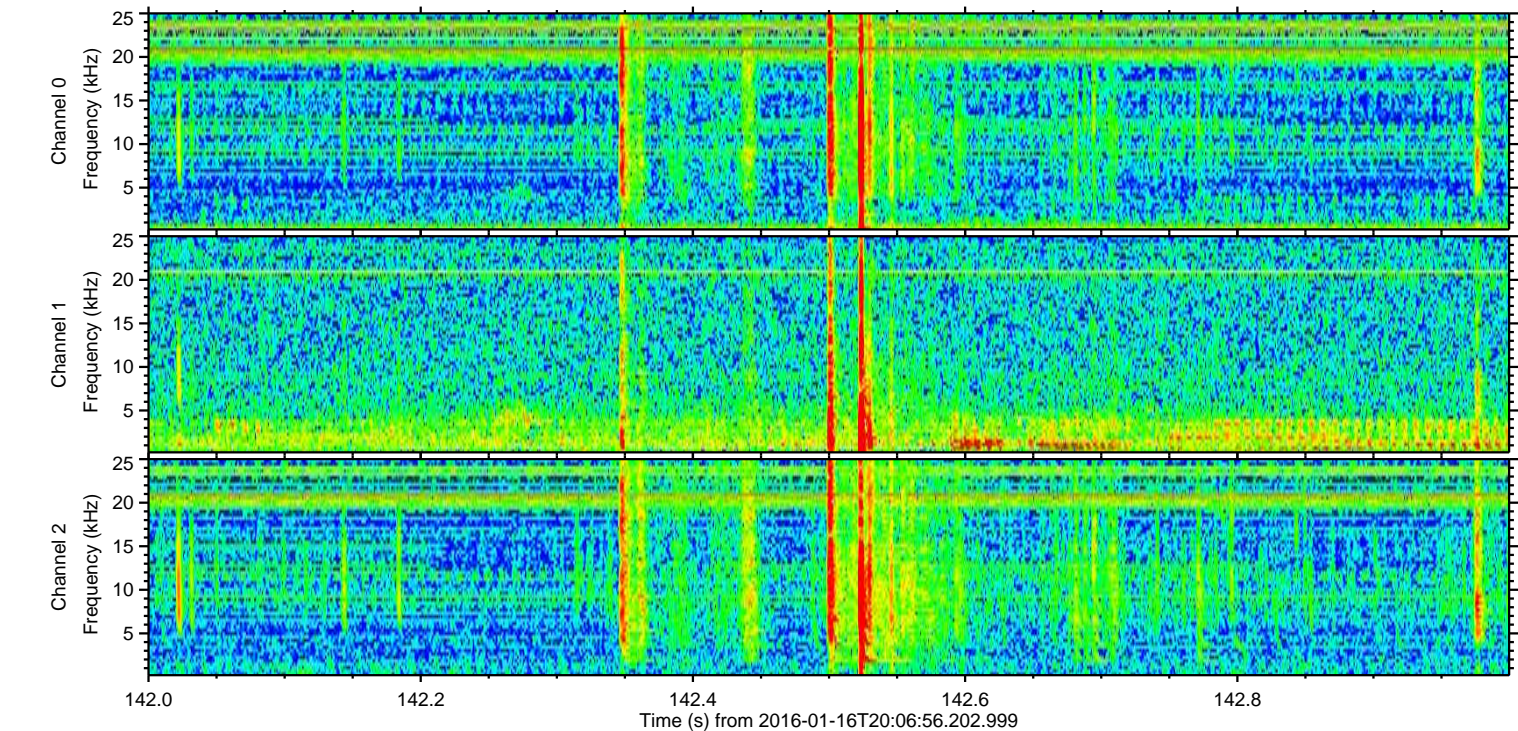
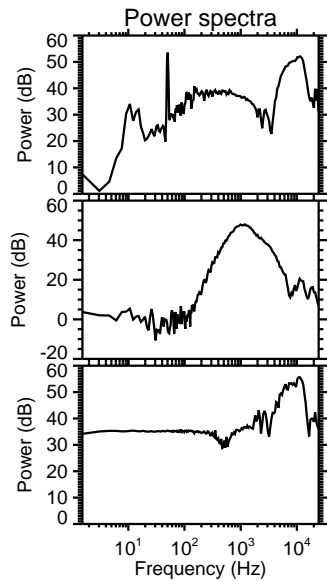
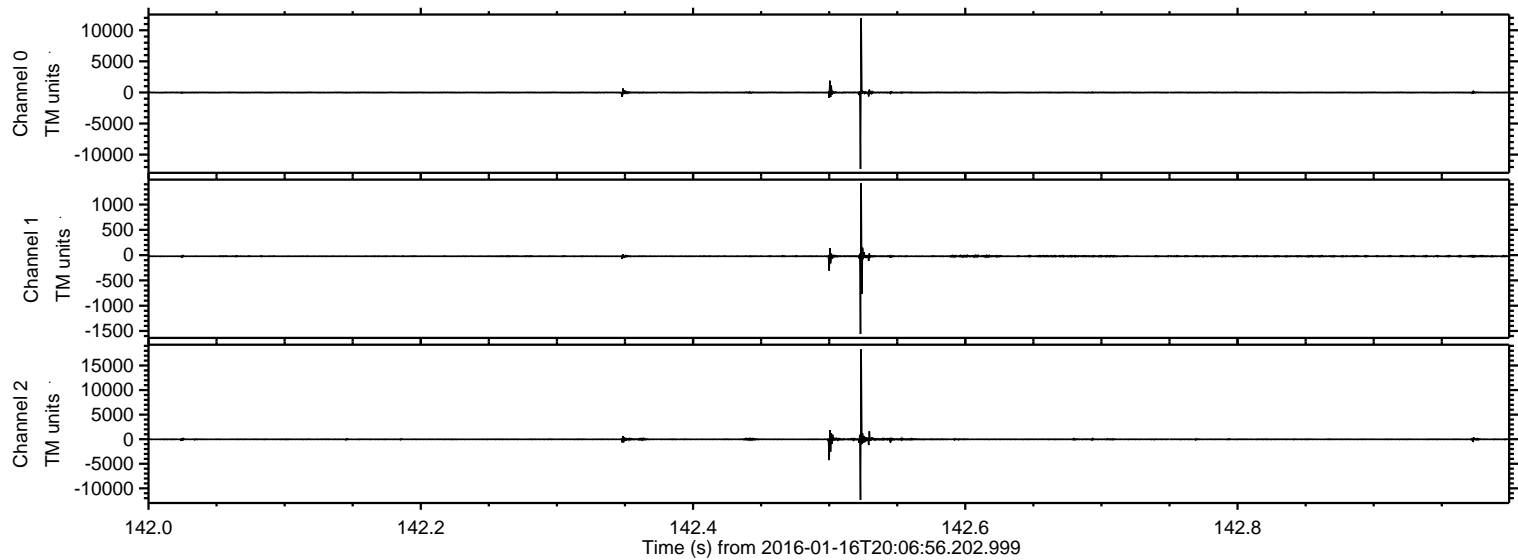
ELMAVAN 3D WAVEFORMS (Measured data sampled at 50 kHz) 51000 packets of 144 samples from 2016-01-16T20:06:56.202.999. Part 8/147

Processed Thu Mar 31 01:29:56 2016 by ELM ver.2012-10-06 from 001__elm20160116_200655__dat00.bin

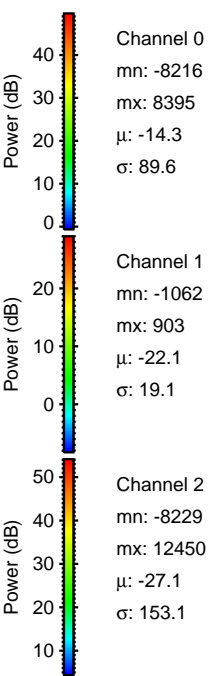
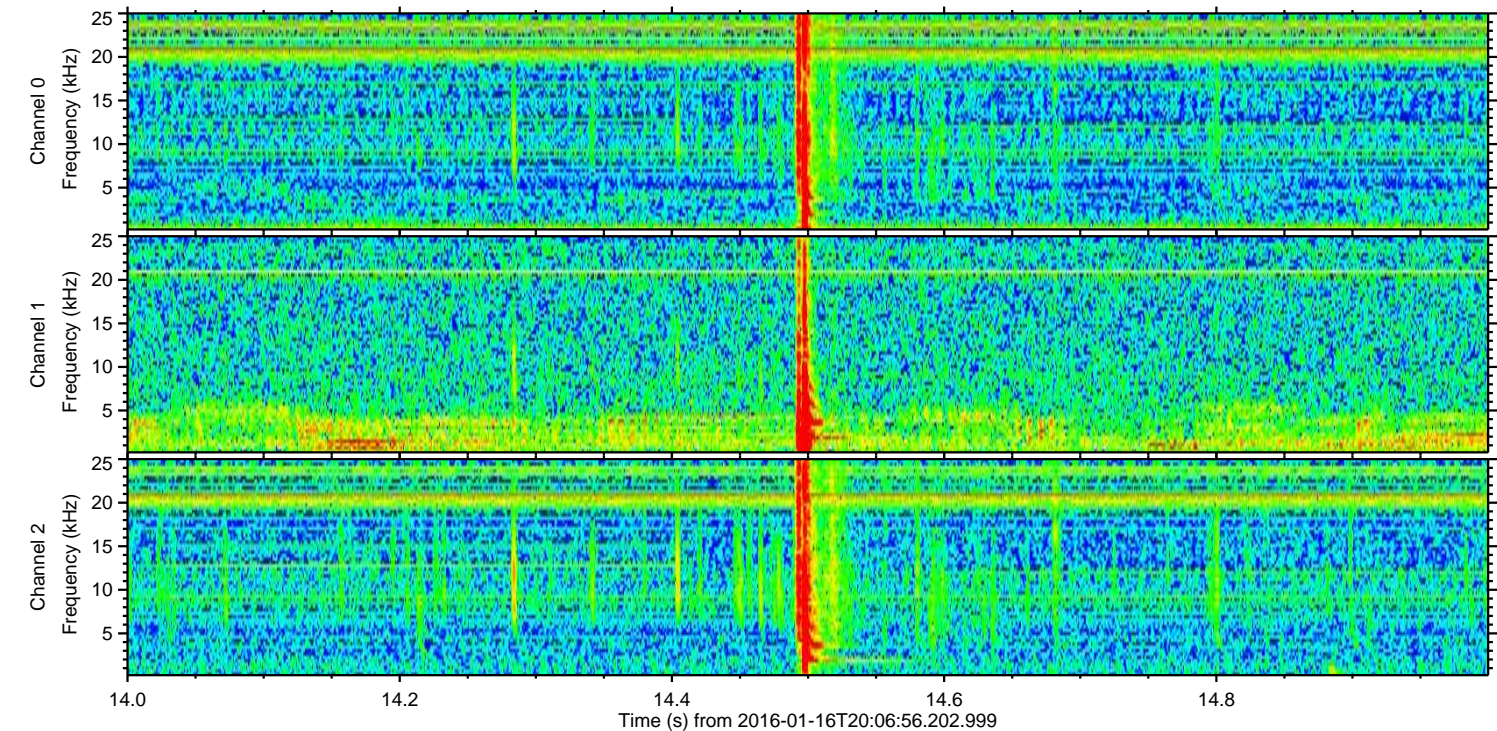
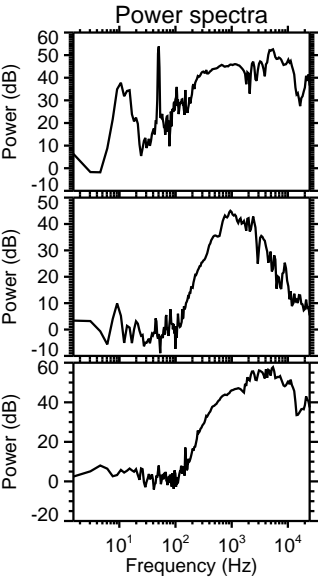
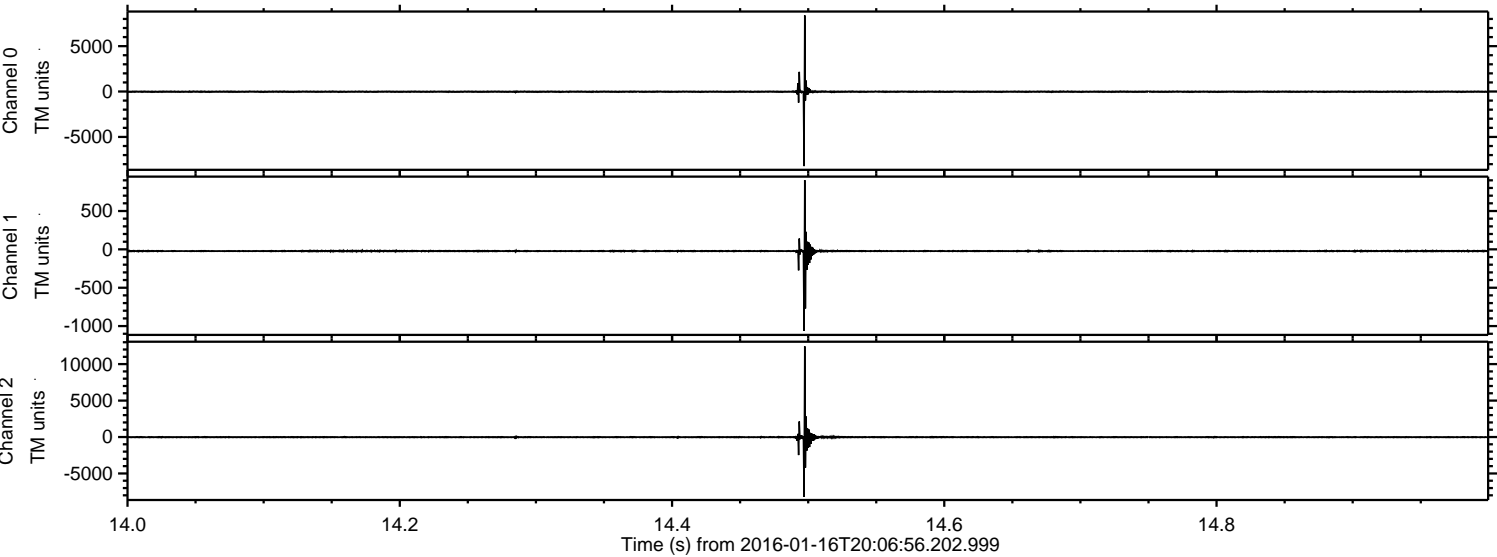


ELMAVAN 3D WAVEFORMS (Measured data sampled at 50 kHz) 51000 packets of 144 samples from 2016-01-16T20:06:56.202.999. Part 143/147

Processed Thu Mar 31 01:29:57 2016 by ELM ver.2012-10-06 from 001__elm20160116_200655__dat00.bin

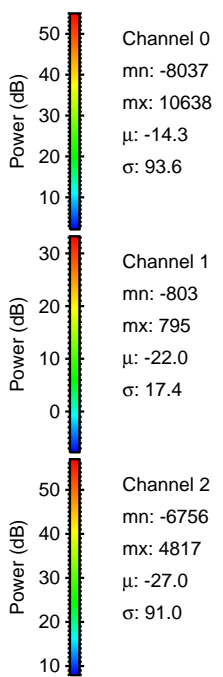
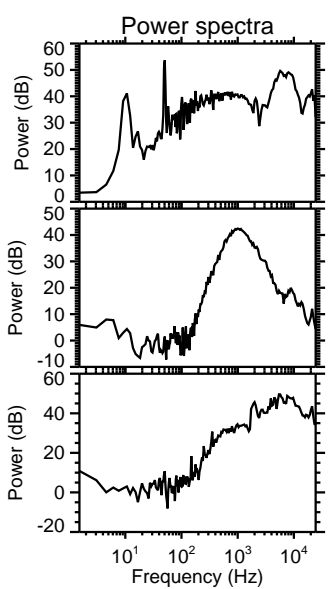
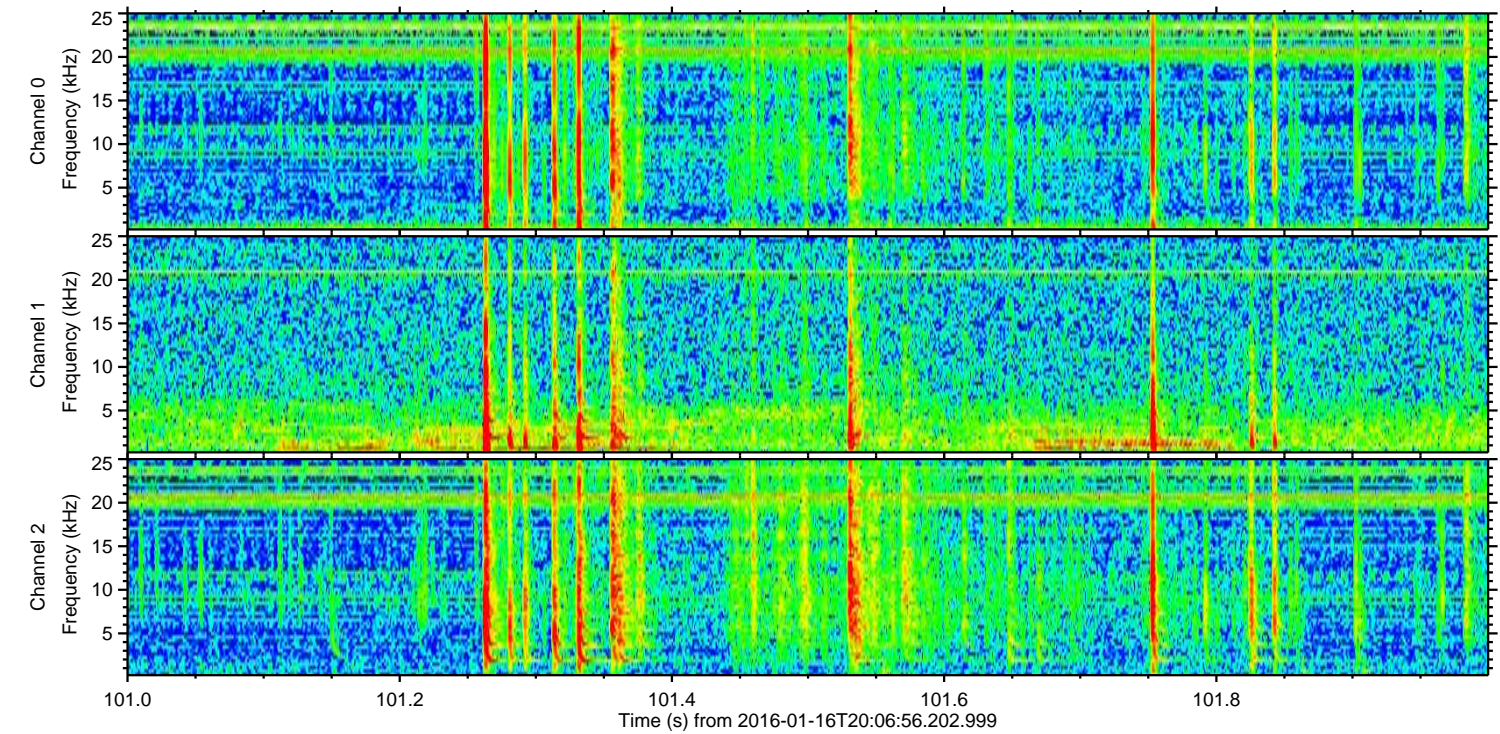
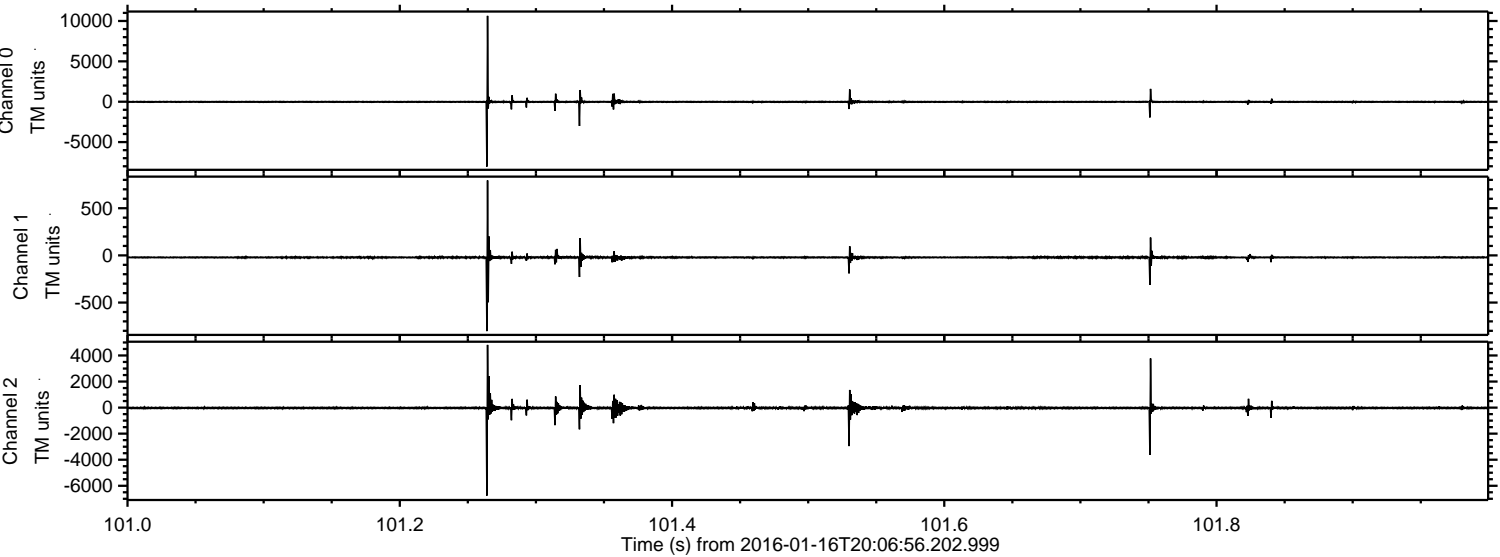


Processed Thu Mar 31 01:29:58 2016 by ELM ver.2012-10-06 from 001__elm20160116_200655__dat00.bin

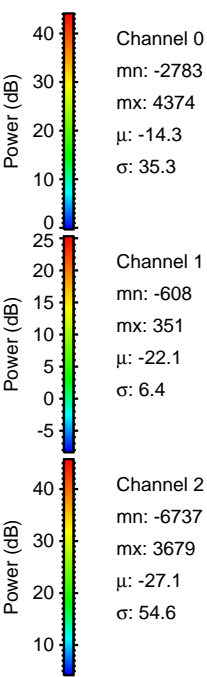
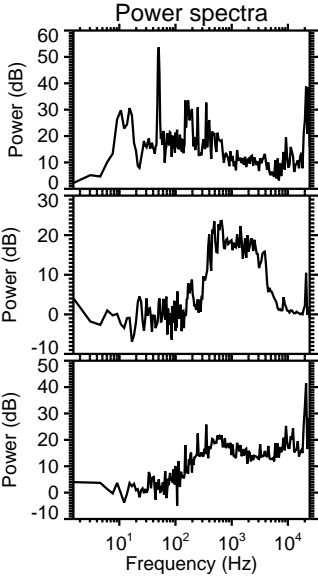
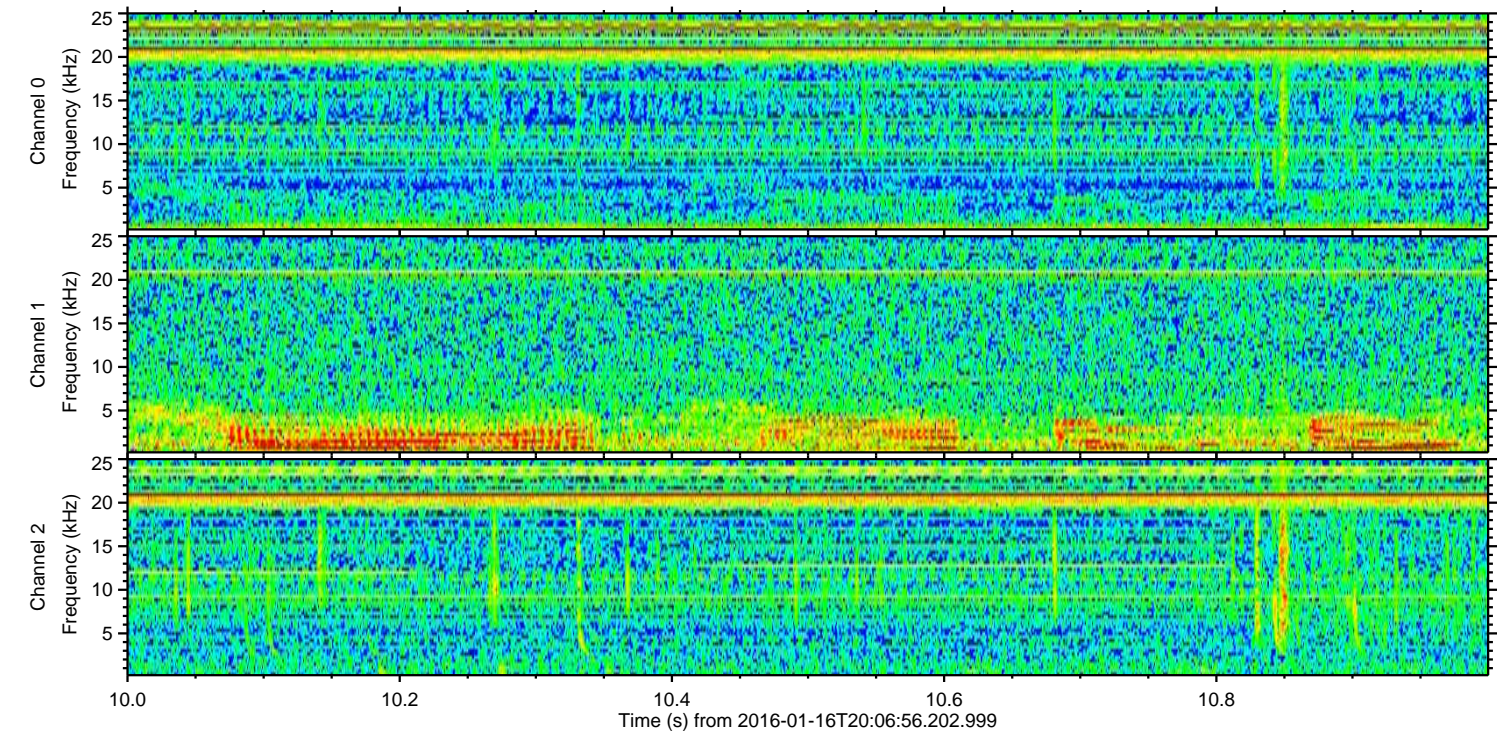
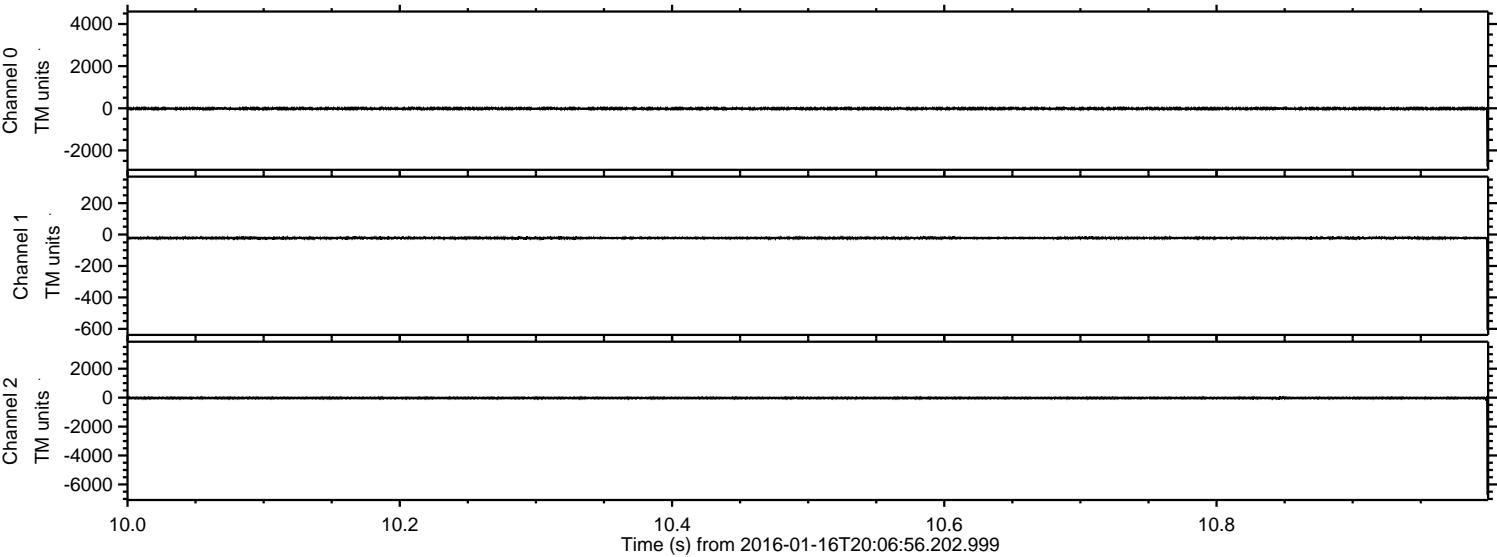


ELMAVAN 3D WAVEFORMS (Measured data sampled at 50 kHz) 51000 packets of 144 samples from 2016-01-16T20:06:56.202.999. Part 102/147

Processed Thu Mar 31 01:29:59 2016 by ELM ver.2012-10-06 from 001__elm20160116_200655__dat00.bin

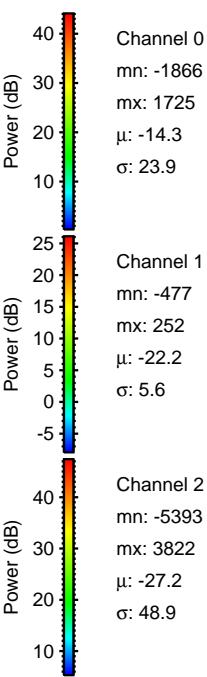
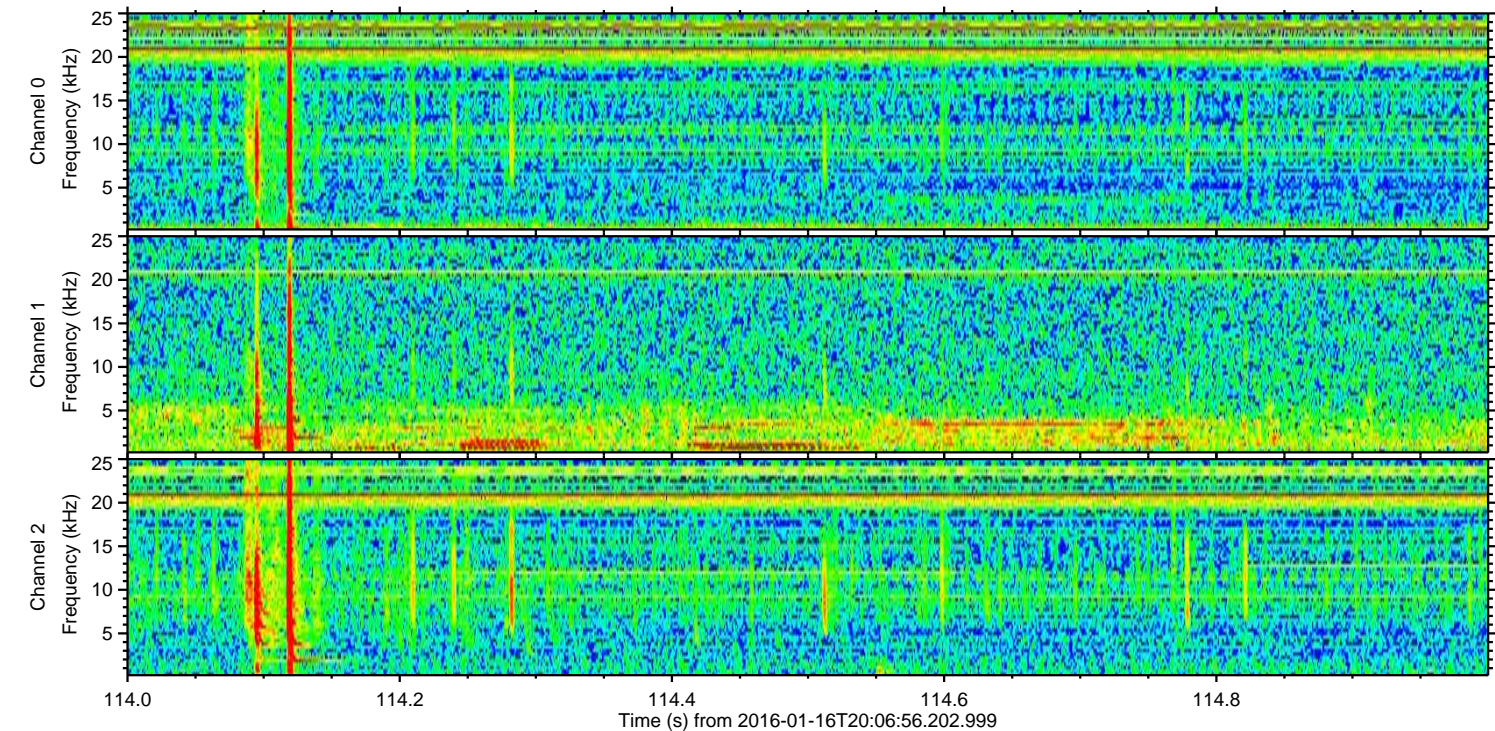
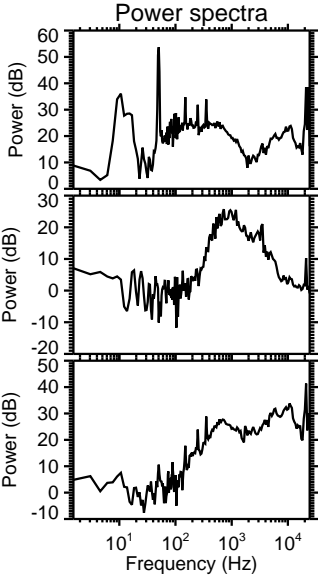
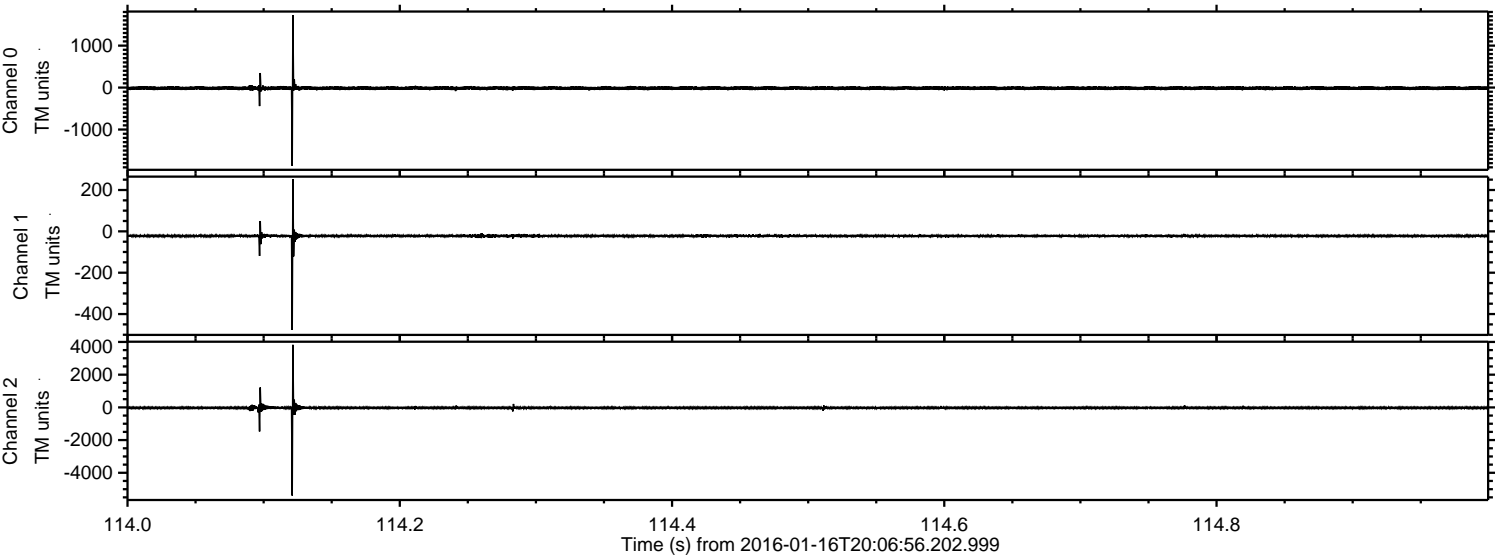


Processed Thu Mar 31 01:30:00 2016 by ELM ver.2012-10-06 from 001__elm20160116_200655__dat00.bin

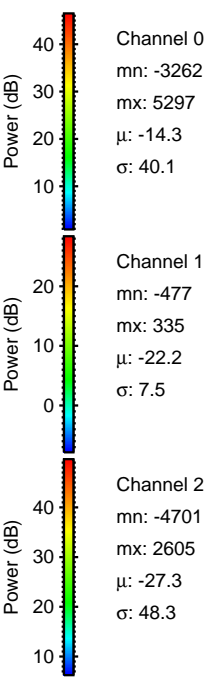
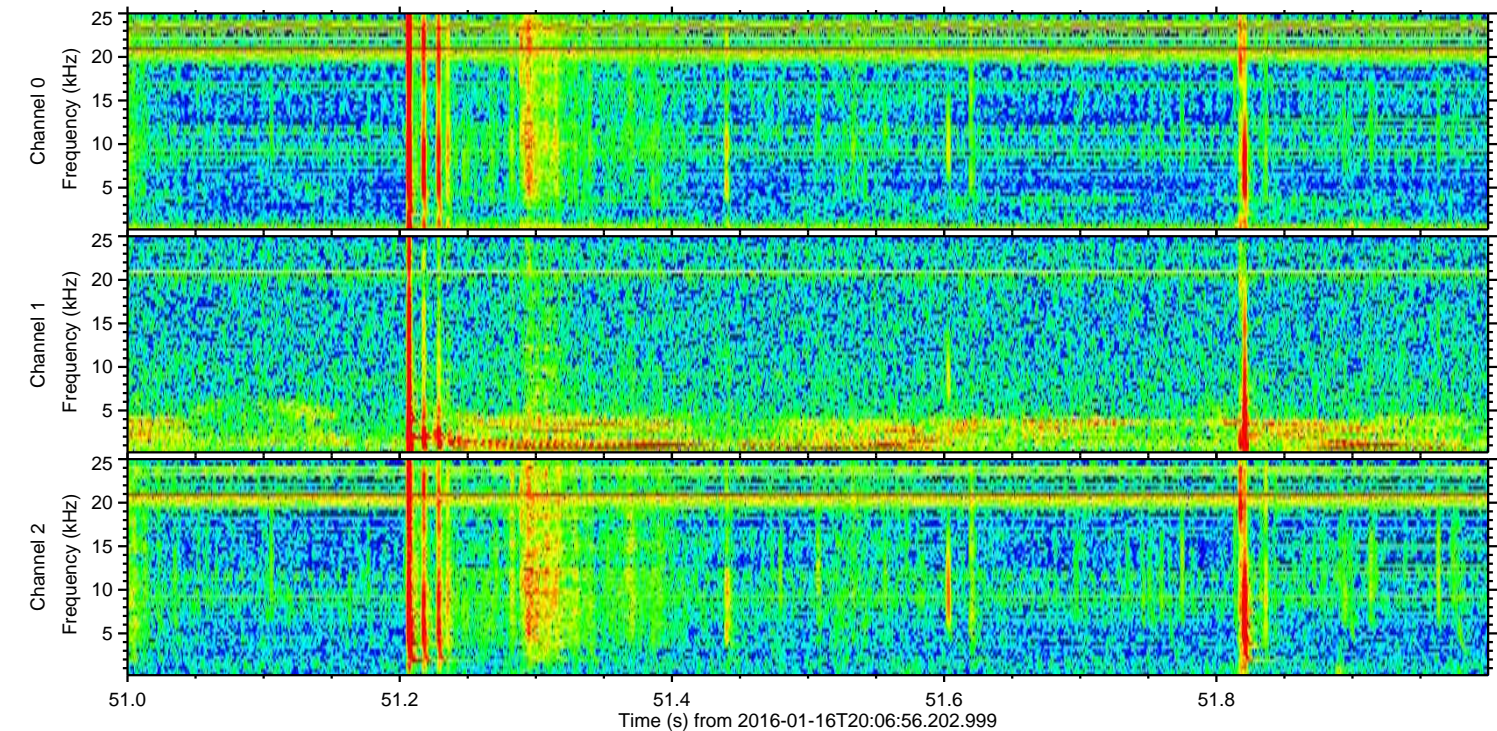
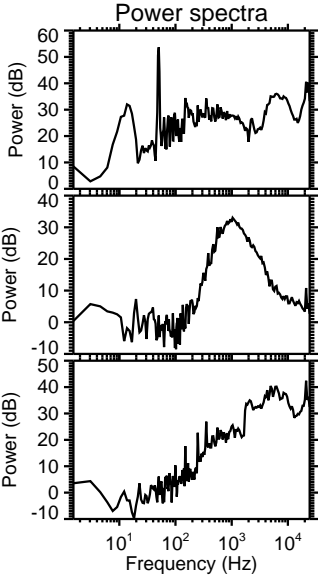
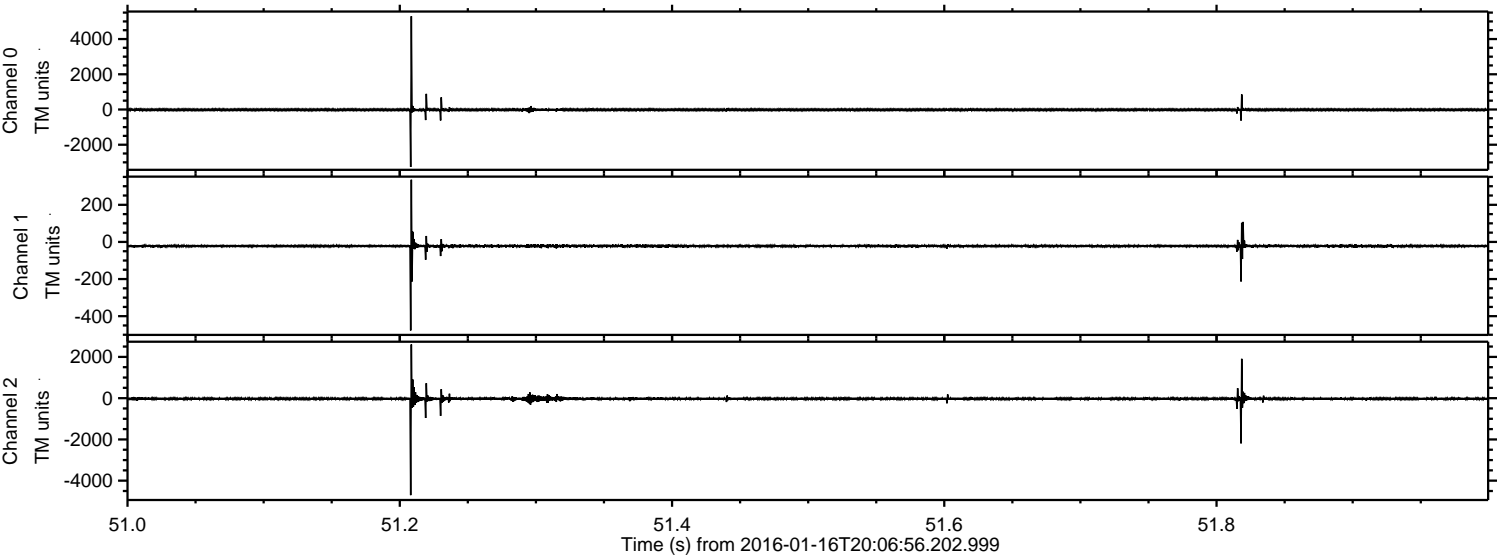


ELMAVAN 3D WAVEFORMS (Measured data sampled at 50 kHz) 51000 packets of 144 samples from 2016-01-16T20:06:56.202.999. Part 115/147

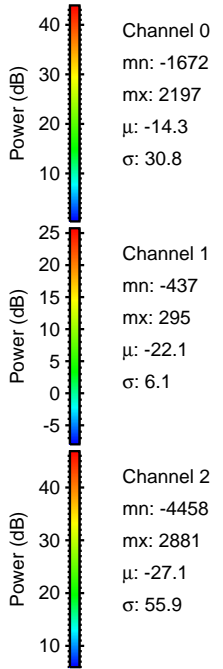
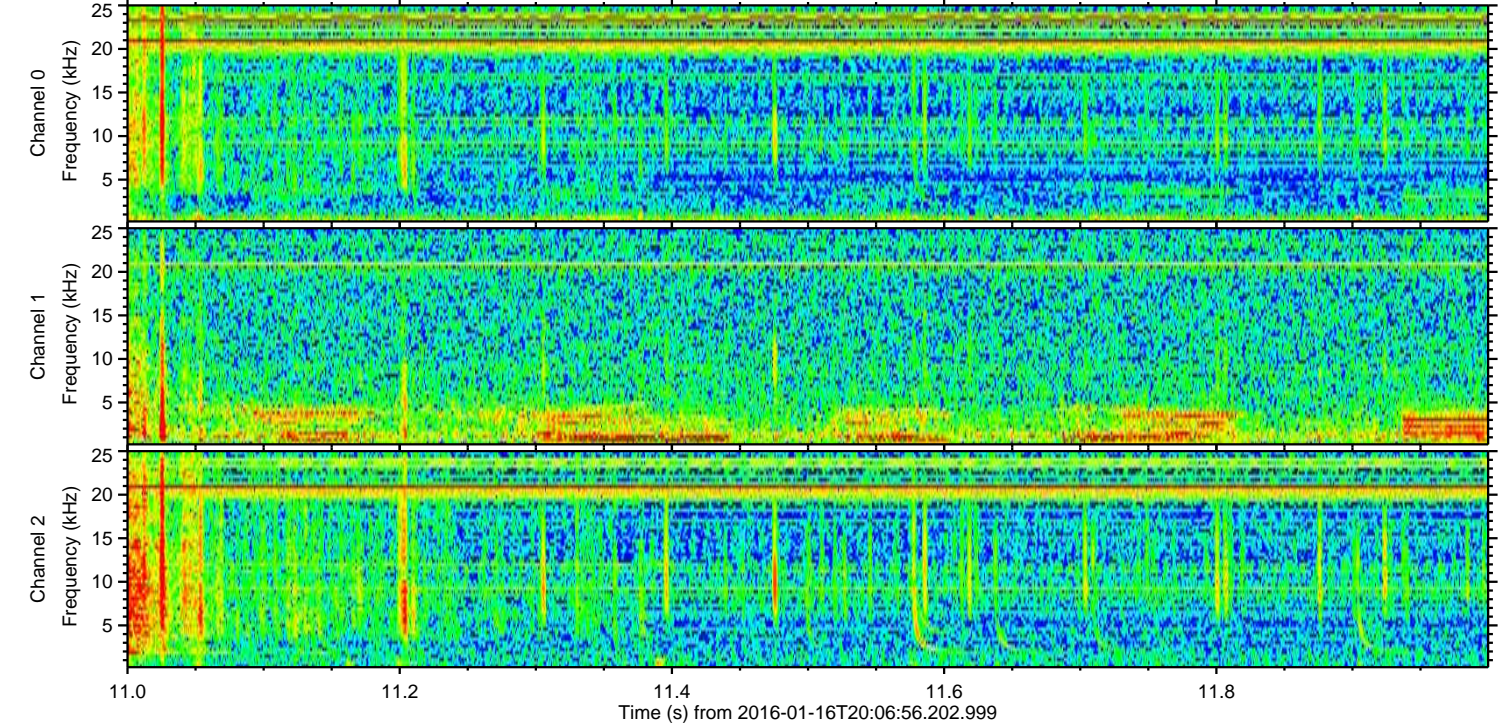
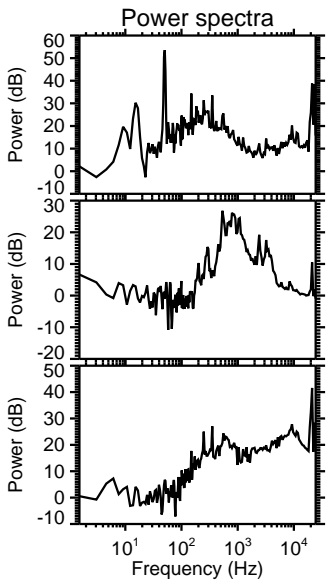
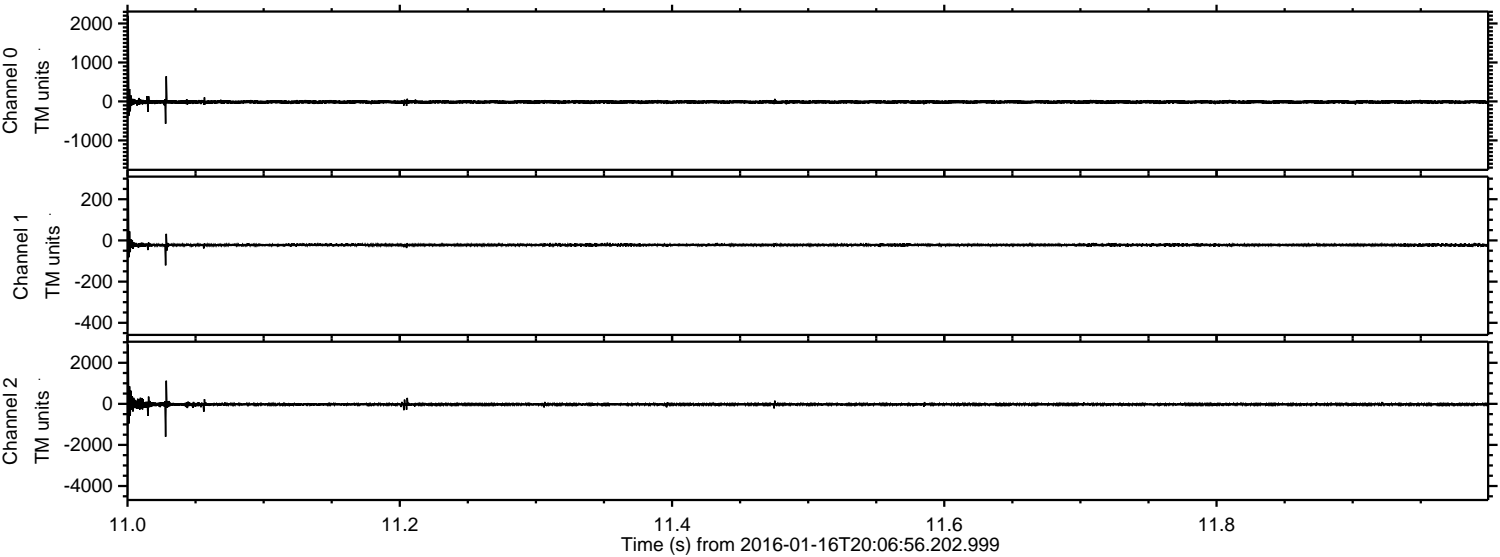
Processed Thu Mar 31 01:30:01 2016 by ELM ver.2012-10-06 from 001__elm20160116_200655__dat00.bin



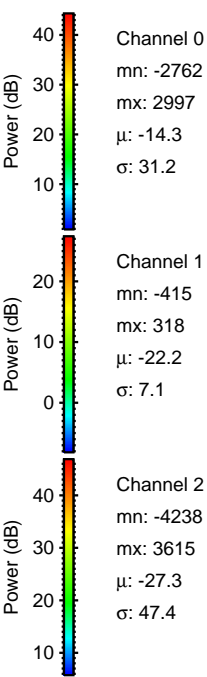
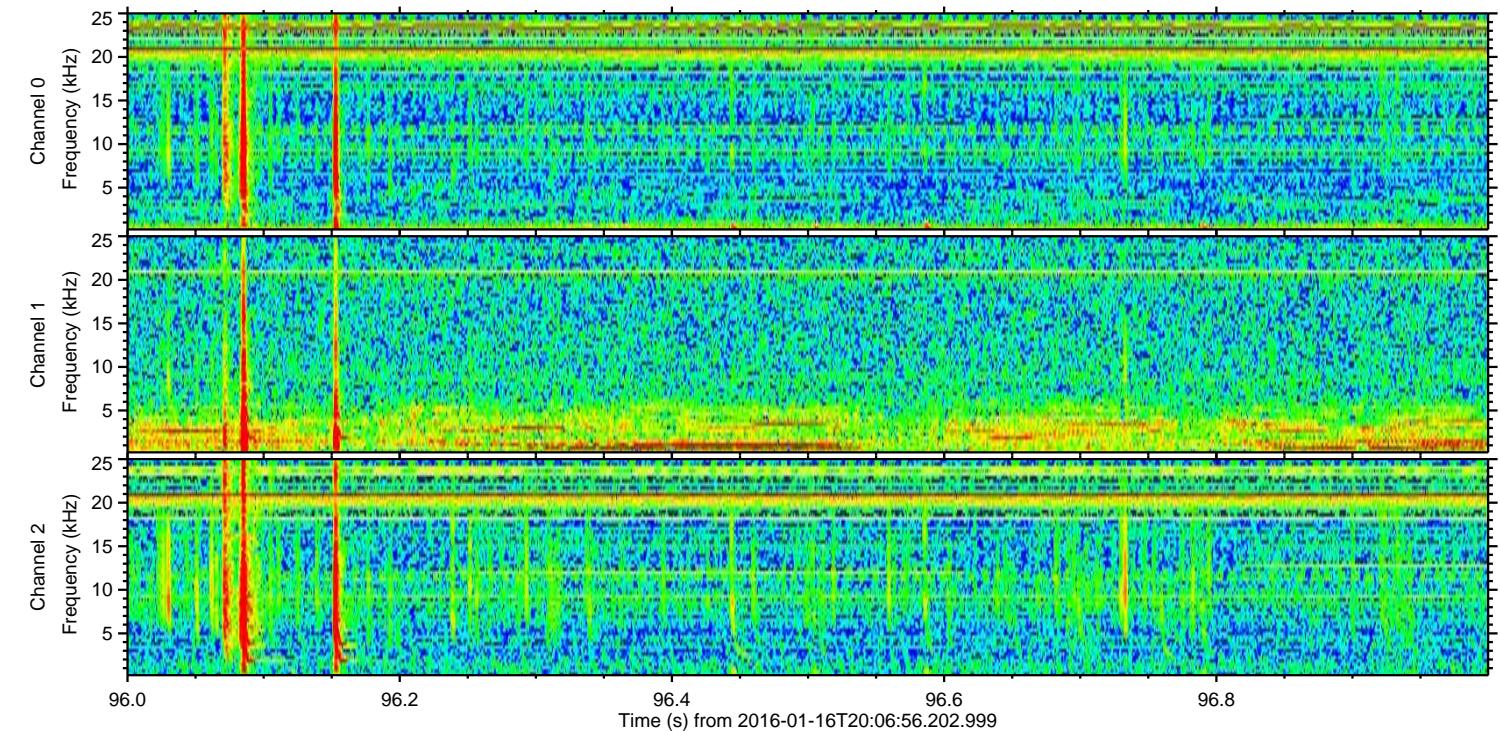
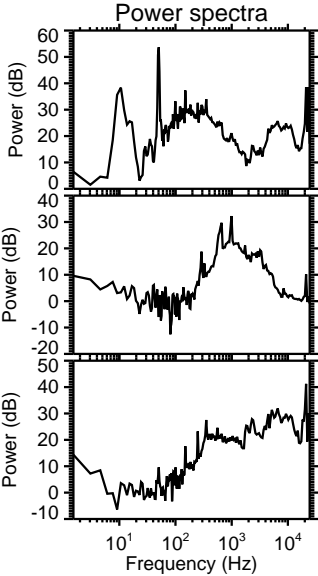
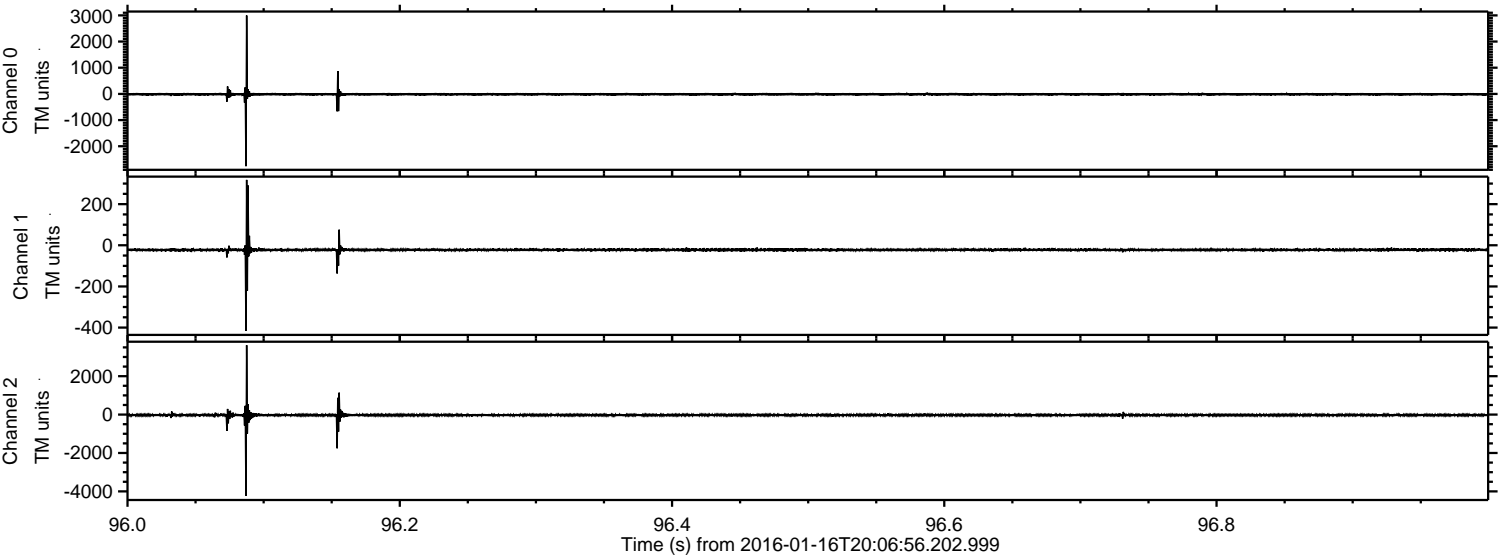
Processed Thu Mar 31 01:30:01 2016 by ELM ver.2012-10-06 from 001__elm20160116_200655__dat00.bin



Processed Thu Mar 31 01:30:02 2016 by ELM ver.2012-10-06 from 001__elm20160116_200655__dat00.bin



Processed Thu Mar 31 01:30:03 2016 by ELM ver.2012-10-06 from 001__elm20160116_200655__dat00.bin



Channel 0
mn: -2762
mx: 2997
 μ : -14.3
 σ : 31.2

Channel 1
mn: -415
mx: 318
 μ : -22.2
 σ : 7.1

Channel 2
mn: -4238
mx: 3615
 μ : -27.3
 σ : 47.4

Processed Thu Mar 31 01:30:04 2016 by ELM ver.2012-10-06 from 001__elm20160116_200655__dat00.bin

