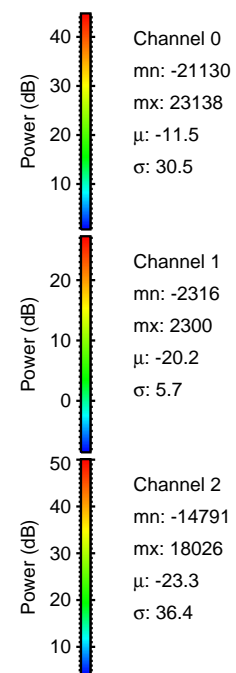
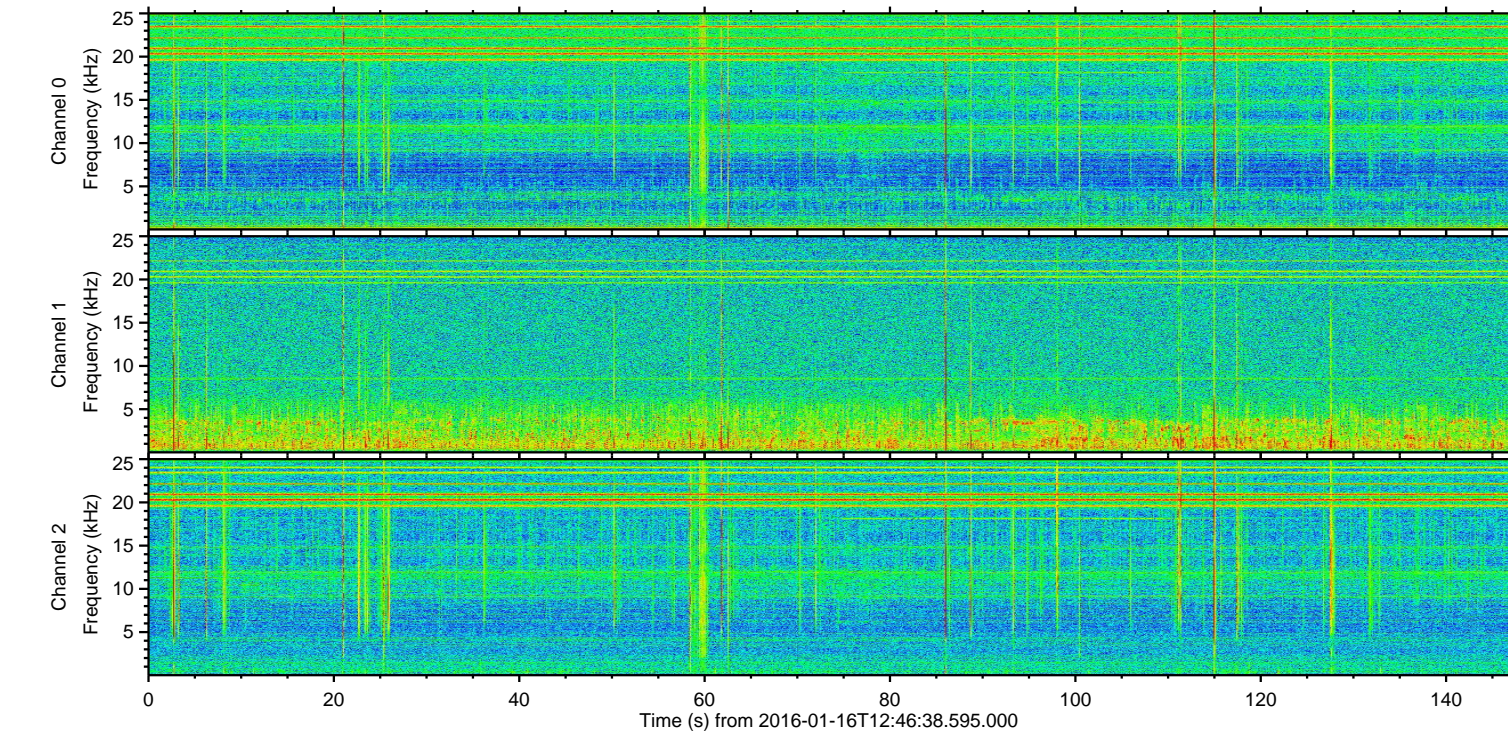
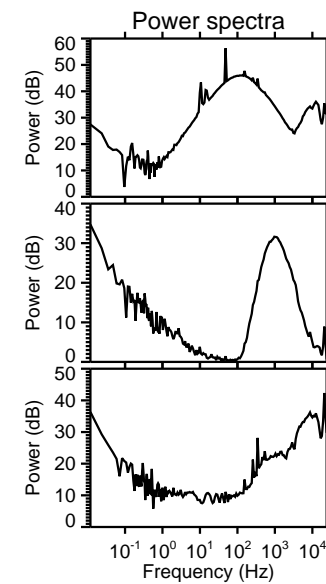
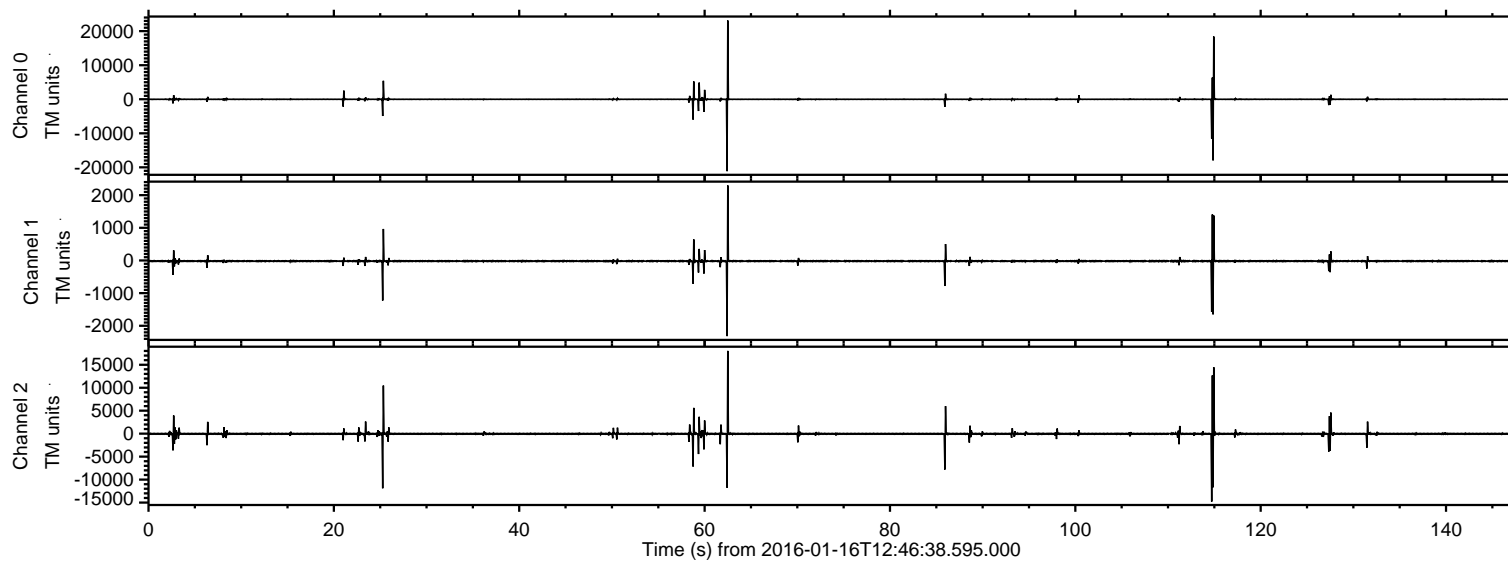
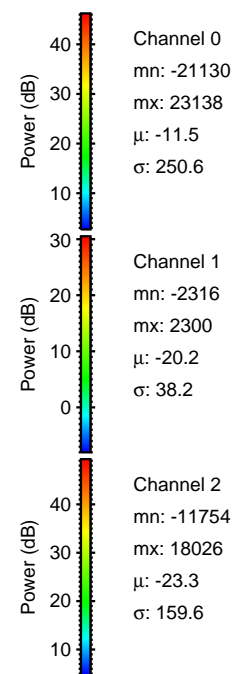
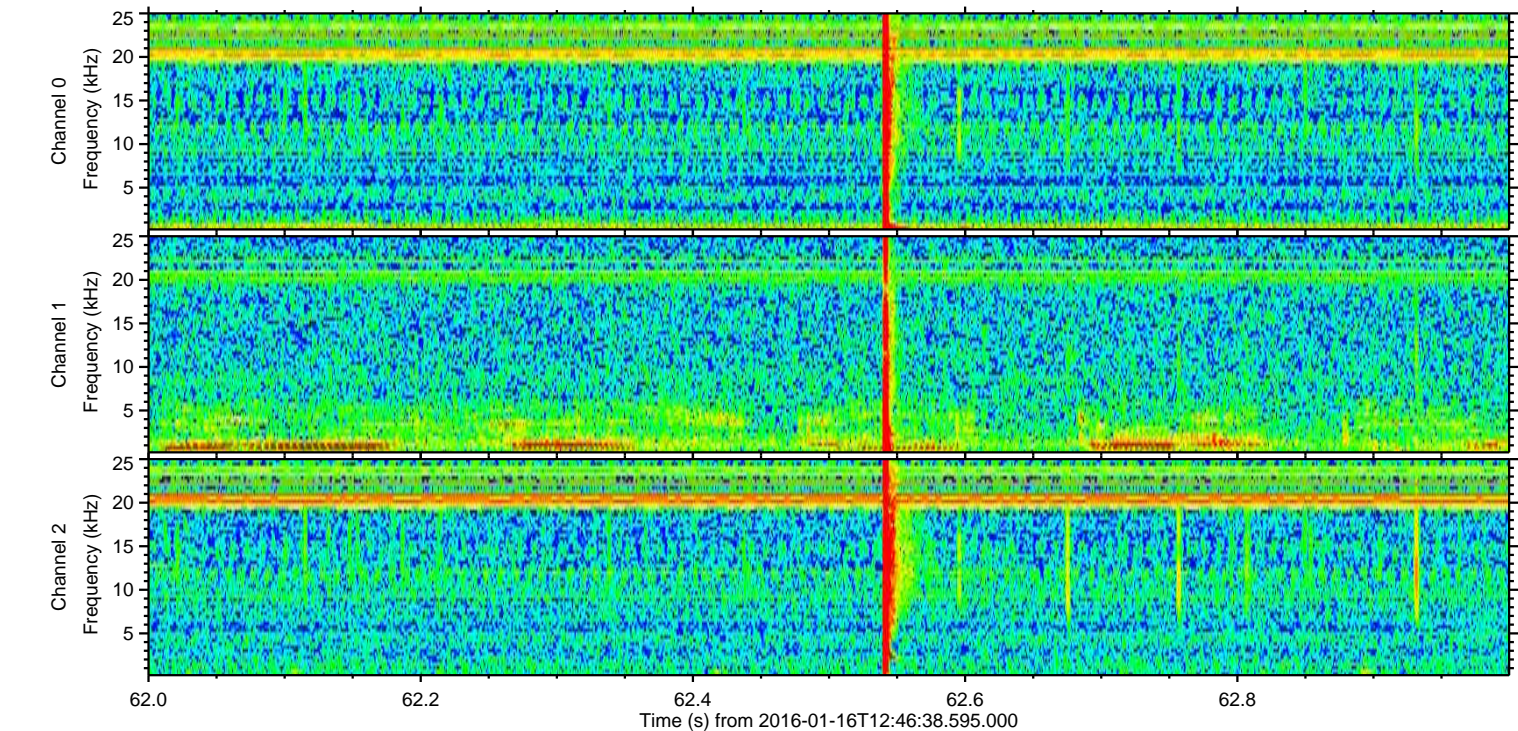
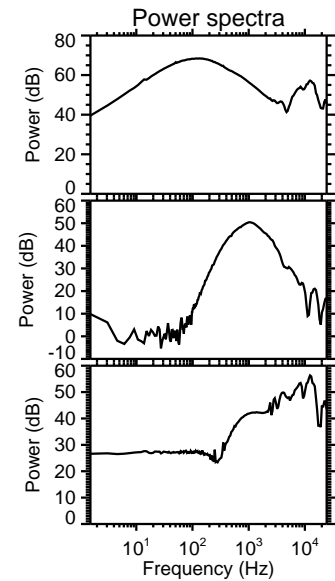
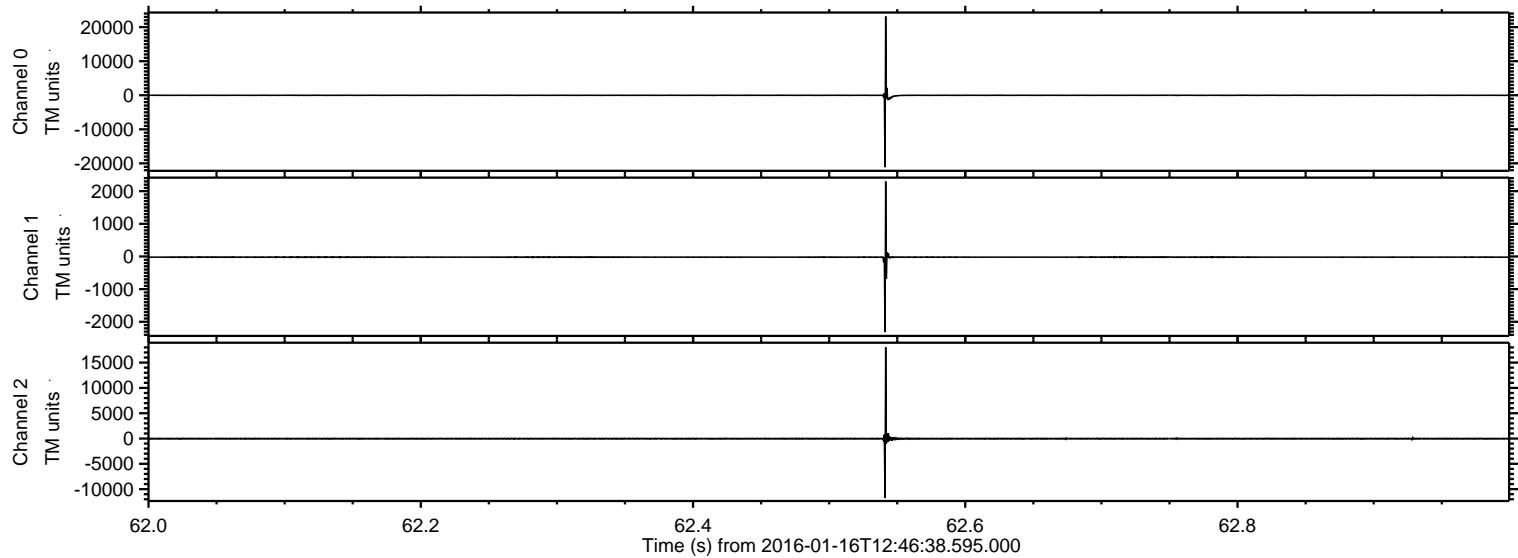


ELMAVAN 3D WAVEFORMS (Measured data sampled at 50 kHz) 51000 packets of 144 samples from 2016-01-16T12:46:38.595.000.

Processed Thu Mar 31 00:02:38 2016 by ELM ver.2012-10-06 from 001__elm20160116_124637__dat00.bin

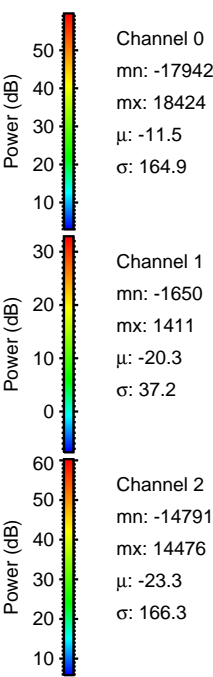
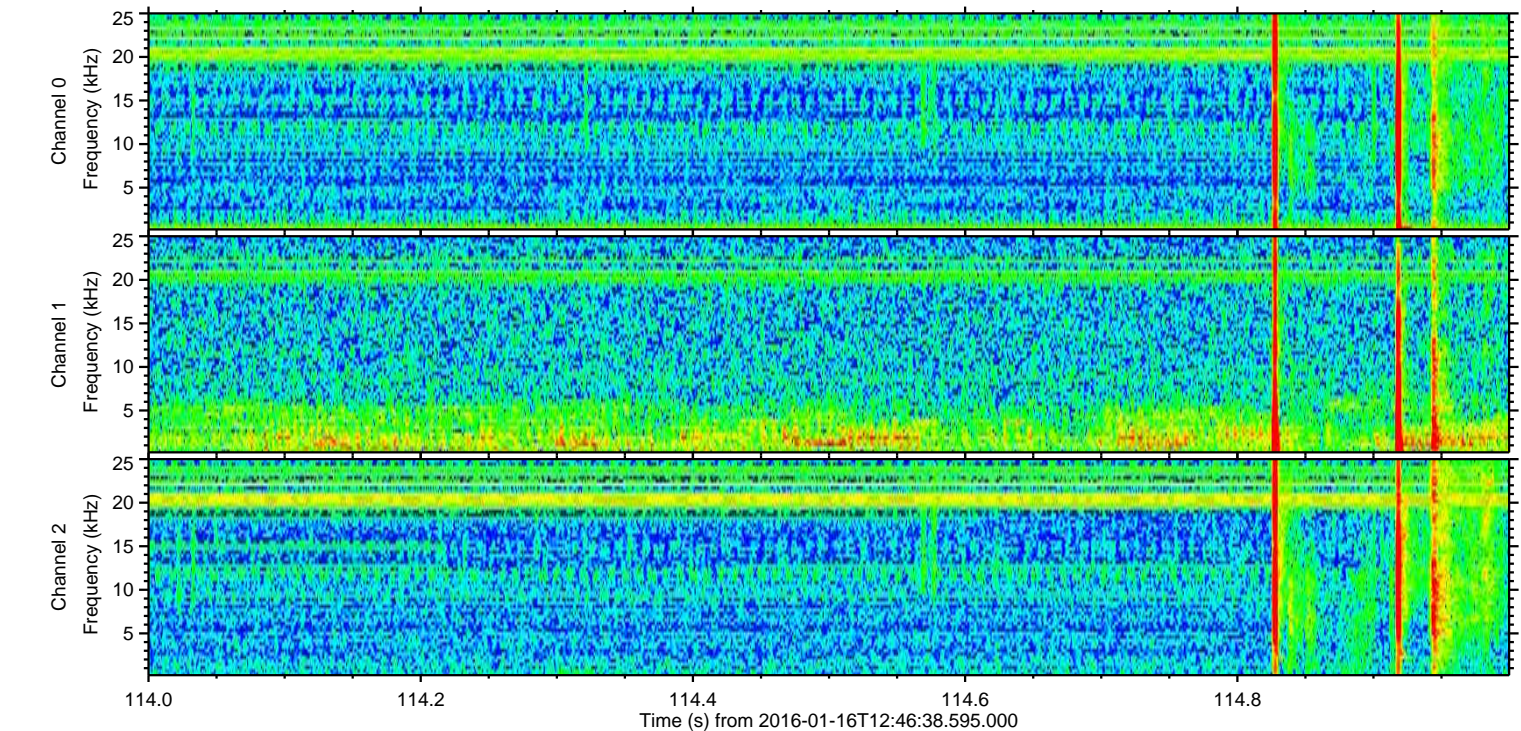
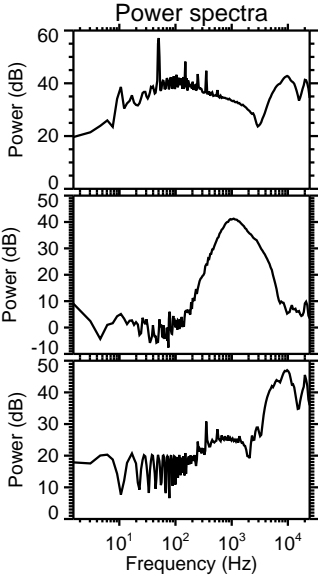
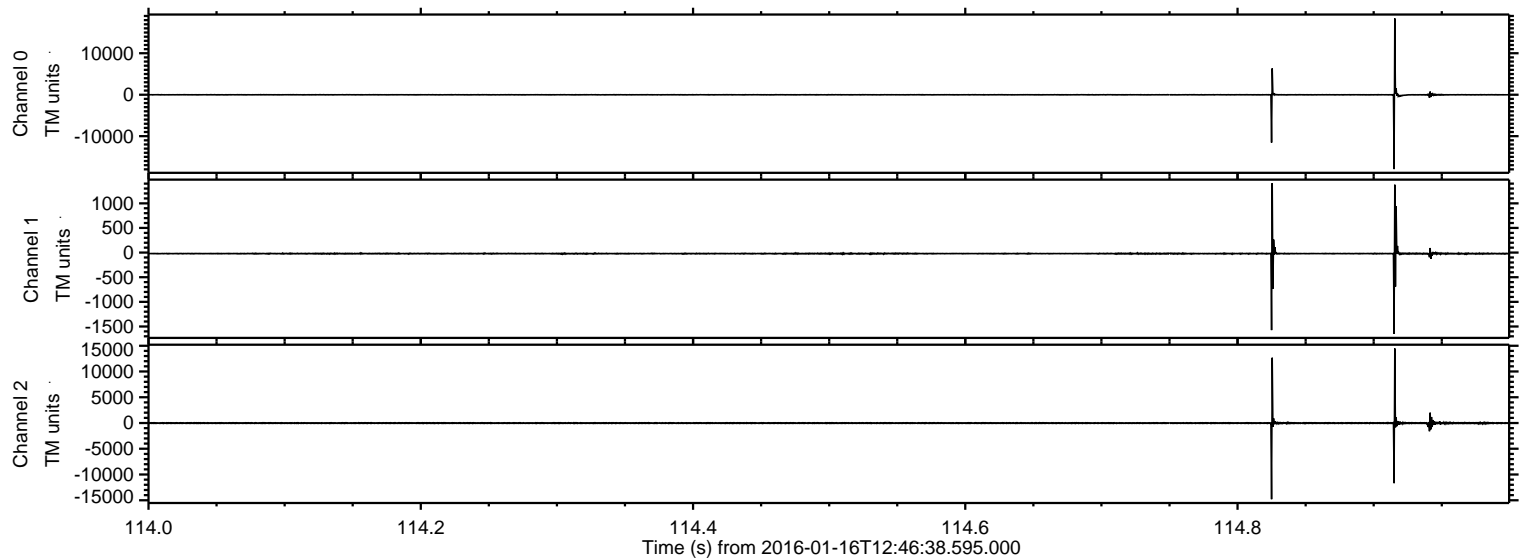


Processed Thu Mar 31 00:02:49 2016 by ELM ver.2012-10-06 from 001__elm20160116_124637__dat00.bin

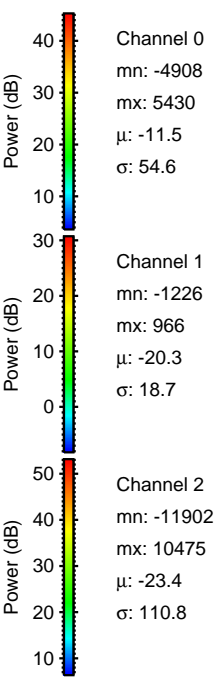
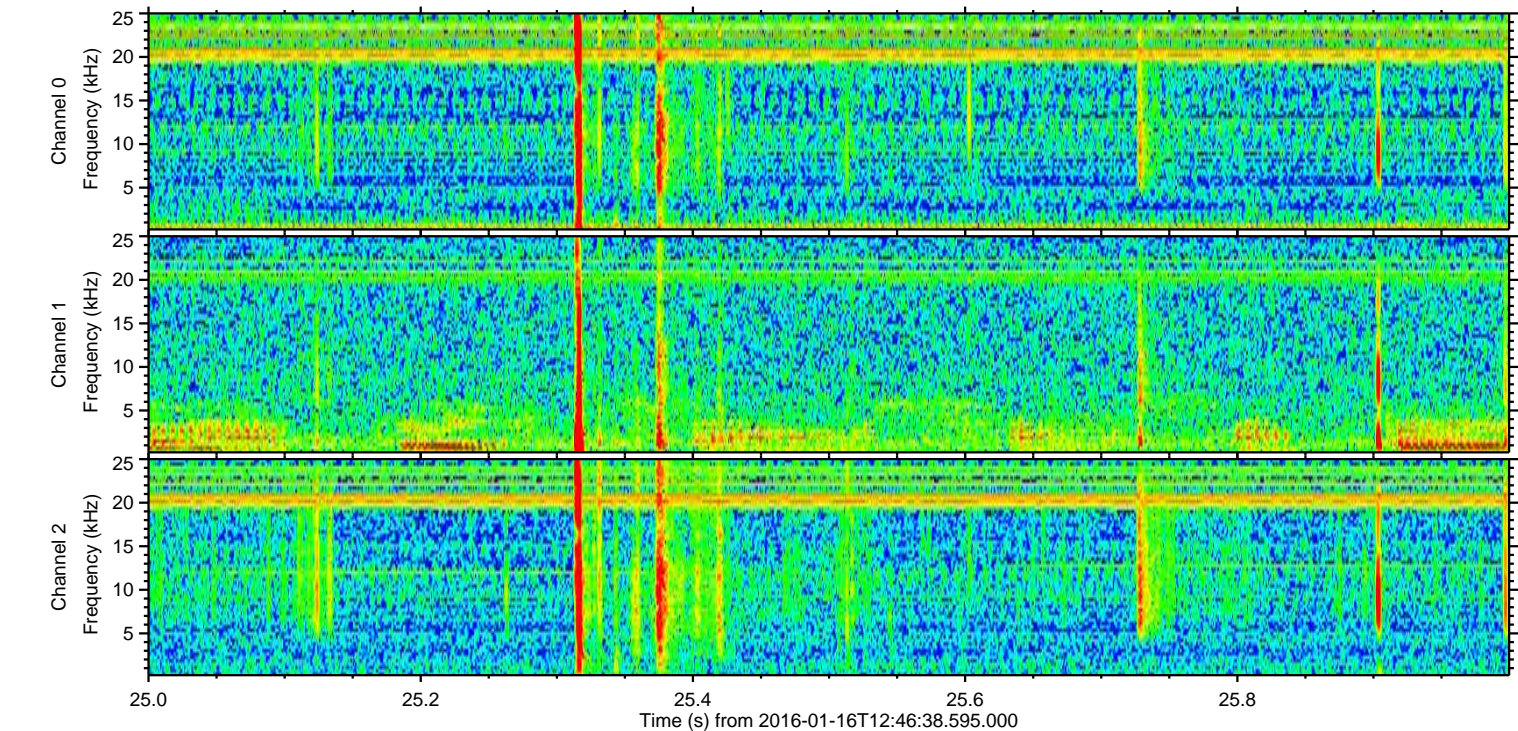
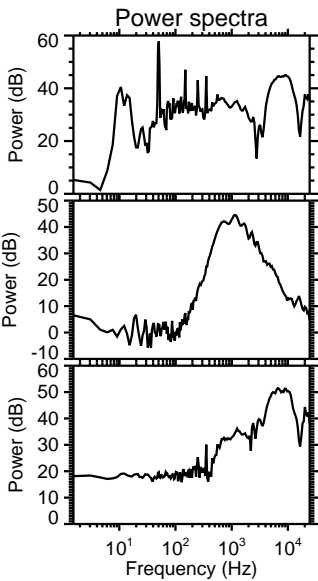
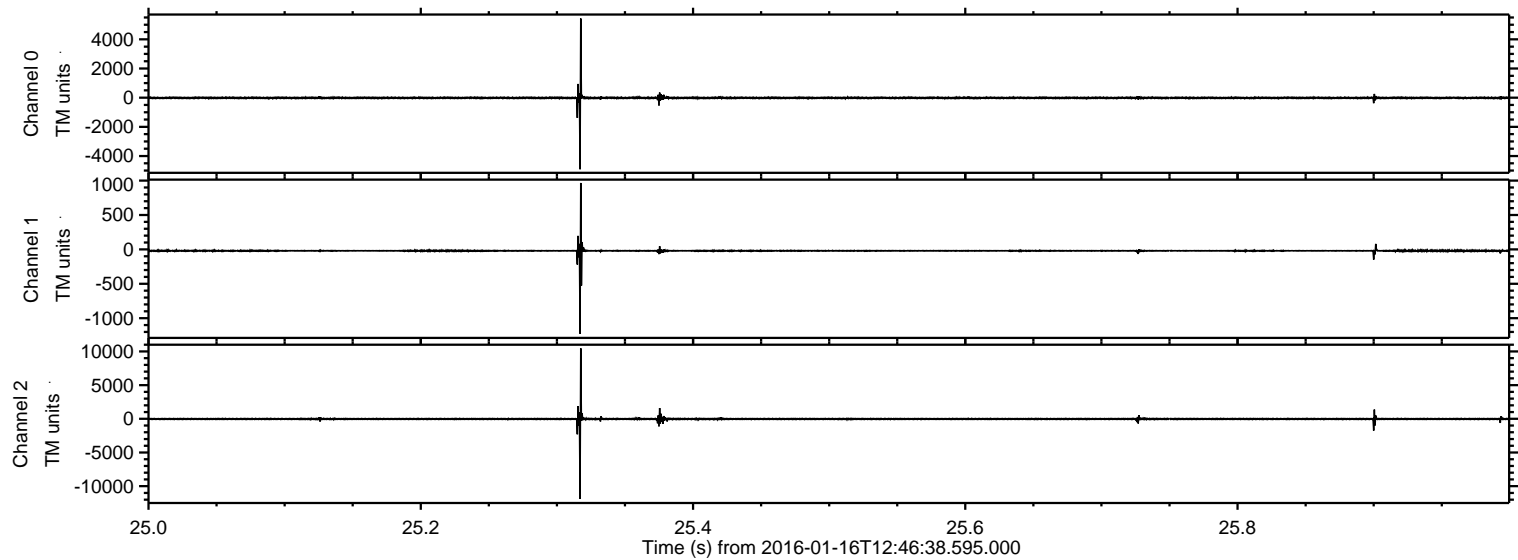


ELMAVAN 3D WAVEFORMS (Measured data sampled at 50 kHz) 51000 packets of 144 samples from 2016-01-16T12:46:38.595.000. Part 115/147

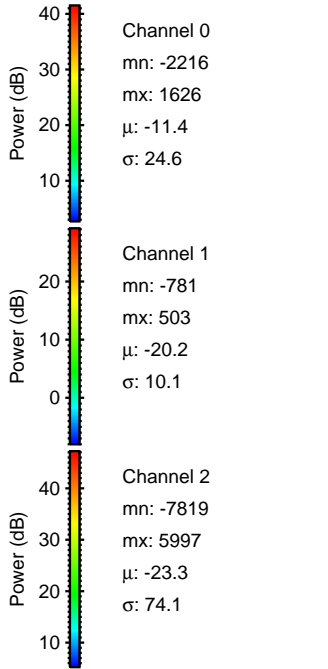
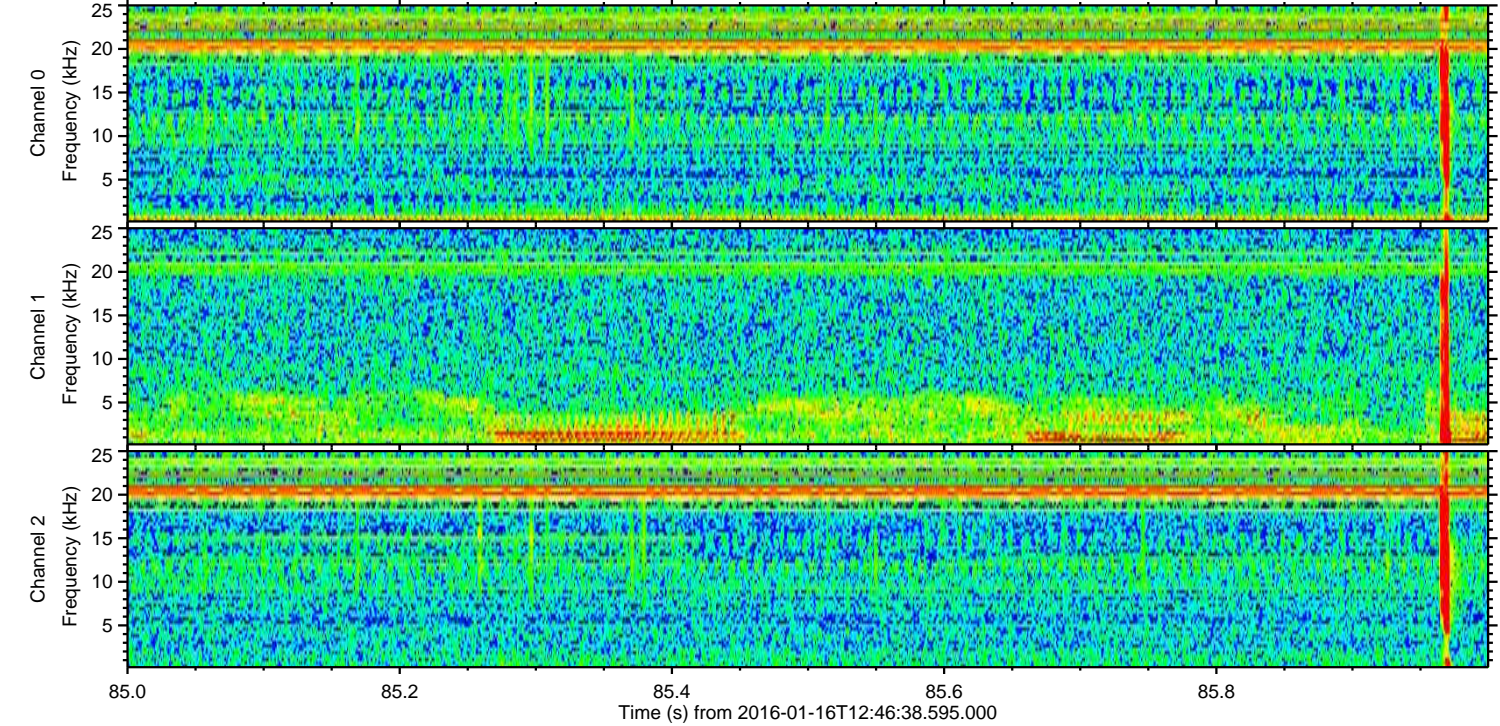
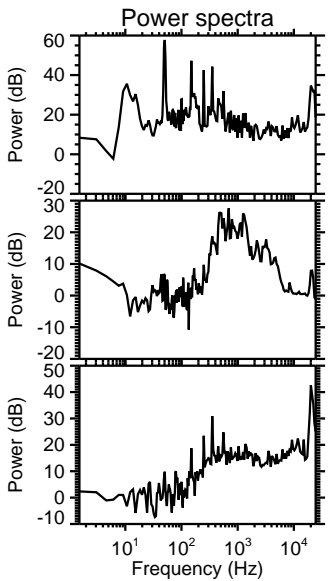
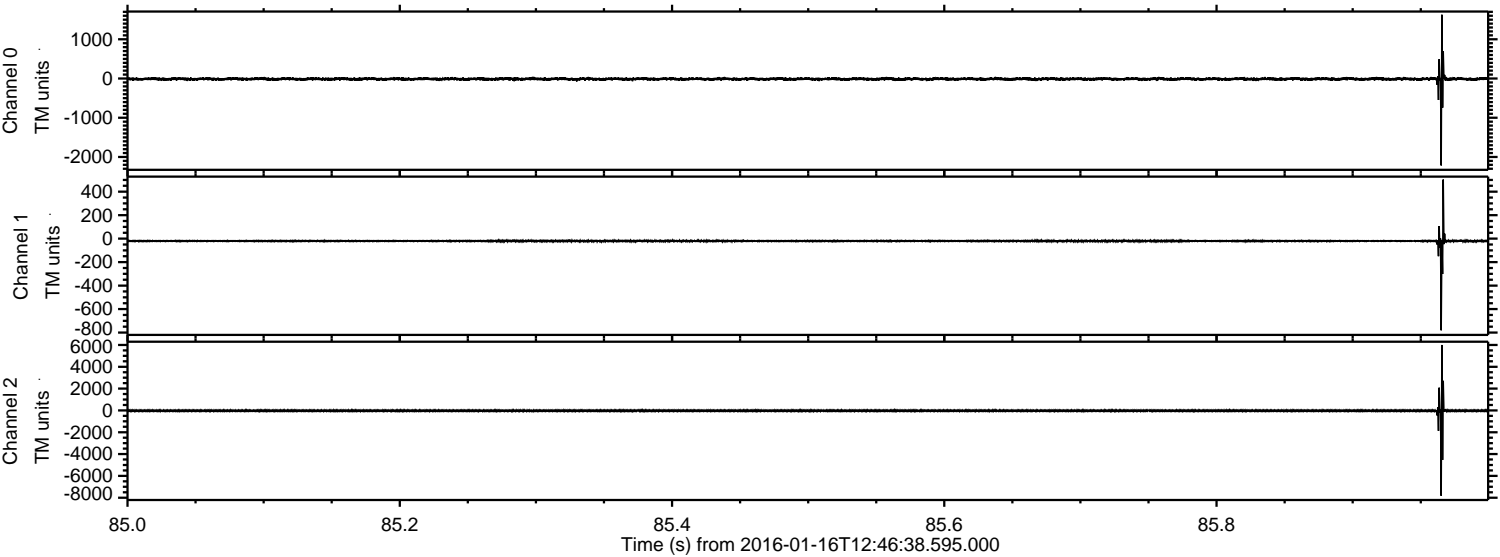
Processed Thu Mar 31 00:02:50 2016 by ELM ver.2012-10-06 from 001__elm20160116_124637__dat00.bin



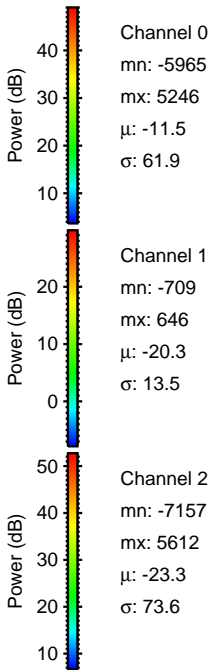
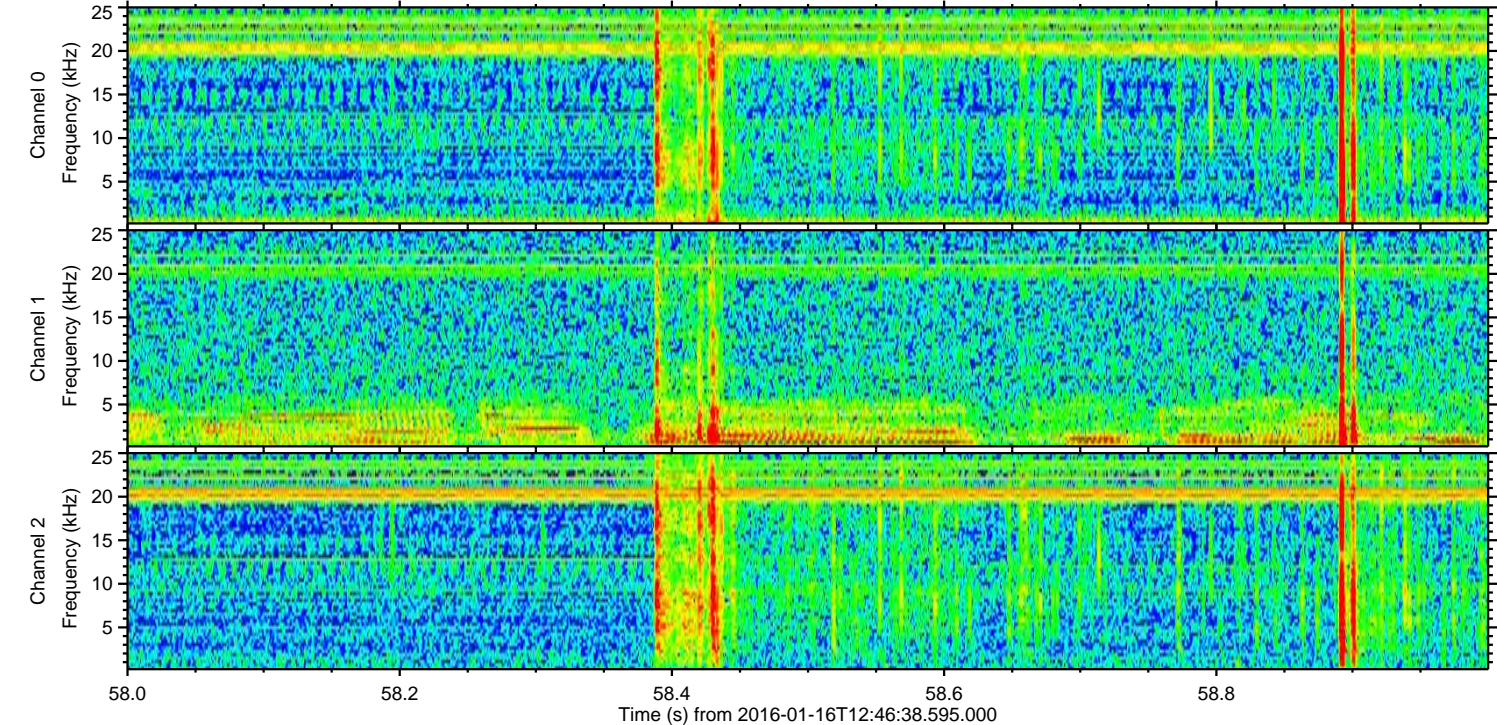
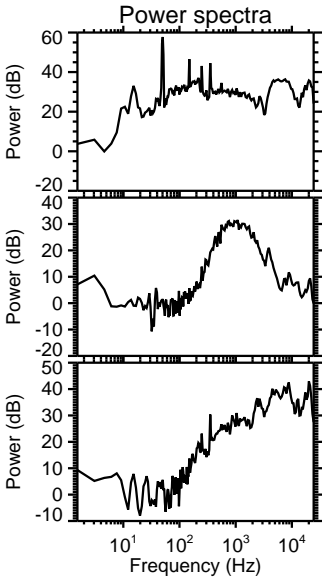
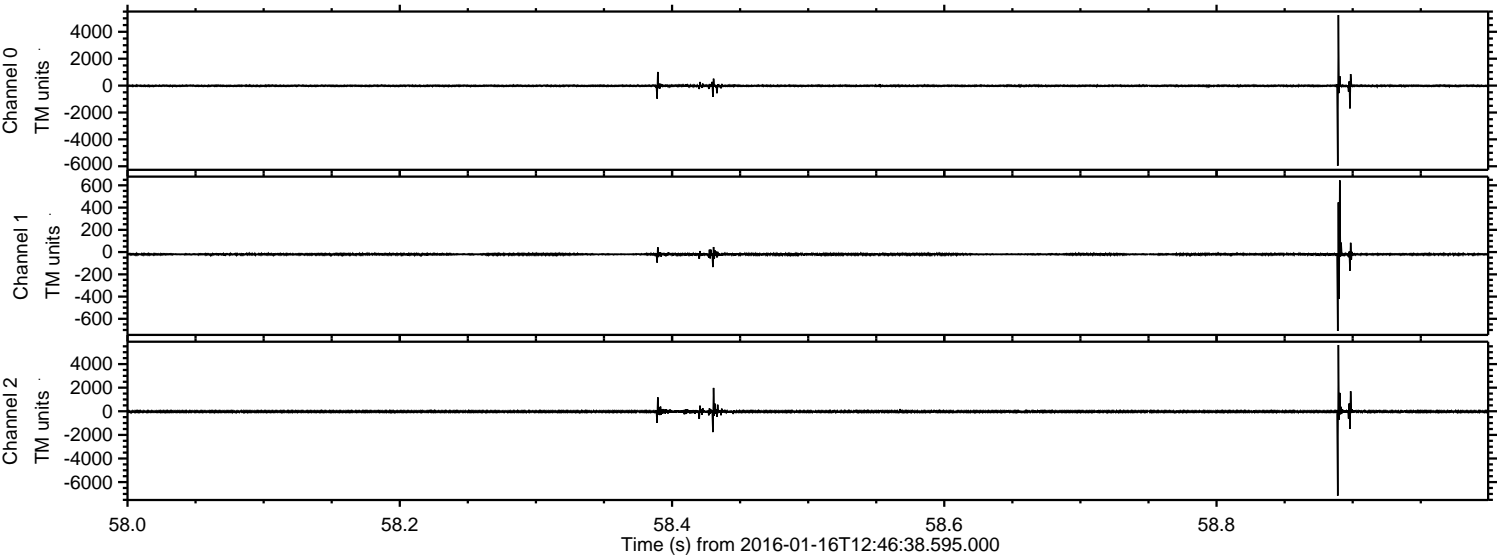
Processed Thu Mar 31 00:02:51 2016 by ELM ver.2012-10-06 from 001__elm20160116_124637__dat00.bin



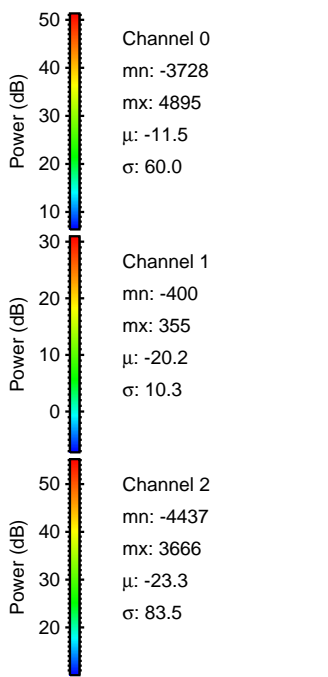
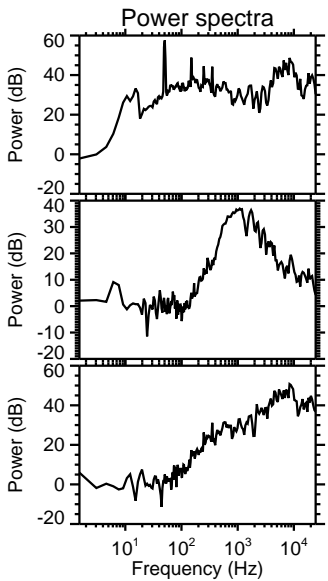
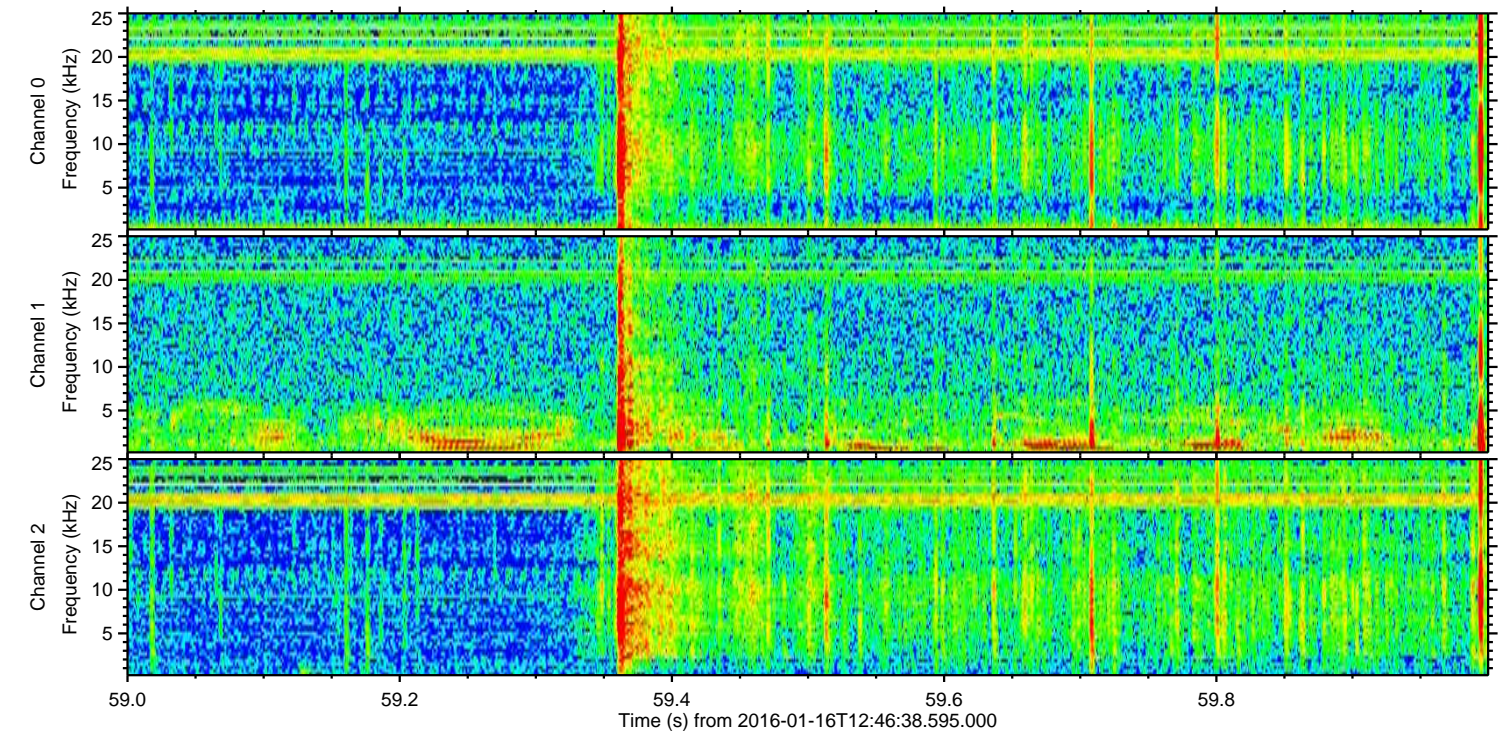
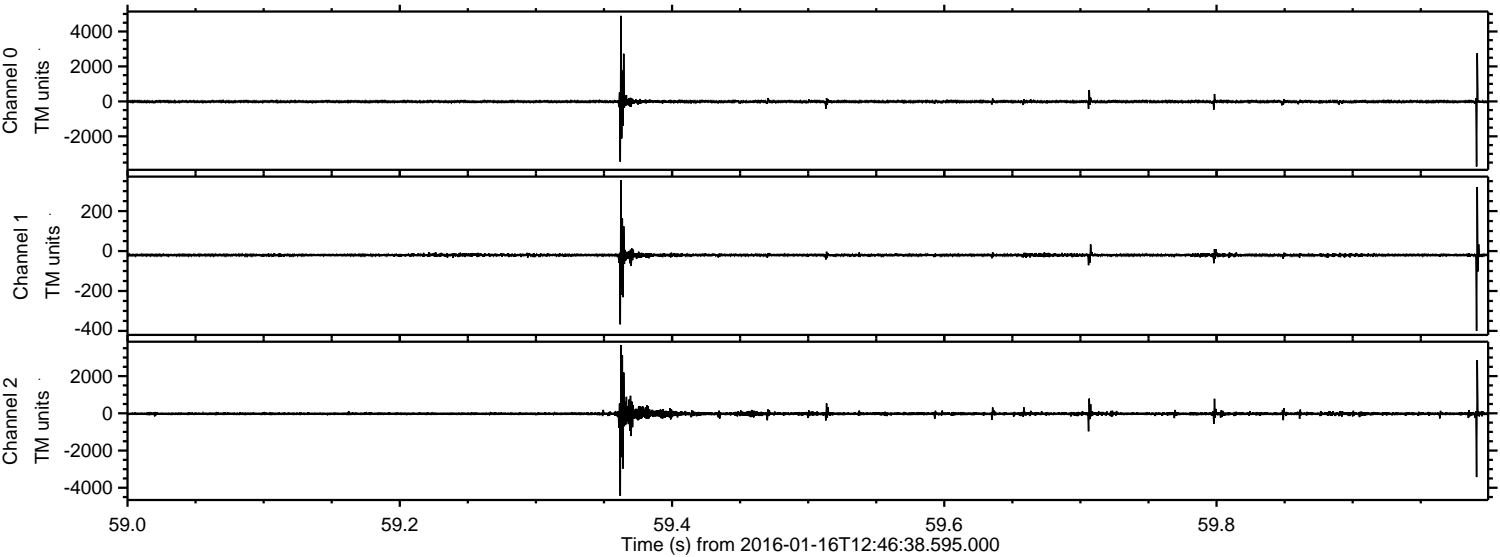
Processed Thu Mar 31 00:02:52 2016 by ELM ver.2012-10-06 from 001__elm20160116_124637__dat00.bin



Processed Thu Mar 31 00:02:53 2016 by ELM ver.2012-10-06 from 001__elm20160116_124637__dat00.bin

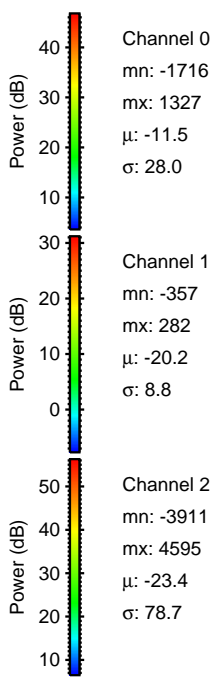
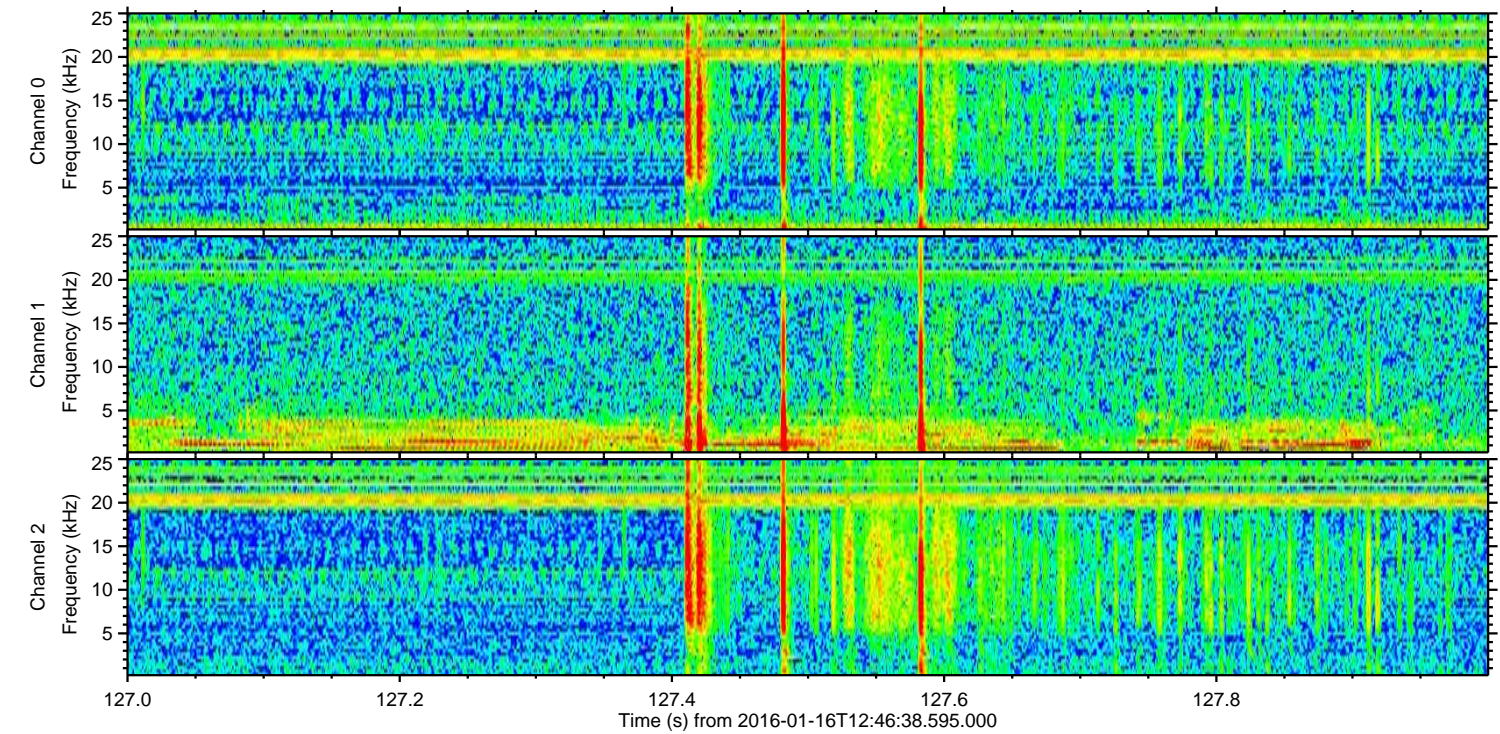
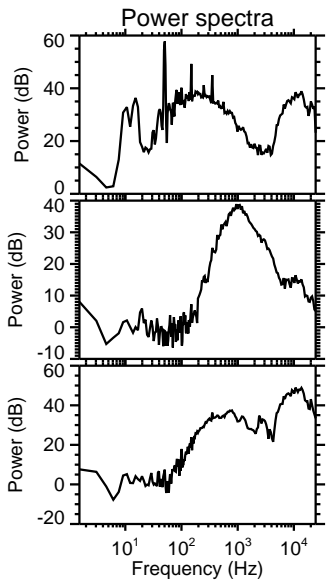
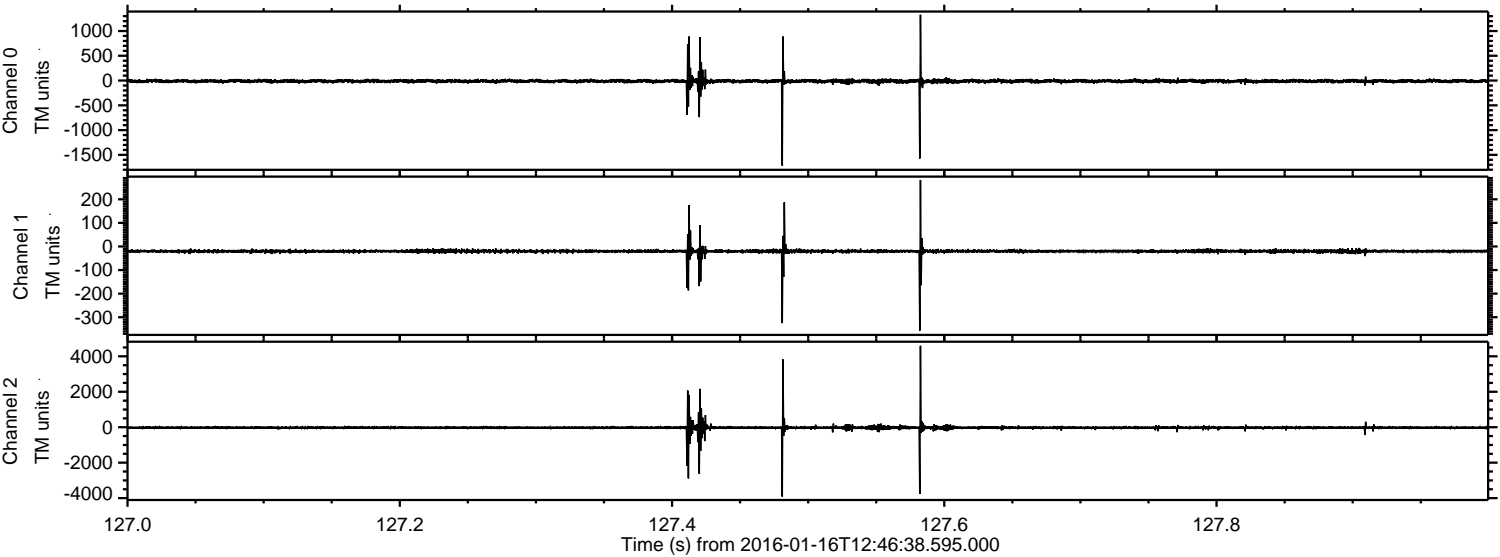


Processed Thu Mar 31 00:02:54 2016 by ELM ver.2012-10-06 from 001__elm20160116_124637__dat00.bin

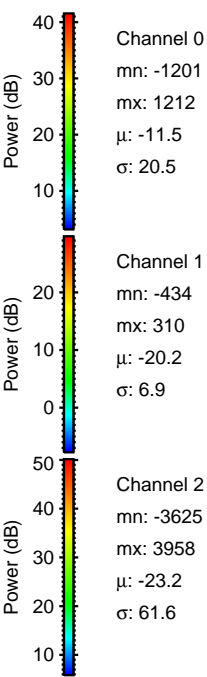
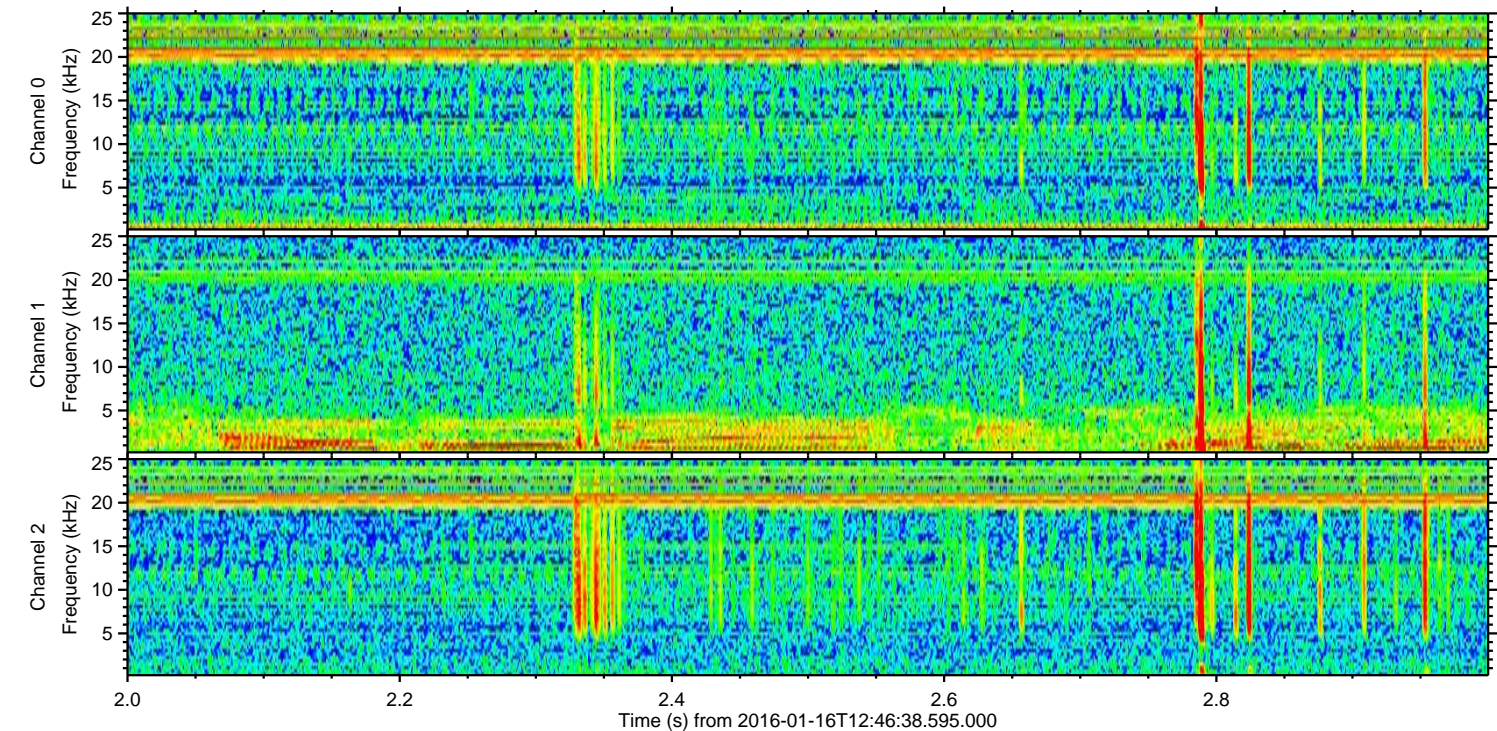
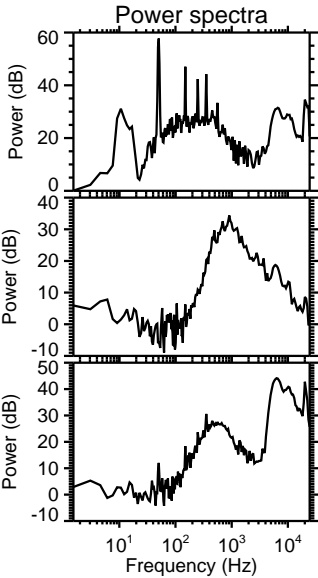
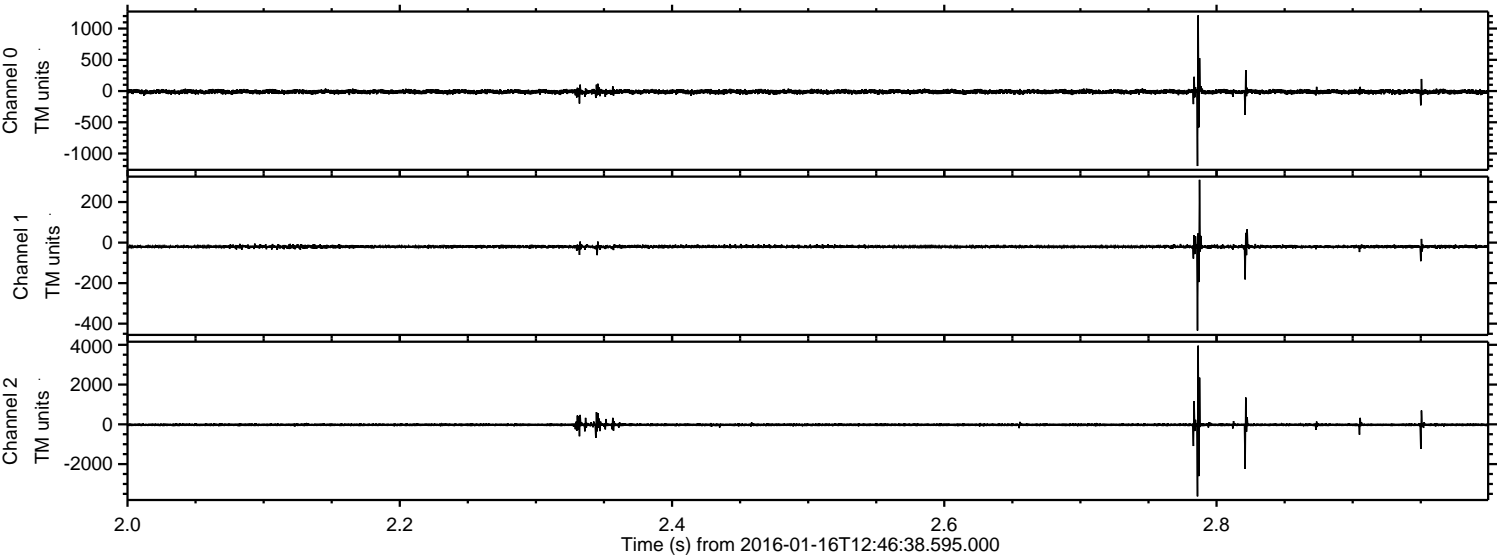


ELMAVAN 3D WAVEFORMS (Measured data sampled at 50 kHz) 51000 packets of 144 samples from 2016-01-16T12:46:38.595.000. Part 128/147

Processed Thu Mar 31 00:02:55 2016 by ELM ver.2012-10-06 from 001__elm20160116_124637__dat00.bin

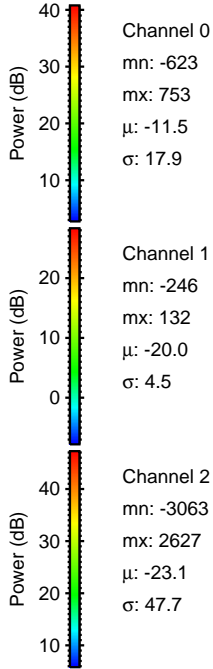
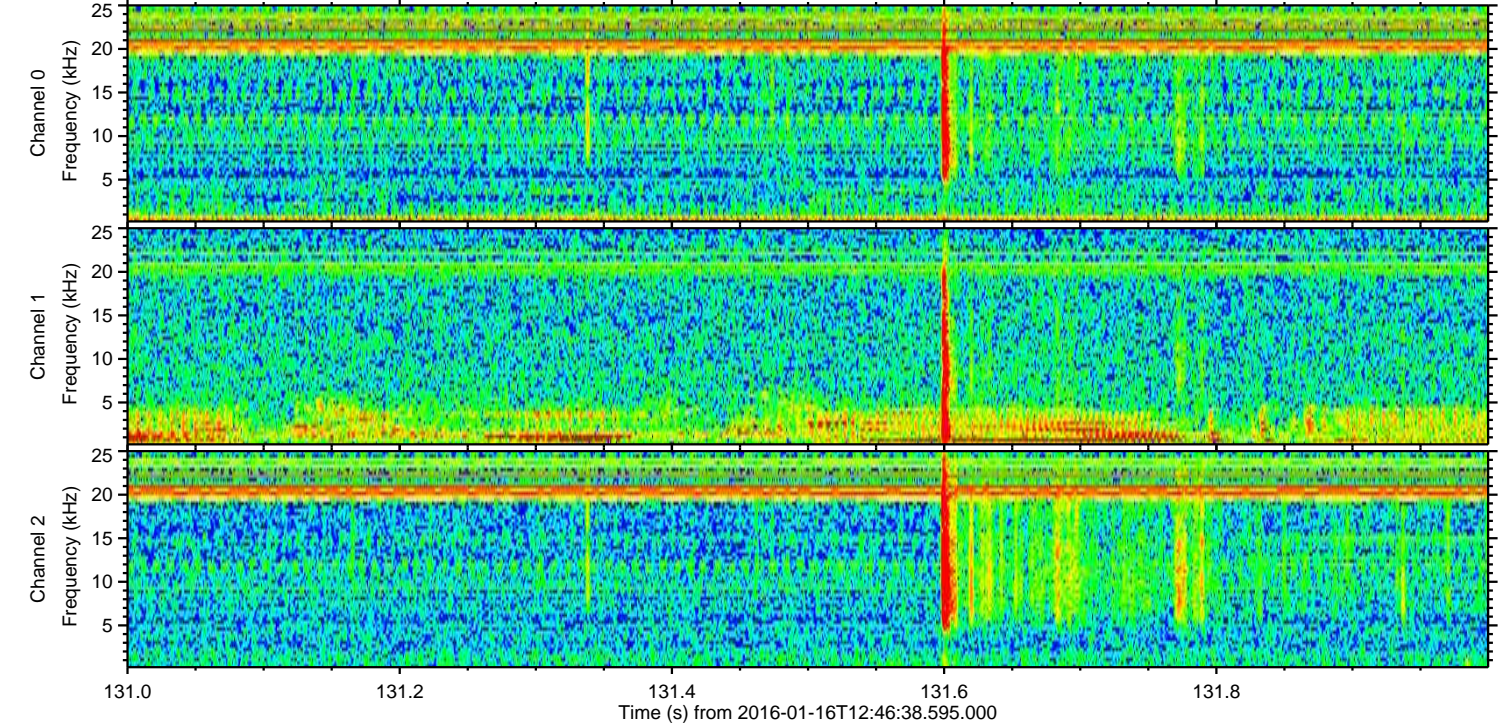
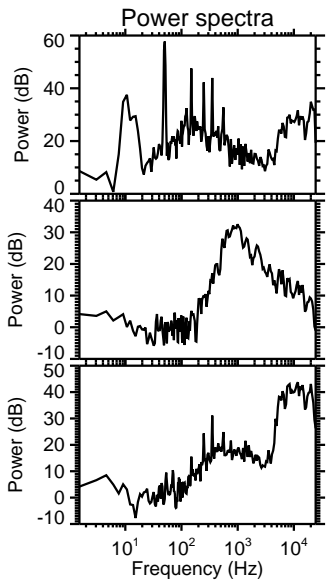
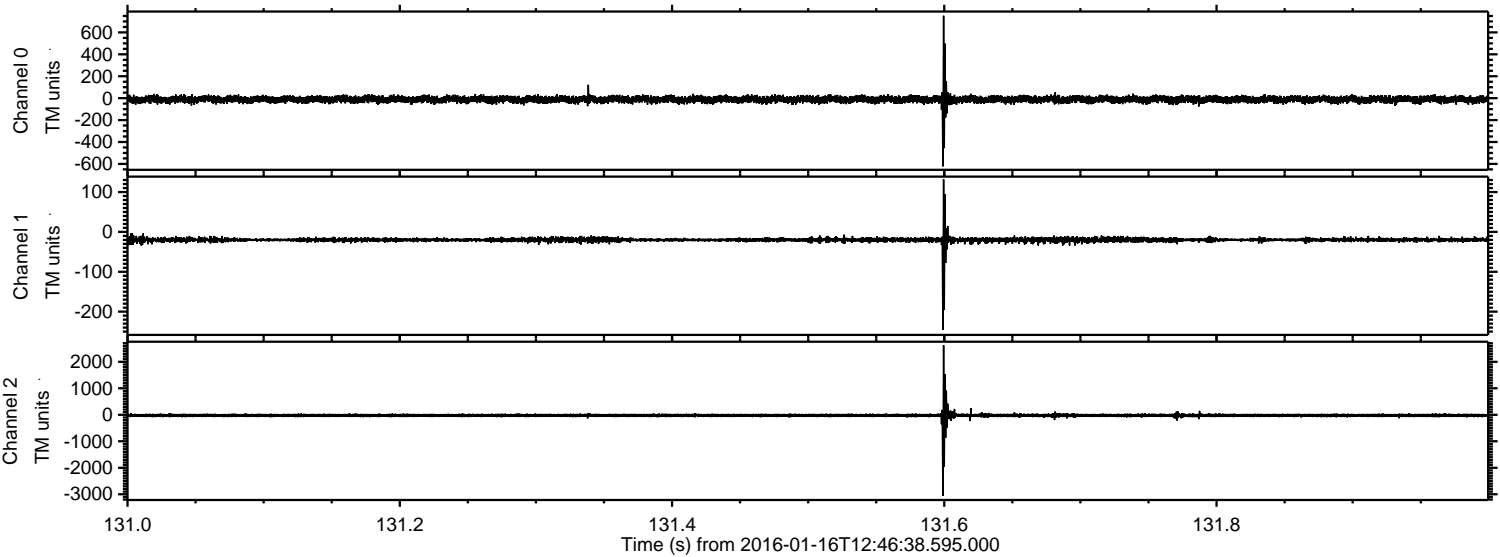


Processed Thu Mar 31 00:02:56 2016 by ELM ver.2012-10-06 from 001__elm20160116_124637__dat00.bin



ELMAVAN 3D WAVEFORMS (Measured data sampled at 50 kHz) 51000 packets of 144 samples from 2016-01-16T12:46:38.595.000. Part 132/147

Processed Thu Mar 31 00:02:57 2016 by ELM ver.2012-10-06 from 001__elm20160116_124637__dat00.bin



Channel 0
mn: -623
mx: 753
 μ : -11.5
 σ : 17.9

Channel 1
mn: -246
mx: 132
 μ : -20.0
 σ : 4.5

Channel 2
mn: -3063
mx: 2627
 μ : -23.1
 σ : 47.7

Processed Thu Mar 31 00:02:58 2016 by ELM ver.2012-10-06 from 001__elm20160116_124637__dat00.bin

