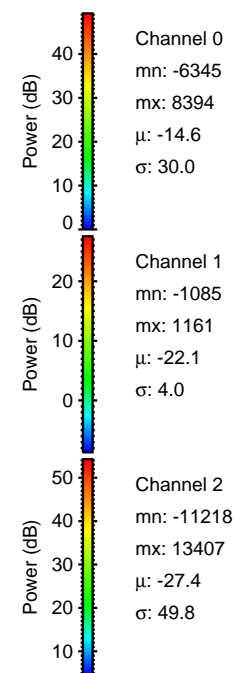
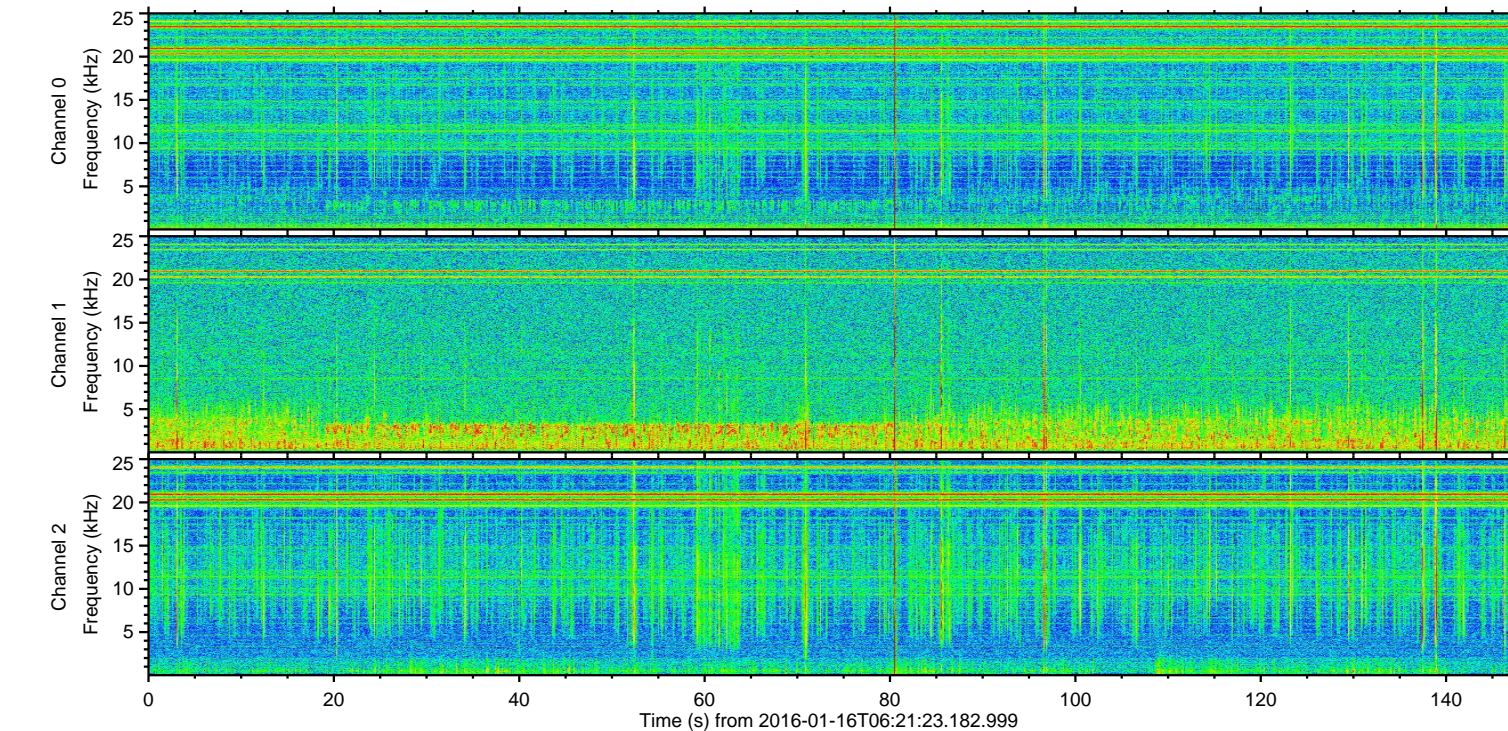
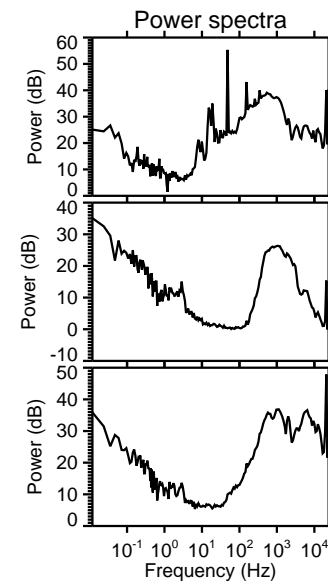
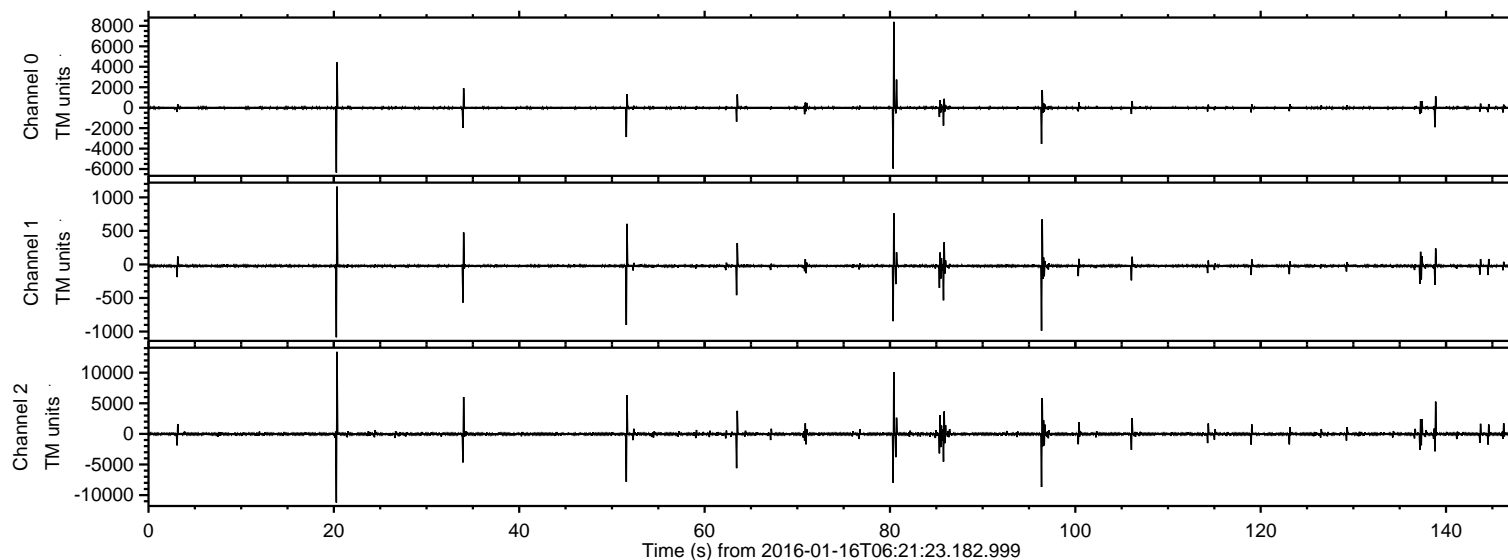


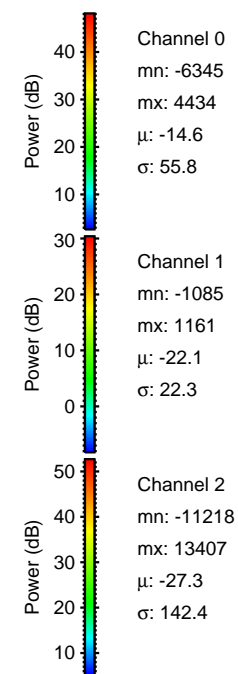
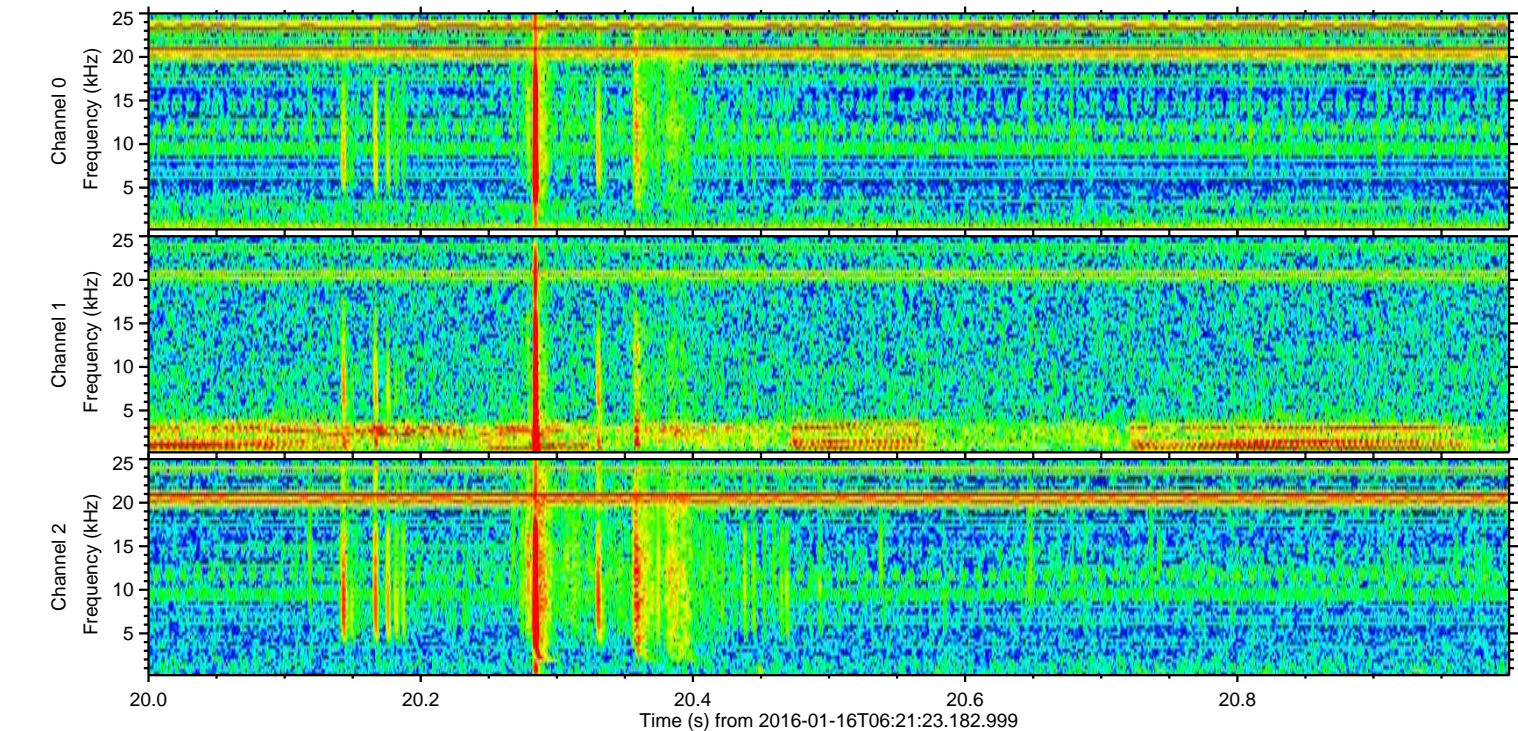
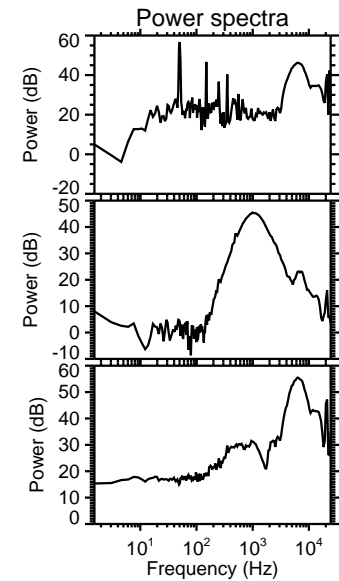
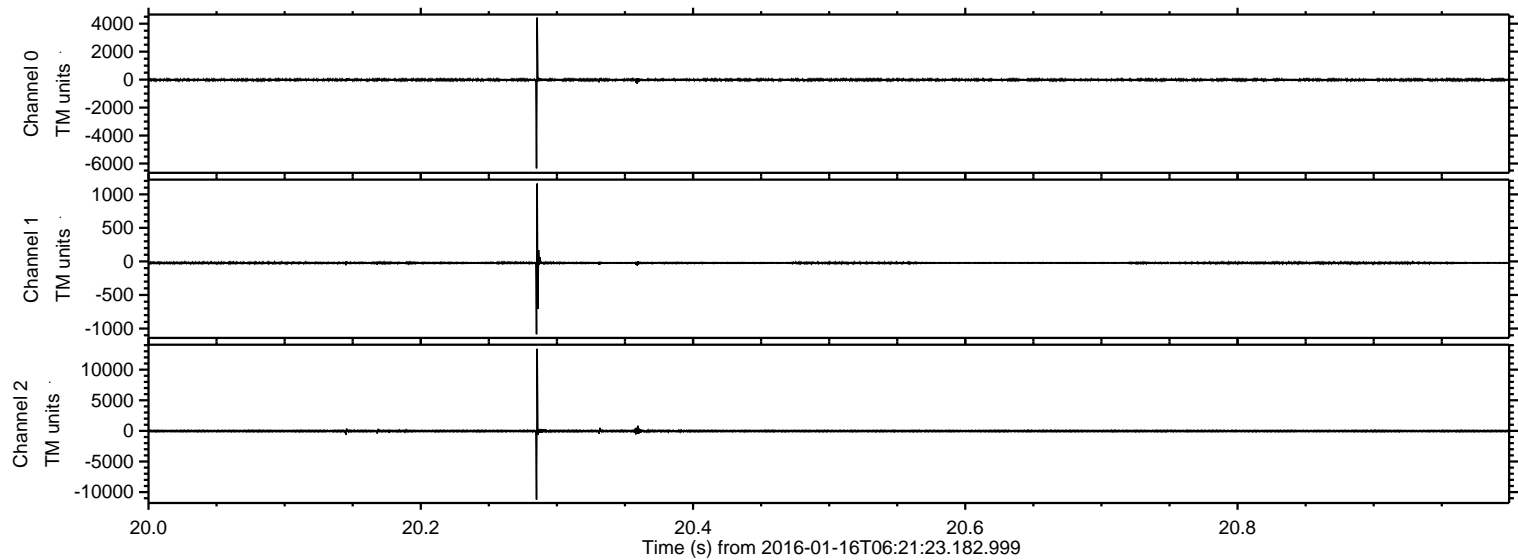
ELMAVAN 3D WAVEFORMS (Measured data sampled at 50 kHz) 51000 packets of 144 samples from 2016-01-16T06:21:23.182.999.

Processed Wed Mar 30 22:46:26 2016 by ELM ver.2012-10-06 from 001__elm20160116_062122__dat00.bin



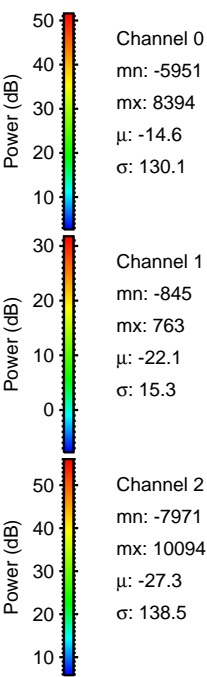
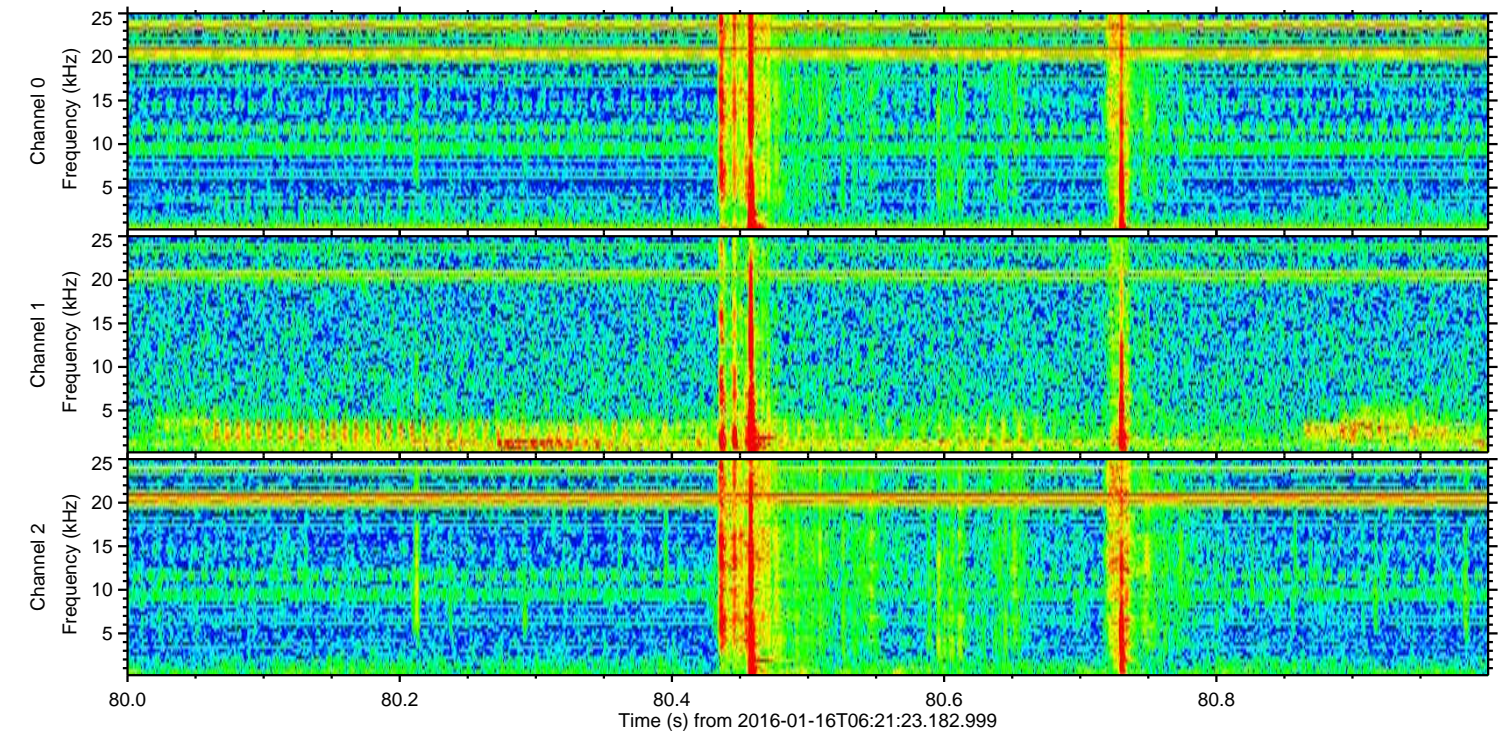
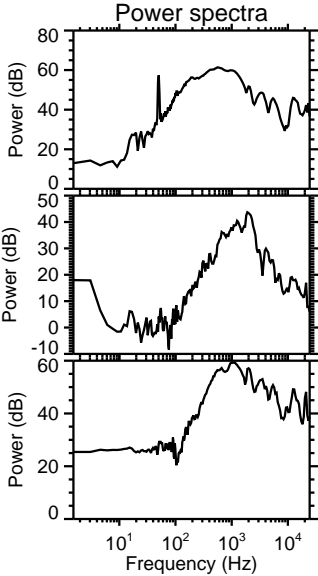
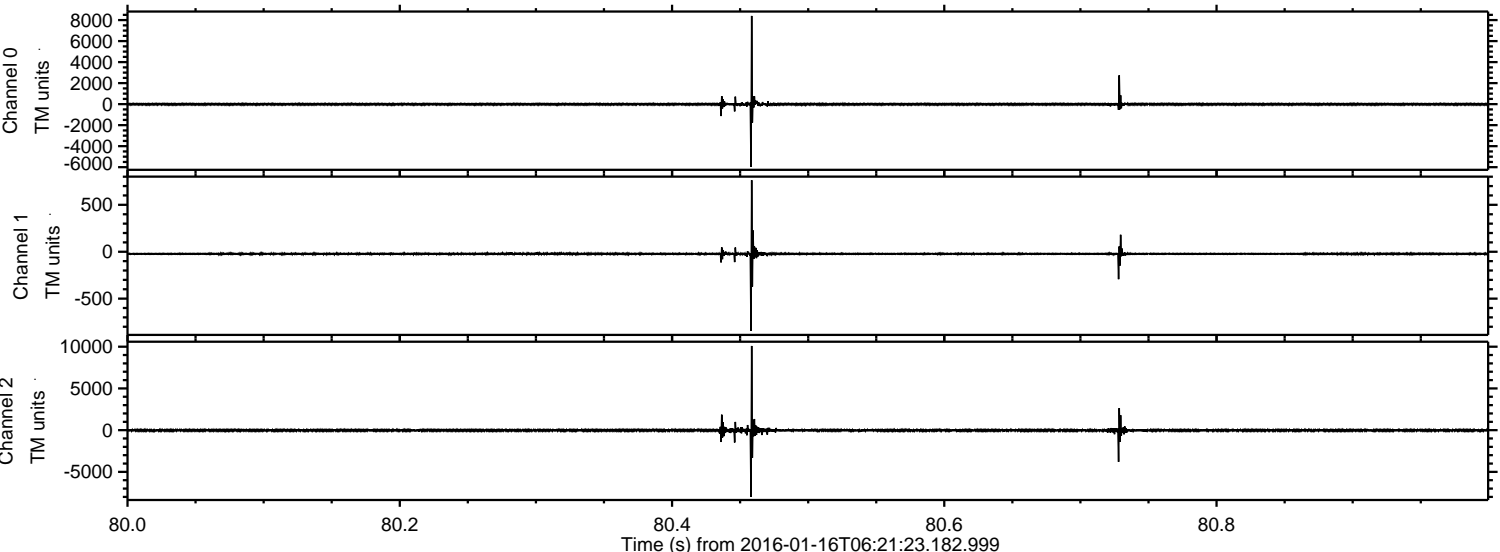
ELMAVAN 3D WAVEFORMS (Measured data sampled at 50 kHz) 51000 packets of 144 samples from 2016-01-16T06:21:23.182.999. Part 21/147

Processed Wed Mar 30 22:46:37 2016 by ELM ver.2012-10-06 from 001__elm20160116_062122__dat00.bin



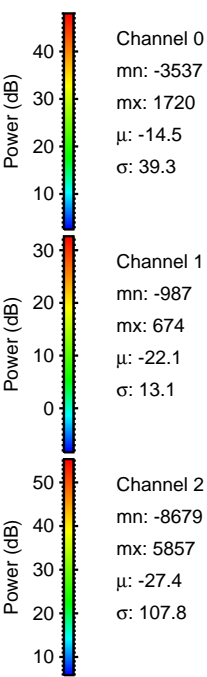
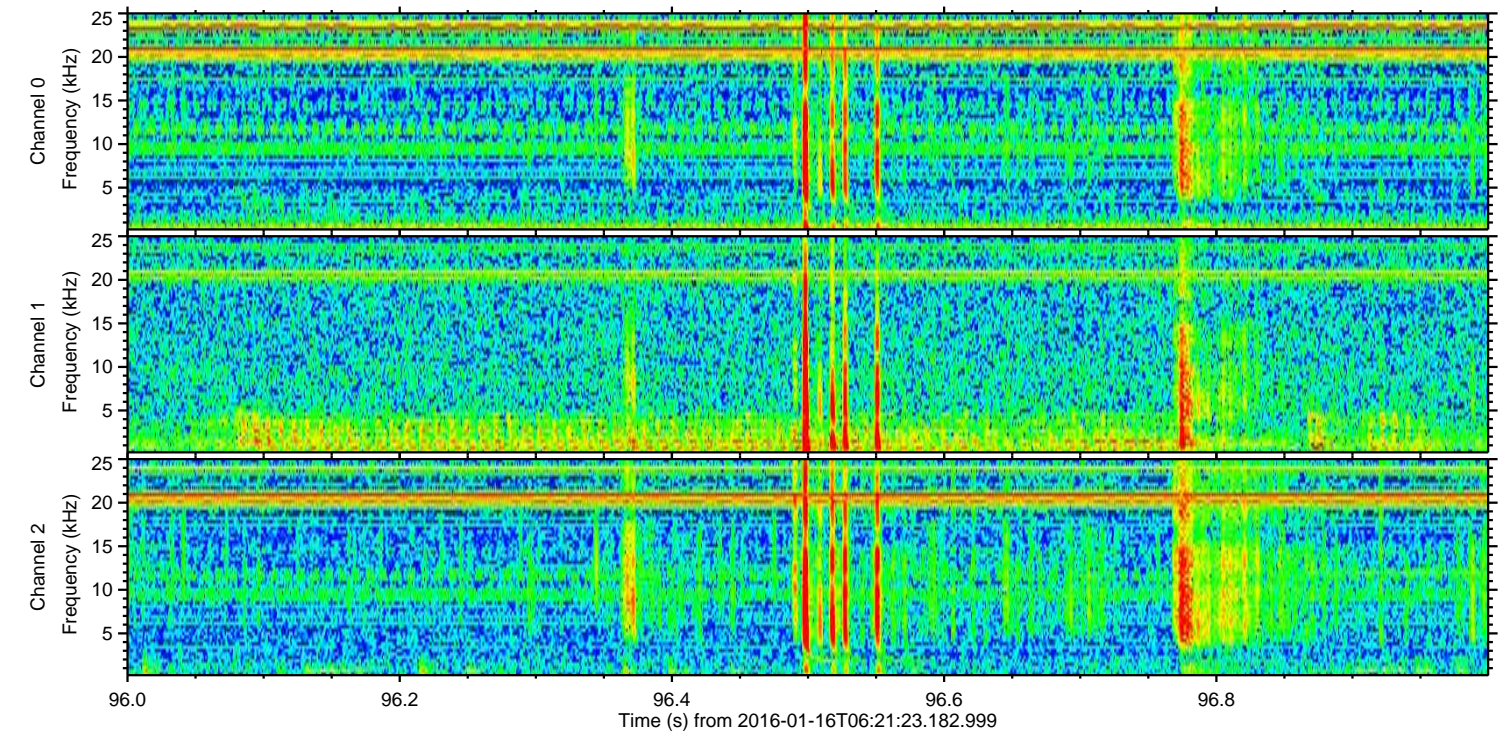
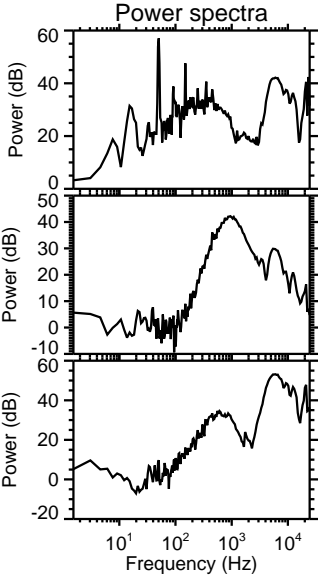
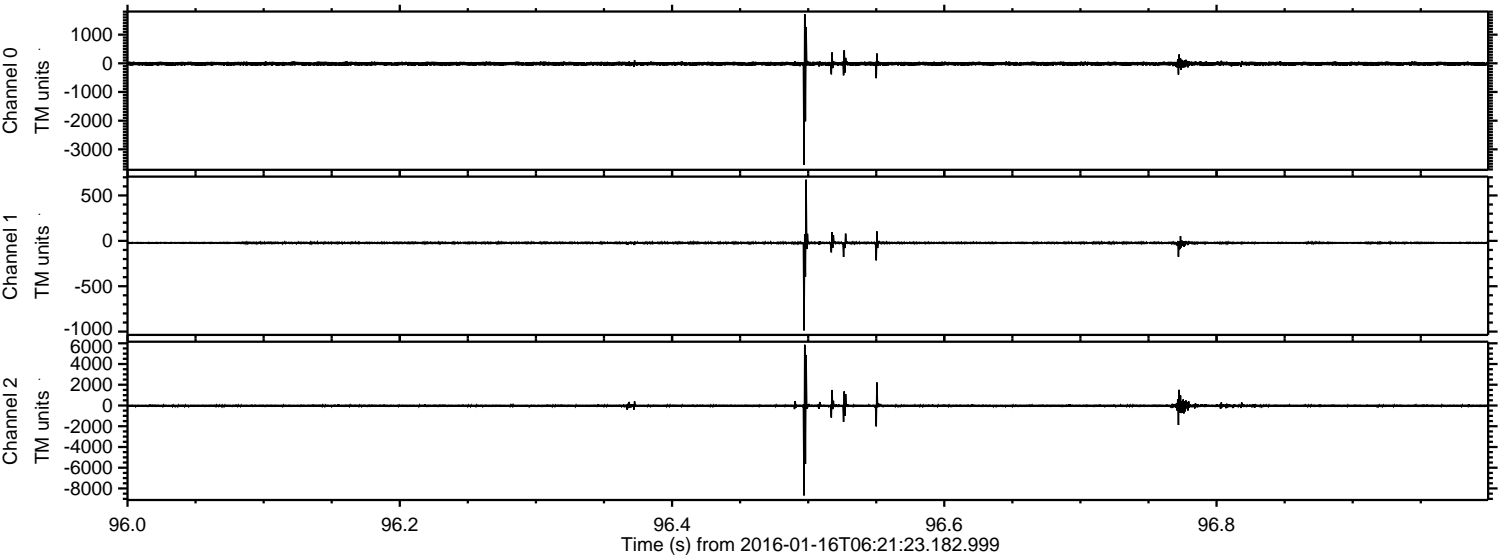
ELMAVAN 3D WAVEFORMS (Measured data sampled at 50 kHz) 51000 packets of 144 samples from 2016-01-16T06:21:23.182.999. Part 81/147

Processed Wed Mar 30 22:46:38 2016 by ELM ver.2012-10-06 from 001__elm20160116_062122__dat00.bin



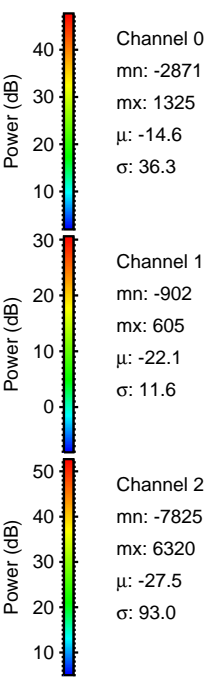
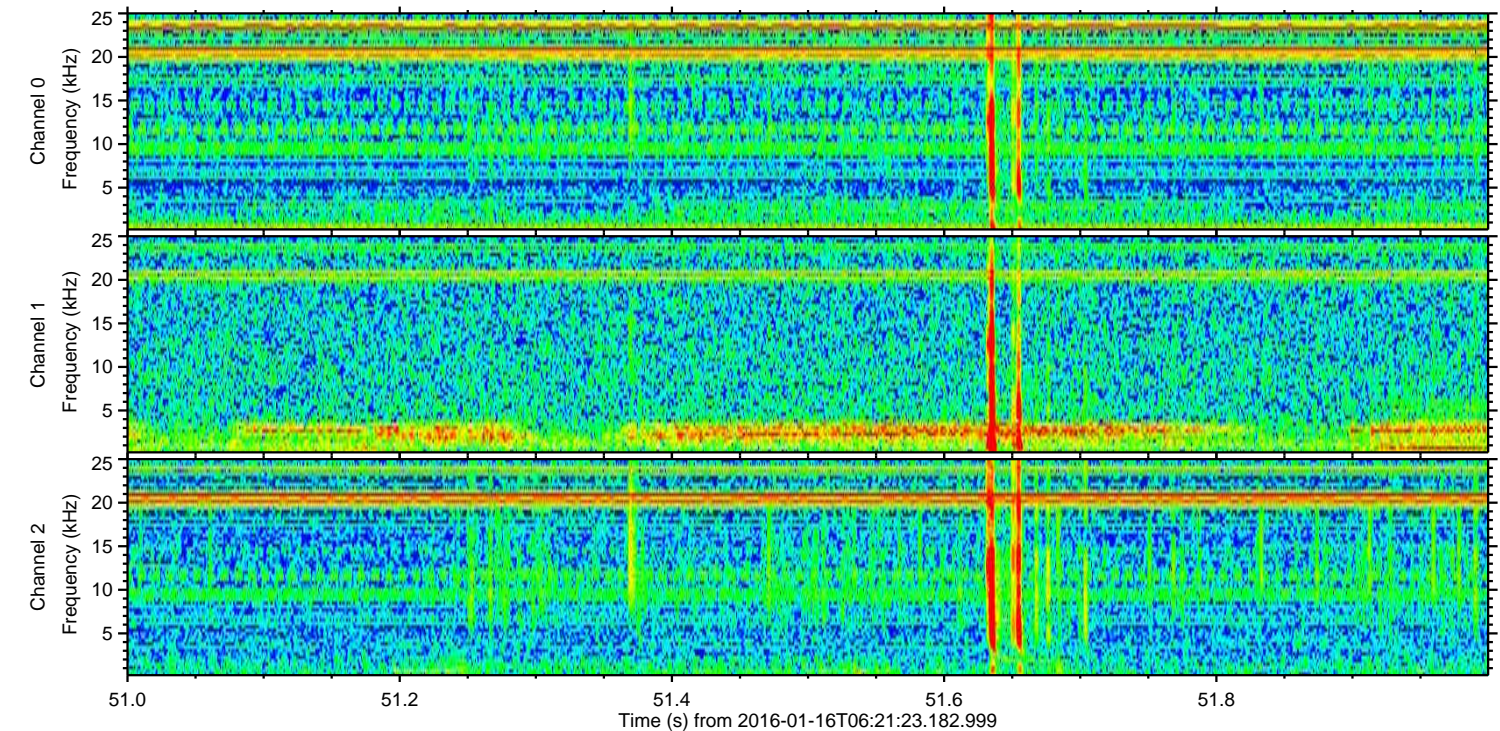
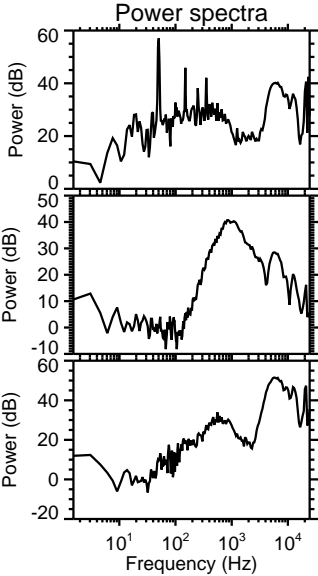
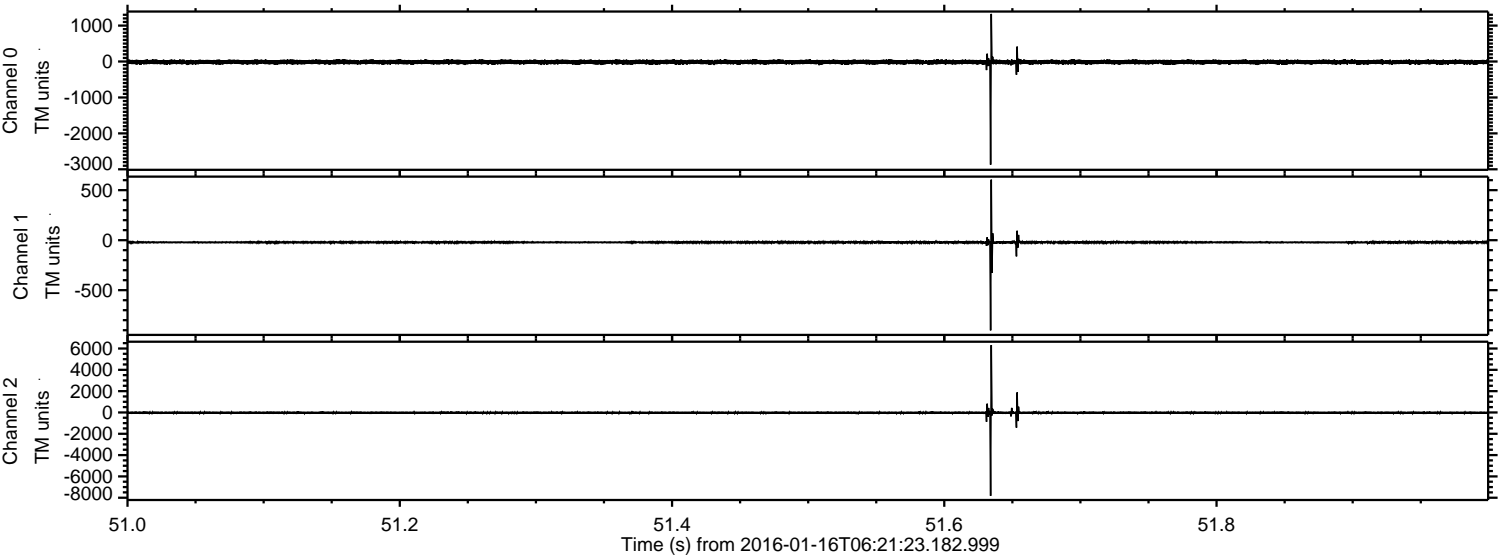
ELMAVAN 3D WAVEFORMS (Measured data sampled at 50 kHz) 51000 packets of 144 samples from 2016-01-16T06:21:23.182.999. Part 97/147

Processed Wed Mar 30 22:46:39 2016 by ELM ver.2012-10-06 from 001__elm20160116_062122__dat00.bin



ELMAVAN 3D WAVEFORMS (Measured data sampled at 50 kHz) 51000 packets of 144 samples from 2016-01-16T06:21:23.182.999. Part 52/147

Processed Wed Mar 30 22:46:40 2016 by ELM ver.2012-10-06 from 001__elm20160116_062122__dat00.bin

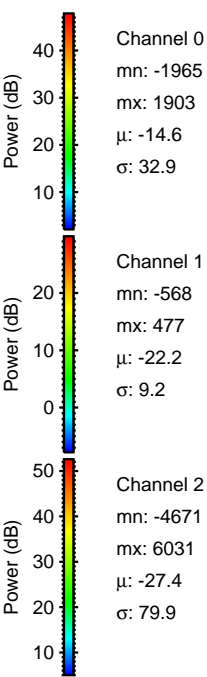
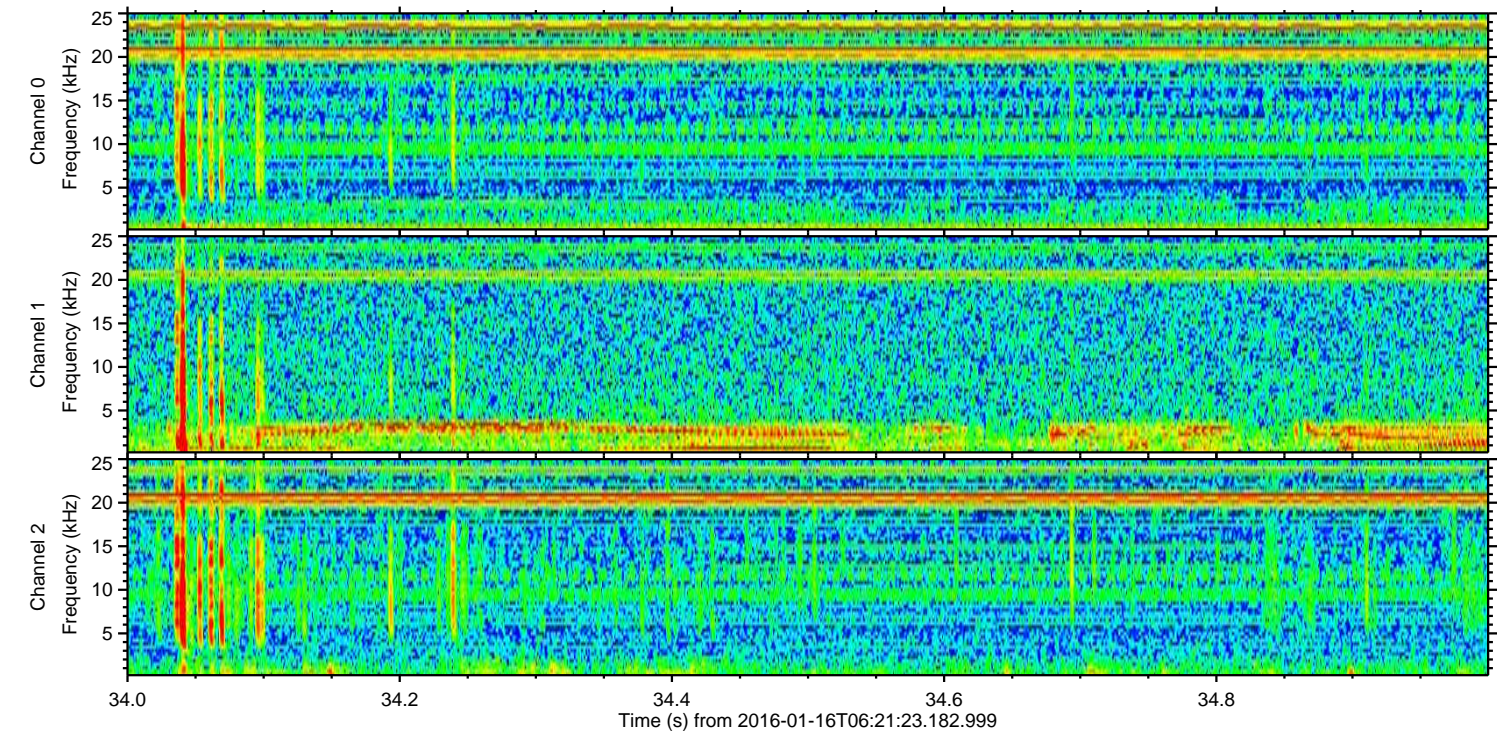
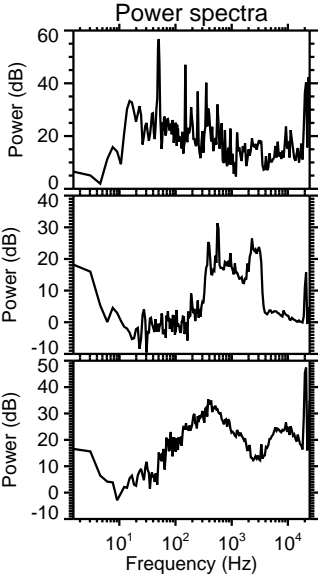
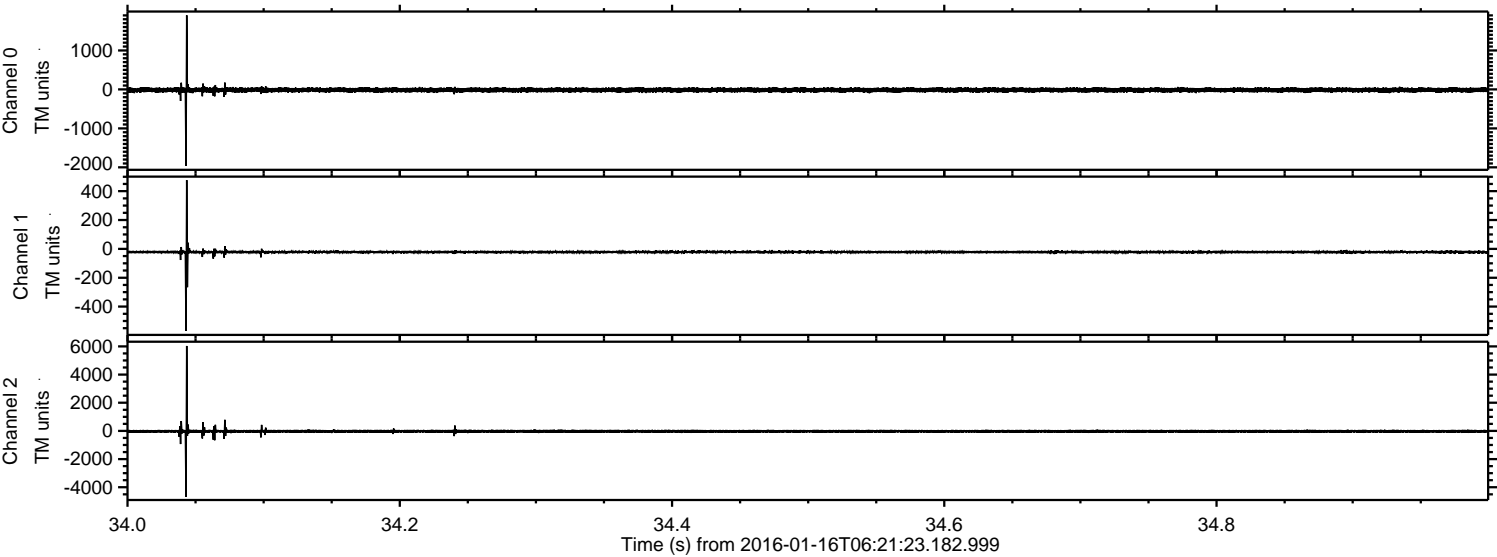


Channel 0
mn: -2871
mx: 1325
 μ : -14.6
 σ : 36.3

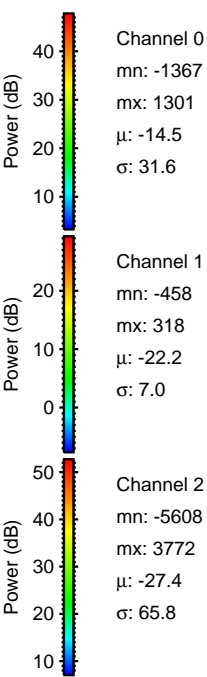
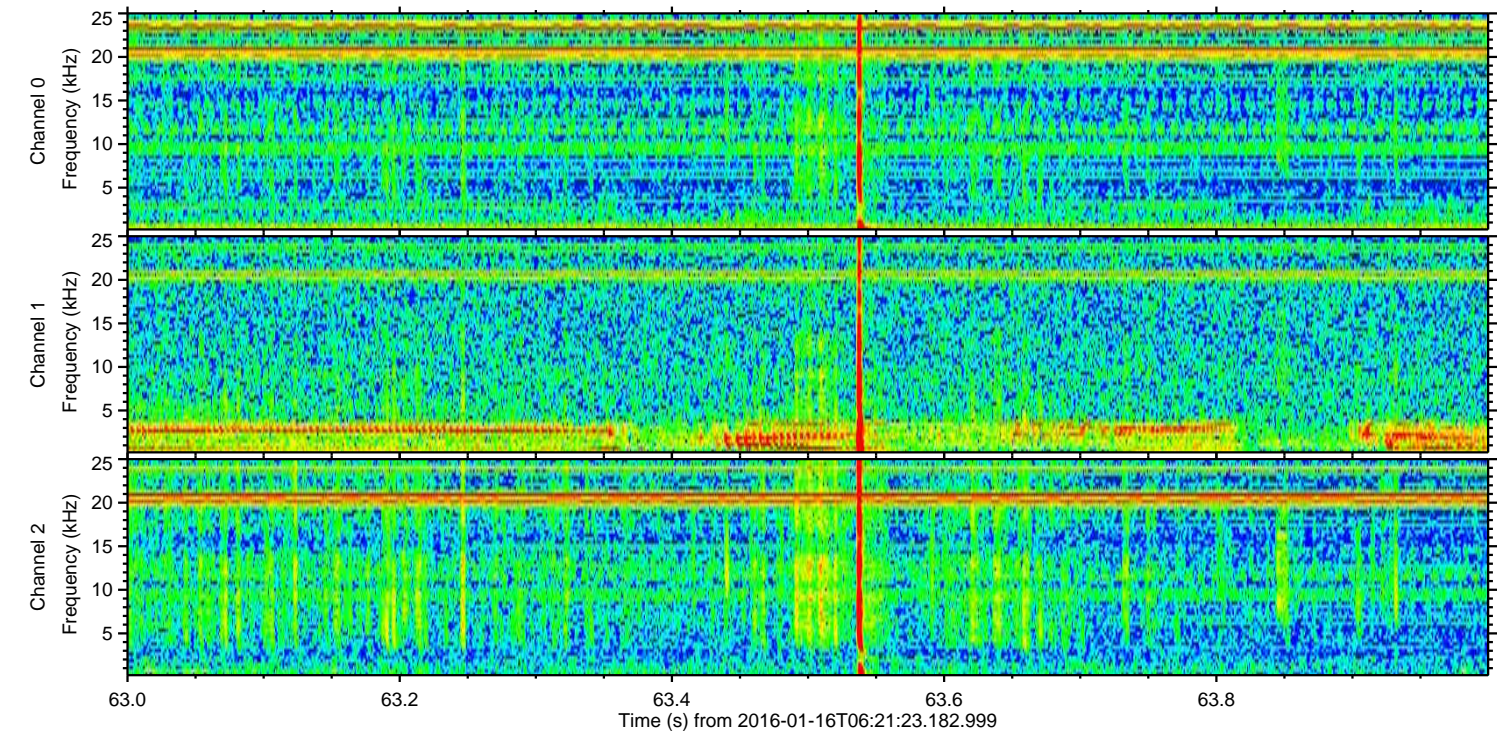
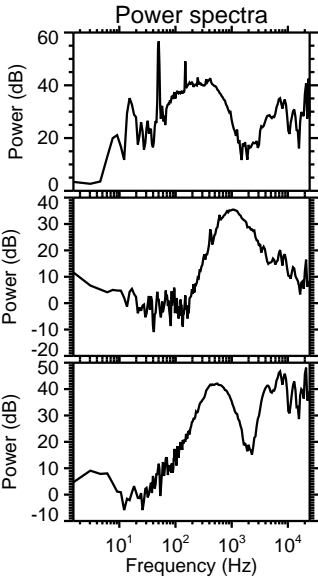
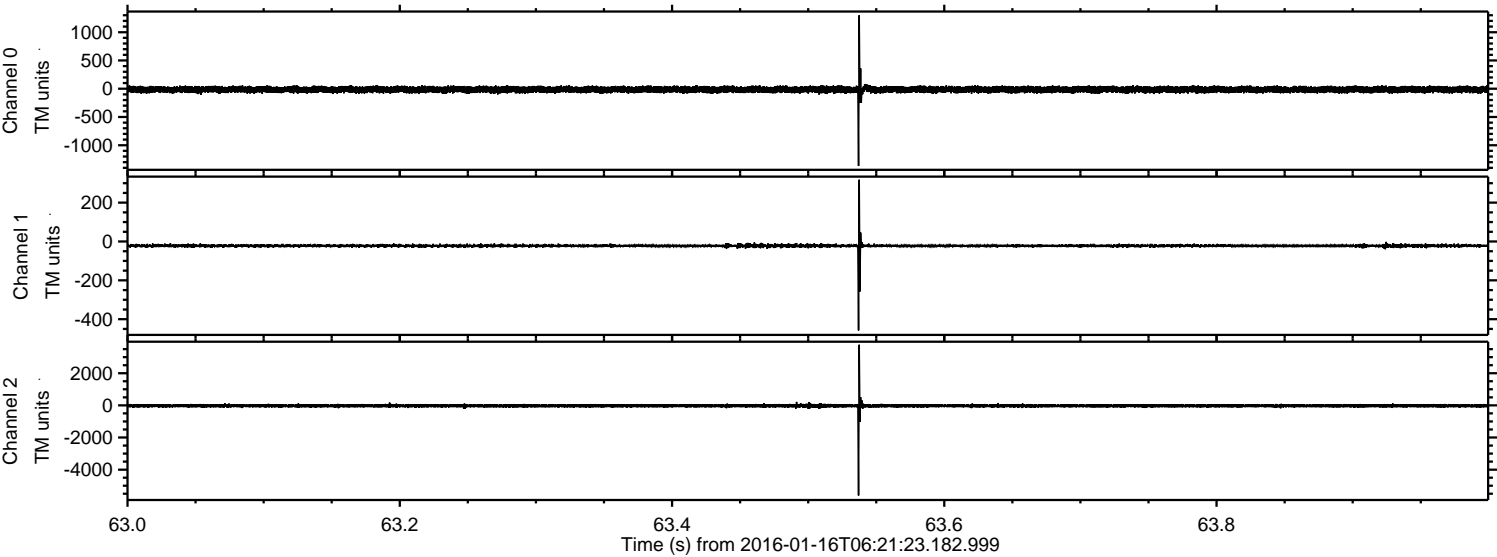
Channel 1
mn: -902
mx: 605
 μ : -22.1
 σ : 11.6

Channel 2
mn: -7825
mx: 6320
 μ : -27.5
 σ : 93.0

Processed Wed Mar 30 22:46:41 2016 by ELM ver.2012-10-06 from 001__elm20160116_062122__dat00.bin



Processed Wed Mar 30 22:46:42 2016 by ELM ver.2012-10-06 from 001__elm20160116_062122__dat00.bin



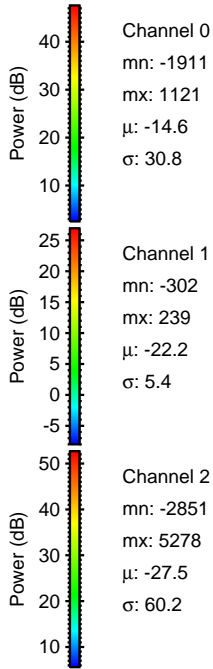
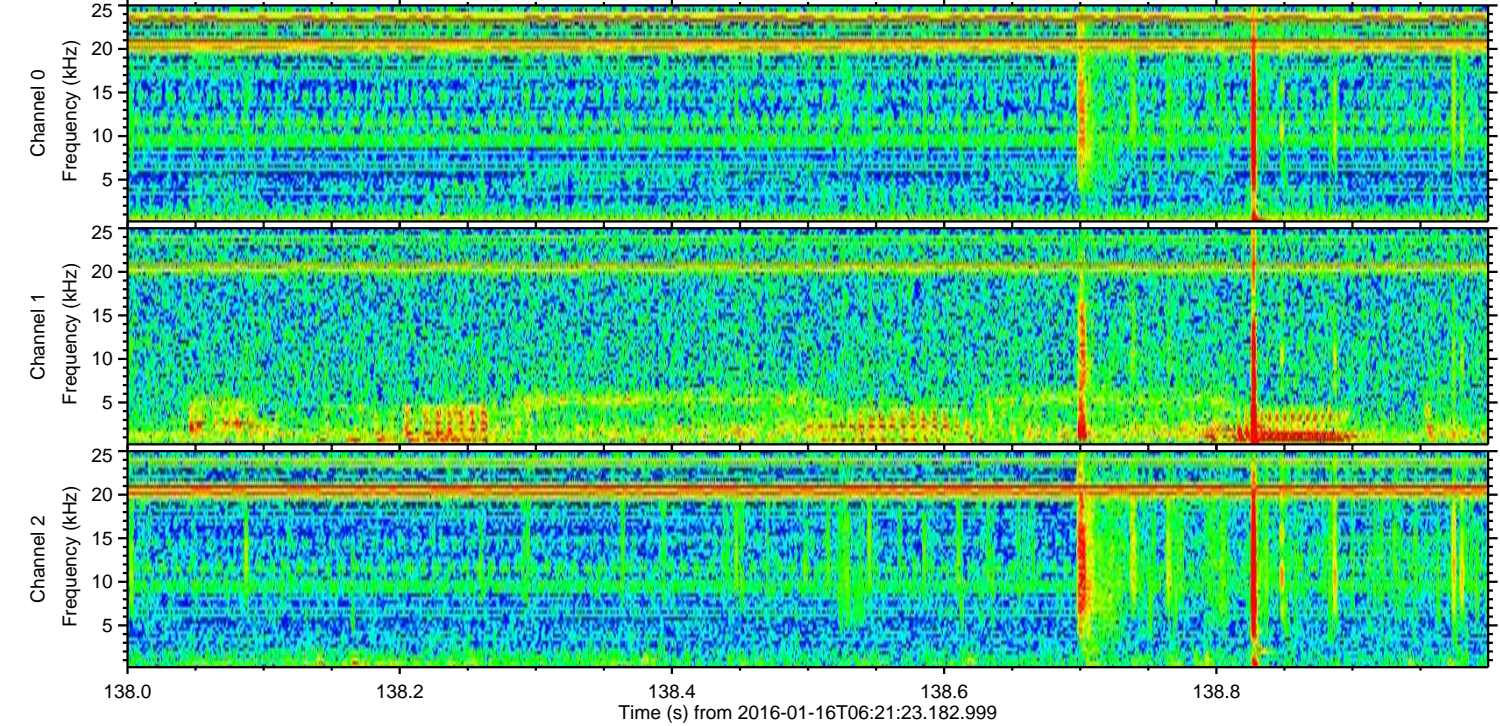
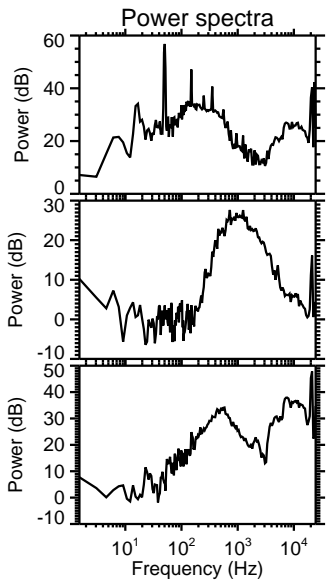
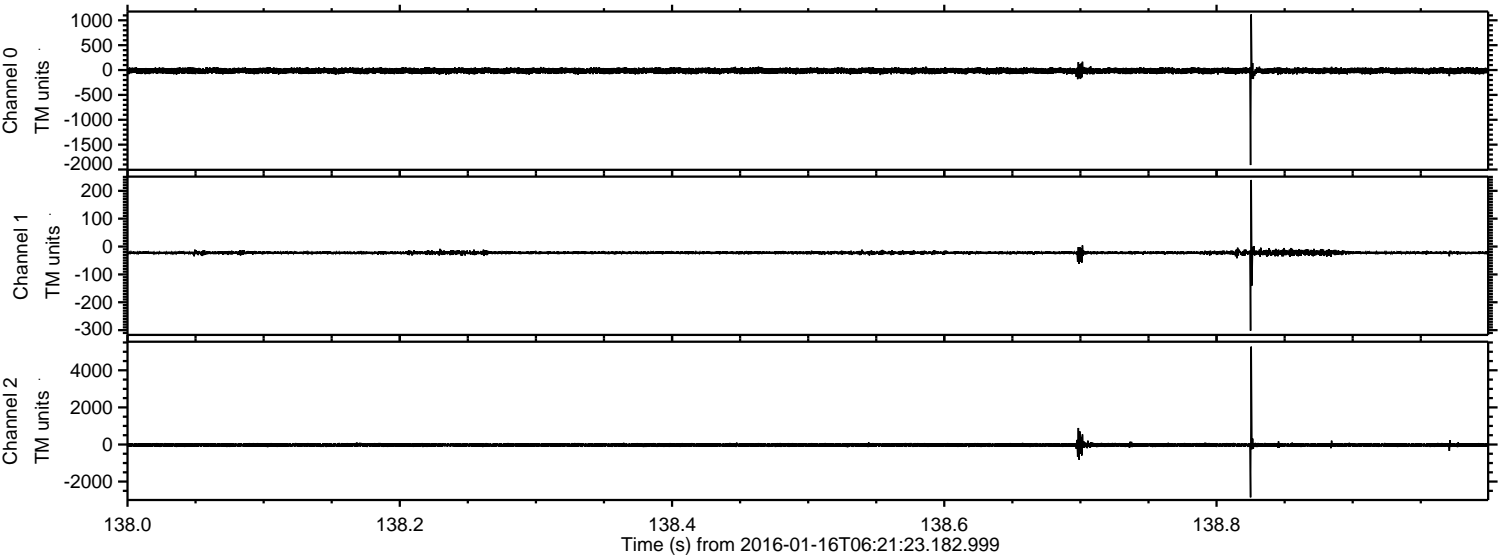
Channel 0
mn: -1367
mx: 1301
 μ : -14.5
 σ : 31.6

Channel 1
mn: -458
mx: 318
 μ : -22.2
 σ : 7.0

Channel 2
mn: -5608
mx: 3772
 μ : -27.4
 σ : 65.8

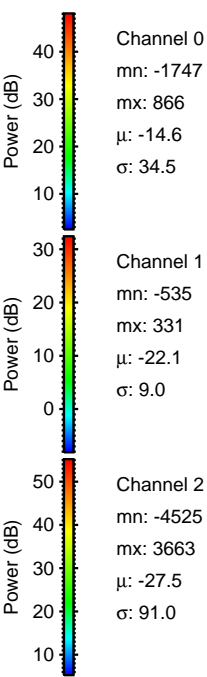
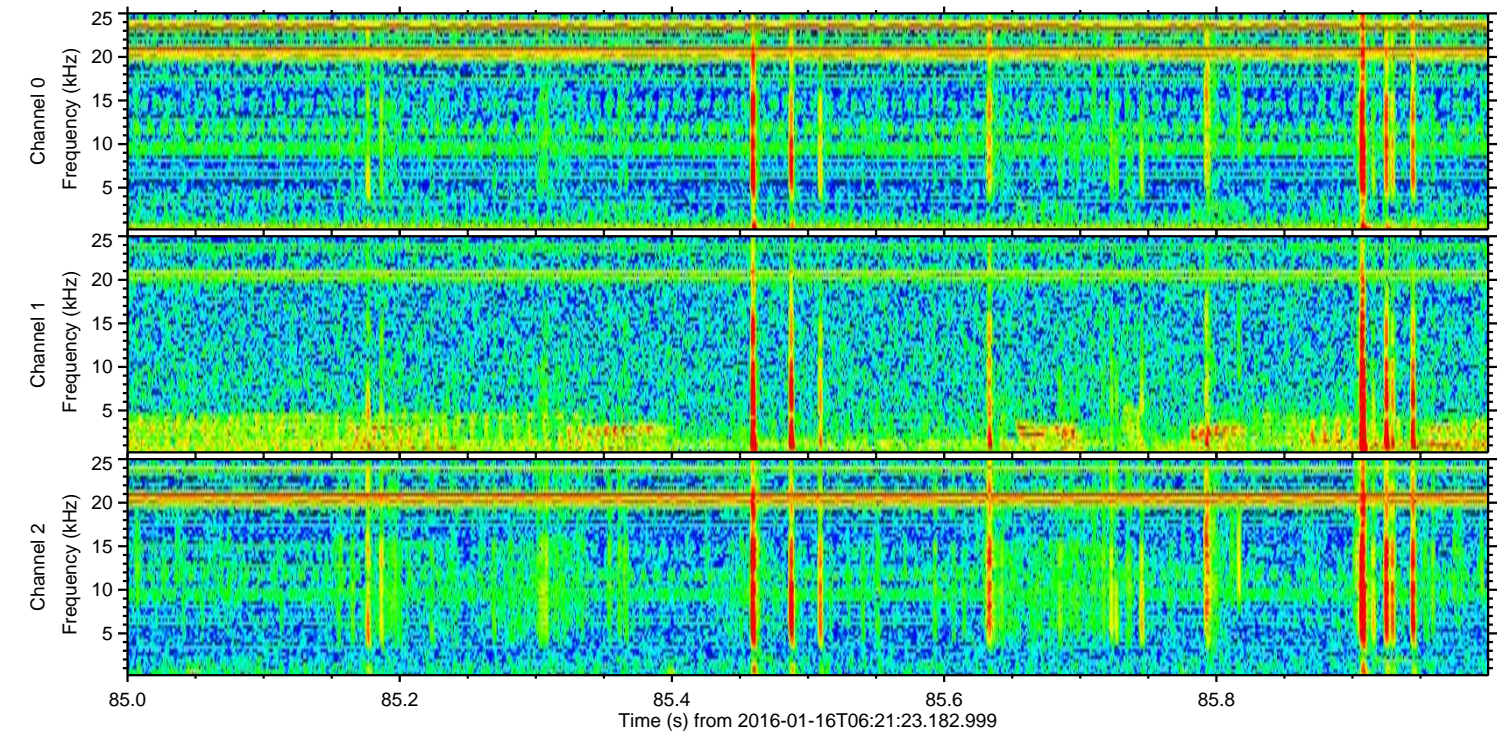
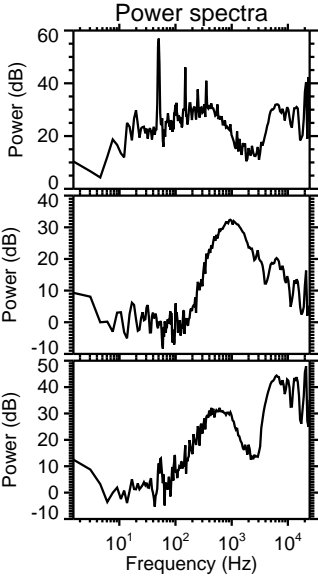
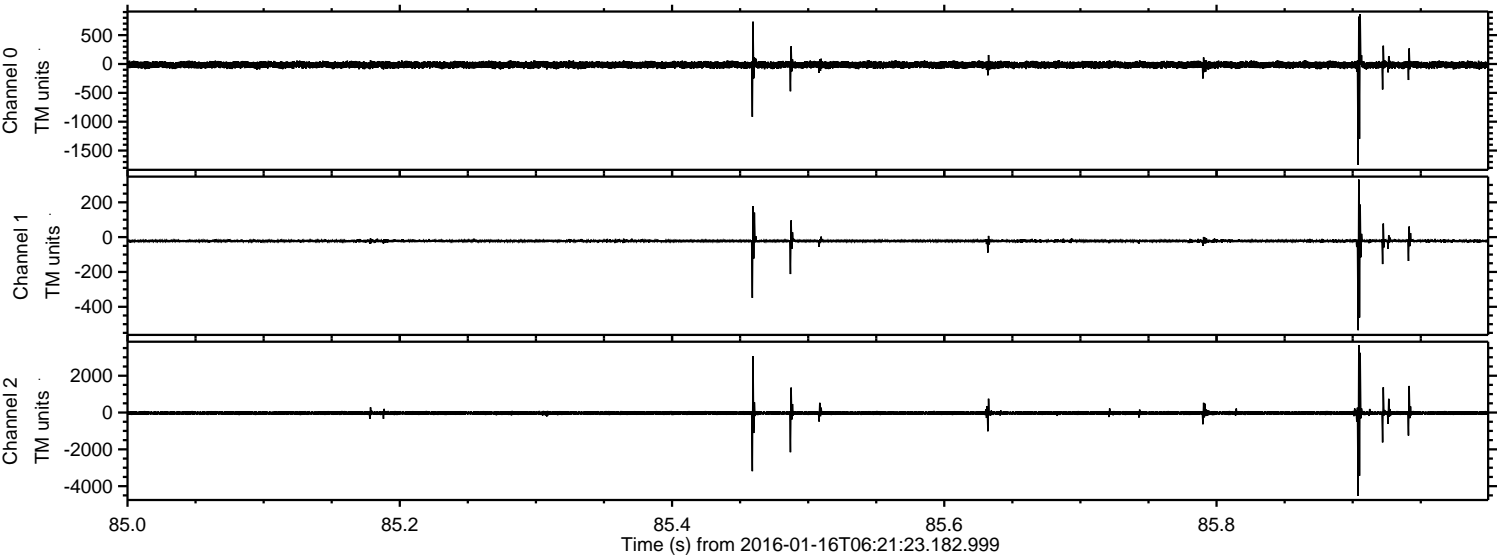
ELMAVAN 3D WAVEFORMS (Measured data sampled at 50 kHz) 51000 packets of 144 samples from 2016-01-16T06:21:23.182.999. Part 139/147

Processed Wed Mar 30 22:46:43 2016 by ELM ver.2012-10-06 from 001__elm20160116_062122__dat00.bin



ELMAVAN 3D WAVEFORMS (Measured data sampled at 50 kHz) 51000 packets of 144 samples from 2016-01-16T06:21:23.182.999. Part 86/147

Processed Wed Mar 30 22:46:44 2016 by ELM ver.2012-10-06 from 001__elm20160116_062122__dat00.bin

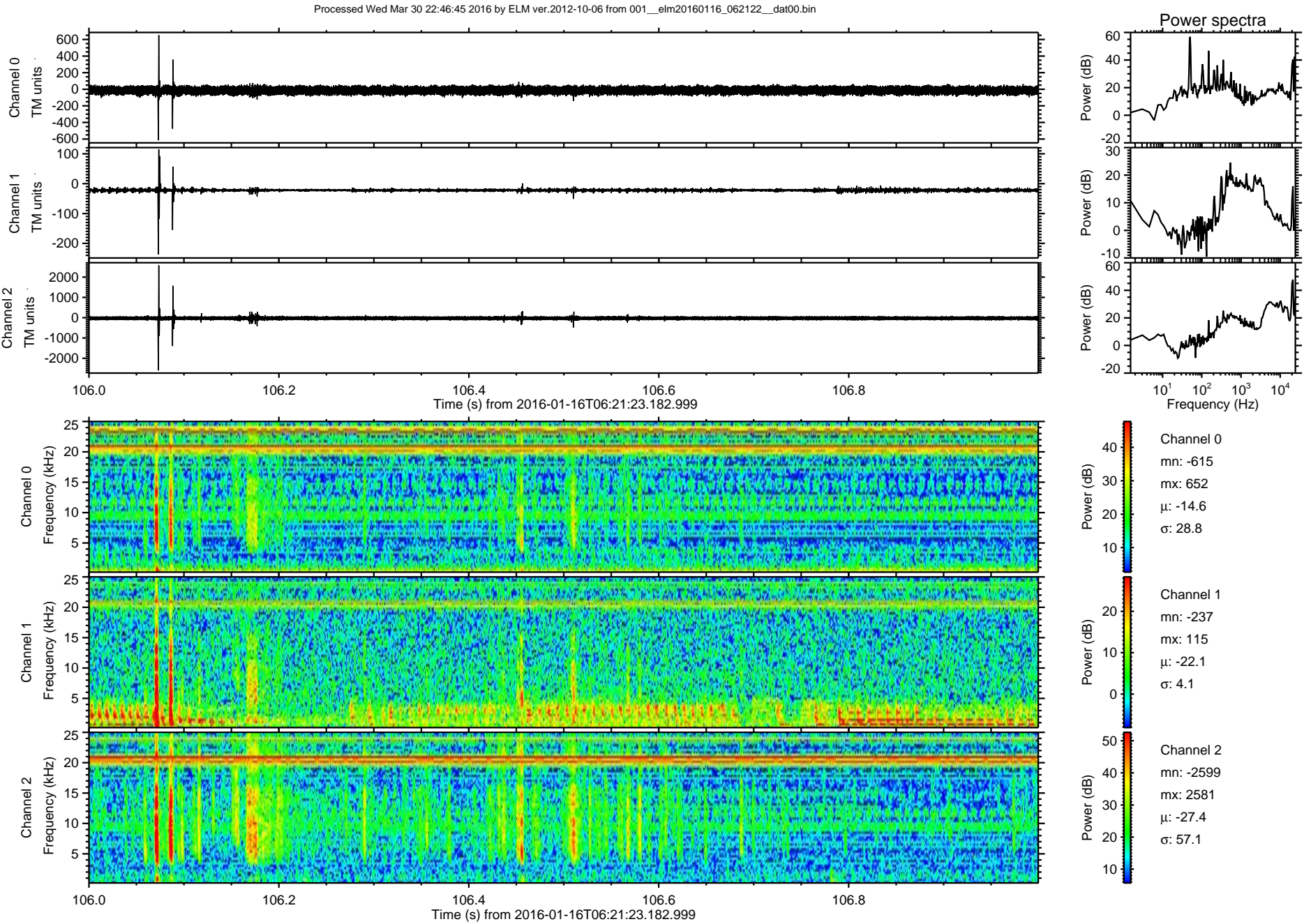


Channel 0
mn: -1747
mx: 866
 μ : -14.6
 σ : 34.5

Channel 1
mn: -535
mx: 331
 μ : -22.1
 σ : 9.0

Channel 2
mn: -4525
mx: 3663
 μ : -27.5
 σ : 91.0

ELMAVAN 3D WAVEFORMS (Measured data sampled at 50 kHz) 51000 packets of 144 samples from 2016-01-16T06:21:23.182.999. Part 107/147



Processed Wed Mar 30 22:46:46 2016 by ELM ver.2012-10-06 from 001__elm20160116_062122__dat00.bin

