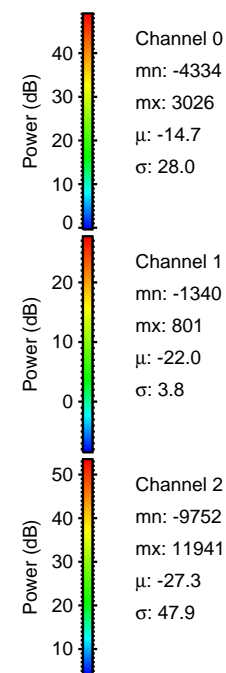
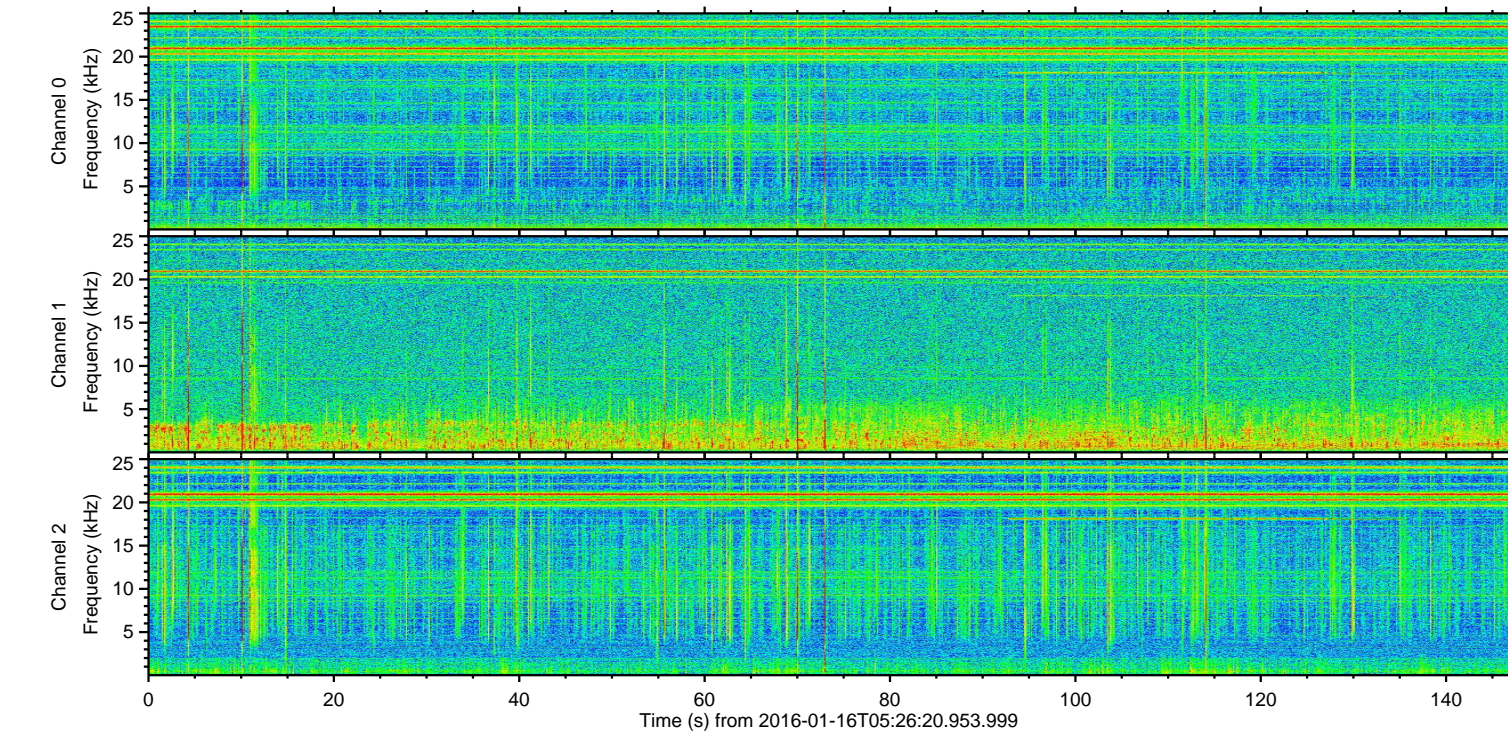
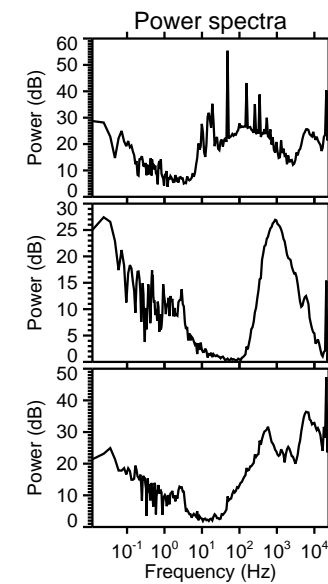
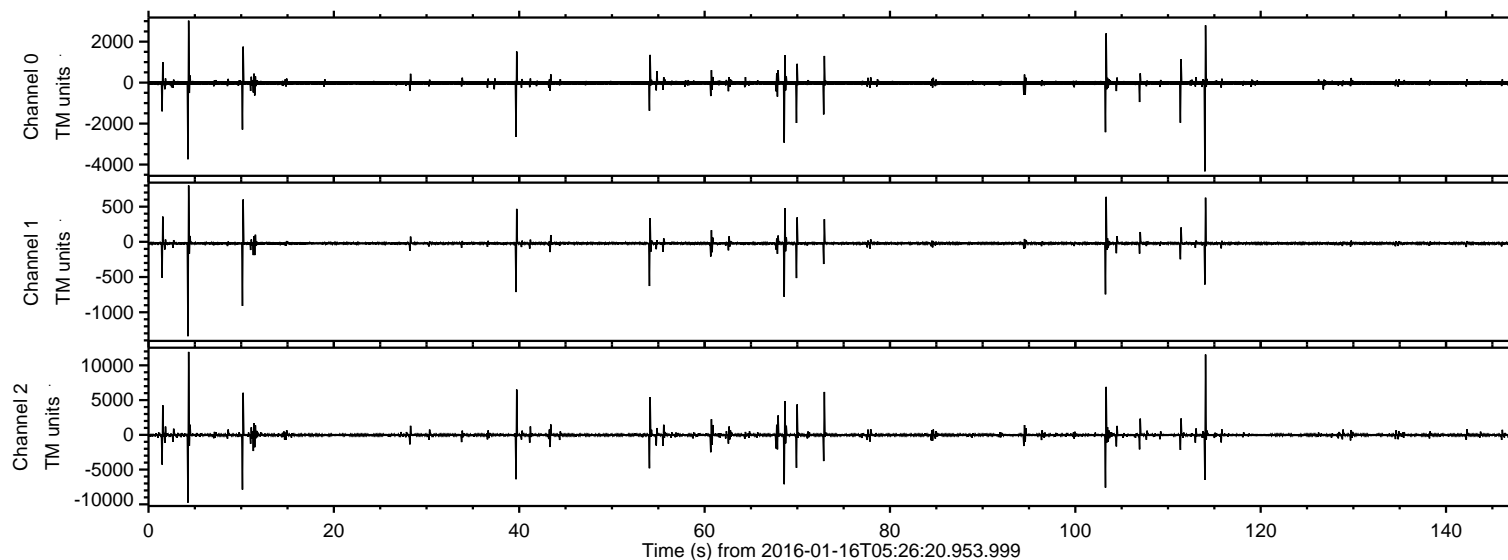
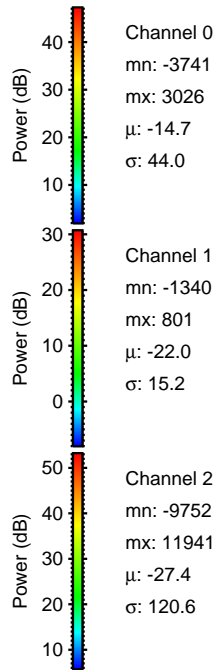
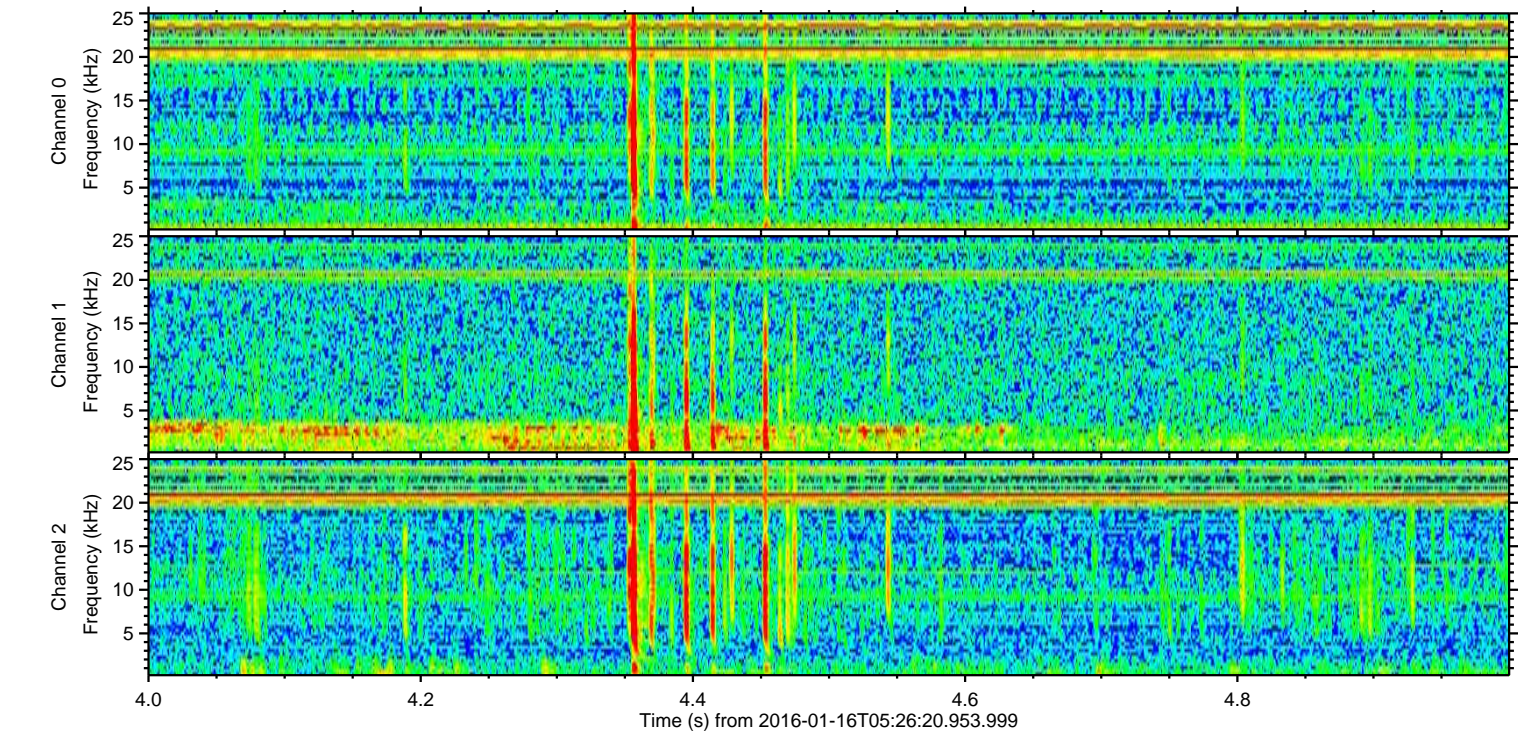
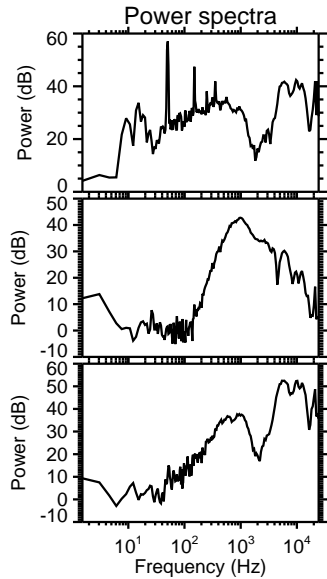
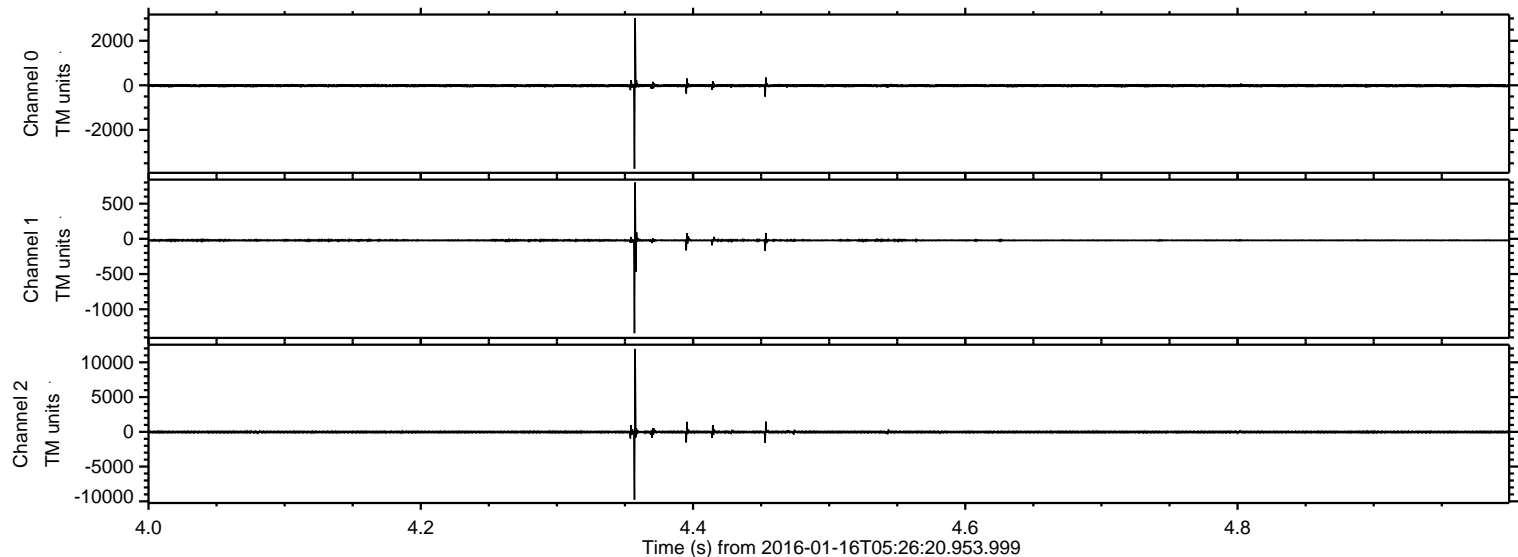


ELMAVAN 3D WAVEFORMS (Measured data sampled at 50 kHz) 51000 packets of 144 samples from 2016-01-16T05:26:20.953.999.

Processed Wed Mar 30 22:35:31 2016 by ELM ver.2012-10-06 from 001__elm20160116_052619__dat00.bin

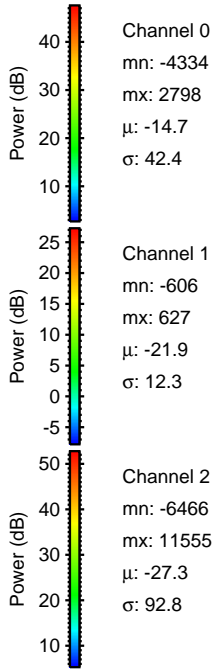
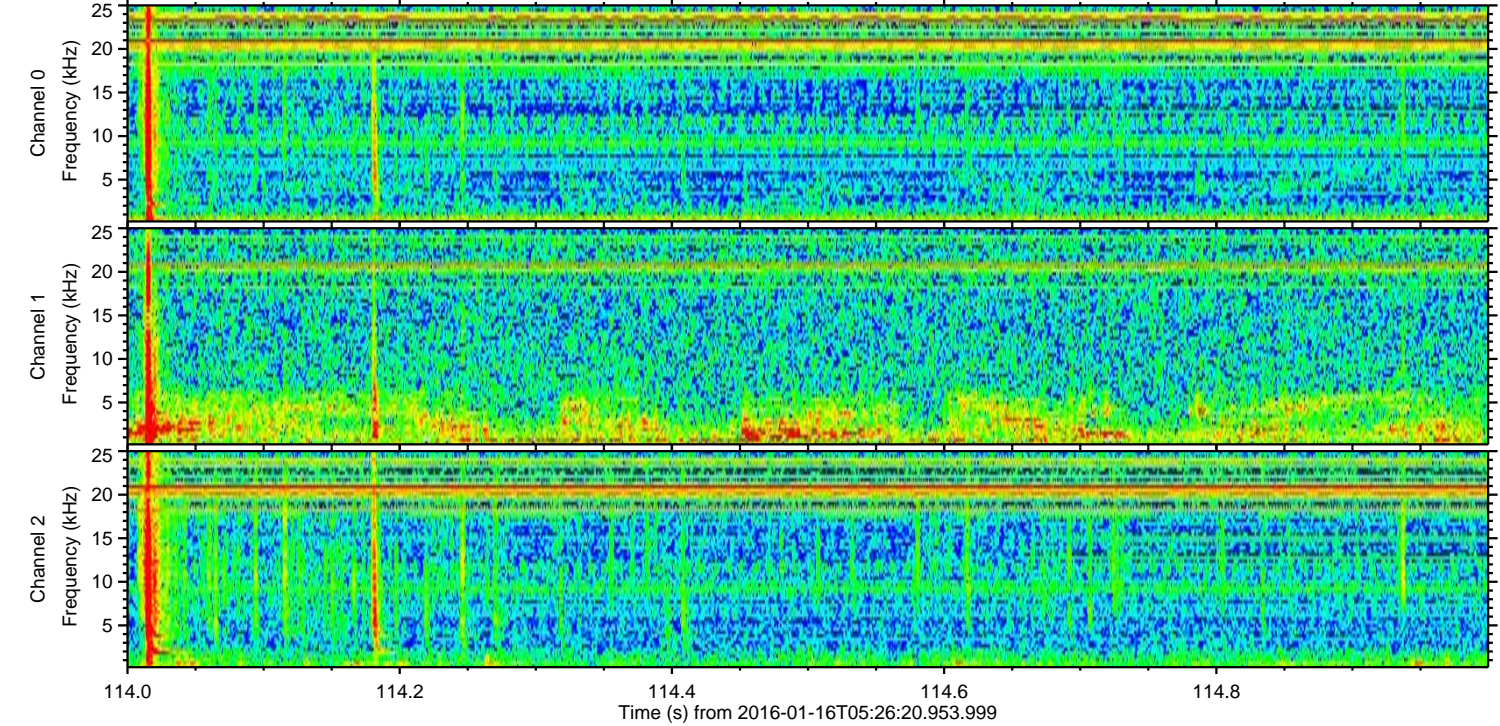
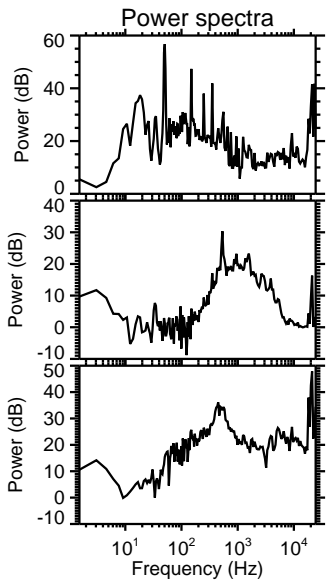
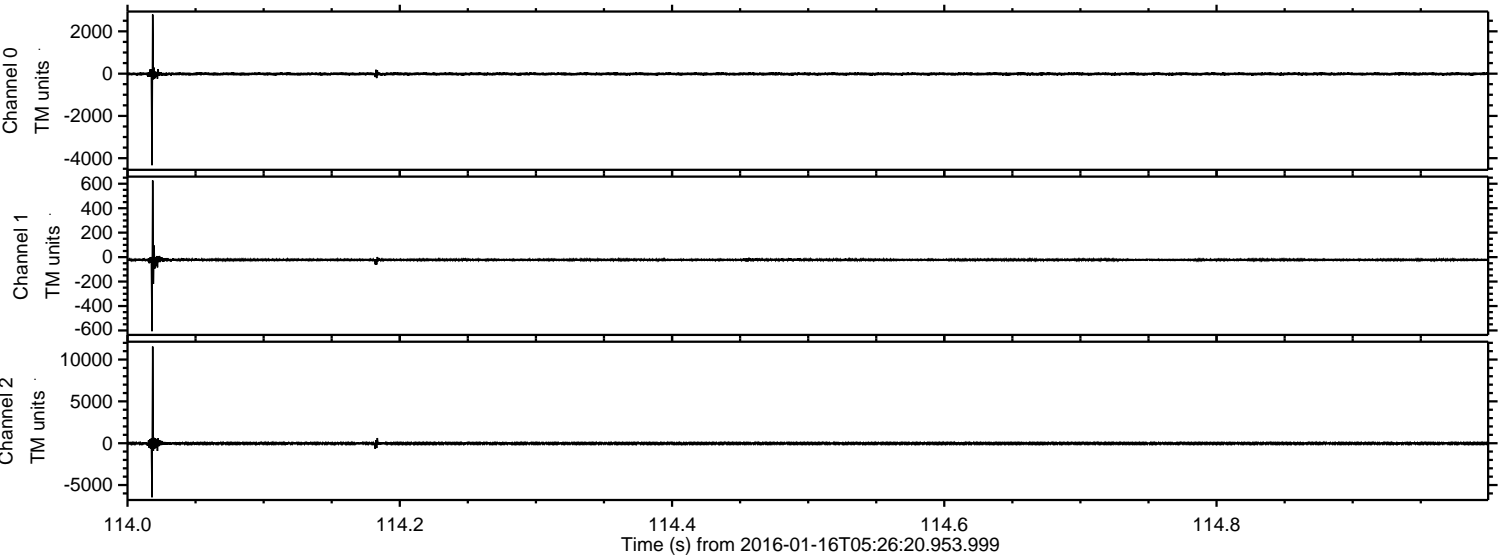


Processed Wed Mar 30 22:35:43 2016 by ELM ver.2012-10-06 from 001__elm20160116_052619__dat00.bin



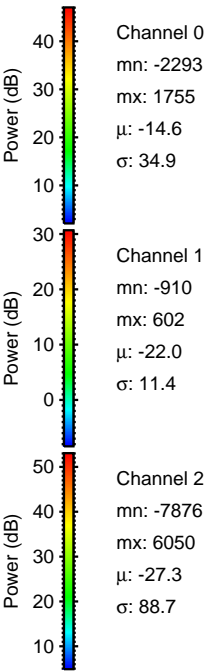
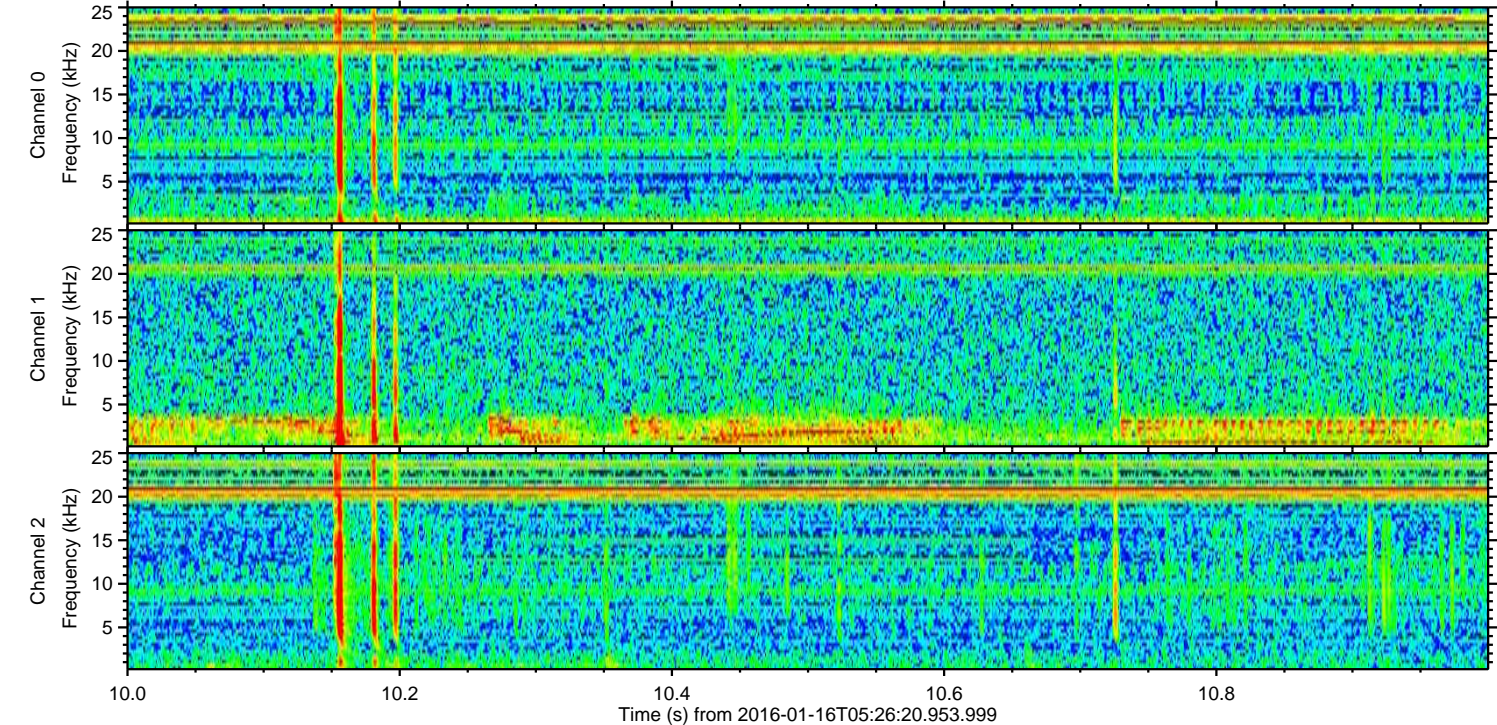
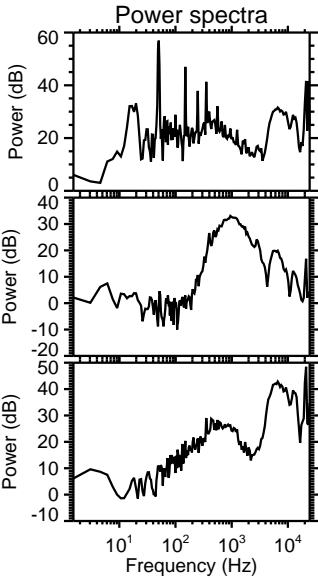
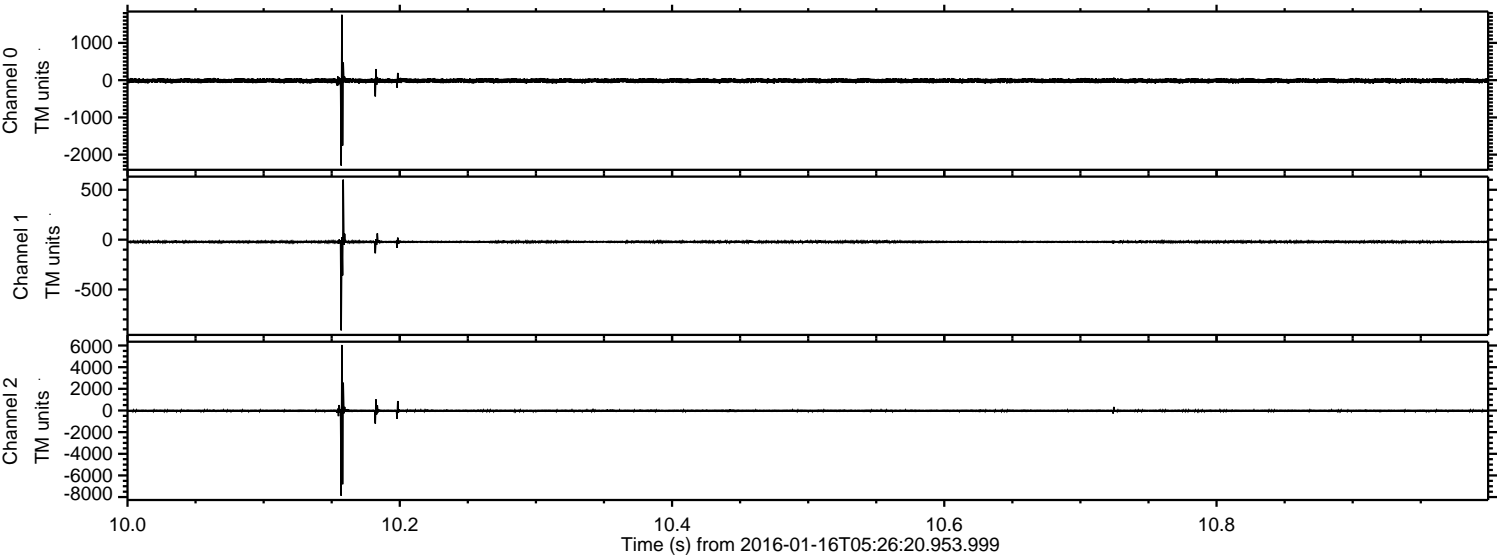
ELMAVAN 3D WAVEFORMS (Measured data sampled at 50 kHz) 51000 packets of 144 samples from 2016-01-16T05:26:20.953.999. Part 115/147

Processed Wed Mar 30 22:35:44 2016 by ELM ver.2012-10-06 from 001__elm20160116_052619__dat00.bin



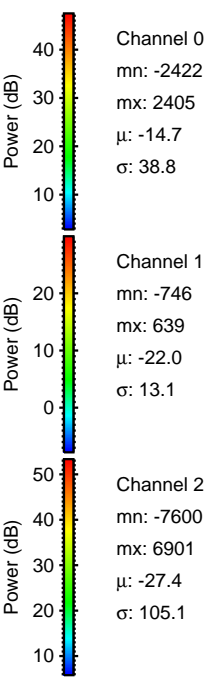
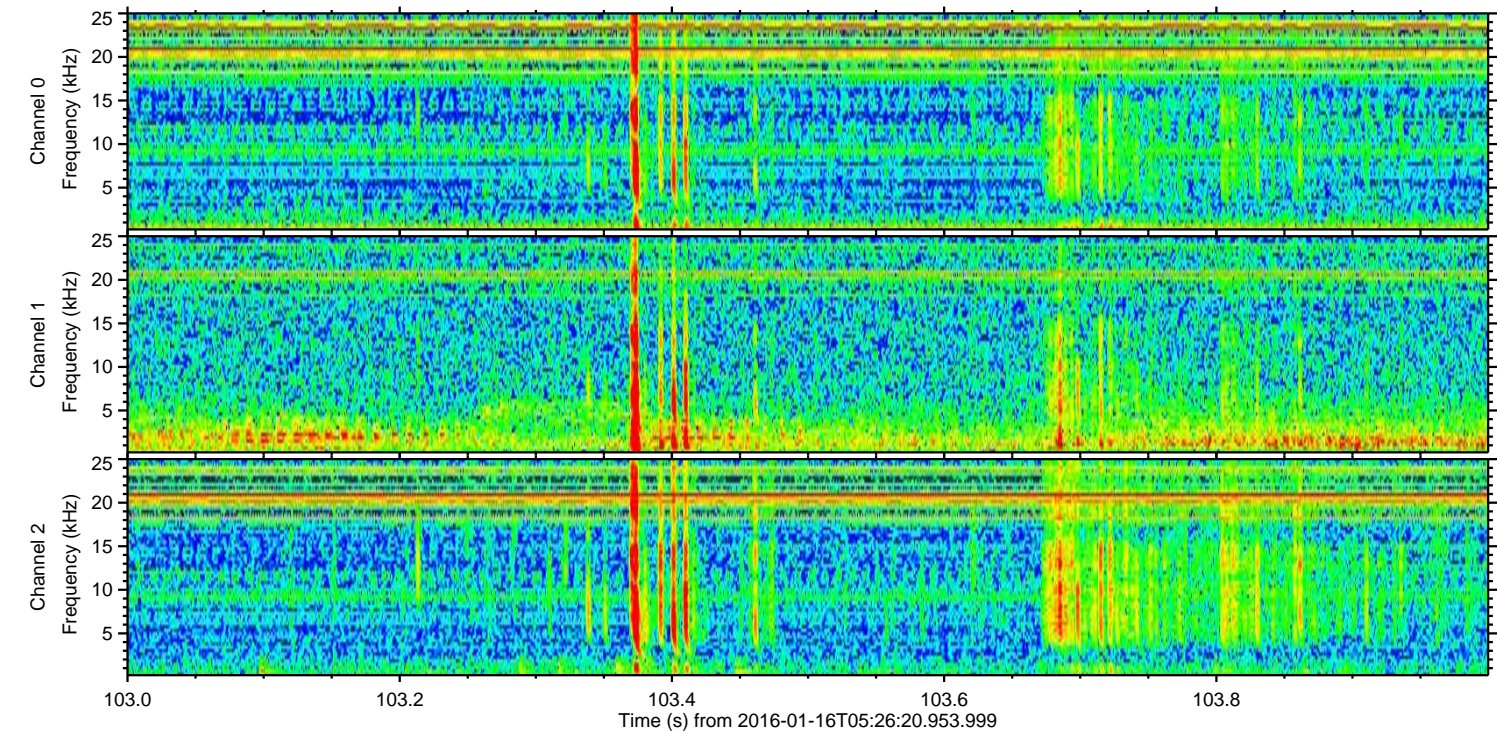
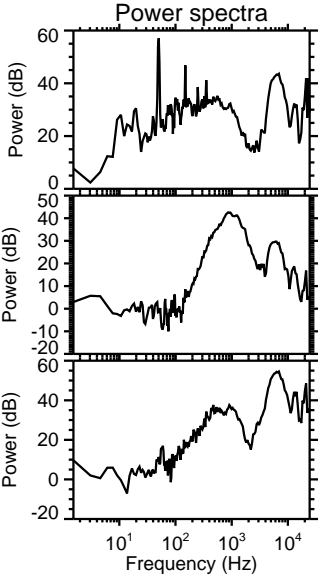
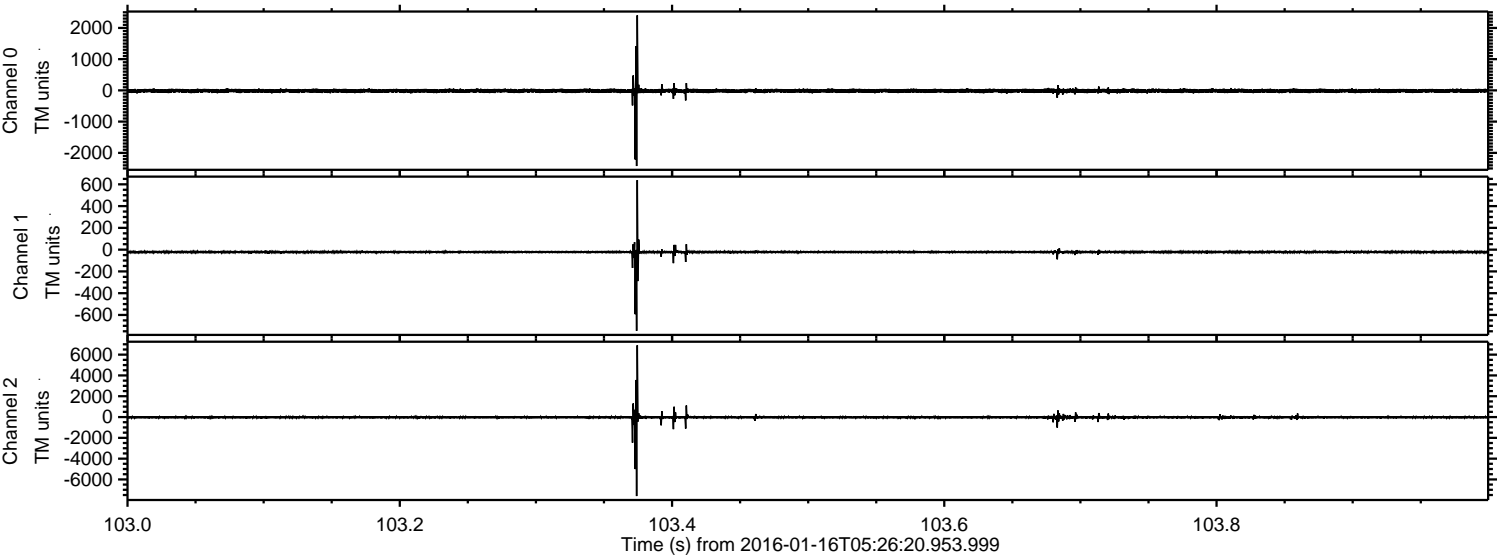
ELMAVAN 3D WAVEFORMS (Measured data sampled at 50 kHz) 51000 packets of 144 samples from 2016-01-16T05:26:20.953.999. Part 11/147

Processed Wed Mar 30 22:35:45 2016 by ELM ver.2012-10-06 from 001__elm20160116_052619__dat00.bin

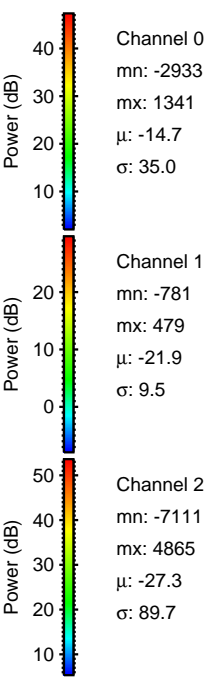
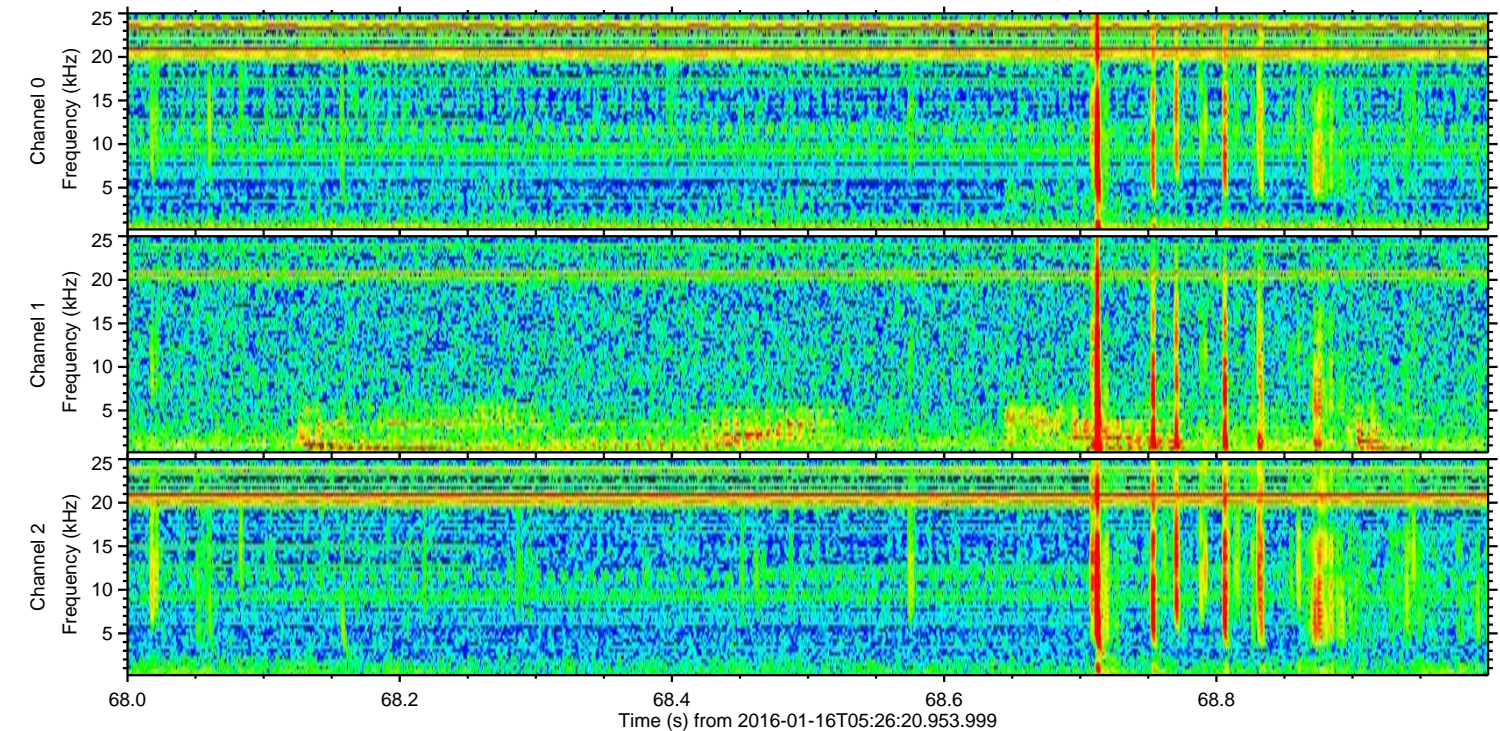
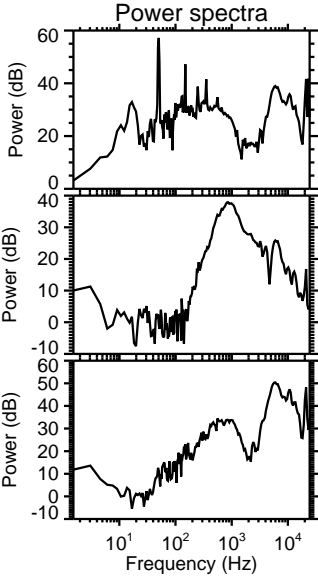
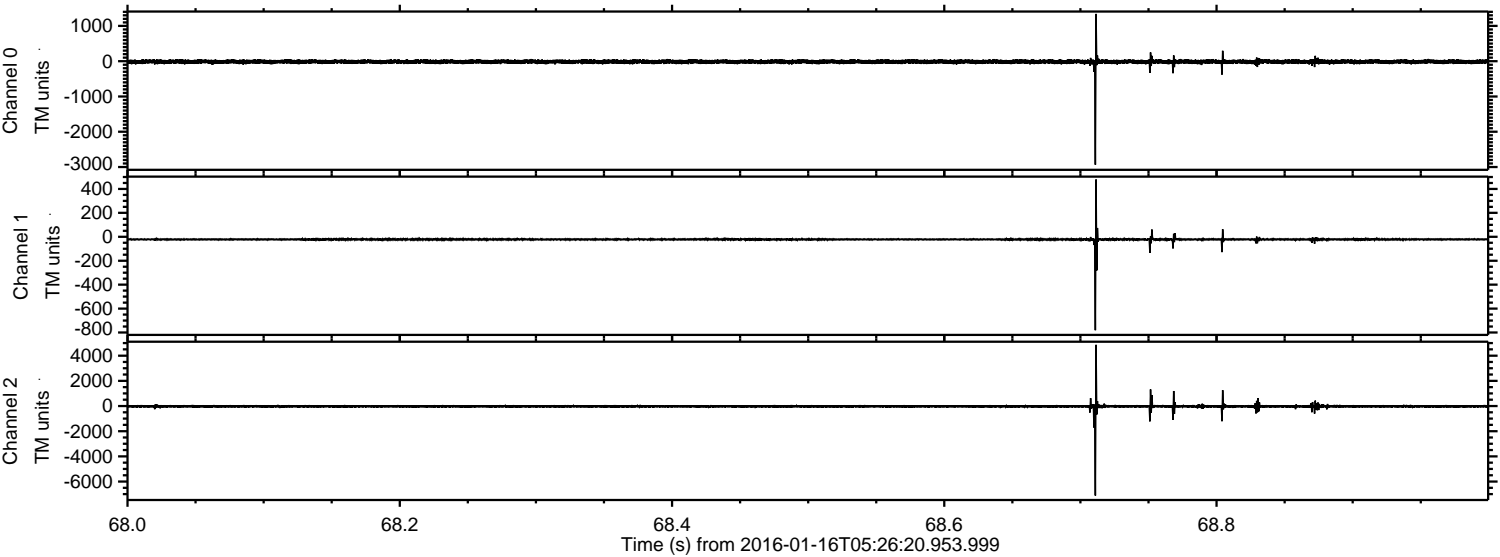


ELMAVAN 3D WAVEFORMS (Measured data sampled at 50 kHz) 51000 packets of 144 samples from 2016-01-16T05:26:20.953.999. Part 104/147

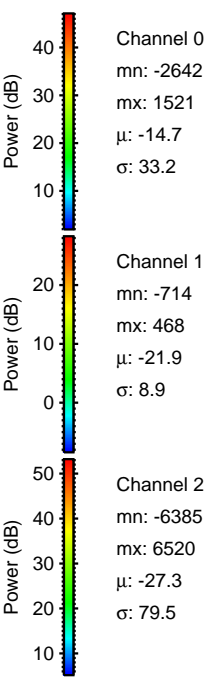
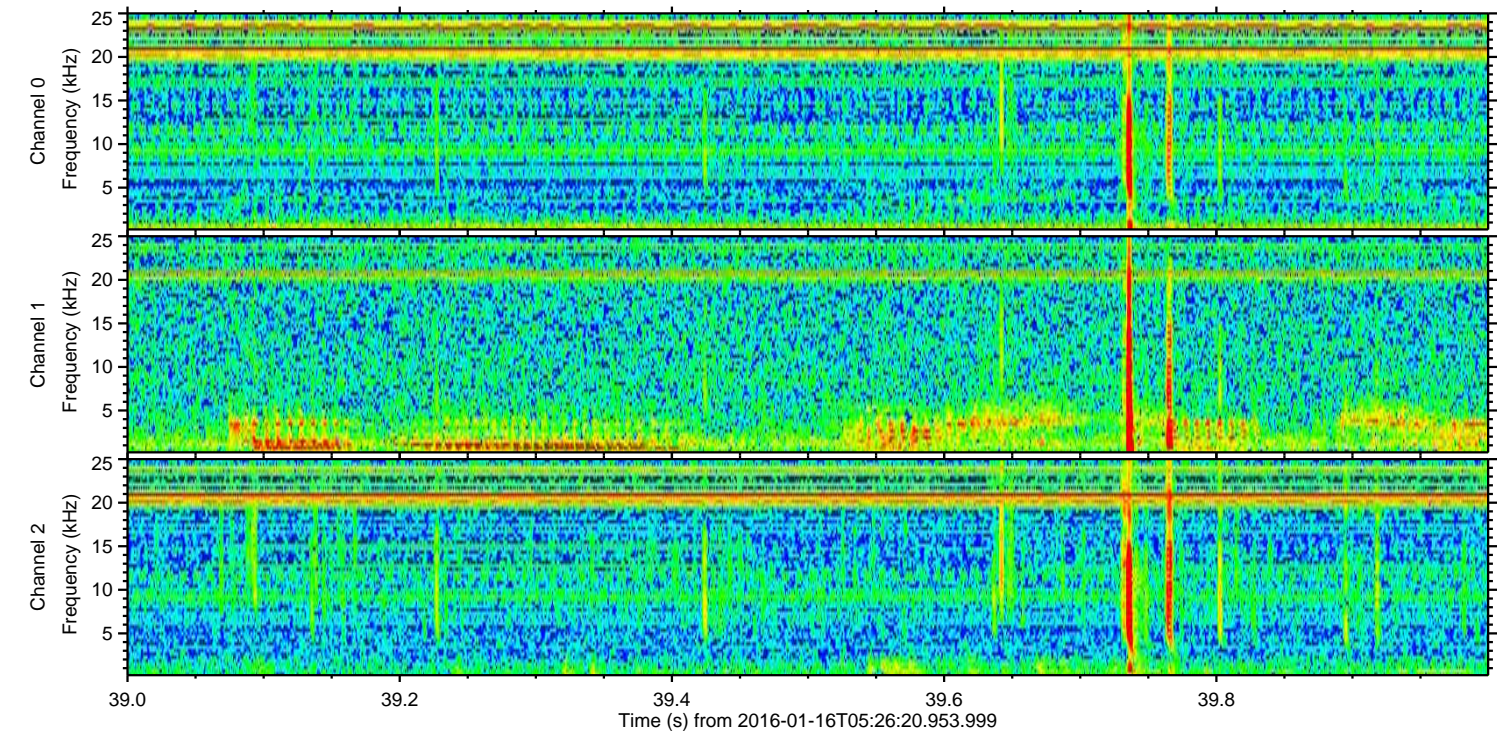
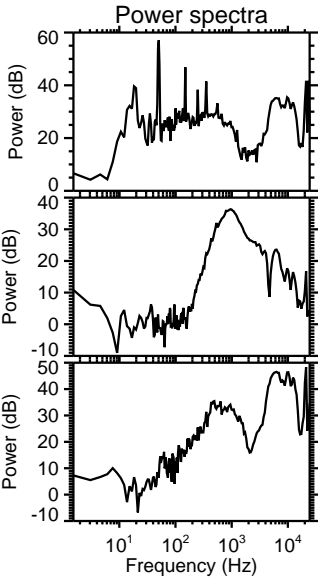
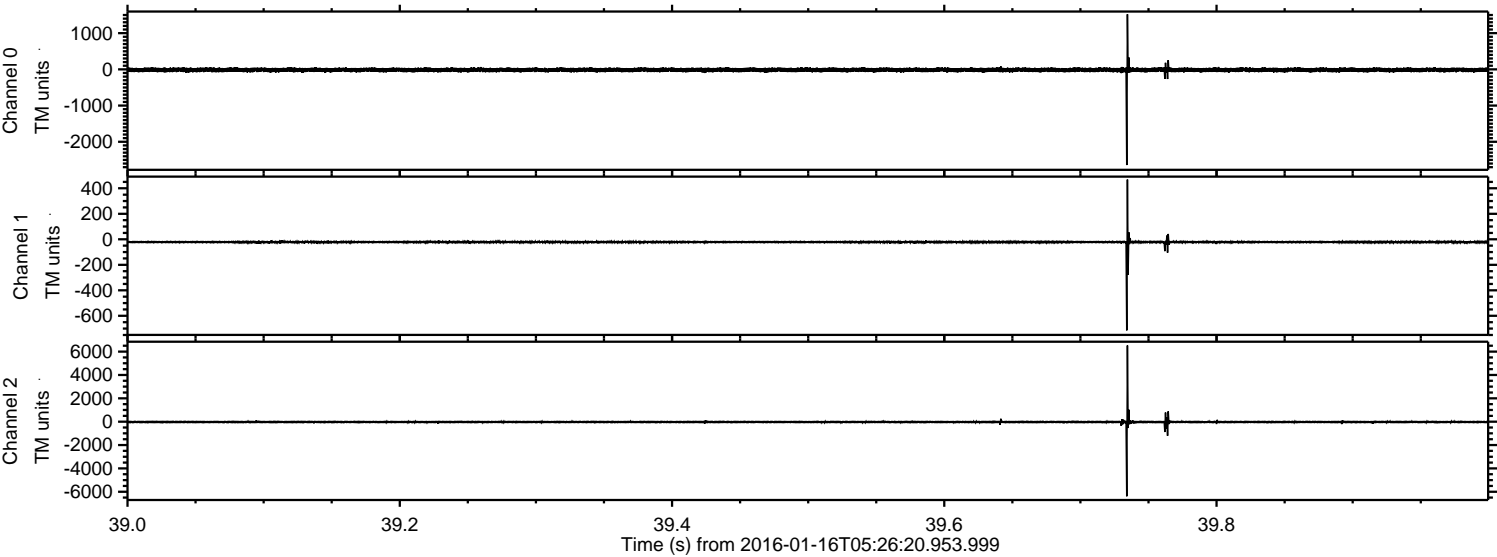
Processed Wed Mar 30 22:35:46 2016 by ELM ver.2012-10-06 from 001__elm20160116_052619__dat00.bin



Processed Wed Mar 30 22:35:47 2016 by ELM ver.2012-10-06 from 001__elm20160116_052619__dat00.bin

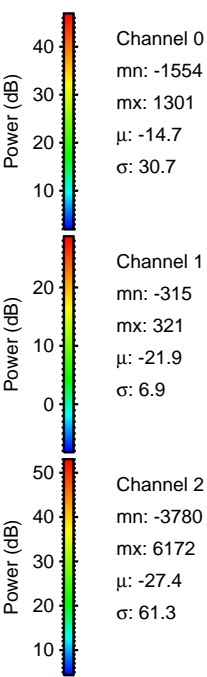
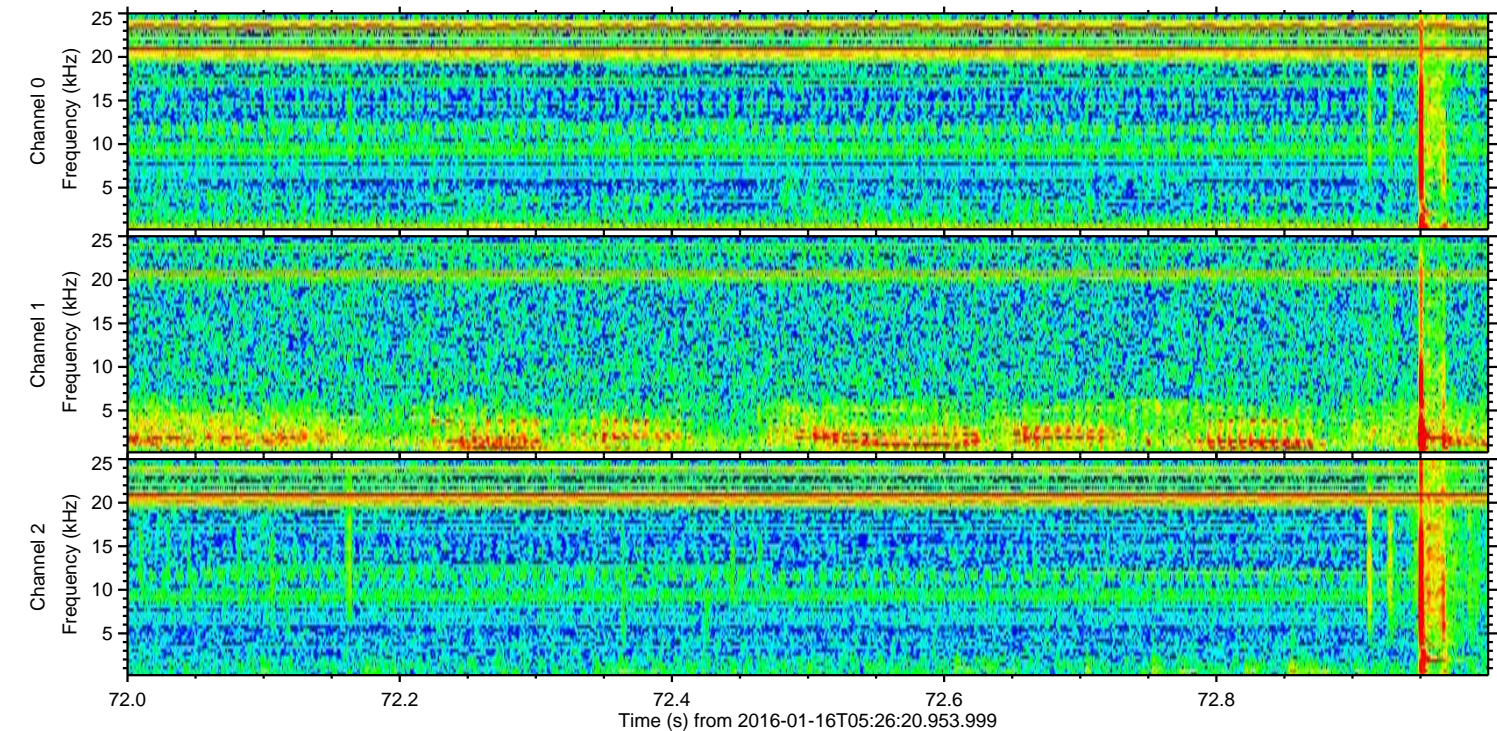
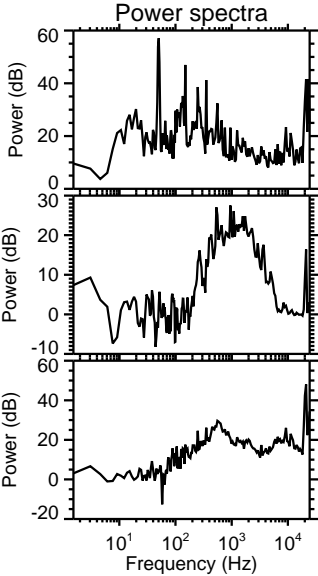
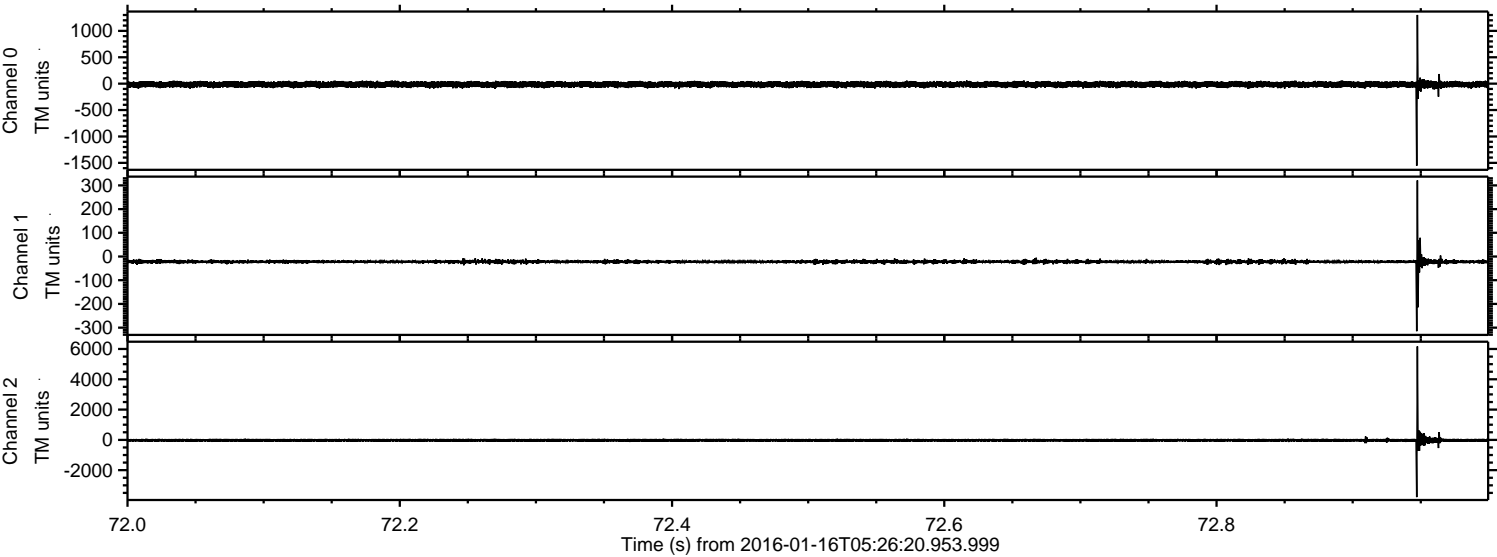


Processed Wed Mar 30 22:35:48 2016 by ELM ver.2012-10-06 from 001__elm20160116_052619__dat00.bin

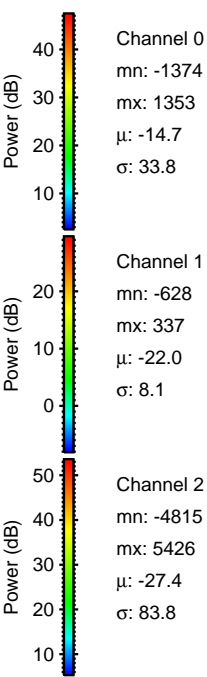
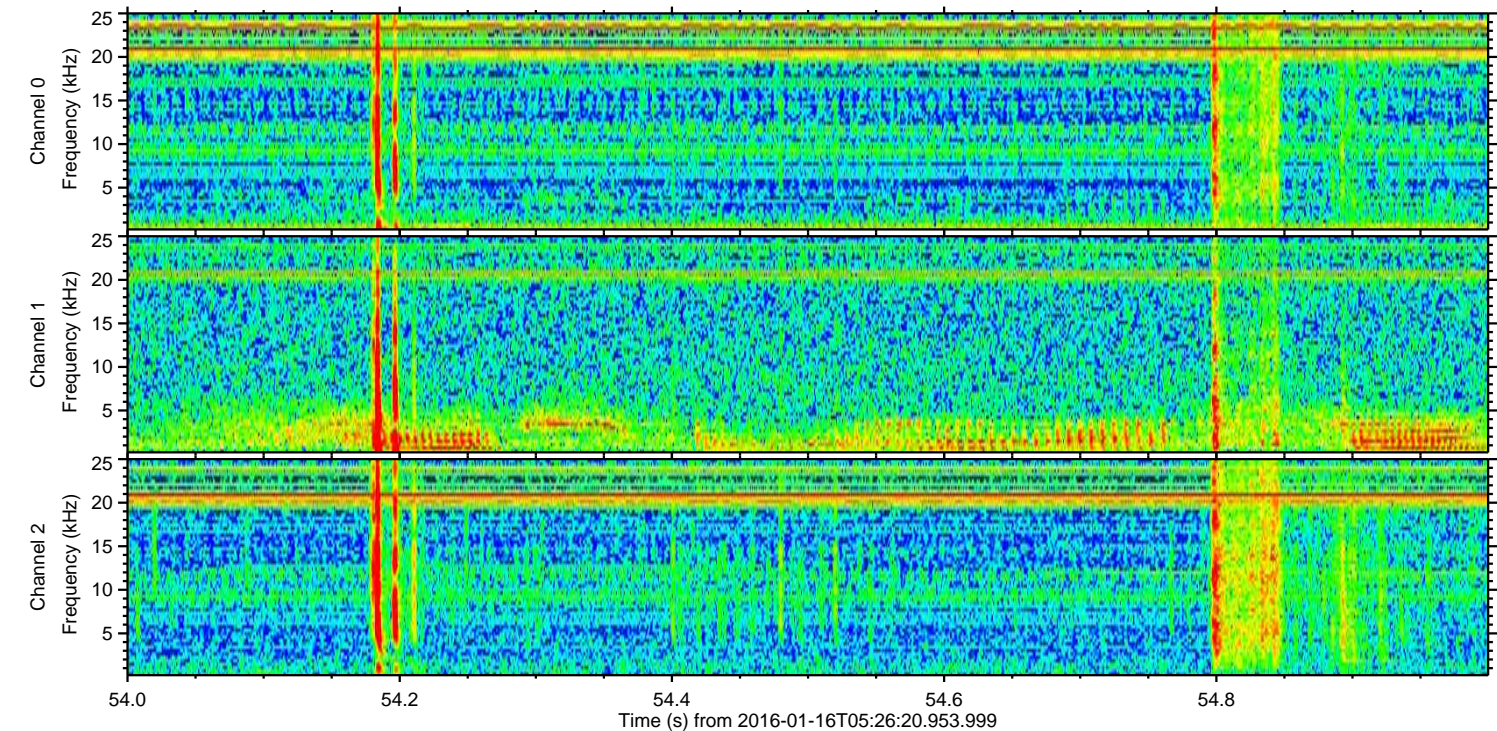
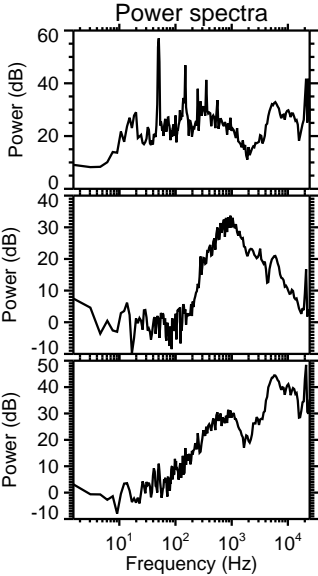
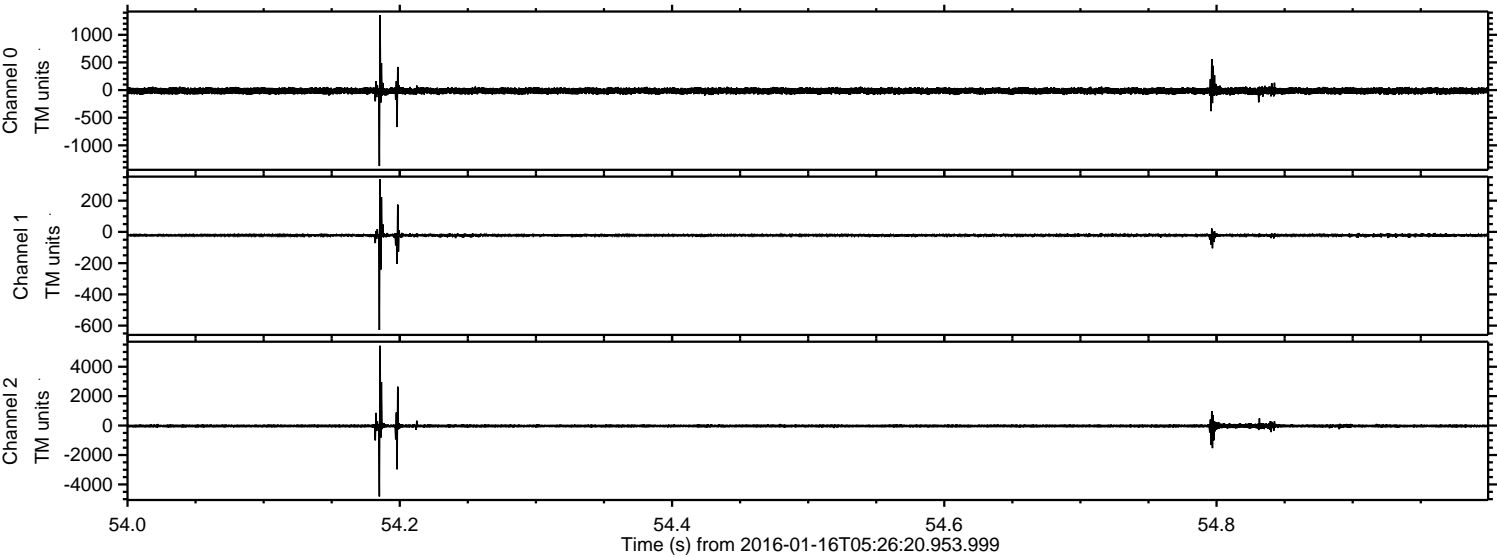


ELMAVAN 3D WAVEFORMS (Measured data sampled at 50 kHz) 51000 packets of 144 samples from 2016-01-16T05:26:20.953.999. Part 73/147

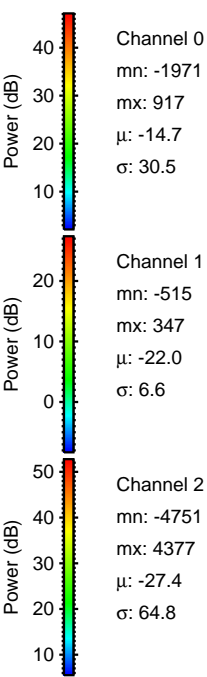
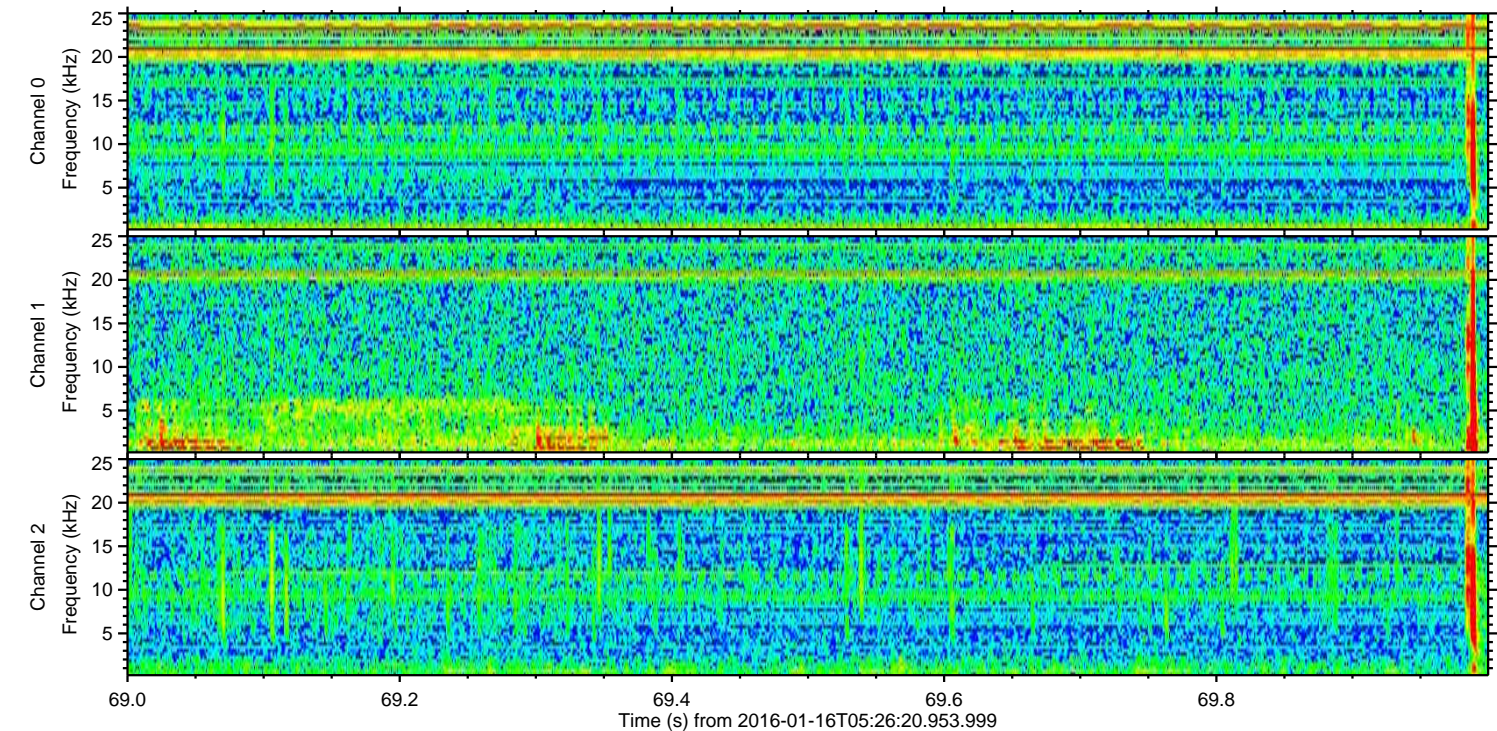
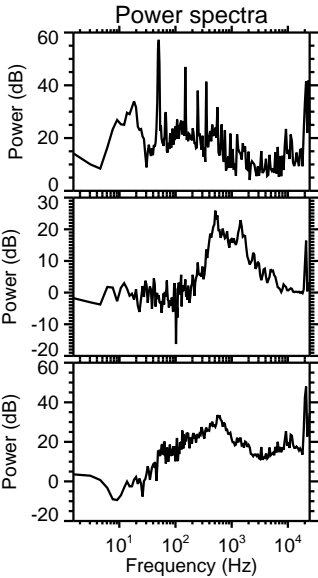
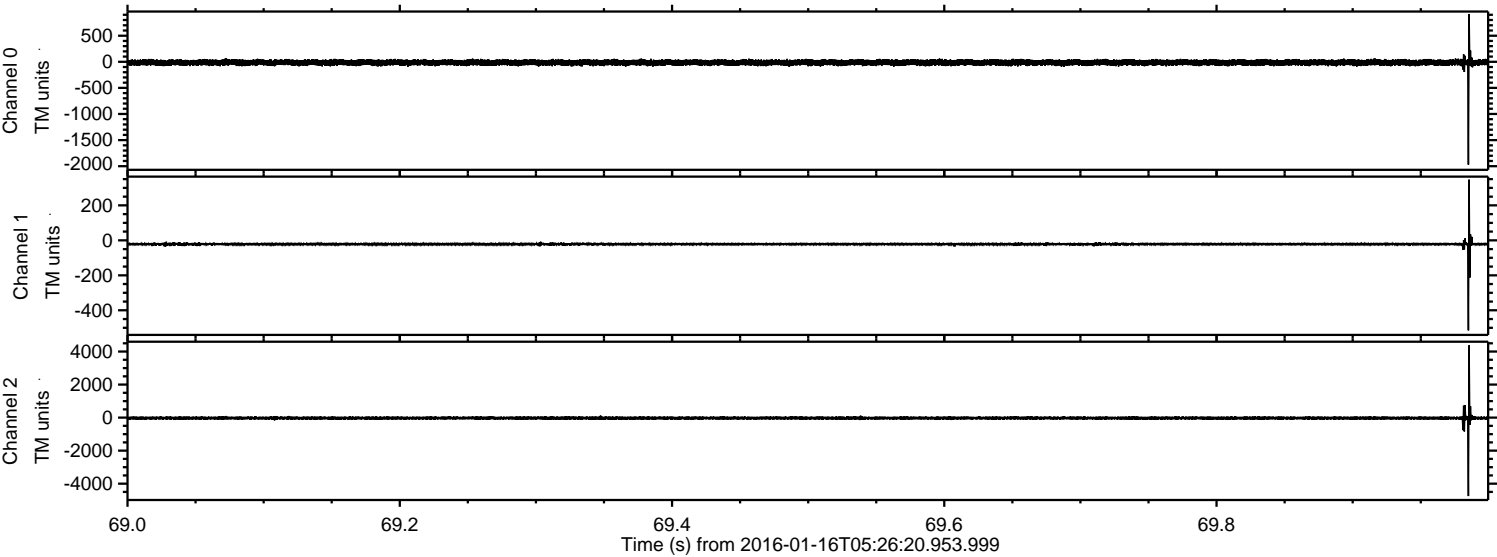
Processed Wed Mar 30 22:35:49 2016 by ELM ver.2012-10-06 from 001__elm20160116_052619__dat00.bin



Processed Wed Mar 30 22:35:49 2016 by ELM ver.2012-10-06 from 001__elm20160116_052619__dat00.bin



Processed Wed Mar 30 22:35:50 2016 by ELM ver.2012-10-06 from 001__elm20160116_052619__dat00.bin



Processed Wed Mar 30 22:35:51 2016 by ELM ver.2012-10-06 from 001__elm20160116_052619__dat00.bin

