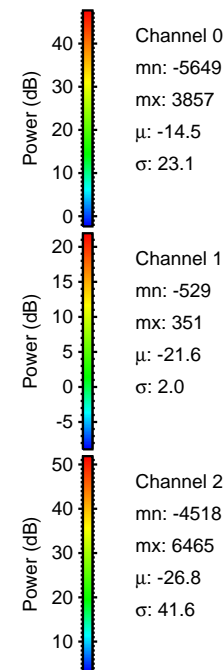
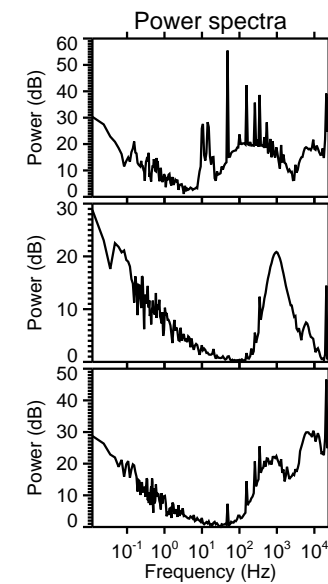
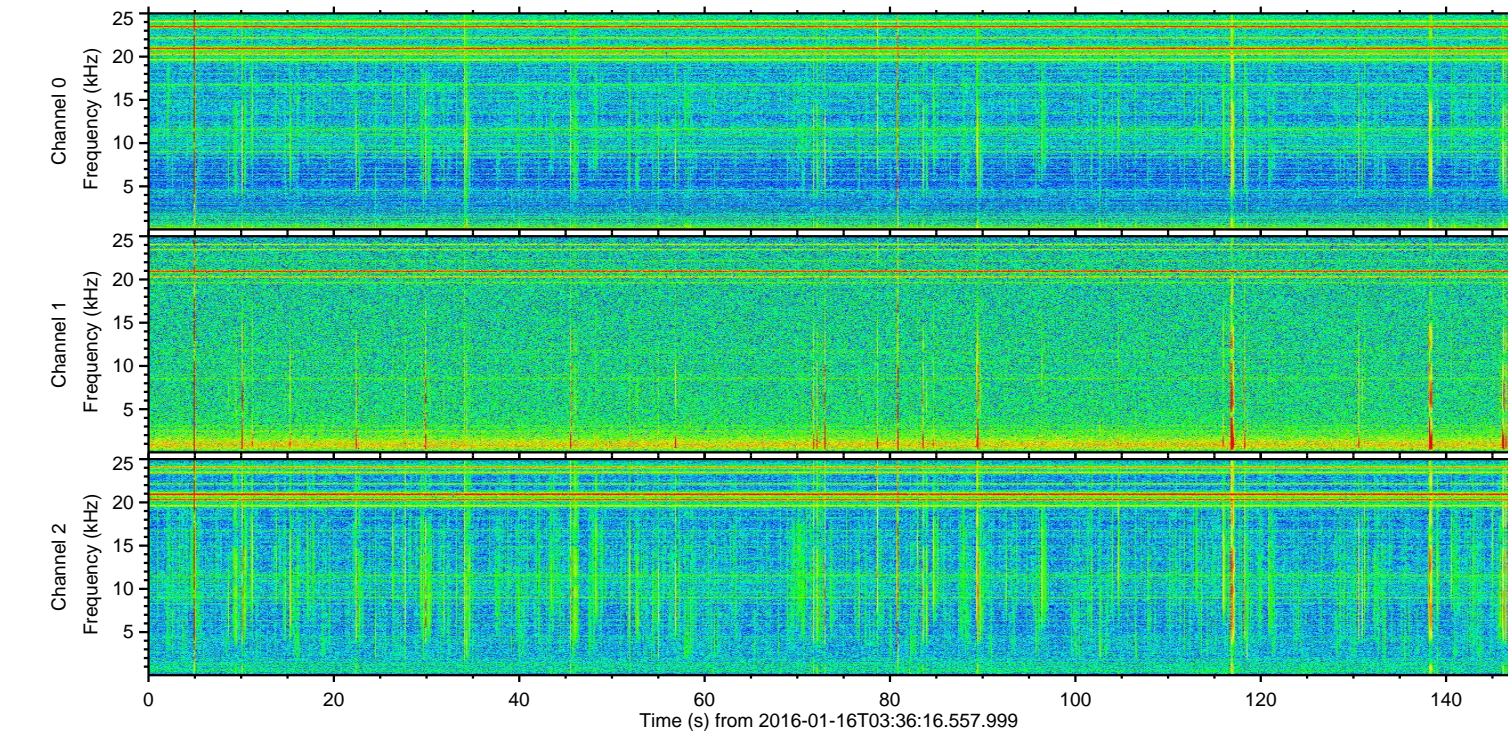
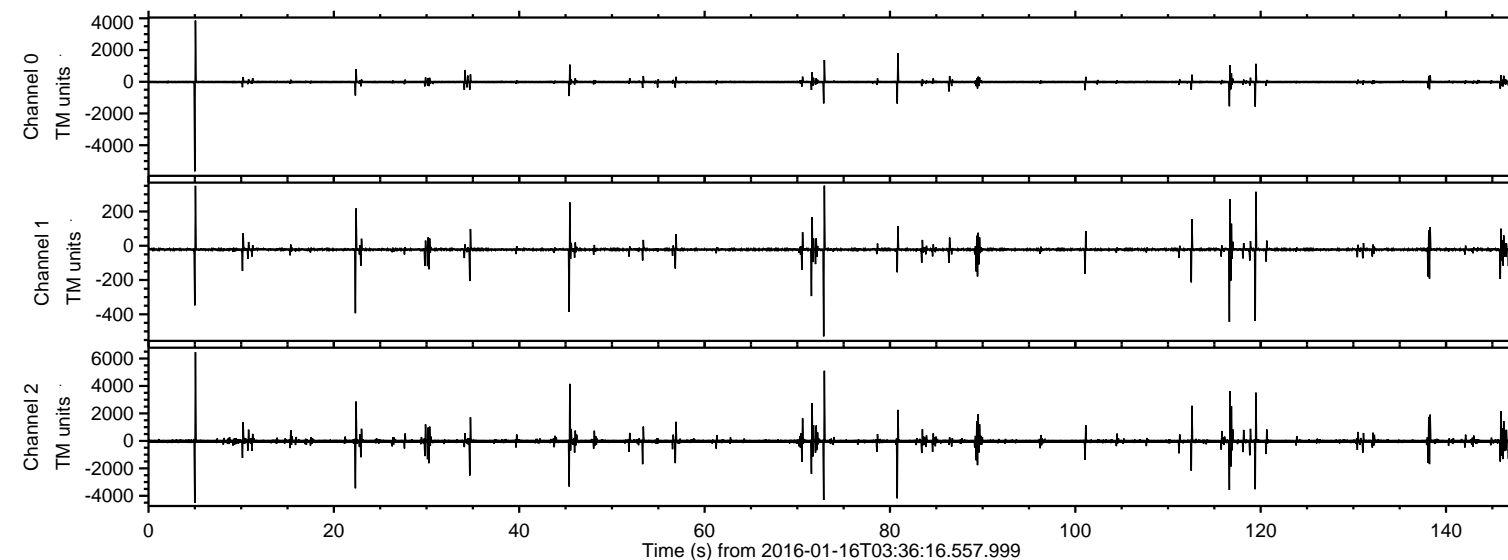
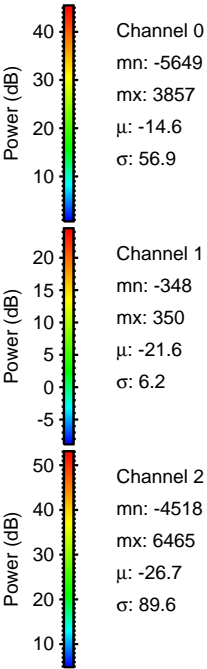
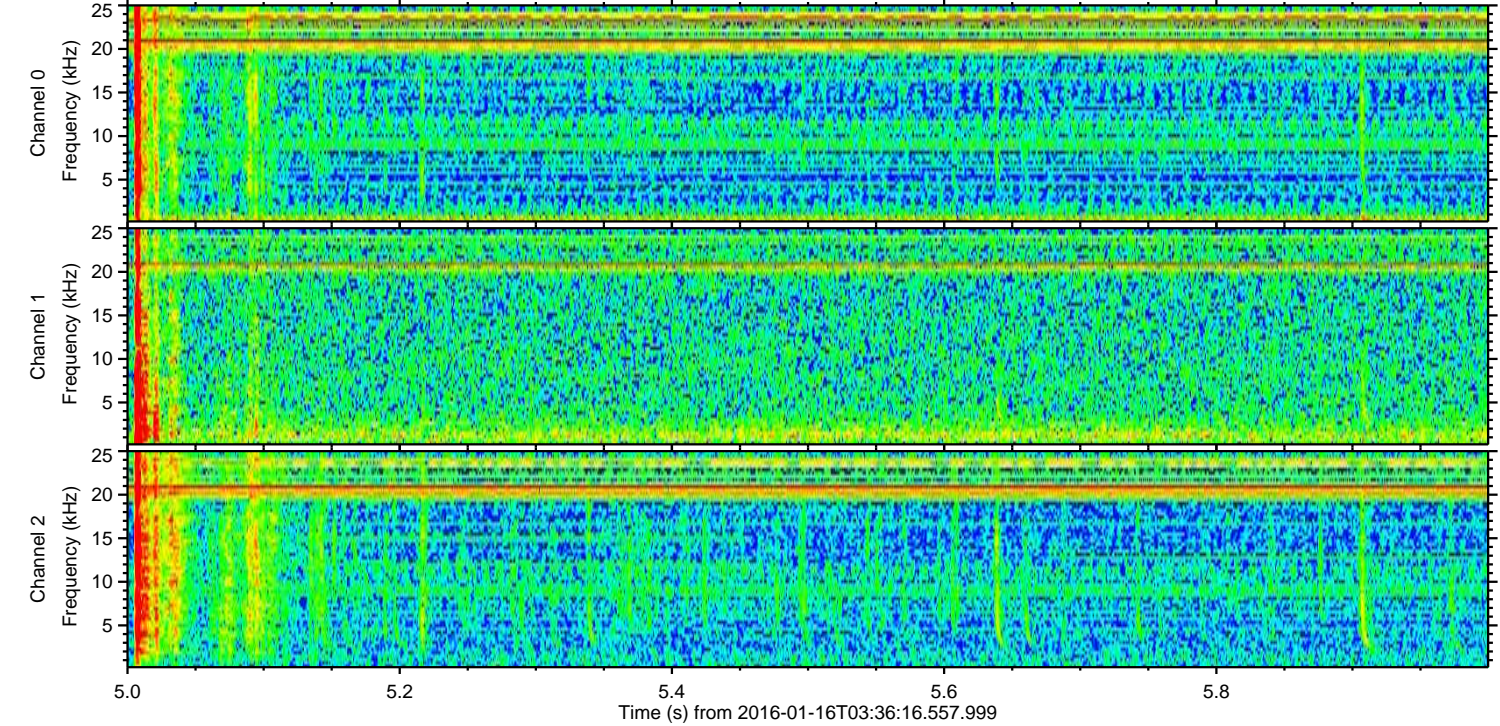
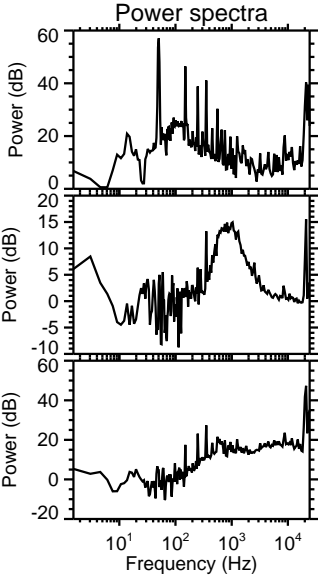
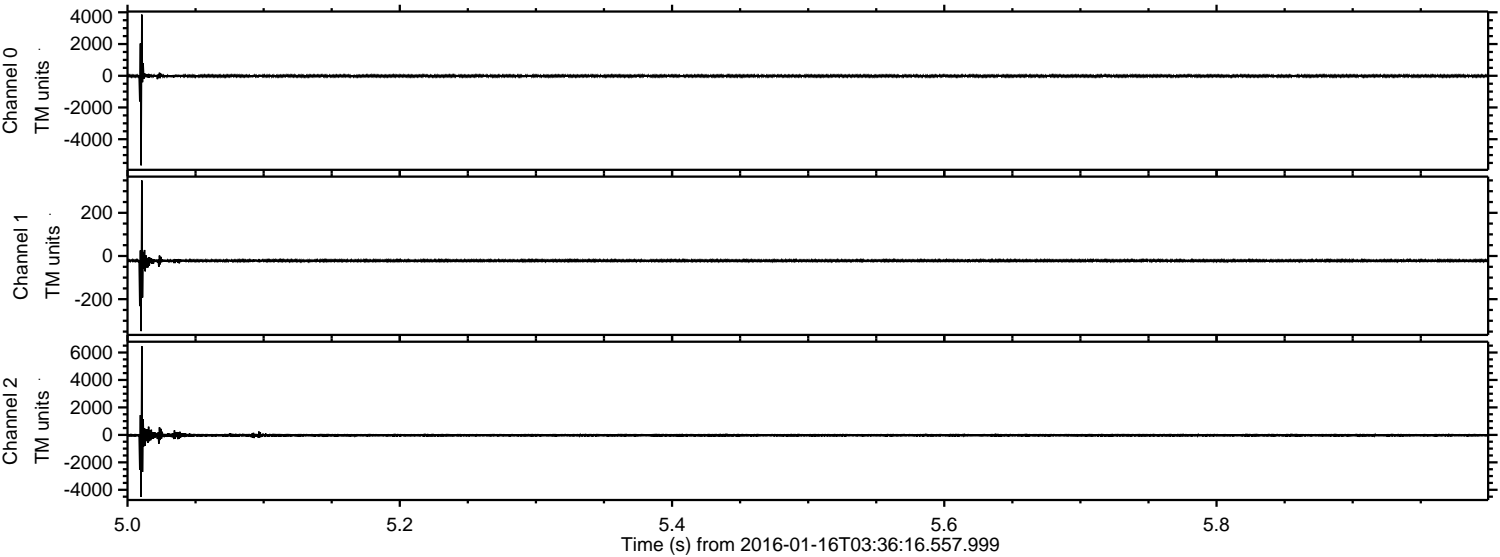


ELMAVAN 3D WAVEFORMS (Measured data sampled at 50 kHz) 51000 packets of 144 samples from 2016-01-16T03:36:16.557.999.

Processed Wed Mar 30 22:13:37 2016 by ELM ver.2012-10-06 from 001__elm20160116_033615__dat00.bin

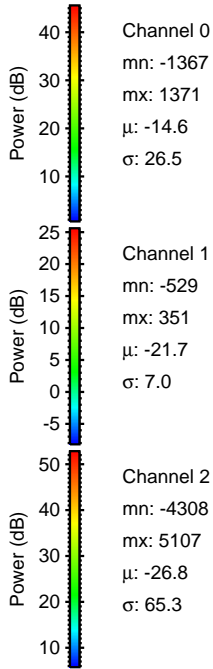
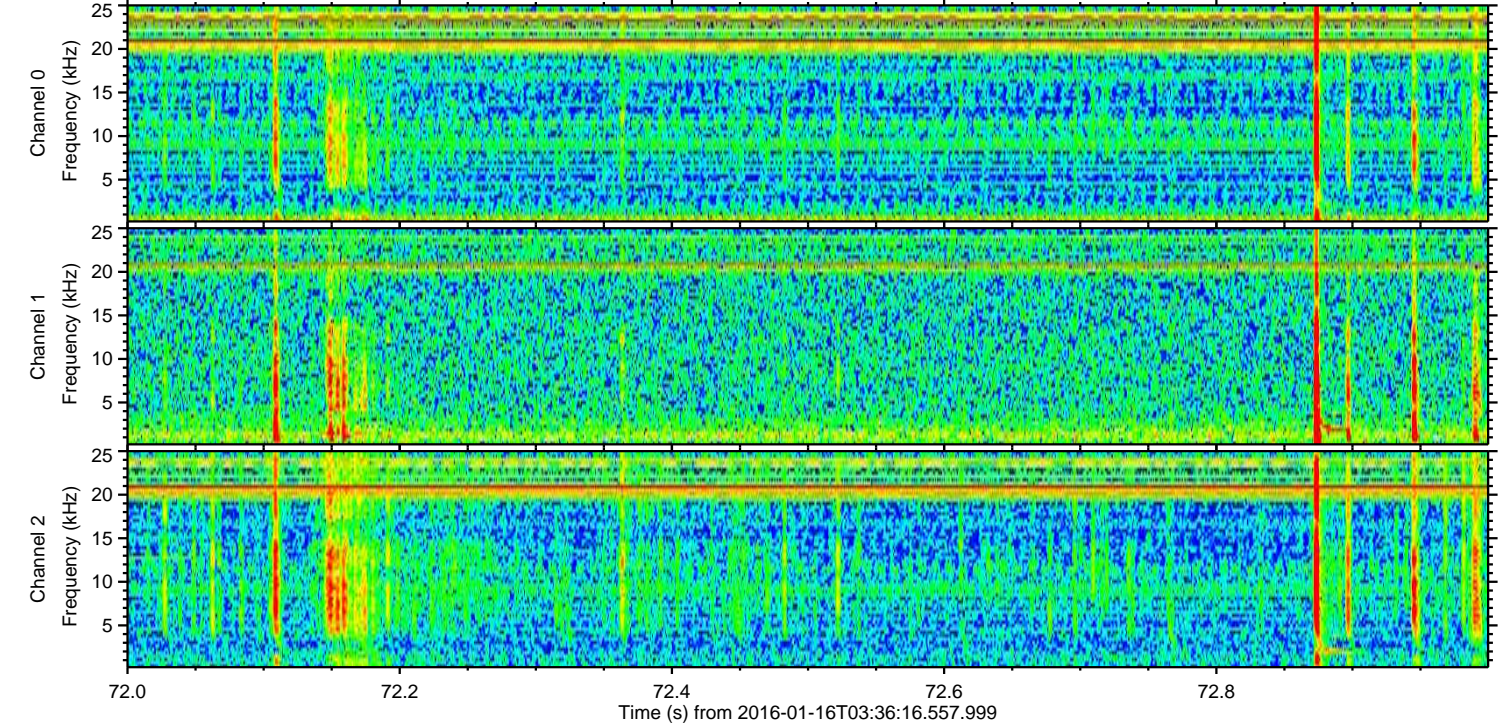
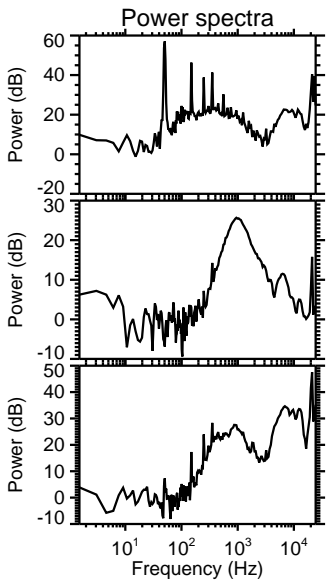
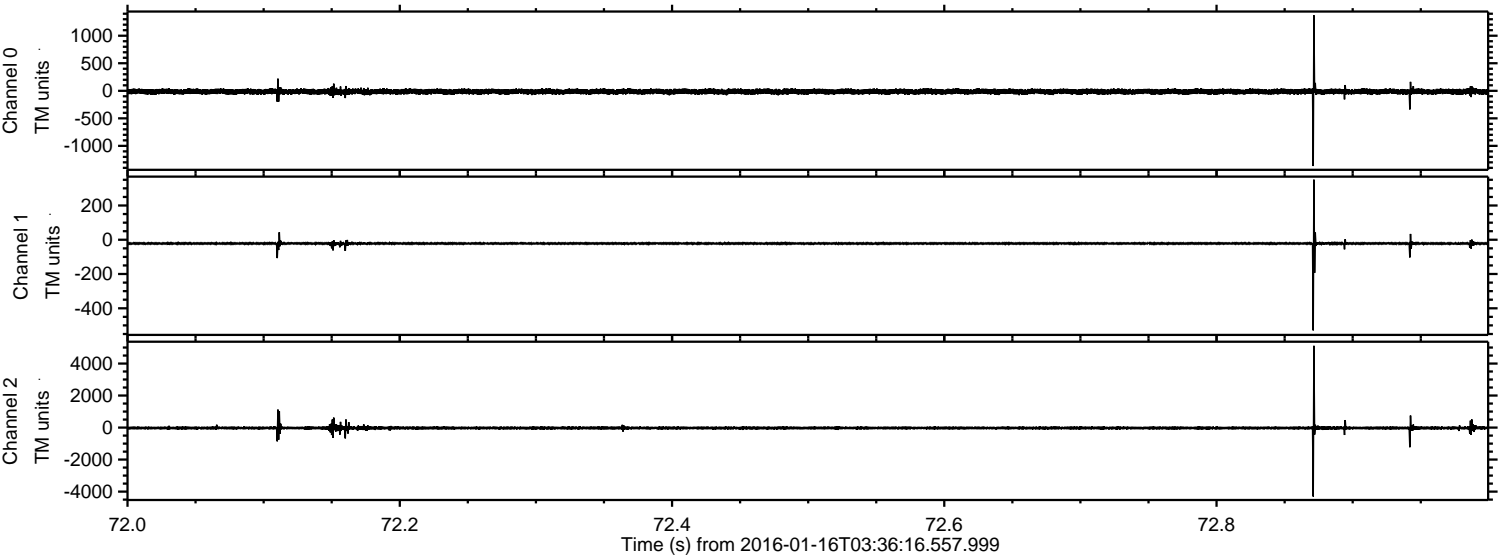


Processed Wed Mar 30 22:13:49 2016 by ELM ver.2012-10-06 from 001__elm20160116_033615__dat00.bin

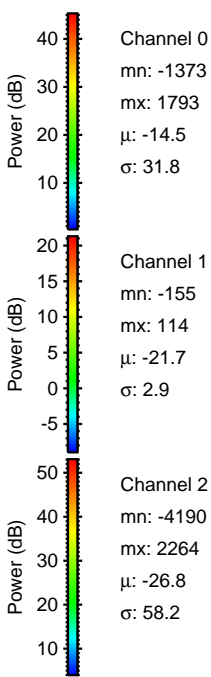
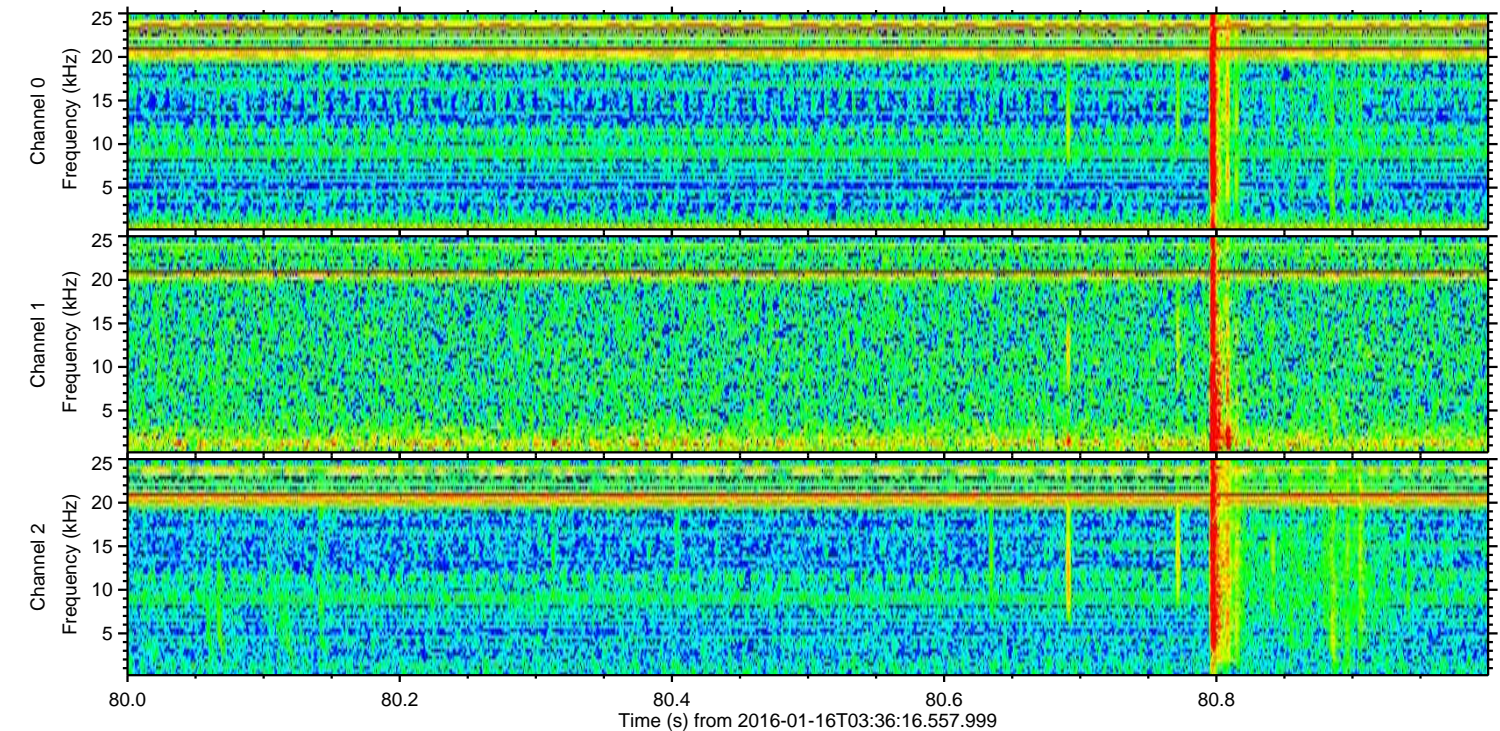
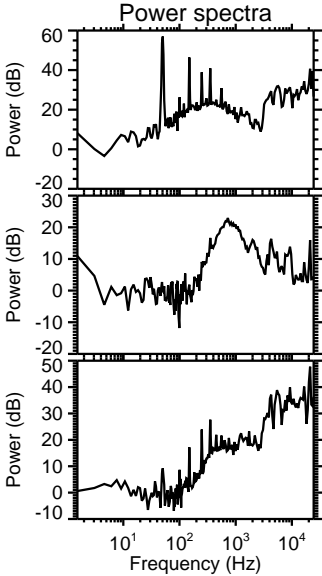
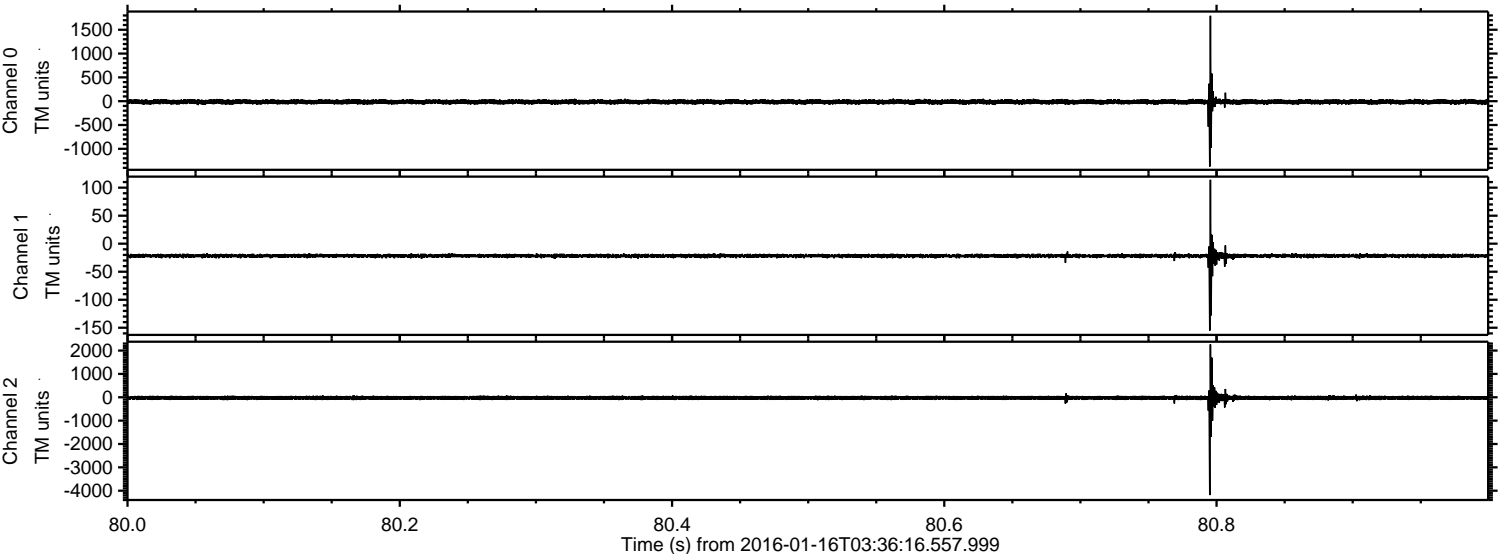


ELMAVAN 3D WAVEFORMS (Measured data sampled at 50 kHz) 51000 packets of 144 samples from 2016-01-16T03:36:16.557.999. Part 73/147

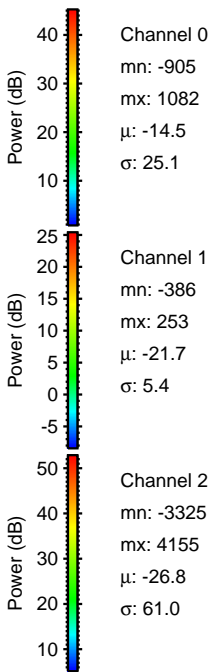
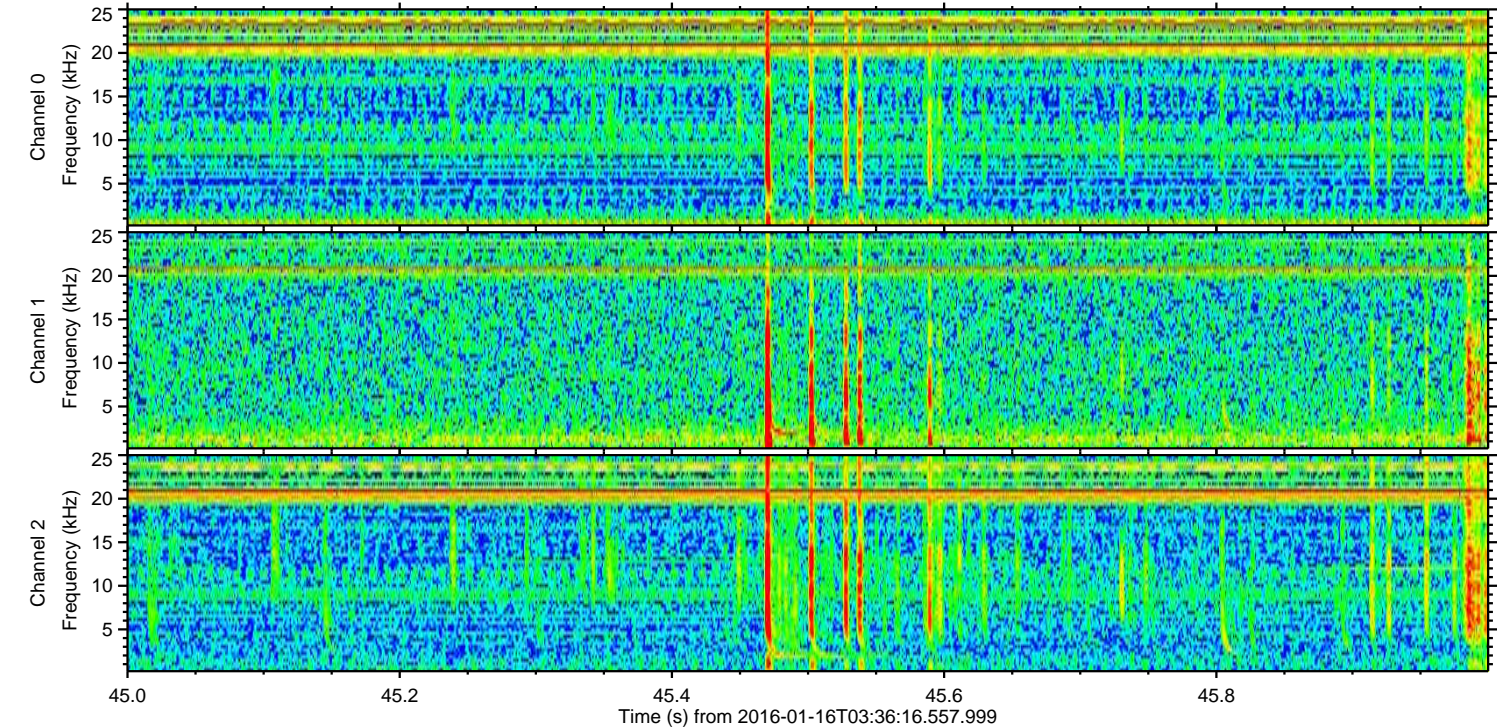
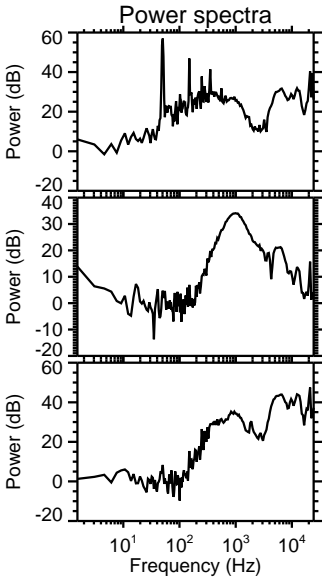
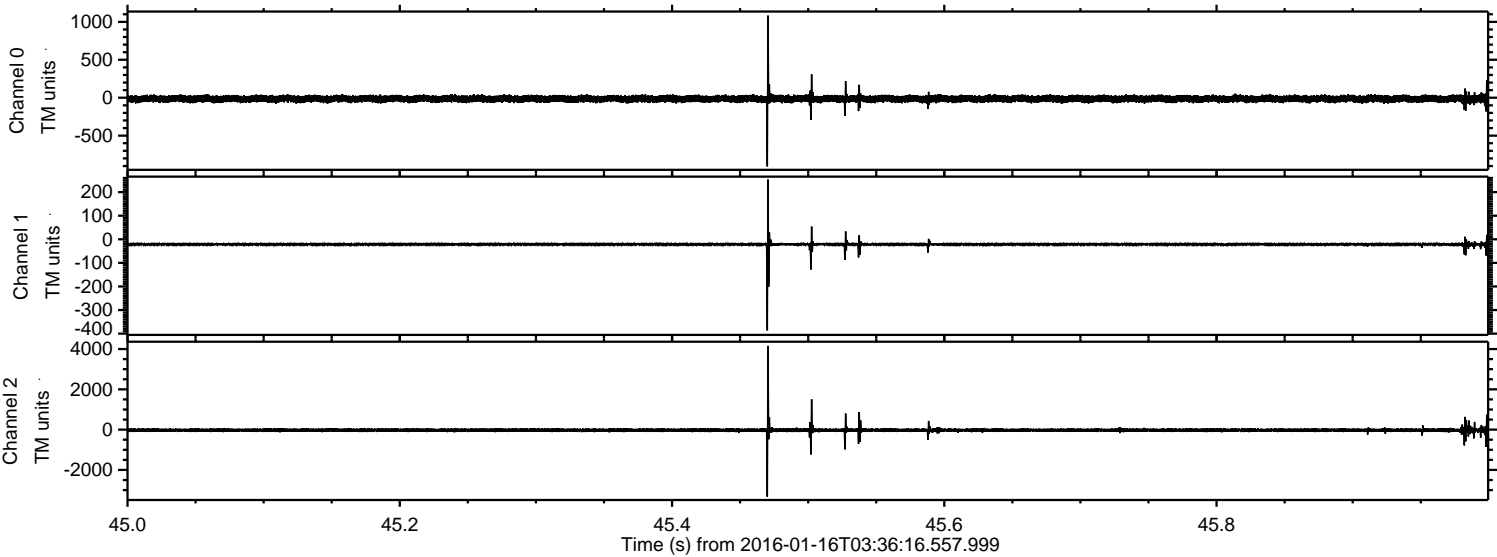
Processed Wed Mar 30 22:13:50 2016 by ELM ver.2012-10-06 from 001__elm20160116_033615__dat00.bin



Processed Wed Mar 30 22:13:51 2016 by ELM ver.2012-10-06 from 001__elm20160116_033615__dat00.bin

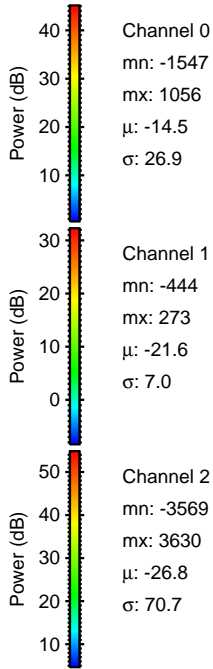
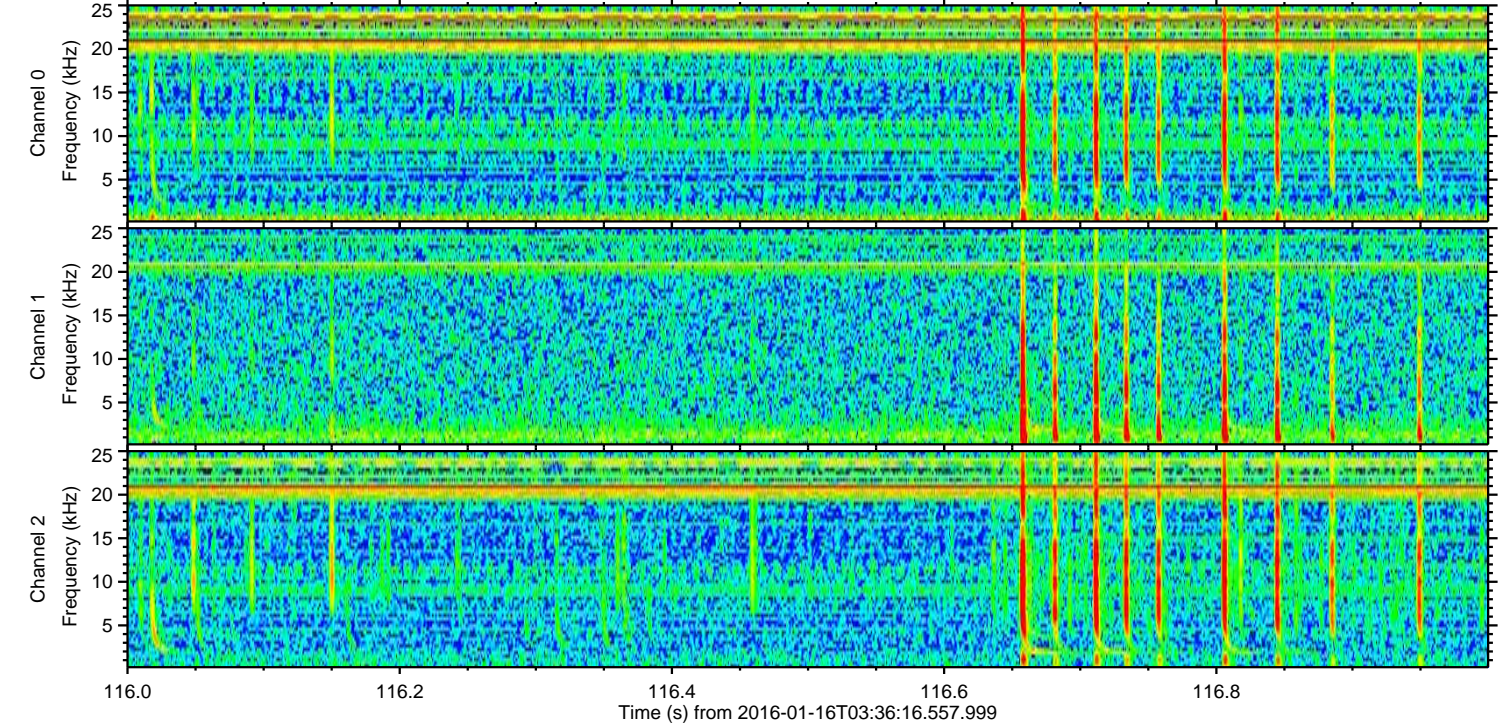
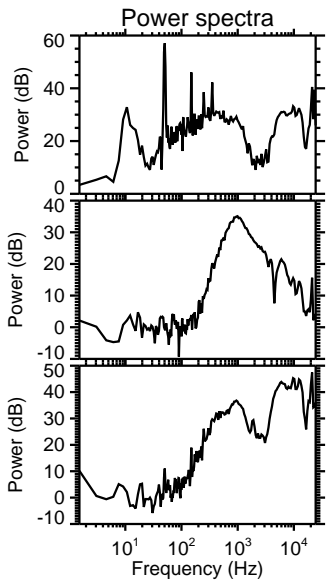
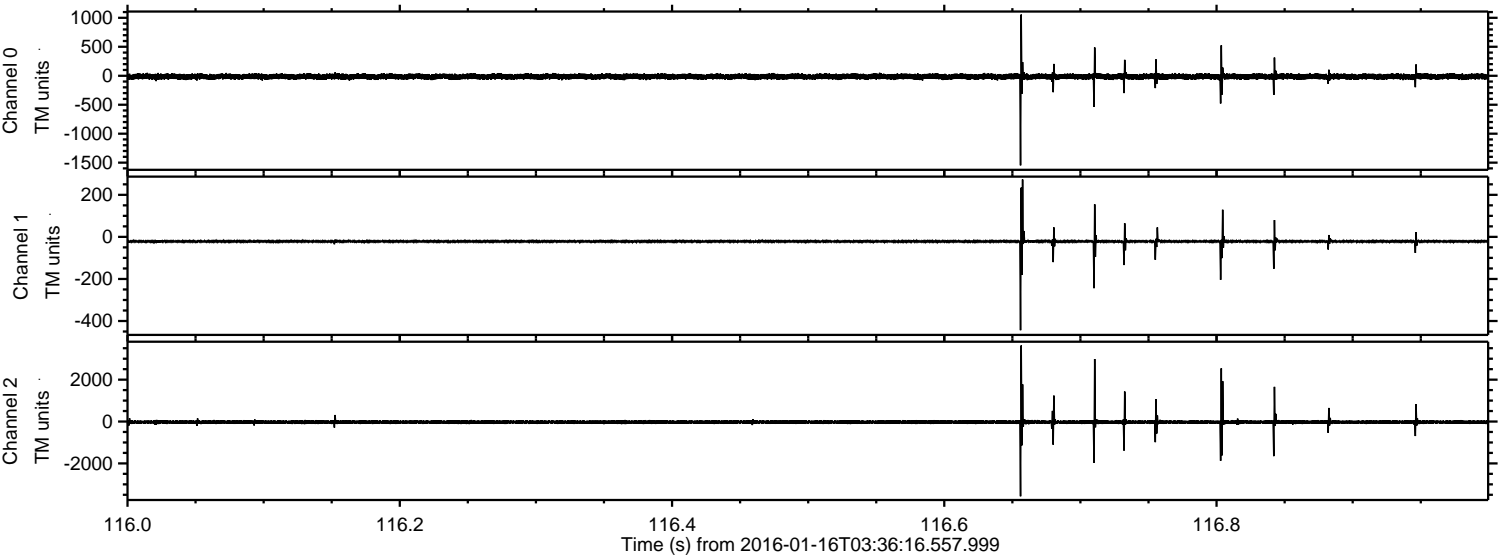


Processed Wed Mar 30 22:13:52 2016 by ELM ver.2012-10-06 from 001__elm20160116_033615__dat00.bin



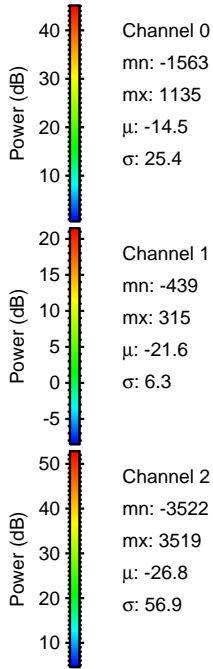
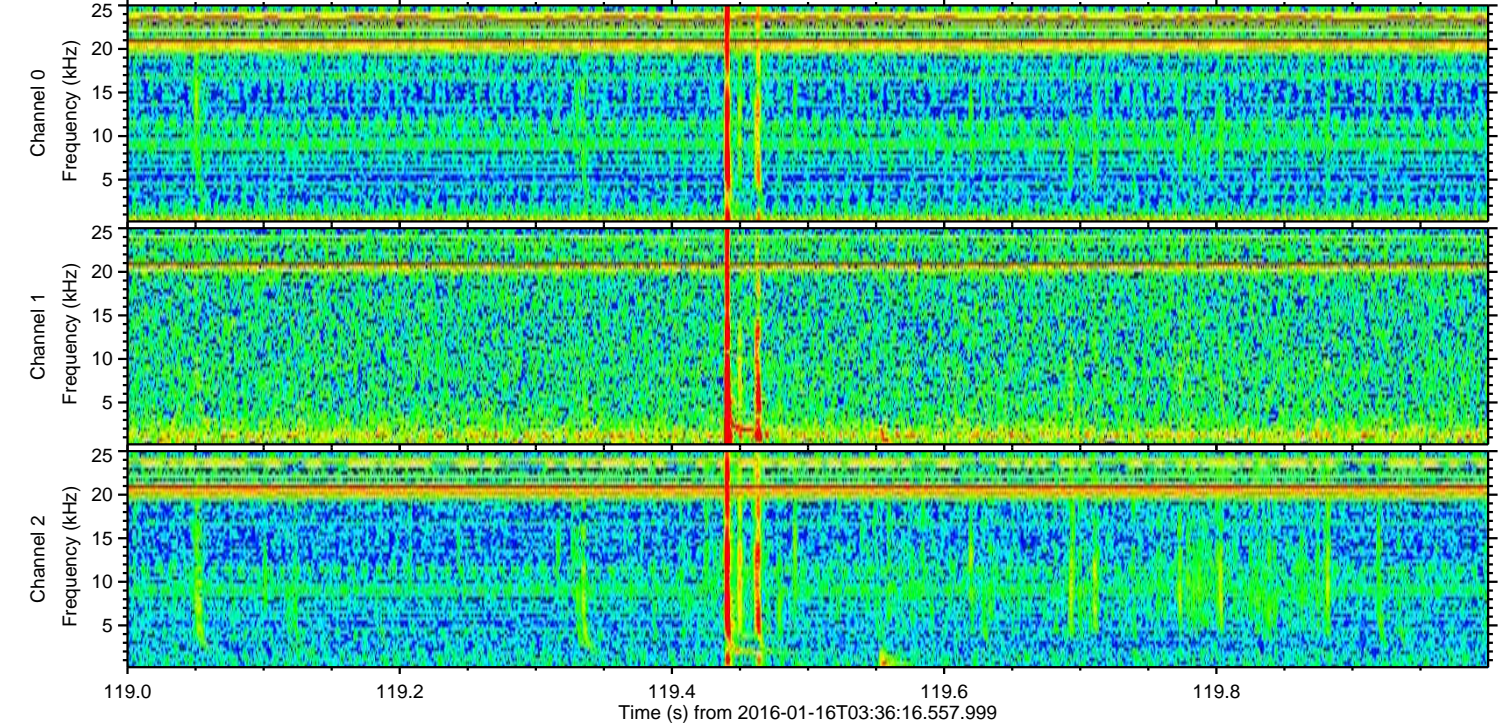
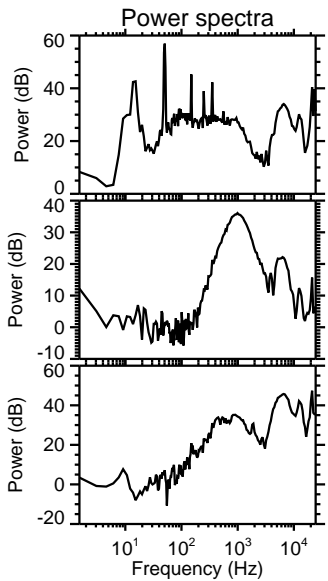
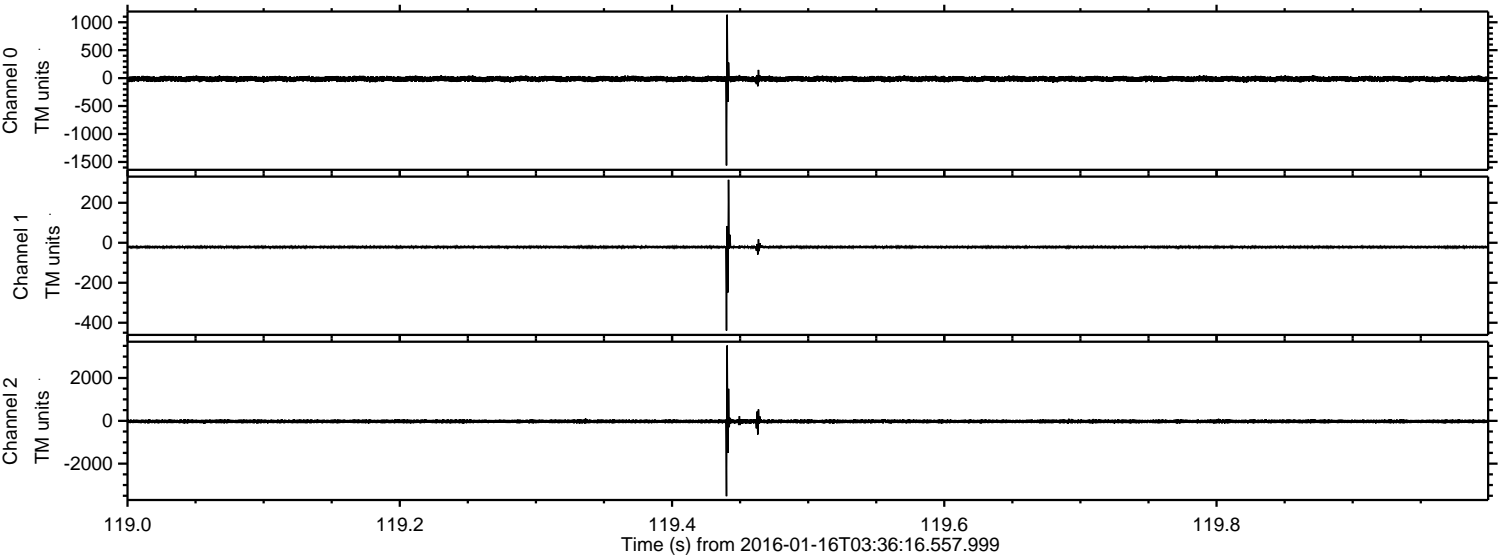
ELMAVAN 3D WAVEFORMS (Measured data sampled at 50 kHz) 51000 packets of 144 samples from 2016-01-16T03:36:16.557.999. Part 117/147

Processed Wed Mar 30 22:13:53 2016 by ELM ver.2012-10-06 from 001__elm20160116_033615__dat00.bin

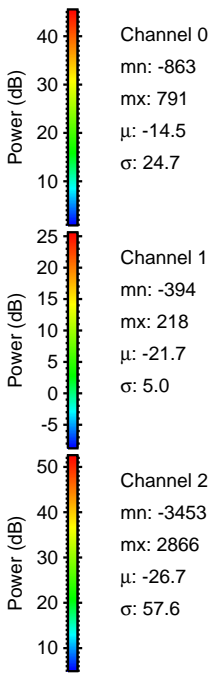
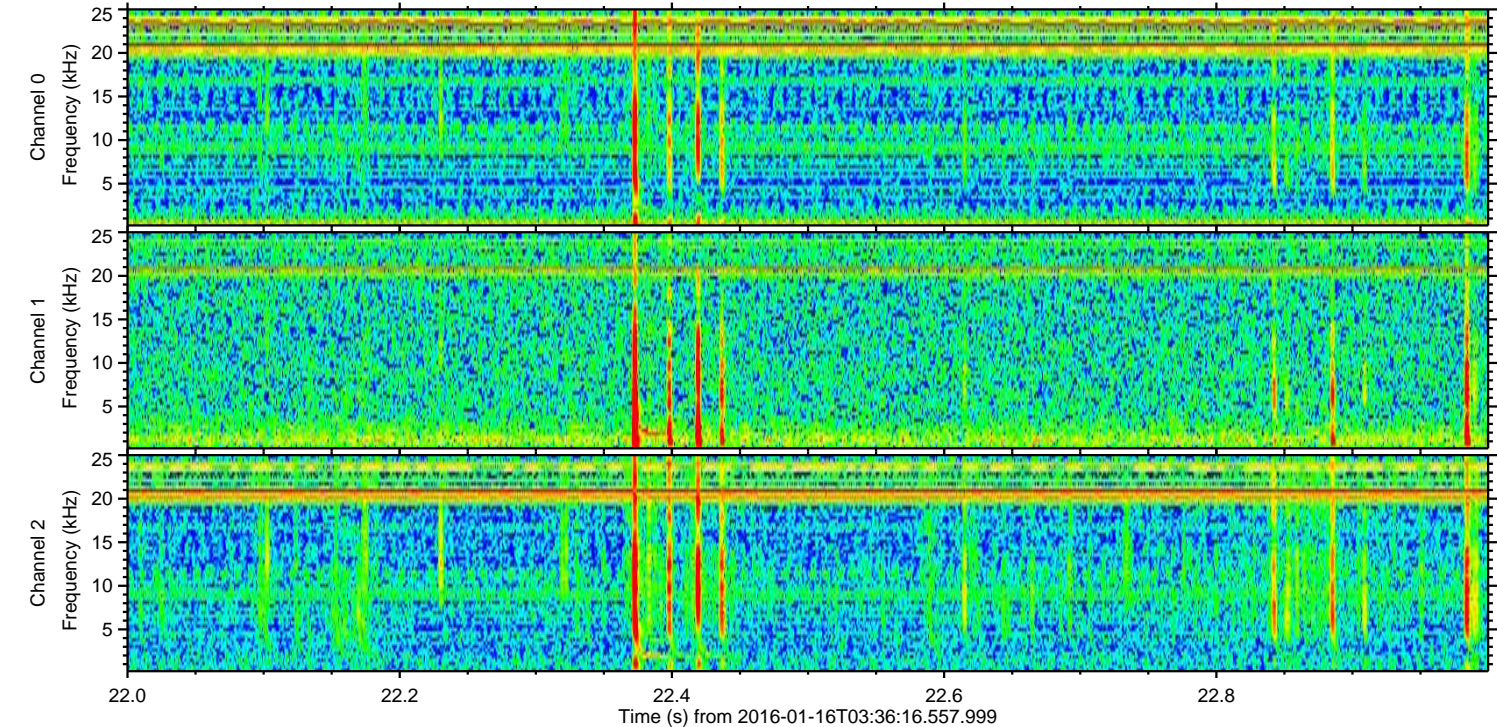
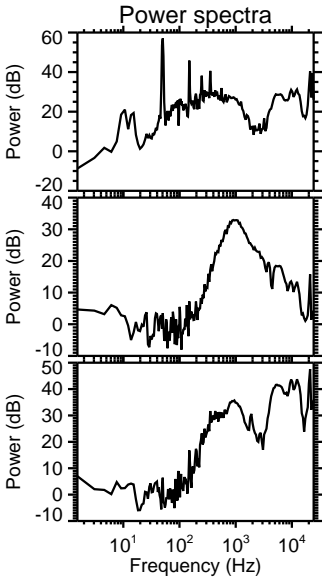
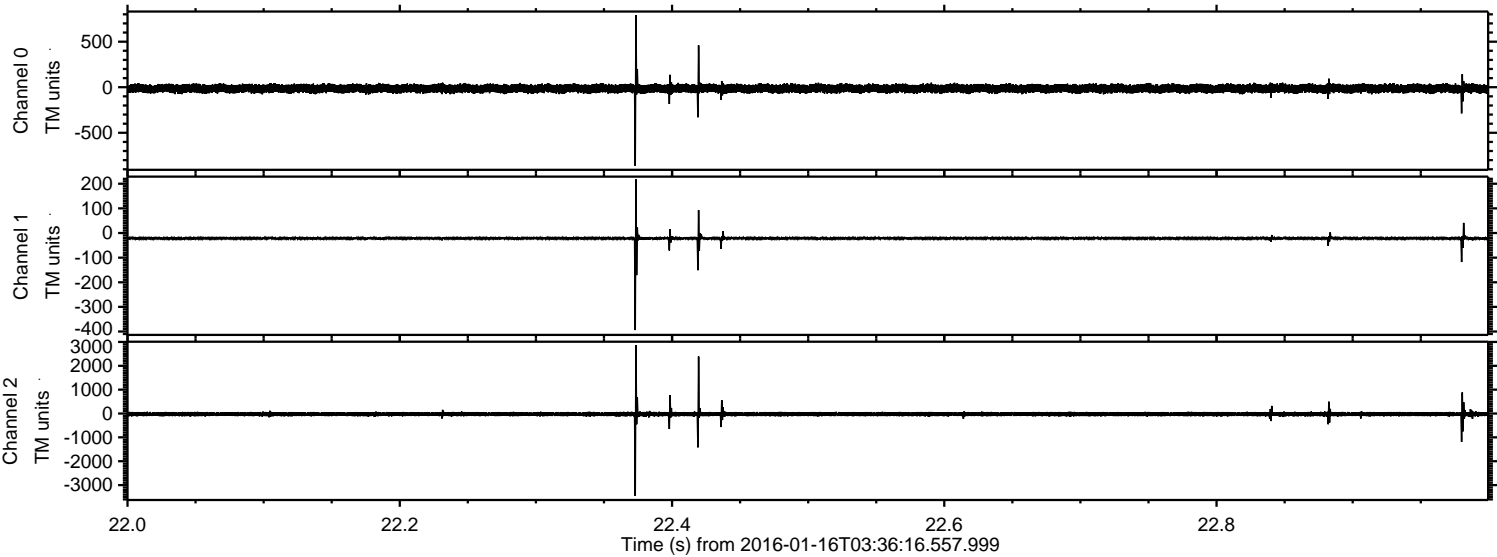


ELMAVAN 3D WAVEFORMS (Measured data sampled at 50 kHz) 51000 packets of 144 samples from 2016-01-16T03:36:16.557.999. Part 120/147

Processed Wed Mar 30 22:13:54 2016 by ELM ver.2012-10-06 from 001__elm20160116_033615__dat00.bin

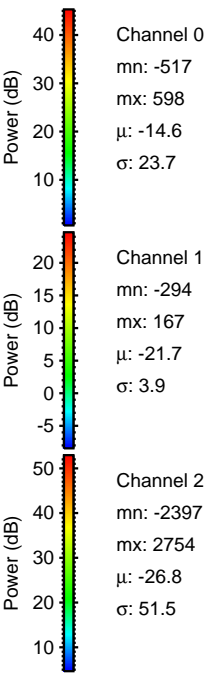
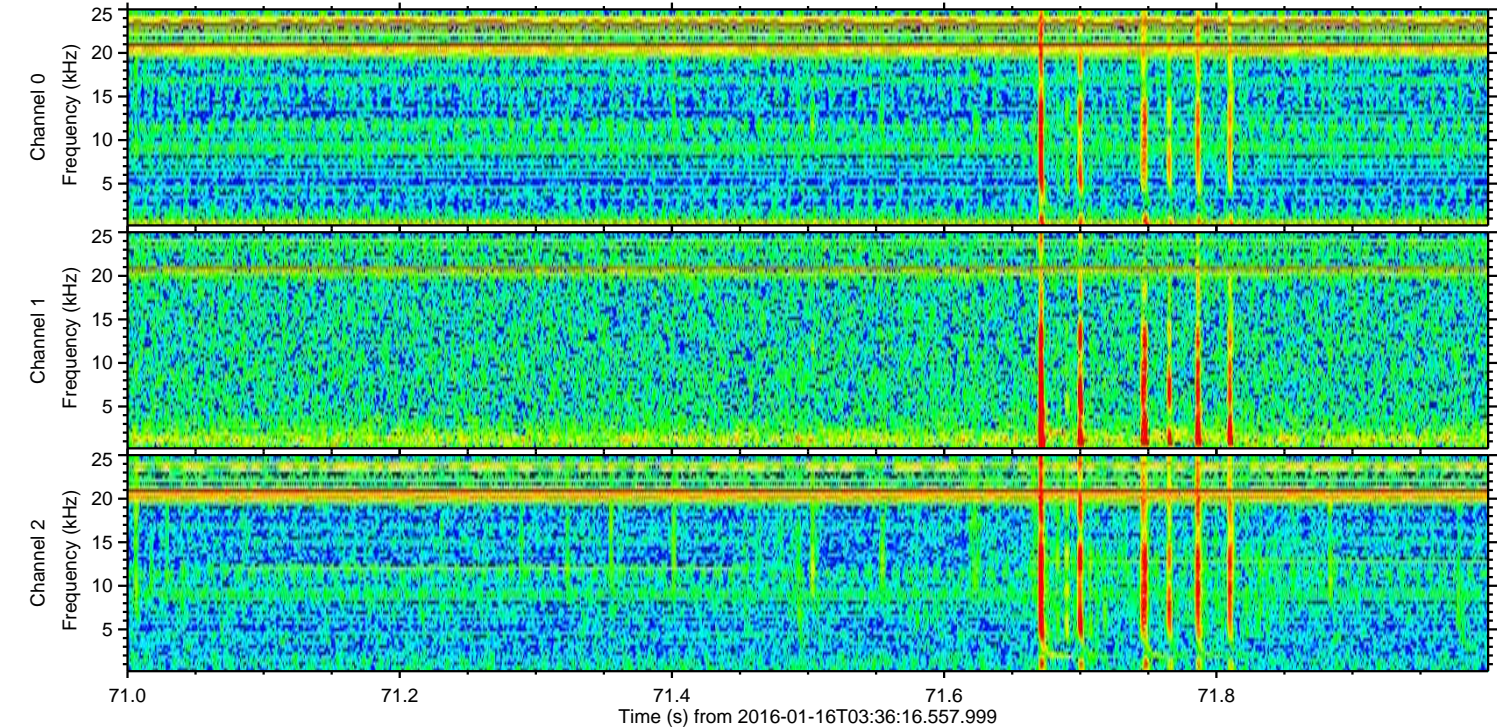
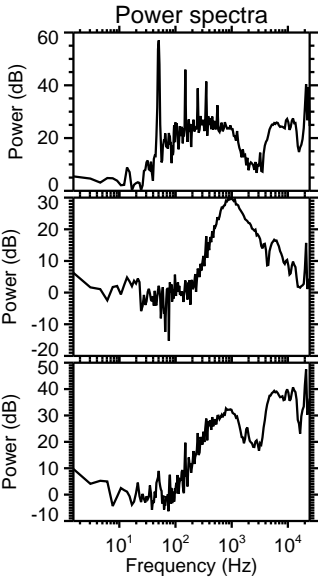
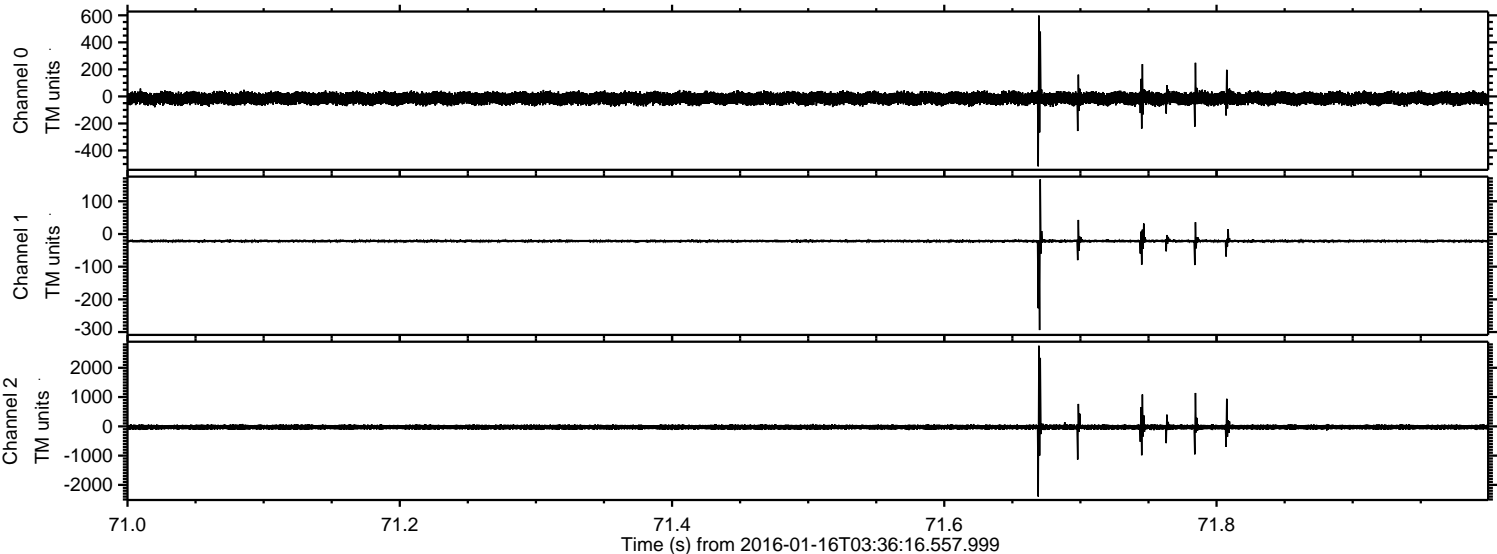


Processed Wed Mar 30 22:13:55 2016 by ELM ver.2012-10-06 from 001__elm20160116_033615__dat00.bin



ELMAVAN 3D WAVEFORMS (Measured data sampled at 50 kHz) 51000 packets of 144 samples from 2016-01-16T03:36:16.557.999. Part 72/147

Processed Wed Mar 30 22:13:56 2016 by ELM ver.2012-10-06 from 001__elm20160116_033615__dat00.bin



Channel 0
mn: -517
mx: 598
 μ : -14.6
 σ : 23.7

Channel 1
mn: -294
mx: 167
 μ : -21.7
 σ : 3.9

Channel 2
mn: -2397
mx: 2754
 μ : -26.8
 σ : 51.5

Processed Wed Mar 30 22:13:57 2016 by ELM ver.2012-10-06 from 001__elm20160116_033615__dat00.bin

