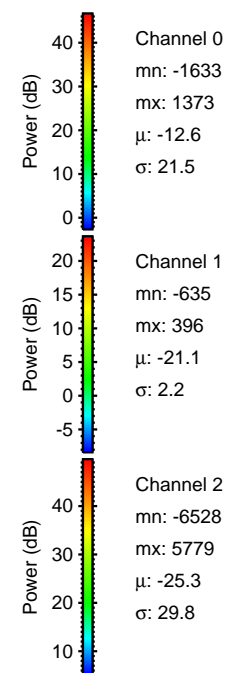
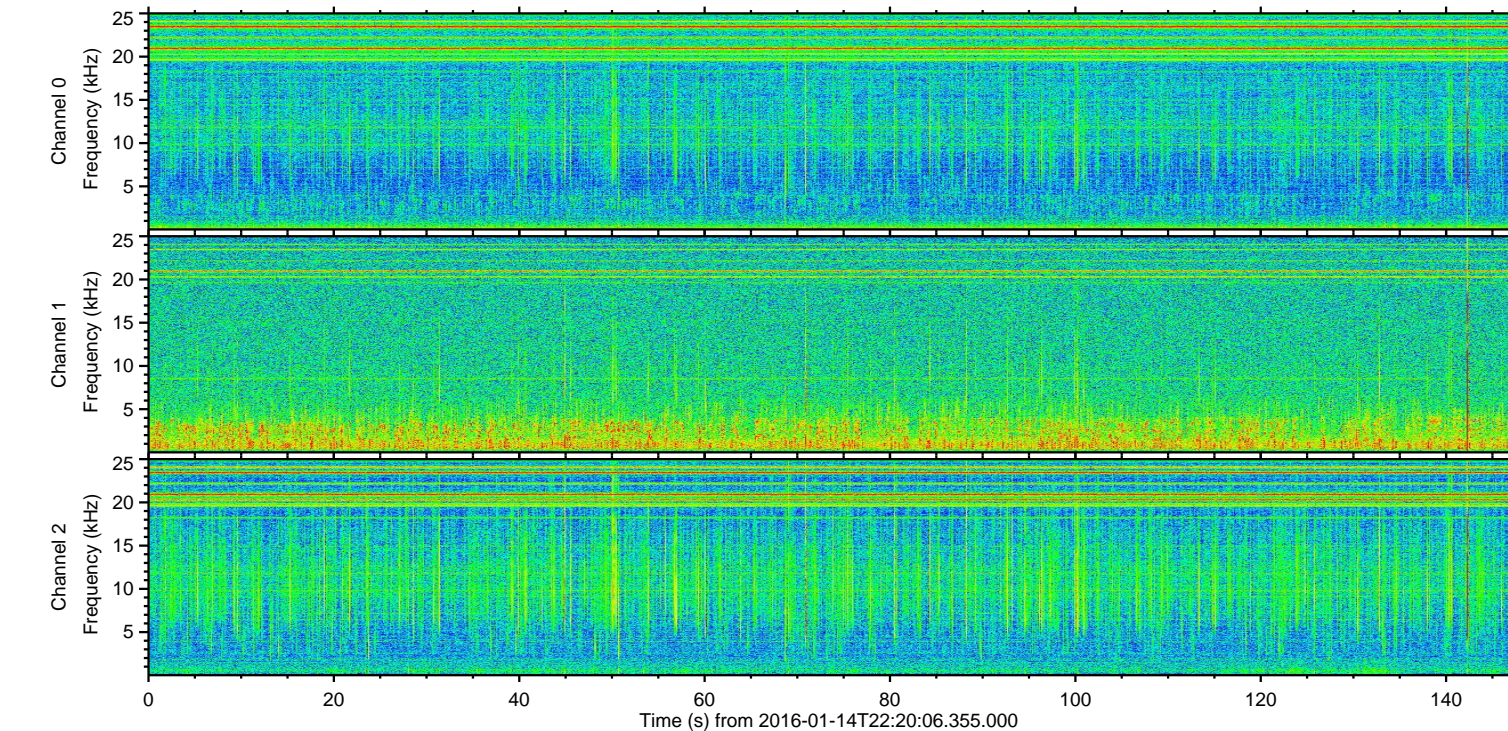
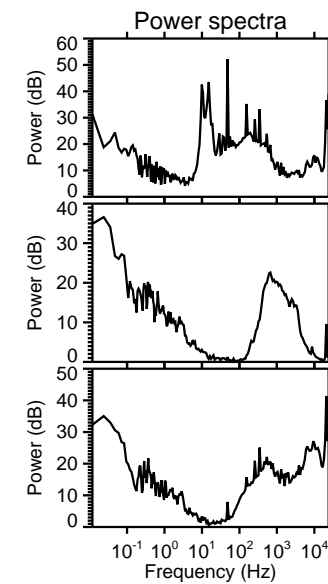
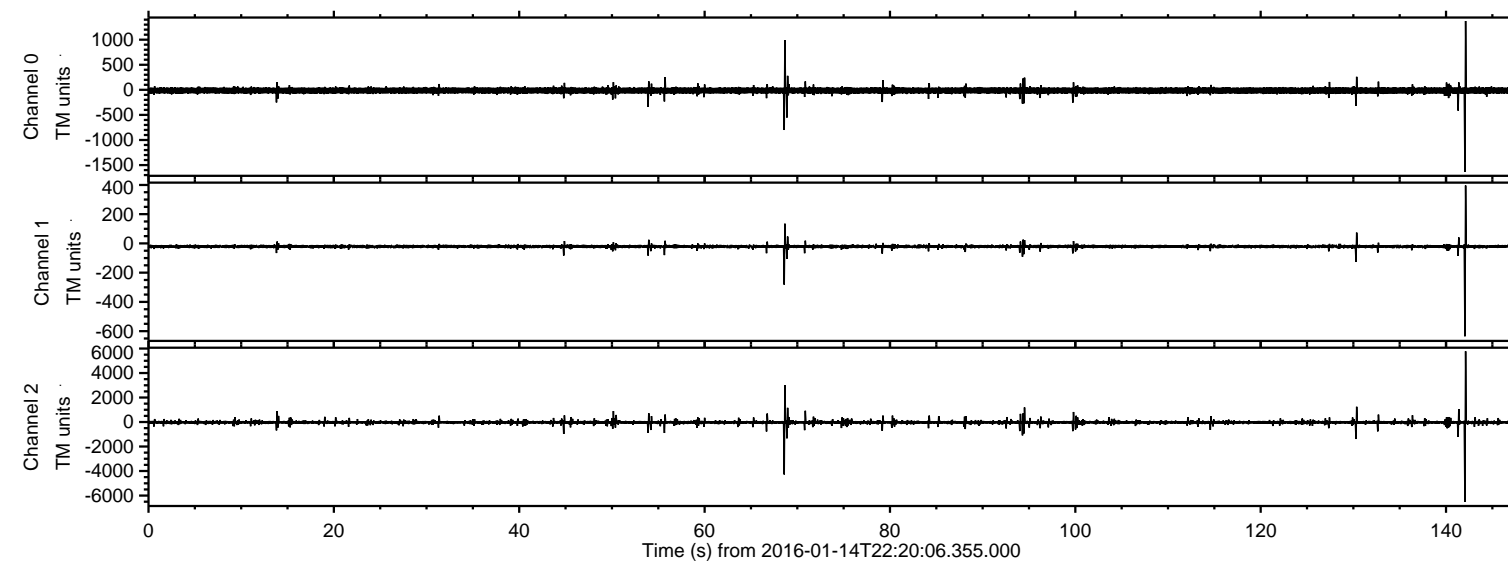


# ELMAVAN 3D WAVEFORMS (Measured data sampled at 50 kHz) 51000 packets of 144 samples from 2016-01-14T22:20:06.355.000.

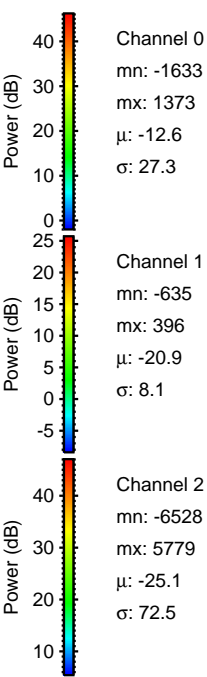
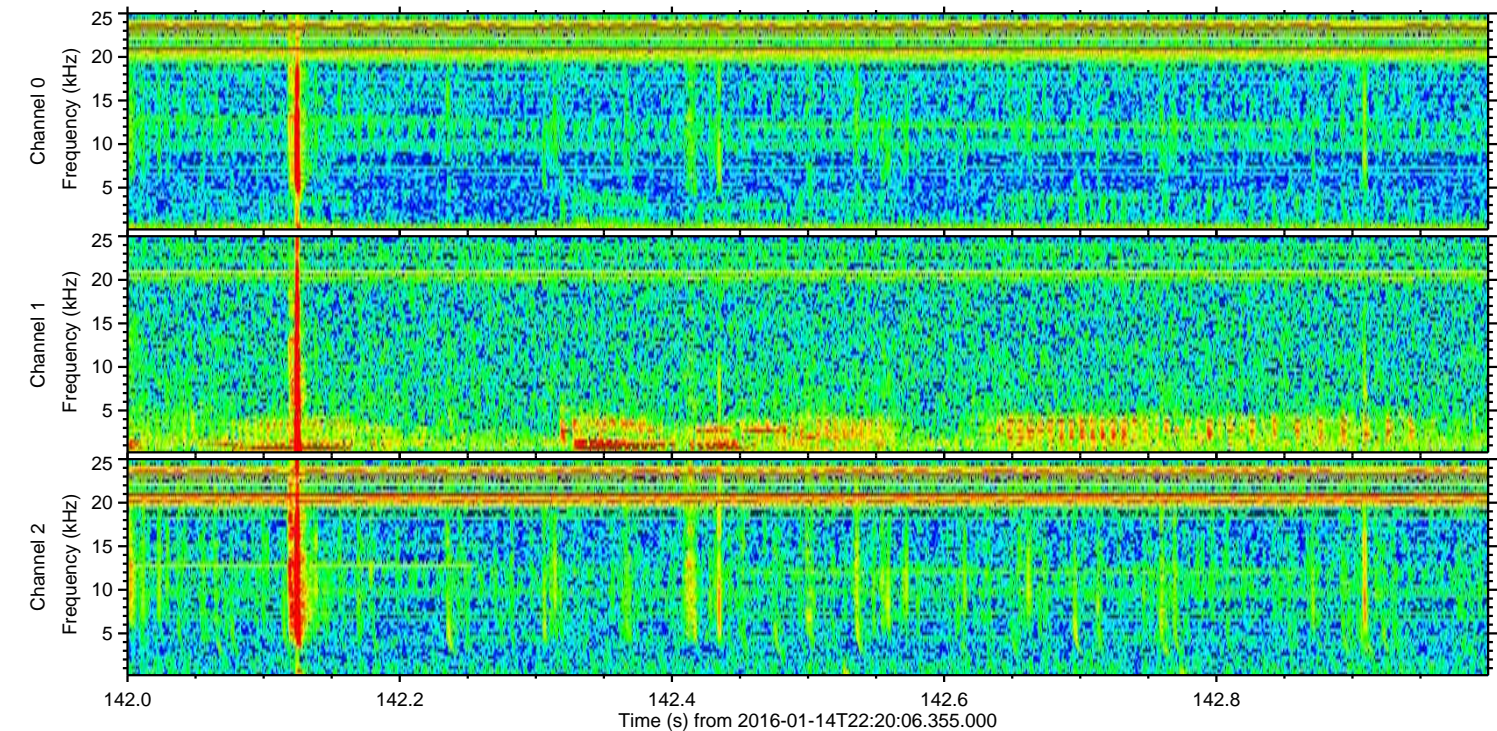
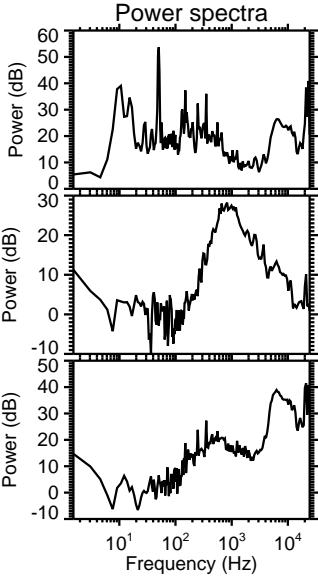
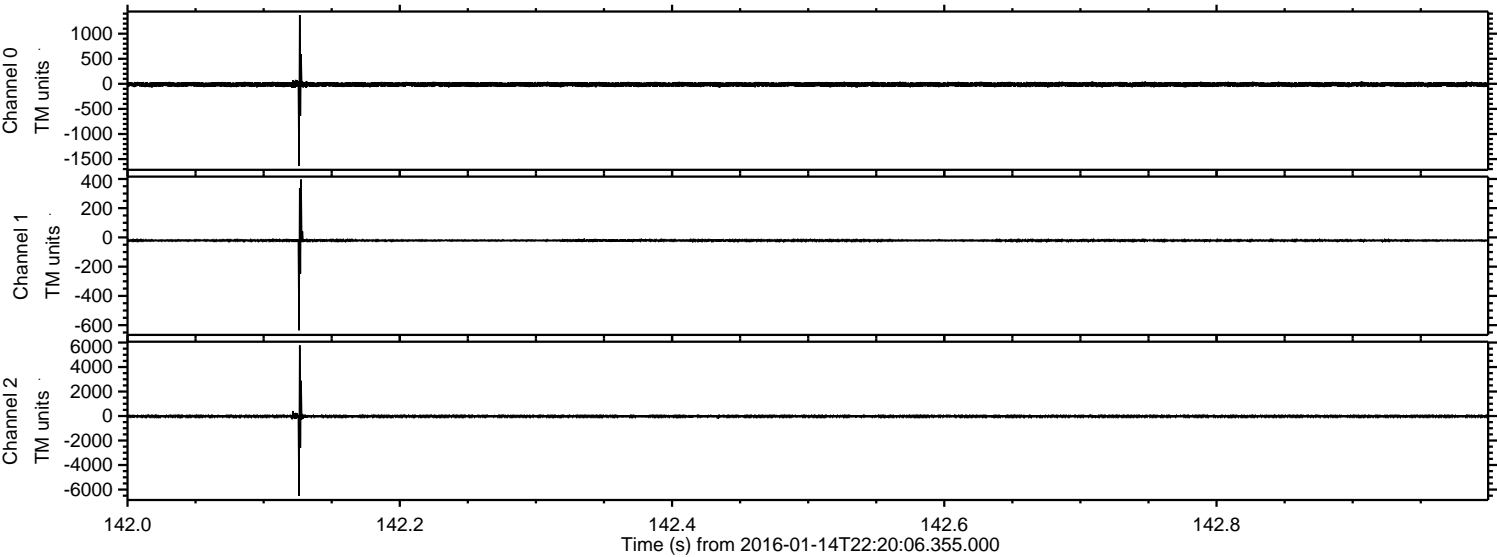
Processed Wed Mar 30 16:26:03 2016 by ELM ver.2012-10-06 from 001\_\_elm20160114\_222005\_\_dat00.bin





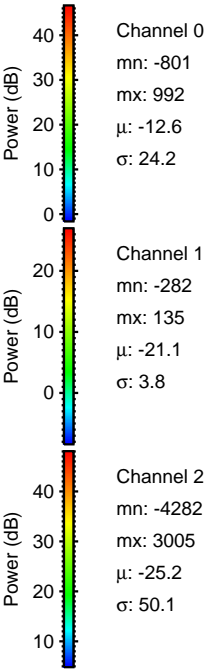
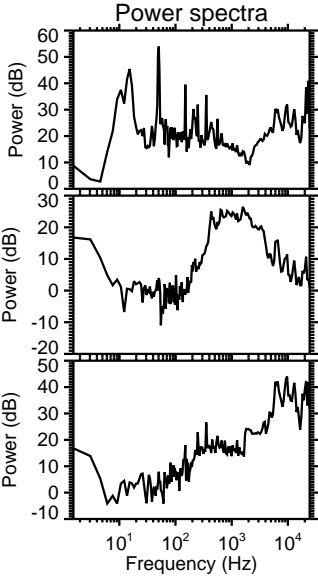
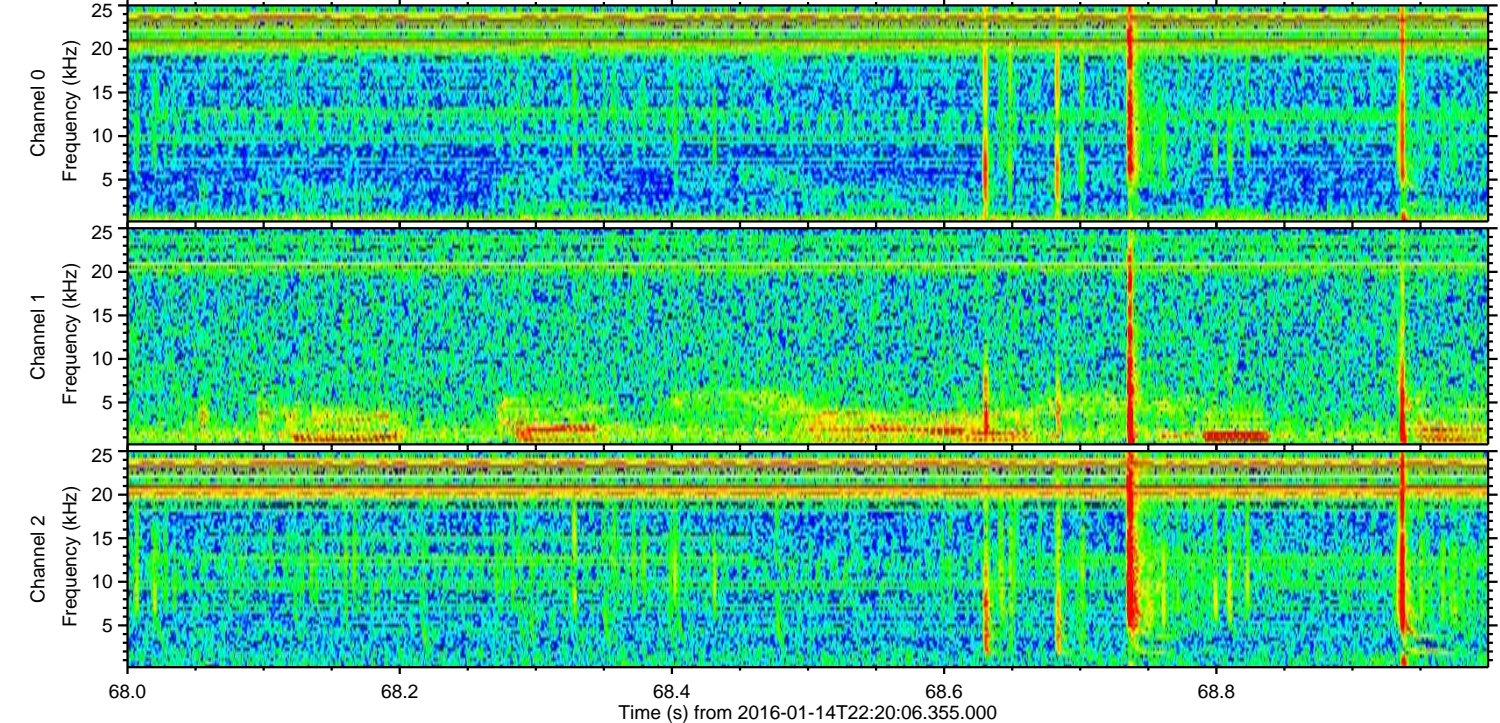
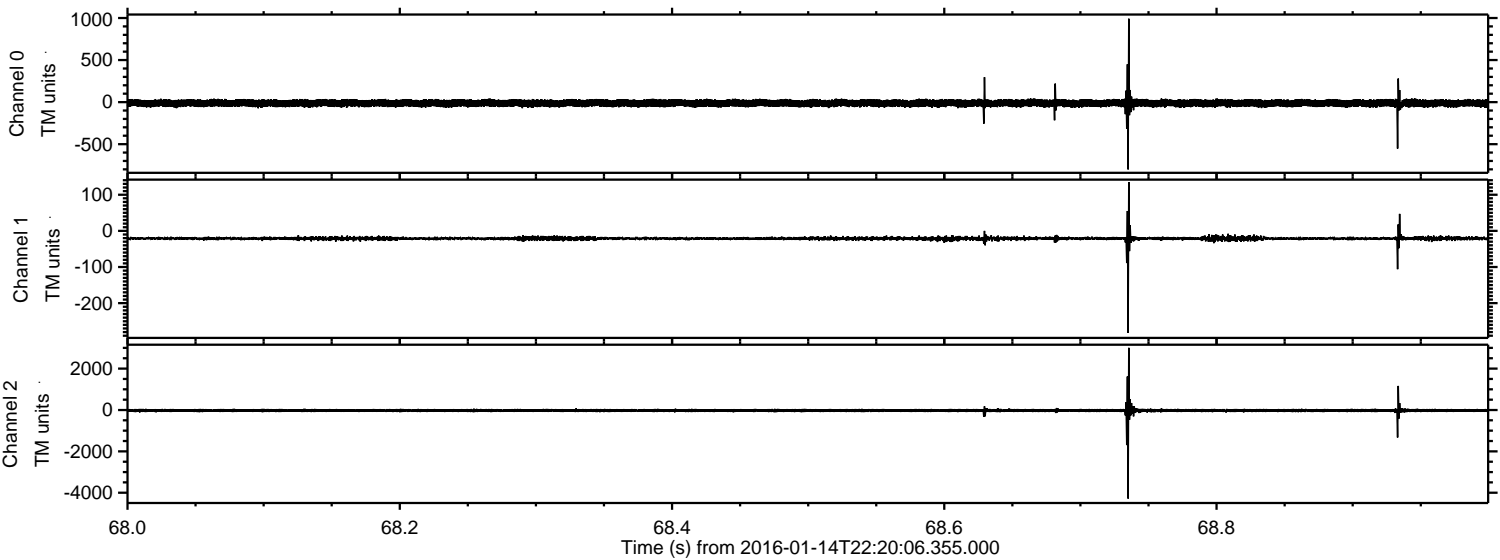
ELMAVAN 3D WAVEFORMS (Measured data sampled at 50 kHz) 51000 packets of 144 samples from 2016-01-14T22:20:06.355.000. Part 143/147

Processed Wed Mar 30 16:26:15 2016 by ELM ver.2012-10-06 from 001\_\_elm20160114\_222005\_\_dat00.bin





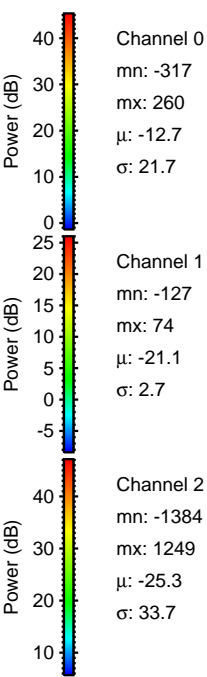
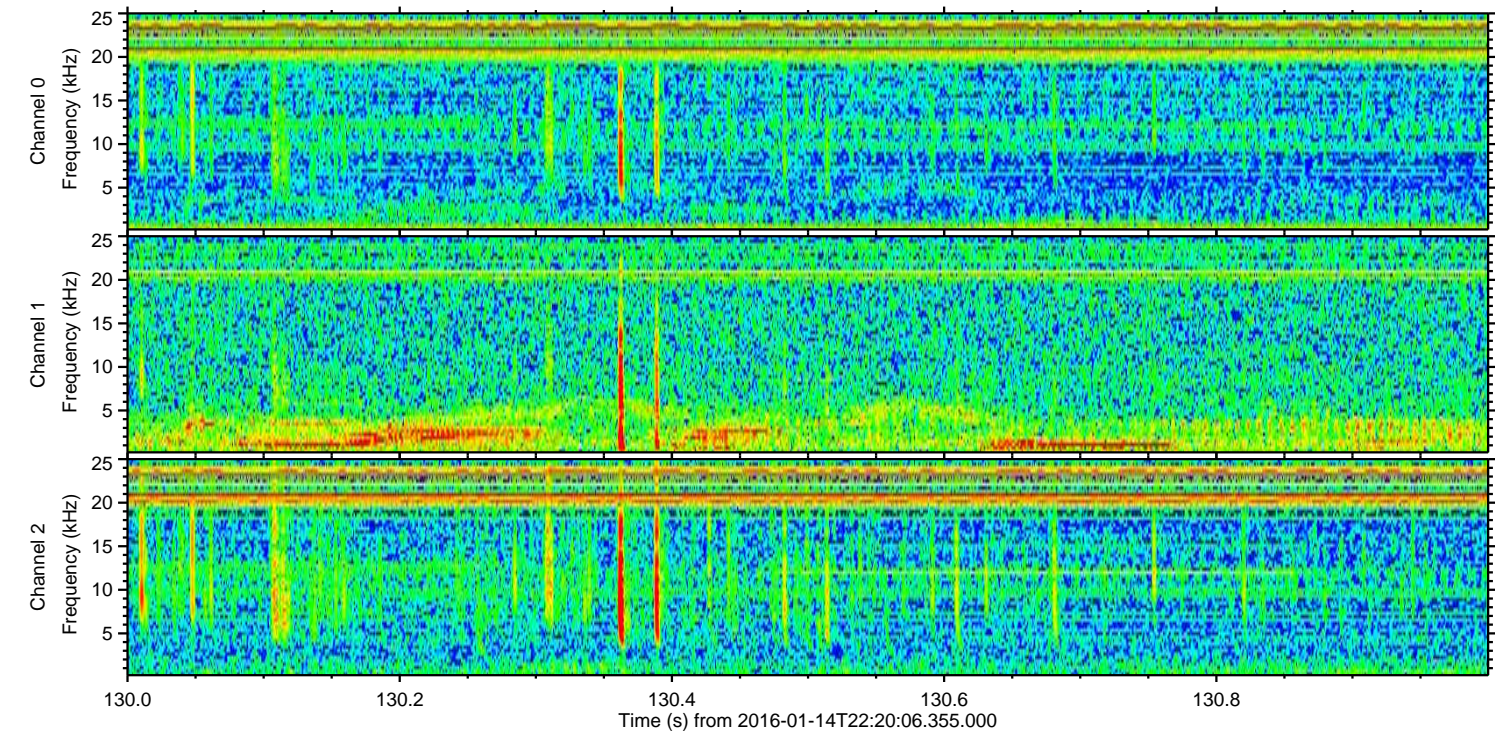
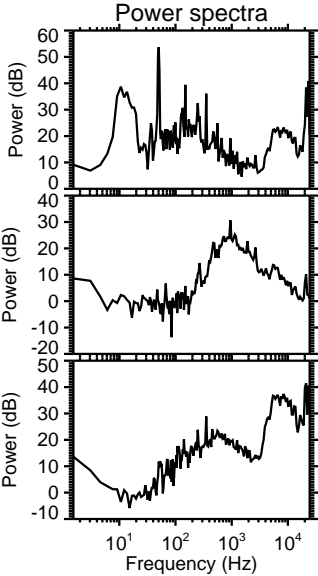
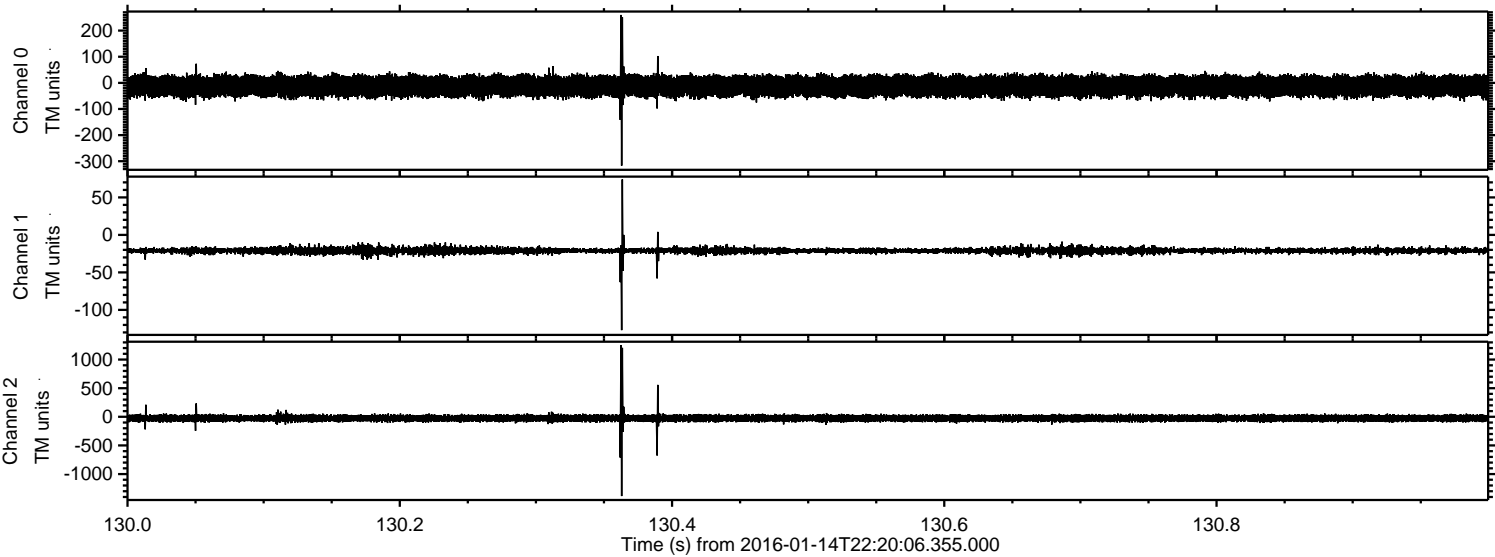
Processed Wed Mar 30 16:26:16 2016 by ELM ver.2012-10-06 from 001\_\_elm20160114\_222005\_\_dat00.bin





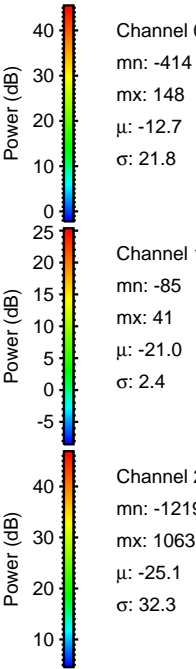
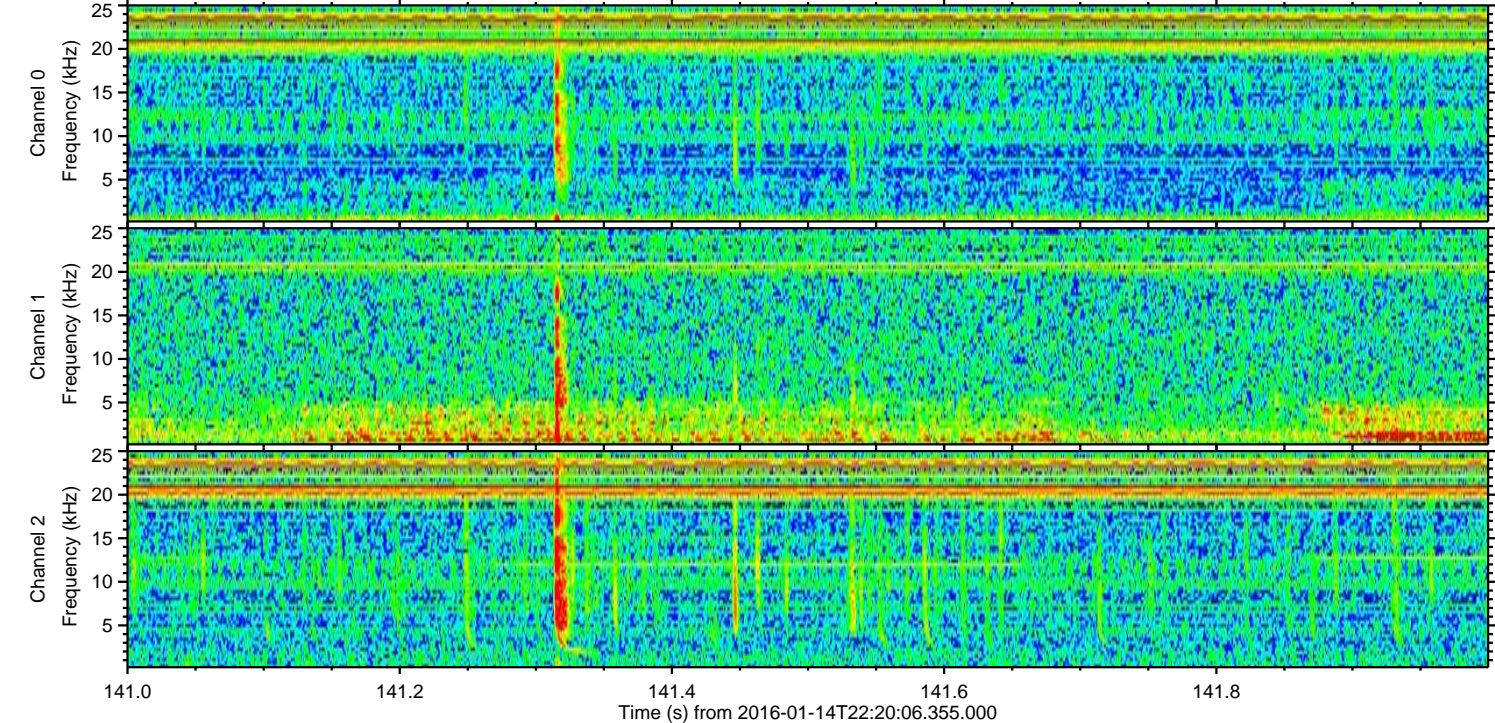
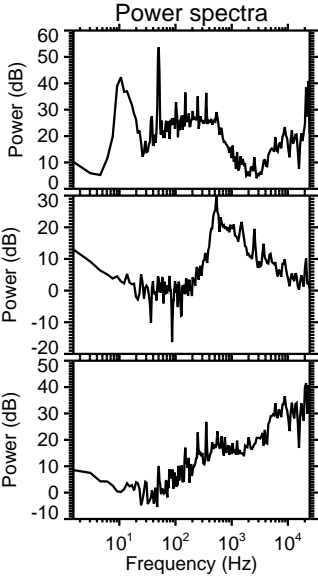
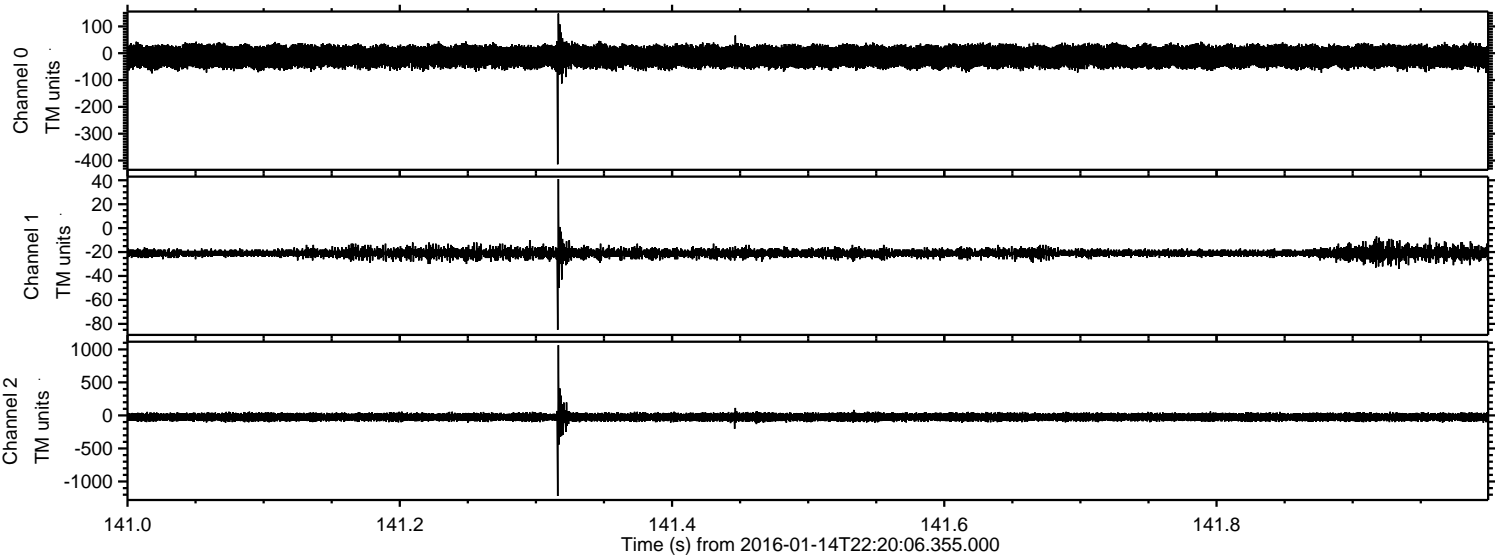
ELMAVAN 3D WAVEFORMS (Measured data sampled at 50 kHz) 51000 packets of 144 samples from 2016-01-14T22:20:06.355.000. Part 131/147

Processed Wed Mar 30 16:26:17 2016 by ELM ver.2012-10-06 from 001\_\_elm20160114\_222005\_\_dat00.bin



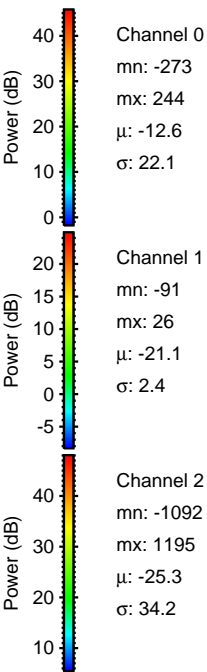
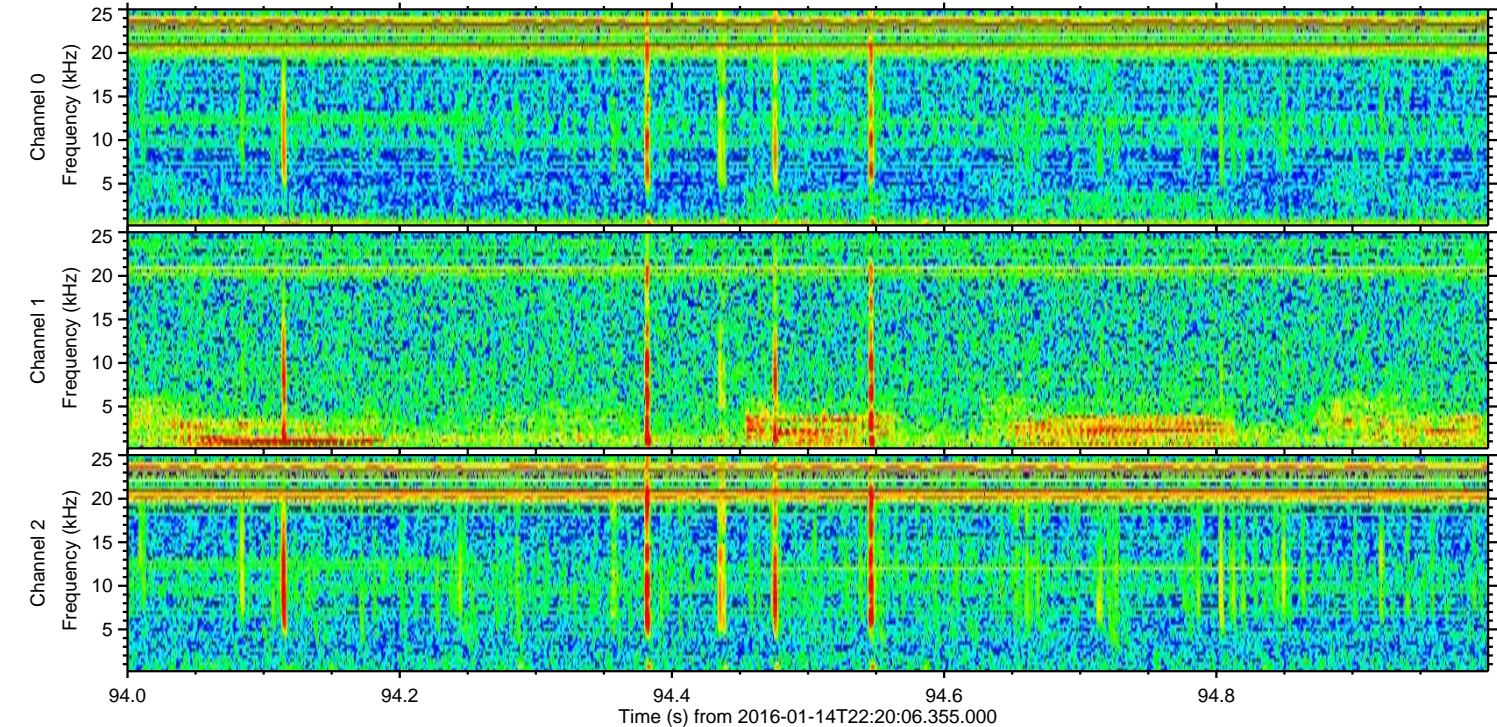
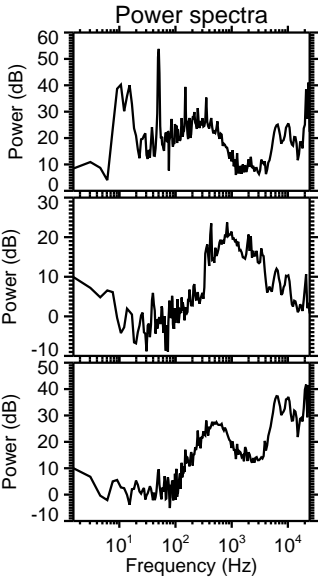
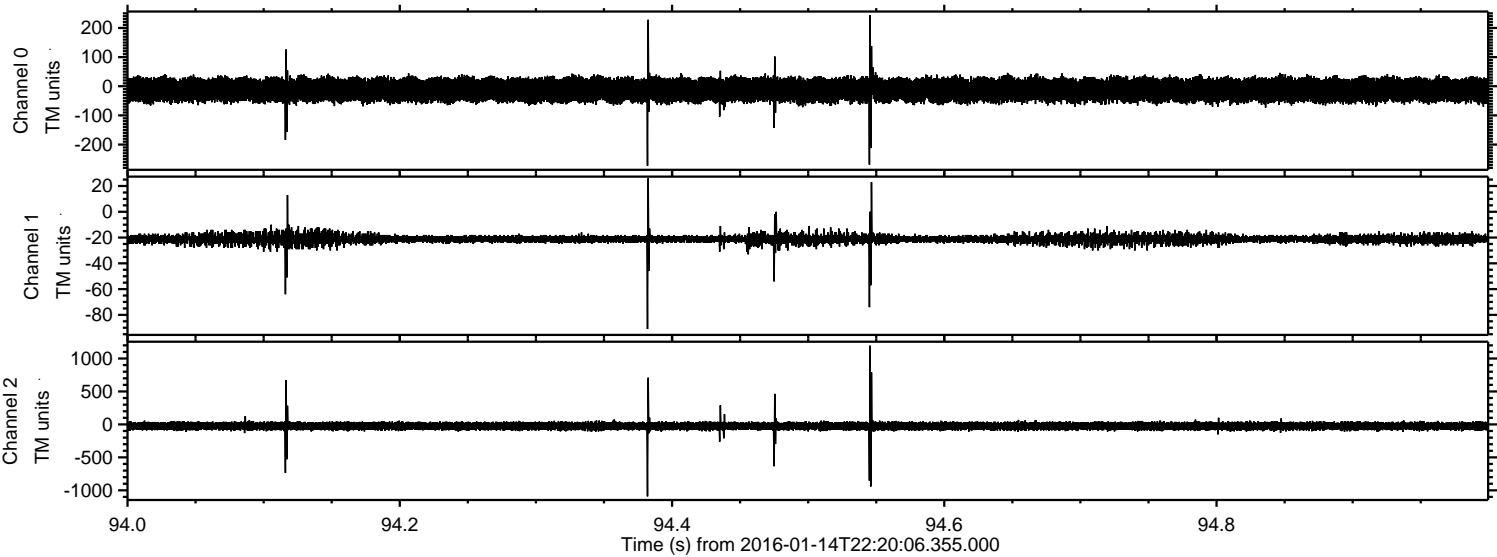


Processed Wed Mar 30 16:26:17 2016 by ELM ver.2012-10-06 from 001\_\_elm20160114\_222005\_\_dat00.bin



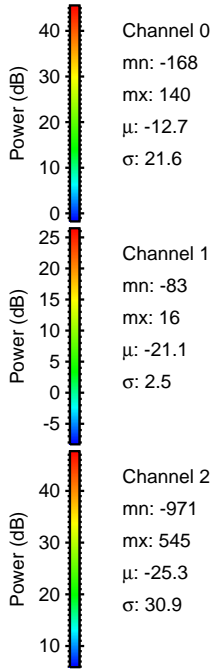
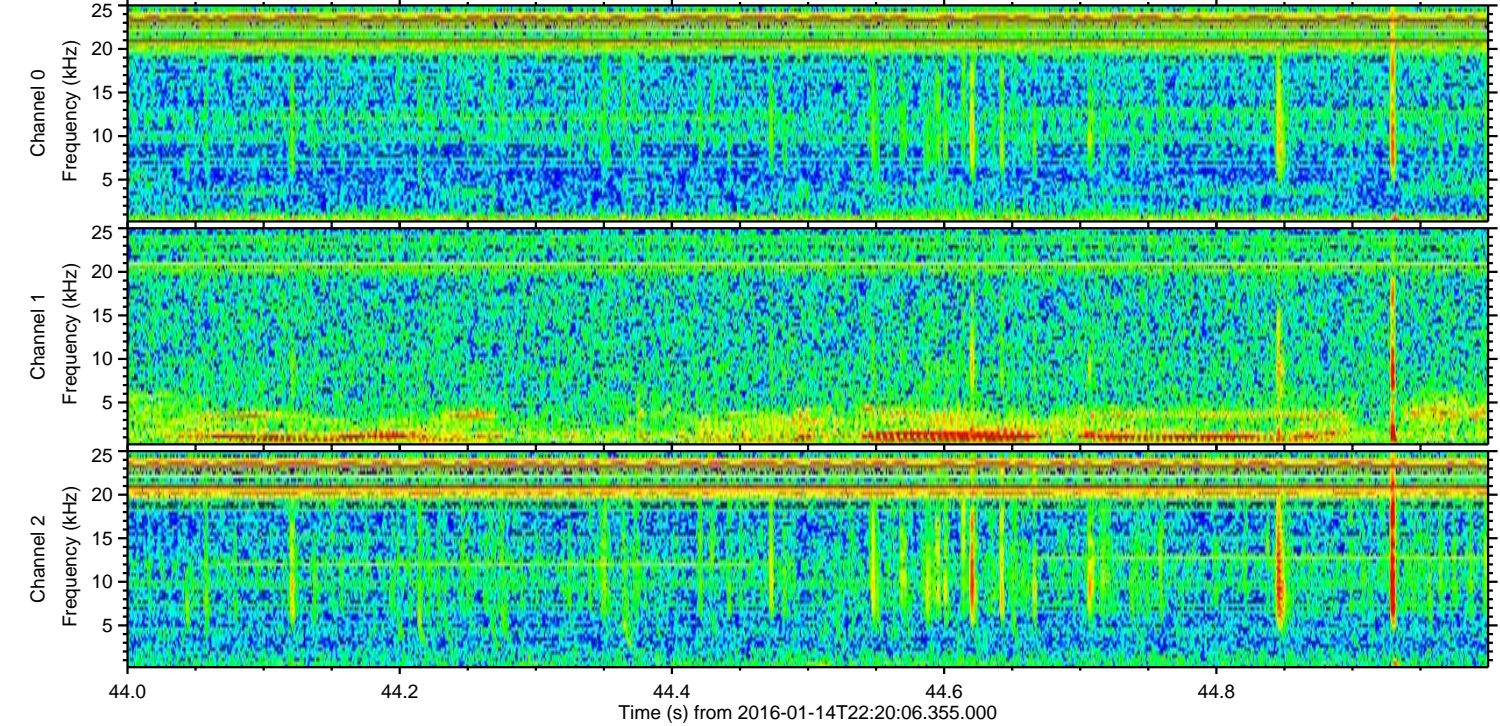
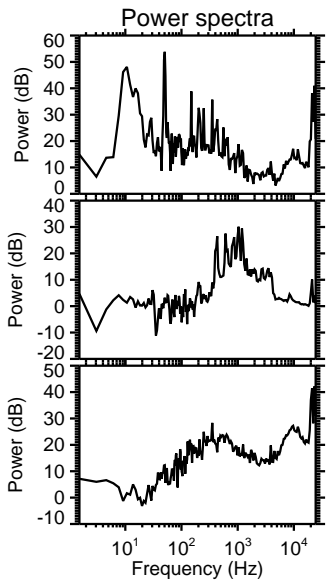
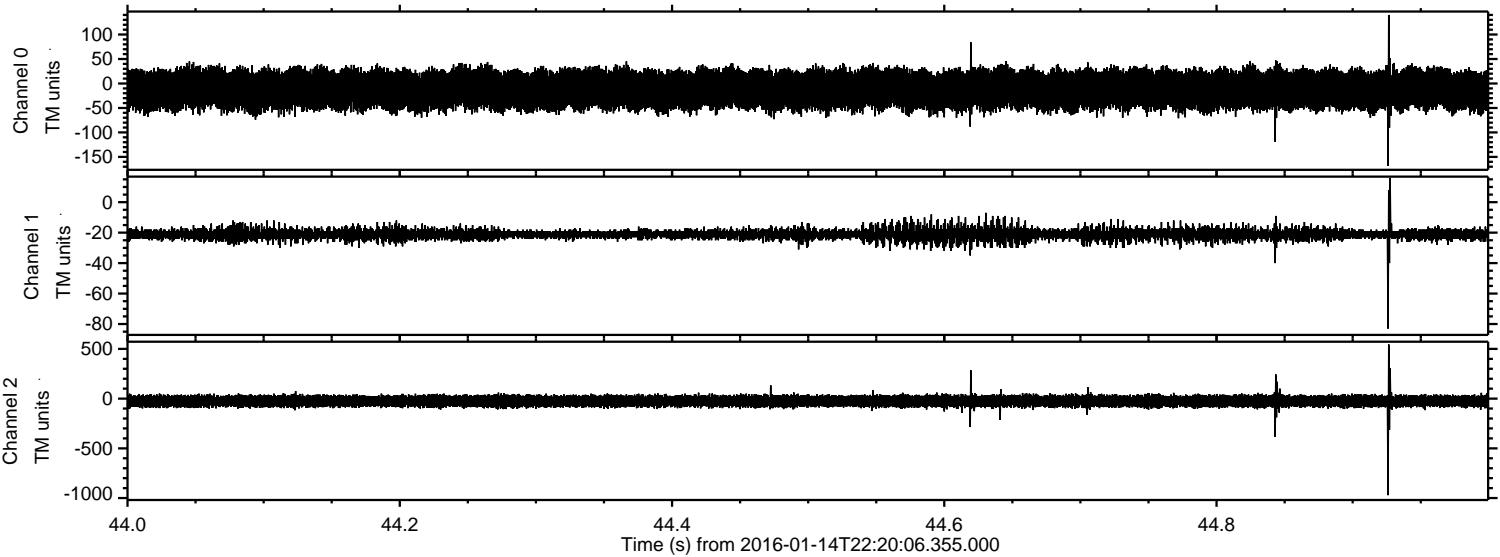


Processed Wed Mar 30 16:26:18 2016 by ELM ver.2012-10-06 from 001\_\_elm20160114\_222005\_\_dat00.bin



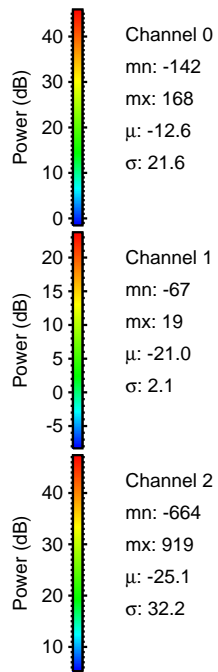
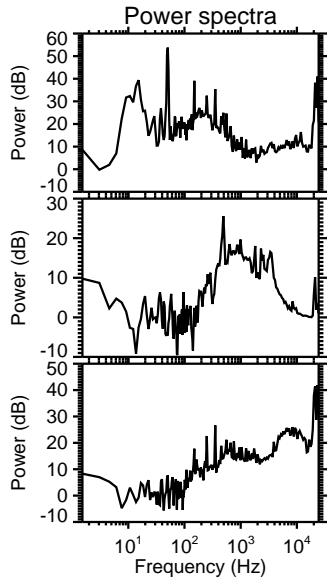
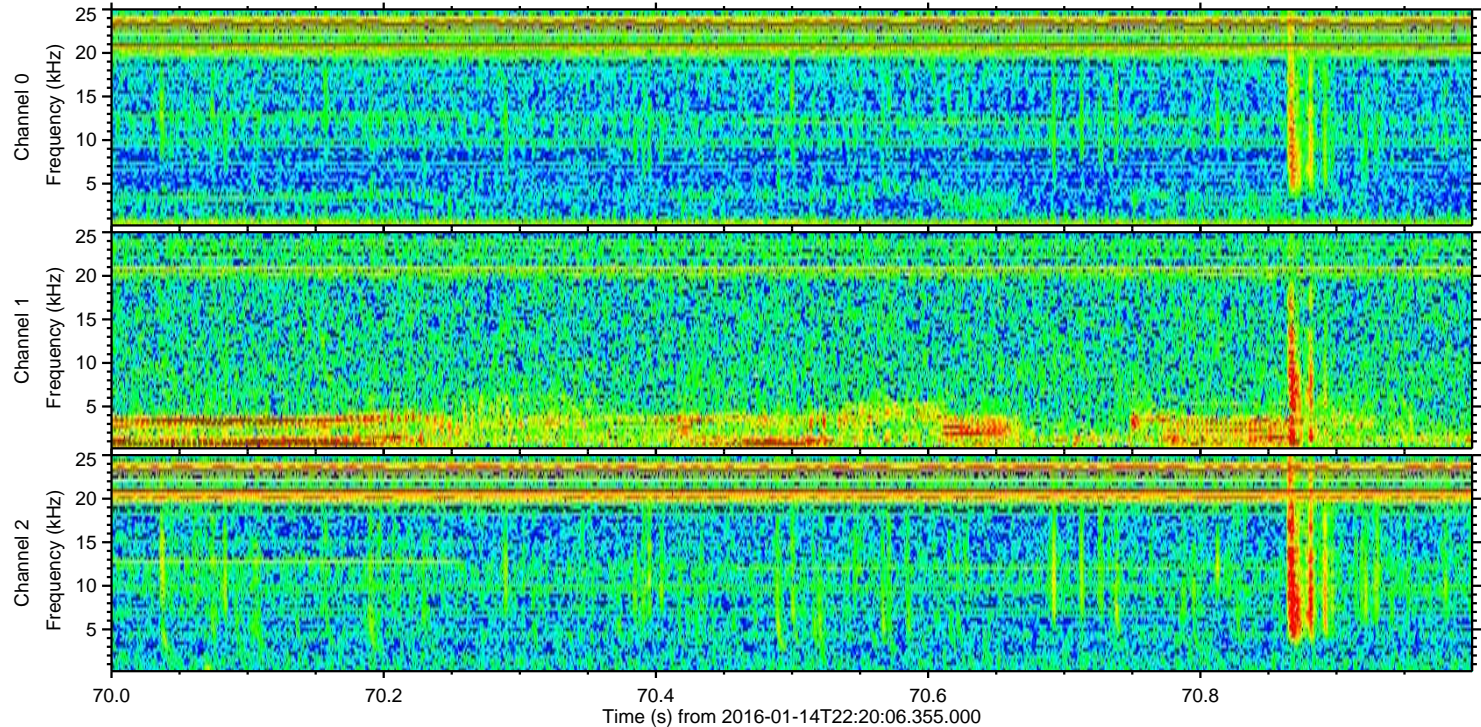
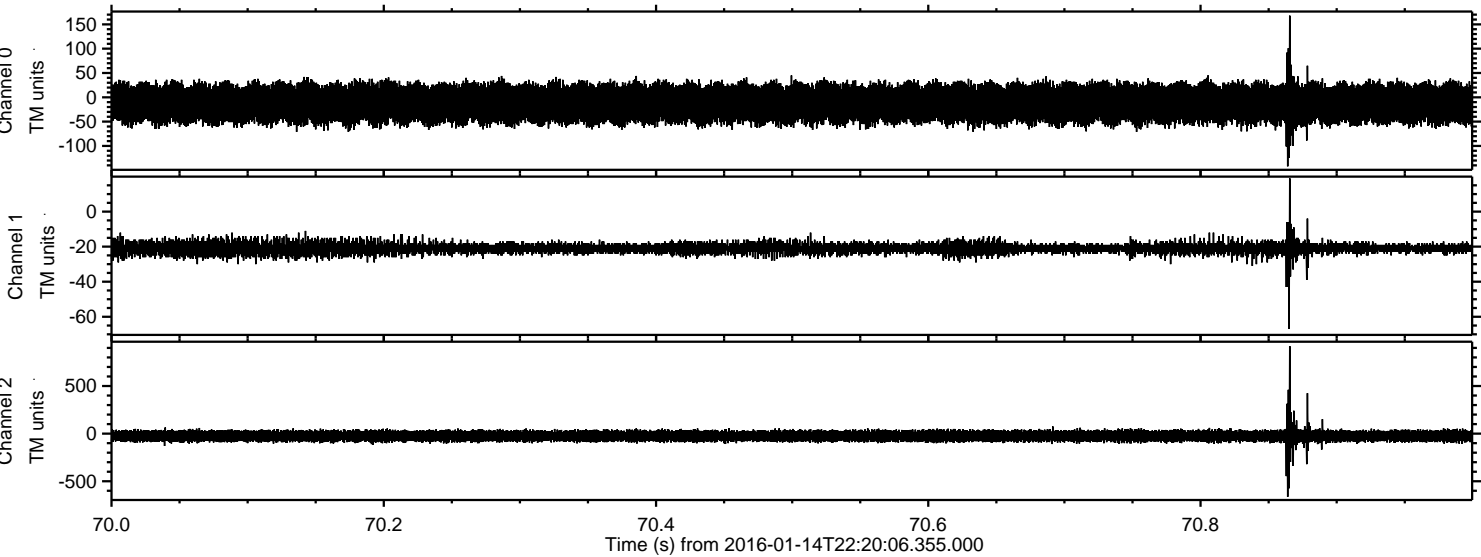


Processed Wed Mar 30 16:26:19 2016 by ELM ver.2012-10-06 from 001\_\_elm20160114\_222005\_\_dat00.bin



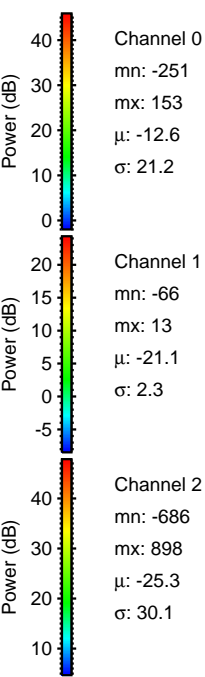
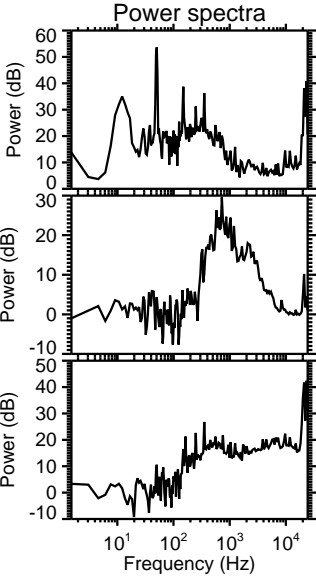
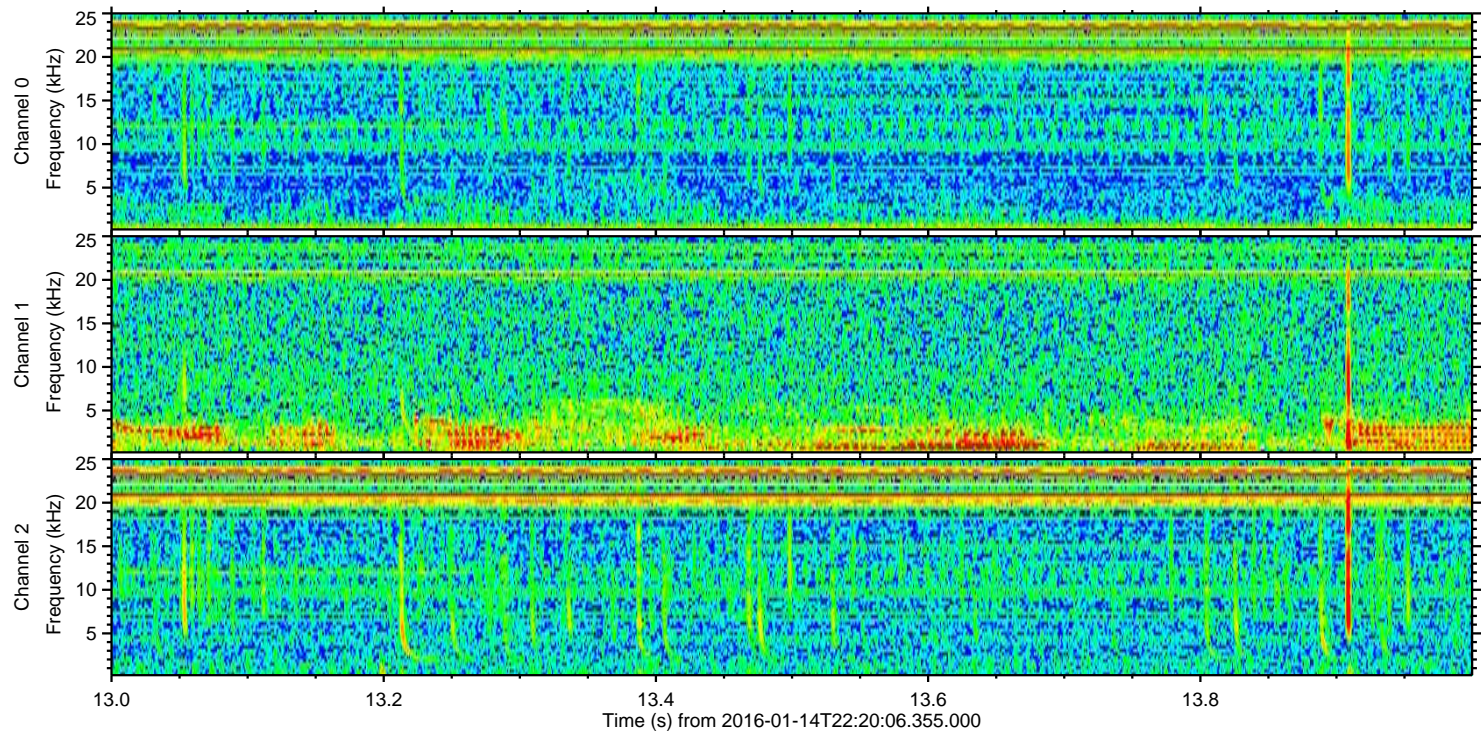
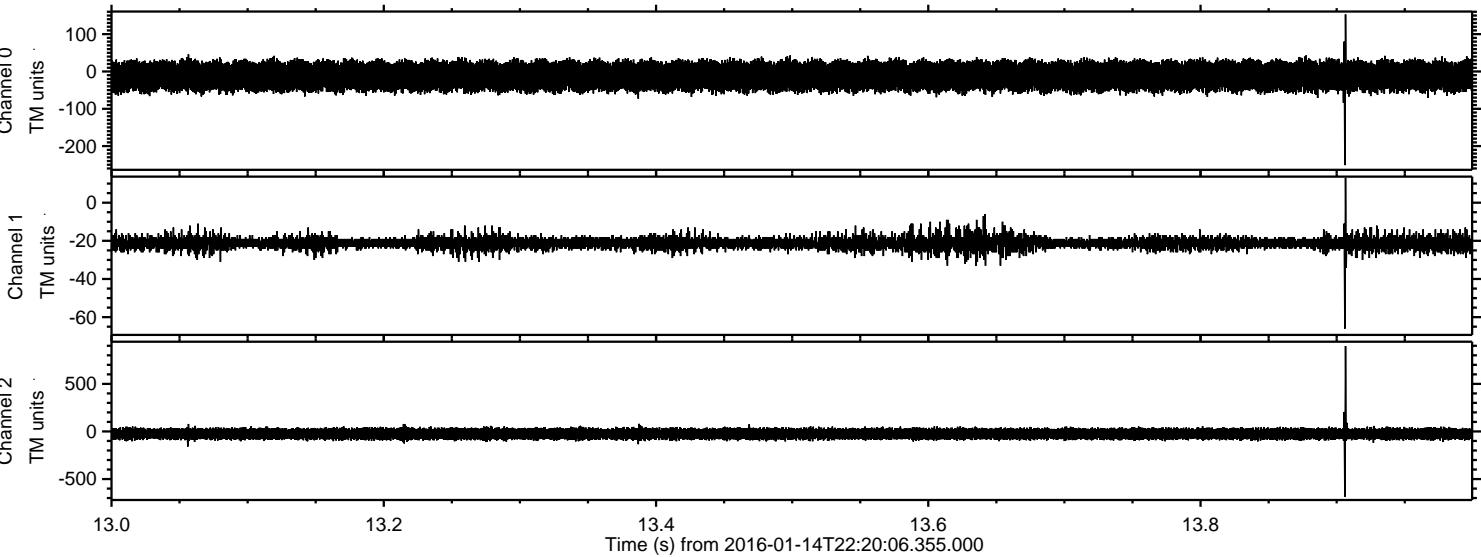


Processed Wed Mar 30 16:26:20 2016 by ELM ver.2012-10-06 from 001\_\_elm20160114\_222005\_\_dat00.bin





Processed Wed Mar 30 16:26:21 2016 by ELM ver.2012-10-06 from 001\_\_elm20160114\_222005\_\_dat00.bin



Power spectra

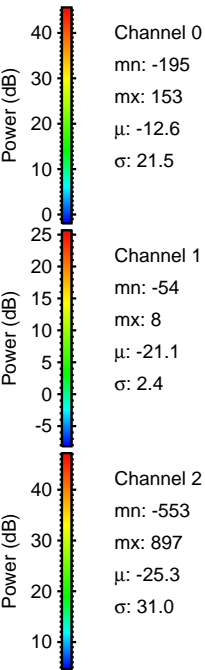
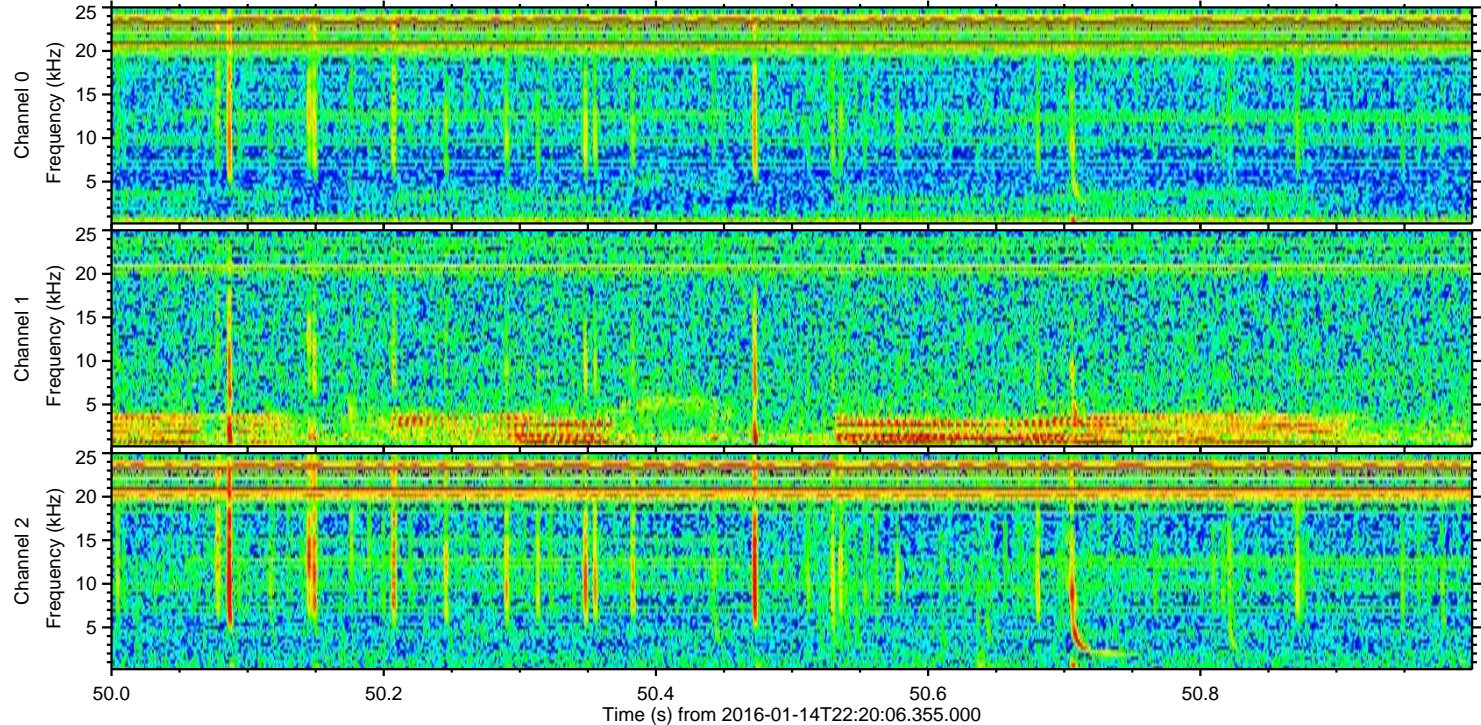
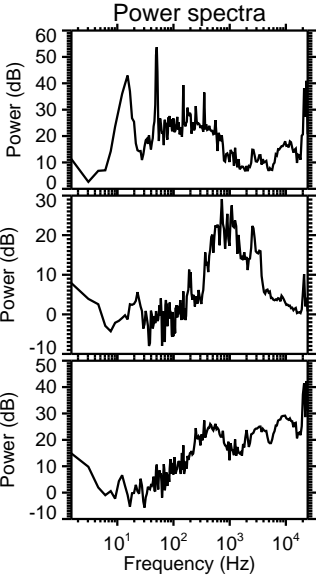
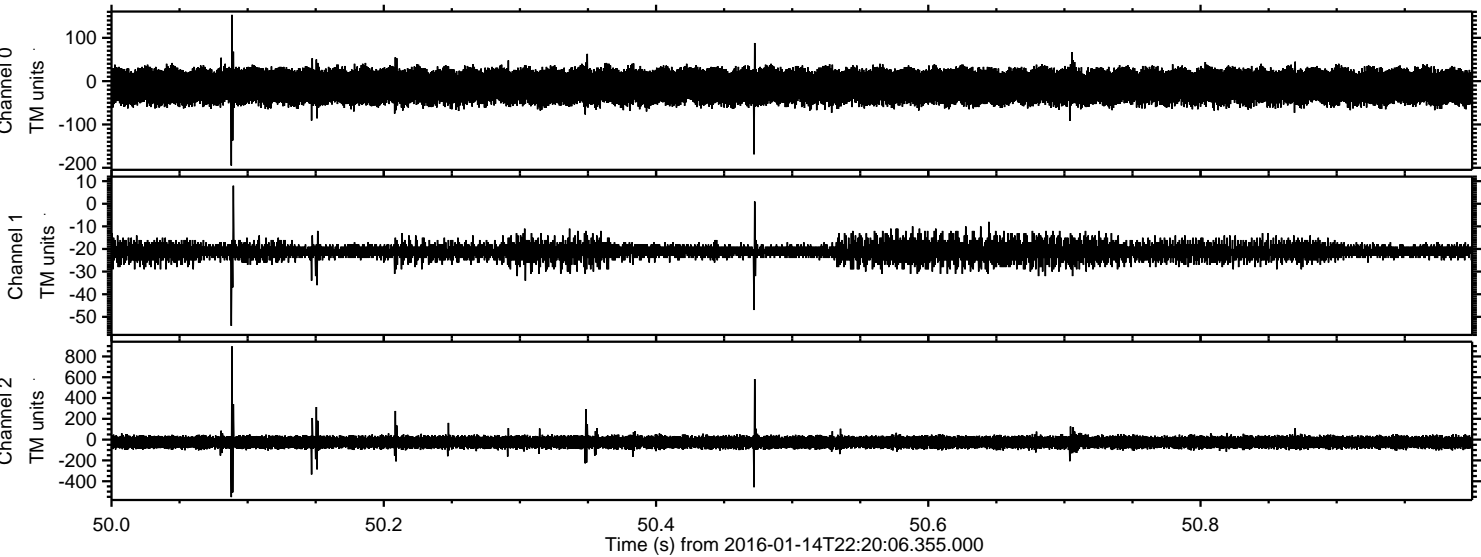
Channel 0  
mn: -251  
mx: 153  
 $\mu$ : -12.6  
 $\sigma$ : 21.2

Channel 1  
mn: -66  
mx: 13  
 $\mu$ : -21.1  
 $\sigma$ : 2.3

Channel 2  
mn: -686  
mx: 898  
 $\mu$ : -25.3  
 $\sigma$ : 30.1



Processed Wed Mar 30 16:26:22 2016 by ELM ver.2012-10-06 from 001\_\_elm20160114\_222005\_\_dat00.bin





Processed Wed Mar 30 16:26:23 2016 by ELM ver.2012-10-06 from 001\_\_elm20160114\_222005\_\_dat00.bin

