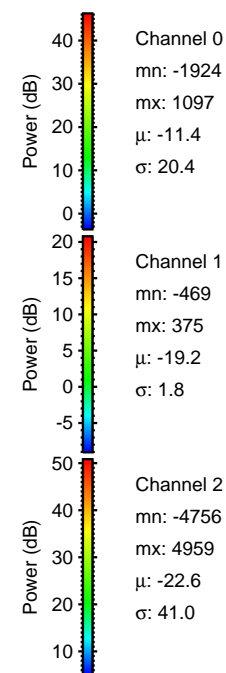
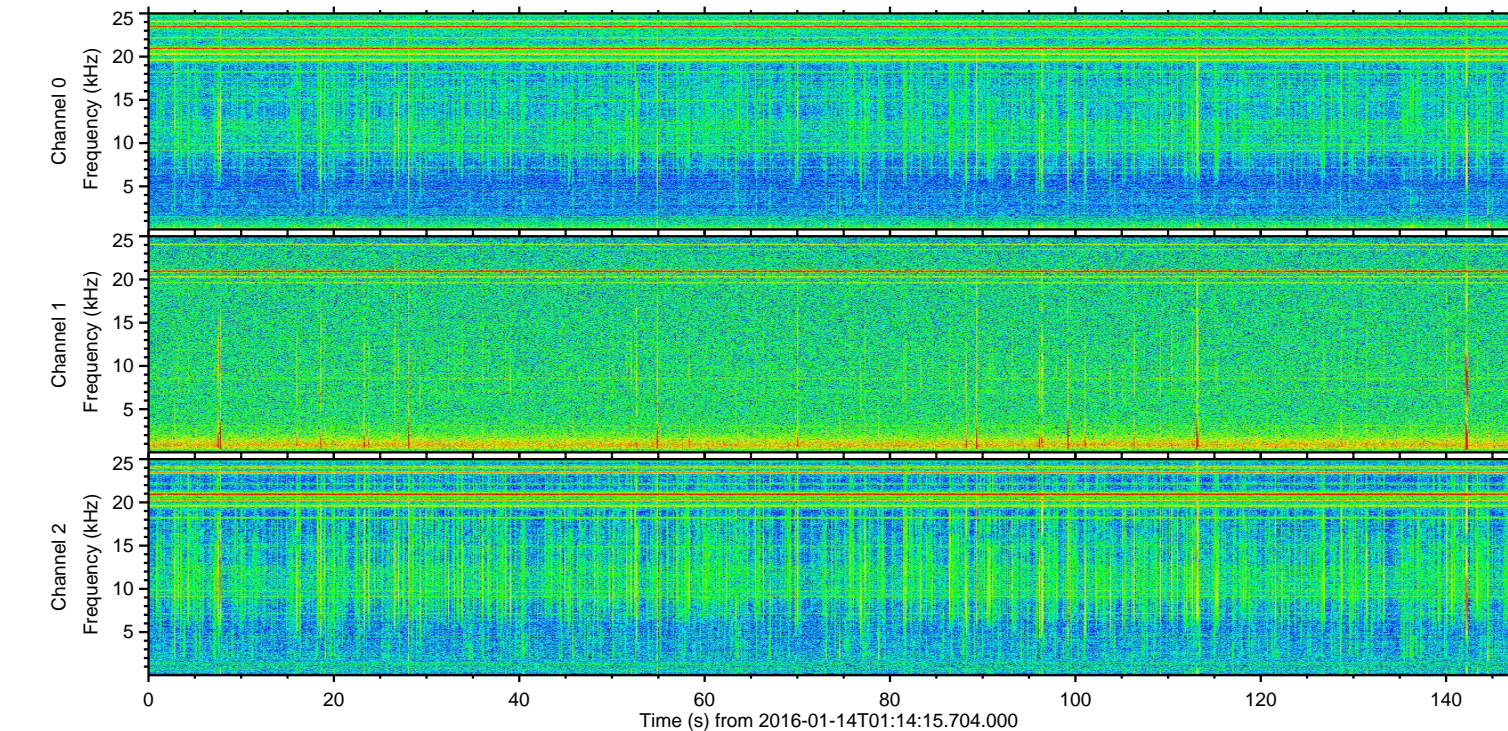
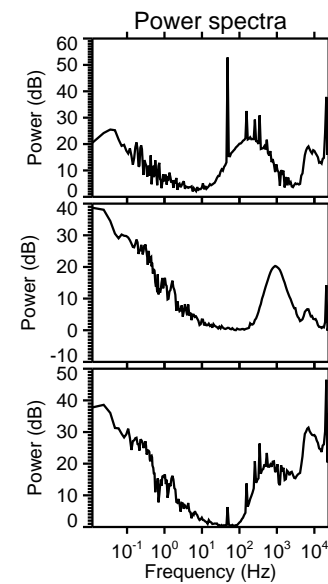
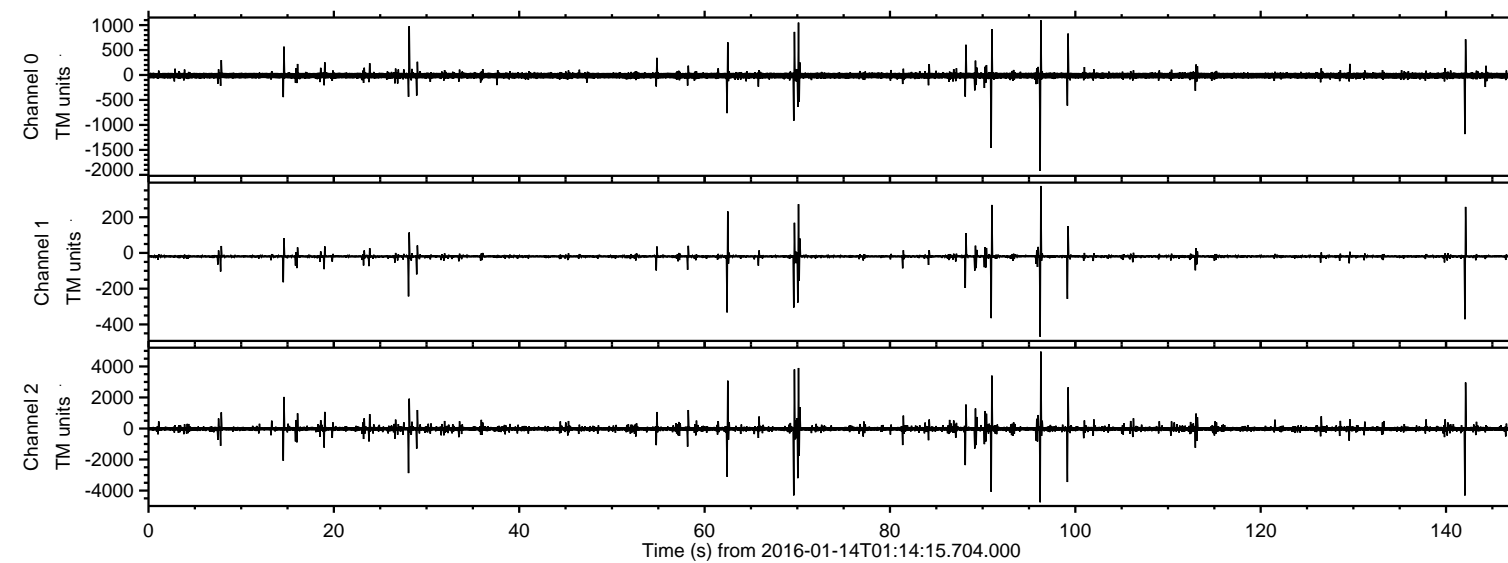
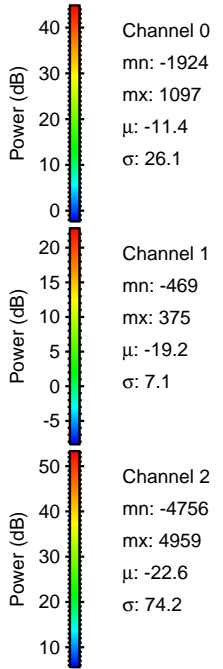
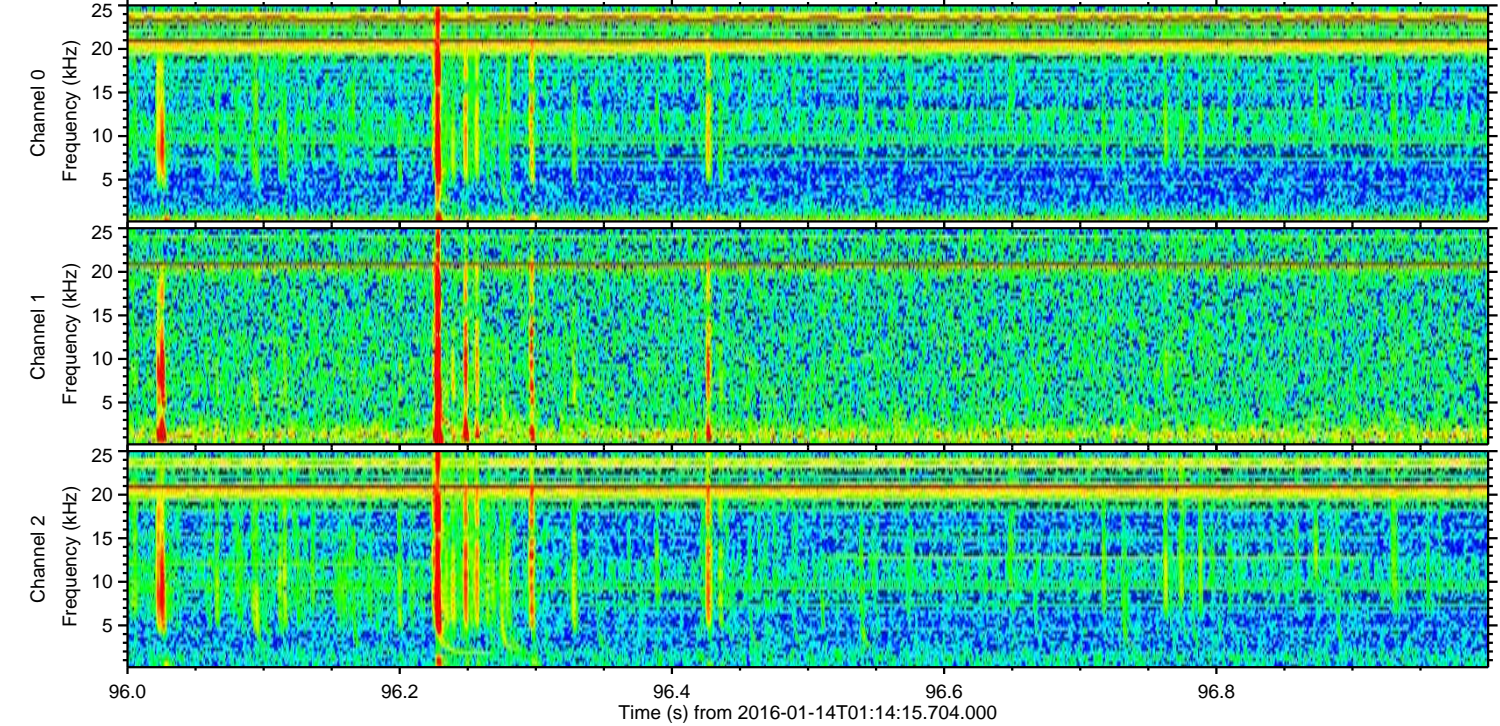
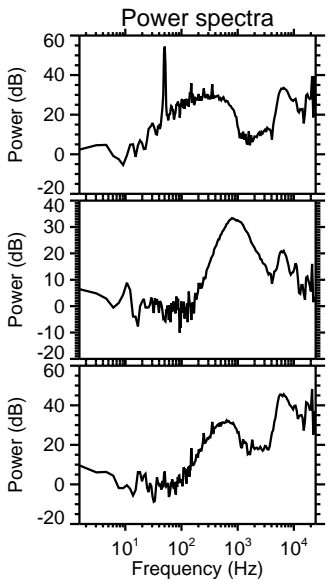
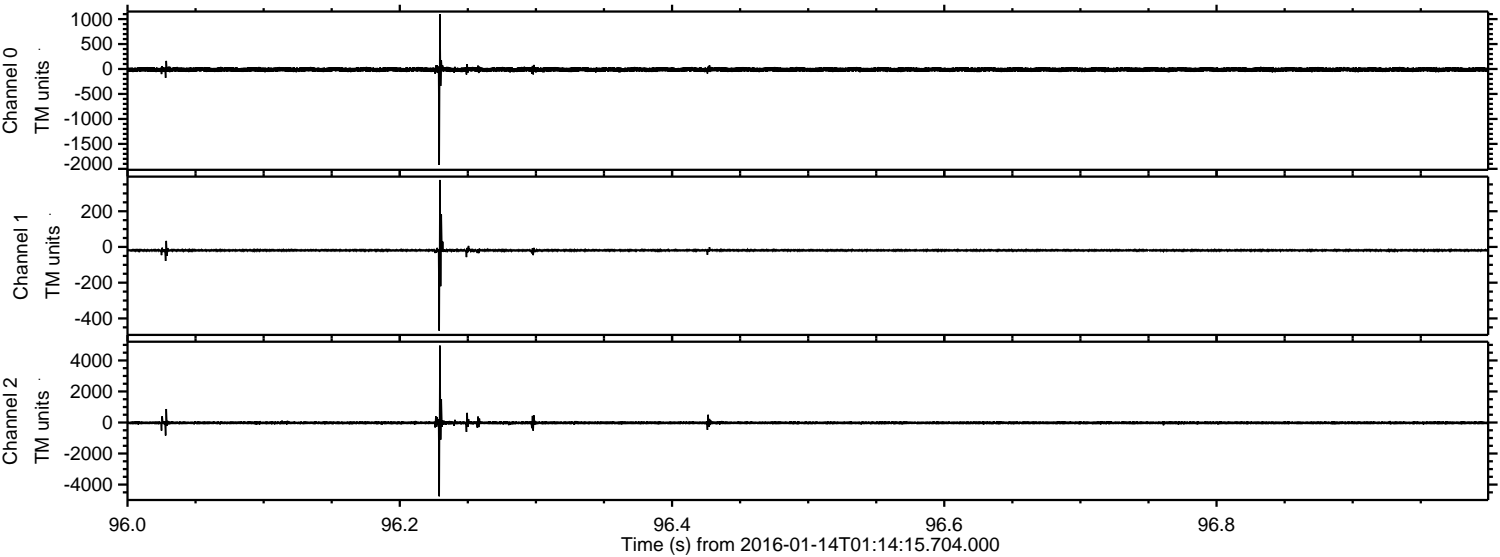


ELMAVAN 3D WAVEFORMS (Measured data sampled at 50 kHz) 51000 packets of 144 samples from 2016-01-14T01:14:15.704.000.

Processed Wed Mar 30 12:20:40 2016 by ELM ver.2012-10-06 from 001__elm20160114_011414__dat00.bin

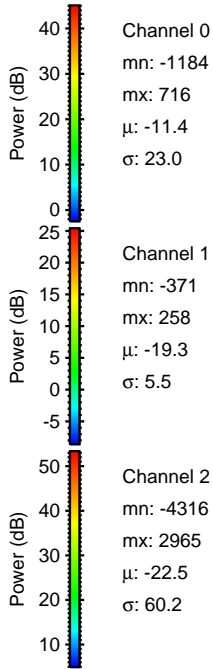
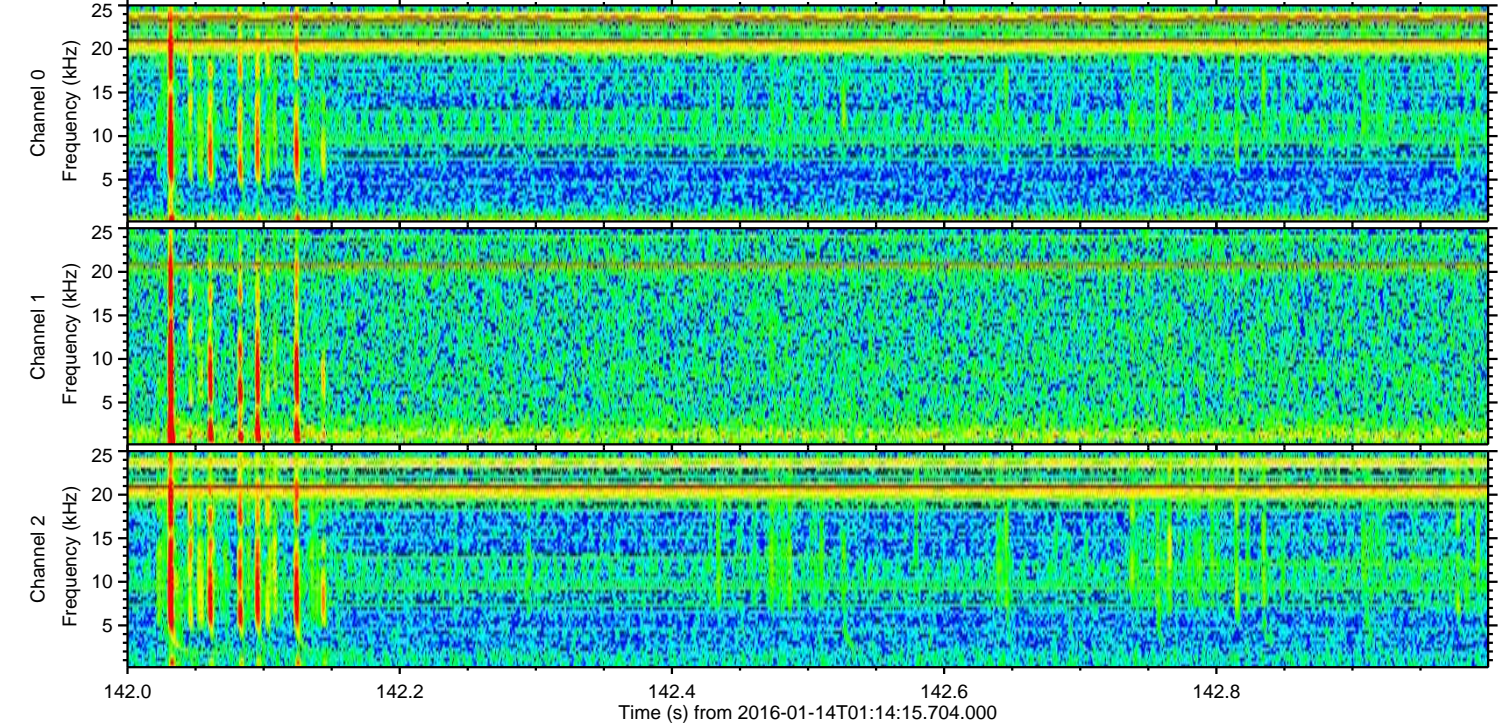
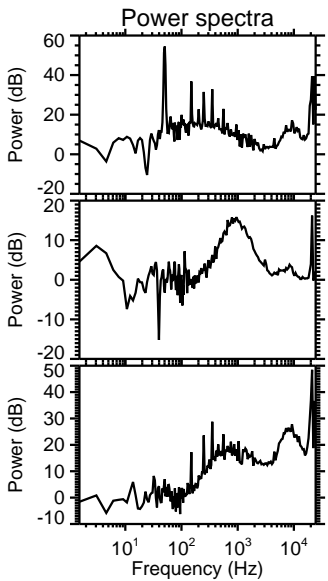
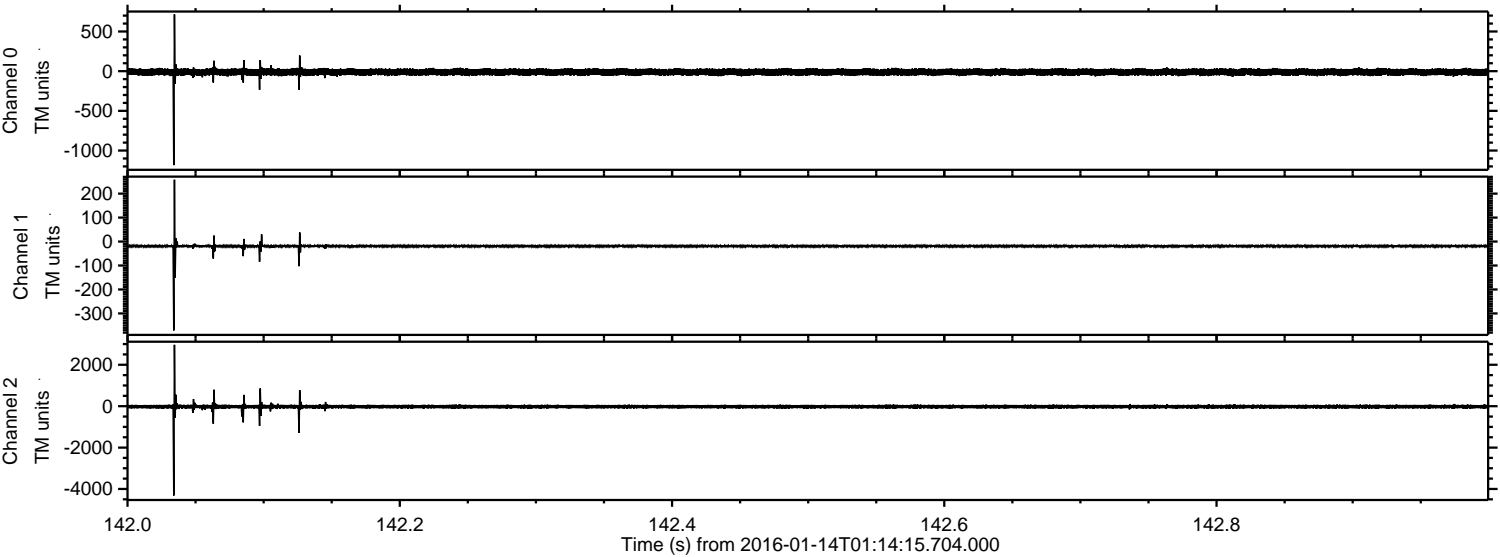


Processed Wed Mar 30 12:20:51 2016 by ELM ver.2012-10-06 from 001__elm20160114_011414__dat00.bin

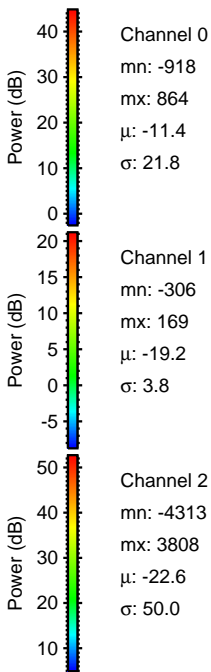
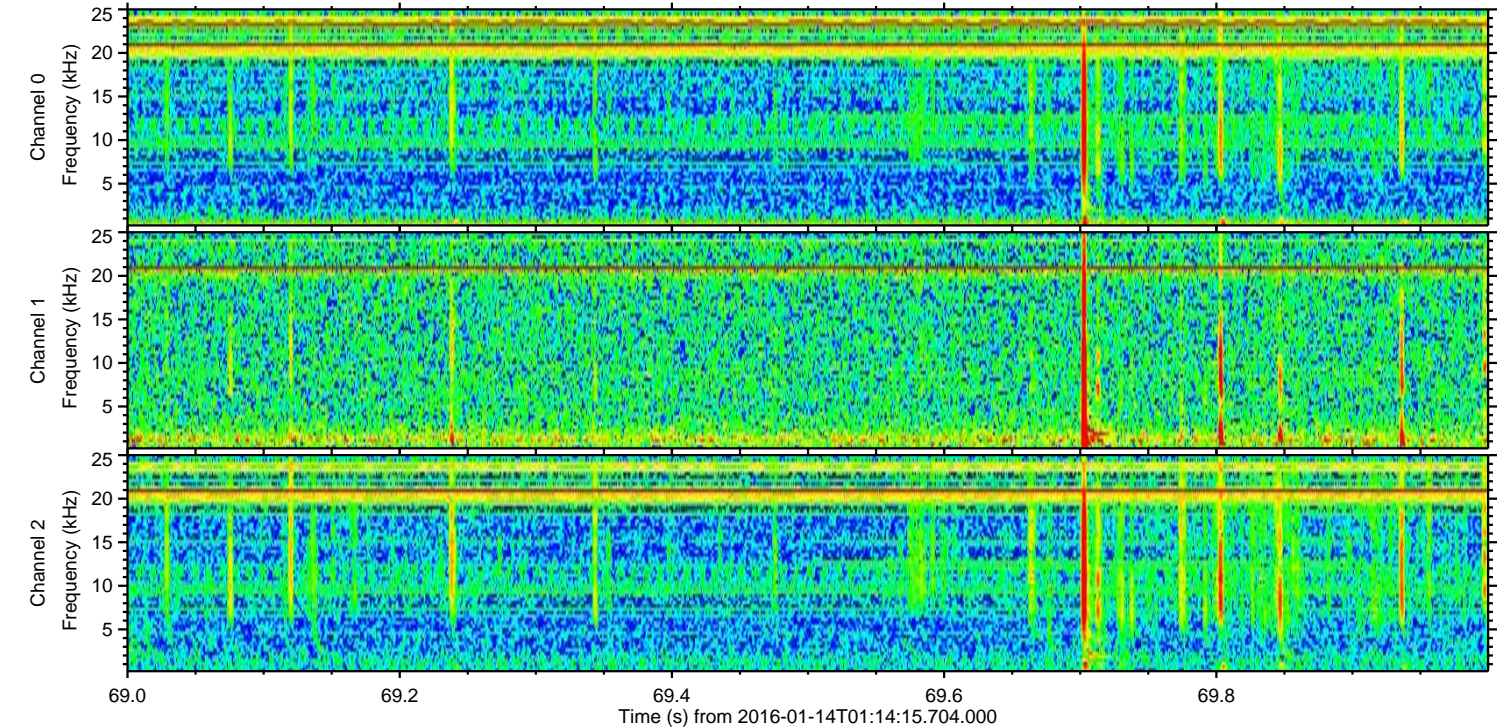
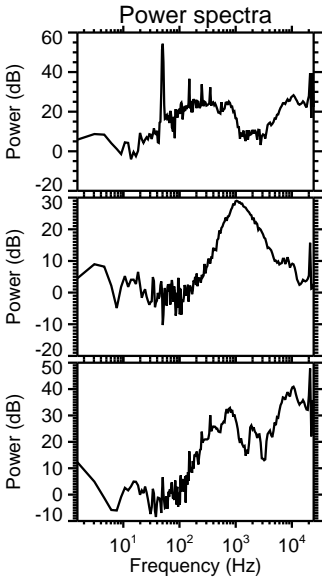
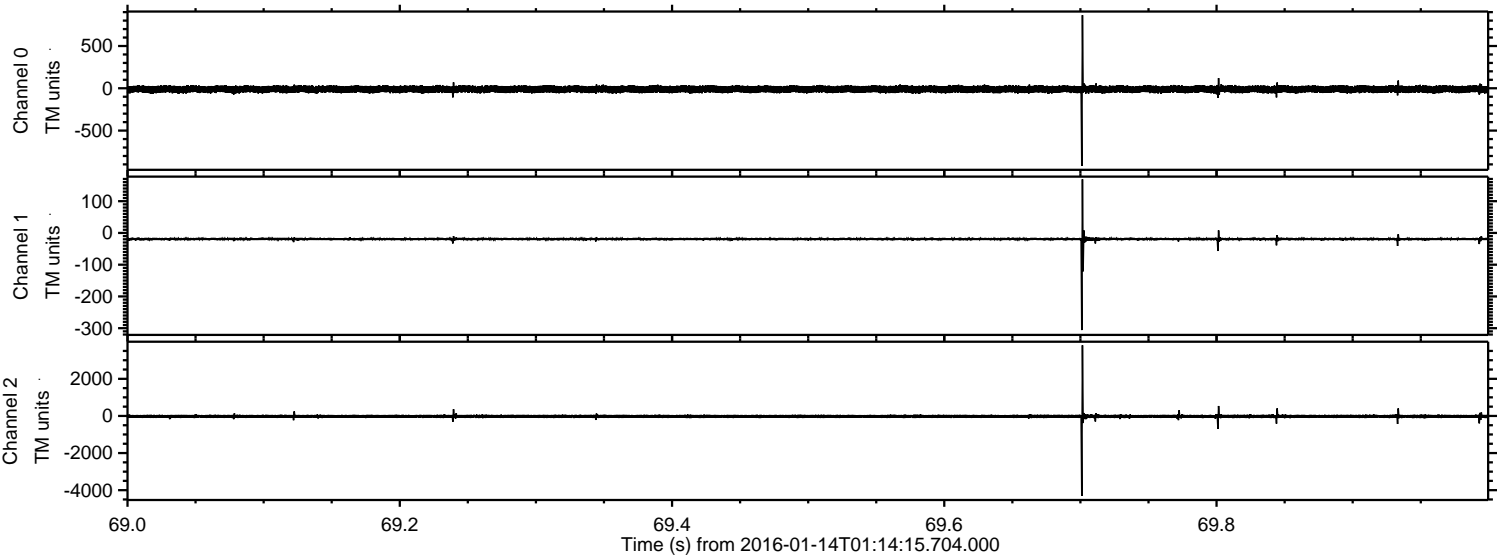


ELMAVAN 3D WAVEFORMS (Measured data sampled at 50 kHz) 51000 packets of 144 samples from 2016-01-14T01:14:15.704.000. Part 143/147

Processed Wed Mar 30 12:20:52 2016 by ELM ver.2012-10-06 from 001__elm20160114_011414__dat00.bin

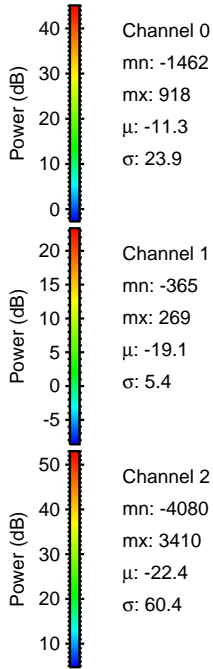
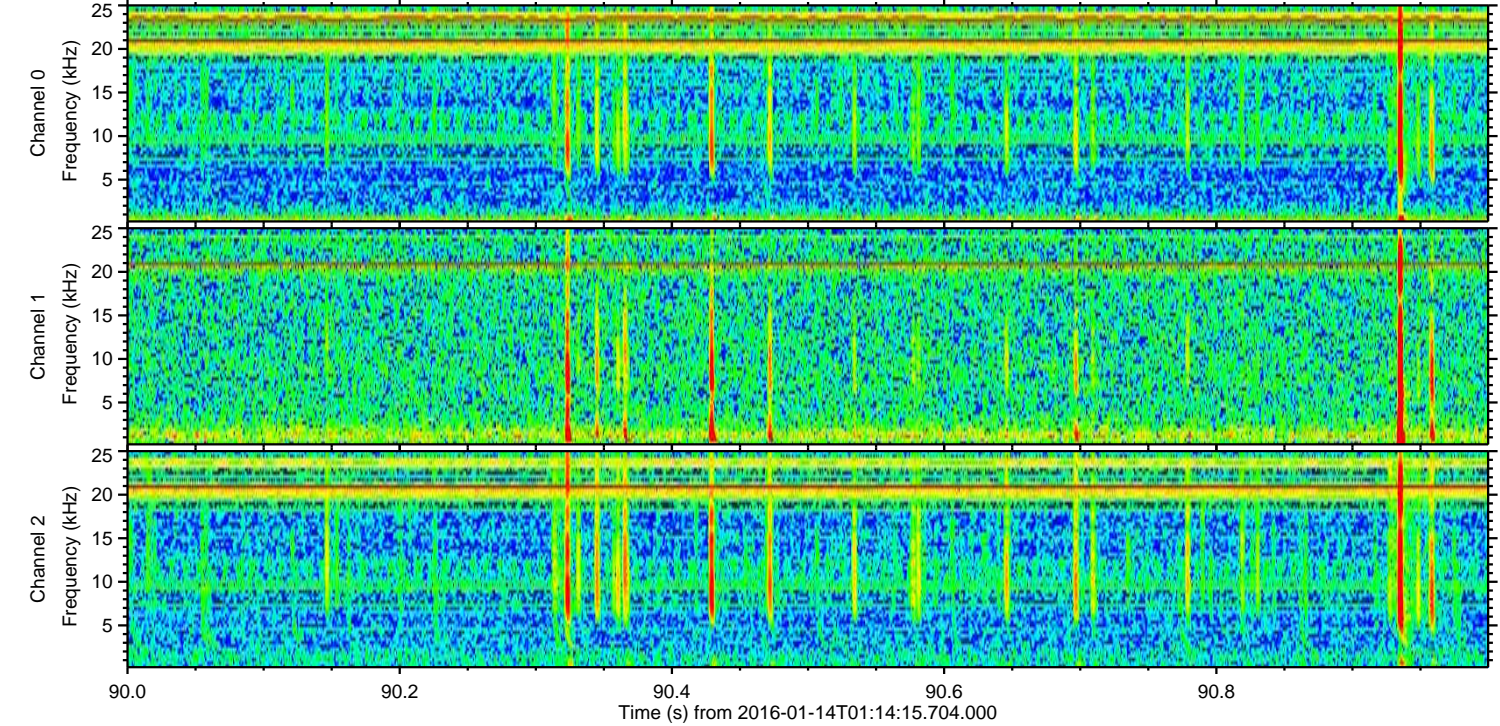
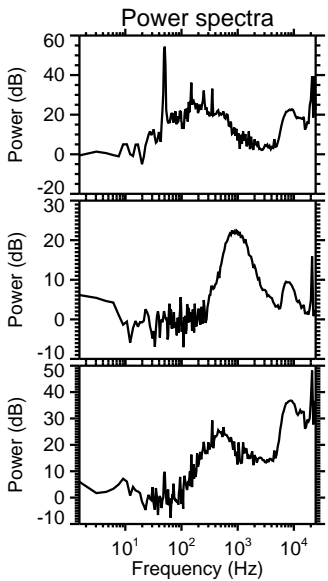
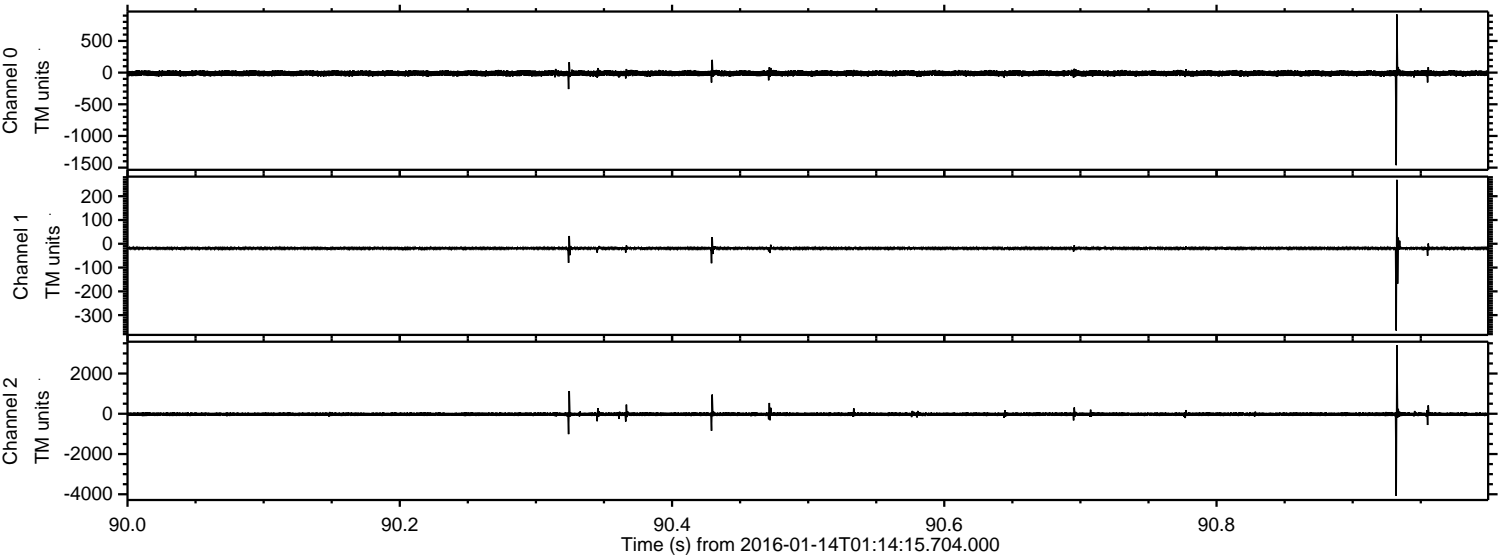


Processed Wed Mar 30 12:20:53 2016 by ELM ver.2012-10-06 from 001__elm20160114_011414__dat00.bin

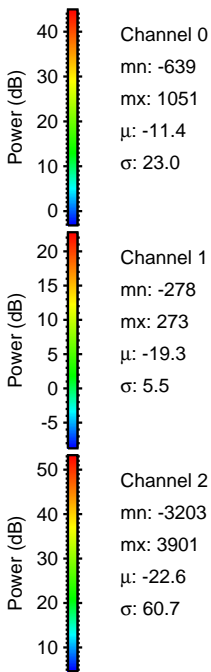
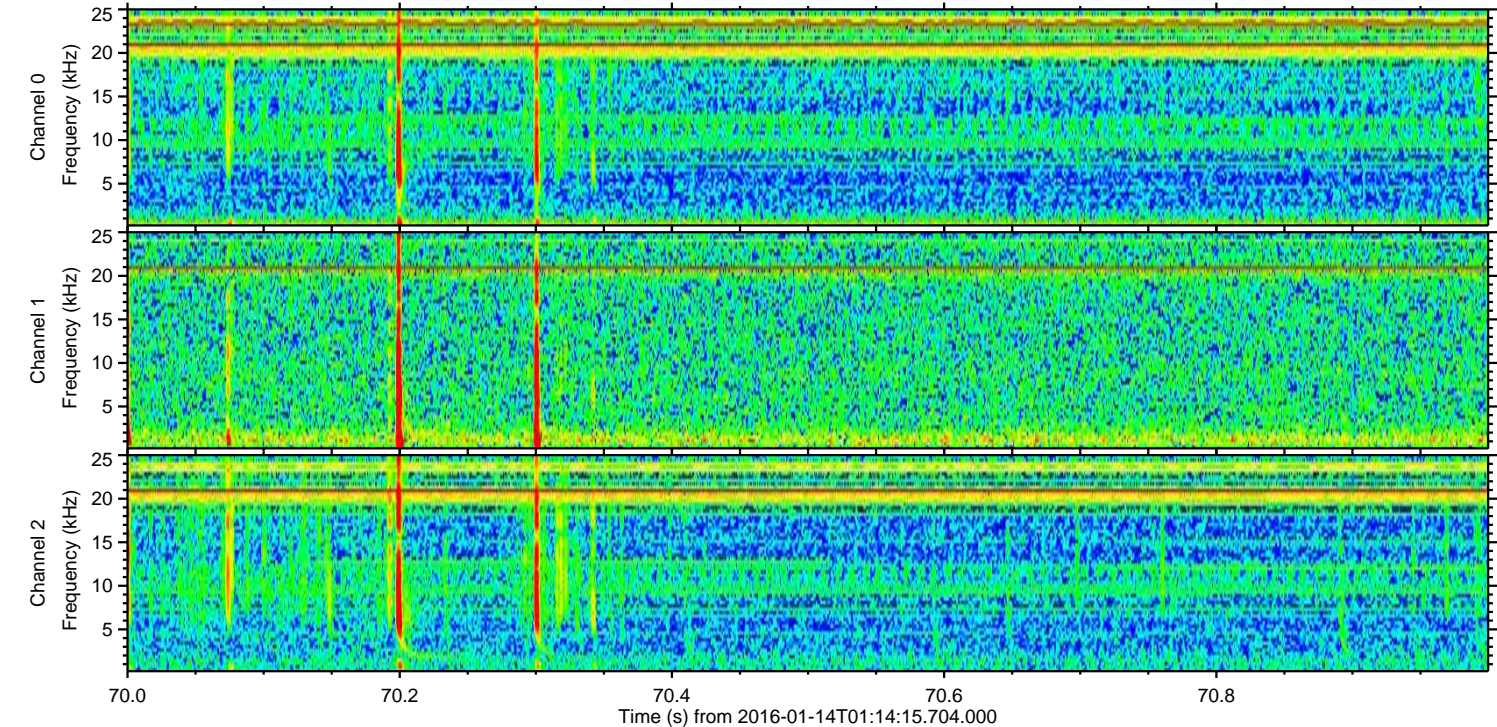
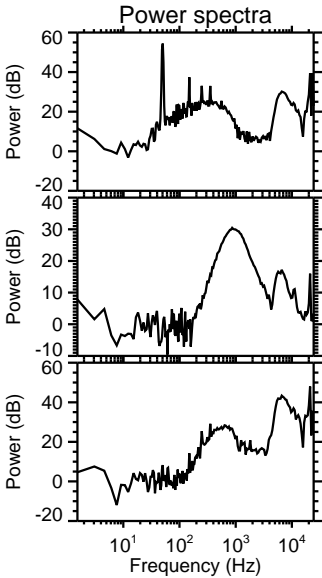
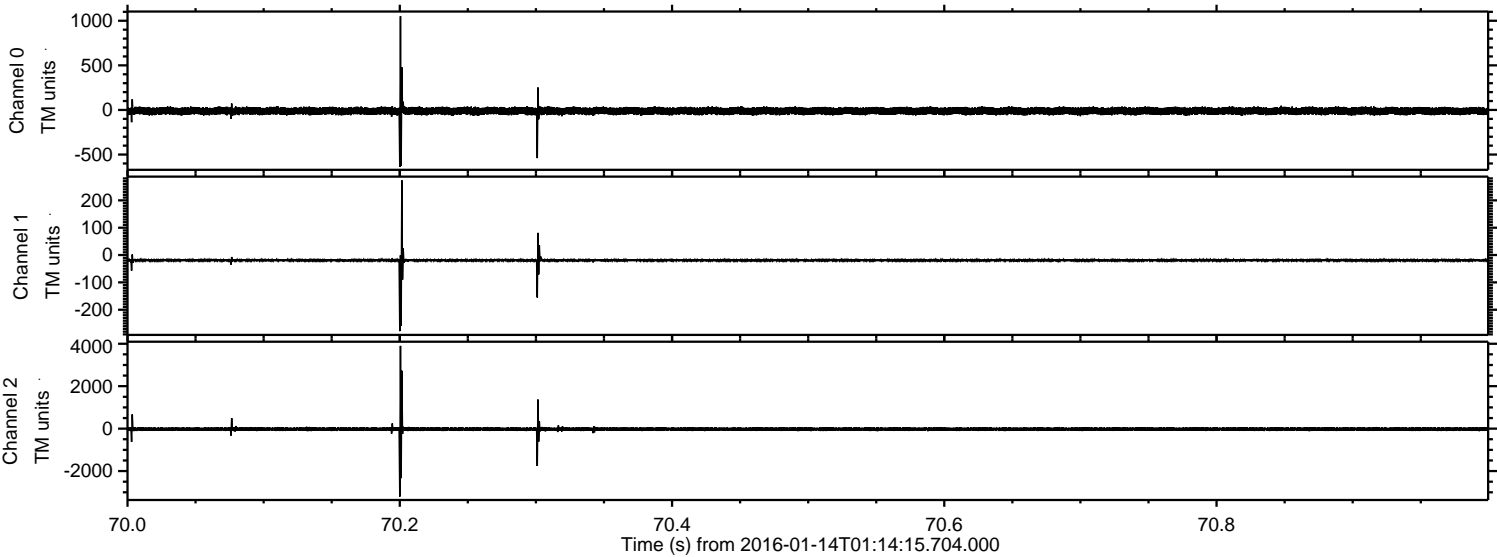


ELMAVAN 3D WAVEFORMS (Measured data sampled at 50 kHz) 51000 packets of 144 samples from 2016-01-14T01:14:15.704.000. Part 91/147

Processed Wed Mar 30 12:20:54 2016 by ELM ver.2012-10-06 from 001__elm20160114_011414__dat00.bin

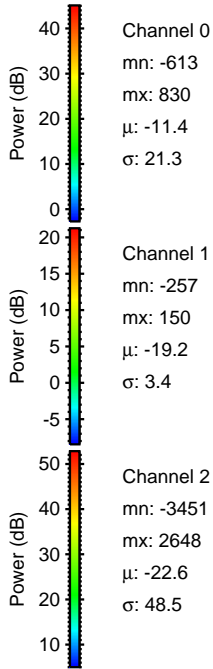
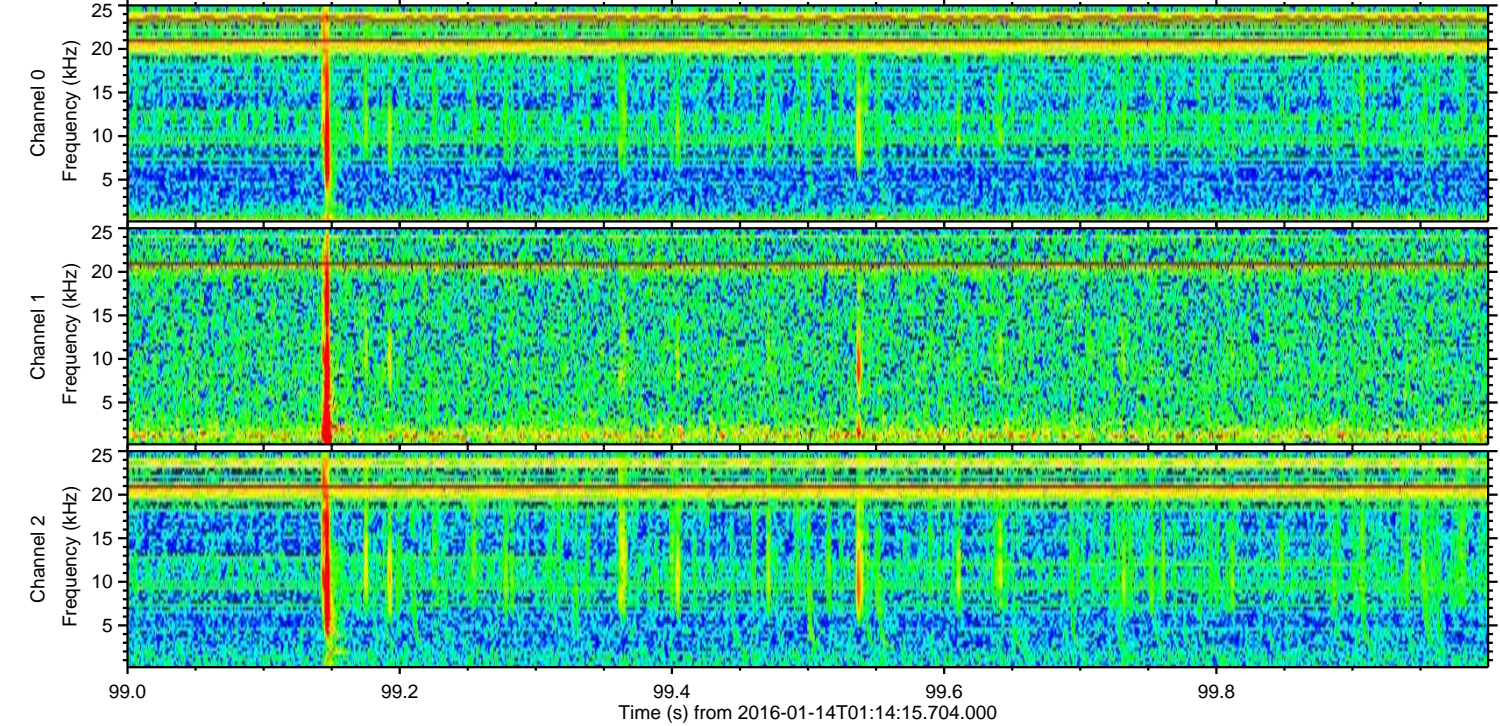
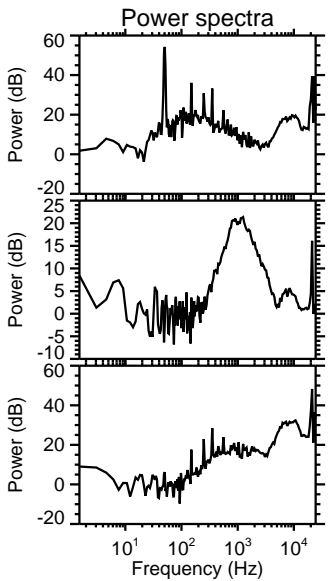
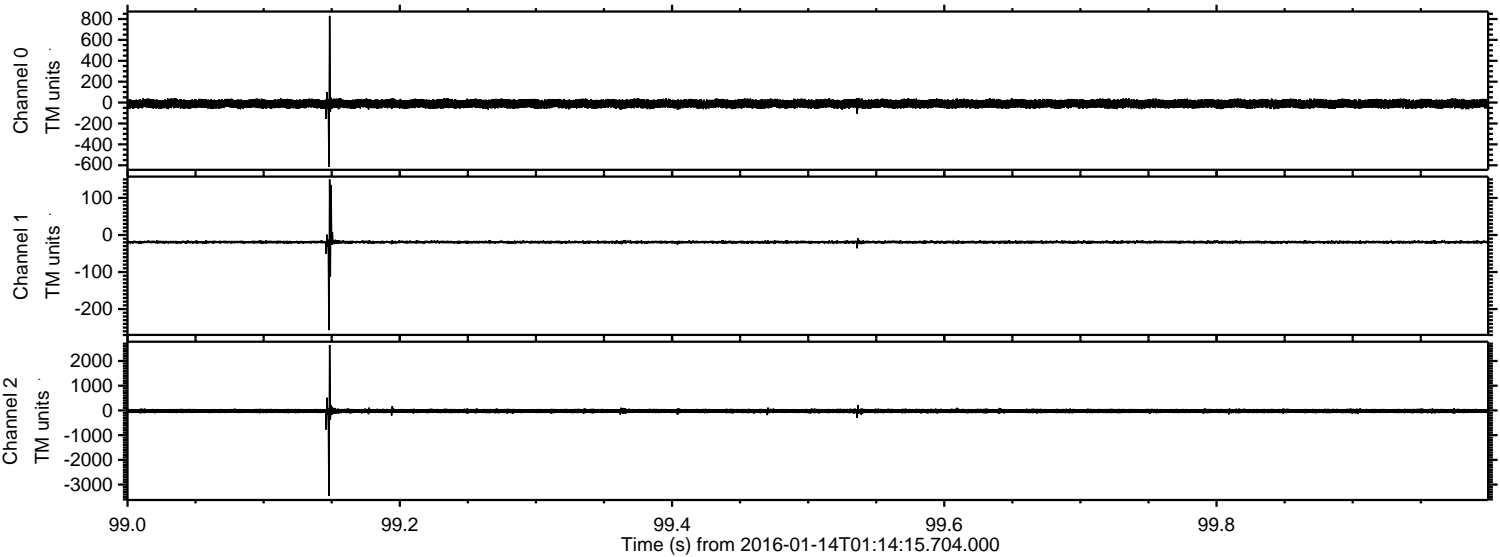


Processed Wed Mar 30 12:20:55 2016 by ELM ver.2012-10-06 from 001__elm20160114_011414__dat00.bin

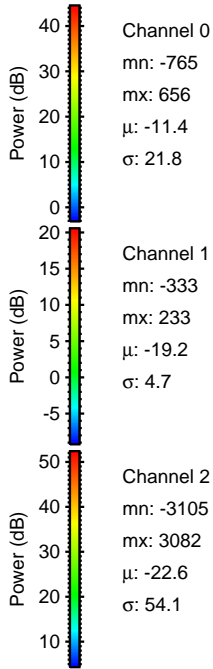
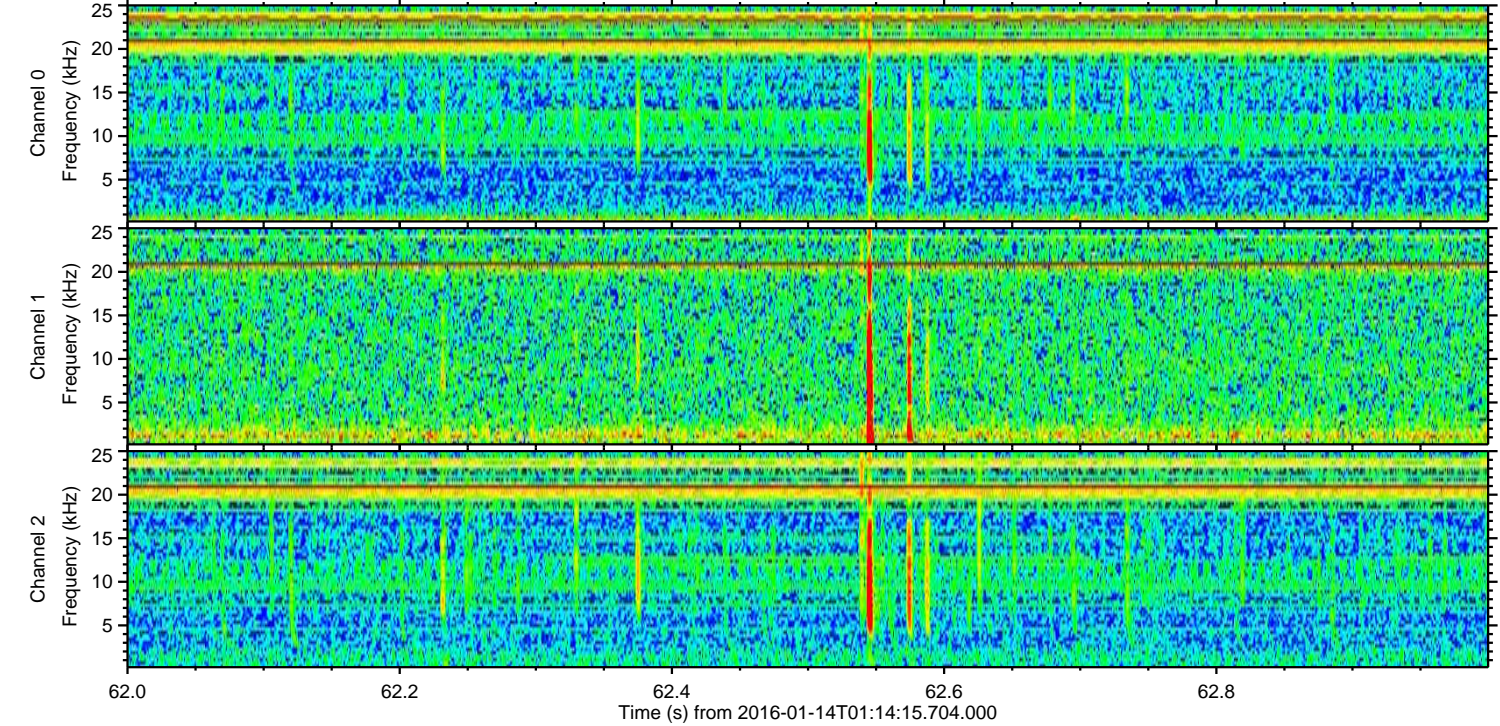
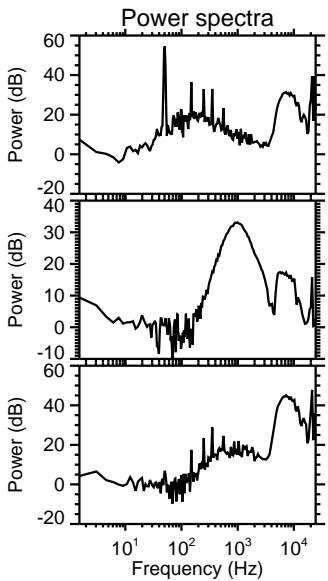
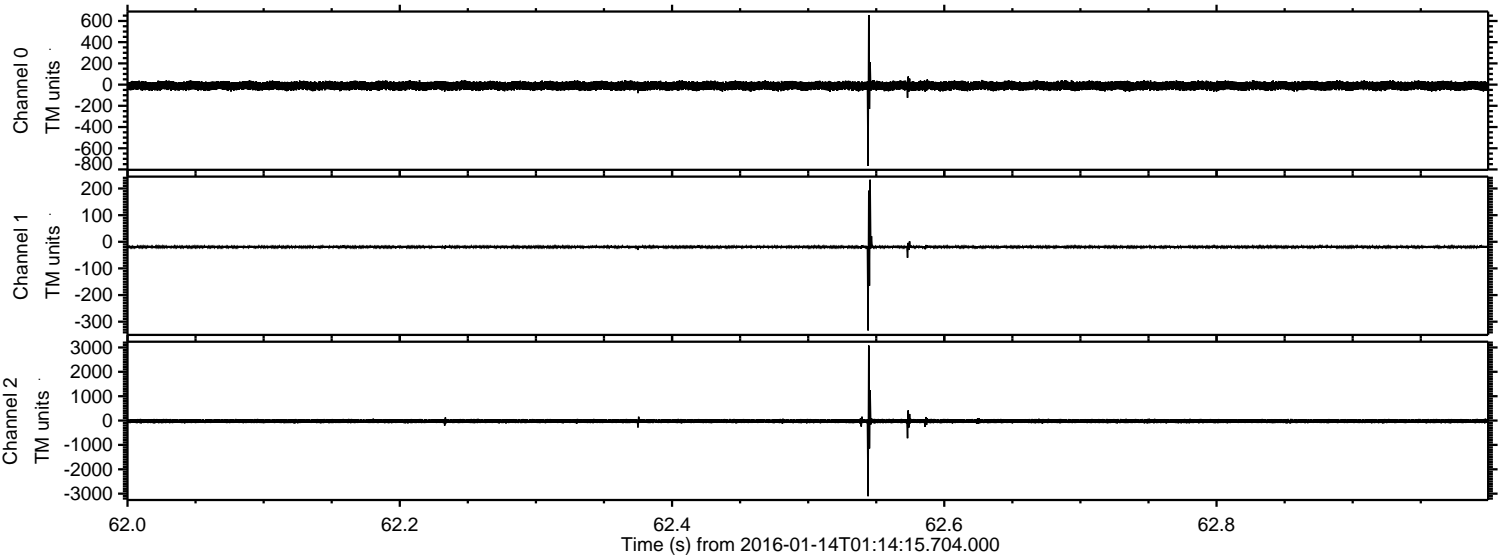


ELMAVAN 3D WAVEFORMS (Measured data sampled at 50 kHz) 51000 packets of 144 samples from 2016-01-14T01:14:15.704.000. Part 100/147

Processed Wed Mar 30 12:20:56 2016 by ELM ver.2012-10-06 from 001__elm20160114_011414__dat00.bin



Processed Wed Mar 30 12:20:57 2016 by ELM ver.2012-10-06 from 001__elm20160114_011414__dat00.bin

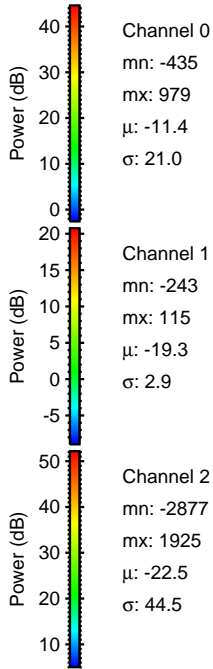
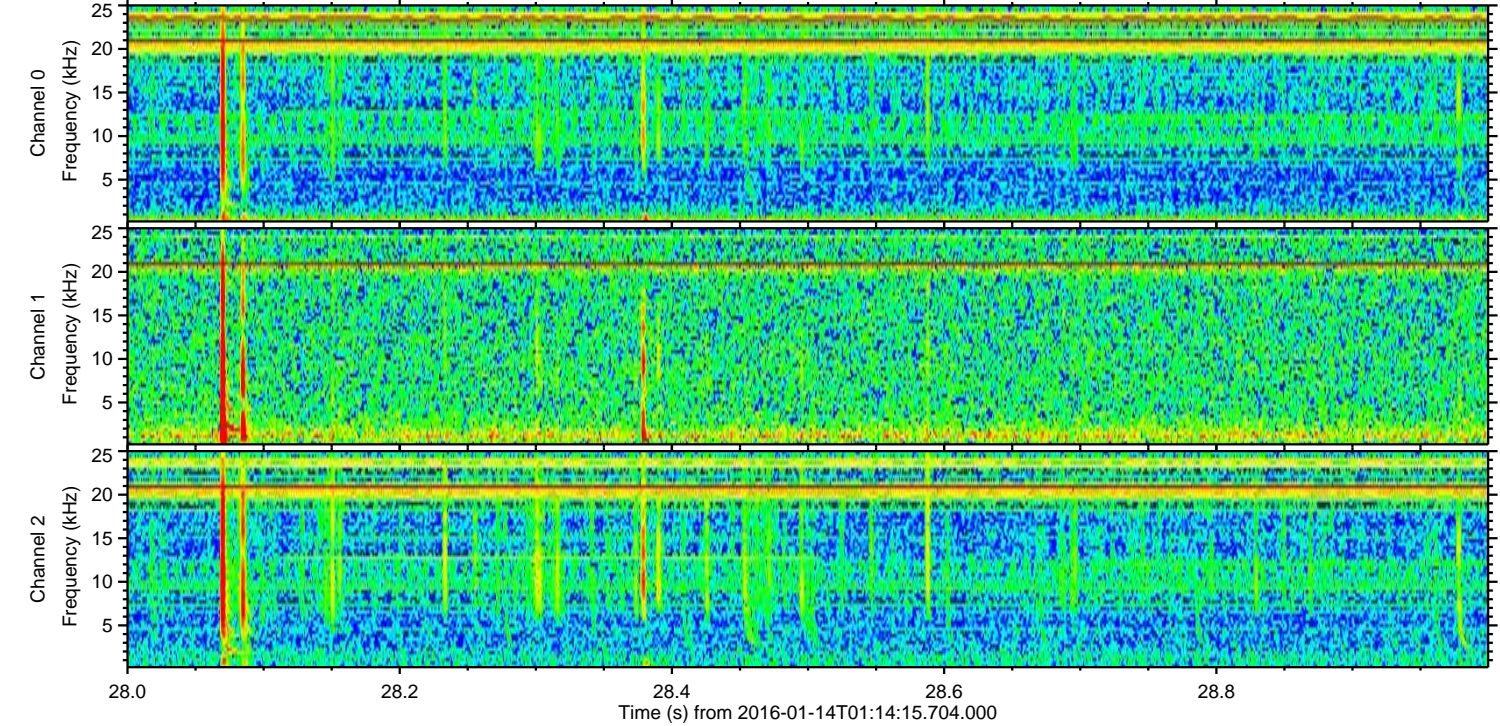
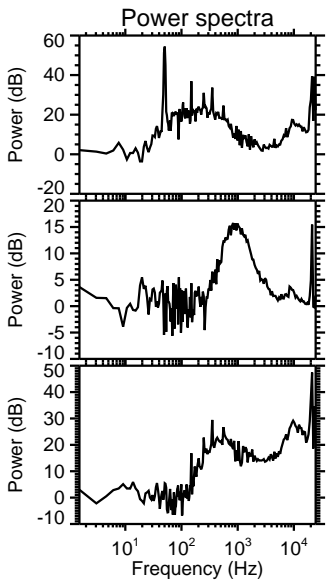
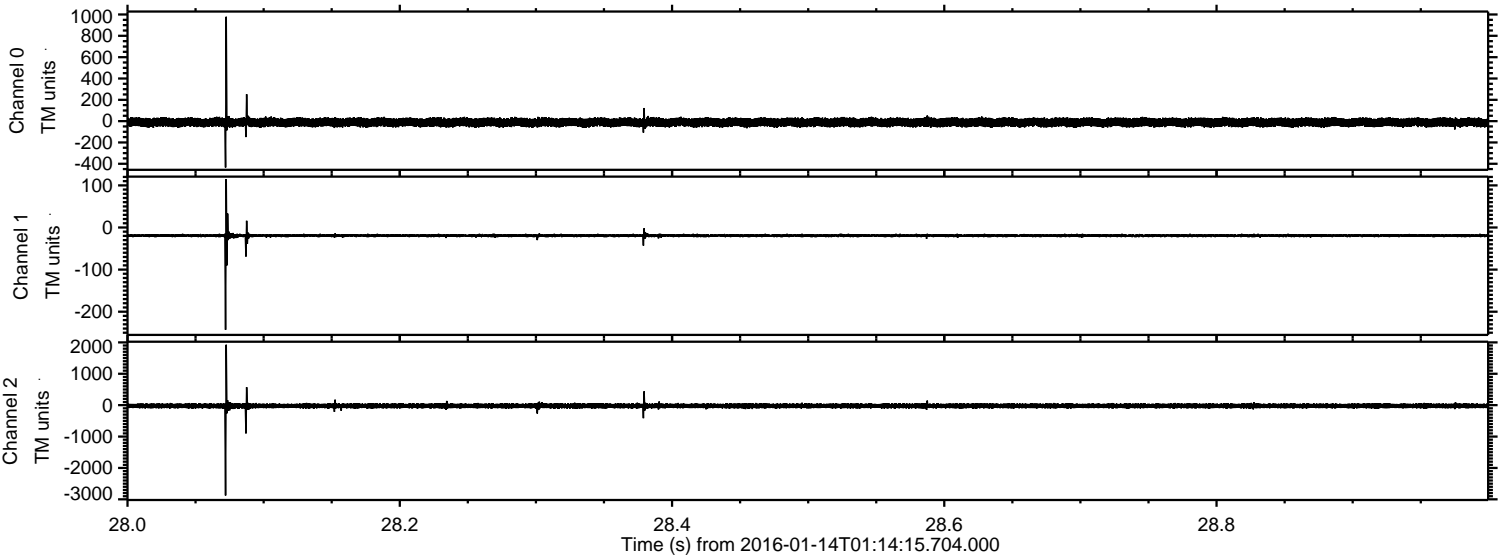


Channel 0
mn: -765
mx: 656
 μ : -11.4
 σ : 21.8

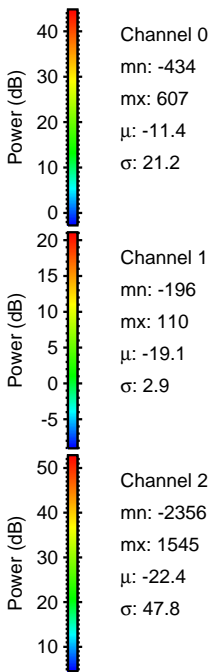
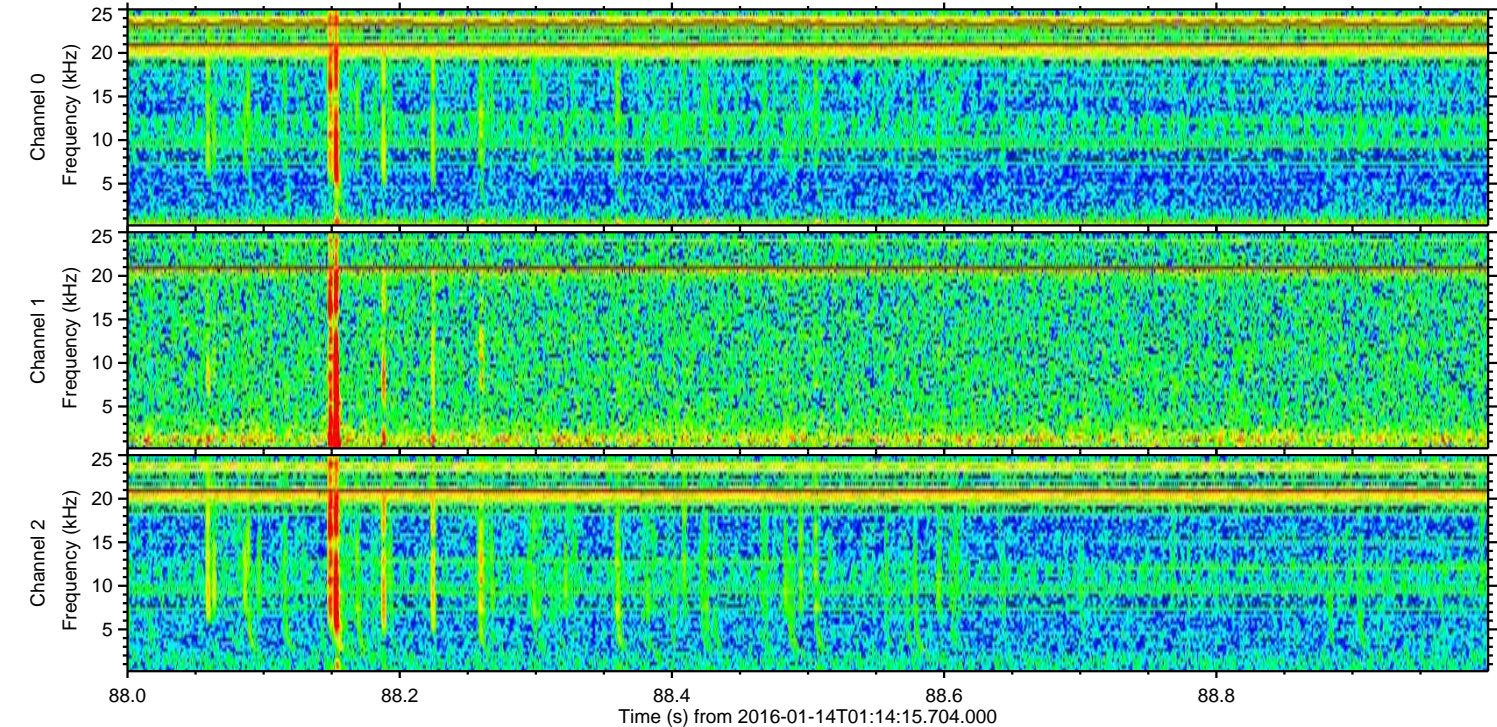
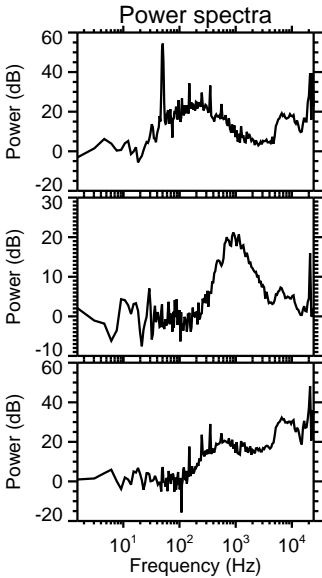
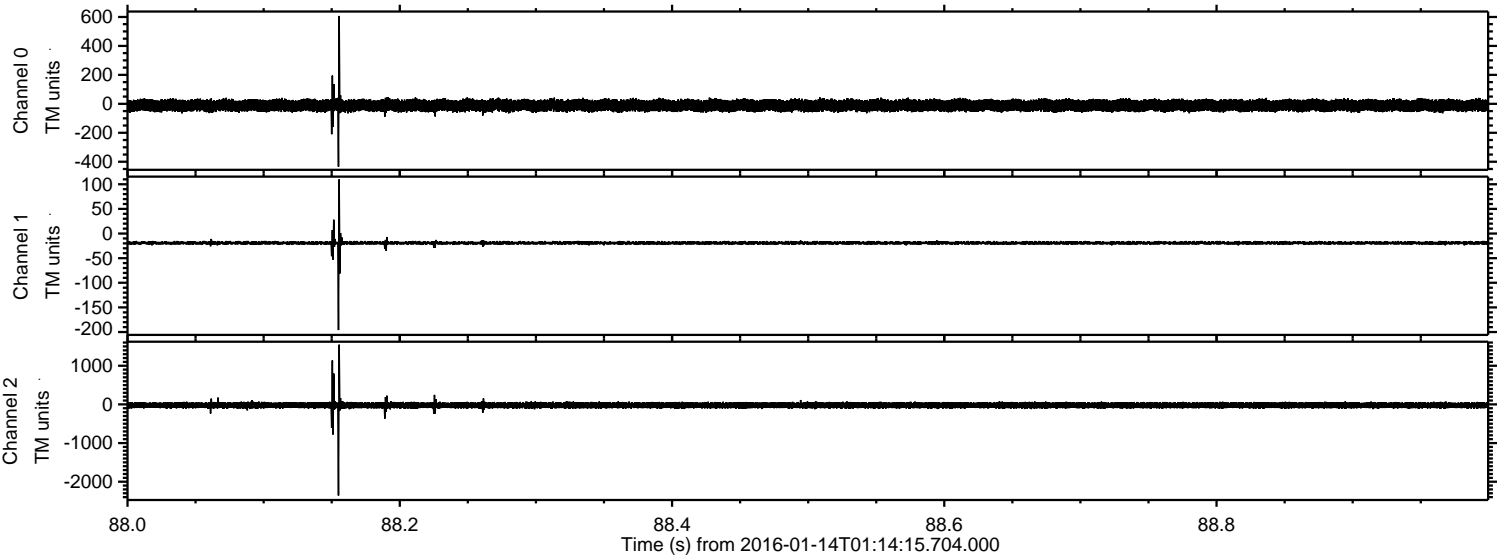
Channel 1
mn: -333
mx: 233
 μ : -19.2
 σ : 4.7

Channel 2
mn: -3105
mx: 3082
 μ : -22.6
 σ : 54.1

Processed Wed Mar 30 12:20:58 2016 by ELM ver.2012-10-06 from 001__elm20160114_011414__dat00.bin



Processed Wed Mar 30 12:20:59 2016 by ELM ver.2012-10-06 from 001__elm20160114_011414__dat00.bin



Processed Wed Mar 30 12:21:00 2016 by ELM ver.2012-10-06 from 001__elm20160114_011414__dat00.bin

