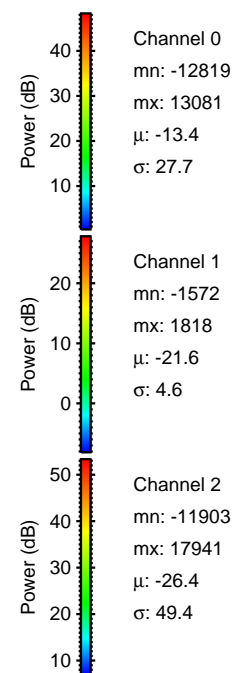
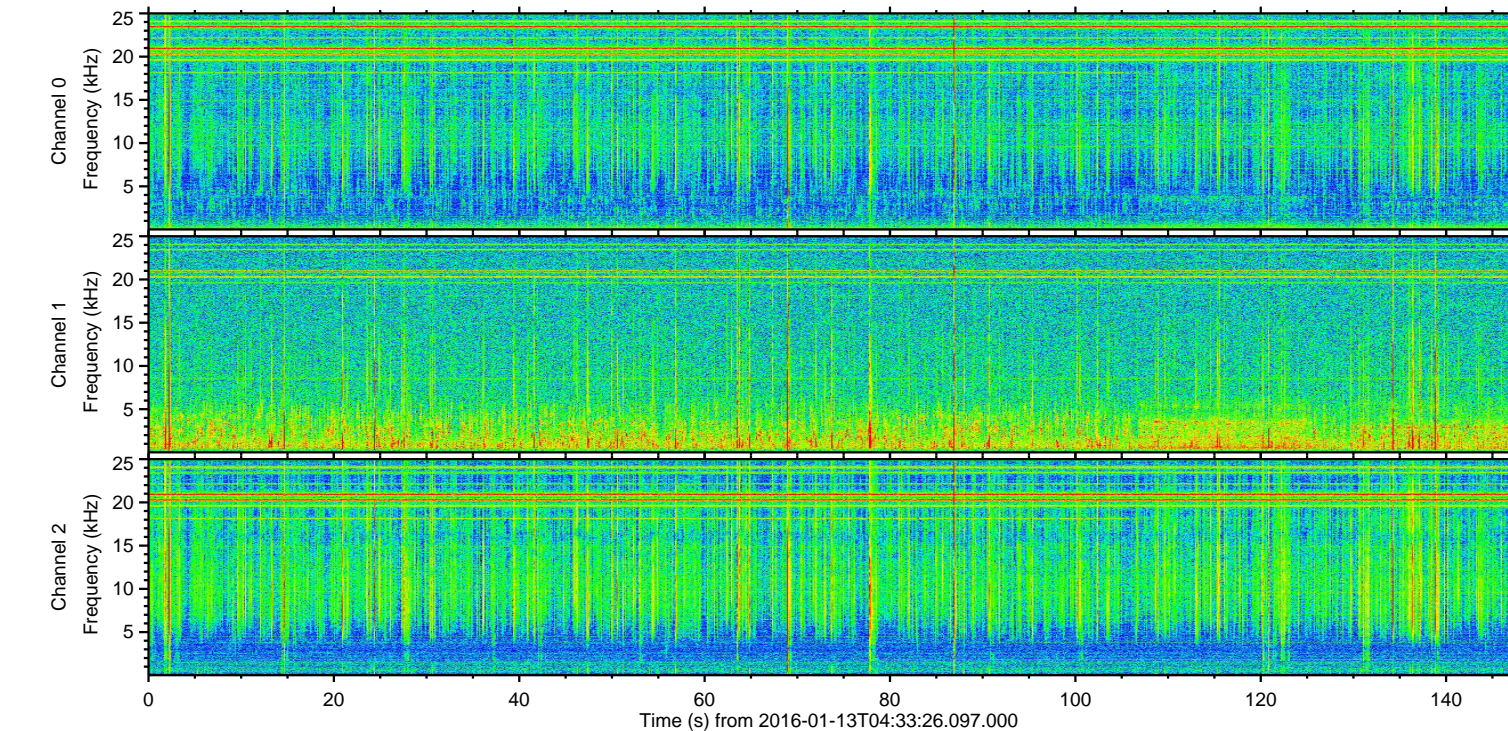
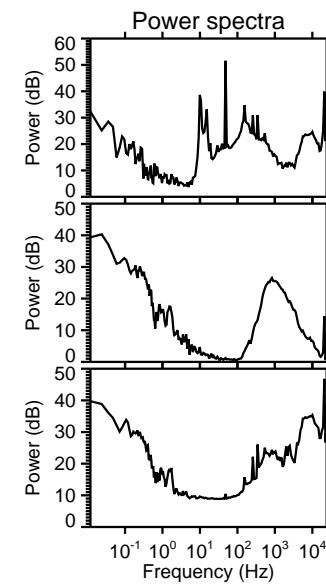
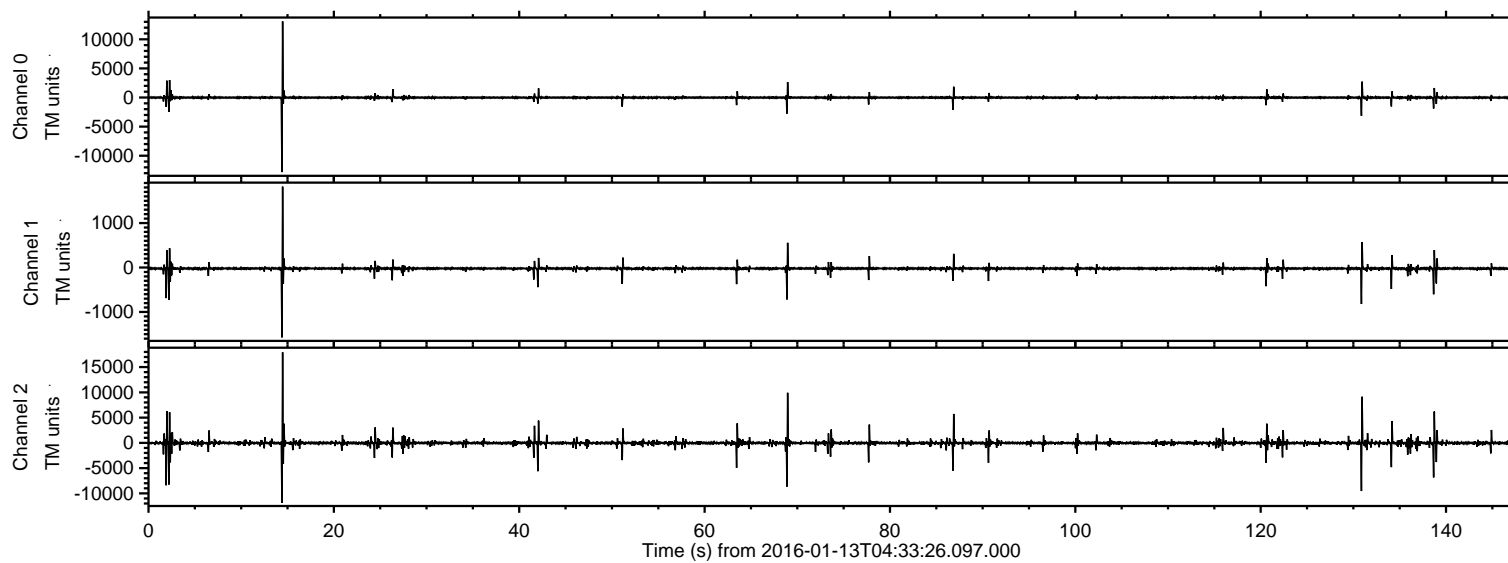
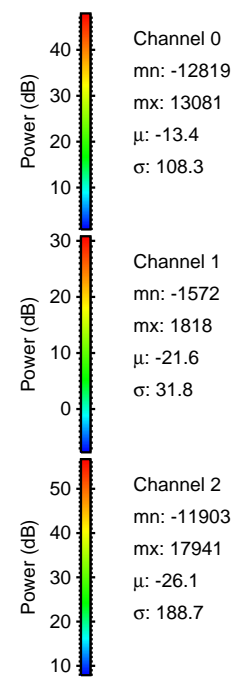
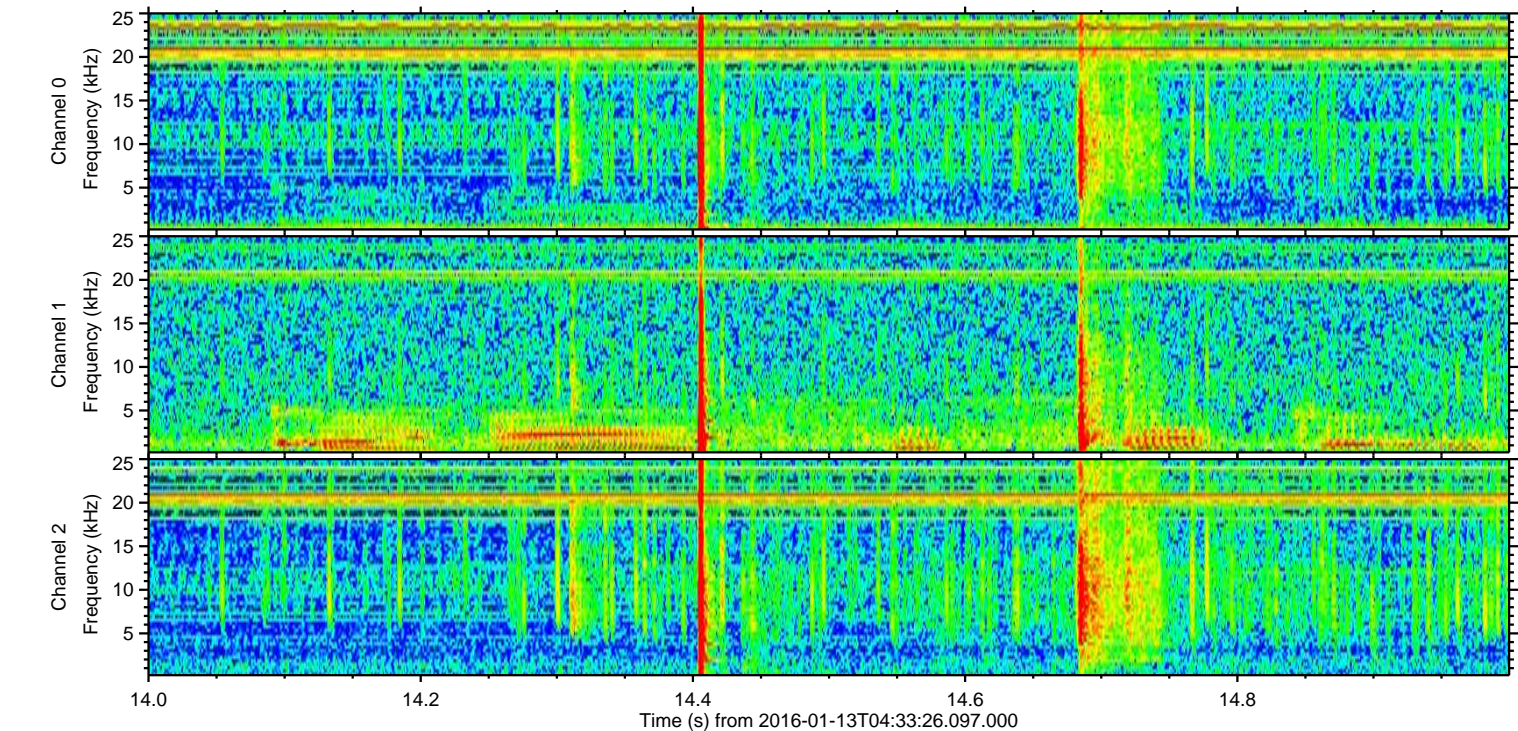
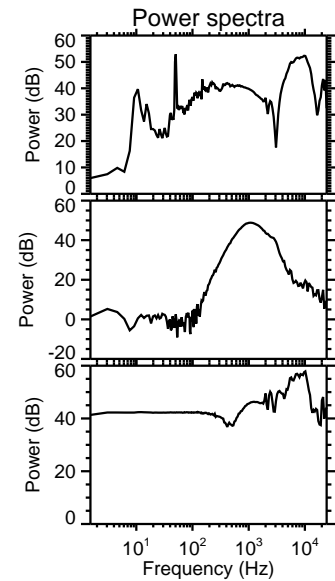
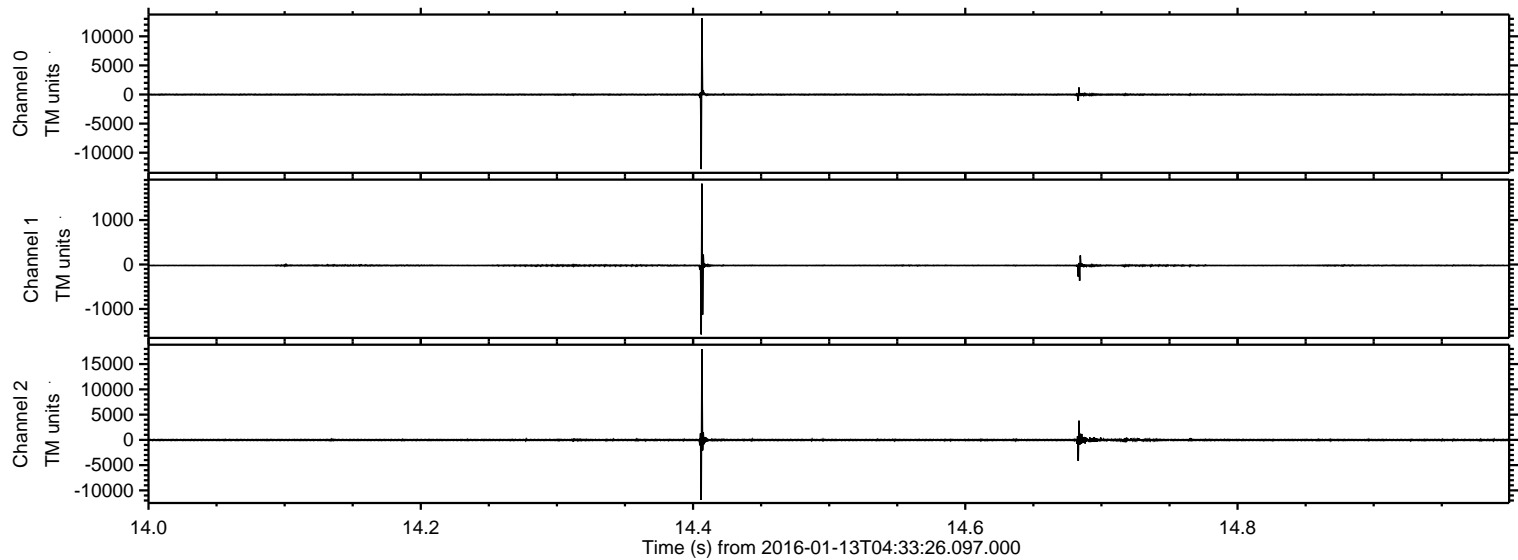


ELMAVAN 3D WAVEFORMS (Measured data sampled at 50 kHz) 51000 packets of 144 samples from 2016-01-13T04:33:26.097.000.

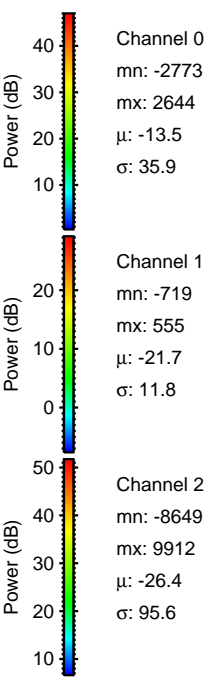
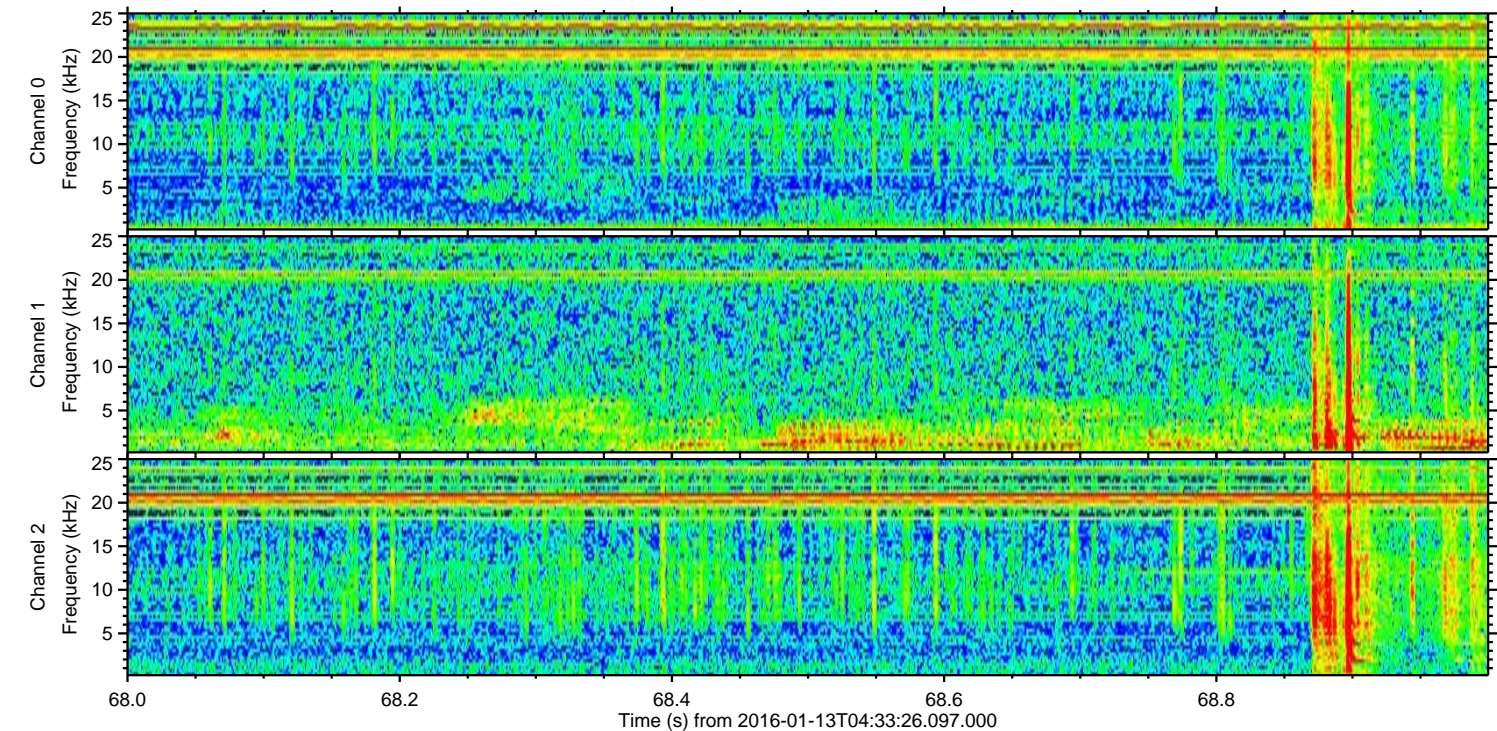
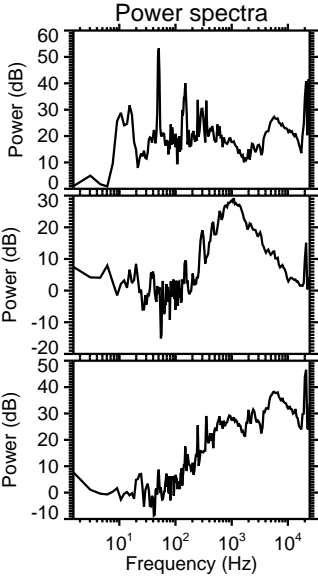
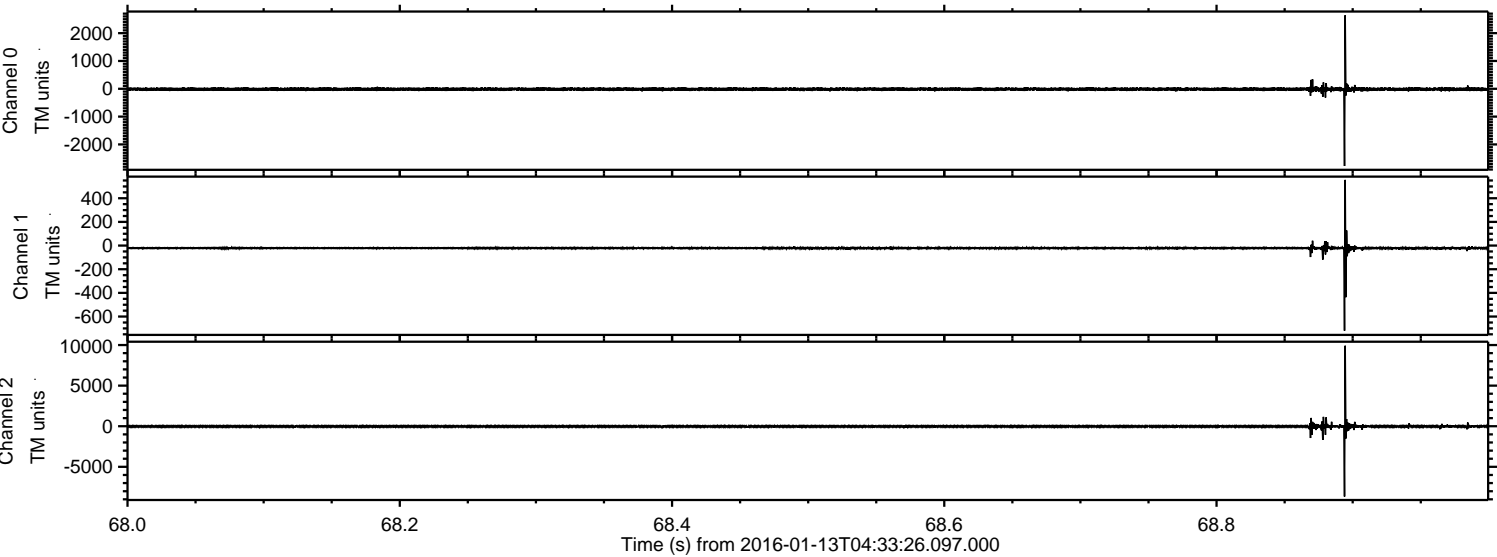
Processed Wed Mar 30 08:16:12 2016 by ELM ver.2012-10-06 from 001__elm20160113_043325__dat00.bin



Processed Wed Mar 30 08:16:24 2016 by ELM ver.2012-10-06 from 001__elm20160113_043325__dat00.bin



Processed Wed Mar 30 08:16:25 2016 by ELM ver.2012-10-06 from 001__elm20160113_043325__dat00.bin



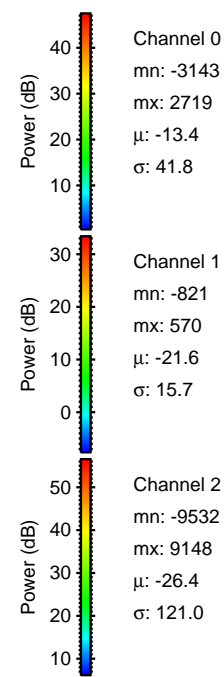
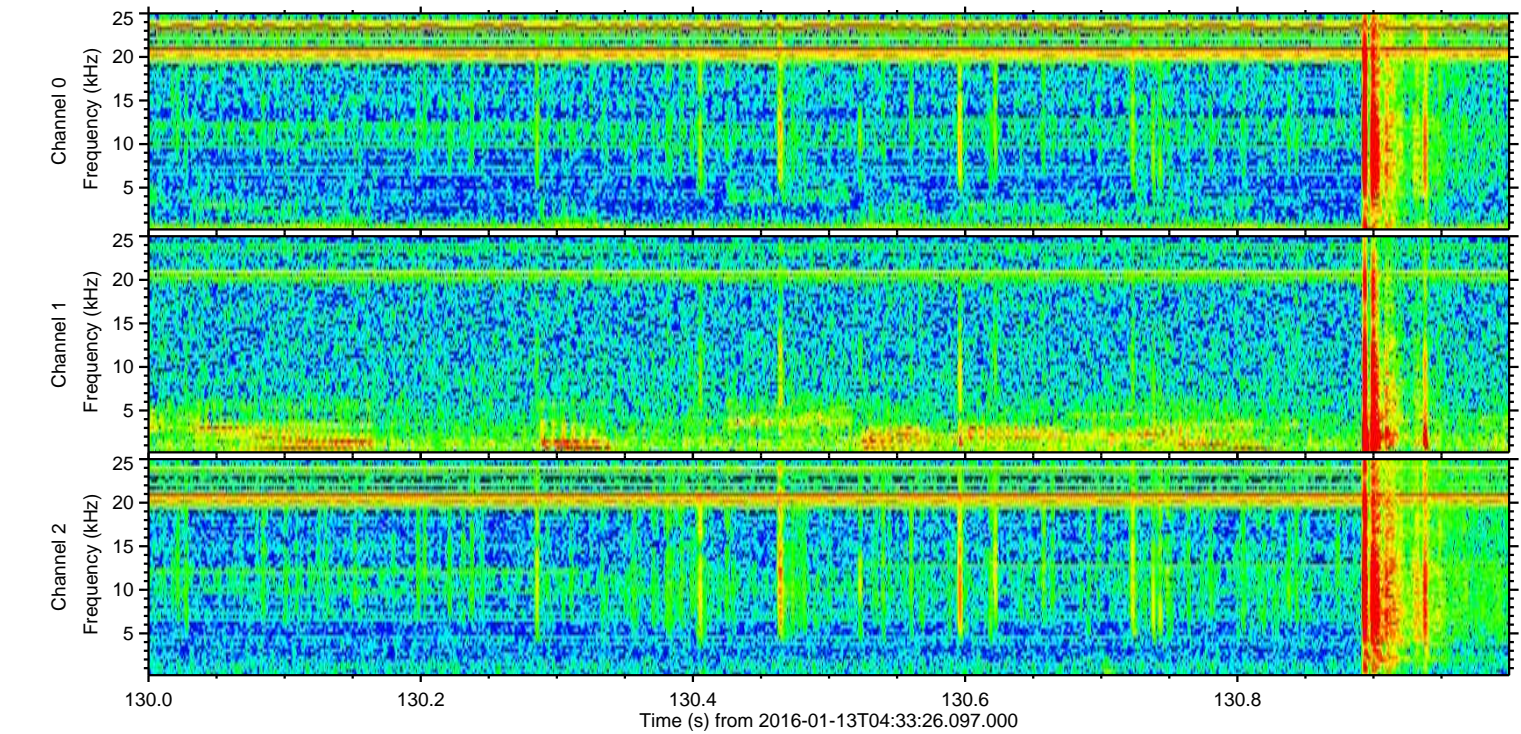
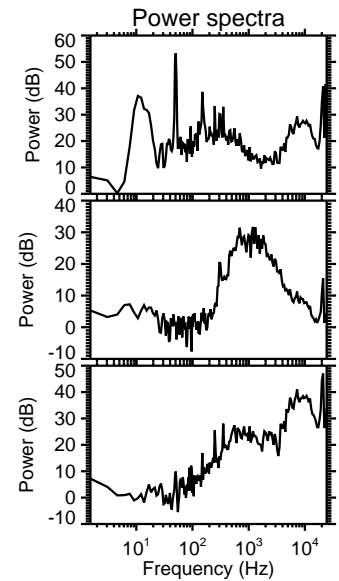
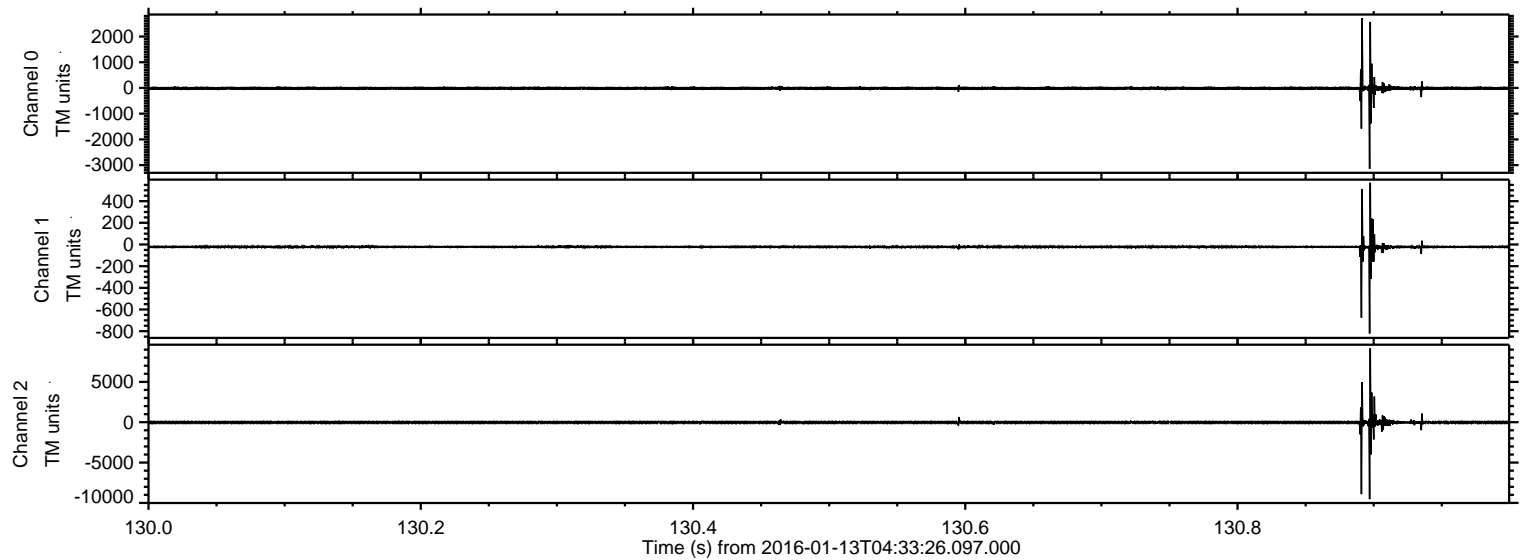
Channel 0
mn: -2773
mx: 2644
 μ : -13.5
 σ : 35.9

Channel 1
mn: -719
mx: 555
 μ : -21.7
 σ : 11.8

Channel 2
mn: -8649
mx: 9912
 μ : -26.4
 σ : 95.6

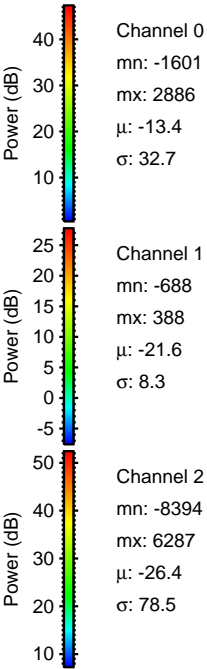
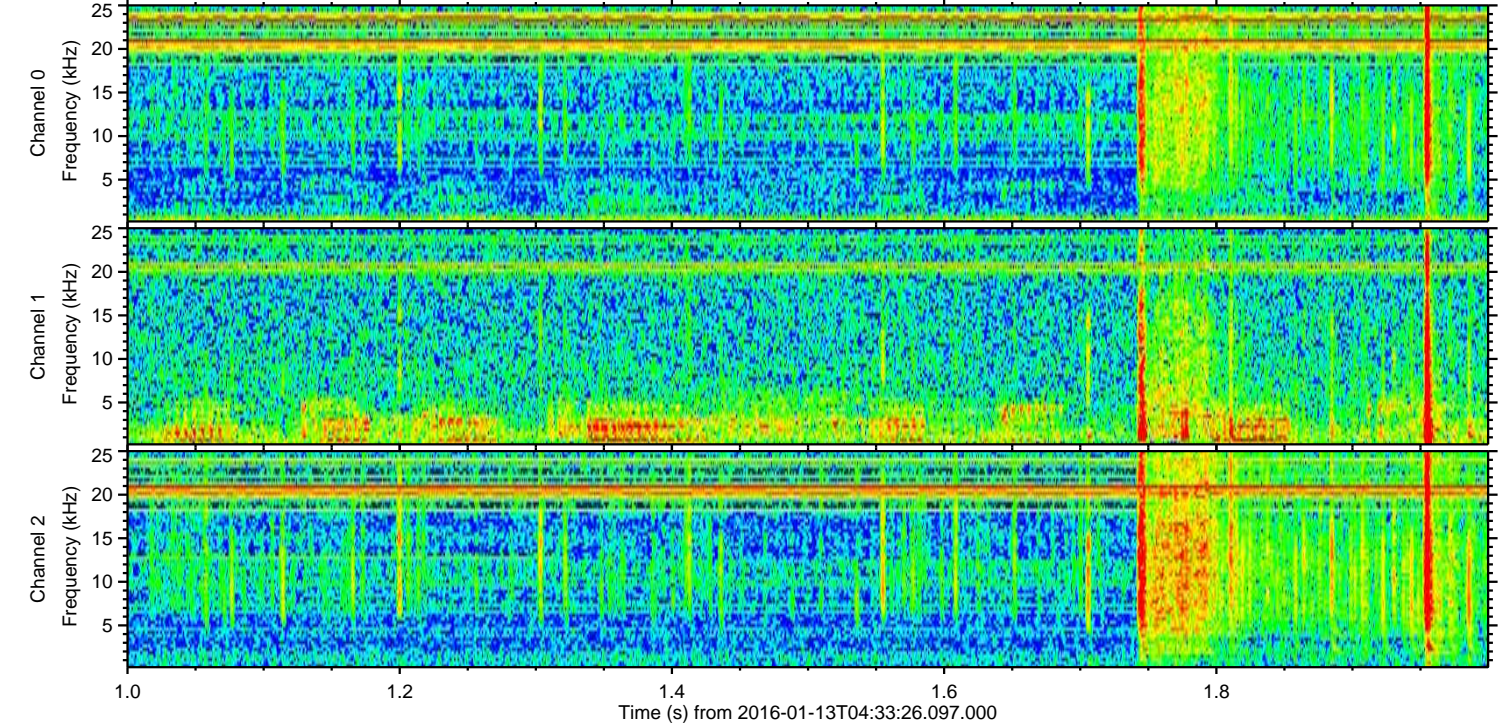
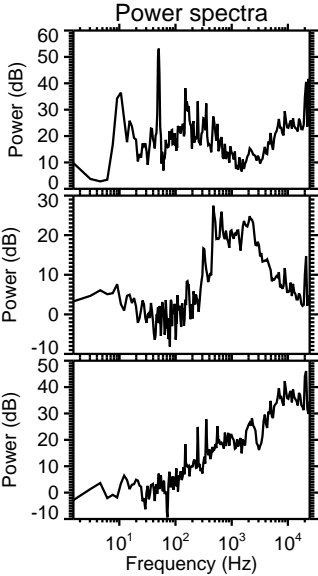
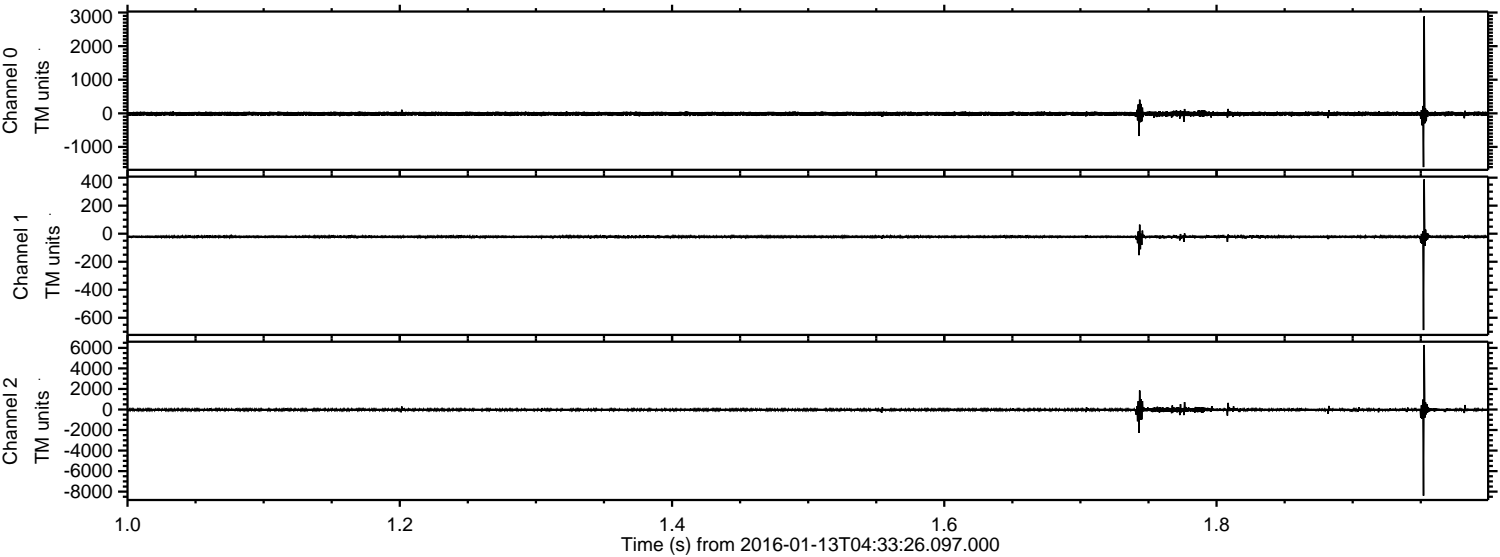
ELMAVAN 3D WAVEFORMS (Measured data sampled at 50 kHz) 51000 packets of 144 samples from 2016-01-13T04:33:26.097.000. Part 131/147

Processed Wed Mar 30 08:16:26 2016 by ELM ver.2012-10-06 from 001__elm20160113_043325__dat00.bin

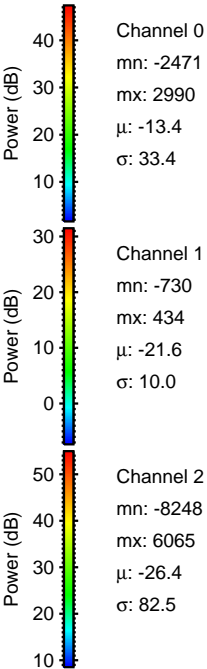
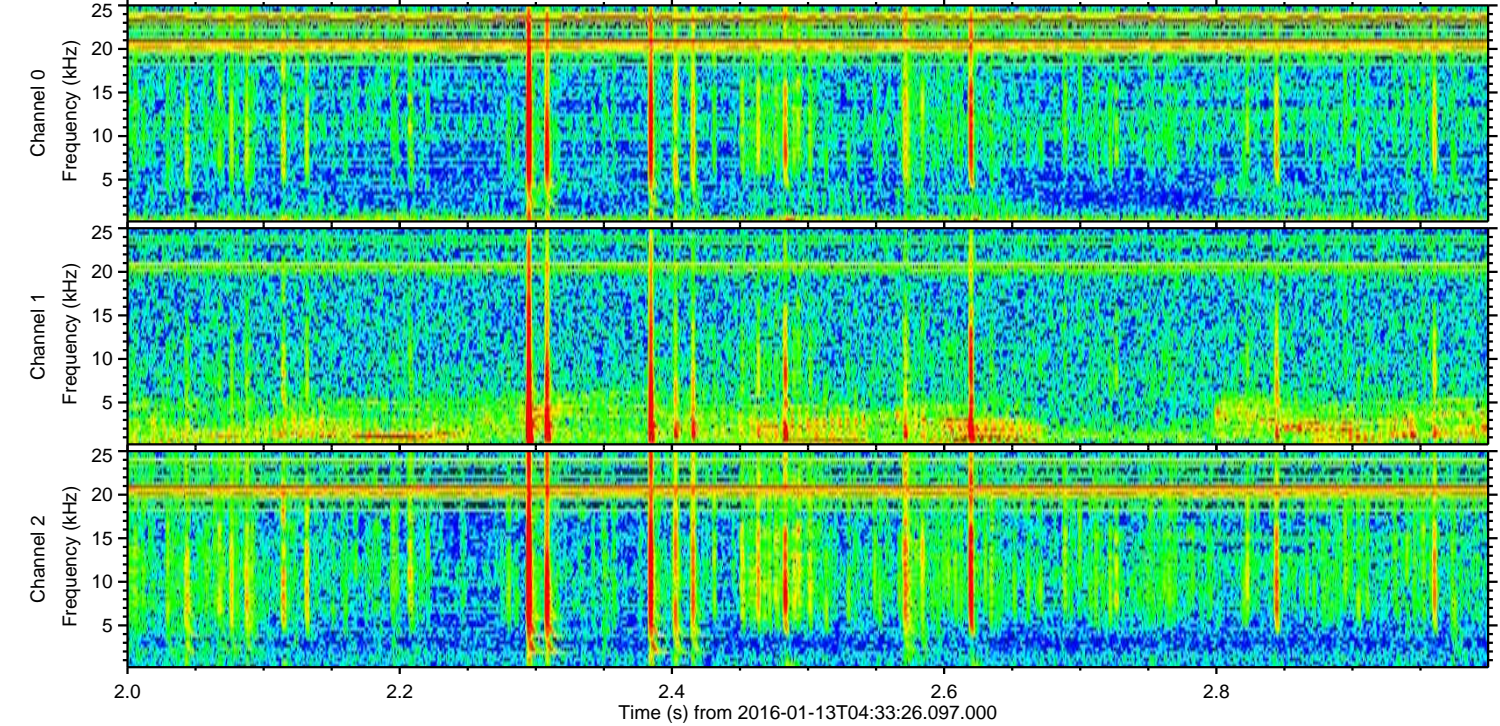
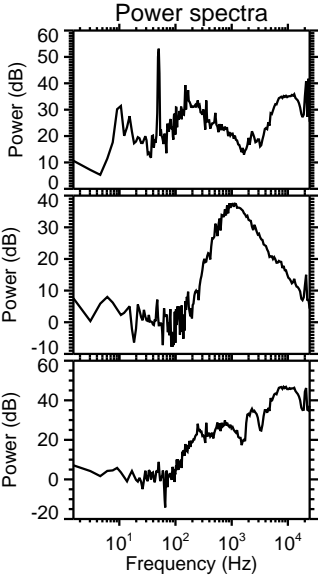
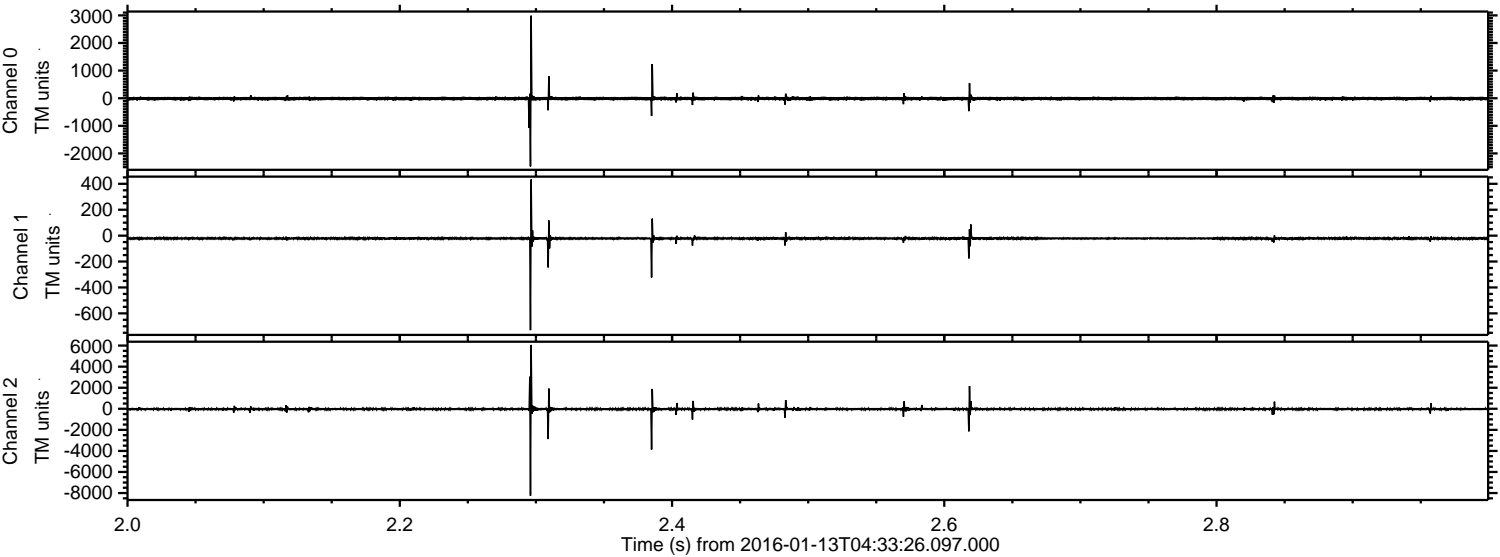


ELMAVAN 3D WAVEFORMS (Measured data sampled at 50 kHz) 51000 packets of 144 samples from 2016-01-13T04:33:26.097.000. Part 2/147

Processed Wed Mar 30 08:16:27 2016 by ELM ver.2012-10-06 from 001__elm20160113_043325__dat00.bin

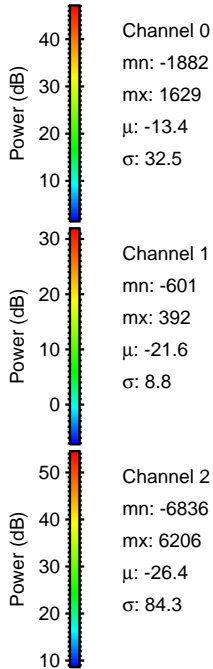
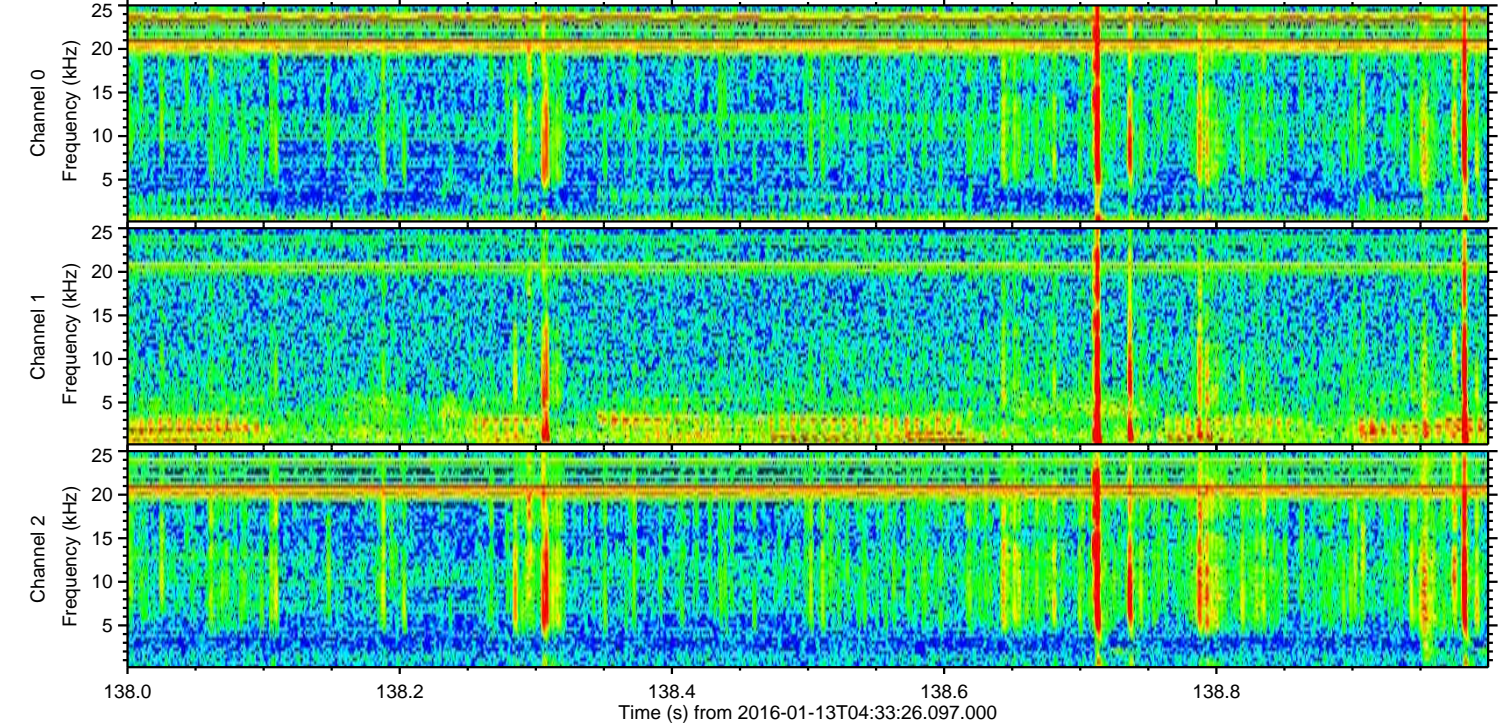
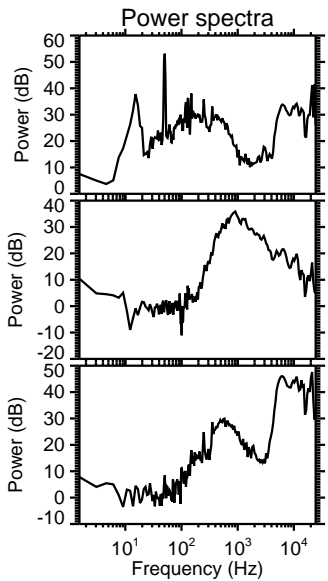
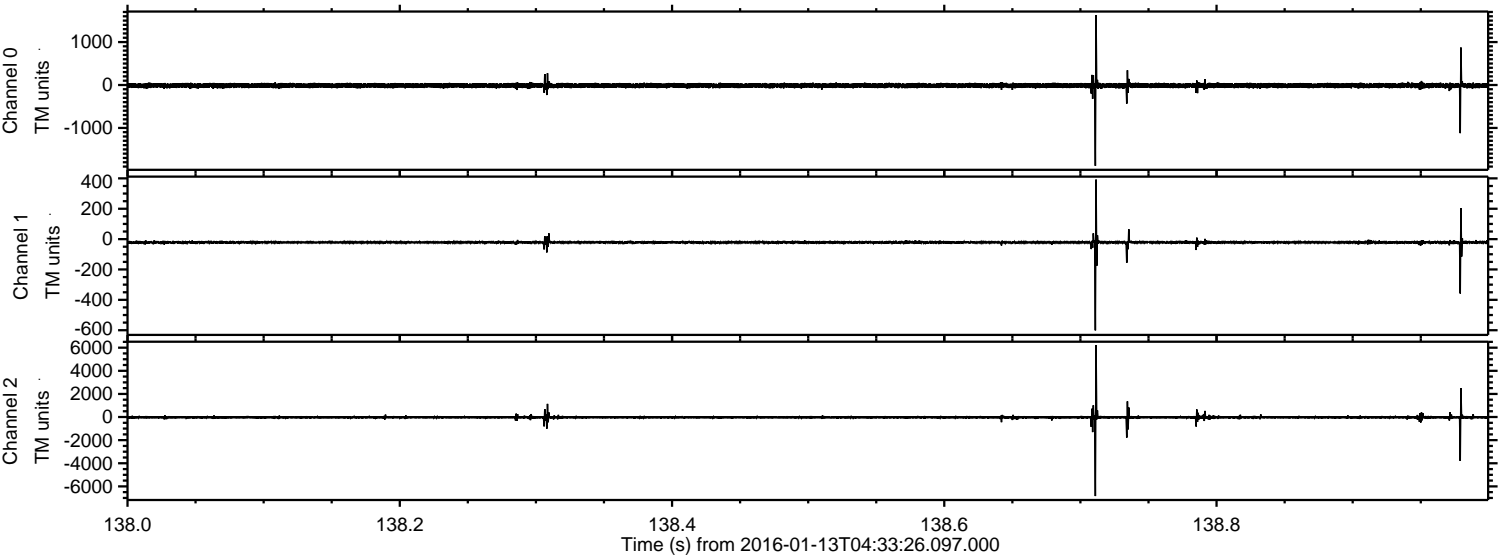


Processed Wed Mar 30 08:16:27 2016 by ELM ver.2012-10-06 from 001__elm20160113_043325__dat00.bin

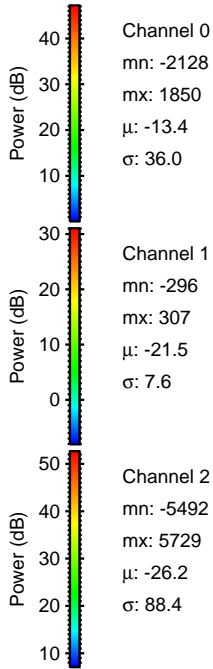
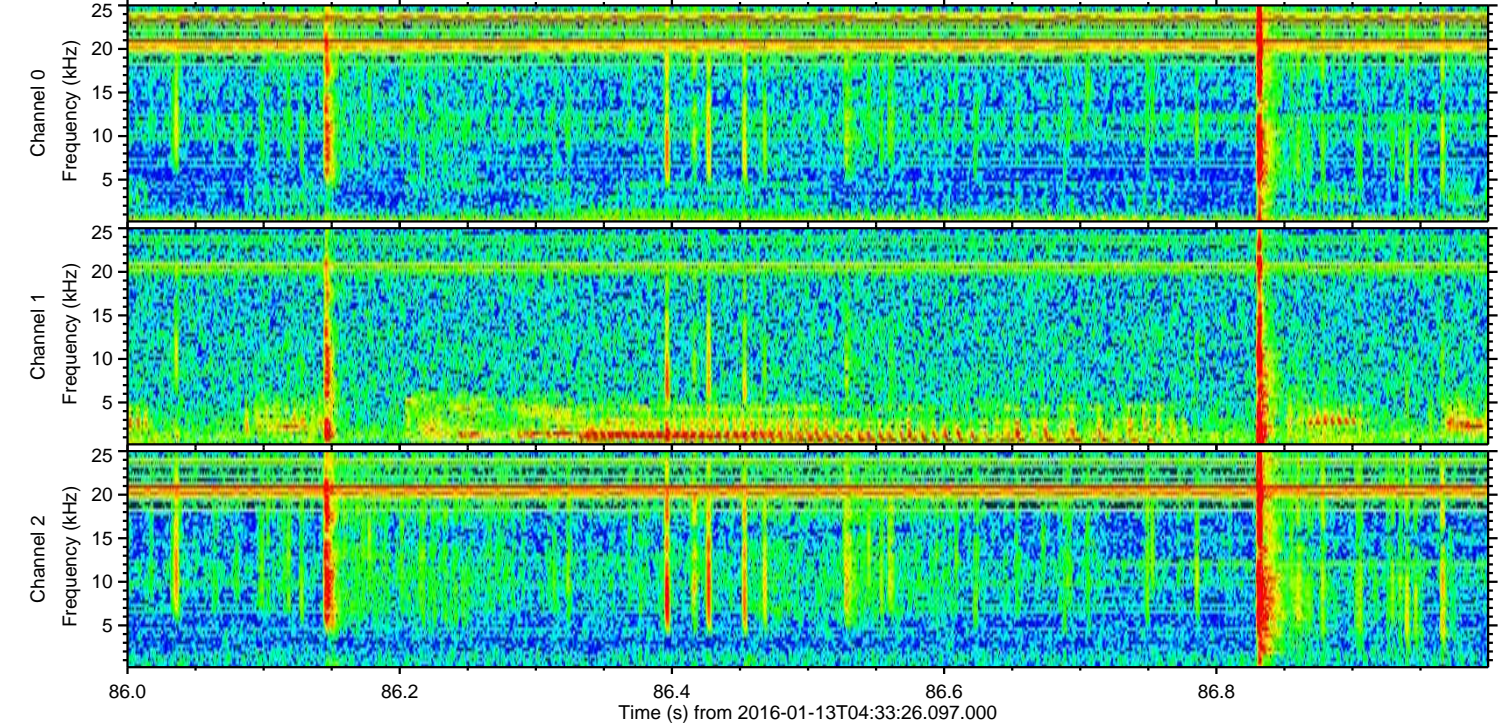
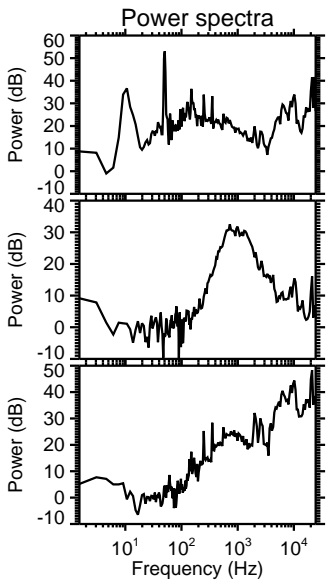
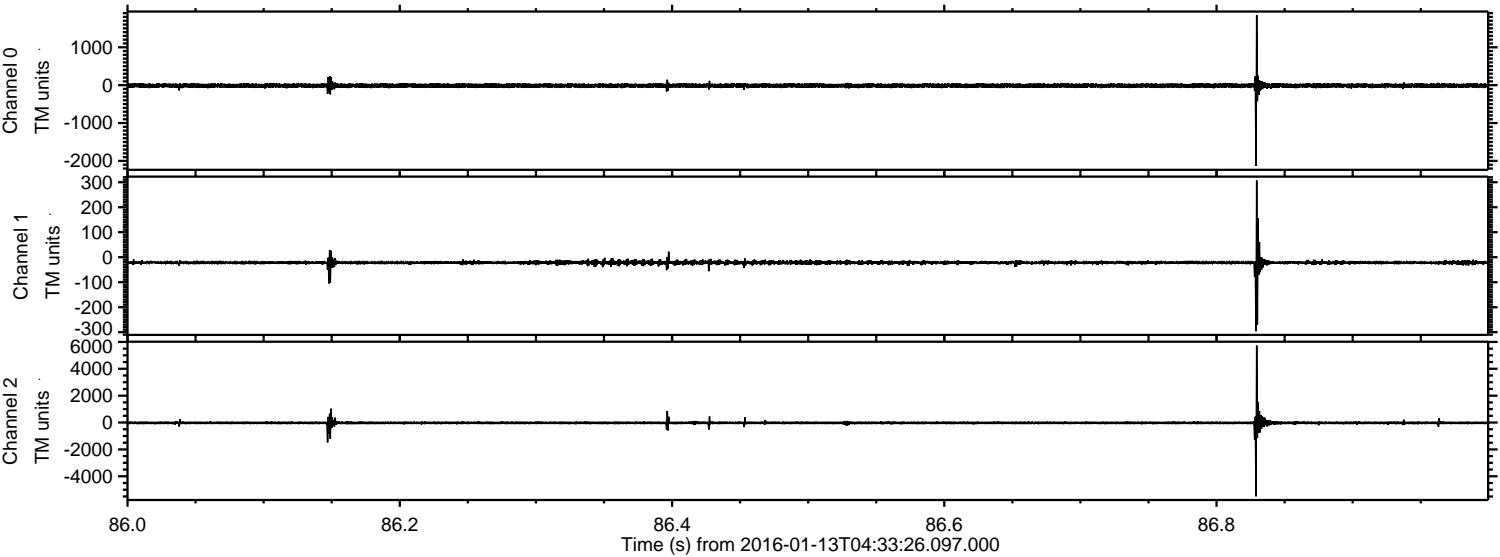


ELMAVAN 3D WAVEFORMS (Measured data sampled at 50 kHz) 51000 packets of 144 samples from 2016-01-13T04:33:26.097.000. Part 139/147

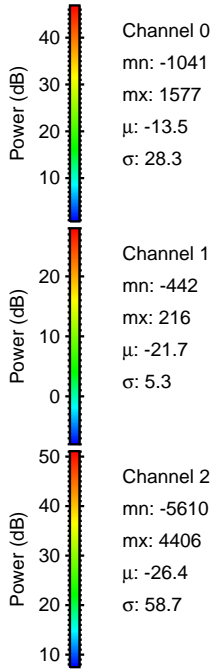
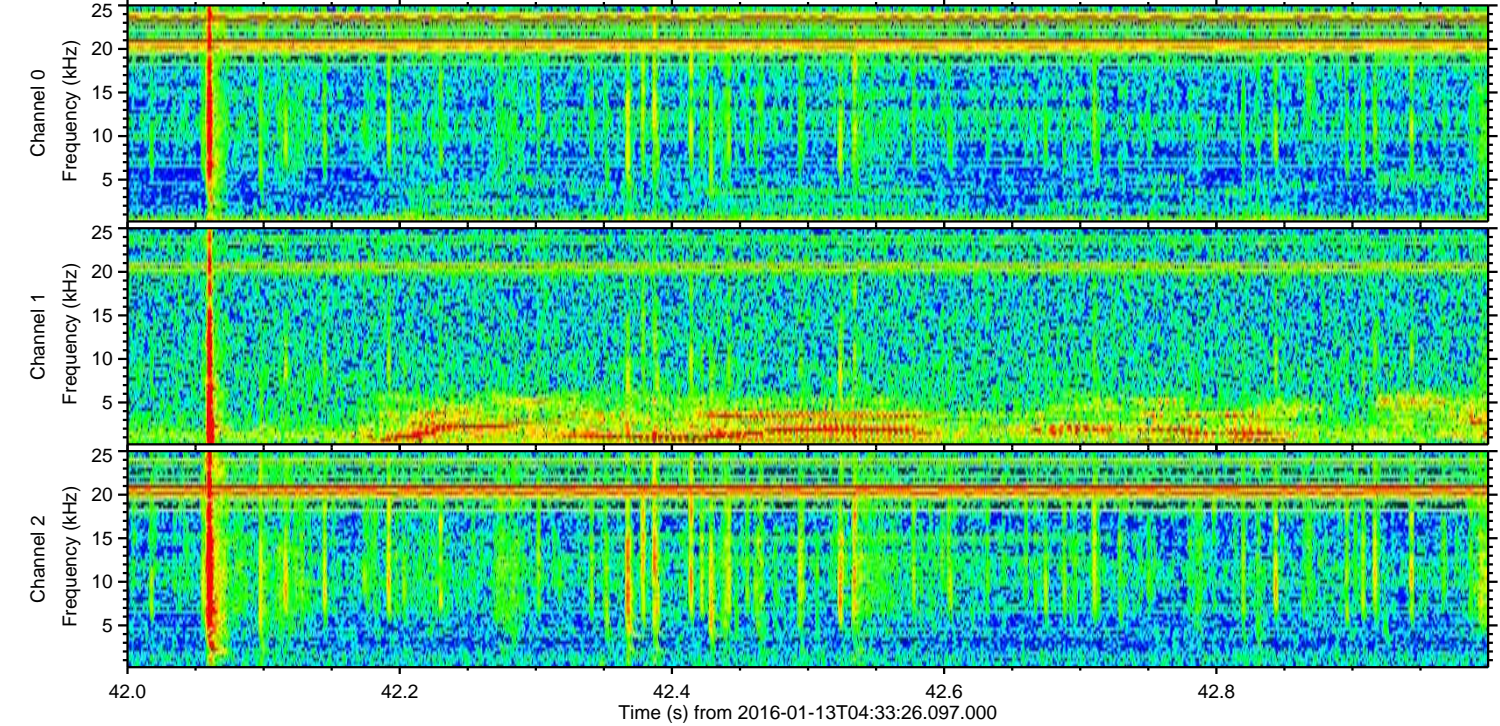
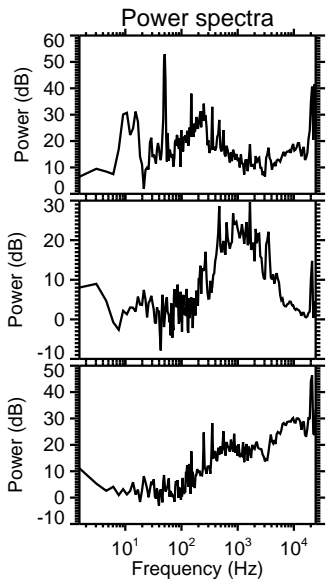
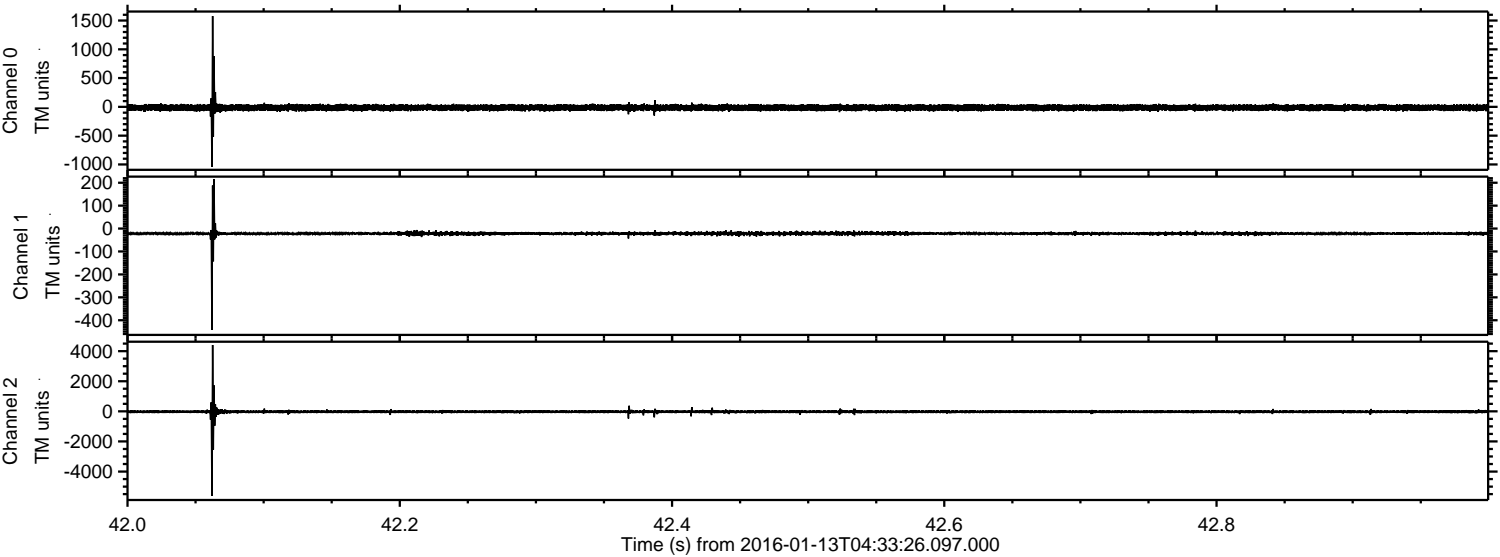
Processed Wed Mar 30 08:16:28 2016 by ELM ver.2012-10-06 from 001__elm20160113_043325__dat00.bin



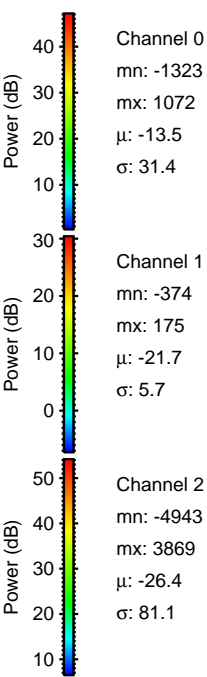
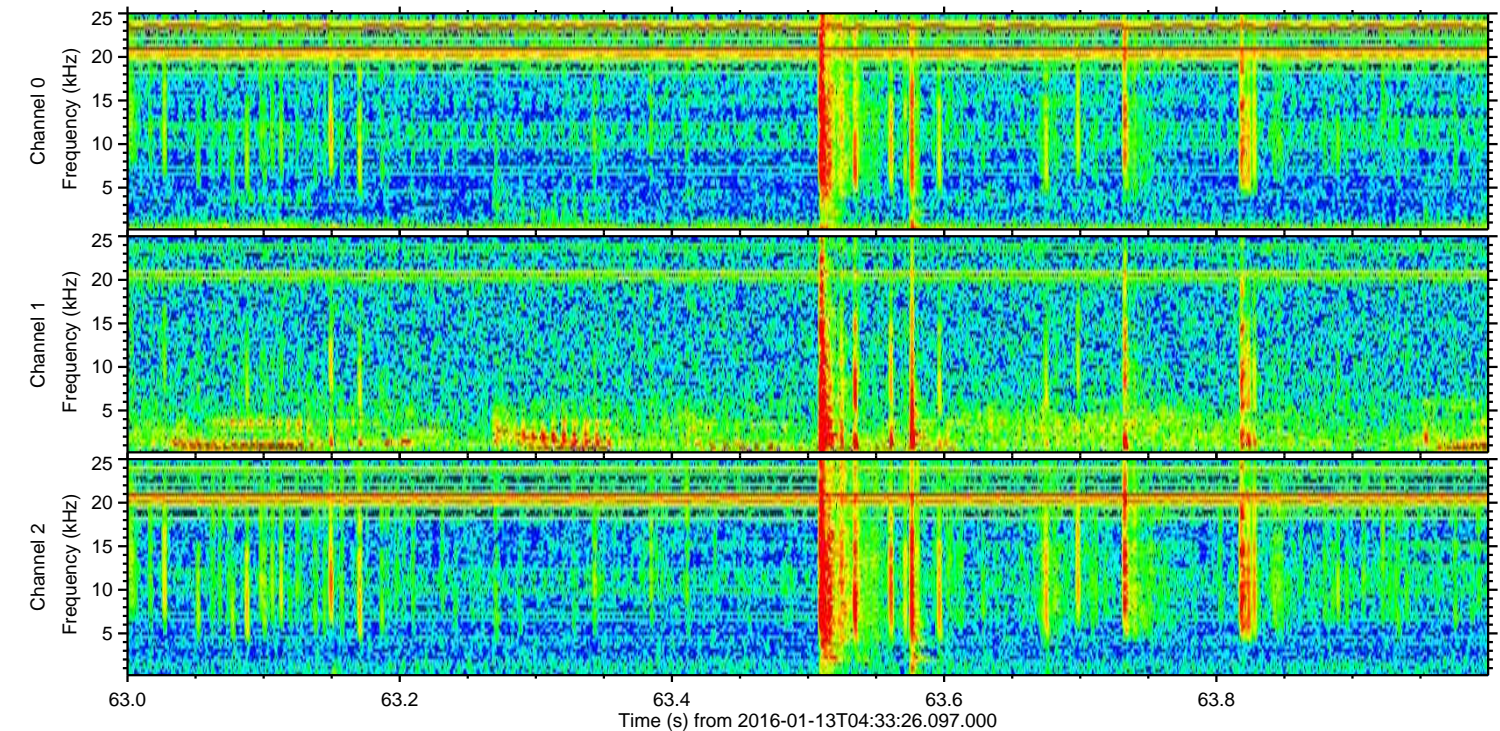
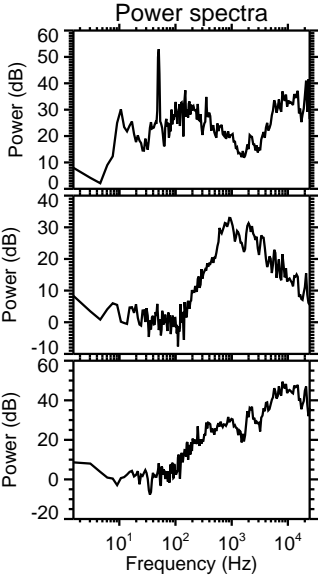
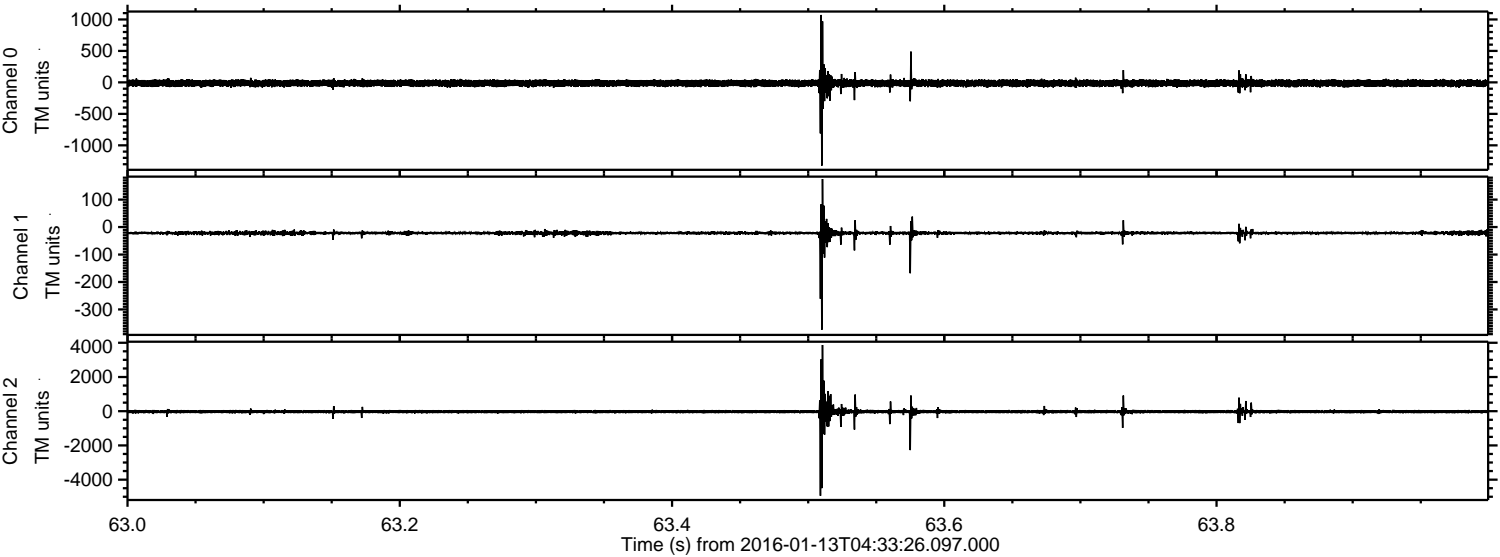
Processed Wed Mar 30 08:16:29 2016 by ELM ver.2012-10-06 from 001__elm20160113_043325__dat00.bin



Processed Wed Mar 30 08:16:30 2016 by ELM ver.2012-10-06 from 001__elm20160113_043325__dat00.bin



Processed Wed Mar 30 08:16:31 2016 by ELM ver.2012-10-06 from 001__elm20160113_043325__dat00.bin



Channel 0
mn: -1323
mx: 1072
 μ : -13.5
 σ : 31.4

Channel 1
mn: -374
mx: 175
 μ : -21.7
 σ : 5.7

Channel 2
mn: -4943
mx: 3869
 μ : -26.4
 σ : 81.1

