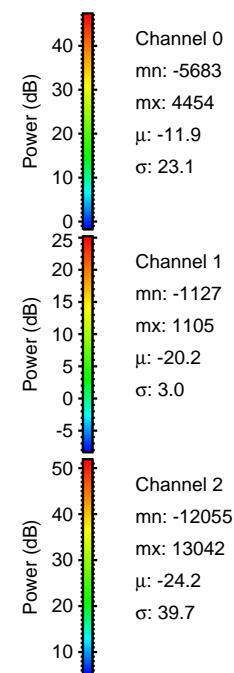
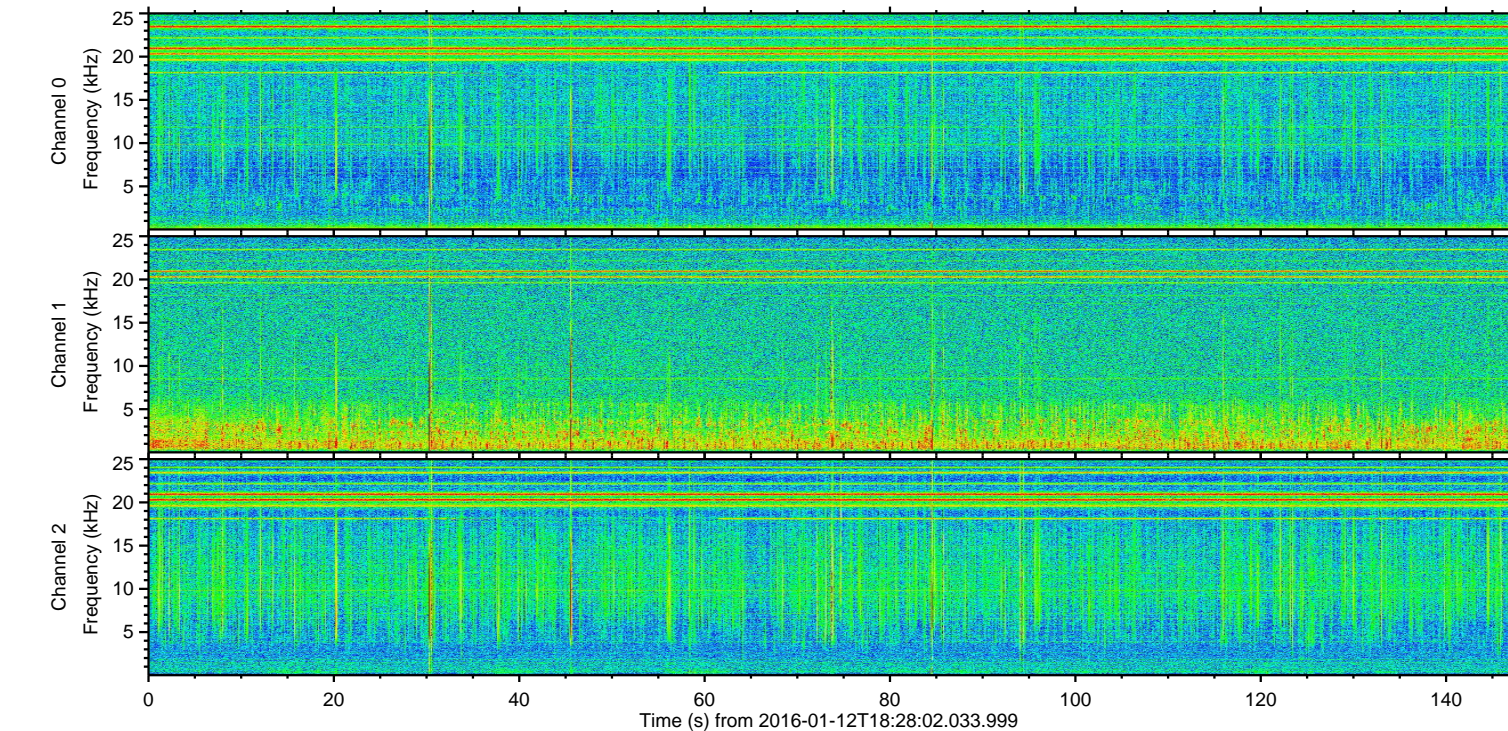
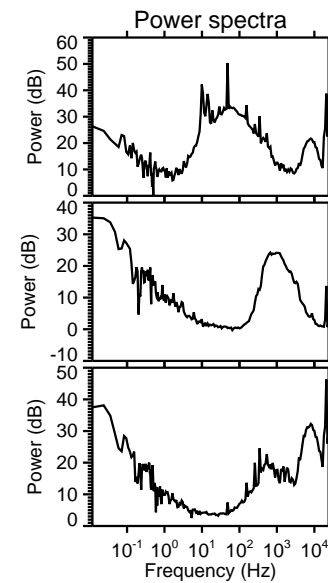
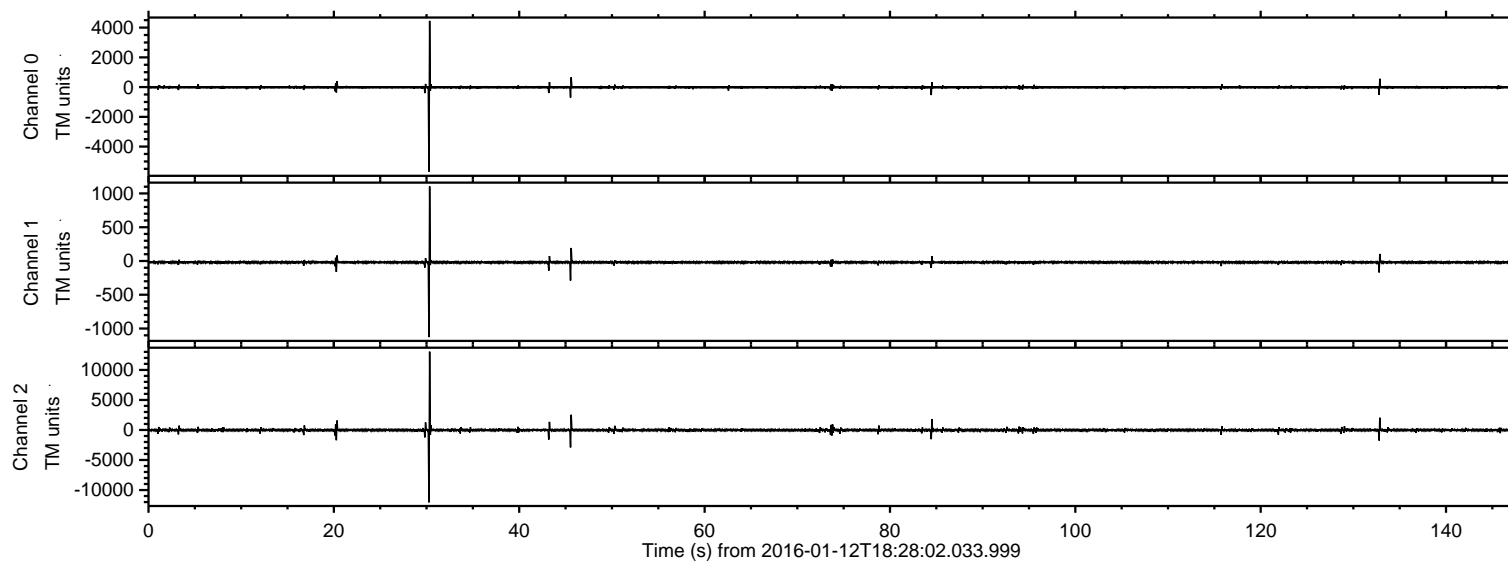


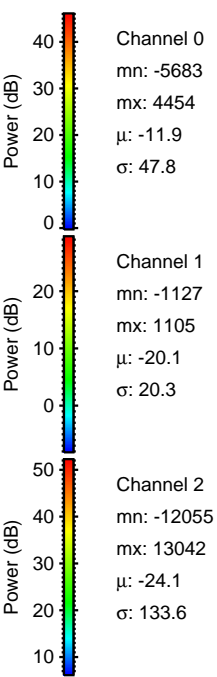
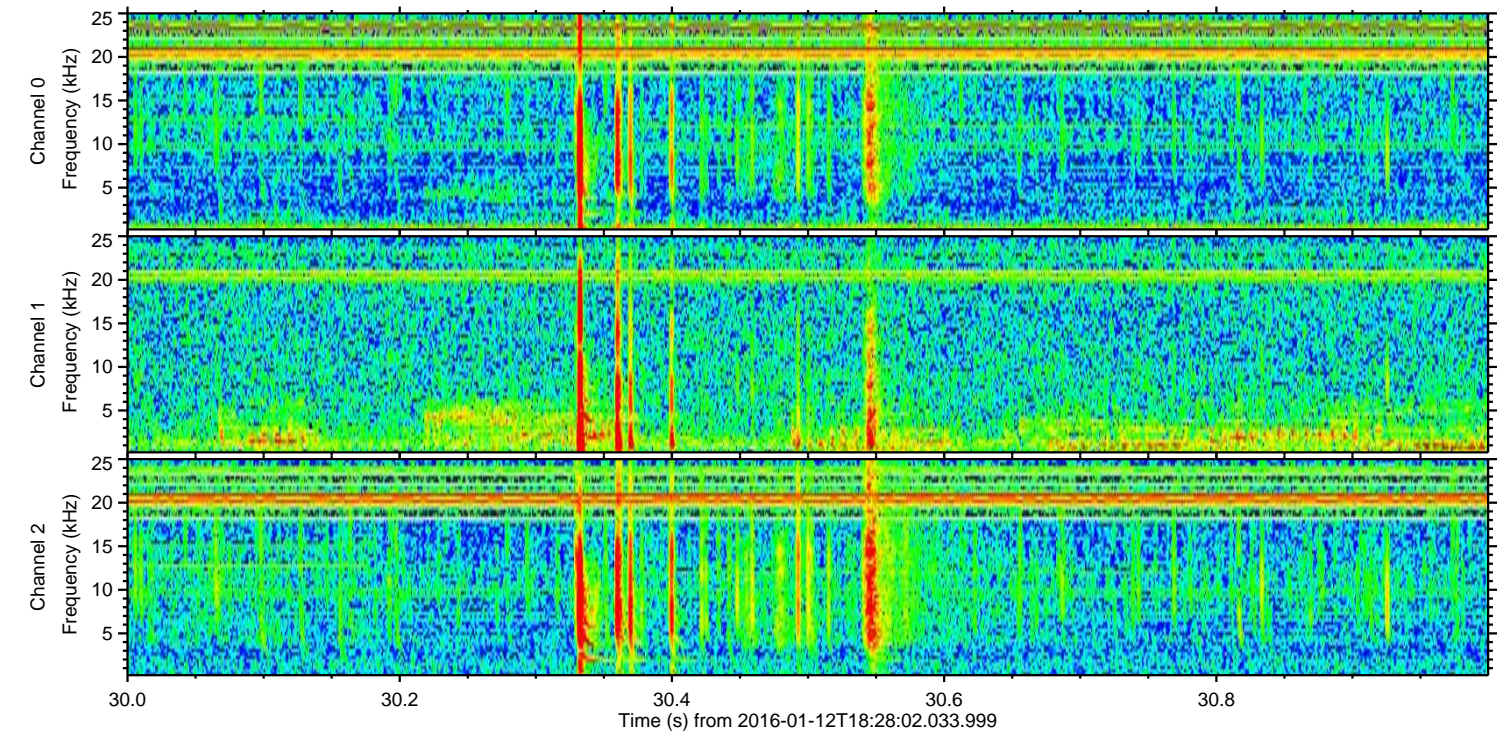
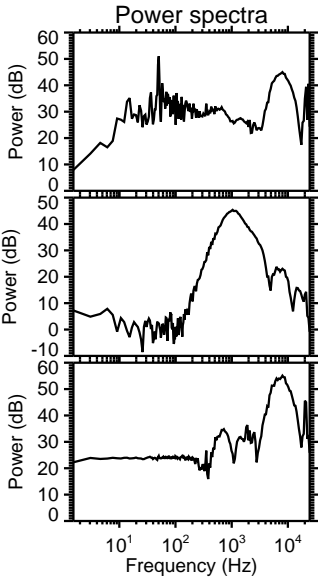
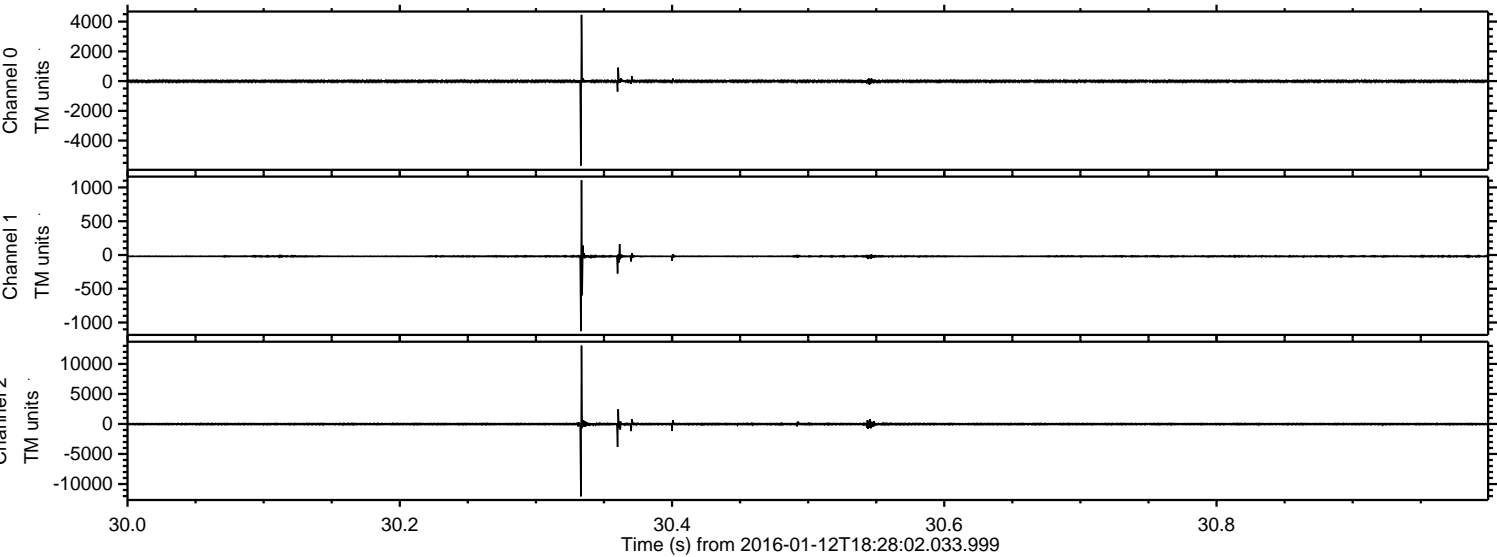
ELMAVAN 3D WAVEFORMS (Measured data sampled at 50 kHz) 51000 packets of 144 samples from 2016-01-12T18:28:02.033.999.

Processed Wed Mar 30 06:18:51 2016 by ELM ver.2012-10-06 from 001__elm20160112_182801__dat00.bin

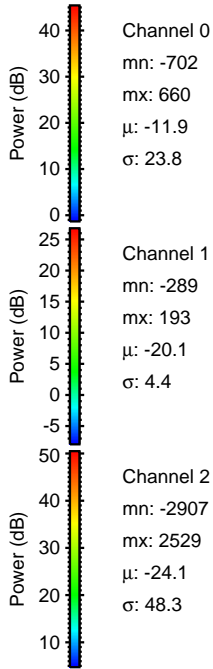
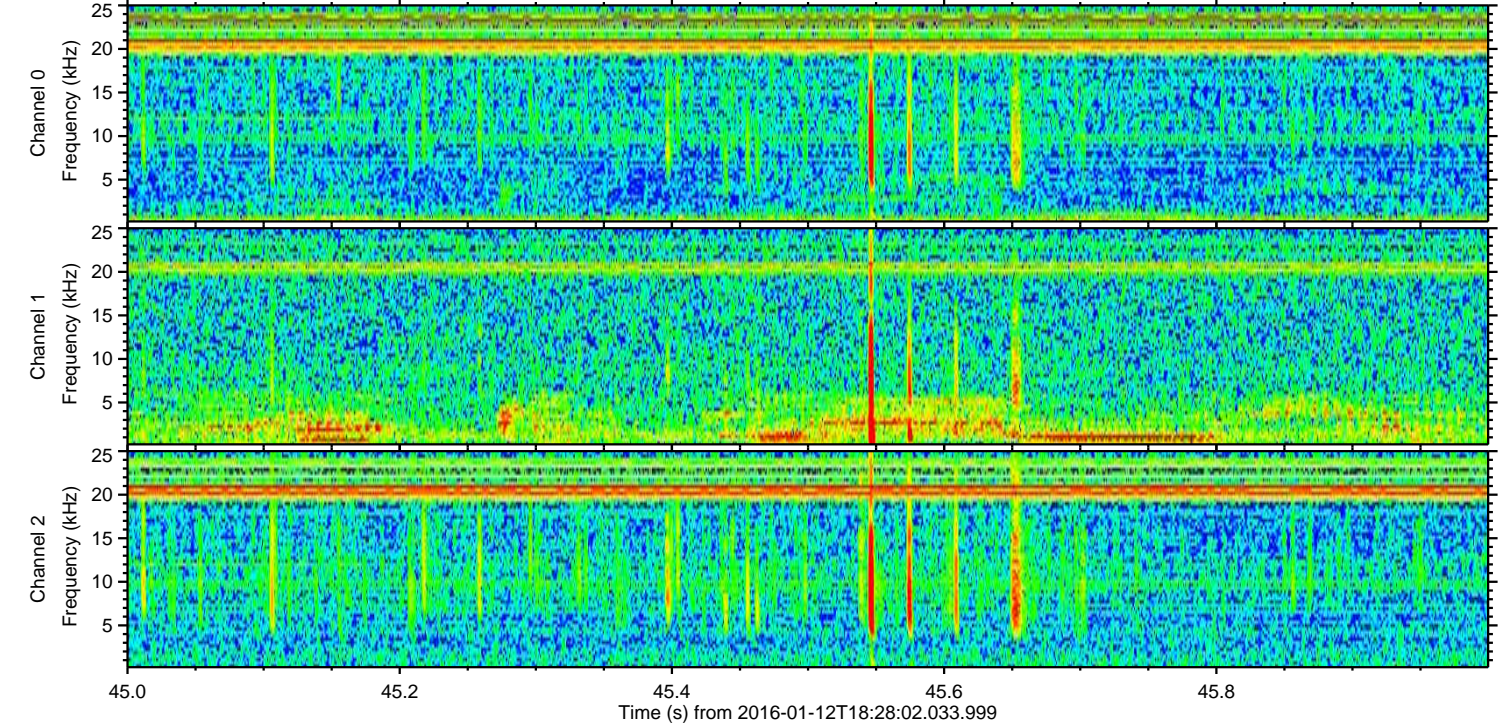
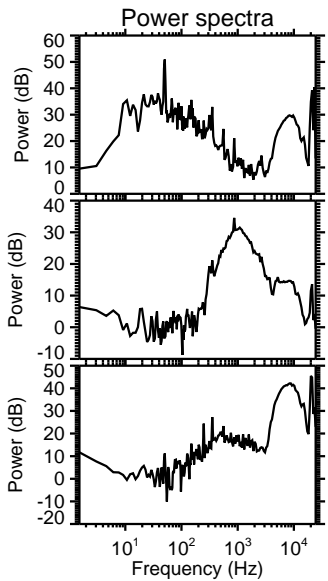
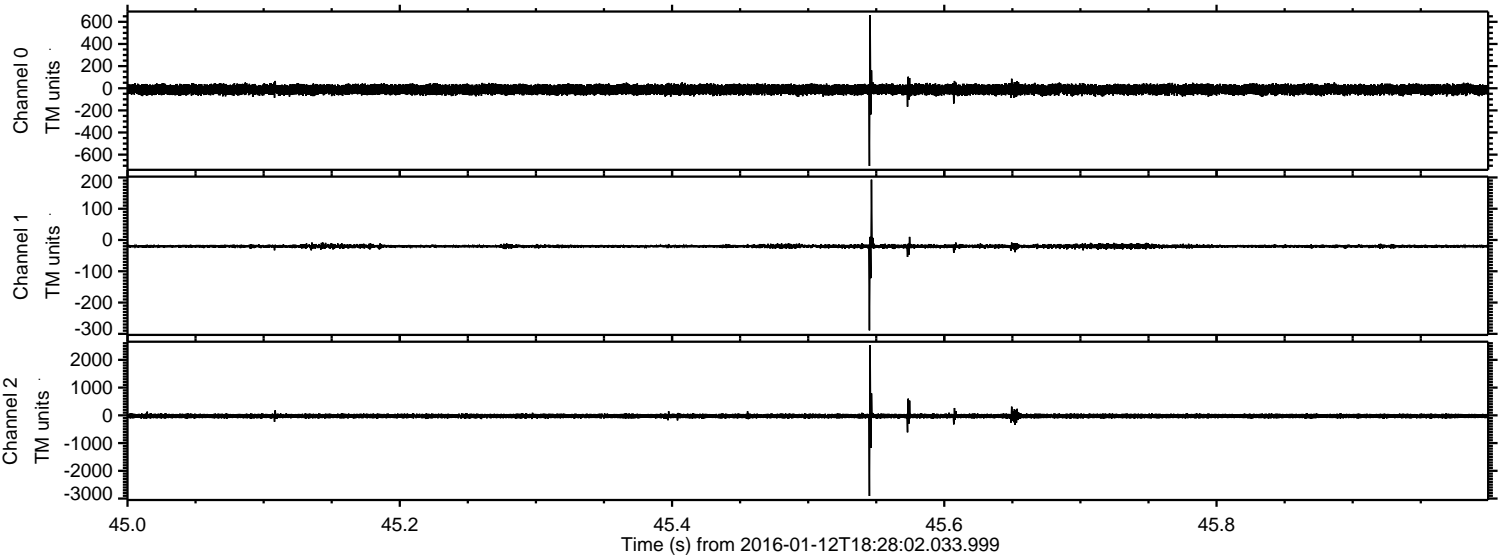


ELMAVAN 3D WAVEFORMS (Measured data sampled at 50 kHz) 51000 packets of 144 samples from 2016-01-12T18:28:02.033.999. Part 31/147

Processed Wed Mar 30 06:19:03 2016 by ELM ver.2012-10-06 from 001__elm20160112_182801__dat00.bin



Processed Wed Mar 30 06:19:04 2016 by ELM ver.2012-10-06 from 001__elm20160112_182801__dat00.bin



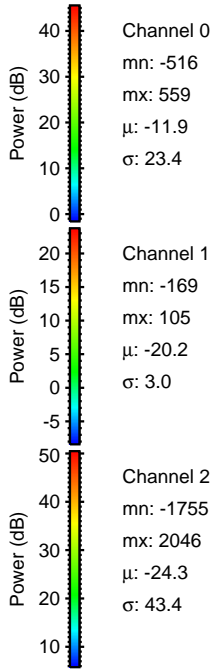
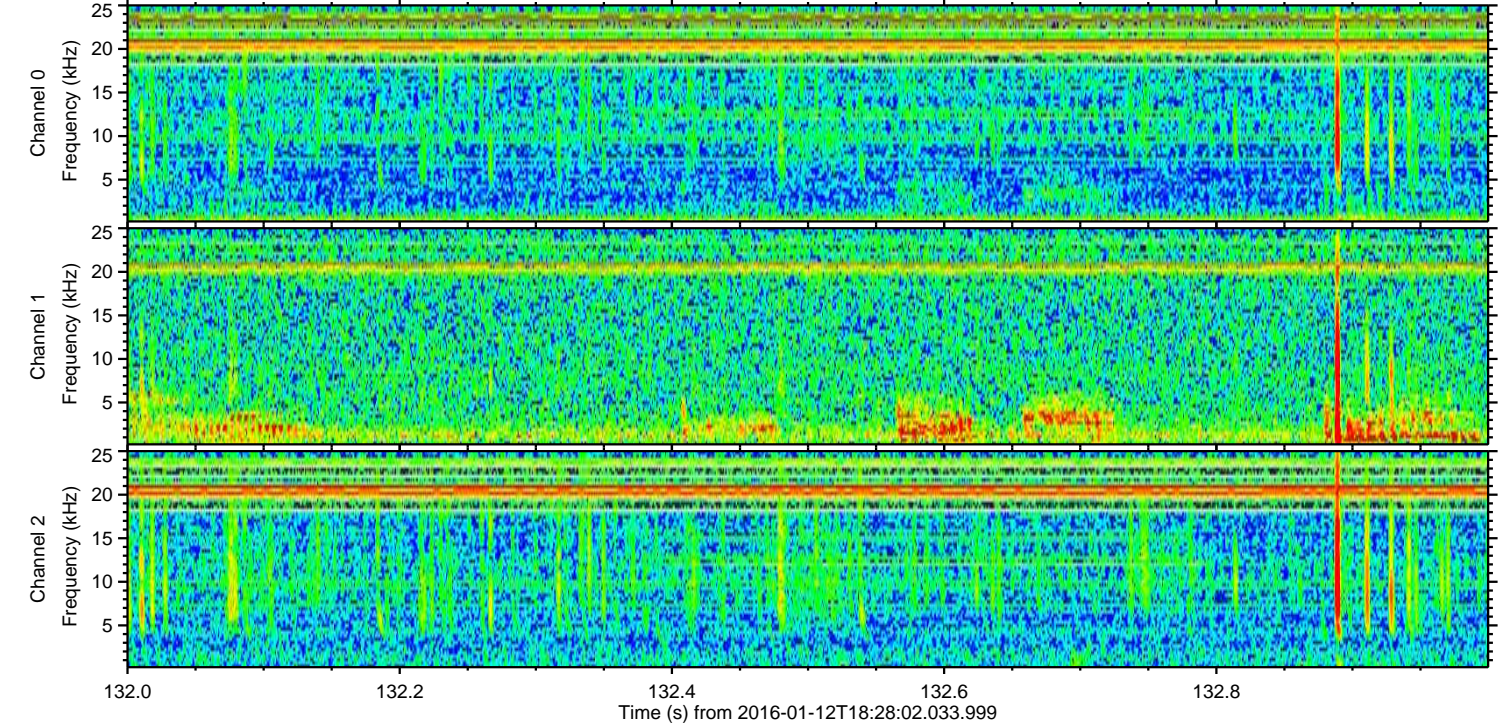
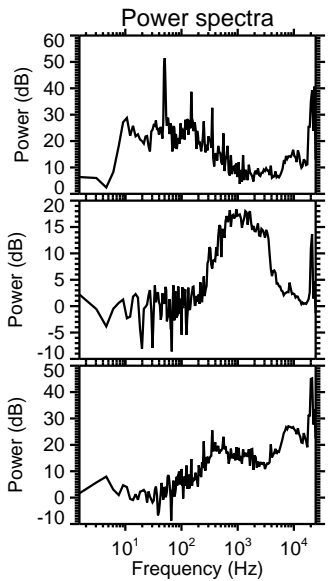
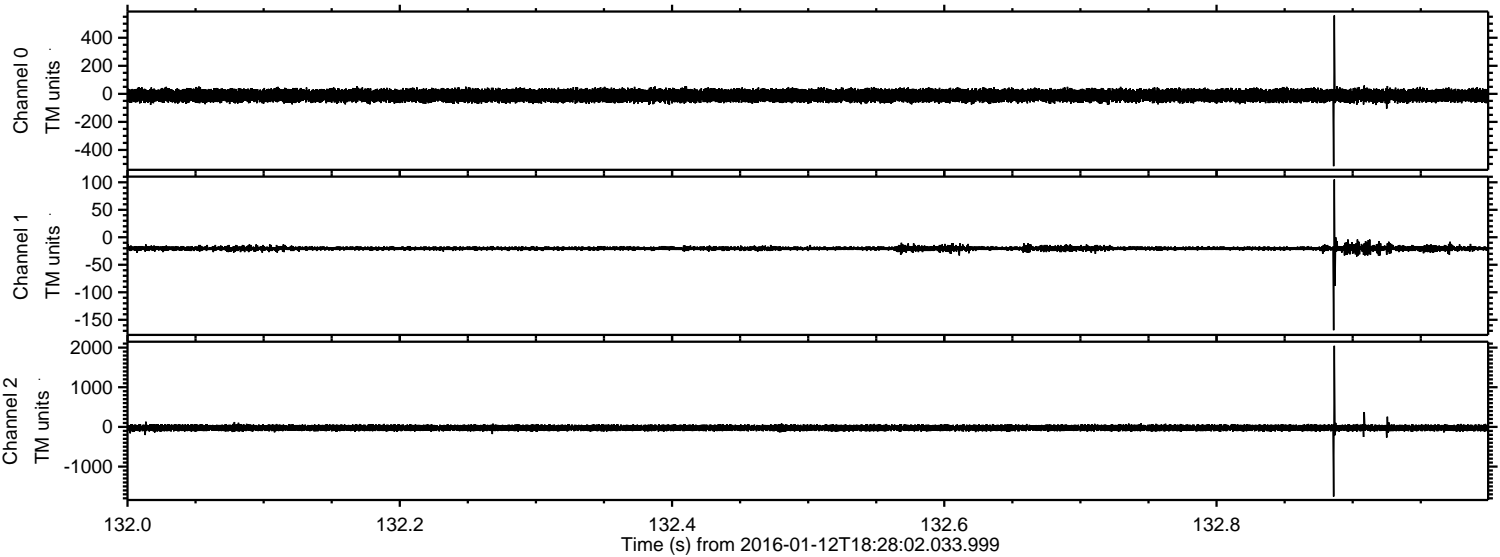
Channel 0
mn: -702
mx: 660
 μ : -11.9
 σ : 23.8

Channel 1
mn: -289
mx: 193
 μ : -20.1
 σ : 4.4

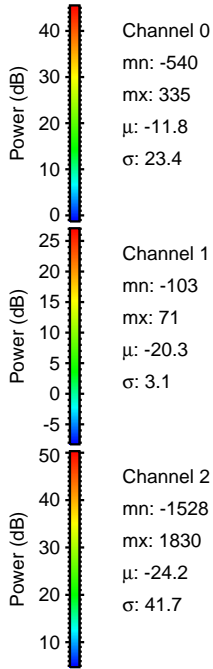
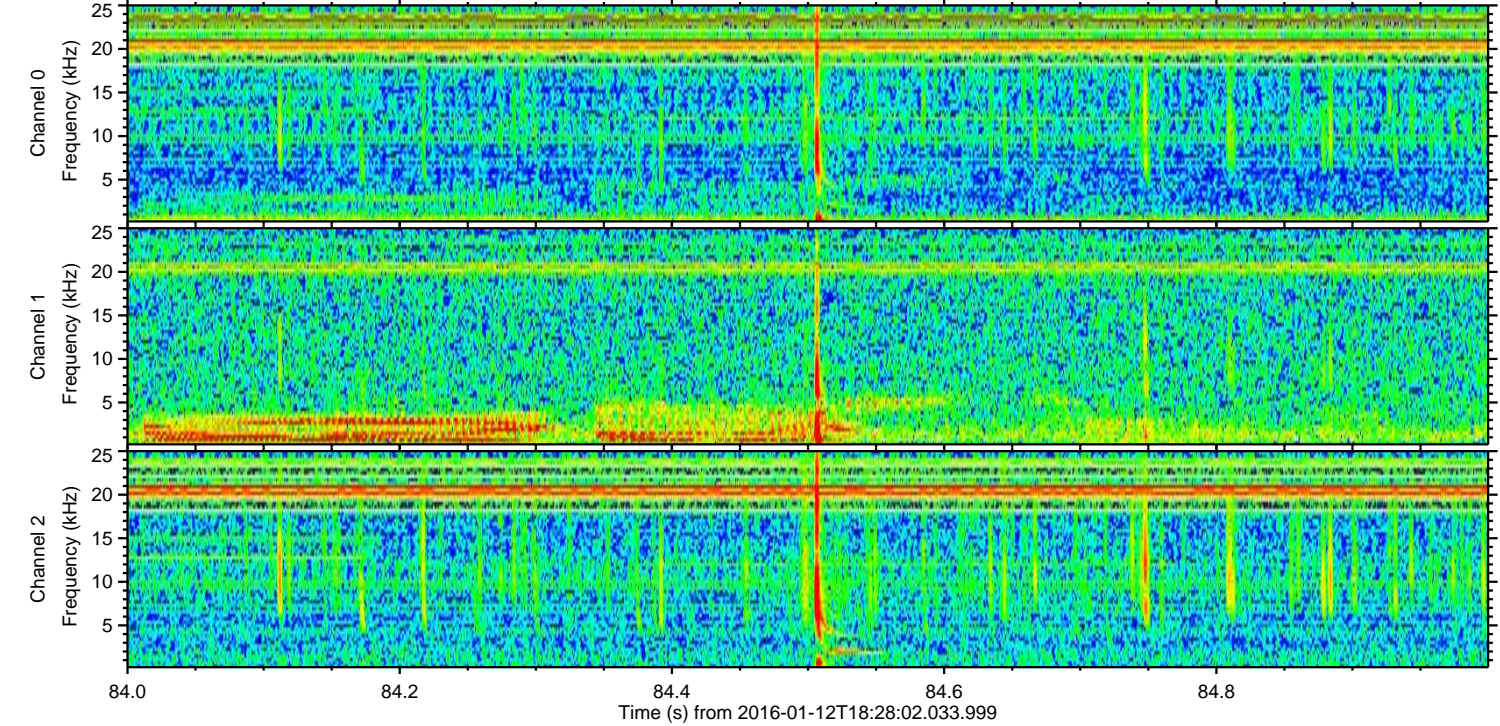
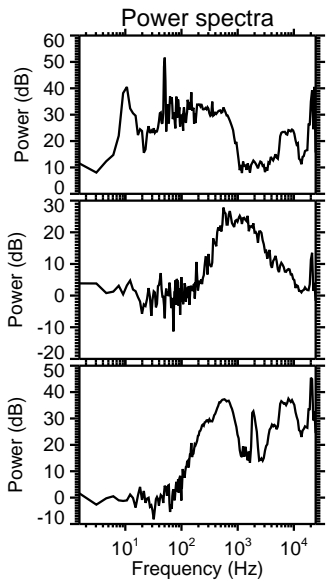
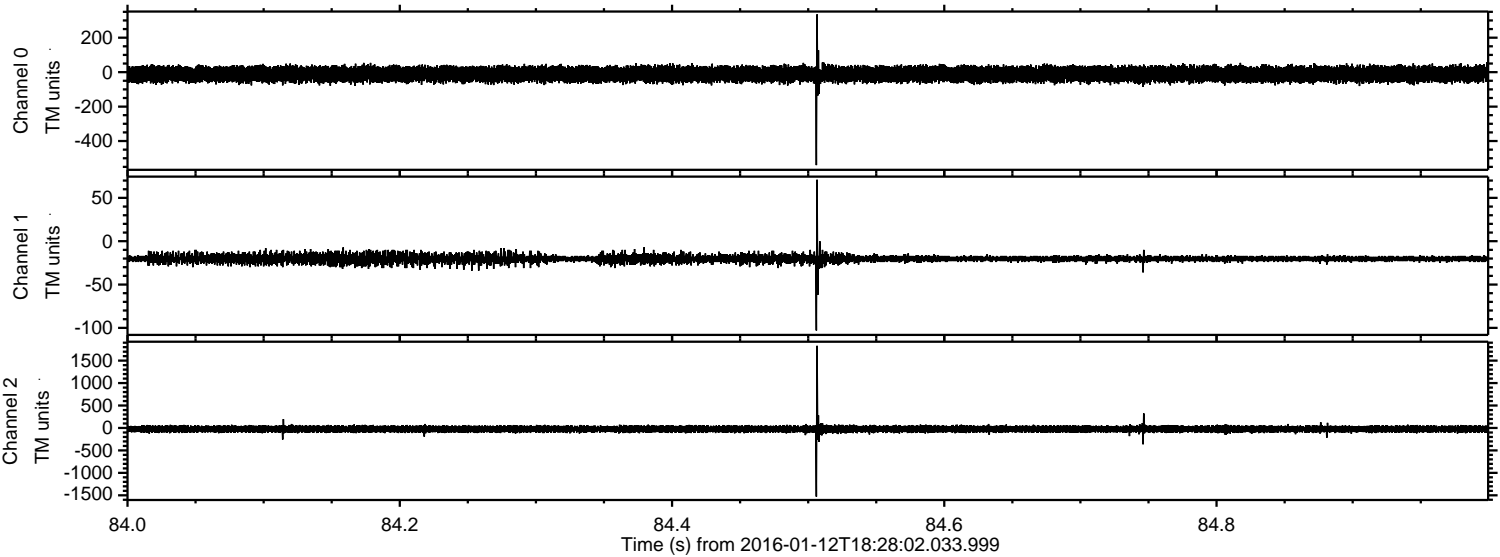
Channel 2
mn: -2907
mx: 2529
 μ : -24.1
 σ : 48.3

ELMAVAN 3D WAVEFORMS (Measured data sampled at 50 kHz) 51000 packets of 144 samples from 2016-01-12T18:28:02.033.999. Part 133/147

Processed Wed Mar 30 06:19:05 2016 by ELM ver.2012-10-06 from 001__elm20160112_182801__dat00.bin



Processed Wed Mar 30 06:19:06 2016 by ELM ver.2012-10-06 from 001__elm20160112_182801__dat00.bin

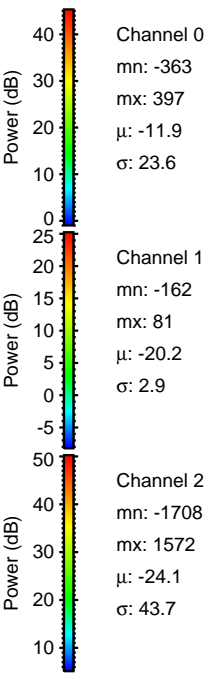
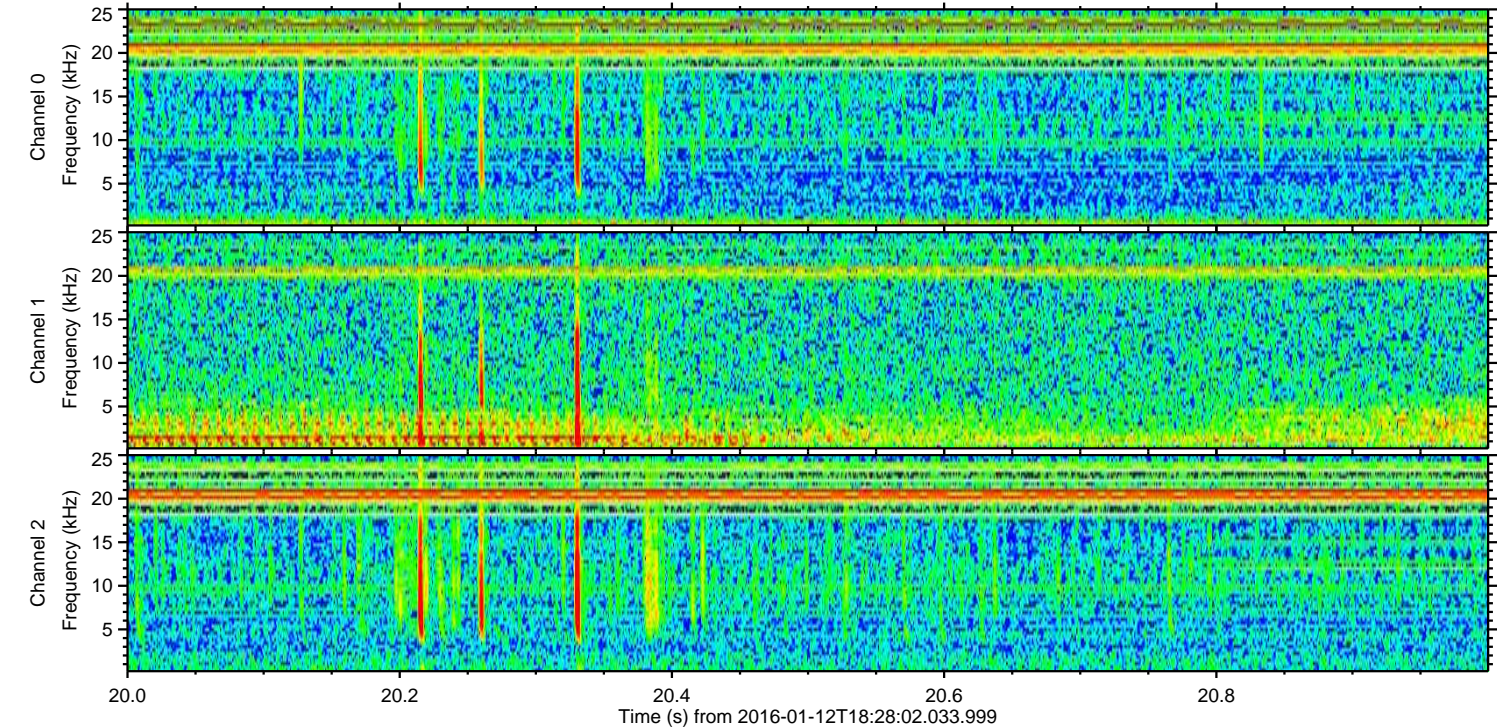
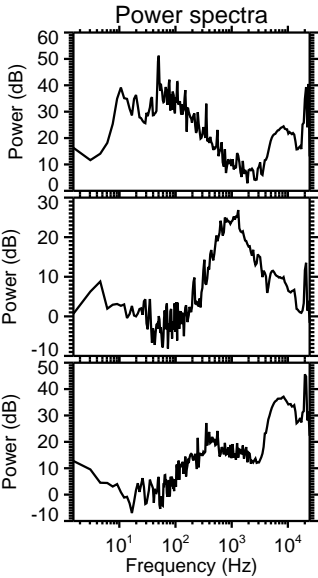
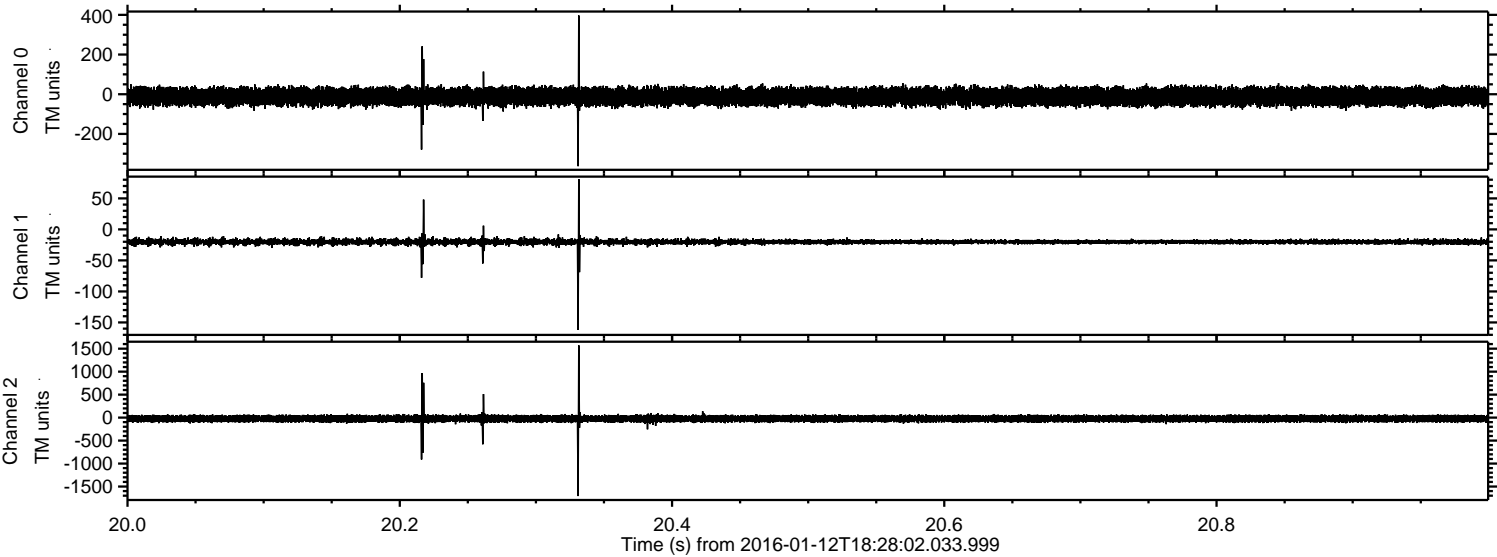


Channel 0
mn: -540
mx: 335
 μ : -11.8
 σ : 23.4

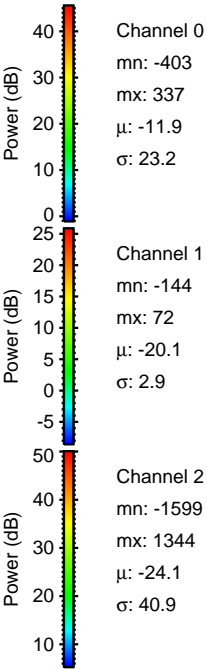
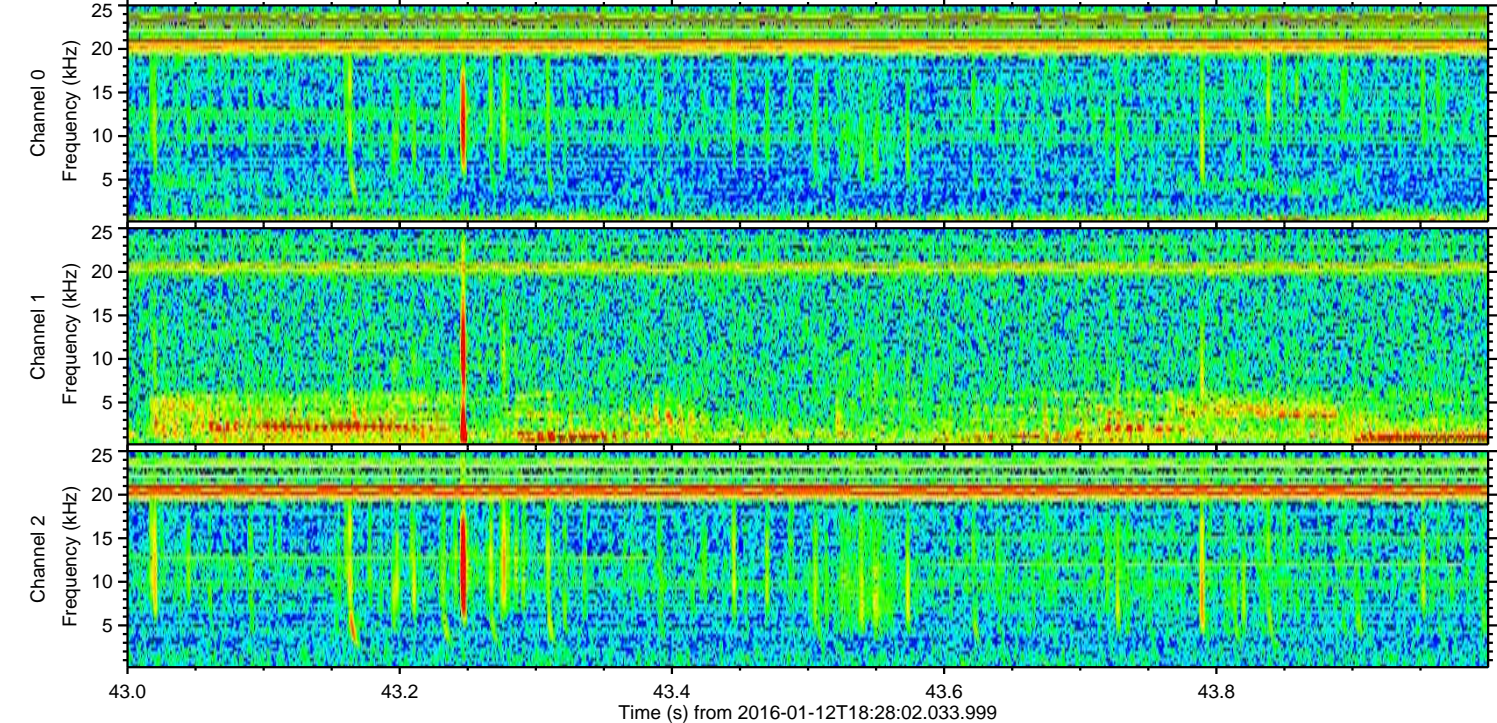
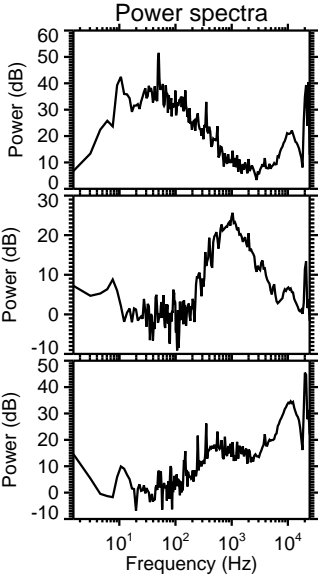
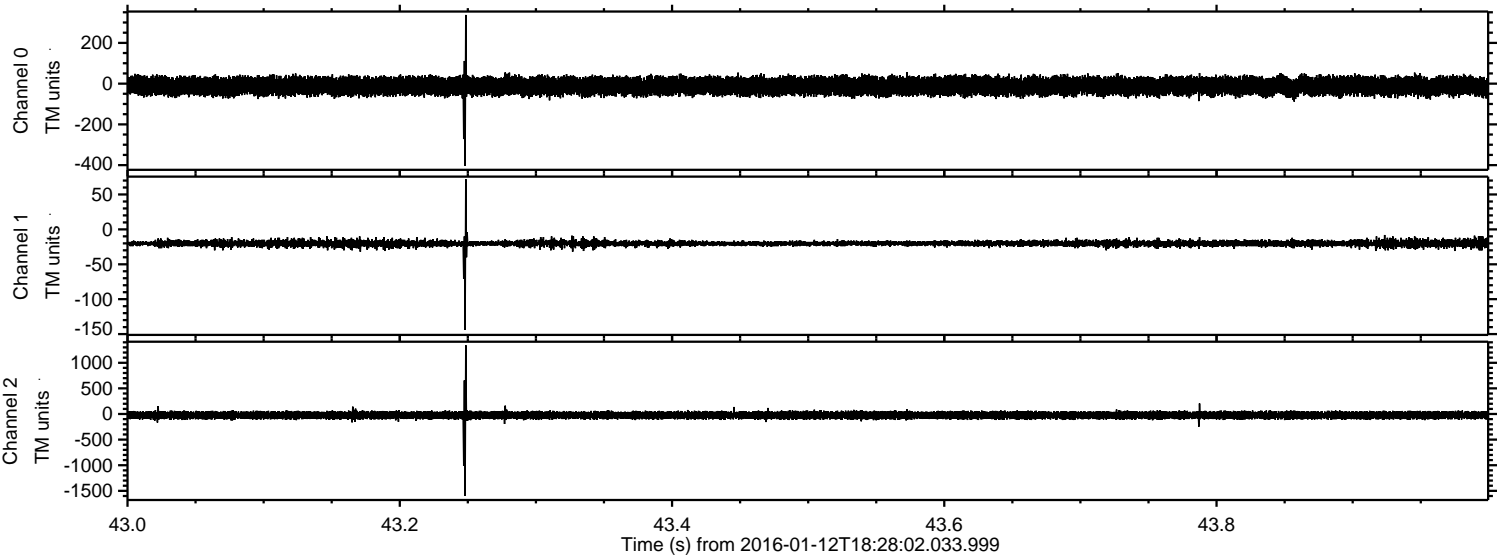
Channel 1
mn: -103
mx: 71
 μ : -20.3
 σ : 3.1

Channel 2
mn: -1528
mx: 1830
 μ : -24.2
 σ : 41.7

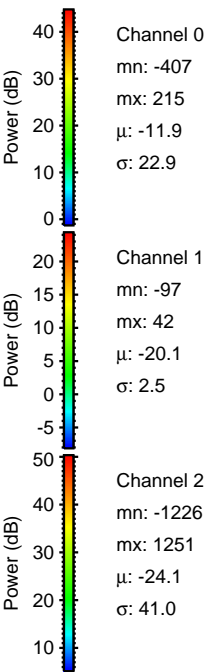
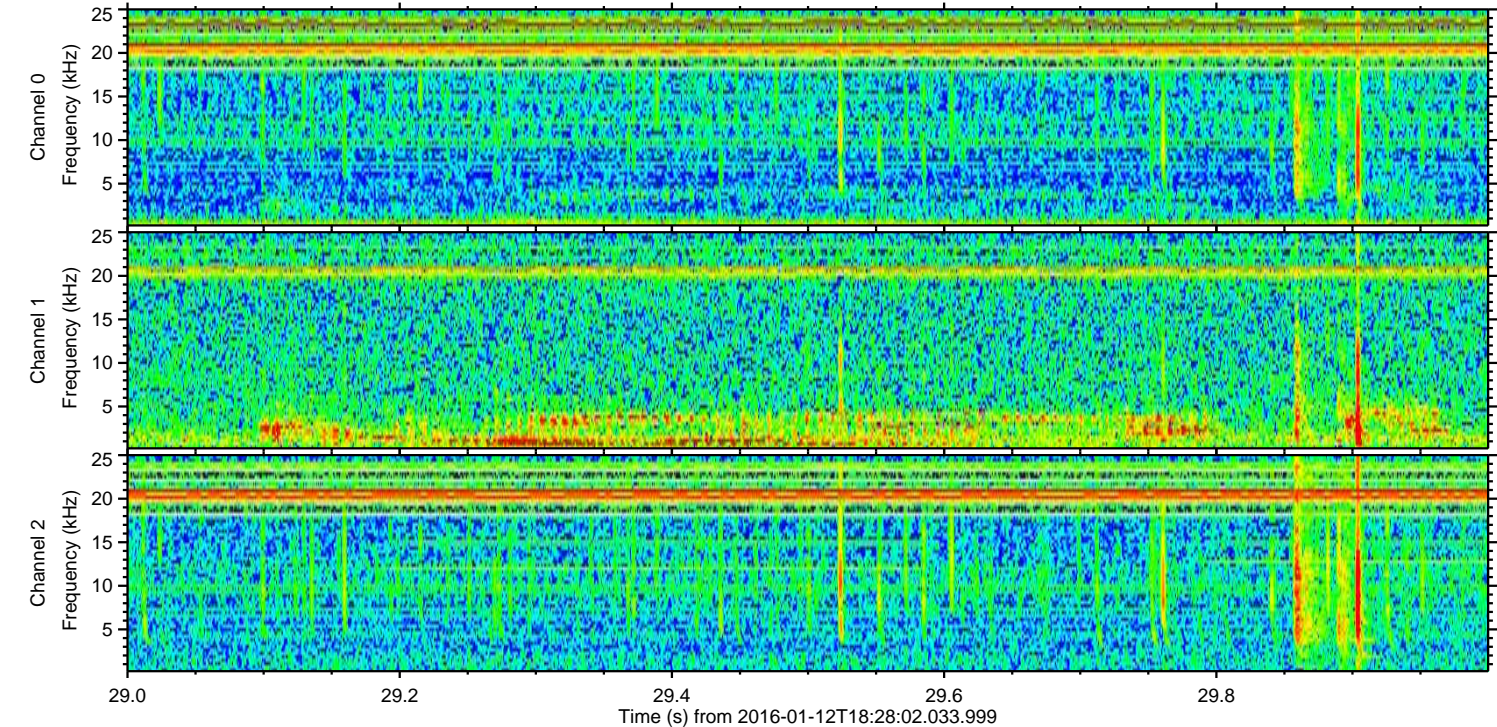
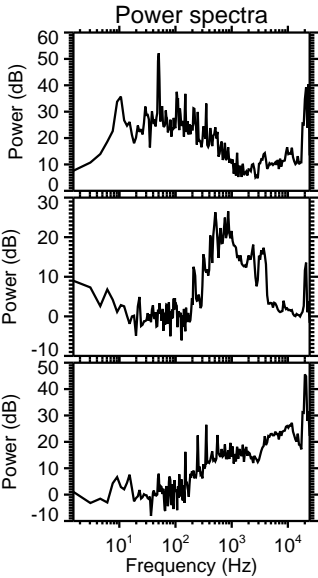
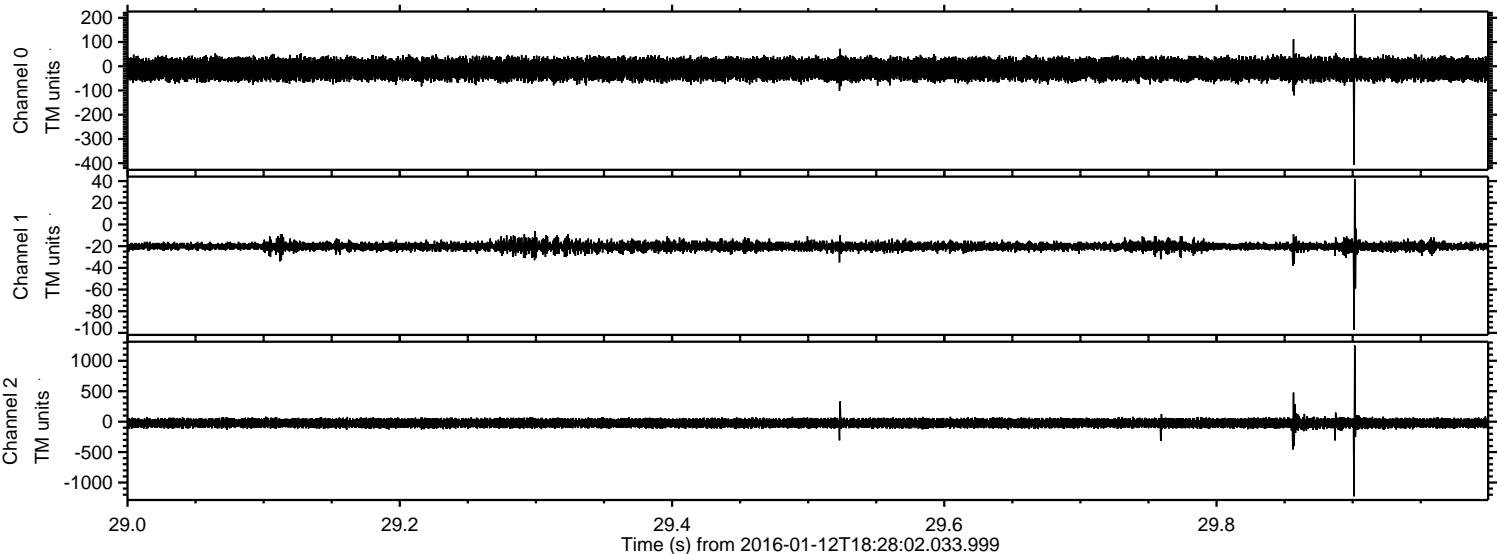
Processed Wed Mar 30 06:19:06 2016 by ELM ver.2012-10-06 from 001__elm20160112_182801__dat00.bin



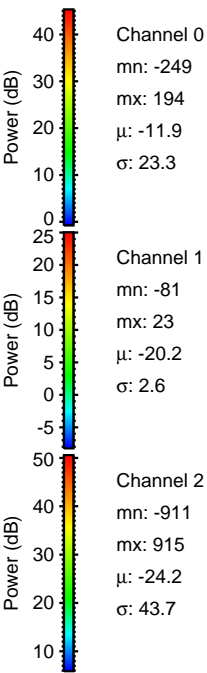
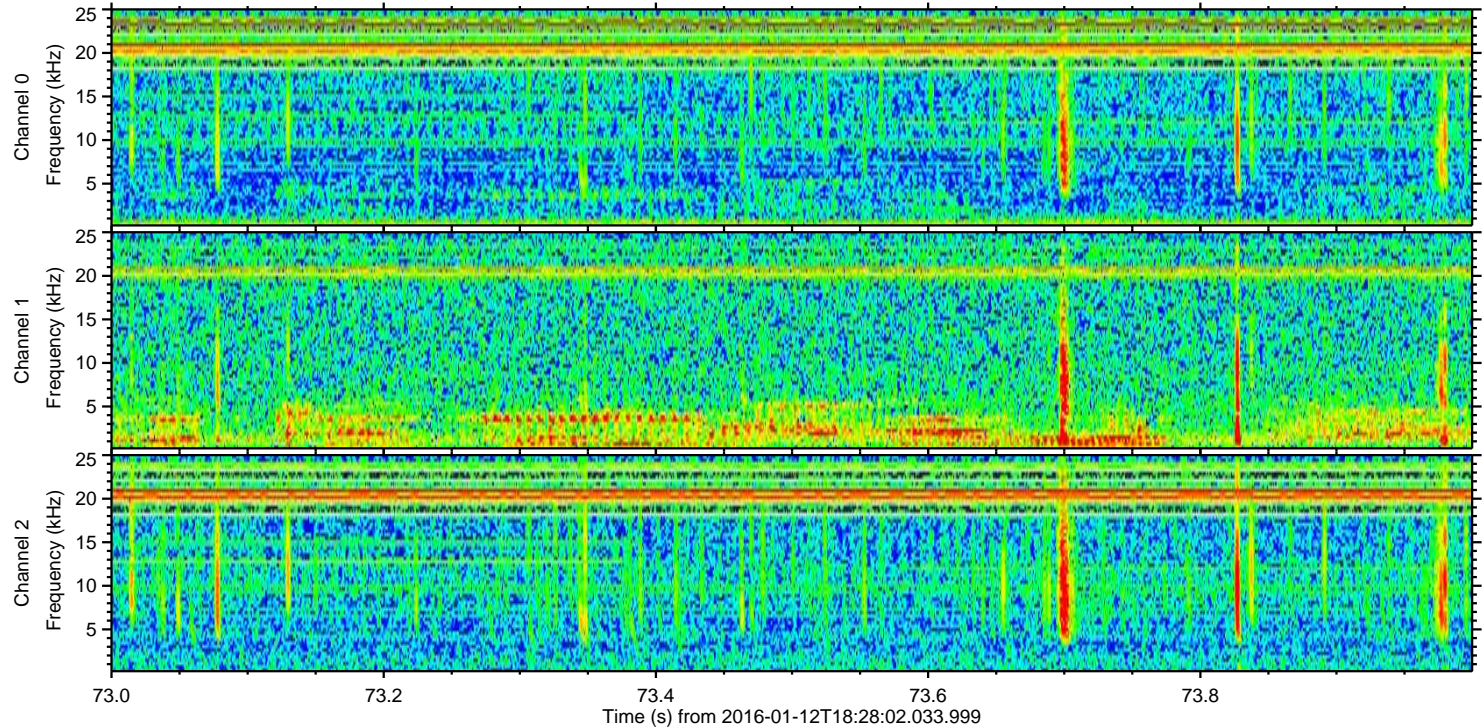
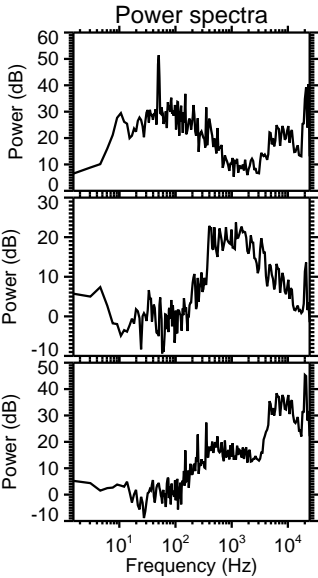
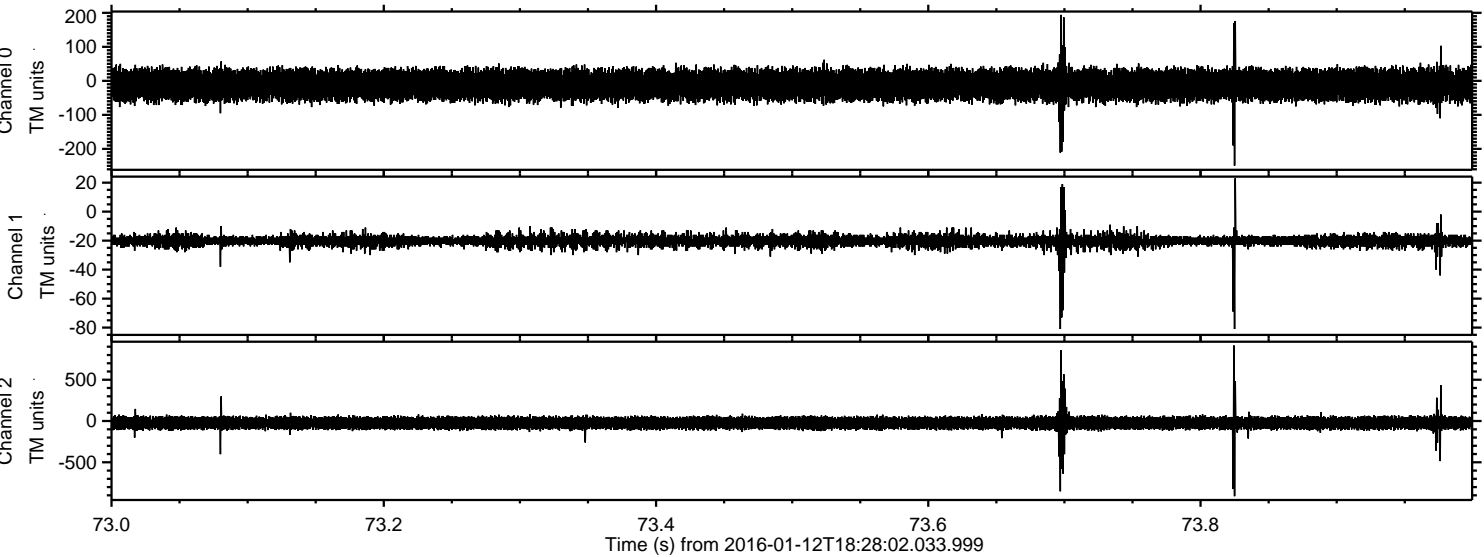
Processed Wed Mar 30 06:19:07 2016 by ELM ver.2012-10-06 from 001__elm20160112_182801__dat00.bin



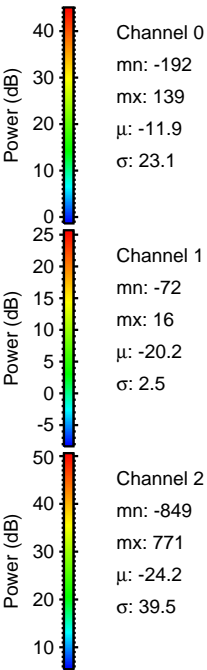
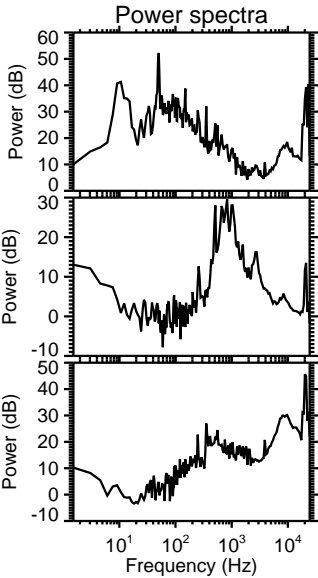
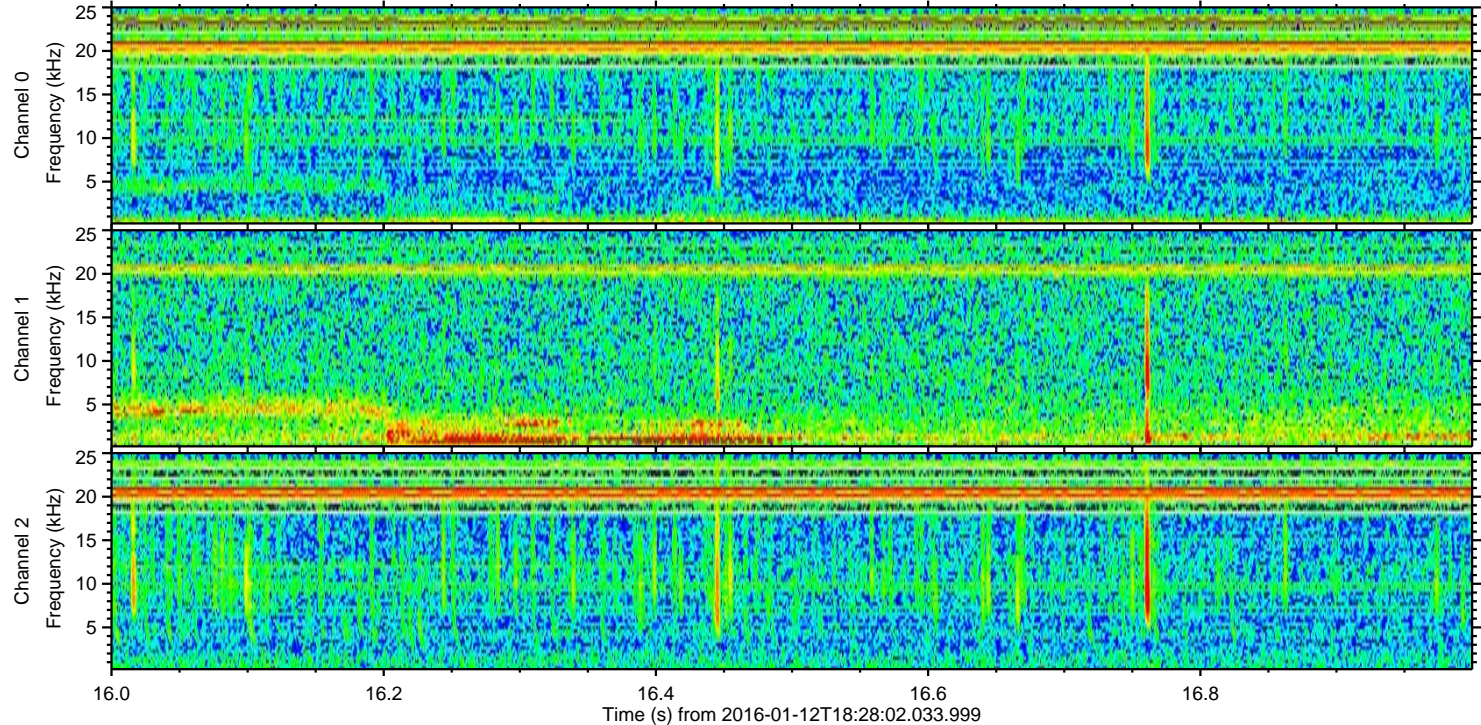
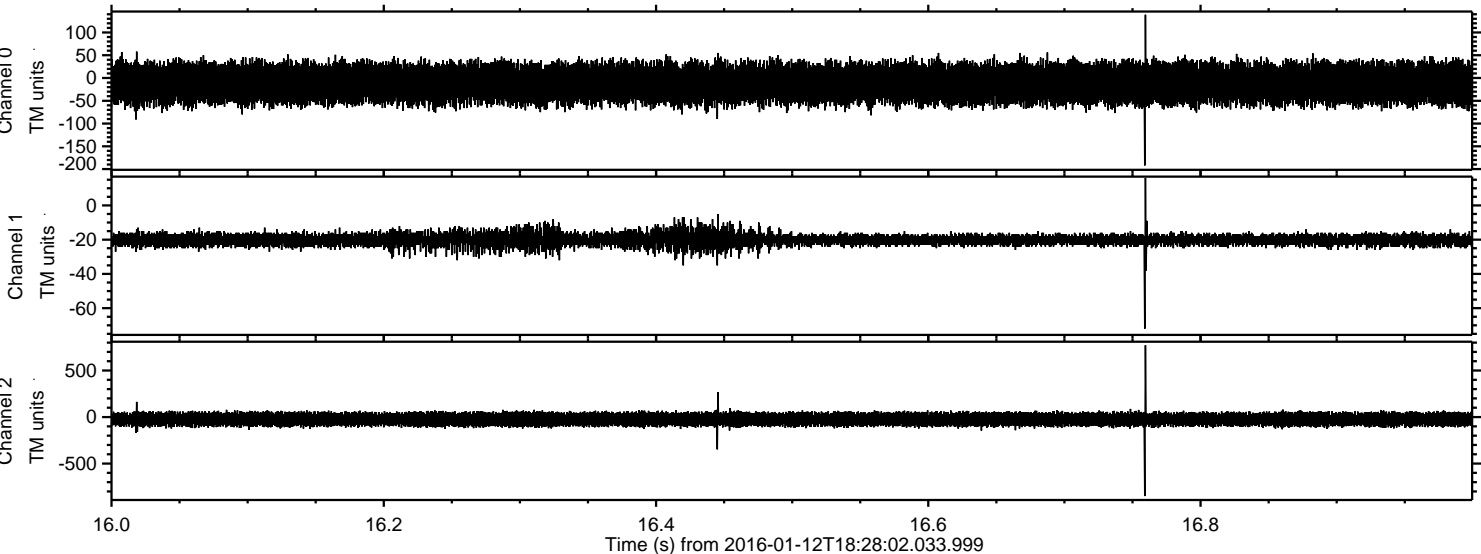
Processed Wed Mar 30 06:19:08 2016 by ELM ver.2012-10-06 from 001__elm20160112_182801__dat00.bin



Processed Wed Mar 30 06:19:09 2016 by ELM ver.2012-10-06 from 001__elm20160112_182801__dat00.bin



Processed Wed Mar 30 06:19:10 2016 by ELM ver.2012-10-06 from 001__elm20160112_182801__dat00.bin



Processed Wed Mar 30 06:19:11 2016 by ELM ver.2012-10-06 from 001__elm20160112_182801__dat00.bin

