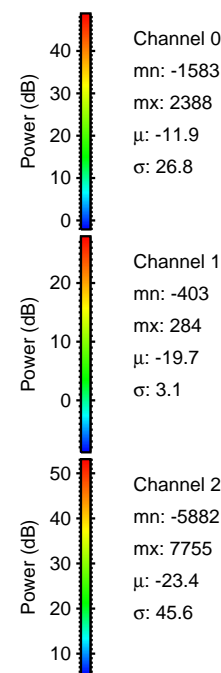
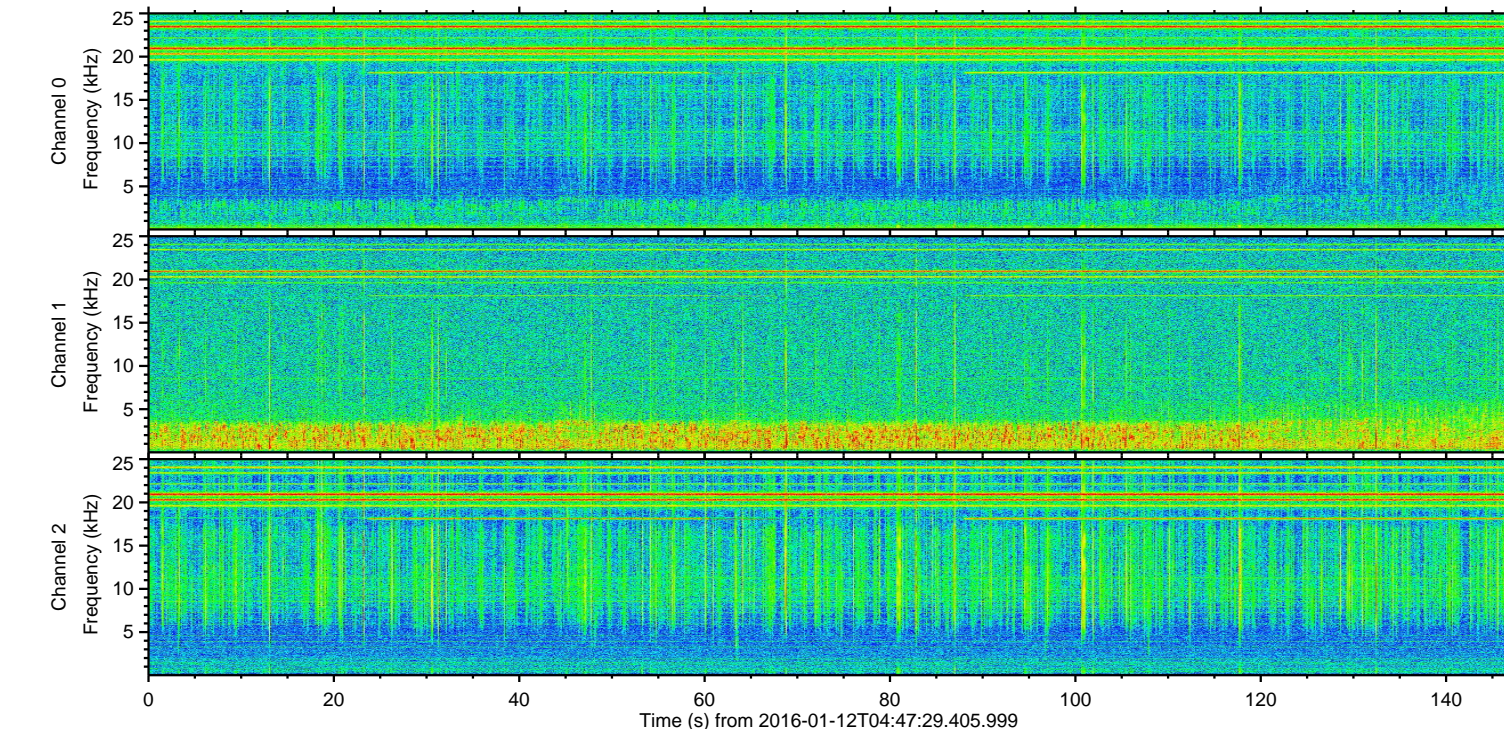
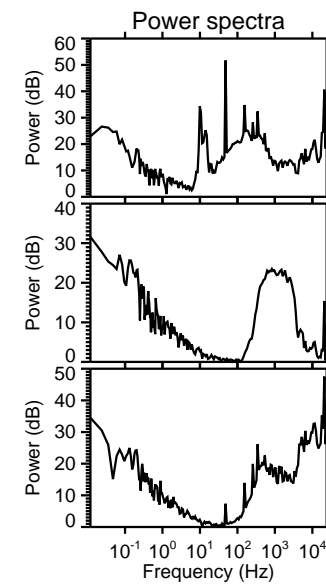
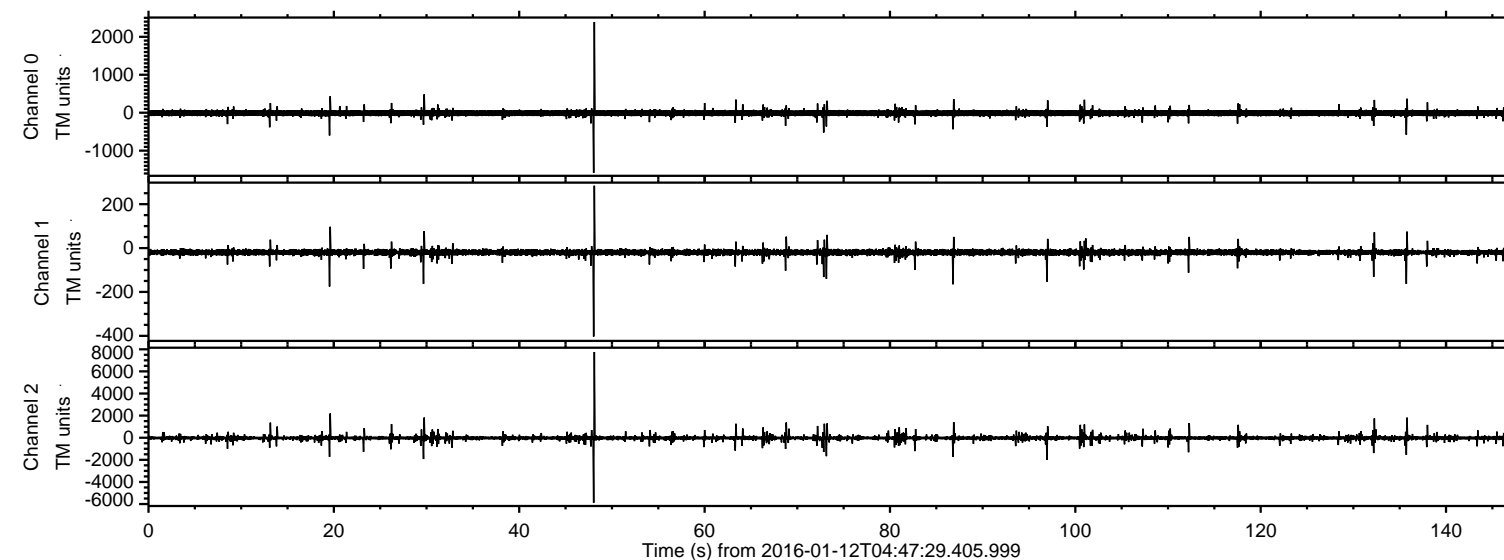
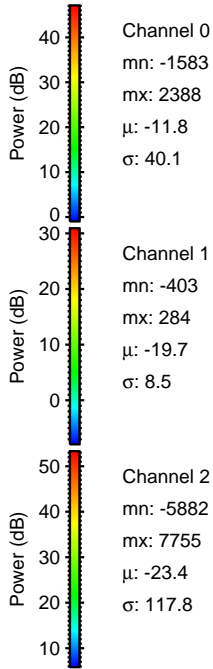
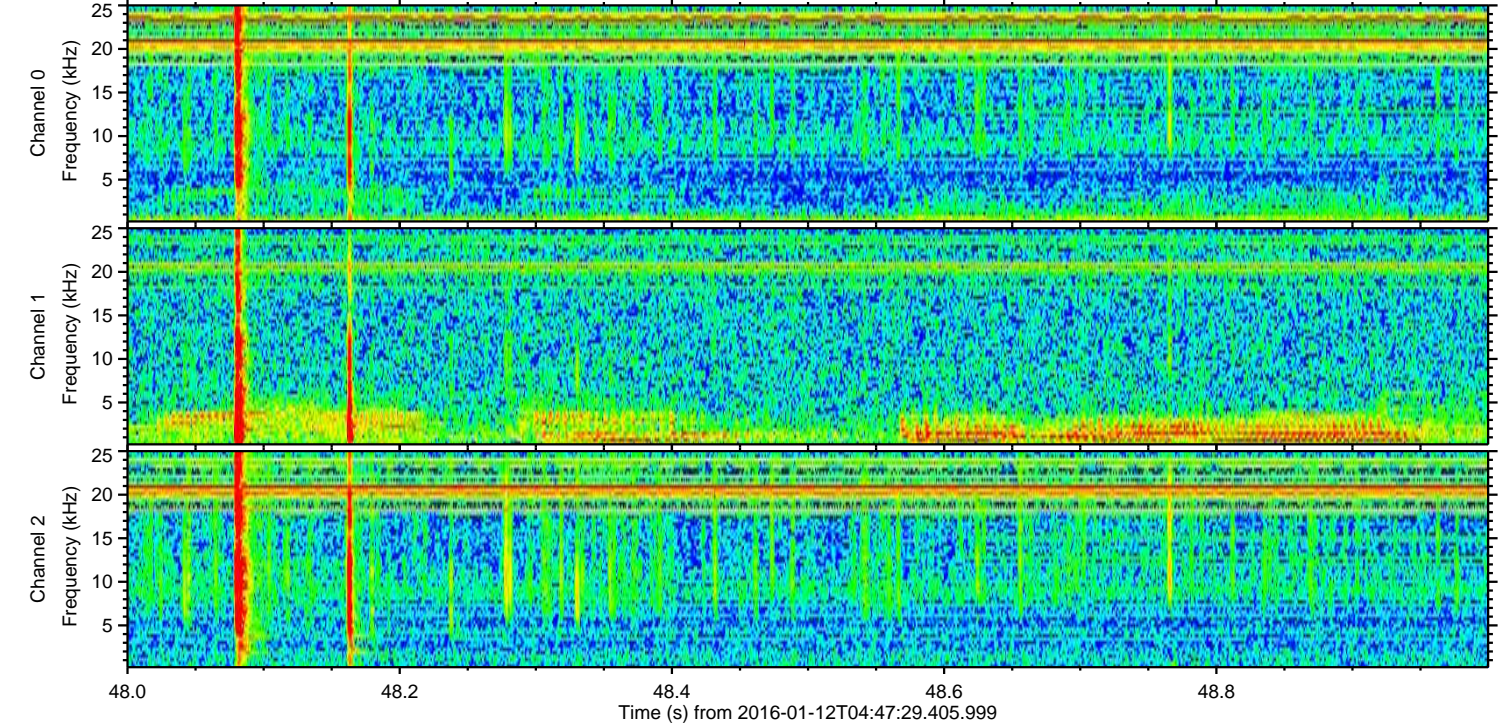
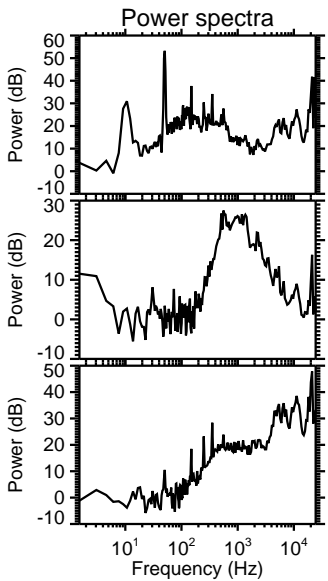
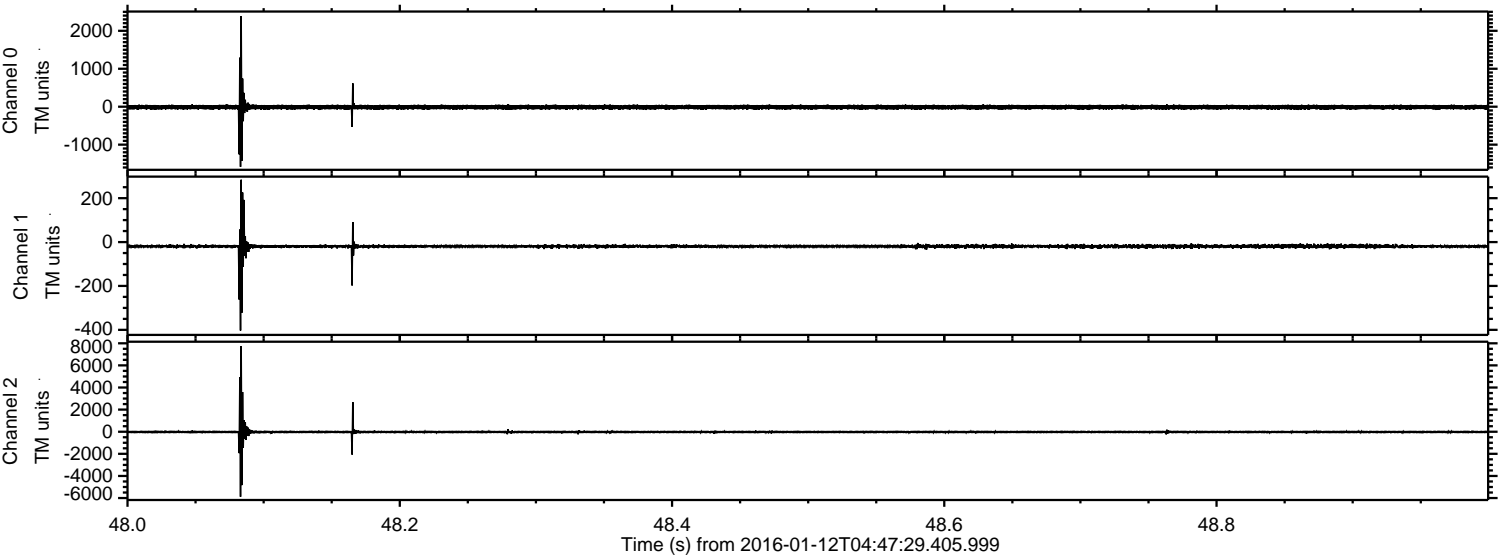


ELMAVAN 3D WAVEFORMS (Measured data sampled at 50 kHz) 51000 packets of 144 samples from 2016-01-12T04:47:29.405.999.

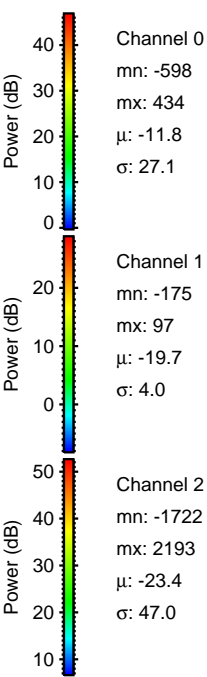
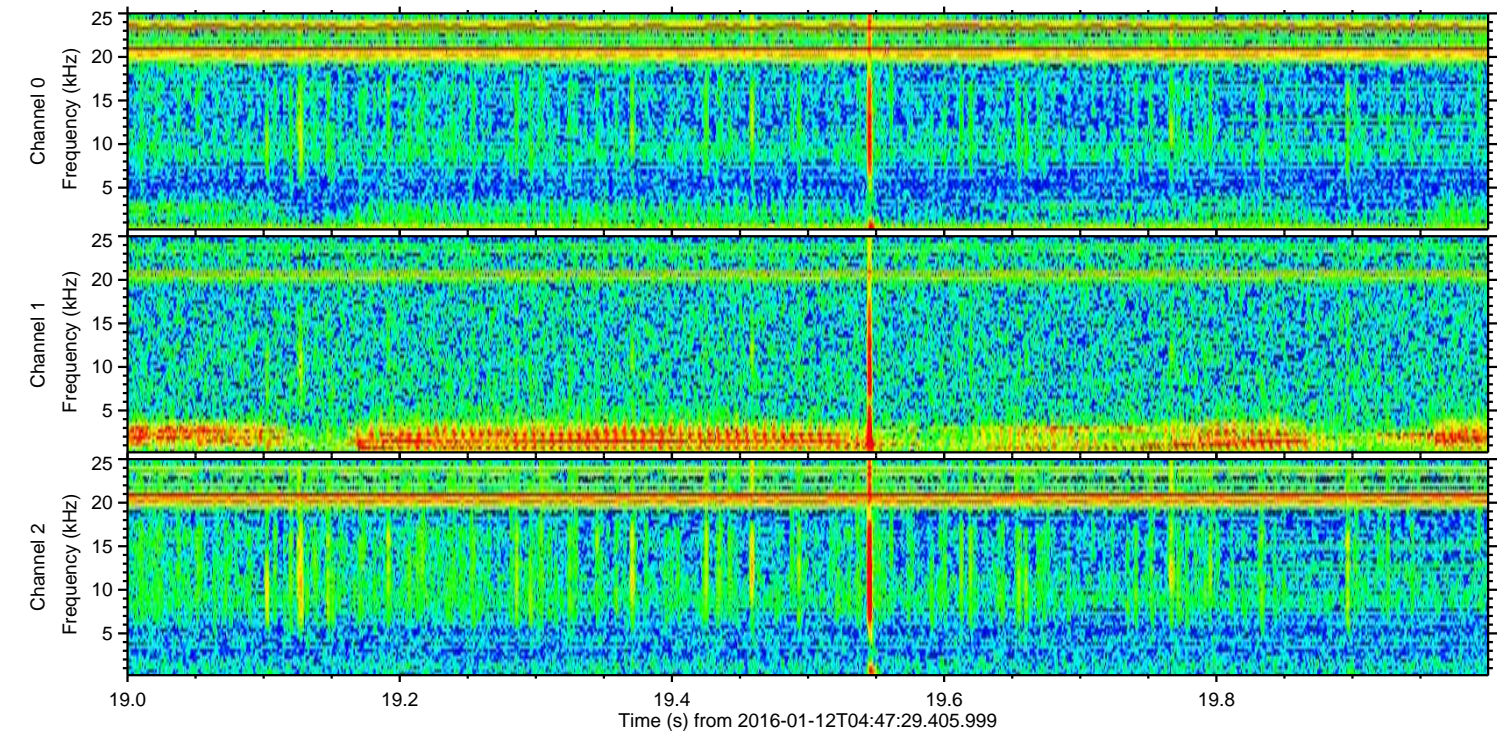
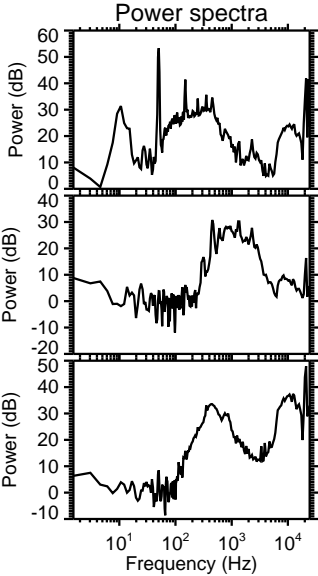
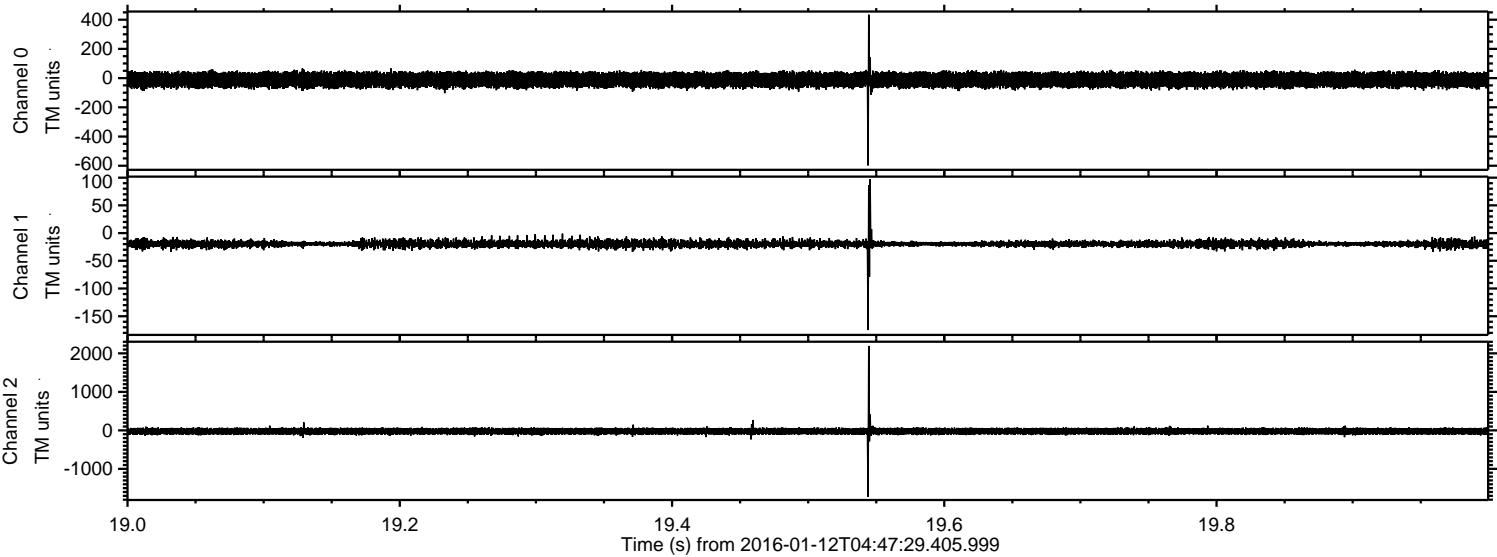
Processed Wed Mar 30 03:42:06 2016 by ELM ver.2012-10-06 from 001__elm20160112_044728__dat00.bin



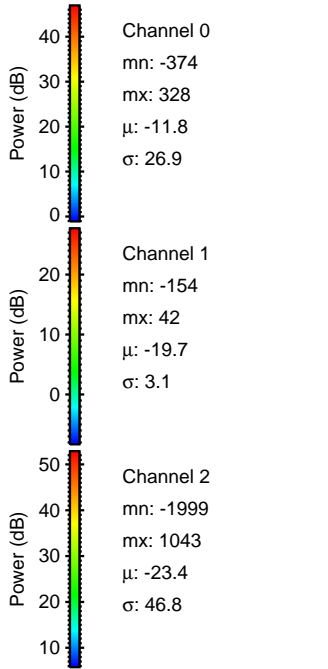
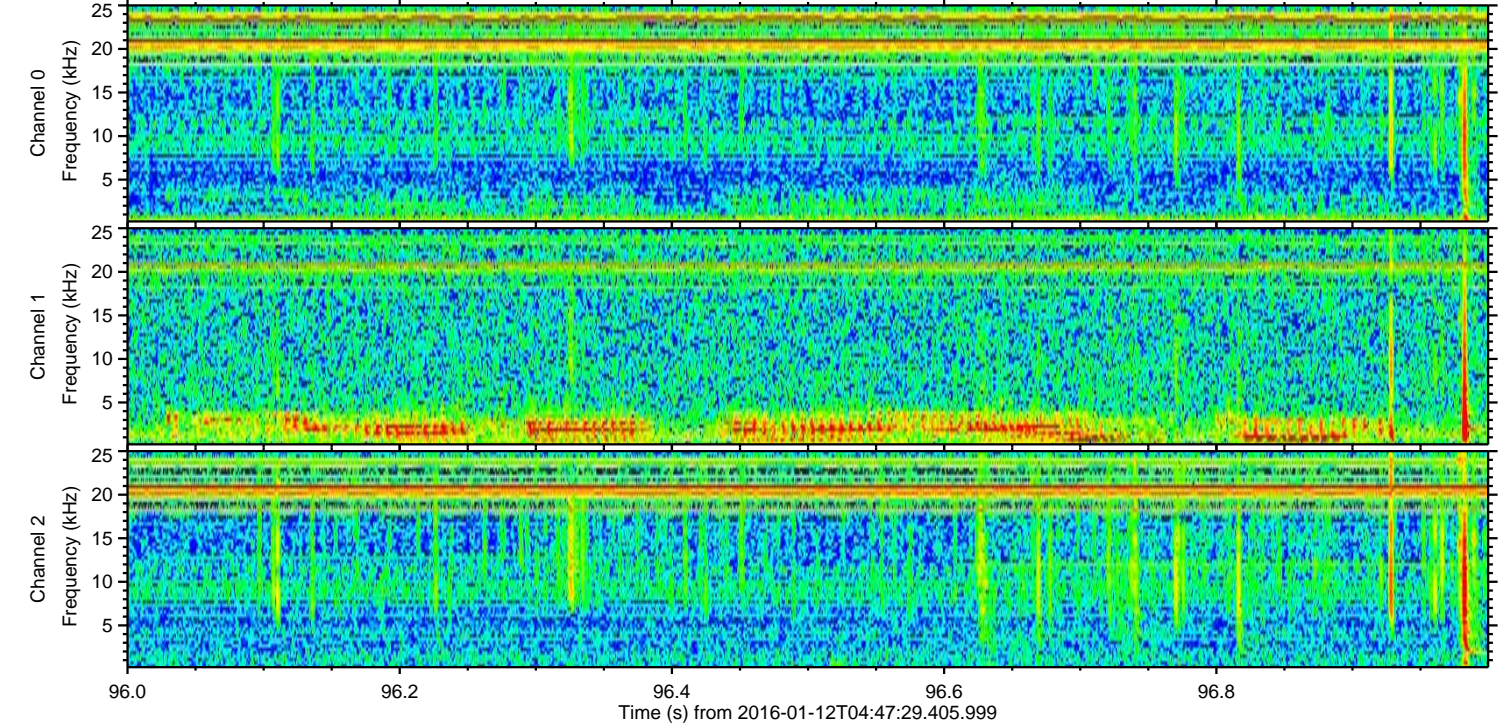
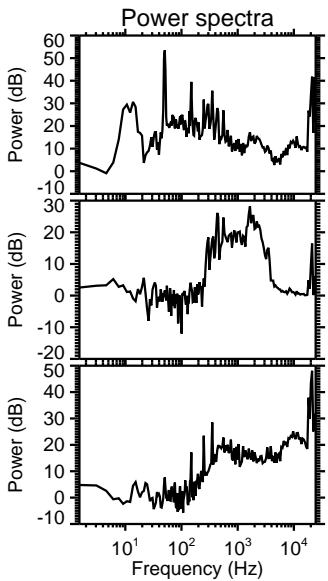
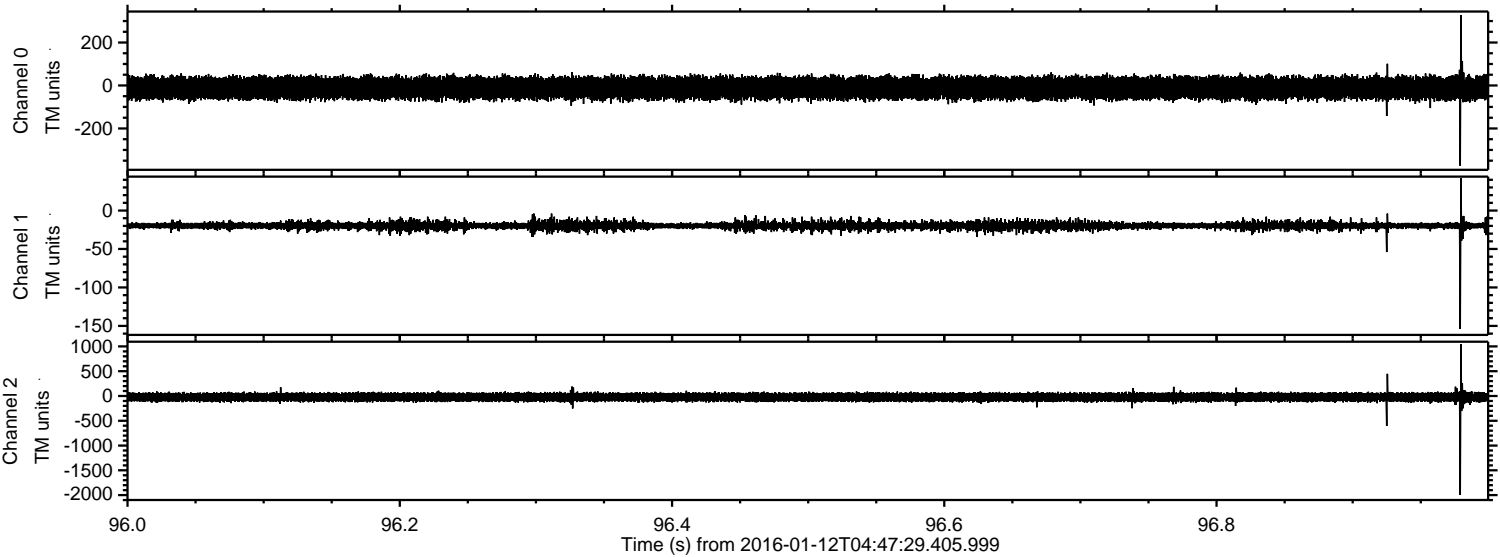
Processed Wed Mar 30 03:42:17 2016 by ELM ver.2012-10-06 from 001__elm20160112_044728__dat00.bin



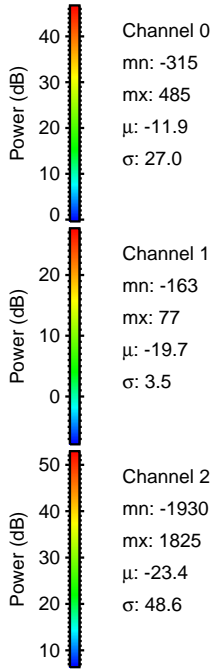
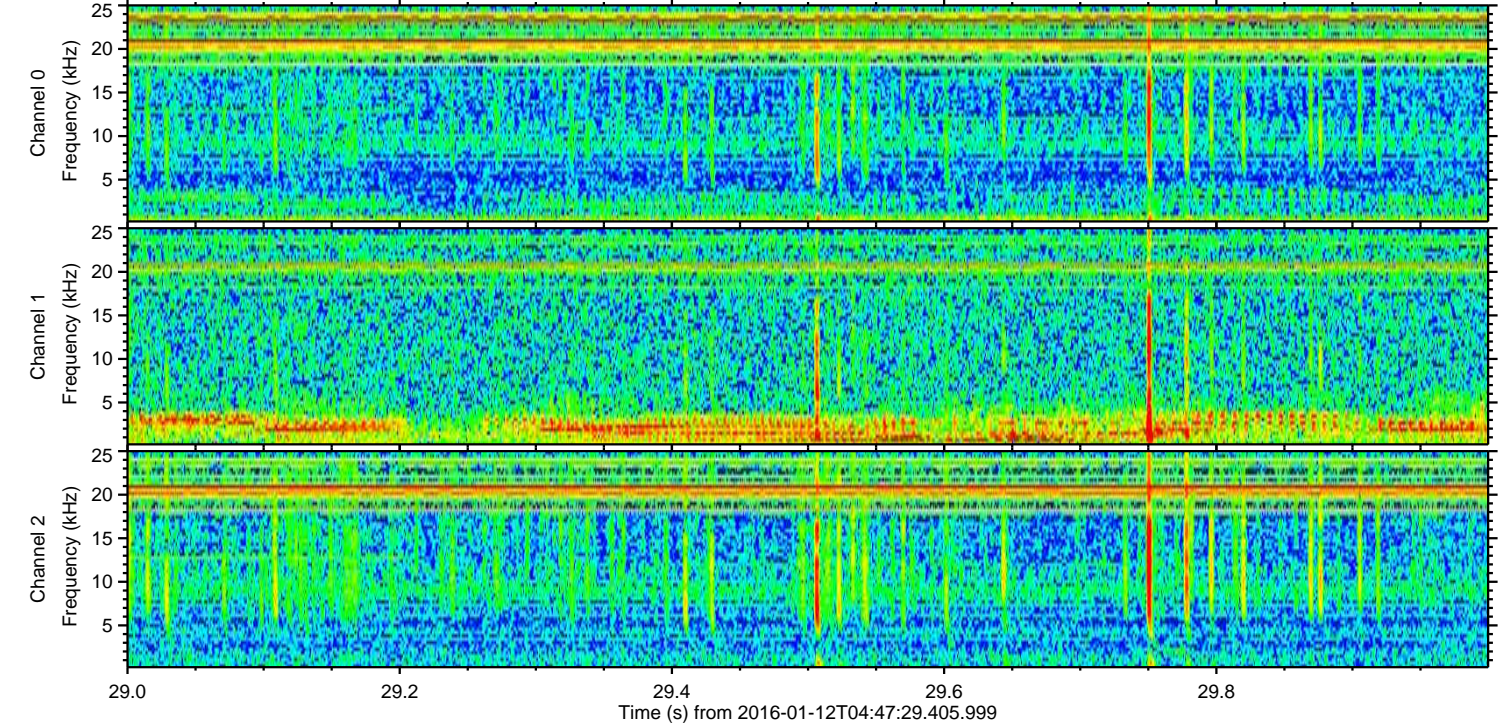
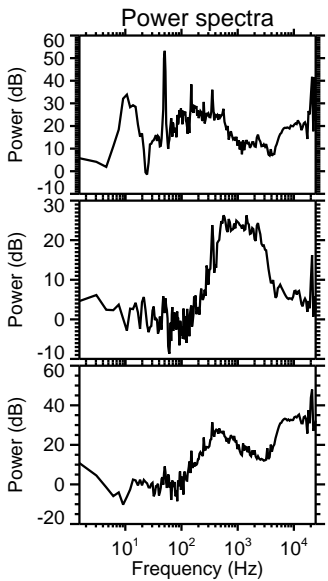
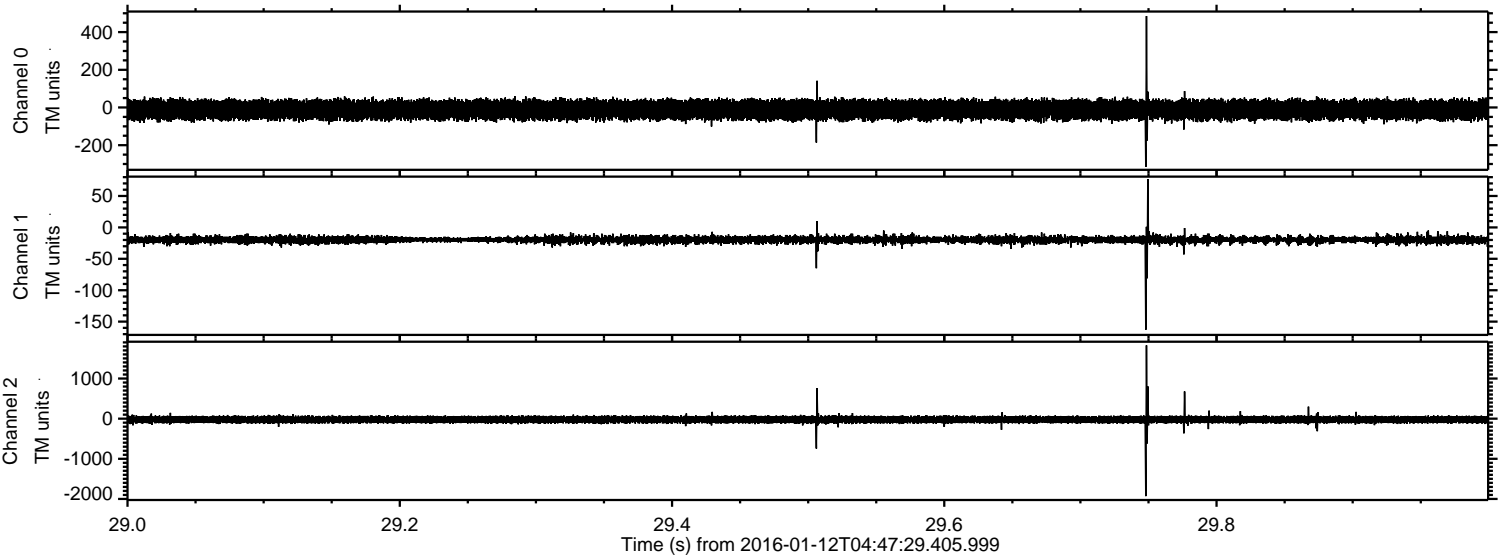
Processed Wed Mar 30 03:42:18 2016 by ELM ver.2012-10-06 from 001__elm20160112_044728__dat00.bin



Processed Wed Mar 30 03:42:19 2016 by ELM ver.2012-10-06 from 001__elm20160112_044728__dat00.bin

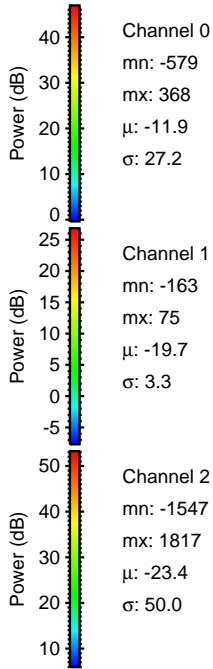
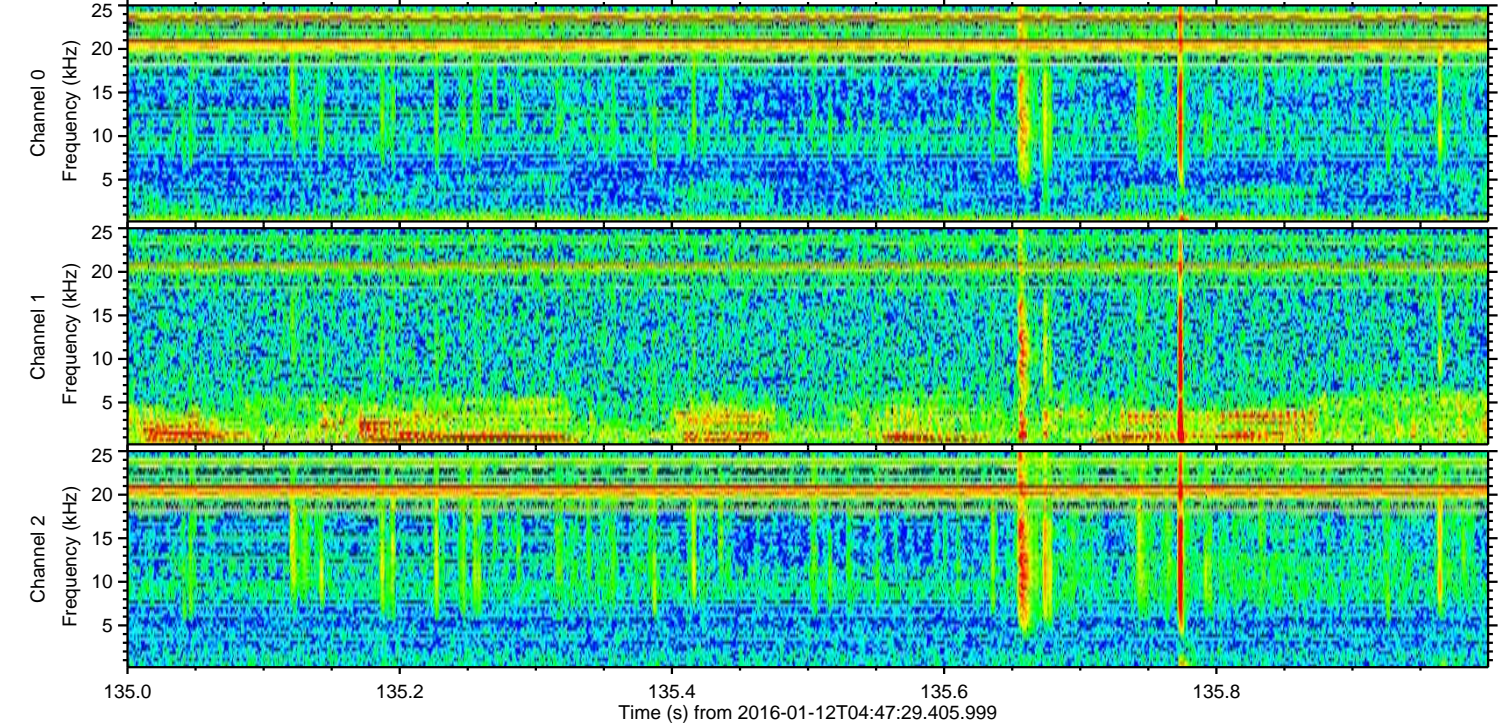
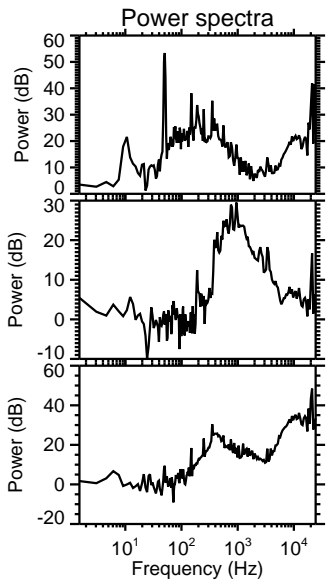
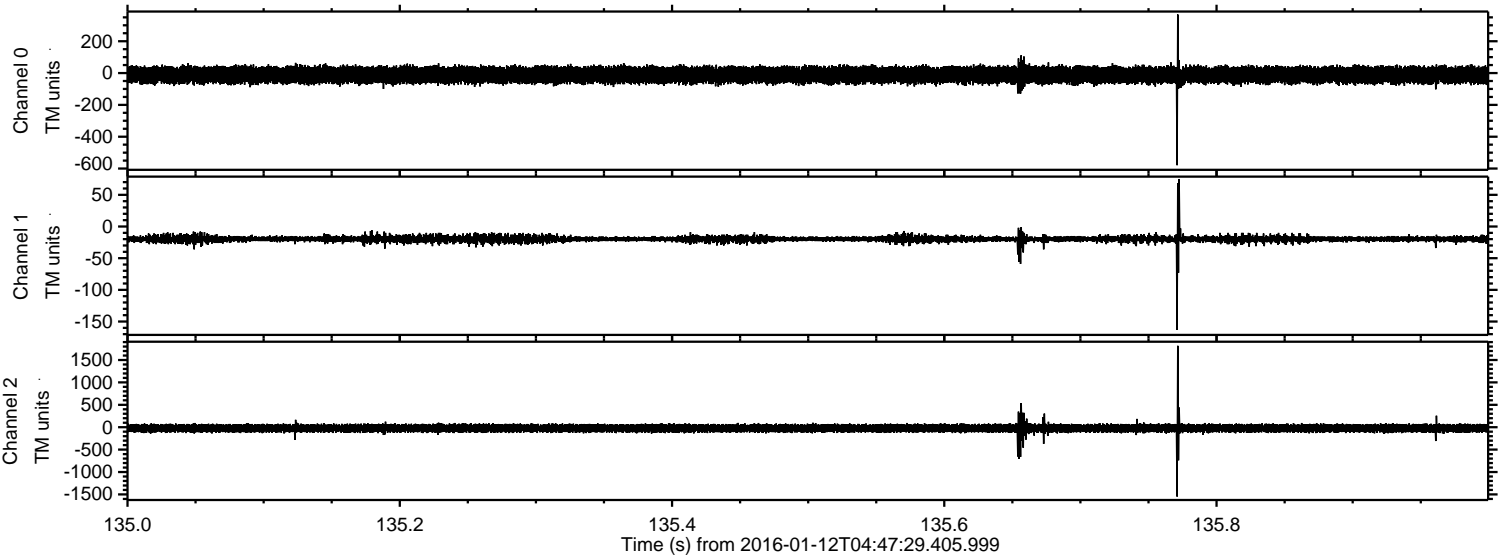


Processed Wed Mar 30 03:42:20 2016 by ELM ver.2012-10-06 from 001__elm20160112_044728__dat00.bin



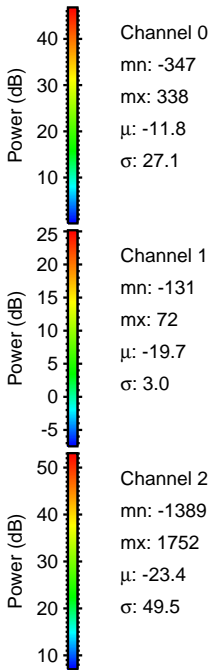
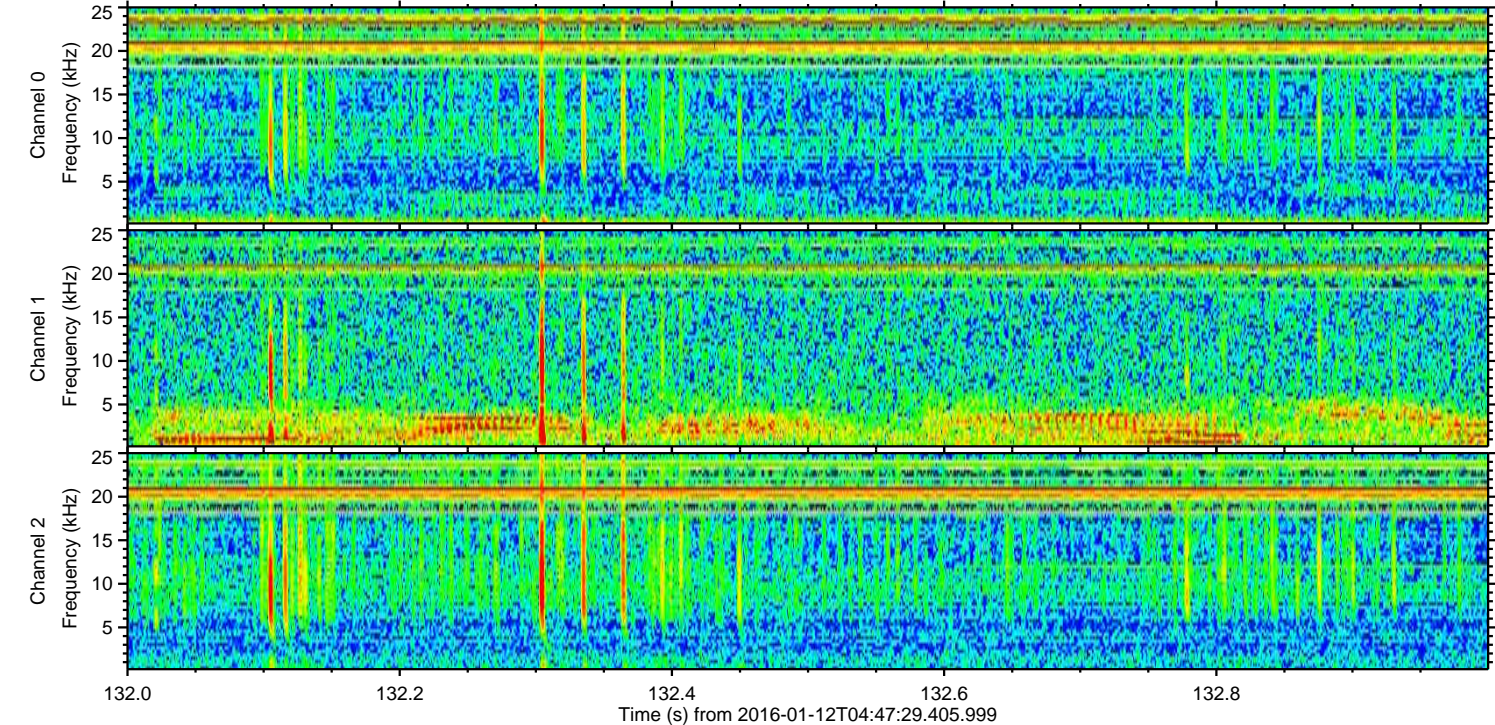
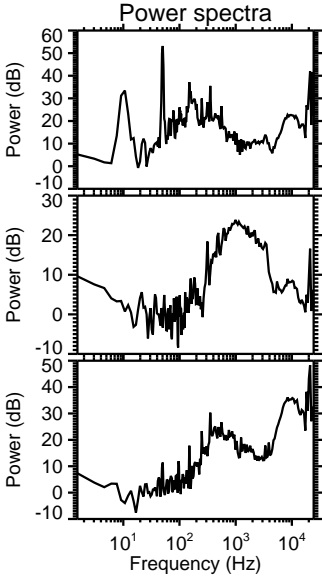
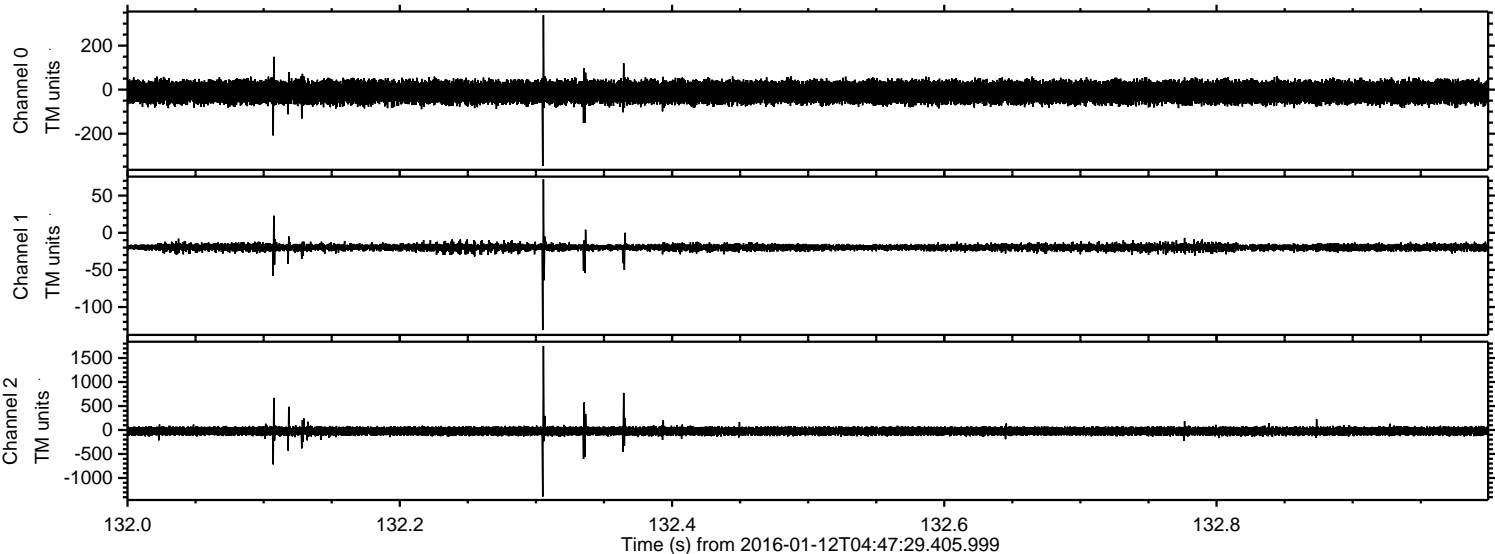
ELMAVAN 3D WAVEFORMS (Measured data sampled at 50 kHz) 51000 packets of 144 samples from 2016-01-12T04:47:29.405.999. Part 136/147

Processed Wed Mar 30 03:42:21 2016 by ELM ver.2012-10-06 from 001__elm20160112_044728__dat00.bin

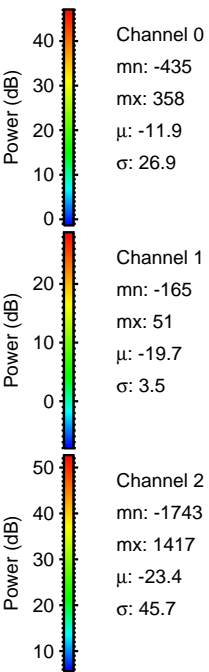
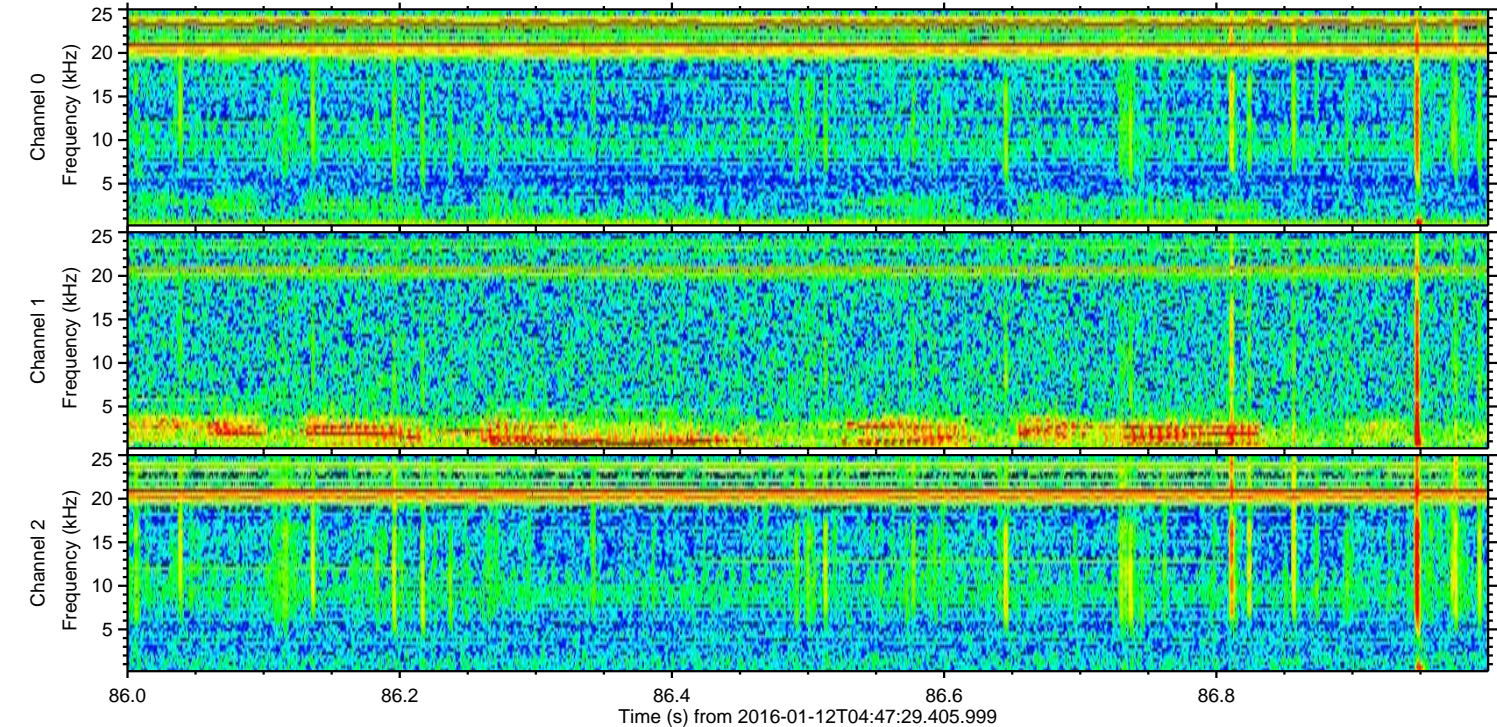
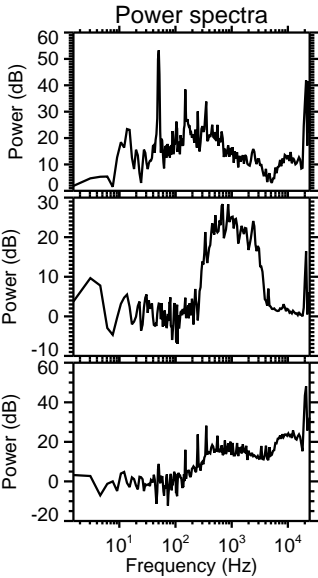
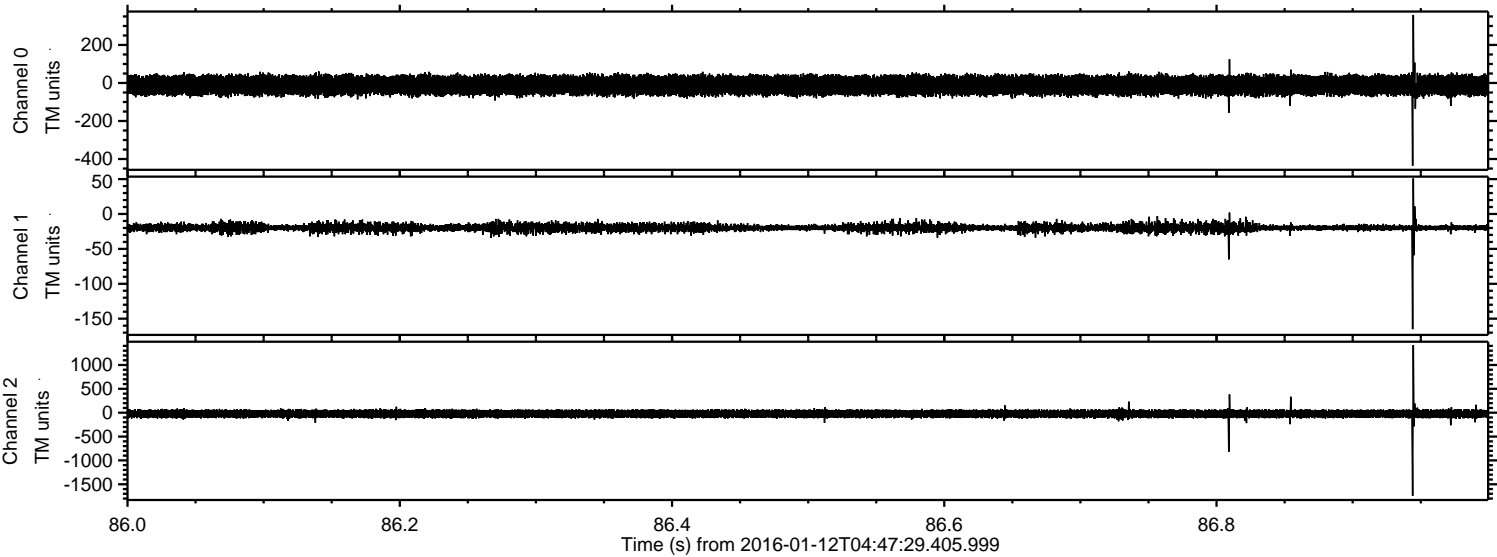


ELMAVAN 3D WAVEFORMS (Measured data sampled at 50 kHz) 51000 packets of 144 samples from 2016-01-12T04:47:29.405.999. Part 133/147

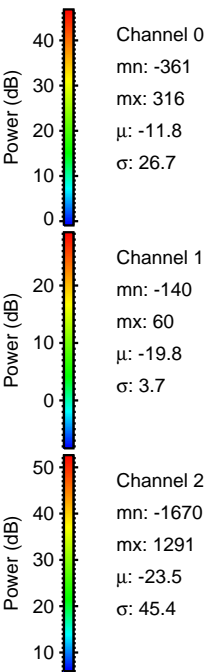
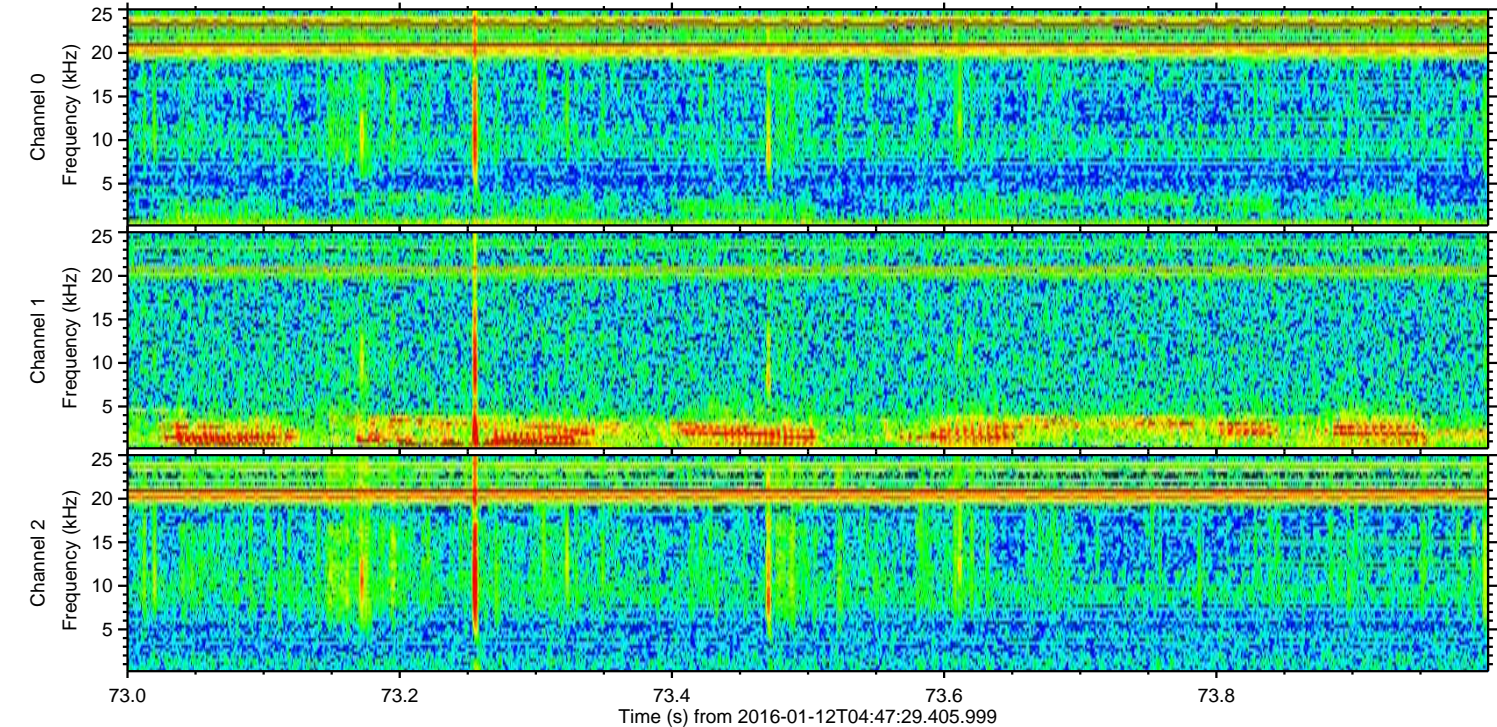
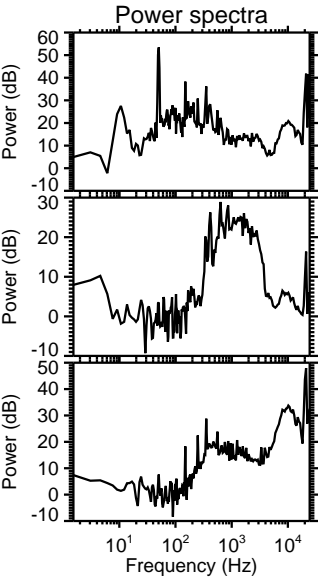
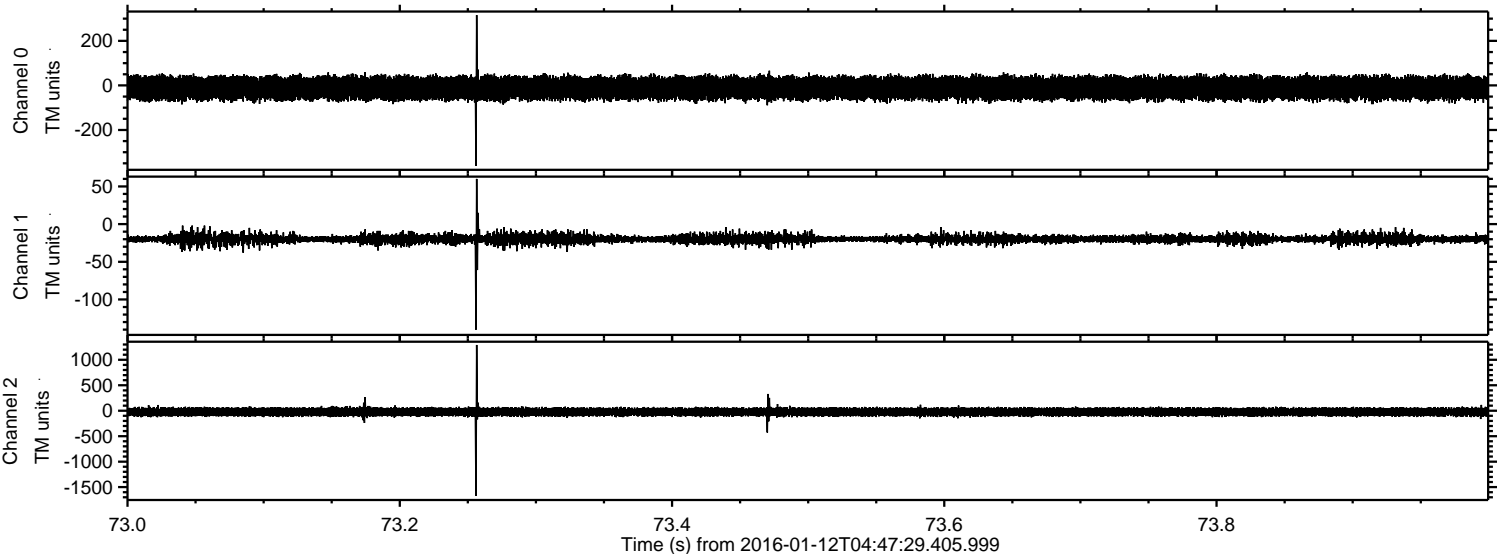
Processed Wed Mar 30 03:42:22 2016 by ELM ver.2012-10-06 from 001__elm20160112_044728__dat00.bin



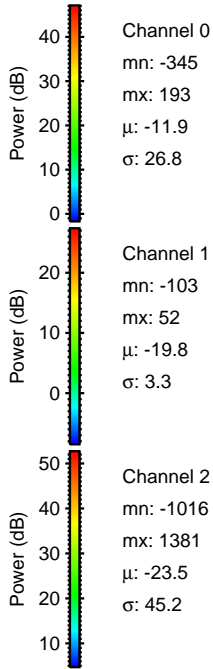
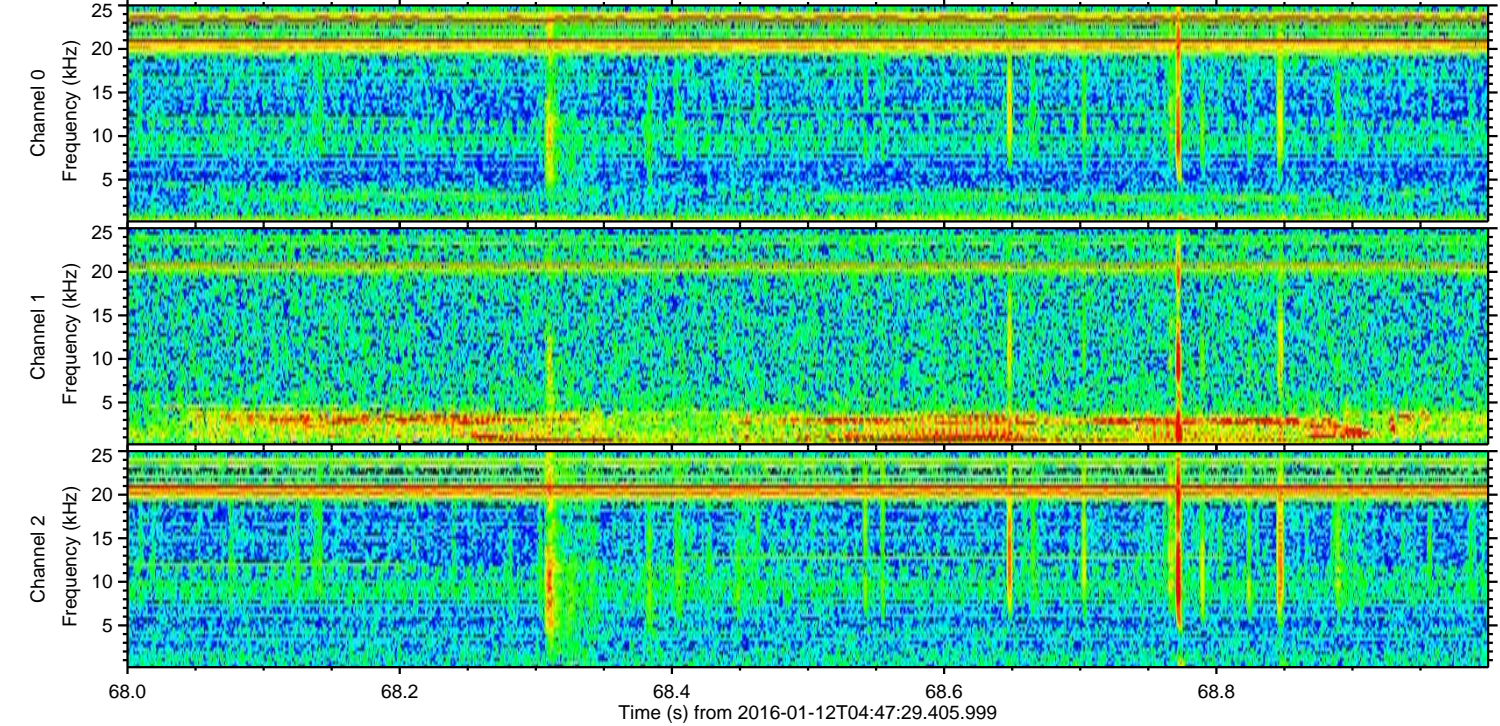
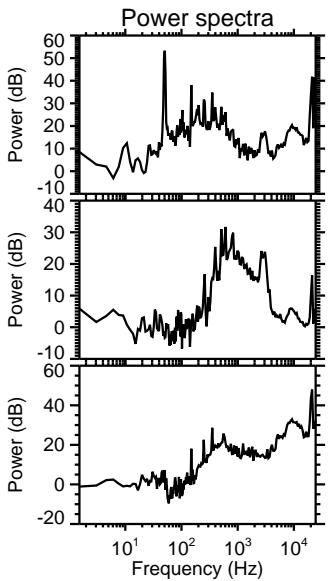
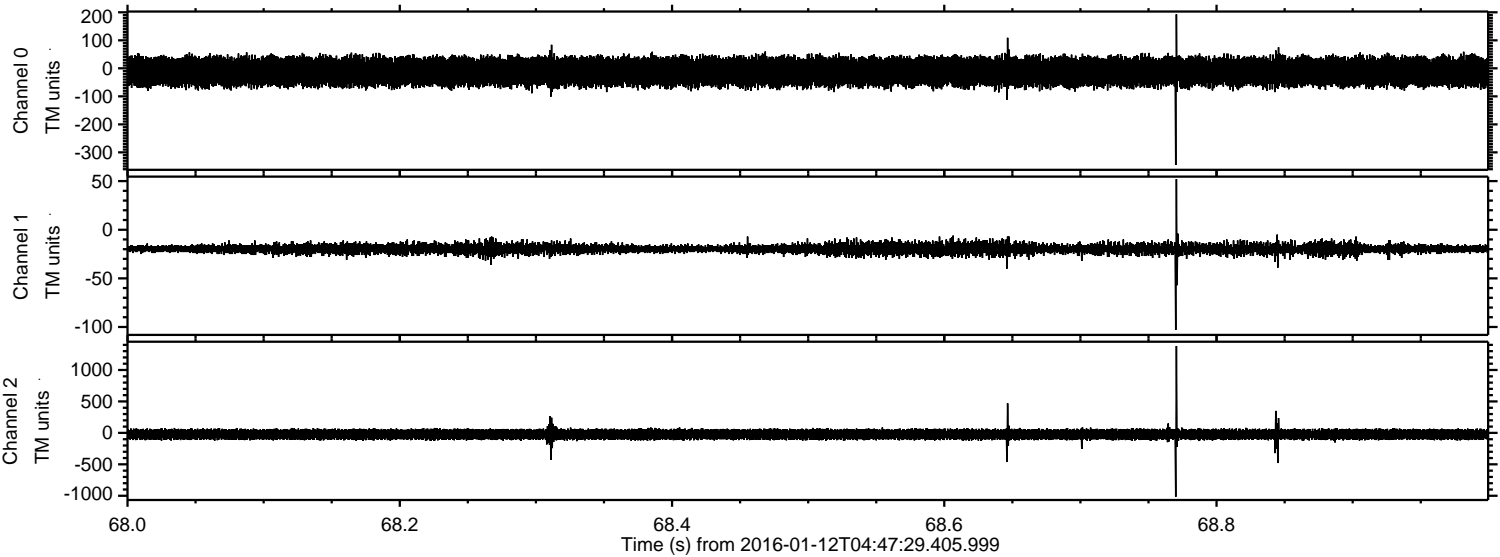
Processed Wed Mar 30 03:42:23 2016 by ELM ver.2012-10-06 from 001__elm20160112_044728__dat00.bin



Processed Wed Mar 30 03:42:24 2016 by ELM ver.2012-10-06 from 001__elm20160112_044728__dat00.bin



Processed Wed Mar 30 03:42:25 2016 by ELM ver.2012-10-06 from 001__elm20160112_044728__dat00.bin



Channel 0
mn: -345
mx: 193
 μ : -11.9
 σ : 26.8

Channel 1
mn: -103
mx: 52
 μ : -19.8
 σ : 3.3

Channel 2
mn: -1016
mx: 1381
 μ : -23.5
 σ : 45.2

Processed Wed Mar 30 03:42:26 2016 by ELM ver.2012-10-06 from 001__elm20160112_044728__dat00.bin

