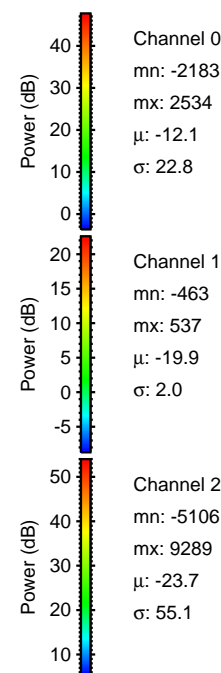
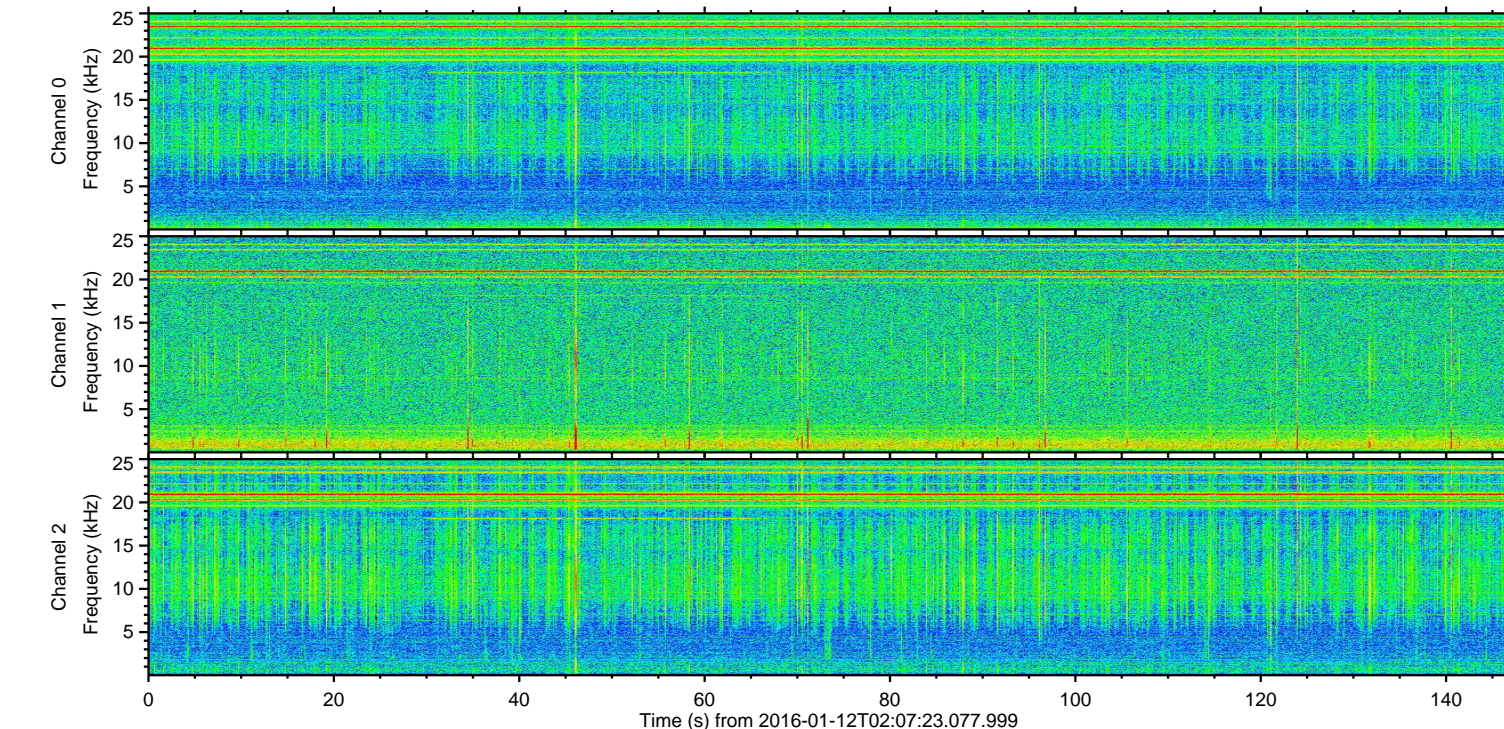
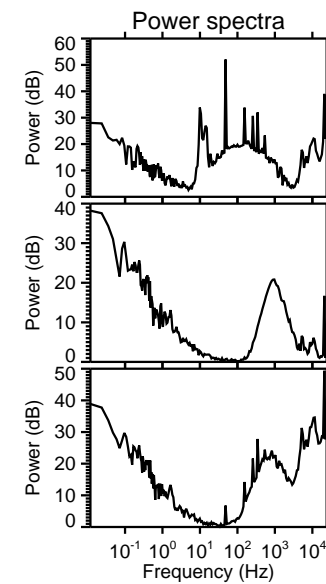
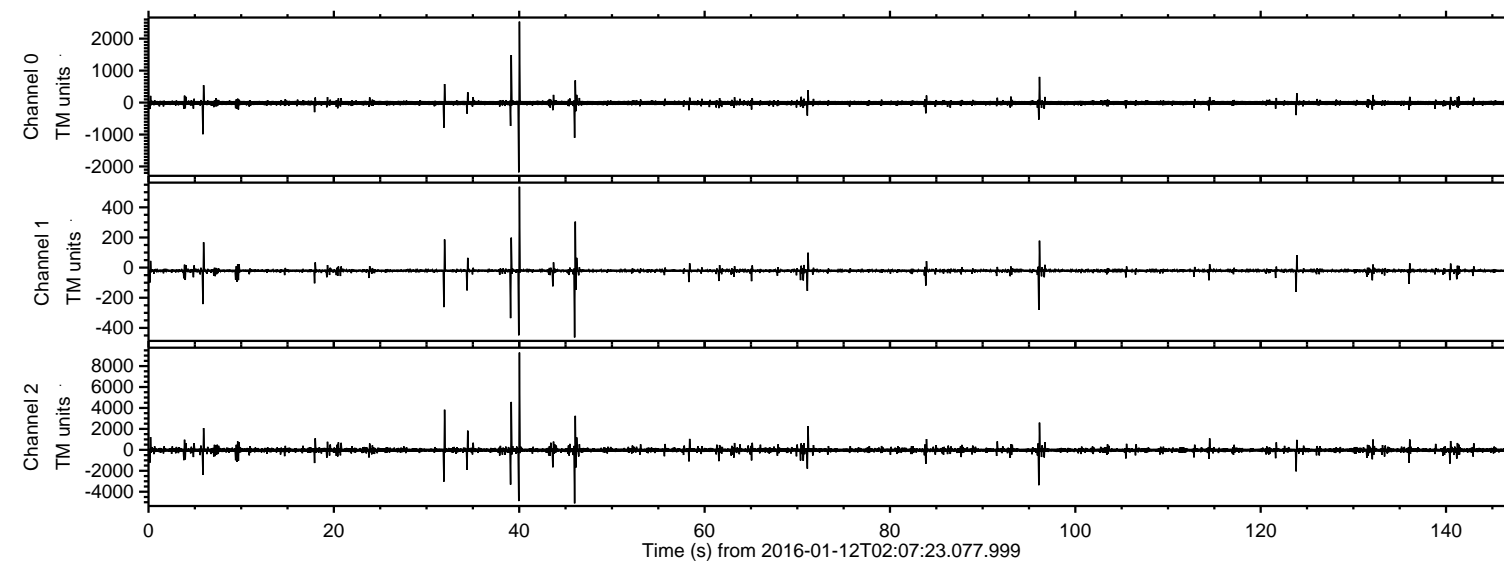


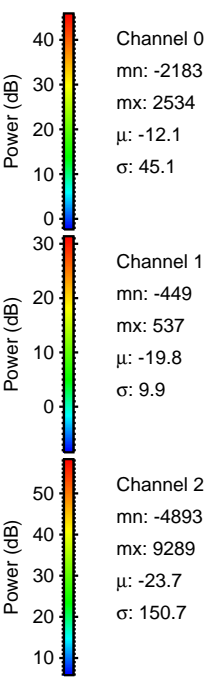
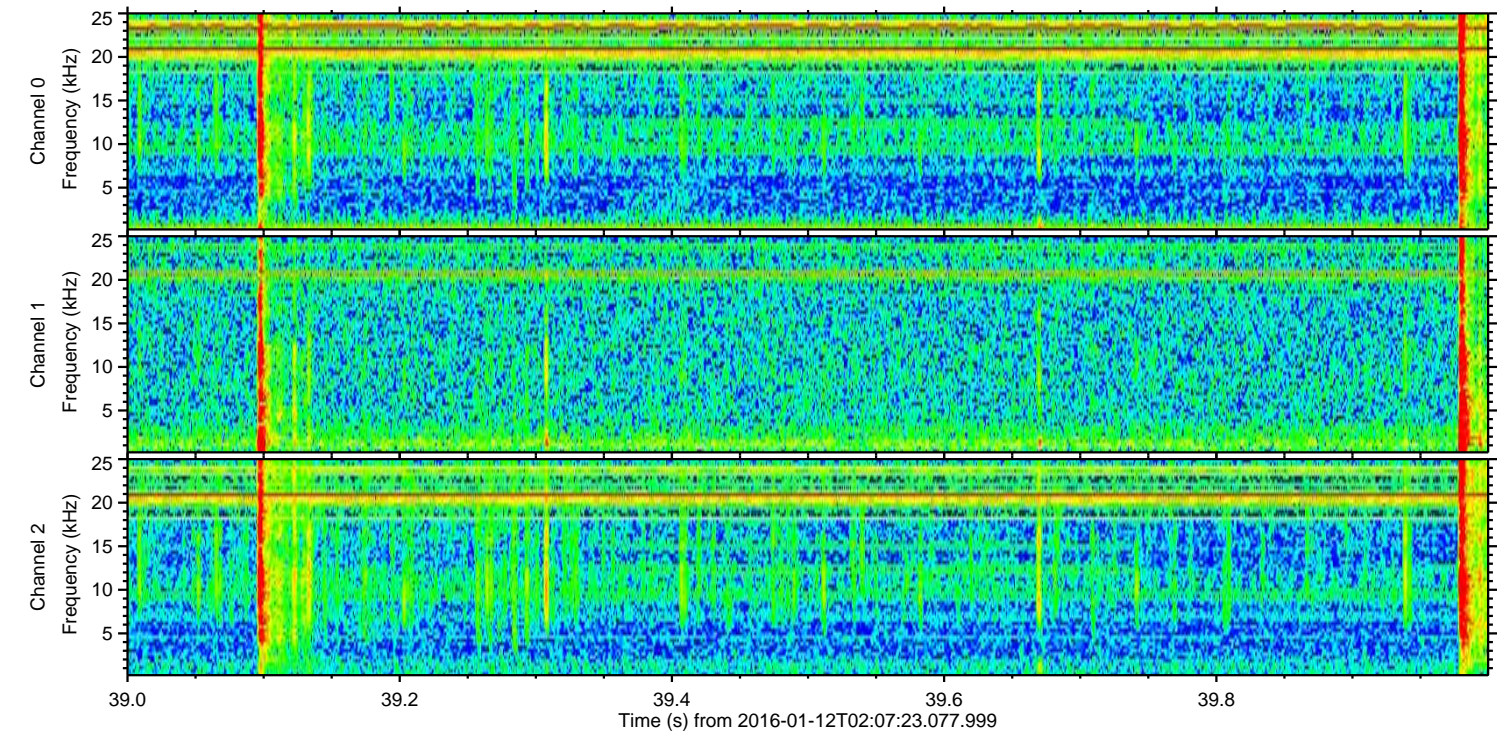
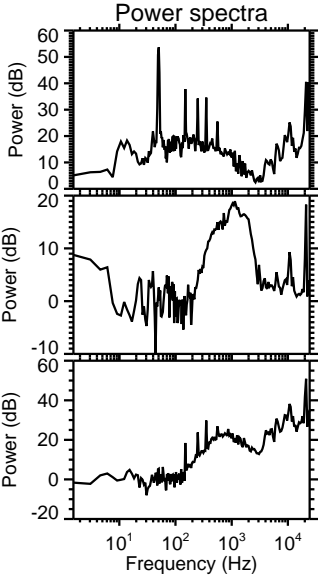
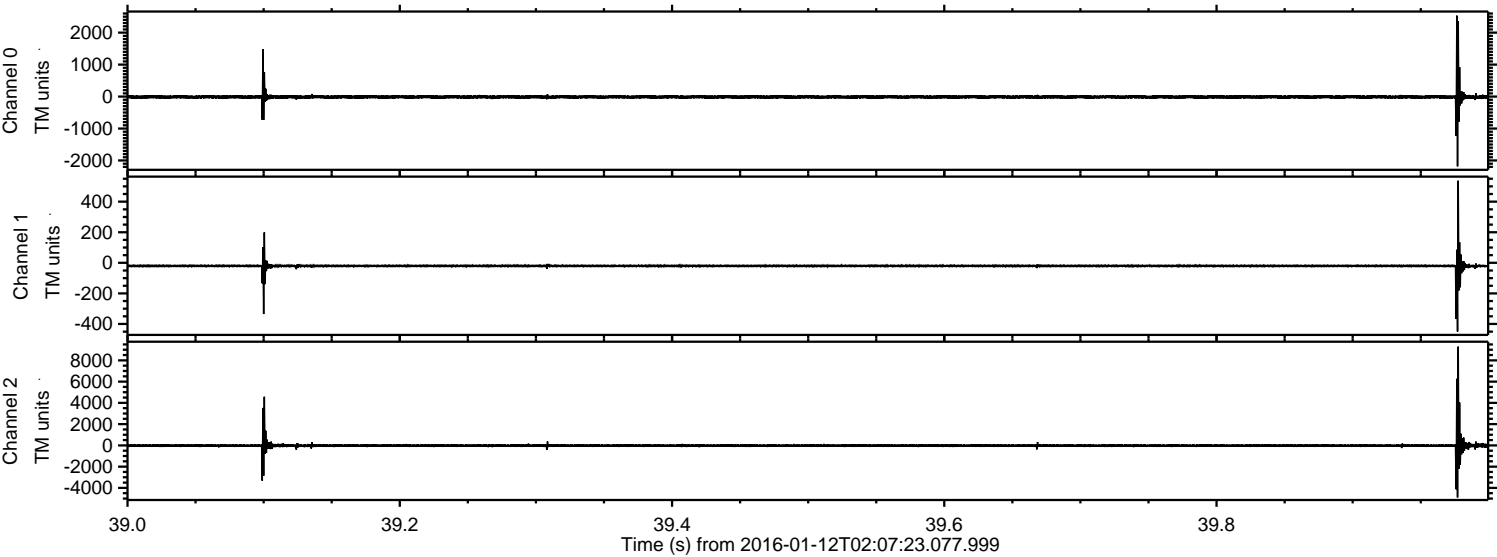
# ELMAVAN 3D WAVEFORMS (Measured data sampled at 50 kHz) 51000 packets of 144 samples from 2016-01-12T02:07:23.077.999.

Processed Wed Mar 30 03:11:17 2016 by ELM ver.2012-10-06 from 001\_\_elm20160112\_020722\_\_dat00.bin





Processed Wed Mar 30 03:11:29 2016 by ELM ver.2012-10-06 from 001\_\_elm20160112\_020722\_\_dat00.bin



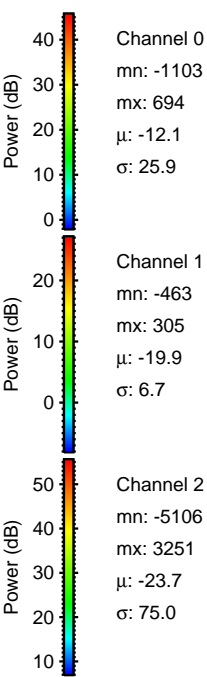
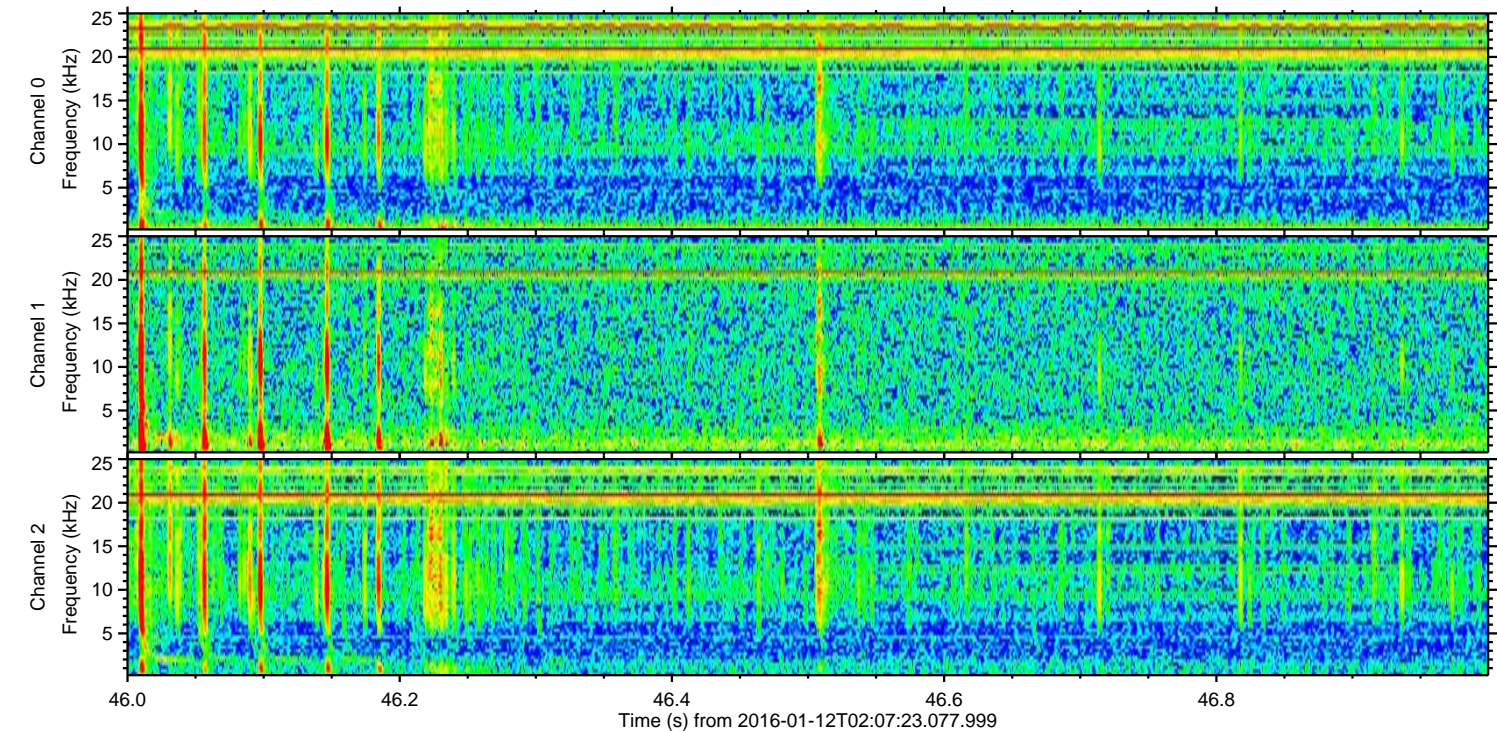
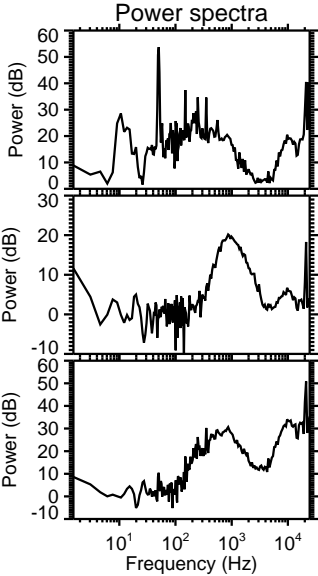
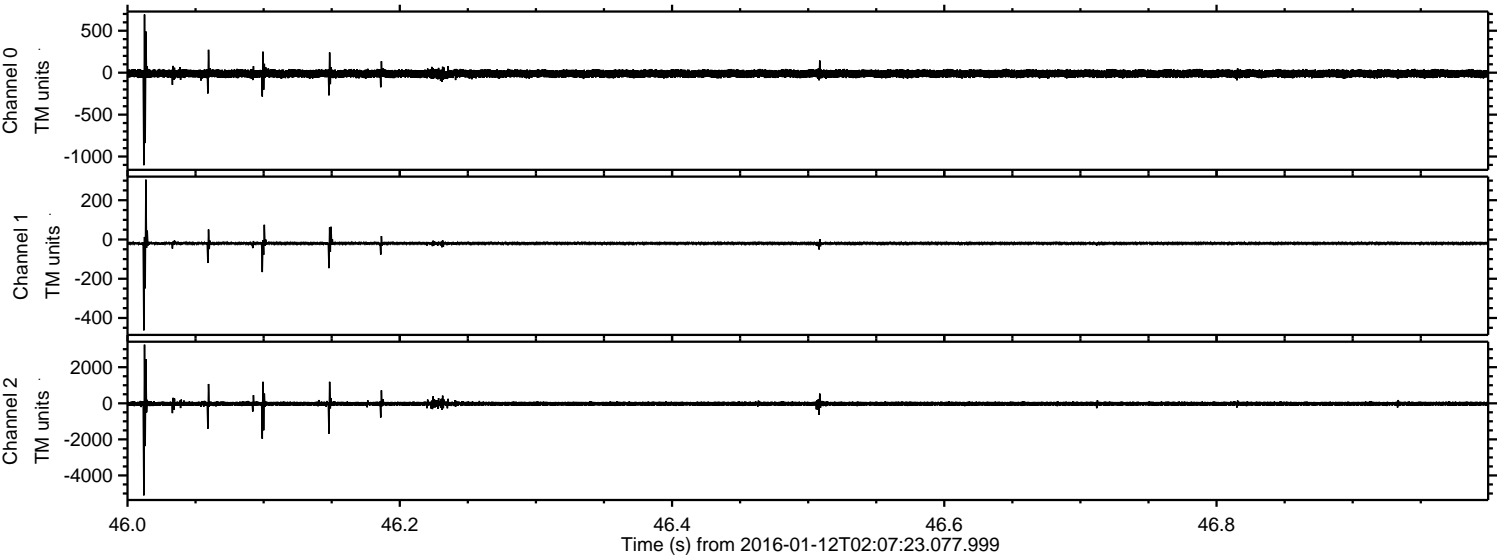
Channel 0  
mn: -2183  
mx: 2534  
 $\mu$ : -12.1  
 $\sigma$ : 45.1

Channel 1  
mn: -449  
mx: 537  
 $\mu$ : -19.8  
 $\sigma$ : 9.9

Channel 2  
mn: -4893  
mx: 9289  
 $\mu$ : -23.7  
 $\sigma$ : 150.7

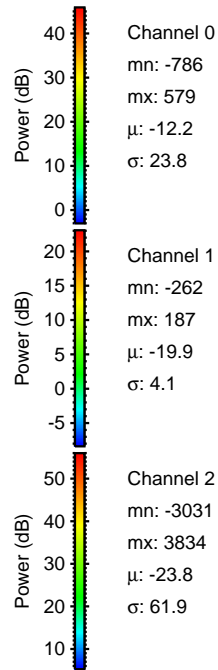
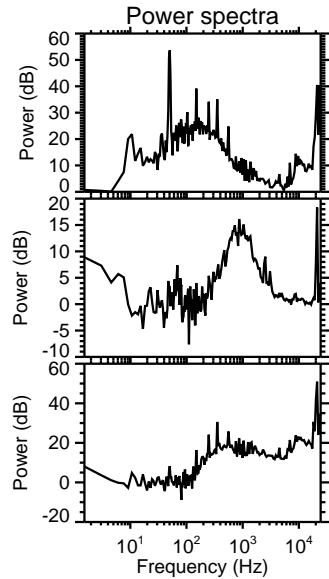
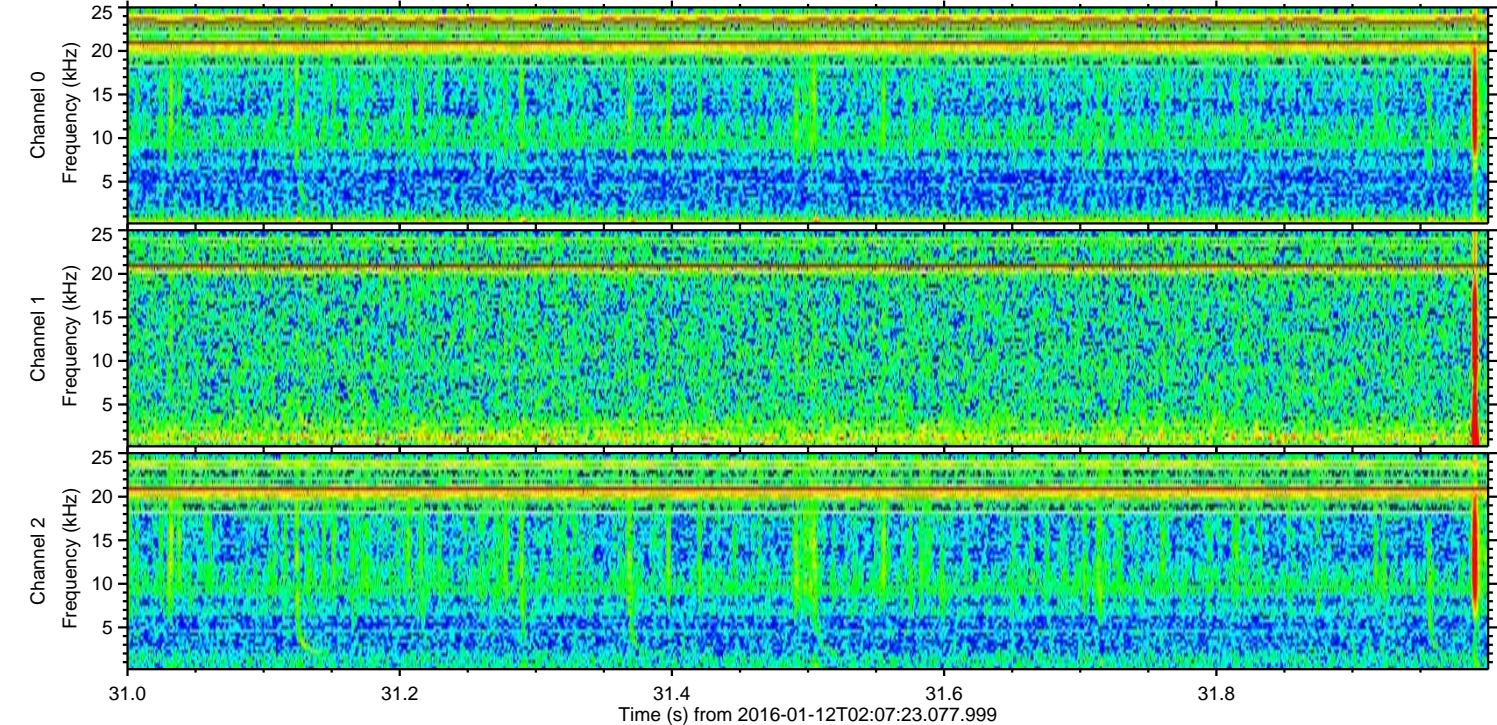
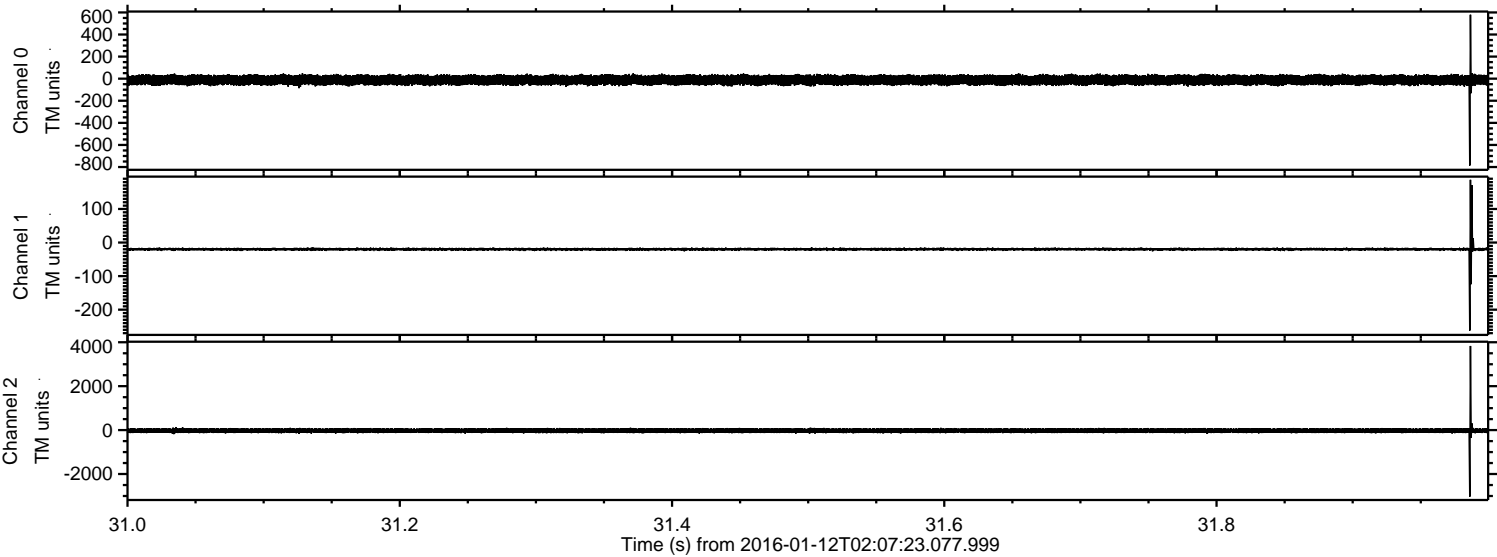


Processed Wed Mar 30 03:11:30 2016 by ELM ver.2012-10-06 from 001\_\_elm20160112\_020722\_\_dat00.bin



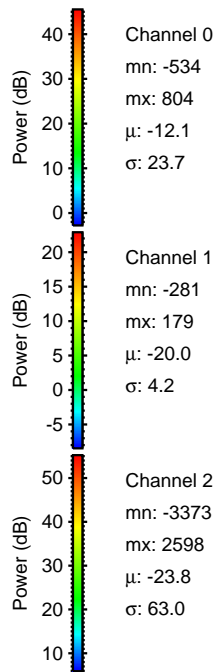
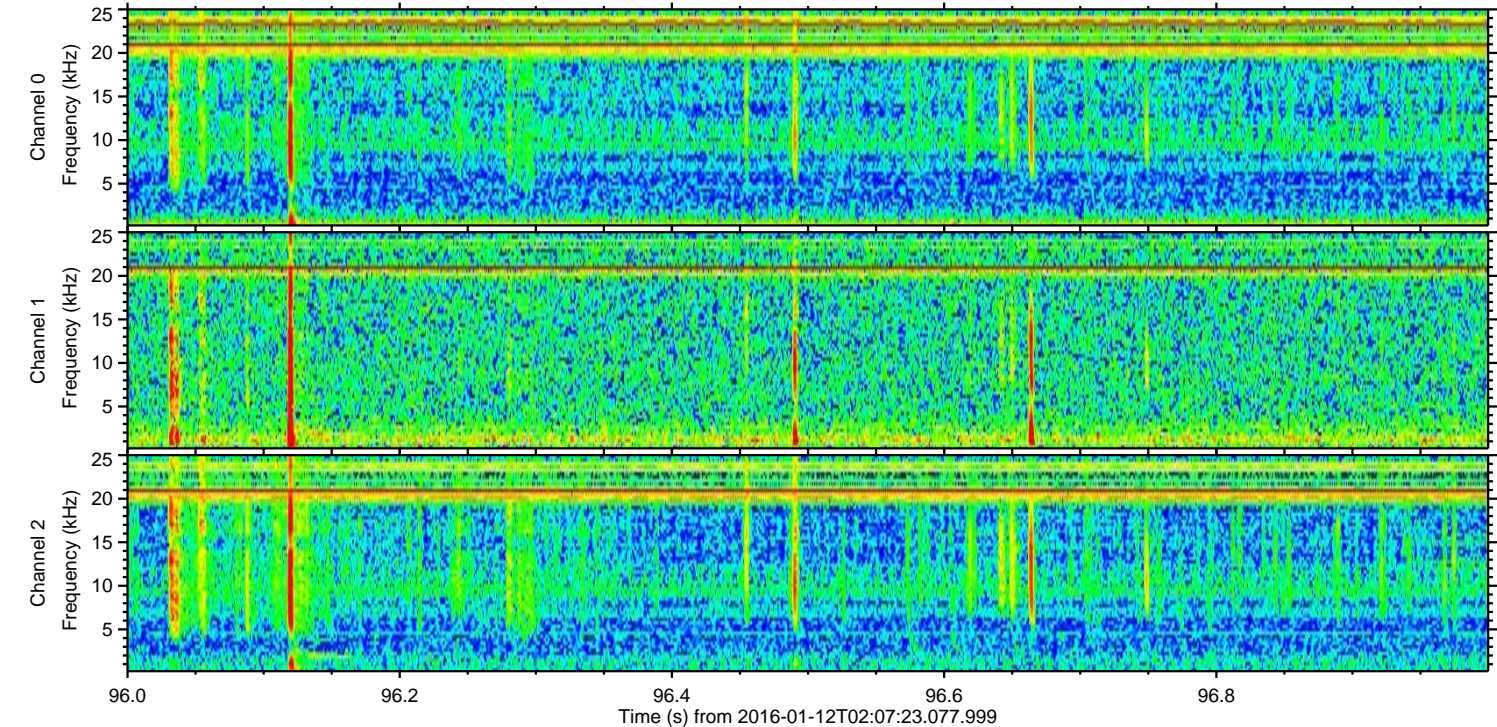
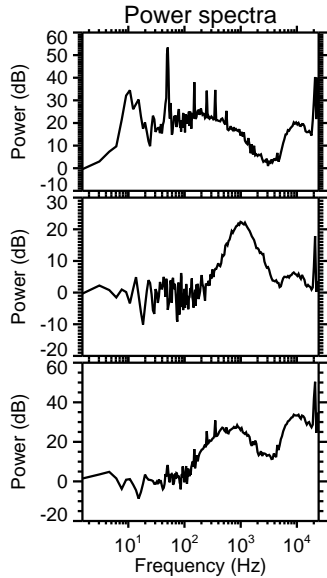
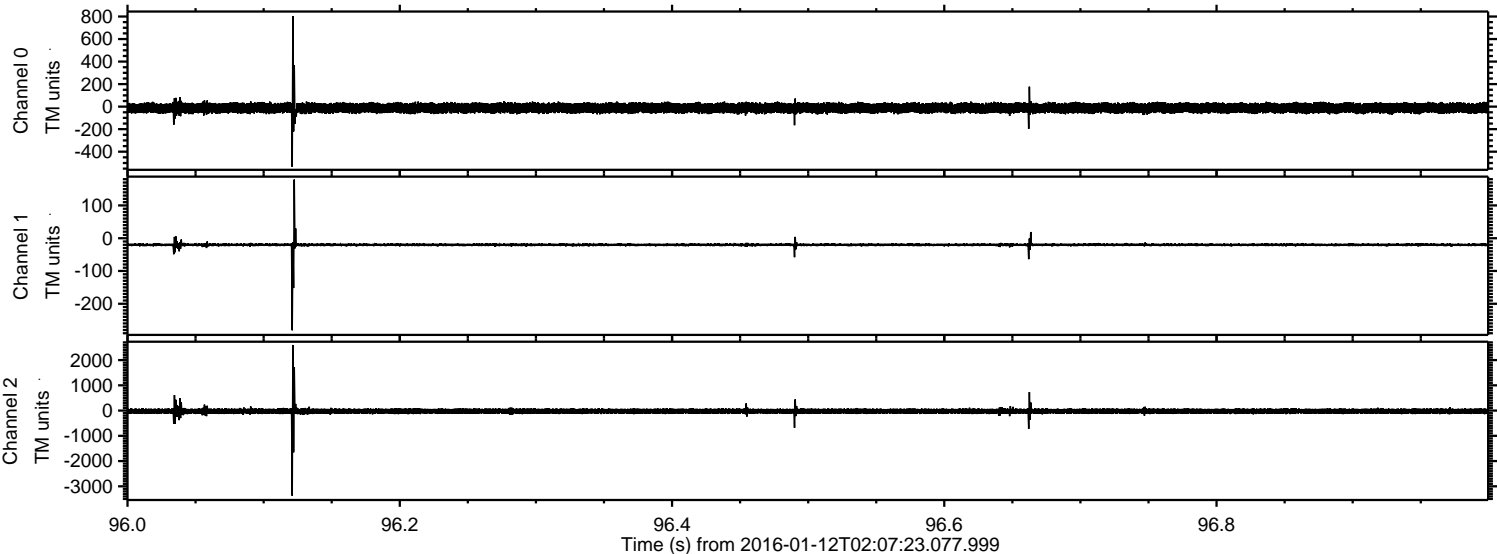


Processed Wed Mar 30 03:11:31 2016 by ELM ver.2012-10-06 from 001\_\_elm20160112\_020722\_\_dat00.bin



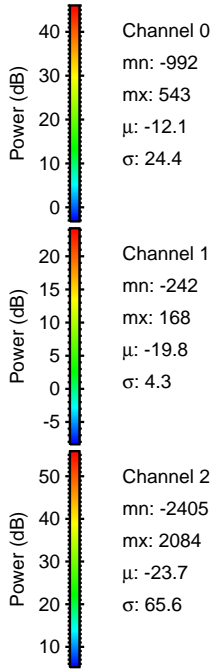
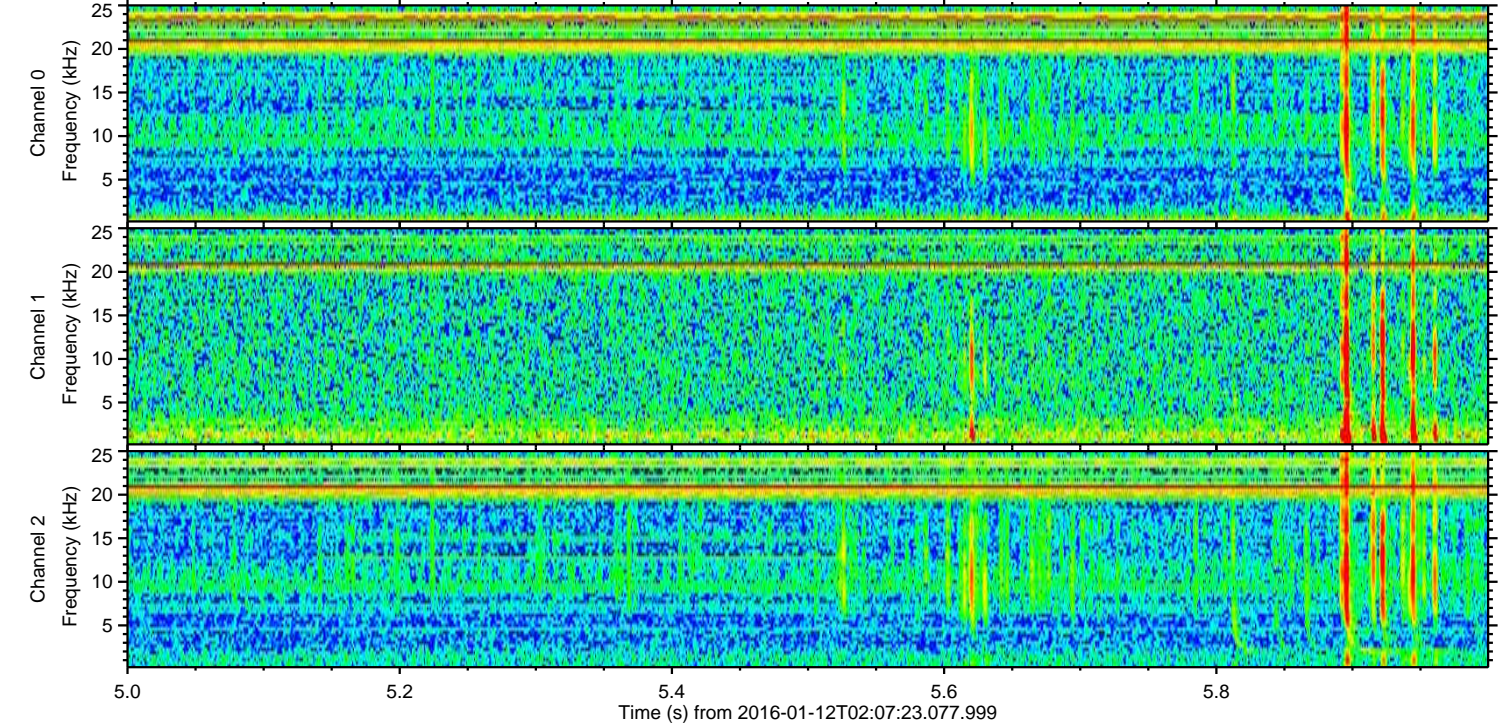
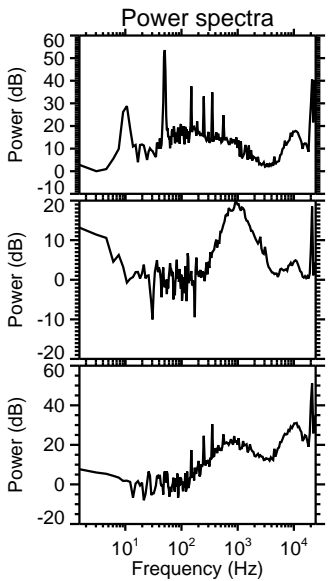
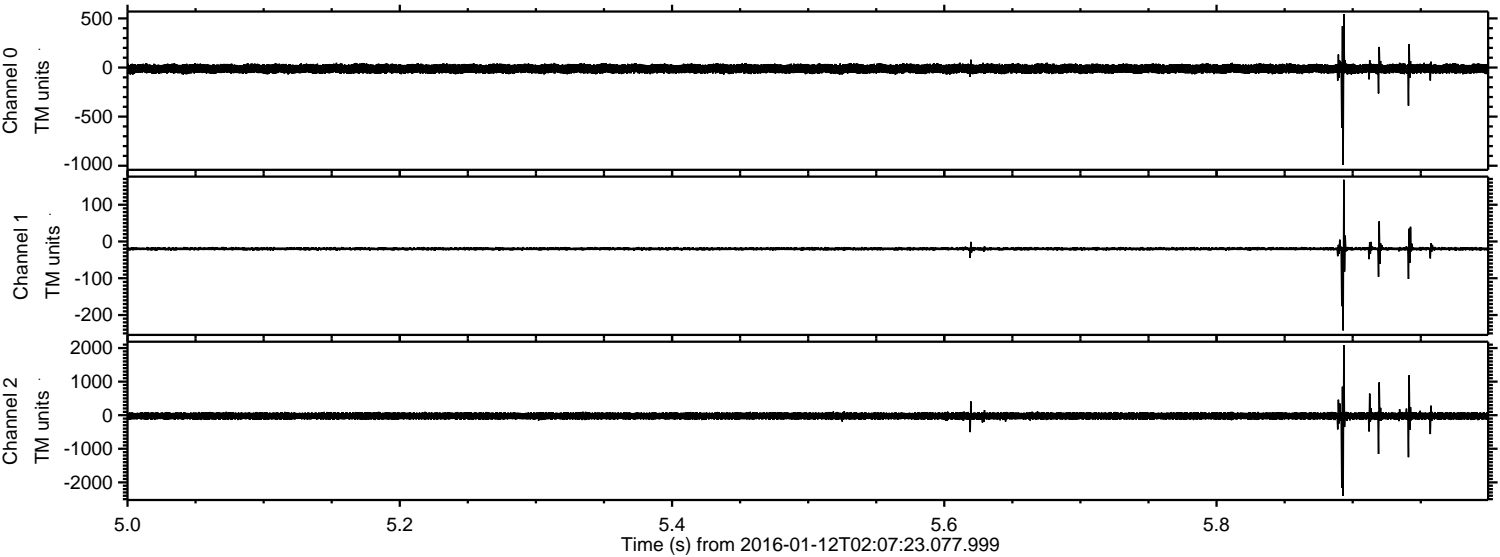


Processed Wed Mar 30 03:11:32 2016 by ELM ver.2012-10-06 from 001\_\_elm20160112\_020722\_\_dat00.bin



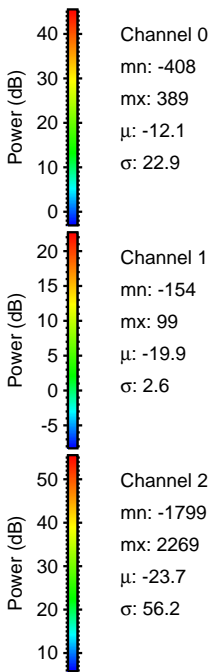
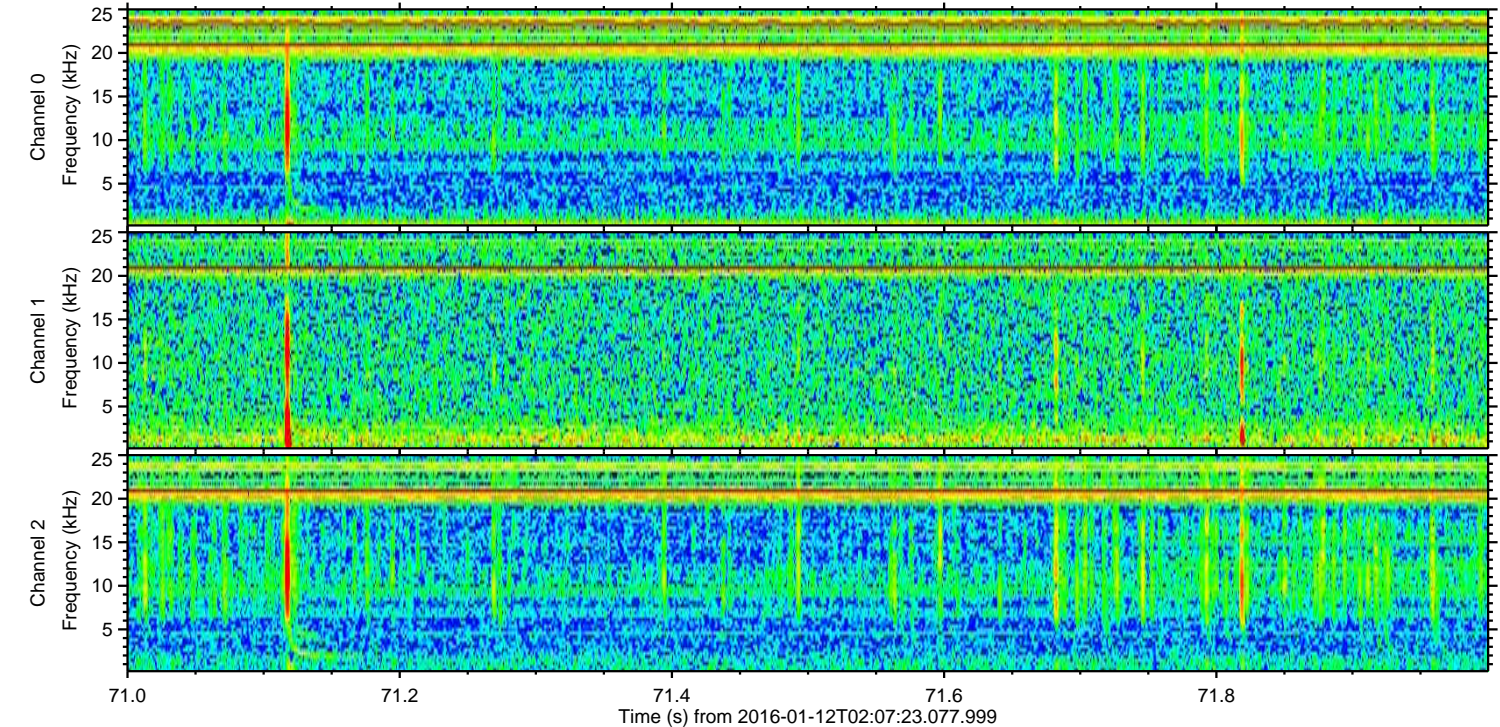
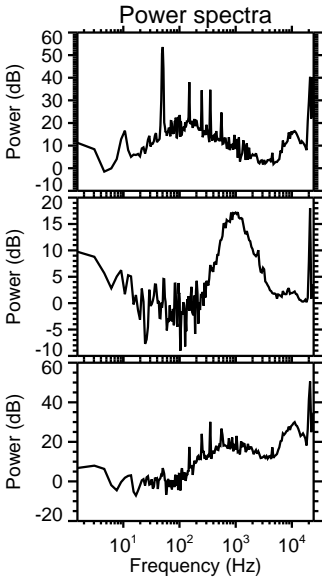
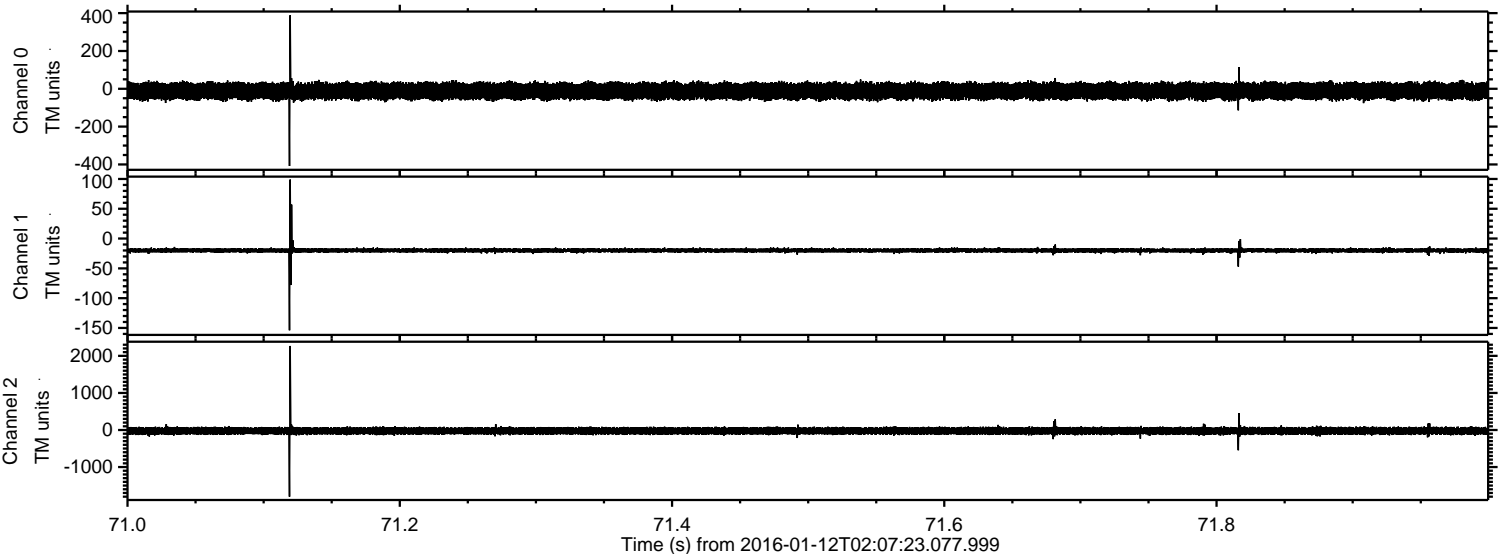


Processed Wed Mar 30 03:11:33 2016 by ELM ver.2012-10-06 from 001\_\_elm20160112\_020722\_\_dat00.bin





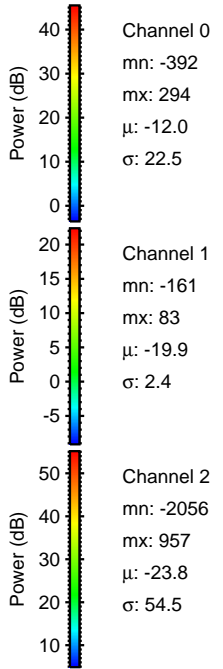
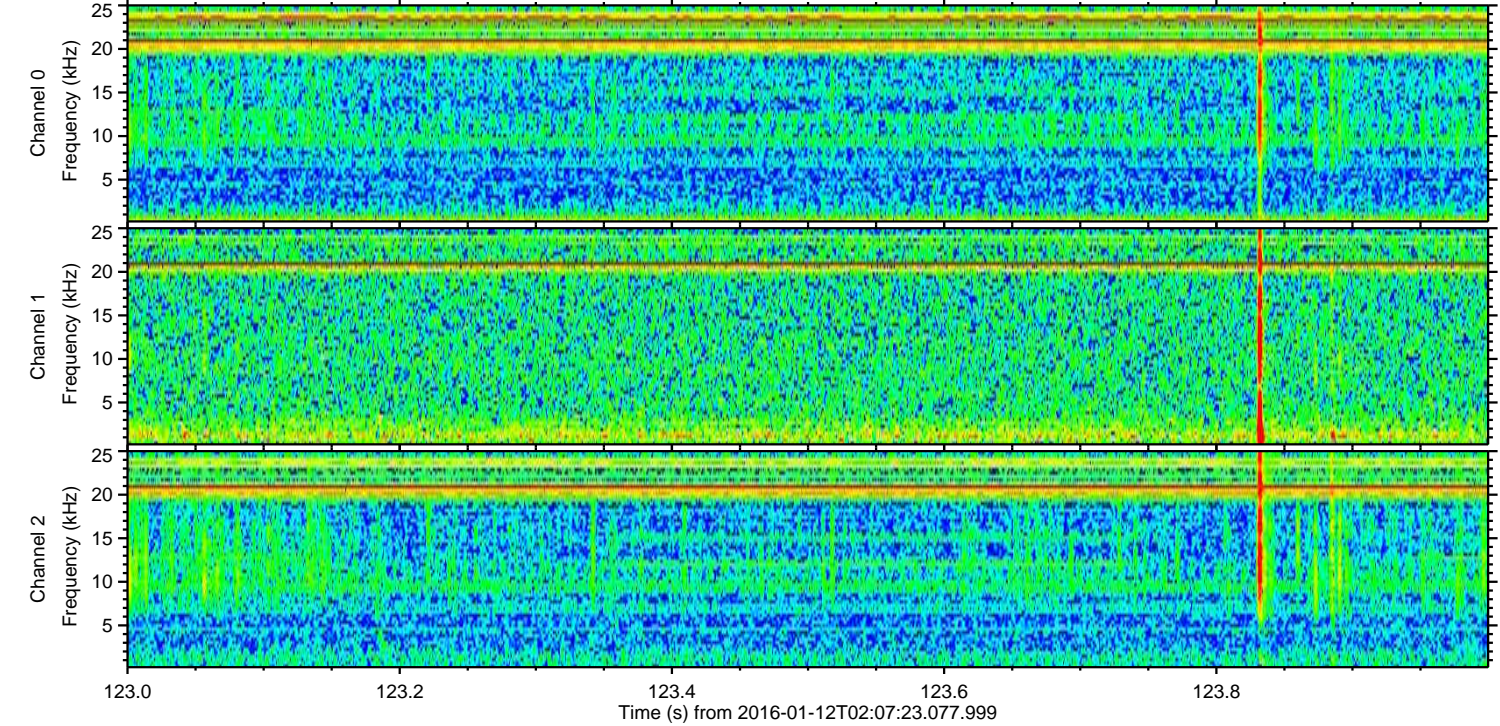
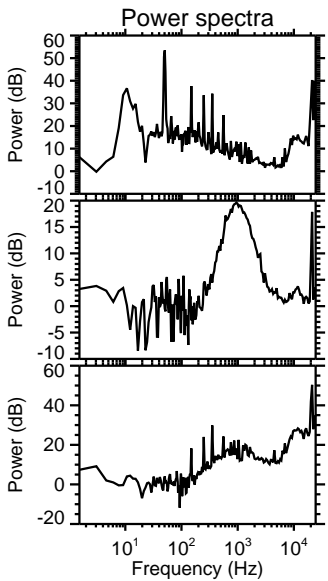
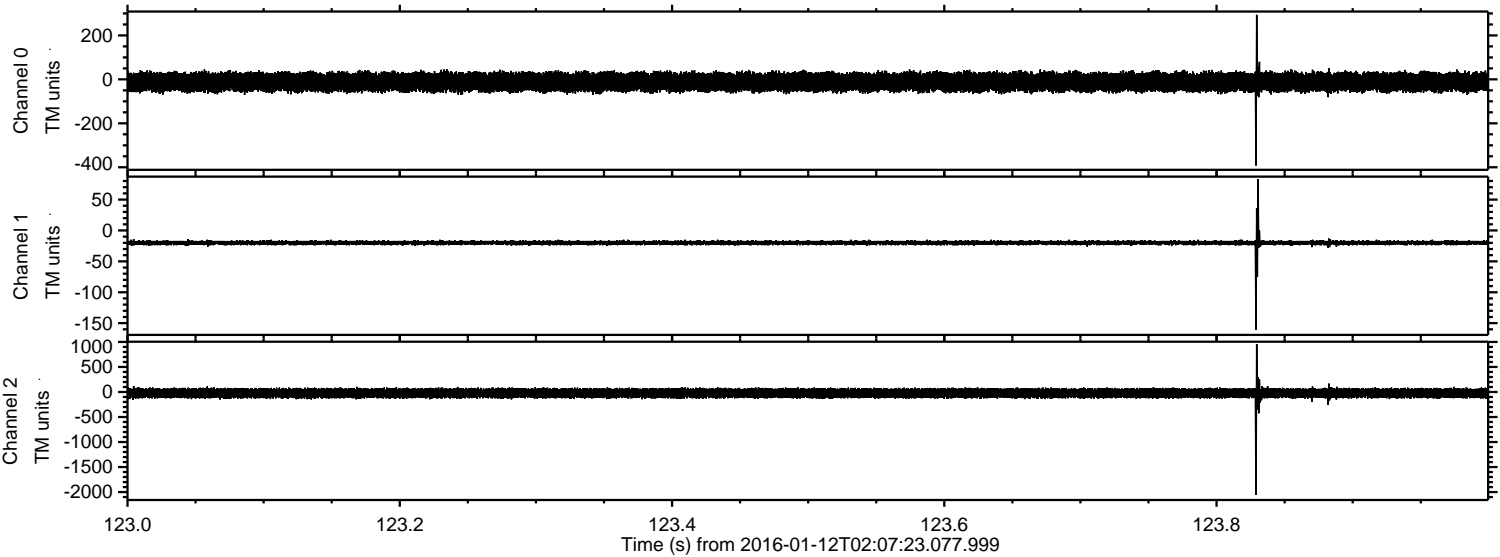
Processed Wed Mar 30 03:11:34 2016 by ELM ver.2012-10-06 from 001\_\_elm20160112\_020722\_\_dat00.bin





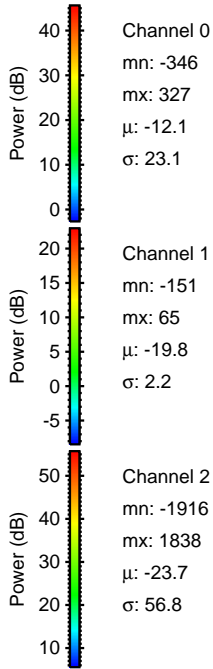
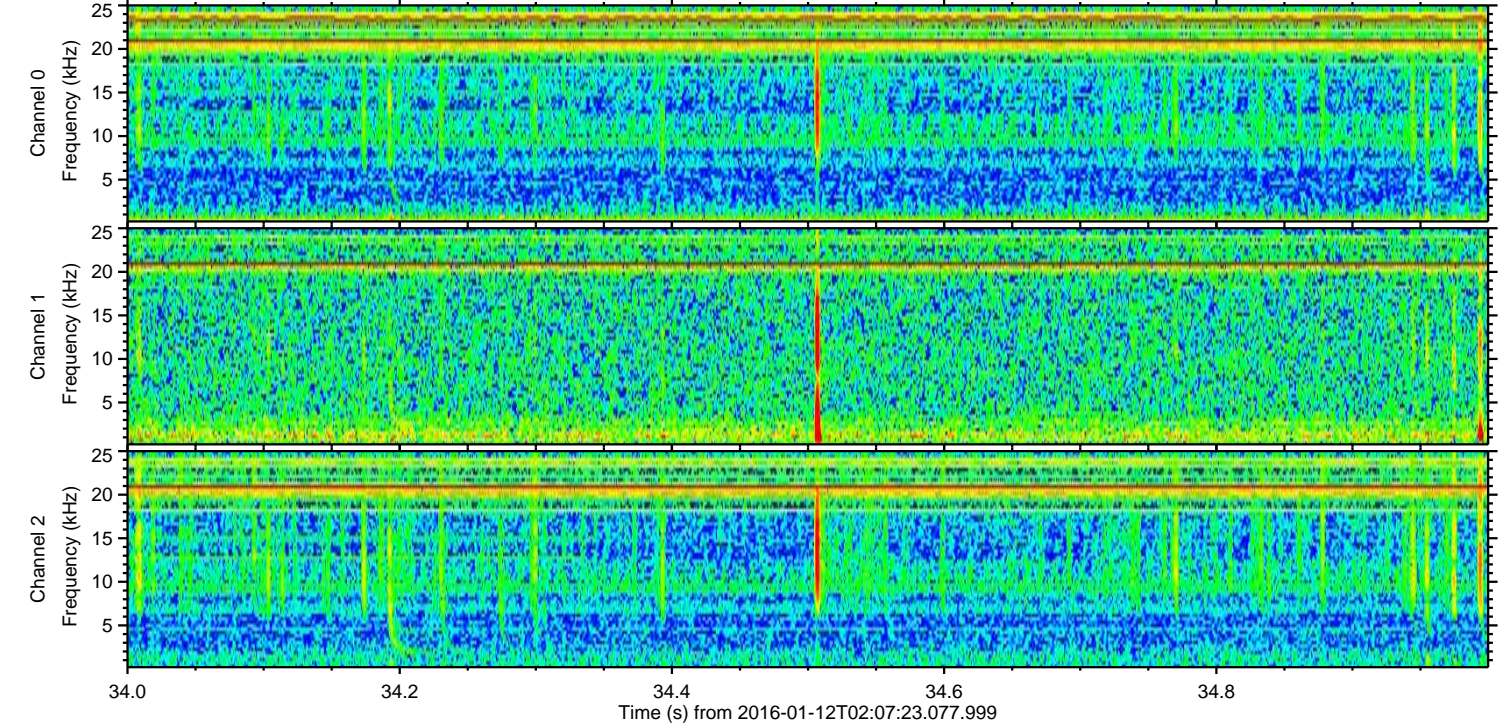
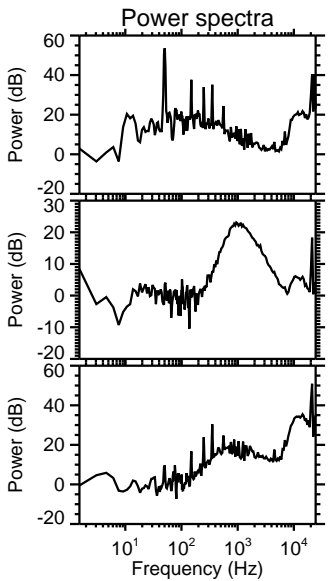
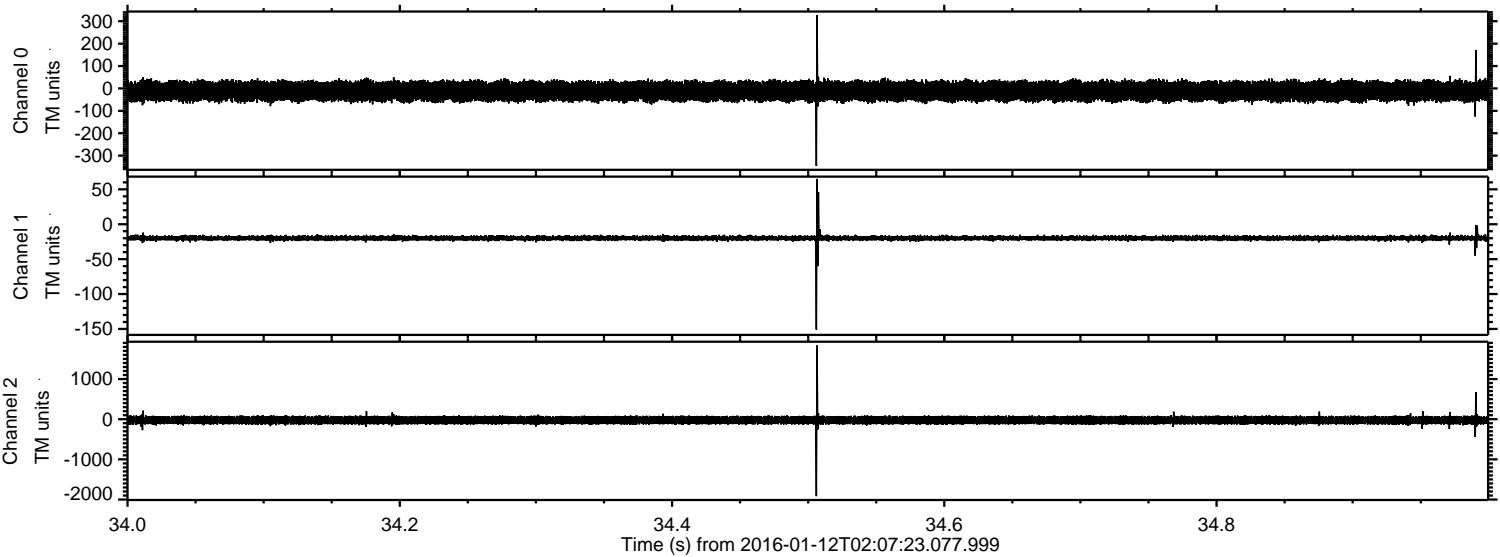
ELMAVAN 3D WAVEFORMS (Measured data sampled at 50 kHz) 51000 packets of 144 samples from 2016-01-12T02:07:23.077.999. Part 124/147

Processed Wed Mar 30 03:11:35 2016 by ELM ver.2012-10-06 from 001\_\_elm20160112\_020722\_\_dat00.bin





Processed Wed Mar 30 03:11:36 2016 by ELM ver.2012-10-06 from 001\_\_elm20160112\_020722\_\_dat00.bin



Channel 0  
mn: -346  
mx: 327  
 $\mu$ : -12.1  
 $\sigma$ : 23.1

Channel 1  
mn: -151  
mx: 65  
 $\mu$ : -19.8  
 $\sigma$ : 2.2

Channel 2  
mn: -1916  
mx: 1838  
 $\mu$ : -23.7  
 $\sigma$ : 56.8



Processed Wed Mar 30 03:11:36 2016 by ELM ver.2012-10-06 from 001\_\_elm20160112\_020722\_\_dat00.bin

