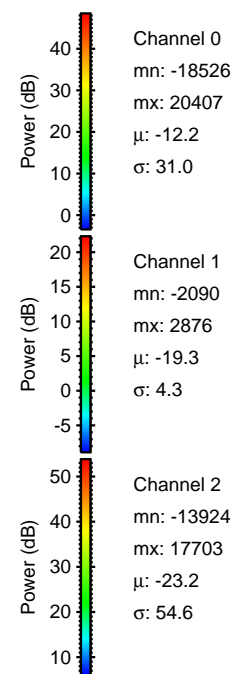
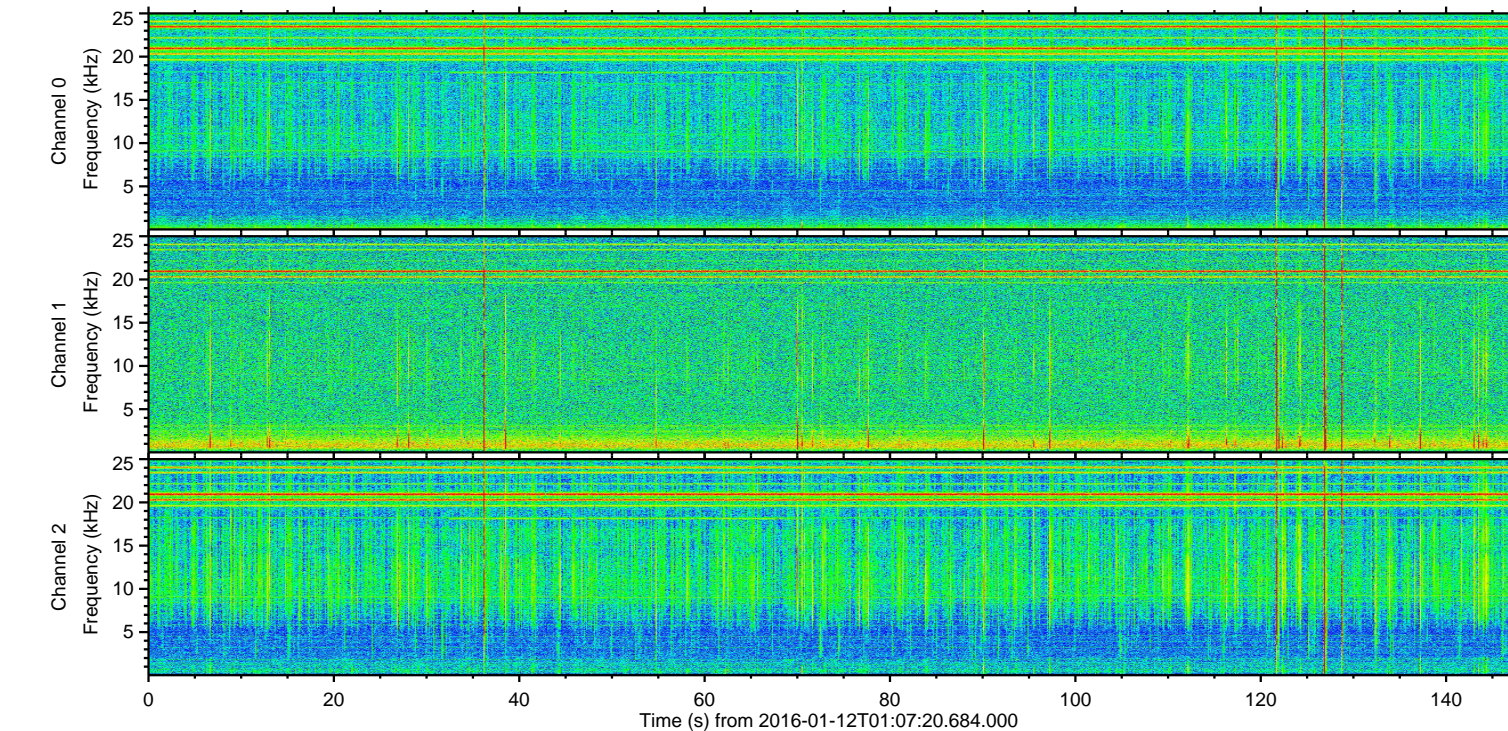
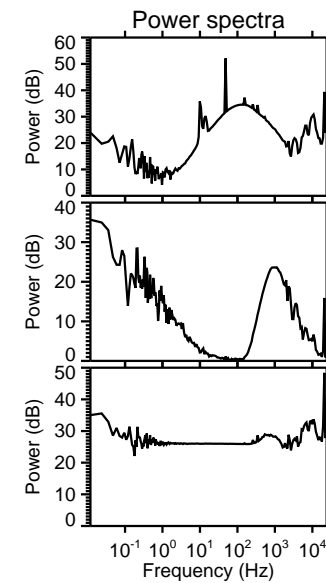
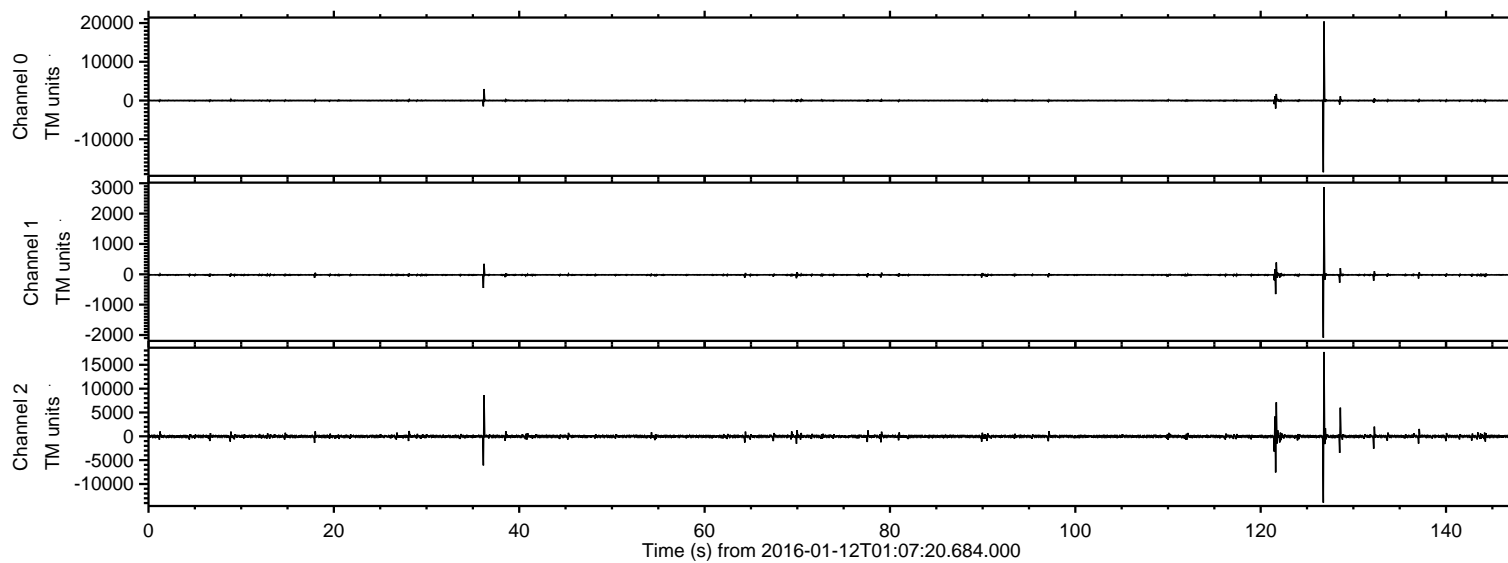


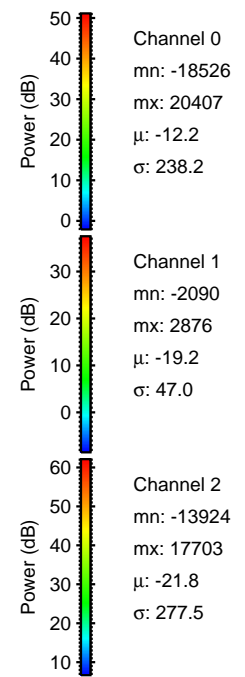
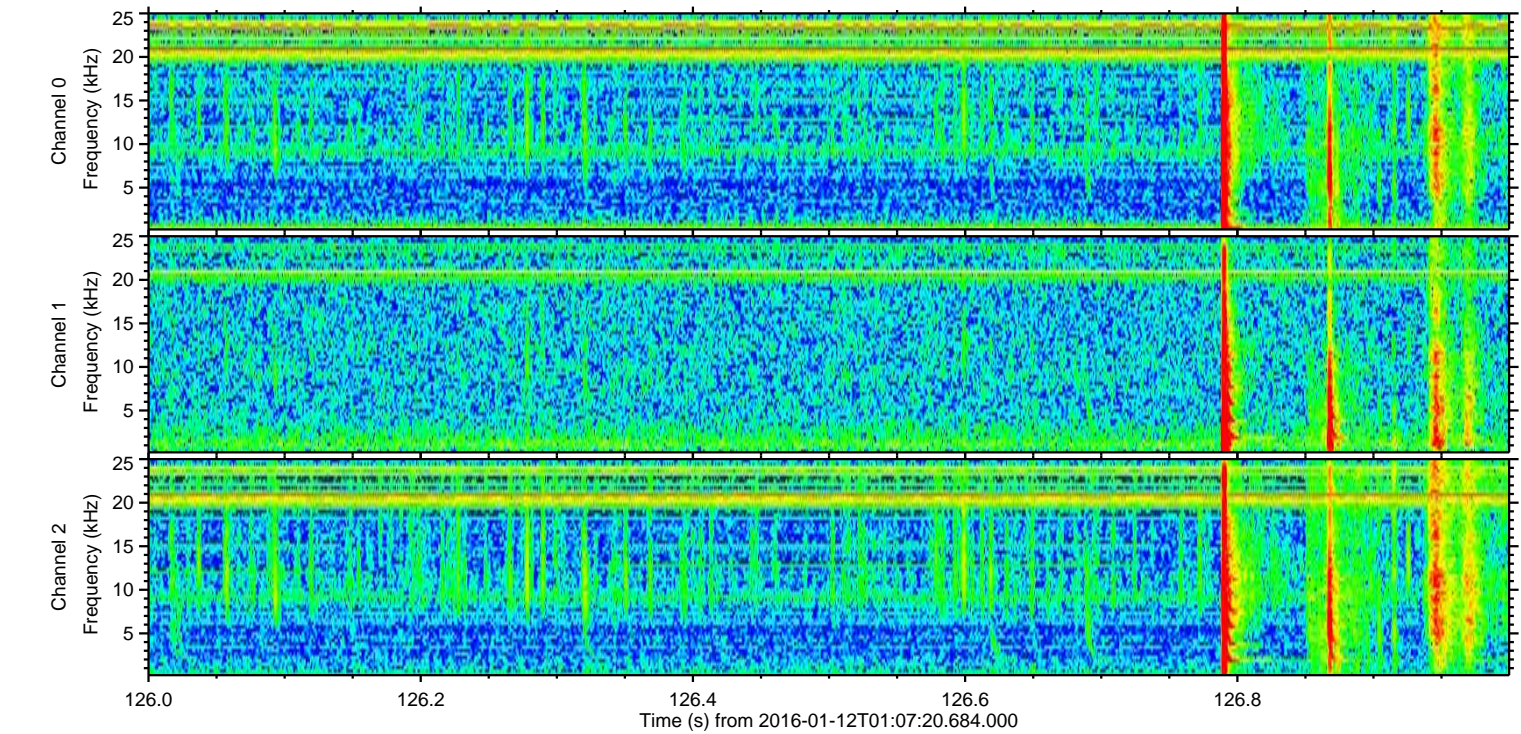
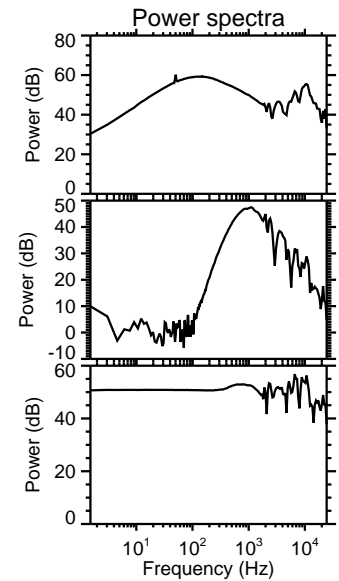
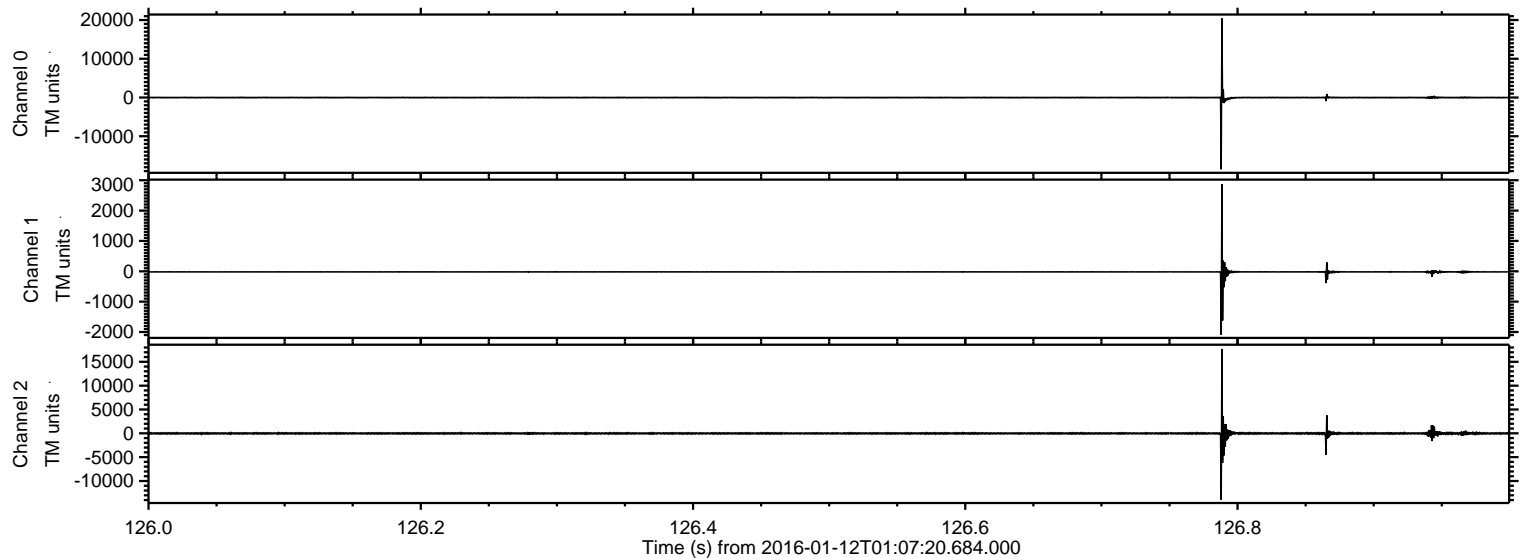
ELMAVAN 3D WAVEFORMS (Measured data sampled at 50 kHz) 51000 packets of 144 samples from 2016-01-12T01:07:20.684.000.

Processed Wed Mar 30 03:00:43 2016 by ELM ver.2012-10-06 from 001__elm20160112_010719__dat00.bin

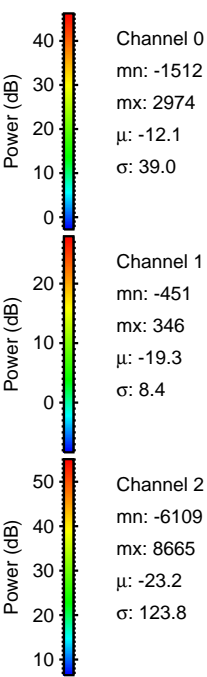
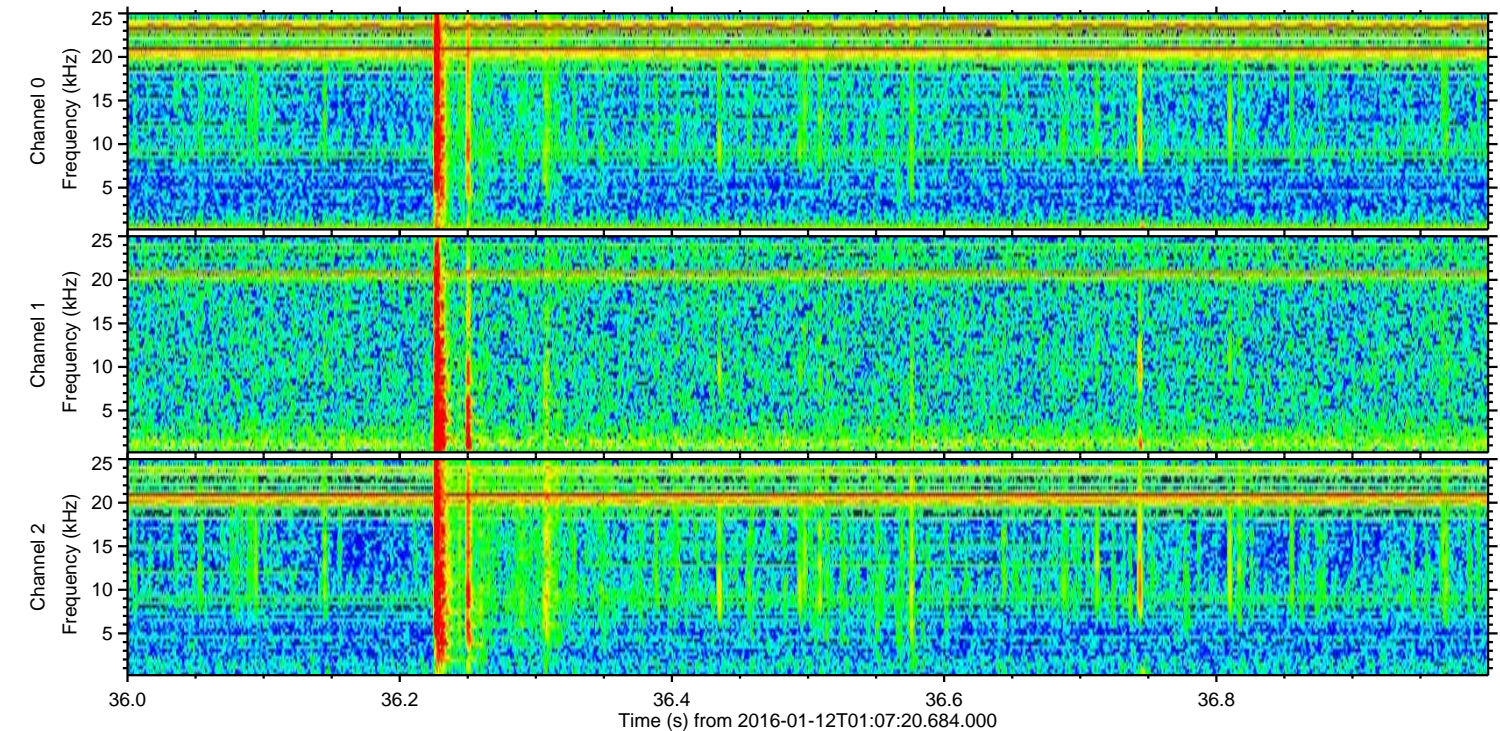
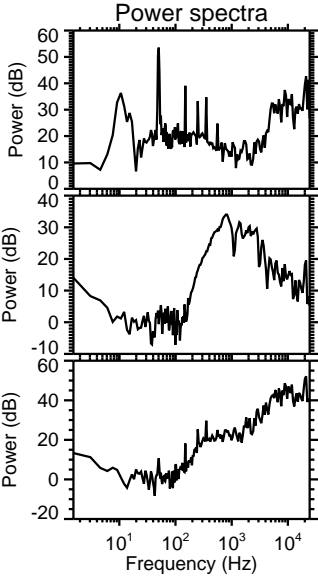
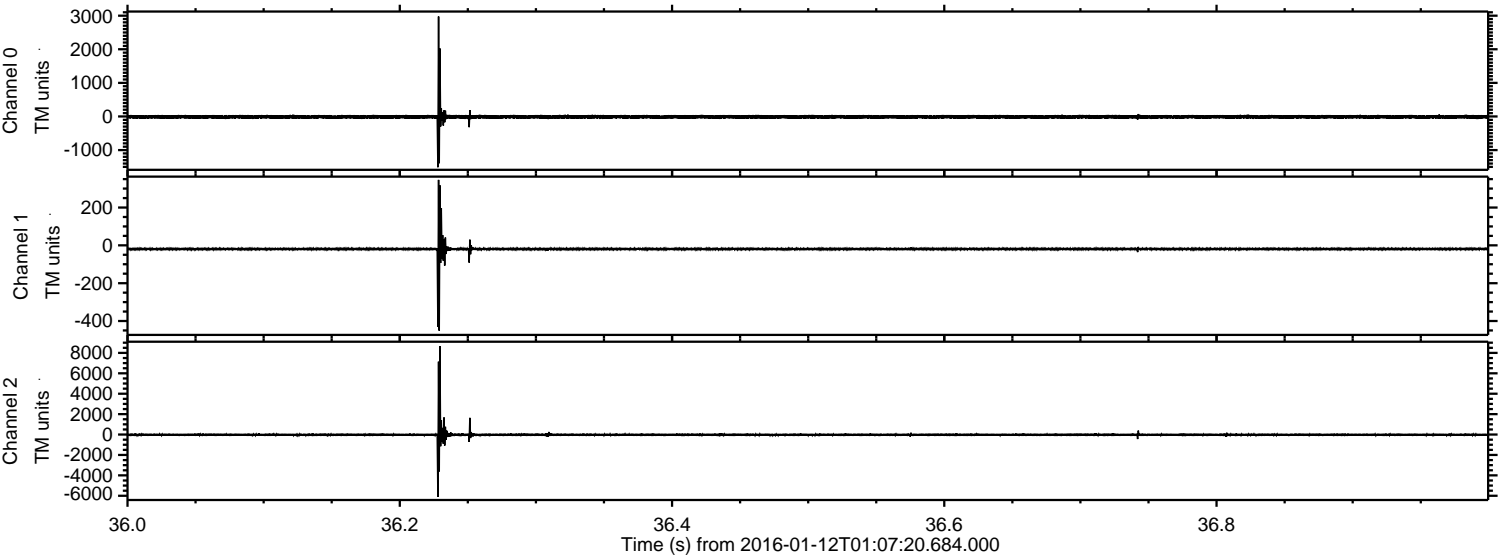


ELMAVAN 3D WAVEFORMS (Measured data sampled at 50 kHz) 51000 packets of 144 samples from 2016-01-12T01:07:20.684.000. Part 127/147

Processed Wed Mar 30 03:00:55 2016 by ELM ver.2012-10-06 from 001__elm20160112_010719__dat00.bin

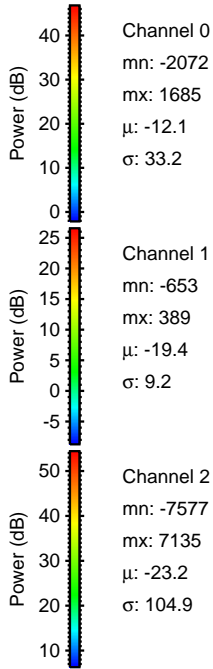
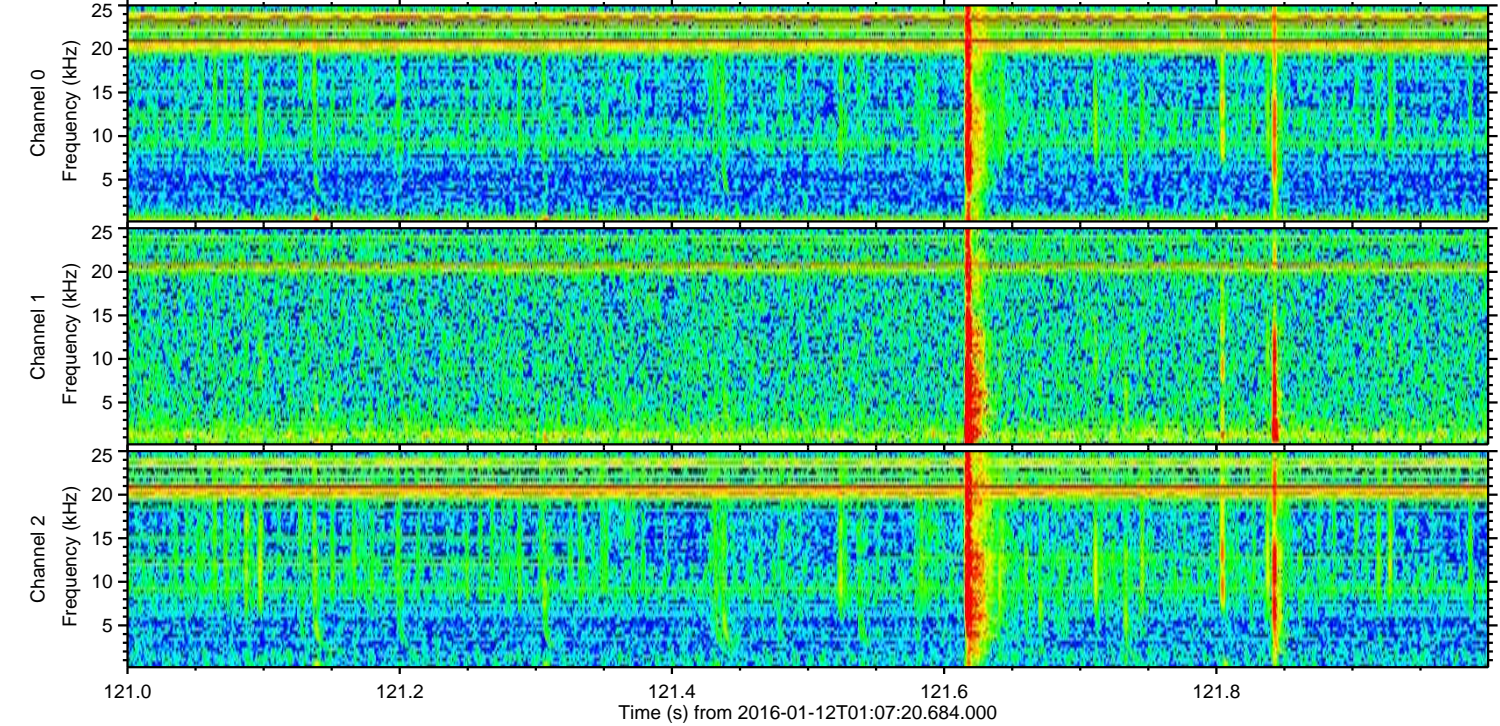
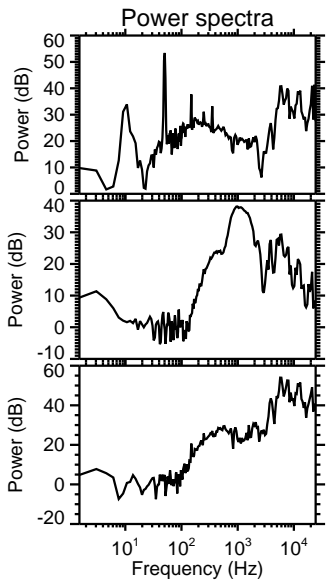
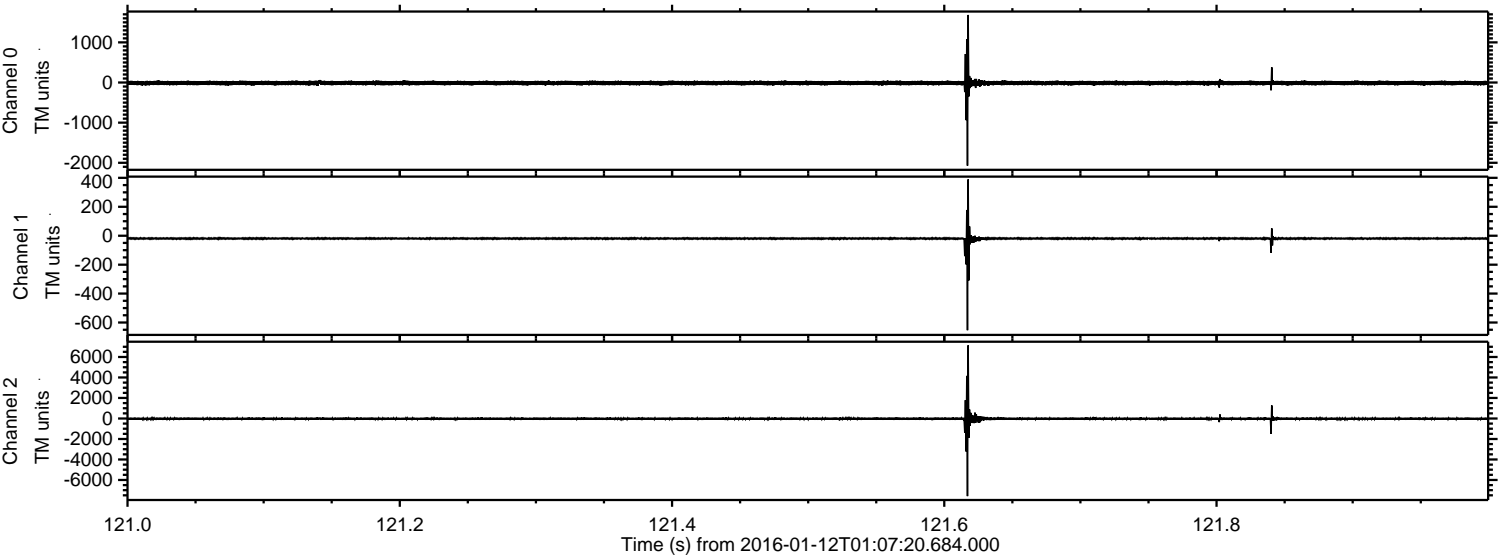


Processed Wed Mar 30 03:00:56 2016 by ELM ver.2012-10-06 from 001__elm20160112_010719__dat00.bin



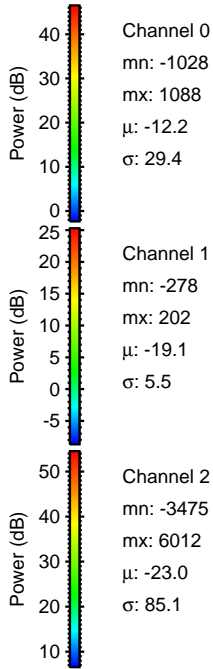
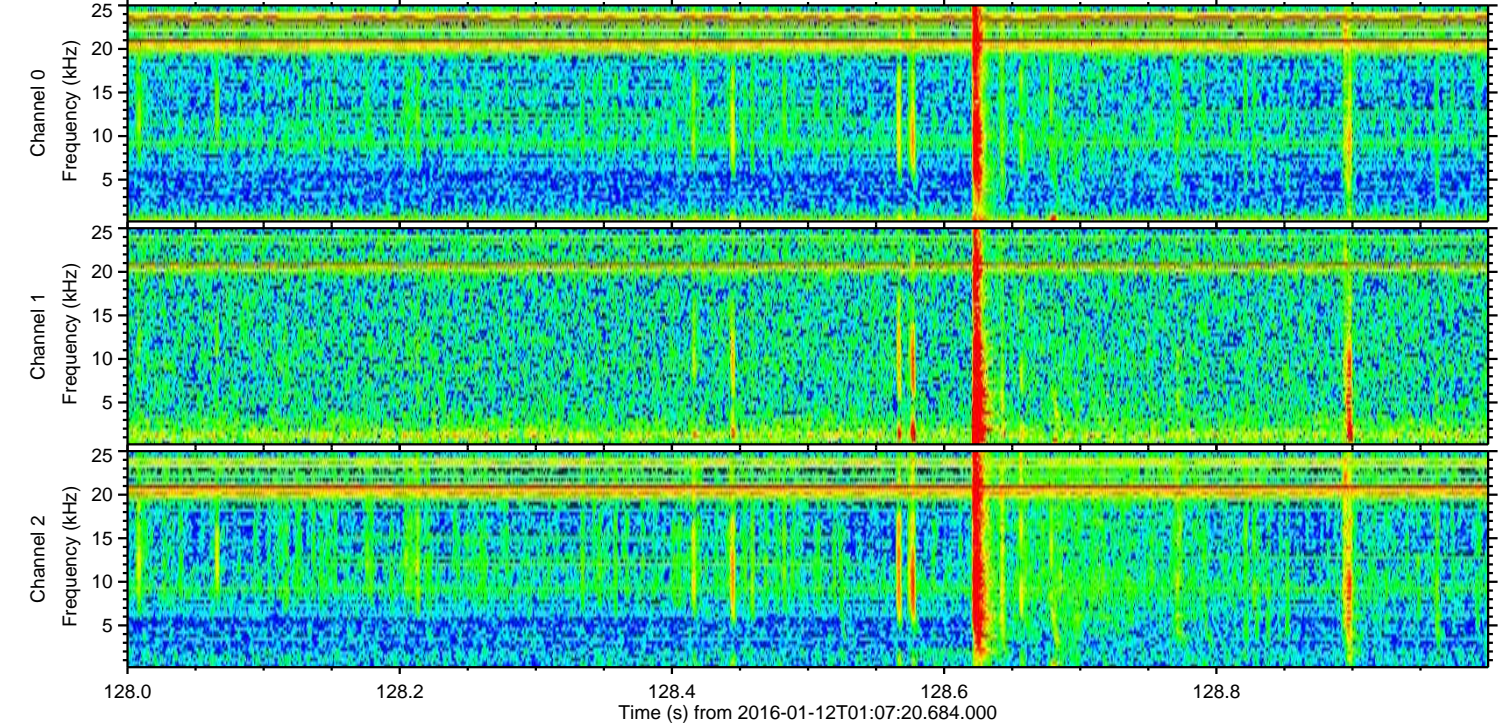
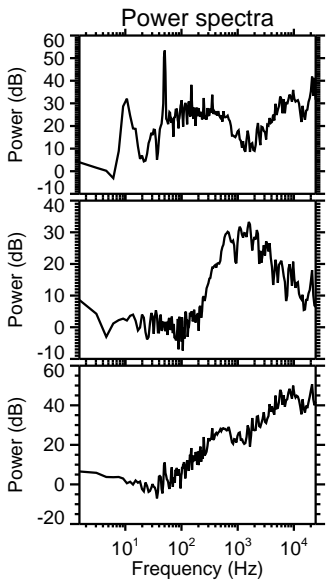
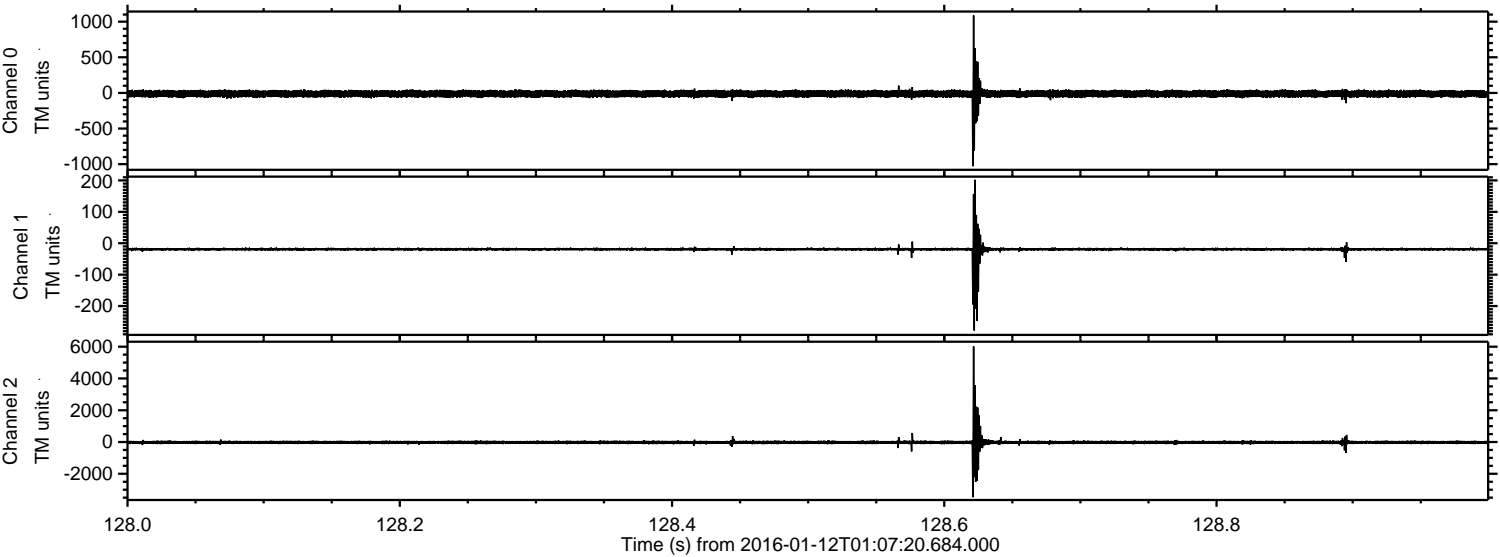
ELMAVAN 3D WAVEFORMS (Measured data sampled at 50 kHz) 51000 packets of 144 samples from 2016-01-12T01:07:20.684.000. Part 122/147

Processed Wed Mar 30 03:00:57 2016 by ELM ver.2012-10-06 from 001__elm20160112_010719__dat00.bin



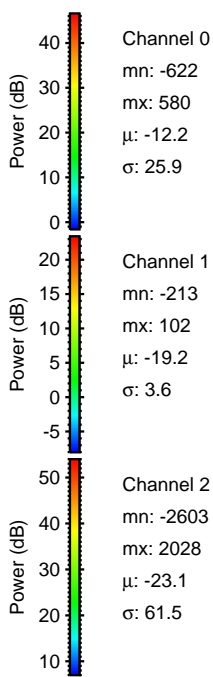
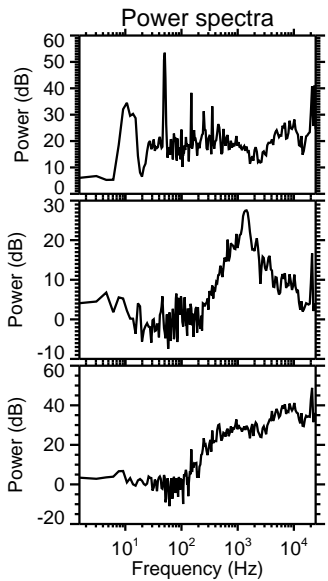
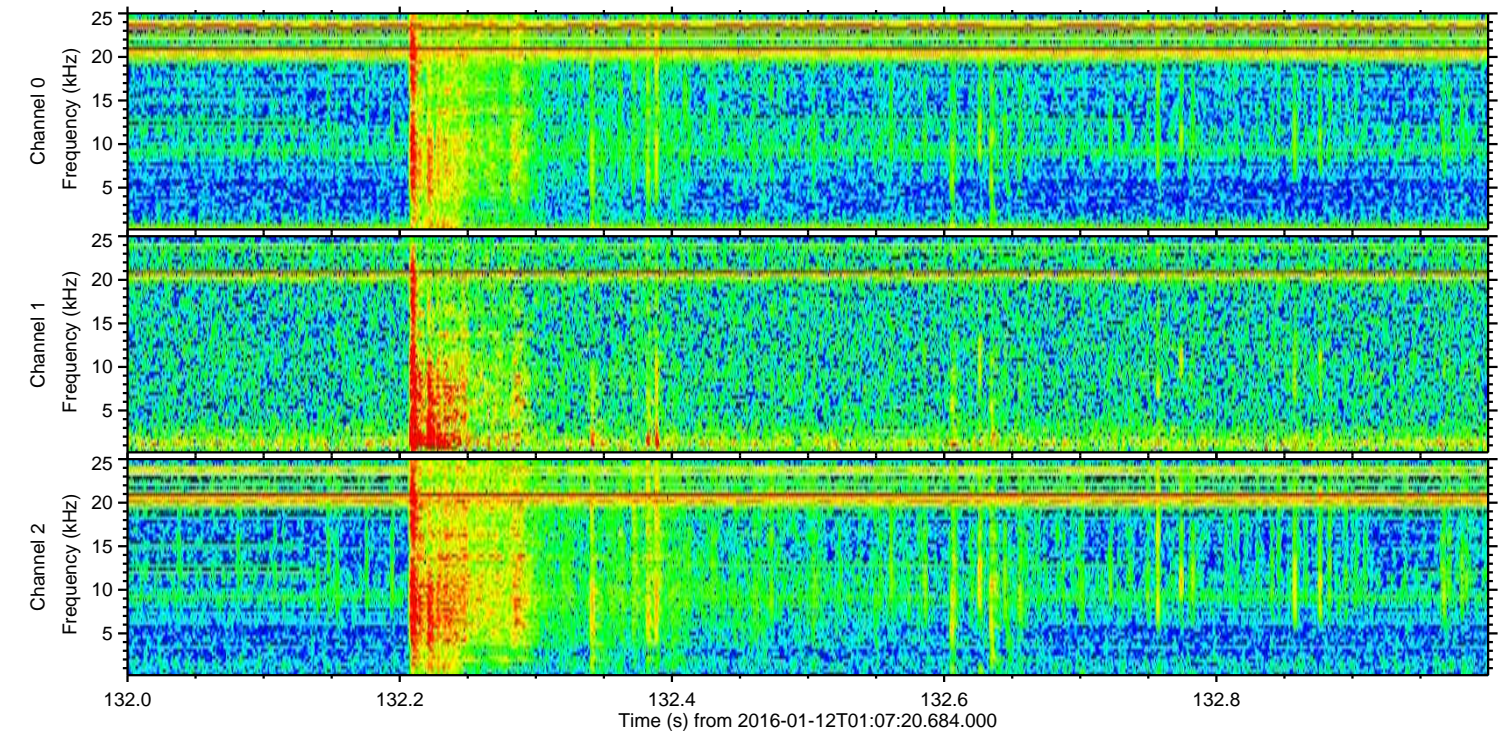
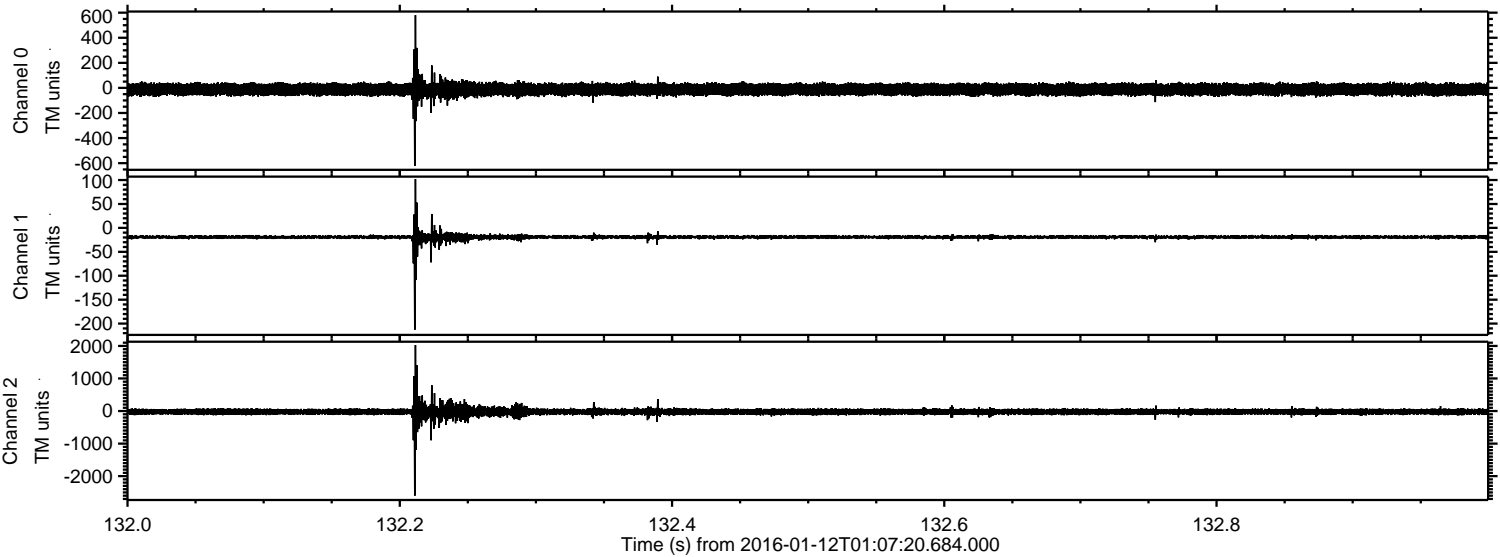
ELMAVAN 3D WAVEFORMS (Measured data sampled at 50 kHz) 51000 packets of 144 samples from 2016-01-12T01:07:20.684.000. Part 129/147

Processed Wed Mar 30 03:00:58 2016 by ELM ver.2012-10-06 from 001__elm20160112_010719__dat00.bin



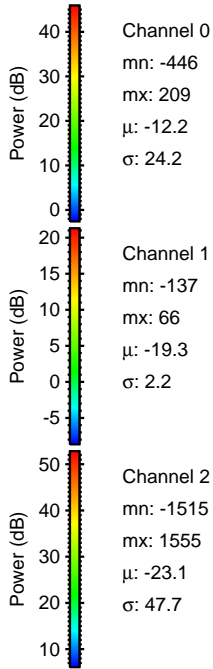
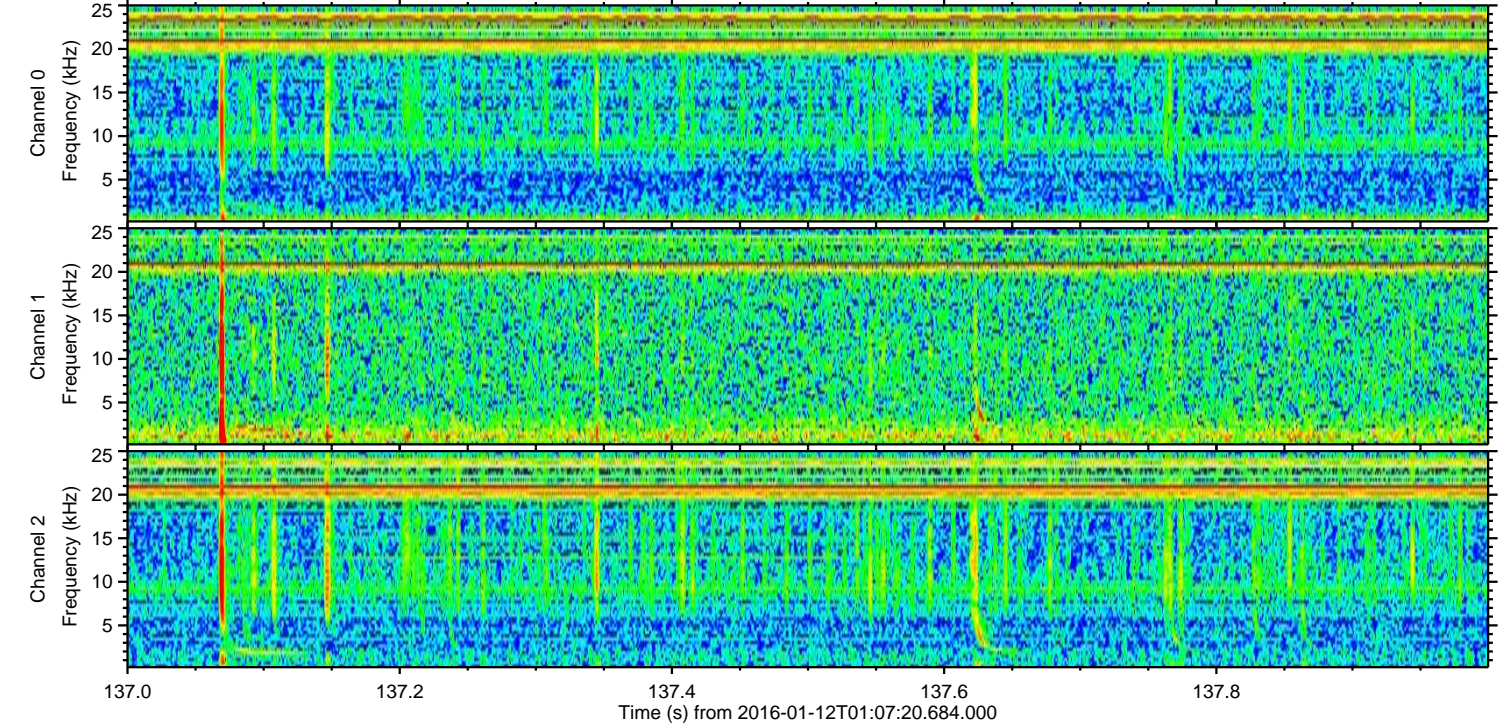
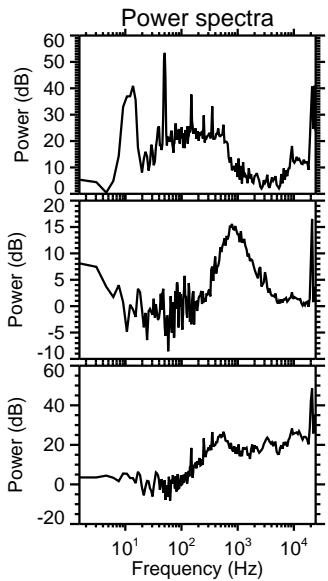
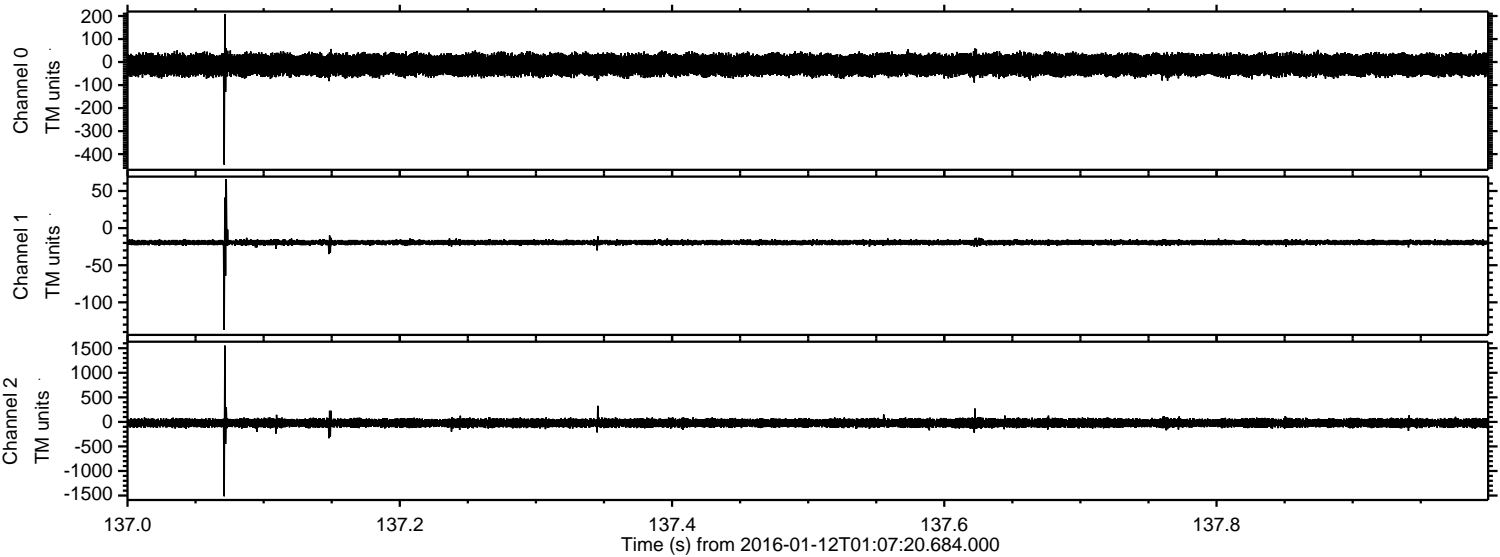
ELMAVAN 3D WAVEFORMS (Measured data sampled at 50 kHz) 51000 packets of 144 samples from 2016-01-12T01:07:20.684.000. Part 133/147

Processed Wed Mar 30 03:00:59 2016 by ELM ver.2012-10-06 from 001__elm20160112_010719__dat00.bin

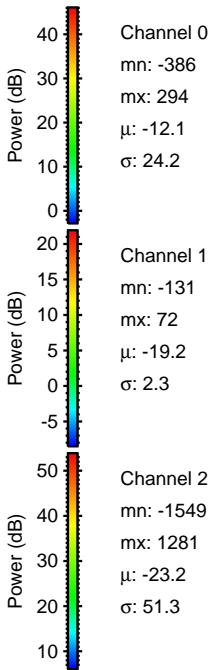
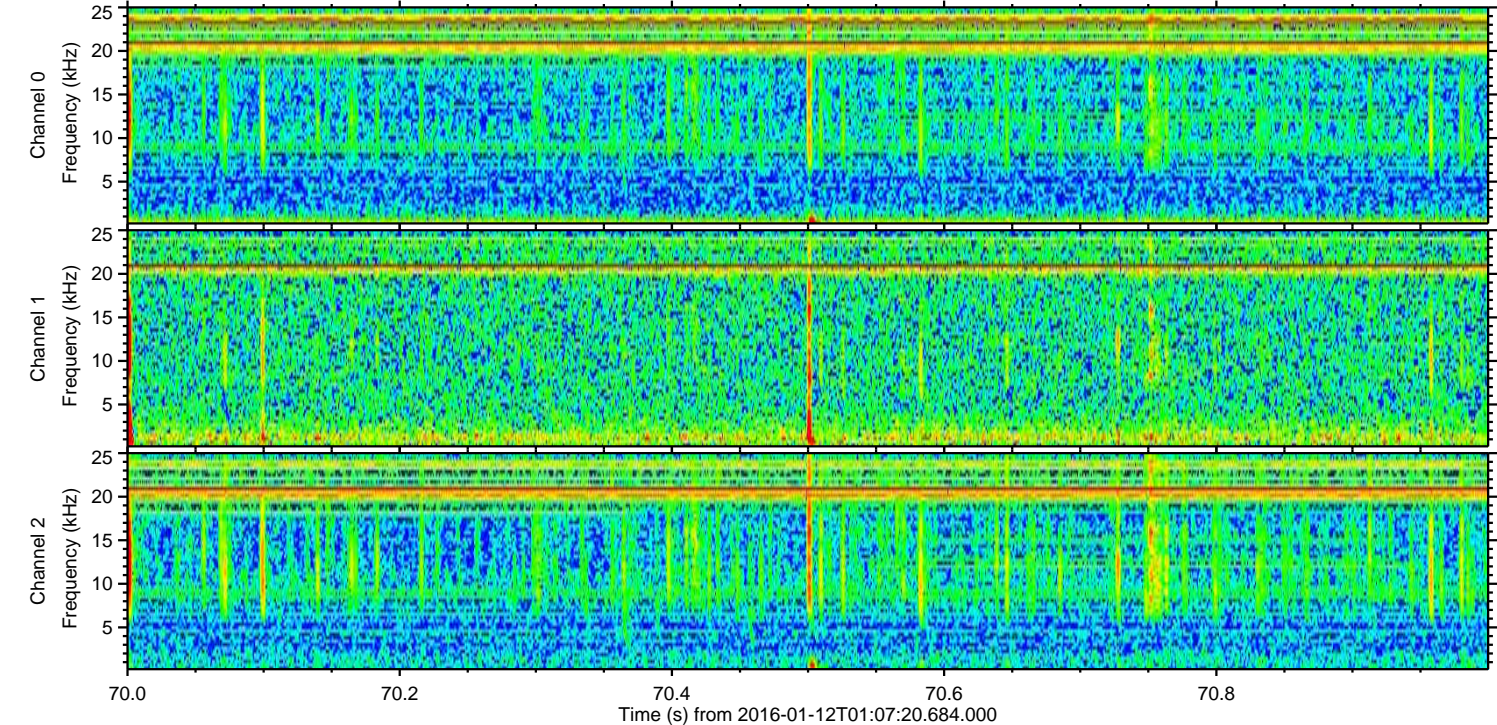
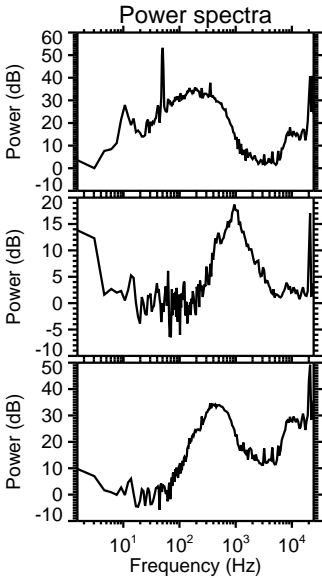
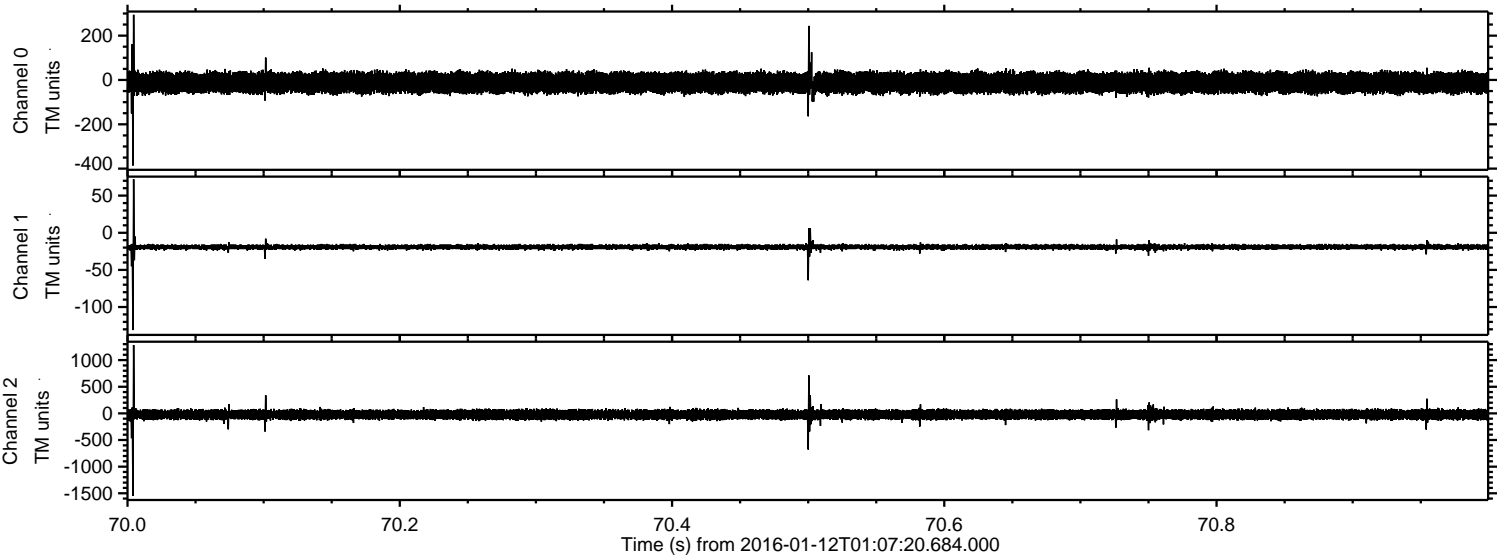


ELMAVAN 3D WAVEFORMS (Measured data sampled at 50 kHz) 51000 packets of 144 samples from 2016-01-12T01:07:20.684.000. Part 138/147

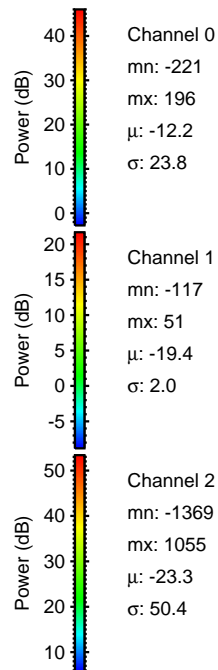
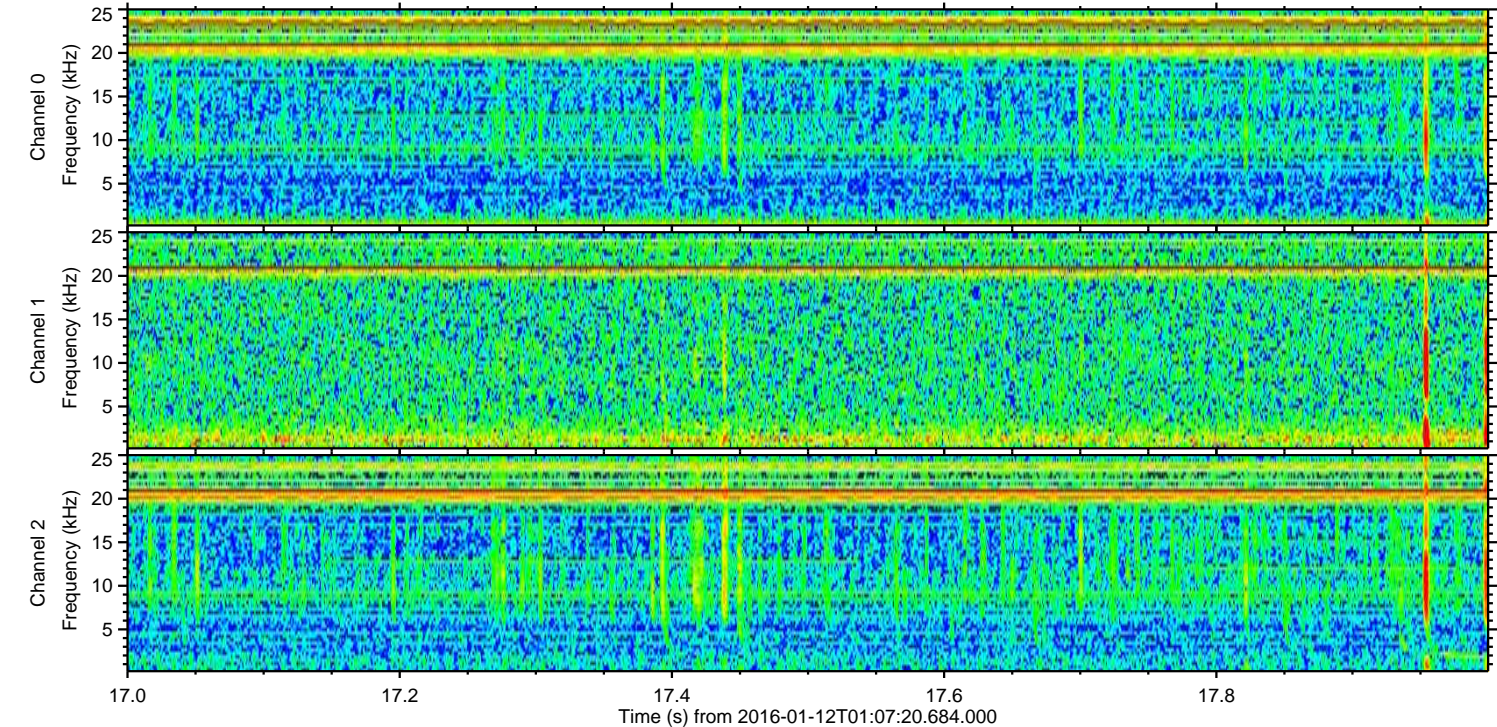
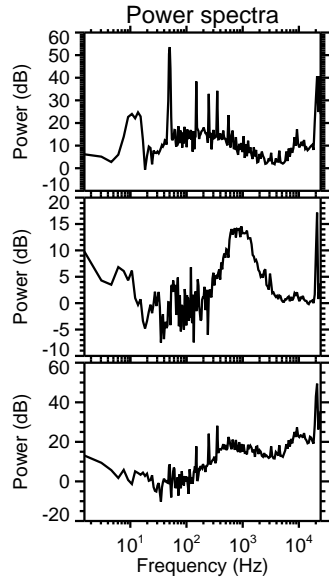
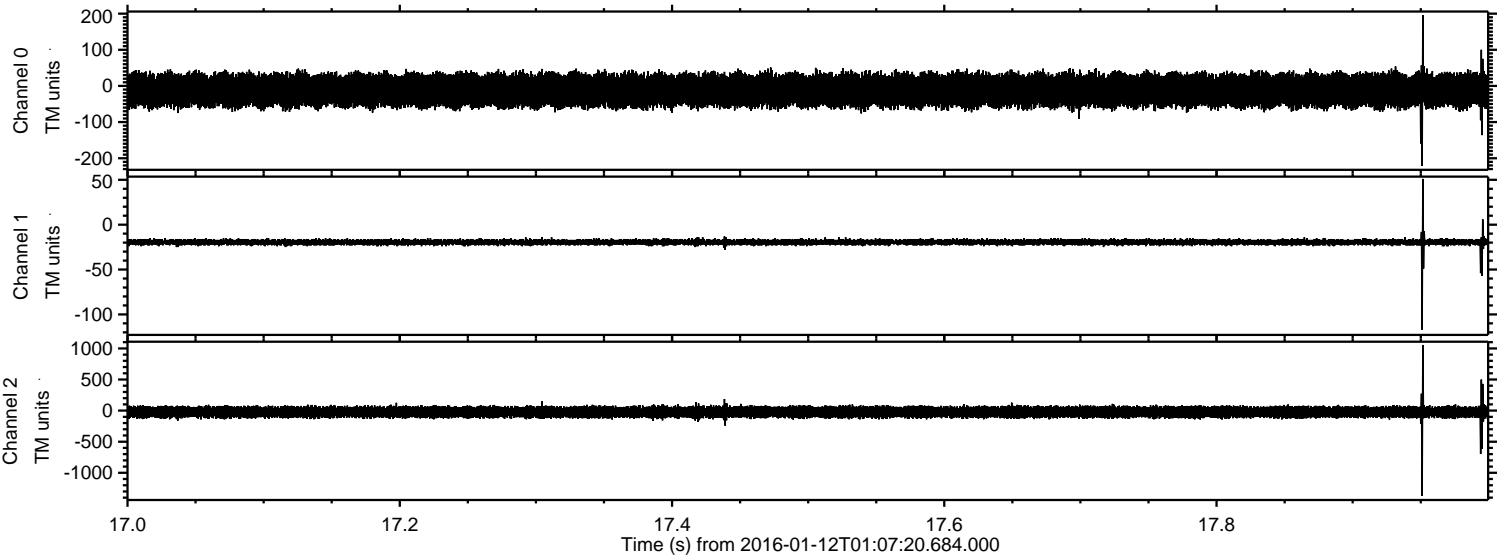
Processed Wed Mar 30 03:01:00 2016 by ELM ver.2012-10-06 from 001__elm20160112_010719__dat00.bin



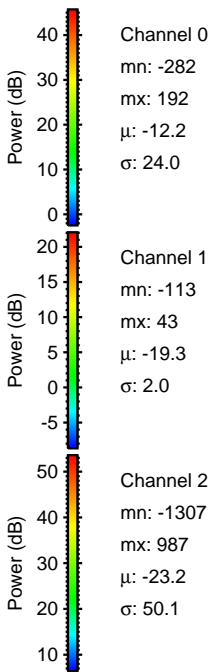
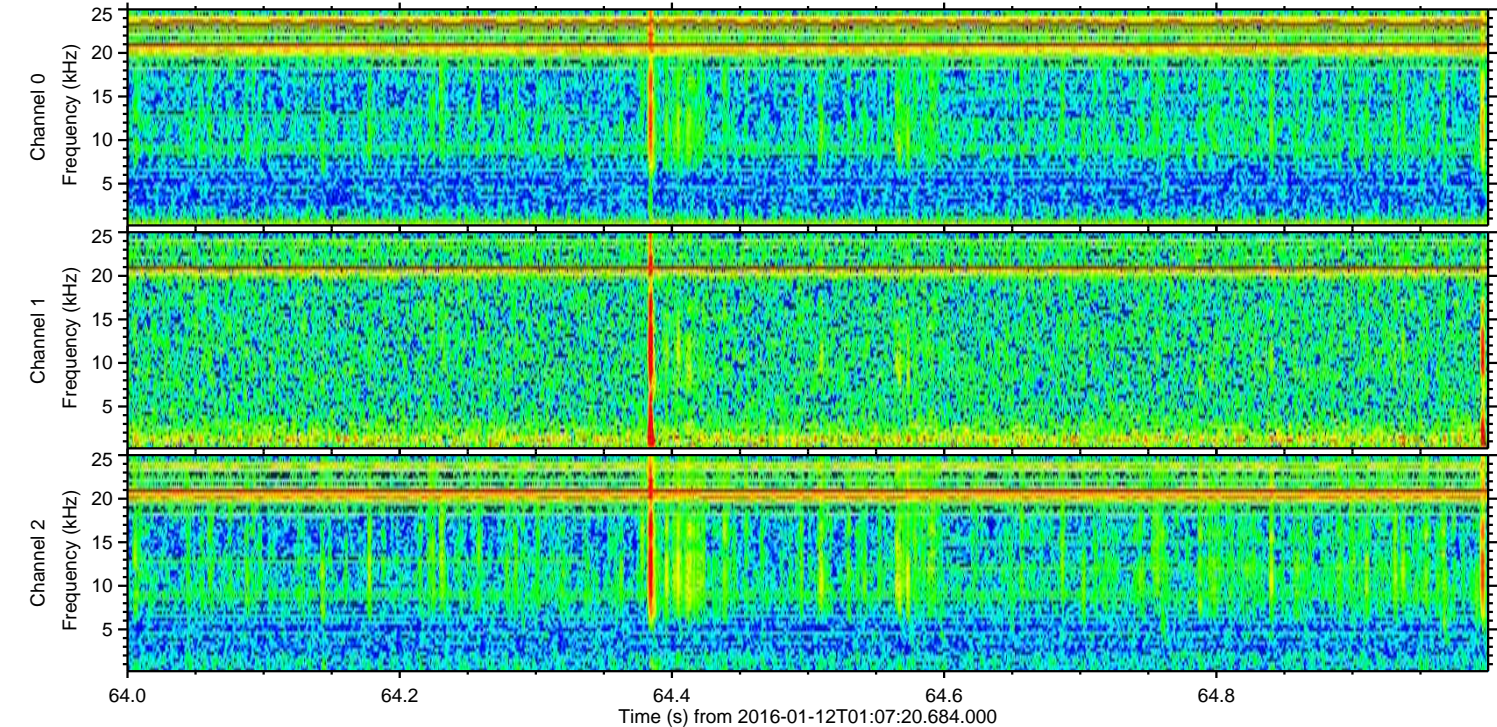
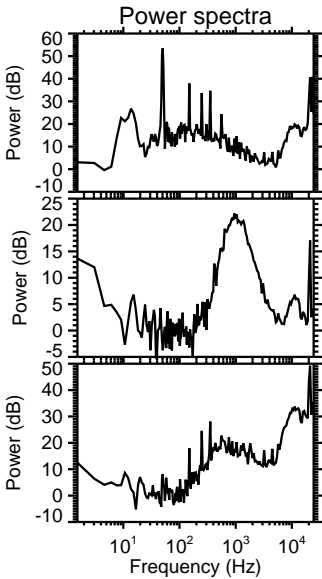
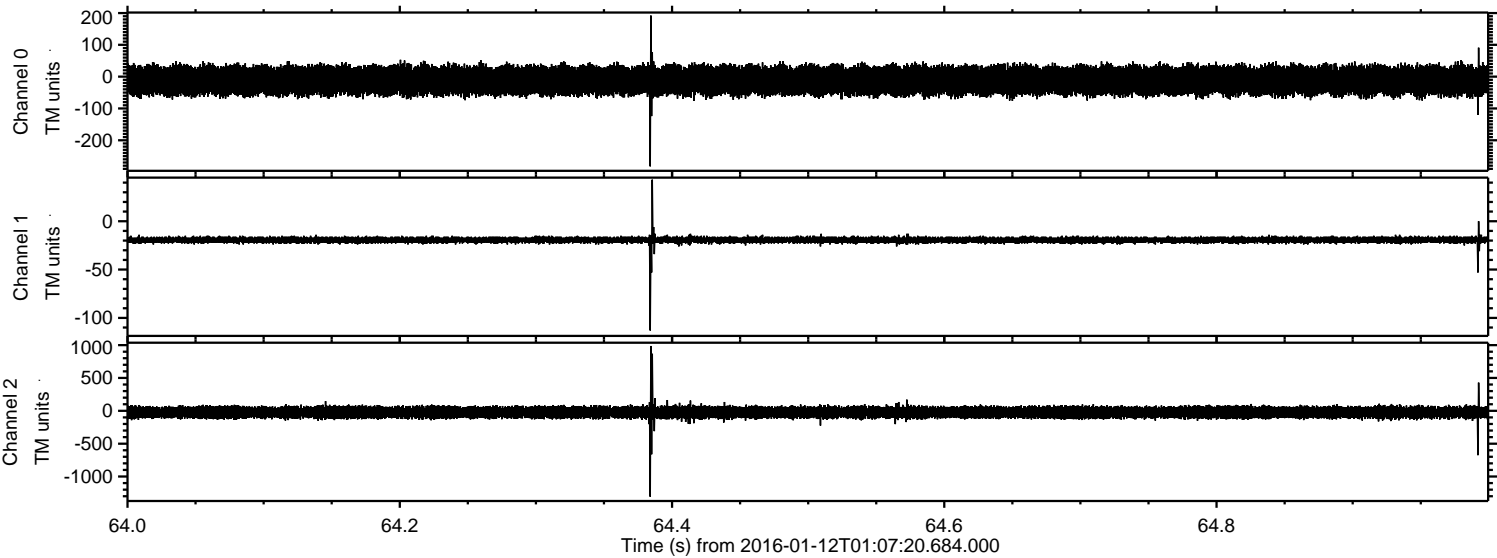
Processed Wed Mar 30 03:01:01 2016 by ELM ver.2012-10-06 from 001__elm20160112_010719__dat00.bin



Processed Wed Mar 30 03:01:01 2016 by ELM ver.2012-10-06 from 001__elm20160112_010719__dat00.bin



Processed Wed Mar 30 03:01:02 2016 by ELM ver.2012-10-06 from 001__elm20160112_010719__dat00.bin



Processed Wed Mar 30 03:01:03 2016 by ELM ver.2012-10-06 from 001__elm20160112_010719__dat00.bin

