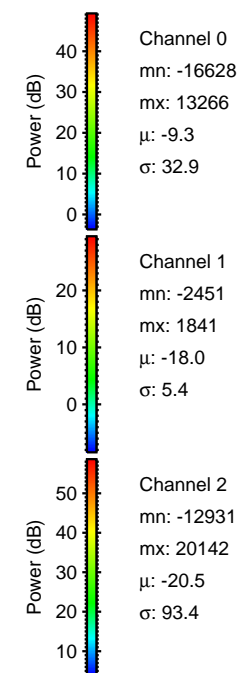
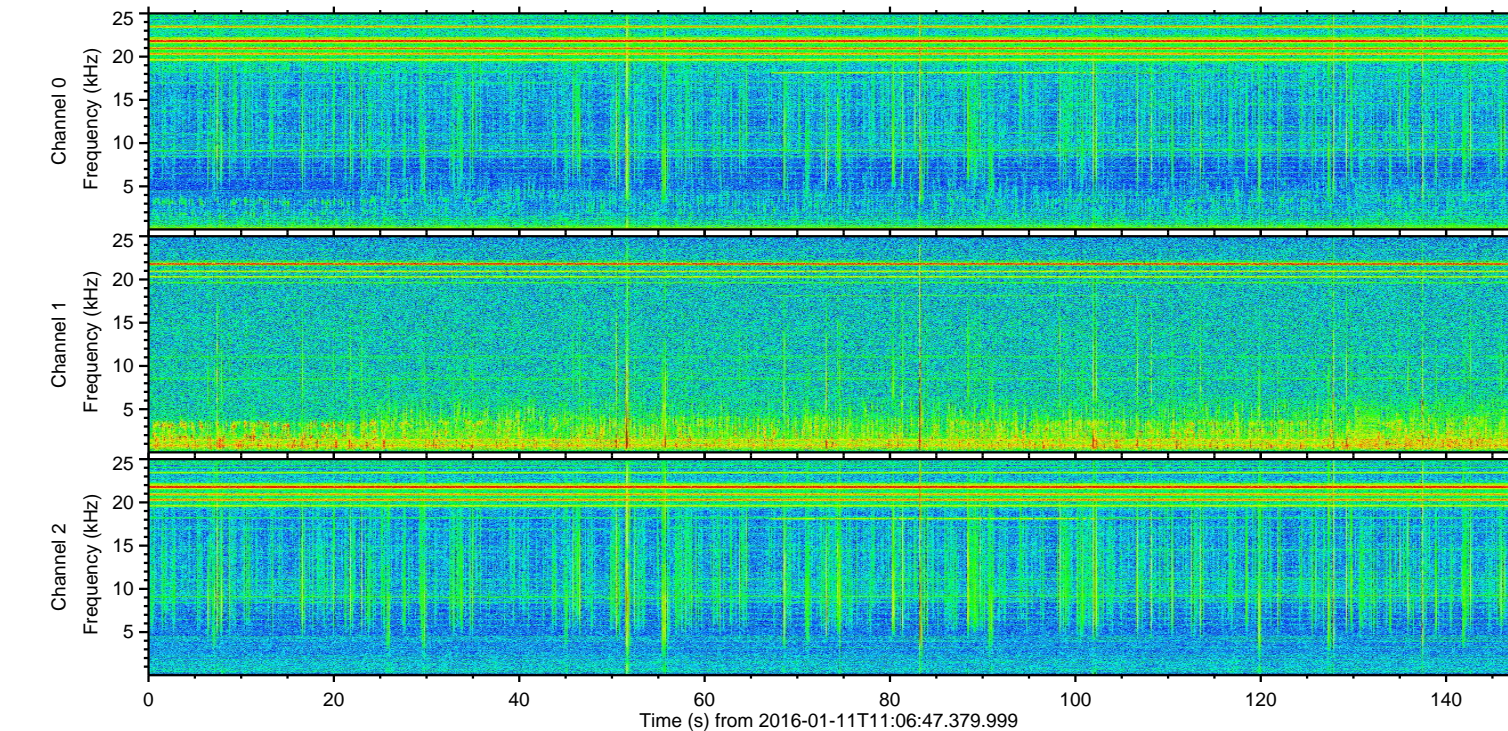
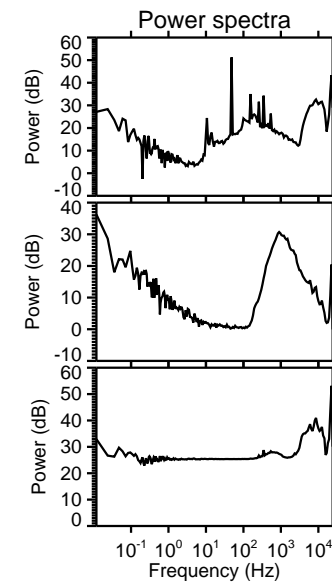
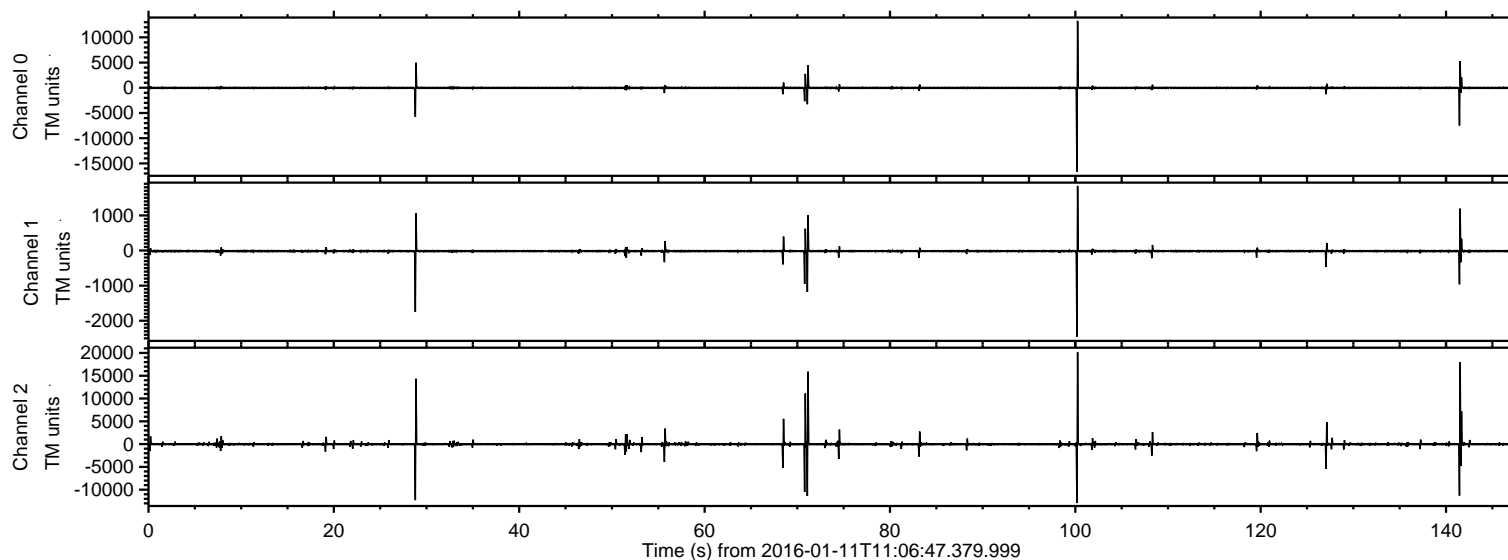


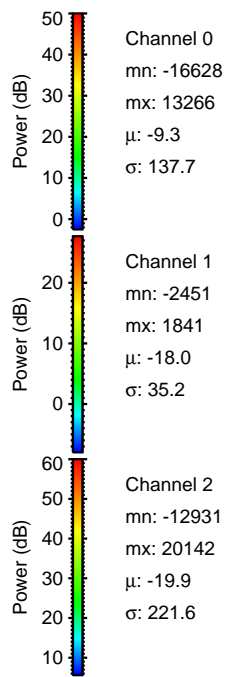
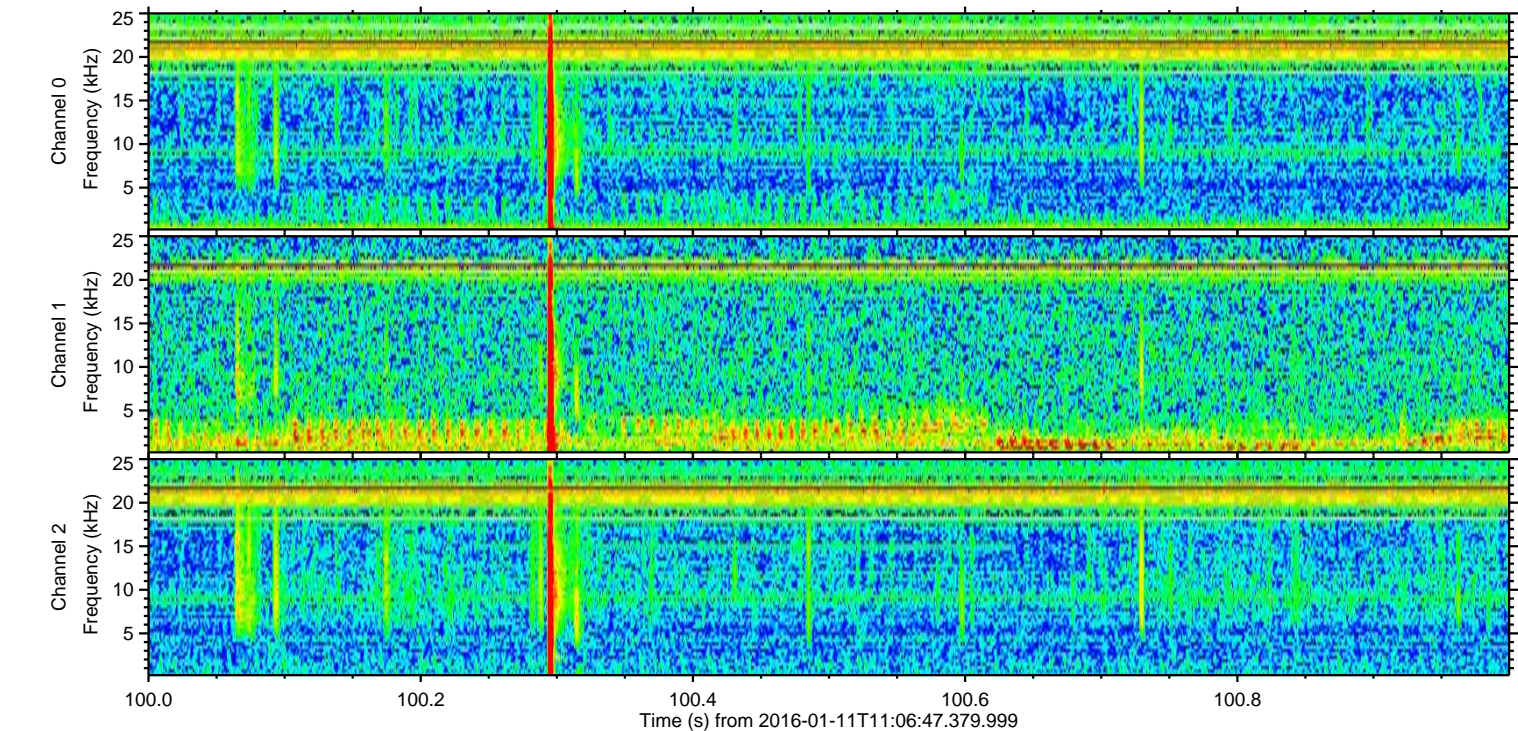
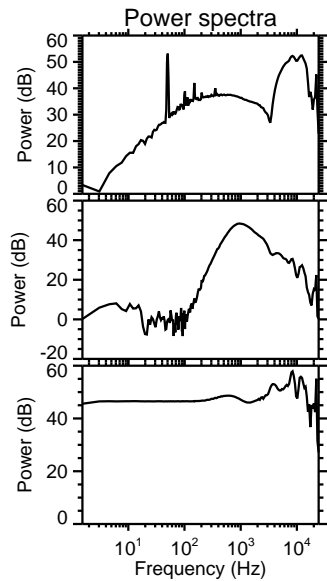
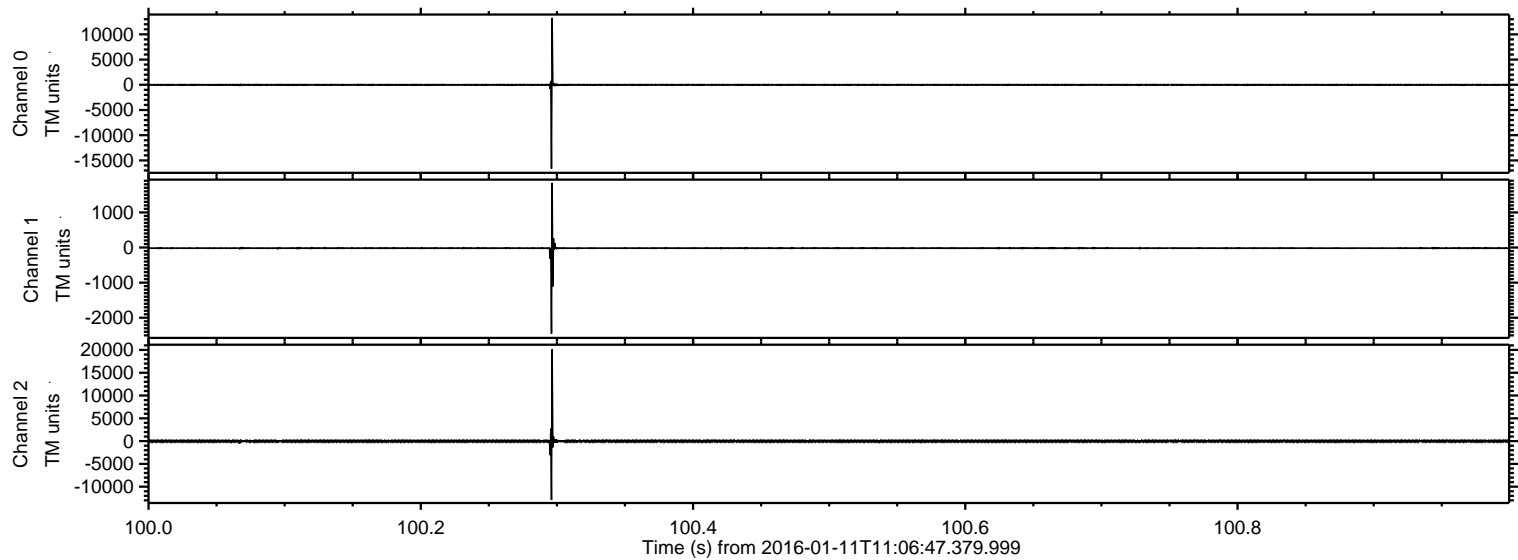
ELMAVAN 3D WAVEFORMS (Measured data sampled at 50 kHz) 51000 packets of 144 samples from 2016-01-11T11:06:47.379.999.

Processed Wed Mar 30 00:20:23 2016 by ELM ver.2012-10-06 from 001__elm20160111_110646__dat00.bin



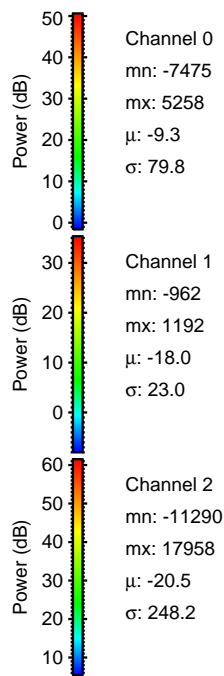
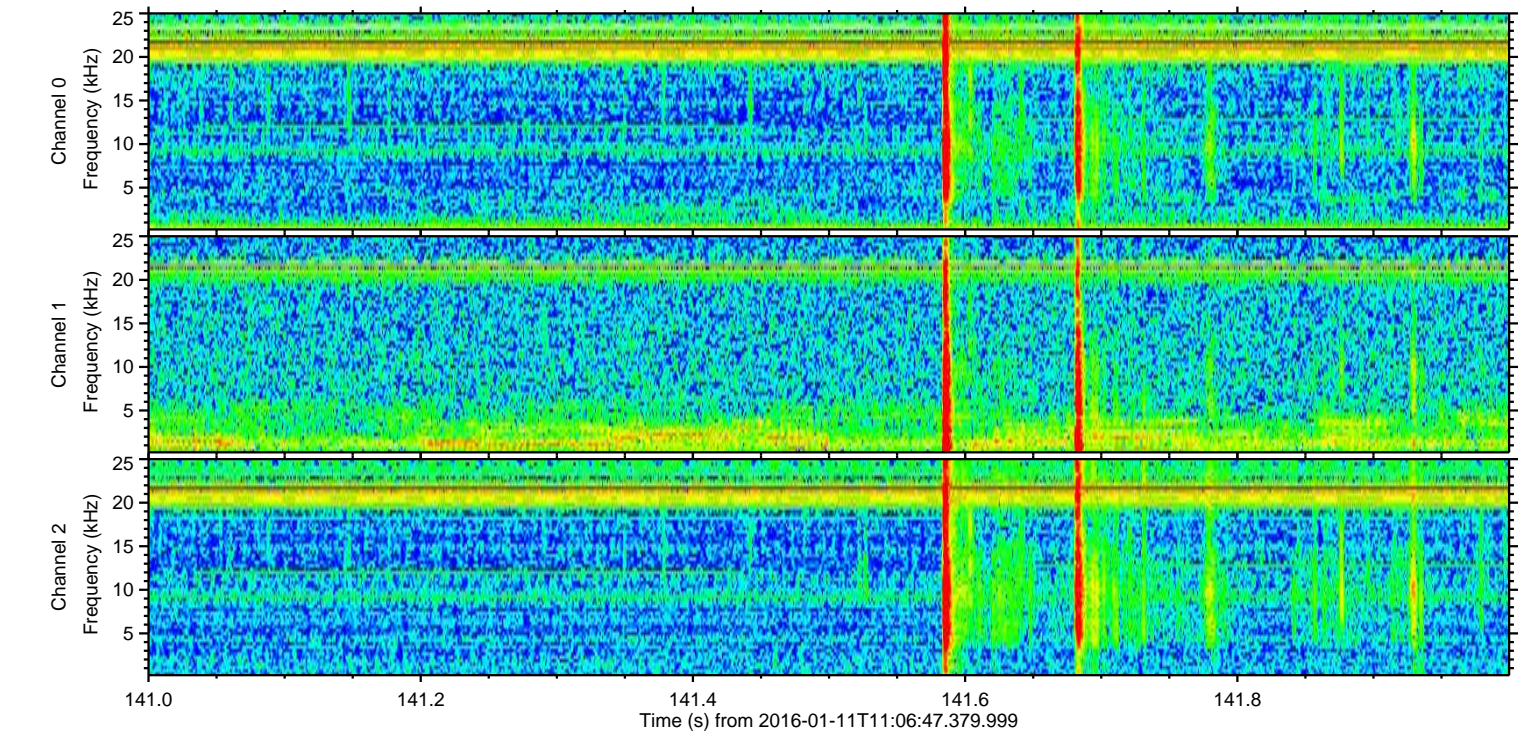
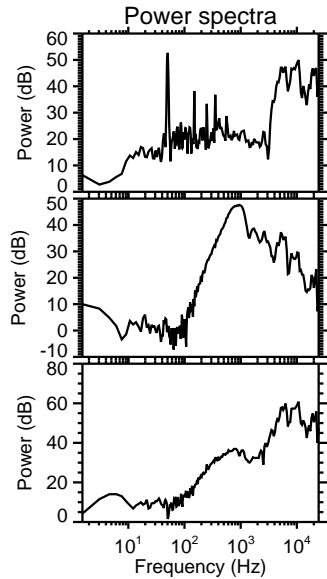
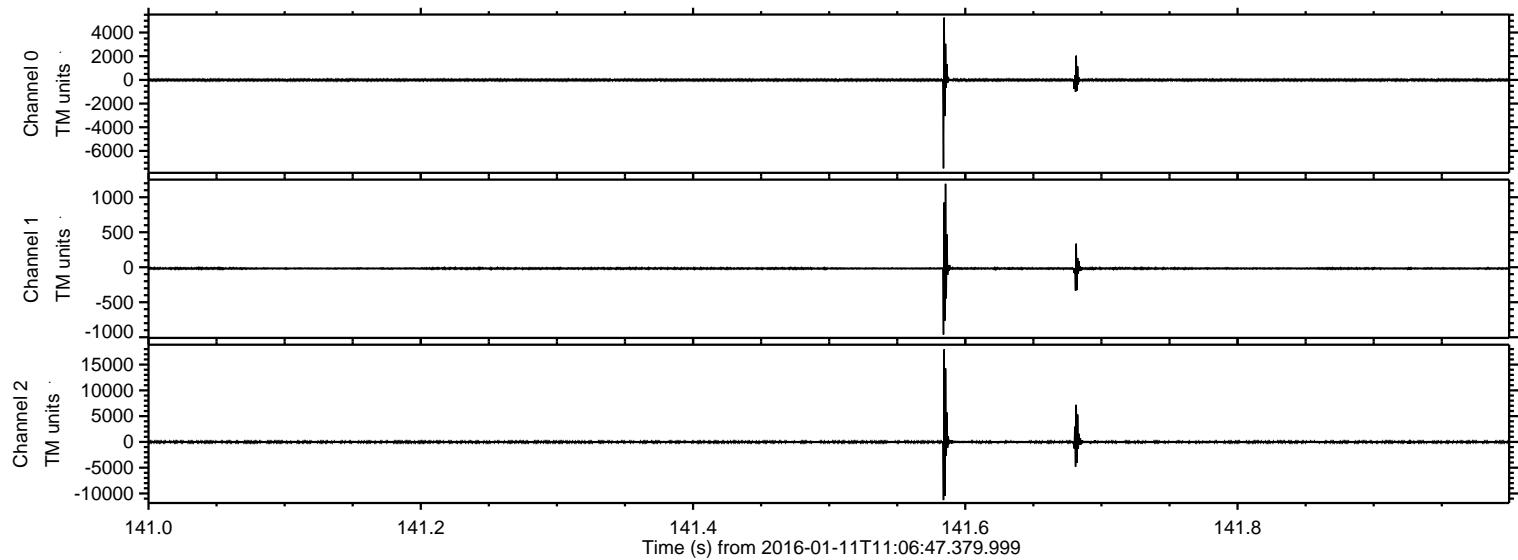
ELMAVAN 3D WAVEFORMS (Measured data sampled at 50 kHz) 51000 packets of 144 samples from 2016-01-11T11:06:47.379.999. Part 101/147

Processed Wed Mar 30 00:20:35 2016 by ELM ver.2012-10-06 from 001__elm20160111_110646__dat00.bin



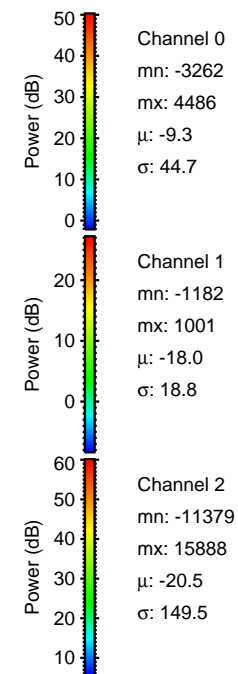
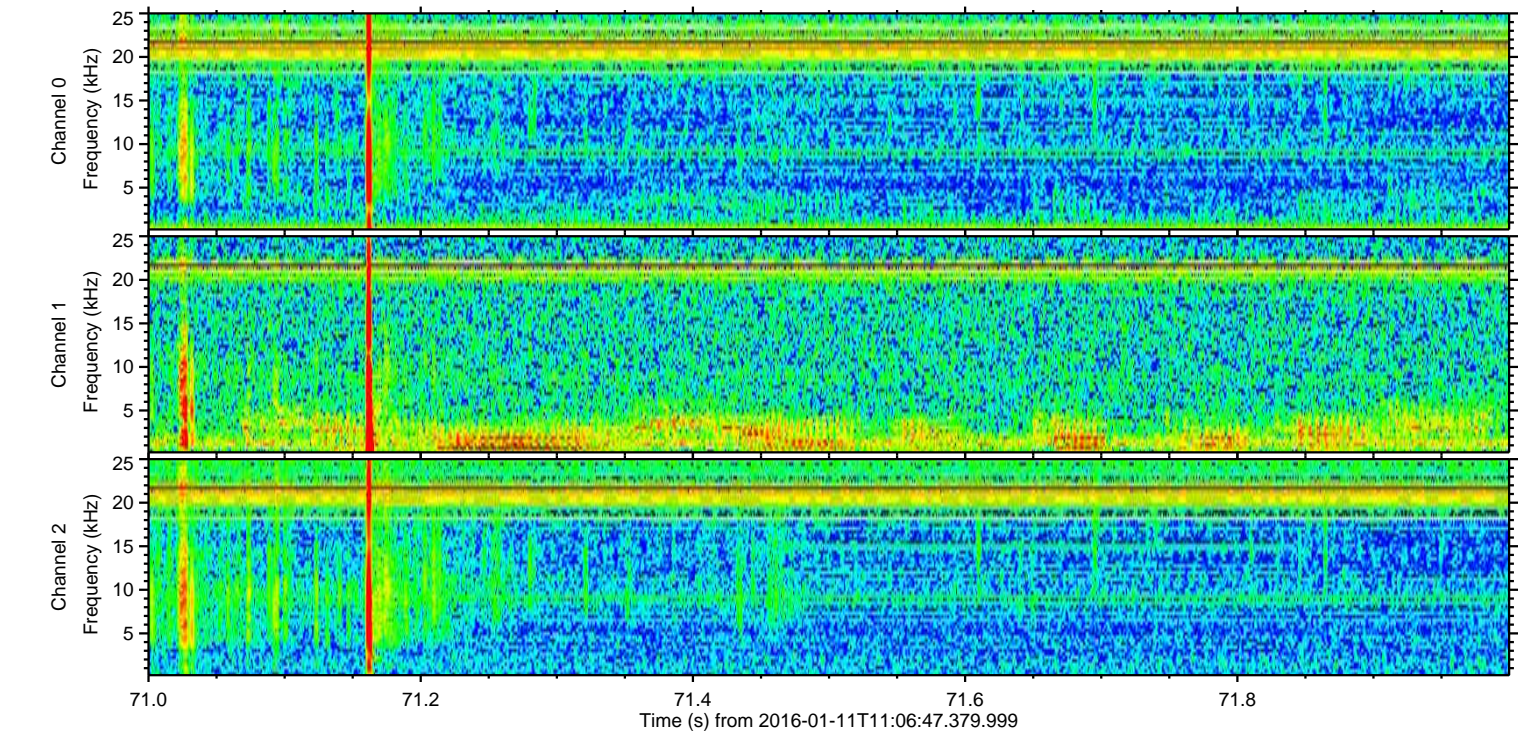
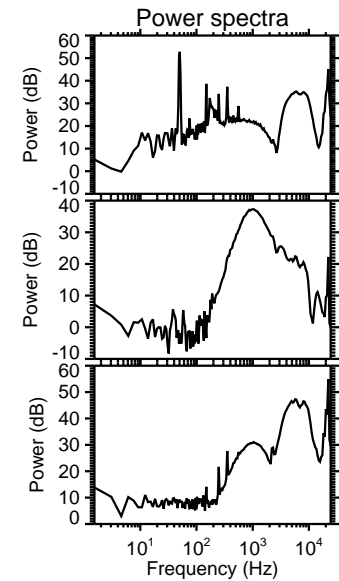
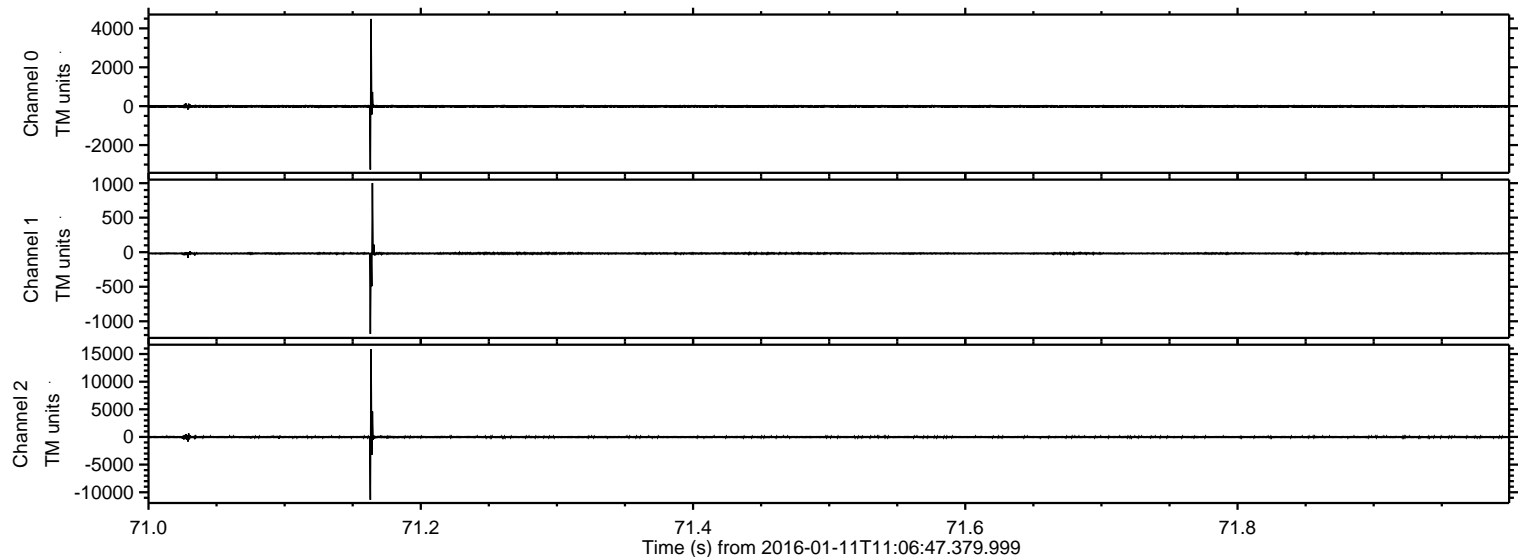
ELMAVAN 3D WAVEFORMS (Measured data sampled at 50 kHz) 51000 packets of 144 samples from 2016-01-11T11:06:47.379.999. Part 142/147

Processed Wed Mar 30 00:20:36 2016 by ELM ver.2012-10-06 from 001__elm20160111_110646__dat00.bin

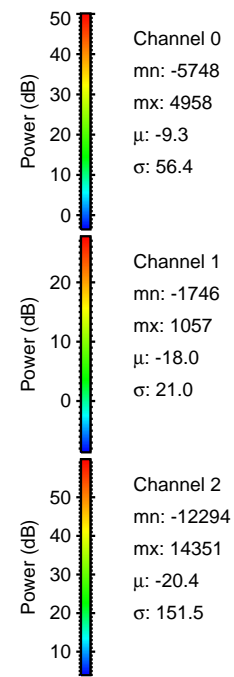
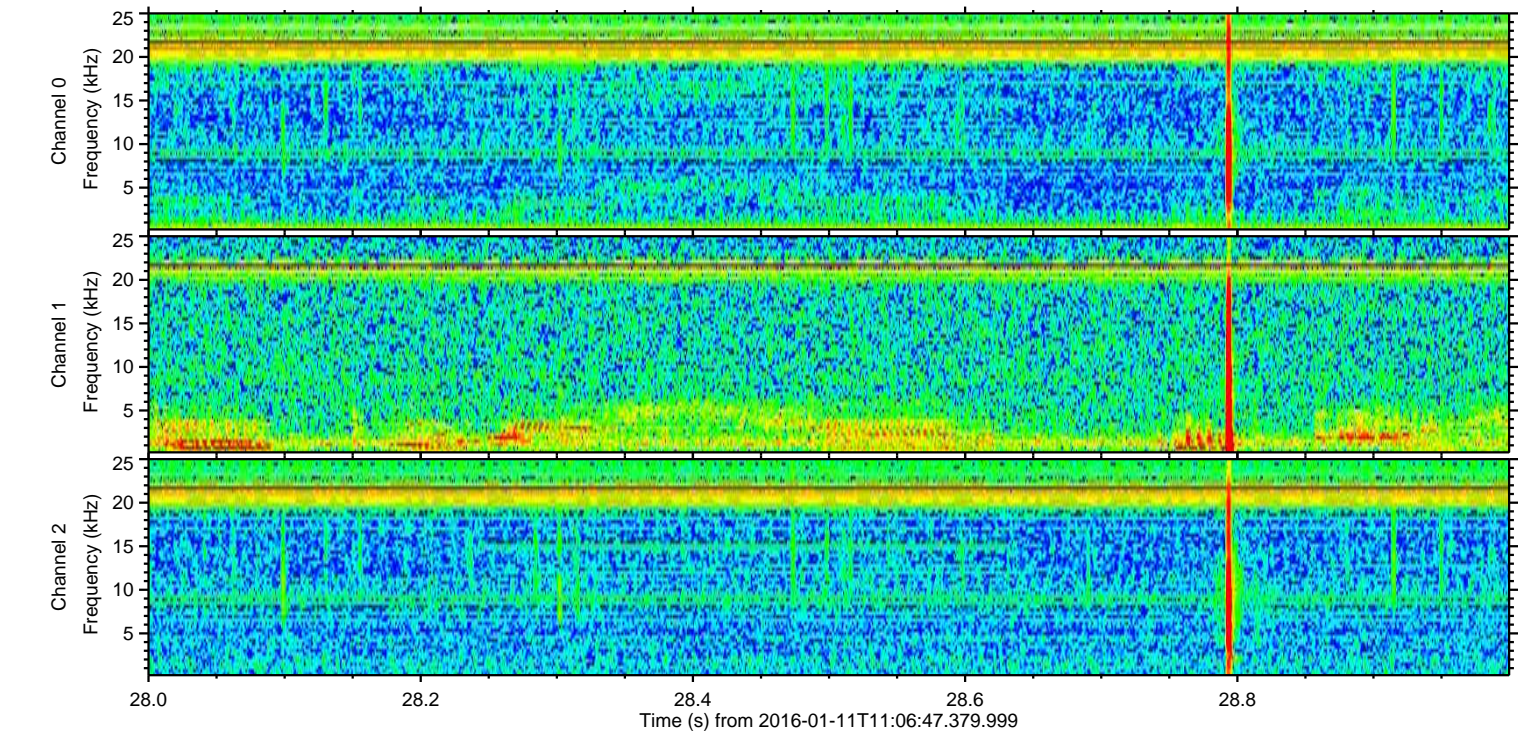
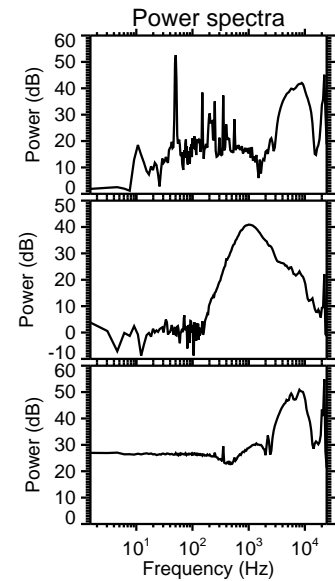
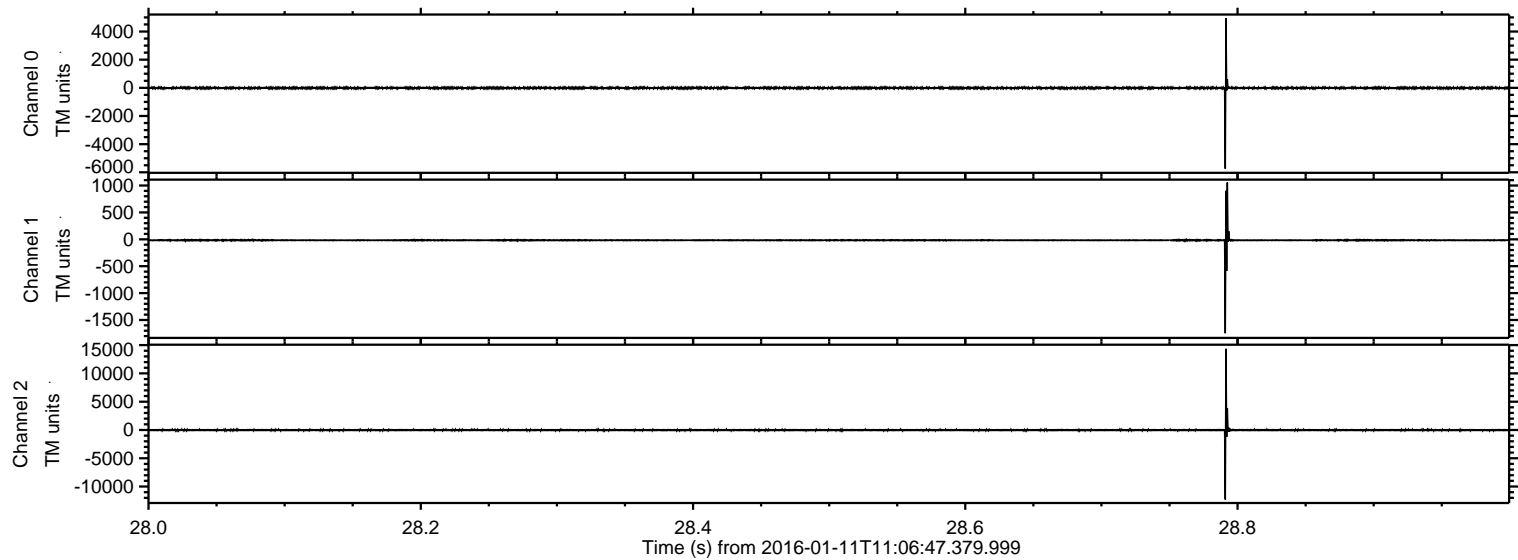


ELMAVAN 3D WAVEFORMS (Measured data sampled at 50 kHz) 51000 packets of 144 samples from 2016-01-11T11:06:47.379.999. Part 72/147

Processed Wed Mar 30 00:20:37 2016 by ELM ver.2012-10-06 from 001__elm20160111_110646__dat00.bin

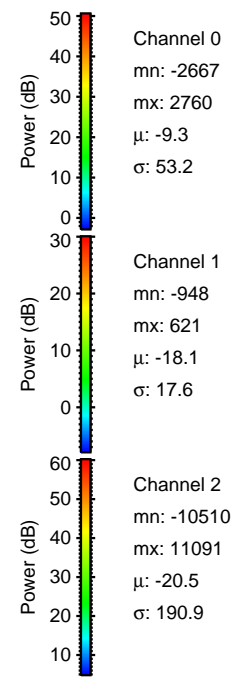
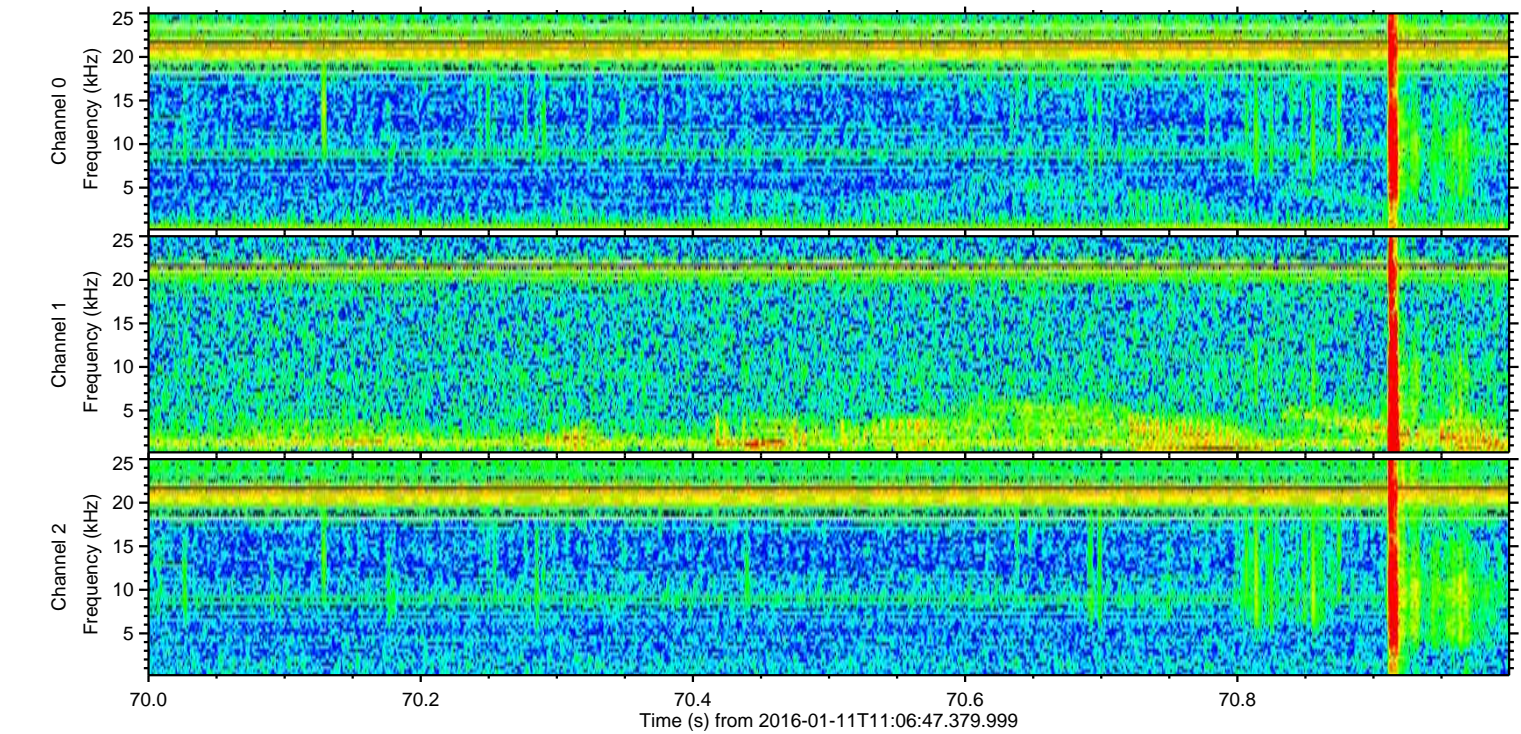
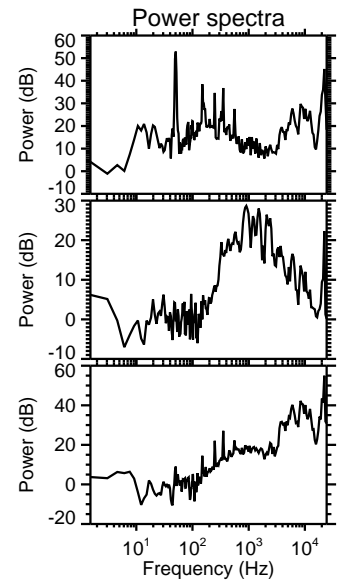
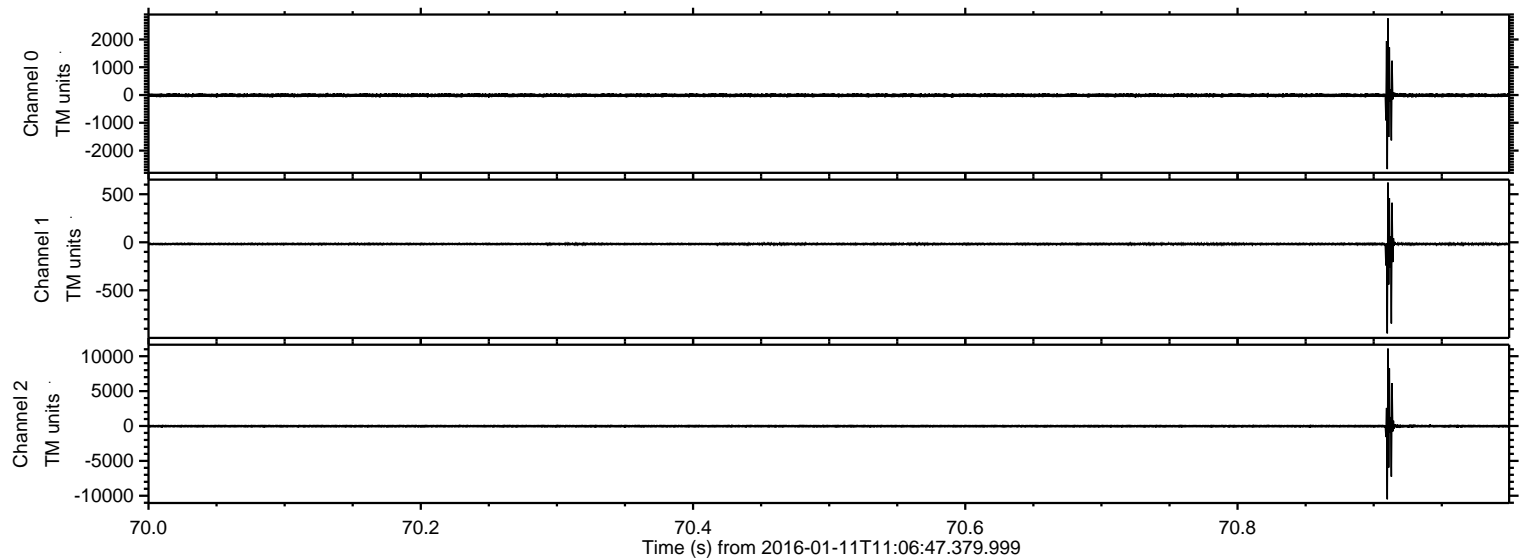


Processed Wed Mar 30 00:20:38 2016 by ELM ver.2012-10-06 from 001__elm20160111_110646__dat00.bin

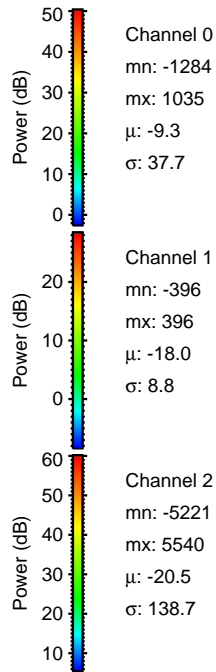
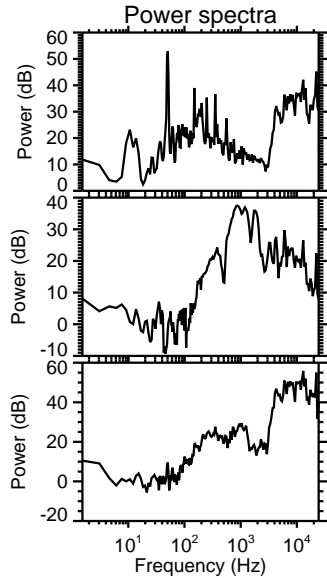
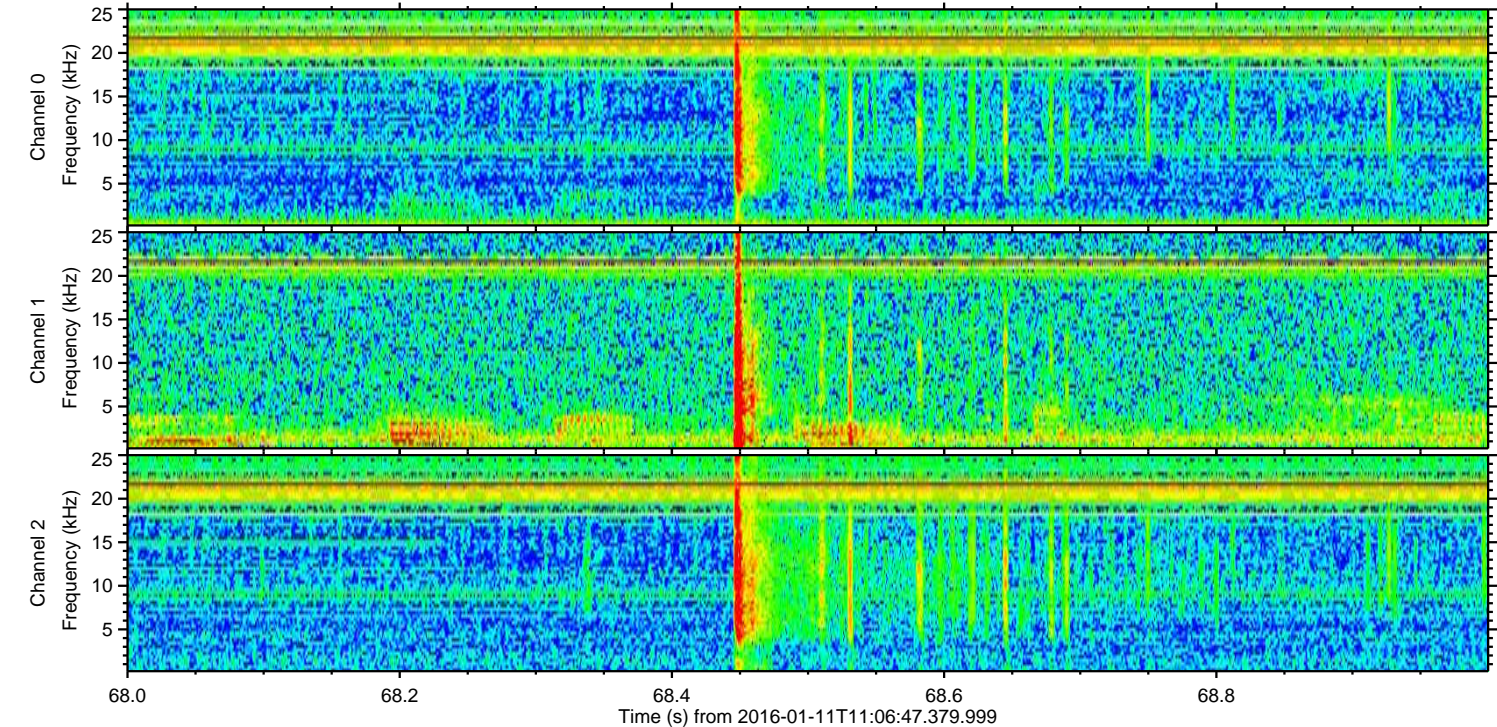
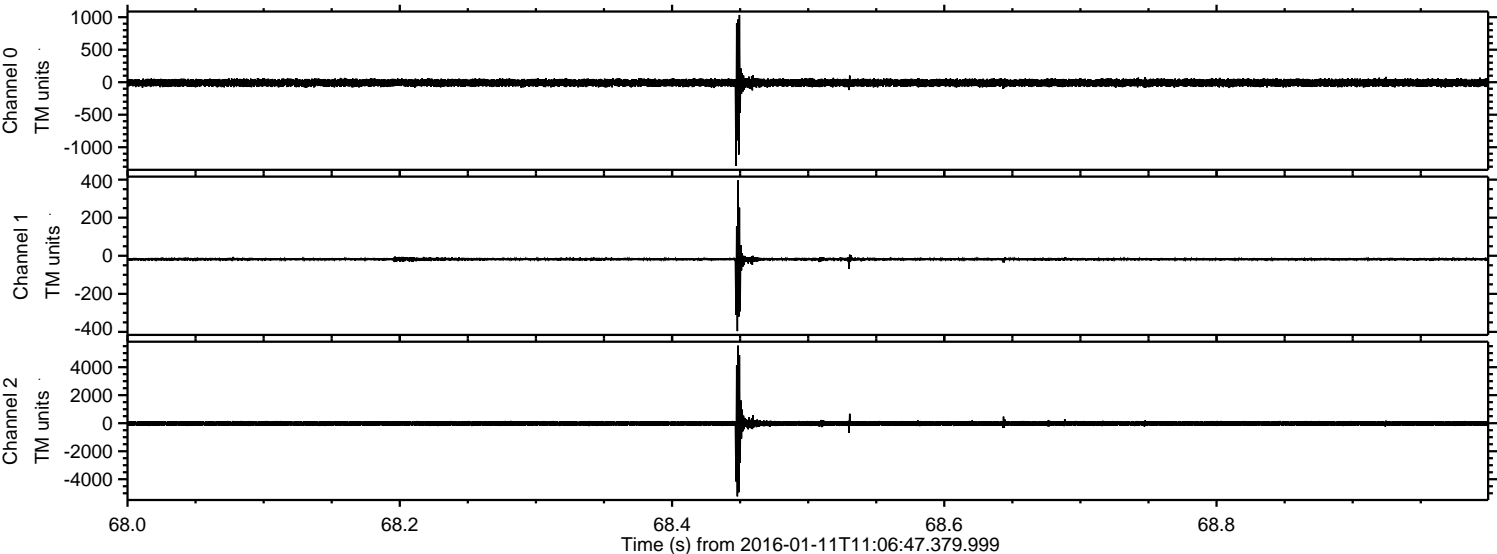


ELMAVAN 3D WAVEFORMS (Measured data sampled at 50 kHz) 51000 packets of 144 samples from 2016-01-11T11:06:47.379.999. Part 71/147

Processed Wed Mar 30 00:20:39 2016 by ELM ver.2012-10-06 from 001__elm20160111_110646__dat00.bin

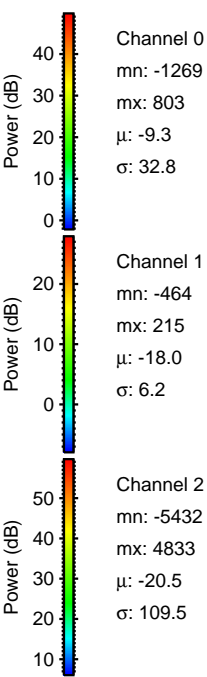
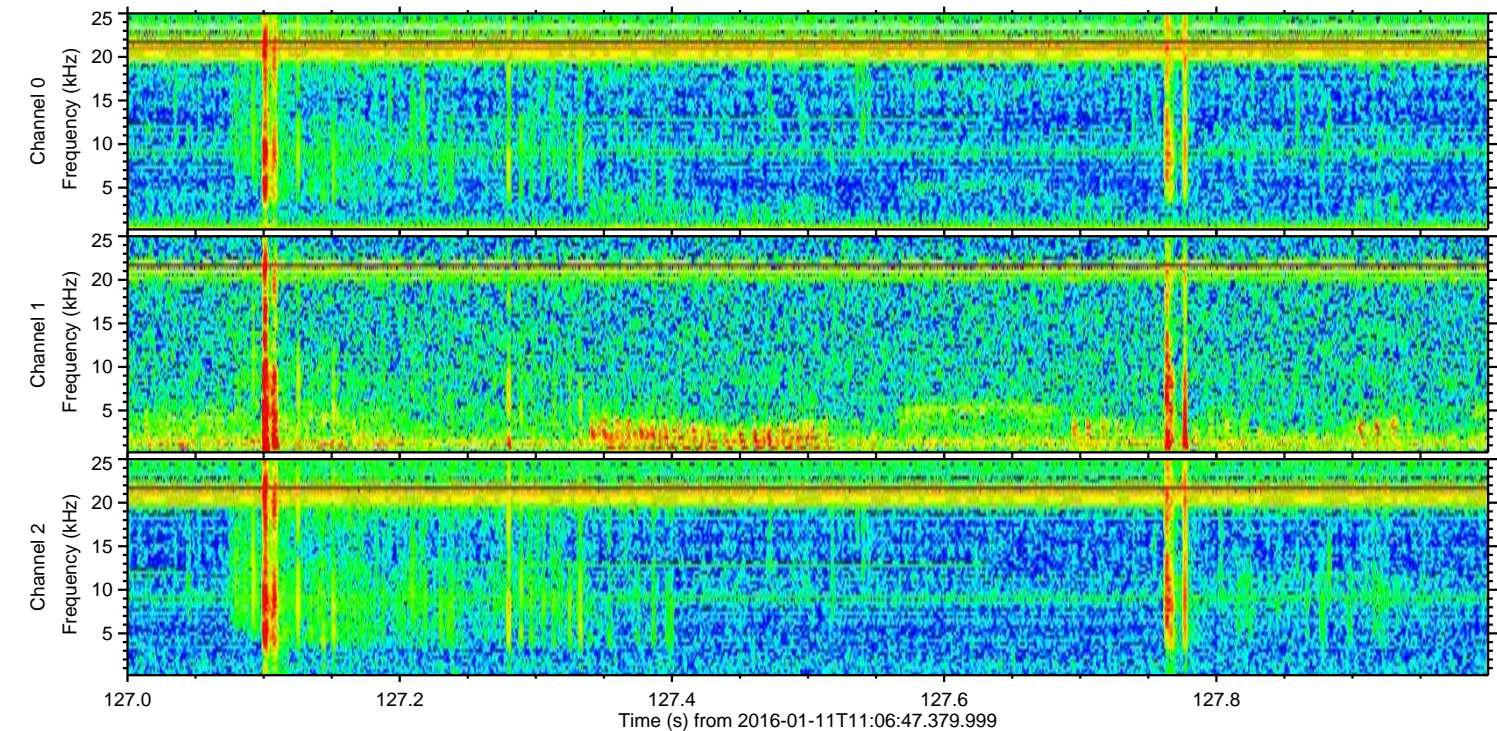
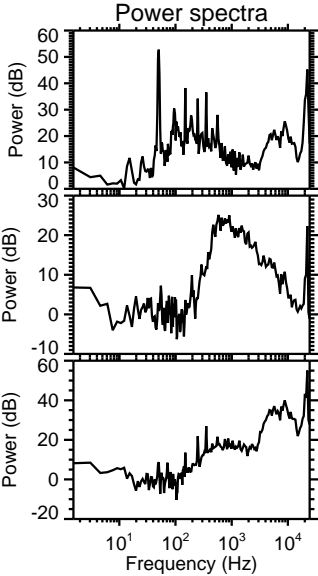
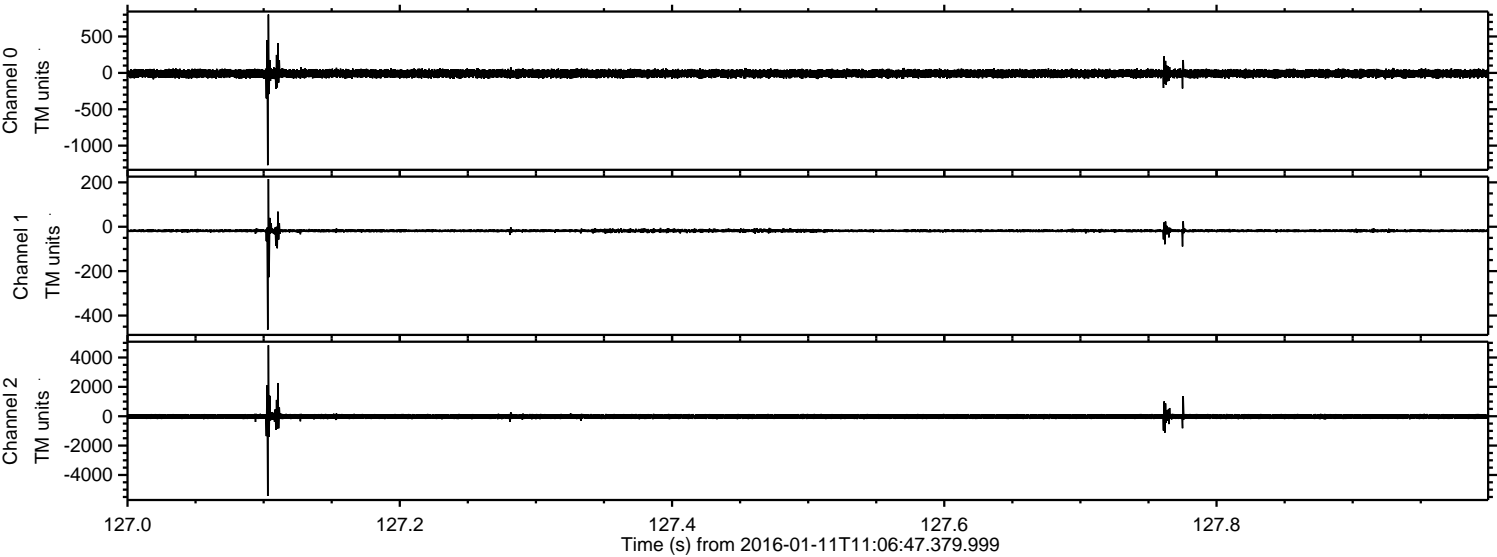


Processed Wed Mar 30 00:20:40 2016 by ELM ver.2012-10-06 from 001__elm20160111_110646__dat00.bin

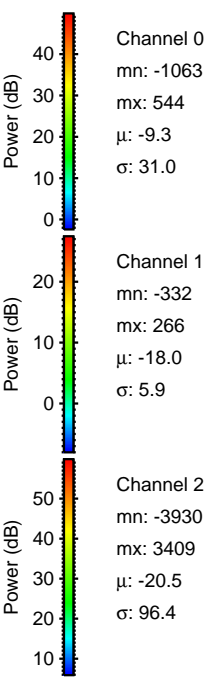
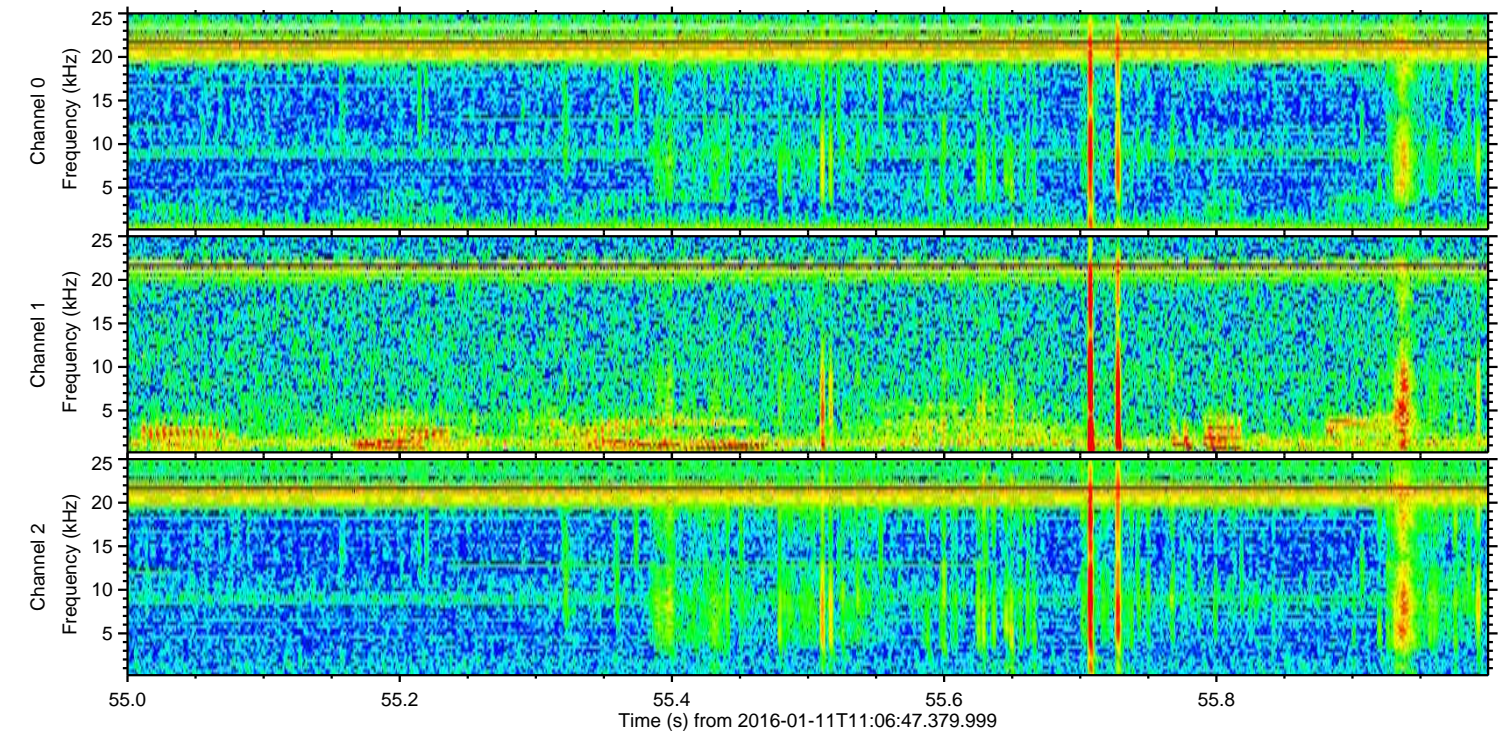
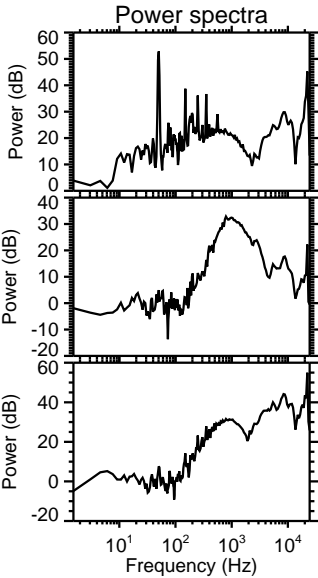
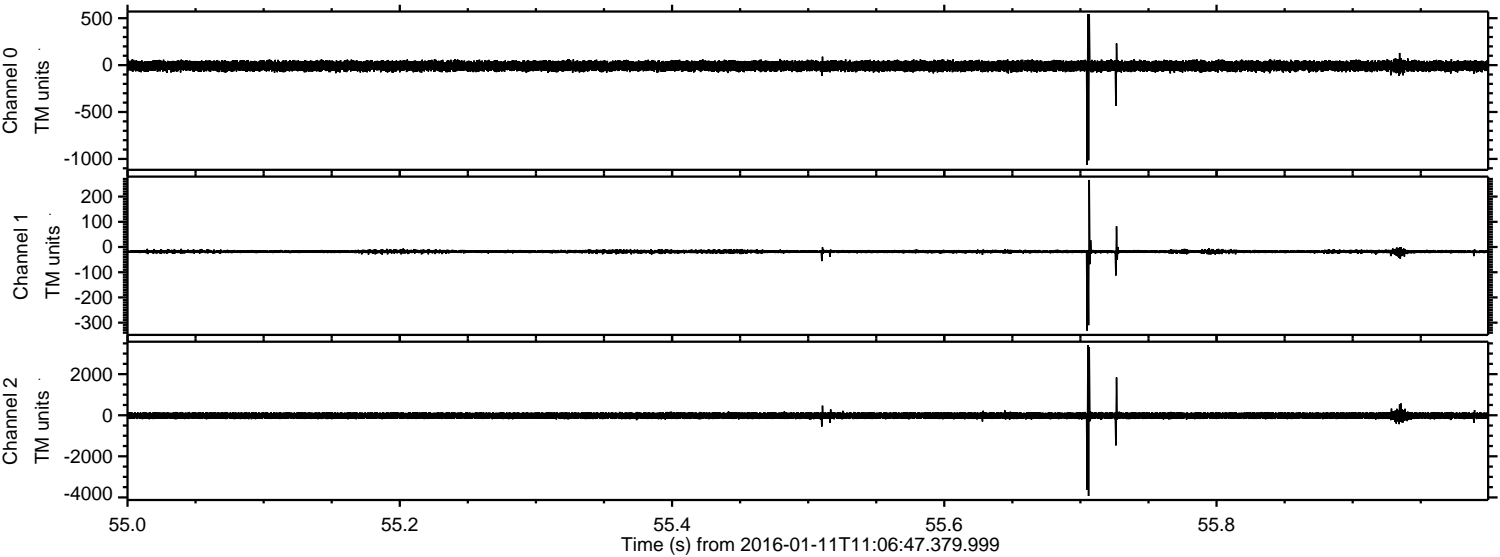


ELMAVAN 3D WAVEFORMS (Measured data sampled at 50 kHz) 51000 packets of 144 samples from 2016-01-11T11:06:47.379.999. Part 128/147

Processed Wed Mar 30 00:20:40 2016 by ELM ver.2012-10-06 from 001__elm20160111_110646__dat00.bin



Processed Wed Mar 30 00:20:41 2016 by ELM ver.2012-10-06 from 001__elm20160111_110646__dat00.bin

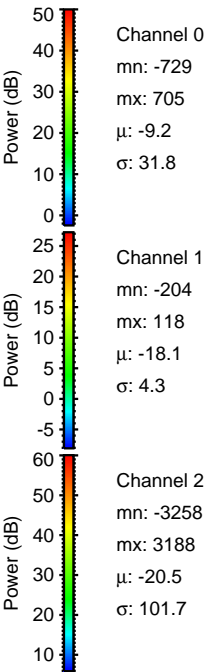
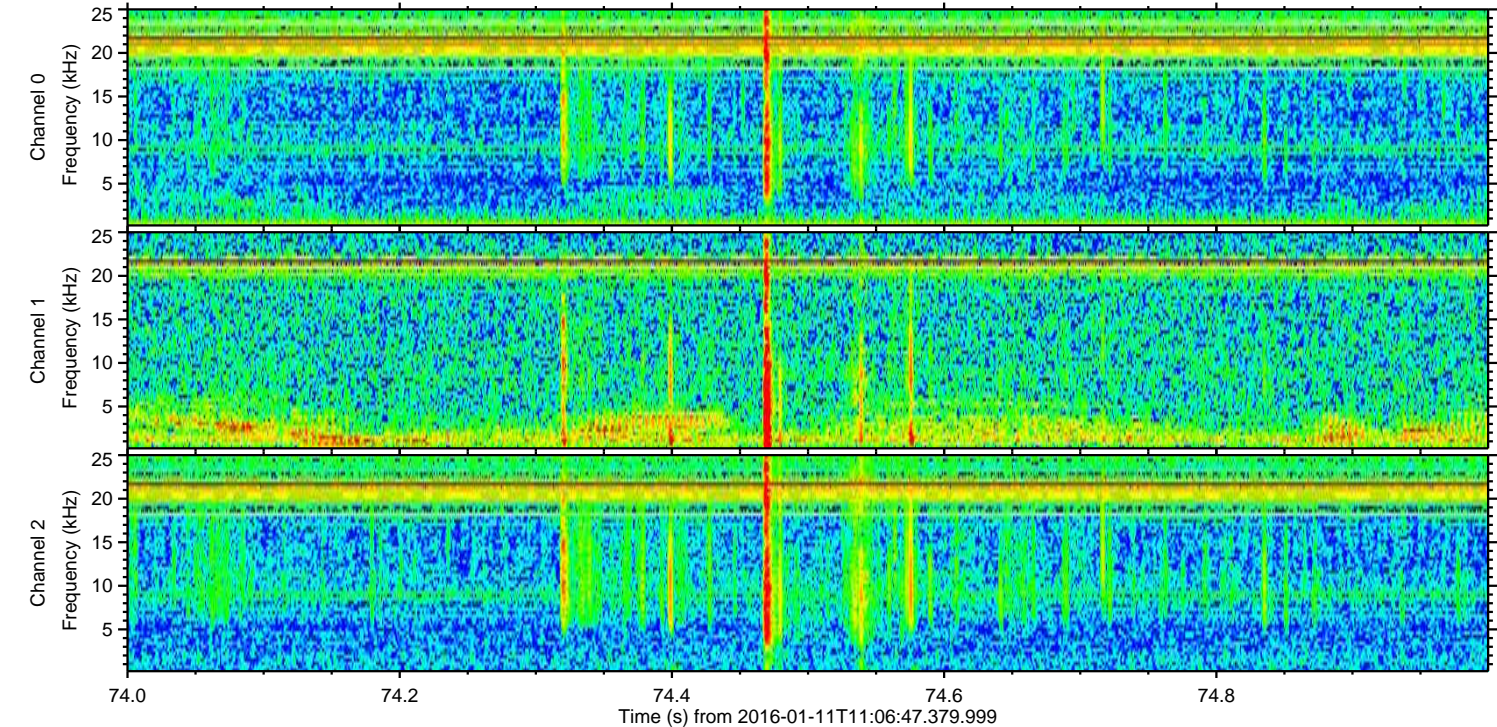
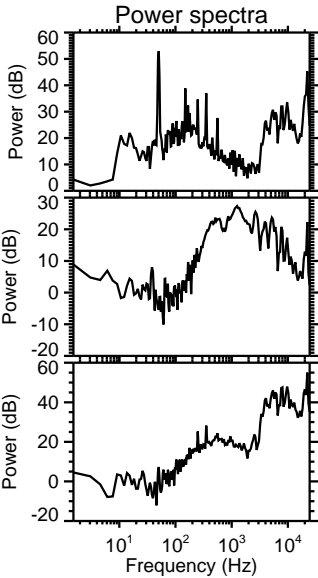
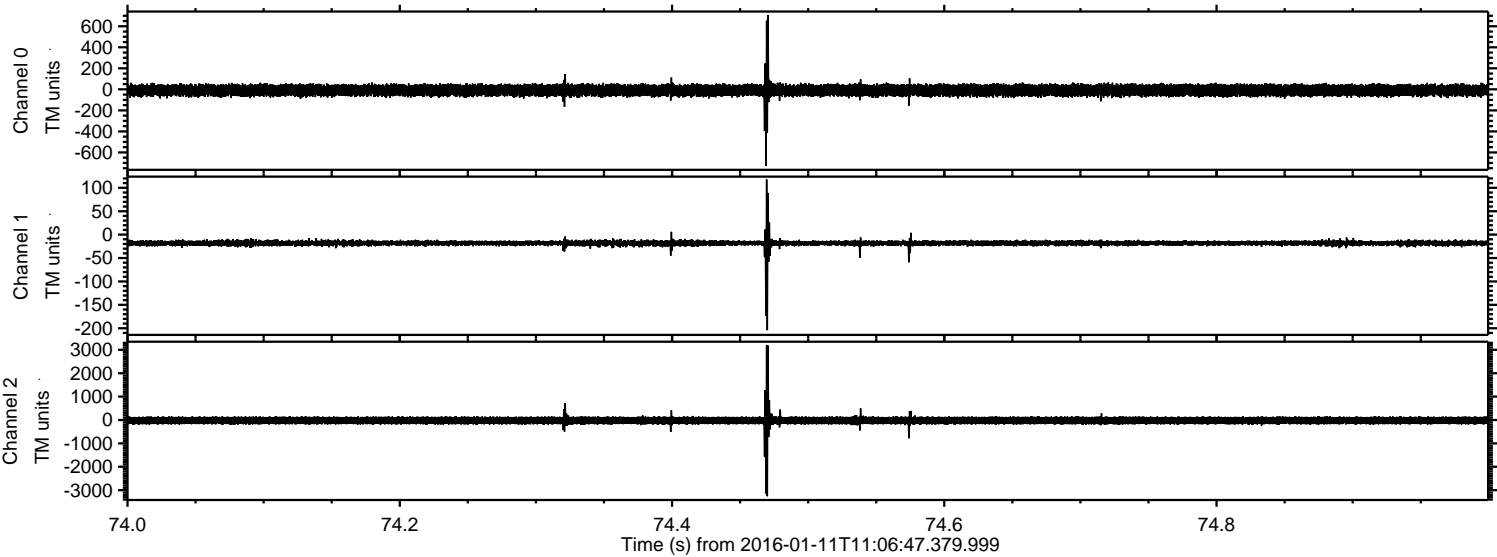


Channel 0
mn: -1063
mx: 544
 μ : -9.3
 σ : 31.0

Channel 1
mn: -332
mx: 266
 μ : -18.0
 σ : 5.9

Channel 2
mn: -3930
mx: 3409
 μ : -20.5
 σ : 96.4

Processed Wed Mar 30 00:20:42 2016 by ELM ver.2012-10-06 from 001__elm20160111_110646__dat00.bin



Processed Wed Mar 30 00:20:43 2016 by ELM ver.2012-10-06 from 001__elm20160111_110646__dat00.bin

