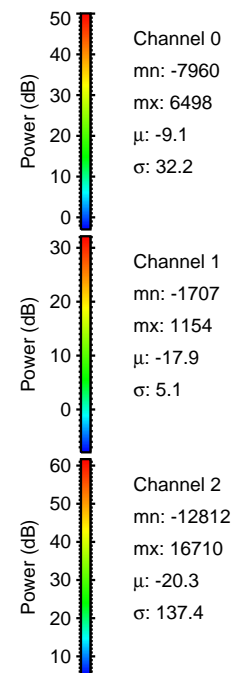
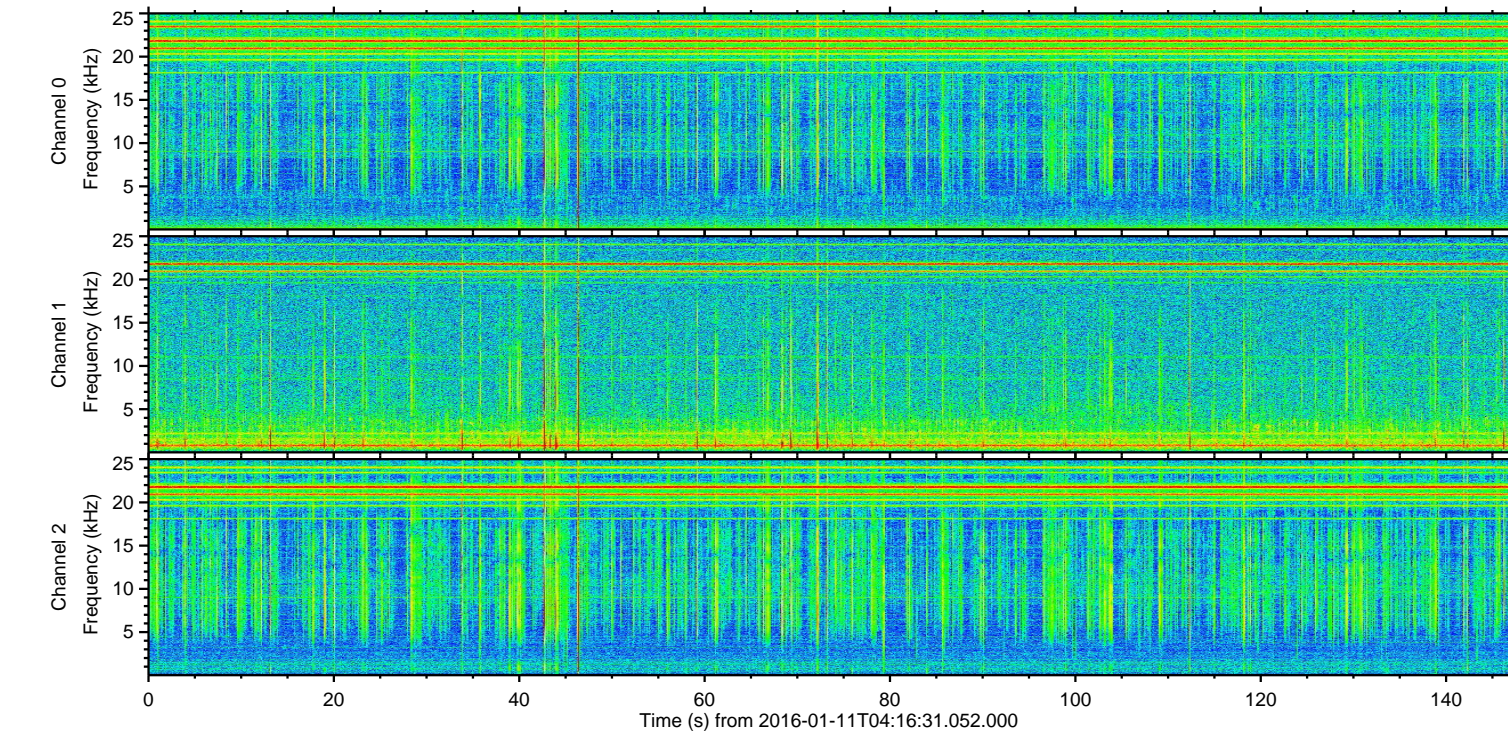
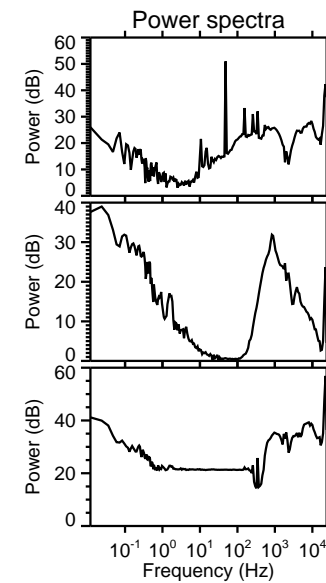
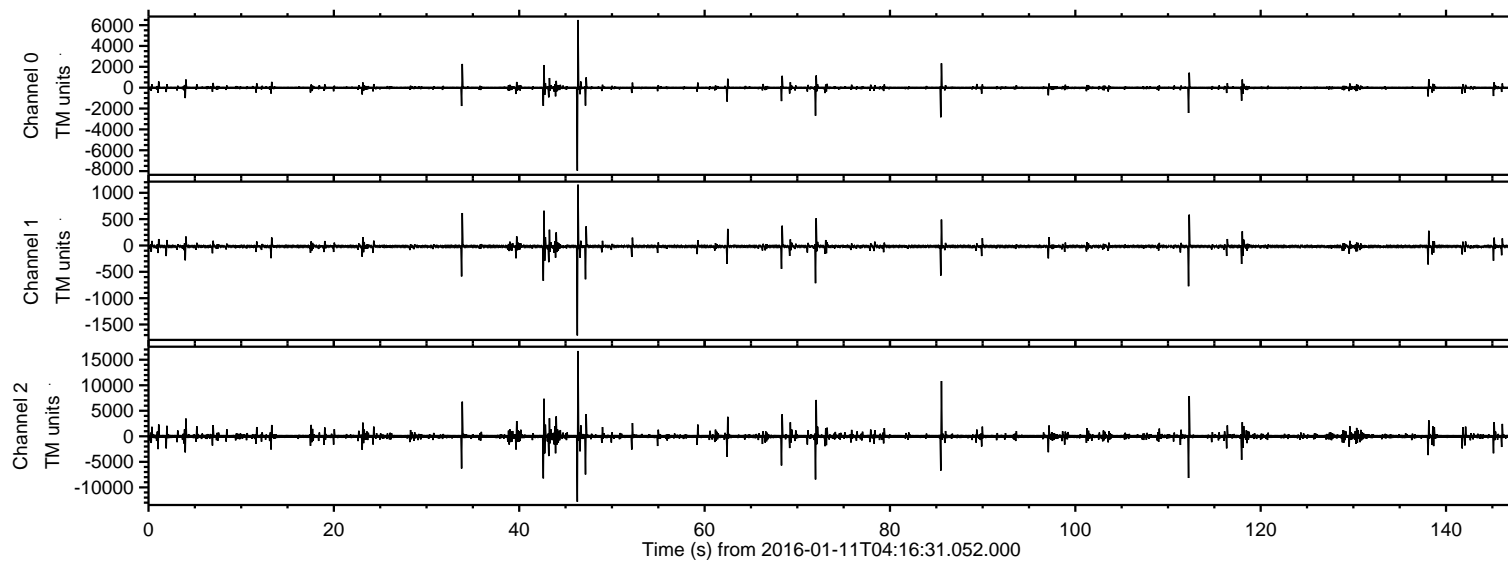


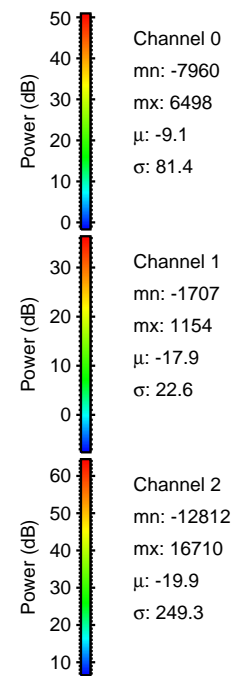
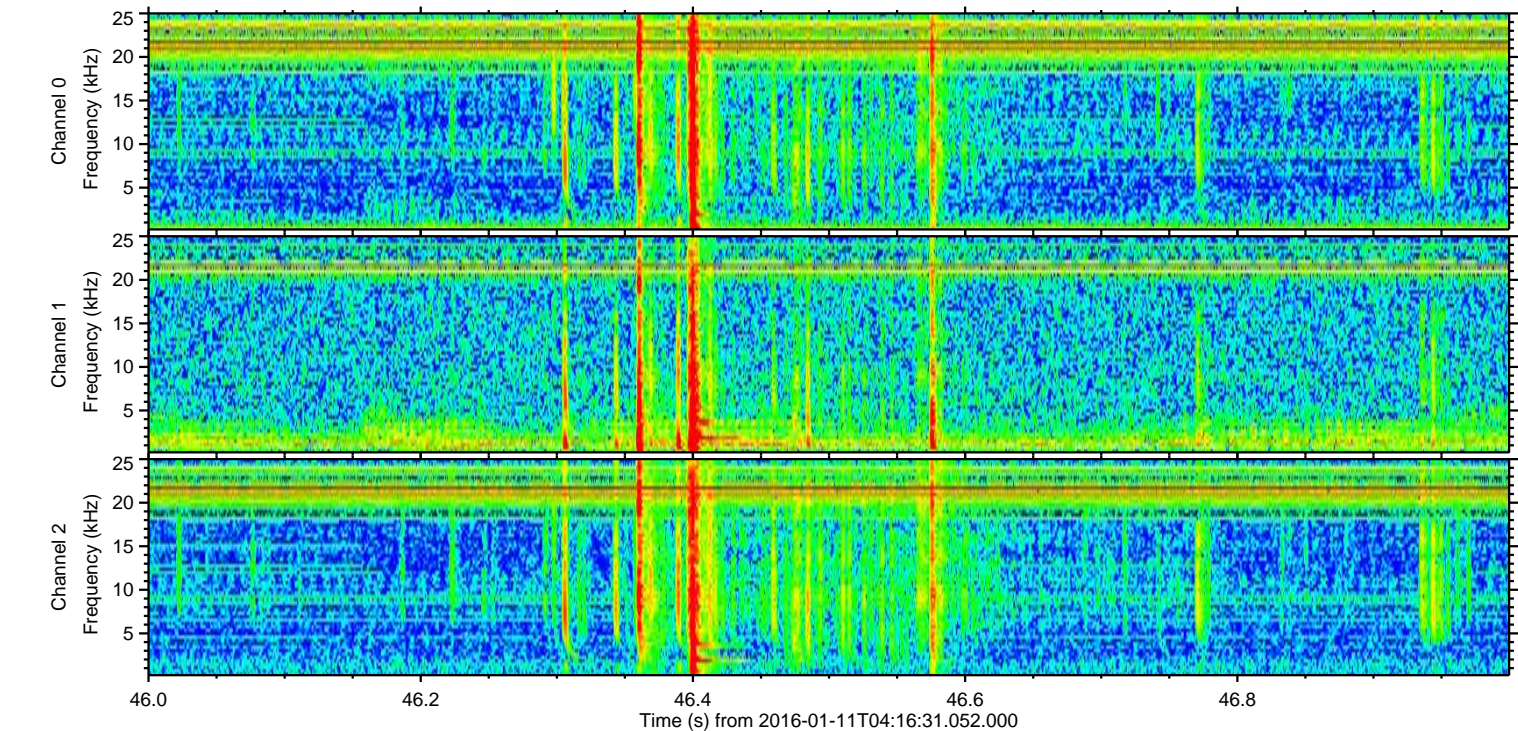
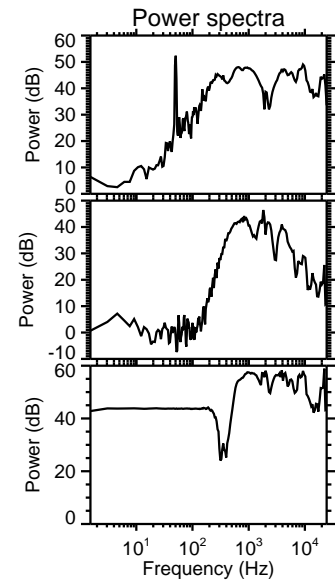
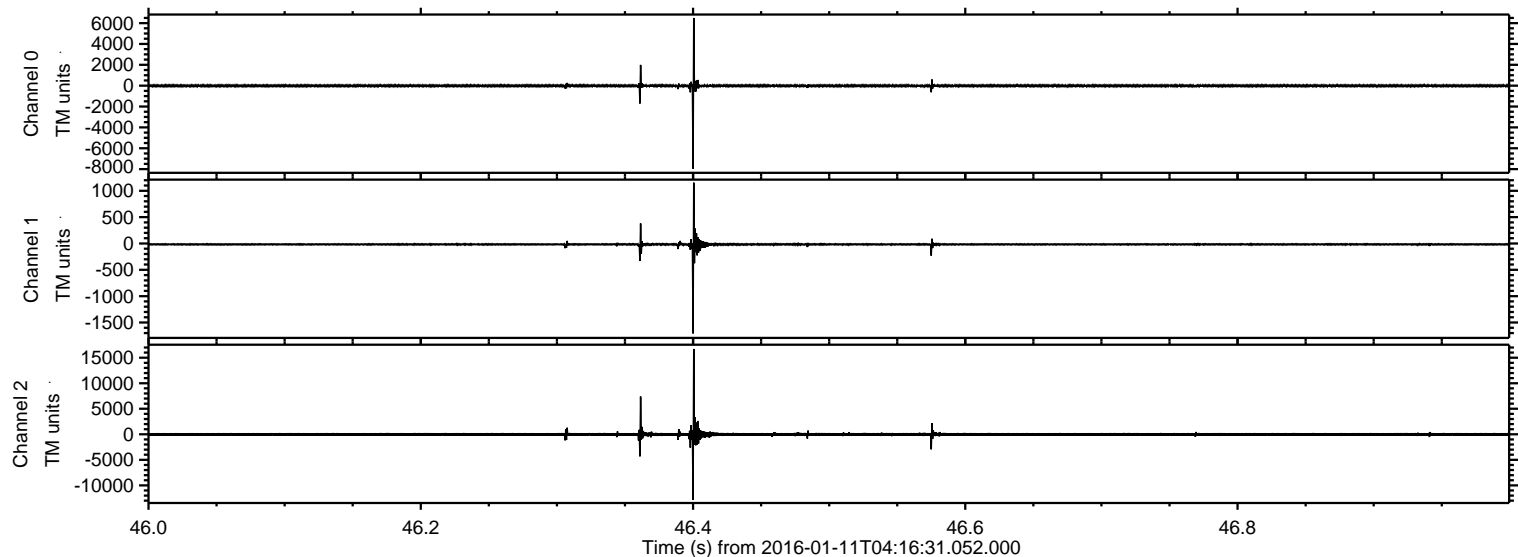
# ELMAVAN 3D WAVEFORMS (Measured data sampled at 50 kHz) 51000 packets of 144 samples from 2016-01-11T04:16:31.052.000.

Processed Tue Mar 29 23:00:33 2016 by ELM ver.2012-10-06 from 001\_\_elm20160111\_041630\_\_dat00.bin



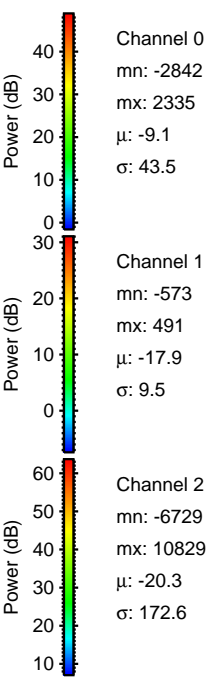
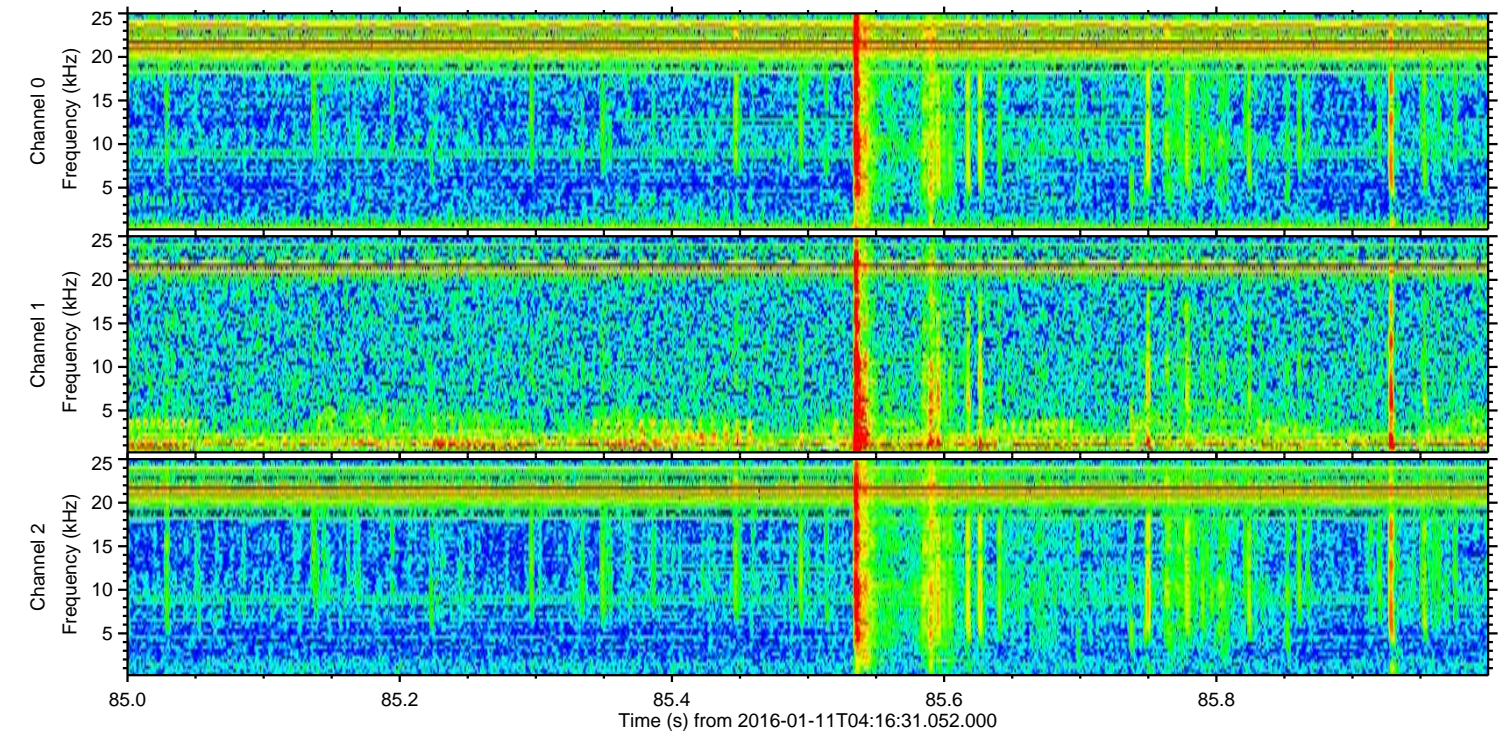
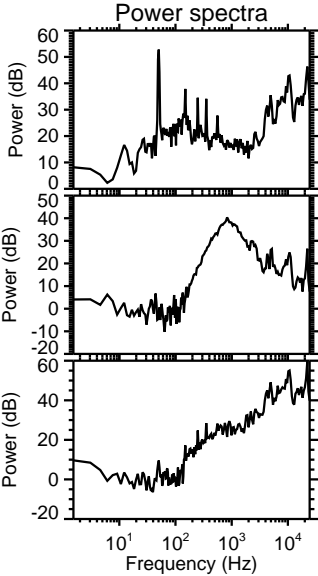
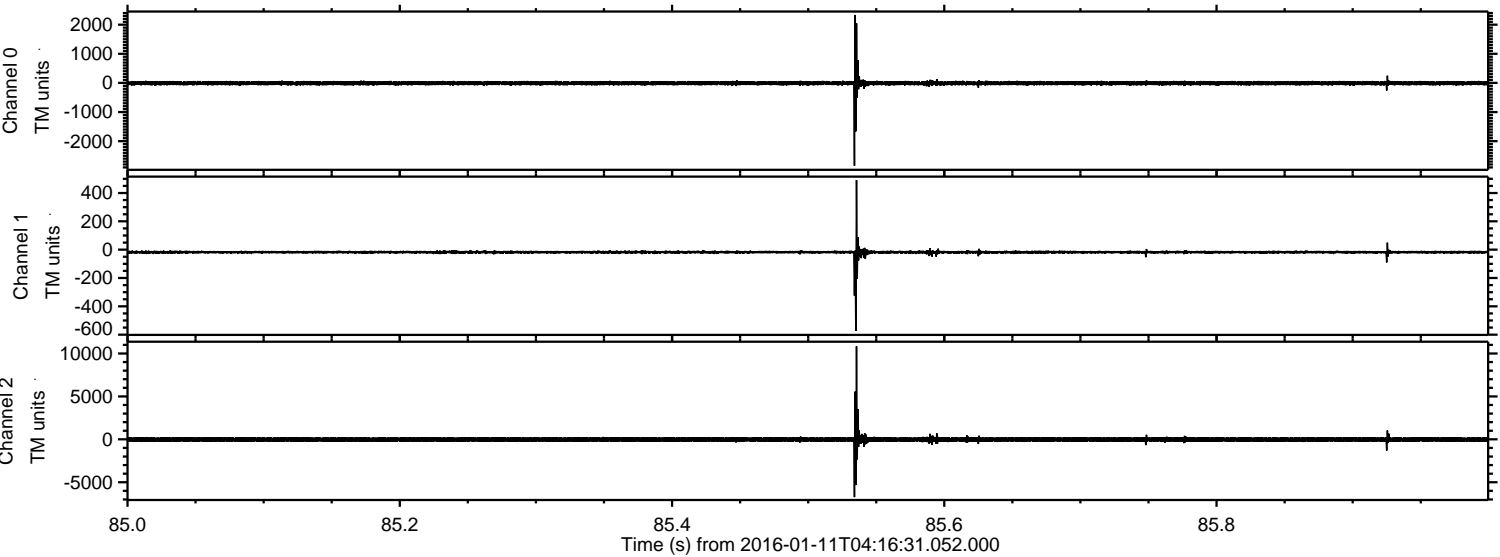
ELMAVAN 3D WAVEFORMS (Measured data sampled at 50 kHz) 51000 packets of 144 samples from 2016-01-11T04:16:31.052.000. Part 47/147

Processed Tue Mar 29 23:00:45 2016 by ELM ver.2012-10-06 from 001\_\_elm20160111\_041630\_\_dat00.bin



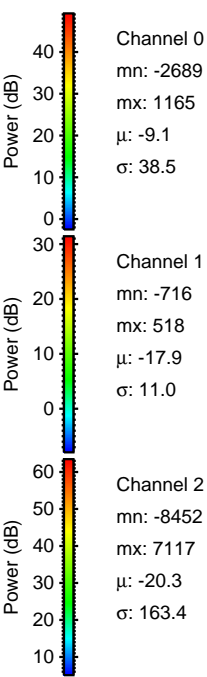
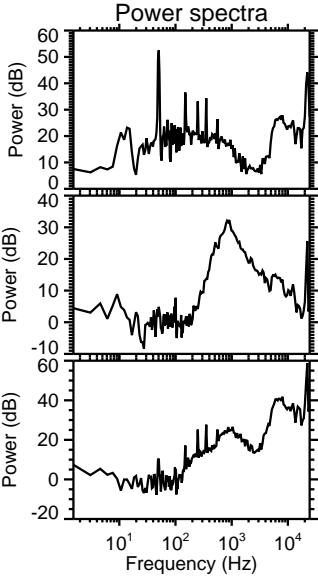
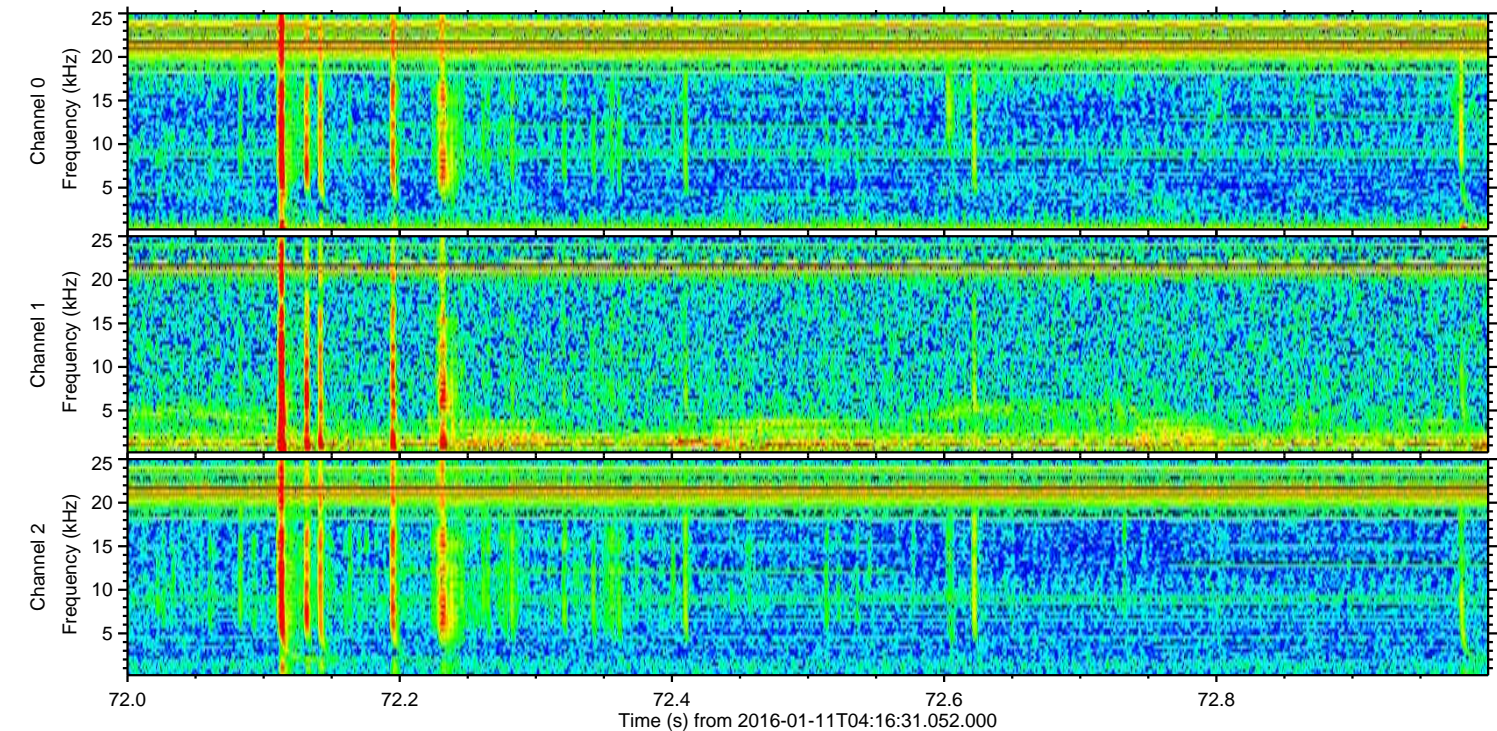
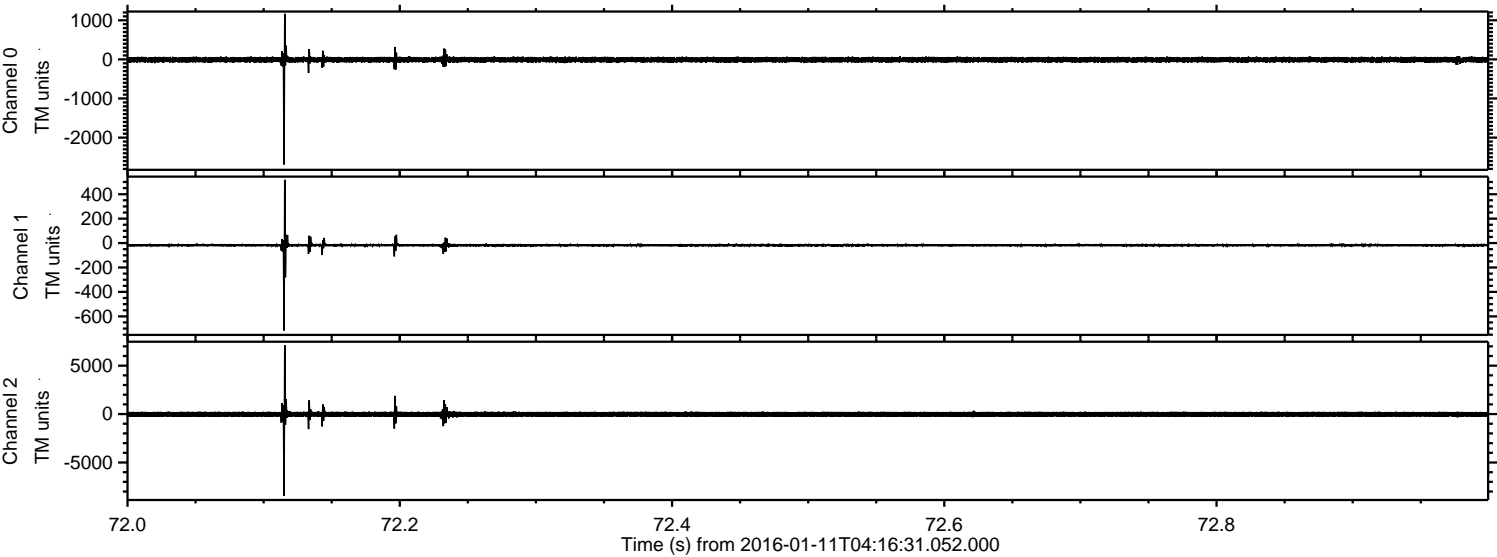
ELMAVAN 3D WAVEFORMS (Measured data sampled at 50 kHz) 51000 packets of 144 samples from 2016-01-11T04:16:31.052.000. Part 86/147

Processed Tue Mar 29 23:00:45 2016 by ELM ver.2012-10-06 from 001\_\_elm20160111\_041630\_\_dat00.bin



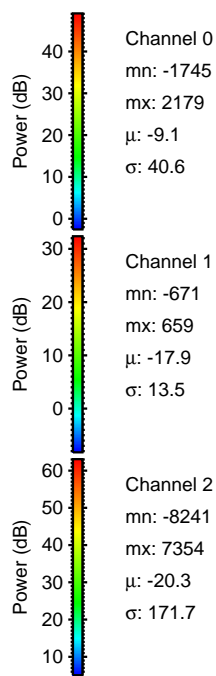
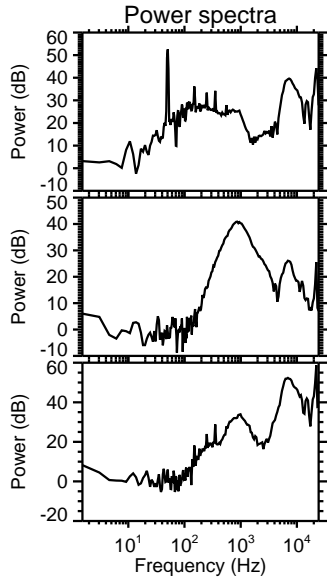
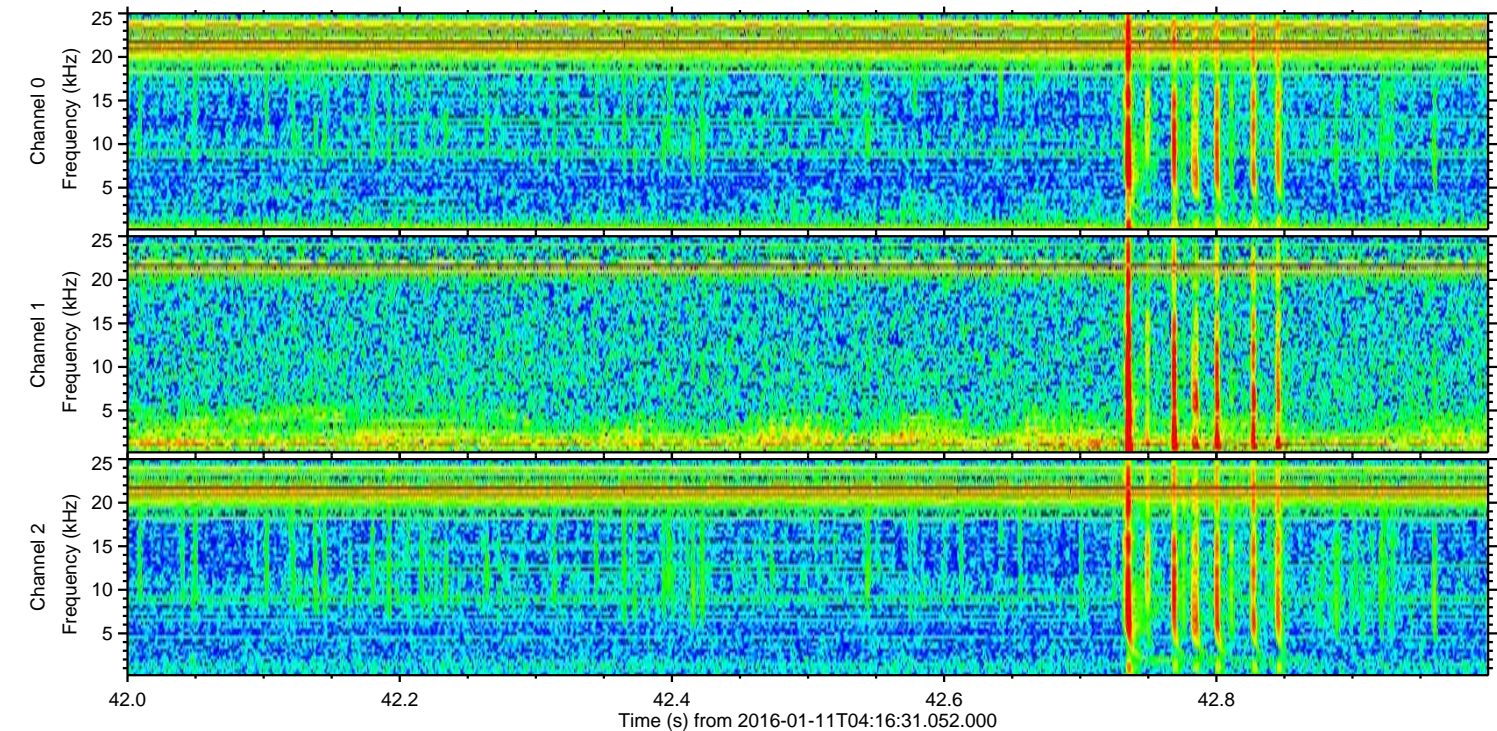
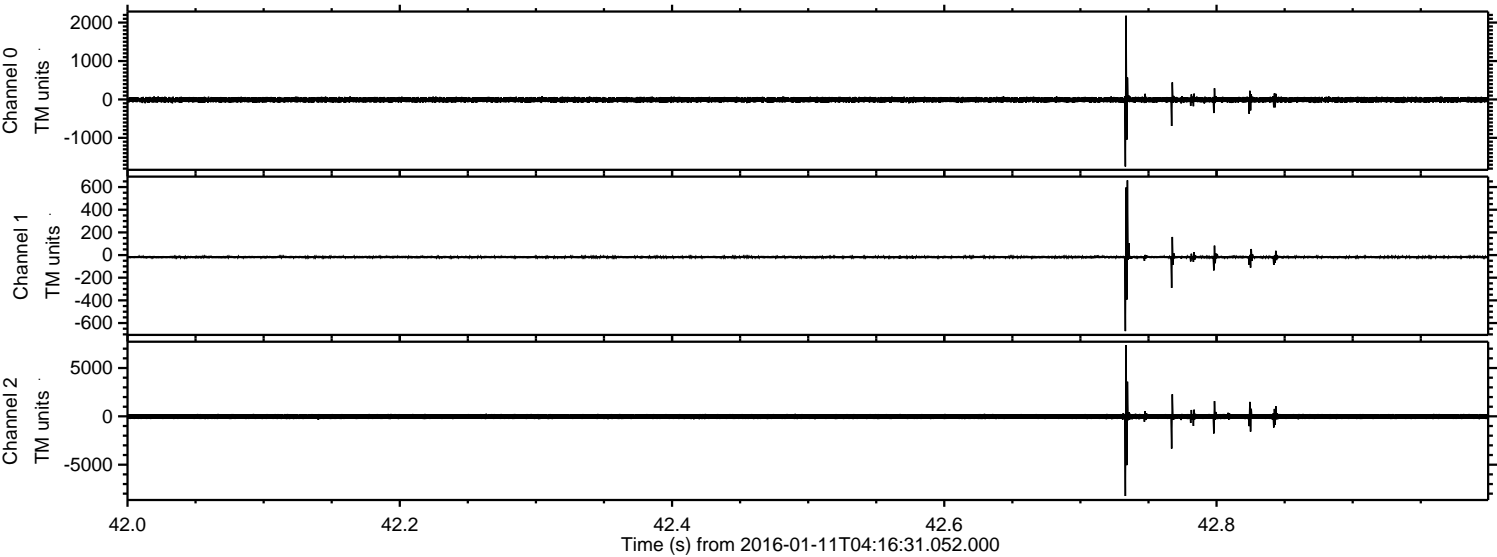
ELMAVAN 3D WAVEFORMS (Measured data sampled at 50 kHz) 51000 packets of 144 samples from 2016-01-11T04:16:31.052.000. Part 73/147

Processed Tue Mar 29 23:00:46 2016 by ELM ver.2012-10-06 from 001\_\_elm20160111\_041630\_\_dat00.bin



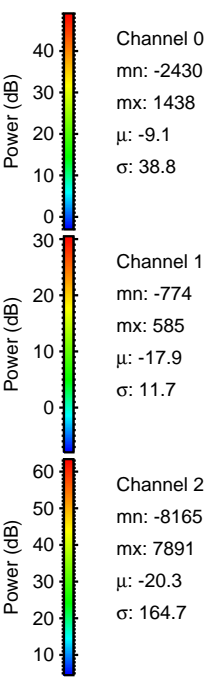
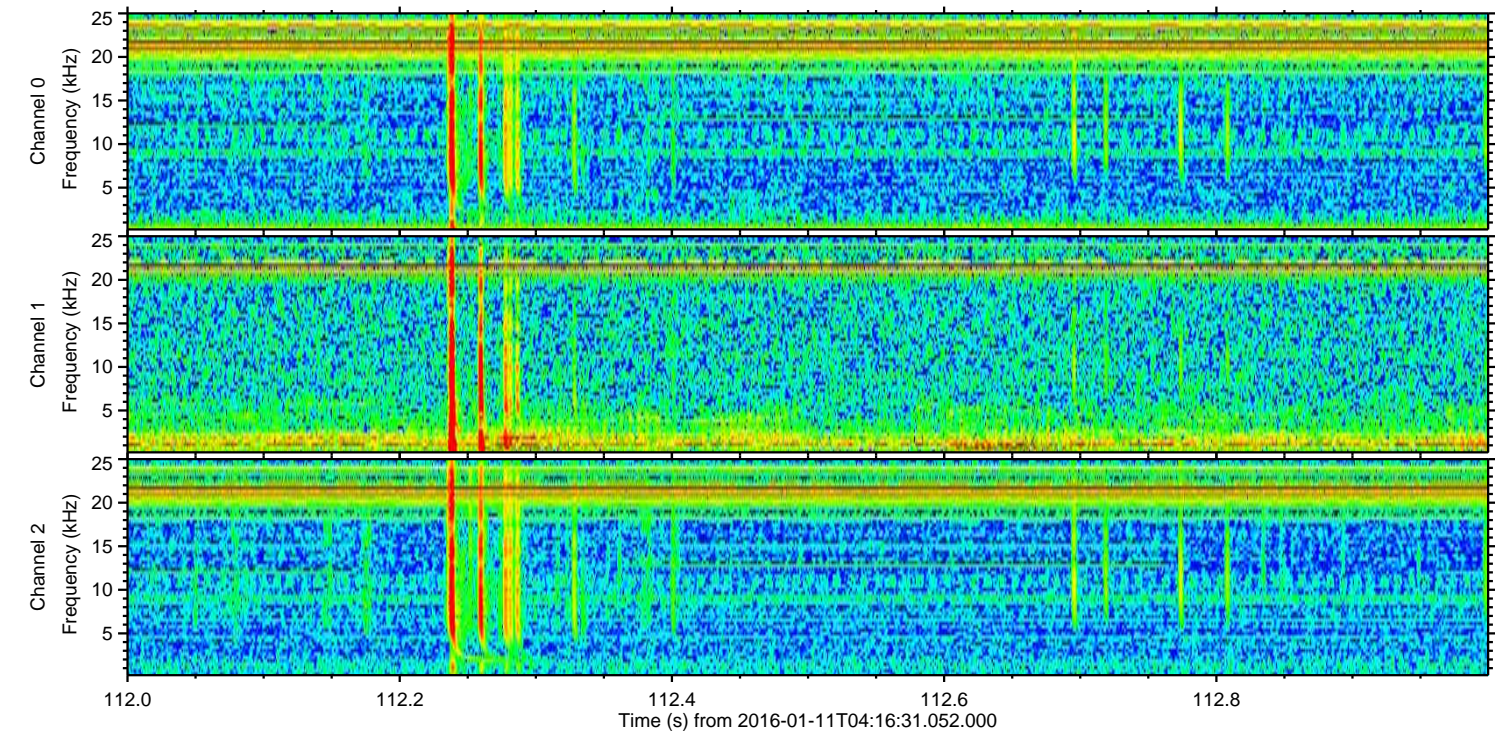
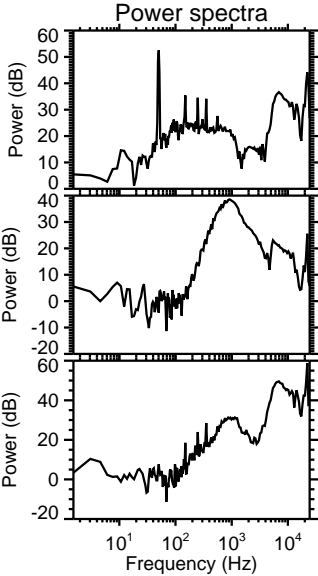
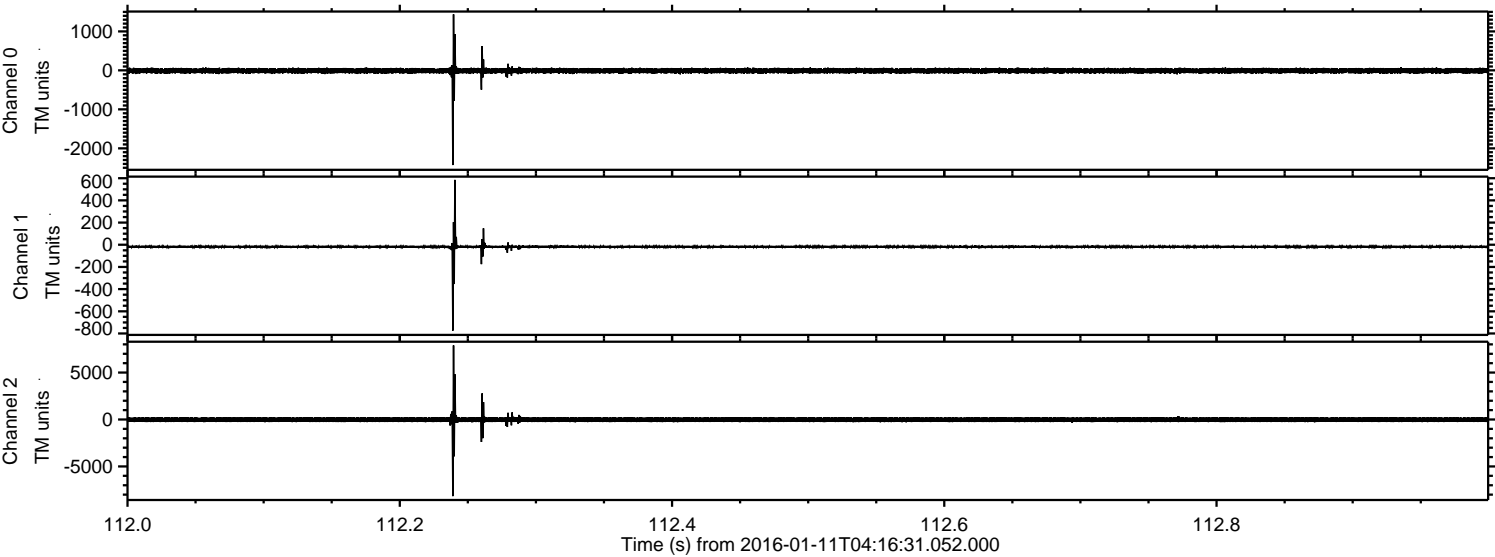
ELMAVAN 3D WAVEFORMS (Measured data sampled at 50 kHz) 51000 packets of 144 samples from 2016-01-11T04:16:31.052.000. Part 43/147

Processed Tue Mar 29 23:00:47 2016 by ELM ver.2012-10-06 from 001\_\_elm20160111\_041630\_\_dat00.bin



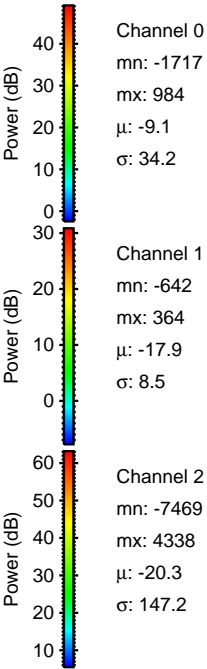
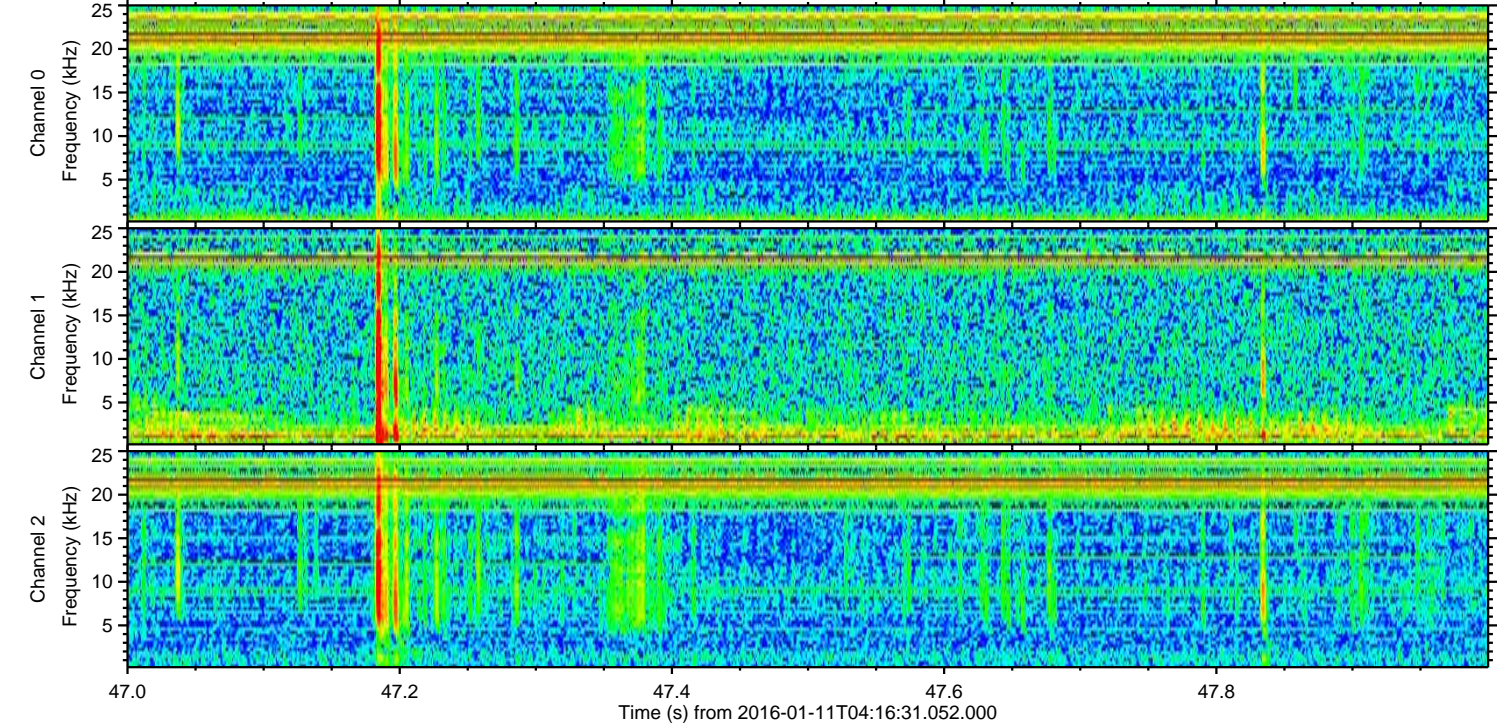
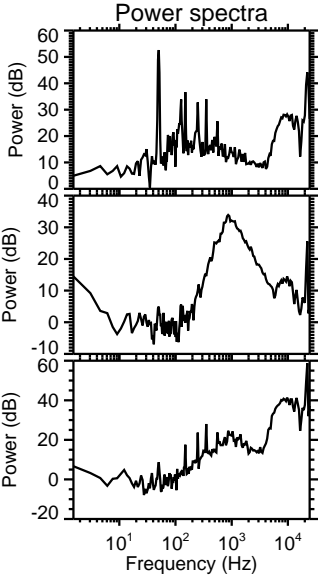
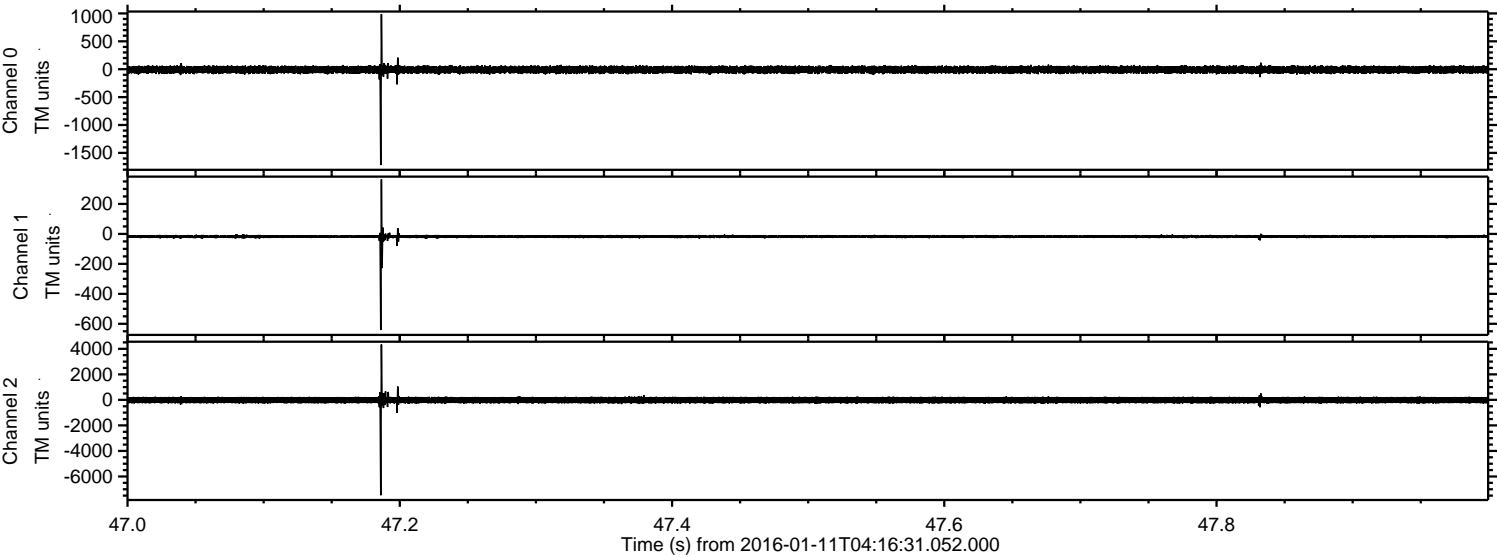
ELMAVAN 3D WAVEFORMS (Measured data sampled at 50 kHz) 51000 packets of 144 samples from 2016-01-11T04:16:31.052.000. Part 113/147

Processed Tue Mar 29 23:00:48 2016 by ELM ver.2012-10-06 from 001\_\_elm20160111\_041630\_\_dat00.bin

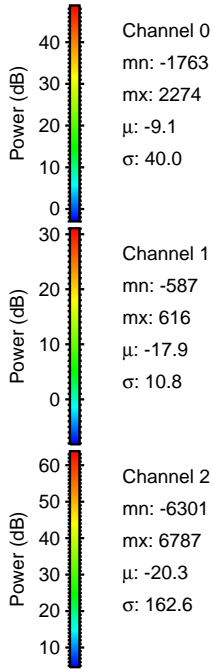
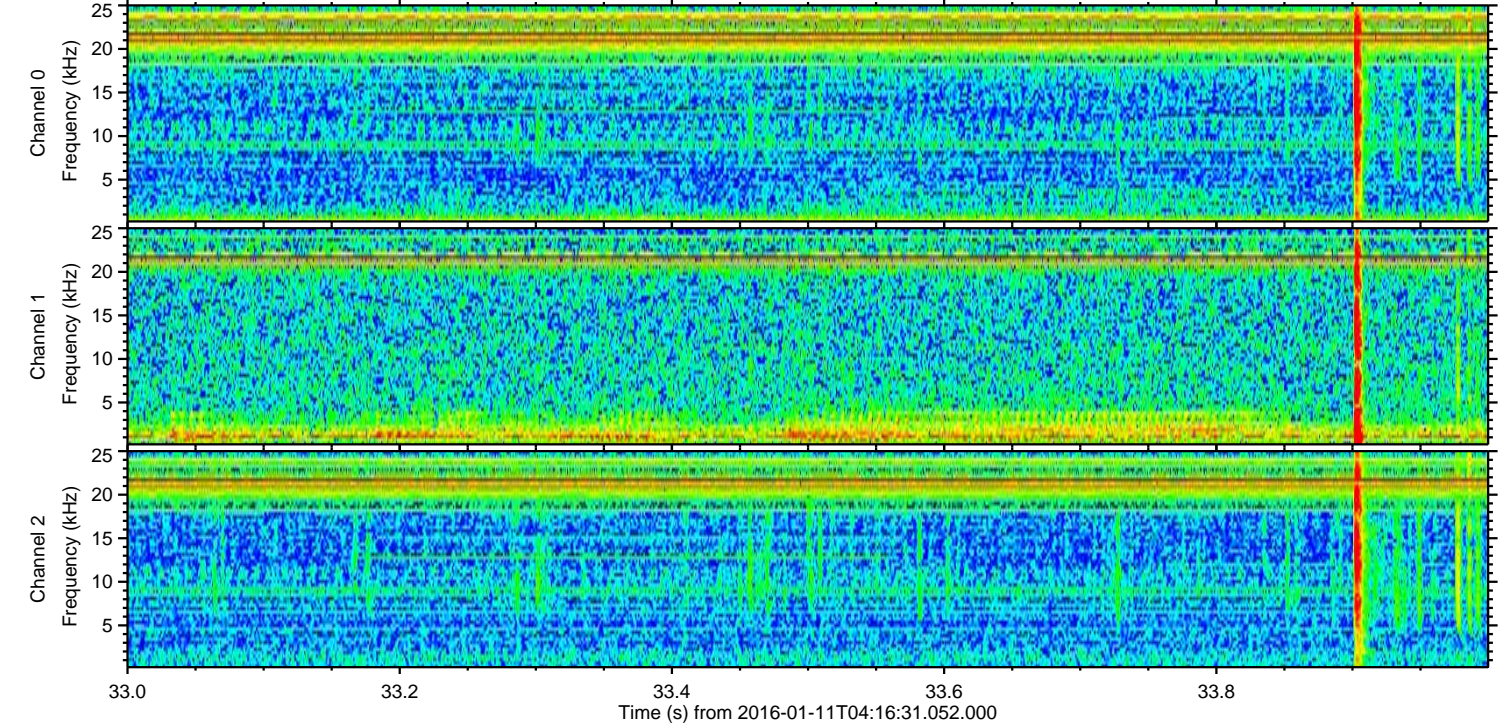
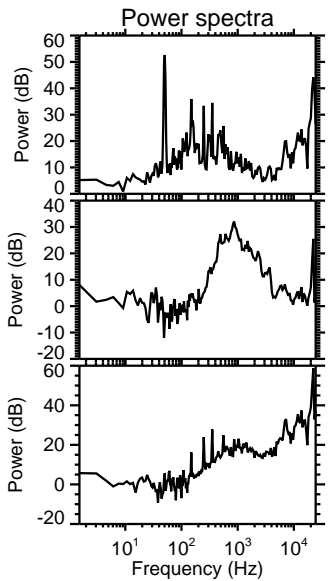
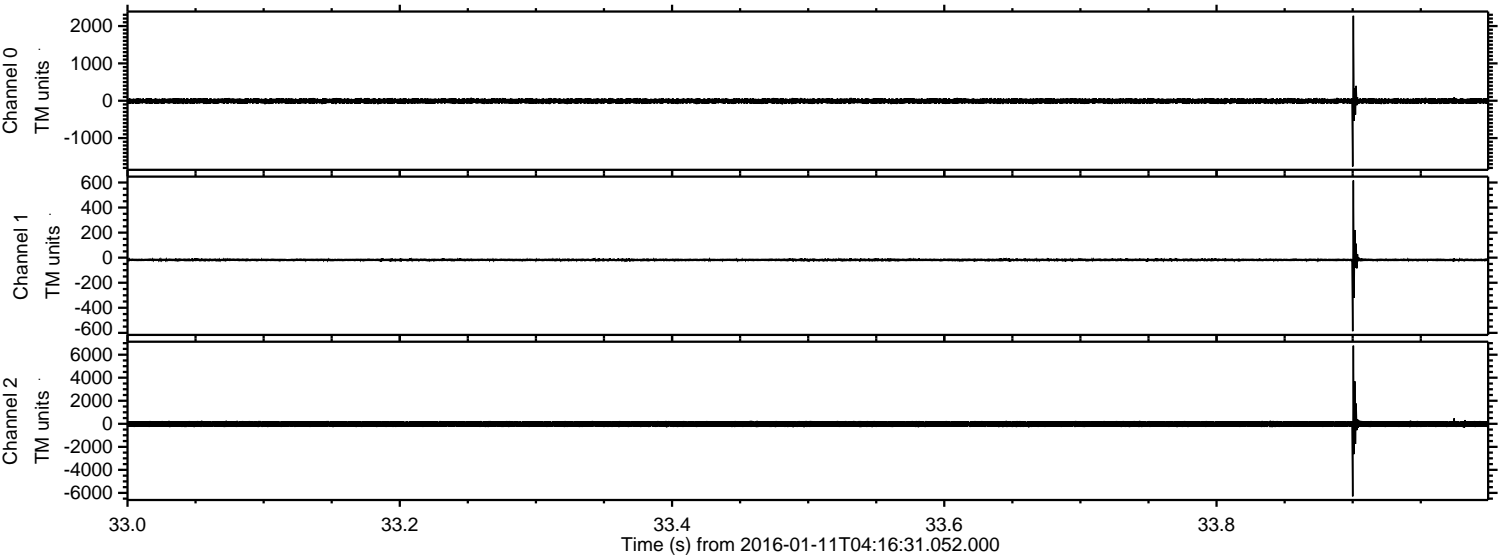


ELMAVAN 3D WAVEFORMS (Measured data sampled at 50 kHz) 51000 packets of 144 samples from 2016-01-11T04:16:31.052.000. Part 48/147

Processed Tue Mar 29 23:00:49 2016 by ELM ver.2012-10-06 from 001\_\_elm20160111\_041630\_\_dat00.bin



Processed Tue Mar 29 23:00:50 2016 by ELM ver.2012-10-06 from 001\_\_elm20160111\_041630\_\_dat00.bin

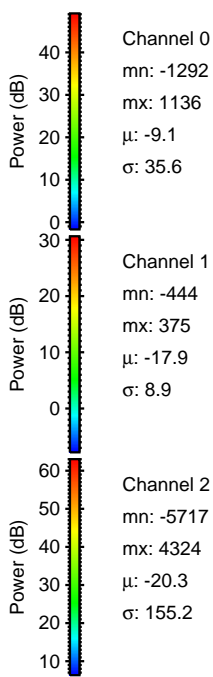
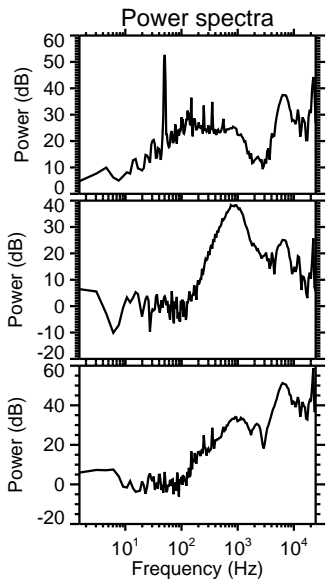
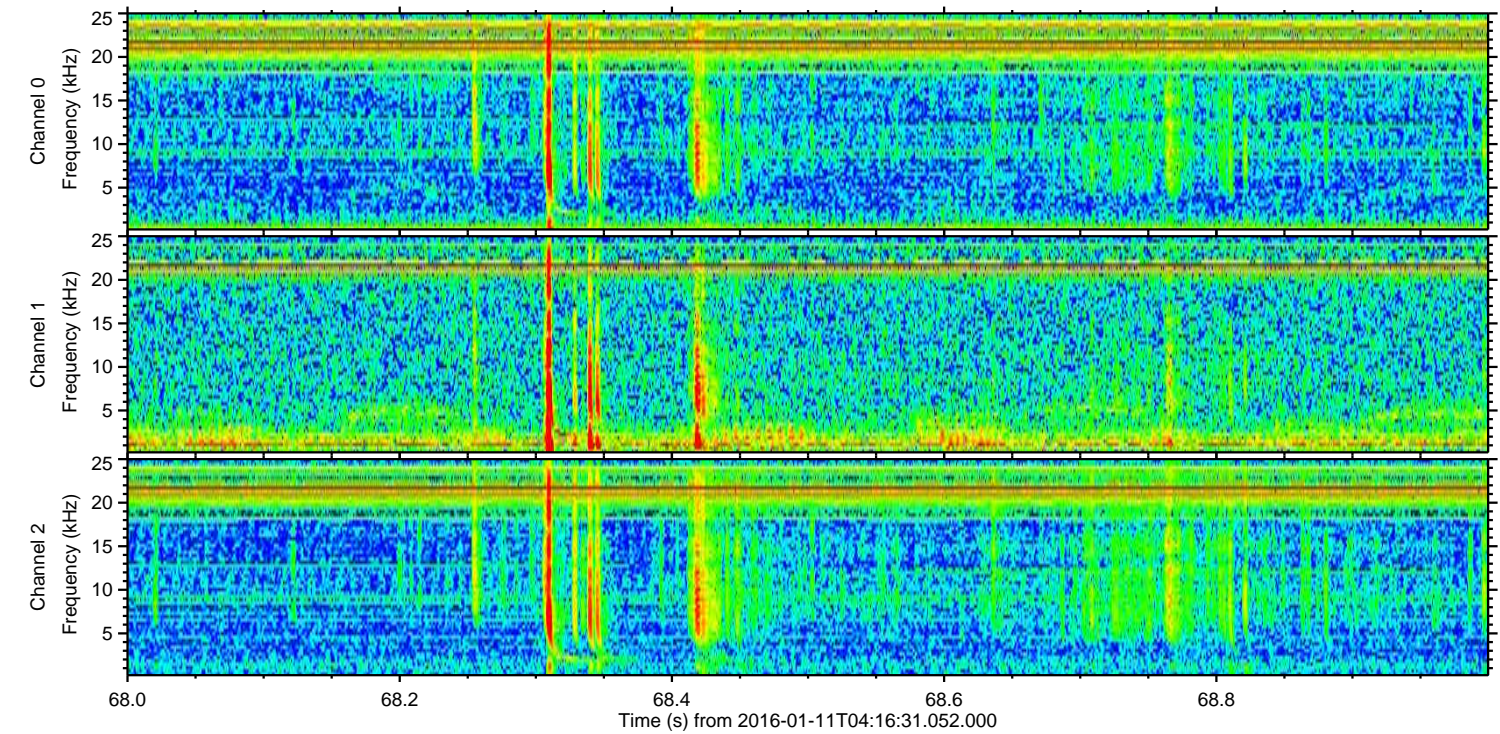
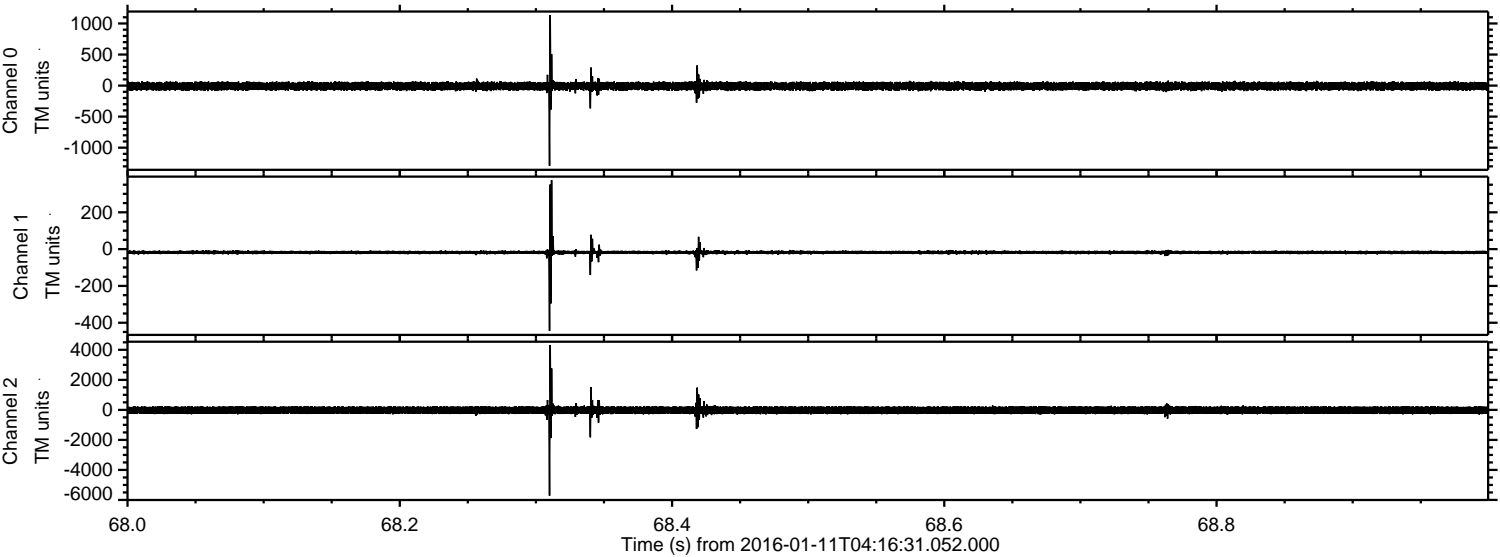


Channel 0  
mn: -1763  
mx: 2274  
 $\mu$ : -9.1  
 $\sigma$ : 40.0

Channel 1  
mn: -587  
mx: 616  
 $\mu$ : -17.9  
 $\sigma$ : 10.8

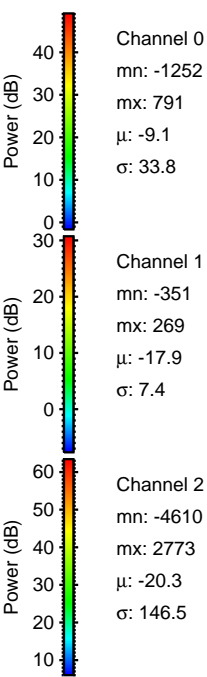
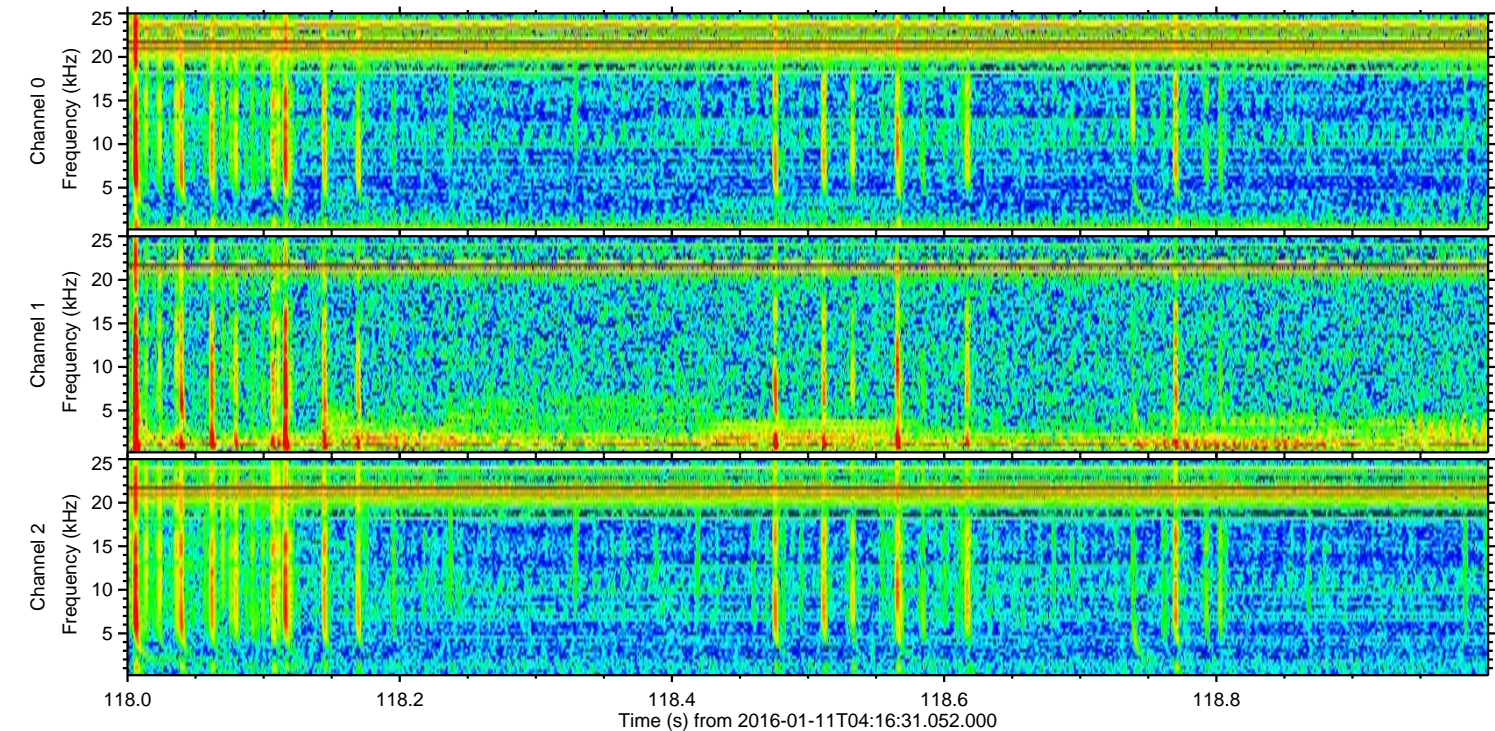
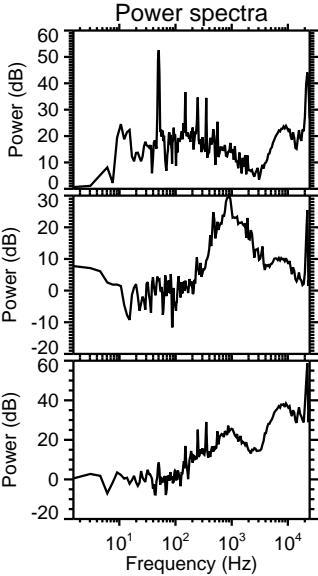
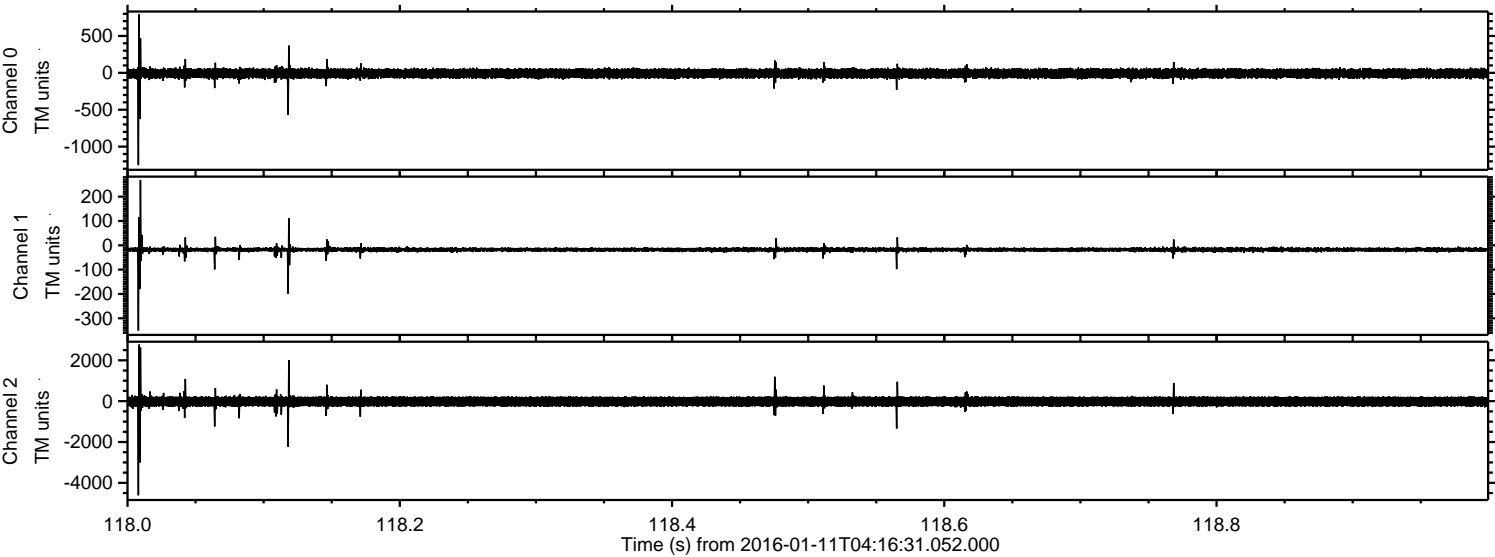
Channel 2  
mn: -6301  
mx: 6787  
 $\mu$ : -20.3  
 $\sigma$ : 162.6

Processed Tue Mar 29 23:00:51 2016 by ELM ver.2012-10-06 from 001\_\_elm20160111\_041630\_\_dat00.bin



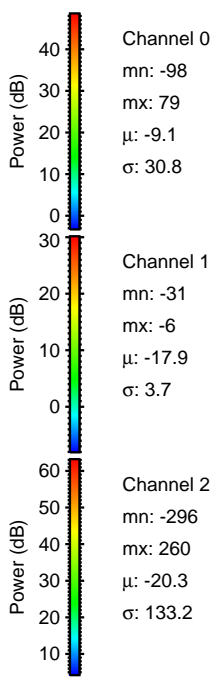
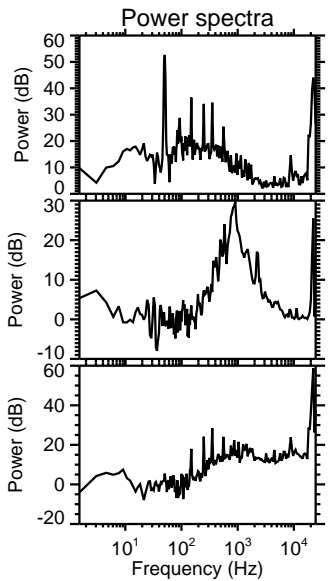
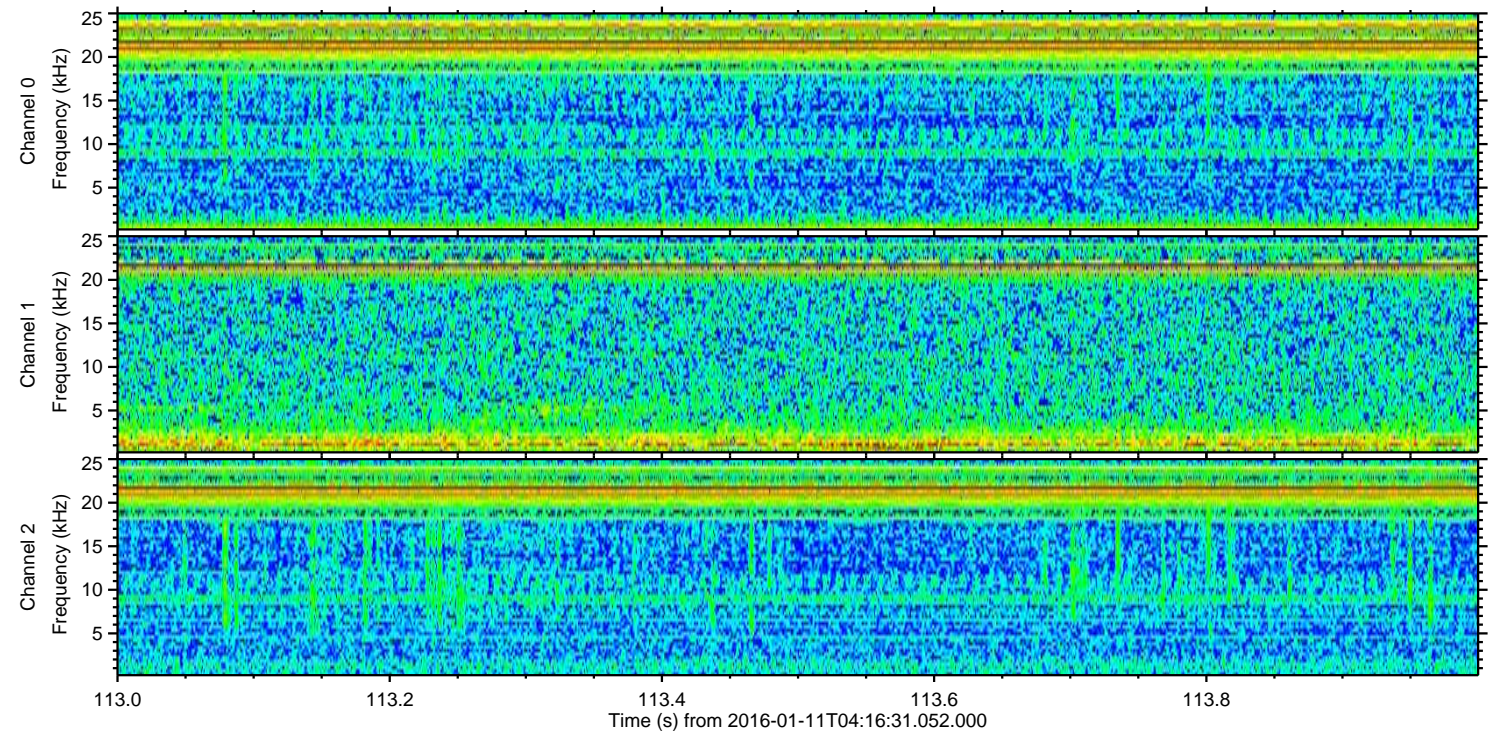
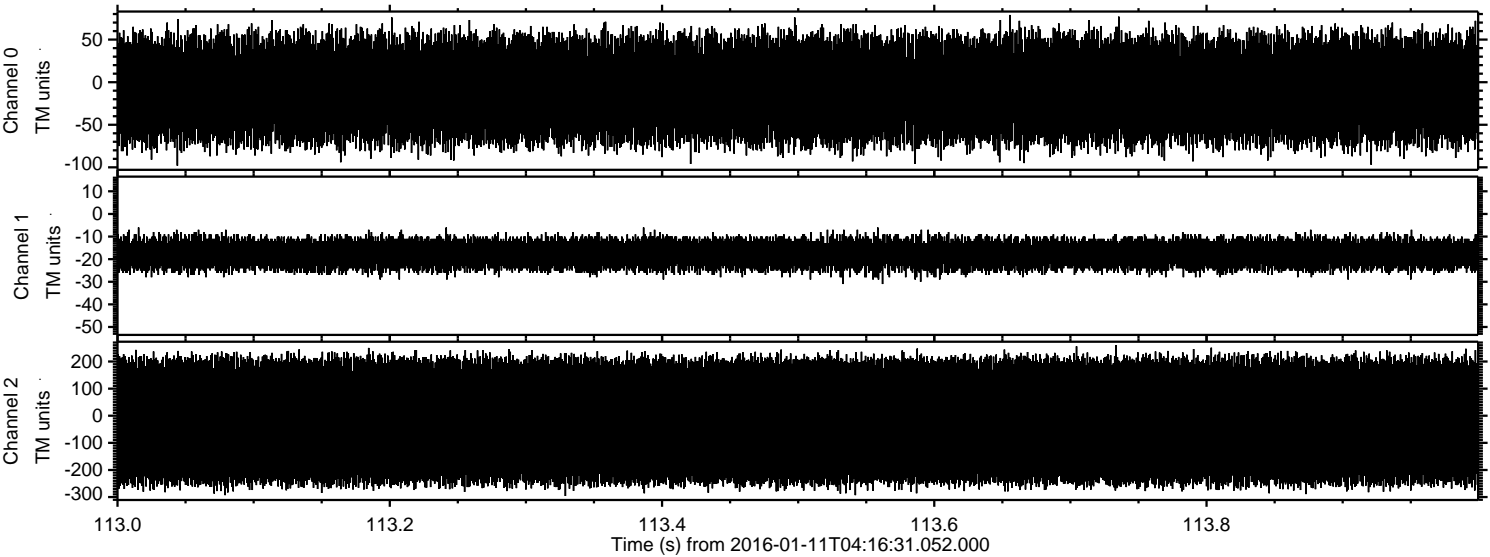
ELMAVAN 3D WAVEFORMS (Measured data sampled at 50 kHz) 51000 packets of 144 samples from 2016-01-11T04:16:31.052.000. Part 119/147

Processed Tue Mar 29 23:00:52 2016 by ELM ver.2012-10-06 from 001\_\_elm20160111\_041630\_\_dat00.bin



ELMAVAN 3D WAVEFORMS (Measured data sampled at 50 kHz) 51000 packets of 144 samples from 2016-01-11T04:16:31.052.000. Part 114/147

Processed Tue Mar 29 23:00:53 2016 by ELM ver.2012-10-06 from 001\_\_elm20160111\_041630\_\_dat00.bin



Channel 0  
mn: -98  
mx: 79  
 $\mu$ : -9.1  
 $\sigma$ : 30.8

Channel 1  
mn: -31  
mx: -6  
 $\mu$ : -17.9  
 $\sigma$ : 3.7

Channel 2  
mn: -296  
mx: 260  
 $\mu$ : -20.3  
 $\sigma$ : 133.2