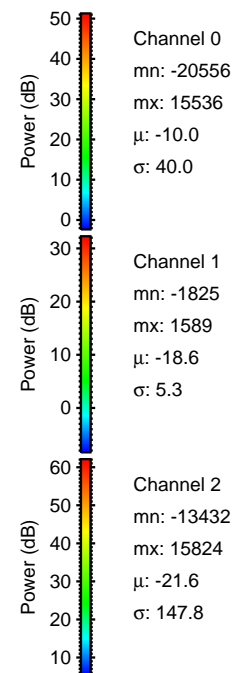
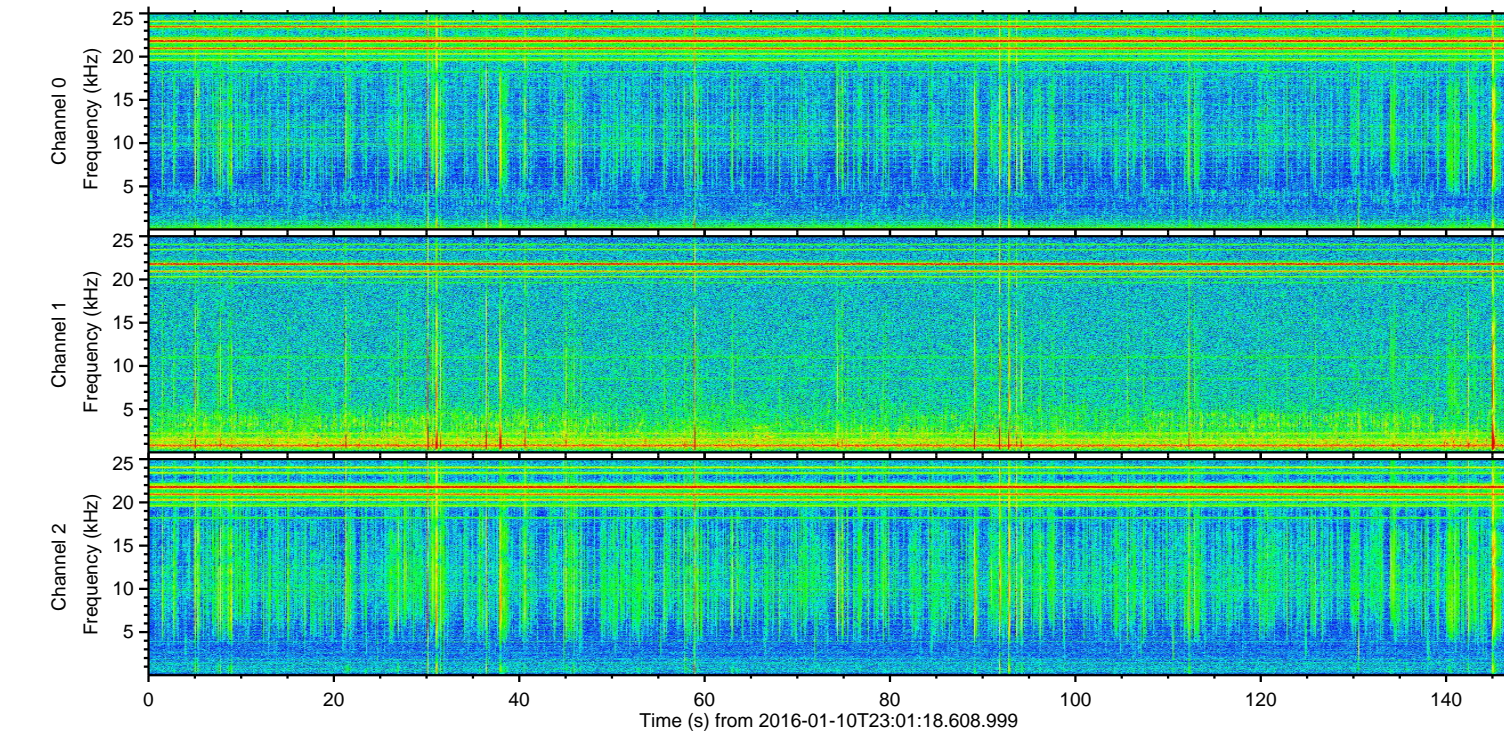
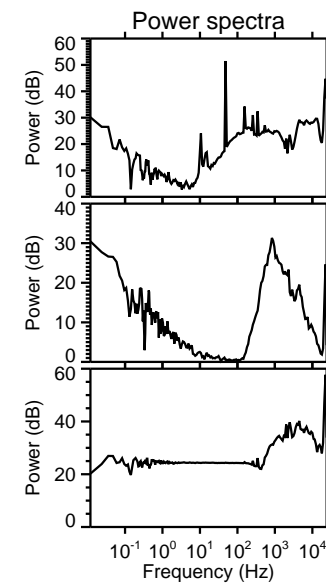
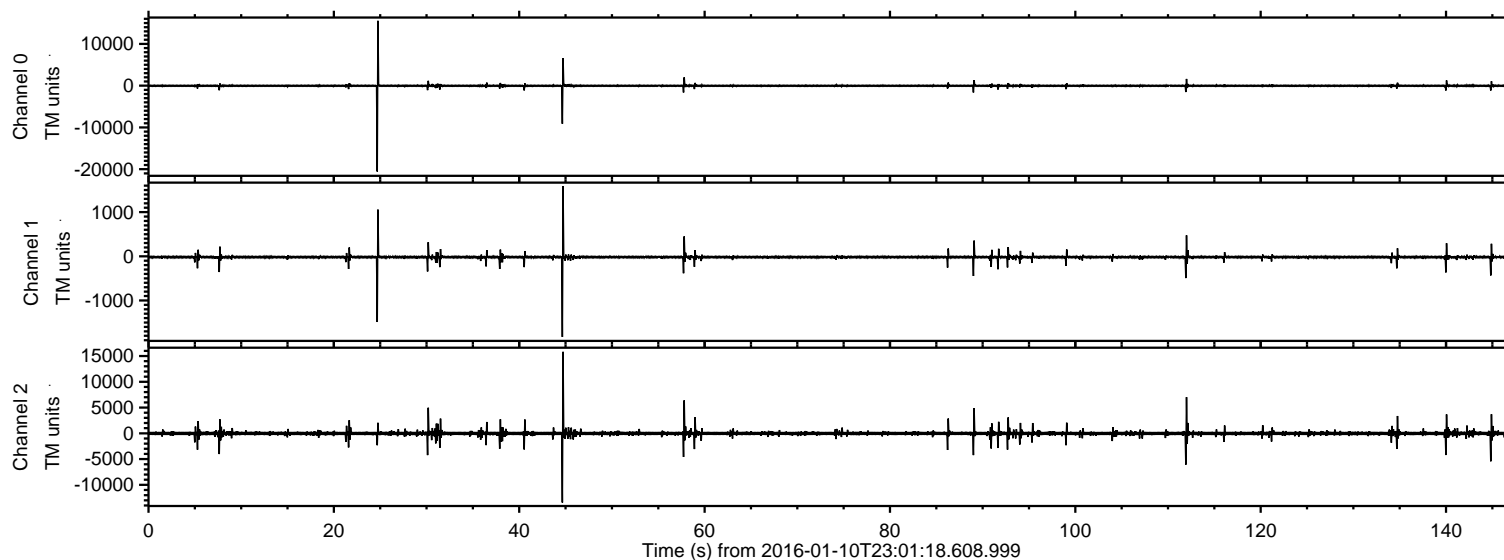
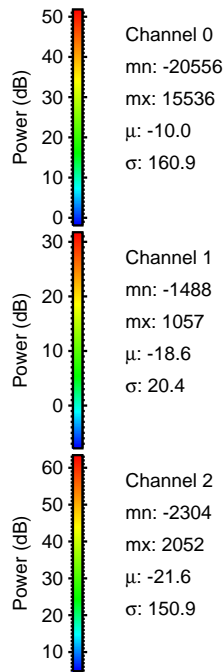
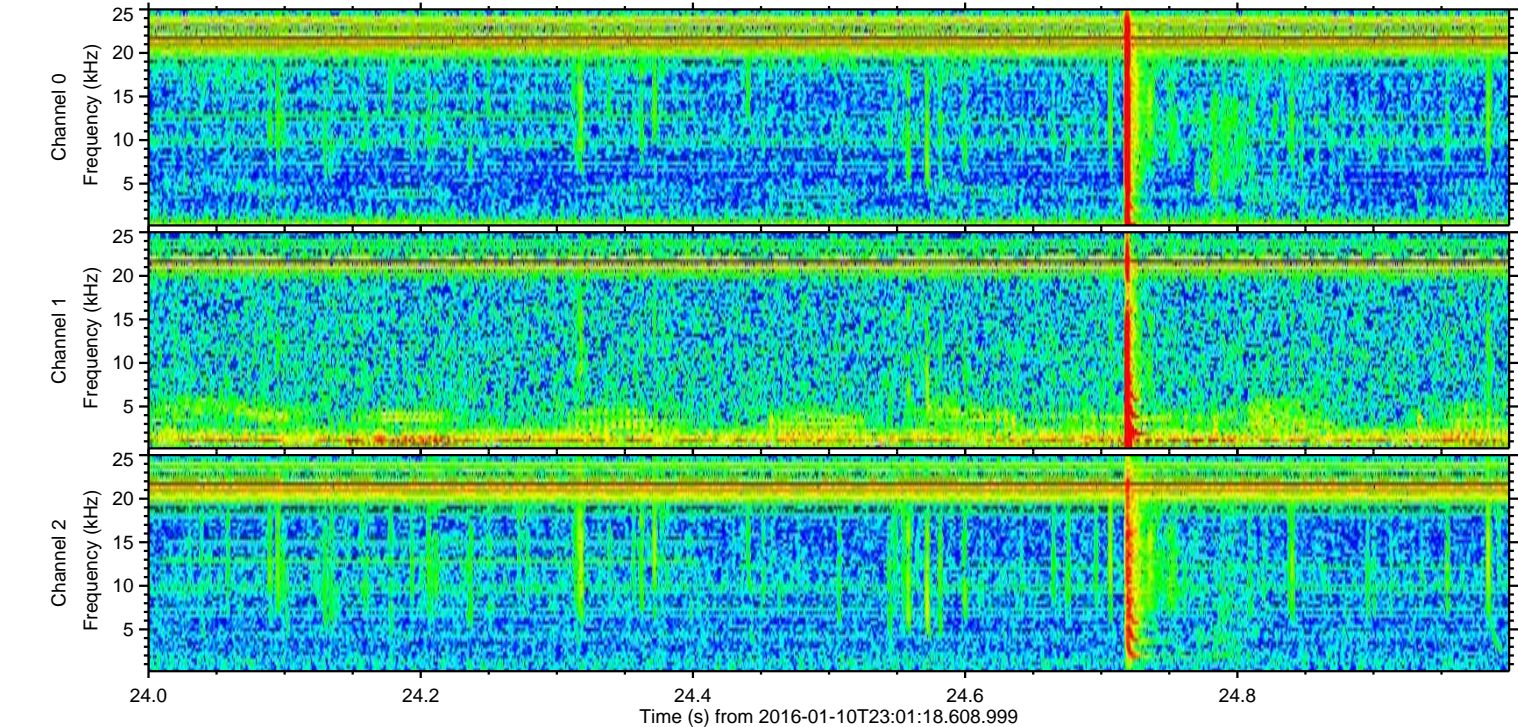
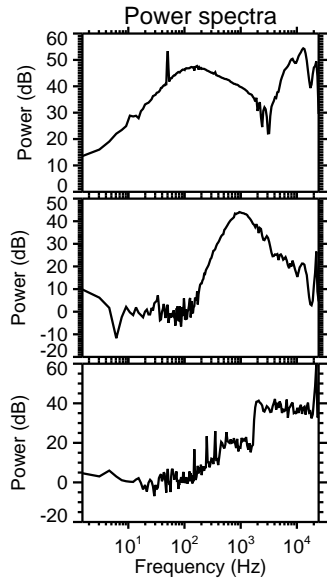
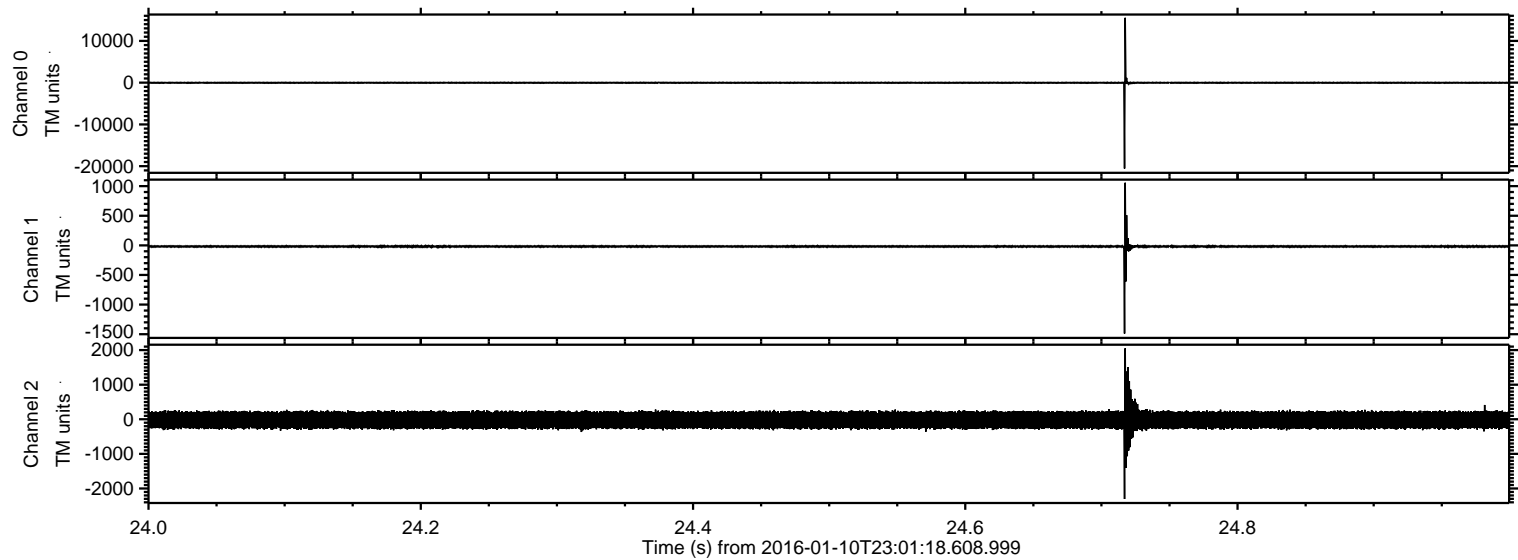


ELMAVAN 3D WAVEFORMS (Measured data sampled at 50 kHz) 51000 packets of 144 samples from 2016-01-10T23:01:18.608.999.

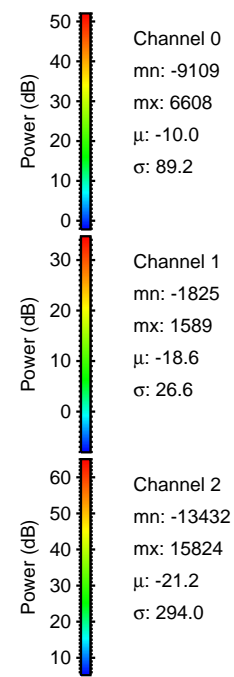
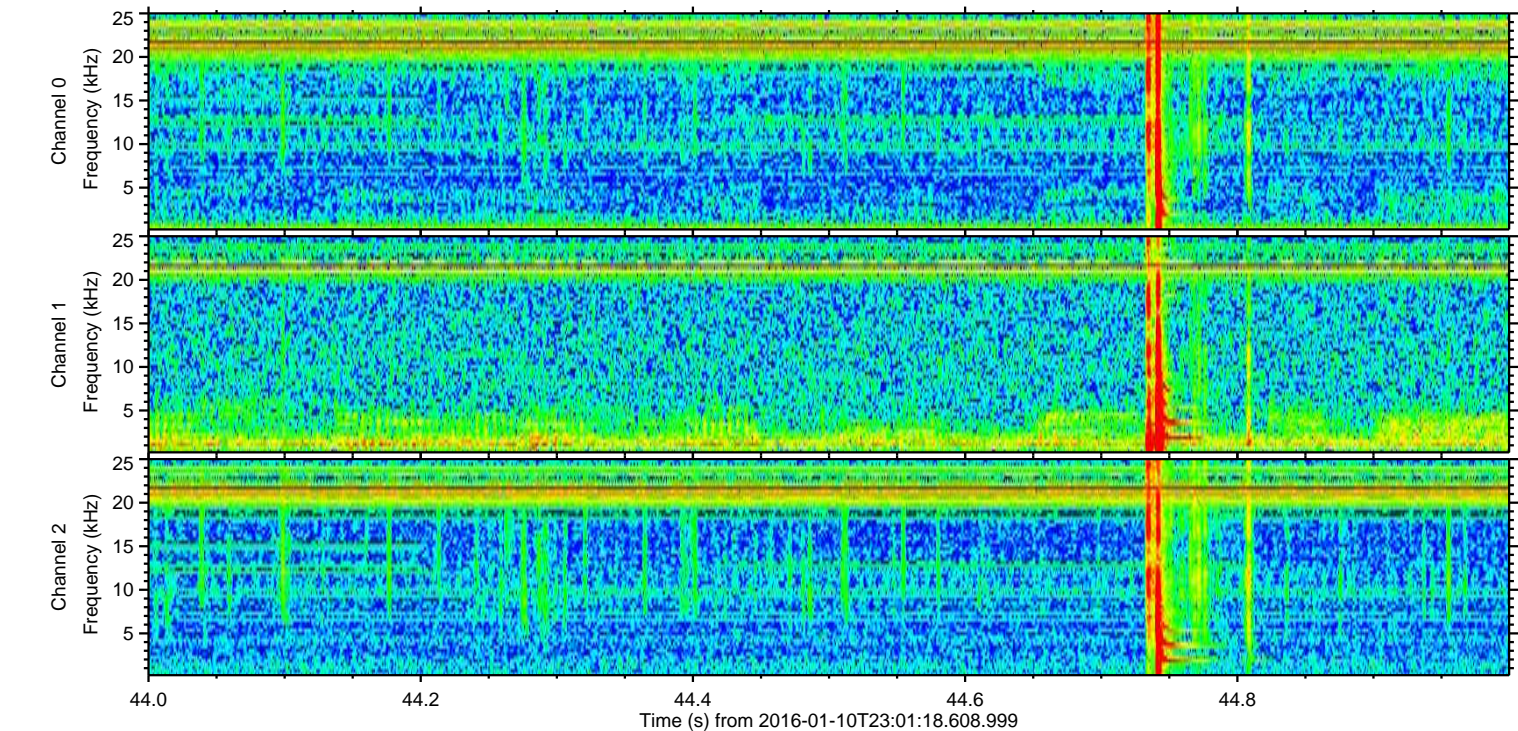
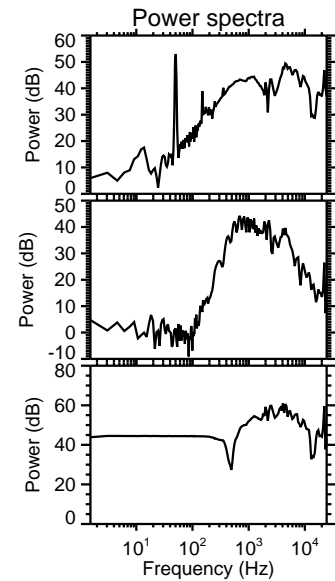
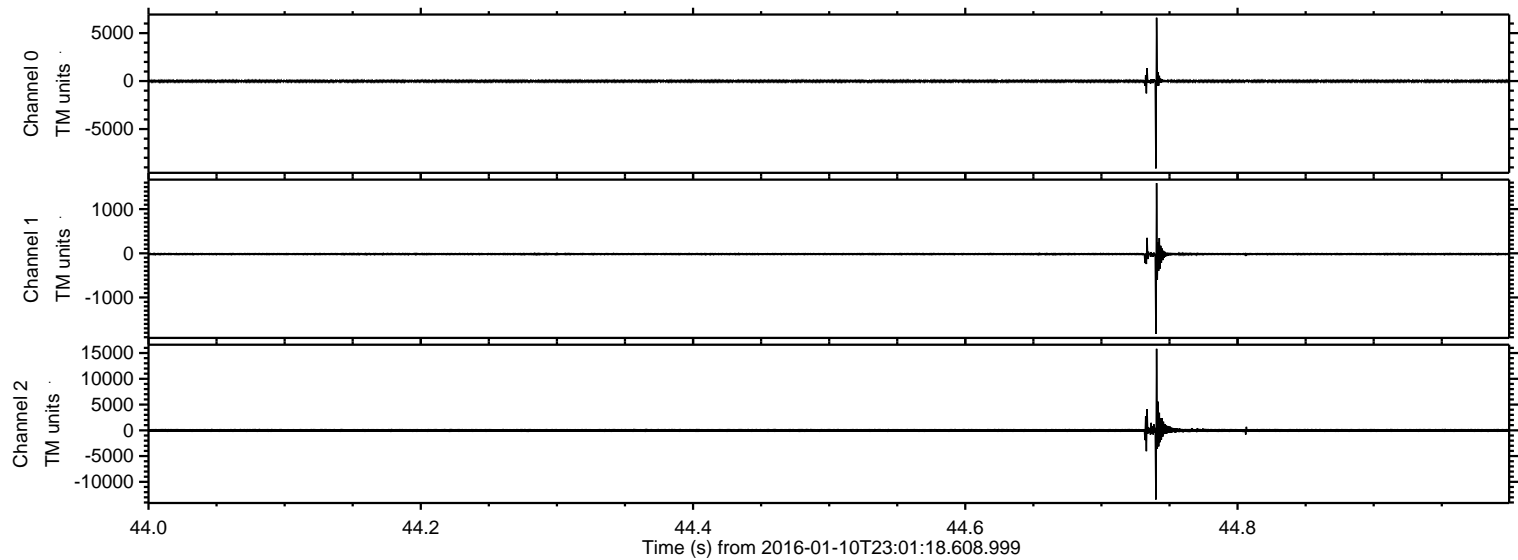
Processed Tue Mar 29 21:59:49 2016 by ELM ver.2012-10-06 from 001__elm20160110_230117__dat00.bin



Processed Tue Mar 29 22:00:02 2016 by ELM ver.2012-10-06 from 001__elm20160110_230117__dat00.bin

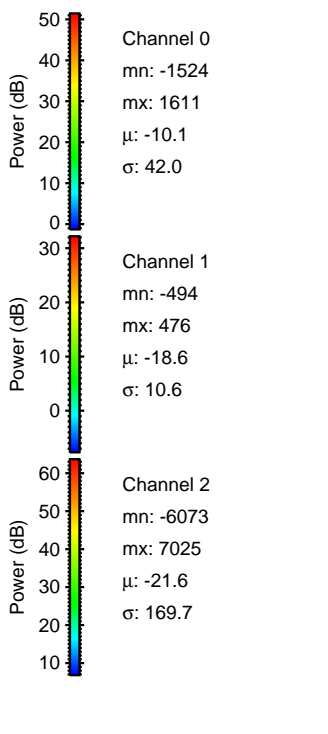
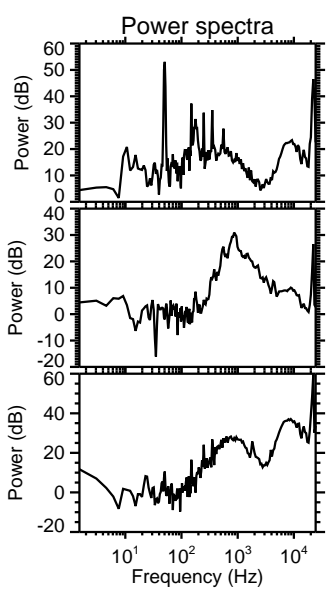
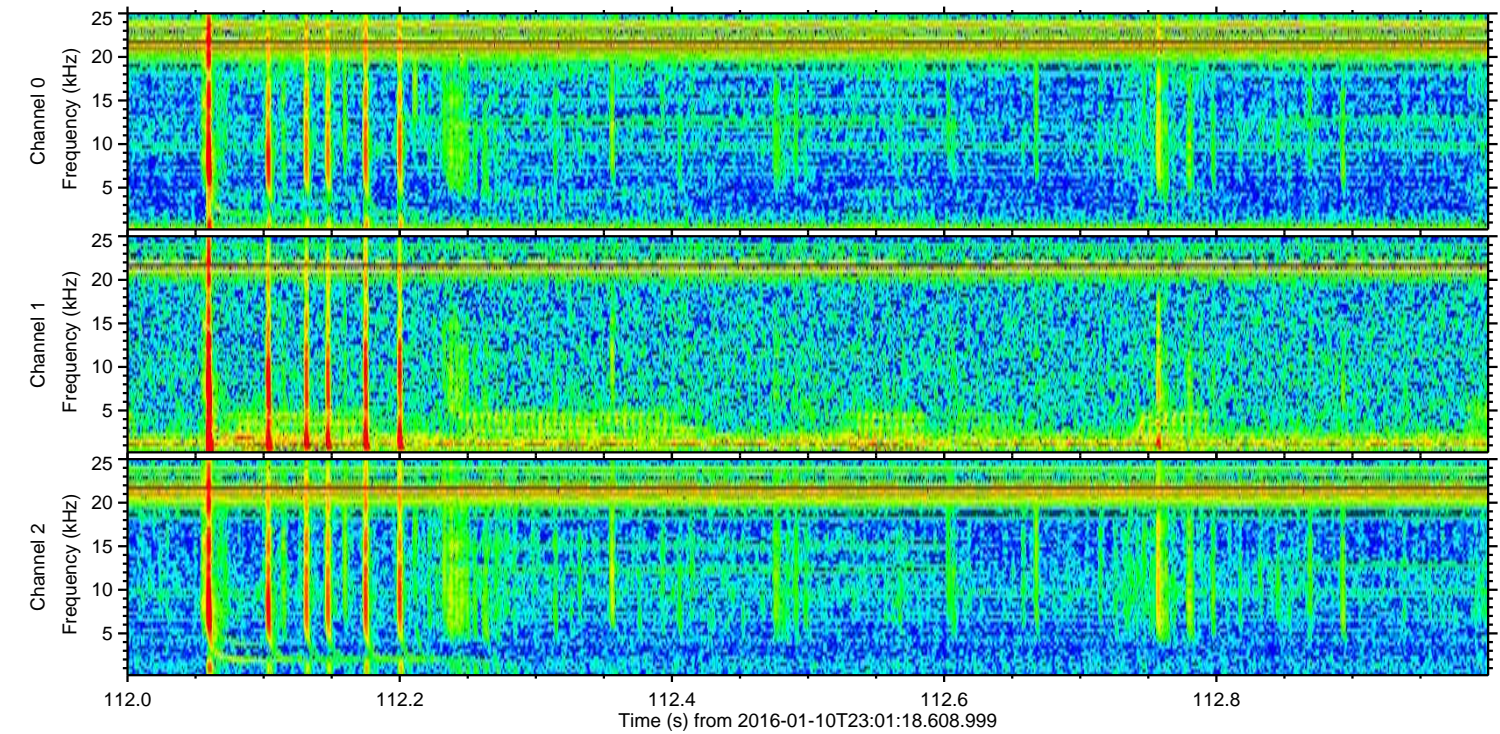
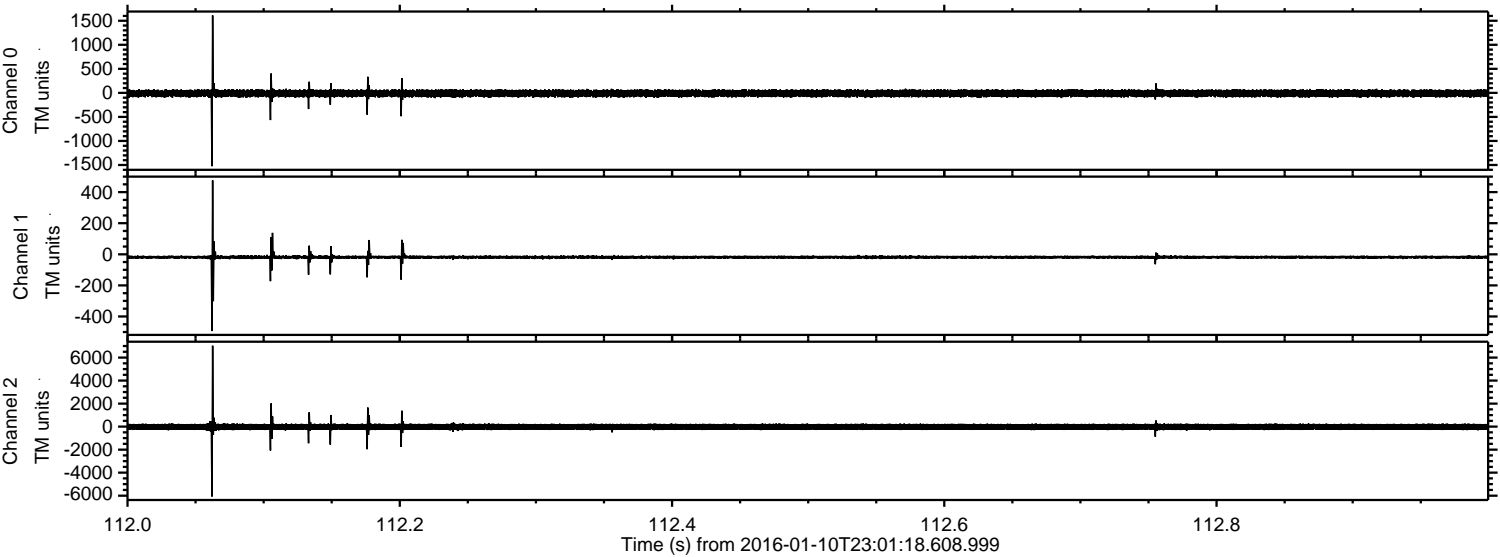


Processed Tue Mar 29 22:00:02 2016 by ELM ver.2012-10-06 from 001__elm20160110_230117__dat00.bin

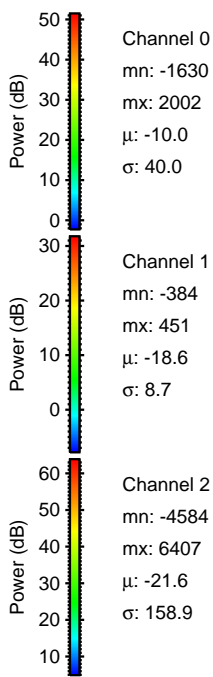
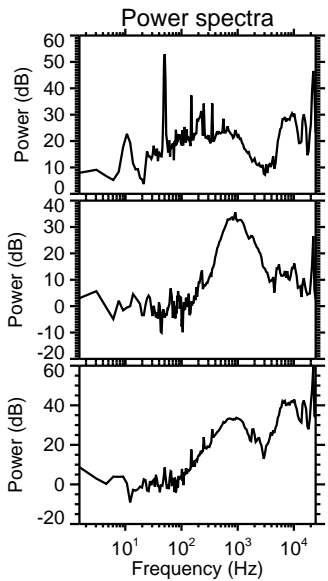
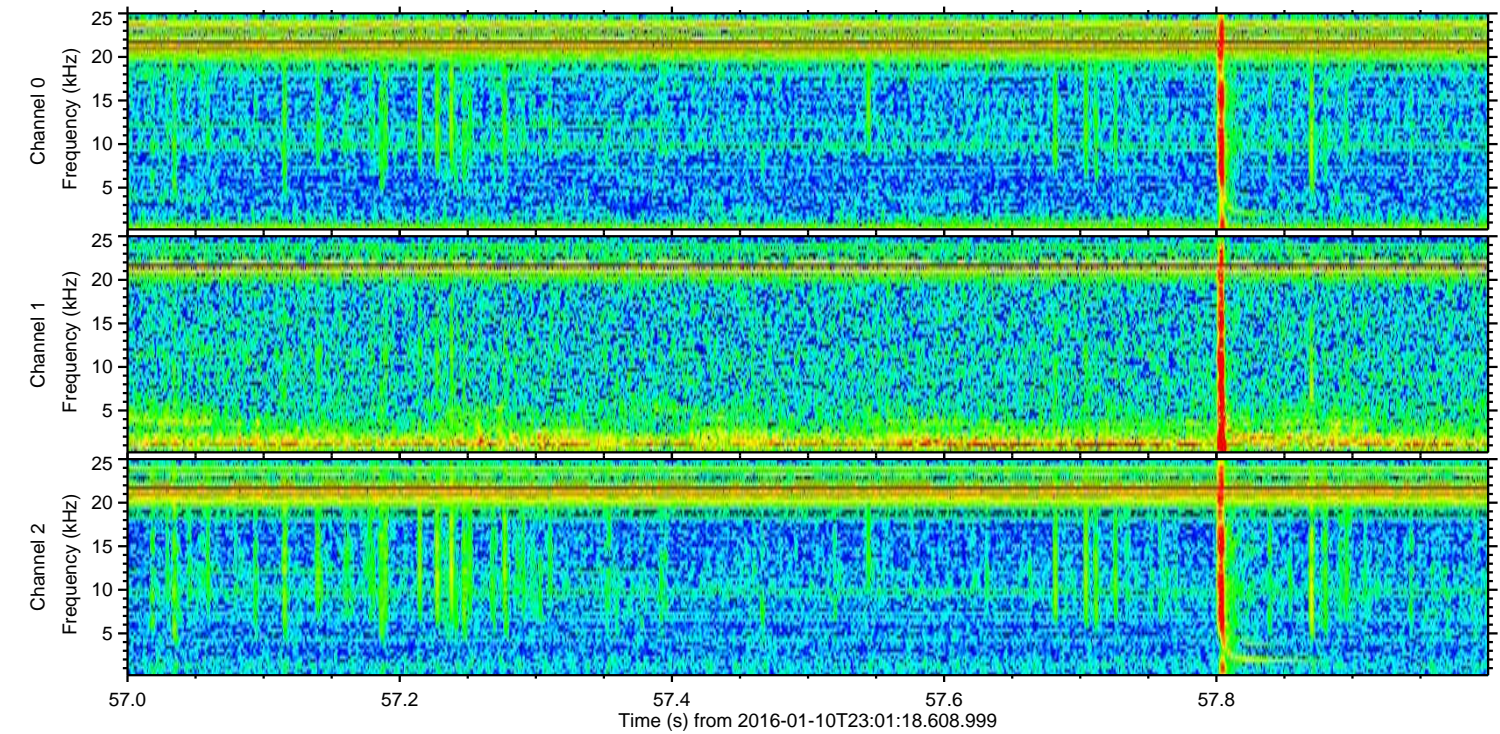
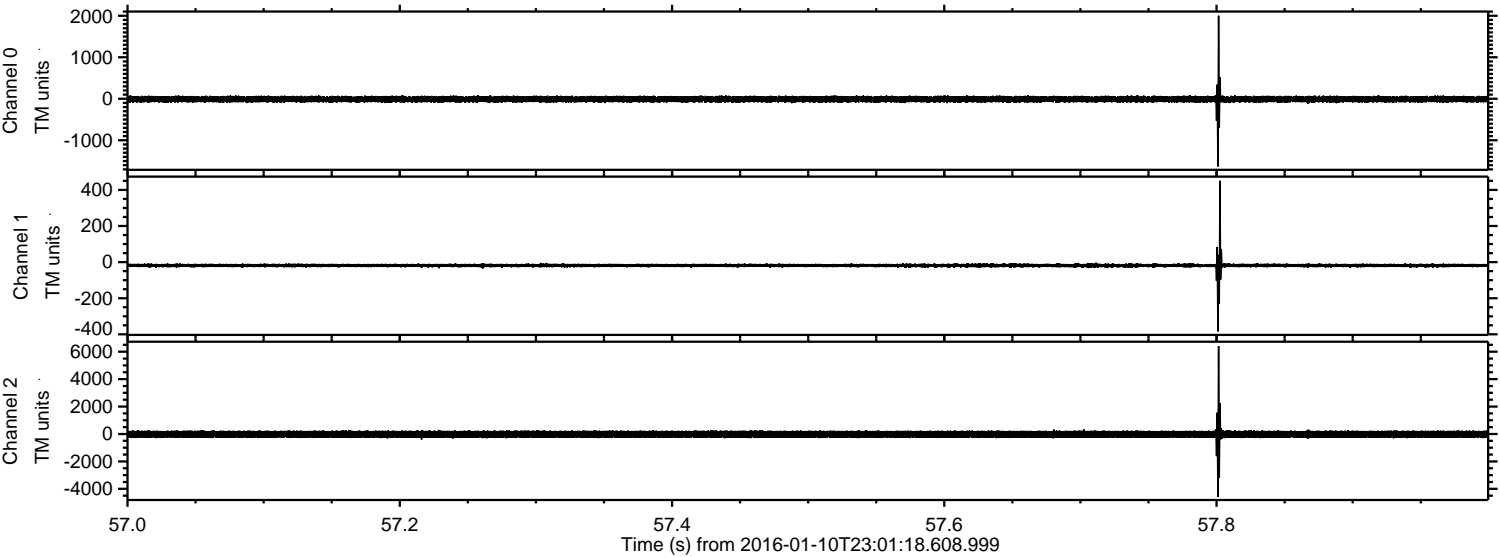


ELMAVAN 3D WAVEFORMS (Measured data sampled at 50 kHz) 51000 packets of 144 samples from 2016-01-10T23:01:18.608.999. Part 113/147

Processed Tue Mar 29 22:00:03 2016 by ELM ver.2012-10-06 from 001__elm20160110_230117__dat00.bin



Processed Tue Mar 29 22:00:04 2016 by ELM ver.2012-10-06 from 001__elm20160110_230117__dat00.bin



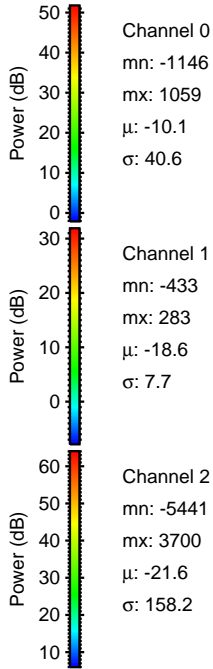
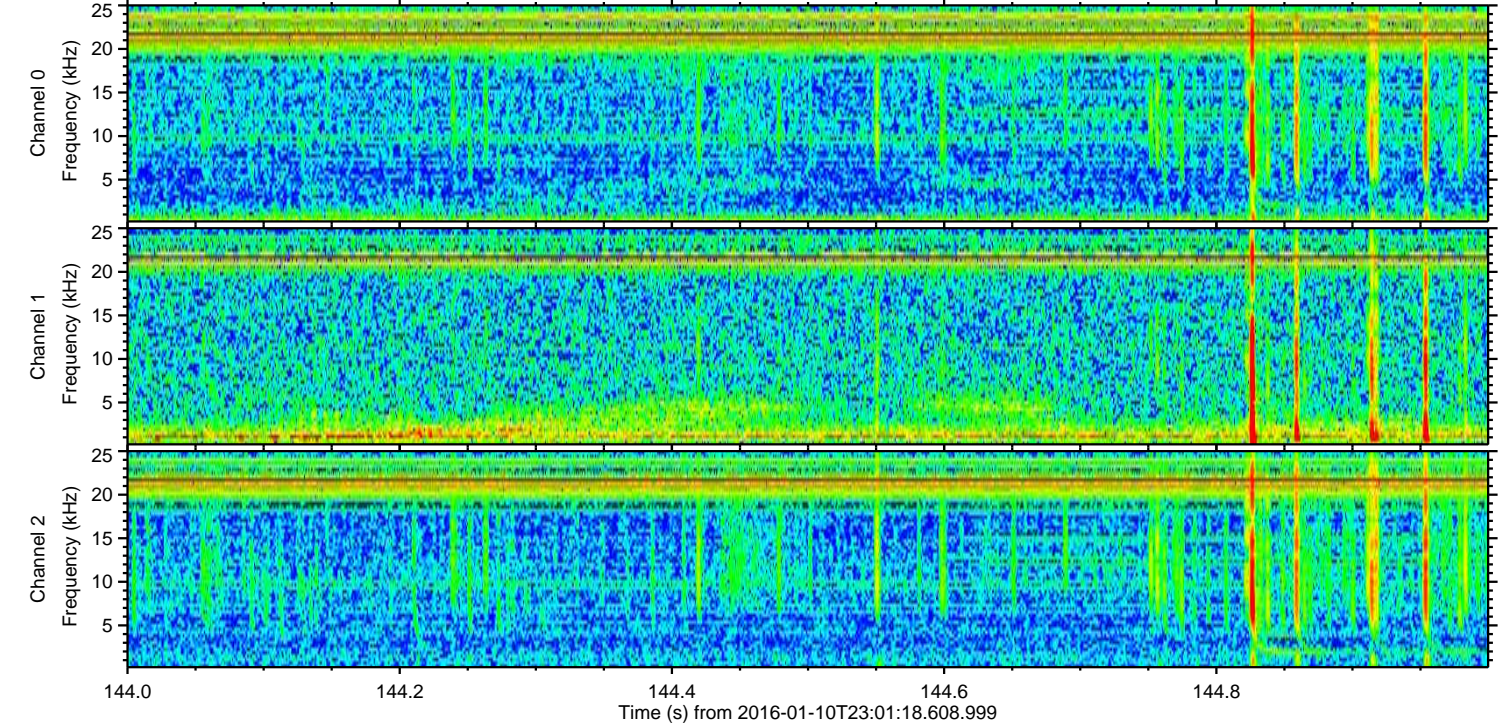
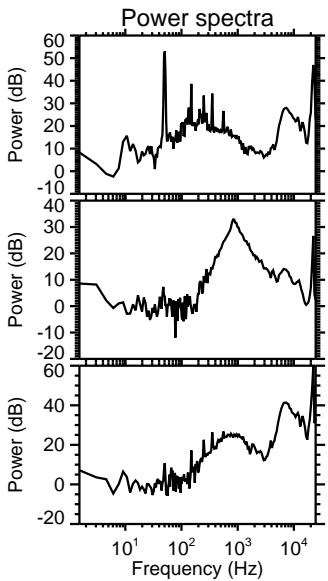
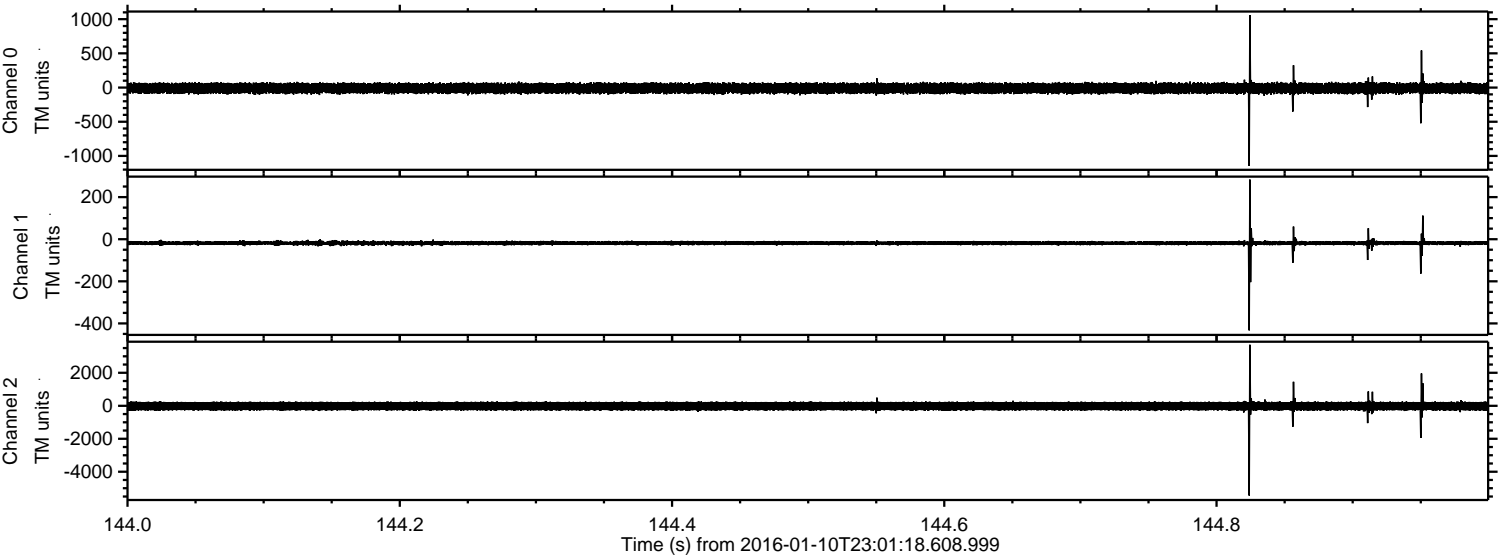
Channel 0
mn: -1630
mx: 2002
 μ : -10.0
 σ : 40.0

Channel 1
mn: -384
mx: 451
 μ : -18.6
 σ : 8.7

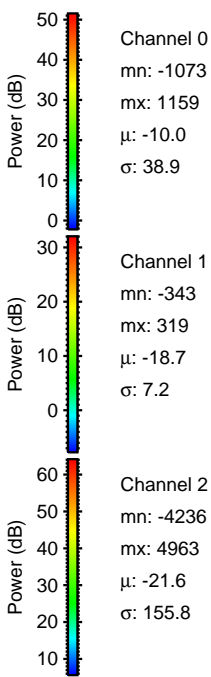
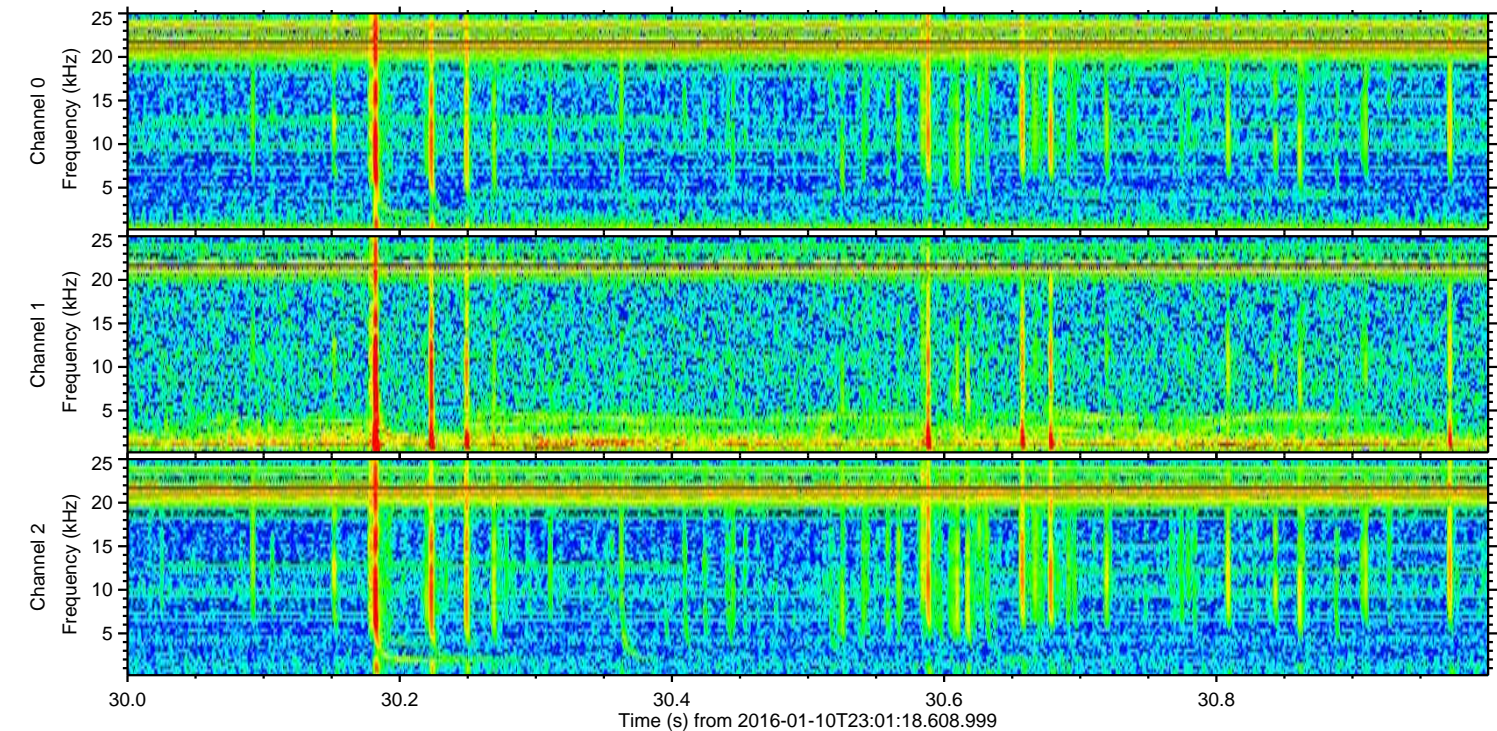
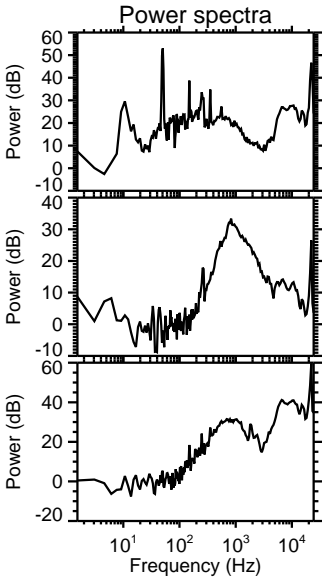
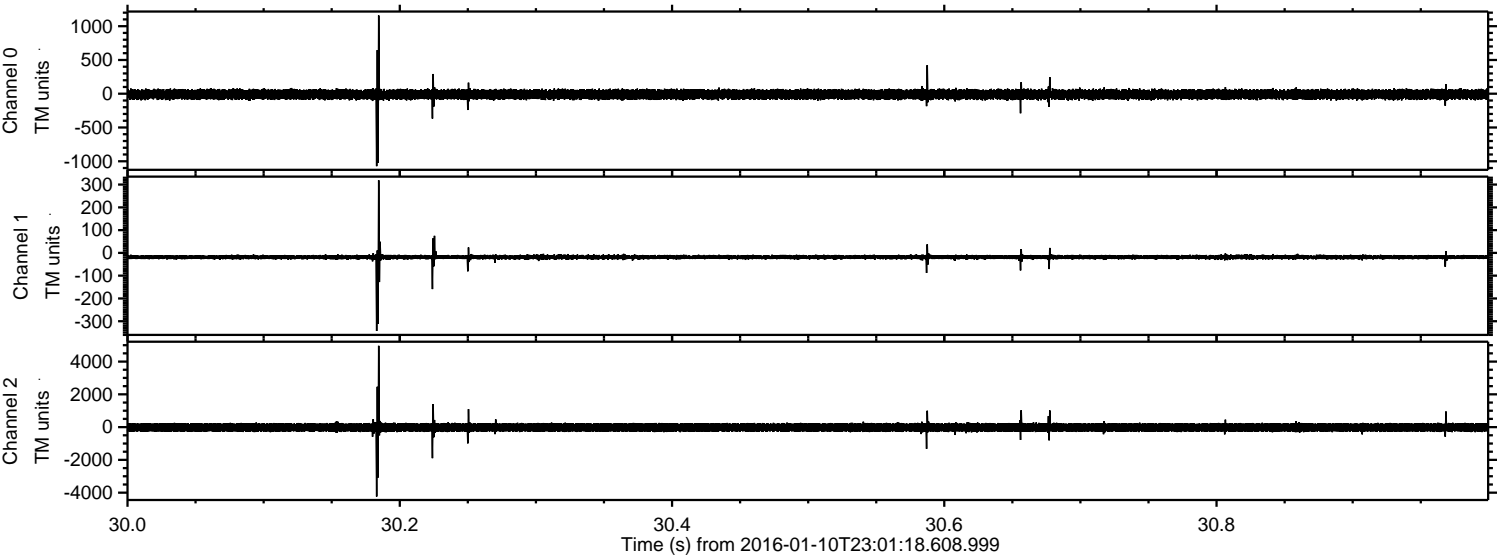
Channel 2
mn: -4584
mx: 6407
 μ : -21.6
 σ : 158.9

ELMAVAN 3D WAVEFORMS (Measured data sampled at 50 kHz) 51000 packets of 144 samples from 2016-01-10T23:01:18.608.999. Part 145/147

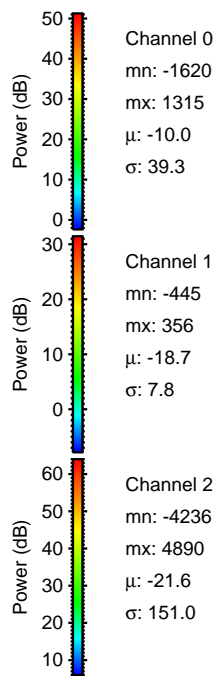
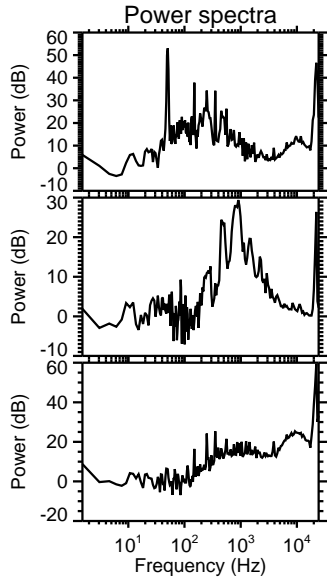
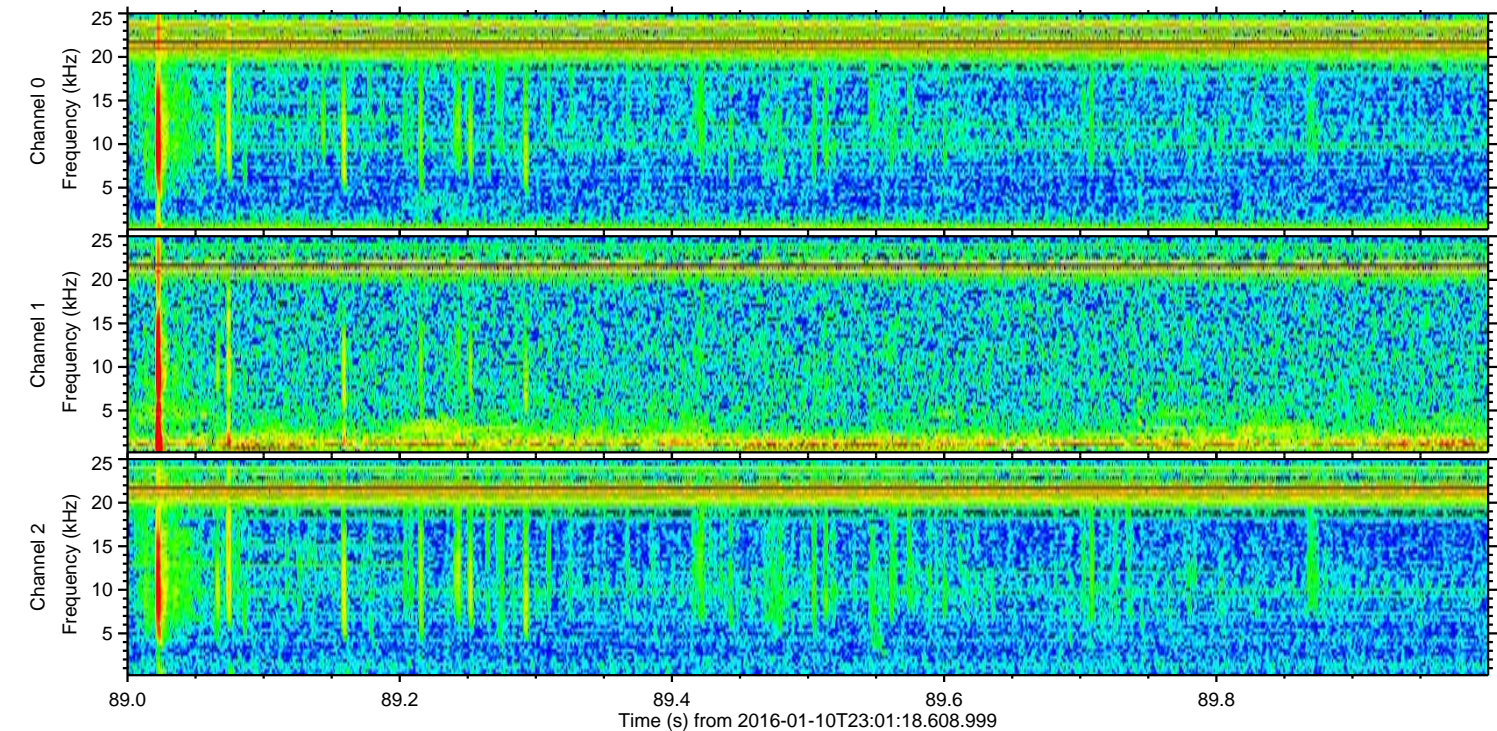
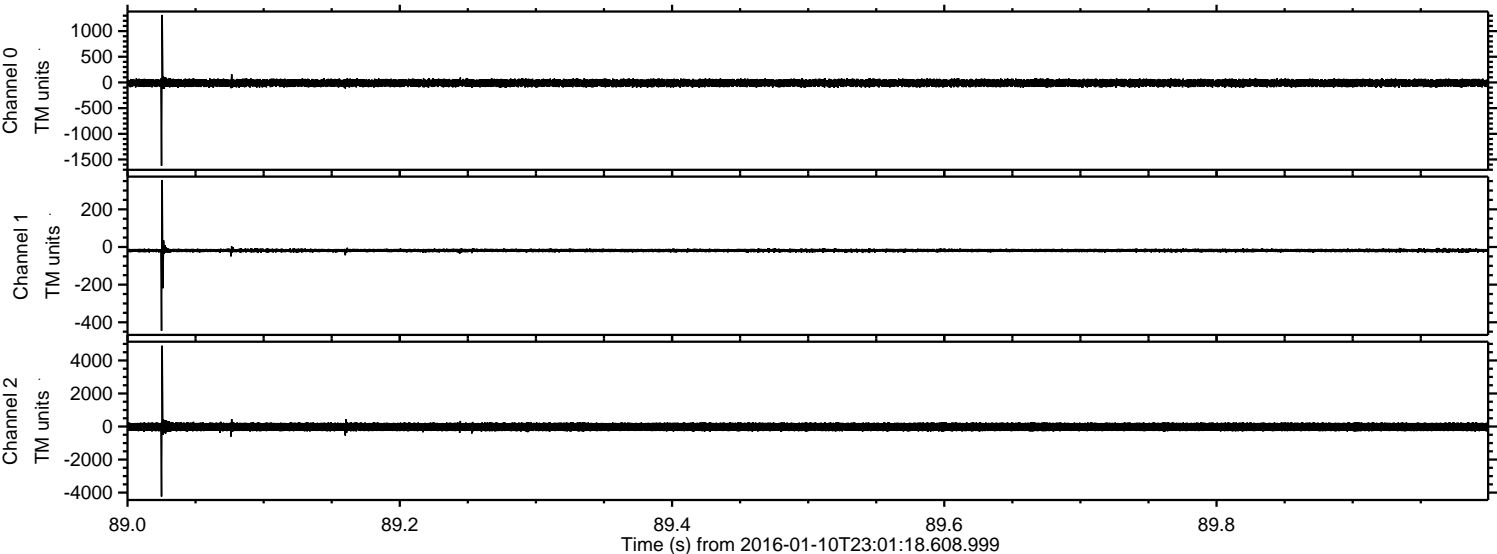
Processed Tue Mar 29 22:00:05 2016 by ELM ver.2012-10-06 from 001__elm20160110_230117__dat00.bin



Processed Tue Mar 29 22:00:06 2016 by ELM ver.2012-10-06 from 001__elm20160110_230117__dat00.bin

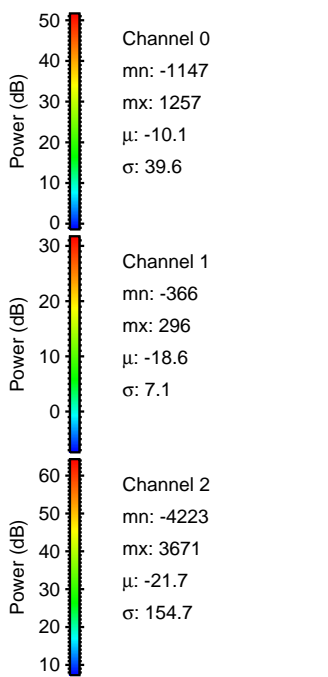
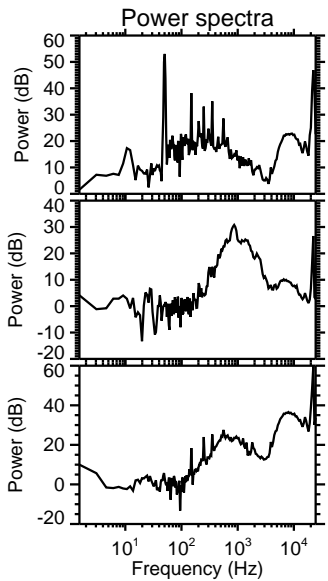
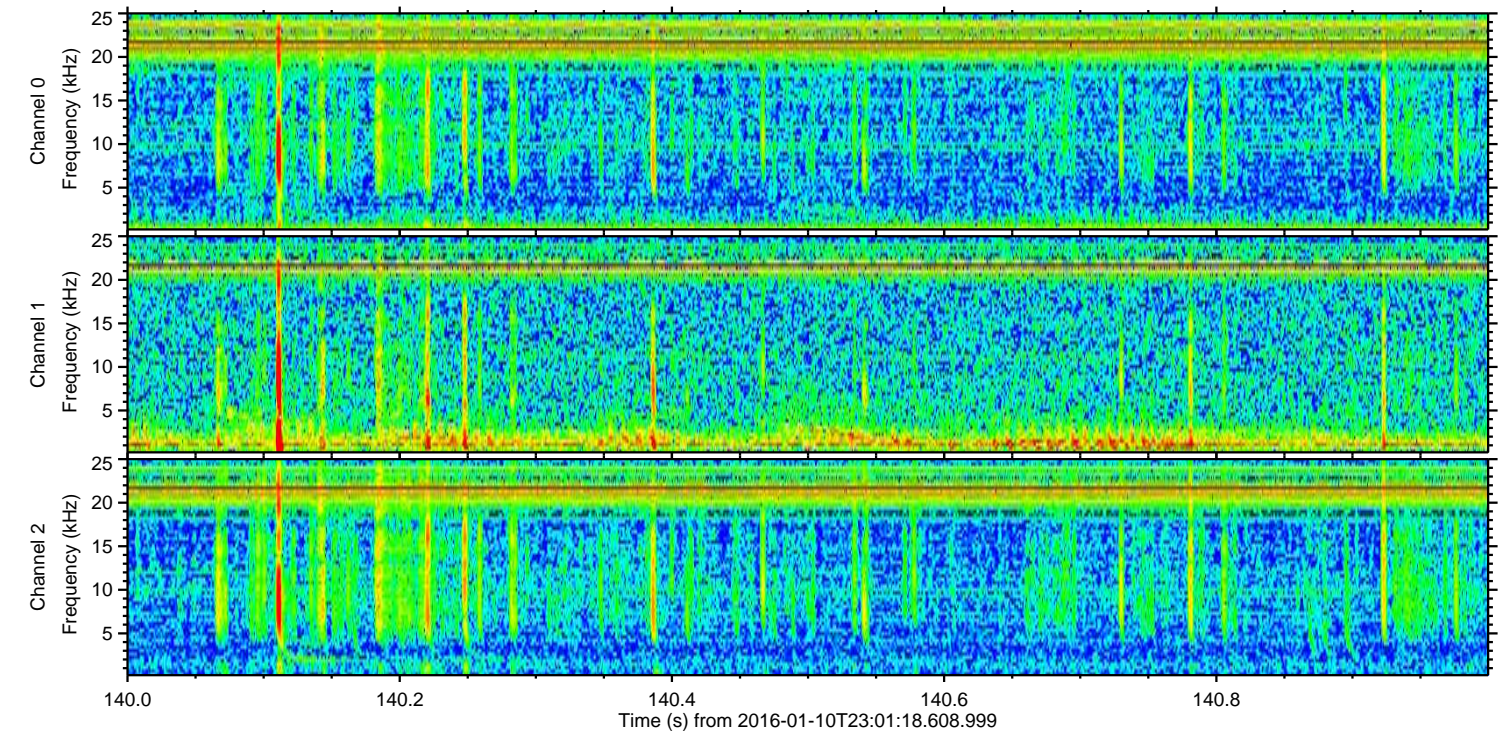
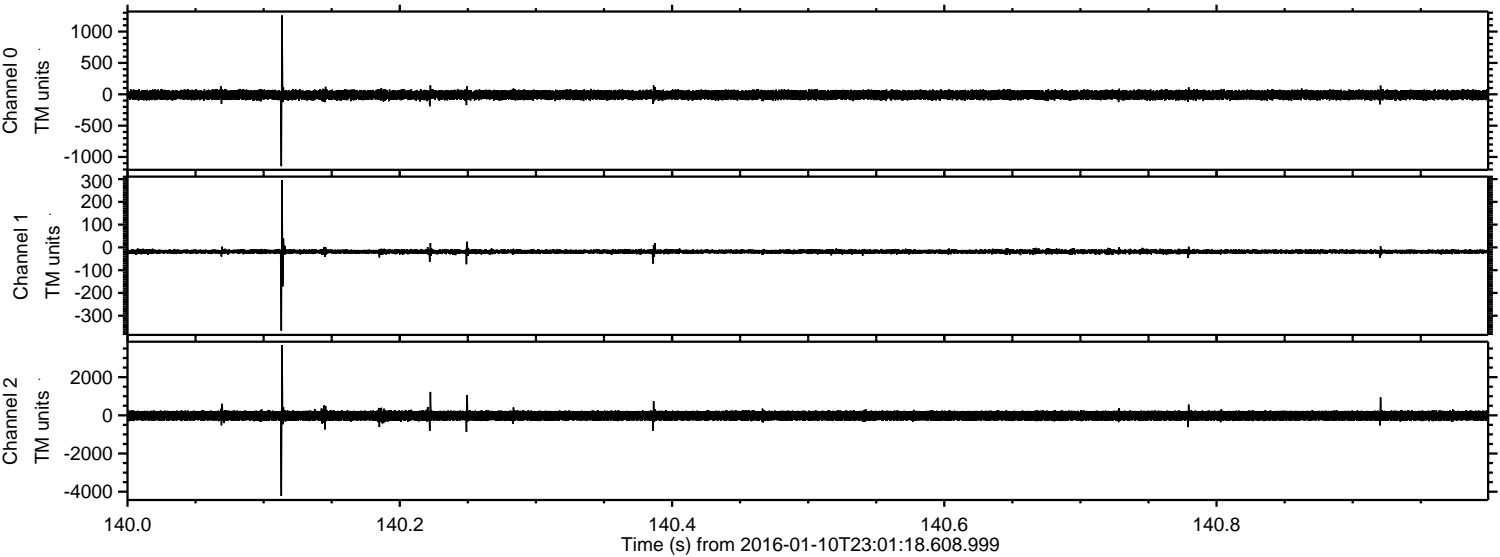


Processed Tue Mar 29 22:00:07 2016 by ELM ver.2012-10-06 from 001__elm20160110_230117__dat00.bin

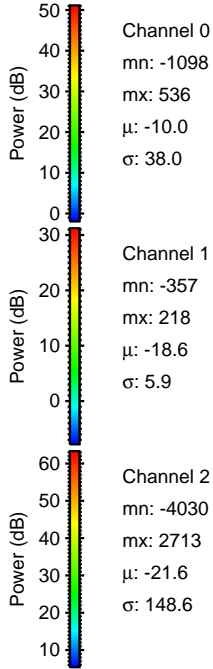
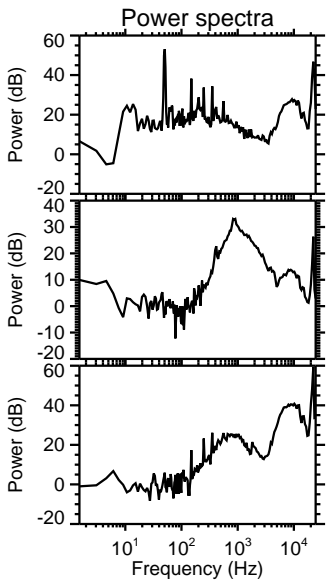
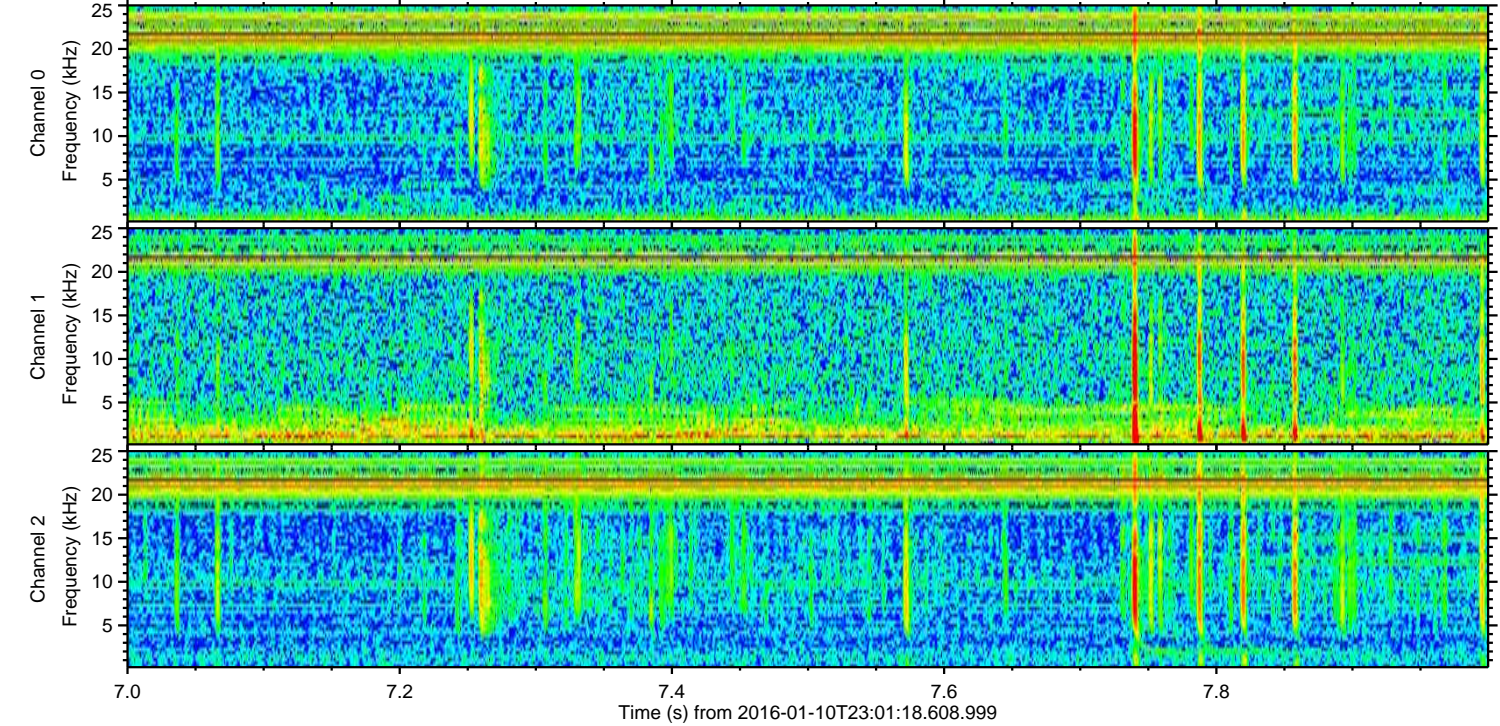
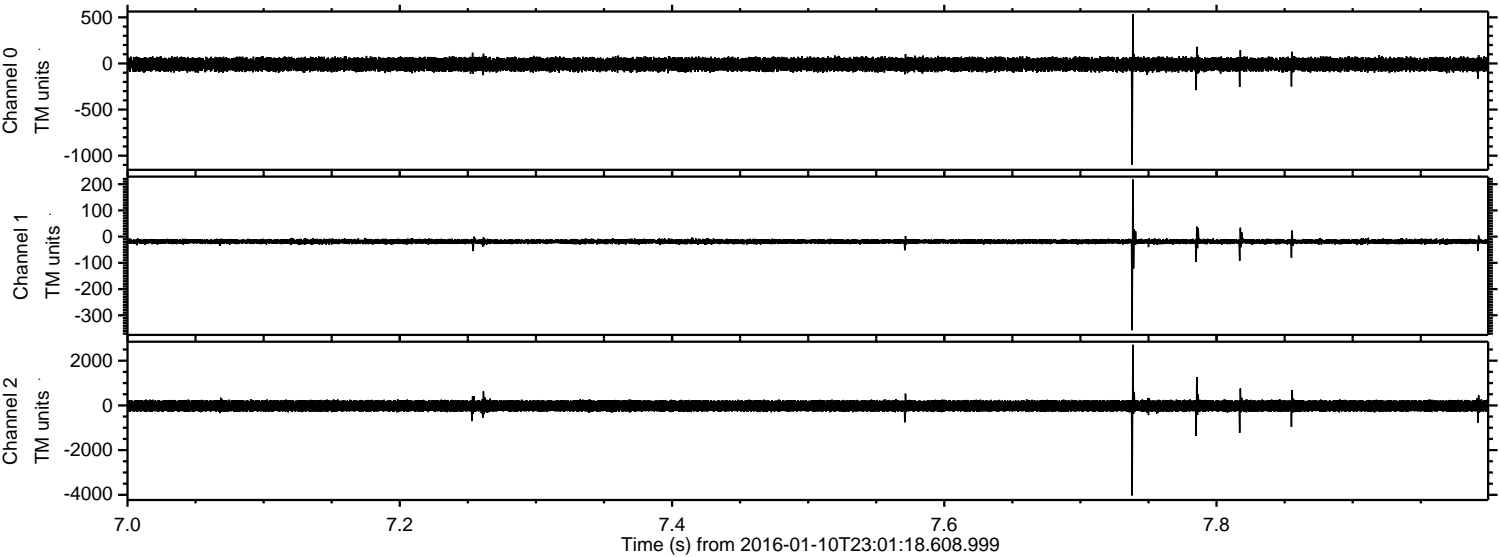


ELMAVAN 3D WAVEFORMS (Measured data sampled at 50 kHz) 51000 packets of 144 samples from 2016-01-10T23:01:18.608.999. Part 141/147

Processed Tue Mar 29 22:00:08 2016 by ELM ver.2012-10-06 from 001__elm20160110_230117__dat00.bin



Processed Tue Mar 29 22:00:09 2016 by ELM ver.2012-10-06 from 001__elm20160110_230117__dat00.bin



Channel 0
mn: -1098
mx: 536
 μ : -10.0
 σ : 38.0

Channel 1
mn: -357
mx: 218
 μ : -18.6
 σ : 5.9

Channel 2
mn: -4030
mx: 2713
 μ : -21.6
 σ : 148.6

Processed Tue Mar 29 22:00:10 2016 by ELM ver.2012-10-06 from 001__elm20160110_230117__dat00.bin

