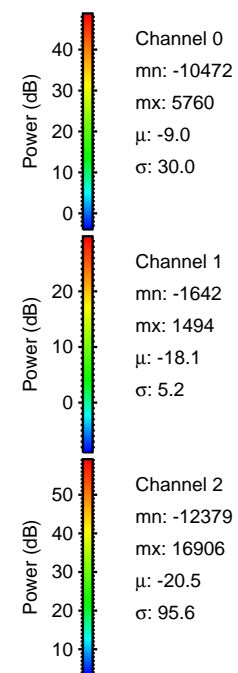
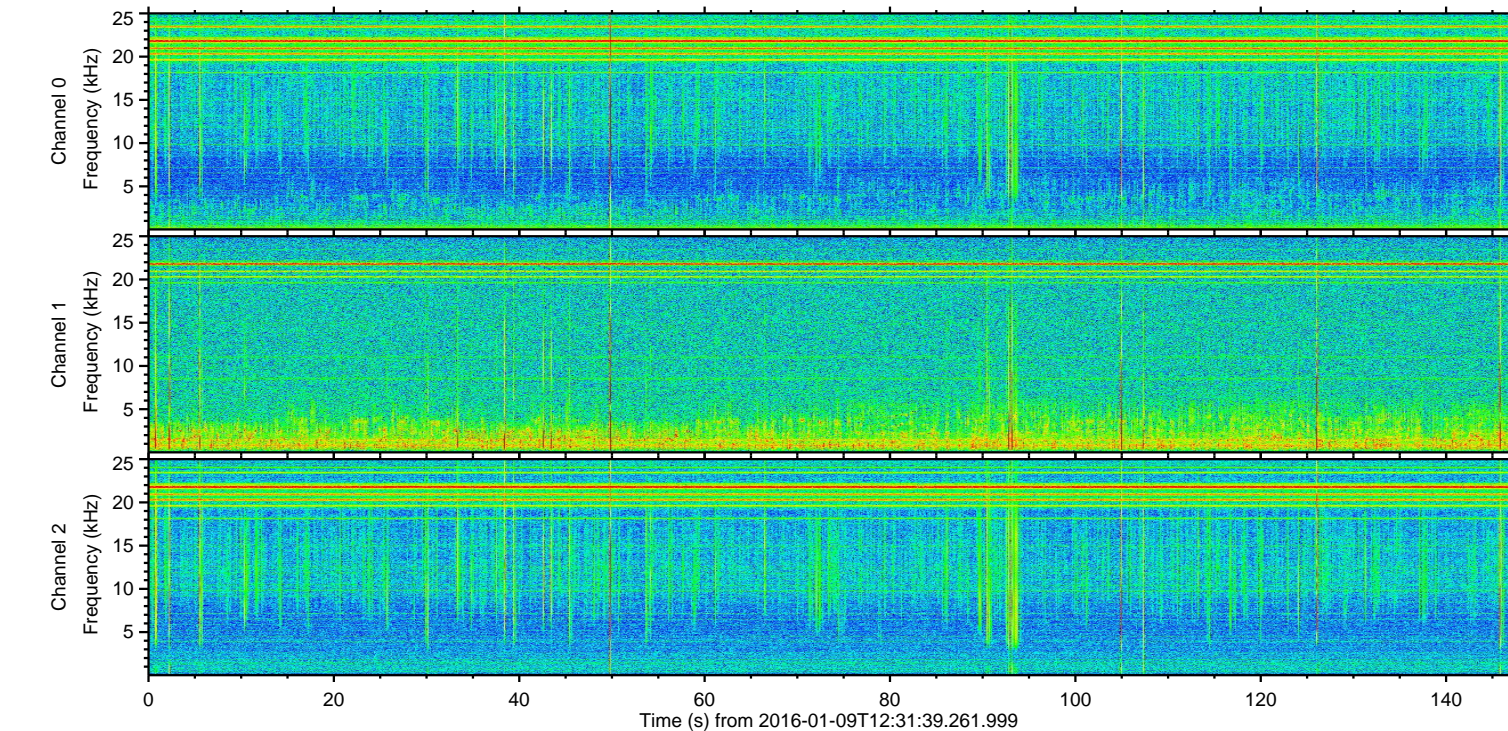
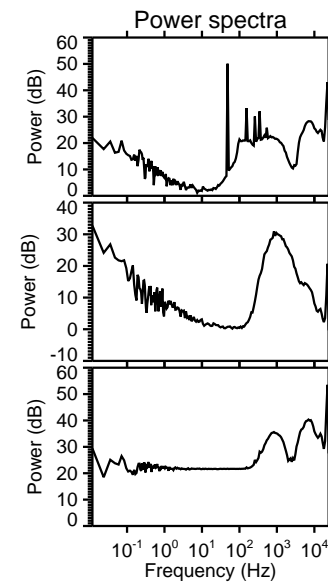
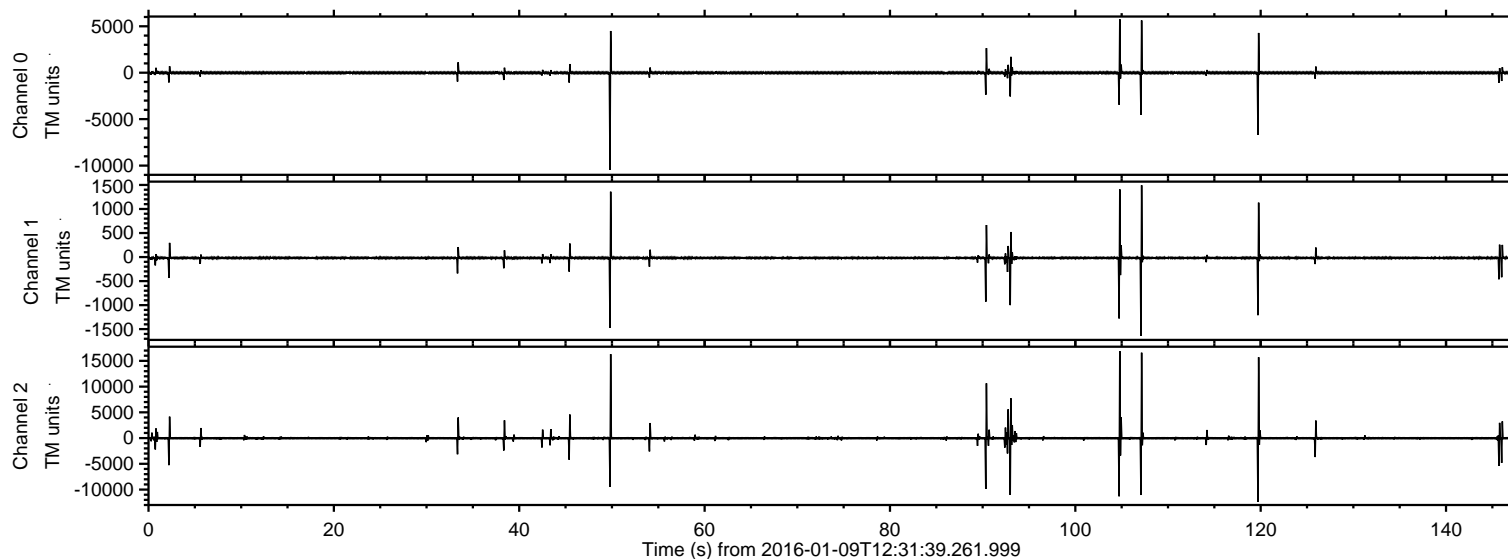


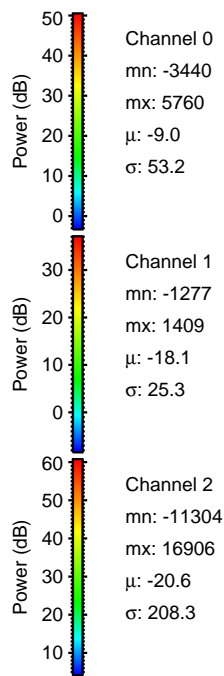
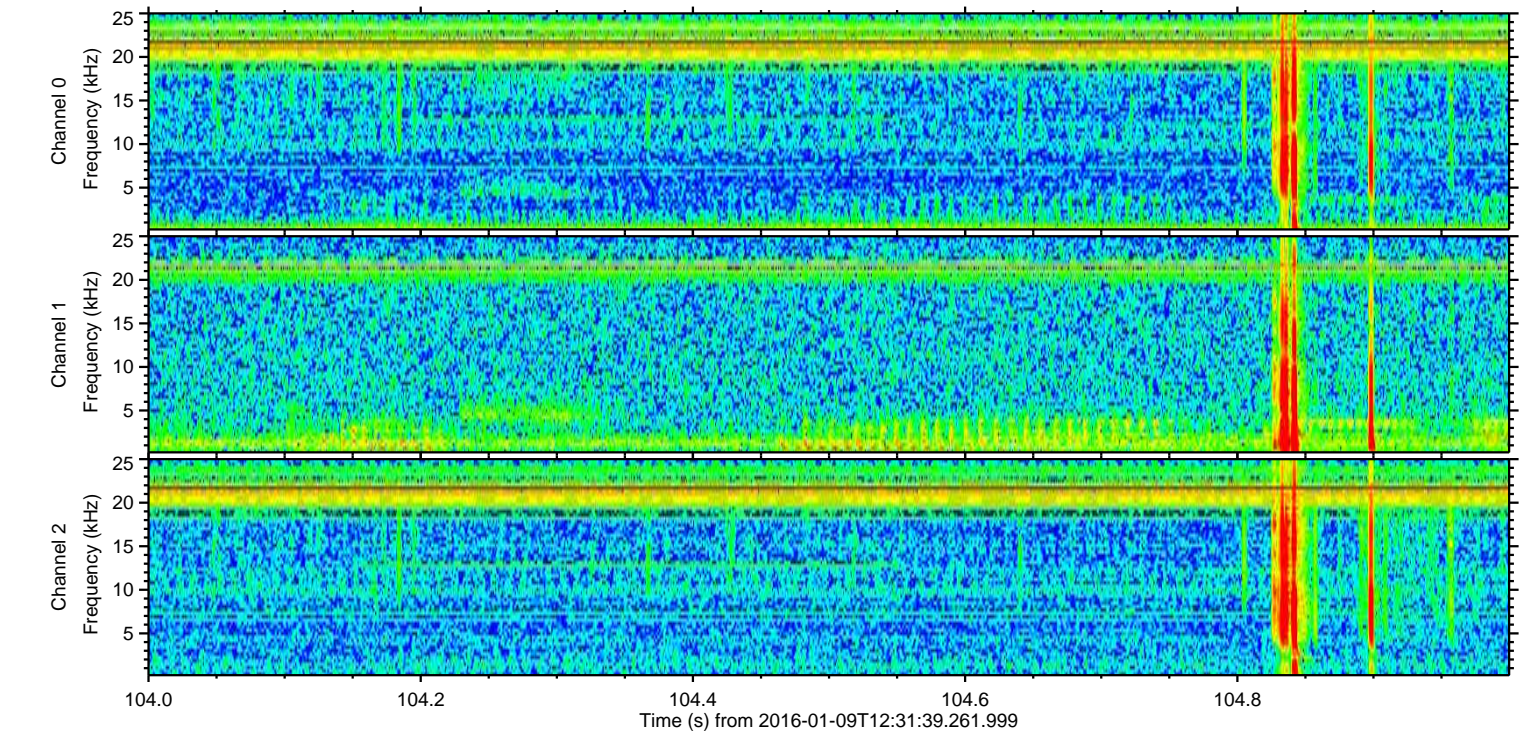
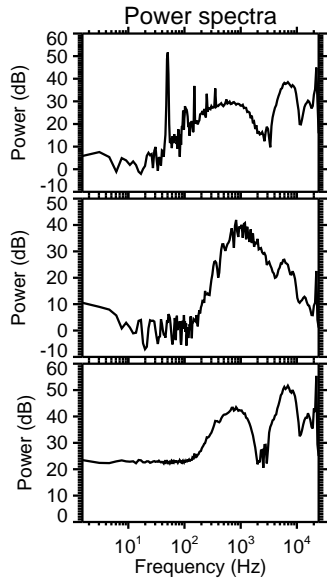
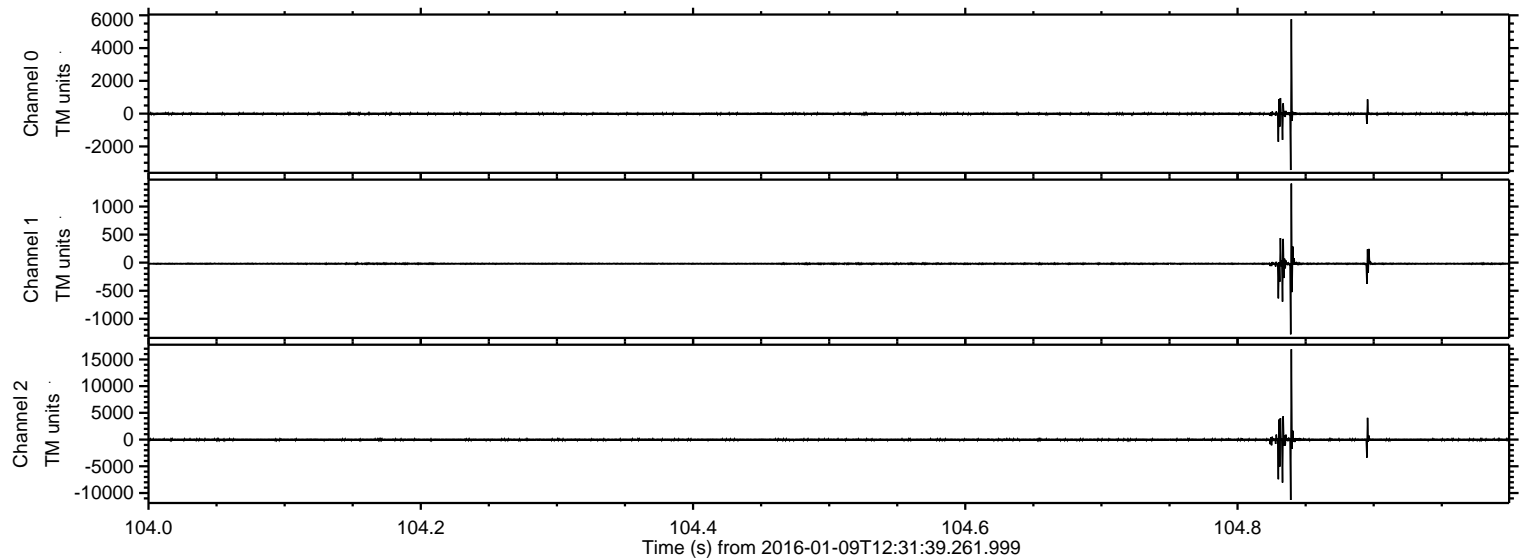
ELMAVAN 3D WAVEFORMS (Measured data sampled at 50 kHz) 51000 packets of 144 samples from 2016-01-09T12:31:39.261.999.

Processed Thu Mar 24 16:44:59 2016 by ELM ver.2012-10-06 from 001__elm20160109_123138__dat00.bin



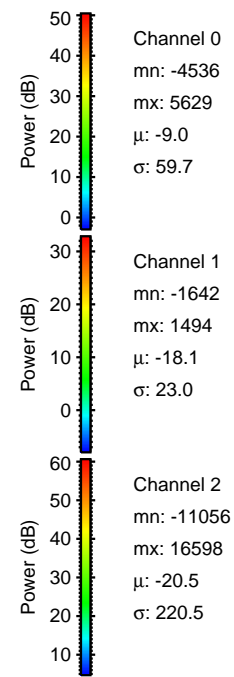
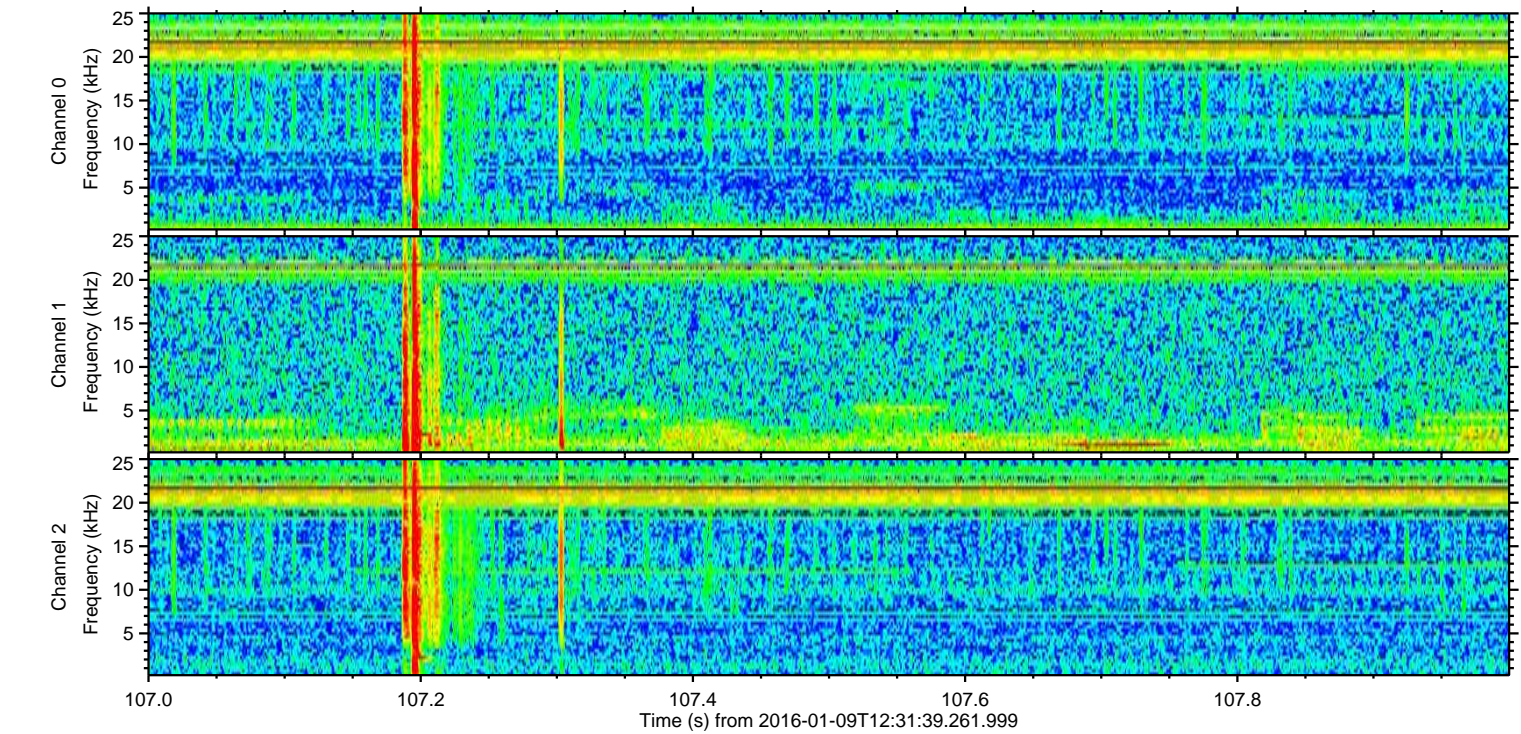
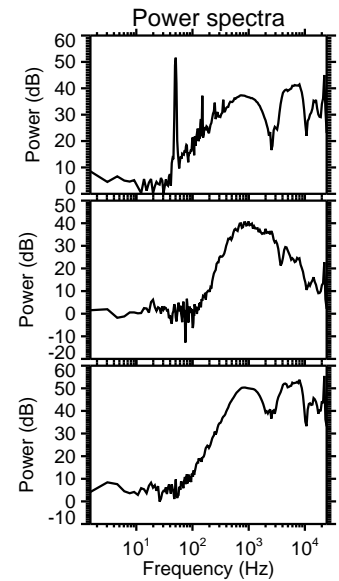
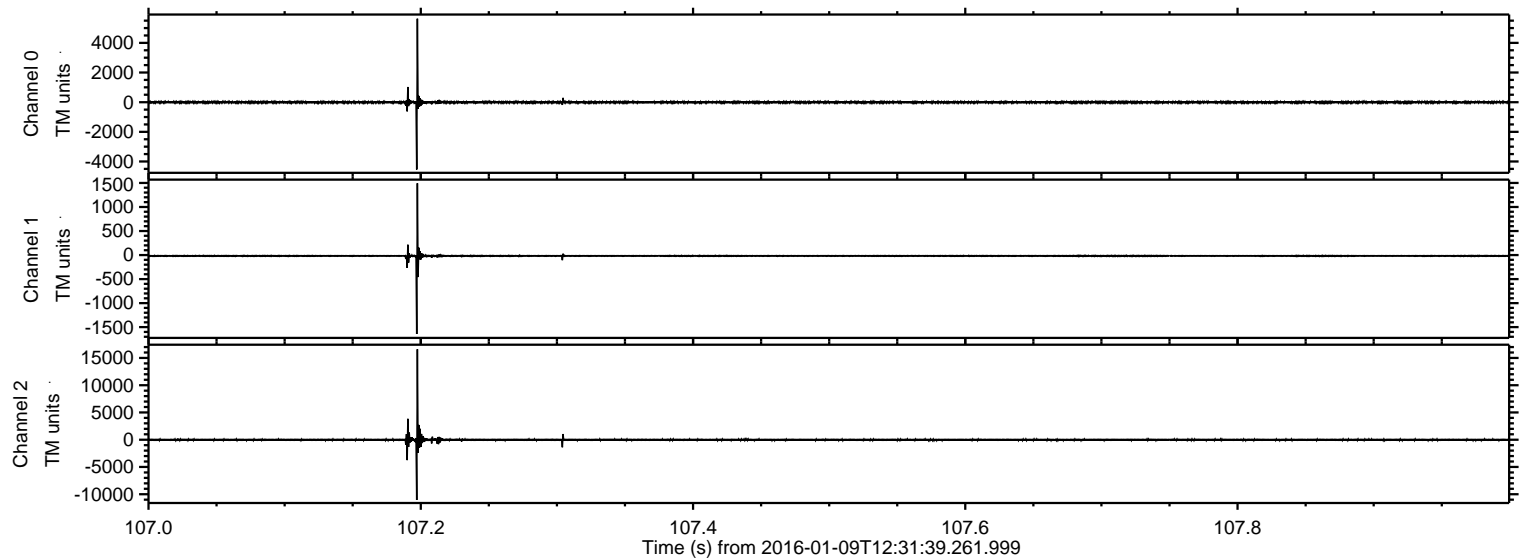
ELMAVAN 3D WAVEFORMS (Measured data sampled at 50 kHz) 51000 packets of 144 samples from 2016-01-09T12:31:39.261.999. Part 105/147

Processed Thu Mar 24 16:45:11 2016 by ELM ver.2012-10-06 from 001__elm20160109_123138__dat00.bin

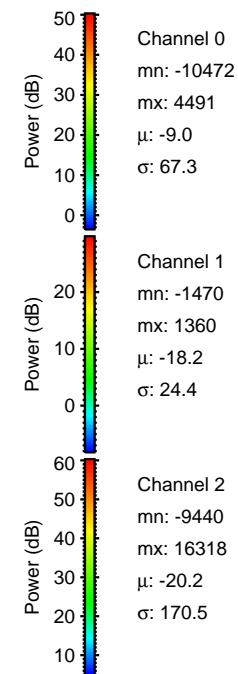
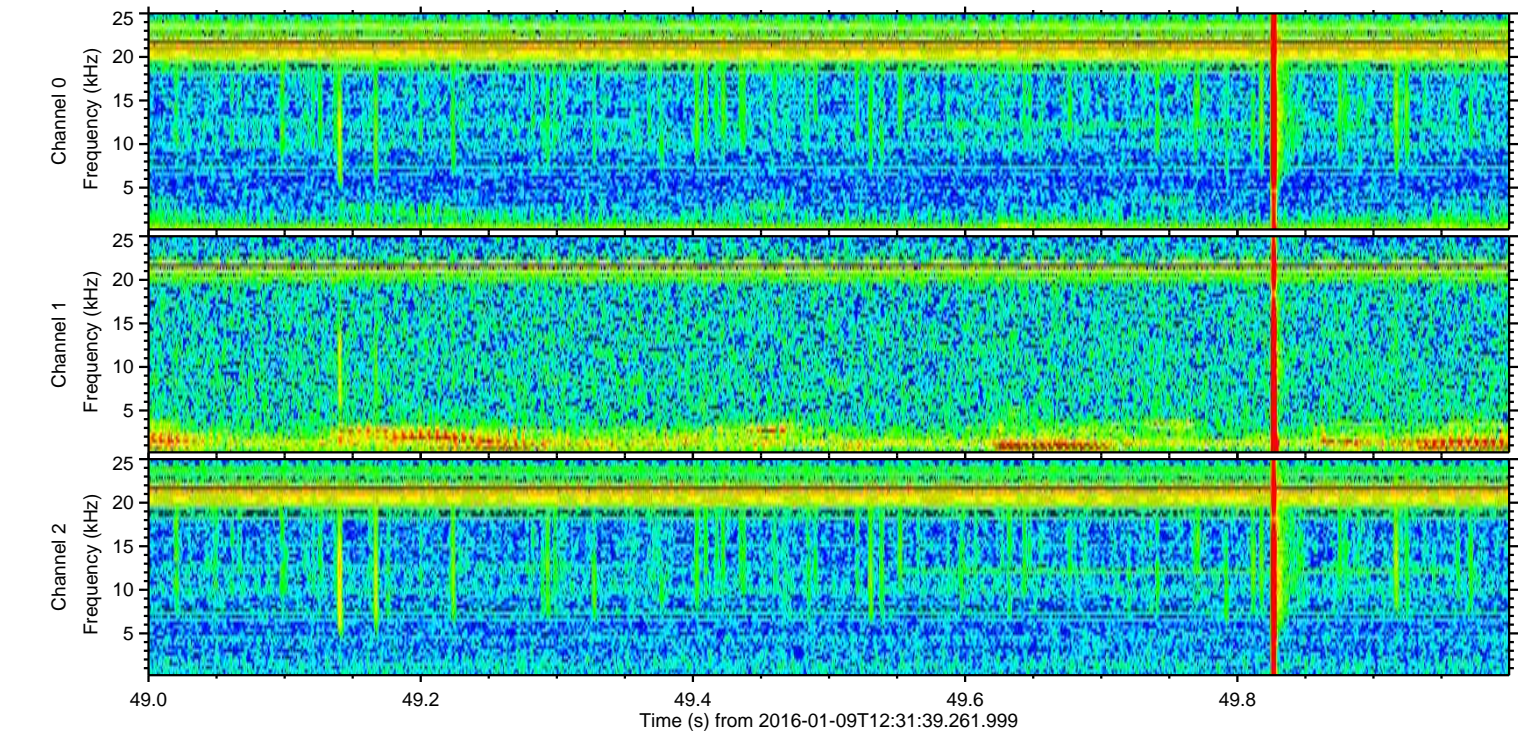
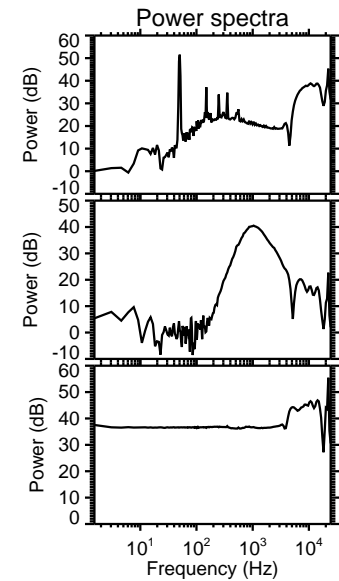
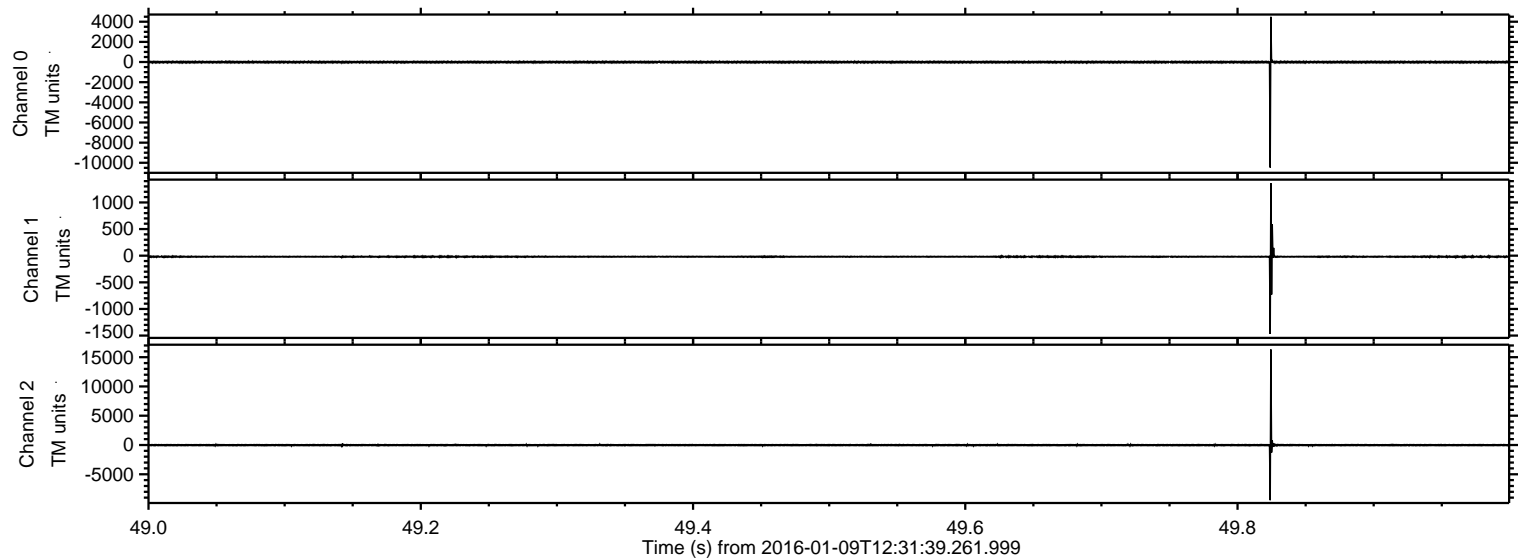


ELMAVAN 3D WAVEFORMS (Measured data sampled at 50 kHz) 51000 packets of 144 samples from 2016-01-09T12:31:39.261.999. Part 108/147

Processed Thu Mar 24 16:45:12 2016 by ELM ver.2012-10-06 from 001__elm20160109_123138__dat00.bin

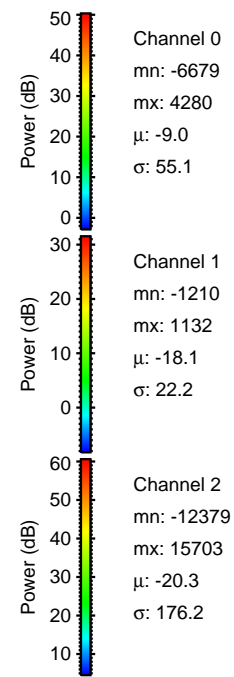
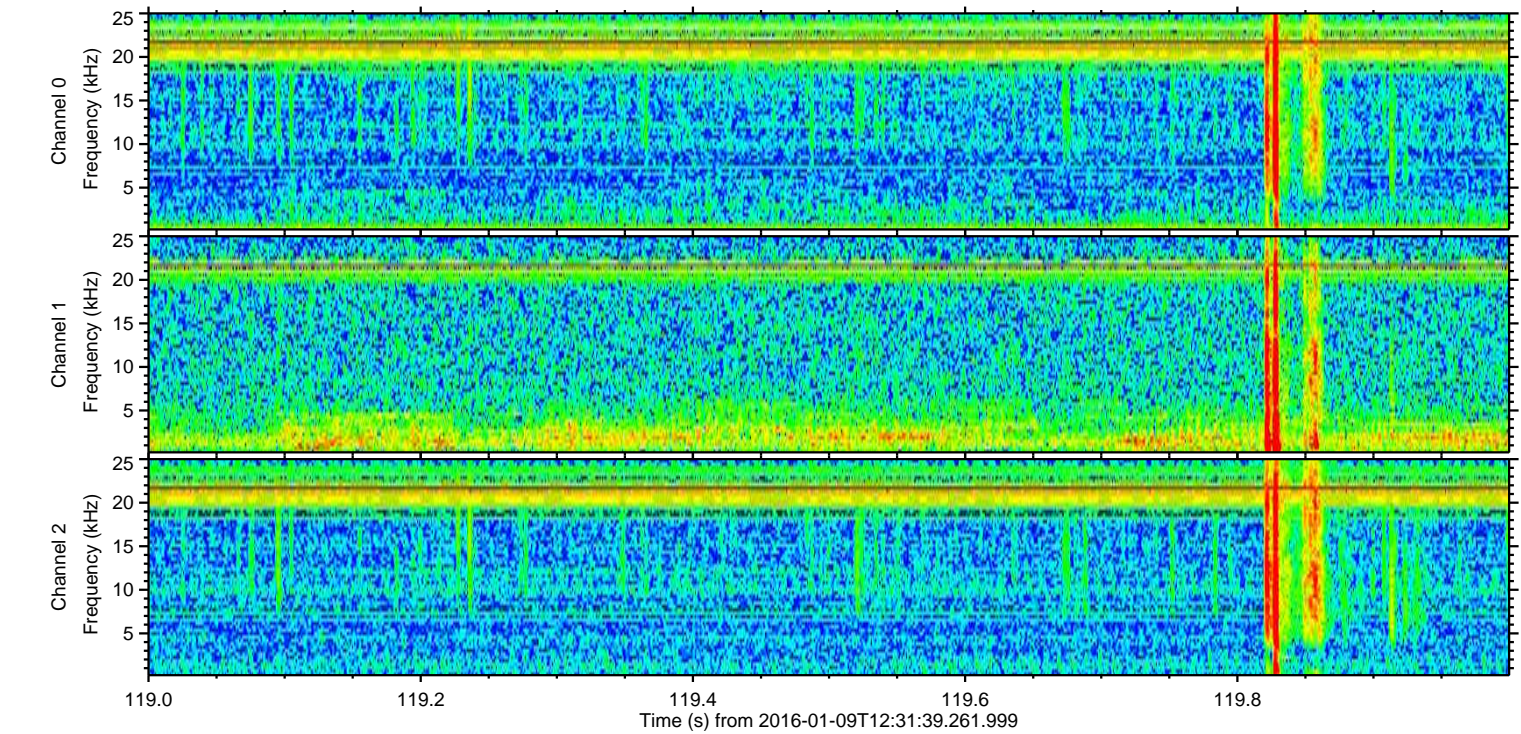
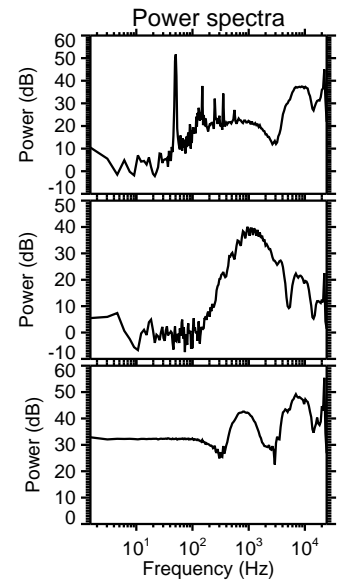
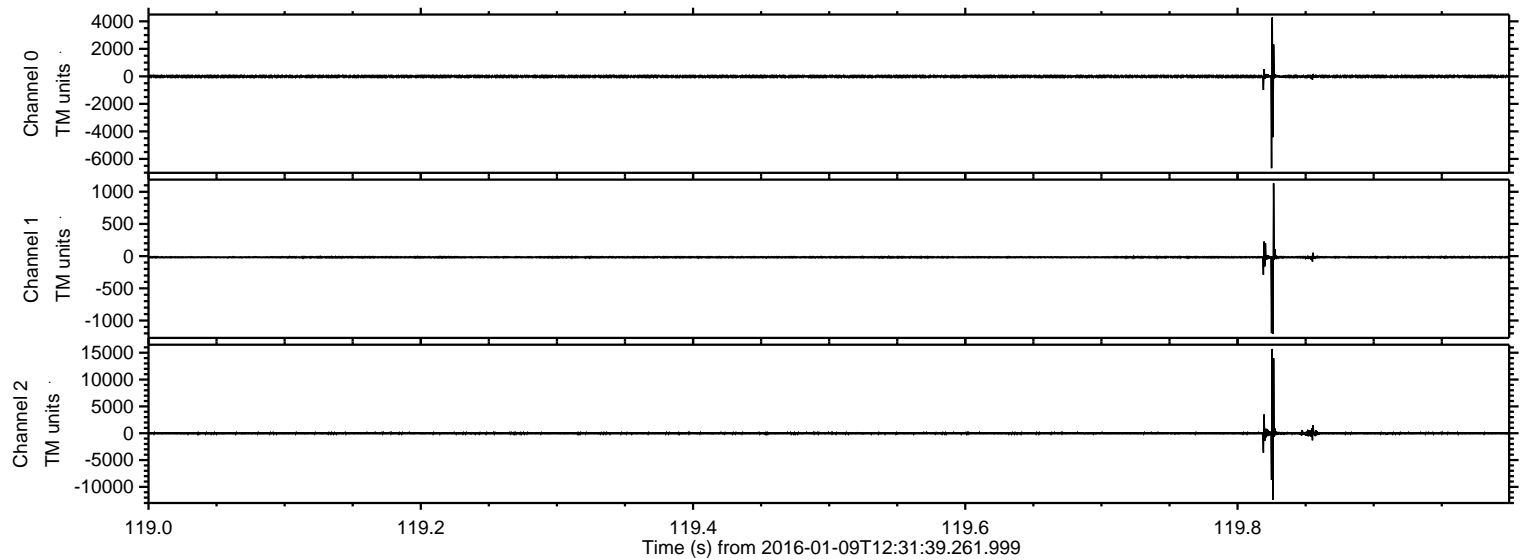


Processed Thu Mar 24 16:45:13 2016 by ELM ver.2012-10-06 from 001__elm20160109_123138__dat00.bin

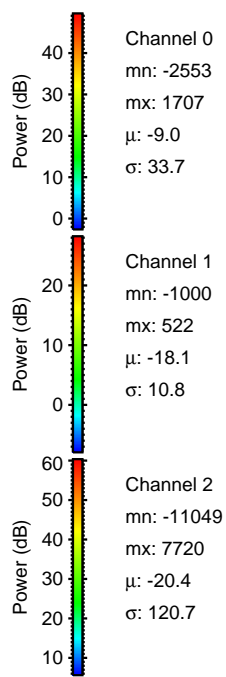
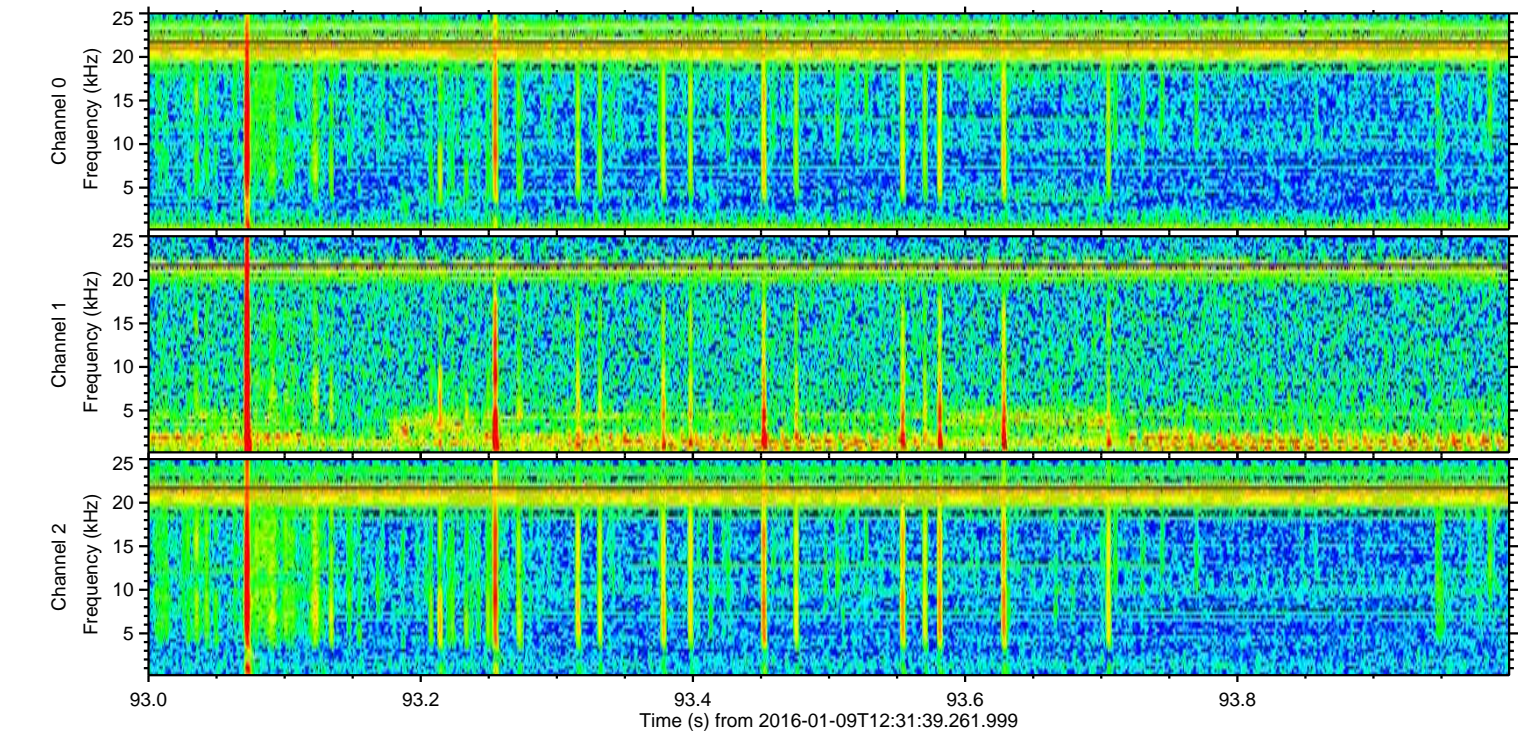
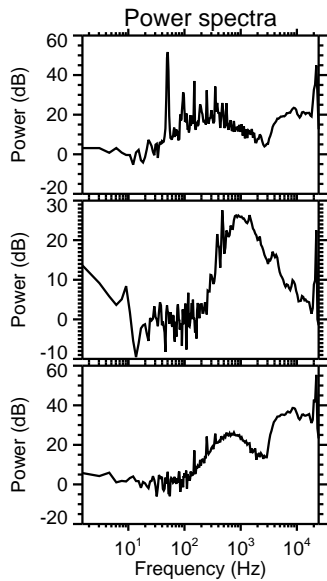
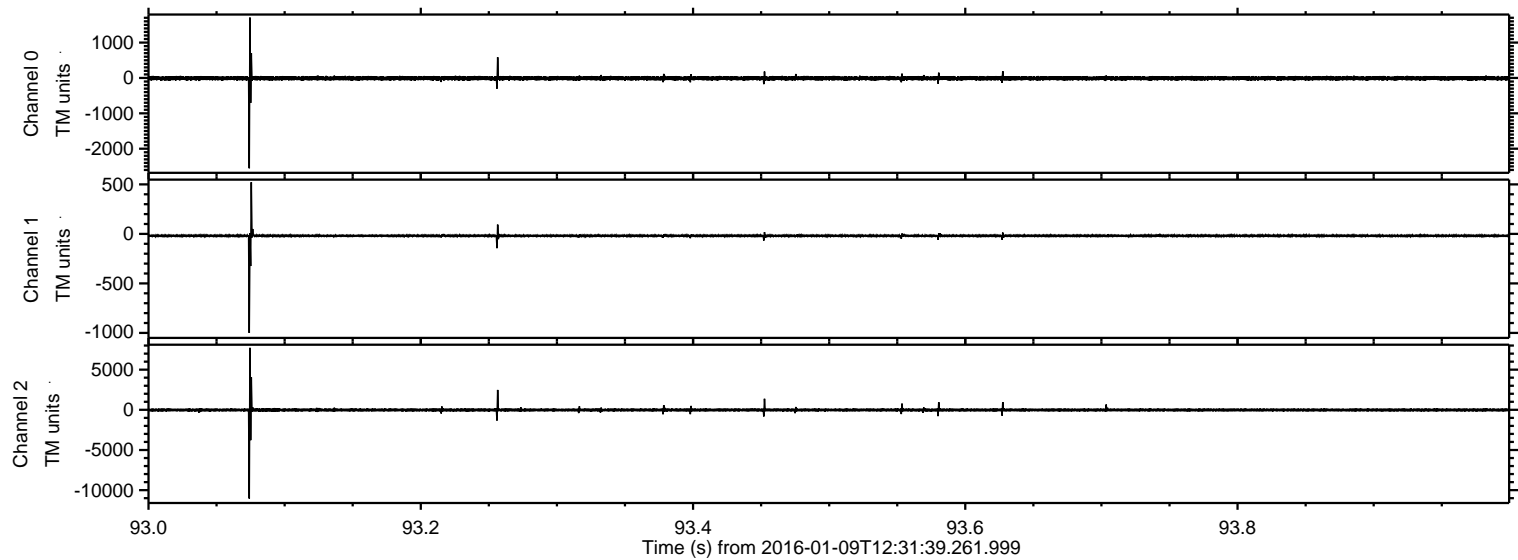


ELMAVAN 3D WAVEFORMS (Measured data sampled at 50 kHz) 51000 packets of 144 samples from 2016-01-09T12:31:39.261.999. Part 120/147

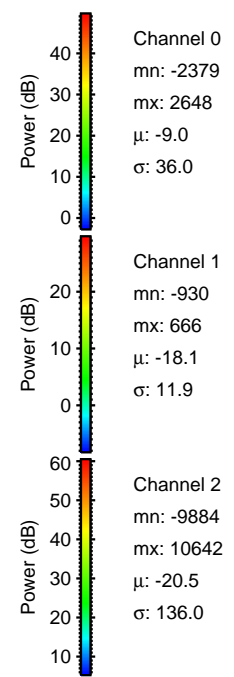
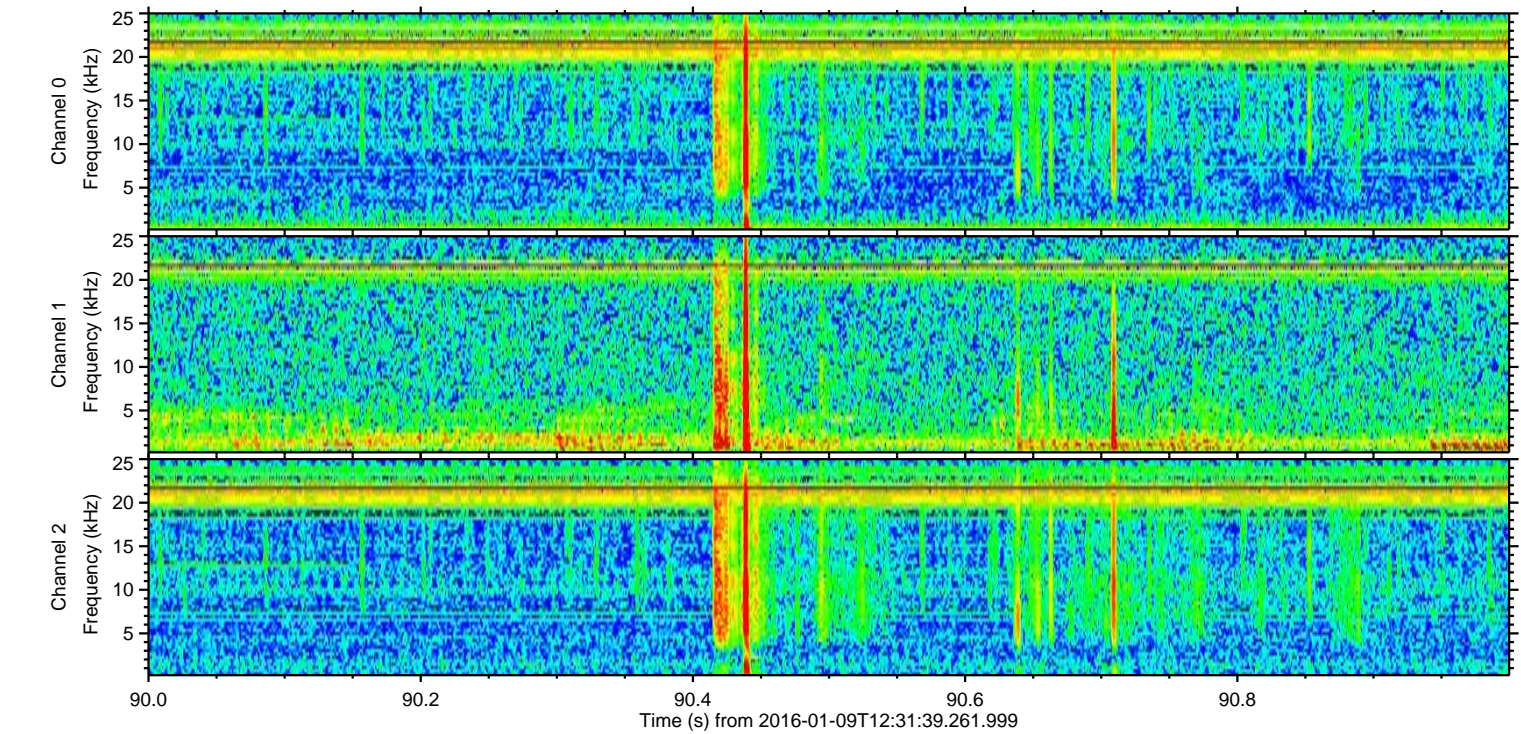
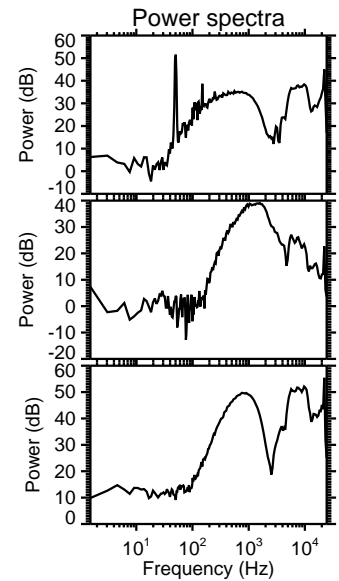
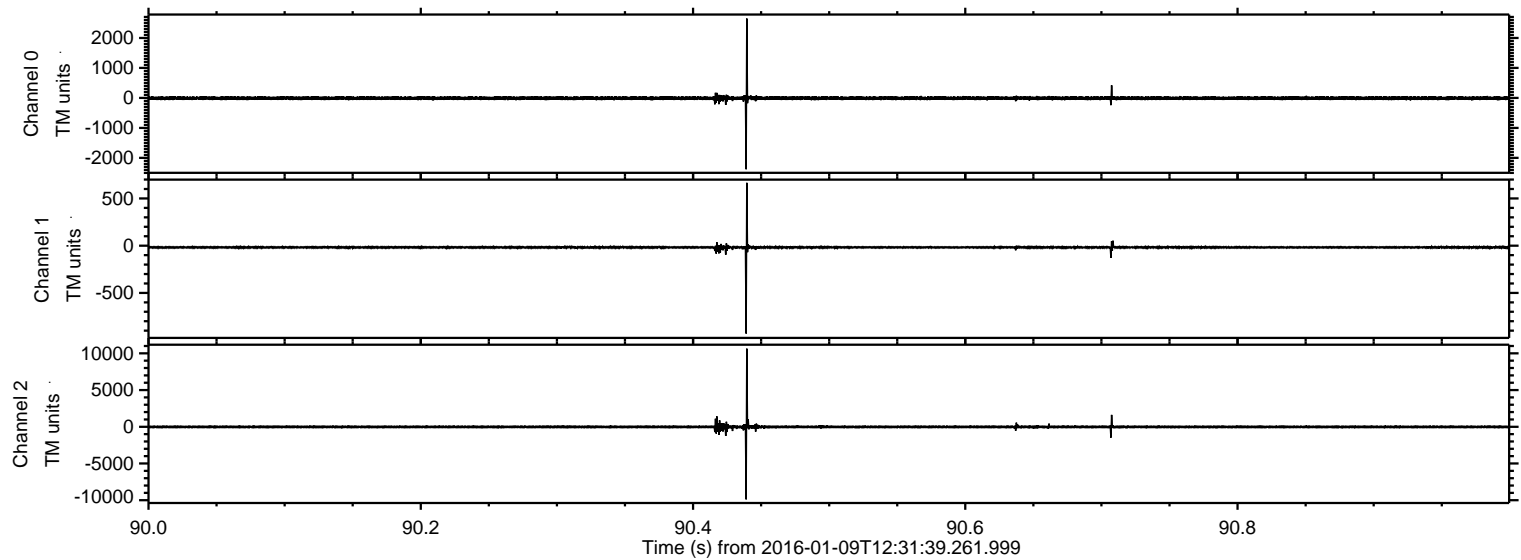
Processed Thu Mar 24 16:45:14 2016 by ELM ver.2012-10-06 from 001__elm20160109_123138__dat00.bin



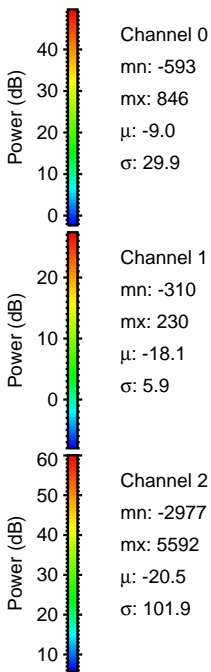
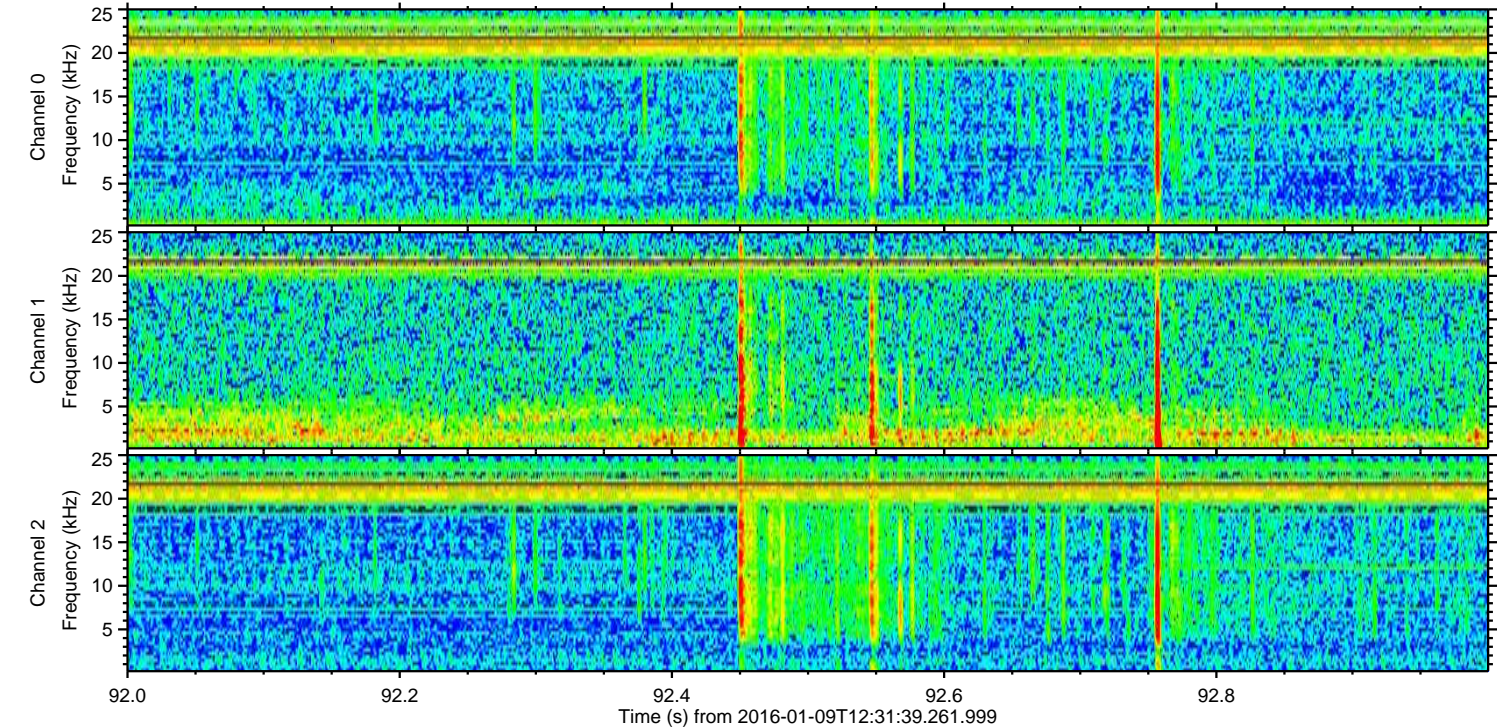
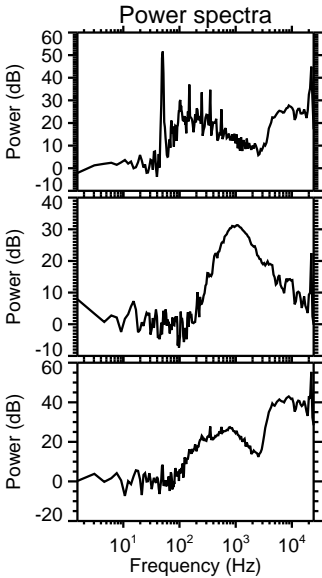
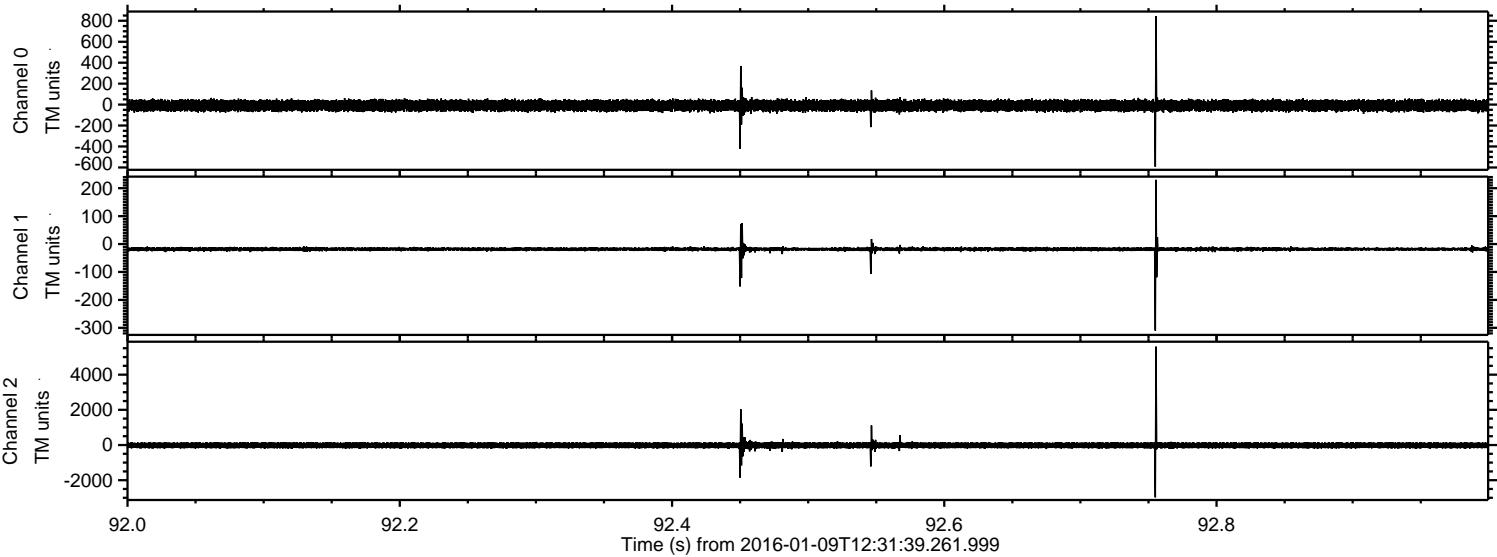
Processed Thu Mar 24 16:45:15 2016 by ELM ver.2012-10-06 from 001__elm20160109_123138__dat00.bin



Processed Thu Mar 24 16:45:16 2016 by ELM ver.2012-10-06 from 001__elm20160109_123138__dat00.bin

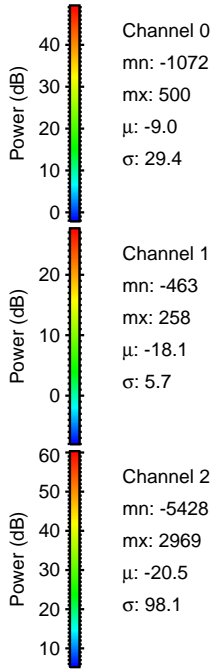
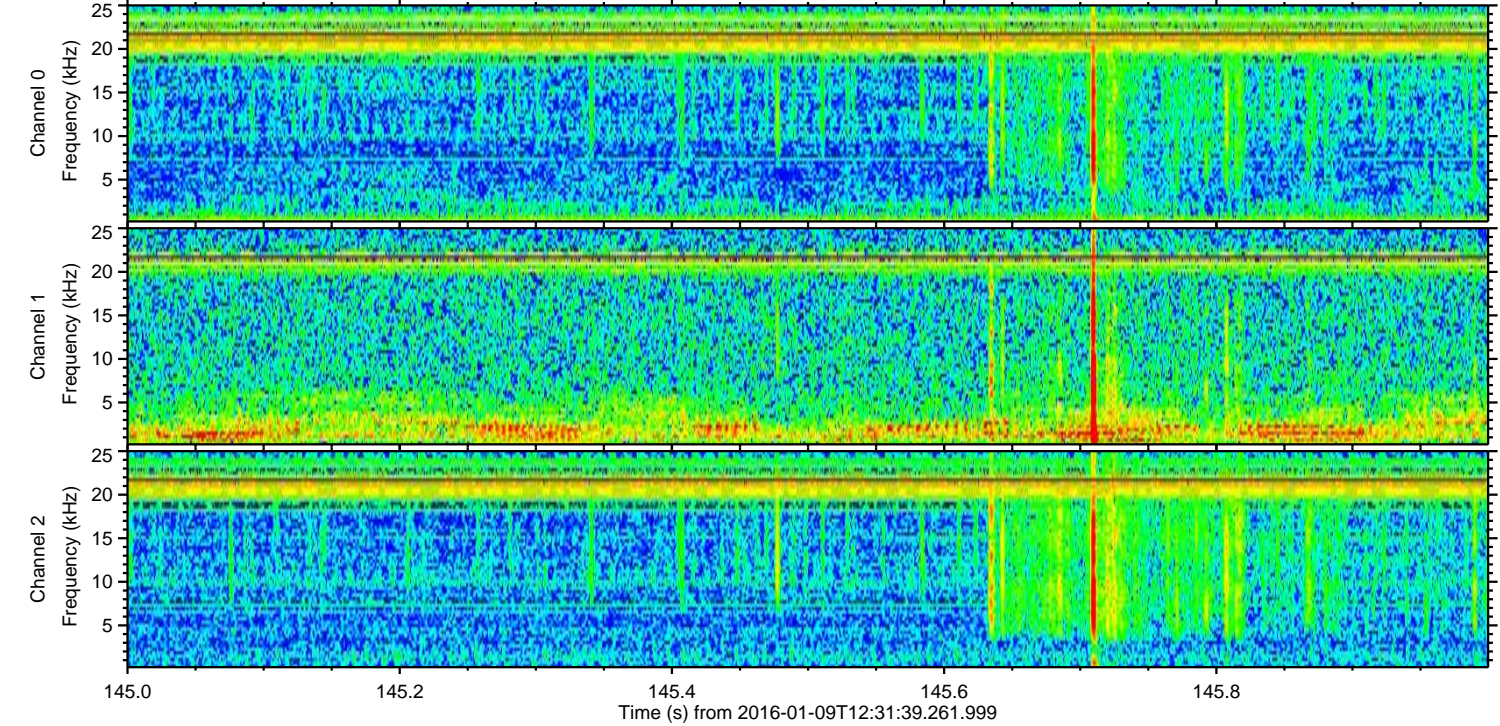
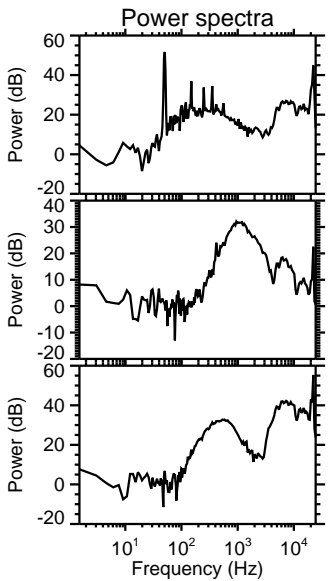
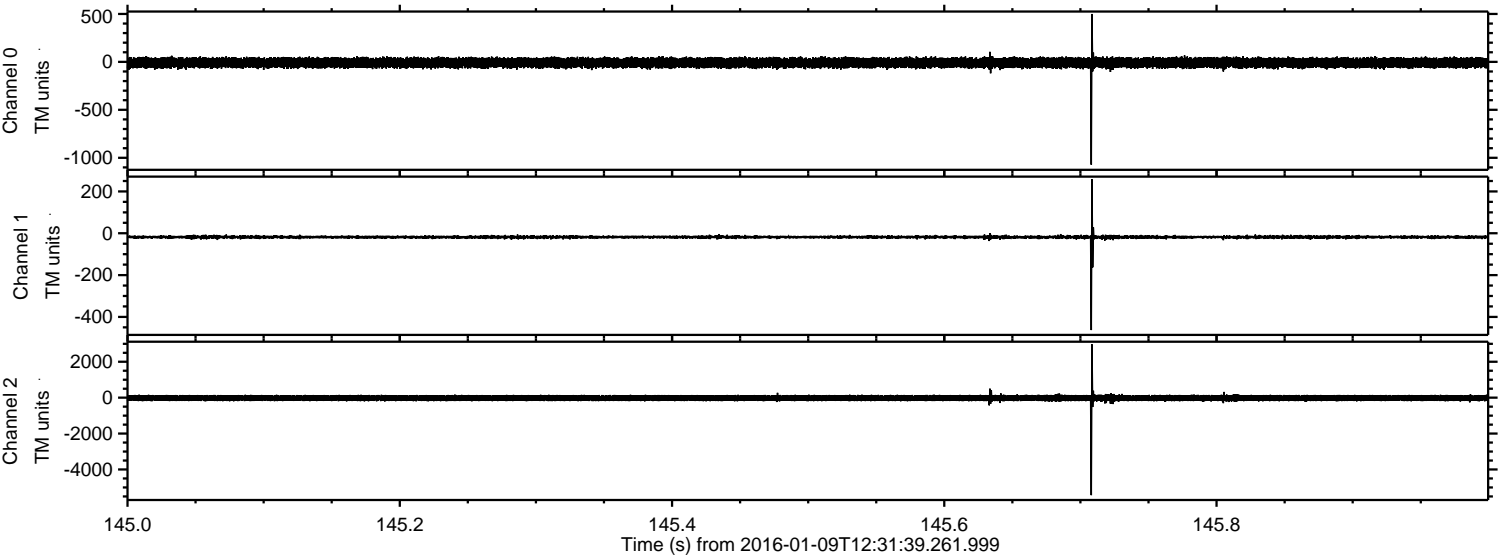


Processed Thu Mar 24 16:45:17 2016 by ELM ver.2012-10-06 from 001__elm20160109_123138__dat00.bin



ELMAVAN 3D WAVEFORMS (Measured data sampled at 50 kHz) 51000 packets of 144 samples from 2016-01-09T12:31:39.261.999. Part 146/147

Processed Thu Mar 24 16:45:18 2016 by ELM ver.2012-10-06 from 001__elm20160109_123138__dat00.bin

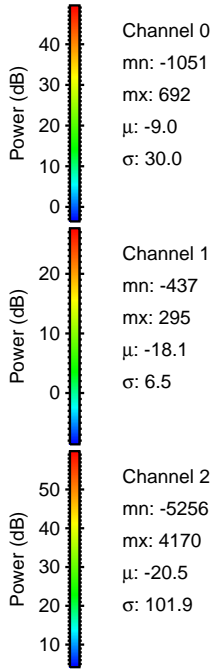
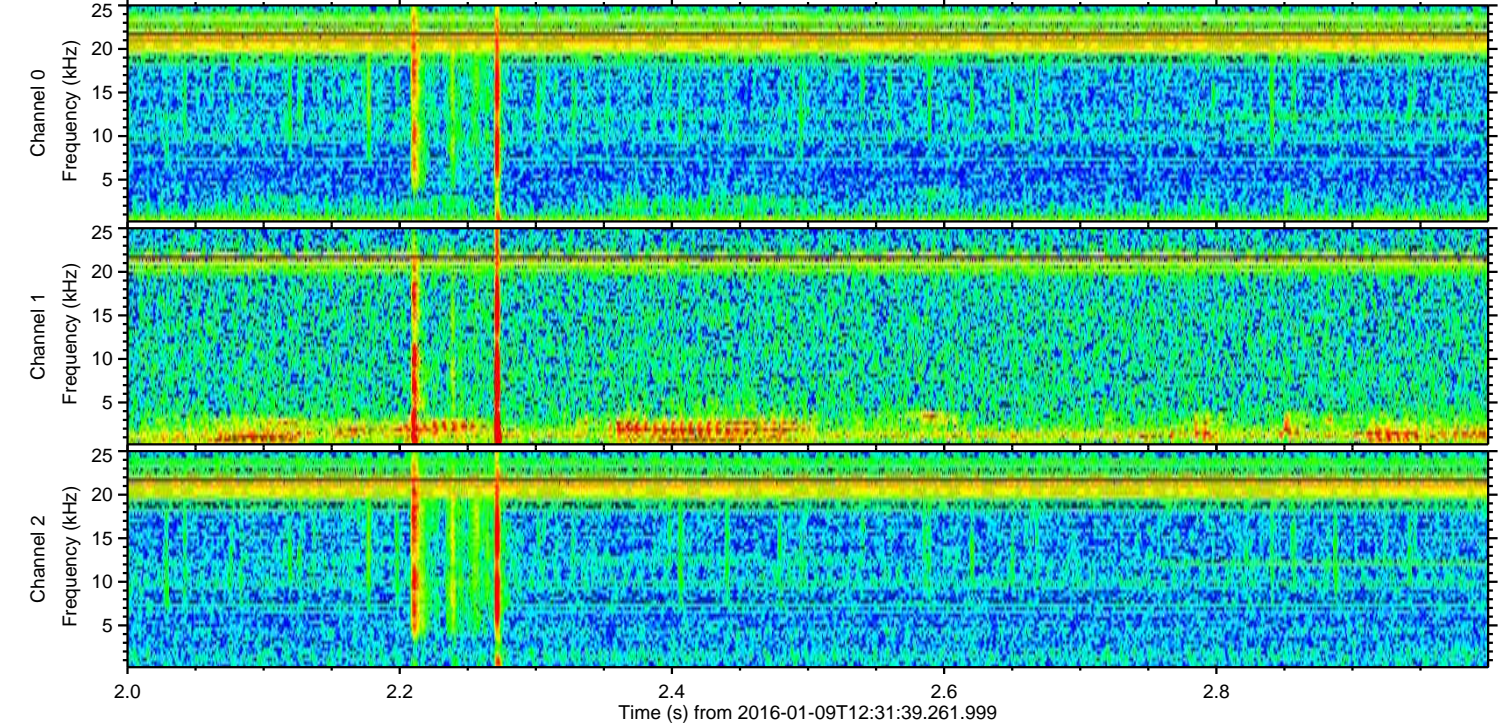
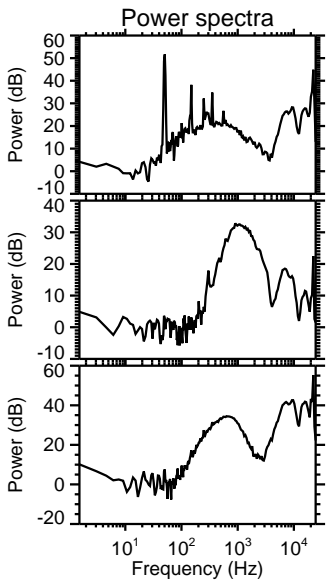
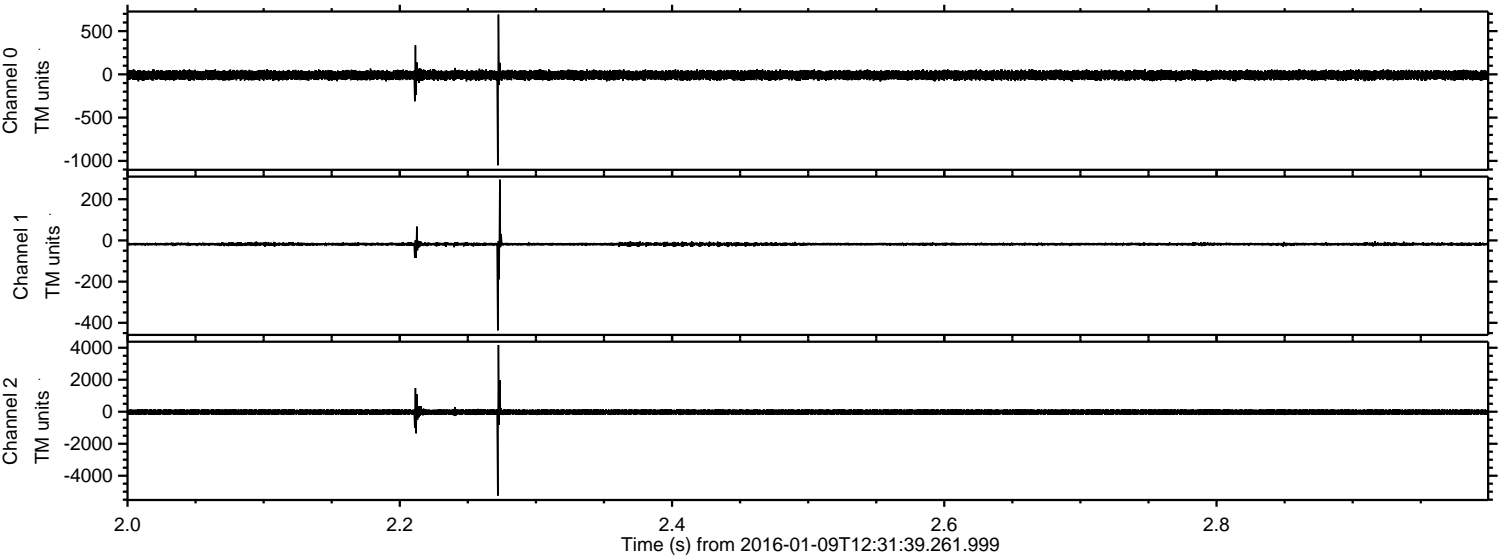


Channel 0
mn: -1072
mx: 500
 μ : -9.0
 σ : 29.4

Channel 1
mn: -463
mx: 258
 μ : -18.1
 σ : 5.7

Channel 2
mn: -5428
mx: 2969
 μ : -20.5
 σ : 98.1

Processed Thu Mar 24 16:45:19 2016 by ELM ver.2012-10-06 from 001__elm20160109_123138__dat00.bin



Processed Thu Mar 24 16:45:19 2016 by ELM ver.2012-10-06 from 001__elm20160109_123138__dat00.bin

