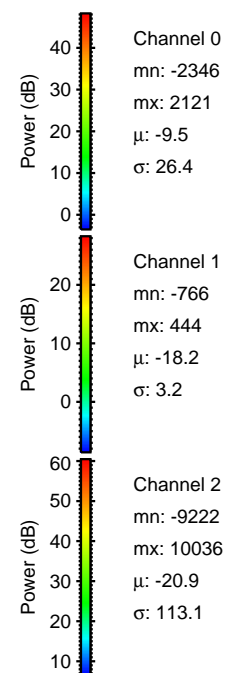
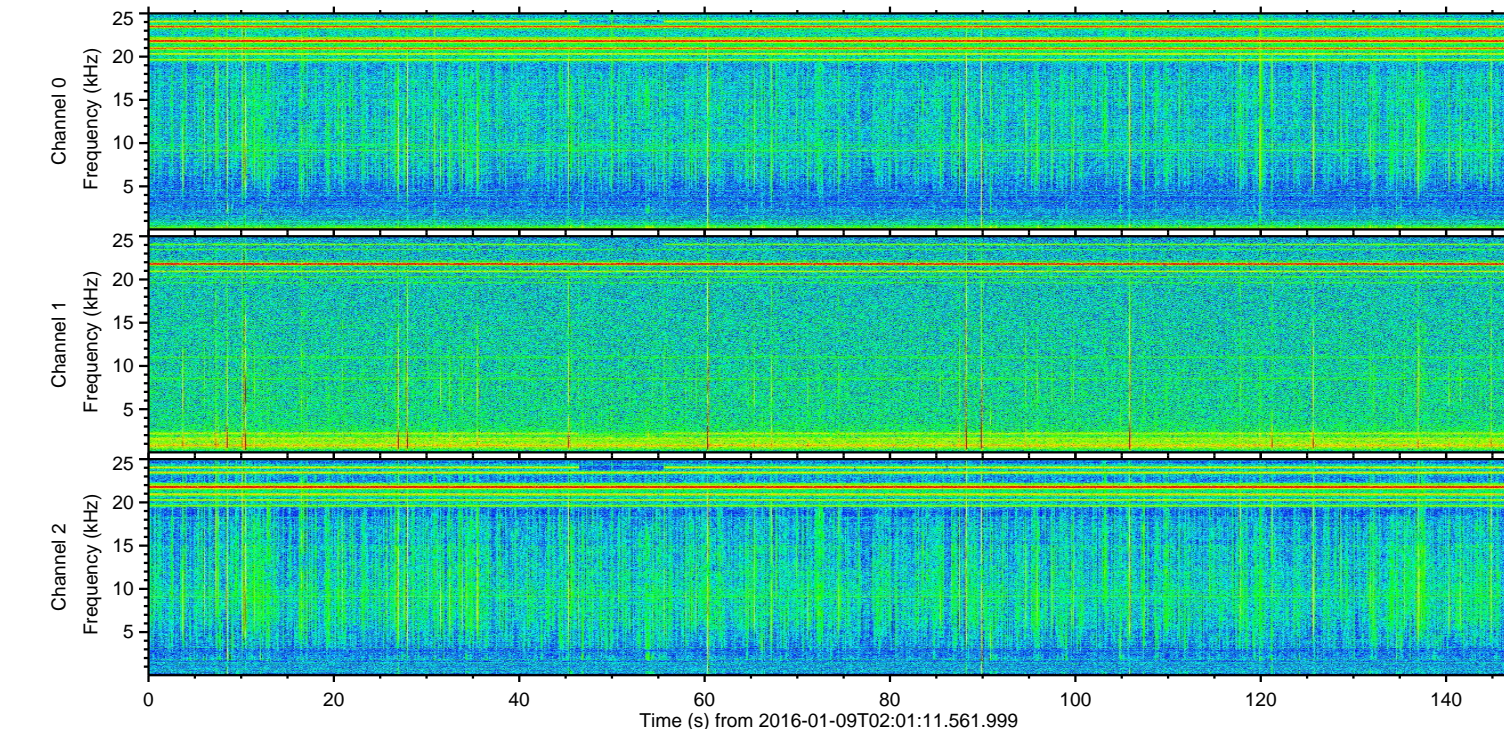
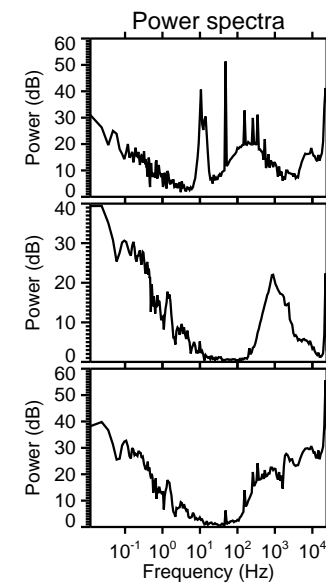
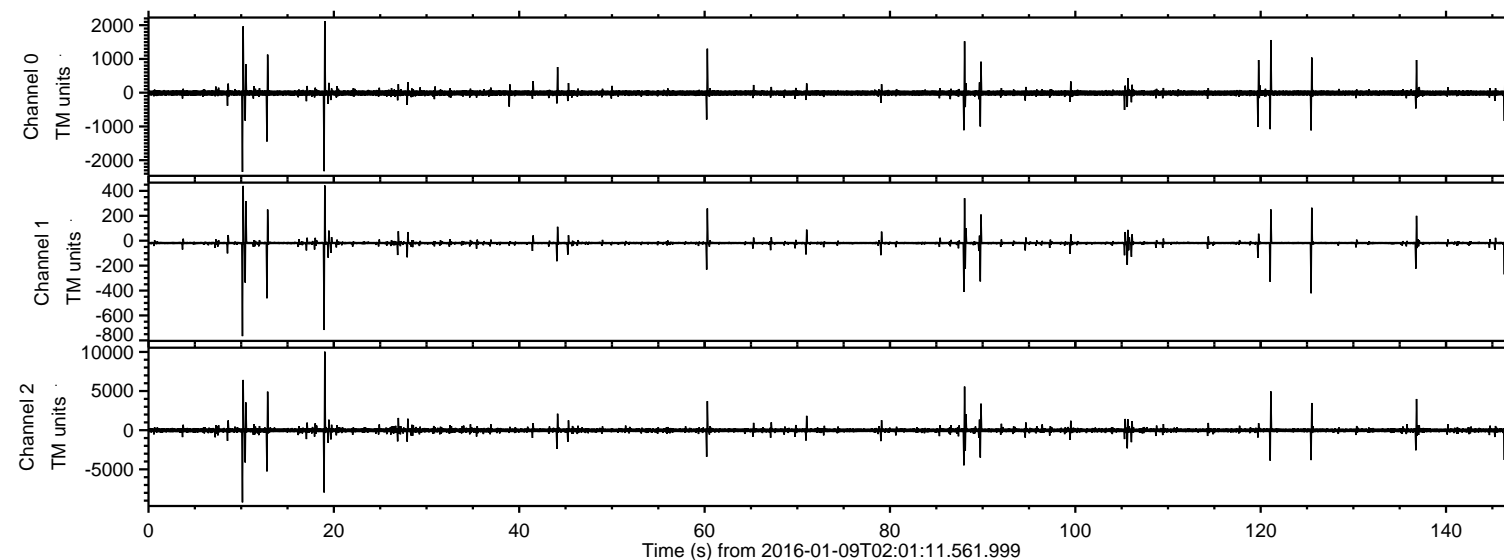
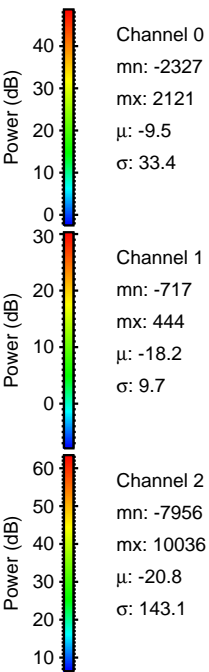
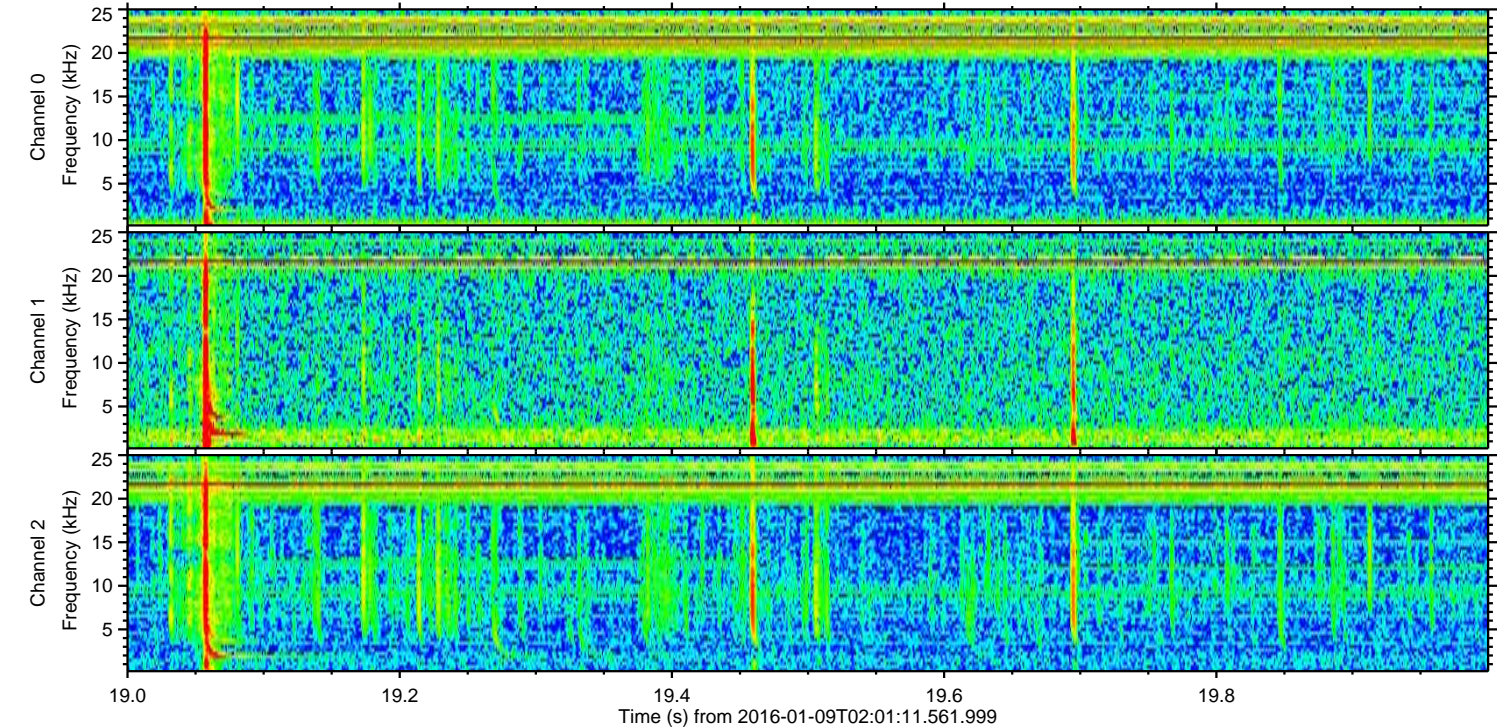
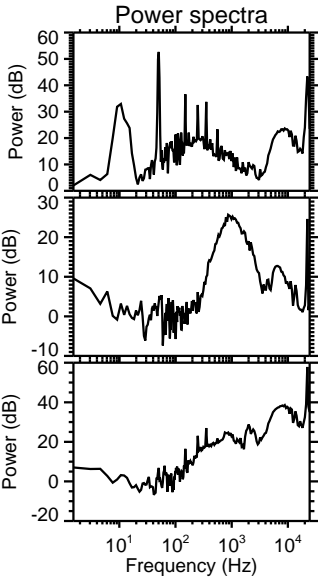
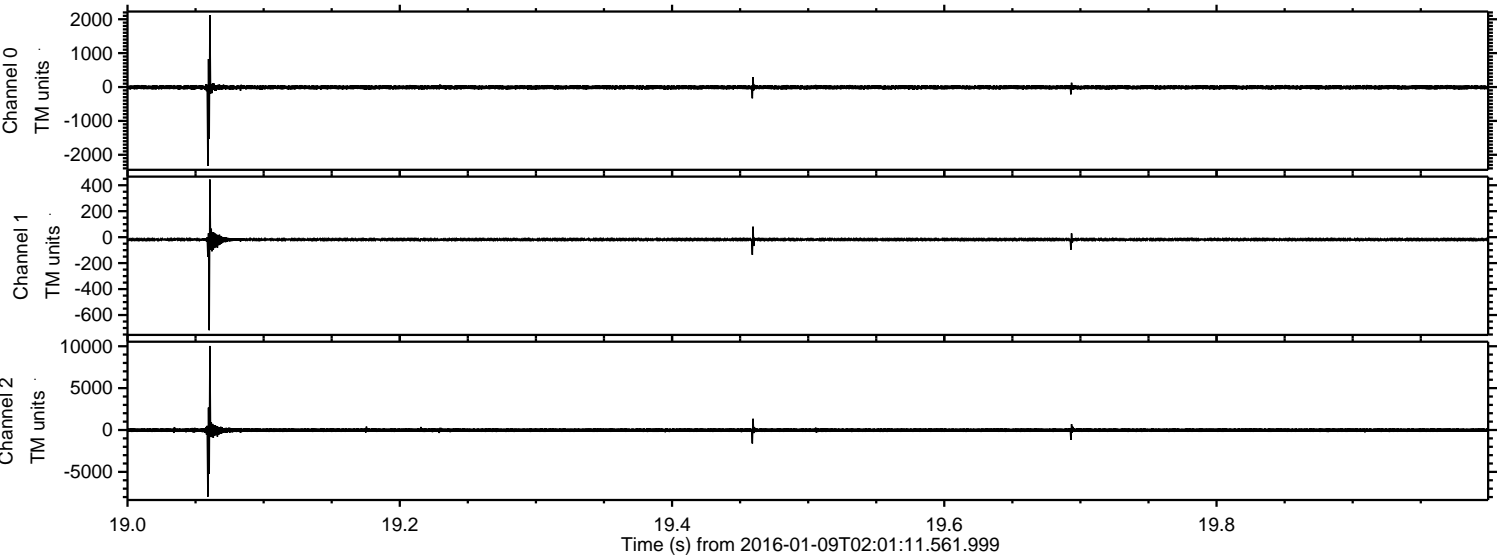


ELMAVAN 3D WAVEFORMS (Measured data sampled at 50 kHz) 51000 packets of 144 samples from 2016-01-09T02:01:11.561.999.

Processed Thu Mar 24 04:24:43 2016 by ELM ver.2012-10-06 from 001__elm20160109_020110__dat00.bin

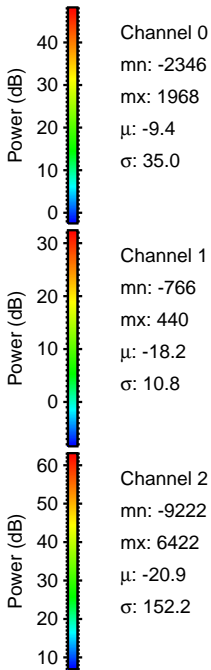
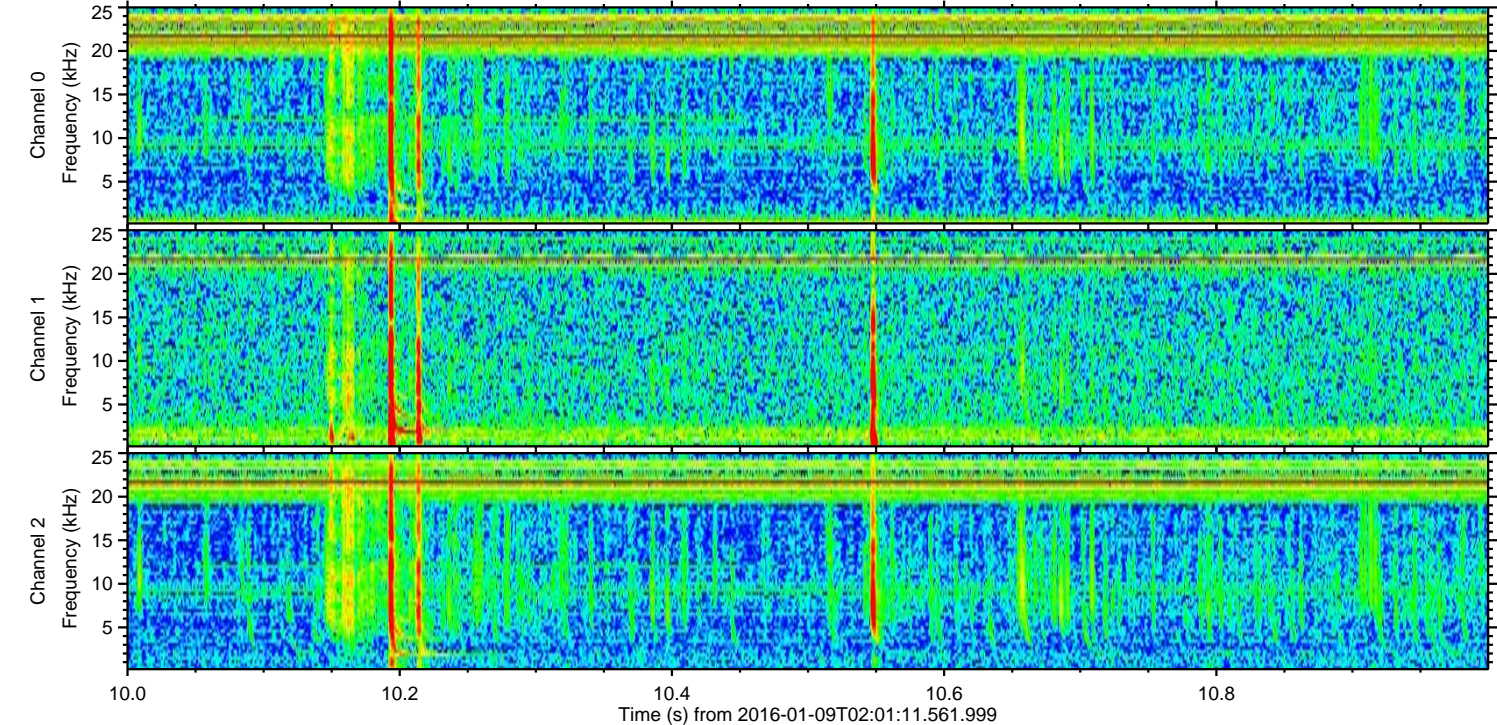
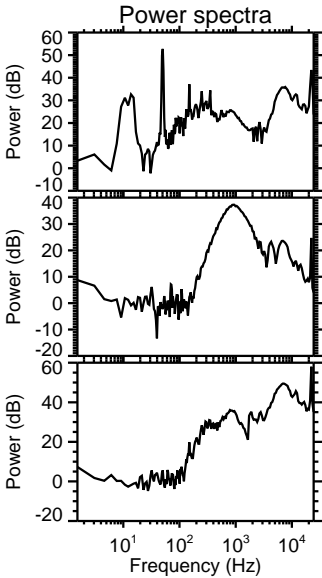
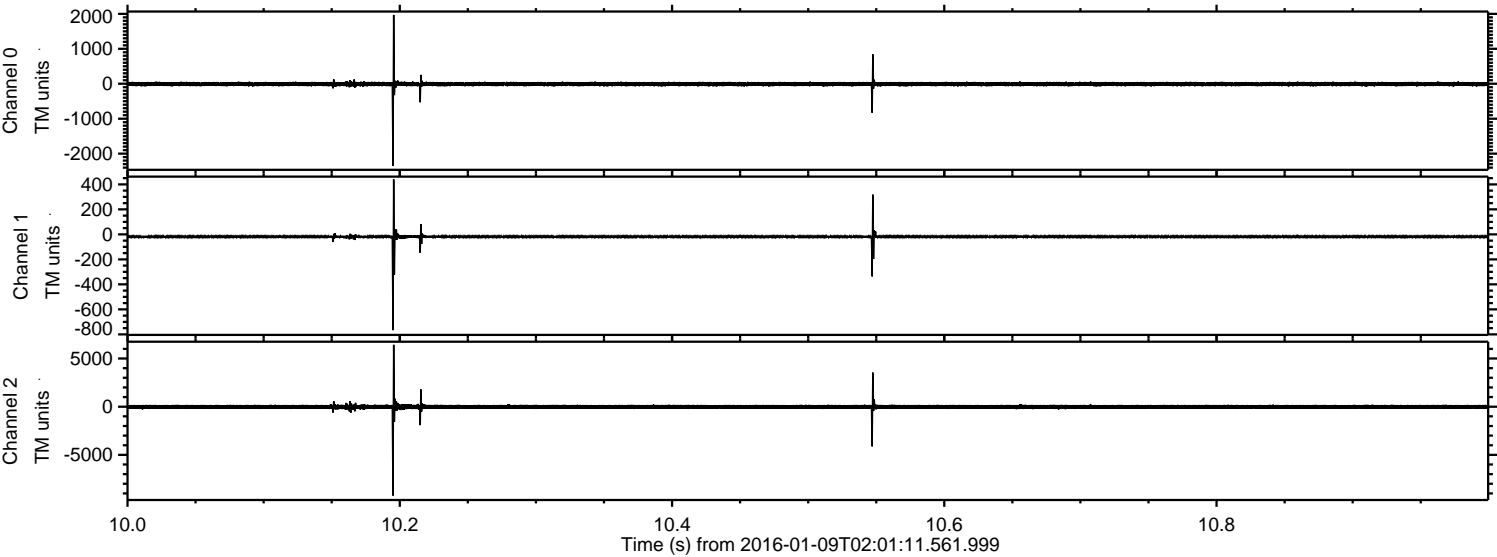


Processed Thu Mar 24 04:24:55 2016 by ELM ver.2012-10-06 from 001__elm20160109_020110__dat00.bin

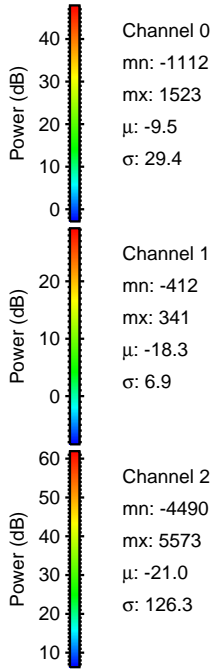
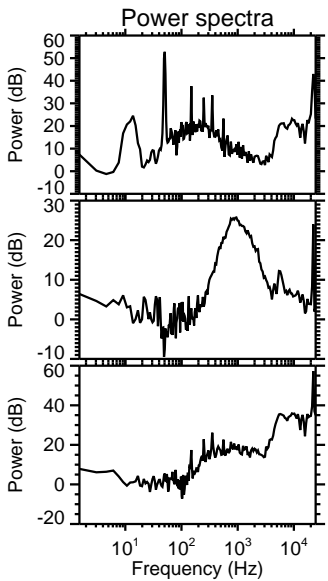
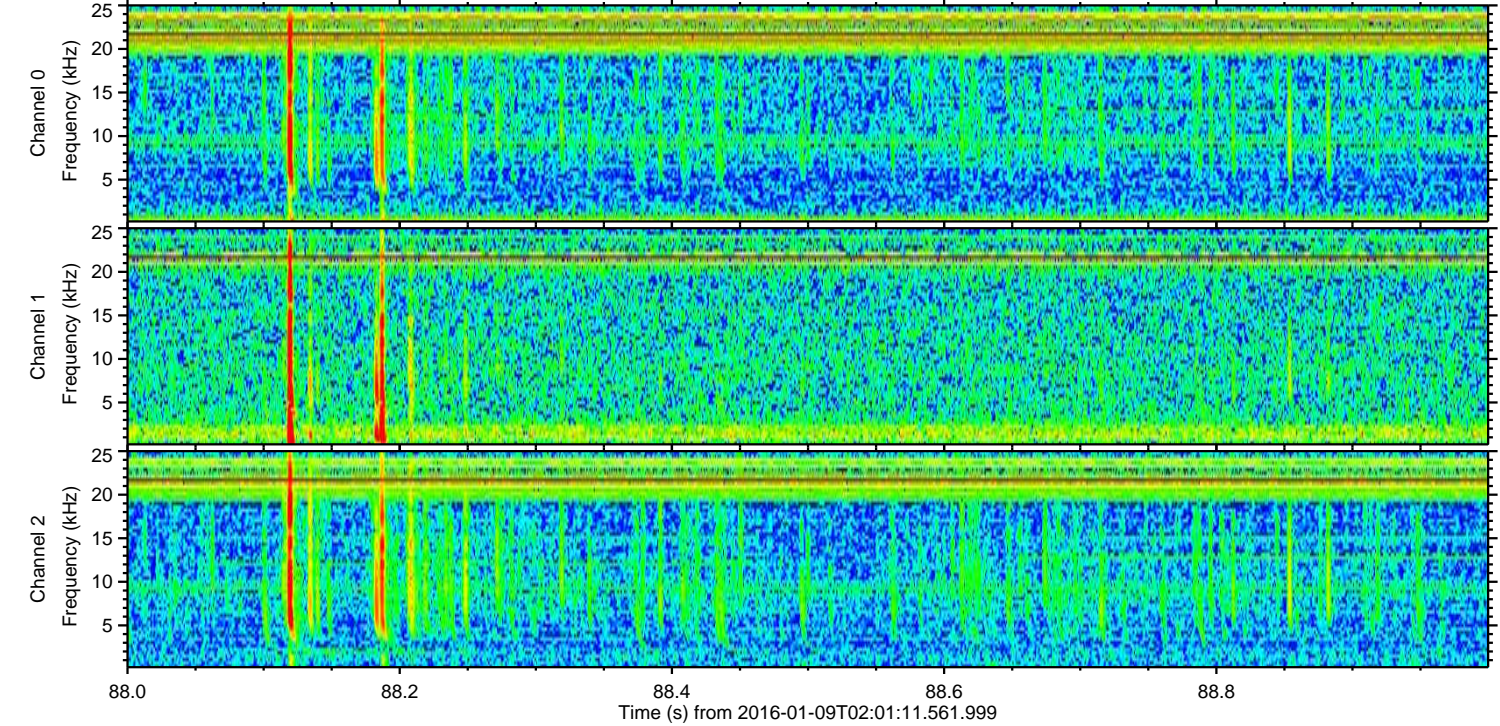
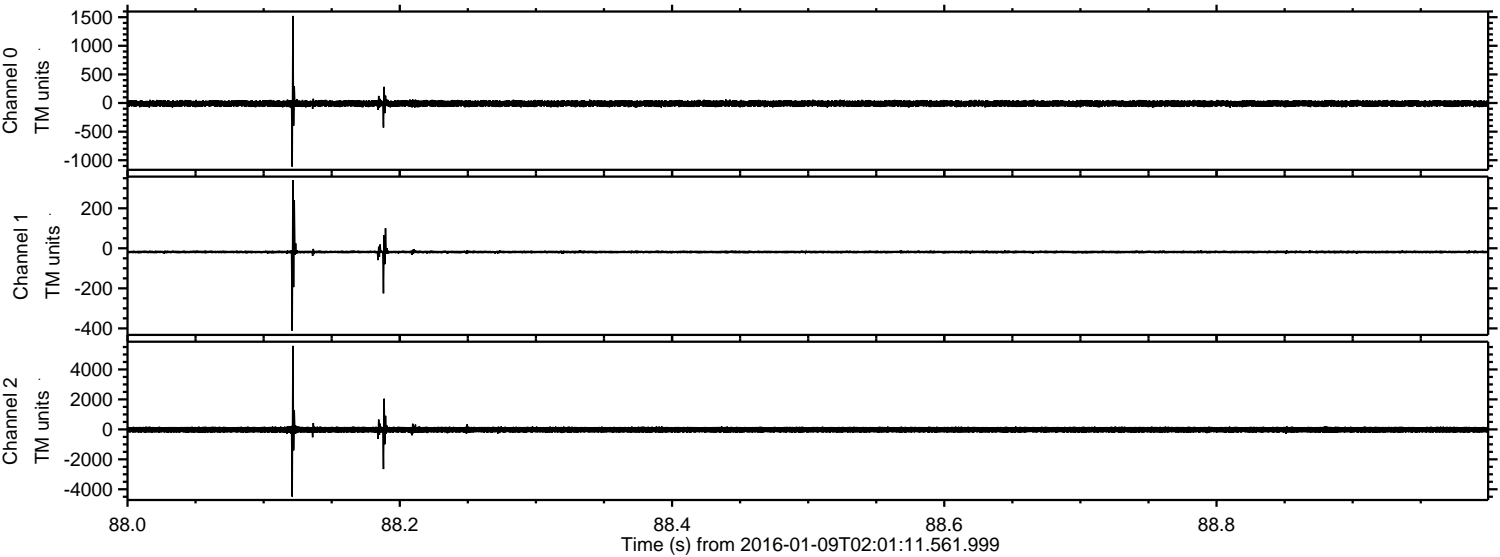


ELMAVAN 3D WAVEFORMS (Measured data sampled at 50 kHz) 51000 packets of 144 samples from 2016-01-09T02:01:11.561.999. Part 11/147

Processed Thu Mar 24 04:24:56 2016 by ELM ver.2012-10-06 from 001__elm20160109_020110__dat00.bin

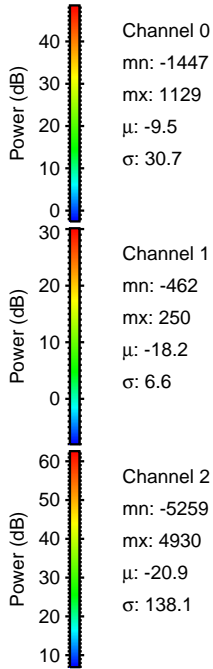
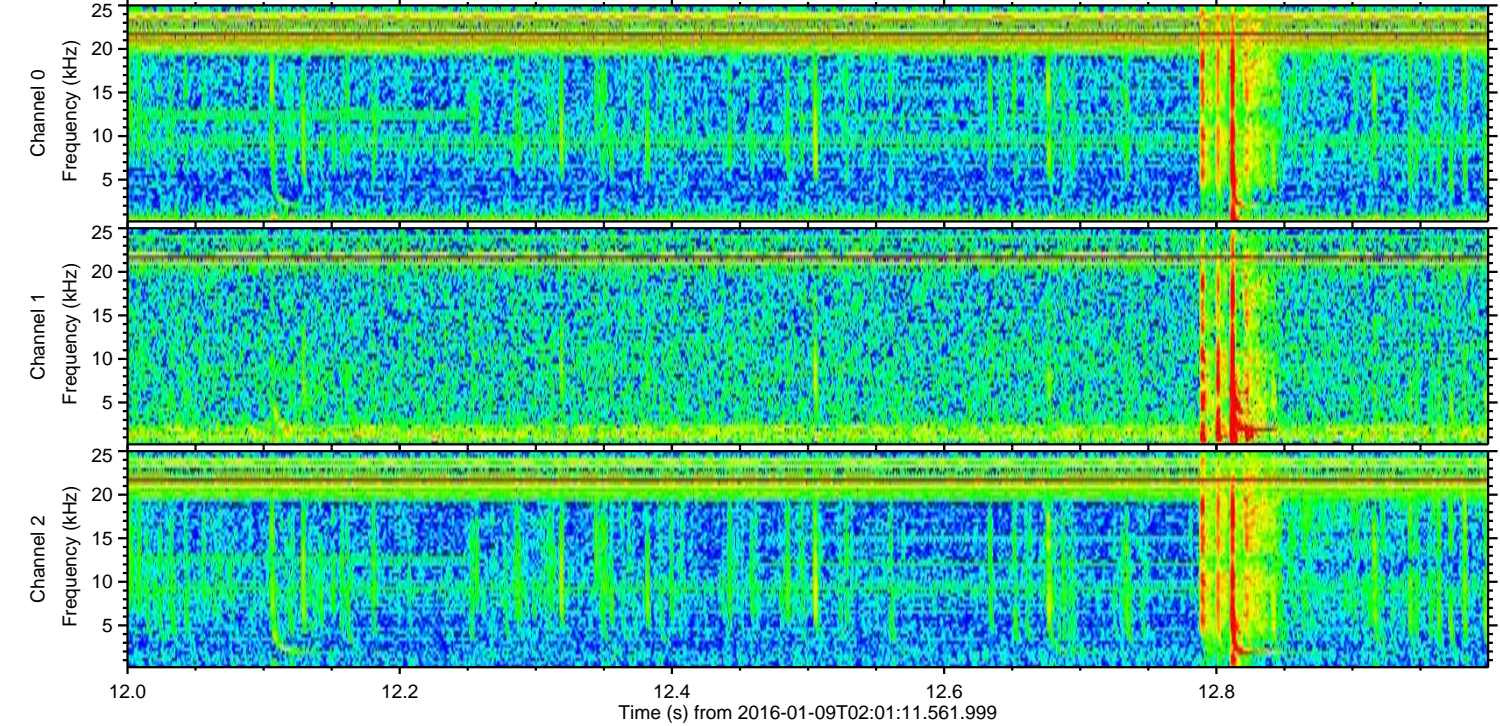
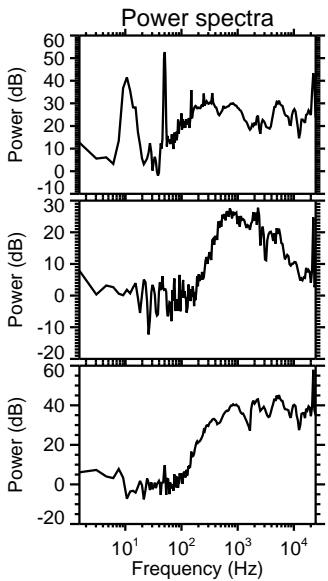
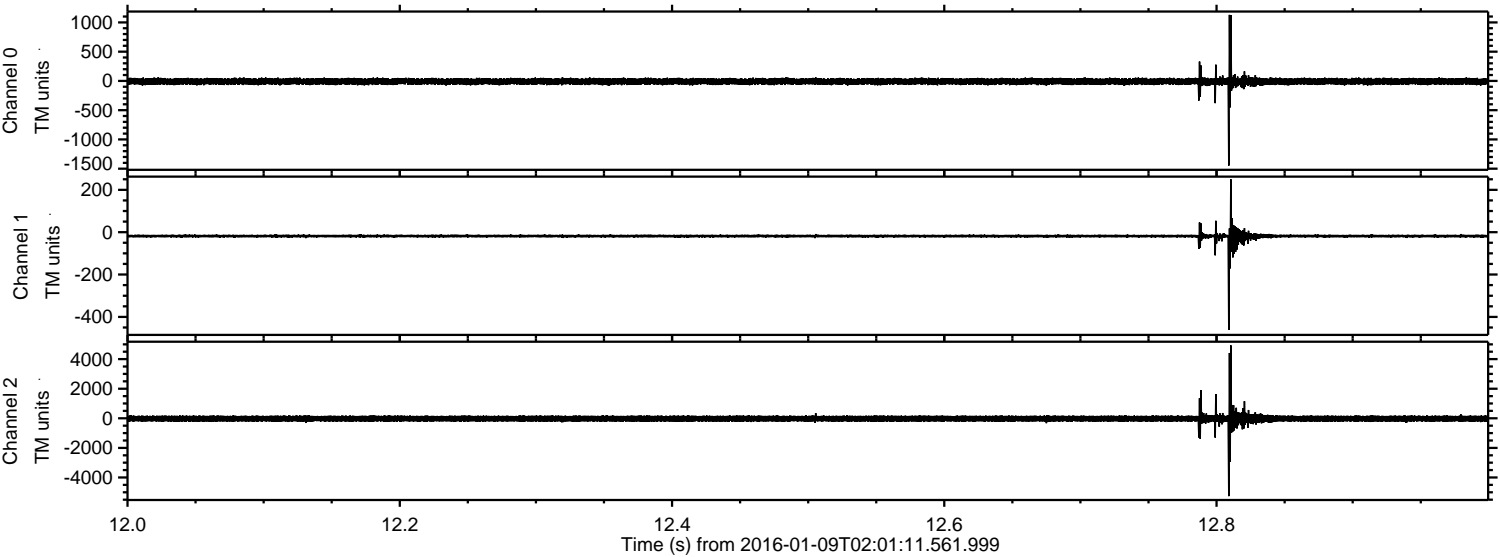


Processed Thu Mar 24 04:24:57 2016 by ELM ver.2012-10-06 from 001__elm20160109_020110__dat00.bin



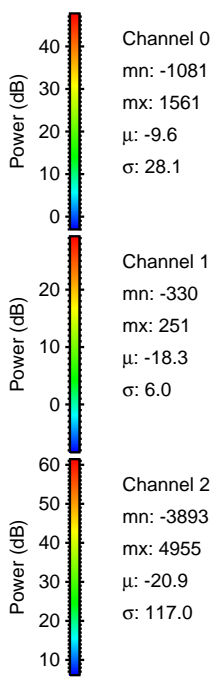
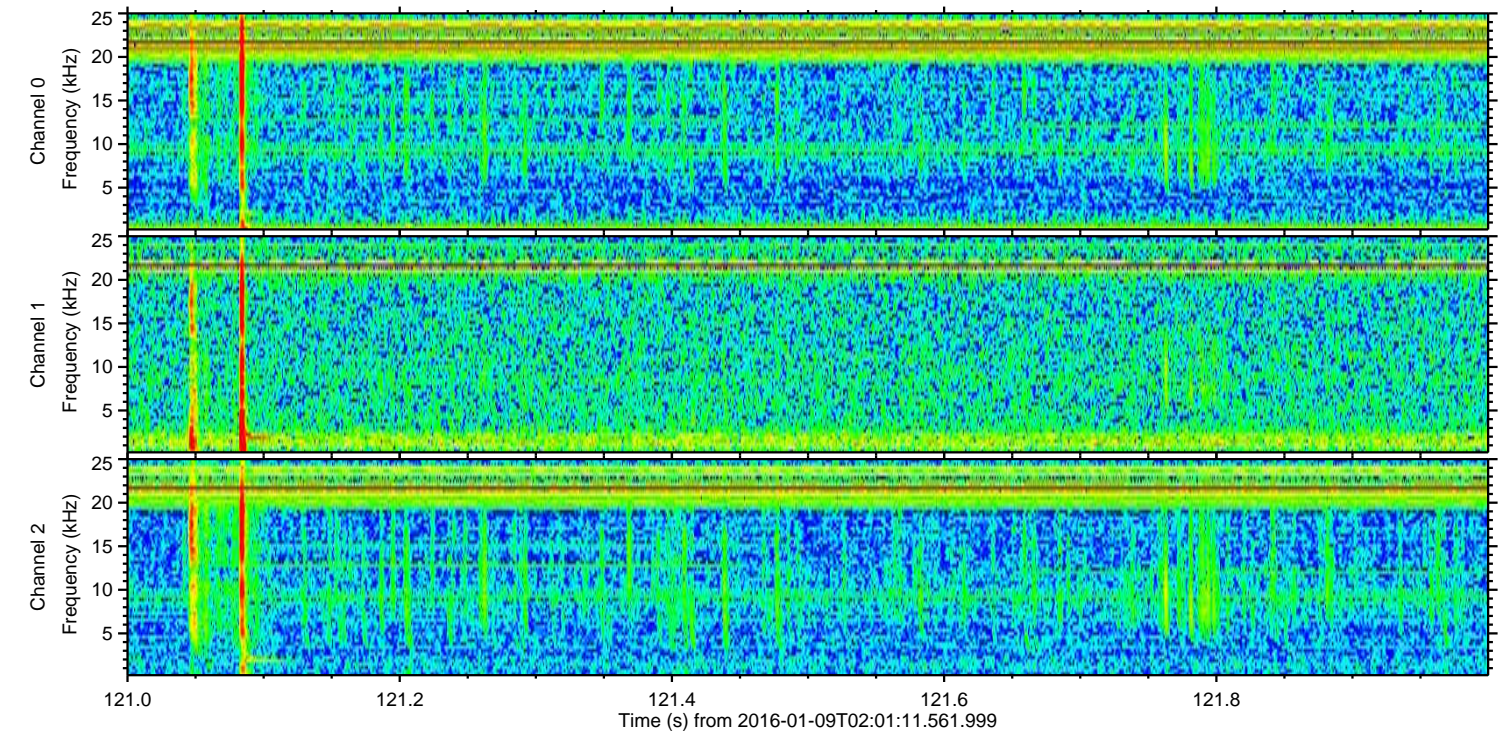
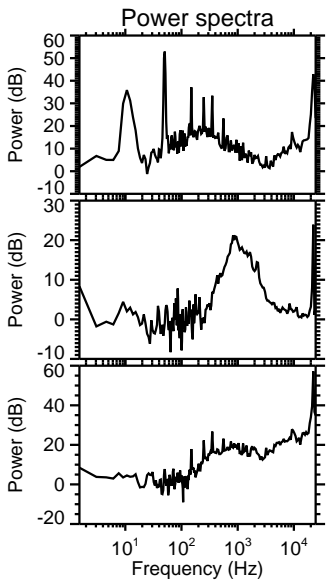
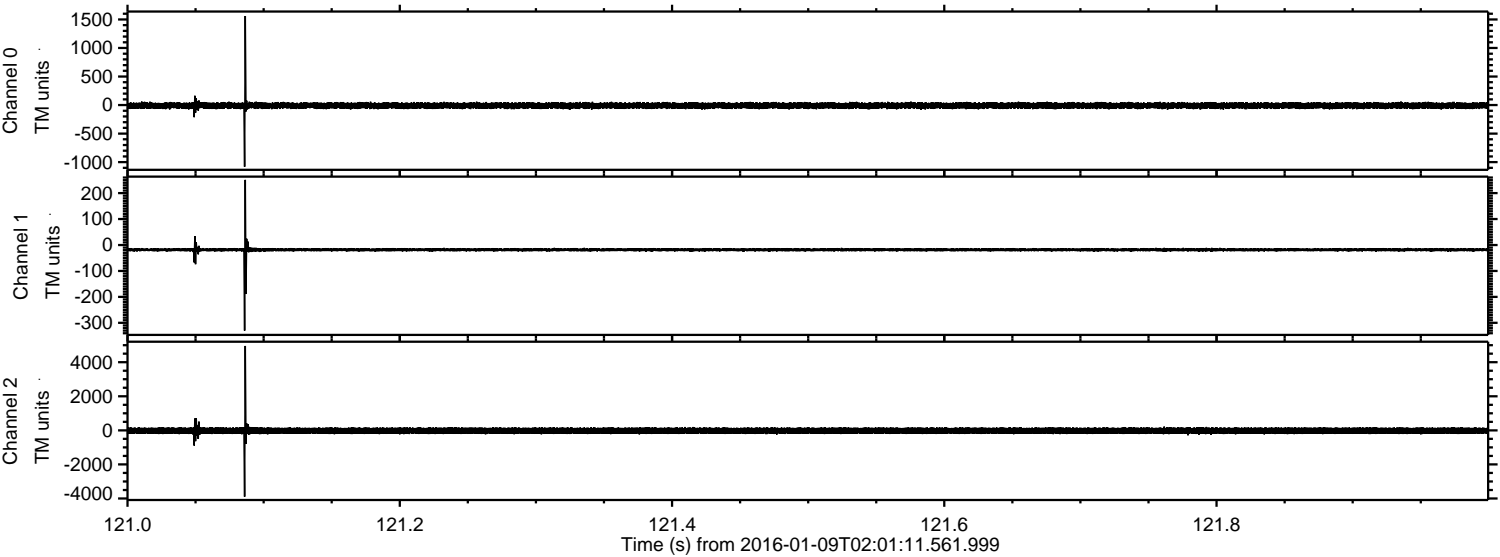
ELMAVAN 3D WAVEFORMS (Measured data sampled at 50 kHz) 51000 packets of 144 samples from 2016-01-09T02:01:11.561.999. Part 13/147

Processed Thu Mar 24 04:24:58 2016 by ELM ver.2012-10-06 from 001__elm20160109_020110__dat00.bin



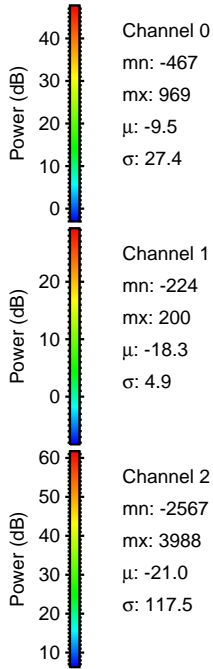
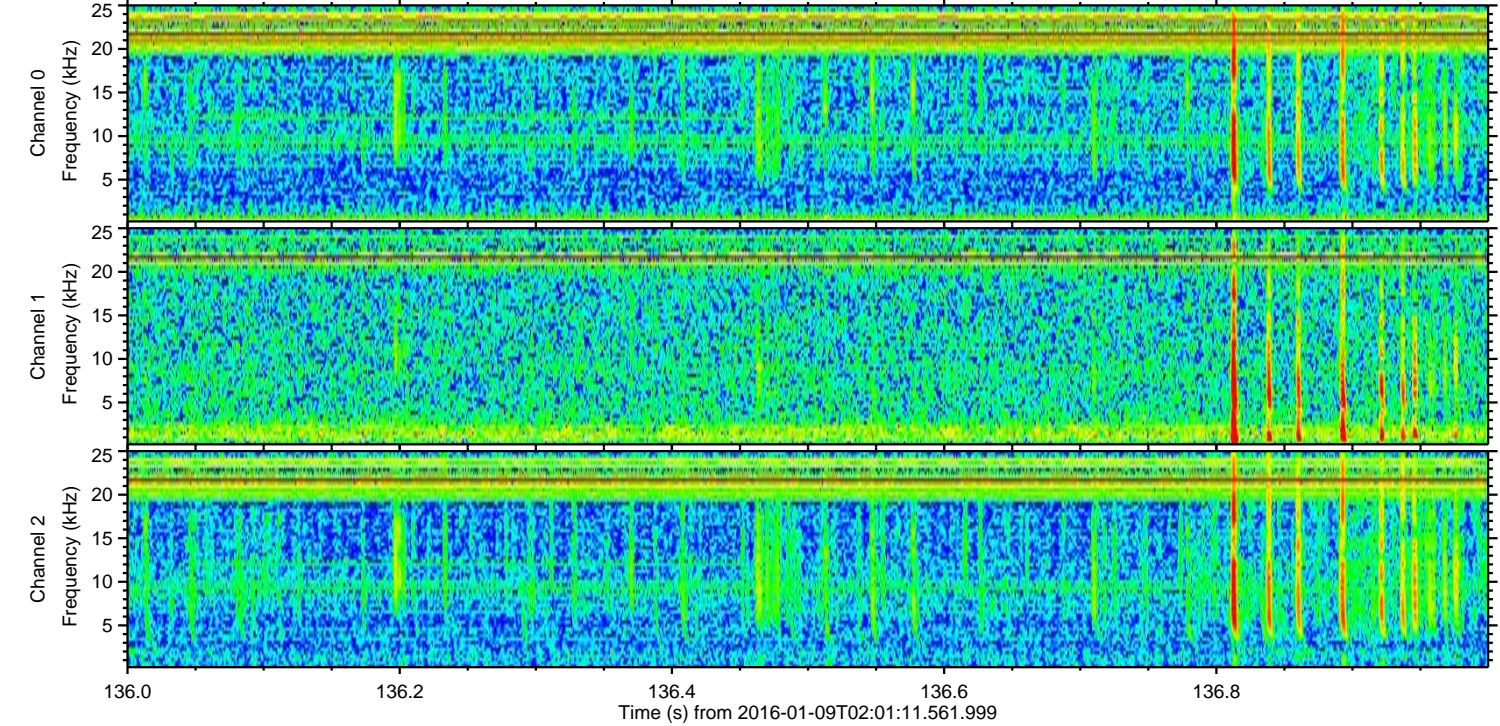
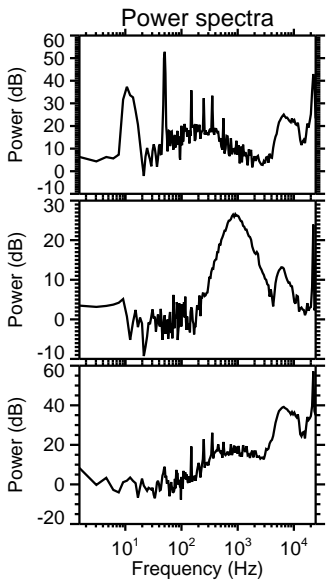
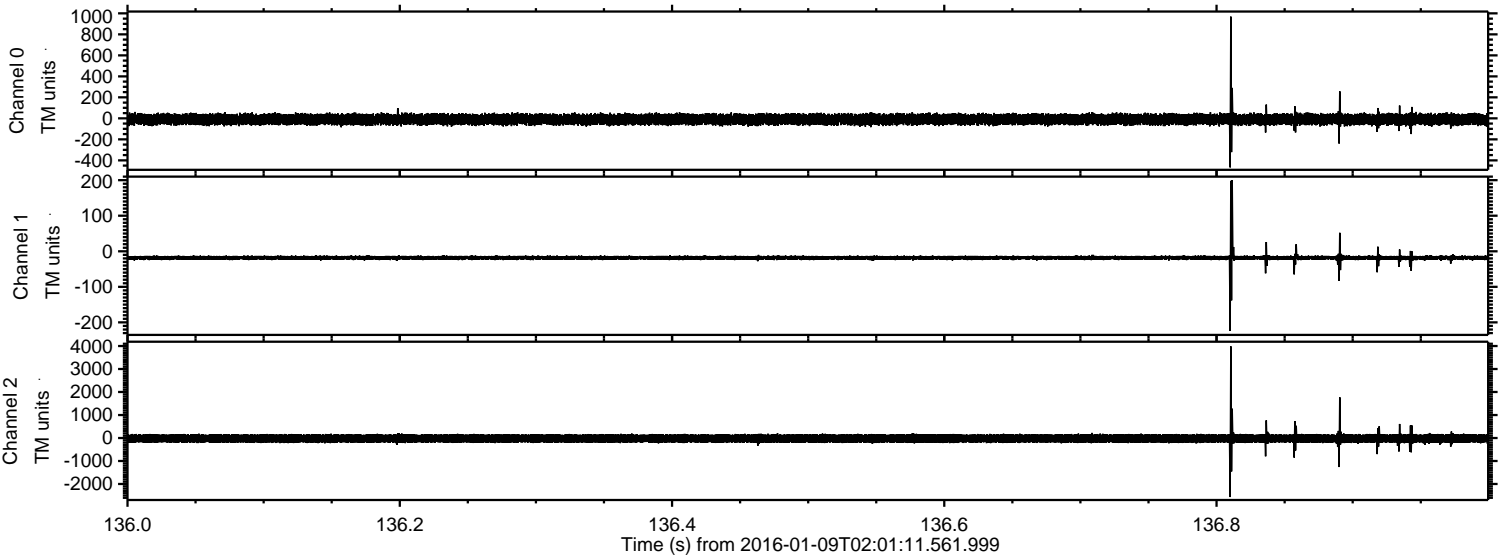
ELMAVAN 3D WAVEFORMS (Measured data sampled at 50 kHz) 51000 packets of 144 samples from 2016-01-09T02:01:11.561.999. Part 122/147

Processed Thu Mar 24 04:24:59 2016 by ELM ver.2012-10-06 from 001__elm20160109_020110__dat00.bin



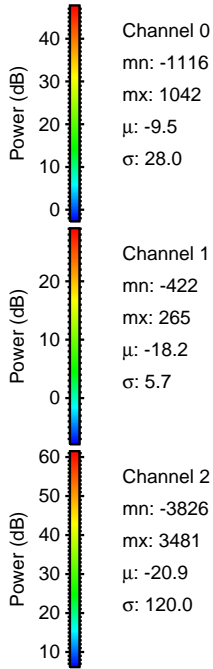
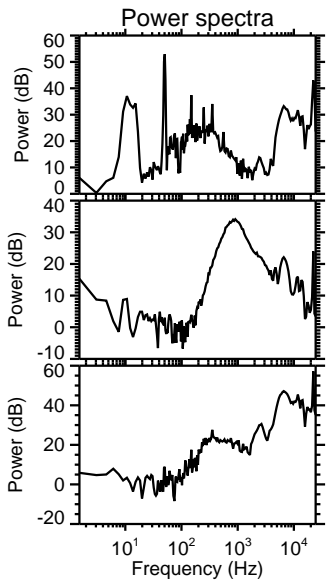
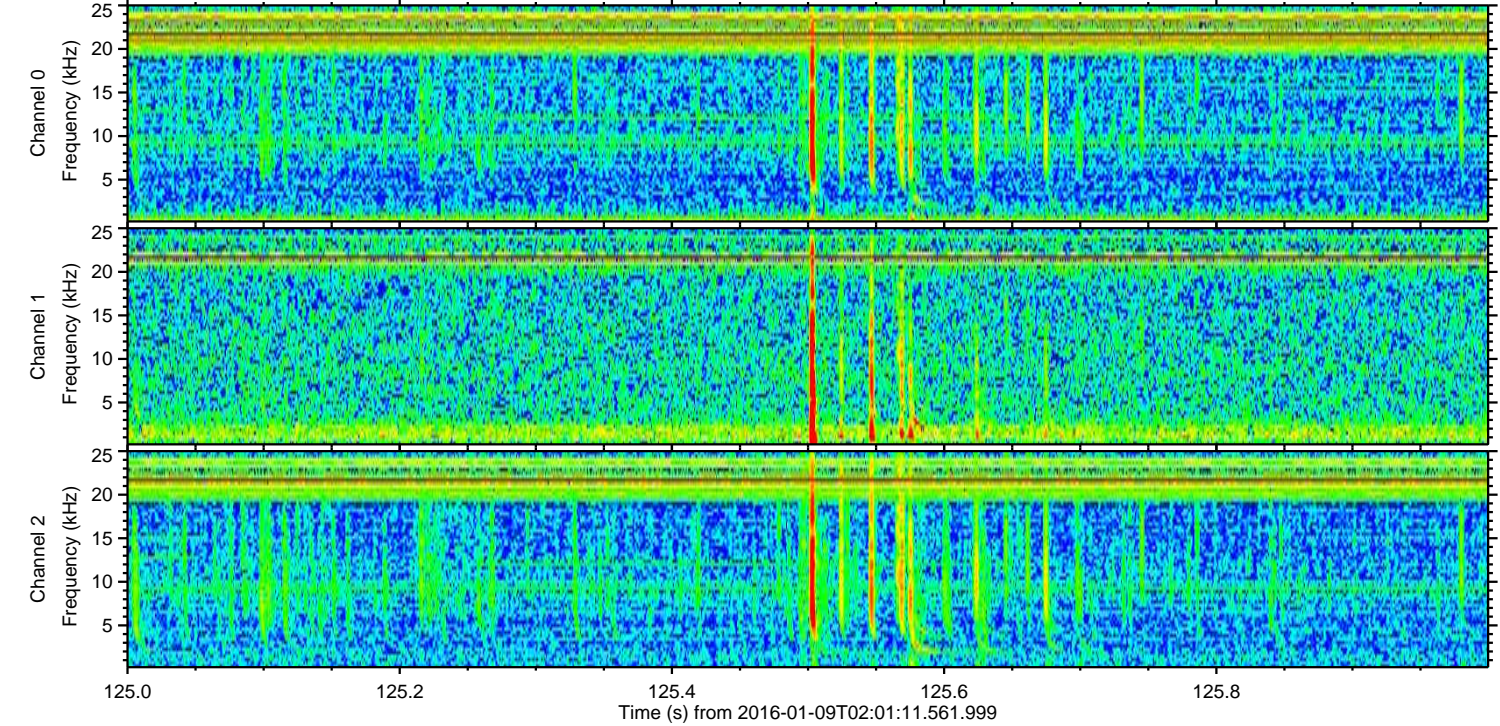
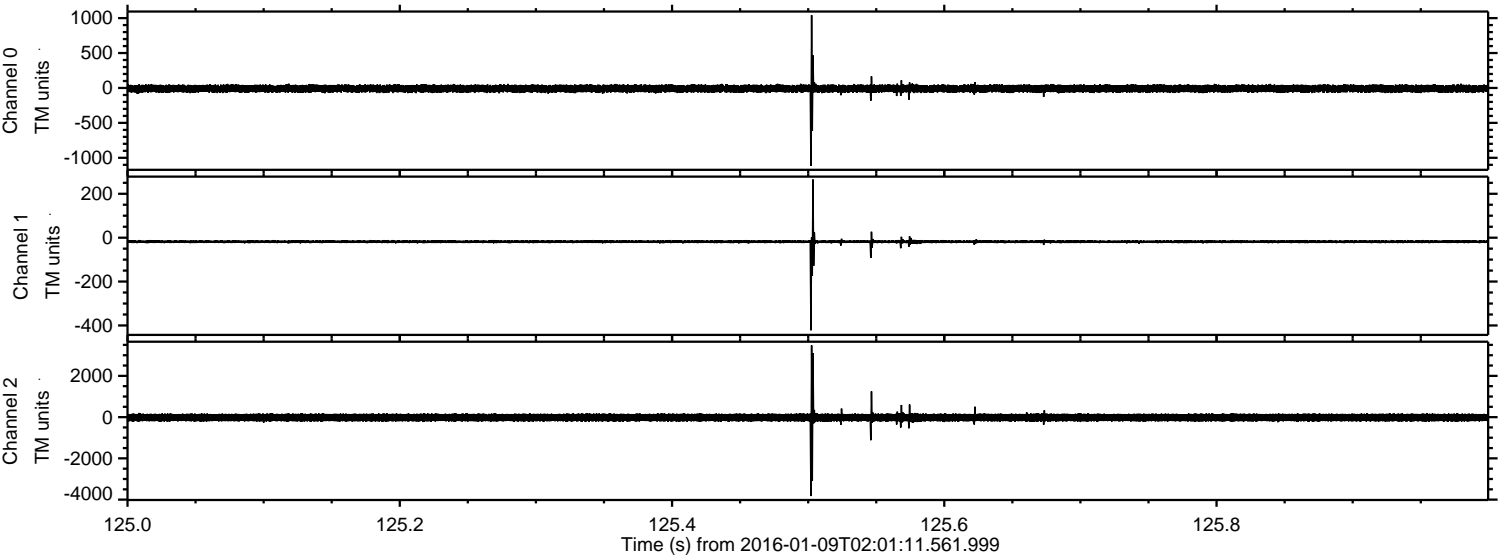
ELMAVAN 3D WAVEFORMS (Measured data sampled at 50 kHz) 51000 packets of 144 samples from 2016-01-09T02:01:11.561.999. Part 137/147

Processed Thu Mar 24 04:24:59 2016 by ELM ver.2012-10-06 from 001__elm20160109_020110__dat00.bin



ELMAVAN 3D WAVEFORMS (Measured data sampled at 50 kHz) 51000 packets of 144 samples from 2016-01-09T02:01:11.561.999. Part 126/147

Processed Thu Mar 24 04:25:00 2016 by ELM ver.2012-10-06 from 001__elm20160109_020110__dat00.bin

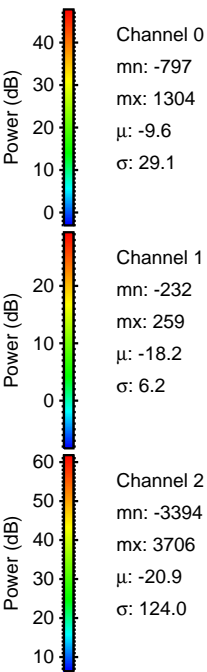
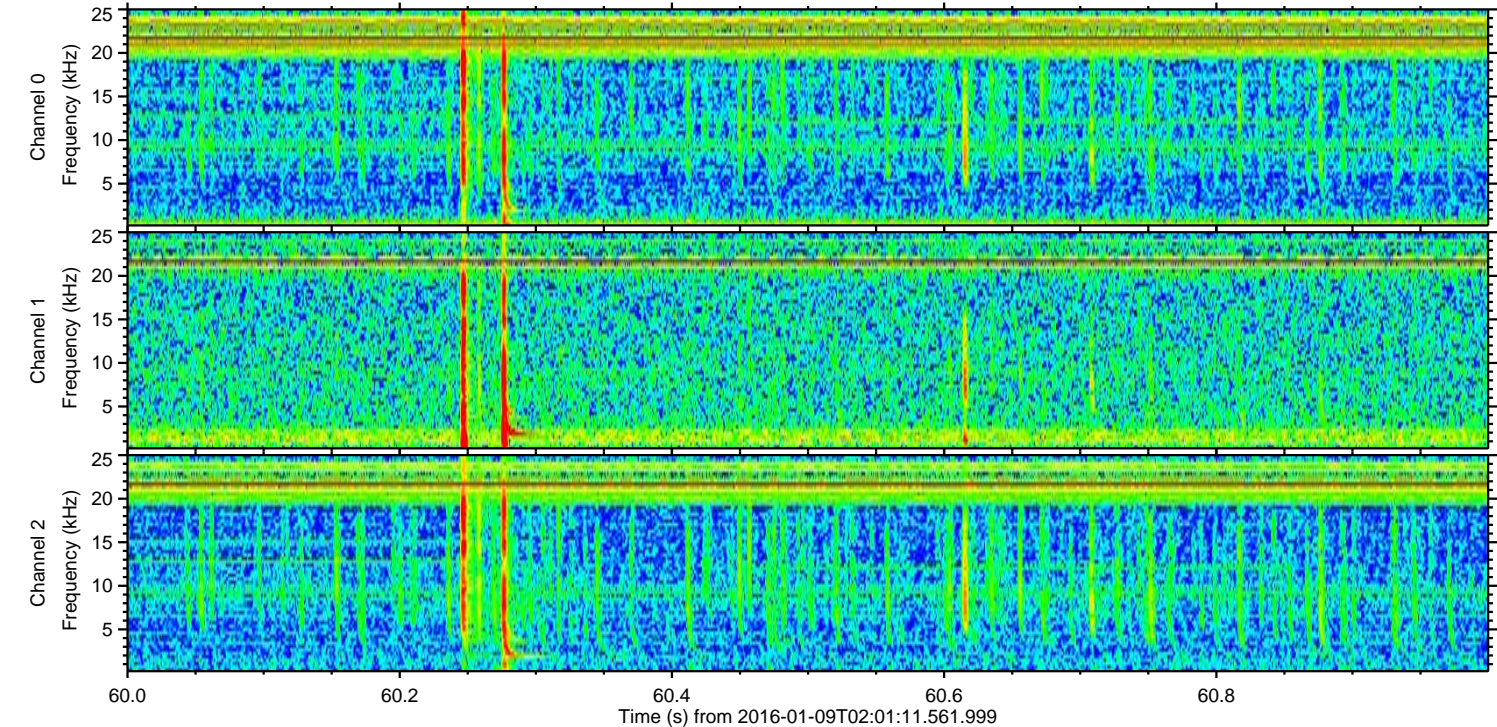
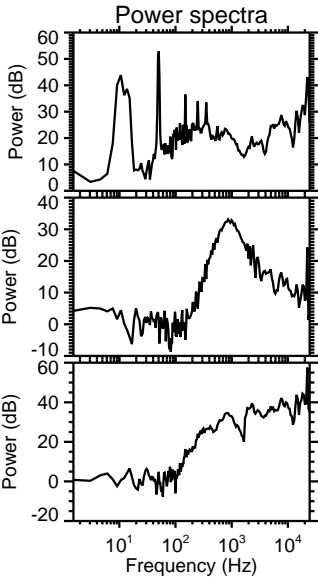
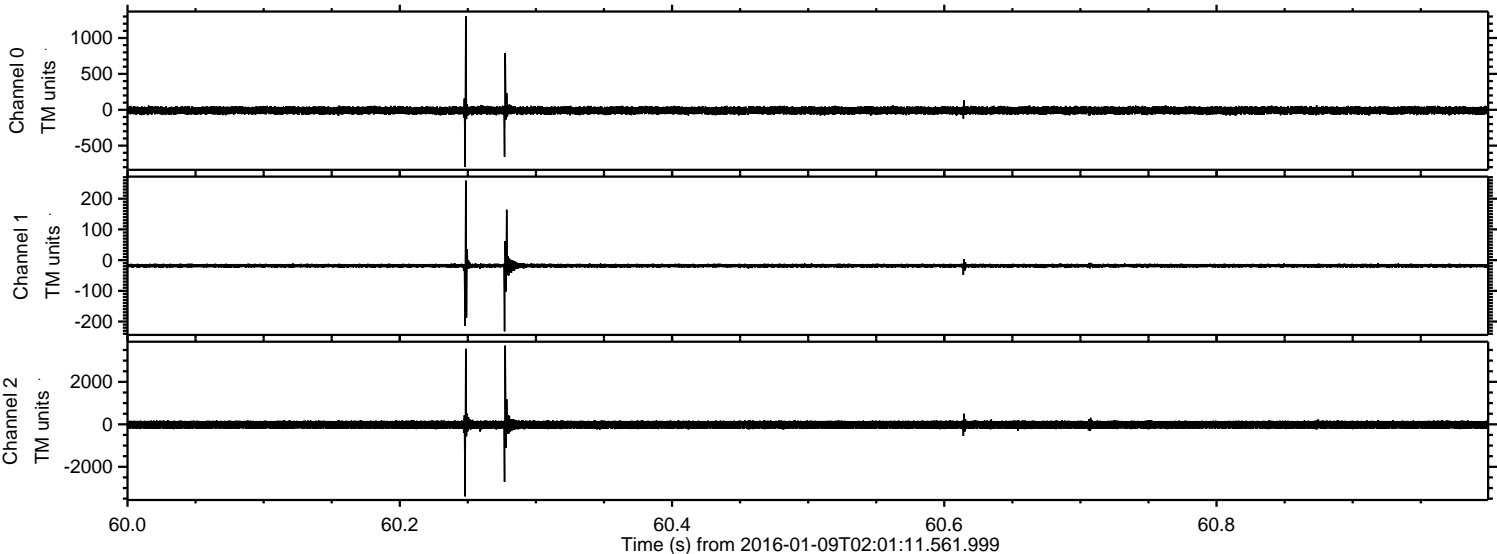


Channel 0
mn: -1116
mx: 1042
 μ : -9.5
 σ : 28.0

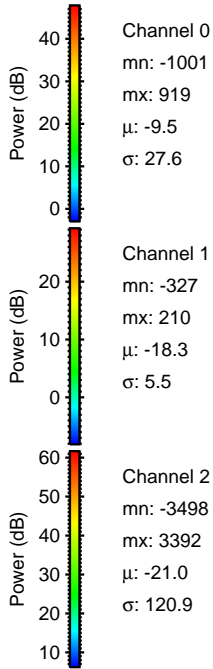
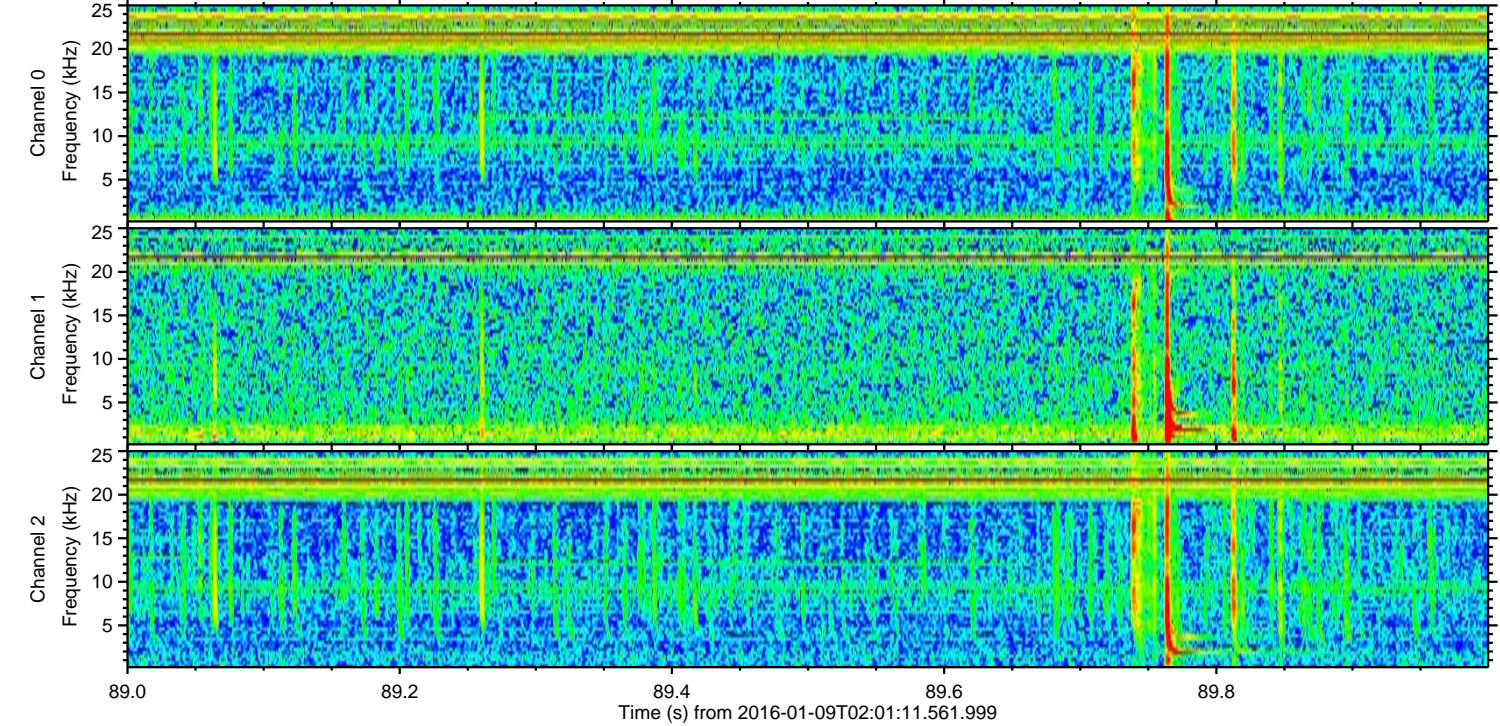
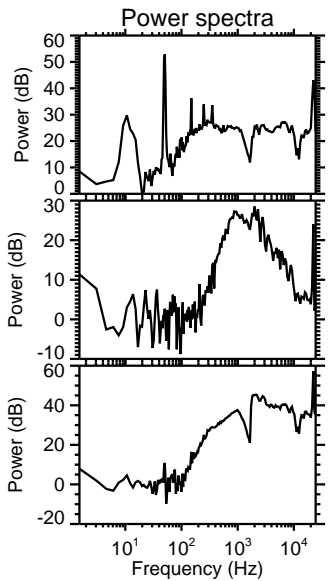
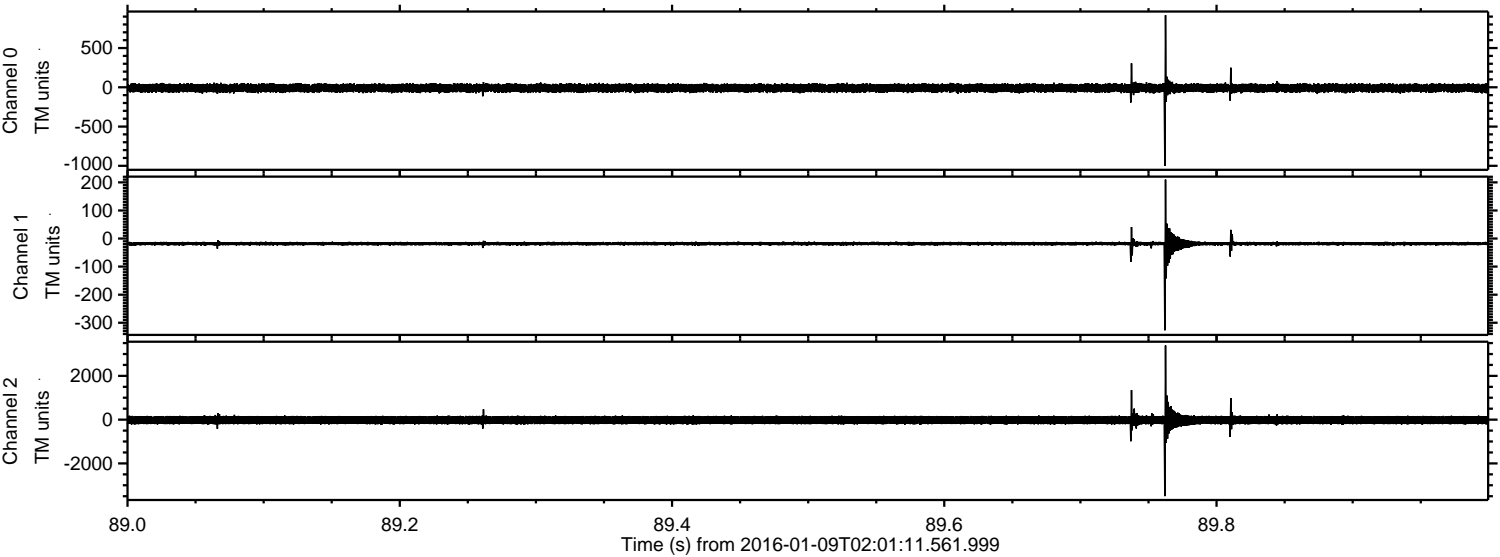
Channel 1
mn: -422
mx: 265
 μ : -18.2
 σ : 5.7

Channel 2
mn: -3826
mx: 3481
 μ : -20.9
 σ : 120.0

Processed Thu Mar 24 04:25:01 2016 by ELM ver.2012-10-06 from 001__elm20160109_020110__dat00.bin



Processed Thu Mar 24 04:25:02 2016 by ELM ver.2012-10-06 from 001__elm20160109_020110__dat00.bin



Processed Thu Mar 24 04:25:03 2016 by ELM ver.2012-10-06 from 001__elm20160109_020110__dat00.bin

