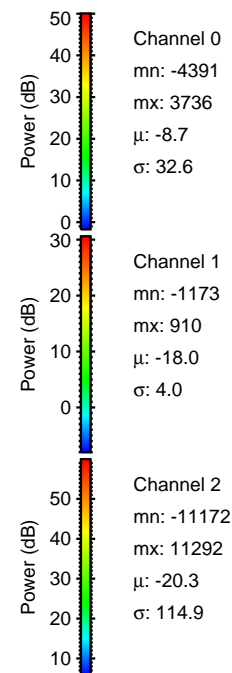
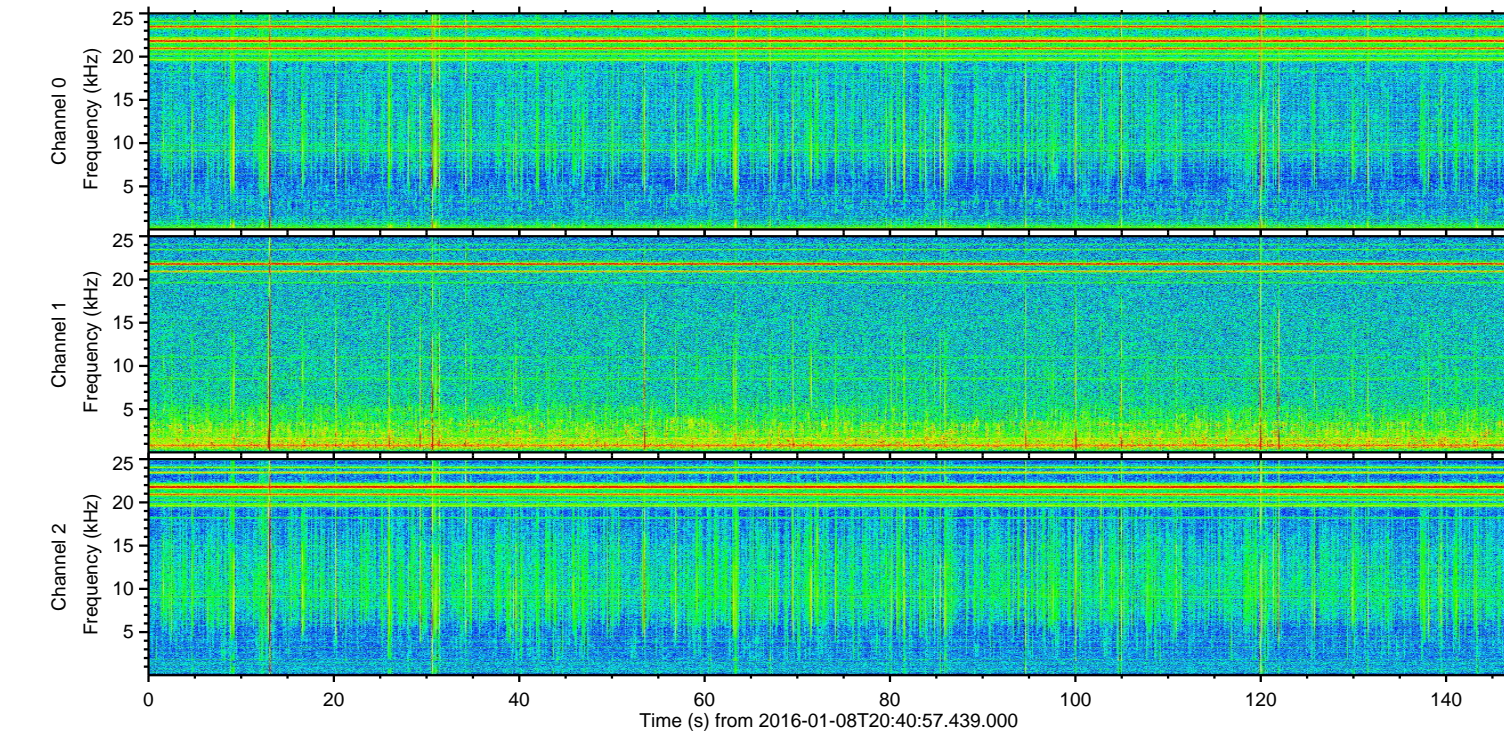
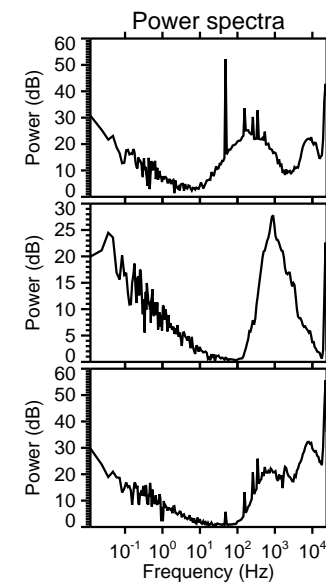
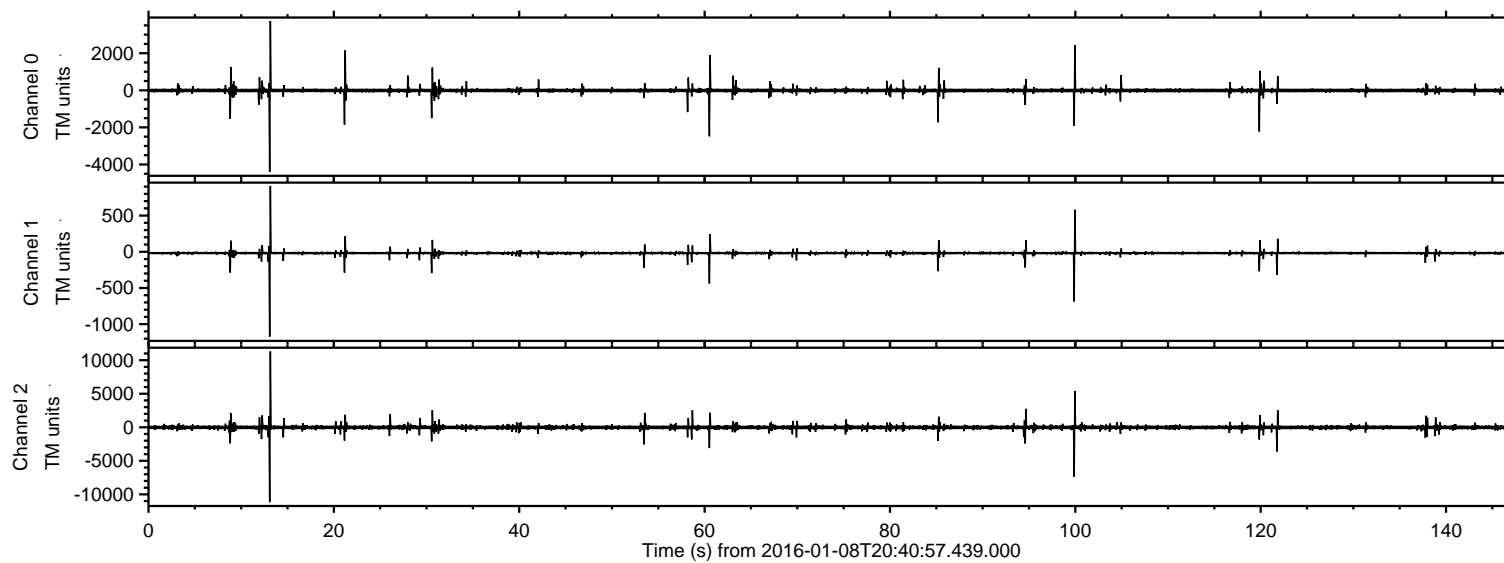
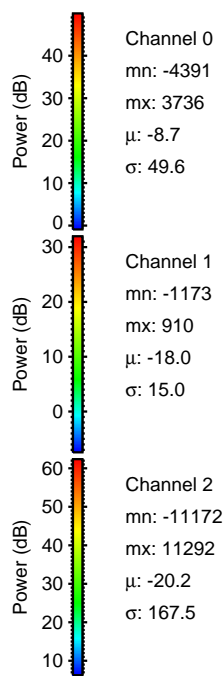
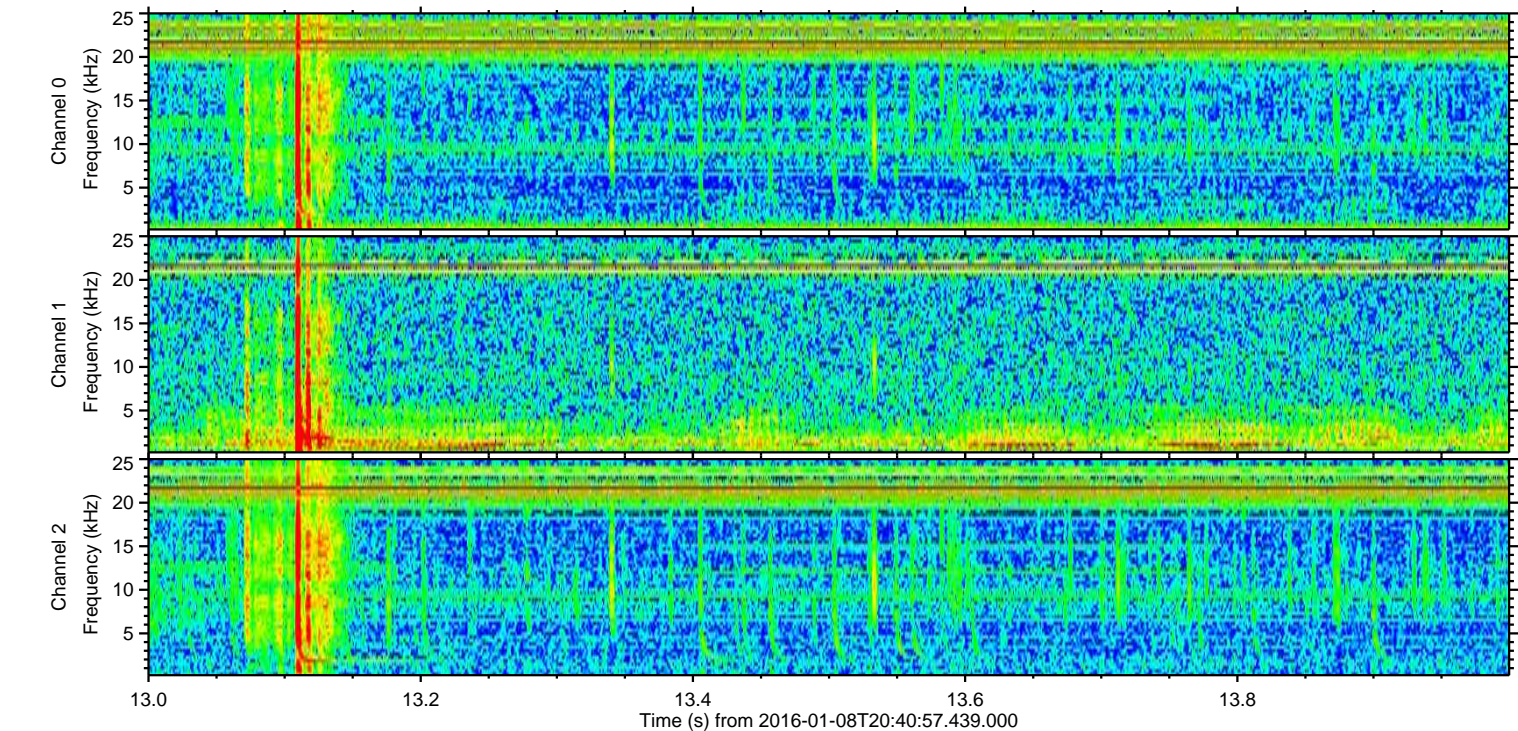
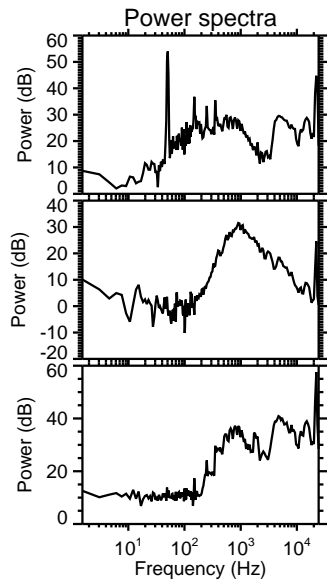
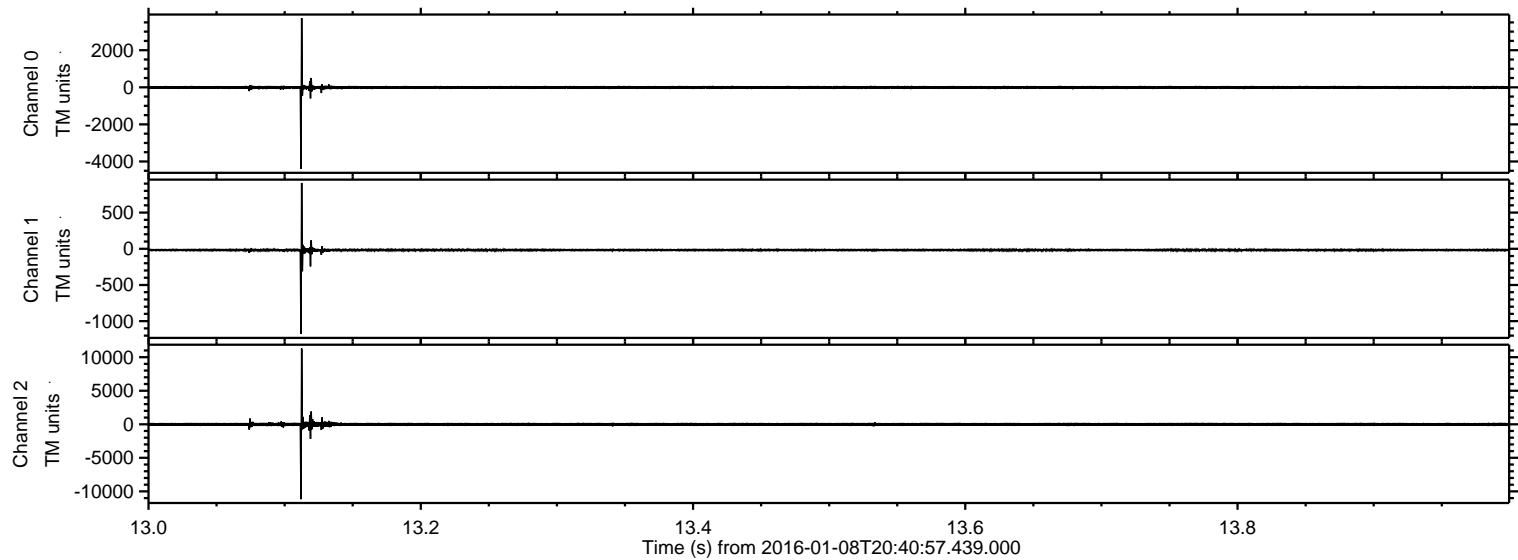


ELMAVAN 3D WAVEFORMS (Measured data sampled at 50 kHz) 51000 packets of 144 samples from 2016-01-08T20:40:57.439.000.

Processed Wed Mar 23 21:49:42 2016 by ELM ver.2012-10-06 from 001__elm20160108_204056__dat00.bin

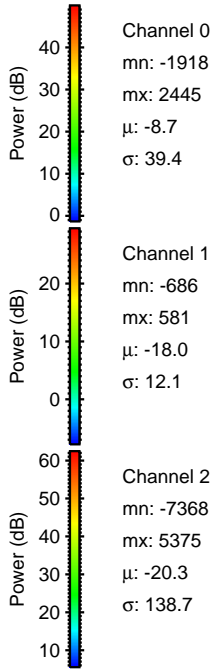
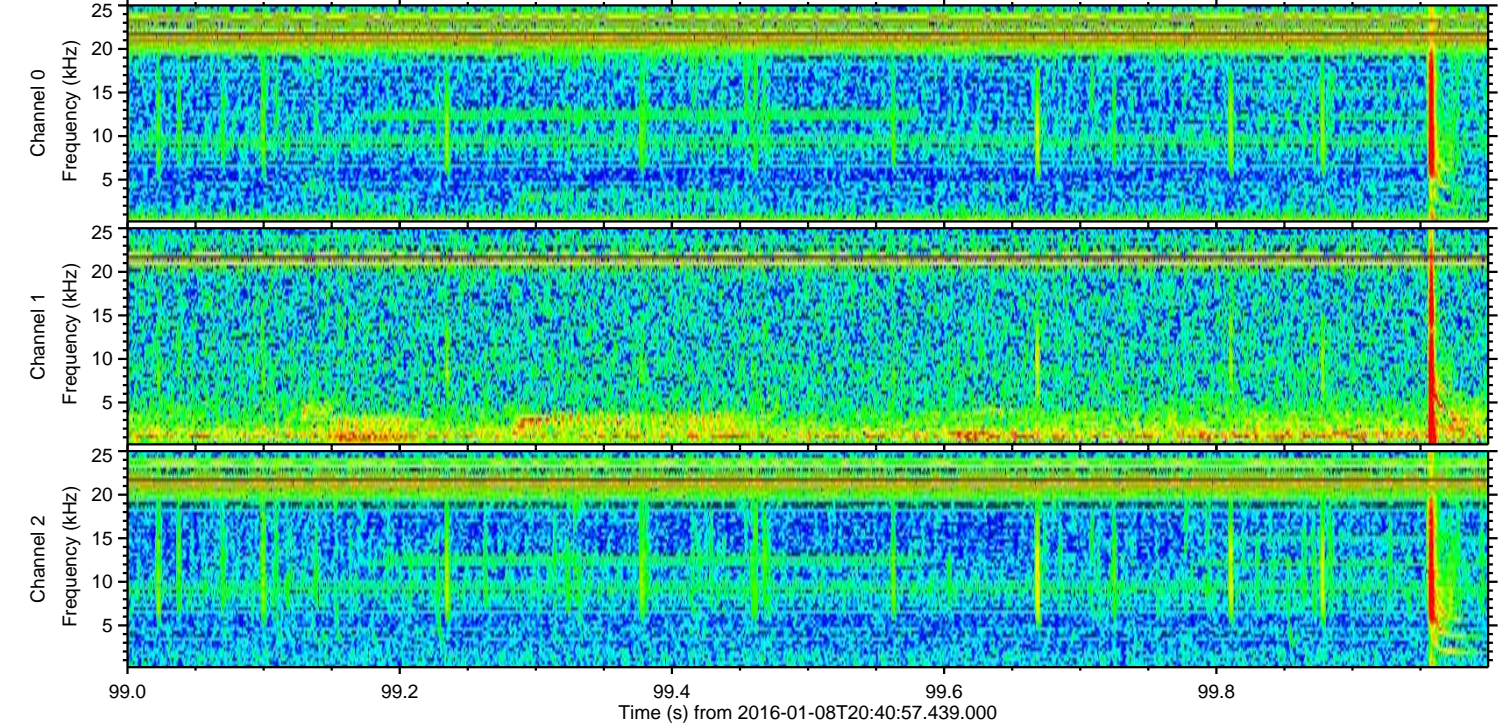
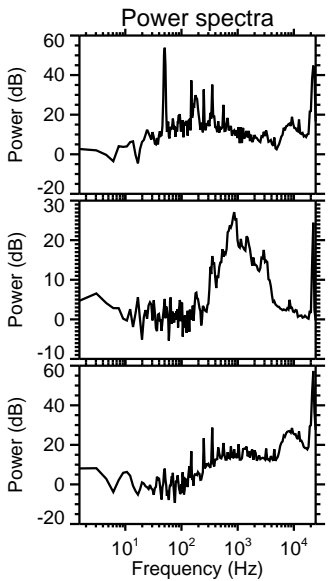
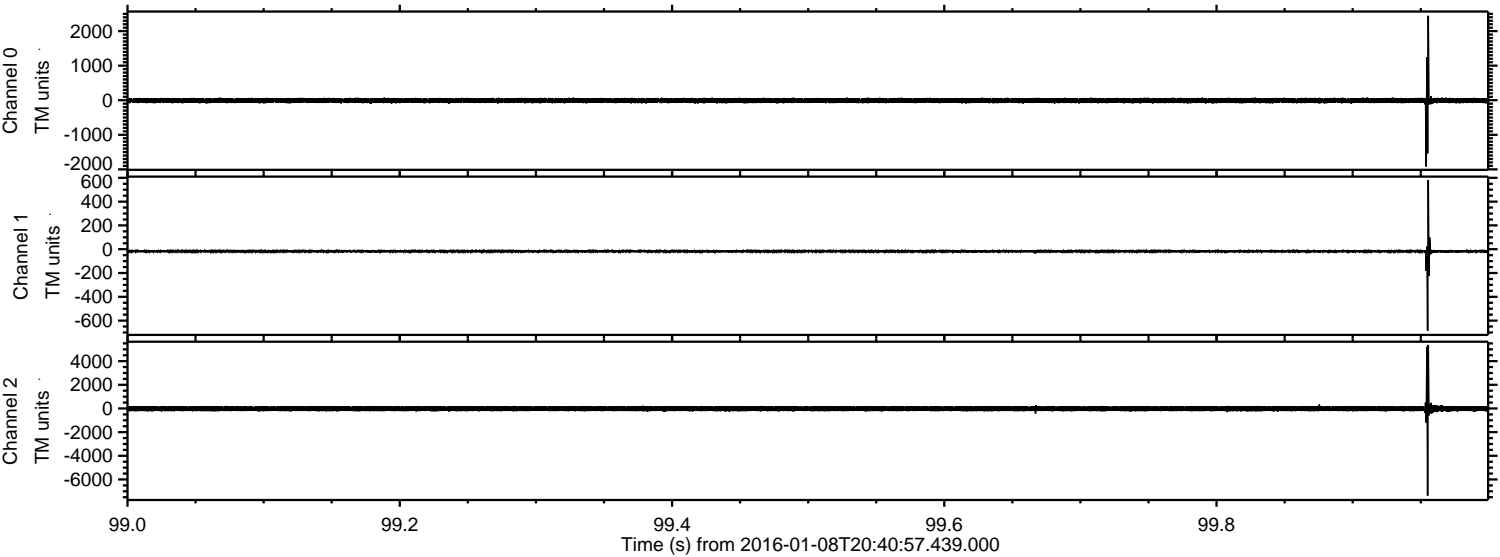


Processed Wed Mar 23 21:49:53 2016 by ELM ver.2012-10-06 from 001__elm20160108_204056__dat00.bin



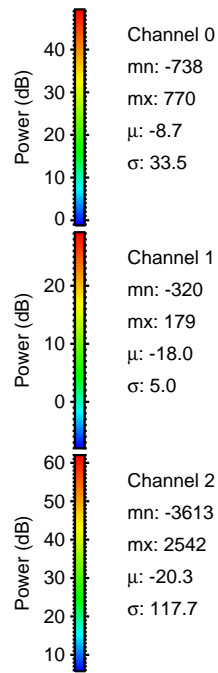
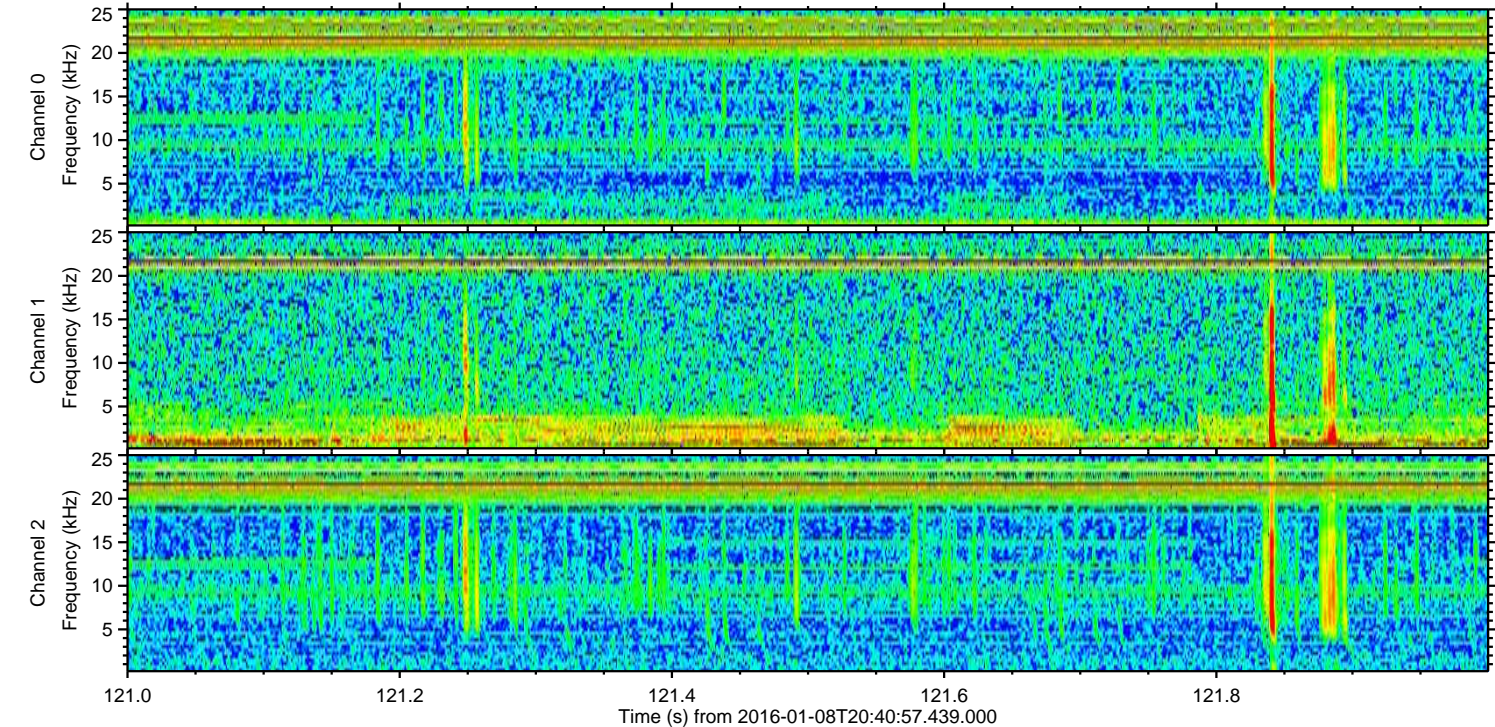
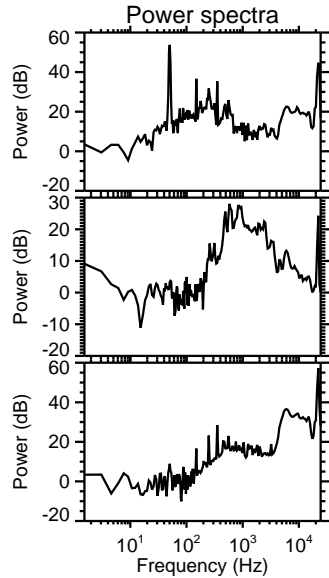
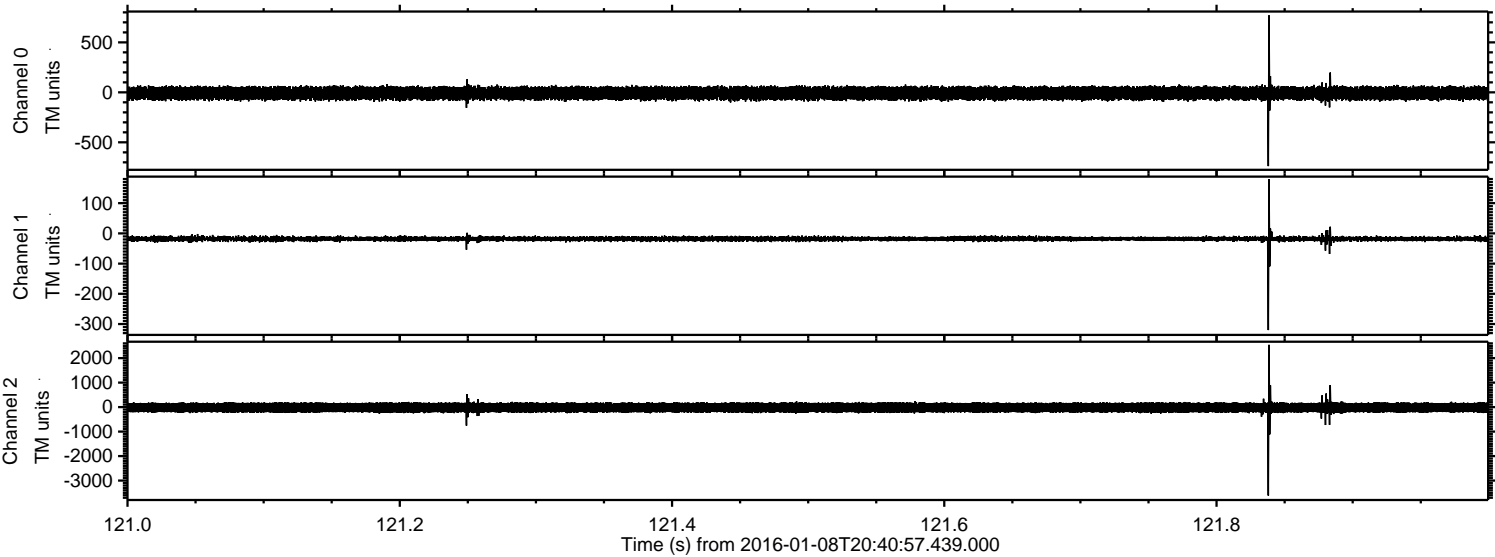
ELMAVAN 3D WAVEFORMS (Measured data sampled at 50 kHz) 51000 packets of 144 samples from 2016-01-08T20:40:57.439.000. Part 100/147

Processed Wed Mar 23 21:49:54 2016 by ELM ver.2012-10-06 from 001__elm20160108_204056__dat00.bin

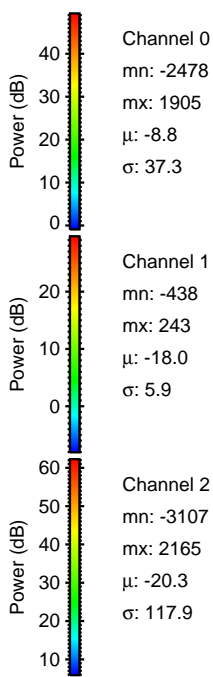
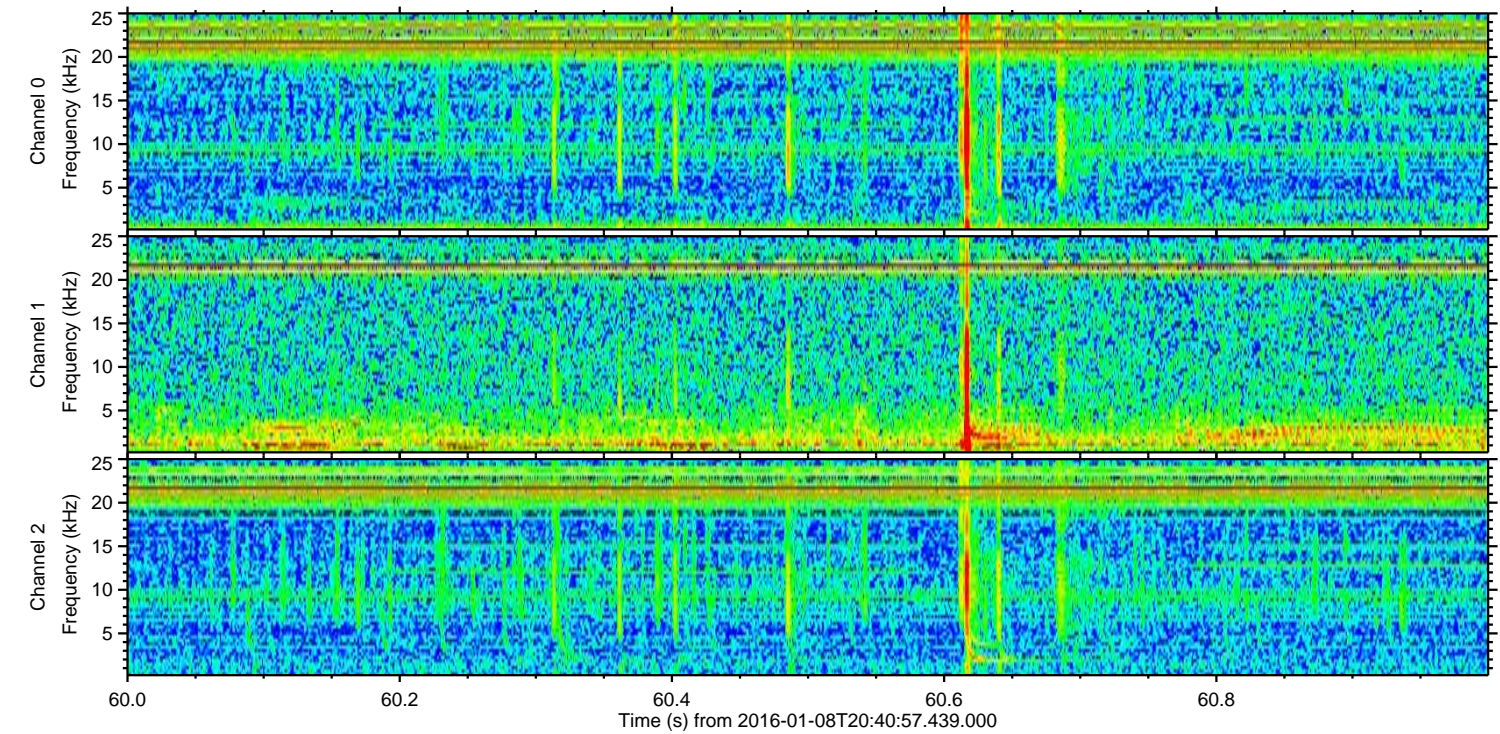
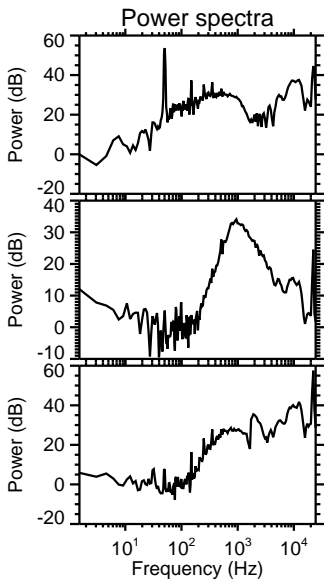
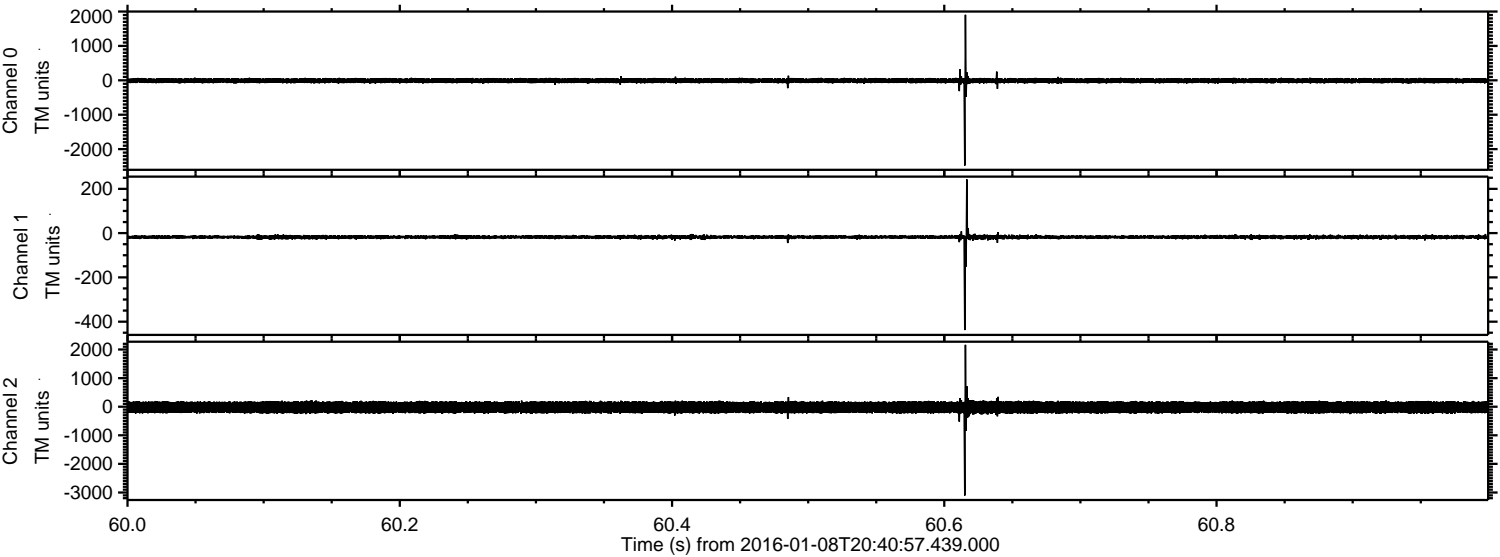


ELMAVAN 3D WAVEFORMS (Measured data sampled at 50 kHz) 51000 packets of 144 samples from 2016-01-08T20:40:57.439.000. Part 122/147

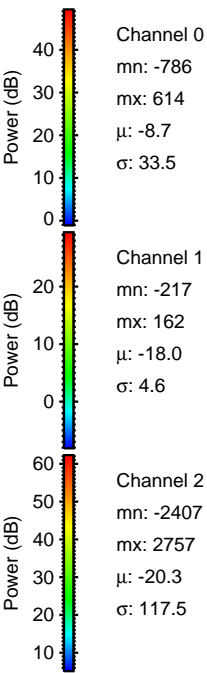
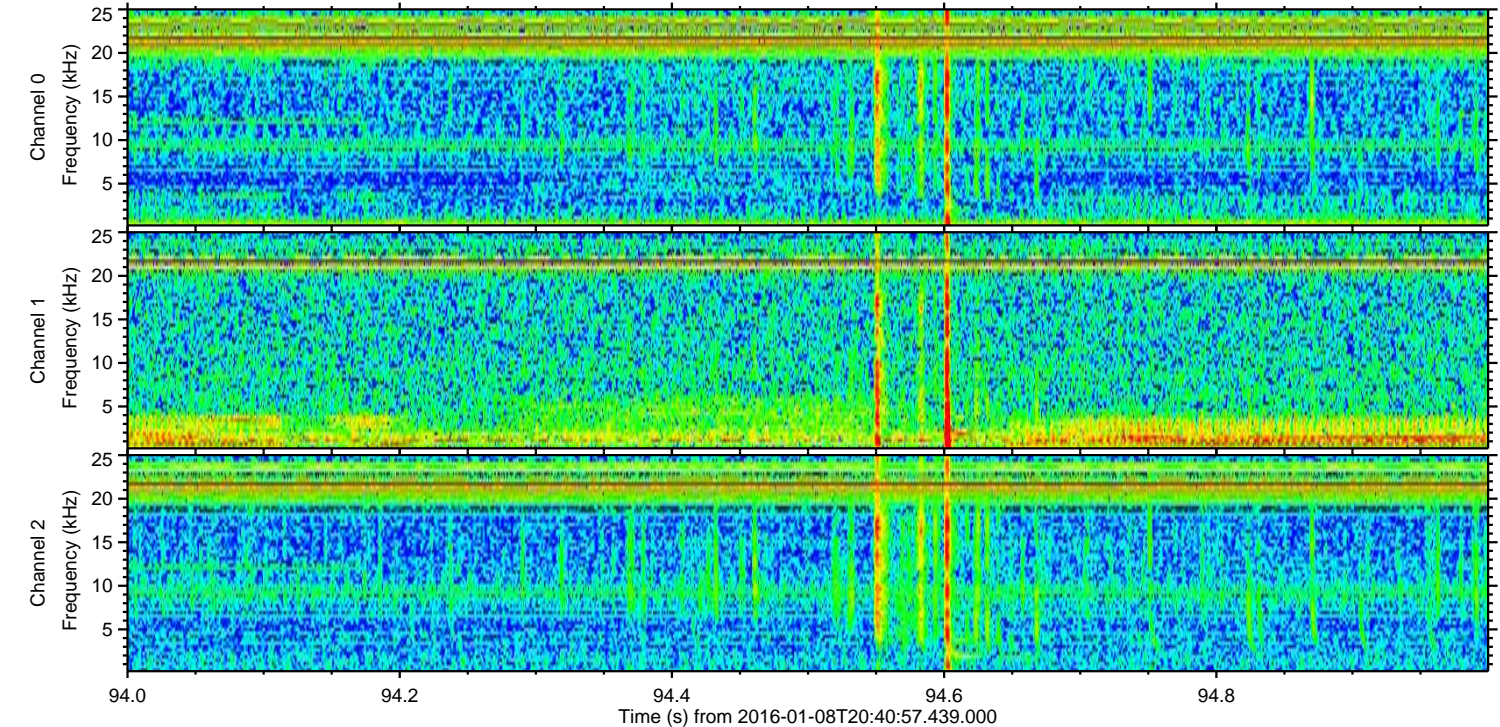
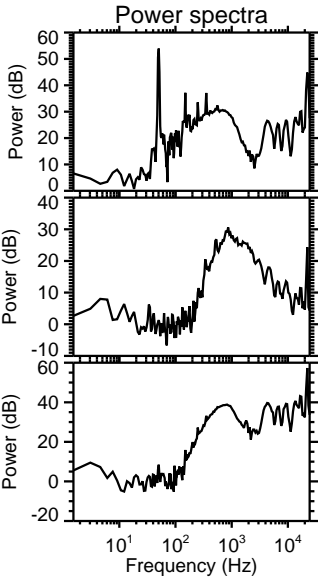
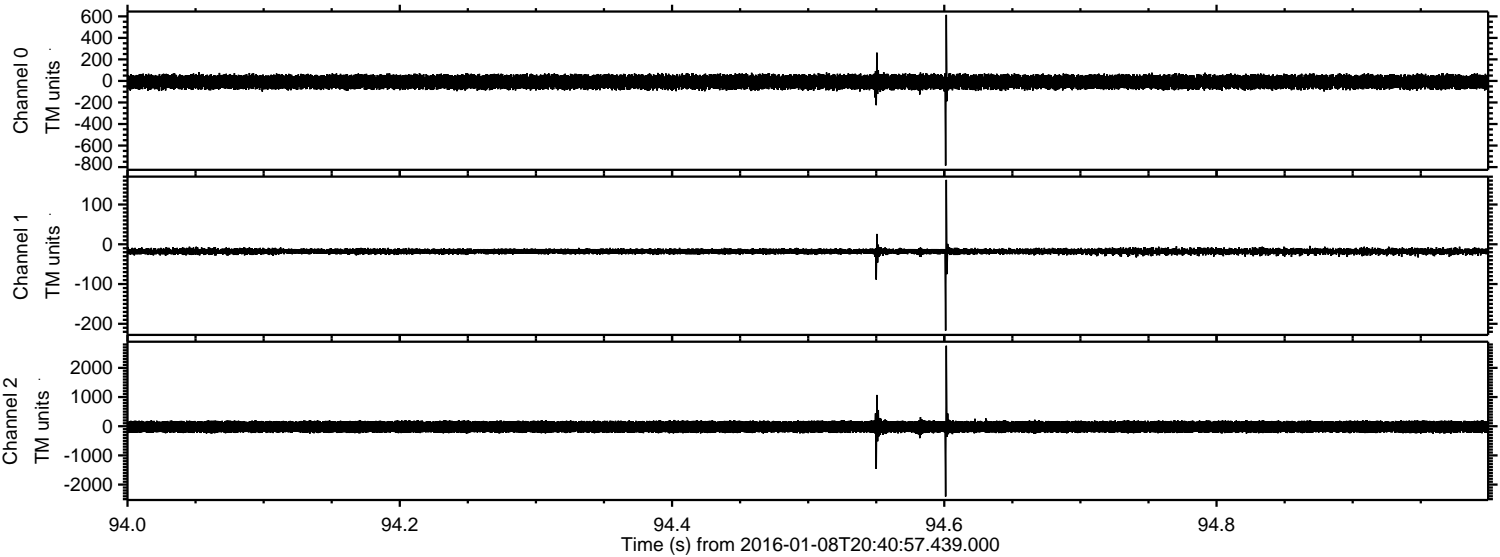
Processed Wed Mar 23 21:49:55 2016 by ELM ver.2012-10-06 from 001__elm20160108_204056__dat00.bin



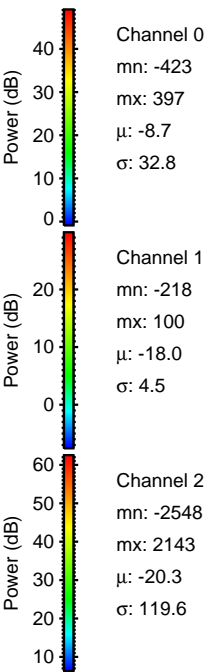
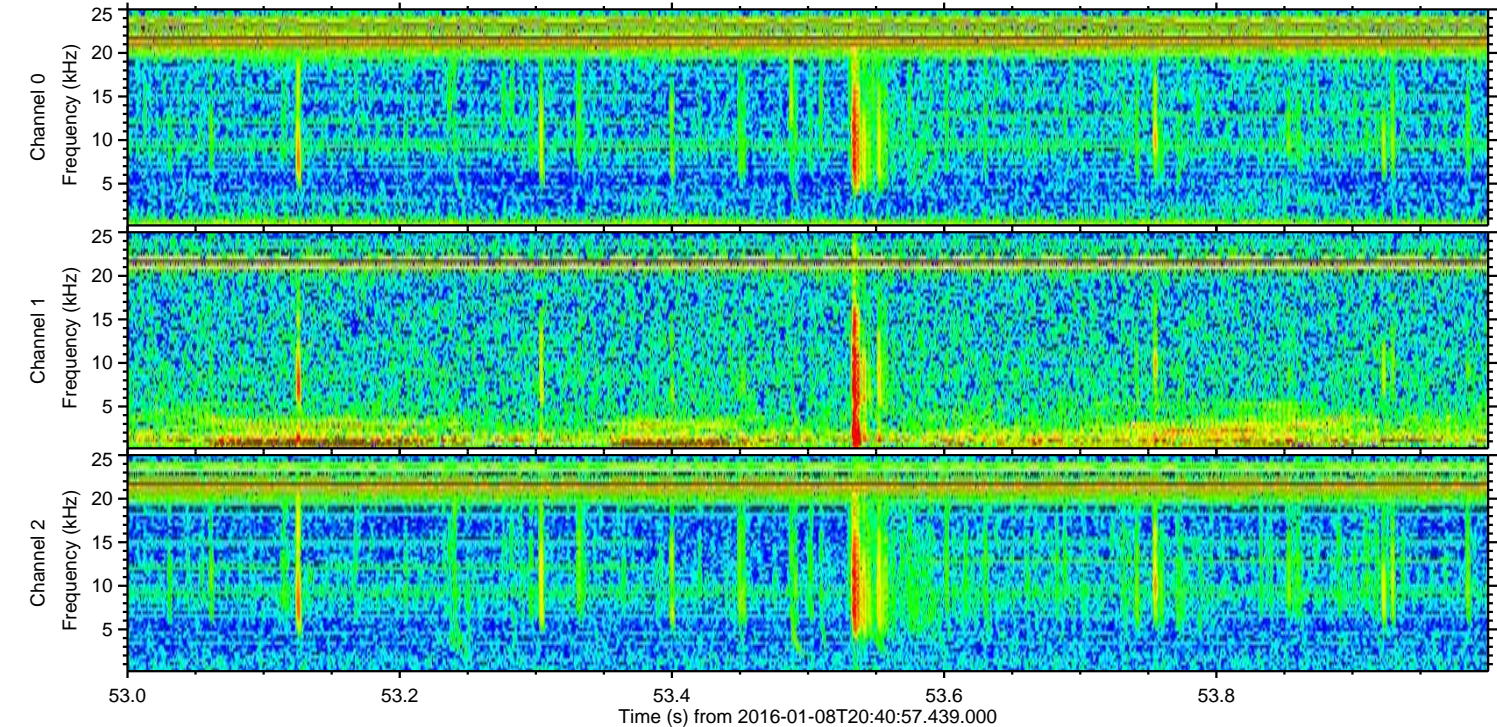
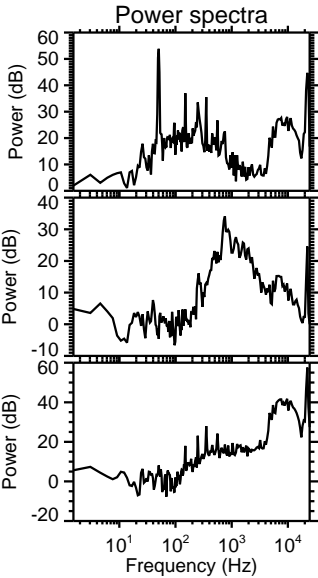
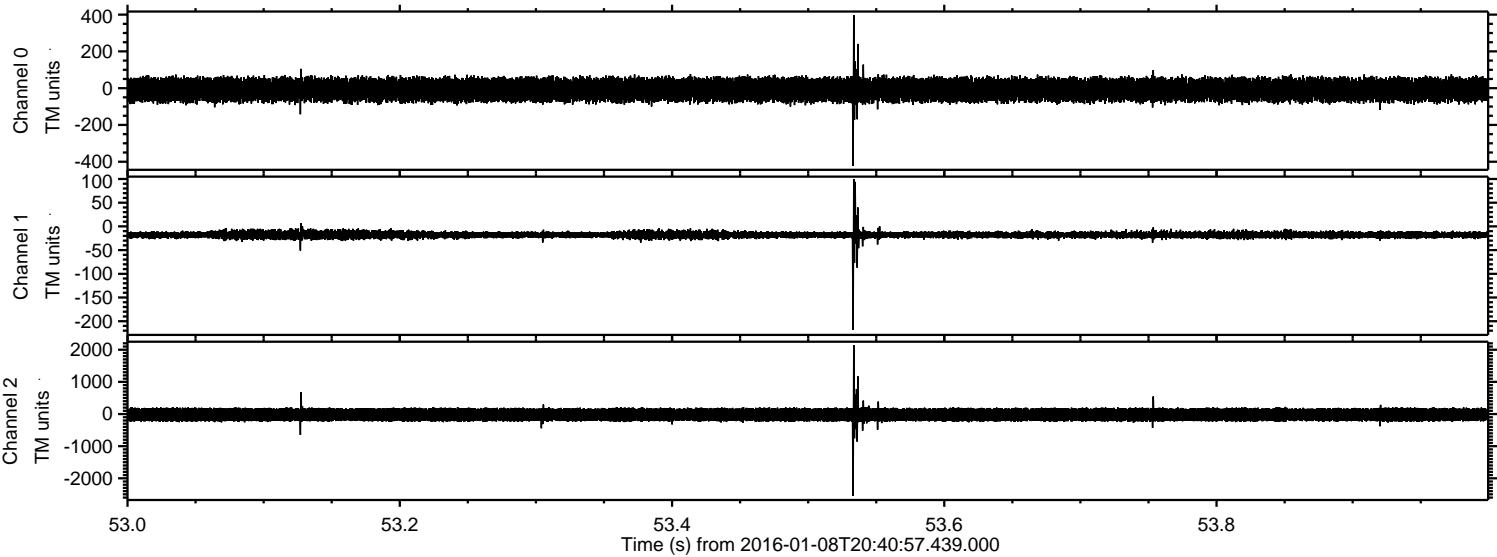
Processed Wed Mar 23 21:49:56 2016 by ELM ver.2012-10-06 from 001__elm20160108_204056__dat00.bin



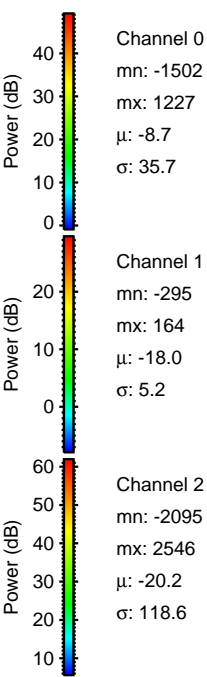
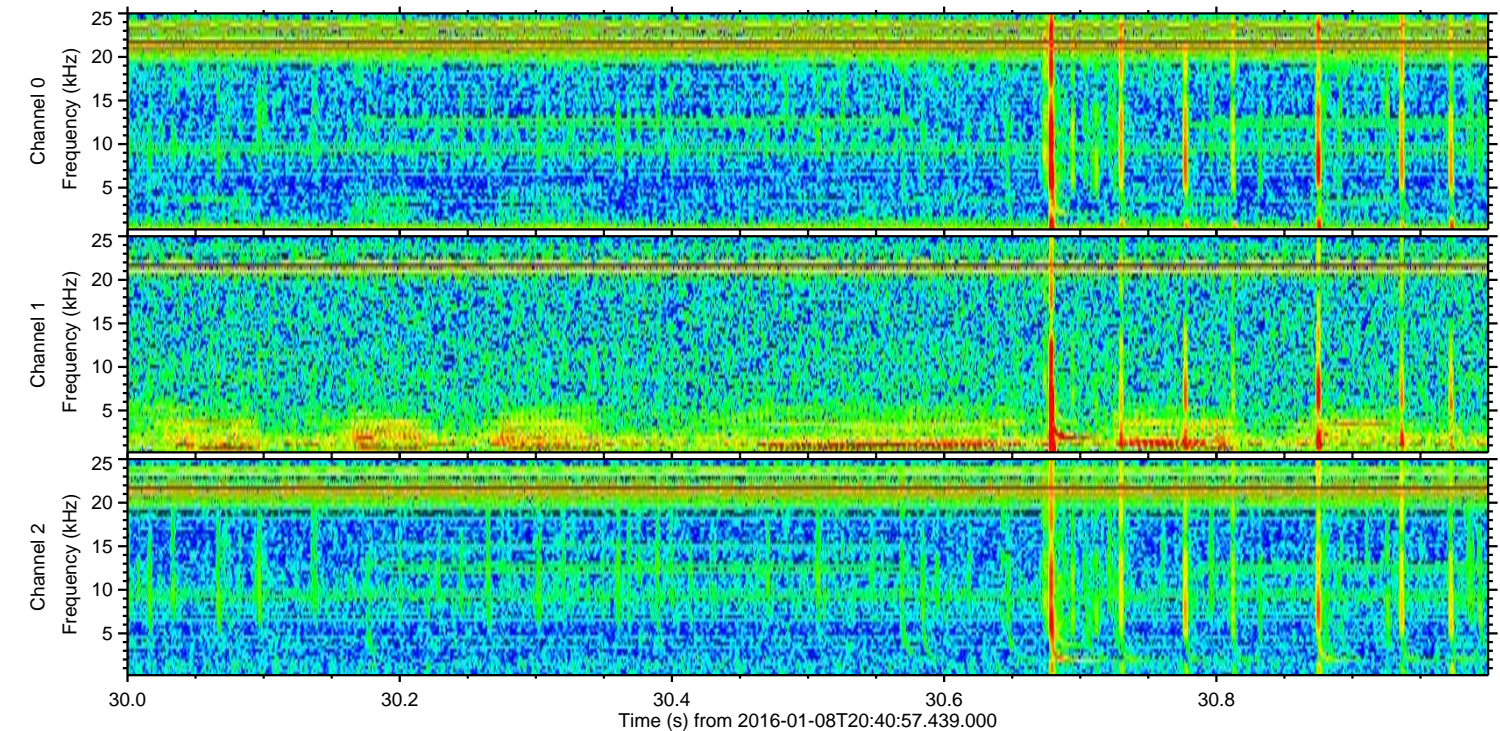
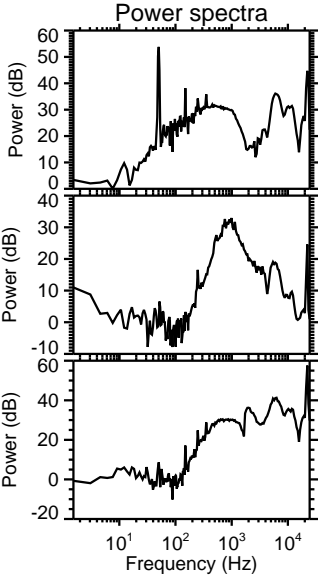
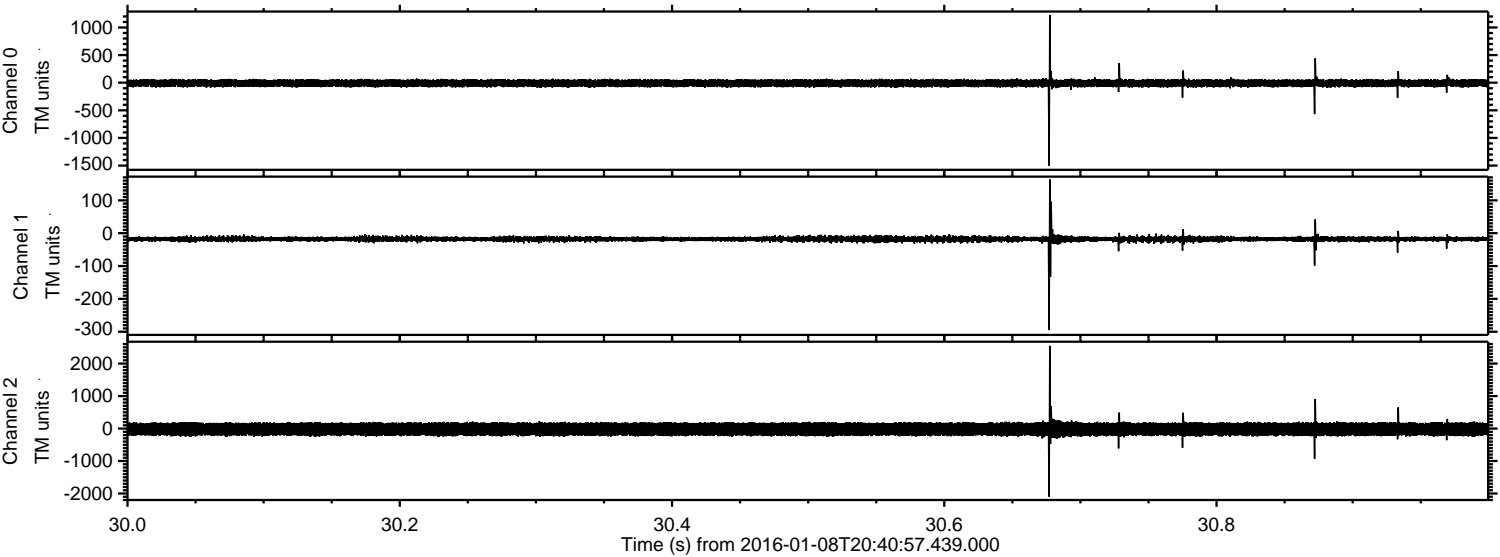
Processed Wed Mar 23 21:49:57 2016 by ELM ver.2012-10-06 from 001__elm20160108_204056__dat00.bin



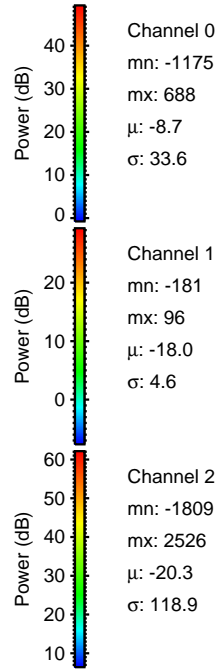
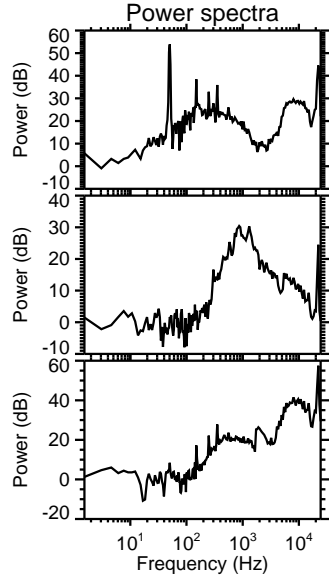
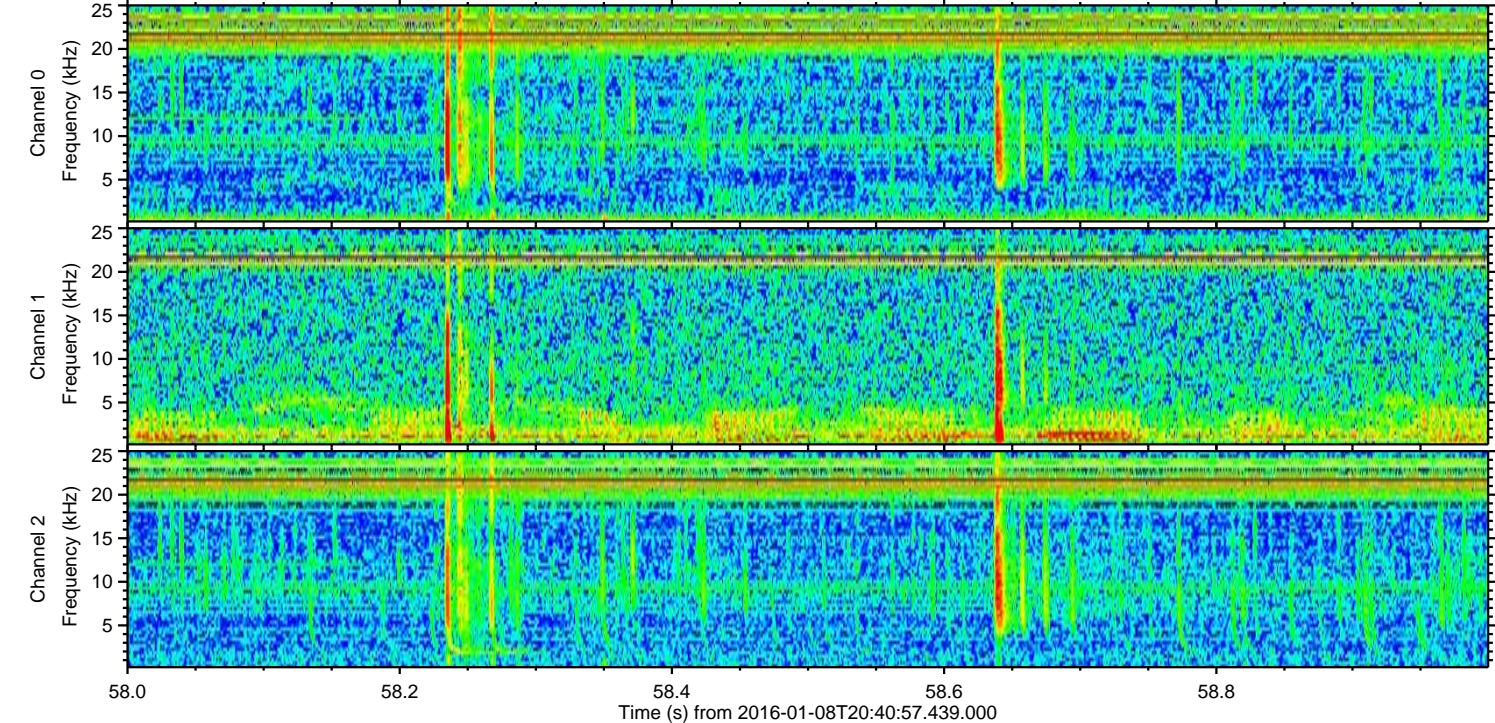
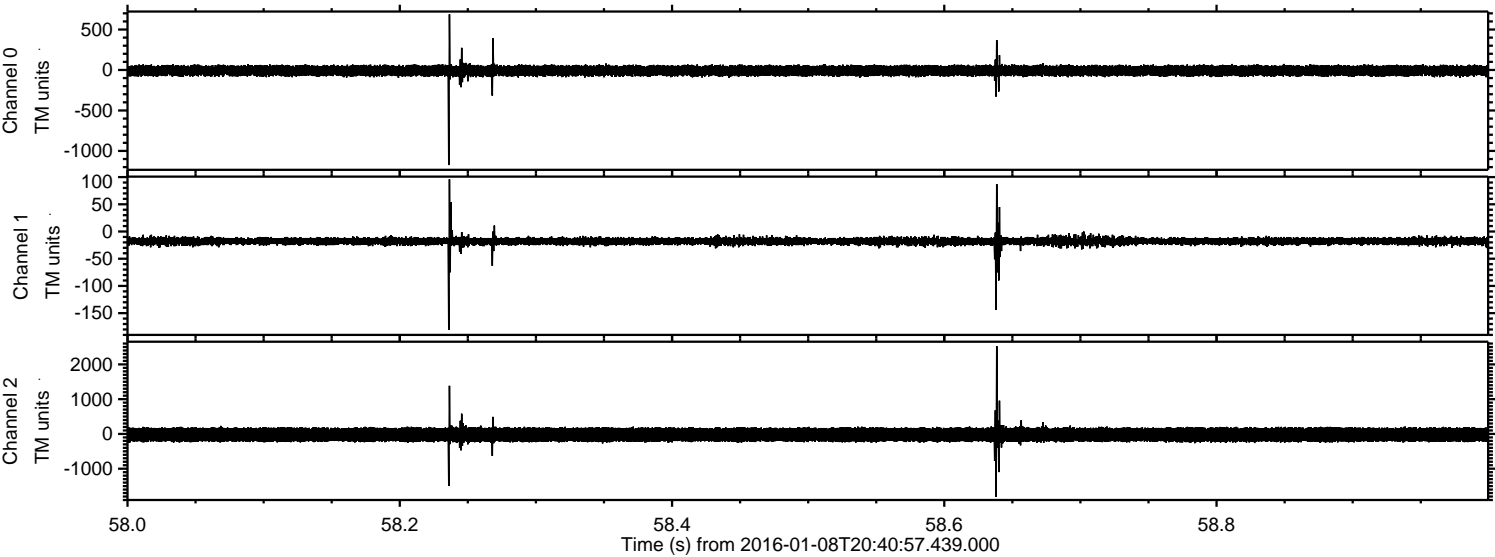
Processed Wed Mar 23 21:49:58 2016 by ELM ver.2012-10-06 from 001__elm20160108_204056__dat00.bin



Processed Wed Mar 23 21:49:59 2016 by ELM ver.2012-10-06 from 001__elm20160108_204056__dat00.bin



Processed Wed Mar 23 21:50:00 2016 by ELM ver.2012-10-06 from 001__elm20160108_204056__dat00.bin

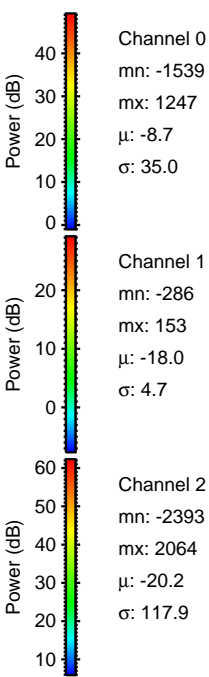
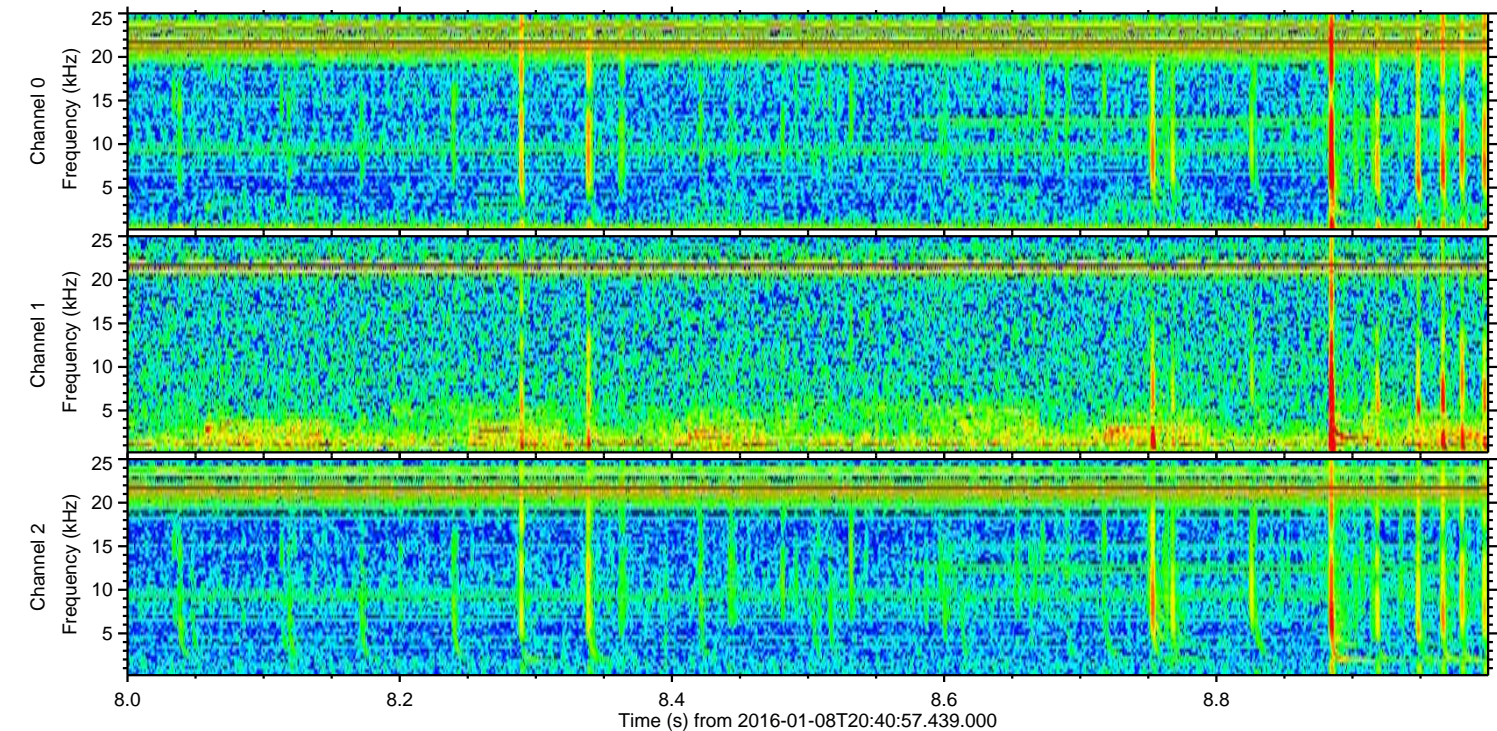
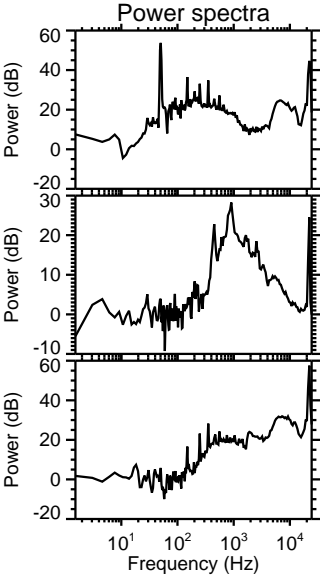
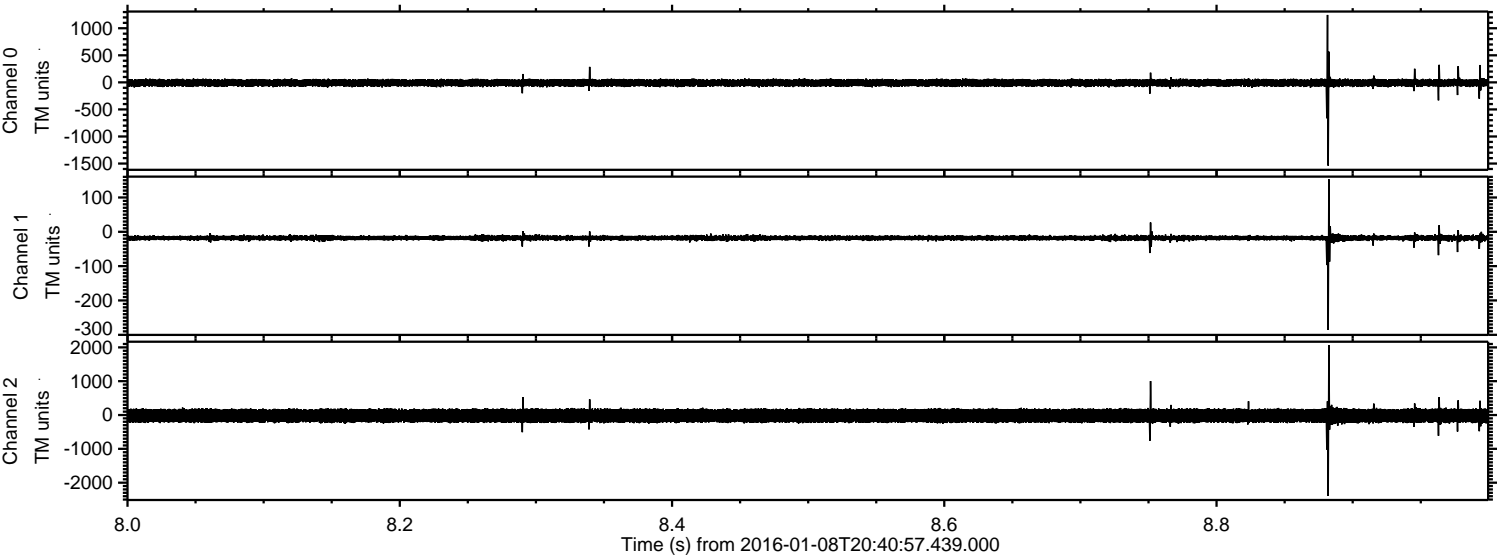


Channel 0
mn: -1175
mx: 688
 μ : -8.7
 σ : 33.6

Channel 1
mn: -181
mx: 96
 μ : -18.0
 σ : 4.6

Channel 2
mn: -1809
mx: 2526
 μ : -20.3
 σ : 118.9

Processed Wed Mar 23 21:50:01 2016 by ELM ver.2012-10-06 from 001__elm20160108_204056__dat00.bin



Channel 0
mn: -1539
mx: 1247
 μ : -8.7
 σ : 35.0

Channel 1
mn: -286
mx: 153
 μ : -18.0
 σ : 4.7

Channel 2
mn: -2393
mx: 2064
 μ : -20.2
 σ : 117.9

Processed Wed Mar 23 21:50:02 2016 by ELM ver.2012-10-06 from 001__elm20160108_204056__dat00.bin

