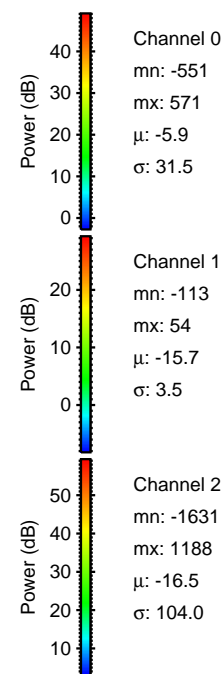
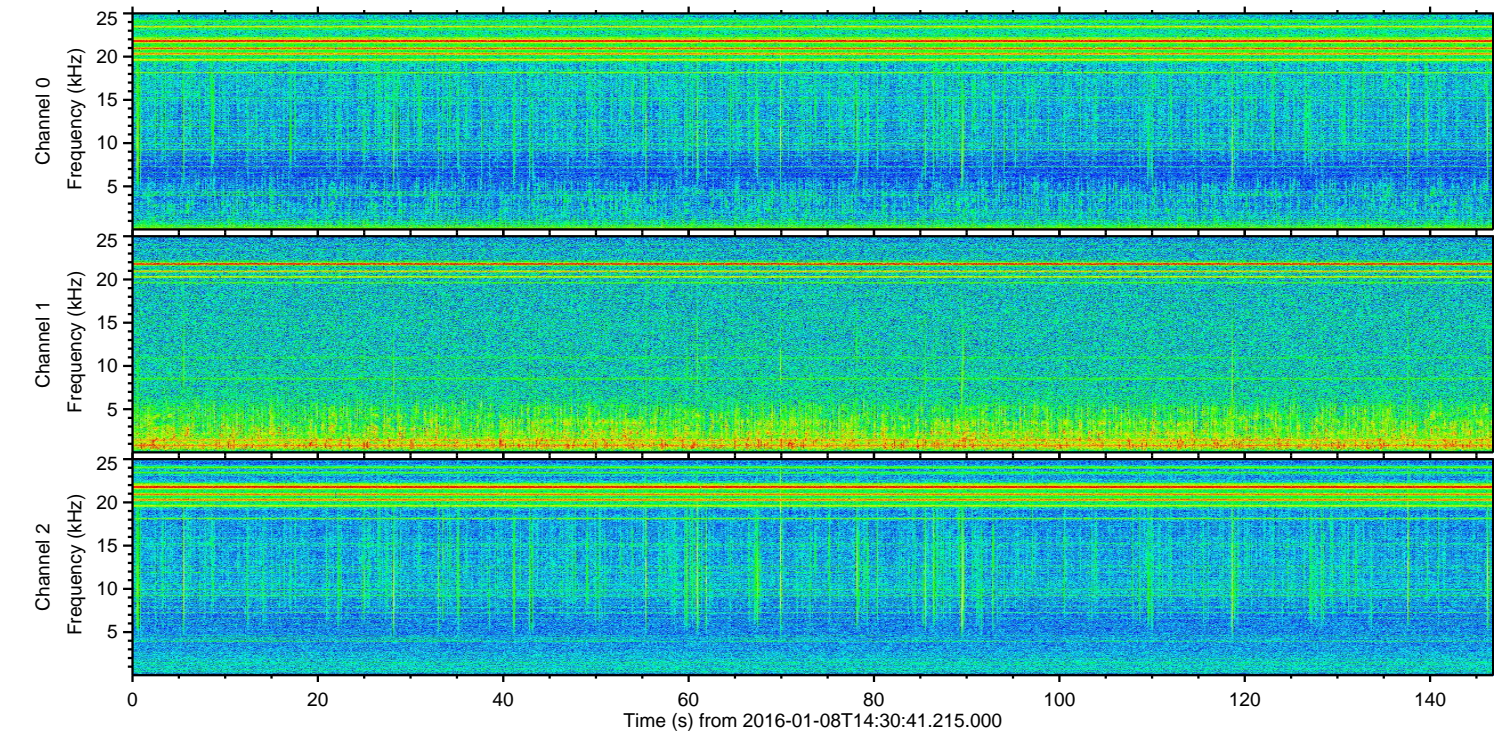
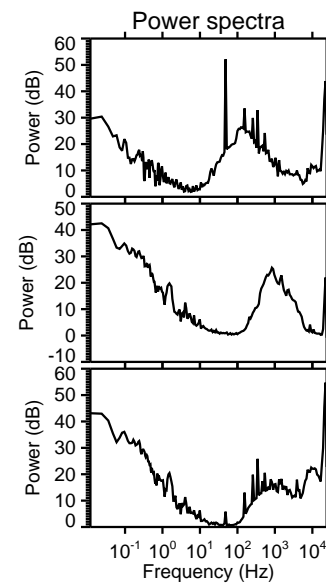
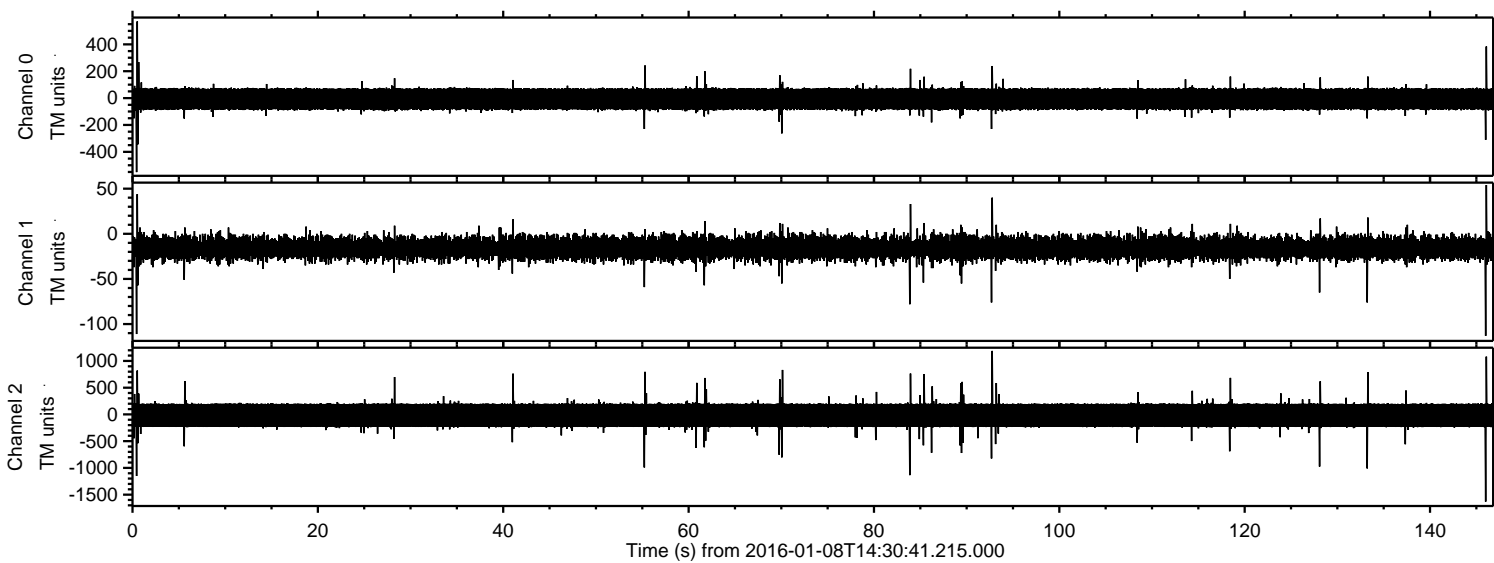
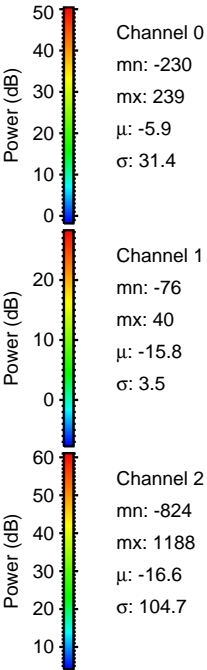
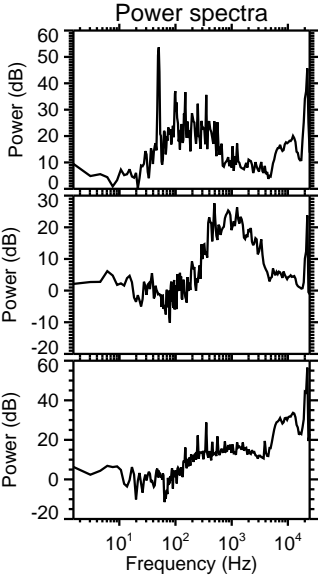
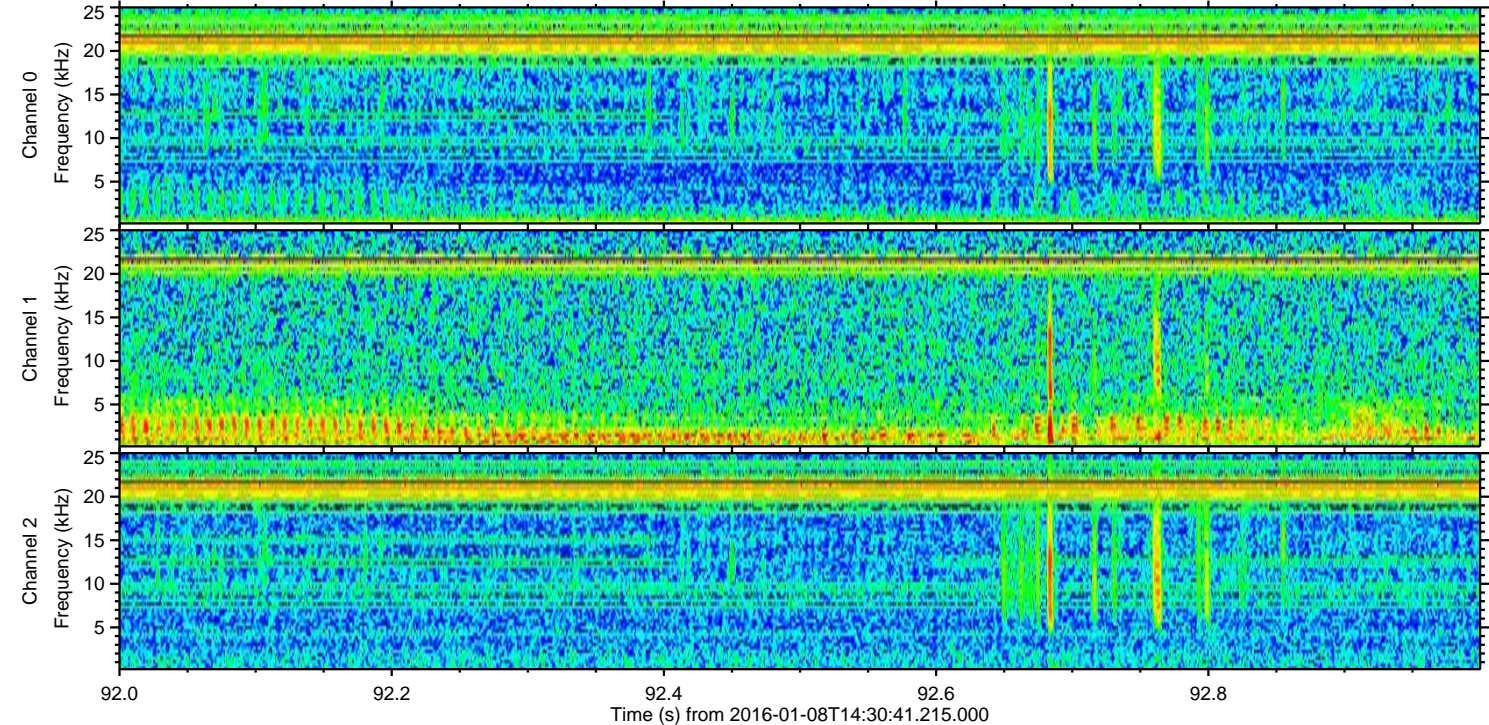
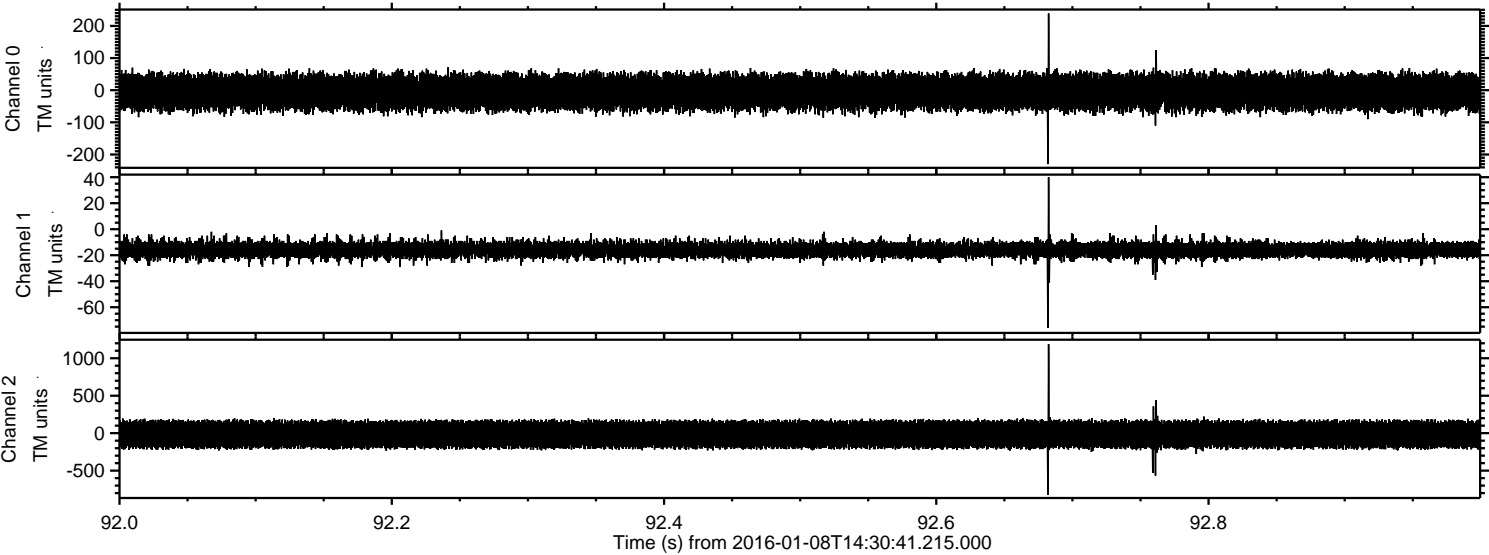


ELMAVAN 3D WAVEFORMS (Measured data sampled at 50 kHz) 51000 packets of 144 samples from 2016-01-08T14:30:41.215.000.

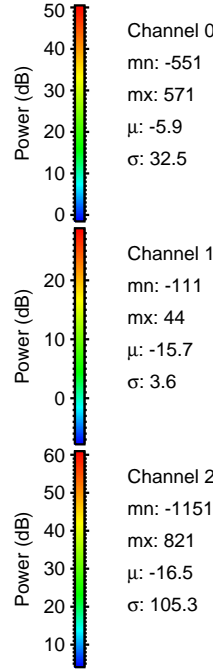
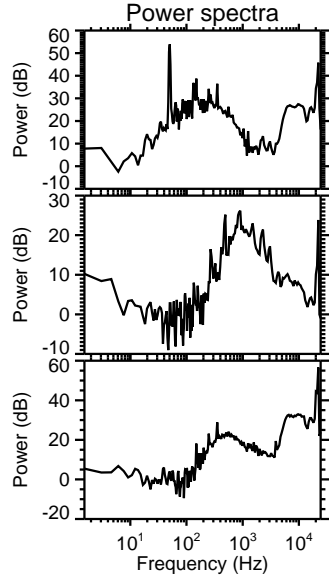
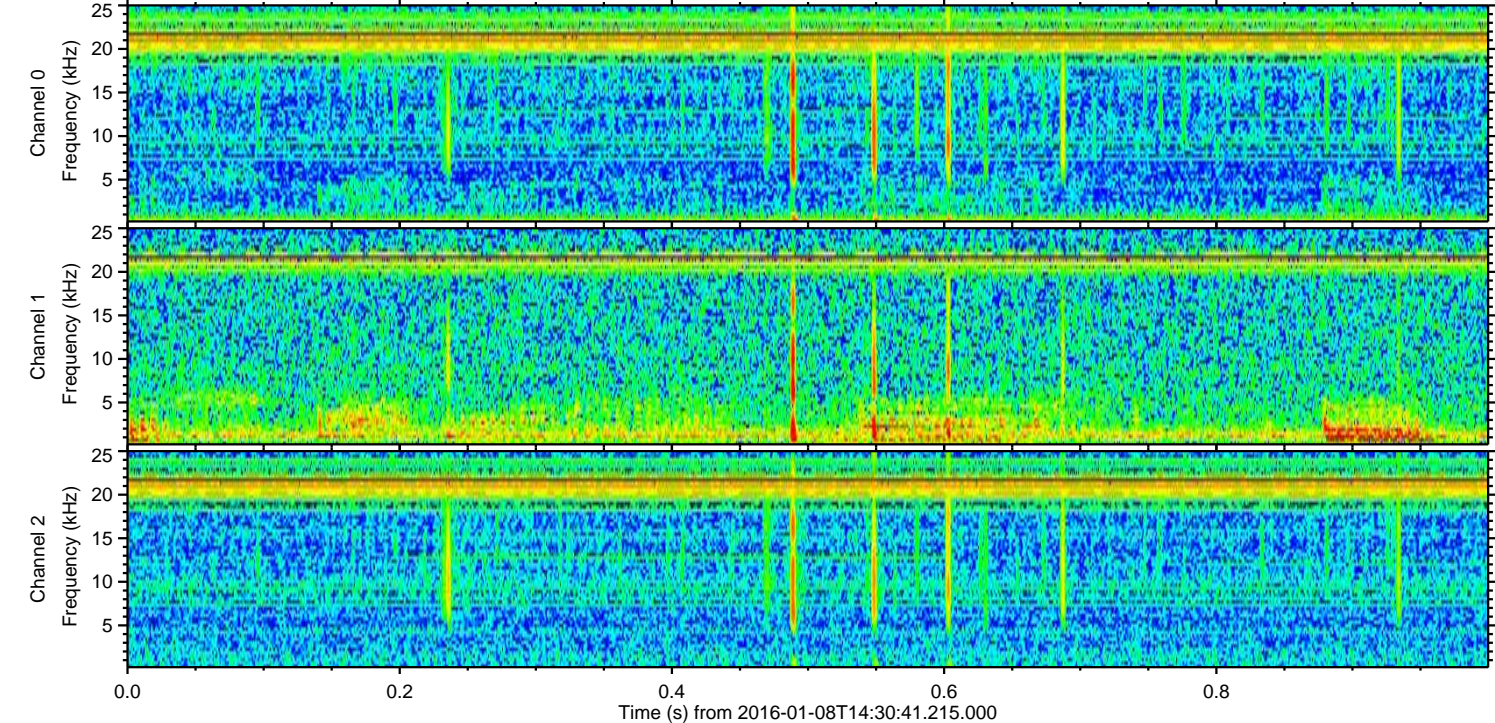
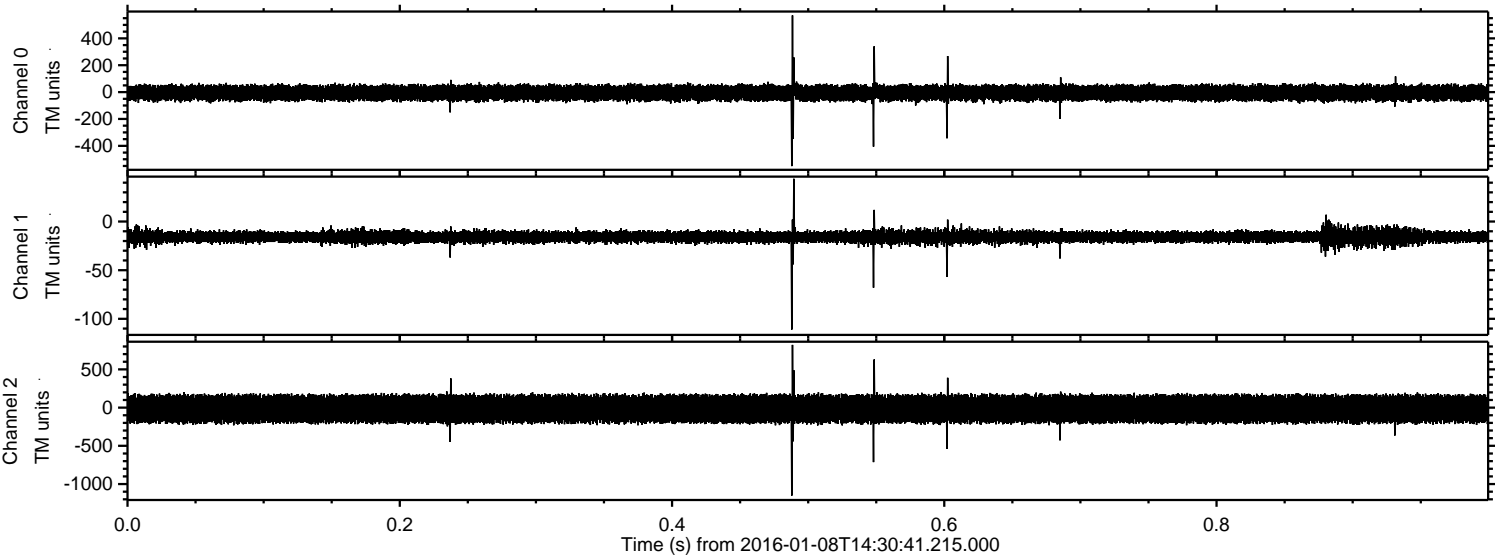
Processed Wed Mar 23 18:31:06 2016 by ELM ver.2012-10-06 from 001__elm20160108_143040__dat00.bin



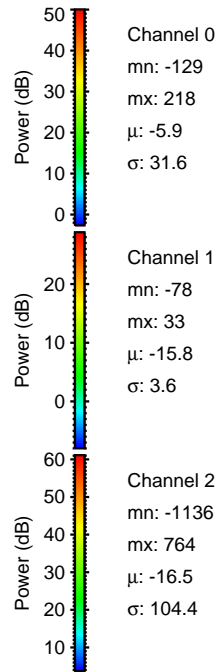
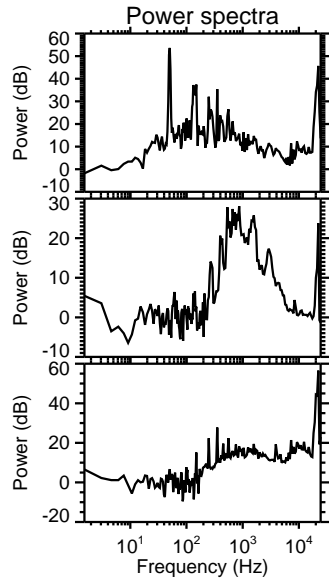
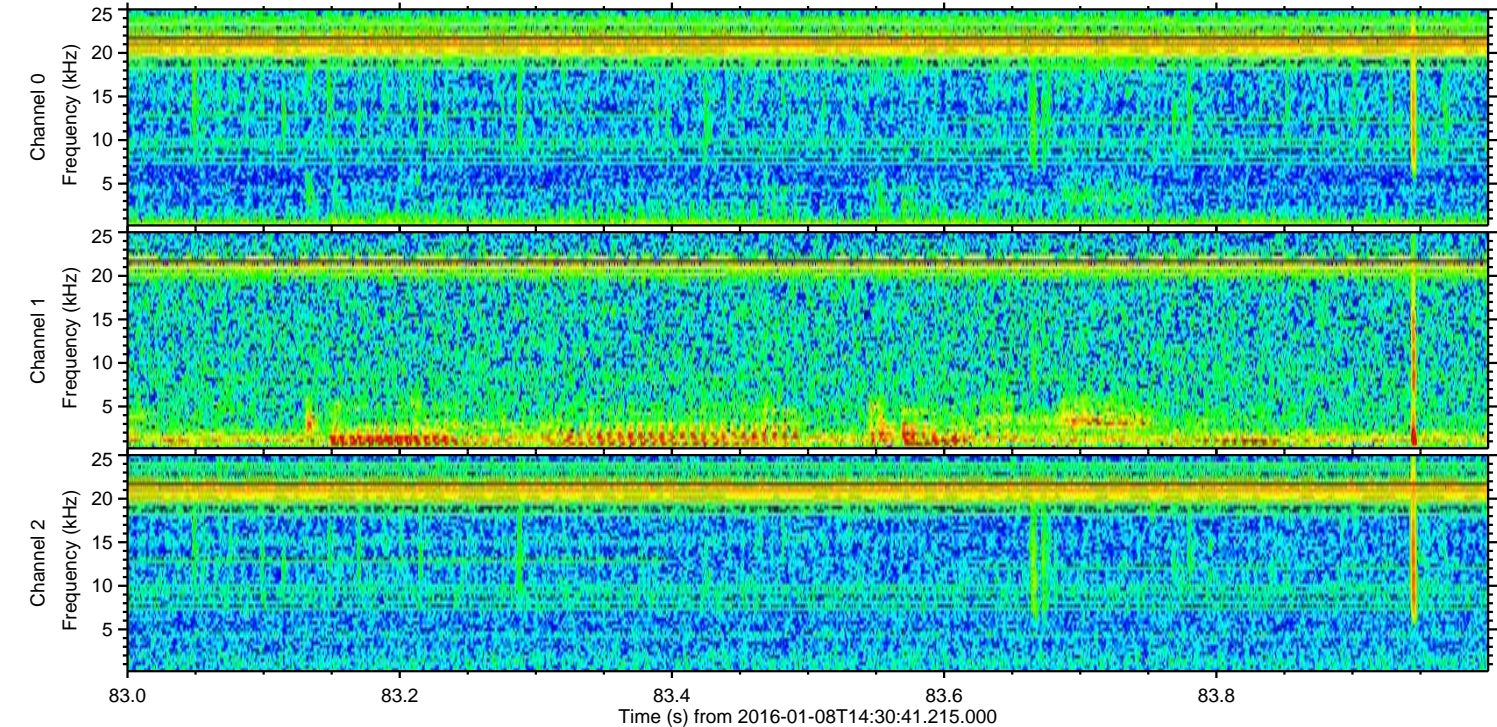
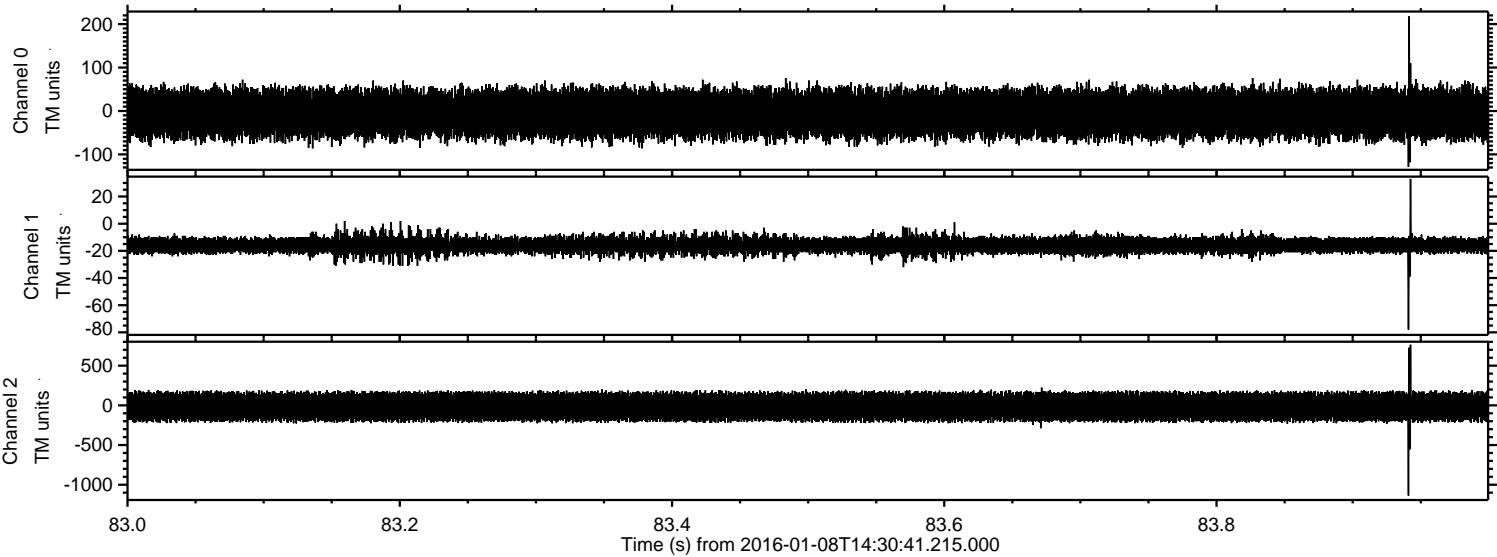
Processed Wed Mar 23 18:31:19 2016 by ELM ver.2012-10-06 from 001__elm20160108_143040__dat00.bin



Processed Wed Mar 23 18:31:20 2016 by ELM ver.2012-10-06 from 001__elm20160108_143040__dat00.bin

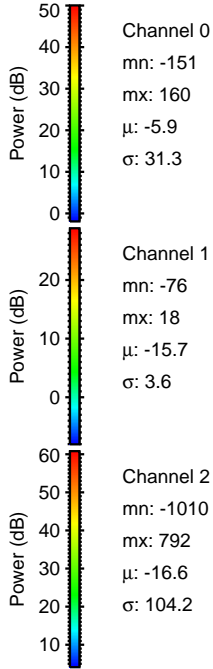
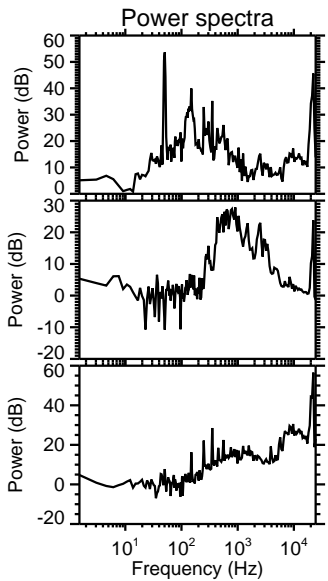
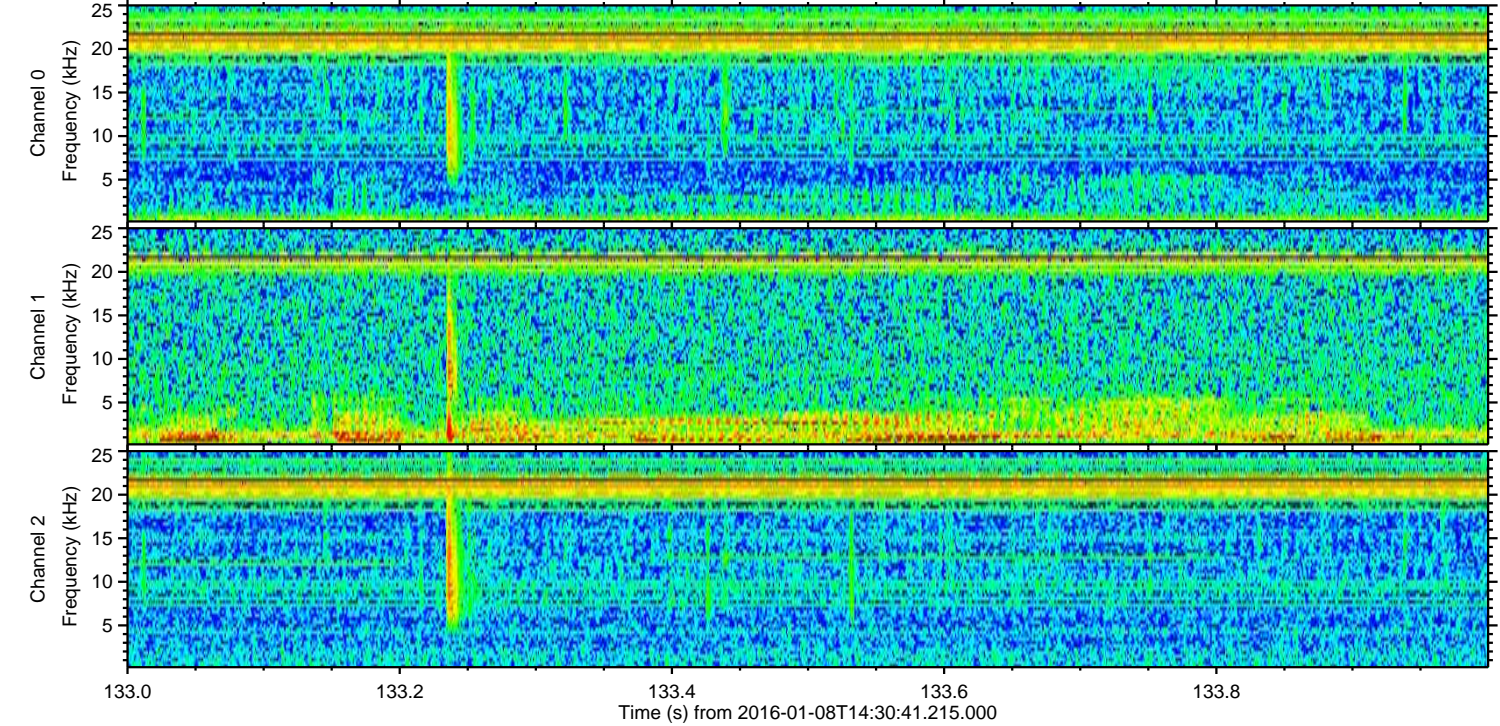
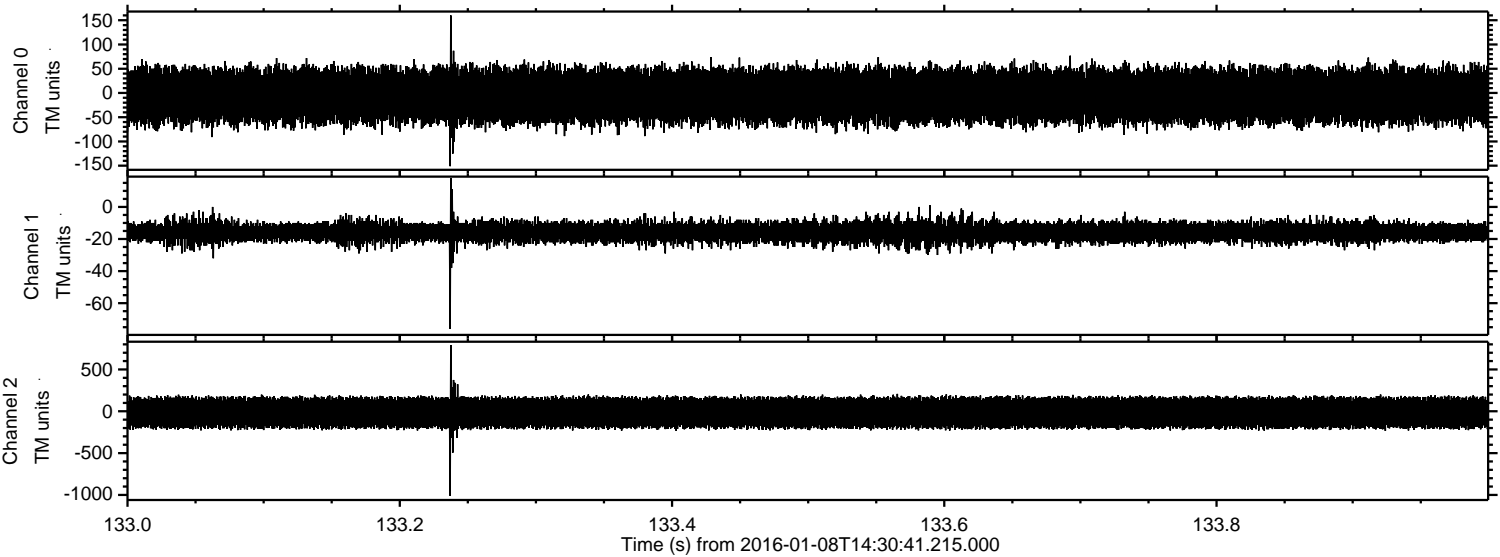


Processed Wed Mar 23 18:31:21 2016 by ELM ver.2012-10-06 from 001__elm20160108_143040__dat00.bin

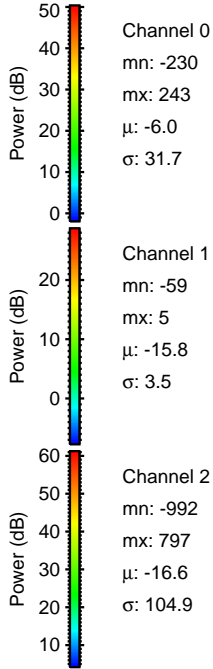
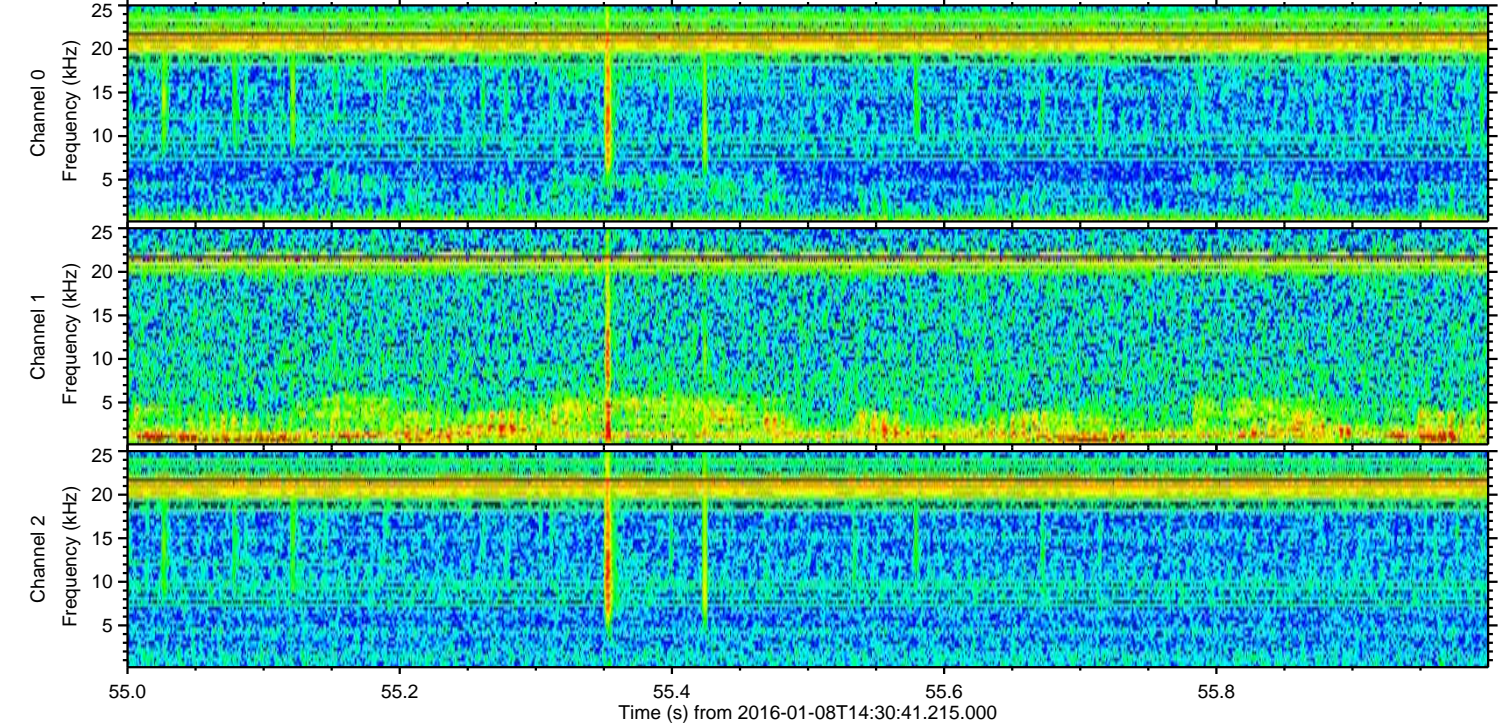
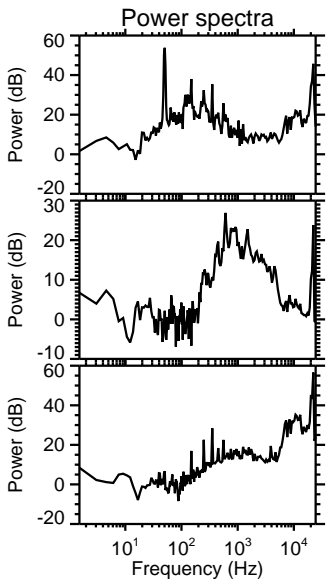
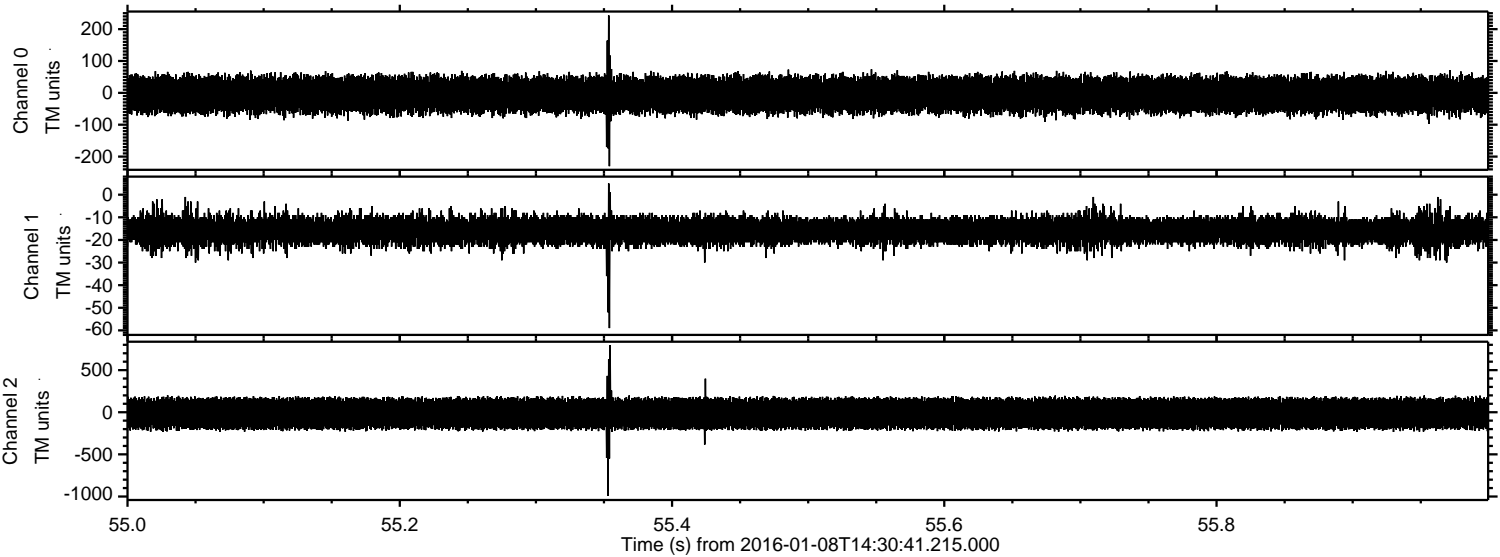


ELMAVAN 3D WAVEFORMS (Measured data sampled at 50 kHz) 51000 packets of 144 samples from 2016-01-08T14:30:41.215.000. Part 134/147

Processed Wed Mar 23 18:31:22 2016 by ELM ver.2012-10-06 from 001__elm20160108_143040__dat00.bin

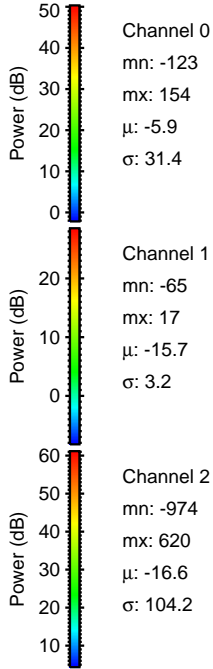
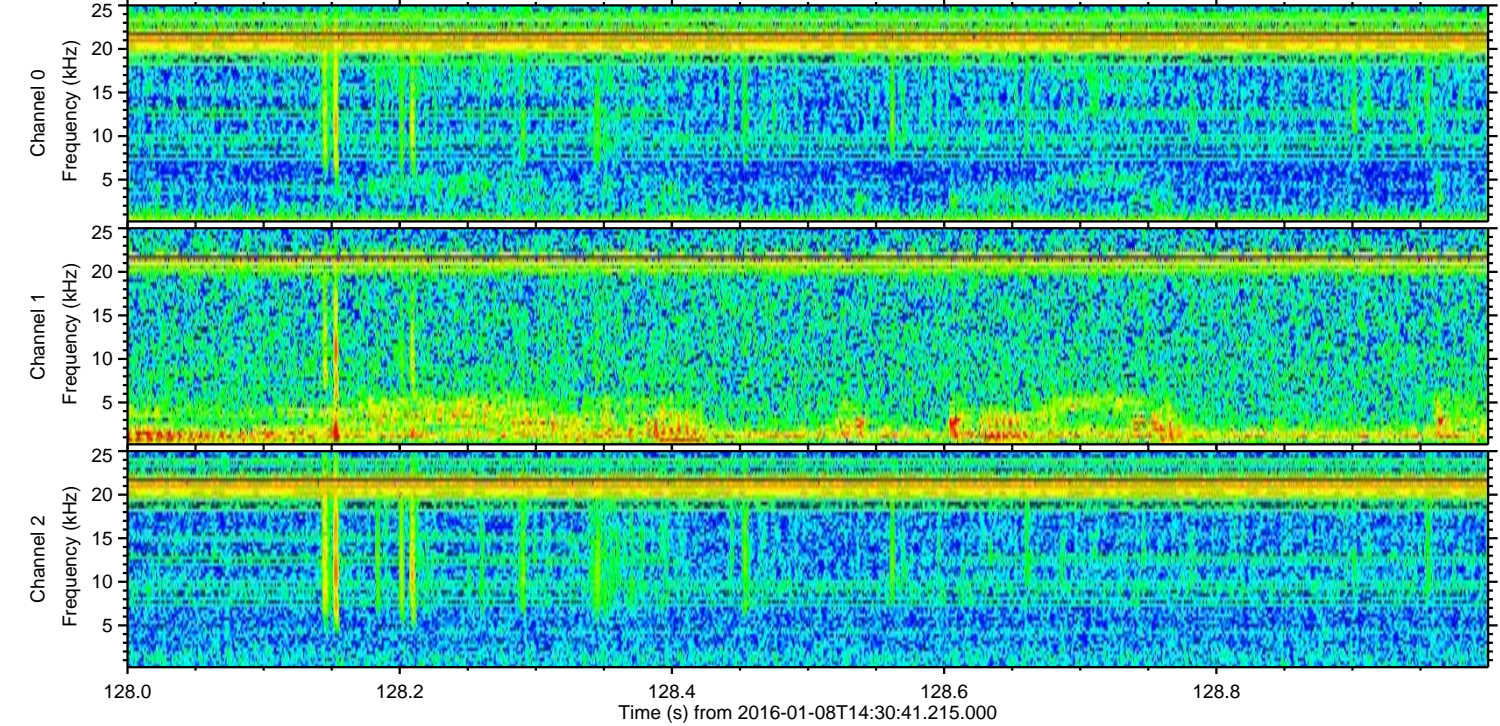
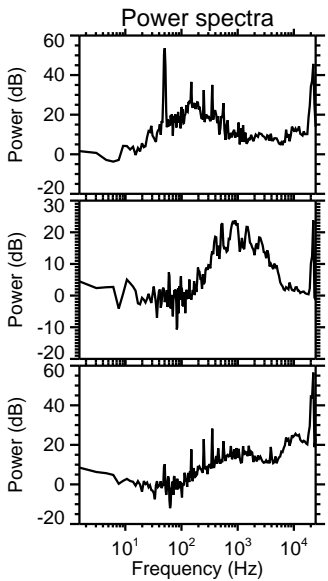
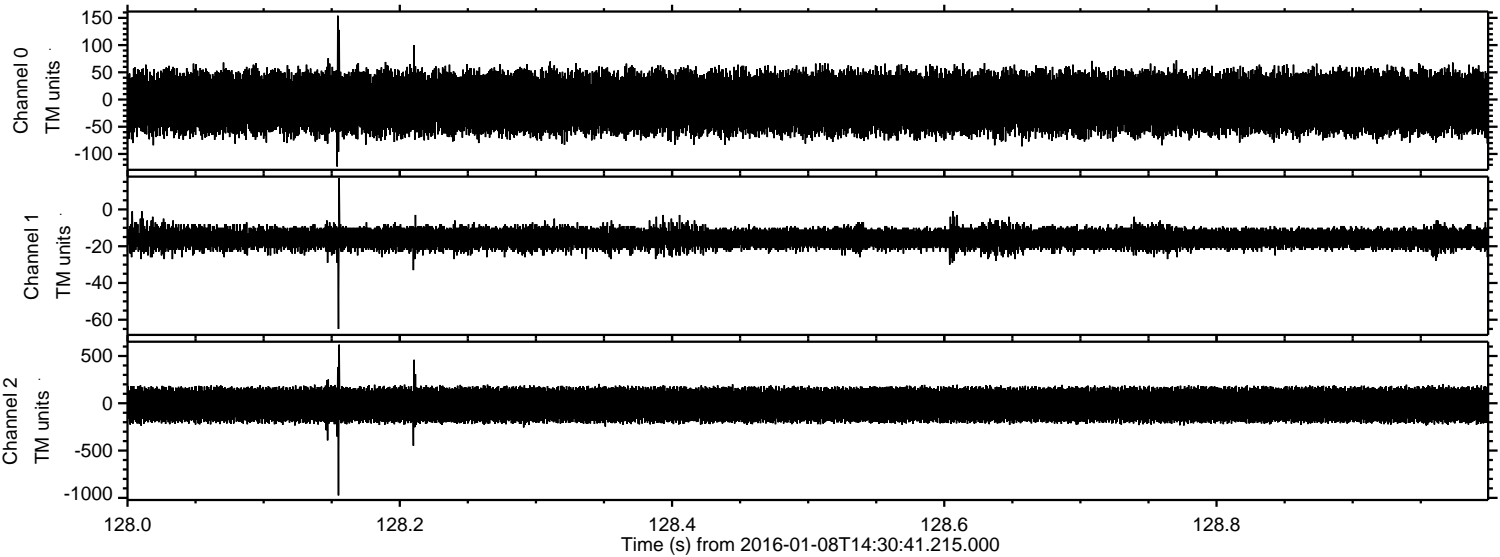


Processed Wed Mar 23 18:31:23 2016 by ELM ver.2012-10-06 from 001__elm20160108_143040__dat00.bin



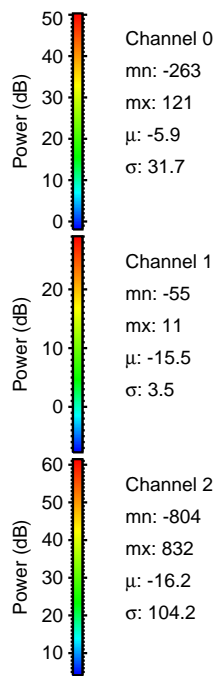
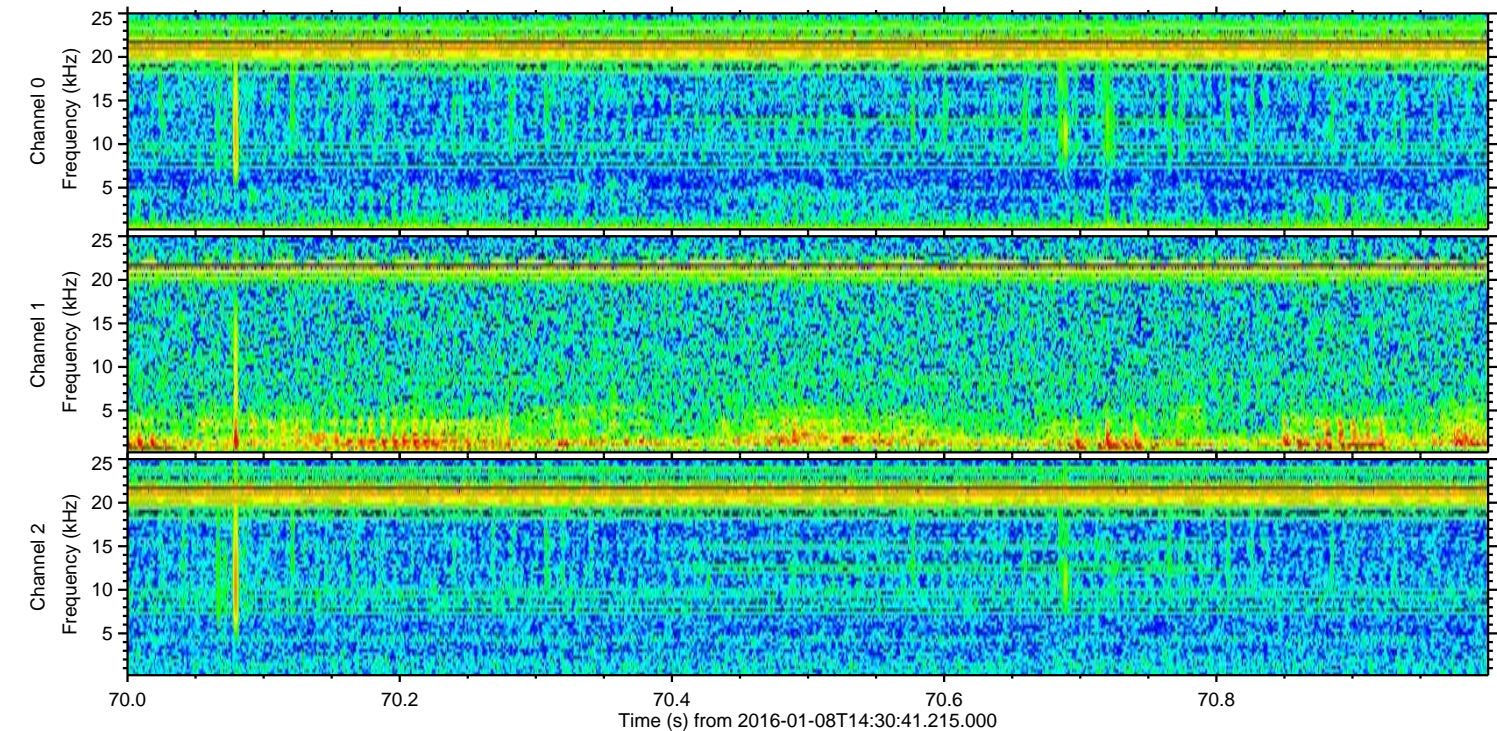
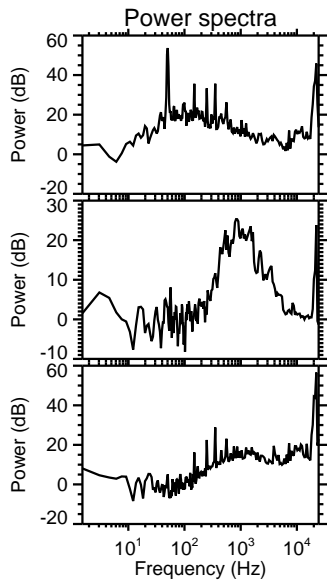
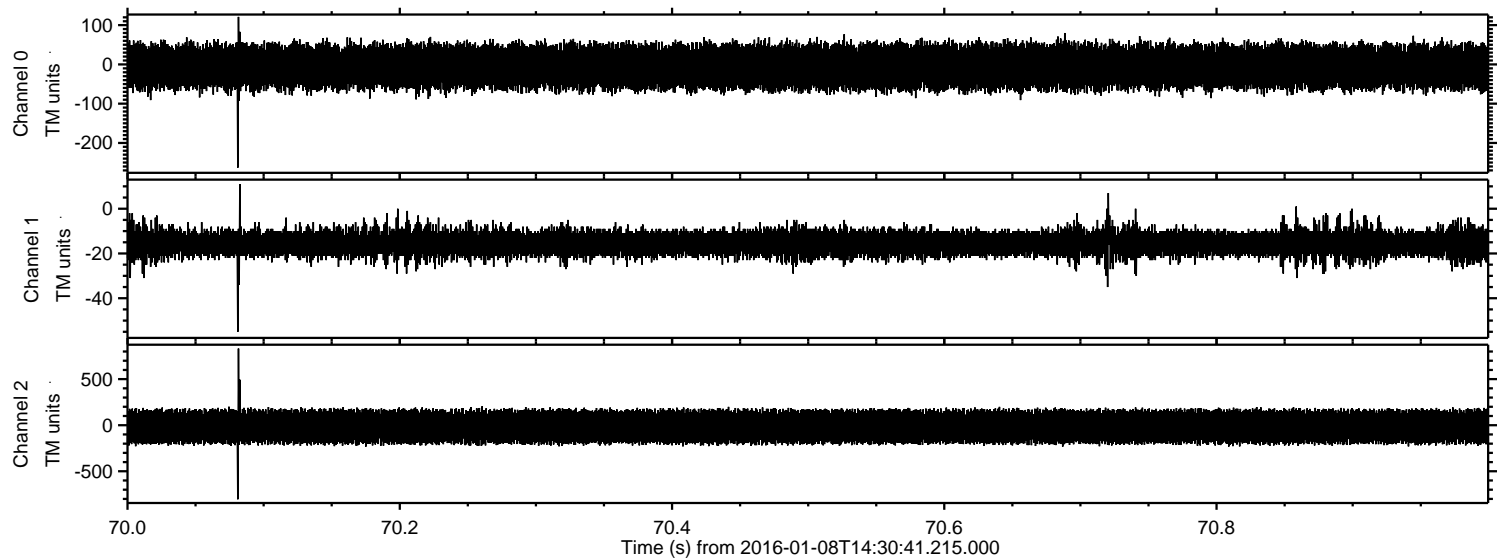
ELMAVAN 3D WAVEFORMS (Measured data sampled at 50 kHz) 51000 packets of 144 samples from 2016-01-08T14:30:41.215.000. Part 129/147

Processed Wed Mar 23 18:31:24 2016 by ELM ver.2012-10-06 from 001__elm20160108_143040__dat00.bin

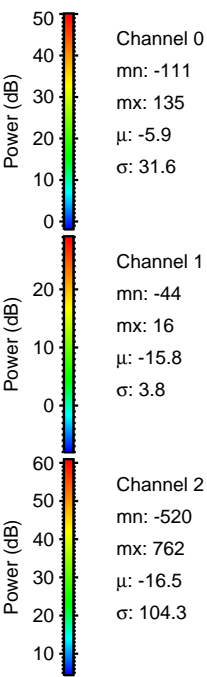
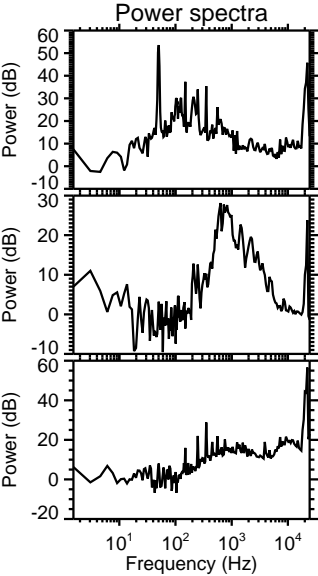
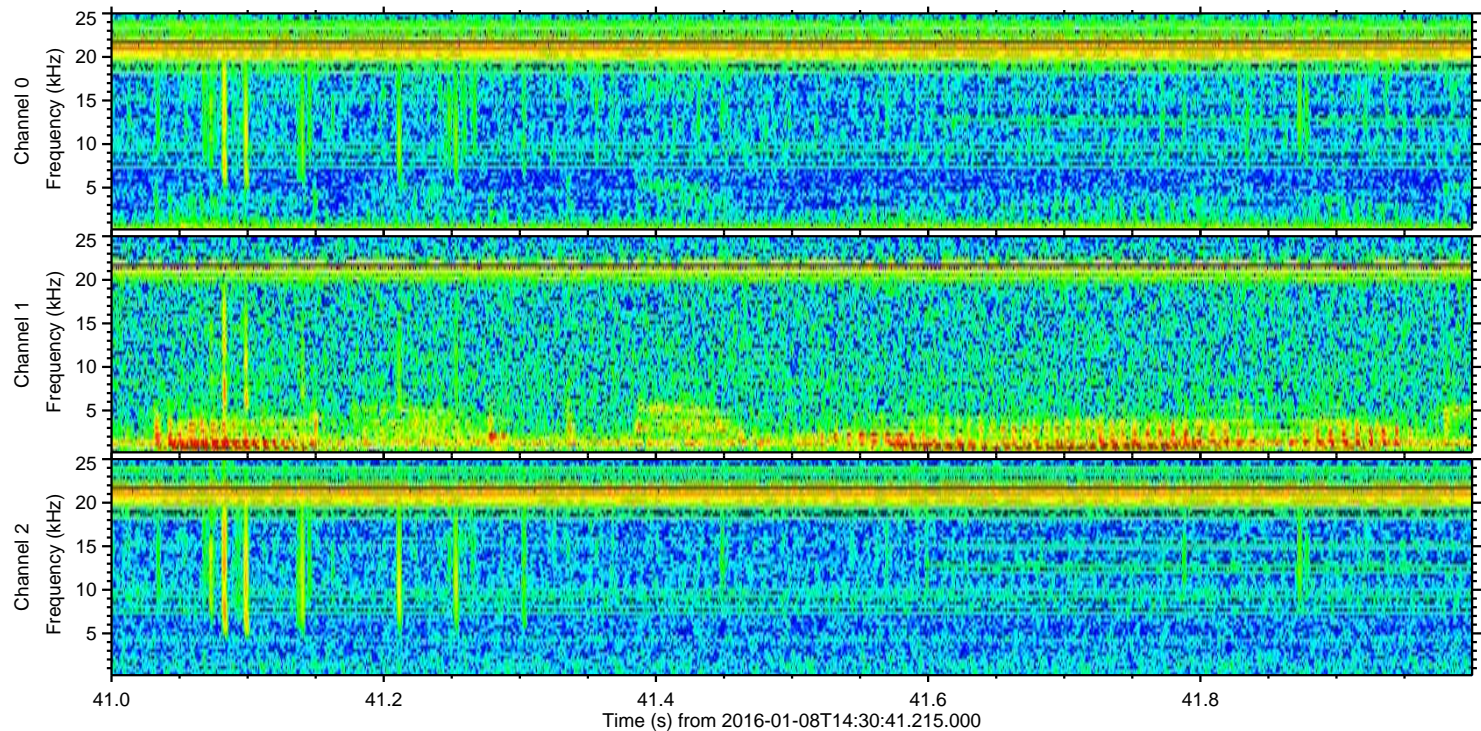
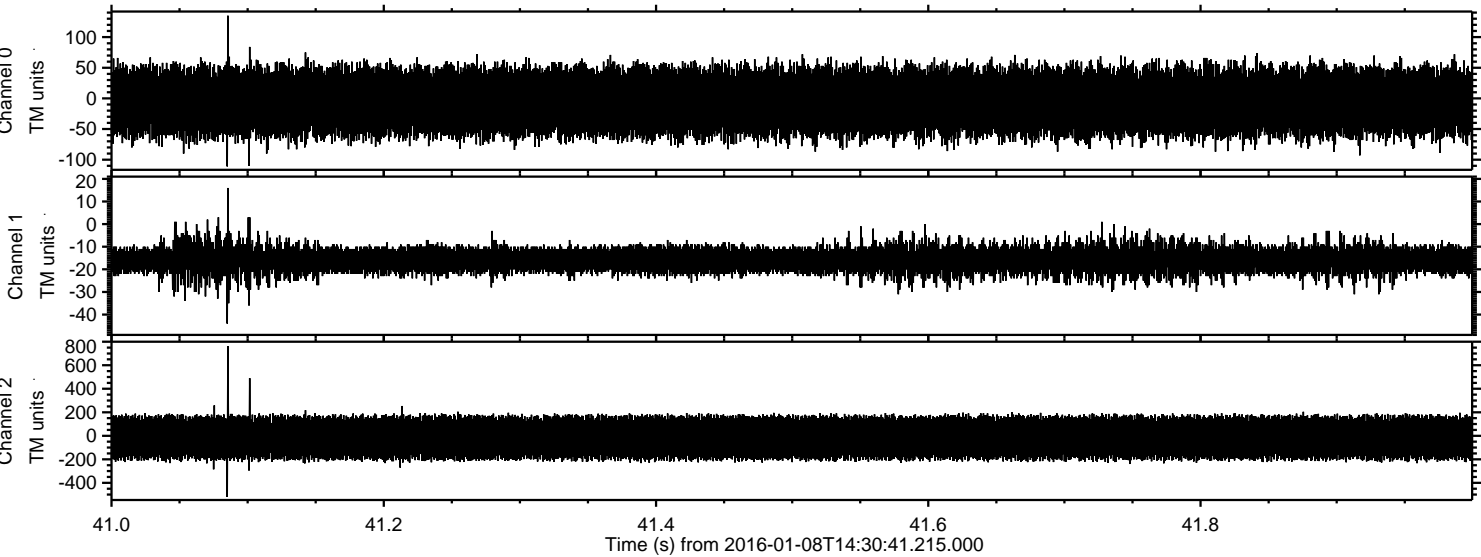


ELMAVAN 3D WAVEFORMS (Measured data sampled at 50 kHz) 51000 packets of 144 samples from 2016-01-08T14:30:41.215.000. Part 71/147

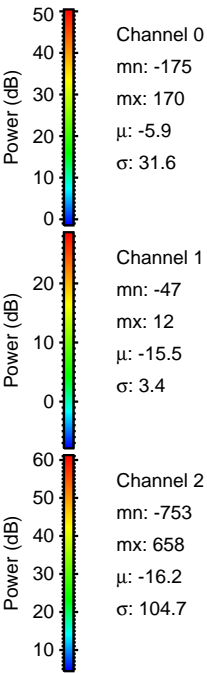
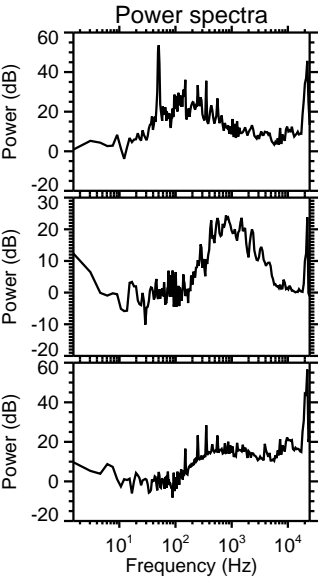
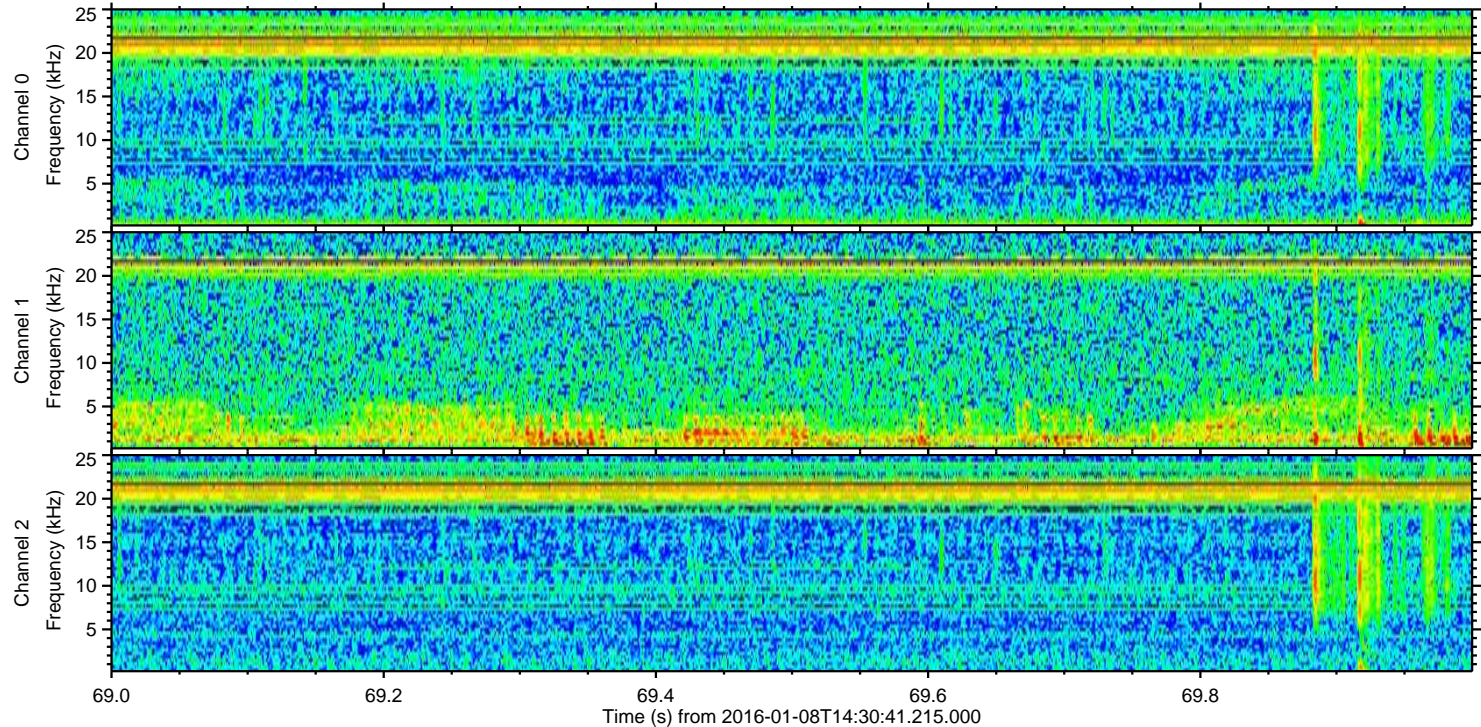
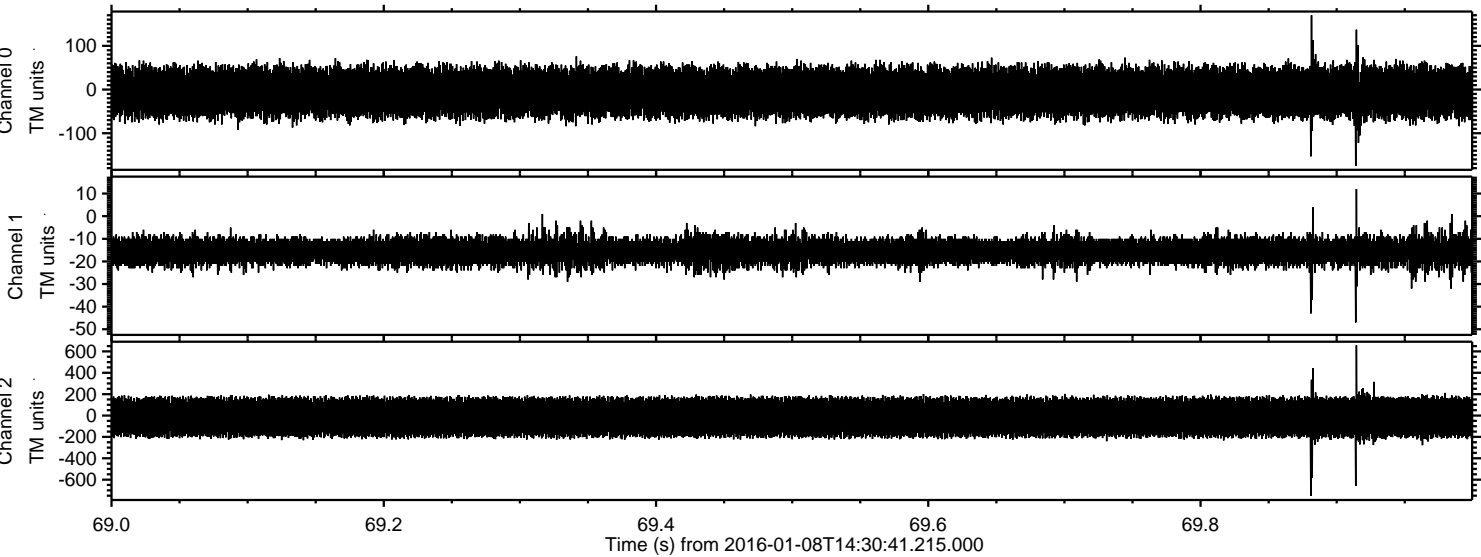
Processed Wed Mar 23 18:31:25 2016 by ELM ver.2012-10-06 from 001__elm20160108_143040__dat00.bin



Processed Wed Mar 23 18:31:26 2016 by ELM ver.2012-10-06 from 001__elm20160108_143040__dat00.bin



Processed Wed Mar 23 18:31:27 2016 by ELM ver.2012-10-06 from 001__elm20160108_143040__dat00.bin



Channel 0
mn: -175
mx: 170
 μ : -5.9
 σ : 31.6

Channel 1
mn: -47
mx: 12
 μ : -15.5
 σ : 3.4

Channel 2
mn: -753
mx: 658
 μ : -16.2
 σ : 104.7

Processed Wed Mar 23 18:31:28 2016 by ELM ver.2012-10-06 from 001__elm20160108_143040__dat00.bin

