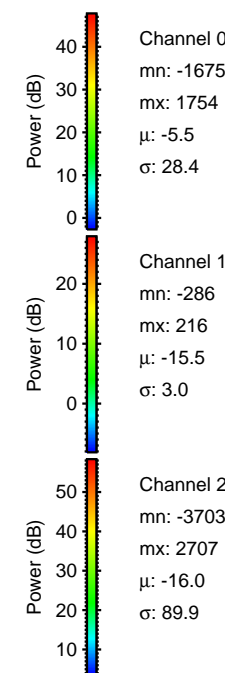
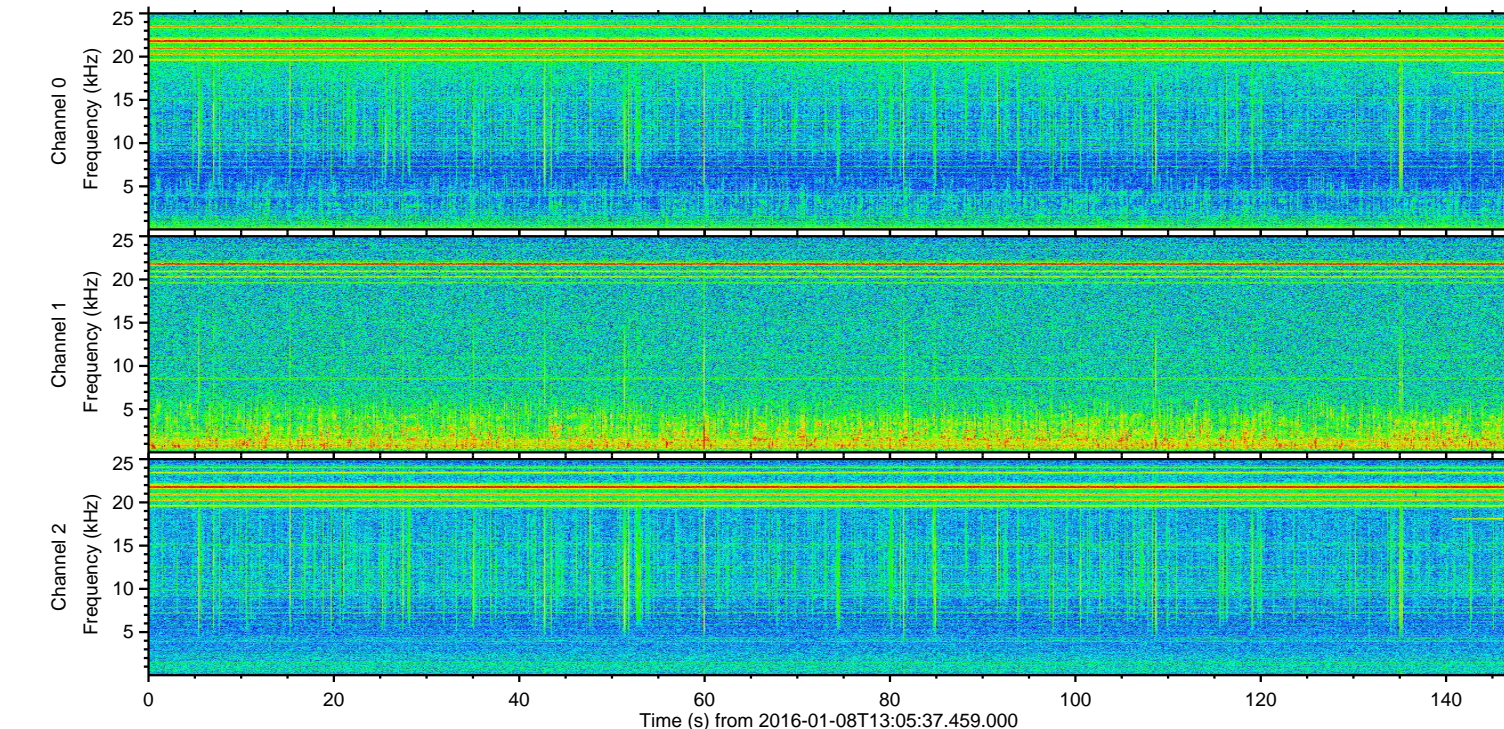
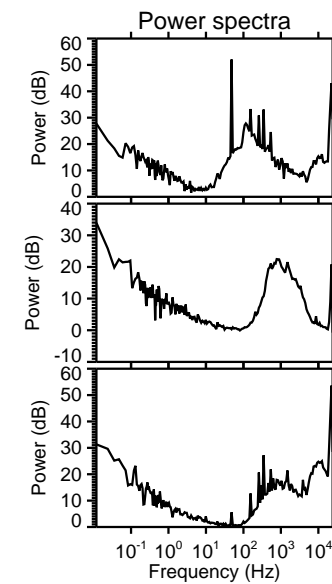
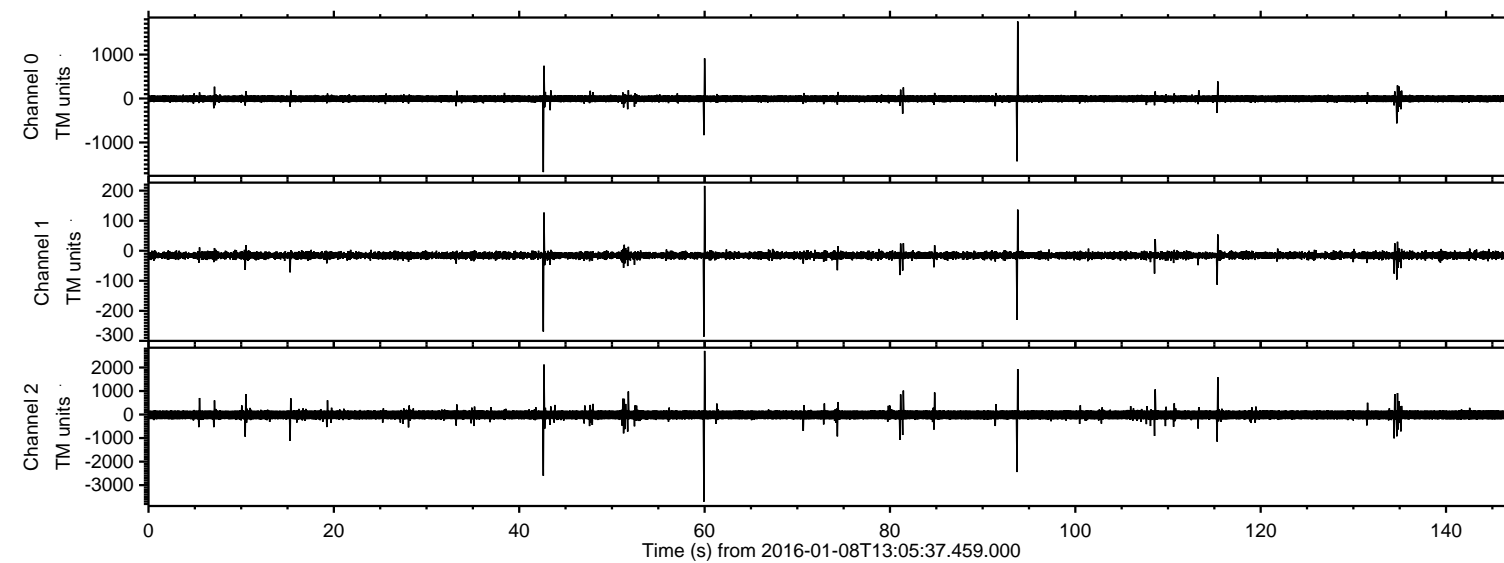
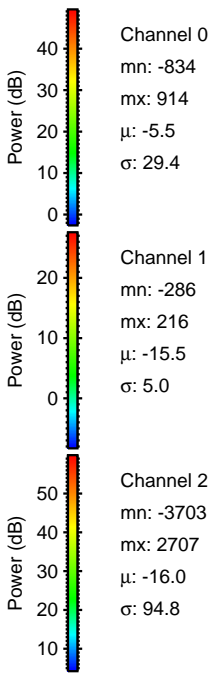
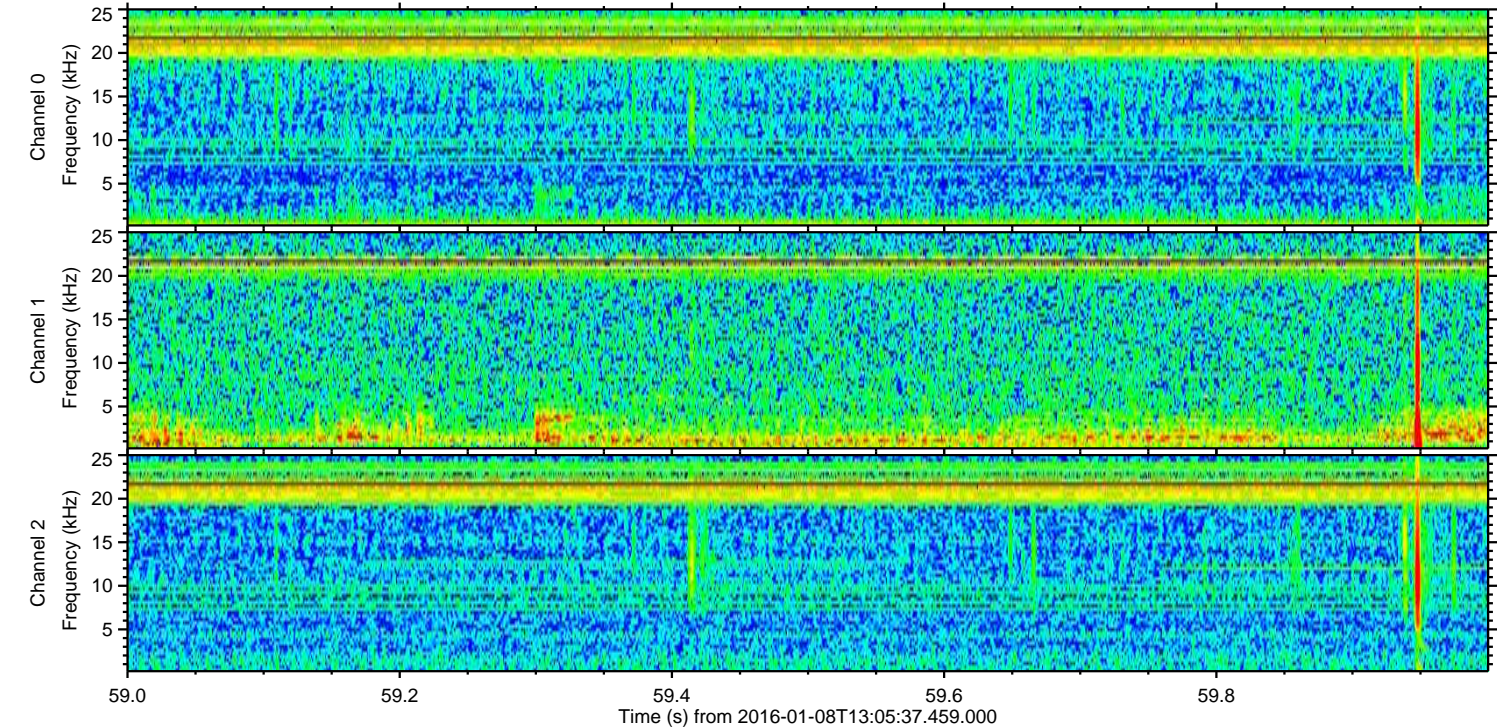
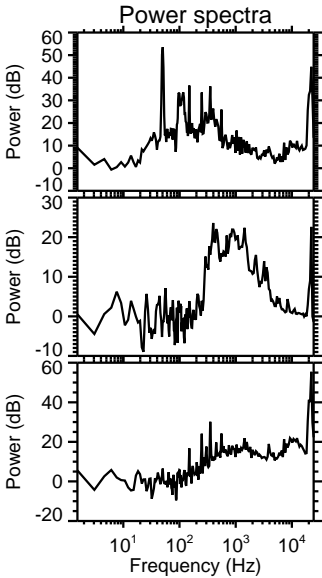
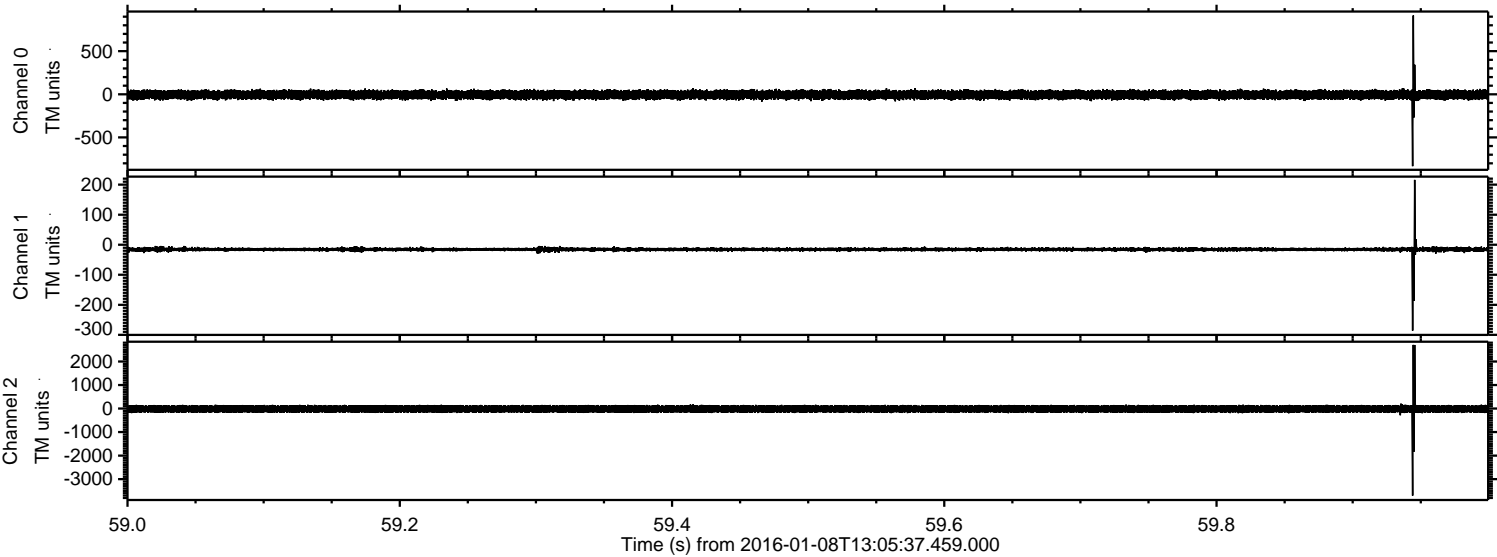


ELMAVAN 3D WAVEFORMS (Measured data sampled at 50 kHz) 51000 packets of 144 samples from 2016-01-08T13:05:37.459.000.

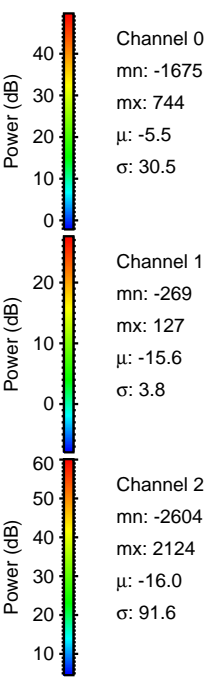
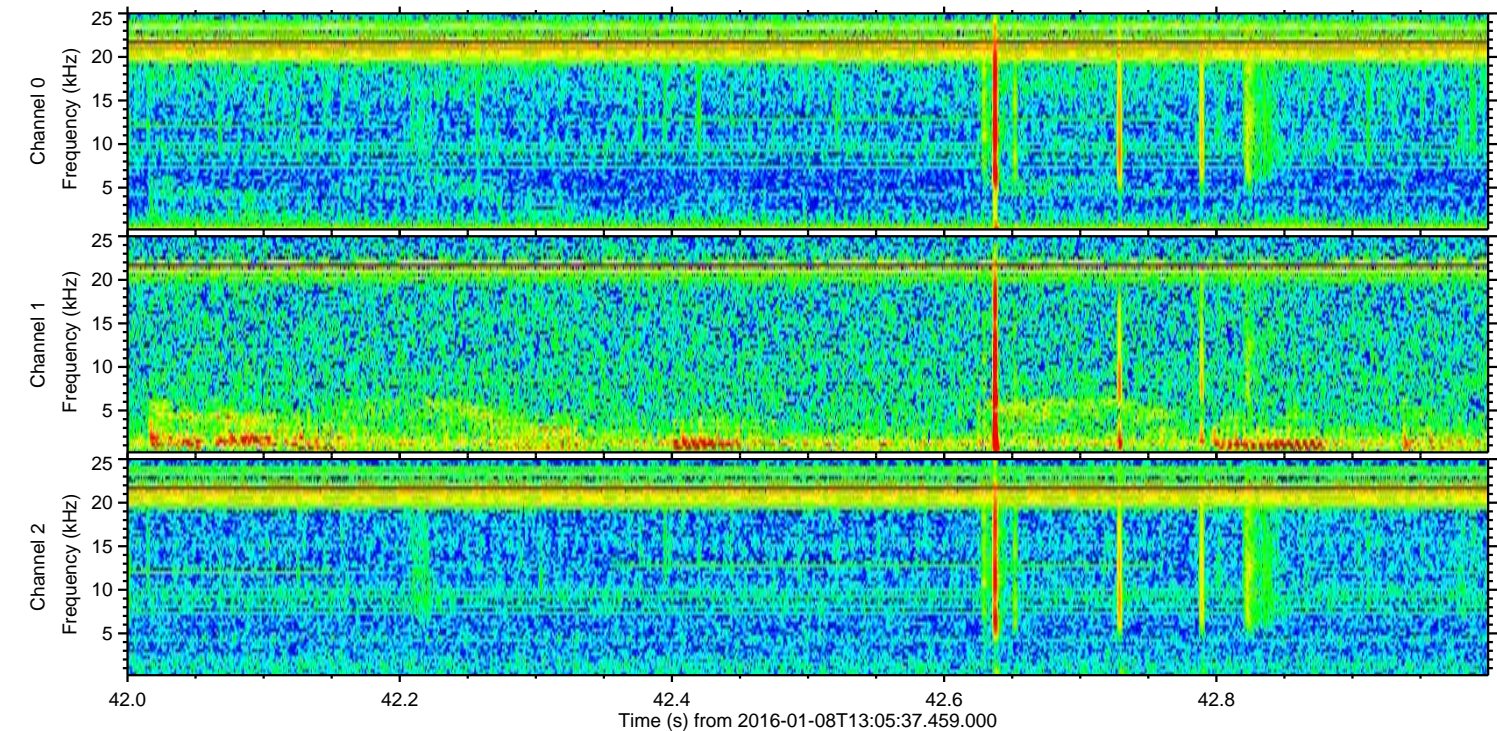
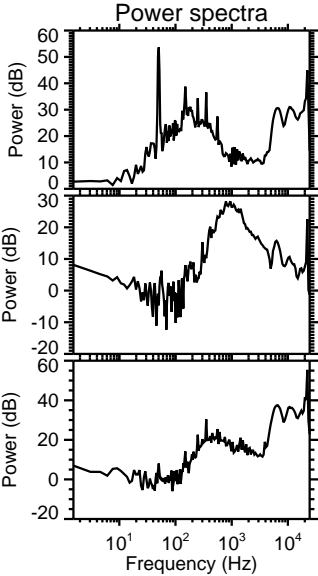
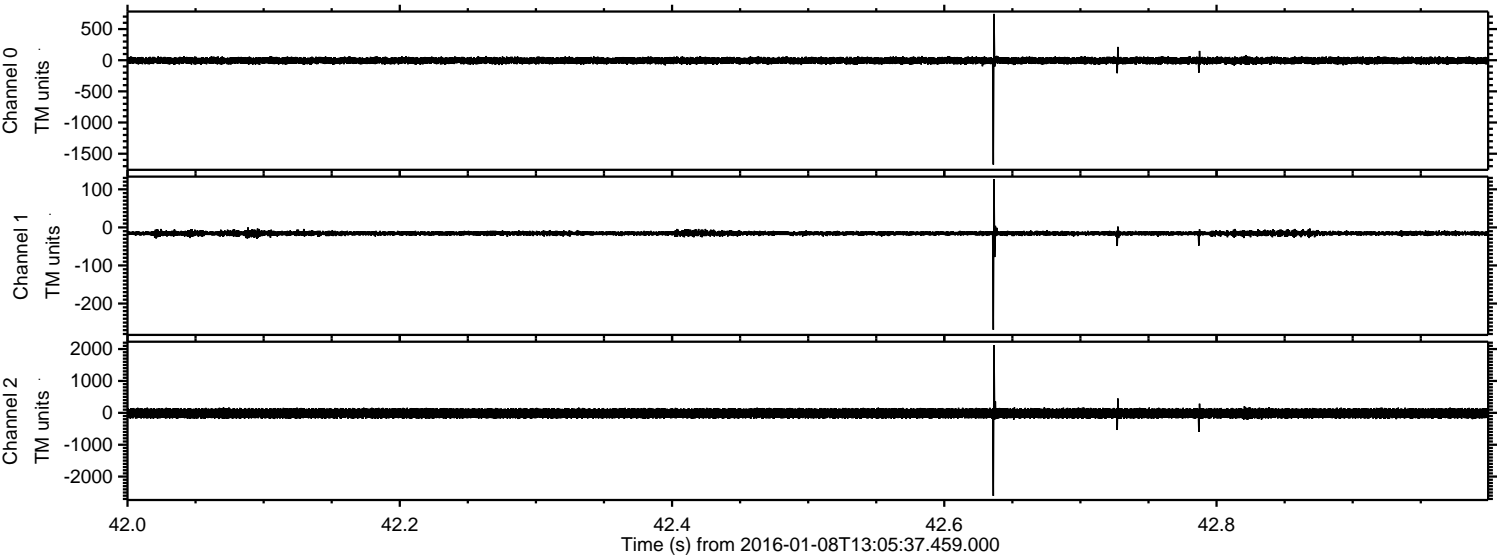
Processed Wed Mar 23 17:56:06 2016 by ELM ver.2012-10-06 from 001__elm20160108_130536__dat00.bin



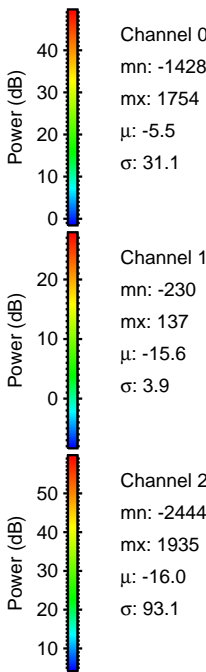
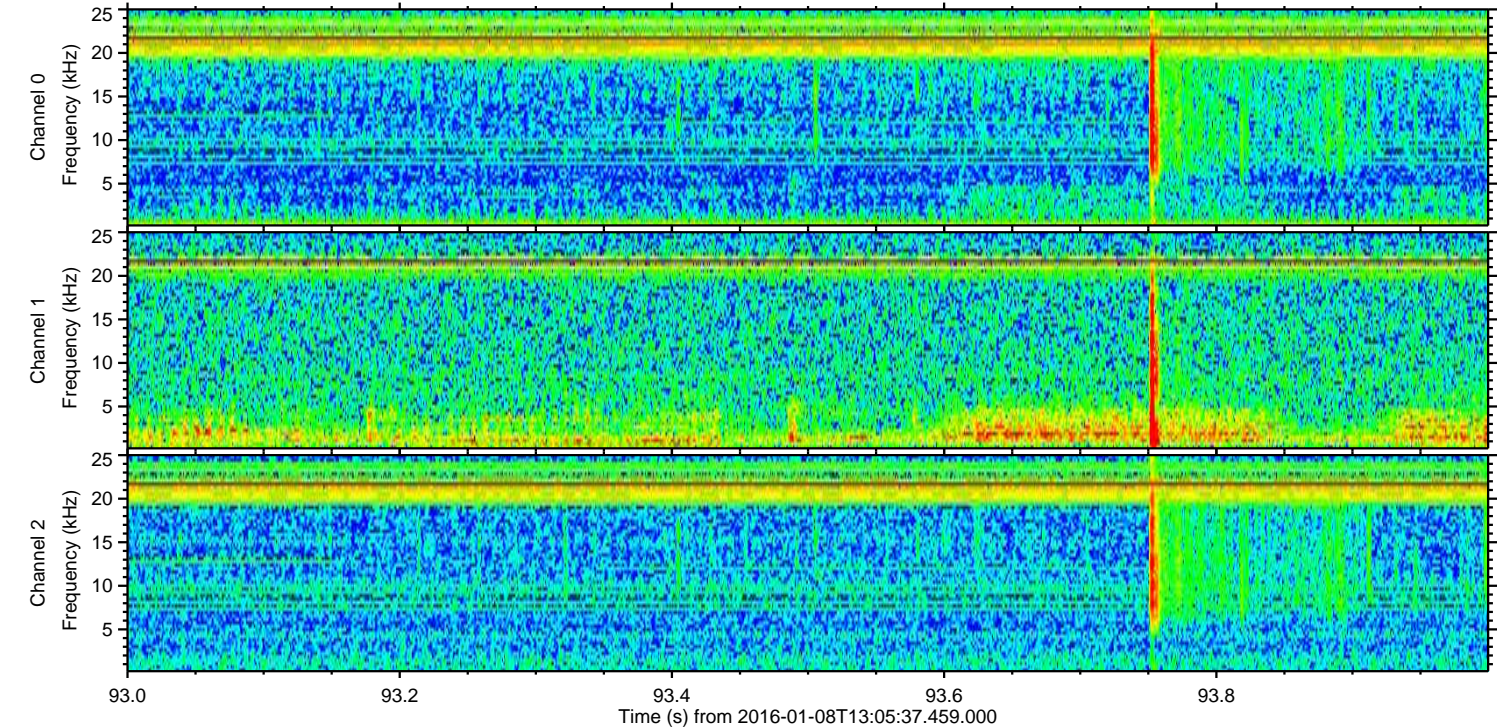
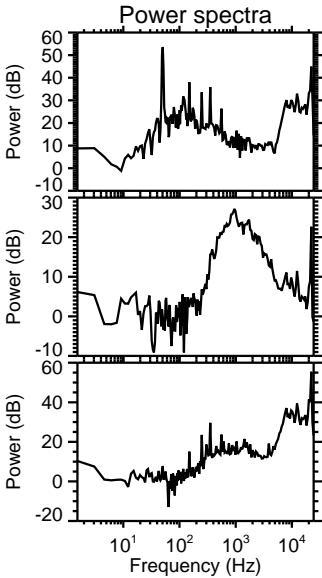
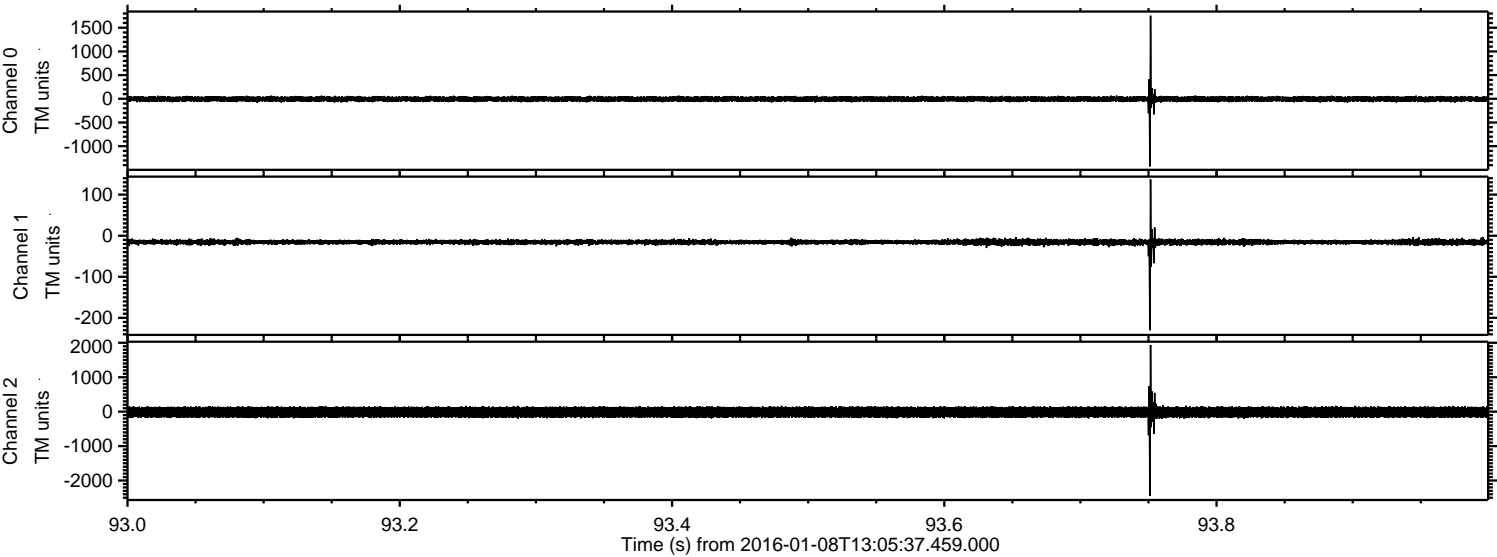
Processed Wed Mar 23 17:56:20 2016 by ELM ver.2012-10-06 from 001__elm20160108_130536__dat00.bin



Processed Wed Mar 23 17:56:21 2016 by ELM ver.2012-10-06 from 001__elm20160108_130536__dat00.bin

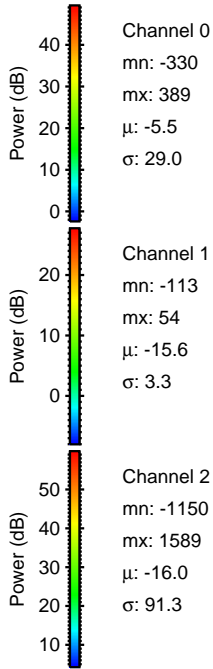
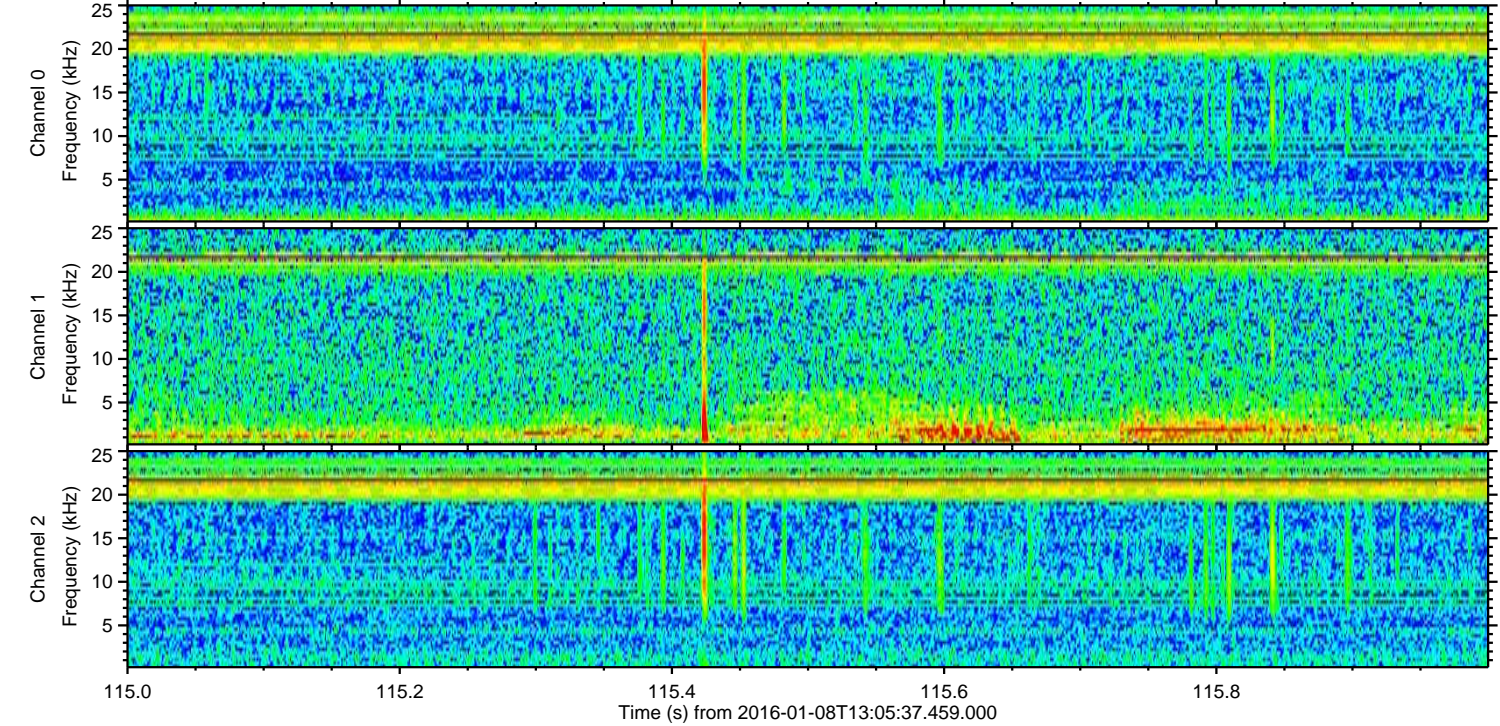
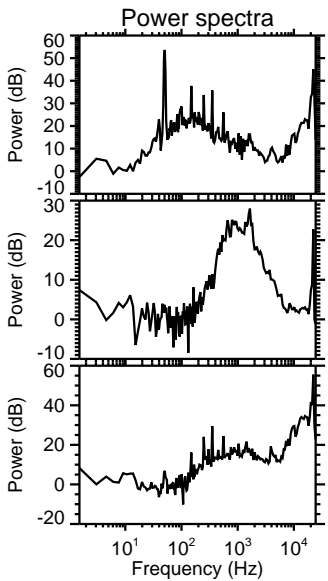
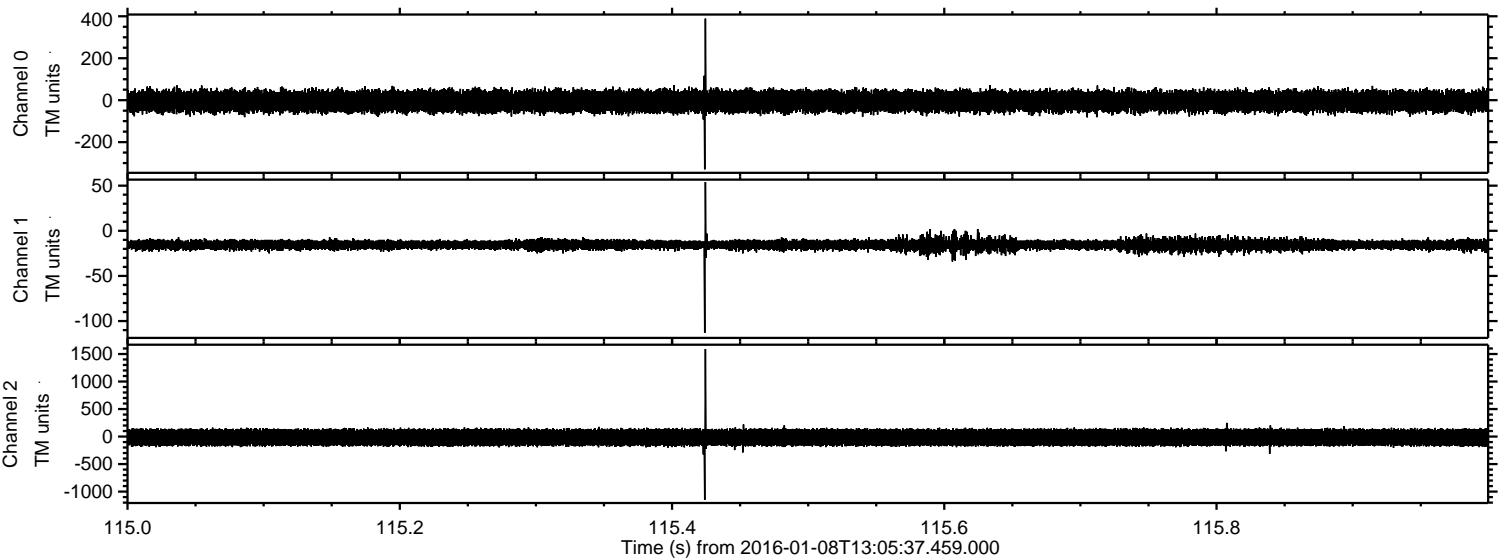


Processed Wed Mar 23 17:56:22 2016 by ELM ver.2012-10-06 from 001__elm20160108_130536__dat00.bin

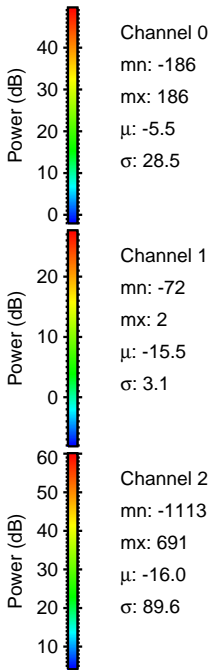
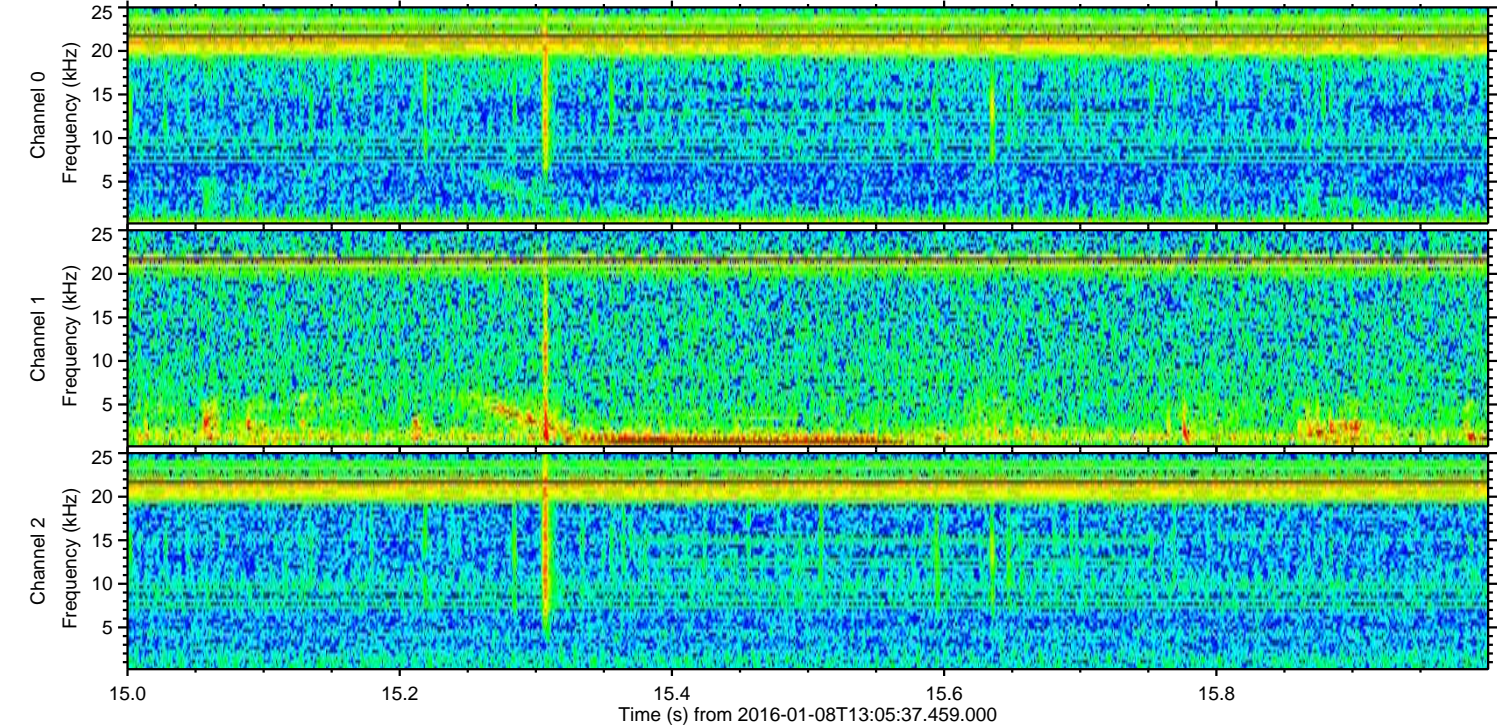
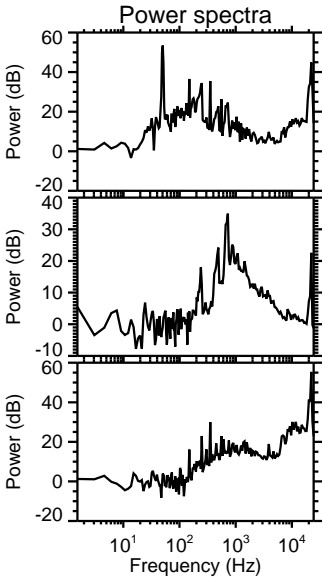
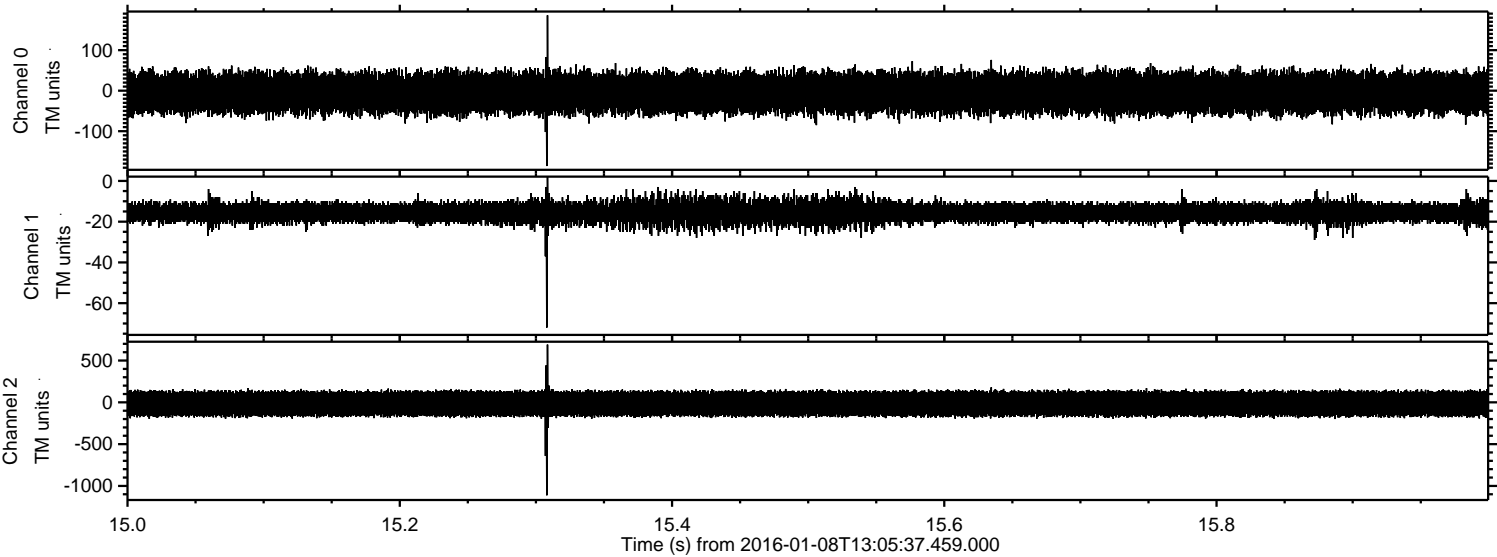


ELMAVAN 3D WAVEFORMS (Measured data sampled at 50 kHz) 51000 packets of 144 samples from 2016-01-08T13:05:37.459.000. Part 116/147

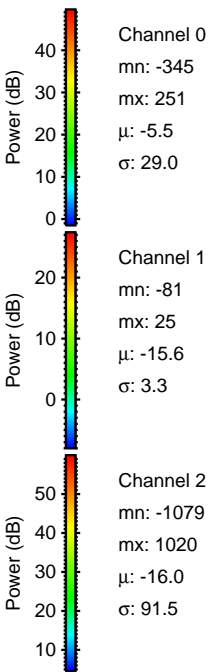
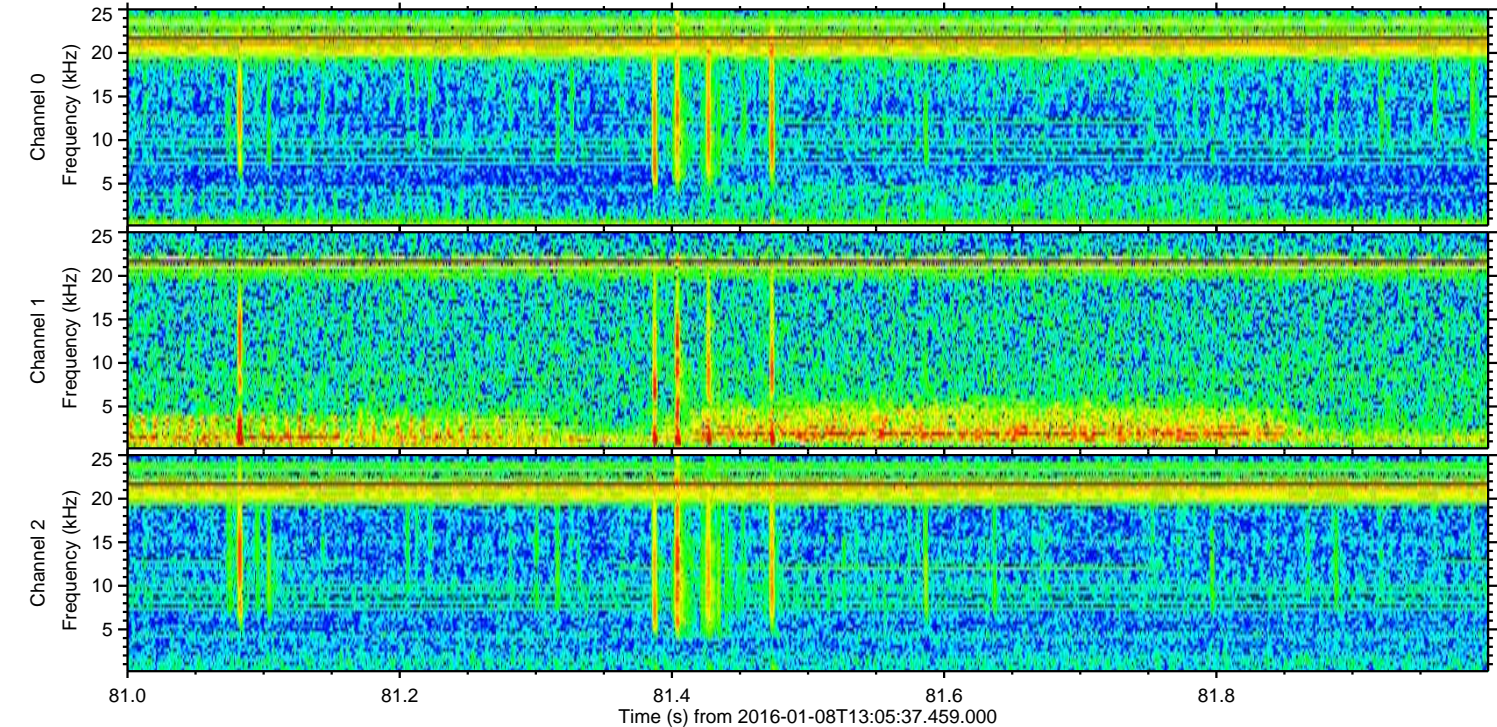
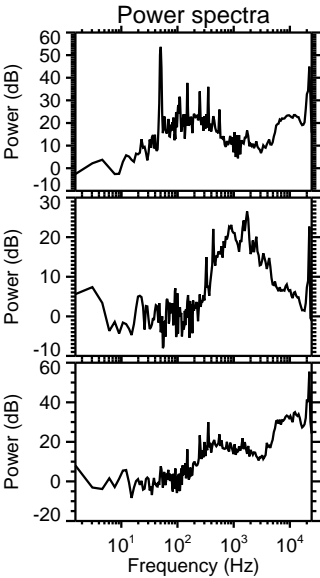
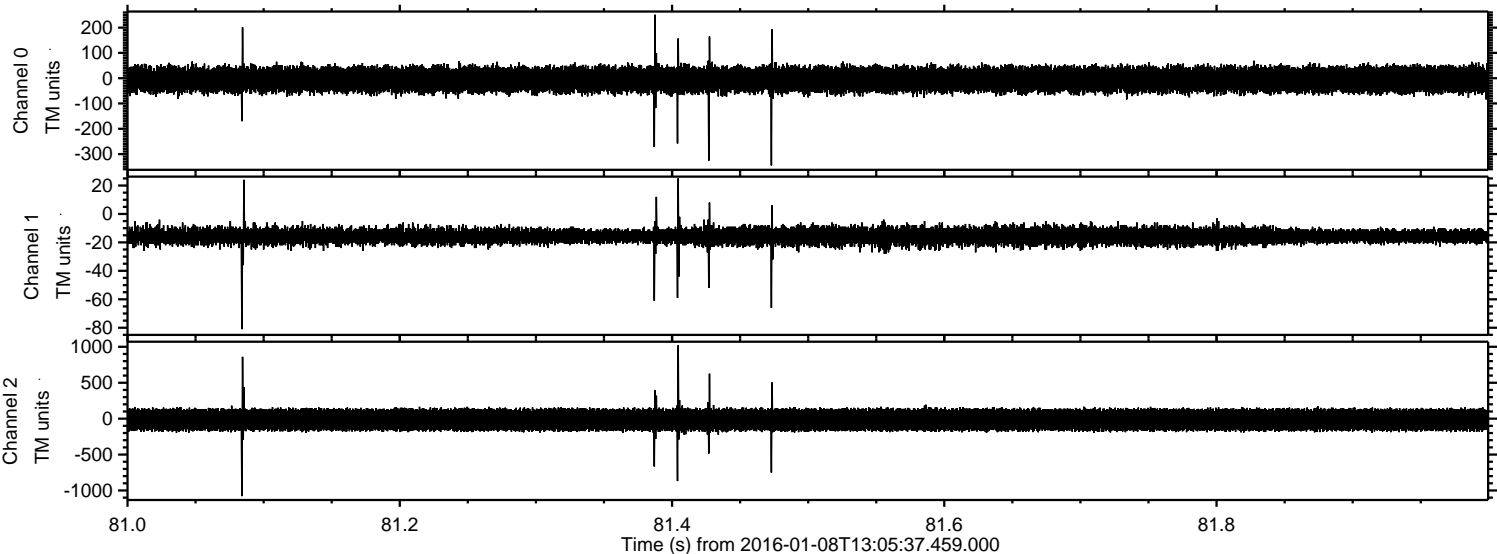
Processed Wed Mar 23 17:56:23 2016 by ELM ver.2012-10-06 from 001__elm20160108_130536__dat00.bin



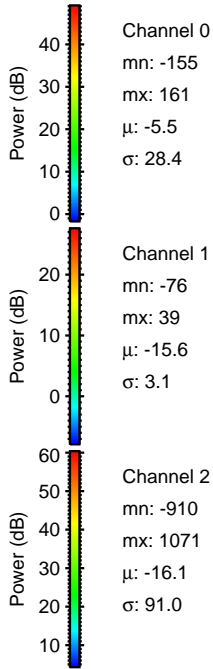
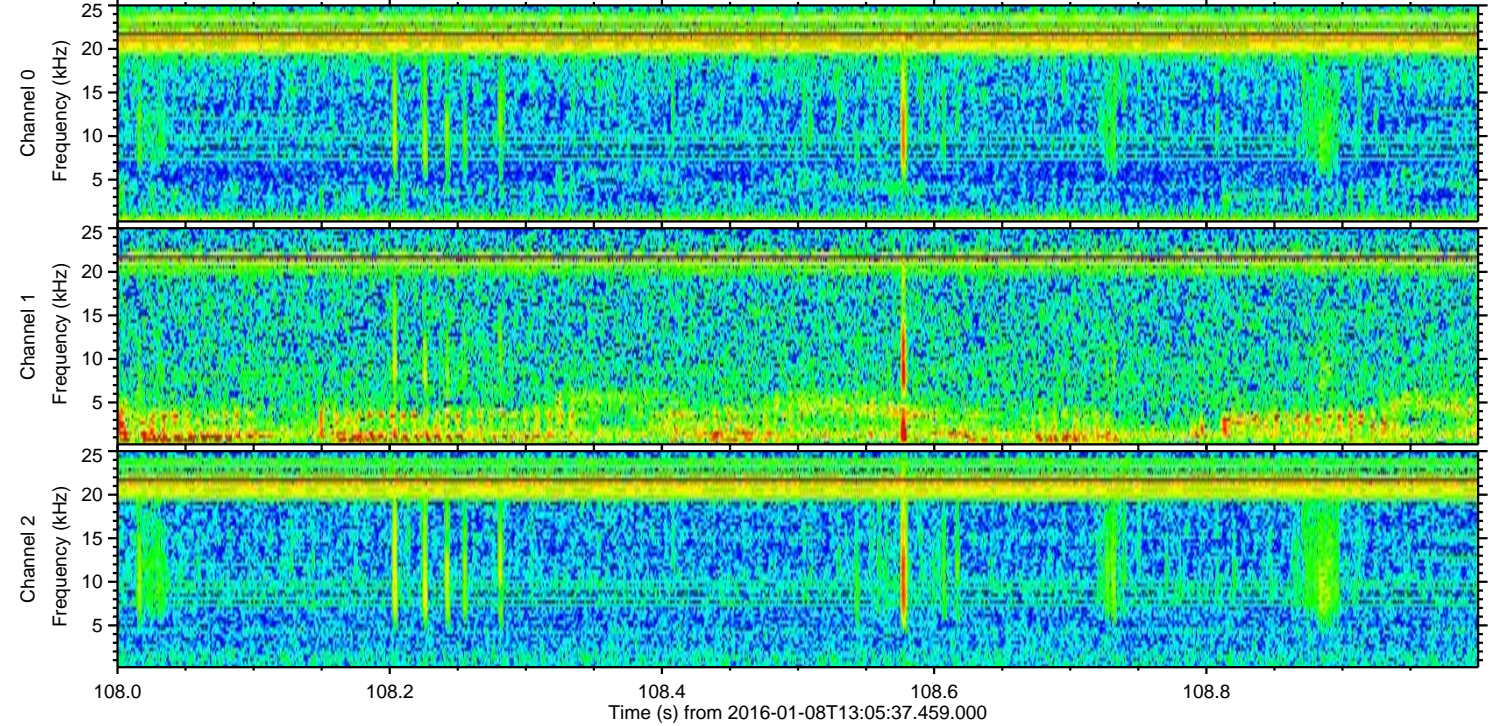
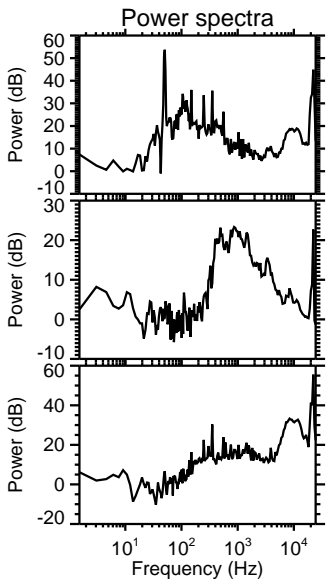
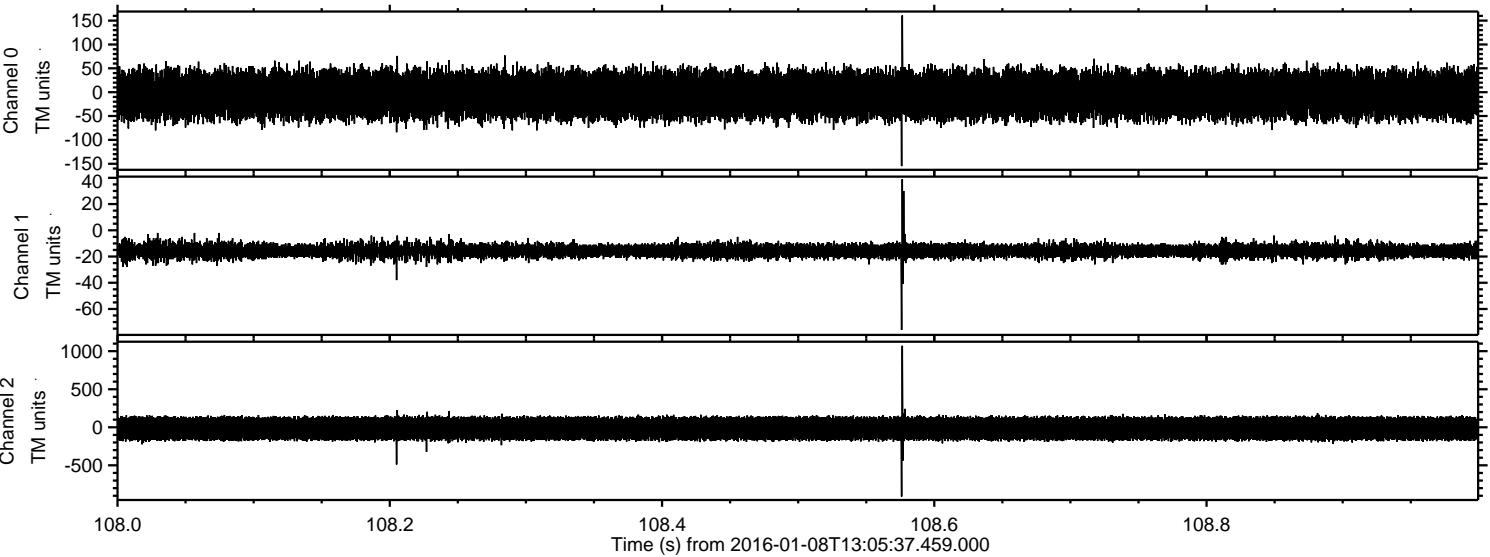
Processed Wed Mar 23 17:56:24 2016 by ELM ver.2012-10-06 from 001__elm20160108_130536__dat00.bin



Processed Wed Mar 23 17:56:25 2016 by ELM ver.2012-10-06 from 001__elm20160108_130536__dat00.bin

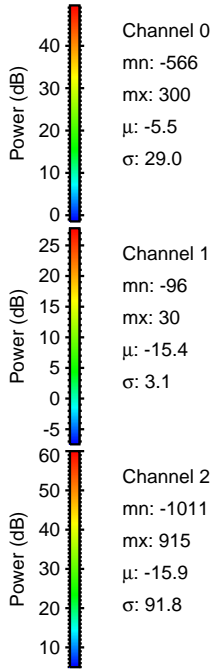
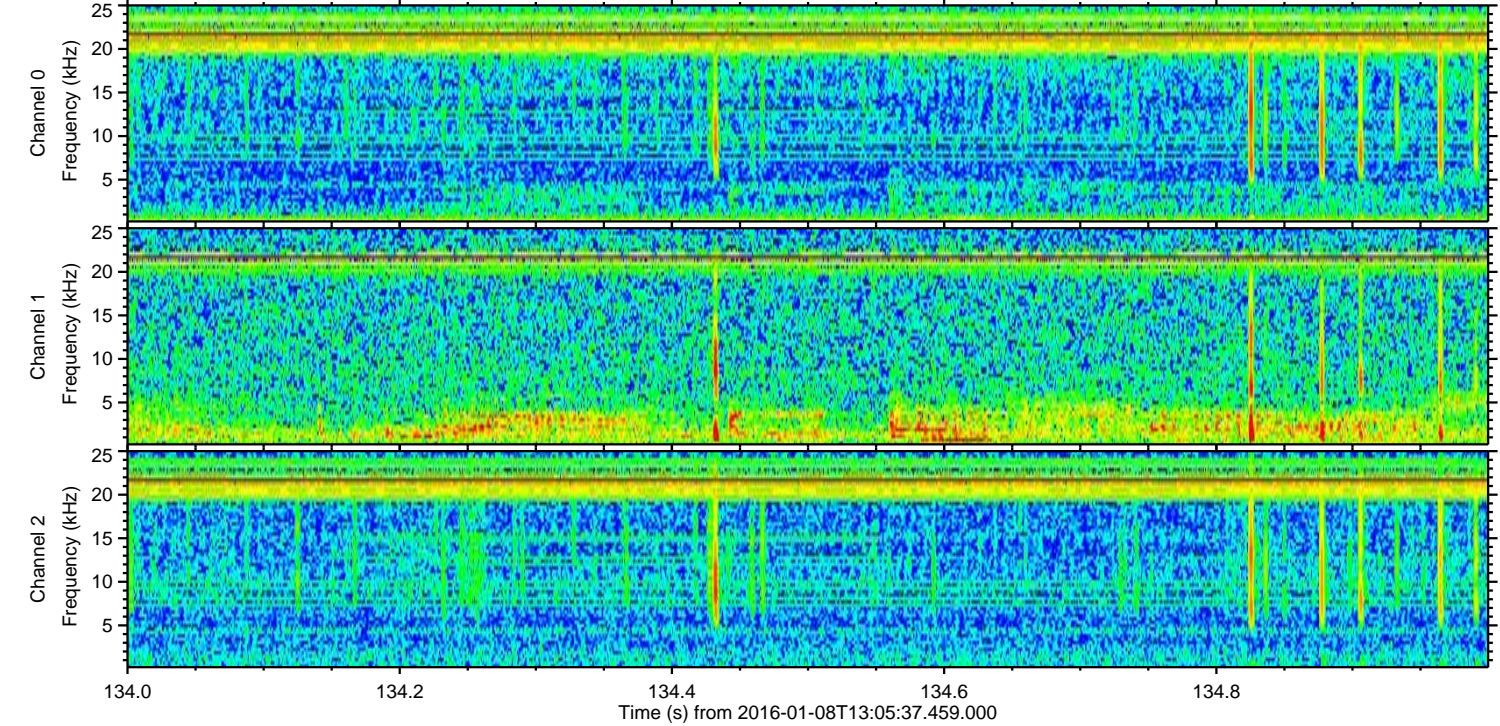
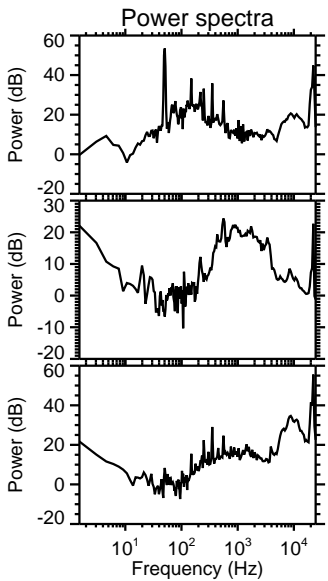
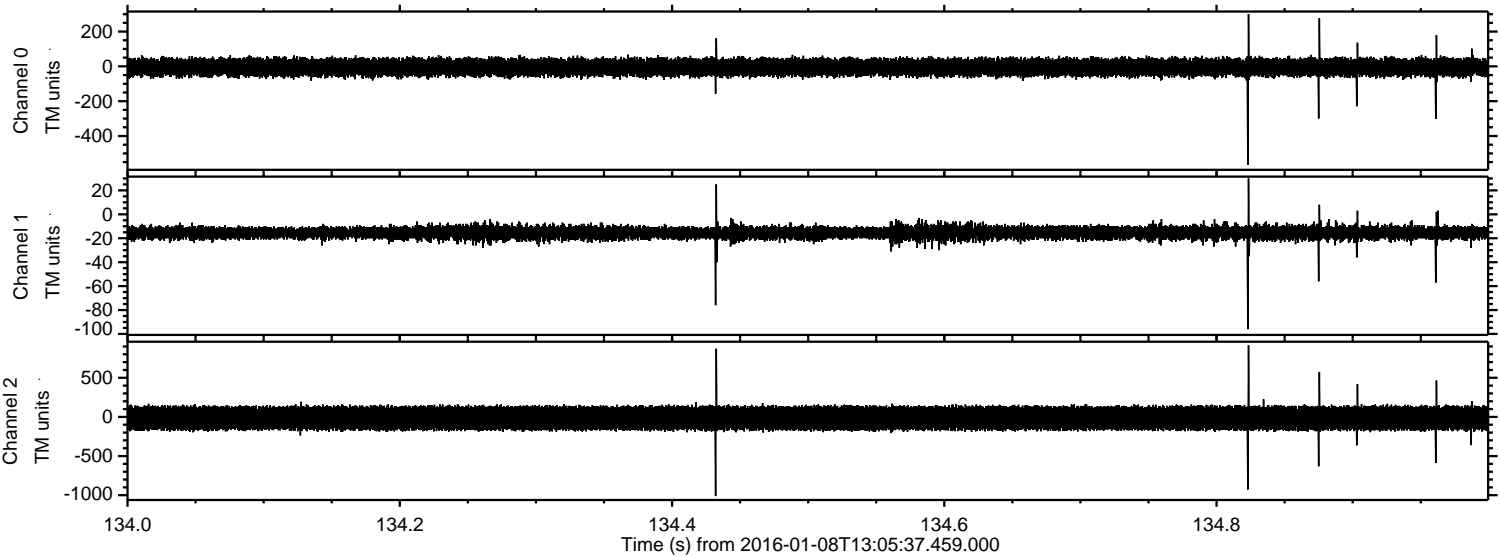


Processed Wed Mar 23 17:56:26 2016 by ELM ver.2012-10-06 from 001__elm20160108_130536__dat00.bin



ELMAVAN 3D WAVEFORMS (Measured data sampled at 50 kHz) 51000 packets of 144 samples from 2016-01-08T13:05:37.459.000. Part 135/147

Processed Wed Mar 23 17:56:26 2016 by ELM ver.2012-10-06 from 001__elm20160108_130536__dat00.bin

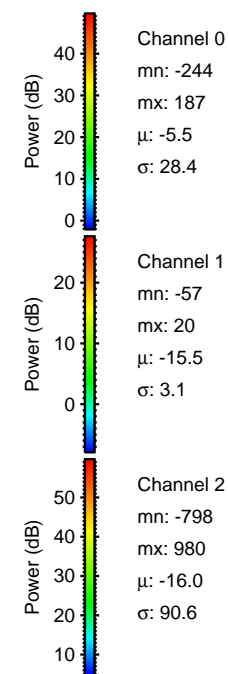
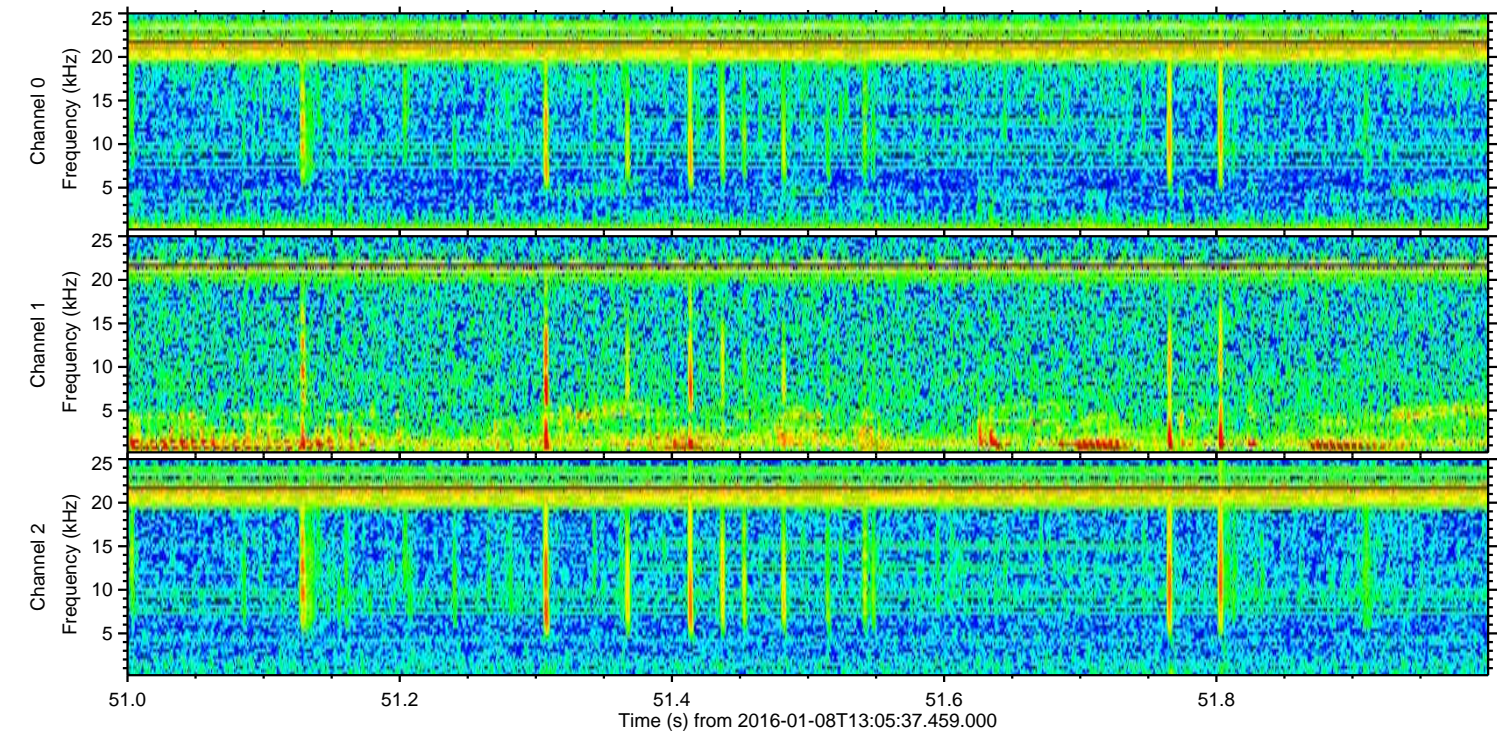
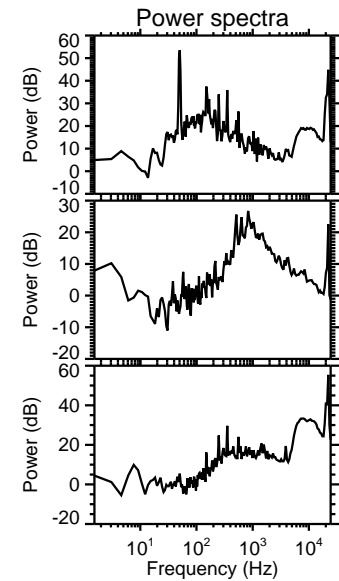
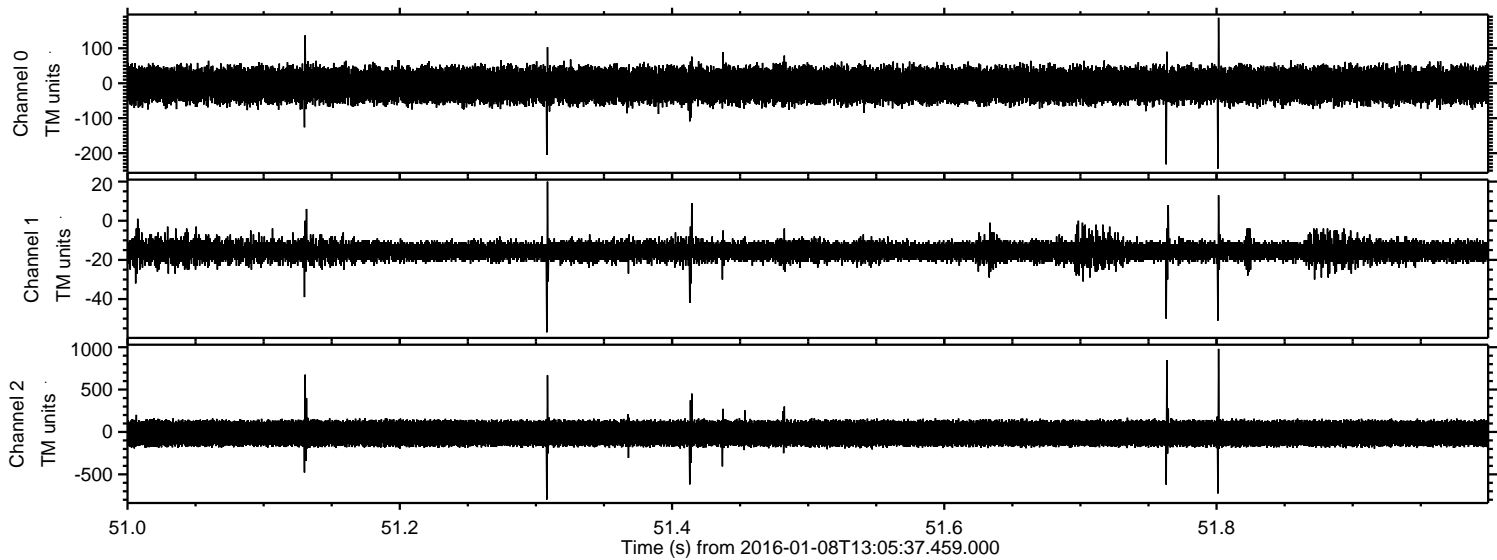


Channel 0
mn: -566
mx: 300
 μ : -5.5
 σ : 29.0

Channel 1
mn: -96
mx: 30
 μ : -15.4
 σ : 3.1

Channel 2
mn: -1011
mx: 915
 μ : -15.9
 σ : 91.8

Processed Wed Mar 23 17:56:27 2016 by ELM ver.2012-10-06 from 001__elm20160108_130536__dat00.bin



Processed Wed Mar 23 17:56:28 2016 by ELM ver.2012-10-06 from 001__elm20160108_130536__dat00.bin

