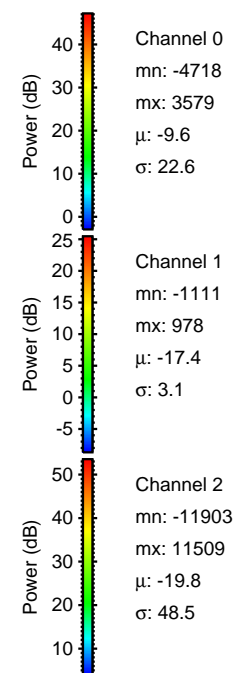
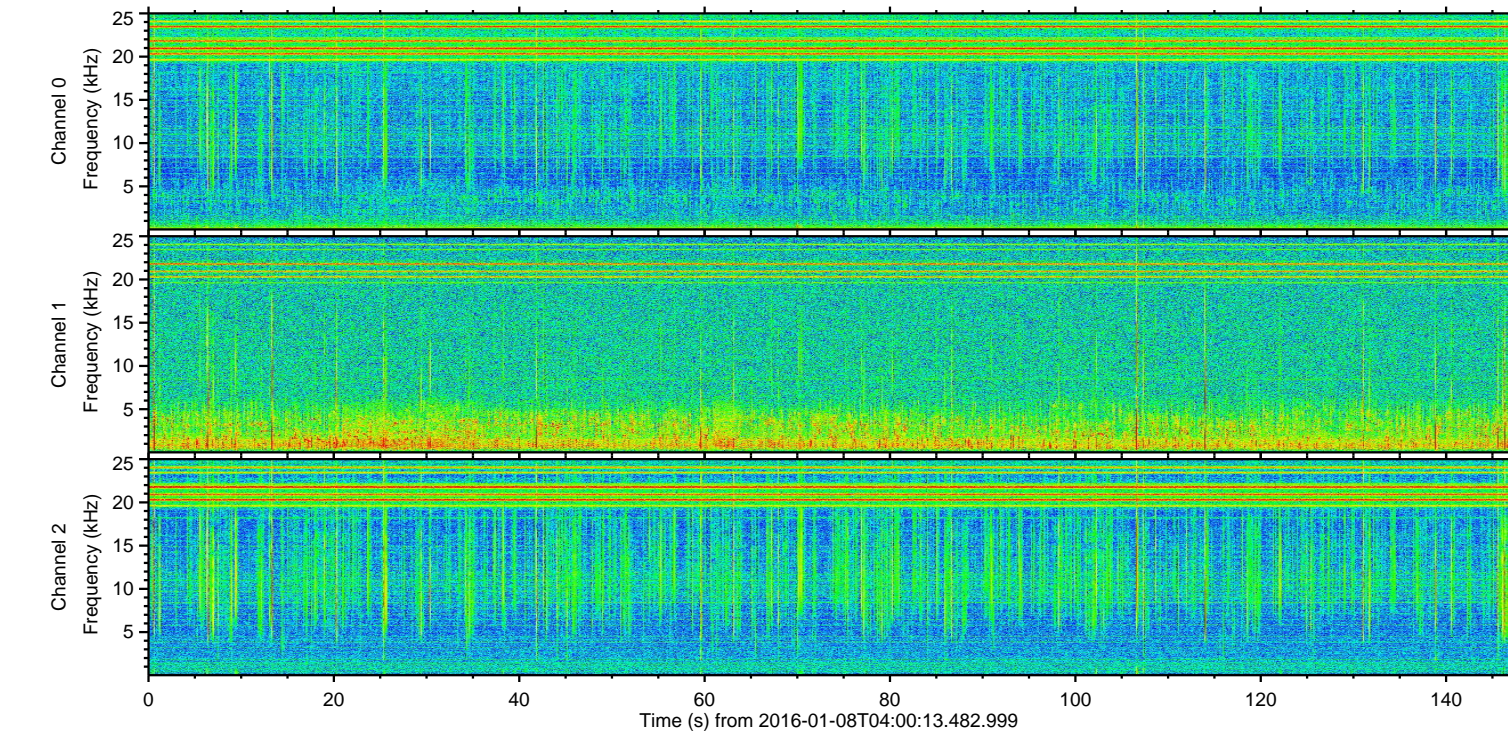
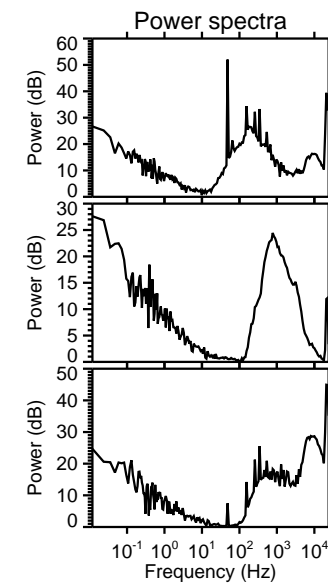
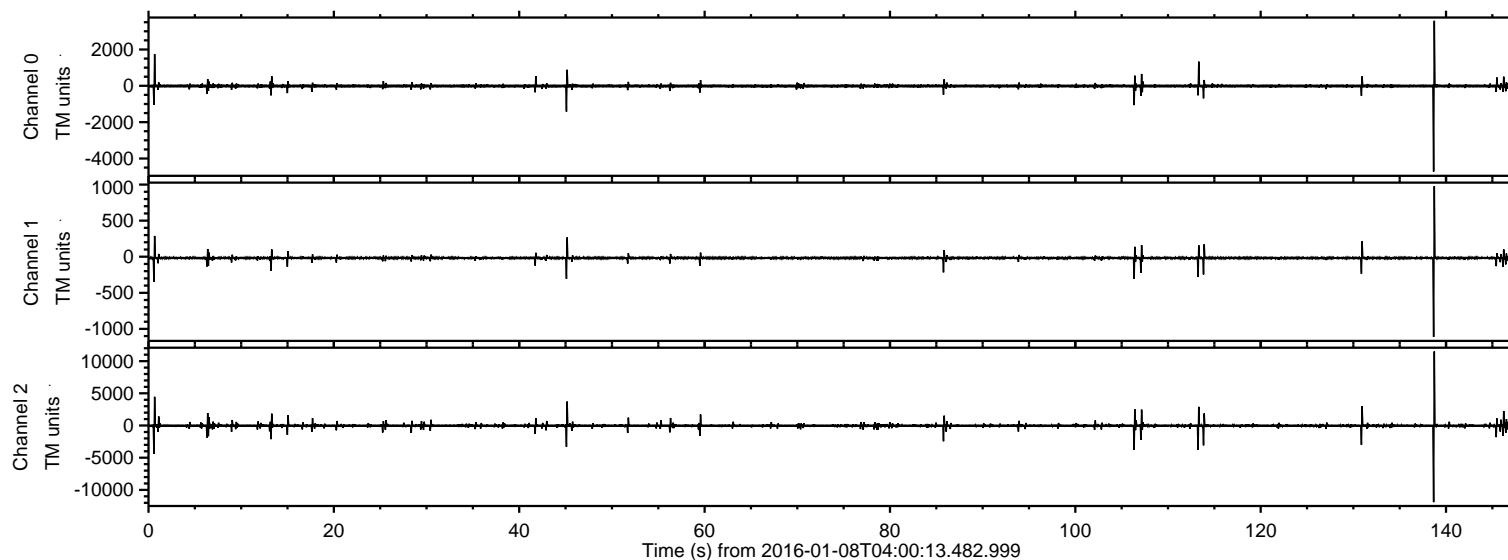


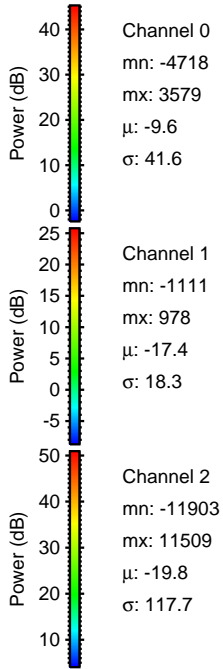
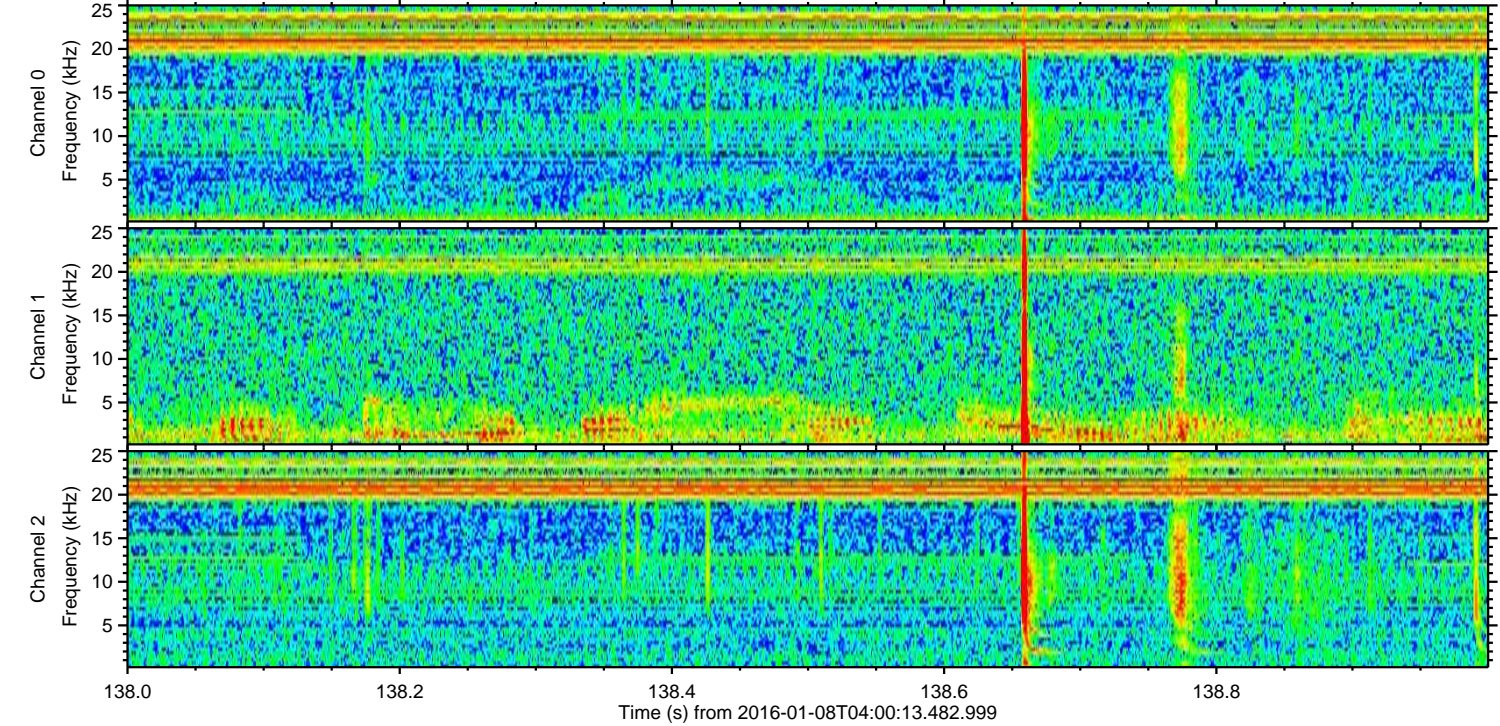
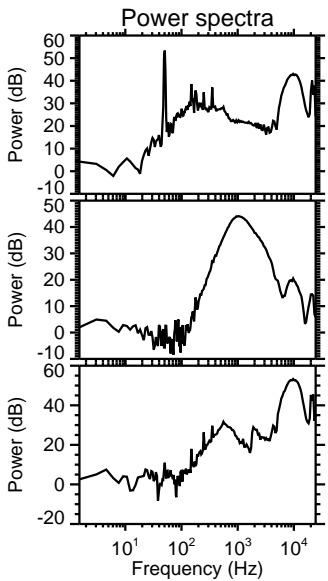
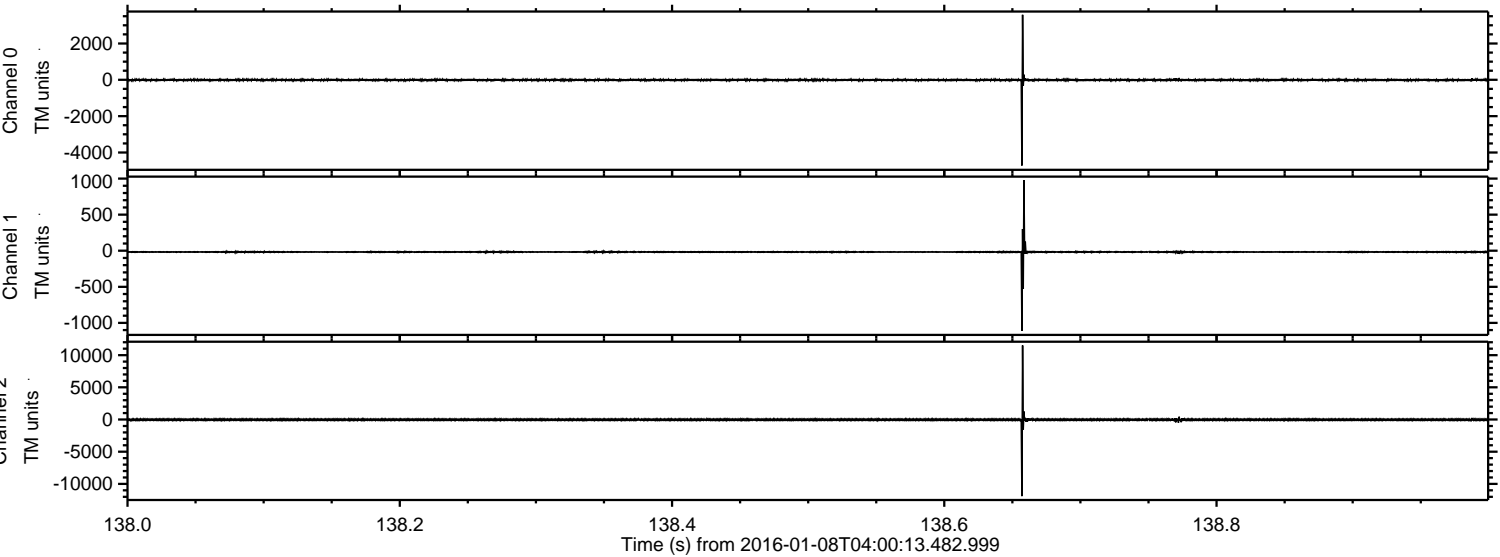
ELMAVAN 3D WAVEFORMS (Measured data sampled at 50 kHz) 51000 packets of 144 samples from 2016-01-08T04:00:13.482.999.

Processed Wed Mar 23 13:35:56 2016 by ELM ver.2012-10-06 from 001__elm20160108_040012__dat00.bin



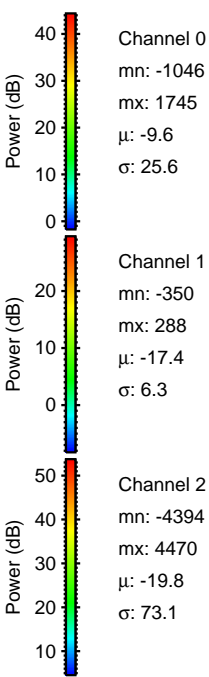
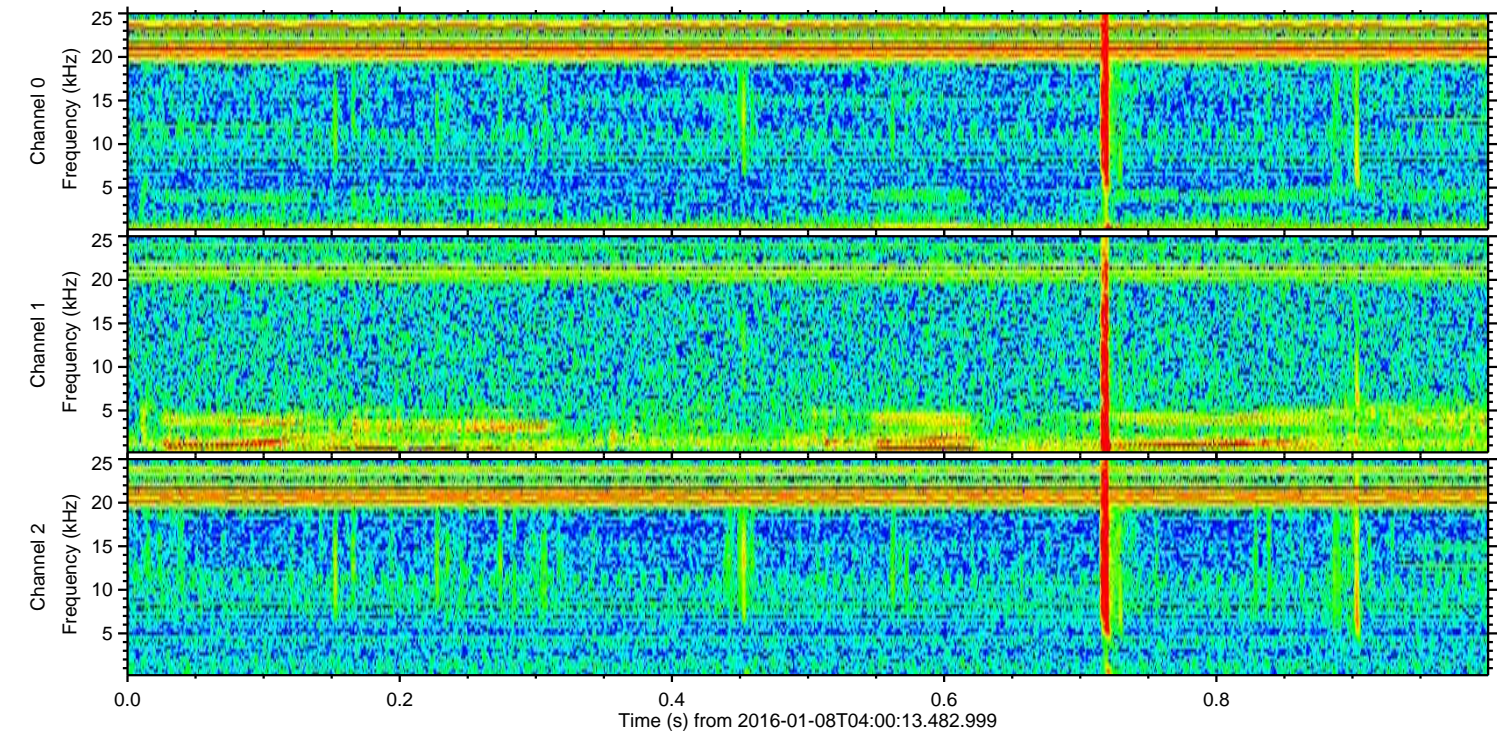
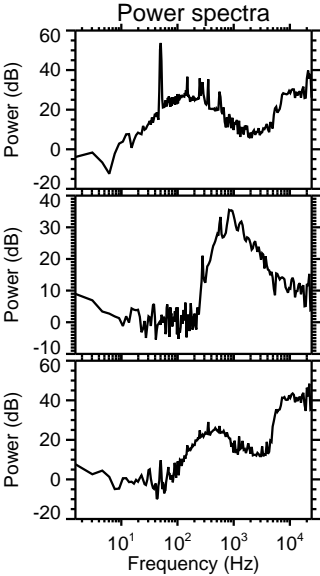
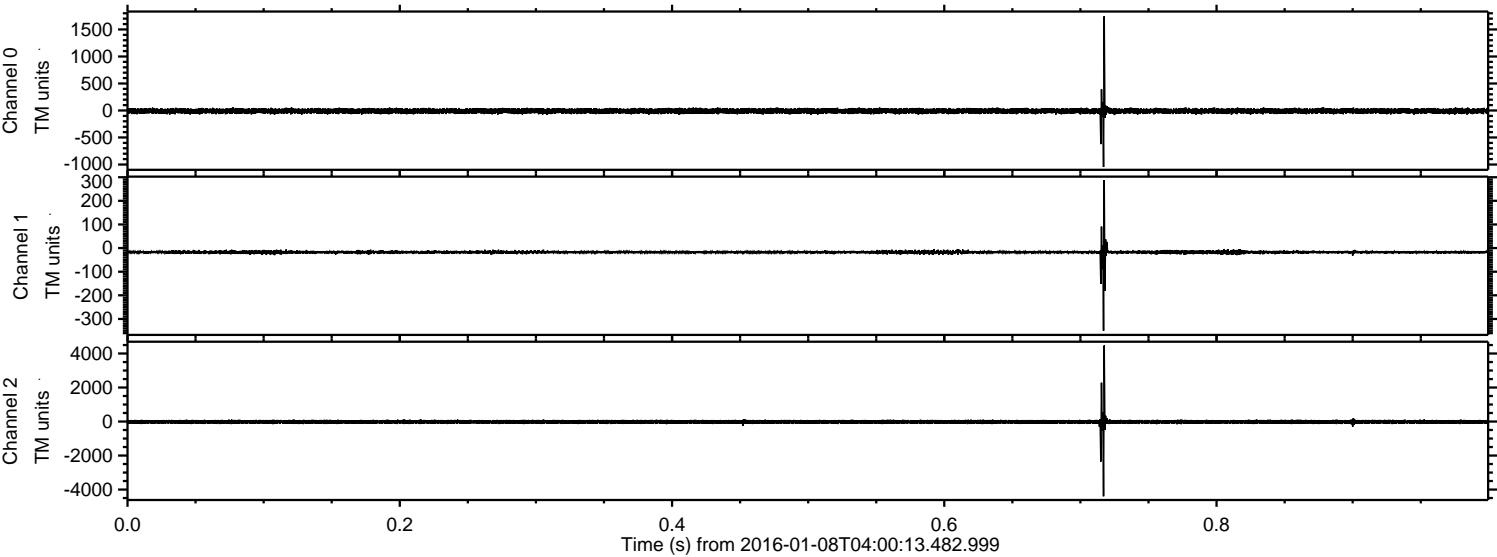
ELMAVAN 3D WAVEFORMS (Measured data sampled at 50 kHz) 51000 packets of 144 samples from 2016-01-08T04:00:13.482.999. Part 139/147

Processed Wed Mar 23 13:36:09 2016 by ELM ver.2012-10-06 from 001__elm20160108_040012__dat00.bin



ELMAVAN 3D WAVEFORMS (Measured data sampled at 50 kHz) 51000 packets of 144 samples from 2016-01-08T04:00:13.482.999. Part 1/147

Processed Wed Mar 23 13:36:10 2016 by ELM ver.2012-10-06 from 001__elm20160108_040012__dat00.bin



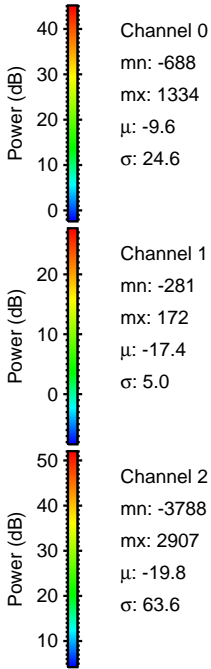
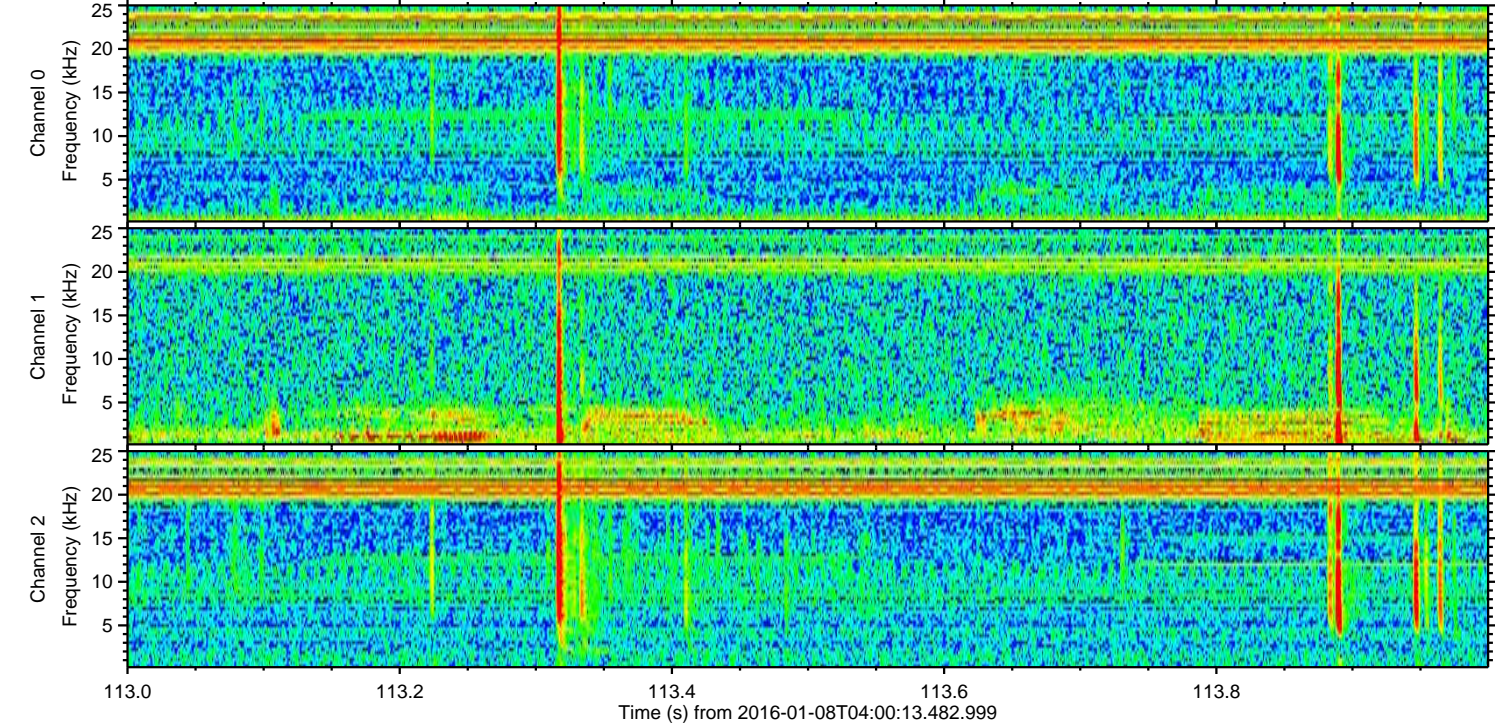
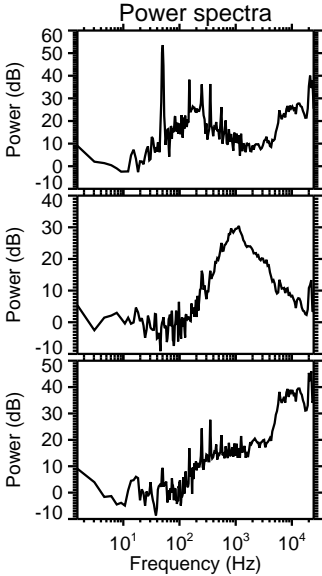
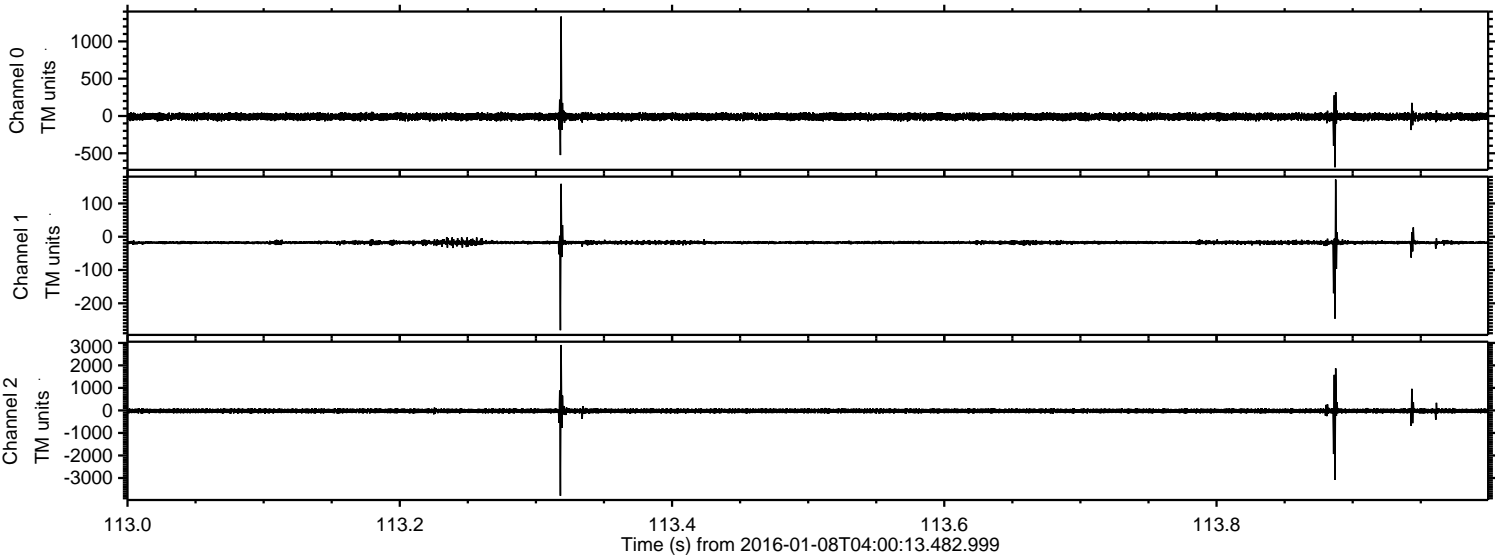
Channel 0
mn: -1046
mx: 1745
 μ : -9.6
 σ : 25.6

Channel 1
mn: -350
mx: 288
 μ : -17.4
 σ : 6.3

Channel 2
mn: -4394
mx: 4470
 μ : -19.8
 σ : 73.1

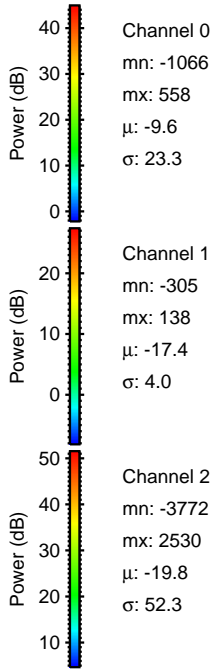
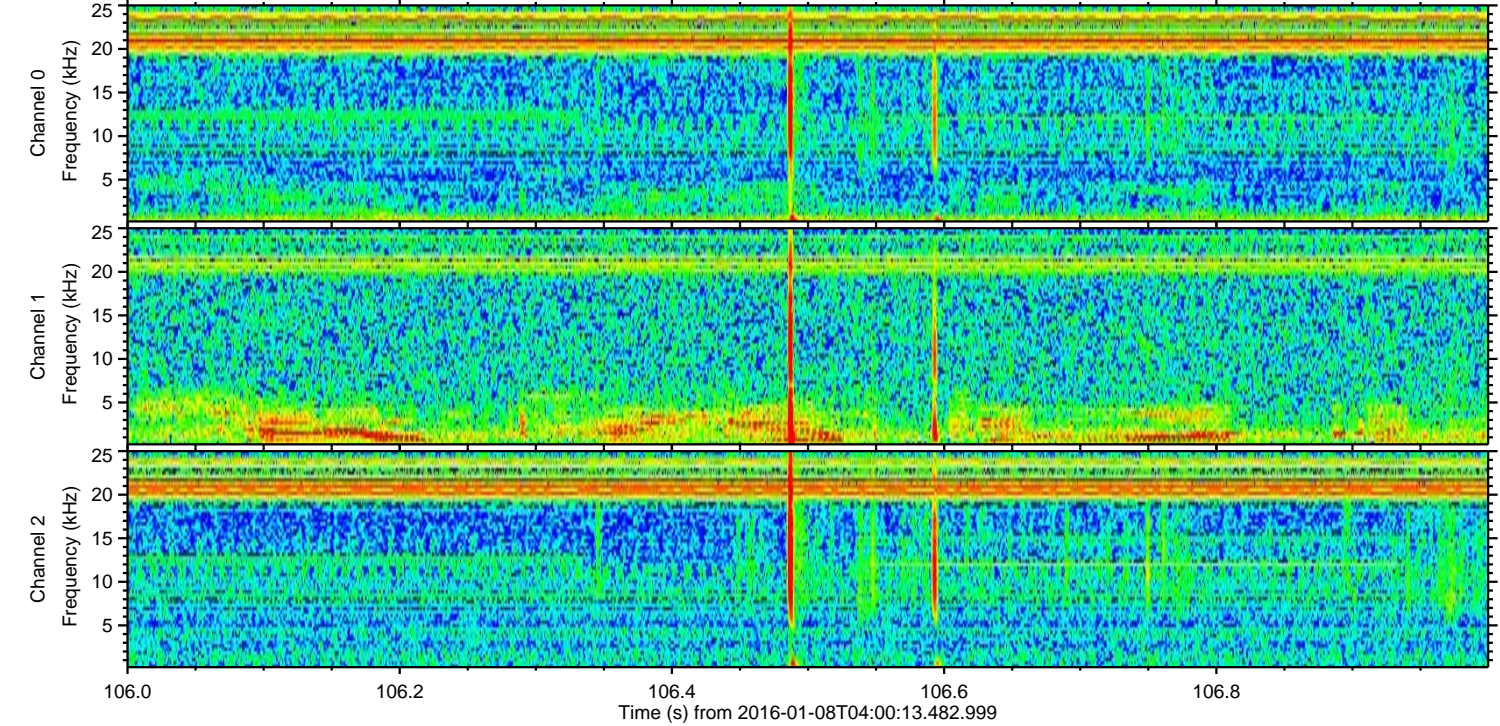
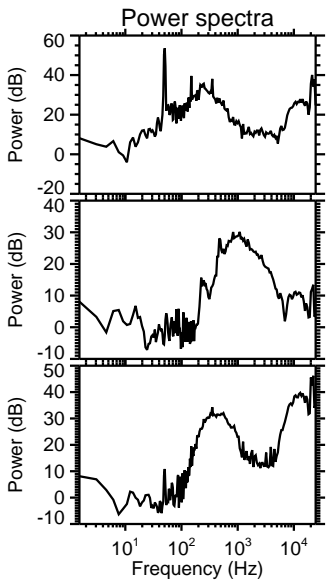
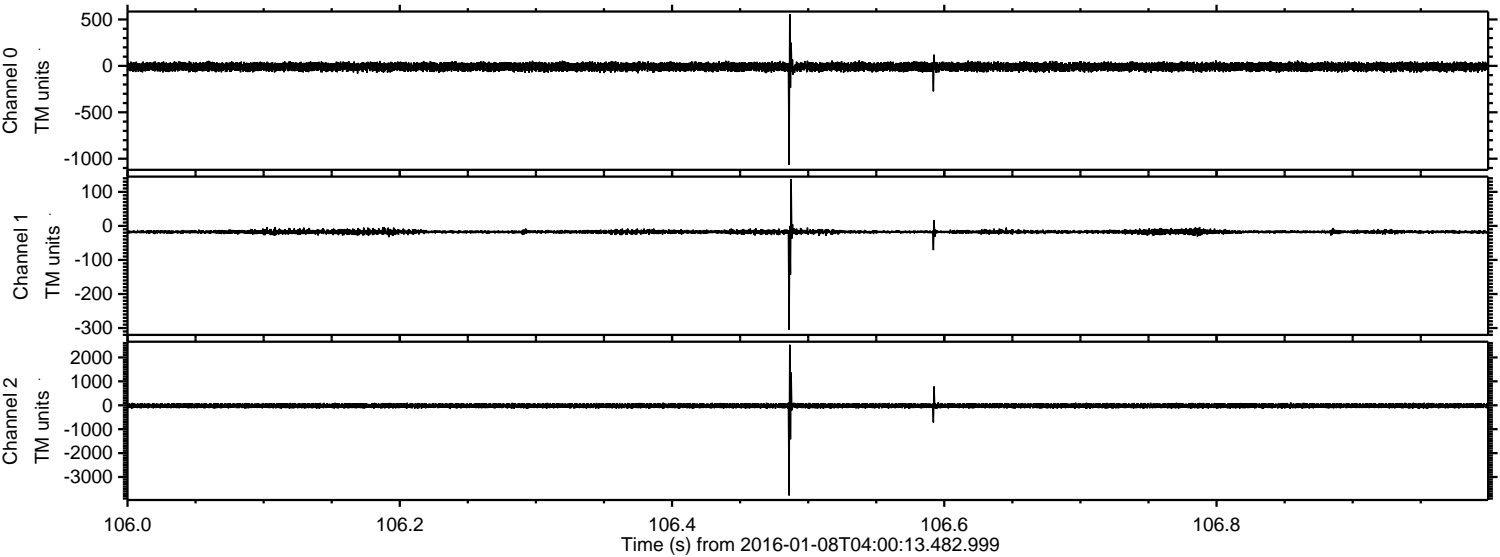
ELMAVAN 3D WAVEFORMS (Measured data sampled at 50 kHz) 51000 packets of 144 samples from 2016-01-08T04:00:13.482.999. Part 114/147

Processed Wed Mar 23 13:36:11 2016 by ELM ver.2012-10-06 from 001__elm20160108_040012__dat00.bin



ELMAVAN 3D WAVEFORMS (Measured data sampled at 50 kHz) 51000 packets of 144 samples from 2016-01-08T04:00:13.482.999. Part 107/147

Processed Wed Mar 23 13:36:12 2016 by ELM ver.2012-10-06 from 001__elm20160108_040012__dat00.bin

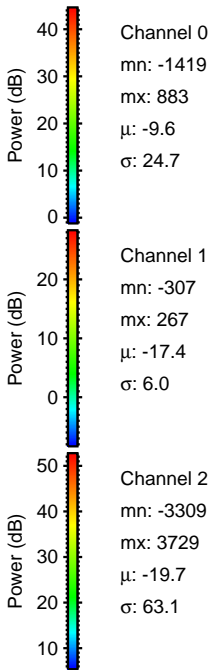
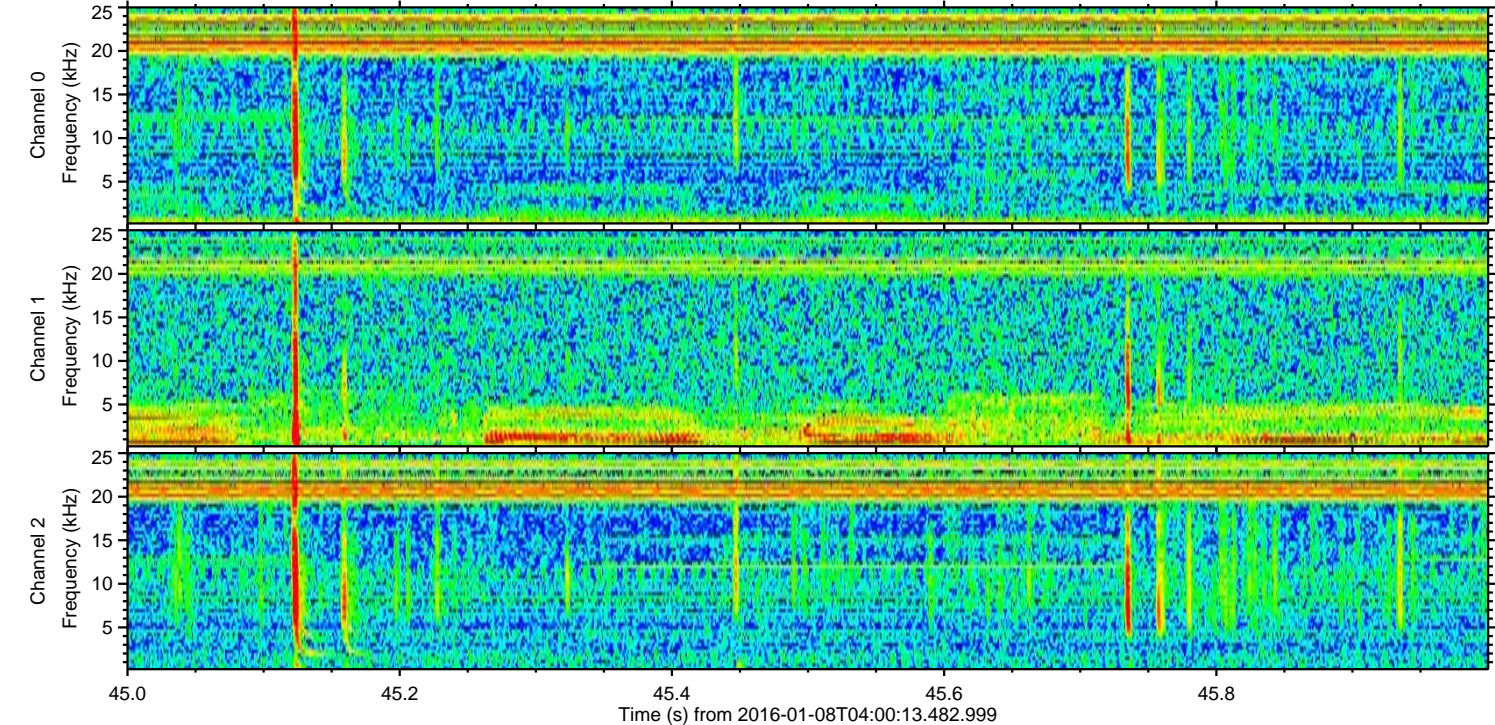
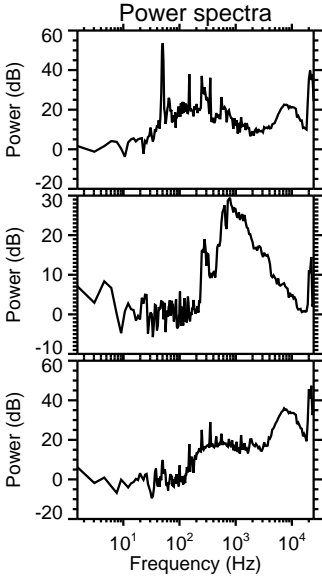
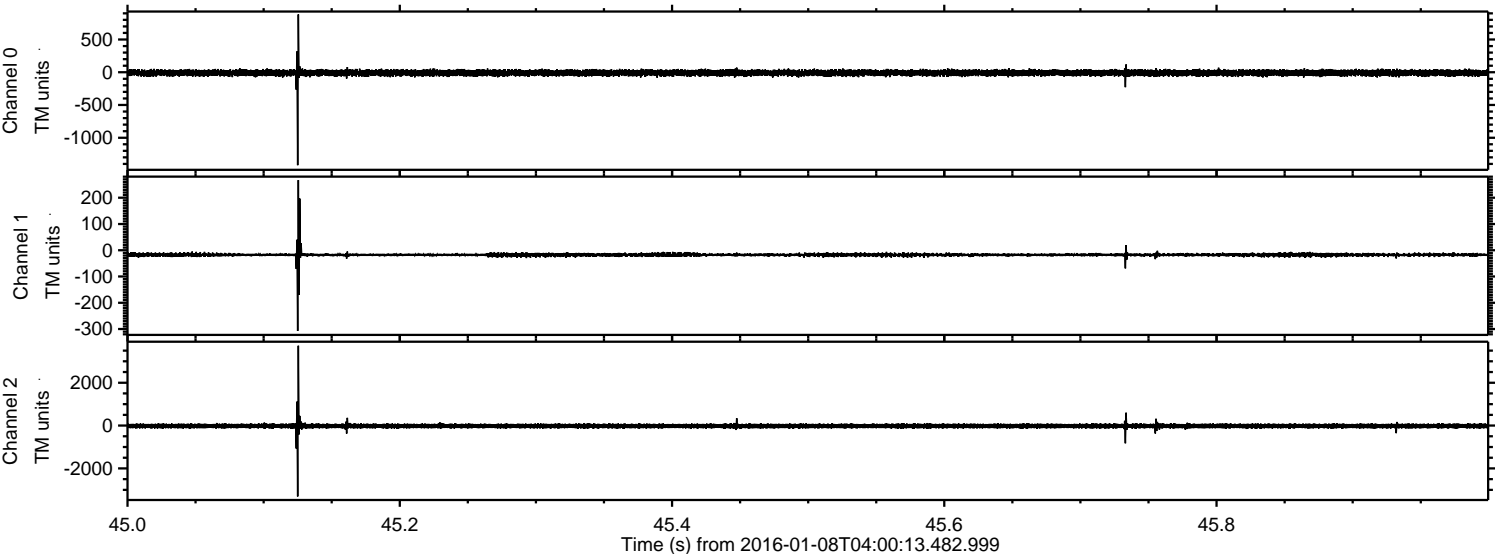


Channel 0
mn: -1066
mx: 558
 μ : -9.6
 σ : 23.3

Channel 1
mn: -305
mx: 138
 μ : -17.4
 σ : 4.0

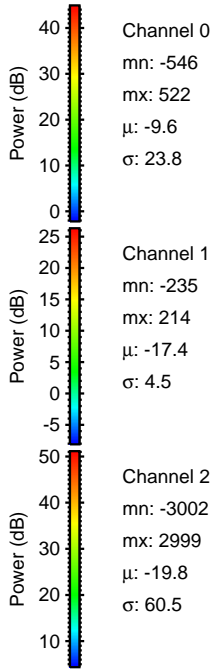
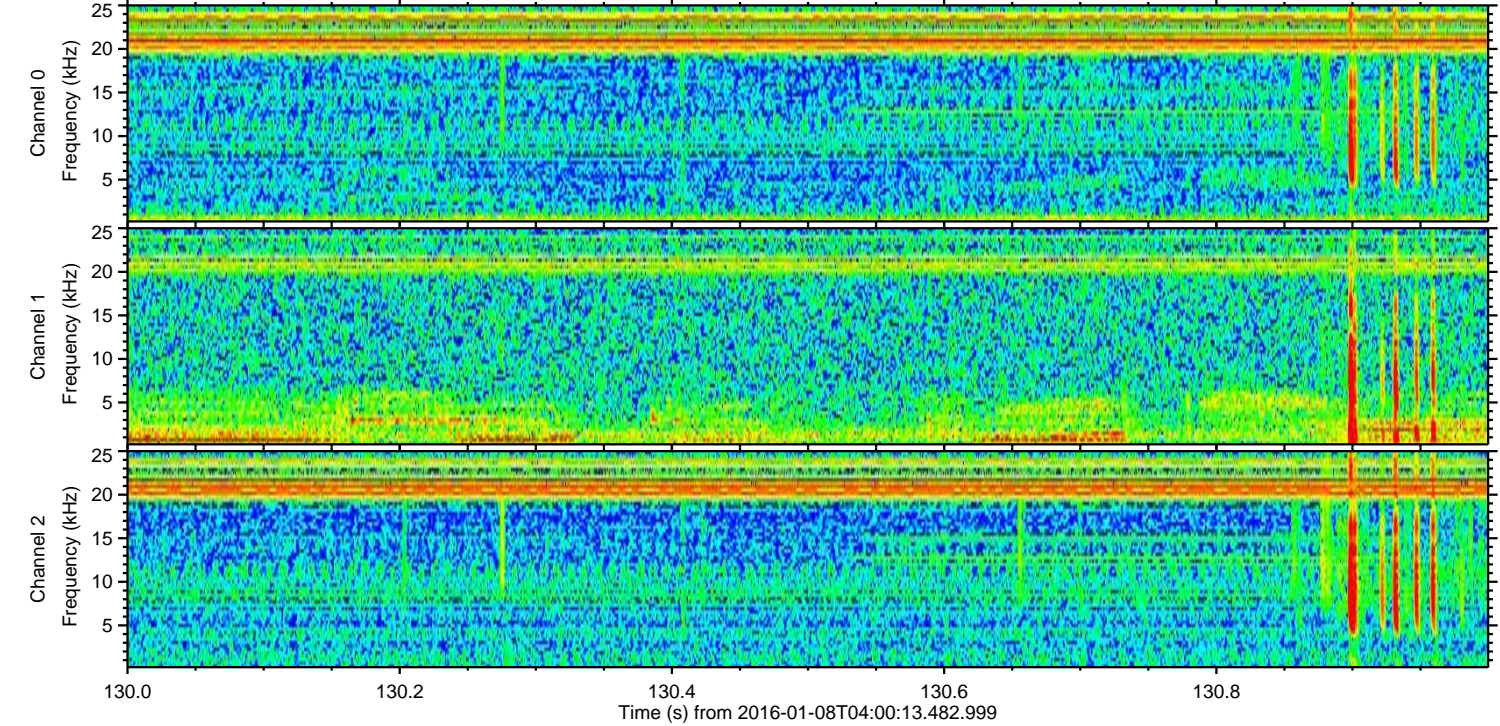
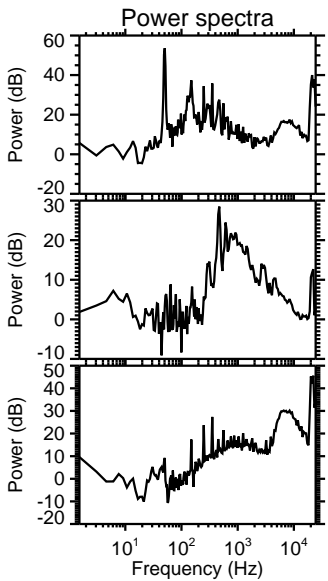
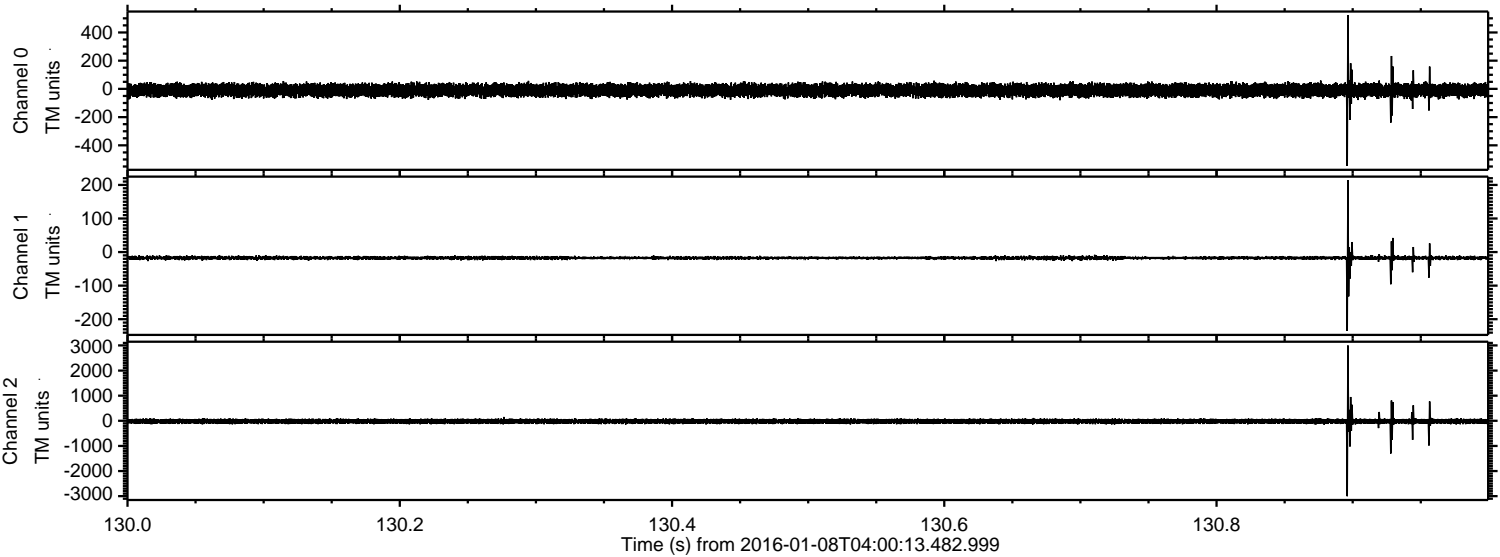
Channel 2
mn: -3772
mx: 2530
 μ : -19.8
 σ : 52.3

Processed Wed Mar 23 13:36:13 2016 by ELM ver.2012-10-06 from 001__elm20160108_040012__dat00.bin



ELMAVAN 3D WAVEFORMS (Measured data sampled at 50 kHz) 51000 packets of 144 samples from 2016-01-08T04:00:13.482.999. Part 131/147

Processed Wed Mar 23 13:36:14 2016 by ELM ver.2012-10-06 from 001__elm20160108_040012__dat00.bin



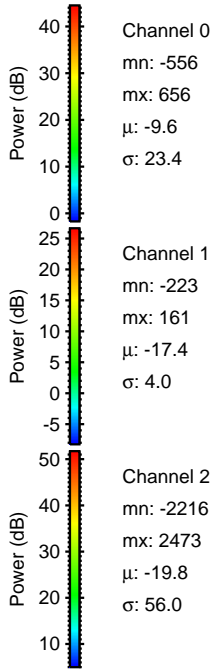
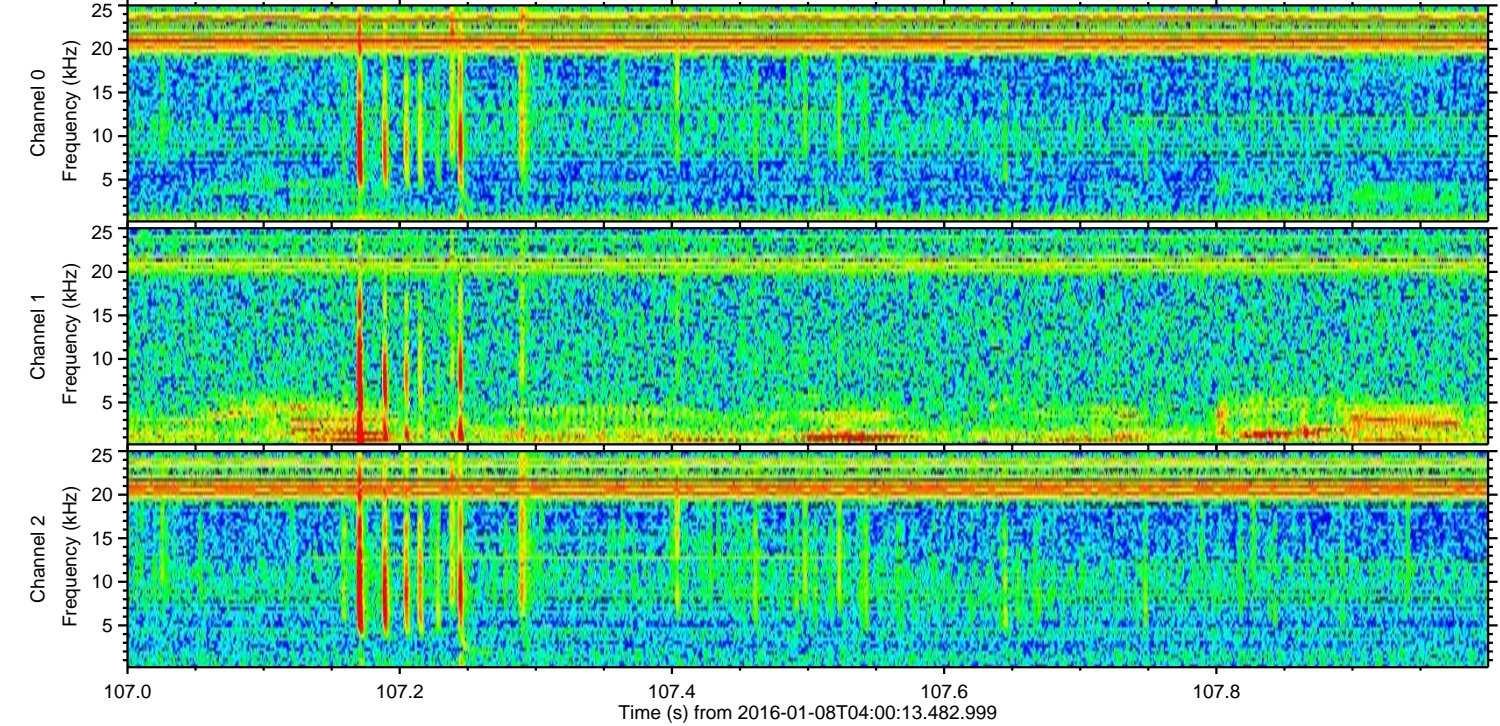
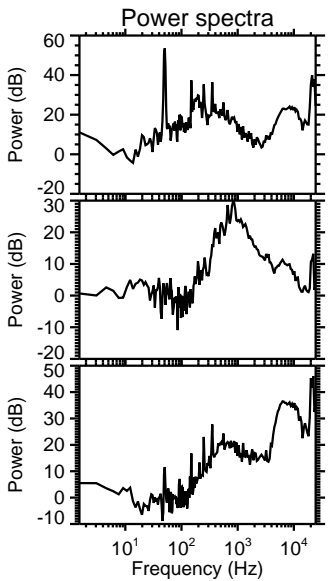
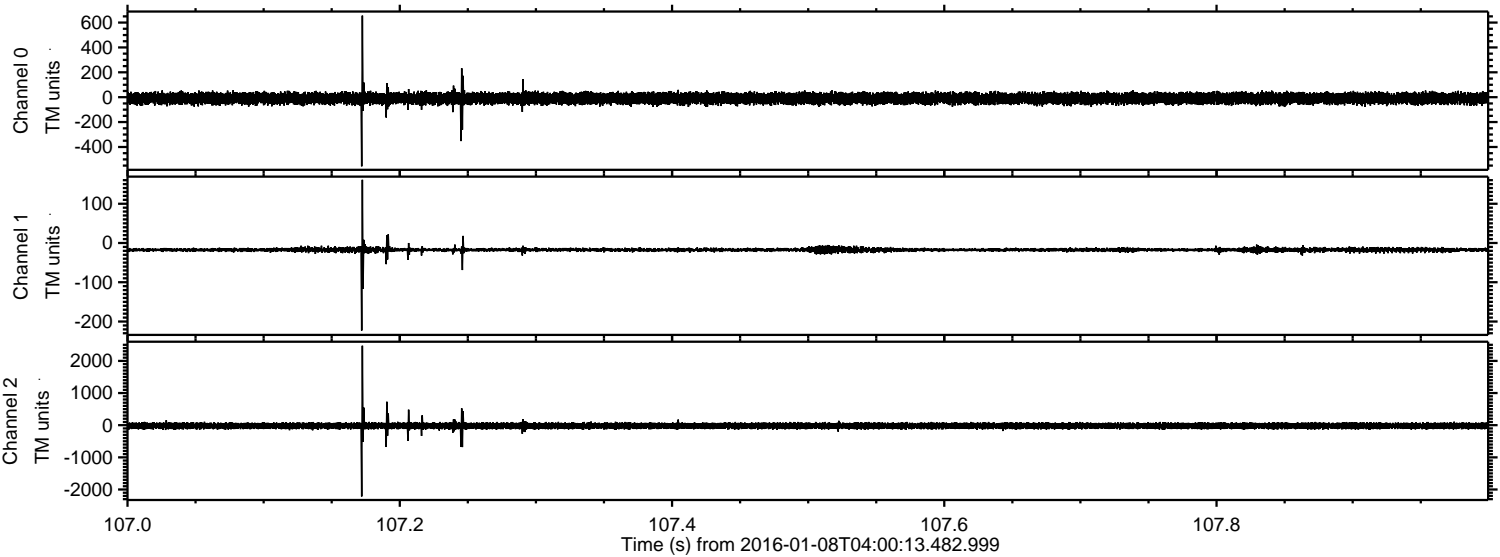
Channel 0
mn: -546
mx: 522
 μ : -9.6
 σ : 23.8

Channel 1
mn: -235
mx: 214
 μ : -17.4
 σ : 4.5

Channel 2
mn: -3002
mx: 2999
 μ : -19.8
 σ : 60.5

ELMAVAN 3D WAVEFORMS (Measured data sampled at 50 kHz) 51000 packets of 144 samples from 2016-01-08T04:00:13.482.999. Part 108/147

Processed Wed Mar 23 13:36:15 2016 by ELM ver.2012-10-06 from 001__elm20160108_040012__dat00.bin

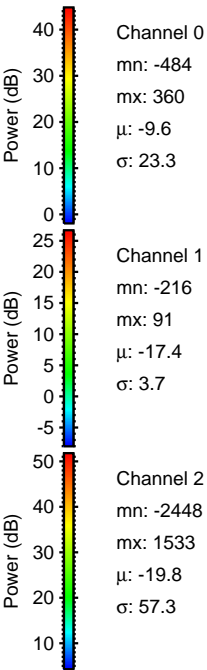
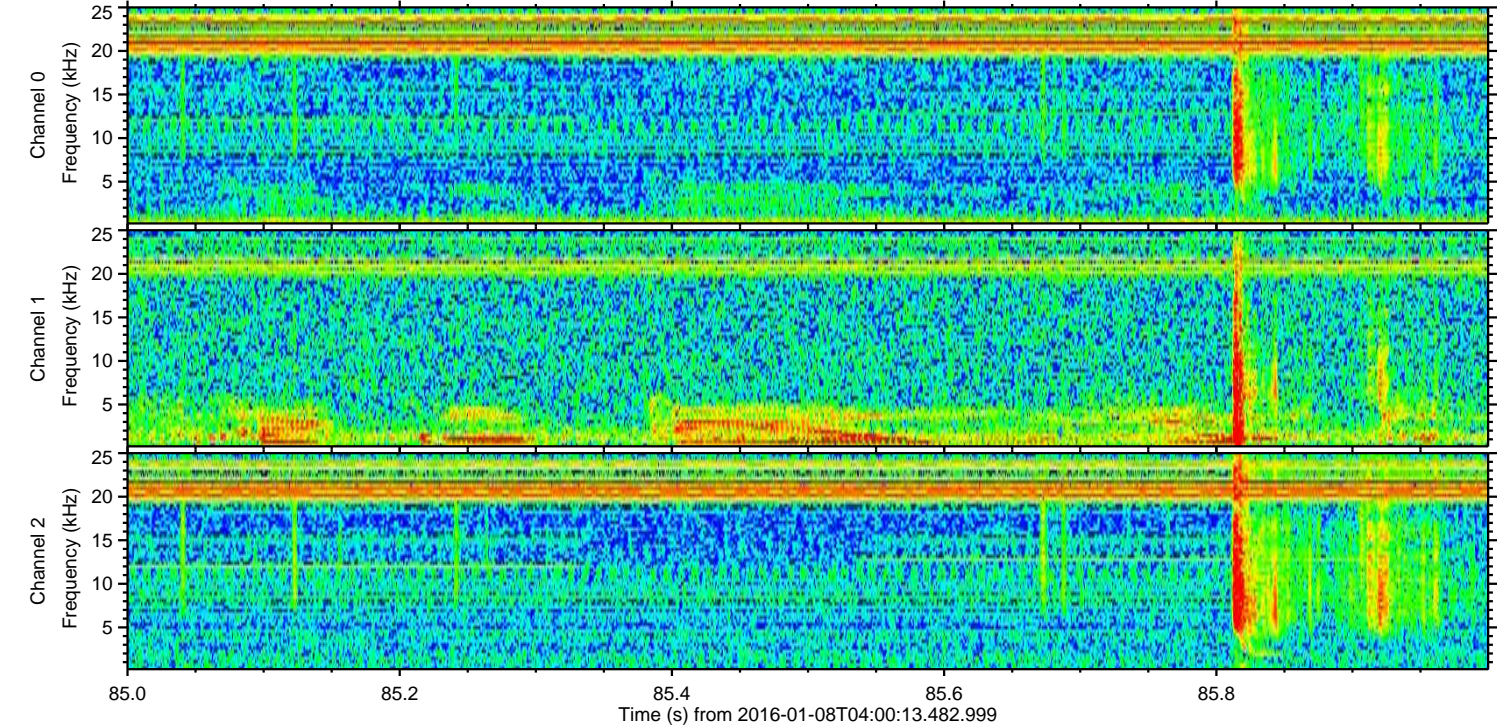
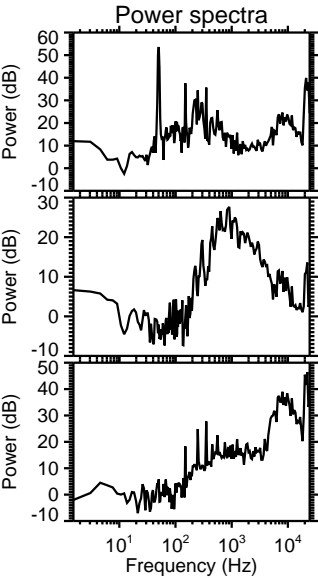
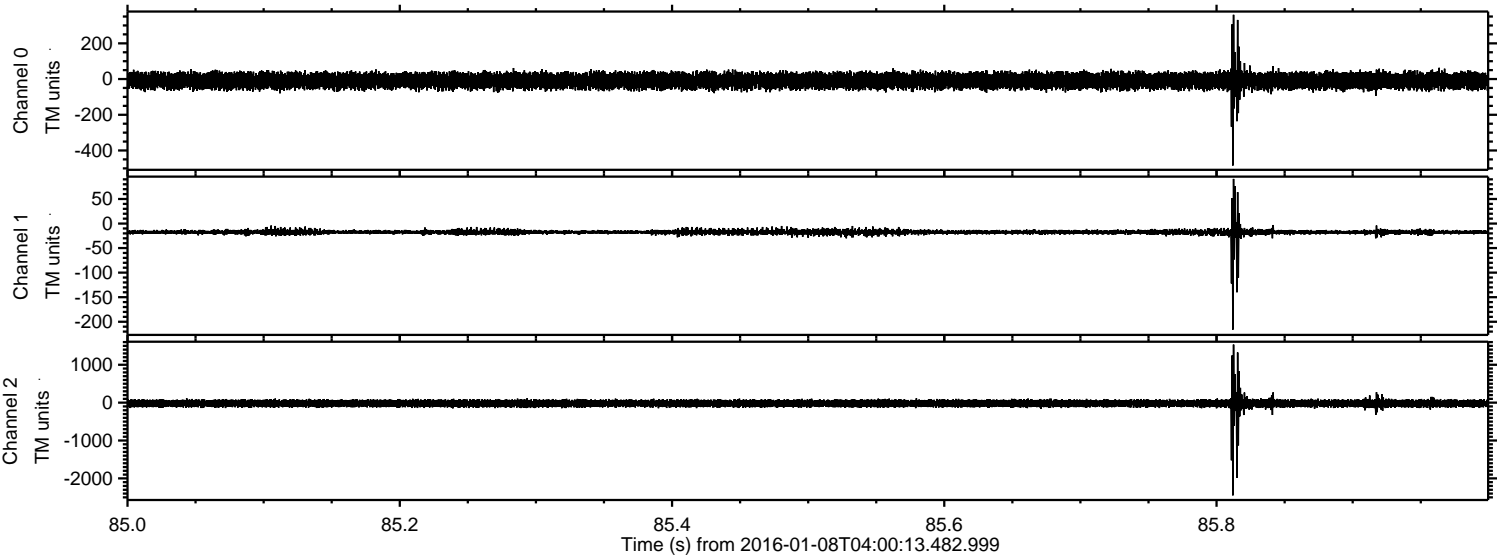


Channel 0
mn: -556
mx: 656
 μ : -9.6
 σ : 23.4

Channel 1
mn: -223
mx: 161
 μ : -17.4
 σ : 4.0

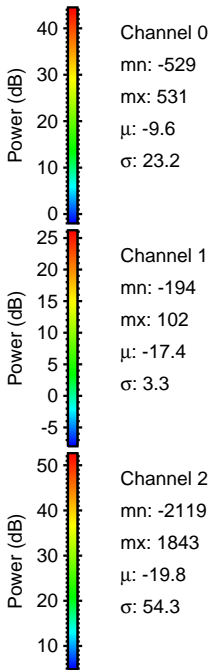
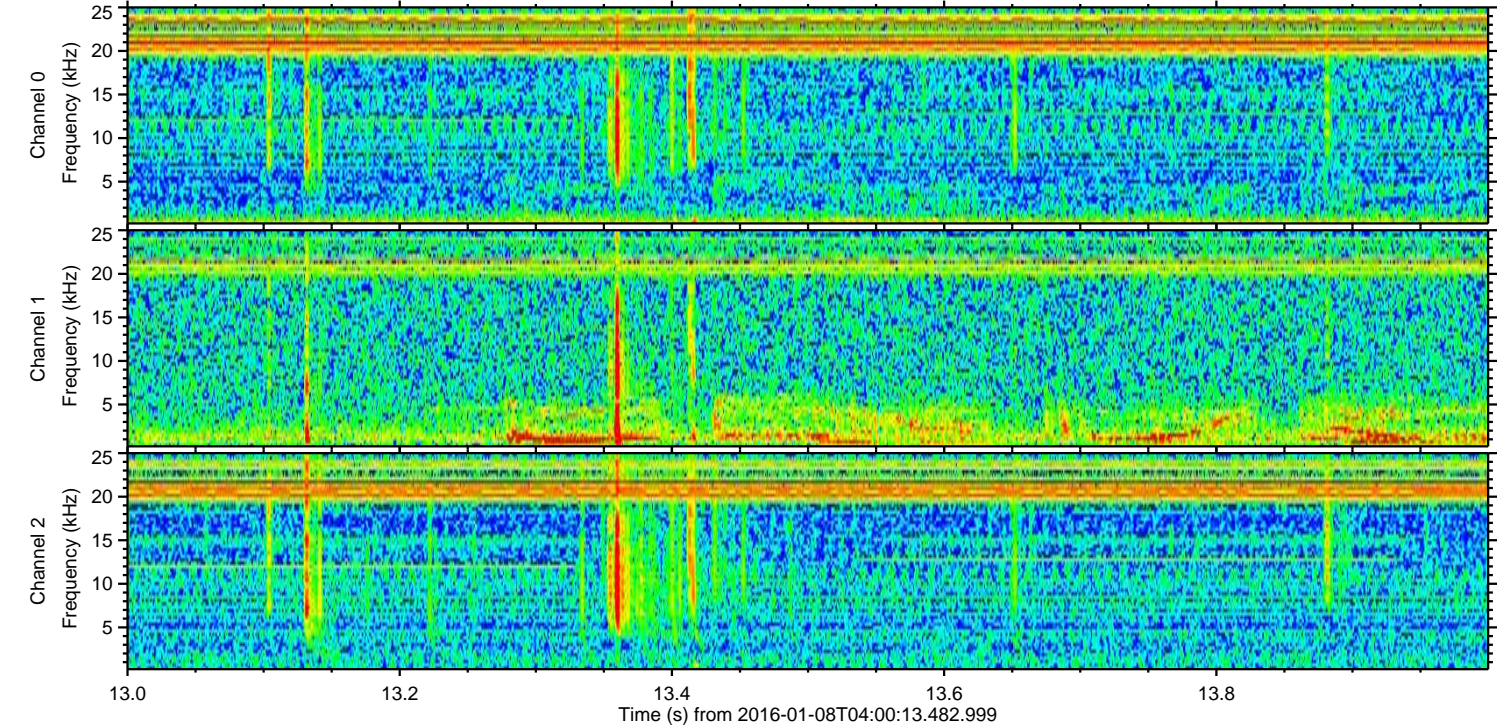
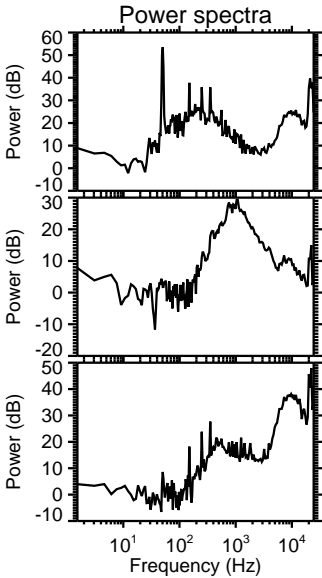
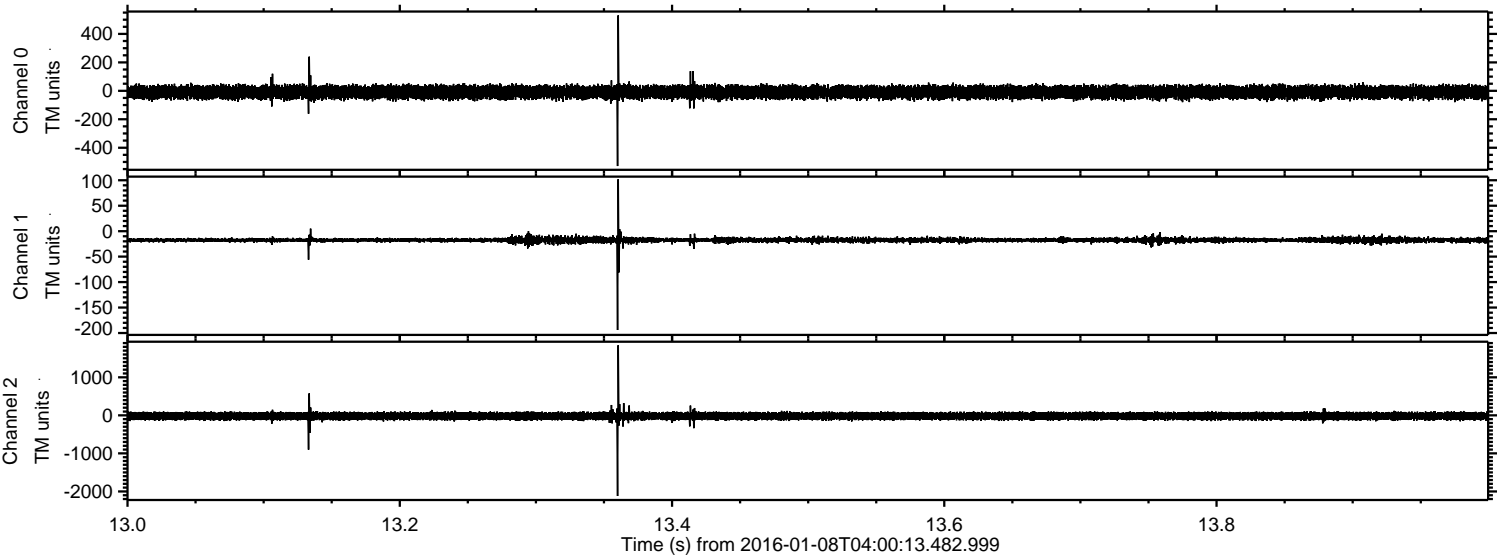
Channel 2
mn: -2216
mx: 2473
 μ : -19.8
 σ : 56.0

Processed Wed Mar 23 13:36:16 2016 by ELM ver.2012-10-06 from 001__elm20160108_040012__dat00.bin



ELMAVAN 3D WAVEFORMS (Measured data sampled at 50 kHz) 51000 packets of 144 samples from 2016-01-08T04:00:13.482.999. Part 14/147

Processed Wed Mar 23 13:36:17 2016 by ELM ver.2012-10-06 from 001__elm20160108_040012__dat00.bin



ELMAVAN 3D WAVEFORMS (Measured data sampled at 50 kHz) 51000 packets of 144 samples from 2016-01-08T04:00:13.482.999. Part 144/147

