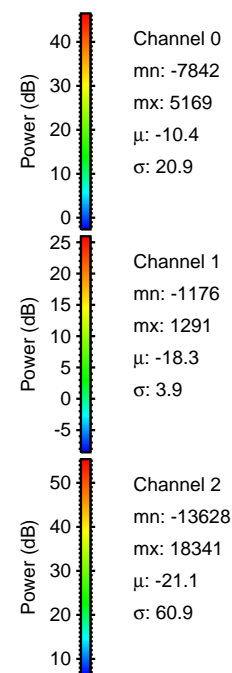
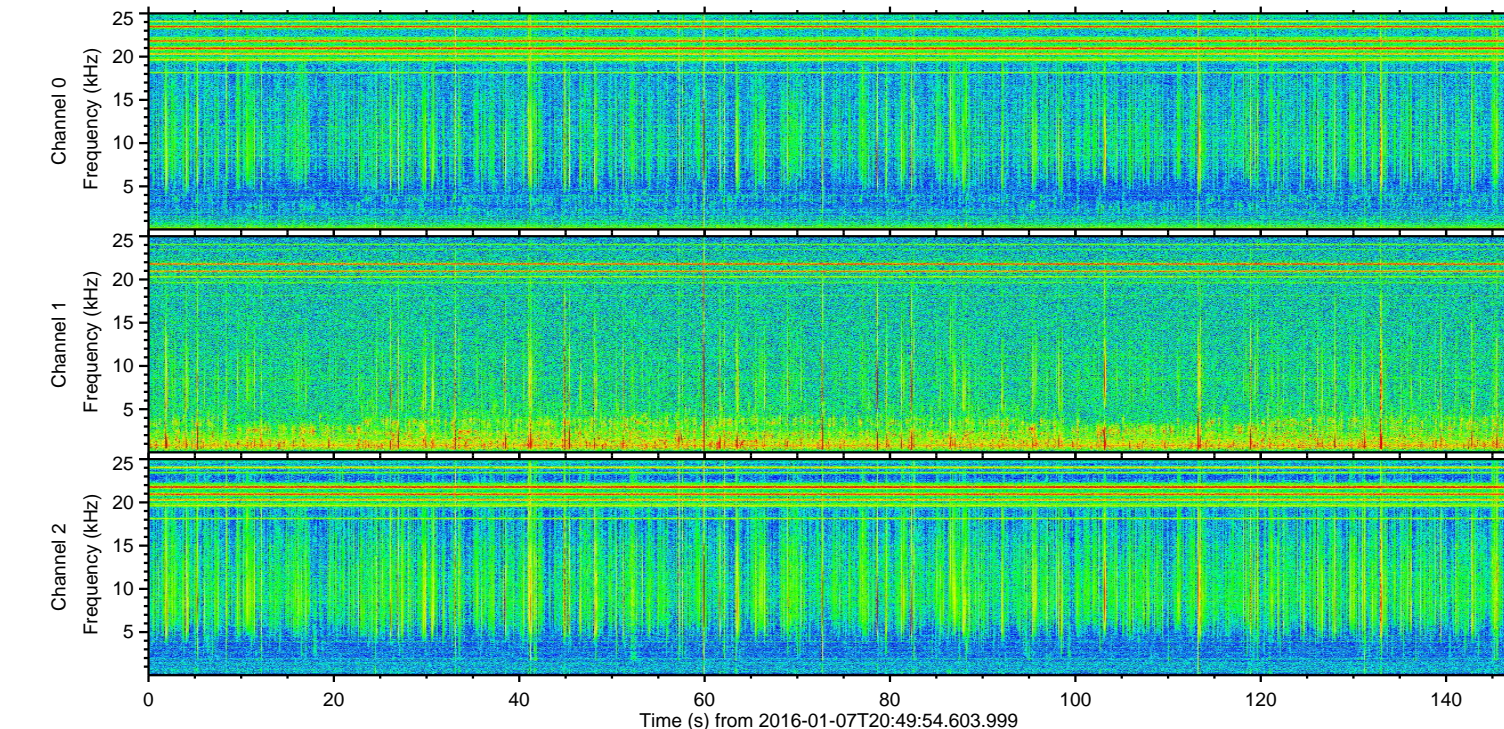
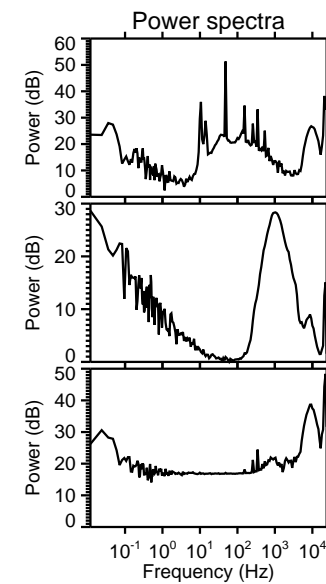
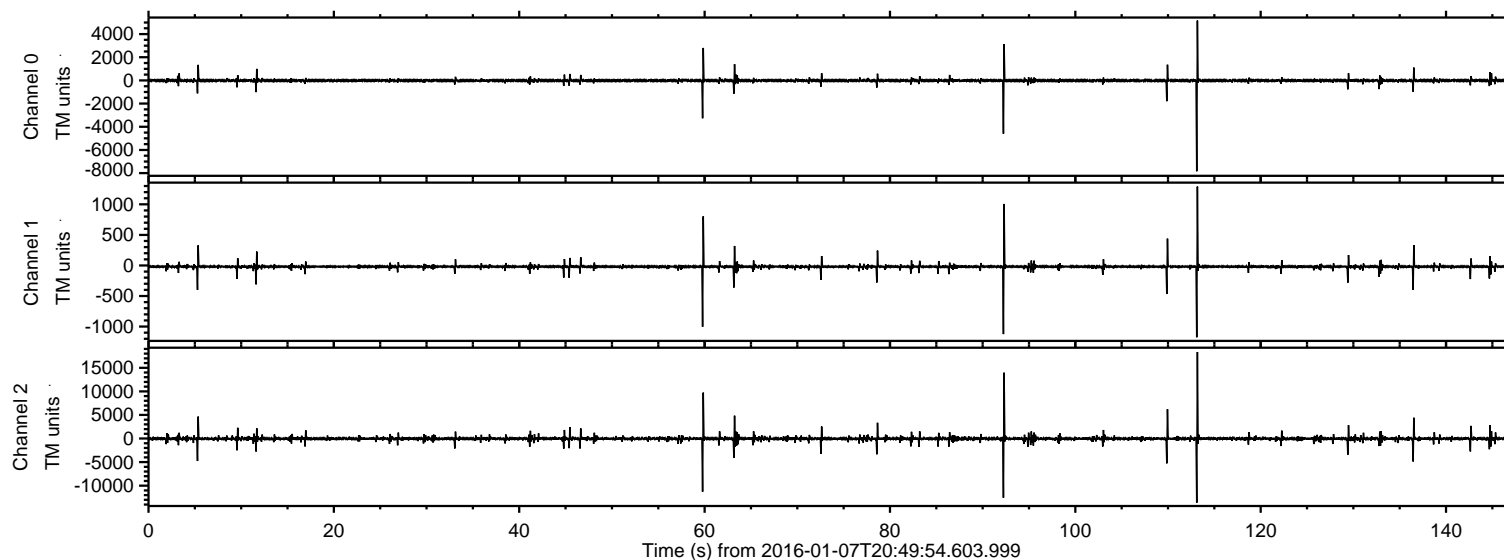


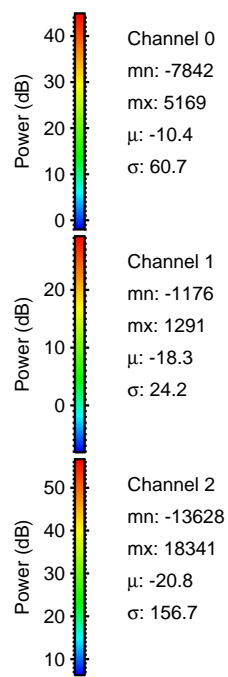
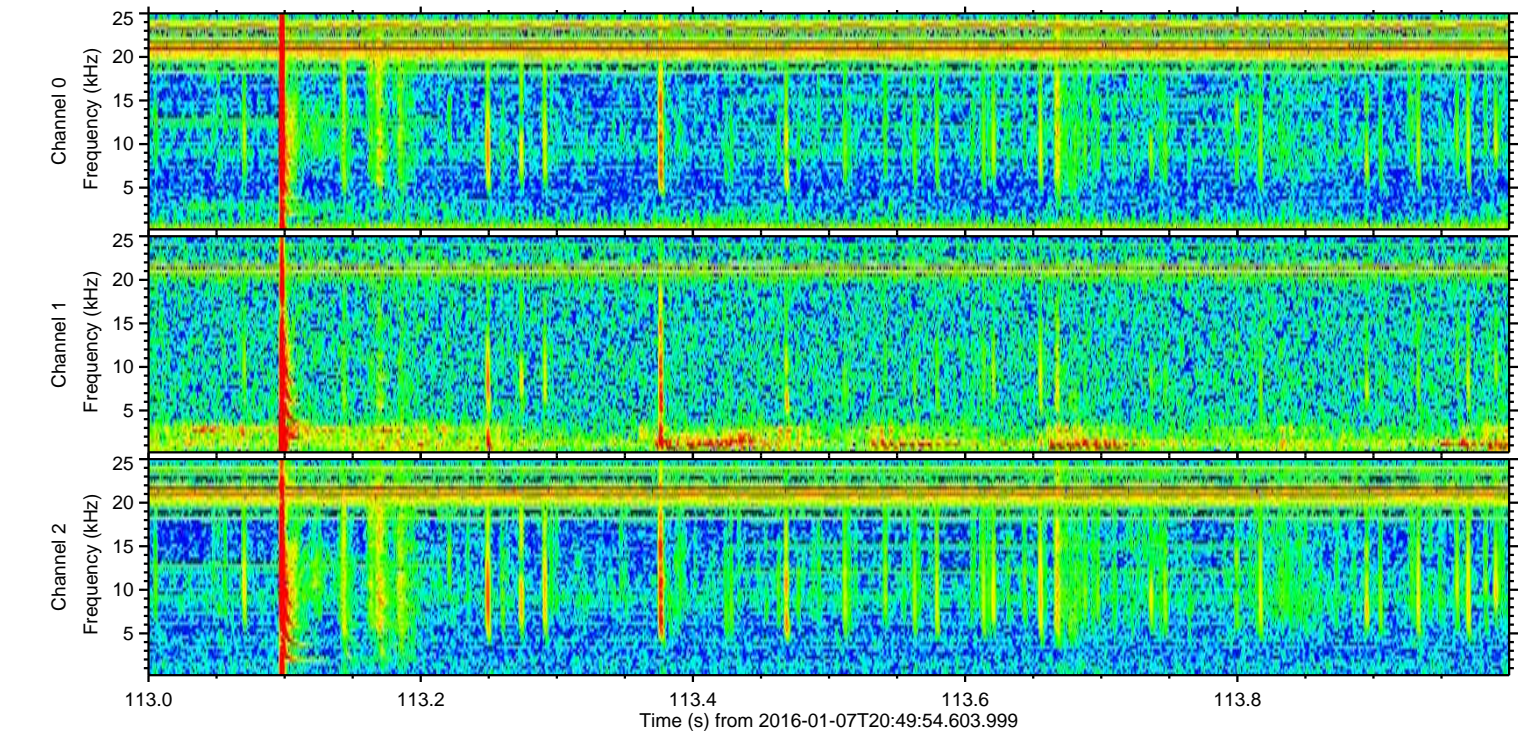
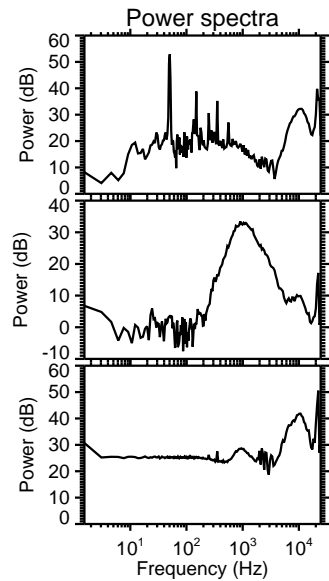
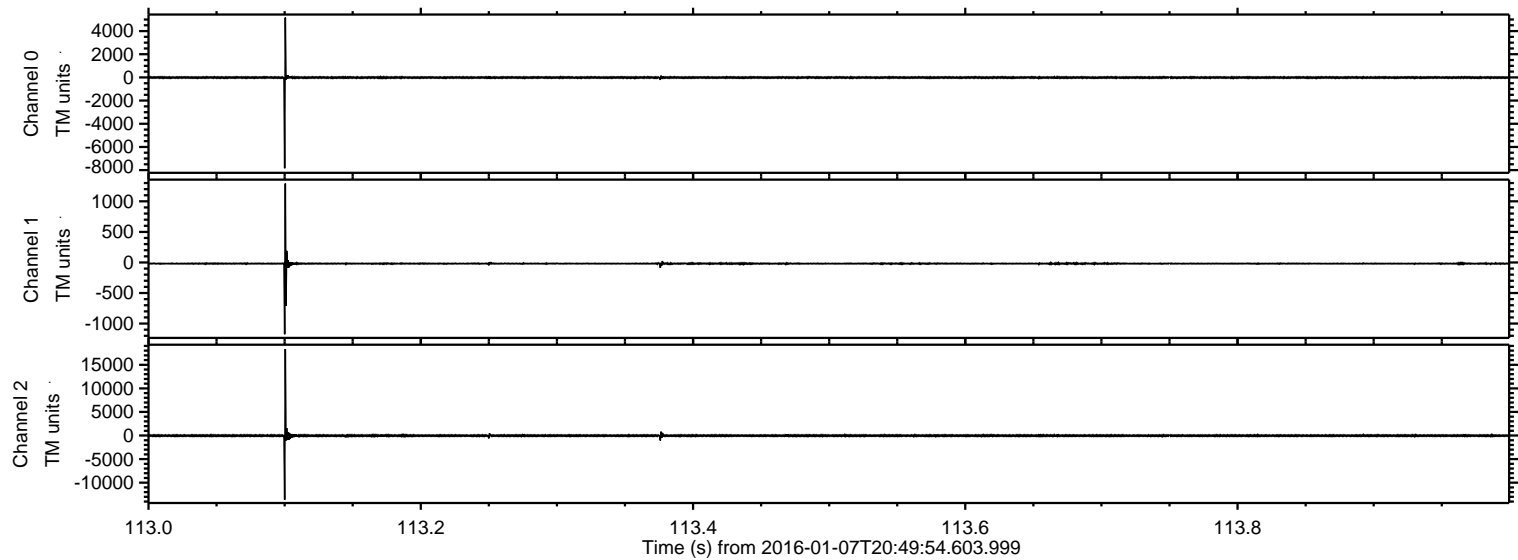
ELMAVAN 3D WAVEFORMS (Measured data sampled at 50 kHz) 51000 packets of 144 samples from 2016-01-07T20:49:54.603.999.

Processed Wed Mar 23 05:54:38 2016 by ELM ver.2012-10-06 from 001__elm20160107_204953__dat00.bin

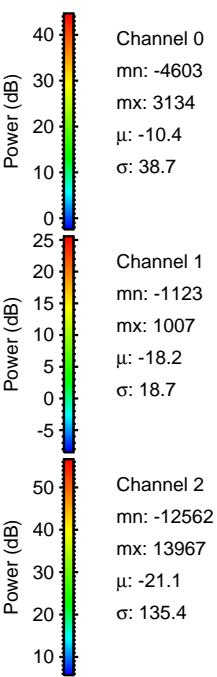
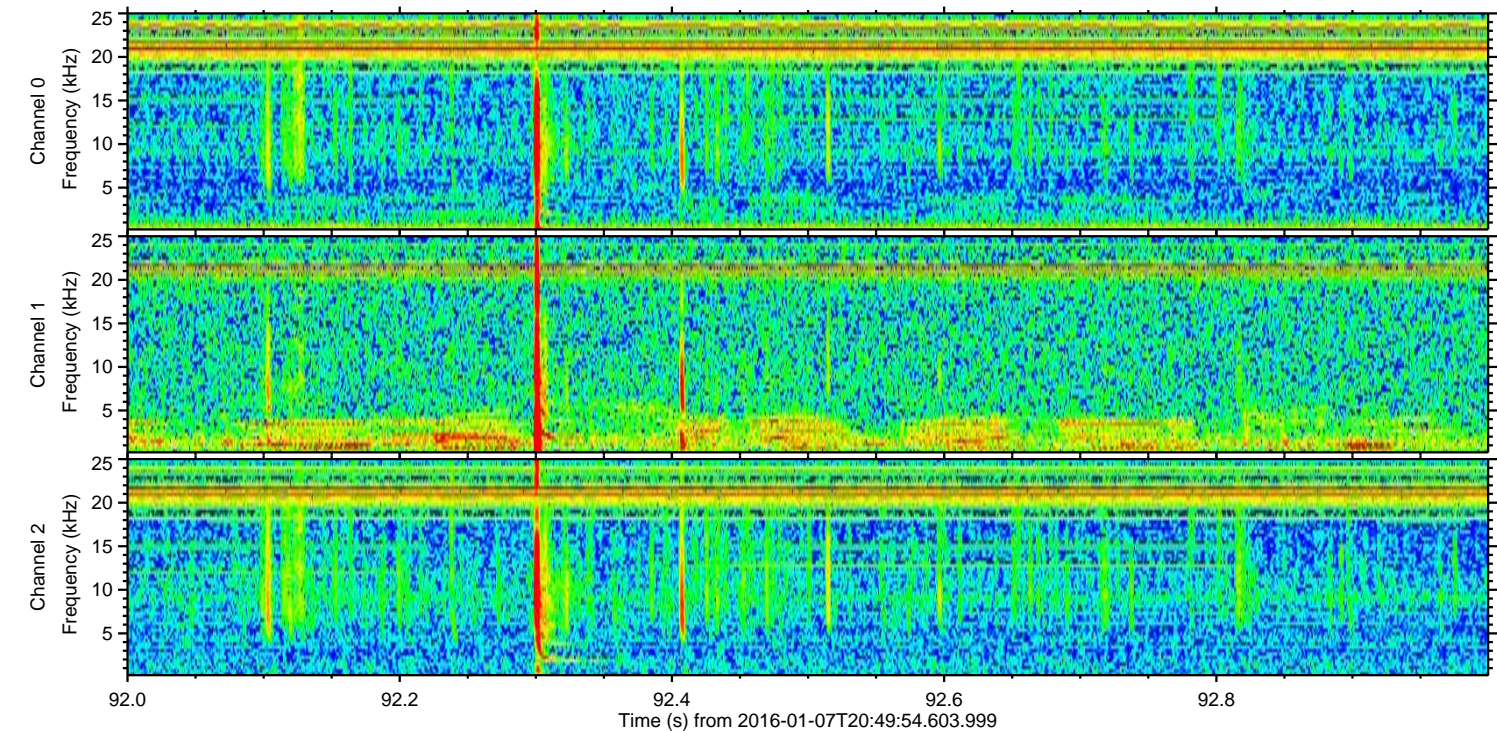
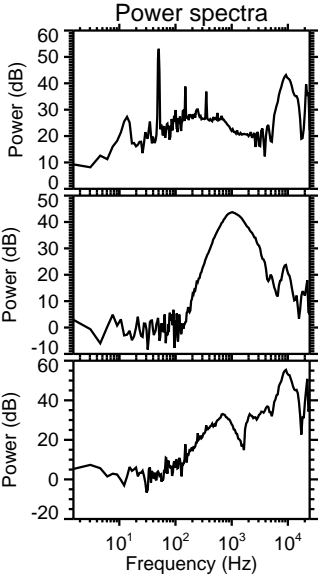
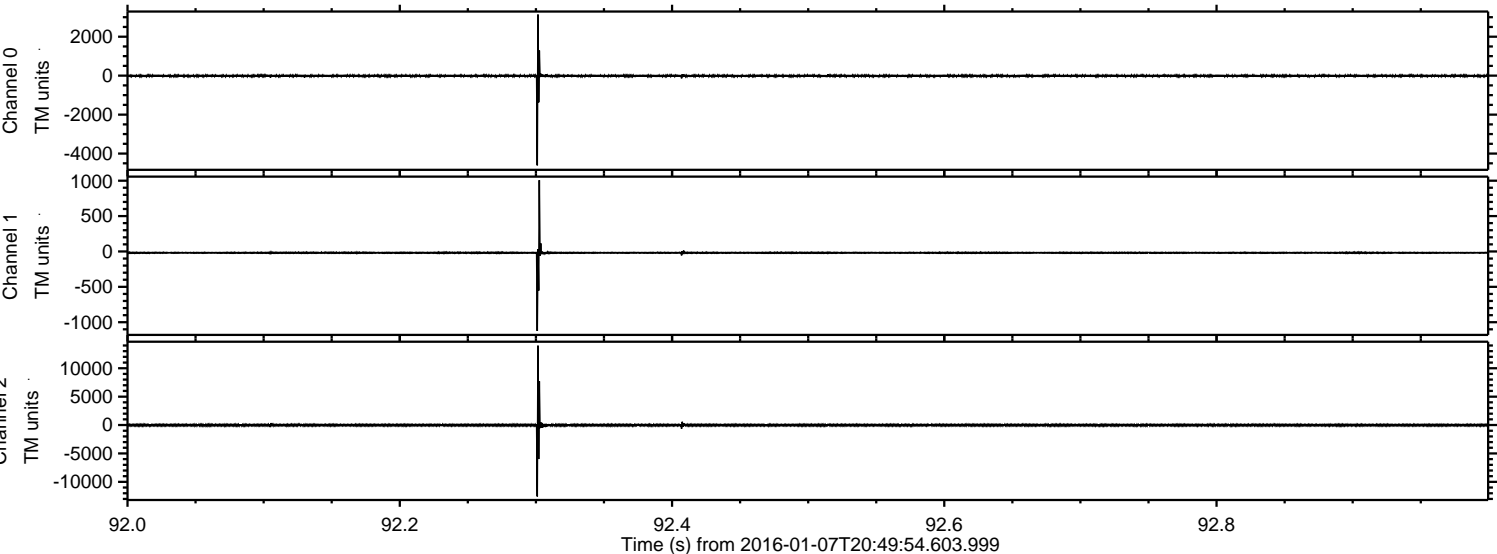


ELMAVAN 3D WAVEFORMS (Measured data sampled at 50 kHz) 51000 packets of 144 samples from 2016-01-07T20:49:54.603.999. Part 114/147

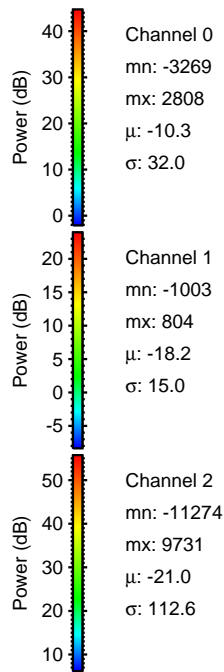
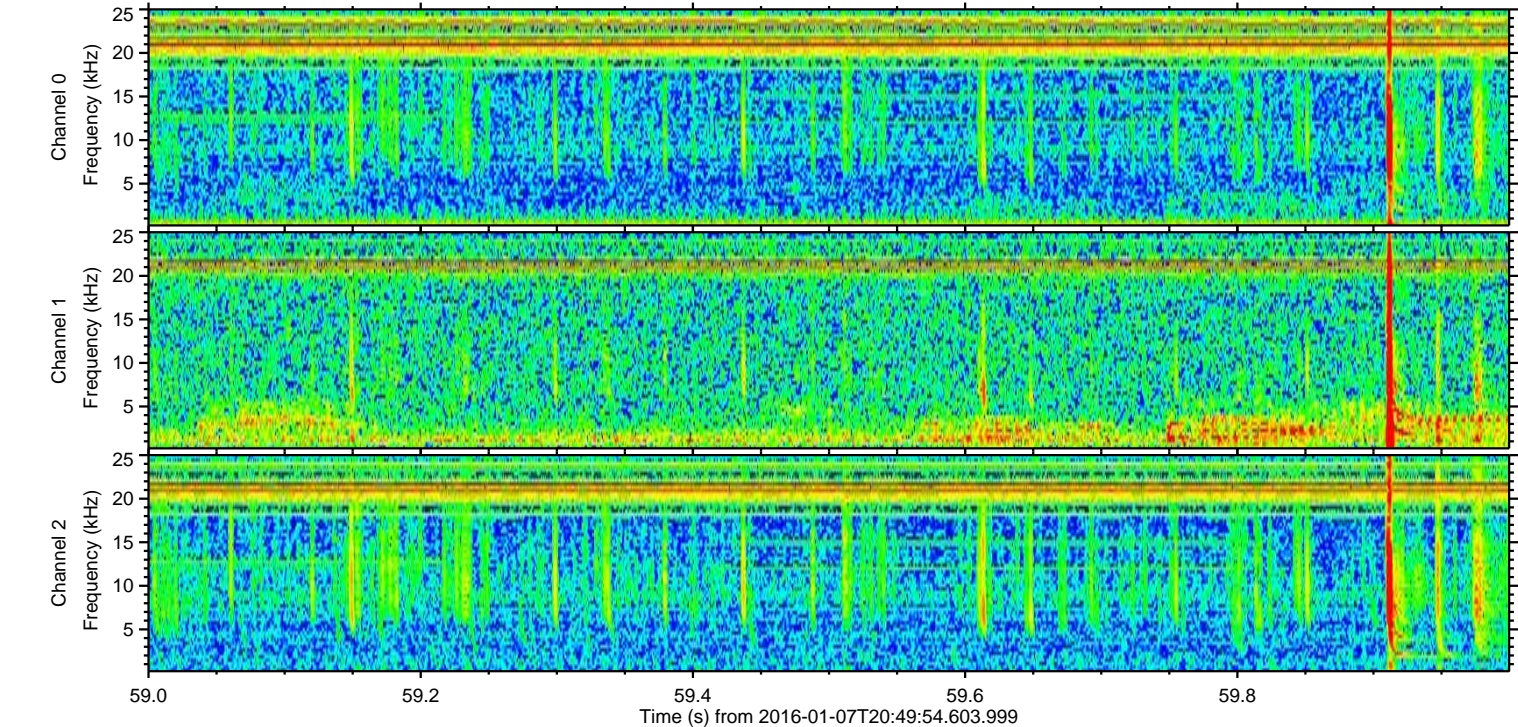
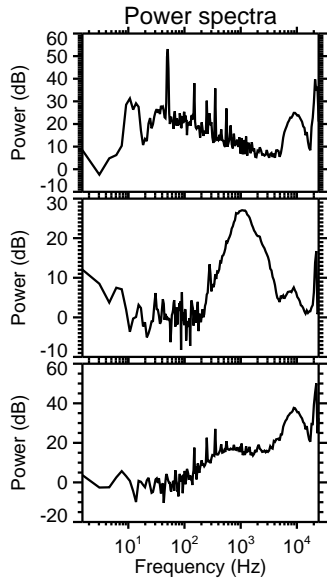
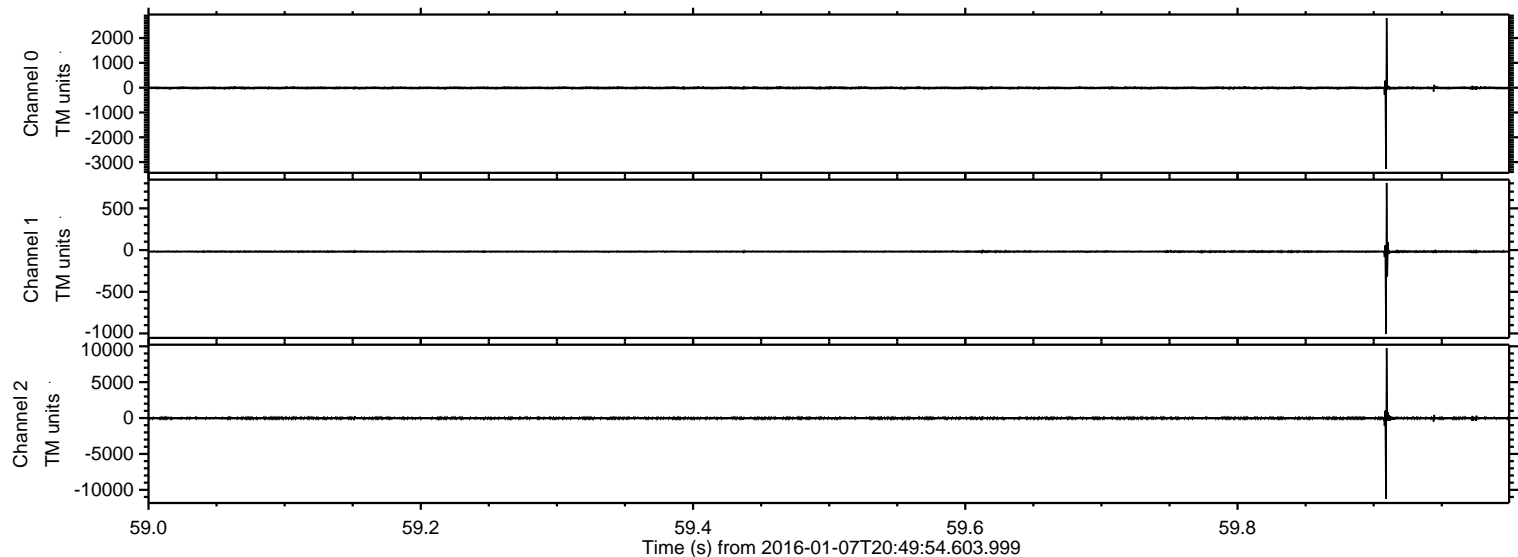
Processed Wed Mar 23 05:54:50 2016 by ELM ver.2012-10-06 from 001__elm20160107_204953__dat00.bin



Processed Wed Mar 23 05:54:50 2016 by ELM ver.2012-10-06 from 001__elm20160107_204953__dat00.bin

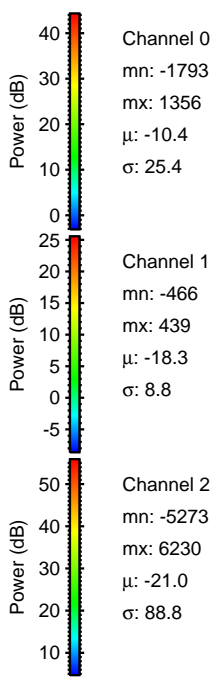
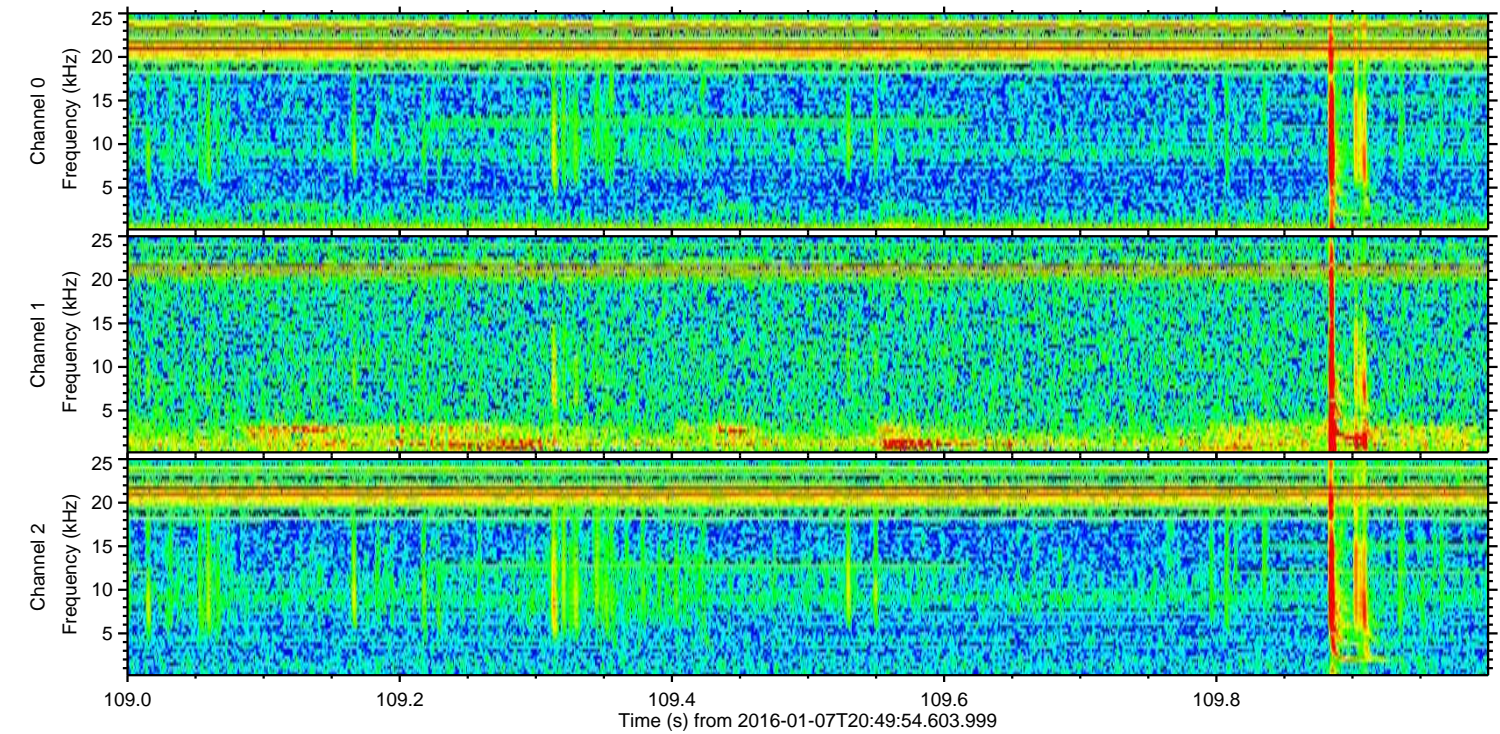
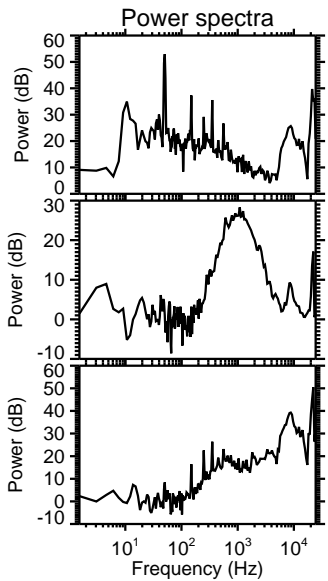
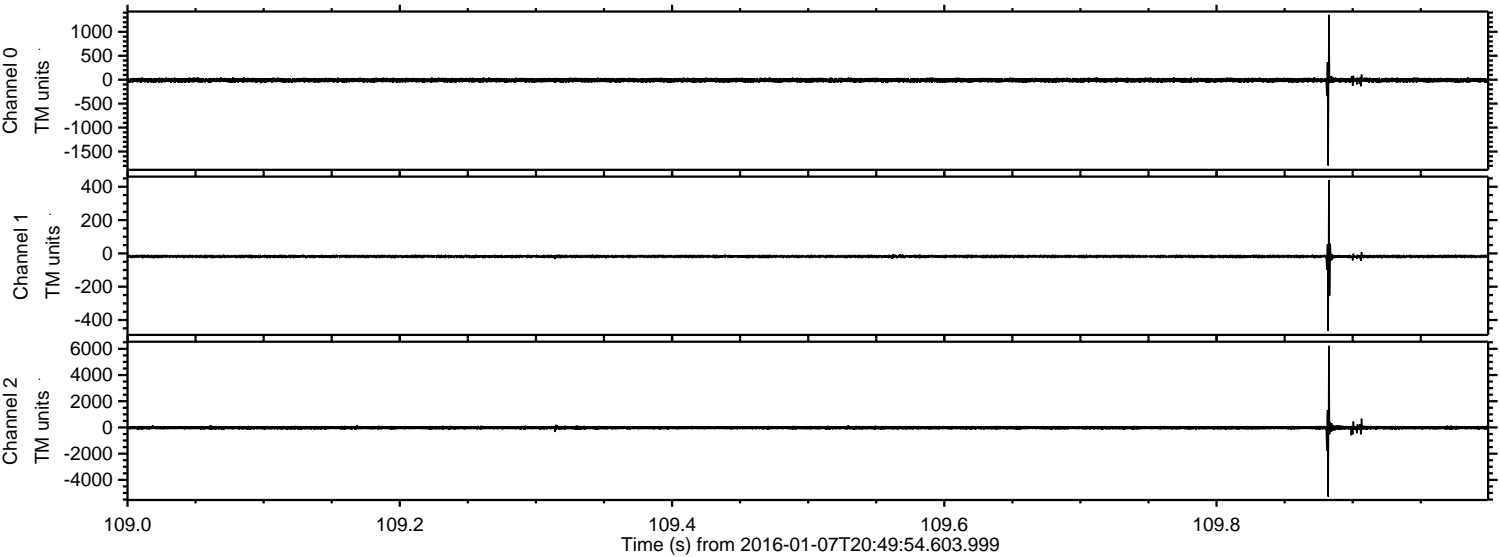


Processed Wed Mar 23 05:54:51 2016 by ELM ver.2012-10-06 from 001__elm20160107_204953__dat00.bin



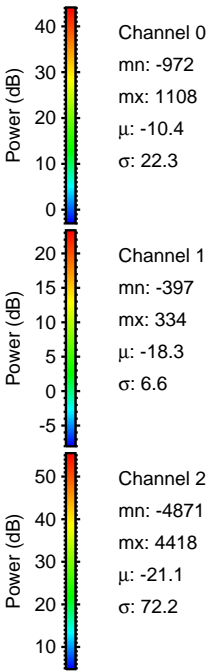
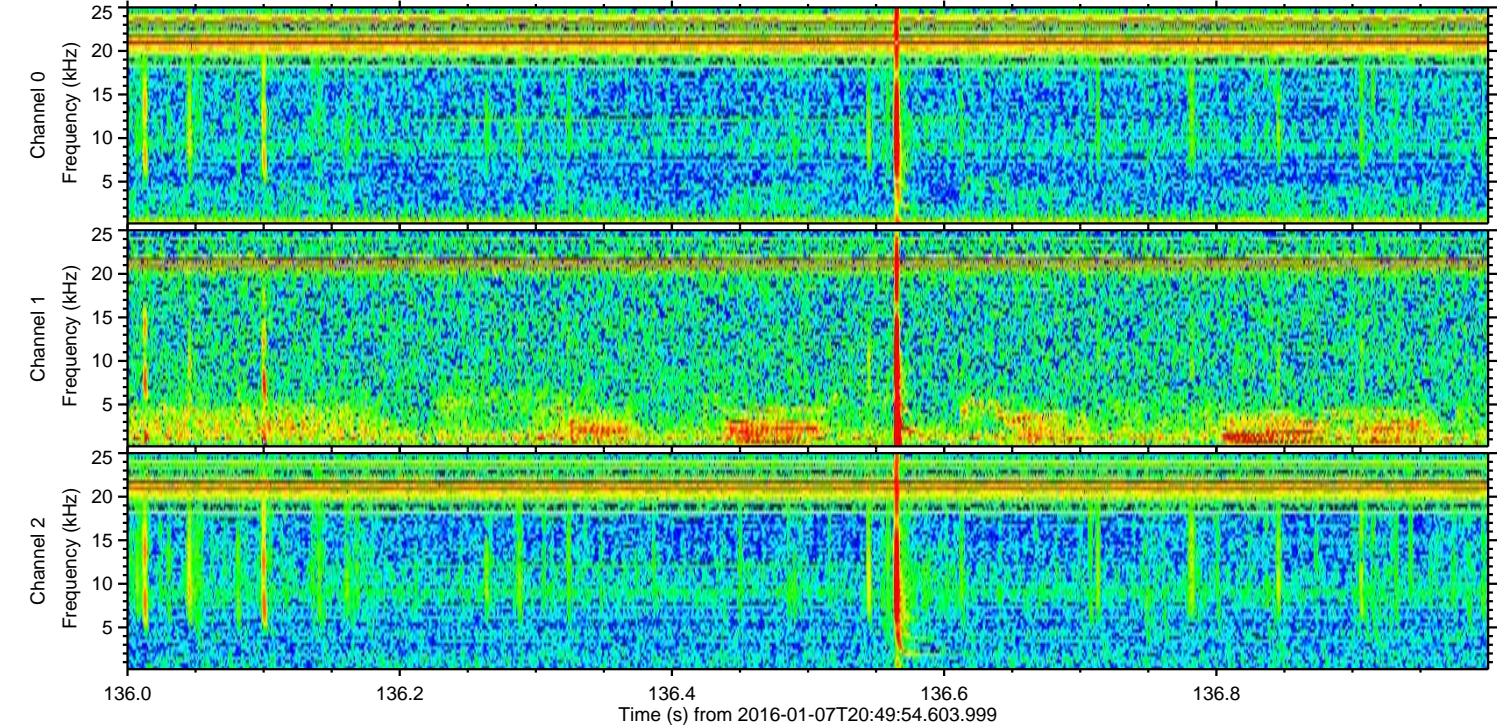
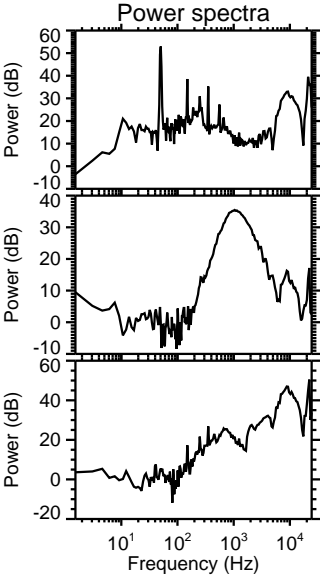
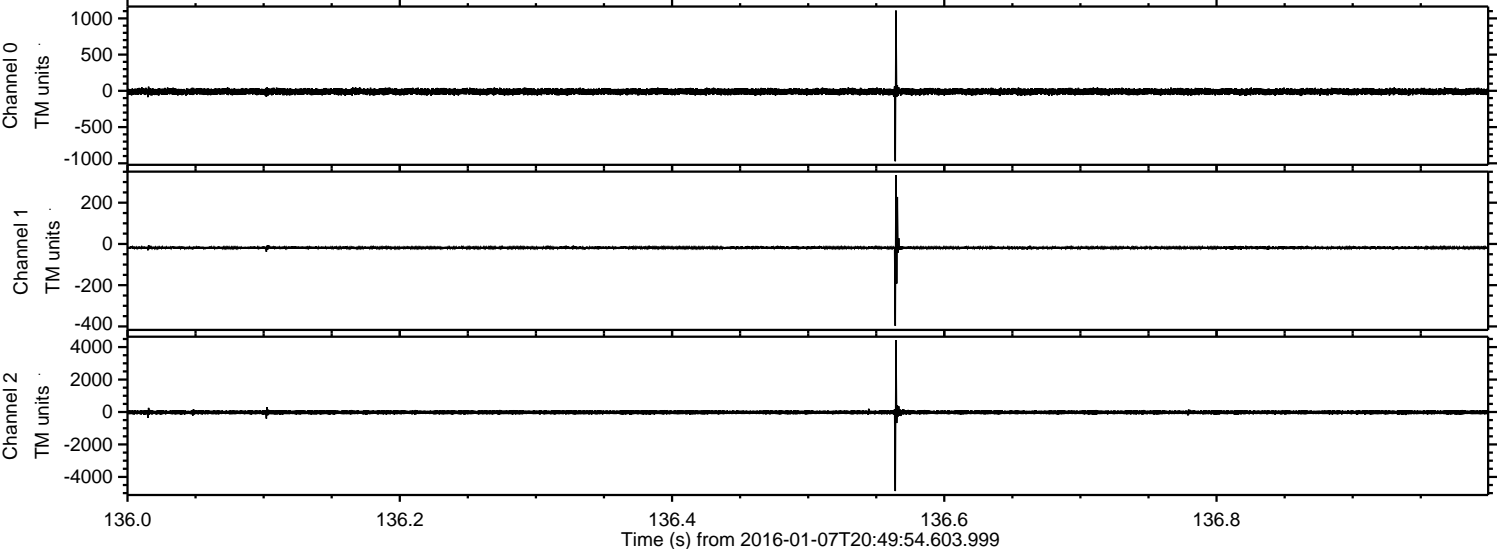
ELMAVAN 3D WAVEFORMS (Measured data sampled at 50 kHz) 51000 packets of 144 samples from 2016-01-07T20:49:54.603.999. Part 110/147

Processed Wed Mar 23 05:54:52 2016 by ELM ver.2012-10-06 from 001__elm20160107_204953__dat00.bin

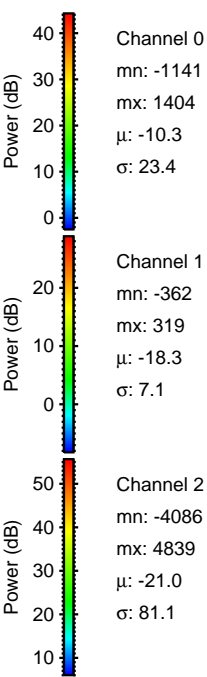
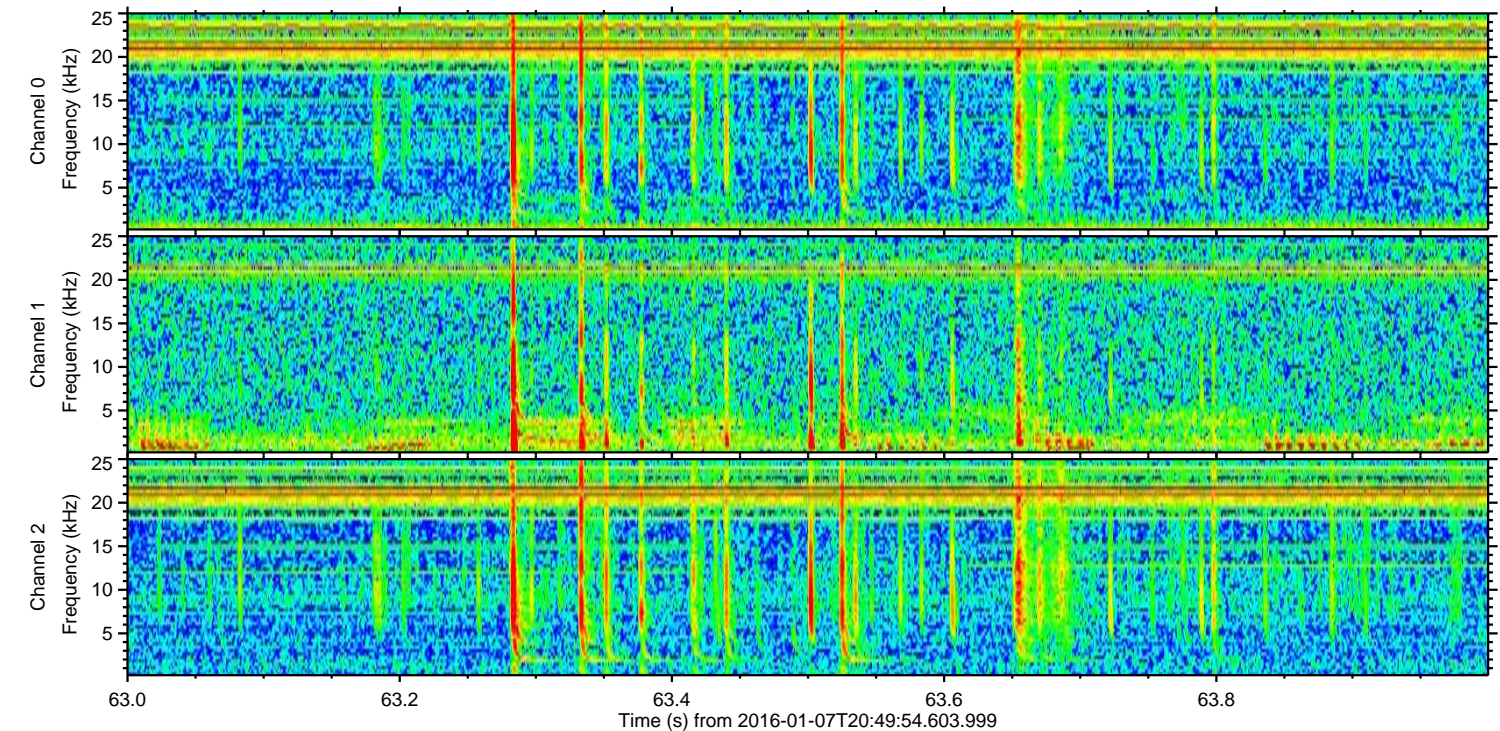
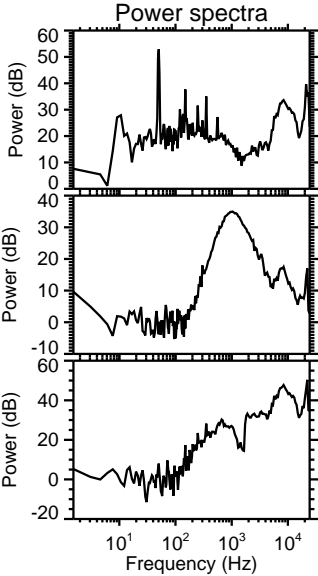
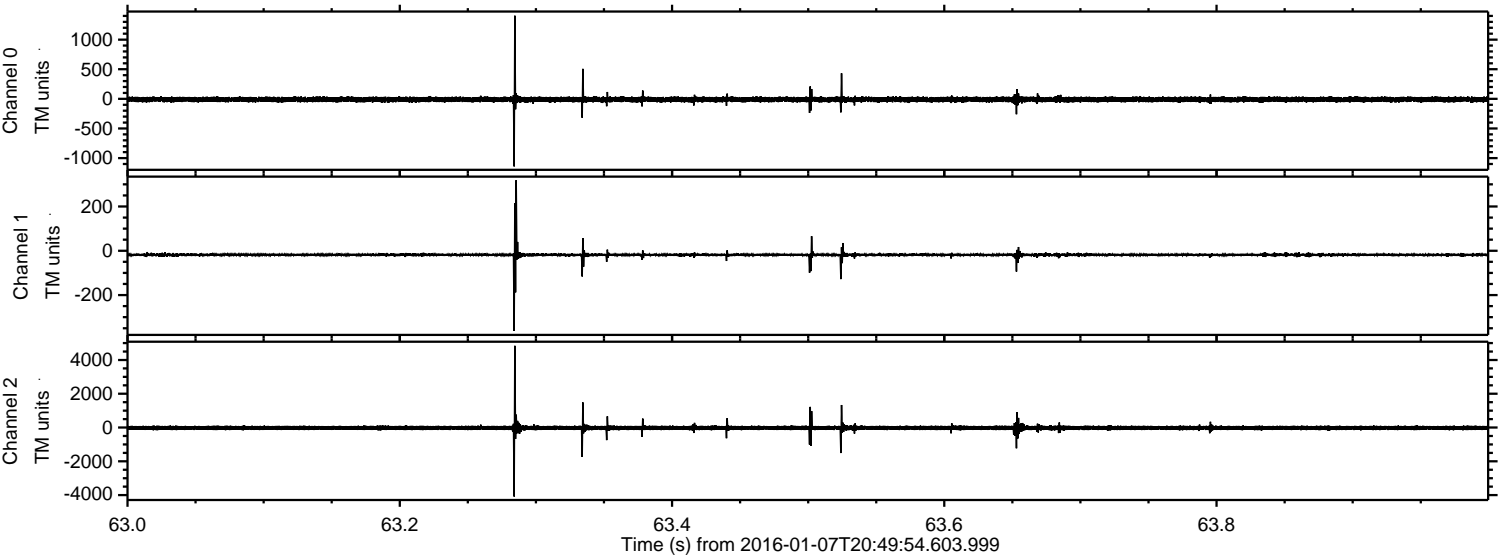


ELMAVAN 3D WAVEFORMS (Measured data sampled at 50 kHz) 51000 packets of 144 samples from 2016-01-07T20:49:54.603.999. Part 137/147

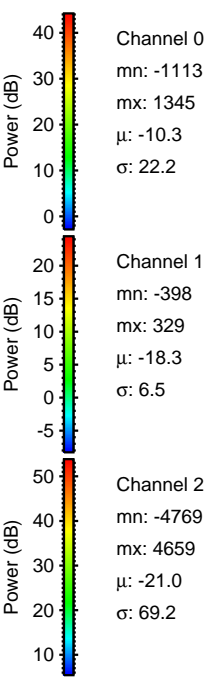
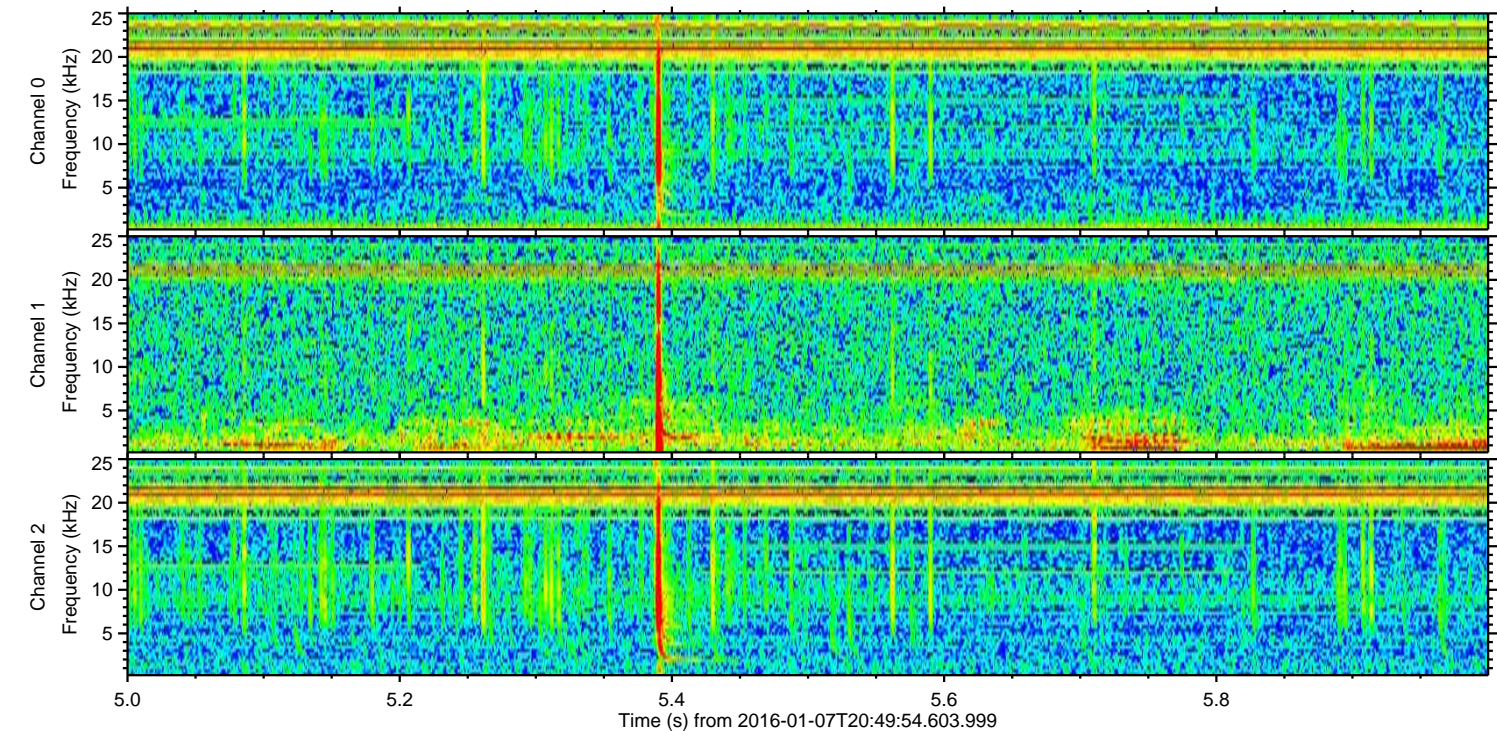
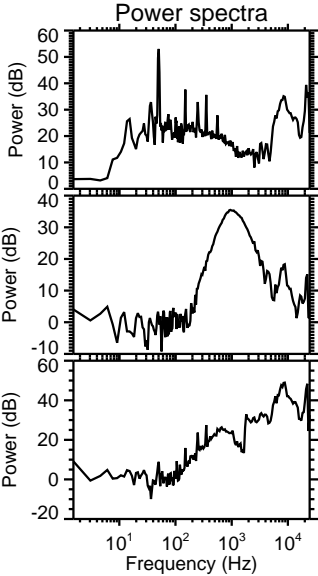
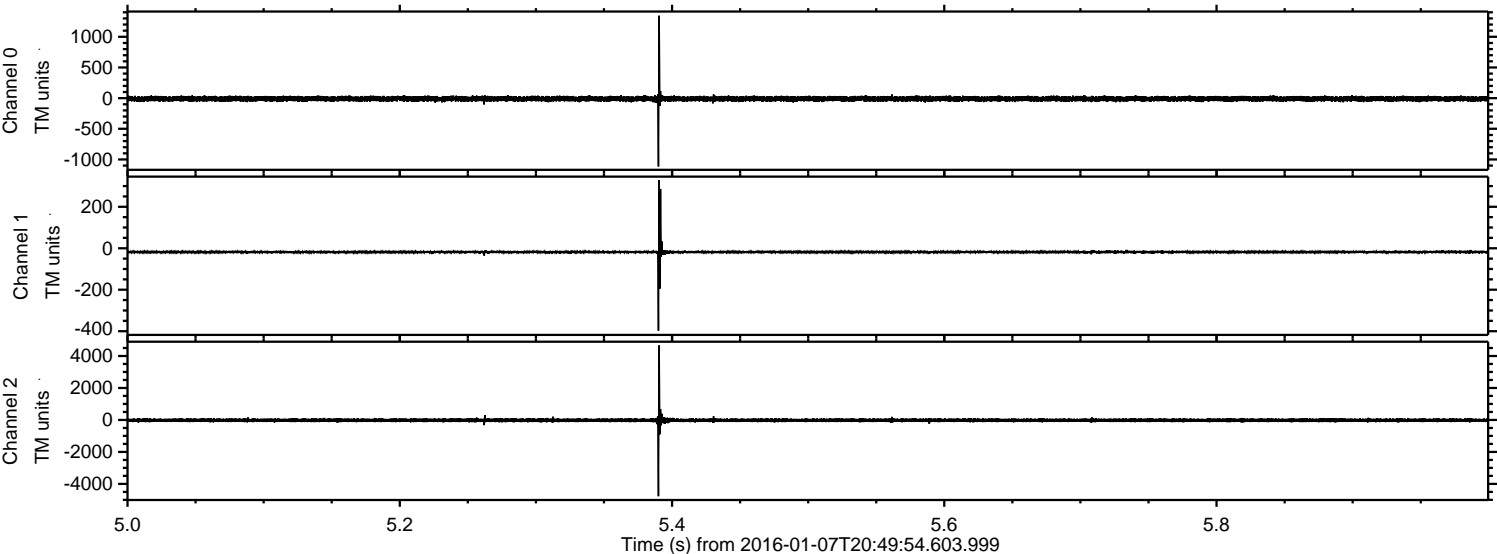
Processed Wed Mar 23 05:54:53 2016 by ELM ver.2012-10-06 from 001__elm20160107_204953__dat00.bin



Processed Wed Mar 23 05:54:54 2016 by ELM ver.2012-10-06 from 001__elm20160107_204953__dat00.bin

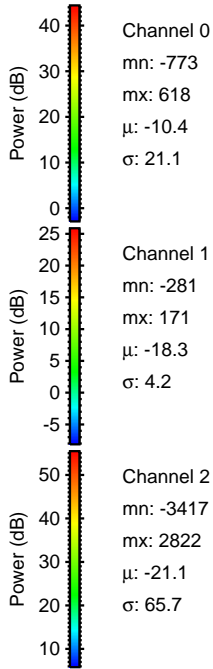
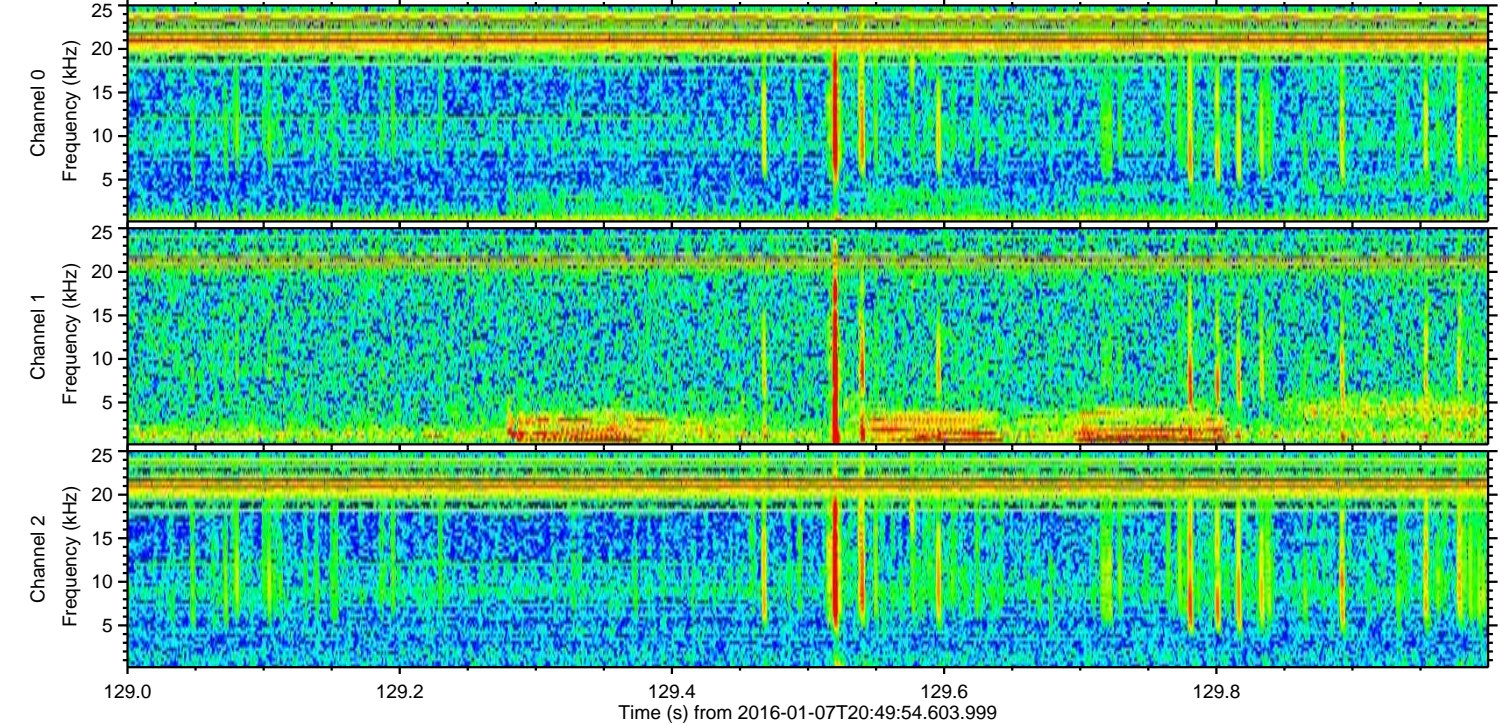
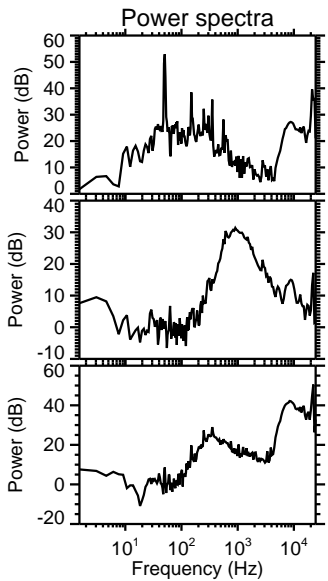
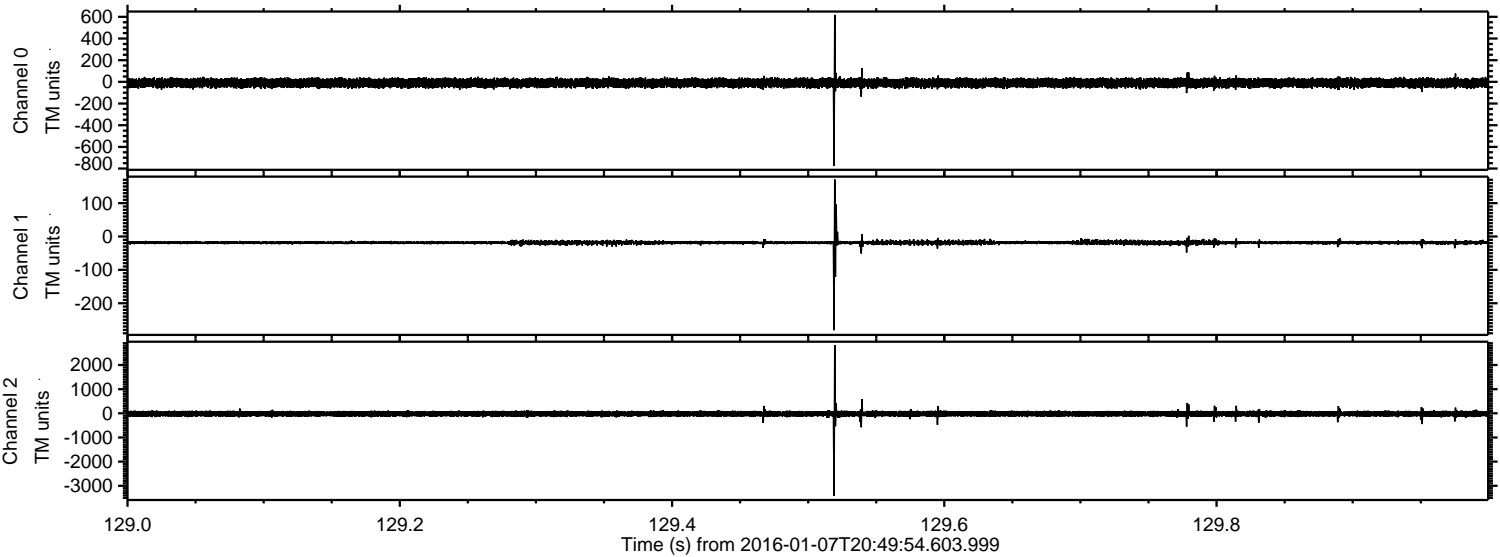


Processed Wed Mar 23 05:54:55 2016 by ELM ver.2012-10-06 from 001__elm20160107_204953__dat00.bin



ELMAVAN 3D WAVEFORMS (Measured data sampled at 50 kHz) 51000 packets of 144 samples from 2016-01-07T20:49:54.603.999. Part 130/147

Processed Wed Mar 23 05:54:56 2016 by ELM ver.2012-10-06 from 001__elm20160107_204953__dat00.bin

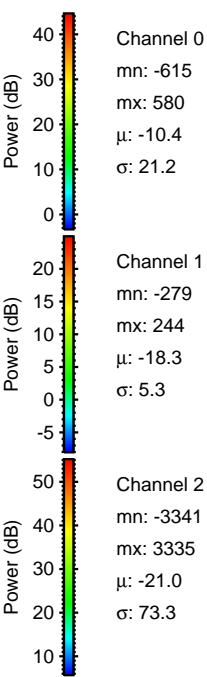
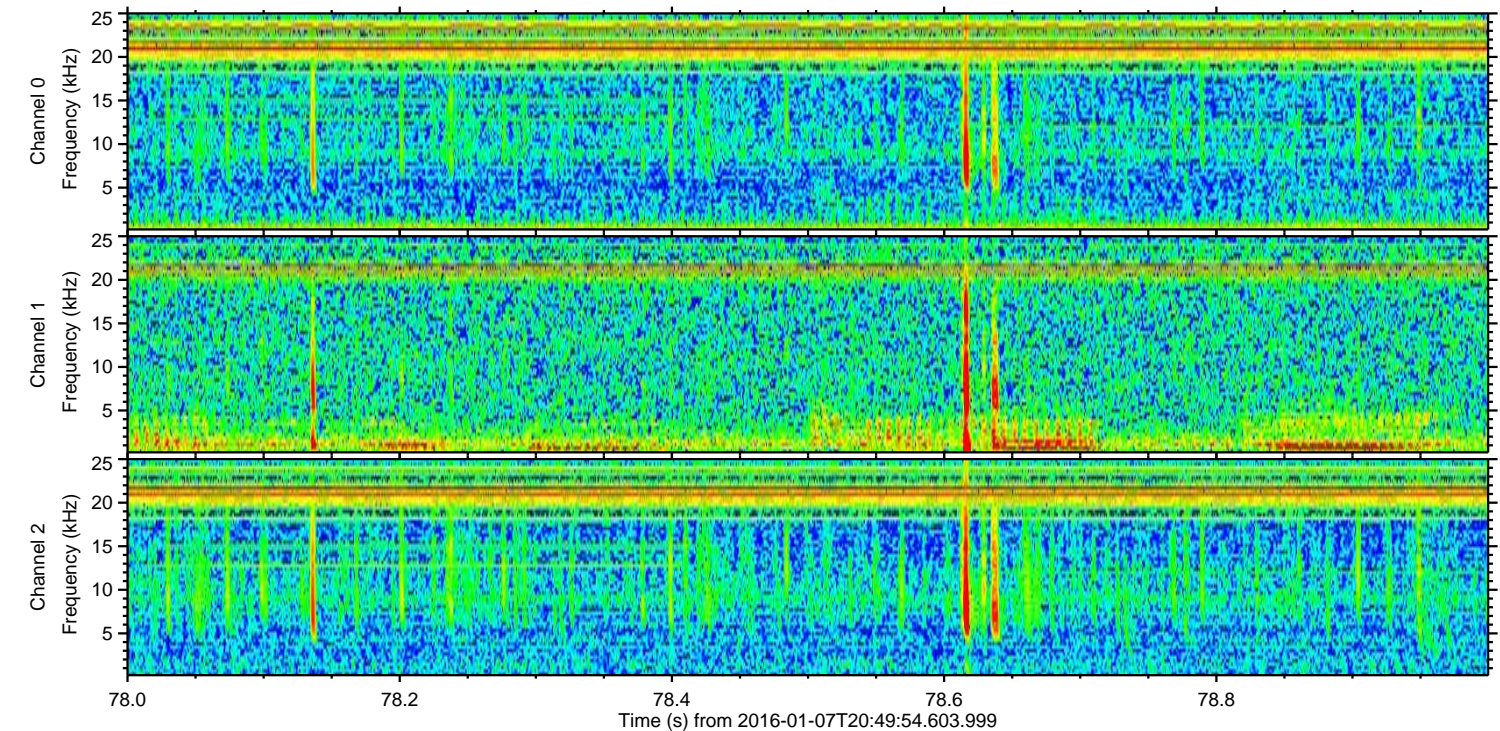
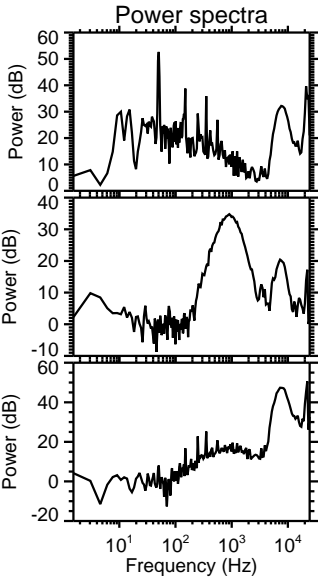
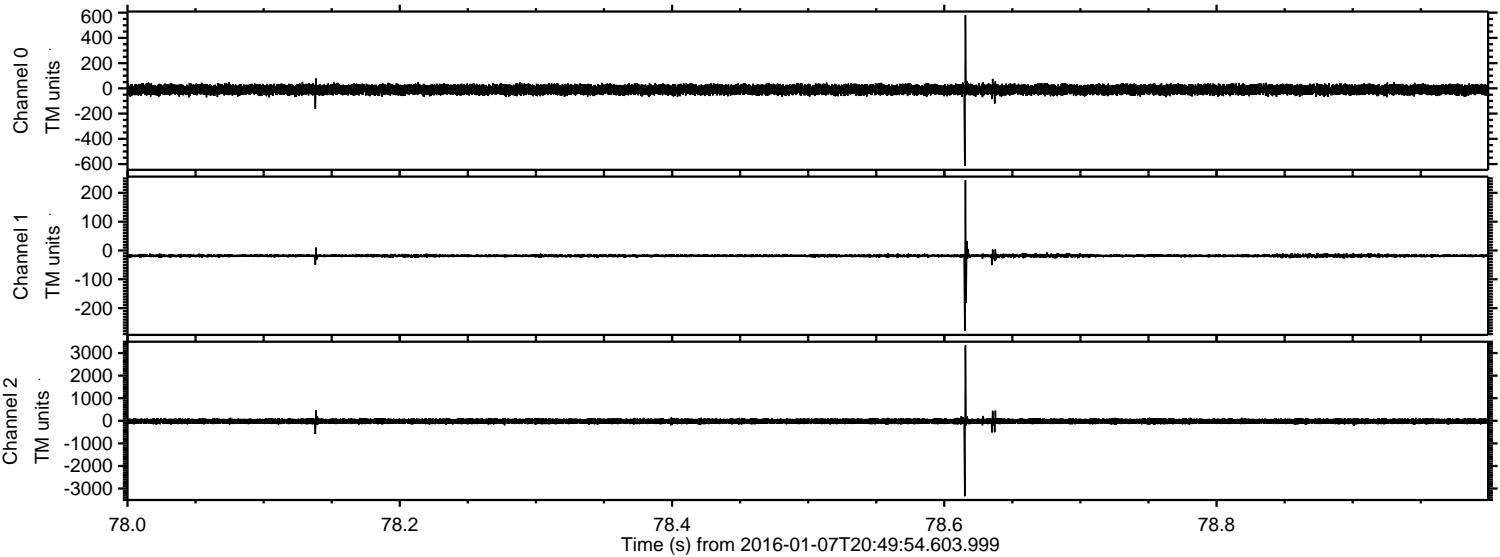


Channel 0
mn: -773
mx: 618
 μ : -10.4
 σ : 21.1

Channel 1
mn: -281
mx: 171
 μ : -18.3
 σ : 4.2

Channel 2
mn: -3417
mx: 2822
 μ : -21.1
 σ : 65.7

Processed Wed Mar 23 05:54:57 2016 by ELM ver.2012-10-06 from 001__elm20160107_204953__dat00.bin



Processed Wed Mar 23 05:54:58 2016 by ELM ver.2012-10-06 from 001__elm20160107_204953__dat00.bin

