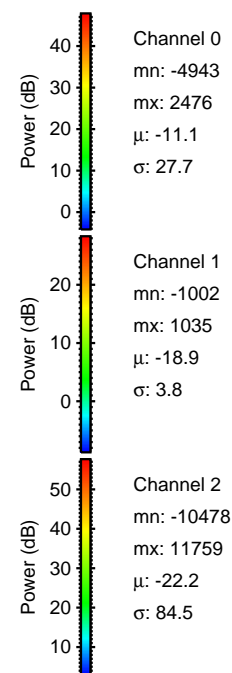
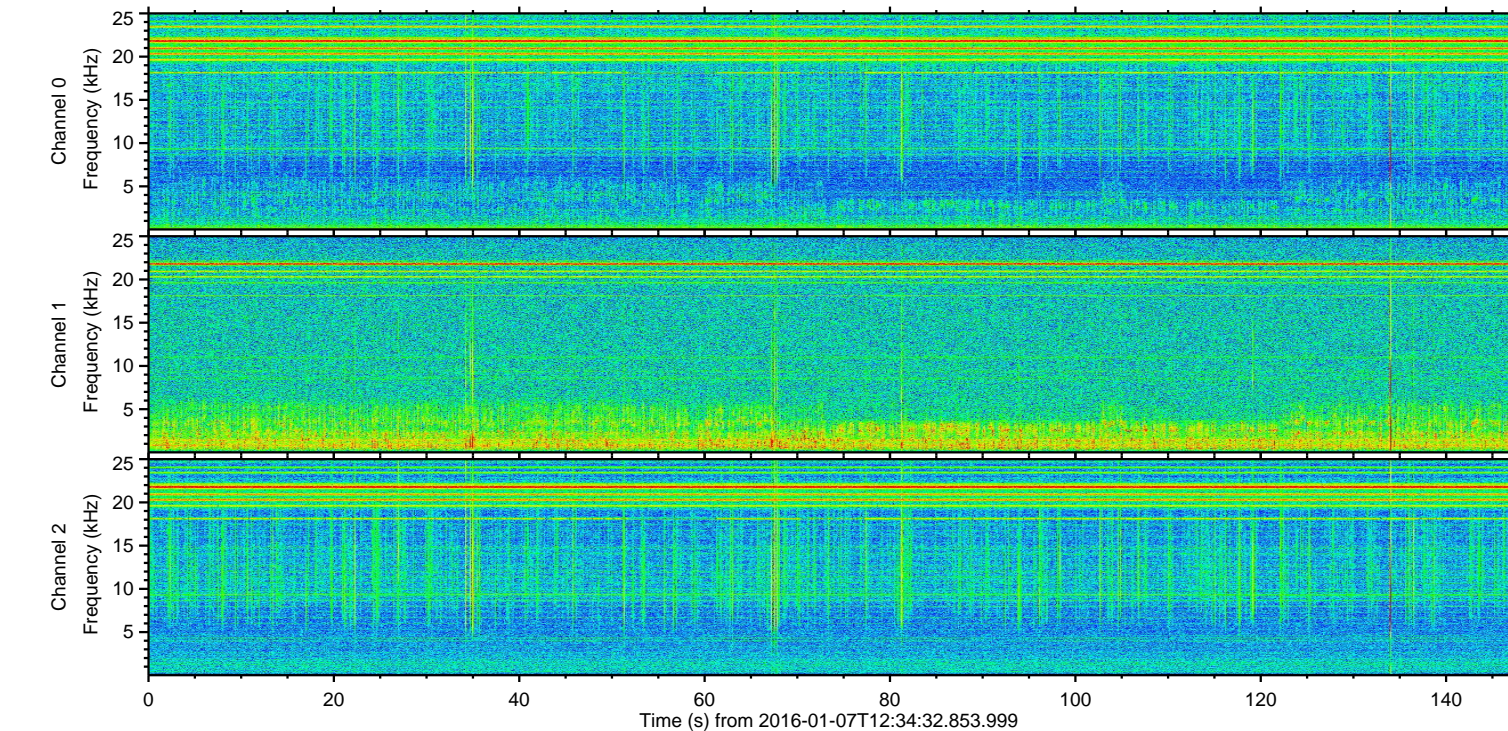
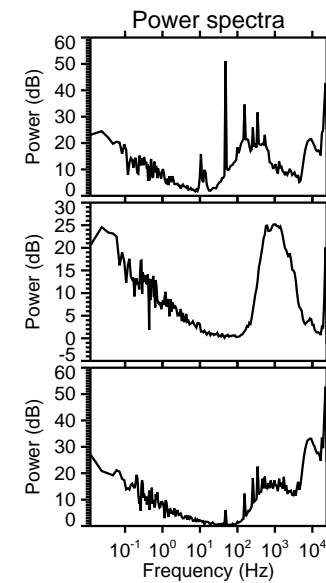
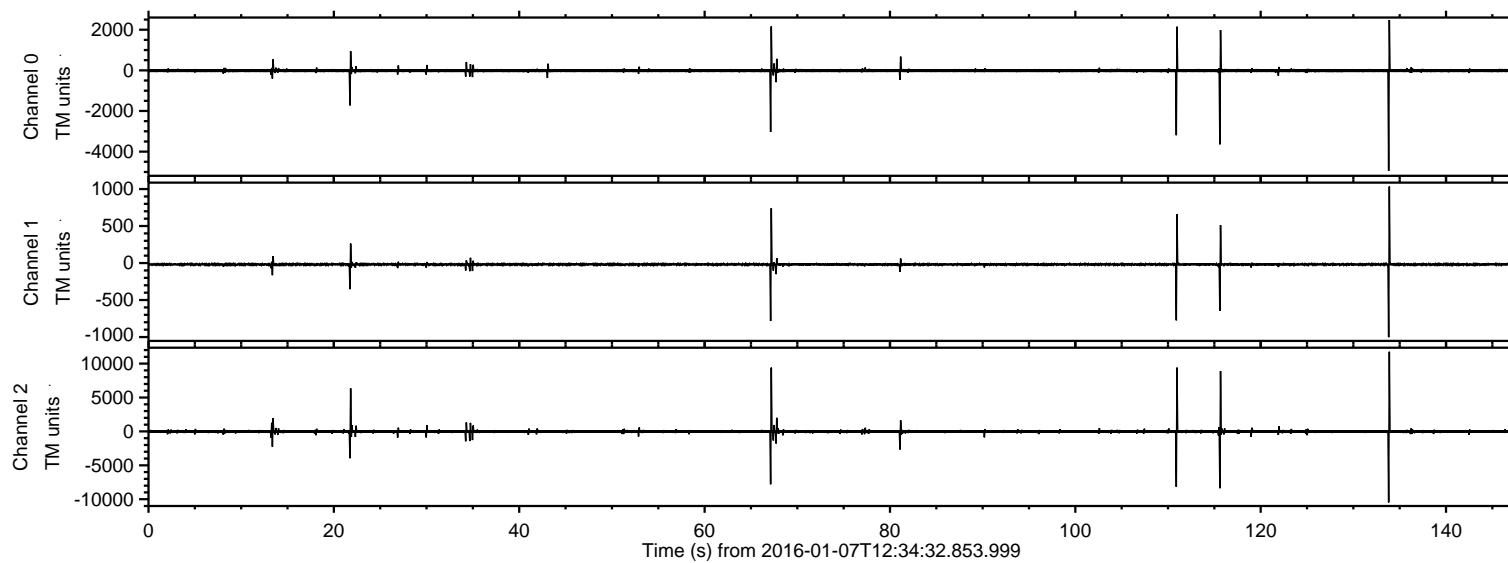


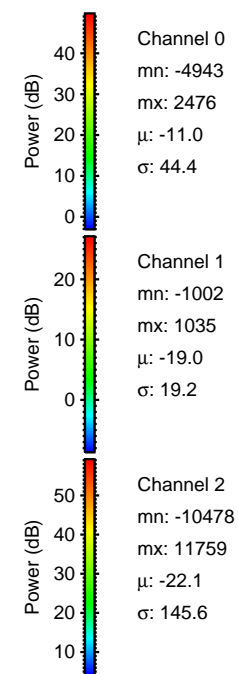
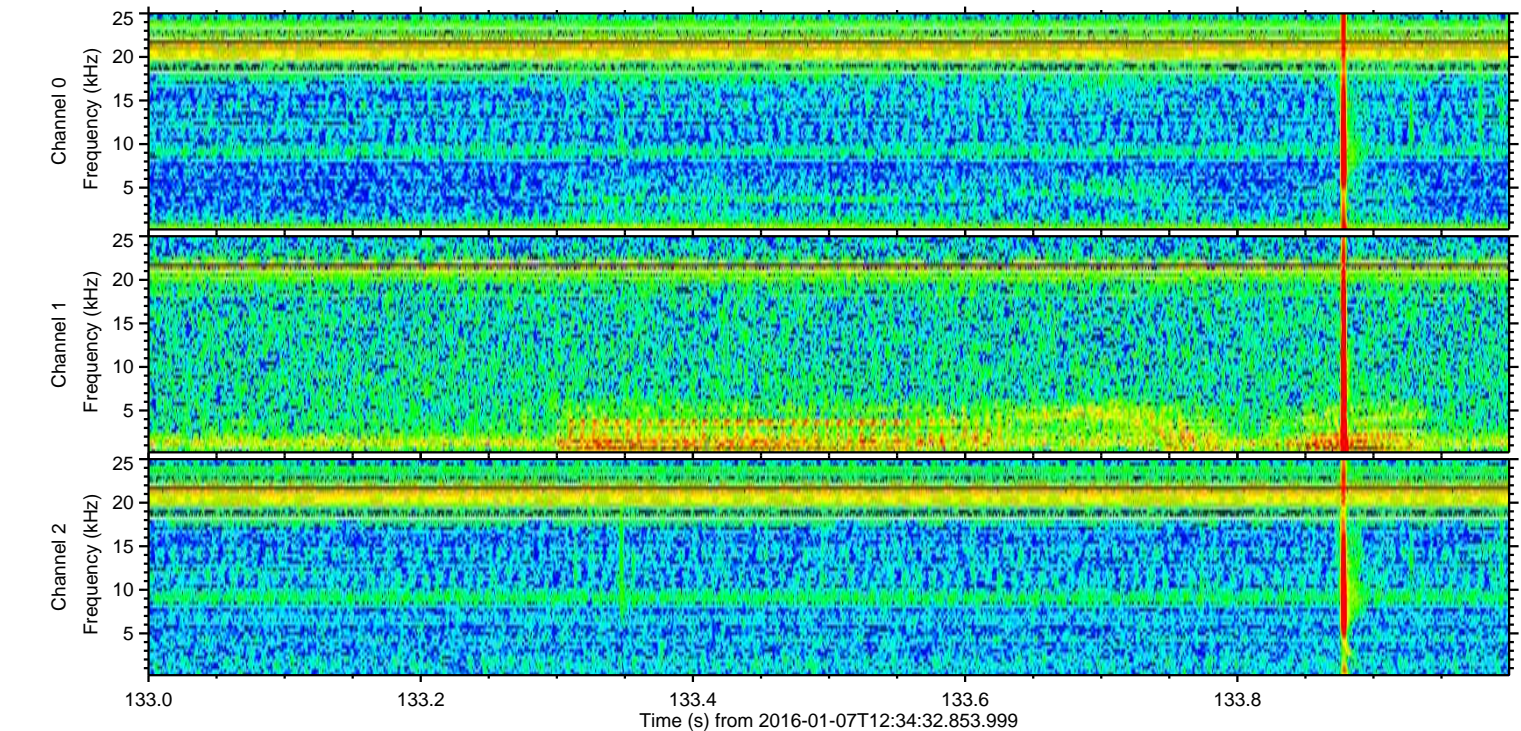
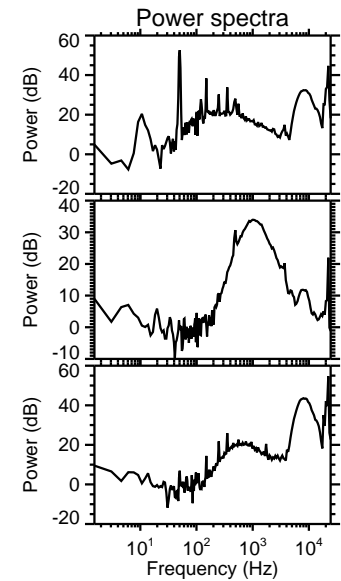
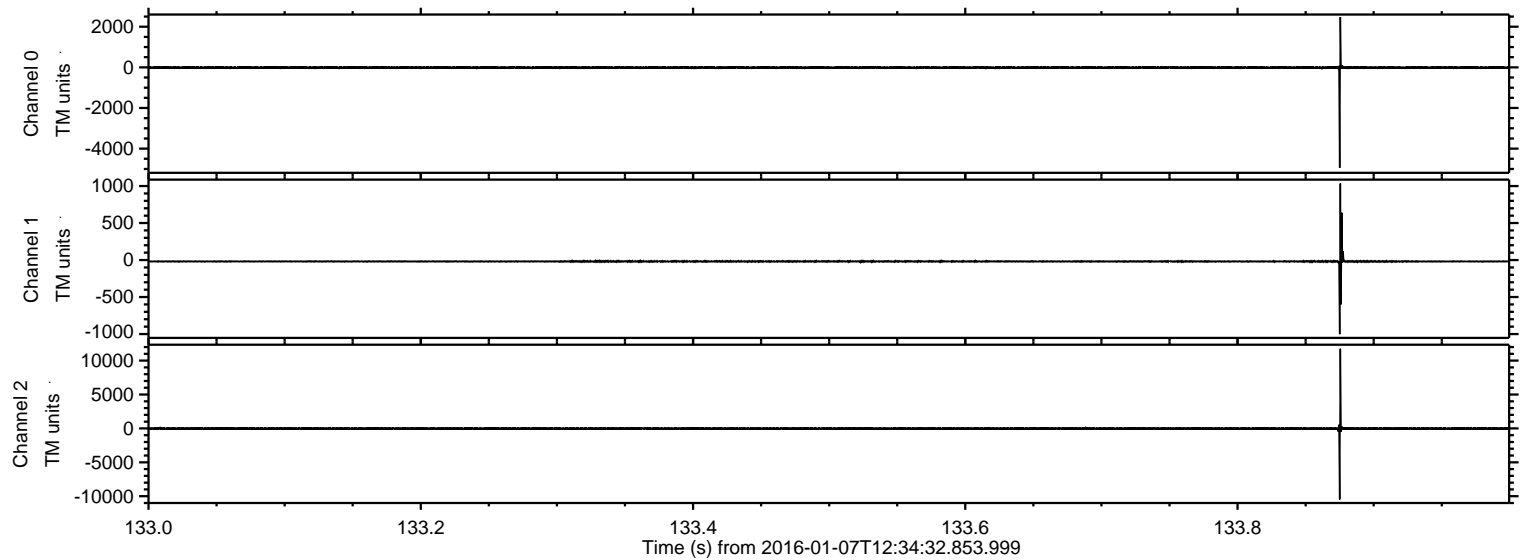
ELMAVAN 3D WAVEFORMS (Measured data sampled at 50 kHz) 51000 packets of 144 samples from 2016-01-07T12:34:32.853.999.

Processed Wed Mar 23 01:07:04 2016 by ELM ver.2012-10-06 from 001__elm20160107_123431__dat00.bin

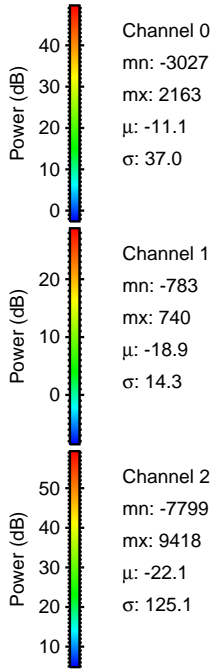
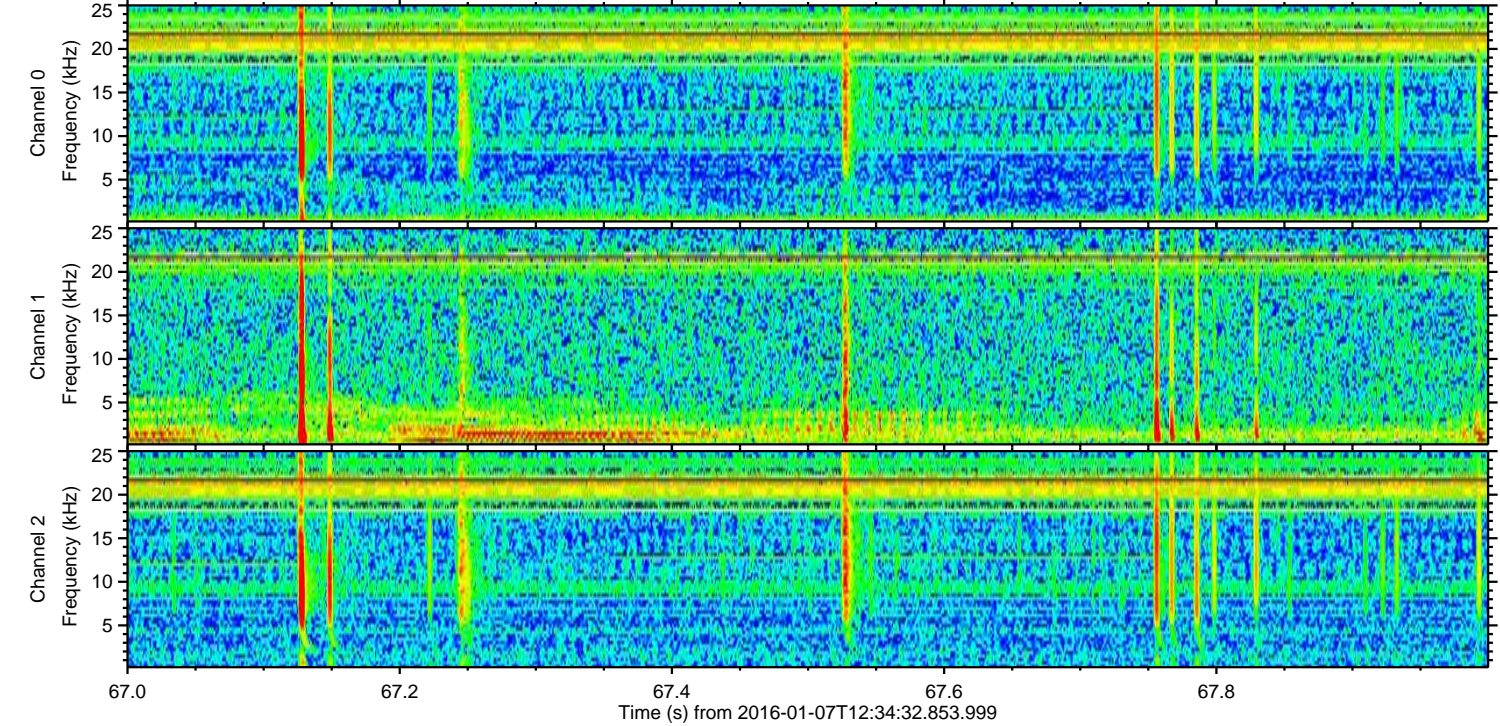
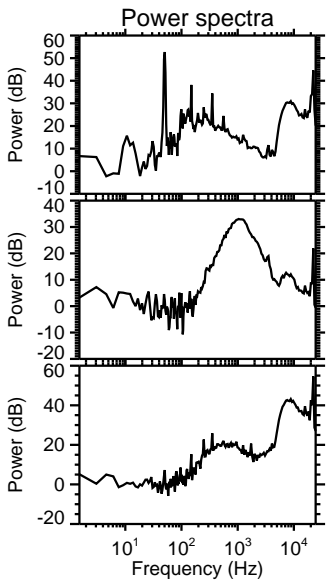
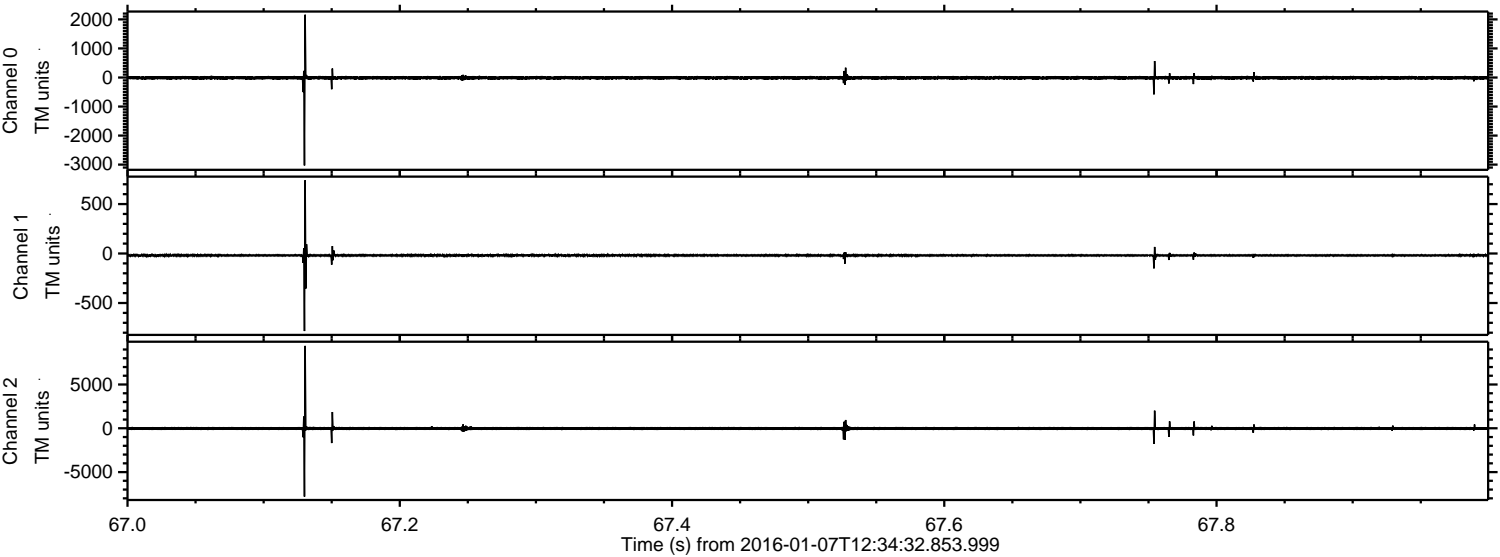


ELMAVAN 3D WAVEFORMS (Measured data sampled at 50 kHz) 51000 packets of 144 samples from 2016-01-07T12:34:32.853.999. Part 134/147

Processed Wed Mar 23 01:07:15 2016 by ELM ver.2012-10-06 from 001__elm20160107_123431__dat00.bin



Processed Wed Mar 23 01:07:16 2016 by ELM ver.2012-10-06 from 001__elm20160107_123431__dat00.bin



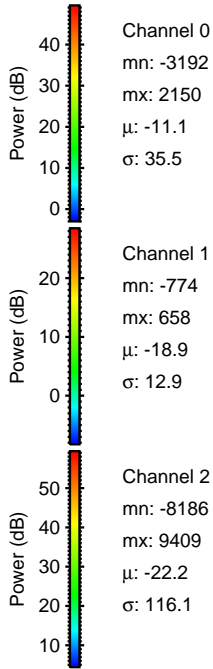
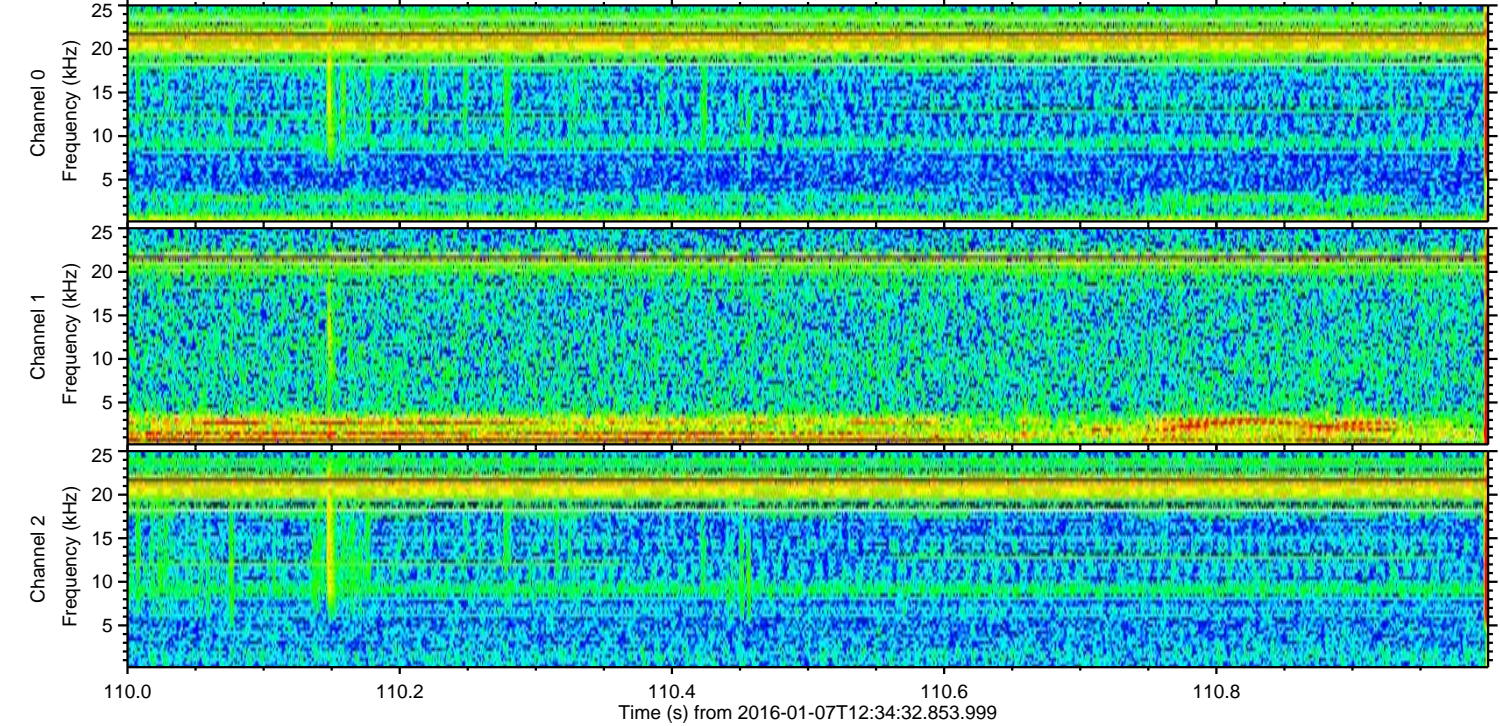
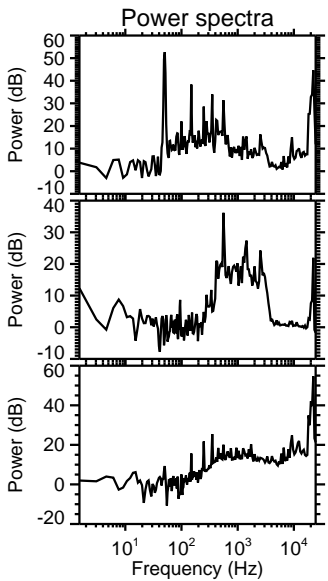
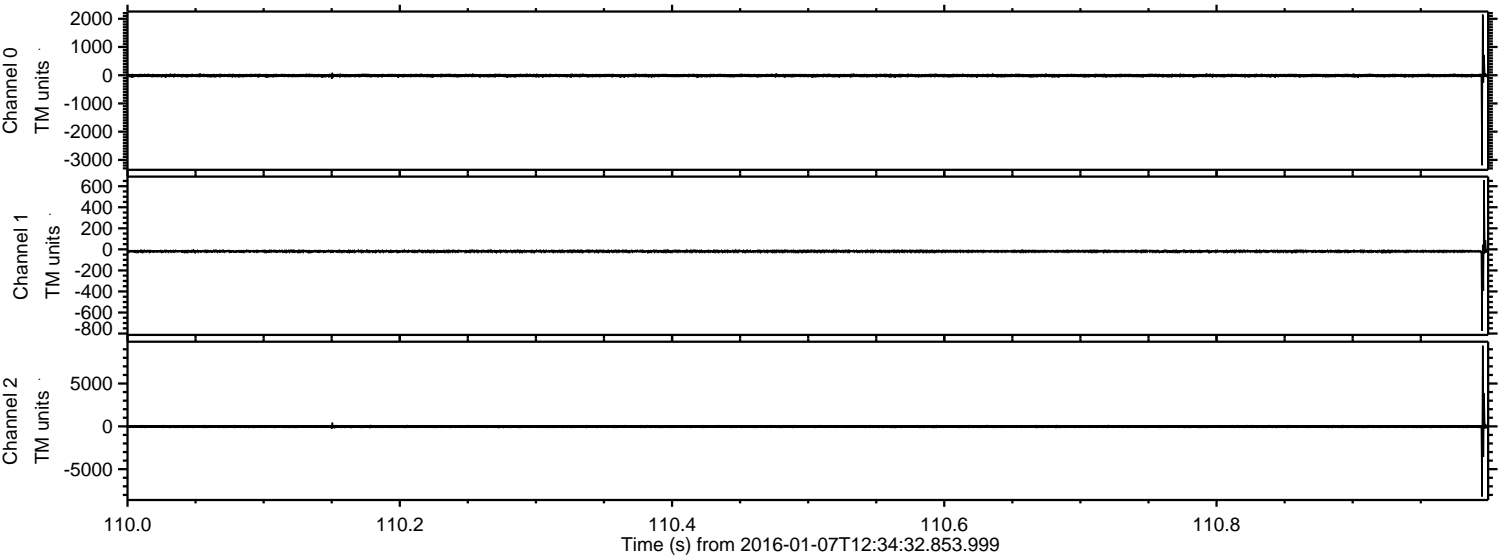
Channel 0
mn: -3027
mx: 2163
 μ : -11.1
 σ : 37.0

Channel 1
mn: -783
mx: 740
 μ : -18.9
 σ : 14.3

Channel 2
mn: -7799
mx: 9418
 μ : -22.1
 σ : 125.1

ELMAVAN 3D WAVEFORMS (Measured data sampled at 50 kHz) 51000 packets of 144 samples from 2016-01-07T12:34:32.853.999. Part 111/147

Processed Wed Mar 23 01:07:17 2016 by ELM ver.2012-10-06 from 001__elm20160107_123431__dat00.bin



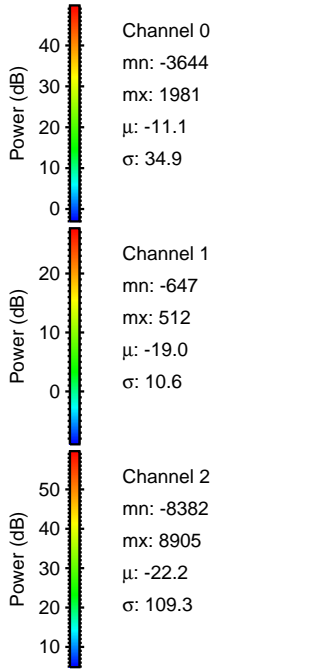
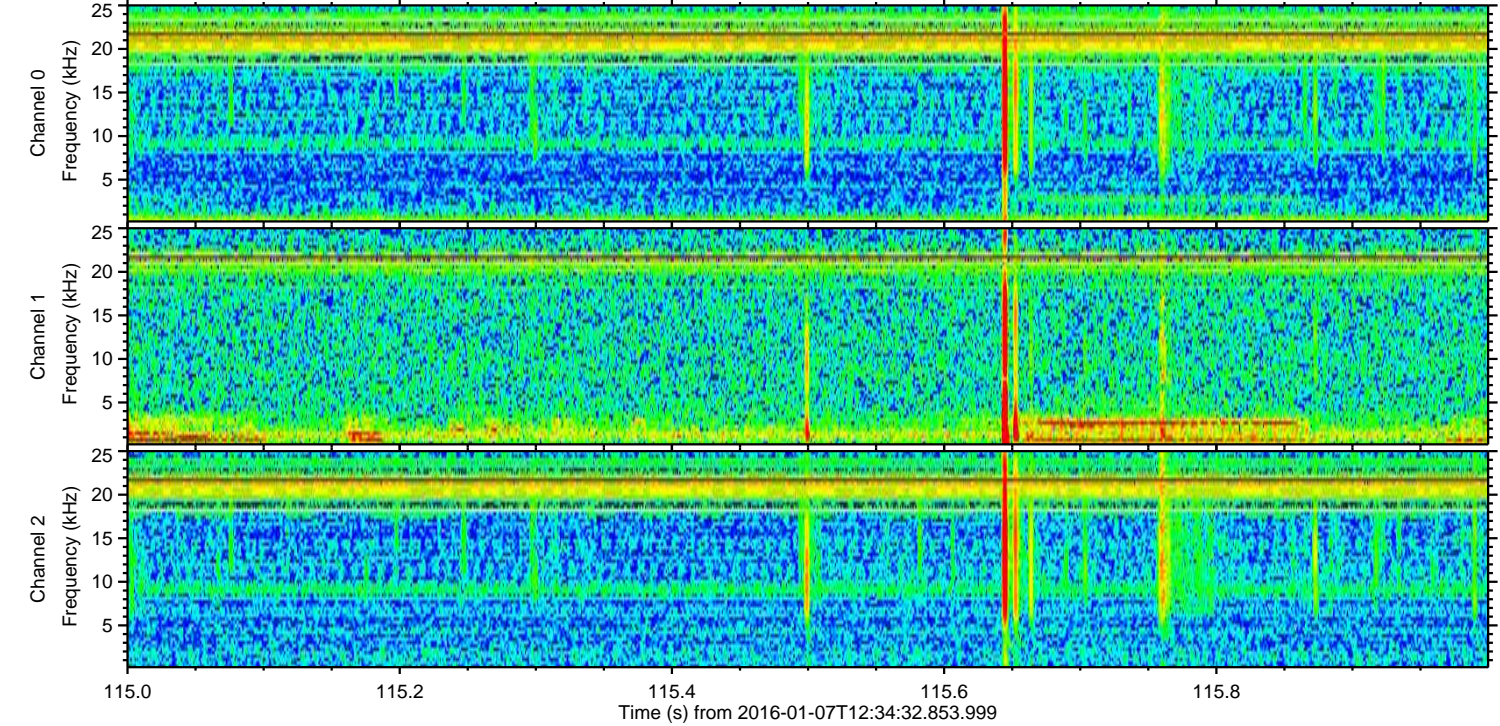
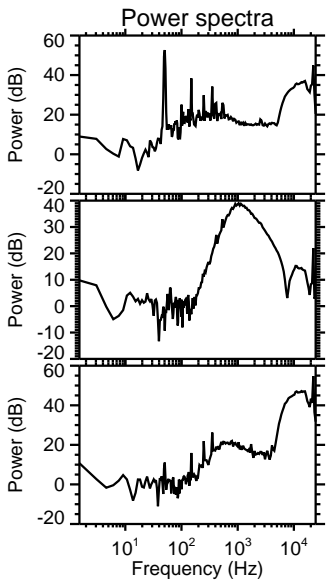
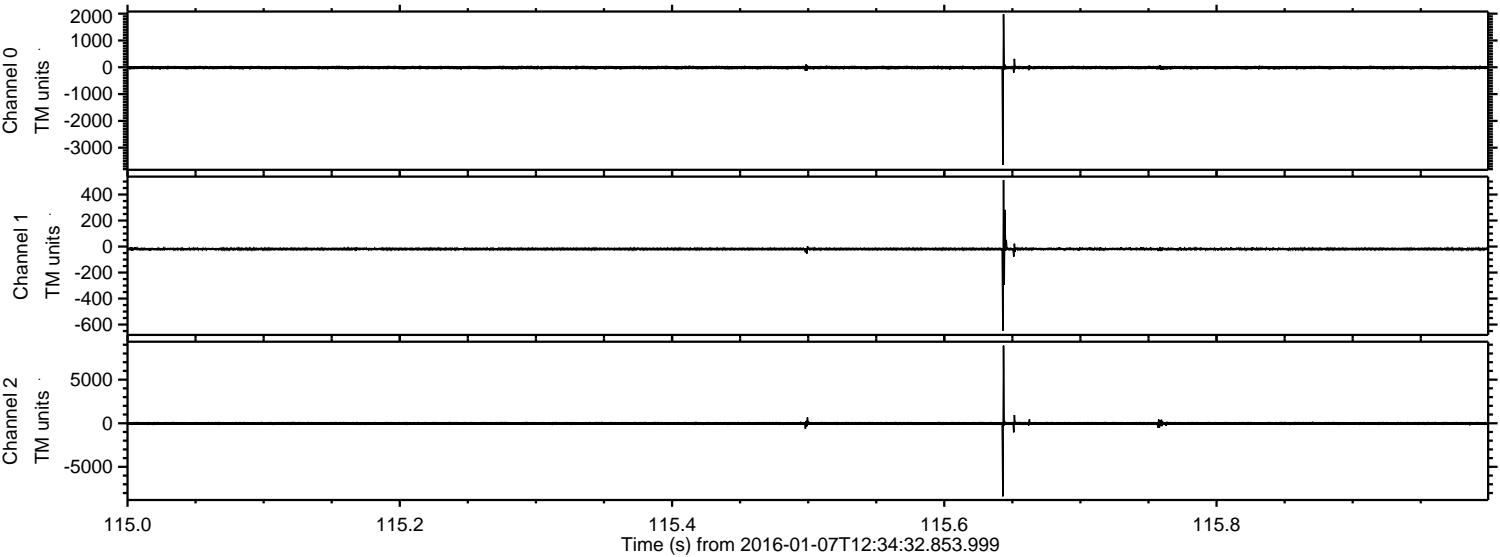
Channel 0
mn: -3192
mx: 2150
 μ : -11.1
 σ : 35.5

Channel 1
mn: -774
mx: 658
 μ : -18.9
 σ : 12.9

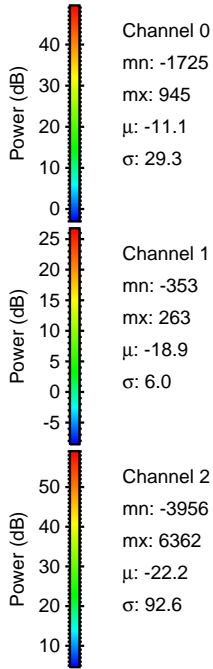
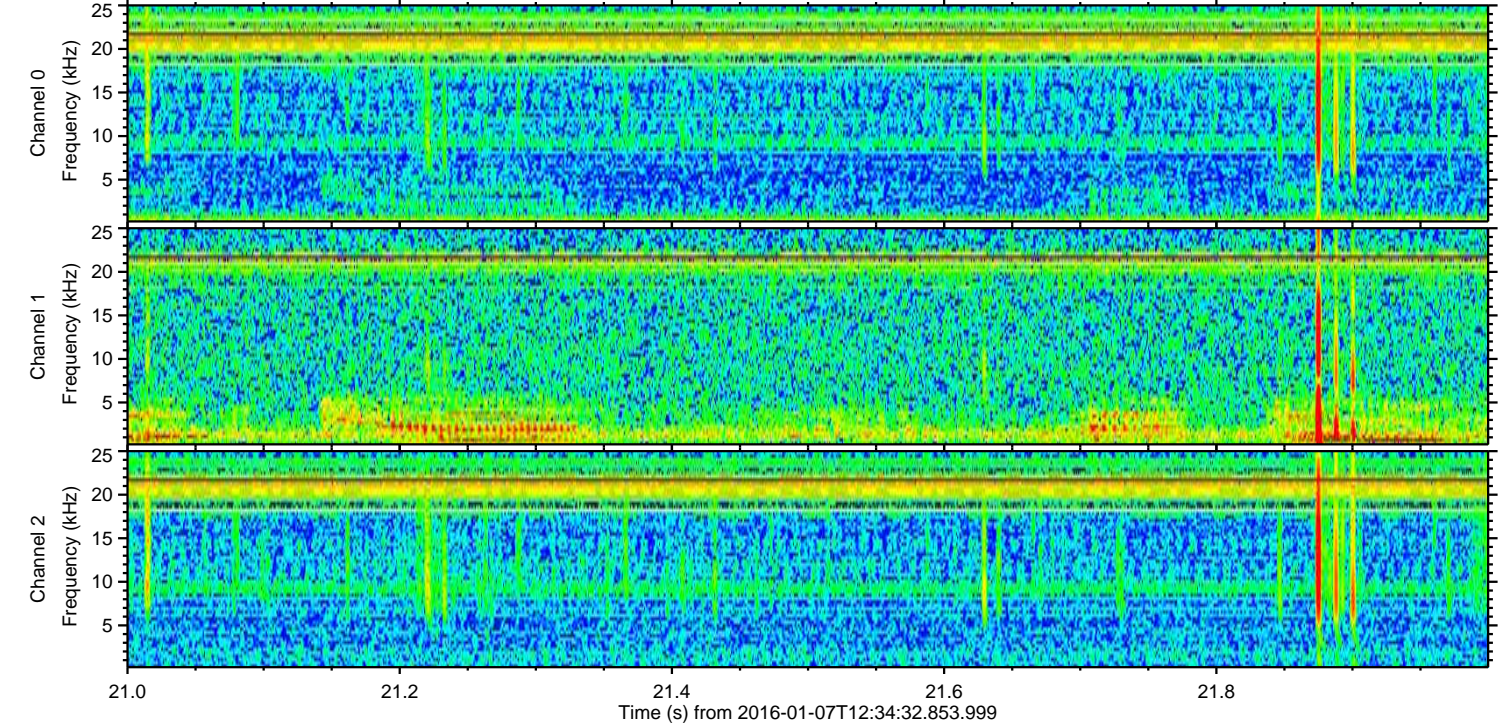
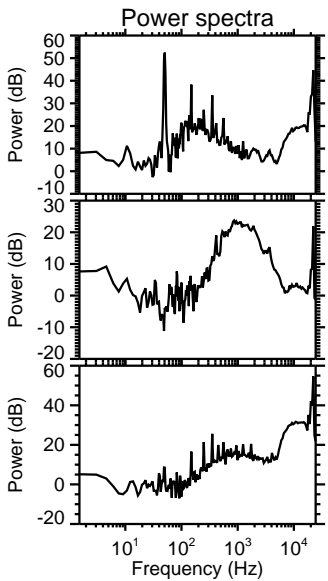
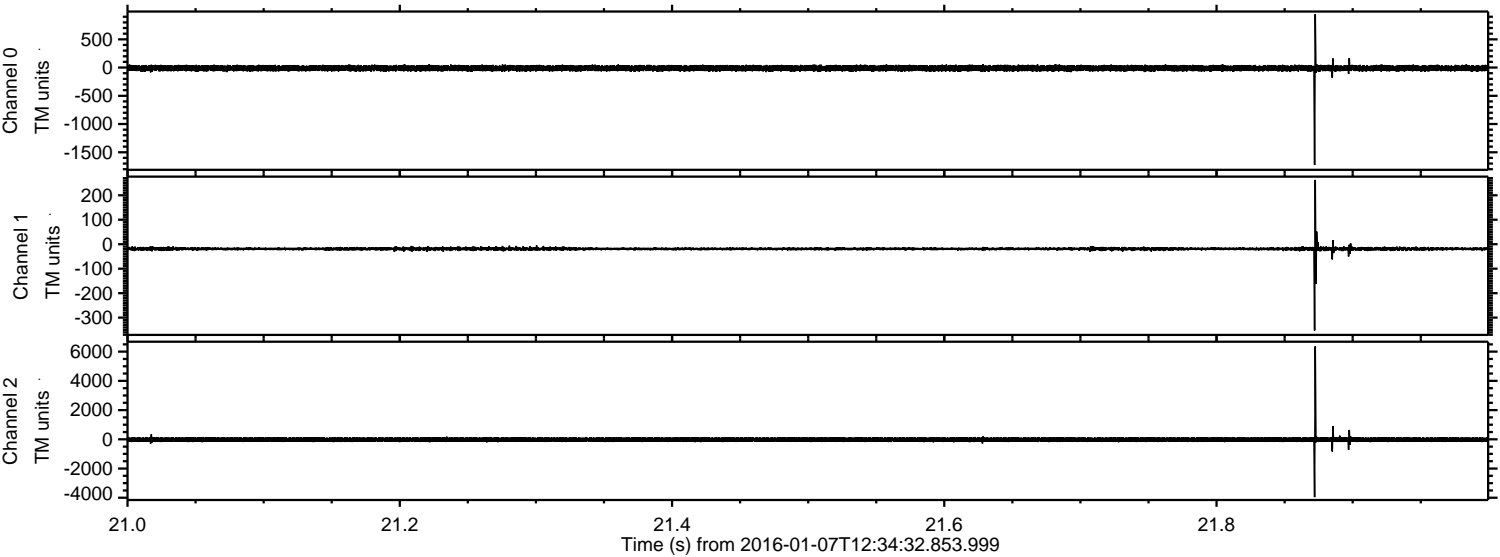
Channel 2
mn: -8186
mx: 9409
 μ : -22.2
 σ : 116.1

ELMAVAN 3D WAVEFORMS (Measured data sampled at 50 kHz) 51000 packets of 144 samples from 2016-01-07T12:34:32.853.999. Part 116/147

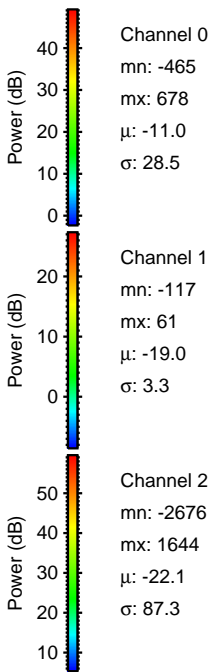
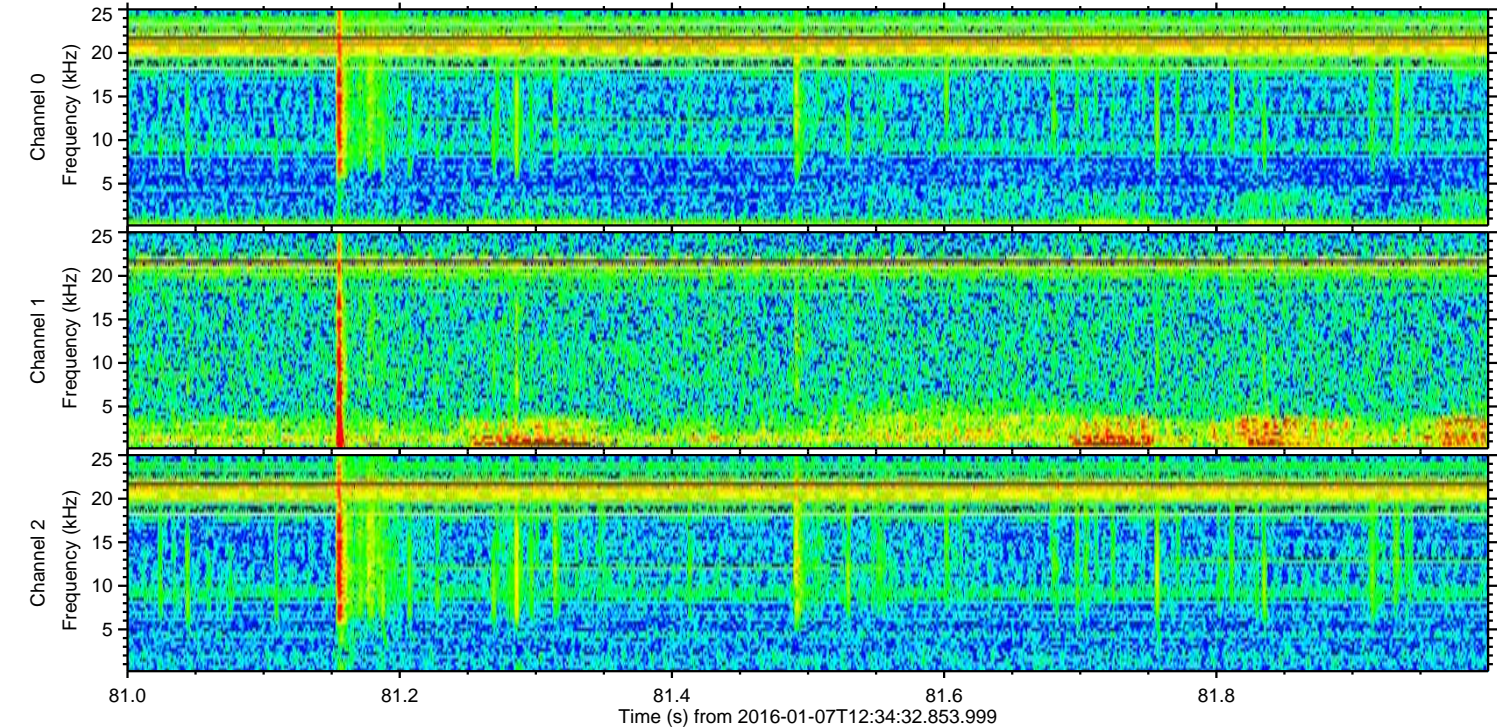
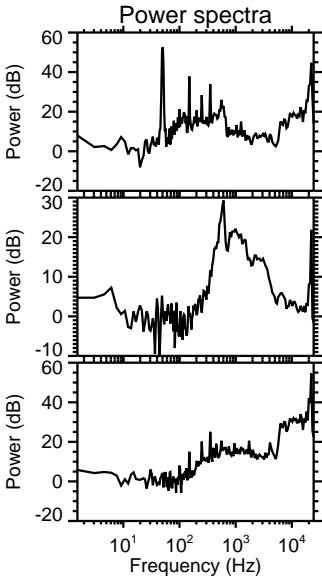
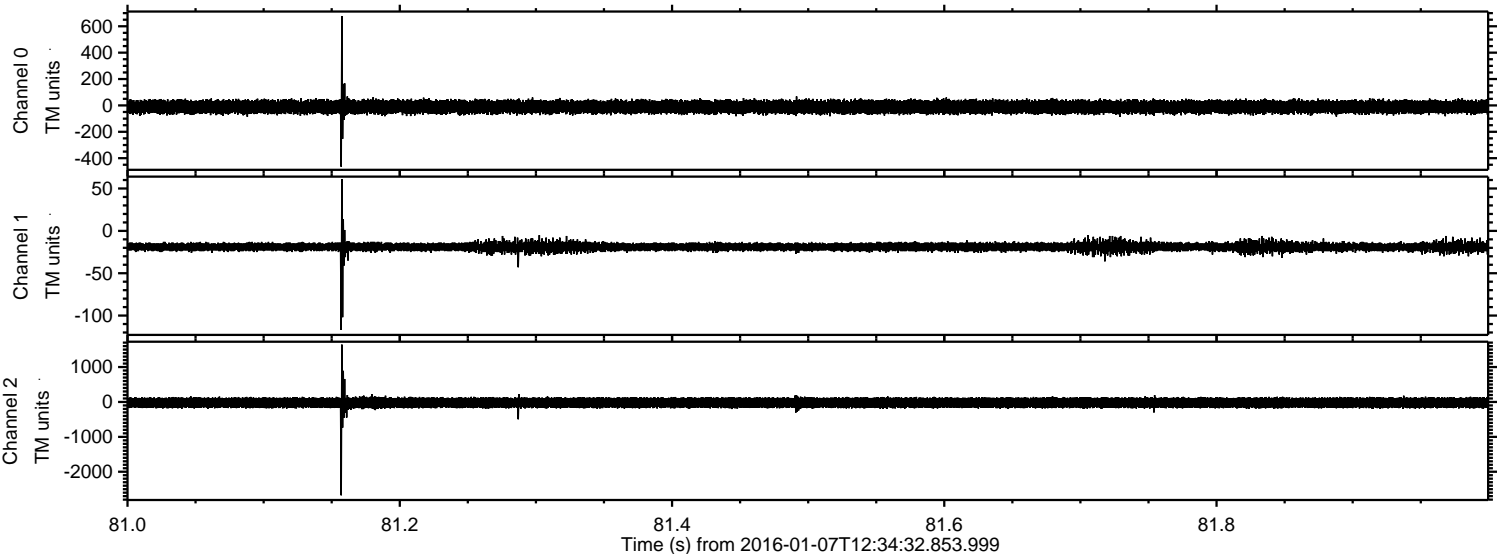
Processed Wed Mar 23 01:07:18 2016 by ELM ver.2012-10-06 from 001__elm20160107_123431__dat00.bin



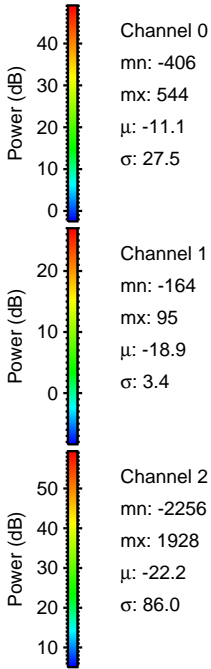
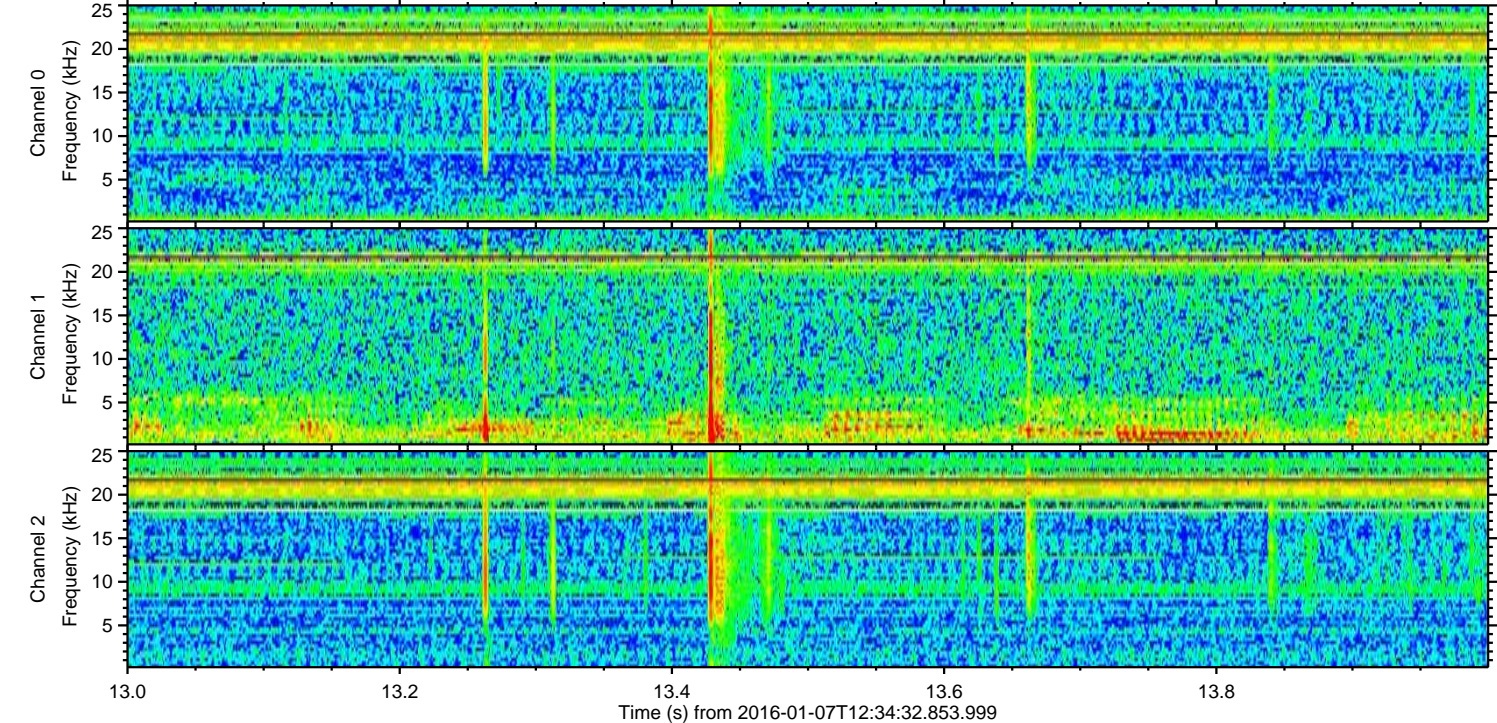
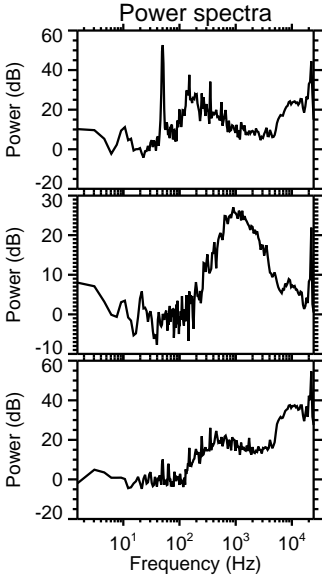
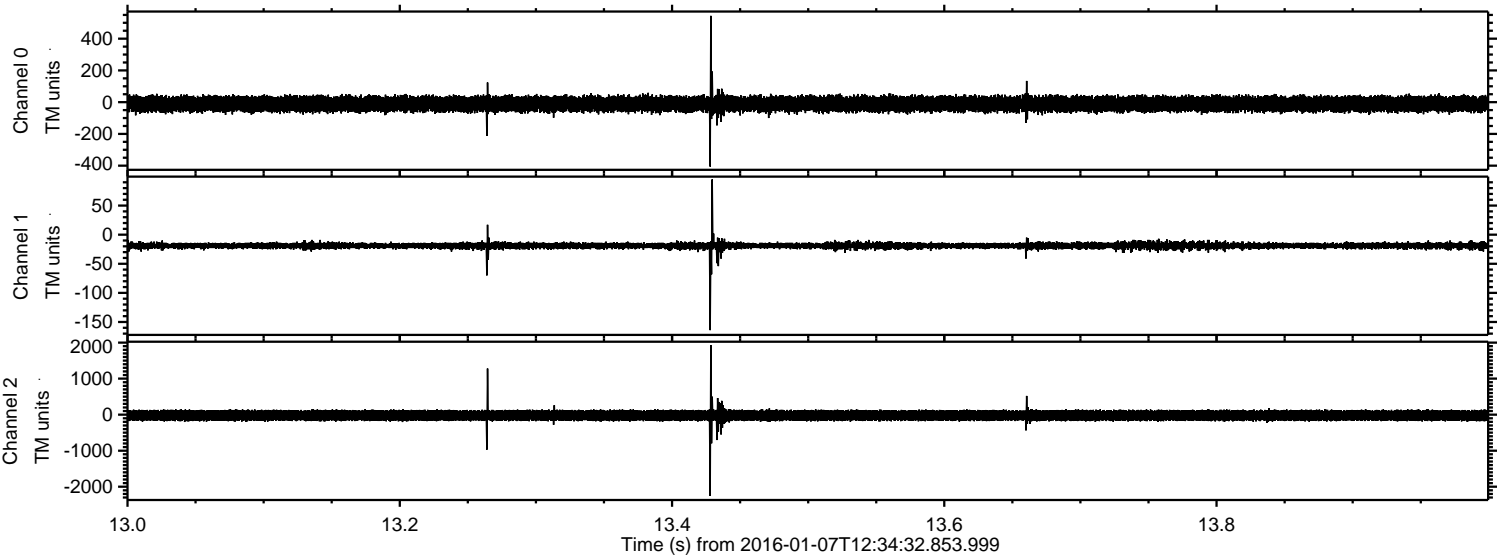
Processed Wed Mar 23 01:07:19 2016 by ELM ver.2012-10-06 from 001__elm20160107_123431__dat00.bin



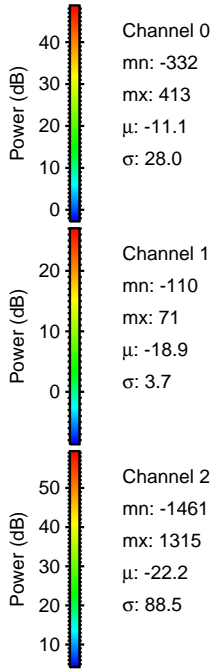
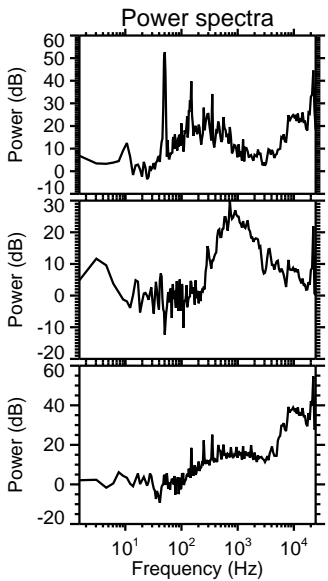
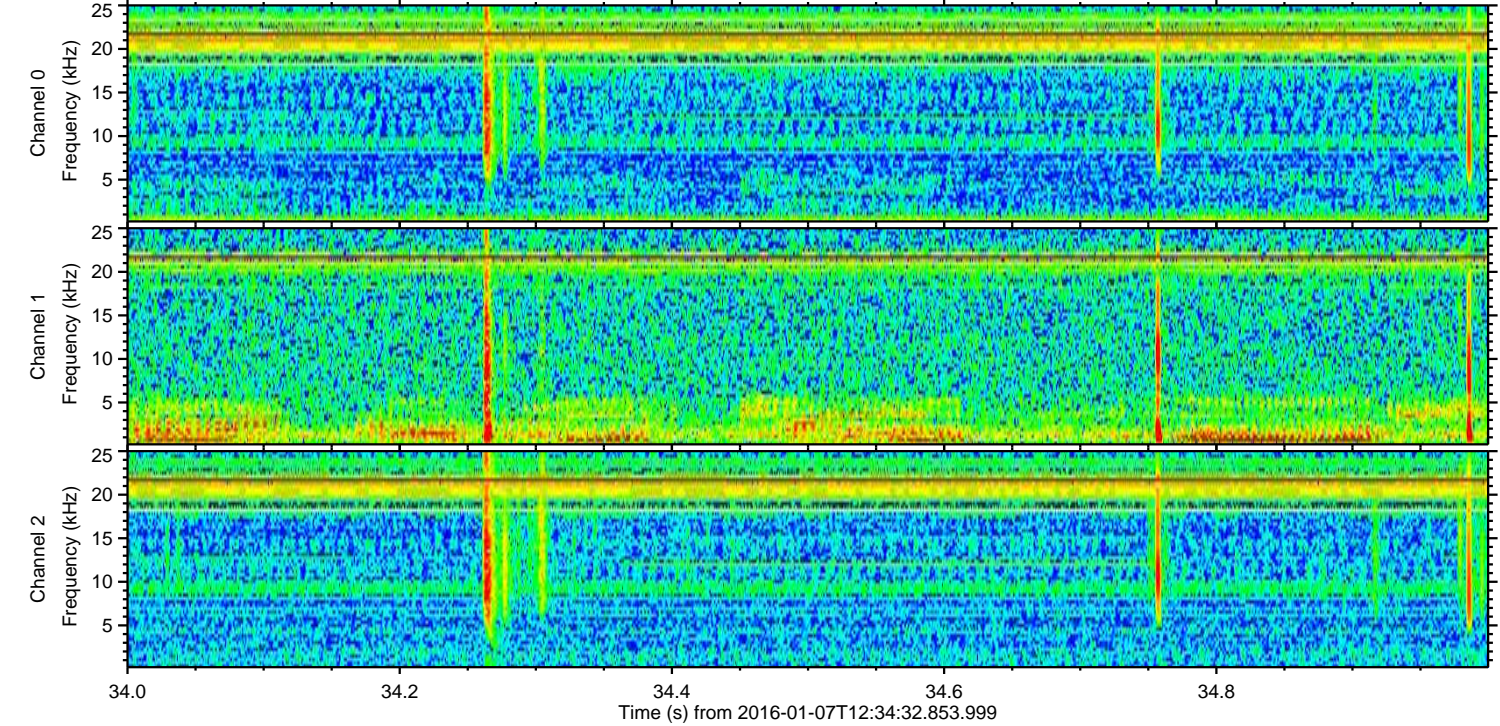
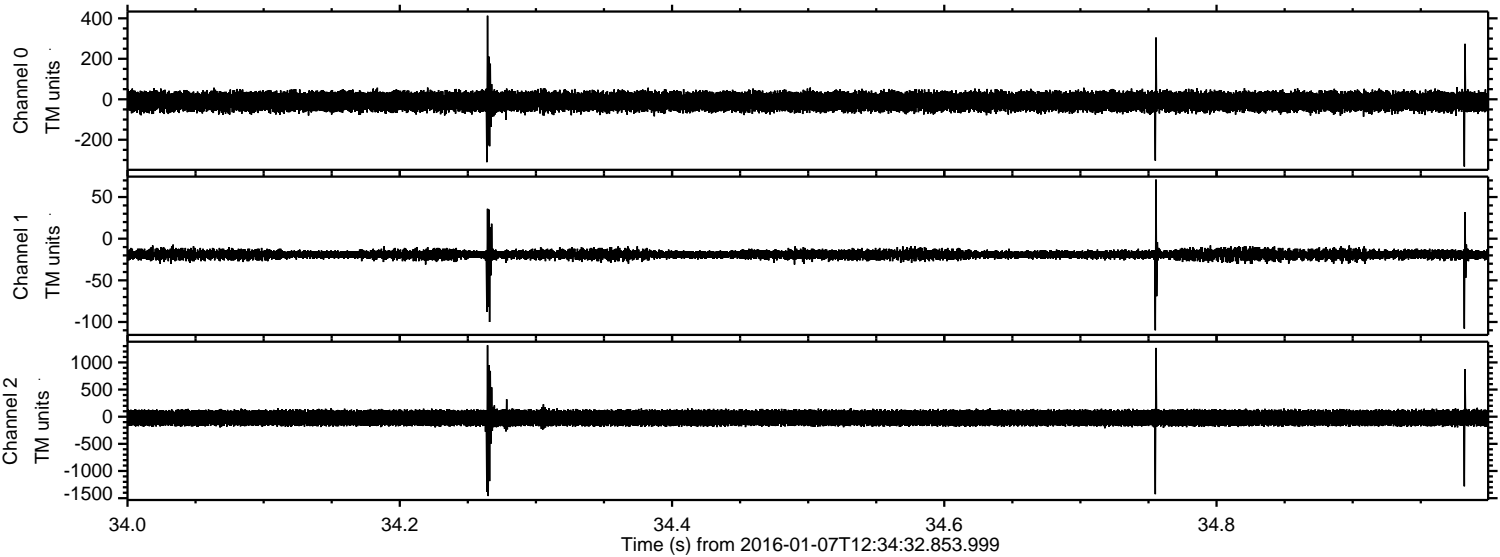
Processed Wed Mar 23 01:07:20 2016 by ELM ver.2012-10-06 from 001__elm20160107_123431__dat00.bin



Processed Wed Mar 23 01:07:21 2016 by ELM ver.2012-10-06 from 001__elm20160107_123431__dat00.bin



Processed Wed Mar 23 01:07:22 2016 by ELM ver.2012-10-06 from 001__elm20160107_123431__dat00.bin

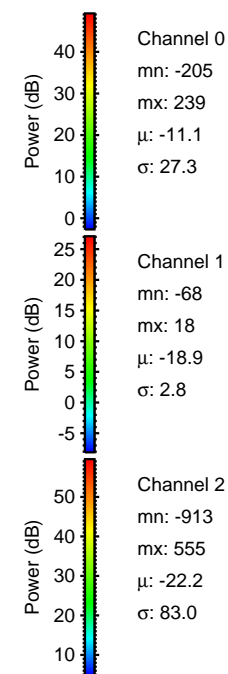
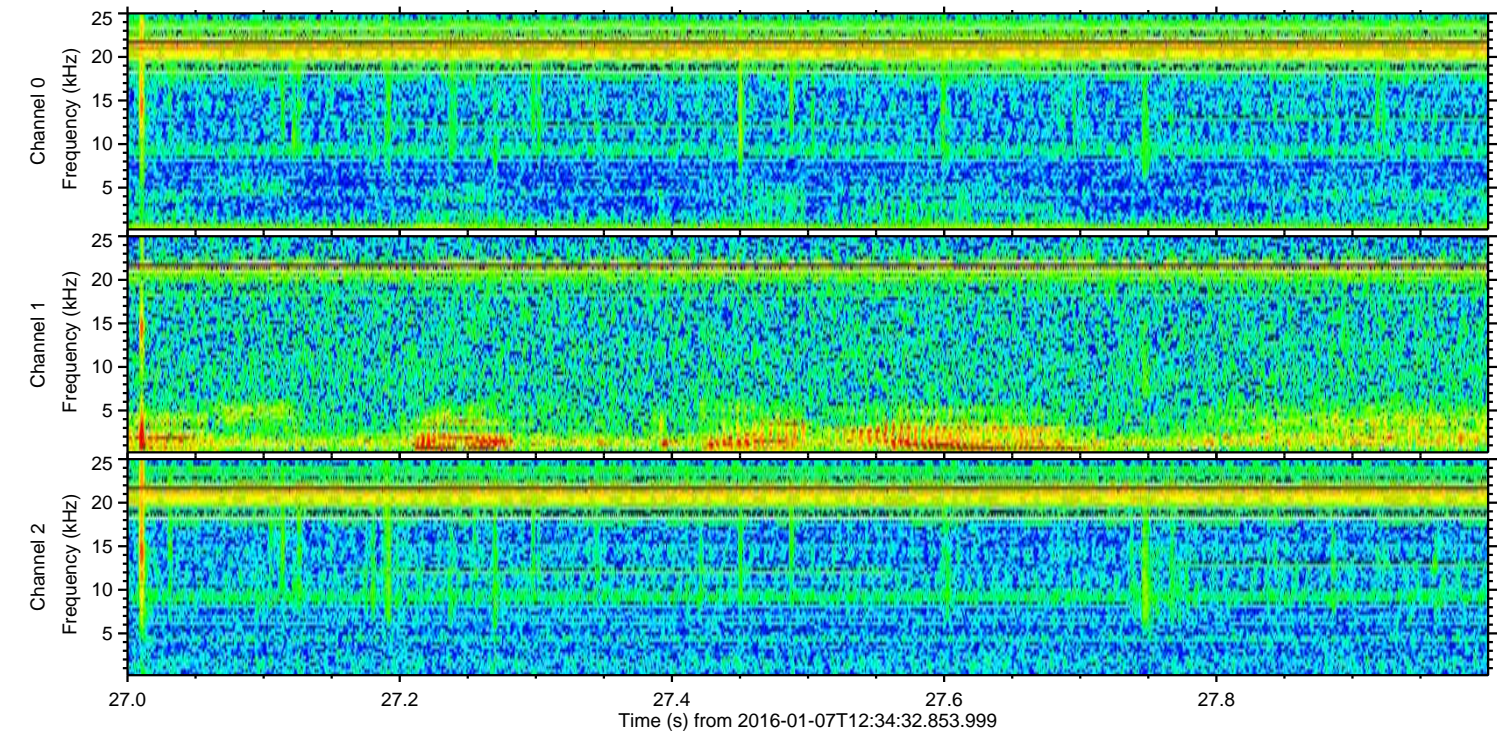
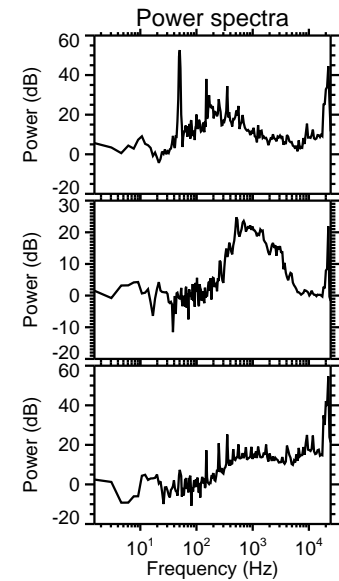
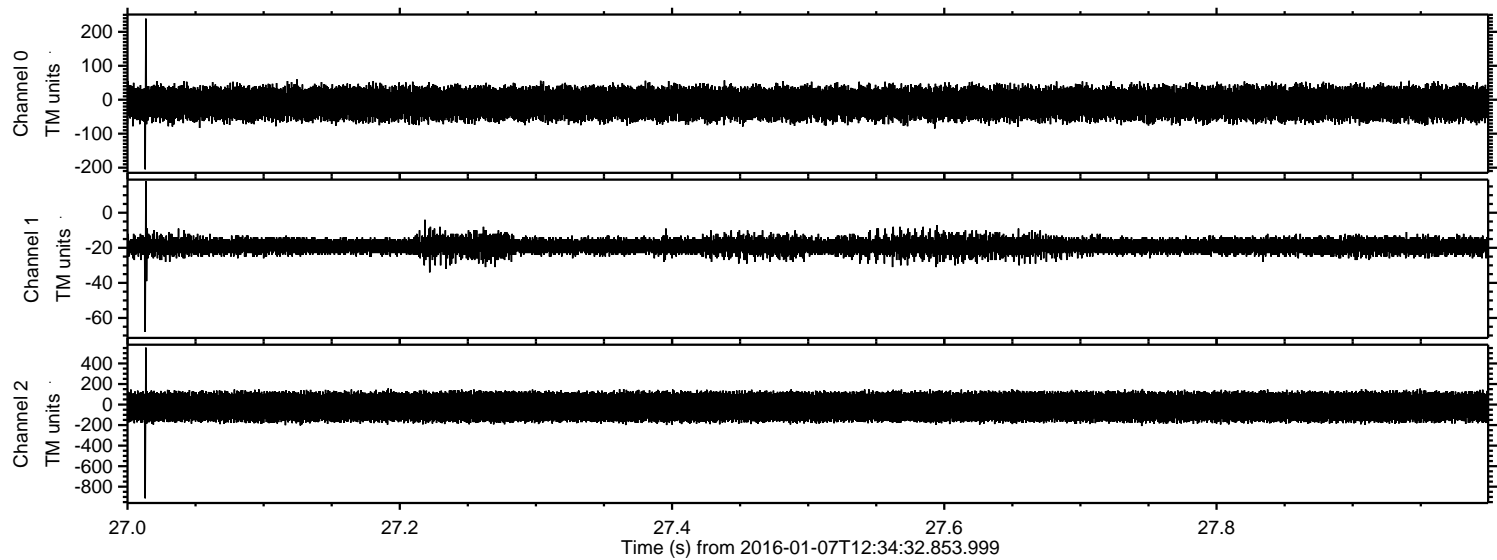


Channel 0
mn: -332
mx: 413
 μ : -11.1
 σ : 28.0

Channel 1
mn: -110
mx: 71
 μ : -18.9
 σ : 3.7

Channel 2
mn: -1461
mx: 1315
 μ : -22.2
 σ : 88.5

Processed Wed Mar 23 01:07:23 2016 by ELM ver.2012-10-06 from 001__elm20160107_123431__dat00.bin



Processed Wed Mar 23 01:07:24 2016 by ELM ver.2012-10-06 from 001__elm20160107_123431__dat00.bin

