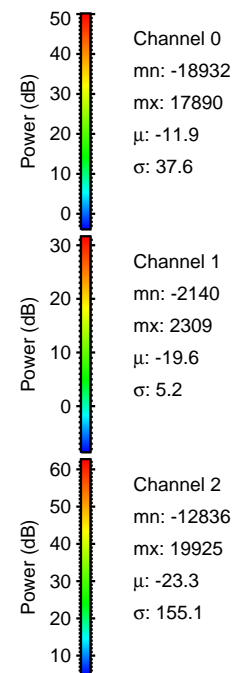
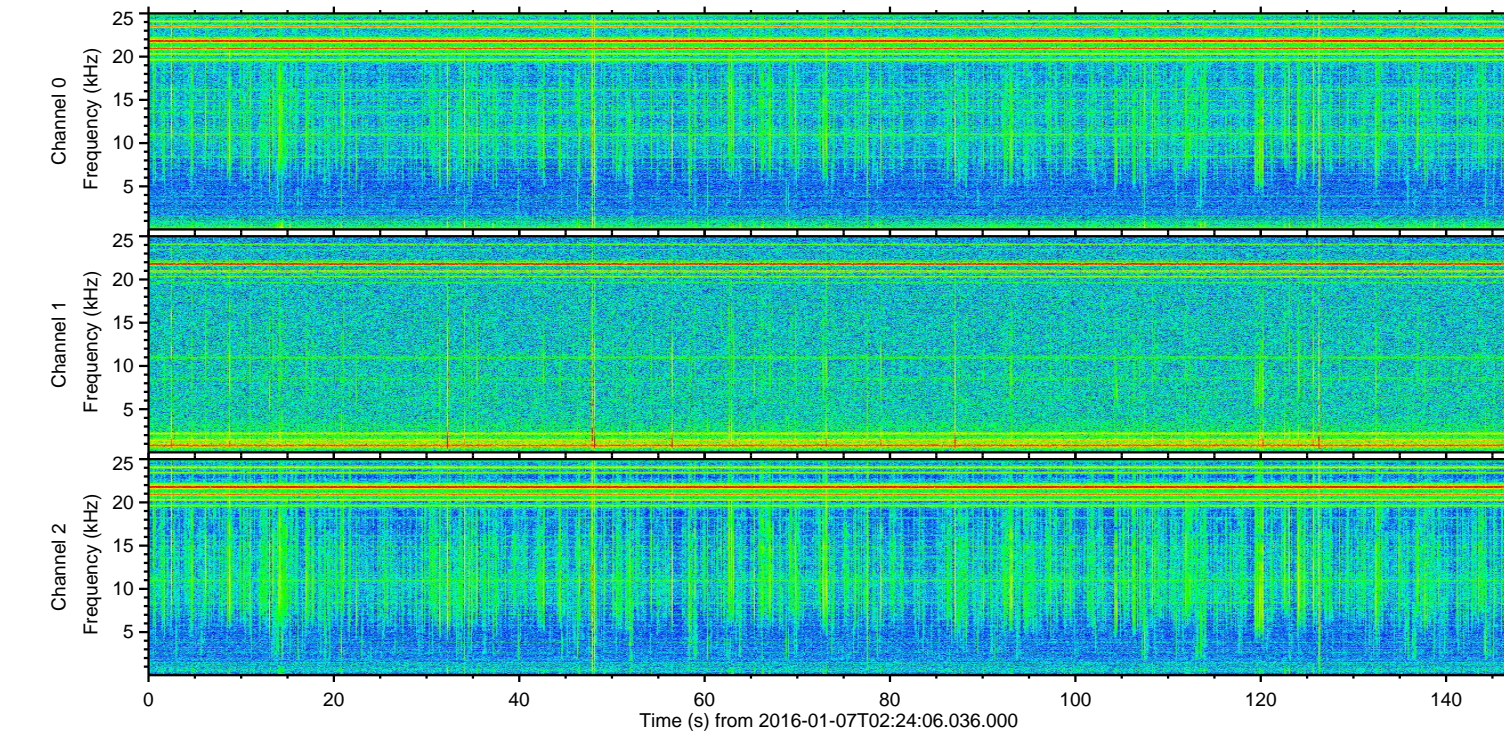
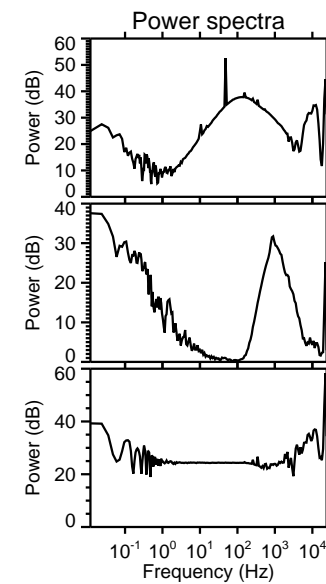
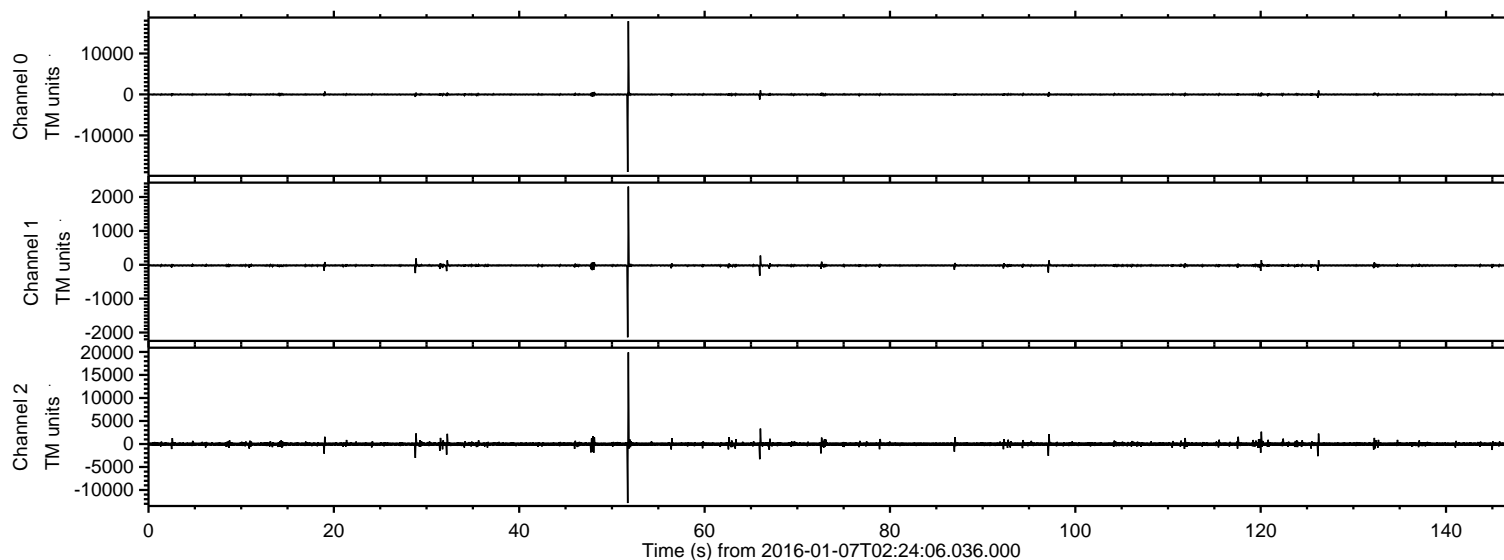


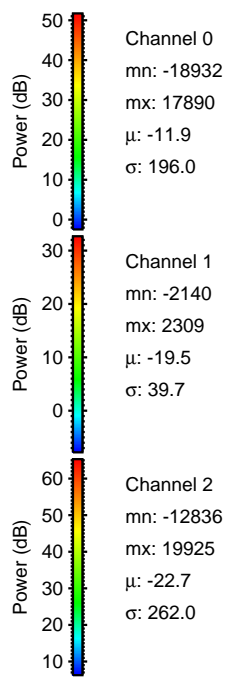
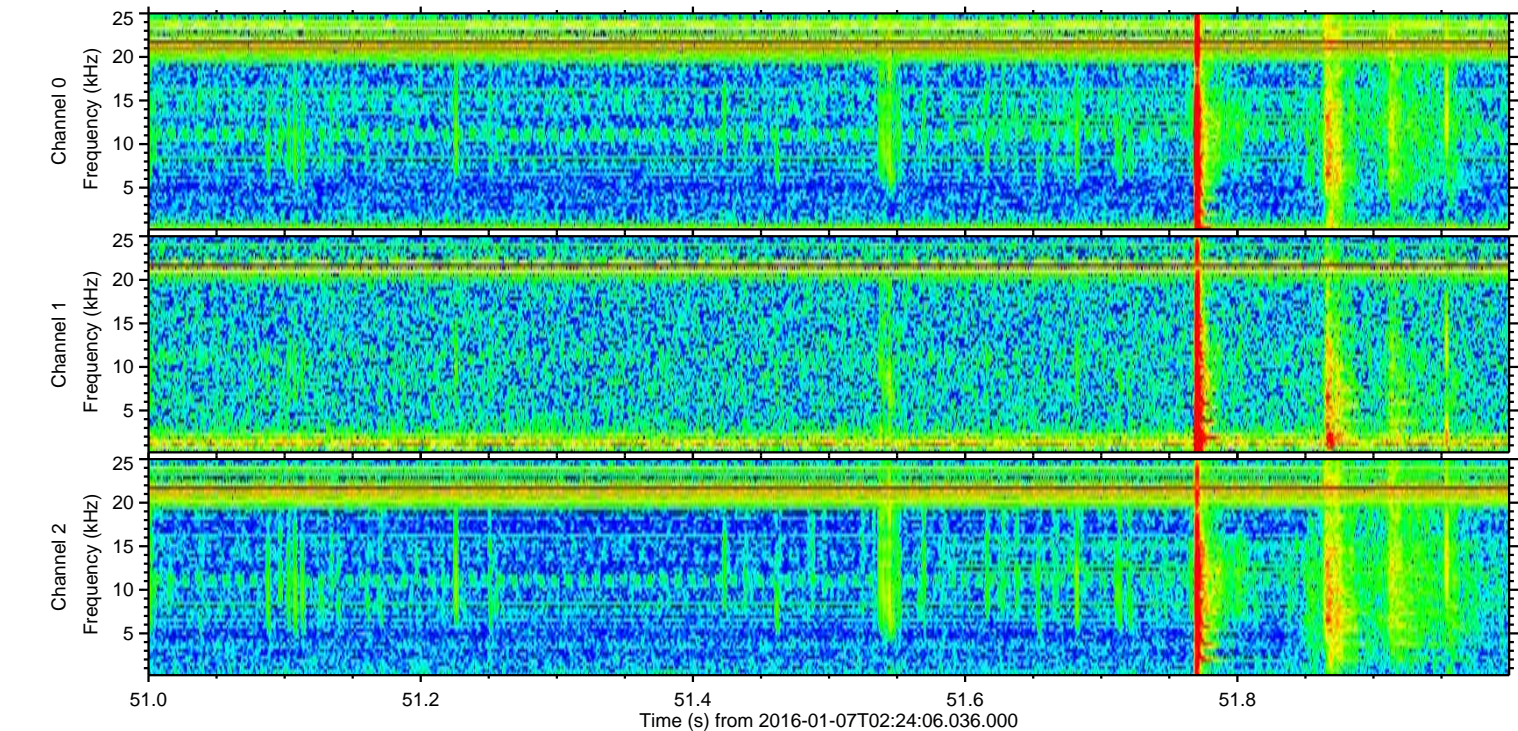
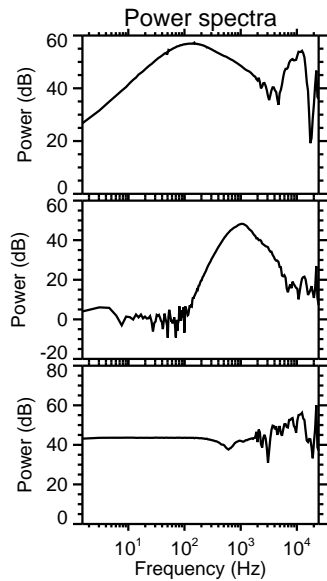
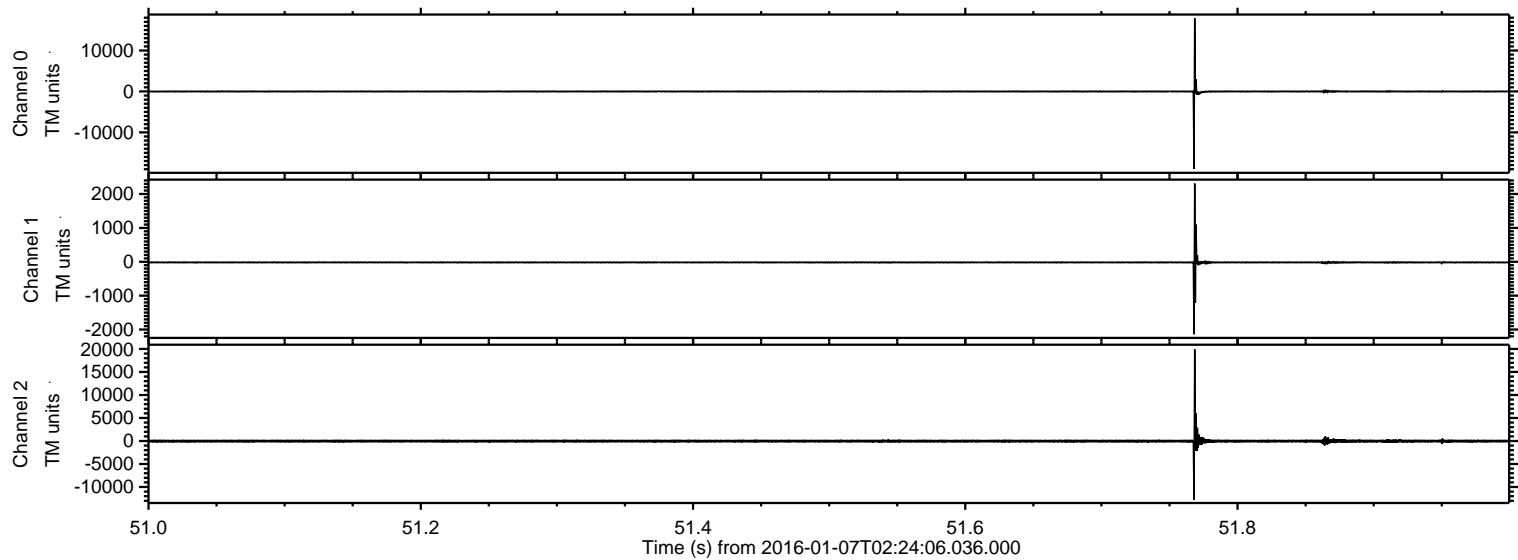
# ELMAVAN 3D WAVEFORMS (Measured data sampled at 50 kHz) 51000 packets of 144 samples from 2016-01-07T02:24:06.036.000.

Processed Tue Mar 22 22:21:44 2016 by ELM ver.2012-10-06 from 001\_\_elm20160107\_022405\_\_dat00.bin



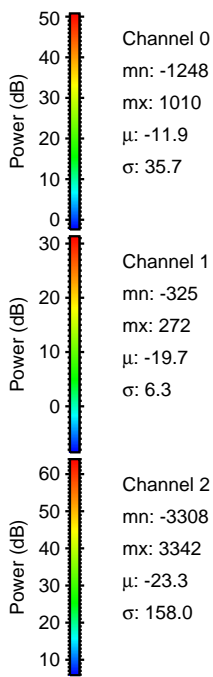
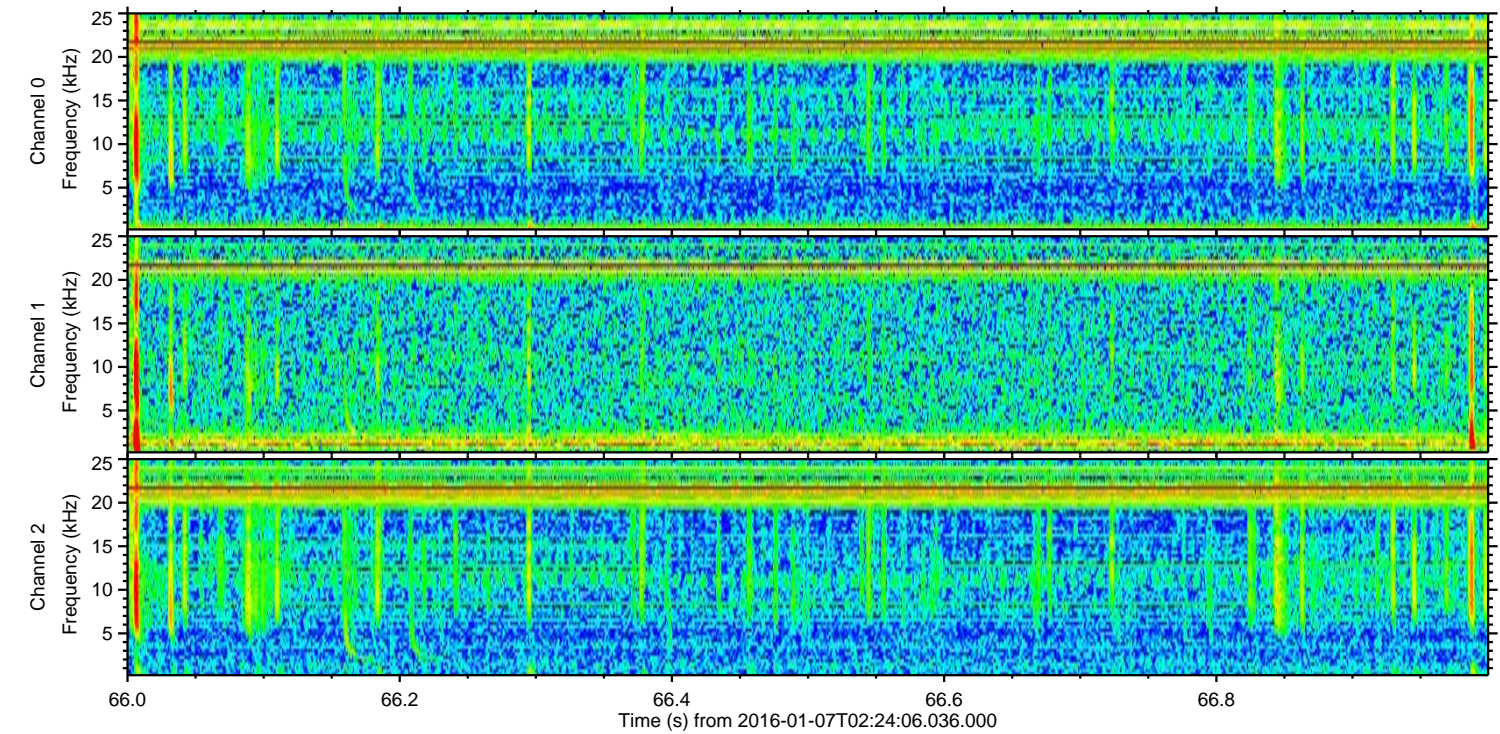
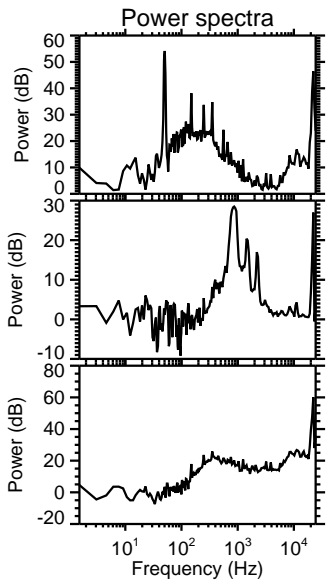
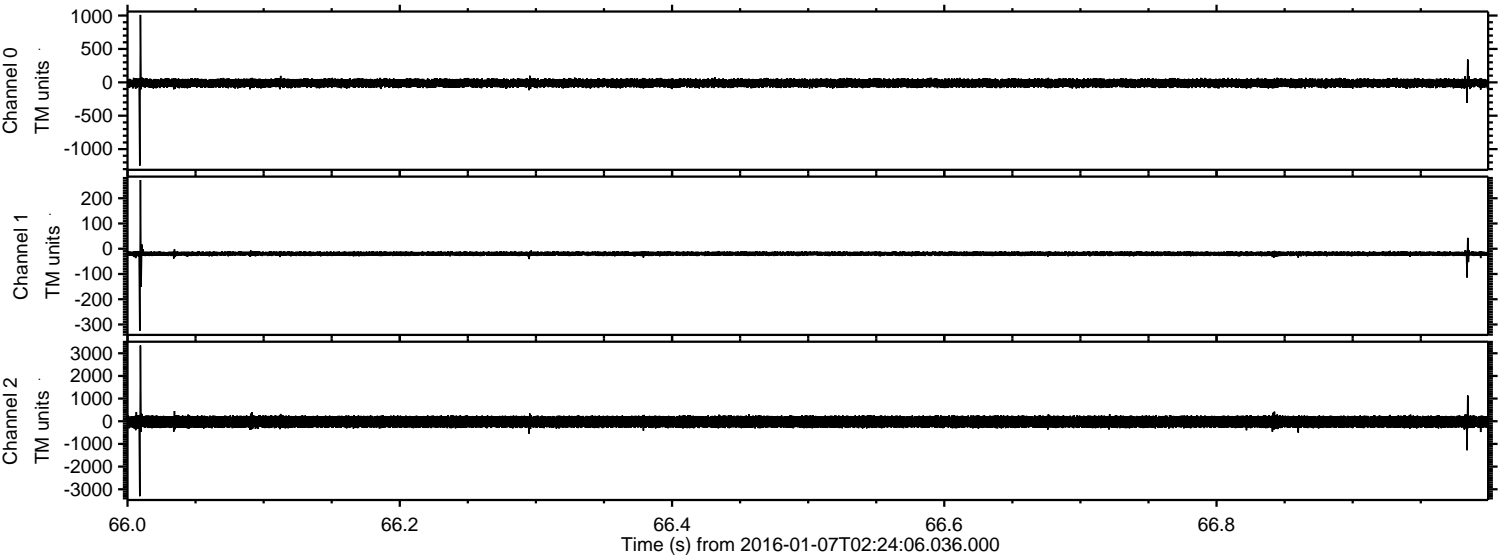


Processed Tue Mar 22 22:21:56 2016 by ELM ver.2012-10-06 from 001\_\_elm20160107\_022405\_\_dat00.bin





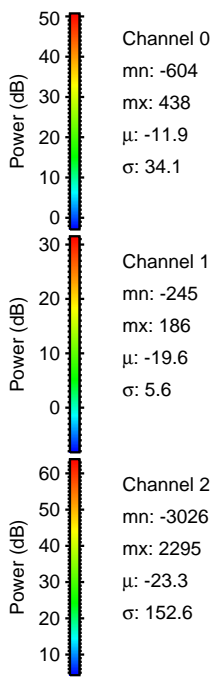
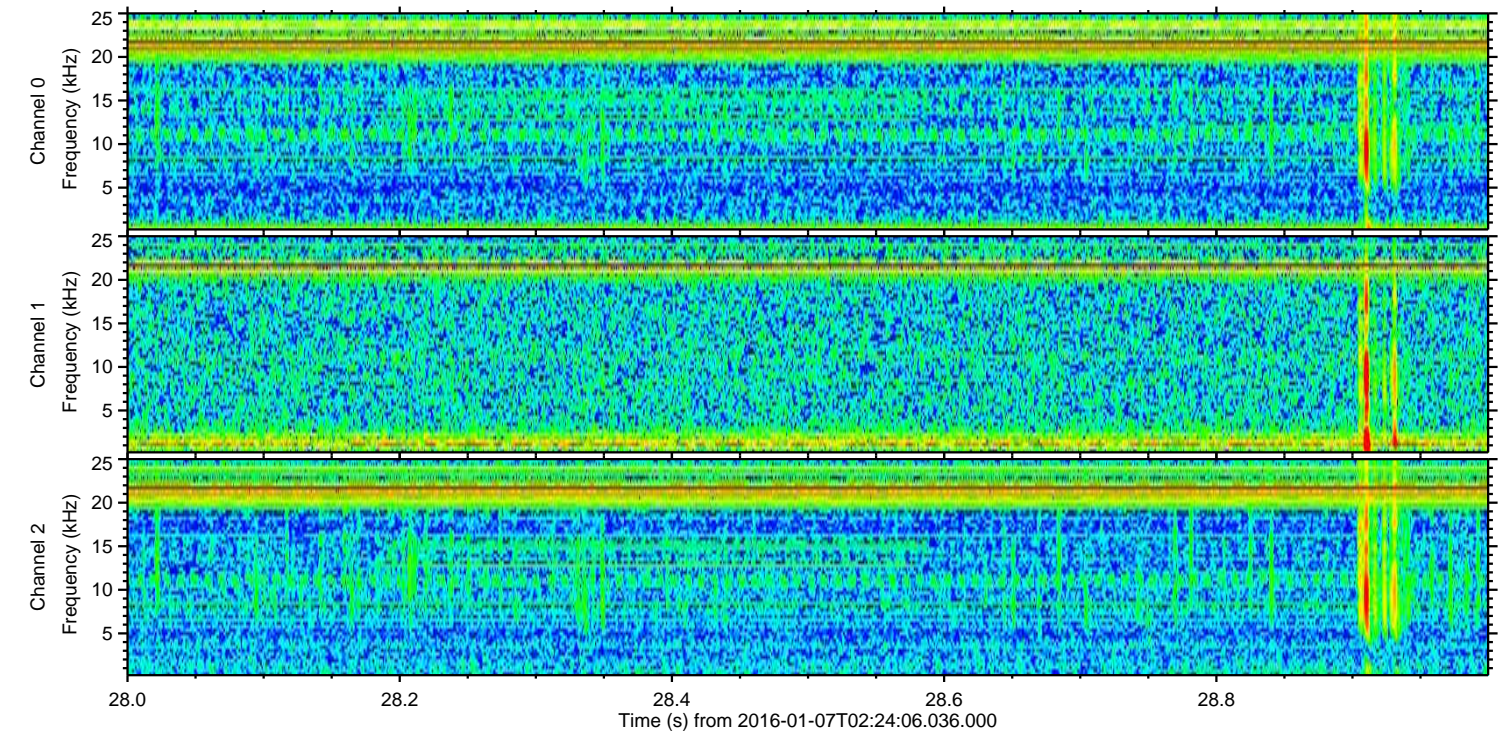
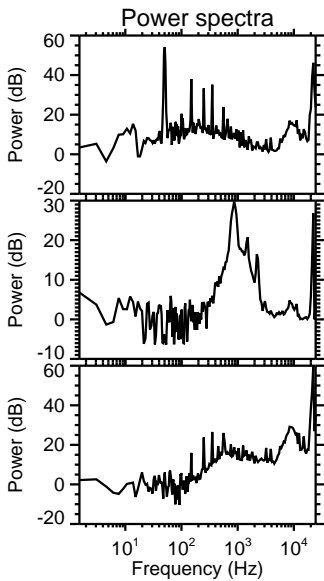
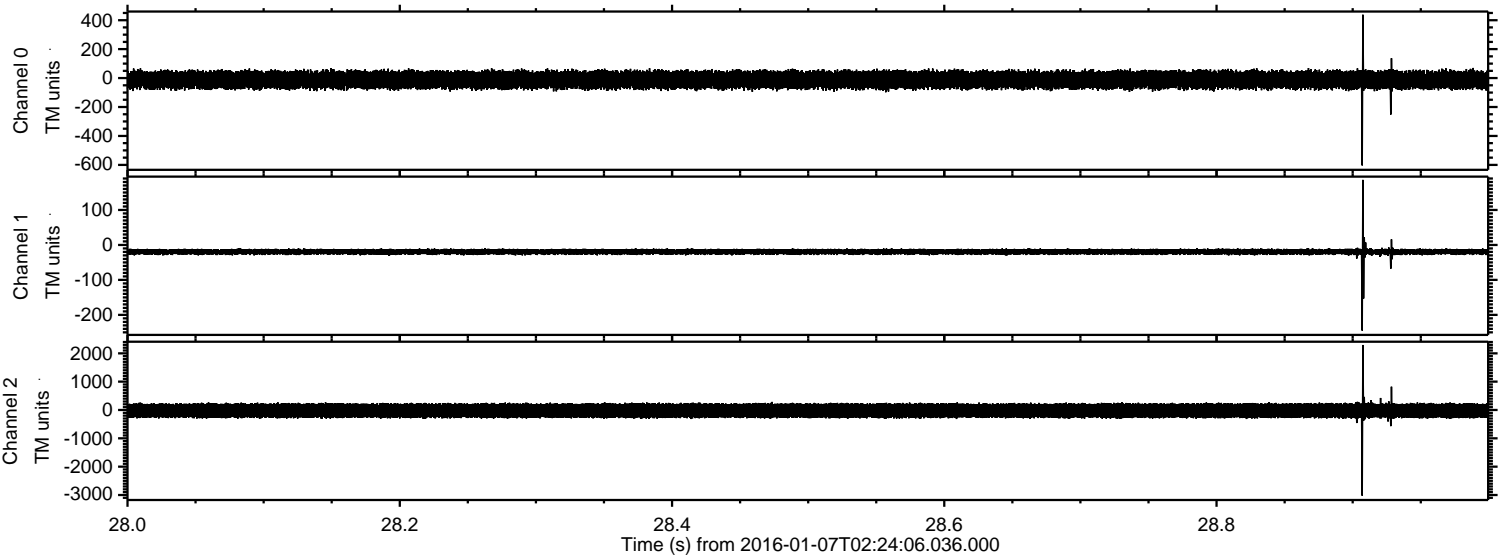
Processed Tue Mar 22 22:21:57 2016 by ELM ver.2012-10-06 from 001\_\_elm20160107\_022405\_\_dat00.bin





ELMAVAN 3D WAVEFORMS (Measured data sampled at 50 kHz) 51000 packets of 144 samples from 2016-01-07T02:24:06.036.000. Part 29/147

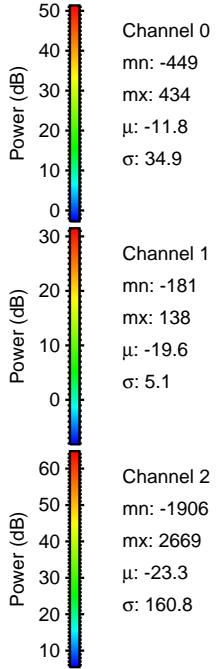
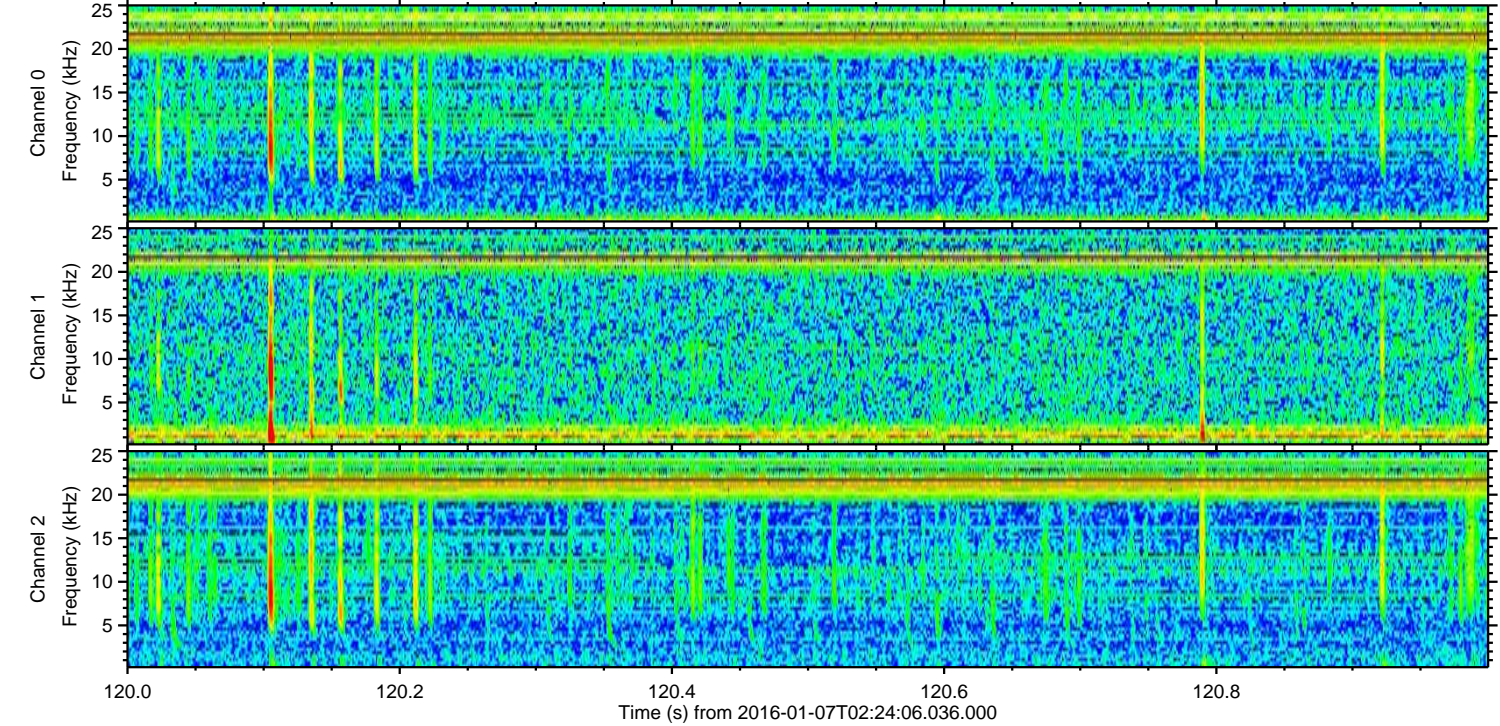
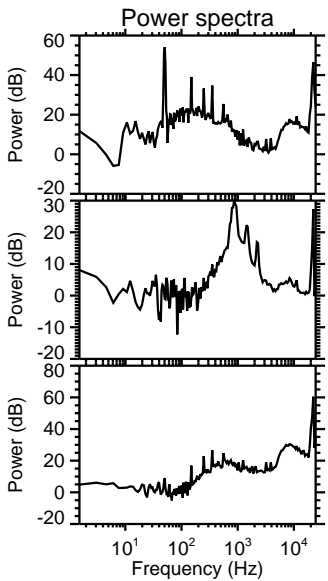
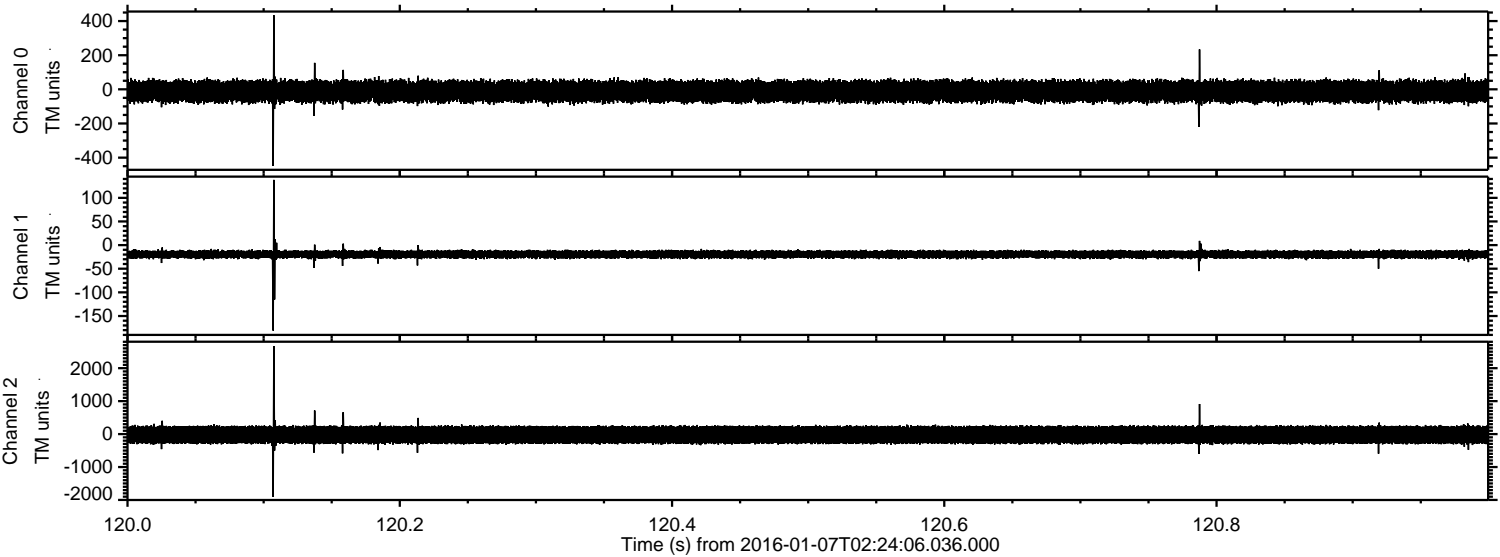
Processed Tue Mar 22 22:21:58 2016 by ELM ver.2012-10-06 from 001\_\_elm20160107\_022405\_\_dat00.bin





ELMAVAN 3D WAVEFORMS (Measured data sampled at 50 kHz) 51000 packets of 144 samples from 2016-01-07T02:24:06.036.000. Part 121/147

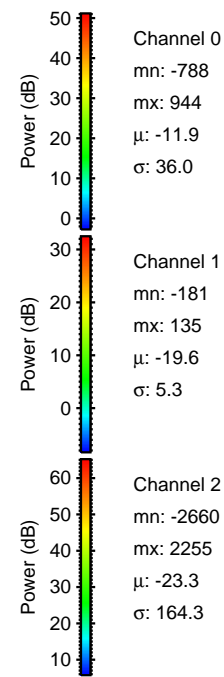
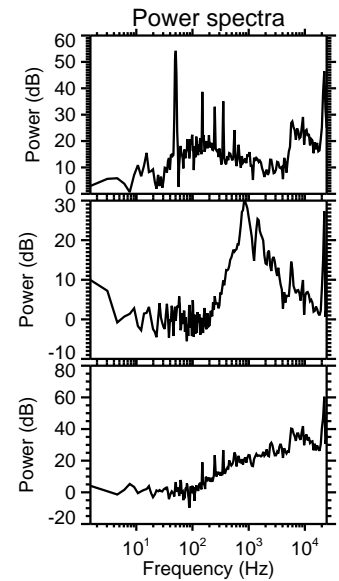
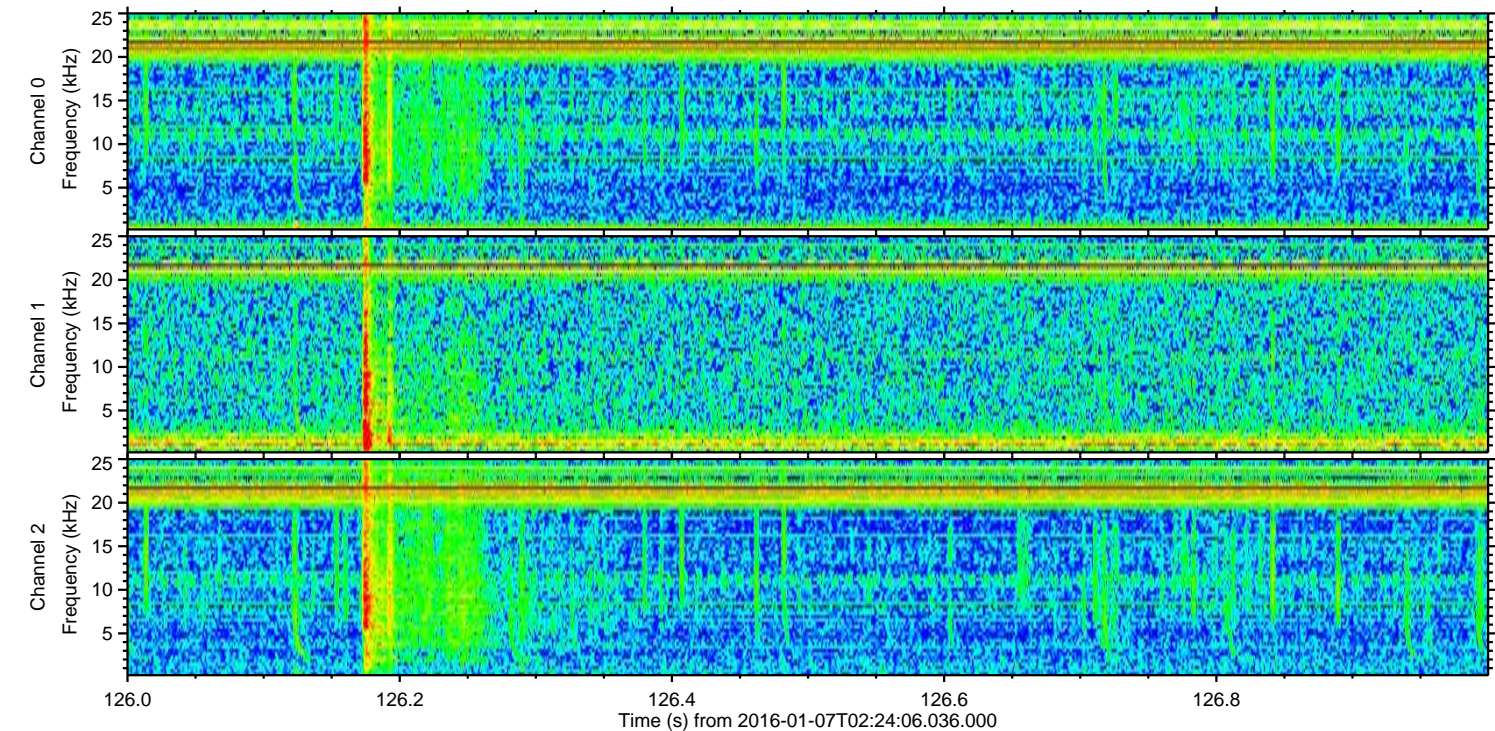
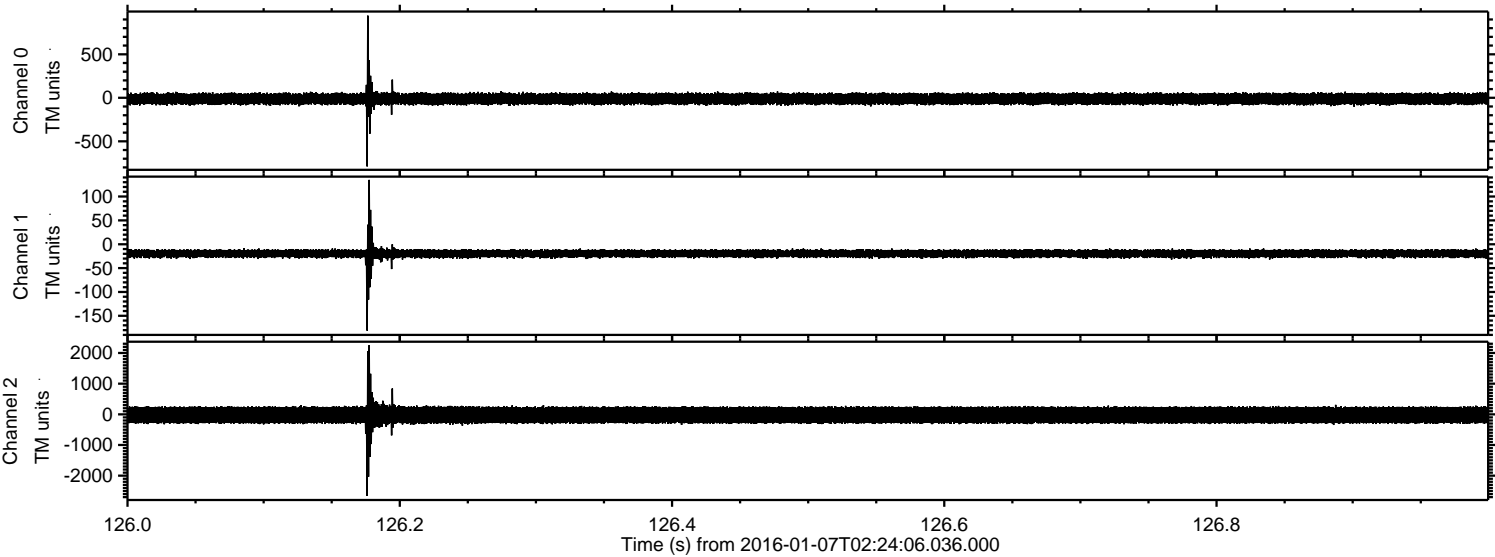
Processed Tue Mar 22 22:21:59 2016 by ELM ver.2012-10-06 from 001\_\_elm20160107\_022405\_\_dat00.bin





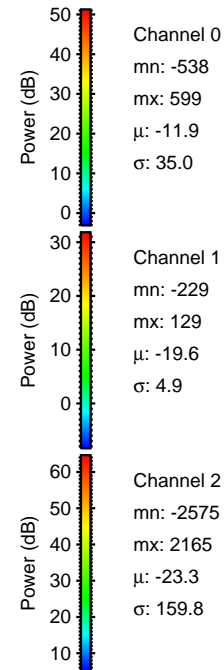
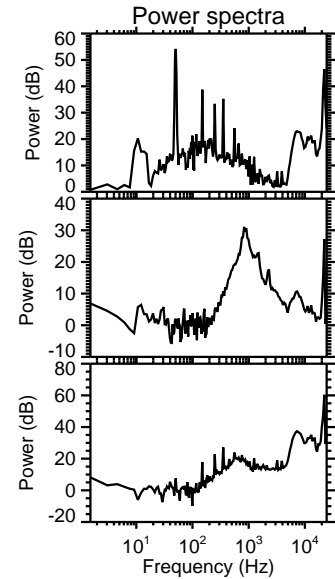
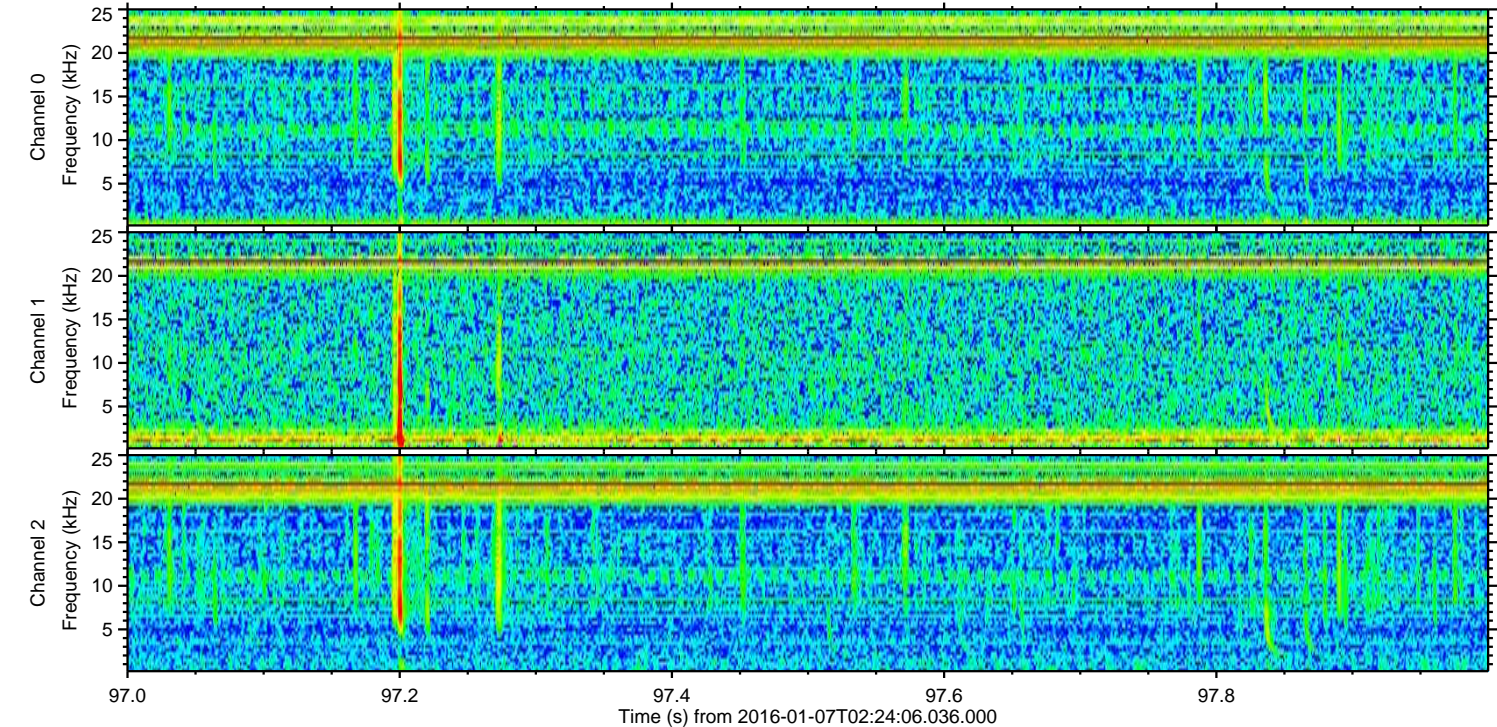
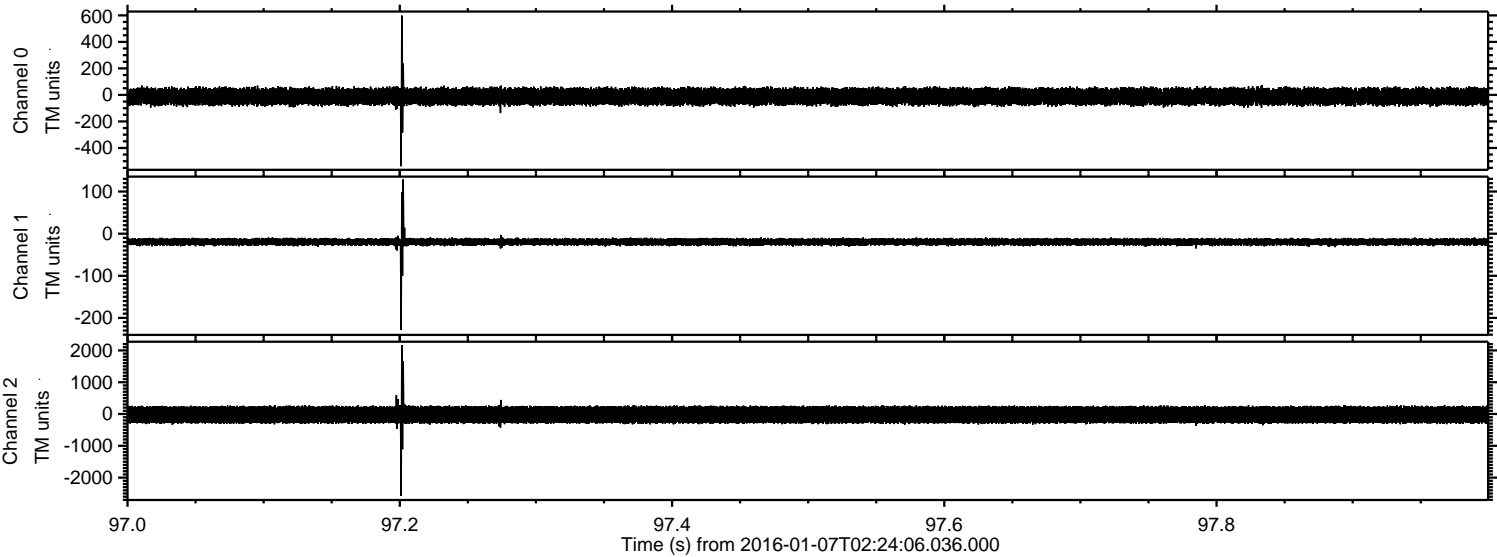
ELMAVAN 3D WAVEFORMS (Measured data sampled at 50 kHz) 51000 packets of 144 samples from 2016-01-07T02:24:06.036.000. Part 127/147

Processed Tue Mar 22 22:22:00 2016 by ELM ver.2012-10-06 from 001\_\_elm20160107\_022405\_\_dat00.bin



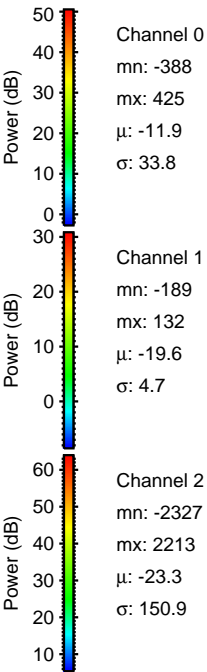
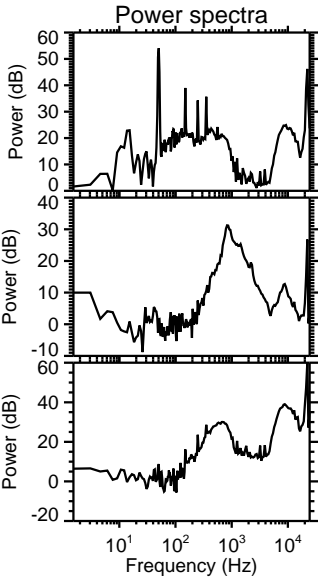
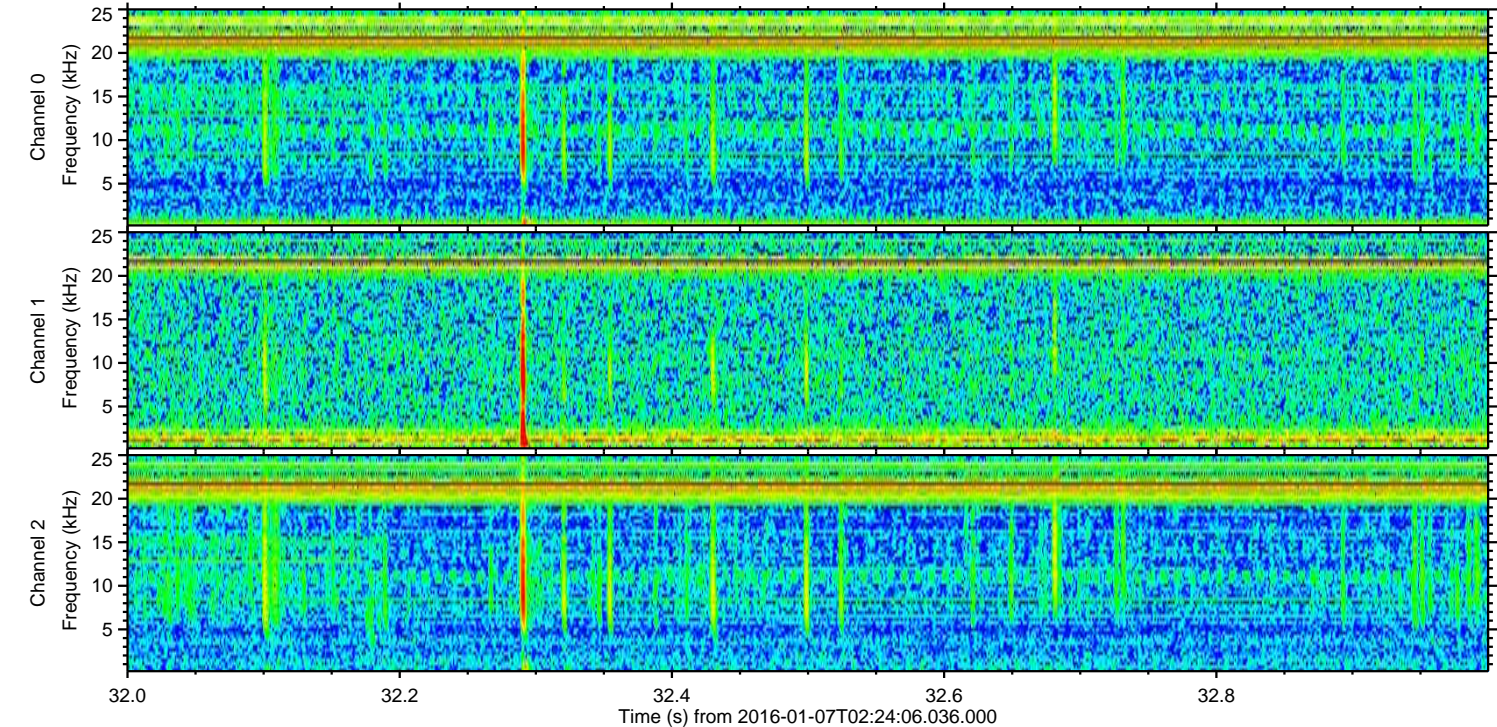
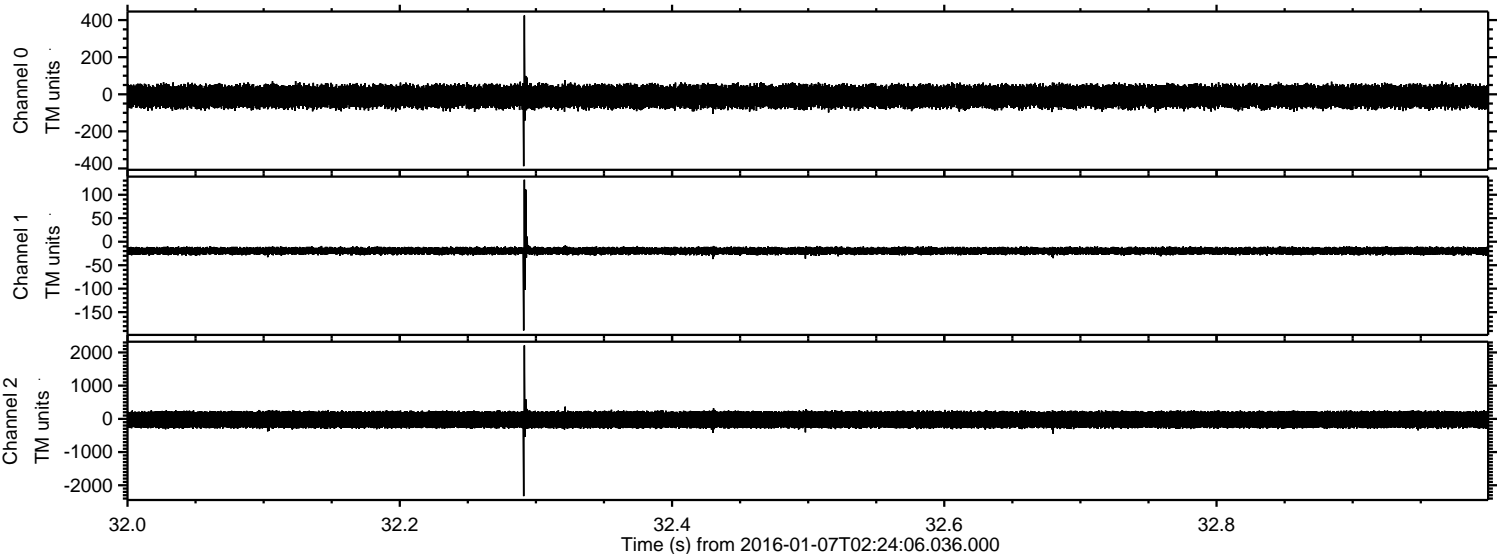


Processed Tue Mar 22 22:22:00 2016 by ELM ver.2012-10-06 from 001\_\_elm20160107\_022405\_\_dat00.bin



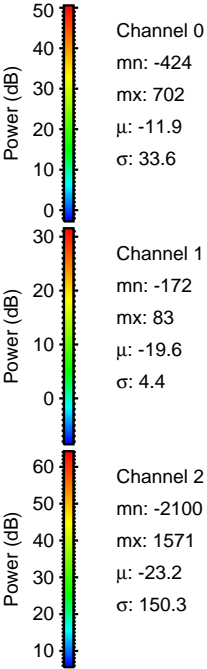
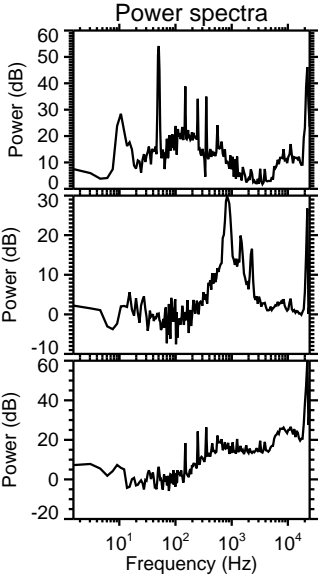
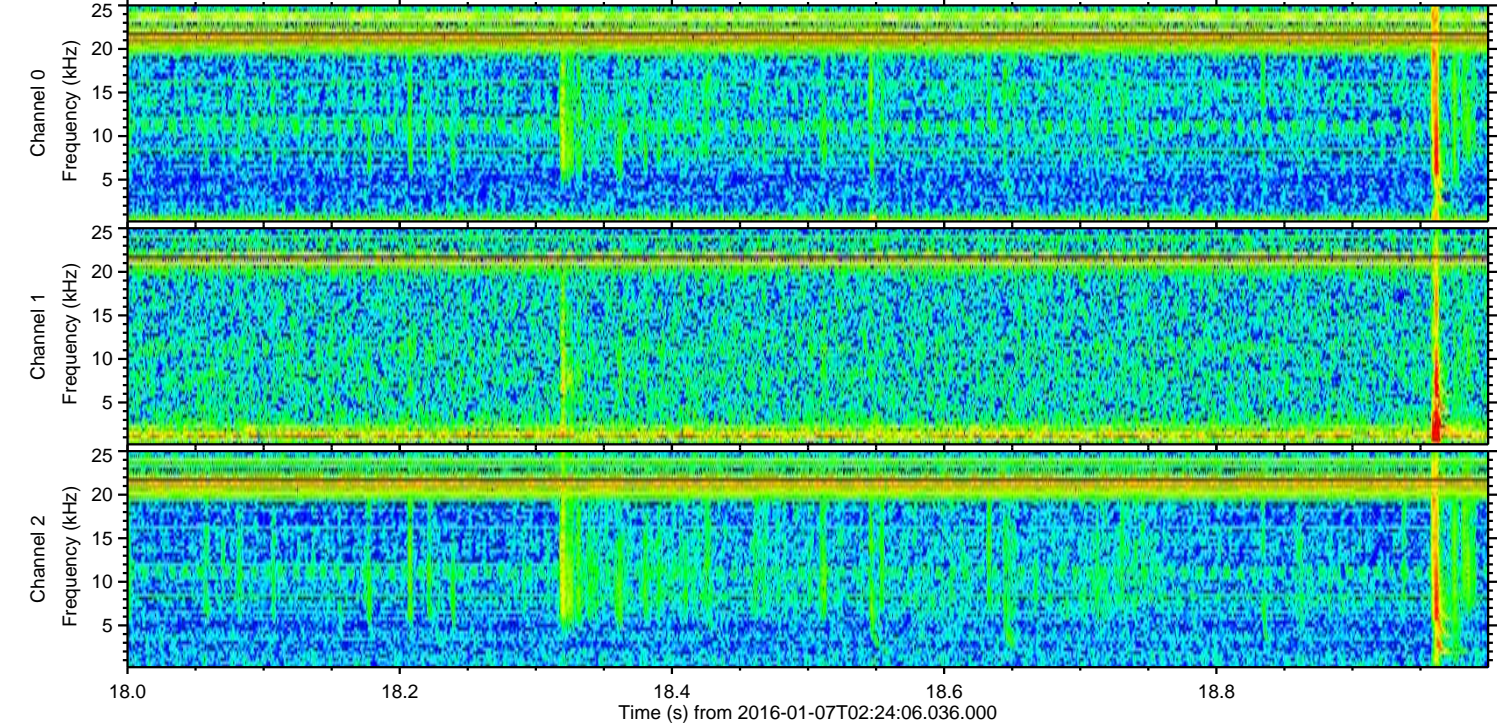
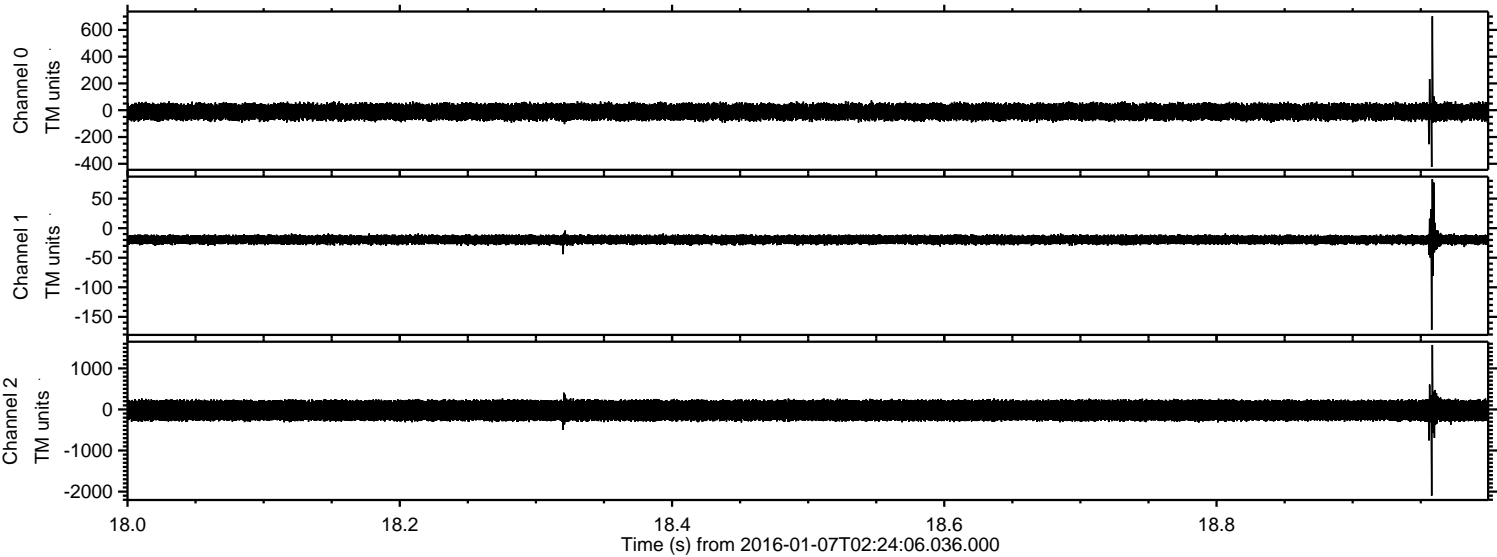


Processed Tue Mar 22 22:22:01 2016 by ELM ver.2012-10-06 from 001\_\_elm20160107\_022405\_\_dat00.bin



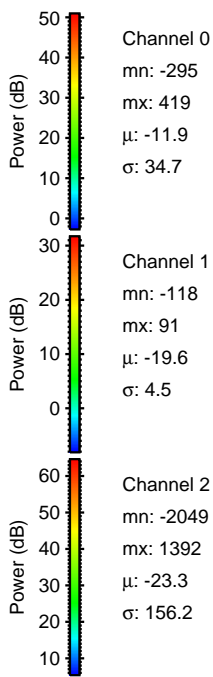
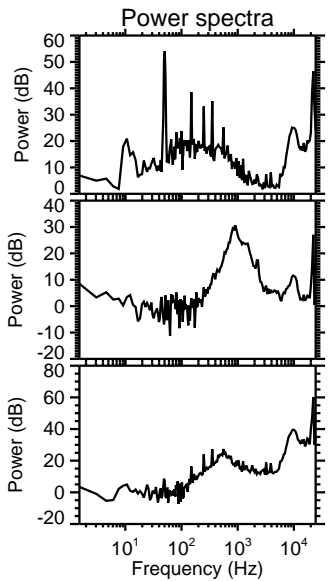
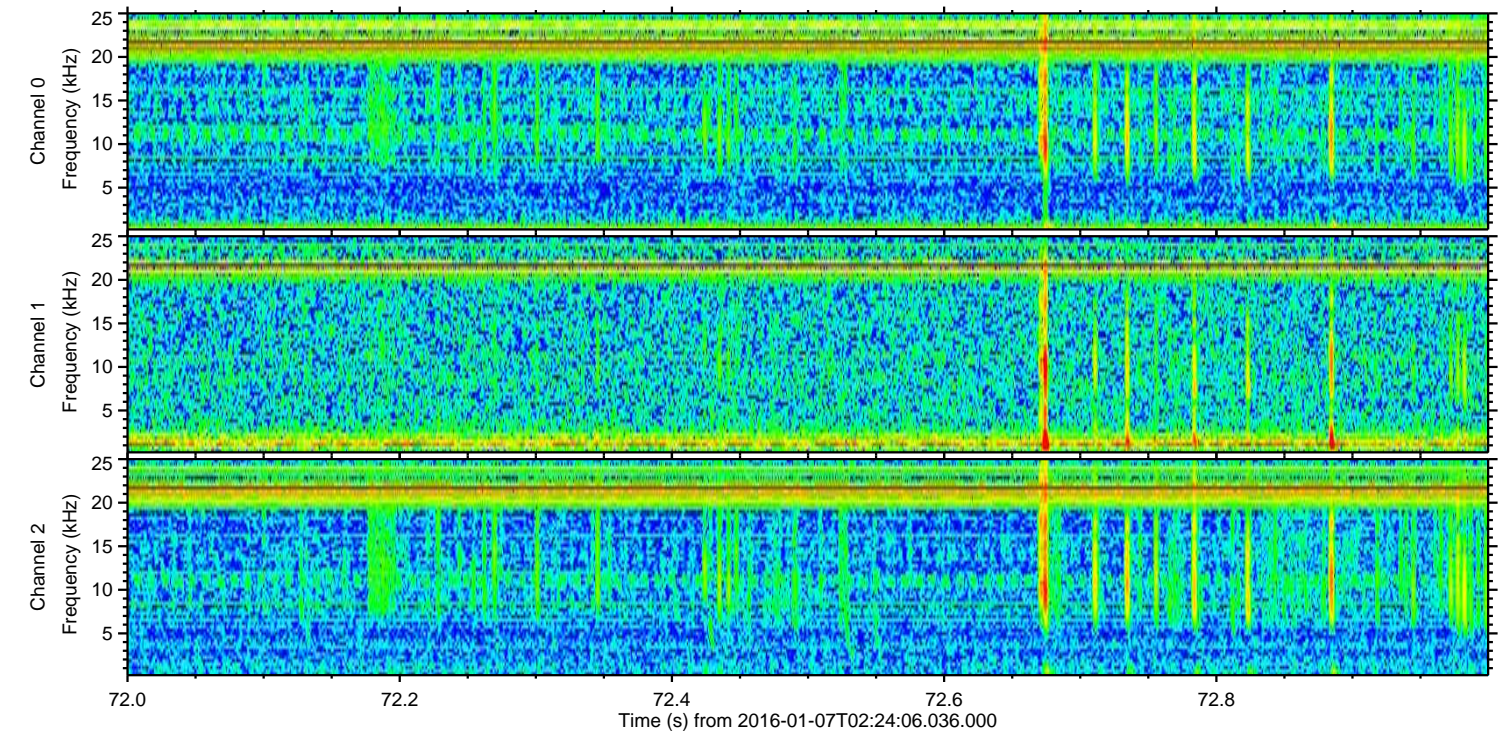
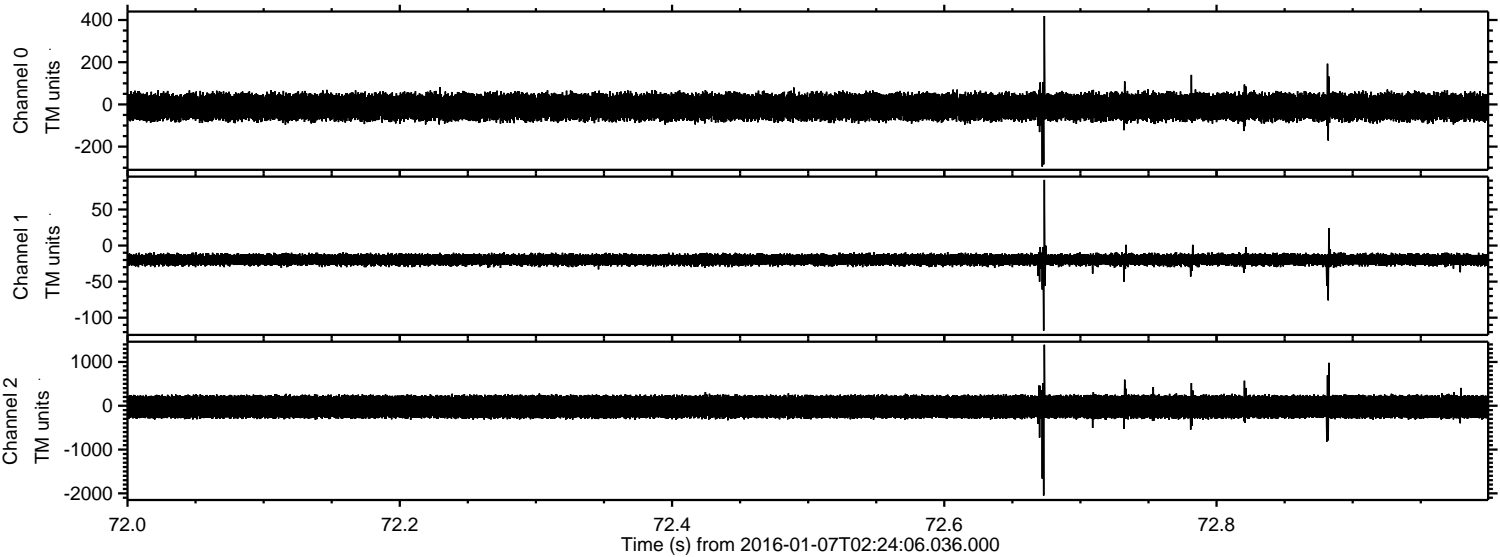


Processed Tue Mar 22 22:22:02 2016 by ELM ver.2012-10-06 from 001\_\_elm20160107\_022405\_\_dat00.bin





Processed Tue Mar 22 22:22:03 2016 by ELM ver.2012-10-06 from 001\_\_elm20160107\_022405\_\_dat00.bin



Channel 0  
mn: -295  
mx: 419  
 $\mu$ : -11.9  
 $\sigma$ : 34.7

Channel 1  
mn: -118  
mx: 91  
 $\mu$ : -19.6  
 $\sigma$ : 4.5

Channel 2  
mn: -2049  
mx: 1392  
 $\mu$ : -23.3  
 $\sigma$ : 156.2



Processed Tue Mar 22 22:22:04 2016 by ELM ver.2012-10-06 from 001\_\_elm20160107\_022405\_\_dat00.bin

